

Historic, Archive Document

Do not assume content reflects current scientific knowledge, policies, or practices.

62.17

527
F-36

FENNELL'S ORCHID NEWS

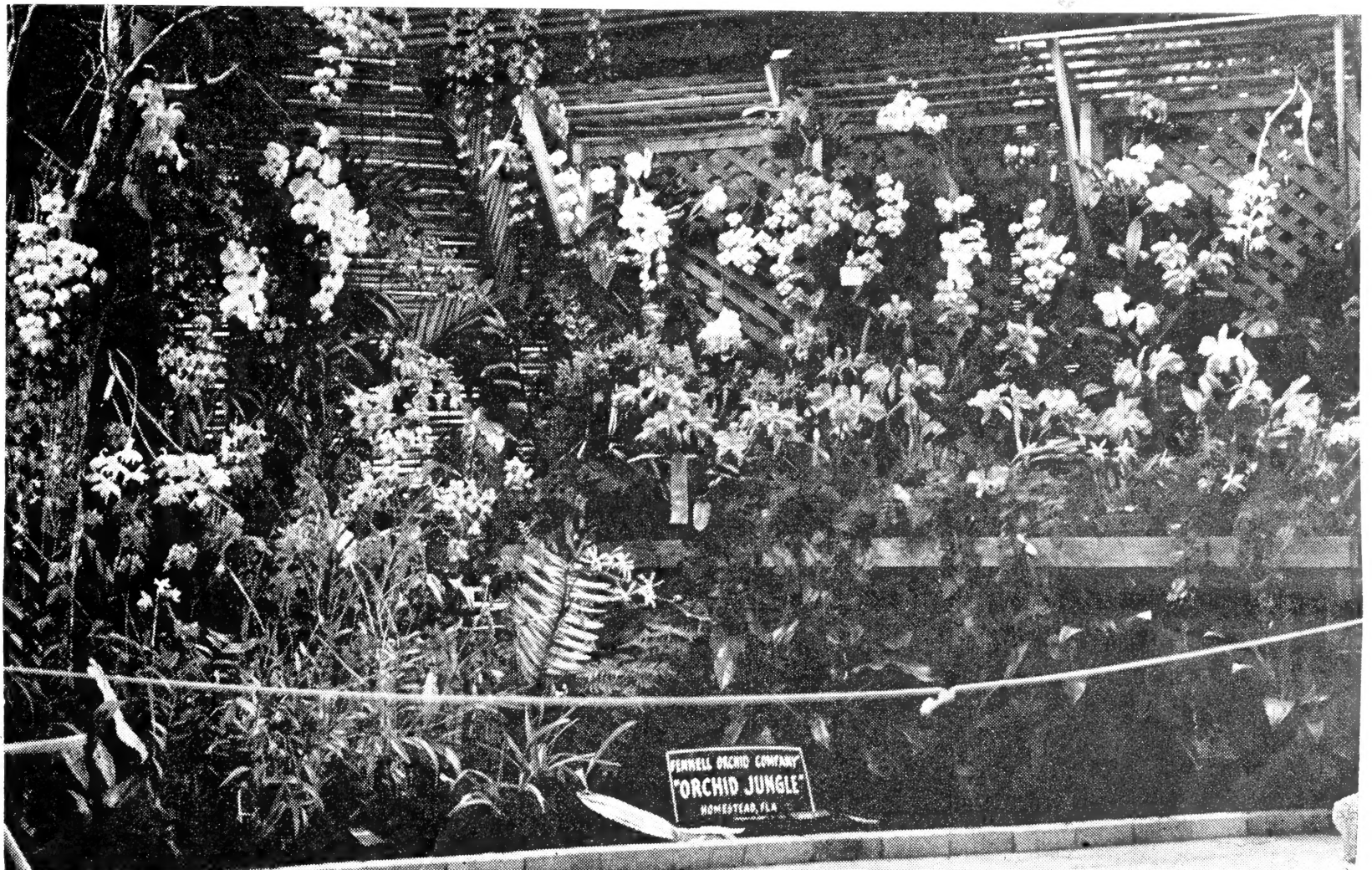
Published Quarterly by FENNELL ORCHID CO. ★ Route 1, Box 230, Homestead, Florida
Orchid Importers, Growers and Hybridists For Over 40 Years

L-1
CURRENT
AUG 1950
U.S. DISTRICT COURT
SOUTH FLORIDA
JUL 20 1950

Vol. 4

SUMMER — 1950

No. 2



OUR PRIZE WINNING EXHIBIT

Awarded the American Orchid Society trophy as the most meritorious exhibit in the Sixth Annual International Orchid Show of the South Florida Orchid Society, Miami, February 1950. Individual plants in the exhibit also won firsts for Best Vanda in the show (V. Velthuis) and Best Cattleya Species in the Show (C. Lueddemanniana Fennell's var. The exhibit also won first prize for the best 100 sq. ft. exhibit.

We showed 5 species and varieties of Dendrobiums, 2 of Cypripediums, 10 of Vandas, 2 of Bletias, 6 of Epidendrums, 10 of Phalaenopsis, 10 of Cattleyas, 2 of Spathoglottis, 1 of Aranda, 3 of Brassocattleyas, 2 of Laelio Cattleyas.

SOME MORE VANDAS

When we started talking of Vandas in these articles back in 1948 and when we started growing them seriously back in 1944 we were principally interested because we knew that Vandas were beautiful, easily grown, that there were many kinds and colors of them and that therefore they should be more widely grown but we didn't realize quite what we were starting.

Now we have thousands of plants and produce several hundred blooms per day and surprisingly the demand for these

plants and blooms still exceeds our supply.

From our viewpoint at present Vandas may even pass Cattleyas in popularity within the near future.

Vanda Mevr. L. Velthuis var. Sun-glow, for instance, when we showed it in our display at the 1950 South Florida Orchid Show, not only won the prize as the Best Vanda in the Show but attracted more attention than any other plant in our exhibit, and people have continued to talk about it. They are right of course as it is an extraordi-

narily beautiful and long lasting flower. The plant has also bloomed several times a year for us.

But while Velthuis and many of the Sanderiana hybrids are unexcelled for size and conformation, they are not as free blooming as are some of the other Vandas.

We are particularly interested in the ever blooming types such as V. Gilbert Triboulet, V. Flammerole, V. Dorothy Warne, V. Ann Kirch, V. Miss Van Deun, V. Cooperi, and of course our old friends, V. Miss Joaquim and its light form V. Rose Marie.

FENNELL'S ORCHID NEWS

From The Orchid Jungle
Published By

FENNELL ORCHID CO.
Homestead, Florida

CULTURAL HINTS

ORCHID GROWERS seem to be divided into two rather definite camps—the feeders and the non-feeders. Frankly I may be prejudiced—we feed all of our plants and we sell the fertilizer we use *but* I can't imagine growing orchids again without a definite feeding program.

By feeding we have reduced the time it takes us to bloom cattleya seedlings by nearly 50%, we have increased the size, intensity of color, and texture of our flowers very appreciably and we have more than tripled the number of flowers from our collection.

In addition we have found no bad effects as a result of the feeding we do.

Our plants are stronger, branch and grow more freely, and as a result have to be repotted more often but they also produce three times as many flowers as formerly.

We have made many careful experiments on types of fertilizer and on how to use them and we now have a very satisfactory mixture and procedure.

Our fertilizer is relatively low in nitrogen but high in potash, phosphorus, calcium and magnesium—the foods which build strength and flowering ability into our plants.

We have found the following facts to be of real importance in orchid feeding:

1st. Light—High light intensity is a must. Unless you give your plants all the light they can take without serious burning they cannot assimilate the extra food you feed them.

2nd Air—The orchids need plenty of warm fresh air—not a stuffy, humid “turkish bath” type of greenhouse, but a fresh, airy, moderately humid condition such as is found in an open forest in the summer. Fresh air is important in feeding as more carbon dioxide is used by the plants in their stepped-up growth.

Unless your summer greenhouse temperatures are within one or two degrees of the outside shade temperature during the middle of the day and afternoon, your houses are too hot and you should consider shade above the glass and more ventilators.

An Invitation

ORCHID JUNGLE—While we charge admission to the Orchid Jungle with competent guide service, for casual visitors, customers and members of any orchid society are admitted free. Just show the attendant at the gate your membership card or mention that you are a customer and give him your name.

3rd. Most Orchids—Particularly those with pseudobulbs—like to dry out between waterings and *do not like to be kept constantly moist*. Conditions vary but heavy watering once weekly is usually sufficient. The weekly application of fertilizer at this time is usually best. We often water with plain water first, then water on the fertilizer in the last ten minutes of the watering (we use overhead sprinklers which take 20-25 minutes to wet our plants down thoroughly). We also quite often give the plants one or two 5-minute sprayings with clear water within the week between the heavy waterings, depending upon the weather.

Under this system we have never had any accumulation of fertilizer salts on the top of the osmunda in our pots.

4th. Good roots are necessary if you want good growth—with or without food. High Solubility of the ingredients is important if you want good results from water application. Water application is the safest and easiest way to supply th fertilizer we have found. Regular applications are also important.

Fenorco Plant Food is made of the finest most readily soluble ingredients.

6th. Animal manures are dangerous to use on epiphytes and are relatively low in nutrients—they have invariably caused premature breakdown of the osmunda and loss of roots in our experiments. On terrestrials they have produced fast growth but shy flowering when used alone.

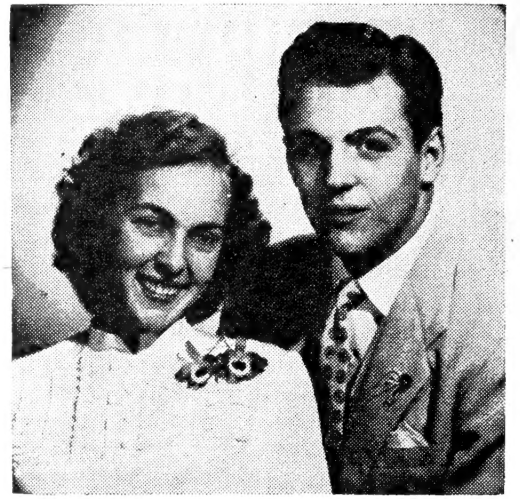
A FINE NEW DENDROBIUM

About four years ago we made a very interesting Dendrobium cross—D. Pauline x D. Phalaenopsis Dixon's variety. The first of these seedlings is now in bloom and it's a stunningly beautiful flower. Though the largest bulb is only about 7" tall it carries 6 flowers each 2½" wide with heavy texture and a very dark glowing violet-purple color.

Of course this first seedling to bloom may be the best or the worst of the lot but it is definitely an improvement on either parent.

Pauline is very strong and large growing with many spikes of numerous heavy textured dark flowers but the flowers are small, only about 1½" in diameter and the segments are narrow.

Dixon's variety of D. Phalaenopsis is not so strong growing as Pauline nor as floriferous but its flowers are broad petalled, large, very dark and handsome. The one fault of its flowers is



Mr. and Mrs. Thomas A. Fennell, Jr.
(Trudy and Tom, Jr.)

We have just had an addition to the family—March 8th was the momentous day when Trudy Hirsch Bower and Tom, Jr., were married; so now—after nearly 26 years of married life—Dorothy and I have a daughter—and a very lovely and fine daughter she is.

Trudy is interested in orchids, as well as a certain young orchid grower—and now has taken over the duty of operating the Orchid Shop in Burdine's Miami store, and for some strange reason she always sells more when she is there than I do on the days when I relieve her, but maybe her beauty and gracious way of meeting the public has something to do with it. In any case she's a very charming addition to our family and firm and we love her.

that they are somewhat lacking in texture.

Our seedlings of this cross are very strong and fast growing. The first bloomed at three years of age and we expect some very fine orchids here. The one that has bloomed has flowers intermediate between the two parents and all of them seem to follow Pauline in strength of growth.

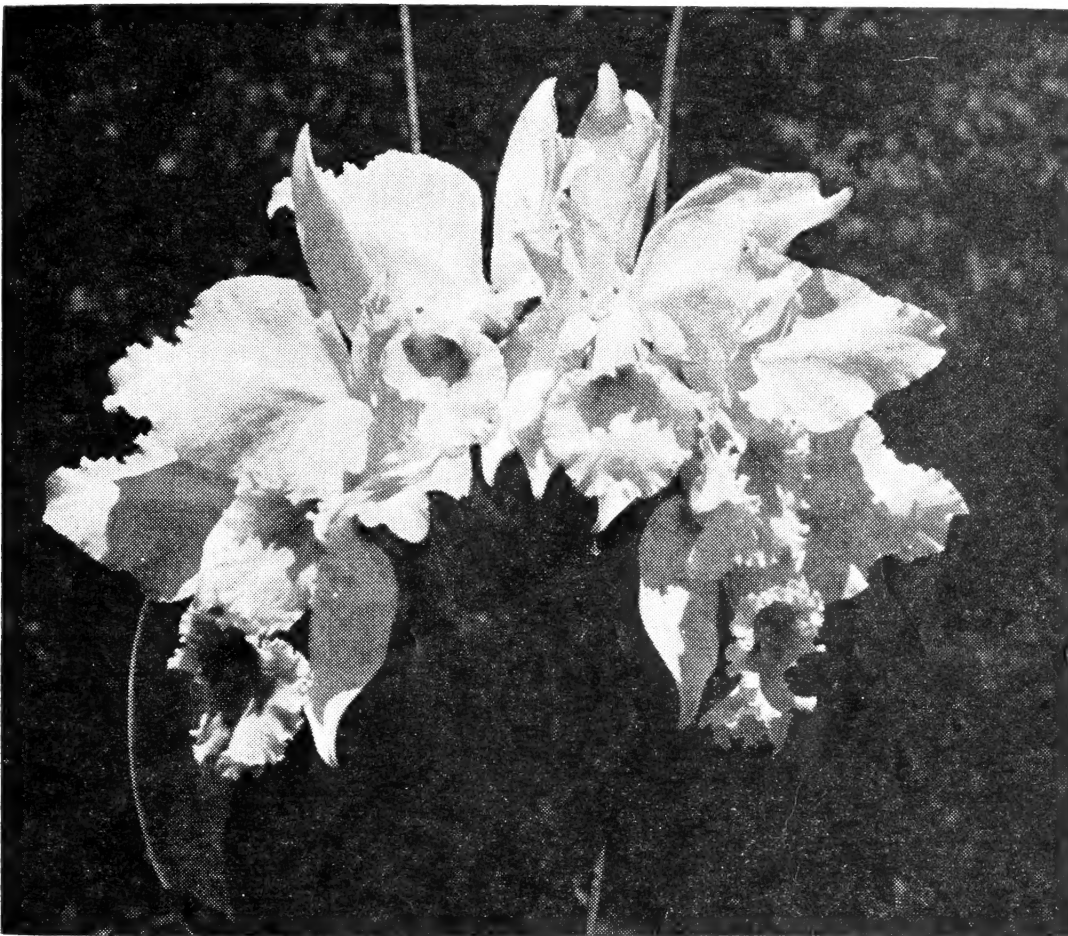
Dendrobiums are close behind Vandas in their increasing popularity. You'll see many more of them in the years ahead. We have had as many as 125 flowers per plant in one year—Pauline and Sander's Crimson, for instance, are in bloom almost the year round, they are good for cut flowers and add interest to your collection.

THE FORGOTTEN ORCHID

Feeling poetical the other day we would have quoted some poetry on orchids—if we had known any. But unfortunately we didn't.

Perhaps you have the advantage of us. Perhaps you know some. If so, send us a copy.

The best selection, in the opinion of the editor, T. A. F. Sr., will receive a prize—a nice WPL seedling in a 4" pot!



CATTELEYA ST. PETERSBURG var TRUDY FENNEL

This plant produced 17 flowers on its first four bloomings in 15 months. Seven on this spike, one was crowded out and faced the other way. It is now making seven strong new growths. Just another indication of what feeding can accomplish.

No. 85—*C. Bowringiana* var. *Purple Princess* x *Self*.—This is, we believe the best *C. Bowringiana* available. It is strong growing, producing clusters of from 12 to 25—2" - 2½" violet purple flowers in September and October. Easily grown. Elegant orchids in miniature.

8 to 10 plants 1" - 2" tall.....\$5.00

No. 225—*C. Joan Manda* x *C. trianaei**alba*.—A strong growing hybrid of two fine pure white parents. These plants are among the fastest growing seedlings we have.

8 to 10 plants 2" - 3" tall.....\$15.00

No. 223—*C. Mossiae* x *C. Harold*—Two fine parents used here, should make a medium to dark—dark lipped hybrid for the Easter-Mother's Day period.

8 to 10 plants 1" - 2" tall.....\$5.00

No. 164—*Lc. Aphrodite* x *C. Odalisque*—From this cross we expect a medium to dark lavender, dark lipped spring bloomer. Should be floriferous and beautiful. Strong growing.

8 to 10 plants 1½" - 2½" tall.....\$5.00

No. 218—*C. Guatemalensis* x *Schroderae* —A light, heavy textured large round *Schroderae* was used here on our *Guatemalensis*. Should be medium sized lavender suffused with orange flowers in clusters, late winter early spring blooming. An unusual color that attracts attention, has been a best seller with us.

8 to 10 plants, 2" - 3½" tall.....\$5.00

No. 133—*C. Mossiae Wagneri* x *C. Odalisque alba*.—Two of our finest and best pure whites were used here. Should be winter and spring blooming. Very strong growing.

8 to 10 plants, 2½" - 3½" tall \$15.00

No. 223—*C. Mossiae* x *C. Harold*—Two very good spring blooming parents—both dark with brightly marked lips. The *Mossiae* is an exceptionally fine shaped one. Should produce floriferous bloomers with large round dark flowers.

8 to 10 plants 1" - 2" tall.....\$5.00

8 to 10 plants 2" - 3" tall..... 7.50

No. 163—*Lc. Aphrodite* x *C. Mossiae*—A fine cross for the Easter-Mother's Day period, both parents carry from three to six blooms per spike as a rule. Both are popular for cut flowers as well as blooming plants.

8 to 10 plants 1" - 2" tall.....\$5.00

8 to 10 plants 2" - 3" tall..... 7.50

No. Z710—*C. Mossiae* x *Lc. Altesse*—This *Lc. Altesse* is one of our best stud plants, round flowers, large lip, dark, heavy texture, floriferous and strong growing. It bloomed three times last year. The *Mossiae* is one of our best, large and dark and round. This cross should be very fine.

8 to 10 plants 2" - 3" tall.....\$12.50

No. 213—*C. Bowringiana* x *C. Dupreana* —Another fine cross of our exceptional *C. Bowringiana* var. *Purple Princess*, with a very large fine *C. Dupreana*

which resembles a large and fine *C. gigas*. Should be a good dark spray orchid of medium size and heavy texture. Very strong grower.

8 to 10 plants 2" - 3" tall.....\$5.00

No. 177—*Lc. Aphrodite alba* x (*C. Harold alba* x *C. Hardyana alba*)—*Lc. Aphrodite* is an old standby, always admired. Strong grower, very floriferous, it blooms in April and May with white s&p and dark velvety lip. The other parent is a very large white s&p brilliant yellow and purple lip. Should produce good, strong floriferous, spring bloomer W. P. L.

8 to 10 plants 1½" - 2" tall....\$10.00

No. 181—*C. Admiration* x *C. Leda Brilliant*—Two of our best stud plants combined to make a cross for which we have the highest expectations. *C. Admiration* is the finest pure cattleya I have seen. *C. Leda* is a truly beautiful bronze hybrid with wonderful form and texture. Usually gives bright dark color to its progeny. We expect a fine winter - early spring bloomer, large and dark, heavy, brilliant purple lip marked with gold.

8 to 10 plants 2" - 3" tall.....\$15.00

No. 222—*C. Leda Bronze* x *C. Schroderae* One of our finest *Ledas*—a medium sized heavy textured round flower with a dark fine lip, and lavender suffused with gold s&p, was pollinated with our finest round heavy *Schroderae*, should be very fine, late winter and spring blooming.

8 to 10 plants 2" - 3" tall.....\$12.50

ORCHID CUT FLOWERS

Plenty of Fine Hybrid and White Cattleyas, Vandas, Rare Blue Vandas and Dendrobiums At All Times

You can now get all the finest quality orchid flowers you want at any time from us. We have a large and constant supply and can reach almost any point in the U. S. by air within 24 hours.

We sell either wholesale or retail quantities of the blooms, or made up corsages—if you have a large party or club function which you want to make particularly outstanding consider orchids to give it that exotic and extra touch.

Our prices for July through November are—

Cattleyas\$15.00-\$30.00 per doz.

Cattleyas made

into corsages 30.00- 50.00 per doz.

Pure white Cattleyas.... 4.00- 7.50 ea.

Pure white Cattleyas

in corsages 5.00- 10.00 ea.

Baby Vandas (4 doz. or

more) 3.00 per doz.

Baby Vandas in plastic

holders with 1, 2, or

3 flowers her holder

(4 doz. or more) 4.25 per doz. flowers

Hybrid Blue Vandas

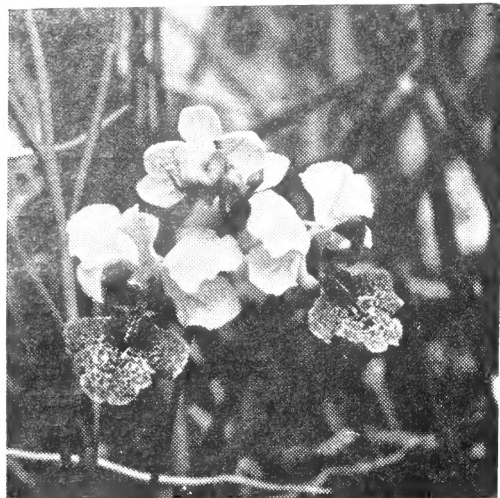
(when available) 15.00-25.00 per doz.

Hybrid Blue Vandas in

plastic holders or cor-

sages of 1, 2, or 3

blooms 18.00-30.00 per doz.



VANDA HOOKERIANA

One of the rarest and finest Vandas, delicate and hard to grow but one of the best parents in the Vanda tribe. Ever-blooming. This was crossed with *V. teres* to make *V. Miss Joaquim* and is the reason *Miss Joaquim* is so floriferous. We are using it in a number of fine crosses both in the *terete* and *semi-terete* groups. Sorry no plants of this for sale.

FENNEL'S ORCHID SEED LIST

No. 238—*Lc. Britannia Rubra x C. Mossiae*—This *Britannia* is extremely dark and has fine shape while the *Mossiae* is also dark, large and has heavy texture. Both are spring blooming.

No. 239—*C. Mossiae x Lc. Altesse*—(*Lc. Ernie Pyle*). Our finest dark *Mossiae* was used here with our beautiful *Altesse*. Should make a late winter, early spring dark, with wonderful texture, shape and color.

No. 240—*C. Guetamalensis x C. Schroederiae*—This should give small to medium sized *cattleyas* in clusters in March and April. Color should be lavender suffused with orange.

No. 241—*C. Speciosissima x C. Rajah dark*—*Rajah* has dark brilliant crimson purple color, large brilliant lip and heavy texture. The *Speciosissima* has very wide heavy petals and medium dark color. This should make a fine dark winter *cattleya*.

No. 242—*C. Mossiae x C. Belgica*—*Belgica* is a large medium dark heavy exhibition type *cattleya* and one of the best parents known while the *Mossiae* used is dark, heavy and large. Should make a fine winter-spring hybrid.

No. 243—*C. Speciosissima x C. Mossiae*—Should make a fine winter-spring bloom with beautiful shape and dark color. Probably a sprinkling of these will bloom throughout the year.

No. 244—*C. trianaei x C. Furnes*—*Furnes* is like a glorified *Mossiae* and the cross should be similar to a fine *Trimos*. Probably late winter blooming.

No. 245—(*C. trianaei x Lc. Dominicana*) *x Lc. Marinid*—*Lc. Marinid* has a dark glowing red-purple color that defies description. Size and shape excellent. The *C. trianaei x Lc. Dominicana* cross is deep velvety purple in color. Should make a very fine show dark.

No. 246—*C. gigas x Lc. Altesse*—*Gigas* flowers as soon as the new growth is completed while *Altesse* waits like *Mossiae*. Both parents exceptionally fine. This cross should bloom throughout the year and should be one of the best hybrids we have made.

No. 247—*C. gigas Frau Melanie Beyrodt x C. Dowiana aurea*—This cross makes *C. Hardyana alba* one of the finest and best June blooming crosses. Strong growing, has white or cream s&p with a glorious dark lip beautifully marked with gold. You can't go wrong here.

No. 248—*C. Fabianid x C. trianaei*—This *Fabianid* is large, heavy and very dark while the *trianaei* is dark, heavy and round. This should make a very fine dark for the Christmas season.

No. 249—*C. St. Petersburg var. Excelsior x Brassavola Digbyana alba*—*C. St. Petersburg var. Excelsior* is one of our very finest show quality pure whites while the *Brassavola Digbyana alba* was awarded the first prize in the 1949 International Orchid Show of the South Florida Orchid Society as the best orchid in the show other than a *cattleya*. This should make a very fine pure white *Brasso-cattleya*. Only a limited amount of this cross available.

Prices on All Cattleya and Vanda Seed

(Except No. 249)

Full Packets	\$12.00
Half Packets	7.00
Quarter Packets	5.00
No. 249—Half Packets	15.00
No. 249—Quarter Packets	10.00

DENDROBIUMS

D. UNDULATUM x D. VERATIFOLIUM—a rare hybrid—nice young plants.

In 2" pots.....\$5.00 Each

D. AINSWORTHIAE—lavender and pink hybrid, flowers in clusters on old stems, plants 8—10" tall.

In 3" pots.....\$7.50 Each

D. MOSCHATUM—yellow flowers in long sprays from old stems, plants 6—8" tall.

3" pots

D. FIMBRIATUM OCULATUM—bright orange flowers in long sprays, plants 8—10" tall.

3" pots

D. NOBILE—lavender and white flowers in clusters on old stems, plants 8—10" tall. In 3" pots.....\$7.50 Each

D. PIERARDII x D. SUPERBUM ALBUM—pendant plants with light lavender flowers. Seedlings in 3" pots, stems 3-5" long.....\$5.00 Each

ender flowers. Seedlings in 3" pots, stems 3-5" long.....\$5.00 Each

H 1—*D. SHIBATA x D. PHALAE-NOPSIS MAUNA KEA*—should produce long sprays of white or near white flowers. Strong young seedlings.

In 2" pots.....\$5.00 Each

H 1346—*D. NELLY SANDER*—a pure white hybrid of the *D. Formosum* group, plants 1½—2" tall.

In 2" pots.....\$5.00 Each

Dend. Phalaenopsis dark—Parents very dark and fine seedlings 6" - 8" tall in 3" pots

\$5.00 ea.

Dend. Nobile—A fine old favorite, plants 6" - 8" tall in 3" pots

3.50 ea.

10" - 15" tall in 4" pots

7.50 ea.

Dend. Moschatum var Calceolaria flowers more yellow than the type 7.50 ea.

Den. Louis Bleriot—A very famous and fine hybrid seedlings in 4" pots 6" - 10" tall

8.50 ea.

Dend. Phal. var. Hololeucum—Parents pure white, seedlings 6" - 8" tall in 3" pots

6.50 ea.

PEOPLE ARE FUNNY

Are you feeding your orchids?" Tom, Sr., asked a customer who was visiting the Jungle the other day. "Yes", she said, "I am feeding my *Phalaenopsis*. I haven't started feeding the *Cattleyas* yet." "Gee" Tom replied, "It's a good thing our Mothers didn't wait as long to feed us as some people do their orchids! We would have been a puny lot."



3. VANDA VELTHIUS var. Sunglow

(*V. Sanderiana x V. Miss Joaquim*)

Judged the best Vanda in the 1950 Sixth Annual International Orchid Show. Flowers large, heavy, long lasting, color lavender suffused with gold.

**FENNELL'S ORCHID
CATALOGUE 1950**

**A VERY FINE NEW
DENDROBIUM**

No. 173—*D. Pauline* x *D. Phaluenopsis*
Dixon's var.—*Pauline* is our strongest
growing *Dendrobium*, flowers dark
purple about 1½" in diameter 20—30
on long spikes borne in the fall and
spring. *D. Phal. Dixon's* variety is
the largest flowered darkest variety of
D. Phal. known. Strong growing
plants, should be very fine.

2½"—3" pots plants
4"—6" tall\$5.00 ea.

VANDAS

Some New Blues

No. 188—*V. Saphir var. Magnificia* x
V. Miss Joaquim—*V. Saphir var. Mag-*
nificia has round deep blue flowers 4"
—4½" in diameter. It is floriferous
and fairly strong growing, while *Miss*
Joaquim is the most nearly ever-bloom-
ing orchid known. These seedlings
should be strong growing, free flower-
ing with long spikes of blue flowers.
Semi-terete wants lots of light. Will
probably flower throughout the year.
Rare and fine.

2" pots plants 2"-3" tall.....\$5.00

V. Herziana x *V. teres alba*—This should
make a light blue *semi-terete* probably
flowering throughout the year. Rare
and fine.

3" pots plants 2"-2½" tall.....\$5.00

3½ pots plants 3"-3½" tall..... 7.50

V. Miss Van Duen—(*V. Miss Joaquim*
x *V. teres Andersonii*). Larger flower-
ers than *Miss Joaquim* with the same
free flowering habit.

Cuttings 10"-12" long, each.....\$7.50

V. Hookeriana x *V. Miss Joaquim*—15"
cuttings\$10.00 ea.

V. La Paloma alba—15"
cuttings 7.50 ea.

V. Ross Marie—15" cuttings 7.50 ea.

V. Miss Joaquim—15" cuttings 3.50 ea.

V. Mevr. L. Velhuis — 5 to 6" tall 3"
pot 10.00 ea.

6 to 8" tall 3" pot 12.50 ea.

10 to 12" tall 4" pot 15.00 ea.

V. Iwasaki x *V. Sanderiana*—Should be
fine yellow or terra cotta color 6 to
8" tall 3" pots 15.00 ea.

V. Gilbert Triboulet—Fine everblooming
blue—10-15" tall flowering size 5 to
6" pots 35.00-50.00 ea.

V. Saphir—8 to 12" tall 4 to 5"
pots 20.00-30.00 ea.

V. Flammerole—10 to 15" tall flowering
size very fine dark lavender-blue, 5"
pots 35.00-50.00 ea.

V. Dorothy Warne—15"
cuttings 15.00 ea.

V. Anne Kirsch—12" to 15"
cuttings 15.00 ea.

V. Madame Dinger—12" - 15"
cuttings 15.00 ea.



CHYSIS BRACTESCENS

The flowers are 3 to 4 inches wide,
nearly round and of heavy texture.
They are borne on short spikes which
are made at the base of the new growths.
They flower in April and May for us.

The beautiful white flowers are fra-
grant.

The plant is of easy culture, give
it about 50% sunlight, grow it with
the cattleyas and feed and water it as if
it were a cattleya.

We grow most of our plants on chunks
of tree fern fiber and suspend them from
the roof of one of our lath-houses where
they get all the local rain in addition
to our waterings.

Their long club-shaped bulbs and thin
plicate leaves are naturally pendant

and we believe they grow best when
allowed to hang down as nature in-
tended. In their native forests they
hang down from the limbs of the trees
and make a very decorative appearance.
They make the woods seem to be literally
dripping with orchids.

I think I have received more pleasure
collecting these plants than any I have
ever found. Several years ago I had the
pleasure of visiting their native hills in
Mexico and of collecting them together
with some plants of *Laelia anceps* in al-
most exactly the same spot my father
found them some 60 years earlier.

If you want an easily grown, easily
flowered white orchid don't pass up
the *Chysis*. We have them in several
sizes and prices.

**PHALAENOPSIS
The Best Whites**

Phal. Winged Victory—One of the finest
and most famous pure whites. Flower-
ers round, large and heavy textured.

2½" pots 3"-3½" longest dimension
across leaves\$5.00 ea.

2" pots 2"-2½" longest dimen-
sion across leaves 3.50 ea.

Phal. Doris—The most famous of all
Phalaenopsis. Flowers heavy large
and white, sometimes suffused with a
faint pink blush in the center.

2" pots 2"-2½" longest dimension
across leaves\$3.50 ea.

Phal. Doris x *Phal. Elizabethiae*—Our
best pure white *Doris* back on its
Elizabethiae parent. Should be pure
white round heavy textured and fine.

4" pots 5" longest dimension across
leaves\$7.50 ea.

CHYSIS BRACTESCENS

3" potted plants 4 to 6" long \$3.50 ea.

Large plants on tree fern chunks,
bulbs 8 to 12" long—2-3 bulbs per
plant, ea.\$10.00

Still larger specimen plants on tree
fern chunks, 3-4 bulbs per plant,
each\$15.00

CATTLEYA SPECIES

These are strong, well established
plants of good types.

C. Trianaei, per lead\$ 8.50 ea.

C. Schroederiae, per lead 6.50 ea.

C. Mossiae, per lead 8.50 ea.

C. Mendellii, per lead 8.50 ea.

C. Lueddemanniana, per lead 8.50 ea.

C. Gigas, per lead 10.00 ea.

FENNELL'S ORCHID SEED LIST - SPRING 1950

CATTLEYA HYBRIDS

No. 901—*C. Enid alba*—One of the best winter-Spring whites. *C. Enid* (lavender type) blooms the year round, the *alba* form only late winter, early spring. Strong growing and heavy bloomer. Both parents very fine.

3" pots 4"-6" tall, ea.....\$6.00

3" pots 6" - 8" tall.....10.00 ea.

4" pots 10"-12" tall..... 17.50 ea.

4' pots 12"-15 tall in

sheath 25.00 ea.

No. *C. 163*—*C. Mossiae Reineckiana* x *C. Canhamiana alba*—Both parents large, strong, fine W. P. L. Both are heavy flowering types as well. Should produce many large heavy textured flowers and vigorous plants.

3" pots 8"-10" tall\$12.50 ea.

4" pots 10"-12" tall 17.50 ea.

No. *R 145*—(*Lc. Pamela* x *C. Gatton Ruby*) x *Bc. Hartland*. A very fine *Bc.* Several of these have bloomed and all have been very good. At least half have been show quality. Large, dark, heavy textured and ruffled flowers with a beautiful brasso lip.

3" pots 8-10" tall.....\$12.50 ea.

4' pots 8" - 12" tall.....17.50 ea.

4" pots 12"-15" tall in

sheath 25.00 ea.

No. *R211* - *C. Clotilde* x *Lc. Sam Houston*—Two fine dark parents should bloom over a long season and make a good commercial.

3" pots 8"-10" tall\$12.50 ea.

4" pots 10"-12" tall 17.50 ea.

No. *R149* - *C. Amantic* x *C. Angelina*—Very strong, vigorous plants show *Mossiae* influence in heavy bloom and rank growth, vary from medium light to dark, usually have brilliant purple and yellow throat.

3" pots 8"-10" tall.....\$ 7.50 ea.

4' pots 10"-15" tall..... 12.50 ea.

No. 904 - *C. Enid alba* x *C. Mrs. F.*

Knollys.—A fine white with colored lip cross for winter and spring. Both parents very fine, heavy textured.

2½" pots 4" - 6" tall.....\$6.00 ea.

3" pots 6" - 8" tall10.00 ea.

4" pots 8" - 12"17.50 ea.

No. 80—*C. Schroderae* x *Bl. Helen*.—Those that have bloomed have been very nice. Highly fragrant, cream colored s&p with a large lip gold throat with sometimes a touch of lavender, blooms Feb. - May.

3" pots 6"-8" tall.....\$10.00 ea.

4" pots 8"-12" tall 15.00 ea.

No. 311 - *L. Purpurata* x *Bl. Helen*.—*L. purpurata* blooms in May for us with a spray of 6-10 medium sized flowers, white s&p with purple throat, crossed with *Bl. Helen* which is a large, frilly *Brasso* with yellowish cream s&p and light lavender lip. Should be a nice spring bloomer, several on a stem.

2½" pots 4"-6" tall.....\$4.00 ea.

3" pots 6"-8" tall..... 6.00 ea.

4" pots 8"-10" tall 8.00 ea.

No. 81 - *C. Leda* x *C. Gigas Sanderiana*—One of our best seedings to flower recently—about half have bloomed so far. All are good sized, well held flowers of good texture. They vary from medium dark to very brilliant dark purple flowers with very bright purple lips and gorgeous golden eyes.

4"—pots 10"—15" tall.....\$17.50 ea.

4"—pots 10"—15" tall in

sheath25.00 ea.

TRAYS

As we have reported previously we have discontinued the use of 1¾", 2" and 2½" pots and use in their stead trays 2" x 6" size which hold 8 - 10 strong young plants. When we take our plants out of the trays they are ready for 3" and 4" pots.

The 1" to 2" plants in trays are the

equivalent of 1¾' pot plants; while the 2" to 3" plants are strong 2½" pot plants. Each size are well established in the trays and can go 6 to 8 months before a shift will be necessary.

Don't confuse these tray grown plants with community pot plants. These plants are much heavier than plants ever become in community pots as they have plenty of room and root room. They are heavy, stocky plants better than most 1¾" to 2½" pot plants.

These are all fine crosses and are priced very low when their size and the quality of their parentage is considered. Try a few, we know you'll be pleased with them, they're really a very great value.

No. 196—*Lc. Altesse* x *C. Marstoni*—Two of our finest late winter early spring bloomers. *Marstoni* is like a large dark *Mossiae* while *Altesse* is a heavy beautifully proportioned massive flower with a very brilliant lip. We expect some very fine plants from this cross to bloom in the difficult February - March season.

8 to 10 plants 1½"-2" tall.....\$10.00

No. 216 - *Lc. Altesse* x *C. Mendellii*—This *Mendellii* is very large and fine with a deep brilliant lip and light s&p. The *Altesse* is heavier textured more massive and equally fine in color. Should make a beautiful Easter-Mother's Day hybrid.

8 to 10 plants 1"—1½" tall....\$10.00

No. 204—*C. Enid* x *C. Guatemalensis*—A large dark *Enid* was crossed with our brilliant lavender-suffused-with-orange *Guatemalensis*. Should make a dark, free flowering medium sized flower some of which will show orange tints. Probably winter and spring blooming.

8 to 10 plants 1" - 1½" tall.....\$5.00

No. 139—*C. trianaei alba* x *Blc. Dorothy Fennell alba*—This *trianaei* has pure white s&p with a faint trace of pink in the lip, it is large wide petalled and heavy. The *Dorothy Fennell* is our var. *Perfection* which has large heavy round pure white petals and a large frilled lip heavily marked with gold but with only a trace of pink. These should be very fine.

8 to 10 plants 1½" - 2" tall....\$10.00

No. 123—*Blc. Dorothy Fennell* x *C. trianaei dark*.—This cross should make a very fine dark *Blc* which should bloom in the Christmas and mid-winter season. Both parents large, fine, heavy textured dark, strong growing.

8 to 10 plants, 1" - 2" tall.....\$15.00

No. 72 - *C. Portia dark* x *C. Monarch large dark*.—This *Portia* is dark violet-purple in color and large for its type producing 5 to 6 flowers per cluster. The *Monarch* is large, very dark, very heavy textured, long lasting and free flowering. Should make a medium sized very dark fall and early winter *cattleya*.

8 to 10 plants 1" - 2" tall.....\$15.00



VANDA TERES AT THE ORCHID JUNGLE

Var. *Andersonii* 15" Cuttings — \$3.50 ea.



ORNAMENTAL CONSERVATORY AND HOUSE PLANTS

Left—*Monstera Deliciosa*; Center—*Philodendron Rubens*; Right—*Philodendron Hastatum*; Right Upper—*Philodendron Cordatum*.

All of these plants will grow well in the house and add a nice background for your orchid flowers. Minimum shipping order \$5.00.

Cissus discolor—A very beautiful vine. Leaves ovate, acuminate deeply veined on top with violet, underneath purple. A very fine hanging basket plant. Young plants in 4" pots.....\$1.50 ea.

Fittonia argyrea—A beautiful ground cover for beneath the benches, for use in pots, baskets or terraria. Oval leaves green veined in white about 3" - 4" long. 3" pot plants.....\$1.00 ea.

Fittonia Verschaffeltia—Like the above but stiffer, heavier leaved and slower growing, leaves veined in bright rose. Rare. 3" pot plants.....\$1.50 ea.

Pothos aurea—The old standby. Sometimes called "variegated Philodendron" leaves heart shaped green with irregular yellow markings. Strong grower in the house. 3" pot plants 6" - 8" long. 50c ea.

Pothos Marble Queen—Like the above, leaves beautifully marbled with white, not as fast growing as aurea. 3" pot plants 3 - 5 leaves.....75c ea.

Philodendron cordatum—The Philodendron most generally seen, leaves 3" - 4" long heart shaped, easily grown. 5 - 6 plants per 4" pot, plants 8" - 12" long. \$1.25 ea.

P. cordatum variegated—Same as above but leaves marbled with light green and white. Rare. One plant per 3" pot, 3 - 4 leaves.....\$1.50 ea.

P. Hastatum—One of the larger leaved types, leaves arrow shaped 8" - 12" long, 4 - 6 leaves per plant, 5" pot.....\$2.50 ea. Larger plants with bigger leaves 5 - 7 per plant, 6" pots.....\$5.00 ea.

Monstera deliciosa—The most decorative leaves in the whole aroid family. Leaves up to 4 ft. long, deeply indented and punctured with a very interesting pat-

tern. Makes a very fine house or conservatory plant.

Several sizes of plants from—
4" pots\$3.50 to
8" pots\$15.00 ea.

Spathyphyllum floribundum—Another very beautiful aroid. Leaves long and shiny, flowers profusely in May-June with beautiful white bracts something like small cala lillies. Takes house conditions better than any other plant we know. 4" pot plants.....\$2.50 ea.

Bromeliads—We have a grand mixture of these interesting "air plants" all of which bear beautiful flower spikes and have attractive foliage. None are named varieties but we can choose small or large varieties for you. They grow exceedingly easily in the house, just keep the vase-shaped center of their leaves filled with water. Please state whether you want the large (15" - 25" tall) or the small (8" - 15") type. Per plant\$1.50 ea.

AFRICAN VIOLETS

(*Saintpaulias*)

We have a large assortment of African Violets and can furnish you with nearly any variety you may desire.

At the moment we can furnish the following varieties in 3" pots at \$1.25 each. Minimum order \$5.00

DARK BLUE

Blue Boy, Blue Girl, Dupont Blue, Mentor Boy, Vulcan

LIGHT BLUE

Blue Eyes, Sailor Boy

LAVENDER

Dupont Lavender, Red Head, Amethyst, Bicolor

PINK

Pink Lady

WHITE

White Lady, White Water Lily

If you want some particular variety not listed we probably have it and can furnish it if you will let us know your desires.

OUT OF THE ORDINARY

Among orchids we have had in bloom during the last month which merit more than casual attention have been *Brassavola digbyana alba* which took a first prize in Fifth International Orchid Show in Miami in February 1949. *C. Lueddemanniana* which took first prize for the best *cattleya* species in the 1950 show, a specimen plant of D. Sanders' *Crimson dark var.* which won a Certificate of Cultural Achievement in March from the South Florida Orchid Society, *Renanthera Storei*, with a gorgeous spike of red blooms, a plant of *C. gigas* with two spikes of seven flowers each and another spike of four in a 7" pan, *Vanda Dearei* Cyp. Mme. Martinet with two pink flowers, *C. Superba* with 11 brilliant blooms on 3 spikes, several B200s with 4 "fancy" blooms per spike, *Ble. The Baroness*, two fine varieties of *Laelia tenebrosa*, *Aerides odoratum*, *D. Formosum Giganteum*, *Renanthera coccinea*, *Vanda Merrillii*, *V. Hookeriana*, and many new and as yet unnamed *Vandas* and *Cattleyas*.



Left to Right—No. 1—African Violet (*Blue Boy*) in 3" pot as regularly supplied. No. 2—African Violet (*Amethyst*) in Haeger Pottery Planter. No. 3—*Fittonia Argyrea* in 3" pot. No. 4—*Fittonia Verschaffeltia*.

NEW DEPARTMENTS



Two strong young plants from a tray—Ready for 3" pots—Notice the two strong growths on each another result of regular feeding with FENORCO PLANT FOOD.

FENORCO HYDROPONIC PLANT FOOD

If you haven't tried this fertilizer on your orchids do so now.

Fenorco Plant Food is the result of years of careful experiments on thousands of plants in our collection.

When used according to directions it is perfectly safe for all kinds and ages of orchids and other plants. Our experiments show that it definitely increases growth and the number of flowers per plant as well as the size and texture of the flowers.

Give your plants a chance to do their best—feed them regularly with Fenorco Plant Food.

Try 5 or 10 pounds today.

Prices:

- 1 lb.....\$1.00, postage and packing 50c
- 2 lbs. 4 oz.\$2, postage and packing 80c
- 5 lbs. postpaid in U. S.....\$ 4.25
- 10 lbs. postpaid in U. S..... 8.00
- 20 lbs. postpaid in U. S..... 16.00

We do not advise shipment of less than five pounds as the postage and packing charges are out of proportion to the value of the material.

Special prices on larger quantities.

Dealerships are open in many localities.

We are offering Fenorco Plant Food primarily as a service to our customers. Orchids are grown without feeding and while we think feeding advisable we suggest that you try it cautiously at first. We did and it works for us.

Have you sent us your subscription to the "ORCHID NEWS"? If not, send us your \$1.00 today, or a year's subscription free with order of \$10.00 or more.

We are introducing with this issue of the NEWS two new departments—Books and Ornamental Conservatory Plants for the orchid collector.

We will keep our book offerings down to a few that we feel are up to date and worthwhile for the amateur or professional grower. We will review each book we feel is worth offering as it comes along. In this issue we review three recent additions to the list.

Gardening in Your Window

By Jean Hersey

This is a delightful, non-technical, how-to-do-it book on window gardening. It describes many novel ways of growing beautiful plants in your home and tells you a number of interesting stories about these plants.

It has a whole section of some 36 pages devoted to orchids and among other things it shows you how, including diagrams and lists of materials, to build your own Orchidarium in your window for approximately \$25.00.

I feel that Mrs. Hersey has written a very fine and charming book on indoor gardening. For orchid growers it is essentially a book for the beginner.

Fascinating illustrations make you want to start window gardening.

Price postpaid\$3.00

Orchids Are Easy to Grow

By Harry B. Logan and Lloyd C. Cosper

This is one of the two best books to date for the serious orchid grower, whether he be amateur or professional. Its chapter on nutrition is particularly good as are its general directions for orchid culture.

It impresses me as being a modern and effective work on orchid culture. It is easily read and practical in its approach to most of our problems. Profusely illustrated in both black and white and in color.

Price postpaid\$6.00

HAVE YOU TRIED FENORCO PLANT SPRAY?

It's the easy and proven way to keep your plants clean. Dilutes 48 to 1.

Gallons.....\$15.00 Quarts.....\$5.50 Pints.....\$3.50 Postpaid

HOME ORCHID GROWING

By REBECCA T. NORTHERN

A delightfully written book particularly slanted at the beginner who, at least at first, intends to grow his plants in the home. Mrs. Northern's approach to the problem of growing orchids in one's home is thoroughly practical and completely devoid of the usual mysterious hocus pocus that many writers seem to use when writing of orchid culture.

She is the wife of Henry T. Northern, Plant Physiologist and Professor of Botany at the University of Wyoming and throughout her book she takes great care to make as easily understood as possible the scientific background on which modern orchid culture is based.

This is the other "Best Modern Book on Orchids". It is particularly good in treatment of Diseases, Pests and the "home" culture. Its illustrations on "how to do", potting, etc., are extremely fine. Profusely illustrated in black and white and in color.

Give these for gifts!

Price Postpaid \$6.00

"HOW AN ORCHID DRESSES YOU UP"

A friend of ours has an ambitious wife, who, at the age of fifty, has gone back to the University to get a degree.

Last winter we gave her a C. Speciosissima bloom about the time of her mid-term exams.

She perched the large lavender bloom on top of her black curls, a little left of center.

"How an orchid dresses you up" her husband exclaimed in surprise. Pleased by this response Judy decided to wear the bloom during exam week, hoping it would boost her morale.

This frivolity called forth remarks from both instructors and fellow students, tension evaporated and Judy came through with high marks in all her courses. Her husband was so pleased that he now considers an orchid a "must and all finals bring a request for a large orchid bloom."

SEC. 34.66 P. L. & R.

Fennell Orchid Company
Route 1, Box 230
HOMESTEAD, FLORIDA

Librarian
U. S. Dept. of Agriculture
Washington,
D. C.

POSTMASTER: If undeliverable or address has been changed notify sender on Form 3547, postage for which is guaranteed. May be opened for postal inspection.

