

## **Historic, Archive Document**

Do not assume content reflects current scientific knowledge, policies, or practices.



62.43 Index\*

LIBRARY  
RECEIVED

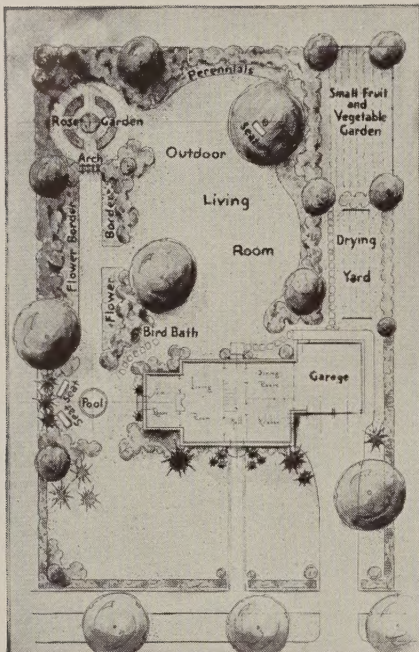
★ MAR 30 1950 ★

U. S. Department of Agriculture

# Home Landscapes

**SPRING 1950**

Holm and Olson  
Saint Paul, Minnesota



A landscape plan will show you just what and where to plant.

REAL BEAUTY IS THE RESULT  
OF CAREFUL PLANNING

Let  
HOLM and OLSON  
Help You Plan

That's Part of Our Service

## How We Serve You!

**WHEN TO ORDER.** Try to make up your order and send it in soon after this catalog reaches you. Early orders enable us to reserve for you the plants wanted and to give you the first selections.

**Your order will be shipped just when the weather is most favorable** and at just the right time for planting.

**How to Order.** Send in your orders by whatever means you prefer and we assure you of prompt, careful attention. For your convenience our order blank is placed in this catalog, ready for your use.

**Give Shipping Instructions.** Tell us how you want shipments made; whether by Freight, Parcel Post (suitable only for small packages) or Express, and indicate any special routing. We recommend Express as most advantageous and desirable excepting on heavy, bulky shipments. When not instructed we will use our best judgment.

**No Packing Charge.** Catalog prices are all based on stock F. O. B. St. Paul and no charge is made for packing. Twin-City deliveries are made to any St. Paul or Minneapolis address.

**Terms.** Cash with order is expected and money should be sent by check, post office order or bank draft. If credit is to be arranged please advise us in ample time and furnish the usual business references. All accounts are due by the 10th of the month following date of purchase.

**PARK NURSERIES, HOLM & OLSON**—Members of the American Association of Nurserymen, Minnesota State Nurserymen's Association and Twin City Nurserymen's Association.

**All Trees, Evergreens, Shrubs, Perennials and Seeds** are regularly inspected by the State Department of Agriculture, for which a certificate has been issued for 1950.

**FULL PLANTING INSTRUCTIONS** are sent with the acknowledgment of every order. Consult us freely for any further information you may need. We want the opportunity to help you and no expense will be spared to make every order we send you give entire satisfaction.

## The Liberal Plant Guarantee

**First.** You are assured that you will receive the best quality of live, healthy plants, properly packed to reach you safely. If any plant ordered proves untrue to variety it will be re-supplied without charge.

**Second.** We agree to re-supply any plants that may fail to become established the first season after planting at one-half the original catalogued purchase price. Requests for any such replacements must reach us before October 1st of that season and the account must be paid in full when due.



## "HOME LANDSCAPES" 1950

**T**O those of you whom we will be privileged to serve. This new catalog will tell you about the many choice Trees, Shrubs, Evergreens and plants, the growth and beauty of which you can enjoy right in your own home yard. The varieties are those that are adapted to the soils and climate of these North-Central States.

A guide to more attractive home grounds and gardens, dedicated to men and women who appreciate the refined pleasures and beauty attached to home landscapes, and who desire to develop the maximum amount of beauty, comfort and use at a minimum of expense and care.

### 54 Years In Business Reflects Service, Quality and Dependability

The Park Nurseries, Holm & Olson, have not only assembled the greatest commercial collection of plant materials and carried out the most outstanding gardening developments in this Northwest, but through the years have acquired a mass of information about plants and gardening that is of inestimable value. Our men have been trained in all branches of horticulture and landscape gardening. Our advice and services are at the disposal of our customers and friends at all times.

### Make Full Use of Our Landscape Service

1. **Twin City Service.** Our Landscape Gardeners are prepared to handle your landscape problems for you. It makes no difference how large or how small your grounds may be, we are prepared to render you this service.  
  
Careful planting, skilled gardeners, modern equipment and choice plants of dependable quality are the foundation of our complete service.
2. **For Our Out-of-Town Customers.** We help you **Plan-By-Mail**. Send us a sketch and measurements of your grounds. We will suggest ways of making your property most attractive.
3. **Special Out-of-Town Consultation.** For larger public and private properties a personal call by our Landscape Architects may be to your advantage. These special trips can be arranged by appointment. The charges are moderate.

**Your Inquiries Are Always Welcome**

**The Park Nurseries—Holm & Olson, Inc.**

*(Established 1895)*

20-24 West Fifth St.  
Phone Minneapolis Midway 2772

Saint Paul 2, Minnesota  
St. Paul Cedar 7335

Nurseries — 1200 St. Clair Ave.





## Evergreens For Permanent Planting

**E**VERGREENS form the background to permanent planting. Upon their quality, form and location depends much of the beauty and charm of your grounds and garden. Because of their permanence and dignity they have an individuality that brings them into a very intimate relation with those in whose garden they are planted. We will be pleased to help you select suitable varieties.

At the Park Nurseries the Evergreens are given particular attention to develop their full beauty and symmetrical growth. They are dug with solid root balls so that they can be moved without loss of vitality. Full planting directions are always given to assure you the best results. **COME TO THE NURSERY AND SEE OUR EVERGREENS.**

To help you realize how much growing-time you can save when you plant Evergreens of substantial size **WE GIVE THE AGE, AS WELL AS THE SIZE, OF THE OLDER TREES** along with their prices.

### Plant Northern Grown Evergreens

#### The Arborvitae—Thuja

**American Arborvitae** (*Thuja occidentalis*). 20 ft. A native evergreen with soft, lacy, fan-shaped foliage. The tree is bushy at the bottom and tapers toward the top. Stands trimming well.

2 to 3 ft., 8 yr.-----	\$ 4.50	3 to 4 ft., 10 yr.-----	\$ 7.00
4 to 5 ft., 11 yr.-----	12.00	5 to 6 ft., 12 yr.-----	17.00
6 to 7 ft., 13 yr.-----	\$22.00		

(Refer to colored insert.)

**Pyramidal Arborvitae** (*Thuja occidentalis pyramidalis*). 18 ft. An attractive, solid pyramid of soft green that retains its outline without shearing. Useful in foundation plantings.

2½ to 3 ft., 10 yr.-----	\$ 6.00	3 to 4 ft., 12 yr.-----	\$ 9.00
4 to 5 ft., 13 yr.-----	13.00	5 to 6 ft., 14 yr.-----	17.00

**Siberian Arborvitae** (*Thuja wareana siberica*). 8 ft. A symmetrical, compact evergreen of conical outline with broad base. Rich green leaves. Very useful in foundation plantings.

18 to 24 in., 10 yr.-----	\$ 6.00	2 to 2½ ft., 11 yr.-----	\$ 8.00
2½ to 3 ft., 13 yr.-----	10.00	3 to 3½ ft., 15 yr.-----	12.00

**Sherman Arborvitae** (*Thuja Occi. Shermani*). 15 ft. An upright tree with dense, compact, dark green foliage. New introduction. Used in groups and house plantings.

2 to 3 ft., -----	\$10.00	3 to 4 ft., -----	\$12.00
4 to 5 ft., -----	\$15.00		

#### The Cedars and Junipers

**Dundee Juniper** (*Juniper virginiana Hilli*). 15 ft. A new, and the most interesting Pyramidal type Juniper produced. Spring color bluish green changing to Plum color in fall. Growth thick and compact. Hardy and drought resistant.

2 to 3 ft., 8 yr.-----	\$ 9.50	3 to 4 ft., 10 yr.-----	\$13.50
4 to 5 ft., 11 yr.-----	16.75	5 to 6 ft., 12 yr.-----	21.50
6 to 7 ft., -----	\$28.00		

**Pfitzer's Juniper** (*Juniperus pfitzeriana*). 6 ft. A graceful, bushy evergreen suited to foreground plantings and particularly adapted to house foundation Evergreen groups. Foliage is an attractive greenish-hue. The branches are spreading and gracefully drooping. Stands the city's dust and soot well.

(Refer to colored insert.)

15 to 18 in., .7 yr.-----	\$5.00	18 to 24 in., 9' yr.-----	\$ 6.50
24 to 30 in., 10 yr.-----	8.00	30 to 36 in., 12 yr.-----	10.00
3 to 4 ft., 13 yr.-----	\$12.00		

**Silver Cedar** (*Juniperus scopulorum*, grafted varieties). 15 ft. A new, pyramidal type Cedar of striking beauty. Bright silvery-green foliage that holds its color all year through. The growth is compact and symmetrical making it a superb, ornamental evergreen. Very hardy and drought resistant.

(Refer to colored insert.)

2 to 3 ft., 8 yr.-----	\$ 9.50	3 to 4 ft., 10 yr.-----	\$13.50
4 to 5 ft., 11 yr.-----	16.75	5 to 6 ft., 12 yr.-----	21.50
6 to 7 ft., 13 yr.-----	\$28.00		

**NOTE.** The figures following the name show the approximate height at maturity.

# For All Year Around Beauty — Plant Evergreens

**Andorra Juniper** (*Juniper horizontalis plumosa*). 5 ft. spread. A dwarf spreading Juniper of silvery green, turning pinkish or purple in autumn, a distinct color which holds until Spring.

15 to 18 in., 7 yr.-----\$5.00      18 to 24 in., 9 yr.-----\$6.50

**Red Cedar** (*Juniperus virginiana*.) 25 ft. Useful wherever a pyramid of rich green is wanted. Probably the most useful of all evergreens because of its beauty, hardiness and adaptability. Can be kept trimmed and shaped to most any outline. Grows naturally to a tall pyramid with broad base.

30 to 36 in., 8 yr.-----\$5.50

3 to 4 ft., 9 yr.-----\$ 8.00      4 to 5 ft., 10 yr.-----\$12.00  
5 to 6 ft., 11 yr.----- 15.00      6 to 7 ft., 12 yr.----- 22.00

**Savin's Juniper** (*Juniperus sabina*.) 3 ft. A thickly branched, low-spreading shrub form. Hardy and very desirable wherever a low type evergreen is wanted. A native of Alpine mountain regions and thrives well under Minnesota conditions. Stands city atmospheric conditions.

15 to 18 in., 8 yr.-----\$5.00      18 to 24 in., 9 yr.-----\$6.50  
24 to 30 in., 10 yr.----- 8.00      30 to 36 in., 12 yr.-----10.00

**Welchi Juniper** (*Juniperus virg. Welchii*). A pyramidal type, growing naturally thick and dense, needing little trimming. Bluish green foliage.

3 to 4 ft.-----\$13.50      4 to 5 ft.-----\$16.75  
5 to 6 ft.-----\$21.50

## The Pines

**Dwarf Mugho Pine** (*Pinus mughus*). 3 ft. Very popular compact and dwarf-growing evergreen. Unexcelled for planting about the foundation lines or in front of taller evergreens. In the spring the new growth resembles miniature candles at the end of each branch.

15 to 18 in. spread, 8 yr. \$5.00      18 to 24 in. spread, 9 yr. \$6.50  
24 to 30 in. spread, 12 yr. 8.00      30 to 36 in. spread, 13 yr. 10.00

**Mountain Pine** (*Pinus montana*). 6 ft. Taller and more open growing than the Mugho pine. Desirable as a lawn specimen or in the foreground of taller varieties.

24 to 30 in., 9 yr.-----\$8.00      2½ to 3 ft., 10 yr.-----\$10.00  
3 to 3½ ft., 12 yr.-----\$12.00

(Refer to colored insert.)

## The Douglas Fir

**Douglas Fir** (*Pseudotsuga douglasi*). 40 ft. The large bluish-green needles are soft and fragrant. A dependable and handsome large-growing tree of conical shape. Splendid for lawn specimen or in the background of an evergreen group.

3 to 4 ft., 11 yr.-----\$ 8.00      4 to 5 ft., 13 yr.-----\$11.00  
5 to 6 ft., 14 yr.----- 14.00      6 to 7 ft., 16 yr.----- 20.00

## The Spruces—Picea

**Black Hills Spruce** (*Picea canadensis albertiana*). 30 ft. A native of the Black Hills and the hardiest of all spruces. The growth is a rounded, compact pyramid with branches low to the ground. Foliage is a bright fresh green. Stands dry soils and open exposures and is always an ornamental specimen.

18 to 24 in., 10 yr.-----\$ 5.00      24 to 30 in., 11 yr.-----\$ 6.00  
30 to 36 in., 12 yr.----- 8.00      3 to 4 ft., 13 yr.----- 10.00  
4 to 5 ft., 15 yr.----- 15.00      5 to 6 ft., 17 yr.----- 20.00

**Blue Spruce, "Colorado"** (*Picea pungens glauca*). 35 ft. The most admired of all evergreens because of its luxuriant, rich, silvery-blue needles. Outstanding as a lawn specimen. Our Blue Spruce trees have an unusually bright color and are full branched and solid specimens.

2 to 2½ ft., 11 yr.-----\$ 9.00      2½ to 3 ft., 12 yr.-----\$11.00  
3 to 3½ ft., 13 yr.----- 13.00      3½ to 4 ft., 15 yr.----- 15.00  
4 to 4½ ft., 16 yr.-----18.00      4½ to 5 ft., 18 yr.----- 21.00  
5 to 6 ft., 19 yr.-----\$27.50

**Colorado Spruce** (*Picea pungens*). 35 ft. An attractive, hardy spruce of even full-branched growth. Similar to the Blue Spruce but with less blue color. Grows easily in most any situation and makes a shapely, sturdy tree.

24 to 30 in., 11 yr.-----\$ 6.00      30 to 36 in., 12 yr.-----\$ 8.00  
3 to 4 ft.----- 10.00      4 to 5 ft.----- 15.00  
5 to 6 ft.-----\$20.00

## The Yews—Taxus

Interest in Yew trees is fast increasing. No family of Evergreens has such popularity in recent years as the Yews. This interest is easily accounted for. The answer is the outstanding merit of the trees in richness of color, variation of form, thriftiness of growth and adaptability to various soils and planting locations.

**Yew, Upright.** (*Taxus capitata*). 5 ft. A very ornamental, medium-size Evergreen with clean, waxy, dark-green leaves. Grows close, upright and compact. The fruit is a red berry.

2½ to 3 ft., 10 yr.-----\$21.00  
3 to 3½ ft., 13 yr.-----\$27.00      3½ to 4 ft., 15 yr.-----\$30.00

**Yew, Dwarf Japanese** (*Taxus cuspidata nana*). 2½ ft. A dwarf and very compact Yew with rich, dark-green foliage.

15 to 18 in., 11 yr.-----\$13.00      18 to 24 in., 12 yr.-----\$16.00





# Ornamental Trees

*Plant a Living  
Memorial—Tree*

## Bring Comfort and Beauty To The Home Grounds

**T**REES are indispensable. The attractiveness and comfort needed to complete a landscape setting is the proper placing of desirable Trees. They furnish the height to relieve flatness and bare appearance of lawn or house. They accent interesting views, act as backgrounds and form screens. We will gladly help you select suitable varieties for your grounds.

Since trees reach their maturity slowly you can save years of waiting by using larger sizes. That you may better judge the time saved by planting older stock we give both the sizes and the approximate age with the prices in our catalog listing. **COME TO THE NURSERY AND SEE OUR TREES.**

### The Ash

**American White Ash** (*Fraxinus americana*). 60 ft. A native tree of straight, trim growth. Splendid for lawn or boulevard. A clean tree not troubled generally by insects and dependably hardy through the north.

6 to 8 ft. ....	\$1.50	8 to 10 ft. ....	\$2.60
1½ in. diam., 7 yr. ....	5.75	2 in. diam., 8 yr. ....	7.50
2½ in. diam. ....	\$11.00		

### The Birches

**Cutleaf Weeping Birch.** 35 ft. A graceful white-barked, weeping tree. Tall and slender with branches bending to the ground. Delicately-cut leaves. Very popular for lawn planting.

5 to 6 ft. ....	\$3.75	6 to 8 ft. ....	\$5.50
-----------------	--------	-----------------	--------

**White or Paper Birch.** 40 ft. Upright and rapidly growing with grayish-white bark. Very attractive as a specimen or when planted near Evergreens.

5 to 6 ft. ....	\$2.00	6 to 8 ft. ....	\$3.00
-----------------	--------	-----------------	--------

### The Catalpa

**Western Catalpa** (*Catalpa speciosa*). 40 ft. Unusually large heart-shaped leaves and fragrant white flowers. An interesting lawn tree.

6 to 8 ft. ....	\$2.00	8 to 10 ft. ....	\$3.00
-----------------	--------	------------------	--------

### The Hackberry

**Hackberry** (*Celtis occidentalis*). 50 ft. A hardy, native long-lived tree with rough bark. The foliage somewhat resembles the Elm. Wide spreading tops giving good shade.

6 to 8 ft. ....	\$1.50	8 to 10 ft. ....	\$2.60
1½ in. diam. ....	4.25	2 in. diam., 12 yr. ....	5.75

### New Flowering Crabs

Flowering Crabs are the most important dual purpose trees. They are covered with beautiful blossoms in the Spring and loaded with bright colored fruits in the fall—a joy to the eye and a delight to the birds.

#### For Color in Early Spring

**Almey Crab. New.** White-starred, red flowers followed by hundreds of red fruits large as silver dollars. Starts bearing when young, is one of the showiest, dependable Crabs. Plant as specimen or background.

4 to 5 ft. ....	\$2.50	5 to 6 ft. ....	\$3.00
-----------------	--------	-----------------	--------

**Dolgo Crab.** 15 ft. A splendid lawn tree of symmetrical shape that is beautiful in both flower and fruit. Fruit is an intense bright red and covers the tree.

4 to 5 ft. ....	\$2.00	5 to 6 ft. ....	\$2.50
-----------------	--------	-----------------	--------

**Flame Crab. New.** A medium size, profusely-flowering tree. The brilliant red, edible fruits cover the branches from September to January.

4 to 5 ft. ....	\$2.00	5 to 6 ft. ....	\$2.50
-----------------	--------	-----------------	--------

**Hopa Crab.** 15 ft. A new ornamental tree with abundant rose-colored flowers that cover the branches in May. Strikingly ornamental red fruits that hang on until late fall.

4 to 5 ft. ....	\$2.00	5 to 6 ft. ....	\$2.50
-----------------	--------	-----------------	--------

**Red Silver Crab.** 12 ft. A new ornamental tree with silver cut leaved foliage, ornamental red fruit in abundance.

4 to 5 ft. ....	\$2.00
-----------------	--------

**Specimen Crabs, 7 to 8 ft., each \$5.00.**

**PLEASE NOTE:** In the description the figures following the name indicate the approximate height of growth.



**FOR SHADE, SHELTER  
AND LASTING BEAUTY  
ABOUT YOUR HOME**

*A Tree adds to the  
beauty of Nature  
and Comforts  
of Man.*



**Y**OUR grounds are not complete without the use of trees. They give elevation against the sky and produce shadows on the lawn; frame beautiful vistas and shut out undesirable views.

**The Horsechestnut**

**Horsechestnut (Buckeye)** (*Aesculus hippocastanum*). 40 ft. Five-fingered leaves. Covered in May with white flowers that stand up like candles. A most unusual and desirable lawn tree.  
6 to 8 ft. -----\$3.50      8 to 10 ft. -----\$5.00

**The Coffee Tree**

**Kentucky Coffee Tree** (*Gymnocladus dioica*). 40 ft. A tree gnarled and thickly branched, bark gray and rough. Develops a wide-spreading top. Foliage airy and graceful.  
6 to 8 ft. -----\$4.00

**The Elms**

**American Elm** (*Ulmus americana*). 60 ft. A gracefully-arching and wide-spreading tree that is unquestionably the most popular tree in America for shade, street and lawn planting. It is tough grained and fast growing which places it at the head of the "permanent" class of ornamental trees. Very hardy.  
6 to 8 ft. -----\$1.50      8 to 10 ft. -----\$2.75  
1½ in. diam., 7 yr. ---- 4.25      2 in. diam. 9 yr. ----- 6.00  
2½ in. diam., 11 yr. ---- 8.00      3 in. diam., 14 yr. -----12.00  
Larger specimen Elms priced on request.

Flowering Crabs on display.



**The Maples—for fall color**

**Norway Maple** (*Acer platanoides*). 50 ft. A handsome lawn and shade tree forming a perfect rounded head of broad, dark green leaves.  
6 to 8 ft. -----\$4.50      8 to 10 ft. -----\$6.00  
1½ in. diam., 8 yr. ---- 9.00      2 in. diam., 10 yr. -----12.00  
2½ in. diam., 12 yr. -----15.00

**Purple Leaf Maple** (*Acer plantanoides* Schwedler). 40 ft. Leaves are bright reddish-purple in spring toning to a deep purplish-green later. Highly prized for lawn planting.  
6 to 8 ft. -----\$5.50      8 to 10 ft. -----\$8.00  
1½ in. diam., 10 yr. -----10.00

**Silver Maple** (*Acer dasycarpum*). 60 ft. The leaves are light green with silvery green beneath. A native rapid-growing tree that succeeds anywhere.  
6 to 8 ft. -----\$1.50      8 to 10 ft. -----\$2.60  
1½ in. diam., 5 yr. ---- 4.25      2 in. diam., 7 yr. ----- 5.75

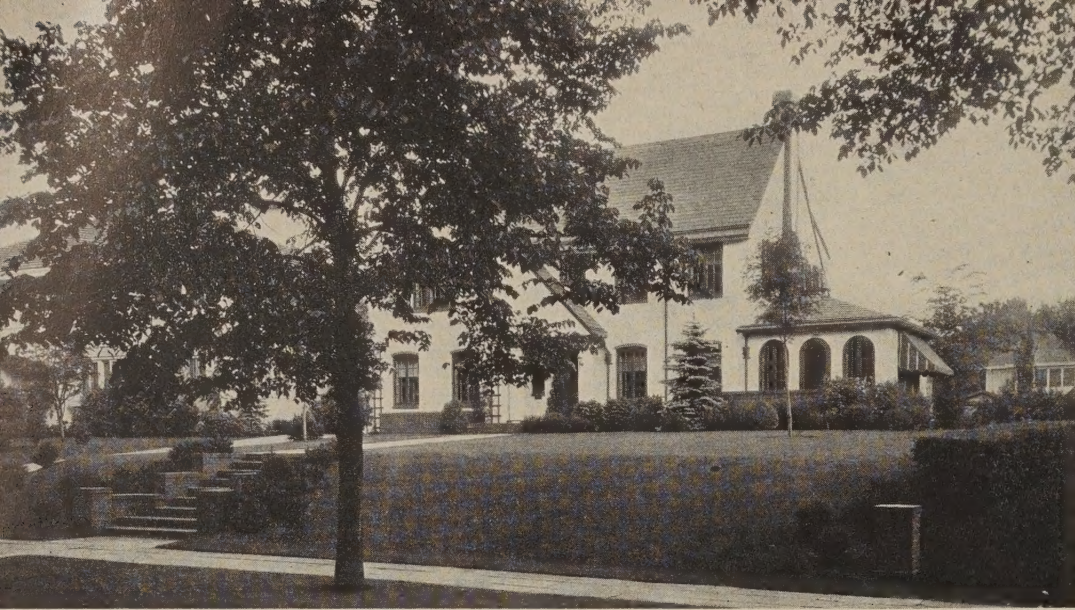
**Sugar Maple (Hard Maple)** (*Acer saccharum*). 70 ft. A symmetrical hardy native tree of great beauty. Forms a dense oval head of dark green leaves. Brilliant fall coloration.  
6 to 8 ft. -----\$4.50      8 to 10 ft. -----\$6.00  
1½ in. diam., 10 yr. ---- 9.00      2 in. diam., 12 yr. -----12.00

**Tatarian Maple** (*Acer tataricum* Ginnala). 15 ft. A very hardy, shrub-like tree for lawn specimen or with tall shrubs in the border. Fall coloring a bright red.  
3 to 4 ft., bushy -----\$1.35  
4 to 5 ft., bushy ----- 2.00

**NORWAY MAPLE "Crimson King"**  
**Acer Plantanoides Schwedleri Nigra.**  
(Plant Pat. No. 735.) A new Red Leaf Norway Maple from Europe, retaining its bright coloring throughout the summer. A magnificent tree giving color to the garden all summer.  
6 to 8 ft. -----Each \$12.00

**A GIFT CERTIFICATE FROM  
HOLM & OLSON**

To a friend for Christmas, Easter, Mother's Day and Birthdays. A living Tree, Evergreen, Shrub, Rose or Perennials will bring exciting and lasting joy.



# Plan To Plant

**A LIVING MEMORIAL**

**T**HE first and most important consideration in planting a living memorial tree is to be sure that it is located with foresight, and that every detail is considered before planting takes place.

## Ornamental Trees

Deciduous Trees are those that drop their leaves in winter. They are fairly rapid growing and are easily planted in the Spring. Deciduous trees are well suited for planting as lawn and street trees, they give shade in the summer and admit light in the winter.

### Linden—Basswood

**American Linden (Basswood)** (*Tilia americana*). 70 ft. A stately tree with broad, heart-shaped leaves; fragrant white flowers. Quite hardy, native; fine for lawn or street planting.

6 to 8 ft. ....	\$3.00	8 to 10 ft. ....	\$4.00
1 1/2 in. diam., 7 yr. ....	4.75	2 in. diam., 9 yr. ....	5.75

### The Mountain Ash

**Mountain Ash** (*Sorbus aucuparia*). 30 ft. White flowers in May followed by bright orange-red berries, which hang on for months. Very ornamental. Used as a specimen on the lawn or as an accent in the border.

8 to 10 ft. ....	\$4.00	1 to 1 1/2 in. diam. ....	\$5.00
------------------	--------	---------------------------	--------

**PLUM, Purple Leaf.** Please see under shrubs—page 12.

### The Poplars

**Bolleana Poplar** (*Populus bolleana*). 40 ft. Upright columnar growth with smooth, gray-green bark. Glossy, green leaves with downy white undersides. Makes a strong vertical accent.

6 to 8 ft. ....	\$2.00	8 to 10 ft. ....	\$2.50
10 to 12 ft. ....	3.00	2 in. diam., 6 yr. ....	5.00

**Lombardy Poplar** (*Populus fastigiata*). 40 ft. A tall picturesque, spike-like tree. Erect and pyramidal in form. Planted for landscape effect, as an accent or for screening purposes. Grows quickly. Seldom spreads over 8 ft. wide and can be used to advantage in places of restricted size between buildings, in small lawns and along narrow avenues.

6 to 8 ft. ....	\$1.50	8 to 10 ft. ....	\$1.75
10 to 12 ft. ....	.....	.....	\$2.50

### The Willows

**Golden Willow** (*Salix vitellina aurea*). 35 ft. A symmetrical, round-topped tree. Rapidly growing with branches of rich golden yellow. Very hardy.

6 to 8 ft. ....	\$2.00	8 to 10 ft. ....	\$3.00
-----------------	--------	------------------	--------

**Laurel-Leaf Willow.** 20 ft. Shiny dark green foliage resembling the laurel. The best willow for shade and screen.

6 to 8 ft. ....	\$1.75
8 to 10 ft. ....	2.50

**Niobe Weeping Willow.** 30 ft. Golden bark and graceful weeping branches that sweep the ground. A much-admired lawn tree.

6 to 8 ft. ....	\$3.00
8 to 10 ft. ....	4.00

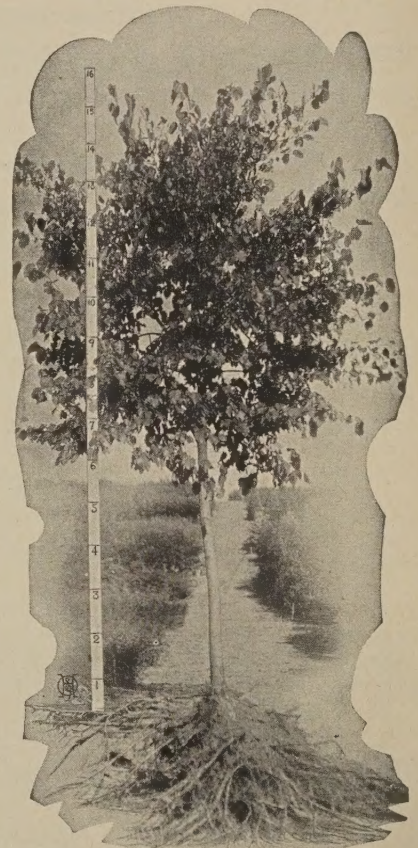
**Wisconsin Weeping Willow.** 30 ft. The hardiest of the weeping willows. Very desirable for a quick growing, ornamental lawn specimen. Dark colored bark.

6 to 8 ft. ....	\$3.00
-----------------	--------

### The Black Walnut

**Black Walnut** (*Juglans nigra*). The familiar nut-bearing tree. Grows slowly to majestic size.

6 to 8 ft. ....	\$3.00
-----------------	--------



A young tree from our Nursery. Note the well-developed top and the full fibrous root growth.

### A GIFT CERTIFICATE FROM HOLM & OLSON

To a friend for Christmas, Easter, Mother's Day and Birthdays. A living Tree, Evergreen, Shrub, Rose or Perennials will bring exciting and lasting joy.

# Vines

## FLOWERING - CLIMBING TRAILING



THE grace and beauty of well placed vines add charm to building, walls and trellis. Use them to soften harsh angles, to frame vistas and to screen undesirable views. Their flowers are produced in masses, important in providing color.

**BITTERSWEET** (*Celastrus scandens*). A hardy rapid-growing native climber with glossy leaves and often with red berries in the fall.  
Strong 2 yr. plants.....\$0.85    Extra size.....\$1.25

**BOSTON IVY** (*Ampelopsis veitchii*). A small-leaved ivy that clings to walls closely. Needs protection in Minnesota. Excellent for low walls or piers.  
Strong 2 yr. plants.....\$1.00    Extra size.....\$1.25

**DUTCHMAN'S PIPE** (*Aristolochia siphon*). The heavy, heart-shaped, close-growing leaves make this vine unexcelled for shade and screens.  
Strong 2 yr. plants .....\$2.00

**ENGELMAN'S IVY** (*Ampelopsis engelmannii*). Clings without support to brick, stone or plaster. Grows rapidly and is absolutely hardy. Crimson fall color.  
Strong 2 yr. plants.....\$0.60    Extra size.....\$0.85

**GRAPE, Hardy Beta**. A rapid growing vine with handsome foliage for pergolas, arbors and fences. Desirable fruit of tart flavor for eating or preserving.  
Strong 2 yr. plants .....\$0.55

**HONEYSUCKLE, Scarlet Trumpet** (*Lonicera sempervirens*). A graceful twining vine for small lattices. The bright, scarlet flowers are very attractive.  
Strong plants .....\$0.85

**MATRIMONY VINE** (*Lycium chinensis*). A good trailer to cover slopes. Large red berries follow the bright purple flowers.  
Strong 2 yr. plants .....\$0.85

### We Start Your Clematis Vines for You

For your best results we supply all Clematis in strong plants that are potted and in active growth when delivered. Remove the plant from the pot and plant the top of the earth ball three inches below the ground level.

### Clematis—Queen of Flowering Vines

**Purple Clematis** (Jackmani). The popular, large-flowering clematis with gorgeous flowers of velvety, violet-purple. Beautiful on a trellis or lattice.

(Refer to colored insert.)

Strong, potted plants .....\$1.50

**Red Clematis** (Mme. Ed. Andre). Large, rosy-carmine flowers.

Strong, potted plants .....\$1.50

**Sweet Clematis** (Paniculata). A dependable flowering vine for fence or lattice. In late summer it is covered with great sheets of fragrant, white starry flowers.

Strong, growing plants .....\$1.50

## Hedges

Add character and beauty to the garden. The uses are varied. A screen, a border, a wall of green.

**BARBERRY, Thunbergi**. Makes a neat low boundary. Small leaves. Red berries. Stands trimming.

12 to 18 in. ....\$35.00 per 100  
18 to 24 in. .... 45.00 per 100

**BUCKTHORN**. A very hardy and dense-growing ornamental hedge. Rich green leaves that are always attractive. Highly recommended.

2 to 3 ft., bushy plants .....\$40.00 per 100  
3 to 4 ft., bushy plants ..... 45.00 per 100

**HONEYSUCKLE** (Tartarian). A rapid growing tall hedge with pink flowers and red berries.

2 to 3 ft. ....\$55.00 per 100  
3 to 4 ft. .... 60.00 per 100

PLEASE NOTE—25 or more plants sold at the 100 rate.





## Flowering Shrubs

**B**EAUTY and utility in landscape planting comes from the free use of flowering shrubs. Their delicate coloring, fragrance and profusion of bloom entitles them to an important place in modern planting.

After the flowering season their colorful foliage, brilliant berries, together with their colored twigs and branches in winter add year round beauty and interest.

It is the softening grace of the dwarf and medium height shrubs when planted about the foundations that creates the transformation from bareness to beauty. The taller shrubs find their proper place as specimens in the lawn or in the border along the lot boundaries to give privacy or to screen out unattractive views.

A large area of our nursery and the skill of experienced gardeners is devoted to developing our shrubs into sturdy, handsome plants that will quickly bring attractiveness to your home grounds. Allow us to help select suitable varieties for your grounds. Come to the Nursery and see our flowering shrubs.

**PLEASE NOTE:** The figures following the shrub name show the approximate height of growth.

### Flowering Almond

**Double Flowering Almond** (*Amygdalus rosea*). 4 to 5 ft. A symmetrical upright shrub with a striking display of pink, rose-like flowers along the branches in early spring. One of the earliest shrubs to bloom. A white-flowering variety is also offered.

2 to 3 ft. -----\$1.50      3 to 4 ft. -----\$1.75

### Amelanchier (Juneberry)

**Juneberry** (*Amelanchier canadensis*). 15 ft. Good native shrub with white flowers early in spring and black fruit that attracts birds. A tall and desirable background shrub.

2 to 3 ft. -----\$1.25      3 to 4 ft. -----\$1.50

### Barberry

**Green Barberry** (*Berberis thunbergii*). 2½ ft. The most popular hardy dwarf shrub with low, spreading growth to form a dense bush. Red berries, brilliant fall foliage color. Grows most anywhere—in partial shade, sunny, moist or dry places. (For hedges please see page 7.)

12 to 18 in. -----\$0.60      18 to 24 in. -----\$0.75

### The New Red-Leaved Barberry

**Red-Leaved Barberry**. 2½ ft. Similar in growth to the Japanese Barberry but has rich, bronze-red leaves that hold their red color all summer. A bright contrast to other shrubs. Plant in full sun for best leaf color. One of the best of the newer plants.

12 to 18 in. -----\$1.00      18 to 24 in. -----\$1.25

**Koreana Barberry**. 4 ft. A new compact shrub, medium height, foliage dark green to bright red. Fruit red. A shrub recommended for planting about buildings.

18 to 24 in. -----\$0.80      24 to 36 in. -----\$1.00

### Buckthorn

**Buckthorn** (*Rhamnus cathartica*). 8 to 10 ft. Very dependable dense-growing shrub with lustrous leaves and black berries. A twiggy growth that permits of trimming to any desired form or outline. (See page 7 for hedge prices and sizes.)

2 to 3 ft. -----\$0.50      3 to 4 ft. -----\$0.75

### Caragana

**Caragana**. See Siberian Pea Tree, page 12.

### The True-Hedge Columnberry A New Ornamental Plant

This splendid shrub (Plant Patent No. 110) is a very hardy, graceful, native shrub that grows well in sun or shade. Its handsome, glossy leaves thickly cover its pyramidal form. Perfect for a low hedge or as specimen plants in the garden or shrub borders.

15 to 18 in. -----\$0.80 each

18 to 24 in. -----1.00 each

### Coralberry

**Coralberry** (*Symphoricarpos vulgaris*). 3 to 4 ft. A medium height, graceful shrub that grows well in sun or shade. Red berries cluster the ends of the branches in late summer.

2 to 3 ft. -----\$0.75      3 to 4 ft. -----\$1.00

### Cotoneaster

**Cotoneaster acutifolia**. QUINCE BERRY. 6 ft. A neat, clean shrub with dark, glossy green leaves. A dense-growing and highly ornamental bush all season with a striking, bright yellow fall coloration.

18 to 24 in. -----\$0.90      2 to 3 ft. -----\$1.25

3 to 4 ft. -----\$1.75

# Sturdy Varieties

FOR NORTHERN GARDENS

## Currants (Ornamental)

**Mountain Currant** (*Ribes alpinum*). 4 ft. Excellent, dense-growing, very hardy ornamental shrub. Stands shearing and will grow in shade. Probably the most generally useful of all the dwarf shrubs. (For hedges see page 7.)

15 to 18 in. -----\$0.75      18" to 24 in. -----\$1.10  
24 to 30 in. -----\$1.50

**Yellow-Flowering Currant** (*Ribes aureum*). 6 ft. A substantial, spreading bush with large, yellow, fragrant flowers in spring. Stands shade. A very popular old-fashioned shrub.

2 to 3 ft. -----\$0.75      3 to 4 ft. -----\$1.00

## Dogwood (Cornus)

**Golden Dogwood** (*Cornus siberica aurea*). 6 ft. Highly valued for its bright yellow branches in fall and winter and particularly attractive when planted near the red-barked variety. White flowers.

2 to 3 ft. -----\$0.75      3 to 4 ft. -----\$1.00

**Red-Twigged Dogwood** (*Cornus siberica*). 6 ft. A hardy, vigorous bush with bright coral-red branches which make the sturdy shrub attractive in all seasons. Strong and erect in growth.

2 to 3 ft. -----\$0.75      3 to 4 ft. -----\$1.00

**Variegated Dogwood** (*Cornus elegantissima*). 6 ft. The green leaves are striped and margined with white. Red colored bark. An unusual plant making a bright spot of color in the shrub group.

2 to 3 ft. -----\$1.75      3 to 4 ft. -----\$2.00

## Elderberry (Sambucus)

**Black-Fruited Elder** (*Sambucus canadensis*). 6 ft. The old-fashioned favorite with large clusters of fragrant white flowers and edible black fruit. A rapid-growing hardy shrub that stands partial shade.

2 to 3 ft. -----\$0.75      3 to 4 ft. -----\$1.00

**Cut-Leaved Elder** (*Sambucus nigra laciniata*). 6 ft. Lacy, fern-like leaves that make a pleasing contrast with other shrubs. The branches are spreading and gracefully drooping.

2 to 3 ft. -----\$0.75      3 to 4 ft. -----\$1.00

**Golden Elder** (*Sambucus aurea*). 7 ft. A handsome wide-spreading shrub with bright yellow leaves all season. It shows its brightest color when planted in a sunny spot.

2 to 3 ft. -----\$0.75      3 to 4 ft. -----\$1.00

**Red-Berried Elder** (*Sambucus racemosa*). 7 ft. Big clusters of bright red berries in July. A large native shrub of spreading growth.

2 to 3 ft. -----\$0.75      3 to 4 ft. -----\$1.00

## Euonymus (Strawberry Bush)

**Euonymus alatus**. WINGED STRAWBERRY BUSH. 6 to 8 ft. The bark on its horizontally-growing branches has a curious winged development. The leaves are clean and lustrous and have a brilliant fall color. Rose colored berries in fall.

2 to 3 ft. -----\$2.25      3 to 4 ft. -----\$3.00

**Euonymus Alatus Compacta**. Dwarf Winged Euonymus. 5 ft. A very choice dwarf compact form of Alatus. Will thrive in shade.

18 to 24 in. -----\$2.50      2 to 3 ft. -----\$3.00

**Euonymus europaeus**. STRAWBERRY BUSH. 8 ft. An admirable, hardy shrub with upright, slender, green branches; neat foliage and pink colored fruits. Bright fall foliage color.

3 to 4 ft. -----\$1.50      4 to 5 ft. -----\$3.00

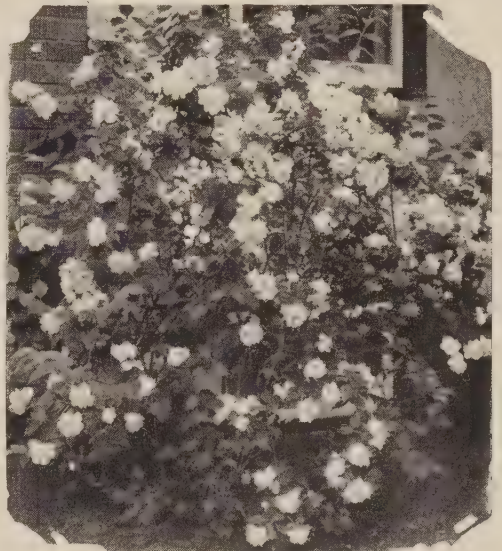
## Golden Bell (Forsythia)

**FORSYTHIA**. GOLDEN BELL. 5 ft. A graceful, drooping shrub with golden, bell-shaped flowers in spring. Needs winter protection in Minnesota.

2 to 3 ft. -----\$0.85      3 to 4 ft. -----\$1.10



Snowberry has pendulous clusters of large, white berries.



The new double-flowering Mock Orange.



The unusual white and green leaves of the Variegated Dogwood.



The Large Flowering Hydrangea. Effective in the shrub border throughout the fall months.

# Northern Grown Shrubs

FOR  
FLOWER, FOLIAGE  
AND FRUIT

For Color, Fragrance, and Profusion of Bloom, Plant More Flowering Shrubs.

## The Honeysuckles (Lonicera)

**Pink Honeysuckle** (*Lonicera tatarica rosea*). The popular pink to rose flowering Honeysuckle bush. Bright red berries follow the blossoms. Very hardy, rapid-growing shrub that thrives well in sun or partial shade.

18 to 24 in. -----\$0.60      2 to 3 ft. -----\$0.75  
3 to 4 ft. ----- 1.10      4 to 5 ft. ----- 1.35

**Morrow's Honeysuckle** (*Lonicera Morrowi*). 5 to 6 ft. Compact yet spreading growth with gracefully curved branches. Cream-yellow flowers cover the stems in May followed by red berries in July.

2 to 3 ft. -----\$0.75      3 to 4 ft. -----\$1.10  
4 to 5 ft. -----\$1.35

**White Honeysuckle** (*L. tatarica alba*). 8 ft. A hardy bush honeysuckle with white flowers. The general appearance and type of growth is similar to the Pink flowering variety.

2 to 3 ft. -----\$0.75      3 to 4 ft. -----\$1.10

**Red Honeysuckle** (*Lonicera Zabeli*). 8 ft. A new true red flowering shrub. Upright in growth, branches slender and graceful. Blooms profusely.

3 to 4 ft. -----\$1.10      4 to 5 ft. -----\$1.35

## The Hydrangeas

**Hydrangea, Large Flowering** (*H. paniculata grandiflora*). 4 ft. Magnificent, conical flowers of white that have a pink color in fall and are often cut for winter house decoration. The largest and most handsome flowers of all hardy shrubs.

18 to 24 in. -----\$1.00      2 to 3 ft. -----\$1.50

**Hydrangea Snowhill** (*H. arborescens grandiflora*). 3½ ft. Large white snowball-like flowers from June to frost. A pleasing bush in every way with large leaves and spreading growth. Likes partial shade. Always admired in house-foundation plantings.

18 to 24 in. -----\$1.00      2 to 3 ft. -----\$1.50

## Large Flowering Mockorange

**Sweet Mockorange** (*Philadelphus coronarius*). 8 ft. A popular, old-time favorite. Big, pure-white and delightfully fragrant flowers in June that give the plant its name. A splendid ornamental and hardy tall shrub.

18 to 24 in. -----\$0.75      2 to 3 ft. -----\$1.10  
3 to 4 ft. ----- 1.35      4 to 5 ft. ----- 1.50

## The Mockoranges (Syringa)

**Double-Flowering (Virginal) Mockorange.** 4 to 5 ft. Magnificent new variety with large, creamy-white and fragrant double flowers. Full bloom in spring followed by occasional flowers all season. Excellent foliage and a shrub that always attracts attention.

2 to 3 ft. -----\$1.50      3 to 4 ft. -----\$2.00

**Golden Mockorange** (*Philadelphus aureus*). 3 ft. Bright golden yellow leaves made this dwarf shrub valuable to color shrub groups. Cheerful and attractive all through the summer.

15 to 18 in. -----\$1.50      18 to 24 in. -----\$2.00

**Lemoine's Mockorange** (*Philadelphus Lemoinei*). 5 ft. A hardy erect fine-leaved shrub. Its slender branches bear an abundance of fragrant white flowers in June. Particularly desirable in house foundation plantings.

2 to 3 ft. -----\$1.10      3 to 4 ft. -----\$1.35

**Double-Flowering (Snowflake) Mockorange.** Pat. 538. 6 ft.

First offering of this new outstanding shrub. Double flowering, sweet scented and a profuse bloomer. Shrub exceptionally hardy, gracefully branched, foliage dense

2 to 3 ft. -----\$1.75      3 to 4 ft. -----\$2.25

## The Ninebarks (Physocarpus)

**Dwarf Ninebark** (*Physocarpus monogynus*). 3½ ft. A desirable addition to the list of hardy, dwarf shrubs. Native of Colorado. Makes a full bush of upright growth with small leaves. Bears white flowers in spring. Grows well in most any soil.

2 to 3 ft. -----\$1.00      3 to 4 ft. -----\$1.25

**Golden Ninebark** (*Physocarpus aureus*). 6 ft. A full-branched bushy, golden-leaved shrub. Makes a pleasing color contrast in shrub groups.

2 to 3 ft. -----\$1.00      3 to 4 ft. -----\$1.25

**Tall Ninebark** (*Physocarpus opulifolius*). 7 ft. A vigorous, large-leaved shrub that is excellent for use as a screen or background planting. The white flowers of spring are followed by red seed pods.

2 to 3 ft. -----\$1.00      3 to 4 ft. -----\$1.25  
4 to 5 ft. -----\$1.50



French Lilac Double

# Spring Lilacs

FOR FRAGRANT

BEAUTY



French Lilac Single

The Lilac like the Rose is more closely wrapped up in the esteem and affection of the American Gardener. It offers so much fragrance, color, profusion of bloom and thick rich green foliage.

Throughout our northern states the Lilac thrives splendidly and quickly grows into a magnificent shrub. Dependable and absolutely hardy.

## ENJOY THE NEW FRENCH LILACS

**French Hybrid Lilacs** are modern improvements of the old-fashioned lilac. The flowers are gorgeous in coloring and much larger in size. The French Lilacs bloom when young and bear year after year a profusion of delightful blossoms.

### Selected French Lilacs

**Alphonse Lavallo.** Flowers double, of medium size, color blue changing to a lavender violet. Deeper within than without. Clusters large, shapely and compact. A recommended variety.  
 2 to 3 ft. -----\$2.00    3 to 4 ft. -----\$2.50  
 4 to 5 ft. -----\$3.50

**Belle de Nancy.** Flowers large, double, developing into large compact clusters. Satiny pink in color. A splendid variety for both flower and foliage. Blooms in profusion.  
 2 to 3 ft. -----\$2.00    3 to 4 ft. -----\$2.50  
 4 to 5 ft. -----\$3.50

**Capitaine Baltet.** Enormous trusses, single flowers of largest size. Profuse bloomer. Distinct novelty.  
 3 to 4 ft. -----\$5.00    5 to 6 ft. -----\$7.00

**Charles Joly.** Flowers double, large. A very dark purple red with silver reflex. Clusters open of medium size. A favorite variety, one of the best all-around double dark colored French lilacs.  
 2 to 3 ft. -----\$2.50    3 to 4 ft. -----\$3.00  
 4 to 5 ft. -----\$4.00

**Charles X.** A free flowering favorite. Flowers single of medium size, color reddish violet with a bluish tinge, compact clusters of medium size. One of the most free flowering of all French lilacs.  
 2 to 3 ft. -----\$2.00    3 to 4 ft. -----\$2.50  
 4 to 5 ft. -----\$3.50

**Ludwig Spaeth.** Flowers single in large well filled clusters, very deep maroon-red. A free bloomer and of strong thrifty growth. A very popular variety and without question the best all-around dark colored lilac.  
 2 to 3 ft. -----\$2.50    3 to 4 ft. -----\$3.00  
 4 to 5 ft. -----\$4.00

**Marie Legraye.** Flowers large, single, creamy white. Clusters of medium size. A strong, erect and very profuse bloomer. Note: this plant blooms when very young.  
 2 to 3 ft. -----\$2.00    3 to 4 ft. -----\$3.00  
 4 to 5 ft. -----\$3.50

**Michael Buchner.** Flowers double, medium to large, color pinkish lilac differing from most varieties in the blending of its colors. Clusters long and narrow. A well known and one of the most popular varieties.  
 2 to 3 ft. -----\$2.00    3 to 4 ft. -----\$2.50  
 4 to 5 ft. -----\$3.50

**Madame Lemoine.** Flowers large, double, pure white. Clusters narrow, medium to large. One of the most satisfactory and popular of the double whites. A very vigorous and dependable bloomer.  
 2 to 3 ft. -----\$2.00    3 to 4 ft. -----\$2.50  
 4 to 5 ft. -----\$3.50

**Mrs. Florence Stepman.** Flowers single, large pure white. Plant upright in growth, foliage light green. The best single white.  
 2 to 3 ft. -----\$2.50    3 to 4 ft. -----\$3.00  
 4 to 5 ft. -----\$4.00

**Miss Ellen Wilmott.** Large flowers, double to very double. Creamy white in very large and long panicles. A strong grower and a free bloomer, generally rated as the best of the double white lilacs.  
 2 to 3 ft. -----\$2.50    3 to 4 ft. -----\$3.00  
 4 to 5 ft. -----\$4.00

**President Grevy.** Flowers large, semi double to double in large pyramidal clusters. A clear soft delicate blue. A favorite variety and one of the best of its color.  
 2 to 3 ft. -----\$2.00    3 to 4 ft. -----\$2.50  
 4 to 5 ft. -----\$3.50

**President Lincoln.** Single, clear blue flowers. Growth upright. Considered the outstanding blue colored lilac.  
 2 to 3 ft. -----\$2.50    3 to 4 ft. -----\$3.00  
 4 to 5 ft. -----\$4.00

**Persian Lilac** (*Syringa persica*). 7 ft. Has small leaves and open graceful growth. Light purple flowers in May. Lacks the heavy coarse appearance of the common lilac.  
 2 to 3 ft. -----\$1.25    3 to 4 ft. -----\$1.50  
 4 to 5 ft. -----\$2.00

**Purple Lilac** (*Syringa vulgaris*). 10 ft. The old-fashioned, fragrant lilac. A hardy and dependable shrub that everyone admires. Offered also in white-flowering variety.  
 18 to 24 in. -----\$0.60    2 to 3 ft. -----\$1.10  
 3 to 4 ft. -----\$1.35    4 to 5 ft. -----1.50

**Villosa Pink-Flowering Lilac.** 10 ft. Unusually ornamental in rich dark foliage with pink-lilac flowers in June. A choice variety that flowers two weeks later than the other types.  
 2 to 3 ft. -----\$1.25    3 to 4 ft. -----\$1.50



## Colorful Shrubs ACCENT THE BORDERS

Spotlight your shrub and flower border with pink double flowering and Purple-leaf Plums, easily grown, exceptionally hardy.

### The Plums—Ornamental Varieties

**Pink-Flowering Plum** (*Prunus triloba*). 5 ft. A great attraction in early Spring when the branches carry clusters of large, double pink rose-like flowers. Similar to the Flowering Almond but a more desirable and hardier shrub.

2 to 3 ft. -----\$1.75    3 to 4 ft. -----\$2.50  
4 to 5 ft. -----\$3.00

**Purple-Leaf Plum** (Newport). 10 ft. A shrub of substantial size that has dark, purple-colored leaves all summer. Makes a striking color contrast in shrub plantings or as a lawn specimen.

2 to 3 ft. -----\$1.75    3 to 4 ft. -----\$2.50  
4 to 5 ft. -----\$3.00

### Snowberry (*Symphoricarpus*)

**White Snowberry** (*Symphoricarpus racemosus*). 4 ft. Slender, graceful shrub with large waxy white berries in September that remain far into the winter. Splendid for planting in front of larger shrubs and under trees.

2 to 3 ft. -----\$0.75    3 to 4 ft. -----\$1.00

### Siberian Pea (*Caragana*)

**Siberian Pea Tree** (*Caragana arborescens*). 8 ft. A tall shrub of upright growth with bright green pea-like leaves. Yellow flowers in May followed by ornamental seed pods. Stands poor soils and dry locations.

2 to 3 ft. -----\$0.60    3 to 4 ft. -----\$0.85  
4 to 5 ft. -----\$1.25

### Russian Olive (*Oleaster*)

**Russian Olive** (*Elaeagnus angustifolia*). 12 ft. A hardy tall shrub with willow-like leaves of rich silvery white. Suited for background plantings and very hardy. Yellow fruits follow the inconspicuous flowers of spring.

3 to 4 ft. -----\$1.00    , 4 to 5 ft. -----\$1.25

#### A GIFT CERTIFICATE FROM HOLM & OLSON

To a friend for Christmas, Easter, Mother's Day and Birthdays. A living Tree, Evergreen, Shrub, Rose or Perennials will bring exciting and lasting joy.

### Roses—Hardy Bush Varieties

**Rose, Red Leaved** (*Rosa rubrifolia*). 3 ft. A hardy rose with red leaves all summer. Makes a beautiful contrast in the shrub groups. The blossoms are of a bright pink and are followed by red fruits. Upright in growth with slender, purple branches.

Strong plants -----\$1.00    Extra size -----\$1.25

**Rugosa Rose**. 4 ft. A splendid shrub with the unusual attraction of large, pink flowers, handsome deep green foliage and bright fruit pods. Introduced from Japan and has proven extremely hardy and vigorous in growth.

Strong plants -----\$1.00    Extra size -----\$1.25

**Smooth Wild Rose** (*Rosa blanda*). 5 ft. A sturdy, native shrub rose with dark red stems almost without prickles. The abundant pink flowers are followed by scarlet fruits. Splendid in the shrub border or on exposed slopes.

Strong plants -----\$1.00    Extra size -----\$1.25

PLEASE SEE PAGES 17, 18, 19 FOR COMPLETE LIST OF ROSES.

### The Spiraeas

**Bridal Wreath** (*Spiraea Van Houttei*). 5½ ft. Most admired of all shrubs. A graceful bush with arching branches that is a snow-bank of flowers in late May. Grows well in most any situation.

2 to 3 ft. -----\$0.70    3 to 4 ft. -----\$1.00  
4 to 5 ft. -----\$1.25

**Callosa Rosea Spiraea**. 3 ft. Rose colored flowers in flat-topped clusters all season. A splendid medium height shrub. Well suited for house-foundation plantings.

12 to 18 in. -----\$0.75    18 to 24 in. -----\$1.00

**Crimson Spiraea** (*S. Anthony Waterer*). 2 ft. A free-flowering dwarf shrub of compact form. Rosy-crimson flowers in flat-top clusters all summer. A pleasing color combination planted with Snow-hill Hydrangea.

15 to 18 in. -----\$0.75    18 to 24 in. -----\$1.00  
24 to 30 in. -----\$1.25







## REAL BEAUTY IS THE RESULT OF CAREFUL PLANNING

### Planning the Home Grounds

With appreciation of good design now wide spread, additional emphasis is placed on the necessity for adequate landscape treatment. Planned home grounds are now the rule. The modern trend is to have the outside as well planned, useful and beautiful as within.

### You Can Develop Your Yard So That It Invites Use.

An open central area of well-kept lawn beckons the foot-steps. A shapely tree or two for protection with suitable garden seat or chairs in their cool shadows will create a lure to the garden that is irresistible.

Children play safely in such a foliage-protected yard and the entire household turns gratefully to such surroundings for healthful pleasure and recreation.

A home is more than just a house. It includes the yard and room for out door living.

### Bring the Living Room Out Doors

The style for beauty, seclusion and use outside the home is upon us—and this new style finds its most charming expression in the Modern Outdoor Living Room.

Right in your own home yard, no matter what its size, there is an opportunity to create a shelter-spot. There, in sheltered seclusion, you can find rest and ease in the quiet beauty of the out-of-doors.

A delightful "out-of-doors living room" can be made without elaborate settings. All that is needed is a tasteful and proper arrangement of plantings and simple accessories that provide comfort and relaxation.

### Actual H & O Reproductions

Grouped about these pages are views of home grounds and gardens, planned and constructed "by HOLM & OLSON", demonstrating how the principles of gardening can be applied to the development of your home grounds. They illustrate the modern treatment of planting directly about the house, the Out Door living room, Flower Borders, correct Tree planting, Evergreen settings and Lawn building.

A study of these photographs will help and give you a working knowledge of modern landscape planting and act as a guide to improving your home grounds.

Choose your plants carefully—in this book we have striven for accuracy of description and adaptation. Please note—all material listed in this catalog is hardy and northern grown.







# HOLM & OLSON **EVERGREENS**



Upright Cedar



Colorado Blue Spruce



Arborvitae

Evergreens are the aristocrats of the plant world. In summer they give a refreshing coolness, and in winter their cheerful colors add interest to the dull winter landscape.



Mugho Pine



Pfitzer's Juniper



Peonies



Fall Asters



Phlox



Oriental Poppy



Regale Lily



Astilbe



Hybrid Delphinium



Alaska Daisy

H. & O. Perennials are sturdy 2 year old, field-grown plants that are dug freshly to your order. We make no attempt to compete with the ordinary offerings of Perennial plants. H. & O. grow and distribute the better strains of quality plants.

**Summer Flowering Perennials**

- |               |                    |
|---------------|--------------------|
| Anchusa       | Lilies             |
| Alaska Daisy  | Platycodon         |
| Baby's Breath | Phlox (In Variety) |
| Coreopsis     | Statice            |
| Gaillardia    | Thalictrum         |
| Gas Plant     | Veronica           |
| Hollyhocks    | Viola              |

**Fall Flowering Perennials**

- |             |                    |
|-------------|--------------------|
| Aconitum    | Physostegia        |
| Boltonia    | Phlox (In Variety) |
| Fall Asters | Rudbeckia          |
| Lythrum     | Sedum Spectabile   |



Lythrum, Morden's Pink

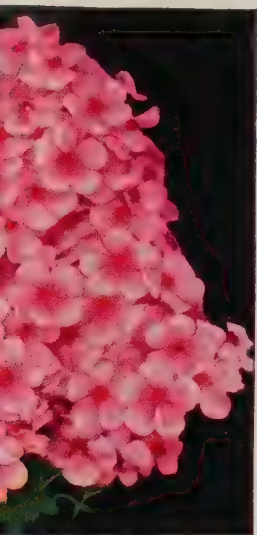


Gaillardia



Coreopsis

# Hardy Garden Flowers



lox



Trollius



Purple Clematis



daisy



Persian Daisy



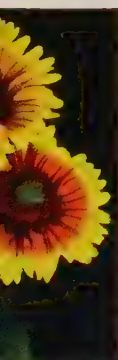
Aquilegia



Hardy Pinks



Bleeding Heart



a



s

No home landscape is complete without hardy garden flowers. A garden of perennials is a continuous pleasure from early spring until late fall. They give great satisfaction when arranged in clumps, masses, and drifts of one kind.

## Perennials, for Cut-Flowers

- |               |               |
|---------------|---------------|
| Baby's Breath | Hardy Pinks   |
| Coral Bell    | Hardy Asters  |
| Coreopsis     | Iris (German) |
| Columbine     | Peonies       |
| Delphinium    | Persian Daisy |
| Gaillardia    | Shasta Daisy  |

## Spring Flowering Perennials

- |                    |                |
|--------------------|----------------|
| Astilbe            | Iris (German)  |
| Bleeding Heart     | Oriental Poppy |
| Columbine          | Peonies        |
| Delphinium         | Persian Daisy  |
| Hemerocallis Flava | Shasta Daisy   |



Chrysanthemum



Dame Edith Helen



Souv. Claudius Pernet



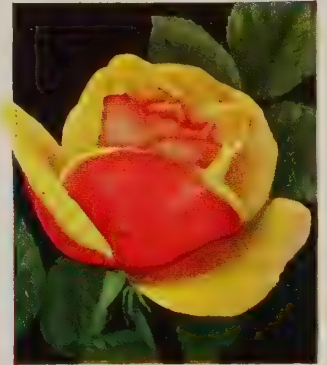
Red Radiance



Betty Uprichard



Pres. Herbert Hoover



Golden Dawn



Etoile de Hollande



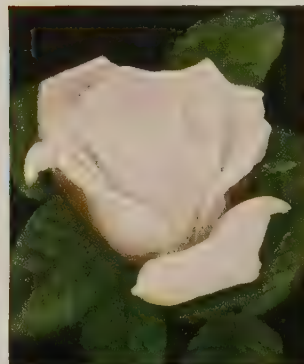
Talisman

**HOLM & OLSON**

*Roses*



Mrs. E. P. Thom



Mme. Jules Bouche



Radiance





## Ever-Blooming Hybrid Tea Roses

ILLUSTRATED and described are the choicest and most popular varieties of Hybrid Tea Roses. These varieties are northern grown, reliably hardy, and will furnish a generous supply of flowers throughout the growing season. (Protect in winter.)

PRICES—Strong Plants—started and growing in pots—\$2.00 each; 5 for \$9.50; 10 for \$17.50.

### Pink and Rose Colors

**BETTY UPRICHARD.** Very fragrant flowers of salmon-pink tinted with copper pink on outside. Long-pointed buds.

**CONDESA DE SASTAGO.** Deep coppery pink, golden yellow reverse.

**DAME EDITH HELEN.** A brilliant soft pink. Long pointed buds and huge, full flowers. Highly perfumed.

**PICTURE.** Velvety clear rose-pink with undertones of salmon. Very double.

**RADIANCE.** Large, double blooms of bright rose pink. A popular variety that succeeds everywhere. Long blooming season.

### Scarlet and Crimson Roses

**CHRISTOPHER STONE.** Bud long pointed; blooms semi double, large, vivid scarlet, overlaid velvety crimson.

**ETOILE DE HOLLANDE.** Large, bright crimson red. Free bloomer. The most popular red garden rose. Well-formed flowers.

**GRUSS AN TEPLITZ.** Lovely, fragrant, bright crimson. Always in bloom and succeeds everywhere. Large, bushy plants.

**MARGARET McGREDY.** Opens a vivid scarlet turning later to brick red. Seldom out of bloom. Large, long-pointed buds.

**POINSETTIA.** Blooms large, double, bright unfading scarlet.

**RED RADIANCE.** Bright rosy red. Very large full flowers on a vigorous plant. Very free in blooming.

### White Monthly Roses

**KAISERIN AUGUSTE VIKTORIA.** Creamy buds developing into bright snow-white blooms. Fragrant. The perfect white rose.

**MME. JULES BOUCHE.** Large double white. Free blooming.

### Yellow and Copper Shades

**GOLDEN DAWN.** Very double, fragrant lemon-yellow blossoms. Remarkably fine foliage. Vigorous and free-flowering.

**HINRICH GAEDE.** Bud pointed, nasturtium red opening orange-yellow with nasturtium yellow glow.

**JOANNA HILL.** Deep creamy white tinted with salmon and ochre-yellow. Strong stems. Popular as a cut flower.

**MRS. E. P. THOM.** A superior yellow garden rose. Rich unfading lemon-yellow flowers. Fine, long buds.

**MRS. PIERRE S. DUPONT.** Considered one of the best free flowering golden yellow roses.

**PRESIDENT HOOVER.** Long pointed buds opening to various shades of orange. Spice fragrance.

**SISTER THERESE.** Bud long pointed; flower very large, semi-double, cupped. Golden yellow, edges spotted madder carmine. Good foliage.

**SOUVENIR DE CLAUDIUS PERNET.** One of the best of the modern yellow everblooming roses. Striking sunflower yellow.

**TALISMAN.** Fragrant flowers of glowing golden-yellow, tinted copper, red and orange. The most vividly colored rose.

### THE REASONS WHY H. & O. PREPARED, POTTED ROSES ARE BETTER

These **Specially Prepared Roses** are all carefully selected 2 and 3 year old field plants. They have been started early in 6 inch pots and are in healthy, active growth when you receive them. Plant them right into your garden and they will produce results quickly. **With these started potted rose plants you are certain of beautiful roses to enjoy this season.**



## The New "Patented Roses"

THE most popular of the favorites are suggested, along with the best and most thrilling of the new ones. All selected for their hardiness in Minnesota, abundance of bloom and growing habit.

### WE SUPPLY THESE NEW ROSES IN POTTED, GROWING PLANTS SURE TO BLOOM FOR YOU THIS SEASON

**BETTY PRIOR.** (Plant Patent 340.) One of the most satisfying Floribunda Roses, flowers resemble red dogwood blossoms in shape and size, shrimp pink inside, carmine pink outside. Profuse bloom all season. Potted Plants -----\$2.00 each

**BLAZE.** (Plant Patent No. 10.) A marvelous everblooming scarlet red climbing rose, vigorous grower and blooms over a long season. Potted plants -----\$2.00 each

**CRIMSON GLORY.** (Plant Patent No. 105.) Large, full, deep velvety crimson. Fragrant. Continuously in bloom. Potted plants -----\$2.00 each

**DIAMOND JUBILEE** (Patented). Double, high centered flowers of glowing buff-orange with a touch of orange yellow at base. Potted plants -----\$2.50 each

**FASHION.** (Patent No. 789.) Single, brilliant luminous coral flowers overlaid with gold. 1950 Novelty. Potted plants -----\$2.50 each

**NEW DAWN.** (Plant Patent No. 1.) Everblooming climber; large exquisite flowers of delicate pink on long stems. Fragrant blossoms; bronze-green foliage. Potted plants,-----\$2.00 each

**PEACE** (Plant Pat. 591.) All-American Rose selection for 1946. Distinguished by the changing colors through which it passes—yellow, gold, cream, ivory, white and pink. Potted plants -----\$2.50 each

**PERMANENT WAVE.** (Plant Patent 107.) Floribunda. Named for the interesting "permanent wave" of the semi double bright cochineal red blossoms. Huge clusters, glossy foliage. Potted plants ----- \$2.00 each

**PINNOCHIO.** (Patent No. 484.) Abundance of pointed buds of salmon-flushed gold, opening to miniature hybrid tea like rose. Potted plants -----\$2.00 each

**ROSE OF FREEDOM.** (Patent No. 791.) Long stemmed, current red blooms. Potted plants -----\$2.50 each

**SUTTER'S GOLD.** (Patented) A. A. R. S. for 1950. Beautiful, long pointed yellow bud, richly shaded with orange and red. Rich tea fragrance. Potted plants -----\$2.50 each

## The June Flowering Roses

### "HYBRID PERPETUALS"

These are the hardiest of the large-flowering garden roses. Perfection in size of flower, fragrance, disease resistance, and strength of growth predominates. Most varieties flower in June and July, many repeat throughout the summer.

**PRICES—Growing, Potted Plants—\$2.00 each; 5 for \$9.50.**

**Frau Karl Druschki.** This is the ideal hardy white rose; pure in color, perfect in form, strong grower and free flowering; outstanding in every way.

**General Jacqueminot.** Glowing crimson, very soft and velvety. The most popular garden rose.

**Paul Neyron.** Largest flowering rose. Deep rose pink color, full and double, sweet scented. Blooms throughout summer months.

**Ulrich Brunner.** Cherry red, flower large and full, of exquisite form and substance.

## The Climbing Roses

### For House-Wall and Garden-Trellis

Plant Climbing Roses near the porch or on the house walls to have their fragrance and color close at hand. Use them in the garden to decorate lattices, arbors, pillars, pergolas and as festoons over walls.

**PRICES H. & O. POTTED, GROWING CLIMBERS**  
Each \$1.75—unless otherwise noted.

**Climbing American Beauty.** Large, double flowers of bright rose pink.

**Dorothy Perkins.** Big clusters of soft, shell-pink roses. Flowers profusely.

**Excelsa.** Double crimson flowers in clusters. (The improved "Crimson Rambler.")

**Golden Pyramid.** Large, semi double, unfading cadmium yellow. Very vigorous.

**Paul's Scarlet Climber.** Loose clusters of large-sized, double flowers of bright scarlet red. Unexcelled brilliance.

**Primrose.** Canary yellow roses of double form in profusion. Fine for cutting.

# Hardy Rugosa Roses

**BLOSSOM ALL SUMMER**



The new Rugosa Roses are full and double, sweetly fragrant and the flowers appear abundantly and almost continuously from June until October. The plants are particularly valuable for hardiness, healthiness and ability to thrive under most adverse conditions of soil and climate, withstanding Minnesota winters without covering.

We offer strong, dormant plants that will bloom this year.

- Amelia Gravereaux.** Double fragrant flowers of bright cerise red. Price, strong plants, \$1.75.
- Belle Poitvine.** Clusters of double, magenta-pink roses over a long season. Price, strong plants, \$1.75.
- Dr. Eckener (New).** Large semi-double flowers of salmon-pink with gold at base of petals. A new and unusual hybrid. Price, \$1.75.
- F. J. Grootendorst.** Full clusters of smaller, bright-crimson roses. Always in bloom. Price, strong plants, \$1.75.
- Hansa.** Double, fragrant, wine-red flowers. Handsome dark green foliage. Sturdy growth and long season of bloom. Price, \$1.75.
- Hugonis.** An early flowering shrub rose with sprays of light yellow roses along the graceful branches. Strong plants, \$1.75.
- Rugosa Rubra.** Rugosa Rose. Handsome crinkled leaves and large, single rose flowers of pink to rosy red. Red fruit. Price, \$1.00.
- Sir Thomas Lipton.** A free-blooming, fragrant double white. Price \$1.75.

## SPECIAL COLLECTION — DOUBLE FLOWERING RUGOSA ROSES

Hardy Roses that bloom all season. Need no winter covering. Plant them in a sunny spot near house or in the garden.

- 1 BELLE POITVINE—Rosy Pink
- 1 HANSA—Wine Red
- 1 GROOTENDORST—Crimson
- 1 SIR THOS. LIPTON—White

4 STRONG STURDY PLANTS TO  
BLOOM THIS YEAR -----\$6.00

## THE BABY RAMBLER ROSES (Dwarf Polyantha)

The Baby Ramblers are small size bushes, very popular because of their dwarf size and heavy flowering. The roses are borne in full clusters and are in bloom continuously throughout the summer.

Plant the Baby Ramblers in beds alone or in front of the taller roses.

**Red Baby Rambler (Lafayette.)** Clusters of semi-double, open, deep, glowing red, suffused vivid crimson flowers. Potted plants, \$1.75.

**Red Baby Rambler (Donald Prior.)** Plant Patent No. 377. A Floribunda with immense clusters of semi-double, brilliant red flowers, petals large and wavy. Very vigorous and free blooming. Potted plants -----\$2.00 each

## THE HARDY BUSH-ROSES

These hardy bush or shrubby roses are very useful for planting in with the usual flowering shrubs in borders or in boundary groups. They are particularly suited for planting on banks, slopes and in locations where a naturalistic effect is desired.

**Blanda.** Soft pink flowers on thornless stems 3 to 4 ft. high. Red fruit in fall. Price, strong plants, \$1.00; extra size, \$1.25.

**Harrison's Yellow.** The best hardy yellow-flowering bush rose. Semi-double golden yellow. Price, strong plants, \$1.75.

**Rubrifolia.** Pink flowers. Reddish-purple leaves all summer. Price, strong plants, \$1.00; extra size, \$1.25.

**Sweet Briar, Rubiginosa.** The old favorite Sweet Briar fragrant pink rose with aromatic leaves. Price, strong plants, \$1.00.



# A Chart Of The Hardy Perennials

This chart makes it easy to plan your flower plantings. The height of growth, general color and the season of bloom of the more popular perennials is shown.

SEASON						VARIETY NAME	HEIGHT					COLOR						
MAY	JUNE	JULY	AUGUST	SEPT.	OCT.		IN FEET					WHITE	PINK	YELLOW	ORANGE	RED	BLUE	PURPLE
							1.	2.	3.	4.	5.							
						ACHILLEA - BALL OF SNOW												
						ACONITUM - MONKSHOOD												
						ANCHUSA - ALKANET												
						ANTHEMIS - HARDY MARGUERITE												
						AQUILEGIA - IN VARS - COLUMBINE												
						ASCLEPIAS - BUTTERFLY WEED												
						ASTER - NEW ENGLAND												
						ASTILBE - HYBRID VARIETIES												
						BOCCONIA - PLUME POPPY												
						BOLTONIA ASTEROIDES												
						CAMPANULA - HARE BELL												
						CHRYSANTHEMUM - ALASKA DAISY												
						COREOPSIS - TICKSLED												
						DELPHINIUM - IN VARS - LARKSPUR												
						DIELYTRA - BLEEDING HEART												
						DIANTHUS - SWEET WILLIAM												
						DIANTHUS - SCOTCH PINK												
						FUNKIA - WHITE PLANTAIN LILY												
						FUNKIA - BLUE PLANTAIN LILY												
						GALLARDIA - BLANKET FLOWER												
						GYPSOPHILA - BABY'S BREATH												
						HELIOPSIS - ORANGE SUNFLOWER												
						HEUCHERA - CORAL BELLS												
						HEMEROCALLIS - LEMON DAY LILY												
						HOLLYHOCKS - IN VARS.												
						IRIS - GERMANICA - IN VARS												
						LILIUM - TIGER LILY												
						LILY-OF-THE-VALLY												
						LYCHNIS - JERUSALEM CROSS												
						LYTHRUM - LOOSESTRIFE												
						MONARDA - OSWIGO TEA												
						MYOSOTIS - FORGET-ME-NOT												
						PEONIES - IN VAR.												
						PAPAVER - ORIENTAL POPPY												
						PHLOX - IN VARS.												
						PLATYCODON - BELLFLOWER												
						PYRETHRUM - PERSIAN DAISY												
						PYRETHRUM - OX-EYE DAISY												
						RUDBECKIA - GOLDEN GLOW												
						SEDUM - STONE CROP												
						STATICE - SEA-LAVENDER												
						TROLLIUS - GLOBE FLOWER												
						YUCCA - ADAM'S NEEDLE												

## CONSULT OUR LANDSCAPE DEPARTMENT

Our Landscape Department is prepared to handle your planting, grading, lawn and garden problem for you. It makes no difference how large or how small your problem may be, we are prepared to handle this service at a moderate cost in keeping with the type of development desired. Landscape planning in advance will create better Landscape results in a substantial saving in costs by guarding against overplanting, incorrect grades and poorly constructed lawns.

Call us for an appointment. St. Paul Cedar 7335—Minneapolis Ne. 2772.

# Iris

**RICH IN COLOR**

**PROFUSE IN**

**FLOWERS**



The Iris is the Orchid of the garden and with its varied and beautiful shades of color it lends itself in a manner unequalled by any other family of hardy plants to a great variety of groupings.

In the new varieties you will find richer blues, purer reds, better pinks, and larger yellows.

**PLANTING DIRECTIONS**—Plant the roots just below the surface in an open, sunny spot. Protect with a light covering of hay or straw in late fall.

The varieties are grouped according to color effect.

## Pink-Toned Iris

Price Each

<b>Dream</b> —Lovely rose-pink with orange beard.....	\$0.40
<b>Frieda Mohr</b> —(S) Light pink-lilac; (F) lilac rose .....	.50
<b>Midgard</b> —A delightful rose-pink effect with yellow shadings..	.40
<b>Rameses</b> —A new pink-buff blend .....	.40
<b>Susan Bliss</b> —A deep pink tone .....	.50

## Red-Toned Iris

Price Each

<b>Caprice</b> —(S) Red purple; (F) deeper claret .....	\$0.40
<b>Cheerio</b> —(S) Lustrous gold, (F) rich velvety red .....	.50
<b>Copper Lustre</b> —Copper toned overlaid with golden iridescence ..	.50
<b>Dauntless</b> —Brilliant bronze-red effect. Large self color.....	.40
<b>Elmohr</b> —Rich mulberry red.....	2.00
<b>Medrano</b> —Red maroon in effect .....	.40

## Dark Blues and Purples

<b>Lent Williamson</b> —(S) Soft violet; (F) royal purple.....	\$0.40
<b>Majestic</b> —(S) Blue violet; (F) velvety raisin purple .....	.40
<b>Missouri</b> —Large, tall, true blue .....	.75
<b>Morning Splendor</b> —(S) Petunia violet; (F) red purple.....	.40
<b>Sierra Blue</b> —Tall, soft enamel like blue .....	.50
<b>Winneshiek</b> —Large velvety dark blue violet .....	.50

## Light Blue Iris

<b>Great Lakes</b> —Pure clear blue .....	\$1.00
<b>Princess Beatrice</b> —Silvery blue-lavender .....	.50
<b>Sensation</b> —Remarkable crisp corn-flower blue .....	.75
<b>Valor</b> —Tall deep-blue violet .....	.50

## Brown-Purple Iris

<b>Bruno</b> —(S) Bronzy heliotrope; (F) rich, violet purple.....	\$0.40
<b>Depute Nomblot</b> —Purple, bronze and claret-crimson.....	.40
<b>Evolution</b> —Bronze buff and heliotrope blue .....	.40

## SPECIAL—RAINBOW IRIS COLLECTION

A choice collection of colorful Iris. **Eight strong roots**—one each of **pink-toned, white, red-toned, lavender, yellow, blue, purple** and **pastel**. All roots carefully labeled.

A "Rainbow Collection"—**8 plants (\$4.00 value) for—\$3.50**

(Parcel postage 25 cts. extra.)

## Pastel Shades

Price Each

<b>Dolly Madison</b> —Light mauve-lilac shaded gold.....	\$0.40
<b>Mother of Pearl</b> —Soft lavender with pearly sheen.....	.40

## White Iris

<b>Fairy</b> —Soft white with blue glow. A favorite.....	\$0.40
<b>Snow White</b> —A hardy, tall, strong, large pure white.....	.50
<b>Wabash</b> —Standards white, falls ultramarine .....	1.00
<b>White Queen</b> —A fragrant snow white .....	.50

## Yellow Iris

<b>Gold Imperial</b> —Clear yellow with bright orange beard.....	\$0.40
<b>Golden Majesty</b> —Rich deep golden yellow on 3 ft. stems.....	1.00
<b>Talisman</b> —Blend of yellow and peach rose shades .....	.40

## "IRIS ORCHIDS" COLLECTION

Superb New Varieties that Excel in Size and Color

<b>Buechley's Giant</b> —A giant in size and bloom, medium blue...\$0.50
<b>Crystal Beauty</b> —Gorgeous stately pure white..... .50
<b>E. B. Williamson</b> —Coppery red .....
..... .50
<b>Golden Light</b> —Red-cinnamon and orange. Very unusual..... .50
<b>Gudrun</b> —Large snowy white .....
..... .60
<b>Jean Cayeaux</b> —Great flowers of orange buff and brown..... .75
<b>Mrs. J. L. Gibson</b> —The best deep blue and violet .....
..... 1.00
<b>Ohrmor</b> —Grey lavender, larger than Wm. Mohr..... .75
<b>Spokane</b> —Glowing red brown .....
..... .50
<b>Wm. Mohr</b> —Immense frilled flower of soft lilac and violet..... .50
<b>Special Collection 1 each 10 varieties .....</b>
<b>.....\$5.00</b>

## Early Flowering Dwarf Iris (Pumila)

The very early flowering low growing Iris. They multiply rapidly, bloom profusely and take care of themselves. Well suited for Rock Gardens and border planting.

Colors—choice of yellow, blue, purple and white. Each 30 cts.

For shipments by Parcel Post please add 6c per root to Iris for postage.

# Choice Peonies

## PEONIES LEND THEMSELVES ADMIRABLY TO BORDER PLANTING



Double White Avalanche



Single Early Mikado

These magnificent plants are the most permanent and choicest of all perennial plants. We supply Peonies in the best planting size—all strong, healthy 3 to 5 eye divisions and all freshly dug.

**PLANTING PEONIES**—Plant peonies in beds and borders. Most useful and valuable as accent and fillers in the perennial garden.

Plant in good soil with the top of the roots about 2 inches under the surface of ground.

**QUANTITY PRICE**—5 or more Peonies (your selection) sold at 10% discount from the each price.

For parcel post shipments add 10c per root.

### RED DOUBLE-PEONIES

<b>Karl Rosefield</b> —Rich, glowing crimson. Large flowers .....	\$1.00
<b>Longfellow</b> —Cherry, with crimson tones. Strong stems .....	1.00
<b>Lora Dexheimer</b> —An intense flaming crimson-red .....	1.00
<b>Mary Brand</b> —Abundant blooming; clear red. Long lasting .....	1.00
<b>Mons. Martin Cahuzac</b> —Darkest maroon-red peony .....	1.50
<b>Mr. L. Van Leeuwen</b> —Light crimson; abundant bloomer .....	1.00
<b>Tenuifolia Fl. Pl.</b> —(FERN-LEAF PEONY). Very early, double crimson with fern-like leaves. Blooms in late May .....	3.00

Should be planted in late August. Order now for delivery at proper time.

### WHITE DOUBLE-PEONIES

<b>Alsace Lorraine</b> —A rich, creamy-white. Mid-season .....	\$0.75
<b>Avalanche</b> —Large cone-shaped ivory-white. Strong grower .....	1.00
<b>Couronne d'Or</b> —Snow white with golden stamens .....	.75
<b>Enchantresse</b> —Big, globular, late creamy-white. Showy .....	1.00
<b>Festiva Maxima</b> —Splendid white with crimson flakes .....	.75
<b>Frances Willard</b> —Mid-season, exquisite pure white .....	1.00
<b>Mme. Jules Dessert</b> —Cream tinted with buff and salmon .....	1.00
<b>Mons. Dupont</b> —Large flower with crimson blotch. Tall .....	1.00
<b>Mrs. A. M. Brand</b> —Large, glistening, fragrant, pure white .....	2.50

### PINK DOUBLE-PEONIES

<b>Claire Dubois</b> —A globular, clear violet-rose. Late .....	\$1.00
<b>Florence Macbeth</b> —Very large, soft blush-pink .....	2.00
<b>Kelway's Queen</b> —Large double, bright rose pink .....	.75
<b>La Fee</b> —A strikingly beautiful soft, pink blend .....	1.00
<b>Lilian Gumm</b> —Large rose pink .....	1.00
<b>Martha Bulloch</b> —Enormous, shell-pink fragrant flowers .....	2.50
<b>Mons. Jules Elle</b> —Enormous, shell pink fragrant flowers .....	1.00
<b>Mrs. John Kleitsch (New)</b> —A glorious, fragrant, deep rose pink .....	2.00
<b>Myrtle Gentry (New)</b> —Clear pink with salmon tint. Fragrant .....	2.00
<b>Phoebe Cary</b> —A large, soft, rose pink. Fragrant .....	1.00
<b>Reine Hortense</b> —Delicate pink with crimson flecks .....	1.00
<b>Sarah Bernhardt</b> —Bright apple-blossom pink, silver tipped .....	1.00

### THE NEW SINGLE PEONIES

#### Unusually Lovely Flowers of Great Charm and Beauty

The outer row of large petals surrounds a center of smaller petals or brilliant yellow stamens. The flowers are strikingly decorative both in the garden and for cutting.

<b>Albiflora</b> —Silky white with yellow center. Fragrant .....	\$0.75
<b>Exquisite</b> —Pure white border petals with center of white and yellow. Sturdy growth .....	1.00
<b>Laciniata</b> —Early-flowering red with cut-leaf foliage .....	1.00
<b>Le Jour</b> —Largest single white peony. Gold center .....	1.00
<b>L'Etincelante</b> —Deep clear pink, cup-shaped with silvery tips .....	1.00
<b>Mikado</b> —Crimson. Like a giant red poppy .....	1.00
<b>Pride of Langport</b> —Brilliant soft peach-pink, very large .....	1.00

### HOME-YARD PEONY COLLECTION

A selected assortment of six choice, large-flowering, double Peonies. 6 varieties, all different,—2 white, 2 pink, 2 red. **SPECIAL PRICE—6 Choice Plants .....\$5.00** (Postage 30c)

We suggest this as a pleasing group of fine Peonies for those who want choice flowers and are unfamiliar with variety names.

# Hardy Garden Phlox

**FOR COLOR IN  
YOUR GARDEN**



For a brilliant, bold color effect during the late summer and autumn, plant more hardy phlox.

## For Color and Profusion of Bloom in Midsummer Plant More Hardy Perennial Phlox

The Phlox is without doubt the most colorful and most popular of all the perennials. The showy flowers are the brightest spot in the garden during middle to late summer.

The recent Phlox introductions are marked improvements over the older types. We offer a very careful selection of the better and newer varieties.

**PLANTING**—Plant phlox in well drained enriched soil. Never let plants go to seed, never water overhead. Keep plants well watered by letting hose run slowly on the ground. This prevents mildew. Space phlox roots 12 to 15 inches apart and cover the roots with 1½ inches of soil.

### The Red Phlox

**Augusta (New Plant Patent).** The finest, vividly colored American Beauty red phlox. 60 cts. each.

**B. Comte.** A deep shade of red-plum. Tall growing.

**Beacon.** A pleasing cherry-red. Tall growing. Large flowers.

**Charles Curtis (New).** Sparkling sunset red. Does not fade or discolor. 60 cts. each.

**Fireglow.** A new, brilliant color. Flaming scarlet that is often vermilion. Large flowers freely produced.

**Leo Schlageter (New).** One of the most pleasing full rich scarlets with orange cast. Tall. 3 ft.

**R. P. Struthers.** A choice soft red. Tall and free blooming.

### Lavender and Blue Phlox

**Caroline Vandenberg (New).** Very large flowers of light-blue tones.

**Miss Eihel Pritchard.** A new French-mauve colored phlox. General color effect is light blue. Good sized flowers in large clusters.

### The White Phlox

**Bridesmaid.** White flowers with a crimson-carmine eye.

**F. G. VonLassburg.** Medium height, free flowering white.

**Mary Louise (New).** Pure white, exceptionally large. Good grower, free bloomer, medium height. 60 cts. each.

**Miss Lingard.** Very early blooming and fragrant. Glossy green foliage. Immense heads of white flowers. 60c each.

**Mrs. Jenkins.** Large flowering, pure white.

**PRICES OF PHLOX (Unless otherwise noted,  
Strong plants—50 cts. each.  
(For shipment by parcel post add 10% for postage.)**

### The Pink Phlox

**Cheerfulness (New).** 3 ft. Sparkling salmon orange. 60 cts. each.

**Daily Sketch (New).** English novelty. Grows to 3 ft. Big flower heads with extra large florets. A bright salmon pink with vivid crimson eye. 60 cts. each.

**Enchantress.** A strong-growing plant with clear salmon-pink flowers that have a darker eye.

**Lilian.** Soft cameo pink. Strong grower.

**Mrs. I. F. Farrington.** Delightful salmon shade, darker eye.

**Pantheon.** Deep salmon-pink petals with lighter centers.

**Rheinlander.** A very beautiful salmon-pink with deeper center. Flower heads are large and held on strong stems.

**Rijnstroom.** A lovely rose-pink, much like Paul Neyron rose. Very large flower heads. Strong grower.

**Thor.** Rich, salmon-pink with crimson eye.

### The Dwarf Early Phlox

For Borders and for Rock Gardens

**PHLOX SUBULATA.** A mass of bloom in early spring covers the delicate moss-like foliage. Excellent for rockery and border, and invaluable for carpeting the ground or covering graves.

**Lilacina—Pink—White** ..... 40 cts. each; 3 for \$1.00

**"VIVID" (New).** An improved early, dwarf pink with unusually brilliant clear pink flowers ..... 50 cts. each.

**PHLOX DIVARICATA (Wild Sweet William).** Large fragrant lavender flowers on 9 inch stems in April and May. Likes shade. Ideal for ground cover between Tulips, edging for spring flowering borders ..... 40 cts. each; 3 for \$1.00

### SPECIAL—HOME YARD PHLOX COLLECTION

Ten field-grown roots, 2 each of 5 popular varieties—light pink; white; deep pink; red and lavender.

**SPECIAL GROUP PRICE—10 Plants** ..... \$4.50  
(Postage 25 cts. extra.)



# Hardy Garden Flowers

EARLY SPRING UNTIL LATE FALL

THE interest in hardy flowers was never so wide spread as at the present time. The reason is—Flowering perennials are the backbone of the flower garden, most of them repeating faithfully each year with a minimum of attention. These plants live in the open ground. Many are useful as cut flowers, others for border displays or the Rock Garden. The best effect is usually produced by setting the plants out in separate groups of three or five of one variety.

You will find listed here not only the older favorites but many new, choice varieties and novelties. Dependable and hardy all through the North.

**Park Nurseries Perennials are sturdy 2 year old, field-grown plants that are dug freshly to your order. We make no attempt to compete with the ordinary offerings of Perennial plants. We grow and distribute the better strains of quality plants. Come to the Nursery and see our plants.**

\*ROCK GARDEN PLANTS. Varieties marked with a star (\*) are adapted to rockeries.

## 1950 PRICES FOR PERENNIALS

(unless otherwise noted)

Strong 2 yr. field plants 40 cents each; 4 of one variety \$1.50

Extra size, 60 cents.

(For shipment by parcel post add 10%)

**ACHILLEA. PERRY'S BALL-OF-SNOW.** 1½ ft. Pure white flowers like a small pompon chrysanthemum. Blooms June to September.

**ACONITUM fischeri. MONKSHOOD.** 3 ft. Strong spikes of dark blue, helmet-shaped flowers. September and October. 50 cts.

**ALASKA DAISY.** Large white and yellow daisy.

\***ALYSSUM saxatile compactum. GOLDEN TUFT.** 12 in. Massees of yellow flowers in early spring. For rockery or border.

**ANCHUSA italica, Dropmore. ALKANET.** 4 to 5 ft. Turquoise blue flowers in June and July. Large heavy leaves.

\***Anchusa Myosotidiflora.** 12 in. Unusual perennial from Russia Light blue, forget-me-not flowers rise above the clump of heart-shaped leaves. Sun or shade. Blooms May and June. 50 cts.

\***ANEMONE pulsatilla. PASQUE FLOWER.** 9 in. Cupped flowers of violet to purple in April and May. 50 cts.

**ANTHEMIS tinctoria kelwayi. HARDY MARGUERITE.** 1½ ft. Daisy-like flowers of golden yellow. June to October.

\***AQUILEGIA canadensis. NATIVE CANADA COLUMBINE.** 2 ft. Flowers red and yellow. June to August.

**Aquilegia chrysantha. GOLDEN COLUMBINE.** 2 ft. Yellow flowers with long spurs. June to August.

**Aquilegia, "Crimson Star."** (New). 2 ft. Entirely new color in Columbines—crimson and white combination. Unusual and effective. Large flowers.

**Aquilegia helenae. BLUE COLUMBINE.** 1½ ft. June to August. Bright blue with long white spurs.

**Aquilegia Hybrids.** Long-spurred flowers in a variety of beautiful colors. Choice for garden display or cutting.

\***ARMERIA Laucheanae.** 9 in. A dwarf variety of Sea Pink with bright rosy-red flowers in May and June.

**ARTEMISIA lactiflora.** 3 to 4 ft. MOUNTAIN FRINGE. Plumes of sweetly scented creamy white flowers. August to September.

\***ARABIS alpina. ROCKCRESS.** An early blooming dwarf border plant. Covered with white flowers in April and May.

(Refer to colored insert.)





## Chrysanthemums- For Late Summer and Early Fall Color In The Garden and Border

**Aster, "Amethyst."** 3 to 4 ft. Purple-blue flowers produced by the hundreds in September and October. 50 cts. each.

**Aster, Blue Gem.** Double blue flowers. 3 ft. 50 cts. each.

**Aster Frikarti.** New. 3 ft. Large, lavender-blue asters from July to frost. A delightful flower for display and cutting. 75 cts. each.

**Aster novae-angliae.** NEW ENGLAND ASTER. (Michaelmas Daisy). 4 to 5 ft. Hardy purple Aster. September and October.

**Aster, Lil Fardell.** 4 to 5 ft. Showy flowers are rich, mauve pink. September and October.

**Aster, Mt. Everest.** (New). 3 ft. Pyramids of pure white, which flower right down to the ground. September. 50 cts. each.

**Aster, Red Rover.** (New). 3 to 4 ft. Deep rosy red flowers with golden center. A novelty for the fall garden. September. 50 cts. each.

**ASTILBE "Betsy Cuperus."** (New). 4 ft. Dainty flowers of white with pink centers in graceful spikes 18 inches long. June. 50 cents each; extra size, 75 cts. each.

**Astilbe, "Peach Blossom."** (New). 2 ft. Bears long plumes of delicate light-pink flowers. Excellent flower border plant. June. 50 cents. each; extra size, 75 cts. each.

**BABYSBREATH.** See *Gypsophila*, page 26.

**BLEEDING HEART** (*Dicentra spectabilis*). 18 in. Rose-crimson heart-shaped flowers. The old garden favorite. April and May. 75 cts.; extra size, \$1.00.

\***CAMPANULA Carpatica.** CARPATHIAN HAREBELL. 8 to 10 in. Bell-shaped, light blue flowers in July and August.

\***CAMPANULA Calycanthema.** CUP-AND-SAUCER. 3 ft. Erect plants. Large cup and saucer flowers. June and July. Colors mixed in rose, white and blue.

**Campanula medium.** CANTERBURY BELLS. 3 ft. A biennial. Large bell-shaped flowers of rose, blue and white. July.

**CENTAUREA montana.** PERENNIAL CORN-FLOWER, 1½ ft. Violet blue flowers. July to September.

**CLEMATIS Mandschurica.** 3 ft. Bears abundantly attractive white Clematis flowers, July to September. Unexcelled for cutting. Always attracts attention. Strong plants, 50 cts. each.

**COREOPSIS Lanceolata grandiflora.** TICK-SEED. 2 ft. Golden yellow flowers on long graceful stems from June until frost. Fine for cutting.

**DAISY, Alaska.** 12 to 15 in. An improved Daisy that blooms in middle to late summer. White flowers with yellow center.

**Daisy, Shasta.** 18 in. The popular June flowering white daisy.

### NEW HARDY GARDEN CHRYSANTHEMUMS

Your garden can afford to be extravagant with the New Fall flowering Chrysanthemums. They are most attractive in pastel colors, easy to grow and bloom profusely. Extend your flowering season six weeks by planting these new gems of the garden.

**Cushion mums.** Low growing, 10 to 12 in. high, spreading to 2 ft. or more, forming cushions of bloom. Start flowering early in September. **Bronze, Pink, Red, White and Yellow.** 35 cts. each; 3 for \$1.00; extra size, 50 cts. each.

### EARLY LARGE FLOWERING

**Dean Kay.** A pleasing lavender-pink, semi-double, commences to bloom early, and continues until stopped by hard frost. 50 cts. each; 3 for \$1.25.

**Mrs. Pierre S. duPont III.** Considered one of the finest. A shade of soft peach blended with mauve, overcast with a luminous sheen. 50 cts. each; 3 for \$1.25.

**Mme. Chiang Kai-shek.** Chrome yellow blending to cadmium yellow beautifully formed flowers, fully double, two inches across. Strong grower. \$1.00 each.

### SPECIAL MUM COLLECTION

Early blooming, large flowering kinds in yellow, bronze, red, lavender and pink. 35 cts. each; 3 for \$1.00. Collection of one each, six different varieties ----- \$2.00



No home landscape is complete without hardy garden flowers. A garden of perennials is a continuous pleasure from early spring until late fall. They give great satisfaction when arranged in clumps, masses and drifts of one kind.

### DELPHINIUM (Larkspur)

The Delphinium (Larkspur) of today possesses a beauty and dignity of its own. It is without rival, a plant of tall habits and erect. Flower spikes blue and freely borne.

**DELPHINIUM Belladonna.** LARKSPUR. 3 to 4 ft. Clear turquoise blue flowers of delicate beauty. Blooms freely over a long period. 50 cts. each.

**Delphinium Bellamosum.** 3 to 4 ft. A dark blue Larkspur of free-blooming habit. 50 cts. each.

**Delphinium Chinense.** SLENDER LARKSPUR. 3 ft. Heads of bright blue flowers in open sprays from June until frost. Finely cut, fern-like foliage.

**Delphinium Chinense alba.** White flowering form of Slender Larkspur.

**Delphinium LAMARTINE.** 4 ft. Deep blue with white eye. Foliage good; disease resistant. 60 cts. each.

**Delphinium, "H. & O. Hybrids."** 4 to 5 ft. Our own selected strain of large flowering Larkspurs in a wide range of light and dark colors. 60 cts. each.

**Delphinium, NEW HOLLYHOCK.** Very full spire-shaped (like a hollyhock) heads of single and double flowers in many shades of blue. Tall and sturdy growth. Unusual. The best of the English selections. Price 75 cts. each.

**DIANTHUS Barbatius.** SWEET WILLIAM. 18 in. Flowers in variation of red, white and rose colors. May to July.

\***Dianthus Plumarius.** CLOVE PINK. 9 in. The fragrant white to scarlet flowers bloom in early summer. Grass-like leaves.

**DICTAMNUS Fraxinella albus.** WHITE GAS PLANT. 3 ft. Heavy spikes of white flowers in June and July. Flowers and foliage intensely aromatic. Especially useful where Lupines do not thrive. 75 cts. each.

**Dictamnus Fraxinella.** GAS PLANT. 3 ft. Heavy spikes of deep pink, purple-veined flowers in June and July. Flowers and foliage both fragrant. 75 cts. each.

\***DICENTRA Eximia.** PLUMY BLEEDING HEART. 9 to 12 in. Rosy pink heart-shaped flower in bloom from May through August. Delicate, finely cut foliage. 60 cts. each.

**Dicentra spectabilis.** BLEEDINGHEART. 18 in. 75 cts. each; extra size, \$1.00.

**DIGITALIS.** GIANT SHIRLY FOXGLOVE. 4 ft. Long flower heads of bell-shaped blossoms. Colors, rose, shell pink and blue mixed. July.

\***EUPHORBIA Polychroma.** A rare border and rock garden plant. Grows to 1 ft. in compact form. Covered in June with lemon-yellow rose-like flowers.

\***FERNS, Hardy.** We offer a selection of the best strong-growing native hardy ferns suitable for yard planting. 50 cts. each.

\***FORGET-ME-NOT** (*Myosotis semperflorens*). 10 in. Dainty blue flowers with yellow eye from May to September. Fine dwarf border plants. Likes shade and moist places.

\***FUNKIA (Hosta) caerulea.** BLUE PLANTAIN LILY. 3 ft. Lavender-purple flowers, striped with lighter color. July. Bold, dark green foliage. 50 cts. each.

**Funkia Lanceolata.** Narrow leaved Plantain Lily. 15 in. Drooping flowers of blue in July and August. Excellent border plant. Dark green glossy foliage. Stands shade.

**Funkia Subcordata.** WHITE PLANTAIN LILY. 18 in. Fragrant white, lily-like flowers in August and September. Bright glossy foliage. 75 cts. each.

\***Funkia Variegata.** STRIPED PLANTAIN LILY. 15 in. Broad, waxy foliage, beautifully variegated with white. Very attractive border plant. Blue flowers in July. Stands shade. 50 cts. each.

**GAILLARDIA Grandiflora.** BLANKET FLOWER. 2 ft. Rich red and crimson petals with broad border of yellow. June to October. Unsurpassed for cutting.

**GYPSOPHILA Paniculata.** BABYBREATH, 2 to 3 ft. Unexcelled cut flowers. Tiny white blossoms cover the plant through July and August.

**DOUBLE BABYBREATH Gypsophila.** BRISTOL FAIRY. Full, double, snow-white flowers in large sprays. True, grafted variety. \$1.00 each.

**HELENIUM autumnale superbum.** YELLOW STAR. 4 to 5 ft. Golden-yellow flowers in August and September. 50 cts. each.

**Helenium Riverton Gem.** 3 ft. Old gold shaped with terra cotta and red. For cutting or garden show. August to frost. 50 cts. each.

(Refer to colored insert.)



The Royal or Regal Lily, one of the most beautiful and hardiest lilies grown in Minnesota—worthy of a place in every garden.

### HEMEROCALLIS—Day Lily

No other group of hardy perennials has received the attention, by gardeners, as has the so called Day Lily. Hybrids are very valuable for plantings in borders. Especially desirable where tones of yellow and orange are desired.

**HEMEROCALLIS Dumortieri.** STRIPED DAYLILY. 20 in. A medium-height, rich cadmium yellow lily with brown stripes on the outside of flower. June.

**Flava.** LEMON DAYLILY. 2½ ft. Sweetly scented lemon-yellow flowers in June and July.

**Judge Orr.** A large-flowering, tall, free-blooming golden yellow lily. June.

**Middendorffi.** 2 ft. Rich yellow lilies in July. Follows Flava variety in blooming.

**Thunbergi.** 2½ ft. A late, yellow-blooming lily. July.

**Anna Betscher.** Round, broad petaled, rich buttercup yellow. July. 75 cts.

**Goldeni.** Well-rounded, deep golden flowers. July. 75 cts.

**Gypsy.** Deep orange with red shadings. Late June. 75 cts. each.

**Hyperion.** Outstanding in flower and growth. Immense lemon-yellow. Late July. \$1.00 each.

**Mikado.** Striking deep-orange with maroon bars. June. 75 cts. each.

**Mrs. Austin.** Broad-petaled round flowers of deep orange. Mid-July. 75 cts.

#### DAY LILY COLLECTION

A collection of six different Day Lilies to bloom from May to August, including 1 Hyperion, considered the best yellow. All are very graceful, free flowering and hardy.

**SPECIAL GROUP—6 Plants-----Price \$2.50**

\***HEUCHERA Pleu-de-Feu.** ALUMROOT. 18 in. Tuft of handsome evergreen leaves with delicate, crimson flower bells on slender stems. July. 50 cts.; extra strong, 75 cts.

\***Heuchera Sanguinea.** CORALBELLS. 18 in. A variety of the above with bright coral-red flowers. 50 cts. each; extra strong, 75 cts.

**HIBISCUS.** ROSEMALLOW. 4 to 5 ft. Giant, funnel-shaped flowers of red, white or pink on sturdy plants. July and August. 50 cts. each.

**Hollyhock.** DOUBLE FLOWERING. 5 to 7 ft. Yellow, white, pink and red colors. July and August.

**LATHYRUS Latifolius.** PERENNIAL SWEET PEA. Semi-climbing plants with showy pea-flowers of deep pink over a long season. 50 cts. each.

**LILY-OF-THE-VALLEY.** 8 to 10 in. Pure white dainty bell-shaped flowers in May and June. Bulb clusters, 25 cts. each. Heavy clumps, 40 cts.

**LINUM NARBONNENSE.** Blue Flax. 18 in. Graceful foliage with delicate flowers of azure blue with white eye. May to August.

### THE LARGE-FLOWERING LILIES

Our specially-prepared, potted and growing Lilies are sure to bloom. The graceful growth and gorgeous flowers make the Lilies the attraction spot of the garden.

**When planting remove from pot and plant the earth ball 5 inches below ground level.**

**AURATUM.** GOLDBRANDED LILY. 3 ft. Fragrant white flowers spotted crimson with central yellow band. Red anthers. July and August. **Started and potted plants \$1.25 each; 6 for \$7.00.**

**REGALE.** REGAL LILY. Large fragrant white flowers that are striped pink outside and have yellow shadings within the cup. July. Large bulbs, 60 cts.; **Started plants, \$1.00; 6 for \$5.50.**

**SPECIOSUM RUBRUM.** CRIMSON SPOTTED LILY. 3 ft. A fragrant lily, under-color white, shaded and spotted with crimson. August and September. **Started potted plants, \$1.25; 6 for \$7.00.**

**Lily Elegans.** ORANGE CANDLESTICK LILY. 18 in. Very hardy variety producing orange-red flowers in great numbers. July. Bulbs, 40 cts.; 3 for \$1.00.

**Lily Tigrinum, fl. pl.** DOUBLE TIGER LILY. 3 to 4 ft. An improved variety of this old favorite. Orange-red spotted black. July and August. Large bulbs, 40 cts. each; 3 for \$1.00.

**LUPINUS Polyphyllus.** LUPINE. 3 to 4 ft. Azure blue, pea-shaped flowers in long spikes. Late May and June. 50 cts. each.

**LYTHRUM Morden Hybrid (New).** A real clear rose pink form growing 3 ft. high. July to September. 60 cts. each.

**MONARDA didyma.** OSWEGO TEA. 3 ft. Compact heads of bright red flowers. Aromatic foliage. June to September.

**Monarda Salmon Queen.** Attractive clear salmon pink flowers, fragrant foliage.

**PACHYSANDRA terminalis.** 6 to 9 in. A handsome trailing plant for ground cover. Stands shade. 40 cts. each; 12 for \$4.00.

**PHYSOSTEGIA.** ROSY SPIRE. 3 ft. Spikes of ball-like flowers, color rosy-crimson. Blooms in September.

**Physostegia "vivid."** FALSE DRAGONHEAD. 2 ft. Spikes of deep pink, bell-like flowers in September. Excellent cut flowers.

**Prices—unless noted—40 cts. each; 3 for \$1.00. Extra size—60 cts. each.**

**For shipment by parcel post please add 10% for postage.**

(Refer to colored insert.)



## Spotlight Your Garden With Flowering Perennials

**PLATYCODON grandiflorum.** BALLOON FLOWER. 18 in. Star-shaped blue or white flowers at the tip of each branch. Compact, busy growth. June to September.

**POLYGONUM Reynoutria-Dwarf Lace Plant.** This handsome ground cover is easy to grow, very hardy and establishes itself rapidly. Does best in full sun. Pale green foliage turns bright red in fall. Height 1 ft., 60 cts. each.

**PYRETHRUM Hybridum.** PERSIAN DAISY. 2½ ft. Daisy-shaped flowers in white to shades of pink, rose and red. Splendid for cutting. May and June.

**Pyrethrum Uliginosum.** GIANT DAISY. 4 to 5 ft. Large white flowers in August and September. Splendid for cutting.

**Poppy, Oriental. New Named Varieties**—60 cts. each, as follows:

**Beauty of Livermore.** Crimson with dark shadings.

**Mrs. J. Harkness.** Bright salmon, rose scarlet.

**Mrs. Perry.** Salmon pink, shaded apricot. "Best Pink Poppy."

**Olympia.** Brilliant flame-scarlet shaded with golden salmon. Semidouble.

**POPPY, Oriental (Papaver orientale).** 2½ ft. Massive cup-shaped flowers of deep scarlet.

\***Poppy, Iceland (Papaver nudicaule).** 12 in. Cup-shaped flowers of clear colors, white, yellow and orange scarlet. Bloom all summer.

**RUBECKIA laciniata.** GOLDEN GLOW. 5 to 6 ft. The popular, double yellow blossoms of August and September.

**Rubbeckia purpurea.** PURPLE CONE FLOWER. 3 to 4 ft. Rose-purple flowers with tall, brown center. August to October.

**SALVIA pitcheri.** MEADOW SAGE. 3 to 4 ft. Every stem tipped with spikes of pretty sky-blue flowers. August and September.

### SEDUM—A splendid edging and rockery plant.

**Sedum, Dwarf Varieties**—These hardy plants grow closely to the ground to make a thick carpet of foliage. Choice of **yellow, white** and **pink** flowering kinds. Price 25 cts. each; 5 for \$1.00.

**Sedum Spectabile**—Erect growing with heads of rose pink flowers in August. Fleshly, light-green leaves.

**Sempervivum**—Hardy "Hen and Chickens." Small rosettes of thick leaves. Excellent rock garden plant.

**STATICE latifolia.** SEA LAVENDER. 2 ft. Delicate purple-blue flowers cover the branching top in August and September. 50 cts.

**THALICTRUM adiantifolium.** MEADOW RUE. 2½ ft. Graceful foliage like a Maiden Hair fern. Clusters of open, white flower balls in June. 50 cts. each.

**TROLLIUS, Asiaticus.** YELLOW GLOBE FLOWER. 2 ft. A glorified Buttercup. Handsome dark green foliage with yellow cup-like flowers in May and June. 60 cts.; extra size, 75 cts.

**Trollius ledebouri.** ORANGE GLOBE FLOWER. 2½ ft. Strong-growing, hardy perennial with handsome foliage and large orange flowers. 60 cts. each; extra size 75 cts. each.

**VALERIANA officinalis.** HARDY GARDEN HELIOTROPE. 3 ft. Sweetly fragrant, gray-pink flowers in June and July.

**VERONICA longifolia.** JAPANESE SPEEDWELL. 2 ft. Long spikes of attractive blue-violet flowers. August and September. A good garden and cut flower.

**Veronica blue spires.** 2 ft. Improved variety, deep blue spikes. Upright, continuous bloomer, withstands heat. 50 cts. each.

\***Veronica rupestris.** Grows 3 in. high with thickly matted, deep green foliage. Excellent for rock garden plantings. Well covered with bright blue flowers in early June.

\***Veronica Spicata.** SPEEDWELL. 1½ ft. Spikes of blue flowers. June to September. Excellent garden plant.

\***VIOLA.** JERSEY GEM. 8 in. Rich green foliage with blue flowers like small pansies. May to September. Splendid border plant and a delightful, dainty cut flower.

\***YUCCA filamentosa.** ADAM'S NEEDLE. 4 ft. Stiff sword-shaped leaves with tall spikes of white, drooping flowers in July. 50 cts. each; extra size 75 cts.

Prices—unless noted—40 cts. each; 3 for \$1.00.

Extra size—60 cts. each.

(For parcel post shipment please add 10%)

(Refer to colored insert.)

# Fruit

## For Food and Beauty

### The Hardy Apples

Price—Strong Trees, 5 to 6 feet, \$2.00 each. Specimens 7 to 8 ft., \$4.00.

No other fruit tree contributes more to your garden and orchard than the apple. As the trees grow older, their good features become more pronounced and your trees more valuable.

**ANOKA.** Large yellow, red-striped fruit of fine flavor in August. Bears early on young trees—often fruiting second year after planting.

**BEACON.** (New Minn. Variety.) An early-ripening, highly-colored, deep red apple of good size. Valued for both eating and cooking.

**DUCHESS.** Yellow with red stripes. Ripens early. A large size popular September fruit. Bears heavily. Free from blight.

**FIRESIDE.** An attractive, red, long keeping apple with a high flavored, rich deliciousness that makes it just the fruit for a winter evening by the fire.

**HARALSON.** Deep red winter apple. Fine quality. A new hardy and dependable Minnesota apple.

**MINJON.** A Minnesota form of Jonathan, good eating and cooking quality.

**PRAIRIE SPY (New Minn. variety).** Bright red over a yellow ground, medium size, late. Excellent keeper.

**WEALTHY.** A fine-quality red apple that fruits abundantly. A very popular Minnesota variety. Season, September to January.

#### Hardy Crab Apples

Price—Strong Trees, 5 to 6 feet, \$2.00 each.

**DOLGO.** Good flavored, highly ornamental bright red fruit. Makes excellent jelly. Ripe in September. \$2.50.

**WHITNEY.** Best of the sweet crabapples. Large, well flavored and early red fruit.

#### Hardy Plums

Price—Strong Trees, 5 to 6 feet, \$2.00 each.

**LaCRESCENT.** Our best quality yellow plum. Sweet and juicy.

**PIPESTONE.** Large yellow fruit with a red blush. Midseason. Excellent quality for dessert or preserving.

**SUPERIOR.** (New introduction.) Large, conic-shaped, deep red juicy fruit. Small pit. Nearly free-stone.

**UNDERWOOD.** Early ripening attractive red plum. A very popular hardy variety. Trees bear annually.

#### Cherries

Price—Strong Trees, \$2.00 each.

**MONTMORENCY.** A sour cherry. Hardy. Luscious juicy red fruit.

**OKA CHERRY.** New hardy and productive hybrid from So. Dak. Low-headed tree producing tremendous crops of large red fruit. Color, rich purple-red inside and out. Flavor delicious for dessert or preserving.

#### Hardy Pears

**PARKER.** The hardiest of the pears and, after extensive trial, now recommended for Minnesota. Produces abundant, rather small but excellent quality fruit. 4 to 5 ft., \$2.00.

#### Asparagus

**PARADISE.** An excellent green asparagus.

Price—Strong Roots, \$1.00 per dozen; \$5.00 per 100

#### Currants

Price—Strong 2-year Plants, 70 cts.; \$5.50 per 10.

**RED LAKE.** New Minnesota currant. Erect bush. Large red fruit in heavy clusters. Excellent flavor.



#### Gooseberries

Price—Strong 2-year Plants, 90 cts.; \$4.00 per 5.

**PIXWELL.** Very productive, large, light green when immature, ripening to pink. It is the abundance of fruit which hangs away from the stems making it easy to pick, that gives it its name.

#### Grapes

Price—Strong Plants, 55 cts. each; \$2.50 per 5.

**BETA.** A medium size, black grape with sprightly flavor. Unusual hardness and a heavy bearer.

**CONCORD.** The large, black grape. Always popular.

#### Raspberries

Price—20 cts. each; \$1.50 per 10

**CHIEF.** The new Minnesota introduction. Early and heavy crops of firm, red berries. Very hardy.

**LATHAM.** Large red berries in abundance. Later than Chief. A hardy Minnesota variety with fruit of very attractive color.

#### Rhubarb or Pie Plant

**STRAWBERRY.** Early and tender. 50 cts. each.

**McDONALD.** (New). Highly colored red stalk, very succulent and tender. A splendid improved variety. Price, 70 cts. each.

#### Strawberries

**SENATOR DUNLAP.** June-bearing. Considered the most dependable, all-purpose strawberry. Large crops of big, deep red berries.

Price—Strong Plants, 60 cts. per dozen; \$2.50 per 100.

**BRUNES MARVEL.** Everbearing. Large, sweet berries, free stem, produced freely.

Price—\$1.25 per dozen; \$10.00 per 100.





Sow "Velvet Sod"—the best grass seed. "Velvet Sod" makes a lawn of lasting beauty.

## H & O "High Test" Lawn Grass Seed

Good lawns can only follow the use of clean, pure seed of high germination test. H. & O. High Test Seed is dependably good—selected, re-cleaned seed that is the best in quality that we can secure.

**AMOUNT OF SEED TO SOW** — Allow one pound of seed to every 200 square feet of new lawn area. For re-seeding on old lawns one pound of seed to 400 square feet will be sufficient.

### HISTORY BEHIND A QUALITY GRASS SEED MIXTURE

Grass seeds are usually purchased under brand names, the basis of all good grass seed mixtures must be the same. The important feature of a good mixture is that it must contain heavy well developed seeds from selected grass stocks that have been grown and cured for the distinct purpose of seed production.

Purity of the seed, free from weed seeds, germination and weight per bushel are the important factors to consider. Avoid mixtures that contain annual weed seed, Timothy and domestic Rye grass.

Kentucky Blue grass and Red Top are the basic seeds used in good grass seed mixtures.

Prices are given for seed packed and ready to ship. Add 10c per lb. for parcel post if shipment by mail is wanted.

#### "Velvet Sod" Seed

"Velvet Sod" Lawn Seed is an unusually high grade and careful mixture of permanent fine-bladed, rich green grasses. Specially prepared to meet the climatic conditions of our northern states. Its high weight of 25 lbs. per bushel indicates its purity and freshness from chaff and adulterations. We use this seed on all our own landscape work and recommend it as the best seed obtainable.

1 lb. \$1.25; 5 lbs. \$6.00; 10 lbs. \$11.00; 20 lbs. \$20.00

#### Shady-Side Seed

Where ordinary grasses will not grow we suggest sowing this special "shady-side" mixture which contains varieties naturally tolerant to shade. Extra attention of fertilizing and watering is very important under these shade conditions and a light re-seeding each spring helps maintain the sod.

1 lb. \$1.25; 5 lbs. \$6.00; 10 lbs. \$11.00; 20 lbs. \$20.00

#### WEEDONE

Weedone, the original 2-4 D weedkiller. Kills dandelions, plantain, chickweed, and most other lawn weeds. Also kills poison ivy, poison oak, bind weed and other noxious weeds that plague the gardener. Formula: 6 oz. Weedone to 5 gallons of water. This solution will cover 1,000 sq. ft. applied under pressure. Weedone does not kill Crab Grass.

6 fluid ounce bottle (for 1,000 sq. ft.)	-----	\$ 0.75
1 quart bottle (for 5,000 sq. ft.)	-----	2.50
1 gallon can (for 20,000 sq. ft.)	-----	7.50

#### Creeping Bent Grass

**Sea Side Bent**—A true, unmixed creeping bent seed. It produces a thick, low and close-growing turf for lawns and golf greens. (Creeping Bent sod requires often and close cutting and special attention in fertilizing.)

1 lb. \$2.00; 5 lbs. \$9.75; 10 lbs. \$19.00

#### Red Top Grass

Red Top is a fine-leaved grass that germinates and develops very quickly. It is of particular value in getting a new sod established. For a permanent lawn it should not be sown alone.

1 lb. \$1.50; 5 lbs. \$7.25

#### White Clover Seed

The best imported white Dutch clover with small leaves and dense growth. Very often sown with other grasses, particularly in a new lawn, where it helps cover the ground, thicken the sod and so tends to crowd out weeds.

½ lb. \$0.85; 1 lb. \$1.50; 5 lbs. \$7.25

#### Kentucky Blue Grass

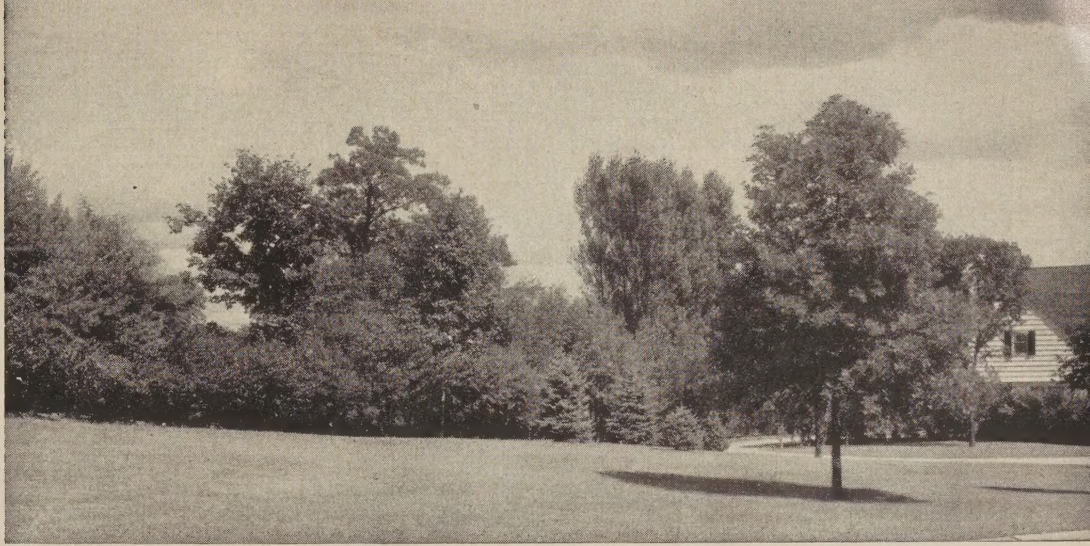
A beautiful grass that should be the main constituent of every good lawn here in the north. It is sometimes used alone but as it develops slowly, it becomes better established if sown in a mixture. Our seed is a very choice grade of carefully re-cleaned extra heavy seed with an average weight of 21 lbs. per bushel.

1 lb. \$1.50; 5 lbs. \$7.25

Send for "HOW TO MAKE A LAWN." This booklet tells you how to make and care for a lawn. It gives practical and helpful information. Mailed on request.

# Fertilizers

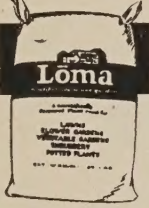
FOR LAWN AND  
GARDEN



This lawn is always beautiful. Fertilized Spring and Fall.

## Feed Your Lawn Garden and Trees

There are three chemical elements of plant food commonly used in fertilizers. They are Nitrogen, Phosphate and Potash. A balanced fertilizer is one which contains all three, commonly expressed in a formula of three numbers. The first indicates the proportion of Nitrogen, the second Phosphate and the third Potash.



**Lōma** ALL PURPOSE FERTILIZER  
Free of All Odor

**Lōma** Beautifies lawns and gardens

**The PERFECT PLANT FOOD**  
For Lawns and Victory Gardens

Lōma is a concentrated plant food. It produces a luxuriant, healthy growth of foliage and flowers.

**For the Lawn.** Apply 40 lbs. to each 1,000 sq. ft. of area. Scatter evenly and wet down.

**For the Garden.** Apply along the rows or around plants according to directions on package.

25 lbs. \$1.75; 50 lbs. \$2.75; 100 lbs. \$4.50



the **NEW**  
**MINERALIZED**  
**HIGH ANALYSIS** **Lōma**  
For Everything  
Green That Grows

**MINERALIZED LOMA** contains the Essential Mineral Elements which science has proven are most frequently lacking in the soil:

Copper	Boron	Iron
Manganese		Zinc

25 lbs. \$2.50; 100 lbs. \$8.00.

### Dried Cattle Manure—Driconure

A time tested all organic fertilizer made entirely of animal manures. Dehydrated, finely ground for more convenient handling. Good for flowers, shrubs and lawn. One 50 lb. bag will fertilize 500 square feet of area.

50 lb. bag \$2.50

### TREE FEEDING

Promotes new growth, more foliage and healthy trees.  
How to Fertilize Your Trees

Extra plant food keeps trees in healthy, vigorous growth and overcomes drouth.

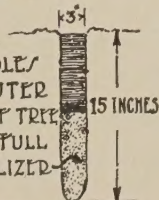
#### AMOUNT TO APPLY

Use 15 lbs. of fertilizer (LOMA preferred) for each inch of tree trunk diameter. (A 5 inch tree needs 75 lbs. of plant food.)

Apply the fertilizer as shown in the diagram and water thoroughly.



MAKE HOLES UNDER OUTER BRANCHES OF TREE FILL HALF FULL WITH FERTILIZER



SPACE HOLES ABOUT 30 INCHES APART

### Bone Meal

**BONE MEAL.** A selected, finely-ground meal of animal bone that contains valuable nitrogen and phosphoric acid plant food. A safe and excellent fertilizer for peonies, roses and all garden plants. Our Bone Meal has been slightly steamed to soften it and to hasten its fertilizing action. Apply to flower borders one lb. to 15 sq. ft. and cultivate in. Use generously around trees and shrubs.

25 lbs. \$2.50; 50 lbs. \$4.50; 100 lbs. \$8.00

### Milorganite—For the Lawn

Activated sludge fertilizer scientifically prepared, a natural plant food rich in organic nitrogen. A non-burning, long-lasting lawn fertilizer. Apply in early spring and fall. Use 40 lbs. to 1,000 sq. ft.

100 lb. bags, \$4.00



### Many Choose This Complete Plant Food

Gardeners use Vigoro on lawns, flowers, trees, and vegetables. It is complete plant food that supplies the vital elements plants need from the soil for vigorous growth. Feed everything you grow Vigoro.

100 lbs. \$4.25

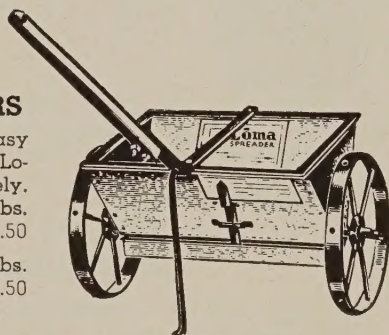
# Garden Supplies and Accessories



**Toro Leaf-Master** glides gently over grass with minimum effort. Picks up leaves, twigs, grass, etc. Adjustable for height of sweeping -----\$52.00

## LOMA SPREADERS

Useful—Well-built. Easy to operate. Spreads Loma evenly and accurately.  
 16 in. spreader—holds 22 lbs.  
 Price -----\$7.50  
 20 in. spreader—holds 40 lbs.  
 Price -----\$11.50



All have mechanical agitators and shut-off control.

## TRI-GEN

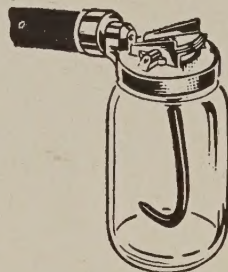
Rose Garden Spray Treatment

Positive protection against all Insects and Diseases

TRI-GEN gives complete protection against all plant insects and diseases, including black-spot, mildew, aphid (plant-lice), slug worms, caterpillars, etc. Especially recommended for roses, asters, snapdragons, carnations, hollyhocks, delphiniums, phlox, chrysanthemums, zinnias, golden glo, dahlias, and many other plants.

E—Kit. Protects	6 to 10 roses for season	-----	\$ 0.90
A—Kit. Protects	12 to 20 roses for season	-----	1.50
B—Kit. Protects	50 to 80 roses for season	-----	4.00
C—Kit. Protects	100 to 160 roses for season	-----	6.00
D—Kit. Protects	400 to 600 roses for season	-----	20.00

## SPRAYS SOLUBLE FERTILIZERS OR WEED KILLERS



## NEW GRO-GUN

Feeds lawns or gardens while watering them. Spray 15 gals. with each filling of pint jar furnished, or 30 gals. when using quart jar. Cover a small hole to spray properly proportioned fertilizer or weed killer. Remove finger to spray plain water. No mist, no side spray, no fog to drift. Dual Cap fits narrow neck bottle and wide mouth jars . . . attach fertilizer or weed killer bottles directly to the Gro-Gun.

**PRICE—\$2.45**

(Complete with pint jar.)

## The Improved Water Lance

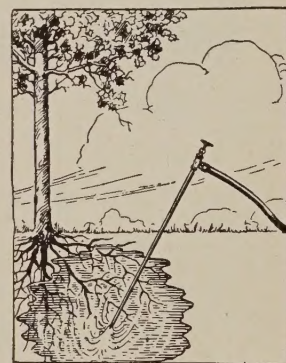
For watering the roots of trees and shrubs. Saves time — saves water — gets results.

This handy device is very simple to use. It connects right to your garden hose.

In 2 minutes use it supplies more water right to the plant roots where it is needed than by 2 hours of the old surface watering. We recommend it.

**Price—\$3.50**

(Postage 25c extra)



## METHODS OF CONTROLLING INSECTS

**Chewing Insects.** Arsenate of Lead kills all eating and chewing insects. Example, grubs. 1 to 2 tablespoons of arsenate of lead to 1 gallon of water. 1 lb., 60 cts.; 4 lb. bags, \$1.75.

**Sucking Insects.** Nicotine 40% kills all sucking insects. Example, plant lice. 1 tablespoon to 3 gallons of water. 5 ounces, \$1.10.

**Fungus Diseases.** Bordeaux prevents blight, rot, mildew and fungus. 1 to 2 tablespoons to a gallon of water. 1 lb., 40 cts.

**Dormant Spray.** Lime-Sulphur for scale, scabs and soot blotch. 1 lb. to 1 gallon of water. 1 lb., 40 cts.

**Black Spot and Mildew.** Dusting Sulphur for roses and other plants. 2 lbs., 45 cts.

**Grub and Earth Worms.** Arsenate of Lead dissolved in water. 10 lbs. to 1000 sq. ft. of lawn surface. 1 lb., 60 cts.; 4 lb. bags, \$1.75







# Trees, Evergreens and Shrubs

APPROPRIATE FOR  
LANDSCAPE PLANTING

## Evergreens for the Open Lawn

The selection of Evergreens is an investment in dignity and permanence. Choose them carefully with an eye to the future. Give them plenty of room. Plant in well drained soil.

American Arborvitae	Austrian Pine
Dundee Juniper	Mountain Pine
Red Cedar	Black Hill Spruce
Douglas Fir	Colorado Spruce.

## Evergreens for Around the House and Buildings

Plantings at the doorway and around the house foundation will delight you in all seasons with their green color. Do not crowd. Plant in fertile well drained soil.

Pyramidal Arborvitae	Savin Juniper
Siberian Arborvitae	Andorra Juniper
Chandler Silver Cedar	Mugho Pine
Pfitzer Juniper	Yew (Dwarf)

## Lawn Trees

Careful thought given to selecting the best varieties for a particular use and location is important. They may be used as accent, for shade, shadows, and to supply flower, fruit and foliage.

Birch in variety	American Linden
Flowering Crabs	Mountain Ash
Horse Chestnut	Hackberry
American Elm	Red Maple
Maples in variety	Crataegus

## Early Flowering Trees

Flowering trees are a part of the glory of Spring. There is no waiting for a show of flowers and color. Recommended—Specimens. Flowering Crabs are outstanding.

Dolgo Crab	Mountain Ash
Flame Crab	Hawthorn-Crataegus
Hopa Crab	Purple Leaf Plum
Red Silver	Dbl. Flowering Plum
Betchel's Dbl. Flowering Crab	Horse Chestnut

## Shrubs with Exceptional Flowering Qualities

This group contains many of the old favorites as well as many of the new varieties. Your border will be aglow with summer color when these varieties are planted in groups.

Dbl. Flowering Almond	Hybrid Rugosa Roses
Yellow Flowering Currant	Bridal Wreath
Forsythia ovata	Spiraea Anthony Waterer
Honeysuckle in variety	Spiraea Snow Garland
Hydrangea, Large Flowering	Tamarix
Virginal Mockorange	Weigelia
Snowflake Mockorange	Dbl. Flowering Plum
Hybrid French Lilacs	Persion Lilac

## Low Shrubs. for House and Border Plantings

Flowering and foliage shrub plantings near the house should consist of low and medium compact slow growing plants. They provide a transition from house to ground and from background shrubs to lawn area. Recommended varieties:

Green Barberry	Rugosa Roses
Red Barberry	Dwarf Ninebark
Alpine Currant	Spiraea Thunbergi
Hydrangea	Spiraea Anthony Waterer
Golden Mockorange	Snowberry

## Colorful Shrubs for Accent in the Border.

Use these shrubs in sunny exposure. They will spotlight the border and house plantings with exciting beauty. Plant in groups of three and five.

Red-leaved Barberry	Golden Mockorange
Euonymus alatus nana	Russian Olive
Variagated Dogwood	Golden Ninebark
Dbl. Flowering Plum	Tamarix
Purple Leaf Plum	Rubrifolia rose

## Fruiting Shrubs and Small Trees that Attract Birds

There are a number of plants which produce edible seeds and fruit attractive to birds. The ones enumerated below are the most important and ornamental.

Barberry	Euonymus
Buckthorn	Yellow Currant
Cotoneaster	Honeysuckle
Dogwood	Snowberry
Elderberry	Russian Olive
Highbush Cranberry	Mountain Ash
Arrowwood	Crataegus

**HOLM & OLSON, INC.,**

SAINT PAUL 2, MINN. and ROCHESTER, MINN.

**THE PARK NURSURIES**