

## **Historic, Archive Document**

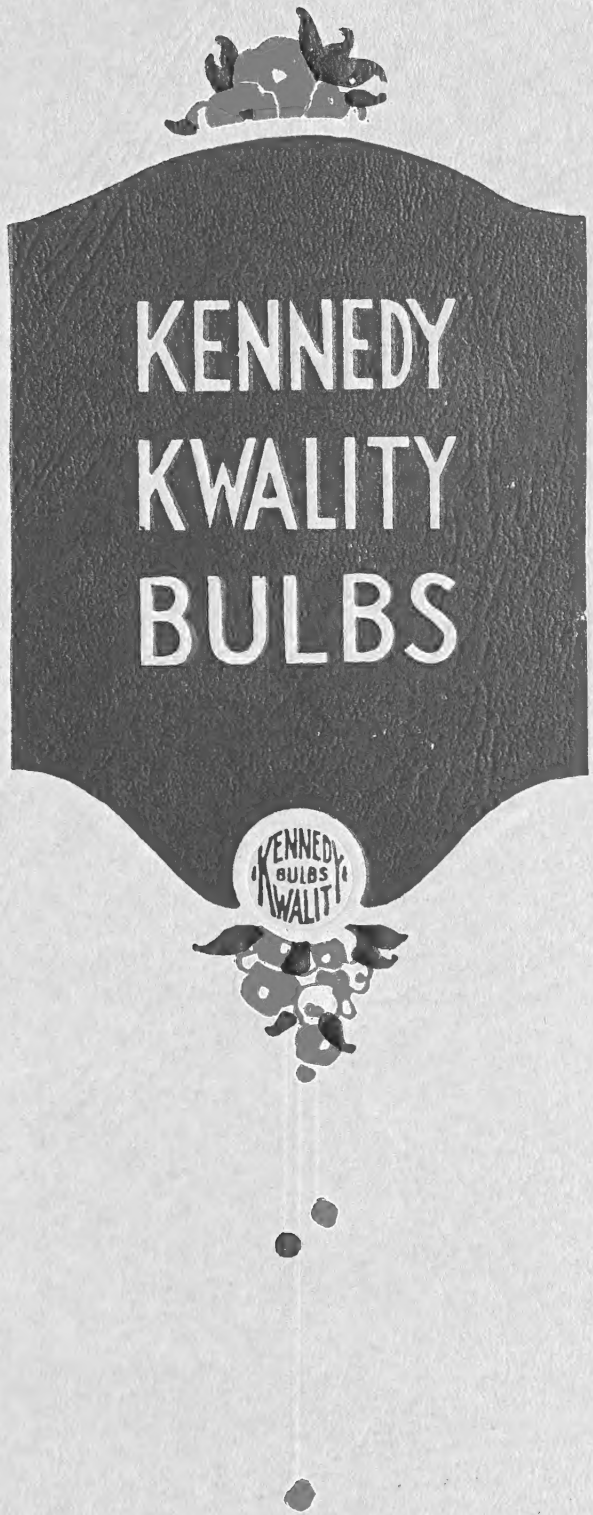
Do not assume content reflects current scientific knowledge, policies, or practices.



62.61

Re

**LIBRARY**  
**RECEIVED**  
 ★ JUN 29 1950 ★  
 U. S. Department of Agriculture



**AUTUMN**  
**1950**

**ANDREW R. KENNEDY INC.**  
 SEEDS ~ BULBS ~ PLANTS  
 22-24 W. 27th ST. NEW YORK 1, N. Y.





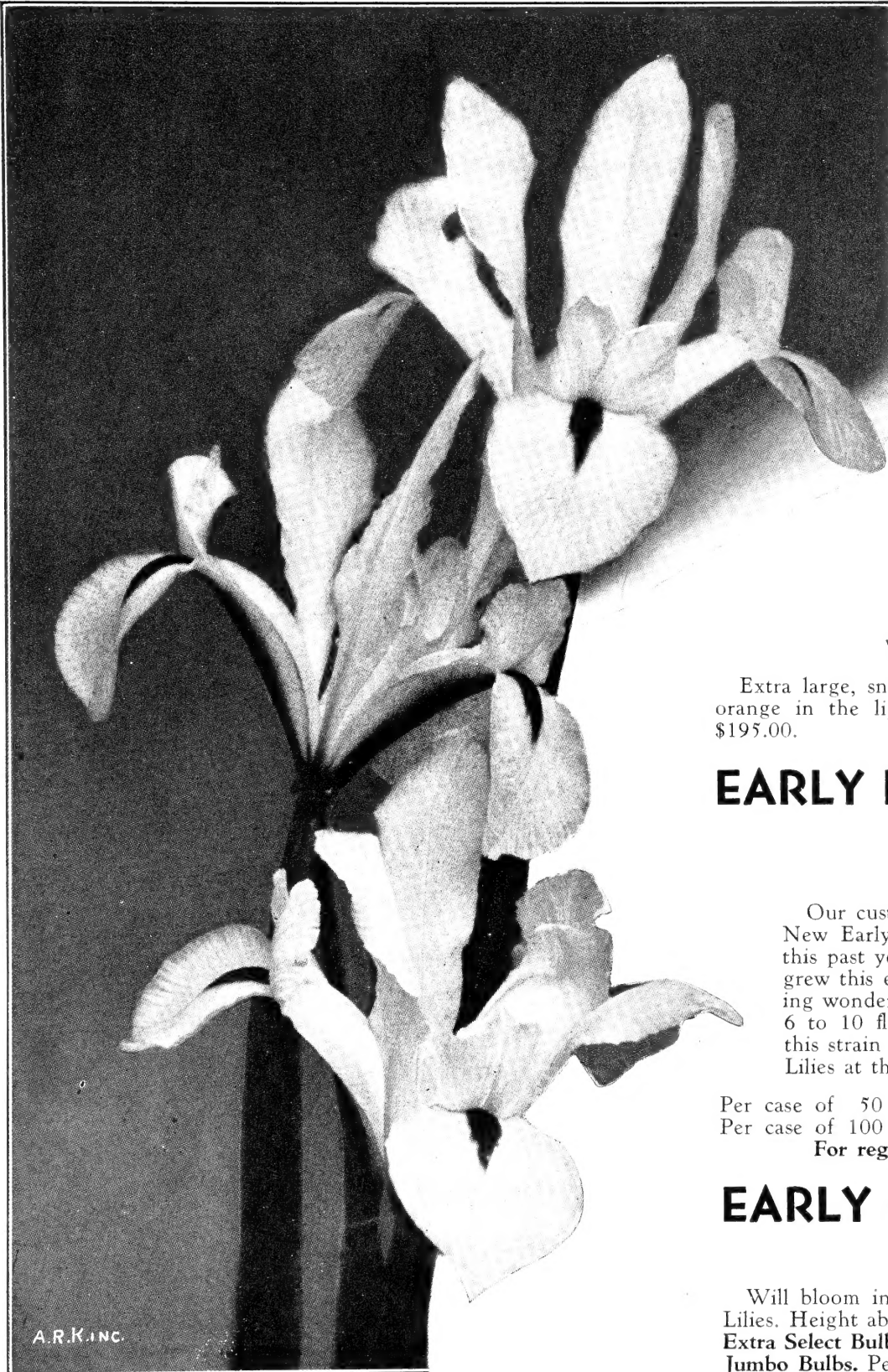


# Kennedy Quality Prepared Bulbs for Early Forcing

Our specially prepared bulbs for early flowering again this past winter proved superior in earliness, size and number of flowers.

To shorten the growing period of different types of forcing bulbs we have perfected the process in curing and precooling which makes their forcing earlier and one hundred per cent productive.

As a result of this special preparation all our prepared bulbs bloom from twenty-one to sixty days earlier than the same varieties taken from regular stock.



DUTCH IRIS

## DUTCH IRIS

### Joan of Arc

Enormous creamy white Iris with yellow blotch on the falls. A strong grower and an outstanding new variety. Early January. 100 for \$29.00.

### Wedgewood

The strongest and earliest of the blue Dutch Iris. May be had in flower for Thanksgiving and thereafter throughout the winter, without sacrificing quality of flowers. 100, \$22.50; 1,000, \$220.00.

### Yellow Queen

Our top size prepared bulbs can be flowered by the first week in January without the loss which usually results from early forcing of this variety. 100, \$17.00; 1,000, \$165.00.

### White Excelsior

Extra large, snow-white with narrow feather of golden orange in the lips. Early January. 100, \$20.00; 1,000, \$195.00.

## EARLY FLOWERING LILIUM HARRISI

(True Howardi)

Our customers had no difficulty in flowering our New Early strain of Liliium Harrisi for Christmas this past year. We have letters from customers who grew this early strain complimenting us and reporting wonderful Liliium Harrisi at Christmas, carrying 6 to 10 flowers per stem. We cannot recommend this strain too highly to anyone desiring white tube Lilies at the Christmas season.

Per case of 50 bulbs .....\$ 78.00

Per case of 100 bulbs ..... 150.00

For regular Liliium Harrisi, see page 9.

## EARLY FLOWERING LILIUM CROFT

Will bloom in March and carries 8 to 10 large Easter Lilies. Height about 2½ to 3 feet.

Extra Select Bulbs. Per 100 \$97.50.

Jumbo Bulbs. Per 100 \$140.00.

For regular Liliium Croft, see page 10.



# Prepared Bulbs for Early Forcing

## NARCISSUS

NORTHWEST AMERICAN GROWN  
ABSOLUTELY SUPERIOR FOR EARLY FORCING

### **Campernelle Odorus Giganteus** (Jonquil)

This beautiful, sweet-scented Jonquil of deep golden yellow is second only to our prepared King Alfred in popularity with our customers. 100, \$20.00.

### **Early Perfection (Poetaz)**

Earliest Poetaz variety. Our prepared bulbs force easily for Christmas. 100, \$20.00.

### **Fortune (Incomparabilis)**

Bright yellow, well overlapping perianth; very large deep orange cup. Superior to Helios in every respect. Flowers early December. 100, \$35.00.

### **Golden Harvest (Ajax)**

Enormous golden yellow trumpet and perianth. Trumpet measures over two inches across. Flowers two weeks earlier than King Alfred. 100, \$35.00.

### **Helios (Incomparabilis)**

Deep yellow perianth, light orange crown. This is a very free-flowering variety and our prepared bulbs may be forced in flower in early December if desired. 100, \$25.00.

### **King Alfred (Ajax)**

Our customers again report having our prepared King Alfred in flower last winter as early as December 15th. Bulbs average three to four exceptionally large flowers. 100, \$32.00.

## TULIPS

We offer only those varieties which were outstanding in last year's trials. Our prepared Tulips bloom from 3 to 6 weeks earlier than regular stock.

### **Albino**

The best pure white Cottage Tulip for forcing. Our prepared bulbs flower in early January. 100, \$30.00.

### **Christmas Glory**

A Perfect Scarlet Tulip for Christmas with 18-Inch Stems

Heralded again last season by everyone seeing it in bloom, as a wonderful acquisition to the list of Christmas flowers. 100, \$30.00.

### **Christmas Gold**

Beautiful golden yellow. 18-inch stems. May be forced for Christmas. 100, \$30.00.

### **Christmas White**

Earlier and taller than Albino. Pure white. 100, \$35.00.

### **Rose Copeland**

Deep rose-pink. Early January. 100, \$30.00.

### **Improved William Copeland**

One of the best lavenders for forcing. Sweet scented. Early January flowering. 100, \$30.00.

### **Mrs. E. H. Krelage (Ajax)**

One of the best white Trumpet Narcissus. Our prepared bulbs of this variety will flower the first week in January. 100, \$35.00.

### **Spring Glory (Ajax)**

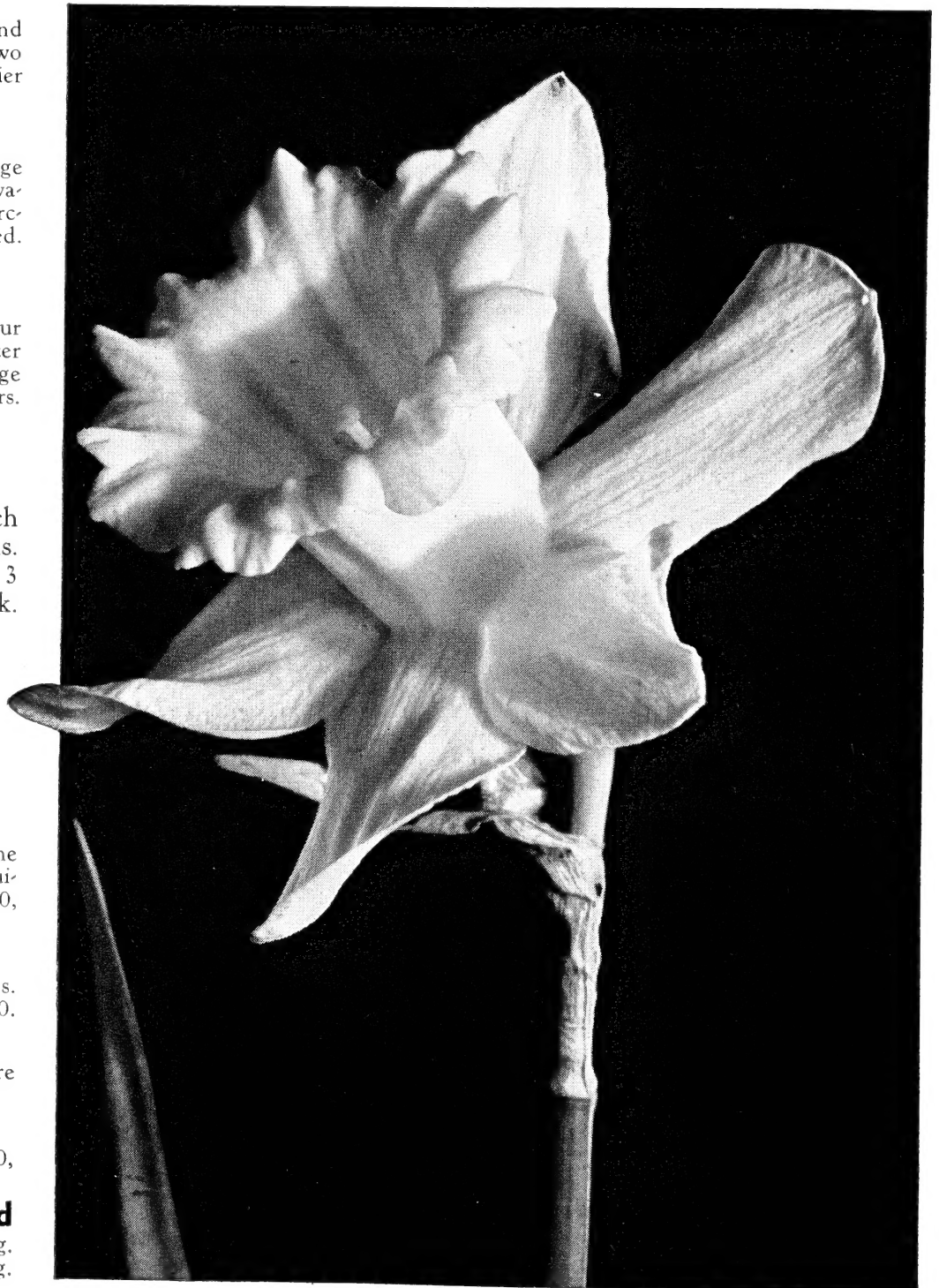
Large golden yellow trumpet, white perianth, free flowering. Flowers early January. 100, \$30.00.

### **Texas (Double)**

Very large full flower. Yellow at the edge of the petals shading to bright orange at the center. Will flower early January. 100, \$37.50.

### **Unsurpassable (Ajax)**

A giant deep yellow. The largest of all yellow Daffodils, almost twice the size of King Alfred. Will flower for January 1st. 100, \$45.00.



NARCISSUS, King Alfred



# Kennedy Kwality Bulbs and Roots for Forcing

## RETARDED IN COLD STORAGE



The bulbs offered below are now being retarded in cold storage, and can be forced in bloom in a surprisingly short time. Retarded stock develops the finest blooms.



A Pot of Kennedy Kwality LILY-OF-THE-VALLEY

### CALLAS

**Elliottiana.** Deep golden yellow, with white spotted foliage.  
**Case of 50 bulbs \$65.00, case of 100 bulbs \$120.00**

### LILY-OF-THE-VALLEY

The Lily-of-the-Valley that we place in cold storage is the best procurable, and every pip is specially selected for the purpose; successful forcing in 18 to 25 days is thus assured.

**Case of 100 \$22.50, case of 250 \$55.00**

### SPIRAEA

**Deutschland.** A great improvement on Gladstone. Pure white.  
**Case of 12 clumps \$25.00**

**Fanal.** Feathery sprays. Brilliant red. **Case of 12 clumps \$25.00**

**Gloria Superba.** Very best of the deep pinks; forces readily.  
**Case of 12 clumps \$25.00**

### LILIUM

#### Lilium, Long. Formosanum (Erabu Type)

A most suitable variety for summer and fall blooming. Retarded bulbs for delivery up to July 1st.  
**Case of 50 bulbs \$95.00**

#### Lilium, Giganteum

**Case of 50 bulbs \$95.00**

#### Lilium, Henryi

One of the most beautiful Japanese Lilies. Rich orange-yellow.  
**Case of 50 bulbs \$75.00**

#### Lilium, Speciosum Album

Beautiful pure white; good forcer.  
**Case of 50 bulbs \$135.00**

#### Lilium, Speciosum Melpomene

The finest colored Speciosum. Rich crimson.  
**Case of 50 bulbs \$95.00**



SPIRAEA, Gloria Superba

# Kennedy Quality Bulbs for Forcing

## ALLIUM

**NEAPOLITANUM.** Very attractive bulbous plant for greenhouse culture. Each bulb produces numerous heads of pure white flowers on slender stems. The foliage is bright green and the cut flowers are long lasting and unusually decorative. Recommended for outside culture only when well protected. 100, \$10.00; 1000, \$95.00.

## AMARYLLIS

**GIANT HYBRIDS.** (Hippeastrum.) A re-selected strain of the very largest flowered sorts, ranging in color from almost pure white through shades of pink to deepest scarlet.

**Jumbo Bulbs.** Doz., \$13.00; 100, \$95.00.



## ANEMONE (Windflower)

This beautiful flower has caused great comment at recent flower shows due to its wonderful color combinations and its usefulness as a cut flower.

### CULTURAL SUGGESTIONS FOR GREENHOUSE GROWING

Plant Anemones any time from September until February. Place tubers close in a flat of clean sand, cover 1 inch and keep moist. Place in cool house for a week and tubers will be sprouted and ready to plant in pots or bench 4 in. apart each way. Use virgin sandy loam about 5 in. deep, containing about 10 percent well-rotted manure. Success depends on cool growing conditions, night temperature should not go above 45 degrees; 38 degrees at night will produce larger flowers. Water sparingly until plants are growing well then give plenty of water and occasional feeding. Maximum light and ventilation should be provided at all times. Perfect drainage is essential.

**BLUE POPPY.** An excellent strain bearing flowers measuring 3 inches across in beautiful blue shades. 100, \$15.00.

**CHRYSANTHAEFLOA.** Similar to St. Brigid but with a greater proportion of double flowers and petals more finely divided. Superb colors. 100, \$15.00.

**CREAGH CASTLE STRAIN.** An improved strain of St. Brigid type, but stronger, taller stems, larger flowers and comprises all the beautiful colors. 100, \$15.00.

**DE CAEN.** Single, giant French Poppy-flowered. Thick petals and long, strong stems. 100, \$15.00.

**HOLLANDIA.** An exquisite, scarlet Anemone having more than its usual number of petals and borne on tall, strong stems. 100, \$15.00.

**ST. BRIGID.** Semi-double. True Irish strain, large flowers mostly double with finely divided petals consisting of the most brilliant and varied shades all having a handsome blue-black central base. 100, \$15.00.

**THE BRIDE.** Large pure white flowers, white center. 100, \$15.00.

## BEGONIAS

TUBEROUS ROOTED

January Delivery

Newest types and varieties, see spring catalog.



## FREESIAS

### GREENHOUSE GROWN BULBS

We wish to call your attention to our list of greenhouse grown Freesia bulbs. All the varieties in this box are greenhouse grown, in sterilized soil. While such bulbs are more costly to produce we can not recommend their use too highly when the result is compared with that of field grown bulbs. Another advantage to be gained from greenhouse grown stock is their response to early forcing which makes a Freesia crop certain for the Christmas holidays.

California-grown Freesia bulbs proved so unsatisfactory the past few years that we have discontinued all except greenhouse-grown stock which our customers have found far superior in every respect.

**APPLE BLOSSOM.** (U. S. Plant Patent No. 486.) Soft apple-blossom-pink. Giant size and exceptional lasting qualities.

**Extra Selected Top Size Bulbs.** 100, \$18.00; 1,000, \$175.00.

**BRONZE GIANT.** A striking combination of copper and bronze, large flower, tall, strong, wiry stem; flower borne well above foliage.

**Extra Selected Top Size Bulbs.** 100, \$18.00; 1,000, \$175.00.

**GIANT APOTHEOSE.** An improved Apotheose, with flowers much larger and color a deep, lavender-pink. A robust grower and earliest of all varieties to bloom.

**Extra Selected Top Size Bulbs.** 100, \$18.00; 1,000, \$175.00.

**GIANT CREAM.** Discarded for Primrose Improved.

**GIANT LAVENDER.** The best lavender yet introduced.

**Extra Selected Top Size Bulbs.** 100, \$18.00; 1,000, \$175.00.

**KING OF THE YELLOWS.** (U. S. Plant Patent No. 488.) A giant deep golden yellow.

**Extra Selected Top Size Bulbs.** 100, \$18.00; 1,000, \$175.00.

**MARYON.** (U. S. Plant Patent No. 32.) The best blue Freesia to date and in competition has no equal in the blues. It flowers easily for Christmas, producing large open clear blue flowers on strong wiry stems. Two and occasionally three breaks from a single bulb is characteristic of its strong habit.

**Extra Selected Bulbs.** 100, \$15.00; 1,000, \$145.00.

**Extra Selected Top Size Bulbs.** 100, \$18.00; 1,000, \$175.00.

**PRIMROSE IMPROVED.** Giant cream. Very large flowers on extra heavy stems.

**Extra Selected, Top Size Bulbs.** 100, \$18.00; 1,000, \$175.00.

**SNOWSTORM.** (U. S. Plant Patent No. 487). We believe this to be the largest and strongest growing Freesia yet introduced. Very large flowers of heavy texture, white very slightly tinted pink on outside of petals. Same flowering season as Freesia, Maryon.

**Extra Selected Bulbs.** 100, \$15.00; 1,000, \$145.00.

**Extra Selected Top Size Bulbs.** 100, \$18.00; 1,000, \$175.00.

FREESIA, Giant Apotheose



## GERBERA

(Reselected Hybrids)

Extra heavy flowering roots for winter forcing. Assorted colors. Doz., \$22.50; 100, \$175.00.

## GLADIOLUS, Tristis Supreme

(Greenhouse grown bulbs)

The flower is delightfully fragrant, and will stand cut a week in good condition. There is only one color in Gladiolus Tristis: cream-white. We receive numerous inquiries for pink and yellow which are often seen and greatly admired. For anyone desiring these colors, we recommend the following procedure: The cut flowers should be plunged into flower dye from 2 to 3 hours, the intensity of the color depending upon the strength of dye solution. 100, \$22.50.

## GLADIOLUS, Colvillei

The Colvillei Gladiolus are excellent for cut flowers, being very graceful and of attractive colorings. Easily forced into bloom by March.

**NYMPH.** White with crimson markings. 100, \$15.00.

**PEACH BLOSSOM.** Soft pink. 100, \$15.00.

**SPITFIRE.** Reddish salmon. 100, \$15.00.

**THE BRIDE.** Beautiful white. 100, \$15.00.





*Kennedy Quality Bulbs for Forcing—continued*

# HYACINTHS

## FRENCH ROMAN

This beautiful variety, if planted early in September, will bloom at Thanksgiving and all through the winter by keeping in a cool place, and bringing the pots or boxes of planted bulbs to a warm temperature as the flowers are needed. Fine for growing in fibre or pebbles in living room.

**White.** The flowers are produced in great profusion, each bulb throwing 3 or 4 spikes of delicately scented, clear white blossoms.

**Selected Bulbs.** 12-14 cm. Doz., \$3.50; 100, \$25.00.

**Mammoth Bulbs.** 13-15 cm. Doz., \$4.40; 100, \$30.00.

**Exhibition Bulbs.** 15 cm. up. Doz., \$5.00; 100, \$35.00.

*French Roman Hyacinths, Blue and Pink, discarded in favor of Hyacinths, Multiflora.*

## NEW FAIRY HYACINTH

**Borah.** This new type Hyacinth is a cross from the Dutch and early French Roman Hyacinths. Several flower spikes from a single bulb produce a mass of slender, buoyant blooms. Excellent pot plant and very useful for cutting, 18 inches. This year we can offer only one color: light blue. Doz., \$6.50; 100, \$45.00.

## DUTCH ROMAN

(Prepared Miniature)

These are small size, single flowering Dutch Hyacinths; they bloom a little later than French Romans, but the flowers are larger with stronger stem. We are listing best varieties in this class.

	100
<b>Gertrude.</b> Rosy pink .....	\$20.00
<b>La Victoire.</b> Carmine .....	20.00
<b>L'Innocence.</b> Best white .....	20.00
<b>Grand Maitre.</b> Porcelain-blue .....	20.00
<b>Queen of Blues.</b> Light blue .....	20.00
<b>City of Haarlem.</b> Yellow .....	20.00
<b>Nimrod.</b> Light pink .....	25.00

## Hyacinths Multiflora

Stock Very Limited

As a result of a special preparation in July, a single bulb produces from 8 to 12 separate flower spikes. Each spike is 15 to 18 inches tall, lighter than the usual Dutch Hyacinth, resembling the French Roman in formation. Excellent for cutting and decoration work. Each bulb is a mass of bloom, delicately fragrant and extremely handsome as a pot plant. White, pink, and blue. Doz., \$13.00; 100, \$95.00.

**24 Flower Spikes From Two Kennedy Quality Multiflora Hyacinth Bulbs**



For General List of Hyacinths, See Pages 12 and 13.

## BULBOUS IRIS

### DUTCH IRIS

This race of Iris are deservedly becoming very popular. The flowers are larger, the falls broader than Spanish Iris, and bloom two weeks earlier. Excellent for pot culture and has wonderful lasting qualities as a cut flower. Varieties listed are the best in their respective color classes.

Only the largest bulbs of Dutch Iris can be forced successfully, bulbs offered below are picked from the season's top roots.

The following Iris are American Northwest grown. Our trials prove conclusively that this stock is superior to that from any other source.

We will gladly quote prices on imported IRIS in variety.

**HOBBEWA.** This variety received more favorable comment at the International Flower Show than all the other Irises. Both standards and falls are white with pronounced gold blotch on falls. 100, \$20.00.

**IMPERATOR.** Cornflower-blue with small yellow blotch on falls, excellent lasting qualities as a cut flower (late). 100, \$12.00.

**JOAN OF ARC.** Enormous creamy white Iris with yellow blotch on the falls. A strong grower and an outstanding new variety. 100, \$27.50.

**PRINCESS BEATRIX.** Deep yellow and soft orange in an exquisite combination. Immense flowers make this one of the outstanding Iris novelties in years. 100, \$27.50.

**WEDGEWOOD.** Beautiful true Wedgwood-blue. Large flower on strong, tall stalks. We recommend Wedgewood without hesitation as the best blue Iris for forcing. Superior to other blue varieties in size and for lasting qualities as a cut flower.

**Extra Selected Bulbs.** 100, \$16.00.

**Jumbo Bulbs.** (Stock limited.) 100, \$22.00.

**WHITE EXCELSIOR.** Extra large, snow-white. The coloring is accentuated by a narrow feather of golden orange in the lips. 100, \$18.00.

**WHITE PEARL.** The finest pure white Dutch Iris yet introduced, twice the size of White Excelsior. 100, \$27.50.

**YELLOW QUEEN.** Uniform yellow of splendid size. A good companion to Wedgewood and the combination is very effective. 100, \$16.00.

### SPANISH IRIS

Somewhat similar to the Dutch Iris, but later blooming. Excellent for late forcing.

**BRITISH QUEEN.** Extra large, pure white.

**CAJANUS.** Splendid deep golden yellow, large flowers.

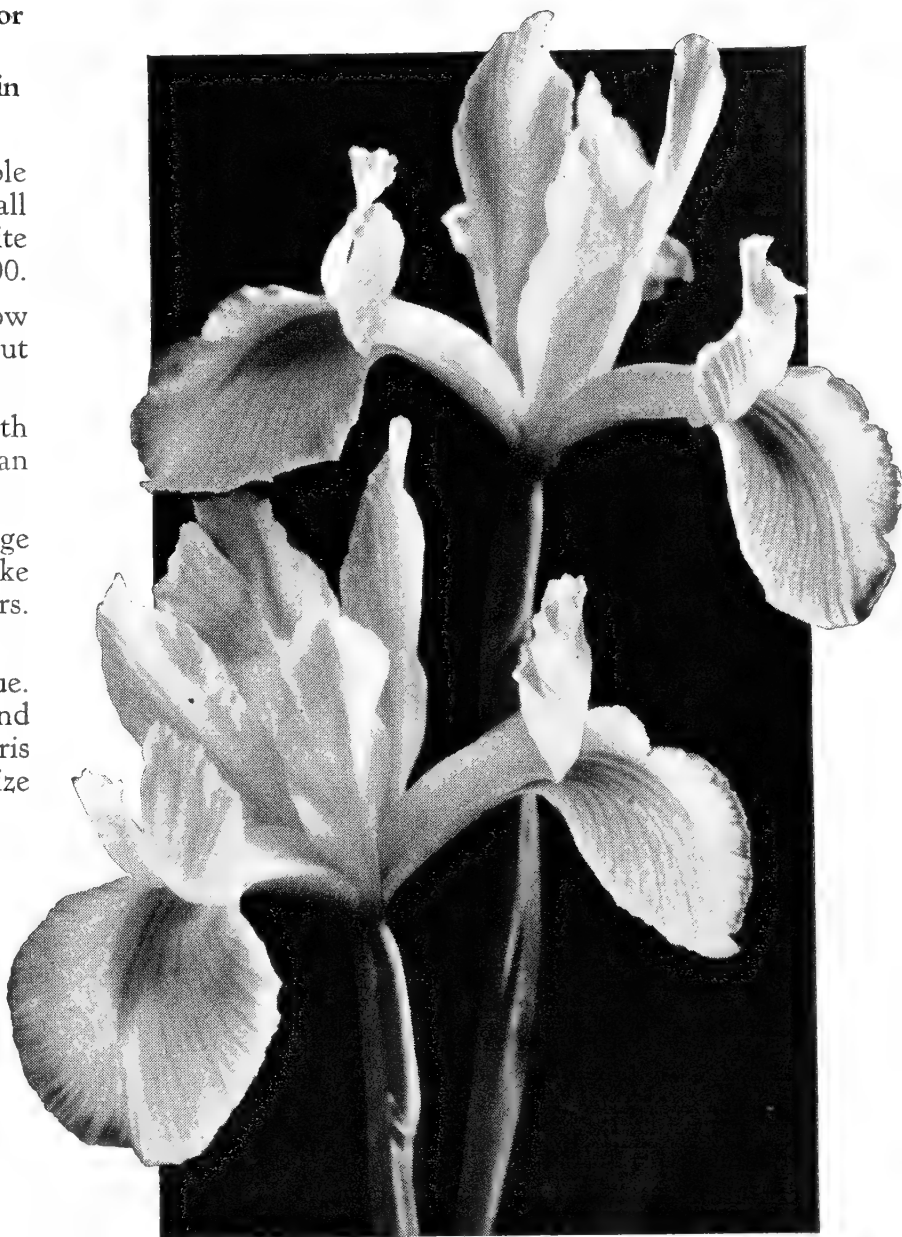
**KING OF THE BLUES.** Fine deep purplish blue.

**LONGFELLOW.** White falls, light lilac petals, large. One of the most beautiful of all Spanish Iris.

**Extra large bulbs, 100, \$15.00.**

**Prepared Dutch Iris  
for Extra Early Forcing  
Page 1**

**RETARDED LILIES  
FOR WINTER FLOWERING  
Page 3**



IRIS, Wedgewood

### ENGLISH IRIS

Protect the first year from heavy frost, and thereafter they may be left for years undisturbed.

**SUPERFINE MIXED.** This new strain of English Iris has been grown from seed in the state of Oregon and is absolutely free from disease. Comprises all the beautiful colors of the English Iris, namely light blue, dark blue, China-blue, purple, mottled and white. 100, \$20.00.

### IXIAS

Ixias produce very graceful flowers in the most brilliant colors and are splendid as cut flowers.

**NAMED VARIETIES.** All colors or mixed varieties. 100, \$15.00.

### LACHENALIA

**PENDULA SUPERBA.** One of the most satisfactory Christmas blooming pot plants. Beautiful pendulous orange-red flowers, purple at tips. 100, \$35.00.

### LEUCOCORYNE

(Glory of the Sun, from Chile)

**IXIODES ODORATA.** Leucocoryne is most deservedly becoming more popular every year. Flowers are sweet scented with long lasting qualities as a cut flower. Flowers are borne on strong, wiry stems about 18 inches long. Grow in cool greenhouse, treatment similar to Freesia. 100, \$30.00.

### LILY-OF-THE-VALLEY (Retarded)

The Lily-of-the-Valley that we place in cold storage is the best procurable, and every pip is especially selected for the purpose; successful forcing in 18 to 25 days is thus assured. Case of 100, \$22.50; case of 250, \$55.00.

### NARCISSUS POLYANTHUS

**CHINESE SACRED LILY.** Flowers white with yellow cups, produced in clusters of five to six on each stem. Doz., \$3.50; 100, \$25.00.

**GRAND SOLEIL D'OR.** Flowers borne on long stems, in clusters, beautiful clear yellow with bright orange cup; may be forced as easily as Paper-White.

**Extra Selected Bulbs.** Doz., \$2.60; 100, \$17.50; 1,000, \$170.00.

**Extra Selected Exhibition Bulbs.** Doz., \$2.90; 100, \$20.00; 1,000, \$195.00.

**PAPER-WHITE GRANDIFLORA.** Snow-white flowers of large size. Borne in clusters.

**Extra Selected Bulbs.** Doz., \$1.75; 100, \$14.00; 1,000, \$135.00.

**Extra Selected Exhibition Bulbs.** Doz., \$2.25; 100, \$16.00; 1,000, \$155.00.



ORNITHOGALUM, Arabicum

### ORNITHOGALUM

**ARABICUM (Star of Bethlehem).** Fragrant white flowers with glistening black central boss and yellow anthers. Many flowers on a stem. Jumbo bulbs: 100, \$15.00; 1,000, \$145.00.

### OXALIS

**Winter flowering pot plant of easy culture.**

Plant 5 or 6 bulbs in a 6-inch pot—place in a dark, cool position to root, then place in a sunny window or conservatory in a temperature of about 60 degrees.

**BERMUDA BUTTERCUP.** Bright yellow. Doz., 75c; 100, \$5.00.

**PINK, WHITE, LAVENDER.** Doz., 75c; 100, \$5.00.

## Kennedy Kwality Lilies for Forcing

### KENNEDY KWALITY CALLA LILIES

Callas are easily grown in pots or benches, requiring only rich soil and plenty of water. We take great care to secure only bulbs which are thoroughly ripened and free from disease.

**AETHIOPICA (Lily of the Nile).** The well-known white Calla Lily.

**Mammoth Bulbs.** Doz., \$8.00; 100, \$60.00.

**Jumbo Bulbs.** Doz., \$11.00; 100, \$75.00.

**Selected Jumbo Bulbs.** Doz., \$13.00; 100, \$95.00.

**GODFREY.** This everblooming variety produces quantities of large snow-white blooms.

**Jumbo Bulbs.** Doz., \$13.00; 100, \$95.00.

**REHMANNI.** Improved pink Calla. A very dainty Calla Lily growing about 10 inches high, producing flowers about 2 inches in diameter, of pure deep pink. Foliage dark green and very attractive.

**Extra Selected Top Size Bulbs.** \$1.25 each; \$13.50 per doz.; \$97.50 per 100.

**ELLIOTTIANA YELLOW.** A deep golden flowered variety, 4 to 5 inches across. The leaves are spotted with white. Most impressive as a conservatory plant, and now among the leading forcing bulbs. Our bulbs have given most gratifying results, many groups taking highest honors this past spring at competitive shows.

**Selected.** Doz., \$8.00; 100, \$60.00.

**Extra Selected.** Doz., \$10.00; 100, \$70.00.

**Jumbo.** (Stock limited.) Doz., \$13.00; 100, \$95.00.

**SPRAY OF GOLD.** An improved Calla Elliottiana. Sulphur-yellow flowers, exceptionally large, long, strong stems. Foliage green spotted white.

**Jumbo Bulbs.** Doz., \$13.00; 100, \$95.00.



# Kennedy Kwality Lilium Harrisi



A Prize-Winning Group of Our Special Strain of Lilium Harrisi

## LILIUM HARRISI

Our strain of Lilium Harrisi has again proven its superiority at the leading Flower Shows during the past season.

This is the true Easter Lily from Bermuda and is a strong grower with good foliage, producing a cluster of long, glistening pure white tubular shaped flowers of heavy substance.

Our growers' fields in Bermuda are entirely free from disease and stock supplied by us has been consistently free from mosaic.

### Selected Bulbs

Per case of 50 bulbs .....\$50.00  
Per case of 100 bulbs ..... 97.50

### Extra Selected Bulbs

Per case of 25 bulbs .....\$ 50.00  
Per case of 50 bulbs ..... 95.00  
Per case of 100 bulbs ..... 175.00

### Extra Selected Exhibition Bulbs

Per case of 25 bulbs .....\$75.00  
Per case of 50 bulbs ..... 145.00  
Per case of 100 bulbs ..... 280.00

## EARLY FLOWERING LILIUM HARRISI (Howardi)

See page 1.

EASTER DATES—1951, March 25th; 1952—April 13th.



# Kennedy Quality Lilies for Forcing

*continued*

## LILIUM CANDIDUM

In a number of cases where both northern grown and southern grown Candidum have been forced we find that the northern grown are superior. We earnestly recommend to our customers that they use the northern grown for forcing as well as for outdoor planting. However, we will continue to list southern grown while there is a demand. **Southern Grown for Forcing.** 100, \$75.00.

## LILY-OF-THE-VALLEY

The Lily-of-the-Valley that we place in cold storage is the best procurable, and every pip is specially selected for the purpose; successful forcing in 18 to 25 days is thus assured. Case of 100, \$22.50; case of 250, \$55.00.

## LILIUM LONGIFLORUM, AMERICA

A native Lily which carries 5 to 8 pure white trumpets of great size and substance.

### Extra Selected Exhibition Bulbs.

Per case of 25 bulbs .....	\$ 45.00
Per case of 50 bulbs .....	80.00
Per case of 100 bulbs .....	150.00

## LILIUM, CROFT

For a pot plant, this Lily, CROFT, is about 2½ feet high when finished. Eight to ten large bell-shaped flowers are carried on sturdy stems, with heavy lustrous foliage.

**Selected Bulbs.** Per 100, \$75.00.

**Extra Selected Bulbs.** Per 100, \$95.00.

**Jumbo Bulbs.** Per 100, \$135.00.

## LILIUM LONGIFLORUM, ERABU

(Formosum)

Lilium Erabu has practically replaced the old Lilium Formosum because the plants are more vigorous, taller and the blooms more showy. Free from disease.

### Selected Bulbs. (Single Crown.)

Per case of 50 bulbs .....	\$ 65.00
Per case of 100 bulbs .....	125.00

### Extra Selected Bulbs. (Single Crown.)

Per case of 25 bulbs .....	45.00
Per case of 50 bulbs .....	85.00
Per case of 100 bulbs .....	160.00

### Extra Selected Exhibition Bulbs. (Single Crown.)

Per case of 25 bulbs .....	50.00
Per case of 50 bulbs .....	95.00
Per case of 100 bulbs .....	175.00

## LILIUM LONGIFLORUM GIGANTEUM

This variety is of stocky growth with dark stems and is unusually free from disease. The flowers are large and pure white. Medium height.

### Extra Selected Bulbs.

Per case of 100 bulbs .....	\$150.00
-----------------------------	----------

### Extra Selected Exhibition Bulbs.

Per case of 100 bulbs .....	160.00
-----------------------------	--------

## LILIUM, ESTATE

An American-grown Lily; vigorous plant with heavy canelike stems with 6 or 7 blooms. The attractive dark green foliage, and the pure white, velvet texture of the blooms, resemble Lilium Harrisii. Blooms under glass late April, May.

**Extra Selected Bulbs.** Per 100 .....\$ 95.00

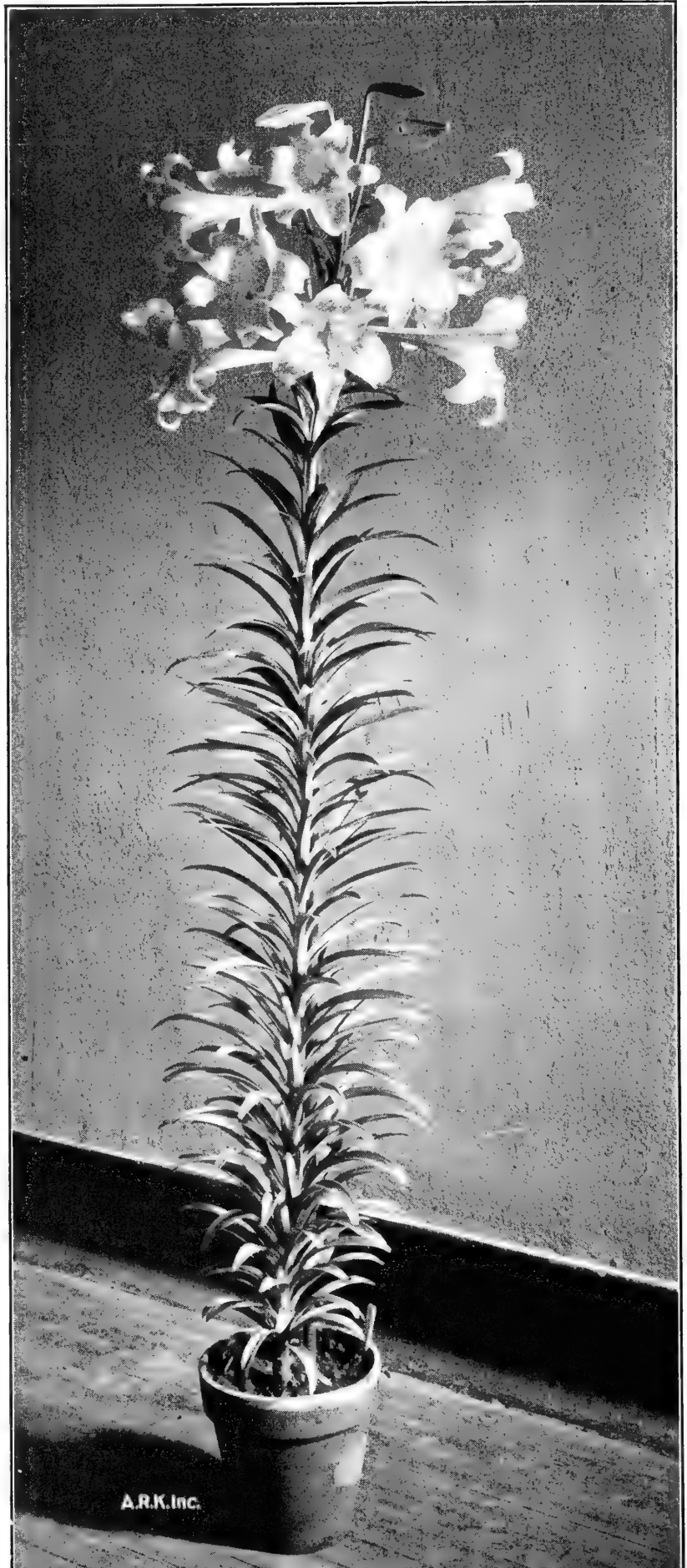
**Extra Selected Exhibition Bulbs.** Per 100 ..... 135.00

## LILIUM LONGIFLORUM, INSURPASSABLE

A new Lily, developed in Oregon, of great merit. A vigorous grower. Exceptionally fine foliage, producing a head of eight to ten long, glistening pure white tubular-shaped flowers of heavy substance. Case of 50 bulbs, \$145.00.

**LILIUM, RETARDED** See page 3

LILIUM Longiflorum, Erabu



A.R.K. Inc.



## Ranunculus

**CULTURAL DIRECTIONS FOR GREENHOUSE GROWING  
SAME AS ANEMONE. See page 4.**

This flower is deservedly becoming more popular each year. No doubt some of this increased popularity is due to the great improvement made in recent years as to color, size, formation of flowers, length and stiffness of stem and long flowering season. Their great variety of color and long lasting qualities as a cut flower make them adaptable for all decorative purposes.

The strains and types offered below are the finest obtainable.

### **Balliang**

A semi-double strain which was a sensation wherever shown this spring. The flowers are very large and the petals of the flowers beautifully frilled. 100, \$15.00; 1000, \$145.00.

### **Claremont Hybrids**

Giant double flowers on tall, strong stems in many wonderful colors and color combinations. 100, \$15.00; 1000, \$145.00.

### **Palafior**

The flowers are more than twice the size of the old strain of Ranunculus and the colors clear, embracing red, yellow, pink, rose, crimson, white. 100, \$15.00; 1000 \$145.00.

### **Tecolote Giants**

An excellent strain. This mixture is composed of double and semi-double flowers covering a complete color range. 100, \$15.00; 1000 \$145.00.

### **International Giants Improved**

For this, our leading mixture, we have included the best from our own West Coast, and the Peony-flowered which are outstanding. 100, \$20.00; 1000, \$195.00.



### **HARDY PLANTS FOR NATURALIZING**

**MERTENSIA Virginia** (Bluebells). Foliage glaucous gray and bears drooping clusters of clear blue flowers in May. Should be planted in dormant condition in September-October. 1 ft. 100, \$35.00.

**ANCHUSA Myosotidiflora**. An entirely distinct dwarf species from the Caucasian Mountains growing but 10 to 12 inches high, producing during April and May sprays of beautiful Forget-me-not-like flowers of a rich blue. 100, \$45.00.

**PHLOX Divaricata Canadensis**. Commences to bloom early in April, and continuing through May, with large, fragrant, lavender flowers on stems 10 inches high. 100, \$45.00.

**RANUNCULUS,  
International Giants  
Improved**



# Kennedy Quality Exhibition Hyacinths

VARIETIES MARKED THUS (\*) ARE CHOICEST VARIETIES OF GREAT MERIT

## KENNEDY KWALITY COLLECTION EXHIBITION HYACINTHS

ANNE MARIE. Bright pink.  
 ARENTINE ARENSEN. Pure white.  
 CITY OF HAARLEM. Pure yellow.  
 DELFT BLUE. Beautiful blue.

IVANHOE. Indigo-blue.  
 LA VICTOIRE. Deep carmine.  
 MYOSOTIS. Light blue.  
 PRINCESS MARGARET. Soft pink.

25 each of the above 8 varieties,  
 \$95.00.

100 each of the above 8 varieties,  
 \$370.00.



### Blue Shades

- \*BISMARCK. Sky-blue, broad spike, early forcer.
- \*DELFT BLUE. Very attractive, large, compact spike. Good forcer or for bedding.
- DR. LIEBER. Lavender-blue, tinged violet, compact spike.
- \*DR. STRESEMAN. Lovely blue, slightly lighter edge, a trifle deeper blue than Schotel.
- DUKE OF WESTMINSTER. Purplish blue, white center.
- ENCHANTRESS. Porcelain-blue.
- \*ELECTRA. Pale blue, white eye, large flower, new.
- GRAND MAITRE. Deep porcelain-blue, large truss.
- \*IVANHOE. Glistening, rich, indigo-blue.
- KING OF BLUES. Large truss, best dark blue.
- MENELIK. Black. Strong spike.
- \*MYOSOTIS. Long truss, light blue bells.
- \*PERLE BRILLIANT. Light blue, tinged lavender, large bells on fine spike.
- \*QUEEN OF THE BLUES. Porcelain-blue, compact.
- \*SIR WILLIAM MANSFIELD. Clear mauve, early.

### Pink and Rose Shades

- \*ANNE MARIE. A very beautiful tall pink spike. Early forcer.
- GEORGE VAN DER MEY. Very deep pink, beautifully formed spike.
- GERTRUDE. Rose-pink, large compact spike.
- \*HERALD. Excellent spike of clear rose, bells of perfect form, very early.
- \*LADY DERBY. Soft rose-pink, large spike.
- \*PANAMA. Improved Lady Derby. Large rosy pink bells. Fine spike.
- \*PINK PEARL. Early forcer. Deep rose with lighter edge.
- \*PRINCESS MARGARET. An immense well-formed truss, bells soft pink. Far superior to Lady Derby. An excellent forcer.
- \*QUEEN OF PINKS. Deep pink, large bells.

Price of above varieties:

Mammoth Bulbs. Doz., \$6.00; 100, \$40.00.

Exhibition Bulbs. (Extra selected top roots.) Doz., \$7.50; 100, \$50.00.

**RED SHADES**

- \*JON BOS. Striking deep carmine, tinted scarlet, strong stem. Recommended for early forcing.
- \*LA VICTOIRE. Bright carmine.
- VAN TUBERGEN'S SCARLET. Fiery scarlet.
- \*VESUVIUS. Deep carmine-red.

**YELLOW SHADES**

- \*CITY OF HAARLEM. Pure yellow, large, good form.
- \*KING OF THE YELLOWS. Deep yellow, strong spike.
- \*ORANJEBOVEN. Apricot-orange, good forcer.
- \*PRINCE HENRY. The deepest yellow. Large broad spike. Truly an exhibition variety.
- YELLOW HAMMER. Golden yellow, large truss.

**WHITE SHADES**

- ARENTINE ARENDSSEN. Snow-white, long spike.
- CORREGGIO. Pure white, large bells.
- \*LA GRANDESSE. Pure white, perfect form.
- \*L'INNOCENCE. Milk-white, best early forcer.
- MADAME VAN DER HOOP. Creamy white, good form.
- \*QUEEN OF THE WHITES. Clear white, large compact spike.
- \*ZWANENDRIFT. The best pure white late.

**PRICES OF ABOVE VARIETIES**

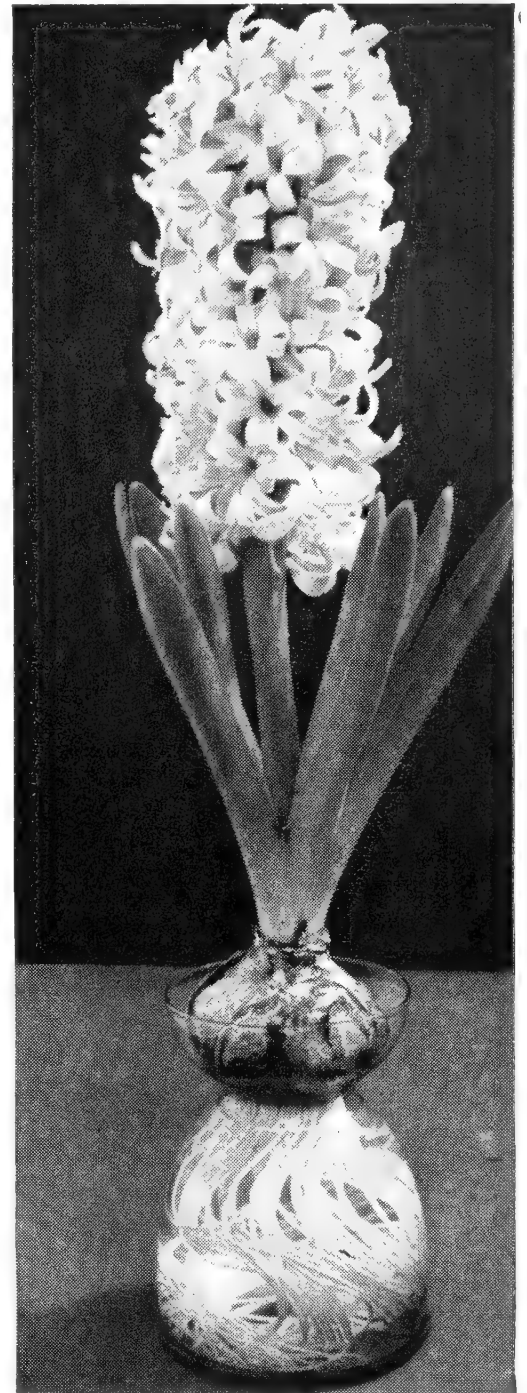
Mammoth Bulbs. Doz., \$6.00; 100, \$40.00.  
 Exhibition Bulbs. (Extra selected top roots.) Doz., \$7.50; 100, \$50.00.

**KENNEDY KWALITY BEDDING HYACINTHS**

The stems of many varieties of Hyacinths are not stout enough to hold up the heavy spike of flower and when planted in the open, droop over upon the ground. The varieties listed below have stout stems and are excellent for bedding.

- |   |                                 |
|---|---------------------------------|
| GERTRUDE. Deep pink.                    | LA VICTOIRE. Deep carmine-rose. |
| GRAND MAITRE. Light blue, shaded lilac. | L'INNOCENCE. Pure white.        |
| KING OF THE BLUES. Dark blue.           | ORANJEBOVEN. Apricot-orange.    |
| LADY DERBY. Rose-pink.                  | PERLE BRILLIANT. Pale blue.     |
|   | YELLOW HAMMER. Pure yellow.     |

Price of above varieties: Doz., \$4.40; 100, \$30.00.



**GROWING HYACINTHS IN WATER**

Before placing Hyacinths on the Hyacinth glasses, the old roots must be removed. Fill the glass with cool water, place the bulb on the glass so rootbase touches the water, then place the glasses in a cool, dark closet or cellar until the top growth is 4 in. above the bulb. Preferred temperature not over 50 degrees Fahrenheit. When 4 in. top growth has been made, place the glasses in the light (not direct sunlight) in a warm room and if necessary some water may be added but never change the water completely.

Hyacinth Glasses: Blue, Amber, Crystal, \$1.00 each; postpaid, \$1.25 each.

Large Forcing Bulb and Hyacinth Glass: \$1.75.

State choice of color of Glass and Bulb.



KENNEDY QUALITY BEDDING HYACINTHS



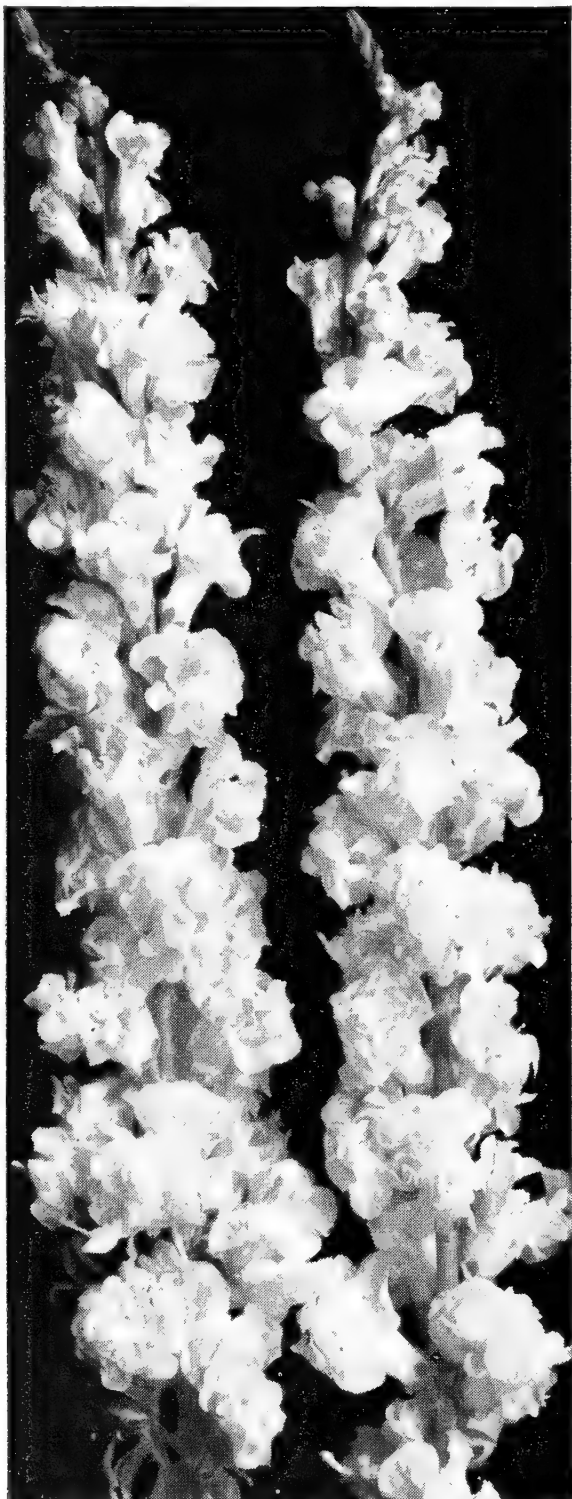


# Kennedy Quality Greenhouse Plants

## DOUBLE ANTIRRHINUM

KENNEDY'S DOUBLE PINK  
KENNEDY'S DOUBLE WHITE

The flower head is 18-20 inches. The blooms are perfect doubles, forming a pyramidal spike 3 feet over-all. Practically shatter proof. **Plants Only:** Ready June 1st and later. 2 1/4-inch pots, 100 plants, \$45.00; 25 plants, \$15.00.



KENNEDY'S DOUBLE PINK ANTIRRHINUM

## BEGONIAS

(Delivery June-July)

- Genesee Beauty.** Deep rose, compact growth. 2 1/4-inch pots. 25 plants, \$25.00; 100 plants, \$90.00.
- Lady Mac.** Free flowering, rose-pink. 2 1/4-inch pots. 25 plants, \$25.00; 100 plants, \$90.00.
- Marjorie Gibbs.** Large flowering, clear self pink. 2 1/4-inch pots. 25 plants, \$25.00; 100 plants, \$90.00.



CALCEOLARIAS

## CALCEOLARIAS

(Delivery September-October)

SEEDLING TYPE

- Multiflora Nana.** Gilbert strain.
  - Triumph.** Superior strain in shades of yellow, orange, red, rose.
  - VARIETIES GROWN FROM CUTTINGS**
  - Greater New York.** This strain includes all the finer shades of Calceolarias.
  - Improved Perfection.** Very strong grower. Shades of yellow, orange, and amber.
  - Mary Louise.** (New.) Brilliant carmine-red. Early.
  - Pink Cloud.** (New.) Fine assortment of delicate pink shades.
  - Pink Perfection.** Rich rose-pink.
  - Stewartii.** Canary-yellow.
- 2 1/4 inch pots, 25 plants, \$20.00; 100 plants, \$75.00.

## CYCLAMEN

(Delivery June and Later)

- Pink, Red, Salmon, White or Mixed.** 3-inch pots, 25 plants, \$26.00; 100 plants, \$95.00.

## EUPHORBIA

(Delivery June-August)

- Jacquinaeflora.** 2 1/4-inch pots, 25 plants, \$25.00; 100 plants, \$90.00.

## GERBERAS See page 5.

## HYDRANGEAS

Finest New Named Hybrids

- Delivery June. 2 1/4-inch pots, 25 plants, \$20.00; 100 plants, \$75.00.
- Delivery September-October. 6-inch pots, 12 plants, \$30.00; 100 plants, \$225.00.

## POINSETTIA

(Delivery July-September)

- |   |                 |                   |
|---|-----------------|-------------------|
| <b>Double Henrietta Ecke</b>                              | <b>Oak Leaf</b> | <b>Ruth Ecke</b>  |
| <b>Mrs. Paul Ecke</b>                                     | <b>Pink</b>     | <b>White Ecke</b> |
| 2 1/4-inch pots, 25 plants, \$15.00; 100 plants, \$45.00. |                 |                   |

## Narcissus and Daffodils

### DIVISION I TRUMPET NARCISSUS

Distinguishing characters: One flower to a stem. Trumpet or corona as long or longer than the perianth segments.

**AEROLITE.** Despite its size this golden Daffodil is beautifully proportioned. Pure medium yellow trumpet with perianth deep primrose, medium early, long lasting in garden or cut. Doz., \$3.75; 100, \$27.50.

**ANTIBE.** Strong white perianth, trumpet pale apricot shaded salmon and orange when opening, changing to soft pink. Doz., \$11.00; 100, \$75.00.

**BEERSHEBA.** Perianth and trumpet of enormous size. Sturdy foliage and stem. Pure white. Doz., \$5.75; 100, \$40.00.

**COVENT GARDEN.** Perfect light yellow Daffodil, very free-flowering and a good forcer. Recommended. Doz., \$4.40; 100, \$30.00.

**EMPEROR.** Clear yellow trumpet, primrose perianth. **Extra Selected Double Nose Bulbs.** Doz., \$3.10; 100, \$22.00.

**Mother Bulbs.** Doz., \$3.75; 100, \$27.50.

**FLOWER CARPET.** Similar to King Alfred. Flowers more freely and is slightly earlier. Good forcing variety. Doz., \$5.00; 100, \$35.00.

**GLORY OF SASSENHEIM.** White perianth, long trumpet of deep chrome-yellow, reflexing at the brim. Doz., \$3.75; 100, \$27.50.



NARCISSUS, Thalia

**GOLDEN HARVEST.** Enormous golden yellow trumpet and perianth. Trumpet measures over two inches across and is beautifully curved and slightly fringed. Doz., \$3.75; 100, \$27.50.

**IMPERATOR.** Large, strong, well formed, pure white. Recommended. Doz., \$5.00; 100, \$35.00.

**KING ALFRED.** Very large perfectly shaped flower; long, strong stems. Golden yellow trumpet, perianth deeply frilled.

**Extra Selected Double Nose Bulbs.** Doz., \$3.40; 100, \$24.00.

**Mother Bulbs.** Doz., \$3.75; 100, \$27.50.

**LORD WELLINGTON.** Many exhibitors declare this the best Yellow Trumpet to date. The broad, heavy petals and huge trumpet are rich golden yellow. Doz., \$3.75; 100, \$27.50.

**MOUNT HOOD.** Overlapping pure white perianth with large creamy white trumpet, changing to pure white when in full bloom. The finest white in this class. Doz., \$11.00; 100, \$75.00.

**MRS. E. H. KRELAGE.** The largest White Trumpet. For purity of color, perfect form and stem this surpasses all others. Large, white frilled trumpet, broad, imbricated perianth. Splendid early exhibition variety.

**Extra Selected Double Nose Bulbs.** Doz., \$3.70; 100, \$27.00.

**Mother Bulbs.** Doz., \$4.65; 100, \$32.50.



NARCISSUS, Flower Carpet



MRS. R. O. BACKHOUSE. See Division II.

**PINK BEAUTY.** White perianth of good form. Opens apricot-yellow with deeper edge turning salmon-pink. Doz., \$13.00; 100, \$95.00.

**PINK FAVORITE.** Pure white perianth. Trumpet opening very pale yellow turning to a most beautiful apricot-pink, somewhat darker inside. Doz., \$13.00; 100, \$95.00.

**PINK RIM.** Cup is pale citron-yellow with distinct light picotee-pink rim, white perianth, tall strong stem. Doz., \$13.00; 100, \$95.00.

**PRESIDENT LEBRUN.** Rich yellow trumpet shading to orange. The overlapping perianth is pure white. Perfect form and real substance. Recommended. Doz., \$4.65; 100, \$32.50.

**QUEEN OF BICOLORS.** Pure white perianth, rather short and wide open trumpet of deep yellow. Recommended for early forcing. Doz., \$3.75; 100, \$27.50.

**ROXANE.** A beautifully proportioned large pure white trumpet and perianth. Without question an exceptional variety and considered by many the best white Trumpet. Doz., \$5.00; 100, \$35.00.

**SIAM.** Pure white perianth, well formed and good substance. The wide, flaring apricot cup changes gradually to soft pink. A giant flower. Doz., \$11.00; 100, \$75.00.

**SPRING GLORY.** (Bicolor.) The earliest of all Bicolors; white perianth, deep yellow trumpet.

Extra Selected Double Nose Bulbs. Doz., \$3.40; 100, \$24.00.  
Mother Bulbs. Doz., \$3.75; 100, \$27.50.

### THALIA - Miniature Daffodil

Three to four magnificent pure white flowers carried on strong stems. Excellent for rock garden or forcing.  
Doz., \$3.50; 100, \$25.00

**UNSURPASSABLE.** A giant deep yellow throughout. Tall, strong stem. Recommended. Doz., \$5.75; 100, \$40.00.

**VAN WAVEREN'S GIANT.** Flowers huge, perianth primrose, bright yellow trumpet. Splendid forcer.

Extra Selected Double Nose Bulbs. Doz., \$5.00; 100, \$35.00.  
Mother Bulbs. Doz., \$5.75; 100, \$40.00.

**WODAN.** Broad canary-yellow perianth. Large, flaring crown of the same color, edged light orange and very frilled. A superb variety. Doz., \$4.65; 100, \$32.50.



NARCISSUS, Mrs. E. H. Krelage

## DIVISION II LARGE-CUPPED NARCISSUS

Distinguishing characters: One flower to a stem; cup or corona more than one-third but less than equal to the length of the perianth segments.

**ADVENTURE.** Free flowering, large, medium yellow of perfect form. Doz., \$4.65; 100, \$32.50.

**ARANJUEZ.** Pale yellow perianth and crown. Crown broadly edged orange. Doz., \$5.00; 100, \$35.00.

**DAISY SCHAEFFER.** Discarded for Gertie Millar.

**DICK WELLBAND.** Pure white perianth of finest quality and perfect form; the large cup is deep orange-red. Award of Merit. Doz., \$3.70; 100, \$27.00.

**DUKE OF WINDSOR.** Soft white overlapping perianth with short ruffled cup. Inside of cup is a band of flaked gold. Outstanding novelty. Recommended. Doz., \$5.00; 100, \$35.00.

**FORTUNE.** Broad overlapping petals of perfect form and substance. Deep yellow, wide open cup of rich copper shaded orange, fringed. Holds its color well. Doz., \$4.40; 100, \$30.00.

**GERTIE MILLAR.** An exceptionally fine Leeds. Broad white perianth, creamy yellow cup. Doz., \$5.00; 100, \$35.00.

**HELIOS.** Deep yellow perianth, finely shaped and of great substance; light orange crown, turning deeper with age. One of the earliest to force and very free flowering, tall stems. Doz., \$3.10; 100, \$22.00.

**JOHN EVELYN.** Very large flower, measuring 4 inches across, broad creamy white perianth, large open cup with double frill, tinted rich tangerine. Doz., \$3.40; 100, \$24.00.



NARCISSUS, John Evelyn

## DIVISION II—Continued

**MARY BLONK.** Broad white perianth, flaring rich canary-yellow cup, fringed and edged marigold-orange. Vigorous growth and free flowering. Outstanding. Doz., \$4.40; 100, \$30.00.

**MAJARDA.** A superb Daffodil. Creamy white perianth. Large flaring flat crown of clear orange-yellow. Tall grower, free flowering. Doz., \$4.40; 100, \$30.00.

**MEKKEDA.** Large pale yellow perianth; broad, graceful deep orange cup. Strong grower and free flowering. Very showy. Doz., \$5.00; 100, \$35.00.

**MRS. R. O. BACKHOUSE.** This is the famous "Pink Daffodil"; fine informal perianth of ivory-white, beautifully proportioned, slim long trumpet of apricot-pink at the deeply fringed edge; delicately beautiful but of exceptional substance. Doz., \$5.00; 100, \$35.00.

**REGINALD DIXON.** Pale yellow, overlapping perianth. Large, flat, yellow crown broadly edged orange. Doz., \$5.00; 100, \$35.00.

**RENE DE CHALONS.** Broad overlapping clear yellow perianth, the long cup is deeper yellow, broadly edged dazzling orange. A most beautiful Narcissus which keeps well when cut. Doz., \$5.00; 100, \$35.00.

**SCARLET ELEGANCE.** Deep rich yellow perianth. The crown is bright orange-scarlet, creating an outstanding red and yellow flower. Doz., \$3.10; 100, \$22.00.

**SCARLET LEADER.** The perfectly flat, creamy white perianth is much overlapping and round; the large, perfectly flat crown is 1½ inches across and is bright red throughout. Absolutely sun-proof. Highly recommended. Doz., \$5.00; 100, \$35.00.

**SELMA LAGERLOF.** Large snow-white perianth, large, flat lemon-yellow cup with broad band of vivid orange. Very showy. Doz., \$5.00; 100, \$35.00.

**SMARAGD (Emerald).** (New.) Pure white perianth; wide, flaring, short deep and heavily ruffled crown of great substance; color lemon-yellow. One of the finest. Doz., \$4.40; 100, \$30.00.

**TUNIS.** Strong, tall stem carries pure white perianth; holds a pure ivory cup with golden edge. Recommended. Doz., \$5.00; 100, \$35.00.

## DIVISION III SMALL-CUPPED NARCISSUS

Distinguishing characters: One flower to a stem; cup and corona not more than one-third the length of the perianth segments.

**ALCIDA.** Giant flower, pure white perianth opening flat, star shaped, with individual petals over 1½ inches wide, broad citron-yellow cup with blood-orange frill; strong grower, fine substance; free flowering; very late. Doz., \$3.10; 100, \$22.00.

**FIRETAIL.** Creamy white perianth, broad, firm texture, flat crown brilliant crimson-scarlet. Stems 18 inches, flowers face forward. Doz., \$3.50; 100, \$25.00.

**JANE LEECH.** Large flower, pure white perianth, clear light primrose cup. Doz., \$3.10; 100, \$22.00.

**KANSAS.** Pure white perianth, large flat lemon-yellow crown with narrow cinnamon colored edge which does not burn. Doz., \$4.40; 100, \$30.00.

**LADY KESTEVEN.** Extra fine variety. Pure white perianth with cherry-red cup. Doz., \$5.50; 100, \$37.50.

**LADY MOORE.** Snow-white perianth, yellow cup with deep orange edge. Very free flowering, easy to force. Doz., \$3.50; 100, \$25.00.

**QUEEN OF THE NORTH.** Broad overlapping white segments, pale primrose cup with finely crinkled edges. Doz., \$2.90; 100, \$20.00.

**VERGER.** Snow-white perianth, bright red-edged cup. Lovely texture, perfect form, from bud to full bloom. Recommended. Doz., \$5.00; 100, \$35.00.

## DIVISION V and VI TRIANDRUS NARCISSUS

Distinguishing characters: Characteristics of Narcissus Triandrus clearly evident.

### NARCISSUS FOR ROCK GARDEN

**BULBODIUM CONSPICUUS.** Doz., \$2.65; 100, \$18.00.

**CYCLAMINEUS.** Doz., \$6.50; 100, \$45.00.

**JUNCIFOLIUS MINIATURE.** Doz., \$5.00; 100, \$35.00.

**THALIA.** Doz., \$3.50; 100, \$25.00.

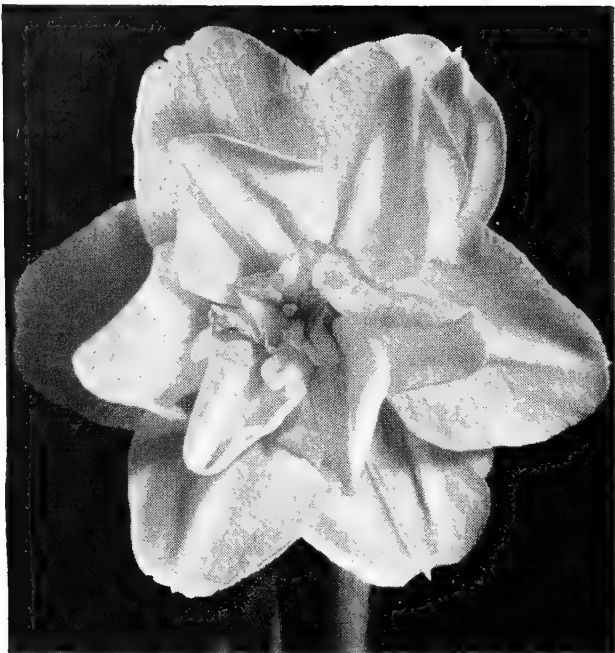
**TRIANDRUS ALBUS.** Doz., \$2.65; 100, \$18.00.

**TRIANDRUS PULCHELLUS.** Doz., \$3.70; 100, \$27.00.

**TRIANDRUS MOONSHINE.** Doz., \$5.00; 100, \$35.00.



NARCISSUS,  
Firetail



NARCISSUS, Mary Copeland

### DIVISION VIII TAZETTA NARCISSUS

Distinguishing characters: Characteristics of any of the Narcissus Tazetta group clearly evident.

**CHEERFULNESS.** Double white Poetaz hybrid, 3 to 4 large flowers on a strong stem. While the general effect of the coloring is white, there is a suggestion of pale yellow at the base of the petals which gives character to the entire flower. Stands out as one of the best and most charming introductions. Proven hardy in New England. Doz., \$2.65; 100, \$18.00.

**EARLY PERFECTION.** The earliest of all Poetaz. A great improvement over Elvira, 6 to 8 flowers per stem, white with yellow cup. Can be forced to bloom in early January. Doz., \$2.65; 100, \$18.00.

**GERANIUM.** Large pure white perianth with a magnificent orange-red cup. Four to six flowers on a stem. Truly an exhibition variety. Doz., \$2.90; 100, \$20.00.

**GLORIOUS.** Perfectly round flat perianth, of purest white; brilliant orange cup. Recommended highly for exhibition. Doz., \$2.90; 100, \$20.00.

**HALVOSE.** Lovely primrose-yellow perianth, deep red-orange cup. An improved orange cup. Recommended. Doz., \$2.60; 100, \$17.50.

**LAURENS KOSTER.** Pure white perianth, orange cup. Forces early. Doz., \$2.50; 100, \$17.00.

**LA FIANCEE.** The best white Poetaz. Broad pure white perianth of heavy texture, large deep orange-red eye. Very early and free blooming. Doz., \$2.90; 100, \$20.00.

**ORANGE CUP.** Creamy white, conspicuous orange cups, a most delightful color combination. Doz., \$2.65; 100, \$18.00.

**SCARLET GEM.** Four to five flowers to the stem. Deep golden yellow perianth with solid deep red cup. Doz., \$2.65; 100, \$18.00.

## Kennedy Quality Narcissus and Daffodils—continued

### DIVISION IV DOUBLE NARCISSUS

Distinguishing character: Double flowers.

**ALBUS PLENUS ODORATUS.** Double, large, pure white. Its fragrance adds to its general usefulness as a cut flower. Highly recommended. Doz., \$2.90; 100, \$20.00.

**MARY COPELAND.** Beautifully formed double rows of pure white petals interwoven with shorter deep orange-red segments. Doz., \$5.00; 100, \$35.00.

**IRENE COPELAND.** Ivory-white with small creamy yellow inner petals. Double well-filled flower, strong stem, excellent for February forcing or bedding. Doz., \$4.40; 100, \$30.00.

**INGLESCOMBE.** A good double flower, lovely bright yellow. Recommended. Doz., \$2.90; 100, \$20.00.

**TEXAS.** The color of the petals changes from yellow at the edge to bright orange at the center of a very full flower. Recommended. Doz., \$4.65; 100, \$32.50.

**TWINK.** Double of the semi-full type, petals alternating a soft primrose and clear orange, give the flower a most attractive appearance and make it most adaptable for decorative work. Forces easily; flowers early in the field. Doz., \$2.90; 100, \$20.00.

**VON SION.** The real old-fashioned double Daffodil. Large double flower of golden yellow.

**Extra Selected Double Nose Bulbs.** Doz., \$2.10; 100, \$15.00.

**Mother Bulbs.** Doz., \$2.90; 100, \$20.00.

NARCISSUS, Cheerfulness













**DIVISION IX  
POETICUS NARCISSUS**

Distinguishing characters: Characteristics of the Narcissus Poeticus group without admixture of any other.

**ACTAEA.** Pure white, perfectly overlapping petals of great texture. Fiery red-rimmed eye. The largest and most strikingly beautiful of them all. Excellent forcer. Doz., \$2.90; 100, \$20.00.

**GLORY OF LISSE.** Snow-white petals, yellow cup, edged red. Doz., \$2.90; 100, \$20.00.

**HORACE.** Pure white perianth, conspicuous red eye, free flowering and strong stem. Doz., \$2.90; 100, \$20.00.

**ORNATUS.** Pure white perianth, broad cup margined scarlet. Fine for planting in grass.  
**Mother Bulbs.** Doz., \$2.90; 100, \$20.00.

**ORNATUS MAXIMUS.** Extremely broad overlapping petals, recurving from typical Pheasant's-eye cup; unsurpassed for naturalizing. Doz., \$2.90; 100, \$20.00.

**RECURVUS (True Pheasant's Eye).** Pure white perianth, cup deep orange-red.  
**Mother Bulbs.** Doz., \$2.65; 100, \$18.00.

**DIVISION VII  
JONQUILLA NARCISSUS**

Distinguishing characters: Characteristics of any of the Narcissi, Jonquilla group clearly evident.

**CAMPERNELLE ODORUS GIGANTEUS.** The finest and best of the hybrids. Size, perfume and foliage are superior to the other Campernelles. Forces exceedingly well and early. Doz., \$2.65; 100, \$18.00.

**FLORE PLENO.** Rich double yellow, very fragrant. Doz., \$2.65; 100, \$18.00.

**GOLDEN PERFECTION.** The largest Jonquil introduced; two or three large flowers on strong stems. The perianth overlaps and is handsomely proportioned. Perianth and cup are clear yellow. Doz., \$2.90; 100, \$20.00.



KENNEDY KWALITY NARCISSUS naturalized for permanent landscape effect. Plant a few thousand each year for sweeps of color. Varieties in our mixture are selected for hardiness and ability to increase in number.

**TREVITHIAN.** This Jonquilla Hybrid has broadly overlapping perianth with shallow medium crown. Two or three flowers on a stem are clear lemon-yellow throughout. Good forcer. Recommended. Doz., \$2.90; 100, \$20.00.

**Kennedy Kwality Mixtures of Narcissus for Naturalizing**

Our mixtures of Narcissus for naturalizing are comprised of named varieties best adapted to this purpose. We recommend these mixtures to those who wish to make permanent plantings for mass effect.

	100	1000
<b>LARGE TRUMPET VARIETIES. Double Nose Bulbs</b> .....	\$17.50	\$160.00
Large Round Bulbs .....	15.00	135.00
<b>INCOMPARABILIS and BARRI VARIETIES. Double Nose Bulbs</b> .....	15.00	135.00
Large Round Bulbs .....	13.50	125.00
<b>LEEDSI VARIETIES. Double Nose Bulbs</b> .....	15.00	135.00
Large Round Bulbs .....	13.50	125.00
<b>POETAZ VARIETIES. Double Nose Bulbs</b> .....	15.00	135.00
Large Round Bulbs .....	13.50	125.00
<b>POETICUS VARIETIES. Double Nose Bulbs</b> .....	15.00	135.00
Large Round Bulbs .....	13.50	125.00
<b>DOUBLE VARIETIES. Double Nose Bulbs</b> .....	17.50	160.00
Large Round Bulbs .....	15.00	135.00
<b>A MIXTURE OF ALL THE ABOVE VARIETIES. Double Nose Bulbs</b> .....	15.00	135.00
Large Round Bulbs .....	12.00	110.00



# Kennedy Quality

## GIANT FLOWERING TULIPS

### KENNEDY KWALITY COLLECTION OF OUTSTANDING EXHIBITION VARIETIES

Varieties in this collection were outstanding at Spring Flower Shows this year and have proved superior to anything in their respective classes. The length of stem, texture, and form of flower attracted considerable attention and comment from exhibitors and judges. We do not hesitate to recommend them for your consideration as the very finest collection of Tulips to date regardless of price. Complete descriptions will be found under the various classes, from pages 21 to 26.

ARABIAN NIGHTS. D. Chestnut-red.  
BACCHANALIA. C. Amaranth-red.  
CORONADO. D. Begonia-rose.  
CUM LAUDE. D. Deep violet.  
DEBORAH. D. Clara Butt-pink.  
DIXIE SUNSHINE. B. Yellowish tan.  
DON EUGO. B. Chestnut-brown.

ECLIPSE. D. Blood-red.  
GLACIER. D. Giant white.  
INGA HUME. C. Red, yellow edge.  
UNSURPASSABLE. D. Huge lilac.  
IVORY GLORY. C. Giant creamy white.  
MARGAUX. D. Wine-red.  
MAVOURNEEN. D. Violet-magenta.

MONGOLIA. C. Chrome-yellow.  
MRS. JOHN T. SCHEEPERS. C. Yellow.  
NIPHETOS. D. Lemon-yellow.  
NOTRE DAME. D. Claret-red.  
QUEEN OF NIGHT. D. Purplish black.  
THE BISHOP. D. Deep violet.

25 each	20 varieties	(500 bulbs)	.....\$ 85.00
50 each	20 varieties	(1000 bulbs)	..... 160.00
100 each	20 varieties	(2000 bulbs)	..... 300.00





## GIANT FLOWERING DARWIN TULIPS

During the war years, the Holland growers, in spite of tremendous difficulties, managed to increase their stocks of Novelty Tulips. This year we have revised our list to include the introductions displayed at the show in Lisse, Holland. Several of these varieties received THE AWARD OF MERIT of the DUTCH BULB GROWERS ASSOCIATION. We can recommend them without reservation.

The Darwin Tulip is of the later-flowering class. For beds and borders we recommend the following varieties for their stately bearing and rich colors. These Tulips grow from 24 to 34 inches high, the flowers are borne on strong stems and are of the finest shades known among flowers.

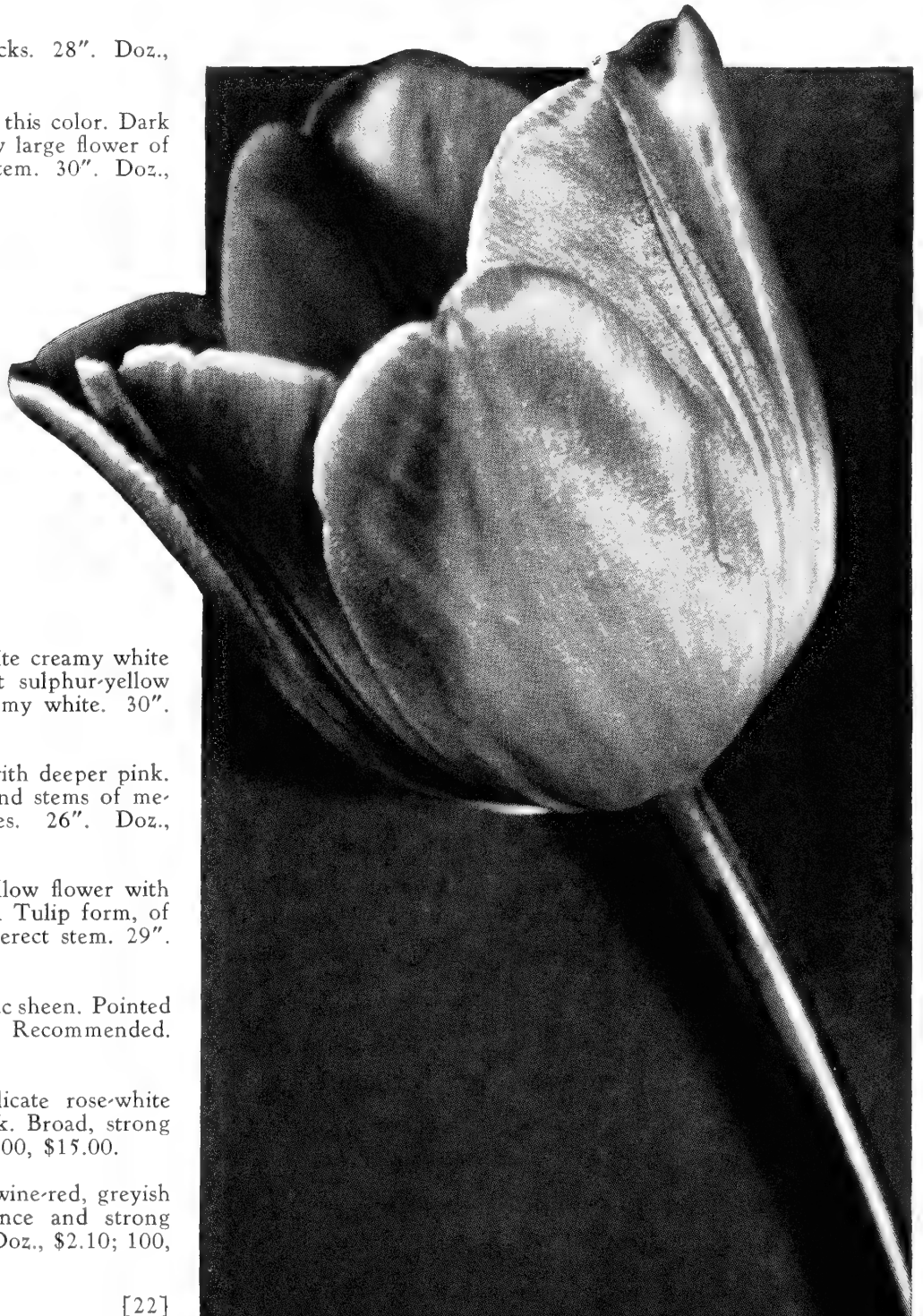
Great care has been exercised to select only the best varieties in each color class. However, we are in a position, through our growers in Holland, to supply any variety requested if ordered before August 15th. Varieties prefaced by an F and O are equally suitable for indoor or outdoor culture; varieties prefaced by an O are for outdoor culture only. These varieties are of exceptional merit and bear highest recommendation.

- O.—ADORATION.** A brilliant flesh-pink Tulip with lighter edge and white base. Very large and strong flower, carried on a tall stiff stem. Superior to any other Tulip of similar color. 31". Doz., \$2.65; 100, \$18.00.
- F. O.—ANNIE SPEELMAN.** Creamy white, oval flower of velvety texture. Finishes pure white on 30-inch stems. 30". Doz., \$2.90; 100, \$20.00.
- O.—ARABIAN NIGHTS.** A perfect egg-shaped flower of very heavy texture and substance. The color is a most unique chestnut-red with darker sheen. The only Darwin of this color to date. 28". Doz., \$3.50; 100, \$25.00.
- F. O.—Bartigon.** Cherry-red. 24". Doz., \$1.50; 100, \$11.00.
- O.—BLEU EAGLE.** A very lovely shade of deep violet-purple with blue base. Large flower of great substance on strong stem. 28". Doz., \$2.10; 100, \$15.00.
- F. O.—Bleu Aimable.** Late forcer. Soft bluish lilac. Very large flower. 24". Doz., \$2.10; 100, \$15.00.
- F. O.—BOSTONIAN.** Extremely large flower of good substance. Color black-red shaded carmine-red, anthers and center black. 26". Doz., \$2.90; 100, \$20.00.
- F. O.—BREITNER.** Very striking and nothing like this in Tulips. Center of outside petals black-red, outside margin dark scarlet-red, inside fiery scarlet, base black with narrow white margin. 26". Doz., \$2.65; 100, \$18.00.
- F. O.—CAROLINE TESTOUT.** Soft pink with large white base. Extremely long lasting bloom which does not fade. An even more beautiful color than the rose Caroline Testout. 30". Doz., \$2.10; 100, \$15.00.
- F. O.—CHARLES NEEDHAM.** Striking carmine-scarlet. Large flower on 28-inch stem. A real addition to any border. Doz., \$2.10; 100, \$15.00.
- F. O.—CHARMING BEAUTY.** Lovely carmine-red shading to pale rose toward the edge of the petals. Pale blue base, dark anthers. 26". Doz., \$2.10; 100, \$15.00.
- F. O.—CITY OF HAARLEM.** Splendid exhibition variety. Immense vermilion-scarlet, blue-black base edged white. 27". Doz., \$2.10; 100, \$15.00.
- F. O.—CLEMATIS.** Clear rose-lilac, lighter at the edge of petals; excellent forcer. 27". Doz., \$2.10; 100, \$15.00.
- O.—CORONADO.** Deep begonia-rose. Large, long-pointed flower of excellent substance. Pure white base with black anthers. Outstanding. 28". Doz., \$2.10; 100, \$15.00.
- O.—CUM LAUDE.** Deep violet overlaid with blue, lighter edges. Large flower on very strong stem. 28". Doz., \$2.65; 100, \$18.00.
- F. O.—DEBORAH.** Soft Clara Butt-pink with broad pale pink margin. Inside vivid pink with blue center. Very unusual, long, large oval shaped flower on wiry stem. 27". Doz., \$2.60; 100, \$17.50.
- F. O.—DRAMMEN.** Soft rosy violet. Color more vivid inside, clear light blue base, black anthers. 27". Doz., \$2.10; 100, \$15.00.
- F. O.—DUKE OF WELLINGTON.** A delightful creamy white flower of good form and character, white anthers and base. It is carried on a stiff stem and has great lasting qualities. 28". Doz., \$2.10; 100, \$15.00.
- F. O.—ECLIPSE.** Rich blood-red with steel-blue base. The best of its color. 27". Doz., \$2.10; 100, \$15.00.
- O.—EUNICE.** Lovely salmon-rose, very large. 29". Doz., \$2.10; 100, \$15.00.
- F. O.—FARNCOMBE SANDERS.** Scarlet, white base, large. 30". Doz., \$1.60; 100, \$12.00.
- F. O.—FAUST.** Deep purplish maroon. Enormous flower. 30". Doz., \$2.10; 100, \$15.00.
- F. O.—GLACIER.** A giant all-white Tulip. The sensation among Tulips again this year at the International Spring Flower Show. Enormous oval-shaped flower of great substance borne on strong, stout stems, the flower petals measuring over 6 inches in length. This variety will last 3 weeks in the garden or when cut and does not open wide when placed in a warm room. 30". Doz., \$2.65; 100, \$18.00.
- F. O.—GLORIA SWANSON.** The largest Tulip of this color. Enormous crimson-red with blue base. Tall, strong stem and flower has great lasting qualities. 32". Doz., \$2.10; 100, \$15.00.
- F. O.—GLORIOSA.** Excellent bedding variety. Flower good size and substance, strong stem. Distinct violet-blue with no trace of rose. 30". Doz., \$2.90; 100, \$20.00.
- F. O.—GOLDEN AGE.** Golden yellow overlaid with orange, large flower on strong stem; one of the most beautiful. 28". Doz., \$2.10; 100, \$15.00.
- F. O.—HELEN GAHAGAN.** A delightful soft creamy white, inside lemon-yellow with yellow anthers. Large, oblong flower on stiff stem. 29". Doz., \$2.10; 100, \$15.00.

## Kennedy Kwality Darwin Tulips—continued

- F. O.—HUMMING BIRD.** Clear deep violet with light center, a very delightful Tulip and one of the best of the novelties in this color. 30". Doz., \$2.10; 100, \$15.00.
- F. O.—J. K. LILLY.** A handsome cup-shaped flower. There is no variation in the color which is vermilion-red. Clear yellow center and anthers. Graceful, wiry stem. Fine for forcing in mid-February. 28". Doz., \$2.65; 100, \$18.00.
- F. O.—JUBILEE.** Rich bluish purple, excellent for exhibition. 28". Doz., \$2.10; 100, \$15.00.
- F. O.—KING GEORGE V.** An excellent forcer. Enormous flower on strong stem. Salmon-red. 30". Doz., \$2.10; 100, \$15.00.
- F. O.—KRIEMHILDE.** Snow-white flower, white base and anthers. Early blooming. 29". Doz., \$2.10; 100, \$15.00.
- F. O.—LADY HILLINGDON.** Orange shaded buff, a color not usually found among the Darwin Tulips. When forced it is a beautiful bright orange. 30". Doz., \$2.10; 100, \$15.00.
- O.—La Tulipe Noire.** One of the best blacks. 28". Doz., \$1.70; 100, \$13.00.
- F. O.—MAHOGANY.** The finest Tulip in this color. Dark mahogany with a much darker base. Very large flower of excellent form borne on very strong stem. 30". Doz., \$2.90; 100, \$20.00.
- F. O.—MARGAUX.** Enormous flower on strong stiff stem. Deep wine-red with wide border of a lighter shade. A unique Tulip. 30". Doz., \$1.60; 100, \$12.00.
- F. O.—MARK ANTONY.** A huge, clear deep wine-purple, same color throughout. Remarkable substance, wiry stem, black anthers. Without a doubt one of the loveliest Darwin Tulips in this color. 30". Doz., \$4.40; 100, \$30.00.
- F. O.—MAVOURNEEN.** Outside petals are violet-magenta edged silver, inside magenta to base. Good flower on strong stem. A better King Mauve. 31". Doz., \$2.10; 100, \$15.00.
- F. O.—MRS. GRULLEMANS.** An exquisite creamy white flower with clear white center and light sulphur-yellow anthers. When forced the flower is creamy white. 30". Doz., \$2.10; 100, \$15.00.
- O.—MR. VAN ZYL.** Soft pink overlaid with deeper pink. Flowers very large, very strong texture and stems of medium height; excellent keeping qualities. 26". Doz., \$2.10; 100, \$15.00.
- F. O.—NIPHETOS.** A glorious lemon-yellow flower with light base and anthers, of perfect Darwin Tulip form, of remarkable texture, carried on a strong, erect stem. 29". Doz., \$2.10; 100, \$15.00.
- F. O.—NOTRE DAME.** Claret-red, with lilac sheen. Pointed curving petals of real good substance. Recommended. Doz., \$2.10; 100, \$15.00.
- F. O.—OLD ROSE.** An outstanding delicate rose-white flower with clear white base, anthers dark. Broad, strong flower on wiry stems. 26". Doz., \$2.10; 100, \$15.00.
- F. O.—OPORTO.** A perfect flower. Deep wine-red, greyish white base, dark anthers. Good substance and strong stem. Preferred to King George V. 29". Doz., \$2.10; 100, \$15.00.
- O.—PAUL REVERE.** Bright carmine shaded rose; base white and blue; black anthers. Flowers are broad and of fine substance; stems wiry. 27". Doz., \$2.10; 100, \$15.00.
- F. O.—Pride of Haarlem.** Fine formed flowers, coloring brilliant salmon-rose shaded with scarlet; blue base. 28". Doz., \$1.70; 100, \$13.00.
- F. O.—PRINCESS ELIZABETH.** Beautiful rose. This variety has special value as a forcer, it comes easy and has a strong stem. 26". Doz., \$1.75; 100, \$14.00.
- F. O.—PRINCESS MARY.** Brilliant rose-pink, wonderfully large. 30". Doz., \$2.50; 100, \$17.00.
- O.—QUEEN OF THE NIGHT.** A Tulip of rare beauty. Large flower on tall, stiff stem. Deep purplish black. 30". Doz., \$2.10; 100, \$15.00.
- F. O.—ROYAL GUEST.** Glorious creamy white with yellow anthers. The large oval flower develops slowly to finish pure white. 29". Doz., \$2.10; 100, \$15.00.

DARWIN TULIP, Mavourneen



## Kennedy Quality Darwin Tulips—continued



- F. O.—SCOTCH LASSIE.** Of purest deep lavender with darker shade inside and dark blue base. This variety is far superior to the well known Darwin Tulip, Melicette. 29". Doz., \$2.10; 100, \$15.00.
- F. O.—SPANISH BEAUTY.** Deep American-Beauty-red outside, lighter inside, white and blue base alternating in petals. Outer petals reflex. Outstanding. 27". Doz., \$2.10; 100, \$15.00.
- F. O.—SPRING SONG.** Bright red with delicate salmon shading. Extremely large flower. Will bloom with Cottage Tulip, Advance. Extra fine for forcing. 28". Doz., \$2.90; 100, \$20.00.
- O.—SUNKIST.** Bright, rich golden yellow with yellow anthers. Outstanding variety. 26". Doz., \$2.10; 100, \$15.00.
- F. O.—SUNSET GLOW.** Lovely deep rose shaded orange, inside bright salmon, yellow center. Exceptionally fine color. An improved Afterglow. 27". Doz., \$2.10; 100, \$15.00.
- F. O.—THE PEACH.** A gorgeous peach-colored Tulip with large white center. Flower very large on stiff, stout stem. 30". Doz., \$2.10; 100, \$15.00.
- O.—THE BISHOP.** Deep violet, best of the color. 29". Doz., \$2.25; 100, \$16.00.
- O.—Tubergen's Glory.** Bright rosy salmon with distinct blue base. Flower of good substance and size. 30". Doz., \$2.10; 100, \$15.00.



DARWIN TULIP, The Peach



### DARWIN TULIP SUNKIST Planted Among PHLOX DIVARICATA CANADENSIS

A beautiful effect is created by planting PHLOX DIVARICATA with Tulips of any related shade of lilac, lavender and purple, yellow or white, or a combination of these colors. In addition to the variety here illustrated we suggest GLACIER, UNSURPASSABLE, MONGOLIA, MRS. MOON or THE BISHOP.

- F. O.—UNSURPASSABLE.** An improved William Copland, at least three times larger and a more beautiful lilac color. 27". Doz., \$2.10; 100, \$15.00.
- O.—VAGABOND PRINCE.** Inside clear bright purple with blue and white center, outside distinct carmine-purple edged violet-purple. Flower broad, large and great substance. Quite distinct as it gives an effect of two shades of purple. 28". Doz., \$4.40; 100, \$30.00.
- F. O.—VENUS.** Very large, beautiful flower of silvery rose. 28". Doz., \$2.10; 100, \$15.00.
- F. O.—White Giant.** Among the finest large, white Darwin Tulips. 32". Doz., \$2.10; 100, \$15.00.
- F.—Wm. Copland.** Lilac-mauve. Forcing only. 26". Doz., \$2.10; 100, \$15.00.
- F. O.—Wm. Pitt.** A good red Darwin, center white, changing to purple, very showy. 24". Doz., \$2.10; 100, \$15.00.
- F. O.—Yellow Giant.** Deep yellow, flecked red at tips of petals. 29". Doz., \$1.60; 100, \$12.00.
- F. O.—ZWANENBURG.** The pure white Darwin. A large flower of perfect shape and sturdy character. 28". Doz., \$2.10; 100, \$15.00.

#### Darwin Tulip Mixture

The varieties above are especially selected for some outstanding characteristic. Our mixture of Darwin Tulips is made from these bulbs, all top size, and including some of each of those varieties recommended. Doz., \$1.70; 100, \$13.00.



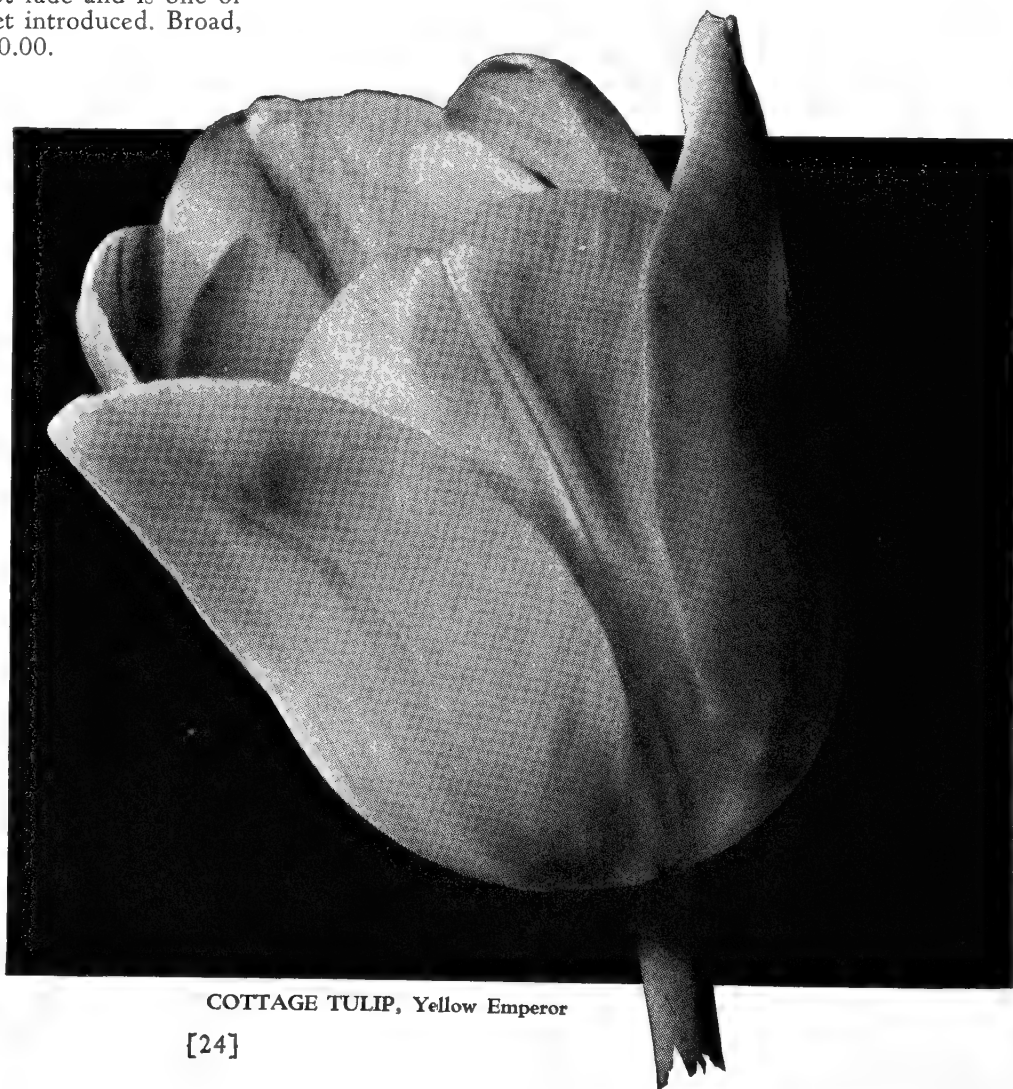


# Kennedy Quality Late May-Flowering or Cottage Tulips

The latest of the late flowering Tulips. If planted in October these Tulips will bloom beautifully during May. For length of stem, form of flower and beautiful shades of color, the Cottage Tulips cannot be excelled. They are perfectly hardy and very much at home in garden borders and edges of shrubbery, also naturalized on banks and rough lawns that are mowed by scythe only.

Varieties prefaced by an **F** are most suitable for forcing; varieties prefaced by an **F** and **O** are equally suitable for indoor or outdoor culture; varieties prefaced by an **O** are for outdoor culture only.

- F. O.—ADVANCE.** An enormous glowing orange-scarlet with glistening black base. Tall, strong stem. 28". Doz., \$2.10; 100, \$15.00.
- F. O.—ALBINO.** Pure white very graceful flower on 26-inch stems. Recommended for January forcing. Doz., \$2.10; 100, \$15.00.
- F. O.—BACCHANALIA.** Deep amaranth-red with purple sheen, more brilliant inside. White base with lavender-blue halo. Large oval flower. 26". Doz., \$2.10; 100, \$15.00.
- F. O.—BELLE JAUNE.** (Yellow Supreme.) A large, long-petaled flower of good substance, on stiff, straight stem. Dazzling golden yellow with light base and yellow anthers. An excellent bedding variety. 30". Doz., \$2.10; 100, \$15.00.
- F. O.—CARRARA.** Valuable for late forcing. Pure white. 22". Doz., \$2.10; 100, \$15.00.
- O.—CHAPPAQUA.** An exquisite carmine-rose, center yellow edged blue. Oval shaped flower of great substance. Highly recommended for bedding. 32". Doz., \$4.40; 100, \$30.00.
- F. O.—COTE D'IVOIRE.** Amber-white outside, pale yellow inside, base and anthers yellow. Does not fade and is one of the most attractive pale yellow Tulips yet introduced. Broad, strong flower. 26". Doz., \$2.90; 100, \$20.00.
- O.—CRIMSON RAMBLER.** Dark carmine-scarlet. Large, long flower of great substance. This variety never burns. 27". Doz., \$2.10; 100, \$15.00.
- F. O.—DIDO.** An exquisite flower. Very large. Outside orange-red shaded carmine with orange edges, inside bright orange-salmon, yellow base bordered green. 27". Doz., \$2.10; 100, \$15.00.
- O.—G. W. LEAK.** Bright vermilion-scarlet, large yellow center. 28". Doz., \$2.10; 100, \$15.00.
- F. O.—GOLDEN HARVEST.** (Golden Ophelia.) A lovely large lemon-yellow flower of great substance, tall, stiff stems. 28". Doz., \$1.75; 100, \$14.00.
- F. O.—GOLDEN MEASURE.** May easily be forced for St. Valentine's Day if brought into the greenhouse Jan. 10. Extremely fragrant. Very striking golden yellow inside, outside somewhat lighter with tiny red edge. Egg-shaped flower. Excellent for cutting. 26". Doz., \$2.10; 100, \$15.00.
- O.—GOLDEN NUGGET.** An exquisite Tulip with great lasting qualities. Outside golden yellow, flushed rose, inside golden yellow with huge black basal blotch. 24". Doz., \$2.10; 100, \$15.00.
- F. O.—INGA HUME.** A distinct improvement on Magnolia. Inside cream flecked red. Outside cherry-rose with sharply lined soft yellow edge. Flower large, born on strong stem. 26". Doz., \$2.10; 100, \$15.00.
- F. O.—Inglescombe Yellow.** Canary-yellow, globular flowers. 22". Doz., \$1.75; 100, \$14.00.
- F. O.—IVORY GLORY.** Huge, globular, creamy white for the border where it will last three weeks. A novelty of merit. 26". Doz., \$4.40; 100, \$30.00.
- F. O.—LEMON QUEEN.** (Mother's Day.) Soft yellow. Splendid form and substance. 28". Doz., \$1.75; 100, \$14.00.
- F. O.—MARJORIE BOWEN.** Immense flower of perfect form. Exquisite combination of buff-salmon and soft rose. 28". Doz., \$2.10; 100, \$15.00.
- F. O.—MONGOLIA.** A large canary-yellow Tulip of great beauty, carried on tall strong stem. One of the finest late flowering yellow Tulips. 28". Doz., \$2.10; 100, \$15.00.



COTTAGE TULIP, Yellow Emperor



## Kennedy Kwality Late May-Flowering or Cottage Tulips continued



- F. O.—MOONLIGHT.** Large, pale yellow. One of the handsomest of the light yellows. 26". Doz., \$2.10; 100, \$15.00.
- F. O.—Mrs. Moon.** Late pure yellow, reflexed petals. 25". Doz., \$2.10; 100, \$15.00.
- F. O.—MRS. JOHN T. SCHEEPERS.** A very large and beautiful yellow oval-shaped flower of great substance carried on a straight stem. 26". Doz., \$2.10; 100, \$15.00.
- F. O.—PERSIAN BEAUTY.** Outside carmine-rose slightly edged yellowish bronze shading to salmon toward the yellow base. Large egg-shaped flower of excellent substance. 28". Doz., \$2.10; 100, \$15.00.
- O.—PRINCESS MARGARET ROSE.** A sport of Inglescombe Yellow. Canary-yellow edged red. 25". Doz., \$2.10; 100, \$15.00.
- F. O.—Rosabella.** Beautiful carmine-pink, broad white edge, inside shell-pink, creamy white base. 27". Doz., \$2.10; 100, \$15.00.
- O.—SULPHUR PEARL.** A perfect pastel yellow, clear base and yellow anthers. One of the newer yellow Tulips. Outstanding. Does not fade in hot weather. 27". Doz., \$2.10; 100, \$15.00.
- O.—SUMMER GLOW.** Brilliant orange-red, outside shaded carmine, yellow center and anthers. Oval flower on stiff stem. 30". Doz., \$2.10; 100, \$15.00.
- F. O.—YELLOW EMPEROR.** A brilliant yellow Tulip of great beauty and size. Highly recommended. 27". Doz., \$1.75; 100, \$14.00.
- O.—ZOMERSCHOON.** Salmon-rose on creamy ground, flaked white. An exquisite Tulip although one of the older varieties. 18". Doz., \$2.65; 100, \$18.00.

**KENNEDY KWALITY MIXTURE OF COTTAGE TULIPS**

This mixture is made up of named varieties as listed and is very satisfactory when used for naturalizing and permanent plantings. Doz., \$1.70; 100, \$13.00.

## Kennedy Kwality Lily-Flowered Tulips

An unusually graceful and decorative class of Tulips. The petals are reflexed and pointed, which adds a delicate lightness to any group of Tulips. Previously listed with the Cottage Tulips, we are grouping them separately, because we believe they deserve more popular attention and use.

- F. O.—ASTOR.** Light lilac-bronze shaded salmon. 24". Doz., \$2.10; 100, \$15.00.
- F. O.—CAPTAIN FRYATT.** Dark ruby-violet, violet-blue center. A unique color. 24". Doz., \$2.10; 100, \$15.00.
- F. O.—FASCINATING.** Unusually long and graceful. Twisting yellow petals are slightly sprayed darker yellow. Recommended. 26". Doz., \$2.10; 100, \$15.00.
- O.—GOLDEN EMBLEM.** Golden yellow, perfect form, strong stem. We suggest this as one of the best Lily-flowered Tulips in this color. 25". Doz., \$2.10; 100, \$15.00.
- O.—LINETTE.** Clear blue-violet with darker center. A new color in this class. 25". Doz., \$7.00; 100, \$50.00.
- F. O.—MARCELLINA.** Lovely, graceful cerise-pink Tulip with white base, yellow anthers. 24". Doz., \$2.10; 100, \$15.00.
- F. O.—MARTHA.** Rich red, white and blue center. An improved Artemis. 26". Doz., \$2.10; 100, \$15.00.
- F. O.—STANISLAUS.** Brilliant orange. Outstanding novelty. Excellent for pot culture. 23". Doz., \$5.75; 100, \$40.00.
- F. O.—THE BRIDE.** Creamy white, turning pure white. Beautiful reflexed and graceful flower. Highly recommended. 23". Doz., \$2.10; 100, \$15.00.
- F. O.—YANKEE GIRL.** The salmon-buff petals are reflexed and curled in a half circle. A different form on wiry stems, and its lasting quality makes it ideal for cutting. 26". Doz., \$2.90; 100, \$20.00.



LILY-FLOWERED TULIP, Fascinating

**KENNEDY KWALITY MIXTURE OF LILY-FLOWERED TULIPS**

This mixture comprises all the beautiful colors of the Lily-Flowered Tulips. Doz., \$2.10; 100 \$15.00.

# Kennedy Kwality Old Dutch Breeder Tulips

The Breeder Tulip is becoming more popular every year. The flowers are of gigantic size, borne on long, stiff stems and combine a beautiful blending of bronze and art colors. They are splendid companions to the Darwin and Cottage classes, creating fine color harmony with the brilliant shades of the latter.

Varieties prefaced by an **F** are most suitable for forcing; varieties prefaced by an **F** and **O** are equally suitable for indoor or outdoor culture; varieties prefaced by an **O** are for outdoor culture only.

**O.—ADMIRAL TROMP.** Bright orange-red shaded salmon. Large flower, strong stem. 29". Doz., \$2.10; 100, \$15.00.

**F. O.—ALGERICA.** Petals chestnut with lavender bloom and copper-gold margin. Distinctive, handsome bloom on good stem. 29". Doz., \$2.10; 100, \$15.00.

**O.—ASTRACHAN.** Inside pale mahogany-red, shaded golden bronze, outside magenta edged gold, center yellow and black; dark anthers. Extremely large, broad, strong flower on wiry stem. 28". Doz., \$2.10; 100, \$15.00.

**F. O.—AUTUMN GLOW.** Bronze flushed red shading to bronze at the edge. New and highly recommended. 30". Doz., \$2.10; \$15.00.

**O.—BACCHUS.** Deep plum-purple. Darker bloom on outer petals. Beautifully shaped flower. Sturdy stem. 32". Doz., \$2.10; 100, \$15.00.

**F. O.—BLOIS VAN AMSTEL.** Lovely violet-blue with lighter edge and blue base. Very large flower carried on strong stem. 30". Doz., \$2.10; 100, \$15.00.

**F. O.—BONNIE PRINCE.** Lilac, strongly flushed reddish lilac; outer petals are much darker with lighter shades. Huge long flower. 31". Doz., \$2.10; 100, \$15.00.

**F. O.—CHERBOURG.** Very large, golden bronze on yellow ground, outside tinted lilac. 32". Doz., \$2.10; 100, \$15.00.

**O.—CHEYENNE.** Inside light geranium-red, outside carmine edged orange-red. Base and anthers yellow. Extra fine. 29". Doz., \$2.90; 100, \$20.00.

**F. O.—CHINESE BANDIT.** Immense oval-shaped flower. Chinese red, bronzy orange. Inside bright with vivid yellow base. Fine striking flower, stem not too tall, about 25 inches. The largest Tulip flower. Doz., \$2.65; 100, \$18.00.

**O.—DILLENBURG.** Salmon-orange, outside shaded lilac. 25". Doz., \$2.10; 100, \$15.00.

**F. O.—DENISE.** Dark American-Beauty-red, shaded scarlet-red; yellow base, blue-black halo. 28". Doz., \$2.10; 100, \$15.00.

**F. O.—DENVER.** Rich blue-lavender with distinct pure white center. Enormous flower of good substance on very strong stem. Highly recommended. 32". Doz., \$2.25; 100, \$16.00.

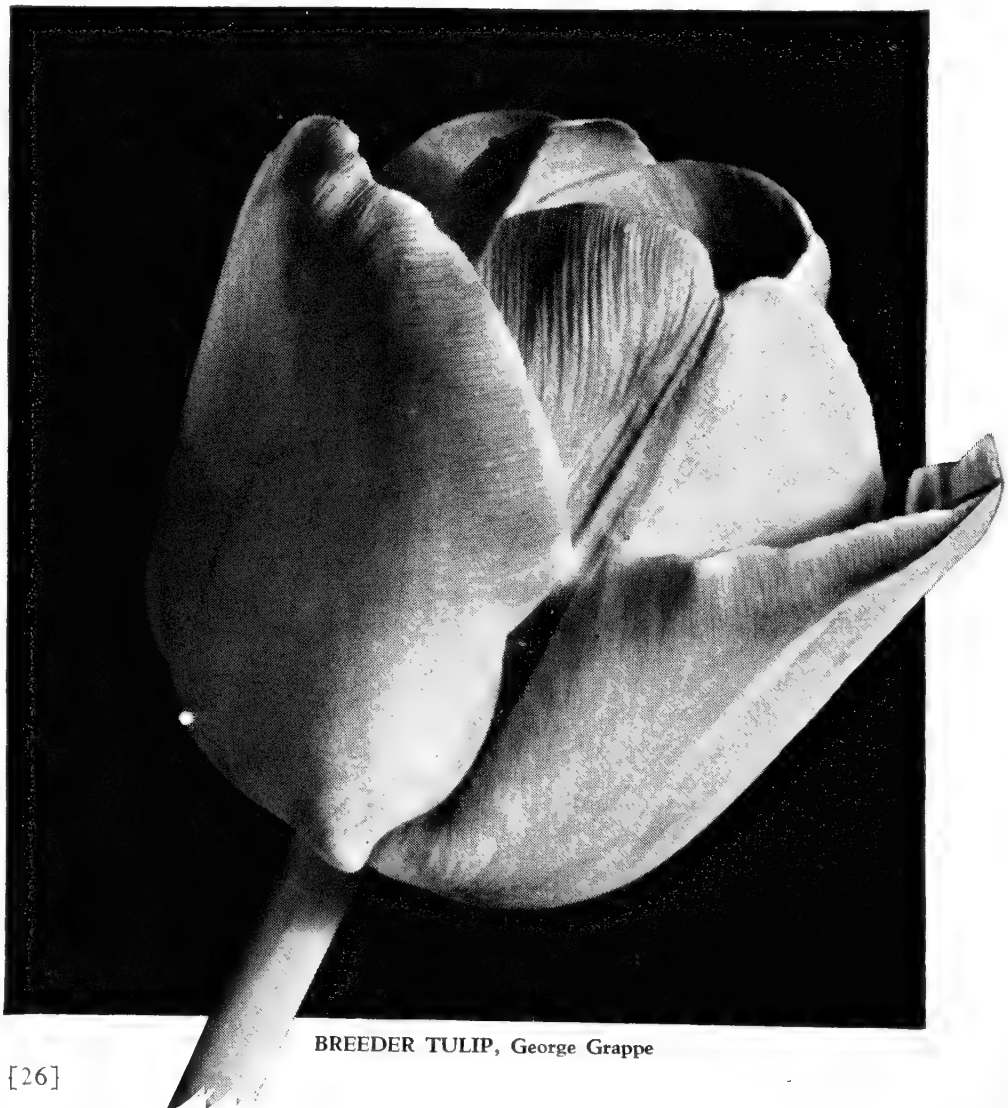
**F. O.—DIXIE SUNSHINE.** A very much improved Jaune d'Oeuf. Outside petals yellowish tan with pale lilac shading. Broad margin of buff-yellow, inside palest yellow turning to buff-yellow at edges. 28". Doz., \$2.25; 100, \$16.00.

**F. O.—DON EUGO.** Chestnut-brown three-cornered flower somewhat lighter at edge, inside deeper in color. A great improvement over Dom Pedro in color, size and texture. Recommended for forcing in mid-February. 24". Doz., \$2.10; 100, \$15.00.

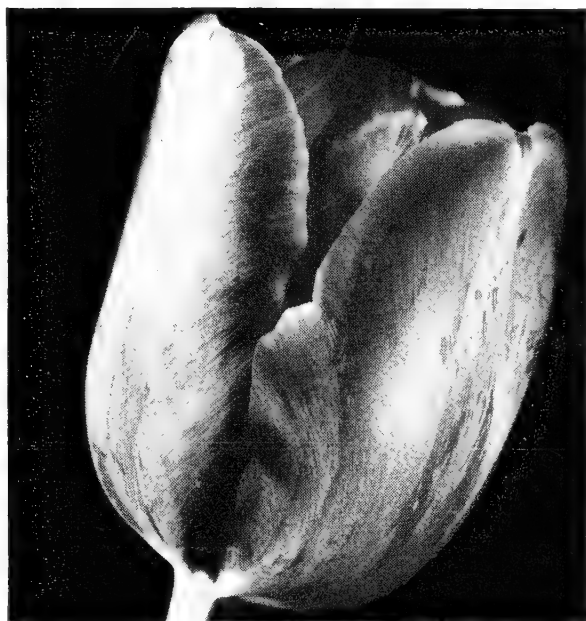
**F. O.—DRAGON'S BLOOD.** Chinese lacquered inner petals, dull oxblood-red outside; olive-colored base. The outer petals reflex somewhat. A brilliant colored novelty which we especially recommended. 28". Doz., \$2.10; 100, \$15.00.

**F. O.—GARDEN MAGIC.** The clearest and largest yellowish tan Breeder ever introduced. Outer petals slightly flushed purple, clear yellow base. 29". Doz., \$2.25; 100, \$16.00.

**F. O.—GEORGE GRAPPE.** Enormous uniform lavender-blue flower, distinct heavenly blue base. A great favorite in all trial gardens. 32". Doz., \$2.10; 100, \$15.00.



BREEDER TULIP, George Grappe



BREEDER TULIP, Louis XIV

- F. O.—HERMES.** Bright orange-red, slightly shaded bronze on edges of petals, yellow center. One of the outstanding bright colored new Breeder Tulips. 29". Doz., \$2.10; 100, \$15.00.
- F. O.—INDIAN CHIEF** (Meyerbeer). Reddish mahogany, purple flush, edged coppery brown. Exceedingly large flower on very tall stem. 32". Doz., \$2.10; 100, \$15.00.
- F. O.—INDIAN SUNSET.** Mahogany with a distinct reddish flush, interior somewhat darker, base nearly black. Outstanding variety in this color. 29". Doz., \$2.10; 100, \$15.00.

- F. O.—JESSEY.** Clear deep coffee-brown, flushed bronze-red, yellow base. Very large flower; tall, erect stem. Highly recommended. 36". Doz., \$2.10; 100, \$15.00.
- F. O.—J. J. BOUMAN.** An exquisite flower, tomato-red, flushed claret, delicately edged yellowish bronze. One of the finest Breeder Tulips in this color. We recommend this for the garden. 28". Doz., \$2.10; 100, \$15.00.
- F. O.—KATHLEEN TRUXTON.** Outside petals soft slaty rose with handsome soft copper-yellow edging. Far superior to Breeder Tulip Limnos. Long oval-shaped flower. 28". Doz., \$2.50; 100, \$17.00.
- F. O.—LOUIS XIV.** A royal flower, purple flushed golden brown, large globular flowers. 32". Doz., \$2.10; 100, \$15.00.
- O.—MOROCCO BEAUTY.** A much improved Dom Pedro. Clear Morocco-red, interior reddish mahogany, yellow base, straight stem. Outstanding novelty. 26". Doz., \$2.25; 100, \$16.00.
- F. O.—MOUNT ROYAL.** Bright bluish violet broadly edged soft bronze, inside much brighter toward the base which is yellow; anthers dark. 28". Doz., \$2.10; 100, \$15.00.
- F. O.—ORIENTAL.** Oval, pointed flower. Soft Havana overlaid with faint shading of violet. Stem tall and stiff. One of the loveliest new Tulips in this rare and unusual color. 27". Doz., \$2.65; 100, \$18.00.
- O.—PAPAGO.** Poppy-red with pure yellow base. Exceptionally large, oval shaped flower. Highly recommended. 29". Doz., \$2.90; 100, \$20.00.
- F. O.—STEPHANIE.** Delicate lilac, shaded violet, lighter edge, clear bluish white base. A gigantic flower of perfect form. Recommended. 30". Doz., \$2.10; 100, \$15.00.
- F. O.—TASMANIA.** Clear reddish orange inside and out. Wiry stem with yellow base, edged yellow. Extremely fine flower and distinct. 28". Doz., \$2.10; 100, \$15.00.

**KENNEDY KWALITY MIXTURE BREEDER TULIPS.**

This mixture comprises all the beautiful colors of the Breeder Tulips. Doz., \$1.75; 100, \$14.00; 1000, \$135.00.

## *Kennedy Kwality Single Early Tulips*

The Single Early varieties do not grow as tall as the Darwin and Cottage Tulips but flower much earlier and are very showy.

Varieties prefaced by an F are most suitable for forcing; varieties prefaced by an F and O are equally suitable for indoor or outdoor culture; varieties prefaced by an O are for outdoor culture only.

- F. O.—Couleur Cardinal.** Deep crimson-scarlet. Excellent for bedding. Doz., \$2.10; 100, \$15.00.
- F. O.—DE WET.** Beautiful orange-yellow, flushed orange-scarlet. Freesia fragrance. Doz., \$2.10; 100, \$15.00.
- F. O.—Keizerskroon.** Bright crimson-scarlet, edged golden yellow. Excellent for bedding or forcing. Doz., \$2.10; 100, \$15.00.
- F. O.—PINK BEAUTY.** Deep glowing rose with large white base. Doz., \$2.90; 100, \$20.00.
- F. O.—RISING SUN.** Golden yellow; very large. Doz., \$2.10; 100, \$15.00.
- F. O.—Rose Luisante.** Beautiful rosy pink, white base, fine for bedding. Doz., \$2.10; 100, \$15.00.
- F. O.—White Hawk.** Pure white. Doz., \$2.10; 100, \$15.00.



SINGLE EARLY TULIP, Keizerskroon

**KENNEDY'S RAINBOW MIXTURE, SINGLE EARLY TULIPS**

We make this mixture up ourselves; it contains a wide range of colors from choice named sorts in a well-balanced proportion. Doz., \$2.10; 100, \$15.00.



# Kennedy Kwality Early Double Tulips

For Forcing

- F. O.—MR. VAN DER HOEF. Golden yellow, sport of Murillo. 12". Doz., \$2.60; 100, \$17.50.
- F. O.—PEACH BLOSSOM. The finest deep pink, sport of Murillo; excels its parent not only in color but in size. 12". Doz., \$2.25; 100, \$16.00.

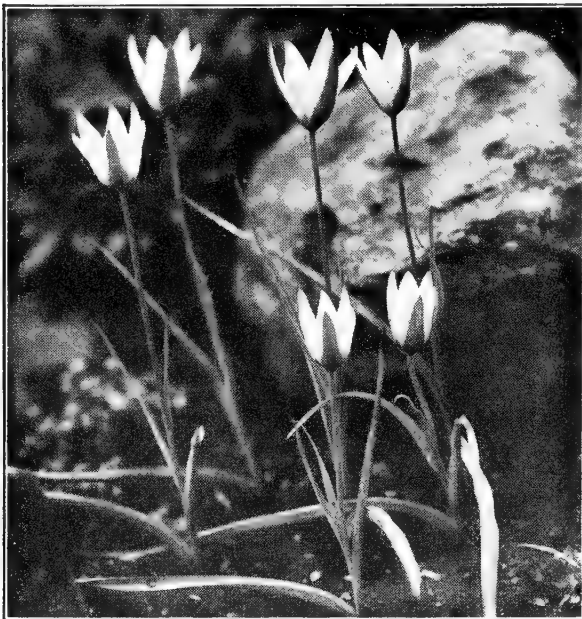
- F. O.—SCARLET CARDINAL. Brilliant vermilion-scarlet. Without question the best in this color. A very early forcing variety. 15". Doz., \$2.90; 100, \$20.00.
- F. O.—SCHOONOORD. One of the best double white Tulips, a sport of Murillo. Large, full flower. 12". Doz., \$2.60; 100, \$17.50.

# Kennedy Kwality Double Tulips

Late May or Peony-Flowered

- O.—BLEU CELESTE (Blue Flag). Huge flower on strong stem, soft violet-blue. An exceptionally fine double late Tulip. 17". Doz., \$2.90; 100, \$20.00.
- O.—COXA. Scarlet, daintily tipped white; very large and fully double. 22". Doz., \$2.10; 100, \$15.00.
- F. O.—EROS. Fine substance and large flower. Old rose, tinted silvery rose toward the edge. 20". Doz., \$2.10; 100, \$15.00.

- F. O.—LIVINGSTONE. Brilliant carmine-red, yellow center. 18". Doz., \$2.10; 100, \$15.00.
- F. O.—MOUNT TACOMA. Large pure white flower, resembling a double Peony. 23". Doz., \$2.10; 100, \$15.00.
- O.—UNCLE TOM. Sparkling deep red. Large flower, resembling a Peony. 24". Doz., \$2.90; 100, \$20.00.



# Kennedy Kwality Botanical or Tulip Species

- O.—CHRYSANTHA. Soft, light yellow inside, outside rose. A very dainty Himalayan Tulip, similar to Tulipa Clusiana. Height 4". Doz., \$1.45; 100, \$10.00; 1000, \$95.00.
- F. O.—CLUSIANA. (French Grown.) This unique variety grows about 10 inches high and the blooms are about the size of the Crocus. The color is beautiful white with red stripe, violet base. An excellent Tulip for rock gardens or borders. One of the most admired Tulips at the New York Flower Show. Doz., \$2.10; 100, \$15.00.
- O.—FLORENTINE ODORATO. (Sylvestris). A sweet scented, wild English Tulip. Medium sized, drooping flower of pure yellow. Fine for naturalizing. Doz., \$2.10; 100, \$15.00.
- F. O.—KAUFMANNIANA. (The Waterlily Tulip). The earliest of all Tulips, creamy yellow, outside shaded soft red, inside deep yellow, resembles a Water Lily when open; fine for rock gardens. Doz., \$2.10; 100, \$15.00.
- O.—KAUFMANNIANA SCARLET ELEGANS. Inside brilliant scarlet, outside not quite so brilliant. A most beautiful species Tulip for the garden. Doz., \$4.40; 100, \$30.00.

# Kennedy Kwality Parrot or Dragon Tulips

These Tulips have large blooms with feathered petals. They are showy and effective in flower borders. Grown in hanging baskets the drooping flowers look like Orchids.

- F. O.—BLUE PARROT. A gorgeous flower. Bright violet shaded steel-blue. Very large flower and tall, strong stem. 29". Doz., \$2.10; 100, \$15.00.
- F. O.—BLACK PARROT. Brilliant velvety maroon-black. Sport of Ph. de Communes. The only Parrot Tulip in this color. Highly recommended. 26". Doz., \$13.00; 100, \$95.00.
- F. O.—FANTASY. Salmon-rose, veined green. 27". Doz., \$2.10; 100, \$15.00.
- F. O.—ORANGE FAVORITE. Bright orange, green blotches, yellow base. A sport from Cottage Tulip, Orange King. Good substance, on strong stems. Sweet scented. 26". Doz., \$2.10; 100, \$15.00.
- F. O.—SUNSHINE. Bright yellow, deeply lacerated, outer petals usually green. The leading yellow Parrot Tulip. 15". Doz., \$2.90; 100, \$20.00.
- F. O.—RED CHAMPION. Cochineal-carmine-red, shaded rose. Large flower, very showy. Recommended. Doz. \$2.90; 100, \$20.00.
- F. O.—THERESE. Brilliant cochineal-carmine, inside vivid cerise-scarlet, white center, tinted blue. Sport of Darwin Tulip, Farncombe Sanders. 30". Doz., \$2.65; 100, \$18.00.



PARROT TULIP, Orange Favorite



# Kennedy Quality Miscellaneous Bulbs and Roots for Outdoor Planting



## CAMASSIA

A hardy bulbous plant which will naturalize and flourish in any good garden soil.

**LEICHTLINI COERULEA.** The best of all varieties of Camassia. Delphinium-blue, height 3 ft. Blooms late April or early May. Doz., \$1.60; 100, \$12.00.

## CHIONODOXA

(Glory-of-the-Snow)

An early spring flower and should be largely used in borders and dotted over bulb beds, also massed on rock work. Once established the flower spikes will increase in size and beauty and will form attractive patches of brilliant blue and white in early spring.

**GIGANTEA.** Soft lavender. Doz., 85c; 100, \$6.00; 1,000, \$45.00.

**LUCILIAE.** Beautiful blue, pure white center. Doz., 85c; 100, \$6.00; 1,000, \$45.00.

**LUCILIAE ALBA.** Pure white. Doz., \$1.45; 100, \$10.00; 1,000, \$95.00.

**LUCILIAE ROSEA.** Rose-pink. Doz., \$1.45; 100, \$10.00; 1,000, \$95.00.

**SARDENSIS.** Intense bright blue. Doz., 85c; 100, \$6.00; 1,000, \$45.00.

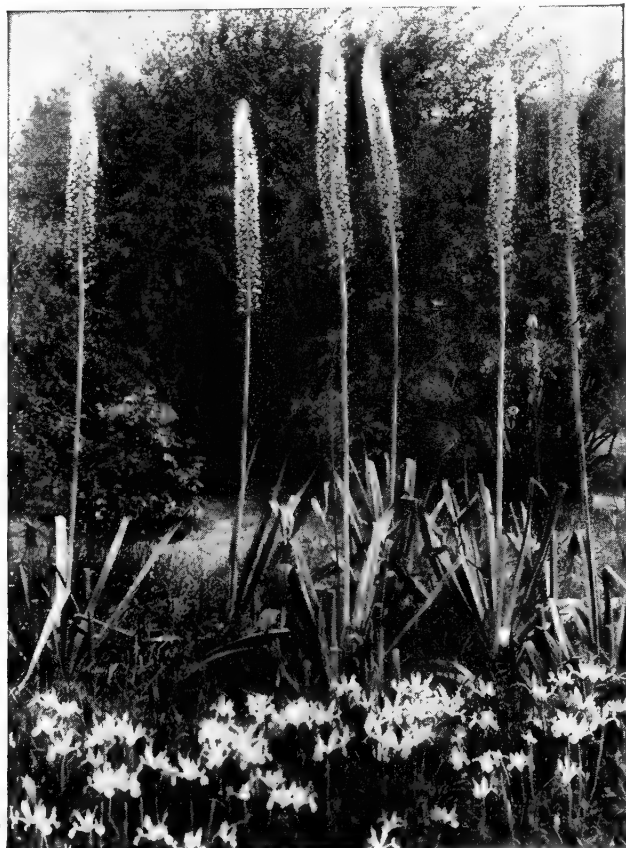
## COLCHICUM

Giant autumn flowering Crocus, excellent for rock gardens, blooming from September to November. Will bloom indoors without soil or water.

**AUTUMNALE ALBUM.** Pure white. Doz., \$6.50; 100, \$45.00.

**AUTUMNALE MAJOR.** Rosy lavender. Doz., \$6.50; 100, \$45.00.

**LILAC WONDER.** Violet-mauve, very dainty. Doz., \$6.50; 100, \$45.00.



EREMURUS, Elwesianus



DIELYTRA, Spectabilis

## CROCUS, AUTUMN FLOWERING

These fall flowering Crocus are eminently suitable for naturalization and should be planted in quantity for autumn color. They are in continuous bloom from late August through September and October. Bulbs arrive early August and will start flowering two weeks after planting.

**SATIVUS.** Purplish lilac feathered violet with orange stigmata. Large, free flowering, scented. 100, \$6.00.

**SPECIOSUS, ARTABIR.** Light blue feathered darker. Large. 100, \$8.00.

**SPECIOSUS ALBUS.** Large snow-white flowers. 100, \$8.00.

**SPECIOSUS AITCHISONI.** Long, tapering bright blue flowers feathered darker blue. 100, \$8.00.

**ZONATUS.** Rosy lilac with orange zone. Easily grown indoors. 100, \$6.00.

## CROCUS, GIANT FLOWERING

One of the first flowers of spring. Plant bulbs two inches deep and two or three inches apart. They are so pretty they ought to be found in every garden. Plant on the lawn among the grass. Fine for house culture.

**AMETHYST.** Amethyst-blue, lighter at base. Doz., \$1.00; 100, \$7.00.

**EARLY PERFECTION.** Dark blue, very early. Doz., \$1.00; 100, \$7.00.

**ENCHANTRESS.** Light blue. Doz., \$1.00; 100, \$7.00.

**GOLDEN GOBLET.** Extra large. Doz., \$1.15; 100, \$8.00.

**KATHLEEN PARLOW.** Pure white, very large. Doz., \$1.00; 100, \$7.00.

**PURPUREA GRANDIFLORA.** Dark purple, good forcer. Doz., \$1.00; 100, \$7.00.

**QUEEN OF THE BLUES.** Pure deep lilac-blue. Doz., \$1.00; 100, \$7.00.

**SNOWSTORM.** Pure white. Doz., \$1.15; 100, \$8.00.

**STRIPED BEAUTY.** Dark blue, striped, very large. Doz., \$1.15; 100, \$8.00.

**MIXED ALL COLORS.** Doz., 85c; 100, \$6.00; 1,000, \$57.50.



# Kennedy Quality Miscellaneous Bulbs and Roots— continued

## DIELYTRA SPECTABILIS

(Bleeding Heart)

STRONG CLUMPS. Doz., \$11.50; 100, \$85.00.

## DODECATHEON

(Shooting Stars)

Among the earliest flowering plants. They form close rosettes of broad leaves from which arise stems about one foot high with umbels of Cyclamen-like flowers.

**CLEVELANDI.** Flowers white shading to soft pink, beautifully zoned. 100, \$25.00.

**HENDERSONI.** Umbels of rose-colored flowers, fragrant. 100, \$25.00.

**MEADIA.** Rose with white base, anthers reddish yellow. 100, \$25.00.

## ERANTHIS HYEMALIS

(Winter Aconite)

Very hardy. Bright yellow flowers that bloom very early. Do best in partial shade. Doz., 85c; 100, \$6.00; 1,000, \$57.50.

## FRITILLARIA

**IMPERIALIS** (Crown Imperials). Clusters of immense bell-shaped flowers surmounted with tufts of green foliage. Hardy. Doz., \$9.00; 100, \$65.00.

**MELEAGRIS.** Exceptionally fine for pot culture or may be grown equally well in borders. The large, drooping bell-shaped flowers range in color as follows: White, yellow, striped, purple and black, and are splashed in the most unusual way. **MIXED.** 100, \$8.00; 1,000, \$75.00.

**RECURVA** (Mission Bells.) Orange-scarlet flowers. Free flowering. Doz., \$5.00; 100, \$35.00.

LYCORIS Squamigera



LILY-OF-THE-VALLEY, Naturalized

## EREMURUS

An excellent subject for the hardy border. Produces stalks 8 feet in height, the flower spike being 2 to 3 feet long with numerous star-shaped flowers. A covering of leaves or litter is advisable to protect from late frost.

**BUNGEI.** Enormous clear yellow spikes flowering in July. Each, \$3.00.

**ELWESIANUS.** Tall spikes, 10 feet high, of soft pink flowers, blooming in June. Each, \$5.00.

**ELWESIANUS ALBUS.** Pure white, similar to above variety. Each \$5.00.

**HIMALAICUS.** Immense flower spike of waxy white flowers. Each, \$4.00.

**HIMROB.** Height from 8 to 10 feet. Silver-pink. Blooms in June. Each, \$4.00.

**ROBUSTUS.** Stalk 8 to 10 feet, rosy pink flowers. June. Each, \$5.00.

**SHELFORD HYBRIDS.** 6-foot stalk with dense spike of flowers. Comprising all colors of Eremurus. July. Each, \$4.00.

## ERYTHRONIUMS

(Dog's-Tooth Violets)

An excellent subject for shady places or rockery. Small Lily-like flowers blooming in April. Named varieties, our selection. 100, \$10.00; 1,000, \$95.00.

## LILY-OF-THE-VALLEY

(For Outdoor Planting)

Strong clumps. Doz., \$11.00; 100, \$75.00.

## LYCORIS SQUAMIGERA

Of the Amaryllis family and very hardy. The foliage appears in early spring, dies away several weeks later and the flower stalk appears with umbels of large, Lily-shaped flowers, delicate pink shading blue. Extra large flowering bulbs. Each, \$2.00; doz., \$18.50; 100, \$145.00.

*Kennedy Quality Miscellaneous Bulbs and Roots—*  
*continued*



**MERTENSIA VIRGINICA**  
 (Virginia Bluebells)

A lovely combination of soft pink and porcelain-blue. Plants grow about 1½ to 2 feet tall, bearing panicles of flowers one inch long in short pendent clusters. Will grow equally well in sun or shade. These plants flower from the time the Daffodils are in bloom and continue throughout the May-flowering Tulip season.

Extra heavy clumps. Doz., \$5.00; 100, \$35.00.

**MUSCARI**  
 (Grape Hyacinth)

Very fine when planted in masses, perfectly hardy. Bloom early in May. Excellent for pot culture.

**ALBUM.** Pure white. Doz., \$1.15; 100, \$8.00.

**ARMENIACUM.** Large size, very early, deep cobalt-blue. Doz., 75c; 100, \$5.00.

**AZUREUM.** Cambridge-blue, blooms in February. Doz., 75c; 100, \$5.00.

**HEAVENLY BLUE.** Light blue, extra large. Doz., 75c; 100, \$5.00.

**PLUMOSUM** (Plume Hyacinth). Handsome feathery plumes of violet-colored flowers blooming in May. Height 7 inches. A most unusual and fascinating flower. Doz., 75c; 100, \$5.00.

**ORNITHOGALUM**

**UMBELLATUM** (Star of Bethlehem). This is the small white hardy variety that is seen in great profusion around many of the old gardens. It propagates readily and adapts itself splendidly to naturalizing. 100, \$7.00; 1,000, \$65.00.

**VARIETIES FOR FORCING.** See page 8.

**PEONIES**

List on request.

**SNOWDROPS**

The first flower of spring.

**DOUBLE.** Doz., \$1.60; 100, \$12.00; 1,000, \$115.00.

**SINGLE ELWESII.** The largest of all Snowdrops. Doz., \$1.25; 100, \$9.00; 1,000, \$87.50.

**SCILLAS (Wood Hyacinth)**  
**Campanulata**  
 (English Bluebell)

Bears spikes 15 inches high of bell-like flowers, during early May.

**ALBA MAXIMA.** Clear white, with very fine large bells. Doz., 85c; 100, \$6.00.

**BLUE QUEEN.** Porcelain-blue, tall growing, free flowering. Doz., 85c; 100, \$6.00.

**EXCELSIOR.** Bright deep blue, with large bells. Doz., 85c; 100, \$6.00.

**ROSE QUEEN.** Bells of soft lilac-rose, very pretty. Doz., 85c; 100, \$6.00.

**Nutans**  
 (Scotch Bluebell)

**ALBA.** White. Doz., 85c; 100, \$6.00.

**COERULEA.** Blue. Doz., 85c; 100, \$6.00.

**ROSEA.** Rose. Doz., 85c; 100, \$6.00.

**Sibirica**  
 (Siberian Squill)

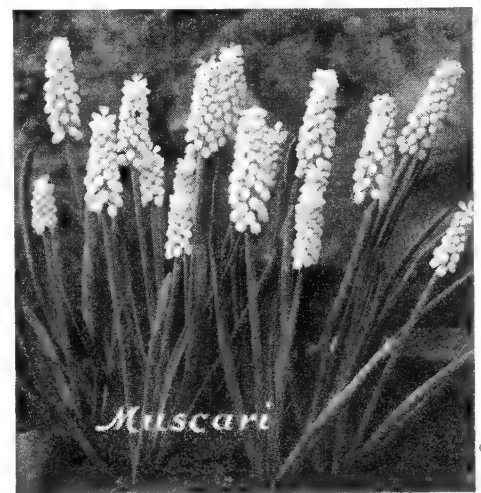
**BLUE.** Discarded for Spring Beauty.

**ALBA.** Same as above but white. Doz., \$1.25; 100, \$9.00.

**SPRING BEAUTY.** A new variety about four times the size of Sibirica, growing 9 to 10 inches high. Sky-blue. Doz., \$1.25; 100, \$9.00.



*Scilla Sibirica*



*Muscari*

**IRIS, BEARDED**

List on request.

**IRIS, JAPANESE**

List on request.

**IRIS, DUTCH**

See page 7.

**IRIS, ENGLISH**

See page 7.

**IRIS, SPANISH**

See page 7.

**IRIS RETICULATA**

Blooms early spring just before Crocus. The flowers are rich violet with yellow markings, fragrant. Recommended for early forcing. Doz., \$1.45; 100, \$10.00.

**LEUCOJUM VERNUM**

Perfectly hardy, resembling Snowdrops but much larger, naturalize readily. 100, \$15.00.





A Section of a Prize Winning Lily Garden Grown from Bulbs Retarded by Us for This Purpose

On the opposite page hardy Lilies are described in detail. With the description of each variety we indicate the approximate month in which the variety will bloom in this vicinity.

In general, the stem rooting varieties should be planted deeper and the base rooting varieties more shallow.

If the bulbs are to be planted in the fall, some cover should be provided to keep the beds from freezing because some Lily bulbs arrive in late November.

For spring planting we have facilities to hold the bulbs in perfect condition for delivery when the ground is open the following spring.

# Kennedy Quality Hardy Lilies—continued



The Lilies we offer are all perfectly hardy and will produce a quantity of beautiful flowers of various colors, which effect cannot be duplicated by any other flower. Lilies are very adaptable for herbaceous borders or for planting among shrubbery. Bulbs should be planted at least twice their own depth and if the soil is heavy it is desirable to use a quantity of sand under the bulbs to provide drainage.

**Explanation:** The numerals refer to the season of bloom, thus 6 would mean June; 7, July; 8, August.

**AURATUM ESPERANZA.** This magnificent strain of Auratum includes all the finest named and selected varieties. (8).

**Esperanza** strain is far superior and is not to be confused with Japanese Auratum which is also offered on this page. Doz., \$45.00; 100, \$350.00.

**AURATUM** (Golden Rayed Lily of Japan). White, studded with crimson spots, and through the center of each petal is a gold band; large and fragrant. (8).

**Mammoth Bulbs.** Doz., \$20.00; 100, \$150.00.

**Jumbo Bulbs.** Doz., \$30.00; 100, \$200.00.

**BROWN.** Yellow with brown anthers, outside brown. (6). Doz., \$27.50; 100, \$195.00.

**CANADENSE.** Varying in color from yellow to orange-red. Doz., \$5.00; 100, \$35.00.

**CANDIDUM.** (True Northern French Grown.) This beautiful fragrant Lily is more frequently referred to as the "Madonna" or "Annunciation Lily." Its giant white spikes with contrasting golden yellow stamens are among the earliest to appear in summer and most beautiful of all June-flowering Lilies. Its flower stems reach a height of 4 feet and the blooms make a charming contrast with Delphiniums in the hardy flower border. Our Northern French grown bulbs reach us in August-September and **must** be planted during the fall. (6).

**Selected Bulbs.** Doz., \$7.00; 100, \$50.00.

**Mammoth Bulbs.** Doz., \$11.00; 100, \$75.00.

**Monster Bulbs.** Doz., \$13.00; 100, \$95.00.

**Extra Selected Jumbo Bulbs.** Doz., \$17.50; 100, \$125.00.

**ESTATE.** For a pure white tube Lily to bloom in August, this American grown Lily is ideal for the border or Lily group in the garden. Like all hardy Lily plantings, for best results mulch lightly. (8).

**Extra Selected Bulbs.** Doz., \$18.00; 100, \$135.00.

**Extra Selected Exhibition Bulbs.** Doz., \$20.00; 100, \$150.00.

**HANSONI.** Flowers reddish orange, eight to twelve in a cluster, 3 to 4 feet high. (6.)

**Extra Selected Bulbs.** Doz., \$14.50; 100, \$110.00.

**HENRYI.** One of the most beautiful and most satisfactory of the Japanese Lilies. Will grow well in any soil, is absolutely hardy and when planted in permanent borders will improve each year, attaining a height of 6 to 7 feet, producing up to 25 blooms of rich orange-yellow. Plant 8 inches deep. (8-9.)

**Extra Selected Bulbs.** Doz., \$13.00; 100, \$95.00.

**Monster Bulbs.** Doz., \$14.50; 100, \$110.00.

**PHILIPPINENSE FORMOSANUM** (Dream Lily). Resembles the Easter Lily in shape. Pure white with a faint brownish lavender tinge on the outside of each petal. Delightful fragrance and blooms continuously from August till frost. (8-9.)

**Selected Late Flowering Strain.** Doz., \$9.00; 100, \$65.00.

**REGALE** (Myriophyllum). This Lily does well in direct sun as well as part shade. Sturdy grower, strong stems, attaining a height of 4 feet, producing 6 to 8 long, trumpet-shaped flowers. The fragrance is similar to the Jasmine; flowers white, slightly suffused pink with a beautiful shade of canary-yellow at center, blending part way up the trumpet. (7.)

**Mammoth Bulbs.** Doz., \$9.00; 100, \$65.00.

**Monster Bulbs.** Doz., \$11.25; 100, \$80.00.

**Jumbo Bulbs.** 10-inch and up. Doz., \$13.50; 100, \$97.50.

**SPECIOSUM ALBUM.** Pure white. Extremely hardy. (8.)

**Mammoth Bulbs.** Doz., \$30.00; 100, \$200.00.

**Monster Bulbs.** Doz., \$40.00; 100, \$250.00.

**SPECIOSUM, MELPOMENE.** Superior to Roseum Rubrum or Magnificum. White shaded deep pink, suffused with red. (8).

**Mammoth Bulbs.** Doz., \$15.00; 100, \$115.00.

**Monster Bulbs.** Doz., \$20.00; 100, \$150.00.

**Jumbo Bulbs.** Doz., \$23.50; 100, \$180.00.

**SUPERBUM.** Bright orange-red, spotted, shading from yellow to crimson. (7.)

**Monster Bulbs.** Doz., \$6.50; 100, \$45.00.

**TENUIFOLIUM** (Coral Lily). One of the most brilliant of all the hardy Lilies, flowering in June. They are borne on slender stems 1 to 2 feet high, carrying from 5 to 10 flowers to each stalk. This variety is perhaps the best Lily for planting in rock gardens. (6.)

**Extra Selected Bulbs.** Doz., \$5.00; 100, \$35.00.

**TESTACEUM** (Nankeen Lily). An exquisite dull apricot Lily with orange-yellow anthers. A most beautiful Lily. Shows up well when planted in borders with Liliun Candidum or Delphinium. (6.)

**Selected Bulbs.** Doz., \$25.00; 100, \$190.00.

**Extra Selected Bulbs.** Doz., \$35.00; 100, \$245.00.

**TIGRINUM SPLENDENS** (Tiger Lily). Orange-salmon; 3 feet high. (7-8.)

**Mammoth Bulbs.** Doz., \$6.50; 100, \$45.00.

**Monster Bulbs.** Doz., \$9.00; 100, \$65.00.

**Jumbo Bulbs.** Doz., \$12.00; 100, \$90.00.

**TIGRINUM FLORE PLENO** (Double Tiger Lily). (7-8.)

**Monster Bulbs.** Doz., \$11.00; 100, \$75.00.

**UMBELLATUM, MIXED.** Orange, yellow and crimson shades. (6.) Doz., \$9.00; 100, \$65.00.

**WILLMOTTIAE.** Tall and graceful with vivid orange-red flowers spotted brown, recurved petals. 4 to 5 ft. (7-8.) Doz., \$13.00; 100, \$95.00.

**Cold Storage Liliums for Forcing.** See pages 9 to 10.



# *Kennedy Quality Lawn Grass Seed*

## **For Permanent Lawns of Putting Green Texture**

### **HOW TO MAKE A LAWN**

The ground should be thoroughly prepared; that is, the soil should be fertilized, then turned over to a depth of 6 inches and pulverized. Sow good seed (which is very essential) roll the ground and cross roll in order to press the seed firmly into the soil. The proper time to sow grass seed depends upon the latitude. In the central and eastern states seed may be sown from March 1st to the end of June. Seed may be sown in the fall, from the first part of August to the end of October. Sow, if possible, when the ground is moist. For seeding a new lawn use 150 pounds to the acre.

### **KENNEDY'S BENTURF**

REG. U. S. PAT. OFF.

#### **Lawn Grass Seed Mixture** (Bent Formula)

The popularity of golf in recent years has made comparison of lawns and putting greens an easy matter. One hardly expects his lawn to look as perfect as a putting green, but this is possible if sown with Kennedy's Benturf Lawn Grass Seed Mixture. With reasonable preparation and care excellent results have been accomplished with our Kennedy's Benturf Lawn Grass Seed Mixture which contains a large amount of Bent seed. This makes a compact, rapid growth, forming a close sward withstanding wear and tear.

Lb. \$2.15, 25 lbs. \$50.00, 100 lbs. \$195.00

### **KENNEDY'S GREENTURF**

#### **Lawn Grass Seed Mixture** (Formerly Kennedy's Green Velvet)

This is the lawn grass seed mixture which for over 25 years has seeded many of the most beautiful lawns in America under the name of Kennedy's Green Velvet Lawn Grass Seed Mixture. Recently worthless mixtures bearing the trade name "Green Velvet" have been marketed to the confusion of our patrons. To avoid this confusion we have changed the name to KENNEDY'S GREENTURF LAWN GRASS SEED MIXTURE. The seed in this mixture is all recleaned and especially adapted to withstand the heat and drought of the summer. When properly sown and cared for GREENTURF will produce a beautiful green lawn the entire season.

Lb. \$1.75, 25 lbs. \$38.75, 100 lbs. \$150.00



**KENNEDY'S GREENTURF LAWN GRASS SEED**

This photo is a view of part of the lawn on the estate of one of our Long Island customers, sown with Kennedy's Greenturf Lawn Grass Seed



# Kennedy Quality Lawn Grass Seed Continued



## KENNEDY'S KARPETURF Lawn Grass Seed Mixture

This mixture is comprised of some of the quick germinating grasses as well as larger proportions of the permanent, deep rooted varieties. It has been tried in a great many sections of the country and has given excellent results where a quick cover was desired and has proven particularly adaptable for sowing on old lawns which have become shabby and in need of renovating.  
Lb. \$1.45, 25 lbs. \$32.50, 100 lbs. \$125.00

## KENNEDY'S RENOVATING MIXTURE

This mixture has been tried in a great many sections of the U. S. for the past few years. It contains grasses which grow especially well in light or sandy soil. Recommended for renovating lawns which have become bare in spots.  
Lb. 90c, 25 lbs. \$20.00, 100 lbs. \$75.00

## KENNEDY'S TENNIS COURT MIXTURE

The hardiest and finest low-growing grasses are contained in this mixture. It produces a beautiful and lasting green turf calculated to withstand hard wear and tear.  
25 lbs. \$48.75, 100 lbs. \$190.00

## KENNEDY'S PUTTING GREEN MIXTURE

This mixture is made up of deep rooting permanent grasses with a view of forming a close turf which will stand being played on a great deal without showing any wear and tear.  
25 lbs. \$48.75, 100 lbs. \$190.00

## KENNEDY'S KWIKTURF Lawn Grass Seed Mixture

Where a quick turf is desired which will remain green with a minimum of care and attention we recommend this mixture which is composed of deep rooting, strong growing grasses.  
Lb. \$1.10, 25 lbs. \$25.00, 100 lbs. \$95.00

## KENNEDY'S SHADETURF Lawn Grass Seed Mixture

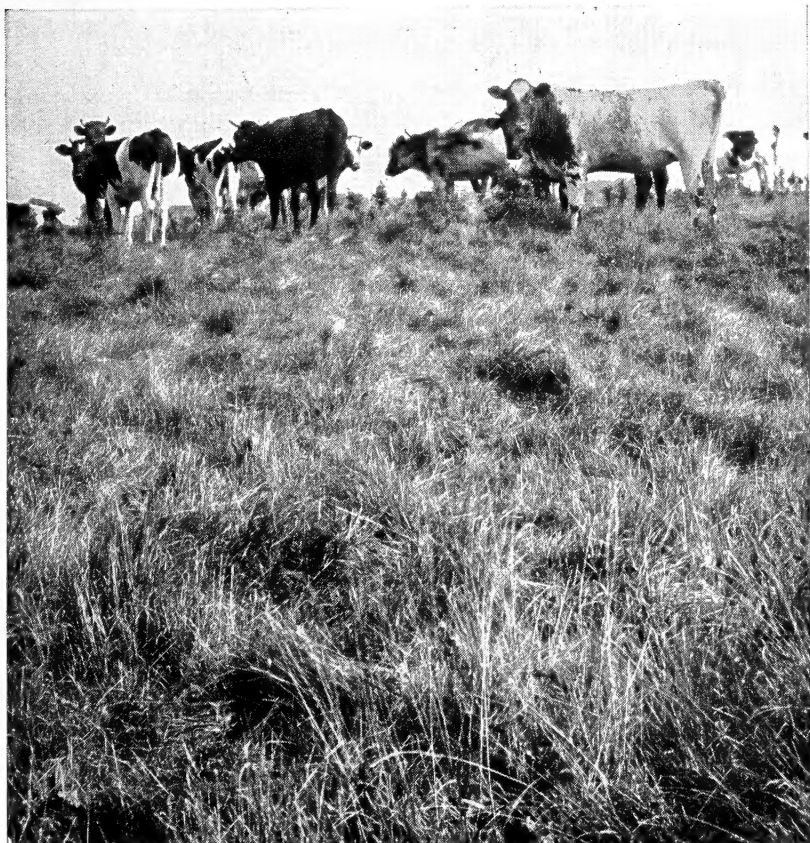
This is a mixture of extra fine grasses adapted for growing in the shade and under trees. We recommend the use of this mixture wherever other grasses, on account of shade have failed to make a close sward.  
Lb. \$1.85; 25 lbs. \$41.25, 100 lbs. \$160.00

## KENNEDY'S TERRACE MIXTURE

A mixture of strong, deep-rooted grasses for banks and terraces. Although the grasses are strong and deep-rooted, they will produce a fine, green velvety surface, and also prevent washing away during heavy rains.  
Lb. \$1.90, 25 lbs. \$42.50, 100 lbs. \$165.00

## LAWN CLOVER—Dwarf White

The only variety suitable for lawns. Very dwarf and of a spreading habit. We advise sowing White Clover separately on account of the seed being much heavier than that of the finer grass seed. It has a tendency to work to the bottom of the receptacle it is being sown from and consequently the last part of the grass seed sown has a greater percentage of Clover than the first.  
Lb. \$2.00



## KENNEDY'S PASTURE MIXTURE

### FOR PERMANENT PASTURE AND HAY CROPS

Our Permanent Pasture Grass Seed Mixtures contain only grasses most suitable for this purpose. The result of sowing Kennedy's Permanent Pasture Mixture is a successive growth of rich, succulent grasses from early spring until late fall.

We recommend, in good soil, sowing 80 lbs. per acre or in poor soil 100 lbs. per acre. We also suggest sowing an additional 10 lbs. of Red Clover, in either case, to the acre.

Permanent Pasture Grass Seed may be sown either spring or fall but we advise sowing Clover in the spring only.

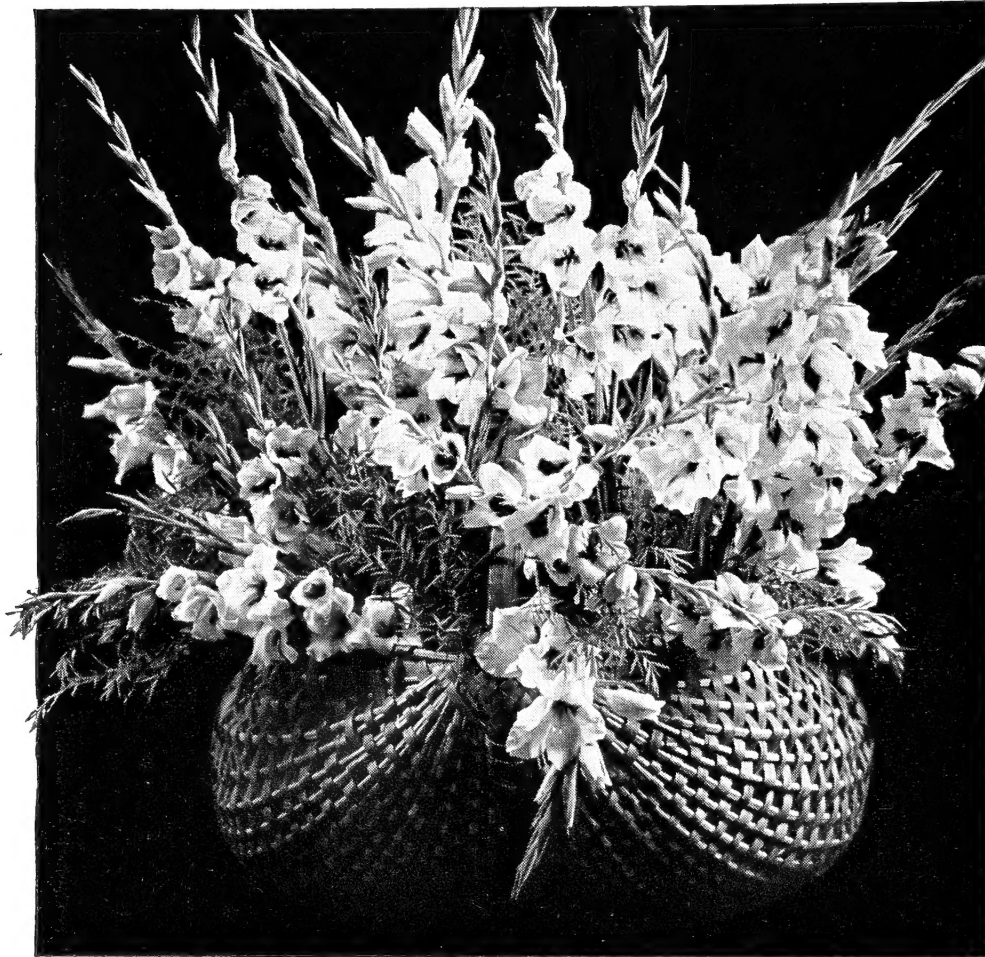
When ordering state whether your soil is sand, clay, moist or dry so that the proper proportions of the various grasses may be used.

- A—For Light Soil. Sow 100 lbs. per acre.  
100 lbs. \$72.50
- B—For Wet, Heavy Soil. Sow 100 lbs. per acre.  
100 lbs. \$85.00
- C—For Woodland Pastures. Sow 100 lbs. per acre.  
100 lbs. \$90.00

SEPARATE GRASSES AND CLOVERS  
Market prices

# Kennedy Quality Gladiolus

## for September and Early October Blooming



THE GLADIOLUS here listed are regular top size bulbs which we ship for usual summer bloom. From this stock, we select those varieties we consider the best in a complete color range and hold them in cold storage.

For fall and winter bloom, either under glass or outside in the southern states. We have the following large flowered and miniature varieties.

**Algonquin.** Vivid glowing scarlet, 8 to 9 wide open flowers, beautifully ruffled. The finest scarlet yet introduced. Tall, straight spike and a real exhibition variety. 100, \$15.00.

**Beacon.** Salmon-red with large cream blotches. Half a dozen large flowers open with many buds on long stout stems. The flowers are slightly ruffled. A distinct variety unlike any other. 100, \$12.00.

**Blue Beauty.** One of the best blue varieties, light blue with edges of petals overlaid violet. 100, \$18.00.

**Jane Leech.** Exquisite coral-pink with canary-yellow throat. The most beautiful Gladioli we have yet seen. Florets are large, well placed, 6 to 8 open at one time on tall spike of 16 to 18 buds. 100, \$25.00.

**Jeanie.** An exquisite and distinctive clear rich pink with white mid-ribs and creamy yellow throat. Six large blooms open; strong, tall spike carrying 18 to 20 buds. 100, \$15.00.

**Leading Lady.** A creamy white sport of Picardy and like its parent a tall, strong grower and truly an exhibition variety. 7 to 8 open florets, 16 to 17 buds. 100, \$18.00.

**Margaret Beaton.** Pure snow-white with small scarlet blotch in the throat. 7 to 9 well-placed blooms open on a long flower head. Strong grower. 100, \$15.00.

**Oregon Gold.** Tall plant with long flower heads and large ruffled perfect yellow blooms. 9 to 10 open at one time. Destined to become very popular. 100, \$18.00.

**Picardy.** One of the most beautiful light pinks in existence. Tall, straight spike with 8 to 10 beautiful, well-placed flowers 5 to 6 inches across. 100, \$12.00.

**Shirley Temple.** Large, wide open flowers, with as many as 12 open at a time. Heavy substance and beautifully ruffled. Light cream with deeper throat. 100, \$15.00.

**Snow Princess.** A greatly improved Maid of Orleans. White shading to light cream in throat. Generally considered one of the best whites. 100, \$15.00.

**Spotlight.** Blooms large, slightly waved, on tall spikes. Clear deep yellow with scarlet blotch. 6 to 7 open. 100, \$18.00.

### MINIATURE VARIETIES

**Curlette.** Pure golden yellow. Small and daintly ruffled. 100, \$15.00.

**Orange Butterfly.** The tiny florets have real substance and are rich, glowing bronzy orange in color. The tendency to crook is in this case no disadvantage since it enhances its value for decorative purposes. Orange Butterfly is in a class by itself. 100, \$15.00.

**White Butterfly.** With the demand for white unabated, this dainty ruffled white Primulinus with cream throat is unexcelled for decorative arrangement. Tall slender stems with well-placed flowers. The very best white Primulinus. 100, \$15.00.

# INDEX

	Page		Page		Page
Allium .....	4	Gladiolus, Summer-Flowering .....	36	Lily-of-the-Valley .....	3, 8, 10, 30
Amaryllis .....	4	Tristis Supreme .....	5	Lycoris .....	30
Anchusa .....	11	Grass Seed .....	34, 35	Mertensia .....	11, 31
Anemone .....	4	Greenhouse Plants .....	14	Muscari .....	31
Antirrhinum, Plants .....	14	Hyacinths, Bedding .....	13	Narcissus, Polyanthus .....	8
Begonias, Plants .....	14	Dutch Roman .....	6	Dutch .....	15-19
Calceolarias, Plants .....	14	Exhibition .....	12, 13	Narcissus, Prepared .....	2
Callas .....	3, 8	Fairy .....	6	Ornithogalum .....	8, 31
Camassia .....	29	French Roman .....	6	Oxalis .....	8
Chionodoxa .....	29	Multiflora .....	6	Phlox .....	11
Colchicum .....	29	Hyacinth Glasses .....	13	Poinsettias, Plants .....	14
Cold Storage Bulbs and Roots .....	1	Hydrangeas, Plants .....	14	Ranunculus .....	11
Crocus .....	29	Iris, Prepared .....	1	Scillas .....	31
Cyclamen, Plants .....	14	Dutch .....	7	Snowdrops .....	31
Dielytra .....	30	English .....	7	Spirea, Retarded .....	3
Dodecatheon .....	30	Spanish .....	7	Strawberries .....	39, 40
Eranthis .....	30	Reticulata .....	31	Tulips, Breeder .....	26, 27
Eremurus .....	30	Ixias .....	8	Cottage .....	24, 25
Erythroniums .....	30	Lachenalia .....	8	Darwin .....	21-23
Euphorbia, Plants .....	14	Leucocoryne .....	8	Double .....	28
Fertilizer .....	Inside Back Cover	Leucojum .....	31	Lily-Flowered .....	25
Freesia .....	5	Lilium, Hardy .....	32, 33	Parrot .....	28
Fritillaria .....	30	Forcing .....	9, 10	Single Early .....	27
Gerbera, Plants .....	5	Croft, Early Flowering .....	1	Species .....	28
Gladiolus, Colvillei .....	5	Harrisi, Early Flowering .....	1	Prepared .....	2
		Lilium, Retarded .....	3		

## POTTING MATERIALS—PEAT MOSS, ETC.

### CHARCOAL

Keeps soil of potted plants sweet. Orchids like to root on it. Fine or coarse.

### MOSS, LIVE GREEN SPHAGNUM

For potting Orchids and other stove plants. In season only.

### SHEET MOSS—NATURAL GREEN

In sheets ranging in size 1 foot wide, 2 to 4 feet long.

### MOSS, SPHAGNUM

Useful for mixing in soil for potting.

### PEAT MOSS

For mixing with soil and mulching Rhododendron beds, storing of Dahlia roots, etc. Market price.

### PEAT—ORCHID

The finest for Orchids and Ferns.

## FERTILIZERS

### PRICES ON APPLICATION

#### BLOOD AND BONE

Largely used for garden crops.

#### BONE, FINE GROUND

Excellent for Rose culture, top-dressing for lawns, etc.

#### HORSE MANURE

Fresh, well shaken out, very little straw. In carload lots. Rotted. In carload lots.

#### CARNATION FOOD

This Carnation food is not a chemical stimulant but an evenly balanced ration to produce a natural growth, vitality and productivity.

#### SHEEP MANURE, PULVERIZED

Excellent as top-dressing for lawns. Special grade, pulverized.

#### DAHLIA FOOD

A plant food essentially adapted for use on this exacting plant. Not a concentrated chemical fertilizer, but a perfect plant food.

#### ROSE FOOD

An organic fertilizer, containing the vital elements of plant life in scientifically correct proportions to make it an ideal food for Roses. Will keep your bushes in splendid condition and produce an abundant crop of perfect blooms.

Complete List of Fertilizers on Request





Kennedy's  
Lawn Grass  
Seed  
for  
Beautiful  
Permanent  
Lawns

ANDREW R. KENNEDY INC.  
22 TO 24 W. 27<sup>TH</sup> ST. NEW YORK.

SEEDS - BULBS  
PLANTS