

## **Historic, Archive Document**

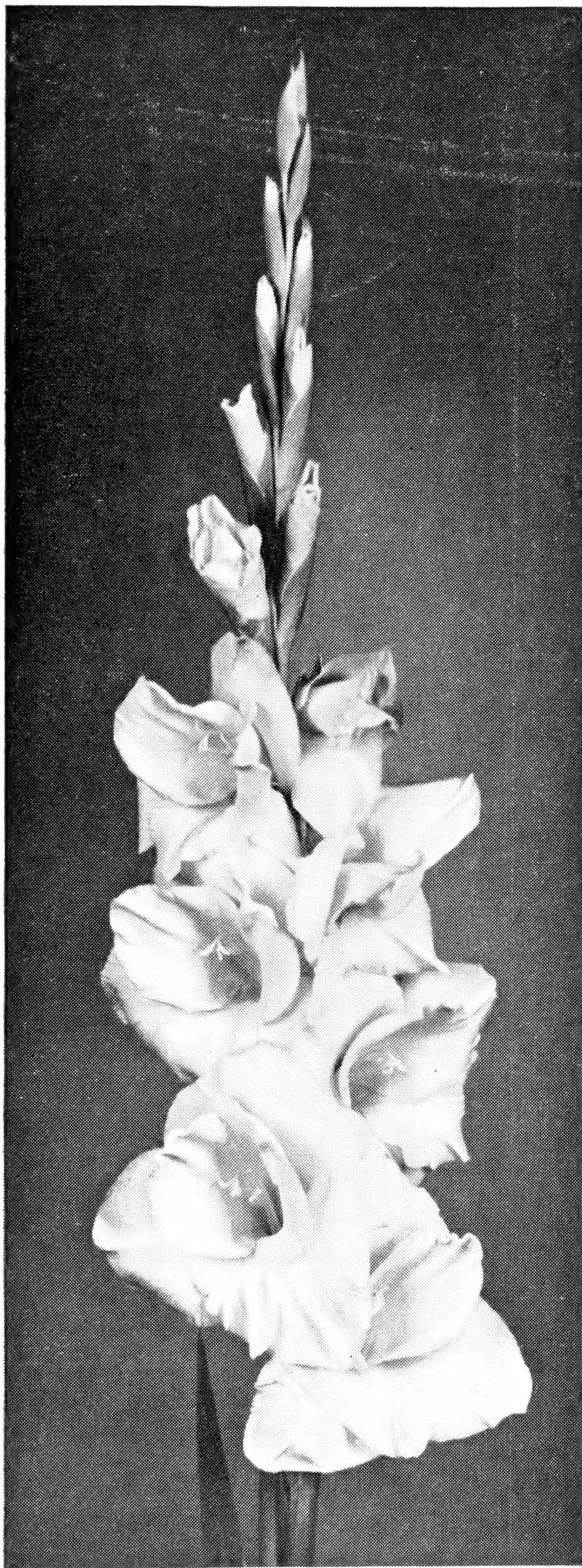
Do not assume content reflects current scientific knowledge, policies, or practices.



62.97

RECEIVED  
★ OCT 28 1949 ★  
U. S. Department of Agriculture

ll



Keepsake

*1950*

10TH ANNIVERSARY  
CATALOGUE

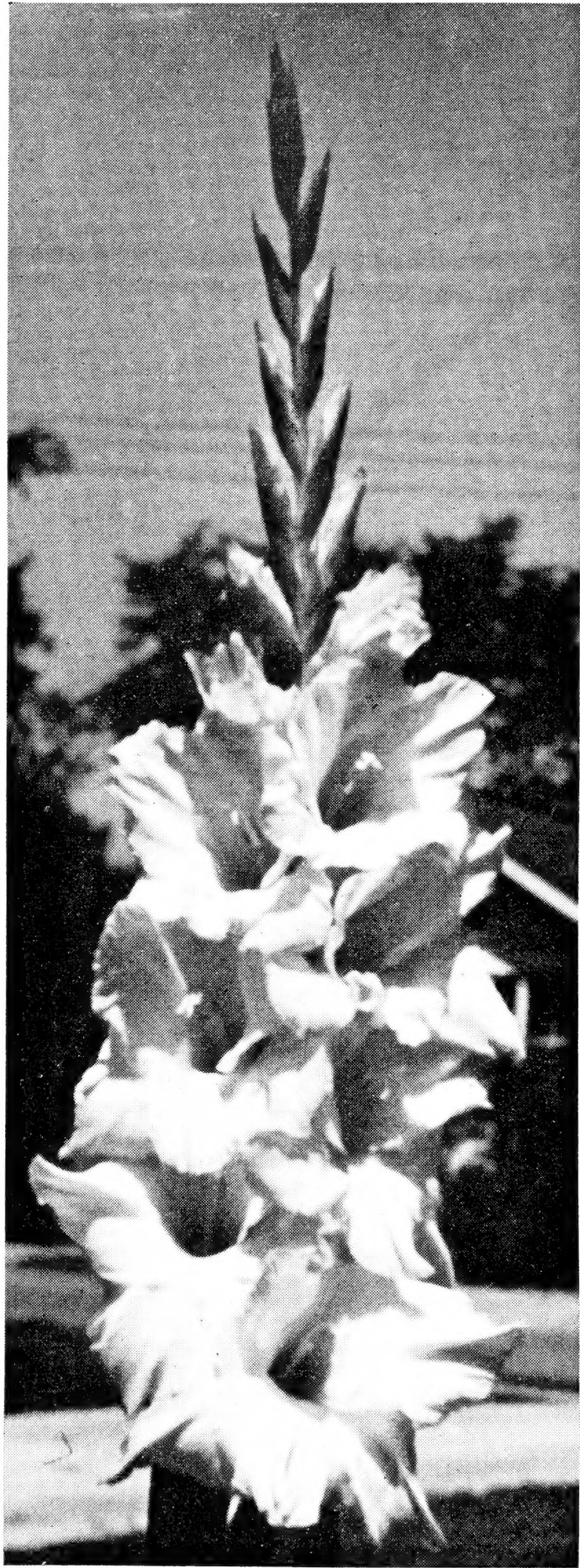
# *Reliance Gardens*

The Original Home of  
Variation  
Badger Beauty  
Miss Wisconsin  
Wax Model  
Tralee



**WALTER C. KRUEGER**

657 E. Washington St.  
OCONOMOWOC, WISCONSIN



Miss Chicago



### Diane and basket Tralee

Dear Glad Friend:

Again it is a pleasure to send you my 1950 list of gladiolus bulbs, being my 10th list.

It is a privilege to thank my 1949 customers for their orders, and for their expressions of satisfaction with the high quality of stock received, and the results obtained.

This anniversary list again presents a few novelties and exhibition varieties, priority of listing is given to gladiolus with cut-flower possibilities.

Wholesale prices are gladly sent to those entitled to them.

### BUSINESS TERMS

Minimum order \$2.00. Retail orders are prepaid. Wholesale orders F. O. B. Oconomowoc. Overcount or extras with all retail orders. 5% cash discount on all retail orders paid for in full prior to December 15, 1949. Payment in full before shipment.

I aim to send out only healthy bulbs, true to name, and will cheerfully refund the purchase price on any order found unsatisfactory on receipt, and promptly returned; but no guarantee of growth is implied in the sale (careless usage of chemical dips and sprays make this mandatory) nor will I be responsible for the crop. All orders are placed with the above conditions accepted by the purchaser. All orders are accepted subject to stock crop and subject to prior sale.

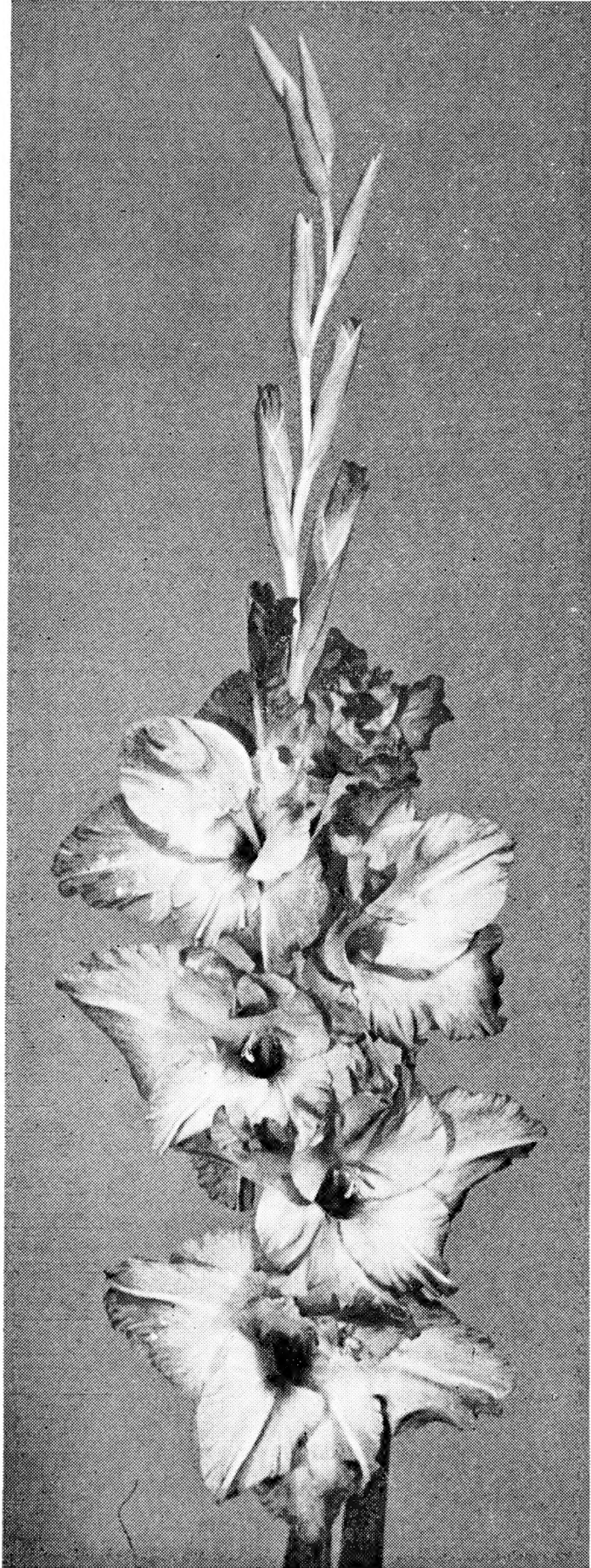
No bulblets orders are solicited nor accepted after April 1, 1950 for spring shipment.

Flowers and bulbs are inspected by the State Department of Agriculture, #1297.

This price list cancels all previously published retail prices, and voids any heretofore announced prices or price policies.

Signed,

WALTER C. KRUEGER



Queen Mary

## GENERAL REMARKS

Producing and selling top quality bulbs and cut gladiolus is the only business of Reliance Gardens. Since there is no other source of income you are assured of receiving the necessary service, courtesy, and quality stock, to insure your repeat business.

Since the selection of varieties listed is one of the factors of customer satisfaction you may be certain that a business cannot afford to offer or boost inferior varieties. While opinions do not always agree, you, the customers, may depend on the fact that every variety listed is, when grown in sufficient number to form a valid conclusion, a good variety. Reliance Gardens does not offer for sale the varieties that it finds wanting in merit. They, in spite of their cost, become a cash and labor cost loss.

New varieties, the seedlings of yesterday, are added to the list after careful evaluation and testing by experts. Their opinions added to that of ours based on 18 years of seedling growing experience, 19 years of growing glads, and 9 years in cut flower production, and that of the florist, who use the product, comprise the panel of opinion that decides whether or not a seedling is worthy of introduction.

Reliance Gardens is proud of its introductions, the Krueger varieties, and its co-introductions. A few of the former are Variation, Badger Beauty, Miss Wisconsin and Dream Girl. - Red Rascal, Hearts Desire and Spic & Span illustrate the latter.

It should be apparent to the reader that some good varieties of gladiolus must be dropped from the list when their price drops below a profitable price for a "one family" venture. They may be obtained from growers of larger acreage.

It is also inevitable that good varieties must be deleted from our list when an introducer, who gives us his price for our early (October) catalogue, materially lowers his price for the same variety in his own list.

The pictures in this catalogue are bon-a-fide reproductions of the variety named. Every variety herein listed has been grown by Reliance Gardens except Aloha, Miss Alberta, New Yorker. The judgment of the introducer is accepted in these cases as being sound.

Reliance Gardens stock is of high quality, our generosity in filling orders, a measure of our appreciation of your business, is second to none. Our service to our customers is appreciated, and our promptness in answering inquiries or sending a copy of order is considered a necessary business courtesy.

Please use the name Reliance Gardens, or street address in your correspondence, for there are three of us by the same name in this community.

We are satisfied to let others "sell the sizzle instead of the steak." Translated, we mean that we are satisfied to sell bulbs of quality and let others provide the frills of salesmanship.

It is assumed that the buyer of bulbs knows that neither a living thing nor a mechanical contrivance of man's handiwork is perfect, and that even every specimen of the best variety of gladiolus is not perfect. We of Reliance Gardens have not achieved perfection.

Symposiums of varieties may only record distribution not merit. Symposiums of variety winnings can record only the winning data of varieties received by the compiler.

Your early orders, which make for a more uniform monthly income, are much appreciated.

We make no claims to having "grown them all", but we do test more varieties than many who claim to do so.

Since we cannot know in September, the sales inducing specials or discounts of our competitors we can only assure you, that your order placed here will be filled to equal or exceed any special of our competitor friends, or if you prefer Reliance Gardens will meet the price of its competitors who advertise in N.E.G.S. or N.A.G.C. publications, on all varieties introduced during 1946 or earlier, as long as my stock is adequate to do so.

On your order enter the lower price and indicate in your letter the source of this price.

## 1949 OBSERVATIONS

The outstanding observation of this past growing season was the extraordinary class of those seedlings selected for 1950 introduction and co-introduction. In this respect Bridal Orchid (Cosmopolitan Glad Gardens) heads the list, followed closely by Golden Crown (C. & G. Melk) Fashion (Gladmeadow), Miss Alberta (Torrie and Flad), and Keepsake and Cooney Miss from our own gardens.

Miss Chicago was easily the favorite of garden visitors, and its major wins in competition brought on a wave of buying that will exhaust stocks very early in the selling season.

From a commercial growers point of view the 1950 introductions meet their requirements.

I see no reason to change my mind, but rather have evidence to strengthen my conviction that Mauvie Rose is the best "market flower" of 1948 introduction, Miss Chicago the best "florist variety" introduced in '49, and that Spic & Spon and Tralee are commercial greats.



Cooney Miss



Variation, an old timer, is in a class by itself as a commercial pink.

The following remarks, pertaining to each color class, in their usual order, are made from the flower and bulb growers view point. Other lists feature exhibition varieties.

Silver Court and White Wings lead the parade in whites. Miss Alberta and White Challenge are tops in the blotched white class. Creamy white Texas and Florence Nightingale are outstanding. The former is earlier, both are dependable performers. The superlative spikes of cream La Belle will not soon be forgotten. Sun Spot reigns over the buff color class. At last there are some yellows of size and beauty which perform consistently. Cynthia is the earliest—a great commercial. Keepsake is the most beautiful. Its tests reports (private testing) are excellent. Deep yellow Golden Crown is a functional beauty. Golden Beauty is a real competitor.

Dieppe is superb in the flame colored group. Ninety Grand is a proven commercial, particularly under Florida growing conditions.

Spic & Span "rules the roost" in salmon with Fashion, Elaine and Queen Mary challenging this rulership. Pioneer is good.

Tivoli like Coryphee is a classy pink. Hiho has a vibrant color note. They with Hearts Desire form a great trio. Cooney Miss will give an excellent account of itself in this class.

Phantom Beauty, Deborah Sampson, and Evangeline in buff pinks vie for the top spots in this unusual color.

Red Cherry rates highest of the lighter reds.

Redwing leads the reds with Mt. Gem as its closest competitor. Birch Red is a lustrous dark red of quality.

Bridal Orchid will lead all the lavenders, though Patrician and Siboney have many boosters. Smaller Lucky (a deeper toned Badger Beauty) is a great glad.

The rose color class has many great glads in its wide range. No variety grown here approaches Dream Girl as a spike maker. Silver rose Tralee hit the "jack-pot" at the shows to add to its esteem with the growers. Miss Wisconsin hit the wholesale market with its beautiful color. It won't be equaled for many years. Miss Chicago is a great florists beauty — what a glad! Venida with its cream center is a superb basket glad.

Lancaster is my favorite purple.

No "blue" appeared to challenge Blue Bonnet.

From an exhibitors point of view Boise Belle is a real "ribbon getter", and it may be as outstanding as a commercial glad.

Connie G is another superb exhibition variety.

You will note that in this catalogue that ruffing is not considered as a separate mark of virtue. Flower performance, clarity of color, consistency, health, and field habit are more important than a few "kinks" on petals.

**Best new commercial prospects:**

Bridal Orchid, Cooney Miss, Cynthia, Fashion, Golden Crown, Keepsake, Mauvie Rose, Miss Alberta Nancy, Ninety Grand, Silver Court, Tralee and White Wings.

**Best bets for major exhibition wins:**

Boise Belle, Bridal Orchid, Connecticut Yankee, Connie G, Fashion, Hearts Desire, Miss Chicago, Queen Mary, Redwing, Venida, and White Challenge.

**Varieties florists like to receive:**

Dieppe, Keepsake, Miss Chicago, Miss Wisconsin, Spic & Span, and Variation.

**Most open florets:**

Boise Belle, Bridal Orchid, Miss Chicago, Redwing, Spic & Span, Venida, White Challenge.

**"Waterless wonders":**

Dream Girl, Spic & Span, Texas, Tralee, Venida, and White Challenge.

**Earliest:**

Cynthia, June Day, Mauvie Rose, Red Cherry and Tralee.

**Most beautiful:**

Bridal Orchid, Keepsake, Miss Chicago, Miss Wisconsin, and White Challenge.

**Most exciting new varieties:**

Bridal Orchid, Keepsake, and Miss Chicago.

**Most ruffled:**

La Belle and White Goddess.

## 1950 INTRODUCTIONS

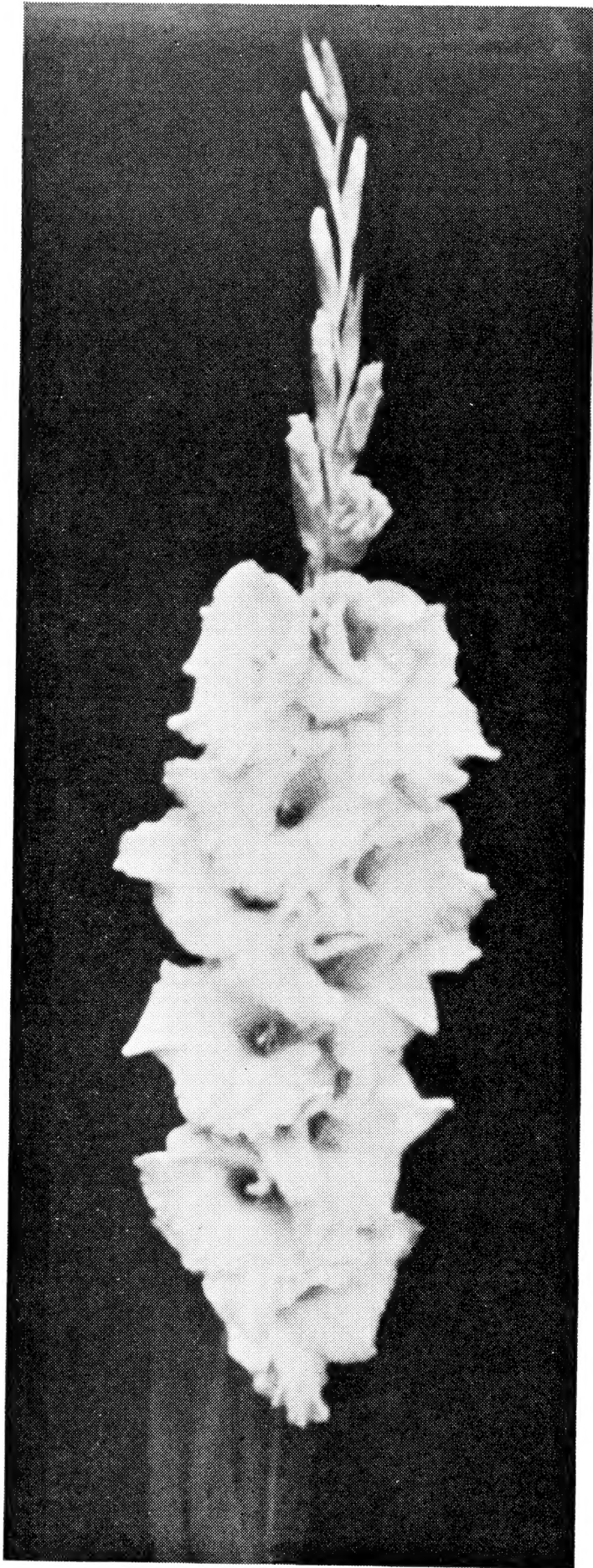
**COONEY MISS (Krueger)**

540

formerly seedling #1015-27

Beauty and utility are associated with Cooney Miss, which has been on test here at Reliance Gardens for six years. Visiting cataloguers have singled it out for its clarity of color, a medium pink with an inconspicuous throat marking like that of Picardy. (Cooney is the local "abbreviation" for Oeconomowoc).

Cooney Miss is primarily a florists flower as it opens its very wide open 5' florets from a bud cut, and it opens to the tip in water. The attachment is unusually secure, hence it can be roughly handled without damage to the florets. To these virtues add "long keeping" tendencies, fast and easy increase, from vigorous bulblet plants.



Bridal Orchid

Cooney Miss blooms in early mid-season from low growing upright foliage that produces a spire type spike that attains satisfactory cutting height, though it is not a tall variety.

It is a consistent spiker carrying about 5 very wide open florets on a 16 bud spike.

The florists that I supply like it.

**Price each bulb, Large \$4.00; Med. \$3.00; Small \$2.00; Bulblets 50c each, 10 for \$4.00, with or without a bulb purchase.**

**Starter stock unit — 6 Large and 8 Med. and 10 Small and 100 bulblets for \$60.00, ½ unit for \$30.**

Kodaslide in color on a loan basis for inspection.

#### **KEEPSAKE, (Krueger '50)**

410

formerly seedling #1012-41

Keepsake is noteworthy for its classic yellow coloring and its florets are devoid of any throat marks. A smooth finish enhances the color appeal. Keepsake is not the tallest, nor the largest, nor the most ruffled gladiolus, but it is the most beautiful yellow.

Keepsake is derived from Crinkle Cream and Lois.

Keepsake grows to a height of 54 inches. It produces a spire type spike, from low growing upright foliage, which carries 15 to 17 buds, six of which open at one time. The florets are of 4½ to 5 inch size.

Keepsake blooms in early mid-season. It produces bulblets generously and they germinate readily.

Being a grandchild of Picardy, Keepsake will produce some crooked spikes and a small percentage of misplaced florets.

A Florida grower and a California wholesale grower are enthusiastic about Keepsake.

**Price each bulb, Large \$4.00; Med. \$3.00; Small \$2.00; Bulblets 50c each, 10 for \$4.00, with or without a bulb purchase.**

**Starter stock unit — 6 Large and 8 Med. and 10 Small and 100 bulblets for \$60.00; ½ unit, \$30.00.**

Kodaslide in color on loan basis.

## **1950 CO-INTRODUCTIONS**

#### **ALOHA, (Graff '50)**

Originator's description

"Aloha is a very beautiful gladiolus. It stands 55" to 60" in height. The flower head is about 30" long having a total of 20 buds. The stem is wiry, straight and strong. The balance is good, its facing erect. Its lasting qualities are excellent. It will open 6 to 8 florets.

The color of Aloha is that of a ripe apricot. The throat is lighter than the floret. It opens well when cut in color bud. Bulblets increase and germination is very good." Bulbs this season will be from bulblet grown stock.

**Price each bulb any size \$5.00.**

**One bulb and 10 select bulblets for \$10.00.**

**Growers unit of 5 Large and 5 Med. and 5 Small and 200 bulblets for \$125.**

#### **BRIDAL ORCHID, (Carlson-Puerner)**

Cosmopolitan Glad Gardens has come up with another outstanding introduction, this time in the much needed light (not pale) lavender color.

Bridal Orchid will open up to 10 very large florets, on a bud spike of 20 buds usually in formal arrangement. It is simply stunning because of its great color bulk and its unusually fine color. It grows to a good field height.

An inspection of its home growing revealed consistency of growth and health. Those growing here at Reliance Gardens equaled those viewed and brought here for color photography (Kodaslide on a loan basis when requested), hence no super culture was employed by the introducer.

Bridal Orchid is in my opinion, the number one purchase on everybody's list.

Its winnings attest to its appealing beauty and beautiful form.

1 Best Seedling and champion spike, Sun Prairie, Wis. '49.

2 American Home Achievement Award, Beloit, Wis. '49.

3 Best Seedling and American Home Award, Garfield Park, Ill. '49.

4 Champion Seedling single and 3 spikes, American Home Achievement Award, Springfield, Ill. '49.

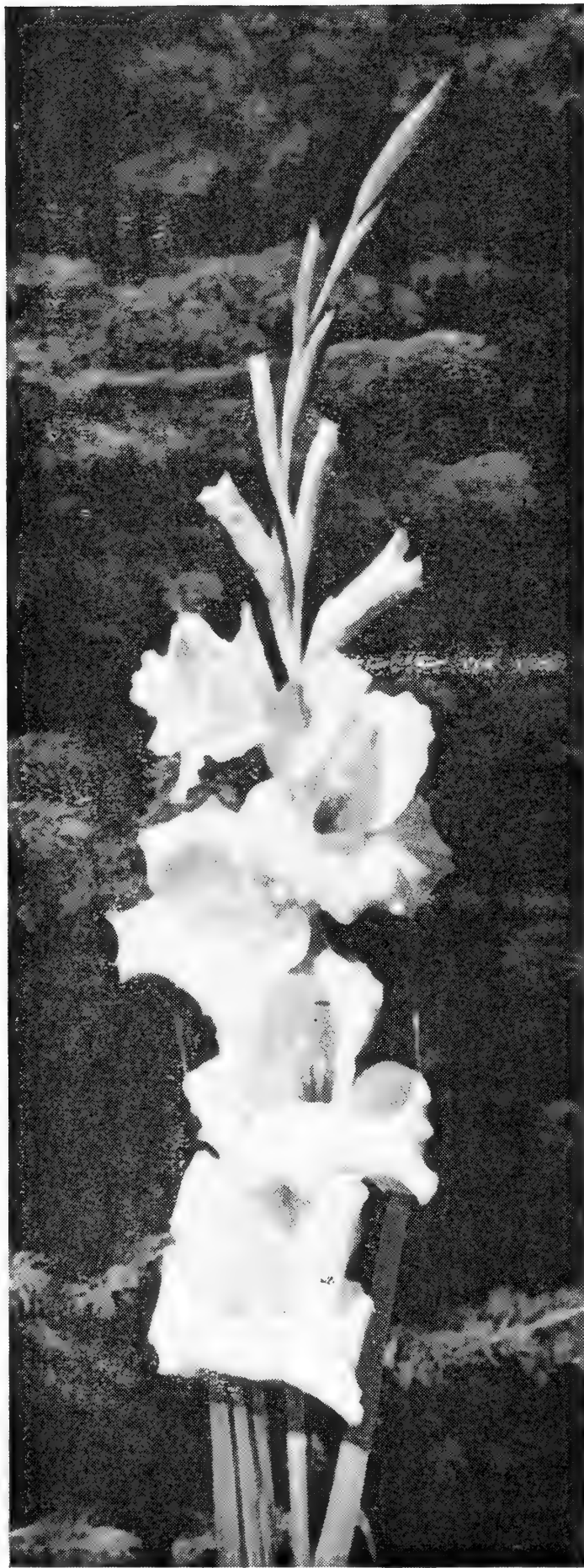
**Prices each bulb any size \$5.00.**

**One bulb and 5 select bulblets, \$10.00**

**Grower unit prices on application.**

#### **FASHION, (Graff '50)**

A fine gladiolus from a fine set of parents which bloomed here under its seedling name of "Pinky". It was outstanding in color, habit, and general appeal. Fashion was singled out by a large grower when he visited my planting in early season. It passed its cut bloom tests with an excellent record.



**Golden Crown**

This fine lively geranium pink grows to a height of 55" and produces a flower head of 28" which carry seven or more open florets, which are nicely fluted and very recurved, in formal arrangement.

It increases well. I predict a bright future for Fashion.

Bulbs this season will be from bulblet grown stock.

**Price, each bulb any size \$5.00 each.**

**One bulb and 10 select bulblets for \$10.00.**

**Growers unit consisting of 5 Large and 5 Med. and 5 Small with 200 bulblets for \$125.00.**

#### **GOLDEN CROWN (George Melk, Jr.)**

This is the deep yellow that commercial growers have been looking for for years. Golden Crown is the first introduction from Melk Bros. who are one of Milwaukee's large wholesale cut flower producers and whose non-irrigated fields require glads that can produce without pampering.

I grew Golden Crown as a seedling under the name of "Skips Yellow". Skip being the son of G. Melk.

The yellow color of Golden Crown is beautiful and clean. Florets are without blotch or markings, and attain 5" size. It blooms in mid-season and is both consistent and healthy, like one of its parents Snow Princess. It is a rapid propagator.

Golden Crown grows to a height of 55".

Champion Seedling Basket, Wis., Beloit '49.

**Price each bulb \$5.00, any size bulb.**

**Ten select bulblets and one bulb for \$10.00.**

**Growers unit prices on application.**

#### **MISS ALBERTA (Torrie - Flad '50)**

Miss Alberta and Queen Mary are the first offerings of James Torrie and John Flad, both of Madison, Wis., of their many outstanding seedlings.

Miss Alberta is a pure informal white with a strikingly splashed lavender throat. Florets are 4½" to 4¾", ruffled, with lower petals fluted. The flowerhead is 20 to 24" and carries 17 buds of which 5 are open with 6 or 8 buds showing color. It is a vigorous grower and produces 100% cuttable spikes. It matures in mid-season, and bulblet production and germination is excellent.

Miss Alberta is a striking flower in baskets and in arrangements. This fact coupled with its excellent habits make it a perfect prospect for a commercial gladiolus.

Miss Alberta rated high in N.A.G.C. tests in '49. Scored as excellent Sun Prairie '46 and in '48, Madison '48, and Wis. G. Soc. State Fair Show '49. Placed first Waterloo '49 (3 spikes).

**Price each bulb, Large \$3.00; Med. \$2.00.**

**Unit of 1 Large and 1 Med. and 1 Small and 10 bulblets for \$5.00.**

**Growers unit of 5 Large and 10 Med. and 15 Small and 100 bulblets, \$40.00.**

#### **NEW YORKER, (Graff '50)**

Originator's description

"The color is a very delicate shade of pink. The lower two petals have a light throat marking and a small amount of red peppering in the throat. This gives a little extra life and buoyancy. The edge of the florets are frilled. New Yorker attains a height of 55" with flower heads of 28" which carry 20 or more buds on a perfect balanced wiry stem. The facing and placement is excellent. It will open 6 or more florets. Its health is good. Most of its bulblets will bloom."

Bulbs this season will be from bulblet grown stock only.

**Price each bulb, any size \$5.00.**

**One bulb and 10 bulblets (selected) for \$10.00.**

**Growers unit of 5 Large and 5 Med. and 5 Small and 200 bulblets for \$125.00.**

#### **NINETY GRAND, (Zimmer - Ward)**

It has been my privilege to grow Ninety Grand as a seedling in '46-'47 and again this past summer, and I know it to be a healthy and consistent performer. It is primarily a "growers" glad, a rapid increaser, bud cut opener, tip opener, and easy buncher. If you place more importance on health, and performance, than on ruffles, then Ninety Grand is an excellent introduction.

Its color is mid-way between salmon and red and it opens eight to 9 florets at one time on straight spikes which carry 20 or more buds. It is an excellent keeper. Ninety Grand produces many bulblets that germinate easily.

Colored slides of Ninety Grand are available on a loan basis.

**Price, each bulb any size \$3.00; One bulb and 10 bulblets for \$5.00.**

**One Large and 1 Med. and 1 Small and 15 bulblets for \$15.00.**

**Growers unit — 2 Large and 4 Med. and 10 Small and 500 bulblets for \$75.**

#### **QUEEN MARY (Torrie - Flad)**

My test lot of Queen Mary, in varying sizes, bloomed for me throughout the bloom season and gave an excellent performance irrespective of growing conditions. The



Dream Girl

color is a soft melting salmon of excellent color appeal. Every spike was straight, and those from the larger bulbs carried 20 buds with 7 open florets excellently placed and securely attached. Queen Mary grew to a height of 54". The plants retained their health throughout the growing season. It blooms in early mid-season.

The better qualities of both Picardy and Elizabeth the Queen (parents) are apparent in Queen Mary. The florets of over 5½" size are both wide open and "arty", with some fluting and light ruffling. The color softens in the inner floret area.

Queen Mary is a good propagator. It will be a strong competitor for high exhibition honors, and gives high promise of commercial success.

Award of excellence, Waterloo, Ia. '49.

Div. Champion, Elkhorn (Southern Wis. and Northern Ill.), '49.

Price each bulb, Large \$5.00; Med. \$5.00; Small \$4.00.

One bulb and 10 selected bulblets for \$10.00.

Growers unit of 2 Large and 4 Med. and 6 Small and 100 bulblets \$50.00.

## GENERAL LIST

See prices on the inside back cover.

The continuation of the first line following the name of the variety gives in order the following information: originator or originator and introducer, year of introduction, and size and color code numbers.

Medium size florets are in the 300 series; large florets in the 400 series; giant florets in the 500 series. Smaller sized flowers are not listed herein.

Well known varieties are listed separately following this general list without color descriptions.

### **ABIGAIL (Myers-Milo '46)**

466

A very fine lavender of vigorous growth. It is of the same fine lavender shade as Minuet, with a throat marking like that variety. Abigail blooms in Mid-early season and opens 8 florets at one time. It increases very satisfactorily. It is a variety of great promise in a color class that needs added varieties of merit, particularly those that grow tall.

### **ADORATION (Klein)**

466

A beautiful blend of pink orchid and cream color, in the throat area, is, together with its health and vigor, its primary virtue. Adoration did not attain 400 size here, but it is beautiful.

### **ASTRID (Jack-Gove '46)**

462

A very desirable rose of fine color values. Its ruffling adds to its beauty. Astrid blooms in early mid-season from plants of average height. A basket or vase of this variety is truly beautiful.

### **BEAUTY'S BLUSH (Fisher '47)**

440

The first spikes of Beauty's Blush that I saw at the Garfield Park show in 1946 caused me to note it for purchase. A fine variety for the color conscious fan. It should be classed as cream.

### **BIRCH RED (Rich '45)**

552

A large flower, deep red, with a fine color sheen that will find its way to success, in shop, field, and show, on its fine qualities.

### **BLUE BONNET (Beardmore '48)**

576

A recital of the color combination, medium to pale blue, with a deeper blue throat mark does not seem exciting, but the purity of color and the fine saturation of its colors combined with its large sized and regularly placed florets make it a beauty. It is a worth while variety.

### **BLUE LAGOON (Snyder '46)**

478

A medium violet of cup shaped florets that grows very tall and which propagates rapidly. It will exceed the leading "blue" in adverse growing conditions (inadequate moisture) and for that reason Blue Lagoon is of commercial importance. Its bulbs are healthy. Cup shaped florets.

### **BOISE BELLE (Roberts '48)**

343

Boise Belle offers a new color arrangement, that of a cream yellow florets with a pink halo of sharp marginal line. A basket of this variety with its many open florets would delight any fan or florist. It should win handily.

### **CHIEF PONTIAC (Snyder '49)**

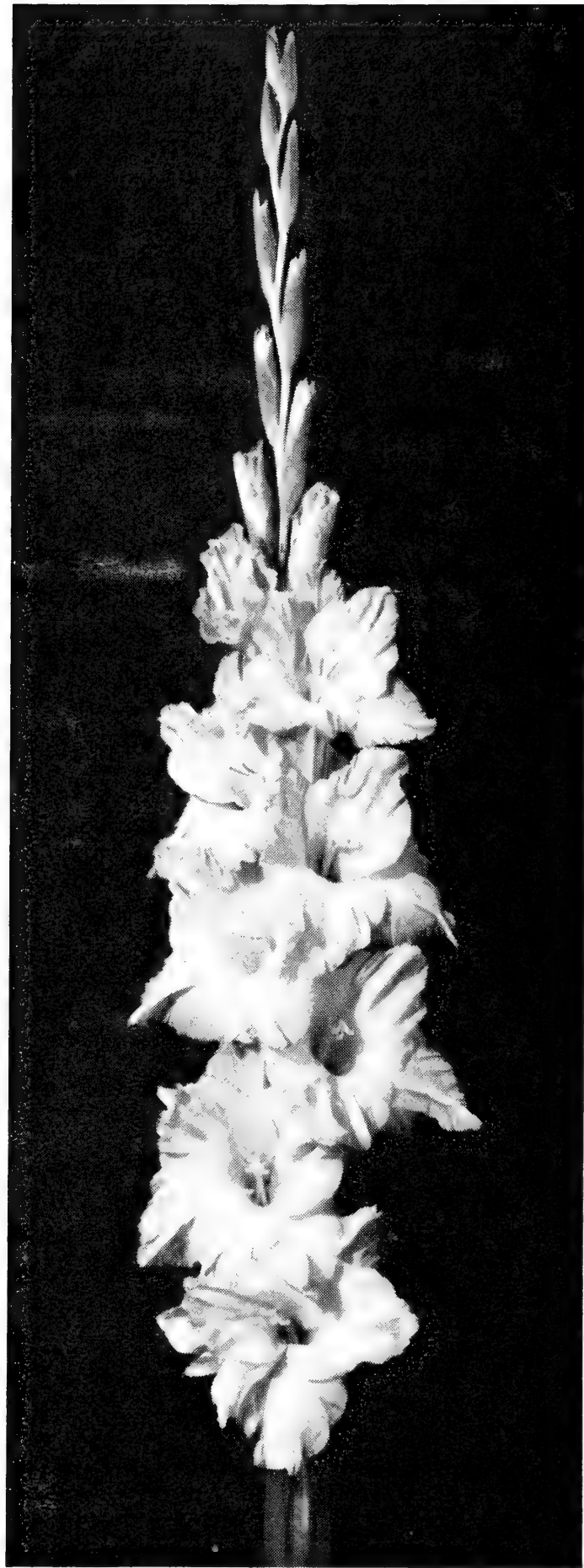
536

The few bulbs of Chief Pontiac that I grew made outstanding spikes of high proportions. It bloomed in early season. This looks like a fine variety, a fine red scarlet.

### **COLOR MARVEL (Krueger '46)**

310

Florists select Color Marvel out of a group of cut glads quickly. The unusual blend of orange, pink, and orange is attractive, and desirable for certain types of floral work. Because of its size it does not receive the approval of the typical glad fan. Its fine habits make it a very fine variety.



Hearts Desire



- CONNECTICUT YANKEE** (Schenetsky '44) 441  
 Back in the limelight with a championship is superb Connecticut Yankee, a fine pink with a sharp blotch. It builds impressive spikes with 8 or more florets open at one time. It will be grown for many years, because of its quality. Its floret placement is precise.
- CYNTHIA** (Graff '49) 410  
 A second years growth experience with Cynthia makes me certain that it is the best very early yellow for cit-flower production available to the grower. With extra early bloom characteristics, purity of its color and consistency of performance as well as easy increase makes Cynthia a great commercial gladiolus. Under field culture Cynthia grows to the height of 52 inches. Its keeping qualities are excellent. No "green" appears in the bud color of Cynthia.
- DAISY MAE** (Lins-Ruble '45) 441  
 Orange salmon Daisy Mae with its deeper blotch has won many friends. It receives praise as a strong dependable grower.
- DEBORAH SAMPSON** (Scheer '47) 440  
 The stately spikes of tall Deborah Sampson, with its many open recurved florets are very impressive. It appears to have the necessary good growing habits of a worthy variety. It made a very fine impression here.
- DIEPPE** (Hassel '45) 452  
 Fiery salmon scarlet Dieppe with its unique floret shape seems to be headed for commercial success. It is a fine variety in a needed color class. The spikes are big and attractive. It blooms in mid-season. It is a fine commercial variety.
- DREAM GIRL** (Krueger '45) 460  
 In a class by itself as a spike maker under all conditions, and from all bulb sizes. Only Spic & Span and Tralee give it competition in this respect. Dream Girl opens 8 pale rose florets with a harmonizing rose blotch of small size. Florists desire the long tapering ribbons of color. It is improving as a propagator, and may yet achieve commercial recommendation.
- EASTER PARADE** (Briggs-Scott) 400  
 White with soft cream yellow throat is the color of this fine growing gladiolus. Floret placement and attachment were excellent. It produced the best bulblet grown stock of any variety that I have grown. Easter Parade has many western boosters.
- ELAINE** (Pennington '49) 432  
 A vivid deep salmon commercial gladiolus has been desired for some time. Elaine, grown here at Reliance Gardens under test appealed to me very much both because of its own beauty and because of a need for its sparkling color. It withstood the drought and heat very well.  
 Elaine grows to a height of 50" from plants which allow of a low cut, and makes nice spikes that carry 17 or more buds with 6 or 7 open florets of near 5" size. Elaine is a beautiful gladiolus.
- EVANGELINE** (Palmer-Gove '48) 540  
 A beautiful light to pale pink with shades of apricot (not rose) that can, when well grown, take championship honors, because of its many (10-12) open florets. It is said to be resistant to Florida plant and bulb pests. Stock supplied will be that of the introducer.
- FABULOUS** (LaSalle-Arenius '46) 443  
 The florets of Fabulous are of salmon hue and have a cream blotch on which is superimposed a deeper pink crescent. Its habits are very acceptable.
- FLORENCE NIGHTINGALE** (Harris '47) 400  
 From small stock this white with two inoffensive throat marks gave a satisfactory performance. Its below the ground performance is not known at this writing. Florence Nightingale received much praise from eastern growers last year. Its performance this past summer was excellent. It has great color bulk. Great commercial prospect.
- GOLD MEDAL** (Beardmore-Krueger '48) 516  
 A giant buff yellow that is an exciting exhibition variety. This mid-early gladiolus is one of the tallest glads grown. Its wide open, waved florets add much to its beauty. Large bulb spikes far exceed those from the smaller sizes. It should be cut in near bud. A complete sell-out precluded any possibility of adding to its show record. It will sell out again.
- GOLDEN ARROW** (Pruitt '47) 510  
 A smooth medium to pale yellow with little or no detracting marks in the throat. It has a good western record and many endorsers in the mid-west. It appears to be an excellent yellow variety.
- GOLDEN BEAUTY** (Coates '47) 510  
 The largest clear medium to dark yellow to bloom in early season. The tall spikes carried 18 buds of which eight 4¾" florets opened at one time. It has a strong stem and excellent attachment. Golden Beauty is one of the new ones that deserves especial recommendation.



Mauvie Rose

- HAROLD K (Knight-Gove '49)** 552  
While on test here as a seedling Harold K produced florets of 7" size. It is a stupendous flower of fine color, heavy substance and good attachment. It increases satisfactorily. Harold K is an excellent deep red.
- HEARTS DESIRE (Fiedler-Puerner '48)** 540  
Performance from bulbs and bulblets makes it easy to recommend Hearts Desire to the fan and to the commercial grower. The fine color heavy ruffling of this mid-season glad adds beauty to its imposing spikes.
- HIHO (Knight '48)** 540  
This tall descendent of Ogarita with its vivid pink color and large cream white inner floret areas did very well here from all sizes of stock. Bulblet bloom exceeded that of many varieties grown from large bulbs. A mid-season variety of real merit.
- JACOBS DREAM (Johnson '49)** 506  
This sport of Marimba in a new color, cream with a tiny throat mark like Wanda produced some gigantic spikes here, with 6 or 7 florets. It is large enough to please the "size fan."
- JUNE DAY (Roberts '46)** 411  
With Donella, June Day is one of the earliest glads to bloom. June Day is a pink with a small cherry blotch. It grows to good height both from bulbs and from bulblets. There is little doubt that June Day is an important commercial gladiolus. and a fine variety for the fan.
- KELSEY (Yates-Ruehr '46)** 530  
Picardy with a creamy white throat with no other markings characterizes this fine sport. Its habits are identical to those of Picardy, which makes it a fine variety. A basket of Kelsey at Kankakee, Ill. was very impressive.
- KLONDIKE (Snyder '47)** 412  
The deep yellow bordering on orange yellow color of Klondike is not its only virtue. Regular performance and easy propagation make it a fine glad. It is a tall variety. Florists will approve of it.
- LA BELLE (Krueger '49)** 406  
At this writing many "knockout" spikes of La Belle are on hand to thrill the garden visitors, and to give the florists a sample of this superb heavily ruffled cream white. A complete sellout in the large bulb sizes accounts for no bloom during the show season to build a show reputation for La Belle, because of its mid-late bloom season. La Belle because of its stupendous spike requires water at bloom time. Pinking of the lower floret results when bud development is slow due to inadequate water. It will open to the tip in water. Dignity, beauty, charm, and utility are characteristics of La Belle which is a rapid and easy propagator. Colored slides of La Belle are available on a loan basis.
- LADY ANNE (Buchanan '47)** 500  
A very large white with a small yellow throat area. It is quite ruffled. Lady Anne is a very beautiful variety that should be a winner at the shows.
- LADY MARION (White)** 466  
This greatly publicized rose lavender with its lavender pink florets merging into a cream center with its thumb nail size throat mark of rosy lavender is said to have great commercial possibilities. It grows well.
- LANCASTER (Palmer-Gove '44)** 470  
The truest purple coloring of any gladiolus belongs to Lancaster. The tall spikes of it with 8 open florets make fine exhibition spikes. Every show exhibitor should have Lancaster.
- LANCELOT (Snyder '49)** 410  
Medium to light yellow colored florets of which 6 to 8 open at one time. The florets are not crowded. Lancelot grew well here.
- LAVENDEL DREAM (?)** 466  
A pale but intense lavender "blue" color, and earliness of bloom make Lavendel Dream and important gladiolus. It is particularly impressive in basket work. It is a tall growing gladiolus.
- LEADING LADY (Johnson)** 506  
This excellent creamy white sport of Picardy is too well known to require description.
- LUCKY (Jack-Gove '47)** 366  
A clean lavender with a creamy white throat of about the size and color of Badger Beauty. It blooms in early season.
- MAUVIE ROSE (Wesselman '48)** 462  
After growing Mauvie Rose as a seedling in the summer of 1947, and again in greater numbers after a futile offer to purchase it, I have no hesitancy in recommending it as the most important commercial introduction of 1948 because of its rose color, fine habit and extra early bloom season. The outer petals are deep rose, and the inner petals blend into mauve. It makes a satisfactory but conservative spike that carry 5 open 4 $\frac{3}{4}$ " florets. After seeing hundreds of spikes of Mauvie Rose I am convinced



Redwing

that it is, because of color and earliness together with consistent performance, one of the truly great market flowers. It does well on the "show table". Kodasliques are available for your inspection on a loan basis.

**MINSTREL (Palmer-Gove '44)**

566

The largest lavender, and for that reason much in demand by exhibitors and fans. Minstrel blooms in mid-late season from short plants that produce good flower heads.

**MISS CHICAGO (Buchheit-Krueger)**

560

The few blooming size bulbs of Miss Chicago that remained for planting added to the show record of this beautiful rose lavender as follows: Champion Spike, 1st State Fair Show; Champion 3 spikes W. G. S. State Fair Show; Best spike shipped less than 500 miles S. E. M. G. S. bronze medal. Miss Chicago shared the limelight with Miss Wisconsin during the 9 days of gladiolus shows at the State Fair. At Beloit and Springfield it revealed its beauty in basket and as a part of a display. Miss Chicago with its unique rose color and its inverted yellow crescent is indeed beautiful. Since it opens up to 10 florets of giant size in compact placement is eye catching, a florist flower supreme. Spikes of Miss Chicago cut at first opening will, in several days time, increase flower head length by many inches as the florets open. Happily Miss Chicago is a conservative increaser, leaving value with the investor. Reports of its performance elsewhere are to date highly enthusiastic. It will sell out early. Previous major wins of Miss Chicago include champion seedling, Kankakee '49; 3 spike seedling champion, Kohler '49 (Wisconsin); American Home Achievement Award, Garfield Park '49 Favorite seedling Wisconsin Symposium '49. Kodasliques available on a loan basis.

**MISS WISCONSIN (Krueger '43)**

460

A variety that enjoys the distinction of being in a class by itself as to color tone. The fine rose colored florets are sought for by florists. Heavy demand annually depletes existing stock. It is a consistent performer. It opens up to 8 florets at one time. Miss Wisconsin won Grand Champion honors at the Wisconsin show '47. Miss Wisconsin is exceptionally well liked by florists. It has a fine health record generally and in Florida. Top winner 460 color class N. E. G. S. '49 winning summary.

**MISS VERMONT (Hatch-Gove '45)**

510

The crepe paper lavender pink of Miss Vermont has always appealed to me. Its cut spikes are among the best "keepers" in floral work and florists welcome it for their floral work. Miss Vermont is a fine gladiolus.

**MORNING STAR (Van Prooyen '48)**

500

On several occasions the superlative spikes of this white sport of Picardy have by the efforts of the introducer graced the show tables at mid-west shows. Since it is a Picardy sport its habits and traits are known. A fine variety.

**MT. GEM (Requa '46)**

436

After viewing many superlative spikes of Mountain Gem at the glad shows, it finally was included in my planting where it demonstrated the conclusion that it was a great red.

**NANCY (Arnett '49)**

452

Cherry toned red Nancy, different in shade than the usual red, lived up to the publicity given it, as well as its performance here as a seedling. It passed all tests here as a great commercial. It opened 8 florets with much bud color from very tall plants. Its bulblets germinated well.

**OCTOBER SUNSHINE (Quackenbush '47)**

420

Blends of yellow and orange are beautiful, and so is appropriately named October Sunshine. It appears that October Sunshine will deserve commercial rating. It is a mid-early variety of fine habit.

**ORANGE GOLD (Marshall '45)**

420

One of the most vigorous plants in the glad world. Orange Gold has a deep orange color with a yellow throat. It is very showy and the color is liked by florists. A basket of it gets attention at once. Even though the bulblets are difficult to germinate, it is a top commercial variety. It is early.

**PATRICIAN (Scheer '47)**

566

With two years of growing experience as a basis for my opinion, I believe Patrician to be the best new commercial lavender. It makes very large florets of fine color with a very faint flecking under some conditions. My stock is, and has been healthy and clean.

**PERSONALITY (Butt '47)**

560

The particular virtue of Personality is the formation of giant florets (7 open) of fine keeping qualities. The color is of a subdued shade of rose. The plants grow to better than average height. It appears to a fine variety.

**PHANTOM BEAUTY (Bastian '47)**

440

Precision spikes with precision placement are traits of blush pink Phantom Beauty which have given it Championships. The variety opens up to 10 florets at one time. It is a variety of great promise. Glad fans will approve of it.

**PINK CHARM (LaSalle-Arenius '46)**

542

Pink Charm with a good water supply gives superb spikes of vibrant pink color with a warm glow in the throat in early season. I like to use it for my florist outlets.



Spic & Span

- PIONEER (LaSalle-Arenius '45)** 532  
Big, bold Pioneer with its giant florets of deep salmon with yellow centers and 8 open florets, is a superb variety. It will be grown commercially, for its habits are desirable.
- POINCIANA (Snyder '48)** 562  
It achieves the point of representing a new color note in the glad patch, a blend color of rose and red salmon. Its florets, triangular in type are huge.
- RED CHERRY (Roberts '46)** 450  
Consistency of placement, fine spikes, nice ruffling, and the many open florets (10) of this fine scarlet-red, together with its early bloom season made it rank "tops" in competition with all the newcomers to my planting. A great glad for the "show boys" and the trade. Highly recommended.
- RED RASCAL (Graff '45)** 550  
The bright red ruffled florets of Red Rascal and the fine spikes that it produces make it a fine variety. It is a tall grower that blooms in mid-season from tall plants. It increases satisfactorily.
- REDWING (Wright-Graff '48)** 536  
To its past record here as a fine spiker and a fine vibrant color, Redwing added fine healthy bublet growth, and it repeated its production of fine spikes. Redwing is an excellent commercial and show glad that blooms in mid-season. It opens up to 9 florets at one time. The fine spikes from small stock, at this writing, are simply superb.
- RELIANT (Krueger '48)** 500  
The giant of glad plants, with water the giant of spike and floret. Reliant is at its best in the adequate rainfall of September, apparently to harmonize with its late bloom season. This white is real stud material for the plant breeder, and a dandy to impress the neighbors and friends. In more southerly areas it will appear at the shows with credit.
- SIBONEY (Allen '48)** 566  
A giant lavender, a bit darker in color than "the Queen". It makes fine spikes with long flowerheads. It is highly endorsed.
- SILVER COURT (Lens '48)** 400  
If you are looking for a blemish color in this fine white, you will have to look hard and long. It is white. Silver Court made a fine impression here at Reliance Gardens. It is an early variety of importance.
- SILVER WINGS (Ritsema-Graff '45)** 500  
Silvery cream white Silver Wings with lightly ruffled florets is capable of making stunning spikes. Its habits are like Picardy, the variety from which it sported, though it makes smaller and a greater number of bulblets.
- SPIC & SPAN (Carlson-Puerner '46)** 432  
A basket of this fine ruffled pink with its "gun barrel" spikes which carry 8 open florets and much bud color is as spectacular as its performance. It is a great commercial variety everywhere. Its record of important awards is a long and enviable one. It does well in Florida. Highly recommended.
- SPOTLIGHT (Palmer-Gove '44)** 413  
The yellow that is deservedly in heavy demand because of its sharp color contrast, medium yellow with a small scarlet blotch, and because of its fine habits. Spotlight is a tall growing variety. It is a fine commercial variety.
- SUN SPOT (Roberts '45)** 417  
Sun Spot won national recognition at Binghamton in '47. Its durability and propensity for holding many open florets, and its consistent performance appealed to me. Ribbon gathers and florists will like Sun Spot. Its bright small blotch is appealing. It blooms in early mid-season.
- TARAWA (Palmer-Gove '46)** 436  
Fiery scarlet with cream spears and 8 open florets in formal arrangement make Tarawa with its imposing spikes a very fine exhibition variety. Its bulb habits coupled with bloom traits make it a variety of commercial promise.
- TEXAS (Buchanan-Bork '47)** 500  
Earliness bud cut opening qualities, and other fine habits make Texas a very promising commercial. Its color is creamy white with a creamy center. The florets are of giant proportions, and good attachment. It is a tall variety. Recommended as a commercial and exhibition variety.
- TIVOLI (Van Konnynenberg '46)** 442  
One of the pleasant surprises of the season was Tivoli with the much needed pink color like that of the older Coryphee, a beautiful warm toned pure pink. Tivoli opens up to 8 florets at one time. It is a fine commercial.
- TRALEE (Krueger '47)** 460  
Quality will tell! Reports from cut-flower growers on Tralee have been numerous and laudatory. For the second time Tralee was first in variety baskets at the Wis. Seedling and recent introduction show (Sun Prairie '49). At Springfield, Ill. it was commercial 3 spike champion (N.E.G.S. Silver Medal). At the Wis. G. Soc. spon-

sored State Fair Show Tralee was champion recent introduction vase. Tralee is a spike maker from all bulb sizes, and under all conditions. Its distinctive silvery rose color, its trait of opening 8 or more florets, good propagation and consistent performance, and its early bloom season make it a great commercial. The number of open spikes will not exceed the crooks of other commercials in number, and florists approve of it. Highly recommended. It is an early variety that does not fleck.

Kodasliques are available on a loan basis.

**TOPFLIGHT (LaSalle-Arenius '46)**

460

The sharp rose pink of Topflight easily attracts attention. Its fine color and its habit of opening many florets outweigh its fault of lack of "tip finish". Foliage of Topflight ripens early.

**TREASURE ISLAND (Lins '47)**

542

A beautiful blend of pink and lavender pink tones. Growers have a high regard for this fine pink. Treasure Island is a variety of real merit.

**TROCADERO (Lins '46)**

422

Salmon scarlet Trocadero has already won favor both for its color and fine performance. Its color rival is but one, Dieppe.

**TRUELOVE (Klein '45)**

440

The soft colors of pale but bright pink Truelove with its cream white floret centers, regular performance, and early bloom habit make it an excellent variety. Truelove will reach success as a commercial variety, and it will please the fan and exhibitor.

**VARIATION (Krueger '41)**

340

No early pink has eclipsed non-flecking, tall, many open floreted Variation in all the intervening years, as a cut flower and florists delight. It will live on through the years. The color, serene lavender cast pink with a creamy white throat, is superior. Greatest number of wins '49 class 340 N.E.G.S. summary.

**VENIDA (Milo '47)**

460

A fine future is predicted for bold blotched Venida—rose with a large creamy white center. It opens 8 florets at one time. It achieves its maximum color effect when several spikes are together in a basket or vase. Venida is an excellent variety.

**WAX MODEL (Krueger '46)**

400

Give the florist an opportunity to select his white and the invariable result is the choice of Wax Model. Its immaculate white color enhanced by its small lavender spear is unusual. The fact that it is tall and early and a fast propagator make it a commercial. It opens 5 florets on a 20 inch flower-head.

**WHITE CHALLENGE (Arnett-Janes '47)**

501

The soundly attached florets of White Challenge with the pale pink blotches and 8 or more open, make a very imposing spike. It is an excellent keeper. A mid-season variety, of much commercial promise. It is a winner of record. Grand Champion Spike, Springfield, Ill. '49.

**WHITE GODDESS (Roberts '48)**

500

A ruffled white with a small cream throat area that can attain superlative rank. White Goddess produces its very large florets of 5½" size, on good spikes, in relatively early season. It grows well from bulblets. It is a very fine variety.

**WHITE MAGIC (Kuhn '47)**

500

White Magic started its career with important wins in Michigan. It is a clear heavily ruffled white of beauty. It opens five 5½" florets at one time.

**WHITE WINGS (Errey)**

500

The gigantic "arty" white florets with a suggestion of a tiny throat mark are delightful. It gave outstanding performance here. It is a "comer".

## HOME GARDENERS' PAGE

Many garden enthusiasts are not members of flower societies and information relative to protection and culture are not available to them, hence the following information.

Gladiolus bulbs upon receipt should be removed from the package and stored in any airy cool location until planting time. All gladiolus, yours, mine, and those received from other persons should be treated before planting. One chemical is readily available, namely, Lysol. The manufacturer recommends a solution of 1¼ tablespoons of Lysol for each gallon of water. Place the bulbs in a cloth bag and immerse in the prepared liquid for 6 hours or more, and plant at once.

When the plants have attained a height of eight inches they should receive a weekly insect treatment. The dusts sold for this purpose by seed stores are very convenient. A combined D.D.T. and rotenone dust is effective. I prefer a liquid D.D.T. preparation, and I am partial to Detex, which I am certain that your seed store can procure for you. If not please request the correct address.

After bloom and harvest gladiolus bulbs should be protected by D.D.T. dust in winter storage.

With this little care you should be easily able to produce gladiolus spikes better than those of the growers.



# HOME GARDENERS

# QUANTITY PRICES

Blooming size bulbs,  
(No's 1's, 2's & 3's)

|                                   | per doz. | per 25  | per 100 |
|-----------------------------------|----------|---------|---------|
| Abigail, lavender                 | \$ 4.00  | \$ 7.00 | \$21.00 |
| Astrid, rose, ruffled             | 3.00     | 5.00    | 15.00   |
| Burma, deep rose, ruffled         | 1.30     | 2.00    | 7.00    |
| Color Marvel, orange yellow       | 1.25     | 2.00    | 7.00    |
| Daisy Mae, blotched orange        | 1.25     | 2.00    | 7.00    |
| Dieppe, flame                     | 1.00     | 1.75    | 5.00    |
| Fabulous, salmon                  | 4.00     | 7.00    | 21.00   |
| Firebrand, red                    | 1.00     | 1.75    | 5.00    |
| Huntress, lavender                | 1.80     | 3.25    | 10.00   |
| Leading Lady, cream white         | 1.00     | 1.75    | 5.00    |
| Lucky, lavender                   | 2.00     | 3.50    | 10.50   |
| Lavender Prince, deep lavender    | 1.00     | 1.75    | 5.00    |
| Minstrel, giant lavender          | 2.00     | 3.50    | 10.50   |
| Miss Wisconsin, rose              | 1.50     | 2.50    | 8.00    |
| Miss Vermont, pale rose           | 2.00     | 3.50    | 10.50   |
| Mt. Index, white                  | 1.00     | 1.75    | 5.00    |
| Orange Gold, deep orange          | 2.00     | 3.50    | 10.50   |
| Pink Charm, early pink            | 2.00     | 3.50    | 10.50   |
| Pioneer, giant salmon             | 1.00     | 1.75    | 5.00    |
| Silver Wings, white Picardy Sport | 1.25     | 2.00    | 7.00    |
| Spotlight, yellow & red           | 1.00     | 1.75    | 5.00    |
| Tarawa, red                       | 3.00     | 5.50    | 18.00   |
| Wax Model, white                  | 2.50     | 4.00    | 12.00   |

½ doz. at ½ of dozen rate

## COLLECTION

COLLECTION A 100 large bulbs unlabeled \$4.00

COLLECTION B 100 medium bulbs unlabeled \$3.00

## RETAIL PRICE LIST

10 bulb at 8 times the single price; 100 at 8 times the ten price

|                      | PRICE EACH BULB |       |       | BULBLETS |       |         |
|----------------------|-----------------|-------|-------|----------|-------|---------|
|                      | L               | M     | S     | 1        | 10    | 100     |
| Abigail              | \$.50           | \$.35 | \$.20 | \$.10    | \$.50 | \$ 4.00 |
| Adoration            | .75             | .50   | .35   | .10      | .75   | 6.00    |
| *Aloha               | 5.00            | 5.00  | 5.00  | ....     | 5.00  | ....    |
| Astrid               | .35             | .25   | .15   | ....     | .25   | 2.00    |
| Badger Beauty        | .10             | .07   | .05   | ....     | .10   | .80     |
| Beauty's Blush       | .20             | .15   | .10   | ....     | .10   | .40     |
| Birch Red            | 1.00            | .75   | .50   | .10      | 1.00  | 8.00    |
| Blue Bonnet          | 3.00            | 2.50  | 2.00  | .30      | 3.00  | 24.00   |
| Blue Lagoon          | .75             | .50   | .35   | ....     | .50   | 4.00    |
| Boise Belle          | 2.00            | 1.50  | 1.00  | .25      | 1.75  | 14.00   |
| Bonnie Jean          | .10             | .07   | .05   | ....     | .10   | .80     |
| *Bridal Orchid       | 5.00            | 5.00  | 5.00  | ....     | ....  | ....    |
| Burma                | .15             | .12   | .10   | ....     | .15   | 1.20    |
| Chief Pontiac        | 2.00            | 1.50  | 1.00  | .20      | 1.60  | 12.80   |
| Color Marvel         | .15             | .10   | .05   | ....     | .15   | 1.20    |
| Cooney Miss          | 4.00            | 3.00  | 2.00  | .50      | 4.00  | 32.00   |
| Connecticut Jankee   | .50             | .35   | .25   | ....     | .50   | 4.00    |
| Cynthia              | 3.00            | 2.00  | 1.00  | .40      | 3.00  | 24.00   |
| Daisy Mae            | .15             | .10   | .05   | ....     | .15   | 1.20    |
| Deborah Sampson      | .75             | .50   | .35   | .10      | .75   | 6.00    |
| Dieppe               | .10             | .07   | .05   | ....     | ....  | .50     |
| Dream Girl           | .50             | .35   | .25   | .10      | .50   | 4.00    |
| Easter Parade        | .50             | .35   | .25   | ....     | .50   | 4.00    |
| Elaine               | 2.00            | 1.50  | 1.00  | .25      | 2.00  | 16.00   |
| Evangeline           | 2.50            | 1.50  | 1.00  | .20      | 1.50  | 12.00   |
| Fabulous             | .50             | .35   | .25   | ....     | .50   | 4.00    |
| *Fashion             | 5.00            | 5.00  | 5.00  | ....     | 5.00  | ....    |
| Firebrand            | ....            | .07   | .05   | ....     | ....  | .80     |
| Florence Nightingale | .75             | .50   | .30   | .10      | .75   | 6.00    |
| Gold Medal           | 1.00            | .75   | .50   | .15      | 1.00  | 8.00    |
| Golden Arrow         | .25             | .15   | .10   | ....     | .25   | 2.00    |
| Golden Beauty        | 1.00            | .75   | .50   | .15      | 1.00  | 8.00    |
| *Golden Crown        | 5.00            | 5.00  | 5.00  | ....     | 5.00  | ....    |
| Harold K             | 2.50            | 1.50  | 1.00  | .20      | 1.60  | 13.00   |
| Heart's Desire       | 1.25            | 1.00  | .75   | .15      | 1.20  | 10.00   |
| Hiho                 | 1.50            | 1.00  | .50   | .15      | 1.20  | 10.00   |
| Huntress             | .20             | .15   | .10   | ....     | .20   | 1.60    |
| Jacobs Dream         | 4.00            | 3.00  | 2.00  | .50      | 4.00  | 32.00   |

10 bulb at 8 times the single price; 100 at 8 times the ten price

|                        | PRICE EACH BULB |      |      | BULBLETS |      |       |
|------------------------|-----------------|------|------|----------|------|-------|
|                        | L               | M    | S    | 1        | 10   | 100   |
| June Day .....         | .75             | .50  | .30  | ....     | .50  | 4.00  |
| Keepsake .....         | 4.00            | 3.00 | 2.00 | .50      | 4.00 | 32.00 |
| Kelsey .....           | .30             | .15  | .08  | ....     | .30  | 2.40  |
| Klondike .....         | .75             | .50  | .35  | ....     | .50  | 4.00  |
| La Belle .....         | 2.00            | 1.50 | 1.00 | .25      | 2.00 | 16.00 |
| Lady Anne .....        | .35             | .25  | .15  | ....     | .35  | 2.80  |
| Lady Marion .....      | 1.25            | 1.00 | .50  | .15      | 1.00 | 8.00  |
| Lancaster .....        | .25             | .20  | .15  | ....     | .25  | 2.00  |
| Lancelot .....         | 2.00            | 1.50 | 1.00 | .20      | 1.60 | 12.80 |
| Lavendel Dream .....   | .75             | .50  | .35  | .10      | .75  | 6.00  |
| Lavender Prince .....  | .15             | .10  | .05  | ....     | .15  | 1.20  |
| Leading Lady .....     | .10             | .07  | .05  | ....     | .... | .80   |
| Lucky .....            | .25             | .20  | .10  | ....     | .15  | 1.20  |
| Mauvie Rose .....      | 1.00            | .75  | .50  | .15      | 1.00 | 8.00  |
| Minstrel .....         | .25             | .20  | .15  | ....     | .25  | 2.00  |
| *Miss Alberta .....    | 3.00            | 2.00 | .... | ....     | unit | ....  |
| Miss Chicago .....     | 4.00            | 3.00 | 2.00 | .50      | 4.00 | 32.00 |
| Miss Wisconsin .....   | .20             | .15  | .10  | ....     | .20  | 1.60  |
| Miss Vermont .....     | ....            | .15  | .10  | ....     | .20  | 1.60  |
| Morning Star .....     | 2.00            | 1.50 | 1.00 | .25      | 2.00 | 16.00 |
| Mt. Gem .....          | .75             | .65  | .45  | .10      | .75  | 6.00  |
| Mt. Index .....        | .10             | .07  | .05  | ....     | .... | .80   |
| Nancy .....            | .50             | .35  | .25  | ....     | .50  | 4.00  |
| *New Yorker .....      | 5.00            | 5.00 | 5.00 | ....     | 5.00 | ....  |
| *Ninety Grand .....    | 3.00            | 3.00 | 3.00 | ....     | .... | ....  |
| October Sunshine ..... | .75             | .50  | .25  | .05      | .40  | 3.00  |
| Orange Gold .....      | .15             | .10  | .05  | ....     | .15  | 1.20  |
| Oriental Pearl .....   | .20             | .15  | .10  | ....     | .20  | 1.60  |
| Patrician .....        | 3.00            | 2.00 | 1.00 | .35      | 3.00 | 24.00 |
| Personality .....      | .50             | .30  | .20  | .10      | .50  | 4.00  |
| Phantom Beauty .....   | .50             | .35  | .25  | ....     | .50  | 4.00  |
| Pink Charm .....       | .25             | .15  | .10  | ....     | .25  | 2.00  |
| Pioneer .....          | .15             | .10  | .05  | ....     | .15  | 1.20  |
| Pionciana .....        | 1.50            | 1.00 | .75  | .15      | 1.20 | 9.60  |
| *Queen Mary .....      | 5.00            | 5.00 | 4.00 | ....     | 5.00 | ....  |
| Red Cherry .....       | .75             | .50  | .30  | .08      | .60  | 4.50  |
| Red Rascal .....       | 1.00            | .75  | .50  | .15      | 1.00 | 8.00  |
| Redwing .....          | 2.50            | 1.75 | 1.00 | .30      | 2.50 | 20.00 |
| Reliant .....          | .75             | .50  | .25  | .10      | .75  | 6.00  |
| Silver Court .....     | 1.00            | .75  | .60  | .15      | 1.00 | 8.00  |
| Siboney .....          | 1.50            | 1.00 | .60  | .20      | 1.50 | 12.00 |
| Silver Wings .....     | .15             | .10  | .05  | ....     | .15  | 1.20  |
| Spic & Span .....      | .80             | .70  | .60  | .10      | .75  | 6.00  |
| Spotlight .....        | .10             | .07  | .05  | ....     | .... | .80   |
| Sun Spot .....         | .75             | .50  | .30  | .10      | .60  | 4.80  |
| Tarawa .....           | .35             | .25  | .15  | ....     | .35  | 2.80  |
| Texas .....            | .50             | .35  | .25  | ....     | .50  | 4.00  |
| Tivoli .....           | .40             | .30  | .20  | ....     | .40  | 3.20  |
| Topflite .....         | 1.50            | 1.00 | .50  | .15      | 1.00 | 8.00  |
| Tralee .....           | 1.00            | .75  | .50  | .15      | 1.00 | 8.00  |
| Treasure Island .....  | .75             | .50  | .25  | .10      | .75  | 6.00  |
| Trocadero .....        | .75             | .50  | .25  | .10      | .75  | 6.00  |
| Truelove .....         | .15             | .10  | .05  | ....     | .15  | 1.20  |
| Variation .....        | .10             | .07  | .05  | ....     | .... | .80   |
| Venida .....           | 1.00            | .75  | .50  | .10      | .80  | 6.40  |
| Wax Model .....        | .35             | .25  | .15  | ....     | .35  | 2.80  |
| White Challenge .....  | 1.50            | 1.00 | .50  | .20      | 1.50 | 12.00 |
| White Goddess .....    | 1.00            | .75  | .50  | .10      | .75  | 6.00  |
| White Magic .....      | ....            | 1.50 | 1.00 | .25      | 2.00 | 16.00 |
| White Wings .....      | 1.80            | .60  | .40  | .10      | .80  | 6.40  |

\* Bulb purchase required with a bulblet purchase.

Join the New England Gladiolus Society, Inc.  
Write Horticultural Hall, Boston 15, Mass.

Join the North American Gladiolus Council  
2 Williams St., Bel Air, Md.