

Historic, Archive Document

Do not assume content reflects current scientific knowledge, policies, or practices.

62.09



IRIS and HEMEROCALLIS
for
 1950

Lyon's Irisland

IN THE SAN FERNANDO VALLEY

LYON IRIS GARDENS
 7041 WOODMAN AVENUE
 VAN NUYS, CALIFORNIA

● Telephone — STATE 5-6014

Greetings From Irisland:



IN THE HEART OF THE SAN FERNANDO VALLEY

You are invited to Irisland's 11th Annual Seasons Opening, which begins April 9th of this year, where the tall Bearded Iris will be unfolding their panorama of gorgeous beauty in such a rainbow of colors as you've dreamed about.

As the season progresses, our display will include the various Beardless species, such as the Douglasianas, Evansias, Spurias, Siberians and Louisianas. Then the Hemerocallis will be blooming through the summer and fall.

Last year we had an extensive showing of the new World Famous "Flamingo Pinks" here at Irisland. This year we have added a host of the choice newly introduced top rating Iris from far and near. Ranging in colors from pinks to browns, and whites to near-blacks. Too you will find all of the recent A.I.S. Dykes Medal Winners, the 1949 Award of Merit Iris, plus a number of other fine award winners.

Your many expressions of approval on the addition of a "Color Chart" with the current "Symposium Iris" noted for your convenience, are appreciated.

We are thankful for the confidence shown in us by you, and for your friendly patronage.

Your continued interest and friendship have been a source of great inspiration to us here at Irisland, and we hope that through the coming years this mutual feeling will grow even stronger.

David and Mildred Lyon

TO OUR CUSTOMERS—

Our aim is to supply the finest Iris Rhizomes and Hemerocallis plants that can be grown. We aim first of all to please, so if for any reason your order is not up to expectations we would appreciate your prompt notice.

SHIPPING TIME—

Bearded Iris, Dwarfs, Evansias, and Louisianas, from July 1st to late December.

Spurias, Siberians, Hemerocallis, from September 1st to late December.

Douglasianas, November, December, January and February.

Where it is preferred—We will ship Spurias, Louisianas, and Hemerocallis in late February to March 10th.

Orders will be shipped in rotation as received except when time is specified. We appreciate you telling us when is the best time for us to ship to your locations.

Those wishing to call for their orders, PLEASE NOTIFY US SEVERAL DAYS AHEAD OF TIME. Thank you.

Plants should always be set out immediately.

HOW TO ORDER—

Please use the enclosed order blank. Be sure your name and full address are clearly lettered to avoid delays or loss in transit. Please send check or money order with order. **Stamps** cannot be accepted.

SALES TAX—

Residents of California, include 3% State Sales Tax.

Residents of City of Los Angeles, include 3½% Sales Tax.

SUBSTITUTIONS—

Please list several extra varieties, which we may substitute, should we be short on any items ordered. If no extra items are given for substitutions, we will substitute a near color of equal or better value, on items listed at less than \$1.00.

MEMBERS OF—

The American Iris Society and Southern California Iris Society.
The Hemerocallis Society.

LYON'S IRISLAND

SPURIA IRIS

The Spurias, often called the "butterfly Iris", are another beardless variety of the Iris family which is hardy and easy to grow. They range from three to five feet in height and will grow in most any location of the garden.

We feel confident that they will grow in any section, from the colder Northeastern states to the warmer Southern states, because we have shipped Spurias to all sections, and all reports about their adapting themselves have been good.

SAUGATUCK

TWO OPALS

Their blooming season starts near the last of the Bearded Iris season, thus prolonging Iris display in the garden. Too, they are one of the finest for cut flowers for arrangements and especially fine for corsages.

Once planted, they establish themselves and do not need to be transplanted for several years. Like the other rhizomous Iris, they should be given shallow plantings, that is, just cover the rhizomes. Plant from 1½ to 2 feet apart.

For specimen blooms we suggest an application of steer fertilizer around your plants, at the close of the winter, when the new growth is starting up. A compost mulch is very fine too. Keep them well watered during their growing season, especially the pre-blooming growth. You will be well rewarded.

SHIPMENTS will be made from September 1st, to late December. For those living in the colder regions we will ship in late February, after your hard, cold winter is over, if you wish it. Please keep in mind that blooms should not be expected until next year, if planted this late.

AZURE DAWN (Nies 1947)

An attractive blue-lavender of smooth color and texture, with a lemon-chrome signal patch on the falls. 46". \$1.25; 3 for \$3.00

BLUE DISPLAY (Nies 1947)

This is a tall medium blue Spuria iris with a yellow signal patch. Strong grower and heavy bloomer, a fine garden accent and will doubtless be in much demand for flower arrangements and commercial cut flower growers. Late. 46". \$1.50; 3 for \$3.75

BRONZSPUR (Nies 1941)

A blending of brown and yellow, veined sepia. The garden effect is brownish-tan. 46". \$1.25; 3 for \$3.00

CANARY ISLAND (M. R. Walker 1948)

Large flowered tall Spuria, remarkably sturdy and free-flowering. The delightful canary-yellow falls are very broad, ruffled around the edges in white. Standards large and erect, somewhat flaring, are white with canary-yellow at the haft. Style arms very broad and show a beautiful white crest. Stalks about 48" tall. Highly commended A.I.S. 1947. \$6.00

DUTCH DEFIANCE (Nies 1943)

A very good hardy blue with a yellow signal patch on the slightly frilled falls. Eric Nies considers this one of his best Spurias, and it most certainly is the largest in size. Award of Merit, A.I.S. 1949. 48". \$4.00; 3 for \$10.00

LARK SONG (Nies 1946)

The most ruffled of all the Spurias, and certainly it reminds us of Misty Gold. Beautifully poised, broadly horizontal in form. Its heavy substance and nicely rounded falls are a most delightful shade of rich yellow with the ruffled border white. The standards are almost white. This one is a heavy bloomer. Only a few rhizomes available. \$10.00

MICHIGAN STATE (Nies 1943)

Large bronze flower of good form. The entire flower is veined in a deeper tone of brownish bronze, producing a variation in effect. 40" \$2.00

MONNIERI

A golden yellow. This and Ochroleuca were used extensively in the work of creating this new series of Spuria beauties. 36". 60c

OCHROLEUCA

Soft white flowers, yellow patch on the falls. 50c; 3 for \$1.25

PASTORAL (E. Nies 1943)

A dainty innovation of an orange and lavender combination. The center of the fall petals is orange-yellow with a delicate lavender border. The upright standards are yellow suffused to lavender. Light lavender styles with deep lavender crests enhance this lovely creation. Very fine form, substance and texture. 32". \$3.50; 3 for \$8.75

RUSSET FLAME (Nies 1941)

A distinctive addition to the Spurias. Its glowing rich russet coloring, with an undercolor of deep yellow, is charming. The falls are bordered dark brown. 40". \$1.50

SAUGATUCK (Nies 1941)

This is a medium shade of lavender-blue. The standards are blue, with a yellow base. Falls are yellow with a wide border of the same lavender-blue around the edges. The veining is slightly pronounced. Early. 42". \$1.50; 3 for \$3.50

TWO OPALS (E. Nies 1946)

The Spurias are now coming to us in that much to be admired ruffled form. This one is most pleasing in its "new look". The standards are soft cream. Falls are the same, washed with lavender. Two Opals has that odd and rare gift of acquiring the tints or tones of whatever background it is placed against. This quality will make it most valuable for "My Lady's Corsage". Stock is still limited. 46". \$7.00

WADI ZEM ZEM (Milliken 1943)

An extremely large flower of clear deep cream color, with flaring falls two inches or better in width. An outstanding Spuria of excellent form, finish and substance. 48". \$3.00

YELLOW SWALLOWTAIL (Nies 1943)

Light yellow standards and rich deep velvety yellow falls of very smooth extra heavy substance. Not a fast increaser. 36". \$3.00

DOUGLASIANA HYBRIDS

These are California natives and thrive in almost any location in the garden with the average amount of care and watering. However, we advise some sun. Greatly admired in a garden cluster. They are grand plants for the perennial border, and do not require resetting for several years. Ideal as cut flowers for flower arrangements.

These little beauties start blooming out here in California about mid-April and bloom intermittently well into June. Plants are ever-green. This species is found in its native location up in the northern part of California, among the Redwoods. They grow and increase beautifully down here in Southern California where our climatic conditions are more moderate. A plant of Orchid Sprite has weathered Tennessee winter conditions for the past two years.

The only time the Douglasianas can be divided is in the middle of the winter, while dormant. We will ship established divisions from November 1st to late February (damp packed). (We suggest February where extremely cold winters prevail, as in New York and Canada, unless protection can be given, because of the lack of time for the plants to become established before extreme cold sets in.)

Immediate planting is necessary, as they do not like to have their roots exposed to the air. Keep well watered until established. Remember, too, that all Iris require good drainage.

Douglasianas will be available at the garden in gallon cans.

ARIOSO (Nies 1948)

This little gem of beauty has good size flowers with very smooth petals. The color is almost white with a most attractive flush of blue on the falls. \$3.00

BLUE SAGE (Nies 1947)

The Nies selections of California native irises are always much admired, wherever shown, for their fine quality of blooms, growth habits and beauty of color. Blue Sage is a wonderful color of sage blue with an ethereal pink glow, which is felt more than seen, cast over the entire bloom. Excellent substance, finish, and form. It is a heavy bloomer and exceptional branching. A stalk of Blue Sage won the Gold Cup for the best beardless stalk in the show at Hollywood's Iris Show 1949. 18". \$3.00

CAROLE CABEEN (Nies 1949)

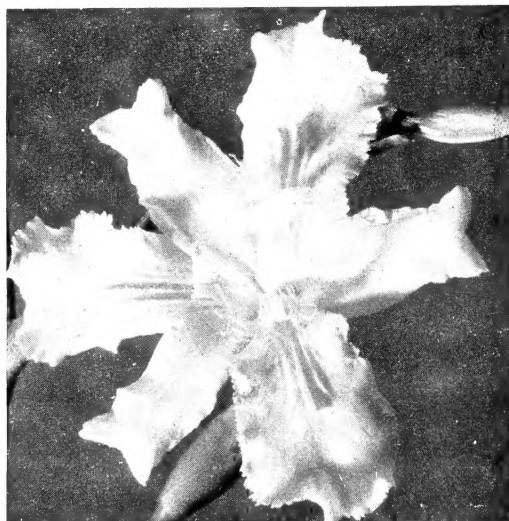
Mr. Nies has named this new Douglasiana for his granddaughter. A very pale blue lavender with a blue splash on the fall petals. Standards are blue lavender, bluish in the center. Styles, paler lavender. Splendid form and a very smooth, nice large flower. \$3.00

ORCHID SPRITE (Nies 1943)

Masses of pinkish-orchid flowers of beautiful form on 12" stems. There is nothing like this exquisite little beauty. Award of Merit A.I.S. 1948. \$2.00

YELLOW OPAL (Nies 1943)

Dainty and lovely, this little iris is a distinct addition to the Douglasiana group. Petals are more rounded and a light creamy white with purplish venation and deeper yellow midrib, giving an opalescent glow. Makes an attractive mound of foliage well covered with bloom on 12" stems. \$3.00



EVANSIA IRIS NADA (See page 5)



DOUGLASIANA IRIS, ORCHID SPRITE

SIBERIAN IRIS

Here is a species of the Iris family of long standing and proven sterling worth. Their tall slender grasslike foliage with slender graceful flower stems, give a daintiness and delicate beauty unlike any of the other Iris species. Holding their own as a cut flower for flower arrangements.

We have found that this species likes lots of sunshine. Adaptable around pools, or in the garden, making distinctive specimen clumps. These are not of the Rhizomous type Iris, but like the Douglasianas, a plant which is dividable into sections. The best time to divide, and plant them is late summer or early fall. The Siberian species always dies back completely for the winter. New growth starts up very early in the spring.

New divisions should be kept watered until well established, thereafter, moderate watering is all that is necessary. They may be left undisturbed in your gardens for several years. Siberians are winter hardy.

CAESAR'S BROTHER (Morgan 1932)

The best dark violet. Late bloomer. 36". \$1.00

MOUNTAIN LAKE (Gersdorff 1938)

Distinctive clear medium blue self with crisp flaring falls slightly ruffled. The center of the flower is lighter in its coloring. 36". \$2.50

TUNKHANNOCK (Scheffy 1944)

One of the largest whites of flaring form. Plant this one with Tycoon. 38". \$3.00

TYCOON (Cleveland 1938)

Said to be the largest Siberian to be flowered to date. Huge wide petaled flowers of violet-blue with a satiny finish. Outstanding. 34". \$3.00

LYON'S IRISLAND

LOUISIANA IRIS

This beardless variety which is proving to be very much in demand, has a most graceful, carefree air, challenging us to give it a try. Originating from down in the Louisiana swamps, they fill another much needed type for our gardens. Where it might be too shady for the other Iris species, plant Louisianas.

Out here in Southern California we treat them just as any other Iris, taking care to use the following cultural needs. Louisianas don't seem too particular about when they are planted, but for best blooms the coming season, we suggest starting your plants late in summer, or early fall. Early spring planting (February), in the colder regions of the eastern states, might prove quite beneficial, inasmuch as they would be well established before the next winter. However, not too much should be expected the first season of blooming where late planting is practiced.

Select a spot in your garden that gets filtered shade from the hottest part of the day's sun. Set your plants about two feet apart, where different varieties are used. Shallow planting is best. Just cover the tops of the rhizomes. Keep the ground mulched with leaf mold, compost, or even steer fertilizer is good. It is important that Louisiana Iris are kept well watered while in the growing state, especially until they have established themselves. Then again in the early spring, as plants begin their pre-blooming seasonal growth, give them lots of water. They will reward you with more abundance of blooms, larger in size, and taller in stalks.

We have added a few of our collection, which we are importing direct from Louisiana, to our listing for this season. This collection is being selected especially for us by the best authorities on Louisiana Iris.

BAYOU VERMILION (MacMillan 1943)

An Abbeville red, said to be one of the best and reddest in crimson red tones. Its rich velvety flower, with three golden lines for a crest, measure 6½". \$5.00

CACIQUE (Berry)

One of the darkest blackish-purple Louisianas with a gold strip on the fall petals. 36". 75c

CONTRAST (De Baillon-Dormon 1943)

Bi-colors are quite a rarity in the Louisiana species. Here is one with a graceful flat form. The sepals are violet and the upright petals are of palest orchid. Its crest is a bright yellow. \$5.00

DARK MORASS (Nies)

We find here a lovely large royal purple flower flushed with chocolate tints in the heart of the blooms. Plant this with J. D. Nies. 40". 75c

ELEPHANTINA (Small 1931)

Large flaring ivory-white, with a yellow signal patch, of good heavy substance and wonderful form. \$1.00

FORSYTHIA (C. Dormon 1946)

The largest and truest Abbeville yellow with a graceful form. \$5.00

GIGANTICAERULEA "Orchid"

Robust plants with large showy flowers of a most pleasing shade of orchid. Bright yellow crest on recurved sepals. Petals upright. 36". \$2.00

GOLDEN FAIRY (Nies 1946)

A lovely medium to dark toned yellow of free blooming habit. Mid-season. 40". \$1.25

HAILE SELASSIE (MacMillan 1943)

One of the finest and most popular Abbeville Iris. Great flat flowers of good form, with sepals and petals meeting. Deep velvety vivid red-violet, with a long clearcut crest of gold. Excellent placement of blooms. A true gem for flower lovers. 28". Late. \$2.00

J. D. NIES (Nies 1934)

The garden effect is a rich maroon-brown. By Royal Horticultural color, the center of the falls are maroon, blended with majolica yellow as the color sweeps toward the outer edge of the sepals, gradually giving way to the majolica yellow at the very edge. Standards are a blend of maroon and majolica yellow. 36". \$2.00

JUENE FILLE (De Baillon-Dormon 1942)

Delicate and lovely large frilly white flowers with a yellow crest. 40". \$1.50

KRAEMERS YELLOW (Kraemer 1943)

A rare shade of sulphur yellow with green style arms. This is a collected natural hybrid of giganticaerulea flaring form. Good quality. Mid-season. 30". \$4.00

MAGNOLIA PETAL (De Baillon-Dormon 1942)

Large deep cream 6" flowers with a bright yellow crest. Firm substance and fine form. These cream colored Irises lend themselves well for effective landscaping and flower arrangements. 30". \$2.50

MALLARD WING (Nies 1946)

Medium grey-blue flower with dark purple in the center of the falls. A unique and striking color combination. Its form is of that beautiful flaring saucer type. Good heavy texture. 40". \$3.00

MARY S. DEBAILLON (C. Dormon 1942)

Here is the 1948 DeBaillon Award Louisiana Iris. They are like tremendous orchids. Petals are orchid-pink, sepals of lavender-rose. These stunning 7" flowers are set off by a broad yellow crest. Often several enticing blooms are open at the same time on a stalk. 36". \$2.00

RHUMBA (Shehee-Dormon 1946)

This Iris was collected near New Orleans. Its exquisite huge 7" blooms are an entrancing shade of orchid. \$2.00

ROYAL HIGHNESS (De Baillon-Dormon 1946)

Of deepest violet-blue in color. Handsomely ruffled, huge 7" flowers make a majestic display in the garden. Stalks over three feet in height. \$3.00

SAVANNARUM

A brilliant deep rich blue flower with a yellow signal patch on the falls. Plant in front of Golden Fairy. 35". \$1.00

VINICOLOR

A magnificent flower of rich velvety wine-red. Large blooms of perfect form and fragrance. 42". \$1.00

WILD CHERRY (C. Dormon 1946)

This is a new introduction of Miss Dormon's in the Abbeville red hybrids. Huge 7" flowers of an exciting "wild cherry" coloring. Magnificent. Stock very limited. \$10.00
Dwarf and Table Iris are miniature in size, ranging from 6" to

EVANSIA IRIS, CRESTED

An Evansia Iris should be planted in a SHADY LOCATION and kept moist at all times. Leaf mold is a good ground cover. They start blooming about the middle of March and often we find blooms still coming out as late as in June.

This species makes a very satisfactory pot plant for the colder regions as it is not winter hardy. Early planting assures better blooming the next spring. Slightly acid loving.

NADA (Giridlian 1936)

Dainty 2¾" white flowers with edges laced, on 2½' stalks, branching and rebranching, carrying as many as 40 terminal buds. Each bud produces as many as five flowers in succession. Blooms over two months. Ideal as a cut flower, and for corsages. \$1.00

DWARF AND TABLE IRIS

27" in height. Some varieties bloom several times a season on established clumps. Their blooming season starts in February, which is earlier than the Tall Bearded Iris.

Ideal as rockery specimens. They also make adorable borders for driveways and the perennial flower beds.

Rhizomes are small. Planting care same as for the Bearded Iris.

DWARF IRIS (Height 6" to 12")



Cyanea Crimson-purple.	25c
Dapperling Yellow.	25c
Laddie Boy Medium blue.	25c
Orange Queen Orange.	35c
Peshawar-Onco Brown-purple.	40c
Snow Maiden Ruffled white.	25c
Socrates Red-purple.	25c
Path of Gold Yellow.	\$1.25



TABLE IRIS (Height 18" to 27")

Bunting Pale violet.	75c
Chewink Light blue.	75c
Pewee White.	25c
Warbler Yellow.	50c

Introductions for 1950

By Lyon Iris Gardens

BEARDED IRIS

PINK MATRON (Carl C. Taylor 1950)

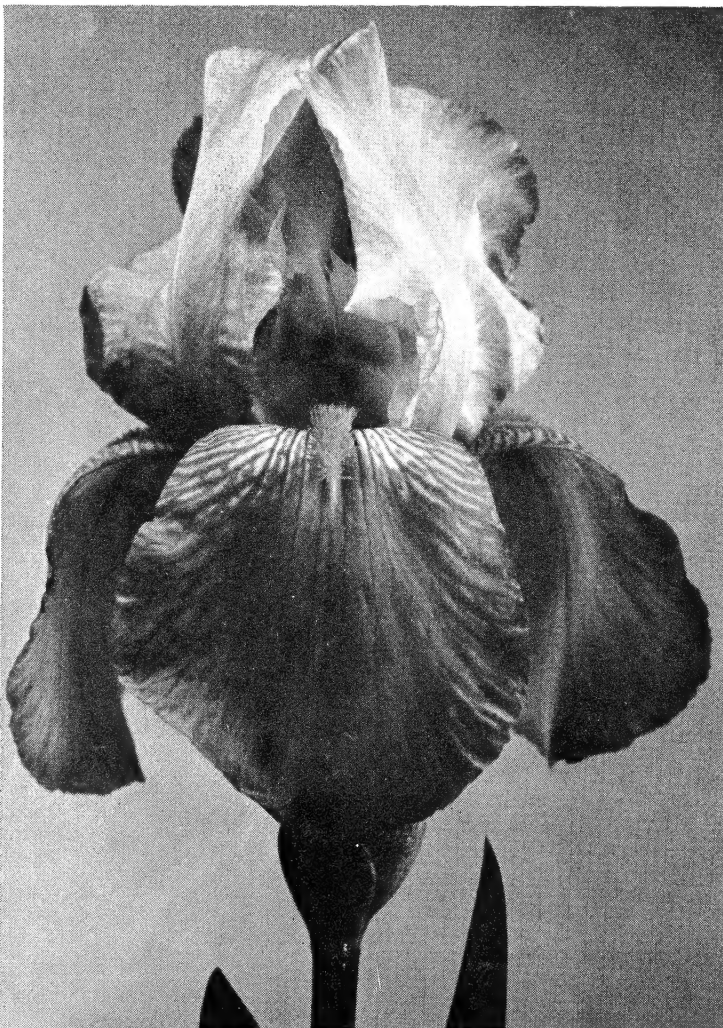
(Pink Ruffles x Princess of Brentwood)

Those who have grown Carl Taylor's Golden Ruffles, Hija Mia, etc., know that he is a very discriminating hybridizer. Now again he has given us one of the most delightful pink blends. Very smooth in texture, with those full rounded petals, semi-flaring form, and good size flowers, which we Iris lovers love to see in an Iris. Excellent placement on well branched stalks, good substance, delightful fragrance, and a vigorous grower. Winter hardy. 40". \$10.00

Lyon's Irisland

SELECTED BEARDED IRIS

An Excellent Selection of Standard Varieties—Specially Priced on Page 11.



BERKELEY GOLD

ABOUT IRIS

The name of the originator, and date introduced, follows each variety listed.

Height of blooms is often indicated in inches with season of blooming, such as: Early, Mid-season, or Late. We believe these will help you in making your selections.

IRIS TERMS: AMOENA—White or tinted standards with colored falls.

BICOLOR—Light standards and dark falls of the same color.

BLEND—A combination of two or more colors.

PLICATA—Stitched or stippled color on white or yellow flower.

SELF—The same uniform color all over.

VARIEGATA—Yellow standards with fall of purple or red-brown.

ALADDIN'S WISH (Murawska 1945)

One of the most novel patterns in the bearded Iris. An appealing shade of medium blue, with brushed markings of cream

throughout the large flowers. Midseason. 36". \$3.00

ALBA SUPERBA (J. Sass 1943)

Huge pure white broad petaled blooms of heavy substance, carried on tall well branched stalks. This iris increases rapidly. 38".

\$2.50

ALDURA (Larsen 1943)

Delicately lovely in its soft clear blue etching on huge flowers of clear blue-white. This is one of the most distinctive plicatas in this color. Exceptionally fine substance and graceful flaring form. Mid-season. 36".

\$1.00

AMANDINE (G. Douglas 1946)

This cool lemon cream self is a great favorite among the new cream Iris. Etched with the delicacy and clearness of Haviland china, yet of that wonderful substance which withstands adverse weather conditions so well. Blossoms are beautifully ruffled with broad, rounded full petals of perfect form on well branched stalks. Award of Merit A.I.S. 1948. Midseason. 36".

\$7.50

AMIGO (Williamson 1934)

This rich amoena has light lavender standards and pansy-purple falls. 30".

50c

AMITY (Corey 1945)

A daintily stitched plicata of soft white background, delicately etched in soft tints of blue. A picture worthwhile. 36".

\$2.50

AND THOU (Graves 1942)

Pale wedgwood blue with a deeper flush of blue in the center of the blooms. Its ethereal quality makes one linger longer in admiration of this impressive Iris. Beautifully formed and of good substance. Hardy. Mid-season. 40".

\$1.00

ARAB CHIEF (Whiting 1944)

A rich and glowing self of brilliant burnt orange coloring. Flowers are of good size. Very late. 36".

\$2.00

ARCADE BUTTERCUP (Milliken 1947)

A clean and clear yellow of very deep tones. Not a tall Iris but its smooth texture, semi-flaring falls and good substance, make it a fine plant for the front of your flower beds. 30".

\$5.00

ARGUS PHEASANT (De Forest 1948)

There are few Iris of a solid self color with the beard that matches, but here is a new gorgeous golden Argus-brown with the same colored beard. Large flowers of smooth texture, pleasing form, and good branching. 38". Honorable Mention A.I.S. 1948.

\$18.00

AUBURN (Kleinsorge 1945)

Novel and impressive coppery henna-brown with an undertone of gold. The solidness of color is broken by a vivid patch of blue in the center portion of the fall petals. Auburn has good garden value because of its color carrying qualities. Early. 36". \$7.50

AZALEA (Nesmith 1946)

Both attractive and charming is this lovely new color of Azalea pink with a flush of ivory over the entire flower. A coral pink beard enhances its beauty. Flowers are medium sized, and of good substance. It is a generous bloomer and increases rapidly. Mid-season. 36". \$6.00

AZURE SKIES (Pattison 1943)

Beautifully ruffled, crisp self of light lavender blue. A fine late bloomer. \$1.25

BALTIS (C. G. White 1948)

An onco-bred of deep naphthalene violet shades, which carries the oncocyclous characteristics. Three-way branching on stalks 30". Honorable Mention A.I.S. 1948. Very early. \$5.00

BANDMASTER (Hall 1944)

Vigorous in growing habits, and a free bloomer. The color is a clear medium blue, which does not fade. It has large blooms of fine form, substance, and well branched. Mid-season. 36". \$2.00

BARBARA ADAMS (Cahoon 1947)

A smooth, rich deep blue-purple self of medium size with flaring falls and well formed standards. It is set off by a blue beard, tipped white. Early mid-season. 34" \$4.00

BATAAN (Kleinsorge 1942)

A real innovation and a much sought after Iris. Its dark blending of copper, with plum, henna and rich brown make a most desirable color picture. 34". \$2.00

BERKELEY GOLD (Salbach 1942)

This rich deep yellow self of even tone, fine form and heavy substance, is a grand addition to any garden. \$1.00

BLACK & GOLD (Kleinsorge-Salbach 1943)

A most striking variegata, with standards of deep rich chrome, and black maroon falls. We suggest you plant this Iris where it will get some shade. Tall. Mid-season. \$1.00

BLACK BANNER (Nicholls 1947)

A new near black of intense coloring. Velvety and rich with the hafts of the fall petals almost solid in the same midnight hue of the flower. A worth while addition to any garden. Late. 36". Honorable Mention A.I.S. 1947. \$2.50

BLUE GLOW (Nicholls 1945)

An impressive flower of deep rich blue with a brown flush on the haft of the fall petals. The beard is of near white. A decided sheen makes this one of the loveliest late bloomers. Honorable Mention A.I.S. 1948. 36". \$3.50

BLUE RHYTHM (Whiting 1945)

Hailed by all who view it as a top ranking Iris. In fact it was awarded the Award of Merit A.I.S. 1947, and was runner-up for the Dykes Medal 1949. The color is a near cornflower-blue with a silvery sheen. Good size blooms with full broad well proportioned petals. There are no haft markings to detract from its smoothness of beauty. A good grower with fine branching. Mid-late. 38". \$4.00

BLUE SHIMMER (J. Sass 1941)

A sparkling and distinctive pure white, plicated with the clearest medium blue stipplings which appear to have been sprayed on. Rated as the most outstanding Iris in its color class. Mid-season. 38". \$1.50

BLUE VALLEY (K. Smith 1947)

One of the most talked of Iris of the season. It is said that this is one of the truest blues of all the Iris. It is a seedling from a Lake George x Great Lakes cross. The large ruffled blooms with flaring falls are medium blue which continues well into the heart of the flower with a smooth texture, and metallic sheen which sparkles throughout the entire flower. Mid-season. 36". Award of Merit 1949. \$10.00

BRILLIANT AMBER (Salbach 1947)

Here is an excellent Iris of character and distinction. Its large blooms are in brilliant shades of golden brown and amber, with just a suggestion of pink in its makeup. Has well closed standards of deep amber with slight pink cast. Falls are semi-flaring, of bright golden brown with deeper gold veining. A deep yellow beard enhances the tone. Heavy substance, well branched, and good grower. Mid-season. 40". \$5.00



BLUE SHIMMER

BRYCE CANYON (Kleinsorge 1944)

Definitely a color break which has rightfully become a must to all Iris enthusiasts. Its new shade of warm henna-copper on a large flower with domed standards and broad, well rounded falls of fine substance and branching is breath-taking. Runner-up for Dykes Medal 1948. Mid-season. 36". \$3.50

CALIFORNIA PEACH (Salbach 1941)

Grand delicate blend of outstanding qualities. Standards of soft old gold shading to rose, falls are of salmon apricot with a suggestion of soft lavender in the center. 38". 50c

CAPTAIN WELLS (Cook 1941)

Deep glossy maroon purple of uniform coloring with no haft markings. Beard is bronze-yellow. Its richness shines luxuriantly. A late bloomer. 36". \$1.00

CAROLINE BURR (K. Smith 1940)

Large, well formed flowers of ivory-white with a tinge of elusive green. 45". \$1.00

CASA MORENA (DeForest 1943)

An entirely new shade of burnt sienna and chestnut that glistens in the sunlight as though it were frosted. A self color with golden style arms and beard of brownish orange. Flowers are large and well formed on nicely branched stalks. Midseason. 38". \$2.00

CASCADE SPLENDOR (Kleinsorge 1945)

Heralded by A.I.S. Judges as a most outstanding blend of pink, tan and apricot. Large blooms, ruffled in both standards and falls, of good substance. Late. 36". \$3.50

CHAMOIS (Kleinsorge 1944)

Truly appropriately named. A real chamois color without any veining or markings to mar its smooth clear color. Large flowers beautifully formed, with standards domed and falls slightly waved at the edges. The smooth soft finish makes this Iris most desirable. Award of Merit A.I.S. 1948. Midseason. 34". \$5.00

CHANTILLY (Hall 1945)

Ruffled orchid pink flowers with a flush of gold at the haft. The edges of both standards and falls are so very heavily frilled, giving the appearance of being edged with lace. Has good substance and is winter hardy. 36". \$3.50



BRYCE CANYON



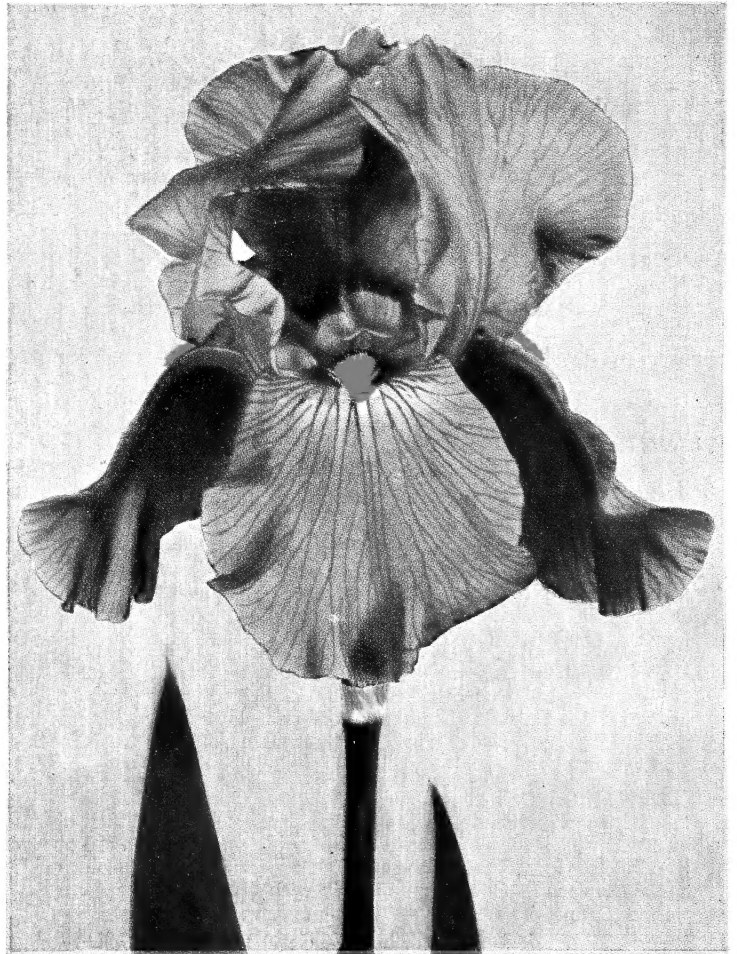
SOLID MAHOGANY

CHAR-MAIZE (D. Lyon 1949)

A large flowered Iris of exceptional merit. Extra fine in proportion and heavy of substance with falls and standards delicately ruffled. For richness of color this flower is hard to surpass, for the deep yellow shows rich tones of chartreuse which blend and deepen in the ruffling to present a flower of definite quality. The heavy substance withstands degrees of heat and wind such as to wilt average Iris. Char-maize is vigorous, presenting well spaced flowers on tall branching stems. 44". Midseason. Highly commended A.I.S. 1948. Honorable Mention A.I.S. 1949. See color illustration front cover. \$22.50

CHERIE (D. Hall 1947)

One of the newest "flamingo" pinks and a worthwhile addition to any garden. Its delicate shade of real pink contrasted with a deep tangerine beard is most entrancing. In fact, it is a "must have". The ruffled blooms are of good size, form and substance. A vigorous grower. Midseason. 34". Award of Merit A.I.S. 1949. \$18.00



CHIVALRY

CHICORY BLUE (Douglas 1942)

Large slightly ruffled self of chicory blue, with firm substance and smooth finish. This Iris has bloomed intermittently all through the late summer and early fall for us. Early-midseason. 36". \$2.50; 3 for \$6.25

CHIEF POKING FIRE (DeForest 1942)

A bright and distinctive oxblood-red and Victoria lake, with an infusion of copper over the entire flower. Firm texture and good sized blooms with domed standards and broad flaring falls. A very satisfactory red in every way. \$1.00

CHINA LADY (Milliken 1943)

Early in the season this refreshing tall stately Lady opens into blooms of exquisite glistening ivory. There is a golden glow sent out from the heart of the flower which is accentuated by a brilliant yellow beard. It has excellent substance, form and finish. 75c

CHINA MAID (Milliken 1936)

One of the finest pinks. Soft lilac-pink blended golden bronze. Tall. Mid-season. 75c; 3 for \$1.85

CHIVALRY (J. Wills 1944)

This exquisite Iris, a Dykes Medal winner for 1947, is most desirable and should be in every garden. Its blooms are medium blue with ruffled edges, having domed standards that are large and full. The gracefully flaring falls are broad at the haft, and are of excellent texture. A blue tipped orange beard gives a finish to this gem of real blue. Midseason. 36'' \$7.50

CLAREMONT (Nies 1947)

Flowers are dark violet with attractive brown tints in the haft, shoulders accentuated further by the burnt orange beard. Falls semi-flaring, rich satiny texture. Fall bloomer. 75c

CLOTH OF GOLD (Whiting 1945)

A vivid clear deep golden yellow with a sparkle. Everybody's favorite, because of its many fine qualities and refinement of finish, flaring form, firm substance, and fine branching stalks. Midseason. 38'' \$2.00

CLOUD CASTLE (Graves 1944)

Charming pale wisteria blue self of good size and form with fluting at the edges of the standards. The wide flaring ruffled falls are of smooth texture. It possesses an unusual sparkling sheen. 37''. Mid-season. Award of Merit A.I.S. 1949. \$3.00

COCK ROBIN (Hall 1947)

Here is an enchanting new variegata with tan-gold standards and brown-red falls. It will make a brilliant and colorful display spot for your garden. Mid-season. 36'' \$3.00

COLOR CARNIVAL (DeForest 1949)

We saw this in Fred DeForest's garden while at the 1949 A.I.S. Convention. The flower is a deeper pink than Spindrift, and has a startling color contrast of bright purplish tones throughout the top portion of the fall petals, surrounding a bright tangerine beard. No, you never saw anything like it before. It is truly a color carnival. Mid-season. 36'' \$10.00

COPPER GLOW (G. Douglas 1945)

A rich and brilliant Iris. Standards are a blending of coppery rose and golden brown and slightly fluted edges. The flaring falls are deep golden yellow with an all over flush of same color as the standards. Burnished gold beard and styles complete the picture. Mid-late. \$3.00

COPPER PINK (Kellogg 1941)

A beautiful soft pink, flushed with sparkling copper. Fine form and substance. 75c

COPPER ROSE (Cook 1941)

A blending of old rose, copper and brown, enlivened by a glow of golden yellow in the center of the flower. Its smooth silky finish, with no venation markings makes this an exceptionally fine Iris. \$1.00

CORDOVAN (Kleinsorge 1946)

This is one of Bryce Canyon's seedlings. In color it is close to that of Cordovan leather. Rich and glossy tones of deep coppery ox-blood red. Standards are coppery rose-red. Falls are frilled at the edges. Large flowers with good branching. Mid-season. 36'' \$2.50

CORTICA (H. Sass 1940)

A yellow plicata with neat marking of reddish brown tones, on a background of soft yellow. Not a fast grower. Mid-season. 30'' \$1.00

COUNTRY LASS (Walker 1947)

Light rose blend overlaid with buff. Flowers are of good size and slightly ruffled. The beard is orange, fine, and very dense. Early midseason. 39'' 50c

COURTIER (D. Hall 1947)

Deepest in color of all the new "Flamingo" pinks, which is its outstanding charm. Not a large flower but its branching is good. The deep tangerine beard is very prominent. Mr. Hall says that all his flamingo pinks are winter hardy and set seed freely. Mid-season. 30'' \$6.00

DAFFY (DeForest 1947)

A novel innovation and well named. This trim plicata is of good form, size and substance. The ground color is near-white, with cream on the reverse side of the falls. The standards are flushed maroon. Falls are peppered with Zebra stripe and all variations in maroon. Mr. DeForest says that some of Daffy's seedlings show the same variations. Try it. Midseason. 36'' \$3.00

DAWN OF GOLD (Salbach 1940)

A late blooming Iris of deep medium yellow tones. Nicely formed flowers with flaring falls. A good increaser. Late. 35'' 75c

DAYBREAK (Kleinsorge 1941)

Large slightly ruffled flowers of golden pink with a coppery undertone of good form and substance. One of the best pink blends. Tied with Ola Kala for Dykes Medal A.I.S. in 1946. \$1.25

DEEP VELVET (Salbach 1939)

One of the richest dark Irises of deep red-violet. Beautifully flared falls. Award of Merit 1942. Mid-late. 36'' 75c

DESERT SONG (Fay 1946)

This is definitely one of the most outstanding of the cream colored Iris. Beautifully flared and ruffled. Excellent substance, and clean hafts. Blooms over a long period. Early-mid-season. 36''. Award of Merit A.I.S. 1949. \$7.50

DISTANCE (Cook 1946)

Harmonious in its clear smooth silvery light blue coloring. Void of veining at the hafts. The beard is white and inconspicuous. Mid-season. 36''. Award of Merit A.I.S. 1949. \$7.00

DOWN EAST (Tobie 1943)

An anthracene purple self with semi-flaring falls of an exquisite velvety texture. The beard is purple, tinted bronze. Mid-season. 37'' \$2.50

DREAMCASTLE (Cook 1943)

A beautiful clear solid orchid pink color. Its white beard tinted lemon yellow at the base makes a very pleasant effect. The large flowers with domed standards and semi-flaring falls are striking. Award of Merit 1948. \$5.00

DREAM GIRL (Hall 1944)

This is one of the true "flamingo" pinks. Self colored with no venations on the haft, and holds its color well. A free bloomer and good increaser, but rhizomes are not large. Midseason. 32'' \$3.00

DUET (N. Grant 1942)

A most unique color combination that attracts. Standards are of honey-beige with a pink flush, and falls are pleroma violet bordered with same color as standards. Flowers good form, fine substance and a long bloomer. Excellent branching. 38'' \$1.00

EASTER BONNET (Maxwell 1946)

An enticing new color combination of rhodinite pink, bordered with a half-inch margin of burnished gold on both the standards and the falls. A golden flush in the heart of the flower combined with a gold beard make this startling new color combination very attractive. Midseason. 36'' \$3.00

EDWARD LAPHAM (Lapham 1942)

The nearest to real red of all Iris. A true crimson self with no markings to mar its beauty. A bronze-gold beard gives finish to this smoothly tailored splendid red. Mid-late. 34'' \$2.00

ELLA CALLIS (H. Sass 1942)

Here is an Iris that catches the eye of every garden visitor. The color is strikingly different. Huge deep yellow flowers with an orange flush on the falls. Midseason. 36'' \$1.50

ELMOHR (Loomis 1942)

The Dykes Medal Winner of 1945. A William Mohr hybrid of exquisite shades of rich, reddish-mulberry. Flowers are huge in size. 35'' \$1.00

ENVOY (DeForest 1948)

A smooth dark Iris whose bright rich standards are flushed reddish purple, and the falls are a near black with an orange beard. \$15.00

ESQUIRE (Lothrop 1945)

In Southern California where this Iris was originated, Esquire has received much favorable comment. It is a seedling of Brunhilde and has that same uniform rich, smooth deep blue-purple color, although taller, and of better form. Excellent branching. Mid-late season. 40'' \$5.00

EXTRAVANGANZA (G. Douglas 1944)

A real Amoena. The standards are white with a slight shading of cream at the base. The falls a blending of iridescent copper, red, lavender, and deep violet, with a violet flush down the center. Very late. 40'' \$6.00

FANTASY (D. Hall 1947)

Most attractive lovely tones of rose and orchid-lavender with a flush of golden yellow at the throat of the flower. The tangerine beard illuminates this fantasy of color. Not a tall Iris but when it bloomed in our garden, four blooms opened at one time on the well branched stalks, giving us a profusion of dainty coloring. Every year this Iris has bloomed again in the fall for us. Award of Merit A.I.S. 1949. Midseason. 30'' \$15.00

FERNANDO (Grace Tyler 1948)

This Iris was first shown at the Van Nuys Flower Show in 1941, where it won praise and admiration from everyone. It is a Violet Crown seedling. Its well formed large blooms have always commanded attention in our garden too. In color it is a striking deep rose-purple, of good garden value. Late midseason. 38". \$1.25

FIESTA (C. G. White 1936)

The standards are like sparkling copper, and the falls apricot-orange with a brilliant orange beard. Loved by all who see it. 36". \$1.00

FIRECRACKER (D. Hall 1943)

This is the brightest red plicata of them all. The flower is yellow, heavily stitched and etched in a glowing dark burgundy red. Its charm attracts attention from afar. Midseason. 32". \$3.00

FLORADORA (D. Hall 1947)

A medium toned flamingo pink of medium size with good form and substance on well proportioned height foliage and stalks. A geranium red beard makes a pronounced contrast greatly admired. There are no markings on the haft of the fall petals. Midseason. 30". \$5.00

FLORA ZENOR (J. Sass 1942)

One of the new "cameopinks" with a tangerine beard, medium size flowers, which remind one of strawberry ice cream. Mid-season. 36". 75c

FORT KNOX (Milliken 1941)

Smooth light golden yellow of good branching, substance, and growing habit. Midseason. 40". \$1.00; 3 for \$2.50

FORTUNE (Kleinsorge 1941)

A uniform old gold color with overlay of rusty red. Large blooms of medium height. Mid-late. 36". 75c

FORTUNE'S FAVOR (DeForest 1944)

A beruffled giant of bright glistening tan. The standards are broad and closed. Wide rounded falls are overlaid with a rosy lavender tint, and a luxuriant orange beard. Midseason. 36". \$2.50

FRANCELIA (McKee 1944)

A brilliant deep chrome-yellow which is carried down into the throat of the flower. The beard is of the same pleasing tones of yellow. Flowers are beautifully formed of fine substance and well branched. They have good keeping quality. Midseason. 34". \$3.00

FULL MEASURE (DeForest 1941)

A deep orange-tone yellow self with an orange beard. Late. 40". Plant this one in back of Golden Ruffles. \$1.25

GALE STORM (Nies 1947)

Very large medium lavender blue flower of wonderful form, finish and substance and of good height. A vigorous grower and heavy bloomer. 40". \$1.50

GALLANT LEADER (Weisner 1939)

Charming combination of deep rose-red standards with velvety maroon falls blended with rich brown at the haft. Late bloomer. 36". \$1.00

GARDEN FLAME (H. Sass 1941)

Another late bloomer of rich garnet red tones with no venations. A favorite among the reds. It makes a vivid and brilliant emphasis in the garden. Mid-late. 34". \$1.00

GARDEN GLORY (Whiting 1943)

Rich bordeaux red blooms with no haft venations and a deep bronze-gold beard which helps to accent the enameled smoothness of this splendid new addition to the reds. Flowers are of medium size with flaring form. Mid-late. 33". \$4.00

GARDEN MAGIC (Grinter 1936)

A worthwhile addition to anyone's garden. Not a rapid increaser, therefore, there is never too much stock available. Its deep rich red color, fine substance and good form, make an attractive Iris. Mid-late season. 36". 75c

GAY SENORITA (Salbach 1944)

A stunning variegata of huge size. Standards deep honey yellow, falls golden yellow ground color, heavily overlaid deep brown with deeper brown veining. Good substance and does not fade. Early mid-season. 40". \$1.50

GENERAL MacARTHUR (Weed 1943)

This Iris is of huge size. Stately cream-white self with an inner glow of gold at the haft. Late. 38". 75c

GOLDEN EAGLE (D. Hall 1942)

Brilliant light yellow with a satiny sheen. Large flowers of good form and substance. A fast grower. Early midseason. 38". \$1.00

GOLDEN FLEECE (J. Sass 1940)

A very popular and outstanding light cream-yellow Iris with standards lemon-yellow, and falls creamy-white, edged gold. Midseason. 36". \$1.00

GOLDEN MADONNA (Essig 1940)

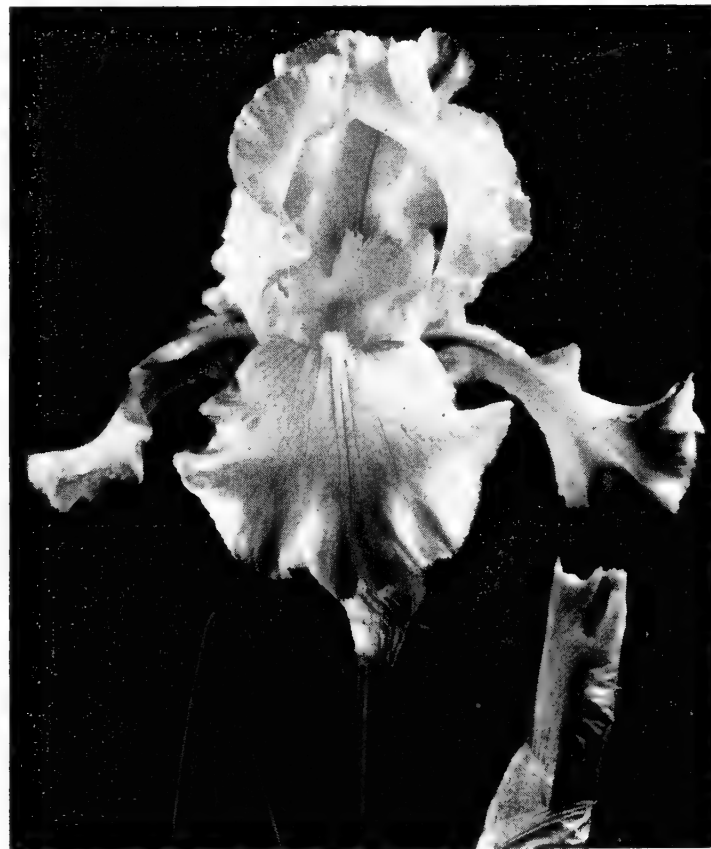
One of the most impressive Irises. Large full rounded blooms of exceptionally smooth finish. The standards are creamy-yellow, with falls milk-white, edged gold. Its fragrance reminds one of the Easter Lilies. Midseason. 40". \$1.00

GOLDEN MAJESTY (Salbach 1938)

An exceptionally fine Iris both in performance and color of deep yellow which does not fade. Mid-late. 36". 50c

GOLDBEATER (Kleinsorge 1944)

One of the highlights in the yellow class. Highly praised by A.I.S. Judges. A deep chrome-yellow self with no haft venations to mar its solidness of color, and the buds themselves show this same bright clean yellow. Large flowers, excellently branched, and a good increaser. Midseason. 36". \$2.00



SNOW FLURRY

Planting Directions for Bearded Iris

Iris will grow well and bloom freely if planted in well drained soil, and have at least one-half day's sun. Dig the soil to a depth of about 10 inches. Bone meal may be worked in if desired. When planting a rhizome, spread the small roots out, firm the soil about them, and have the rhizome, or bulb-like portion of the plant, just below the soil level, about one-half inch. (If soil is sandy, 1 inch.) Plant from 12 to 24 inches apart.

Water well after planting, keep moderately moist until well established and growing. Thereafter, every 10 days or two weeks is sufficient watering. Keep ground lightly mulched and plants clean, so that the sun may reach the ground around them at all times.

If your ground is in need of fertilizing, be most careful not to allow any fertilizers to come in contact with plants, as this will cause rot. The proper time to fertilize is after the plants are well established (late in winter).

Divide and reset Iris every three or four years (June to October).

ORDER SHEET

LYON IRIS GARDENS

**7041 WOODMAN AVENUE
VAN NUYS, CALIFORNIA**

Order No. Date

Ship to

Street or R. F. D.

City State
Zone

Ship When

Amount Enclosed How Ship

Substitutions—If supply of a variety you have ordered is sold out, may we send you another, of equal or greater value? Yes....., No.....

Quantity	Variety	Each	Price
Total			
California State Sales Tax 3% City of Los Angeles Sales Tax ½%			
TOTAL			

POSTAGE—We prepay postage anywhere in the United States on orders over \$3.00. On orders less than \$3.00 please add 35c to cover postage and packing costs.

OUR IRRESISTIBLE COLLECTION

OFFER No. 1—Select 4 from Row 1 } **8 Iris for \$8.00**
 2 from Row 2 }
 2 from Row 3 }

OFFER No. 2—Select 6 from Row 1 } **12 Iris for \$12.00**
 3 from Row 2 }
 3 from Row 3 }

Row No. 1	Row No. 2	Row No. 3
CAROLINE BURR	BLUE SHIMMER	CHICORY BLUE
ELMOHR	HIJA MIA	DOWN EAST
FORT KNOX	MOONLIGHT	JASPER AGATE
GOLDEN EAGLE	MADONNA	KATHERINE FAY
GYPSY BARON	PAINTED DESERT	LADY MOHR
HER GRACE	RED VALOR	TEA ROSE
HOOSIER	SILVER SUSIE	ALBA SUPERBA
SUNRISE	SONRISA	
SHERIFFA		
REMEMBRANCE		
SPUN GOLD		
TISHOMINGO		

IRISLAND'S SPECIAL COLLECTION

7 Iris Gems for \$30.00

EXTRAVAGANZA	LADY BOSCAWEN
RED MAJESTY	HELEN MCGREGOR
GOLDEN RUFFLES	ROCKET
COURTIER	

NOVELTY COLLECTION

8 for \$17.50

CHANTILLY	PINK LACE
CLOUD CASTLE	BARBARA ADAMS
JASMINE	TOBACCO ROAD
MOUNT HERMON	FIRECRACKER

Our SPECIAL BEGINNER'S Offer

Make Your Own Collections from This Selected List of Good Standard and Tried Varieties.

25% DISCOUNT on \$5.00 Orders

33 1/3% on \$7.50 Orders or More

AIDA—Ochre and buckthorn brown.	\$.35
ALATOR—Cyclamen pink and gold.60
ALWAYS—Ivory, plicated red-purple.50
ANN SHERIDAN—Empire yellow.50
ARCTIC—White and gold. 34"50
ATROUS—Deep burgundy red. 34"	1.00
AUBANEL—Shrimp pink60
AUTUMN FLAME—Fall bloom, deep red.75
AZTEC COPPER—Blended violet-copper.50
BALMUNG—Yellow-brown plicata75
BELLE COVERT—Deep rose tones. 34"50
BLUE ZENITH—Clear sky blue.75
BRONZINO—Golden and coppery bronze.35
BROWN BOY—Brown and copper.50
CARVED IVORY—Ivory-cream. 34"40
CHINA BOY—Bronzy-red shaded brown.50
CHINA ROSE—Blended orchid, rose, pink.50
CITY OF LINCOLN—Red and yellow variegata.50
CORONET—Soft golden tan. 35"35
CROWN OF GOLD—Deep yellow. 34"40
DAMERINE—Deep velvety red. 36"50
DAY'S FAREWELL—Blended rose-lavender.50
DESTINY—Deep bronze purple. 36"40
DUBROVNIK—Deep rose, gold violet blend.35
E. B. WILLIAMSON—Bright copper red. 34"40
ELSA SASS—White with lemon edge. 34"50
FAIR ELAINE—White and yellow bi-tone.50
FAIR ENOUGH—Medium blue, flushed lavender.30
FAIRY LUSTRE—Primrose yellow. 36"60
FLORA CAMPBELL—Etruscan red.50
FLORENTINE—White, plicated light blue.50
FRANK ADAMS—Tan and red variegata.50
FRIEDA MOHR—Lilac and rose blend.35
GIRALDA—Orchid pink. 40"50
GIRIDLIAN'S CHOICE—Petunia violet.75
GOOD SIR—Bronzy-brown tones. 36"50
GOOD SUN—Dark brown tones. 36"50
GUDRUN—Huge lustrous white. 34"35
ICY BLUE—Icy blue. 36"50
JUNALUSKA—Golden copper and red. 36"40
LAKE HURON—Real blue bi-color. 36"50
L. MERTON GAGE—Raspberry pink blend.50
LOS ANGELES—White and blue plicata.40
LOUVOIS—Rich brown-red bi-color. 34"50
MME. LOUIS AUREAU—White and heliotrope.40
MARY E. NICHOLLS—Smooth fine white.50
MATULA—Rose, orange, apricot blend.50

MAY DAY—Apricot, orange, copper blend.	\$.35
MICHELANGELO—Dove grey and brown blend.35
MING YELLOW—Rich yellow.75
MISS CALIFORNIA—Fine orchid-rose. 40"50
MOUNT WASHINGTON—Tall soft white.75
MRS. J. L. GIBSON—Inky blue-purple. FB.50
NARADA—Late blooming light blue. 40"50
NARANJA—Deep orange-yellow. 36"40
NED LEFEVRE—Orange, salmon blend. 36"50
NIGHTFALL—Pansy-purple. 36"75
OLD PARCHMENT—Creamy-buff and gold.60
ORLOFF—Cream and cinnamon plicata. 32"50
ORMOHR—Lilac to violet. 36"50
PATRICIA—Medium size ruffled white.60
PINK MARVEL—Salmon pink. 39"40
PIUTE—Deep rich red. 34"50
PLATINUM BEAUTY—Lemon-platinum. 36"50
RANCHO—Early mulberry-red. 40"30
REGAL BEAUTY—Bi-color in violets.50
ROSE BOWL—Tall deep rose.75
ROSELAND—Buff-rose and berry-red. 36"75
ROSY WINGS—Rose and copper blend. 34"35
RUTH POLLOCK—Yellow and red plicata.50
SALAR—Opalescent flesh tints. 36"50
SAMOVAR—Coppery-orange. 34"50
SHINING WATERS—Clear light blue. 40"40
SIERRA BLUE—Clear medium blue. 40"35
SIERRA SNOW—Late clear white. 36"50
SKY MAID—A real medium blue. 36"60
SONNY BOY—Copper henna blend.50
SPRING CLOUD—White and blue plicata.50
SPRING DANCE—Light grey-lavender. 42"75
SPRING MEADOW—Rich deep blue-violet.	1.00
STARDOM—Salmon-buff blend. 34"50
STARLESS NIGHT—Deepest red. 36"50
STELLA POLARIS—Cool white. 36"35
THE BISHOP—Smooth bishop's purple.75
TIFFANY—Yellow and rose plicata. 35"50
TOKEN—Gold-rose and brown-red.50
TOP SERGEANT—Brilliant red-brown.50
TREASURE ISLAND—Soft yellow.50
UKIAH—Very dark red. 46"50
WESTLANDER—Lavender-violet combination75
WHITE GODDESS—Pure glistening white.75
WINTER SHADOWS—Shadowy grey-blue.50
WM. A. SETCHELL—Huge violet-blue.75
YELLOW JEWEL—Clear wax yellow. 35"50

COLOR CHART OF BEARDED IRIS

NOTE: Varieties marked with (*) are in 1949 Symposium. Following name is the number or location of the Iris in the Symposium listing.

<p>White</p> <p>Alba Superba \$2.50 Arctic .50 General MacArthur .75 Gudrun .35 *Katherine Fay (39) 2.50 *Lady Boscawen (21) 6.50 *Matterhorn (81) .50 Mount Hermon 4.00 Mount Washington .75 *New Snow (18) 7.50 Patricia .60 *Priscilla (75) 1.00 *Sharkskin (71) 1.50 Sierra Snow .50 Silver Susie 1.50 *Snow Carnival (60) 2.00 *Snow Flurry (15) 1.25 Snow Velvet 1.00 *Spanish Peaks (47) 12.50 Stella Polaris .35 Vigil 5.00 White Goddess .75 White Spire 1.00 *White Wedgwood (87) 2.00 *Winter Carnival (50) 1.00</p> <p>Cream</p> <p>*Amandine (16) 7.50 Caroline Burr 1.00 Carved Ivory .40 China Lady .75 *Desert Song (57) 7.50 Golden Madonna 1.00 Ivory Tower 2.50 Mary E. Nicholls .50 Snowqualmie .50</p> <p>Light Yellow</p> <p>Fairy Lustre .60 Fort Knox 1.00 Full Measure 1.25 *Golden Fleece (48) 1.00 Matty Gates 15.00 *Moonlight Madonna (43) 1.50 *Tiffanja (20) 1.00</p> <p>Medium Yellow</p> <p>Ann Sheridan .50 California Gold .35 Crown of Gold .40 Dawn of Gold .75 *Elsa Sass (94) .50 *Fair Elaine (38) .50 Golden Ruffles 5.00 Hija Mia 2.00 Illinois Sunshine 3.50 Jasmine 3.50 *Ming Yellow (98) .75 Misty Gold 1.50 Moontide 6.00 Song of Gold .75 Sunny Ruffles 1.50 Symbol 1.00 *Treasure Island (51) .50</p> <p>Deep Yellow</p> <p>Arcade Buttercup 5.00 *Berkeley Gold (13) 1.00 *Cloth of Gold (61) 2.00 Ella Callis 1.50 Fortune .75 Francelia 3.00 Gay Senorita 1.50 *Goldbeater (46) 2.00 Golden Eagle 1.00 *Golden Majesty (66) .50 Invictus .75 Late Sun .75 Naranja .40 *Ola Kala (1) 1.50 *Span Gold (52) 1.00 Yellow Jewel .50</p>	<p>Chartreuse</p> <p>Char-Maize 22.50 Green Pastures 4.00 *Lady Mohr (10) 2.50</p> <p>Tans</p> <p>Aida .35 Amberwood 1.00 Bermuda Sand 1.00 Brilliant Amber 5.00 Buckskin .40 *Chamois (36) 5.00 Copper River 4.00 Coronet .35 Fortune's Favor 2.50 Nightingale 1.00 Nylon .50 Old Parchment .60 Platinum Beauty .50 Salar .50</p> <p>Orange—Burnt Orange</p> <p>*Arab Chief (65) 2.00 May Day .35 Orange Flame .60 *Rocket (35) 8.00 Samovar .50 Token .50 Wakarusa .75</p> <p>Bronze—Copper Browns</p> <p>*Argus Pheasant (67) 18.00 Auburn 7.50 Aztec Copper .50 Bataan 2.00 Bronzino .35 Brown Boy .50 Brown Thrasher 1.25 *Bryce Canyon (6) 3.50 *Casa Morena (33) 2.00 China Boy .50 Copper Glow 3.00 Copper Rose 1.00 *Cordovan (70) 2.50 Good Sir .50 Good Son .50 Juliet 3.00 *Junaluska (91) .40 Lockwood 6.00 Marimba 1.00 *Mexico (93) 2.00 *Prairie Sunset (23) 1.00 Russet Wings 6.50 Sonny Boy .50 *Tobacco Road (40) 3.00 Top Sergeant .50 Veishea 1.00</p> <p>Blends</p> <p>Alastor .60 Arethusa .50 *Cascade Splendor (17) 3.50 Daffy 3.00 Day's Farewell .50 Dubrovnik .35 Fiesta 1.00 Frieda Mohr .35 *Grand Canyon (37) .75 Joppa Parrot 6.00 Matula .50 Michelangelo .35 Mellowglow 4.00 Ned Lefevre .50 Painted Desert 1.50 Red Amber 1.00 Sonrisa 1.50 Stardom .50 Sultan's Robe 3.00 Sunset Serenade 1.00 Tea Rose 2.00</p>	<p>Pinks (Rose Tones and Flamingo)</p> <p>Aubanel .60 Azalea 6.00 *Cherie (34) 18.00 *China Maid (54) .75 Color Carnival 10.00 Copper Pink .75 Country Lass .50 Courtier 6.00 Dream Girl 3.00 *Easter Bonnet (59) 3.00 Floradora 5.00 Flora Zenor .75 Hit Parade 6.00 Lori May 1.00 Majenica .75 Melanie .60 *Pink Cameo (19) 4.00 Pink Lace 4.00 Pink Marvel .40 Pink Perfection 1.50 Pink Ruffles .75 Pink Sensation 15.00 Rose Pearl 1.00 Salmonette 5.00 Sea Shell .75 Shannopin .75 *Spindriff (79) 2.00</p> <p>Rose</p> <p>Belle Covert .35 China Rose .50 E. B. Williamson .40 Gypsy Rose 6.00 Inspiration 1.00 Lighthouse .50 Miobelle 2.00 Miss California .50 Misty Rose 1.00 Morocco Rose .60 Old Rose .75 Rose Bowl 1.00 Roseland .75 Rose Splendor 6.00 Rosy Wings .35 Tapestry Rose 1.00 *Three Oaks (76) 2.50</p> <p>Reds</p> <p>Anna Gage .50 Atrous 1.00 Autumn Flame .75 Chief Poking Fire 1.00 *Christabel (68) .50 Claret Velvet .40 Damerine .50 Dark Knight .50 Edward Lapham 2.00 Flora Campbell .50 Gallant Leader 1.00 Garden Flame 1.00 *Garden Glory (32) 4.00 Garden Magic .75 Jasper Agate 2.00 Louvois .50 Mandalay 1.00 Orelia 6.00 Piute .50 Rancho .30 *Ranger (30) 2.00 Red Gleam .75 Red Majesty 6.00 *Red Valor (72) 1.50 Redward 3.00 Redwyne 5.00 Ruby Glow .75 *Solid Mahogany (22) 3.00 Starless Night .50 *The Red Douglas (62) .75 Ukiah .50</p>	<p>Variiegata</p> <p>Black and Gold 1.00 *City of Lincoln (64) .50 Cock Robin 3.00 Deseret .30 Dust 1.00 Frank Adams .50 *Gypsy (82) 1.50 *Mary Vernon (96) 2.00 Rajah Brooks 2.00 Red Torch 4.00 Three Sisters 1.00</p> <p>Amoena</p> <p>*Amigo (26) .50 *Extravaganza (41) 6.00 *Lothario (58) 2.00 Louise Blake 2.50 *Wabash (12) .50 Westlander .75</p> <p>Plicata</p> <p>Aladdin's Wish 3.00 Aldura 1.00 Always .50 Amity 2.50 Balmung .75 *Blue Shimmer (11) 1.50 Coritica 1.00 *Firecracker (73) 3.00 Florentine .50 Gypsy Baron 1.00 Innovation 1.50 Lady Naomi .50 *Los Angeles (24) .40 Love'ace 10.00 Mme. Louis Aureau .40 Maid of Astalot .50 Marquita .40 *Minnie Colquitt (55) 2.00 Orloff .50 Patrice 2.00 Rodeo 6.00 Royal Scot 1.00 Ruth Pollock .50 San Francisco .50 Spring Cloud .50 *Tiffany (99) .50</p> <p>Light Blue</p> <p>And Thou 1.00 *Azure Skies (14) 1.25 *Cloud Castle (84) 3.00 *Distance (45) 7.00 *Gloriole (69) .50 *Helen McGregor (4) 8.00 Icy Blue .50 Pale Dawn 5.00 Spring Dance .75 *Sylvia Murray (49) 2.25 Tishomingo 1.00 Winter Shadows .50</p> <p>Medium Blue</p> <p>*Bandmaster (53) 2.00 *Blue Rhythm (5) 4.00 *Blue Valley (28) 10.00 B'ue Zenith .75 Chicory Blue 2.50 *Chivalry (3) 7.50 Fair Enough .30 *Great Lakes (2) .75 Lake Breeze 3.00 *Lake George (83) 3.50 Lake Huron .50 *Missouri (90) .50 Mountain Sky .75 Narada .50 Persuasion .75 Pierre Menard 17.50 *Shining Waters (89) .40 *Sierra Blue (97) .35 Sky Maid .60 Sparkling Blue 1.00</p>	<p>Dark Blue</p> <p>Barbara Adams 4.00 Blue Glow 3.50 Claremont .75 Gale Storm 1.50 Lucerne .75 Spring Meadow 1.00 *The Admiral (31) 1.00</p> <p>Pink Blends</p> <p>California Peach .50 *Daybreak (88) 1.25 Lancaster .50 L. Merton Gage .50 Melitza .75 New Horizon 6.00 Pink Matron 10.00 Princess of Brentwood 3.00 Premier Peach 5.00 *Remembrance (85) 1.00</p> <p>Orchid—Orchid Pink and Lavender</p> <p>*Chantilly (27) 3.50 *Dreamcastle (29) 5.00 *Fantasy (78) 15.00 Giralda .50 *Harriet Thoreau (92) 1.50 Illusion 3.00 *Lynn Langford (77) 5.00 Manyusa 1.50 Morning Melody 7.50 Orchid Lady .75 Syringa 5.00</p> <p>Lilac—Mauve Light Violet</p> <p>*Elmohr (9) 1.00 Fernando 1.25 Girdlian's Choice .75 Grace Mohr .75 Her Grace 1.00 Hoosier Sunrise 1.00 Lilac Lane 8.00 *Mulberry Rose (25) 1.00 Mustopha .75 Ormaco 1.00 Ormohr .50 Present 1.50 Sheriffa 1.00 *Violet Symphony (44) .75</p> <p>Purple—Light to Medium</p> <p>Heigho 25.00 *Lord Dongan (86) 1.00 Peg Dabagh 12.50 Pride .40 Regal Beauty .50 Royal Command .40 Rubient 1.00 The Bishop .75 *Vatican Purple (95) 3.00 Vice Regal 2.00</p> <p>Purple—Dark</p> <p>Baltis 5.00 Black Banner 2.50 *Captain Wells (74) 1.00 *Deep Velvet (56) .75 Destiny .40 Down East 2.50 Envoy 15.00 Esquire 5.00 Indiana Night 2.50 *Master Charles (7) 2.50 Mrs. J. L. Gibson .50 *Nightfall (100) .75 Purple Moor 5.00 *Sable (8) 1.00 Storm King 1.00 Velvet Dusk 7.50 William A. Setchell .75</p>
---	---	---	--	---

GOLDEN RUFFLES (C. C. Taylor 1946)

We expect to see this new lovely clear golden yellow ruffled Iris of Carl Taylor's go far in its popularity. Beautifully and generously branched 40" stems, carrying many large ruffled blossoms of heavy satiny texture and perfect flaring form make a most effective garden clump. Voted by members of the Southern California Iris Society as the best Iris of the 1947 season. Very floriferous. Mid-season. Award of Merit A.I.S. 1949. \$5.00

GRACE MOHR (Jory 1935)

A pogo-Cyclus of pale lilac, veined darker lilac. Huge blossoms with flaring falls. Good growing habits. Hardy. Midseason. 40". 75c

GRAND CANYON (Kleinsorge 1941)

A blending of plum, copper, and gold. Different in color and very attractive. 35". 75c

GREAT LAKES (Cousins 1938)

1942 Dykes Medal. Striking new pure, clear medium light blue. One of the bluest and best. Its stately flaring form and crisp heavy texture give this Iris an above average keeping quality. Excellent in every way. Midseason. 38". 75c

GREEN PASTURES (Heller 1947)

Huge blooms of a chartreuse yellow, with a touch of blue at the beard which is most effective. The foliage is wide and tall. It is a prolific increaser. Hardy. Honorable Mention. A.I.S. 1947. Mid-season. 44". \$4.00

GYPSY (Kleinsorge 1944)

A warm and pleasing variegata with copper-gold standards and solid chestnut brown falls. A choice variety in a limited color field. Late. 38". \$1.50

GYPSY BARON (Schreiner 1942)

An unusual plicata. Silvery white flower, heavily marbled and sprayed with Mulberry-purple. The beard is yellow which enhances the deep coloring. Early mid-season. 36". \$1.00

GYPSY ROSE (Whiting 1946)

Rich tapestry red with a copper infusion, and accented by a blue blaze on the falls. Luxuriant yellow beard, on broadly rounded falls of extra large flowers. Midseason-late. 38" Honorable Mention A.I.S. 1949. \$6.00

HARRIET THOREAU (Cook 1944)

Broad petaled orchid-pink. A great improvement in this color class. Large well formed flowers of splendid texture, which blooms abundantly. Mid-season. 38". \$1.50



HELEN MCGREGOR—Dykes Medal Winner

HEIGHO (Craig 1949)

The hybridizer considers this his best oncocyclus hybrid to date. Immense globe-like flowers of heavy substance with unusually broad and full petals. Smoothly colored, a clear bradley violet with a hint of a signal patch at the tips of the dull orange-gold beard. It starts blooming early and continues until late. Ideally branched, vigorous grower. 45". Honorable Mention A.I.S. 1949. \$25.00

HELEN MCGREGOR (Graves 1946)

Much enthusiasm has been created over this new clear very light blue Iris which has no trace of lavender in it. The flowers are of rounded form, beautifully ruffled. Extra heavy substance with an almost white beard. Mid-late. 36". Award of Merit A.I.S. 1948. Dykes Medal 1949. \$8.00

HER GRACE (DeForest 1940)

Large, rounded flaring blossoms of gray-blue-violet. A unique color; good substance. Midseason. 35". \$1.00

HIJA MIA (C. C. Taylor 1946)

A soft empire yellow self, ground flushed lemon chrome. Its large flowers with broad petals of good substance on tall, well branched stems make a picture of beauty. A vigorous grower. 45". \$2.00

HIT PARADE (D. Hall 1947)

Another flamingo pink of good form and substance. The color of this one is between Courtier and Floradora. The flowers are larger and slightly ruffled. It has the characteristic tangerine beard that all of Mr. Hall's new pinks carry. A free bloomer and increases well. Mid-season. 30". \$6.00

HOOSIER SUNRISE (Lapham 1942)

A subtle blend of mauve-pink warmly infused with buff. Excellent substance, large flowers, with broadly rounded petals. Midseason. 40". \$1.00

ILLINOIS SUNSHINE (Faught 1946)

This one seems to have captured the fancy of many Iris lovers. An intriguing rich golden yellow with a bright orange beard. Vigorous grower. 38". Midseason. Honorable Mention A.I.S. 1949. \$3.50

ILLUSION (Kleinsorge 1943)

Huge blooms of ethereal lilac pink with tawny brown overlay on the haft and a brown tipped beard. This is an Ormoir seedling and it blooms very late. 30". \$3.00



LADY MOHR

INDIANA NIGHT (Cook 1942)

Brilliant deep velvety blue-purple. This is a seedling from the famous Sable line and is highly praised. It is well branched and of unusual size, substance and texture. 38". \$2.50

INNOVATION (Hall 1945)

A most impressive deep pink stitched plicata of beautiful form and substance. In reality it is rose trimmed on white ground. Winter hardy, and very late. 36". \$1.50

INSPIRATION (Stevens 1937)

Inspiration's exquisite giant blooms have no rivals. Without question this is the best deep rich rose color. Its huge, beautifully formed, smoothly finished, clear, even toned, lustrous rose-carmine coloring is unmarred by markings of any kind other than a slight brownish flush on the haft of the fall petals. Mid-season. 38". \$1.00

INVICTUS (D. Hall 1941)

Intense deep yellow with a subdued orange tone and has dark amber markings on the haft. 38". 75c

IVORY TOWER (M. R. Walker 1948)

Ivory Tower is a tall candelabra type flower that blooms early in the spring. Buds are long and pointed with several appearing at the same time on a well branched stem, giving the appearance of a candelabra with cream colored candles. The flowers open into immense banana cream blooms with broad falls and arching standards of splendid substance. It won an H.C., A.I.S. 1946. \$2.50

JASMINE (Grant 1944)

An enchanting smooth clear golden yellow self of gardenia texture with no haft markings. Falls are velvety and semi-flaring. Mid-season. 40". \$3.50

JASPER AGATE (Williams 1943)

A new and rich shade of gold-copper-red, with an underlying copper-pink tone of smooth finish and no veinings. Heavy textured of medium size on medium stalks. 34". Midseason. \$2.00

JOPPA PARROT (C. G. White 1948)

This is an Oncobred Iris that is most certainly different but intriguing. Such a mixture of colors has never been painted by nature. Valuable for hybridizing use. Described as having a ground color of yellow-beige with various areas of cinnamon-violet and mahogany. Foliage is short. The flowers are nicely formed. 24". Rhizomes small. \$6.00

JULIET (Kleinsorge 1946)

Considered to be one of the most colorful Iris. It is flame-copper with salmon shadings. The center of the flower is bright burnt-orange. Has good form and substance. Midseason. 36". \$3.00

KATHERINE FAY (Fay 1945)

Has won high praise among the Iris enthusiasts. An all white, large, semi-flaring ruffled blooms with no yellow at the haft. Hardy. Midseason. 36". \$2.50

LADY BOSCAWEN (Graves 1946)

Exquisitely ruffled pure, cool white, large, broad petaled flowers with a decided sheen that makes this one of the loveliest of the white Iris. The flowers are smooth in texture and have fine substance. They are well spaced on beautifully branched stalks. Certainly a well worthwhile addition to any garden. Award of merit A.I.S. 1948. Midseason. 42". \$6.50

LADY MOHR (Salbach 1944)

This "Lady" has created more enthusiasm and comments than any other Iris for many a day. Bred from a bearded Iris to an oncocyclus hybrid. Inherits the best characteristics of both parents. Its coloring in the standards are clear oyster shell white and falls a frosted chartreuse yellow with prominent veining. Blooms over a long period of time. Early midseason. 36" to 45". \$2.50

LAKE BREEZE (Fay 1945)

Ruffled cool wisteria blue with just a suspicion of pink delicately suffused on the center of the petals of beautifully formed flowers. Hardy. Midseason. 38". \$3.00

LAKE GEORGE (Smith 1945)

A self of soft blue-violet, shading darker at the haft. The standards are broad and slightly ruffled, falls flare gracefully. Mid-late bloomer. 39". \$3.50; 3 for \$8.75

LILAC LANE (Whiting 1947)

Here is another Iris we saw while at the 1949 A.I.S. Convention and just had to have in our collection. A pink toned lilac self of delicate coloring with a pearly iridescence to emphasize its beauty and lovely styling. Large wide petaled, heavy substantanced flowers, slightly ruffled. A true gem for flower lovers. Honorable Mention A.I.S. 1948. Midseason. 36". \$8.00



OLA KALA—Dyke's Medal Winner

LATE SUN (DeForest 1940)

Rich deep yellow with a red-gold overlay. Flowers are of heavy substance and well formed. A fine Iris. Mid-late. 36". 75c

LOCKWOOD (DeForest 1947)

Enticing bright brown blend with an attractive blaze on the rounded falls. Smooth texture and well branched stalks. Mid-late. 38". \$6.00

LORD DONGAN (K. Smith 1940)

Broad standards of Chinese violet, falls of deep velvety pansy-violet, with no venation markings. \$1.00

LORI MAY (DeForest 1941)

An especially pleasing color is this daphne pink of flaring form and thick petals. Mid-late. 30". \$1.00

LOTHARIO (Schreiner 1942)

A new Iris of colors very much in demand. Light blue standards and rich plush blue-purple falls with orange beard. Lightly frilled blooms on well branched stems. 38". \$2.00

LOUISE BLAKE (Smith 1943)

A very striking amoena. Arched light chicory blue standards, fluted at the edge. Velvety violet falls edged with chicory blue, and a faint sheen of rich copper near the throat. Midseason. 30". \$2.50

LOVELACE (Mitchell 1948)

This soft delicately stitched plicata is a picture of harmonious colorings. The standards are buff-white with a soft pink stippling, while the falls are a warm white completely edged with the soft pink stippling, deepening in tone at the haft. The flowers are crisp, flaring and slightly ruffled. 36". \$10.00

LUCERNE (Salbach 1940)

A stunning Iris of the deepest smooth clear blue carried on tall stalks. Blossoms are large and beautifully formed. There are few Iris in this color range and one to excel this one in beauty and growing habits. Midseason. 40". 75c

LYNN LANGFORD (D. Hall 1946)

The richest and most charming of the new orchid pinks. The flower is of good size, form and substance. It is of a deep toned orchid pink, shading to golden yellow at the center of the flower and beard, with no veinings. Midseason. 36". \$5.00

LYON'S IRISLAND

MAJENICA (Cook 1941)

A bright and colorful salmon tinted pink blend which is both pleasing and refreshing. Crisp wide petaled flowers of smooth finish and firm substance. We predict a lasting popularity for this one. Midseason. 36" 75c

MANDALAY (Hall 1943)

A new and very attractive color of smooth reddish rose, that has been greatly admired. Hardy, free bloomer. Late. 33". 1.00

MARIMBA (DeForest 1943)

Striking clear light cinnamon blooms on well branched stalks. Midseason. 38". \$1.00

MARQUITA (Cayeux 1931)

A strikingly different and beautifully formed Iris, very much in demand. With domed standards of deep cream, falls same, veined watermelon-rose. 40c

MARY VERNON (McKee 1942)

This variegata comes highly recommended. Its standards are antique gold with a flush of Chianti ruby at the midrib. Falls Chianti ruby with edging same as standards. 37". \$2.00

MASTER CHARLES (Williamson 1943)

Rich smooth mulberry-purple, sending out a brownish glow from the center of the flower—giving a note of variation and a stunning effect in the garden. Tall and well branched stalks. 38". Midseason. \$2.50

MATTY GATES (Sass 1946)

This new distinctive reverse bitone yellow pattern is like Golden Fleece, except that it is deeper and clearer in tone. Standards are lemon-chrome. Falls white with a three-fourths inch border of lemon-chrome. Finish is waxlike. Mid-late. 36". \$15.00

MELANIE (Hillson 1941)

This is a fine Iris. Its lovely large ruffled glistening orchid-pink blossoms stand out as a garden subject. Has wonderful substance and good branching. Midseason. 40". 60c

MELITZA (Nesmith 1940)

Lovely pastel of delicate salmony flesh colorings and tangerine beard which enhances the beauty of the flower. Midseason. 40". 75c; 3 for \$1.85

MELLOWGLOW (Whiting 1942)

This mellow, glowing blend is hailed as one of the most outstanding. A deep peachy apricot with a flush of pink smoothly blended on the wide and arched standards, with broadly rounded falls. Midseason. 38". \$4.00

MEXICO (Kleinsorge 1943)

Vivid and gay, a bicolor with buff golden standards, closed and almost pointed in form. Broad flaring falls of red-brown, blending into golden buff at the waved edges. Large flowers and nicely branched. Late. 36". \$2.00

MINNIE COLQUITT (H. Sass 1942)

Here is a plicata that is different and most popular. The ground color is pure white with a massive, and wide, heavy stitching of wine-purple around both the standard and fall petals, which are slightly ruffled, giving an effect of a purple band around the edges. Early midseason. 35" \$2.00

MIOBELLE (McKee 1945)

A most intriguing rose self blended with an arraying spell of copper. In form, the falls, being very broad, increase the beauty and desirability of this beauty. Late season. 38". \$2.00

MISSOURI (Grinter 1933)

1937 Dykes Medal Winner. Clear rich medium blue with standards a little lighter than the falls. Definitely one of the best blues of its class. 36". 50c

MISTY GOLD (Schreiner 1943)

The exquisite delicate beauty of this lemon-toned Iris is breath taking. Its crinkle-petals with gold braiding at the edges is strikingly effective. Mid-late. 36". \$1.50

MISTY ROSE (Mitchell-Salbach 1943)

This Iris was well named. Its standards are pearly-pink, with falls deeper, suffused brownish rose. Midseason. 40". \$1.00

MOONLIGHT MADONNA (J. Sass 1943)

A crisp smooth textured beautifully ruffled flower of shimmering clear lemon-ice, with a cream-white flush in the center of falls. Said to be an improved Elsa Sass. Midseason. 36". \$1.50

MOONTIDE (McKee 1946)

Here is a rich cadmium yellow that has an orange beard, broad and roundly domed standards and wide flaring falls. Finish is of firm substance and velvety texture. Honorable Mention A.I.S. 1946. Midseason. 40". \$6.00

3 OF 1 VARIETY PRICE SPECIAL**For Bearded Iris Only**

Each	Each
\$.30—3 for \$.75	\$ 2.50—3 for \$ 6.25
.35—3 for .90	3.00—3 for 7.50
.40—3 for 1.00	3.50—3 for 8.75
.50—3 for 1.25	4.00—3 for 10.00
.60—3 for 1.50	5.00—3 for 12.50
.75—3 for 1.85	6.00—3 for 15.00
1.00—3 for 2.50	7.50—3 for 18.75
1.25—3 for 3.10	8.00—3 for 20.00
1.50—3 for 3.75	9.00—3 for 22.50
2.00—3 for 5.00	10.00—3 for 25.00
2.25—3 for 5.65	12.00—3 for 30.00

MORNING MELODY (Becherer 1948)

A stunning picture is always painted in one's garden with these soft orchid-lavender flowers. This one is beautifully styled, pure in color, graceful in form, and enriched with a white beard. Mid-season. 36". \$7.50

MOROCCO ROSE (Loomis 1937)

Beautiful large rose-pink self. Very popular. Midseason. 36". 60c

MOUNT HERMON (Lowry 1945)

Cool white silver edged regal flowers, with cupped standards, slightly ruffled and broad semi-flaring falls, with no markings around the pale lemon yellow beard. There is a lustre over the entire flower. Midseason. 42". \$4.00; 3 for \$10.00

MULBERRY ROSE (Schreiner 1941)

Delightfully new and unusual coloring, mulberry-rose. The large graceful blooms are of outstanding beauty in the garden. Very effective color. Midseason. 40". \$1.00

NEW HORIZON (Fay 1946)

A choice variety in the peach-pink coloring, which comes from the "Flamingo" line. It is almost a self, with the tangerine beard, and pink buds. Flowers are of good size and substance and are carried on tall well branched stalks. Honorable Mention A.I.S. 1947. Late. 38". \$6.00

NEW SNOW (Fay 1946)

White as new snow. The beard is a bright yellow, the only color on the entire flower, as there are no haft markings. In form, it is ruffled and flaring. Midseason. Hardy. 38". \$7.50

NIGHTINGALE (Hall 1942)

Glistening golden russet self. Large full flowers on well branched stalks. Midseason. 36". \$1.00

OLA KALA (J. Sass 1943)

A really grand yellow of the deepest shades, in fact it could almost be called orange. In addition to the vivid deep orange yellow coloring, this flower is beautifully ruffled. In form the standards are closed, falls are semi-flaring and gracefully carried on exceptionally well branched stems. Holds up well under adverse weather conditions. Dykes Medal A.I.S. 1948. Midseason. 38". \$1.50

OLD ROSE (Salbach 1940)

It beckons you to explore. A beautiful old rose self with the falls shading to a soft cardinal near the haft. Excellent form and fine substance are carried on tall stalks. Early midseason. 40". 75c

ORCHID LADY (Salbach 1943)

Lovely large perfectly formed flowers in rich shades of lilac-pink, suffused copper, especially near the heart of the flower and around the edges of the petals. Its heavy substance and gracefully poised blooms mark this as an outstandingly fine cut flower. The artificial light brings out the charming color tones. Late. 36". 75c

ORELIO (DeForest 1947)

(Pronounced Or-el'-yo.) This is a Casa Morena and Garden Flame cross. It is a bright rich brown-red. Pleasingly large flowers of good substance and form on graceful stalks. Honorable Mention A.I.S. 1948. Mid-late. 35". \$6.00

ORMACO (Kleinsorge 1942)

Oncocylus hybrid and bearded Iris cross. An odd blend of violet with much bronze and brown, especially around the center of the large flowers. Medium height. \$1.00

PAINTED DESERT (Milliken 1942)

This Iris has been well named. Its soft desert colorings have produced a lovely blending of colors which is unlike any other as yet seen. Quite outstanding. 44". \$1.50

PALE DAWN (Fay 1945)

Here Mr. Fay has given us a pale blue Iris in a tailored form. Hardy. Midseason. 38". \$5.00

PATRICE (DeForest 1945)

This is an excellent plicata. Creamy standards, flushed with soft shades of pale rosy-lavender. The flaring falls are a frosted white brushed bright gold across the haft, and speckled rose-brown. Trim and prim in its flower placement on a nicely branched stalk. Midseason. 38". \$2.00

PEG DABAGH (Craig 1948)

A Wm. Mohr derivative. Novel color of smooth clear blue-violet. Full rounded good substance flowers. Early bloomer and heavy increaser. 45". Honorable Mention A.I.S. 1948. \$12.50

PERSUASION (Reibold 1941)

Soft crisp clean clear powder-blue of classic perfection, with many blossoms on a perfectly branched stem reaching 38 to 40 inches in height. Blooming intermittently from midseason on through late summer. 75c

PIERRE MENARD (Faight 1948)

A magnificent addition to the medium blue class. The standards, slightly open, are of hyacinth blue, with beautifully flaring campanula violet falls, veined hyacinth blue. Very heavy substance, and good branching. Midseason. 36". Honorable Mention A.I.S. 1948. \$17.50

PINK CAMEO (Fay 1946)

One of the most famous "flamingo" pinks. Its deep, pure pink long pointed buds open up into the delightful new translucent cameo pink, enriched by a tangerine-orange beard with which these new pinks are endowed. The smoothly finished blooms are well placed on nicely branched stems. A picture of delicate beauty to delight the most exacting. Award of Merit A.I.S., 1948. Early midseason. 36". \$4.00

PINK LACE (J. Sass 1947)

A rosalane pink self with a tangerine beard, lightly frilled. Medium sized blooms of smooth finish make this a welcome addition to the "Pink" family. Midseason. 36". \$4.00

PINK MATRON (C. C. Taylor 1950)

See New Introductions, page 6.

PINK RUFFLES (Smith 1940)

Heavily ruffled flowers of lilac pink with deeper pink veining at the base of the flower. 27". 75c

PINK SENSATION (Hall 1948)

This is one of the latest introductions of David Hall's world famous "Flamingo Pinks", with a tangerine beard. A true, delicate light pink with laced edges. In form, the petals are large, full and rounded. A very early bloomer. 33". \$15.00

PRAIRIE SUNSET (H. Sass 1939)

Dykes Medal winner 1943. A subtle blending of rich apricot, peach, rose, copper, and gold. A self of indescribable iridescent colorings. This was truly a real color break. Midseason. 34". \$1.00

PREMIER PEACH (D. Hall 1946)

This is not a pink Iris but a peach Iris, which has no haft markings to mar its delicate beauty. Flowers are a clear pinkish peach self of good size and form. Honorable Mention A.I.S. 1946. Midseason. 34". \$5.00

PRESENT (C. G. White 1942)

An Onco-bred of merit. The flower is enticingly marked with soft colorings of pinkish tints, netted throughout, with a signal patch of velvety rose on the fall petals. In form, it shows much of its onco breeding, but the foliage, height, and performance take their place among the Europeans. Midseason. 32". Award of Merit A.I.S. 1949. \$1.50

PRINCESS OF BRENTWOOD (C. C. Taylor 1945)

A well branched soft pink blend. Large flowers with splendid form and substance. Mr. Taylor uses this Iris in the breeding of his new pinks. 48". \$3.00

PRISCILLA (Whiting 1942)

Pure white with no veining to mar her purity of color, even the beard is white. 30". \$1.00



LYNN LANGFORD

PURPLE MOOR (Lapham 1947)

Maybe this is the answer. Superbly magnificent in its huge deep purple blooms of glossy velvet. Its surprisingly fine substance, and even color, contribute towards the making of a remarkable Iris. Mid-late. 36". \$5.00

RAJAH BROOKE (Norton 1945)

A variegata fancier's joy. It's different. Standards topaz, falls pigeon-blood red, with wide border of topaz on the edge, with beard of burnished gold. Late. An excellent Iris. 38". \$2.00

RANGER (Kleinsorge 1943)

A distinctive late blooming brilliant crimson-red self with high closed cone-shaped standards. Broad velvety falls. 36". Late. \$2.00

RED AMBER (Loomis 1942)

Jasper pink standards, and falls a blend of old rose and eugenia red with copper suffusion. \$1.00

RED GLEAM (Lapham 1939)

Glamorous rich velvety brilliant red with a brownish cast. Mid-late. 34". 75c

RED MAJESTY (G. Douglas 1946)

Majestic in its gorgeous, brilliant robe of eugenia rose, with a touch of yellow infusion at the throat, finished by a heavy yellow beard. Five way branching with a perfect placement of large semi-flaring blooms. Honorable Mention A.I.S. 1948. Late season. 42". \$6.00

RED TORCH (Sass 1947)

Emphasis has been placed on the true red in this Iris. It might be termed as a variegata-blend. The standards are a deep buff or rich gold-bronze. The falls are said to be the nearest to real red of any Iris yet to be found. Smooth and solid in color, brilliant pure velvet in texture, and gracefully flaring in form. Mid-late. 34". Honorable Mention A.I.S. 1947. \$4.00

RED VALOR (Nicholls 1939)

Iris come and go—but Red Valor came and is still here. Because it is a good all around red Iris. Splendid substance, weather resistant, good form, branching and height. A glowing garnet-red with a brown beard. Award of Merit A.I.S. 1943. Mid-late. 38". \$1.50

REDWARD (Cook 1942)

An impressive rich deep crimson-red with a bit of purple influence. Nicely formed flowers with wide flaring falls. Mid-late. 34". \$3.00

REDWYNE (McKee 1945)

A new bright mahogany red that is exquisite. Its unusual velvety rich texture and solidness of color have won much praise for this outstanding red which merits the fine praise it has received. Mid-season. 36". \$5.00

REMEMBRANCE (D. Hall 1942)

One of the best of the pink blends. Delicate soft pink, blended with a soft yellow overtone throughout the flower. Full rounded large blooms complete the picture. Mid-late. 38". \$1.00

ROCKET (Whiting 1945)

A true gem. The most outstanding deep orange Iris. Brilliant, smooth, large full flowers, majestically placed on 36" stalks. Standards of deepest chrome yellow and the falls really orange. Midseason. Award of Merit 1947. \$8.00

RODEO (DeForest 1947)

Just about the best yellow and brown plicata we have seen to date. A great improvement over Tiffanja. Huge blooms of surprising substance and flaring form. Creamy gold background with white in the center of fall petals, lightly patterned and stitched with buckskin brown. Beard brown, tipped gold. Truly a superior Iris in every way. Honorable Mention A.I.S. 1949. Midseason. 36". \$6.00

ROSE PEARL (Salbach 1944)

Attractive bi-color of cream standards with a light suffusion of pinkish lilac. The falls are buff-pink. Good bloomer. 28". \$1.00

ROYAL SCOT (D. Hall 1944)

Attractive red trimmed plicata of a pleasing tone of burgundy red. At a distance it gives the effect of a red Iris. 36". \$1.00

RUBIENT (Whiting 1942)

Rich pansy-purple standards, deep velvety blackish-purple falls with edge same as standards. Hardy. Midseason. 30". \$1.00

RUBY GLOW (Schreiner 1941)

Hailed as the best of the reds in the Intermediate class. Real velvety ruby-red with a brilliant orange beard. Very floriferous. Early. 24". Award of Merit A.I.S. 1948. 75c

RUSSET WINGS (Wills 1946)

This ruffled beauty has an inner glow. Peach tones deepening into russet are set off by the striking orange beard. Truly beautiful. Midseason. 36". \$6.50

SABLE (Cook 1938)

A gorgeous black-violet with a lustrous finish of great beauty. Beard violet. 36". \$1.00

SALMONETTE (J. Sass 1946)

One of a series of newer pinks by Sass. A yellowish pink or salmon self with softly blending tangerine beard. Well branched. 34" to 36". Honorable Mention A.I.S. 1947. \$5.00

SEA SHELL (Loomis 1940)

Widely sought by hybridizers for use as parent of the new pinks. A delicate seashell tint. Midseason. 34". 75c

SHANNOPIN (Pillow 1940)

Almost an amoena. Standards are a clear cream of ruffled form, while the falls are of deep pink. Midseason. 40". 75c

SHARKSKIN (G. Douglas 1942)

This Iris has been named Sharkskin because of its firm substance with finish as of soft silk. Pure white with pale yellow flushed deep in the throat. Midseason. 44". \$1.50

SHERIFFA (White 1942)

A lovely onco-bred of iridescent purple tones. Outstanding color. 36". \$1.00; 3 for \$2.50

SILVER SUSIE (DeForest 1941)

Translucent silvery white with sparkling sheen. Nicely flared stately form. One of the tallest whites. Good branching. Mid-season. 50". \$1.50; 3 for \$3.75

SNOW CARNIVAL (Graves 1942)

A grand ruffled white of great promise. Snow white in coloring and huge in size. Good heavy texture, hardy, early midseason. 40". \$2.00

SNOW FLURRY (Rees 1939)

An enormous, tall, very ruffled white with an ice-blue flush. One of the most talked of Iris in commerce. Early. \$1.25; 3 for \$3.15

SNOW VELVET (H. Sass 1942)

A most beautiful large white with gold at the throat. Named "Snow Velvet" because of its very heavy texture, like real velvet, and has wonderful weather resistance. Midseason. 38". \$1.00

SOLID MAHOGANY (J. Sass 1944)

By Ridgeway, this new deep red which has become very popular, has standards of Victoria lake and falls a velvety burnt lake. Excellent form and winter hardy. Midseason. 38". \$3.00

SONRISA (DeForest 1942)

An exquisite coppery pink with a creamy yellow undertone and metallic finish. Large flowers, with rounded, flaring falls. Of good substance and excellent placement on well branched stems. Mid-late. 38". \$1.50

SPANISH PEAKS (Loomis 1947)

This Iris is rated as about the best pure white to date. Every speck of the entire flower is white, even the heart and beard. Beautifully formed blooms, with broad petals. Excellent substance, fine texture and graceful branching. Honorable Mention A.I.S. 1948. Mid-late. 38". \$12.50

SPARKLING BLUE (Grant 1942)

Sparkling flax-blue of fine merit. Long blooming season. 41". \$1.00

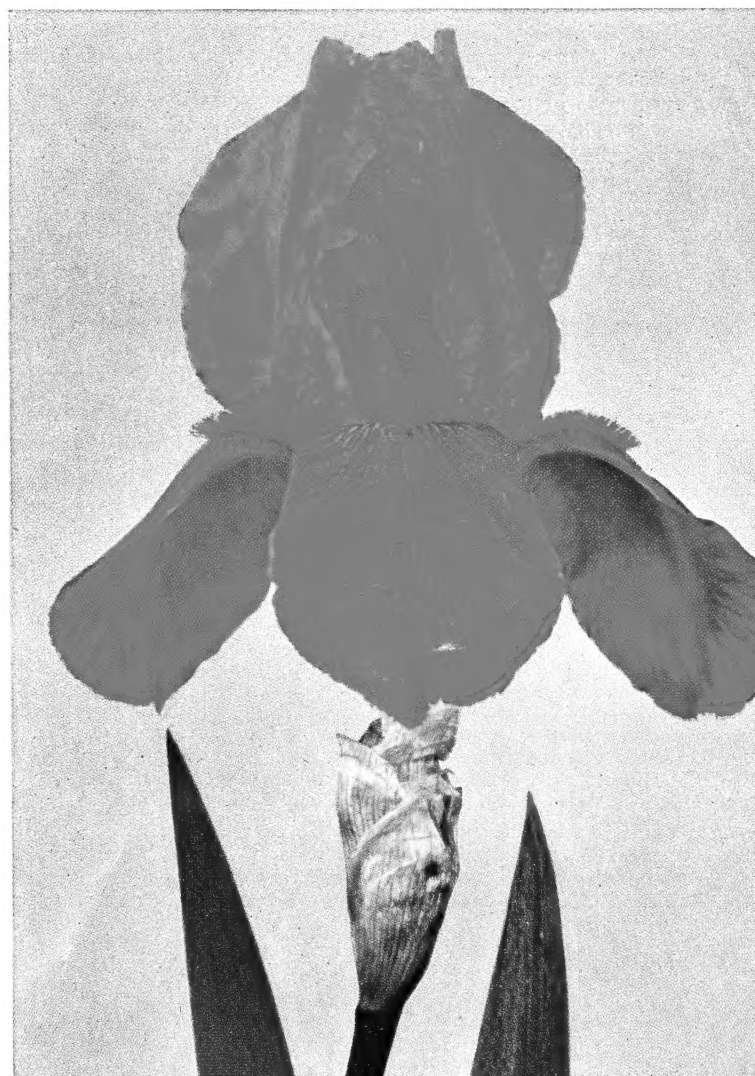
SPINDRIFT (Loomis 1944)

This is really a color break in the pink class. A delicate "sea shell" or coral pink of translucent quality, with a tangerine-orange beard which makes a contrast of beauty. This was seedling No. TQ-70. Midseason. 36". \$2.00

SPUN GOLD (Glutzbeck 1940)

Dykes Medal winner in 1944. Its velvety texture and deep clear golden yellow color with good form, substance, and branching make this an outstanding Iris. 38". \$1.00

ROCKET



STORM KING (Nicholls 1940)

Well named, it reminds one of a black storm arising with its silky shining, almost black-purple blooms of immense size with horizontal flaring falls. There are no venation markings to mar its velvety perfection. A late bloomer. 36". \$1.00

SULTAN'S ROBE (Salbach 1945)

This new Iris is of the richest shades of copper, gold, old rose and red. The broad heavy substanced flaring falls have a pronounced overlay of gold on the shoulders and a bright dash of blue-violet in the center of the petals, emphasizing its rich colorings. Its orientall beauty is charming. Midseason. 36". \$3.00

SUNNY RUFFLES (Waters 1943)

Ruffled clear lemon yellow chrome deepening to gold around the outer edges of each of the gracefully formed petals. Early midseason. 36". \$1.50

SUNSET SERENADE (J. Sass 1943)

The finest of the Prairie Sunset seedlings. Its blooms are larger and somewhat lighter and brighter in tone than its parents. 36". \$1.00

SYLVIA MURRAY (Norton 1944)

Visions of sheer loveliness await one in the garden where this fine silvery light blue of varied tones is blooming. Blooms are huge in size. 38". Award of Merit A.I.S. 1949. \$2.25

SYMBOL (C. G. White 1941)

A smooth heavy textured intense deep yellow self of outstanding richness and quality. Brushed with bright golden brown at the haft of the fall petals. Midseason. 36" \$1.00; 3 for \$2.50

SYRINGA (Lowry 1947)

Lilac colored self. The subtle coloring and fragrance give this Iris value in the garden. Nicely formed closed standards, and broad semi-flaring falls. Good substance, graceful branching. Honorable Mention A.I.S. 1947. Midseason. 40". \$5.00

TAPESTRY ROSE (D. Hall 1942)

Enchanting soft old rose blend. There are few blends in these shades. Large flowers of good substance and form. It is a free bloomer. Midseason. 36". \$1.00

TEA ROSE (Whiting 1944)

So well and neatly blended, this old rose and copper Iris could almost be called a pink. Its clear glowing coloring gives the appearance of a self. A good Iris and a free bloomer. Midseason. 36". \$2.00

THE ADMIRAL (D. Hall 1941)

An intense blue a little deeper than medium blue. Outstanding substance and finish. Often blooms in the fall. 35". \$1.00

THE RED DOUGLAS (J. Sass 1937)

1941 Dykes Medal winner. Standards raisin purple. Falls dahlia purple. The garden effect is a stunning red. 36". 75c

THREE OAKS (Whiting 1943)

Described as close to copper rose, or Etruscan red, in color. The falls have a blue blaze in the center which gives the entire flower distinction. Strong stems, with close branching. Effective as a garden clump. A good increaser. Midseason. 38". Award of Merit A.I.S. 1949. \$2.50

THREE SISTERS (DeForest 1941)

Striking and unusual color combination. This Iris has cream standards and bronzy Indian-lake falls. Early. Midseason. 34". \$1.00

TIFFANJA (DeForest 1942)

Exquisite, dainty and different. A plicata of Colonial buff standards. Glistening white falls edged Colonial buff, brushed at the haft and sprayed around the border with brown. 42". \$1.00

TISHOMINGO (Caldwell 1942)

Large clear wisteria-blue self of ethereal beauty. A frosty flush throughout the flower accentuates its cool crispness. Excellent substance and flaring form. Late. 36". \$1.00

TOBACCO ROAD (Kleinsorge 1942)

A golden tobacco brown. So striking in its new coloring and beautiful form that it was among the favorites in our garden. \$3.00

VATICAN PURPLE (Whiting 1943)

Large, bold, deep blue-purple self of fine form and smooth heavy substance, which gives it a long lasting quality. Wide flaring falls, void of haft markings, with silky finish. Mid-late. 38". \$3.00

VELVET DUSK (Schreiner 1948)

This one is a deep rich glistening and lustrous purple. Even the beard is a dull bluish brown which makes it a most unique Iris. The blooms are of good size, with full rounded flaring form. Mid-late. 36". \$7.50

VIGIL (Wills 1947)

This is a real classic Iris, with large blooms of smooth firm texture. Sedate in its carriage of semi-flaring form which is slightly ruffled. Snow white in effect, clean pure white in color. Even the hafts are devoid of any markings. Nicely branched. Blooms early, midseason and late. Hardy. 38". Honorable Mention A.I.S. 1947. \$5.00

VIOLET SYMPHONY (K. Smith 1940)

This is one of the outstanding Iris. A gleaming Bradley's violet self of pleasing appearance. Huge in size, its petals are broad and rounded, molded into worthwhile flowers of distinction. Mid-season. 40". 75c

WABASH (Williamson 1937)

1940 Dykes Medal winner. Best amoena of distinct coloring. Standards are white and falls are deep violet-blue, margined white. 35". 50c

WAKARUSA (Lapham 1941)

Very unusual blending of burnt orange, copper, and vivid red. Midseason. 35". 75c

WAYFARER (Mitchell 1948)

A large frilled plicata with pleasing form. Its lovely white flowers are edged and stippled with lavender. Said to be a good parent for hybridizing. 36". \$3.00

WHITE SPIRE (Milliken 1943)

A large vigorous white of semi-flaring form and beautiful, very tall well branched stalks. 48". \$1.00

WHITE WEDGWOOD (Grant 1943)

When these blooms first open they are a light blue-white, changing to a pure white with a light blue flush at the haft around a heavy dark blue tipped beard. The keen contrast is entrancing. Midseason. 36" \$2.00

WINTER CARNIVAL (Schreiner 1941)

Elaborately sedate in its styling of snow whiteness with a gold throat which enhances its beauty. 40". \$1.00

YARKAND (C. G. White 1948)

Described as a "symphony of violets" which tells the story beautifully. The color ranges from light wisteria violet to Bradley's and Madder Violet, both in blending and veining. Nicely shaped large flowers borne on single branched stalks. Rhizomes are small. 24". Honorable Mention A.I.S. 1948. \$3.50



ROYAL SCOT

LYON'S IRISLAND

HEMEROCALLIS (Daylilies)

The daylily, or Hemerocallis, is one plant that comes close to being all things to all gardeners. First of all, you can grow them with ease wherever you live.

This perennial is equally adapted to the rigorous winter of North Dakota, to the dry atmosphere of New Mexico, the humidity of Florida, and the changeable climate around New York.

Daylilies can be grown without fuss or bother, also fitting into various conditions of soil and moisture, to full sun or partial shade.

These pest-free plants will be a permanent addition to your garden. They can be divided and transplanted every three or four years.

You can combine Daylilies with almost any other perennial and with many flowering shrubs and trees.

They are in full bloom in the middle of the hot summer when flowers are not too plentiful, and many varieties continue through reblooming periods, clear up until heavy frosts.

SHIPMENTS will be made from September 1st to late December. Early spring shipments will also be made if you wish it (from late February to March 10th).

ANNIS VICTORIA RUSSELL (Russell 1942)

Huge, wide petaled golden yellow. Its lovely flower makes it desirable. Evergreen. May-June. Not recommended for zero weather conditions. 38". \$1.00

ANTOINETTE (Hayward 1942)

Striking, large, spreading flowers of darkish purple-brown petals with an orange throat. \$1.00

BLACK FALCON (Nesmith 1941)

Something new in Daylily colors. This one is a very dark tone of blackish chocolate-maroon. Large flowers with wavy edges and a shallow canary yellow cup. Deciduous. July-August. 36". \$6.00

CHENGTU (Stout 1935)

Tall stalks filled with flowers of blended red with crimson mid-zone. A species type and a very good increaser. 42". August-September. Evergreen. 75c

CHIANTI (Nesmith 1943)

A raspberry self of medium size, producing a purple effect in the garden. The sepals and petals recurve from the small yellow cup. 38". July-August. \$2.50

CROWN OF GOLD (Nesmith 1933)

Clear deep orange flowers. Blooms with the Iris, early and continues blooming on through the season. 36". Deciduous. 75c

CRYSTAL PINK (Nesmith 1938)

Salmon coloring with deeper rose halo. A hardy grower. Tall and well branched. 42". Semi-deciduous. July-August. \$1.50

DAUNTLESS (Stout 1935)

Pale yellow with greenish throat. A great garden favorite with long blooming season. 36". Semi-deciduous. 75c

DAWN PLAY (Nesmith 1938)

Deep velvety rose, flushed gold in the heart of the flower. Blooms early in the season and then again in the fall. 50". \$3.00

DR. STOUT (Traub 1938)

Rich deep orange, overlaid bright cinnamon. July-August. \$1.50

FULVA ROSEA (Rosalind) (Native of China)

This is one of the choicest and most beautiful of any known species of the Hemerocallis. It is a lustrous rose-pink. The flowers are narrow petaled. 38". July-August. \$2.00

GOLDEN BYNG OF YIMY (Perry 1938)

Flowers of large size, recurved in form, of rich golden yellow with midrib of golden buff. 48". July, August. \$1.00

GRANADA (Traub 1938)

Reddish bronze with yellow throat and yellow midrib. Well branched stalks. 30". June, July, August. 75c

HONEY REDHEAD (Nesmith 1942)

A rare combination of colors makes this flower one of the most highly praised by Hemerocallis fanciers. The flowers are bright rose-red with a well defined border of pale yellow. 38". June, July. Deciduous. \$2.50

HYPERION (F. Meade 1925)

Huge waxy soft canary yellow, and is still considered one of the best. A good husky grower. 36". July-August. 50c

LADY FERMOR HESKETH (Perry 1924)

Large canary yellow flowers, flushed deeper at the center. 36". \$1.00

LINDA (Stout 1936)

A bicolor with ruffled petals of golden yellow, pastel shaded and bright clear yellow sepals. 36". Deciduous. 75c

MATADOR (Nesmith 1940)

A full cup-shaped flower of dazzling brilliance with 20 or more buds on nicely branched scape. A bright, rich mahogany, almost crimson, with a deep red velvety flush on the petals. 38". July, August. \$1.50

MRS. B. F. BONNER (Russell 1942)

Pale lemon with very wide petals. Long blooming season and truly one of the best lemon colored Hemerocallis. 36". 75c

MRS. HERBERT H. DEWEY (Hayward 1938)

A light golden yellow, flushed fulvous red. Medium size, open, compact type flower. 44". \$1.00

PERSIAN PRINCESS (Nesmith 1932)

Deep velvety red petals with a heavy overflush of purple, the sepals are a shade lighter, but with the same depth of color. 40". July, August. \$2.00

PINK CHARM (Nesmith 1940)

A beautiful open flower that has a very rosy appearance with center of soft yellow. One of the best pinkish Daylilies. 48". Evergreen. \$2.50

POTENTATE (Nesmith 1943)

A very outstanding flower of pansy purple. Broad full petals and sepals with the purple going way down in the throat, even the stamens and pistil are in purple. 42". July-August. \$8.00

PURPLE FINCH (Nesmith 1942)

A very rich glowing flower with full recurving petals and sepals of red purple with a darker flush above the cup of yellow. 42". July, August. \$2.50

RED CINDERELLA (Russell 1945)

Most pleasing in its styling and lovely coloring of near cherry-red. 36". July-August. \$1.50

REDMAN (Hayward 1938)

Clean red-orange self. A 5½ inch flower with medium wide segments. 42". June, July. \$1.00

REGAL LADY (Nesmith 1941)

A rose bicolor. Large flowers with deep rose petals blending into a deeper rose zone bordering the pale yellow cup. The cream sepals are faintly flushed with rose, giving the effect of a bicolor. 40". June, July. \$1.50

ROSY DAY (Nies 1943)

A very tall Hemerocallis with a great number of buds on each scape. The large, fragrant flowers have an undercolor of light yellow, but the edges of the sepals and the outer half of the petals are washed with a rosy pink. 40". Evergreen. 60c

ROYAL RUBY (Nesmith 1942)

A smoothly finished crimson red flower with full semi-reflexed petals and sepals. A self with almost no yellow in the cup. 38". July, August. Deciduous. \$6.00

ROYALTY (Nesmith 1940)

Large open flowers of true maroon with a velvety suggestion of blue-purple sheen. Wide petals and sepals. Contrasting, is the star-shaped cup of rich yellow. 40". July-August. \$4.00

SANTA MARIA (Russell 1945)

Another new note has been struck—open evenings—which makes this one more useful in flower arrangements. Near old rose in color, with a yellow-green throat. 30". \$1.00

STALWART (Cook 1935)

A beautiful and nicely formed flower with slightly recurving petals. A rich shade of orange with a slight fulvous tinge, a rich color, non-fading. 42". August. Deciduous. 75c

SU-LIN (Nesmith 1941)

A bicolor of mauve and creamy yellow. The flowers are open and flaring. Delicate and lovely in its soft coloring. 36". July-August. Deciduous. \$2.50

SUNNYWEST (H.P. Sass 1933)

One of the most prolific flowering varieties grown. Large flowers of pale canary yellow, with a waxy finish. A beautiful garden picture when clumps are established. 48". July, August. 50c

SWEETBRIAR (Nesmith 1938)

Both petals and sepals are rosy-pink and open wide showing the soft yellow throat. Sweet briar is one of our favorites. 40". July. \$2.50

THE ALAMO (Russell 1943)

The Oriental blending of this vivid rosy red is most pleasing. Broad sepals and petals. An early bloomer. 40". Evergreen. 75c

THERON (Stout 1934)

Dark red purple with a great depth of color. The throat is pale orange. It lends variety to a planting of yellow. 30". July, August. Deciduous. \$1.00

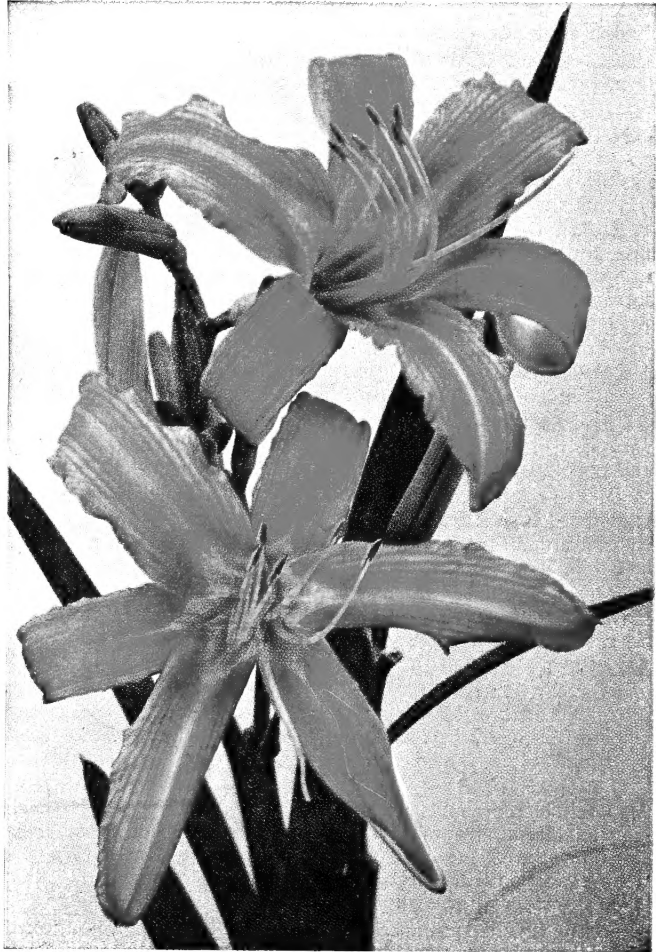
IN THE SAN FERNANDO VALLEY

LYON IRIS GARDENS
 7041 Woodman Avenue
 Van Nuys, California

LIBRARY
 U S DEPT. OF AGRICULTURE
 WASHINGTON 25, D. C.

Sec. 34.66 P. L. & R.
 U. S. Postage
PAID
 VAN NUYS, CALIF.
 Permit No. 29

POSTMASTER: Return Postage Guaranteed.
 If addressee has removed and new address
 is known, notify sender on FORM 3547 Postage for which is guaranteed.



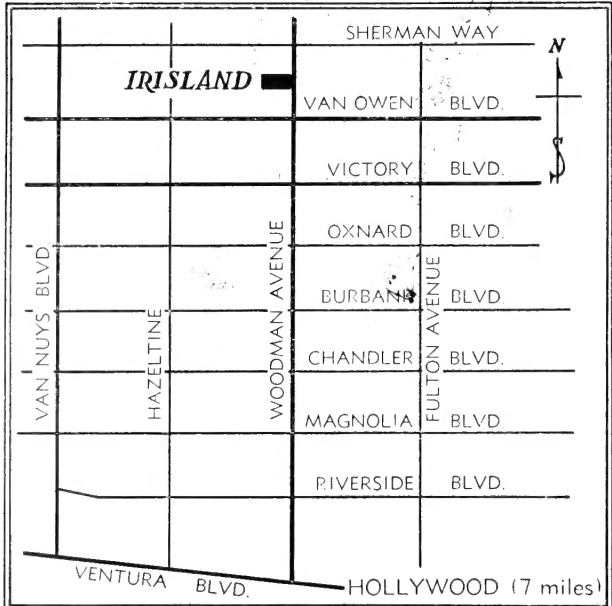
HEMEROCALLIS FULVA ROSEA (See page 19)

We invite you to join . . .
THE AMERICAN IRIS SOCIETY
 440 Chestnut Street, Nashville 10, Tennessee
 Annual Dues—\$3.50

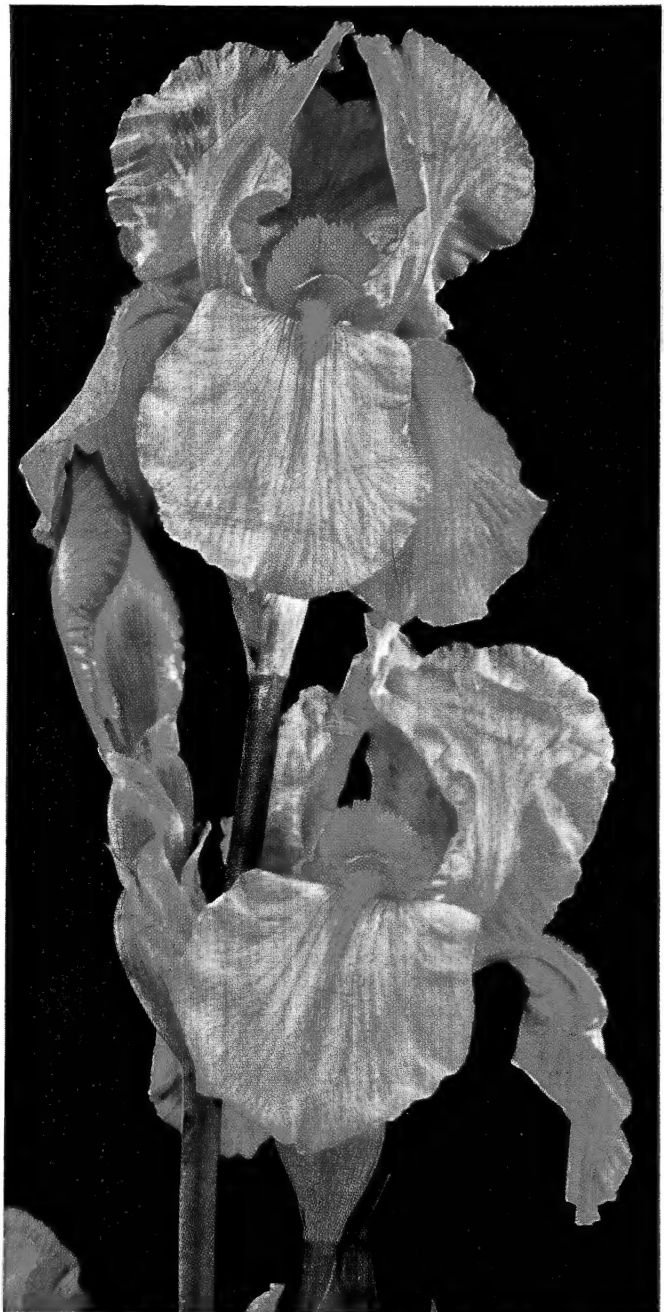
THE HEMEROCALLIS SOCIETY
 c/o Pearl Sherwood, Atlantic City, Iowa
 Annual Dues—\$3.00

THE IRIS—An authoritative book on Iris
 Published by The American Iris Society
 Paper Binding, \$1.50; Permanent Binding, \$2.50

MAP SHOWING LOCATION OF LYON'S GARDENS:



VISITORS WELCOME



CHAMOIS (See page 7)