

Historic, Archive Document

Do not assume content reflects current scientific knowledge, policies, or practices.

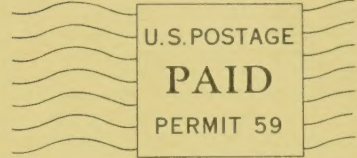
62.47 Return Postage Guaranteed

Jan. 5, 1950

SEC. 562. P. L. & R.

Ed. F. Mangelsdorf & Bro., Inc.

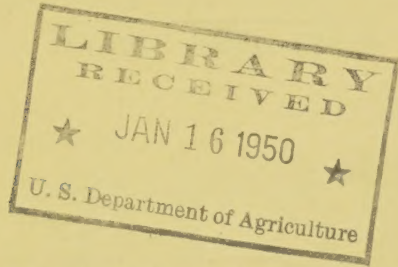
Wholesale Grass and Field Seeds



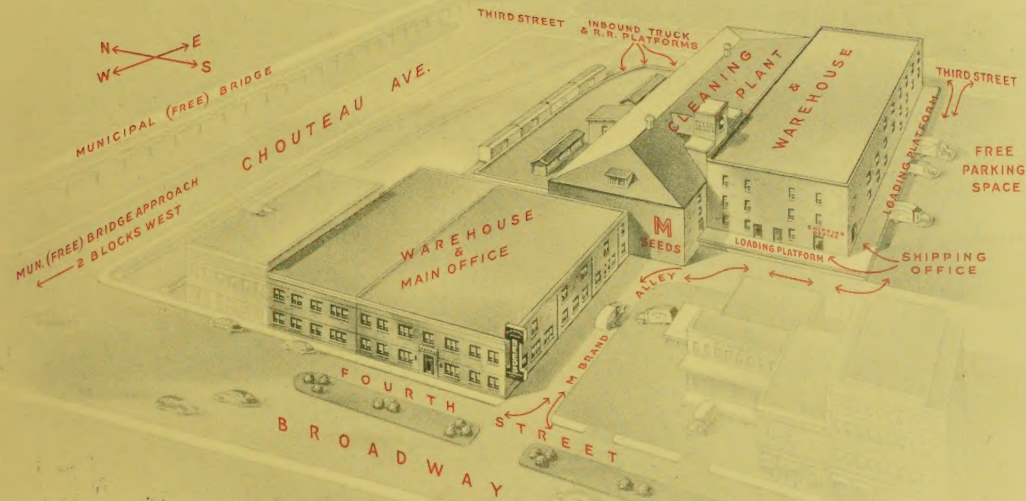
1020 SOUTH FOURTH STREET
Saint Louis 4, Mo

Important!

Market Quotations



Library, U. S. Dept. of Agriculture
Washington 25, D. C.



OUR ST. LOUIS PLANT

Convenient location: just south of Municipal (Free) Bridge—near truck depots, railroads, wholesale district—out of congested area.

Ample truck-loading space—**off the street**—with free parking lot. Two entrances—Fourth or Third St.—to platform which can serve 22 trucks at a time.

Railroad trackage alongside building. Bulk unloading provided for.

Building contains 150,000 square feet. Newest types cleaning machinery, with arrangement for quick, efficient, economical handling and cleaning of seeds.

Large, modern, daylight seed-testing laboratory to control buying, cleaning and preparation of seeds to meet and surpass requirements of the Federal and various State seed laws.

St. Louis is close to the producing territory of a wide assortment of Grasses, Clovers, Beans, Peas and Forage seeds, enabling us to offer first-hand at low prices.

In addition, we operate our large cleaning and storage plant at Atchison, Kansas, for handling and cleaning seeds originating in that area and the West. Atchison is in the northeast corner of Kansas, just across the Missouri line, in the center of the Blue Grass producing districts of Missouri, Kansas, Iowa and Nebraska.

ED. F. MANGELSDORF & BRO., INC.

1020 SOUTH FOURTH STREET

ST. LOUIS 4

Wholesale Only. Under same management in St. Louis since 1919.

SEED DISINFECTANTS

Treated seed gives better stands, helps prevent plant disease, improves yields and quality.

CERESAN, NEW IMPROVED

For Wheat, Barley, Oats, Rye.

Sizes of Packages	Retail Price Per Package	Dealer Price	Packages Per Case
4-oz. can	\$ 0.45	\$ 3.30 per doz.	3 doz.
1-lb. "	1.00	8.00 " "	1 "
4-lb. "	3.40	15.30 " 1/2"	1/2 "
40-lb. pail	28.75	23.00 per pkg.	1 per pkg.
100-lb. D.	69.00	55.00 " "	1 "

CERESAN "M"

For Wheat, Barley, Oats, Rye, Sorghums, Flax, Millet, Cotton, Sugar Beets. Can be used as a dust, or the slurry method.

14 oz.	\$ 1.00	\$ 8.00 Doz.	12
3 lb.	2.85	25.50 "	6
40 lb. Pail	28.75	23.00 Ea.	1
100-lb. Drum	69.00	55.00 "	1

SEMESAN BEL *New Improved*

A Dip disinfectant for seed potatoes. (1 pound treats 60 to 80 Bushels.)

2-oz. pkt.	\$ 0.50	\$ 3.25 per doz.	12 doz.
1-lb. can	2.00	16.00 " "	1 "
4-lb. "	6.35	28.50 1/2 "	1/2 "

SEMESAN

A General Disinfectant for Vegetable and Flower Seeds or Bulbs, and Certain Plant Diseases.

1/2-oz. pkt.	\$0.20	\$ 1.45 per doz.	12 doz.
2-oz. can	0.60	4.45 " "	3 "

REGULAR CERESAN

For Cotton, Millets, Sorghums. One pound treats 5 to 8 Bushels.

Sizes of Packages	Retail Price Per Package	Dealer Price	Packages Per Case
1-lb. can	\$ 0.85	\$ 7.05 per doz.	1 doz.
4 3/4-lb. "	3.50	15.60 1/2 "	1/2 "
25-lb. pail	16.10	12.75 per pkg.	1 only
100-lb. D.	57.75	47.20 " "	1 "

BARSPROUT

A dust applied to Potatoes and other root crops to retard sprouting in storage.

		Dealer	Retail
12 oz. can	48 per case	\$8.00 Doz.	\$1.00 Ea.
5 lb. "	4 " "	3.65 Ea.	5.50 "

WEEDICIDE WEED KILLER

LIQUID REGULAR (2-4D)

(Dilute 1 oz. to 1 1/2 gal. water.)

Size	Treats	Packed	Dealer	Retail
2-oz.	680 sq. ft.	2 doz.	\$1.80 Doz.	\$0.25 Ea.
1-qt.	1/4-acre	6 only	14.00 "	1.75 "

LIQUID CONCENTRATE (2-4D)

(Dilute 1 ounce to 6 gals. of water.)

1-pt.	1/2 acre	1 doz.	\$16.00 Doz.	\$2.00 Ea.
1-qt.	1 "	6 only	28.00 "	3.50 "
1-gal.	4 acres	1 "	5.80 Ea.	6.85 "
5-gal.	20 "	1 "	27.75 "	32.75 "

ALL PRICES SUBJECT TO CHANGE WITHOUT NOTICE

END O PEST

3 way protection for chewing insects, sucking insects and fungus diseases.

	Dealer	Retail
10 oz. Applicator Gun (24 per case)	\$15.25 Case	\$0.98 Ea.
10 oz. Refill Cartridge (24 per case)	11.70 "	.75 "
2 lb. Pouring Spout pkg. (12 per case)	12.60 "	1.50 "

ACCOTOX 50% DDT Wettable Powder.

Add to water for cattle and barns

	Dealer
4-lb. bags (12 per case)	\$1.20 per bag

FUMIGANTS

CYANO GAS, A-DUST

for pest control

CYANO GAS, G-FUMIGANT

for mill and elevator fumigation

State purpose for which desired.

Size	Per Case	Dealer	Retail
4-oz.	1 dozen	\$2.80 Doz.	\$0.39 Ea.
1-lb.	4 "	7.00 "	.98 "
5-lb.	20 cans	2.50 Ea.	3.75 "
25-lb.	4 "	9.35 "	12.50 "
100-lb.	1 can	24.00 "	30.00 "

FOOT PUMP DUSTERS

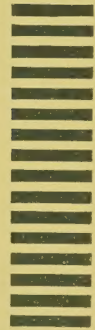
\$8.25 Ea. \$11.00 Ea.

Postage
Will be Paid
by
Addressee

First Class
Permit No. 4
Sec. 510 P.L. & R.
Saint Louis,
Mo.

BUSINESS REPLY CARD
NO POSTAGE STAMP NECESSARY IF MAILED IN THE UNITED STATES

ED. F. MANGELSDORF & BRO., INC.
1020 SO. FOURTH ST.
ST. LOUIS 4, MO.



←
**DETACH
AND
MAIL
YOUR
ORDER
ON
THIS
POST
CARD**
**WE
PAY
THE
POSTAGE**
←

SEED CHART

SEED	WEIGHT PER BU.	POUNDS PER ACRE	TIME OF SEEDING
ALFALFA.....	60	15-20	MARCH, MAY—AUGUST, SEPTEMBER
ALSIKE CLOVER.....	60	6-10	JANUARY, APRIL—AUGUST, OCTOBER
ATLAS SORGO.....	56	20-30	APRIL—JULY
BARLEY.....	48	72-96	MARCH, APRIL—SEPTEMBER
BERMUDA GRASS.....	40	5-10	MARCH—JUNE
BLUE GRASS (LAWNS: 1 LB. 200 SQ. FT.).....	14	30-40	FEBRUARY, JUNE—AUGUST, OCTOBER
BROME GRASS.....	14	15-25	FEBRUARY, APRIL—AUGUST, OCTOBER
BUCKWHEAT.....	48	48-60	MAY—JULY
CANE, FODDER.....	50	50-65	MAY—JULY
CORN, FIELD.....	56	7-10	MAY—JULY
" ENSILAGE.....	56	30-35	MAY—JULY
CLOVER, ALSIKE.....	60	6-10	JANUARY, APRIL—AUGUST, OCTOBER
" BUR (HULLED).....	60	15-20	AUGUST—NOVEMBER
" CRIMSON.....	60	15-20	JULY—OCTOBER
" RED.....	60	10-12	JANUARY, APRIL—AUGUST, NOVEMBER
" SWEET.....	60	15-25	JANUARY, MAY—JULY, SEPTEMBER
" SWEET (UNHULLED).....	40	25-40	NOVEMBER—FEBRUARY
" WHITE (LAWNS: 1 LB. 400 SQ. FT.).....	60	3-5	FEBRUARY, JUNE—AUGUST, OCTOBER
COWPEAS (DRILLED).....	60	45-70	MAY—AUGUST
GROHOMA.....	56	20-30	APRIL—JULY
JOHNSON GRASS.....	28	20-30	APRIL—JULY
KAFFIR CORN—MILO MAIZE—HEGARI.....	56	20-30	MAY—JULY
LAWN GRASS (LAWNS: 1 LB. 200 SQ. FT.).....	25	150-200	FEBRUARY, APRIL—AUGUST, OCTOBER
LESPEDEZA, KOREAN (MEASURED BU. 45 LBS.).....	25	15-25	FEBRUARY—MAY
" KOREAN (HULLED).....	60	10-15	FEBRUARY—MAY
MEADOW FESCUE (ENGLISH BLUE GRASS).....	24	25-35	MARCH, MAY—AUGUST, SEPTEMBER
MILLET, GERMAN.....	50	40-50	MAY—JULY
" HUNGARIAN.....	48	40-50	MAY—JULY
" JAPANESE.....	35	25-40	MAY—JULY
OATS.....	32	50-75	MARCH—MAY
ORCHARD GRASS.....	14	20-25	MARCH, MAY—AUGUST, OCTOBER
PASTURE MIXTURE.....	25	25-35	MARCH, JUNE—AUGUST, OCTOBER
RAPE, DWARF ESSEX.....	56	6-10	APRIL—SEPTEMBER
REDTOP, SOLID (MEASURED BU. 32 LBS.).....	14	8-12	FEBRUARY, JUNE—AUGUST, OCTOBER
" UNHULLED.....	14	20-30	FEBRUARY, JUNE—AUGUST, OCTOBER
REED CANARY GRASS.....	30	8-12	FEBRUARY, APRIL—AUGUST, SEPTEMBER
RYE, WINTER.....	56	60-90	JULY—NOVEMBER
RYE GRASS.....	24	25-35	FEBRUARY, JUNE—AUGUST, OCTOBER
SOYBEANS (DRILLED).....	60	30-60	MAY—AUGUST
SUDAN GRASS.....	40	15-30	APRIL—JULY
SUNFLOWER.....	22	3-6	MAY—JULY
TIMOTHY.....	45	8-12	FEBRUARY, MAY—AUGUST, NOVEMBER
VETCH, HAIRY WINTER.....	60	30-50	AUGUST—NOVEMBER