

Historic, Archive Document

Do not assume content reflects current scientific knowledge, policies, or practices.

Today's Quotations

1950

62.81

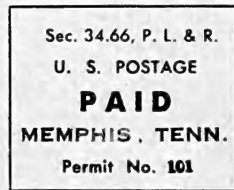
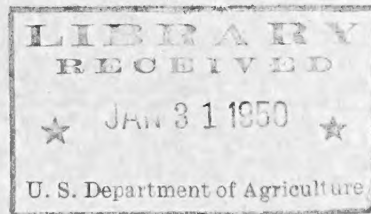
SEEDS

from ...

W. B. MALLORY & SONS CO.

Memphis 2, Tenn.

P. O. Box 2486



LIBRARY
U.S. DEPT. OF AGRICULTURE
WASHINGTON 25, D.C.

Return Postage Guaranteed

FIELD SEEDS

W. B. Mallory & Sons Co.

GARDEN SEEDS

Warehouse and Office
431 S. Main St.

P. O. BOX 2486
MEMPHIS, TENNESSEE

Telephone
5-7661

All Items Quoted F.O.B. Memphis and Subject to Stock on Hand when Order is Received, or any Radical Market Changes in Price.
 W. B. MALLORY & SONS CO. GIVE NO WARRANTY, EXPRESS OR IMPLIED, AS TO THE PRODUCTIVENESS OF ANY SEEDS WE SELL AND WE WILL NOT BE IN ANY WAY RESPONSIBLE FOR THE CROP. (OUR LIABILITY IN ALL INSTANCES IS LIMITED TO THE PURCHASE PRICE OF THE SEED.)

CERTIFIED D. & P. L. 15

Grade "A" Blue Tag, Treated & Delinted

Price Ton Lots, per ton.....\$150.00
 Less than ton, per bag.....\$ 7.75

COTTON SEED

EMPIRE

First Year From Breeder

Treated and Delinted, per ton.....\$160.00
 Less than ton lots, per bag.....\$ 8.25

CERTIFIED STONEVILLE 2B

Grade "A" Blue Tag, Treated & Delinted

Price Ton Lots, per ton.....\$150.00
 Less than ton, per bag.....\$ 7.75

ALFALFA

Oklahoma, 150 pound bags,
 U. S. Verified Origin, per pound..... .53
 (Include Inoculation)



	Per. Bu.
Keystone 38 (Early Yellow)—Delta Land.....	9.50
Keystone 222 (Full Season Yellow)	
Delta and Hill Land.....	9.50
Keystone U. S. 13 (Early Yellow)	
Delta and Hill Land.....	8.00
Keystone Tennessee 10 (Medium Maturity)	
White) — Fertile Soil.....	9.50
Keystone Dixie 17 (Medium Maturity)	
White) — Fertile Soil.....	9.50
Keystone Dixie 11 Hybrid.....	10.00
Keystone Trucker's Favorite Hybrid	
(Extra Early White).....	Later

Ask for Quantity Discount

FIELD CORN (open pollinated)

NUBBER AND TIPPED

YELLOW DENT, 2½ Bu. Bags, per bu.....	3.35
WHITE DENT (90 day), per bu.....	Ask
MOSBY PROLIFIC, 2½ Bu. Bags, per bu.....	Ask
MOSBY PROLIFIC, Certified, 2 bu. bags.....	Later
TENN. RED COB, 2½ bu. bags, per bu.....	3.35
NEAL'S PAYMASTER, 2½ Bu. Bags, per bu.....	3.35
NEAL'S PAYMASTER (Certified), per bu.....	4.00
JARVIS PROLIFIC, 2½ Bu. Bags, per bu.....	3.35
JARVIS PROLIFIC (Certified), per bu.....	4.25
THOMPSON'S PROLIFIC, 2½ Bu. Bags, per bu.....	3.35
TRUCKER'S FAVORITE, 2 Bu. Bags.....	5.60
EARLY SURPRISE, 2 Bu. Bags.....	5.60

CLOVERS

Ladino Clover, per pound.....	Ask
Red Clover, per pound.....	.60
White Dutch Fancy, per pound.....	Ask
Alsike Clover, per pound.....	.45

INCLUDE INOCULATION

SEED OATS

Columbia, 3 Bu. Bags, per bu.....	1.35
-----------------------------------	------

FORAGE SEEDS

ORANGE CANE, 100 lb. bags, per cwt.....	Later
AMBER CANE, 100 lb. bags, per cwt.....	Later
ATLAS SOGRO, 100 lb. bags, per cwt.....	Later
HEGARI, 100 lb. bags, per cwt.....	Later
MARTIN MILO, 120 lb. bags, per lb.....	.05
GERMAN MILLETT, 100 lb bag, per cwt.....	Later

LESPEDEZA

KOBE, 100 lb. bags, per pound.....	.13¾
KOREAN, No. 1, 100 lb. bags, per pound.....	.07½
SERICEA, hulled and scarified, per pound.....	.22

INCLUDE INOCULATION

GRASSES

	100-lb. Lots
	Per lb.
BERMUDA GRASS (Hulled) per lb.....	.75
BERMUDA GRASS (Unhulled) per lb.....	.55
DALLAS, per pound (imported).....	.60
ORCHARD, per pound.....	.35
RED TOP (Herd's grass), per pound.....	.60
RYE GRASS, per pound.....	Out
SUDAN, 100-lb. bags, per pound.....	Later
SWEET SUDAN, per pound.....	.10½
TIMOTHY, per pound.....	.34
KENTUCKY BLUE GRASS, per pound.....	.67
CERTIFIED KY. 31 FESCUE, per lb.....	.85

PEANUTS

TENN. RED (Improved)		Later
100 lb. bags, per lb.....		Later
Less than sack lots, per lb.....		Later

CANE SEED (For Syrup)

SAPLIN SORGHUM, 100 lb. bags, per lb.....	Later
Less than bag lots, per lb.....	Later

SEED SOWERS

CYCLONE.....	ea. \$2.75
--------------	------------

TURNIP SEED

	100 lb.	30 to	Less
	Lots	100 lb.	than
		30 lbs.	30 lbs.
Purple Top White Globe.....	.70	.72	.75
Large White Globe.....	.60	.62	.75
Seven Top.....	.38	.40	.42
Rutabaga.....	.47	.49	.50
Mixed.....	.40	.42	.45
Shogoin.....	.38	.40	.42
Purple Top Strap Leaf.....	.44	.46	.48

SPINACH

Bloomsdale Savoy Reselected.....	.33	.34	.36
----------------------------------	-----	-----	-----

MUSTARD

Tendergreen.....	.43	.44	.45
Southern Giant Curled.....	.43	.44	.45
Fla. Broadleaf, (Smooth).....	.43	.44	.45

	100 lb.	30 to	Less
	Lots	100 lb.	than
		30 lbs.	30 lbs.
RAPE, DWARF ESSEX.....	.18	.19	.20
OKRA, WHITE VELVET.....	.50	.55	.60
DWARF GREEN.....	.50	.55	.60
KALE, DWARF SIBERIAN.....	per lb. .80		
Kentucky Field PUMPKIN.....	.50	.55	.60
CANTALOUPE, Hale's Best—No. 36.....	per lb. 1.20		

CORN (Garden Varieties)

	100 lb.	30 to	Less
	Lots	100 lb.	than
		30 lbs.	30 lbs.
GOLDEN BANTAM			Later
(Sweet) per lb.....			Later
TRUCKER'S FAVORITE, per lb. .10½	.11½	.12½	
EARLY SURPRISE, per lb. .10½	.11½	.12½	
YELLOW DYNAMITE, per lb.....			Later

WATERMELON

WE DO NOT SELL LESS THAN 1 LB. OF MELON SEED

	100 lb.	30 to	Less
	Lots	100 lb.	than
		30 lbs.	30 lbs.
DIXIE QUEEN, per lb.....	1.25	1.30	1.35
FLORIDA GIANT, per lb.....	.60	.62	.64
STONE MOUNTAIN, per lb.....	.85	.90	.95
TOM WATSON, per lb.....	.85	.90	.95
KLECKLEY'S SWEET, per lb.....	.85	.90	.95
WINONA, per lb.....	1.35	1.40	1.45
BLACK DIAMOND, per lb.....	.60	.62	.64
CANNON BALL, per lb.....	.60	.62	.64

SOY BEANS

TANNER (for hay), 2 bu. bags, per bu.....	4.00
VIRGINIA (for hay), 2½ bu. bags, per bu.....	3.75
KINGWAY (black) (for hay),	
2 bu. bags, per bu.....	3.35
LAREDO (for hay), 2½ bu. bags, per bu.....	6.85
MAMLOXI, 2 bu. bags, per bu.....	Ask
BROWN BILOXI, 2 bu. bags, per bu.....	5.10
ARKSOY, 2 bu. bags, per bu.....	3.50
OGDEN, 2 bu. bags, per bu.....	Ask
S-100, 2 bu. bags, per bu.....	Ask

INCLUDE INOCULATION

SEED BAGS

COFFEE BAGS—	
Good used, for Soy Beans and Oats, each.....	.20

GARDEN PEAS

	100 lb.	30 to	Less
	Lots	100 lb.	than
		30 lbs.	30 lbs.
PURPLE HULL.....			Later
HALF RUNNER Blackeyed Peas.....			Later
BROWN CROWDER PEAS.....			Later
EARLY ALASKA PEAS.....	.11½	.13½	.15½
THOMAS LAXTON PEAS.....	.16½	.18½	.20½
LAXTONIA PEAS.....	.20½	.22½	.24½
TALL TELEPHONE PEAS.....	.19½	.21½	.23½
LARGE MARROW FAT PEAS.....	.15	.17	.19

GARDEN SEED

WE DO NOT SELL LESS THAN 5 LBS. OF BEANS

	100 lb.	30 to	Less
	Lots	100 lb.	than
		30 lbs.	30 lbs.
BEANS—			
BOUNTIFUL STRINGLESS			
(Bush) Beans.....	.21	.23	.25
GIANT STRINGLESS G. P.			
(Bush) Beans.....	.25	.27	.28
BURPEES, STRINGLESS G. P.			
(Bush) Beans.....	.21½	.23½	.25½
RED VALENTINE			
STRINGLESS (Bush) Beans.....	.27½	.29½	.31½
TENN. GREEN POD			
(Bush) Beans.....	.25	.27	.29
KENTUCKY WONDER			
(Pole) Beans.....	.22½	.24½	.26½
WHITE CORNFIELD			
(Genuine) (Pole) Beans.....	.24½	.26½	.28½
STRIPED CREASEBACK			
(Pole) Beans.....	.27	.29	.31
HENDERSON			
(Bush) Lima Beans.....	.20¼	.22¼	.24¼
FLORIDA SPECKLED			
(Pole) Lima Beans.....	.22¼	.24¼	.26¼
SIEVA or CAROLINA WHITE			
(Pole) Lima Beans.....	.22¼	.24¼	.26¼
GIANT BUTTER			
Speckled (Pole) Lima Beans.....	.29¼	.31¼	.33¼
JACKSON WONDER			
(Calico) (Bush).....	.21¼	.23¼	.25¼
BLACK VALENTINE			
(Stringless) (Bush).....	.26	.28	.30

DERRIS MIXTURE

FOR CONTROL MEXICAN BEETLE AND OTHER INSECTS

12/1-lb. CASE, per case.....	1.65
6/5-lb. CASE, per case.....	3.75

BLACK LEAF "40"

Per Dozen (1-oz. Bottles).....	2.79
--------------------------------	------



"THE INOCULANT IN THE CARTON"
 Always specify unit size and kind of seed to be inoculated.

Variety	Units per case	Unit size	Unit Prices Wholesale Retail
Combination	10	1 Bu.	.32 each .50
Alfalfa and All Clovers	10	2½ Bu.	.65 each 1.00
Soybeans	10	2 Bu.	.40 each .50
All Varieties	10	5 Bu.	.35 each .55
	1	50 Bu.	3.50 each 5.00
Vetch, Aust. Winter Peas Field and Garden Peas	10	100 Lb.	.32 each .50
Lespedeza Unhulled or hulled — All Varieties	10	100 Lb.	.20 each .30
Cowpeas, Peanuts, Mung Beans, Limas, Kudzu, Crotalaria	10	100 Lb.	.20 each .30
Lupines	10	5 Bu.	.35 each .55
All Varieties	10	100 Lb.	.32 each .50
Garden Peas Canning Peas Garden Beans	10	Combination for 1 Bu. each	.32 each .50
Garden Peas Beans, Limas Sweet Peas and Lupines	10	Packets for 5 Lbs. of seed	.09 each .15

FOR BIGGER, BETTER CROPS

Especially Bred

- High Yields
- Sound Corn
- Resistance to Drought, Insects, Disease, Lodging, Heat and Cold

Here's a Tip! PLANT KEYSTONE 38 THE ALL PURPOSE HYBRID



ORDER CARD Date.....

Gentlemen:

Please ship us via..... the following:

QUANTITY

KIND OF SEED

Don't forget your NAME AND ADDRESS

FIELD AND GARDEN SEED PLANTING

FIELD SEED	Lbs. Per Bu.	Pounds Per Acre	Time of Seeding
Alfalfa	60	20 to 35	Feb. to May-Aug. to Nov.
Barley	48	72 to 100	Apr. to June-Sept.-Dec.
Bermuda (Unhulled).....	40	8 to 15	March to August
Bermuda (Hulled).....	50	5 to 10	March to August
Blue Grass, Ky., for Lawn	14	75 to 100	Mch. to May-Aug.-Nov.
Blue Grass, Ky., for Past....	14	30 to 40	Mch. to May-Aug.-Nov.
Broom Corn.....	48	5 to 8	April to June
Clover, Alsike.....	60	6 to 10	Feb. to May-Aug. to Nov.
Clover, Black Medic.....	60	15 to 20	Feb. to March-Aug. to Dec.
Clover, Burr in Burr.....	10	40 to 80	July to Aug.-Sept.-Oct.
Clover, Burr Hulled.....	60	15 to 25	Aug. to Sept.-Oct.-Nov.
Clover, Crimson.....	60	15 to 20	July to Aug.-Sept.-Oct.
Clover, Hop.....	60	3 to 5	Sept. to April
Clover, Red.....	60	12 to 20	Feb. to Apr.-Aug. to Nov.
Clover, Sweet W. B.....	60	15 to 25	Feb. to May-Aug. to Nov.
Clover, White Dutch.....	60	3 to 5	Aug.-May
Corn, Field.....	56	8 to 10	Mch. to July 15th
Corn, Pop.....	56	8 to 10	Mch. to July 15th
Corn, Silage.....	56	10 to 12	Mch. to July 15th
Cotton, Seed.....	32	25 to 40	Apr.-May-June
Crotalaria	60	10 to 20	Apr. to July 15th
Grass, Dallas.....	10	10 to 15	Mch.-Apr.-May
Grass, Carpet.....	18	10 to 15	March to June
Grass, Orchard.....	14	15 to 20	Feb. to May-Aug. to Nov.
Grass, Rye.....	24	25 to 40	Aug. to Jan.
Grass, Red Top.....	32	10 to 15	Feb. to May-Aug.-Nov.
Grass, Sudan.....	40	25 to 40	May to August 15th
Grass, for Lawns.....	25	90 to 100	Anytime if Can Water
Grass, Timothy.....	45	15 to 20	Feb. to May-Aug.-Nov.
Grass, Pasture Mixture.....	15	15 to 25	Feb. to Apr.-Aug.-Nov.
Hegari	50	4 to 8	Apr.-May-June-July
Kaffir, Milo, Grohoma.....	50	4 to 8	Apr.-May-June-July
Lespedeza, Common.....	25	20 to 30	Jan. to May
Lespedeza, Kobe.....	25	25 to 30	Jan. to May
Lespedeza, Korean.....	25	25 to 30	Jan. to May
Lespedeza, Tenn. 76.....	25	25 to 30	Jan. to May
Lespedeza, Sericea.....	60	15 to 20	Early Spring After Frost
Millet, German.....	50	40 to 50	May-June-July-Aug.
Millet, Pearl.....	50	5 to 10	Early Spring After Frost
Mung Beans.....	60	10 to 15	May-June-July
Oats	32	64 to 96	Feb.-Apr.-Sept.-Nov.
Peanuts	22	50 to 75	Apr.-May-June
Peas, Aus-Winter.....	60	25 to 40	Aug.-Sept.-Oct.-Nov.
Peas, Stock.....	60	60 to 120	Apr.-May-June-July
Rape, Dwarf Essex.....	50	6 to 10	Feb.-Mar.-Sept.-Oct.
Rye, Grain.....	56	60 to 90	Aug.-Sept.-Oct.-Nov.-Dec.
Sagrain	50	4 to 8	Apr.-May-June-July
Sorghum, Forage.....	50	50 to 75	Apr.-May-June-July
Sorghum, Drilled.....	50	10 to 12	Apr.-May-June-July
Sorghum, Syrup.....	50	6 to 8	Apr.-May-June
Soy Beans, Small.....	60	20 to 60	Apr.-May-June-July
Soy Beans, Large.....	60	30 to 90	Apr.-May-June-July
Sunflower, Large.....	24	8 to 10	May-June-July
Velvet Beans.....	60	20 to 40	May-June-July
Vetch, Hairy.....	60	20 to 30	Sept.-Oct.-Nov.-Dec.
Wheat, Smooth.....	60	60 to 90	Sept.-Oct.-Nov.-Dec.

FERTILIZER

5-10-5

"VERTAGREEN" PRICES

RETAIL PRICE

100-lb. Bags.....	\$4.25	10-lb. Bags.....	\$0.90
25-lb. Bags.....	\$1.60	1-lb. Bags.....	\$0.15

DEALERS ONLY—WHOLESALE PRICE

100-lb. Bags.....	\$2.90	10-lb. Bags.....	\$0.59 (6 per bale)
25-lb. Bags.....	\$1.05	1-lb. Bags.....	\$0.09 (32 per bale)

VERTAGREEN

WHAT IT IS

Vertagreen is a high quality, scientifically blended and balanced plant food, excellent for obtaining more prolific growth of lawns, flowers, shrubs, trees, garden vegetables and field crops. It is clean, odorless and easy to apply.

We have it!



**Amazing NEW
HOME
PLANT FOOD**

**FOR
LAWNS, FLOWERS
TREES, GARDEN VEGETABLES, SHRUBS**

AND ALL FIELD CROPS

PLACE YOUR ORDER NOW

Postage
Will be Paid
by
Addressee

No
Postage Stamp
Necessary
If Mailed in the
United States

BUSINESS REPLY CARD

First Class Permit No. 1761. Sec. 34.9 P.L.&R.. Memphis 2, Tenn.

W. B. MALLORY & SONS CO.

SEED DEPARTMENT

MEMPHIS 2, TENNESSEE

BOX 2486

