

## **Historic, Archive Document**

Do not assume content reflects current scientific knowledge, policies, or practices.





# Neosho's Cover Special 815 ROSE Collection

An outstanding collection of best varieties, all 2-yr. No. 1 grade, field grown, Pacific Coast Roses.

1. **Editor McFarland.** Brilliant pink.
2. **Duquesa de Penaranda.** Apricot-peach.
3. **Etoile de Hollande.** Deep velvety red.
4. **Mrs. P. S. DuPont.** Rich gold, spicy fragrance.
5. **Kaiserin Augusta Victoria.** Brilliant white, lemon center.

(Not illustrated.)

**Red Radiance.** Deep red, excellent bloomer.  
**Radiance.** The best blooming pink Rose.

## All 7 for \$5.95



①

②

③

④

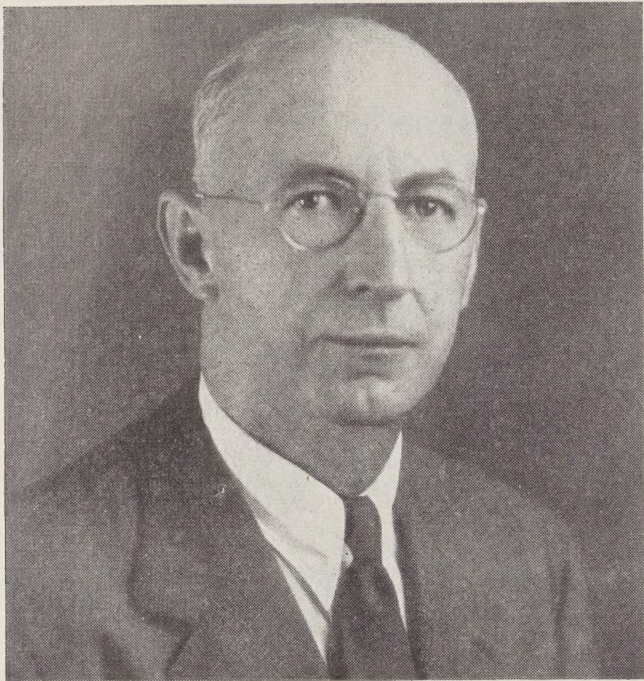
⑤

# Neosho

"Yours for Growing Satisfaction"

## NURSERIES Co. Neosho Missouri





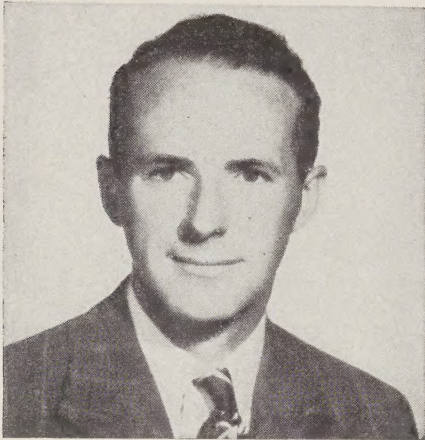
# NEOSHO GUARANTEE

1. **True to Name** stock is our unqualified guarantee. We will replace without charge, or refund purchase price, if any proves otherwise.
2. "Yours for Growing Satisfaction" is our slogan, hence we **guarantee highest quality** and arrival in good condition. Examine shipment carefully on arrival. Any complaints made within **ten days** will be cheerfully adjusted to your satisfaction. We will either refund purchase price or replace stock, as you prefer.
3. Despite every precaution in shipping, handling and planting, there are occasional losses, even with the best of stock, over which none of us have any control. Hence, we offer to help you by sharing your loss. We will replace at one-half price any stock that fails to grow, if you will report by July 1st following planting. Accompany your report with remittance figured at one-half price.

"Yours for Growing Satisfaction,"

President and General Manager.

**EVERY DEPARTMENT HEAD IS DIRECTLY INTERESTED IN SATISFYING OUR CUSTOMERS**



Joseph Weston, Supt. of Production



G. B. Williams, Sec.-Treas.



M. Vaughn Woodard,  
Sales Manager

## DIRECT FROM GROWER TO YOU

Over 400 acres nursery farm of fertile Hagerstown silt loam produces thousands of thrifty, well-rooted plants to make your home more fruitful and more beautiful. We test new plants thoroughly before offering them to our customer. All stock is thoroughly inspected by an authorized State Inspector to guarantee freedom from disease.

We are constantly striving to make our plants and service to you better each year. We guarantee highest quality and arrival in good condition.

Over 50% of our business comes from old customers.

Members American Association of Nurserymen—Missouri and Oklahoma State Association—National Mail Order Nurserymen Association—National Landscape Association.

## HOW TO ORDER

All orders are F.O.B. Neosho, unless otherwise specified. 10% deposit with order, balance when you are ready for shipment or we will ship C.O.D. if you prefer. On orders for less than \$10.00 full cash must accompany order.

**Order by catalog number**, but write in variety also. Be sure and add **free** premiums desired, as listed on page 31—for ordering early. Missouri customers must add 2% Sales Tax.

STATE OF MISSOURI  
DEPARTMENT OF AGRICULTURE  
JEFFERSON CITY

**OFFICE OF THE STATE ENTOMOLOGIST**

Neosho Nurseries Company  
Neosho, Missouri

**ORIGINAL**

No. 2

NURSERY INSPECTION CERTIFICATE

THIS IS TO CERTIFY THAT, in accordance with the Missouri Insect Pest and Plant Disease Law, the nursery and premises belonging to the individual or firm whose name appears hereon have been duly inspected by an authorized Entomologist, and were found to be apparently free of injurious insect pests and plant diseases.

This Certificate is not transferable, and is subject to revocation and other penalties under the provisions of the Laws relating thereto.

Issued July 12, 1949 Expires Sept. 1, 1950

Fee \$39.50

E. B. Roselle, Acting State Entomologist

## Parcel Post Orders

**Add 15% to cover postage on orders up to \$4.00, 10% on all orders over that.**

**Any difference in your favor will be refunded.**

ORDER EARLY



# Neasha HARDY PERENNIALS

PRICES ON ALL PERENNIALS UNLESS OTHERWISE NOTED  
 Each 35c    3 for 90c    6 for \$1.65    12 for \$3.00

502—**BABY'S BREATH** (*Gypsophila*). Lovely feathery panicles of small starry white flowers borne in profusion on the thread-like stalks. Fine for cutting.

503—**BABY'S BREATH, "Bristol Fairy."** Large panicles of double white flowers in which individual blossom is quite large and purest white. Blooms all summer.  
 Each \$1.00

501—**BABY'S BREATH, "Rosy Veil."** Great masses of small light pink flowers from August till frost.

506—**BALLOON FLOWER** (*Platycodon*). Large purplish blue bell-shaped flowers, 2 or 3 inches across. Blooms from July through September. Hardy and easy to grow.

504—**BLEEDING HEART, OLD-FASHIONED** (*Dicentra Spectabilis*). 2 feet. An old favorite known to everyone, that is becoming very popular again. It thrives in partially shaded places. Graceful heart-shaped flowers in April and May. Extra heavy plant.  
 Each \$1.00    3 for \$2.75

505—**BLEEDING HEART, PLUMY** (*Dicentra Eximia*). A dwarf growing new variety with finely cut foliage and pretty pink flowers throughout the season.  
 Each 50c    3 for \$1.35

507—**CANDYTUFT**. Very desirable, dwarf plant covered with white flowers in April-May. Foliage is evergreen and plant is attractive all year. Ultimate height 8 inches.

## CARNATIONS, HARDY

The State flower of Indiana. Choice hybrid garden Pinks possessing all the good qualities you could ask for in a plant. Hardy as an Oak, neat habit of growth, blooms all summer. Spicy fragrance. What more could you ask? We think it is one of the finest garden plants. Mixed colors.

508—**PINK HARDY CARNATION.**    509—**RED HARDY CARNATION.**  
 510—**YELLOW HARDY CARNATION.**

512—**COLUMBINE** (*Aquilegia*). A fine perennial for partially shaded locations with large flowers with long slender out-curving spurs. Shades of blue, yellow, and pink.

516 **COREOPSIS** (*Golden Daisy*). Bright yellow daisy-like flowers in profusion all summer long—easy to grow; fine for cutting. Grows 3 feet tall.

517—**CORNFLOWER ASTER** (*Stokesia*). A perennial of easiest culture with large lavender-blue aster-like flowers in late summer.

## CHRYSANTHEMUMS—LARGE FLOWERING

518—**CHARLES NYE.** Double yellow.    519—**POLAR ICE.** White.  
 520—**FLASHLIGHT.** Red.    521—**SEPTEMBER DAWN.** Double pink.  
 Each 60c    3 for \$1.70    6 for \$2.25

## CUSHION MUMS

A blaze of color from August until frost. Hundreds of blossoms the first year. Easy to grow. Hardy.

522—**Pink.**    523—**Red.**    524—**Yellow.**    525—**Bronze.**    526—**White.**  
 Each 50c    3 for \$1.35    5 for \$2.00

527—**DELPHINIUM.** (Hybrids.) A favorite wherever flowers are grown. Stately spikes from pale blue to deepest indigo-blue and royal purple. Fine for cutting and in the garden. Grows 3 to 5 feet tall.

531—**FORGET-ME-NOTS.** Low growing, everblooming perennial, fine for shady locations.

533—**GAILLARDIA, BURGUNDY** (*Blanket Flower*). One of the showiest giant-sized blooms of rich burgundy-red petals with gold tips. Easy to grow. Excellent for cutting. Grows 3 feet tall.

## HOLLYHOCKS (Double)

A magnificent new strain with exquisite double flowers; hardy and easy to grow.  
 540—**Red.**    541—**Yellow.**    542—**Pink.**    543—**White.**

530—**PAINTED DAISY** (*Pyrethrum*). Showy daisy-like flowers of red, pinks, and whites, with fine femlike foliage. Excellent for cutting.

545—**PINKS, CLOVE** (*Dianthus Plumarius*). Fine plants for the sunny border, easy to grow. Blue-green, grasslike foliage and hundreds of blossoms in reds, pinks, and whites with spicy fragrance.



Cat. No. 504. Old-Fashioned Bleeding Heart  
 Each \$1.00



Cat. No. 528. Shasta Daisy—Each 35c

**807 PHLOX SPECIAL**  
 1 each of 7 different varieties of Phlox  
 for **\$1.85**  
 Only

Cat. No. 545. Clove Pinks  
 Each 35c



ORDER BY CATALOG NUMBER

SEE PAGE 31 FOR FREE PREMIUMS WITH EARLY ORDERS





Cat. No. 527. Delphinium  
Each \$0.35



Cat. No. 516. Coreopsis  
Each \$0.35

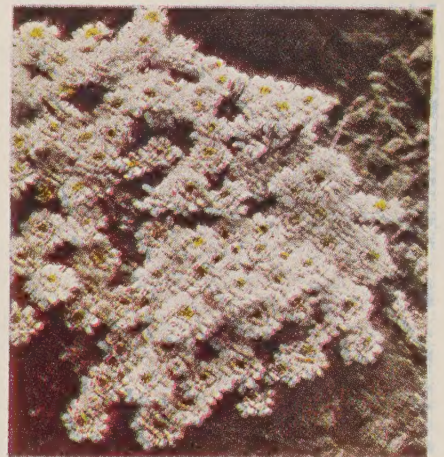
**BE SURE CATALOG NUMBER  
IS ON YOUR ORDER**



Cat. No. 512. Columbine  
Each \$0.35



Cat. No. 523. Red Cushion Mum—Each \$0.50



Cat. No. 507. Candytuft  
Each \$0.35



Cat. No. 524. Yellow Cushion Mum—Each \$0.50



← Hardy  
Carnations  
Each \$0.35  
Cat. Nos.  
508. Pink  
509. Red  
510. Yellow





**DOUBLE HOLLYHOCKS**

Cat. No. 540. Red  
 Cat. No. 541. Yellow  
 Cat. No. 542. Pink  
 Cat. No. 543. White  
 Each 35c



Each 40c; 6 for \$1.85  
 Cat. No. 553. Purple Phlox



Cat. No. 547. Creeping Phlox (Phlox Subulnifera)  
 Each 40c; 6 for \$1.85

**BE SURE CATALOG  
 NUMBER IS ON  
 YOUR ORDER**



Cat. No. 555. Sweetheart Phlox—Each 40c



Cat. No. 562. Sweet William—Each 35c



→  
 Cat. No. 554  
 Salmon Glow  
 Phlox  
 Each 40c

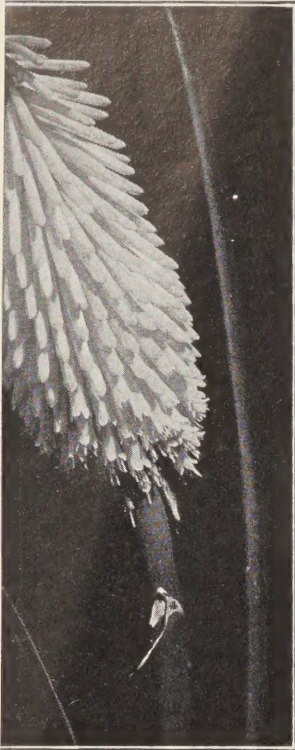
**SEE PAGE 31  
 FOR FREE  
 PREMIUM WITH  
 YOUR ORDER**

←  
 Cat. No. 533  
 Gaillardia  
 Each 35c





# NEOSHO HARDY PERENNIALS



Cat. No. 567  
Tritoma, "Red Hot Poker"  
Each 35c

## PHLOX

PRICES on Phlox as Follows  
Each \$0.40      6 for \$1.85  
3 for 1.00      12 for 3.50

549—**DAILY SKETCH.** A magnificent Phlox. Color is lustrous, sparkling pink with deeper eye. Large trusses of very large flowers on tall, strong stems.

550—**FRAU ALFRED VON MATNER.** The best salmon-orange Phlox grown. Very free flowering. Must be seen to be appreciated.

551—**IRENE.** One of the best easy growing cherry-red Phlox. Medium height with bronzy green foliage.

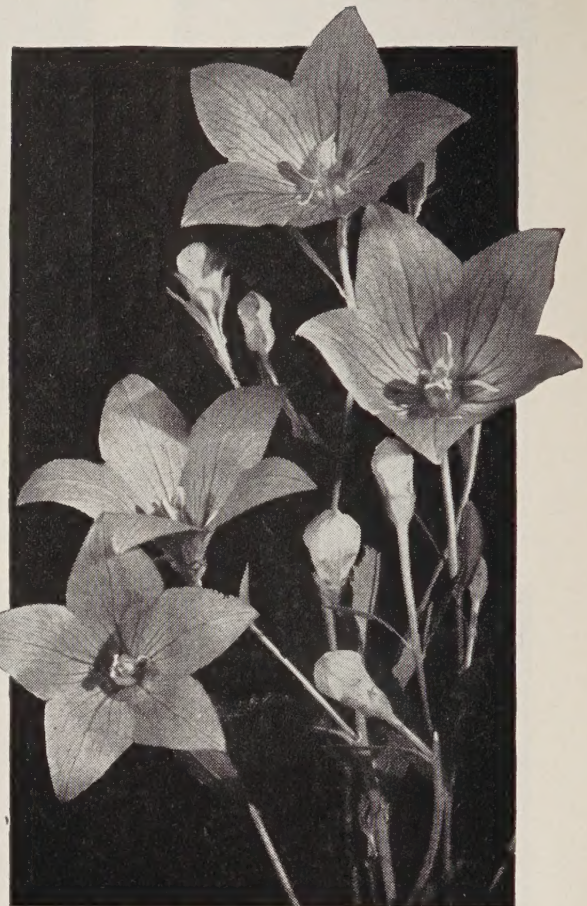
552—**MARY LOUISE.** Without doubt the best white Phlox, with immense heads of purest white. Free bloomer.

553—**ROYAL PURPLE.** Rich shaded violet with deeper eye.

554—**SALMON GLOW.** Immense heads of rich salmon. Very free blooming.

555—**SWEETHEART.** Deep salmon-pink. A beauty.

547—**PHLOX SUBULATA.** (Moss Pinks.) An early spring flowering perennial with pretty mosslike evergreen foliage and masses of pink or red flowers. Fine for rockery or carpeting ground and covering bare spots. Low, compact, spreading growth.



Cat. No. 506. Balloon Flower—Each 35c

## PERENNIALS

Prices On All Perennials Unless Otherwise Noted:  
Each \$0.35      6 for \$1.65  
3 for .90      12 for 3.00

546—**PRIMROSE** (Missouri). Low growing plants with large yellow fragrant flowers, 3 to 5 inches across, borne on trailing stems. Leaves thick and narrow. Excellent for front of border or rock garden.

561—**SPIREA ASTILBE** (Filipendula). Feathery white flowers on 12-inch stems. Lovely fernlike foliage.

528—**SHASTA DAISY.** Large glistening white flowers on long stems. Excellent for cutting. Hardy and easy to grow.

**SWEET WILLIAM** (Dianthus Barbatus). An old garden favorite with dense rounded terminal heads of 20 to 30 flowers. Shades of white, pink, red, and purple.

562—Red.  
563—Pink.  
564—White.  
565—Purple.



Cat. No. 530. Painted Daisy  
Each 35c

566—**SEDUM SPECTABILE.** Erect, growing about 18 in. tall with broad, light green foliage and large heads of brilliant pink flowers in late summer.

567—**TRITOMA** (Red Hot Poker). These new hybrids are hardy, with beautiful flower spikes of brilliant orange-red on graceful stems. 3 to 4 feet tall.

569—**VIOLA, JERSEY GEM.** Attractive flowers doing well in sun or shade. Bloom all summer with large violet Pansy blooms. Grow 6 to 8 in. tall.

Cat. No. 503. Gypsophila, Baby's Breath,  
Bristol Fairy—Each \$1.00





# HARDY HEDGES

A beautiful green wall that beautifies as it serves to make a barrier or a screen at very small initial cost and no maintenance except to prune to desired shape and height.

To make a good compact hedge, they should be planted 8 to 9 inches apart and pruned back to within 2 inches of the ground when they are set. They should be sheared several times in the early part of the growing season to form a dense, compact hedge.



Why is the 2-3 ft. grade more desirable and of better value than 12-18 inch if you are going to cut them back when planting? Because the 12-18 inch will have 2 to 3 canes. The 2-3 ft. will have 5 to 9 canes and a much heavier root system, hence will make a compact hedge the first season.

The hedge plants we offer are heavy, well-branched, field-grown plants which give an immediate effect, and should not be confused with small, spindling, 2-year seedlings from beds.

**300—GREEN BARBERRY.** A protective as well as ornamental hedge, as the small spines will keep out cats, dogs, and chickens. Makes an attractive hedge either trimmed or untrimmed. Perfectly hardy. Red berries, and foliage colors beautifully in fall. Plant 18-24 in. apart.

12-18 in. ....	Per 10	Per 25
18-24 in. ....	\$3.50	\$ 7.50
	5.00	11.25

**301—RED-LEAF BARBERRY.** Same habit of growth as above but with bright red foliage all summer.

12-18 in. ....	Per 10	Per 25
18-24 in. ....	\$5.00	\$11.25
	7.50	16.25

**302—CALIFORNIA PRIVET.** Semi-evergreen, with thick, dark green foliage. Most beautiful of all the Privets, but north of latitude of Kansas City it is only semi-hardy. A rapid grower, can be sheared to any desired height, making a dense, compact green wall. Plant 9-12 in. apart.

12-18 in. ....	Per 10	Per 25	Per 50	Per 100
18-24 in. ....	\$1.25	\$2.50	\$4.00	\$ 6.95
2- 3 ft. ....	1.50	3.00	5.00	8.95
	2.00	4.00	7.00	12.95

**303—HARDY AMUR PRIVET (Amur River North).** America's leading trimmed hedge plant; hardiest of all, standing 20 degrees below zero. Can be trimmed to any desired height and always makes a dense, attractive hedge. Plant 9-12 in. apart.

12-18 in. ....	Per 10	Per 25	Per 50	Per 100
18-24 in. ....	\$1.60	\$3.20	\$5.85	\$ 9.95
2- 3 ft. ....	1.95	4.25	7.95	13.95
	2.50	5.75	10.75	17.95

**305—EUONYMUS PATENS.** Evergreen. Ideal evergreen hedge, should be kept trimmed for best effect. Plant 12-15 inches apart in row.

12-15 in. ....	Per 10	Per 25
	\$5.95	\$13.75

**306—SPIREA, THUNBERGI.** Makes an attractive hedge 4 to 6 feet tall. Its slender arching branches are completely covered with small white blossoms in early spring, and its narrow light green foliage changes to shades of orange in the fall. Plant 2 feet apart.

18-24 in. ....	Per 10	Per 25
2- 3 ft. ....	\$4.00	\$ 9.25
	5.50	12.50

**307—SPIREA, VAN HOUTTEI (Bridal Wreath).** Makes a beautiful untrimmed hedge and is the most widely planted shrub in the United States.

12-18 in. ....	Per 10	Per 25
18-24 in. ....	\$2.95	\$ 6.95
2- 3 ft. ....	3.75	8.75
	4.50	9.95

**304—EVERGREEN PRIVET (Amur River South).** Hardy as far north as Kansas City, Missouri. This Privet has dark green glossy foliage which here at Neosho will hold its foliage all winter long. Plant 9-12 in. apart.

12-18 in. ....	Per 10	Per 25	Per 50	Per 100
18-24 in. ....	\$1.60	\$3.20	\$5.85	\$10.65
2- 3 ft. ....	1.95	4.50	7.95	14.95
	2.50	5.75	10.75	19.95

**308—IBOLIUM PRIVET.** A cross between California and Ibotia Privet, with dark glossy foliage of the California and the hardiness of the Ibotia. Well branched. Plant 9 to 12 inches apart.

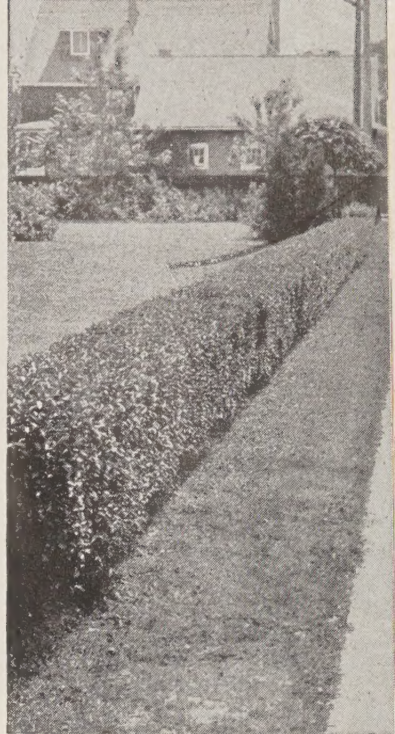
12-18 in. ....	Per 10	Per 25	Per 50	Per 100
18-24 in. ....	\$1.60	\$3.20	\$ 5.85	\$ 9.95
2- 3 ft. ....	1.95	4.25	7.95	13.95
	2.50	5.75	10.75	17.95

**311—HONEYSUCKLE, TATARIAN.** One of the most satisfactory tall growing hedge plants. It is strong, vigorous, and hardy and one of the first shrubs to leaf out in the spring and retains its foliage well into the winter. The small, pink blossoms are followed by bright red fruits. Normally grows into a hedge 6 to 12 feet and will thrive in most any soil. Plant 3 feet apart.

2-3 ft. ....	Per 10	Per 25
3-4 ft. ....	\$6.00	\$13.95
	7.00	16.95

**309—POLISH PRIVET.** An extremely hardy variety with dark green foliage. Plant 9-12 in. apart.

12-18 in. ....	Per 10	Per 25	Per 50	Per 100
18-24 in. ....	\$1.60	\$3.20	\$5.85	\$ 9.95
2- 3 ft. ....	1.95	4.25	7.95	13.95
	2.50	5.75	10.75	17.95



Cat. No. 303. Hardy Amur Privet, Amur River North Per 25, \$3.20

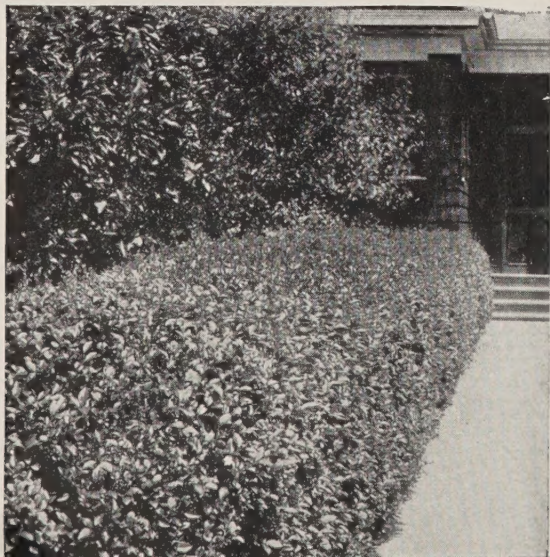


Cat. No. 304. Amur River South Privet Evergreen Privet—Per 25, \$3.20



Cat. No. 307. Spirea Van Houttei Per 25, \$6.95

Cat. No. 302. California Privet—Per 25, \$2.50



Cat. No. 300. Japanese Barberry—Per 25, \$7.50







**CHINESE  
FLAME  
AZALEA**  
(Mollis)



This variety is perfectly hardy in midwest. Is tolerant of lime, will stand 10° below zero. Grows 3-4 ft. Colors range through orange-yellow and salmon. Use on east or north side. Mulch with peat moss, 4 to 6 inches deep.

Each \$2.25

Chinese Flame Azalea (Mollis)  
Each \$2.25



**Cat. No. 40**  
**SPIREA, DWARF CRIMSON** (Anthony Waterer)

Neat dense shrub 2-3 ft. tall with rose-red flowers all summer. Fine for foundation planting.

Specimen, Each 95c Select 80c



**Cat. No. 15—BLUE MIST**

From August till frost is covered with powdery blue-fringed flowers. Grows 2-3 ft. tall and about as broad. Silvery green foliage.

2-yr. No. 1, Each \$1.00



**BE  
SURE  
CATALOG  
NUMBER  
IS ON  
YOUR  
ORDER**



**Cat. No. 24**  
**FORSYTHIA**

Bright yellow bell-shaped flowers in early spring. Grows anywhere.

Specimen,  
Each 80c  
Select 70c



**Cat. No. 49**  
**BEAUTY BUSH**

(Kolkwitzia.) Delicate pink flowers in great profusion in May. Grows 6 to 8 ft. tall. Attractive foliage and habit of growth.

Specimen, Each \$1.00 Select 85c





↓ **BUTTERFLY BUSH**  
or **SUMMER LILAC (Buddleia)**



Bloom all summer. Immense, fragrant flowers. Easy to grow.

**16—CHARMING.** Rosy orchid-pink flowers. Spikes 15-18 inches long. Bright green foliage.

**17—FLAMING VIOLET.** Immense spikes of flaming-violet. Flower trusses 12-18 in. long. Plant is vigorous, upright grower.

**18—ISLE DE FRANCE.** Rich purple flowers with orange eye and rich green foliage.

**19—FARQUAR.** Lilac-purple variety. Blooms all summer.

2-yr. No. 1, Each 80c;  
4 for \$2.75.

**PLEASE ORDER  
BY  
CATALOG NUMBER**

→  
**27—HARDY BLUE or PINK  
HYDRANGEA.** Immense flower heads which are pink in alkaline soil and blue in acid soil. Keep well watered and mulch in winter.  
Each \$1.95

↓ **CRAPEMYRTLE**

One of the best flowering shrubs for areas as far north as southern Missouri. Beautiful watermelon-red blossoms from July until frost.

No. 20—RED. Each 95c.

No. 21—PINK. Each 95c.

**22—WILLIAM TOOVEY.** A new hardier and dwarf growing strain. Beautiful pink blossoms all summer. Blooms on new wood each year so prune back severely each spring.  
Each \$1.25



↑ **14—RED-LEAF BARBERRY.** Lustrous bronze-red foliage all summer. A dense compact shrub about 4 ft. tall. Plant in sun for best color.

Specimen 90c Select 80c



→  
**61—SUNGOLD  
HYPERICUM.**  
(Plant Pat. No. 568.) A brilliant mound of gold all summer. Dazzling golden flowers on a low growing shrub, with glossy green foliage. Grows 3 to 4 ft. tall.  
2-yr. No. 1,  
Each \$1.95



# Hardy FLOWERING SHRUBS

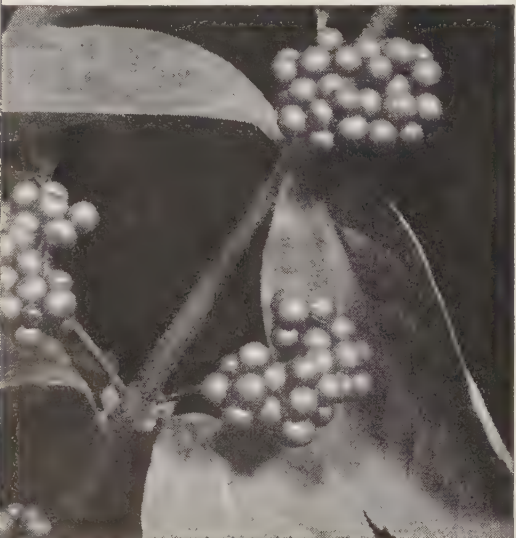
We offer shrubs in two sizes, all hardy, field-grown, first-class plants.

**Select Grade:** Heavy, select plants out of our 2- and 3-year-old blocks; well rooted and heavy branched.

**Specimen Grade:** For those who desire quick results and extra heavy plants.



Cat. No. 52. Deutzia Pride of Rochester  
Specimen \$0.80



Cat. No. 2. Beautyberry  
Specimen \$0.80



Cat. No. 34. Virginal Mock Orange  
Specimen \$1.00

**45—ALMOND, FLOWERING.** Beautiful small double, rose-pink flowers in early spring. Grows 3 to 4 feet tall.

Specimen 95c Select 80c

**ALTHEA.** Picture and description on back cover.

12—Pink. 46—Purple.

13—Red. 47—White.

Specimen 80c Select 70c

**1—BARBERRY, GREEN.** Makes a low, dense, rounded shrub about 3 feet tall, and wide. Will grow in sun or shade and in the fall its foliage colors a beautiful bronzy red. Bright red berries hang on all winter.

Specimen 65c Select 55c

**14—BARBERRY, RED.** Most brilliant colored shrub of all with lustrous red foliage all season and bright red berries in the fall. Plant in full sun.

Specimen 90c Select 80c

**2—BEAUTYBERRY (Callicarpa).** Branches covered in August with thousands of closely set small pink flowers. These are followed in September by masses of glittering violet-blue berries in dense clusters along each branch. Grows 4 to 6 feet tall.

Specimen 80c Select 70c

**49—BEAUTY BUSH (Kolkwitzia).** See picture and description page 8.

**15—BLUE MIST.** Picture and description on page 9.

2-year No. 1, Each \$1.00

**BUTTERFLY BUSH.** Picture and description on page 9.

16—Charming. Each 80c.

17—Flaming Violet. Each 80c.

18—Ile de France. Each 80c.

19—Farquhar. Each 75c.

All 4 above for \$2.75

**50—BUSH CHERRY.** Fruitful as well as ornamental, with white blossoms followed by rich red fruit which is fine for jams, jellies, or pies. Grows 5 to 6 feet tall.

2-year No. 1, 2 for \$1.95

**3—CALYCANTHUS (Sweet Shrub).** A handsome shrub with glossy foliage and chocolate-brown flowers which has a spicy fragrance. Will grow in shade. Grows 5 to 6 feet tall.

Specimen 90c Select 80c

**CRAPEMYRTLE.** Description and picture on page 9.

22—William Toovey. Each \$1.25.

20—Red. 21—Pink.

2-year No. 1, Each 95c

**51—CRANBERRY, HIGH BUSH.** Single white flowers in April and May are followed by clusters of scarlet berries in late summer, hanging on until spring. Will grow in shade as well as sun. 8 to 10 feet.

Specimen \$1.00

**23—DESMODIUM.** A medium growing shrub with long, graceful branches covered with large clusters of royal purple Sweet-Pea-like flowers in early fall—very showy. Grows 5 to 6 feet tall.

2-year No. 1, Each 95c

**52—DEUTZIA, PRIDE OF ROCHESTER.** Double white flowers, tinged with pink, in great profusion in April and May. Grows 8 to 10 feet tall.

Specimen 80c Select 70c

**53—DEUTZIA, GRACILIS.** Low graceful shrub 2 ft. with profusion of white flowers in May. Will grow in shade.

Specimen 95c



Cat. No. 45. Flowering Almond  
Specimen \$0.95

**4—DOGWOOD, RED-TWIGGED.** Bright red twigs which contrast remarkably with the bare, dull-colored branches of other shrubs in winter. Grows 6 to 8 feet tall.

Specimen 80c Select 70c

**69—EUONYMUS PATENS.** A fine shrub for foundation planting, holding its foliage well into winter. Large dark green glossy foliage with berries similar to Bittersweet. Will stand shade. See picture and description on page 15.

Specimen \$1.35

**70—ELDER, GOLDEN.** A large growing shrub with golden yellow leaves which gives a good contrast in the border.

Specimen 80c Select 70c

**24—FORSYTHIA.** Picture and description on page 8.

Specimen 80c Select 70c

**54—FLOWERING QUINCE (Firebush or Japonica).** Brilliant scarlet blossoms in early spring followed by fragrant yellow Quinces which make delicious jelly.

Specimen 80c Select 70c

**55—GLOBE FLOWER (Kerria Japonica).** Brilliant double golden yellow flowers in May and June. Bright green stems and foliage add to the brilliancy of the flowers.

Specimen \$1.25 Select \$1.10

**GROOTENDORST, RUGOSA.** See picture and description back cover.

56—Red. 57—Pink.

2-year No. 1, Each \$1.00

**59—HONEYSUCKLE, FRAGRANT.** Fragrant creamy white flowers nestled in deep green leaves adorn this nearly evergreen shrub. The glossy dark green leaves remain until almost spring. Grows 8 ft. tall.

Specimen 80c Select 70c

**25—HONEYSUCKLE TATARIAN.** A rapid grower with handsome foliage and rosy pink flowers, followed by bright red berries. Fine for border. 8 to 10 feet.

Specimen 80c Select 70c

**26—HONEYSUCKLE, RED ZABELLI.** Rosy red flowers, followed by bright red berries. One of the hardiest shrubs with good, compact bush habit of growth.

Specimen 80c Select 70c

**27—HYDRANGEA, BLUE or PINK.** Description and picture on page 9.

Each \$1.95

**28—HYDRANGEA, A. G.** The Snowball Hydrangea, with large, round, pure white flowers which blooms in early summer.

Select \$1.10

**29—HYDRANGEA, P. G.** Immense cone-shaped white flowers blooming in late summer and fall, which change to pinkish bronze later.

Specimen \$1.25 Select \$1.10

**61—HYPERICUM, SUNGOLD.** See illustration and description on page 9.

2-year No. 1, Each \$1.95

**58—HUGONIS ROSE.** Bright yellow single Rose in spring, attractive foliage. Perfectly hardy. Grows 5 to 6 feet tall.

2-year No. 1, Each \$1.00



# Hardy FLOWERING SHRUBS

68—**JASMINUM NUDIFLORUM.** Low spreading shrub with bright yellow flowers in spring. Holds foliage most of the winter. Plant in sun.  
Each \$1.00

**LILAC, FRENCH.** See illustration and description on page 14.  
Specimen \$1.75 Select \$1.25

62—**LILAC, COMMON.** Grows anywhere and its masses of light purple bloom in early spring are a constant delight.  
Specimen 95c Select 80c

63—**LILAC, CHINESE.** Blooms second year with graceful slender branches covered with lovely rosy lilac flowers in great profusion. Has neat habit of growth and does not sucker (sprout from roots) like common Lilac.  
Specimen 95c Select 80c

64—**MOCK ORANGE.** Single white flowers of sweet-scented fragrance. A vigorous, upright hardy shrub that grows 8 to 10 feet tall.  
Specimen 80c Select 70c

34—**MOCK ORANGE, VIRGINAL** (Double Mock Orange). Large, double white flowers in profusion, exquisitely fragrant. Grows 6 to 8 feet tall.  
Specimen \$1.00 Select 85c

35—**MOCK ORANGE, WHITE BOUTQUET.** The most profuse bloomer. The twiggly branching plant is completely covered with pure white flowers in spring. Fragrant. Grows 6 to 8 feet tall.  
Specimen 80c Select 70c

6—**PEARL BUSH.** In May its branches are covered with hundreds of pearl-like buds, each one of which opens into a gorgeous pure white bloom of large size. A hardy, neat, erect shrub. Grows 8 to 10 feet tall.  
Specimen 95c Select 80c

7—**REGEL'S PRIVET.** (Fernleaf). Low-growing, dense shrub with horizontal branches; thrives in the shade and on depleted soil locations. Grows 6 to 8 feet tall.  
Specimen 65c Select 55c

36—**SNOWBALL.** An old-fashioned, tall growing shrub still popular. In the spring it is completely covered with pure white, snowball-like blossoms. Perfectly hardy.  
Specimen \$1.25 Select \$1.10

67—**JAP. SNOWBALL.** Pure white flowers in a perfect round ball, 3-4 inches across. Attractive foliage. Much neater and superior to regular Snowball.  
Each \$1.50

8—**SNOWBERRY** (Chenaulti). One of the hardiest low growing shrubs with attractive foliage all summer and masses of rose-colored berries in the fall. Grows 4 to 6 feet tall.

Specimen 65c Select 55c  
9—**TAMARISK.** A tall growing shrub with feathery green foliage and bright pink flowers in May. Can be kept pruned to any desired height. Grows 8 to 10 feet tall.

Specimen 95c Select 80c  
65—**VITEX** (Chaste Tree). Grows 8 to 10 feet tall with big palmate foliage and branching spikes of beautiful lavender-blue flowers in August and September. Will stand hot locations.  
Each \$1.00

37—**WEIGELA, ROSEA.** Beautiful rose-pink trumpet-shaped flowers on a broad shrub, 6 to 8 feet tall.

Specimen 90c Select 80c  
71—**WEIGELA, EVA RATHKE.** A rich red-colored Weigela.

Specimen \$1.00 Select 80c  
39—**WEIGELA, VANICEKE.** A new red variety, extremely hardy and heavy bloomer.

Specimen \$1.25 Select \$1.10  
38—**WEIGELA, BRISTOL RUBY.** See description and illustration on Back Cover.

Specimen \$1.25 Select \$1.10  
74—**VIBURNUM CARLESI.** In spring it is covered with blooms so fragrant they perfume the yard. Flowers light pink outside and inside snowy white. Compact grower, 4 to 5 ft. tall. Will grow in shade.

18-24 in., each \$2.50  
40—**SPIREA, ANTHONY WATERER.** See picture and description, page 8.

Specimen 95c Select 80c  
66—**PINK SPIREA** (Froebeli). A low compact shrub to 4 feet, covered in May and June with clusters of bright pink flowers.

Specimen 80c Select 70c  
43—**VAN HOUTTEI.** This popular shrub needs no description. Most people know it as "Bridal Wreath."

Specimen 65c Select 55c  
42—**SNOW GARLAND** (Spirea Thunbergi). Graceful habit, white flowers in March and April. Grows 5 to 6 feet tall.

Specimen 75c Select 60c  
41—**SPIREA** (New Dwarf Crimson). A new dwarf crimson spirea with deep cut foliage and brilliant crimson flowers all summer. Grows 2 to 3 feet tall.  
Each \$1.25



Cat. No. 36. Snowball Specimen—Each \$1.25



Cat. No. 28. Hydrangea, A. G. Hills of Snow Select—Each \$1.10



Cat. No. 29. Hydrangea, P. G. Specimen—Each \$1.25

Cat. No. 42. Spirea Thunbergi Specimen Each 75c

SEE PAGE 31 FOR FREE PREMIUMS WITH ORDERS

Cat. No. 43. Spirea Van Houttei Specimen—Each 65c



Please  
Order  
By  
Catalog  
Number





# FLOWERING TREES



## MAGNOLIAS

**72—SOULANGEANA.** Immense tulip-like blossoms in early spring before leaves appear. Light pink with purple tinge on outside of petals. This variety is hardy.  
18-24 in., \$3.25

**73—SOULANGEANA NIGRA.** Similar to Soulangeana except that blossoms are rich purple color and has tendency to bloom again in fall.  
18-24 in., \$3.25



Cat. No. 72. Magnolia—Each \$3.25

**324—RED BUD.** Clusters of purplish pink flowers cover branches in early spring before leaves appear.  
4-5 ft. . \$1.75    6- 8 ft. . \$2.95  
5-6 ft. . 2.25    8-10 ft. . 3.95

**325—CHINESE RED BUD.** An improved dwarf variety, grows like a large shrub with larger and deeper colored blossoms.  
18-24 in. . \$1.50    3-4 ft. . \$2.75  
2- 3 ft. . 1.95



Cat. No. 318. Pink Dogwood  
Each \$2.95

**PLEASE ORDER  
BY CATALOG NUMBER**

Cat. No. 327. Tree Wisteria—Each \$7.50



Magnolia Soulangeana

**315—CRAB, BECHTEL'S.** Double pink blossoms exactly like small Roses in spring.  
2-3 ft. . \$1.35    3-4 ft. . \$1.75

**316—CRAB, HOPA.** Flowers are deep pink, foliage is maroon and green. The best flowering Crab. Good grower and a beautiful ornamental tree.  
3-4 ft. . \$1.50    5-6 ft. . \$2.50  
4-5 ft. . 1.95    6-8 ft. . 3.50

**317—DOGWOOD, WHITE.** Large white flowers in spring. Bright colored foliage in fall. A beautiful native flowering tree.  
2-3 ft. . \$1.75    4-5 ft. . \$3.50  
3-4 ft. . 2.50

**318—DOGWOOD, PINK.** Similar to White Dogwood except flowers are reddish pink. Blooms quite young.  
2-3 ft., \$2.95

**320—MIMOSA (Silk Tree).** A low flat-headed tree with fernlike foliage and feathery pink blossoms all summer. Not hardy north of Kansas City, Missouri.  
3-4 ft., \$1.25

**321—DOUBLE FLOWERING PLUM.** Small treelike shrub with double pink flowers in spring.  
2-3 ft. . \$1.00    3-4 ft. . \$1.50

**322—RED-LEAF PLUM.** A dwarf compact tree with rich blood-red foliage all summer.  
2-3 ft. . \$1.35    3-4 ft. . \$1.75

**323—DOUBLE FLOWERING PEACH.** Brilliant, double bright red flowers in spring.  
2-3 ft. . \$0.95    4-5 ft. . \$1.75  
3-4 ft. . 1.35    5-6 ft. . 2.25

**326—RUSSIAN OLIVE.** Gray, green foliage with silver underside which gives good color contrast. Will thrive in hot dry locations.  
3-4 ft. . \$0.75    4-5 ft. . \$1.25

Cat. No. 322. Red-Leaf Plum  
2-3 ft., \$1.35; 3-4 ft., \$1.75

**327—TREE WISTERIA.** Beautiful purplish blue flowers completely cover the tree in May. Fine for lawn specimen. Lives for generations. The plants we offer are grown on stems about 4 ft. high.  
Each, \$7.50





# Neasha SHADE TREES



Cat. No. 335. Sugar Maple  
5-6 ft., \$2.75

**330—ASH, WHITE.** A good all-purpose, well-shaped tree of medium rapid growth and long life, not easily broken in storms. Free from insects and diseases. Hardy.

5-6 ft. .. \$1.95      8-10 ft. .. \$3.95  
6-8 ft. .. 2.75      10-12 ft. .. 5.00

**336 MAPLE, NORWAY.** One of the best trees for street and park, with dense upright growth and brilliant colored foliage in the fall. Will do well in most any location.

5-6 ft. .. \$2.75      8-10 ft. .. \$5.00  
6-8 ft. .. 3.75      10-12 ft. .. 7.50

**334—MAPLE, SILVER.** Quick growing and graceful, with deeply cut dark green foliage, silvery white beneath. Often called soft Maple. Foliage colors a golden yellow in fall.

5-6 ft. .. \$1.95      8-10 ft. .. \$3.95  
6-8 ft. .. 2.75      10-12 ft. .. 5.00



Cat. No. 333. Broadleaf  
Chinese Elm  
5-6 ft., \$1.50

**335—MAPLE, SUGAR.** One of the best street and park trees. Dense, upright grower, with brilliant colored foliage in the fall. Does well in most any location. The Sugar Maple that maple sugar is made from.

5-6 ft. .. \$2.75      8-10 ft. .. \$5.00  
6-8 ft. .. 3.75      10-12 ft. .. 7.50

**337—MAPLE, SCHWEDLER.** Glorious colored foliage in spring of green, red, and purple. Turning ruddy green in summer.

4-5 ft. .. \$2.75      5-6 ft. .. \$3.25

**338—SYCAMORE.** Lofty tree with large heart-shaped leaves. Straight, symmetrical grower.

5-6 ft. .. \$1.95      8-10 ft. .. \$3.95  
6-8 ft. .. 2.75      10-12 ft. .. 5.00

**339—POLAR, BOLLEANA.** Similar to Lombardy, except the leaves are dark green with silver underside.

3-4 ft. .. \$0.75      4-5 ft. .. \$1.00  
5-6 ft. .. \$1.25

**340—POPLAR, LOMBARDY.** Tall, slender trees of rapid growth. Dark green leaves.

	Each	5 Each
3- 4 ft. ....	\$0.40	\$0.35
4- 5 ft. ....	.60	.50
5- 6 ft. ....	.75	.65
6- 8 ft. ....	.90	.80
8-10 ft. ....	1.10	1.00

**WILLOW, WEEPING.** Beautiful, graceful, lacy tree with long, drooping branches, densely covered with fresh green leaves. A rapid grower. We have either the green barked or golden barked varieties. State preference when ordering.

**341—GOLDEN.**

**342—GREEN.**

5-6 ft. .. \$1.35      6-8 ft. .. \$2.00

Cat. No. 330. White Ash  
5-6 ft., \$1.95



Cat. No. 340. Lombardy  
Poplar  
3-4 ft., 40c each

## Cat. No. 333 BROADLEAF CHINESE ELM

The fastest growing tree in America. Hardy, drought resistant, beautiful. A sport of Chinese Elm discovered in our nursery row and from which we have propagated the past ten years. Its leaves are large and dark green. The bark is smooth and branches are straight and strong. Will stand high wind, dry summers and cold winters, and will grow from 8 to 14 feet in one year. The demand for this tree is so great we have never been able to build up a surplus stock, so if you want some of these beautiful, permanent, quick growing trees, you'd better place your order at once as our supply is limited. We offer them in the following sizes.

5-6 ft., \$1.50      8-10 ft., \$2.95  
6-8 ft., 1.95      10-12 ft., 3.95

Cat. No. 342. Weeping Willow  
5-6 ft., \$1.35

**332—ELM, CHINESE.** One of the fastest growing shade trees. Small leaves; hardy. Stands extreme drought better than most trees, and will grow in poor soil.

5-6 ft., \$1.00      6-8 ft., \$1.50  
8-10 ft., \$2.25

We also have **Pin Oak**, **Sweet Gum**, and **Tulip Tree** which we dig with ball of earth (not suitable for shipment, due to cost of transportation, boxing, etc.), but customers who call at the nursery can take them with them as they are in sizes:

4-5 ft.      5-6 ft.      6-8 ft.







↑ Cat. No. 687  
 Jane Cowl  
 Dahlia  
 Each 50c

## CHOICE DECORATIVE DAHLIAS

Each 50c    3 for \$1.35    6 for \$2.50

- 685—**AVALON**. Large flowers of clear yellow on long stems.
- 686—**GALLANT FOX**. Vivid red with sturdy stems and excellent keeping qualities.
- 687—**JANE COWL**. A large flower of warm buff and old gold blending to a bright salmon at center.
- 688—**MRS. I. DE VER WARNER**. Large flowers of mauve-pink; can be grown to a diameter of 11 inches.
- 689—**MRS. GEO. BOUTILLIER**. Bright carmine-red, shading to a rich cardinal-red at the center with full petals and deep flower. Average diameter of this Dahlia is 10 inches.

**BE SURE  
 CATALOG NUMBER  
 IS ON YOUR  
 ORDER!**



Cat. No. 670  
**ETHEL CAVE COLE  
 GLADIOLUS**

3 for 30c

See page 17 for Gladiolus varieties.

## BEAUTIFUL HYBRID LILACS

**Fragrant—Bloom First Year  
 Immense Double Blooms**

Have flowered already in the nursery row and will bloom for you the next year after transplanting. They grow 6 to 8 feet tall and do not sucker like the old-fashioned Lilacs. One of the finest of all shrubs.

30—RED.                    32—BLUE.  
 31—PINK.                33—WHITE.

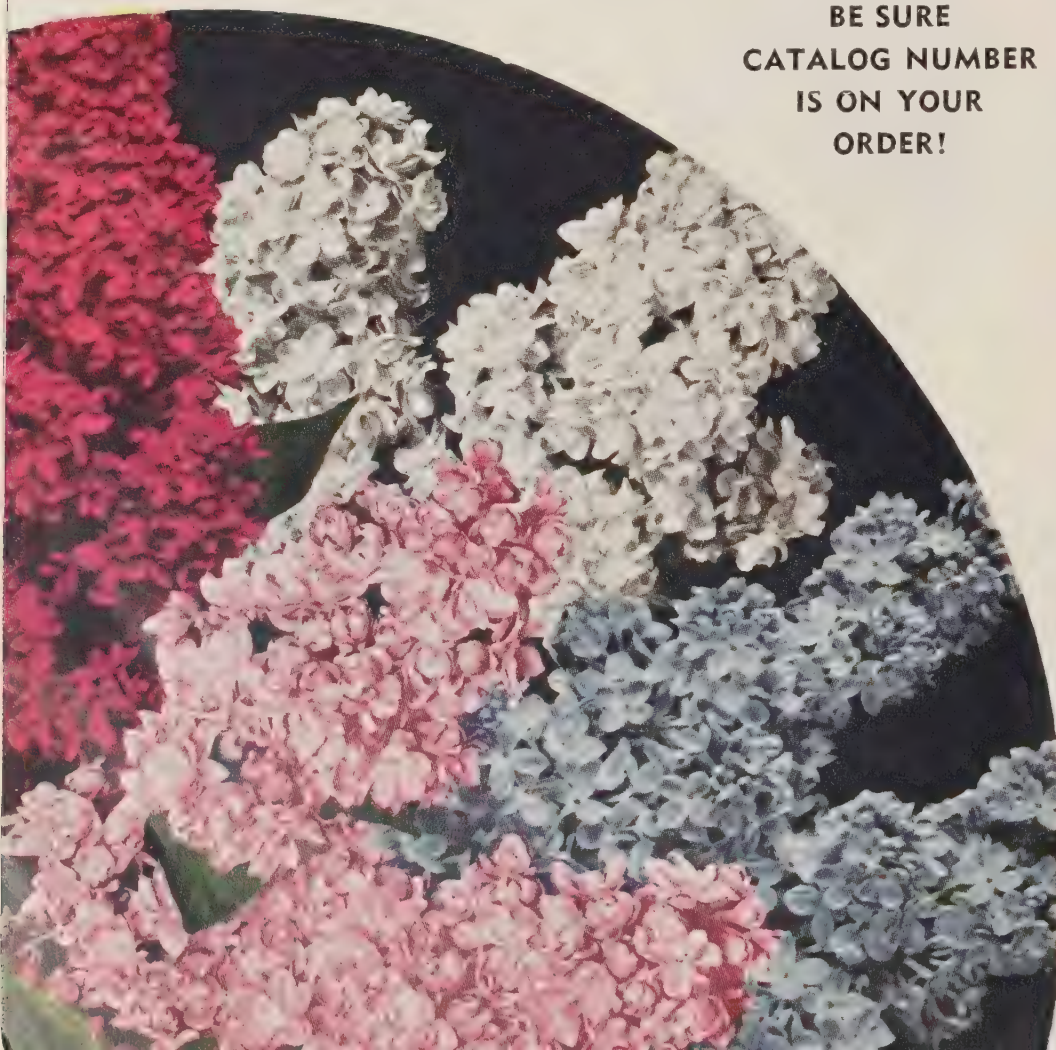
Specimen \$1.75    Select \$1.25

South Polk Street, Sullivan, Ill.

Dear Friends:

I certainly thank you for the nice nursery stock you sent me last fall. I am very pleased, your super size stock is truly super. Everything was as fine as if I had been there to select it in person. That's what I like about your folks. I sure am going to have a pretty place, thanks to your nice stock. Previous stock from you is growing swell.

ALMA LUECHT.







Cat. No. 621  
California Gold Iris  
Each 45c



Cat. No. 622  
Cheerio Iris  
Each 45c



Cat. No. 600. Mons. Jules Elie—Each \$1.00

### PEONIES

Our Peony Roots are big 3-5 eye divisions. Last a lifetime. Hardy as Oaks.

600—MONS. JULES ELIE. Early. Immense light rose-pink with silver markings. Free bloomer. Each \$1.00.

601—KARL ROSENFELD. Late red. Rich velvety crimson. Tall. Each 75c.

602—EDULIS SUPERBA. Early, large, dark pink. Very fragrant. Each 50c.

603—FESTIVA MAXIMA. Early, very large white with crimson markings. Each 75c.

604—FELIX CROUSSE. Midseason. Dark red. A sure bloomer. Each 75c.

605—THERESE. Enormous satiny pink blooms changing to lilac-white in center. One of the best. Each 75c.

606—WALTER FAXON. Extra fine. Bright rose, deepening at center. Delicate and distinct color. Midseason. Each \$1.00.

SPECIAL PEONY COLLECTION No. 800. Our selection of good varieties. 1 Red, 1 Pink, 1 White, all 3 for \$1.50.

### CHOICE IRIS

620—BLUE TRIUMPH. Immense light soft blue. 24 inches. Each 50c; 3 for \$1.35.

621—CALIFORNIA GOLD. Extra large deep yellow. 36 inches. Each 45c; 3 for \$1.25.

622—CHERRIO. Falls satiny ruby-red; orange beard. Each 45c; 3 for \$1.25.

623—EL CAPITAN. Giant maganese-violet flowers. Each 45c; 3 for \$1.25.

624—CRYSTAL BEAUTY. Perfect clear white flowers. Each 35c; 3 for 90c.

625—PINK SATIN. Large, lovely, pinkish mauve. Each 35c; 3 for 90c.

626—JEAN CAYEAUX. Light havana-brown; unusual. Each 45c; 3 for \$1.25.

627—WABASH. White standards; violet falls. Each 75c; 3 for \$2.00.

### DWARF IRIS

Excellent for edging border or rockeries. Bloom in April and May. About 6 inches tall.

640—Purple. 3 for 50c

641—Yellow. 12 for \$1.75

### KOREAN IRIS

Immense flat blossoms in rich colors. Bloom in June. Prefer moist soil.

643—Royal Purple.

644—Pure White.

645—Mahogany-Red.

646—Blue.

Each 50c 4 for \$1.75

### LANDSCAPE IRIS COLLECTION No. 831

We have made up this assortment of good varieties in a wide range of colors. Fine for your border.

10 for \$1.25 25 for \$2.35



← Cat. No. 69 EUONYMUS PATENS

An Evergreen shrub with large dark green glossy foliage and bright orange berries in fall. Will grow anywhere. Grows 5 to 6 feet tall, but can be easily kept smaller by shearing once a year. Fine for foundation planting. Each \$1.35



# NEOSHO HARDY VINES



Cat. No. 440. Bittersweet  
Each 50c

440—**BITTERSWEET.** Clusters of orange-scarlet berries; when dried make lovely winter bouquets. Plant two for pollination. **Each 50c; 3 for \$1.35.**

441—**BOSTON IVY.** The most popular plant for covering brick, stone, or wood. Clings to smoothest surface. Colors beautifully in fall, mottled brilliant orange-red. **Each 75c 3 for \$1.95.**

442—**ENGLISH IVY.** Beautiful dark green evergreen leaf. Clings to masonry if used on north or east side where protected from hot sun. **Each 75c; 3 for \$1.95.**

444—**EVERGREEN HONEYSUCKLE.** (Hall's.) Fragrant white and yellow flowers, and attractive blue-green foliage which remains most of the winter. Grows anywhere. **Each 50c; 3 for \$1.35.**

445—**EVERBLOOMING HONEYSUCKLE** (Heckrotti). See back page for color illustration. Can be grown as a shrub or vine. Bright rose-red flowers lined with gold. Large blue-green foliage. Blooms all summer and is perfectly hardy. **Each 75c; 3 for \$1.95.**

443—**EUONYMUS VEGETUS RADICANS** (Big-Leaf Wintercreeper or Evergreen Bittersweet). Will make a billowy, graceful evergreen foliage plant that will grow on masonry walls if planted nearby. A good "filler" among needle evergreens. Good soil binder and cover for banks. Orange berries in fall and winter. **Each \$1.00; 3 for \$2.75.**

450—**PURPLE-LEAF HONEYSUCKLE** (Lonicera Japonica Purpurea). An evergreen Honeysuckle with long dark green leaves which take on a purple hue in the winter time. The blossom is yellow and white with pink shading on outside. Perfectly hardy and can be trained as a dwarf compact shrub if desired. **Each 75c; 3 for \$1.95.**

449—**SILVER LACE VINE.** The Silver Lace Vine often grows 20 feet the first season. Thousands of fleecy white flowers in late summer. Hardy and easy to grow. **Each 75c; 3 for \$1.95.**



Cat. No. 449. Silver Lace Vine  
Each 75c

## GROUND COVER

451—**TRAILING MYRTLE** (Vinca Minor). A trailing evergreen plant for carpeting ground under shrubs or trees where it is too shady for grass to grow. 2-yr. No. 1 plants, **Each 75c; 6 for \$4.25; 12 for \$7.95.**



Cat. 451. Trailing Myrtle—Each 75c

← Cat. No. 446. Wisteria—Each \$1.00



Cat. No. 577. Large Flowering Clematis  
Each \$1.25

446—**WISTERIA.** Our wisterias are grafted and sure to bloom. Beautiful lilac-purple. **Each \$1.00.**

448—**PINK WISTERIA.** This is the finest pink Wisteria we have ever seen. Clusters about 15 to 18 inches long. Slow to commence flowering, but once started it blooms profusely. 3-year plants; may be trained to tree form. **Each \$2.50.**

447—**DOUBLE VIOLET WISTERIA.** The only double Wisteria known in this country, and has the darkest colored flowers of all. They are exactly like dark-colored purple Violets borne in clusters about 15 to 18 inches long. Very free bloomer. 3-year plants; may be trained to tree form. **Each \$2.50.**

## Large Flowering Clematis

Clematis are one of the most beautiful of all flowering vines. On a trellis, fence or porch their large flowers are a glorious sight.

576—**CLEMATIS, BARON VEILLARD.** Lovely, large flowers, free blooming, pink. **Each \$1.25.**

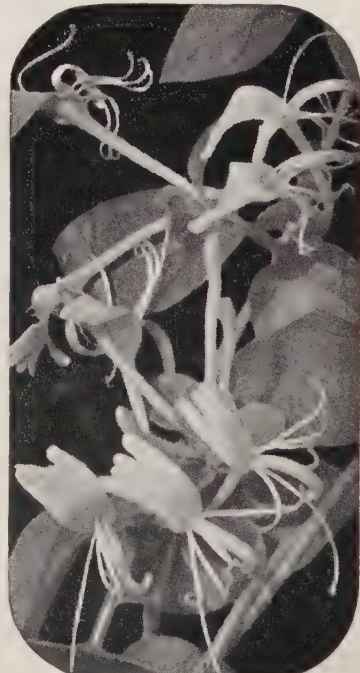
577—**CLEMATIS JACKMANI.** The popular purple variety with large, purple-blue flowers. **Each \$1.25.**

575—**CLEMATIS, MME. ANDRE.** Large purplish crimson flowers. **Each \$1.25.**

578—**CLEMATIS, RAMONA.** Beautiful sky-blue flowers. **Each \$1.25.**

579—**CLEMATIS HENRYI.** A large flowering white Clematis of unusual size and beauty. Flowers in profusion in June. **Each \$1.25.**

580—**CLEMATIS PANICULATA.** Easy to grow, perfectly hardy, rapid growth. Fragrant white star-like flowers in late summer and early fall. **Each 75c; 3 for \$1.95.**



Cat. No. 444. Evergreen  
Honeysuckle (Hall's)  
Each 50c





Cannas—3 for 50c

# CANNAS

No other flowers will give such a brilliant display all summer to fall as a bed of our Cannas. Do not plant too early. Wait until ground is warm, and plant 18 in. apart and 6 in. deep. Bloom first year.

- 694—**PRESIDENT.** Immense flowers of rich scarlet. Green foliage. 4 ft.
- 695—**KING HUMBERT.** Orange-scarlet. Bronze foliage. 4 ft.
- 696—**YELLOW HUMBERT.** Yellow flowers with red spots. Green foliage. 4½ ft.
- 697—**CITY OF PORTLAND.** Coral-pink. Green foliage. 4 ft.

3 for 50c      6 for 90c      12 for \$1.65

## Neasha GLADIOLUS

We guarantee our Gladiolus bulbs to please you when they bloom. Fine large bulbs. Plant after danger of frost is over 6 in. deep and 8 in. apart.

- 668—**BEACON.** Beautiful, striking, ruffled flower of brilliant vermilion-scarlet with light yellow throat. Stately, straight spikes.  
3 for 25c    6 for 40c    12 for 65c    25 for \$1.20
- 669—**CORONA.** Beautiful new Glad with large flowers of ivory-white edged pink on excellent spikes. Profuse bloomer.  
3 for 30c    6 for 50c    12 for 85c    25 for \$1.50
- 670—**ETHEL CAVE COLE.** The finest, largest shell-pink. Flowers are immense and pure even shade of shell-pink. Big spikes with 8 to 10 flowers open at once.  
3 for 30c    6 for 50c    12 for 85c    25 for \$1.50
- 671—**SNOW PRINCESS.** The finest white with very tall, strong spikes and immense flowers of pure snow-white.  
3 for 30c    6 for 50c    12 for 85c    25 for \$1.50
- 672—**VEE CREAM.** Large ruffled golden yellow blossoms with cardinal-red throat blotch. 6 to 8 flowers open at once.  
3 for 30c    6 for 50c    12 for 85c    25 for \$1.50
- 673—**STOPLIGHT.** A magnificent new variety that is called the perfect red. Tall, straight spikes with large, exquisitely ruffled flowers of rich velvety crimson.  
3 for 30c    6 for 50c    12 for 85c    25 for \$1.50



Cat. No. 669. Corona Gladiolus  
3 for 30c

### DELUXE COLLECTION

Cat. No. 806

A collection of finest varieties in the larger bulbs. Flowers large. Blooms that will delight you.

15 for \$1.00    35 for \$2.00  
75 for \$3.50

### RAINBOW COLLECTION

Cat. No. 802

These are best quality medium size bulbs in a wide color range. Guaranteed to bloom and please you.

25 for \$1.35    50 for \$2.25  
100 for \$3.95

Cat. No. 650. Regal Lilies  
Each 45c



### HARDY LILIES

Bloom this summer.

- 652—**EMERALD.** Long, lovely white flowers with a beautiful emerald-green throat. Bloom from August until frost. Easy to grow and perfectly hardy.  
Each 50c    3 for \$1.35
- 651—**CORAL.** A charming little early flowering Lily with strongly recurved petals of waxy texture. Deep scarlet.  
Each 35c    3 for 95c
- 650 **REGAL.** One of the most beautiful and hardiest Lilies grown. Center of flower flushed with yellow shading to white. Outside of petals are streaked with brown shaded with pearly tint. Very floriferous.  
Each 45c    3 for \$1.25
- 653—**SPECIOSUM RUBRUM.** The loveliest of all Lilies. Flowers bright pink edged white. Blooms in August and September on stems 3-4 feet tall. Will come up every year. Very scarce and our supply quite limited.  
Each \$1.00    3 for \$2.75

### DAY LILIES

Grow anywhere.

- 660—**CINDERELLA.** Beautiful red-copper petals of an unusual shade. One of the best. Blooms in July.  
Each 35c
- 661—**GEO. YELD.** A magnificent Day Lily. Wide open petals 6 inches across. Canary-yellow, brushed red, deep red in throat, terminating in a bright yellow star.  
Each 45c
- 662—**OPHIR.** Deep golden yellow trumpet-shaped flowers, 5 inches across, borne 25 to 30 on stem. July and August.  
Each 50c
- 663—**DR. REGEL.** Rich canary-yellow flowers in early March. Very fragrant.  
Each 35c

### DAY LILY COLLECTION

Cat. No. 801

A collection of our choice of good varieties to give you long period of bloom.

4 for \$1.25



SEE PAGE 31  
FOR FREE  
PREMIUMS  
WITH YOUR  
ORDER



↑  
Cat. No. 104. Peace  
(Pat. No. 519)—Each \$2.00



←  
Cat. No. 101  
Charlotte  
Armstrong  
(Pat. No. 455)  
Each \$1.50

PLEASE ORDER  
BY CATALOG  
NUMBER



→  
Cat. No. 106  
Taffeta  
(Pat. No. 716)  
Each \$2.00



←  
Cat. No. 100  
Crimson Glory  
(Pat. No. 105)—Each \$1.50



↑  
Cat. No. 105. Santa Anita (Pat. No. 539)  
Each \$1.50



# Neasha Patented ROSES

SPRING SHIPMENT ONLY



Cat. No. 106. Tallyho (Pat. App. For)  
Each \$2.00

**100—CRIMSON GLORY.** (Pat. No. 105.) A beautiful crimson flower shaded deep red and mellowed by a velvety nap. Excellent dark, velvety crimson-red garden Rose.

Each \$1.50 3 for \$3.75

**101—CHARLOTTE ARMSTRONG.** (Pat. No. 455.) This fine Rose is making a remarkable record. Best new American Rose since 1935. Lovely long streamlined buds open to enchanting full blown flowers. No picture can do the color justice. The buds are carmine and the open flower cerise, beautiful in all States. Long stems fine for cutting.

Each \$1.50 3 for \$3.75

**102—FORTY-NINER.** (Pat. No. 702.) All-American Award for 1949. The most brilliantly hued bicolored ever introduced. Inside of petals a vivid Oriental red while outside is a chrome-yellow. It makes a beautiful plant in the garden, tall and vigorous. Colors are lasting and bright until the last petal drops. Long-shaped buds open into well-shaped blooms.

Each \$2.00 3 for \$5.00

**103—MIRANDY.** (Pat. 632.) Maroon-red buds opening into large double blossoms of good substance. All-America Selection 1945.

Each \$1.50 3 for \$3.75

**104—PEACE.** (Pat. No. 591.) Won the All-American Rose Award for 1946 with the highest score ever given a new Rose. It is vigorous, healthy grower with shiny dark green foliage. No picture can do justice to this truly great Rose. The perfect buds open into large, fully double fragrant flowers. Its greatest charm is the changing panorama of colors. At first the buds are a rich gold edged cerise. As the outer petals unfold the gold changes to canary, then lightens to creamy ivory. The cerise edge gradually deepens and becomes broader, so the fully open flower appears a sparking cerise with a creamy yellow base. The flowers last a long time, and are beautiful at all stages.

Each \$2.00 3 for \$5.00

**105—SANTA ANITA.** (Pat. No. 539.) A lovely Rose with perfectly formed long-pointed buds that unfold into glorious flowers of crystal clear, peach-blossom-pink. The clear color, delicate fragrance, and exquisite form make this Rose one of the outstanding pinks.

Each \$1.50 3 for \$3.75

**106—TAFFETA.** (Pat. No. 716.) Predominant colors are orange, begonia and carmine, with considerable yellow at the edge. The buds medium sized, well formed with fluted edges. The flowers are semi-double with about 21 petals. Large dark green leaves that are mahogany-red before they reach maturity.

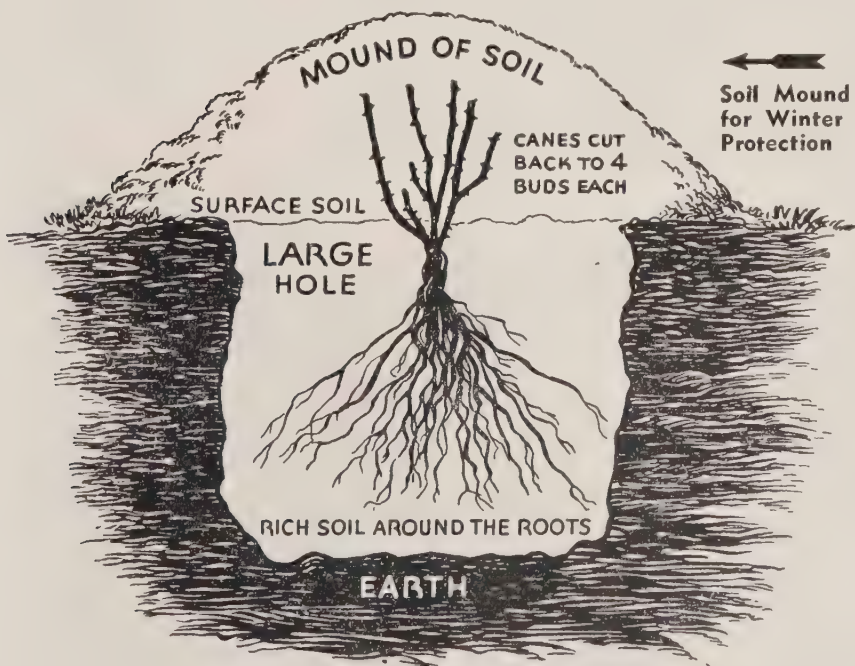
Each \$2.00 3 for \$5.00

**107—TALLYHO.** (Pat. No. Appl. For.) Beautiful deep cardinal-red buds, remarkably handsome open flowers with many petals, rich spicy fragrance. Inside of petals is a delightful shade of pink, outside is a rich crimson. A unique color scheme never before seen in a Rose.

Each \$2.00 3 for \$5.00



Cat. No. 103. Mirandy (Pat. No. 632)  
Each \$1.50



Correct Planting, Pruning and Protection

## ALL-AMERICAN ROSE COLLECTION 810

1 Peace 1 Tallyho  
1 Charlotte Armstrong 1 Crimson Glory  
4 for \$5.95

## PATENTED ROSE COLLECTION 811

8 Roses—1 each of all patented varieties listed above

8 for \$11.80



# Neasha's **EVERBLOOMING**

SPRING PLANTING RECOMMENDED

We handle only the best quality Roses. Big strong, healthy 2-yr. No. 1 western grown specimens that will thrive and bloom the first year.



Cat. No. 116. Condesa de Sastago



Cat. No. 122. McGredy's Yellow  
Cat. No. 128. Red Radiance

- 115—**BETTY UPRICHARD**. Delicate salmon-pink with outside of petals coppery carmine. Very fragrant.
- 116—**CONDESA DE SASTAGO**. Beautiful blooms of fiery copper inside and rich gold on the reverse. Fragrant and a good strong grower.
- 117—**DUQUESA DE PENARANDA**. Double flowers of apricot-peach color, very fragrant. Attractive foliage.
- 118—**EDITH NELLIE PERKINS**. Shapely two-toned pink flowers, coppery rose outside and soft salmon-pink inside. Profuse bloomer.
- 119—**ETOILE DE HOLLANDE**. Large deep crimson flowers with velvety finish and rich fragrance. Good foliage. One of the finest red Roses.
- 131—**EDITOR McFARLAND**. Long pointed buds, fragrant flowers of clear brilliant pink with strong stems. Excellent for cutting. Long lasting.
- 120—**K. A. VICTORIA**. Creamy buds and perfect delicate white flowers, tinted lemon-yellow at center. Double.
- 121—**McGREDY'S IVORY**. Perfectly formed long pointed buds of ivory-white. Always in flower.
- 123—**McGREDY'S SCARLET**. Large, vivid rose-red flowers. Plants are healthy and large. This Rose is a deep scarlet-red and one of the best.
- 122—**McGREDY'S YELLOW**. Unfading canary-yellow flowers of excellent form. Dark glossy holly-like foliage.
- 124—**MRS. CHARLES BELL**. A sport of Red Radiance with flowers of similar form, but of delicate salmon-pink coloring.
- 132—**MRS. P. S. DU PONT**. Double flowers of rich gold, spicy fragrance. Plants bushy and foliage attractive.
- 125—**PRES. HOOVER**. Large flowers of flaming scarlet and yellow in bud, opening to soft creamy yellow with scarlet markings. Long stems.
- 126—**POINSETTIA**. Semi-double flowers of bright rich scarlet. Rich tea fragrance. Good bloomer.
- 127—**RADIANCE**. Globular cup-shaped flowers of two-toned pink. Vigorous, free blooming. Most popular pink Rose grown.
- 128—**RED RADIANCE**. Deep red sport of Radiance and exactly like it except for color.
- 129—**ROUGE MALLERIN**. Deep rich red with a velvety texture; does not fade or blue. Very fragrant and a healthy grower.
- 130—**THE DOCTOR**. One of the outstanding new Roses. The buds are long and pointed, expand to simply enormous blooms. Color is an exquisite silvery pink, uniform in color both in bud and open flower, with a fragrance so intense that it can be detected many yards away.



Cat. No. 119. Etoile de Hollande  
Cat. No. 121. McGredy's Ivory



Cat. No.





# ROSES *Bloom First Year*

PRICES: Hardy, 2-Yr., No. 1, Each \$1.00    3 for \$2.75    12 for \$9.50  
Field-Grown

## COLLECTION No. 812

One Each Of the Following:  
 Condesa de Sastago  
 McGredy's Yellow  
 Red Radiance  
 Etoile de Hollande  
 McGredy's Ivory

Best Grade, 2-Yr., No. 1  
 All 5 for \$4.50



Cat. No. 115. Betty Uprichard



Cat. No. 117. Duquesa de Penaranda

## COLLECTION No. 813

One Each Of the Following:  
 President Hoover  
 Radiance  
 Betty Uprichard  
 Rouge Mallerin  
 Mrs. P. S. Du Pont  
 Duquesa de Penaranda  
 Edith Nellie Perkins  
 McGredy's Scarlet

Best Grade, 2-Yr., No. 1  
 All 8 for \$6.75

## COLLECTION No. 814

1 of each of varieties shown in color.

Best Grade, 2-Yr., No. 1  
 All 13 for \$10.25



Cat. No. 125  
 Pres. Hoover

127. Pink Radiance



Cat. No. 129. Rouge Mallerin  
 Cat. No. 132. Mrs. P. S. DuPont



Cat. No. 118. Edith Nellie Perkins

Cat. No. 123  
 McGredy's  
 Scarlet





# EVERBLOOMING CLIMBING ROSES

## EVERBLOOMING CLIMBING ROSES

Prices: 2-yr., No. 1, each \$1.15;  
5 for \$4.95.

- 155—CLIMBING K. A. VICTORIA. Soft pearly white shading to light lemon in center.
- 156—MRS. P. S. DU PONT. Deep golden yellow; semi-double.
- 157—CLIMBING TALISMAN. Two-toned red and gold.
- 158—CLIMBING RADIANCE. Vivid pink, profuse bloomer.
- 159—CLIMBING RED RADIANCE. Scarlet-cerise, profuse bloomer.

## PATENTED EVERBLOOMING CLIMBING ROSES

- 166—BLAZE. (Pat. No. 10.) The everblooming Paul's Scarlet. **Each \$1.50.**
- 160—DR. J. H. NICOLAS. (Pat. No. 457.) New hardy everblooming climbing Rose with double rose-pink flowers on long stems. Hardy and disease resistant. Grows more like a pillar Rose. **Each \$1.50.**



Cat. No. 158. Climbing Pink Radiance—Each \$1.15



Cat. No. 162. Climbing American Beauty  
Each \$0.90

## Hardy CLIMBING ROSES

2-yr., No. 1 plants.

Each 90c; 3 for \$2.50; 12 for \$8.75.

(Except on Doubloons)

- 162—AMERICAN BEAUTY. A strong grower with large, fragrant crimson flowers.
- 163—DR. VAN FLEET. Lovely pointed buds of delicate pink. Profuse bloomer.
- 164—PAUL'S SCARLET. Brilliant scarlet, semi-double flowers, very striking.
- 165—SILVER MOON. Semi-double white flowers with golden yellow stamens.
- 161—DOUBLOONS. (Pat. No. 152.) The best hardy yellow climber. Large golden yellow flowers—semi-double over a long period. Glossy green foliage. **Each \$1.50.**

## EVERBLOOMING HARDY BABY ROSES

2-yr., No. 1 plants.

Each \$1.00; 3 for \$2.75; 12 for \$9.50.

Fine for cemetery planting, in front of evergreens, or in solid beds. Use them anywhere you want. Constant bloom from June till frost. Hardy as any shrub. Bloom first year.

- 140—CHEERIO. A profuse bloomer, with deep pink double flowers.
- 141—ELSE POULSEN. Semi-double apple-blossom-pink flowers on tall erect stems.
- 142—FLORADORA. Constantly in bloom with brilliant rust-red flowers. One of the best.
- 143—IMPROVED LAFAYETTE. Cheerful cherry-red, semi-double flowers all summer.
- 144—IDEAL. Dark red, single blooms in large clusters.
- 145—ORANGE TRIUMPH. Brilliant orange-scarlet flowers in huge clusters.
- 146—SUNMIST. Big clusters of bright yellow Roses.

### PATENTED FLORIBUNDA ROSES

- 147—PINOCCHIO. (Pat. No. 484.) Pointed salmon buds; salmon-flushed gold. Blooms in huge clusters. **Each \$1.25.**
- No. 148—PERMANENT WAVE. (Pat. No. 107.) Wavy-petaled blooms of rich rose-pink in huge clusters. Unusual red-bronze foliage. **Each \$1.50.**

Cat. No. 141. Else Poulsen  
Each \$1.00







Cat. No 145. Orange Triumph  
Baby Rose—Each \$1.00

BE SURE  
AND  
ORDER BY  
CATALOG  
NUMBER



Cat. No. 143. Imp. Lafayette  
Baby Rose—Each \$1.00



Cat. No. 166. Blaze (Everblooming Paul's Scarlet) (Pat. No. 166)  
Each \$1.50



Cat. No. 157. Climbing Talisman  
(Everblooming)  
Each \$1.15

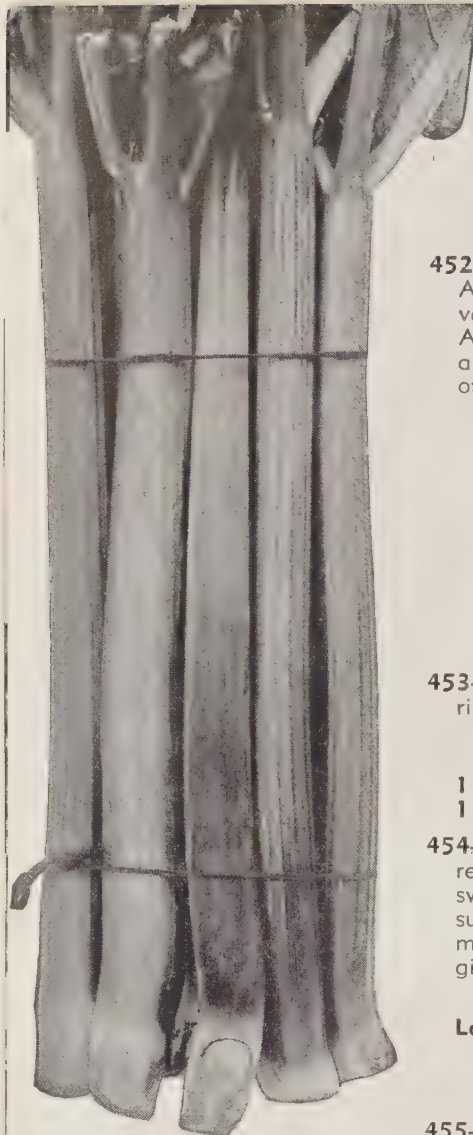
Cat. No. 161. Doubloons (Pat. No. 152) Each \$1.50

Cat. No. 148. Permanent Wave  
(Pat. No. 107.) Floribunda—Each \$1.50





# ASPARAGUS - RHUBARB



Cat. No. 453  
Victoria Rhubarb  
3 for 45c

## ASPARAGUS

**452—ASPARAGUS, MARY WASHINGTON.** The best Asparagus whether for home use or market. This variety was developed by the U. S. Department of Agriculture, and is rust resistant. It is earlier, stalks are larger, more tender, more productive, than any other variety.

Heavy, 1-year		Jumbo, 2-year	
25 for	\$ 0.95	25 for	\$ 1.25
50 for	1.75	50 for	2.25
100 for	2.95	100 for	3.95
200 for	5.25	200 for	6.95
500 for	11.95	500 for	13.95
1000 for	22.50	1000 for	25.95

## RHUBARB

**453—RHUBARB, VICTORIA.** A giant red-stalked variety; early, tender, with mild acid flavor.

	3 for	6 for	12 for
5/8-inch	.....\$0.45	\$0.75	\$1.30
1 -inch	......60	1.00	1.75
1 1/2-inch	......75	1.25	2.35

**454—MacDONALD RED RHUBARB.** The best large, red Rhubarb with stalks of giant size; tender and sweet, requiring less sugar. Stays tender far into the summer. Can be grown only from divisions, which makes it cost more, but you get the genuine red, giant size, heavy producing strain.

	Each	4 for	10 for
Large divisions	.....\$0.60	\$2.00	\$4.00

## HORSERADISH

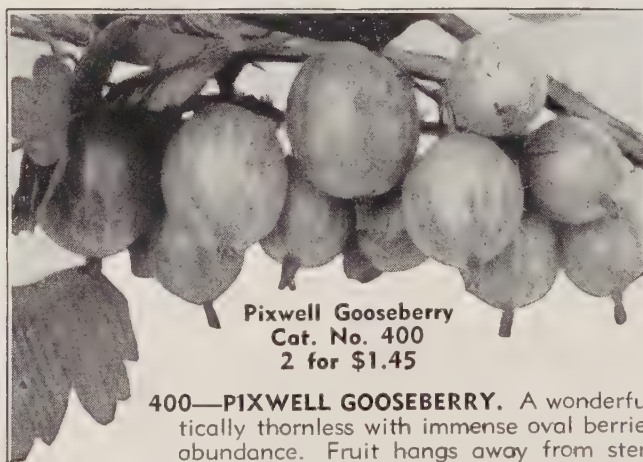
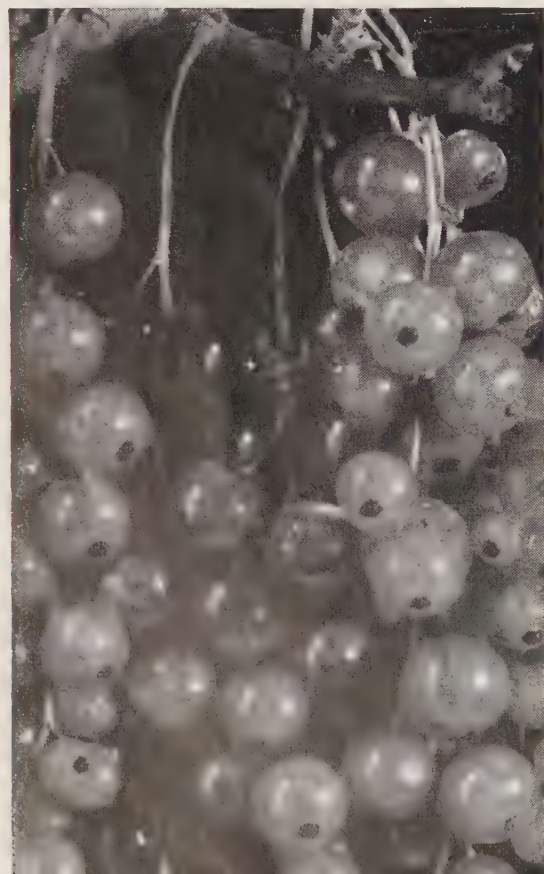
**455—CRISP, SNAPPY HORSERADISH.** True Maliner Kren, which has that crisp, snappy taste without bitterness. Will grow on most any soil.

	3 for	7 for	16 for
Crowns	.....\$0.50	\$1.00	\$2.00



Cat. No. 452. Mary Washington Asparagus—2-year, 25 for \$1.25

# CURRANTS—GOOSEBERRIES



Pixwell Gooseberry  
Cat. No. 400  
2 for \$1.45

**No. 808  
TRIAL  
OFFER**  
25 Mary Washington Asparagus  
3 Victoria Rhubarb  
\$1.85 Value  
28 Plants for \$1.50

**400—PIXWELL GOOSEBERRY.** A wonderful new variety, practically thornless with immense oval berries produced in great abundance. Fruit hangs away from stems, making it easy to pick. One of the best for jellies, preserves, and sauce.  
2 for \$1.45    6 for \$3.95    12 for \$6.75

**401—OREGON CHAMPION GOOSEBERRY.** The ranking Gooseberry in both size and quality. Extra large pale transparent berries of unexcelled quality. Brings highest prices. Wonderful for pies and preserves.  
← 2 for \$1.00    6 for \$2.40    12 for \$4.50

**402—RED LAKE CURRANT.** A newer Red Currant with larger berries, superior quality and flavor. Hardy and heavy yielding.  
2 for \$1.00    6 for \$2.40    12 for \$4.50

**403—PERFECTION CURRANT.** The standard of quality in Currants. Extra large, red berries, sweet and delicious.  
2 for 90c    6 for \$2.25    12 for \$3.95





Cat. No. 405. Concord Grapes  
2-yr., No. 1—10 for \$2.15

# NEOSHO GRAPES

*Bear Every Year*

*Last a Lifetime • Easy to Grow*

HEALTHFUL • WHOLESOME • APPETIZING

Fine for Jelly

Butter, Juice, and Fresh for the Table

405—CONCORD. The standard Blue Grape, good size, hardy and productive. See special price.

407—FREDONIA. A new variety; large, juicy, delicious berry. Will produce 50% more than Concord. Ripens 10 days ahead of Moore's Early. See special price.

408—MOORE'S EARLY. Ripens 2 weeks ahead of Concord. See special price.

### Prices On Concord, Fredonia, Moore's Early

Super X, 2-Year No. 1	
Each	\$ 0.30
5 for	1.20
10 for	2.15
25 for	4.75
100 for	16.00

1-Year No. 1	
Each	\$ 0.25
5 for	1.00
10 for	1.75
25 for	3.95
100 for	12.50

Write for prices on larger quantities.

### Prices On Varieties Listed Below

**NEOSHO SUPER X.** 2-year, No. 1. Our biggest, bushy, well-rooted vines—often bear first year after planting.

Each	\$0.40	10 for	\$2.75
5 for	1.75	25 for	5.75

**NEOSHO.** 1-year, No. 1. Thrifty, well-rooted, 1-year plants.

Each	\$0.30	10 for	\$2.15
5 for	1.20	25 for	4.75

### WHITE VARIETIES

410—NIAGARA. Larger bunches and berries than Concord—excellent quality. Ripens about with Concord.

413—PORTLAND. Large amber-white berries with delicious rich spicy flavor. Vigorous, hardy and productive.

### RED VARIETIES

409—AGAWAM. Large red berries, sweet and aromatic. Ripens after Concord.

412—CACO. Extra large red berries, sweet and delicious. Heavy producer. Bears young.

414—DELAWARE. Extra sweet Red Grape. Small bunches and berries of extra good quality.

### BLUE VARIETIES

406—CAMPBELL'S EARLY. Large bunch and berry, high quality. Ripens two weeks ahead of Concord.

411—SHERIDAN. Late blue-black Grape. Ripens a week after Concord. Sweet, rich flavor. Large berries. Heavy bearer.

### Red, White and Blue GRAPE SPECIAL No. 819

This assortment particularly chosen for hardiness, long season, wonderful flavor, easy to grow. An ideal assortment for every home owner.

2 Moore's Early	2 Fredonia	1 Agawam
2 Concord		1 Niagara

**8 Sturdy Vines for \$1.85**

(Regular Value \$2.20)



Cat. No. 407. Fredonia  
2-yr., No. 1—Each 30c

Free Premiums—See page 31



# Plant Neasha Honey-Sweet **STRAWBERRIES**



Cat. No. 423. Blakemore  
25 for 75c

All varieties offered are **self-pollenizing**. Since best results are obtained from spring planting we ship all Strawberries in **spring only**. Order now for spring shipment.

Anyone can grow Strawberries. Have them fresh from your garden.

**424—AROMA.** (Midseason to late.) The favored mid-season shipping berry, which has made the Ozarks famous as producers of the world's finest berries. Large, firm, delicious berries which stand shipping extra well. Brings top prices on every market.

25 for \$0.75    100 for \$2.00    500 for \$5.95  
50 for 1.25    200 for 3.50    1000 for 9.95

**423—BLAKEMORE.** Extra early, bright red berry. Highly flavored and a tremendous yielder; self-pollenizing. A heavy plant maker. Easy to develop a full, wide row the first season. Fine for quick freezing storages. Thrifty and prolific, and adapted to varied soil and climatic conditions. A money maker wherever Strawberries will grow. Our plants are "yellows" free.

25 for \$0.75    100 for \$2.00    500 for \$5.95  
50 for 1.25    200 for 3.50    1000 for 9.95

**422—SENATOR DUNLAP.** A very popular berry, for home use and local market, noted for dependability and productiveness. A medium sized deep glossy red berry of rich, sweet flavor and wonderful quality. The ideal table berry.

25 for \$0.90    100 for \$2.40    500 for \$ 7.50  
50 for 1.50    200 for 4.20    1000 for 12.00

## **STREAMLINER**

### **420—EVERBEARING STRAWBERRIES**

**Everbearing Strawberries Will Bear This Summer and Fall—Large Size—Wonderful Color Delicious Flavor**

The outstanding everbearing Strawberry. Very large berries of rich red color and the finest flavor and quality of any Strawberry. Starts bearing 60 to 90 days after planting, and you will have berries right up to heavy frosts. It is a heavy bearer and self-pollenizing. It has everything, large size, excellent flavor, good color, and is a heavy bearer. Be sure and plant some Streamliner—the best berry there is.

25 for	.....	\$ 2.00
50 for	.....	3.50
100 for	.....	5.90
200 for	.....	10.50
500 for	.....	19.50
1000 for	.....	34.50

Cat. No. 420  
Streamliner  
25 for \$2.00

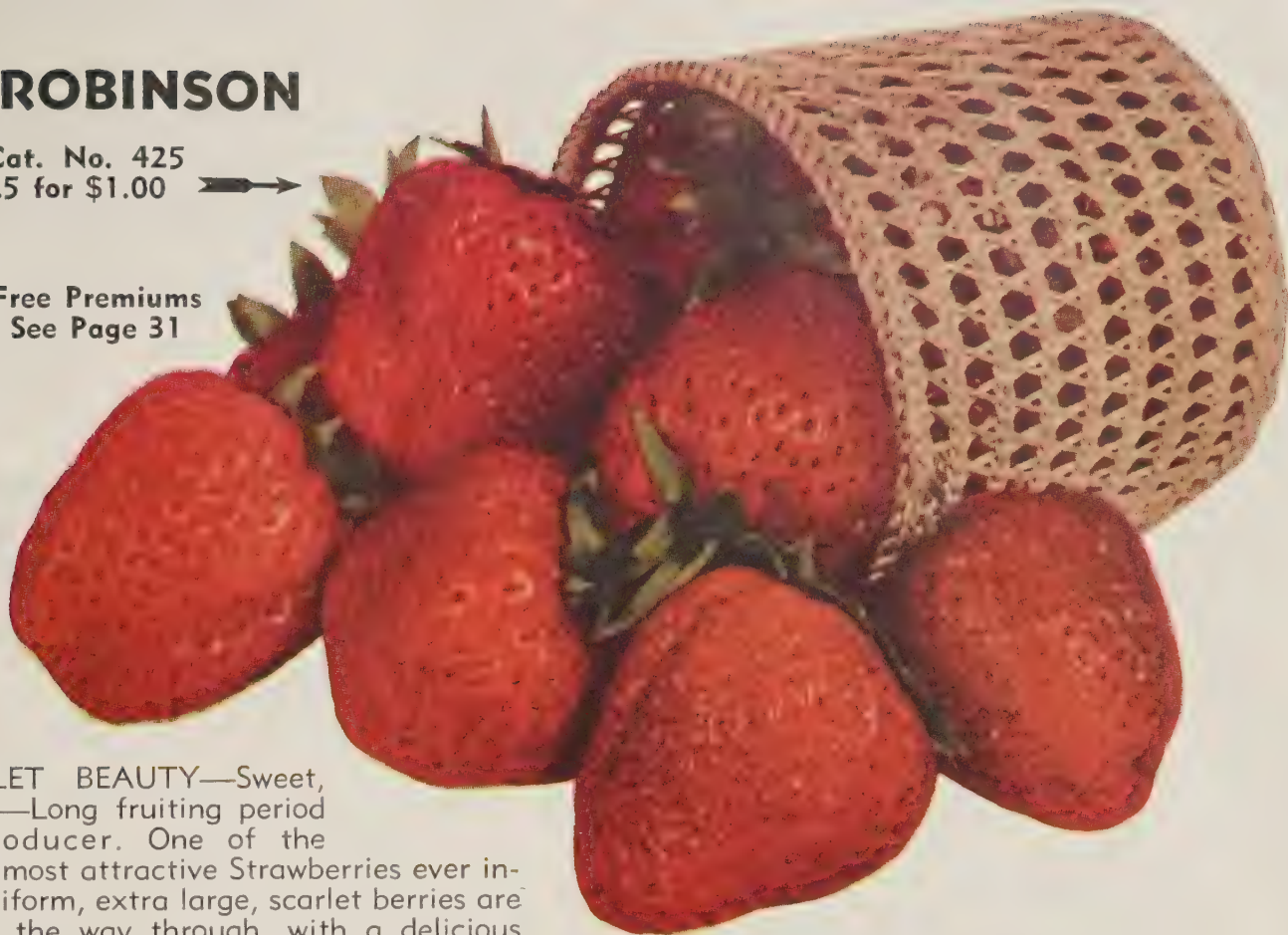




## New ROBINSON

Cat. No. 425  
25 for \$1.00 →

Free Premiums  
See Page 31



A SCARLET BEAUTY—Sweet, solid berries—Long fruiting period—Heavy producer. One of the fanciest and most attractive Strawberries ever introduced. Uniform, extra large, scarlet berries are solid red all the way through, with a delicious sweet flavor. A thrifty plant maker with heavy, light green foliage. Ripens just after Blakemore and fruits over a long period holding its large size to the last picking.

25 for	\$1.00	200 for	\$ 5.50
50 for	1.65	500 for	9.00
100 for	3.00	1000 for	16.00

## Cat. No. 421 GIANT GEM (Everbearing)

Will bear this summer and fall—Everyone should have some everbearing Strawberries. Do you know anything that tastes better than home-grown, fresh, sweet, juicy Strawberries? They bear quickly and don't require much space.

Giant Gem is a very popular variety, as it does well anywhere. Highly productive with large, firm,

bright red berries of delicious flavor. They will start bearing 60 to 90 days after planting. Some customers report fresh berries at Thanksgiving.

25 for	\$1.25	200 for	\$ 6.50
50 for	2.25	500 for	12.95
100 for	3.50	1000 for	21.50

## ALL-SEASON STRAWBERRY SPECIAL

Cat. No. 817

This special bargain offer will furnish you with sufficient plants to supply the average family with berries throughout the season.

25 Streamliner	50 Blakemore
25 Giant Gem	50 Aroma

Regular Value \$4.75  
150 for \$3.75



Cat. No. 421  
Giant Gem  
25 for \$1.25



# Neashe's Delicious BERRIES

SPRING SHIPMENT RECOMMENDED



Cat. No. 415  
McDonald Blackberry  
25 for \$2.95

## BLACKBERRIES

**415—McDONALD.** Very early. Large, oblong, very good quality; drought resistant, vigorous grower. Plant in rows 8 to 10 feet apart. The vines trail the first season like Dewberry, but grow upright the next year. We will include with each 25 McDonald plants, 5 plants FREE of Early Harvest for cross pollination. Plant every fourth or fifth plant. The best Blackberry for size, quality and production.  
25 for \$2.95; 50 for \$5.50; 100 for \$9.75; 200 for \$17.50;  
500 for \$34.50

**416—EARLY HARVEST.** Ripens early, with glossy jet-black berries of medium size and excellent quality. Heavy bearer and very hardy. Ripens early, ahead of dry weather.

10 for \$1.50      50 for \$5.50      200 for \$17.50  
25 for 2.95      100 for 9.75      500 for 34.50

**417—ELDORADO.** The hardiest, best quality Blackberry. Thrives on poor soil. Large, firm, sweet flavored berries, almost coreless. Ripens over a long period. A heavy regular bearer.

10 for \$1.50      50 for \$5.50      200 for \$17.50  
25 for 2.95      100 for 9.75      500 for 34.50

### No. 818 HOME BERRY COLLECTION

Our selection of the best varieties for your home berry patch. The wonderful Indian Summer Red Raspberry, Cumberland Raspberry, the standard blackcap, the sensational Thornless Boysenberry, and the Eldorado Blackberry. These are all good yielders of fine quality berries. Plant them and you will have plenty of luscious berries for sauce, pies, jellies and preserves. Our fine, healthy plants will grow vigorously for you.

12 Indian Summer Red Raspberry      12 Thornless Boysenberry  
12 Cumberland Black Raspberry      12 Early Harvest Blackberry  
**48 Plants for \$5.50**

**430—THORNLESS BOYSENBERRIES.** Immense delicious berries with a tangy Raspberry-Dewberry flavor. Thornless plants. Delicious fresh or canned. Planted in the spring they will make 6 to 8 feet of growth first year and will produce a heavy crop the next year.

10 for \$1.95      50 for \$7.50      200 for \$23.95  
25 for 3.95      100 for 12.95      500 for 49.50

## RASPBERRIES

**431—CUMBERLAND.** Midseason. Berries are large, fine and sweet. Cumberland has been the standard blackcap for many years. Plants are self-supporting, non-suckering. Plant in early spring.

10 for \$1.50      50 for \$5.50      200 for \$17.50  
25 for 2.95      100 for 9.90      500 for 34.50

**432—MORRISON.** This new berry is drought resistant and ripens a little later than Cumberland. Berries of immense size, very sweet and juicy. Plants are healthy, vigorous growers. The best late Black Raspberry.

10 for \$1.95      50 for \$6.75      200 for \$22.50  
25 for 3.75      100 for 11.95      500 for 47.50

**433—SODUS.** Berries large, firm and excellent quality. Extremely hardy, drought resistant and not subject to winter injury; does not require winter protection even in Minnesota. A great shipping and canning berry because of its wonderful keeping qualities. Produces fruit of large size, fine color and good flavor. Most productive Raspberry.

10 for \$1.95      50 for \$6.75      200 for \$22.50  
25 for 3.75      100 for 11.95      500 for 47.50

**434—INDIAN SUMMER.** Everbearing Red Raspberry. Many are planting Indian Summer as a one-crop variety because of its vigor and large size, fine flavored berries. Berries are much larger than other everbearing types and of excellent quality. The summer crop ripens very early; the autumn crop from September until frost.

10 for \$1.95      50 for \$6.75      200 for \$22.50  
25 for 3.75      100 for 11.95      500 for 47.50

**437—SUNRISE.** Extra early. Extra quality. A new berry introduced by U.S.D.A. of unusual hardiness and resistance to disease. Stands severe winter as well as heat and drought. Ripens early, bright red color, excellent quality.

10 for \$1.95      50 for \$6.75      200 for \$22.50  
25 for 3.75      100 for 11.95      500 for 47.50

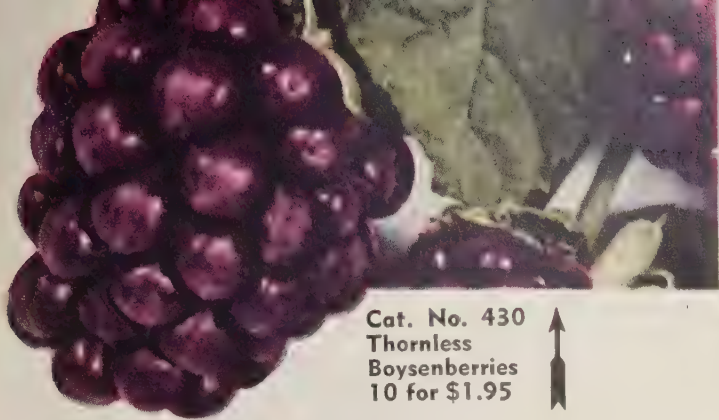
**436—LATHAM.** Late Red Raspberry. A superior variety which does well in all sections of the country. Adaptable to all sorts of soil conditions, climates, and sections. Cold weather has no effect on Latham as it originated in Minnesota. A great shipping and canning berry because of its wonderful keeping qualities. Produces fruit of large size, fine color, and good flavor.

10 for \$1.95      50 for \$6.75      200 for \$22.50  
25 for 3.75      100 for 11.95      500 for 47.50



Cat. No. 436. Latham Red Raspberry—10 for \$1.95





Cat. No. 430  
Thornless  
Boysenberries  
10 for \$1.95



Cat. No. 437  
Sunrise Red Raspberry  
10 for \$1.95



Cat. No. 434  
Indian Summer Red Raspberry  
10 for \$1.95



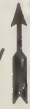
BE SURE  
YOU  
ORDER BY  
CATALOG  
NUMBER



Cat. No. 433  
Sodus Purple Raspberries  
10 for \$1.95



Cat. No. 431  
Cumberland Black Raspberry  
10 for \$1.50



Ca. No. 432  
Morrison Black Raspberry  
10 for \$1.95

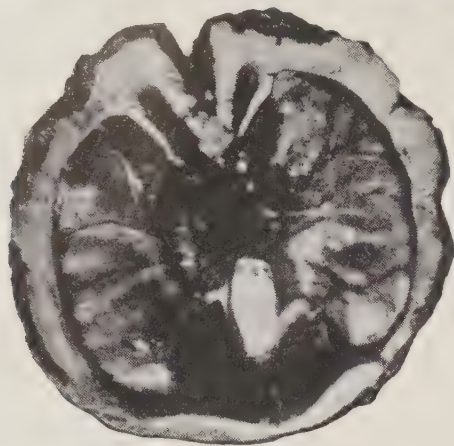
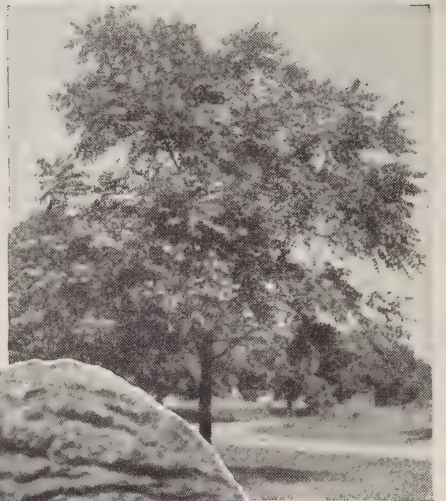




# Thomas BLACK WALNUT

## No. 212

Now you can have improved, grafted Black Walnut which is giant in size and kernels come out in halves. Thomas is the fastest growing and produces the largest nuts. It bears very young, generally next year after planting. A mature tree will produce 15 to 40 bushels of nuts, which sell from \$4.00 to \$10.00 per bushel. The nuts are immense size and crack easily. A bushel of nuts crack out 10 to 12 pounds of meats. Meats are of delicious flavor. Will grow anywhere.

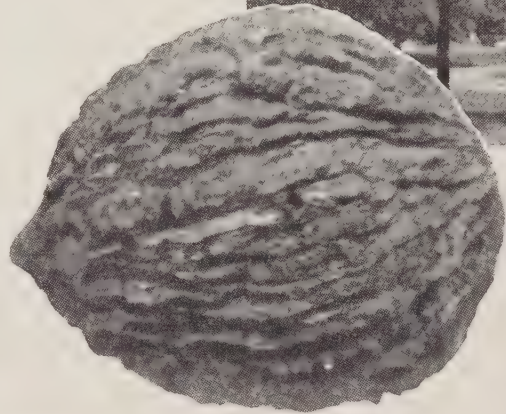


	Each	5 Each
4-5 ft. ....	\$3.25	\$3.00
3-4 ft. ....	2.75	2.60
2-3 ft. ....	2.25	2.15

**212-A—THOMAS WALNUT SEEDLINGS.** Some of our growers have been very successful in growing Thomas from seed. Many times almost identical to the thin-shelled, large size, single partition grafted Thomas Walnut. We have grown several thousand of these ourselves from Thomas seed of our own selection, and offer them at the following attractive prices.

	Each	5 Each	25 Each
4-5 ft. ....	\$1.95	\$1.75	\$1.50
3-4 ft. ....	1.50	1.25	1.00
2-3 ft. ....	.95	.75	.65

Do not confuse these with hedge size plants offered by many. These are specimen plants.



## NUT TREE SPECIAL

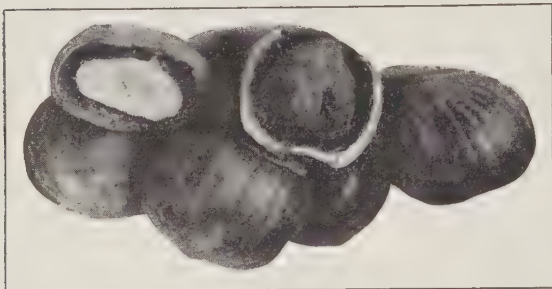
### No. 825

2-3 ft.

1 Thomas Walnut 1 Stuart Pecan  
1 Hazelnut

All 3 for **\$5.95**

## Stuart PAPER-SHELL PECAN



## No. 214 HAZELNUT

Round, sweet kernels, easily removed and delicious for many uses. Plants are ornamental with deep green foliage and compact, bushy habit of growth. Fruits freely. Plant a group of them in the corner of your yard.

	Each	5 Each
2-3 ft. ....	\$1.40	\$1.30

## No. 213

Hardest of the southern paper-shell varieties. Can be grown as far north as Kansas City. Nut is large, long, thin-shelled, of excellent quality. Tree is ornamental and of fairly rapid growth. A very profitable variety for commercial planting. Plant 40 feet apart.



	Each	5 Each
4-5 ft. ....	\$3.50	\$3.25
3-4 ft. ....	2.95	2.75
2-3 ft. ....	2.45	2.25

## NEOSHO SUPERIOR LAWN GRASS SEED

**Have Beautiful Green Velvety Lawns by Using Neosho Superior Lawn Grass Seed**  
All our mixtures are made up of highest quality seed, and with proper amount of moisture should give you a beautiful lawn.

**NEOSHO SUPERIOR MIXTURE.** This is composed of finest seeds mixed according to our own formula to give a most satisfactory and permanent lawn.  
1 lb., 85c; 3 lbs., \$2.25; 10 lbs., \$6.95

**NEOSHO DENSE SHADE MIXTURE.** A special mixture of best grasses for lawns which are partially or completely shaded.  
1 lb., 95c; 3 lbs., \$2.75; 10 lbs., \$8.75

**NEOSHO QUICK LAWN MIXTURE.** An inexpensive mixture of good seed for quick coverage. Best for this section of the country.  
1 lb., 70c; 3 lbs., \$1.95; 10 lbs., \$5.95

**PERENNIAL RYE GRASS.** A very satisfactory grass for Ozark area, as it makes a good lawn quicker than Blue Grass and is just as permanent. Bright green color.  
1 lb., 45c; 3 lbs., \$1.25; 10 lbs., \$3.50

**BLUE GRASS.** Fancy re-cleaned seed.  
1 lb., 95c. 3 lbs., \$2.75; 10 lbs., \$8.75

**BERMUDA GRASS.** For sections south of Kansas City.  
1 lb., 95c. 3 lbs., \$2.75; 10 lbs., \$8.75





# MONEY SAVING SPECIAL OFFERS



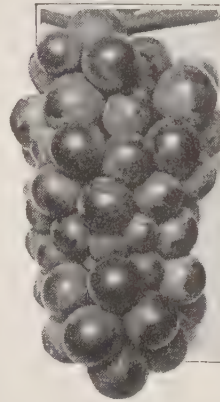
## Home Orchard Special No. 823

We have made up this special for the suburban home owner who wants enough fruit for his own use. You can select your own varieties on this special.

5 Apple 2 Pear  
5 Peach 2 Cherry  
2 Plum Free—3 Grapes

16 Trees, 3-4 ft.,  
2-year grade, \$10.95

16 Trees, 4-6 ft.,  
2-year grade, \$13.95



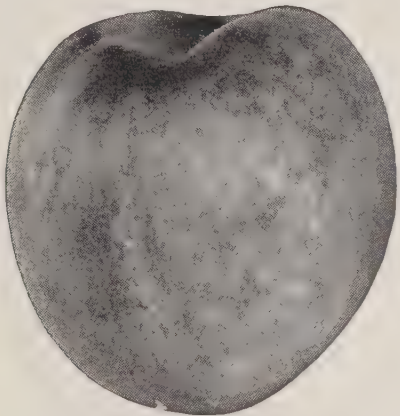
## Red, White and Blue Grape Special No. 819

This assortment particularly chosen for hardiness, long season, wonderful flavor, easy to grow. An ideal assortment for every home owner.

2 Moore's Early 1 Agawam  
2 Concord 1 Niagara  
2 Fredonia

8 Sturdy Vines for \$1.85

(Regular Value \$2.20)



## Freestone Peach Special No. 826

Fresh Peaches from your own trees from July 1st. to September.

1 Golden Jubilee  
1 Belle of Georgia  
1 Elberta  
1 Hale-Haven  
1 Early Elberta

(Regular Value \$5.75)

One Yellow Delicious Apple tree free with either order.

All 5 Trees,  
4-5 ft., ..... \$3.10

All 5 Trees,  
Super X, ..... 4.95



## Cherry Pie Special No. 824

2 Early Richmond  
2 Montmorency

All 4 (3-4 ft.)  
for Only \$5.50

All 4 (Super X)  
for Only \$6.50

# Free PREMIUM WITH EVERY ORDER

When you send us your order for Nursery Stock you may select free Premiums as follows:

On Nursery Orders of \$5.00 select one of these premiums.

On Nursery Orders of \$10.00 select two.

On Nursery Orders of \$15.00 or more, select any three.

A—12 Gladiolus, our choice.  
B—1 Pink Peony, our choice.  
C—6 Iris, our choice.  
D—3 Double Hollyhocks.  
E—1 Pink Spirea.  
F—3 Dahlias, our choice.

Premiums must be written on order or none will be sent, even if you notify us later. We reserve the right to substitute in case we run short on any of these premiums.

## RA-PID-GRO

Liquid plant food. Contains 11 vital food elements plus vitamins. Will make your plants thrive and grow under any conditions. Easy to use. No risk of burning as it is dissolved quickly in water. One pound makes 176 pounds of liquid fertilizer (22 gallons). One pound of Ra-Pid-Gro is equal to 110 pounds of any fertilizer you may have used in the past. Feed your trees, shrubs, evergreens, flowers, vegetables.

1 lb. for \$1.25 2 lbs. for \$2.35  
5 lbs. for \$4.50

## DED-WEED

Kill your weeds. Won't hurt your grass. Easy to rid you lawn of plantain, dandelions, chickweed, etc. Simply add water and spray your lawn. Kills the roots.

4-oz. can, (will cover 4000 sq. ft.) \$1.25

## PEAT MOSS

Mulch with Peat Moss to conserve moisture, keep down weeds, winter protection. Peat Moss is a very fine soil conditioner. It mellow heavy soils and helps bind sandy soils. It is a pure source of humus, needed by most soils. Use one-fourth Peat Moss mixed with soil when planting and you will get better results.

1-bushel-bag, \$1.25  
2-bushel-bag, 2.00  
4-bushel-bag, 3.50

## DRICONURE

The all organic animal manure. It is dehydrated and finely pulverized for more convenient handling. It is all plant food. No weed seed—no waste. Adds humus to the soil. One 50-lb. bag will provide sufficient fertilizer for approximately 500 sq. ft. of gardening surface or 1000 sq. ft. of established lawn. Fine for evergreens, shrubs, flowers, Roses, vegetables and lawns.

7 1/2-lb. bag, \$0.75 50-lb. bag, \$2.25  
100-lb. bag, \$4.00

## PLANT HEALTH

All-Purpose Spray. Kills worms, insects, fungus. Neosho All-Purpose Dust. Our own special formula. Kills eating insects such as cutworms, bag worms and canker worms. Controls fungous diseases, such as mildew and black spot. Controls sucking insects, such as aphid and red spider. Keeps your shrubs, Roses, evergreens and perennials in healthy condition. Remember, an ounce of prevention is worth a pound of cure. Start your dusting when leaves appear and continue at regular intervals. Will adhere to foliage better if applied when foliage is damp.

1 1/2-lb. carton, \$0.75



DIRECT FROM GROWER  
**PLANT NEOSHO**  
 IMPROVED VARIETIES—EARLY

Complete description of all varieties given on page 34.

PRICES—All Varieties

	Each	5 Each	10 Each	25 Each
Super X .....	\$1.25	\$1.15	\$1.05	\$0.95
5-7 ft. ....	1.00	.90	.80	.70
4-5 ft. ....	.80	.70	.60	.55
3-4 ft. ....	.70	.60	.50	.45
2-3 ft. ....	.60	.50	.40	.35

Write for prices on larger quantities.



↑ Cat. No. 251. Belle of Georgia—White Freestone

↓ Cat. No. 255. Red Gage Elberta—Yellow Freestone, extra hardy, ripens Aug. 15-20



↑ Cat. No. 260. Red Haven—Smooth-Skinned Yellow Freestone, ripens July 5



↑ Cat. No. 257. Golden Jubilee—Large Yellow Freestone, ripens July 15



TO YOU

# PEACHES

BEARERS—HEAVY PRODUCERS



↑  
Cat. No. 253

**Elberta.** Yellow freestone. Very large and productive. Ripens Aug. 10-15.



→  
Cat. No. 254  
**Early Elberta.** The best Elberta. Ripens five days ahead of regular Elberta.



↖  
Cat. No. 252  
**Champion.** White freestone. Ripens Aug. 1.

**SPECIAL No. 827** One Each of Every Variety Pictured.  
9 trees, 3-4 ft., \$4.95  
Two Of Each Variety 18 for \$8.75  
BE SURE YOU ORDER BY CATALOG NUMBER



↑  
Cat. No. 258. **Nesoho Hale.** Immense size; excellent quality. Yellow freestone. Ripens Aug. 5.



↘  
Cat. No. 259  
**Hale-Haven**  
Wonderful yellow freestone. Ripens Aug. 1.



# Neosho's Home Grown PEACH TREES

**250—ALTON.** A semi-cling, white Peach with a beautiful red blush. You'll have a crop of Alton whenever seedlings bear. Ripens about July 15th. An extremely good regular bearer.

**251—BELLE OF GEORGIA.** (White Freestone.) An unusually large Peach. Creamy white blushed with red; good quality. Very hardy, vigorous and productive. The most popular and widely planted white Peach. Ripens August 1st.

**252—CHAMPION.** (White Freestone.) Midseason. An exceptionally high quality, attractive, hardy white Peach. It has a peculiar honeyed sweetness; ideal for home use and local markets. Ripens August 1st.

**253—ELBERTA.** (Yellow Freestone.) Midseason. Very large, golden yellow with red cheek. Tree is very productive, yields large quantities of uniform highly colored fruit. Can be shipped or hauled to distant markets. Ripens August 10th to 15th.

**254—EARLY ELBERTA.** Our own special strain of Early Elberta that we have fruited for years and subjected to every test and found it a money maker wherever grown. Ripens 5 days ahead of Elberta. A smooth rich flavor much more pleasing in taste than Elberta.

**255—ELBERTA, GAGE.** A wonderful improved bud sport of the Elberta Peach. Ripens 3 to 5 days after standard Elberta. Is of wonderful size and improved color. Most outstanding feature of this Peach is its resistance to disease and hardiness in bud; crops every season.

## Peach Prices—All Varieties

	Each	5 Each	10 Each	25 Each
Super X .....	\$1.25	\$1.15	\$1.05	\$0.95
5-7 ft. ....	1.00	.90	.80	.70
4-5 ft. ....	.80	.70	.60	.55
3-4 ft. ....	.70	.60	.50	.45
2-3 ft. ....	.60	.50	.40	.35

Write for prices on larger quantities.

**258—HALE.** (Yellow Freestone.) Very large in size. Ripens August 5th just ahead of Elberta. Very firm, solid meated. Stands long shipment. Brings highest prices on every market.

**259—HALE-HAVEN.** A magnificent cross between the wonderful quality of J. H. Hale and the hardiness of South Haven. Wonderful size and color, and shipping qualities; hardy in bud and vigorous tree. A profit making variety you cannot afford to overlook. Ripens August 1st.

**256—IMPROVED EARLY ELBERTA.** The earliest of the Elberta, ripening about July 5th. A rich golden yellow freestone of delicious flavor. A heavy bearer, wonderful shipper, reaches market early to obtain highest prices.

**263—INDIAN BLOOD.** (Clingstone.) Late. An old-fashioned favorite of fine flavor. Flesh is blood-red color. Wonderful for canning, pickling, and preserving.

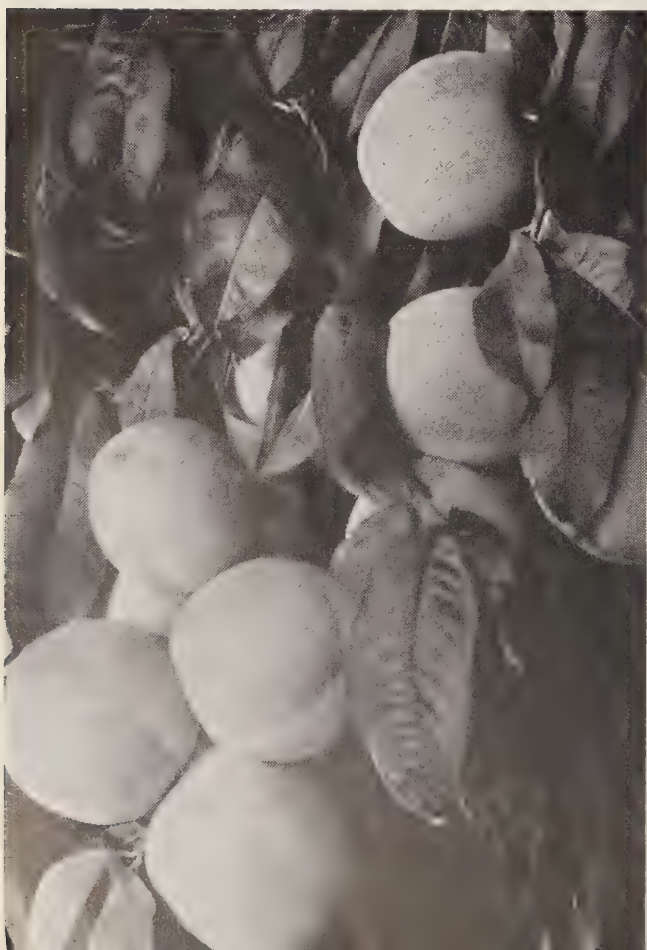
**264—RED BIRD.** (Clingstone.) An unusually large, early commercial variety. Very firm and ships well. Creamy white, covered with bright red. Ripens July 1st.

**260—RED HAVEN.** A smooth-skinned, almost fuzzless, early yellow freestone Peach. Ripens uniformly, early in July. Tree is vigorous and bears so heavily, fruit should be thinned to increase size.

**261—FAIR'S BEAUTY.** Hardiness, great beauty, high quality, recommend this Peach for all sections. You can hardly distinguish it from Elberta in size and quality, but it ripens July 10th, 30 days ahead of Elberta. Very hardy in bud, often producing a crop when other varieties are winter-killed. Fruit is medium to large in size, flesh is firm, tender, melting and juicy. Freestone, clinging slightly when the Peach is hard ripe.

**262—FRANK'S.** (Clingstone.) Fine flavored, large, solid meated, yellow cling, ripening about the 5th of September. A very superior Peach because of its size, beautiful color, high quality, and high production. Fine for pickling and preserving.

**257—GOLDEN JUBILEE.** A beautiful yellow freestone Peach ripening 25 days ahead of Elberta, about July 15th. Good size and quality. One of the best shippers of the early varieties. Plant Golden Jubilee this year, and you will have these hardy freestone Peaches bearing for you in 2 to 3 years.



**All Season  
Peach Collection No. 828**

1 J. H. Hale	1 Belle of Georgia
1 Elberta	1 Golden Jubilee
1 Red Bird (Cling)	1 Hale-Haven

**6** 5-7 ft. Trees for **\$4.95**

Good 3- to 4-ft. Trees—All 6 for \$3.25.



# Fall 1949 and Spring 1950 Price List

# NEOSHO EVERGREENS

*For Year Round Beauty*

## SPECIAL NOTATION

PRICES ON EVERGREENS ARE BALLED AND BURLAPPED FOR CASH AND CARRY CUSTOMERS.

IF SHIPMENT IS DESIRED, 15% MUST BE ADDED TO THESE PRICES TO COVER EXTRA PACKING COST.

All Prices are F. O. B. Neosho.

## ARBOR-VITAE

Formal pressed leaf types of pyramidal, conical and globe shapes. The American type is hardy in the North, while the Chinese types withstand heat and drought, and are better adapted to the southern locations.

**AMERICAN PYRAMIDAL ARBOR-VITAE.** Dark green pyramidal habit.

2-3 ft., \$3.95      3-4 ft., \$4.95

**BERCKMANN'S GOLDEN ARBOR-VITAE.** Conical, compact with bright green pressed leaf foliage, gold tipped.

18-24 in., \$3.50      3-3 1/2 ft., \$6.75

2-2 1/2 ft., 4.50      3 1/2-4 ft., 7.50

2 1/2-3 ft., 5.50

**BERCKMANN'S GLOBE ARBOR-VITAE.**

A more dwarf and compact form of Berckmann's Golden.

18-24 in., \$3.95      24-30 in., \$4.95

**EXCELSA ARBOR-VITAE.** An improved pyramidal form, with finer pressed foliage and hardier than Baker's.

30-36 in., \$3.95      4-5 ft., \$5.95

3-4 ft., 4.95      5-6 ft., 7.50



Irish Juniper



Excelsa Arbor-Vitae



Berckmann's Golden Arbor-Vitae



Globe Arbor-Vitae



Pfitzer Juniper

**Neosho Nurseries Co.**

**Neosho, Mo.**



# Evergreens Add Charm and

All Evergreens are Priced Balled and Burlapped

## JUNIPERS - Pyramidal

These are the hardiest of all ornamental Evergreens. Readily adapt themselves to all sorts of climatic conditions. Can be pruned formal if desired.

**CANNARTI JUNIPER.** One of the best pyramidal sorts with deep green foliage and attractive bright blue berries.

3-4 ft., \$6.95    4-5 ft., \$8.75    5-6 ft., \$10.50

**CHINESE JUNIPER.** Bright blue-green, prickly foliage. Retains its color throughout the winter. Plant maintains straight central leader without pruning.

3-4 ft., \$6.95    4-5 ft., \$7.95    5-6 ft., \$9.95

**DUNDEE JUNIPER.** A slender type with green foliage, which colors a beautiful live bronze-purple in winter. Plant maintains straight central leader without pruning.

3-4 ft., \$6.95    4-5 ft., \$8.75    5-6 ft., \$10.50

**IRISH JUNIPER.** Slender, pyramidal, with blue-green foliage all the year around. Maintains straight leader without pruning.

3-4 ft., \$4.95    4-5 ft., \$6.50    5-6 ft., \$7.95

**KETELEERI JUNIPER.** A broad, pyramidal type with bright green color, which it retains through the winter.

3-4 ft., \$6.95    4-5 ft., \$7.95    5-6 ft., \$9.95

**VIRGINIANA GLAUCA** (Silver Glauca). The best Silver Juniper, requires pruning to keep it compact.

3-4 ft., \$6.95    4-5 ft., \$8.75    5-6 ft., \$10.50



Keteleeri Juniper



Entrance Planting

## JUNIPERS - Spreading

**ANDORRA JUNIPER.** Very low spreader with bluish green foliage which colors a live purplish cast in winter.

18-24 in., \$4.95    2-2½ ft., \$5.85    2½-3 ft., \$6.95

**PFITZER JUNIPER.** The best all-around evergreen grown. Exceptionally hardy, spreading habit of growth and good green foliage.

18-24 in., \$4.25    2½-3 ft., \$6.25    4-5 ft., \$9.95  
2-2½ ft., 5.25    3-4 ft., 7.95

**PFITZER COMPACTA.** A more compact form of Pfitzer Juniper.

15-18 in., \$3.75    18-24 in., \$4.25    24-30 in., \$5.25

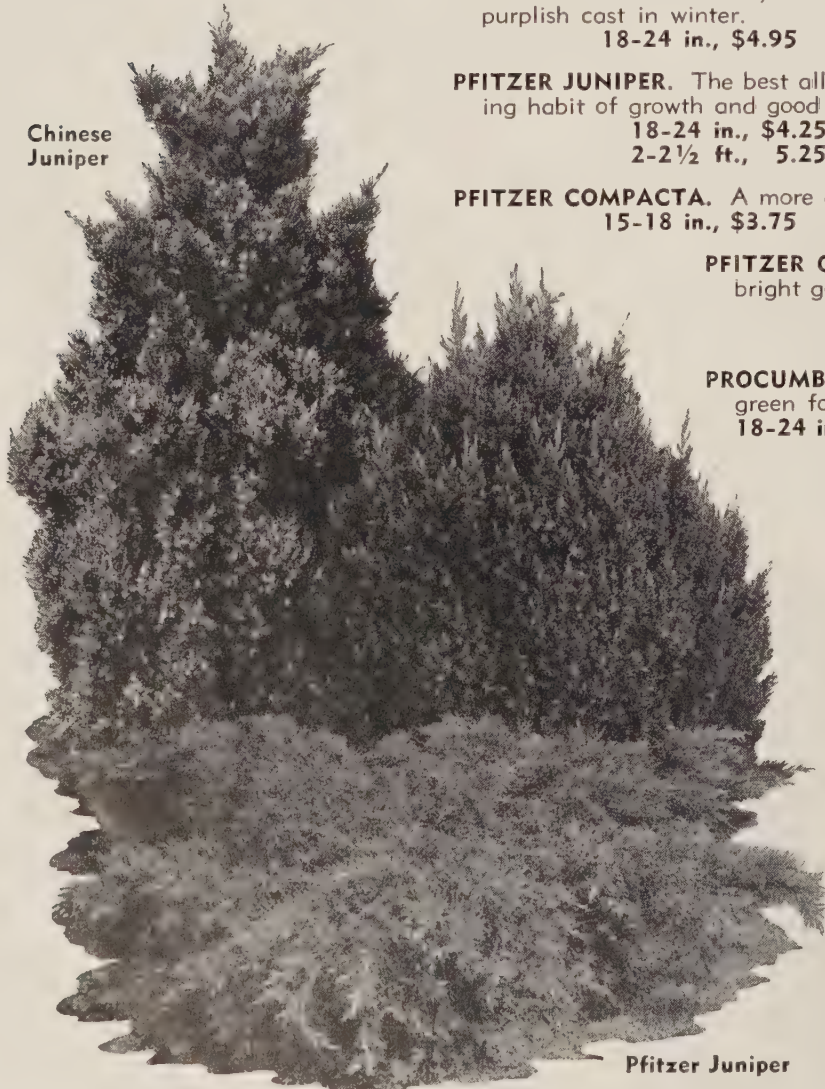
**PFITZER GOLD TIPPED.** Same habit as Pfitzer Juniper with tips bright golden.

18-24 in., \$4.25    2½-3 ft., \$6.25  
2-2½ ft., 5.25    3-3½ ft., 7.95

**PROCUMBENS.** Very dwarf, spreading type with prickly blue-green foliage.

18-24 in., \$4.25    2-2½ ft., \$5.25    2½-3 ft., \$6.25

Chinese Juniper



Pfitzer Juniper



Procumbens Juniper



# and Dignity to Your Home



Planting

All Evergreens are Priced Balled and Burlapped

## JUNIPERS - Intermediate

These types are intermediate between the low spreading types and the upright forms.

**MEYERI.** A dwarf irregular type with bright steel-blue foliage.  
18-24 in., \$4.95    2-2½ ft., \$5.95    2½-3 ft., \$6.95

**SPINY GREEK.** Cone-shaped, compact, with silvery blue-green foliage.

18-24 in., \$3.50    2½-3 ft., \$5.50  
2-2½ ft., 4.50    3-4 ft., 7.50

**GLOBE JUNIPER.** Dark green, globe form.  
15-18 in., \$3.95    18-24 in., \$4.95

## JAP YE W

Best Evergreen for shade. Rich, deep green color. Excellent foundation Evergreen for east and north side.

**UPRIGHT FORM.**

18-24 in., \$6.50    2-2½ ft., \$8.50    2½-3 ft., \$10.50

**INTERMEDIATE FORM.**

18-24 in., \$6.50    2-2½ ft., \$8.50    2½-3 ft., \$10.50

## PINES and SPRUCE

**MUGHO PINE.** A compact globe type suitable for foundation and corners.

18-24 in., \$4.95    2-2½ ft., \$5.95

**SCOTCH and AUSTRIAN PINE.** Dark needles, broad cone.  
3-4 ft., \$6.50    4-5 ft., \$7.95

**NORWAY SPRUCE.** The best Spruce for Midwest conditions. Good dark green color.

3-4 ft., \$5.25    4-5 ft., \$6.95    5-6 ft., \$9.95



Cannarti Juniper



Scotch Pine



Spiny Greek  
Juniper



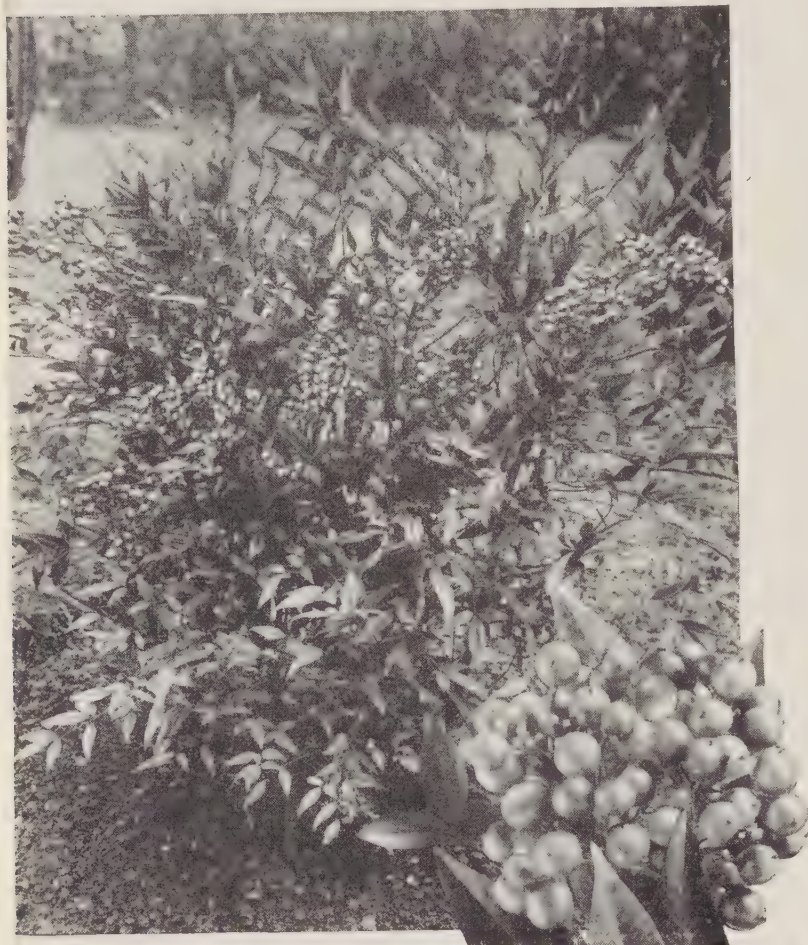
Mugho Pine



# Broadleaf Evergreens

All Evergreens are Priced Balled and Burlapped

These shrubs are fine for foundation planting as they hold their foliage through the winter. Most of them have attractive berries and their foliage colors brilliant red and orange in the fall. Several varieties do well in shade. Everyone should use some of these in the planting.



Nandina



Euonymus Patens

**ABELIA.** 4-5 feet tall. A hardy free blooming shrub with shiny purplish green leaves. Blooms profusely all summer with small, light pink, trumpet-shaped blossoms. Graceful upright, spreading grower.  
18-24 in., \$2.50 2-3 ft., \$3.00

**AZALEA HINODEGIRI.** Low growing evergreen Azalea with bright red flowers. Use on east or north side only.  
12-15 in., \$3.95

**BOXWOOD.** Fine dwarf broadleaf evergreen which can be used as specimen, for edgings, or in tubs. Will do well in partial shade.  
12-15 in., \$3.95 15-18 in., \$4.95 18-24 in., \$5.95

**EUONYMUS PATENS.** 4-5 feet tall. One of the finest evergreen shrubs, with bright green glossy foliage. Compact and shapely habit. In the fall numerous orange, bittersweet berries add to its charm. Will grow in shade or sun, and can be pruned any way desired.  
18-24 in., \$2.35 2½-3 ft., \$3.50  
2-2½ ft., 2.75 3-3½ ft., 4.50

**EUONYMUS RADICANS.** Similar to Euonymus Patens with big, shiny, evergreen leaves and bright scarlet and orange berries in fall. If planted near wall can be trained to climb.  
18-24 in., \$2.35 2½-3 ft., \$3.50  
2-2½ ft., 2.75 3-3½ ft., 4.50

**HOLLY, AMERICAN.** Spiny, glossy foliage; bright red berries.  
2-2½ ft., \$6.95

**MAGNOLIA GRANDIFLORA.** True southern Magnolia. Large glossy dark green leaves, which remain throughout the winter. Large creamy white blooms in June, intensely fragrant. Not hardy north of Springfield, Mo.  
18-24 in., \$4.50 2-3 ft., \$6.50

**MAHONIA.** 3-4 feet tall. A hardy broadleaf evergreen with shiny green, holly-like leaves, which turn a bronzy red in fall and winter. In spring the clusters of yellow flowers are very attractive; these are followed by blue berries in June and July. Will grow in shaded locations.  
18-24 in., \$3.75 2-2½ ft., \$4.50

**NANDINA.** 4-5 feet tall. An erect growing shrub with bamboo-like shoots. Foliage finely cut, brilliantly colored, varying from dark green to bright red. Clusters of brilliant red berries in fall.  
18-24 in., \$2.75 2-2½ ft., \$3.50

**PYRACANTHA LALANDI.** Dark foliage; orange berries.  
18-24 in., \$3.25 2-2½ ft., \$4.00 2½-3 ft., \$5.00



Abelia Grandiflora



# Neasha BUSH CHERRY

Cat. No. 50

The new quick-bearing Cherry. Easy to grow; sure to produce; highly productive; good flavor. Hardy everywhere. Perfectly hardy ornamental shrub with white blossoms followed by rich red fruit which is fine for making jam, jelly and pie. Plant two or more for pollination. 2-yr., No. 1—2 for \$1.95.



## Neosho CHOICE PLUMS and PEARS

Write for prices on larger quantities.

	Each	5 Each	10 Each	25 Each
Super X .....	\$1.75	\$1.60	\$1.40	\$1.25
4-5 ft. ....	1.50	1.35	1.15	.95
3-4 ft. ....	1.25	1.10	.90	.70
2-3 ft. ....	1.00	.85	.70	.50

- 235—AMERICA.** Golden yellow with red check. Bears young. Produces in abundance, high quality, sweet, juicy, solid meated Plums. Free from rot, extremely hardy. Ripens July 20th.
- 236—BURBANK.** Large cherry-red Plum. Flesh amber-yellow, with rich sugary flavor; high quality and very productive.
- 237—ITALIAN PRUNE.** The favorite market Prune. Medium to large size. Dark purple, good quality; blooms late. One of the most widely grown Prunes in America.
- 238—MUNSON.** Earliest, ripening last of June. Large, yellow, good quality, tender, juicy, sweet. Bears young, producing large crops.
- 239—PRESIDENT.** The largest of all Plums. A beautiful dark purplish black with a heavy bloom. Ripens late, 10th of September. A wonderful rich flavored freestone, solid-flesh Plum.
- 240—PREMIER.** Extra large, bright red, yellow juicy flesh. Cling. Ripens August 1st. A good producer.
- 241—SAPA.** (Hansen Hybrid.) Bears first year. A large size purple Hansen hybrid, with purple flesh full of rich juice of fine flavor. Bears heavy crops annually and begins fruiting the first year after planting. Ripens middle of July.
- 242—STANLEY.** Crop second year, ripens 10 days ahead of other Prunes. Beautiful purple-blue skin; sweet golden flesh. Freestone. The hardiest Prune for the Middle West.
- 243—WANETA.** A Hansen hybrid. Exceptionally hardy, withstanding extremely hot and dry weather. Often bears second year. Color purplish red; 2 inches in diameter.

## PEAR VARIETIES

	Each	5 Each	10 Each	25 Each
Super X .....	\$1.75	\$1.60	\$1.40	\$1.25
4-5 ft. ....	1.50	1.35	1.15	.90
3-4 ft. ....	1.25	1.10	.90	.70
2-3 ft. ....	1.00	.85	.70	.50

Write for prices on larger quantities.

- 215—BARTLETT.** (Late summer.) The leading commercial variety; one of the most popular for dessert and canning. Flesh is white, fine grained, juicy and sweet. Tree is vigorous, very productive, hardy, bears young.
- 216—DOUGLAS.** (Early fall.) Douglas is a large, handsome Pear of Bartlett quality that ripens in early fall and comes into bearing the second or third year. Golden yellow, flushed with pink; tender, juicy, excellent flavor. It is blight proof, very resistant to dry weather.
- 217—KIEFFER.** (Winter.) Large, yellow, russeted; flesh white; rather coarse. A market and kitchen variety that succeeds farther south where other varieties fail. Tree hardy, very vigorous, resistant to blight. Blooms early.
- 218—LINCOLN.** (Summer.) Large, yellow; quality good to very good; similar to Bartlett, but more resistant to blight. Succeeds farther south than Bartlett can be grown.
- 219—SEEDLESS.** A Pear without seeds or core; all sweet, juicy flesh; a great producer; excellent quality, good size. Hardy. Tree bears young, ripens 10 days after Bartlett; self pollenizer. Fruit is a large, beautiful golden yellow with blush. Flesh is tender, sweet, juicy and delicious.

FREE PREMIUMS  
See Page 31

## Neasha APRICOT and NECTARINE

	Each	5 Each	10 Each
Super X .....	\$1.75	\$1.60	\$1.50
4-5 ft. ....	1.50	1.35	1.25
3-4 ft. ....	1.25	1.10	1.00
2-3 ft. ....	1.00	.90	.80

- 245—SUPERB APRICOT.** This fine variety originated in Kansas and has been largely planted in the Middle West. Hardy, productive. Fruit is medium large, orange-yellow, flesh firm, high quality. Fine for eating, sauce, preserves and pies.
- 246—SCHEIHING APRICOT.** Improved Superb. Can stand colder weather and is a heavier producer. Plant one of these with the Superb for pollinization.
- 247—SURECROP NECTARINE.** A cross between Peach and Plum. Has smooth skin like a Plum and seed like a Peach. Flesh and flavor of both Plum and Peach. Quality unusually pleasing. Beautiful bright red; size about same as medium size Peach. Freestone. Bears after second year.

## Send Living Gifts

For Mother's Day, Easter, Christmas, anniversaries, for any occasion. Simply send us name, address and money order for amount you wish to spend and we will send this party a Gift Certificate good for this amount with your name as donor. We will also send them our catalog stating that they are to select whatever they wish for the amount of Certificate and we will ship stock at proper planting time.

March 16, 1945  
"May I say that the shipment just received was the finest stock I have received for several years. Enclosed is additional order with check enclosed."  
RICHARD W. HICKS  
Akron, Ohio





↑ Cat. No. 201. Montmorency Cherry  
2-2½ ft.—Each \$1.20

Cat. No. 215  
Bartlett ↓  
Pear  
2-3 ft.—\$1.00



# Neasha CHERRIES

Bear Young—Easy to Grow

## SOUR CHERRIES

**200—EARLY RICHMOND.** The favorite early bright red May Sour Cherry. Fruit is medium size. A good canner. Tree is medium size. Ripens about a week earlier than Montmorency. Plant some of each variety to give you fresh Cherries over a longer period.

**201—MONTMORENCY.** The most widely planted Cherry. Productive and a regular bearer. Colors early before ripe—a distinct advantage for shipping. The fruit is roundish, plump and a beautiful glowing red. It hangs in clusters, making picking easy. The fruit does not crack or rot, even in very hot weather. It hangs on without dropping after it is dead ripe. The flesh is rich, sprightly and pleasant. A good shipper and a good canner. Does not mash down in the box.

### SOUR CHERRY PRICES

	Each	5 Each	10 Each	25 Each
Super X .....	\$1.80	\$1.50	\$1.40	\$1.30
3-4 ft. ....	1.60	1.40	1.30	1.20
2½-3 ft. ....	1.40	1.30	1.20	1.10
2-2½ ft. ....	1.20	1.10	1.00	.90

Write for prices on larger quantities.

**BE SURE  
AND  
ORDER BY  
CATAOG  
NUMBER**



↑ Cat. No. 206. Black Tartarian  
2-3 ft.—Each \$1.20

## SWEET CHERRIES

### SWEET CHERRY PRICES

	Each	5 Each	10 Each	25 Each
Super X .....	\$1.80	\$1.60	\$1.40	\$1.30
4-6 ft. ....	1.60	1.40	1.30	1.20
3-4 ft. ....	1.40	1.30	1.20	1.10
2-3 ft. ....	1.20	1.10	1.00	.90

**205—BING.** Very large, black, highest quality. Midseason.

**206—BLACK TARTARIAN.** Beautiful lustrous, purplish black when ripe. Medium size for Sweet Cherry. Very good quality. Very productive and a regular bearer. Early.

**207—LAMBERT.** Large, dark purple, firm, rich, juicy. Late.

**208—LATE DUKE.** Large, heart-shaped, dark red, semi-sweet variety with hardy qualities that succeeds well here in the Middle West.

**209—NEOSHO NAPOLEON.** A select strain of yellow Sweet Cherry. Mellow sweet flavor.

**210—SENECA.** Early. Black, rich sweet flavor. Best for Middle West.

A Sweet Cherry planted alone is not likely to bear fruit, because it is self-sterile. Plant a Black Tartarian with any other Sweet Cherry for cross pollination.

→ Cat. No. 242  
Stanley Prune  
2-3 ft.—Each \$1.00

**SEE PRECEDING  
PAGE FOR  
COMPLETE  
LIST OF  
PLUMS AND  
PEARS**





*Neasha*

# APPLES

**BEAR YOUNG  
BEST VARIETIES  
BIG THRIFTY  
ROOTS**

Our improved varieties eliminate necessity for color packing as they color solid 2 to 4 weeks ahead of regular varieties.

↓ Cat. No. 270  
Dark Red  
Delicious

↓ Cat. No. 276  
Double Red  
Stayman



↑ Cat. No. 284  
Whetstone

↑ Cat. No. 274  
Golden  
Lodi

↑ Cat. No. 272  
Grimes Golden

We finished picking our own Dark Red Jonathan Apple crop on August 19th. Every Apple on every tree ran 100% color, eliminating necessity to color pick. Reached early market and brought top prices.

See Page 38 for Complete Apple List and Prices.

## Apple Special No. 830

One each of the following Apples:

- Dark Red Jonathan
- Grimes Golden
- Double Red Stayman
- Golden Jubilee
- Ruby Red Rome Beauty
- Whetstone
- Dark Red Delicious
- Yellow Delicious

2-Year, 5-7 Ft.

9 for .....\$ 6.95

18 for ..... 12.50

2-Year, Super X

9 for .....\$ 8.95

18 for ..... 15.95



↑ Cat. No. 277  
Turley  
Winesap

Cat. No. 273. Dark Red Jonathan



↑ Cat. No. 275  
Ruby Red Rome Beauty



↑ Cat. No. 271  
Yellow  
Delicious





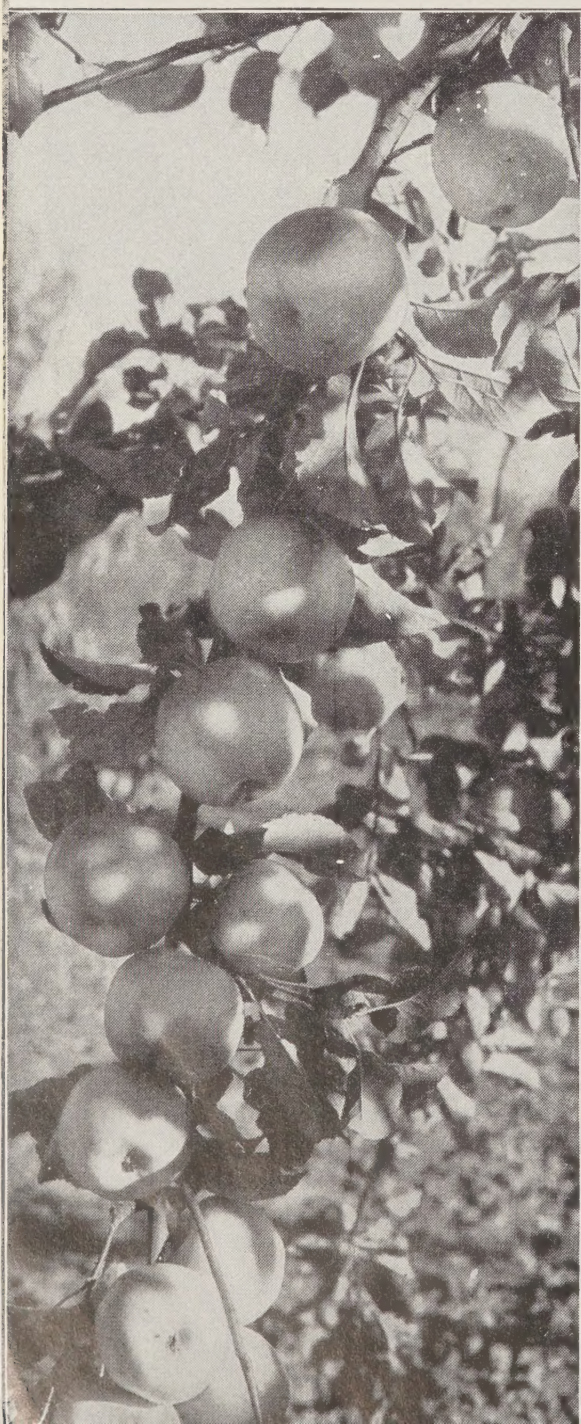
# Neosho Improved APPLE VARIETIES

Large commercial orchardists depend upon Neosho Nurseries Company for new and improved true-to-name varieties.

We have long had a reputation for supplying trees that produce profitable, productive orchards that we are zealous to maintain. Let us help you to "Growing Satisfaction."

**279—ANOKA.** The Old Folks Apple. The second year, big, full-sized crop; earliest and heaviest bearing Apple. Hardy in all climates; never winter-kills. Ripens in August but can be used a month earlier. Apples are good size. Yellow, striped red.

**280—BLACK BEN.** (Winter.) The best of the Ben Davis family. It attains a much higher color than Ben Davis or Gano. The tree is hardier, more vigorous and more prolific than Ben Davis. Fruit is large, solid dark red.



## PRICES—All Varieties

Write for prices on larger quantities.

	Each	5 Each	10 Each	25 Each
<b>Super X</b> .....	\$1.25	\$1.15	\$1.05	\$0.95
<b>5-7 ft.</b> .....	1.00	.90	.80	.70
<b>4-5 ft.</b> .....	.80	.70	.60	.50
<b>3-4 ft.</b> .....	.70	.60	.50	.40

**281—CHAMPION.** (Summer.) A late summer Apple. Large, attractive red, and of fine quality. Tree is hardy and a heavy bearer.

**282—DUCHESS.** (Red.) Attractive yellow Apple with red stripes; medium size. Profits are larger. One of the most profitable summer varieties. Bears young.

**270—DELICIOUS, DARK RED.** Colors a deep red 2 to 3 weeks before the common Delicious begins to take color. Bigger profits for the grower because earlier picking, earlier marketing, and more extra fancy grade.

**271—DELICIOUS, YELLOW.** Popular, big, beautiful, golden yellow Apple. Has a wonderful flavor, excellent quality, firm flesh, and ripens fast. Begins bearing at a very early age and is a vigorous grower, so that a six-year-old tree can have 5 or 6 bushels of apples, and a 15-year-old tree 20 to 25 bushels. Brings highest price and is in demand on every market.

**272—GRIMES GOLDEN.** A rich golden color, fine flavor and aroma, an ideal dessert Apple, and an equally fine cooker. Easy to grow, hardy and prolific bearer.

**273—JONATHAN, DARK RED.** The most profitable Apple obtainable. The Dark Red Jonathan attains a brilliant red color 2 weeks before ripening, and this, in turn, gains the advantage of higher market price for the grower. Early marketing also eliminates windfalls.

**274—LODI, GOLDEN.** New Improved Transparent. A large waxen Apple of clear transparent color. Flesh is firm and skin thick. Keeps and ships unusually well for an early variety. Twice the size of Transparent, and the tree is a vigorous spreading grower. It ripens July 1st.

**275—RED ROME.** An improved Red Rome Beauty. Color of fruit much brighter and a solid red. Produces much higher percentage of fancy Apples. Bears at an early age. Tree is a vigorous strong grower. Because it blooms a week or ten days after other varieties, it more often escapes spring frost.

**276—STAYMAN WINESAP.** The Neosho Dark Red Stayman is a marvelous improvement over many Stayman Apples; has more color and keeping qualities. It is a solid dark red, which makes it a universal favorite.

**277—TURLEY WINESAP.** A truly fine quality Apple of the Stayman type, which positively does not skin crack. A beautiful red color. You will find it a profit maker.

**283—WINESAP, IMPROVED.** An improved strain. A good shipper and an exceptionally good keeper in ordinary and cold storage. Splendid bright red, and indistinctly striped with dark purplish red; good quality. Medium size; hardy; a heavy, regular bearer.

**284—WHETSTONE.** A wonderful new variety of Jonathan strain crossed with Ben Davis and Delicious. Highly productive, large red Apples that hang on the tree until Christmas if necessary. An excellent keeper. One of the best Apples for baking.

**285—WEALTHY.** (Late Summer.) A most dependable and widely planted late summer Apple; bright red striped; medium to large size; ripens over a long season. Very good quality. Very hardy; bears young.

**286—WILLOW TWIG RED.** (New Improved Strain.) A new selected sport of Willow Twig of larger size, very uniform and symmetrical, and unexcelled color. Keeps in storage until May without scalding or breaking down.

**278—YELLOW TRANSPARENT.** (Early Summer.) Extra early Apple; medium size, a beautiful clear yellow. Unexcelled for pies, tarts, and apple sauce. Tree extremely hardy, upright, compact grower; often used as a filler; reliable cropper.

**287—YORK IMPERIAL.** (Winter.) Bright pin-striped with dark red; fair quality. A very heavy bearer. Easy to handle. Good keeper in dry storage.

## 288—VIRGINIA CRABAPPLE

One of the best jelly Crab Apples. Medium size, golden yellow. A late bloomer and prolific bearer, seldom failing to have a crop. Will produce crops with as little attention as any Crab Apple that we know.



# DWARF APPLE TREES

## DWARF APPLE PRICES

227 Yellow Transparent  
226 Red Delicious

225 Dark Red Jonathan  
228 Yellow Delicious

3-4 ft., each \$3.00; 4 for \$10.50.

## THE IDEAL TREE FOR EVERY HOME

Dwarf apple trees are highly prized for the small garden where space is limited, as they can be planted 10-12 feet apart. The fruit produced is larger than that from standard trees, and start producing fruit the first or second year after planting.

Our stock is budded on the famous Malling Root Stock, No. 1 and No. 9, to insure a permanently dwarf tree. Trees are only 10 feet high at maturity. They may be used wherever a flowering tree is wanted, as they are also extremely decorative in the spring when full of bloom. Remember, the trees are dwarf in size, but they will bear full size fruit in great abundance.

We offer the above varieties. It is a good idea to plant two or more for cross pollination.



2-Yr. Dwarf Yellow Delicious  
Already Bearing  
3-4 ft., \$3.00

### BACK YARD FRUIT SPECIAL No. 829

1 Dwarf Apple, 3-4 ft.  
1 Montmorency Cherry, 3-4 ft.  
1 Bartlett Pear, 3-4 ft.

All Three  
Trees for

**\$4.95**

Two Grapes Free

## DWARF PEAR TREES



### LARGE DELICIOUS FRUIT; BEAR YOUNG

These attractive small trees require little space yet often bear the second year after transplanting. Fruit is top quality and often larger than from standard trees. Ideal for the small yard or garden. We offer one variety only.

**BARTLETT—Cat. No. 220**

2-yr., 3-4 ft.

Each \$3.00 4 for \$10.50

## Special for Commercial Orchardists

We are growing both Virginia and Hibernial understock.

The Iowa State University at Ames, Iowa, has done wonders, and highly recommends improving the hardiness, productiveness, and early bearing of commercial orchards by top working desired varieties onto Virginia and Hibernial Crab understocks. Hence we offer both Virginia and Hibernial Crab.

	10 Rate	25 Rate	100 Rate
2-yr. branched, 5-7 ft. ....	\$0.80	\$0.70	\$0.65
2-yr. branched, 4-6 ft. ....	.70	.60	.50
1-yr. whips, 3-4 ft. ....	.50	.40	.35

## Please Don't Forget

Be sure you have listed correct catalog number on your order. Write variety name as well as number. Be sure you have listed free premiums you desire. Be sure your name and address is written plainly.

## Easy Payment Plan

There is no red tape to our Easy Payment Plan. The minimum order we can accept on this basis is \$25.00, on which a \$5.00 deposit is required with your order. The balance is paid in monthly payments of \$2.50 each. The only extra charge is \$1.00 added for carrying charge. We will handle orders up to \$200.00 on our Easy Payment Plan. The deposit and carrying charge varies with the amount of the order. Simply write for our Time Payment Blank, which gives full details. Fill it out and return with your deposit. You will receive shipment of your order at the proper time for planting. In this way you can enjoy several months growth on your plants while you are making your easy payments.

Neosho Nurseries  
Neosho, Mo.

January 15, 1948  
Emporia, Kansas

Dear Sirs:

I wish to advise you that I have some of the finest trees in the country and they are all practically from your nursery. Also have a very fine Raspberry patch. Part were bought from you and part from another nursery and wish to state your plants and trees far excel anything I have bought from other nurseries. As you probably know this part of Kansas has been very difficult to start trees and berries, and your fairness of replacement shows you are the kind of a firm people like to deal with. I have not mentioned before the fine growth of your stock, due to the fact I do not care to throw bouquets until I have proven to myself that it merits same.

Also wish to state I don't believe you can buy better Roses anywhere than we secured from you. The ones we have were very thrifty and bloomed continually until frost and also brought quite a comment from our neighbors. All in all I am a booster for your nursery.

Very truly yours  
R. A. BLASCHE





**445 EVERBLOOMING HONEYSUCKLE (Heckrotti)**

Can be grown as a shrub or vine. Bright rose-red flowers lined with gold. Large blue-green foliage. Blooms all summer and is perfectly hardy.

Each 75c    3 for \$1.95



**Cat. No. 38  
Weigela  
Bristol Ruby**  
(Pat. No. 492)

The hardiest and best Weigela grown. Makes a shapely thrifty plant 6-8 ft. tall with attractive rich green foliage. Plant is completely hidden in late May or early June with beautiful ruby-red, trumpet-shaped flowers. A real sight to behold. Has tendency to bloom again in fall.

Specimen \$1.25    Select \$1.10

**GROOTENDORST RUGOSA ROSE**

Everblooming hardy shrub Rose. Grows 4-6 ft. tall, blooms all summer with clusters of double flowers. Foliage is dark, glossy green. Fine for borders or foundation.

No. 56 Red    2-Yr.,  
No. 57 Pink    No. 1    Each \$1.00



**ALTHEA or ROSE OF SHARON**

A fine shrub for the border or for screening an unsightly view. Large Hollyhock-like blossoms from July until fall.

No. 12 Pink    No. 46 Purple  
No. 13 Red    No. 47 White  
Specimen 80c    Select 70c

BE SURE  
TO ORDER  
BY  
CATALOG  
NUMBER

See Page 31  
for FREE  
Premiums  
With Order

**NEOSHO NURSERIES CO.**  
Neosho, Mo.