

Historic, Archive Document

Do not assume content reflects current scientific knowledge, policies, or practices.

62,65

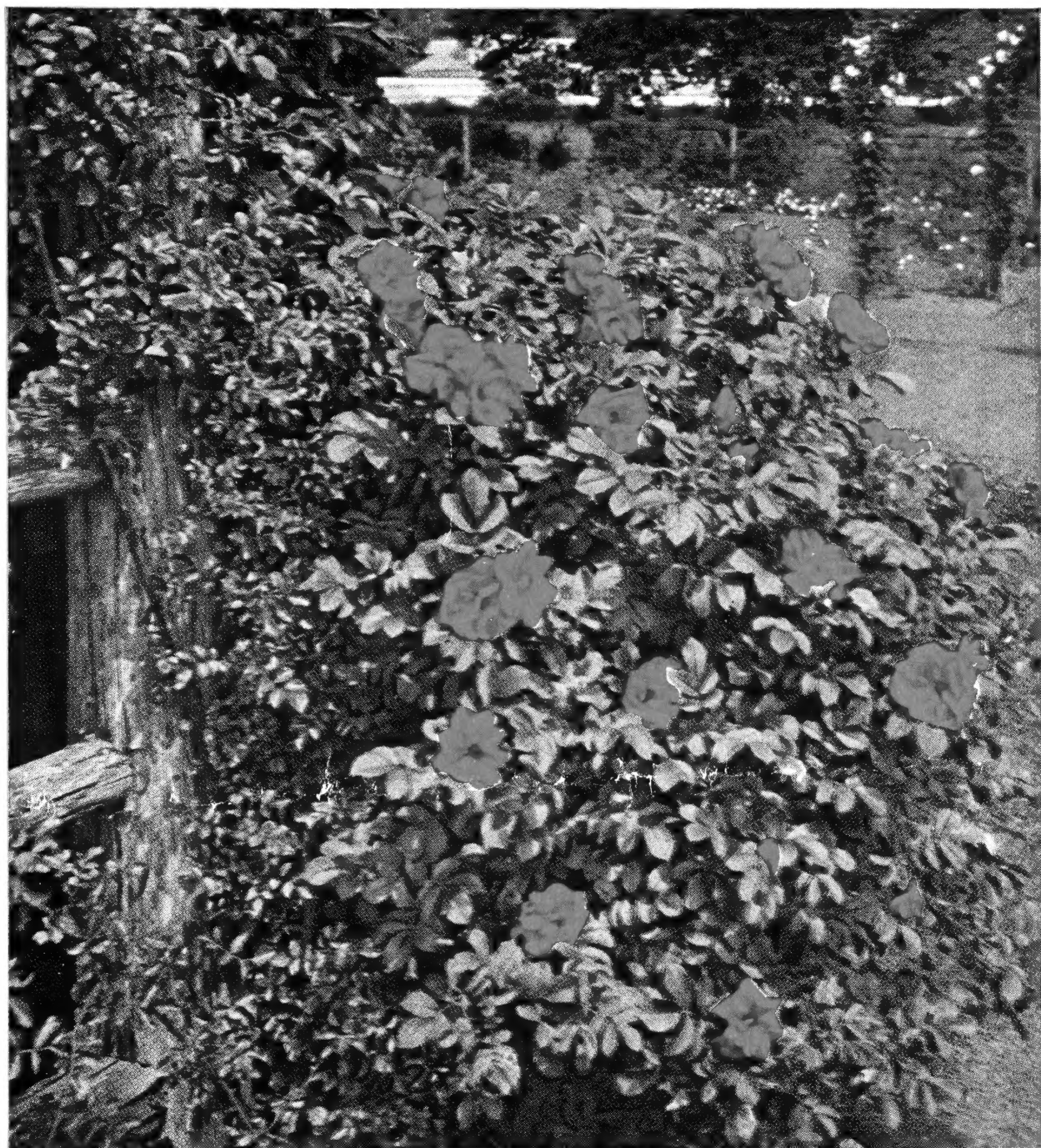
1950

LIBRARY RECEIVED

★ FEB 28 1950 ★

U. S. Department of Agriculture

Hybrid Rugosa Roses



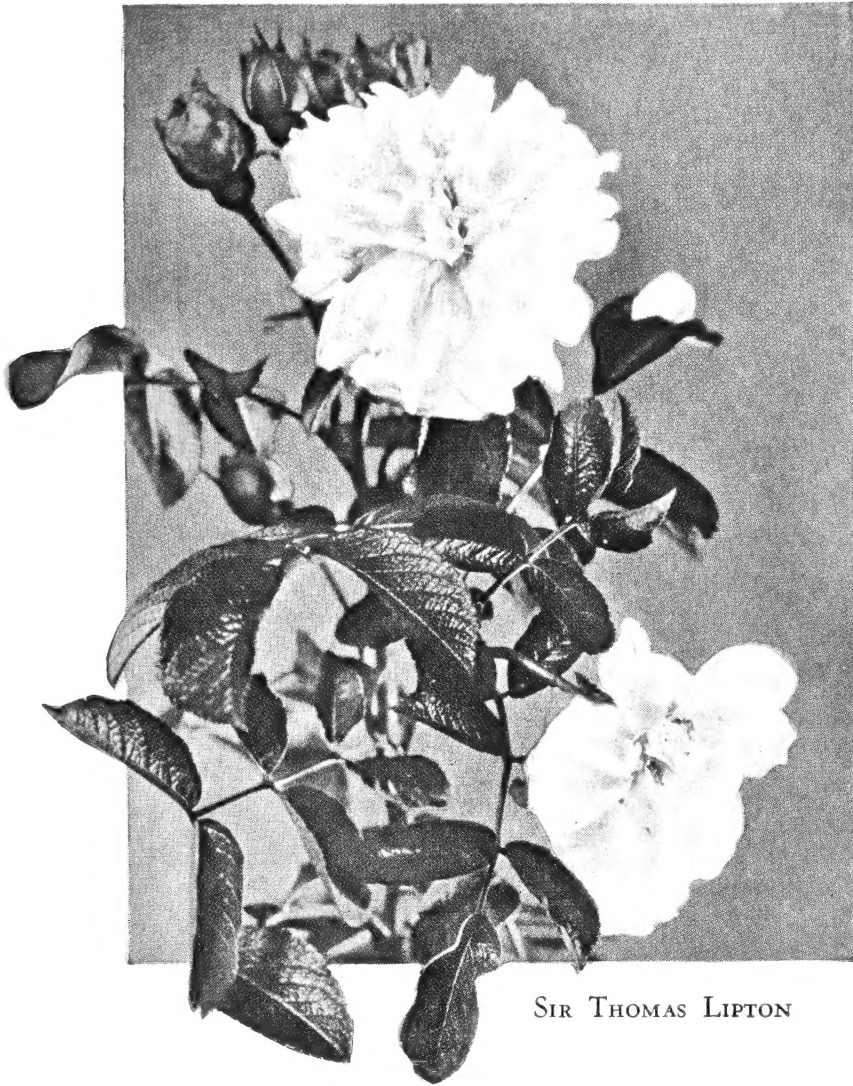
AMELIE GRAVEREAUX

AN outstanding rose of exceptional merit. Carmine red—full double—very fragrant. One of the new and one of the very choicest of the Rugosa Hybrids. The flowers open a rich carmine red which turns to deep American Beauty color as they mature. The large flowers are unusually beautiful in the partially opened bud. The Amelie Gravereaux has a delightful fragrance. It blooms liberally in June but even more so in August and September, often carrying a dozen blooms within eight weeks after planting.

The Northwest Nursery Company

“Builders of Beautiful Gardens”

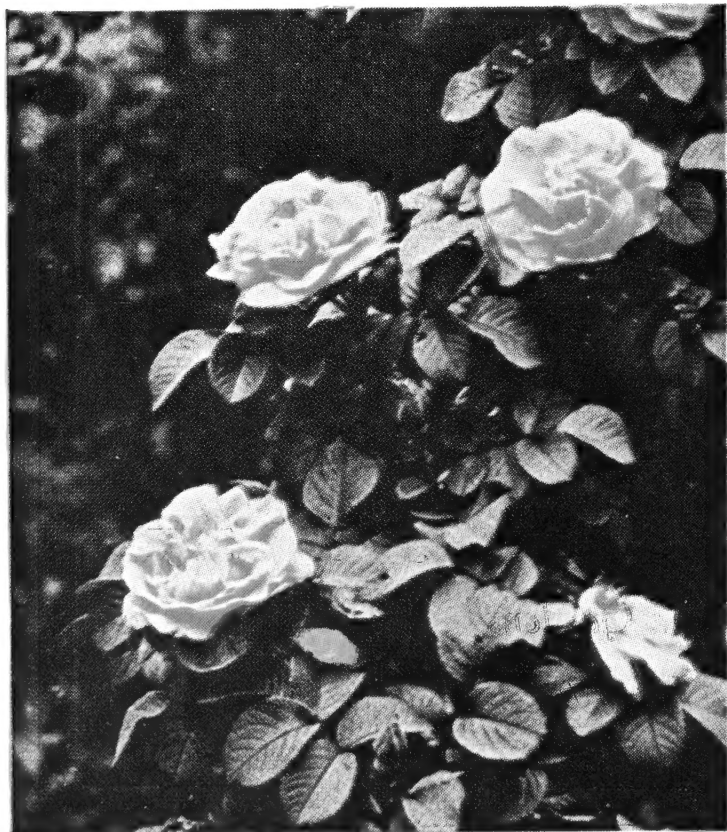
VALLEY CITY, NORTH DAKOTA



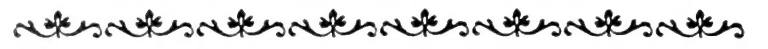
SIR THOMAS LIPTON

CONRAD F. MEYER

The clear, silvery pink, large flowers are very double, rich and fragrant. This Rose produces its flowers on long single stems rather than in clusters. Blooms throughout summer and fall. Resembles the well known but tender varieties in form and size.



CONRAD F. MEYER

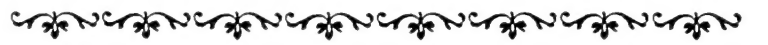


Roses for Northern Gardens

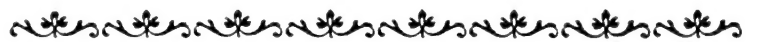
*Rich in color, fine in quality—
sweet in fragrance*

SIR THOMAS LIPTON

The flowers are pure white, fragrant, perfectly double, and are borne in clusters. Half open buds and full blooms are found in every cluster, and an amazing abundance of flowers can be counted on during early summer. Later bloom will follow pruning in July. This rose is attractive either as a specimen or in mass plantings.

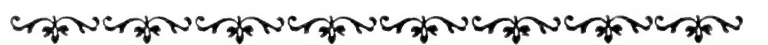


F. J. GROOTENDORST



F. J. GROOTENDORST

With bright orange red flowers of fair size, this rose produces a wealth of bloom similar to the Baby Ramblers, but in tight clusters. Large quantities of flowers are assured until frost. With its stems growing to an even height, this Rose is especially well adapted for low mass plantings. It can be depended upon in all locations.

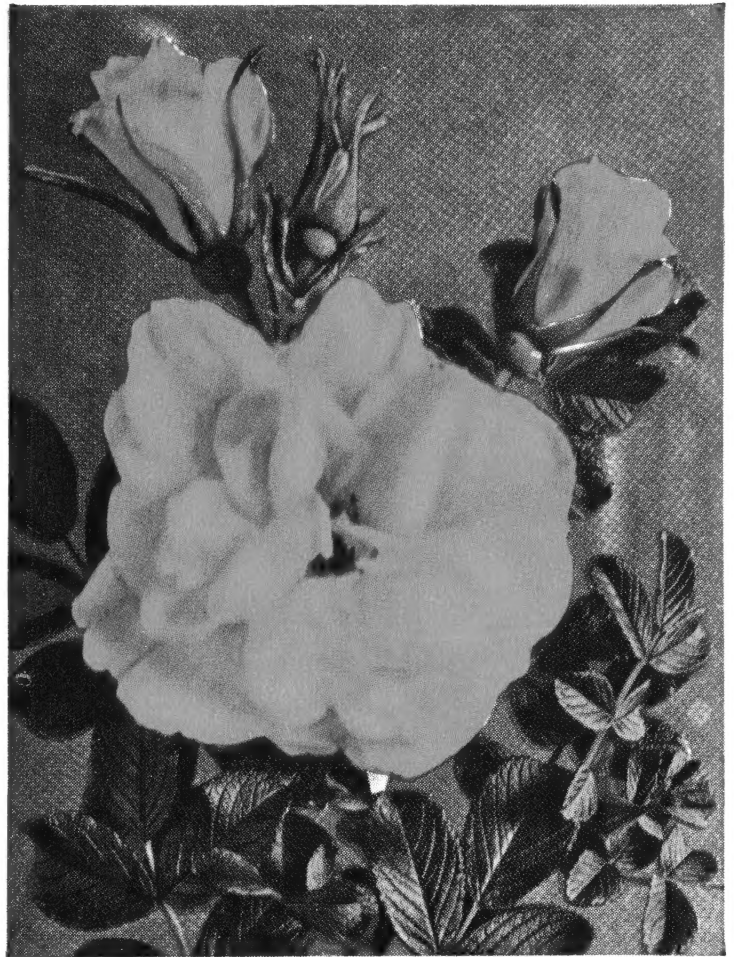


The Eskimo Beauties

“The hardiest of all choice roses—they ask no winter protection”

HANSA

The flowers are deep violet red, extra large and perfectly double and fragrant. The buds of the clusters open at about the same time giving the appearance of one immense rose. Trimmed in mid-summer, it responds with a wealth of bloom in the fall. Effective as a hedge, or may be trimmed into tree form. This is the red “Eskimo Beauty.”



HANSA

BELLE POITEVINE

The full double flowers are of bright rose pink and in loose clusters. Blooms start in June and continue until fall. Very dense growing, it is ideal for hedges and foundation plantings; but also makes a good specimen. Belle Poitevine requires no winter protection and is the pink “Eskimo Beauty.”



BELLE POITEVINE

BLANC DE COUBERT

With snow white blooms, double and fragrant, and arranged in large clusters, Blanc de Coubert is at its best during the summer and fall. Might be called a white Hansa, and like that variety is excellent for a hedge or rose tree. Thrives in the coldest places and is the white “Eskimo Beauty.” Especially pretty in half open bud.



BLANC DE COUBERT

EVERYONE MAY HAVE ROSES

WITH THESE

New Hardy Rugosa Hybrids



OUR new hardy Hybrid Rugosa Roses mark one of the triumphs of plant scientists. Choice dependable Roses are now ready for the door-yards of the most northern homes. Several, too, are most unusual in that they thrive equally well in Texas and Arizona as in Maine and Manitoba. These newcomers are rich in color, fine in quality, sweet in fragrance, beautiful in their lustrous foliage. With proper attention they will bloom from June until freezing time.

THE STORY of their development is a romance in plant life. Crowding the snow line, high up on the sides of the mountains of Japan, grow the Rugosa Roses, the most beautiful of all the wild types. These Rugosas have rugged constitutions. They possess deep glossy green foliage. They are covered from June to September with large single flowers of pink, white or red. The high qualities of this rose caught the attention of the rose breeders. If the rugged, thrifty and everblooming qualities of this plant could be interbred and eliminate the delicate constitutions of the well-known types, and yet retain the color and size of the latter, what an advance would be made!

THOUSANDS of seedlings were produced and a few were chosen as outstanding. These may be separated into two groups. The first, aptly named the "Eskimo Beauties," show a high percentage of Rugosa blood. Their foliage is heavy and shines with a deep green lustre. The flowers are double, or nearly so, and all are exceedingly fragrant. The three best of the Eskimo Beauties are *Hansa*, violet-red; *Belle Poitevine*, pink; and *Blanc de Coubert*, white.

THE ROSES of the second group display more the appearance of the old garden favorites. They are indeed wonderful door-yard Roses with choice double blooms, comparing favorably with the best. There may be extreme locations in the far north where light covering may be best for winter, but in most locations from the Gulf to the lakes they may be enjoyed without pampering or petting. In this group are *F. J. Grootendorst*, red; *Conrad F. Meyer*, pink; *Sir Thomas Lipton*, white.

THESE new Hybrid Rugosa Roses are a distinct new group of Roses. They have taken their places as true aristocrats in the best flower gardens of every state of the Union and in Canada.

CONSIDER OUR LANDSCAPE SERVICE

WHAT CAN OUR LANDSCAPE SERVICE DO FOR YOU?

In the spirit of helpfulness, just as the gas man cleans your windshield, we offer the service of our trained Landscape Architects to help you design your plantings. Whether it's a group of shrubs, a house foundation planting, a complete yard with its outdoor living room or a community park, our skilled Architects are ready with helpful suggestions or a complete design.

Bring Your Planting Problems, Both Farm and City, To Us.

The Northwest Nursery Company

Valley City, North Dakota