

## **Historic, Archive Document**

Do not assume content reflects current scientific knowledge, policies, or practices.



62,51

=1950=

# NEBRASKA NURSERIES

## LANDSCAPE

DESIGN

CONSTRUCTION

PLANTING



### PIN OAK

Pin Oaks, the most majestic of all shade trees, are now available at the price of just ordinary trees (see price list). Records have shown that the Pin Oak, the fastest growing of all the Oaks, actually grows almost as fast as the American Elm, and is one of the most enduring of all trees. These tall pyramidal shaped trees have rich green foliage which is deeply cut and colors to a glorious coppery red in the fall.

Visitors always welcome  
at  
Lincoln's Largest Nursery.

4815 "O" Street,  
Lincoln,



Phone 4-2222,  
Nebraska.

# NEBRASKA NURSERIES



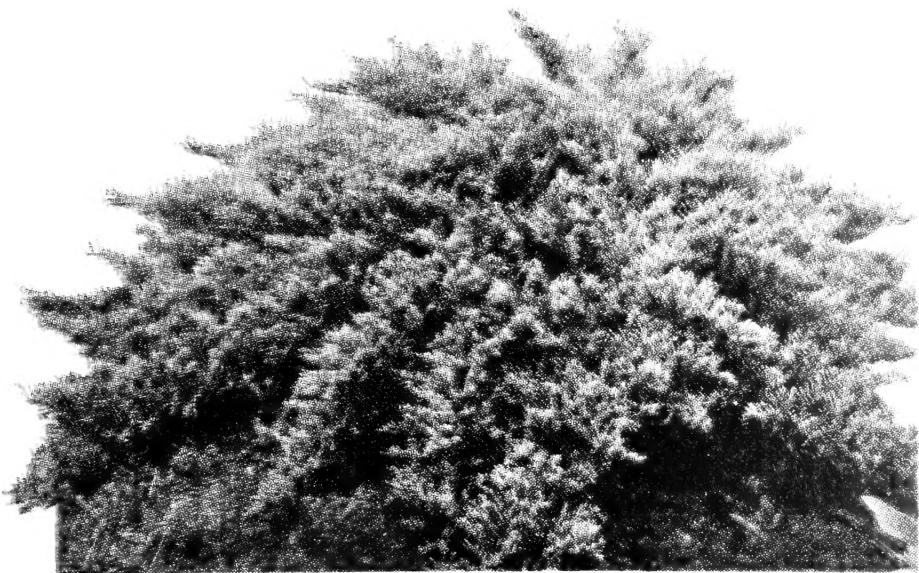
**JUNIPER, PFITZER**

The most popular low-growing spreading evergreen. Attractive blue-green foliage. Grows rapidly and does well in sun or shade.



**COLORADO BLUE SPRUCE**

The most beautiful evergreen for specimen planting. Will stand extreme weather conditions.

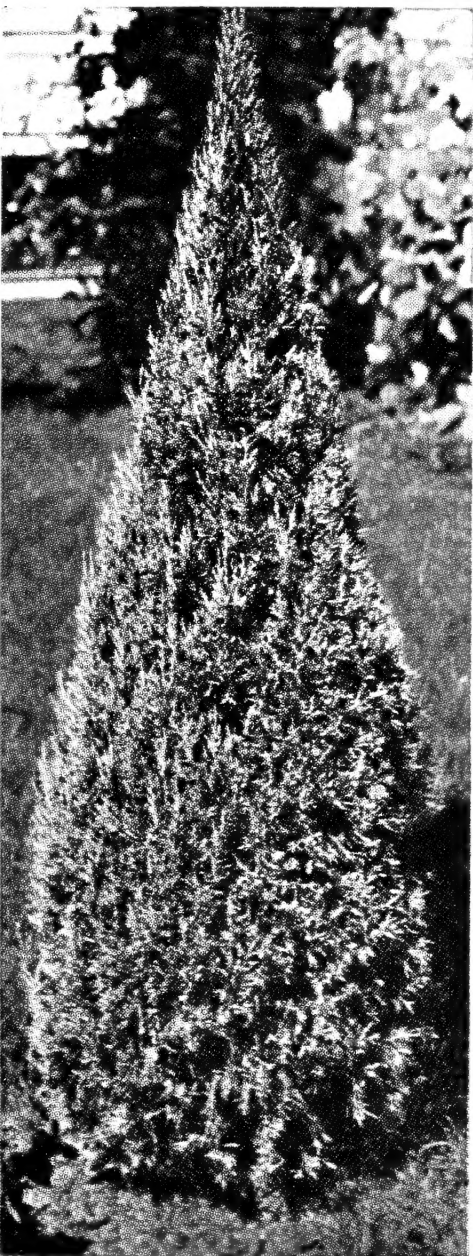


**JUNIPER, TAMARIX SAVIN**

A low-spreading evergreen, having many fine needles of bluish green.

**CALL  
4-2222  
FOR  
LANDSCAPE  
SERVICE**

**SEE  
ENCLOSED  
LIST FOR  
PRICES ON  
ALL ITEMS**



**JUNIPER, STUHR'S SILVER**



**JUNIPER, CANAERT**





# SPECIMEN EVERGREENS

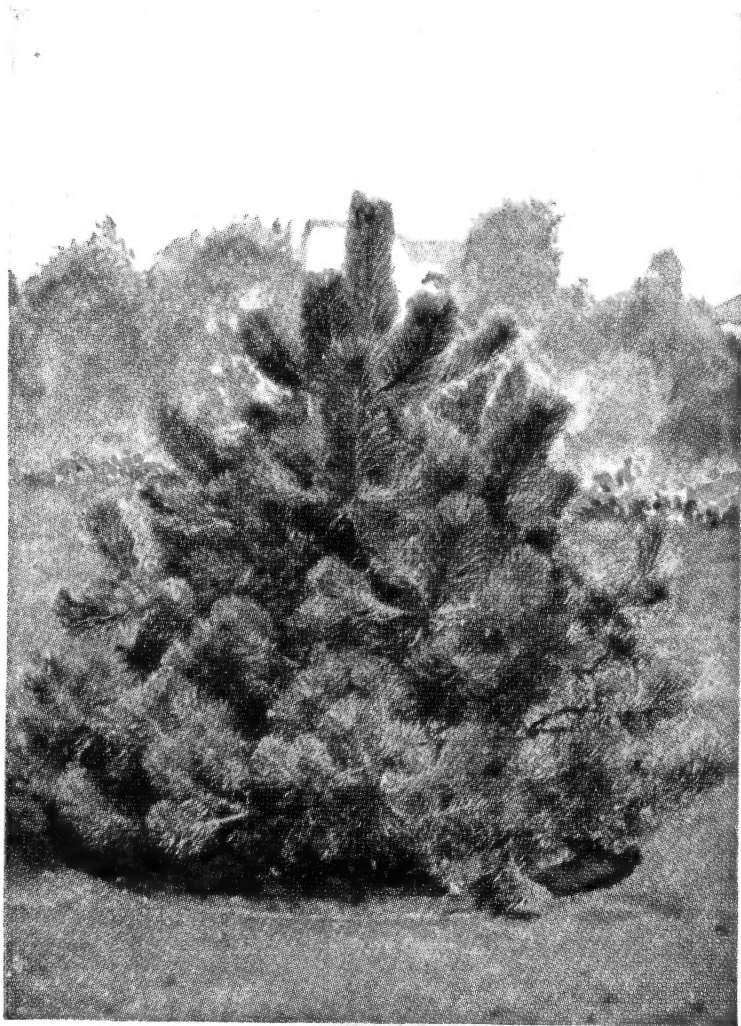


**JUNIPER, ANDORRA**

Very popular with those who want a prostrate creeping type for low foundation plantings, borders or for use as a bank cover.

## Planting Guide

Twenty-four pages of helpful suggestions on Planting, Trimming, Feeding and Wrapping Shade and Fruit Trees, Evergreens, Roses and Shrubs. Sent **free** with each order.



**AUSTRIAN PINE**

Rapid growing evergreen with long, rich dark green needles.





# Presenting Colorful Everblooming Hybrid Roses *For All Summer Bloom*

## NEBRASKA NURSERIES

### *Rainbow Collection*

We offer in this collection ten varieties of the most popular Hybrid Tea Roses for this locality. An excellent variety list for a colorful planting at modest cost. For other collections and a complete list of varieties available this spring, see the enclosed price list.

All our Roses are extra heavy 2-year, field-grown plants that will provide a generous supply of choice cut flowers throughout late spring, summer and fall.



#### MEMBERS

American Association of Nurserymen  
Western Association of Nurserymen  
Nebraska Association of Nurserymen  
National Landscape Nurserymen's Association



Christopher Stone



Etoile de Hollande



Sister Therese

Editor McFarland



Mrs. E. P. Thom

Talisman



McGredy's Scarlet



Rowena Thom

K. A. Victoria

# HARDY FLOWERING SHRUBS



## FORSYTHIA, SPRING GLORY

The showiest and earliest shrub to bloom; bright yellow flowers appear before the leaves.



## PERSIAN LILAC

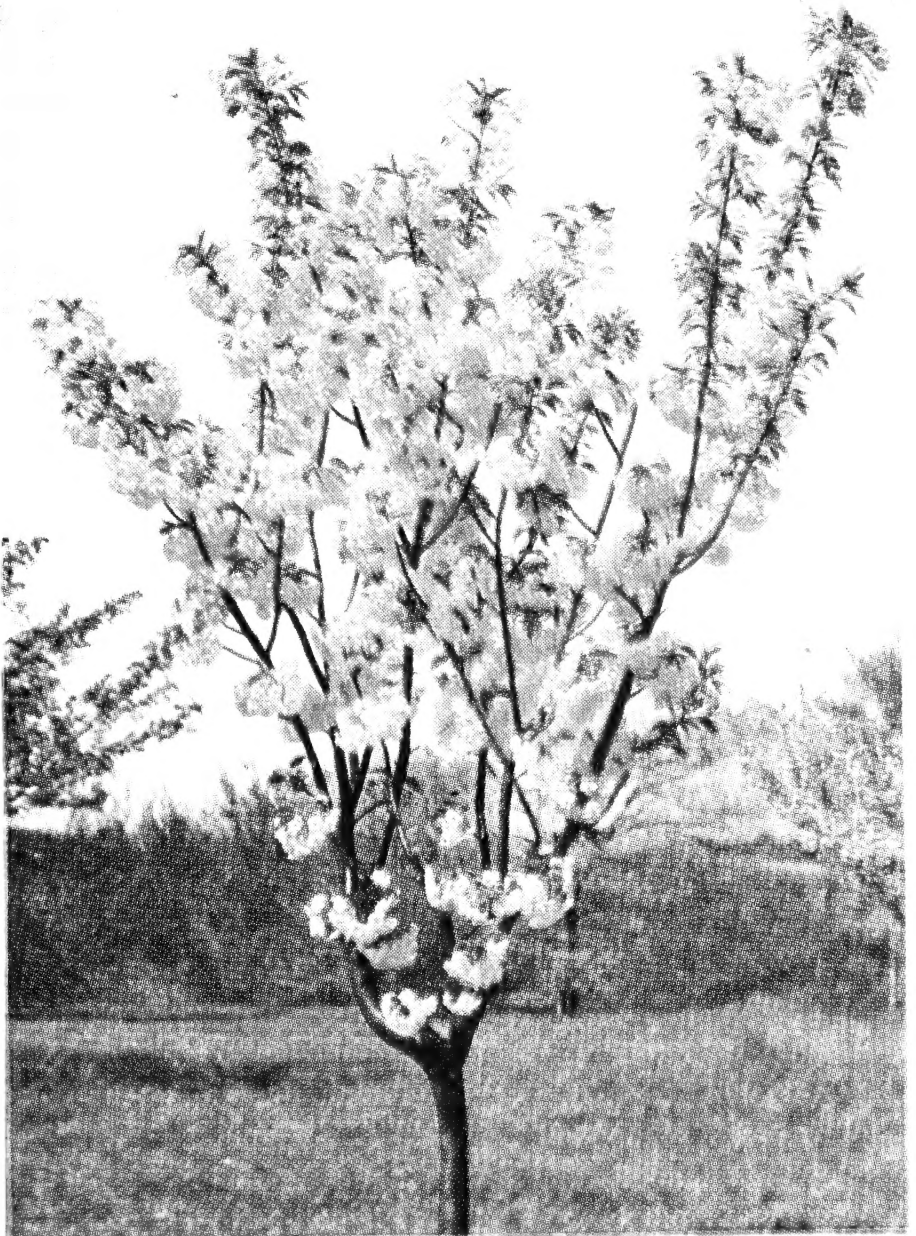
Sometimes called Chinese Lilac. Various shades of lavender and purple blossoms literally cover the compact plants in May. This Lilac does not sprout away from the plant as the old-fashioned Lilac does.



# NEBRASKA NURSERIES



Red Bud



Hopa Flowering Crab

