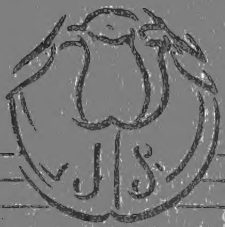


Historic, Archive Document

Do not assume content reflects current scientific knowledge, policies, or practices.

John Scheepers Inc.
New York 5, N.Y.

LIBRARY
RECEIVED
★ AUG 17 1950 ★
U. S. Department of Agriculture



BEAUTY *from* BULBS

FALL
1950

Beauty from Bulbs



FALL 1950 EDITION

Presents

**SUPERIOR VARIETIES
OF FLOWERING BULBS
OF
PROVEN MERIT
FOR OUTDOOR AND
INDOOR CULTURE**

(For Index see page 40)

JOHN SCHEEPERS, Inc.

Flower Bulb Specialists

37 WALL STREET, N. Y. 5, N. Y.

"Serving America's Finest Gardens for Over 35 Years"

TELEPHONE
HANOVER 2-1177

CABLE ADDRESS
TULIPS, NEW YORK



Tulip Color Box



BACKGROUNDS AND ENVIRONMENTS

Many a Tulip flowers to blush unseen because it lacks a background or a suitable environment. Shrubbery or walls may form the background or it may be merely adjacent foliage. From the vast range of spring flowering shrubs, one cannot make a mistake in selecting these for backgrounds. Visualize a shoal of pink Adorable, Rosabella or Princess Mary, under the lee of a massed planting of the beautiful lilac, Miss Willmott; or Mrs. John T. Scheepers or Mother's Day, lying like a patch of the starry heavens under the purple pendants of a Wistaria, or the cherry-rose of King George V, near the pure white flowers of Spirea. The spread of Peony-leafage or the feathery spikes of Polemonium or the broad leaves of Anchusa, these may create a contrasting environment for Darwin and Breeder Tulips. Or it may be that the flowers of herbaceous plants that bloom simultaneously with the Tulip, will help create the necessary harmonious or contrasting environment—the great variations of Tall Bearded Irises, the low blue of Spring Veronica and the scorching orange of Siberian Wallflower. Visualize the bronze-violet of Louis XIV, the apricot-pink of Marjorie Bowen and the white of Glacier with the blue flowers of *Phlox divaricata*. Or this same Tulip combination with *Mertensia virginica*.

But not alone is the background and environment made on an upper plane; much depends on what lies below the Tulips—the ground cover and the low plants blooming immediately thereabouts. From the simplest contrasts to the subtlest combinations the selection can be made. With blue Aubretia, for example, the contrasting orange of Orange Delight and the lemon of Mother's Day; with white Arabis or Iberis, scarlet and crimson Tulips—the cherry-rose of King George V; with Violets or Myosotis, the yellow of Wall Street, or the chestnutty Huchtenburg, or Conde Nast, or Mrs. F. E. Dixon or the orange-yellow of Jeanne Désor or even the pointed spires of Lily Tulip, Alaska.

COLOR HARMONIES

Like the animals that walked into the ark two by two "after their kind," so must Tulips be combined "after their kind" if we are to succeed with them as picture material. Varieties of delicate coloring and structure should be kept apart from those of brilliant, insistent coloring and robust structure.

Dark colored varieties are used for the main bold rear or front color effect. Interplant these with contrasting colors or different tones of the main planting. It is well nigh axiomatic that background colors should be strikingly darker or lighter than the foreground colors. Thus La Tulipe Noire and The Bishop, or Louis XIV and Bacchus can be used for a mass of dark tones; Annie Laurie—an old-rose—Zwanenburg or Alaska, or light bronze varieties will afford contrasts. Another contrasting

combination would be the maroon of Bourgogne and the yellow of Belle Jaune. Or the black maroon La Tulipe Noire with soft pinks such as Adorable and Mr. Van Zyl. Or the apricot-colored Reve D'Or and Dido with purples and crimsons.

When Tulips are used in the perennial border, there should be no sharp dividing line between the colors. They should be planted in irregular shoals or drifts that run one into the other, so that as an observer walks along the border the color aspect is constantly changing. On the other hand, continuity should be maintained by planting a few bulbs of the same tones all through the border so that they connect the various drifts.

Zwanenburg and the silvery pink of Princess Elizabeth close by a shoal of pink Northern Queen and the rose-pink Rosabella, then some of the Marjorie Bowen and the Northern Queen can be extended beyond the shoals to connect them. This echoing from shoal to shoal and bed to bed is merely the application of the principle of repetition that is found in all good art.

COLORS OF FAR AND NEAR

Blue is the color of distance and its affinities lend a far air of expanse to a garden. The blue of the sky and the white of clouds give the same effect of distance to the eye. If the garden is small, it can be lent a distance by planting these in blended masses—the lilacs of Madame Butterfly and Blue Gem; the purples of Scotch Lassie and The Bishop, and the Salmon-Orange of Limnos. If the garden is to be given a close and intimate air, then use the colors that advance—the reds, oranges and yellows such as Eclipse, Huchtenberg, Limnos, Sonate, Inga Hume and Conde Nast.

BALANCE AND FOCAL COLORS

The strong tones—the reds, oranges and yellows—are more penetrating than the blues, purples and mauves, and consequently should be used as focal colors to attract the eye where color accent is desired. From these color heights the tones can be scaled down on each side in adjacent shoals.

Remember also to give at least the semblance of balance in your color plantings lest the border appear restless. Thus the dark, rich red of Eclipse and the cardinal red of City of Haarlem might be combined for a focal mass, with descending balanced shoals on each side of Barbara Pratt, a rosy red, blended down to meet a shoal of the rose, orange and salmon of Dido or Orange Ophelia.

But for all these subtleties, there are some Tulips that in our opinion can stand alone without any supporting tints save from the immediate greenery of other plants. The superb purple of Bacchus, the ardor of Reve D'Or, the maidenly blushing of Rosabella, the regal hauteur of Tantalus—such Tulips may pass unaccompanied.

Breeder Tulips



Most garden Tulips begin life as self-colored flowers. After a time the coloring matter gets broken up into stripes and blotches. Before this change takes place, they are known as "Breeder" or "Mother" Tulips.

They flower approximately at the same time as the Cottage and Darwin Tulips, during the month of May, excepting in southern sections where they bloom in April.

These aristocrats of the Tulip family, with

their immense blooms, borne on strong, stiff stems, frequently exceeding a height of forty inches, have become, of recent years, the most sought-after of all the Tulips.

The Rembrandtesque tone in their deep coloring and the artistic blending of shades as well as the great possibilities offered in combinations of color, have made them especially valuable to the critical garden enthusiast.

BACCHUS. Here is the richest colored of the violet-blue Tulips. Especially interesting is the dusky bloom on its outer petals, a grape-like bloom. The large flower is carried erect on a fine strong stem. The beautiful tone of purple in this flower suggests its association with sky-blue spring flowers, and the suggestion of *Anchusa myosotiflora* is given here as an appropriate companion for this Tulip. Height, 33 inches. \$1.35 for 10; \$11.00 per 100. See illustration, *Color Guide*.

BARCAROLLE. A very fine Tulip of beautiful form and fine substance. The bloom is immense and of a lovely shade of clearest purple, carried on a tall, erect stem. Rising out of a mass of orange and purple Pansies, or bronzy Primroses it is a beautiful sight to behold. Height, 32 inches. \$1.50 for 10; \$12.50 per 100. See illustration, *Color Guide*.

DILLENBURG. This lovely Tulip, with its well-shaped flower of luminous flame color towering high on a gracefully swaying stem, is a joy to behold. Of a clear orange-red that diffuses into clear yellow along edges. The inside of the flower is flame-scarlet with a stripe of clear primrose-yellow running lengthwise through center of the three petals of inner circle, tapering towards tip and spreading its pure yellow at base of all petals, setting off effectively the jet black anthers. Plant with groups of *Limnos* against a green background, with *Scilla campanulata*, var. *Excelsior*, as a foreground planting. Height, 32 inches. \$1.15 for 10; \$9.00 per 100. See illustration, *Color Guide*.

GEORGES GRAPPE. Another of the so-called "Giant Breeders," a giant in every respect. Of a soft mauve with a clear blue base. Grown for the exhibition table, this variety should readily reach a height of 4 feet. As the flower is of large size, the height is of added advantage. Height, 30 inches. \$1.45 for 10; \$12.00 per 100. See illustration, *Color Guide*.

GORGEOUS. A well named Breeder which has an exceptionally large flower and a tall, strong stem; dark orange with a rosy bloom, interior scarlet-orange with a circular yellow base, ringed with pale olive filaments. Delightfully fragrant. Height, 28 inches. \$1.50 for 10; \$12.50 per 100. See illustration, *Color Guide*.

HUCHTENBURG. Exceedingly large flower on a tall stem, of very good form and substance. This beautiful Tulip is of bluish lilac color flushed with chestnut-red. It is margined with brownish gold and has black anthers. Height, 36 inches, \$1.55 for 10; \$13.00 per 100. See illustration, *Color Guide*.

INDIAN CHIEF. Perhaps the most artistic of all Breeder Tulips; a flower of enormous size carried on a very tall, stiff stem of glorious coloring and in every way desirable for every purpose. The beautiful, intriguing color is of an Indian brown, flushed coppery brown; a very effective dark, wood brown Tulip with a burnish metallic sheen and illusive rose-colored lights. One of the handsomest of the brown Breeders standing head and shoulders above any other Tulip used in the garden. A magnificent effect may be obtained by planting a mass of this splendid variety above a bed of brown Pansies. Height, 38 inches. \$1.40 for 10; \$11.50 per 100. See illustration, *Color Guide*.

JESSEY. A most attractive Tulip of rather deep, clear coffee-brown, flushed bronzy red with yellow base. The enormous flowers are carried on very tall, strong stems. Truly imposing. Try a few rising from a carpet of "Basket of Gold." Height, 36 inches. \$1.35 for 10; \$11.00 per 100.

LIMNOS. This is a very outstanding new Tulip that will be highly prized in every garden. A lovely salmon-pink bordered orange, the shadings being most exquisite. Height, 32 inches. \$1.65 for 10; \$14.00 per 100. See illustration, *Color Guide*.

LOUIS XIV. The vigorous plant has a large, goblet-shaped flower, which possesses a most artistic blending of tones of indescribable beauty, deliciously scented. Dark bluish violet with tawny margin flushed golden brown and dull blue base with a yellow star, shaded bronze. A mass planting of this unique Tulip gives a comforting feeling of repose. Picture a large border of these giants above masses of Forget-me-nots or yellow Pansies; or the beautiful effect obtained by planting them with "Dillenburg," "Bacchus," "Gorgeous" and Darwin Tulip "Madame Butterfly." Height, 34 inches. \$1.40 for 10; \$11.50 per 100. See illustration, *Color Guide*.

REVE D'OR. This rich golden bronze Tulip, with color shadings ranging from a clear yellow through the center of the petals to a deep chrome-yellow along the edges, flushed with carmine on the outside, has the characteristic Breeder shape. Rising high over a bed of rich velvety purple Pansies produces a warm and glorious color combination. Height, 28 inches. \$1.40 for 10; \$11.50 per 100. See illustration, Color Guide.

SONATE. A very beautiful variety that can best be described as a tomato-red, margined orange and flushed carmine on the inside of the petals; base is yellow and green and the anthers are black. Height, 30 inches. \$1.50 for 10; \$12.50 per 100. See illustration, Color Guide.

TANTALUS. Probably the most stately and beautiful of the new giant Breeder Tulips. An outstanding exhibition Tulip. The very large cup-shaped flowers are of a light cadmium-yellow overlaid with dull slate-violet. Base is dark yellow with black anthers. A most beautiful color picture can be created by planting them in drifts along the purple "Bacchus" and rising from a foreground planting of *Scilla campanulata*. Height, 32 inches. \$1.40 for 10; \$11.50 per 100.

BULB FOOD

For finest results in your garden use SCHEEPERS' BULB FOOD at planting time and throughout the growing season. See page 34.

Utilizing the Nooks and Corners

HARDLY ever can it be said that a garden is so full of bulbs that no more can be tucked away in it. Nearly always there are nooks and corners that might be utilized to bring about charming spring pictures. A careful inspection of even the smallest of gardens will usually reveal many such places that at the present time are giving no good account of themselves at all. It is a great pity not to make use of them in the interests of spring delight. Here are a few such positions that in most gardens are neglected.

Close About the Base of Trees. Scillas, Snowdrops, Winter Aconites, Daffodils, Crocuses.

Rough Banks. All varieties, including *Tulipa Eichleri* and *Tulipa Clusiana*.

Beneath Shrubs. Any low growing sorts.

At the Base of Hedges. All kinds, including Tulips.

Close to Garden Seats. Daffodils in particular, and Hyacinths.

In the Lawn. Crocuses, Snowdrops, Scillas, Chionodoxas, Muscari.

In the Rose Beds. Daffodils or Tulips.

Between Clumps of Peonies. Daffodils, Tulips, Lilies.

Between Rows of Vegetables for Cutting. All kinds.

Tucked in About the Sundial or Bird Bath. All kinds.

As a Border to Flower Beds. All kinds.

At the Feet of Grape Vines. All kinds.

At the Base of Climbing Roses. Muscari, Narcissi, Tulips.

In the Fern Bed. Scillas, Trilliums, Snowdrops Fritillarias, Winter Aconites.

Close Against a Wall Behind the Perennials. All kinds.

The Dull Border on the North Side of the House. Scillas, Snowdrops, Winter Aconites, Leucojums.

At the Edges of Grass Walks. Muscari, Crocuses, Scillas, Snowdrops, Chionodoxas.

Wild Flowers may be planted in practically any location in the garden. Special booklet on these interesting plants will be mailed in August.

Ferns. Almost anywhere in the garden. In the perennial border—along the bridal-path, in the wild garden, under the trees, in the rockery, in a damp spot or a dry spot. Excellent for a shady spot where nothing else will grow. Special booklet will be mailed in August.

*"I had waited all the winter for a sign;
Something wondrous, a miracle divine;
Today it came, a very lovely thing,
A Narciss in the close a-blossoming;
Blue wings a gleam, a song bird's sweetest strain,
In gladness for spring's miracle again."*

—LYMAN

Cottage and Hybrid Tulips

"This old world seems young once more."



COTTAGE TULIPS are varieties which have been found, for the most part, sequestered in the old cottage gardens of the British Isles. Hybrid Tulips are the results of crosses between the Cottage, Breeder and Darwin Tulips. They flower approximately at the same time as the Breeder and Darwin Tulips, during the month of May, with exception of the far southern section, where they bloom in April. They are often marked by long, rather pointed petals and thin, wiry stems.

All the Tulips offered in our list are beautiful, presenting a great variety in form and coloring. They are prized for cutting because of their long stems and graceful habit, and are especially adaptable for permanent, hardy flower borders where they should be freely planted in large clumps and in masses.

ARETHUSA. The artistically formed flower is of a translucent, light chrome-yellow. There is hardly a tint just like it, contrasting perfectly with the green of its leaf, adding to its other charms an exquisite spring-like fragrance, all that makes spring intoxicating to sense and spirit. Massed over brown wallflowers or rising out of drifts of trembling Forget-me-nots, or in combination with Bizarre Tulips, they will create unforgettable pictures. Height, 26 inches. \$1.20 for 10; \$9.50 per 100. *See illustration, Color Guide.*

BARBARA PRATT. One of the most remarkably beautiful and brilliant Tulips of recent introduction. The color is a most radiant cherry-pink with an extraordinary effect of golden light shining through it. The flower is long and exquisitely modeled and gives forth a delicious fragrance. It does not fade in the sun and lasts in perfection for a much longer period than most Tulips. A luminous and beautiful flower, worthy of a fine name, undoubtedly destined for a great future. Height, 36 inches. \$1.45 for 10; \$12.00 per 100.

BELLE JAUNE. One of the most beautiful of the deep-yellow Tulips. Very fine egg-shaped flower of deep golden yellow with a bright yellow interior, a light base and yellow anthers, and carried on a strong, erect stem. A planting of this Tulip in front of Lilac "Katherine Havemeyer" will create an unforgettable picture. Height, 30 inches. \$1.25 for 10; \$10.00 per 100.

CARRARA. This is a fair pale Tulip, which has already created, by its beauty, a sensation at the great flower shows. It is as round as the breast of a swan; as purely white as the marble from which it takes its name, and is in all ways an enchanting Tulip. Height, 27 inches. \$1.35 for 10; \$11.00 per 100. *See illustration, Color Guide.*

CONDÉ NAST. An outstanding novelty of great charm. One of the latest Tulips to flower. Of barium-yellow, almost the color of straw and with delicate pencilings of geranium-pink outlining the petals. Its long, slender cup opens only slightly even in bright sunshine. Planted near bleeding heart and in front of a pink dogwood will greatly enhance its beauty. Height, 28 inches. \$1.65 for 10; \$14.00 per 100. *See illustration, Color Guide.*

DIDO. Here is a perfect flower, bewitching in its loveliness. Unspeakably glorious in its extraordinarily luminous light effects and its long and slender form, poised firmly at the top of its tall, straight stem, it must strike everyone as among the wonders of the world of Tulips. Its color is deep rich pink or light jasper-red, with Lambert topaz lights and amber edges to the petals, the base and anthers pale corn-yellow. A lovely ensemble and warmly fragrant. Where a bright color effect is needed it is superb. Height, 32 inches. \$1.35 for 10; \$11.00 per 100. *See illustration, Color Guide.*

G. W. LEAK. A charming cup-shaped flower, the outer petals slightly flared, showing the influence of the Cottage Tulip blood. The color is amazing, a pure spectrum-red with a scarlet interior. The anthers are apricot-yellow with a light yellow base that reflects slightly on the outside of the petals. Picture this Tulip rising from the silvery *Artemisia frigida* and amidst drifts of Cottage Tulip "Arethusa." Height, 29 inches. \$1.45 for 10; \$12.00 per 100.

INGA HUME. An exquisite variety of creamy white with cherry flushes. Inside of bloom a deeper yellow with cherry markings. Long lasting flower strong stems. Height, 24 inches. \$1.45 for 10; \$12.00 per 100. *See illustration, Color Guide.*

JEANNE DESOR. A large, long flower much resembling the Darwin type is carried erect on a strong, tall stem. The color is very striking, of a deep orange-yellow with a suffusion of scarlet towards the edges of the petals. A late bloomer, it has increasing value as a variety that should be carefully considered when adding to your collection for the border. Height, 28 inches. \$1.65 for 10; \$14.00 per 100. *See illustration, Color Guide.*

MARJORIE BOWEN. The beautifully formed flower, which is large and carried on a strong, tall stem, is of a shade of buff and salmon which passes into deep rose-pink with salmon shades; the center is white. Its best use is with Forget-me-nots near, though in any spot where the Myrtle's lavender-blue flowers abound, this Tulip would be charming rising from among them. Height, 26 inches. \$1.35 for 10; \$11.00 per 100. *See illustration, Color Guide.*

MOTHER'S DAY. This is one of the largest deep-yellow varieties in existence. The flowers are egg-shaped, of great substance and carried on tall, strong stems. While the yellow color of this beauty is rather deep, it has a tone of softness making it extremely desirable. Indeed an outstanding variety. Plant in combination with Breeder Tulips "Reve D'Or" and "Louis XIV" with bronze and purple Pansies as ground cover. Height 32 inches. \$1.20 for 10; \$9.50 per 100.

MRS. F. E. DIXON. This very beautiful Tulip makes a deep impression upon all who see it. Of immense size, yet artistic in the extreme, lovely in form, the softly colored, sulphury yellow bloom is carried upright on strong stiff stem. The petals have a waxlike texture and are of a substance rarely met with. An excellent variety in every way, undoubtedly, one of the finest of the Cottage hybrids. A beautiful picture might be made by planting this beauty amongst Forget-me-nots or with light blue and white Pansies or with a background of lilac "President Fallières." Many happy combinations may be made with this wonderful Tulip. Height, 28 inches. \$1.45 for 10; \$12.00 per 100.

MRS. JOHN T. SCHEEPERS. The first impression one gets from this Tulip is its majestic beauty. Elegantly formed, oval-shaped, large flowers of pure golden yellow, very clear of color, are carried on tall, thick, sturdy stems with clear green foliage that in itself commands immediate attention. The entire plant is of the strongest development. The blooms are enormous with fleshy, wholesome petals, of unsurpassed substance and of fine lasting quality. A real giant among Tulips. This magnificent variety is recognized by experts as the choicest yellow Tulip for garden decoration, one that especially suits the American climate. Height, 30 inches. \$1.35 for 10; \$11.00 per 100.

NORTHERN QUEEN. This is an exquisite new variety that has caused much attention. Extra large flower, white with deep border of pink down the flower to within 1 inch of the base. Very showy and fine in any collection. Strong stems 30 inches high. \$1.25 for 10; \$10.00 per 100.

ORANGE OPHELIA. Terra cotta, outside salmon-orange. A very outstanding Tulip which will give a very colorful effect to your group, especially planted with purples like "Barcarolle" or "Bacchus." Fine, strong stems. Height, 31 inches. \$1.90 for 10; \$16.50 per 100. See illustration, Color Guide.

ROSABELLA. There is hardly a Tulip anywhere to match this flower for a certain soft charm. Its color may be described as a delicious pink, warm, delicate and sweet, as lovely as a pink rosebud, or the colors of a seashell, tender pink with a blush of deeper color suffusing each petal, and smart black anthers. Not so tall as some of its enterprising contemporaries, yet it carries itself nicely on a stem of twenty inches or so, and would give particular grace and beauty to a spot where taller and smaller Forget-me-nots spread themselves below. Makes an engaging offset with Phlox divaricata and a pale yellow Intermediate Iris. It should have a spot of its own, a place given to its own loveliness. One of the most desirable Tulips with a fine fragrance. Height, 27 inches. \$1.45 for 10; \$12.00 per 100. See illustration, Color Guide.

WALL STREET. One of the best yellow Tulips for general use. The large canary-yellow flowers are of Darwin shape and carried on a fine erect stem. Very beautiful. A bed of this Tulip underplanted with Pansy "Lord Beaconsfield" provides a most beautiful picture. Height, 26 inches. \$1.15 for 10; \$9.00 per 100.

For finest results use SCHEEPERS' BULB FOOD (See page 34)



Awarded us twice by the Garden Club of America.

Awarded us three times by the Holland Bulb Growers' Association of Haarlem, Holland.



A few of the **GOLD MEDALS**

*Bestowed on us
for Merit*



Awarded us for our exhibit in the International Spring Flower Show at Heemstede, Holland.



Awarded us many times at the International Flower Show, New York.

Giant Darwin Tulips

“Flood the garden with beauty.”

A vigorous race of self-colored flowers, distinguished by their strong and tall stems and their shapely flowers. To all intents and purposes they are “Breeder Tulips.” They flower simultaneously with the Breeder, Cottage and Hybrid Tulips during the month of May, with the exception of far southern sections, where they bloom during April.

The varieties named in our list have been specially selected as being distinct, showy, and beautiful. Unsatisfactory varieties have been eliminated, so that you need have no hesitation in choosing the colors you require, as all are good.



ANNIE LAURIE. This Tulip draws immediate attention in the garden. Beautifully formed delicate rose-pink blooms with a trace of fuchsia lights on the outer petals. A planting in front of dark evergreens would be most effective. Height, 28 inches. \$1.30 for 10; \$10.50 per 100. *See illustration, Color Guide.*

BLUE GEM. A most lovely association of violet and rosy heliotrope will be found in this new variety. Extra large oval blooms with strong, stiff stems. Plant with “Mrs. John T. Scheepers” or “Alaska” for finest effect or a ground planting of yellow Pansies to bring out the beautiful tones. Height, 28 inches. \$1.45 for 10; \$12.00 per 100. *See illustration, Color Guide.*

BLUE PEARL. A tall, nobly carried Tulip, deep mauve-violet, petals edged silvery violet. This large bold flower is beautifully formed and makes a fine combination with the lemon colored Tulip “Mother’s Day” or the deliciously colored “Conde Nast,” with a floor of viola “Jersey Gem.” Height, 28 inches. \$1.75 for 10; \$15.00 per 100. *See illustration, Color Guide.*

BLUE PERFECTION. A Tulip of great charm with its enormous pale hortense-violet flowers. The cups are very deep and wide with generously overlapping petals. A pleasing color contrast may be obtained by planting this variety near Rosa Hugonis with Alyssum saxatile, var. citrinum as a ground cover planting. Height, 28 inches. \$1.55 for 10; \$13.00 per 100. *See illustration, Color Guide.*

BOURGOGNE. A deep wine-red flower of great beauty with dark blue center. A wonderful Tulip, of immense size, graceful and carried on a fine, strong stem. Plant near other white Darwin Tulips with a foreground planting of Iberis sempervirens. Height, 30 inches. \$1.55 for 10; \$13.00 per 100.

CAROLINE TESTOUT. This very unusual and beautiful Tulip was named after the well known rose of that name. The color of this Tulip is even more beautiful, a soft rose with a large white base. Of perfect shape and it has exceptional lasting qualities. A Tulip with a great future. Height, 28 inches. \$1.65 for 10; \$14.00 per 100.

CHARLES NEEDHAM. Possibly the best of the red Darwin Tulips. Flowers are of large size, of brilliant red, and carried on strong stems. The color holds well in sunshine. It combines very well with mauve and white intermediate irises, and a most lovely picture can be created by using Iberis sempervirens as a ground cover. A fine exhibition Tulip. Height, 28 inches. \$1.45 for 10; \$12.00 per 100.

CITY OF HAARLEM. A dependable, handsome Darwin of great substance and of fiery cardinal-red. The deep violet base of this Tulip, outlined in white, gives it a striking effect when open. It is admirably at home among all the lighter-colored spring flowers, such as the hardy alyssum “Silver Queen,” with gay effects in the garden or border. Height, 31 inches. \$1.40 for 10; \$11.50 per 100.

CLARA BUTT. Lovely pure pink Tulip that should be in quantity in every garden; of a delightful color that will go with most anything. In some lights an elusive soft salmon suffusion in this fine flower adds to the interest of this beautiful blossom. Would make a striking effect massed against purple Barberry. Height, 28 inches. \$1.20 for 10; \$9.50 per 100.

DUKE OF WELLINGTON. A delightful pure white flower of good form and character with cream anthers and base. The large flowers have fine lasting qualities and are carried on a good stem. This chaste, noble Tulip is considered one of the finest of all white Tulips. It has a round cup which, for purity of color and perfection of texture, is not to be seen elsewhere. There is no colored base; the Tulip is the purest white throughout except for soft violet anthers and greenish white stigma. Height, 32 inches. \$1.55 for 10; \$13.00 per 100.

ECLIPSE. Dark, rich red Darwins are not too common, but here is one of beautiful form, splendid firmness of petal and stem, which would be capital if used with "La Tulipe Noire," a Tulip long known to many of us as a most valuable flower for the spring enrichment of the border. "Eclipse" is a glowing, dark blood-red flower with a lustrous surface and violet, white-margined center. So substantial is its quality that it lasts well through the Tulip season. Height, 30 inches. \$1.40 for 10; \$11.50 per 100. *See illustration, Color Guide.*

GLACIER. Undoubtedly one of the best of the white exhibition Tulips. Huge flower of pure white, carried on a strong, tall stem. A most beautiful picture can be created by planting this variety near Darwin Tulip "Eclipse" with a ground cover of Phlox divaricata var. Laphami. Height, 31 inches. \$1.60 for 10; \$13.50 per 100.

GOLDEN AGE. This is one of the most beautiful of all yellow hybrids of recent introduction. The large flower of a bright golden yellow with orange fleckings is carried on tall, stiff stem. A valuable addition to your collection; may we suggest that you try a few of these, to put a clump here and there in your border plantings? Height, 28 inches. \$1.40 for 10; \$11.50 per 100. *See illustration, Color Guide.*

HELEN WILLS. Large flower of perfect form of the finest rosy lilac flushed with blue and a bluish white base. Superior to all other varieties in this shade and one of the longest lasting in the garden. The unusually rare shadings in this Tulip are shown to best advantage if placed in slightly shaded situation; indeed a fine addition to the garden especially in company with a ground cover of Forget-me-nots. Height, 28 inches. \$1.60 for 10; \$13.50 per 100. *See illustration, Color Guide.*

INSURPASSABLE. Here is another hybrid of exceptional merit. A very large lilac flower, of fine form and great substance, held aloft on tall, strong stem. Planted with Munstead primroses, or rising out of a mass of Forget-me-nots and the double arabis, or standing in a clump by itself, this unusual variety will attract immediate attention and will make very beautiful groupings. Height, 28 inches. \$1.50 for 10; \$12.50 per 100.

KING GEORGE V. A dazzling cherry-rose Tulip of great size and noble carriage; one of the finest introductions and a most telling color in the garden. The cup is graciously modeled and deep and the Jacqueminot shadows at the base of the petals lend an exquisite softness to the brilliant flower. The color holds well in sunshine. An effective setting may be had by planting a mass of this among Myosotis or Cheiranthus Allioni. Height, 30 inches. \$1.40 for 10; \$11.50 per 100. *See illustration, Color Guide.*

LADY HILLINGDON. A most outstanding and beautiful Tulip. The flowers hold their shape well and are carried on firm, erect stems. The prevailing color is a clear geranium-pink marvelously suffused with rose-purple with the edge of the inner petals of bittersweet-orange, giving the effect of a glow from within. The base and anthers are a light cadmium-yellow. Combines well with the darker toned "Pride of Zwanenburg." Height, 28 inches. \$1.50 for 10; \$12.50 per 100. *See illustration, Color Guide.*

LA TULIPE NOIRE. The darkest of the Tulips. A very large, rich, velvety, blackish maroon flower. Height, 28 inches. \$1.35 for 10; \$11.00 per 100.

MADAME BUTTERFLY. A tall and stately exhibition Tulip. The large flowers are egg-shaped and of pale mauve, the middle of the exterior petals shaded with Chinese violet, deepening in the center of the flower to Matthew's purple. Small white base and black anthers. Associated with hybrid Tulip "Mr. Van Zyl" and Darwin Tulip "Princess Mary" rising from drifts of Phlox divaricata var. Laphami, and in front of tall Bleeding Hearts. Height, 30 inches. \$1.40 for 10; \$11.50 per 100. *See illustration, Color Guide.*

MR. VAN ZYL. A new Darwin Tulip that has been very much admired. Glorious dark rosy pink with border somewhat paler. Large flower of excellent substance. Height, 30 inches. \$1.50 for 10; \$12.50 per 100. *See illustration, Color Guide.*

NIPHETOS. A glorious ivory-yellow flower considerably darker at opening, paling to a pale ivory-yellow when fully developed. The interior of the flower is somewhat stronger in color, with a lighter base and yellow anthers. Of very graceful form, the petals have a remarkable texture and possess long-lasting qualities. The large flowers are carried on fine stems. Possibly the best Tulip in its color class and one of the most beautiful. Height, 30 inches. \$1.15 for 10; \$9.00 per 100.

ORANGE PERFECTION. A brilliant, large, handsomely proportioned flower borne on a tall, stiff stem, bright cherry-pink in color with an orange glow, like sunshine, illuminating the petals. In some lights it looks almost golden. Immensely effective in the border. Height, 30 inches. \$1.50 for 10; \$12.50 per 100. *See illustration, Color Guide.*

PRIDE OF HAARLEM. An old, but very fine Tulip. Of brilliant rosy carmine with blue base. Very large flower of superb form borne on a tall, strong stem. Height, 30 inches. \$1.20 for 10; \$9.50 per 100.

PRIDE OF ZWANENBURG. A most beautiful Tulip. It is best described as spinel-pink, suffused with rose-red, lightening towards the margin with white base and bluish black anthers. Lovely under a Double-Flowering Peach near the beautiful white Lily-flowering Tulip, "White Duchess." Height, 30 inches. \$1.45 for 10; \$12.00 per 100.

PRINCESS ELIZABETH. An extraordinarily lovely rose-pink Tulip with topaz lights and hints of fuchsia shadowings on the exterior and a clearly defined white base with a blue halo. The cup is large and rather deep, of slender, yet rounded form, and opens well. Delightful with a foreground of dark Phlox "Purple Heart" or planted in front of dark evergreens. Height, 28 inches. \$1.20 for 10; \$9.50 per 100.

PRINCESS MARY. Here is a long, slender, egg-shaped Tulip of exquisite and gentle grace, a most glorious hue, indeed one of the finest of all the Darwins. The flower is very large and well shaped, of a full warm rose-pink, deeper within and with fawn-colored lights and a fine pale rib down each petal, a white base with purple halo. The inner tone of pink is both deep and rich. Lovely with fluffy white flowers. For this stately and tall Tulip, the use of *Dicentra spectabilis* is suggested, if planted in the border. If planted in partial shade the magnificent color will show to the best advantage. Height, 35 inches. \$1.55 for 10; \$13.00 per 100. See illustration, *Color Guide*.

SCOTCH LASSIE. Of purest deep lavender, shaded darker inside, with dark blue base. Large substantial flower, slightly reflexing. Will last 3 weeks and longer either in the garden or used as a cut flower. One of the finest lavender Tulips in our entire collection. Not quite so tall as others but valuable in every way. Height, 26 inches. \$1.35 for 10; \$11.00 per 100.

For finest results use SCHEEPERS' BULB FOOD at planting time and throughout the growing season. See page 34.

THE BISHOP. This highly desirable Tulip is often considered the best in its color; we always use it in our plantings for our exhibits. It is a tall variety with a medium sized cup of a lively tone of Bishop's purple with elusive fawn-colored lights on the reverse of the petals and a white interior base with black anthers. Height, 30 inches. \$1.55 for 10; \$13.00 per 100. See illustration, *Color Guide*.

TURNER. Extra-large flower of exceedingly rich cherry-rose color, outside garnet-purple. This is an extra fine variety that should be in every worthwhile collection. Height, 28 inches. \$1.40 for 10; \$11.50 per 100. See illustration, *Color Guide*.

VENUS. This whole flower has a chalice or cup of the loveliest, deepest pink. A very finely formed flower, which is held at the top of a three-foot stem. Its faint flush of paler pink at the top of the inner petals adds to the charm of the flower. Only the taller spring flowers should cluster about the plantings of the tulip—*Mertensia virginica* is one that could not fail to look well here, or a mass of *Scilla campanulata* var. *Excelsior*. This is one of the most attractive of the pink Tulips with its pure color as of a wild rose. Height, 30 inches. \$1.55 for 10; \$13.00 per 100. See illustration, *Color Guide*.

ZWANENBURG. A fine white Darwin Tulip, available at a reasonable price. Large flowers of good substance, of purest white with a small black base and black anthers. Tall and vigorous grower. Especially attractive combined with the deep red Darwin Tulip "Eclipse." Height, 32 inches. \$1.50 for 10; \$12.50 per 100. See illustration, *Color Guide*.



The Beautiful Lily Flowering Tulip "White Duchess" in a white and green garden (See page 12).

Single Early Tulips

SINGLE EARLY TULIPS are very useful for bedding purposes, for planting in groups in front of late-flowering Tulips to extend the flowering season. We offer in this list only varieties of proven merit for American gardens. Prices quoted are for the very highest quality, of course.

DE WET. Of a glorious orange color, with unusual golden salmon effect produced by scarlet veining on a deep orange ground. One of the most beautiful of Early Tulips. Makes gorgeous beds interplanted with Forget-me-nots. Has a fine fragrance, and is splendid under artificial light. Height, 17 inches. \$1.25 for 10; \$10.00 per 100.

KEIZERSKROON. Large scarlet flower, edged with bright yellow. Splendid for distant beds. Height, 16 inches. \$1.40 for 10; \$11.50 per 100.

LADY BOREEL. The finest early pure white Tulip for beds. Flower of fine form, long and slender. Height, 16 inches. \$1.50 for 10; \$12.50 per 100.

MON TRÉSOR. One of the best yellow bedding Tulips; color deep and clear; very handsome form. Height, 13 inches. \$1.55 for 10; \$13.00 per 100.

PINK BEAUTY. Large and artistically formed, vivid pink flower carried on a strong, erect stem. Makes beds of remarkable brilliance and beauty when interplanted with Forget-me-nots. Lasts a long time in bloom. Height, 12 inches. \$1.65 for 10; \$14.00 per 100.

WHITE HAWK. One of the best white bedding Tulips and delightful for window-boxes and garden interplanted with yellow Pansies. Height, 12 inches. \$1.40 for 10; \$11.50 per 100.

Double Early Tulips

FOR EFFECTIVE PLANTING in beds or borders, located in exposed situations where the taller-growing kinds are unsuitable. For substance and lasting qualities, these Tulips are invaluable. We offer below only those varieties that have given complete satisfaction and in finest selected quality only upon which superior quality our prices are predicated. Most varieties are delightfully fragrant.

BOULE DE NEIGE. Large, pure white flower resembling a white Peony. Valuable for bedding. Height, 10 inches. \$1.75 for 10; \$15.00 per 100.

MARÉCHAL NIEL. Very beautiful variety, the color is distinct; soft canary-yellow flushed with soft orange. Splendid for high lights in the garden. Height, 11 inches. \$1.40 for 10; \$11.50 per 100.

MR. VAN DER HOFF. This is, without doubt, one of the finest golden yellow double Tulips; it is an exquisite flower, very full and large and excellent for outdoor planting. Height, 11 inches. \$1.35 for 10; \$11.00 per 100.

MURILLO. Exquisite soft pink, with white markings. Makes beautiful beds and is the most easily grown. Height, 11 inches. \$1.35 for 10; \$11.00 per 100.

PEACH BLOSSOM. Large, very double, bright pink flowers, flushed white. It is most effective for indoor decoration and lasts a long time cut. Height, 11 inches. \$1.35 for 10; \$11.00 per 100.

VUURBAAK. Fine scarlet Tulip, opening to brilliant orange-scarlet. Handsome for beds. Height, 11 inches. \$1.60 for 10; \$13.50 per 100.

For finest results use SCHEEPERS' BULB FOOD (See page 34).

Double May-Flowering Tulips

(Peony-Flowered Tulips)

These flower approximately at the time of the great Darwin Tulips. They are thankful for a little shading against the hot midday sun which will enable them to carry their heavy blossoms erect. Most varieties are fragrant.

ALLEGRO. This Tulip presents a most beautiful and unusual color scheme of bright cherry and white. Height, 18 inches. \$1.55 for 10; \$13.00 per 100.

BLEU CELESTE. Large, violet-purple Tulips flowering later than other double sorts. It is very fine for indoor decoration and for the garden. Height, 16 inches. \$1.75 for 10; \$15.00 per 100.

EROS. Very large flower of clear old rose. A very interesting Tulip, as the flower resembles a peony flower very closely. One of the best doubles for the American garden as the flower has fine substance. Height, 22 inches. \$1.35 for 10; \$11.00 per 100.

MOUNT TACOMA. A very fine, immense, double Tulip, almost like a full-blown peony; the petals are of the purest white with yellow suffusion at the base. Height, 24 inches. \$1.50 for 10; \$12.50 per 100.

ROYAL YELLOW. This new introduction is very beautiful. Flowers are as large as a peony and pure yellow. A combination planting with "Mount Tacoma" and "Uncle Tom" is magnificent. Delightfully fragrant. Height, 22 inches. \$1.75 for 10; \$15.00 per 100.

UNCLE TOM. A very beautiful Tulip. Large, double flowers of a uniform deep glossy red. Height, 20 inches. \$1.75 for 10; \$15.00 per 100.

Parrot Tulips

YOU WILL LIKE to have some of these quaintly shaped flowers, particularly for house decoration or for clumps here and there in the border or where you have strong groups of evergreens. Their artistic form and coloring make them especially suitable for cut flower purposes or for long drifts against a deep green background.

After careful study we have decided to confine ourselves to the following varieties. All are very fine and will give you much satisfaction and pleasure.

BLUE PARROT. A blue sensation is a fitting description for this very beautiful Parrot Tulip. Large flowers that open wide on good stems. Height, 22 inches. \$1.20 for 10; \$9.50 per 100.

FANTASY. The magnificent pink Parrot Tulip. It is not only the strangely exciting form of this Tulip or its main color, which is a delightful warm pink, that entralls one; it is the inner color of it, a deep and velvety rose color which is more sumptuous than words can tell. The wonderful encrustation on back of petals is like an enameling of apple-green. And one of the virtues of this wonderful flower is its stiff, straight stem. Very lovely with *Scilla campanulata* var. "Excelsior." Height, 26 inches. \$1.25 for 10; \$10.00 per 100. *See illustration, Color Guide.*

GADELAN. A sensational novelty, resembling a *Cattleya* orchid in color and shape. When fully developed it often measures 6 to 7 inches across with a blending of blues and purples, edged white with emerald-green markings. The inside of the flower is bright violet-purple with white center and contrasting black anthers. Fine sturdy stems. Height, 22 inches. \$1.85 for 10; \$16.00 per 100.

ORANGE FAVORITE. A triangular shaped Parrot large and beautiful flower. True orange lighter to edges of the petals, many times tipped with a narrow margin of yellow, yellow base and black anthers, a most outstanding new novelty. Height, 22 inches. \$1.60 for 10; \$13.50 per 100.

RED CHAMPION. The description for this beautiful Parrot would be the same as for "Fantasy" with the exception that it is scarlet-red. A fine addition to the Parrot group. Height, 22 inches. \$1.60 for 10; \$13.50 per 100.

SUNSHINE. Exquisite flower of a bright golden yellow. One of the most outstanding Parrot Tulips both for color and form. Artistic effects are obtained by planting this Tulip with the variety "Gadelan" in semi-shade, particularly when set at the base of evergreens. \$1.75 for 10; \$15.00 per 100.

THERESE. A beautiful large Tulip carried on a fine stem. This attractive variety is a sport of the well known "Mr. Farncombe Sanders" which it resembles in color, being a brilliant rosy-red. \$1.70 for 10; \$14.50 per 100.

Bizarre and Bijbloemen Tulips

Old Dutch Broken Tulips

IN THE OLD DAYS OF THE 17TH CENTURY when the Dutch produced new varieties by "breaking" the colors and the tulip mania seized Holland, these Bizarres and Bijbloemen were the kinds most sought after. They still retain popularity and the better they become known the more they are asked for.

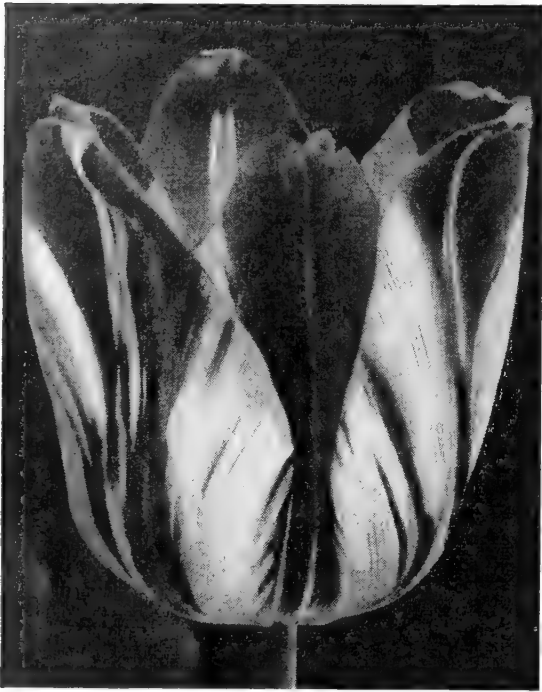
The Bizarres may be characterized as having dark brown stripes and featherings on a yellow ground; the Bijbloemen as having a white ground with rose or mauve stripes and featherings.

They bloom at the same time as the Darwins and, while we like to see a section of the garden or of the borders given over exclusively to mass plantings of these, they will also lend themselves because of their subtle colorings in flakes and feathers, to interesting combinations with self colored Breeder, Cottage or Darwin Tulips.

Until we know these fine Bizarre and Bijbloemen Tulips better in this country, we are losing one of the greatest and most interesting pleasures of the spring garden.

We have searched gardens and nurseries in England and Holland for the most unusual of these old time favorites and take pleasure in presenting to you a limited number of outstanding varieties. All are beautiful and may be planted together.

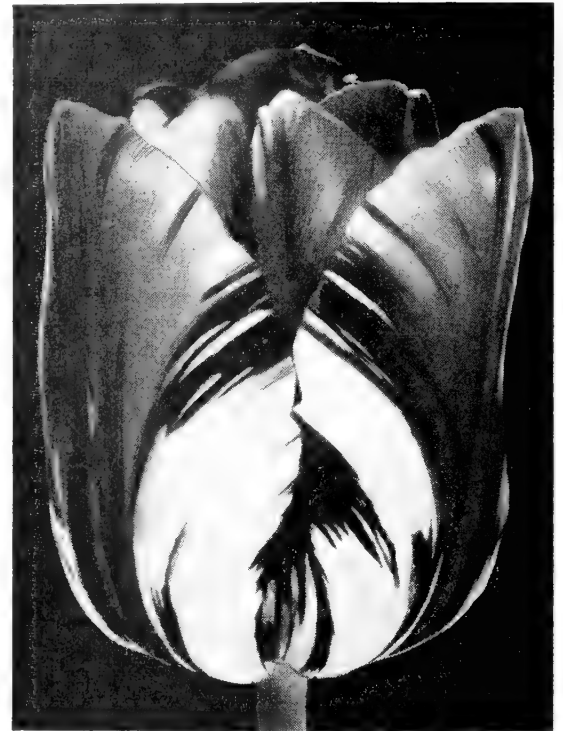
To assist the lover of unusual things in their selection, we have assembled here the following collections:



BIZARRE TULIP

Collection of Bizarre Tulips in five finest named varieties selected by us, \$7.50 for 50; \$15.00 per 100.

Collection of Bijbloemen Tulips in five finest named varieties and consisting half of violet and half rose shadings, varieties selected by us, \$7.50 for 50; \$15.00 per 100.



BIJBLOEMEN TULIP

Lily-Flowering Tulips

AS THE RESULT of crossing the dainty, pointed-petaled *Tulipa retroflexa* with a Darwin, we have here a very beautiful and distinct race of Tulips, having graceful, slightly reflexing flowers with curved, pointed petals, carried on tall, sturdy stems.

They flower with the Breeder, Cottage, Hybrid and Darwin Tulips, during the month of May, except in far southern areas where they bloom during April.

ALASKA. Here is a most remarkable Tulip of a clear bright yellow and most elegant form. The tone of the yellow is very unusual, it is so even and so soft, and the form of the long slender flower is equally interesting. The flower is all of charming yellow, there is no other color anywhere. The petals reflex slightly and the charm of the slender bloom is marked. A fine tulip to use with *mertensia* or with *Scilla campanulata* var. "Excelsior." Height, 25 inches. \$1.35 for 10; \$11.00 per 100. See illustration, Color Guide.

ELEGANS ALBA. A delightful creamy white Tulip with narrow carmine margin that does not spread as the flower ages. A bed of this is very pretty, edged with the old-fashioned green and white-striped funkias. Height, 24 inches. \$1.75 for 10; \$15.00 per 100. See illustration, Color Guide.

WHITE DUCHESS. Exceedingly beautiful, lily-flowering Tulip of a pure snow-white. The flower is very large and of most artistic form; the base is absolutely pure, the anthers are creamy white, giving to the entire Tulip the effect of a perfect purity. It is carried on a tall, straight, strong stem and will create a lovely picture if planted in clumps with a ground cover of *myosotis* or *Anchusa myosotidiflora*. Height, 29 inches, \$1.60 for 10; \$13.50 per 100. See illustration, page 9.

Botanical Tulips

“Water Lily Tulips”

They naturalize readily in the Wild Garden; Beautiful in the Rockery

THE GENERAL CHARACTERISTICS of the various species, all of which are natives of Asia Minor and Central Asia, are bright colors and recurved petals. With care and the provision of suitable quarters they will flower quite satisfactorily. They feel most contented in rock gardens and borders. The list we offer contains the varieties that have proven most satisfactory.

BIFLORA. Small flowers, several to a stem of pure white. A delicate little gem highly suited for the rockery. Height, 6 inches. \$1.15 for 10; \$9.00 per 100.

CLUSIANA. Often called the “Lady Tulip.” A charming, sprightly, vivid, upstanding beauty, with gray-blue leaves and a blossom gaily striped bright rose and white; one of the most fascinating of these species. The small, pointed flower is of artistic form, distinct and beautiful. Height, 12 inches. \$1.20 for 10; \$9.50 per 100. *See illustration, Color Guide.*

DASYSTEMON. Very beautiful dwarf species, specially valuable for planting in the rock garden or for drifts in front of or below evergreens; may also be attractively used for clumps here and there in the early flower border. In early April the delightful, very showy flowers appear, about six inches above the ground, spreading themselves over fine foliage; its cup is like a star, yellow with white lights. Several flowers are produced on a stem, once the plant has become established. Lovely with Chionodoxa, Lucilliae, Muscari and Scilla Siberica, blue. Height, 6 inches. \$1.25 for 10; \$10.00 per 100.

FOSTERIANA RED EMPEROR. A glorious scarlet-red Tulip of remarkable size and substance; large black center with a yellow border. This brilliant flower created a sensation in the recent International Flower Show in New York. A few bulbs may well be tried for high lights in the border or for planting in a clump in front of tall evergreens. Height, 18 inches. \$1.50 for 10; \$12.50 per 100.

KAUFMANNIANA. One of the most beautiful of all Tulips. Large creamy flower, brilliantly marked with stripes of carmine, yellow center, it opens flat and is carried on a stem usually less than a foot in height. First Tulip to bloom in the garden in April and it is delightful. Plant large masses under trees or evergreens. Splendid for naturalizing in shady places; self-sows freely. Try planting it with Muscari “Heavenly Blue.” Height, 5 to 8 inches. \$1.40 for 10; \$11.50 per 100.

KAUFMANNIANA BRILLIANT. A little beauty. Brilliant Turkish red with a yellow center, most effective in the rock garden or for naturalizing under trees or evergreens. Foliage nicely mottled with brown spots. Height, 8 inches. \$2.75 for 10; \$25.00 per 100.

KAUFMANNIANA GAIETY. Creamy white inside and out with trace of a red flush on outer petals as the flower ages. A short stem which makes the flower appear to be resting on the leaves. A charming variety. Height, 6 inches. \$1.40 for 10; \$11.50 per 100.

KAUFMANNIANA VIVALDI. A charming variety not alone for its beautiful coloring but also greatly admired for its colorful foliage which is mottled and flecked brown. Clear yellow shaded cherry at the center of each petal. Naturalizes readily. \$1.75 for 10; \$15.00 per 100.

LINIFOLIA. This is an ideal Tulip for high lights in the rock garden. Beautiful, dainty species of a fiery scarlet flowering about 7 inches above the ground in early April. Extremely attractive, also for clumps among dark green evergreens. Height, 7 inches. \$1.90 for 10; \$16.50 per 100.

PERSICA. A charming dwarf variety for narrow borders of the rock garden. Fragrant yellow flowers, bronze on the exterior, are borne in twos or threes on a slender, curving stem. Height, 3 inches. \$2.25 for 10; \$20.00 per 100.

PRAESTANS FUSILIER. This new variety is very beautiful indeed. Three to five intense scarlet-orange flowers on wiry strong stem. Excellent for rockery, garden or woodland. Height, 10 inches. \$1.25 for 10; \$10.00 per 100.

VIRIDIFLORA PRAECOX. (The green Tulip). Large, well-formed, wide-open flower with pointed petals of a soft pale green edged with creamy yellow. A charming variety of extraordinary coloring. Very nice to cut with yellow or pink Tulips. Very scarce. (Please order early.) Height, 20 inches. \$2.25 for 10; \$20.00 per 100.

Special Collections of Botanical Tulips

So that our friends may become more familiar with these specie Tulips, we have arranged special collections as follows:

10 bulbs each of the 12 varieties listed
Total 120 Extra Selected Bulbs
Regular catalog price \$20.05
Special Price \$18.50

5 bulbs each of the 12 varieties listed
Total 60 Extra Selected Bulbs
Regular catalog price \$10.03
Special Price \$9.50

Choice Collections of Scheepers' Tulips

Varieties have been selected to give complete color harmony. Planting plan will be submitted if requested with order. Bulbs are of the same fine quality as if ordered separately. We stock only one grade "The Cream of Holland's Crop."

EXHIBITION COLLECTION

No. 1

Consisting of 10 EXTRA SELECTED BULBS each of the 10 varieties listed below: See illustrations, Color Guide.

BLUE GEM—Blue
 ECLIPSE—Red
 JEANNE DESOR—Yellow & Red
 LOUIS XIV—Purple
 MARJORIE BOWEN—Sal.-pink
 MRS. J. T. SCHEEPERS—Yellow
 ORANGE OPHELIA—Orange
 REVE D'OR—Copper
 ROSABELLA—Pink
 ZWANENBURG—White

100 EXTRA SELECTED BULBS, packed and labeled separately, with cultural instructions included.

Catalog Value, \$14.85

SPECIAL COLLECTION PRICE, \$13.50

No. 1-A

50 EXTRA SELECTED BULBS, same as above, only 5 each of 10 varieties as listed.

Catalog Value, \$7.43

SPECIAL COLLECTION PRICE, \$7.00

GARDEN COLLECTION

No. 2

Consisting of 10 EXTRA SELECTED BULBS each of the 10 varieties listed below: Full descriptions will be found on pages as noted.

BLUE PARROT—Blue	11
CARRARA—White	5
CITY OF HAARLEM—Red	7
DIDO—Deep Pink	5
DILLENBURG—Orange	3
MARJORIE BOWEN—Salmon	5
NORTHERN QUEEN—Pink & White	6
PRIDE OF HAARLEM—Cherry	8
PRINCESS ELIZABETH—Pink	9
WALL STREET—Yellow	6

100 EXTRA SELECTED BULBS, packed and labeled separately, with cultural instructions included.

Catalog Value, \$12.70

SPECIAL COLLECTION PRICE, \$11.25

No. 2-A

50 EXTRA SELECTED BULBS, same as above, only 5 each of 10 varieties as listed.

Catalog Value, \$6.35

SPECIAL COLLECTION PRICE, \$5.75

FRAGRANT CUTTING GARDEN COLLECTION

No. 4

While Tulips, in general, have little or no fragrance, we have over a number of years chosen with great care from thousands of Holland's best bulbs certain strains which do have a very definite and appealing fragrance. Some have Freesia fragrance others a spicy scent, all delightful for indoor decoration. The Early Flowering collection also contains beautiful "doubles." Supplied in finest mixtures.

EARLY FLOWERING

Mid-April into May

LATE FLOWERING

All during May

25 EXTRA SELECTED BULBS \$ 4.00

50 EXTRA SELECTED BULBS 7.75

100 EXTRA SELECTED BULBS 15.00

(Kindly specify whether you wish early or late flowering kinds.)

New Novelty Tulips from Holland

THE FOLLOWING COLLECTION of new novelty Tulips, having been tested and found to meet the stringent requirements of Scheepers, is now available to the garden lover, who demands the best.

COTTAGE TULIPS

PRINCESS MARGARET ROSE. This beautiful new Tulip is an exquisite soft canary yellow with red stripes through each petal. Would be beautiful planted in a combination with "Northern Queen," with Blue Scilla Campanulata "Excelsior" for an under planting. Height, 24 inches. \$1.75 for 10; \$15.00 per 100.

ROSY WINGS. A well named Tulip that is radiant and cheerful in the garden. An apricot-pink, blooms are lighter on the inside. A long flower beautifully mottled and a very outstanding novelty. A beautiful under planting would be White Iberis. Height, 24 inches. \$2.50 for 10; \$22.50 per 100.

DARWIN TULIPS

SMILING QUEEN. Lovely rosy pink. Flower is extra large, of beautiful form and long lasting qualities, carried on a strong stiff stem. For a charming combination plant with the light yellow "Mrs. John T. Scheepers". Height, 32 inches. \$2.15 for 10; \$19.00 per 100.

LILY-FLOWERING TULIPS

PAINTED LILY. The Ballerina of Tulips. The slender elegance of this flower can only be compared with the grace of "Elegans Alba". Deep, buttercup yellow with a sharp scarlet edge, exquisite indeed. Height, 26 inches. \$2.35 for 10; \$21.00 per 100.



GOLD MEDAL

Awarded us by Her Majesty, Queen Wilhelmina of the Netherlands, at the International Flower Show.

BUNCH-FLOWERED TULIPS

While these are not new Tulips, they have been neglected the past few years. They have from 3 to 5 flowers to the stem and are exquisite planted in beds or in groups throughout the border.

MADAME MOTETT. Creamy white flushed shell pink as the flower ages. Height, 24 inches. \$1.65 for 10; \$14.00 per 100.

RAINBOW. A beautiful white, edge pink, changing to current red as the flower ages. Height, 24 inches. \$1.65 for 10; \$14.00 per 100.

WALLFLOWER. A dark brown Tulip with a bright yellow base. Height, 24 inches. \$1.65 for 10; \$14.00 per 100.

NOVELTY TULIP COLLECTION

Consisting of 10 EXTRA SELECTED BULBS each of the 7 varieties listed on this page.

70 EXTRA SELECTED BULBS, packed and labeled separately, with cultural instructions included.

Catalog Value \$13.70

SPECIAL COLLECTION PRICE \$12.50

Supreme Hyacinths

Exhibition Size

OUR SUPREME QUALITY BULBS ARE SPECIALLY PREPARED TO WIN HIGH AWARDS AT EXHIBITIONS

Have you ever tried the lovely and artistic arrangement of these fragrant and impressive flowers, set several in a basket or brass container that can be made to fit so harmoniously in your scheme of interior decoration?

Long lists of varieties only tend to confuse, therefore we offer in these pages only those sorts that careful selection has proven to be the very best. Our hyacinths have been awarded highest awards at all important flower shows.

Blue Shades

BISMARCK. Clear light blue, the large trusses of blooms are carried on strong stems. Very fine in the garden, excellent for early forcing. Exhibition bulbs, \$4.05 for 10; \$38.00 per 100.

DR. LIEBER. Very early; lavender blue; heavy, perfect spike. Exhibition bulbs, \$4.05 for 10; \$38.00 per 100.

KING OF THE BLUES. Splendid compact truss with fine, bright, dark blue bells; flowers late. Exhibition bulbs, \$4.05 for 10; \$38.00 per 100.

PERLE BRILLIANT. Most attractive, light, porcelain blue, with splendid spike, well formed. Exhibition bulbs, \$4.05 for 10; \$38.00 per 100.

White

ARENTINE ARENDSSEN. A fine exhibition hyacinth. The large bells are of clearest white and carried on a long, well-formed spike. Exhibition bulbs, \$4.05 for 10; \$38.00 per 100.

EDELWEISS. One of the finest and most showy pure white; long, full truss of perfect form with fine waxy bells. Grand exhibition flower. Exhibition bulbs, \$4.05 for 10; \$38.00 per 100.

Yellow

CITY OF HAARLEM. Large, well-formed truss of a bright golden yellow. Fine exhibition flower. Exhibition bulbs, \$4.05 for 10; \$38.00 per 100.

Rose Shades

MARCONI. Long, splendid truss with large bells of a fine rose pink. Exhibition bulbs, \$4.05 for 10; \$38.00 per 100.

PINK PEARL. This new variety is exceptionally fine. Clear light pink. Beautiful in the garden and as a pot plant for indoor decoration. Exhibition bulbs, \$4.05 for 10; \$38.00 per 100.

PRINCESS MARGARET. A very interesting novelty. Extremely large, well-formed soft pink bells carried on a wide, immense truss. It is by far the best pink hyacinth both as to size and color. Exhibition bulbs, \$4.05 for 10; \$38.00 per 100.

QUEEN OF THE PINKS. The pink form of "King of the Blues"; a lovely bright rosy pink. Exhibition bulbs, \$4.05 for 10; \$38.00 per 100.

Scarlet

JAN BOS. A very fine carmine-red, tinted scarlet, lighter color to the center of each floret. Very fine in the garden, excellent for forcing. Exhibition bulbs, \$4.05 for 10; \$38.00 per 100.

TUBERGEN'S SCARLET. Fiery scarlet spike of medium size. A splendid novelty of striking color. Exhibition bulbs, \$4.05 for 10; \$38.00 per 100.

We have a limited number of **JUMBO EXHIBITION BULBS** available in the above named varieties at **\$4.50 for 10; \$42.50 per 100.**

For finest results use SCHEEPERS' BULB FOOD at planting time and throughout the growing season. (See page 34)

Hyacinths

Garden Size for Mass Planting

Our Hyacinth specialist provides us with select quality bulbs most suitable for planting in masses in the garden, in varieties producing flower spikes not quite so long and "top-heavy," so that they will stand up in rough weather.

Those with weak stems have been eliminated, and the following sorts have been carefully selected, having strong stems and bearing in every way most desirable for this purpose.

The cost of this choice stock has been set somewhat lower; the quality, of course, will be of the same high grade we have always furnished.

Blue Shades

BISMARCK. Strong, well-filled spike with large, light blue bells. \$2.45 for 10; \$22.00 per 100.

DR. LIEBER. Clear lavender-blue; fine strong stem. \$2.45 for 10; \$22.00 per 100.

KING OF THE BLUES. Splendid compact truss with fine, bright dark blue bells. \$2.45 for 10; \$22.00 per 100.

PERLE BRILLIANT. Most attractive, light porcelain-blue, with splendid spike, well formed. \$2.45 for 10; \$22.00 per 100.

White

EDELWEISS. Strong spike with large, pure white bells. \$2.45 for 10; \$22.00 per 100.

L'INNOCENCE. Strong truss with large, pure white bells. \$2.45 for 10; \$22.00 per 100.

Rose Shades

LADY DERBY. Long splendid truss with large bells of a fine rose-pink. \$2.45 for 10; \$22.00 per 100.

LA VICTOIRE. Strong, stout spike with medium-sized bells of a bright carmine-rose. \$2.45 for 10; \$22.00 per 100.

MARCONI. Immense spikes with large bells of lovely rose-pink. Very strong grower. A slightly darker "Lady Derby." \$2.45 for 10; \$22.00 per 100.

QUEEN OF THE PINKS. A lovely bright rosy pink. \$2.45 for 10; \$22.00 per 100.

Yellow

CITY OF HAARLEM. Strong, large truss of bright golden yellow. \$2.45 for 10; \$22.00 per 100.



An Excellent Use for the Holland Hyacinths



Narcissus "BEERSHEBA"

Narcissi or Daffodils

NOTE: Our prices are based on supplying EXTRA SELECTED DOUBLE NOSED JUMBO BULBS. Smaller size bulbs can be supplied at greatly reduced prices; however, we recommend planting largest bulbs for finest effect.

DIVISION I—TRUMPET DAFFODILS

Trumpet (or crown) as long as, or longer than the perianth segments (petals). (Divided into three classes.)

CLASS A. ALL YELLOW

AEROLITE. Here is a golden Daffodil that is sure to replace many older varieties; the large flower is beautifully proportioned, giving the impression of gracefulness, despite its size; perianth deep primrose with a pure medium-yellow trumpet which is held in bold relief by the broad pointed star formed by the flat opening outer petals, an inch and a half wide; medium early, but remaining until late, and one of the longest lasting of all Daffodils either in the garden or after being cut. \$2.05 for 10; \$18.00 per 100. *See illustration, Color Guide.*

EMPEROR. Rich, full, yellow trumpet; deep primrose perianth. Splendid for planting in masses and for naturalizing. Extra heavy bulbs. \$1.85 for 10; \$16.00 per 100.

GOLDEN HARVEST. Here is a giant yellow trumpet. In its perfection it is larger than the famous "King Alfred." Trumpet deep golden yellow, clear yellow overlapping perianth. Received Award of Merit and First Class Certificate in Holland, and always a prize winner on our exhibition tables. \$2.05 for 10; \$18.00 per 100.

KING ALFRED. Remarkably handsome Daffodil; unrivaled in its particular color. Large, bold, golden yellow flower with deeply frilled mouth, elegantly recurved; of lasting quality both in the garden and when cut. Extra heavy bulbs, \$2.05 for 10, \$18.00 per 100. SPECIAL STOCK, only limited quantity available. \$2.50 for 10; \$22.50 per 100.

LORD WELLINGTON. One of the finest of the white Trumpet Daffodils. The enormous flower is of rich golden yellow with broad petals, large trumpet and carried on a tall, strong stem. Though the flower is very large, it is, on account of its perfect form, refined in appearance. \$2.25 for 10; \$20.00 per 100. *See illustration, Color Guide.*

CLASS B. ALL WHITE OR ALMOST WHITE

BEERSHEBA. Possibly the most popular of the white Trumpet varieties. Perianth and trumpet of magnificent proportions with sturdy foliage and stem. Its color is not pure white, yet is expressive of purity in the highest sense. Deserves to be included in every exhibition collection. \$2.75 for 10; \$25.00 per 100. *See illustration above.*

MRS. E. H. KRELAGE. One of the finest of the white Trumpet Narcissi. Excellent for the exhibition table. Large, erect flowers with pure white perianth and soft yellow trumpet. Of great substance. \$2.00 for 10; \$17.50 per 100.

W. P. MILNER. A Miniature with white trumpet and perianth. Splendid for the rockery or for naturalizing in short grass. \$1.50 for 10; \$12.50 per 100.

CLASS C. PERIANTH WHITE, TRUMPET LEMON, YELLOW OR PRIMROSE (BI-COLOR)

MRS. R. O. BACKHOUSE. This famous flower, of delicate distinction, is most unusual and charming in color. Its flaring, informal perianth of ivory-white holds forth a beautiful, finely proportioned, slim, long trumpet of clear pale apricot at the deeply fringed edges. Delicately beautiful but of exceptional substance and long lasting. Like many of the white Trumpets it nods slightly, and the wonderful hue of the trumpet and the partly reflexed perianth make it a most uncommon and delightful Daffodil, one of those treasures which a collector loves to possess. \$3.25 for 10; \$30.00 per 100. *See illustration, Color Guide.*

CLASS C. (Bi-Color)

PRESIDENT LEBRUN. A new and outstanding variety of exceptional merit. Extra large flower with pure white perianth and large trumpet of soft yellow. Very fine for the garden or for the exhibition table where it will receive much attention. \$3.25 for 10; \$30.00 per 100. See illustration, *Color Guide*.

SPRING GLORY. Still a great favorite for the garden and for all purposes. Free-flowering, with excellent stem and bearing a large flower of beautiful form and substance. The trumpet is long and of a chrome-yellow with a reflexed brim and a snow-white perianth. Fine for mass planting and permanent naturalizing. Extra heavy bulbs, \$2.00 for 10; \$17.50 per 100. Special stock, only limited quantity available. \$2.25 for 10; \$20.00 per 100.

DIVISION 2—INCOMPARABILIS

(Large Chalice-Cupped Daffodils)

Cup measuring from one-third to nearly the length of the perianth segments (petals).

Varieties marked (2a) have a yellow perianth. Varieties marked (2b) have a white perianth.

ABELARD. (2a) Broad yellow cup, orange tint at edge, and showy orange anthers, supported by broad primrose perianth of exceptionally good substance; beautiful in the unfolding bud, and unusually long lasting flower. Award of Merit. \$2.05 for 10; \$18.00 per 100. See illustration, *Color Guide*.

CARLTON. (2a) A most beautiful variety that is destined to become very popular when more favorably known. Broad overlapping flat perianth with a large expanded cup. The whole flower is of a soft uniform yellow. Very free flowering, of long-lasting quality, early and a strong and sturdy grower. Excellent for the exhibition table. \$1.70 for 10; \$14.50 per 100.

DEANNE DURBIN. (2b) This is a beautiful variety. Pure white, perfectly round overlapping perianth, cup a deep orange throughout and of perfect shape. A lovely exhibition variety. \$1.75 for 10; \$15.00 per 100.

DICK WELLBAND. (2b) One of the finest of recent introductions. Very strong grower and exceptionally free-flowering. The perianth is pure white and the cup a brilliant flame-orange. The color does not fade but rather intensifies with age. The flower has unusual lasting qualities. Its greatest beauty lies in the startling contrast between petals and cup which makes it stand out even in the largest collection of Daffodils. An exhibition variety "par excellence." \$1.90 for 10; \$16.50 per 100. See illustration, next page.



Incomparabilis Narcissus "JOHN EVELYN"

FORTUNE. (2a) First Class Certificate R. H. S. This is undoubtedly the most wonderful flower of recent introduction. It is a giant Incomparabilis of the largest size, perfect form and gorgeous color on a 2-foot stem; fine flat overlapping perianth of great substance which stands boldly at right angles to the crown of clear deep lemon-gold color with long bold crown of wonderful glowing coppery red-orange. A long-lasting, free-flowering, strong and vigorous grower. Early. A truly magnificent bloom, a credit to your garden. \$2.15 for 10; \$19.00 per 100.

FRANCISCA DRAKE. (2b) It is impossible to describe adequately the beauty of this unusual flower; the pure white perianth petals are of unusual substance, 1½ inches wide, and tinted gold at the base, which shows through on the outside; the cup, wide and deep, is golden yellow at the base, changing gradually to flame-orange at the densely frilled edge; the flowers are held well above the fine foliage and give the effect of a flock of white sea gulls taking flight; strong growing and very free-flowering. \$1.65 for 10; \$14.00 per 100. See illustration, *Color Guide*.

JOHN EVELYN. (2b) One of the finest. Deservedly an international favorite; outstanding among the Incomparabilis hybrids. Flat-opening perianth, 4 to 6 inches across, with a flat cup nearly 2 inches in diameter, densely frilled, the perianth being pure white, without any trace of shading; the cup lemon-yellow and fluted, or shirred to the base; strong grower; free-flowering and a good propagator; one of the great Daffodils of the present day. \$1.75 for 10; \$15.00 per 100. See illustration above.

MILFORD-HAVEN. (2b) Very attractive flower with cream-white perianth and ruffled white cup, deeply frilled at edge chrome-yellow at base and shading into a rich orange-scarlet. A gorgeous color combination. \$1.75 for 10; \$15.00 per 100. *See illustration, Color Guide.*

SCARLET ELEGANCE. (2b) Perianth golden yellow, long cup of intense red. The color contrast makes it stand out in the garden. Very lovely and highly recommended. \$1.75 for 10; \$15.00 per 100. *See illustration, Color Guide.*

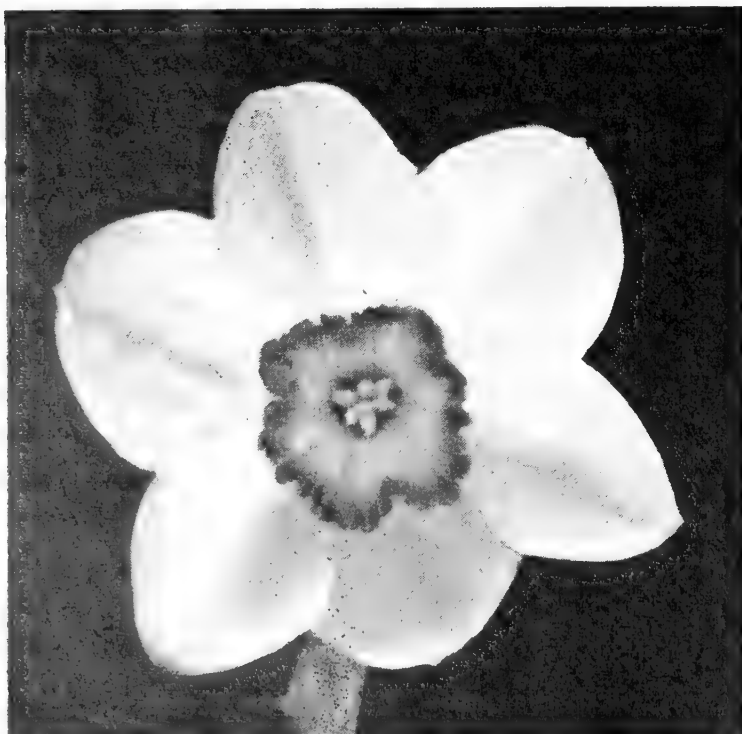
YELLOW POPPY. (2a) A very beautiful Daffodil with large, flat overlapping perianth of clear primrose with wide cup of light orange-yellow and prettily frilled orange margin. \$1.60 for 10; \$13.50 per 100.

DIVISION 3—BARRII

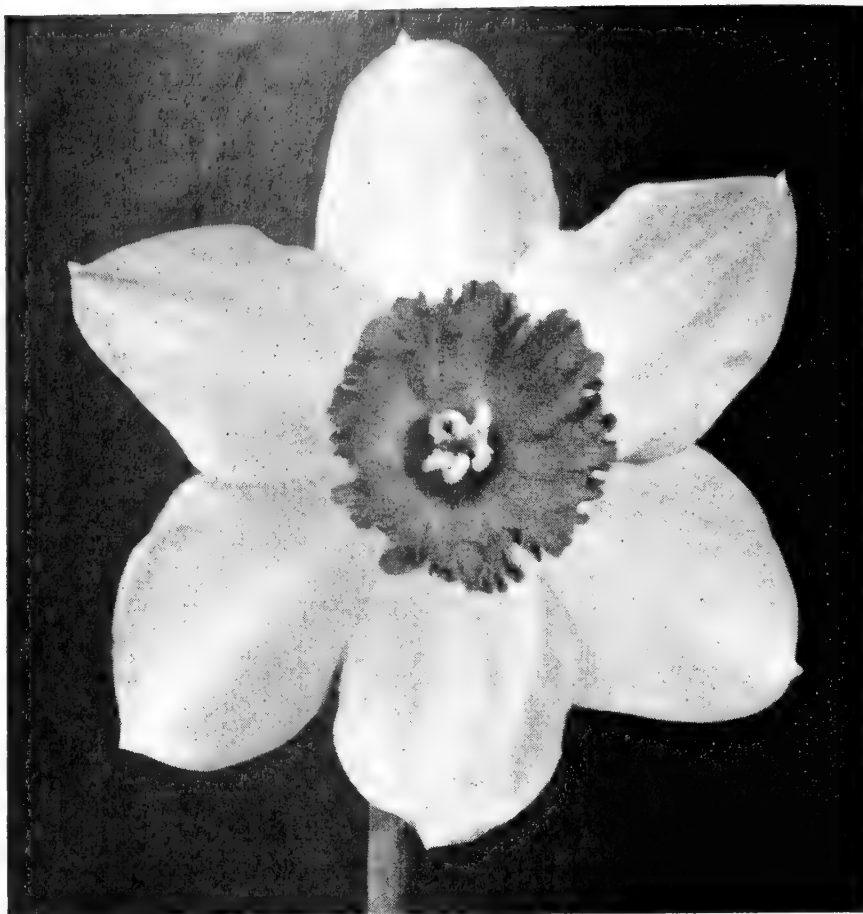
(Short-Cupped Daffodils)

Cup (or crown) measuring less than one-third the length of the perianth segments (petals), varieties marked (3a) have a yellow perianth. Varieties marked (3b) have a white perianth.

DIANA KASNER. (3b) One of the most valuable show varieties. Pure white perianth with a large fluted yellow cup—frilled blood-red. Very free flowering. \$1.65 for 10; \$14.00 per 100.



Barrii Narcissus, "LADY DIANA MANNERS"



Incomparabilis Narcissus "DICK WELLBAND" (See page 19)

FIRETAIL. (3a) D deservedly popular the world over; broad-petaled creamy white perianth and large orange cup with scarlet-orange frill. First class Certificate. \$1.65 for 10; \$14.00 per 100.

LADY DIANA MANNERS. (3b) A very fine daffodil with broad white perianth and a large, flat orange crown, broadly margined with deep red. A wonderful show variety. \$1.65 for 10; \$14.00 per 100. *See illustration below.*

LADY KESTEVEN. (3b) This is undoubtedly one of the finest Barrii introduced. Words fail to describe this wonderful Daffodil adequately. Suffice it to say that the perianth is pure white, well formed and substantial and that the cup is of the very deepest red ever seen in a Daffodil; the color does not seem to fade in the sun. A wonderful show variety. \$3.25 for 10; \$30.00 per 100.

MRS. BARCLAY. (3b) Large flower with flat, reflexed, broad-petaled overlapping perianth of pale primrose, changing to pure white; deeply frilled flat cup of primula-yellow, with dainty orange picotee; extremely showy and a great favorite in the garden or for exhibition. \$1.75 for 10; \$15.00 per 100.

PEGGY. (3b) Very large, flat-opening perfectly formed perianth of a pure poeticus-white, and of exceptional texture; medium-sized cup of lemon-yellow with golden-orange margin. A tall and vigorous grower which belongs in every collection. \$1.85 for 10; \$16.00 per 100. *See illustration, Color Guide.*

For finest results use SCHEEPERS' BULB FOOD (See page 34)

DIVISION 4—LEEDSII

(*Eucharis-Flowered Daffodils*)

Perianth white, and cup (or crown) white, cream or pale citron, sometimes tinged with pink or apricot. This group is specially designated by its color. Varieties marked (4a) have a cup (or crown) not less than one-third yet less than the length of the perianth segments. Varieties marked (4b) have a cup (or crown) less than one-third the length of the perianth segments.

DAISY SCHAEFFER. (4a) One of the best of the remarkable giant Leedsii types, the flower 4½ inches across, with a trumpet formed cup of nearly 2 inches, it resembles a giant Trumpet, but much more graceful in form. The perfect overlapping perianth is pure white, with cup opening primrose and turning to light canary-yellow, deeper at the mouth with a greenish tint; long lemon-yellow stigma and styles add to the color harmony of this remarkable flower. \$1.95 for 10; \$17.00 per 100.

GERTIE MILLAR. (4a) Wonderful flower of the new giant Leedsii type with pure white perianth similar to, and as large as, "Van Waveren's Giant," with a beautifully proportioned pale primrose cup deeply fluted and of translucent texture; unusually long pistils and anthers match this color perfectly. \$2.00 for 10; \$17.50 per 100. See illustration, *Color Guide*.

NETTE O'MELVENY. (4b) Sure the "little people" must have been abroad frolicking in the moonlight when this fairy flower was born; a dancing Daffodil with pure white perianth and a cup of clear lemon-yellow, with orange picotee. Splendid foliage, tall graceful stem and good neck; in every way a delightful flower. \$1.65 for 10; \$14.00 per 100.

DIVISION 5

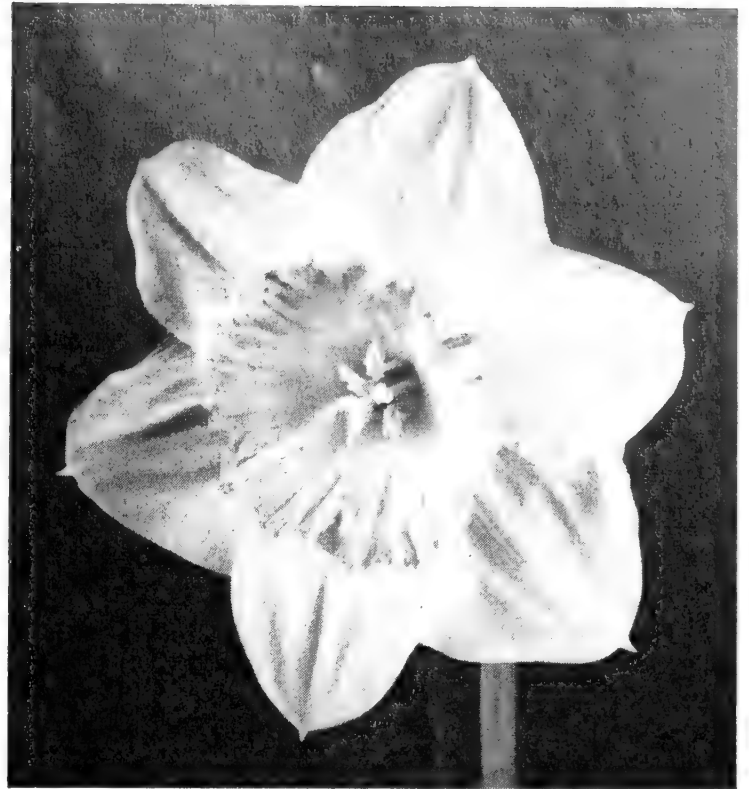
TRIANDRUS AND TRIANDRUS HYBRIDS

INCLUDES ALL VARIETIES obviously containing Narcissus Triandrus blood. For grace and beauty they are unsurpassed. We recommend a situation partly shaded by trees, and if a little very fine dwarf grass seed is sown among them, the beauty of their flowers is enhanced. They may remain undisturbed for years.

Varieties marked (5a) are yellow. Those marked (5b) are white.

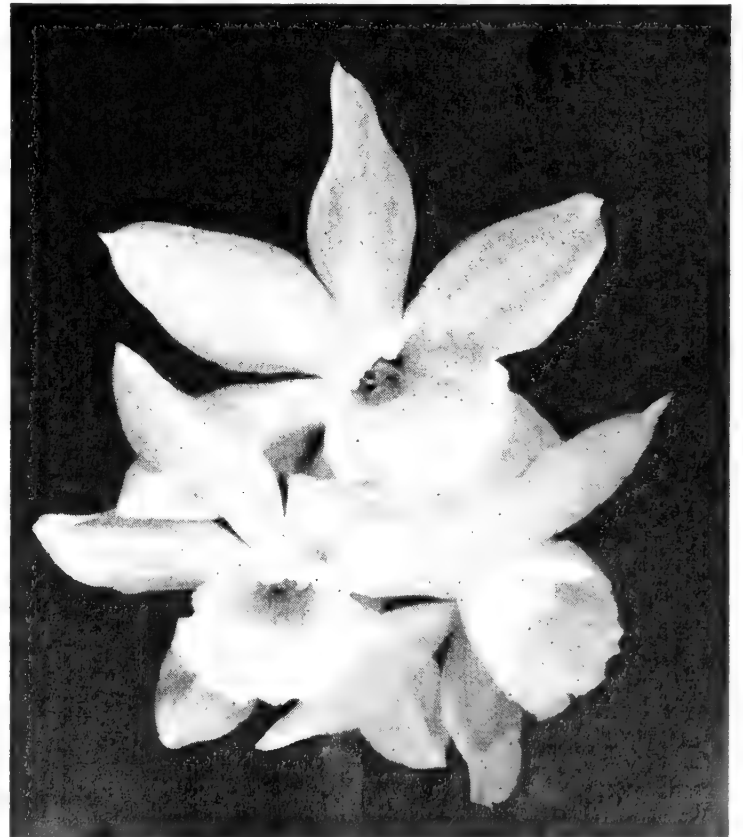
MOONSHINE. (5b) Very attractive. This variety caused considerable attention at one of our recent exhibits. Perianth and cup creamy white, star-shaped. \$2.05 for 10; \$18.00 per 100. See illustration at right.

THALIA. (5b) Often called the Orchid-flowered Daffodil. The beautiful pure white flowers are carried three or four to a stem and are most attractive for either indoor decoration or planting in the rock garden. Very attractive. \$2.50 for 10; \$22.50 per 100.



Leedsii Narcissus, "TUNIS"

TUNIS. (4a) A most beautiful, striking flower. Broad, white, overlapping perianth and wide-open, large cup of softest primrose becoming with age overlaid at the edges with a rare sheen of greenish gold. Outstanding exhibition variety and exceptionally fine for semi-shady situations in the garden. \$2.25 for 10; \$20.00 per 100. See illustration above.



Triandrus Hybrid, "MOONSHINE"

DIVISION 6

CYCLAMINEUS HYBRID

Includes all varieties obviously containing *Narcissus Cyclamineus* blood.

FEBRUARY GOLD. Beautiful golden yellow, exquisitely formed flower with reflexed perianth, which have aroused much interest in recent exhibitions. Commences flowering in late March. Very refined and beautiful. \$2.75 for 10; \$25.00 per 100.



Broadcasting Daffodils

*"On meadow green, by leafy hedge
In woodland shade and rushy sedge
By little lowly rills;
While yet the north wind blows his blast
Before the storm and sleet are past
Laugh out the Daffodils."*

—SHAKESPEARE



DIVISION 7

JONQUILLA AND JONQUILLA HYBRIDS

Includes all varieties obviously containing *Narcissus Jonquilla* blood.

GOLDEN SCEPTRE. Standard-bearer of the new type of hybrid which has become so popular because it is so much more gracefully proportioned than the giant Trumpet. A medium-sized perfectly built flower of deep Jonquil-yellow, 3 inches or so in diameter, the perianth star-shaped, just a shade lighter in coloring than the Trumpet, which is slightly rolled and flaring at the mouth like a miniature Trumpet. The entire flower is of the greatest substance, keeping in perfect condition exceptionally long, both in the garden and when cut. The foliage is attractive and the flowers are produced on tall tapering stems; very vigorous in growth and a strong propagator. "Golden Sceptre" should merit a place in every garden. Late flowering \$1.50 for 10; \$12.50 per 100.



Jonquilla Hybrid, "SIMPLEX"

JONQUILLA SIMPLEX. The true single sweet Jonquil, of light elegant growth, bearing out-of-doors in early May charming clusters of numerous small rich yellow flowers of delicious scent. \$1.25 for 10; \$10.00 per 100. *See illustration above.*

TREVITHIAN. A fine companion for "Golden Sceptre," blooming somewhat earlier; cluster-flowering type, well worth growing even if all the flowers came singly; perianth a clear butter-yellow with broad outer petals opening flat like those of a Trillium, with the narrow inner petals curving forward around the moderate sized shapely trumpet of deep jonquil-yellow, with anthers to match. A lovely flower in every way borne gracefully on a very tall stem above attractive green foliage; ideal for cutting as well as for garden display and a strong propagator. \$1.65 for 10; \$14.00 per 100. *See illustration, Color Guide.*



Double Poetaz, "CHEERFULNESS"

DIVISION 8—POETAZ

(Tazetta Hybrids)

They have several flowers on a single stem.

These plants are tall and vigorous growers, bearing heads of large, well-formed flowers, delightfully fragrant; they are much finer than the old *Polyanthus Narcissi*, and have the advantage of being much hardier. The following are the most satisfactory in this group.

CHEERFULNESS. The double "Elvira," a very pleasing double white Poetaz with good stem. A fine garden and show flower. \$1.40 for 10; \$11.50 per 100. *See illustration above.*

GERANIUM. This excellent Poetaz has a pure white perianth, well rounded and a cup of intense orange scarlet, four or more flowers to a stem. Late flowering. Excellent for the garden or cutting. \$1.35 for 10; \$11.00 per 100.

LAURENS KOSTER. Very handsome variety; perianth white with deep yellow cup. \$1.35 for 10; \$11.00 per 100.

ST. AGNES. Excellent for naturalizing. Pure white perianth with citron-yellow cup. The flower is beautifully shaped and it is a free flowering variety. \$1.40 for 10; \$11.50 per 100. *See illustration, Color Guide.*

DIVISION 9—POETICUS

(*The True Poet's Narcissi*)

Beautiful when naturalized under the Lilacs.

These "Poet's Daffodils" have snow-white petals and a small flattened eye or crown, yellow or lemon, edged more or less deeply with scarlet-crimson, and sometimes almost all scarlet. All are sweetly scented. "Poet's Narcissi" are thirsty souls. They are thankful for a little shade.

ACTAEA. The best of the Poeticus types. Very large, pure white perianth with deep orange cup. Very fine substance. A most beautiful exhibition flower. \$1.70 for 10; \$14.50 per 100. *See illustration, Color Guide.*

EDWINA. Purest white perianth, broad and overlapping petals, very flat cup, yellow-edged red. Fine form and substance highly recommended. Award of Merit. \$1.50 for 10; \$12.50 per 100.

RECURVUS. (*The Old Pheasant's Eye*). The latest Poeticus to come into flower. Pure white perianth; cup deep orange-red. The best for massing and naturalizing. \$1.35 for 10; \$11.00 per 100.

DIVISION 10—DOUBLE

For greatest perfection of bloom, the members of this group should be planted in slight shade.

MARY COPELAND. One of the famous varieties of the new semi-double type, this has been termed the most striking double in cultivation; the longer petals are pure cream with a golden ray down the center, interspersed with shorter petals of lemon and brilliant orange, giving a three-color effect; unsurpassed for the garden or the show bench. Very beautiful gardenia-shaped flower. \$2.75 for 10; \$25.00 per 100. *See illustration, Color Guide.*

TEXAS. A very fine variety. Tall growing and of splendid form. Pale yellow interspersed with brilliant orange. An exceptional show variety. \$2.25 per 10; \$20.00 per 100.

TWINK. Very attractive flower carried on tall strong stem, artistically formed. This most unusual variety, always standing upright, is semi-double and of a delightful combination of creamy yellow and soft orange. Very unique. \$1.75 for 10; \$15.00 per 100.

Special Collections of Scheepers' Narcissi

The bulbs supplied in these collections are of the same quality as when purchased by separate variety, EXTRA SELECTED DOUBLE-NOSED JUMBO BULBS. We handle only one grade, "The Cream of Holland's Crop."

ILLUSTRATED EXHIBITION COLLECTION

No. 1

Every one an exhibition flower. Highly recommended for flower shows or for select groups throughout the perennial border. See illustrations, Color Guide.

ABELARD (<i>Incomparabilis</i>)	MRS. R. O. BACKHOUSE (<i>Pink trumpet</i>)
GERTIE MILLAR (<i>Leedsii</i>)	PEGGY (<i>Barrii</i>)
LORD WELLINGTON (<i>Yellow trumpet</i>)	PRES. LEBRUN (<i>Bi-color trumpet</i>)
MARY COPELAND (<i>Double</i>)	ST. AGNES (<i>Poetaz</i>)
MILFORD HAVEN (<i>Incomparabilis</i>)	TREVITHIAN (<i>Jonquilla</i>)

100 EXTRA SELECTED DOUBLE-NOSED BULBS, 10 each of the above varieties, all separately labeled, with full planting and cultural instructions included with each order.

Catalog Value, \$22.20

SPECIAL COLLECTION PRICE, \$20.50

No. 1-A

50 EXTRA SELECTED DOUBLE-NOSED BULBS, same as above, only half the quantity, 5 each of the above varieties.

Catalog Value, \$11.10

SPECIAL COLLECTION PRICE \$10.50

GARDEN COLLECTION

No. 2

These fine varieties are all highly recommended for border planting or for naturalizing.

	Page		Page
CARLTON (<i>Incomparabilis</i>)	19	LADY DIANA MANNERS (<i>Barrii</i>)	20
CHEERFULNESS (<i>Double Poetaz</i>)	23	NETTE O'MELVENY (<i>Leedsii</i>)	21
EMPEROR (<i>Yellow trumpet</i>)	18	RECURVUS (<i>Poeticus</i>)	23
FIRETAIL (<i>Barrii</i>)	20	TWINK (<i>Double</i>)	23
JONQUILLA SIMPLEX (<i>Jonquil</i>)	22	YELLOW POPPY (<i>Incomparabilis</i>)	20

100 EXTRA SELECTED DOUBLE-NOSED BULBS, 10 each of the above varieties, all separately labeled, with full planting and cultural instructions included with each order.

Catalog Value, \$15.85

SPECIAL COLLECTION PRICE, \$14.00

No. 2-A

50 EXTRA SELECTED DOUBLE-NOSED BULBS, same as above, only half the quantity, 5 each of the above varieties.

Catalog Value, \$7.93

SPECIAL COLLECTION PRICE, \$7.25

"A perfect golden chalice Daffodil
Singing in the breeze in warmth and chill,
Symbol of all the lovely things to see
Within your close the blooming days to be."

—LYMAN

The Lure of the Little Daffodils

Beautiful in the Rockery and along the Woodland Paths

By "little Daffodils" are meant certain wild species of small stature that are all too seldom seen in gardens but that are, when given proper conditions, no more difficult to grow and to keep than are their prototypes of the later spring.

That they are not more grown is perhaps due to the entirely unfounded belief that prevails in many quarters that these little Daffodils are not hardy. This is not at all the case. They are quite hardy in the face of many degrees of extreme cold, but they do require certain conditions of soil and drainage if they are to be permanent and increase their kind as we would have them do. Moreover the bulbs are so small that they are frequently injured or dug out of the soil through thoughtless use of the hoe or spade in the part of the garden where they live—and this I believe to be the most frequent cause of failure with them. The rock garden offers them the most ideal home; here the soil may easily be mixed to their liking, and they may be assured immunity from interference by the mangling hoe. They may also be grown, however, in half shaded borders or on little shaded woody slopes under the eye of a loving and understanding caretaker, and where they are happy they increase and multiply with gratifying freedom.

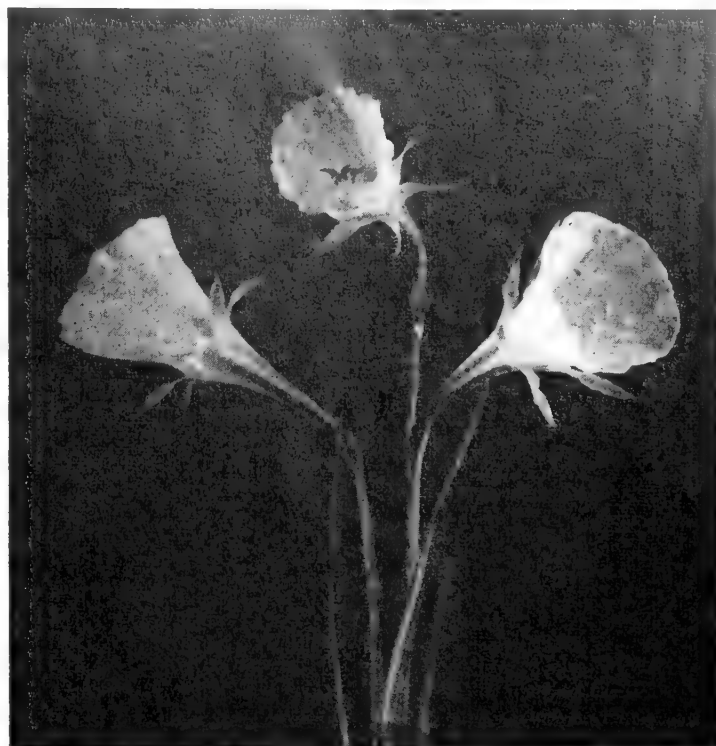
BULBOCODIUM CONSPICUUS. Flowers rich gold yellow, or hoop petticoat form and rush-like foliage; height, 6 inches. Prefers a dampish, sandy peat soil. \$1.50 for 10; \$12.50 per 100. *See illustration, this page.*

CYCLAMINEUS. The Yellow Cyclamen-flowered Daffodil. This beautiful little Daffodil is the earliest of all and is a charming, elegant little flower of very distinct form; the trumpet is rich yellow, straight and tube-like, elegantly serrated at the mouth, while the perianth is reflexed as in a Cyclamen. A valuable little species for pot culture, edgings, rock-work, and to naturalize in grass and shady nooks, or at the water's edge; it delights in a dampish sandy peat soil and should be left undisturbed for years. Height, 6 inches. \$1.90 for 10; \$16.50 per 100. *See illustration, Color Guide.*

NANUS. The smallest and dwarfest of all trumpet Daffodils, producing outdoors in early spring dainty little trumpet flowers of a rich full yellow; height about 3 inches. It likes a peaty soil and may be naturalized on rockeries or in grass, or grown in pots or pans. \$1.75 for 10; \$15.00 per 100.

TRIANDRUS ALBUS. An exquisitely beautiful little species, appropriately called the "Angel's Tears" Daffodil; it is of slender growth, and produces a cluster of elegant little creamy white flowers with globular cup and perianth reflexing as in the Cyclamen; height, 7 inches. The bulbs should be left undisturbed to establish themselves. \$1.65 for 10; \$14.00 per 100. *See illustration, Color Guide.*

W. P. MILNER. A miniature with white trumpet and perianth. Splendid for planting in the rock garden or for small pans. Extra heavy bulbs. \$1.50 for 10; \$12.50 per 100.



Narcissus, "BULBOCODIUM CONSPICUUS"

MINIATURE COLLECTION

No. 3

These exquisite Miniature Daffodils are especially adapted for planting in the rock garden or through the perennial border in spots where they can be readily seen at flowering time. The "Little Daffodils" are harbingers of spring with flowers in early April.

BULBOCODIUM CONSPICUUS
CYCLAMINEUS
NANUS
TRIANDRUS ALBUS
W. P. MILNER

50 EXTRA SELECTED BULBS, 10 each of the above varieties, all separately labeled, with full planting and cultural instructions included with each order.

Catalog Value, \$8.30

SPECIAL COLLECTION PRICE, \$7.50

No. 3-A

25 EXTRA SELECTED BULBS, same as above, only half the quantity, 5 each of the above varieties.

Catalog Value, \$4.15

SPECIAL COLLECTION PRICE, \$3.75



An exquisite planting of Naturalized Daffodils in the garden of one of our clients.

SCHEEPERS' SPECIALLY PREPARED MIXTURES FOR NATURALIZING

See illustration, Color Guide

These mixtures have been especially prepared by us to give a maximum performance in a long flowering period. They are all EXTRA SELECTED DOUBLE-NOSED BULBS—the best—and will give a marvelous display. Bulbs look best planted in drifts on hillsides, in the woodland along the paths, under trees out on the lawn, especially White Birch, also in large groups at the back of the perennial border. Fine for the cutting garden, too.

GOLD MEDAL MIXTURE NUMBER ONE. Containing all types to assure a flowering period of from 4 to 6 weeks. \$10.00 per 100; \$95.00 per 1,000.

GENERAL MIXTURE NUMBER TWO. A special mixture of all types, not as many varieties as contained in mixture number one, therefore not quite as long a flowering period. \$9.00 per 100; \$85.00 per 1,000.

SHORT CUP MIXTURE NUMBER THREE. This mixture contains only short cup varieties. All extra fine varieties. \$8.50 per 100; \$80.00 per 1,000.

(Quotations on larger quantities made upon request)

New Novelty Narcissi

(At Greatly Reduced Prices)

This superb collection is very distinctive and we feel honored in being able to exclusively introduce them to our clients this year. All have been tested and proven to be of very superior qualities. Special awards in Holland will bear out these facts.

DIVISION IA.—YELLOW TRUMPET

DOMINATOR. Enormous in size and with a good strong stem. Perianth is golden yellow and the cup is extra large of pure golden yellow, it is reflexed and serrated to add to its beauty. Award of Merit, Haarlem, 1948. \$4.00 each; \$37.50 for 10.

DIVISION IB.—WHITE TRUMPET

ADA FINCH. A most beautiful novelty of outstanding merit. Has received highest awards wherever exhibited. Perianth is overlapping, of fine substance and of purest white with a pure white trumpet. Very refined flower, an exhibition variety. \$3.50 for 10; \$32.50 per 100.

ROMAINE. Very large, pure white wide open trumpet. The trumpet is imbricated, creating a most artistic and refined appearance. Very fine novelty. Award of Merit, Haarlem, Holland. \$3.25 for 10; \$30.00 per 100.

DIVISION IC.—PINK TRUMPET

ROSY TRUMPET. A Backhouse variety that is well suited for the rockery or in intimate places in the garden. The trumpet is a very deep satin rose and the perianth is star shaped. A very beautiful variety. \$3.25 for 10; \$30.00 per 100.

DIVISION II.—INCOMPARABILIS

DAINTINESS. A lovely pure white round and flat perianth, with a nicely frilled yellow cup with deep orange-red margin. Extra fine novelty and a prizewinner. Award of Merit, Haarlem, Holland. \$5.25 for 10; \$50.00 per 100.

DUKE OF WINDSOR. Of all the new varieties this one is exceptional. A seedling of that garden favorite "John Evelyn" with all its fine qualities. Creamy yellow perianth 4 to 6 inches across with flat cup nearly 2 inches in diameter, densely frilled and of rich orange. One of the greatest Daffodils to date. Special awards wherever exhibited. \$7.75 for 10; \$75.00 per 100. *See illustration, Color Guide.*

MANGOSTEEN. (2a) A most outstanding exhibition flower. Broad overlapping perianth of a clear light yellow, contrasted with a broad, elegantly frilled, deep orange-red cup. Very large and commanding flower. \$3.00 for 10; \$27.50 per 100. *See illustration, Color Guide.*

DIVISION III.—BARRII

ARANJUEZ. This is a beautiful novelty. The bright yellow perianth is well rounded, the cup is short, deep yellow and delightfully edged red. Always a prizewinner and should be in every collection. \$2.25 for 10; \$20.00 per 100.

POMONA. Pure white, wax-like perianth, the petals overlapping to form a complete circle. Flat cup of citron-yellow flushed apricot and with a small orange margin. As the flower ages the cup changes from apricot to green, while the margin of orange deepens. The unique beauty is a sight to behold. Offered at a special low price this season. \$2.75 for 10; \$25.00 per 100.

DIVISION VIII.—POETAZ

CRAFORD. 4 to 5 exquisite blooms on a stem. Pure white perianth with a beautiful large orange cup. The earliest of all Poetaz to flower. It will force readily indoors planted in pebbles and water like "Paperwhites." Received two highest awards of Merit in Holland. \$5.25 for 10; \$50.00 per 100.

These beautiful Narcissi all highly recommended for planting in groups throughout the border. They are new and outstanding varieties and would be sure winners at Flower Shows.

For finest results use SCHEEPERS' BULB FOOD (See page 34)

Magnificent Lilies

IT WAS ONLY A FEW YEARS AGO that hybridists commenced to show active interest in the creation of new Lilies. At the summer show of the Massachusetts Horticultural Society held in Boston, we were awarded the large Gold Medal of the Massachusetts Horticultural Society for our Lily display, at the same time three of our Lilies were awarded "Awards of Merit" at this exhibition.

While there are a multitude of true Lilies in existence, only a small number have proven to be successful in the average American garden. For this reason we have confined ourselves to certain varieties. The varieties of new Lilies appearing in these pages have all been thoroughly tested. You may order them with the utmost confidence that they represent the best that have been produced to date.

JUNE-FLOWERING LILIES

AMABILE. An attractive species from Korea which has proved to be easy of cultivation in this country. It bears as many as six vivid red "Turk's Cap" flowers spotted with black. Height, 3 to 4 feet. June-flowering. Stem-rooting. Plant 6 inches deep in well drained, gritty soil with leaf mold. Enjoys partial shade. Extra selected bulbs, \$8.75 for 10; \$85.00 per 100.

BROWNII. (True.) One of the finest and most satisfactory Lilies. The flower stem is 3 to 4 feet tall, is tinged with reddish brown, and the foliage is long, narrow, gracefully curved, and of a deep green tint. The trumpet-shaped flowers are large, well formed, and of great substance, lasting a long time when cut. These massive, delightfully fragrant flowers open pale yellow, fading to a creamy white of great purity. The outside of the trumpets is streaked with reddish brown. Plant 8 inches deep in light, sandy loam or peat and give good drainage; in open or semi-shade. A grand plant for light soils, being content even with pure sand and a little manure; yet succeeds in stiffer land or in heavy soil. Stem-roots; fall planting; June-July flowering. Extra heavy, selected bulbs, \$2.00 each; \$19.00 for 10.

CANADENSE. Broad, funnel-shaped, drooping flowers, varying from yellow to orange; spotted inside; graceful and pretty. Fine among azaleas, in damp peat beds or leaf mold. Excellent for naturalizing. Base-roots; fall planting, 5 inches deep; June-July flowering. Extra selected bulbs, \$4.50 for 10; \$42.50 per 100. A smaller, good, flowering bulb, \$3.75 for 10; \$35.00 per 100.

CANADENSE FLAVUM. Broad funnel-shaped drooping flower on long stalks about 3 feet high. Almost bell-shaped with the ends of the petals slightly turned back. Golden yellow, handsomely spotted inside. Graceful and pretty. Fine among azaleas, in damp peat or very light loam or leaf mold. Excellent for naturalizing in thin woodland. Base-roots; fall planting, about 5 inches deep. June-July flowering. Selected bulbs, \$4.50 for 10; \$42.50 per 100. A smaller, good, flowering bulb, \$3.75 for 10; \$35.00 per 100.

CANDIDUM. (Ascension or Madonna Lily). The Lily of antiquity was undoubtedly *L. candidum*. Maeterlinck refers to this loveliest of Lilies when he says: "The great white Lily, the lord of the gardens, the only authentic prince among all the commonalty issuing from the kitchen garden, the ditches, the copses, the pools and the moors, among the strongers come from none knows where, with his invariable six-petaled chalice of silver; whose nobility dates back to that of the gods themselves, the immemorial Lily raises his ancient sceptre, august, inviolate, which creates around it a zone of chastity, silence and light." Be very careful that you plant the right type of this beautiful Lily. There is an early-flowering variety which is grown in the south of France. These should be used exclusively for forcing; if planted in the garden they are prone to disease and are unsatisfactory.

The true type to use for the garden is the *Lilium Candidum* from the north of France. This bulb is easily recognized by its composition of white fleshy scales, while the southern France sort has very light pink, loose scales.

This Lily, of all Lilies, should be planted in quantity in every garden—emblem of purity, the inspiration of poet and painter for centuries, and a benediction in the garden when June is melting into July—its delicious fragrance is not equalled by any other Lily. To create a beautiful picture, plant strong clumps of *Delphinium Belladonna* or English Hybrids of *Delphiniums*, in light blue varieties with these Madonna Lilies. We receive a limited number of bulbs of enormous size which we offer under the name of "Special Stock," \$13.00 for 10; \$62.50 for 50; \$125.00 per 100. Extra heavy, selected bulbs, \$9.00 for 10; \$43.00 for 50; \$85.00 per 100. Selected, slightly smaller bulbs, \$6.00 for 10; \$26.00 for 50; \$50.00 per 100. *See illustration, Color Guide.*

CHALCEDONICUM. Grows to a height of 3 to 4 feet. Flowers in loose clusters, small but symmetrical in shape, with recurved petals; bright red and waxlike. Does splendidly in properly drained heavy soil and even in clay; should not be disturbed when once established. Often flowers very poorly the first season, but nothing is more lovely than a clump of this Lily in bloom when established. Base-rooting; fall planting, 5 inches deep; June-July flowering. Extra Selected bulbs, \$2.50 each; \$22.50 for 10; \$197.50 per 100. A smaller, strong flowering bulb, \$1.75 each; \$15 for 10.

CROCEUM. (True.) A favorite with those who like its color. Bright orange flowers are carried upright; very hardy, thriving in any soil in a sunny garden border or among shrubs in half shade. Is at its best towards the end of June and early July. It seems to bear its well filled heads of great orange cups as willingly in a city plot as in a country garden; while its leaves show by their deep green color, and the whole plant by its robust health and vigor, how little it worries about conditions of town life that are so fatal to many plants. Stem-rooting; fall planting, 5 inches deep. True stock. Extra selected bulbs, \$7.00 for 10; \$67.50 per 100.

ELEGANS IN VARIETY. (Thunbergianum). The number of forms and varieties is legion, varying in color from pale lemon-yellow to rich orange-brown, embracing various tints of orange to almost red and from soft apricot to approaching crimson; varying also in flowering season. A copious planting of these in mixture through a colony of funkia or white heuchera produces a most effective display, continuous for a considerable period. Stem-roots; plant in fall or early spring, 8 or 9 inches deep, in sunny situation; June-July flowering. These lilies are so frequently mixed in their colors that we have decided to offer them in mixed varieties. Extra heavy bulbs. \$6.25 for 10; \$60.00 per 100.

HANSONII. In every way most desirable, not particular in its cultural requirements and extremely handsome in flower; does well in light loam. Plant among shrubs and low plants to protect young shoots, this being one of the earliest Lilies to appear in spring. Does as well in thin woodland as it does in the border. Protect from full sun, otherwise the flower will bleach a little. The stem reaches a height of 4 to 5 feet, carrying blossoms 2 inches across, regularly reflexed, the petals being of a bright orange-yellow, spotted more or less with brown; of a waxy texture. Stem-roots; fall planting only, 10 inches deep; June-flowering. Extra heavy selected bulbs, \$9.75 for 10; \$95.00 per 100. *See illustration, Color Guide.*

HUMBOLDTII MAGNIFICUM. Stout, erect stem, with whorls of leaves at regular intervals. Numerous drooping flowers borne in loose, triangular clusters of brilliant golden yellow, spotted with purple on the reflexed petals; showy; prefers deep, peaty soil, but will grow in any well drained soil, which must be deep, for the roots go straight down. It produces a splendid flowering plant; 5 feet high. Base-roots; fall planting only, 4 inches deep; June-July flowering. Extra heavy, selected bulbs, \$9.00 for 10; \$87.50 per 100.

JAPONICUM. (Formerly listed as Kramerii.) This is one of the few "pink" Lilies of our gardens, and a very lovely thing it is. The flowers are carried horizontally on stems 3 feet high. Somewhat capricious in its requirements. The soil generally advised for it is a light loam, while some claim that the color is finest in peat. It is a Lily so beautiful and of a color so lovely and unusual that it is worth taking pains with. It roots from the stem as well as from the bulb, and therefore should be planted rather deeply, fully 8 inches. It has been known to give as many as seven blooms to a stem, though one and two flowers to a stem the first year is usual. The funnel-shaped, finely formed flowers are 6 inches or more in length, and as much across, of a beautiful pink color often shaded blush. Late fall or early spring planting; stem-roots. We recommend that these Lilies be planted in pots and started in cold frames; then plunge later, pot and all,

in the places set aside for them, giving them a little protection from the midday sun. Extra-heavy, selected bulbs, \$9.00 for 10; \$85.00 per 100. *See illustration, Color Guide.*

MARTAGON ALBUM. There are few more beautiful things than the white Martagon Lily when seen in its best form and thriving in such a way as to reveal its full beauty. The appearance of these Lilies is graceful and delightful in the extreme. Rising on slender stems, 4, 5, and sometimes nearly 6 feet high, the numerous drooping, waxlike, white "Turk's Cap" flowers, with yellow-tipped stamens, look inexpressibly fascinating. The small flowers are symmetrical in shape, with reflexed petals, and are borne in terminal, pyramid-shaped clusters. The white Martagon appears to flourish best where its lower growths have the benefit of the partial shade afforded by herbaceous plants or shrubs, and it never looks better than when springing through and towering over some of moderate vigor. They like loamy soil, but they are finest in cool, damp places. The Martagon Lily does wonderfully well in the shade of trees, and the white variety is no exception in this respect. Few, if any, stem-roots; fall planting only, 6 inches deep; June-flowering. Extra heavy, selected bulbs, \$1.25 each; \$11.00 for 10; \$105.00 per 100.

MARTAGON DALMATICUM. Strong growing, stately Lily; the stems rise as tall as 6 feet, with correspondingly large flower cluster, once the plant is happily established. The flowers are a deep vinous purple of waxy texture and shine as if varnished. Base-roots; fall planting, 6 inches deep; June-flowering. Extra heavy, selected bulbs, \$9.75 for 10; \$95.00 per 100.

MAXWILL. A new hybrid, from a cross between L. Leichtlini (var. "Maximowczi x Willmottiaë.") In its general habit and pyramidal inflorescence this hybrid is similar to L. Willmottiaë, but the blooms are lighter in color, the stamens are longer and the anthers are orange-red. The spike is tall and very strong, but gracefully slender, bearing as many as thirty or more large recurving flowers. Height, 6 to 7 feet. Comes into flower in late July. A splendid Lily acclaimed by Lily specialists the world over. Free flowering and remarkably free from the ordinary Lily diseases. Of easiest culture. Stem-rooting. Plant 6 to 8 inches deep. Awarded the Silver Banksian Medal by the Royal Horticultural Society, 1933. Extra heavy, specimen bulbs, \$1.00 each; \$8.50 for 10. Smaller, good flowering bulbs, \$7.00 for 10; \$67.50 per 100.

MONADELPHUM SZOVITZIANUM. One of the finest Lilies and not difficult to grow. It reaches a height of 4 to 6 feet. The stems are stout and the numerous leaves are pale green. As many as twenty flowers are sometimes borne on one stem of established bulbs, forming pyramid-shaped clusters.

The flowers are drooping, with the segments of a thick wax-like texture, regularly recurved. They vary from a pale citron-yellow to deep yellow. The first season planted it sometimes does not show much growth above the ground, but the following season it will grow freely.

Once established, it dislikes being tampered with. This beautiful and fine Lily of gardens must not be confused with a variety called Monadelphum, which is collected in Russia and is inferior to Szovitzianum. Base-roots; fall planting only, 4 inches deep; early June flowering. Extra heavy, selected bulbs, \$2.00 each; \$17.50 for 10. *See illustration, Color Guide.*

TENUIFOLIUM. A charming little early-flowering Lily with strongly recurved petals of waxy texture; deep scarlet. A gem in the rock garden as in the border. Likes a cool, damp, loamy soil and partial shade. Stem-roots; fall planting only, 7 inches deep; early June-flowering. Extra selected bulbs, \$3.25 for 10; \$30.00 per 100. A smaller, good, flowering bulb, \$2.75 for 10; \$25.00 per 100.

TENUIFOLIUM, GOLDEN GLEAM. A beautiful, robust, and floriferous hybrid of this type, bearing numerous flowers of a pure apricot-yellow. A very elegant and fine plant. Flowers splendidly every year and is always much admired. Stem-roots; fall planting only, 7 inches deep; early June-flowering. Extra heavy, selected bulbs, \$3.75 for 10; \$35.00 per 100. A smaller, good, flowering bulb, \$2.75 for 10; \$25.00 per 100.

TESTACEUM. This beautiful Lily is also known as "Excelsum" and as the "Nankeen Lily." One of the choicest border Lilies. The dull apricot tone, set off by orange anthers, put it in a color class by itself. There is a tender warmth in the color of this charming Lily. It is the most graceful of all. It often grows from 5 to 6 feet high when established, and the horizontally poised heads of drooping flowers wave in a breeze in a graceful way. It is beautiful for every kind of garden use but loses effect, because of its tender coloring, if planted in a mixed border with brighter flowers. In combination with light shaded Delphiniums or with the Madonna Lily, which it resembles in the disposal of its leaves on the stem and in a certain grace of habit, it is most effective. It is also a good Lily for pot culture. It has the texture of *Lilium Candidum*, with reflexed petals. It does well under the same conditions as *L. Candidum*, and should be planted the same depth, 2 inches below the surface of the ground. It flourishes best in loam and semi-shade. Base-roots; fall planting only, 2 inches deep. June-July flowering. Extra heavy, selected bulbs, \$2.00 each; \$20.00 per 10. See illustration, *Color Guide*.

UMBELLATUM LILIES

This group of Lilies consists of hybrids from *Lilium Elegans*; they are free-flowering with large umbellate heads of flowers, easily grown. Stem-rooting. Plant 4 inches deep. Fall planting only; June-flowering.

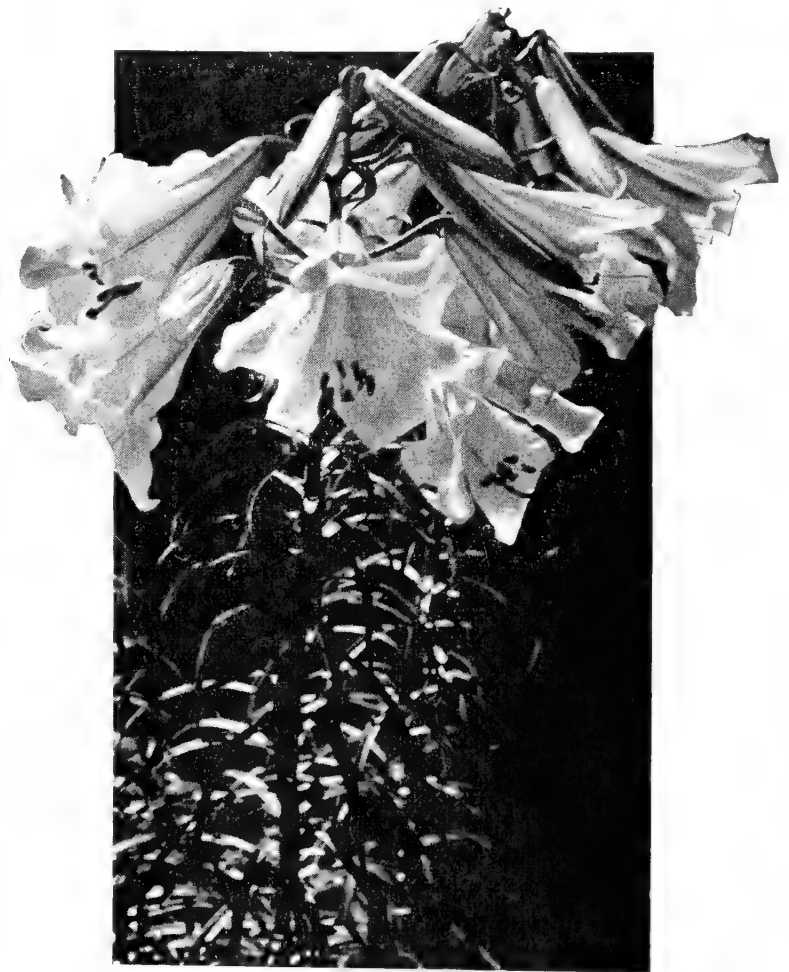
UMBELLATUM, APRICOT. A very beautiful and distinct variety. The flowers are of a lovely shade of delicate apricot-yellow borne in large heads. This Lily is at its best when grown in a cool, shady position. Extra selected bulbs, \$6.25 for 10; \$60.00 per 100.

UMBELLATUM GRANDIFLORUM. A very free-flowering Lily of easy culture. Carries large umbellate heads of light orange-red flowers. Extra selected bulbs, \$5.25 for 10; \$50.00 per 100. A small, good, flowering bulb, \$3.75 for 10; \$35.00 per 100.

UMBELLATUM, ORANGE TRIUMPH. A superb Lily with very large heads of massively shaped flowers, richest glowing orange at the center, deepening in shade towards the edge of the petals and slightly spotted with blackish purple. The flowers are very large, with broad, smooth petals, having a very finished appearance. Extra selected bulbs, \$6.25 for 10; \$60.00 per 100.

UMBELLATUM SPLENDIDUM. A magnificent variety growing 2 to 2½ feet high, with large umbellate heads of brilliant vermilion-orange flowers shading to a rich coppery crimson tone. As a border plant the color effect is most striking and unusual. The flowers are unspotted or nearly so and the points of the petals are slightly reflexed. Extra selected bulbs, \$6.25 for 10; \$60.00 per 100.

WASHINGTONIANUM. A beautiful Lily with fragrant, drooping white flowers on a stem 4 to 5 feet in height. The reverse of the flowers has a tinge ranging from light pink to a deep wine color. This Lily requires a thoroughly drained situation; it does exceedingly well when once established. Stem-rooting; June-July flowering; plant in fall only, 10 inches deep. Extra selected bulbs, \$1.50 each; \$12.50 for 10; \$110.00 per 100.



Lilium, GEORGE C. CREELMAN (See page 31)

For finest results use SCHEEPERS' BULB FOOD at planting time and throughout the growing season. (See page 34)

JULY-FLOWERING LILIES

CENTIFOLIUM. Found in a cabbage garden by the late Mr. Reginald Farrer, in his first expedition to China. In general appearance it resembles a huge *Lilium Sulphureum* or *Browni*, with long, tubular, white flowers, colored and streaked externally with brown and flushed internally with yellow at the base of the trumpet. This is a giant among Lilies, and has proved quite hardy. Fall planting only, 8 inches deep; July-flowering. Extra selected bulbs, \$8.00 for 10; \$75.00 for 100. *See illustration, Color Guide.*

DAVIDII (True). A fine Lily from western China, very graceful, with a tall slender stem, strong and erect and bearing up to twenty or more bright cinnabar-red, tiger-like flowers, copiously spotted with glossy black. It combines a very refined and elegant appearance with a splendid constitution and is one of the best summer-flowering Lilies we have. Height, 5 to 7 feet. Late July-flowering. Stem-rooting. Plant in either a sunny or partially shaded position, 6 to 8 inches deep, in well-drained, sandy loam with leaf mold. Extra selected bulbs. \$1.25 each; \$11.00 for 10.

GEORGE C. CREELMAN. One of the outstanding introductions of recent years. The *true* Creelman Lily. Beautiful—permanent—prolific—hardy—dependable—easy to grow. Award of Merit, Royal Horticultural Society, 1934. This Lily is not to be confused with “seedlings” of the Lily, sometimes offered as *Lilium Creelman*. “Creelman” is beautiful in form and color, and artistic, while sturdy, virile, permanent, dependable and disease resistant. The long-lasting flowers, which are very large, often measuring 8 inches in length, carried in large numbers on strong, long stems, with fine foliage, resemble a Regal Lily of the best and truest type, with the bronzy tones more pronounced and a more intense yellow in the throat. It blooms 2 weeks after the Regal Lily, many flowers opening at one time. We have counted 35 perfect flowers and buds on a 6-foot spike. Very strong and vigorous grower, the entire plant has an appearance of well-being. We have found this Lily to be entirely free from ordinary diseases to which so many other Lilies are subject. Easiest of culture and one of the hardiest. Stem-rooting. Plant 10 inches deep. Extra heavy, specimen bulbs, limited stock, \$2.25 each; \$21.00 for 10. Selected strong flowering bulbs, \$1.50 each; \$14.00 for 10. *See illustration, page 30.*

PARDALINUM GIGANTEUM MAGNIFICUM. Also known as “The Sunset Lily.” A variety recently re-introduced, which we can recommend very highly. The very strong spikes reach a height from 6 to 8 feet with very large flowers, the outer petals being a scarlet-orange, the inner half, bright orange, thickly dotted purplish brown. Extra selected bulbs, \$7.50 for 10; \$72.50 per 100.

REGALE. (The Regal or Royal Lily). *Lilium Regale* is truly a royal Lily, worthy of a place in every garden; it is a lover of loam and sunshine. A vigorous grower with sturdy stems, 4 to 6 feet high, densely covered with

long, linear-lanceolate foliage. Center of flower flushed with yellow, shading to white at the outer edges; externally the flowers are streaked with brown on the “ribs,” shaded through the almost translucent petals with a delightful pearly tint; the contrast between the rich wine color of the reverse of the petals and the gold shading of the throat is extraordinarily beautiful.

The Regal Lily is very floriferous and, when thoroughly established, bears as high as eighteen and twenty flowers during the season. Like most other Lilies, it should be planted deep—at least 9 inches, should have good drainage, and when growing should be watered copiously with liquid manure as they are gross feeders. They succeed in any good rich garden soil.

In the herbaceous border, planted in clumps of five to twenty-five bulbs, they are especially attractive among the delphiniums and other July-flowering perennials. Where these magnificent Lilies are planted in quantity, the air in the cool of the morning and in the evening is laden with a delightful perfume, exhaled from every blossom.

Jumbo Bulbs, 13 inches in circumference and larger, \$1.50 each; \$12.50 for 10; \$110.00 per 100.

Extra selected large bulbs, 11 to 13 inches in circumference, \$1.25 each; \$10.00 for 10; \$97.50 per 100.

Large size good flowering bulbs, 11 inches in circumference, \$1.00 each; \$9.00 for 10; \$85.00 per 100.

Smaller size, 9 to 10 inches in circumference, \$7.00 for 10; \$65.00 per 100. *See illustration, Color Guide.*

SUPERBUM. The color in this desirable Lily varies from pale yellow to deep crimson, more or less spotted on the inner surface of the petals. Valuable as a late-flowering Lily. Fine, established specimens often reach a height of 10 feet and more, bearing from twenty to thirty elegantly reflexed flowers, arranged in large cone-like clusters. Does well in ordinary garden soil if given good drainage, partial shade and a ground cover; prefers a damp situation. Plant in large clumps or masses. Base-roots; fall planting only, 4 inches deep; July-flowering. Selected bulbs, \$5.00 for 10; \$47.50 per 100. A smaller, good-flowering bulb, \$4.00 for 10; \$37.50 per 100.

WILLMOTTIAE. This beautiful Lily was introduced from China and has proved to be of strong and vigorous constitution. Ordinarily it grows to a height of 4 feet and bears as high as 20 flowers on a stem. It has been known to reach a height of 6 to 7 feet, carrying as many as 40 or more flowers on a stem when established. The flowers are 3 inches across, of a vivid orange-red; the recurved petals are covered with numerous small brown spots. The slender foliage is a deep rich green and the whole plant is of a distinct and graceful habit. It is so floriferous as to need staking if planted in a windy location. Stem-rooting; plant in fall or early spring, 8 inches deep; July-flowering. Extra strong bulbs, \$6.00 for 10; \$57.50 per 100. Smaller, good flowering bulbs, \$4.50 for 10; \$42.50 per 100.

AUGUST-FLOWERING LILIES

AURATUM

AURATUM MACRANTHUM (Platyphyllum). This is the robust growing form; the stem is stout and attains a considerable height, the leaves are broad; enormous flowers, white, richly spotted yellow. Undoubtedly the choicest of all, and in our opinion, superior to the type.

Through our connections with the American Government in control in Japan we have been successful in securing the same special strain of bulbs that we handled prior to the war. They are all especially selected for us and are free from disease.

Some extra JUMBO size bulbs are available at very special prices:

Mammoth Size 14 to 20 inches in circumference (Very Limited) \$2.10 each, \$20.00 for 10.

Jumbo Size 13 to 15 inches in circumference (Limited) \$1.75 each, \$17.00 for 10.

Extra Large Size 11 to 13 inches in circumference \$1.25 each; \$10.00 for 10; \$97.50 per 100.

Large Size 10 to 11 inches in circumference \$1.00 each; \$9.00 for 10; \$87.50 per 100. *See illustration, Color Guide.*

BATEMANNAE. Clear, glowing apricot flowers, from 3 to 4 inches in diameter, on stems about 3 feet high, bearing from 4 to 6 flowers in a terminal umbel or cluster; free of spots; is at its best early in August. \$8.75 for 10; \$85.00 per 100.

HENRYI. A splendid garden plant, vigorous in its growth, failing very seldom. One of the best border Lilies, reaching over 8 feet and more in height when established, and bearing more than twenty flowers of a rich, deep, orange-yellow. Fine foliage. Does well in both light and heavy loam, but prefers soil with a mixture of peat. Plant very deep, 10 inches. A partially shaded place, sheltered from high winds, suits it best. It is a beautiful Lily. Stem-roots; late fall or early spring planting. August-September flowering. Extra selected bulbs, \$1.25 each; \$10.00 for 10; \$97.50 per 100. Selected bulbs, \$5.75 for 10; \$55.00 per 100.

*"All still and Lily-scented,
The garden seemed to say:
'Oh, weary one, come, enter
And cast your cares away.'
For tall and white the Lilies
Like guardian angels stood,
To ward away the evil
And encompass the good.
To turn away thoughts world-wise,
To want and see and hear
The God-like, silent message
Of things that bless and cheer."*

—LYMAN

SPECIOSUM

It is our opinion that this is deservedly one of the greatest favorites as a border plant, of daring as well as beautiful form. The petals are well rolled back and are handsomely spotted, often branded with distinct color. The style is thrown out in a curved line of much grace and strength. The stamens boldly diverge from it. The anthers are conspicuous for their size, color and extremely delicate poise. Must be planted deeply because it forms an unusually strong mass of stem roots.

SPECIOSUM ALBUM NOVUM. This form is distinct from the "Krätzeri." Flowers are large, of the purest white, with beautiful golden yellow anthers. Stem-roots. August-September flowering. Available for planting in late November or early spring. Extra selected bulbs, \$2.25 each; \$22.00 for 10; \$210.00 per 100. Smaller, good flowering bulbs, \$1.75 each; \$15.00 for 10; \$140.00 per 100.

SPECIOSUM MAGNIFICUM. Rich ruby-carmine, margined white; stout of substance and broad of petal. Improved "Rubrum." This variety stands out prominently on account of its vigorous growth as well as the size and depth of coloring of the blooms. Stem-roots, August-September flowering. Available for planting in late November or early spring. Jumbo bulbs. \$1.25 each; \$12.00 for 10; \$115.00 per 100. Extra selected large bulbs. \$1.10 each; \$10.00 for 10; \$97.50 per 100. Small but good flowering size bulbs. \$7.50 for 10; \$72.50 per 100. (For the finest effect we recommend the large size bulbs.) *See illustration, Color Guide.*

SPECIOSUM MELPOMENE. The delicate beauty of the lighter colored flowers makes this variety most desirable. Deep carmine-crimson, intensified by a narrow margin of white. Stem-roots, August-September flowering. Jumbo bulbs. \$1.25 each; \$12.00 for 10; \$115.00 per 100. Extra selected large bulbs. \$1.10 each; \$10.00 for 10; \$97.50 per 100. Small but good flowering size bulbs. \$7.50 for 10; \$72.50 per 100. (For finest effect we recommend the large size bulbs.)

TIGRINUM FLORE PLENO. The double form. The best example of a double Lily we have. Extra selected bulbs, \$5.25 for 10; \$50.00 per 100.

TIGRINUM SPLENDENS. The finest form of Tiger Lily with the richest color. The large, shapely flowers are of a rich, dark, salmon-orange spotted with glossy black. This Lily is very robust in habit and of easy culture. Stem-roots; late fall or early spring planting. 10 inches deep; August-September flowering. Extra selected bulbs, \$5.25 for 10; \$50.00 per 100. A smaller, good, flowering bulb, \$4.25 for 10; \$40.00 per 100.

New and Rare Lilies

THE FAMOUS BACKHOUSE HYBRID LILIES

Resulting from crossing *Lilium Hansonii* with the various types of *Lilium Martagon*. The late Mrs. R. O. Backhouse developed this wonderful new strain and garden lovers have much to thank this lady for, for her development of these very beautiful Lilies. They are for the gardener who wishes to surround himself with the choicest flowers and plants in the creation of an "exclusive garden."

MRS. R. O. BACKHOUSE. A tall and stately Lily growing upwards of five feet high, bearing from fifteen to thirty flowers of an orange-yellow tone, lightly spotted with purple. The general form of the flower is somewhat reminiscent of *Hansonii*, but the petals are wider and stouter and the flower does not reflex so much as in *Martagon*; this Lily is most distinct in character and we look upon it as one of the finest hybrids yet raised. Fall planting, about 8 inches deep; June-flowering. A few specimen bulbs, \$7.50 each. Extra-selected bulbs, \$4.00 each.

SCEPTRE. One of the best of the seedlings raised by Mrs. Backhouse and one of the last to flower. As grown in our trial garden the plants were over 6 feet in height. This variety is very vigorous and free-flowering. It must be seen growing to appreciate its effectiveness. The flowers, which are star-shaped, are pinkish buff and freely covered with small dark spots. When better known it will prove a great acquisition to the hardy flower border. Fall planting, about 8 inches deep; June-flowering. A few specimen bulbs, \$7.50 each. Extra-selected bulbs, \$6.50 each.

BACKHOUSE HYBRID LILIES IN MIXTURE. There is such a great variation in lovely shadings and forms that all cannot be named. We now offer a superior mixture, consisting of carefully selected colorings; a splendid investment that will increase in value and beauty from year to year. Only limited stock is available and we recommend that reservations be made early. Extra-selected bulbs, \$40.00 for 10.

OTHER NEW AND RARE LILIES

CONCOLOR SCHEEPERS' IMPROVED STRAIN.

Offered for the first time this season and considered a great improvement over the Korean type. The scarlet red blooms are star shaped and held upright on strong, wiry stems. Grows 3 to 4 feet high with 12 and more nicely placed blooms on each stem. An unusual Lily for two reasons: the blossoms are not recurved but star shaped and they are held upright rather than the pendant type of Lily. Plant 5 inches deep. July-flowering. Offered at a very special price this season. Extra-selected bulbs, \$1.00 each; \$9.00 for 10; \$75.00 per 100.

GRACE MARSHALL. A beautiful novelty, the result of crossing *Lilium Willmottiaë*, and a seedling of *L. dauricum*. Height up to 5 feet. Received Award of Merit from the Royal Horticultural Society of England. A strong and vigorous grower, very floriferous, with as many as thirty-two large blooms carried on one plant when established. The color is between a grenadine-red and scarlet with brown spots which extend to within an inch of the tips of the broader segments and becoming more numerous towards the center. The outside of the petals is brownish in appearance. The crimson shadings in the center of the flower with grayish "fuzz" give this flower a very unusual appearance. June-flowering. Stem-rooting. Plant 6 to 8 inches deep. Extra-selected bulbs, \$3.00 each; \$25.00 for 10.

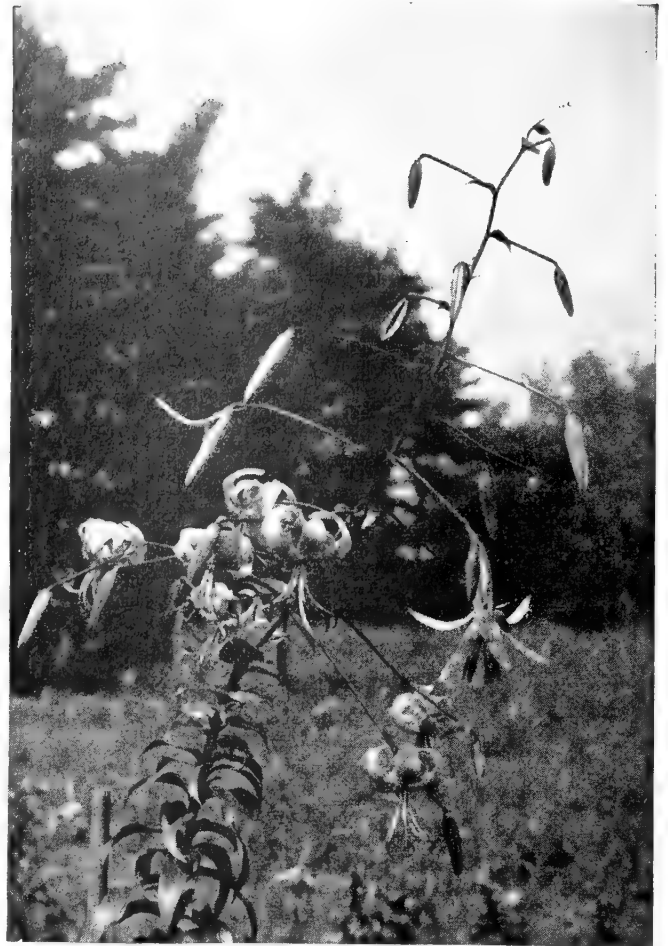
GREEN MOUNTAIN SELECT HYBRIDS. These fine trumpet hybrids were produced by that great Lily enthusiast the late Dr. L. Horsford Abel; they consist of the finest selection of white trumpet of his time. The flowers vary greatly, some being long and tubular and others short and wide open; the flowers likewise vary in color, being white, cream, yellow, orange or greenish throats; the outside of the flower is very similar to the *Regale*. The extended flowering period is also another fine quality. They remain in flower 4 weeks and more. Heights vary from 4 to 6 feet, with many flowers per stem. Plant 10 inches deep. July, August flowering. Extra-selected bulbs, \$1.85 each; \$16.00 for 10; \$155.00 per 100.

DAVIDII (True). A fine lily from western China, very graceful, with a tall slender stem, strong and erect and bearing up to twenty or more bright cinnabar-red, tiger-like flowers, copiously spotted with glossy black. It combines a very refined and elegant appearance with a splendid constitution and is one of the best summer-flowering lilies we have. Height, 5 to 7 feet. Late July-flowering. Stem-rooting. Plant in either a sunny or partially shaded position, 6 to 8 inches deep in well-drained sandy loam with leaf mold. Extra-selected bulbs, \$1.25 each; \$11.00 for 10.

HENRYI "JOHN T. SCHEEPERS." This variety was exhibited at the Royal Horticultural Society Lily Conference in London as *Lilium Henryi* (var. "Citrinum"), and created a sensation at that time. It is a cross between *Lilium Henryi* and *Pardalinum Roezlii*. It is the most refined citron yellow with bright red stamens. The color contrast between the stamens and the flower is very pleasing. The flowers are larger than *Lilium Henryi*, but otherwise it has the same growth and habit and blooms at the same time. Stem-rooting. Plant 10 inches deep. Extra-strong, selected bulbs, \$10.00 each; smaller, flowering bulbs, \$5.00 each. See illustration.

PRIDE OF CHARLOTTE. This is undoubtedly one of the finest white trumpet Lilies to date. The flowers are extra large pure white in the throat and stained bronzy gold on the outside. 5 to 6 feet high and very floriferous. July and August flowering. Plant 10 inches deep. Extra selected bulbs, \$1.50 each; \$13.50 for 10.

LILLIAN CUMMINGS SCHEEPERS' IMPROVED STRAIN. Very beautiful novelty resulting from crossing *Lilium Willmottiae* with a seedling of *L. dauricum*. Very strong and vigorous grower, reaching a height of 5½ feet. Large flowers of a clear grenadine-red with small dark brown spots with the outside of petals of a paler hue. The individual flowers are slightly smaller than *L. x Grace Marshall* and there is a distinct division between the segments. Received Award of Merit of the Horticultural Society of New York. June-flowering. Stem-rooting. Plant 6 to 8 inches deep. Extra strong, selected bulbs, \$2.00 each; \$18.00 for 10; \$175.00 per 100.



Lilium, HENRYI "JOHN T. SCHEEPERS"

SCHEEPERS' BULB FOOD

for
GLADIOLI
MONTBRETIAS
IRISES
LILIES
DAHLIAS
*TULIPS
*NARCISSI
*and All Other
Bulbous Plants

*Spread some "Scheepers' Bulb Food" over the ground before you cultivate for the first time in Spring, then work it in as you cultivate. Repeat this performance when the flower buds appear. These two feedings will result in exhibition blooms at flowering time. For naturalistic planting we suggest a third feeding in September.

We have been asked by many friends to tell them what sort of plant food we use in growing our choice bulbs. We told them we had a special formula that gave health and long life to these plants. A few prevailed upon us to make up a quantity and let them try it in their own gardens. We did.

The extraordinary success that these gardeners met with and the enthusiasm resulting from it, have encouraged us to offer all our friends and patrons a chance to use the very same plant food in their attempt at producing healthy, luxuriant flowers with strong stems and exquisite colorings.

And so we present this opportunity for you to order some of SCHEEPERS' BULB FOOD, and we recommend that you try it with your next planting. It is almost entirely composed of organic matter and may be used with absolute safety in connection with the planting of bulbs at any time, in any soil, or with any other plants. It is also economical—a teaspoonful for each bulb is the average requirement.

A good plan is to spread a small quantity over the area where the bulbs are planted or around the growing plants before you cultivate. Worked into the soil in this way will show splendid developments in plants and flower buds.

We are sure that if you take advantage of this offer you will find it a very happy investment. (Directions for use contained in each bag or can.)

5-lbs. (good for approximately 375 bulbs), \$1.85
25-lbs. (good for approximately 1250 bulbs), 3.50
100-lbs. (good for approximately 5000 bulbs), 9.50

Take Advantage of the Large Economical Sizes—Will not Spoil in Storage

Delphinium

The stately Delphinium has a place in everyone's garden. Planted as a background for the Madonna or the Regale Lily, it creates a color combination that is most desirable. They are equally as effective in a border planting, along a hedge or in clumps in the rear of the perennial garden. Five to six feet high.

Our collection of choice Hybrids is the result of many years of careful selection in the nursery.

The perennial Larkspur of today is one of the most beautiful flowers. None exhibits more splendidly the various shades of blue, the color of which we have so little amongst flowers in our garden. There is azure blue, gentian blue, the shade of sapphire and the hue of imperial purple. The blue color, in whatever shade, is ever welcome in the riot of summer flowers, because nearby its effect is coolness while at the far end of a view it increases the apparent distance. (*Illustration Color Guide.*)

Hybrids

SCHEEPERS' HYBRIDS. Exhibition quality blooms in finest mixture. Strong, field-grown clumps, \$1.00 each; \$9.00 for 10; \$87.50 per 100.

SCHEEPERS' HYBRIDS IN SEPARATE SHADES. Light, dark, mauve and pure white. Strong, field-grown clumps, \$1.25 each; \$11.00 for 10; \$95.00 per 100.

PACIFIC COAST STRAIN. This new California strain contains many prize winners and has become very popular in the past few years.

Finest Mixture. Strong, field-grown clumps, \$1.00 each; \$9.00 for 10; \$87.50 per 100.

Separate Shades. Light, dark, mauve and white. Strong, field-grown clumps, \$1.25 each; \$11.00 for 10; \$95.00 per 100.

Belladonna

(Pfitzer's Improved Strain)

The flowers of this hardy Larkspur are poised like a sky-blue butterfly on slender, stiff stems, away from the main stalk. They are of an exquisite, heavenly, turquoise-blue.

The habit of growth of this plant is very graceful. Planted with Madonna or Nankeen Lilies, or in front of the much taller and formal Delphinium Hybrids, they create a lovely effect. They are one of our best cut flowers, and perfectly hardy. Established plants produce a number of spikes, giving three crops during the season. Four feet high. Extra heavy clumps of the true, unmixed improved variety, \$7.75 for 10; \$75.00 per 100.



Miscellaneous Bulbs and Roots

FALL PLANTING AND EARLY SPRING FLOWERING—FOR PERMANENT EFFECTS

FOR PLANTING in accord with the natural surroundings of your gardens, expressive of perfect harmony and good taste; along the woodland path, in wildflower sanctuaries, along rivulets, brooks or wherever naturalistic planting is wanted. For planting of banks or ground cover among daffodils hyacinths or tulips, in the border in drifts or as edging.

CAMASSIA ESCULENTA. Very showy in mass plantings. Forms flower spikes up to 2 feet high, bearing a cluster of star-shaped flowers of a very fine rich purple. Plant 4 inches deep. Extra-heavy bulbs, \$1.50 for 10; \$12.50 per 100.

CHIONODOXA LUCILLIAE. (Glory of the Snow). An extensive planting forms one of the most sumptuous displays of floral beauty; a mass of blue and white, intense and brilliant. They bloom at the time of the crocuses, producing dwarf flower spikes, bearing from 8 to 10 little blossoms of a sky blue with a pure-white heart, creating a lovely effect. They should be planted in fall 3 inches deep, about 18 bulbs to a square foot in a sunny location or in half shade and in places where they can remain undisturbed for a number of years. The flowers will cross with one another and will seed themselves, forming natural colonies. \$0.75 for 10; \$5.00 per 100.

CHIONODOXA LUCILLIAE ALBA. A white form of the above, very effective when interspersed with the blue. \$0.75 for 10; \$5.00 per 100.

Crocuses

Spring-Flowering Varieties; Plant in Fall

EXCELSIOR. The largest lilac Crocus in existence. Very scarce. \$0.75 for 10; \$5.00 per 100.

GRAND YELLOW. Golden yellow. Very floriferous. \$0.75 for 10; \$5.00 per 100; \$47.50 per 1,000.

PURPUREA GRANDIFLORA. Very large, purple-blue. \$0.85 for 10; \$6.00 per 100; \$57.50 per 1,000.

REMEMBRANCE. The best lavender Crocus, very large flowers. \$1.25 for 10; \$10.00 per 100; \$97.50 per 1,000.

SNOWSTORM. The best white Crocus in existence, very large flowers. Very scarce. \$1.00 for 10; \$7.50 per 100.

STRIPED BEAUTY. Narrow lavender stripes on white ground. \$0.75 for 10; \$5.00 per 100; \$47.50 per 1,000.

Superior Mixture of Spring-Flowering Crocuses

The planting in mass effects in large quantities of this Superior Mixture of the finest varieties of Spring Flowering Crocuses is lovely always. In drifts up against the house or along the shrubbery, on the grassy banks or at the sides of the driveway, under the trees, in the orchard or anywhere in the garden to bring some color in earliest spring. Purple, amethyst, mauve, lavender, yellow, white, striped—all these colors mixed indeed produce a ravishing effect.

Highest quality bulbs, \$4.00 per 100; \$37.50 per 1,000.

DICENTRA SPECTABILIS. (Bleeding Heart). The "Lyre Flower" or "Locks and Keys." A charming hardy perennial plant of most interesting structure. The leaves are a fine shade of green and have much decorative value due to their unusual pattern. Long racemes of graceful, heart-shaped pink flowers, inner petals which protrude are white. Excellent border plants as well as a wild garden addition where they lend beauty and charm. Extra heavy clumps, \$1.00 each; \$9.00 for 10.

DODECATHEON MEADIA. (Shooting Star). Very pretty perennial, bearing rose-colored, often white flowers in May and June; sometimes called "American Cyclamen." Thrives in rich, moist woods as well as in the open border. Extra strong roots, \$3.25 for 10; \$30.00 per 100.

ERANTHIS HYEMALIS. (Winter Aconite). These produce, at about the same time that the crocuses are in bloom, little yellow flowers like buttercups about 3 inches above the ground, with setting of fine green, frilled-like collars which never seem to mind the worst of weather conditions. They will thrive under trees where few other plants can hold their own. They seed themselves freely and colonies from self-sown seed are soon formed. Plant firmly 2 inches deep, in shade or half shade about 18 bulbs to a square foot. Mulch in autumn with leaf soil. \$0.75 for 10; \$5.00 per 100.

ERYTHRONIUM AMERICANUM. (Dog's Tooth Violet). These are charming woodland plants, producing in early April, small, lily-like flowers whose colors run in delicate tints of white, pink, cream, bright yellow and rose. They thrive in shaded corners or crevices of rock-work. Their beauty is enhanced by their richly mottled leaves. They like a light, rather damp, but well drained soil. Plant the corms about 5 inches deep. \$2.25 for 10; \$20.00 per 100.

FRITILLARIA MELEAGRIS (Guinea Hen Flower or Checkered Lily.) These produce in early April dwarf, pendent, bell-shaped flowers in various shades of color, curiously checkered, striped and splashed. They are very effective in colonies, requiring a somewhat dry situation. Invaluable for mass planting and for naturalizing. \$0.75 for 10; \$5.00 per 100.

GALANTHUS (Snowdrops). These are particularly effective under hedges, under cedar trees and in thin woodland, along the walk or in the rock garden. They are the first to open in spring and are very lovely. They dislike being moved and should be left alone to naturalize themselves. Plant two inches deep; mulch in winter with leaf soil, leaves or well-decayed manure. The single-flowering snowdrops, if they are left alone, soon take to producing double flowers. The differences and shadings in the varieties of snowdrops are so comparatively slight that it does not seem worthwhile to offer them in variety. \$0.85 for 10; \$6.00 per 100.

LEUCOJUM VERNUM (Spring Snowflake). This is one of the earliest and most attractive spring flowers. Growing from 6 to 8 inches high they bear dainty, nodding flowers which are white tipped with green. They should be planted in early fall in a good, light, well drained soil in which they may be buried 2 inches deep, in masses or bold clumps, to be effective 4 inches apart, and then be left alone to bloom year after year. \$1.50 for 10; \$12.50 per 100.

MERTENSIA VIRGINICA (Blue Bells). This is indispensable in the garden for color effect; a lovely soft pink and porcelain-blue combination. The plant grows from 1 to 2 feet high bearing a panicle of flowers about one inch long in short pendent clusters. It is splendid for the open border or for naturalizing along the woodland path, in the dell, along the brook or pond; it flowers from the time the daffodils are in bloom, continuing while the May-flowering Tulips are at their best. We urge all garden lovers to use this delightful plant in quantity as it is permanent and so helpful to create beautiful pictures. Extra heavy clumps that will flower abundantly next spring if planted early this fall, \$3.00 for 10; \$27.50 per 100.

MUSCARI HEAVENLY BLUE (Grape Hyacinths). While there are several kinds of muscari, we consider this variety the best for mass planting. The flowers open just about the time that the chionodoxas and crocuses are going off. They do very well in the wild garden and also in the grass if it is not too rank. Nice under trees and along the borders where they may be left undisturbed. They will seed themselves and make pretty effects when established. \$0.75 for 10; \$5.00 per 100.

ORNITHOGALUM UMBELLATUM (Star of Bethlehem). The hardy type; flowers are white with black eye, carried in umbels of 3 or more flowers. Very fine for naturalizing in woodland. \$1.00 for 10; \$7.50 per 100.

SCILLAS (Wood Hyacinths). These flourish in sun as well as in shade under trees. Not particular about the soil in which they grow; ideal for the wild garden but not to be despised in the border, especially if left alone for 2 or 3 years without being disturbed in any way; splendid in the rock garden. Produce drooping bell-like flowers. The following varieties are the best:

SCILLA CAMPANULATA BLUE. Porcelain-blue, candelabra-shaped bells, blooming with the May-flowering Tulips. Superior to scilla "Nutans," which we discarded. Plant four inches deep. \$0.75 for 10; \$5.00 per 100.

SCILLA CAMPANULATA "EXCELSIOR." The finest variety for grouping, for planting in front of May-flowering Tulips, for permanent edging or for naturalizing in the woodland and among shrubbery. Tall flower spikes carry many fine large bells of a lovely deep blue; a most desirable variety. \$0.75 for 10; \$5.00 per 100.

SCILLA CAMPANULATA MAXIMA ALBA. The pure-white form. \$0.75 for 10; \$5.00 per 100.

SCILLA CAMPANULATA ROSEA. This is a soft lilac-rose form of this type. \$0.75 for 10; \$5.00 per 100.

SCILLA SIBIRICA BLUE (The Siberian Squill). This is the earliest to bloom connecting the flowering of the crocuses with that of the narcissi. They are fine for naturalizing under trees or in open woodland, producing drooping, bell-like flowers on stems 3 to 4 inches in height. Succeeds very well in the rock garden. Color bright blue. Plant 3 inches deep in shade, half shade, or in full sun. Mulch in autumn with leaf soil, leaves or well-rotted manure. \$0.85 for 10; \$6.00 per 100.

SCILLA SIBIRICA ALBA. The fine white form of above. \$1.00 for 10; \$7.50 per 100.

SCILLA SIBIRICA SPRING BEAUTY. A glorified scilla "Sibirica blue." The color is a much clearer blue; the plant produces taller stems with 5 to 6 flowers from one bulb. An exceedingly fine introduction. \$1.25 for 10; \$10.00 per 100.

TRILLIUM ERECTUM. These Trilliums like a damp, shady situation and blossom early in the spring. Have broad leaves with a dark purple flower. Extra strong clumps. \$2.75 for 10; \$6.00 per 25.

TRILLIUM GRANDIFLORUM. This is the prettiest of all Trilliums. Grows 8 to 15 inches high, producing large white flowers, often 2¼ inches long and 2 inches wide, turning to lilac shade with age. Extra strong clumps, \$2.25 for 10; \$4.50 per 25.

TRILLIUM STYLOSUM. This variety is very effective if planted in large colonies, producing pink flowers in early spring. \$2.75 for 10; \$6.00 per 25.

For finest results use SCHEEPERS' BULB FOOD at planting time and throughout the growing season. (See page 34.)

Lilies-of-the-Valley

NO DWELLER in the country should be without a generous bed of Lilies-of-the-Valley. In high and in lowly gardens these simple, fragrant flowers have ever been among the most welcomed of the year. In early times the dried-off, distilled blossoms were deemed a cure for many "griefs" of the flesh, and while our faith in their potency may be less firm today, surely it is true that when we come unexpectedly upon the slender stems of frosted, scented bells hiding among the bright green leaves we receive refreshment for the mind and the spirit.

The Lily-of-the-Valley is essentially a shade-loving plant. Beds should be given a northern or northwestern exposure if possible, and the most desirable soil is a rich, sandy loam. In planting, the clumps should be set about 3 inches apart and about 2 inches below the surface. A dressing of well-rotted manure and leaf mold in the autumn after the leaves have died down will insure more and finer flowers in the spring.

LILY-OF-THE-VALLEY CLUMPS

Their importation having been restricted, they are very scarce. Extra-heavy clumps for immediate effect. \$8.00 for 10; \$38.00 for 50; \$75.00 per 100.

Iris Kaempferi

(July Flowering)

ALL PRIZE-WINNING VARIETIES

The best skill of the ingenious hybridists has been extended to bring this, their most splendid creation, to a high state of perfection. Today the great blossoms, which seem variously to be fashioned of delicate crepe, of lustrous satin, or rich velvet, exhibit an amazing range of hues, from gleaming white through tender grey to many tones of lavender and blue, and violet, from mauve through rose to claret to regal crimson-purple, many of them flushed or dappled, veined or margined with contrasting colors, creating an infinite variety of effects and beauty that has no peer. Truly "Orchids of the flower garden." They can be made happy and will grow in any garden.



BETTIE F. HOLMES DELIGHTFULLY ARRANGED WITH BLUE DELPHINIUMS, REGALE AND MADONNA LILIES.

ANNA CASE MACKAY. Double. Very early. The ground color of this Iris is pure white suffused toward edge of petals to a bright crimson. Very unusual. Extra selected clumps, \$1.25 each; \$10.00 for 10.

BETTIE F. HOLMES. Double. Pure white. Flowers measure one foot across and do not burn. Considered the best of the white Iris. Fine for cutting. See illustration above. Extra selected clumps, \$1.25 each; \$10.00 for 10.

KAMATA. Double. Sky-blue, veined white. Very distinct. Extra selected clumps, \$1.25 each; \$10.00 for 10.

KATHERINE HAVEMEYER. Double. Clear sky-blue. A large and very beautiful Iris. Excellent for cutting, fine graceful foliage. Extra selected clumps, \$1.00 each; \$9.00 for 10.

KURO KOMO. Double. Purple, overlaid with dark blue. Yellow blotches. Very beautiful and distinct. Extra selected clumps, \$1.00 each; \$9.00 for 10.

LUCY MARSHAL. Double. Very large Pansy-violet with white veins. Center white with yellow spurs. Extra selected clumps, \$1.00 each; \$9.00 for 10.

MARGARET. Triple. One of the few triple flowering Iris. Soft bluish violet, large wavy petals. White center with cast of blue radiating therefrom. Extra selected clumps, \$1.25 each; \$10.00 for 10.

MRS. J. ALEXANDER HAYDEN. Double. White ground edged and shaded pale violet. Stigmas white slightly edged and tipped pale violet. Extra selected clumps, \$1.00 each; \$9.00 for 10.

NORMA. Double. Lavender-pink with clear violet halo surrounding the yellow blotch. Extra selected clumps, \$1.50 each; \$12.50 for 10.

PURPLE GIANT. Single. Royal purple with golden center. Extra selected clumps, \$1.25 each; \$10.00 for 10.

PYRAMID. Double. Deep violet-purple veined yellow deep in the center of each petal. Extra selected clumps, \$1.25 each; \$10.00 for 10.

COMPLETE COLLECTION OF IRIS KAEMPFERI

Consisting of one root each of the eleven varieties listed. Total, 11 extra selected heaviest clumps.

Catalog Value \$13.00

Special Collection Price.... 11.50

Heemerocallis

Day Lilies

We introduce a new race created from the old favorite "Lemon Lily"—new colors—new forms—prolonged flowering periods and varieties that remain in flower in the evening.

From early spring until frost this group of "Lilies" demands no special care in the garden. They are unsurpassed as to hardiness, freedom from disease and insect pests. Their five-month flowering period of bloom—still more for a southern garden where they will bloom two or three times a year—makes them valuable as a cut flower, in a perennial border, on slopes or banks to prevent soil erosion and for naturalizing in the garden or field.

Of easy and simple culture, they demand a reasonably moist soil, fairly rich, and prefer, but do not require, slight shade.

Absolutely Hardy in all parts of the country. Blooms produced freely throughout the season. No bleaching, curling or wilting prematurely. Flowers during the evening. Placement of flowers, up and above the foliage. Fine strong stems. Foliage that is healthy to beautify the garden.

Increase garden Beauty—reduce labor costs.

AUGUST PIONEER. August, September flowering. Height, 34 inches. The medium sized blooms of chrome-yellow are delicately flushed red on the outer half of the petals. Well placed blooms are held on well branched scapes. Extra selected roots, \$1.25 each; \$10.00 for 10.

BOUTONNIERE. August flowering. Height, 36 inches. Attractive, small cup-shaped blooms of light rosy peach with lighter mid-stripe; sepals almost clear yellow. A late blooming variety of distinction. Extra selected roots, \$1.25 each; \$10.00 for 10.

CINNABAR. July, August flowering. Height, 34 inches. Fine delicate shade of brownish red; sepals and petals of a strongly glistening gold with cadmium-yellow throat and outer half of petals sprinkled rich, fulvous red. Very large flowers, recurving and well placed with 18 to one stem. Extra selected roots, \$0.75 each; \$7.25 for 10.

D. D. WYMAN. July, August flowering. Height, 30 inches. A beautiful light, golden yellow with a tawny splash across each petal with the flower gradually fading to a pale, soft yellow. An excellent flower. Extra selected roots, \$0.75 each; \$7.25 for 10.

GOLDEN DREAM. July flowering. Height, 36 inches. A most attractive flower of deep golden orange. The large flowers are carried on fine stems. Extra selected roots, \$0.75 each; \$7.25 for 10.

HYPERION. July, August flowering. Height, 42 inches. Tall growing with very large flowers of clearest lemon-yellow throughout. One of the very best of the new Heemerocallis. Extra selected roots, \$1.00 each; \$9.00 for 10.

J. R. MANN. June, August flowering. Height, 42 inches. A beautiful flower of frosted apricot held on strong stems. Extra selected roots, \$0.75 each; \$7.25 for 10.

MIKADO. June, July flowering. Height, 36 inches. In a recent survey throughout the country, this variety was voted first out of 321 varieties, scoring 94.5 points. Rich orange with mahogany-red eye; the contrast is most pleasing and attractive. This variety has one of the longest flowering periods and frequently repeats in September. Extra selected roots, \$1.00 each; \$9.00 for 10.

MRS. W. H. WYMAN. August flowering. Height 42 inches. A marvelous hybrid of a very pale glistening yellow. Delicate in color and form. Very attractive. Extra selected roots, \$0.75 each; \$7.25 for 10.

PATRICIA. June, July flowering. Height, 30 inches. This was second choice of recent poll, scoring 93.7 points. Pale, uniform yellow with tinge of lemon-chrome and greenish throat. The 5-inch blooms are very shapely. Exceptionally good evening bloomer. Extra selected roots, \$1.25 each; \$10.00 for 10.

For finest results use SCHEEPERS' BULB FOOD at planting time and throughout the growing season. (See page 34.)

ALL SEASON COLLECTION OF HARDY HEMEROCALLIS

Consisting of one extra selected root each of the 10 varieties listed. Flowers will be had from June 1st until mid-September. All of these varieties are listed as leaders and they consist of a complete color range, from lightest lemon-yellow to deep brown and blotched varieties. 10 extra selected roots, each one separately labeled.

Regular Catalog Value.....	\$9.50
Special Collection Price.....	8.75

Index

	Page		Page
BULB FOOD	34	Jonquilla	22
CAMASSIA	36	Leedsii	21
CHIONODOXAS (<i>Glory of the Snow</i>).....	36	Miniature	25
CROCUSES	36	Poetaz	23
DELPHINIUMS	35	Poeticus	23
DICENTRA (<i>Bleeding Hearts</i>).....	36	Triandrus	21
DODECATHEON (<i>Shooting Stars</i>).....	36	Trumpet	18
ERANTHIS (<i>Winter Aconites</i>).....	36	New Novelties	27
ERYTHRONIUM (<i>Dog's Tooth Violets</i>).....	36	Special Collections	24
FRITILLARIA (<i>Checkered Lilies</i>).....	36	Mixed for Naturalizing	26
GALANTHUS (<i>Snowdrops</i>).....	36	ORNITHOGALUM (<i>Stars of Bethlehem</i>)	37
HEMEROCALLIS	39	SCILLAS (<i>Wood Hyacinths</i>)	
HYACINTHS		Campanulata (<i>English Blue Bells</i>).....	37
Exhibition Size	16	Sibirica (<i>Siberian Squills</i>)	37
Garden Size	17	TRILLIUMS	37
IRIS KAEMPFERI	38	TULIPS	
LEUCOJUM (<i>Spring Snowflakes</i>).....	37	Bizarre and Bijbloemen	12
LILIES		Botanical	13
June Flowering	28	Breeder	3
July Flowering	31	Bunch-Flowered	15
August Flowering	32	Cottage	5
New Novelties	33	Darwin	7
LILY OF THE VALLEY	37	Double Early	10
MERTENSIA (<i>Blue Bells</i>)	37	Double May Flowering	11
MISCELLANEOUS BULBS AND ROOTS	36	Lily Flowering	12
MUSCARI (<i>Grape Hyacinths</i>)	37	Parrot	11
NARCISSI OR DAFFODILS		Single Early	10
Barrii	20	New Novelties	15
Cyclamineus	22	Special Collections	14
Double	23	Fragrant Collections	14
Incomparabilis	19		

Brochures on

Beauty from Bulbs

to be mailed this summer

- Iris, Peonies and Eremuri
 - Wild Flowers, Ferns and Vines
 - Indoor Winter Blooming Bulbs and Roots
-
- Forcing—For conservatory and greenhouse culture (sent on request only)

