

## **Historic, Archive Document**

Do not assume content reflects current scientific knowledge, policies, or practices.



62.17

Gen



©

PEACE. Patent 591. WORLD'S NO. 1 ROSE

# *Distinctive Trees and Shrubs*

HJORT'S 1950 BOOKLET

**THOMASVILLE NURSERIES, INC.**

*"Home of Roses"*

THOMASVILLE, GEORGIA



The Rose Queen of the Thomasville Rose Festival, Miss Jane Jay, and her Court ride on a float decorated with Spanish Moss. This was the 28th annual festival sponsored by the Thomasville Garden Club.

## Terms of Business

**Location.** Main Nursery office, lath-houses, and Trial-Grounds at intersection of Boston and Summerhill roads with Boulevard, 2 miles east of Thomasville. Roses and Evergreen Nursery on Boston Road, 3 miles east of Thomasville. The Thomasville-Boston Road is a link of the Lone Star Trail from Los Angeles to St. Augustine, and is also known as U. S. Highway No. 84.

**Invitation to Visitors.** Visitors are welcome at our place every day in the year, and there is no obligation to purchase.

**Terms.** Cash with order or satisfactory references, except to parties of known responsibility.

**Transportation at Purchaser's Risk.** All transportation expenses are to be paid by the purchaser except on Roses and Liriope; our responsibility ceases upon delivery, in good order, to forwarding companies.

**Substitution.** We do not substitute unless so authorized. It is well, however, as the season advances, to name substitute to be used in the event of shortage.

**Inspection.** Our Nurseries were inspected by a representative of C. H. Alden, State Entomologist, Atlanta, Ga., July, 1949, and a certificate to this effect, and that plants are fumigated as required by law, accompanies every shipment. We comply with the various laws of the states into which we ship.

**Claims.** If, by any possibility, errors should occur, they will be promptly rectified, if claim is made within 10 days after receipt of the goods.

**Guarantee.** We cannot control conditions after plants leave our hands, and we cannot, therefore, guarantee our plants to live. We do guarantee all stock sent out to be well rooted, true to name, properly packed and shipped according to instructions.

**Quantity Rates.** Forty or more plants at the 100 rate; 300 or more at the 1000 rate.

**Order Early.** We cannot too strongly urge the advisability of ordering early. In so doing one gets the assortment and pick of the stock and avoids disappointment of possible failure to get order filled complete. Orders may be sent early and stock reserved for later delivery.

**Address** all communications and make remittances payable to Thomasville Nurseries, Inc., Thomasville, Ga.

### VISITORS, PLEASE NOTE:

We wish to serve everyone in turn. At the height of the season sometimes many cars are at the nursery at one time. In order that salesmen may know who is "next" please give your name at the office upon arrival. The ladies in the office will then see that you are served in turn and as quickly as possible consistent with adequate and courteous attention to all.

#### We Are Members of:

American Association of Nurserymen  
Southern Nurserymen's Association  
Georgia Nurserymen's Association  
American Camellia Society  
American Rose Society  
Georgia Rose Society

DUPLICATE

Reg. 70

### GEORGIA DEPARTMENT OF ENTOMOLOGY ATLANTA, GEORGIA

#### CERTIFICATE OF NURSERY INSPECTION

THIS IS TO CERTIFY that the nursery stock in the nurseries of

Thomasville Nurseries, Inc.  
Thomasville, Georgia

has been inspected by an inspector of the Georgia Department of Entomology on 7/11/49 and was found to be apparently free from especially injurious pests.

This certificate is void after 8/31/50, but may be revoked for cause.



C. H. Alden  
State Entomologist

# Foreword.....

Service to our customers will be at a very high level in the season we are entering. The quality of plants in roses, camellias, azaleas, etc., is the best. We offer very few small plants this season—practically everything we list is grown in our fields. All are grown on fertile land built up with cover crops and crop rotation.

It has long been our policy to keep right up with the "New," selecting the best for the Lower South, but, unlike many growers, we do not discard old varieties of proven merit. Old Fashioned Tea Roses are ideally suited to the hot, moist climate of the Lower South, so we have become the one source in the South offering a large collection of them. But, at Thomasville we grow hybrid teas equally as well, including many of the best of the newer, patented roses. Such varieties as Peace and Charlotte Armstrong have been greatly admired in our fields the past summer.

While we seek to give the maximum of good value, we do not grow plants cheaply for the purpose of selling them the cheapest. Rather, we are growing the finest quality and catering to the patronage of those who want the best. We think our plants are priced very low for good quality. We invite those who can do so to come to the nursery, see for yourselves and compare values. However, for those who order by mail, we promise careful selections and prompt shipment.

Always we have tried to be one of America's best nurseries. But, we are not one of the largest. We are large enough to grow a wide assortment of stock, but small enough that every transaction passes under the eyes of one of the Hjorts. We are grateful for the patronage of the past, and pledge ourselves to faithful service in the new season.

THOMASVILLE NURSERIES, INC.

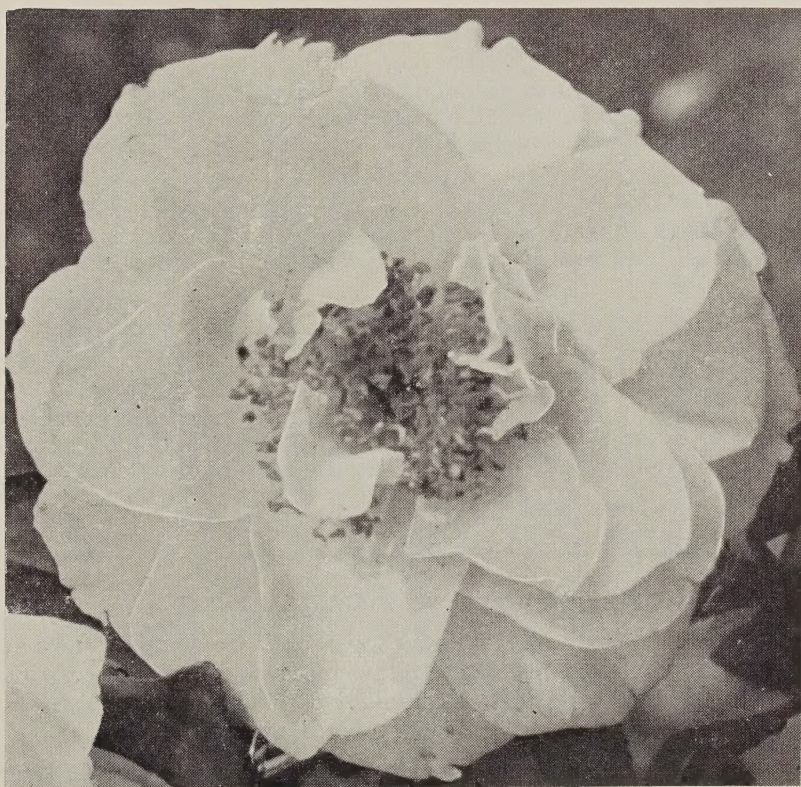
Thomasville, Georgia

By Sam. C. Hjort, President

October 1, 1949



REMARKABLE NEW FLORIBUNDA,  
FASHION



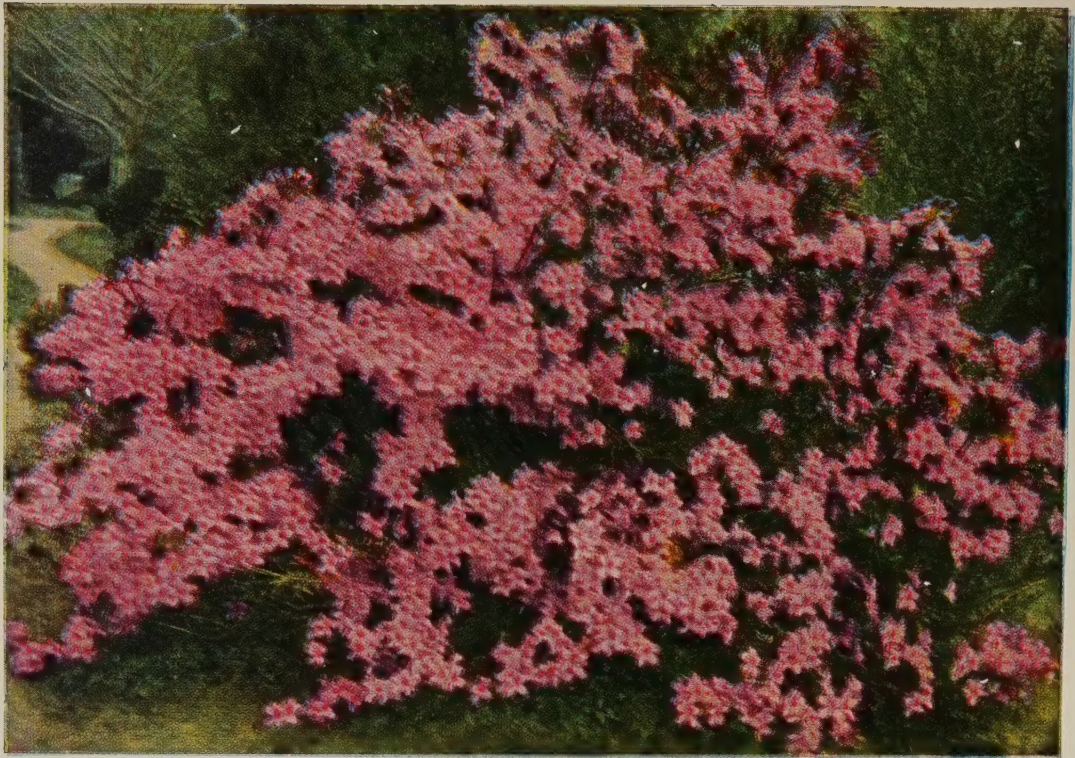
CAMELLIA, VIRGIN'S BLUSH

## Join the American Camellia Society

A membership in the American Camellia Society will bring you News-letters periodically throughout the year and a bound Yearbook that contains the latest information on culture, pest control, varietal nomenclature, history, descriptions and sources of new varieties and exact scientific information on various subjects concerning Camellias.

Annual dues, \$3.00

Make payment to American Camellia Society, Box 2398 University Station, Gainesville, Florida.



AZALEA INDICA ELEGANS

## HJORT'S *Top-Quality* INDICA AZALEAS

FOR spectacular color and greatest profusion of bloom, nothing equals Azaleas, especially the Indica varieties, so perfectly adapted for use in the Gulf and Coastal section of the Lower South. The hardier varieties, such as Lawsal and Formosa, succeed also farther inland, and many have successfully grown Geo. L. Taber, Pride of Mobile and others.

In woodland areas of parks and private estates around Thomasville, as well as many other Deep South communities, Elegans, President Clayes and other tall varieties are extensively used; but these, and many others that do not grow quite so fast, are being used more and more in foundation plantings and as specimen plants.

From the small-growing varieties like Duc de Rohan and Iveryana, through medium ones such as Cremina and Fielder's White, to the tallest ones, there are so many types and colors that one can vary a planting indefinitely by the use of Indica Azaleas alone. Depending on the winter, the season is from February to late April.

Our plants have been given ample space, fertilizing and pruning to make the stockiest plants, all set with flower buds. Perhaps one can buy cheaper Azaleas, but if you want the finest we invite you to buy them here. Visitors are urged to come and see for themselves.

Azaleas make a mass of fine roots and transplant easily with a ball of soil, making it possible to plant them at all seasons of the year. Some of our varieties, which most nurserymen don't list at all, are in limited supply. Whether you wish to plant in the fall or not, we urge you to order early. Shipment can be made at any time desired.

---

### AZALEAS—Kinds and Culture • H. HAROLD HUME

A comprehensive new guide to this important family of flowering shrubs. Covers deciduous and persistent-leaved varieties, history, botany, adaptability, propagating methods, planting operations, summer and winter care, landscape use and indoor culture. A volume that should be in the possession of all lovers of fine gardens. 220 pages; 73 illustrations, 10 in full color. Price, \$3.75.

---



CROEMINA



GEO. L. TABER



ELEGANS

## GROUP I AZALEA INDICA

The faster-growing varieties of *Azalea indica*, generally characterized by large leaves, hairy underneath, and large flowers.

PRICES OF GROUP I AZALEA INDICA		
	Each	12
8 to 12 in., bare root .....	\$0 75	\$7 50
12 to 15 in., bare root .....	1 00	10 00
15 to 18 in., B&B .....	1 50	15 00
18 to 24 in., B&B .....	2 00	20 00

**Alba.** Large; single; white. Tall; late.

**Elegans.** Light, clear pink; makes a large, symmetrical bush. Very early bloomer. One of the loveliest and most satisfactory of *Indica* Azaleas, and a feature of Hjort's Azalea Woodland.

**Formosa.** Greatest of all *Indica* Azaleas. Large, purplish pink flowers. Bush grows tall and shapely. Darkest green foliage of all varieties, Easy to grow; late bloomer.

**Geo. L. Taber.** Finest of variegated Azaleas. Very large flower; blush-pink with marking of deeper pink and red. Tall grower; late in blooming. Always much admired, always satisfactory.

**Lawsal.** Bright salmon-pink. Tall, bushy grower; late flowering. We highly recommend Lawsal as one of the hardiest and most satisfactory of *Indica* Azaleas.

**President Clayes (Flame).** Flame-red, a delightful color through a woodland or fronting a dark background. Tall, compact, fast grower. Early.

**Pride of Mobile.** Deep watermelon-pink; large flower. Late bloomer. Makes a very tall and compact bush, and everywhere in the Lower South is much admired. Very satisfactory.

**Vittatta fortunei.** Picturesque, open-growing Azalea. White with lavender stripes and splotches. Very early.

### QUALITY AZALEA INDICA

Our Azaleas are compact, well-grown plants of the highest quality. If you want the finest, we have them!

### WONDERFUL NEW AZALEA, JUDGE SOLOMON

A Pink Formosa at last! Judge Solomon is a pink sport of Formosa, raised at Savannah and named in honor of the eminent patron of gardening whose acres of beautifully landscaped grounds are one of the charm spots of America. A perfect Formosa bush in foliage and vitality, with deep pink blooms which remain true to color, without reverting. Brand new and very scarce. 12 to 15 in., \$2.00; 15 to 18 in., \$2.50; 18 to 24 in., \$3.50.

### LOVELY NEW AZALEA, WHITE FORTUNEI

Pure white; extra early like its parent, *Vittatta fortunei*. No tendency to revert to variegated. An extremely useful addition to the *Indica* Azalea group. Originated at Hjort's Azalea Woodland. 12 to 15 in., \$2.00; 15 to 18 in., \$2.50; 18 to 24 in., \$3.50 each.

## VISIT HJORT'S AZALEA WOODLAND

March is the month of Azaleas. Then the midseason varieties are at their height, comprising the greatest range of color and form. In March we are glad to have visitors come on Sunday afternoons and enjoy with us the wonderful display of Azalea bloom at Hjort's Azalea Woodland, two miles east of Thomasville on the paved State Road No. 38. Late Azaleas, including beautiful native varieties, bloom far into April.

Enlarged and ample parking facilities are provided and conveniently placed signs guide you easily through the Azalea plantings. All the main roads into Thomasville are paved, and visitors from many cities in this section have found it a delightful Sunday afternoon trip to drive over to see the Azaleas at Hjort's Azalea Woodland.

Absolutely no admission charge or collections taken and nobody is asked to buy. This is the greatest display of Azalea color and varieties in this section. Come and enjoy it with us.

## GROUP II AZALEA INDICA

Mostly medium growers, generally more compact and of less rapid growth than Group I. Very profuse and showy. Choice, compact plants.

### PRICES OF GROUP II AZALEA INDICA

	Each	12
6 to 8 in., bare root.....	\$0 75	\$7 50
8 to 12 in., bare root.....	1 00	10 00
12 to 15 in., B&B.....	1 50	15 00
15 to 18 in., B&B.....	2 00	20 00
18 to 24 in., B&B.....	3 00	30 00

Indica varieties are the most satisfactory Azaleas for the Lower South. Our plants are compact and well set with flower buds; quality is well above the average.

**Fielder's White.** Long considered the finest of all white Indica Azaleas for its large, pure white, exquisitely formed flowers and profuse blooming habit, early and midseason. We especially recommend this Azalea. We always felt more whites should be planted.

**George Franc.** Very large flower; rose-pink with deeper center. One of the earliest and most beautiful of Indica Azaleas. Very spreading in growth.

**Iveryana.** Slow of growth, but with lovely, large blooms borne freely on a spreading bush. White striped pink and orange.

**Phoenicia.** A very spreading and compact Azalea producing blooms almost identical in color with Formosa. Fine for use in foundation plantings; prized for its deep green foliage as well as attractive blooms.

**Pride of Thomasville.** Here is a comparatively new, and certainly different Azalea. It is purplish red, a color half-way between Formosa and Pride of Dorking. Long flowering season; begins fairly early and continues almost to the end of the Formosa period.

**Prince of Orange.** A favorite among the very late, compact-growing Azaleas. Large, scarlet blooms.

**Rosea Purpurea (Royal Red).** Rose-red flowers profusely borne on a low, spreading bush, late in the season.

**Violacea Rubra (Royal Purple).** Variable single and semi-double flowers of dark purple borne on a bush with darkest green foliage. Compact in growth.



FIELDER'S WHITE

LAWSAL

**Brilliant.** Brilliant deep pink. Small, bushy grower; late.

**Coccinea Major.** Similar to Prince of Orange. Flower not quite so large, but somewhat darker. Spreading growth; late bloomer.

**Crœmina.** One of the finest of all Azaleas. Very large flower of light pink. Very compact in growth and profuse in blooming; early. Long a great favorite at Magnolia Gardens, but not offered by many nurserymen. Those who have this variety love it.

**Dixie.** This salmon-red is one of the finest Indica Azaleas. Midseason. A hardy and satisfactory variety.

**Duc de Rohan.** Medium size; salmon-pink; very early. A great favorite in Florida.

## AZALEA AND CAMELLIA FERTILIZER

For maximum growth, bloom, and general well-being, it is necessary to feed your plants properly. Unfortunately for the Azalea and Camellia grower, most commercial fertilizers are made neutral by the use of limestone, and are not suitable for acid-loving plants.

To meet this need we keep in stock Reliance Azalea and Camellia Special, a commercial fertilizer which is acid, easy to apply, and has no objectionable odor. It supplies a balanced and complete food for these plants. With your purchases you will receive a little booklet giving much information on the planting and care of Azaleas and Camellias.

Prices of Reliance Azalea and Camellia Special Fertilizer: 25 lbs. \$1.50, 50 lbs. \$2.50, 100 lbs. \$4.50, f.o.b. Thomasville, Ga.



# HJORT'S KURUME AZALEAS

The Kurumes, natives of Japan, fully one thousand miles farther north than the native habitat of the Indica varieties, are by far the hardiest Azaleas, and in the Lower South have stood perfectly the freezes which damaged more tender kinds. The Kurume Azaleas, contrary to popular belief, are not all dwarf growers. There are medium and tall kinds, and the widest assortment of color. We have developed a large stock of these dependable Azaleas, and our prices are lower than these plants can usually be bought for, while the quality is the best. Our plants, from smallest to largest, are shapely and well set with buds. All varieties have evergreen foliage.

## PRICES OF KURUME AZALEAS

	Each	12	100
6 to 8 in.....	\$0 75	\$7 50	\$60 00
8 to 10 in.....	1 00	10 00	80 00
10 to 12 in.....	1 50	15 00	120 00
12 to 15 in.....	2 00	20 00	
15 to 18 in.....	3 00	30 00	

6 or more plants at 12 rate; 50 or more at 100 rate  
Larger specimen plants \$5.00 to \$50.00 each

\*The double varieties are marked thus\*; all other varieties are single.

**Apple Blossom.** A lovely single. All that the name implies in color. 8 to 10 in., 10 to 12 in.

**Avalanche.** Large clusters of single white flowers. 10 to 12 in., 12 to 15 in.

**Bridesmaid.** Glowing salmon-pink; small glossy foliage. Midseason. All sizes.

\***Cherry Blossom.** A favorite of the tall growers; very light pink. Somewhat late in flowering. 10 to 12 in.

\***Christmas Cheer.** Brilliant bright red; the small foliage is very dark green and compact. The earliest of the red Kurumes. Medium. All sizes.

\***Coral Bells.** Beautiful shell-pink, shading somewhat deeper at center; free flowering and dainty. The dwarfiest of the dwarfs; ultimate height 4 feet. Early. All sizes.

**Enchantress.** Large, deep salmon-rose flowers borne in great profusion. A vigorous, new and delightful Kurume variety. All sizes.

**Flame.** This Flame Azalea is one of the best of the Kurumes and one of the tallest growers. Midseason. All sizes.

\***Hexe.** Large, deep red flowers. Late bloomer. 6 to 8 in., to 12 to 15 in.

**Hinodegiri.** Brilliant scarlet; foliage rounded and deep green. A midseason bloomer, coming into flower just before Christmas Cheer has finished. Medium. All sizes.

**Hoo.** Single white flowers with pink edges. One of the fastest growing Kurumes. 10 to 12 in.

\***Hortensia.** One of the taller growers of the pink Kurumes. Midseason. 8 to 10 in., to 12 to 15 in.

\***Lorraine.** Large, deep pink Hexe-like flowers. Late. 8 to 10 in., 10 to 12 in.

\***Mme. Pericat.** Hose-in-hose; large, light pink flower. Late bloomer very showy.

**Peach Blow.** A fine Kurume with flowers of light peach-blossom-pink. One of the fastest of the Kurumes. Tall; midseason. All sizes.

\***Pink Pearl.** Light pink, produced in dense clusters. Tall; midseason. All sizes.

\***Salmon Beauty.** Large; salmon-pink. Free flowering. Midseason. All sizes.

**Salmon Queen.** This salmon-colored Kurume Azalea is one of the best of the single-flowering kinds. Medium; midseason. 8 to 10 in., to 15 to 18 in.

\***Snow.** The best of the white Kurumes. Medium; midseason. All sizes.

\***Sweetheart Supreme.** One of the loveliest of double-flowering Azaleas; light rose-pink. 10 to 12 in., 12 to 15 in.

**Vesuvius.** Deep flame-red. Vigorous, tall grower. Late. All sizes.

**Azalea macrantha.** Late spring and summer-flowering Azalea; fine for greatly extending the flowering season. Single and double pink kinds. Evergreen foliage. Same sizes and prices as Kurume Azaleas.

## Extra-Fine Specimen Azaleas

We continue rearranging some of our heretofore permanent plantings of Azaleas and offer at slightly higher than catalog prices some very compact, extra-select specimens that should be seen to be appreciated.



KURUME AZALEA, CORAL BELLS

## NATIVE AZALEAS

In limited supply this season we offer stocky, well-grown *Azalea austrina* (yellow), *A. canescens* (pink), and *A. alabamensis* (white). 2 to 3 ft., \$5.00; 3 to 4 ft., \$7.50.



©  
CRIMSON GLORY

## HJORT'S *Thomasville* Roses

. . . . 52 YEARS WITH ROSES

**B**Y FOLLOWING simple rules we are successfully growing at Thomasville not only the easy-to-grow Teas, but many other types, including Hybrid Teas, even to yellow ones.

Roses will thrive in most garden soils capable of growing flowering trees and shrubs, but the location must be one that is well drained, or drainage must be put in the bottom of holes at planting time. Dig holes at least 18 inches in depth and width, and use several shovelfuls of well-rotted cow manure; or if this is not available, use peat moss, or 50 percent of each. Set the plants just deep enough to leave the bud union above the ground, which means no deeper than they stood in the nursery. Pack well and water thoroughly. In the spring use a balanced fertilizer, preferably a moderate application repeated four or five times during the growing and flowering season.

Roses must be dusted or sprayed to keep down fungous diseases and insects. We have always preferred a good dust such as Du Pont Floral Dust, Phygon or Pomogreen, although there are good dusts by other manufacturers. Rose dusts should contain copper-sulphur to control fungous diseases, with 3 percent DDT added to combat insects.

Don't cut blooms the first year; such treatment is often the cause of dieback and complete loss, especially with yellow or Pernetiana varieties. If you must cut a few blooms the first year, take them with short stems and only from top growth. This is very important. Those who dust regularly and use the shears sparingly, the first season, grow such Roses as Peace and Eclipse well.

Rose lovers will do well to join the American Rose Society, a non-profit organization which for annual dues of \$4.50 will mail you the beautifully illustrated Annual, a bi-monthly Magazine and a Members' Handbook. For \$5.00, sent to Georgia Rose Society, Box 608, Thomasville, Ga., you get all these, plus membership in the Georgia Rose Society, which mails regularly a bi-monthly Rose Bulletin of many timely and useful Rose articles.

Visitors have been charmed by the great display of top quality Rose plants blooming in our fields the past season, including many of the new and patented varieties. We may not have enough 2-year Rose plants to sell the entire season, but those we ship this year are of the finest quality. The Rose shipping season begins November 1 and continues through February. Regardless of when you will plant, we urge that you order early.

Rose gardening is such a delightful experience, and you get more for the money out of it than any other hobby!

# HYBRID TEA

## Roses

### PATENTED VARIETIES

**Better Times.** Patent 23. Cerise-red; pointed buds on long stems. Fine for cutting. \$1.35.

**Capistrano.** Patent applied for. One of the four 1950 All-America Winners. Deep, glowing rose-pink buds and open flowers. Sturdy, upright growth. Fine cut-flower variety. \$2.50

**Charlotte Armstrong.** Patent 455. Bud long pointed, carmine-red; open flower large, cerise-pink. Long stems; vigorous growth. A truly outstanding Rose in every respect. Winner of Sweepstakes at 1949 Thomasville Rose Show. \$1.50.

**Countess Vandal.** Patent 38. Long, slender buds and large, high-centered blooms on vigorous bushes. Carmine-pink, shaded buff and gold. \$1.35.

**Crimson Glory.** Patent 105. Deep crimson-red; very double. Growth vigorous. Although many new red Roses are on the market, we still believe this one is the best of all deep red varieties. \$1.35.

**Eclipse.** Patent 172. Long, streamlined buds of golden yellow. We believe it to be easily the best solid deep yellow Rose. \$1.35.

**Grande Duchesse Charlotte.** Patent 774. Long pointed buds on long stems; carmine-red, opening to begonia-pink. Tall grower; bronze foliage. \$1.50.

**Horace McFarland.** Patent 730. Apricot buds, changing to coral-pink open flowers. A different and beautiful new Rose. \$1.50.

**Katherine T. Marshall.** Patent 607. Clear, glowing pink on stiff stems; fine for cutting. Strong growth. Possibly the best pink Rose in the patented group. \$1.35.



CHARLOTTE ARMSTRONG

**Mirandy.** Patent 632. Very large, double, dark garnet-red; highly fragrant. Upright and vigorous in growth. A strong contender for first place in red Roses. The favorite in some of the best gardens at Thomasville. \$1.50.

**Mission Bells.** Patent applied for. Deep salmon-pink, opening to clear shrimp-pink color. Vigorous, branched growth. Long pointed buds on long stems; tea-scented fragrance. One of the four 1950 All-America Winners. \$2.50.

**Mme. Cochet-Cochet.** Patent 129. Copery pink; long pointed buds open to large, semi-double flowers; fragrant. Strong grower. \$1.50.

**Nocturne.** Patent 713. Deep cardinal-red; strong stems produce large flowers. Vigorous plant. Was one of the 1949 All-America Winners. \$1.50.

**Peace.** Patent 591. Easily the World's No. 1 Rose. Winner of all top National Awards in America, France and England. Winner of blue ribbons and sweepstakes prizes in shows everywhere. Peace is a strong grower, has large, handsome foliage, and produces large, very double, long-lasting flowers of soft yellow, flushed and edged pink. An exquisite Rose. Illustrated on front cover. \$2.00.

### PRICES

All \$1.35 Patented Roses are 3 for \$3.40

All \$1.50 Patented Roses are 3 for \$3.75

All \$2.00 Patented Roses are 3 for \$5.00

All \$2.50 Patented Roses are 3 for \$6.30

No further discounts. All postpaid

In an order for 3 plants you may select 3 varieties when all are priced the same.



©

ECLIPSE

## SEE *Top Quality* ROSES HERE!

All spring and summer our Rose fields are a colorful sight. We grow the best. Come and see them.

### For Beautiful Roses

*Beats Bugs  
and Blights*

WITH

### DU PONT FLORAL DUST

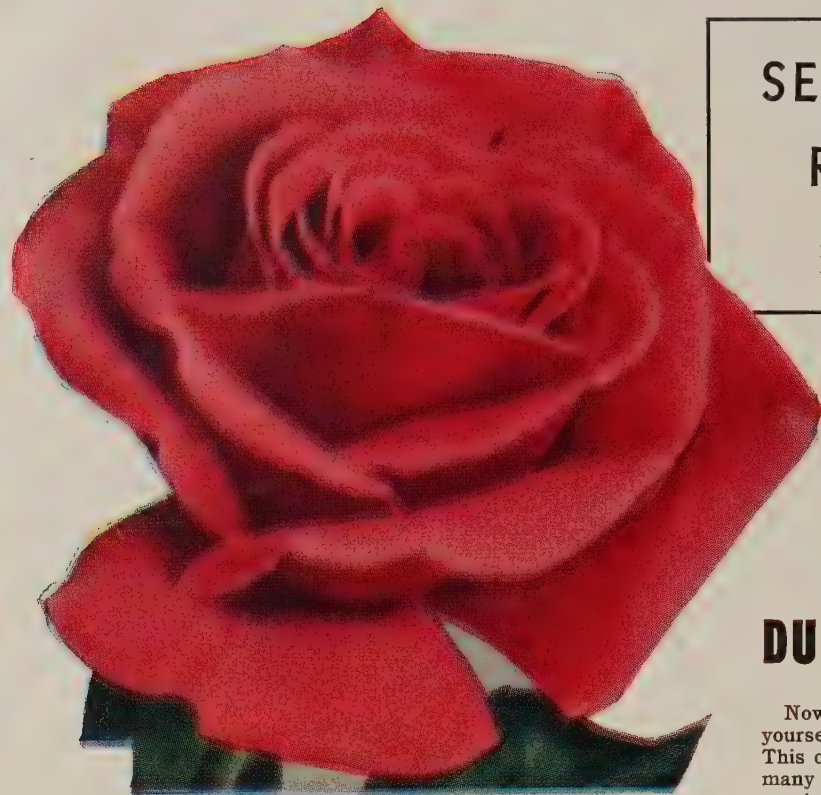
Now you can keep the foliage healthy to assure yourself more beautiful Roses from year to year. This one product enables you to avoid damage from many insects and fungous diseases. It contains special Du Pont chemicals ready mixed for prompt application. Highly effective in prevention and control of disease and insect damage, yet safe on sensitive varieties. Ideal for use as dust or spray. Apply Du Pont Floral Dust as directed on the label. Use it on your other flowers too.

Contains these outstanding insecticides and fungicides:

DU PONT "FERMATE," effective new organic fungicide for rust, blackspot and powdery mildew; plus sulphur.

DU PONT METHOXYCHLOR, excellent new insecticide, quick acting and long lasting; plus rotenone.

8 ozs. in refillable, sturdy dust gun, \$1.00; 1-lb. canister \$1.40. (Prices include postage and handling.)



TALLYHO

### HYBRID TEA ROSES, Patented Varieties, continued

**Rubaiyat.** Patent 758. Large, cerise-red buds, opening to rose-pink flowers. One of the most vigorous of Hybrid Tea varieties. In the North it is called a "red;" in the Lower South we term it one of the best "pinks." \$1.50.

**Sutter's Gold.** Patent applied for. Long pointed buds, richly shaded orange and red, opening to deep yellow flowers. Plant is vigorous and branching in growth. A 1950 All-America Winner. \$2.50.

**Tallyho.** Patent 828. A 1949 All-America Winner, different in color from any other Rose. Buds are almost red; open flower is Neyron-like rose-pink, with outer petals carmine-pink. Bush is vigorous. \$2.00.

### PATENTED ROSES in Limited Supply

In excellent plants but limited quantity we can supply the following as long as the stock lasts: **Hybrid Teas**, Applause (\$2.00), Fantasia (\$1.50), Fortyniner (\$2.00), Lowell Thomas (\$1.50), Mandalay (\$2.00), McGredy's Sunset (\$1.35), New Yorker (\$2.00), and White Briarcliff (\$1.35); **Floribundas**, Pinkie (\$1.50), Summer Snow (\$1.25), and World's Fair (\$1.25); **Climber**, Cl. Crimson Glory (\$2.00).



SUTTER'S GOLD

THOMASVILLE NURSERIES

# Floribunda

## ROSES (Hybrid Polyanthas)

### PATENTED VARIETIES

**Donald Prior.** Pat. 377. Semi-double, fragrant, very dark red. Vigorous and free flowering over a long season. A great favorite in the Lower South. \$1.25.

**Fashion.** Patent 789. Buds oriental red, opening to a luminous pink, overlaid with gold, becoming coral with age. In England last summer Fashion was given the National Rose Society's Gold Medal for the best new Rose shown. A 1950 All-America Winner and winner of the Bagatelle Gold Medal in France. \$2.00.

**Geranium Red.** Patent 811. Perfectly named. Bears a profusion of geranium-red flowers with fragrance somewhat like geraniums, on vigorous, upright bushes. \$1.50.

**Pinocchio.** Patent 484. Semi-double; pink, suffused salmon. Strong, compact, floriferous bush. A favorite bedding Rose, also prized as a cut-flower variety. \$1.25.

**Red Pinocchio.** Patent 812. Very dark red Rose of excellent qualities. High rating in all test gardens. Vigorous, handsome bush; very profuse bloomer. \$1.50.

**Topaz.** Patent 300. Dainty, clear yellow, miniature, double blooms produced in great abundance on a low, compact bush. Wonderful yellow Floribunda. \$1.25.



©  
FASHION

## Climbing ROSES

### PATENTED VARIETIES

**Cl. Crimson Glory.** CHT. Patent 736. Valuable sport of the famous bush variety. Large, double, dark red. \$2.00.

**Golden Glow.** LC. Patent 263. Perfect in color and form; beautiful golden yellow buds and flowers on strong lateral stems. \$1.50.

**High Noon.** L.C. Patent 704. Deep lemon-yellow blooms on very long stems. A new and highly rated variety. \$2.00.

### PRICES

All \$1.25 Patented Roses are 3 for \$3.15

All \$1.50 Patented Roses are 3 for \$3.75

All \$2.00 Patented Roses are 3 for \$5.00

All \$2.50 Patented Roses are 3 for \$6.30

No further discounts. All postpaid.

In an order for 3 plants you may select 3 varieties when all are priced the same.



© GERANIUM RED

# HYBRID TEA

## Roses

### Varieties Not Patented

The Roses we offer are some of the finest we have ever grown, and were much admired by visitors who saw them in our fields the past summer.

**Editor McFarland.** Deep pink, comparable to Radiance in growth and blooming. During hottest weather is the best pink Rose. Very thrifty; very profuse. \$1.00.

**Etoile de Hollande.** Brilliant crimson. Fairly double, fragrant blooms on long stems. The most generally satisfactory and successful of deep red Roses. \$1.00.

**Golden Dawn.** Bud is sunflower-yellow, flushed old-rose; flower very double, perfectly formed, fragrant, sunflower-yellow passing to lemon-yellow with pink tints with age. Possibly the best non-patented yellow for the Southeast. \$1.00.

**Kaiserin Auguste Viktoria.** Snowy white, with slight lemon tint at center. The most generally satisfactory of white Hybrid Tea Roses. \$1.00.

**Kathleen Mills.** Buds deep pink, opening wild-rose-pink, reverse darker. Similar to Dainty Bess, but a little deeper color and some more petals. \$1.00.

**Killarney Queen.** Sport of original Killarney Rose, but larger and deeper in color. Semi-double, open, very lasting. A long-lived Hybrid Tea. \$1.00.

**Light Editor McFarland.** Beautiful light pink sport of the favorite Editor McFarland, discovered in our fields several years ago by Peter W. Hjort. Fully as vigorous and free blooming as its parent. A fine new Rose which has come to stay. \$1.50 each, 3 for \$3.75.



EDITOR McFARLAND

**Betty Uprichard.** Carmine, shaded salmon; long pointed buds. Vigorous bush; free bloomer. \$1.00.

**Briarcliff.** Rose-pink; large, double, and fragrant. Fine for cutting. \$1.00.

**Caledonia.** White. Large, double, high-centered flower on stiff stems. \$1.00.

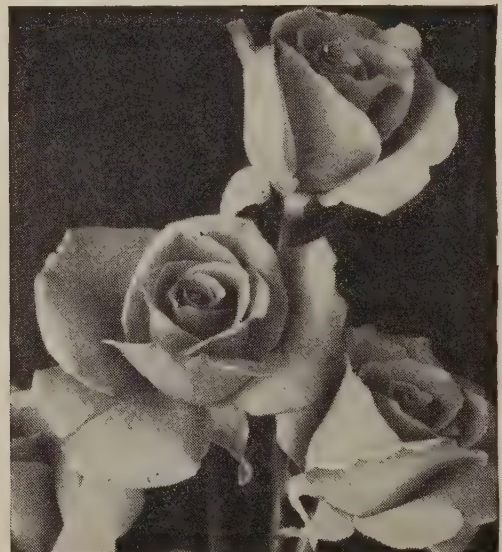
**Condesa de Sastago.** A Spanish novelty of high coloring—coppery red and yellow. \$1.00.

**Dainty Bess.** Charming, single, wild-rose-pink flowers in clusters. For exhibition, disbud, leaving one bud to make large flower. \$1.00.

**Edith Nellie Perkins.** Deep pink, shaded salmon. \$1.00.



MISSION BELLS



CAPISTRANO

1950 ALL-AMERICA ROSES

**Luna.** Pale yellow. Beautiful pointed bud; flower large and fairly double, on long stem. Fragrant. Foliage dark; growth vigorous. \$1.00.

**Mrs. Charles Bell.** Sport of Radiance, and identical with parent in vigorous growth, freedom of bloom and size of flower. Shell-pink to salmon-pink. Easily the finest Rose of its color. \$1.00.

**Picture.** Large, long pointed buds on stiff stems; deep rose-pink, opening slightly lighter. \$1.00.

**Poinsettia.** Distinctively different in color and foliage. Poinsettia-scarlet, double blooms borne on strong stems with large foliage. \$1.00.

**President Herbert Hoover.** Flame-pink, scarlet and yellow; long pointed buds on heavy stems. A good Rose, honoring a sound and patriotic American. \$1.00.

**Radiance.** Carmine-pink on strong stems. A vigorous, free bloomer over a long season. By long odds the most popular of all pink Roses. \$1.00.

**Red Radiance.** Easily the most generally planted red Rose, for like its parent, Radiance, it is practically perfect in size, stem, color, growth, freedom of bloom and persistency. \$1.00.

**Roslyn.** Long pointed, golden yellow buds; flower opens lighter. Extensively grown and appreciated in the South. \$1.00.

**Rouge Mallerin.** Pointed, fairly double, dark red flower. Very fragrant. Becoming a favorite where known. \$1.00.

**Sœur Therese.** Long pointed, chrome-yellow buds, opening to daffodil-like flowers. \$1.00.

**Talisman.** Brilliant red and gold buds, opening to orange-yellow flowers, gradually changing to light yellow, tinted pink. \$1.00.

**The Doctor.** Sparkling pink pointed buds, large flowers. Extremely vigorous and prolific. One of the best of the newer Roses. \$1.00.

**White Radiance.** Sport of Radiance. Ivory-white. A vigorous grower and bloomer, but definitely not as double and large as its parent. \$1.00.

**White Killarney.** Sport of Killarney. A good, long-lived, white Rose. \$1.00.

**Yellow Talisman.** Buds golden yellow, long pointed; flowers open somewhat lighter. Very successfully grown in Thomasville gardens. \$1.00.

All \$1.00 Non-Patented Roses are 3 for \$2.50, 6 for \$4.75, 12 for \$9.00, postpaid. This makes our Roses by the dozen figure 75c each, a considerable saving over the each rate.

While ours is a very extensive Rose listing and the plants are excellent quality, some varieties are in limited supply. In ordering, especially as the season advances, it is well to permit substitutions, to be made from similar varieties.



WHITE KILLARNEY



DAINTY BESS



ROUGE MALLERIN



TALISMAN



SŒUR THERESE



EDITH NELLIE PERKINS



FLORIBUNDA, CECILE BRUNNER

## Hybrid Perpetual Roses

This class of Old-Fashioned Roses is rapidly coming back into favor in our Southland. All of this group produce very large, fragrant blooms in the spring, and some, like Paul Neyron and Frau Karl Druschki, bloom all summer long, too. These Roses are easy to grow, and those who plant them can expect much Rose pleasure.

**Duchess of Sutherland.** One of the most beautiful of Hybrid Perpetuals. Large, very double, pointed buds of lovely peach-pink color, opening to handsome flowers. \$1.00.

**Frau Karl Druschki (White American Beauty).** This is the one pure paper-white Rose without a tinge of pink or lemon. Very large and very double. \$1.00.

**General Jacqueminot.** Bud scarlet-crimson; flower large, clear red, very fragrant. The vigorous old "Jack Rose" deserves a place in Southern gardens. \$1.00.

**Georg Arends.** Soft rose-pink. Cup-like bud and large flower, very fragrant. \$1.00.

**J. B. Clark.** Intense crimson. In this section easily the favorite of the deep red Hybrid Perpetuals. Well-formed buds, very large and double. \$1.00.

**Paul Neyron.** Greatest of all pink Hybrid Perpetuals. Immense, cup-like bud; perfect, well-formed, open flower. We have been short of stock of this Rose for years, but now have many more plants of finest quality. \$1.00.

**Ulrich Brunner.** Often called the "Red Paul Neyron" to which it is similar in growth and form; cerise-red. \$1.00.

In limited supply we can furnish strong, 2-yr. No. 1 plants of other Hybrid Perpetuals: Clio, Gloire Lyonnaise and King George V.

## Dwarf Polyantha Roses

These are commonly called "Baby Roses," and are excellent for borders, hedges or any place where a small and compact Rose is used.

**Chatillon Rose.** Small, double, rose-pink flowers borne profusely over a long season. \$1.00.

**Golden Salmon Superior.** All that the name implies, and a unique color in Roses. \$1.00.

**Katharina Zeimet.** Small, double, pure white flowers in large clusters. Bushy and dwarf in growth. \$1.00.

**Sparkler.** Very dark red sport of Golden Salmon. Very profuse bloomer all the Rose season. \$1.00.

**Tip-Top (Baby Doll).** Double flowers about 2½ inches across, pointed in the bud. Tyrian rose passing to pale yellow; reverse white. Short stems; bushy. \$1.00.

# Floribunda ROSES

## Varieties Not Patented

The term "Floribunda" is used to designate bush Roses producing clusters of blooms without interruption from early April till heavy frost. They were formerly called "bedding Roses" and are used for mass color effect, although most varieties are lovely in certain cut-flower arrangements.

The Floribundas we grow are thrifty varieties, even to the most dwarf kinds. More of these charming Roses should be grown in beds and borders.

**Baby Chateau.** Deep crimson, very vigorous and prolific new floribunda. \$1.00.

**Cecile Brunner.** The "Sweetheart Rose." One of the treasures of Old South gardens, just as valued today as in the past. A Tea-Polyantha which develops into a large, vigorous bush producing an abundance of small, double, pink blooms in clusters. \$1.00.

**Dagmar Spath.** A pure white sport of the well-known and appreciated Improved Lafayette Floribunda. \$1.50.

**Else Poulsen.** Semi-double; bright rose-pink. Vigorous, upright grower. Flowers large for a Floribunda, borne in great and profuse clusters over a very long season. A beautiful cut flower, especially for small arrangements in blue containers. \$1.00.

**Floradora.** Exquisitely formed buds of orange-scarlet in sprays of 6 to 12 blooms, opening to cinnabar-red, camellia-shaped flowers. Very vigorous and profuse. \$1.00.

**Gruss an Aachen.** Large, double, salmon-pink flowers on a small, compact bush. Very fine. \$1.00.

**Improved Lafayette.** Large; semi-double; cherry-red. Very strong grower and very profuse bloomer over a long season. Ideal for borders or group plantings where Floribundas are most effective. \$1.00.

**Perle d'Or.** The salmon "Sweetheart Rose." A Tea-Polyantha variety, growing into a large, Tea Rose-like bush, producing many clusters of small, double flowers, identical in size with Cecile Brunner. \$1.00.

**Snowflake.** Small, semi-double, white flowers produced freely on very vigorous, bushy plants. Very disease resistant, showing Tea blood. \$1.00.

## PRICES

All \$1.00 Roses offered on this page are 3 for \$2.50, 6 for \$4.75, 12 for \$9.00. \$1.50 Roses are 3 for \$3.75, 6 for \$7.50. All Roses are shipped express or parcel post, prepaid.

*All of our Rose plants are 2-yr.,  
best quality*





## HJORT'S *Old-Fashioned* TEA ROSES

Here is a group of Roses perfectly adapted to the hot, moist climate of the Lower South and soils that are sandy, although these plants grow over the entire South and in any good Rose soils.

Tea Roses were brought to Europe from China's gardens in the late 1700's. In northern Europe they were not well received, but in southern France they found conditions of climate and soil suitable and rapidly gained favor. Soon they were brought to America. They did not thrive in the North, but once planted in the South, especially the Gulf and Coastal areas, became immensely popular and thriving, and outlived other classes of Roses.

One Bon Silene Rose in Thomasville, at the residence of the Misses Annie and Julia Wright, is 87 years old, and there are bushes of Mme. Lombard, Safrano and others in this area that are fully half a century in age. Some of these bushes are in old cemeteries or on grounds where practically no care is given. It is Roses such as these that show ours is essentially a Tea Rose section.

Most Teas are not considered cut-flower varieties, but some produce large flowers on stiff stems. The best of these are Baroness Henriette Snoy, William R. Smith, Maman Cochet, White Maman Cochet and Mme. Lombard. A lot of the others are much better than is generally believed. The pink varieties are the favorites in the Teas, for while the reds grow vigorously it is admitted none of them have color comparable to Crimson Glory and Etoile de Hollande, nor are there yellows like Eclipse and Sœur Therese—they are lighter. One does not plant Teas for flowers like Peace and Charlotte Armstrong, but for profusion of bloom, ease of growth and length of life.

If you are not so sure you can grow good Roses, by all means start with the Teas. You will love them for their dependable qualities. And, really, they are beautiful!

**Baroness Henriette Snoy.** Bright peach-pink; large, double, well-formed flowers. One of the best cut-flower varieties. Very strong grower. We believe we are the first firm in America to distribute this Tea Rose.

**Bon Silene.** Salmon-rose to carmine; large; fairly double; fragrant. Growth vigorous; profuse and constant bloomer.

**Bridesmaid.** Clear silvery pink; double; fragrant.

**Comtesse Riza du Parc.** Almost the color of the Hybrid Tea, Mrs. Charles Bell—salmon to shell-pink. Looks like a pink form of Safrano; excellent bloomer.

**Duchesse de Brabant.** Soft shell-pink. Bud short, globular; open, cupped flower. Growth vigorous and bushy. Long a favorite Tea.

**Freiherr von Marschall.** Carmine-red; double. Vigorous and constant; one of the best red Teas.

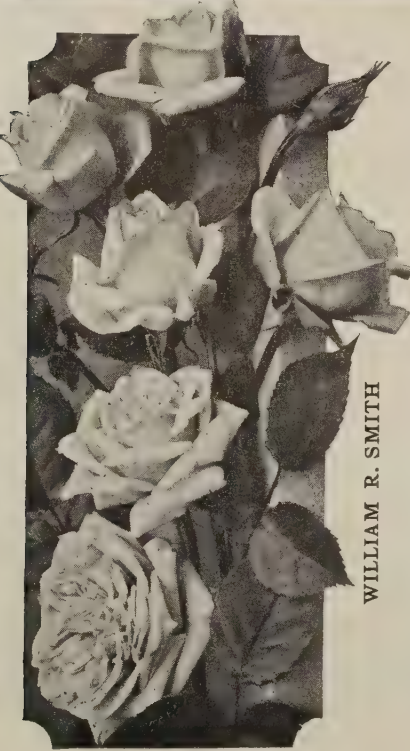
**Isabella Sprunt.** Safrano sport. Large; full; sulphur-yellow.

**Lady Hillingdon.** Bud long pointed; flower semi-double, open, fragrant, apricot-yellow. Bushy growth; bronze foliage. The favorite yellow Tea Rose.

**Louis Philippe.** (Bengal.) Deep red; foliage dark and glossy. Blooms best in fall and continues through mild winters. Fine for hedges.

**Maman Cochet.** Bud large, long pointed; flower large, double, fragrant, clear pink. One of the finest cut-flower Teas.

Tea Rose prices are shown on page 17.



WILLIAM R. SMITH

**Marie van Houtte.** Canary-yellow, petals tipped pink. Large, fairly double flowers borne in profusion over a long season. Foliage dark and luxuriant. Should be in every collection of Teas.

**Mlle. Franziska Kruger.** Coppery pink; long-pointed buds.

**Mme. Lombard.** Carmine-pink, deepening to almost red by fall; large, double, well-formed flowers. Strong grower and profuse bloomer. A favorite in the South and generally considered the greatest of Tea Roses.

**Mme. Melanie Soupert.** Salmon-yellow, shaded pink. An old Rose, but one of the best. Large, very double flowers on stiff stems.

**Monsieur Tillier.** Small, double, dark red flowers give this Tea Rose the appearance of a Floribunda. May well be called the "Red Sweetheart Rose." Comparable to Cecile Brunner in growth and bloom.

**Mrs. B. R. Cant.** Deep rose to light red; large, double flowers. Vigorous and profuse. One of the best of all Tea varieties.

**Mrs. Dudley Cross.** Most vigorous of all yellow Tea Roses. Light yellow, long, Cochet-like bud; immense flowers. Wood thornless.

**Old Gold.** Clear pink, shaded gold. A rare and attractive Tea Rose that is well named.

**Papa Gontier.** Rose-red; fine, long-pointed buds and large, semi-double flowers.

**Princesse de Sagan.** An old, deep red Tea Rose. We found this variety in an old garden in 1946.



SOUV. DE LA MALMAISON



BARONESS HENRIETTE SNOY, WONDERFUL NEW MEMBER OF OLD-FASHIONED TEA GROUP

## HJORT'S Old-Fashioned TEA ROSES

**Safrano.** Safron-yellow. Very vigorous bush and free bloomer. A very old, dependable Tea appreciated where it is known.

**Souv. de la Malmaison.** A rare and lovely old Bourbon variety. Large, very double flowers, flesh-pink, fragrant, on a strong bush. Very desirable. \$1.50.

**Sunny South.** Very vigorous and prolific old Tea. May be a French variety renamed years ago. Semi-double; two-tone yellow and pink flowers.

**White Maman Cochet.** Sport of Maman Cochet. Large; double; pure white with slight pink tinge. Easily the best white Tea Rose.

**William R. Smith.** Here is the finest cut-flower variety of all the Teas. Large, double, long-lasting flowers of blush-pink color, on long, stiff stems. Always a favorite, always satisfactory.

**Zelia Praedel.** Small, double white.

Other Tea varieties in limited supply: Alexander Hill Gray, Mme. Jos. Schwartz. Also these we have discovered in old gardens, but to date have not found names: Coppery Pink, Small Very Dark Double Red (very good).

You who do not have favorable Rose-growing conditions are urged to plant some of these vigorous, easy-to-grow Tea Roses. They are lovely and fragrant.

All Tea Roses are \$1.00 each, 3 for \$2.50, 6 for \$4.75, 12 for \$9.00, except as noted. (This makes \$1.00 Roses by the dozen, 75c each.) \$1.50 Tea Roses are 3 for \$3.75, 6 for \$7.50. In ordering 12 Roses, one may select 12 varieties if desired. All Roses shipped by express or parcel post, prepaid.

### See THE THOMASVILLE ROSE SHOW APRIL 27-28, 1950

Rose Time in the Deep South is celebrated annually through the staging, by the Thomasville Garden Club, of the Thomasville Rose Show, the most spectacular flower show of the Southeast. Last spring the 28th annual event consisted of a gigantic parade of many floats, coronation of the Rose Queen, Miss Jane Jay, tours of famous Southern plantations, the Rose Show and special exhibits in buildings of the Veterans Domiciliary and Rose Show dances. Some 50,000 people saw the events.

The 1950 show is expected to surpass in size and beauty all previous ones. If you miss seeing the Thomasville Rose Show you miss a great experience. All Thomasville welcomes you!



## JOIN THE AMERICAN ROSE SOCIETY and the Georgia Rose Society

MRS. B. R. CANT

Rose lovers everywhere will find membership in the American Rose Society most helpful and interesting. For \$4.50 yearly dues one receives every spring a beautiful illustrated Annual containing many vital and informative articles by Rose growers, mostly amateurs, in all sections of the country, and the bi-monthly American Rose Magazine, each issue full of interesting material. Also, the yearly Members' Handbook. We also invite you, wherever you live, to join the Georgia Rose Society, which issues a bi-monthly News Letter, several mimeographed sheets of timely Rose information.

For \$5.00 you will receive membership in both the American Rose Society and the Georgia Rose Society. Remittance should be mailed to Georgia Rose Society, Box 608, Thomasville, Ga. We receive no commissions. Only because these are non-profit organizations is it possible to give so much for \$5.00.







©

CITY OF YORK

## Climbing ROSES

In our Southland, climbing Roses are lovely for many uses. They may be planted on arbor, trellis, fence, tied to poles or set on embankments. The Rambler Roses (R) produce a great profusion of bloom in the spring and sometimes repeat to some extent in the fall. The Noisettes (N), the Climbing Teas (CT), and the Climbing Hybrid Teas (CHT) bloom intermittently from early spring till cold weather. Some of the latter, like Cl. Talisman and Cl. Luxembourg, because of great vitality, are used in preference to the bush form of these Roses.

Since many nurseries produce too few climbing Roses, we are growing them rather extensively, in an effort to give a better assortment of Rose varieties to gardens of the Southeast. We include some of the finest older varieties that have become scarce.

All Climbing Roses are \$1.00 each, 3 for \$2.50, 6 for \$4.75, 12 for \$9.00, except as noted. In an order of 3 to 12 Roses you may select 3 to 12 varieties if you wish.

**American Pillar.** R. Beautiful single Roses borne in clusters; deep pink with white eye.

**Belle of Portugal.** HG. Long pointed buds open into large, semi-double, light flesh-pink flowers. Glossy foliage. Very strong grower, producing a great abundance of flowers in spring.

**City of York.** LC. Semi-double; pure white with golden stamens. Dark, glossy foliage. A very beautiful new Rose. \$1.50.

**Cl. Caledonia.** CHT. Strong climbing sport of the beautiful bush variety.

**Cl. Cecile Brunner.** Mt. A strong climbing form of the favorite Sweetheart Rose. Bears a great profusion of small, double pink flowers in clusters.

**Cl. Dainty Bess.** CHT. Climbing form of the lovely single Rose.

**Cl. Devoniensis.** CT. A fine climbing sport of the very fine old Tea Rose; sometimes called the "Magnolia Rose." Double; light pink. Vigorous and free blooming.

**Cl. Etoile de Hollande.** CHT. Very fine climbing sport of the deep red bush variety.

**Cl. Killarney.** CHT. Sport of bush Pink Killarney. Vigorous and free flowering. Long a great favorite at Thomasville.

**Cl. Louis Philippe.** CB. Sport of the bush variety; deep red. Foliage small and glossy.

**Cl. Luxembourg.** CHT. Sport of the deep yellow bush Luxembourg. A very rank grower and good bloomer.

**Cl. Maman Cochet.** CT. A great favorite in climbing Roses in the Thomasville area is this sport of the bush Maman Cochet.

**Cl. Marie van Houtte.** CT. A vigorous climbing form of the well-known bush Tea Rose.

**Cl. Mrs. Charles Bell.** CHT. A vigorous climbing sport of the popular bush variety.

**Cl. Papa Gontier.** CT. Sport of the old Tea bush variety. Vigorous; free blooming.

**Cl. Perle d'Or.** Mt. Sport of the charming salmon-yellow Sweetheart Rose. Vigorous and profuse.

**Cl. Pink Radiance.** CHT. A most valuable addition to the collection of Climbing Hybrid Teas. Identical in size of flower and color with the bush variety.

**Cl. Red Radiance.** CHT. A choice red climbing Rose; sport of bush Red Radiance.

**Cl. Red Talisman.** CHT. For those who cannot successfully grow bush Talisman Roses, here is a strong climbing red sport.

**Cl. Souv. de la Malmaison.** CB. Very rank-growing sport of the famous old Souv. de la Malmaison. Flesh-pink, very double; fragrant.

**Cl. Talisman.** CHT. A vigorous sport of the bush Talisman, identical in color and continuous in bloom. Those who do not succeed with the bush Talisman should plant the climber, which is vigorous and satisfactory.

**Dr. W. Van Fleet.** LC. Flesh-pink; double. A profuse bloomer. One of the most beautiful of Roses.

**Elegance.** LC. Double, fragrant, spectrum-yellow flower on long, strong stem. Glossy foliage; very vigorous and profuse.

**Glenn Dale.** LC. Extremely vigorous climbing Rose with abundant foliage. Medium-sized lemon flowers, fading to white, borne in a profusion of clusters. Slightly fragrant.

**Lamarque.** N. Medium size; double; very fragrant; pure white, lemon center. Growth vigorous; intermittent bloomer over long season.

**Marechal Niel.** N. A great Southern favorite and long a specialty with us. Deep yellow; continuous bloomer. Our Thomasville-grown Marechal Niel plants are extra fine. \$1.50 each, 3 for \$3.75.

**Mary Wallace.** LC. Large; deep pink. A profuse spring bloomer.

**Mermaid.** Very large, single, lemon-yellow, Cherokee-like Rose. Very scarce and very choice. \$1.50.

**Mme. Gregoire Staechelin (Spanish Beauty).** CHP. A delightful pearl-pink climbing Rose. Very profuse bloomer in the spring.

**Paul's Scarlet Climber.** LC. Brilliant scarlet, semi-double flowers in large, heavy clusters. A profuse bloomer, always reliable.

**Reve d'Or.** N. Buff-yellow; medium size; fragrant. Foliage rich green, extending to the base of plant. A great favorite at Thomasville.

**Silver Moon.** LC. Very large; single; pure white with golden stamens. Very strong grower; abundant spring bloomer. A magnificent Rose in the South.

**Solfaterre.** N. Flowers large, double, light yellow, slightly fragrant. Growth vigorous; repeats in blooming.

**Yellow Banksia.** A charming Rose of the Old South. For more than a hundred years the Banksias have been prized for their extreme earliness of bloom, lovely small, double, deep yellow flowers, ease of growth and long life of the plant. \$1.50 each, 3 for \$3.75.



VILLE DE NANTES

## CAMELLIAS *for Lower South Gardens*

Nothing brings such charm and distinction to gardens of the Gulf and Coastal section of the Southland as Camellias. They are at home in an area approximately from Charleston, through Augusta, Macon, Columbus, Montgomery, Meridian, Vicksburg, and New Orleans to the coast. With extra care, lovely Camellias may be grown above these limits. But the area designated is where these charming winter-flowering trees are at their best, and where they give a thrilling display in mid-winter. Camellias and azaleas are a necessity if we are to keep our gardens of the Lower South distinctive.

Design in the garden is rightly regarded as of primary importance, and the kinds of plants used in securing a desired effect are a secondary consideration. But if this pleasing design can be carried out with extra-fine and out-of-the-ordinary plants, then gardens of unusual beauty result. Such plants are the azaleas and Camellias, and gardens in which they are used are immediately lifted out of the commonplace. These shrubs take the place of good evergreen and deciduous shrubs and fill the garden with a glory that is unsurpassed in the winter and early spring.

For many years we have given special attention to the growing of winter and early spring-flowering material, and particularly to Camellias in the past decade. Our Camellias are above the average in quality; practically all we offer this season were grown in fields and woodland beds. You will like these Camellia plants!

### JOIN THE AMERICAN CAMELLIA SOCIETY

Annual Membership dues are \$3.00, for which you will receive the instructive Annual issued by the Society, as well as the quarterly News-letter. Address American Camellia Society, Box 2398, University Station, Gainesville, Fla.

# GROUP A CAMELLIAS • *Grafted Plants*

## New and Rare Varieties

- Adolphe Audusson.** Large; semi-double; very dark red, marbled white. Ours is a superior strain, lighter than most. Very choice. Grafted, 12 to 15 in. to 18 to 24 in.
- Adolphe Audusson, Red Sport.** Generally considered the finest of semi-double red Camellias. Very dark red with golden stamens. Heavy, dark green foliage. A "must" for every Camellia garden. Grafted, 12 to 15 in. to 18 to 24 in.
- Angel's Blush.** Loveliest of miniature Camellias. Very small, double, chaste and beautiful light pink. Grafted, 12 to 15 in. to 15 to 18 in.
- Bessie Morse Bellingrath.** Semi-double; white with faint pink flush and golden stamens. Grafted, 15 to 18 in. to 18 to 24 in.
- Black Dragon.** Large; irregular double; very dark red. Has the appearance of an almost black Woodville Red. Grafted, 12 to 15 in., to 15 to 18 in.
- Donckelari.** Large; semi-double; red and white. Very hardy. Ours is the old, true-to-name Donckelari. Grafted, 12 to 15 in. to 18 to 24 in.
- Fimbriata Superba (Fred Sander).** Medium size; semi-double; distinct saw-edge; deep red. Grafted, 12 to 15 in.
- Haku-Rakuten (Refugee).** Large; semi-double; pure white, with long, showy stamens. Grafted, 12 to 15 in. to 18 to 24 in.
- High Hat.** Lovely, light pink sport of Daikagura. Like parent, blooms very early. Grafted, 12 to 15 in., \$10.00; 15 to 18 in., \$5.00.
- Imperator (French).** Very large; irregular double; dark red. Very choice. Grafted, 12 to 15 in. to 15 to 18 in.
- Iwane-Shibori.** Large; semi-double; white, splotched red. Grafted, 12 to 15 in. to 18 to 24 in.
- Jessica, Variegated.** Large; almost single; white, striped red. Grafted, 12 to 15 in. to 18 to 24 in.
- Kenny (Glen).** Very large; irregular double; deep pink and white variegated. Upright growth, heavy wood, large foliage. Has the appearance of being an extra-fine Lady Jane Grey, but a more reliable and perfect bloomer. Very choice. Grafted, 12 to 15 in. to 18 to 24 in.

### COMPACT, FIELD-GROWN, TOP-QUALITY CAMELLIAS

Practically all of our Group A Camellias are superior, field-grown plants.



MATHOTIANA RUBRA

## GROUP A CAMELLIAS, continued

**K. Sawada.** Patent 431. Outstanding and exquisite Camellia from Overlook. Flower pure white, very double and fully imbricated. When fully open shows few stamens in center. Very choice. Grafted, 15 to 18 in. to 18 to 24 in.

**Lady Hume's Blush.** Tiered, double; white, flushed pink. Very rare and beautiful Camellia. Grafted, 12 to 15 in.

**Lady of the Lake.** Medium size; semi-double; pure white with golden stamens. Grafted, 12 to 15 in. to 15 to 18 in.

**Lila Rosa.** Large; irregular double; very early. Almost a red Daikagura. Grafted, 12 to 15 in. to 18 to 24 in.

**Martha Brice.** Large; semi-double; light lavender-pink, a color not found in other Camellias. Compact growth; very large, light green foliage. A very lovely Camellia from Quitman, Ga. Own-root, 8 to 12 in. to 18 to 24 in., specimen.

**Mathotiana Rosea.** Very large; double imbricated; sometimes shows a few stamens in center at end of season; deep pink. This Mathotiana sport is the largest of all pink double-flowering Camellias. Makes a fine bush with heavy foliage; always satisfactory. Grafted, 12 to 15 in. to 18 to 24 in., specimen.

**Mathotiana Special.** Here is an exceptionally fine new member of the Mathotiana group, of our raising. Like Mathotiana Variegated (formerly called in error C. M. Hovey), but the white spots are fewer and much larger; growth and foliage same as parent. Strikingly handsome. Grafted, 12 to 15 in. to 18 to 24 in., specimen.

**Mrs. K. Sawada.** Patent 481. Complete double, imbricated; white flushed pink. A chaste and lovely Camellia. Grafted, 15 to 18 in. to 18 to 24 in.

**Pride of Descanso.** Very large; semi-double; pure white. One of the famous "S" varieties. Grafted, 8 to 12 in., \$10.00; 12 to 15 in., \$15.00.

**Thelma Dale.** Very large; incomplete double with petal sizes intermixed; rose-pink, striped and spotted white. Very choice. Grafted, 12 to 15 in., \$10.00.

**Victory White.** Large; sometimes semi-double, sometimes irregular double (peony form); pure white. Grafted, 12 to 15 in. to 18 to 24 in.

**Ville de Nantes.** No. 1 Camellia of America. Extra large; semi-double; most blooms red with white stripes and splotches. There is an occasional solid red flower; some flowers are mostly white. Winner of first prizes and sweepstakes awards everywhere shown. Our plants of this variety, like most of our Camellias, are compact, field grown, many with flower buds. Grafted, all sizes.

**Virgin's Blush.** Loveliest light pink, semi-double Camellia. Fastest grower of new, choice varieties; large exhibition blooms. Created quite a sensation at flower shows the past year. If Ville de Nantes is America's No. 1 Camellia, Virgin's Blush may be worthy of the No. 2 position. Grafted, all sizes.

**White Crane.** Very large; pure white, showy golden stamens. There has been confusion about this variety, but ours is the genuine strain. Always greatly admired, always satisfactory. Grafted, 12 to 15 in. to 15 to 18 in.

**White Empress.** Very large; pure white, golden stamens. In popularity this is the leading semi-double Camellia. Grafted, 12 to 15 in. to 18 to 24 in.

**White Queen.** Very large; semi-double; pure white. Looks like a giant form of Snowdrift. Late bloomer. Grafted, 12 to 18 in. Own-root, 18 to 24 in.

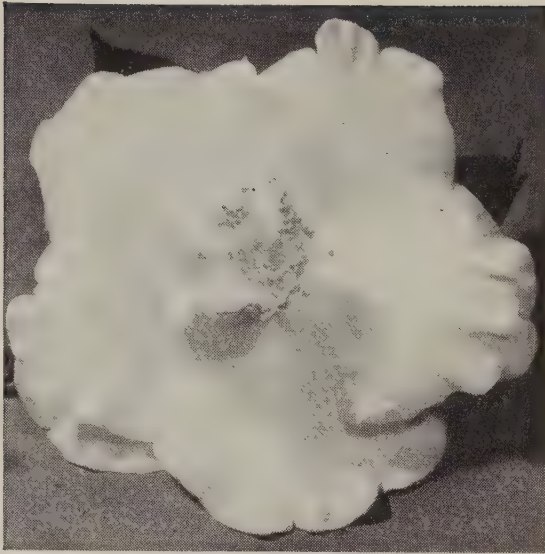
**Woodville Red.** Very large; incomplete double; cherry-red. One of the showiest of Camellias. A great exhibition variety. Grafted, 12 to 15 in. to 18 to 24 in.

**Bryan Wright.** Very beautiful new Camellia. A seedling raised by Miss Beatrix Hoyt, Thomasville, Ga. and introduced now for the first time. Medium size; soft, light pink, in color between Lady Hume's Blush and Pink Perfection; showy golden stamens. A chaste and lovely flower. Habit of growth like Pink Perfection; foliage darker. Compact, field-grown, grafted plants, 2-yr., \$35.00; 1-yr., \$25.00.

### PRICES OF GROUP A CAMELLIAS

Except as noted

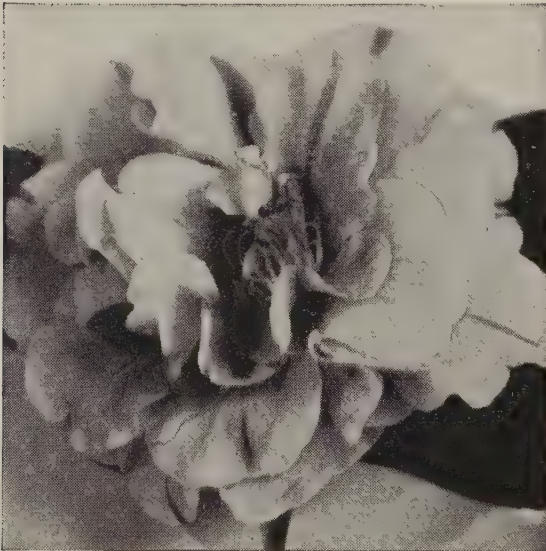
GRAFTED PLANTS	Each
8 to 12 in., field grown, 1 yr. only, B&B.....	\$7 50
12 to 15 in., field grown, 1 yr. and 2 yr., B&B.....	8 50
15 to 18-in., field grown, 2 yr., B&B.....	10 00
18 to 24 in., field grown, 2 yr. and 3 yr., medium, B&B.....	12 00
18 to 24 in., field grown, 2 yr. and 3 yr., specimen, B&B.....	15 00
<b>OWN-ROOT PLANTS</b>	
8 to 12 in., bed grown, branched.....	\$3 50
12 to 15 in., bed grown, branched.....	5 00
15 to 18 in., field grown, B&B.....	7 50
18 to 24 in., field grown, medium, B&B.....	10 00
18 to 24 in., field grown, specimen, B&B.....	12 00
2 to 2½ ft., field grown, specimen, B&B.....	15 00
2½ to 3 ft., field grown, specimen, B&B.....	17 50



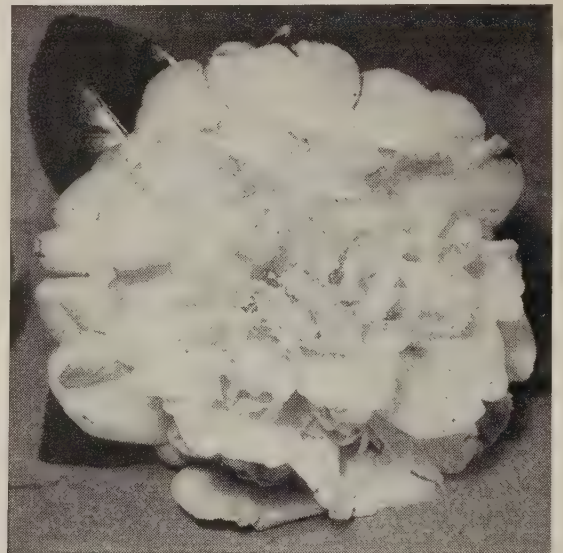
**WHITE EMPRESS**



**JESSICA**



**COMTE DE NESSELRODE**



**VICTORY WHITE**



**WHITE GIANT**



**DONCKELARI**



## GROUP B CAMELLIAS

### Mostly Grafted

**Dr. W. G. Lee.** Very large; semi-double; blood-red with showy golden stamens. Slow-growing, compact bush with heavy, dark foliage. Grafted, 12 to 15 in. to 18 to 24 in.

**Dr. Lee, Variegated.** Beautiful sport of the solid red variety with all the parent's qualities. Grafted, 12 to 15 in. to 18 to 24 in.

**Duchess of Sutherland.** Large; semi-double; pure white with occasional showy pink stripe. Very fine. Large, light green foliage; compact growth. Own-root, all sizes.

**Eleanor of Fairoaks.** Medium size; semi-double; cherry-red, mottled white. Sport of the well-known red Vedrine. Own-root, 12 to 15 in. to 18 to 24 in.

**Elizabeth Boardman.** Medium size; semi-double; pure white with golden stamens. Compact bush. One of the really fine whites. Grafted, 8 to 12 in. to 15 to 18 in.

**Flame.** Large; semi-double, almost single; flame-red with golden stamens. Growth upright and fast. A flower of distinctive color, always admired. Very satisfactory. Grafted, 18 to 24 in.

**Flame, Variegated.** Sport of the solid red Camellia, and possessing all the excellent qualities of the parent. In variegated Camellias, this one is among those of outstanding merit. Grafted, 12 to 15 in. to 18 to 24 in.

**Glen 40.** Large; complete double, imbricated; very dark red. Slow grower, but compact bush producing exhibition flowers. Grafted, 12 to 15 in. to 18 to 24 in.

**Gosho-guruma.** Medium size; semi-double; dark red with short, prominent stamens. Compact and columnar in growth. Own-root, 12 to 15 in. to 18 to 24 in.

**Imura.** Extra large; semi-double, almost single; pure white with long, showy stamens. For many who love singles, here is one of the most attractive. Own-root, 12 to 15 in. to 18 to 24 in.

**Jessica.** Very large; semi-double, almost single; deep red with one compact ring of long golden stamens in center. Blooms late. Always a great favorite in the Thomasville area. Grafted, 12 to 15 in. to 2 to 3 ft.

**Josephine Duell.** Large; semi-double; deep pink. A very hardy and very beautiful Camellia. Own-root, 12 to 15 in. to 2 to 3 ft.

**Kumasaka, Variegated.** Sport of the older, solid pink Kumasaka. Large; irregular double; deep pink, with flecks and stripes of white. Bush is compact in growth, and leaves are distinctive in being almost all variegated. Own-root, 18 to 24 in. to 2 to 3 ft.

**Lady Jane Grey (Eugene Lize).** Very large; irregular double (peony form); deep pink with white marbling. Small, compact-growing bush with foliage similar to Donckelari. Long popular in the Thomasville area. Own-root, all sizes.

**Lady Mary Cromartie.** Large; semi-double; deep pink. Bush compact and shapely. Superior to many newer semi-doubles. At Thomasville always lovely and satisfactory. Grafted, 18 to 24 in. to 2 to 3 ft.



**DEBUTANTE**  
Loveliest pink peony-form Camellia

**Amabilis.** Single white; stamens in distinctively different circle formation. Vigorous bush. Own-root, 8 to 12 in. to 15 to 18 in.

**Arajishi.** Earliest of Camellias; often blooms last of July and continues through fall. Irregular double, much like Prof. C. S. Sargent; cherry-red. Grafted, 12 to 15 in. to 18 to 24 in.

**Aunt Jetty.** A solid red form of Gov. Mouton. Incomplete double; large outer petals with petaloids in center; very dark red. Exceptionally hardy, and always a favorite where known. Own-root, 18 to 14 in. to 2 to 3 ft.

**Bessie McArthur.** Large; semi-double; deep pink to light red. Large foliage; compact growth. One of the most cold-resistant of all Camellias. Grafted, all sizes.

**Catherine Cathcart.** Large; complete double, imbricated; soft, light rose-pink with large white spots. Always a favorite where known. Own-root, 12 to 15 in. to 18 to 24 in.

**Comte de Nesselrode.** Large; semi-double with petals intermixed; light pink, spotted and striped deep pink. Sometimes called a glorified Herme, but is superior in flower, foliage and growth. An old but superior variety; name lost for years. Has created much interest at flower shows where it appeared under various local names. At Thomasville it is always attractive. Grafted, all sizes.

**Daikagura.** Finest of the very early Camellias. At Thomasville it almost invariably commences blooming in September and continues through Christmas. Large; irregular double; deep pink. Always lovely, always satisfactory. Grafted, 12 to 15 in. to 18 to 24 in.

**Daikagura, Variegated.** Sport of the solid pink Daikagura, with habit of growth, size of bloom, and earliness the same. Grafted, 12 to 15 in. to 18 to 24 in.

**Debutante.** Easily the most popular of large pink Camellias. Every bloom is perfect, of incomplete double formation with petal sizes intermixed. Foliage is large and deeply serrated. Fast, symmetrical growth. Begins blooming early and continues over a long season. Own-root, all sizes.

**Lallarook (Il Tramonto; Laurel Leaf).** Largest of all double, imbricated Camellias. Clear, satiny pink, marbled and spotted white; sometimes solid pink flowers appear on the same bush. Occasional flowers are tiered, like *Candidissima* in form. Upright growth; long, pointed, glossy leaves. A great favorite. Own-root, all sizes.

**La Reine.** A lovely sport of the pink Camellia, Lady Mary Cromartie; like the parent but flecked and spotted white. Grafted, 12 to 15 in. to 18 to 24 in.

**Lindsay Neill.** A fine Camellia from Columbus, and one of the most sought-after of rare varieties. Large; semi-double; dark red, splotched white, with an occasional solid red flower. Grafted, 8 to 12 in. to 18 to 24 in.

**Lotus.** Largest of fancy whites. Semi-double; immense petals; yellow stamens. Long, dull green leaves are heavily ribbed. Not very hardy; in upper part of the Camellia section it should be given protection. Own root, 18 to 24 in.

**Magnoliæflora.** Medium size; single; delicate, light pink. Well named. One of the loveliest of Camellias; should be in every collection. Very hardy for a light-colored variety. Grafted, 12 to 15 in. to 18 to 24 in.

**Marchioness of Exeter.** Irregular double, Sargent-like flower; large; deep pink. Early. Grafted, 15 to 18 in., to 18 to 24 in.

**Marchioness of Exeter, Variegated.** Sport of the above. Same size of bloom, with white spots and stripes. Grafted, 15 to 18 in. to 18 to 24 in.

**Marion Mitchell.** Large; semi-double; deep red. Slowly growing and not easy to grow, but those who can raise it are richly rewarded with delightful blooms. Grafted, 12 to 15 in. to 18 to 24 in.

**Mathotiana Rubra.** The finest of all double, dark red Camellias. Huge flowers; complete double, incomplete imbricated. Late in season the flowers usually show few short, golden stamens in center. Foliage is large; bush compact and uniform in growth. A "must" in every Camellia collection. It is impossible to have too many Mathotianas as long as one has room to grow them. Own-root, all sizes.

**Mathotiana, Variegated.** Sport of the above, formerly incorrectly called C. M. Hovey. Has every one of its parent's excellent qualities and should be extensively planted throughout the entire area where Camellias are grown. Own-root, all sizes.

**Mrs. Charles Cobb.** Large; incomplete double with petal sizes intermixed; very dark red. Bush compact and vigorous. Own-root, 18 to 24 in.

**Nagasaki.** Large; semi-double; deep pink with white splotches. Own-root, 18 to 24 in.

**Pæoniaeflora.** Very large; irregular double, similar in form to Prof. C. S. Sargent, but larger; peach-pink, peppered and splotched with white. Large foliage; compact, upright bush. Very fine. Grafted, 18 to 24 in., to 2 to 3 ft.

**Pink Shell.** Large; semi-double; shell-pink. Grafted, 15 to 18 in. to 18 to 24 in.

**Pink Star.** One of the few really salmon-pink Camellias. Large; double, irregular, similar to *Debutante* in form. Makes a uniform, compact bush; blooms over a long season. Very satisfactory. Own-root, 12 to 15 in. to 2 to 3 ft.

**Rev. John Bennett.** Very large; semi-double, almost single; compact ring of long, golden stamens in center of flower. Genuinely salmon-pink in color. Long, narrow, distinct foliage. Very choice. Grafted, 12 to 15 in. to 2 to 3 ft.

**Rose Dawn.** Large; complete, imbricated double; rose-pink. Often called the Pink Alba Plena. Very select. Grafted, 15 to 18 in. to 18 to 24 in.

**September Morn.** Medium size; semi-double; white, flushed pink. Very early bloomer, usually beginning early in September. Grafted, all sizes.

**Smiling Beauty.** One of the most refined and beautiful of comparatively new Camellias. Large; semi-double; soft, light pink, slightly deeper than *Magnoliæflora*. Grafted, 12 to 15 in. to 2 to 3 ft.

**Snowdrift.** One of the most genuinely lovely of Camellias and perhaps the hardiest white. Perfectly formed, regular, semi-double; pure white flowers, with beautiful golden stamens. Bush of compact, symmetrical growth. Own-root, all sizes.

**Triphosa.** Largest of all single Camellias. Pure paper-white without a tinge of other coloring. Very large petals, and one compact ring of long, golden stamens in center of flower. Own-root, all sizes.

**Vashti.** A lovely Camellia from Vashti School, Thomasville, Ga. Easily the most choice of the variegated Camellias of the standard, complete double form. Medium sizes; light rose-pink, splashed with deep pink and red. Bush of compact, symmetrical growth. Own-root, all sizes.

**Vedrine.** Medium size; incomplete double with mixed petals; deep red. Own-root, 8 to 12 in. to 18 to 24 in.

**Victor Emmanuel.** Finest late-flowering red Camellia with stamens. Large; semi-double; deep red. One of the most striking of fancy Camellias. Makes a compact, shapely bush producing many large and perfectly formed flowers. Very satisfactory. Own-root, all sizes.

**White Giant.** Fastest growing of large white Camellias. Giant flowers; pure white with golden stamens. Large foliage; upright, compact growth. Grafted, 12 to 15 in. to 18 to 24 in.

## PRICES OF GROUP B CAMELLIAS

Except as noted

### GRAFTED PLANTS

	Each
8 to 12 in., field grown, 1 yr. only, B&B.....	\$5 00
12 to 15 in., field grown, 1 yr. and 2 yr., B&B.....	7 50
15 to 18 in., field grown, 1 yr. and 2 yr., B&B.....	10 00
18 to 24 in., field grown, 2 yr., medium, B&B.....	12 00
18 to 24 in., field grown, 2 yr. and 3 yr., specimen, B&B.....	15 00
2 to 3 ft.....	17 50

### OWN-ROOT PLANTS

8 to 12 in., bed grown, branched.....	\$2 00
12 to 15 in., bed grown, branched, B&B.....	3 00
15 to 18 in., field grown, medium B&B.....	5 00
18 to 24 in., field grown, medium, B&B.....	7 50
18 to 24 in., field grown, specimen, B&B.....	10 00
2 to 3 ft.....	15 00

## Plants as Gifts

Camellias, Azaleas, etc., make delightful gifts to send at Christmas, on birthdays or any special occasions. Such gifts are lasting and become more beautiful as time goes along. Send us your card, or authorize us to write your name on a special one, and we will place in an envelope, attach to the plant, and ship according to your instructions. If you wish, we will forward transportation prepaid and bill you with the actual cost. Please send such orders as far in advance of shipping date as possible. The supplying of gift plants for our customers has become one of our specialties.



VICTOR  
EMMANUEL

*Official American Camellia Society  
Classifications are explained on page 30.*

## Come See Them in Bloom

Lovely as the illustrations are in our catalog, they cannot do justice to these glorious flowers. We urge you to come see our Camellias in bloom and make your selection from living specimens.



MONARCH



GLOIRE DE NANTES



REV. JOHN BENNETT



MARTHA BRICE



PINK PERFECTION

## GROUP C CAMELLIAS

### Own-Root Plants

**Alba Plena.** The acme of perfection in double, imbricated whites. Pure white, wax-like. Very early flowering. 12 to 15 in. to 18 to 24 in.

**Bealei Rosea.** Small flower; complete double; clear rose-pink color. Dark, pointed foliage; vigorous compact and rounded growth. Hardy, and a profuse bloomer over a long period. All sizes.

**Candidissima.** Small; tiered double flower; pure white. One of the loveliest of all double-flowering Camellias. Slow-growing, compact bush, well worth a place in any garden for its distinctiveness. 12 to 15 in. to 18 to 24 in.

**Carnation (Christmas Glory).** Medium size; complete double, irregular, high-centered form; glowing bright red. Almost invariably at its height of bloom at Christmas time. Bush vigorous and compact, profuse in blooming. All sizes.

**C. M. Hovey (Col. Firey).** Large; complete double, regular imbricated; deep red. Very hardy. One of the fastest growers of large-flowered Camellias. All sizes.

**Derbiana.** Large; complete double of irregular, high-centered form; very dark red. One of the fastest-growing and most symmetrical of Camellias. All sizes.

**Elegans (Chandler).** The standard of perfection in Camellias. An old variety but here to stay; always hardy, always satisfactory. Large; incomplete double, large outer petals, petaloids in center; deep pink with white splotches, occasionally a solid pink flower. Sets flower buds while small. All sizes.

**Elizabeth.** Medium size; complete double, incompletely imbricated; pure white. An occasional flower has a pink stripe. All sizes.

**Gloire de Nantes (Leeana Superba).** Medium large; incomplete double with large petals; deep watermelon-pink color. Late bloomer. Bush vigorous; foliage very large, dark green and showy. One of the best of the older varieties. All sizes.

**Gloire de Nantes, Variegated (Latifolia).** A sport of the watermelon-pink variety, with white flecks and spots, and all the good characteristics of the parent. All sizes.

**Gov. Mouton.** Medium size; incomplete double, large outer petals with petaloids in center; deep red, mottled white. Very vigorous. 18 to 24 in.

**Herme.** Here is one of the best of the older varieties. One of the hardiest, always lovely. Large; incomplete double with petal sizes intermixed, light pink with white edges and pink and red splotches. 8 to 12 in. to 18 to 24 in.

**Imperator (Georgia).** A Camellia of deep pink to light red color, not to be confused with the deep red French Imperator. We need a better name for one of these varieties. Georgia Imperator has perfectly formed, complete double flowers with incomplete imbrication. Foliage is dark and glossy; bush compact in growth. 12 to 15 in. to 18 to 24 in.

**Jarvis Red.** Medium large; produces flowers of both semi-double and incomplete double form with petaloids in center; very dark red. Bush very compact and vigorous in growth. All sizes.

**Kumasaka.** Medium size; semi-double; deep rose-pink. Even the smallest plants are free bloomers. Late. 12 to 15 in. to 2 to 3 ft.

**Lady Clare (Empress).** Very large; semi-double, almost single; deep rose-pink. Large foliage; compact, rounded bush. One of the hardiest of Camellias, always attractive and dependable. All sizes.

**Lady Clare, Variegated.** Beautifully splotched and striped sport of the solid pink variety; growth and flowering habit identical. All sizes.

**Lady Vansittart.** Medium size; semi-double, almost single; cherry-red. Glossy, pointed, somewhat twisted foliage; thrifty bush. 18 to 24 in.

**Lady Vansitti (Davis Dark Red).** Medium size; incomplete double with large outer petals and petaloids in center; very dark red. Smooth, pointed foliage. Very late bloomer. An old variety; we think the true name has been lost. 8 to 12 in., 12 to 15 in.

**Lilyi.** Small; complete imbricated double. Very profuse bloomer, midseason to late. The fastest-growing pure white Camellia. All sizes.

**Maurice Hurst.** Very fast-growing Camellia. Large; produces both semi-double and irregular double flowers on same bush; salmon-rose color. Very hardy, and profuse for a large-flowered variety. All sizes.

**Monarch (Honneur d'Amerique).** Very large; complete double, irregular with high center; deep pink to light red, usually marbled white. Slow grower but develops into an attractive, almost completely round bush, and the immense flowers are produced over a long season. 18 to 24 in.

**Monjisu, Red.** Small; semi-double; dark red. Even the smallest bush blooms heavily. Lustrous, dark foliage. 18 to 24 in.

**Monjisu, Variegated.** Like the above, but with splotches and spots. 18 to 24 in.

**Mrs. F. L. Gibson.** Small; single; white striped, pink, with many solid red or solid pink flowers on same bush. A very unusual Camellia, raised by the late Mr. Frank L. Gibson of Thomasville and named in honor of his wife. Exceptionally long flowering season. A large bush will bloom from October to March. All sizes.

**Mrs. F. L. Gibson, Herme-Colored Sport.** Like the parent bush from which it is a sport, but has the white edge and same stripes as seen in Herme. 12 to 15 in. to 18 to 24 in.

**Mrs. F. L. Gibson, Pink Sport.** A solid pink sport of the above, producing somewhat larger flowers than the parent bush. 12 to 15 in. to 18 to 24 in.

#### GRADING OF GROUP C CAMELLIAS

We can't divide our Camellias into many groups. So, in grading, we grade closely on such as Alba Plena and Elegans, but liberally on others like Carnation and Derbiana.

**Nobilissima.** Medium size; incomplete double with petal sizes intermixed; pure white. Early. 12 to 15 in. to 18 to 24 in.

**Otome.** Medium large; complete imbricated double. This is a beautiful light pink sport of Elizabeth. All sizes.

**Pink Perfection.** All that the name implies, and the most generally loved and appreciated of all Camellias. Small; complete imbricated double; shell-pink. Very hardy for a light-colored variety and blooms profusely over a very long season. Grows into a very compact and symmetrical bush. One cannot have too many Pink Perfections as long as there is a place to plant them. All sizes.

**Prince Eugene Napoleon (Pope Pius IX).** Large; complete imbricated double; rose-red. When grown in full sun some petals are tipped white. Makes a very uniform and attractive bush. Very hardy, and blooms profusely. One of the best of the older varieties. All sizes.

**Prof. C. S. Sargent.** One of the greatest of all Camellias. Large; complete double, irregular, with high, pin-cushion center; very dark red. Early flowering. Bush is thrifty and symmetrical and produces blooms in great abundance over a

long period. Nobody can lose in planting Prof. C. S. Sargent. A very vigorous understock on which to grow any other kind by grafting. All sizes.

**Rev. John G. Drayton.** Medium size; semi-double with golden stamens; unvarying soft rose-pink color on inside and outer petals. Large, light green foliage; compact and upright bush. 12 to 15 in. to 18 to 24 in.

**Sarah Frost.** A famous old Camellia of the South. Medium size; full, imbricated double; rose-pink to light red. Very profuse bloomer. Bush is vigorous, compact and tall in growth. Greatly valued as a free-blooming Camellia, an evergreen, and a vigorous understock on which to graft varieties of lesser vitality. All sizes.

**Semi-Double Blush.** Small; almost single; blush-white. Bush fast growing and compact; heavy bloomer. Perhaps the hardiest light pink Camellia. All sizes.

Being an "old" variety is nothing against a plant. Rather, the old varieties that remain in favor occupy a unique position, for they stay with us strictly on merit.

### PRICES OF GROUP C CAMELLIAS

OWN-ROOT PLANTS		Each	12
8 to 12 in., bed grown, branched.....		\$1 00	\$10 00
12 to 15 in., bed grown, branched.....		1 50	15 00
15 to 18 in., bed grown, branched, B&B.....		2 50	25 00
18 to 24 in., bed grown, branched, B&B.....		3 50	35 00
18 to 24 in., field grown, compact, B&B.....		5 00	50 00
2 to 3 ft., field grown, compact, B&B.....		7 50	

6 or more plants sold at 12 rate.

As many as 12 varieties may be procured at the 12 price.

## CAMELLIA SASANQUA

One of the newer and finest of all the broad-leaved evergreens. Similar to *Camellia japonica*, but looser and faster growing. Very profuse bloomers, the flowers commencing to open the latter part of September and continuing on through November—a time when very few flowers can be had.

They are extremely satisfactory in landscape work, as individual specimens, in foundation plantings, and for hedges, and their popularity is only just beginning.

**Cleopatra.** Large, beautiful deep pink flowers, semi-double, and having crinkled petals. Foliage thick, dark and glossy. A vigorous and compact grower. All sizes.

**Dawn.** Easily the finest of the light pink Sasanquas. Large, semi-double flower. 2 to 2½ ft., 2½ to 3 ft.

**Rosea.** Medium, single, deep pink flowers in great profusion. Fast grower, free bloomer. This variety at Thomasville blooms September to January. All sizes.

**Snow-on-the-Mountain.** Large flowers for a Sasanqua, but very free bloomer. Semi-double, ivory-white flowers. All sizes.

	Each	12
8 to 12 in., from beds.....	\$1 00	\$10 00
12 to 15 in., from beds.....	1 50	15 00
15 to 18 in., from beds.....	2 00	20 00
18 to 24 in., from beds.....	2 50	25 00
	Each	
18 to 24 in., specimen.....	\$3 50	
2 to 2½ ft., specimen.....	5 00	
2½ to 3 ft., specimen.....	7 50	

*In Limited Supply  
We Have Many Other Camellias.  
Correspondence Invited*



SASANQUA ROSEA

## Oriental MAGNOLIAS

Oriental Magnolias are rapidly increasing in popularity in the South, being one of the showiest and most satisfactory of large shrubs or small trees. We are glad to be able to offer a collection of varieties such as few growers have developed.

**Denudata Elongata.** Seedling of Denudata or Conspicua. Flowers slightly larger than parent; mostly pure white to lemon-white, but occasionally showing a faint tinge of purplish pink at base. Very fine. 3 to 4 ft., \$10.00 each.

**Denudata Purpliana.** Translucent reddish purple. Very large. Different and distinctive. 3 to 4 ft., \$10.00 each.

**Liliflora.** The most common Oriental Magnolia in the South. Medium purple on outer petals, light purple (almost white) inside. 2 to 3 ft., \$3.50; 3 to 4 ft., \$5.00 each.

**Liliflora Nigra.** Very dark sport of the above, and like parent is a midseason bloomer. 2 to 3 ft., \$5.00; 3 to 4 ft., \$7.50 each.

**Rustica Rubra.** Very large, cup-shaped, purplish red flower. In form is one of the most beautiful of Magnolias. Late. 2 to 3 ft., \$7.50; 3 to 4 ft., \$10.00 each.

**Soulangeana.** Most popular variety in the United States, long prized for its beautiful, cup-like form, light pink color and extreme earliness of bloom. 2 to 3 ft., \$5.00; 3 to 4 ft., \$7.50 each.

**Soulangeana Alexandrina.** A hybrid that is more vigorous than the well-known Soulangeana. Flower larger, with 9 petals; most blooms are deep purplish pink, lighter inside. 2 to 3 ft., \$6.00; 3 to 4 ft., \$8.50 each.

**Soulangeana Lennei.** Possibly largest of all Magnolias. Large, cup-shaped, deep purple flower. Late bloomer. Fine to extend the season. 2 to 3 ft., \$7.50 each.

**Stellata (Star Magnolia).** Dwarf variety, seldom reaching a height of more than ten feet. Produces numerous, waterlily-like flowers in early spring. 18 to 24 in., \$5.00 each.



MAGNOLIA SOUL. ALEXANDRINA

## The Rare GORDONIA ALTAMAHA

### Franklinia altamaha

This exquisite, spring-flowering, magnolia-like tree was first found along the banks of the Altamaha River in Georgia, and taken in 1777 to Philadelphia by John Bartram, who named it in honor of his friend, Benjamin Franklin. Later expeditions failed to locate more of this tree along the Altamaha, but it has been occasionally found elsewhere. It is a unique and rare little tree. 2 to 3 ft., \$5.00; 3 to 4 ft., \$7.50 each.

### Visitors Will Be Served

We are well prepared to wait on customers who come to the nursery. Many field-grown Evergreens and Flowering Shrubs are being continually dug, balled and burlapped, price-tagged and set in beds for immediate sales at the main nursery. While the services of experienced salesmen are usually available, you can practically serve yourself here.



THE RARE GORDONIA ALTAMAHA

# Broad-leaved EVERGREENS

The Lower South is indeed fortunate in its wealth of broad-leaved evergreens. Many of them have beautiful blooms and berries—a distinct advantage over conifers. With the use of broad-leaved material one is able to get definite contrasts in color and size of foliage, blossoms over a long period, low-growing and tall-growing, columnar or spreading plants, as the location demands.

**ABELIA grandiflora.** Well-known evergreen with dark green leaves and small white flowers from May till frost. Useful in flowering borders, foundation plantings and hedges.

	Each	12	100
12 to 18 in.....	\$0 50	\$5 00	\$40 00
18 to 24 in.....	75	7 50	60 00
2 to 3 ft.....	1 00	10 00	

**CLEYERA japonica.** One of the most beautiful of evergreens for this section. Thick, waxy, dark green leaves. Creamy white, fragrant flowers.

	Each	12	
2 to 3 ft.....	\$3 50	\$30 00	
3 to 4 ft.....	5 00	40 00	
4 to 6 ft.....	7 50		

**FEIJOA Sellowiana.** One of the most beautiful and satisfactory of all evergreens. Bluish green foliage. Compact growth. Brilliant crimson and white flowers in summer. Use more Feijoa and less ligustrums and pittosporums.

	Each	12	
18 to 24 in., B&B.....	\$2 00	\$17 50	
2 to 3 ft., B&B.....	3 00	27 50	

**GARDENIA florida** (Cape Jasmine). Sweet-scented white flowers. Well known and very popular.

	Each	
18 to 24 in.....	\$2 00	
2 to 3 ft.....	3 50	

**G. Mystery.** Very fast grower with larger blooms than the preceding.

	Each	
18 to 24 in.....	\$2 00	
2 to 3 ft.....	3 50	

**ILEX opaca** (American Tree Holly). All of our plants of this well-known native Holly are grown by grafting from heavy bearing plants. Choice specimens.

	Each	
5 to 6 ft., B&B.....	\$10 00	
6 to 8 ft., B&B.....	15 00	

**LIGUSTRUM lucidum** (Wax-Leaf Privet). Dark, glossy foliage. Ours is a very select strain of this variety. The most useful of all Privets in landscape plantings.

	Each	12
12 to 18 in., B&B.....	\$1 00	\$10 00
18 to 24 in., B&B.....	2 00	20 00
2 to 3 ft., B&B.....	3 50	35 00

**NANDINA domestica.** A most striking plant in winter when the normally green leaves turn a brilliant red. Our Nandinas are the superior large-leaf varieties and bear large clusters of red berries. Extremely valuable in landscape effects, growing in full sun or much shade.

Stocky Plants	Each	12
8 to 12 in., bare root.....	\$0 75	\$7 50
12 to 18 in., B&B.....	1 00	10 00
18 to 24 in., B&B.....	2 00	20 00
2 to 3 ft., B&B.....	3 00	30 00

**OSMANTHUS** (Tea Olive). The well-known Sweet Olive of Southern gardens. **O. fragrans** (white-flowering) and **O. fragrans aurea** (yellow-flowering).

Prices of Osmanthus	Each
18 to 24 in., from field, B&B.....	\$2 00
2 to 3 ft., from field, B&B.....	3 50
3 to 4 ft., from field, B&B.....	5 00
4 to 6 ft., from field, B&B.....	7 50

**PHOTINIA glabra.** New growth of this plant is vivid red and very attractive among other evergreens during the growing season. Should be pruned often to induce new growth.

Each	10	
18 to 24 in., B&B.....	\$2 00	\$17 50
2 to 3 ft.....	3 50	30 00
3 to 4 ft.....	5 00	

**PITTOSPORUM Tobira.** Thick, dark green leaves in rosettes on the stem. Flowers in dense terminal heads, creamy white and very fragrant.

Each	12	
12 to 18 in., B&B.....	\$1 50	\$15 00
18 to 24 in., B&B.....	2 50	25 00
2 to 3 ft., B&B.....	3 50	

**P. Tobira variegata.** Beautiful variegated form of the above, with same spreading habit of growth. Fine to use with green-leaved plants in foundation and border plantings.

Each	12	
12 to 18 in., B&B.....	\$1 50	\$15 00
18 to 24 in., B&B.....	2 50	25 00
2 to 3 ft., B&B.....	3 50	

**PYRACANTHA formosana** (Red Hawthorn). One of the choicest of all evergreens for the South. Profusion of white flowers in summer and red berries in winter. Large, compact grower.

Each	10	
12 to 18 in., B&B.....	\$1 00	\$9 00
18 to 24 in., B&B.....	2 00	17 50
2 to 3 ft., B&B.....	3 50	30 00

**VIBURNUM macrophyllum.** Very glossy, dark green leaves, large and long. Upright in growth. A prized evergreen in the south.

Each	12	
12 to 18 in., B&B.....	\$1 00	\$10 00
18 to 24 in., B&B.....	2 00	20 00
2 to 3 ft., B&B.....	3 50	35 00

**V. suspensum.** Large, deeply veined, slightly crinkled foliage. Cream-colored flowers in late winter. Very spreading in growth. Responds to hard pruning, and is used extensively in foundation and border plantings in the Lower South.

Each	12	
12 to 18 in., B&B.....	\$1 50	\$15 00
18 to 24 in., B&B.....	2 50	25 00
2 to 3 ft., B&B.....	3 50	

In limited supply we have a choice lot of other evergreens, including *Ilex Burfordi*, *Buxus japonica*, *Biota pyramidalis*, *Juniperus chinensis* Pfitzeriana, etc.

## MISCELLANEOUS PLANTS

**Bambusa falcata.** A very handsome clump Bamboo with fern-like leaves. Rarely grows taller than 12 feet. May be kept pruned low as a hedge. Will grow in dense shade next to trees or in full sun. Small clumps, 3 to 4 ft., \$1.50 each, \$15.00 for 12. Larger clumps, \$2.50 to \$5.00 each.

**B., Dwarf.** Feathery foliage and compact growth, rarely growing over 5 feet. An unusual Bamboo, imported years ago and name lost. Fine to use in landscape plantings for variety. 2 to 3 ft., \$2.50; 3 to 4 ft., \$3.50 each.

**Violet, Gov. Herrick.** Very large; deep purple; highly fragrant. The finest variety for the Southeast. 10 cts. each, \$1.00 for 12, \$7.50 per 100.

**Wisteria chinensis.** Three varieties: Blue, White and Purple. Our Wisterias are grown from cuttings taken from free-flowering plants and are not to be compared with seedlings, \$1.50 each.



FLOWERING QUINCE

## DECIDUOUS TREES and SHRUBS

	Each	12	100
2-yr. plants.....	\$0 75	\$7 50	\$60 00
3-yr. plants.....	1 00	10 00	80 00

Except where noted

- CORNUS florida** (Dogwood). The native White Dogwood is one of the best flowering trees. 4 to 5 ft., \$2.00; 5 to 6 ft., \$3.00 each.
- CYDONIA japonica** (Flowering Quince). Two varieties, Rose-Red and Pure White. Flowers in winter. \$1.50 to \$3.00 each.
- DEUTZIA**. Showy spring-flowering shrubs. White or Pink.
- FORSYTHIA** (Golden Bell). Late winter and spring-flowering shrubs with golden yellow flowers.
- LAGERSTROEMIA** (Crape-Myrtle). A vigorous shrub or small tree with beautifully fringed flowers in summer. We have Watermelon-Red and White.
- LONICERA fragrantissima** (Upright Bush Honey-suckle). Masses of fragrant, creamy white flowers in midwinter.
- PRUNUS Mume**. A truly delightful small deciduous tree, covered with deep pink flowers in January. 3 to 4 ft., \$3.50; 4 to 5 ft., \$5.00; 5 to 6 ft., \$7.50 each.
- P. persica** (Double-flowering Peach). Three varieties—Pink, Red, White. 3 to 4 ft., \$1.00; 4 to 5 ft., \$1.50 each.
- SPIRÆA**. Indispensable shrubs for border plantings.
- S., Anthony Waterer**. Dwarf, compact bush; rose-red flowers; late spring and summer.
- S. Reevesiana**. Upright; double; white.
- S. Vanhouttei**. Single Bridal Wreath.
- S. Thunbergi**. Dwarf; white.
- VITEX Agnus-castus** (Chaste-Tree). Lilac flowers borne in great profusion in midsummer on small, many-branched trees. Foliage light green, serrated with white. Blue-flowering trees and shrubs are rare; here is one perfectly adapted to the South.
- WEIGELA rosea**. Vigorous shrub producing a wealth of pink, bell-shaped flowers in early spring.

- ALTHEA**. Free-flowering shrub or small tree. Single or double varieties in Red, Pink, Purple, Variegated, and White.
- AMYGDALUS** (Flowering Almond). Dwarf shrub with small flowers in late winter. White or Pink. 2-yr. plants only.
- CALYCANTHUS floridus**. The Sweet Shrub of old-fashioned gardens. 2-yr. plants only.
- CERCIS canadensis** (Redbud). With the first touch of spring this native tree is covered with reddish purple flowers. \$1.50 to \$3.00 each.

**DRY PEAT MOSS IN BAGS.** The great soil-building value of Peat Moss has long been recognized. Unfortunately, express and freight rates have risen to the point where raw, wet peat can no longer be shipped. We are glad to again offer perfectly dry, finely granulated Peat Moss. When soaked for using, it absorbs several times its weight in water. Transportation costs very small.

1-bus. bag .....\$1 00    3-bus. bag .....\$2 50    1 large bale .....\$6 00

### Official American Camellia Society Classifications

- SECTION I. Simple**—Stamens all central, united in a cylinder or in fascicles.
- Group A. *Single*—Normal corolla of five to seven petals, occasionally nine. Mrs. F. L. Gibson.
- Group B. *Semi-double*—Petals more than seven, usually fourteen to twenty. Donckelari.
- SECTION II. Incomplete Double**—Petals numerous with single stamens or fascicles of stamens or both intermixed forming an irregular mass.
- Group A. *Petals large*, representing fascicles of stamens. Gloire de Nantes.
- Group B. *Petals small*—Formed from single stamens or very small fascicles. Elegans (Chandler).
- Group C. *Petal sizes intermixed*—The features of A and B are combined. Herme.
- SECTION III. Complete Double**—All stamens have disappeared. Either they have been replaced by petals or if present they are few in number and hidden by petals.
- Group A. *Regular imbricated*—Petals regularly imbricated (*i.e.* overlapping like shingles on a roof) from circumference to center, either completely or with only a small unexpanded remnant in the center. Alba Plena.
- Group B. *Incomplete imbricated*—Petals imbricated except for a relatively large unopened center. Mathotiana.
- Group C. *Tiered*—Petals arranged in tiers or rows from flower circumference to center giving a star-like effect. Candidissima.
- Group D. *Irregular*—Petals irregularly arranged in a convex mass, usually small, stipulate, strap-shaped and folded. Prof. C. S. Sargent.

Any system of grouping has value in two directions. It is of use in placing varieties in groups of similar forms, thus resolving, in this instance, a great confused mass of forms into workable sections. It is also valuable in staging specimens for exhibition purposes. It must be remembered, however, that many varieties are not stable in form. Their flowers do not conform to a uniform pattern. Hence, any classification used in staging a Camellia show has application to the exact specimen or specimens in hand; whether the specimen is representative of the variety is another matter.









# LIRIOPE MUSCARI

## The Big Blue Liriope

No one who has seen showy *Liriope Muscari* in bloom at Thomasville throughout the summer will ever forget the colorful sight. This is truly the most useful of all border plants. It grows well in dense shade or in the full sun. It is used to border walks and beds, on slopes to prevent washing, as a ground-cover, in porch-boxes and as potted plants. Averages 8 to 12 inches in height and spread.

*Liriope Muscari* is so easy to grow it is fool-proof. While it thrives best in light but enriched soils, it will persist in well-nigh impossible hard and heavy soils. And though it will bloom in any location, the foliage is of better dark green color when planted in shade or partial shade. *Liriope* plants may be set any time of the year, and several years later may be dug, divided into at least four times the quantity, and the planting extended.

Our *L. Muscari*, sometimes listed as *L. graminifolia densiflora*, is genuine, grown from divisions only. We grow no seedlings, since they usually revert to the small-leaf type with light, stringy flowers of short duration. Our division-grown *L. Muscari* has wide leaves and produces uniform, heavy spikes of deep lavender-blue flowers over a long season. Plant 6 inches apart for continuous line.

*Liriope* is so hardy it may be planted in the entire South. If you are not ready to plant a border, try a dozen or more plants. You will be pleased.

### PRICES OF LIRIOPE MUSCARI:

	Each	10	100
2-yr. division plants . . . . .	\$0 10	\$1 00	\$7 50
Transportation prepaid			

## AZALEA AND CAMELLIA FERTILIZER

For maximum growth, bloom, and general well-being, it is necessary to feed your plants properly. Unfortunately for the Azalea and Camellia grower, most commercial fertilizers are made neutral by the use of limestone, and are not suitable for acid-loving plants.

To meet this need we keep in stock Reliance Azalea and Camellia Special, a commercial fertilizer which is acid, easy to apply, and has no objectionable odor. It supplies a balanced and complete food for these plants. With your purchases you will receive a little booklet giving much information on the planting and care of Azaleas and Camellias.

Prices of Reliance Azalea and Camellia Special Fertilizer: 25 lbs. \$1.50, 50 lbs. \$2.50, 100 lbs. \$4.50, f.o.b. Thomasville, Ga.

## INDEX

Abelia . . . . .	Page 29	Floral Dust . . . . .	Page 10	Osmanthus . . . . .	Page 29
Althea . . . . .	30	Flowering Almond . . . . .	30	Peat Moss . . . . .	30
Amygdalus . . . . .	30	Flowering Peach . . . . .	30	Photinia . . . . .	29
Azaleas . . . . .	4-7	Flowering Quince . . . . .	30	Privet . . . . .	29
Bamboo . . . . .	29	Forsythia . . . . .	30	Pittosporum . . . . .	29
Bambusa . . . . .	29	Gardenia . . . . .	29	Prunus . . . . .	30
Bridal Wreath . . . . .	30	Golden Bell . . . . .	30	Pyracantha . . . . .	29
Calycanthus . . . . .	30	Gordonia . . . . .	28	Redbud . . . . .	30
Camellias . . . . .	19-27	Hawthorn . . . . .	29	Roses . . . . .	8-18
Cape Jasmine . . . . .	29	Holly . . . . .	29	Spiræa . . . . .	30
Cercis . . . . .	30	Honeysuckle . . . . .	30	Sweet Shrub . . . . .	30
Cleyera . . . . .	29	Ilex . . . . .	29	Tea Olive . . . . .	29
Cornus . . . . .	30	Lagerstrœmia . . . . .	30	Viburnum . . . . .	29
Chaste Tree . . . . .	30	Ligustrum . . . . .	29	Violet . . . . .	29
Crape-Myrtle . . . . .	30	Liriope . . . . .	31	Vitex . . . . .	30
Cydonia . . . . .	30	Lonicera . . . . .	30	Weigela . . . . .	30
Deutzia . . . . .	30	Magnolia . . . . .	28	Wisteria . . . . .	29
Dogwood . . . . .	30	Nandina . . . . .	29		
Feijoa . . . . .	29				
Fertilizers . . . . .	6,31				

RED PEACH

DOUBLE  
FLOWERING  
ALMOND

WHITE PEACH

**FOR ABUNDANT COLOR AT SMALL EXPENSE**

*Plant Flowering Trees and Shrubs*

Whether you are starting a planting around a new home or trying to brighten up a garden that has "gone stale," you will find an ally in flowering trees and shrubs. At a very modest price you can have quantities of beautiful bloom over a period of several weeks in the spring, and through summer, too, if you choose carefully. We of the South have a great variety from which to make a choice.

*Do Not Wait*

Until you see flowering trees and shrubs in bloom to plant them. Set them in the fall or winter for best results



FORSYTHIA (Golden Bell)



VITEX (Chaste-Tree)

**THOMASVILLE  
NURSERIES, INC.**

**THOMASVILLE • GEORGIA**