

Historic, Archive Document

Do not assume content reflects current scientific knowledge, policies, or practices.

62.67

©1950

Dr

LIBRARY
RECEIVED
★ FEB 28 1950 ★
Beauties
U. S. Department of Agriculture

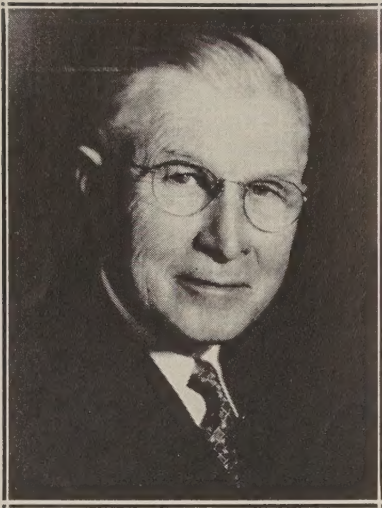
*for Your
Garden*

- Peonies
- Iris
- Hemerocallis
- Poppies
- Bulbs
- Chrysanthemums



C. F. Wassenberg

VAN WERT,
OHIO



Wassenberg's Beauties

FOR YOUR GARDEN

IRISES PEONIES POPPIES
 CHRYSANTHEMUMS BULBS HEMEROCALLIS

Printed Planting Instructions Accompany Every Order

All plants shipped Parcel Post or Express Prepaid. Orders amounting to less than \$2.00, include 25c extra for Parcel Post.

These are without a doubt the most beautiful and satisfactory of all garden flowers. Hardy and so easy to grow they appeal to the amateur as well as the experienced gardener.

You will find both the new higher priced novelties for those who want the latest sorts and also the many hundreds of exquisite kinds that are just a few years older that are priced so low as to be available to the most modest purse. All shipped to you prepaid at the proper time.



Snow Flurry



China Maid

MONEY-SAVING COLLECTIONS

Your Choice

Alike or Assorted Parcel Post Prepaid

Each	3	12
\$0.30	\$0.75	\$2.85
.35	.90	3.25
.40	1.00	3.75
.50	1.25	4.35
.60	1.50	5.00
.75	2.00	7.50
1.00	2.70	9.00
1.50	3.60	13.00
2.00	5.00	18.00

IRISES

Iris in some form are native to practically all parts of the world. As a class no flowering plant gives so much beauty for so little cost and attention.

The following list of Tall Bearded Iris offers the newer kinds which, because scarce as yet, are relatively more expensive than the old varieties found on pages 8 and 9. Because our list is so extensive we can give only brief descriptions.

Get some of these newer kinds for your garden. You will revel in their beauty and your friends will enjoy kinds they have never seen.

MONEY-SAVING COLLECTIONS

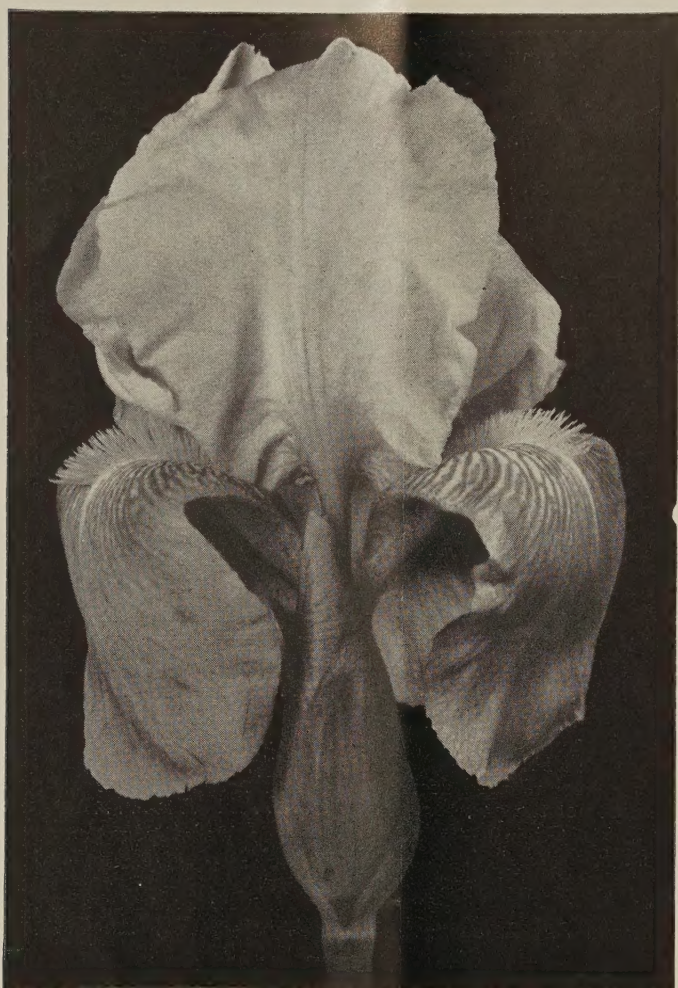
Your Choice

Alike or Assorted Parcel Post Prepaid

Each	3	12
\$0.30	\$0.75	\$2.85
.35	.90	3.25
.40	1.00	3.75
.50	1.25	4.35
.60	1.50	5.00
.75	2.00	7.50
1.00	2.70	9.00
1.50	3.60	13.00
2.00	5.00	18.00

Call Bearded Varieties

	Each		Each
Aladdin's Wish. (Mur.) Blue brushed cream with the brushings as if chalked on rather than blended. Blooms are very large, most unusual and lovely. A real innovation	\$5.00	Blue Rhythm. (Whit.) Very large flowers of cornflower-blue. Growing from 3 to 4 feet in height, perfectly branched. Consider it tops	\$7.50
Alastor. (Splen.) A very fine Cyclamen-pink. A. M.	.75	Blue Shimmer. Plicata. Dappled with blue	2.50
Aline. (Stern.) Pure blue. It possesses an enamel-like luster which makes it distinct from all other blues	.30	Blue Triumph. (Grinter.) A very fine soft light blue, flaring falls. Honorable Mention A. I. S.	.30
Allumeuse. (Gage.) Falls mahogany-red, standards bright violet-blue. Center is fiery orange. 40 inches tall. HM AIS	.50	Blue Velvet. One of the best dark blues	.30
Almaviva. 42. S. old rose; F. amaranth-red	.50	Blue Zenith. (Whit.) Slightly ruffled, large and tall, light campanula-blue. An Iris of good height, branching, and has many buds on laterals, gorgeous in the clump	5.00
Always. (White.) Rosy bronze and ivory. 38 in.	.50	Boadicea. Apricot blend	.30
Amandine. (G. Doug.) Refreshing cool cream self, wide petals, fine form. Well branched	8.50	Bonanza. Yellow Plicata. Lovely	.75
Amber Beads. 40 in. Golden amber. Different	.30	Bountiful Blue. Fall blooming. Blue; good	.35
Amethyst Dome. 36 in. S. pure amethyst; F. carmine	.75	Bonsor. (Connell.) Deep velvety blue-blue. Rich combination of color. Recommended	.50
Amigo. (Wmsn.) Light lavender standards and very deep Hyacinth-violet falls, edged the color of the standards, and margined white. 34 in.	.75	Brahim. (Mey.) 36 in. A new intense blue	.50
Angelus. (Egelberg.) Lilac-pink blend; fine	.50	Bright Lights. (Schr.) A bright waxy yellow with alabaster-white blaze on falls and soft tan stitching to further captivate one	5.00
Anitra. (Sass.) Verbena-violet self; large. 36 in.	.40	Bronzino. (Salb.) S. frosty golden bronze; F. bright coppery bronze. 36 in.	.50
Anna Gage. (Gage.) S. tawny olive; F. garnet-brown	2.00	Brown Thrasher. (Kirk.) One of the newest and best brown Iris. Medium size flowers in two tones of golden brown, bright and like the glint of sunshine on a brown thrasher wing	2.00
Anne-Marie Cayeux. (Cay.) Blend of soft pastel colors. S. pinkish lilac, flushed gray; F. metallic blue over gray	.30	Brunhilde. (Sal.) Vivid indigo-blue, with a blue beard. Large flowers. Fragrant	.50
Anne Newhard. (Weis.) New Pansy-blue self. 38 in.	1.00	Bryce Canyon. (Klein.) Red-brown touched with henna is self-colored and decidedly one of the most interesting blends of the past few years	6.00
Antigone. 36 in. Dykes Medal. Deep pure yellow	2.00	Buckskin. (Klein.) 40 in. Almost a self in real buckskin tan. Large flowers	.60
Apricot. Golden apricot self	.50	Buechley Giant. (Buech.) Very large flower of soft medium blue with perfect form	.35
Apricot Glow. (Weis-Schr.) Rosy apricot. 36 in.	.50	Buffawn. S. light fawn; F. light pinkish buff	.60
Arab Chief. (White.) An Iris of brilliant coloring—near to burnt orange in effect. Large size, pleasing form	3.00	Burning Bronze. (Ay.) Standards light red. Falls deep coppery red. Large and brilliant. Honorable Mention A. I. S.	.35
Arctic. A creamy, smooth, warm white with a gold throat which spills over in a generous overflow of yellow on the falls	.75	Buttercup Lane. Rich Buttercup-yellow. Blooms somewhat ruffled. Very effective in clumps	.75
At Dawning. (Kirk.) Standards pinkish white with gold at the base. The falls are a soft rose. Beautiful gold-veined throat and deep orange beard	.40	Caballero. 45 in. S. soft rose; F. mahogany	.50
Aubanel. (Cay.) A fine flower of shrimp-pink. A. M.	.75	Cadetou. (Cay.) S. yellow; F. garnet edged gold	1.00
Autumn Dawn. Soft pink. Fall bloomer	.40	Cafe Au Lait. (Gra.) Creamy tan self	.40
Autumn Frost. (Schr.) Moonlight color. 36 in.	.35	Calcutta. (Klein.) Cocoa-brown tones overlaid with a blush veil. 42 in.	.35
Autumn Haze. (Sass.) S. wine; F. velvet-violet	.30	California Gold. (M. & M.) One of the best deep yellows. It is tall, large and a free bloomer	.35
Autumn Queen. White; low grower	.30	California Peach. (Salb.) Delicate pink and apricot	1.00
Azure Skies. Ruffled lavender-blue self	2.00	Captain Wells. (Cook.) 38 in. A.M.A.I.S. A brilliant maroon-purple. Closed standards and wide flaring falls	1.50
Ballet Girl. (Sass.) Pure blush-pink	.50	Caroline Burr. A delicately colored ivory-white with something different in a cream—a soft mirage-like dash of palest green. A. M.	1.50
Balmung. (Sass.) Yellow Plicata. H. M., 1940.; A. M., 1942	1.00	Casa Morena. (Defor.) Rich coppery brown glowing like amber. Among the richest Iris in brown shades. A solid self	4.00
Bandmaster. (Hall.) A very large, vigorous growing medium blue. Immense foliage and heavy stems 36 to 40 inches tall. HM AIS '44	4.00	Cascade Splendor. (Klein.) A very colorful crimped flower that mingles pink, apricot, and tan smoothly in one flower. Heavy, tall stalks	6.00
Bayside. 44 in. Deep rich velvet bicolor	.50	Celestielle. New English Plicata. Medal winner	1.00
Beau Brummel. 32 in. Huge, dark rich blue-purple	.75	Chamois. (Klein.) An Iris of distinction and refinement. Petals slightly waved. Very novel and different. One of the finest pastels	6.00
Beige Princess. 42 in. Lovely soft rose-beige	1.00	Champaign Glow. 38 in. Huge flowers of soft yellow	1.00
Belmont. (Wil.) 36 in. A very early blue self	1.00	Chantilly. (Hall.) The crinkled and ruffled Iris. The interesting point about this Iris is its creamy lace edging crocheted on standards, falls and style arms	5.00
Beowulf. (Schr.) True maroon-red; early	.35	Charlotte Millet. (Cay.) A beautiful bright reddish lilac self. Late. 36 in.	1.00
Berkeley Fire. (Salb.) 36 in. A fine red bicolor	.75	Charm. (Mit.) 30 in. Glowing Strawberry-red	1.00
Berkeley Gold. (Salbach 1942.) Large, deep, clear yellow self. Well-branched stems. Late. 32 in.	1.50	Cheerio. (Ay.) Falls rich, satiny ruby-red, with orange beard. Standards are soft rose, flushed yellow. 40 in.	.35
Bertha Gersdorff. (J. Sass.) An oddly feathered flower of pale yellow, marked with rosy purple. Large blooms, lots of them, on 3-ft. stems	1.50	Chenoc. (P-5-3.) Very large. Blue velvety falls; standards light blue; orange beard	.75
Beverly. Fine deep pink. Good size; free blooming	1.00	Chestnut Hill. (Gage.) Deep yellow self; fragrant. 45 in.	.75
Black Beauty. A large Iris of classic perfection of form and uniform indigo tone. Very lustrous and velvety	.40		
Black Forest. (Schr.) "Black as pitch" says introducer. A rich silky, ebony, blue-black. Startling new introduction. HM AIS 1946	6.00		
Black Magic. Rich velvety black sheen	.30		
Black Wings. One of the best dark blues	.35		
Blended Beauty. (Weed.) Golden bronze standards and falls	.30		
Blenheim. (Stern.) Rich bronze and Pansy-violet	.50		
Blue Diamond. Glistening bright sky-blue	.75		
Blue Frills. (Stephenson.) Pure azure-blue Iris. Clear and uniform in color. A rich glossy texture. 34 inches	5.00		
Blue Gown. Tall blue self. Large flower	.30		
Blue Heaven. Very dark blue	.50		
Blue Melody. Light blue self	.75		
Blue Monarch. Tall blue	.35		
Blue Peter. (White.) One of the best very dark blue-purples. 37 in.	.50		



California Gold

	Each
Deep Velvet. Blackish red-purple, with perfectly formed blossoms. Very large bronze beard	\$1.00
Derek Meyer. E. Rich velvety pansy-violet. 40 in.	2.00
Derrill Hart. S. Rose shot with bronze; F. wine35
Deseret. (Thor.) Striking Variegata. 40 in.40
Destiny. (Burgess.) Giant blue-purple; fine40
Dinah Shore. (Wms.) A resplendent and enchanting honey-orange shaded Iris. A pure self. Ideal branching. Blooms unusually long	2.50
Directeur Pinelle. (Cay.) S. coppery wine-red; F. wide, deep velvety blackish garnet-red. Tall, large40
Dog Rose. Delicate soft pink. Superb35
Don Juan. A popular variety35
Dorcas Hutcheson. Bicolor. Fall bloomer. Violet-rose35
Doxa. Greenish tan. Early. 26 in.30
Dreamcastle. (Cook.) The loveliest pure orchid-pink done to perfection. A vision of sheer loveliness	7.50
Dubrovnik. (Wmsn.) A colorful blend of deep rose and gold with a beard of deep orange. Good branching. 38 inches75
Easter Morn. (Ess.) Very fragrant, pure sparkling white, with a satiny sheen and glowing yellow center40
E. B. Williamson. (Cook.) New Iris in a coppery red tone, sprinkled with gold dust over entire flower. Perfect form; heavy substance40
Eclador. (Cay.) Large yellow; frilled50
El Capitan. Tall, light blue30
Electra. (J. Sass.) Plicata of white and brownish purple35
Elkhart. (Lap.) Deep chestnut-red; large40
Ella Winchester. (Grin.) Brilliant velvety garnet self. Brownish self. Brownish gold beard40

	Each
China Maid. (Mill.) Pink blend, bronze and lilac	\$0.75
China Rose. (Mill.) Rose50
Chivalry. (Wills.) Dykes Medal Winner for 1947, and one of the most outstanding Iris in the medium blue range	10.00
Chloris. (Knorr.) Medium light pink self35
Chosen. Large new yellow60
Christabel. A sheer brilliant red50
City of Lincoln. (Sass.) Queen of Variegatas! Clear golden yellow standards, fiery red falls; a very startling contrast .	.50
Claret Velvet. Dark maroon-red, burnt gold beard50
Claribel. (J. Sass.) S. white frilled blue; F white35
Copper Lustre. (Kirk.) Copper and gold blend. Large flowers. Dykes Memorial Medal winner in 193850
Copper Piece. (Kell.) Bright reddish toned with copper shadings. 34 in.50
Copper Pink. Large, soft pink with copper	1.00
Copper Rose. A fine blend of old rose, tan and copper ...	1.50
Coral Mist. (Grant.) Pink and deeper coral with a cinnamon flush on the falls. Large flowers, flaring form with very nice, tall, widely branched stems	5.00
Coritica. (H. Sass.) The neat delicate markings are trim and precise, done in a rich brown tone on clear, mellow yellow background	1.50
Coronet. (D. Hall.) A blended self of golden tan with a delicate underlay of rosy biege. H. M., A. I. S., 1939. 34 in.35
Crimson Tide. (Nic.) Very large brilliant red	1.00
Crown Hill. Blue bicolor; ruffled50
Crown of Gold. 36 in. One of the best new yellows	1.00
Crystal Beauty. Tall white; large gold beard30
Cyrus the Great. Velvety large deep violet35
Damerine. Deep rich red75
Dawning Day. (S-12-8.) Tall, medium large golden yellow; falls veined brick-red50
Daybreak. (Klein.) A huge golden pink, with slight undertones of copper. Perfect form and excellent branching ..	2.00



Elmohr

Elmohr. (Loomis.) 1945 Dykes Medal Winner. Rich mulberry-purple. The outstanding Wm. Mohr seedling 1.00

	Each
El Morocco. (Bech.) A beautiful opal-pink Iris with broad, rounded petals and heavy leather-like substance	\$1.50
Elsa Sass. (Sass.) Exquisite new Iris in a bewitching shade of yellow, like a sparkling glass of ice-cool lemonade	.60
Empire State. Midseason. Dark red bicolor	.50
Eros. Fine shrimp-pink	.40
Ethel Peckham. (Wmsn.) Largest red-toned Iris. The huge flowers are perfect in form and the rich deep red color makes it one of the best	.50
Ethiop Queen. (Schr.) Standards of deep blackish violet and falls practically coal-black. 34 inches	.75
Evelyn Pullar. A two-toned pale blue	.50
Evolved. 48 in. Bronze-violet blend	.75
Exclusive. (Gr.) Clear light blue. Falls deeper than standards. Very distinct and exclusive	.35
Fair Elaine. (Mit.) A.M., A.I.S. Stately flower of cream-white standards and rich golden falls. 38 in.	.75
Fairylea. (Hall.) White plicata; yellow beard	.35
Falklands. 36 in. Hardy new snow-white	.75
Far West. (Klein.) Gold, salmon, coral blend	.40
Ferric. (Mill.) S. light purple; F. red-purple. 36 in.	.75
Firebrand. Gold-red bicolor. Extremely late	.50
Fire God. Rich reddish brown	.30
Flaming Torch. 32 in. S. hellebore; F. neutral red	.50
Flora Campbell. A self of beautifully styled rich russet-red to peach-red	.50
Flora Zenor. Melting cameo-pink, like foam on a Strawberry soda, with deeper lines of rose at the haft. A rich orange to tangerine beard	1.00
Florentina. Plicata. White ground, dotted blue	.75
Forest Aflame. S. bronze-brown, strongly suffused red; F. velvety chestnut-red-brown	1.00
Fort Knox. Rich golden yellow. 36 in.	1.00
Fortune. (Klein.) Large, coppery, brown-gold self; flaring falls	1.00
Francesca. 40 in. New deep pink self	1.00
Frank Adams. (Laph.) Rosy tan standards and rosy red falls. Rich orange beard. Very large flowers and foliage. H. M., A. I. S., 1938. 36 in.	.50
French Maid. (Grant.) A very fine pink blend	.75
Frieda Mohr. Large, tall, luminous lilac-rose. Many years a favorite	.35
Frost Queen. Frosty white	.30
Gallant Leader. (Weis.) S. rose-red	1.00
Garden Flame. (H. Sass.) Garnet-red self with its golden beard and excellent branching habits. It's a favorite of the master of hybridizers	1.50
Garden Magic. (Grint.) A magnificent deep glowing velvety red. Quite late; tall with a large bloom. H. M., A. I. S., 1937	1.00
Glen Ellen. (Con.) Luminous golden tan; well-branched stems. H. M., A. I. S.	.50
Gloriole. (Gage.) Soft Lobelia-violet self with a greenish flush at center. Very large, 7 inches across	.50
Glow Port. An exceptional Iris in wine-red	.50
Gold Champion. 36 in. New. Huge, massive, uniform, bright canary-yellow	1.00
Gold Coast. (Pilk.) New English yellow	.75
Golden Age. A large yellow self, frilled edges	.50
Golden Arrow. 42 in. Large, pure lemon-yellow	.75
Golden Bear. (Mitc.) Rich golden yellow. A beautiful new yellow. 36 in.	.50
Golden Cataract. Rich yellow. Fall bloomer	.30
Golden Fleece. Lemon standards, cream falls edged with gold. Ruffled	1.50
Golden Hind. (Chad.) Yellow tinted with orange	.35
Golden Image. 36 in. Clear deep pure yellow	1.00
Golden Majesty. (Salb.) A deep rich yellow of heavy substance. One of the best. Late. 42 inches. H. M., A. I. S., 1939	.60
Golden Slippers. (DeForest.) Daffodil-yellow. 36 in.	.50
Golden Spike. Deep, gorgeous golden yellow with a brilliant heavy orange-yellow beard. A very fine Iris with oval formed flowers, large, and of excellent substance	.75
Golden Star. (Way.) 36 in. New. Pure deep gold with terra cotta flush	1.00
Golden Treasure. (Schr.) Solid deep cream with central portion of golden orange. Very vigorous. 40 inches	.50



City of Lincoln

	Each
Gold Queen. An interesting new yellow	\$0.75
Goldsmith. 42 in. Pure deep yellow, flushed bronze	.50
Gold Wing. (Wayman.) Large popular yellow	.50
Good Cheer. S. yellow; F. bright yellow veined red	.75
Grace Mohr. (Jory.) Large flower of soft lilac, veined manganese-violet	.75
Grand Canyon. An odd blend of plum, copper and gold. It is an Iris to be admired and one entirely different. 40 inches tall, perfectly branched, and flowers over a very long season	1.00
Great Lakes. One of the finest pure blues; beard almost white. Dykes Medal, 1942	1.00
Gudrun. (K. Dykes.) Large, white, considered by some to be the finest. The largest and best for massing in whites	.35
Halloween Night. (Weed.) 38 in. Bright lemon-yellow, intricately veined in deep gold	1.00
Happy Days. (Nich.) A large fine yellow, glistening with a deep orange beard. The largest of the yellows. Seven-inch blooms with seven or eight on each stalk. Fine form.	.35
Harriet Thoreau. (Cook.) A new and delightful orchid-pink self. Tall and strong stems. 38 inches. HM AIS, 1945	3.00
Helen McGregor. (Graves.) Clear pale blue of perfect form. Flaring and daintily ruffled, very large. Ranks as 'one of the best new Irises. HM AIS, 1946	10.00
Helen M. Riedel. (Riedel.) A fine orange blend	.50
Homerun. 36 in. S. bronze; F. red. Extra fine	.75
Hoosier Sunrise. (Laph.) A bright and attractive blend of mauve-pink and yellow. Flowers are large, stalks strong	1.00
Icy Blue. Distinct and beautiful. Lightest of blue	.60
Imperial Blush. (H. Sass.) Very large soft pink. Considered the largest and finest in its class. Fragrant. 44 in.	.50
Indiana Sunset. A blending of sunset colors from Mr. Lapham	2.00
Indian Hills. (Gra. & Schr.) Rich true purple	.40
Inspiration. (Stev.) Brilliant cerise-rose, huge and imposing. Entirely different and has all good points. Practically a self, with brownish warm cast on the haft	1.50
Ivory Tint. (Way.) Midseason. Light yellow bicolor	.50

MONEY-SAVING COLLECTIONS

Each	Your Choice Alike or Assorted Parcel Post Prepaid	
	3	12
\$0.30	\$0.75	\$2.85
.35	.90	3.25
.40	1.00	3.75
.50	1.25	4.35
.60	1.50	5.00
.75	2.00	7.50
1.00	2.70	9.00
1.50	3.60	13.00
2.00	5.00	18.00

- Jake. (Sass.) Very fine new white Each \$0.60
- Jasmania. (Ay.) Large, perfectly formed flower of a new shade of yellow. The falls have a slight touch of lavender at the center. 42 in.35
- Jasper Agate. (Wms.) Distinct new shade of copper-gold-red, with an underlying copper-pink tone throughout the entire flower. Smooth velvety finish and no veining, a true self 3.00
- Jean Cayeux. Gray and brown blend. Dykes medal winner35
- Jeb Stuart. Velvety rich red; fine35
- Jelloway. A lovely garden Iris. Clean yellow50
- Jerry. (Lap.) One of the finest reds30
- Jinnie Sue. Popular Williamson introduction75
- Junaluska. (Kirk.) F. vivid velvety carmine; S. lovely rose and soft yellow blend. Very large40
- Kalinga. (Klein.) Creamy white. Fine form35
- Katherine Fay. (Fay.) A grand white, large, tall and with semi-flaring ruffled blooms. All white, no yellow in center; easy grower and rapid multiplier 5.00
- Katisha. (Hall.) Dainty tourmaline-pink50
- Khiva. 40 in. Rich deep burgundy, red-toned self50



Great Lakes

- King's Ransom. (Mil.) 48 in. A fine white \$0.75 Each
- Klondyke Gold. (Kirk.) Enormous flowers of deep, pure yellow. Does not fade 1.00
- Kwan Yin. (Wilh.) Lovely apricot self. Good size. 36 in.40
- Lady Lilford. Dark blue veined40
- Lady Mohr. (Salb.) A granddaughter of famous William Mohr. Different. Standards are "oyster white", the falls pale chartreuse. 36 in. 5.00
- Lady Paramount. (White.) Soft primrose-yellow35
- Lake Huron. A medium toned blue self from Mr. Sass50
- Lancaster. (Cook.) Handsome lustrous old rose of heavy substance. Fine for garden and show flowers. Very floriferous. An outstanding production60
- Lavender and Old Lace. 36 in. Lavender-violet75
- Lecoq. 30 in. Blue-violet with flaring falls 1.00
- Lighthouse. (Salb.) S. strawberry; F. dark violet60
- Lights On. (Laph.) One of the reddest Irises. Well shaped with solid unveined hafts, velvety falls and vivid color. 30 to 36 inches 7.50
- Lilimani. (J. Sass.) Velvety blackish self40
- Lord Dongan. (K. Smith.) Striking. Chinese-violet standards and broad, deep pansy-violet, plush-like falls 2.00
- Los Angeles. White Plicata. Fine40
- Lothario. (Schr.) An Amigo-type Amoena. Very rich and velvety, much taller than the famous Amigo and with flowers of great size 3.00
- Louvois. (Cay.) S. Havana tinted brown and the flaring falls are velvety maroon, edged with bronze. 36 in.60
- Lucrezia Bori. (Schr.) Large bronze-yellow. Ruffled and flushed standards35
- Lynn Langford. (Hall.) Orchid-pink in deep tint, with golden yellow center. Flowers are large, very flaring in form, produced on stout 3-ft. stems 8.00
- Maid of Astolat. (J. Sass.) White with brilliant blue styles and crest35
- Majenica. (Cook.) Distinct new pinkish blend with tinge of salmon. Flowers are full, rounded and huge in size. 3 feet 1.00
- Majestic Rose. Brilliant. S. rose; F. rosy violet 1.00
- Marco Polo. (Schr.) Rich glowing pink40
- Marisha. (J. Sass.) Soft cream-yellow standards with heavily flushed light pink falls overlaid the same tone of creamy yellow. 38 in. One of the finest pink blends50
- Marquita. (Cay.) Huge flowers of brilliant smooth ivory. Center of falls turns red with age, leaving a cream colored border40
- Martie Everest. Fall blooming bicolor. Fine blue50
- Mary E. Nichols. Frosty white with a generous smooth overlay of dull gold at the haft. Beautifully formed75
- Mary Geddes. Orange-salmon. Dykes Medal winner30
- Massenet. French introduction. Red-purple50
- Master Charles. (Wmsn.) Rich and glowing mulberry-purple. Brilliant and distinctive. One of the finest of Longfield introductions 3.50
- Mata Hari. (Nic.) 40 in. A deep blue-violet50
- Matterhorn. (J. Sass.) The finest pure white in existence today. Very delicate despite large size. Creamy beard. Flaring falls. 40 inches. Midseason75
- Matula. (Sass.) A very beautiful and unusual blend of warm rosy tan and apricot-rose that is almost breath taking50
- Maud Deming. (Lap.) S. lilac; F. red-purple50
- May Day. (Hall.) Fine glowing apricot-salmon self40
- Melanie. A lovely shimmering orchid-pink, with tall stems, and ideally branched75
- Meliza. Standards are a delicate ivory-pink, the falls are of the same coloring with deeper flush around the beard, which is intense pinkish tangerine75
- Mexico. Gay, brilliant buff and brown 2.00
- Michelangelo. (Weed.) Very unusual tan35
- Midwest Gem. (H. Sass.) Light yellow beard50
- Ming Yellow. (Glutz.) A very large, smooth yellow. Faultless. Midseason. 36 inches75
- Minnie Colquitt. (H. Sass.) Massive white Plicata, entirely different from all others. The whole flower is slightly ruffled. A fine Iris in every way and a husky grower ... 3.00
- Miobelle. (McKee.) The surprisingly branched stalks of this variety represent a new achievement. A lustrous rose self. Very good substance 2.50



Minnie Colquitt

JOIN THE AMERICAN IRIS SOCIETY

Send check to: 444 Chestnut Street, Nashville 10, Tennessee

Dues \$3.50 per year. The four quarterly bulletins will keep you "up-to-date" on Iris culture and the latest happenings.

The new book: *The Iris An Ideal Hardy Perennial*, written and published by members of the American Society, is a gem which everyone should have. Paper bound, \$1.50. Permanent binding, \$2.50.

May be had from above address, or send your order to me.

	Each
Miss Ann. A daintily colored flower of pearly pink. 38 in.	\$0.40
Miss Bonnie. 38 in. Fine, large flowers of garnet-red	.50
Miss California. (Sal.) Beautiful rose-lilac	.50
Missouri. (Grint.) Very fine deep blue. Perfect form. Dykes Memorial Medal winner in 1937	.50
Mme. L. Aureau. (Cay.) An unusually fine white, sprinkled heliotrope. Dykes Medal winner	.40
Modiste. (D. Hall.) A smooth silky lavender-mauve of large size, splendid branching, fine blooming habit. 38 in.	.40
Mohrson. Improved Wm. Mohr. Violet	.50
Moonlight Madonna. (Sass.) Large ruffled self of lemon ice. Has form and substance	2.00
Monadnock. (Sal.) Gigantic, vivid rose-red	.75
Morocco Rose. (Loomis.) Soft pink standards flushed deeper; falls of deep pink. Honorable Mention A. I. S.	.60
Mount Cloud. White self; fragrant	.35
Mountain Snow. (Kellogg.) A glistening white with a faint blue touch	.40
Mountain Sunset. (Klein.) Fawn and old gold	.50

	Each
Mt. Washington. (Essig.) A.M., A.I.S. A gigantic white, well-branched stalks. 50 in.	\$0.75
Mrs. Gamelia. (R-4-22.) Large lavender-blue self. Tall; strong foliage	.50
Mrs. J. L. Gibson. (Gibson.) Very rich velvety dark blue self. Large flowers of fine form. 38 inches	.40
Mrs. Herbert Hoover. Rose bicolor	.35
Mrs. Silas Waters. (Ayres.) A fine pale yellow	1.00
Mrs. Willard Jacques. (Sass.) New pink and cream blend	.40
Mulberry Rose. Deep mulberry-pink shaded brown. Tall. Unusual	1.25
Naranja. (Mitch.) Rich yellow self	.40
Narain. (Shuber.) Medium blue self. 36 inches	.35
Nassak. (H. Sass.) White Plicata, blue stitch	.35
National Giant. Gigantic flowers. S. bronze-violet; F. rose-violet	.75
Natoma. Cinnamon-rose	.50
Nene. Huge red purplish flowers. Attracts attention	.30
Nightfall. (Hall, 1942.) Rich dark Pansy-purple. Standards are several shades lighter than the falls. Plush-like substance. 36 in.	1.00
Nightingale. (Hall.) Iris is a glistening golden russet. Both standards and falls are identical in tone and even the beard is in harmony. 3 feet	1.25
Noonday Sky. Lavender-blue; slightly fragrant	.50
Nylon. Coppery tan self with heavy gold beard. The flowers are extra large; the stalks well branched	.75
October Blaze. Fall tones	.35
Ojibway. (Kirk.) Coppery Indian color	.35
Ola Kala. Deep yellow ruffled self. A.M., 1945. Very striking, fine	2.50
Old Parchment. (Klein, 1939.) A. M., A. I. S., 1941. A light creamy tan, with golden buff overlay, a most distinctly beautiful new Iris. 38 in.	1.00
Orange Flame. Golden orange and copper-bronze, a subdued blended color	.75
Oregon Sunshine. (Weed.) One of the finest pale yellows now available. Slightly fragrant	.50
Orloff. (H. Sass.) Yellow, red-brown Plicata. 30 in.	.50
Ormaco. (Klein.) First seedling of famous Ormohr. Cast in metallic splendor of mystic violet infused with bronze and true brown. Truly magnificent	1.50
Ormohr. (Klein.) A very outstanding Iris in pale lilac, with a silvery cast, veined violet. Beautiful blooms of immense size	.50
Ossar. (H. Sass.) Blackish red self. 32 in.	.35
Ozone. (J. Sass.) A very unusual and beautiful blend of deep pearly mauve. Very fine	.50
Painted Desert. (Mill.) A flower which has brought to life the brilliant coloring of the Arizona Mesa. The plants are strong and stalks well branched. 4 ft.	2.00
Pale Moonlight. (Ess.) Fine soft sky-blue. Very large. Free flowering, uniform color	.50
Palerme.	1.00
Paltec. (Den.) Light blue. Low grower. Unusual, fine	.35
Patricia. (H. Sass.) A very clean and sparkling white. Both standards and falls frilled and fluted at the edges	.60
Peachblow. (H. Sass.) A pinkish plicata with yellow ground. Oval-shaped blooms on tall stems, nicely branched. Rapid increase	1.50
Pearl Lustre. Light bluish-yellow	.35
Percale	.50
Peshawar. (Schr.) Brown and purple. Rich color	.40
Picador. Yellow Variegata. 44 in.	.35
Pink Cameo. (Fay.) One of the new series of "flamingo" pinks. A true pink devoid of violet influence. A startling tangerine beard. 3 ft.	10.00
Pink Lustre. Very good new pink	5.00
Pink Opal. Tall orchid-pink	.30
Pink Reflection. (Cook.) A fine Hydrangea-pink	3.00
Pink Ruffles. (Smith.) 30 in. Ruffles revolve from pale to deep pink	.75
Pink Satin. (Sass.) Outstanding pink	.35
Piute. (Thom.) Pure rich red; fine; tall	.50
Platinum Beauty. Pastel lilac-pink blend	.50
Platon. 48 in. Huge deep rich violet flowers	.75
Poinsettia. 38 in. Huge Dahlia-carmine bicolor	.75
Prairie Sunset. Sunset effect	1.00
Primat. (Cay.) Light pink toned	.35
Priscilla. (Whit.) A white that is white, beard and all	1.50
Purple Encore	1.00



Red Valor

Purple Giant. (Gage.) Red-purple, bronze guard	Each	\$0.35
Radiant. (Sal.) Coppery orange; gigantic	.50	
Raejean. (Whit.) L. 36 in. Two-toned yellow of late blooming habits	.75	
Rambeau. (S-16-5.) Blue ultramarine self	1.00	
Ranger. (Klein.) VL. 36 in. H.M., A.I.S., 1944. Almost crimson in color. Large blooms with cone-shaped standards and broad semi-flaring falls	3.00	
Rebellion. (Klein.) Glowing deep blood-red	.40	
Red Bonnet. (Gage.) A dark red self with large flowers of fine form and texture. Excellent. H.M., A.I.S., 1939	.50	
Red Dominion. Rich, outstanding red. 42 in.	.35	
Red Gleam. A rich red, velvety and brilliant, with a chestnut cast. One of the finer Iris of its color in this price class	1.00	
Red Glory. S. soft rose; F. blackish coppery red	1.00	
Red Meadow. S. Hydrangea-red; F. violet-carmine	.75	
Red Radiance. Rich glowing red. 38 in.	.40	
Red Sails. (Lap.) 38 in. S. chestnut flushed red; F. velvety	.50	
Red Sox. Named after Cincinnati Reds	.50	
Red Sunset. S. brownish rose; F. Dahlia-carmine	.75	
Red Valor. Garnet-red; magnificent	2.00	
Regal Beauty. S. light violet; F. blackish	1.00	
Remembrance. (Hall.) A very fine blend of pink and light yellow. The flowers are large and of good substance. Very desirable. 3 feet	2.00	
Rhages. Violet Plicata. Large	.35	
Rhapsody. Lovely combination of violet-purple and brown. Late	1.00	
Rheintochter. S. white flushed lilac; F. velvety violet-blue with lilac border	.30	
Rob-Roy. 42 in. Large rich maroon-red	.35	
Rocket. (Whit.) An orange self, the standards pure deep chrome and the falls orange-chrome almost to the edge. Ideal form, and nice branching. 3 ft.	15.00	

Rose Allure. Rose	Each	\$0.75
Rose Bronze Blend. Bronze-brown, flushed rose	1.50	
Rose Dominion. Brilliant American-Beauty-Rose color	.30	
Rose Top. (H. Sass.) Like a fine piece of needlework is this elaborate Plicata, fashioned of cream-yellow with lacy ruffles of novel rose markings	3.50	
Rosy Wings. (Gage.) Blend of brown, red and pink with an orange beard. Fragrant. Dykes Memorial Medal winner in 1939	.30	
Royal Coach. Bright yellow Plicata, dotted brown	.50	
Royal Command. (Hall.) A very rich velvety purple	1.00	
Royal Salute. Royal purple; fragrant	.35	
Royal Sceptre. Very lovely soft primrose-yellow	.75	
Royal Scot. (Hall.) Red Plicata	2.00	
Rubeo. (M. & M.) A huge red; good	.50	
Ruby Velvet. Midseason. Dark red bicolor	3.00	
Ruffled Beauty. Midseason. Light blue self	.30	
Russet Mantle. (Schr.) An extremely smooth russet-brown Iris. S. soft buff; F. rich velvety garnet-brown	2.00	
Ruth Pollock. Fine yellow Plicata. A. M.	.50	
Sable. (Cook.) Almost perfectly black, with a harmonizing blue beard. Large; tall. H.M., A.I.S., 1937	1.00	
Salar. Blended cream and salmon. Very lovely	.75	
Samovar. Colorful coppery rose. Grand	.50	
Sandalwood. (H. Sass.) Army-brown; large; fine	.35	
Sandia. (Wmsn.) Bright deep pink blend. Unusual with a smoky veil. Blooms are large. 40 inches	.40	
Sand Tone. New light yellow effect	.50	
San Francisco. Large white Plicata with lavender stitching. Dykes Medal winner. 38 in.	.50	
Santa Barbara. A fine light blue	.40	
Saracen. Brownish Indian-red	.75	
Sargon. 39 in. A magnificent dark purple bicolor	.75	
Schooner. (McDade.) White	.35	
Sea Dawn. Brown tan blend	.35	
Sea Deep. Tall, well branched. Medium blue bicolor	.50	
Sensation. One of the best light blues	.30	
Setting Sun. (Kirk.) A brilliant fiery red-copper as of the afterglow of a red sunset. 36 in.	.50	
Shah Jehan. (Neel.) Soft blended Variegata. Standards straw color, glistening rose sheen and lavender edges. Falls reddish brown, changing to purple. Late; extra fine. 40 in.	.30	
Shannopin. (Pil.) S. yellow; F. pink. Tall; striking; fine	1.00	
Shantung	.50	
Shawano. (Wmsn.) A tall brilliant yellow with Vandyke-red veining on falls. Heavy cadmium-yellow beard. H. M., A. I. S., 1940	.50	
Sheriffa. Deep plum with metallic luster. An outstanding Onco-bred Iris. Very popular. 3½ feet	1.00	
Shining Waters. (Ess.) Sky-blue self	.40	
Siegfried. (H. Sass.) New Plicata; yellow	.50	
Sierra Blue. (Ess.) Blue of immense size. Perfect form and very tall. Dykes Memorial Medal winner in 1935	.35	
Signal Light. (Kirk.) Large red self. 36 inches	.75	
Silvanus. (Gage.) Rose and violet	.50	
Silver Glaze. 36 in. Sparkling silvery blue	.50	
Silver Top	.50	
Sir Knight. Dark rich velvety blue	.50	
Smolder. (Nich.) A deep purple self with a red undertone. Standards are well domed. The velvety falls are carried out and down. Late and tall	.60	
Snow Carnival. (Graves.) Outstanding ruffled white; is one of the white masterpieces in Iris	3.00	
Snow Flurry. (Rees.) Perfectly formed blooms of pure ice-white. The unopened buds are lightly tinted blue, but open like an enveloping spray of soft snow	1.25	
Snowking. (H. Sass.) Large white of fine form. Standards broad and arching. Falls broad and flaring. Beard yellow. Honorable Mention, A. I. S. 38 in.	.35	
Snoqualmie. (Brehm.) A large rich smooth cream	.60	
Snow Belle. (McKee.) 38 in. A fine pearly white	.50	
Snow Velvet. White, with Gardenia-like, velvety texture. Large and beautiful. 40 in.	1.50	
Solid Mahogany. (J. Sass.) Grand new red, is one of the finest dark Irises for recent years. Beautifully formed. Color described by the name. 3 ft.	5.00	

	Each
Solitude. (Klein.) Deep Mulberry self	\$1.00
Sorrente. Scarce. Only a few to offer	1.00
Souv. de L. Chavagnac. Fall bloomer. Violet. Fragrant35
Spindrift. (Loom.) Translucent, delicate seashell or coral-pink, with furry tangerine beard to accentuate the color. Well branched with stiff, willowy stems	3.00
Spokane. (J. Sass.) A brilliant red-brown blend. Rich and unusual coloring. Orange beard. 38 inches35
Sporty. (R-9-2.) Light tan and purple blend; looks like a sport coat75
Spring Cloud. (Jory.) Blue and white Plicata50
Springfield. Deep violet and garnet-red75
Spring Prom. (Hall.) 38 in. A lemon-yellow given H. M.35
Spun Gold. (Glutz.) 38 in. A large rich deep golden yellow	1.50
Stained Glass. Copper-red self50
Stateliners. Midseason. Light yellow bicolor35
Stardom. Onion-skin-pink. H. M. and A. M.75
Starless Night. (J. Sass.) Rich deep glowing blackish red, practically the only red Iris that is this deep in color ...	1.00
Summer Tan. (Kirk.) Blend of yellow, brown and tan. Early and very distinct35
Sundance. Blend. One of Mrs. Nesmith's achievements, a fine blend of tan and mahogany. Tall	1.00
Sun Dust. Chrome-yellow	1.00
Sun Gold. Early, large bright yellow75
Sunset Gold. 32 in. A rich deep yellow75
Sunset Serenade. Golden tan and apricot. Fine form and habit. Large flowers. 36 in.	2.00
Sunset Tan. (Egelberg 1940) M. 36 in. An entrancing, harmonious combination of soft buff-fawn with a pale copper-pink glow. Fine self, pinker and less bronze than most Iris in similar color class75
Sun Tan. (Mit.) S. orange-tan; F. overlaid purple35
Tan Delight. 40 in. Buff-tan-violet blend50
Tan Tone. One of the new tans	1.50
Tapestry Rose. (D. Hall 1942.) M. Blended flower of soft old rose. Large flowers have excellent substance, and are carried on well-branched stalks. Vigorous and free blooming. H. M., A. I. S., 1941. H. M., A. I. S., 1942	1.50



Wabash

	Each
Tarantella. (Sass.) Ruffled delicate pink	\$0.50
Television Blue. (Shub.) Medium blue35
Tenaya. Black reddish purple. 3½ feet35
The Admiral. An effective intense blue. Form is unusual, falls flare. A most effective garden clump	1.00
The Bishop. Rich purple self75
The Guardsman. (Grant.) Dusky pink. S. with darker F. ...	2.00
Theodolinda. Pure white Plicata. Good. 44 inches40
The Black Douglas. (J. Sass.) This is one of our darkest and richest Iris. Standards erect. S. madder-violet; F. semi-flaring violet with a bronze beard. Very velvety30
The Red Brick. (Weed.) Color of red brick. 31 in.40
The Red Douglas. (J. Sass.) Fine new red	1.00
Tiffany. (H. Sass.) Yellow Plicata; unusual50
Tiffanja. Distinctive yellow Plicata. H. M., 1944. Most beautiful of its class	1.50
Tiger-Tiger. Fine red50
Tobacco Road. H. M., 1944. Golden tobacco-brown blend. Horizontal falls. Tall and striking	5.00
Token. Old gold S. flushed rose; F. rosy brown-red75
Top Sergeant. Red-brown self. Velvety falls. Beautiful garden habit	1.50
Torchlight. Brilliant Variegata! Yellow and red50
Tower of Jewels. Fine bright yellow and mauve50
Treasure Island. (Klein.) Olive-yellow50
Tuscany Gold. Reddish gold blend. 32 in.30
Ultra. Bicolor. Fall bloomer. 26 in. Ultramarine-blue35
Vagabond Prince. Fine, tall, purple-violet. 36 in.75
Varese. (Wmsn.) A very brilliant red-purple. Good substance; erect stems35
Vatican Purple. (Whit.) Deep but bright blue-purple, silky in finish but heavy in texture, without haft markings. 3-ft. stems	4.00
Veined Beauty. Plicata of white and violet. Falls white edged with dotted and veined violet50
Velvet Knight. Midseason. Dark blue self75
Velvet Wonder. Dark rich blackish red-purple75
Venus de Milo. Fine new white. 42 inches35
Violet Crown. Very tall; pure violet. 40 in.50
Violet Symphony. A gleaming lilac-mauve self. A splendid Iris whose quiet beauty ranks it near the top of its class .	1.00
Vision. (Cay.) Variegata of clear yellow and brown35
W. Carey Jones. 30 in. Smooth, soft clear ivory35
Wabash. (Wmsn.) A white bicolor. S. pure white; F. rich Hyacinth-violet with a small margin of snow-white. A perfect flower. 39 in.75
Wantage. Velvety, rich purple with black sheen50
War Eagle. (J. Sass.) Light rose-red, large. 42 in.30
Wasatch. (Thorup.) Pure glistening white with a border of blue featherstitching40
Waverly. (Wil.) H.M., A.I.S. Very large flowers of a medium blue. Strongly fragrant	1.00
West Point. (Nic.) Wonderful bicolor. Extra fine50
White Goddess. (Nes.) 38 in. H.M., A.I.S. Large glistening flowers of pure white. Sturdy growing habits75
Wine Glory. (Weed.) A combination of colors: red, purple and violet. A very profuse bloomer. Tall. 38 in.35
Winnesheik. (Egel.) Excellent dark blue35
Winter Carnival. (Schr.) A fine hardy white, bred in Minnesota. Widely flaring falls, snow-white in color; the throat heavily tinted with gold. One of the best whites.	1.00
Wm. A. Setchell. (Brehm.) 36 in. A fine violet tone75
Wm. Mohr. A huge, pale lilac of medium height, veined deep violet, giving an odd, yet strangely lovely effect35
Wonderchild. (Weed.) Very large, deep dark Pansy-purple flowers of perfect form. Very distinct. 38 in.35
Wotan. (Grint.) Velvety purple-brown blend35
Yakima. Brilliant Variegata. A free bloomer and easy grower.50
Yellow Champion. (R-9-1.) Large, tall bronze-yellow. Similar to Claude Aureau only larger50
Yellow Fragrance50
Yellow Jewel. (K. Smith.) A deep golden yellow, it has every good point in the way of growth and large flowers	2.00
Zaharoon. Beautiful blend of soft pastel tints35
Zebra. Leaves striped white; blossoms blue40
Zulu. S. anile; F. dark velvety blue-purple30

25^c Ea.

Greatest Collection in
America at this Price

20 for \$ 4⁵⁵

Parcel Post Prepaid

Your Choice
All Labeled, Guaranteed True to
Name With Planting Instructions

275 of the Finest Irises

Many of which sold as high as \$25.00 and \$50.00 each only a few years ago. Order as many as your garden and purse will permit. Think of the beauty and pleasure a few dollars invested in these will give you and your friends the rest of your life. Include 25c extra for parcel post on orders amounting to less than \$2.00. See inside back cover for Collections.

Abelard. Purple.
Allies. Red.
Apache. Red.
Afterglow. Lavender-gray.
Airy Dream. Pink.
Alcazar. Purple-violet.
Alan Hoyt. Brown.
Albright. Orchid.
Alice Harding. Large yellow.
Al-Lu-We. Variegata.
Allure. Pink blend.
Alta California. Yellow.
Ambassador. Bronze.
Amber. Yellow.
Amber Wave.
Ambera. Pale yellow.
Ambrosia. Pink.
Amenti. Gray and mauve.
Amitola. Russet and pink.
Andromede. Smoky.
Antares. Yellow.
Aphrodite. Pink.
Ariel. Blue.
Argynnis. Variegata.
Asia. Lavender.
Aurex. Purple.
Autumn Elf. Lavender.
Autumn King. Blue.
Autumn King, Jr. Bi-color blue.
Autumn Surprise. Violet.

Baldwin. Violet.
Beotie. Bluish lavender.
Blackamoor. Black-purple.
Blazing Star. Yellow.
Blue Hill. Blue.
Blue June. Blue-lavender.
Blue Torch. Blue.
Bonita. Yellow.
Brandywine. Violet.
Brising.
Buto. Blue.

Cameliard. Yellow.
Capri. Light yellow with bronze.
Caprice. Rosy red.
Cardinal. Lavender-purple.
Castalia. Blue.
Cecil Minturn. Pink.
Challenger. Purple.
Chartier. White.
Chief Sidar. Rosy red.
Chromylla. Yellow.

Churchmouse. Brown.
Cinnabar. Maroon.
Clara Noyes. Rich blend.
Classic. Lavender.
Claude Aureau. Yellow.
Cockatoo. Yellow.
Col. Candelot. Brown.
Coppersmith. Copper.
Coral. Lavender.
Coronation. Yellow.
Crown Jewel. Orange.
Crown Prince. Gold and red.
Cryso. Yellow.
Cudbear. Purple.
Cydnus. Blue.

Dalila. White and red.
Damozel. Ruffled.
Danube. Dark blue self.
Day Dream. Pink.
Dauntless. Fine red.
Dazzler. Red.
Decennial. Carmine.
Depute Nomblot. Rich red tone.
Desert Gold. Yellow.
Distinction. Rose.
Dolly Madison. Blend.
Dor. K. Williamson. Rich purple.
Dore. Daffodil.
Dorothy Dietz. White.
Douglas. Purple.
Dr. Chas. Mayo. Pink.
Dream. Pink.
Duke of York. Mauve.
Dune Sprite. Yellow.
Dymia. Purple.

Eclaireur. White.
Eclat. Pink and copper.
Ed. Michel. Red.
Eliz. Egelberg. Rose.
Elsa. Blue tones.
Elsinore. Yellow.
Eleanor Roosevelt. Purple.
El Tovar. Variegata.
Enchantment. Violet.
Endymion. Buff.
Erebian. Red.
Esplendido. Purple.
Esterel. Pink.
Ethelwynn Dubuar. Lovely pink.
Euphony. Copper.
Evolution. Bronze.

Farandole. Gray.
Flamingo. Rose-red.
Flammenschwert. Red.
Florentina Alba. White.
Folkwang. Pink.
Francheville. Fawn.
Frololite. Pink.

Garden White. White.
Gay Hussar. Red.
Geo. P. Baker. Yellow.
Geo. Yeld. Apricot.
Germanica. Blue.
Giant Baldwin. Blue.
Gleam. Blue.
Gobelin Red. Oxblood.
Golden Bow. Choice yellow.
Golden Flare. Apricot.
Golden Glory. Yellow.
Golden Light. Blend.
Gold Imperial. Yellow.
Gold Spangle. Yellow.
Grace Lapham. Pink.
Grace Sturtevant. Red.
Grandiosa. Violet.
Grand Monarch. Red.
Grey Mist. Grey.
Guyasuta. Deep violet-blue self. 30 inches.

Havamal. Blue.
Hearthstone Copper.
Helios. Yellow.
Henri Riviere. Blend.
Hermene. Rose-pink.
Hernani. Red.
Hussard. Blue.
Hypnos. Blend.

Indian Chief. Red.
Indigo Bunting. Blue.
Irma Pollock. Carmine.

James Storer.
Jean Lafitte. Rose.
Jolly Roger. Indigo.
Joyance. Cream.
June Knight. Blue.
Junia. Clear blue.

Kath. McFarland. Purple.
Kensington.
King Juba. Variegata.
Kinglet. Yellow.

King Midas. Buff.
King Tut. Red-brown.
Klamath. Mulberry.
Kochii. Claret.
Kublai-Khan. Rosy red bicolor.

Lady Byng. Pale lavender.
Lady Gage. White.
L'Aiglon. White.
Largo. Soft yellow.
Le Corrage. Bronze.
Legend. Claret.
Le Grand Ferre. Grey edged.
Lent A. Williamson. Purple.
Liberty Bell. White.
Lillian Toedt. Vivacious rose.
Lohengrin. Rose.
Lord Lambourne. Red.
Lord of June. Blue.
Louis Willert. Raspberry.
Lux. Strawberry.

Magenta. Red-purple.
Maisie Lowe. Bicolor.
Majestic. Red-purple.
M. A. Porter. Violet.
Mary Barnet. Lavender.
Mary Gibson. Rose blend.
Mary Senni. Mauve.
Mary Williamson. Lavender.
Maygold. Yellow.
Medrano. Claret.
Melchior. Purple.
Mid-West Purple. Purple.
Mildred Presby. Bicolor.
Miss Avarilla. Variegata.
Moonglo. Yellow blend.
Moonlight. Silver.
Morning Splendor. Red.
Motif. Dark purple.
Mozambique. Red-purple.
Mrs. H. F. Bowles. Gold.
Mrs. Marion Cran. Pink.
Mrs. Valerie West. Bronze.
Mt. Royal. Purple.
Mussolini. Vivid blue.
My Maryland. Violet-purple.

Nebraska. Deep yellow.
Ningal. Buff.
Nightshade. Purple.
Norrone. Bright blue.
No-We-Ta. Pink.
Numa Roumestan. Red.
Nusku. Yellow.
Nymph. Yellow.

October Opera. Rich velvety purple.
 Odaroloc. Mauve.
 Olive White. Cream.
 Omaha. Pink.
 Opaline. Pink.
 Ozark Blue. Blue.

Packard Blue. Late, rich blue.
 Pallida Dalmatica. Lavender.
 Papio. Pansy-purple; early.
 Parisiana. White.
 Pavane. Lavender-purple.
 Paulette. Light blue.
 Peaches. Apricot blend.
 Persia. Blue blend.
 Pluie d'Or. Yellow.
 Pocahontas. White.
 Pres. Pilkington. Blend.
 Princess Beatrice. Light lavender.
 Prospero. Lavender-purple.
 Purple Silk. Purple.

Quaker Princess.
 Queen of May. Pink.
 Rameses. Blend.
 Realm. Blue self.
 Red Ember. Crimson.
 Red Giant. Purple.
 Red Orchid. Red.
 Redwing. Bronze-red.
 Rhein Nixe. Blue.
 Rheingauferle. Pink.
 Rheintochter. Bicolor.
 Rosalind. Pink.
 Royal Beauty. Blue-violet.

Salonique. White and purple.
 Sandakan. Pale drab.
 Sangreal. Yellow.
 San Luis Rey. Red.
 Sapphire Night. Indigo.
 Selene. Large white.
 September Skies. Red-purple.

Serenade. Pink.
 Serenite. Blend.
 Shekinah. Pale yellow.
 Sherwin-Wright. Yellow.
 Shirvan. Brownish.
 Shogun. Red.
 Sikh. Copper.
 Skitchewaung. Pink.
 Snowbound. White.
 Slattlea. Light violet.
 Snow White. White.
 Solferino.
 Southland. Lemon.
 Souv. de Mme. Gaudichau. Purple.
 Spark. Brick-red.
 Spring Maid. Pink.
 Stanwix.
 Sunburst. Yellow, apricot glow.
 Sun Mist. Creamy.
 Sunset. Yellow.
 Surefire. Light yellow.
 Susa. Purple.
 Susan Bliss. Lilac-pink.
 Swazi. Pansy-violet.
 Sweet Sixteen. Pink.

Taj Mahal. White.
 Talisman. Yellow blend.
 Tapestry. Mulberry.
 Tint o' Tan. Bronze-tan.
 Thuratus. Purple.
 Tokay. Salmon-pink.
 Trail's End. Yellow.
 Trostringer. Rose-pink.
 True Charm. White.
 True Delight. Plicata.

Valor. Bicolor.
 Vesper Gold. Yellow.

Waconda. Red.
 Wambliska. White.
 Wedgewood. Blue self.
 White and Gold. White.
 White Autumn King. White.
 White Marble. Tall, white, gold beard.

Zouave. Violet.

Vesper Iris



The beautiful filigree of graceful branches of the Vesper Iris is studded with an almost unbelievable number of jewel-like flowers, truly a mammoth bouquet. The delicately colored blossoms, which at a little distance resemble somewhat a multitude of gorgeous butterflies at rest, with motionless outstretched wings, vary in color, including such hues as cool translucent lavender, with markings of mahogany, copper, lemon, orange, brown and Tyrian.

30¢ Each
6 for \$1.25
12 for \$2.40
 P. P. Prepaid



The Vesper Iris, which often grows almost shoulder high, has a graceful ethereal beauty really impossible to describe. It is perfectly hardy and will endure both severe cold and intense heat with impunity. This little known but most desirable Iris will enhance the beauty of your garden with its delicate blossoms in the latter part of July and during August, sometimes continuing to flower even in September, filling the gap between the late Tall Bearded varieties and the fall bloomers.

30c each 6 for \$1.25 12 for \$2.40



Bleeding Hearts

A favorite in grandmother's garden and popular for flower arrangements today. A delight in early spring. Blooming size plants.

75c each 3 for \$2.00
 P. P. Prepaid

Dwarf Bearded Iris

Short-stemmed, sturdy, brave little fellows which bloom in early spring. Make wonderful edges for perennial or shrub plantings and give you color in early May when you are still hungry for flowers after the long winter.

	Each
Azurea. Sky-blue; early	\$0.25
Atroviolacea. Red-purple, very early. 5 inches	.25
Bridesmaid. Pale blue and yellow25
Citrea. Lemon-yellow25
Cyanea. Red-purple; fragrant25
Dixmude. S. blue; F. red-violet25
Florida. Soft primrose-yellow25
Graminea. Red toned; fragrant25
Harbor Lights. Light yellow25
Jean Siret. Everbloomer; cream25
Lurida. Col. Candelot color25
May Night. Very dark blue-purple25
Marocain. S. violet; F. Pansy-violet; good25
Mozo. New red; dwarf50
Orange Queen. Very popular yellow25
Royal. S. rich blue; F. reddish purple25
Schneekuppe. White with cream throat. 6 in. .	.25
The Bride. White; free flowering25
Tony. Red-purple with an orange beard25
Yellow Frills. Yellow; ruffled25
Zua. White frosted crepe, crinkled. 16 in.25
Zwanenburg. Cream and maroon. 12 in.25



Schneekuppe

IRIS *Kaempferi* OR JAPANESE IRIS

The Modern Orchid of the Garden

We are now offering you the finest of all Iris types, the Kaempferi. Mass plantings will make your garden a spot of sheer breath-taking beauty. Fine form and graceful foliage make it a thing of real beauty even after the blooms are gone. See back inside cover for Collections. Each



Gold Bound

Betty F. Holmes. Large double pure white flowers with lemon-yellow midrib	\$0.75
Catherine Parry. Blue overlaid rosy red50
Eleanor Parry. Double, claret-red, flamed with white and blue50
Fanny Hamlet Childs. Double, violet-purple, mottled and splashed white50
Fascination. Flesh-pink50
Flamingo50
Gold Bound. Pure white; gold banded center. .	.50
Helen Von Siebold. Crimson-purple, white veined50
Koko-No-Iro. Enormous double flowers. Rich violet-purple with white petaloids50
Kumuchi-Gumi. Dark blue50
Lucia Marshall. Large double, Pansy-violet ..	.50
Mahogany. Velvet-mahogany-red50
Norma. Double, lavender-pink flowers50
Pyramid. Double, indigo-blue flowers50
Purple and Gold. Rich violet-purple. See illustration on inside back cover50
Reine des Bulgares. Lavender50
Repsime. Giant double flowers, light blue with wide white margins, stigmas ivory75
Rose H. Scheepers. Mauve-gray, overlaid blue	.50
Rose Anna. Double ivory-white, heavy ruby-red veins, conspicuous yellow blotch50
Seacrest. White and blue50
Stella. Single violet, veined white. See illustration on inside back cover50
Subotai. Single rosy red, good. See illustration on inside back cover50
Thomas Lovett. Double, violet with gold band.	.50

Beardless Iris

Here are listed some unusual types, some of which are native varieties from various parts of the world—all interesting and probably some you have never seen.

	Each
Aurea. (Spuria.) Yellow; tall	\$0.50
Bob White. (Sib.) Waxy snow-white. 28 in.35
Caesar. (Sib.) Brilliant dark red-purple. 30 in.50
Caesar's Brother. (S.B.) New light blue50
Distinction. (Sib.) Speckled blue and white35
Dor. K. Williamson. (Hybrid.) Dark violet25
Emperor. (Sib.) Dark blue; tall35
Gay Heart. (S.B.) Dark blue50
Heavenly Blue. Sib.) New clear blue50
Kingfisher's Blue. (Sib.) Bright blue35
Mrs. Gray Hill. (Sib.) Intense blue35
Nora Distin. (Sib.) Blue and white. 30 in.60
Ochroleuca. (Spuria.) White and yellow35
Peggy Perry. (S.B.)50
Periwinkle. (S.B.) A showy deep violet-purple50
Perry's Blue. (Sib.) One of the best blues35
Pseudacorus. (England.) Bright yellow; tall; late35
Queen Victoria. Very tall, white and yellow50
Red Emperor. Red velvet	1.00
Shelford Giant. (Spuria.) Large and tall75
Skylark. (Sib.) Exquisite light blue35
Snow Queen. (Sib.) Waxy white35
Star Dust. (Sib.) White; tall35
Thelma. (S.B.) Sky-blue50
White Dove. (Sib.) Beautiful large white35



Heavenly Blue



Dorcas Hutcheson

Fall Bloomers

All of these bloom in the fall as well as the spring. Until a few years ago Iris was only a spring flower. Now the season is greatly extended. These are not common in gardens. You should have some.

	Each
The Modern Orchid of the Garden	
Autumn Dawn. Soft pink. Fall bloomer	\$0.40
Autumn Elf. (Brown.) S cream; F. lavender; fragrant25
Autumn Frost. (Schr.) Exquisite frosty white. 36 in.35
Autumn Haze. (H. Sass.) Large violet-purple. 34 in.30
Autumn King. (H. Sass.) Blue-purple; popular. 36 in.25
Autumn King Junior. Blue-lavender bicolor. 28 in.25
Autumn Surprise. Fine new medium blue25
Autumn Queen. White. Low grower; fall bloomer30
Black Magic. Rich velvety black sheen30
Bountiful Blue. Fine blue, very popular35
Dorcas Hutcheson. Bicolor. Fall bloomer, violet-rose35
Eleanor Roosevelt. (Sass.) Deep red-violet. 20 in.25
Frost Queen. (Sass.) Good dependable white30
Glowport. Wine-red; fall bloomer50
Golden Cataract. (Dysart.) Rich golden yellow30
Halloween Night. Bright lemon-yellow	1.00
Laura Hutcheson. (H. Sass.) Red-pink cast. 26 in.30
Martie Everest. Fall blooming bicolor, fine blue50
October Blaze. Deep red with violet undertone, with brilliant beard. Fall bloomer35
October Opera. (H. Sass.) Rich velvety purple. 24 in.25
Olive White. (H. Sass.) Deep cream; very fine25
Peggy Babbington. 28 in. A rich deep clear uniform yellow	.30
Sangreal. (J. Sass.) Clear pure yellow. 28 in.25
September Skies. (Sass.) Clear red-purple. 16 in.25
Southland. (H. Sass.) Deep lemon-chrome25
Souv. de L. Chavagnac. Dwarf violet; fragrant35
Surefire. (Nich.) Light yellow25
Ultra. Bicolor. Fall bloomer. 26 in. Ultramarine blue35
White Autumn King. (Sass.) Pure white25

4 Single Peonies

Now so popular, in Red, White, Rose, and Pink—all labeled, standard divisions.

Catalog Value **\$3²⁵**
at Least \$4.00

2 COLLECTIONS

Parcel Post **\$6²⁵**
Prepaid

4 Japanese Peonies

All the rage, in Red, Pink, Rose, and White—all labeled, standard divisions.

Catalog Value **\$3²⁵**
at Least \$4.00

2 COLLECTIONS

Parcel Post **\$6²⁵**
Prepaid

SPECIAL GARDEN COLLECTION

This collection will give color to your garden from April to October.

Catalog Value \$14.25

15 Lovely Irises

5 Gorgeous Peonies

5 Colorful Hemerocallis

5 Beautiful Poppies

All labeled and assorted to color and blooming period. Shipped in August, September or October.

Parcel Post Prepaid

\$10²⁵

4 Double Peonies

Gorgeous double varieties, in Red, Pink, and White—all labeled, standard divisions.

Catalog Value **\$3²⁵**
at Least \$4.00

2 COLLECTIONS

Parcel Post **\$6²⁵**
Prepaid



Sarah Bernhardt



Mons. Jules Elie

10 GORGEOUS PEONIES

- 2 White—Kelway's Glorious and Mrs. Edward Harding
- 2 Red—Longfellow and W. F. Turner
- 2 Pink—Tourangelle and Sarah Bernhardt
- 1 Yellow—Primevere
- 1 Cream—Solange
- 2 Rose—Souv. de Louis Bigot and Victoire de la Marne

All high grade varieties you will be proud to own and show your friends.

All Labeled

Only **\$12²⁵**

Parcel Post
Prepaid

PEONIES

Double Varieties

	Each
A. B. Franklin. (Fran.) White, opening blush	\$5.00
Addielanchea. (Bra.) Creamy white	1.00
Adolphe Rousseau. (Des.) Very early, garnet-red. Tall, strong stems. Foliage dark, tinged red	1.00
Aksarben. (Ros.) Brilliant dark crimson	1.00
Albert Crousse. (Cr.) Large, late light rose-pink with a creamy tone. Tall, has strong stems, good foliage and blooms profusely	1.00
Alice Balfour. (Kel.) Delicate rose-pink	1.00
Alice Harding. (Lem.) Cream-white with soft pink guard petals. Stems and foliage good. A very fine flower	2.50
Allure. (Neeley.) White. Loosely built.	3.50
Alpheus Hyatt. (Rich.) Rose-pink. Late	1.00
Alsace-Lorraine. (Lem.) Late cream-white with a light touch of brownish yellow at the base of the petals	1.00
Apollo. Late, light pink, fine	3.00
A. P. Saunders. (Thur.) Flesh-white. Late	2.00
Archie Brand. (Bra.) Shell-pink	1.00
Arlequin. (Des.) Large; pale rose-pink	1.00
Armance Dessert. (Dor.) Soft silvery salmon-pink. 1.50	
Asa Gray. (Cr.) Pale lilac dotted	1.00
Auguste Dessert. (Des.) Rose-red with a slight silver border on each petal. A plant of medium height and a profuse bloomer	1.00
Auguste Villaume. (Cr.) Rose. Late. Tall	1.00
Augustin d'Hour. Solferino-red	1.00
Avalanche. (Cr.) A blush-white of waxy texture tinted pink, giving a creamy effect. Large, late bloomer and fragrant	1.00
Aviateur Lindbergh. (Dor.) Extra fine red	2.50
Ball o' Cotton. (Fra.) Pure white, fragrant, of medium height with good foliage. Petals incurved to form a large white ball similar to name	1.00
Baroness Schroeder. (Kel.) Pale flesh-white. One of the best. A late bloomer, fragrant, has strong stems and excellent foliage	1.00
Bayadere. (Lem.) Cream-white; dwarf	1.00
B. B. Wright. (Wri.) Beautiful pink. Tall	5.00
Beaumarchais. (Lem.) Flesh-pink. Tall	3.00
Ben Franklin. (Bra.) Dark crimson, tall	1.00
Benoit. Dark red	1.00
Bertrade. (Lem.) Tall white. Late	1.00
Betty Blossom. (Thur.) Soft yellow effect	2.00
Betsy Jean Miller. Good pink, late	3.00
Bishop Burke. (Vor.) Rosy crimson, strong stems	1.50
Blanche King. (Bra.) Considered by many the best deep pink. Holds its form and color in the field and makes a fine show flower as well	5.00
Blushing Beauty. (Fran.) Pale pink	2.50
Candeur. (Des.) Silvery pink. Bright green foliage	1.00
Catherine. (Rich.) Pink. Rose type	1.00
Catherine Coupland. (Nielsen.) Semi-rose type, mid-season, flesh-pink changing to white. Strong vigorous grower ..	10.00
Charlot. (Dor.) Silvery lilac. Strong stems	1.00
Cherry Hill. (Thur.) One of the earliest reds. This maroon-red is brightened by yellow stamens. Tall, strong stems hold the clusters of blooms erect	1.00
Chestine Gowdy. Variegated cone-shaped pink	1.00
Claire Dubois. (Cr.) Satiny pink. Large, late	1.00
Clara Anderson. (And.-Hol.) White, gold stamens	1.00
Clemenceau. (Des.) Carmine with silver edge	1.50
Col. Chas. A. Lindbergh. (Kund.) Early red	1.00
Cornelia Shaylor. (Shay.) Guards pale rose, collar of flesh-white, darker in center. Tall, large, and late	1.50
Coronation. (Kel.) Light pink, white center	1.00
Couronne d'Or. (Cal.) Milk-white, with center petals edged crimson. Late	1.00



Baroness Schroeder

	Each
Crystola. (And.) Pure crystal-white. New	\$2.00
C. W. Shock. (Fra.) Red. Midseason	1.00
David. (Kel.) Coral-pink	1.00
David Harum. (Bra.) Clear bright crimson; fine texture. Strong stems. Broad, light green foliage	1.50
Denise. (Lem.) White flecked crimson	2.50
Denis Debatene. (Dor.) Salmon-pink	1.50
Desire. (Lem.) Delicate mauve. Rich rose fragrance	1.00
Dorchester. Flesh-pink. Late	1.00
Doris Shaylor. (Shay.) Fine pink. Free bloomer	1.00
Dorothy J. (Jones.) Tall, rich cream. Home Achievement Medal and Silver Medal in Seedling Class at National Peony Show, 1940. A fine flower with a future	15.00
Dr. Edgar Pleas. (Pleas.) Lilac-pink	1.00
Dr. J. H. Neeley. (G. & R.) Large, tall white	5.00
Duchess of Albany. Rose-pink. Large	1.00
Duchesse de Nemours. (Cal.) Cupped white guards with a moderately full center of canary-yellow. Large, medium tall	1.00

	Each
Dulcinee. (Lem.) Pale pink. Fragrant	\$2.50
Duluth. (Fra.) A late pure white	3.00
E. C. Shaw. (Thur.) Light old rose with pink tones. Medium height, fragrant, tall, stems strong with glossy foliage	1.50
Edith M. Snook. (Snook.) Flesh-pink. Late	10.00
Edulis Superba. (Lem.) Guards and center petals bright old-rose-pink. Collar is lighter pink, narrow petals. Very early	1.00
E. G. Hill. (Lem.) Deep rose. Unusual color	1.00
E. J. Shaylor. (Shay.) Rose-pink. Good	1.00
Elisa. (Des.) Hydrangea-pink. Semi-double	1.00
Elise Renault. (Dor.) Lilac-pink	2.50
Elizabeth B. Browning. (Bra.) Pure white, late bloomer. Fragrant; tall	1.50
Ella Christiansen. (Bra.) Deep pink. Fine	5.00
Elsa Sass. (Sass.) Full rose type white. Tall	5.00
Elwood Pleas. (Pleas.) Pale rose-pink changing to light flesh- pink in center. Flowers flat, large, and late	1.00
Enchantress. (Lem.) Very late white with lemon tints in collar and crimson wire edges to a few center petals. Tall with strong stems	1.00
Estafette. (Des.) Crimson with a silver margin bordering the petals. Very fine and very early	1.00
Etta. (Ter.) Deep shell-pink. Large, late	1.00
Eucharis. (Lem.) White. Late	1.00
Eugene Verdier. (Cal.) Pale hydrangea-pink	1.00
Eugenie Verdier. (Cal.) A hydrangea-pink. Darker in center than on edges. Flecked crimson. Fragrant	1.00
Evangeline. (Lem.) Compact pale pink. Late	1.00
Evening Glow. (Hol.) Tall lilac. Very late	1.00
Evening Star. (Sass.) White with flame-red edgings in center	5.00
Exquisite. (Kel.) Fragrant rose-pink. Early	1.00
Fannie Lee. (Vor.) American-Beauty-red	1.50
Fanny Crosby. (Bra.) Yellow center	1.50
Faustine. (Lem.) Pale pink	1.00
Felix Crousse. (Cr.) Brilliant crimson, silky luster. Good keeper	1.00
Festiva Maxima. (Miel.) Large white, with a few crimson flakes on the central petals. Tall, early. One of the best whites	1.00
Flamingo. (And.) Light pink, early	2.00
Florence MacBeth. (Sass.) Large light pink	1.50
Floweret of Eden. (Nee.) Mauve-pink. Large	1.00
Fragrans. Very late rose	1.00
Frances Shaylor. (Shay.) White and gold effect	1.00
Frances Willard. (Bra.) Blush-white. Strong stems, heavy dark foliage. Very popular and good	1.00



Victory Chateau Thierry



David Harum

	Each
Francois Rousseau. (Des.) Dark red. Early	\$1.00
Frankie Curtis. (Vor.) A large delicate white. Very free flowering. Stiff stems and known as "the White Mons. Jules Elie"	3.00
Franklin's Pride. (Fran.) Pink. Fragrant	3.00
Galathee. (Lem.) Flesh-white. Very late. Tall	1.00
Garden Princess. (Nee.) Midseason light pink	2.00
Gene Stratton Porter. (Ros.) White. Bird-nest form	1.00
Genevieve. (Lem.) Enormous white. Very late	3.50
Georgiana Shaylor. (Shay.) Large light rose-pink. Center petals flecked crimson. Medium height and strong stems.	1.25
Germaine Bigot. (Des.) Pale lilac-rose	1.00
Gigantea. (Cal.) Clear rose-pink. Silver-tipped petals. Fra- grant, tall, good foliage. Very early	1.00
Gilbert Barthelot. (Dor.) Silvery pink	1.50
Gilberte. (Lem.) Late pink. New French variety	1.50
Ginette. (Des.) Flesh-pink. Dwarf	1.00
Gismonda. (Cr.) Flesh colored. Late; tall	1.00
Gloriana. (Nee.) Pink. Extra fine	1.50
Glorious. (Kel.) Light pink shading to white	1.00
Golden Dawn. (Gumm.) White with yellow center	2.50
Golden Wedding. (Pleas.) Canary-yellow	1.00
Golden West. (And.) Rose-pink guards	1.50
Good's Dream. (G. & W.) White. Midseason	3.50
Grace Batson. (Sass.) Deep pink bomb	1.50
Grace Loomis. (Saun.) White. Late; tall	2.00
Grandiflora. (Rich.) Bright pink. Tall, very large. One of the last to bloom	1.00
Gretchen. Light pink	1.00
Grover Cleveland. (Ter.) Large, late, bright crimson of medium height. Stiff stems with excellent foliage	1.00
H. A. Hagen. (Rich.) Deep rose-pink. Late	1.00
Hansina Brand. (Bra.) Pink. Prize winner	5.00
Hans Peter Sass. (Sass.) A very fine flower of blush-white. Out of all of Mr. H. P. Sass' seedlings, he picked this Peony to bear his name	5.00
Harry L. Burden. (Nee.) Delicate pink. Large	2.50
Harriet Farnsley. (Bra.) Dark crimson	1.00
Harry F. Little. (Nich.) Tinted white, large	7.50
Harry L. Richardson. (Ros.) Red	1.50
Hazel Kinney. (Bra.) Clear hydrangea-pink	1.50
Helen Wolaver. (Bra.) Seashell-pink	1.00
Henri Core. (Dor.) Flesh-pink	1.00
Henry Avery. (Bra.) White with yellow collar	1.00
Henry Webster. (Fra.) Large red; late	3.00

	Each
Hermione. (Sass.) Light tall pink. Late	\$1.50
Hespanola. (And.) Shell-pink	2.00
H. F. Reddick. (Bra.) Bright dark crimson	1.00
Ideal. (Franklin). (8.90) Very large. Full Rose type, dark pink, stiff stems with good foliage, fragrant. Late. 34 inches	3.00
Ingenieur Doriât. (Dor.) Carmine-red	2.50
Inspecteur Lavergne. (Dor.) Fine new red. Early	2.00
Isoline. (Lem.) Pale yellow effect. Large	1.50
James Boyd. (Thur.) Flesh, changing to white	1.00
James Kelway. (Kel.) Rose-white. Early, fragrant	1.00
James R. Mann. (Thur.) Rosy pink	1.00
Jean Harlow. A fine white with golden reflections in the depth of the petals. Early midseason. Very scarce	10.00
Jeannot. (Des.) Fine flesh-pink. Wiry stems and good foliage. Late	1.50
Jenny Lind. (Barr.) Pink	1.00
Jessie Shaylor. (Thur.) Deep cream	1.00
John M. Good. (G. & W.) White. Rose type. Early	1.50
John Richardson. (Rich.) Rose-pink. Fragrant	1.00
Jubilee. (Pleas.) Large ivory-white. Very flat blooms; tall, free flowering	1.00
Judge Berry. (Bra.) A delicate light rose-pink. Very large, early, with good foliage	1.00
Judge Snook. (G. & R.) Cream-white. Large	7.50
Judy Becker. (Sass.) Brilliant dark red. Large. Tall	5.00
June Day. (Fra.) Light flesh edged lavender	1.50
Karl Rosenfield. (Ros.) Very bright crimson. Good cut flower. Tall, strong stems	1.00
Katherine Havemeyer. (Thur.) Flesh-pink	1.50
Kaub. (G. & K.) Silvery pink	3.00
Kelway's Glorious. (Kel.) Fine white with a creamy suffusion in the depths. Strong rose fragrance. Free flowering. Strong stems	3.00
Kelway's Queen. (Kel.) Late bright pink with flecked crimson center. Fine quality of color	2.50
Koenigen Wilhelmina. (Kre.) Rose-pink. Tall	1.00
Kunderd's Jubilee. (Kund.) White	1.50
Lady Alex. Duff. (Kel.) Very fine pale pink	1.00
La Fee. (Lem.) Light old-rose-pink with a narrow collar of creamy pink. Strong roselike fragrance. Tall, free flowering	1.50
La France. (Lem.) Clear light pink with splashes of crimson on the outer petals. Tall, strong stems	1.00
La Lorraine. (Lem.) Large cream-white, tinted pink. Yellow glow produced by a few yellow stamens. Tall, free flowering. Stout stems with good foliage	2.00



Mrs. John M. Kleitsch

	Each
Lamartine. (Lem.) Old-rose-pink. Dark	\$1.00
La Perle. (Cr.) Soft pink, cup-shaped	1.00
La Rosiere. (Cr.) Cream-white. Gold stamens	1.00
Last Rose. (Sass.) Deep pink; very late	2.50
La Tendresse. (Cr.) White	1.00
La Tulipe. (Cal.) Lilac-white	1.00
Laura Dessert. (Des.) Guard petals creamy white enclosing a center of pure canary-yellow. Should be cut to preserve the color	2.00
Le Cygne. (Lem.) The best white Peony. Pure ivory-white without any markings whatsoever. Large. Fragrant. Foliage large and dark green. A rating of 9.9 by the American Peony Society. (The highest rating ever given to any Peony)	3.00
Leviathan. (Kel.) Deep rose	1.00
Libellule. (Des.) Flesh marked crimson	1.00
Lillian Gumm. (Gumm.) Outer petals very large and ruffled. Deep rose-pink. Fragrant, stems and foliage good	1.00
Livingstone. (Cr.) Lilac-rose. Large; late	1.00
Longfellow. (Bra.) Bright crimson intensified by golden yellow stamens near center. Very good cut flower	2.00
Lora Dexheimer. (Bra.) A bright crimson with a few stamens which are not very noticeable. Large, midseason	1.25
Lorch. (G. & K.) Cream-white, rose scented	1.00
Lord Kitchener. (Ren.) Very early red	1.00
Loren Franklin. (Fra.) Dark pink. Late	3.00
Loveliness. (Hol.) Hydrangea-pink. Late	1.00
Lucile Hartman. (Fra.) Light pink. Vigorous	2.50
Lucky Strike. (Wri.) Bright rose-pink; fragrant	2.50
Lucy E. Hollis. (Hol.) Pink	1.00
Luetta Pfeiffer. (Bra.) Very pale pink, nearly white. Center petals flecked red, and numerous yellow stamens. Tall, with strong stems and very early	1.00
Lucy Shaylor. (Shay.) Creamy yellow center	2.00
Luxor. (Sass.) A white Mons. Jules Elie	7.50
Mabel L. Franklin. (Fra.) Light pink	1.00
Madelon. (Des.) Silvery pink, large. Late	1.00
Madonna. (Nee.) Cream-white. Loosely built	5.00
Magnificent. (Bra.) Dark red. Tall. Early	1.25
Manitou. (And.) Blush with rose fragrance	1.50
Mar. Ell. Waggamann. (Dor.) Salmon. Tall	1.50
Margaret Vierheller. (Wett.) White. Large	1.50



Solange



Tourangelle

- Each
- Marie Crousse. (Cr.) A delicate shell-pink. Guards very large. Fragrant, tall, strong stems and excellent foliage .. \$1.00
 - Marguerite Gerard. (Cr.) Immense heart-shaped guard petals, broad serrated crown of pale flesh-pink. Darker in the center. Small petals in center mixed with many yellow stamens 1.00
 - Marie Jacquin. (Vor.) A semi-double Peony of pure white with a large cluster of yellow stamens in the center. Strong stems and light green foliage. Known as the Water Lily Peony 1.00
 - Martha Bulloch. (Bra.) One of the best rose-pink Peonies. This variety is admired by everyone. Very large flower .. 1.50
 - Marvel. (Secor.) Fine large pink. Fragrant 1.50
 - Mary Brand. (Bra.) Dark clear crimson, with a few yellow stamens buried in the collar. Notably fragrant for a red variety. Very free flowering 1.50
 - Mary A. Livermore. (Hol.) Lilac-pink 1.00
 - Mary Woodbury Shaylor. (Shay.) Clear pink 1.00
 - Matchless Beauty. (Nee.) Cream-white. Good 3.50
 - Matilda Lewis. (Saun.) A fine red 5.00
 - Maud L. Richardson. (Hol.) Lilac-rose. Tall 1.00
 - Midnight. (Bra.) Deep maroon 1.25
 - Mignon. (Lem.) Amber-white. Dwarf foliage 1.00
 - Mildred May. Immaculate white with golden stamens in rings that intensify its purity; tall good stems; blooms in triangular clusters 10.00
 - Milton Hill. (Rich.) Very light shell-pink with a few red blotches on central petals. Strong stems with excellent foliage 1.00
 - Minerva (Sass.) Blush-pink. Strong stems 1.50
 - Minnie Shaylor. (Shay.) Several rows of fluffy crepelike petals of clear light pink fading to white. Center of golden yellow. Stamens very attractive. Most popular Peony at blooming time on our farm 2.00
 - Minuet. (Fra.) A very large light pink. Stiff stems and sure bloomer. Late 5.00
 - Miriam. (Chase.) Rich pink. Semi-double 1.00
 - Miss Henninger. (Ter.) White. Very popular 1.00
 - Miss Minneapolis. (Fra.) Pale pink. Late 3.50
 - Mlle. Jeanne Riviere. (Riv.) Pink, yellow center 1.00
 - Mme. Auguste Dessert. (Des.) Rose. Beautiful form 1.50
 - Mme. Calot. (Miel.) Flesh, crimson flaked 1.00

- Each
- Mme. Claude Tain. (Dor.) Fine white \$1.50
 - Mme. de Treyeran. (Des.) Flesh-white 1.00
 - Mme. de Verneville. (Cr.) Blush-white. Early 1.00
 - Mme. Ducl. (Mech.) Soft pink bomb. Early 1.00
 - Mme. Edouard Doriat. (Dor.) White. Fine 1.50
 - Mme. Emile Debatene. (Dor.) New pink 2.00
 - Mme. Emile Dupraz. (Riv.) Old-rose-pink, fragrant 1.00
 - Mme. Emile Galle. (Cr.) Lilac-white 1.00
 - Mme. Emile Lemoine. (Lem.) A beautiful white with crimson streaks on the outer petals. Tall and free-flowering. Very erect 1.00
 - Mme. Escary. (Lem.) Creamy white. Very large 2.50
 - Mme. Gaudichau. (Mil.) Dark crimson. Tall 1.50
 - Mme. Geissler. (Cr.) Light old-rose-pink. Bright in center and tipped on the reverse with silver 1.00
 - Mme. Guyot. (Pail.) Cream. Yellow center 1.00
 - Mme. Jules Dessert. (Des.) Very fine light pink, fading to white. Well formed, tall, mildly fragrant. Fine Peony for garden or the show room 1.00
 - Modele de Perfection. (Cr.) Late; old rose 1.00
 - Modella. (Bet.) Light pink. Dwarf 1.50
 - Modeste Guerin. (Gue.) Rose-pink. Early 1.00
 - Mons. Dupont. (Cal.) Milk-white 1.00
 - Mons. Jules Elie. (Cr.) Very large light rose-pink. Very popular. Mildly fragrant. One of the best 1.00
 - Mons. Martin Cahuzac. (Des.) This Peony is the darkest red of all. Deep maroon-red, very near black. Early 2.00
 - Mont Blanc. (Lem.) Opens white with creamy center. Develops into a large flat flower. Rose scented 1.00
 - Montrose. (And.) Large deep rose bomb 1.50
 - Moonglow. (Rosen.) Yellow-white, mid-season. Opens beautiful 5.00
 - Mount Everest. (Sass.) Late white 5.00
 - Mr. L. Van Leeuwen. (Nie.) Dark pink. Large 2.00
 - Mrs. A. B. Franklin. (Fra.) Pure white. New 4.00
 - Mrs. A. G. Ruggles. (Bra.) Light pink. Late 1.00
 - Mrs. A. M. Brand. (Bra.) Pure glistening white. Very large flower of perfect rose form; uniform petals. Late. Medium height, erect stems 5.00
 - Mrs. C. S. Minot. (Min.) Shell-pink and white 1.50
 - Mrs. Deane Funk. (Bra.) A fine pink 2.50



Philippe Rivoire



Walter Faxon

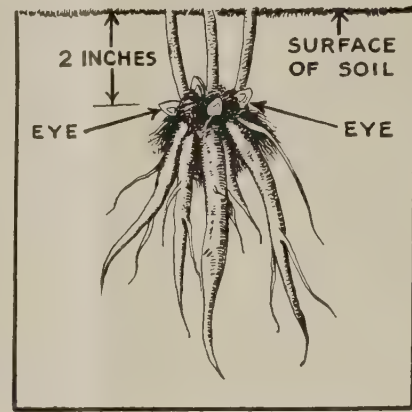
	Each
Mrs. Edward Harding. (Shay.) Large white illumined by bright golden stamens under the petals. Medium size, stiff stems; very early	\$1.50
Mrs. Frank Beach. Fine large white. Similar to Jubilee	5.00
Mrs. Franklin D. Roosevelt. (Fran.) Rose-type medium pink. Very large. One of the best	5.00
Mrs. Geo. Bunyard. (Kel.) Lilac-rose. Tall	1.50
Mrs. Geo. Rawson. (S. & A.) Light pink. Late	2.00
Mrs. Harry F. Little. (Little.) Blush, large late, tall and very fine	10.00
Mrs. John M. Good. (G. & W.) White	1.50
Mrs. John M. Kleitsch. (Bra.) Light violet-rose	2.50
Mrs. John M. Lewis. (Lew.) Rich medium red	2.00
Mrs. J. V. Edlund. (Edl.) Largest white. Tall	7.50
Mrs. Livingston Ferrand. (Nich.) True salmon-pink. Won the Silver Medal of A. P. S., 1936	25.00
Mrs. M. P. Clough. (Shay.) Salmon and white	1.00
Mrs. R. M. Bachellor. (Vor.) White. New	5.00
Mrs. Romaine B. Ware. (Bra.) Light pink. Tall	2.00
Mrs. Shaylor Force. (Shay.) White. Very large	1.00
Mrs. Springer Brooks. (Edl.) White. Midseason	10.00
Mrs. W. A. Rafferty. Tall, rose-pink; never offered before. Origin: Mrs. Rafferty, Greencastle, Indiana, a famous Peony connoisseur	10.00
Mrs. Ward Welch. White. Very beautiful	5.00
Mrs. W. D. Bennett. (Wett.) Late pink	1.50
Myrtle Gentry. (Bra.) Beautiful light pink fading to blush-white. Fragrant, tall, with strong stems and good habit ..	3.00
Nancy Dolman. (Vor.) Pale rose-pink of conical form. Tall with stiff stems and very late	2.00
Nanette. (Dor.) Cream-white. Early	1.50
Nell Shaylor. (Shay.) White and gold	1.50
New Era. (Franklin). A pure white Mons. Jules Elie. On the broad rounded guards rests a giant white Mum.	3.00
Nick Shaylor. (S. & A.) White, Rose type. One of the best	5.00
Nimbus. (And.) Tall white, rose type	1.50
Nina Secor. (Sec.) Pure white	1.50
Ninon. (Dor.) Soft flesh	1.00
Nobility. (Van Leeu.) Bright pink	2.50
Nymphea. (Thur.) Creamy white. Yellow stamens	1.00
Octavie Demay. (Cal.) Pink. Fragrant. Early	1.00
Odile. (Dor.) Flesh-pink. Fine	5.00

	Each
Old Silver Tip. (Bra.) Deep rose-red	\$1.00
Onondaga. (Lit.) New tall red	7.50
Opal. (Pleas.) Opalescent tints. Large	1.00
Opal Iris. (Pleas.) Large; light pink	1.00
Pallas. (Ter.) Rose-pink. Early and dwarf	1.00
Paradise. (Hol.) Hydrangea-pink. Dwarf	1.00
Pasteur. (Cr.) Pink, nearly white. Tall	1.00
Perrette. (Des.) White, tinged flesh	1.00
Peter Pan. (Hol.) Lilac-rose. Large, erect	1.00
Philippe Rivoire. (Riv.) Very dark rich crimson. Greatly admired by all Peony lovers. Richly rose-scented. Considered the finest red	3.00
Philomele. (Cal.) Guards dark old rose with collar of narrow buff petals. Fragrant; good foliage	1.00
Phoebe Cary. (Bra.) Lavender-pink. Late. Tall	1.00
Phyllis Kelway. (Kel.) Very large loosely built rose-pink. The center petals are intermingled with bright golden stamens. Stiff stems with abundant foliage. Fine	1.50
Pierre Duchartre. (Cr.) Lilac-pink	1.00
Pink Opal. (Sass.) Late light pink	2.00
Pitti Sinn. (Vor.) Pink. Strong plant	1.00
Pomponette. (Des.) Pink and silver	1.00
Prairie King. Brilliant, light crimson, shaded purple	1.50
Pres. F. D. Roosevelt. (Franklin.) (9.39.) A large full, double Rose type, dark pink. Tall and vigorous with stiff stems. A striking and much admired variety	5.00
Pres. Taft. (Cal.) Rose-pink with fluffy petals, notched, and silvered at the tips and occasionally flecked with crimson in the center. Tall, free flowering	1.00
Pres. Wilson. (Thur.) Bright rose-pink fading to a lighter shade with age. The flower possesses a rich spicy fragrance, is of medium height, with strong stems	1.50
Pride of Essex. (Thur.) Light rose-pink, fading to blush-white with a golden suffusion from its many gold stamens. The center petals are flecked crimson. Fragrant	1.25
Pride of Paulding. (Nee.) Rich flesh-pink	1.00
Primevere. (Lem.) White guard petals enclosing a large ball of sulphur-yellow small petals. Like all yellow Peonies it must be cut to retain its natural color	1.50
Prince of Darkness. Deep red, almost maroon. Semi-Rose type. Early. Richly fragrant	1.00
Priscilla Alden. (Rob.) Warm white. Early. Fine form	2.00
Prof. C. Potrat. (Dor.) Cherry-pink. Tall. Late	1.50
Queen of Pleasance. (Pleas.) Pink	1.00



President Taft

	Each
Ralph. (Pleas.) Bright pink. Very late	\$1.00
Raoul Dessert. (Des.) Mauve, shaded pink	1.00
Reine Hortense. (Cal.) Delicate pink. Fine	1.00
Reine Baronet. (Mil.) Tyrian pink	2.00
Renee Marie. (Des.) Soft pink to white. Large	1.00
Rev. H. N. Tragitt. (Bra.) White, Rose type	3.00
Richard Carvel (Bra.) Large, very early, bright crimson. Tall, slightly fragrant, with good stems	1.25
Rita. (Des.) Flesh-salmon-pink, cupped flower	1.00
Rosa Bonheur. (Des.) Soft flesh-pink. Late	1.00
Rosanna Shrader. Three-toned pastel pink	5.00
Rose Shaylor. (Shay.) Flushed white. Fine	2.00
Rosette. (Des.) Silvery flesh. Erect grower	1.00
Rosine. (Lem.) Pale lilac. Late. Fragrant	2.00
Ruth Brand. (Bra.) Lavender-pink	1.00
Ruth Elizabeth. Late mid-season. Rose form, brilliant color. Double red	15.00
Samuel Hughes. (Kel.) Deep amaranth	1.00
Sarah Bernhardt. (Lem.) Dark rose-pink. Agreeably fragrant, of medium height, strong stems. A fine flower	1.00
Sarah Carstenson. (Ter.) Hydrangea-pink	1.00
Sarah K. Thurlow. (Thur.) Large white. Late	1.50
Secretary Fewkes. (Shay.) Creamy white. Large	1.00
Shawnee Chief. (Bigger.) Dark brilliant red. New	4.00
Shaylor's Dream. (Shay.) Flesh. Very large	1.00
Solange. (Lem.) A very distinct Peony. The color could be described best as coffee-with-cream color. Dark green foliage	1.50
Sops of Wine. (Secor.) Dark red, purplish; late	1.00
Souv. de A. Millet. (Mil.) Amaranth-red. Tall	1.50
Souv. de Louis Bigot. (Des.) A vivid salmon-pink. Erect bloomer and should be in every garden	1.50
Souv. de Francois Ruitton. Pink	1.00
Souv. de Gen. Gallieni. (Riv.) Pink	1.50
Stephanie. (Ter.) Delicate pink. Free bloomer	1.00
Strassburg. (G. & K.) Silvery lilac-rose	1.50
Supreme. (Hol.) Pink. Late and good	1.00
Suzette. (Des.) Bengal rose	1.00
Sylvia Louise. (Saun.) Tyrian purple. Fine	1.50
Tanager. (Sass.) Red. Midseason	1.50
The Disc. (Sass.) Late red	1.50
The Gem. (Pleas.) Crimson. Small. Midseason	1.00
Therese. (Des.) Old-rose-pink. Considered the best pink. Of medium height with strong stems and heavy foliage.	2.00
Thos. C. Thurlow. (Thur.) Salmon-flesh	1.50
Tourangelle. (Des.) Pale cream-white with a tan suffusion in the depths of the flower. Very high rated; lovely	1.00
Umbellata Rosea. (Des.) Pink. Early	1.00
Vaughan Torrey. (V. Bonn). Very similar to Solange only with a pinkish tint. Erect	5.00
Venus. (Kel.) Delicate shell-pink	1.00
Victor's Crown. (Nee.) Pink. Midseason	5.00
Victory Chateau Thierry. (Bra.) Bright pink	3.50
Victoire de la Marne. (Des.) One of the largest purplish red Peonies. Has lighter edges, giving a silvery effect	1.50
Walter Faxon. (Rich.) Vivid salmon-pink, often called salmon-rose. A good show flower. It is medium size, mildly fragrant, has good stems and foliage	1.50
Ward Welsh. (Nee.) Flesh. Late	10.00
W. E. Blanchette. (Bra.) One of the largest reds; tall	15.00
Westhill (Little). Medium light pink. Strong grower. Early. H. M.	10.00
Wiesbaden. (G. & K.) Deep pink	1.00
Welcome Guest. (Hol.) Pink	1.00
W. F. Christman. (Fra.) Flesh-white. Large	1.00
W. F. Turner. (Shay.) Very dark crimson petals with a blackish sheen, mingled with yellow stamens. Tall, free flowering. Early	1.50
Wilton Lockwood. (Shay.) Rose-pink. Very large	1.50
W. L. Gumm. (Gumm.) White. Late	5.00
Zest. (Hol.) Pink	1.00



Proper Depth is Important in Planting

Peony Species

Species and Hybrids will give you a month more of Peony bloom, as they will all bloom from 10 days to 30 days before the Chinensis varieties. All have unusual foliage, color of bloom and growing habit. You'll enjoy having some or all of them in your plantings.

	Each
Anomala. Cut leaves, rose-lilac. Early	\$1.00
Ligulata Rosea. Soft pink	2.50
Lobata. Brilliant cerise, unusual	10.00
Officialis Rosea Plena. Bright pink double. Early	1.50
Officialis Rubra Plena. Rich red; very early	1.50
Pubens. Bright carmine; dwarf. Early	2.00
Tenuifolia Flora Plena. Rich double red. Fern leaf foliage ..	2.50
Tenuifolia Latifolia. Crimson. Single	1.50



Tenuifolia flora plena

THE AMERICAN PEONY SOCIETY

A \$3.00 membership keeps you posted on the doings in the Peony world.

Send checks to:

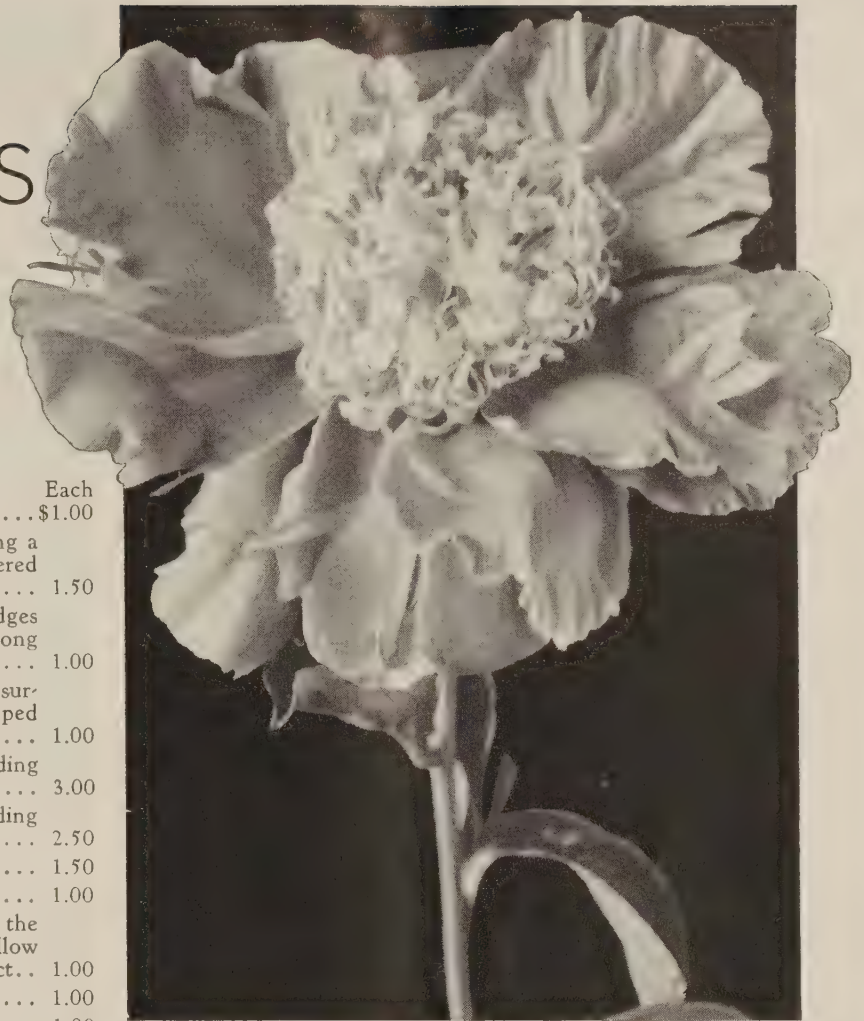
THE AMERICAN PEONY SOCIETY
W. F. Christman, Secretary
Northbrook, Illinois

Japanese

PEONIES

This type of Peony is very graceful in growth and quite different in type of flower. The flowers are single or semi-double with wide flaring petals of exquisite coloring and texture. The centers are usually a more or less compact mass of tiny petals or petaloids surrounding the stamens and usually of a color contrasting with the main petal color. Very charming color effects are found among them.

	Each
Akalu. (Des.) Large carmine-red midseason	\$1.00
Akashigata. (Des.) Bright rose guard petals surrounding a heavy center of filamental petals of bright pink bordered with gold	1.50
Alma. (Shay.) Light pink. The petals darker on the edges and center than at the base which is near white. Strong stems and good foliage	1.00
Altar Candles. (Pleas.) Cupped, flesh-pink guard petals surrounding a center of narrow, wax-white petaloids, tipped with red	1.00
Ama-No-Sode. Guard petals bright rose-pink surrounding yellow staminodes, tipped rose. One of the best	3.00
Antwerpen. Very large flowers of carmine-pink surrounding a beautiful center	2.50
Apple Blossom. Flesh-pink, midseason	1.50
Attraction. (Hol.) Tyrian rose, fragrant, large	1.00
Aureolin. (Shay.) A light rose-pink which is paler at the edges. Center composed of narrow bright canary-yellow petaloids, with yellow carpels, giving a fine yellow effect..	1.00
Capt. Alcock. (Kel.) Dark pink, midseason	1.00
Caroline. (Pleas.) Snow-white	1.00
Cascade. White, midseason	1.00
Cathedral. Vivid dark rose-pink guard petals with narrow lighter edges. Center of long pale pink petaloids. Very popular	1.00
Charm. (Fran.) Dark red. Tall. Strong. Late	3.00
Constance. (Bern.) Pink, yellow center, midseason	1.50
Crown Hill. Unusual rose and yellow	1.50
Dawn. (Cal.) Light pink. Free flowering	1.00



Akashigata



Mikado (See page 20)

	Each
Dog Rose. (Kel.) Delicate light pink	\$1.50
Emperor of India. Dark red. Medium tall	1.00
Eva. Light lilac-crimson. Fine	2.00
Exquisite First. White, good, midseason	1.00
Fairy. Light pink. New	2.00
Flashlight. (Hol.) Tyrian rose, free blooming	1.50
Fugi-No-Mine. Pure milk-white	1.50
Fugi-Zoma-Gorona. Wistaria-pink. Extra fine	3.00
Fuyajo. Dark purplish crimson guard petals of smooth texture and heart-shaped outline. The center is a cluster of dark old rose petaloids, heavily tipped with pale cream. Tall, strong stems, foliage tinged red	1.00
Ginko-Nishiki. White streaked crimson	1.50
Glory. (Hol.) Light Tyrian rose	1.00
Goddess. (Kel.) Rose-pink self	2.00
Golden Nugget. (Pleas.) Rosy lilac	1.00
Gold Mine. (Hol.) Tyrian rose	1.00
Gypsy. (Hol.) Wine-red, medium size	1.50
Hakodate. (Mil.) Large pure white. Rare	5.00
Hana-No-Sota. (Des.) Deep pink. Popular	1.00
Hari-Ai-Nin. (Bab.) Maroon, outstanding variety	2.50
Hatsugi. Dark red. Midseason	1.00
Henri Potin. (Dor.) China-pink. Late	1.00
Hinoke Sakhie. Violet	1.00
Ho-Gioku. White	1.00
Innocence. (Hol.) Light old rose guards	1.00
Isani-Gidui. The best white Japanese. Pure white guard petals with yellow staminodes, carpels green, tipped pale yellow, moderately tall, vigorous, with crinkled foliage ..	5.00
Joseph Plagne. (Dor.) Carmine-red	1.50
Kameno-Kerogama. Clear red	1.00
Kino-Kimo. Crimson-carmine. Free blooming	1.00

C. F. WASSENBERG, VAN WERT, O.

	Each
King of England. (Kel.) Dark maroon-red guards with buff staminodes streaked with dark rose-pink. Carpels green. Tall	\$1.50
Knight of the Thistle. (Kel.) Crimson. Dwarf	1.00
Kukeni-Jishi. (Des.) Silvery pink, midseason	5.00
Kumagoe. Crimson-pink	1.00
Lotus. Beautiful pale pink	1.50
Lou Shenk. (Rose.) An attractive pink	1.00
Margaret Atwood. Pure white, cuplike flowers with an occasional pink flush on the outside. The center is a ball of yellow staminodes	2.00
Melody. (Auten.) Pink, yellow center. Fragrant	1.00
Mikado. Waxed, cupped petals of rich dark crimson. Center broad and flat, red and yellow staminodes. The most popular Japanese variety	1.00
Minamota. A fine purple-red	1.00
Miyo-No-Hana. White, lovely, rare	3.50
Monterey. (Auten.) Light salmon. Honorable Mention ..	2.00
Moon-Yen-Claire. (Pleas.) Rose-pink	1.00
Mr. G. F. Hemerick. (Van Leeu.) Fine rose-pink	2.50
Mrs. Mac. (Fran.) Pink, flecked	1.50
Nippon Beauty. (Auten.) Dark red with center of staminodes flushed and edged yellow. One of the best Japanese. Late	3.00
Nippon Brilliant. (Auten.) Red, very attractive	5.00
Nippon Gold. (Auten.) Deep pink	2.00
Noon Day. Rose, very fine	1.50
Nymphe. (Des.) Pink	1.00
O Fugi. Flesh guard petals	1.00
Oki-No-Nami. Hydrangea-pink	1.00
Ohanagassa. Red tinged rose	1.50
Ohirama. Carmine tinged purple	1.00
Onahama. (Gumm.) Dark rich red	2.00
Oriental Pearl. (Wri.) Large light rose-pink	3.00
Ostrich Plume. (Pleas.) White guards	1.00
Petite Renee. (Des.) Carmine-pink	1.00
Ping Wing. Pink of medium height	1.00
Polar Star. White and yellow. Very large. Very tall with red seed pods	3.00
Prairie Afire. (Bra.) Dark pink. Fine	5.00
Princess Duleep Singh. (Kel.) Rose-pink	3.00
Rabelais. (Des.) Pink	1.00
Rashooman. Glowing rose-red guard petals. Center of slender staminodes, incurved tips of rose-red	1.25



Isani-Gidui



Ama-No-Sode

Rigolette. (Dor.) Broad purple-crimson petals	Each \$2.50
Rose of Nippon. Deep rose, different	1.50
Rose Valley. (Scott.) Pink. Honorable Mention of American Peony Society. Very refined	5.00
Ruigegno. Rich dark maroon	1.25
Sagoroma. (Mil.) Salmon guards	1.00
Seiriu Somae. White and sulphur	1.00
Shavano. (And.) Clear rose-pink	2.50
Shiro Sangai. Heavy smooth guard petals of pure cream-white. Long, narrow petaloids of yellow tipped darker. Free flowering	1.50
Shy Maid. (Auten.) Lavender-pink	1.00
Silver Plume. (And.) Silvery pink	2.00
Snow Wheel. White, very popular	1.50
Soshi. (Mil.) Deep rose	2.00
Soma Ganoka. Clear dark crimson cupped shape guard petals. Flat center of yellow staminodes. Foliage dark green, ruffled	1.50
Sunburst. (Shay.) White. Beautiful. Fragrant	3.00
Sunrise. (Hol.) Pink with yellow center	1.50
Surugu. (Mil.) New pure red	1.50
Taiho. Pink	1.00
Tamate Boku. The highest rated Peony of the Japanese type. Guards are dark old-rose-pink with a center of threadlike yellow staminodes. Very beautiful flower	10.00
Tarantella. (Auten.) Extra fine light red	1.50
Tokio. A large rose-pink with loose narrow staminodes with wide tips tinted pale yellow, buff and pink. Very erect grower	1.50
Toro-No-Maki. Guards of pale blush-white fading to pure white. Center composed of whitish staminodes edged and suffused yellow at the tips. Carpels pale green	3.50
Torpilleur. (Des.) Carmine-purple	1.25
Vera Wassenberg. (Was.) Rose-pink	25.00
Weigetsuka. Large pink	1.50
Westerner. (Bigger). A very distinctive rose-pink Japanese of the largest size, with stems strong and erect. Flowers cup shaped	10.00
White Japan. White. Yellow petaloids	1.00
Yamato Tsukasa. Bright rose. Midseason	1.00
Yeso. White tinted yellow	1.00
Yellow King. (Hard.) New Peony. The beautiful center is of filamental petaloids of yellow surrounded by very lovely soft pink guard petals. Best yellow among the Japanese ..	5.00

Single PEONIES



L'Etincelante

Somewhat like the Japanese Peony but having no central petals, the stamens being exposed to form the contrast with the guard or main petals. As a class they are very graceful plants, holding their blooms well off the ground without support and offering very handsome subjects for bouquets as well as the garden.

Albiflora. Pure white with bright yellow stamens. Very popular	Each \$1.00
Angelus. (9.17). Very large soft, even, light pink single. . .	3.00
Arcturus. (9.30). Extremely rich, clear dark red single. Tall	5.00
Black Prince. (Thur.) Large deep red with a satiny sheen. Stamens reddish at base tipped yellow. Carpels green. Stiff stems and excellent foliage	2.00
Charlotte Core. (Dor.) Large pure white	2.50
Clairette. (Des.) White tinged pink	1.00
Clio. (Pet.) Good pink	1.00
Cottage Maid. (Pleas.) Light pink	1.00
Edith West. (Bra.) Large white	1.50
Eglantine. (Des.) Pink and white	1.00
Flanders Fields. (Bra.) Brilliant red	5.00
Harriet Olney. (Bra.) A soft rose with center of yellow stamens. Erect grower. Early	1.00
Helen. (Thur.) A double row of broad, round, dark shell-pink petals with a mass of golden yellow stamens in center. Considered by many as the best single Peony	3.00
Imperial Red. (Sass.) Red. Erect grower. Striking	2.00
Jeanne Ernoult. (Dor.) Rich apple-blossom-pink guards. Tall stems. Very fine flower	2.00
Kelway's Wild Rose. (Kel.) Speckled pink	1.50
King Albert. (Kel.) Rose-violet	1.00
Krinkled White. (Bra.) Large flower with pure white petals which are crinkled. Tall, stems slender but very strong with light green foliage	3.00
La Fiancee. White. Yellow stamens	1.00
Le Jour. (Shay.) White, with two rows of very long, wide overlapping petals. The center has a broad ring of golden yellow stamens surrounding a group of reddish carpels. Considered the best white Single Peony	2.00
L'Etincelante. (Des.) Cup-shaped flowers of very bright pink. Stamens in center are bright yellow. Tall, stiff stems with excellent foliage	1.25
Letitia. (Kel.) Clear pink	1.00
Louise Delettre. (Dor.) Light pink	1.00
Madeleine Gauthier. (Des.) Light flesh-pink petals of waxy texture surrounding a center of yellow stamens and yellow-green carpels with red base and tips	1.50
Mafeking. (Kel.) Dark rose-pink	1.00
Marguerite Dessert. (Des.) White, splashed pink	1.00
Maurice Maeterlinck. (Kel.) Crimson-pink	1.00

May Oleson. (Ole.) Apple-blossom-pink	Each \$1.00
Minnehaha. (Pleas.) Very early, bright cherry-red with center tufts of clear golden stamens	1.00
Mischief. (Auten.) Lovely soft pink, yellow center	2.00
Moonbeam. Opal tints. Unusual	1.50
Nellie. (Kel.) Rose-pink, with a small tuft of yellow stamens in center. Carpels ruddy green. Blooms in clusters. Dwarf.	1.00
Perle Blanche. (Des.) Broad rounded white petals enclosing a large mass of golden yellow stamens. Tall, free flowering, erect stems	1.25
Pocahontas. (Pleas.) Rosy red. Late. Tall	1.00
Pres. Lincoln. (Bra.) Red. Midseason	5.00
Pride of Langport. (Kel.) Pale rose-pink petals surrounding a large cluster of very bright golden stamens and pale green carpels. Tall, thin, wiry stems with abundant foliage	1.50
Princess Matilda. (Des.) China-pink	1.00
Pure Love. (Kel.) Shell-pink. Yellow stamens	1.00
Queen. (Pleas.) White. Yellow center	1.00
Sea Shell. (Sass.) Very delicate, slightly fluted, light pink. Distinct	3.00
Silvia Saunders. (Saun.) Cup-shaped bright clear rose-pink fading lighter toward the center which is filled with yellow stamens. Good grower and an abundant bloomer. Extra fine	2.50
Spring Maid. Light pink. Yellow stamens	1.00
The Moor. (Barr.) Dark red. Early	1.00
Toreador. (Wett.) Red. Very late. Tall	1.00
Veloutine. (Des.) Tyrian rose	1.00
Venise. (Des.) Brilliant pink. Very good	1.00
Vera. (Gumm.) Very dark crimson-maroon with a silky sheen. Compact center of clear golden stamens	1.50
Verdun. (Dor.) Very large flowers with rich crimson guards	1.50
Vesuve. (Des.) Dark red. Dwarf	1.00
Whiteley Major. White. Yellow stamens	1.00
White Swan. (Pleas.) Good late white	1.00
Wilbur Wright. (Kel.) Dark crimson-maroon with attractive center of yellow stamens	1.00



Krinkled White

Hemerocallis

DAY LILIES

The old-fashioned Day Lily has undergone a transformation in the hands of hybridists in the past few years. Now we have great variety of color, time of bloom, May to September, and new shapes from which to choose. All are hardy and do well in sun or partial shade. If you do not have these newer Day Lilies you are missing a rare beauty in your garden. Beautiful for cut flowers as well as garden. See back inside cover for Collections. Each

Acres of Gold. Mass of yellow . . . \$1.00

Afterglow. (Stout.) Flowers are a pale buff, tinted with sunset hues which become pinker and more pronounced at the throat. 40 in. Deciduous 3.00

Aladdin. (Stout.) 3½ ft. June. Garnet-brown spot on petals; outer half golden orange 2.50

Alamo 5.00

Amaryllis. (Bet.) Large golden orange, slightly deeper in throat. July and August. 36 in.50

Anna Betscher. (Bet.) Deep orange, shaded with bronze.50

Apricot. (Yeld.) Early free blooming light apricot-orange flowers. Fragrant. May and June35

Apricot Glow. Apricot and gold75

August Orange. (Stout.) This Day Lily blooms in August. The flowers are rich orange3.00

August Pioneer. (Stout.) Chrome-yellow with outer half of petals flushed red. August and September. 34 in. 1.50

Aureole. (Japan Hybrid.) Deep cadmium-yellow. Extra fine. May and June. 36 in.35

Autumn Prince. (Stout.) 3½ ft. August to frost. Best late clear yellow3.00

Baby Tears. This dainty 4-inch flower is a "must have" for profusion of bloom. Rosy red ruffled petals. 3½ ft. April, May, June2.50

Bagdad. (Stout.) Throat of orange, with outer part of petals copper-red overlaid with orange. 42 in. June and July . . 1.00

Bay State. (Bet.) A large glistening yellow. Fast growing. 46 in. June to August50

Bernice75

Bijou. (Stout.) A ground color orange overcast with rich fulvous red. 24 in. June and July50

Boutonniere. (Stout.) Light rosy peach petals with grassy foliage. 36 in. July and August75

Buckeye. (Stout.) 3 ft. June. Full, clear orange with large mahogany-red eye1.50

Caballero. (Stout.) This is a large flowered (to 6 inches) striking bicolor with vermilion petals and golden yellow sepals and throat. Evergreen. 4 ft.1.50

Calypso. (Burbank.) A clear canary-yellow night bloomer. 40 in. July and August35

Campus Queen. Fine new yellow1.00

Chengtu. 3 feet. July to August. Recurved petals. Flowers 4½ inches. Bright copper-red1.00

Cinnabar. (Stout.) Rosy red-brown with yellow throat. Long blooming. July and August50

Circe. (Stout.) A clear yellow with medium size flowers. 48 in. July1.00

Cissy Giuseppe. (Perry.) Deep rosy bronze. July. 36 in. . . 50

Citrina. A dainty sulphur-yellow color. 36 inches tall. June and July35

Craemore Henna. (Plouf.) A brilliant henna with ruby iridescence and orange throat2.00

Cressida. (Bet.) A bright orange, star-shaped flower of 36-inch height. June to August50

Crown of Gold. (Nesmith.) Large blooms of clear orange which open wide. 36 in. June and July1.00

Dauntless. 3 ft. July, August. Pale yellowish orange. Large wide overlapping petals. Fine1.00



Soudan

- | | |
|--|--------|
| | Each |
| D. D. Wyman. (Bet.) A superb large golden yellow. 36 in. July and August | \$0.35 |
| Dominion. (Stout.) A fine dark, medium large flower, reddish brown with a yellow throat. 3 ft. | 1.50 |
| Doris Dae. (McDade.) | 1.00 |
| Dr. Regel. An orange-yellow. Fragrant. May | .35 |
| Dumortieri. Rich cadmium-yellow of 24-inch height. May and June flowering | .35 |
| Earliana. (Bet.) Golden orange that blooms with the Irises. Very fine. Early | 1.00 |
| Elaine Russell. (Russell.) Here is a true shell-salmon . . . | 4.00 |
| Elizabeth Pike. (Perry.) Orange, brown and yellow. 18 in. Midseason to late | 1.00 |
| Emily Hume. Deep yellow, twisted and fluted. 42 in. July . | 1.50 |
| Estmere. (Yeld.) An apricot-yellow with grassy foliage. Very good. 30 in. May and June | .35 |
| Evangeline. (Russell.) Beautiful and unusual | 3.50 |
| Fairy Queen | 1.00 |
| Festival. (Stout.) Petals orange, with reddish brown tinges, veined. July. 48 in. | 3.00 |
| Flava. Clear lemon-yellow. The old Lemon Lily. 36 in. May . | .35 |
| Fulva. The old roadside Lily. 40 in. July | .35 |
| Fulvol. (Betscher.) 30 in. Late bloomer. Dark fulvous. . | 1.25 |
| Gaiety. (Betscher.) June-July. Luminous color of pale yellow with unusual form. Very attractive | 2.50 |
| Gay Troubadour. (Nesm.) Most unusual red and cream bicolor. July and August. 40 in. | 5.00 |

	Each
George Yeld. (Perry.) Golden yellow petals. 36 in. July and August	\$0.50
Georgia. (Stout.) Buff and pink tones. July and August ..	3.00
Gladness	1.50
Gloriana. (Bet.) A golden yellow with fluted edges. June and July	1.00
Gold Dust. Empire yellow, rather dwarf. 24 in. May and June35
Goldeni. (Bet.) Fine yellow flowers of deep orange. 36 in. June and July35
Golden Queen. Golden yellowish orange	1.00
Gold Standard. Rich canary-yellow. 36 inches high. July and August35
Gypsy. (Bet.) Brilliant deep orange flowers with slender stems. 36 in. June and July35
Hankow. (Stout.) Rich yellowish orange. Blooms 5½ inches wide. 42 in. July and August	3.00
Harvest Moon. (Bet.) Clear orange sherbet. 3 feet tall. July and August50
High Boy. (Gray.) Very pale yellow of enormous height. 5 feet tall. July and August50
Hiroeache	2.00
Hyperion. (Mead.) This Day Lily is considered the finest of all Day Lilies. It has large waxy flowers of soft canary-yellow. 48 in. tall. July and August75
Imperator. (Perry.) Star-shaped. Rich orange-red, lined with sulphur. Large. July and August50
Iris Perry. (Perry.) Orange-bronze flowers. 36 in. July to September75
J. A. Crawford. (Bet.) Beautiful apricot-yellow. 48 inches tall. Very good for landscaping. July and August35
J. R. Mann. (Bet.) A buff and yellow frosted flower. 42 inches tall. June to August50
Keepsake. Golden yellow	\$1.50

	Each
Kwanso Flora Plena. Orange, flushed with red, similar to Fulva only double. 42 inches. July and August	\$0.35
Kwanso Flora Variegata. Almost identical with Kwanso Flora Plena except for the white striped leaves. 42 in.50
Lemona. (Bet.) Pale lemon-yellow flowers. 42 inches tall. July and August35
Lemon Lily. Same as Flava. Old but still good35
Linda. (Stout.) Golden yellow, flecked red, sepals clear yellow. 30 in. June and July75
Lucky Star. (Wayman.) 39 in. Brilliant, effective lemon-chrome. June-July	2.50
Luteola Major. Orange-yellow. Wide open flowers. July and August. 36 in.35
Majestic. (Stout.) Large pure orange	3.00
Mandarin. (Farr.) Lemon-yellow. 48 in. July and August.75
Margaret Perry. (Perry.) Brilliant orange-scarlet lined yellow. 48 in. July and August50
Marvel	1.00
Mary Alice Fuller. Soft canary-yellow	1.00
Mary Florence. (Bet.) Large flowers of waxy apricot-buff. 36 in. June-July75
Midas. (Stout.) Clear rich golden orange, narrow petals, very tall and erect. 42 in. June and July50
Middendorff. Rich orange-yellow. May and June. Very fragrant. 18 in.35
Mikado. (Stout.) Striking orange with red spots on petals. Very good. 36 in. June-July35
Modesty. (Bet.) A large pale yellow. 36 in. June-July75
Monarch. (Stout.) 3 ft. July. Light yellow with delicate halo of orange	2.00
Mrs. A. H. Austin. (Bet.) Deep golden yellow flowers with a 6-inch spread. Long bloomer. July-August50
Mrs. B. F. Bonner. Russell's best pure pale yellow	2.00
Mrs. Chas. Urshul. Primrose-yellow. 38 in.	1.00
Mrs. W. H. Wyman. (Bet.) A late lemon-yellow. 48 in. July and August35
No Siesta	1.50
Old Vintage. (Russ.) Wine colored with yellow throat ...	3.00
On Tour. (Russell.) This Day Lily in a pale yellow is a "must have." 3½ feet. May-June	5.00
Ophir. (Farr.) A large bloom of 5-inch width and 6-inch length, of yellow overlaid with gold. One of the best. Early July to August50
Orange Man. Medium yellow with red buds. Dwarf in height. May and June35
Orange Vase. (Yeld.) Cup-shaped orange-yellow petals35
Pale Moon. (Cleve.) Pale yellow. June, July. 30 in.75
Patricia. (Stout.) A fine pale yellow, with a green throat. Fragrant. 5-inch flowers. Blooms well in evenings and is sun-resisting. 36 in. June and July.	1.50
Persian Princess. (Nesm.) Deep velvety red with heavy overflush of purple. July-August. 40 in.	5.00
Pink Lustre. 45 in. Huge trumpet-shaped flowers of a lustrous soft pink with a bright canary-yellow throat	5.00
Port. 2½ ft. July. Fine port wine flowers on well branched stems	3.00
Princess. (Stout.) A very pale canary-yellow. 39 in. July	3.00
Purple Sage. (Russ.) One of the darkest of the red-purples	5.00
Purple Waters. (Russ.) Extra strong growing, wine-purple	2.50
Queen Bess	2.00
Queen of Gonzales. Solid self orange. Earliest of large flowering kinds. 3 ft. April and May	3.00
Queen of May. 2½ feet. June. Taller than most early varieties. Pale apricot-orange50
Radiant. (Yeld.) Clear fine orange of good quality and texture. 36 in. July and August50
Rajah. (Stout.) Open, scarlet-orange with burning red stripe on petals, giving a brilliant effect. July. 3 ft.	1.00
Rembrandt	2.00
Rosalind. (Fulva-Rosea.) The pink Hemerocallis	5.00
Royal. (Japan Hybrid.) Primrose-yellow of fine texture. 36 in. June and July flowering50
Russell Minuet. Dwarf. Rich rose, yellow stripe. 20-24 in. ...	2.00



Top—Aureole Bottom—Apricot



Hyperion



Mrs. Perry

Oriental Poppies

	Each
Sachem. (Stout.) Exceptionally fine. Deep reddish brown medium sized flowers. Throat is light orange. Evergreen. 3½ feet	\$3.00
Saffron. (Bet.) Saffron-yellow	2.00
Semiramis	1.00
Semperflorens. May-June. 2-3 ft. Rich yellow; best mid-season50
Serenade. (Stout.) Very light pastel shades of yellow and pink. Medium large flowers on tall, stiff stems. 36 in. ..	1.00
Shirley. (Ruys.) Large open flowers of pale apricot-yellow. 36 in. July	1.00
Sirius. (Yeld.) Rich orange with a faint red tinge. Petals crinkled and margins wavy. Long bloomer. 30 in.	1.00
Sir Michael Foster. Apricot. July and August. 48 in.50
Sir William. (Perry.) Orange-red. July-August. 36 in. ..	1.00
Soudan. (Stout.) Pure yellow petals which are broad and crinkled. Four-inch width of flowers. June and July ...	1.00
Sovereign. (Yeld.) Fine orange-yellow. 30 in. May and June35
Summer Multiflora Hybrids. 2½ ft. Late June to late August. Clear orange50
Sunny West. (Sass.) Pale canary-yellow. 48 in.75
Symphony. 3½ ft. June-July. A delicate blend of pastel tones. Sepals toned yellow; petals rose, with midband of darker red	3.00
Tangerine. (Yeld.) Dark burnt orange with buds tinged red. Semi-dwarf of 20 inches. May and June75
The Gem. (Bet.) Rich shade of yellow. 36 in. July and August50
Theron. An "elusive" wine-red with graceful twisted petals. 3 ft. June	2.00
Thunbergi. Pale yellow evening bloomer. 36 in. July and August35
Tuscany Gold. Old gold	1.00
Vesta. (Stout.) Deep glistening gold-orange. Holds up well in hot weather. 30 in. June and July	1.00
Vulcan. (Stout.) A striking ruffled deep maroon, 4-inch flower with a golden orange throat. Very popular. Evergreen. 2½ ft.	3.00
War Path. (Russell.) Petals and sepals even dark mahogany-red. 3 ft. Defies hottest sun. April-May and midsummer.	5.00
Wau-Bun. (Stout.) Soft cadmium-yellow, with fulvous red traces. Petals large with unusual twisted ends. 30 in. July.	1.00
Western Star. (Russell.) Quite the loveliest thing in the darker shades of red	4.00
Winsome. (Yeld.) A pleasing yellow tone. Very fine. 36 in. Fragrant. June and July50
Woodlot Gold. 36 in. Large crinkled flowers of soft gold. July-August	1.00

Huge flaming scarlet, crimson and rich maroon flowers, some with black blotches, also some new colors; pink, salmon and old rose, have revived interest in the old Oriental Poppy. These newer kinds are really marvelous; you must have some of these newer Oriental beauties which bloom between the Iris and Peony seasons. Shipments after August 1st. See inside back cover for Collections.

	Each
Barr's White. Purplish black spots. Large	\$1.00
Beauty of Livermore. Bright crimson; large75
Bracteatum. Fiery scarlet75
Cavalier. Scarlet-red. Crinkly flowers75
Cheerio. An improved Mrs. Perry75
Cerise Beauty. Large cerise-pink75
Enchantress. Soft lilac-rose	1.00
Fairy. Pale pink. Prolific bloomer75
Gold of Ophir. Golden orange. 24 to 28 inches in height. .	1.00
Helen Elizabeth. Pink. Straight 34-inch stems. No dark spots	1.00
Henri Cayeux. Old rose, unusual color	1.00
Jeanne Mawson. Geranium-pink. Erect grower75
Joyce. Cerise and old rose75
Lord Lambourne. Laciniated; scarlet75
May Sadler. Salmon-pink; free flowering75
Mrs. Perry. Salmon-pink; free flowering75
Olympia. Double flame-scarlet with glistening golden salmon75
Orange Perfection. Strong grower; orange-tinted flame-red flowers. Free flowering75
Oriente. Crimson-scarlet. Large purplish black blotches. .	.75
Perry's White. Good size, blue-black blot	1.00
Pink Radiance. Radiant pink. 30 in.75
Proserpine. Chinese-red; immense flowers75
Purity. Soft pink. No spots or markings. Free flowering ..	1.00
Salmon Glow. Double salmon-orange. Strong, erect grower. .	.75
Sass Pink. Pink. Large, crepy texture petals	1.00
Wunderkind. The finest cerise-colored Poppy	1.00
Wurtembergia. Very large red; good75

CHOICE NEW ORIENTAL POPPIES

Curtis Flame. Extra large, flame-red blooms on long, strong stems	1.00
Curtis Flesh-Pink. Flesh-pink overlaid with lavender	1.00
Curtis Mahogany. Lovely mahogany-red	1.00
Curtis Mulberry. Large 8-inch flowers on 3-foot stems. Color is mulberry-red	1.00
Curtis Salmon-pink. Salmon-pink. 8-in. blooms	1.00
Watermelon. Huge flowers of watermelon-pink	1.00



Ophir

7 Hemerocallis

None Priced Less
Than \$1.00

All
Different **\$4.75**
All Labeled

2 COLLECTIONS
Parcel Post **\$8.50**
Prepaid

7 Hemerocallis

(INCLUDING HYPERION 75c)

Everyone is wild about them. Bloom from
May to August—all labeled, no two alike.

\$2.75 2 COLLECTIONS
Parcel Post, **\$5.25**
Prepaid

10 Iris Kaempferi

\$4.15 You won't be sorry when you try these.
Exotic, glamorous—in assorted colors.

2 COLLECTIONS **\$7.95**
Parcel Post, Prepaid

Subotai



Stella

Purple
and Gold



Legend

20 Irises

All Different or All of One Kind
Your Selection **\$4.55** Parcel Post
From Our Lists **\$4.55** Prepaid
on Pages 8 and 9.



Helen Elizabeth

6 Oriental Poppies

WHITE, PINK, RED and ORANGE **\$3.25**
All Labeled, No Two Alike

2 COLLECTIONS **\$6.15**
Parcel Post, Prepaid



Holland Bulbs for Fall Planting

ADVANCE OFFER: 5% DISCOUNT allowed on orders for Holland bulbs selected from this list, which reach us before July 1st, 1949.

TEN BLUE RIBBON DARWIN TULIPS

	12	100
Charles Needham. Brilliant scarlet. The finest red Darwin variety	\$1.30	\$ 9.50
Clara Butt. Beautiful salmon-pink. The favorite pink Tulip	1.30	9.25
Duke of Wellington. Very fine pure white. Strong stem.	1.40	10.00
Inglescombe Yellow. Canary-yellow with yellow anthers.	1.15	8.50
Insurpassable. Lively lilac. Very large flowers	1.45	10.50
New Orleans. Deep Bordeaux-red. Unsurpassed beauty.	1.25	9.00
Pride of Haarlem. Brilliant rosy carmine with blue base.	1.10	8.25
Scarlet Leader. Glittering scarlet-red with pronounced blue heart	1.30	9.25
Sunkist. Golden yellow, large flower of splendid form ..	1.20	8.75
The Bishop. Deep heliotrope. The best in this color	1.30	9.50

DAFFODILS AND NARCISUS

For Naturalizing

	100
Golden Trumpet Daffodils	\$5.50
Short-Cupped Narcissus	5.00
Poet's Narcissus	5.00

DUTCH HYACINTHS

	3	12
Exhibition Size Bulbs (6 colors)	\$1.00	\$3.70
Bedding Size Bulbs (6 colors)60	2.15

CROCUS—HERALDS OF SPRING

	25	100
5 Separate Colors	\$0.50	\$1.75
Mixed Colors45	1.50

SPECIAL OFFER No. 3

20 Crocus Bulbs of 5 Colors—100 for \$2.00

	12	100
Puschkinia libanotica	\$0.35	\$2.00
Blue Grape Hyacinths40	2.50
Chionodoxa30	1.75
Scilla sibirica50	3.50

SPECIAL OFFER No. 4

25 Bulbs Each of Above 4 Varieties—100 for \$2.50

Delivery Prepaid.
Easily followed planting instructions enclosed with every shipment.

SPECIAL OFFER No. 1 **5 Bulbs** each of above 10 varieties **50 for \$4.75**

SPECIAL OFFER No. 2 **10 Bulbs** each of above 10 varieties **100 for \$9.25**

RAINBOW MIXTURE OF DARWIN TULIPS

12 for \$1.00 25 for \$1.90 100 for \$7.25

OUTSTANDING VARIETIES

	12	100
Red Emperor Tulips	\$1.30	\$ 9.50
Keizerskroon. Single early Tulips	1.35	9.90
Fantasy, Parrot Tulips.	1.30	9.50
King Alfred, Daffodils	1.85	13.75

Hardy Garden Chrysanthemums

Blooming in September and October.

	Each	3
Avalanche. Popular large flowered white. 2 ft. September 25 ...	\$0.40	\$1.00
Carnival. Glowing burnt-orange-bronze. 2½ ft. October 560	1.50
Charles Nye. "Gold Star Mum." Brightest golden yellow. 2 ft. October 540	1.00
Early Wonder. Soft pink pompon. 2½ ft. September 2540	1.00
Pink Radiance. Very free blooming pink. 2 ft. September 2540	1.00
Red Velvet. Velvety crimson; large. 2½ ft. October 540	1.00
One each of all 6 varieties shown above \$2.25. 3 each of all 6 varieties	\$6.00.	
Betty. Lovely salmon-pink; 2½ ft. October 140	1.00
Bokhara. Blended soft crimson and wine. 2 ft. October 1060	1.50
Fred F. Rockwell. (Pat. 718). "Bronze Star Mum." Bronze and orange. 2 ft.75	2.00
Korean Princess. (Pat. 640). Anemone-flowered coral-crimson. 2 ft. October 1075	2.00
Mellow Glow. Blend of buff, peach and bronze tints. 2½ ft.60	1.50
Olive Longland. Apricot-toned salmon-pink; 2 ft. September 25.40	1.00
One each of all 6 varieties shown above \$3.00. 3 each of all 6 varieties	\$8.00.	

GARDEN CUSHION MUMS

Apricot Glow. Apricot-bronze.	Major Cushion. Pink; fully double.
Glacier. Pure white; large.	Santa Claus. Best bright red.
Joan Helen. Garnet, yellow center.	Supreme Cushion. Clear bright yellow.
Your choice—3 for \$1.25; 6 for \$2.25, postpaid.	



C. F. Wassenberg Van Wert, Ohio