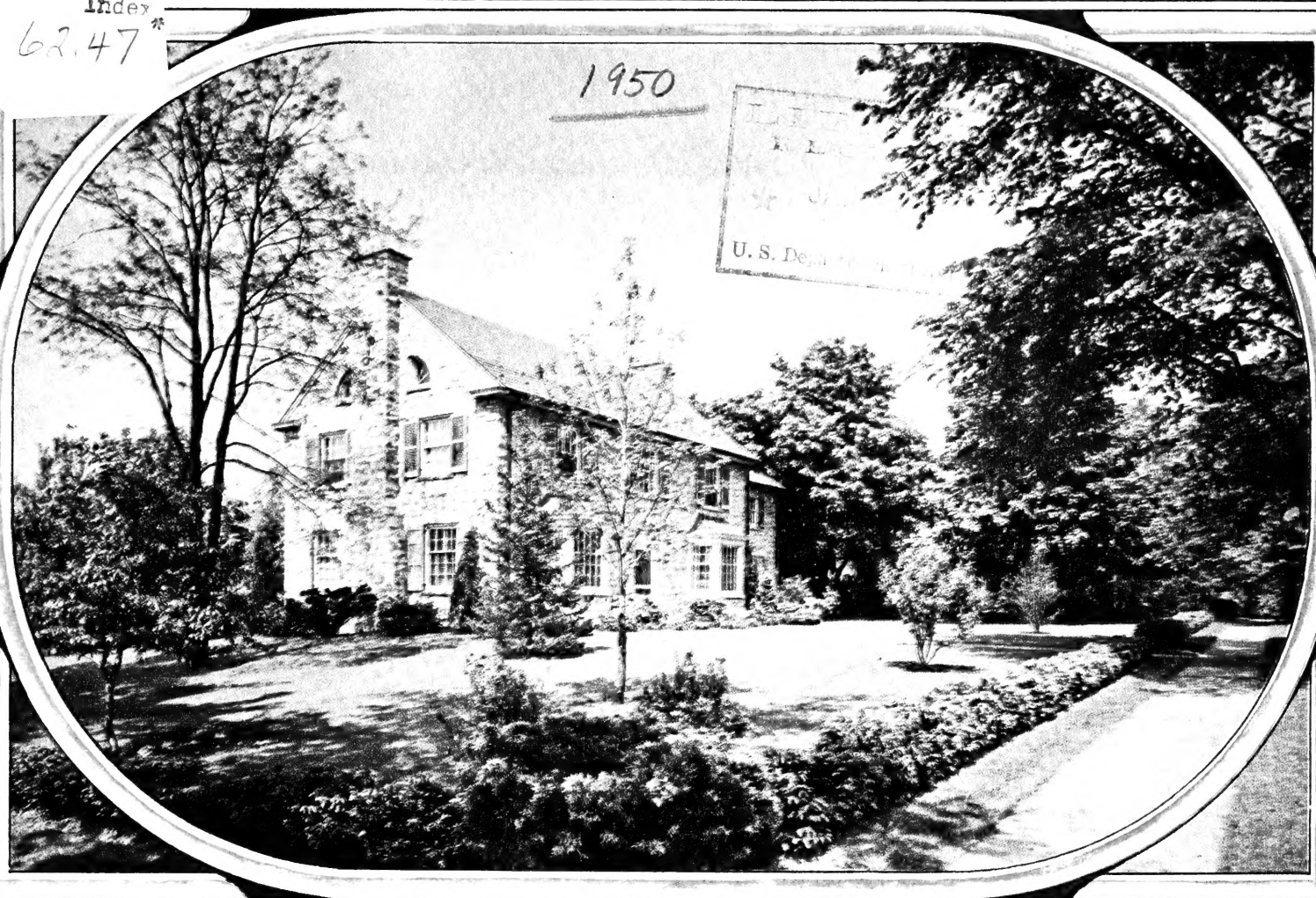


Historic, Archive Document

Do not assume content reflects current scientific knowledge, policies, or practices.

1950



SARCOXIE NURSERIES PEONY FIELDS



WILD BROS. NURSERY COMPANY
Sarcoxie • Missouri



HENRY N. WILD
1875

75 Years

*Devoted to
Specialized Horticulture*

IN THE BEAUTIFUL OZARKS



SARCOXIE NURSERIES
PEONY FIELDS



DALE E. WILD
1950

WILD BROS. NURSERY CO.
Sarcoxie, Missouri

... Delivery ... Our Guarantee ...

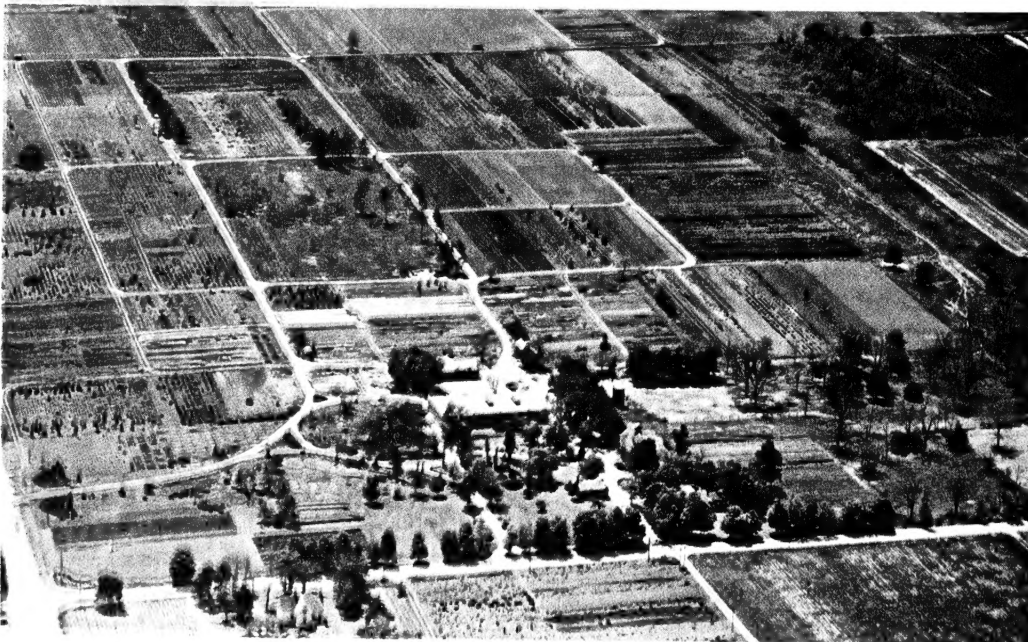
EXPRESS—TRUCK—FREIGHT—Express is generally preferred for long distances on larger orders. Truck Freight leaves our plant twice daily and has proved very satisfactory for shipments not too distant. Please tell us how to ship if you have a preference; otherwise mark your order "Best Way."

PARCEL POST—Prices herein are NOT postpaid unless priced "Postpaid." For mail orders allow sufficient postage. We refund every cent not used. If C. O. D. please send approximately one-fourth the amount of the purchase with your order.

We offer only first grade stock and guarantee every plant we ship to be of first quality, sturdy and free from disease and to reach you in perfect condition.

We exercise care and diligence to have our varieties true to label and sell all our stock with the express guarantee that we will, on proper proof, replace any that may prove otherwise, or refund the amount paid for the same, which shall constitute the extent of our liability.

SUBSTITUTION—When we are out of a particular variety, frequently we can substitute another very similar to complete your order without delay. If this is not satisfactory, mark your order "No Substitute."



Aerial view of our main growing grounds, display gardens and packing house.

MODERN FACILITIES—

We maintain our own irrigation and cold storage facilities. Our stock is grown under the most modern nursery methods. The plants you buy are packed fresh; full of life, and guaranteed to reach you in good condition.



YOU ARE INVITED to visit our nursery, our large gardens, and our packing plant. Bring your family, also your camera, if you wish. We always welcome visitors.



ABELIA GRANDIFLORA

ABELIA GRANDIFLORA. White to light pink; fragrant flowers like small Weigelas from early summer till fall. Small, glossy dark evergreen foliage. 4 to 6 ft. **Each**
 2 to 3 ft., B&B \$3.00
 3 to 4 ft., B&B 4.00

PYRACANTHA LALANDI (Scarlet Firethorn). A picturesque, upright, thorny shrub with Box-like, evergreen foliage. Has white flowers followed with fiery orange-red fruits, lasting well into the winter. Used as specimen shrubs or trained against a wall. **Each**
 18 to 24 in., B&B \$3.25
 2 to 2½ ft., B&B 4.00

MAHONIA AQUIFOLIUM (Oregon Hollygrape). One of the most handsome broadleaf evergreens with the shiny, metallic Holly-like leaves. Dark, glossy green during summer, becoming purplish bronze to red in autumn. Yellow flowers in summer, followed by purple berries in the fall. Grows 3 to 6 feet. **Each**
 15 to 18 in., B&B \$2.75
 18 to 24 in., B&B 3.75



NANDINA

NANDINA. (Lower left.) A semi-evergreen producing large clusters of berries at Christmas time.

Each
 15 to 18 in., B&B \$2.25
 18 to 24 in., B&B 2.75

MAGNOLIAS

MAGNOLIA GRANDIFLORA. The true Magnolia of the South, holding its glossy evergreen leaves throughout the winter. Large, white flowers in summer. Hardy as far North as Kansas City, Missouri.

Each
 2 to 3 ft., B&B \$5.50
 3 to 4 ft., B&B 6.50

MAGNOLIA SOULANGEANA. This beautiful plant is truly a specimen. Produces large, Tulip-like blossoms early in the spring before the leaves appear. Blossoms pink outside, white inside.

With Bloom Buds: **Each**
 3 to 4 ft., B&B \$7.50
 4 to 5 ft., B&B 9.00

Broadleaf Evergreens

IDEAL FOR COMBINATION WITH EVERGREEN GROUPS OR PLANTED AS A SPECIMEN DUG BALLED IN EARTH

Recommended for their variation in foliage color, their fruits and flowers



EUONYMUS VEGETUS

EUONYMUS VEGETUS. For sun or shade, a spreading shrublike plant with beautiful, glossy, light green foliage. By clipping, it forms a dense shrub of any desired shape up to 4 feet high by the same width. Produces Bittersweet-like berries in fall. We prefer this evergreen shrub to *Euonymus patens* because it retains its leaves better during the winter, making it truly an evergreen. **Each**
 12 to 15 in., B&B \$2.00
 15 to 18 in., B&B 2.50
 18 to 24 in., B&B 3.00

EUONYMUS, UPRIGHT RADICANS. (New.) We sincerely recommend this as one of the best dark green leaved evergreen shrubs. It holds its foliage throughout the winter and is just as happy in the shade as in the sun. Beautiful as a specimen or in foundation groupings. Perfectly hardy. Grows 3 to 3½ feet. Excellent when used as a hedge. **Each**
 15 to 18 in., B&B \$2.50
 18 to 24 in., B&B 3.00
 2 to 2½ ft., B&B 4.00
 2½ to 3 ft., B&B 5.00



PYRACANTHA LALANDI



MAHONIA

Sarcoxie Nurseries

BEAUTIFUL EVERGREENS
SUPPLIED YOU—DUG WITH A BALL OF
EARTH WRAPPED IN BURLAP

Each Plant a Specimen



**ARBOR-VITAE,
AMERICAN PYRAMIDAL**

Compact and narrowly pyramidal, is covered with deep rich green foliage. Does not require trimming. Grows 8 to 10 feet.

	Each
18 to 24 in., B&B	\$2.25
2 to 3 ft., B&B	3.50
3 to 4 ft., B&B	4.50
4 to 5 ft., B&B	6.00



BERCKMANN'S GOLDEN ARBOR-VITAE

This dwarf evergreen, of superb ovate form, is slow in growth, very compact. Bright in color. Gold suffused with green.

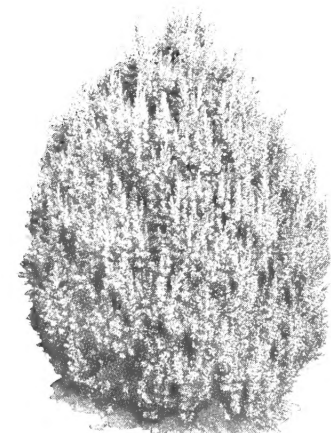
	Each
18 to 24 in., B&B	\$3.50
2 to 2½ ft., B&B	5.00
2½ to 3 ft., B&B	7.50



CANNARTI JUNIPER

Rich dark green foliage. Produces small blue berries. Extremely hardy.

	Each
3 to 4 ft., B&B	\$6.75
4 to 5 ft., B&B	8.75
5 to 6 ft., B&B	10.50



SPINY GREEK JUNIPER

Dense and narrowly conical, tapering to a sharp point. Spiny, grayish green foliage.

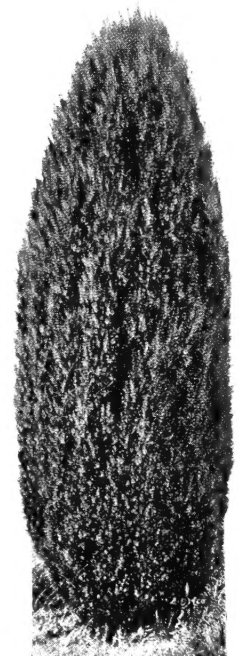
	Each
18 to 24 in., B&B	\$3.25
2 to 2½ ft., B&B	4.25



ARBOR-VITAE, EXCELSA

(Thuja orientalis excelsa). Of an orientalis type with flattened, upright branches, attaining a height of 7 to 8 feet, somewhat oval in form. Foliage dark green.

	Each
2½ to 3 ft., B&B	\$4.00
3 to 3½ ft., B&B	5.00
3½ to 4 ft., B&B	6.00



JUNIPER, IRISH

Finely cut bluish green foliage; a dense, slender, columnar tree; fairly rapid growth, attaining 8 ft.

	Each
Mail Size, postpaid	\$0.40
18 to 24 in., B&B	3.00
2 to 2½ ft., B&B	3.50
2½ to 3 ft., B&B	4.00
3 to 4 ft., B&B	5.00

Sarcoxie Nurseries' Evergreens are Easy to Plant

Grown with plenty of room, our evergreens are compact, well developed trees of their size and variety. They have been transplanted and root pruned to develop a good root system.

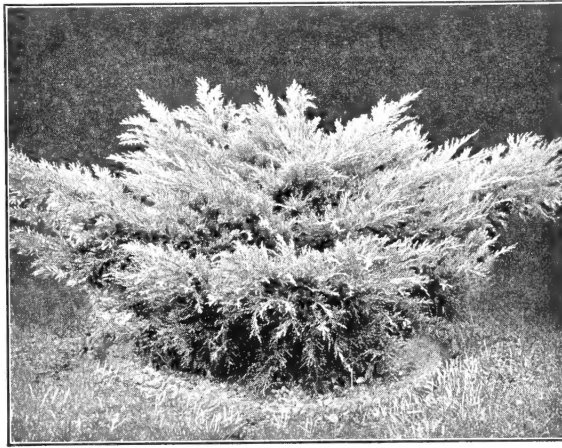
They are liberally graded and, except mail sizes, are dug with a ball of earth wrapped in burlap, termed "balled and burlapped" or B&B. Planting Instructions furnished.

Evergreens Shipped by Express or Truck Line—Are Not Prepaid

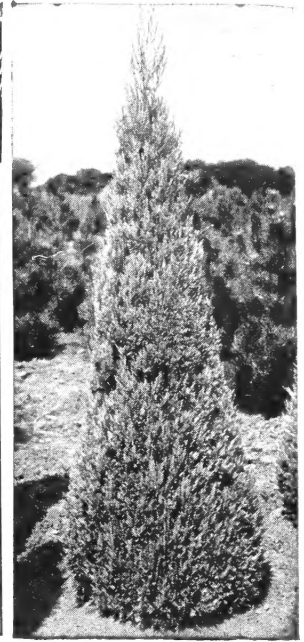


Norway Spruce

QUALITY EVERGREENS
Every Evergreen has been transplanted to increase the root system and sheared for compactness.



Pfitzer Juniper thrives in almost every location.



Juniper Silver Moon.

Spruce

Spruce, Norway

A handsome tree of symmetrical, conical habit; branches spreading, usually drooping with age; dark green needles 1/2-3/4 in. long; beautiful reddish-brown cones.

3 to 4 ft. B&B.... 6.00 each 4 to 5 ft. B&B.... 7.50 each

Spruce, White

Similar to Norway, except it is more compact and decidedly slower growing. Can be used where medium sized tree is desired. Foliage is light green. An excellent evergreen.

18 to 24 in. B&B... 3.00 each 2 to 3 ft. B&B... 4.50 each
3 to 4 ft. B&B..... 6.50 each

Pines

A characteristic of the Pines is that the leaves or needles are in bundles of two, three or five, united at the base, and are longer than those of the Spruce which occur singly and apparently scattered all over the stem though arranged spirally. Most Pines make large trees though a few are dwarf.

Pine, White.

A systematical pyramidal tree with regular whorls of horizontal branches; needles in 5's, soft bluish-green.

2 to 3 ft. B&B.... 4.00 each 3 to 4 ft. B&B.... 5.00 each

Arborvitae

Arborvitae, Woodward Globe

A low, compact form, naturally globular in outline, growing 3-3 1/2 ft. high.

12 to 15 in. B&B..... 1.50 each
15 to 18 in. B&B..... 2.00 each

Junipers

Juniper, Silver Moon; Juniperus scopulorum Silver Moon

One of the most beautiful of the silver Junipers, the color unusually pronounced; a compact, narrowly upright variety of the Colorado Juniper; our own introduction.

2 1/2 to 3 ft. B&B.. 5.00 each 3 to 3 1/2 ft. B&B.. 7.50 each
4 to 5 ft. B&B..... 10.00 each
5 to 6 ft. B&B..... 15.00 each

Juniper, Pfitzer; Juniperus chinensis Pfitzeriana

Wide spreading horizontal branches forming a broad, irregular, low tree; foliage light olive-green; fine; thrives in almost every location.

15 to 18 in. B&B.. 3.50 each 24 to 30 in. B&B.. 5.50 each
18 to 24 in. B&B.. 4.50 each

Juniper, Keteleer's; Juniperus virginiana Keteleeri

A comparatively new variety of the Virginiana Juniper, with bright green foliage; of fairly rapid, upright growth and useful in sun or partial shade.

3 to 4 ft. B&B..... 6.00 each
5 to 6 ft. B&B..... 10.00 each

Juniper, Pathfinder; Juniperus Scopulorum Pathfinder

A bluish-silver type of Colorado or Scopulorum Juniper; very pyramidal habit, Arborvitae-like flat foliage.

4 to 5 ft. B&B..... 9.00 each

Juniper, Wintergreen; Juniperus virginiana Wintergreen

A horticultural variety of Virginia Juniper; broad conical habit; foliage bright yellowish-green, color well retained throughout winter in sharp contrast with many other trees.

4 to 5 ft. B&B..... 8.75 each
5 to 6 ft. B&B..... 10.50 each



Shade Trees Beautify the Lawn

A broad open space of well kept lawn is the first essential of good landscape design, the base against which all else is viewed. Yet it is incomplete without trees to shield the house from the direct heat of the sun, and for ornament. Without trees as a background so the topmost branches extend above and break the roof lines, and a few toward the ends to frame the view, the house appears lost in space.



The bark of the European White Birch is chalky white.

Birch, European White, *Betula alba*

A beautiful, graceful tree of peculiar charm; slender branches, the ends drooping with age, bark chalky white; leaves rather small, triangular, bright light green, yellow in autumn.

6 to 8 ft..... 2.75 each

Crab, Flowering; *Malus*

One of the best groups of small trees for ease of growth, profusion and beauty of flowers. For the Midwest they are more satisfactory than the famed Japanese Flowering Cherries, give much the same effect, and are dependable.

Crab, Hopa; *Malus Hopa*

See color illustration and prices, inside back cover.

Crab, Scheideckeri; *Malus Scheideckeri*. Loaded in latter April with semi-double flowers $1\frac{1}{4}$ to $1\frac{1}{2}$ in. across, pink on a white ground; delicate fragrance; yellow crabs $\frac{3}{4}$ in. across in latter September-October; upright habit, reaching a height of about 8 ft.; blooms young; very resistant to cedar rust.

3 to 4 ft..... .75 each 4 to 5 ft..... 1.00 each
 5 to 6 ft. 1.50 each

Dogwood, Red Flowering

See color illustration and prices.

Dogwood, White Flowering

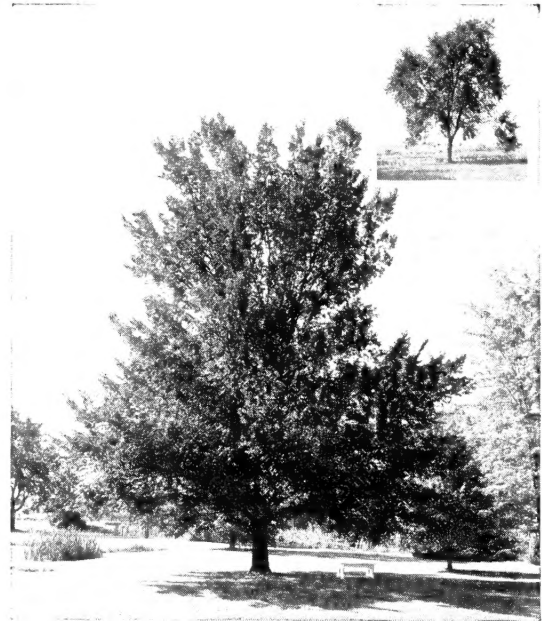
See color page, inside back cover.

Once established, nothing will increase in value and give such good results with so little attention as shade trees.

When planting remove any unnecessary weak limbs and shorten some others. The central shoot or leader is not pruned unless necessary to make the head more dense. As limbs develop higher remove the lower ones to the height desired. Plant firmly, and water as needed, especially first year.

THE SENSATIONAL NEW

Elm Coolshade



Elm, Coolshade, in the Gardens at Sarcoxie.
 (Inset shows ordinary Chinese Elm.)

Undoubtedly the most beautiful Elm we have ever seen. It is a most practical all-purpose shade tree. Unlike the American Elm, it does not have large lateral limbs that are dangerous when overhanging the residence. It may be planted close to the house without worry.

IT'S TOUGH—does not break in the wind and under the burden of ice and snow like the ordinary Chinese Elm.

IT'S BEAUTIFUL—forms a compact tree, somewhat resembling the Hard Maple in form.

IT'S HARDY—like all Chinese Elm, it is hardy and drought resistant. Apparently it is not subject to the Dutch Elm disease or Phloem necrosis which affects the American Elm.

IT'S CLEAN—does not shed leaves early and cause an unsightly lawn—holds its leaves late into the fall.

IT'S RAPID IN GROWTH—not quite so rapid as ordinary Chinese Elm, however produces an abundance of deep green foliage affording a complete shade—a "COOLSHADE"—and a truly beautiful shade tree.

WE SINCERELY RECOMMEND THIS AS THE BEST ELM WE HAVE EVER KNOWN. Grows 35 to 50 feet high.

5 to 6 ft. sturdy trees..... 2.00 each
 6 to 8 ft. sturdy trees..... 3.00 each
 8 to 10 ft. sturdy trees..... 4.00 each

SHADE TREES—continued

Elm, American White; *Ulmus americana*

Our well known and beautiful Elm, forming a large majestic tree with long spreading limbs, and giving a good though not dense shade. Leaves dark green, in autumn golden yellow. Growth rather rapid; long lived; easily transplanted.

6 to 8 ft..... 1.75 each 8 to 10 ft..... 2.50 each

Elm, Chinese; *Ulmus pumila*

Of very rapid growth, with slender branches and leaves smaller than those of the American Elm. The leaves appear very early in the spring and remain till late fall. Especially adapted for arid regions and for quick results.

18 to 24 in., mail size..... .30 each; 3.00 per 10
 3 to 4 ft..... .40 each; 3.50 per 10
 4 to 5 ft..... .50 each; 4.50 per 10
 5 to 6 ft..... 1.00 each; 9.00 per 10
 6 to 8 ft., ¾ to 1 in. caliper..... 1.25 each; 2 for 2.25
 8 to 10 ft., 1 to 1¼ in. caliper..... 2.50 each
 10 to 12 ft., 1¼ in. caliper and up.... 3.50 each



Chinese Elm

Mimosa Tree; Chinese Silk Tree; *Albizia julibrissin*

This unusual, rapid growing Asiatic tree produces a tropical effect. Its spreading branches form a low, flat-topped crown with tiny, fern-like or feathery foliage and fragrant showy pink Acacia-like flowers with long silky stamens at the tips of branches from mid June to September.

Mail size, postpaid. .40 each 3 to 4 ft..... 1.00 each
 2 to 3 ft..... .85 each 4 to 5 ft..... 1.50 each

Oak, Pin; *Quercus palustris*

One of the most handsome Oaks with its spreading, decidedly horizontal to ascending branches, the lower somewhat drooping with age, sometimes almost to the ground, with a symmetrical pyramidal head, oval with age. Leaves glossy green, in autumn deep scarlet. Excellent for landscape and street.

6 to 8 ft..... 3.50 each 8 to 10 ft..... 4.50 each



Sugar Maple has a showy autumn foliage.

Maple, Sugar, Rock or Hard; *Acer saccharum*

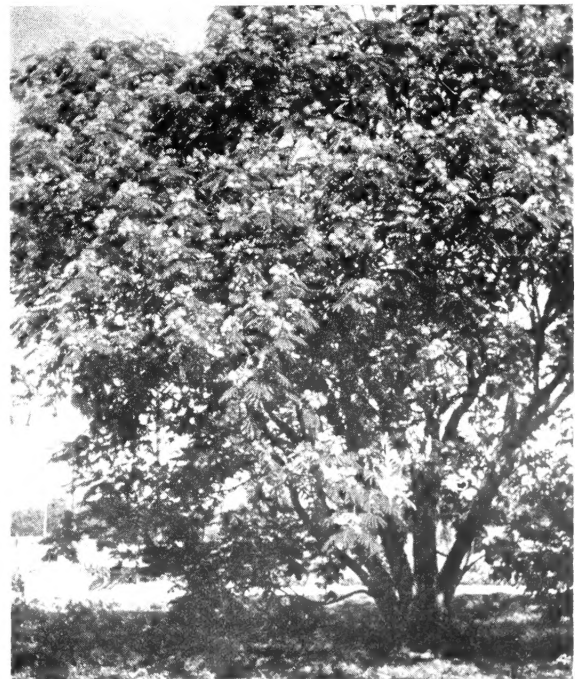
Unquestionably one of our most beautiful long-lived trees. large, stately, with a dense, symmetrical crown; deeply rooted, allowing grass to grow about the trunk; leaves three to five pointed, deep green, in autumn yellow, orange and scarlet. Transplanting may change the autumn color as it is affected by soil and climatic conditions.

6 to 8 ft..... 3.00 each; 27.50 per 10
 8 to 10 ft..... 4.50 each; 42.50 per 10

Maple, Norway

A beautiful round headed tree, valuable for street or lawn planting. The large dark green leaves turn yellow in the fall. Similar to Sugar Maple except more globular in form, and not so brilliant in fall.

6 to 8 ft..... 3.00 each

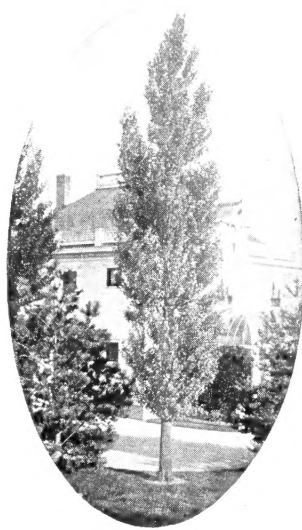


Large Mimosa at Sarcoxie Nurseries.

SHADE TREES—continued

Plum, Purple Leaf; Prunus Thundercloud

The very best purple leaf plum we have yet come across. It holds its bronzy purple color throughout the entire season, not merely in the spring. Upright, strong grower, 25 feet.
3 to 4 ft..... 1.65 each



Lombardy Poplar

Poplar, Lombardy

A picturesque tall, slender tree, columnar in shape with a very formal aspect. Triangular dark green leaves on flat stems, moving freely in the breeze. Very rapid in growth. Used as an accent tree and to create skyline effect. Effective for screen and background plantings.

	Each	Per 10
3 to 4 ft.....	.40	3.50
4 to 5 ft.....	.65	6.00
5 to 6 ft.....	.75	7.00
6 to 8 ft.....	1.00	9.00
8 to 10 ft.....	1.25	11.00
10 to 12 ft.....	1.75	

Red Bud, cercus canadensis

See prices and illustration, inside back cover.

Sycamore, American

A native tree, rugged in character and picturesque in winter with its white bark. Excellent for shade and street planting.

6 to 8 ft., heavy..... 2.50 each

Willow, Babylon Weeping. A large, graceful tree with long, slender, drooping branches; growth rapid.

Mail size, postpaid..... .40 each; 3.50 per 10
4 to 5 ft..... .75 each; 7.00 per 10
5 to 6 ft..... 1.00 each

Willow, Niobe Weeping. A graceful tree; slender, drooping yellow-barked branches; leaves lustrous green; very hardy.

Mail size, postpaid..... .40 each; 3.50 per 10
4 to 5 ft..... .75 each; 7.00 per 10
5 to 6 ft..... 1.00 each

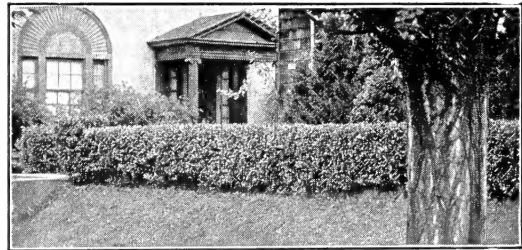
Willow, Pussy. A shrub or small tree, its furry catkins appearing before the leaves; easily grown.

3 to 4 ft..... .75 each



Weeping Willow

Privet the Living Fence



Plant 10 to 12 inches apart. Prune back to within 4 to 6 inches of the ground to make them branch low and thickly. The second spring, if not sufficiently thick, again prune back, a little higher. After that prune to keep the hedge the height and width desired, usually about three times a year. Avoid severe pruning after the middle of August.

Privet, Amur River North; Ligustrum amurense. A rapid growing Privet of upright habit, taking the place of California as it is reliably hardy here. Very fragrant small white flowers like tiny lilacs in late May, followed by black berries; seldom blooms when pruned as a hedge.

	10 for	25 for	50 for	100 for
6 to 12 in., mail size, postpaid..	1.00	2.00	4.00	6.00
12 to 18 in., mail size, postpaid..	1.50	3.00	4.50	8.50
18 to 24 in.....	2.00	4.00	7.50	14.00
2 to 3 ft.....	2.50	5.00	9.00	16.00

Privet, California; Ligustrum ovalifolium. Glossy dark green leaves, retained well into winter.

	10 for	25 for	50 for	100 for
12 to 18 in., mail size, postpaid..	1.25	2.25	3.75	6.50
18 to 24 in.....	1.50	3.00	4.50	8.50

Privet, Chinese. This privet is practically evergreen, holding its leaves all winter, and has proved hardy in our section. Densely foliated with small leaves, it makes an excellent sheared hedge or untrimmed screen where all-year privacy is desired.

	10 for	25 for	50 for	100 for
18 to 24 in., well branched.....	2.50	5.00	9.00	16.00
2 to 3 ft., well branched.....	3.50	7.00	13.00	25.00

Privet, Grodense. NEW spreading Amur River North. A new privet ideal where a low dense hedge is desired. The branches are densely foliated and almost horizontal, making it easy to produce a broad hedge 2 feet wide and up to 3 feet in height.

	10 for	25 for	50 for	100 for
12 to 18 in.....	2.00	4.00	7.50	14.00
18 to 24 in.....	2.50	5.00	9.00	16.00

Privet, Ibolium; Ligustrum ibolium. A hybrid of Ibolta and California, with foliage similar to California, and well retained to the ground; hardy, and valuable where California winter-injures.

	10 for	25 for	50 for	100 for
6 to 12 in., mail size, postpaid..	1.00	2.00	4.00	6.00
12 to 18 in., mail size, postpaid..	1.50	3.00	4.25	8.00
18 to 24 in.....	1.60	3.25	5.50	10.00

Multiflora Rose for Hedges

Rose multiflora. This thorny rose has proved itself as a worthy plant for hedging. Is a solution for high cost farm fencing—grows into a useful fence in two years, has ornamental flowers and fruits. Excellent wild-life cover; repels livestock and does not require trimming. Space 18 to 24 inches apart in row. Grows 6 to 8 feet high.

	25 for	100 for	250 for	1000 for
1 yr. plants.....	1.50	5.00	9.00	35.00

Above Prices of Multiflora Roses are Prepaid.



Cranberry Bush



Grape Myrtle



Deutzia

Cotoneaster acutifolia; Peking Cotoneaster

An upright, yet somewhat spreading shrub with graceful spreading branches reaching 5 to 6 ft. Leaves 1 to 2 in. long, dark, glossy green, in autumn purplish. Small whitish-pink five-petaled flowers in nodding clusters of two to five, followed by conspicuous black berries 1/2 in. long.

2 to 3 ft.90 each

Cranberry Bush; Viburnum opulus

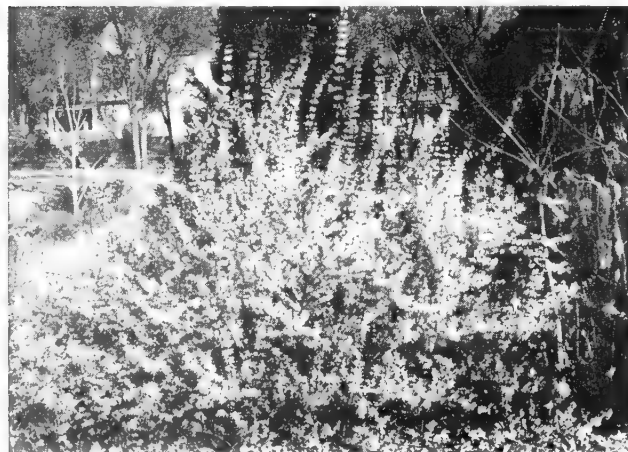
The parent of the Common Snowball, and like it in growth, but the white flowers are in flat clusters in May. The center flowers, which produce the berries, are small, with an outer ring of showy flowers like the individual flowers of the Snowball. The bright scarlet cranberry-like fruits, 3/8 in. long, color in early August, remaining well into winter when not eaten by the birds. Endures partial shade; attains 8 to 12 ft.; prune, if necessary, after blooming.

18 to 24 in.65 each

Grape Myrtle; Lagerstroemia indica

Its clusters of flowers 3/4 to 1 1/4 in. across, the petals crinkled like crepe, are borne in profusion throughout latter summer in clusters 3 to 8 in. long. Foliage up to 2 1/2 in. long, lustrous dark green. As important in the South as Lilacs in the North. May be grown here if mounded in winter like you protect everblooming roses. If the top winter injures, cut back to sound wood and the new growth will bloom first summer. Plants should be cut back before planting—we do this before we ship unless you object. Watermelon red-pink.

18 to 24 in.75 each
2 to 3 ft.90 each
3 to 4 ft. 1.25 each



Forsythia

Desmodium, Purple; Purple Bush Clover; Desmodium penduliflorum; Lespedeza formosa; Desmodium Sieboldi

In late August and September, when few other shrubs are blooming, Desmodium is very showy, its branches somewhat arched with drooping clusters 3 to 9 in. long (sometimes extending 2 ft. along the branches) of rosy-purple flowers nearly 1/2 in. long, like tiny peas. Its delicate-textured foliage consists of three rather small medium deep green leaflets. Grows 3 to 4 ft. high, the clump throwing up more shoots each spring; freezes back in winter; should be pruned to the ground each spring.

2 year No. 1.65 each

Deutzia Pride of Rochester

Covered in latter May with dainty, double, tassel-like flowers in a setting of deep green foliage in upright clusters 4 to 6 in. long, white, outer petals tinted rose; upright, vigorous, growing 6 to 8 ft. high, in any well drained garden soil; prune after blooming.

2 to 3 ft.60 each; 5.50 per 10
3 to 4 ft.75 each; 7.00 per 10

Dogwood, Bailey's; Cornus Baileyi

After the leaves have fallen this shrub lights up the shrubby border with its dark red branches, more intense with the approach of winter. Flat clusters of small fuzzy, cream-white flowers in spring; grows 6 to 10 ft. high. Pruning to the ground early each spring will reduce the height and give more young branches which are of better color. Succeeds in well drained soil, in sun or partial shade.

18 to 24 in.40 each 2 to 3 ft.60 each

Euonymus alata compacta; Dwarf Winged Euonymus

An unusual shrub with two or four very thin, blade-like wings on the branches; grows 3 to 4 feet high; tiny yellowish flowers; autumn foliage very brilliant scarlet, crimson and rose.

18 to 24 in. 1.50 each

Forsythia; Golden Bell

One of the first shrubs to let us know spring is here, with its abundance of four-petaled, somewhat bell-shaped golden flowers often 1 in. long, swinging in small clusters all along the leafless branches in March, sometimes during mild February days, occasionally extending into April. Very free from insects and diseases. The leaves remain green till late fall. Prune soon after blooming, to keep the bush compact and the height desired. Suitable for partial but not dense shade; of easy culture in any well drained garden soil.

Forsythia spectabilis. One of the best upright Forsythias; pure, rich yellow flowers, sometimes 1 1/2 in. across; better color and blooms more freely than most varieties.

Mail size30 each; 2.80 per 10
18 to 24 in.45 each; 4.00 per 10
2 to 3 ft.60 each; 5.50 per 10

Honeysuckle, Bush; Lonicera

Those only acquainted with climbing honeysuckle should plant some of the bush form for their beauty of foliage, profusion of flowers in pairs at the base of the leaves in latter April, and abundant, brilliant berries about the size of a currant, often even more showy than the flowers, in June, when we have few ornamental berries. An excellent specimen shrub and good for screen plantings, because compact in growth, with neat foliage retained late. Of easy culture; suitable for partial shade. Should have sufficient space to develop naturally. Prune if necessary after blooming which, however, reduces the number of berries that year. Most varieties grow 6 to 8 ft. high.

Red Tatarian, tatarica rubra. A graceful shrub that bears a profusion of deep pink flowers in June which shows up well against the foliage. These are followed by an abundance of bright red berries. It flourishes in partial shade.

18 to 24 in..... .45 each; 4.00 per 10
2 to 3 ft..... .60 each; 5.50 per 10

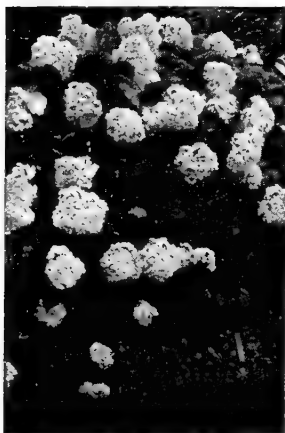
White Bush. Flowers white, excellent for contrast with the colored varieties; red berries in summer.

18 to 24 in..... .45 each; 4.00 per 10
4 to 5 ft..... 1.00 each; 9.00 per 10

Honeysuckle, Zabeli—NEW DEEP RED

A marvelous new improvement producing a well formed bush and an abundance of beautiful red flowers followed with brilliant red fruit. 6 to 7 ft. Excellent.

18 to 24 in..... .45 each; 4.00 per 10
2 to 3 ft..... .60 each; 5.50 per 10
3 to 4 ft..... .80 each; 7.50 per 10



Hydrangea Hills of Snow



Kerria—Globe Flower

Hydrangea Hills of Snow. Well named for its profusion of snow-white flowers in large, somewhat globular clusters, beginning in June; suitable for full sun and partial shade.

2 year size, 18 to 24 in..... .80 each; 3 for 2.25; 7.00 per 10
1 year size, 12 to 18 in..... .60 each; 3 for 1.50; 4.50 per 10

Hydrangea paniculata grandiflora; Peegee

It produces the largest flower heads and is one of the most showy shrubs of August. The large, compact, cone-shaped clusters are white, becoming pale pink with age, the pink varying with the season, finally bronzy. Grows 5 to 7 ft. high. Pruning in early spring, removing weak shoots and severely cutting back the stronger, increases the size of the flower clusters; should have a sunny situation, fertile soil and plenty of water while blooming.

Mail size..... .40 each
15 to 18 in..... .70 each; 3 for 1.95
18 to 24 in..... .80 each; 3 for 2.25



Hydrangea paniculata grandiflora (Pee Gee)

Hypericum Sun Gold (Patented.) Waxy golden flowers all summer on a low growing shrub of glossy foliage. Flowers 2 to 3 inches across. Grows 3 feet.

15 to 18 in..... 1.50 each; 3 for 4.00

Kerria Japonica—Globe Flower. Attractive shrub, native of Japan with slender green branches and showy double yellow flowers. Will grow in any well drained soil and can be used in partial shade.

18 to 24 in..... .90 each

Lilac—See back color page.

Mock Orange, Sweet Scented; Philadelphus coronarius

The name is almost a description. Creamy-white four-petaled fragrant flowers 1 to 1 1/4 in. across in clusters along the branches in May make it a cloud of white. Somewhat spreading, symmetrical habit; succeeds in sun or shaded part of the day; excellent for specimen plants, screens or backgrounds; usually grows 5 to 6 ft. high, sometimes higher. Prune after blooming, removing old and weak branches to the ground.

Mail size30 each; 2.80 per 10
18 to 24 in..... .45 each; 4.00 per 10
2 to 3 ft..... .60 each; 5.50 per 10

Mock Orange, Virginal; Philadelphus virginialis

The delightfully fragrant pure white waxy flowers are semi-double, occasionally single, large, 1 1/2 to 2 1/2 in. across, in clusters along the branches in May and intermittently during summer. Perhaps the most beautiful Mock Orange, though the bush is not as symmetrical as coronarius; moderately tall.

Mail size35 each; 3.40 per 10
18 to 24 in..... .75 each; 7.00 per 10
2 to 3 ft..... .90 each; 8.50 per 10

Mock Orange, Minnesota Snowflake. NEW.

A new patented variety with double pure white flowers. Very fragrant and in large snow-flake clusters. Vigorous and hardy. Plant retains their dark green leaves close to the ground, and are therefore excellent for screen, hedge or specimen. This variety, we think, is due to become very popular because of its vigor and large double blossoms. If you are interested in something new, something exceptionally nice, we suggest you try this plant.

2 to 3 ft. Plant Pat. No. 538.....\$1.50 Each

Olive, Russian; Eleagnus angustifolia

Usually grown as a tall shrub, its height regulated by pruning. Flowers tiny, 4-lobed, narrow bell-shaped, silvery-green outside, lemon colored within; fragrant; fruit olive-shaped 1/2 in. long, yellow with silvery scales; foliage 2 to 3 in. long, light grayish-green above, silvery beneath.

2 to 3 ft..... .30 each; 2.50 per 10

**Privet—NEW—Spreading Shrub
"Grodense"**

We have found this plant to be superior to the older and better known spreading privet, Regel. It is a sport of Amur River North, closely resembling Regel. The almost horizontal spreading branches with their small green leaves produce a beautiful foliage effecting an individual plant; group or as a foundation planting.

Used as a hedge it develops, by shearing, into a low dense hedge with its branches close to the ground. Any width up to two or two and one-half feet and a height of three feet may be produced.

For hedging grades refer to page 8 under hedge. The plants priced here are finished for shrub use.

18 to 24 in.....	.50 each; 3 for 1.25
24 to 30 in.....	.60 each; 3 for 1.50

Privet, Chinese

Of bushy, spreading habit, excellent as a dwarf shrub and for hedges as the small, neat, dark green foliage is retained well toward spring; very fragrant, white flowers like tiny lilacs followed by blue berries. See page 8 for hedge grade. 2 to 3 ft., bushy..... .50 each; 4.50 per 10

Quince, Japan or Flowering; Cydonia japonica

Beautiful in latter March, sometimes February, just as the leaves begin to unfold with its five-petaled flowers 1 to 1½ in. across in clusters of two to six, a fiery scarlet so brilliant it is also called Burning Bush. Its dense foliage is glossy dark green, in autumn bronzy-red. Fruit yellowish-green, 1½ to 2 in. across, not edible, its fragrance retained when dried. Usual height 3 to 6 ft.; branches thorny; young plants somewhat irregular in growth becoming attractive with age. Plant in sun. Prune after blooming. See illustration next page.

12 to 18 in.....	.45 each; 4.00 per 10
18 to 24 in.....	.60 each; 5.50 per 10

Snowball, Common; Virburnum opulus sterile

The name brings to mind the old bush in grandmother's garden, laden with snow-white flowers in globular clusters 3 to 4 in. across in early May. Leaves maple-like, 2 to 4 in. long, bronzy-red in autumn. Grows 6 to 8 ft. high. Succeeds in sun or partial shade. Prune after blooming. See illustration below.

18 to 24 in.....	.75 each	2 to 3 ft.....	1.00 each
3 to 4 ft.....			1.25 each



Snowball

THE SPIREAS

Justly popular for their hardiness, thriftiness, profusion of bloom, graceful habit, neat foliage, and general freedom from serious insects and diseases. The early blooming Spireas, after the bush attains good size, should have some old wood removed to the ground each year immediately after blooming. Prune late blooms in early spring, before growth starts. When neglected for years it may be necessary to prune almost the entire plant to the ground in early spring. They succeed in any moderately moist lawn soil of average fertility.

Spirea Anthony Waterer

Small five-petaled rosy-crimson flowers in dense flat clusters cover the 3 ft. bush in early June. If the flowers are cut off as they fade it blooms at intervals until fall. Dwarf, compact, upright habit; rather fine textured deep green foliage. Excellent for foundation and border plantings, and in front of taller shrubs. Succeeds with sun half the day. Prune part of the old wood out each spring.

12 to 15 in.....	.50 each; 4.50 per 10
15 to 18 in.....	.60 each; 5.50 per 10
18 to 24 in.....	.75 each; 7.00 per 10

Spirea Froebeli; Frobel Spirea

Similar to Anthony Waterer but more vigorous and a little taller, attaining 4 ft.; broader, darker leaves, in autumn overlaid with bronzy-red. Prune same as Anthony Waterer. See illustration next page.

Mail size30 each; 2.80 per 10
12 to 15 in.....	.35 each; 3.00 per 10
15 to 18 in.....	.40 each; 4.00 per 10
18 to 24 in.....	.50 each; 4.50 per 10
24 to 30 in.....	.60 each; 5.50 per 10

Spirea Golden; Spirea opulifolia aurea; Physocarpus aureus

Perhaps unsurpassed for golden foliage color in early spring, becoming bronze-yellow in early summer, green in latter summer, furnishing a variety of colors during the season. Flowers inconspicuous, white, five-petaled, ⅜ in. across in flat clusters 1 to 2 in. across in early May. Grows 5 to 7 ft. high. A sunny situation with pruning each spring gives better spring color.

Mail size25 each; 2.00 per 10
18 to 24 in.....	.50 each; 4.50 per 10
2 to 3 ft.....	.75 each; 7.00 per 10
3 to 4 ft.....	.85 each; 8.00 per 10

Spirea Thunbergi; Thunberg's Spirea

Its graceful spreading and arching branches 3 to 5 ft. high are clothed with many small, pure white five-petaled flowers ⅜ in. across in clusters of three to six in March, before the leaves are developed; leaves very narrow, 1 to 1¼ in. long, light green. The fine feathery foliage makes Thunbergi suitable for nearby plantings where shrubs of coarse texture would be out of place. Better if pruned some each year after blooming.

18 to 24 in.....	.50 each; 4.50 per 10
2 to 3 ft.....	.70 each; 6.50 per 10



Spirea Van Houttei, a fountain of white in May.

Spirea Van Houttei; Van Houtte's Bridal Wreath

A fountain of white in late April and May, its arching branches covered with clusters of small five-petaled flowers one-third in. across; the graceful drooping habit and neat dense foliage, ¾ to 1¾ in. long, make it attractive throughout the season; excellent for grouping, as a background for lower shrubs, a foreground for taller shrubs, a screen, or as a specimen plant. Each spring, after blooming, prune some of the old canes to the ground. Grows 6 to 7 ft. high.

Mail size, postpaid.....	.30 each; 2.80 per 10
18 to 24 in.....	.45 each; 4.00 per 10
2 to 3 ft.....	.50 each; 4.50 per 10
3 to 4 ft.....	.65 each; 6.00 per 10



Spirea Froebeli—Red Summer Spirea

Sumac, Fragrant; Rhus aromatica. A beautiful native plant excellent in shrub groups and for naturalizing. Foliage bronze to brilliant red in fall. Clusters of berries in late summer. Sun or shade, foliage aromatic. 4 to 5 ft.

18 to 24 in..... .30 each; 2.50 per 10

Sweet Shrub, Carolina Allspice; Calycanthus floridus. Odd, double, spicy fragrant, chocolate red flowers about 2 inches across in latter spring; any well drained somewhat rich soil, sun or shade. Grows 4 to 6 ft.

2 to 3 ft..... .75 each; 7.00 per 10

Tamarix: Tamarisk

While grown mainly for their delicate feathery foliage, in general effect like Asparagus, the tiny flowers make the bush a cloud of pink. Prune severely each spring to maintain a continuous supply of new wood and to keep the plant bushy and the height desired. It attains 4 to 15 ft. according to variety. Plant lower growing shrubs in front of the taller Tamarix.

Tamarix Hispida rubra. Grows 5 to 6 feet high with feathery green foliage and long plumes of tiny flowers of bright pink, almost red. Prune severely each year.

18 to 24 in..... .40 each; 3.50 per 10
2 to 3 ft..... .50 each; 4.50 per 10
3 to 4 ft..... .60 each; 5.00 per 10

Vitex; New Chaste Tree. Its long spikes of small, rather deep lavender blue flowers at the ends of the branches in July and at intervals till fall, somewhat resemble those of the Butterfly Bush. It makes a distinctive, rather large shrub of graceful, open airy habit, with five-fingered leaves, dark green above, grayish beneath, with an aromatic pungent odor. Not yet in general use, but desirable in the shrub border for contrast.

18 to 24 in..... .40 each 2 to 3 ft..... .60 each
3 to 4 ft..... .80 each

Weigela; Diervilla

Very showy in May when covered with its profusion of trumpet-shaped flowers 1½ in. long in clusters along the branches. Most kinds make a bush 6 to 8 ft. high and prefer full sun. Best in groups or for corners where they may be given plenty of room. Prune after blooming.

Weigela Eva Rathke. Brilliant carmine-red flowers in May and to a limited extent at intervals during summer; grows about 4 ft. high; succeeds in partial shade. Prune after blooming, otherwise the bush is inclined to become straggly.

18 to 24 in..... .80 each

Weigela Rosea. Distinctly red buds opening rose-pink outside, lighter within; blooms freely.

18 to 24 in..... .60 each
2 to 3 ft..... .75 each



Weigela



View in the Sarcoxie Nurseries' extensive gardens, maintained for testing plants we sell and for the pleasure of our many welcome visitors.

Weigela, Bristol Ruby. NEW.

Plant patent No. 492. This new outstanding Weigela is hardier and more vigorous than any of the red Weigelas. Soft ruby red to crimson. Grows 6 to 7 feet. Sun or partial shade.

2 to 3 ft.....\$1.50 each

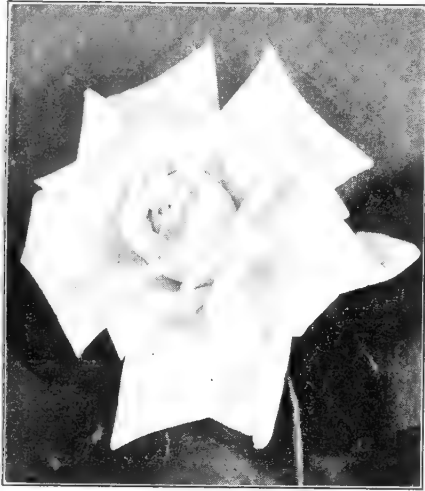
Please allow sufficient postage if ordered by Parcel Post. Postage is additional except on items priced postpaid. We refund every cent not used.

Missouri customers please add 2% Sales Tax as required by state law.

The Sarcoxie Nurseries Again

THE VERY BEST 2 YEAR NO.1 ROSES
GUARANTEED TO PLEASE

Standard Everblooming Bush Roses
Only \$1.00 each, any 5 at 98c each, any 10 at 95c each



Kaiserin Augusta Victoria

ROSES PRE-PAID

With Order of 4 or More.
 Planting Instructions Included.

Pink Radiance. Cameo-pink; large, fragrant and prolific all season.
Pres. Herbert Hoover. Two-tone—bright yellow shaded to cerise-pink and flame-scarlet.
Red Radiance. Fine rich red; blooms constantly and abundantly. Easy to grow.
Sister Therese. Rich daffodil-yellow, outer petals sometimes marked carmine. One of the most beautiful buds, on long stems.

Snowbird. Pure white, very double flowers and beautiful pointed buds; fragrant.
Sunburst. Orange-copper, edges lighter; Tea-Rose fragrance.
Talisman. Two-tone, shading from deep yellow to bright apricot-red. Free blooming.
The Doctor. Sparkling pink buds, pointed, very large. An excellent pink.

Ami Quinard. Rich velvety crimson; semi-double. Fragrant blooms in abundance.
Betty Uprichard. Two-tone—soft pink inside, deep coppery orange outside; fragrant.
Briarcliff. Deep pink inside, lighter on outside; large, fragrant, long-lasting.
Caledonia. Pure white, large, very double, long-lasting. Good for cutting.
Condesa de Sastago. Golden buds striped red; fragrant. Blooms freely.
Duquesa de Penaranda. Large, long, pointed buds of apricot-orange; tea fragrance.
Editor McFarland. Brilliant pink, shapely buds; long-lasting. Vigorous; good cut flower.
E. G. Hill. Deep fadeless scarlet; large and fragrant. Vigorous grower; profuse bloomer.
Etoile de Hollande. Large, fragrant, deep velvety red blooms freely produced. Very popular.
Golden Dawn. Large, pointed buds of bright yellow, outside tinged red. Good double flower. Fragrant.
Grenoble. Scarlet-crimson, beautifully shaped flowers on long stems.
Joanna Hill. Large, beautiful, long, creamy yellow buds, tinged orange at base. Long stems; fine cut flower.
Kaiserin Augusta Victoria. Soft white, slightly tinged lemon-yellow. Excellently formed flowers.
Margaret McGredy. Large, double, brilliant light scarlet tinged orange-vermilion, becoming old-rose as flowers age.
Mrs. Charles Bell. Shell-pink sport of Radiance; sweetly fragrant. Strong grower; free bloomer.
Mrs. E. P. Thom. Large, well-shaped buds of rich yellow; fragrant. Blooms freely.
Mrs. Pierre S. du Pont. Deep golden yellow; heavy spicy fragrance. Blooms freely.
Pink Dawn. Carmine-pink, long, pointed buds; Old-Rose fragrance. Keeps well.

Polyantha Roses

Also called Baby bush roses. They produce clusters of rambler-like flowers on bushes seldom over 18-24 in. high and produce large clusters all summer.

PRICES OF STANDARD ROSES ABOVE APPLY

Cecil Brunner (Sweetheart). Often called sweetheart rose. Tiny buds perfectly formed, and produced in loose sprays. Delicate pink, decidedly fragrant.
Chatillon. Bright pink semi-double blooms touched with orange. Enormous clusters of blossoms on vigorous plants of medium height.
Else Poulsen. A dependable large-flowering Floribunda; bright rose-pink flowers 2¼ inches across in large clusters from early summer till fall on vigorous, upright, thrifty plants about 3 feet tall; single to semi-double, 6 to 12 petals; charming.
Gloria Mundi. Flaming orange-scarlet very double flowers about 1 inch across in dense clusters all summer; holds its color well even in hot weather; vigorous; a good bedding Baby Rambler or Polyantha.
Ideal. All summer long its dark scarlet blooms like Ramblers are produced freely in large clusters on plants about 18 inches high; excellent as a dwarf shrub to give constant bloom in the shrubby border, and as a hedge; very showy in large masses or beds as one would use geraniums. Pol.
Improved Lafayette. Very good, produces large clusters of bright cherry-crimson flowers. A most popular baby rose.

New Patented Polyantha Roses

PRICED INDIVIDUALLY

Fashion (Pat. No. 789). Brilliant coral flowers overlaid with gold opening with waxy graceful petals. Large clusters. A. A. R. S. award for 1950. \$2.00 each.

Goldilocks (Pat. No. 672). Rich golden yellow buds ovoid in shape. Long lasting, hardy and vigorous. \$1.50 each.

Permanent Wave (Pat. No. 107). Large semi-double flowers of rosy pink with cerise edges. Petals ruffled or waved. \$1.25 each.

Pinocchio (Pat. No. 484). Very thrifty grower producing many pointed buds of salmon flushed gold, opening to miniature roses. \$1.25 each.

World's Fair (Pat. No. 362). Produces large clusters of velvety blackish-scarlet flowers with glowing yellow stamens. \$1.25 each.



Polyantha—Baby Bush Rose

It's easy to have fine Roses. Choose from the above list of the finest varieties. They will bring you enjoyment from early spring to frost.

Offer America's Finest Roses

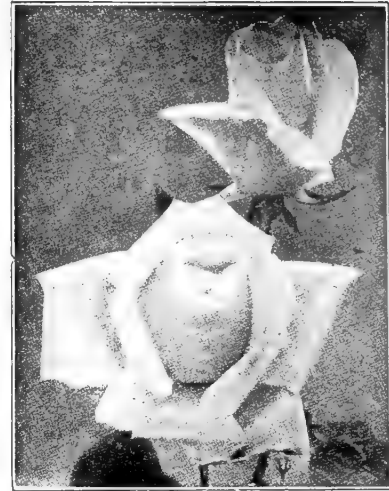
GROWN IN CALIFORNIA ON HARDY STOCK

EVERBLOOMING ROSES GUARANTEED TO BLOOM FIRST YEAR

New Patented Everblooming Bush Roses

Priced individually as price established by patent holder

- Capistrano** (Pat. applied for). Rich shade of deep glowing rose pink in the bud as well as in the open flower. Produces large buds on long stems. A. A. R. S. award 1950. \$2.50 each.
- Charlotte Armstrong** (Pat. No. 455). Winner 1941 All American Award. Long streamlined carmine buds and glorious open flowers of spectrum red. Long stems. \$1.50 each.
- Countess Vandal** (Pat. No. 38). Long, pointed, orange-copper buds; flowers are large, double, high-centered, and have a rich fragrance. The blooms are borne on long stems. \$1.35 each.
- Crimson Glory** (Pat. No. 105). Deep crimson, glorious in its perfect form, its size and its fragrance. One of the most popular and free blooming. \$1.50 each.
- Diamond Jubilee** (Pat. No. 824). Very double flowers of glowing buff-orange with a touch of orange-yellow at base of petals. A. A. R. S. award 1948. \$2.00 each.
- Forty Niner** (Pat. No. 792). Its contrasting, brilliantly hued bi-colors are startling in their brilliant, yet blended beautifully. Inside Orient-red, outside chrome yellow. 1949. \$2.00 each.
- Mirandy** (Pat. No. 692). A huge red rose, very dark and richly perfumed; winner of first place in All-American Rose Selections for 1945. \$1.50 each.
- Mission Bells**. Deep glowing salmon which opens to a clear shrimp pink. Vigorous and heavily covered with disease-resistant coppery green foliage. A. A. R. S. award 1950. \$2.50 each.
- Mme. Chiang Kai-Shek**. Perfectly chiseled petals clasped in long, spiral buds unfurled slowly, culminating in limpid, light clear canary-yellow flowers of perfect proportions. Patented. Winner 1943 All American Rose Selection test. \$1.50 each.
- New Yorker** (Pat. No. 823). Brilliant red with long lasting color. Sturdy, upright and vigorous. An excellent rose producing large flowers on long stems. \$2.00 each.
- Nocturne** (Pat. No. 713). Very strong growing, bushy, upright, and produces many flowers, each with an individual stem. The buds are long and gracefully shaped, dark red with maroon shadings; in cool weather it tends to purple some. \$1.50 each.
- Peace** (Pat. No. 591). Buds golden-yellow, petals edged pink; as the flower opens the gold changes to ivory or alabaster-white, at all times beautiful; large; long-lasting. Winner of 1946 award, All-American Rose Selection test. \$2.00 each.
- Rose of Freedom** (Pat. No. 791). Winners of City of Portland rose award. Long stemmed currant-red blossoms. \$1.50 each.
- Rubaiyat** (Pat. No. 758). Long, pointed, attractive buds on tall, strong upright stems, slowly opens into a very large bloom of rose-red to crimson in the center of half-open flower, reverse of petals several shades lighter; free blooming. Winner of 1947 Award, All-American Rose Selection test. \$1.50 each.



Crimson Glory

ROSES PRE-PAID

With Order of 4 or More
Planting Instructions Included.

- San Fernando** (Pat. No. 785). A magnificent 30 petaled rose of glowing currant-red changing to bright glowing scarlet. A. A. R. S. Award for 1948. \$2.00 each.
- Sutters Gold** (Pat. applied for). Beautiful long pointed yellow buds richly shaded with orange and red. Rich tea fragrance. A. A. R. S. award 1950. \$2.50 each.
- Taffeta** (Pat. No. 716). Rich carmine rose in the bud changing to begonia-rose in the open flower. Reserve of petal is yellow. Petals often frilled. A. A. R. S. Award 1948. \$1.50.
- Tallyho** (Pat. No. 828). Inside petals a unique shade of pink, outside a rich crimson. The long stemmed blooms open slowly. A. A. R. S. award 1949. \$2.00 each.
- Texas Centennial** (Pat. No. 256). Long pointed buds; velvety vermilion-red aging to carmine-red; large; fragrant; long stems. A sport of Pres. Hoover. \$1.25 each.

Hardy Climbing Roses

\$1.00 each, 5 or more at 98c each, 10 or more at 95c each, except as quoted.

- Climbing American Beauty**. Beautiful buds and large flowers of excellent form on good stems; almost the same rich color and fragrance as Bush American Beauty though not as large because there are so many flowers; the size may be increased by pinching off some of the buds; strong, healthy, vigorous, reaching 10 ft. or more; early Climber and Pillar.
- Dr. W. Van Fleet**. Delicate flesh-pink, the center deepening into rosy-flesh; its beautiful pointed buds resembling hybrid teas open into semi-double, cupped flowers borne singly on stems of good length for cutting; medium-early to mid-season; blooms over a long period. Seldom bothered by insects and diseases; good growth, attaining 20 feet; prune moderately. Climber.
- Mary Wallace**. One of the best climber and tall pillar roses. Pretty buds opening into charming, semi-double, cupped flowers often 4 inches across; very bright, clear rose-pink, the base of the petals shaded salmon and gold; medium early; blooms very freely; moderately fragrant; resistant to mildew; vigorous, reaching 20 feet; prune moderately.
- Paul's Scarlet Climber**. Vivid scarlet shaded crimson, intensified by the yellow stamens; flowers of good size, semi-double, in clusters of three to fifteen; a brilliant color well retained; early to mid-season; moderate growth, reaching 10 feet. Climber of moderate height and pillar.
- Pres. Herbert Hoover Climber**. A climbing form of the well known rose of the same name. Everblooming. Truly a wonderful climber. \$1.50 each.
- Primrose**. The rosette-shaped primrose-yellow blooms hold their color better than many roses of this class; climber; midseason.
- Silver Moon**. Creamy buds; beautiful, semi-double, very large white flowers, often 3 to 4 inches across, a cluster of golden stamens in the center; midseason; foliage rich, dark green; blooms very freely, covering the bush; vigorous, reaching 20 to 30 feet; one of the best.
- Spanish Beauty; Mme. Gregoire Staechelin**. Long pointed crimson buds opening into large pink blooms, the outside marked ruby-carmine; fragrant; blooms freely; long stems suitable for cutting; early. Pillar and Climber.
- Talisman Climber**. A climbing form of the beautiful Talisman. Everblooming—best when given a protected but sunny spot. \$1.50 each.

Patented Climbing Roses

- Blaze** (Pat. No. 10). A hardy vigorous climbing rose similar to Paul's Scarlet. Recurrent bloomer. Flowers scarlet-crimson. \$1.50 each.
- Dr. J. H. Nicolas** (Pat. No. 457). Vigorous plant, dark green foliage, double deep rose-pink flowers 5 to 6 inches across. One of the best everblooming climbers. \$1.50 each.
- Peace Climber** (Pat. applied for). Truly a gem for the garden. A climbing form of the new Peace rose. Everblooming, vigorous and fragrant. \$2.00 each.



HARDY VINES - *Natures Drapery* add charm and beauty to your home grounds

Vines can turn that unsightly fence or wall into a beauty spot—also excellent for converting an open portion of the lawn into a private outdoor room. Vines grow rapidly and are always an addition to the landscape.

Postage. Please add 5c per vine, not less than 17c per package.

Bittersweet, American. A high climbing vine; orange-yellow seed pods reveal bright red seed along the branches in autumn; thrives in sun or partial shade; twining.
2 yr.50 each

Clematis paniculata; Japanese Clematis. Thousands of fragrant pure white four-petaled starry flowers 1-1½ in. across in September; twining by leaf stems.
2 yr.75 each; 7.00 per 10

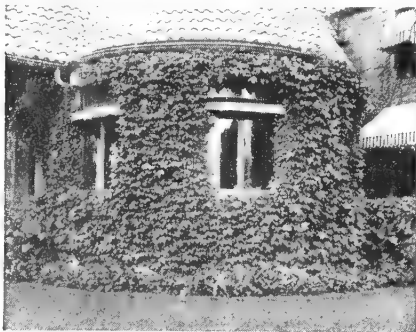
Honeysuckle, Goldflame. A compact twining vine blooming almost all summer; flowers in clusters, deep rose outside, yellow inside; fragrant after nightfall.
2 yr.70 each

Honeysuckle, Scarlet Trumpet. Flowers trumpet-shaped, scarlet outside, buff within, 1½-2 in. long in clusters at tips of branches; twining.
2 yr. No. 1.40 each; 3.50 per 10



Hall Japanese Honeysuckle, excellent for covering walls.

Honeysuckle, Hall Japanese. Flowers very fragrant, white becoming yellow, in June and at intervals to fall; twining; growth rapid.
2 yr. No. 1.50 each 1 yr. No. 1.40 each



Boston or Japanese Ivy.

Ivy, Boston. A graceful vine, excellent for smoothly and closely covering a wall of wood, brick or stone. Leaves three lobed, bright green turning orange to scarlet in the fall.
2 yr. No. 1 plants.75 each; 3 for 2.00

Ivy, English. Evergreen waxy leaves; excellent where persistent foliage is desired. Plant on north of building or in shaded areas. Does not do well in full sun.

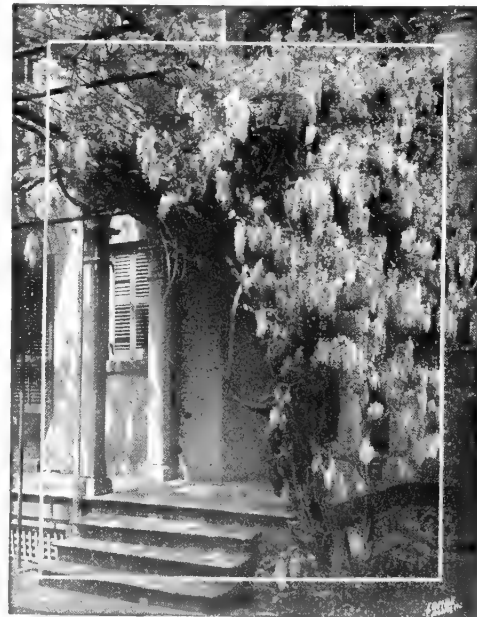
2 yr. No. 1 plants.75 each; 3 for 2.00



Silver Lace Vine

Silver Lace Vine. Easy to grow, this rapid growing vine is ideal for covering porch, pergola, fence or soil banks. Foliage glossy green. Thousands of lacy white flowers from mid-summer to fall. Grows 10 to 12 feet a year.

2 yr. plants. 1.00 each; 3 for 2.80



Wisteria, Chinese

Wisteria, Chinese Blue. Clusters of violet-blue flowers, longer than those of the American and not quite so thick on the cluster.

Grafted plants 1.00 each

Wisteria, Chinese White. Grafted plants, 1.00 each.

CANNAS, bloom June till frost

Parcel Post. Add 15c for 6 or less, 17c per 10.
Plant Cannas 6 inches deep after ground is warm.

Austria. Large; canary-yellow dotted crimson; green foliage; grows 4 to 5 ft. high; blooms freely.

City of Portland. Deep pink; green foliage; grows 3½ ft. high.

King Humbert. Large trusses of large, bright orange-scarlet flowers; bronze foliage; blooms freely; fine; grows 4 to 5 ft.

Louisiana. Large; orange scarlet; green foliage; grows 5 ft.

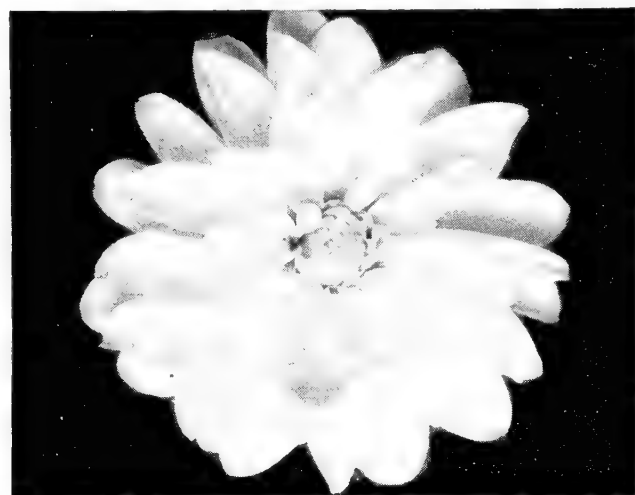
President. Rich, glowing scarlet; large flowers on strong stalks; green foliage; blooms freely; grows 4 ft.; stands heat well.

Yellow King Humbert. Large; rich yellow dotted red, occasionally a scarlet or scarlet-striped flower; green foliage.

Prices of above Cannas..... .20 each; 3 for .45; 10 for 1.50



Cannas



Dahlia

DAHLIAS, for Autumn flowers

Easily grown and give an abundance of flowers in early autumn. The decorative type have large, broad petals in rather flat heads. Special care and disbudding will increase the size of the flowers. Not hardy; must be stored over winter.

Parcel Post—Add 15c for 6 or less, 3c each over 6.

Avalon. Sparkling large yellow.

Beauty Supreme. Large coral pink, almost orchid.

Gallant Fox. Excellent brilliant red.

Golden Eclipse. Golden yellow, center tinted buff

Mrs. I de Ver Warner. Bright lilac rose.

Jersey Beauty. Large luminous coral pink.

Kentucky. Beautiful pink blended with gold and salmon

Orange Glow. Orange to sunset shades

Rose Glory. Rose pink

White Show. Excellent pure white.

Above Dahlias large formal decorative types.

POMPON DAHLIAS

Small globe shape, excellent for small table bouquets—flowers 2 to 2½ inches across.

Lavender Pompon.

Red Pompon.

Snow White Pompon.

Dahlia Prices..... .40 each—see postage rates above.

GLADIOLUS

PRICES
ARE POSTPAID
12 OR MORE

Charles Dickens. Purple violet, large, vigorous.

Debonair. La France pink, throat shrimp pink and white.

Dr. F. E. Bennett. Ruffled fiery red, large, heavy stem.

Ethel Cave Cole. Very large exhibition pink. Excellent.

Margaret Fulton. Rich dark salmon.

Minuet. One of the finest lavender varieties known.

Red Phipps. A soft red with exceptionally long spikes

Snow Princess. Large white with light cream throat.

Large size bulbs, ¼ to ½ in..... .10 each; 1.00 per doz.

SPECIAL PREPAID GLADIOLUS OFFERS

Bouquet Mixture
Our Selection
15 Large Bulbs

Postpaid **\$1.00**
Only

Rainbow Mixture
Our Selection
24 Large Bulbs

Postpaid **\$1.50**
Only

SPECIAL POSTPAID DAHLIA SPECIALS

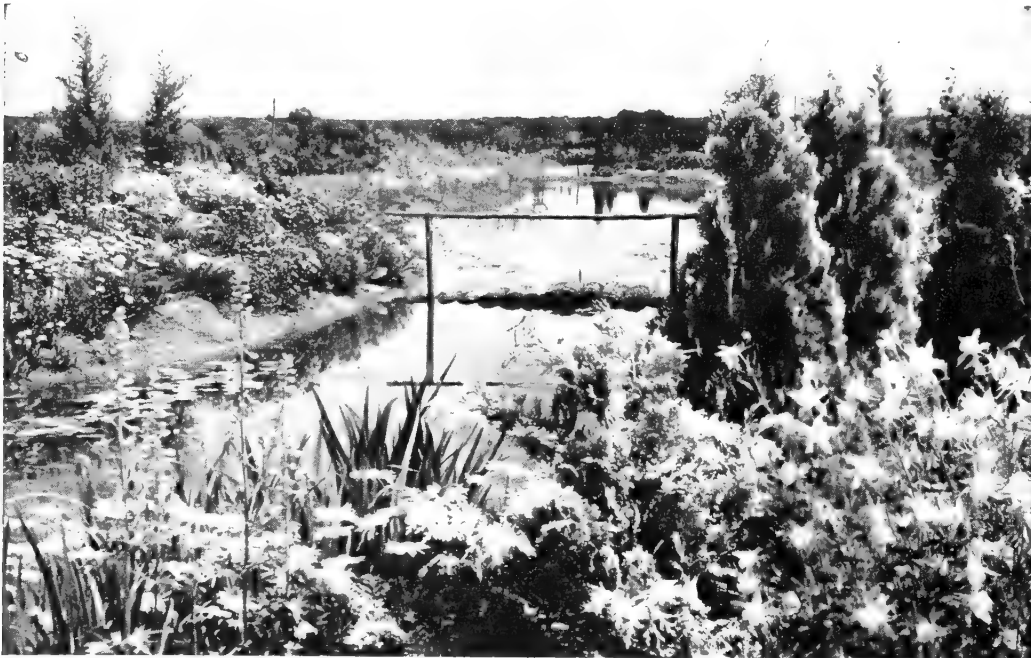
Any six of above
varieties

Postpaid **\$2.25**
Only

Any twelve of above
varieties

Postpaid **\$3.95**
Only

Keep Gay Color in Your Garden with Hardy Flowers



A view in the Gardens of Sarcoxie Nurseries.

Much of the charm of the hardy garden lies in the pleasing changes constantly taking place. Each day during the growing season brings something to interest and delight. Before the snow is gone Snowdrops and Crocus announce the coming of spring. How eagerly we watch for the violets and bleeding heart, followed by a host of flowers—peonies, irises, sweet williams and early daisies. Then the summer flowers—late daisies, phlox, blanket flower, lilies, etc. There need not be a dull day until chrysanthemums bid farewell to autumn.

Sarcoxie Nurseries' Perennials - - -

Are Strong Field Grown Plants

Plants vary in weight and there are eight zones. For Missouri and adjoining states allow 10c for the first and 1½c for each additional plant. Any surplus will be refunded.

These are good, strong, outdoor grown plants, not the small plants offered in low priced collections. Six or more of a kind at the dozen rate.

Anchusa, Dropmore; Summer Forget-me-not

Its large, loose clusters of flowers ½ to ¾ in. across, like Forget-me-nots, are produced freely in latter May on well branched stems 3 ft. high, a good deep, rich blue which does not fade. Remove the old flower stalks after blooming. Succeeds in sun. 30c each, 3 for 80c.

Baby's Breath, Bristol Fairy; Gypsophila Bristol Fairy

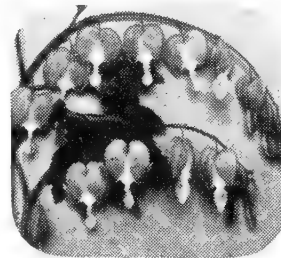
One of the best flowers for producing an airy, graceful effect in the garden or in vases of cut flowers. Dainty double white flowers ¼ inch across arranged in large, loose clusters on stems 2 to 3 feet tall in June. If dried for winter use cut before fully open and hang tips down. Thrives in sun, preferably in a limy soil. 85c each, 2 for 1.50.

Balloon-Flower; Chinese Bell-Flower; Platycodon grandiflora

So named from the odd balloon-like buds which open into five-pointed broad bell-shaped blue flowers 2½ to 3 in. across, at the tips of the branches on stems 1½ to 3 ft. tall in latter June, sometimes at intervals during summer. It should have well drained soil. 30c each, 3 for 70c, 2.50 doz.

Blanket Flower; Gaillardia grandiflora

It blooms from latter May until frost, in spite of heat, cold, wet and drouth. Flowers daisy-like, 2 to 3 in. across, maroon bordered yellow, as gaudy as a Navajo blanket, on stems 1½ to 2½ ft. tall. Prefers full sun. Very free from insects and diseases. Divide and replant every two or three years. Very effective in combination with Shasta daisies. 30c each, 3 for 70c, 2.50 per doz. See illustration next page.



Bleeding Heart

Bleeding Heart;
Dicentra spectabilis



Balloon Flower



Blanket Flower

★
An old-time favorite, rich in sentiment and association. Heart-shaped rosy-carmine flowers with protruding white inner petals, drooping on stems 1½ to 2 ft. high, carried well above the foliage, in latter April. Needs rich, fairly light soil. Succeeds in full sun; excellent in shade. 70c each, 3 for 1.95.

Hardy Flowers—continued



Hardy Chrysanthemums, the glory of autumn.

Hardy Chrysanthemums

In October and the dull days of November, when frosts creep into the air and the garden is nearly bare of color, these keep up the succession of beauty; prefer full sun; will stand shade part of the day; hardiness depends largely on good drainage.

Olive Longland. Pink to autumn shades. Similar to Mrs. DuPont, 10 days earlier. Double.

Red Velvet. Most popular red. 3-inch double. Oct. 5.

White Wonder. White pompon. Supreme. Perfect ball-shaped blooms. Cream to white. Heavy sprays. Wonderful for cutting. Late Sept.

Yellow Avalanche. Large fluffy double yellow. Sept. 15.

Cushion Chrysanthemums

More dwarf than the above varieties and form a compact cushion shaped plant covered with so many flowers the foliage can hardly be seen. Bloom late summer to fall. Easy to grow and sure to bloom.

Pink Cushion

Yellow Cushion

Prices of above Chrysanthemums: 45c each, 3 for 1.25, 4.00 per dozen.



Columbine



Coreopsis

Columbine, Mrs. Scott Elliott's; Aquilegia

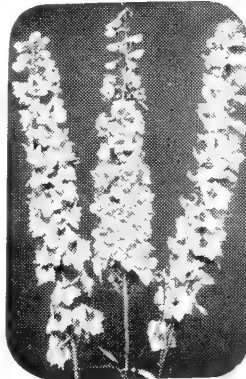
Dainty long-spurred flowers in late April and early May. 1½-2½ ft.; mixed colors. 35c each, 3 for 80c, 3.00 per doz.

Coreopsis lanceolata grandiflora

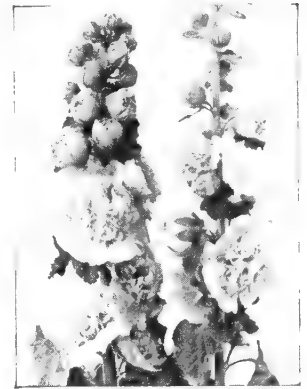
A brilliant note of color in latter May and early June, with its golden daisy-like flowers 2 to 3 in. across on stems 1½ to 2 ft. high. Excellent planted where the yellow will contrast with Delphinium or other blue flowers. Prefers full sun; tolerates partial shade. Divide and replant every two years 30c each, 3 for 60c, 2.25 per doz.



Daisies in Sarcoxie Nurseries Gardens.



Delphinium



Double Hollyhock
Mixed, 30c each; 3 for 70c.

Delphinium Belladonna Improved. The delightful blue of the skies; unrivalled for persistent blooming. A little larger, taller and more vigorous than common Belladonna; 2 ft. spikes. 35c each, 3 for 80c, 3.00 per doz.

Delphinium Bellamosum. A dark blue form of Belladonna 35c each, 3 for 80c, 3.00 per doz.

Daisy, Painted; Pyrethrum. Red daisies 1½ to 2½ inches across in May on 1 to 2-ft. stems. 35c each, 3 for 80c, 3.00 per doz.

Daisy, Early Elder; Chrysanthemum maximum Early Elder

Daisies 2 to 2½ in. across, white with yellow center, borne profusely in May; stems 20 to 30 in. tall; vigorous; divide and replant each two years. 30c each, 3 for 60c, 2.25 per doz.

Daisy, Shasta Alaska; Chrysanthemum maximum Alaska

One of the best Shasta Daisies; 3 to 3½ in. across on stems 15 to 24 in. tall in latter June and early July; white with yellow center; blooms freely; divide and replant every other year. 30c each, 3 for 60c, 2.25 per doz.

Heemerocallis-Daylilies



Daylilies—for spring, summer, fall flowers.

No plant is more easily grown. It thrives everywhere and in most any soil condition, in sun or in shade, it seems equally as happy. They have a place in every garden. Postage same as for Iris.

Baronet. Petals and sepals fulvous red, blending into the orange throat. A pleasing color combination. June-July. 28 inches. 75c each.

Bagdad. A gay combination of several colors—orange, red, yellow and brown; 42 in. June-July. 50c each, 3 for 1.00.

Dauntless. Deep lemon tinged orange; fragrant; large, tall. 3 ft. July-Aug. 50c each, 3 for 1.25.

Delightful Duet. Bi-color, red and yellow, a delightful combination of sunset colors. 28 in. July. \$1.00 each, 3 for 2.50.

Florham. Golden to orange yellow flowers 4½ to 5 in. across on 4 ft. stems in summer; fragrant; half evergreen foliage. 25c each, 3 for 50c.

Harvest Moon. Orange edged lemon; fragrant; large; tall; many buds. 3 ft. July and again in Sept. 50c each, 3 for 1.00.

Hyperion. Canary yellow, center a little deeper; larger; fragrant; many buds; blooms profusely. 44 in. July-Aug. 60c each, 3 for 1.50.

Linda. Of beautiful rosy pink shades with the pearly luster of an orchid, its creped petals add to its splendor; grows 30 in. 2½ ft. Blooms through summer. 60c each, 3 for 1.75.

Margaret Perry. Brilliant orange yellow lined with yellow. 48 in. July-Aug. 50c each, 3 for 1.00.

Middendorffi. Rich pure orange-yellow flowers on 15 to 18 in stems; mild fragrance; blooms freely in early summer. 25c each, 3 for 50c.

Minor, Dwarf Lemon Lily. Small, delightfully fragrant, deep golden yellow starry flowers in May and at intervals during summer. It forms dense clumps 12 to 15 in. high. 25c each, 3 for 50c.

Ophir. Waxy, golden yellow, 5 in. across and 6 in. long; fragrant; tall; many flowers. July-Aug. 50c each, 3 for 1.00.

Rajah. Mahogany red, shading to orange throat; delicate fragrance; very large; blooms profusely. One of the best of this color. 48 in. July-Aug. 60c each, 3 for 1.75.

Serenade. Light shades of yellow and pink. Medium large flowers on tall stiff stems. 36 in. Midsummer. 60c each, 3 for 1.75.

Iris



Iris, "The Orchid of the Garden."

Postage additional. Please add 3c per plant; not less than 15c per package.

Alta California. A very large, tall canary yellow; well branched; fragrant. 25c each, 3 for 85c, 10 for 1.50.

Autumn King. Standards violet blue, falls deep reddish purple; large; vigorous; blooms in May and a lighter crop in the fall. 25c each, 3 for 60c, 10 for 1.50.

California Gold. Large; brilliant deep yellow; of excellent form; tall; blooms freely; well branched. 30c each, 3 for 75c.

Cheerio. Large; standards bronzy light purple tinged red-dish; falls deep velvety ruby red, almost mahogany; fragrant; midseason. 25c each, 3 for 60c, 10 for 1.50.

Elmohr. Very rich red-violet; large flowers; free blooming on tall stems. 1.00 each; 3 for 2.00.

Indian Chief. Very large; standards suntan tinged lavender and pink, falls velvety crimson; fragrant; tall; low and well branched; midseason. 30c each; 3 for 75c.

Indian Hills. Large; standards ruffled bright purple, falls deeper shaded red; fragrant; tall; well branched. 30c each, 3 for 75c.

Lilamani. Velvety, blackish violet self. One of the very best of the "blacks." Gives an outstanding effect in garden or border. 30c each, 3 for 75c, 10 for 1.75.

Morning Splendor. Fine; very large; standards deep lavender-violet, falls velvety reddish purple; good substance; fragrant; midseason; tall. 25c each, 3 for 60c, 10 for 1.50.

Mulberry Rose. Deep radiant mulberry-rose self with bronze beard; a large flower on strong stems. 1.00 each.

Pink Satin. Large; standards decided pink, tinged lavender, falls a little deeper; attractive; tall. 25c each, 3 for 60c, 10 for 1.50.

Prairie Sunset. A mingling of sunset colors. 75c each, 3 for 1.50.

Seminole. Standards violet-red, falls velvety mahogany red to deep crimson; one of the deepest, brightest reds; 2-2½ ft. 25c each, 3 for 60c, 10 for 1.50.

Snow White. Excellent medium priced white. 25c each, 3 for 60c, 10 for 1.50.

Southland. A new deep golden yellow variety with large flowers of fine form and heavy substance on well branching stalks. 35c each, 3 for 75c.

Spun Gold. One of the best solid yellows; good size; good stems; well branched and rich coloring. 1.00 each.

Japanese Iris (Kaempferi)

Blooms after other Iris are gone, producing large flat flowers on graceful stems.

Gold Bound. White with golden stripes.

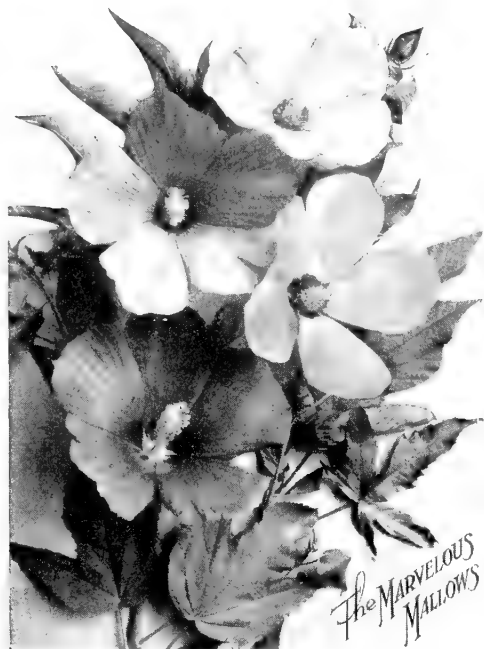
Purple and Gold. Deep purple with golden center.

50c each

3 for 1.40

5.00 per dozen

Hardy Flowers, continued



Mallow, Giant Flowering Hibiscus

Flowers often 6 inches across and they come along continuously from July to October. The shrub like-growth reaches 4½ to 5 ft. high. **Color, Red. 35c each, 3 for 1.00.**

Sedum; Stonecrop

Sedum spectabile Brilliant; Showy Stonecrop. The rosy-red starry flowers ½ in. across are produced freely in large flat-topped clusters on 18 in. stems in latter September and early October. Leaves light bluish-green, thick, broad, 3 in. long. **30c each, 3 for 75c.**

Sweet William; Dianthus barbatus

Gorgeous in mid-May with flat clusters of decidedly fragrant flowers on stems 12 to 20 in. high; pure white, shades of pink, red, almost black and violet, the clusters often 4 in. across with twenty to thirty florets which do not all bloom at once so they last a long time. Useful in the perennial border, rocky and last well as cut flowers. Prefer full sun. Mixed color only. **25c each, 3 for 65c, 2.50 per doz.**

Tuberose, Sweet Scented

Flower spikes 30 to 36 inches tall, with very fragrant, waxy-white flowers from July to frost. **3 for 35c; 6 for 60c; 12 for 1.00.**

Violets, Sweet Russian

Everybody can grow this hardiest of violets as it is of easy culture, and of vigorous growth, soon making large clumps; fragrant, deep, rich bluish-purple flowers in March and April, often in February, and again in October and November. Good in the rocky, at the front of perennial borders, along walks, or any place a low growing plant is desired; prefers partial shade. **25c each, 3 for 60c; 2.25 per doz.**

Violets, Royal Robe

Large, open out flat like a pansy; very fragrant; fragrance detectable many yards away. Deep violet to royal purple; fine. **50c each, 3 for 1.35.**



Phlox in Sarcoxie Nurseries Gardens.

Phlox

Phlox brighten the garden just after the spring flowers are gone and before summer flowers arrive in abundance. Large heads of five-petaled, delightfully fragrant flowers on stems 1½ to 3 ft. high. Use Miss Lingard for late May and early June, and other varieties will continue the display through the first half of July. Cut the flowers as they fade and they give a second, sometimes a third crop. Masses of six or more of each color produce imposing effects. Plant 12 to 15 in. apart, 8 to 12 in. if in a single row, in rich, rather moist soil, deeply prepared. Do not allow seedling to crowd out the original plants.

Field grown plants to bloom the first summer, 30c each, 3 for 85c, 3.00 per doz., except as noted. If by parcel post add 15c per doz.

Africa. Brilliant carmine-red with blood red eye.

Daily Sketch. Light salmon-pink, faint carmine eye; large trusses and individual flowers.

Firebrand. Brilliant cerise, vermilion and orange; of medium height; blooms freely.

July Glow. Vivid purple-red.

Lillian. Exquisite cameo-pink; large; blooms freely; early.

Mary Louise. Pure white; very large trusses and individual flowers. A good grower and prolific bloomer; medium height; perhaps the best white.

Mrs. Jenkins. Pure white; very large trusses.

P. D. Williams. Bright pink, deeper eye; large.

R. P. Struthers. One of the best; clear, bright cherry-red darker eye; large truss, strong, slender stems; tall.

Salmon Glow. Pink shaded salmon.

San Antonio. Vivid brilliant carmine shaded prune-red

Thor. A deep shade of salmon pink.

Phlox Subulata Alba. White flowering Moss Phlox. A mat of somewhat moss-like leaves, covered in early spring with white flowers. Grows 4 to 6 inches

Phlox subulata rubra; Red Flowering; Moss Pinks. A mat of somewhat moss-like leaves, covered in early spring with flowers an inch across. **Rubra (red).** 30c each, 3 for 70c, 3.00 per doz.

Missouri customers please add 2% Sales Tax as required by state law.



Peonies Are Easily Grown



A field of Peonies in bloom at Sarcoxie Nurseries.

Peonies

Hardy as the oak, they are easily grown. Our Pennant Brand Peonies are good strong three to five eye divisions, the finest plants from the nursery row. Planting instructions packed with each order.

Listed below are a few good standard varieties popular among gardeners. Our more complete list will be mailed on request.

When Ordering Peonies, Add Postage—20c for first plant, 5c for each additional plant.

Baroness Schroeder. Large, delicate flesh, becoming white; globular, compact, rose type flowers; fragrant; midseason; blooms freely. **75c each, 3 for 2.00.**

Cherry Hill. Deep garnet; large flowers with a beautiful sheen. **1.00 each.**

Duchess de Nemours. Superb ivory white, greenish markings toward center, becoming pure white; beautiful in the bud; medium to large; crown type; medium early; strong; vigorous; good stems; blooms freely. **50c each, 3 for 1.25.**

Edulis Superba. Beautiful bright, deep rose pink; very fragrant; large; good form; early; crown type; strong; vigorous; blooms freely. **50c each, 3 for 1.25.**

Felix Crousse. Brilliant, rich, even dazzling ruby red; large, globular, solidly and compactly built; bomb type; fragrant; midseason; vigorous; blooms freely; fine. **75c each, 3 for 2.00.**

Festiva Maxima. Large; pure paper white, some center petals flecked purplish carmine; early; rose type; very fragrant; vigorous; very long, heavy stems. **75c each, 3 for 2.00.**

Karl Rosenfield. Rich velvety crimson; very tall, compact grower of stately habit; late. **75c each, 3 for 2.00.**



Lillian Wild, one of the largest and best White Peonies.

Lillian Wild. Very large; delicate flesh, becoming pure white; compact rose type flowers; midseason; blooms freely. In common with other large varieties, it takes three years for it to reach its maximum size. **5.00 each.**

Mme de Verneville. Fine, large, compact flowers literally packed with petals; broad white guards, center slightly blush, becoming pure white, flecked carmine; delightfully fragrant; bomb type; early; vigorous; medium height; good stems. **60c each, 3 for 1.50.**

Mons. Jules Elie. Immense, globular, very full, bomb type flowers on strong stems; glossy flesh pink shading to deeper rose at base; very fragrant; early midseason; blooms freely. **75c each, 3 for 2.00.**

Myrtle Gentry. A beautiful late, light pink fading to nearly pure white with age; a perfect rose form flower; tints of flesh and salmon show throughout the petals; good grower. **2.00 each.**

Queen Emma. A very large, very full, fragrant, bright, light pink rose type flower; midseason to late; blooms freely; compact growth; the flowers keep and ship well. **60c each, 3 for 1.50.**

Sarah Bernhardt. Apple-blossom pink, the petals tipped white; compact, semi-rose type; fragrant; late midseason. **75c each, 3 for 2.00.**

Therese. Very large, rich satiny pink, center becoming lilac white; compact, rose type; very fragrant; midseason; medium tall. **75c each.**

... Special Offers ...



Ozark
Garden
IRIS
Collection

12 good favorite
Iris varieties:

Autumn King
California Gold
Capri
Indian Chief
Morning Splendor
Rameses
Seminole
Snow White
Cheerio
Dauntless
Lilimani
Zuni

This \$3.05 Value

Postpaid for only..... **\$2.50**

**PEONY
COLLECTION
A**

\$3.30 VALUE

6 good named
varieties,
early to late,
assorted
color.
Labeled.

All 6 for
only **\$2.50**
Postpaid



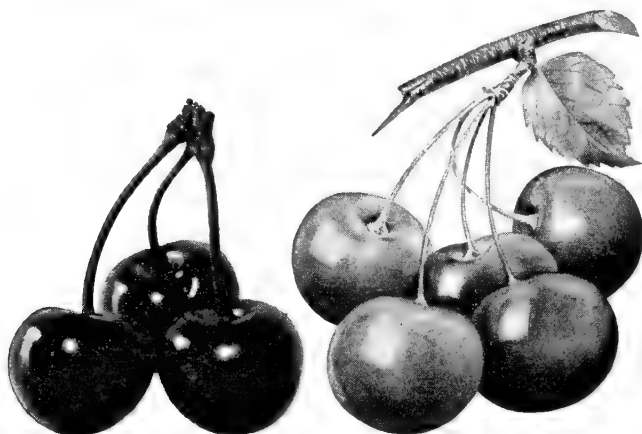
PEONY COLLECTION B \$6.60 Value

12 good named varieties, early to late, assorted colors.
Each labeled.

All 12 for only **\$4.50** Postpaid

. . . Fruit Trees for the Home Orchard . . .

Cherries for Quick Results



Montmorency

Early Richmond

Cherries give quick results, often coming into bearing the fourth year. On good, well drained soil they are successful. On wet soil they are short-lived. Plant 18 to 20 feet apart. There is always a market for Cherries if you have more than you need for home use.

Price of Cherry Trees	Each	Per 10
XXX size, 2 year, $\frac{1}{2}$ in. caliper up, about $3\frac{1}{2}$ to $4\frac{1}{2}$ ft.....	1.60	14.00
Any 5 or more at the 10 rate, less at the each rate.		

Early Richmond (May Cherry). Medium size but very productive; round; bright red, darker when fully ripe; very juicy, sprightly acid; latter May-June; hardy; profitable.

Montmorency. A week or ten days later than Early Richmond; rather large; dark rich red; juicy, pleasant acid; excellent quality; vigorous; hardy; productive; succeeds everywhere.

Plum Trees

Easily grown; bear in spite of neglect, yet respond liberally to good care. Plant 20 to 24 feet apart.

Prices of Plum Trees	Each	Per 10
XX size, $\frac{1}{2}$ in. caliper up, about 5 to 6 ft.....	1.50	13.50
Any 5 or more at the 10 rate, less at the each rate.		

America. Large; yellow with red cheek; juicy; cling; hardy; productive; bears young; one of the most reliable.

Omaha. Large, red with slight yellow cheek; firm; semi-cling; moderately productive; early August; upright growth.

Opata. Bears young and very freely; dark purplish-red with blue bloom; flesh green, firm, sprightly acid; medium size; ripens in July; good for canning, the skin becoming tender when cooked. We think this is the best of the Hansen hybrids.

Sapa. Early; rich dark purple-red skin, flesh and juice; medium to medium large; bears very young; very hardy.

Apricots

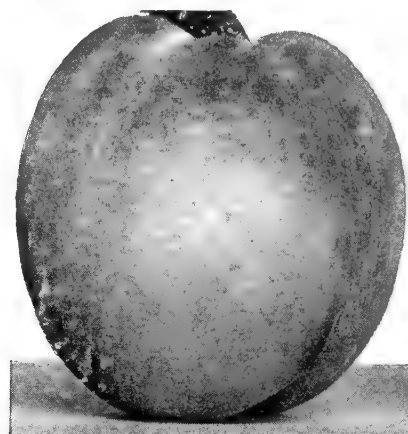
Superb. Large; orange-yellow; good quality; ripens between cherries and peaches.

Prices of Apricots	Each	Per 10
Standard size, $\frac{7}{8}$ to $\frac{1}{2}$ in. caliper, about 3 to $3\frac{1}{2}$ ft.....	1.35	12.50

Nectarine

Nectarine, Surecrop, $\frac{1}{2}$ in. caliper..... 1.25 each

Peach Trees



Peaches come into bearing younger than any other tree fruit, under favorable conditions giving a crop the third year and yields are larger as the trees grow older. A few trees won't cost as much as you probably pay for peaches in one year, and none are so delicious as those freshly picked when ripened on the tree. To the man who has room for a commercial orchard, and will cultivate, prune and take care of the trees, peaches offer great opportunities for good profits. A sandy loam or gravelly soil is best, but the peach adapts itself to almost any well drained soil. Sometimes they are planted 18x18, but 25x25, requiring 75 trees per acre, is better.

Prices of Peach	Each	5 at	25 at
XX size, $\frac{1}{2}$ in. caliper up, about 5 to 6 ft.....	1.00	.90	.80
Standard size, $\frac{7}{8}$ to $\frac{1}{2}$ in. caliper, about $3\frac{1}{2}$ to $4\frac{1}{2}$ ft.....	.85	.80	.70
Any 5 at the 5 rate.			

Belle of Georgia. Very large; white, red cheek; flesh white, fine texture, firm, juicy, rich, high quality; freestone; early August; vigorous, hardy, very productive.

Champion. Large; white, beautiful red cheek; freestone; flesh white, sweet, juicy, rich, delicious; early August; one of the hardiest peaches; vigorous, productive.

Elberta. Very large; golden yellow with a crimson cheek; freestone; flesh rich yellow, firm, juicy, good; mid-August; vigorous, productive; excellent for shipping.

Golden Jubilee. Yellow freestone; ripens ahead of Elberta; good size and quality; desirable for home and market.

Hale Haven. Large; yellow freestone with red cheek; high quality; ripens about ten days or two weeks ahead of Elberta; productive.

J. H. Hale. Large; yellow with red cheek; fine grained; a little earlier than Elberta and more round in shape. An excellent table peach; one of the largest.

Pear Trees, Standard

The quality is improved if gathered when full size and beginning to color but yet firm and ripened in a cool dark room.

Price of Pears	Each	Per 10
X size, 2 year, $\frac{1}{2}$ in. caliper, about 4 to 5 feet.....	1.50	13.50
Any 5 or more at 10 rate.		

Bartlett. Large, waxy yellow with red blush; juicy, fine grained, rich, good quality; latter August; bears young.

Douglas. Golden yellow, flushed with pink, tender, juicy, excellent flavor; resistant to blight; bears young.

Lincoln. Large, yellow, quality good; resistant to blight; bears young; very hardy.

FRUITS—continued

Apple Trees



Prices of Two-Year Apple:	Each	5 at	25 at
XX size, 11/16 in. caliper up, about 5 to 6 ft.....	1.00	.90	.80
Standard size, 7/16 to 9/16 in. caliper, about 3 1/2 to 4 1/2 ft.....	.80	.70	.60
Any 5 or more at the 5 rate.			

- Grimes Golden.** Beautiful yellow; fine quality; Oct.-Dec.
- King David.** Jonathan-Winesap cross; dark wine red.
- Liveland Raspberry.** Large red striped, tart and juicy. A hardy young bearer. Ripens early July.
- Maiden Blush.** A large, clear yellow autumn apple.
- Red Delicious.** Colors early and is red almost all over.
- Red Jonathan.** Deep red; fine quality; Oct. and later.
- Red Stayman Winesap.** Deeper red than the old Stayman; firm, juicy, subacid; good; keeps late; bears young.
- Winesap.** Bright deep red; flesh yellow; very rich, firm; very juicy; sprightly subacid; very good; winter.
- Yellow Delicious.** Large; golden yellow; late winter; excellent.
- Yellow Transparent.** Yellowish-white; fine grained; juicy; sprightly subacid; mid-June; hardy; very young, abundant bearer.

Nut Trees

- Chinese Chestnut.** Blight resistant. Remember not many years ago when sweet Chestnuts could be gathered for home use? Then came a Chestnut blight that spread all over the U. S., killing the trees in nearly every section. We now have a Chinese variety producing large sweet nuts and it is resistant to blight. Bears young, is hardy and a rapid grower. Often bears the third year. Trees furnished are two-year plants.
3 to 4 ft..... 2.50 each
- Pecan—Stewart Paper Shell.** Hardest of all paper-shell varieties. Makes an excellent shade tree, is exceptionally tough. A profitable tree to add to your property.
3 to 4 ft..... 2.95 each
- Walnut—Thomas Black.** This grafted walnut produces giant size nuts at an early age, often producing the second year. Perfectly hardy, this is a profitable tree, valuable for nut production as well as beauty.
3 to 4 ft..... 2.50 each

Gooseberries

Easily grown and readily respond to a little care. Plant 3x5 or 4x5 ft. A northern slope or slight shade is best.
Houghton. The best for most sections; medium size but a profuse bearer; resistant to rust; pale dull red when ripe, usually picked green. 2 year No. 1, 50c each, 3 at 45c each.

Grape Vines

Concord. Large; the most popular black grape; juicy; sweet; hardy; productive; vigorous; mid to late August.
Fredonia. Black; bunch and berries large; good flavor; productive; early; has given good results in Missouri.
Moore Early. Black; large; valued for size, hardiness; productivity and season, about 2 weeks before Concord.
Niagara. Greenish-white to pale yellow; sweet; productive.

Prices of Grapes	Each	5 at	25 at	50 at
Concord, 2 yr. No. 1.....	.30	.25	.22	.20
Fredonia, 2 yr. No. 1.....	.35	.30	.28	.25
Moore Early, 2 yr. No. 1.....	.35	.32	.30	.28
Niagara, 2 yr. No. 1.....	.35	.32	.30	.28



Currants for Jelly

If you like home-made jelly, plant Currants, 3x4 ft. In the Central States they should have partial shade or a northern slope. Red. 2 yr. No. 1 45c each, 3 for 1.20.

Asparagus

Mary Washington and Paradise. Both rust resistant varieties. 70c per doz., 1.25 per 25, 4.00 per 100.

Rhubarb or Pie Plant

Large, tender, delicately flavored stalks; productive. 30c each, 3 for 60c, 1.90 per dozen.

- Blackberries
- Boysenberries
- Raspberries
- Strawberries

See Color Page
Inside Back Cover
for Description
and Prices



HOPA CRAB

Flowering Trees

Add so Much to the Joy of Spring

CRAB, Hopa

Covered in April with deep carmine buds, opening into carmine-rose flowers 1/4 to 1 1/2 inches across, lighter as they age. Twigs, new leaves, and ornamental fruit one inch across in late August, are red; delicate fragrance. Very resistant to cedar rust; blooms young.

	Each
3 to 4 ft.	\$0.75
4 to 5 ft.	1.00
5 to 6 ft.	1.50
6 to 7 ft.	2.00



REDBUD

REDBUD - Judas Tree (Cercis canadensis)

A small tree, outstanding in April with its myriad of rose-pink, pea-shaped flowers 1/2 inch long, clustered thickly along and almost concealing the leafless younger branches. Contrasts beautifully with White Flowering Dogwood. Leaves heart-shaped, 3 to 5 inches long, bright yellow in autumn.

	Each
2 to 3 ft.	\$0.75
3 to 4 ft.90
4 to 5 ft.	1.50

PEACH, Red Flowering

During early spring the Flowering Peaches are covered with a mass of beautifully formed and highly colored double flowers. These trees cannot be too highly recommended. Perfectly hardy, thriving in any soil in which other Peaches grow.

	Each
3 to 4 ft.	\$1.25
4 to 5 ft.	1.75

DOGWOOD, Red Flowering

(Cornus florida rubra)

Beautiful and unusual in late April. Flowers like those of the White Flowering but a deep pink. Foliage and berries like those of the white form.

	Each
2 to 3 ft.	\$3.00
4 to 5 ft.	7.50

SPECIAL OFFER
For Naturalizing
ONE EACH — All 3 to 4 Feet
Hopa Flowering Crab Redbud
White Flowering Dogwood
POSTPAID FOR \$3.00

DOGWOOD, White Flowering

(Cornus florida)

A large shrub or small tree, usually attaining 10 to 15 feet. Valuable for specimens or naturalistic plantings in sun or partial shade. Lovely single white flowers in early spring. Keep it watered.

	Each
3 to 4 ft.	\$2.00
4 to 5 ft.	3.00

Lilac, French Hybrids

Blooms young—often the year planted

CHARLES JOLY. Bright dark purplish red to wine-red; large; fragrant; semi-double to double; midseason.

CHARLES X. Purplish red, becoming lilac as the flower ages; while not the largest it is one of the most reliable free bloomers and makes an excellent display; single.

EDMOND BOSSIER. Deep purplish red; fragrant; single; large.

ELLEN WILLMOTT. Buds seafoam yellow, turning white. Large, double florets. Medium in height.

KATHERINE HAVEMEYER. Violet-pink aging to lavender-blue; double; large; fragrant; long, compact clusters.

MADAME LEMOINE. Best double pure white.

LUDWIG SPAETH. Single, crimson-purple; one of the darkest; rather dwarf.

PASCAL. Single, dusty lavender-pink; early and showy. Rather tall; delightfully fragrant.

REAMUR. Single, reddish lavender; large; fine.

VOLCAN. Red tinged purple, becoming deep ruby-purple; large florets; rather long clusters; fragrant; single; excellent.

WILLIAM ROBINSON. Very double; violet-pink, large, compact flower trusses. Fragrant; blooms freely. We recommend it as one of the best. Rather dwarf.

PRICES OF ABOVE LILACS:

12 to 18 in.	\$1.00 each
18 to 24 in.	\$1.25 each
2 to 3 ft.	\$1.75 each

PERSIAN LILAC

PERSIAN PURPLE. Single, beautiful lilac flowers literally cover the bush in latter May; moderately fragrant. Valuable because they bloom a week to ten days later than other Lilacs. They are tall growing, attaining a height of 8 to 10 feet; are excellent as specimen plants, in shrub groups, or as a hedge.

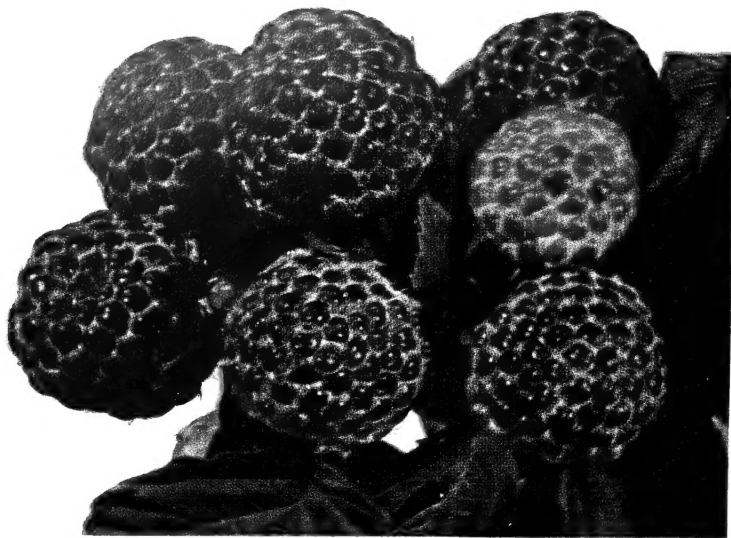
Mail Size, postpaid	40c each; \$3.50 per 10
2 to 3 ft.	75c each; \$7.00 per 10
3 to 4 ft.	90c each; \$8.50 per 10



RED FLOWERING DOGWOOD
The Showiest Tree of All



FRENCH HYBRID LILAC



CUMBERLAND RASPBERRIES

STRAWBERRIES

STRAWBERRY PLANTS ARE GROWN UNDER IRRIGATION AT SARCOXIE

No other fruit gives such quick results as Strawberries. Planted one spring, they give a full crop the next, and with proper care a patch lasts several years. Plant 2 feet apart in the row, the rows 3½ to 4 feet apart; planted 2 x 4 feet requires 5,400 per acre. These plants are well rooted, properly cleaned and carefully packed. All varieties listed are perfect flowered and will bear alone.

AROMA. A heavy bearer and the leading commercial variety in this section. Very large, conical, glossy deep red. Firm; ships well; begins midseason and continues late.

BLAKEMORE. Originated by the United States Department of Agriculture. Bright light red; medium size and good quality. Firm; ships and keeps well; valuable commercially. Jells easily; early. Grown from yellows-free plants.

BRUNE'S MARVEL. A new everbearing variety from the North. Fruit medium size, rather long. Extra good quality and prolific.

DORSETT. Early; rich bright red; large and firm. Good quality.

GIANT GEM. Large; attractive light red; tart, but a flavor usually well liked. Productive; everbearing.

PREMIER. Early; attractive color; good size and quality. Productive.

SENATOR DUNLAP. Dark glossy red, resembling Warfield and of the same rich, juicy flavor; medium size. Midseason; bears heavily and ships well; succeeds almost everywhere.

STREAMLINER. A new everbearer highly acclaimed in all sections of the country.

PRICES OF STRAWBERRIES:

	25	50	100	250	1000	3000
Aroma	\$0.60	\$1.00	\$1.75	\$4.00	\$10.00	\$29.50
Blakemore60	1.00	1.75	4.00	10.00	29.50
Dorsett60	1.00	1.75	4.00	12.50	30.00
Senator Dunlap60	1.00	1.75	4.00	12.50	30.00
Premier60	1.00	1.75	4.00	12.50	36.00

EVERBEARING (Bear the First Summer and Fall)

	25	50	100	250	1000
Brune's Marvel	\$1.50	\$2.50	\$5.00	\$11.00	\$30.00
Giant Gem	1.15	2.00	3.50	6.00	22.50
Streamliner	1.75	3.00	5.50	11.50	32.50

Not less than 25 of a kind sold. 500 or more, assorted, if you wish, at the 1000 rate. If by parcel post, add 15c for 50, 20c for 100, 25c for 250, for Missouri and adjoining states.

BERRY PLANTS ARE EASY TO GROW

SARCOXIE NURSERIES BERRY PLANTS

are easy to grow, and produce large yields on a small area. Enjoy the pleasure of picking all the full ripe fruit you want from your own garden.

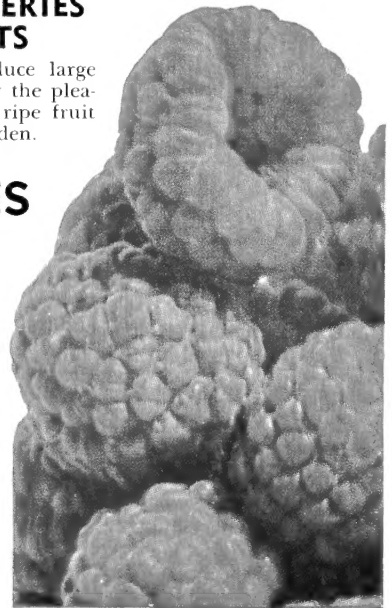
RASPBERRIES

CUMBERLAND. One of the best Blackcaps; large, firm, of excellent quality. Early to midseason; hardy, vigorous, productive. Plant 4' by 7' feet. **\$1.25 for 10; \$2.50 for 25; 50 or more at \$9.50 per 100.**

LATHAM. Large; attractive brilliant red. Good quality; productive. **\$1.40 for 10; \$3.00 for 25; 50 or more at \$11.00 per 100.**

THORNLESS BOYSENBERRIES

No new fruit has caused such a sensation. Imagine a cross combining the delicious flavors of Loganberry, Blackberry, and Raspberry. You get just that in this new fruit. So large that only a few berries are required to fill a pint. Fruit 1½ to 2 inches long, wine-red in color. Bears good crop the second year. **3 for 90c; 10 for \$1.50; 25 for \$3.00; 50 or more at \$11.50 per 100.**



LATHAM RASPBERRIES

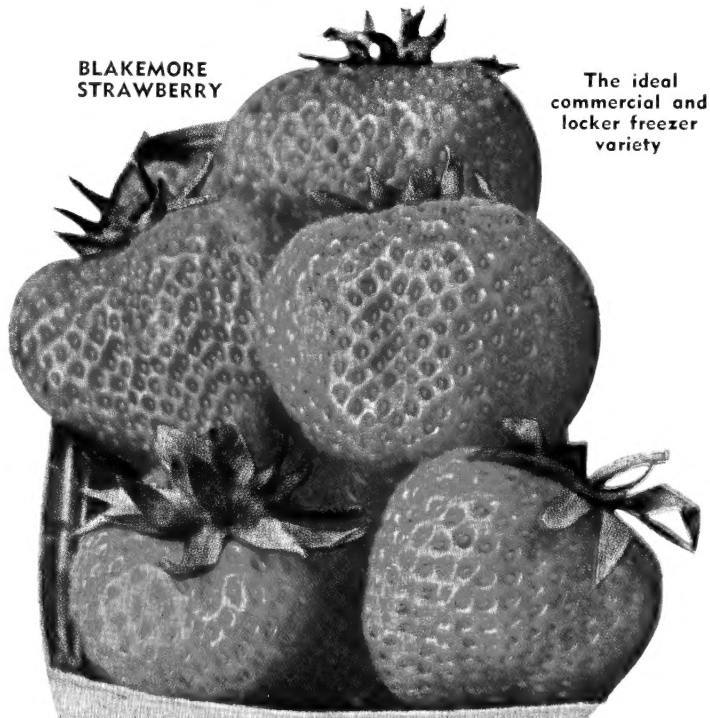
BLACKBERRIES

Blackberries begin bearing the second year and under suitable conditions may be depended upon for regular, profitable crops. A strong, deep loam that will retain moisture, tending toward clay rather than sand, is best. If properly tended they may be planted 2 x 6 feet, 3,600 per acre.

EARLY HARVEST. Medium size but juicy, sweet. Valuable for extreme earliness, hardiness and productiveness; firm, ships well. **\$1.25 for 10; \$2.75 for 25; 50 or more at \$9.50 per 100.**

ELDORADO. Medium to large, oblong-conical, jet-black, sweet. Midseason; hardy, vigorous, productive. **\$1.25 for 10; \$2.75 for 25; 50 or more at \$9.50 per 100.**

BLAKEMORE STRAWBERRY



The ideal commercial and locker freezer variety

Home Strawberry Collection

300 plants, assorted early to late, varieties suitable for your section (not including everbearing), for

\$4.50

POSTPAID

LET US HELP YOU WITH YOUR LANDSCAPE PROBLEMS

We maintain a **COMPLETE LANDSCAPE SERVICE**—
from drawing the plans to delivering and planting the plant material.

A Well Planned Home Is a Home of Distinction

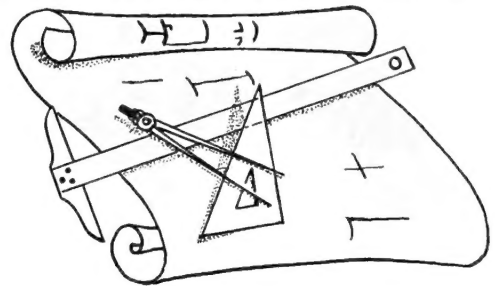


Making Measurements and Drawing Plans

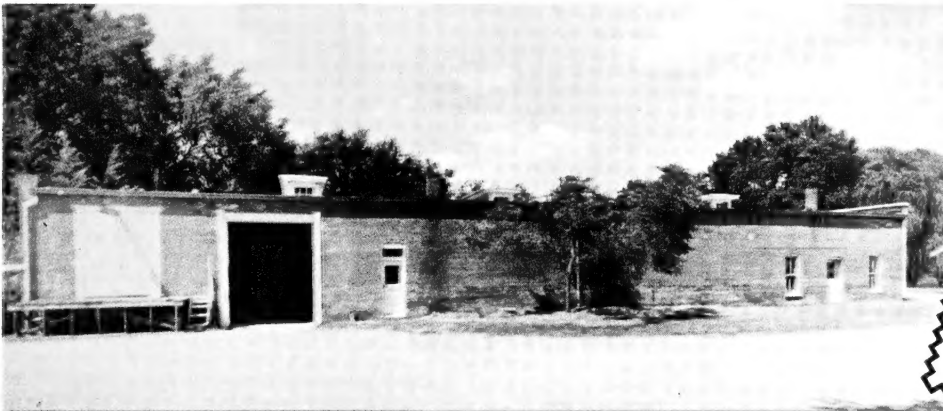
Within a radius of 75 miles we will be glad to have our Landscape representative call and go over your problems. Measurements can then be made, the plans drawn and submitted for your approval. For this service we make a charge of \$10.00 for an ordinary size lot. This amount is credited on your order at the rate of 10% of the plant material purchased. For instance, if your order amounts to \$100.00, your plan has cost you nothing.

For larger properties and special problems, costs are made accordingly.

Properties located over 75 miles distant, ask for prices.



You will be surprised at the saving that can be made and the beauty attained by having your property planned systematically.



PACKING HOUSE AT SARCOXIE NURSERIES

One of the Midwest's most modern, containing 50,000 cu. ft. of modern cold storage rooms.



INDEX

Abelia (color).....	3	Dahlia	17	Magnolia (color).....	3	Rhubarb	24
Albizzia Julibrissin	7	Daisies	19	Mahonia (color).....	3	Roses.....Center Spread	
Althea	9	Daylilies	20	Mallow Hibiscus)	21	Rose of Sharon.....	9
Anchusa	18	Desmodium	10	Maple	7	Russian Olive.....	11
Apricot	23	Deutzia	10	Mimosa	7	Sedum	21
Arborvitae (color).....	4-5	Dogwood (color).....	10, 25	Mock Orange	11	Shade Trees	6-8
Asparagus	24	Elm	6-7	Multiflora Rose.....	8	Shrubs	9-13
Baby's Breath.....	18	Euonymus (Color).....	3, 10	Nandina' (color).....	3	Silver Lace Vine	16
Barberry (Berberis)	9	Evergreens (color).....	3-5	Oak, Pin.....	7	Snowball	12
Balloon Flower.....	18	Forsythia	10	Peach	23	Spirea	12
Beautybush	9	Gaillardia	18	Pear	23	Spruce	5
Birch (Betula).....	6	Gladiolus	17	Perennial	18-22	Stoncrop (Sedum).....	21
Bittersweet	16	Gooseberries	24	Peonies	22	Strawberries (color).....	26
Blackberries (color)	26	Grapes	24	Perennials	18-22	Sweet William.....	21
Blanket Flower.....	18	Hemerocallis (Day Lily).....	20	Philadelphus	11	Syringa (Lilac) (color)	25
Bleeding Heart.....	18	Hollyhock	19	Phlox	21	Tamarix	13
Boysenberry (color)	26	Honeysuckle	11, 16	Pine (Pinus).....	5	Tuberose	21
Buddleia (Butterfly Bush).....	9	Hydrangea	11	Platycodon	18	Viburnum	12
Cannas	17	Hibiscus (Mallovs)	21	Plum	23	Violets	21
Cherry	23	Iris	20, 22	Poplar (Populus).....	8	Vines	16
Chrysanthemums	19	Ivy	16	Privet	8	Vitex	13
Clematis	16	Kerria japonica	11	Pyracantha (color)	3	Weigela	13
Columbine	19	Kolkwitzia	9	Quince, Japan	12	Willow	8
Cotoneaster	10	Lagerstroemia	10	Raspberries (color).....	26	Wisteria	16
Crab, Ornamental (color).....	25	Lilac (color)	25	Redbud (color).....	25		
Cranberry Bush.....	10	Lily, Day	20				
Crape Myrtle.....	10						
Currants, Fruiting.....	24						

EVERY SUNDAY AFTERNOON AT 1 P. M.

RADIO

A QUARTER HOUR IN THE GARDEN

Broadcast by the Sarcoxie Nurseries over WMBH every Sunday afternoon for the past nineteen years

YOUR RADIO PROGRAM

Those within range of the Joplin, Mo., radio station, WMBH, 1450 kilocycles, are invited to tune in each Sunday at 1:00 p. m. for a gardening talk and musical program.

**WMBH
and
WMBH-FM**



WE ARE MEMBERS OF THE

American Association of Nurserymen
Western Association of Nurserymen
Missouri State Nurserymen Association

NO AGENTS

Our sales are direct. Our contacts are usually made by appointments. Refuse to buy from anyone representing himself or herself as our agent. **WE HAVE NO AGENTS.** You get full value with no commission attached.

CREDIT

Our prices are based on cash sales; however, credit will be extended to responsible customers with satisfactory references. Should you prefer to plant now and budget your payments, no doubt suitable arrangements can be made,



"It's Not A Home Until It's Planted"

SARCOXIE NURSERIES PEONY FIELDS

WILD BROS. NURSERY COMPANY
Sarcoxie · Missouri