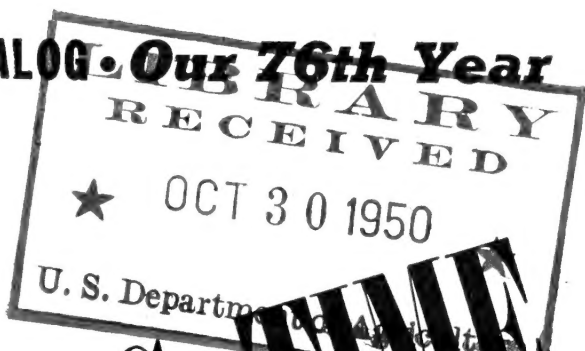


Historic, Archive Document

Do not assume content reflects current scientific knowledge, policies, or practices.

62,47 Index

FALL 1950 CATALOG • Our 76th Year

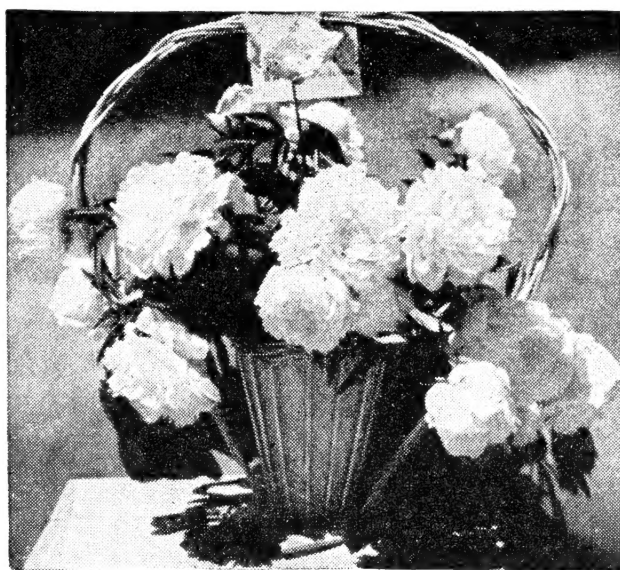


IT'S

PLANTING TIME

for

Shade Trees - Fruit Trees
Shrubs - Evergreens
Vines & Perennials



Basket of Lillian Wild Peonies—See page 25

★

Members of the American Assn. of Nurserymen, Western Assn. of Nurserymen and Missouri State Nurserymen's Assn.

★

SARCOXIE NURSERIES
PEONY FIELDS

WILD BROS. NURSERY CO.
Sarcoxie, Missouri



THE NEW *Elm "Coolshade" . . .*

Undoubtedly the most beautiful Elm we have ever seen. It is a most practical all-purpose shade tree. Unlike the American Elm, it does not have large lateral limbs that are dangerous when overhanging the residence. It may be planted close to the house without worry.

IT'S TOUGH—does not break in the wind and under the burden of ice and snow like the ordinary Chinese Elm.

IT'S BEAUTIFUL—forms a compact tree, somewhat resembling the Hard Maple in form. (See illustration.)

IT'S HARDY—like all Chinese Elm, it is hardy and drought resistant. Apparently it is not subject to the Dutch Elm disease or Phloem necrosis, which affects the American Elm.

IT'S CLEAN—does not shed leaves early and cause an unsightly lawn—holds its leaves late into the fall.

IT'S RAPID IN GROWTH—not quite so rapid as ordinary Chinese Elm, however produces an abundance of deep green foliage affording a complete shade—a "COOLSHADE"—and a truly beautiful shade tree.

WE SINCERELY RECOMMEND THIS AS THE BEST ELM WE HAVE EVER KNOWN. Grows 35 to 50 feet high.

5 to 6 ft. sturdy trees.....	2.00 each
6 to 8 ft. sturdy trees.....	3.00 each
8 to 10 ft. sturdy trees.....	4.00 each

It's Planting Time

This brief price list is sent you as a reminder that it's planting time. Our more complete Spring Catalog will follow in January with additional items including our fine list of Roses.

Shade Trees Beautify the Lawn

A recent survey indicates that landscaping the grounds adds as much as 20% to the resale value. Shade trees constitute one of the most essential items to the landscape and to comfort. Plant trees now for tomorrow's beauty and comfort.

Five or more of a kind at the 10 rate, less at the each rate.

Birch, European White. A graceful tree of peculiar charm with chalky white bark and delicate bright light green foliage.
6 to 8 ft..... 3.50 each

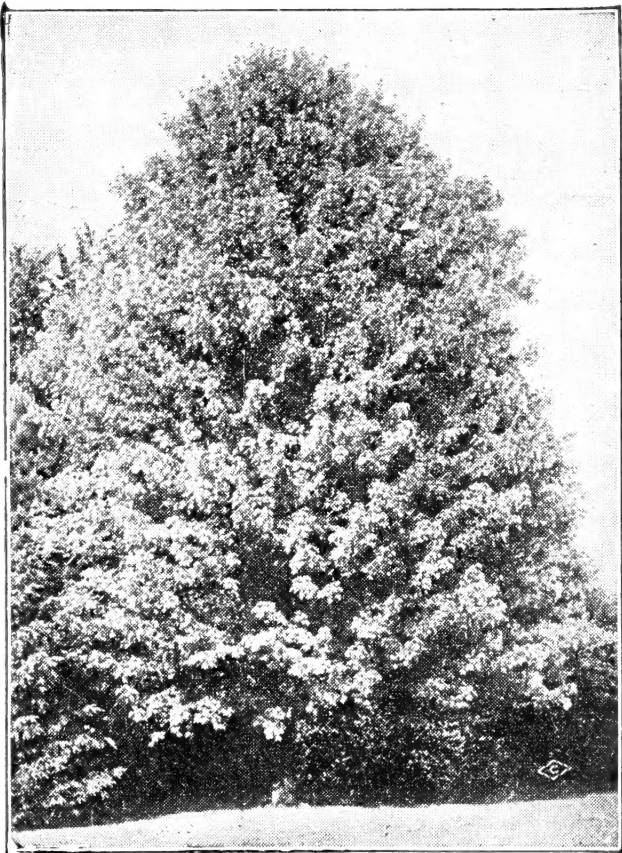
Crab, Hopa. Carmine-rose flowers, 1¼-1½ inches across cover the tree in latter April; twigs, new leaves and fruit red.
3 to 4 ft..... 1.00 each 5 to 6 ft..... 1.75 each
4 to 5 ft..... 1.35 each 6 to 7 ft..... 2.00 each

Dogwood, Red Flowering. Flowers like those of the White but a decided pink, often called red.
2 to 3 ft..... 3.00 each
4 to 5 ft..... 7.50 each

Dogwood, White Flowering. Showy four-petaled white flowers 3 to 4 inches across in latter April; scarlet berries and autumn foliage.
2 to 3 ft..... 1.60 each
3 to 4 ft..... 2.25 each
4 to 5 ft..... 3.00 each

Elm, Chinese; Ulmus pumila. Rapid growth; slender branches; leaves much smaller than those of the American Elm.
18 to 24 in., mail size, postpaid..... .30 each; 3.00 per 10
4 to 5 ft..... .80 each; 7.50 per 10
5 to 6 ft..... 1.00 each; 9.00 per 10
6 to 8 ft., ¾ to 1 in. caliper..... 1.50 each; 2 for 2.75
8 to 10 ft., 1 to 1¼ in. caliper..... 2.50 each

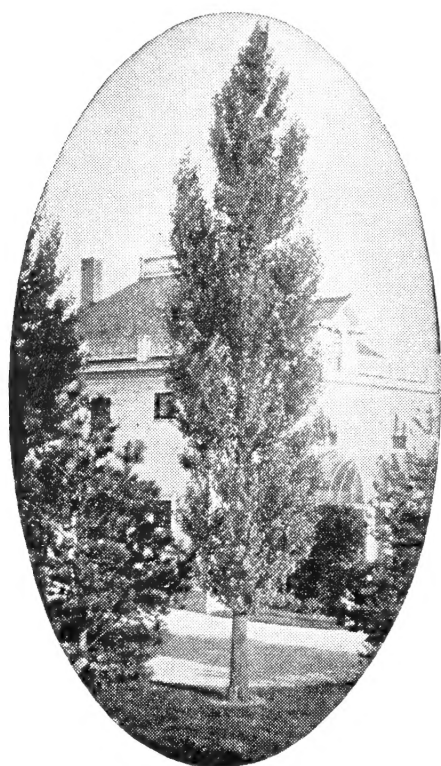
Maple, Sugar, Rock or Hard. Deeply rooted, allowing grass to grow about the trunk; beautiful autumn foliage.
4 to 5 ft..... 2.00 each 5 to 6 ft..... 2.50 each
6 to 8 ft..... 3.25 each 8 to 10 ft..... 5.00 each



Sugar or Hard Maple has beautiful autumn foliage.

Shade Trees

Continued



Lombardy Poplar



Flowering Dogwood

Mimosa; Chinese Silk Tree; Albizzia Julibrissin. A tropical effect; flat crown; tiny feathery foliage; pink acacia-like flowers at tips of branches mid-June to September.

2 to 3 ft.95 each 3 to 4 ft.1.15 each
 4 to 5 ft.1.50 each

Oak, Pin; Pin Oak. One of the best and most rapid growing oaks. Pyramidal and very symmetrical in form. Glossy green foliage.

4 to 5 ft. 2.00 each 5 to 6 ft. 2.75 each
 6 to 8 ft. 3.50 each

Peach, Double Red. In April every twig and branch is bright with perfectly formed double red flowers; blooms young.

3 to 4 ft. 1.25 each

Plum, Purple Leaf; Prunus Thundercloud. The very best purple leaf plum we have yet come across. It holds its bronzy purple color throughout the entire season, not merely in the spring. Upright, strong grower, 25 ft.

3 to 4 ft. 1.75 each

Poplar, Lombardy. Tall and columnar; rapid growth; useful as an accent tree and to screen objectionable views.

4 to 5 ft.65 each; 6.00 per 10
 5 to 6 ft.75 each; 7.00 per 10
 6 to 8 ft. 1.00 each; 9.00 per 10
 8 to 10 ft. 1.25 each; 11.00 per 10

Red Bud. Tiny pea-shaped rose-pink flowers cover the leafless branches in early April; autumn foliage bright yellow.

2 to 3 ft.80 each 3 to 4 ft.95 each
 4 to 5 ft. 1.65 each

Sweet Gum. A stately tree, very symmetrical, with glossy foliage turning brilliant autumn shades in the fall. The young branches are covered with corky bark.

3 to 4 ft. 1.90 each 4 to 5 ft. 2.25 each

Willow, Babylon Weeping. A large, graceful tree with long, slender, drooping branches; growth rapid.

Mail size, postpaid.40 each; 3.50 per 10
 4 to 5 ft., 1 yr.75 each; 7.00 per 10
 5 to 6 ft., 2 yr. 1.50 each;
 6 to 8 ft., 2 yr. 2.00 each;

Willow, Niobe Weeping. A graceful tree; slender, drooping yellow-barked branches; leaves lustrous green; very hardy.

Mail size, postpaid.40 each; 3.50 per 10
 4 to 5 ft., 1 yr.75 each; 7.00 per 10
 5 to 6 ft., 2 yr. 1.50 each;
 6 to 8 ft., 2 yr. 2.00 each;

Willow, Pussy, Lemoine. A shrub or small tree, its furry catkins appearing before the leaves; easily grown.

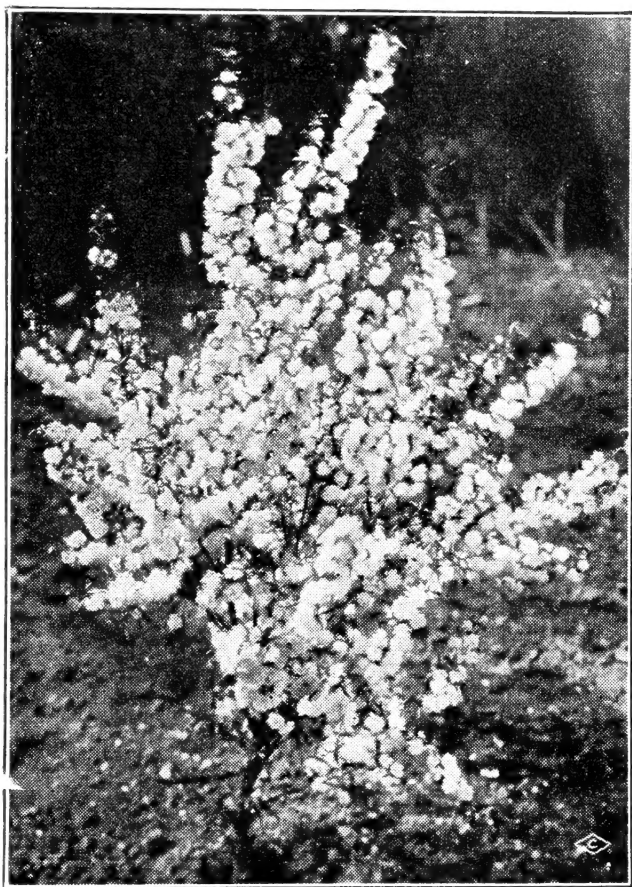
2 to 3 ft.60 each

Sarcoxie Nurseries FLOWERING SHRUBS

For that shady spot—for that sunny spot—for all locations. The Sarcoxie Nurseries have just the plant for the purpose. Thrifty, well grown and liberally graded—they are sure to please.

Postage additional if desired by parcel post. Please allow sufficient postage—we refund every cent not used.

Abelia. See Broadleaf Evergreens, page 20.



Double Flowering Almond.
One of the most showy shrubs in April.

Almond, Double Flowering Pink. Many double pink flowers 1 in. across clusters thick along the branches in early April, before the leaves are developed.

18 to 24 in..... .75 each 2 to 3 ft..... 1.00 each

Althea; Rose of Sharon. Hollyhock-like flowers in late summer to fall; upright habit, attaining 10-15 ft.; easily grown. Colors: Double Pink, Double Red. See illustration, page 6.

2 to 3 ft..... .65 each; 6.00 per 10

3 to 4 ft..... .75 each; 7.00 per 10

4 to 5 ft..... .85 each; 8.00 per 10

Barberry, Thunberg or Japanese. Dwarf, dense, compact, spreading habit; graceful spiny branches; dwarf leaves coloring brilliantly in autumn; scarlet berries $\frac{3}{8}$ in. long in October and later; excellent for foundation planting and hedges.

15 to 18 in..... .50 each; 4.50 per 10

18 to 24 in..... .60 each; 5.50 per 10

Barberry, Red-leaved Thunberg. Foliage a rich bronzy red throughout summer, if planted in the sun; scarlet berries.

Mail size, postpaid..... .35c each; 3.25 per 10

12 to 15 in..... .50 each; 3 for 1.40; 4.50 per 10

15 to 18 in..... .60 each; 3 for 1.60; 5.50 per 10

18 to 24 in..... .70 each; 3 for 2.00; 6.50 per 10

24 to 30 in..... .90 each; 3 for 2.50; 8.50 per 10

Beautybush; Kolkwitzia amabilis. The branches arch gracefully with clusters of Weigela-like flowers, pink mottled orange.

12 to 18 in..... .60 each

18 to 24 in..... .75 each

2 to 3 ft..... .90 each

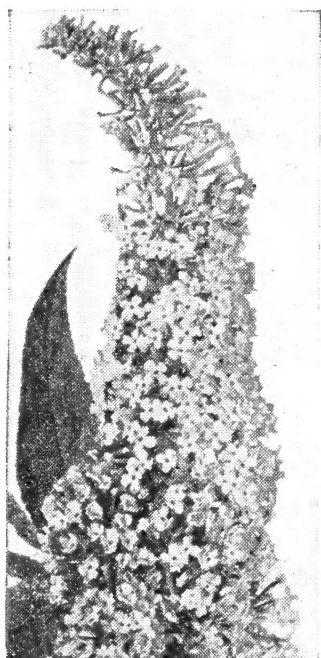
Buckeye, Scarlet. Odd, unusual scarlet flowers in narrow candle-like spikes 6 to 8 in. long in late April and May.

12 to 18 in..... 1.50 each

18 to 24 in., blooming size..... 2.50 each

2 to 2 $\frac{1}{2}$ ft., blooming size..... 5.00 each

HARDY FLOWERING SHRUBS, continued



Butterfly Bush



Forsythia (page 7)

Butterfly Bush. Covered from summer till fall with fragrant flowers resembling lilacs; grows 4 to 6 ft. high, may be kept lower by pruning; mound in winter the same as you protect everblooming roses. We offer the following varieties:

Charming. Lavender tinged pink, the pink more noticeable in the sun.

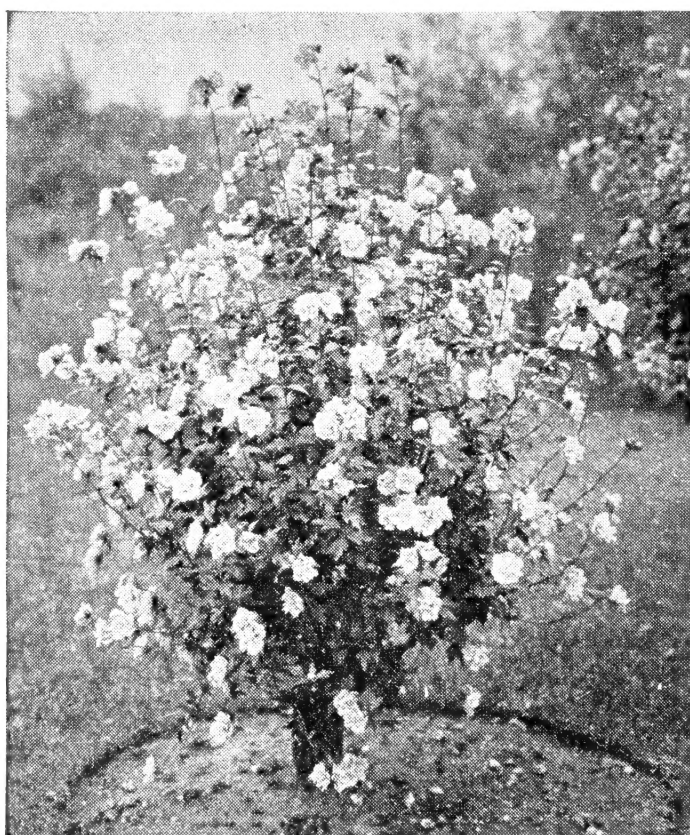
Dubonnet. Rich carmine-purple, similar to the French wine Dubonnet, the shade popular in dress fabrics.

Prices of the two varieties above.

2 year No. 1..... .75 each

Royal Red (Patented). A Butterfly Bush of true royal color. Its immense trusses of brilliant flowers withstand summer's heat and bloom over a long period. A most important addition to any garden.

2 year No. 1..... .90 each



Althea blooms late in summer (page 5).

HARDY FLOWERING SHRUBS, continued

Cotoneaster acutifolia; Peking Cotoneaster. An upright, spreading shrub reaching 5 to 6 ft.; small whitish-pink flowers; black berries 1/2 in. long; autumn foliage purplish-red.

18 to 24 in..... .75 each
2 to 3 ft..... .90 each

Crab, Flowering. See Shade Trees.

Cranberry Bush. See Viburnum opulus.

Crape Myrtle. Watermelon red. Crepe-like deep pink to red flowers born in profusion early summer to fall. Plants should be cut back before planting—we do this before we ship unless you object.

18 to 24 in..... .75c each 2 to 3 ft..... .90 each

Desmodium, Purple. Graceful arching branches covered in late summer with rose-purple, small, pea-shaped flowers.

2 year plants..... .75 each

Deutzia, Pride of Rochester. Double tassel-like flowers, white, outer petals rose, in spikes 4 to 6 in. long in May.

18 to 24 in..... .45 each; 4.00 per 10
2 to 3 ft..... .65 each; 6.00 per 10

Dogwood, Bailey's. Grown mainly for its bright coral-red branches in winter; succeeds in sun or partial shade.

18 to 24 in..... .60 each
2 to 3 ft..... .65 each

Euonymus alata compacta; Dwarf Winged Euonymus. An unusual shrub with 2 or 4 very thin, blade-like wings on the branches; grows 3 to 4 ft. high; tiny yellowish flowers; autumn foliage very brilliant scarlet, crimson and rose.

18 to 24 in..... 1.50 each

Forsythia, spectabilis, Golden Bell. Golden-yellow, 4-petaled flowers, somewhat bell-shaped, before the leaves develop, often in March. Large, rich yellow; showy; one of the best.

Mail size, postpaid..... .35 each; 3.00 per 10
18 to 24 in..... .50 each; 4.50 per 10
2 to 3 ft..... .65 each; 6.00 per 10
3 to 4 ft..... .85 each; 8.00 per 10

Honeysuckle, Bush. Covered in early spring with dainty small flowers, followed in June with red berries even more ornamental than the flowers. Attains 6-8 ft.

Pink Flowering (Tatarian).

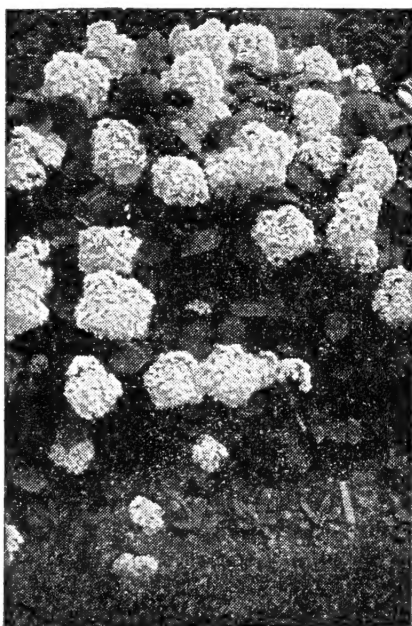
Red Flowering (Tatarian). The new variety Zabeli.

White Flowering.

Yellow Flowering variety, Fragrantissima, which unlike the other varieties, holds its foliage late into winter and blooms in February.

Prices of Bush Honeysuckle

18 to 24 in..... .45 each; 4.00 per 10
2 to 3 ft..... .60 each; 5.50 per 10
3 to 4 ft..... .80 each; 7.50 per 10
4 to 5 ft..... 1.00 each; 9.50 per 10



Hydrangea Hills of Snow. Well named for its profusion of snow-white flowers in large, somewhat globular clusters, beginning in June; suitable for full sun and partial shade.

1 yr., 12-15 in..... .65 each
3 for 1.80
2 yr., 18-24 in..... .80 each
3 for 2.25

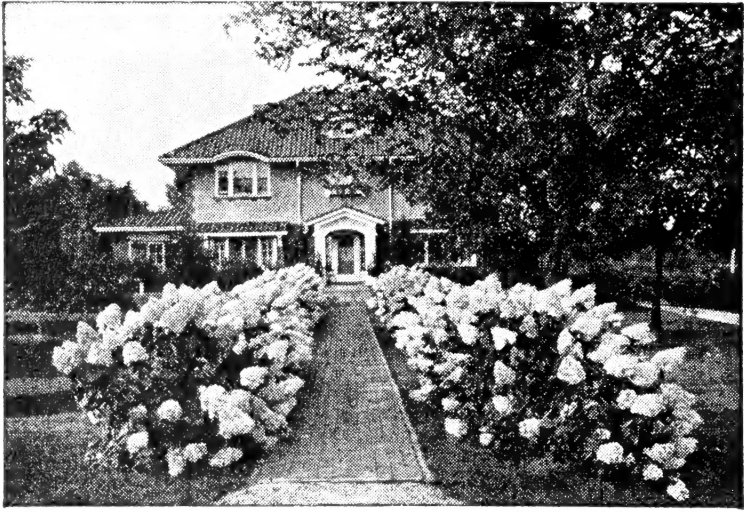
Hypericum Sun Gold. (Patented.) Waxy golden flowers all summer on a low growing shrub of glossy foliage. Flowers 2 to 3 inches across. Grows 3 feet.

No. 1 Plants

1.50 each; 3 for 4.00

Hydrangea Hills of Snow

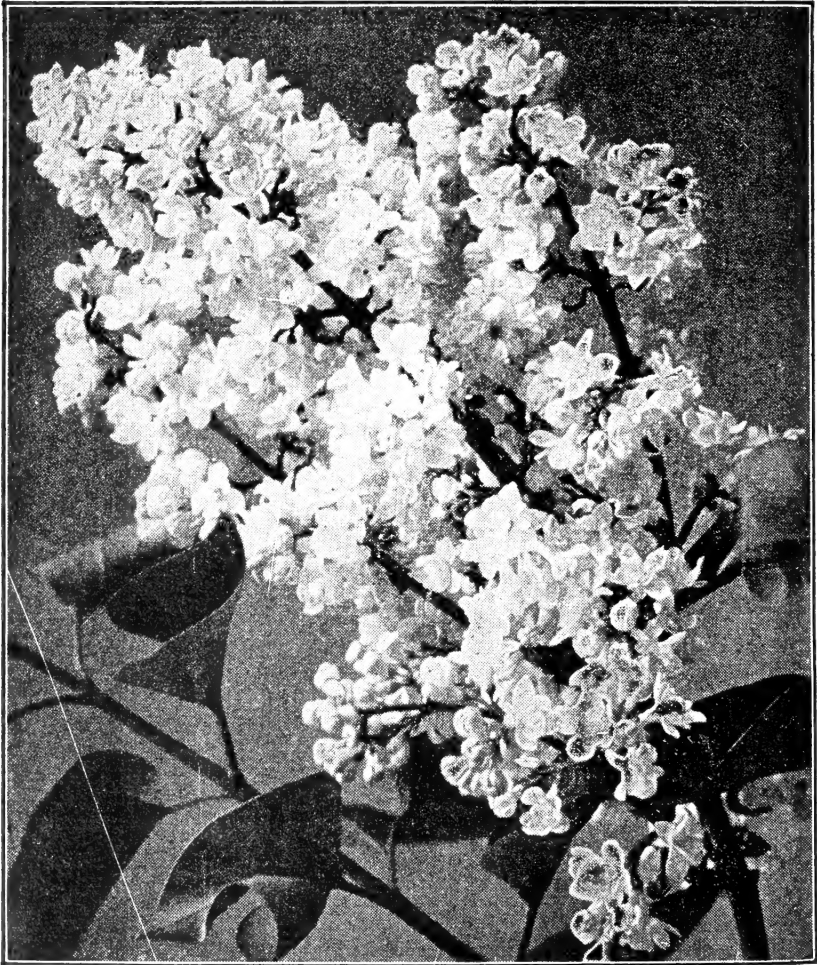
HARDY FLOWERING SHRUBS, continued



Hydrangea paniculata grandiflora (Pee Gee)

Hydrangea paniculata grandiflora. Flowers in great cone-shaped clusters, white assuming rose tints, in profusion in August and September; attains 5 to 7 ft.; plant in full sun.

15 to 18 in.....	.70 each;	3 for 1.95;	6.00 per 10
18 to 24 in.....	.80 each;	3 for 2.25;	7.00 per 10
2 to 3 ft.....	1.00 each;	3 for 2.75;	8.00 per 10



Lilac, French Hybrid

The Hybrid Lilacs bloom younger than the old Common Lilacs, often the year after planting, and are more varied in color; for fragrance and profusion of bloom in April nothing surpasses Lilacs; full sun is best; prices following variety list.

Charles Joly. Bright dark purplish-red to wine-red; large; fragrant; semi-double to double; midseason.

Charles X. Purplish-red, becoming lilac as the flower ages; while not the largest it is one of the most reliable free bloomers and makes an excellent display; single.

FRENCH LILACS, continued

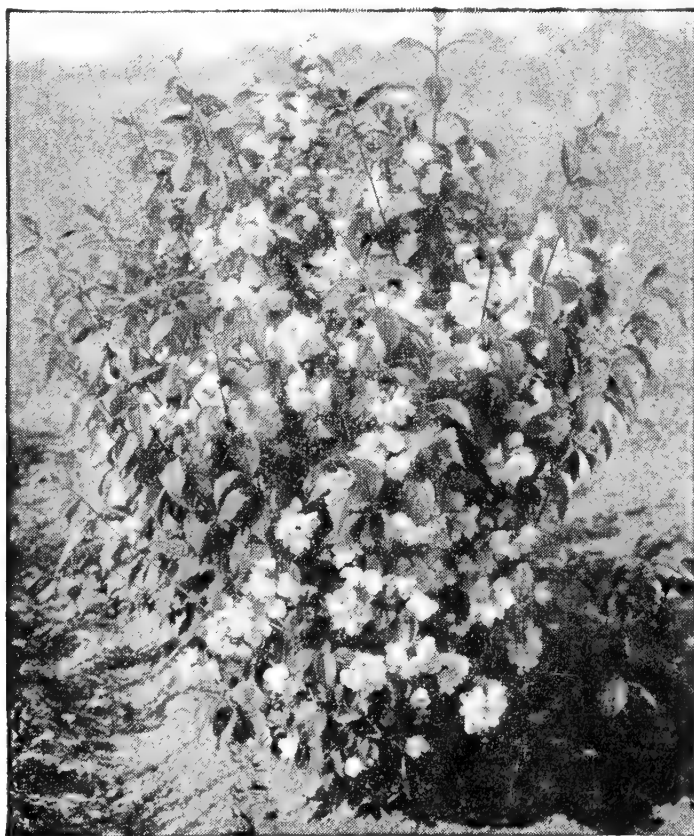
- Edmond Bossier.** Deep purplish-red; single; fragrant; large,
- Ellen Willmott.** Buds seafoam yellow, turning white. Large double florets. Medium in height.
- Katherine Havemeyer.** Violet-pink aging lavender-blue; double; large; fragrant; long compact clusters.
- Madame Lemoine.** The best double pure white.
- Ludwig Spaeth.** Single, crimson-purple; one of the darkest; rather dwarf.
- Pascal.** Single, dusty lavender pink; very early and showy. Rather tall; delightfully fragrant.
- Reamur.** Single, reddish lavender; very large; fine.
- Volcan.** Red tinged purple, becoming deep ruby-purple; large florets; rather long clusters; fragrant; single; excellent.
- William Robinson.** Very double; violet pink, large compact flower trusses. Fragrant; blooms freely. We recommend it as one of the best. Rather dwarf.

PRICES OF ABOVE LILACS

12 to 18 in.....	1.00 each
18 to 24 in.....	1.25 each
2 to 3 ft.....	1.50 each

PERSIAN LILAC

- Lilac, Persian Purple.** Single; about 10 days to two weeks later than ordinary lilac. Flowers lilac pink; very profuse bloomer. Excellent for hedges or background plantings. Grows 6 to 8 feet.
- Mail size, postpaid.....** .40 each; 3.50 per 10
- 2 to 3 ft.....** .75 each; 7.00 per 10
- 3 to 4 ft.....** .90 each; 8.50 per 10
- Mock Orange, Minnesota Snow Flake.** Patented. A new Mock Orange with very double pure white flowers. Very fragrant and in large clusters; vigorous; 6 to 8 ft.
- 2 to 3 ft.....** 1.50 each



Mock Orange, Philadelphus Virginal (page 10)

HARDY FLOWERING SHRUBS, continued

Mock Orange, Sweet Scented. The name is almost a description; four-petaled creamy-white flowers; sun or partial shade.
 18 to 24 in..... .50 each; 4.50 per 10
 2 to 3 ft..... .65 each; 6.00 per 10
 3 to 4 ft..... .80 each; 7.50 per 10

Mock Orange, Virginal. Large semi-double delightfully fragrant white flowers 1½-2½ in. across; moderately tall; frequently flowers intermittently through summer and fall. Excellent for cuttings, as flowers hold up well. Sun or partial shade.

12 to 18 in..... .60 each 2 to 3 ft..... 1.00 each
 18 to 24 in..... .80 each 4 to 5 ft..... 1.25 each

PRIVET CHINESE No. 6—NEW

Practically evergreen, this new Privet holds its waxy bright green foliage until pushed off by new leaves in the spring. Excellent trimmed or left untrimmed. Used for hedges, in shrub groups or in foundation plantings. In hedges plant 3 feet apart.

2 to 3 ft. bushy plants..... .50 each

Privet, Regel. Dense, spreading growth; valuable for shrub plantings; white flowers like tiny lilacs; blue-black berries.

18 to 24 in..... .50 each 2 to 2½ ft..... .60 each

Quince, Japan; Cydonia japonica. Covered with brilliant scarlet five-petaled flowers 1½ in. across in March before the leaves are developed. The true old-fashioned scarlet.

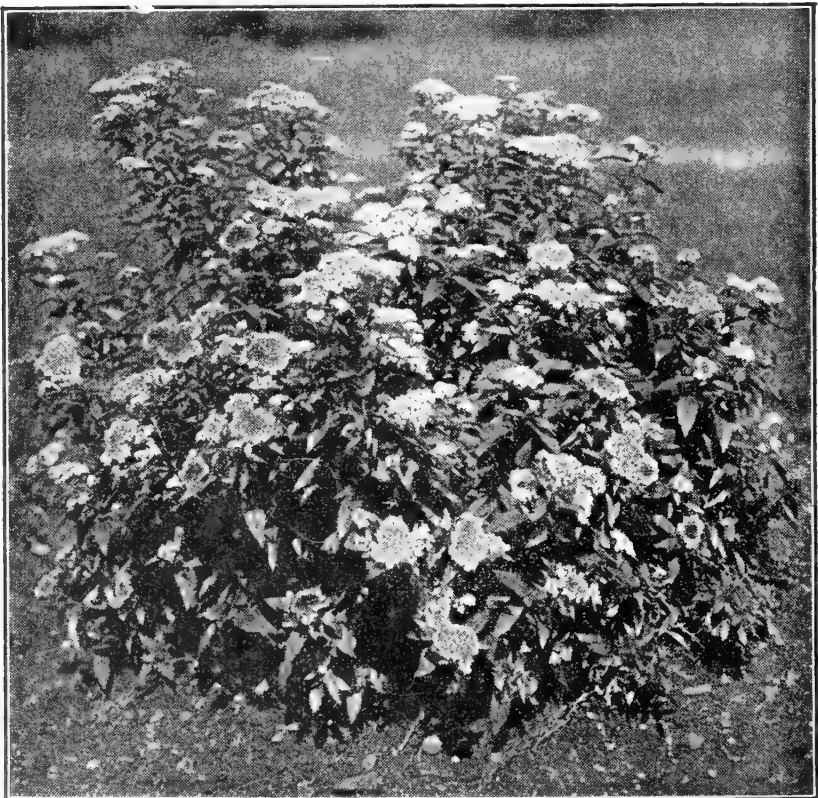
18 to 24 in..... .60 each 2 to 3 ft..... .75 each

Snowball, Common. Covered in early May with clusters of white snowballs 4 in. across; thrives in sun or partial shade.

18 to 24 in..... .80 each 2 to 3 ft..... 1.00 each

Spirea Anthony Waterer. Crimson flowers in flat clusters in late May and at intervals until fall; grows 3 ft. high.

12 to 15 in..... .50 each; 4.50 per 10
 15 to 18 in..... .65 each; 6.00 per 10
 18 to 24 in..... .75 each; 7.00 per 10



Spirea Froebeli—Red Summer Spirea

Spirea Froebeli. Similar to Anthony Waterer but with broader, darker leaves, and about 4 ft. tall.

15 to 18 in..... .45 each; 4.00 per 10
 18 to 24 in..... .55 each; 5.00 per 10
 24 to 30 in..... .70 each; 6.50 per 10

Spirea Golden. Foliage golden in early spring, bronze-yellow in summer, green in latter summer; valuable for color effect.

18 to 24 in..... .50 each; 3.00 per 10
 2 to 3 ft..... .75 each; 4.50 per 10
 3 to 4 ft..... .90 each; 8.00 per 10

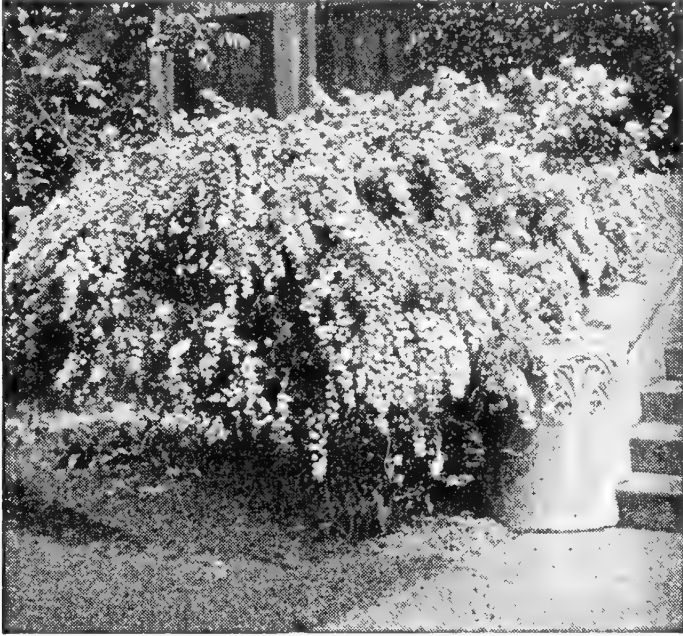
HARDY FLOWERING SHRUBS, continued

Spirea, Thunberg's. Graceful arching branches covered with small pure white flowers in March before the leaves; very narrow light-green leaves 1-1 $\frac{3}{4}$ in. long; grows 3 to 5 ft. high.

18 to 24 in..... .60 each 2 to 3 ft..... .75 each

Spirea Van Houttei. A fountain of white in May with dense drifts of flowers on graceful arching branches; attains 6-7 ft.

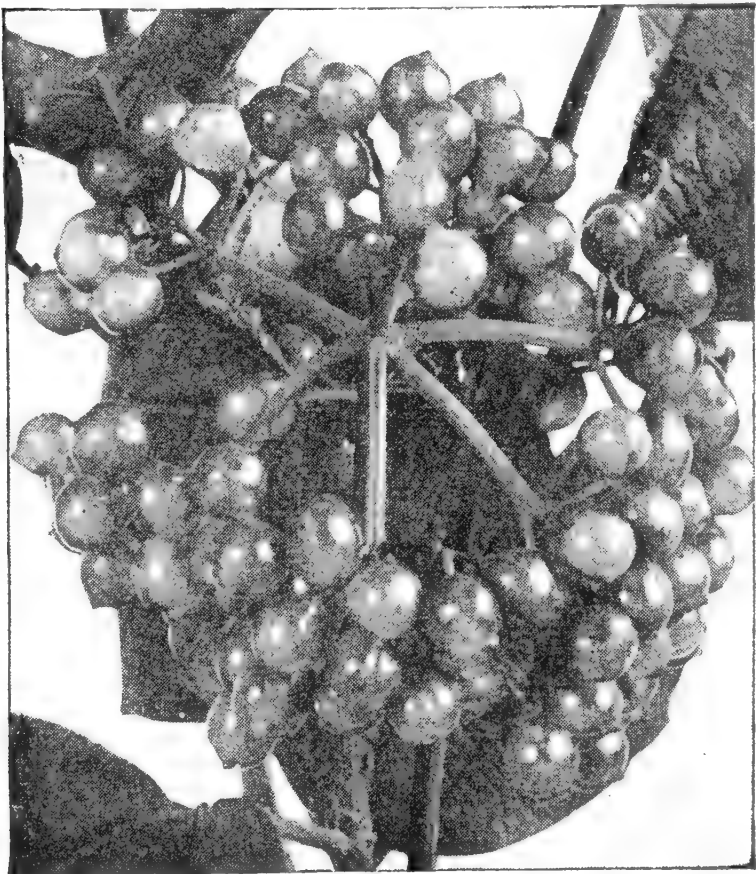
Mail size, postpaid..... .30 each; 2.50 per 10
 18 to 24 in..... .45 each; 4.00 per 10
 2 to 3 ft..... .50 each; 4.50 per 10
 3 to 4 ft..... .65 each; 6.00 per 10



Spirea Van Houttei, a fountain of white in April and May.

Tamarix Hispida rubra. Grows 5 to 6 feet high with feathery green foliage and long plumes of tiny flowers of bright pink, almost red. Prune severely each year.

18 to 24 in..... .45 each; 4.00 per 10
 2 to 3 ft..... .55 each; 5.00 per 10
 3 to 4 ft..... .75 each; 7.00 per 10



Viburnum Opulus—Cranberry Bush (page 12)

HARDY FLOWERING SHRUBS, continued

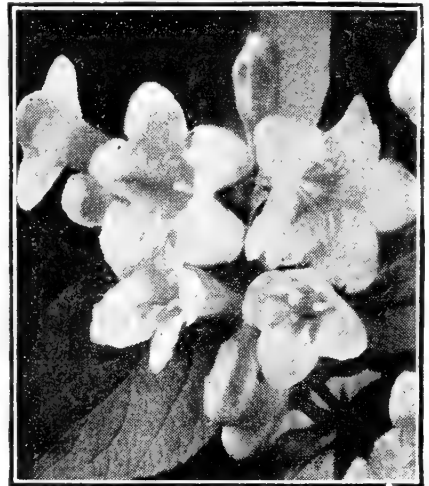
Viburnum opulus; Cranberry Bush. The parent of the Common Snowball, and like it in growth, but the white flowers are in flat clusters in May. The center flowers, which produce the berries, are small, with an outer ring of showy flowers like the individual flowers of the Snowball. The bright scarlet cranberry-like fruits, 3/8 in. long, color in early August, remaining well into winter when not eaten by the birds. Endures partial shade; attains 8 to 12 ft.; prune, if necessary, after blooming.

- 18 to 24 in..... .70 each
- 2 to 3 ft..... 1.00 each

Vitex; New Chaste Tree. Its long spikes of small, rather deep lavender blue flowers at the ends of the branches in July and at intervals till fall, somewhat resemble those of the Butterfly Bush. It makes a distinctive, rather large shrub of graceful, open airy habit, with five-fingered leaves, dark green above, grayish beneath, with an aromatic pungent odor. Not yet in general use, but desirable in the shrub border for contrast.

- 18 to 24 in..... .45 each
- 2 to 3 ft..... .75 each
- 3 to 4 ft..... 1.00 each

Weigela. Very showy in latter May or early June with their trumpet-shaped flowers, clustered thickly along the wide spreading branches. A valuable shrub in sun or partial shade. 5 to 6 ft.



Weigela

Weigela Bristol Ruby. New (Plant Patent No. 492.) This new and outstanding Weigela is hardier and more vigorous than any of the red Weigelas. Soft ruby red to crimson. Grows 6 to 7 ft. Sun or partial shade.

- 2 to 3 ft..... 1.50 each

Weigela, Rose Color. Rose pink; free bloomer.

- 18 to 24 in..... .65 each
- 2 to 3 ft..... .80 each
- 3 to 4 ft..... 1.10 each

Weigela Eva Rathke. Brilliant carmine red, grows about 4 ft. Succeeds in partial shade.

- 18 to 24 in..... .80 each

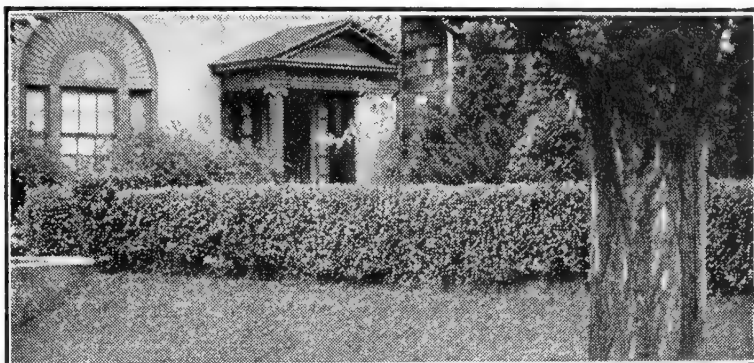
Gift Premiums

With mail orders for \$5.00 or more from this catalog, and received not later than December 30, we will include as a gift, the following:

- Orders from \$ 5.00 to \$10.00—12 Giant Flowering Crocus.
- Orders from \$10.00 to \$15.00—1 each Pink and Red Peony.
- Orders Over \$15.00—8 English Boxwood, 2 yr.

Above premiums to accompany order. We reserve the right to substitute equal value if out at date of mailing.

Privet the Living Fence



Plant 10 to 12 in. apart. Prune back to within 4 to 6 in. of the ground to make them branch low and thickly. The second spring, if not sufficiently thick, again prune back, a little higher. After that prune to keep the hedge the height and width desired, usually about three times a year. Avoid severe pruning after the middle of August.

Privet, Amur River North; Ligustrum amurense. A rapid growing Privet of upright habit, taking the place of California as it is reliably hardy here. Very fragrant small white flowers like tiny lilacs in late May, followed by black berries; seldom blooms when pruned as a hedge.

	10 for	25 for	50 for	100 for
6 to 12 in., mail size, postpaid..	1.00	2.00	4.00	6.00
12 to 18 in.....	1.50	3.00	4.50	8.50
18 to 24 in.....	2.00	4.00	7.50	14.00
2 to 3 ft.....	2.50	5.00	9.00	16.00

Privet, California; Ligustrum ovalifolium. Glossy dark green leaves, retained well into winter.

	10 for	25 for	50 for	100 for
12 to 18 in., mail size, postpaid..	1.25	2.25	3.75	6.50
18 to 24 in.....	1.50	3.00	4.50	8.50

NEW EVERGREEN

Privet, Chinese No. 6—This new privet, introduced by us, is practically evergreen, holding its leaves all winter, and has proved perfectly hardy in our section. Densely foliated with small leaves, it makes an excellent sheared hedge or untrimmed screen where all-year privacy is desired. 6 to 8 feet.

	10 for	25 for	50 for	100 for
18 to 24 in., well branched.....	2.50	5.00	9.00	16.00
2 to 3 ft., well branched.....	3.50	7.00	13.00	25.00

Privet, Ibolium; Ligustrum ibolium. A hybrid of Ibota and California, with foliage similar to California, and well retained to the ground; hardy, and valuable where California winter-injures.

	10 for	25 for	50 for	100 for
6 to 12 in., mail size, postpaid..	1.00	2.00	4.00	6.00
12 to 18 in.....	1.50	3.00	4.25	8.00
18 to 24 in.....	1.60	3.25	5.50	10.00
2 to 3 ft., heavy.....	2.25	4.50	7.50	14.00

only 40¢ a foot

New **HEDGE STAYS GREEN**
ALL YEAR LONG

UPRIGHT EUONYMUS RADICANS

Strong and hardy, thrives in sun or shade. Will make big growth first year. For graceful individual shrubs or fine thick hedge, 10 plants make 10 feet of hedge. Attractive!



AS SHIPPED

10 2-year plants **FOR ONLY \$4.00** POSTPAID

As advertised in National Gardening Magazines by us.

A broadleaf evergreen we sincerely recommend for hedges. See page 20 for more description.

Hardy Vines - NATURES DRAPERY

When planting cut the tops back severely, particularly clinging vines such as *Euonymus radicans* and Boston and English Ivy, as it is the new growth which clings. Twining vines must have a support they can twine around. If the soil near the foundation is poor, replace with good soil.

If by parcel post, add 4c each—not less than 15c per package.

Bittersweet, American. A high climbing vine; orange-yellow seed pods reveal bright red seed in clusters in autumn; thrives in sun or partial shade; twining.

2 yr.50 each

Clematis paniculata; Japanese Clematis. Thousands of fragrant pure white four-petaled starry flowers 1-1½ in. across in September; twining by leaf stems.

2 yr..... .75 each; 3 for 1.95

Honeysuckle, Goldflame. A compact twining vine blooming almost all summer; flowers in clusters, deep rose outside, yellow inside; fragrant after nightfall.

2 yr..... .70 each 1 yr..... .60 each

Honeysuckle, Hall Japanese. Flowers very fragrant, white becoming yellow, in June and at intervals to fall; twining; growth rapid.

2 yr. No. 1..... .50 each; 3 for 1.35

Honeysuckle, Scarlet Trumpet. Flowers trumpet-shaped, scarlet outside, buff within, 1½-2 in. long in clusters at tips of branches; twining.

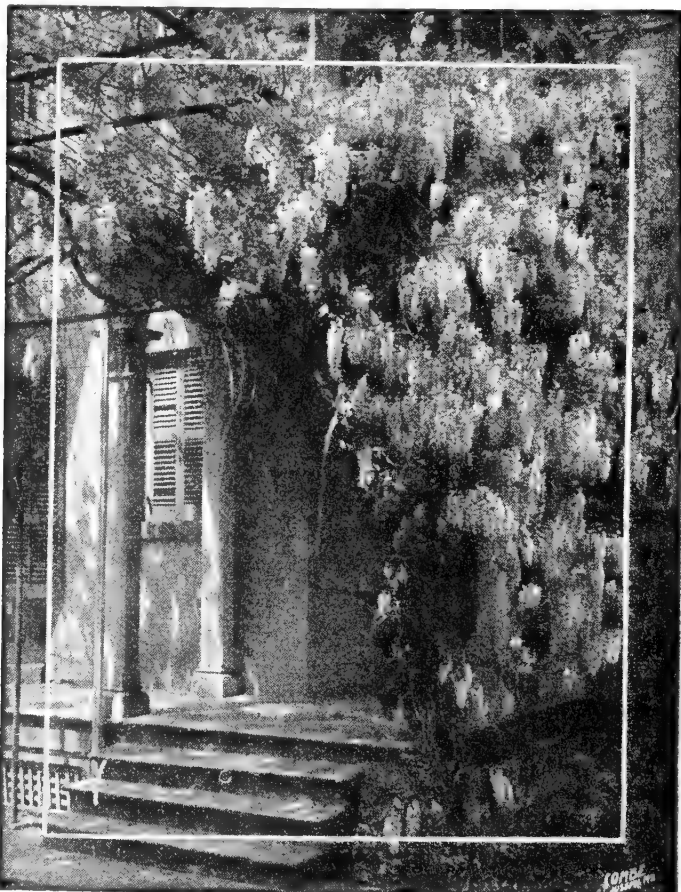
2 yr. No. 1..... .50 each; 3 for 1.35

Ivy, Boston. A graceful vine, excellent for smoothly and closely covering a wall of wood, brick or stone. Leaves three lobed, bright green turning orange to scarlet in the fall.

2 yr. No. 1 plants..... .75 each; 3 for 2.00

Ivy, English. Evergreen waxy leaves; excellent where persistent foliage is desired. Plant on north of building or in shaded areas. Does not do well in full sun.

No. 1 plants from 3-inch pots..... .75 each; 3 for 2.00



Wisteria, Chinese—Next Page.

HARDY VINES, continued



Silver Lace Vine.

Silver Lace Vine. Easy to grow, this rapid growing vine is ideal for covering porch, pergola, fence or soil banks. Foliage glossy green. Thousands of lacy white flowers from mid-summer to fall. Grows 10 to 12 feet a year.

2 yr. plants..... .85 each; 3 for 2.25

Wisteria, Chinese Blue. Clusters of violet-blue flowers, longer than those of the American and not quite so thick on the cluster.

2 year No. 1 plants..... 1.00 each

Wisteria, Chinese White. 2 year No. 1, 1.00 each.

Multiflora Rose for Hedges

Rose multiflora. This thorny rose has proved itself as a worthy plant for hedging. Is a solution for high cost farm fencing—grows into a useful fence in two years, has ornamental flowers and fruits. Excellent wild-life cover; repels livestock and does not require trimming. Space 18 to 24 inches apart in row. Grows 6 to 8 feet high.

Jumbo—Estate Grade—2 yr. 18-24 inch heavy plants grown especially for those wishing immediate hedging effect.

Town and Country Grade—1 yr. 15-18 inch plants, the size recommended for general farm and residential screens and for fencing.

Standard Grade—1 yr. 12-15 inch plants, slightly smaller than the above but well established for utility purpose including fencing, contour planting, wild life covers, etc.

	25 for	100 for	250 for	1000 for
Jumbo—Estate Grade.....	3.25	10.00	20.00	70.00
Town and County Grade.....	1.75	6.00	12.50	45.00
Standard Grade	1.00	3.50	7.50	27.50

Above rose prices postpaid

Sarcoxie Nurseries

Beautiful Evergreens

Specimens every one. Dug with a ball of earth and wrapped in burlap. They are the pick of the nursery row and sure to please. B. & B. indicates Balled and Burlapped.

Our evergreens are grown with plenty of room and are compact, well filled trees of their size and variety. They have been transplanted and root pruned and are well rooted. They are not grown rapidly and soft but are firm and easily transplanted. They are liberally graded.



Evergreen planting at Sarcoxie Nurseries

Arborvitae

Arborvitae, American Pyramidal. Compact and narrowly pyramidal, is covered with deep rich green foliage. Does not require trimming. Grows 8 to 10 ft.

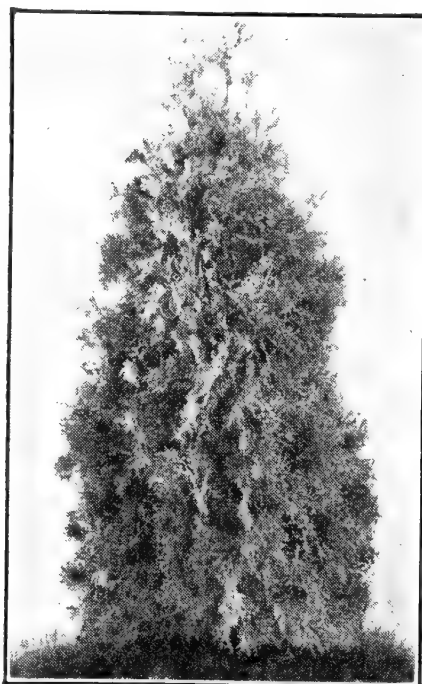
- 18 to 24 in., B. & B. 2.25 each
- 2 to 3 ft., B. & B. 3.50 each
- 3 to 4 ft., B. & B. 4.50 each
- 4 to 5 ft., B. & B. 6.00 each

Arborvitae, Bakers. Upright Chinese type, grows rapidly to about 8 ft. Foliage fern-like, light green.

- 2 to 3 ft., B. & B. 3.50 each
- 3 to 4 ft., B. & B. 4.50 each

Arborvitae, Berckman's Chinese Golden Dwarf. Of superb, somewhat ovate form; dwarf; slow; compact growth, attaining 6 to 7 ft. In spring gold suffused with green; in winter green to bronze green. A gem for both large and small grounds.

- 15 to 18 in. B. & B. 2.50 each
- 18 to 24 in. B. & B. 3.50 each
- 2 to 2½ ft. B. & B. 5.00 each
- 2½ to 3 ft. B. & B. 7.50 each



Arborvitae
American Pyramidal

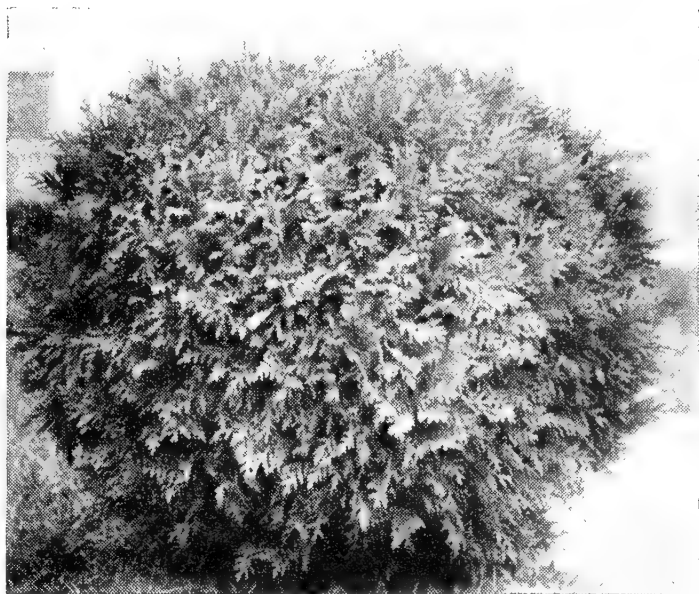
Arborvitae, Bonita. Broadly conical with rounded top; compact dwarf habit growing about 4 ft. high; rich green.

- 15-18 in., B. & B. 3.00 each
- 18-24 in., B. & B. 3.50 each

Arborvitae, Excelsa; Thuja orientalis Excelsa. Of an orientalis type with flattened upright branches, attaining a height of 7 to 8 ft., somewhat oval in form. Foliage dark green.

- 2½-3 ft., B. & B. 4.00 each
- 3-3½ ft., B. & B. 5.00 each
- 3½-4 ft., B. & B. 6.00 each

EVERGREENS, continued



Globe Arborvitae is naturally globular in form

Arborvitae, Woodward Globe. A low compact form, naturally globular in outline, growing 3-3½ ft. high.

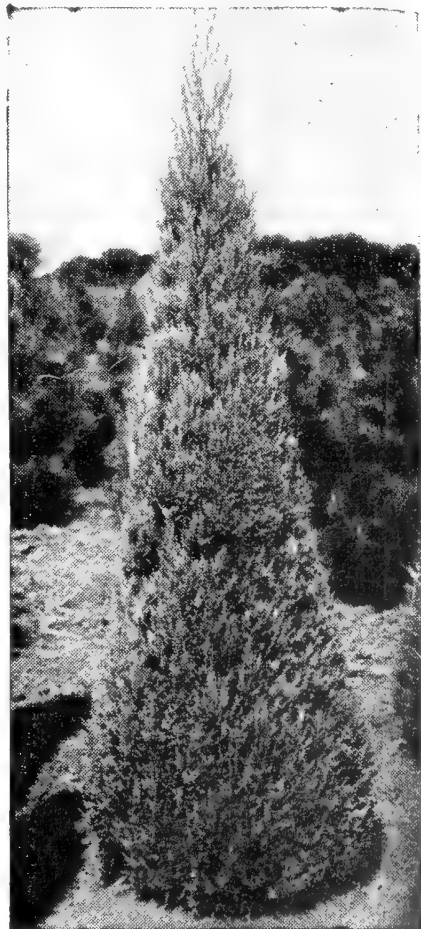
12 - 15 in., B. & B., 1.50 each 18 - 24 in., B. & B. 2.50 each
 15 - 18 in., B. & B., 2.00 each

Junipers

The Junipers vary greatly in size from large trees to low trailing forms, in shape, and in color from deep green to silvery, blue and gold. Some assume a purplish or plum color in winter. The leaves are of two kinds: one sharp pointed and awl-shaped, the other scale-like and overlapping. Some varieties have only one kind of foliage, others both. Red Cedar and its varieties are really Junipers, but are often called Cedars.



2. **Juniper, Irish**
See next page



Juniper, Silver Moon
See page 19

EVERGREENS, continued

Juniper, Blue or Silver; *Juniperus virginiana glauca*. Broadly pyramidal habit, new growth silvery, becoming bluish-green; growth rather rapid, attains 15-20 ft.; fine.

3 to 4 ft., B. & B.. 7.50 each 4 to 5 ft., B. & B.. 9.00 each

Juniper, Cannart. A broadly pyramidal tree attaining 15-20 ft.; deep, rich green, heavily tufted foliage; silver berries on some trees.

3 to 4 ft., B. & B.. 6.75 each 4 to 5 ft., B. & B.. 8.75 each
5 to 6 ft., B. & B. 10.50 each

Juniper, Chinese. See illustration. Narrow, distinctly columnar in habit. Very beautiful deep green foliage with a silvery sheen. Best in sun; does well in partial shade.

3 to 4 ft., B. & B..... 6.00 each
4 to 5 ft., B. & B..... 8.00 each

Juniper, Dundee. Narrowly pyramidal, reaching a probable height of 15 ft.; foliage bluish-green, in winter plum color.

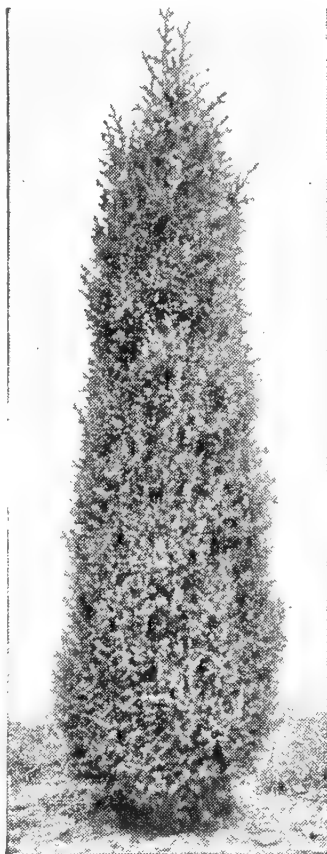
2 to 3 ft., B. & B..... 5.50 each
3 to 4 ft., B. & B..... 6.75 each

Juniper, Henry's. This form of the hardy Virginia Juniper retains its green color all winter. It forms a dense, almost columnar tree and by shearing may be grown 12-15 ft. high with a base of 3 ft. or less.

3 to 4 ft., B. & B..... 6.75 each
4 to 5 ft., B. & B..... 8.75 each

Juniper, Irish. Finely cut bluish-green foliage; a dense, slender, columnar tree; fairly rapid growth, attaining 8 ft.

Mail size postpaid..... .40 each
18 to 24 in., B. & B..... 3.00 each
2 to 2½ ft., B. & B..... 3.50 each
2½ to 3 ft., B. & B..... 4.00 each



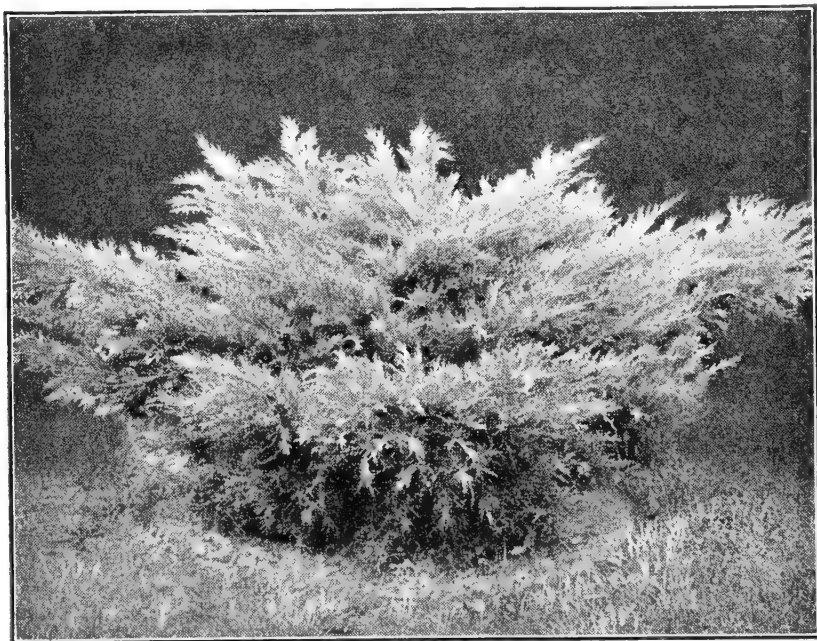
Chinese Juniper

Juniper Keteleeri. A bright green Juniper enduring partial shade; rapid upright growth.

3 to 4 ft., B. & B. 6.00 each 4 to 5 ft., B. & B. 8.00 each
5 to 6 ft., B. & B. 10.00 each

Juniper, Pfitzer. Wide spreading horizontal branches forming a broad, irregular, low tree; foliage light olive-green; fine; thrives in almost every location.

15-18 in., B. & B. 3.50 each 24-30 in., B. & B. 5.50 each
18-24 in., B. & B. 4.50 each 30-36 in., B. & B. 6.50 each



Pfitzer Juniper. Thrives in almost any location.

EVERGREENS, continued

Juniper, Savin. Thickly branched, low and spreading; an excellent unusual tree for foundation planting and to border taller evergreens in a sunny situation.

15 - 18 in., B. & B... 3.25 each 2 - 2½ ft., B. & B... 5.00 each

Juniper, Silver Moon. A compact, narrowly upright Colorado Juniper, unusually beautiful silvery foliage; our own introduction.

2 - 2½ ft., B. & B. 5.00 each 3½ - 4 ft., B. & B. 8.50 each
 2½ - 3 ft., B. & B. 6.00 each 4 - 5 ft., B. & B... 10.00 each
 3 - 3½ ft., B. & B. 7.50 each 5 - 6 ft., B. & B... 12.50 each

Juniper, Spiny Greek. Dense and narrowly conical, tapering to a sharp point; spiny grayish-green foliage.

15-18 in., B. & B. 2.75 each 18-24 in., B. & B. 3.25 each

Juniper, Virginia. The well known native red cedar; foliage sharp-pointed, usually dark green; berries blue; fairly rapid growth. These trees are trained columnar.

3 - 4 ft., B. & B.... 4.00 each 4 - 5 ft., B. & B.... 5.00 each

Juniper, Wintergreen. A new variety of Virginia Juniper. Pyramidal; bright green foliage, retaining this bright green color all winter.

3 - 4 ft., B. & B.... 6.75 each 4 - 5 ft., B. & B.... 8.75 each
 5 - 6 ft., B. & B. 10.50 each

Pines

Pine, Mugho. A many-stemmed, low branched, dwarf dense tree, seldom growing over 5 feet high; dark green needles; excellent for rock gardens and in formal plantings.

12 to 15 in., B. & B..... 3.00 each
 15 to 18 in., B. & B..... 3.50 each
 18 to 24 in., B. & B..... 4.50 each
 24 to 30 in., B. & B..... 6.50 each

Pine, White. A symmetrical pyramidal tree with regular whorls of horizontal branches; needles in 5's, soft bluish-green.

2 to 3 ft., B. & B... 5.00 each 4 to 5 ft., B. & B... 7.50 each
 3 to 4 ft., B. & B... 6.00 each

Spruce

Spruce, Norway. A handsome tree of symmetrical, conical habit; branches spreading, usually drooping with age; dark green needles ½-¾ in. long; beautiful reddish-brown cones.

3 to 4 ft., B. & B..... 6.00 each

Spruce, White. Similar to Norway, except it is more compact and decidedly slower growing. Can be used where medium sized tree is desired. Foliage is light green. An excellent evergreen.

18 to 24 in., B. & B..... 3.00 each
 2 to 3 ft., B. & B..... 4.50 each

RADIO GARDEN TALKS

Those within range of the Joplin, Missouri, Station, WMBH, 1450 on your dial, are invited to tune in each Sunday at one o'clock for a musical program, and a gardening talk by the Sarcoxie Nurseries.

EVERGREENS, continued

Broadleaf Evergreens

Abelia grandiflora. White to light pink; fragrant flowers like small Weigela from early summer till fall. Small, glossy, dark, evergreen foliage. 4 to 6 ft.

- 18 to 24 in., B. & B..... 2.50 each
- 2 to 3 ft., B. & B..... 3.00 each

Euonymus Patens. Evergreen bittersweet shrub. A broad, compact, shapely bush with glossy leathery leaves; small greenish white flowers in summer, followed by scarlet bittersweet-like red fruit remaining on the plant all winter; sun or shade; grows 4 to 6 ft.; excellent for foundation planting; can be trimmed to height desired.

- 15 to 18 in., B. & B..... 1.50 each
- 18 to 24 in., B. & B..... 2.50 each

Euonymus Vegetus. For sun or shade, a spreading shrub-like plant with beautiful glossy light green foliage. By clipping, it forms a dense shrub of any desired shape up to 4 feet high by the same width. Produces bittersweet-like berries in fall. We prefer this evergreen shrub to *Euonymus patens* because it retains its leaves better during the winter, making it truly an evergreen.

- 12 to 15 in., B. & B..... 2.00 each
- 15 to 18 in., B. & B..... 2.50 each
- 18 to 24 in., B. & B..... 3.00 each

Euonymus, upright radicans. UPERAD. This versatile evergreen shrub we sincerely recommend as one of the best dense dark green leaved *Euonymus*. Excellent when used as an evergreen hedge, can be kept low or grown to 3 feet. It is beautiful as a specimen grown unsheared in foundation plantings. If planted close to a brick or stone wall its new growth will finger out and cling to the wall, making a beautiful light covering. If staked, it can be grown as a column to 6 feet.

- | | | | |
|-----------------------|-----------|-----------|-----------|
| 15 to 18 in., B. & B. | 2.50 each | 5 or more | 2.25 each |
| 18 to 24 in., B. & B. | 3.00 each | 5 or more | 2.75 each |
| 3 to 4 ft., B. & B... | 6.00 each | 5 or more | 4.75 each |

Smaller 2-year plants available for border hedges supplied, bare root, \$4.00 per 10, postpaid. See page 13.

Leather-Leaf Viburnum. A vigorous shrub with large, thick leather-like leaves. The foliage resembles *Rhododendron*. Small white blossoms followed by red berries. Sun or partial shade. Grows 5 to 6 feet.

- 18 to 24 in..... 3.00 each

Mahonia aquifolium. Oregon Hollygrape. One of the most handsome broadleaf evergreens with the shiny metallic holly-like leaves. Dark glossy green during summer, becoming purplish bronze to red in autumn. Yellow flowers in summer, followed by purple berries in the fall. Grows 3 to 6 feet.

- 15 to 18 in., B. & B..... 2.75 each
- 18 to 24 in., B. & B..... 3.50 each

Nandina Domestica. A semi-evergreen shrub with numerous upright reed-like stems. Grows 3 to 4 ft., producing large clusters of red berries that are at their best during Christmas season.

- 12 to 15 in., B. & B..... 2.25 each
- 18 to 24 in., B. & B..... 2.75 each

Pyracantha lalandi. Scarlet firethorn. A picturesque upright thorny shrub with box-like evergreen foliage. Has white flowers followed with fiery orange red fruits, lasting well into the winter. Used as specimen shrubs or trained against a wall.

- 18 to 24 in., B. & B..... 3.00 each

KEEP GAY COLORS IN YOUR GARDEN WITH

Sarcoxie Nurseries

Hardy Flowers

Plants by Parcel Post. Plants vary in weight and there are 8 zones. For Missouri and adjoining states please allow 10c for the first and 3c for each additional plant. Any surplus will be refunded.

Six or more of a kind at the dozen rate.

Alyssum saxatile compactum. Basket of Gold. One of the most showy dwarf plants for border or rock garden. Produces masses of bright yellow flowers on stems 10 inches. Blooms May.

25c each

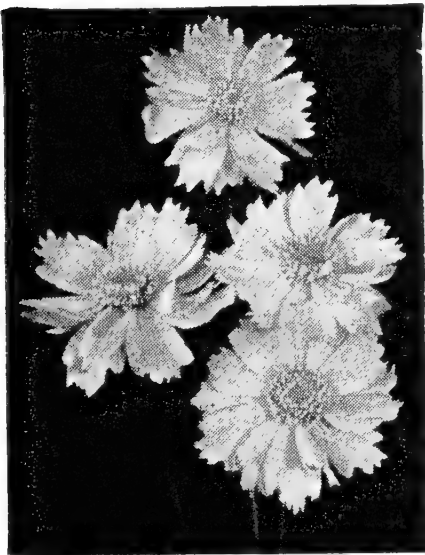
3 for .70

2.50 per doz.

Anchusa Dropmore. Deep blue Forget-me-not-like flowers in latter May; stems 3 ft. high. 30c each, 3 for 80c.

Baby's Breath, Bristol Fairy. Dainty double white flowers $\frac{1}{4}$ in. across in large, loosely arranged clusters in June. Strong plants, 85c each, 2 for 1.50.

Balloon Flower; Chinese Bell Flower. Balloon-like buds, opening into deep blue bell-shaped flowers 2 to 3 in. across, in latter June. 30c each, 3 for 70c. 2.50 per doz.



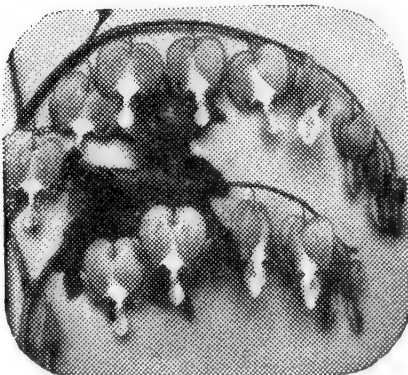
Coreopsis (see page 23)



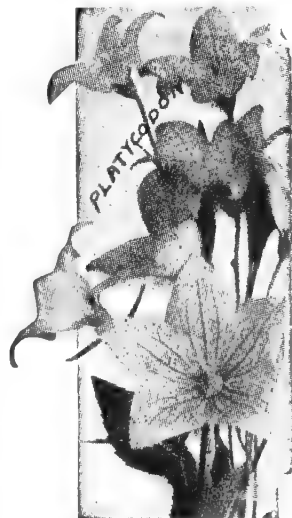
Blanket Flower

Blanket Flower; Gaillardia grandiflora. Flowers 2 to 3 in. across, maroon bordered yellow; late May till fall; easily grown. 30c each, 3 for 70c, 2.50 per doz.

Bleeding Heart. Heart-shaped rosy-carmine flowers tipped white. This old-time favorite should have a place in every garden. Does best in full sun and requires rich, fairly light soil. 60c each, 3 for 1.50.



Bleeding Heart



Balloon Flower

Hardy Garden Chrysanthemums

Chrysanthemums. Hardy "Mums." Every garden needs "mums" to extend the blooming season into autumn. When frost creeps into the air Mums are the only flowers that continue blooming.

We offer the following outstanding varieties:

Algonquin. Very early double yellow. Stocky. Sept. 1.

Betty. Lovely apple-blossom pink, very double flowers on stocky stems. Grows 2 feet. Blooms late Sept.

Carnival. Golden burnt orange. Flowers full double, 3 inches across. Grows 3 feet. Early Oct.

Charles Nye. Large fully double pompon of rich buttercup yellow. 2 feet. Mid-Sept.

Huntsman. New. Vividly brilliant scarlet orange overcast with bronze. Flowers in abundance 3 inches across; late Sept. Grows 30 inches.

Lavender Lady. Queen of them all. Pure lavender. 3 inches. Double. Lusty. Late Sept.

Red Velvet. Most popular red. 3 inches. Double. Oct. 5.

White Wonder. White pompon. Supreme. Perfect ball-shaped blooms. Cream to white. Heavy sprays. Wonderful for cutting. Late Sept.

CUSHION CHRYSANTHEMUMS

Bronze Cushion. Beautiful coppery bronze.

Major Cushion. Greatly improved pink cushion.

Powder Puff Cushion. Best of white cushion varieties.

Red Cushion (Santa Clause). Bright red.

Yellow Cushion. Golden yellow with bronze shadings.

PRICES

45c each

Any 3 for \$1.25

Postage Additional

"MUM" SPECIAL

Any ten of the above outstanding Chrysanthemums, for only

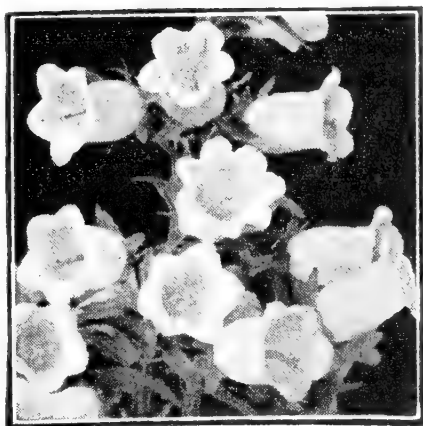
\$3.50

Postpaid

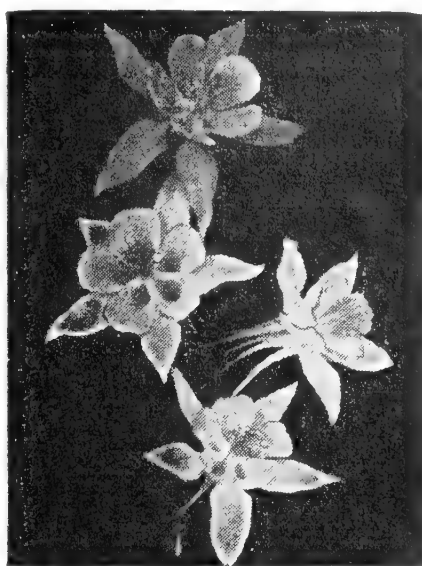


HARDY FLOWERS

Continued



Canterbury Bells



Columbine

Canterbury Bells. Spikes of somewhat bell-shaped flowers 2 inches long on stems 2 to 3 feet high. They give a grand display in May and June. Mulch lightly with straw during winter.

Mixed colors only. 35c each; 3 for 80c; 3.00 doz.

Columbine, Mrs. Scott Elliott's. Dainty spurred flowers in April and May. Mixed colors, 35c each, 3 for 80c, 3.00 per doz.

Daisy, Early Elder. Flowers 2 to 3 in. across on 20-30 in. stems in early May. 30c each, 3 for 60c, 2.25 per doz.

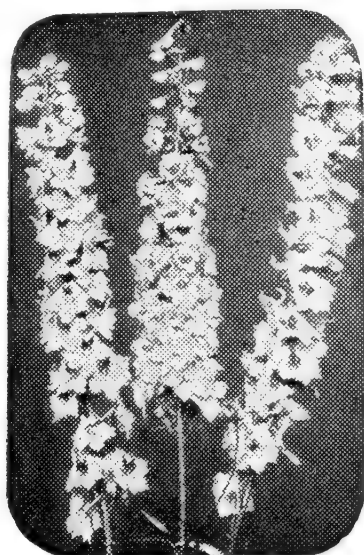
Daisy, Painted; Pyrethrum. Daisies 1½ to 2½ in. across in May on 1 to 2 ft. stems. Can supply pink or red, please state color. 35c each, 3 for 80c, 3.00 per doz.

Daisy, Shasta Alaska. Large, 3 in. or more across, in summer; 15-24 in. stems. 30c each, 3 for 60c, 2.25 per doz.

Delphinium; Perennial Larkspur. Spikes of dainty spurred flowers in May and at intervals during summer if the old flowers are cut off. Plant in full sun, in well drained soil, preferably sandy loam; the addition of ground lime helps.

Delphinium Belladonna Improved. Unrivalled for persistent blooming, the delightful blue of the skies; spikes 1½ to 3 ft. tall. 35c each, 3 for 80c, 3.00 per doz.

Delphinium Bellamosum. A dark blue form of Belladonna. 35c each, 3 for 80c, 3.00 per doz.



Delphinium



Daisy, Early Elder

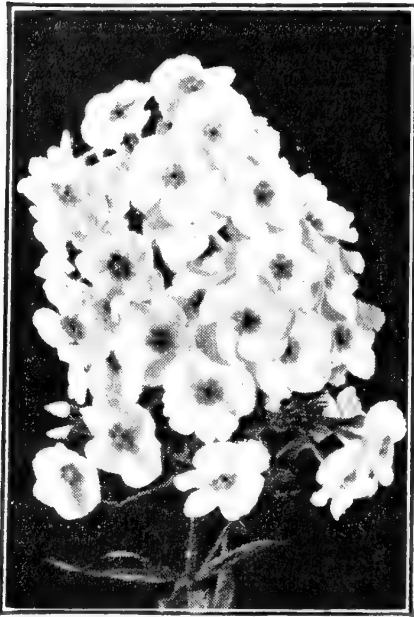
HARDY FLOWERS, continued

Larkspur. See Delphinium.

Lily, Day (Hemerocallis). Ask for special price list.

Pinks, Scotch or Grass. These hardy, fragrant little carnation-like flowers are excellent in borders, in the rockery, or as occasional plants in the garden.

35c each; 3 for 90c; 3.50 doz.



Hardy Phlox

Hardy Phlox

Phlox brighten the garden just after spring flowers are gone and before summer flowers arrive. Plant 12 to 15 inches apart. Best in groups of five or more plants. Grow 1½ to 2½ feet high.

Africa. Brilliant carmine-red with blood red eye.

Blue Boy. Nearest blue of all phlox. A beautiful color and free bloomer.

Daily Sketch. Light salmon-pink, faint carmine eye.

Firebrand. Brilliant cerise, vermilion and orange.

July Glow. Vivid purple-red.

Lillian. Exquisite cameo-pink; large; blooms freely; early.

Mary Louise. Pure white; very large; medium height.

P. D. Williams. Bright pink, deeper eye; large.

R. P. Struthers. Cherry red, darker eye; tall.

Salmon Glow. Pink shaded salmon.

San Antonio. Vivid brilliant carmine shaded prune red.

Thor. Deep salmon pink; excellent.

Our Phlox are field grown. Will bloom first summer.

35c each; 3 for 90c; 3.00 per dozen.

Phlox Subulata Alba. White flowering Moss Phlox. A mat of somewhat moss-like leaves, covered in early spring with white flowers. Grows 4 to 6 inches. 30c each, 3 for 70c.

Sweet William. Gorgeous in mid-May; flat-topped clusters; flowers pure white through shades of pink to deep red; stems 12-18 in.; fragrant. Mixed, 25c each, 3 for 65c, 2.50 per doz.

Violet, Royal Robe. Large, open out flat like a pansy; very fragrant, fragrance detectable many yards away. Deep violet to royal purple; fine. 50c each, 3 for 1.35.

Violets, Sweet Russian. Deep, rich violets; very hardy; easily grown. 25c each, 3 for 60c, 12 for 2.25, 25 for 4.00.



LILIES—Postpaid

Madonna Lilies (Lilium candidum). Northern France grown. Large size, 40c each, 3 for 1.10, 6 for 1.90, 12 for 3.50.

Regal Lilies (Lilium Regale). Inside white with yellow throat, outside pink. 40c each, 3 for 1.00, 6 for 1.90, 3.50 per doz.

Rubrum Lily (L. speciosum magnificum). The most beautiful, deliciously fragrant lily of them all. Ruby-carmine with white margin, blotched deep ruby. Large blooming size bulbs 75c each, 3 for 1.75, 6 for 3.00.

Peonies

Hardy as the oak, they are easily grown. Our Pennant Brand Peonies are good strong three to five eye divisions, the finest plants from the nursery row. Planting instructions packed with each order.

Listed below are a few good standard varieties popular among gardeners. Our more complete list will be mailed on request.

Baroness Schroeder. Large, delicate flesh, becoming white; globular, compact, rose type flowers; fragrant; midseason; blooms freely. 75c each, 3 for 2.00.

Cherry Hill. Deep garnet; large flowers with a beautiful sheen. 1.00 each.

Duchess de Nemours. Superb ivory white, greenish markings toward center, becoming pure white; beautiful in the bud; medium to large; crown type; medium early; strong; vigorous; good stems; blooms freely. 50c each, 3 for 1.25.

Edulis Superba. Beautiful bright, deep rose pink; very fragrant; large; good form; early; crown type; strong; vigorous; blooms freely. 50c each, 3 for 1.25.

Felix Crousse. Brilliant, rich, even dazzling ruby red; large, globular, solidly and compactly built; bomb type; fragrant; midseason; vigorous; blooms freely; fine. 75c each, 3 for 2.00.

Festiva Maxima. Large; pure paper white, some center petals flecked purplish carmine; early; rose type; very fragrant; vigorous; very long, heavy stems. 75c each, 3 for 2.00.

Karl Rosenfield. Rich velvety crimson; very tall, compact grower of stately habit; late. 75c each, 3 for 2.00.

LILLIAN WILD. First certificate award winner 1950 American Peony Society Show. Lovely, delicate, flesh-pink becoming white, very large, compact rose type. Late. Originated and introduced by us.

3.00 each; 3 for 7.00

Mme. de Verneville. Fine, large, compact flowers literally packed with petals; broad white guards, center slightly blush, becoming pure white, flecked carmine; delightfully fragrant; bomb type; early; vigorous; medium height; good stems. 60c each, 3 for 1.50.

Mons. Jules Elie. Immense, globular, very full, bomb type flowers on strong stems; glossy flesh pink shading to deeper rose at base; very fragrant; early midseason; blooms freely. 75c each, 3 for 2.00.

Myrtle Gentry. A beautiful late, light pink fading to nearly pure white with age; a perfect rose form flower; tints of flesh and salmon show throughout the petals; good grower. 2.00 each.

Queen Emma. A very large, very full, fragrant, bright, light pink rose type flower; midseason to late; blooms freely; compact growth; the flowers keep and ship well. 60c each, 3 for 1.50.

Sarah Bernhardt. Apple-blossom pink, the petals tipped white; compact, semi-rose type; fragrant; late midseason; 75c each, 3 for 2.00.

Therese. Very large, rich satiny pink, center becoming lilac white; compact, rose type; very fragrant; midseason; medium tall. 75c each.

When Ordering Peonies, Add Postage—20c for first plant, 5c for each additional plant.

Iris

THE ORCHID OF THE GARDEN

Plant lots of Iris for their grand and royal colors, their beauty of form and texture. Mass them at the borders of the lawn or among shrubbery. Plant along walks or drives. A more complete list of varieties available for a postal card.

Alta California. A very large, tall canary yellow; well branched; fragrant. 25c each; 3 for 65c.

Autumn King. Standards violet blue, falls deep reddish purple; large; vigorous; blooms in May and a lighter crop in the fall. 25c each; 3 for 65c.

California Gold. Large; brilliant deep yellow; of excellent form; tall; blooms freely; well branched. 30c each; 3 for 75c.

Cheerio. Large; standards bronzy light purple tinged reddish; falls deep velvety ruby red, almost mahogany; fragrant; midseason. 25c each; 3 for 65c.

China Maid. An excellent Iris in shades of pink with a slight trace of copper and lilac smoothly blended. An Iris of large size and high quality. 40c each; 3 for 1.00.

Elmohr. Very rich red-violet; large flowers; free blooming on tall stems. .50 each; 3 for 1.00.

Garden Magic. A rich, vivid, glowing red; good form; blooms late. 50c each; 3 for 1.00.

Great Lakes. Pure clear blue with almost white beard. 50c each; 3 for 1.00.

Indian Chief. Very large; standards suntan tinged lavender and pink, falls velvety crimson; fragrant; tall; low and well branched; midseason. 30c each; 3 for 75c.

Indian Hills. Large; standards ruffled bright purple, falls deeper shaded red; fragrant; tall; well branched. 30c each; 3 for 75c.

Lilamani. Velvety, blackish violet self. One of the very best of the "blacks." Gives an outstanding effect in garden or border. 30c each; 3 for 75c.

Morning Splendor. Fine; very large; standards deep lavender-violet, falls velvety reddish purple; good substance; fragrant; midseason; tall. 25c each; 3 for 65c.

Morocco Rose. Pink-rose self with a soft yellow glow at the heart; bright gold beard. 40c each; 3 for 1.00.

Ola Kala. Very dark yellow self; medium large ruffled flowers on 36-inch well branched stems. 1.00 each; 3 for 2.00.

Pink Satin. Large; standards decided pink, tinged lavender, falls a little deeper; attractive; tall. 25c each; 3 for 65c.

Prairie Sunset. A mingling of sunset colors. 60 each; 3 for 1.25.

Seminole. Standards violet-red, falls velvety mahogany-red to deep crimson; one of the deepest, brightest reds; 2-2½ ft. 25c each; 3 for 65c.

Snow White. Excellent medium priced white. 25c each; 3 for 65c.

Southland. A new deep golden yellow variety with large flowers of fine form and heavy substance on well branching stalks. 35c each; 3 for 75c.

Wabash. With clean white standards and bright purple falls. The flowers are large and are borne on well branched stalks almost 40 inches in height. 40c each; 3 for 1.00.

Postage additional on above Iris. Please add 3c per plant; not less than 15c per packages.

*Peonies - Iris and
Hemerocallis
(Daylilies)*

... Special Offers ...

**OZARK GARDEN
IRIS
COLLECTION**

Catalog Value \$3.75
individually la-
beled:

Twelve good fa-
vorite Iris varieties

Black Wings
California Gold
China Maid
Dauntless
Great Lakes
Indian Chief
Lilamani
Morning Splendor
Pink Satin
Rameses
Red Dominion
Snow White

POSTPAID FOR
ONLY.. **\$3.00**

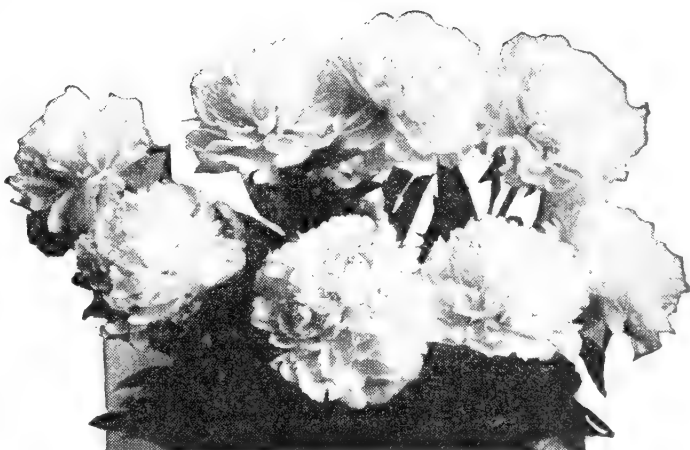


**PEONY
COLLECTION
A**

\$3.70 VALUE

6 good named
varieties,
early to late,
assorted
color.
Labeled.

All 6 for
only **\$3.00**
Postpaid



PEONY COLLECTION B \$7.00 Value

12 good named varieties, early to late, assorted colors.
Each labeled.

All 12 for only **\$5.00** Postpaid

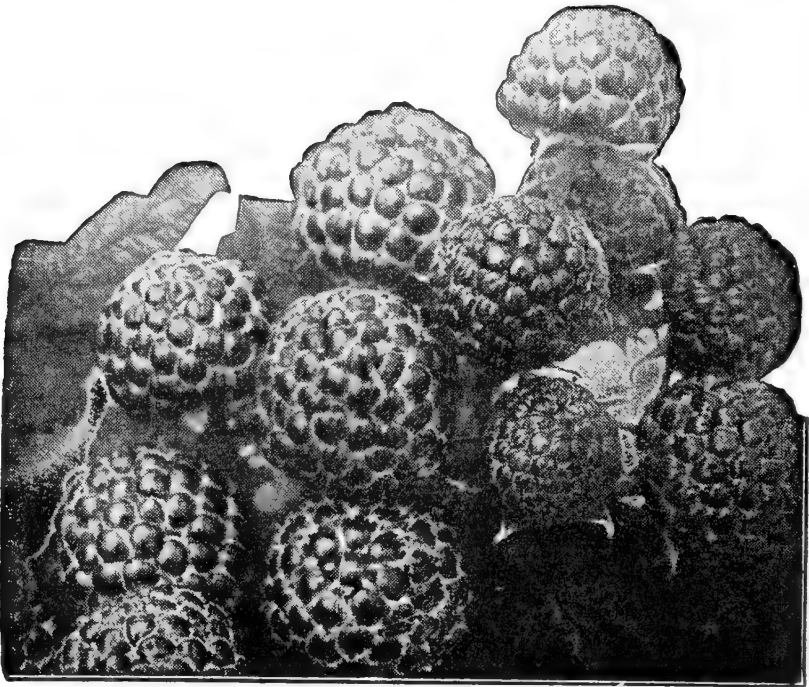
HEMEROCALLIS (Daylilies) SPECIAL

12 popular varieties—one each of those listed in our summer circular. A good assortment of colors and varieties selected to bloom from June through September. Labeled.

All 12 for only **\$5.00** Postpaid

Send for our more complete color folder of Peonies, Iris,
Hemerocallis and Bulbs.

Small Fruits



Black Raspberries

Blackberries

Early Harvest. Medium size but juicy; sweet hardy; very early. 1.25 per 10, 2.75 per 25, 50 or more at 9.50 per 100.

Eldorado. Medium to large, oblong-conical; juicy, sweet, mid-season. 1.25 per 10, 2.75 per 25, 50 or more at 9.50 per 100.

Thornless Boysenberries

No new fruit has caused such a sensation. Imagine a cross combining the delicious flavors of Loganberry, Blackberry and Raspberry. You get just that in this new fruit. So large that only a few berries are required to fill a pint. Fruit $1\frac{1}{2}$ to 2 inches long, wine-red in color. Bears good crop the second year. 3 for 90c; 10 for 1.75; 25 for 3.25; 50 or more at 12.00 per 100.

Currants for Jelly

Red Lake. should have partial shade or a northern slope. 2 yr. 50c each, 3 for 1.25, 6 for 2.40.

Gooseberries

Houghton. Medium size but bears profusely; resistant to mildew; a northern slope or slight shade is best. 2 yr., No. 1, 50c each, 3 for 1.35, 10 for 4.00.

Raspberries

50 or more of a kind at 100 rate.

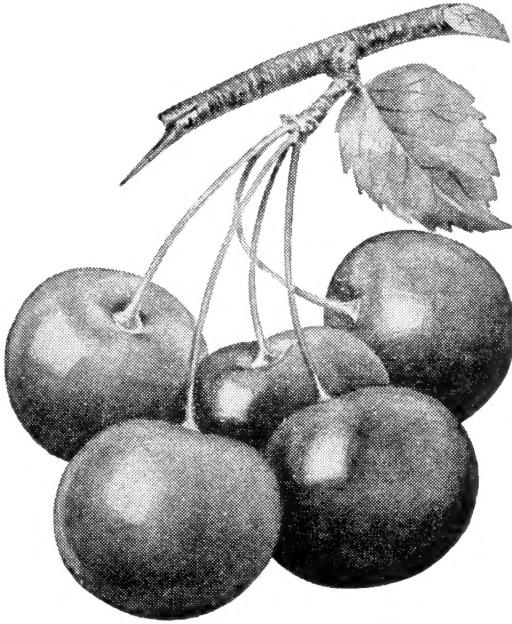
Cumberland. One of the best blackcaps; large, firm; excellent quality; early to midseason; hardy, vigorous, productive; plant 4x7 ft. 1.50 per 10, 2.75 per 25, 50 or more at 10.50 per 100, 500 or more at 80.00 per 1000.

Latham. Large; brilliant red; hardy, productive. 1.75 per 10, 3.50 per 25, 11.00 per 100.

Strawberries

In Southern Missouri and farther north strawberries usually give better results when planted in the spring. They will be quoted in the spring catalog, or by letter on request.

Fruit Trees



Cherries bear young.

Cherry Trees

XX size, 2 year,

11/16 in. caliper up.

Early Richmond (May Cherry). Bright red; bears May, June.

Montmorency. A week later than Early Richmond. Dark red.

Each 1.50, 5 at 1.40 each.

Apricots

Superb. Large; yellow; ripens between cherries and peaches.

Prices of Apricots:

XX size, 11/16 in. caliper, about 4 to 6 ft.....	Each	5 at
	1.95	1.80

Peach Trees

Prices of One-Year Peach:

XX size, 11/16 in. caliper up, about 5 to 6 ft.....	Each	5 at	25 at
	1.00	.90	.80

Belle of Georgia. Very large; white, red cheek; flesh white, firm, juicy, good; freestone; mid August; productive.

Champion. Large; white, red cheek; freestone: flesh white, sweet, juicy, rich; early August; one of the hardiest peaches.

Golden Jubilee. A new large early peach; freestone; yellow flesh and has a distinct blush; fine quality. Highly recommended by leading authorities.

Elberta. Very large; yellow, crimson cheek; flesh yellow, firm, juicy, good; freestone; mid August; productive.

Hale Haven. Large; yellow; freestone of high quality, ripening about ten days or two weeks ahead of Elberta.

J. H. Hale. Large; yellow with red cheek; fine grained; a little earlier and more round than Elberta.

Nectarine

Nectarine, Surecrop. 11/16 in. caliper. 1.75 each.

Pear Trees, Standard

Prices of Pears:

XX size, 2 year; 11/16 in. caliper, about 4 to 5 ft.. .. .	Each	5 at
	1.50	1.35

Bartlett. Large; good quality; latter August.

Douglas. Golden yellow; tender, juicy; blight resistant.

Lincoln. Large yellow. High quality. Bears young.

Plum Trees

XX size, 11/16 in. caliper. 1.75 each, 5 at 1.60 each.

America. Large; yellow with red cheek; juicy; cling; hardy; productive; bears young; one of the most reliable.

Burbank. Large, cherry red, flesh amber yellow, very sweet, high quality, productive.

Premier. One of the largest plums. Bright red, flesh yellow, juicy, tart. Small seed. Very productive.

Sapa. Early; rich dark purple-red skin; very hardy; bears young; medium size.

Apple Trees

Prices of Two-Year Apple:	Each	5 at	25 at
XX size, 11/16 in. caliper up, about 5 to 6 ft.....	1.00	.90	.80
Standard size, 7/16 to 9/16 in. caliper, about 3½ to 4½ ft.....	.80	.70	.60

Any 5 or more at the 5 rate.

Grimes Golden. Beautiful yellow; fine quality; Oct.-Dec.

King David. Jonathan-Winesap cross; dark wine red.

Liveland Raspberry. Large red striped, tart and juicy. A hardy young bearer. Ripens early July.

Maiden Blush. A large, clear yellow autumn apple.

Red Delicious. Colors early and is red almost all over.

Red Jonathan. Deep red; fine quality; October and later.

Red Stayman Winesap. Deeper red than the old Stayman; firm, juicy, subacid; good; keeps late; bears young.

Winesap. Bright deep red; flesh yellow; very rich, firm; very juicy; sprightly subacid; very good; winter.

Yellow Delicious. Large; golden yellow; late winter; excellent.

Yellow Transparent. Yellowish-white; fine grained; juicy; sprightly subacid; mid-June; hardy; very young, abundant bearer.

Grape Vines - 2 Year No. 1

Concord. Large; the most popular black grape; juicy; sweet; hardy; productive; vigorous; mid to late August.

Fredonia. Black; bunch and berries large; good flavor; productive; early; has given good results in Missouri.

Moore Early. Black; large; valued for size, hardiness; productivity and season, about 2 weeks before Concord.

Niagara. Greenish-white to pale yellow; sweet; productive.

Prices of Grapes:	Each	5 at	25 at	50 at
Concord, 2 yr. No. 1.....	.30	.25	.22	.20
Fredonia, 2 yr. No. 1.....	.30	.25	.22	.20
Moore Early, 2 yr. No. 1.....	.40	.35	.30	.28
Niagara, 2 yr. No. 1.....	.40	.35	.30	.28

Asparagus

Mary Washington. Large; productive; resistant to rust; an excellent variety.

1 yr..... .70 per doz.; 1.25 per 25; 3.75 per 100

2 yr. heavy..... .90 per doz.; 1.75 per 25; 4.25 per 100

Rhubarb or Pie Plant

Large, tender, delicately flavored stalks; productive. 30c each, 3 for 60c, 1.90 per doz.

Please allow sufficient postage if ordered by Parcel Post. Postage is additional except on items priced postpaid. We refund every cent not used.

Missouri customers please add 2% Sales Tax as required by state law.

Our Guarantee

We offer only first grade stock and guarantee every plant we ship to be of first quality, sturdy and free from disease and to reach you in perfect condition.

We exercise care and diligence to have our varieties true to label and sell all our stock with the express guarantee that we will, on proper proof, replace any that may prove otherwise, or refund the amount paid for the same, which shall constitute the extent of our liability.

Parcel Post-Express-Freight

Prices herein are not prepaid unless quoted postpaid. Manufactured articles can be of uniform size and weight. Nursery stock varies, even the season when shipped sometimes making a difference. If we prepaid the larger sizes we would have to estimate sufficiently so we wouldn't lose on the average, and most of the time you would be paying too much.

Parcel Post. Plants (except Evergreens) up to 5 ft., can be mailed. Please allow sufficient postage, we refund every cent unused. Add 15% to orders under \$4.00, 10% over that, except where indicated postpaid.

Express. Best for larger orders, especially if bulky.

Freight—Truck or Railroad. Best for Evergreens of large size. Truck freight leaves our plant twice daily and has proved very satisfactory for bulky orders.

FREE

WITH EVERY MAIL ORDER OF
\$5.00 OR MORE WE SEND GIFT
PREMIUMS—SEE PAGE 12.

INDEX

Asparagus	30
Evergreens	15-20
Fruits	28-30
Hardy Flowers	21-27
Hedge Plants	13
Iris	26
Lilies	24
Peonies	25, 27
Perennials	21-27
Privet	13
Rhubarb	30
Rose Multiflora	15
Shade Trees	2-4
Shrubs	5-12
Vegetables	30
Vines	14

SARCOXIE NURSERIES
PEONY FIELDS

WILD BROS. NURSERY CO.
SARCOXIE, MISSOURI

Sec. 34.66 P. L. & R.

U. S. POSTAGE
PAID
SARCOXIE, MO.
Permit No. 2

NOW IS THE TIME
TO
ORDER

FRUITS - TREES - SHRUBS
EVERGREENS & PERENNIALS

POSTMASTER: Notify sender (Form 3547) if addressee has moved; give new address. Return if unknown. Postage for all guaranteed. Catalog 3rd class. May be opened for postal inspection.

Librarian
U. S. Dept. of Agriculture
Washington 25, D. C.