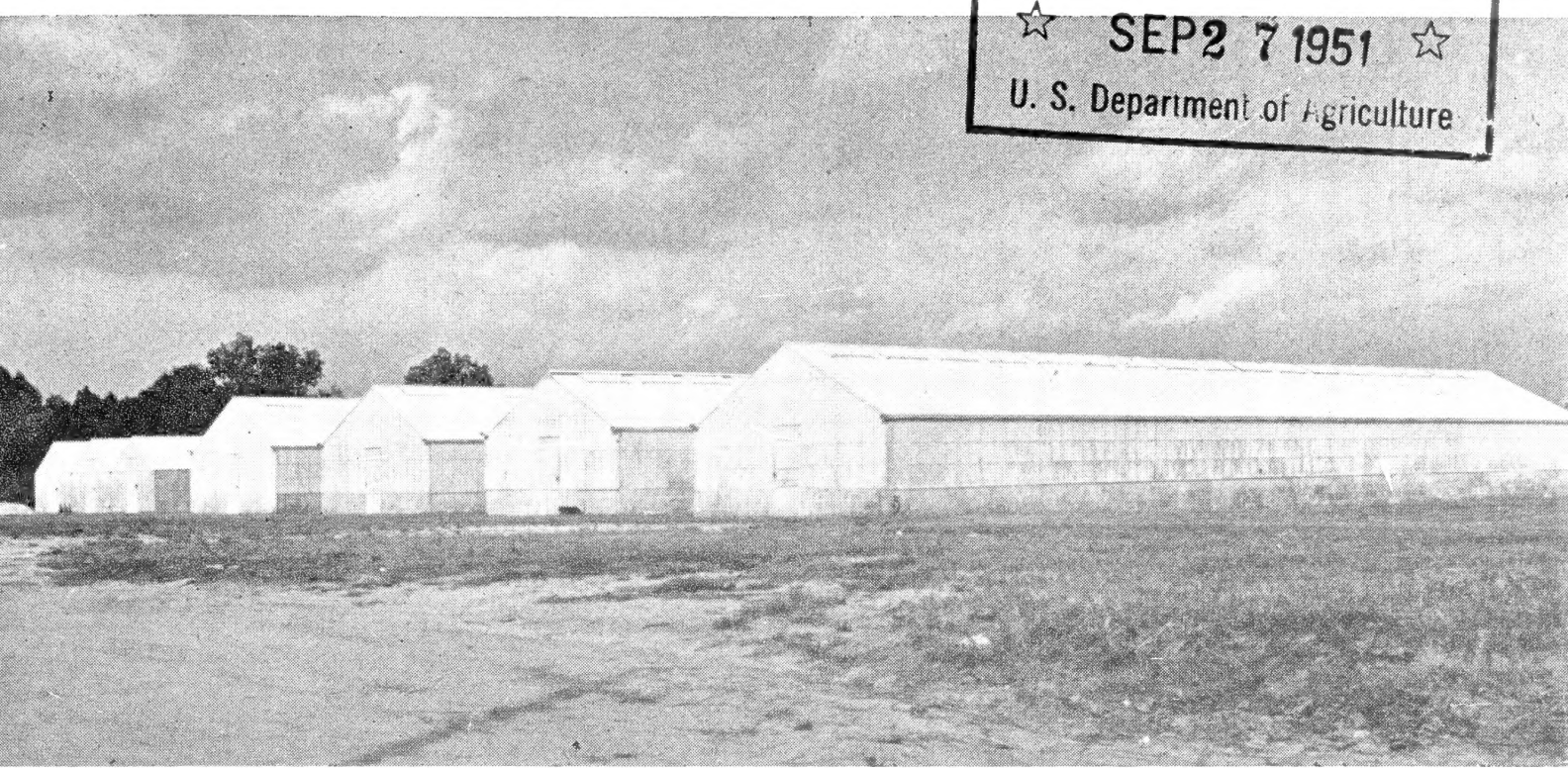


Historic, Archive Document

Do not assume content reflects current scientific knowledge, policies, or practices.

62.01

LIBRARY
RECEIVED
★ SEP 27 1951 ★
U. S. Department of Agriculture



Blackwell Nurseries, Inc.

Semmes, Alabama

The Center of the Azalea and Camellia Industry of America



FALL 1951 • Wholesale Only • SPRING 1952



BLACKWELL NURSERIES

SEMMES • ALABAMA

WHOLESALE ONLY

Fall 1951 • Spring 1952

SHIPPING POINT
SEMMES, ALA.

Telegraph and Telephone
Mobile, Ala., 6-9937

Member of American Association of Nurserymen and Other State and Local Organizations to Promote the Cause of the Industry

Our nurseries are located at Semmes, on highway 42, fifteen miles northwest of Mobile. We have over 14,000 square feet of greenhouse space for propagation only. All these greenhouses are equipped with concrete benches. We have more than 60,000 square feet of hotbed space for growing small plants in. We use most of these for Azalea liners, all equipped with an automatically controlled heating system. We have nearly seventy acres under overhead irrigation where we grow thousands of liners as well as field-grown Azaleas and Camellias. We would be happy to have you visit our nursery and will always have someone to show you around.

Our Business Terms

Prices. All prices are net and when cash accompanies the order, no charge will be made for packing. Otherwise a charge will be made for packing based on cost.

Carload or truck orders, where we do not have to crate the plants, will carry a 20% discount from catalog prices on B&B stock providing cash accompanies order. We cannot allow this discount otherwise. This discount not allowed on liners or any bareroot stock.

Charge accounts. From unknown persons who have not established credit with us, we ask for well-known trade reference and time for investigating. All accounts are due on receipt of invoice unless other arrangements are made when order is filled.

C.O.D. Shipments. Must be accompanied by 25% deposit and will be considered as cash shipments. If you want us to hold certain items for you, we require a deposit of 25%.

Shipments. Please specify by what method you want your order shipped. We will endeavor at all times to send out all orders as near the date specified as possible and will do everything in our power to insure satisfactory delivery to our customers, but our responsibility ceases upon delivery to carrier in good condition, insofar as damages in transit are concerned. However, we are here to please our customers and will at all times do all we possibly can to help, should you have to file claim for any damages.

If you have any reason to complain, or if there is any mistake in the order, please let us know at once so that we can rectify the mistake.

It is to be thoroughly understood that we accept any and all orders with the provision that they shall be void, should any injury befall our stock over which we have no control. All orders are subject to any new Government regulations.

Reference. As to our standing and responsibility, we refer you to any bank or business house in Mobile, as well as the better known nurserymen and florists in this country.



20% "CASH AND CARRY" Discount Allowed on All B&B Stock.

AZALEAS •

THIS year we have a wonderful lot of Azaleas to offer, mostly field grown plants. We have increased the area of our sprinkler system and with the addition of this water we are growing some beautiful plants. They have a wonderful root system and the foliage is excellent.

Azaleas can be moved almost anytime during the year, but for best satisfaction it is much better to get your plants before they start blooming. You will get the benefit of the blooms the first year and they will make a better display for your clients.

For nurserymen and growers we are offering this year a million and a half Azalea liners. We keep them growing all winter in our heated frames in specially prepared soil. They are well rooted and branched for spring delivery. We usually start shipping these liners about the last week in March, but for greenhouse operators where space is available it is better to get them in early February. Because of the quality of our plants and the very low price at which we are offering them, we are usually booked up early in the season. We urge you to order early.



Hot beds where we grow Azalea liners. These beds are equipped with a hot water heating system for protection.

AZALEAS •

KURUME AZALEAS

These are most popular, as they are used extensively as pot plants and also in landscaping for borders as well as mass planting in beds. As a pot plant there is nothing we know of that is superior. We urge you to try a few if you are not already using them.

Christmas Cheer. Hose-in-hose; small deepest red. Small foliage; compact growth.

Coral Bells. Hose-in-hose; small, bell-shaped flowers of a beautiful shade of pink. Small glossy foliage; very compact growth. The favorite of florists for pot culture. We have excellent liners of this variety.

Double Mauve. Hose-in-hose; light mauve flowers entirely cover the plant. Its compactness makes it very good for florist use.

Gardenia Supreme. Hose-in-hose. Beautiful white. Fast grower.

Hexe. Hose-in-hose; large, deep red. Excellent dwarf compact growth. Very much in demand.

Hexe d' Saffalare. Hose-in-hose similar to above except larger. New and very popular.

Hiawatha. Hose-in-hose. Large, dark red. Compact plants.

Hinodegiri. This is a very popular bright red variety. The blossoms cover the plant in such a manner that you can hardly find a leaf when in full bloom. Compact, slow growth. Very desirable as a pot plant.

Mme. Pericat. Hose-in-hose; large light pink flower. Late bloomer, fast grower and very showy.

Mme. Pericat Sport. Beautiful rose - pink sport of Mme. Pericat.

Pink Pearl. Hose-in-hose; pale pink, fading white at center. Profuse bloomer. Early.

Salmon Beauty. Hose-in-hose; large, salmon color. Compact growth. Very showy plant and an excellent variety for pot culture.

Snow. Hose-in-hose; pure white flowers cover the plant. Fairly large, dark green leaves. Very popular with the florist.

Sweetheart Supreme. Salmon-pink. Keeps well. Very fine.

PRICES OF KURUME AZALEAS

	100	1000
Liners	\$11.00	\$100.00
3 to 5 in. compact	30.00	
4 to 6 in. compact	40.00	
6 to 8 in. compact	55.00	
8 to 10 in. compact	75.00	



Block 2-year field grown Camellias

20% "CASH AND CARRY" Discount Allowed on All B&B Stock.



A block of Indica Azaleas in open field.

INDICA AZALEAS

These Azaleas are the most showy of all in the gardens of the South. The blossoms are larger and the plants grow much faster, making very large specimens in a few years' time. They are wonderful shrubs for landscape use, with dark green foliage all during the year and beautiful flowers in the spring. You can be assured that when you plant an Indica Azalea garden for your client, if you do a good job you will have his gratitude for all time. Then, too, these plants can be grown in much colder climates than was thought a few years ago.

Alba Maculata. Late white. Very bushy grower.

Fielder's White. One of the best whites among the Indicas. Dark green, hairy foliage; excellent growth.

Fisher Pink. Light pink. Blooms about the same time as Pride of Mobile. Very good, compact growth.

Formosa. Large purple flowers, somewhat lighter than Phoenicia. Large, thick foliage; probably the fastest grower of all the Azaleas.

George L. Taber. A sport introduced by Glen Saint Mary Nurseries. Fast grower; light green foliage. Pink and white variegation.

Judge Solomon. A pink sport of Formosa. Same growth and blooming habits.

King's White. Mid-season to late bloomer. Large white and very good.

Mrs. G. G. Gerbing. New all white sport of Geo. L. Tabor, brought out by Gerbing Camellia Nursery. A very good white that is much in demand. Quantity limited.

Phoenicia. Light purple. Dark green foliage and fast, compact grower.

President Clay. Orange-red. Fast, upright growth; midseason bloomer. Very good.

Pride of Mobile. Beautiful watermelon pink—probably the most popular of all Indicas. Large foliage; fast growth, similar to that of Formosa. In Mobile there are plants nearly 100 years old that are still blooming profusely. The blooms so completely cover the plants at the height of the season that scarcely a leaf is to be seen.

Salmon (Lawsal). Medium-sized, salmon-colored flowers. Good upright growth. One of the best; known to nurserymen in the South as Daphne Salmon.

PRICES OF INDICA AZALEAS

Liners—April-June delivery	10	100	1000
		\$10.00	\$90.00
8 to 10-in. Budded Plants		\$4.00	35.00
10 to 12-in. Budded Plants		5.50	50.00

20% "CASH AND CARRY" Discount Allowed on All B&B Stock.

Camellia Japonica

THESE beautiful aristocrats of Southern gardens are each year gaining more in popularity than any other shrub known. The various *Camellia* shows that are being held each season all over the country bear evidence of this, and part of the credit for the popularity of the *Camellia* is due to these shows.

There is and always will be quite a lot of argument in regard to *Camellia* names. We are listing each variety by the accepted name used by the majority of growers. No doubt some of these will be changed in the years to come as some are being changed now, and when this happens we will always list each variety by as many names as we know it to be sold under. This will prevent you from duplicating varieties.

We are trying to grow all of the better varieties, and not trying to introduce a lot of new seedlings that are good only for understock. We hope to increase our list of varieties as long as we can find new ones to buy that we believe are worth growing. We use several thousand plants each year for understock and we also sell plants for understock, so we use the poorer flowering sorts for this purpose. We also use many *Camellia Sasanqua* for understock and find it sometimes works better than *Camellia Japonica*.

This year we cannot recommend too highly our lining-out grade—8 to 12 inch. An illustration of these will be found on page 6. These plants are about the finest we have ever grown and we feel that you should get them as early as possible.

Although we plant this size direct to the field and in open beds under our sprinkler system, it might pay you to grow them in partial shade similar to lathhouse for one year.

All of our *Camellias* are transplanted many times and have a wonderful root system. We are sure you will find none better anywhere, and once you use some of our plants you will like them. We know you can please your customers with them.

We are listing our *Camellias* in groups for convenience in pricing. The scarcity, demand, and quality of the blooms determine the group they are listed in. We are not in position to offer liners in all groups, but will as soon as our stock will permit.

Standard Camellias

GROUP I

Alba Plena. One of the oldest and best-known Camellias. A pure white, full, double sort that is preferred for corsage use. Very susceptible to cold damage. Liners only.

Brilliant. Local name. An excellent variety. Large, very double, bright red. Compact grower with dark green foliage.

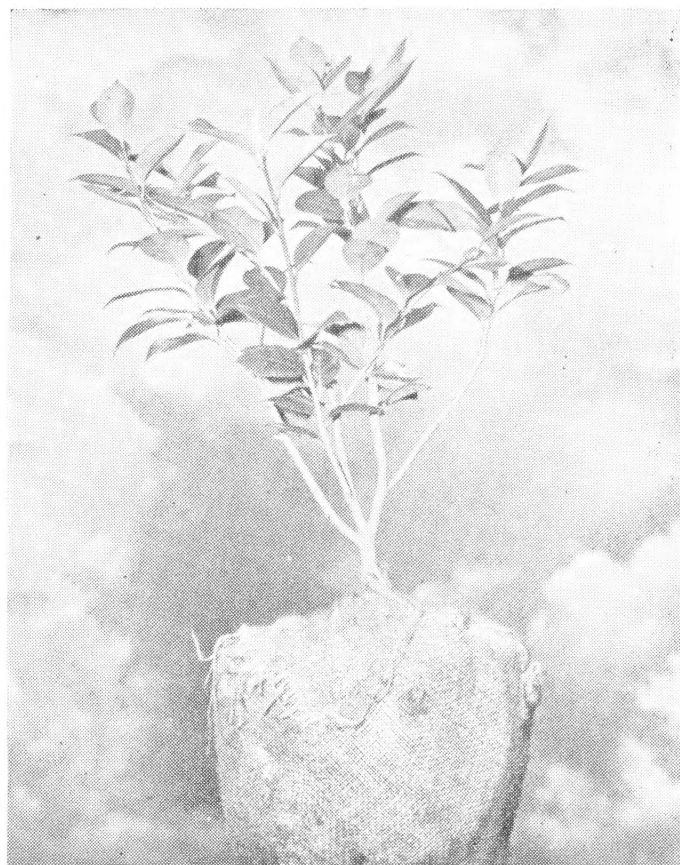
Elegans (Chandleri). Rich cherry-red with white variegation. Large flower, 5 to 6 inches in diameter, some of loose peony form and others with thick peony flowers, all on the same plant. Leaves are rich shiny green.

Governor Mouton. Blood-red, often with white blotches. Spreading growth, with twiggy branches.

Herme. Large, semi-double to peony-form flowers of pink, white and red variegation. Faintly fragrant; an excellent garden variety.

Kumasaka. Large, semi-double, deep pink, showing stamens. Good growth and bloom.

Monarch. Very large, deep pink with white variegation. The stamens are so intermixed that often one single flower will resemble a bouquet. Very compact; dark green foliage.



18 to 24 in. Branched B&B



18 to 24 inch Specimen Camellia, B&B

Pink Perfection (Frau Minna Seidel). Very popular shell-pink that is early and blooms very freely.

Prince Eugene Napoleon (Pope Pius IX). Large, double red flowers. Good growth; light-colored foliage. Very popular.

Professor C. S. Sargent. Crimson flowers of peony form. Excellent grower, early blooming.

Victor Emmanuel. Unusually large, peony form, very deep red. Excellent grower and late bloomer. We have some exceptionally good buys in this variety.

PRICES OF STANDARD CAMELLIAS, GROUP I

	10	100
6 to 8 in. liners		\$30.00
8 to 12 in. liners		40.00
18 to 24 in. light, B&B	\$17.50	
18 to 24 in. specimen, B&B	37.50	
24 to 30 in. specimen, B&B	50.00	

With the exception of the liners, the above are field grown and not lath house stock.

20% "CASH AND CARRY" Discount Allowed on All B&B Stock.



Lath house scene showing thousands of our Camellia liners.

GROUP II

Gloire D' Nantes. Medium size, dark red, semi-double with very large dark green foliage.

Jarvis Red. Large, semi-double, deep red flower with the stamens showing very prominently. Dark green foliage.

Mme. Adele. Large, rose pink, peony form bloom of very loose construction, with yellow stamens intermixed.

Mme. Strekaloff (Belle Romana). Large flowers profusely streaked crimson. Very upright and strong grower. Thick, glossy foliage.

Semi-Double Blush (Celtic Rosea). Beautiful, semi-double, light pink blooms fading to almost white, with yellow stamens. This is an excellent garden variety.

PRICES OF STANDARD CAMELLIAS, GROUP II

	10	100
6 to 8 in. liners		\$25.00
8 to 12 in. liners		30.00
18 to 24 in. light, B&B	\$15.00	
18 to 24 in. specimen, B&B	30.00	

With the exception of the liners the above are field grown and not lath house stock.

GROUP III

Sarah Frost. One of the most common and hardiest of this section: always gives some flowers. Rose-pink, of medium size. Very compact-growing plant.

Mixed. In this lot we offer several good varieties that are as a rule excellent growers. For an evergreen shrub that will produce blossoms, they can't be beat, and at the

very low prices we are offering them they are excellent bargains.

	10
18 to 24 in. light, B&B	\$12.50
18 to 24 in. specimen, B&B	25.00
24 to 30 in. specimen, B&B	35.00

The above are field grown and not lath house stock.

Rare Camellias

Adelphé Audusson Variegated. Very large, semi-double, red and white. One of the very best and should be in all collections.

Big Beauty. Large, white, blotched and dashed with pink. Good grower. Large, light green foliage.

Davis Rose Dawn. A very beautiful rose-pink Camellia of large size, introduced by one of our local nurserymen. Very vigorous grower with dark green foliage. Much in demand.

Flame. Very large, semi-double, red. An excellent variety for colder sections, as it will open where most other sorts will fail. Long, pointed, slightly twisted foliage. Very good grower.

Glen 40. Large, deep flower of very dark red. Slow grower but one of the best double red Camellias.

K. Sawada. Plant Pat. 431. Pure white, very double flower. Fast, upright grower and prolific bloomer. An excellent variety that should be in every collection.

La Reine Variegated. Semi-double flower 5 to 6 inches in diameter, deep pink to red, blotched with white. Very attractive and outstanding Camellia.

Lindsay Neil. One of the most sought-after Camellias this season. We have the stock of the original plant in Columbus, Georgia, and are proud to offer it.

Magnoliaeflora. Blush color, semi-double. Good compact grower with very shiny leaves. This is the most prized of all Camellias that we have to offer in any quantity and should be in every collection.

Mrs. K. Sawada. Plant Pat. 481. Very beautiful delicate pink, resembling Lady Hume's Blush but larger. One of the best for cutting because it is a heavy producer. Bushy, upright grower with dark green foliage.

Rosea Superba Variant. Unusually large, Very much like Mathotiana Variant except for color. Fast grower and considered one of the best. It should by all means be in every collection.

St. Andre. Very large, peony-form flower of dark red. Dark green foliage.

Virgin's Blush. New introduction. Large, semi-double flowers of beautiful blush-pink. Very desirable. We can offer some very good values in this variety.

Woodville Red (Martin Roberts). Very large, peony form, strawberry-red. This is one of the newer varieties for this section and is excellent for any collection.

PRICES OF RARE CAMELLIAS, GROUP I

	Each
12 to 18 in., mostly grafts	\$5.00
18 to 24 in., mostly grafts, limited	6.00

Rare Camellias

GROUP II

Casablanca. Medium rose-pink; formal double. This Camellia opens over a long period and is beautiful in every stage. Its lasting qualities will make it a good cut-flower variety.

Catherine Cathcart. Medium size, double light pink, marbled white. Large, round, light green foliage. A good grower and a fine Camellia.

Debutante (Sara C. Hastie). Large, peony-form, light pink blooms; early. Fast grower with large, serrated leaves of dull green. Very desirable.

Eleanor Haygood. Pale pink, almost blush-color, medium to large flower and when fully open has a few stamens.

Emperor of Russia. Very large, deep scarlet, peony-form flower, with stamens intermixed. Large, dark green foliage. Excellent grower.

Mme. Chiang Kai-shek. Fast-growing Camellia with large, dark green foliage. Flower is very large, of the Donckelari type, crimson-red mottled with white.

Margaret Higdon. Large, semi-double, pink bloom, fading to almost white around edges of petals, with stamens intermixed. Large foliage, somewhat serrated.

Mathotiana Rubra (Purple Emperor; Purple Dawn; Wm. S. Hastie). Very large, deep red flowers turning purple as they age, and showing stamens when fully open. Fast grower with large, dark green foliage.

Mathotiana Variant (C. M. Hovey). Very large-flowering type, similar to Purple Emperor except for white through the flower. One of the very best in flowering as well as growth. Large, dark green foliage with some variegation.

PRICES OF RARE CAMELLIAS, GROUP II

	Each
12 to 18 in., B&B from field branched	\$2.50
18 to 24 in., B&B from field branched	3.50
18 to 24 in. specimen	7.50



A field of 18-24 inch branched Camellias.

Rare Camellias

GROUP III

C. N. Hastie. Medium to large, very dark red, peony-like flower. Dark green, round foliage and good grower. A very nice dark red Camellia.

Colonel Firey. Very double, well-shaped flower, 5 to 6 inches across, of brilliant crimson. One of the best red Camellias. Said to be true C. M. Hovey.

Fanny Bolis. Very large, almost single, red flowers blotched with white. Large, dark green foliage; good growth.

Frizzle White. Semi-double, medium to large, waxy pure white flower, intermixed with many yellow stamens. Narrow, light green leaves.

Goshoguruma. Single, deep velvety red with golden stamens. Medium-sized, full green foliage. Slow, very upright growth.

Laurel Leaf. A very large full double variety of beautiful texture; incurved petals. Most flowers have rose-pink centers and fade into deeper pink at edge, but sometimes come with white blotches.

Monjisu. Very nice Camellia. Deep red, splashed with white; very prominent stamens. Dwarf grower; blooms while young.

PRICES OF RARE CAMELLIAS, GROUP III

	Each
12 to 18 in., B&B branched field-grown ..	\$1.25
18 to 24 in., B&B field-grown	2.00
18 to 24 in., B&B field-grown specimen....	5.00

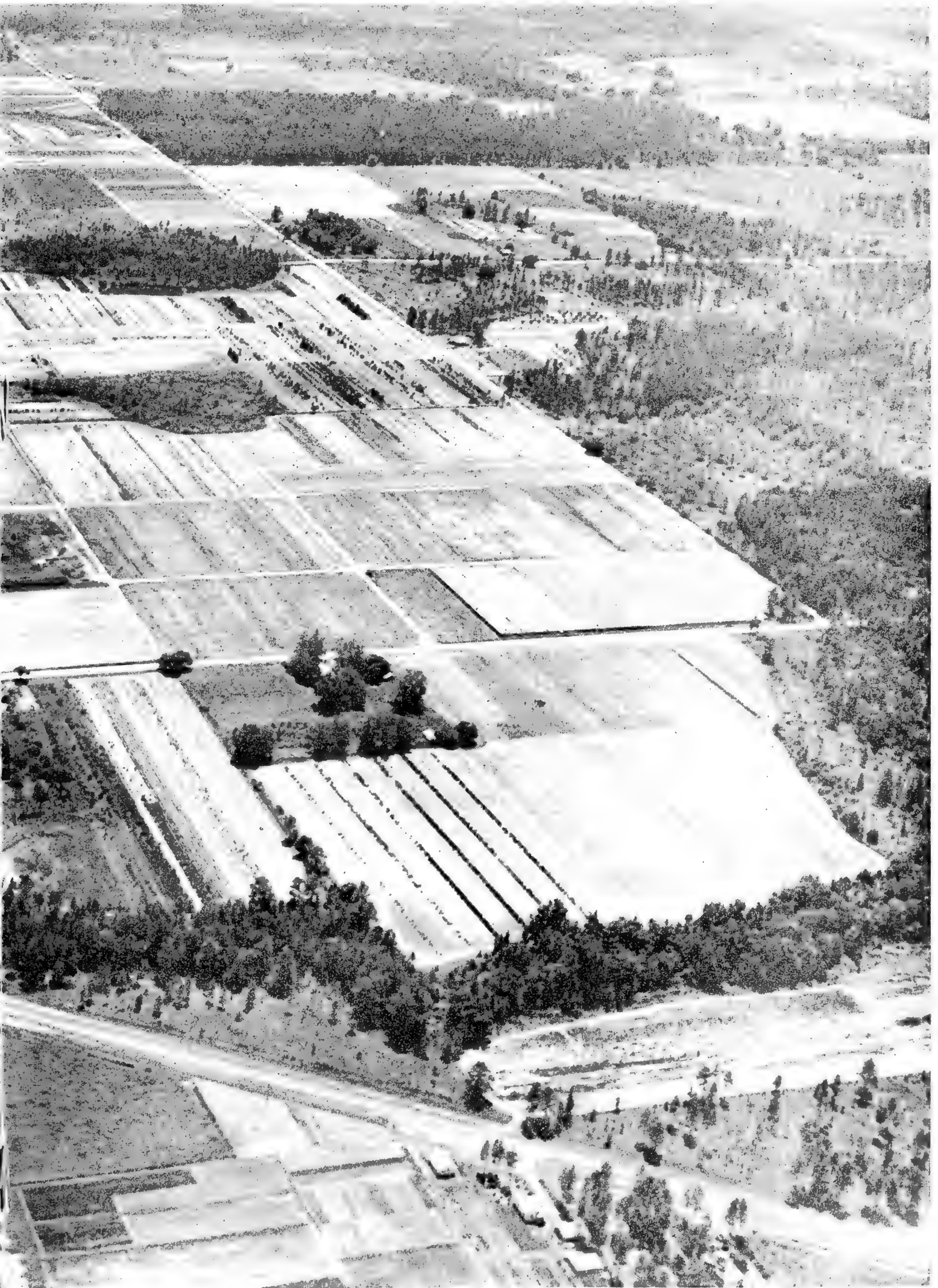


Inside one of our propagating houses. Note the heavy roots on the Magnolia cuttings.

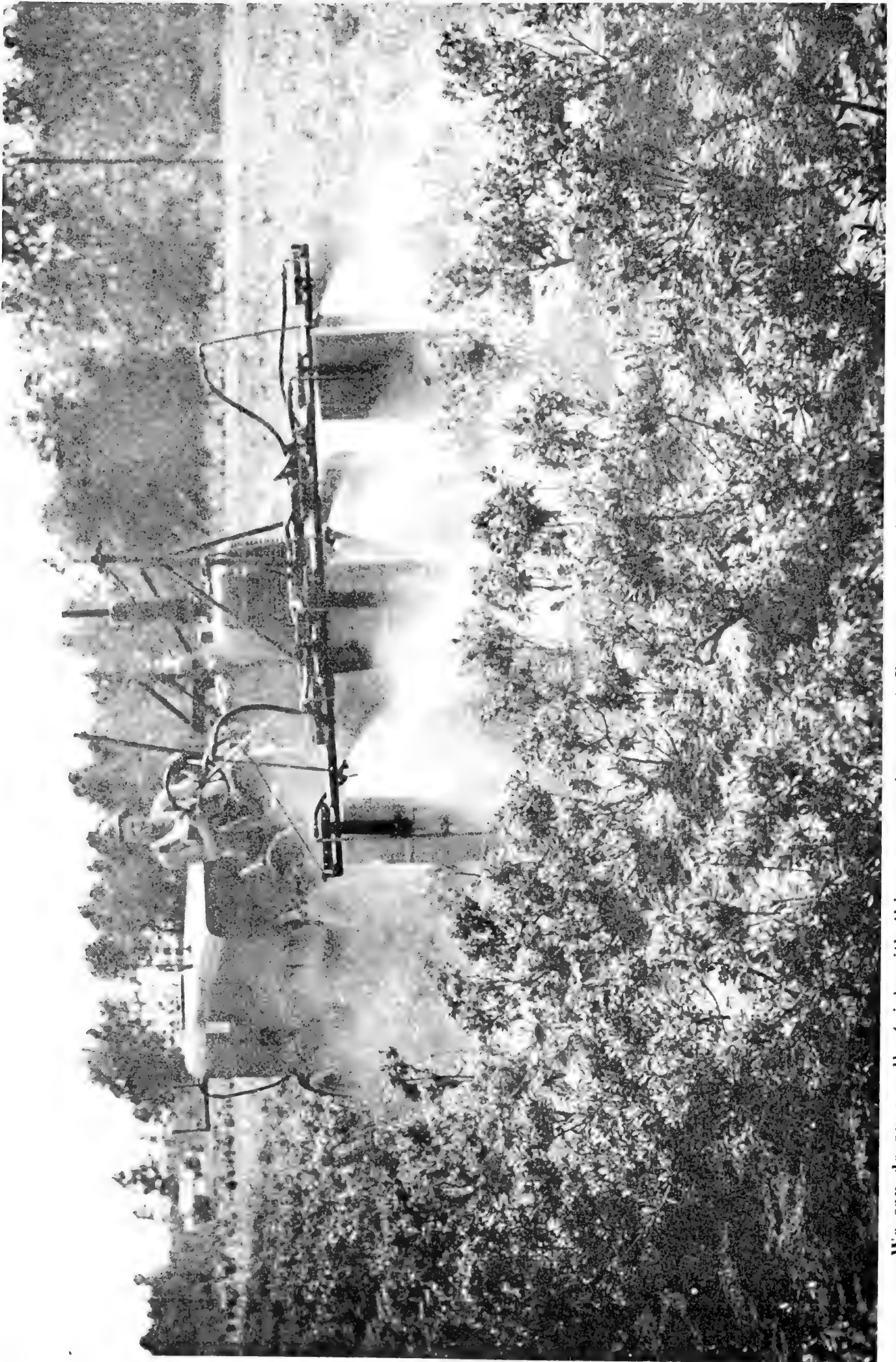
20% "CASH AND CARRY" Discount Allowed on All B&B Stock.



An aerial view of



part of our nursery.



We can do an excellent job with this spray equipment. A Bean pump and tank with rigging made in our own shops.

20% "CASH AND CARRY" Discount Allowed on All B&B Stock.

Camellia Sasanqua

THESE handsome flowering evergreens offer a wonderful opportunity to nurserymen all over the South. They grow and do well in sections where *Camellia japonica* is a failure, and can be used for screens and hedging, trimmed or otherwise, while the individual plants make fine specimens.

Nurserymen in the vicinity of Fort Worth, Memphis, Birmingham, Atlanta, and all up the Atlantic coast-line and most of the Pacific Coast will be doing their clients a great service and will be well repaid for lining out some of our liners of Sasanqua. They make a much better showing than ordinary broad-leaved evergreens and shrubs, even when not in bloom, and when they come into flower they will add distinction to any garden.

We have heard reports from certain sections of the country where *Camellia japonica* does not do so well, that grafting on *Camellia Sasanqua* enabled these nurserymen to grow many varieties of japonica. This was not where the temperature prevented the growing of japonica, however. We do know that most Sasanquas will stand more abuse than any japonica. We have seen them grow in wet ground where japonica would not grow. We are using more and more *Camellia Sasanqua* for understock each year. The demand for it as understock has increased considerably in the last few years, almost depleting the supply of sizes suitable for landscape use. We advise you to cover your needs on this item as early as possible.

Camellia Sasanqua, Annette. A two-toned variety, similar to Cinderella except more dense in growth and flowers are a deeper pink.

Camellia Sasanqua, Cinderella. Very fast grower of pyramidal habit. Flowers are single, two-toned, white in center shading to pink at edges of petals.

Camellia Sasanqua, Cleopatra. Large, single to semi-double, red flowers. Very dark, thick foliage. Compact. Fine for hedges.

Camellia Sasanqua, Daydream. Flowers are extremely large, white at the base, shading to deep pink at the outer edge, with a beautiful cluster of golden yellow stamens in center. Excellent for hedges or screen work.

Camellia Sasanqua, Maiden Blush. Fast grower. Medium size, single of delicate pink.

Camellias Sasanqua, Rosea. Single, large, rose-pink flower. Very fast grower.

Camellia Sasanqua, Snow - on - the - Mountain. Fast-growing, semi-double white that is a very prolific bloomer. Very good.

Camellia Sasanqua, Texas Star. A new variety introduced by Mr. Price Magee, a Louisiana nurseryman. Very symmetrical growth and very dense. Medium size light pink flower.

	10	100
6 to 8 in. liners		\$15.00
8 to 12 in. liners		17.50
12 to 18 in. liners		25.00
18 to 24 in. liners		30.00
18 to 24 in. B&B, field grown	\$12.50	

Camellia Sasanqua, Dawn. Hardest of all Sasanquas. Semi-double white with flesh pink at the margins of petals. Slow grower but very desirable.

6 to 8 in. liners	\$20.00
8 to 12 in. liners	30.00
2 to 3 ft., B&B	\$25.00

ORIENTAL MAGNOLIAS

Our stock of these fine Magnolias is much larger than ever before, and they are about the nicest we have ever seen anywhere. Our liners are especially nice and we recommend them very highly. Most of these Magnolias are hardy in nearly all parts of the United States, and make beautiful trees for Spring flowering.

All liners are shipped bare root and we recommend shipping the larger sizes in this manner when the distance is very great. They can be moved safely in this manner, and can be shipped where B&B would be almost prohibitive.

Magnolia Rustica Rubra. Large flowers of dark reddish purple. Very fast grower and

excellent variety. Later bloomer than Soulangeana.

Magnolia Soulangeana. Very hardy, fast growing, and one of the most sought-after plants for use all over the United States.

	10	100
8 to 12 in., 2 yr., liners	\$ 3.50	\$30.00
12 to 18 in., 2 yr., liners	4.00	35.00
18 to 24 in., 2 yr., liners	4.50	40.00
2 to 3 ft., B&B	20.00	
3 to 4 ft., B&B	30.00	
4 to 5 ft., B&B	40.00	
2 to 3 ft., field-grown, bare root	12.50	
3 to 4 ft., field-grown, bare root	20.00	
4 to 5 ft., field-grown, bare root	30.00	

M. Soulangeana nigra. Dark purple. A late bloomer and not quite so hardy as Soulangeana.

M. liliflora. Tulip Magnolia. Medium-sized, purple flowers. This is a very bushy grower.

(See Page 15 for Price)



MAGNOLIA SOULANGEANA
3 to 4 ft. B&B



MAGNOLIA SOULANGEANA
12 to 18 in. liner

20% "CASH AND CARRY" Discount Allowed on All B&B Stock.



Inside one of our propagating houses—Magnolia Cuttings.

**PRICES OF TWO PRECEDING
MAGNOLIAS**

	10	100
8 to 12 in., 2 yr., liners	\$ 3.00	\$25.00
12 to 18 in., 2 yr., liners	3.50	30.00
18 to 24 in., 2 yr., liners	4.00	35.00
2 to 3 ft., B&B	20.00	
3 to 4 ft., B&B	30.00	
2 to 3 ft., field-grown, bare root	12.50	
3 to 4 ft., field-grown, bare root	20.00	

SOUTHERN MAGNOLIAS

Magnolia Grandiflora. Seedlings transplanted. Bull Bay. Prized shade tree with huge white blooms.

	10	100
6 to 8 in. liners, from beds		\$10.00
8 to 12 in., liners, from beds		12.50
12 to 18 in. liners, from beds		15.00
18 to 24 in. liners, from beds		20.00



MAGNOLIA GRANDIFLORA
8 to 12 in. liner

20% "CASH AND CARRY" Discount Allowed on All B&B Stock.

BROAD-LEAVED EVERGREENS



A field of Evergreens. We can supply a few items for truck and carload shipment of these.

Buxus Harlandi. Slower in growth than B. Japonica, and hardier. Dark green leaves. Grows thick and rounded with little trimming.

B. Japonica. Fast-growing Boxwood with round leaves. Does well in shade or sun. We have excellent plants of this variety.

Prices of both Boxwoods:

	100
4 to 6 in. liners, from beds	\$10.00
6 to 8 in. liners, from beds	12.50
8 to 12 in. liners, field-grown	35.00

Feijoa Sellowiana. Pineapple Guava. A very compact shrub with light green leaves, underside silvery. Small purple flowers in late spring followed by edible fruit in the milder climates.

	100
6 to 8 in. liners, from beds	\$10.00
8 to 12 in. liners, from beds	12.50
12 to 18 in. liners, from beds	15.00

Gardenia Fortunei. Very glossy foliage. Good grower. Blooms more than other varieties.

G. Mystery. Very fast grower. Large foliage and much larger flowers than any other variety.

G. Radicans. Dwarf Cape Jasmine. Dark green foliage and small, very fragrant flowers. Our variety does not have variegation in foliage and is superior to the ones that have.

Prices of above Gardenias:

	100
4 to 6 in. liners, from beds	\$ 6.00
6 to 8 in. liners, from beds	7.50
8 to 12 in. liners, from beds	10.00
12 to 18 in. liners, from beds	12.50
(No Radicans)	12.50



GARDENIA RADICANS

8 to 12 in. liners

Gardenia Veitchi. Winter forcing Gardenia used by florists all over the country. Our plants are strong, healthy and sure to please.

	100
Strong rooted cuttings	\$ 5.00
3 inch pot plants, shipped from Winter Haven, Florida	20.00

Ginkgo biloba. Maidenhair Tree. A very popular shade tree in almost all sections of the country.

	100
6 to 8 in. liners, from beds	\$ 7.50
8 to 12 in. liners, from beds	10.00

Ilex crenata bullata. Slow, dwarf-growing Ilex used extensively in rock gardens. Very glossy, small leaves.

I. crenata rotundifolia. Medium-sized, round leaves similar to boxwood. Very hardy.

	100
4 to 6 in. liners, from beds	\$10.00
6 to 8 in. liners, from beds	12.50
8 to 12 in. liners, from beds	15.00

Illicium Anisatum. (Anise tree). Fast growing evergreen shrub, upright growth. Foliage light green and scented when bruised.

	100
6 to 8 in. liners	\$10.00
8 to 12 in. liners	12.50
12 to 18 in. liners	15.00

Ligustrum lucidum compactum. Wax Privet. Bushy and compact, with very glossy leaves. Not such a fast grower as Japanese Privet.

	100
Rooted cuttings	\$ 5.00
6 to 8 in. liners, from beds	10.00
8 to 12 in. liners, from beds	12.50

Michelia fuscata (Magnolia fuscata). Banana Shrub. Glossy, dark green foliage. Brownish flowers with banana-like fragrance.

	100
6 to 8 in. liners, from beds	\$10.00
8 to 12 in. liners, from beds	12.50

Photina glabra. Very attractive plant that shoots out new growth of brilliant red. Can stand much pruning, and the more it is pruned, the more color you have.

	100
6 to 8 in. liners, from beds	\$10.00
8 to 12 in. liners, from beds	12.50

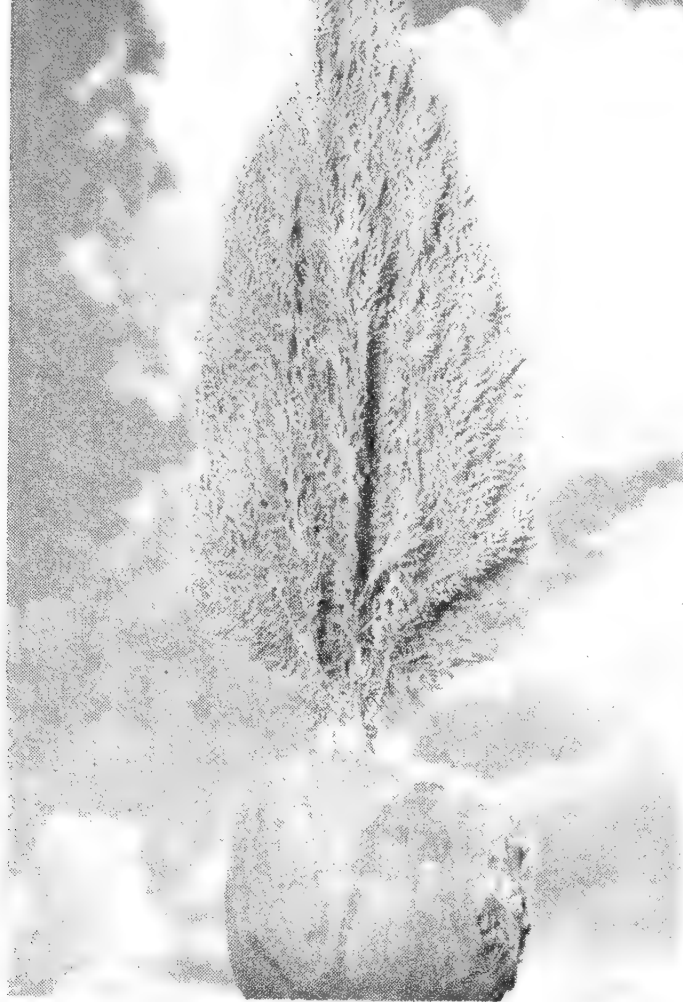
Pyracantha formosana (Ellis Strain). Deep glossy red fruit in immense clusters. Not so upright in growth as *P. coccinea* Lalandi.

	100
3 inch pots, 8 to 12 inches	\$20.00



ILEX C. ROTUNDIFOLIA

8 to 12 in. liners



THUYA O BAKERI
3 to 4 ft., B&B



CAMELLIA SASANQUA
8 to 12 in. liner

Coniferous Evergreens

Cedrus deodara.	100
6 to 8 in. liners	\$12.50
8 to 12 in. liners	15.00

Juniperus Chinensis pfitzeriana (Pfitzer Juniper).	
6 to 8 in. liners	\$12.50

Juniperus Communis Kiyonoi. Columnnar shaped English Juniper.	
6 to 8 in. liners	\$10.00
8 to 12 in. liners	12.50
12 to 18 in. liners	15.00

Thuya Orientalis Aurea Nana.	10	100
12 to 18 in., B&B	\$12.50	
18 to 24 in., B&B	17.50	
2 to 3 ft., B&B	20.00	

Thuya Orientalis Bakeri.	
18 to 24 in., B&B	\$12.50
2 to 3 ft., B&B	17.50
3 to 4 ft., B&B	20.00

Field 1 year Camellias





SEMMES, ALA.

*America's Azalea and
Camellia Center*

All roads lead to Black-
well Nurseries where
quality plants are being
produced by very
modern methods.

Call on us for quality
liners.



BLACKWELL NURSERIES

*America's Azalea
and
Camellia Center*

SEMMES, ALABAMA

