

Historic, Archive Document

Do not assume content reflects current scientific knowledge, policies, or practices.



*Barnes Bros.
Nursery Co.
Yalesville
Conn.*

Telephone:
Wallingford 9-4226



Fashion. Pat. No. 789
See page 3

CATALOG FOR 1951



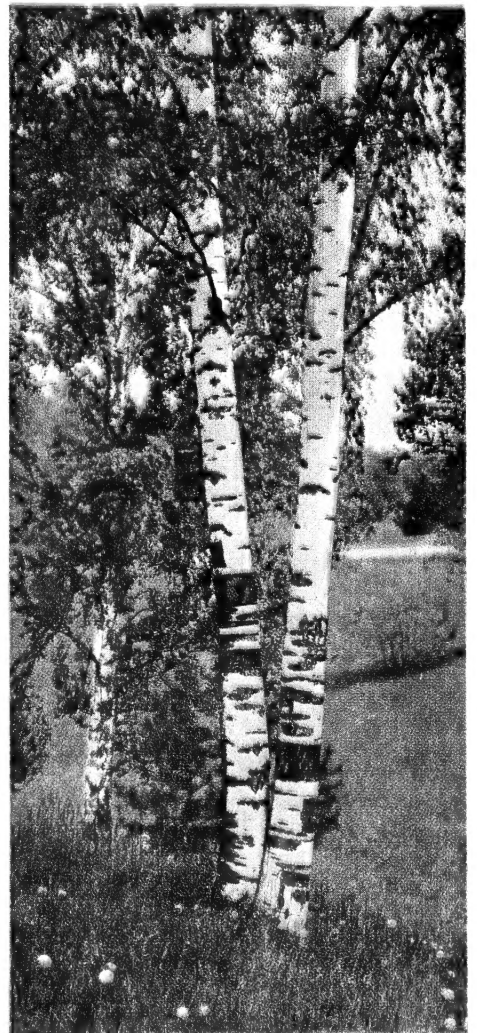
HYBRID FRENCH LILACS

Charles Joly

Ellen Willmott

See page 10

Lucie Baltet



White Birch. See page 6

A Message from Barnes Brothers:

DEAR FRIENDS:

Why buy nursery stock from BARNES BROTHERS NURSERY in 1951?

Because the name Barnes assures you of personal supervision of all stock and every order—sturdy, hardy plants acclimatized to rigorous conditions—sixty years of growing experience—quality which your landscape gardener will verify.

Now when you buy nursery stock, remember plants are alive. It must have quality resulting from careful selection of propagating stock, growing, fertilizing, trimming, handling and packing. You can buy nursery stock at most any price, but remember the greatest investment that you make in your garden is your time. So to make your investment in time pay dividends to you in beauty and satisfaction, start with quality plants.

Sincerely yours,

THE BARNES BROTHERS NURSERY CO.

Per *Joel P. Barnes*

EVERGREENS

We have thousands of well-grown, finely shaped, specimens including **Yew, Arborvitae, Hemlock, Juniper, Spruce, Pine, Cypress** and **Fir**. Descriptive list sent upon request. Visit the nursery, select your evergreens, take them home. Transportation by common carrier almost prohibited by expense for these heavy items.

Our Supplementary Price List describes Evergreens and other plants not offered in this catalog, including **Azaleas, Rhododendrons, Shade Trees** and a few additional **Shrubs**. A copy will be sent upon request.

Please Read Before Ordering

Non-Warranty—(1) If any nursery stock shall prove untrue to the label under which it is sold, provided notice and proper proof thereof are furnished by the purchaser to the seller, the seller shall, at the option of the purchaser either refill that portion of the order which was mislabeled, by any other delivery of stock, or refund the purchase price; but in any case, we are not to be held responsible for a sum greater than the original selling price of such stock. (2) All sales or agreements of sale are made subject to shortage of nursery stock, fire, frost, floods, drought, or other causes beyond the control of the seller.

Terms—Net Cash. We will ship orders C.O.D. providing 25% of the total amount is sent with order.

Transportation Conditions—All goods, unless otherwise specified, are sold F.O.B. our nursery, and travel at purchaser's risk and expense.

Size of Orders—Owing to high costs incident to packing and handling, we cannot accept orders amounting to less than \$1.00.

Plants by Mail—Small orders can be sent by mail, but they will not be sent prepaid unless you add to your remittance 10% of the catalog price to cover postage and special packing. (Minimum charge, 25c.) All trees over 5 ft. tall will be sent by express.

Claims—If there are any claims, they must be made on receipt of goods. Any error of ours will be promptly and satisfactorily adjusted. Claims made after 10 days from receipt of goods cannot be considered. We ship only best grades of stock and use great care in packing. Due to conditions beyond our control, growth of plants cannot be guaranteed.

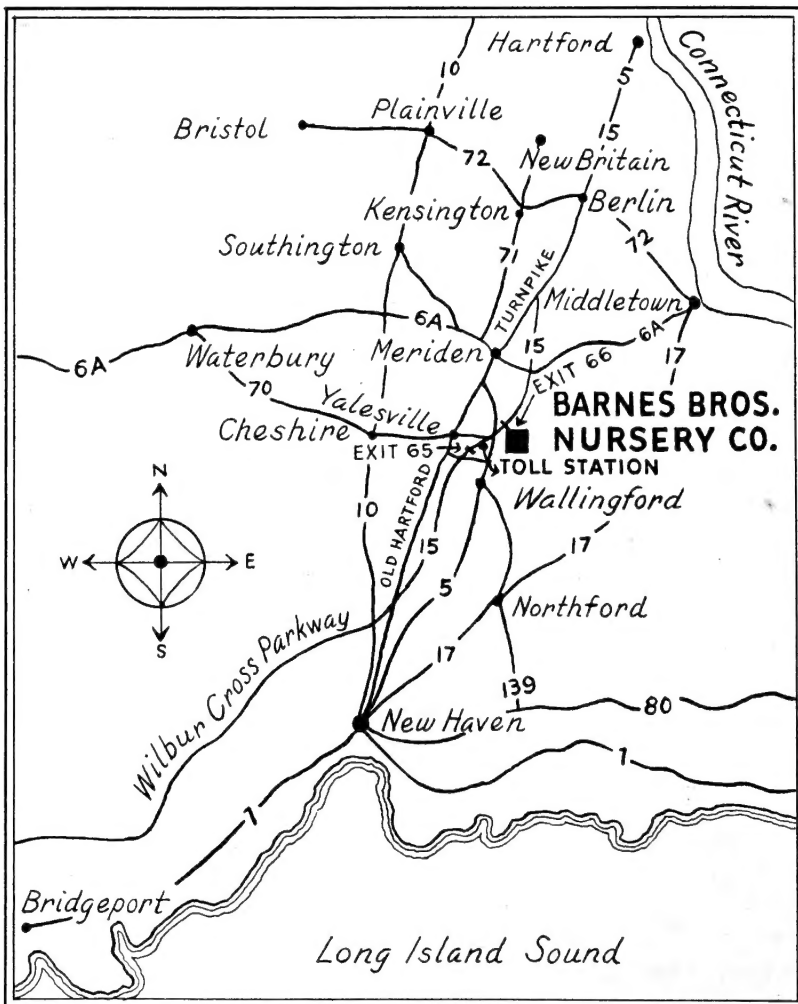
Inspection—Our nurseries are regularly and thoroughly inspected by the Connecticut Experiment Station and found apparently free from injurious insects and diseases.

Location—We are located on the east side of the North Colony Road, Route 5, 3 miles south of Meriden, 2 miles north of Wallingford, Connecticut. Motorists on Wilbur Cross Parkway use Meriden-Wallingford Exit No. 66. Nursery 200 yards south. Motorists traveling north on the Parkway may turn off at Yalesville, Exit 65, to avoid toll station just ahead. See map.

Connecticut residents please add 2% sales tax on all items except fruit trees and other food-bearing plants: Asparagus, Rhubarb, Grape and berry plants.

Phone: WALLINGFORD 9-4226

Connecticut Customers Please Add 2% Sales Tax



Member:
American
Association
of Nurserymen



Member:
Connecticut
Association
of Nurserymen

Climbing Roses

- Blaze.** Bright red. Hardy and dependable. \$1.35 each, 3 for \$3.60
- Cl. Crimson Glory** (*Plant Patent 736*). The beautiful, dark red flowers of the bush Crimson Glory are borne on this gorgeous Climber. Winter protection necessary where temperatures drop below zero. \$1.75 each, 3 for \$5.00.
- Doublons** (*Plant Patent 152*). Masses of buff-yellow flowers on a sturdy, hardy plant. \$1.50 each, 3 for \$4.00.
- Dr. J. H. Nicholas** (*Plant Patent 457*). Huge, double clear pink and fragrant flowers. Repeat blooming. \$1.50 each, 3 for \$4.00.
- Golden Glow** (*Plant Patent 263*). Large, double flowers of spectrum yellow. Makes a marvelous display. Fragrant; hardy. A Brownell origination. \$1.75 each, 3 for \$5.00.
- Paul's Scarlet.** Large, double, intensely red Roses are produced abundantly in June. \$1.10 each, 3 for \$3.15.
- Prosperity.** Large clusters of fragrant, double white flowers, blushed pink at the centers. A beautiful, new, repeat blooming Pillar Rose. \$1.10 each, 3 for \$3.15.
- Cl. Talisman.** Climbing form of the well known Talisman Rose. \$1.35 each, 3 for \$3.60.

Climbing Vines

- AMPELOPSIS quinquefolia** (*Virginia Creeper*). Five-parted leaves turn crimson in the Fall. Rapid growing for fences, rocky slopes, and banks. 50c. each, \$1.35 for 3.
- A. tricuspidata** (*Boston Ivy*). Ideal to use in cities, not fussy about soil, not troubled by pests nor injured by smoke or dirt. Glossy, dark green leaves, red in Fall, make a perfect cover for brick or stone. 75c. each, \$2.00 for 3.
- BIGNONIA radicans** (*Trumpet Vine*). High climbing, with large orange-scarlet flowers, which bloom nearly all Summer. 50c. each, \$1.35 for 3.
- CELASTRUS orbiculatus** (*Oriental Bittersweet*). A vigorous vine with orange-red berries that are splendid for Winter decoration. Plant in groups. 50c. each, \$1.35 for 3.
- CLEMATIS paniculata** (*Sweet Autumn Clematis*). Lovely, white flowers in September. Foliage remains a glossy green until Winter. A beautiful vine. 75c. each, \$2.00 for 3.
- C. jackmani.** Large, purple flowers, 4-6 in. across, are freely produced all Summer on this colorful, attractive, and well-known vine. \$1.25 each.
- C. ramona.** Large, lavender-blue, single flowers in Summer. \$1.25 each.
- LONICERA** (*Goldflame Honeysuckle*). Rose-coral trumpets lined with gold. Blooms from May until frost and can be trained as a shrub, hedge, vine, or ground cover. \$1.00 each, \$2.70 for 3.
- L. japonica halliana** (*Hall's Japanese Honeysuckle*). An old favorite for its fragrance and dark, semi-evergreen leaves. Yellow and white flowers. 50c. each, \$1.35 for 3, \$4.00 for 10.
- POLYGONUM auberti** (*Silver Lace Vine*). Rapid grower. Foamy white flowers in late Summer. It makes a quick, dense screen. Sun or shade. \$1.00 each, \$2.70 for 3.
- WISTERIA chinensis.** Drooping clusters of lavender flowers in May. Grows rapidly. \$1.00 each, \$2.70 for 3.

Hedge Plants

- BARBERRY** (*Berberis thunbergi*). Beautiful, familiar, ever useful. Red berries. 3 yr. branched seedlings, 12-18 in., \$2.50 per 10, \$20.00 per 100.
- RED BARBERRY** (*Berberis thunbergi atropurpurea*). Dark red leaves through the season. Be sure to plant in a sunny place. 12-18 in., 50c. each, \$4.00 per 10, \$30.00 per 100; 18-24 in., 75c. each, \$6.00 per 10, \$45.00 per 100
- CALIFORNIA PRIVET.** Famous for its bright, green foliage which remains green until late in Fall; not reliably hardy north of Connecticut.

California Privet Prices:

12-18 in.	\$1.25 per 10, \$5.50 per 50, \$10.00 per 100
18-24 in.	1.75 per 10, 8.00 per 50, 15.00 per 100
2-3 ft.	2.25 per 10, 10.00 per 50, 18.00 per 100

Patented Hybrid Tea Roses

- Charlotte Armstrong** (*Plant Patent 455*). Streamlined buds open into large cerise-red flowers on long stems. A vigorous plant which blooms freely. \$1.50 each, 3 for \$4.00.
- Crimson Glory** (*Plant Patent 105*). Dark, velvety crimson, large and fragrant. Sturdy and reliable. \$1.50 each, 3 for \$4.00.
- Forty-Niner** (*Plant Patent 792*). A dazzling combination of chrome yellow and Chinese red colors these large, well-formed flowers vividly until the petals drop. A vigorous plant. \$2.00 each, 3 for \$5.00.
- Katherine T. Marshall** (*Plant Patent 607*). Deep coral-pink, fragrant. Large buds, thick petals. Tall, robust bushes. \$1.50 each, 3 for \$4.00.
- Lowell Thomas** (*Plant Patent 595*). Large, pure yellow flowers. \$1.50 each, 3 for \$4.00.
- Mission Bells** (*Plant Patent 923*). Clear shrimp-pink. Full and richly fragrant flowers. Strong, productive plants. \$2.00 each, 3 for \$5.00.
- Peace** (*Plant Patent 591*). Soft yellow, blended with pink and cream at petal edges. Extra double and large. \$2.00 each, 3 for \$5.00.
- Rex Anderson** (*Plant Patent 335*). Ivory-white, perfectly formed, fully double blooms. Free flowering and vigorous. \$1.50 each, 3 for \$4.00.
- San Fernando** (*Plant Patent 785*). Intense dazzling red. Long lasting, unfading and fragrant. Beautiful buds. \$1.50 each, 3 for \$4.00.

Standard Hybrid Tea Roses

- Etoile de Hollande.** Ever popular dark red with large, fragrant flowers throughout the season.
- K. A. Viktoria.** Ivory-white, very full and nicely formed flowers. A well loved favorite.
- Mrs. P. S. Du Pont.** Deep golden yellow flowers are produced freely. Dependable.
- Pink Dawn.** Clear pink, fully double and fragrant. Sturdy, hardy, free blooming.
- Pres. H. Hoover.** A popular time-tested, two-toned combination of red and yellow. A vigorous free flowering plant.
\$1.10 each, 3 for \$3.15, six, alike or assorted, \$6.00

Floribunda Roses

- These are Bush Roses, with clusters of medium-sized blooms from early Summer to late frosts, giving a long, continuous color display. Growing from 2 to 3 feet or more high, they are splendid to use in perennial or shrub borders, in Rose beds, as hedges, or even among evergreens.
- Betty Prior** (*Plant Patent 340*). Sprays of single flowers, clear pink within and deeper outside. Tall, vigorous plants; persistently flowering. \$1.25 each, 3 for \$3.35.
- Dagmar Spaeth.** Large clusters of pure white flowers produced freely all Summer. \$1.25 each, 3 for \$3.35.
- Fashion** (*Plant Patent 789*). Oriental-red buds open into semi-double flowers of orange-pink. Continual bloomers of medium height. \$2.00 each, 3 for \$5.00.
- Floradora.** Brilliant cinnabar-red. Free-flowering and vigorous. \$1.25 each, 3 for \$3.35.
- Goldilocks** (*Plant Patent 672*). Golden yellow, about 3 inches across. blooms profusely; grows about 2½ ft. tall. \$1.50 each, 3 for \$4.00.
- Pinocchio** (*Plant Patent 484*). Salmon-pink, flushed with gold. Prolific and continuous in flowering. \$1.25 each, 3 for \$3.35.
- Red Pinocchio** (*Plant Patent 812*). Similar to the popular Pinocchio but with rich carmine red flowers. \$1.50 each, 3 for \$4.00.


ROSA Hugonis

(Golden Rose of China)—6 Feet

Single yellow flowers 2 inches across, open in early May all along the gracefully arched branches. These make a fine protective border. 2 year, \$1.25 each.

HARRISON'S YELLOW

Old-fashioned, semi-double, bright yellow Roses in May; ferny foliage; spiny stems. Hardy, rugged bushes, growing 6 to 8 ft. tall. \$1.25 each

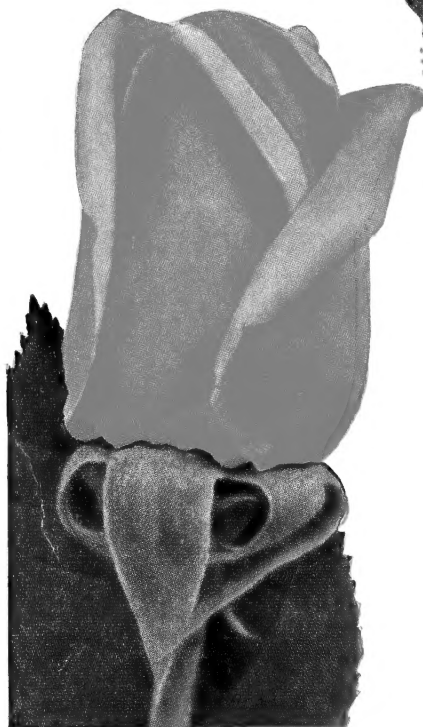
 Indicates All America Rose Selection

Roses for your garden

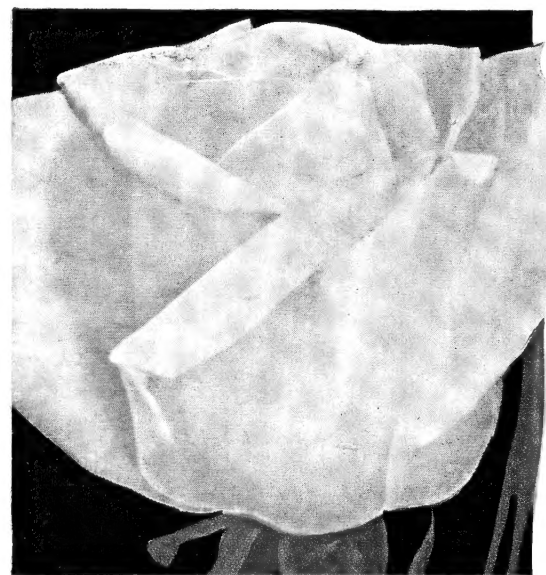
Crimson Glory
Patent No. 105
See page 3



Charlotte Armstrong. Pat. No. 455
See page 3



Katherine T. Marshall. Pat. No. 607
See page 3

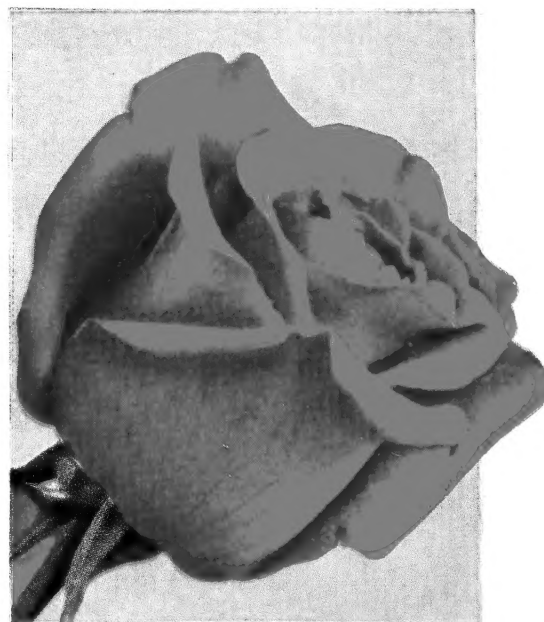


Rex Anderson. Pat. No. 335
See page 3



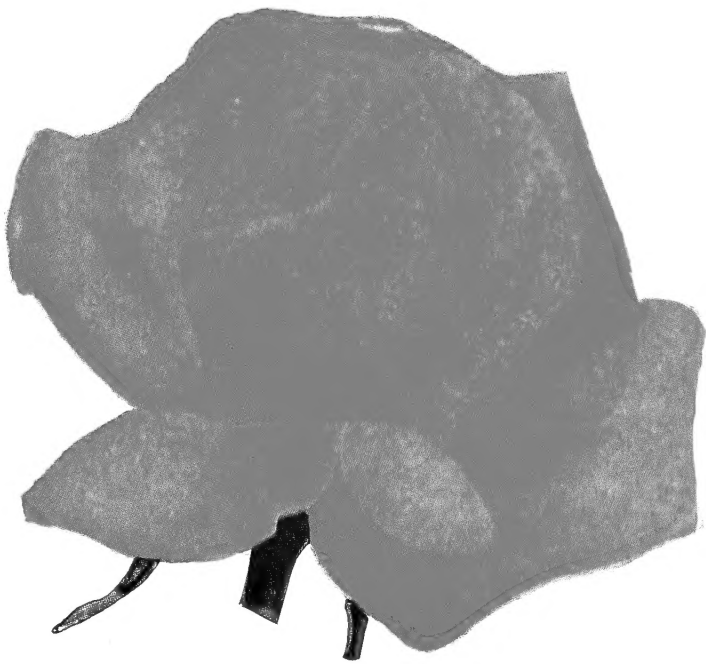
Peace Patent No. 591
See page 3

A
Choice
Selection
of the
Finest
New
Patented
Roses



San Fernando. Patent No. 785
See page 3

Free Blooming-Fragrant-Hardy-Gorgeous Colors



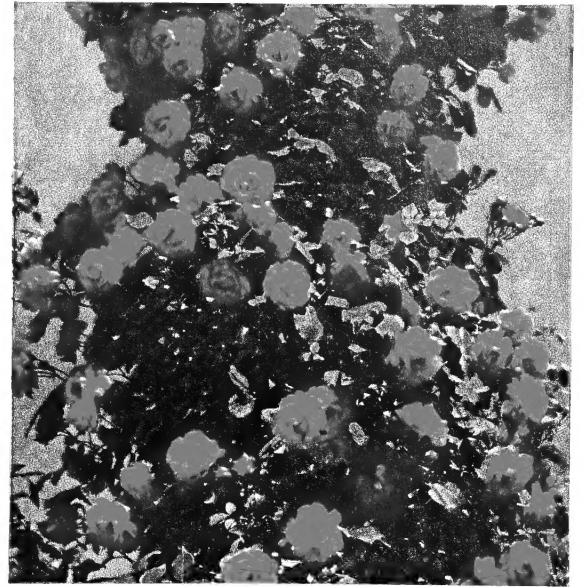
Lowell Thomas
Patent No. 595
See page 3



Pinocchio. Pat. No. 484
See page 3



Mission Bells
Pat. No. 923
See page 3



Blaze—Repeat-Blooming Climber

2-Year No. 1 Plants by American Association of Nurserymen's Standards. Shipping Season for Dormant Roses Ends in Early May



Dr. J. H. Nicholas Pat. No. 457
See page 3

PRATT'S GARDEN AND ROSE DUST

An all-purpose garden and rose dust containing pyrethrum, piperonyl cyclonene and rotenone for insect control, and sulphur and copper for fungous diseases. This provides a single product to combat the majority of insects and fungous diseases on all flowers and vegetables. In a handy, 18-inch dust gun.

2-lb. canister.....\$1.50

1-lb. dust gun.....\$1.35

FLOWERING AND SHADE TREES

BARNES BROS. THRIFTY TREES will give generous shade within a few years. Choose with assurance that you will receive expertly grown, well-rooted specimens. Improve your home by planting trees. Trees will be shipped by railway express.

WHITE BIRCH CLUMPS

(*Betula Alba*)

Silvery white Birches grown so you may have a cluster of these beautiful trees; 2 or 3 stems on one root. 4-5 feet tall, \$2.75 each.

CUTLEAF WHITE BIRCH

(*Betula Alba Laciniata*)—40 Feet

This white barked, graceful tree is one of the most beautiful to plant on a lawn. Leaves are light green and finely cut. Plant in early Spring. 6-8 feet, \$4.50 each.

PAPER BIRCH

(*Betula Papyrifera*)

These are the lovely and graceful white Birch trees of our northern woods. The characteristic white bark is not evident while the trees are small. Plant in groups for a naturalistic effect. Plant in Spring. 5-6 feet, \$3.00 each, \$7.50 for 3.

RED BUD

(*Cercis Canadensis*)

A small, shrubby tree. In Spring before the leaves unfold, it bears masses of rose pink flowers. Effective among evergreens. 3-4 feet. \$1.50 each.

FLOWERING DOGWOOD

(*Cornus Florida*)

A favorite small tree with lovely white flowers and bright Autumn color. Native, hardy and beautiful. Plant in Spring. 3-4 feet, \$3.50, 4-5 ft. \$5.00 each.

PINK FLOWERING DOGWOOD

(*Cornus Florida Rubra*)

A form of above with pink flowers, dwarfer and less hardy. 3-4 feet, \$6.00 each.

PAUL'S SCARLET THORN

(*Crataegus Oxyacantha Pauli*)—15-20 Feet

Double rose-red flowers which come in late May. 5-6 feet, \$5.00 each.

GOLDEN CHAIN TREE

(*Laburnum Vossi*)—15 Feet

Slender tree with long drooping clusters of bright yellow flowers in the Spring. A protected spot is recommended in Connecticut. Not hardy north. Heavy trees, 5-6 feet tall, \$6.00 each.

MOUNTAIN ASH

(*Sorbus Aucuparia*)—25 Feet

An attractive hardy tree for lawns, especially admired for its clusters of orange-scarlet berries from July until Winter. Birds like the fruit. 6-8 feet, \$4.50 each.

Connecticut Customers Please Add 2% Sales Tax

FLOWERING CRABAPPLES

(*Malus*)—15 Feet

These neat little trees make handsome specimens for small lawns, especially in April and May when covered with flowers. Small Apples which follow are appreciated by the birds. Hardy and easily grown.

Heavy, 2-yr. trees, 4-6 ft. tall, \$2.50 each, 4 for \$9.50

Carmine Crab (*Malus atrosanguinea*). Brilliant carmine-rose flowers. Makes a broad and spreading tree. One of the showiest varieties.

Dolgo Crab. White flowers and large bright red Apples which make superb jelly. A double purpose tree.

Eley Crab (*Malus purpurea eleyi*). Wine-red flowers and fruits; splendid and showy; fruits suitable for making jelly.

Hopa Crab. Large, rose-colored flowers; shiny orange and red fruits which make good jelly.

Redbud Crab (*Malus zumi calocarpa*). Red buds, white flowers, brilliant clusters of small red fruits lasting into Winter.

FLOWERING CHERRY

(*Prunus, Kwanzan*)

Large, double, deep pink flowers in Spring. The tree is upright and vigorous in growth. It is one of the most reliable of the beautiful flowering Cherries. 4-5 feet, \$3.50 each.

PURPLELEAF PLUM

(*Prunus, Thundercloud*)

This is a small, upright growing tree with dainty pale pink flowers and dark red-purple foliage which stays dark throughout the Summer. 4-5 feet, \$2.50 each.

WEeping WILLOW

(*Salix Babylonica*)—40 Feet

Long, pendulous branches droop gracefully to the ground. The trees create exquisite effects beside waterways but will thrive also in drier locations. Extra heavy, 6-8 feet trees, \$3.50 each.

FRENCH PUSSY WILLOW

(*Salix*)

This tall shrub is planted for its large, silvery-pink and furry catkins which appear on the first warm days of early Spring or late Winter. Stems are long and willowy and may be easily forced indoors. 2-3 feet, \$1.50 each.

BARNES HARDY FLOWERING SHRUBS

FOR FOUNDATIONS, SCREENS AND BORDERS

All of our Shrubs are field-grown in wide rows where ample tops and fine roots are developed. They are grown in the best way and we know they will please you as they have delighted other purchasers.

Approximate heights at maturity are indicated immediately after names.

BUTTERFLYBUSH

Buddleia alternifolia (*Fountain Butterflybush*). 8 feet.

Long, arching branches are garlands of Lilac flowers in early June. 2 year, 75c. each.

Buddleia, Ile de France. 4 feet. Purple flowers crowd the ends of the gracefully arched branches from August to late Fall. Splendid as a background for an herbaceous border. Prune to the ground each Spring. 75c. each.

Buddleia, White Queen. 4 feet. Pure white. Large florets on thick spikes which are produced abundantly in late Summer and Fall. 75c. each.

BEAUTYBERRY

Callicarpa dichotoma. 4 ft. A small, dainty shrub, with clusters of shiny lavender berries in the Fall. Pink flowers. 2-3 ft., 75c. each.

SWEET SHRUB

Calycanthus. 6 ft. Double reddish brown flowers in May; makes a neat shrub; suitable for shady places. 2 ft., \$1.00 each.

SHRUB DOGWOOD

(Not to be confused with Flowering Dogwood Trees)

Cornus alba sibirica (*Red-branched Dogwood*). 6-8 ft. Bright red stems. Thrives in shady places. Plant for its blazing Winter color. 2-3 ft., 75c. each.

C. lutea (*Goldentwig Dogwood*). 6-8 ft. Its branches make a striking contrast with the Redbranched type. On both of these the young wood is the brightest. Prune back before stems are many years old. 2-3 ft., 75c. each.

SMOKE BUSH

Cotinus coggygia. 15 feet. Tall, treelike favorite. Its fluffy and delicate flowering and fruiting parts look like clouds of smoke. 2-3 feet, \$1.50 each.

FLOWERING QUINCE

Cydonia japonica. 6 feet. Orange-scarlet flowers in early May; thorny. Selected upright type. 18-24 in. 75c. each.

DEUTZIA

Deutzia gracilis (*Slender Deutzia*). 3 ft. Splendid, dwarf shrub; a mass of double white flowers in May. \$1.00 each.

D. Pride of Rochester. 8 ft. Tall and upright. Flowers are white with pinkish tinge and double. 2-3 ft., 75c. each.

EUONYMUS

Euonymus alatus compactus (*Dwarf Euonymus*). 5 ft. A handsome, low-growing shrub, with brilliant Fall foliage. Corky twigs. Fine for foundation plantings. 18 in., \$1.50 each.

E. yedoensis (*Yeddo Euonymus*). 10 ft. Upright growing with splendid large leaves and high Autumn color. Seeds are orange with pale pink coverings. 2-3 ft., \$1.25 each.

PEARLBUSH

Exochorda grandiflora. 10 ft. Masses of pure white flowers in early May; upright habit and showy. 3-4 ft., \$1.50 each.

FORSYTHIA

Forsythia ovata (*Early Forsythia*). 8 ft. First Forsythia to bloom, also the hardiest. Will bloom where flowerbuds of other Forsythias are Winter injured. 2-3 ft., 75c. each.

F. spectabilis (*Showy Forsythia*). 8 ft. Rich golden bells; most showy. Upright grower. 2-3 ft., 75c. each.

ALTHEA or ROSE-OF-SHARON

Hibiscus syriacus. 10 feet. Bright flowers in late Summer; stiffly upright habit. Red, Pink, White; all double; state color. 2-3 ft., 75c. each

H. coelestis. Large, single blue flowers; dwarfer than above. 2-3 ft., 75c. each.

H. rosea grandiflora. Large, single, rose-pink flowers. 2 feet, \$1.50 each.

HYDRANGEA

Hydrangea arborescens grandiflora (*Hills of Snow*). 4 ft. Large clusters of white flowers from June to September. 2 yr., \$1.00 each.

H. paniculata grandiflora (*Peegee Hydrangea*). 8 ft. Pyramids of white, pink tinged flowers. Aug.-Oct. 2-3 ft., \$1.00 each.

BEAUTYBUSH

Kolkwitzia amabilis. 8 ft. Graceful shrub with pink flowers in June. Fine, glossy foliage. 2-3 ft., \$1.00 each.

HONEYSUCKLE

Lonicera morrowi. 6 ft. White flowers, red fruits. Broad and billowy bush. 2-3 ft., 75c. each.

L. tatarica rosea (*Pink Tatarian Honeysuckle*). 8 ft. Beautiful strain of Bush Honeysuckle with rose-colored flowers in June; scarlet fruits; hardy and vigorous; attractive, dark foliage. 2-3 ft., 75c. each.

MOCKORANGE

Philadelphus Atlas. Large, single white flowers, produced abundantly in June. Graceful and slender. 2-3 ft., \$1.50 each.

P. coronarius. 8 ft. Creamy white, single, fragrant flowers in May. 2-3 ft., 75c. each.

P. virginialis. 8 ft. Bears quantities of fragrant, semi-double flowers in June, with recurring bloom late in the Summer and Fall. Upright habit. 2 ft., \$1.00 each.

FLOWERING ALMOND

Prunus glandulosa. 4 ft. Its arching branches are covered with dainty pink rosettes in May. 18-24 in., \$1.00 each.

JETBEAD

Rhodotypos scandens. 5 ft. A neat shrub with white flowers in May and June; shiny black berries; grows in shade. 2-3 ft., \$1.00 each.

SPIRAEA

Spiraea Anthony Waterer. 3 ft. An old favorite with flat clusters of rosy-red flowers all Summer. 2 yr., \$1.00 each.

S. thunbergi. 5 ft. Tiny leaves and flowers give a soft feathery effect. April blooming. 2-3 ft., 75c. each.

S. vanhouttei (*Van Houtte Spirea*). 6 ft. In late May and early June its arching branches are white with masses of flowers. 2-3 ft., 75c. each.

SYMPHORICARPOS

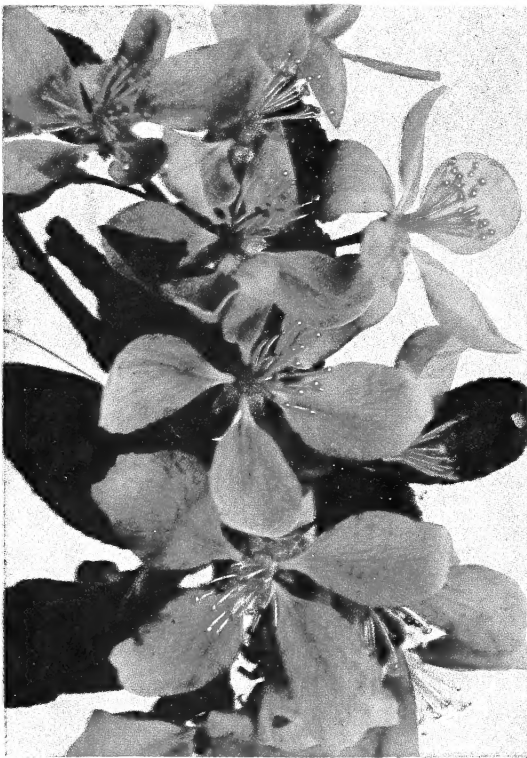
Symphoricarpos racemosus (*Snowberry*). 5 ft. White berries in late Summer and Fall. Fine textured shrub that doesn't mind the shade. 2-3 ft., 75c. each.

S. vulgaris (*Coralberry*). 5 ft. Small, clustered coral-red berries in the Fall. Good to use in a shade place. 2-3 ft., 75c. each.



Flowering Dogwood Trees. See page 6

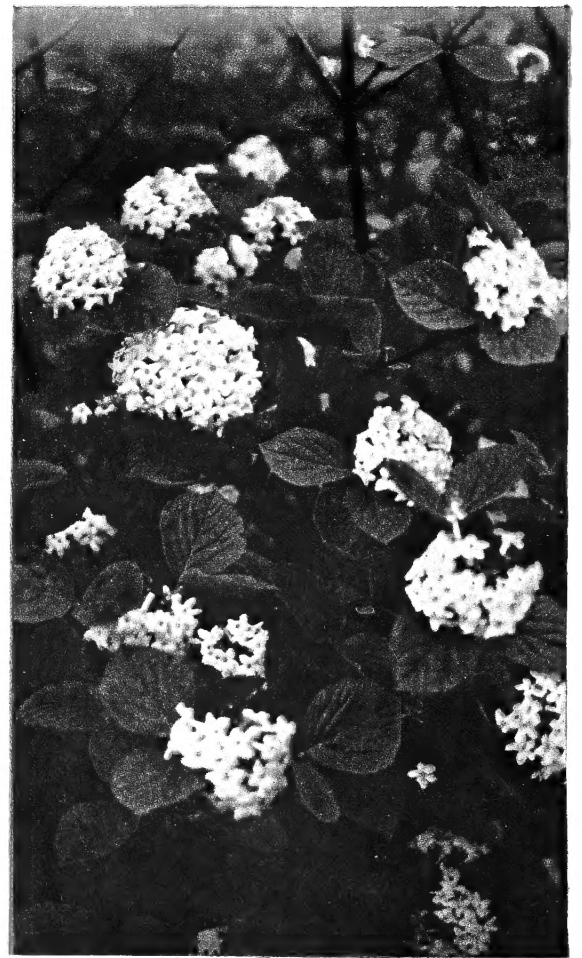
Shrubs, Trees and Vines for Home Planting



Eley Crabapple. See page 6



Forsythia, Golden Bell
See page 7



Viburnum Burkwoodi See page 10



Virginal Mockorange. See page 7

See Page 7
for Shrubs

See Page 3
for Vines

See Page 6
for Trees



Flowering Quince. See page 7

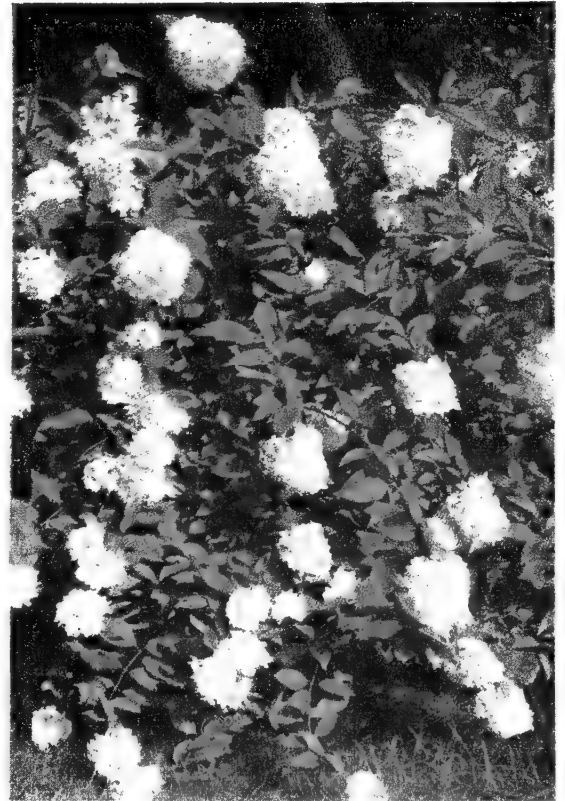
Barnes Selected Ornamental Trees, Shrubs and Vines



Trumpet Vine (Bignonia)
See page 3



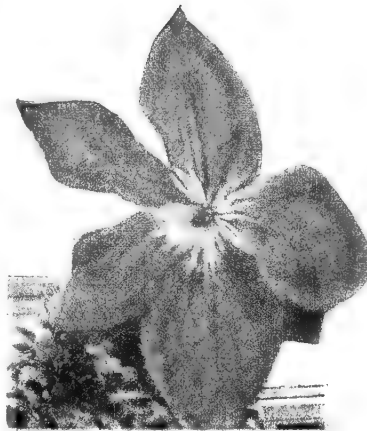
Beautybush, Kolkwitzia
See page 7



Hydrangea P. G.
See page 7



Flowering Cherry, Kwanzan
See page 6



Clematis, Jackmani
See page 3



Spiraea Vanhouttei. See page 7



Weigela Vanickei
See page 10

Flowering Shrubs—Continued

LILAC

Syringa persica (*Persian Lilac*) 10 ft. Fragrant, violet flowers in May and June, often with recurring bloom in the Fall. Flowers freely when young. Broad, billowy, graceful. 2-3 ft., \$1.00 each.

S. vulgaris (*Purple Lilac*). The old-fashioned, fragrant, single purple Lilac. 2-3 ft., \$1.00 each.

HYBRID LILACS

Charles Joly. Double; dark red-purple. Fragrant.

Ellen Willmott. Double. Beautiful white pyramids of flowers. Late.

Lucie Baltet. Single. Pale flesh-pink.

18-24 inches, \$1.50 each; 2-3 feet high, \$2.00 each

TAMARIX

Tamarix africana. Upright and tall, with small, pink flowers in early Summer. Feathery foliage. Thrives in seaside soils. 2-3 ft., 75c. each.

T. odessana. 6-8 ft. Gray-green foliage and pink flowers in late Summer. Excellent for shore plantings. 2-3 ft., 75c. each.

VIBURNUM

Viburnum burkwoodi (*Burkwood Viburnum*). 6 feet. Wonderfully fragrant, pinkish white flowers in Spring. More vigorous in growth habit than *V. carlesi* which it greatly resembles. 18-24 in., \$3.50 each.

V. carlesi (*Koreanspice Viburnum*). 5 feet. Clusters of clove-scented flowers; pink paling to white. April-May. Makes a broad round bush. Its spicy sweetness is delightful in any garden. 18-24 in. \$3.50 each.

Viburnum dilatatum (*Linden Viburnum*). 9 ft. A splendid, big, compact shrub with large white flower clusters in early June, good foliage and fine russet-red color in Autumn. 2 ft., \$1.00 each.

V. tomentosum plicatum (*Japanese Snowball*). 10 ft. Large, round clusters of white flowers in May. Heavy, dark, lustrous foliage. An old favorite for a lawn specimen. 2-3 ft., \$1.00 each.

WEIGELA

Weigela hendersoni. 8 ft. Rose-pink flowers. Vigorous and splendid. May. 2-3 ft., 75c. each.

W. vaniceki. 6 ft. Deep, rosy red flowers in May and June, and again in the late Summer and Fall. Hardy, upright grower. Splendid foliage. 2-3 ft., \$1.00 each.

Shrubs Suitable for Hedging

These splendid shrubs, planted 12-15 inches apart will make a grand hedge. Hardy, dependable, easily cared for; the ultimate in utility and beauty are combined.

LONICERA tatarica (*Tatarian Honeysuckle*). Bushy and tall. Pink flowers in June. Currant-like red fruits in July.

VANHOUTTE SPIREA (*Spiraea vanhouttei*). 6 ft. Its gracefully arched branches are white with flowers in late May or early June.

SNOWBERRY (*Symphoricarpos racemosus*). 5 ft. Makes a light, airy hedge with white berries in Fall. Doesn't mind shady places.

Special Grade for Hedging: 2 year, 12-18 inch plants, \$3.00 for 10, \$10.00 for 50

Connecticut Customers Please Add 2% Sales Tax

Fruit Trees
Barnes Selected Apple Trees

Baldwin. Favorite Winter Apple for all uses. Large, bright red; crisp and juicy.

Cortland. Large, dark red, white-fleshed McIntosh type. A popular kind for home and orchard planting. Ripens in October.

Delicious. Large, solid dark red. High quality. Splendid keeper. Fine Winter eating Apple.

Early McIntosh. August ripening. McIntosh-like in texture, flavor and appearance.

Galbraith Baldwin. A new, all red type of the favorite hard, tasty Winter Apple.

Gravenstein Red. Large, crisp, slightly tart. Excellent cooking Apple. September.

Lodi. Similar to Yellow Transparent in color, quality and flavor. This new variety is larger, firmer and ripens a few days later.

Macoun. A late McIntosh. Dark red, white flesh with a superb flavor. Popular Winter Apple.

McIntosh Red. Dark red, white, juicy flesh. A favorite in northeastern orchards. September.

Red Northern Spy. Bright red. High quality, and flavor, late keeping. Winter.

Rhode Island Greening. Large yellow-green, highly flavored, keeps late. An unexcelled Winter cooking Apple.

Roxbury Russet. Yellow-green overspread with russet. An old favorite which keeps well.

Yellow Delicious. A yellow Apple of excellent flavor and quality. Medium sized. October. (Only 11/16 in. size)

Hyslop Crab. Bright red. October.

2-YR. APPLE TREES	Height	1-9	10-49	50-99	100 or
		Each	Each	Each	more each
11/16 in. and up.....	5-7 ft.	\$1.75	\$1.45	\$1.10	\$0.95
9/16 in. to 11/16 in.....	4-6 ft.	1.35	1.10	.90	.80

SEMI-DWARF APPLE TREES

On dwarfing rootstocks to produce trees about one-half normal size.

Baldwin	Delicious	Red McIntosh
2-year.....\$3.00 each		

STATEMENT OF INSPECTION FOR TRUENESS-TO-NAME

Amherst, Mass.
July 19, 1950

To Whom It May Concern:

All of the apple varieties propagated and now growing in the nurseries of Barnes Brothers Nursery Company, Yalesville, Connecticut, have been examined by the Massachusetts Trueness-to-name Inspection Service. To the best of our knowledge, these trees are true to name as they now stand in the nursery row.

A. P. FRENCH

Peach Trees

Ripening periods stated are for average conditions in Connecticut.
9/16 in. caliper, 4-5 ft. high, \$1.25 each, \$10.00 per 10, \$90.00 per 100

Belle of Georgia. An old, reliable, white-fleshed Peach. Red cheeks. Ripens in late August.

Elberta. The standard commercial Peach. Large, yellow with red cheek. Freestone. Ripens in early September.

Golden Jubilee. Large, yellow red blushed. Fine flavor. Freestone. Mid-August. Popular for homes and orchards.

Halehaven. Large, round, yellow Peach of excellent quality. High color. Freestone. Ripens after Golden Jubilee and before Elberta. Heavy bearer. Recommended for freezing.

J. H. Hale. Very large, yellow, red cheek. Freestone. Ripens early September; fine quality and flavor.

Lizzie. Late September ripening. Nice red cheeks, yellow flesh, little fuzz. Freestone.

Red Haven. An excellent early yellow Peach. Skin smooth and a bright red. Freestone. Flesh firm, sweet, and delicious. Trees, hardy, vigorous and productive.

ALWAYS USE SEPARATE SHEET FOR LETTERS

<i>Quantity</i>	NAME OF PLANTS	<i>Size or Age</i>	<i>Total Price</i>

Please give names and addresses of friends who are interested in plant materials:



FROM

Place
Stamp
Here

The BARNES BROS. NURSERY CO.

“The Original Barnes Nursery”

YALESVILLE, CONN.

Duc

Abu

Bur

Gre

Sta

Bla

v

Nap

L

Mo

b

C

Pear Trees

Prices of Pears: 2 yr., 11/16 in. diameter, 5-6 ft. high, \$2.00 each, \$15.00 per 10, \$100.00 per 100

Bartlett. Most popular Pear for home and market use; fine quality, rich flavor. Ripens in September.

Beurre Bosc. Very large, deep yellow, overspread with russet. Unsurpassed in quality and flavor. October and November.

Clapp's Favorite. Large, red blushed; good quality; the earliest Pear. Ripens late August.

Seckel. Small, round, russet Pears. Sweet and of finest quality; trees productive and hardy. October.

Sheldon. Large, round, russet and red Pears of first quality. September and October.

DWARF PEARS

2-Year, \$3.00 Each

Bartlett

Clapp's Favorite

Duchess. Enormous Pears, delicious, sweet and juicy; ripen in October.

Plum Trees

Abundance. Red cheeks, yellow flesh. Juicy. August.

Burbank. Amber suffused with red. Late Summer.

Green Gage. Yellow-green, juicy and sweet.

Stanley. Purple Prune. Sweet, yellow flesh.

2-year, 11/16 in. diameter, \$2.00 each, \$15.00 per 10

Cherry Trees

Black Tartarian. Sweet. Purplish-black with splendid flavor. Tree vigorous and productive. A favorite.

Napoleon (Royal Anne). Sweet. Pale yellow with bright red blush. Large; delicious flavor. Excellent for canning. Midseason.

Montmorency. Sour. Large, light red. Midseason. Tree comes into bearing young. Productive.

Cherry prices: 1-yr., 11/16 in. diameter, branched, \$2.25 each

CHERRY-PLUM HYBRIDS

Sapa (Also known as Giant Red Flesh). Large, Cherry-Plum. Purple skin, wine-red flesh, fine flavor, excellent for culinary uses. Hardy and best grown as a large bush. Bears heavily on 1-yr. wood, so prune severely, eliminating older wood. Plant with some of Hansen's Bush Cherries for proper pollination. 3-4 ft., \$1.50 each.

Hansen's Bush Cherries. These dwarf, bushy Cherry-Plum hybrids are hardy, easily grown, bear heavily, usually a year after planting. Fruit resembles a small dark red Plum and makes good preserves. Plant in groups for cross pollination. 2-3 ft., 75c. each.

QUINCE

Orange. Bright golden yellow. Large, rounded fruits with splendid flavor. Fine for preserves and jelly. October. Trees are dwarf and bear when young. 2-yr., \$2.00 each.

APRICOT

Early Golden. Golden yellow fruit of good size and quality. An excellent variety to cross-pollinate Moorpark. 9/16 in. diameter, \$2.00 each

Moorpark. Orange yellow, sweet, juicy. Ripens in August. This is one of the hardiest Apricots. 9/16 in. caliper, \$2.00 each.

Giant Hybrid Blueberries

These improved, cultivated Blueberries have produced wonderfully large, plump, tender fruits of delicious flavor. It is essential that they be planted in groups of more than one variety in order to insure cross pollination.

Besides producing this superb fruit, these plants are ornamental at all times of the year. They are suitable to include in a shrub border, growing about 6 feet or more high and their Fall coloration is brilliant.

Blueberries require an acid soil containing an abundance of vegetative matter, like peat, moderate soil moisture and good drainage. Plant about 4 feet apart. Blueberries require pruning to maintain large-sized fruits.

We offer the following varieties of fruiting age: Strong, transplanted, 3 yr. plants, 18-24 in. high at \$1.75 each, 3 for \$4.50, 6 for \$9.00, 12 for \$15.00

Rancocas. Large, light blue, firm and attractive. Early to midseason.

Concord. Large berries borne in Grapelike clusters; fine in flavor and appearance. Midseason.

Jersey. Large berries which keep well. Late. Plants vigorous.

June. Early. Fine producer. Good quality. Bush of medium height.

Stanley. Excellent quality. Light blue. Productive. Midseason.

BLACKBERRIES—Eldorado

Vigorous, hardy and prolific. Berries are large, jet black, and borne in large clusters, which ripen well together. Flavor is good. No hard core.

10 for \$2.00, 25 for \$4.00, 100 for \$10.00

THORNLESS BOYSENBERRIES

Boysenberry. A new berry of huge size and fine flavor; juicy; vigorous grower. Smooth-stemmed type. 2-year, bearing age, 3 for \$1.35, 10 for \$3.50.

GRAPES

Caco. Red.....Midseason

Niagara. White.....Midseason

Concord. Blue.....Midseason

Ontario. White.....Early

Fredonia. Black.....Early

Sheridan. Blue.....Late

2 year, No. 1, 50c. each, 10 of one kind, \$4.00

Golden Muscat. White (Late).....\$1.00 each, 3 for \$2.50

BLACK and PURPLE RASPBERRIES

Cumberland. A fine black Raspberry. Hardy, productive, dependable and disease-resistant.

Sodus. Rich, dark wine-purple berries of excellent quality and flavor. Large and firm. Bears very heavy crops.

Both varieties: 10 for \$2.00, 25 for \$4.00, 100 for \$12.00

PLANTING NOTE FOR BLACK AND RED RASPBERRIES

Be sure to cut the canes back within a few inches of the ground immediately after planting.

ASPARAGUS

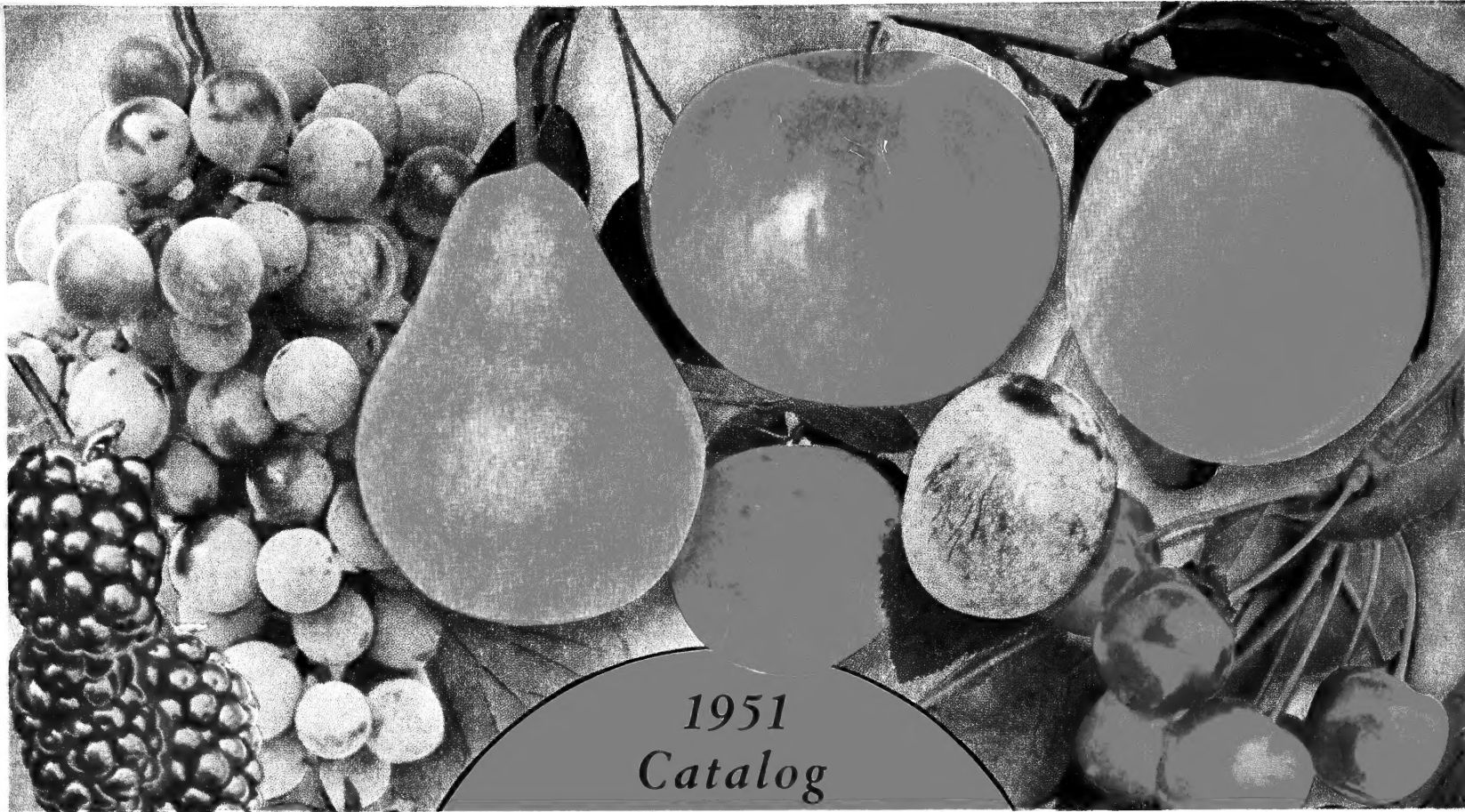
GARDEN FRESH ASPARAGUS TASTES BETTER

Mary Washington. Rust-resistant. Recognized as a leading variety, Asparagus will grow in any garden soil but to produce the largest most tender stalks the soil must be rich and well fertilized. Strong, 2-year roots, 25 for \$1.50, 50 for \$2.50, 100 for \$4.00.

RED RHUBARB

AN EARLY SPRING DELICACY

MacDonald. Considered the finest of the new red Rhubarbs. Excellent quality and flavor, less tart than older kinds. Hardy, of Canadian origin, and quick to grow. 60c. each, 3 for \$1.50.



1951
Catalog

RED RASPBERRIES

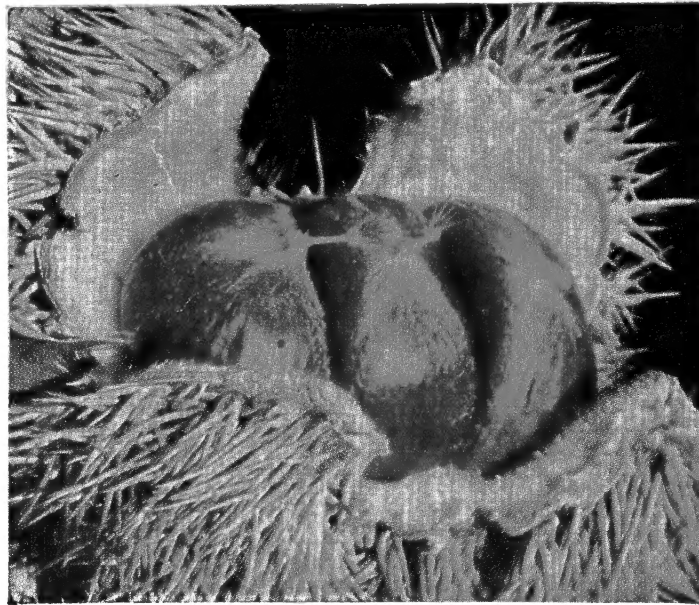
Indian Summer. A splendid, ever-bearing red Raspberry. Delicious flavor. Grand kind for home gardens; heavy crops in June and again in Fall. Selected, 1-yr. plants.

Latham. Bright red, large and firm; delicious flavor. Plants are strong, yield tremendous crops. The leading Red Raspberry. Selected, 1-yr. plants.

Taylor. Berries are large, conic, bright red; firm, of excellent quality and ripen just ahead of Latham. Plants are tall and vigorous.

10 for \$2.00 25 for \$4.00
100 for \$12.00

**Indian Summer
Raspberries**



New Chinese Chestnut

New Chinese Chestnut

Tall (50-60 feet at maturity). Sturdy, fast-growing, blight-resistant trees. Splendid for shade as well as for large, sweet nuts. As cross fertilization is required for nut production, plant two or more trees. Provide a sunny place with rich, deep soil. These trees are about as hardy as Peach trees and are raised from seeds of good bearing trees

2-year, 2-3 feet

\$1.50 each 2 for \$2.75

Hybrid Blueberries



*The Barnes Bros.
Nursery Company*

Yalesville, Conn.

Telephone:

Wallingford 9-4226