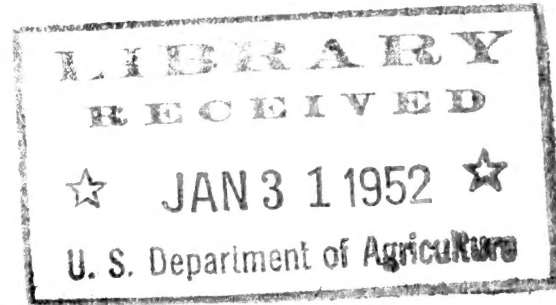


Historic, Archive Document

Do not assume content reflects current scientific knowledge, policies, or practices.

WHOLESALE PRICE-LIST



Fall
1951

Spring
1952

C. R. Burr & Co.
INC.

Wholesale Nurserymen
MANCHESTER, CONNECTICUT
Growing Since '98

Any information which you may need that is not found in this catalog may be had by contacting us at Manchester, Conn. If you so desire, we will have our representative in your area contact you and discuss your needs.

Wrapped Nursery Stock

This catalog provides information concerning bare-root material only. However, C. R. Burr & Company is one of the oldest nurseries attractively root-wrapping Roses, Flowering Shrubs, Ornamentals and many other types of plants. We are one of the largest growers in the East, providing a wide line of wrapped material in various price groups so that the retail nurseryman and dealer can present a well-balanced offering to the trade. All packages contain moist Floravate to maintain proper moisture for the roots of the plants. This material has a high degree of moisture absorption and retention, which permits a longer sales period without serious dehydration of the package.

Information as to the type of packages, prices and varieties wrapped may be had by writing our Manchester office.





Mr. Weldon Miner in one of our two-year shrub blocks, showing the growth obtained in most of our better type varieties. Many of these shrubs were propagated from softwood cuttings, which, after rooting, were put into pots in frames in order to obtain a heavy root system before transplanting to the field.

We would like to call attention to our listing of shrubs this season, inasmuch as we have a quantity of numerous choice varieties that we feel will sell out early in the season. We refer to such items as *Deutzia gracilis*, *Euonymus alatus*, *Kolkwitzia amabilis*, Hybrid Lilaes and many others. We have had a normal growing year, and it is our belief that demand for flowering ornamentals will continue good and that shortages will develop later in the year.

Our prices are competitive and as low as consistent with the shipment of top-quality nursery stock. It is our opinion that prices will remain fairly firm for the entire season, since it appears that good ornamentals are in heavy demand and the supply is limited. In view of this fact, we earnestly recommend that you place your order as soon as convenient to insure getting the stock you need.

We extend a cordial invitation to all nurserymen to visit our nursery. We are always appreciative of the opportunity of showing our stock in the fields as well as our warehouses and greenhouses.

Our main office is nine miles east of Hartford, Conn., near Routes 6, 15 and 44. We will meet you at Hartford or Springfield, Mass., if you notify us when and where you will arrive.

C. R. BURR & CO.

Wholesale Nurserymen

CHARLES S. BURR, *President*

L. F. PALMETER, *Vice-President and
General Sales Manager*

C. E. HOGAN, *Treasurer*

MANCHESTER • CONNECTICUT

"Growing since '98"

Members of American Association of Nurserymen, New England Nurserymen's Association, and Connecticut Nurserymen's Association.

All stock graded according to American Association of Nurserymen's standards.

Terms and Conditions of Sale:

These prices are wholesale and apply only to wholesale quantities. They are based on present market conditions and subject to change without notice.

Terms: F.O.B. Manchester, Conn. 2% 10 days; Net 60 days. C. O. D. orders to be accompanied by 25% of face amount of order. Cash, security or satisfactory references are required from unknown parties.

We Do Not Break Bundles. All orders must be made up in 10 of a variety or multiples of 10 except Evergreens and Ornamental Trees.

Shipping. We welcome customers' instructions regarding shipping. In the absence of definite instructions we will use our own judgment, with the distinct understanding that it is without responsibility on our part. A charge will be made for boxing and crating except when cash accompanies order. Boxing and crating charges will be made for all evergreen and shade trees.

Claims for shortages, unsatisfactory stock or for any cause whatsoever must be made in writing direct to the home office within ten days from receipt of shipment.

Correspondents are requested to use their business letterhead to identify them as being entitled to wholesale prices. We do not quote prices to retail buyers.

Guarantee:

All stock is guaranteed to be true to name, and we will replace or refund the purchase price of any item which is proved not to be the variety listed herein. We will not in any case be liable for a sum greater than the amount originally paid for the item purchased.

Quantity Purchases:

Purchases of 30 or more of one item entitle the purchaser to the 100 rate. Purchases of 300 or more of one item are subject to the 1000 rate.

We have limited quantities of items other than those listed. Mail your want list to our Manchester office.

If you need urgent handling and quick delivery of your order, we have a direct Western Union wire in our office.

OFFICE PHONE NUMBERS
Manchester: 4161-4162-4163



C. R. BURR & CO., *Wholesale Nurserymen*



MANCHESTER, CONN., *Growing Since '98*



Flowering Shrubs

Your shrubs from the Burr Nurseries are transplanted, field-grown plants, two and three years old. They are produced in the famed Connecticut Valley, renowned for its production of quality agricultural crops.

We welcome your inspection of these fine shrubs throughout the year, either in the field or in our warehouses. The plants are propagated, transplanted and grown on in well-spaced, fertilized and cultivated rows. They are pruned, dug and graded to assure you of well-branched, heavy-rooted, northern-grown ornamentals.

ABELIA grandiflora. Glossy Abelia.
Evergreen or nearly evergreen. Small white flowers tinged pink. Grows to 6 feet tall. For foundation plantings and combining with other evergreens.

| | | | |
|--|----|-----|------|
| | 10 | 100 | 1000 |
|--|----|-----|------|

 2 to 3 ft., B&B..\$25 00

BUDDLEIA variabilis (Davidi). Common Butterfly-bush.
Long panicles of lilac-colored flowers with an orange-yellow spot in the throat. Grows 5 to 6 feet tall. Blooms midsummer to frost.

| | | |
|------------------|------|---------|
| 12 to 18 in..... | 2 50 | \$20 00 |
| 18 to 24 in..... | 3 50 | 30 00 |

Buddleia, Ile de France.
Rosy violet-purple. Grows 3 to 4 feet high.

| | | | |
|--|----|-----|------|
| | 10 | 100 | 1000 |
|--|----|-----|------|

 18 to 24 in.....\$5 00 \$45 00

B., Royal Red.
Rich dazzling red. Grows 4 to 6 feet high.

| | | |
|------------------|------|-------|
| 18 to 24 in..... | 5 00 | 45 00 |
|------------------|------|-------|

CALYCANTHUS floridus. Carolina Allspice.
Reddish brown, very sweet-scented flowers in early summer. Grows 4 to 6 feet tall. A handsome upright shrub for border planting.

| | | |
|------------------|------|-------|
| 18 to 24 in..... | 5 00 | 45 00 |
| 2 to 3 ft..... | 6 00 | 55 00 |



A portion of our Buckland farm where 75,000 shrubs were lined out in the spring of 1951.



Flowering Shrubs, continued

CORNUS alba sibirica. Coral Dogwood.
Small white flowers and whitish fruits.
Grown chiefly for its coral-red young
branches. For borders and screen plantings.

| | 10 | 100 | 1000 |
|----------------|--------|---------|------|
| 2 to 3 ft..... | \$5 00 | \$45 00 | |
| 3 to 4 ft..... | 6 50 | 60 00 | |
| 4 to 5 ft..... | 7 50 | 70 00 | |

C. stolonifera. Red-osier Dogwood.
Creamy white flowers and white berries.
Bright reddish purple branches. A spread-
ing shrub 4 to 6 feet tall.

| | | |
|----------------|------|-------|
| 2 to 3 ft..... | 5 00 | 45 00 |
| 3 to 4 ft..... | 6 50 | 60 00 |
| 4 to 5 ft..... | 7 50 | 70 00 |

COTONEASTER horizontalis. Rock Co-
toneaster.

Branches almost horizontal. A good ever-
green shrub for rock gardens. Flowers
pinkish white; fruit bright red.
18 to 24 in., B&B... 20 00

CYDONIA japonica. Flowering Quince.

Showy scarlet flowers and yellowish green
fruit. Spiny shrub for border or garden,
reaching a height of about 4 to 5 feet.

| | | |
|------------------|------|-------|
| 12 to 18 in..... | 4 00 | 35 00 |
| 18 to 24 in..... | 5 00 | 45 00 |
| 2 to 3 ft..... | 6 00 | 55 00 |

C. japonica, Upright Red.

Brilliant red flowers. Upright-growing
shrub.

| | | |
|------------------|------|-------|
| 18 to 24 in..... | 5 50 | 50 00 |
| 2 to 3 ft..... | 6 50 | 60 00 |

DEUTZIA gracilis. Slender Deutzia.

Graceful nodding white flowers. Small
shrub about 2 feet tall. Good for border
planting.

| | | |
|------------------|------|-------|
| 12 to 15 in..... | 5 00 | 45 00 |
| 15 to 18 in..... | 6 00 | 55 00 |
| 18 to 24 in..... | 7 00 | 65 00 |

D., Pride of Rochester.

Very large, double white flowers.

| | | |
|------------------|------|-------|
| 18 to 24 in..... | 4 00 | 35 00 |
| 2 to 3 ft..... | 5 00 | 45 00 |
| 3 to 4 ft..... | 6 50 | 60 00 |

EUONYMUS alatus. Winged Euonymus.

Red and crimson foliage in autumn. Grows
6 to 8 feet tall and is well adapted for
specimen or mass planting.

| | | |
|------------------|------|-------|
| 12 to 15 in..... | 4 50 | 40 00 |
| 15 to 18 in..... | 5 50 | 50 00 |

E. alatus compactus. Dwarf Winged
Euonymus.

More compact growing; 4 to 6 feet tall.

| | | |
|------------------|------|-------|
| 12 to 15 in..... | 4 50 | 40 00 |
| 15 to 18 in..... | 5 50 | 50 00 |

FORSYTHIA intermedia spectabilis.
Showy Border Forsythia.

Bright yellow blooms in April. Grows 8
to 10 feet high. A hardy plant for combin-
ing with other shrubs.

| | 10 | 100 | 1000 |
|----------------|--------|---------|------|
| 2 to 3 ft..... | \$5 00 | \$45 00 | |
| 3 to 4 ft..... | 6 50 | 60 00 | |

F. suspensa Fortunei. Fortune Weeping
Forsythia.

Very vigorous, upright growth 8 to 10 feet
high.

| | | |
|------------------|------|-------|
| 18 to 24 in..... | 4 00 | 35 00 |
| 2 to 3 ft..... | 5 00 | 45 00 |
| 3 to 4 ft..... | 6 50 | 60 00 |

HIBISCUS syriacus anemonæflorus.

Double Pink Althea.

Double flowers with bright center, appear-
ing in late summer. Tall and hardy shrub
for border or specimen planting.

| | | |
|------------------|------|-------|
| 18 to 24 in..... | 4 00 | 35 00 |
| 2 to 3 ft..... | 5 00 | 45 00 |

H. syriacus ardens. Double Purple Althea.

Bluish purple variety.

| | | |
|------------------|------|-------|
| 18 to 24 in..... | 4 00 | 35 00 |
| 2 to 3 ft..... | 5 00 | 45 00 |

H. syriacus, Jeanne d'Arc. Double White
Althea.

| | | |
|------------------|------|-------|
| 18 to 24 in..... | 4 00 | 35 00 |
| 2 to 3 ft..... | 5 00 | 45 00 |

H. syriacus, Lucy. Double Red Althea.

| | | |
|------------------|------|-------|
| 18 to 24 in..... | 4 00 | 35 00 |
| 2 to 3 ft..... | 5 00 | 45 00 |

HYDRANGEA, A. G. Snowhill Hydrangea.

Large white flower heads. Spreading growth
6 to 8 feet tall. For border, specimen and
mass planting.

| | | |
|------------------|------|-------|
| 12 to 18 in..... | 3 50 | 30 00 |
| 18 to 24 in..... | 5 00 | 45 00 |
| 2 to 3 ft..... | 6 00 | 55 00 |
| 3 to 4 ft..... | 7 00 | 65 00 |

H., Pee Gee. Pee Gee Bush Hydrangea.

Very large bloom panicles, white at first but
becoming rose and bronze. Grows 8 to 10
feet high and blooms in August and
September.

| | | |
|------------------|------|-------|
| 12 to 18 in..... | 3 50 | 30 00 |
| 18 to 24 in..... | 5 00 | 45 00 |
| 2 to 3 ft..... | 6 00 | 55 00 |
| 3 to 4 ft..... | 7 00 | 65 00 |

H., Pee Gee, Tree Form. Pee Gee Tree
Hydrangea.

Same as the above, trained in tree or
standard form.

| | | |
|------------------|-------|------------------|
| 18 to 24 in..... | 8 00 | 75 00 |
| 2 to 3 ft..... | 11 00 | 100 00 |
| 3 to 4 ft..... | 13 50 | 125 00 \$1150 00 |





A scene on one of our Connecticut Valley farms, showing a block of shrubs and other material. The Regel Privet in the center of this photograph is two years old and will be ready for delivery this season.

KERRIA japonica pleniflora. Double-flowering Japanese Kerria. Double, bright yellow flowers all summer. Slender but broad growth, 4 to 6 feet high.

| | | | |
|------------------|--------|---------|------|
| | 10 | 100 | 1000 |
| 18 to 24 in..... | \$5 50 | \$50 00 | |
| 2 to 3 ft..... | 6 50 | 60 00 | |
| 3 to 4 ft..... | 8 00 | 75 00 | |

KOLKWITZIA amabilis. Beauty-bush. Abundant shell-pink flowers. Hardy and very showy. Splendid specimen plant reaching 6 to 8 feet in height.

| | | | |
|------------------|------|-------|----------|
| 12 to 18 in..... | 4 00 | 35 00 | |
| 18 to 24 in..... | 5 50 | 50 00 | \$450 00 |
| 2 to 3 ft..... | 7 00 | 65 00 | 600 00 |
| 3 to 4 ft..... | 8 50 | 80 00 | 750 00 |

LONICERA Morrowi. Morrow Honeysuckle. Flowers pure white, changing to yellow; profuse red berries. A shrub with wide spreading branches, 4 to 6 feet tall. For border and mass planting.

| | | |
|----------------|------|-------|
| 2 to 3 ft..... | 5 00 | 45 00 |
| 3 to 4 ft..... | 6 50 | 60 00 |

L. tatarica alba. White Tatarian Honeysuckle. Large, pure white flowers and crimson fruit. Upright, dense growth 8 to 10 feet tall. A good shrub for screening and for attracting birds.

| | | |
|----------------|------|-------|
| 2 to 3 ft..... | 5 00 | 45 00 |
| 3 to 4 ft..... | 6 50 | 60 00 |
| 4 to 5 ft..... | 8 00 | 75 00 |

Lonicera tatarica rosea. Rosy Tatarian Honeysuckle. Flowers delicately tinted pink with deeper edges. Light red berries. A big, graceful shrub.

| | | | |
|----------------|--------|---------|----------|
| | 10 | 100 | 1000 |
| 2 to 3 ft..... | \$5 00 | \$45 00 | \$400 00 |
| 3 to 4 ft..... | 6 50 | 60 00 | 550 00 |
| 4 to 5 ft..... | 8 00 | 75 00 | 700 00 |

L. tatarica rubra. Red Tatarian Honeysuckle. Similar to the preceding but with bright red flowers.

| | | |
|------------------|------|-------|
| 18 to 24 in..... | 3 50 | 30 00 |
| 2 to 3 ft..... | 5 00 | 45 00 |
| 3 to 4 ft..... | 6 50 | 60 00 |
| 4 to 5 ft..... | 8 00 | 75 00 |

L. Zabeli. Zabel's Red Honeysuckle. Profuse red flowers followed by red berries. A shapely bush making a fine accent or specimen shrub.

| | | |
|------------------|------|-------|
| 18 to 24 in..... | 4 00 | 35 00 |
| 2 to 3 ft..... | 5 00 | 45 00 |

Order early to be sure of getting the stock you want.

1000 rate applies on 300 or more



Flowering Shrubs, continued

PHILADELPHUS coronarius. Sweet

Mock-orange.

Creamy-white flowers, very fragrant. An upright, hardy, showy shrub attaining a height of 8 to 10 feet. For garden and border planting.

| | | | |
|------------------|--------|---------|----------|
| | 10 | 100 | 1000 |
| 18 to 24 in..... | \$4 00 | \$35 00 | |
| 2 to 3 ft..... | 5 00 | 45 00 | \$400 00 |
| 3 to 4 ft..... | 6 50 | 60 00 | 550 00 |
| 4 to 5 ft..... | 7 50 | 70 00 | |

P. Lemoinei. Lemoine Mock-orange.

White flowers in short racemes covering the branches. Very fragrant. Grows 4 to 6 feet tall.

| | | | |
|------------------|------|-------|--------|
| 18 to 24 in..... | 4 00 | 35 00 | |
| 2 to 3 ft..... | 5 00 | 45 00 | 400 00 |
| 3 to 4 ft..... | 7 00 | 65 00 | |

P. virginalis. Virginal Mock-orange.

Very large, semi-double, white blooms. An upright grower 6 to 8 feet tall.

| | | | |
|------------------|------|-------|--------|
| 12 to 18 in..... | 4 00 | 35 00 | 300 00 |
| 18 to 24 in..... | 5 00 | 45 00 | 400 00 |
| 2 to 3 ft..... | 6 00 | 55 00 | 500 00 |
| 3 to 4 ft..... | 7 00 | 65 00 | 600 00 |

PRUNUS glandulosa. Pink Almond.

Small, very double, pink rosettes along the stems in late April. A bushy shrub about 4 feet high, very decorative in landscape planting.

| | | |
|------------------|------|-------|
| 18 to 24 in..... | 5 50 | 50 00 |
| 2 to 3 ft..... | 6 50 | 60 00 |

Prunus glandulosa alba. White Almond.

Like the above but white.

| | | | |
|------------------|--------|---------|------|
| | 10 | 100 | 1000 |
| 18 to 24 in..... | \$5 50 | \$50 00 | |
| 2 to 3 ft..... | 6 50 | 60 00 | |

P. triloba. Flowering Plum.

Double pink or rose-colored flowers appearing just before the leaves break open. Very showy and hardy. Spreading and tree-like, 7 to 8 feet tall.

| | | |
|------------------|------|-------|
| 18 to 24 in..... | 5 50 | 50 00 |
| 2 to 3 ft..... | 6 50 | 60 00 |

SPIRÆA, Anthony Waterer.

Bright rosy crimson flowers in summer. Very free-flowering, dwarf, compact shrub 2 to 3 feet tall. Fine for massing at the edge of a shrub border.

| | | |
|------------------|------|-------|
| 15 to 18 in..... | 4 50 | 40 00 |
|------------------|------|-------|

S. Frœbeli. Frœbel Spirea.

Rose-pink flowers in May and June. Dense, flat growth 3 to 4 feet tall.

| | | | |
|------------------|------|-------|----------|
| 12 to 15 in..... | 3 00 | 25 00 | \$200 00 |
| 15 to 18 in..... | 4 00 | 35 00 | 300 00 |
| 18 to 24 in..... | 5 00 | 45 00 | 400 00 |
| 2 to 2½ ft..... | 6 00 | 55 00 | 500 00 |

S. prunifolia. Double Bridal-wreath.

Pure white flowers in early spring on upright, slender branches. Grows 5 to 7 feet high. Very graceful.

| | | | |
|------------------|------|-------|--------|
| 12 to 18 in..... | 3 50 | 30 00 | 250 00 |
| 18 to 24 in..... | 4 50 | 40 00 | 350 00 |
| 2 to 3 ft..... | 5 50 | 50 00 | 450 00 |
| 3 to 4 ft..... | 6 50 | 60 00 | 550 00 |



Philadelphus coronarius. This picture was taken to indicate the number of branches obtained by our method of propagating and growing better type shrubs. This plant will be dug in the fall of 1951 after having been in the field for two years. This variety is obtained from hardwood cuttings that are stuck in the benches of our propagating range in the winter months and then lined out in beds under overhead irrigation for one year prior to the plant's being moved to the field.



Flowering Shrubs, continued

Spiræa Vanhouttei. Van Houtte Spirea.
Dense white flowers in late spring. Grows 5 to 6 feet tall. Good specimen for the shrub border and also makes a fine informal hedge if left unclipped.

| | 10 | 100 | 1000 |
|------------------|--------|---------|------|
| 18 to 24 in..... | \$2 50 | \$20 00 | |
| 2 to 3 ft..... | 4 00 | 35 00 | |

SYMPHORICARPOS Chenaulti. Improved Coralberry.
Light pink berries in summer and fall. A bushy shrub attractive in foliage and habit of growth.

| | | | |
|------------------|------|-------|----------|
| 18 to 24 in..... | 4 00 | 35 00 | \$300 00 |
| 2 to 3 ft..... | 5 00 | 45 00 | 400 00 |
| 3 to 4 ft..... | 6 50 | 60 00 | |

S. racemosus. Snowberry.
Flowers white or pinkish; white berries in showy clusters. A graceful shrub with slender branches, growing 3 to 5 feet high.

| | | |
|------------------|------|-------|
| 18 to 24 in..... | 4 00 | 35 00 |
| 2 to 3 ft..... | 5 00 | 45 00 |
| 3 to 4 ft..... | 6 50 | 60 00 |

S. vulgaris. Coralberry.
Greenish red flowers in summer, followed by red or purplish berries that last all winter. Grows about 4 feet tall. Valuable for bank plantings.

| | | | |
|------------------|------|-------|--------|
| 18 to 24 in..... | 4 00 | 35 00 | 200 00 |
| 2 to 3 ft..... | 5 00 | 45 00 | 300 00 |
| 3 to 4 ft..... | 6 50 | 60 00 | 400 00 |

SYRINGA vulgaris. Common Purple Lilac.
Large panicles of very fragrant, purplish bloom in late May. Grows 12 to 15 feet tall. Desirable as specimen plants and hedges.

| | | |
|------------------|------|-------|
| 12 to 18 in..... | 3 50 | 30 00 |
| 18 to 24 in..... | 5 00 | 45 00 |
| 2 to 3 ft..... | 6 00 | 55 00 |

S. vulgaris alba. Common White Lilac.
The familiar white Lilac. Makes a fine hedge or clump.

| | | |
|------------------|------|-------|
| 12 to 18 in..... | 3 50 | 30 00 |
| 18 to 24 in..... | 5 00 | 45 00 |
| 2 to 3 ft..... | 6 00 | 55 00 |

S., French Hybrids.

Belle de Nancy. Double; satiny rose color.

Charles Joly. Double; dark crimson.

Charles X. Single; dark reddish purple.

Emile Gentil. Double; bright cobalt-blue.

Lucie Baltet. Single; coral-pink.

Mrs. W. E. Marshall. Single; purple.

President Grevy. Double; rosy blue.

| | | |
|------------------|--------|----|
| Any of above: | | 10 |
| 12 to 18 in..... | \$5 00 | |
| 18 to 24 in..... | 7 50 | |
| 2 to 3 ft..... | 10 00 | |

TAMARIX africana. African Tamarisk.
Feathery bloom and foliage; pink flowers in April. A tall, loose-growing shrub to 10 or 12 feet, doing especially well at the seashore.

| | 10 | 100 | 1000 |
|----------------|--------|---------|------|
| 2 to 3 ft..... | \$5 00 | \$45 00 | |
| 3 to 4 ft..... | 6 50 | 60 00 | |
| 4 to 5 ft..... | 7 50 | 70 00 | |

T. tetrandra purpurea. Purple Tamarisk.
Pinkish flowers and reddish brown bark. Spreading branches. Grows to 15 feet.

| | | |
|----------------|------|-------|
| 2 to 3 ft..... | 5 00 | 45 00 |
| 3 to 4 ft..... | 6 50 | 60 00 |
| 4 to 5 ft..... | 7 50 | 70 00 |

VIBURNUM Carlesi. Korean Spice Viburnum.

Pale rosy white flowers, deliciously fragrant, on a low, compact shrub in early spring. Blue-black berries. For screens, hedges or specimens.

| | |
|-------------------|-------|
| 18 to 24 in., B&B | 22 50 |
| 2 to 3 ft., B&B. | 30 00 |

V. Opulus. European Cranberry-bush.
A tall shrub with upright, spreading branches, 8 to 10 feet tall. White flowers in flat clusters in early summer; scarlet berries lasting all winter.

| | | | |
|------------------|------|-------|----------|
| 18 to 24 in..... | 5 00 | 45 00 | \$400 00 |
| 2 to 3 ft..... | 6 00 | 55 00 | 500 00 |
| 3 to 4 ft..... | 8 50 | 80 00 | |

V. Opulus sterile. Snowball.
Large, loose flower heads of pure white.

| | | | |
|------------------|------|-------|--------|
| 18 to 24 in..... | 5 50 | 50 00 | 450 00 |
| 2 to 3 ft..... | 6 50 | 60 00 | 550 00 |
| 3 to 4 ft..... | 9 00 | 85 00 | 800 00 |

WEIGELA, Eva Rathke.

Trumpet-shaped, crimson flowers in May. A spreading shrub 5 to 6 feet tall, making a striking specimen.

| | | | |
|------------------|------|-------|--------|
| 18 to 24 in..... | 5 00 | 45 00 | 400 00 |
| 2 to 3 ft..... | 6 50 | 60 00 | 550 00 |
| 3 to 4 ft..... | 8 00 | 75 00 | |

W. rosea. Pink Weigela.
Large, bright pink flowers. A profuse bloomer.

| | | | |
|------------------|------|-------|--------|
| 18 to 24 in..... | 4 00 | 35 00 | 300 00 |
| 2 to 3 ft..... | 5 00 | 45 00 | 400 00 |
| 3 to 4 ft..... | 6 50 | 60 00 | 550 00 |

W. Vaniceki. Vanicek Weigela.
Great masses of bright crimson flowers. Vigorous and hardy.

| | | |
|------------------|------|-------|
| 18 to 24 in..... | 5 00 | 45 00 |
| 2 to 3 ft..... | 6 50 | 60 00 |





Hedge Plants

When you buy your hedge plants from Burr, you buy the best. They have been a specialty with us from the earliest years, both on our farms at Manchester and in Durham, Conn. Contact Burr's first, particularly for large quantity quotations.

BERBERIS Thunbergi. Japanese Barberry. Rich green foliage turning bright red in the fall. Red fruits lasting all winter. Slow-growing and hardy hedge plant, reaching 4 to 6 feet in height if not trimmed.

| | 100 | 1000 |
|-------------------|---------|----------|
| 3-yr. transplants | | |
| 12 to 15 in..... | \$25 00 | \$200 00 |
| 15 to 18 in..... | 30 00 | 250 00 |
| 18 to 24 in..... | 35 00 | 300 00 |
| 2 to 2½ ft..... | 40 00 | 350 00 |
| 2-yr. seedlings | | |
| 9 to 12 in..... | 6 00 | 50 00 |
| 12 to 18 in..... | 9 00 | 75 00 |
| 18 to 24 in..... | 12 00 | 100 00 |

B. Thunbergi atropurpurea. Red-leaved Japanese Barberry. Dark red foliage throughout the season. Shining red berries. Needs full sun.

| | 100 | 1000 |
|-------------------|-------|--------|
| 3-yr. transplants | | |
| 12 to 15 in..... | 30 00 | 250 00 |
| 15 to 18 in..... | 35 00 | 300 00 |
| 18 to 24 in..... | 40 00 | 350 00 |
| 2-yr. seedlings | | |
| 9 to 12 in..... | 8 50 | 80 00 |
| 12 to 15 in..... | 13 00 | 120 00 |
| 15 to 18 in..... | 20 00 | 175 00 |
| 18 to 24 in..... | 27 50 | 250 00 |

LIGUSTRUM amurense. Amur Privet. Makes an excellent quick-growing hedge or screen. Tall and upright in growth, with dark, shining leaves. Perfectly hardy.

| | | |
|----------------|-------|--------|
| 2 to 3 ft..... | 20 00 | 175 00 |
| 3 to 4 ft..... | 27 50 | 250 00 |

L. Ibolium. Ibolium Privet.

Rich, glossy green leaves on a bushy, hardy plant. Good for hedge planting and is also used as a specimen in a mixed shrub border.

| | | |
|------------------|-------|--------|
| 12 to 18 in..... | 8 00 | 70 00 |
| 18 to 24 in..... | 11 00 | 90 00 |
| 2 to 3 ft..... | 15 00 | 125 00 |

Ligustrum obtusifolium Regelianum. Regel Privet. Low growing, with almost horizontal branches. Makes a dense hedge without trimming; also used as a specimen.

| | 100 | 1000 |
|------------------|---------|----------|
| 12 to 18 in..... | \$30 00 | \$250 00 |
| 18 to 24 in..... | 40 00 | 350 00 |
| 2 to 3 ft..... | 50 00 | 450 00 |

L. ovalifolium. California Privet.

Compact, upright habit of growth. The most widely planted species.

| | | |
|------------------|-------|--------|
| 12 to 18 in..... | 10 00 | 80 00 |
| 18 to 24 in..... | 10 00 | 90 00 |
| 2 to 3 ft..... | 15 00 | 125 00 |
| 3 to 4 ft..... | 22 50 | 200 00 |



BERBERIS Thunbergi





Vines

Our Connecticut Valley-grown vines are extremely well rooted to give you a quick start in securing the coverage you desire.

AMPELOPSIS tricuspidata Veitchi. Boston Ivy.

Glossy green foliage, purplish when young and turning bright tones in the fall. Blue berries. Very graceful and hardy, clinging closely to walls by tendrils.

| | | | |
|-------------------|--------|---------|----------|
| | 10 | 100 | 1000 |
| 2-yr., No. 2..... | \$3 50 | \$30 00 | \$250 00 |
| 2-yr., No. 1..... | 4 50 | 40 00 | 350 00 |

BIGNONIA radicans. Trumpet-vine.

A tall, tropical-appearing vine with large, trumpet-shaped flowers of glowing orange-red in August. A rapid grower; self-clinging. Grows 30 to 40 feet.

| | | |
|-------------------|------|-------|
| 2-yr., No. 1..... | 5 00 | 45 00 |
|-------------------|------|-------|

CELASTRUS orbiculatus. Japanese Bittersweet.

Tall, vigorous climber with bright green leaves and orange-yellow berries that split open in fall, showing crimson within. For covering rocks, walls or lattice.

| | | |
|-------------------|------|-------|
| 2-yr., No. 2..... | 4 00 | 35 00 |
| 2-yr., No. 1..... | 4 50 | 40 00 |

CLEMATIS paniculata. Sweet Autumn Clematis.

Profuse fragrant white flowers in late summer. Well adapted for covering porches, arbors, or the sides of buildings. Vigorous and hardy. Grows 6 to 10 feet.

| | | |
|-------------------|------|-------|
| 2-yr., No. 1..... | 5 00 | 45 00 |
|-------------------|------|-------|

EUONYMUS radicans vegetus. Bigleaf Wintercreeper.

A shrubby climber 5 to 6 feet tall. Will cling to stone or brick walls.

| | | |
|------------------|-------|--------|
| 9 to 12 in..... | 8 00 | 75 00 |
| 12 to 18 in..... | 11 00 | 100 00 |
| 15 to 18 in..... | 15 00 | 125 00 |

LONICERA Heckrotti. Everblooming Honeysuckle.

Fragrant purple flowers. A shrubby vine, splendid for massing and as a ground cover.

| | | |
|-------------------|------|-------|
| 2-yr., No. 1..... | 5 00 | 45 00 |
|-------------------|------|-------|

1000 rate applies on 300 or more

Lonicera japonica Halliana. Hall's Japanese Honeysuckle.

An evergreen climber 10 to 15 feet tall. Flowers white, changing to yellow, very fragrant. Fine for trellises and as a ground cover.

| | | | |
|-------------------|--------|---------|------|
| | 10 | 100 | 1000 |
| 2-yr., No. 1..... | \$2 50 | \$20 00 | |

POLYGONUM Auberti. Silver Lace-Vine.

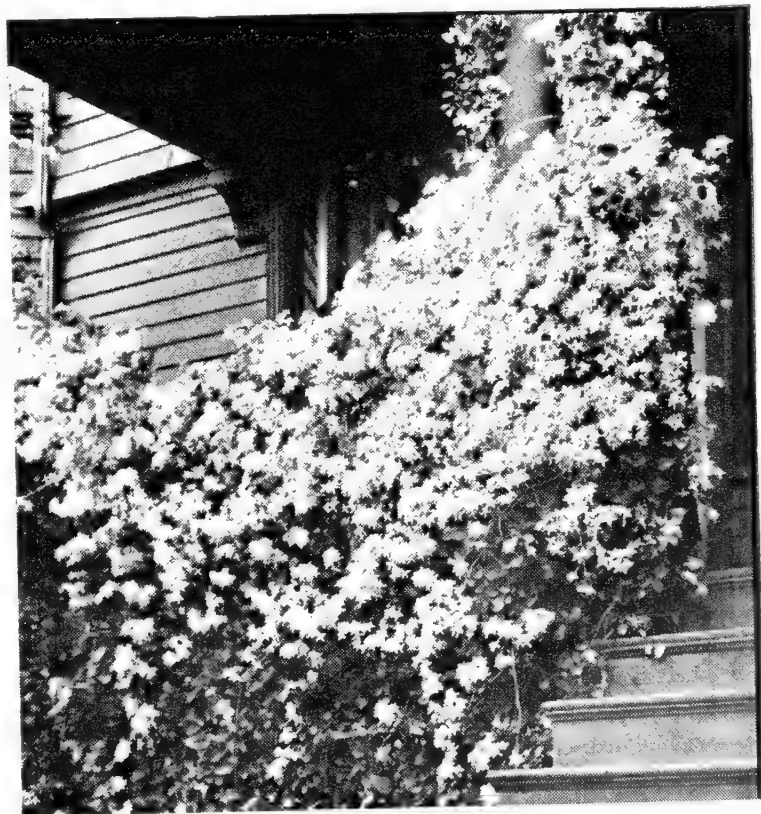
Tiny white flowers in feathery sprays from August to October. A very fast grower, tall and hardy. Grows to 20 feet.

| | | |
|-------------------|------|-------|
| 2-yr., No. 1..... | 6 50 | 60 00 |
|-------------------|------|-------|

WISTERIA, Purple.

Long sprays of handsome bloom. A large, very vigorous, hardy and long-lived vine well adapted for training on porches, arbors and trellises. Grows to about 25 feet.

| | | |
|-------------------|-----------|-------|
| | Seedlings | |
| 2-yr., No. 2..... | 3 50 | 30 00 |
| 2-yr., No. 1..... | 4 50 | 40 00 |
| | Own-root | |
| 2-yr., No. 1..... | 6 50 | 60 00 |



CLEMATIS paniculata





Roses

You will be pleased with the development and luxuriant growth of Burr Roses. They are budded on *Rosa multiflora*, the hardiest and the least suckering of Rose understocks. The plants have been fertilized at the proper time, well cultivated and adequately dusted during the growing season to make them vigorous and disease free.

Hybrid Teas

| | 10 | 100 |
|--------------------|--------|---------|
| 2-yr., No. 1½..... | \$5 00 | \$45 00 |
| 2-yr., No. 1..... | 6 50 | 60 00 |
| 2-yr., Giant..... | 8 50 | 80 00 |

Ami Quinard. Velvety dark maroon; medium size.

Betty Uprichard. Salmon-pink with copery carmine reverse.

Caledonia. Pure white.

Condesa de Sastago. Distinctly two-tone—Oriental red and yellow.

Countess Vandal. Salmon-pink with yellow base.

Crimson King. Deep crimson.

Edith Nellie Perkins. Two-tone—coppery rose and salmon.

Editor McFarland. Glowing pink.

E. G. Hill. Dazzling scarlet.

Etoile de Hollande. Bright red; rich fragrance.

Golden Charm. Deep yellow.

Golden Dawn. Sunflower-yellow.

Joanna Hill. Orange-yellow.

K. A. Viktoria. White with lemon tint; fragrant.

Margaret McGredy. Orange-scarlet.

McGredy's Scarlet. Velvety crimson-scarlet.

McGredy's Yellow. Bright buttercup-yellow.

Pink Radiance. Two-tone pink; fragrant.

Poinsettia. Unfading scarlet.

President Herbert Hoover. Multicolor—scarlet, cerise, flame and yellow.

Red Radiance. Cerise-red.

Soeur Therese. Clear yellow.

Talisman. Multicolor—orange, yellow and red.

The Doctor. Silvery pink; extra large.

Polyanthas

| | 10 | 100 |
|---------------------------|--------|---------|
| 2-yr., No. 1½..... | \$5 00 | \$45 00 |
| 2-yr., No. 1..... | 6 50 | 60 00 |
| 2-yr., Forcing Grade..... | 8 50 | 80 00 |

Else Poulsen. Bright rose-pink.

Floradora. Geranium-red.

Gloria Mundi. Orange-scarlet.

Golden Salmon. Unfading orange.

Gruss an Aachen. Flesh-pink fading to white.

Improved Lafayette. Glowing red.

Red Ripples. Oxblood-red to carmine.

Triomphe Orleansais. Cherry-red.

Hybrid Perpetuals

| | 10 | 100 |
|--------------------|--------|---------|
| 2-yr., No. 1½..... | \$5 00 | \$45 00 |
| 2-yr., No. 1..... | 6 50 | 60 00 |
| 2-yr., Giant..... | 8 50 | 80 00 |

American Beauty. Crimson-carmine.

Frau Karl Druschki. Snow-white.

General Jacqueminot. Clear red.



Roses, continued

Hybrid Rugosas

| | | |
|-------------------|--------|---------|
| | 10 | 100 |
| 2-yr., No. 1..... | \$6 50 | \$60 00 |
| 2-yr., Giant..... | 8 50 | 80 00 |

F. J. Grootendorst. Bright red, fringed like a carnation.

Grootendorst Pink. Clear pink.

Grootendorst Supreme. Deep crimson-red.

Climbing Roses

| | | |
|--------------------|--------|---------|
| | 10 | 100 |
| 2-yr., No. 1½..... | \$5 00 | \$45 00 |
| 2-yr., No. 1..... | 6 50 | 60 00 |
| 2-yr., Giant..... | 8 50 | 80 00 |

Blaze. Scarlet.

Cl. American Beauty. Deep rose-pink.

Cl. Ami Quinard. Velvet maroon.

Cl. Condesa de Sastago. Oriental red and yellow.

Cl. Golden Charm. Deep yellow.

Cl. Pink Radiance. Two-tone pink.

Cl. President Hoover. Scarlet, cerise, flame and yellow.

Cl. Talisman. Orange, yellow and red.

Dr. W. Van Fleet. Appleblossom-pink.

Golden Climber. Sunflower-yellow.

CLIMBING ROSES continued

Mme. Gregoire Staechelin. Delicate pink stained crimson outside.

New Dawn. The everblooming Dr. Van Fleet.

Paul's Scarlet Climber. Bright scarlet.

Primrose. Primrose-yellow.

Silver Moon. Creamy white.

Yellow Rambler. Straw color passing to white.

Patented Hybrid Teas

| | 10 to | 20 to | 100 to |
|--|--------|---------|--------|
| | 19 | 99 | 249 |
| | each | each | each |
| American Flagship. Brilliant scarlet. | | | |
| No. 1..... | \$1 00 | \$0 87½ | \$0 80 |
| No. 1½..... | 80 | 70 | 64 |
| Applause. Light red. | | | |
| No. 1..... | 1 10 | 1 00 | 95 |
| No. 1½..... | 88 | 80 | 76 |
| Bravo. Currant-red. | | | |
| No. 1..... | 1 25 | 1 12½ | 1 05 |
| No. 1½..... | 1 00 | 90 | 84 |
| | 10 to | 20 to | 100 to |
| | 19 | 99 | 249 |
| | each | each | each |
| Capistrano. Rich rose-pink. | | | |
| No. 1..... | 1 25 | 1 12½ | 1 05 |
| No. 1½..... | 1 00 | 90 | 84 |



This field is completely planted to *Rosa multiflora japonica*; the seedlings pictured here are approximately three months old. The popularity of this item has called for a large production for the past several years.



Roses, continued

PATENTED HYBRID TEAS, continued

| | 10 to 19 each | 20 to 99 each | 100 to 249 each | | 10 to 19 each | 20 to 99 each | 100 to 249 each |
|--|---------------------|---------------------|-----------------------|---|---------------------|---------------------|-----------------------|
| Charlotte Armstrong. Rose-red. | | | | | | | |
| No. 1..... | \$1 10 | \$1 00 | \$0 95 | Fred Howard. Yellow touched with light pink. | \$1 50 | \$1 37½ | \$1 30 |
| No. 1½..... | 88 | 80 | 76 | No. 1..... | 1 20 | 1 10 | 1 04 |
| Crimson Glory. Deep crimson; very fragrant. | | | | Grande Duchesse Charlotte. Begonia-rose. | | | |
| No. 1..... | 1 00 | 87½ | 80 | No. 1..... | 1 00 | 87½ | 80 |
| No. 1½..... | 80 | 70 | 64 | No. 1½..... | 80 | 70 | 64 |
| Diamond Jubilee. Buff-orange. | | | | Helen Traubel. Brilliant pink to apricot. | | | |
| No. 1..... | 1 10 | 1 00 | 95 | No. 1..... | 1 50 | 1 37½ | 1 30 |
| No. 1½..... | 88 | 80 | 76 | No. 1½..... | 1 20 | 1 10 | 1 04 |
| Eclipse. Golden yellow. | | | | Katherine T. Marshall. Warm coral-pink. | | | |
| No. 1..... | 1 00 | 87½ | 80 | No. 1..... | 1 00 | 87½ | 80 |
| No. 1½..... | 80 | 70 | 64 | No. 1½..... | 80 | 70 | 64 |
| Forty-niner. Orient-red and chrome-yellow. | | | | McGredy's Sunset. Yellow penciled carmine. | | | |
| No. 1½..... | 88 | 80 | 76 | No. 1..... | 1 00 | 87½ | 80 |
| | | | | No. 1½..... | 80 | 70 | 64 |
| | | | | Mirandy. Deep crimson; very fragrant. | | | |
| | | | | No. 1..... | 1 00 | 87½ | 80 |
| | | | | No. 1½..... | 80 | 70 | 64 |
| | | | | Mission Bells. Shrimp-pink. | | | |
| | | | | No. 1..... | 1 25 | 1 12½ | 1 05 |
| | | | | No. 1½..... | 1 00 | 90 | 84 |
| | | | | New Yorker. Fiery red. | | | |
| | | | | No. 1..... | 1 10 | 1 00 | 95 |
| | | | | No. 1½..... | 88 | 80 | 76 |
| | | | | Nocturne. Cardinal-red. | | | |
| | | | | No. 1..... | 1 00 | 87½ | 80 |
| | | | | No. 1½..... | 80 | 70 | 64 |
| | | | | Peace. Yellow flushed pink. | | | |
| | | | | No. 1..... | 1 40 | 1 25 | 1 20 |
| | | | | No. 1½..... | 1 12 | 1 00 | 96 |
| | | | | Rex Anderson. Ivory-white. | | | |
| | | | | No. 1..... | 1 00 | 87½ | 80 |
| | | | | No. 1½..... | 80 | 70 | 64 |
| | | | | Rose of Freedom. Rose-red. | | | |
| | | | | No. 1..... | 1 00 | 87½ | 80 |
| | | | | No. 1½..... | 80 | 70 | 64 |
| | | | | Rubaiyat. Cerise-red. | | | |
| | | | | No. 1..... | 1 00 | 87½ | 80 |
| | | | | No. 1½..... | 80 | 70 | 64 |
| | | | | San Fernando. Glowing currant-red. | | | |
| | | | | No. 1..... | 1 00 | 87½ | 80 |
| | | | | No. 1½..... | 80 | 70 | 64 |

FRED HOWARD



Roses, continued



PEACE

| | 10 to 19 each | 20 to 99 each | 100 to 249 each |
|--|---------------------|---------------------|-----------------------|
|--|---------------------|---------------------|-----------------------|

Sutter's Gold. Orange-gold.

| | | | |
|-------------|--------|---------|--------|
| No. 1..... | \$1 25 | \$1 12½ | \$1 05 |
| No. 1½..... | 1 00 | 90 | 84 |

Taffeta. Changeable pink, salmon and yellow tones.

| | | | |
|-------------|------|-----|----|
| No. 1..... | 1 00 | 87½ | 80 |
| No. 1½..... | 80 | 70 | 64 |

PATENTED HYBRID TEAS, continued

| | 10 to 19 each | 20 to 99 each | 100 to 249 each |
|--|---------------------|---------------------|-----------------------|
|--|---------------------|---------------------|-----------------------|

Tallyho. Old-rose, darker on reverse.

| | | | |
|-------------|--------|--------|--------|
| No. 1..... | \$1 10 | \$1 00 | \$0 95 |
| No. 1½..... | 88 | 80 | 76 |

Patented Floribundas

Betty Prior. Single; carmine-pink.

| | | | |
|-------------|----|----|----|
| No. 1..... | 90 | 75 | 70 |
| No. 1½..... | 72 | 60 | 56 |

Chatter. Bright carmine-red.

| | | | |
|-------------|----|----|----|
| No. 1..... | 90 | 75 | 70 |
| No. 1½..... | 72 | 60 | 56 |

Donald Prior. Bold red.

| | | | |
|-------------|----|----|----|
| No. 1..... | 90 | 75 | 70 |
| No. 1½..... | 72 | 60 | 56 |

Fashion. Coral-peach.

| | | | |
|-------------|------|------|----|
| No. 1..... | 1 10 | 1 00 | 95 |
| No. 1½..... | 88 | 80 | 76 |

Goldilocks. Golden yellow.

| | | | |
|-------------|----|----|----|
| No. 1..... | 90 | 75 | 70 |
| No. 1½..... | 72 | 60 | 56 |

Masquerade. Changing colors—red, pink, yellow.

| | | | |
|-------------|------|------|----|
| No. 1..... | 1 10 | 1 00 | 95 |
| No. 1½..... | 88 | 80 | 76 |



VOGUE



Roses, continued

PATENTED FLORIBUNDAS, continued

| | 10 to 19 each | 20 to 99 each | 100 to 249 each |
|---|---------------------|---------------------|-----------------------|
| Pinocchio. Salmon-pink. | | | |
| No. 1..... | \$0 90 | \$0 75 | \$0 70 |
| No. 1½..... | 72 | 60 | 56 |
| Red Pinocchio. Velvety deep red. | | | |
| No. 1..... | 90 | 75 | 70 |
| No. 1½..... | 72 | 60 | 56 |
| Summer Snow. White. | | | |
| No. 1..... | 90 | 75 | 70 |
| No. 1½..... | 72 | 60 | 56 |
| Vogue. Cherry-coral. | | | |
| No. 1..... | 1 25 | 1 12½ | 1 05 |
| No. 1½..... | 1 00 | 90 | 84 |
| World's Fair. Velvety crimson. | | | |
| No. 1..... | 90 | 75 | 70 |
| No. 1½..... | 72 | 60 | 56 |

Patented Climbers

| | 10 to 19 each | 20 to 99 each | 100 to 249 each |
|---|---------------------|---------------------|-----------------------|
| Aloha. Deep rose-pink. | | | |
| No. 1..... | \$1 40 | \$1 25 | \$1 20 |
| No. 1½..... | 1 12 | 1 00 | 96 |
| Cl. Crimson Glory. Deep crimson. | | | |
| No. 1..... | 1 10 | 1 00 | 95 |
| No. 1½..... | 88 | 80 | 76 |
| Cl. Peace. Yellow flushed pink. | | | |
| No. 1..... | 1 40 | 1 25 | 1 20 |
| No. 1½..... | 1 12 | 1 00 | 96 |
| Doubloons. Buff-yellow. | | | |
| No. 1..... | 1 10 | 1 00 | 95 |
| No. 1½..... | 88 | 80 | 76 |
| Dr. J. H. Nicolas. Rose-pink. | | | |
| No. 1..... | 1 10 | 1 00 | 95 |
| No. 1½..... | 88 | 80 | 76 |
| King Midas. Golden yellow. | | | |
| No. 1..... | 1 10 | 1 00 | 95 |
| No. 1½..... | 88 | 80 | 76 |



A Planting of Hybrid Tea Roses





Fruit Trees

Choice northern-grown fruit trees have been one of the featured items at Burr's for many years. As New England's largest fruit-tree growers, we are confident that your requirements will be satisfied here. All trees are grown by the most modern methods and all are graded to the standards of the American Association of Nurserymen.

The inspectors of the Massachusetts Fruit Growers Association offer inspection service for trueness-to-name and are regularly employed to inspect Burr blocks of fruit trees. The certificate issued to C. R. Burr & Co., Inc., as of July 23, 1951, reads as follows:

"All of the apple, pear, plum and sweet cherry varieties propagated and now growing in the nursery of C. R. Burr & Co., Inc., Manchester, Connecticut, have been examined by the Massachusetts Trueness-To-Name Inspection Service. To the best of our knowledge, these trees are true-to-name as they now stand in the nursery row.

Signed (A. P. French")

Standard Apples

| | | | |
|--|---------|----------|--|
| 2-yr., 4 ft. and up, $\frac{9}{16}$ -in. cal..... | 100 | 1000 | Red Delicious. Large, solid, red. Excellent flavor. |
| | \$35 00 | \$300 00 | Red Gravenstein. Large, well colored; flesh slightly yellow. Summer. |
| 2-yr., 4½ ft. and up, $\frac{11}{16}$ -in. cal..... | 40 00 | 350 00 | Red Jonathan. Rich red, juicy, firm. For cooking or eating raw. Late fall. |
| 2-yr., 5 ft. and up, 1-in. cal.. | 60 00 | 550 00 | Red McIntosh. Solid red. A heavy yielder. Fall. |
| Baldwin. Large, bright red, crisp. Ships and keeps well. | | | Red Rome Beauty. Bright red. Superior quality. |
| Cortland. Red; fine flavor. A month later than McIntosh. | | | Red Spy. Extra large fruit. Vigorous and hardy. |
| Grimes Golden. Golden yellow, tender fall Apple. | | | Red Stayman's Winesap. Very large, red winter Apple. |
| Lodi. Large, firm, early. | | | Rhode Island Greening. Large, greenish yellow; flesh crisp, quite acid. Keeps well. |
| Macoun. High color; tender, juicy. | | | Roxbury Russet. Yellow-green overspread with russet. Keeps well. |
| Northern Spy. Large, bright scarlet marked yellow. Rich flavor. | | | |
| Red Astrachan. The standard large red summer Apple. | | | |

1000 rate applies on 300 or more



C. R. BURR & CO., Wholesale Nurserymen

MANCHESTER, CONN., Growing Since '98

Fruit Trees, continued

STANDARD APPLES, continued

- ✓ **Wealthy.** Round, almost solid red; flesh tender, fine grained. Very hardy.
- ✓ **Yellow Delicious.** Yellow; excellent flavor.
- ✓ **Yellow Transparent.** Clear yellow; slightly acid. Popular early summer variety.
- Dolgo Crab.** Hardy red Crabapple. Jells easily. Early September.
- ✓ **Hyslop Crab.** Large, deep crimson; flesh yellowish. Hardy and vigorous. October.

Dwarf Apples

| | | |
|--------------------------------------|------|----|
| | 10 | |
| 2-yr., $\frac{9}{16}$ -in. cal..... | \$12 | 50 |
| 2-yr., $\frac{11}{16}$ -in. cal..... | 15 | 00 |

- | | |
|----------------------|---------------------------|
| Baldwin | Red Spy |
| Red Delicious | Yellow Delicious |
| Red McIntosh | Yellow Transparent |

Standard Pears

| | | |
|--------------------------------------|------|------|
| | 100 | 1000 |
| 2-yr., $\frac{7}{16}$ -in. cal..... | \$35 | 00 |
| 2-yr., $\frac{9}{16}$ -in. cal..... | 45 | 00 |
| 2-yr., $\frac{11}{16}$ -in. cal..... | 55 | 00 |

- Bartlett.** Large, golden yellow with reddish blush. Popular summer variety.
- Beurre Bosc.** Brownish yellow; flesh buttery, juicy. Very productive.
- ✓ **Beurre d'Anjou.** Large, green turning yellow; flesh yellowish white. Fall.
- Clapp's Favorite.** Large, yellowish with blush. Summer. Good shipper.
- Kieffer.** Large, rich yellow. Good commercial sort.
- Seckel.** Medium size, yellowish brown; fine grained and juicy. Late September.
- Sheldon.** Russet color. Melting, luscious. Keeps and ships well.

Dwarf Pears

| | | |
|-------------------------------------|-----|-----|
| | 10 | 100 |
| 2-yr., $\frac{7}{16}$ -in. cal..... | \$5 | 00 |
| 2-yr., $\frac{9}{16}$ -in. cal..... | 8 | 00 |

- | | |
|-----------------|-------------------------|
| Bartlett | Clapp's Favorite |
|-----------------|-------------------------|

Plums

| | | |
|--------------------------------------|------|------|
| | 100 | 1000 |
| 2-yr., $\frac{9}{16}$ -in. cal..... | \$45 | 00 |
| 2-yr., $\frac{11}{16}$ -in. cal..... | 55 | 00 |
| 2-yr., 1-in. cal..... | 65 | 00 |

- ✓ **Abundance.** Large, very early, amber turning to cherry color. Freestone.
- ✓ **Bradshaw.** Large, dark violet-red. Early. Good canner.
- ✓ **Burbank.** Deep red; delicious flavor. Meaty and firm.
- Fellenberg.** Large, oval, purple; flesh firm, sweet. Excellent shipper.
- German Prune.** Long, oval, purple with thick bloom. Freestone. Good canner.
- ✓ **Reine Claude.** Large, pale yellow. Rich flavor; juicy.
- Stanley.** Prune type; large, dark bluish purple, fine grained and tender. Early.
- ✓ **Yellow Egg.** Extra large, clear yellow; sugar-sweet. Early.

Sweet Cherries

| | | |
|--------------------------------------|------|------|
| | 100 | 1000 |
| 1-yr., $\frac{9}{16}$ -in. cal..... | \$80 | 00 |
| 1-yr., $\frac{11}{16}$ -in. cal..... | 90 | 00 |

- ✓ **Bing.** Large, firm, almost black. Fine shipper. Midseason.
- Black Tartarian.** Big, black, juicy. Hard and vigorous.
- Governor Wood.** Large, heart shaped, light yellow flushed red. Early.
- Napoleon Bigarreau.** Large, light yellow blushed red; firm and sweet.
- Schmidt's Bigarreau.** Large, firm, deep red. Midseason to late.
- Windsor.** Almost black; flesh pinkish. Large, firm, juicy.

Sour Cherries

| | | |
|--------------------------------------|------|------|
| | 100 | 1000 |
| 1-yr., $\frac{9}{16}$ -in. cal..... | \$70 | 00 |
| 1-yr., $\frac{11}{16}$ -in. cal..... | 80 | 00 |

- ✓ **Early Richmond.** Dark red, tart and juicy.
- ✓ **English Morello.** Rich red, very tart.
- Montmorency.** Bright red. Fine for canning and pies.

1000 rate applies on 300 or more



Fruit Trees, continued

Peaches

| | |
|--------------------|----------------|
| 7/16-in. cal..... | 100 \$40 00 |
| 9/16-in. cal..... | 55 00 |
| 11/16-in. cal..... | 60 00 |

Amber Gem. Yellow flesh. Clingstone. Good for canning.

Belle of Georgia. Large; white flesh. Hardy and productive. Freestone. Midseason.

Champion. Early white freestone.

Crawford Early. Large yellow freestone. Fine quality.

Crawford Late. Large yellow fruit. Late freestone.

Early Elberta. Yellow flesh. Early freestone.

Elberta. Yellow flesh, firm and juicy. Yellow freestone. Medium early.

Golden Jubilee. Early large yellow freestone of high quality.

Peaches, continued

Hale Haven. Very large; richest flavor. Yellow freestone.

J. H. Hale. Yellow skin and flesh. Delicious flavor; extra large. Freestone.

Rochester. Early; high quality. Yellow with red blush. Fine canner.

South Haven. A prolific early Peach. Golden yellow freestone.

Valiant. Large yellow freestone. Excellent producer and canner.

Vedette. Large, yellow fleshed. Freestone.

Quince

| | |
|-------------------|---------|
| | 100 |
| 5/16-in. cal..... | \$35 00 |
| 7/16 in. cal..... | 50 00 |
| 9/16-in. cal..... | 70 00 |

Orange. Large, rich yellow. Makes delicious jam.



Block of 75,000 Apples and Flowering Crab, which will be dug in the fall of 1951.



Small Fruits and Roots



CUMBERLAND RASPBERRIES

| | | | |
|--|--------|---------|------|
| | 10 | 100 | 1000 |
| ASPARAGUS, Washington. Rustproof. Tender and fast growing. | | | |
| 2-yr., No. 1..... | \$4 00 | \$30 00 | |
| BLACKBERRY, Eldorado. Large; fine flavor. Very productive. | | | |
| 1-yr., No. 1..... | 6 00 | | |
| BLUEBERRY, Jersey. Large, light blue. Late. | | | |
| 2-yr., 12 to 15 in. . . | \$5 50 | 50 00 | |
| B., Pioneer. Medium blue; fine flavor. Midseason. | | | |
| 2-yr., 12 to 15 in. . . | 5 50 | 50 00 | |
| B., Stanley. Large berries. Late midseason. | | | |
| 2-yr., 12 to 15 in. . . | 5 50 | 50 00 | |
| RHUBARB, Victoria. Large, thick red stalks. Early. | | | |
| Seedlings, 5/8-in. cal. | 5 50 | 50 00 | |

Raspberries

| | | |
|---|-------|--|
| Cumberland. Large, firm, jet-black. | | |
| 1-yr. tips..... | 6 00 | |
| Indian Summer. Everbearing red. | | |
| 3/16-in. cal..... | 10 00 | |
| Latham. Bright red. Midseason to late. | | |
| 3/16-in. cal..... | 10 00 | |

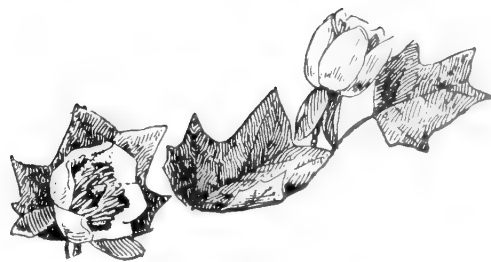
Grapes

| | | |
|---|---------|--|
| Caco. Large, sweet, red; rich flavor. | | |
| | 100 | |
| 2-yr., No. 1..... | \$20 00 | |
| Concord. The standard blue Grape. | | |
| 2-yr., No. 1..... | 15 00 | |
| Niagara. The most popular white variety. | | |
| 2-yr., No. 1..... | 20 00 | |

Seedlings and Lining-Out Stock

| | | |
|--|---------|----------|
| AMPELOPSIS tricuspidata Veitchi. Bos- ton Ivy. | | |
| | 1000 | 10,000 |
| 1-yr., No. 1, 6 to 9-in. tops | \$50 00 | \$450 00 |
| CYDONIA japonica. Flowering Quince. | | |
| 1-yr., 9 to 12 in..... | 50 00 | 450 00 |
| ROSA multiflora japonica. | | |
| 1-yr., 3 mm. and up, 8 to | | |
| 15 in..... | 30 00 | 275 00 |





Ornamental Trees

The great increase in new housing has resulted in a very widespread demand for ornamental trees. It is our belief that this demand will continue to be strong for several years, and we feel that the ornamentals in our blocks at Ellington will prove profitable for you. They are grown in richly fertilized soil, spaced in wide rows and pruned to produce a desirable form. We have many varieties available that have been scarce in recent years.

ACER dasycarpum. Silver Maple.

A large, wide-spreading tree. Bright green leaves, silvery white underneath, turning pale yellow in the fall. Fine shade tree to 80 feet tall.

| | |
|------------------|---------|
| 6 to 8 ft..... | \$10 00 |
| 10 to 12 f | 35 00 |
| 12 to 14 ft..... | 65 00 |

A. palmatum atropurpureum. Red-leaf Japanese Maple.

Leaves dark red in spring, becoming darker. An ornamental growing 8 to 10 feet tall.

| | |
|------------------------|-------|
| 15 to 18 in., B&B..... | 40 00 |
|------------------------|-------|

A. platanoides. Norway Maple.

Round, compact head and spreading branches. An excellent street or lawn tree reaching a height of 40 to 50 feet.

| | |
|------------------|--------|
| 10 to 12 ft..... | 55 00 |
| 12 to 14 ft..... | 90 00 |
| 14 to 16 ft..... | 125 00 |

Acer platanoides Schwedleri. Schwedler Maple.

Leaves bright purplish and crimson in spring, becoming dark green and then red and brown. Grows 40 feet high.

| | |
|------------------|---------|
| 8 to 10 ft..... | \$40 00 |
| 12 to 14 ft..... | 100 00 |

A. rubrum. Red Maple.

A large tree with foliage turning to brilliant scarlet and orange in the autumn. Grows 40 to 50 feet high.

| | |
|------------------|-------|
| 8 to 10 ft..... | 25 00 |
| 10 to 12 ft..... | 50 00 |
| 12 to 14 ft..... | 90 00 |

A. saccharum. Sugar Maple.

Stately, upright, dense habit of growth. Leaves turn bright scarlet, orange and yellow in the fall. A fine street and lawn specimen 50 to 60 feet tall.

| | |
|------------------------------------|-------|
| 6 to 8 ft., 1 to 1¼-in. cal..... | 25 00 |
| 8 to 10 ft., 1¼ to 1½-in. cal..... | 30 00 |
| 10 to 12 ft., 1½ to 2-in. cal..... | 50 00 |
| 12 to 14 ft., 2 to 2½-in. cal..... | 90 00 |



A planting of *Euonymus alatus* in its second summer of growth, which will be dug after having been in the field for three years.



Ornamental Trees, continued

BETULA alba laciniata. Cut-leaf White Birch.

A graceful tree of weeping habit; leaves are lacinated. Grows 20 to 30 feet. 10

5 to 6 ft. \$22 50
6 to 7 ft. 30 00
7 to 8 ft. 50 00

CASTANEA mollissima. Chinese Chestnut.

A hardy tree growing to 40 feet, good for both shade and the nuts it yields.

3 to 4 ft. 15 00

CATALPA Bungei. Umbrella Catalpa.

A small tree with dense, round head. A hardy ornamental used in formal gardens.

5-ft. stem, 2-yr. head. 25 00

CORNUS florida. White-flowering Dogwood.

A beautiful flowering tree with horizontal branches covered with single white flowers in spring. Red fruit and fall foliage. Grows

20 to 25 feet tall; for the edge of woodlands.
3 to 4 ft. 16 50

C. florida rubra. Red-flowering Dogwood.

Bright pink form of the preceding. Fine interplanted with the white Dogwood.

2 to 3 f. 20 00
4 to 5 ft., B&B. 70 00

CRATÆGUS Oxyacantha Pauli. Double Scarlet Haw horn.

Large, double, bright scarlet flowers on a small tree 12 to 15 feet tall. Very showy in May.

3 to 4 ft. 20 00
4 to 5 ft. 30 00
5 to 6 ft. 40 00

HYDRANGEA Pee Gee, Tree Form.

Large white bloom panicles, becoming rose and bronze.

18 to 24 in. 8 00
2 to 3 ft. 11 00
3 to 4 ft. 13 50

JUGLANS nigra. Black Walnut.

A large, shapely tree with round symmetrical crown. Desirable for lawn, landscape or orchard planting. Reaches 80 to 100 feet in height.

8 to 10 ft. 45 00
10 to 12 ft. 70 00

LABURNUM Vossi. Goldenchain-tree.

A small ornamental with drooping racemes of yellow flowers in spring. Grows 15 to 20 feet high. 10

4 to 5 ft. \$30 00
5 to 6 ft. 40 00

MAGNOLIA Soulangeana. Saucer Magnolia.

Large, cupped, white flowers marked rose outside. Very hardy and showy. Grows 25 feet tall.

3 to 4 ft., B&B. 45 00
4 to 5 ft., B&B. 70 00

MALUS Eleyi. Eley Crab.

Pink bloom in May, followed by large red fruit. Reaches 15 to 20 feet in height.

4 to 5 ft. 10 00
5 to 6 ft. 15 00

M. floribunda purpurea. Purple-leaf Flowering Crab.

Purple foliage, bark and flowers. Grows 15 to 20 feet tall.

4 to 5 ft. 10 00
5 to 6 ft. 15 00

M. ioensis plena. Bechtel's Crab.

Double pink flowers like small roses; fragrant. A very fine ornamental.

2 to 3 ft. 7 50
3 to 4 ft. 10 00
4 to 5 ft. 15 00

M., Red Flesh. Red fleshy fruit, greenish bronze foliage, single pink flowers.

4 to 5 ft. 10 00
5 to 6 ft. 15 00

M., Red Silver.

Maroon-red leaves, silvery underneath. Red flowers and fruit.

4 to 5 ft. 10 00
5 to 6 ft. 15 00

MORUS alba pendula. Tea's Weeping Mulberry.

Long slender branches drooping to the ground. Very vigorous and hardy ornamental.

5 ft., 2-yr. head. 17 50

POPULUS nigra italica. Lombardy Poplar.

A tall, columnar tree, rapid growing and hardy. Grows 40 to 60 feet tall.

6 to 8 ft. 5 00
8 to 10 ft. 7 50

PRUNUS, Kwansan.

Deep pink flowers. Branches from the ground up. Vigorous, quick growth.

3 to 4 ft. 17 50



Ornamental Trees, continued

Prunus Persica, Camellia. Flowering Peach. 10
Ornamental Peach with red flowers.
3 to 4 ft..... \$7 50

P. Persica, Helen Bouchers. Flowering Peach.
Double, clear pink flowers on a vigorous tree.
3 to 4 ft..... 7 50
4 to 5 ft..... 10 00

P. Pissardi, Newport. Purple-leaf Plum.
A mass of small single white flowers in spring. Leaves pinkish purple. A fine lawn specimen to 20 feet in height.
4 to 5 ft..... 12 50
5 to 6 ft..... 15 00

P. subhirtella pendula. Weeping Cherry.
Rose-pink flowers on a gracefully weeping tree.
5 to 6 ft., 2-yr. head..... 45 00

QUERCUS palustris. Pin Oak.
A hardy, majestic shade tree with branches sweeping toward the ground. Foliage ruddy green at first, becoming dark glossy green and then scarlet in the fall. A rapid grower to 60 to 80 feet.
6 to 8 ft..... 25 00

SALIX babylonica. Babylon Weeping Willow.
Long, swaying branches. Foliage bright green. A rapid grower needing moist soil. Reaches 30 to 40 feet in height. 10
5 to 6 ft..... \$10 00
6 to 8 ft..... 15 00

S. niobe. Niobe Willow.
A large tree of weeping habit with bright golden yellow branches.
5 to 6 ft..... 10 00
6 to 8 ft..... 15 00

SORBUS Aucuparia. European Mountain Ash.
Broad flat clusters of scarlet berries from July to winter. A feathery little tree 20 to 30 feet tall, attractive to birds.
5 to 6 ft..... 17 50

ULMUS americana. American Elm..
A tall, stately tree of graceful vase form. Hardy and long lived, growing to 100 feet in height or more.
6 to 8 ft..... 7 50
8 to 10 ft..... 15 00
10 to 12 ft..... 50 00
12 to 14 ft..... 60 00
14 to 16 ft..... 75 00



A scene taken on our shade tree farm, showing a group of Norway Maples. Attention is called to the spacing in the row, which permits the production of a well-headed tree.





Evergreens

You may choose from acres of well-grown evergreens at our South Windsor farm. They are grown in soil especially well adapted to produce the fine fibrous root systems so essential to digging with a good firm ball. All our evergreens have tied balls, and whether you need ten or a carload you may be sure of buying well-sheared, root-pruned, properly fertilized trees.

AZALEA calendulacea. Flame Azalea.
A very showy shrub flowering in late spring. Large clusters of flame-colored, red and yellow flowers. Grows 6 to 8 feet tall.

| | |
|------------------|---------|
| | 10 |
| 18 to 24 in..... | \$27 50 |

DAPHNE Cneorum. Rose Daphne.
A very sweet-scented, dwarf evergreen shrub with pink flowers in May and June and intermittently all summer. Grows only 6 to 12 inches high.

| | |
|------------------|-------|
| 6 to 9 in..... | 12 50 |
| 9 to 12 in..... | 17 50 |
| 12 to 15 in..... | 20 00 |

JUNIPERUS communis hibernica. Irish Juniper.
A slender, columnar tree with formal lines. Grows 5 to 6 feet tall.

| | |
|------------------|-------|
| 18 to 24 in..... | 15 00 |
| 2 to 2½ ft..... | 17 50 |
| 2½ to 3 ft..... | 22 50 |

KALMIA latifolia. Mountain Laurel.
A fine broad-leaved evergreen shrub with showy pink bloom clusters in early summer. Needs woodsy soil and part shade. Grows 5 to 6 feet tall or more.

| | |
|------------------|-------|
| 18 to 24 in..... | 25 00 |
| 2 to 2½ ft..... | 35 00 |

PICEA canadensis. White Spruce.
Light bluish green evergreen tree 50 to 60 feet tall. Attractive and shapely.

| | |
|------------------|-------|
| 18 to 24 in..... | 17 50 |
| 2 to 2½ ft..... | 25 00 |

P. canadensis densata. Black Hills Spruce.
Very hardy and slow-growing tree of compact, dense, symmetrical form.

| | |
|------------------|-------|
| 18 to 24 in..... | 17 50 |
| 2 to 2½ ft..... | 25 00 |

Picea excelsa. Norway Spruce.
Handsome, hardy evergreen of rapid growth. Branches usually pendulous. Grows to 100 feet or more.

| | |
|----------------|---------|
| | 10 |
| 3 to 4 ft..... | \$40 00 |
| 4 to 5 ft..... | 50 00 |

P. pungens. Colorado Spruce.
Symmetrical evergreen of pyramidal outline, with branches in distinct whorls. Light green. Reaches 70 to 80 feet in height.

| | |
|------------------|-------|
| 18 to 24 in..... | 17 50 |
| 2 to 2½ ft..... | 25 00 |

RHODODENDRON catawbiense. Catawba Rhododendron.
Large evergreen shrub with huge clusters of rose-purple bloom in late spring. Grows 6 to 8 feet high.

| | |
|------------------|-------|
| 18 to 24 in..... | 30 00 |
|------------------|-------|

R. maximum. Rosebay Rhododendron.
Flowers pinkish white, in profuse clusters in early summer. Excellent for massing, growing 8 to 10 feet tall.

| | |
|------------------|-------|
| 18 to 24 in..... | 25 00 |
|------------------|-------|

TAXUS cuspidata capitata. Upright Japanese Yew.
Symmetrical, pyramidal tree with deep green foliage. Easily trimmed to make an excellent hedge. Grows 20 to 25 feet tall if not pruned.

| | |
|------------------|-------|
| 18 to 24 in..... | 30 00 |
| 2 to 2½ ft..... | 40 00 |
| 2½ to 3 ft..... | 50 00 |
| 3 to 3½ ft..... | 70 00 |

T. media Hatfieldi. Hatfield Yew.
Dense, dark green foliage in beehive shape.

| | |
|------------------|-------|
| 18 to 24 in..... | 30 00 |
| 2 to 2½ ft..... | 40 00 |



Evergreens, continued

Taxus media Hicksi. Hicks Yew.
A columnar form with upright branches and green foliage. Makes a good accent plant 10 to 12 feet tall. 10
18 to 24 in.....\$30 00
2 to 2½ ft..... 40 00
2½ to 3 ft..... 50 00

THUJA occidentalis. American Arborvitæ.
Upright, flat-leaved evergreen making a good screen. Easily sheared to any height desired. Endures city conditions well.
2 to 2½ ft..... 17 50
2½ to 3 ft..... 22 50
3 to 4 ft..... 35 00

T. occidentalis compacta. Parsons Globe Arborvitæ.
A dwarf, ball-shaped form with light green foliage.
18 to 24 in..... 22 50

T. occidentalis Hoveyi. Hovey's Globe Arborvitæ.
A globular tree with bright green foliage.
18 to 24 in..... 22 50

Thuja occidentalis nigra. Dark American Arborvitæ.
Very dense, dark green foliage. Pyramidal habit of growth. Makes a fine hedge or specimen. 10
18 to 24 in.....\$15 00
2½ to 3 ft..... 27 50
3 to 4 ft..... 35 00

T. occidentalis pyramidalis. Pyramidal Arborvitæ.
Distinct columnar growth, with rich glossy green foliage. Reaches a height of 30 to 40 feet if left untrimmed.
18 to 24 in..... 15 00
2 to 2½ ft..... 22 50
2½ to 3 ft..... 27 50
3 to 4 ft..... 35 00

TSUGA canadensis. Canadian Hemlock.
Broad, medium-sized evergreen of very graceful appearance, with dark green foliage. Grows to 50 feet in sun or shade but responds to trimming.
2 to 2½ ft..... 35 00
2½ to 3 ft..... 45 00



The *Daphne* pictured here will be dug in the fall of 1951, when the plants will be three years old. These plants were recently sheared and will be sheared again before digging, in order to produce a heavy, well-branched specimen.





Another range that reflects our propagating effort in evergreens. This house is filled with *Taxus* of various types.

INDEX

| | | | | | |
|------------------|--------|-------------------|--------|---------------------|---------|
| Abelia..... | Page 3 | Forsythia..... | Page 4 | Populus..... | Page 20 |
| Acer..... | 19 | Grapes..... | 18 | Prunus..... | 6,20,21 |
| Ampelopsis..... | 9-18 | Hibiscus..... | 4 | Quercus..... | 21 |
| Apples..... | 15,16 | Hydrangea..... | 4,20 | Quince..... | 17 |
| Asparagus..... | 18 | Juglans..... | 20 | Raspberry..... | 18 |
| Azalea..... | 22 | Juniperus..... | 22 | Rhododendron..... | 22 |
| Berberis..... | 8 | Kalmia..... | 22 | Rhubarb..... | 18 |
| Betula..... | 20 | Kerria..... | 5 | Rosa..... | 18 |
| Bignonia..... | 9 | Kolkwitzia..... | 5 | Roses..... | 10-14 |
| Blackberry..... | 18 | Laburnum..... | 20 | Salix..... | 21 |
| Blueberry..... | 18 | Ligustrum..... | 8 | Sorbus..... | 21 |
| Buddleia..... | 3 | Lonicera..... | 5,9 | Spiræa..... | 6,7 |
| Calycanthus..... | 3 | Magnolia..... | 20 | Symphoricarpos..... | 7 |
| Castanea..... | 20 | Malus..... | 20 | Syringa..... | 7 |
| Catalpa..... | 20 | Morus..... | 20 | Tamarix..... | 7 |
| Celastrus..... | 9 | Peaches..... | 17 | Taxus..... | 22,23 |
| Cherries..... | 16 | Pears..... | 16 | Thu'a..... | 23 |
| Clematis..... | 9 | Philadelphus..... | 6 | Tsuga..... | 23 |
| Cornus..... | 4-20 | Picea..... | 22 | Ulmus..... | 21 |
| Cotoneaster..... | 4 | Plums..... | 16 | Viburnum..... | 7 |
| Cratægus..... | 20 | Polygonum..... | 9 | Weigela..... | 7 |
| Cydonia..... | 4,18 | Poplars..... | 20 | Wisteria..... | 9 |
| Daphne..... | 22 | | | | |
| Deutzia..... | 4 | | | | |
| Euonymus..... | 4,9 | | | | |

The following chart of weights has been compiled to help you better estimate your transportation costs.

Approximate Weights Packed For Shipment

| Quantity | Grade | Approx. Wt. Lbs. |
|--|---|---------------------|
| 100 Shrubs | 12 to 18 in. | 60 |
| 100 Shrubs | 18 to 24 in. | 80 |
| 100 Shrubs | 2 to 3 ft. | 120 |
| 100 Shrubs | 3 to 4 ft. | 160 |
| 10 Shade Trees | 6 to 8 ft. | 50 |
| 10 Shade Trees | 8 to 10 ft. | 75 |
| 10 Shade Trees | 10 to 12 ft. | 225 |
| 3 Shade Trees | 12 to 15 ft. | 225 |
| 1 Evergreen | 12 to 15 in. | 25 |
| 1 Evergreen | 15 to 18 in. | 30 |
| 1 Evergreen | 18 to 24 in. | 35 |
| 1 Evergreen | 2 to 2½ ft. | 45 |
| 1 Evergreen | 2½ to 3 ft. | 50 |
| 1 Evergreen | 3 to 4 ft. | 60 |
| 100 Giant Roses | | 120 |
| 100 Roses No. 1..... | | 90 |
| 100 Roses No. 2..... | | 90 |
| | | Approx. Wt. Lbs. |
| Vines, Honeysuckle and Silver Lace (Light Types) | | |
| 100..... | 2-Yr. No. 1 | 50 |
| Vines, Wisteria and Bittersweet (Heavy Types) | | |
| 100..... | 2-Yr. No. 1 | 90 |
| 100..... | 2-Yr. No. 2 | 70 |
| Hedge Plants (No Foliage) | | |
| 100..... | 18 to 24 in. | 70 |
| 1000..... | 18 to 24 in. (box)..... | 600 |
| Barberry | | |
| 250..... | 3-Yr., 15 to 18 in. or 18 to 24 in. (large box) | 700 |

We are in a position to approximate the cost of transportation and boxing of your shipment if you will ask us for this information well in advance of the shipping date.

All stock offered is graded in accordance with the horticultural standards as established by the American Association of Nurserymen.

IT IS ALWAYS *Time* TO BUY BURR PRODUCTS

| JANUARY | | | | | | | FEBRUARY | | | | | | |
|-----------|----|----|----|----|----|----|----------|----|----|----|----|----|----|
| Su | Mo | Tu | We | Th | Fr | Sa | Su | Mo | Tu | We | Th | Fr | Sa |
| | | 1 | 2 | 3 | 4 | 5 | | | | | | 1 | 2 |
| 6 | 7 | 8 | 9 | 10 | 11 | 12 | 3 | 4 | 5 | 6 | 7 | 8 | 9 |
| 13 | 14 | 15 | 16 | 17 | 18 | 19 | 10 | 11 | 12 | 13 | 14 | 15 | 16 |
| 20 | 21 | 22 | 23 | 24 | 25 | 26 | 17 | 18 | 19 | 20 | 21 | 22 | 23 |
| 27 | 28 | 29 | 30 | 31 | | | 24 | 25 | 26 | 27 | 28 | 29 | |
| MARCH | | | | | | | APRIL | | | | | | |
| Su | Mo | Tu | We | Th | Fr | Sa | | Mo | Tu | We | Th | Fr | Sa |
| 30 | 31 | | | | | 1 | | | 1 | 2 | 3 | 4 | 5 |
| 2 | 3 | 4 | 5 | 6 | 7 | 8 | 6 | 7 | 8 | 9 | 10 | 11 | 12 |
| 9 | 10 | 11 | 12 | 13 | 14 | 15 | 13 | 14 | 15 | 16 | 17 | 18 | 19 |
| 16 | 17 | 18 | 19 | 20 | 21 | 22 | 20 | 21 | 22 | 23 | 24 | 25 | 26 |
| 23 | 24 | 25 | 26 | 27 | 28 | 29 | 27 | 28 | 29 | 30 | | | |
| MAY | | | | | | | JUNE | | | | | | |
| Su | Mo | Tu | We | Th | Fr | Sa | Su | Mo | Tu | We | Th | Fr | Sa |
| | | | | 1 | 2 | 3 | 1 | 2 | 3 | 4 | 5 | 6 | 7 |
| 4 | 5 | 6 | 7 | 8 | 9 | 10 | 8 | 9 | 10 | 11 | 12 | 13 | 14 |
| 11 | 12 | 13 | 14 | 15 | 16 | 17 | 15 | 16 | 17 | 18 | 19 | 20 | 21 |
| 18 | 19 | 20 | 21 | 22 | 23 | 24 | 22 | 23 | 24 | 25 | 26 | 27 | 28 |
| 25 | 26 | 27 | 28 | 29 | 30 | 31 | 29 | 30 | | | | | |
| JULY | | | | | | | AUGUST | | | | | | |
| Su | Mo | Tu | We | Th | Fr | Sa | Su | Mo | Tu | We | Th | Fr | Sa |
| | | 1 | 2 | 3 | 4 | 5 | 31 | | | | | 1 | 2 |
| 6 | 7 | 8 | 9 | 10 | 11 | 12 | 3 | 4 | 5 | 6 | 7 | 8 | 9 |
| 13 | 14 | 15 | 16 | 17 | 18 | 19 | 10 | 11 | 12 | 13 | 14 | 15 | 16 |
| 20 | 21 | 22 | 23 | 24 | 25 | 26 | 17 | 18 | 19 | 20 | 21 | 22 | 23 |
| 27 | 28 | 29 | 30 | 31 | | | 24 | 25 | 26 | 27 | 28 | 29 | 30 |
| SEPTEMBER | | | | | | | OCTOBER | | | | | | |
| Su | Mo | Tu | We | Th | Fr | Sa | Su | Mo | Tu | We | Th | Fr | Sa |
| | 1 | 2 | 3 | 4 | 5 | 6 | | | | 1 | 2 | 3 | 4 |
| 7 | 8 | 9 | 10 | 11 | 12 | 13 | 5 | 6 | 7 | 8 | 9 | 10 | 11 |
| 14 | 15 | 16 | 17 | 18 | 19 | 20 | 12 | 13 | 14 | 15 | 16 | 17 | 18 |
| 21 | 22 | 23 | 24 | 25 | 26 | 27 | 19 | 20 | 21 | 22 | 23 | 24 | 25 |
| 28 | 29 | 30 | | | | | 26 | 27 | 28 | 29 | 30 | 31 | |
| NOVEMBER | | | | | | | DECEMBER | | | | | | |
| Su | Mo | Tu | We | Th | Fr | Sa | Su | Mo | Tu | We | Th | Fr | Sa |
| 30 | | | | | | 1 | | 1 | 2 | 3 | 4 | 5 | 6 |
| 2 | 3 | 4 | 5 | 6 | 7 | 8 | 7 | 8 | 9 | 10 | 11 | 12 | 13 |
| 9 | 10 | 11 | 12 | 13 | 14 | 15 | 14 | 15 | 16 | 17 | 18 | 19 | 20 |
| 16 | 17 | 18 | 19 | 20 | 21 | 22 | 21 | 22 | 23 | 24 | 25 | 26 | 27 |
| 23 | 24 | 25 | 26 | 27 | 28 | 29 | 28 | 29 | 30 | 31 | | | |



C. R. BURR & CO.

Wholesale Nurserymen

MANCHESTER, CONN., Growing Since '98