

Historic, Archive Document

Do not assume content reflects current scientific knowledge, policies, or practices.

62.67 Index*

LIBRARY RECEIVED
★ MAR 23 1951 ★
U. S. Department of Agriculture

Our Country

1891-1951

CHAMPION NURSERIES

WHOLESALE

Spring, 1951

BIG ENOUGH TO SUPPLY YOUR
NEEDS, BUT NOT TOO BIG TO
APPRECIATE YOUR BUSINESS

PERRY, OHIO

PHONE PERRY 2451

NOTICE

CLOSED ON SUNDAY

Prices herein listed cancel all previous lists,
and are subject to change without notice.

TERMS

Prices herein listed are F. O. B. NURSERY at PERRY, OHIO. To those with established record for promptness or with satisfactory references, we shall be pleased to extend our regular terms of 30 days from date of invoice. Two per cent (2%) discount will be allowed if paid within ten (10) days. All orders for C.O.D. shipments must be accompanied by at least one-third (1/3) of the amount of the order so as to insure acceptance upon arrival.

PRICE QUOTATIONS

PRICE QUOTATIONS are made for immediate acceptance, subject to prior sale, and to stenographic, typographical errors, or omissions.

GUARANTEE OF GENUINENESS

We cannot guarantee any trees, shrubs and plants sold by us, other than that they are true to name, and free from any injurious insects or disease, and hold ourselves prepared to replace, on proper proof, all that may prove to be otherwise. Any and all such trees, shrubs and plants are sold upon the express condition and understanding that should any of them prove to be otherwise, we shall not be held responsible for a greater amount than the original price paid, and all orders booked are based on the distinct understanding that the purchaser agrees to the conditions as herein outlined.

CLAIMS

All orders accepted by us are booked on conditions that they shall be void should injury befall the stock from frost, fire, hail storm or other causes of whatsoever nature over which we have no control. All claims of whatsoever nature must be made within 10 days after receipt of the stock. Claims should be made promptly within the time limit specified, and in writing.

Plants become your property upon delivery to the transportation company, and we cannot be responsible for loss, damage, or delay in transit.

SHADE TREES

ACER

	1-9 each	10-19 each	20 up each
— <i>dasycarpum</i> . Silver Maple. 60 ft.			
6 to 8 ft.	\$1.65	\$1.50	\$1.25
1 to 1¼ in.	2.25	2.00	1.75
1¼ to 1½ in. caliper	3.00	2.75	
1½ to 2 in. caliper	3.50		
— <i>saccharum</i> . Sugar Maple. 60 ft.			
5 to 6 ft.	1.75	1.60	1.50
6 to 8 ft.	2.00	1.85	1.75
8 to 10 ft.	3.75	3.50	3.25
1¼ to 1½ in. caliper	4.75	4.50	
1½ to 1¾ in. caliper	5.50	5.25	
1¾ to 2 in. caliper	7.00		
2 to 2½ in. caliper	9.00		

ALMONDS — See *Prunus Glandulosa*

PLATANUS

— <i>orientalis</i> . European Sycamore. 70 ft.			
1 to 1¼ in.	2.50	2.35	2.25
1¼ to 1½ in.	3.50	3.35	3.25
1½ to 1¾ in.		4.35	4.25
1¾ to 2 in.		5.35	5.25
2 to 2½ in.		6.75	6.50

POPULUS — (Own Root)

— <i>alba bolleana</i> . Silver Poplar. 50 ft.			
4 to 5 ft.	1.40	1.10	.95
5 to 6 ft.	1.65	1.40	1.10
— <i>nigra italica</i> . Lombardy Poplar. 75 ft.			
6 to 8 ft.	1.10	.95	.85
8 to 10 ft.	1.25	1.10	.95

SALIX

— <i>blanda</i> . Wisconsin Weeping Willow. 40 ft.			
6 to 8 ft.	2.25	2.15	2.00
8 to 10 ft.	3.00	2.90	2.75
— <i>elegantissima</i> . Thurlow Weeping Willow. 50 ft.			
6 to 8 ft.	2.25	2.15	2.00
8 to 10 ft.	3.00	2.90	2.75

SORBUS

— <i>aucuparia</i> . European Mountain Ash. 30 ft.			
6 to 8 ft.	3.00	2.75	

ULMUS

— <i>pumila</i> . Chinese Elm. 75 ft.			
6 to 8 ft.	2.10	1.95	1.85
8 to 10 ft.	2.50	2.35	2.25

FLOWERING AND ORNAMENTAL TREES

	1-9 each	10-19 each	20 up each
CERCIS			
— <i>canadensis</i> . (Red Bud). 40 ft. 3 to 4 ft.	1.45	1.30	1.20
CRATAEGUS			
— <i>oxyacantha pauli</i> . (Paul's Scarlet Thorn). 15 ft. 3 to 4 ft.275	2.50	
— <i>cordata</i> . Washington Hawthorn 3 to 4 ft. B&B add 60c	2.75	2.50	
4 to 5 ft. B&B add 85c	3.50	3.25	
MALUS			
— <i>eleyi</i> . (Red Flowering Crab). 15 ft. 5 to 6 ft.	2.00	1.85	
— <i>hopa</i> . (Red Flowering). 12 ft. 3 to 4 ft.	1.50	1.25	
4 to 5 ft.	1.75	1.50	
— <i>ioensis plena</i> . (Bechtel's Double Pink). 15 ft. 2 to 3 ft.	1.25	1.00	
3 to 4 ft.	1.50	1.25	
PRUNUS			
— <i>cistena</i> . (Purple Sand Cherry) 20 ft. 2 to 3 ft.	1.00	.90	
3 to 4 ft.	1.35	1.20	
4 to 5 ft.	1.80	1.65	
— <i>newporti</i> . (Purple Leaf Plum) 20 ft. 3 to 4 ft.	1.25	1.15	1.00
4 to 5 ft.	1.60	1.45	1.35
5 to 6 ft.	2.00	1.75	1.65
— <i>persica rubraplena</i> . (Double Flowering Red Peach) 10 ft. 3 to 4 ft.85	.75	.70
4 to 5 ft.	1.00	.85	
5 to 6 ft.	1.20	1.10	
— <i>subhirtella pendula</i> . (Weeping Flowering Cherry) 2 yr. heads, 5 to 6 ft. stem	5.50		
— <i>triloba multiplex</i> —on plum. (Double Flowering Plum) 10 ft. 2 to 3 ft.	1.00	.90	.80
3 to 4 ft.	1.20	1.10	.95
4 to 5 ft.	1.35	1.20	

DECIDUOUS SHRUBS

	1-9 each	10-19 each	20 up each
ACANTHOPANAX			
— pentaphyllum. (Five Leaf Aralia) 8 ft.			
2 to 3 ft.50	.45	.40
3 to 4 ft.60	.55	.50
4 to 5 ft.75	.65	.60
5 to 6 ft.	1.00	.90	.75

ARONIA

— brilliantissima. (Brilliant Chokeberry) 8 ft.			
18 to 24 in.60	.50	
2 to 3 ft.65	.55	
— arbutifolia. (Pyrus - Red Chokeberry) 6 ft.			
18 to 24 in.60	.50	
2 to 3 ft.65	.55	

AZALEA

— mollis. (Chinese Azalea) 5 ft.			
8 to 10 in. B&B.	1.35	1.20	.95
10 to 12 in. B&B.	1.50	1.35	1.25
12 to 15 in. B&B.	1.90	1.75	1.65
15 to 18 in. B&B.	2.50	2.35	2.25
18 to 24 in. B&B.	3.59	3.35	3.25

BERBERIS — (Certified for Inter-State Shipment)

— thunbergi atropurpurea. (Red Japanese Barberry) 5 ft.			
12 to 18 in. \$30 per 100.40	.37	.35
18 to 24 in. \$35 per 100.45	.42	.40
2 to 3 ft. \$45 per 100.55	.47	.45

—**thunbergi.** (Green Japanese Barberry) 5 ft.
3 year transplants

	Per 1000	Per 100	Per 10
12 to 18 in.	200.00	22.50	2.50
18 to 24 in.	250.00	27.50	3.00
2 to 3 ft.	300.00	32.50	3.50

BUDDLEIA

- charming.** Pink
- dubonnet.** Red
- ille de France.** Dark purple
- white beauty.** White

	each 1-9	each 10-19	each 20 up
2 year, No. 160	.50	.45

CALLICARPA

— purpurea. 6 ft.			
15 to 18 in.45	.40	
18 to 24 in.50	.45	

	1-9 each	10-19 each	20 up each
CARAGANA			
— <i>arborescens</i> . (Siberian Pea Shrub) 12 ft.			
18 to 24 in.55	.50	
2 to 3 ft.60	.55	
CARYOPTERIS			
— <i>incana</i> . (Bluemist) 4 ft.			
2 yr. No. 1—specimen plants55	.50	.45
CHAENOMELES			
— <i>cydonia japonica</i> . (Flowering Quince)			
15 to 18 in.45	.40	
18 to 24 in.50	.45	
— <i>cydonia japonica rubra</i>			
18 to 24 in.65	.60	.55
2 to 3 ft.75	.70	.65
CORNUS			
— <i>alba elegantissima</i> . (Variegated dogwood) 6 ft.			
18 to 24 in.50	.45	
2 to 3 ft.65	.60	
3 to 4 ft.75	.70	
4 to 5 ft.85	.80	
— <i>lutea</i> . (Yellow Twig Dogwood)			
18 to 24 in.50	.40	
2 to 3 ft.55	.45	
— <i>stolonifera</i> . (Redosier Dogwood) 10 ft.			
3 to 4 ft.50	.45	.40
4 to 5 ft.75	.65	.60
COTONEASTER			
— <i>divaricata</i> . (Spreading Cotoneaster) 6 ft.			
18 to 24 in. B&B.	1.70	1.55	
2 to 3 ft. B&B.	2.00	1.90	
DAPHNE			
— <i>mezereum</i> . (February Daphne) 4 ft.			
12 to 15 in. B&B.	1.60	1.50	
15 to 18 in. B&B.	1.75	1.65	
DEUTZIA			
— <i>gracilis</i> . (Slender Deutzia) 3 ft.			
8 to 10 in.35	.30	
10 to 12 in.45	.40	
12 to 15 in.55	.50	
— <i>lemoinei</i> . (Lemoine Deutzia) 5 ft.			
12 to 15 in.45	.40	.35
— <i>scraba pride of Rochester</i> . (Double Rose Deutzia) 7 ft.			
18 to 24 in.35	.30	.25
2 to 3 ft.40	.35	.30
3 to 4 ft.45	.40	.35
4 to 5 ft.50	.45	.40

	1-9 each	10-19 each	20 up each
ELAEAGNUS			
— <i>angustifolia</i> . (Russian Olive) 15 ft.			
2 to 3 ft.65	.60	.55

FORSYTHIA			
— <i>spectabilis</i> . (Showy Border Forsythia) 8 ft.			
2 to 3 ft.45	.40	.35
3 to 4 ft.50	.45	.40
4 to 5 ft.60	.55	.50
— <i>spring glory</i>			
2 to 3 ft.50	.45	.40
— <i>suspensa</i> . (Weeping Forsythia) 5 ft.			
2 to 3 ft.45	.40	.35
3 to 4 ft.55	.50	.45
4 to 5 ft.60	.55	.50

HIBISCUS			
— <i>syriacus</i> . (Althea) 15 ft.			
Double White	Double Red		
Double Purple	Double Pink		
2 to 3 ft.55	.50	.45
3 to 4 ft.65	.60	.55

HYDRANGEA			
— <i>paniculata</i> . (PeeGee Hydrangea) 7 ft.			
12 to 18 in.35	.30	.25
18 to 24 in.45	.40	.35
2 to 3 ft.60	.55	.50
— <i>arborescens grandiflora</i> . (Hills of snow)			
2 to 3 ft.60	.55	
— <i>nikko</i> . Blue			
1 year, 3 to 5 canes.65	.60	.55
2 year, 5 to 8 canes.80	.75	.70
3 year Heavy	1.00	.90	.85

HYPERICUM			
— <i>aureum</i> . (Golden St. Johnswort) 4 ft.			
15 to 18 in.45	.40	.35
18 to 24 in.55	.50	.45
2 to 3 ft.65	.60	.55
— <i>Moserianum</i>			
12 to 15 in.65	.55	.50
15 to 18 in.75	.65	.60
— <i>Calycinum</i>			
2 yr. No. 170	.60	.50
— <i>Sungold</i> (Plant Pat. No. 568)			
Each \$1.00; 3 for \$2.75; \$8.50 per dozen			

KOLKWITZIA			
— <i>amabilis</i> . (Beautybush) 6 ft.			
18 to 24 in.55	.50	
2 to 3 ft.65	.60	

	1-9 each	10-19 each	20 up each
LABURNUM			
— vossi. (Goldenchain) 20 ft.			
4 to 5 ft.	3.00	2.75	
5 to 6 ft.	3.50	3.25	
LIGUSTRUM			
— amurense. (Amur North Privet) 12 ft.			
	Per 1000	Per 100	Per 10
12 to 18 in.10	.13
18 to 24 in.12	.15
2 to 3 ft.16	.18
— ibolium. (Hardy California Privet) 10 ft.			
12 to 18 in.08	.09	.12
18 to 24 in.09	.12	.14
2 to 3 ft.12	.14	.18
— ibota vicary. (Golden Privet, hardy, dwarf, bright golden hybrid of Ibota privet with glossy foliage and compact habit)			
12 to 15 in.60	.50	.45
15 to 18 in.70	.60	.55
— ovalifolium. (California Privet) 10 ft.			
12 to 18 in.07	.09	.11
18 to 24 in.09	.11	.13
2 to 3 ft.12	.14	.18
— regals (True type Regals Privet) (From cuttings)			
	1-9 each	10-19 each	20 up each
12 to 15 in.35	.30	.25
15 to 18 in.40	.35	.30
18 to 24 in.45	.40	.35
24 to 30 in.55	.50	.45
LONICERA			
— bella albida. (White Belle Honeysuckle) 8 ft.			
2 to 3 ft.45	.40	.35
3 to 4 ft.55	.50	.45
4 to 5 ft.60	.55	.50
5 to 6 ft.75	.70	.65
— fragrantissima. (Winter Honeysuckle) 8 ft.			
2 to 3 ft.55	.50	.45
3 to 4 ft.60	.55	.50
— morrowi. (Morrow Honeysuckle) 8 ft.			
2 to 3 ft.45	.40	.35
3 to 4 ft.55	.50	.45
4 to 5 ft.70	.65	.60
— tatarica sibirica. (Red Tatarian Honeysuckle) 10 ft.			
18 to 24 in.35	.30	.25
2 to 3 ft.40	.35	.30
3 to 4 ft.50	.45	.40
4 to 5 ft.60	.55	.50
— zabelli. (Zabels Red Honeysuckle) 10 ft.			
2 to 3 ft.55	.50	.45
3 to 4 ft.70	.65	.60

	1-9 each	10-19 each	20 up each
PHILADELPHUS			
— coronarius. (Sweet Scented Mockorange) 9 ft.			
2 to 3 ft.45	.40	.35
3 to 4ft.55	.50	.45
4 to 5 ft.70	.65	.60
— coronarius aurea. (Golden Mockorange) 5 ft.			
9 to 12 in.65	.60	
12 to 15 in.75	.70	
15 to 18 in.85	.80	
18 to 24 in.90	.85	
— virginalis. (Double White) 8 ft.			
12 to 18 in.35	.30	.25
18 to 24 in.45	.40	.35

PRUNUS

— glandulosa rosea. (Double Pink Flowering Almond) 5 ft.			
18 to 24 in.55	.50	.45
2 to 3 ft.65	.60	.55
3 to 4 ft.75	.70	.65

RHODOTYPOS

— kerriodes. (Jetbead) 6 ft.			
18 to 24 in.55	.50	

RHUS

— cotinus. (Purple Fringe) 12 ft.			
2 to 3 ft.	1.10	1.00	
3 to 4 ft.	1.40	1.25	
— lacinata. (Cut Leaf Sumac) 15 ft.			
4 to 5 ft.60	.55	
5 to 6 ft.70	.65	

ROSA

— hugonis. 6 ft.			
3 to 4 ft.85	.75	
4 to 5 ft.	1.00	.90	
— rugosa alba. (Pure White)			
18 to 24 in.50	.45	
2 to 3 ft.60	.55	

SALIX

— purpurea nana. (New blue leaved arctic willow) 5 ft.			
18 to 24 in.40	.35	.30
2 to 3 ft.45	.40	.35
3 to 4 ft.50	.45	.40

	1-9 each	10-19 each	20 up each
SAMBUCUS			
— canadensis acutiloba. (Cutleaf American Elder) 10 ft.			
3 to 4 ft.50	.45	
4 to 5 ft.60	.50	
5 to 6 ft.70	.60	
— canadensis aurea. (Golden American Elder) 15 ft.			
2 to 3 ft.50	.45	
3 to 4 ft.60	.55	
4 to 5 ft.70	.65	
SPIREA			
— anthony waterer. (Anthony Waterer Spirea) 3 ft.			
12 to 18 in.50	.40	
18 to 24 in.60	.50	
— billardi. (Billard Spirea) 6 ft.			
2 to 3 ft.45	.40	
3 to 4 ft.55	.50	
— froebelli. (Dwarf Pink) 4 ft.			
12 to 18 in.50	.45	.40
18 to 24 in.55	.50	.45
— thunbergi. (White Flowering Spirea) 5 ft.			
18 to 24 in.50	.45	
2 to 3 ft.60	.50	
— trichocarpa. (Korean Spirea) 5 ft.			
2 to 3 ft.50	.45	.40
3 to 4 ft.60	.55	.50
— van houttei. (Single White Flowering) 10 ft.			
2 to 3 ft. \$25 per 100.35	.32	.30
3 to 4 ft. \$30 per 100.40	.37	.35
4 to 5 ft. \$35 per 100.45	.42	.40
SYMPHORICARPUS			
— racemosus. (White Snowberry)			
18 to 24 in.35	.30	.25
2 to 3 ft.40	.35	.30
3 to 4 ft.50	.45	.40
4 to 5 ft.60	.55	.50
— orbiculatus vulgaris. (Coralberry)			
18 to 24 in.35	.30	.25
2 to 3 ft.40	.35	.30
3 to 4 ft.50	.45	.40
4 to 5 ft.60	.55	.50

SYRINGA

	1-9 each	10-19 each	20 up each
—persian lilac. 10 ft.			
2 to 3 ft.60	.55	.50
3 to 4 ft.70	.65	
—vulgaris. (Common Purple Lilac) 12 ft.			
2 to 3 ft.65	.60	.55
—vulgaris hybrids. (French named lilacs) 10 ft.			
18 to 24 in.95	.90	.85
2 to 3 ft.	1.50	1.35	1.25
3 to 4 ft.	1.90	1.75	
—Belle de Nancy. D. pink.			
—Chas. Joly. D. red.			
—Gen. Pershing. D. blue.			
—LaTour D’Auvergne. D. reddish purple.			
—Ludwig Spathe. S. red.			
—Mad. Abel Chatney. D. white (2-3’ only)			
—Pres. Grevy. D. blue.			
—Pres. Poincaire. D. reddish purple.			
—Rhum Von Horstenstein. S. reddish purple.			

VIBURNUM

—dentatum. (Arrowhead Viburnum) 12 ft.			
2 to 3 ft.60	.55	
—opulus. (European Cranberry-Highbush) 10 ft.			
2 to 3 ft.50	.45	
3 to 4 ft.65	.60	
—opulus sterelis. 12 ft.			
2 to 3 ft.60	.50	
—tomentosum. (Doublefile Viburnum) 8 ft.			
18 to 24 in.55	.50	
2 to 3 ft.60	.55	
4 to 5 ft.	1.25		
—trilobum americanum. (American Cranberry Bush) 8 ft.			
2 to 3 ft.55	.50	.45
3 to 4 ft.65	.60	.55

VITEX

—latifolia. Macrophylla. (Hardy Lilac Chaste Tree)			
3 to 4 ft.70	.65	.60
4 to 5 ft.85	.80	.75

	1-9 each	10-19 each	20 up each
WEIGELIA			
—abel carrier. 10 ft.			
2 to 3 ft.45	.40	.35
3 to 4 ft.50	.45	.40
4 to 5 ft.60	.55	.50
—Eva Rathke. (New, Red Flowering Weigelia) 5 ft.			
2 to 3 ft.50	.45	
3 to 4 ft.55	.50	
4 to 5 ft.60	.55	
—hendersoni. (Pink Weigelia) 10 ft.			
2 to 3 ft.45	.40	.35
3 to 4 ft.55	.50	.45
4 to 5 ft.65	.60	.55
—rosea. (Pink Flowering Weigelia) 8 ft.			
2 to 3 ft.45	.40	.35
3 to 4 ft.55	.50	.45
4 to 5 ft.65	.60	.55
—variegata nana. (Variegated Leaf Weigelia) 5 ft.			
18 to 24 in.45	.40	
2 to 3 ft.55	.50	

NUT TREES & SHRUBS

	1-9 each	10-19 each
CASTANEA		
—mollissima. (Chinese Chestnut)		
18 to 24 in.	1.50	1.25
2 to 3 ft.	2.00	1.75
JUGLANS		
—regia. (English Walnut)		
2 to 3 ft.	1.75	1.50
3 to 4 ft.	2.50	2.25

HARDY CLIMBING VINES

	1-9 each	10-19 each	20 up each
ARISTOLOCHIA			
—durior (siph) (Large leaf dutchmanpipe-grafts)			
2 yr. No. 1	1.25		
CLEMATIS			
—paniculata. (Sweet Autumn Clematis) 20 ft.			
2 yr. No. 150	.45	.40
—hybrids. Large flowering.			
—henryi. Snow white75	.70	
—jackmanni. Violet blue75	.70	
—Mad. Ed. Andre. Wine red75	.70	
—Ramona. Clear blue75	.70	

1-9 10-19 20 up
each each each

LONICERA

— <i>japonica halliana</i> . (Hall's Japan Honeysuckle) 15 ft.			
2 yr. No. 1 \$185.00 per M.....	.25	.23	.21
— <i>sempervirens</i> . (Scarlet Trumpet) 15 ft.			
2 yr. No. 150	.45	.40

PARTHENOCISSUS

— <i>tricuspidata veitchii</i> . (Boston Ivy) 50 ft.			
2 yr. medium45	.40	.35
2 yr. No. 150	.45	.40

POLYGONUM

— <i>auberti</i> . (Silver Lace Vine) 25 ft.			
2 yr. No. 145	.40	.35

WISTERIA

— <i>sinensis</i> . (Magnifica—Purple Chinese Wisteria) 40 ft.			
2 yr. No. 1 blooming plants....	.80	.75	
(cutting grown)			

BROAD-LEAF EVERGREENS

DAPHNE

— <i>cneorum</i> . (Rose Daphne) (Garland Flower) 15 in.			
8 to 10 in. Spread. B&B.....	1.15	1.00	
10 to 12 in. Spread. B&B.....	1.45	1.30	
12 to 15 in. Spread. B&B.....	1.90	1.75	

EUONYMUS

— <i>fortunei coloratus</i> . (Red-leaved Wintercreeper) 1 ft.			
12 to 15 in.45	.40	.35
15 to 18 in.55	.50	.45
— <i>kiautschovicus</i> . (Patens) (Spreading Euonymus) 8 ft.			
12 to 15 in.60	.55	.50
15 to 18 in.70	.65	.60
18 to 24 in.75	.70	
— <i>patens</i> —see <i>kiautschovicus</i>			
— <i>vegetus</i> . (Bigleaf Wintercreeper) 4 ft.			
9 to 12 in. B&B add 25c.....	.85	.80	.75
12 to 15 in. B&B add 30c.....	1.00	.85	.90
15 to 18 in. B&B add 35c.....	1.30	1.20	1.10

ILEX

— <i>convexa bullata</i>			
12 to 15 in. B&B.....	2.35	2.25	
— <i>crenata latifolia</i>			
15 to 18 in. B&B.....	2.50	2.35	2.25
18 to 24 in. B&B.....	3.25	3.10	3.00

	1-9 each	10-19 each	20 up each
ILEX Continued			
— <i>crenata helleri</i>			
8 to 10 in. B&B.....	2.00	1.35	
10 to 12 in. B&B.....	2.25	2.10	
— <i>crenata rotundifolia</i>			
15 to 18 in. B&B.....	3.00	2.85	2.75
18 to 24 in. B&B.....	4.00		

PIERIS

— <i>japonica</i> . (Japanese Andromeda) 4 ft.			
12 to 15 in. B&B.....	2.75	2.60	
15 to 18 in. B&B.....	3.25	3.10	

EVERGREENS**TAXUS**

— <i>cuspidata</i> . Japanese Spreading Yew. 6 ft.			
15 to 18 in. B&B.....	3.00	2.85	2.75
18 to 24 in. B&B.....	4.00	3.85	3.75
— <i>cuspidata capitata</i> . Upright Japanese Yew. 12 ft.			
18 to 24 in. B&B.....	4.50		
2 to 2½ ft. B&B.....	5.50		
2½ to 3 ft. B&B.....	6.50		
— <i>cuspidata intermedia</i> . 6 ft.			
15 to 18 in. B&B.....	3.50	3.35	3.25
18 to 24 in. B&B.....	4.50	4.35	4.25
— <i>media andersoni</i> . Anderson Yew. 8 ft.			
15 to 18 in. B&B.....	3.25	3.10	3.00
18 to 24 in. B&B.....	4.25	4.20	4.00
— <i>media browni</i> . Brown Yew. 8 ft.			
12 to 15 in. B&B.....	3.00	2.75	
15 to 18 in. B&B.....	3.50	3.25	
18 to 24 in. B&B.....	4.75	4.50	
— <i>media hicksi</i> . Hicks Yew. 10 ft.			
18 to 24 in. B&B.....	4.00	3.85	3.75
2 to 2½ ft. B&B.....	5.00	4.85	4.75
2½ to 3 ft. B&B.....	7.00	6.50	

THUJA

— <i>occ. globosa</i> . Globe A.V. 3 ft.			
12 to 15 in. B&B.....	1.50	1.35	1.25
15 to 18 in. B&B.....	1.75	1.60	1.50
— <i>occ. douglasi pyramidalis</i> . 20 ft. (Douglas Pyr. A.V.)			
2 to 2½ ft. B&B.....	2.00	1.85	1.75
2½ to 3 ft. B&B.....	2.50	2.35	2.25
3 to 4 ft. B&B.....	3.50	3.35	3.25
4 to 5 ft. B&B.....	4.50		
— <i>occ. woodwardi</i> . Woodward Globe A.V. 3 ft.			
12 to 15 in. B&B.....	1.35	1.30	1.25
15 to 18 in. B&B.....	1.75	1.60	1.50

TSUGA

		1-9 each	10-19 each	20 up each
— canadensis. Canadian Hemlock. 75 ft.				
2	to 2½ ft. B&B.....	3.25	3.10	3.00
2½	to 3 ft. B&B.....	4.50	4.35	4.25
3	to 3½ ft. B&B.....	5.50	5.25	5.00
3½	to 4 ft. B&B.....	7.50	7.25	7.00
4	to 5 ft. B&B.....	8.50	8.25	8.00

PEONIES

3-5 eye divisions

	1-9 each	10-19 each
Baroness Schroeder, flesh white, tinted cream	.40	.35
Couronne D'Or, white with crimson blotches	.40	.35
Edulis Superba, soft pink.....	.40	.35
Felix Crousse, flaming red.....	.40	.35
Festive Maxima, white.....	.40	.35
Mad. Jules Dessert, shell pink.....	.35	.30
Mons. Jules Elie, pale lilac rose.....	.45	.40
Sarah Bernhardt. dark rose pink.....	.50	.45

Clumps \$1.00 each

FRUIT TREES

	1-9 each	10-19 each	20 up each
STANDARD APPLE — 2 Year			
1¼ in. and up.....	.75	.65	.60
¾ in. to 1¼ in.60	.55	.50
½ in. to ¾ in.45	.40	.35
Astrachan, Red			Red Staymen Winesap
Baldwin			R. I. Greening
Duchess of Old. Red			Red McIntosh
Delicious Dbl. Red			Red Rome
Cortland			Rome Beauty
Grimes Golden			Red Jonathan
King			Wealthy
Melrose add 20c per tree			Yellow Delicious
Northern Spy			Yellow Transparent
Red Spy			

	1-9 each	10-19 each	20 up each
FRUITING CRAB APPLE — Hyslop			
Same price as Standard Apples			

DWARF APPLE

2 year, 4 to 5 ft.....	2.25	2.10	
Northern Spy		Dbl. Red Delicious	
Red Spy		Jonathan	
Staymens Winesap		McIntosh	

QUINTUPLET APPLE TREES — (5 in 1)

$\frac{7}{8}$ in. and up, 3 year.....	2.50	2.35	
$\frac{1}{16}$ in. 2 year.....	2.00	1.85	

4-in-1 APPLE TREES

$\frac{7}{8}$ in. and up, 3 year.....	2.00	1.85	
$\frac{1}{16}$ in. 2 year.....	1.75	1.60	

3-in-1 APPLE TREES

$\frac{7}{8}$ in. and up, 3 year.....	1.75	1.60	
$\frac{1}{16}$ in. 2 year.....	1.50	1.35	
Staymens Winesap, McIntosh, Yellow Transparent, Double Red Delicious, Yellow Delicious, Northern Spy.			

APRICOTS**—Hungarian**

$\frac{1}{16}$ in. and up.....	1.10	1.00	.95
$\frac{3}{16}$ to $\frac{1}{16}$ in.95	.90	.85

CHERRIES — 2 Year**—Sweet**

$\frac{1}{16}$ in. and up.....	1.35	1.20	1.10
Black Tartarian	Napoleon	Windsor	Bing
Yellow Spanish	Schmidt	Lambert	Gov. Wood

—Sour — 2 year

$\frac{1}{16}$ in. and up.....	1.15	1.05	1.00
Montmorency, May Duke, Brassington, Ey. Rich- mond, Eng. Morello.			

NECTARINES**—Gold Mine**

$\frac{1}{16}$ in. and up.....	1.00	.95	.90
$\frac{3}{16}$ in. to $\frac{1}{16}$ in.85	.80	.75
$\frac{7}{16}$ in. to $\frac{3}{16}$ in.70	.65	.60

		1-9	10-19	20 up
		each	each	each
PEACHES				
1/16 in. and up		.90	.60	.55
3/16 to 1/16 in.		.60	.50	.45
7/16 to 3/16 in.		.50	.40	.35
5/16 to 7/16 in.		.35	.30	.25
Belle of Georgia	Golden Jubilee		Shipper's	
Champion	Hale Haven		Late Red	
Cumberland	Improved		Rochester	
Early Elberta	J. H. Hale		South Haven	
Elberta	Lemon Free		Summercrest	
Fairhaven	Red Haven		Sun High	
Golden East	Red Skin		Triogem	

PEAR—Standard, 2 year

XXX Heavy		.95	.85	.75
1/16 in. and up		.65	.55	.50
3/16 to 1/16 in.		.60	.50	.45
7/16 to 3/16 in.		.50	.40	.35
Anjou	Cope's Seedless		Kieffer	
Bartlett	Duchess		Seckel	
Bosc	Flemish Beauty		Sheldon	
Clapp's Favorite	Gorham		Old Home	

DWARF PEAR

5/8 inch		1.10	1.00	.95
1/2 in.		.85	.80	.75
3/8 in.		.65	.55	.50
Duchess	Bartlett		Seckel	

PLUMS on Plum—2 year

1/16 in. and up		.80	.75	.70
3/16 to 1/16 in.		.65	.60	.55
7/16 to 3/16 in.		.50	.45	.40
Abundance	Shropshire Damson		German Prune	
Burbank	Stanley Prune		Italian Prune	
Reine Claude	Yellow Egg		Lombard	
(Green Gage)				

QUINCE

—Orange

5/8 in. and up		1.15	1.05	1.00
1/2 in. to 5/8 in.		.95	.85	.80
3/8 in. to 1/2 in.		.75	.65	.60

GRAPE VINES

	each	10 each	100 each
Agawam (Red)			
2 yr. No. 1.....	.18	.14	.12
2 yr. No. 2.....	.16	.12	.10
Brighton (Red)			
2 yr. No. 1.....	.18	.14	.12
2 yr. No. 2.....	.16	.12	.10
Caco (Red)			
2 yr. No. 1.....	.20	.17	.15
2 yr. No. 2.....	.18	.15	.13
Catawba (Red)			
2 yr. No. 1.....	.18	.14	.12
2 yr. No. 2.....	.16	.12	.10
Concord (Blue)			
2 yr. No. 1.....	.12	.10	.09
2 yr. No. 2.....	.10	.08	.07
Delaware (Red)			
2 yr. No. 1.....	.20	.17	.15
2 yr. No. 2.....	.18	.15	.13
Fredonia (Blue)			
2 yr. No. 1.....	.18	.14	.12
2 yr. No. 2.....	.16	.12	.10
Niagara (White)			
2 yr. No. 1.....	.14	.12	.10
2 yr. No. 2.....	.12	.10	.08
Portland (White)			
2 yr. No. 1.....	.18	.14	.12
2 yr. No. 2.....	.16	.12	.10

SMALL FRUITS

	1-9 each	10-19 each	20 up each
BUSH CHERRY			
—Hanson's			
18 to 24 in.....	.45	.40	
2 to 3 ft.....	.50	.45	
3 to 4 ft.....	.60	.50	
CURRANTS			
—Red Lake.....	.30	.25	.23
—Wilder.....	.25	.20	.18
GOOSEBERRIES			
—Downing.....	.50	.45	
—Red Jacket.....	.50	.45	
ASPARAGUS	Per 25	Per 100	Per 1000
—Washington.....	\$1.25	\$3.25	\$25.00
BLACKBERRIES			
—Eldorado and Blowers.....	1.95	6.50	55.00

	Per 25	Per 100	Per 1000
BOYSENBERRIES			
—Thornless	3.95	14.00	120.00

RASPBERRIES			
—Cumberland—Black	1.50	5.00	45.00
—Bristol—Black	1.50	5.00	45.00
—Indian Summer—Everbearing	2.25	7.00	60.00
—Latham—Red	2.00	6.00	55.00
—New Logan—Black	1.50	5.00	45.00
—New Morrison—Black	1.50	5.00	45.00
—Newburg—Red	2.25	7.00	60.00
—Sodus—Purple	2.25	7.00	60.00

STRAWBERRIES		1.60	13.00
—Blakemore	Fairfax	Premier	
—Catskill	Fairland	Robinson	
—Dorset			
—Everbearing			
—Gem		3.00	25.00
—Streamliner		3.75	29.50

RHUBARB			
	1-9 each	10-19 each	20 up each
—Champion's Red12	.08	.06
—Canada Red, Divisions50	.45	.35
—Chipman's Red, Divisions35	.30	.28
—McDonald Red, Divisions50	.45	.35

HORSERADISH — Whole Roots18	.14	.12
--	-----	-----	-----

ROSES

	1-9 each	10-19 each	20 up each
HYBRID TEA AND EVERBLOOMING			
2 year, No. 190	.80	.75
2 year, No. 1½80	.70	.65
Ami Quinard—Dark maroon red			
Betty Uprichard—Salmon pink			
Editor McFarland—Deep pink			
Grenoble—Scarlet-crimson			
Korovo—Pink			
Marg. McGredy—Orange-scarlet			
McGredy's Scarlet—Brilliant scarlet			
Golden Sastago—Brilliant yellow			
Lady Ashtown—Carmine pink			
Pres. Plumcocq—Blended pink			
Sister Therese—Buttercup yellow			
Rowena Thom—Rose pink			
Duquesa de Penaranda—Deep apricot			

	1-9 each	10-19 each	20 up each
CLIMBING ROSES			
2 year No. 1	.70	.65	.60
2 year No. 1½	.60	.50	.45
Am. Beauty Cl. —Crimson			
Blaze —Everblooming similar to Paul's Scarlet			
Jacotte —Yellow			
Mary Wallace —Pink			
New Dawn —Everblooming Dr. Van Fleet			
Paul's Scarlet —Bright Scarlet			
FLORIBUNDA AND POLYANTHA ROSES			
2 year, No. 1	.80	.70	.65
Imp. Red Lafayette			

PATENTED CLIMBERS

	1-9 each	10-19 each
DR. J. H. NICOLAS (Pat. No. 457)		
(Double deep rose pink)		
No. 1	Retails \$1.50	1.00
		.90

DECIDUOUS LINING OUT STOCK

	Per 100
Corylus Americana (seedlings)	
6 to 12 in.	\$ 6.00
Deutzia P of R.	
9 to 12 in.	4.00
12 to 15 in.	6.00
Juglans regia (Hardy English Walnut)	
10 to 15 in.	30.00
Lonicera Tat. Rubra	
9 to 12 in.	4.00
12 to 15 in.	6.00
Phil. Coronarius	
9 to 12 in.	4.00
12 to 15 in.	6.00
Platanus acerfolia (European Sycamore)	
12 to 15 in.	8.00
15 to 18 in.	9.00
Populus nigra italica (Lombardy Poplar)	
9 to 12 in.	3.00
12 to 18 in.	3.50
18 to 24 in.	4.50
Spirea V. H.	
9 to 12 in.	4.00
12 to 15 in.	6.00
Weigelia Hendersoni (pink)	
9 to 12 in.	4.00
12 to 18 in.	5.00
18 to 24 in.	8.00

EVERGREEN LINERS

Per 100 Per 1000

ILEX

—Rotundifolia

2½ in. pots, 8 to 12 in. 1 yr.	30.00	275.00
TT field, 8 to 12 in. 2 yr.	37.50	350.00
TT field, 12 to 15 in. 3 yr.	55.00	500.00

JUNIPER

—Glauca Hetzi

TT field, 8 to 12 in. 2 yr.	37.50	
----------------------------------	-------	--

—Pfitzeriana

TT field, 8 to 12 in. 2 yr.	40.00	
----------------------------------	-------	--

RETINSPORA

—plumosa aurea

TT 8 to 12 in.	30.00	275.00
---------------------	-------	--------

TAXUS

—Adams

2¼ in. pots, 1 yr. 6 to 8 in.	22.50	200.00
TT field, 2 yr. 12 to 18 in.	50.00	450.00

—Andersoni

2¼ in. pots, 1 yr. 6 to 8 in.	22.50	200.00
2¼ in. pots, 2 yr. 7 to 9 in.	27.50	250.00
TT field, 3 yr. 8 to 12 in.	40.00	375.00
TT field, 4 yr. 12 to 15 in.	55.00	500.00

—Browni

2¼ in. pots, 1 yr. 4 to 6 in.	22.50	200.00
TT field, 3 yr. 6 to 12 in.	40.00	375.00
TT field, 4 yr. 8 to 15 in.	60.00	550.00

—Capitata

2¼ in. pots, 1 yr. 6 to 8 in.	25.00	225.00
------------------------------------	-------	--------

—Cuspidata

2¼ in. pots, 1 yr. 4 to 8 in.	25.00	225.00
2¼ in. pots, 2 yr. 6 to 10 in.	30.00	275.00
TT field, 3 yr. 6 to 10 in.	37.50	350.00

—Hicksi

2¼ in. pots, 1 yr. 5 to 8 in.	25.00	225.00
2¼ in. pots, 2 yr. 6 to 9 in.	30.00	275.00
2¼ in. pots, 2 yr. 8 to 12 in.	35.00	325.00
TT beds, 2 yr. 8 to 12 in.	35.00	325.00

—Intermedia

TT beds, 2 yr. 6 to 8 in.	35.00	325.00
TT field, 3 yr. 6 to 8 in.	40.00	375.00
TT field, 4 yr. 8 to 15 in.	60.00	575.00

THUJA

—Douglas golden

TT field, 2 yr. 8 to 12 in.	35.00	
----------------------------------	-------	--

—pyramidalis

2¼ in. pots, 1 yr. 4 to 8 in.	25.00	225.00
2½ in. pots, 1 yr. 6 to 8 in.	30.00	275.00
TT field, 8 to 12 in.	35.00	325.00
TT field, 12 to 15 in.	42.50	400.00

THUJA Continued

	Per 100	Per 1000
—woodwardi		
2¼ in. pots, 1 yr. 4 to 8 in.	25.00	225.00
TT field, 2 yr. 6 to 10 in.	35.00	325.00
—elegantissima		
TT field, 2 yr. 8 to 12 in.	35.00	325.00
—Spiralis (Douglas pyr.)		
TT field, 2 yr. 8 to 12 in.	35.00	

EVERGREEN SEEDLINGS & TRANSPLANTS

PINE

—Austrian		
2 yr. sdgls. 3 to 5 in.	6.00	50.00
3 yr. sdgls. 6 to 12 in.	9.00	80.00
—Mugho, 2 yr. sdgls. 1 to 3 in.	7.00	60.00
—Ponderosa		
2 yr. sdgls. 2 to 5 in.	7.00	50.00
3 yr. sdgls. 6 to 10 in.	9.00	80.00
—Scotch		
2 yr. sdgls. 3 to 6 in.	7.00	60.00
3 yr. sdgls. 6 to 12 in.	9.00	80.00

SPRUCE

—Blackhill		
2 yr. sdgls. 1 to 2 in.	7.00	50.00
5 yr. T 4 to 8 in.	12.00	100.00
—Colorado		
2 yr. sdgls. 1 to 3 in.	7.00	60.00
3 yr. sdgls. 4 to 10 in.	10.00	80.00
4 yr. T 3 to 6 in.	16.00	140.00
4 yr. T 6 to 8 in.	25.00	200.00
—Norway		
2 yr. sdgls. 2 to 5 in.	6.00	50.00
3 yr. sdgls. 4 to 12 in.	10.00	85.00
—White		
2 yr. sdgls. 2 to 4 in.	6.00	50.00

FIR—Douglas, 2 yr. sdgls. 2 to 6 in.	6.00	50.00
---	------	-------

JUNIPER

—Virginiana		
2 yr. sdgls. 8 to 12 in.	16.00	120.00

HEMLOCK

—Canadian		
3 yr. T 3 to 6 in.	17.50	140.00

INDEX

A

Acanthopanax	3
Acer	1
Almond, Flowering	7
Althea	5
Ampelopsis	11
Andromeda	12
Apples	13
Apricots	14
Aralia	3
Arborvitae	12
Arctic Willow	7
Aristolochia	10
Aronia	3
Asparagus	16
Azalea	3

B

Barberry	3
Beauty Bush	5
Blackberries	16
Blue Mist	4
Boston Ivy	11
Boysenberries	17
Broadleaf Evergreens	11
Bridal Wreath	8
Buddleia	3
Bush Cherry	16
Bush Cranberry	9
Butterfly Bush	3

C

Callicarpa	3
Caragana	4
Caryopteris	4
Castanea	10
Cercis	2
Chaenomeles	4
Chaste Tree	9
Cherries	14
Chinese Chestnuts	10
Chokeberry	3
Clematis	10
Climbing Roses	18
Coralberry	8
Cornus	4
Cotoneaster	4
Crab Apples	14
Cranberry, Bush	9
Crataegus	2
Currants	16
Cydonia	4

D

Daphne	4-11
Deutzia	4
Dogwood	4
Dutchman's Pipe	10
Dwarf Apple	14
Dwarf Pear	15

E

Elaeagnus	5
Elder	8
Elm Trees	1
English Walnut	10
Euonymus	11
Evergreens	12
Evergreen Liners	19

F

Flowering Almond	7
Flowering Cherry	2
Flowering Crab	2
Flowering Peach	2
Flowering Plum	2
Flowering Thorn	2
Flowering Quince	4
Forsythia	5
French Lilacs	9
Fruit Trees	13-14-15
Floribunda Roses	18

G

Garland Flower	11
Goldenchain	6
Gooseberries	16
Grape Vines	16

H

Hardy Vines	10
Hazelnut	11
Hemlock	13
Hibiscus	5
Honeysuckles	6-11
Horseradish	17
Hybrid Tea Roses	17
Hydrangea	5
Hypericum	5

I

Ilex	11-12
------	-------

J		R	
Japan Flowering Quince	4	Raspberries	17
Jetbead	7	Red Bud	2
Juglans	10	Rhodotypos	7
K		Rhubarb	17
Kolkwitzia	5	Rhus	7
L		Roses	7-17-18
Laburnum	6	Russian Olive	5
Lilac	9	S	
Ligustrum	6	Salix	1-7
Lining Out Stock	18-20	Sambucus	8
Lonicera	6-11	Scarlet Trumpet	11
M		Shrub Roses	7
Malus	2	Seedlings	20
Maple	1	Siberian Pea Shrub	4
Mock Orange	7	Silver Lace Vines	11
Mountain Ash	1	Small Fruits	16-17
Multiple Apples	14	Snowball	9
N		Snowberry	8
Nectarines	14	Sorbus	1
Nut Trees	10	Spirea	8
O		St. Johnswort	5
Oak	1	Strawberries	17
Oregon Grape	12	Sumac	7
P		Sycamore	1
Parthenocissus	11	Symphoricarpos	8
Patented Roses	17-18	Syringa	9
Peaches	15	T	
Pears	15	Taxus	12
Peonies	13	Thorns	2
Philadelphus	7	Thuja	12
Pieris	12	Tsuga	13
Platanus	1	U	
Plums	15	Ulmus	1
Polygonum	11	V	
Poplar	1	Viburnum	9
Privet	6	Vines	10
Prunus	2-7	Vitex	9
Purple Fringe	7	W	
Purple Leaf Plum	2	Walnut Trees	10
Q		Weeping Cherry	2
Quince Flowering	4	Weigela	10
Quince Trees	15	Willow	1-7
Quintuplet Apples	14	Wintercreeper	11
Y		Wisteria	11
		Yew	12

NOTES

NOTES

READ READ

**PLACE YOUR ORDER AS
EARLY AS POSSIBLE**

We are short of help and our orders already booked are heavy. Orders which must be dug, will be made ready in the order in which we receive them.

**Champion Nurseries
Perry, Ohio**

NOTICE

CLOSED ON SUNDAY

BALLED and BURLAPPED

Schedule of additional charges for deciduous stock when ordered Balled and Burlapped.

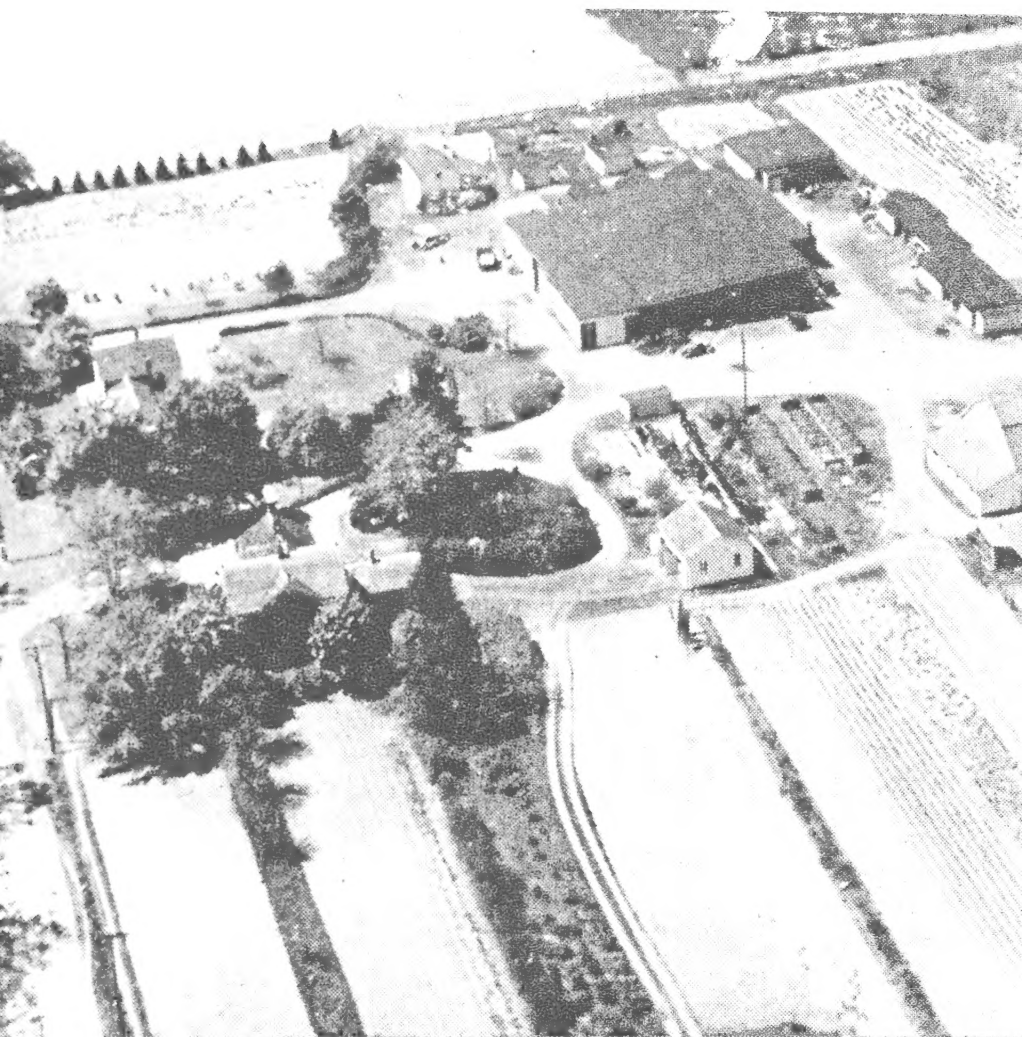
12 in. Diameter	\$.75
15 in. "	1.50
18 in. "	2.75
21 in. "	4.00
24 in. "	5.50
30 in. "	3.00
36 in. "	15.00
42 in. "	22.00

Platforms are in addition to above prices.

BOXING SCHEDULE

10 ft. x 30 in. x 30 in.	\$7.50
10 ft. x 28 in. x 28 in.	7.00
10 ft. x 24 in. x 24 in.	6.25
10 ft. x 20 in. x 20 in.	5.50
8 ft. x 30 in. x 30 in.	6.50
8 ft. x 28 in. x 28 in.	6.00
8 ft. x 24 in. x 24 in.	5.75

Add \$1.25 on all sizes for 12 ft. boxes. Paper lining extra.



Airplane View of Champion Nurseries' Cellars,
Buildings, Office and Family Home,
Narrows Road, Perry, Ohio