


Historic, Archive Document

Do not assume content reflects current scientific knowledge, policies, or practices.




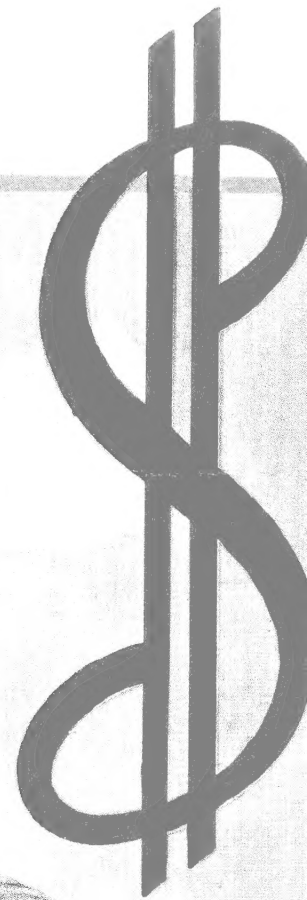
PEACHES
SLIGHTLY
ROTTEN — BUT
A BARGAIN
AT 10¢ A DOZEN!



YOUR CHOICE
\$1. A PAIR



BARGAIN FUEL!!
WITH NO RESPONSIBILITY
AFTER YOU BUY!



YOU CAN *Lose* THOUSANDS OF DOLLARS
ON "BARGAINS" LIKE THESE

FRUITS FOR FOOD AND BEAUTY

All of Consolidated Nurseries Fruit Trees and Bushes offered on this special list are not to be compared with customary small sizes frequently offered. Our trees consist of the best root-system with which to produce good fruit in a comparatively short time.

PRICES OF PEARS EXCEPT WHERE OTHERWISE NOTED

Budded on whole roots of imported French stocks, exceptionally well rooted.

	EACH	DOZ.
Giant Quick—Bearing Size	\$3.50	\$40.00
4 to 6 ft. Selected	2.25	25.00
4 to 5 ft. Standard	1.75	20.00



MISSING LINK

PEAR—Seven months after months after transplanting. Tree of dwarf habit. Blight proof. Quality extra good. Fruit is large yellow with blush, bears heavy crops the first year after planting. Fare superior and quality and young bearing to Douglas. We sell this pear positively under guarantee to refund money if not found exactly as described, introduced and for sale exclusively by Consolidated

Nurseries. Price 3 to 4 ft. \$1.50 each; 4 to 5 ft. \$2.00 each; 4 to 6 ft. Selected \$2.50. Specimens \$3.75 each.

BARTLETT—Yellow with red blush. July

FRENCH PEAR—The Tallest growing pear tree known, reaching the height of 100 to 150 feet. A great bearer and hardy, Fruit yellow medium, perfect in shape very rich, highly perfumed; most valuable pear for canning yet introduced; retains its rich flavor after cooking; not a good commercial pear. July.

GARBER—One of the best hybrids; earlier than Kieffer; very hardy, immensely productive; bears young, good for canning and preserving, Good fertilizer for Kieffer. August.

PINEAPPLE PEAR (Chinese Sand Pear)—Resembles the Kieffer, with crisp, juicy, coarse flesh. Fine for cooking and canning. Puts out growth too early in Spring for Gulf Coast Section. August.

GOLDEN JUNE—Original tree is 65 years old, thrifty and healthy and not a sign of Blight and never had a touch of it. Bears annual crops, and gone by July 1, begins to ripen about June 5th. Has very small core and often but one or two seeds. Often young trees of varieties like Le Conte and Kieffer etc, die with blight in nursery. This variety stands and grows and is not in the least affected by the blight even though only 3½ feet from diseased one, and does not rot at the core (a failing in most all early pears)

KIEFFER—Well known everywhere.

IF YOU DO NOT HAVE A COPY OF OUR GENERAL CATALOG, LISTING A COMPLETE LINE OF ORNAMENTAL SHADE TREES, FLOWERING SHRUBS AND VINES, EVERGREENS AND DECIDUOUS, AS WELL AS A COMPLETE LINE OF BULBS AND HARDY PERENNIALS—WRITE FOR IT.

Our prices are reasonable and in keeping with the high quality of our products we have both expensive and inexpensive plants, but we do not have inferior ones; Ours is probably the most critical clientele in the country and the surpassing excellence of our offerings is simply the outgrowth of our customers demands.

CHERRIES

We list below the only Cherry which we would recommend for the Gulf Coast Section. If interested in other varieties write us for list. **UNCLE SAM**—This is beyond any doubt the largest and grandest cherry the world ever produced. The only cherry to our knowledge which has proved to give satisfactory results in Central and South Texas and in many other localities where all other cherries proved a complete failure. This is the only cherry known that absolutely never fails to bear. Blooms April 1, ripens July 25th and lasts, plump and sweet on the tree, until August 15. Comes in after all other cherries have gone, Best canner. Outcrops them all. Self seeder. Bears heavy crops the first year after planting. Quite as large as the Wild Goose Plum. So late that the birds do not prey upon them. We sell this cherry positively under guarantee to refund money if not found exactly as described. If you plant one cherry tree for home or market, plant "UNCLE SAM" introduced and for sale exclusively by Consolidated Nurseries, Giant Size \$3.50 each. 4 to 6 ft. Selected \$3.00 each. 4 to 5 ft. \$2.50 each.

PRICES OF LIMEQUAT, ORANGES, GRAPEFRUIT, TANGERINES, KUMQUATS AND LEMONS.

	EACH	DOZ.
Giant Bearing Size	\$6.00	\$66.00
Selected Specimens	5.00	56.00
Heavy Trees which have borne in nursery row	4.00	44.00
Two years No. 1 Grade	3.50	40.00

ORANGES

SATSUMA—The hardiest Orange known. Medium, flattened; color deep yellow; rind and segments part freely flesh fine-grained, tender, juicy, sweet and delicious; seedless. Tree bears young, September, October and November. Bring high price in the market.

LOUISIANA SWEET—an annual, very heavy bearer. The flavor is most delicious, Probably the best blood orange for the Gulf Coast Section.

ROBERTSON NAVEL—A development of the Washington Navel, with the same quality seedless fruit but produces larger crops even while quite young. December to April.

GRAPEFRUIT

MARSH SEEDLESS—Size medium, almost seedless, juicy but somewhat bitter. Ripens late and holds exceptionally well.

WALTERS—A leading sort; early in ripening. Fair quality.

THOMPSON PINK—A splendid seedless grapefruit of high quality, juicy, sweet. Pink colored flesh.

LEMONS

EUREKA—Although this high quality lemon is extensively planted commercially. It is one of the best for home planting, producing high quality, juicy medium sized fruits. Tree practically thornless.

MEYER—Lemons are slightly less hardy than oranges except the Meyer, which stands considerable cold. A beautiful ornamental tree for the home garden.

AMERICAN WONDER OR PONDEROSA—A true everbearing variety. The tree has fruit in all stages of development, from the size of a pea up to the ripe fruit. Fruit has been taken from a tree weighing over 4 pounds. In addition to its fruit bearing qualities it makes a very handsome plan for house culture.

KUMQUAT

NAGAMI—Semi-dwarf tree or large shrub of considerable ornamental value. The small deep green foliage makes a beautiful shrub and stands shearing well. The fruits are long and narrow; quite tasty.

Only Nursery Stock of Guaranteed Superior Quality are offered by CONSOLIDATED NURSERIES, No other trees or plants are offered you.

We appreciate all of the legitimate business we can take care of, we know that quality products will make lasting friends, and we know that poor quality stock makes only enemies, so we prefer to lose an order occasionally than deceive people with so called "cheap" trees and plants. We offer only the highest quality products, and they are cheaper in the long run.

MISCELLANEOUS FRUITS

BLUEBERRY—Rancocas, Large berries early, Grover. Large, late berries. \$3.00 each.

RAISIN TREE—Stiff thorny branches covered with bright green shiny foliage. Bears plum-shaped fruit with raisin flavor, August to November \$3.00 each.

GOOSEBERRIES AND CURRANTS—75 cents each. \$8.00 per dozen.

ASPARAGUS—Bonval's Giant. 35 cents each \$3.50 per dozen.

RHUBARB—McDonald, 75 cents each \$8.00 per dozen.

QUINCE—Champion. Fruit very large and productive \$2.50 each.

JUNEBERRY—Improved Dwarf. The fruit is borne in clusters. And is reddish-purple in color and changing to a bluish-black. In flavor it is a mild rich sub-acid. Excellent as a dessert fruit or canned. \$1.50 each.

PAW-PAW or "ARKANSAS BANANA"—A small tree with purple or whitish flowers and handsome foliage. The large fruit is edible and improves by cultivation. Hardy as far north as the middle of Kansas. Worthy of more extensive planting. Very desirable as an ornamental tree. \$2.00 each.

BUFFALO BERRY—Plant the Buffalo Berry for a winter berry, as they are the delicious fruit. December to January. There are male and female plants, therefore, two or more should be planted. One plant alone will not bear fruit. Remember this when ordering. \$1.50 each.

ELDER BERRY—Fruit black very productive, ripening in August and September. The berries are highly esteemed for cooking and making of cordials. In many parts of Europe, they are grown for the purpose of making wine and are said to be of great value for medicinal purposes in case of stomach disorder \$1.50 each.

HUCKLEBERRY—Native plant, is a choice fruit for jam, pies and fruit cake. Grows luxuriant. Very hardy. A prolific bearer. \$1.25 each.

WINEBERRY—This is the most prolific bearer known, the bushes being literally covered with its luscious fruit. \$1.00 each.

STRAWBERRY-RASPBERRY—The plants will attain a height of 2 to 3 feet, producing fruit in branching clusters, bearing ripe fruit and small green berries and large white blossoms at the same time, presenting a beautiful appearance. The berries are usually about 2 or 3 times as large as the red raspberries, bright red in color, and some claim to like the flavor. We don't think the fruit is good enough to command a large sale. We recommend the plant as a curiosity, and for its ornamental value. 90 cents each.

BANANAS—Bananas give a tropical appearance and are perfectly hardy in the middle and lower South. The broad, dark green, glossy foliage is very ornamental, and with proper protection will produce nice fruit. Plants according to size from \$2.00 to \$10.00 each.

PAPAYA—Tropical Dwarfed. Its fruit greatly resembles the cantaloupe in shape, color and flavor, and grows in clusters. So rapidly does the plant fruit that oftentimes there are green fruit, ripe fruit, buds and flowers on the tree at the same time. And its medicinal value has been so long and definitely established that to quote historic praises sounds poetic. Bartolome de la Casas, who accompanied Christopher Columbus on his first voyage of discovery, described his introduction to it in Haiti and Santo Domingo and called it "the fruit of the Angels." Marco Polo described it in his writings (about the year 1295) as tree-growing melons that cured his sailors of dysentery and scurvy. Ponce de Leon described it in minute detail to the King and Queen of Spain, and said that Florida (Seminole) Indians termed it "Vanti", meaning keep well". Vasco de Gama wrote in the early sixteenth century that the native of India used it as a staple food and called it "the Golden Tree of Life." The noted John Harvey Kellogg, M.D., of Battle Creek, Michigan wrote: The free use of Papaya by children would undoubtedly result in an increase in stature in the next generation and a notable increase in the number of persons living to be 100 years of age or more. Should be grown in pots, that protection from cold can be given. Prices, each \$5.00; \$7.50; \$12.50 and \$20.00 according to size.

CHESTNUT—Handsome spreading shade tree. Often bears excellent nuts when quite young \$3.75 each.

FILBERTS—(Hazelnuts) Large round nut, self husking, Large tree and an early bearer. 3 to 4 ft. \$2.50 each.

TANGERINE

DANCY—One of the most delicious varieties of Tangerines. Beautiful large thin-skinned fruit. Easily peeled and containing a wealth of tasty orange-red segments.

LIMEQUAT—Eustis. Try this one for beverages. Distinct from the Lime. Makes a small free-bearing tree.

PRICES OF ALL VARIETIES OF GRAPE VINES, EXCEPT WHERE OTHERWISE NOTED.

Do not compare our stock with so-called cheap priced plants offered by some. Every plant we send out is guaranteed to be first class stock, grown from layers. While not as profitable for the nurseryman as those grown from cuttings, it insures a much better vine for the planter, and one that is longer lived and more vigorous; consequently it cost us more to raise our grapes than it does those who raise from cuttings.

GRADE	EACH	DOZ.
Giant Quick-Bearing Size	\$1.50	\$15.00
2 year old No. 1	1.00	10.00
1 year old, No. 1	.75	8.00

CONCORD—The best known and most popular of all grapes, Best for table, wine, and market; succeeds over a great extent of country, ripens in July.

CARMAN—Very thrifty, ripens evenly, one of the best eating grapes, ripens about August 1.

NIAGARA—Large bunch and berry greenish yellow; flesh sweet. A prolific variety.

AGAWAM (ROGERS No 15) A dark red grape of the Hamburg cross Bunches large, compact, frequently shouldered. Berries large with a thick skin; pulp soft, sweet sprightly; vines very vigorous. June.

CACO—Most delicious of all red grapes, Very sweet and tender.

MOORE EARLY—Bunch medium; berry large round black, with heavy blue bloom; medium quality. Early and desirable. May.

SCUPPERNONG—Large whitish yellow, good quality; bunches small. Very productive and is considered one of the best wine grapes.

THOMAS—Muscadine type; color reddish purple; excellent flavor; tender and sweet; June

BLACK HAMBURG—Large round black grape. Midseason.

MISSION—Black wine grape. September.

MUSCAT—The most popular table grape. Midseason. For raisins and wine.

THOMPSON SEEDLESS—Great, big compact bunches of small green seedless grapes. Quite sweet. Their pleasant flavor is entirely different from that of any other grape. August. No. 1. 2 year old vines \$1.50 each.

BLACK MONUKKA—Black Seedless. Good for both table and wine. Midseason.

CONCORD SEEDLESS—Extra large, fancy blue—black grapes with sweet juicy flesh. Borne in large clusters, have no seeds. Make delicious pies, jelly, juice, wine, jam, etc. The ideal fresh desert grape; No. 1, 2 year old vines \$1.50 each.

BLACKBERRIES AND DEWBERRIES

There should be in every collection a few plants of this delicious, healthful fruit, as it requires but little care and expense, and is an excellent table fruit. The plants should be set from four to six feet apart in a moderately rich soil. Mulching, staking and an occasional pinching-in during the growing season will be accompanied with good effect in productiveness and size of fruit. The plants which we offer are either grown from tips or cuttings. We have no sucker plants to offer at any price.

PRICES OF BLACKBERRIES AND DEWBERRIES

Except where otherwise noted.

	EACH	DOZ.	100
Giant Quick-Bearing Size	\$.40	\$4.00	\$20.00
Heavy field grown 2 year plants	.30	3.00	15.00
No. 1. Field grown plants 1 year old	.25	2.50	10.00

BOYSENBERRY—Very large fruit with delicious flavor. Most prolific. Highest quality. June.

YOUNGBERRIES—Fruit larger than dewberries, with a decided flavor of raspberry Splendid for home use, but will not ship well.

HAUPT BERRY—Originated on Colonel Haupt's place in Hays County. Supposed to be a cross between dewberry and blackberry; large and very prolific, and do well here.

MCDONALD—Medium size; combines firmness and quality; plant other berries near to pollinize: early and valuable. Resists drought.

LOGANBERRY—Said to be a cross between the red raspberry and blackberry resembling the blackberry in shape and raspberry in color. Plants strong, vigorous and very prolific. One the best Southern varieties.

DALLAS—Very prolific; medium size, black, native berry.

SUGARPLUM BLACKBERRY—A prolific fruiter and larger, handsome berries that are sweeter and delicious beyond expression, having no core. Begins ripening in June and continues in full bearing two months. Iron clad in hardness, a superb novelty and one we can highly recommend. Heavy 2 year old plants 40 cents each; \$2.00 for 6; \$3.75 per dozen.

REMEMBER—When buying Nursery Stock Cheapness is not based on what you pay—but **WHAT YOU GET.**

HIMALAYA BERRY—Very successful as a Southern berry and many claim Himalaya to be very productive in the more Northern States. Fruit black, few seeds, and of finest quality. Prune back each winter. For best result, these berries should have a trellis or fence to trail over.

EARLY HARVEST—One of the earliest blackberries in cultivation; habits of growth, dwarf-like; fruit medium size and good quality. Adapted only for Southern climates unless protected in winter.

ICEBERG BLACKBERRY—Pure white one of Luther Burbank's greatest creations. It bears loads of delicious, snowy berries, which are not only white, but so transparent that the seeds, which are unusually small, may be seen in the ripe berries. Clusters larger than those of Lawton; berries at least as large, earlier, sweeter and more tender and melting thruout, though as firm as Lawton is when ripe. No garden complete without this grand White Blackberry. It is a most deliciously sweet and prolific sort, and succeeds everywhere. 50 cents each; 6 for \$2.50; \$4.00 per dozen.

AUSTIN IMPROVED DEWBERRY—This is perhaps the largest dewberry in existence. Much larger than our larger wild dewberry, and blooms late. Must be fully ripe before it is at its best. Ripens several weeks later than our native berry.

MAMMOTH CLIMBING BLACKBERRY—This grows entirely unlike any other blackberry in cultivation. It is a rapid grower, trailing on the ground or upon trellises like grape vines, and under favorable conditions will grow twenty feet in a season. Canes are large and strong; foliage large, healthy, thick and of a deep green color. Almost evergreen. Enormously productive and exceedingly early, ripening three weeks before other varieties. Fruit enormous in size, specimens often reaching 3 inches in length. Seeds small and soft, Core small, very soft and palatable. In size and extra fine flavor surpassing all other varieties. One of the finest fruit novelties of recent years. It is unlike a dewberry or any other so-called running blackberry ever introduced. Heavy 2 year old plants 50 cents each; 6 for \$2.50; 12 for \$4.50.

FIG TREES

The market for figs is never overstocked, and they invariably bring good profitable results. The fig is one of the most valuable fruits of the South, which is adapted to a wide range of soils and climates. Best results are obtained by planting in back yard or around out building, do not cultivate after first year. Our trees are exceptionally well rooted.

GRADE	EACH	DOZ.
Giant Quick-Bearing Size	\$3.00	\$34.00
No. 1. Selected	2.50	28.00
No. 1. 2 year old	2.00	22.50

BROWN TURKEY—Large, brown pulp, tender, fine quality; very late.

BRUNSWICK—Fruit large, dark violet, flesh white and pink; best quality; very prolific; young bearer.

CELEST—(known as Celestial, Sugar or Honey Fig) Medium to small. Immense bearer. Purple color.

MAJESTIC—The hardiest of all figs. Dark fruit with red flesh Very juicy and a good canner.

KADOTA—The small yellow green fruits of the Kadota fig are extremely rich and sweet. Best for preserving of any variety. Ripe Summer and Fall. Not necessary to prune.

MISSION—Black fig. Purple-black, fruits with tasty brownish flesh. Leave trees unpruned.

GREEN ISCHIA (White Ischia) Medium to large; green with crimson pulp; excellent. Middle of July until frost.

LEMON—Medium to large, yellow, white flesh, good.

PRICES OF PEACH TREES

We exercise the greatest care in selecting our peach seed. We never use pits from budded trees. Our pits are gathered from the natural trees through the mountains of North Carolina, where disease is unknown. We guarantee our peaches to be free from borers, peach yellows, San Jose Scale or any other disease.

	EACH	DOZ.
Giant Quick-Bearing Size	\$3.50	\$40.00
4 to 6 ft. Selected	2.25	25.00
4 to 5 ft. No. 1.	1.75	20.00
3 to 4 ft.	1.25	14.00

(F) for Freestone. (C) for Cling, (S-C) for Semi Cling.

ELBERTA—(F) Large yellow with red cheek, flesh yellow, July.

PELIE OF GEORGIA—(F) Skin white, red cheek; flesh white. June.

MAYFLOWER—(S-C) Size medium. Color bright red; ripens well to the seed; vouna and prolific bearer, May.

HONEY—(F) White fleshed, a delicious peach for eating out of hand and just as good for cooking; a favorite East Texas variety, June.

INDIAN BLOOD—(C) Red fleshed; an old favorite. August.

INDIAN CLING—(C) A very large red peach, streaked flesh and a very popular one. This large lucious peach is equally good when eaten fresh or when used for cooking. August.

J. J. HALE—(F) Fruit large yellow, almost covered with red; more highly colored than Elberta, August.

FRANK—(C) Yellow, inclined to overbear, very acid, June.

EARLY WHEELER—(C) One of the best very early peaches, May.

MAMIE FOSS (S-C) Large white, with mostly a red cheek. June.

HEATH CLING OR WHITE ENGLISH—(C) Large; color creamy white, September.

REPLACING OF STOCK FAILING TO GROW

While most nurserymen condemn the policy of replacing any stock at less than one-half retail price, as being unwise, unbusiness-like and wholly unnecessary, we will continue the practice of replacing **free** any of our stock sold at retail that has died any time within two years from time of transplanting, provided our instructions are followed regarding planting and caring for. We do not feel that any reasonable person would ask or expect us to replace the stock not properly planted or given the proper care before and after planting. But our experience has proven that there are a few very unreasonable people in this world, and for that reason we reserve the right to require affidavits of person demanding free replacement to the effect that they complied with our printed instructions as to planting and caring for stock.

OUR BINDING GUARANTEE

We guarantee all trees and plants purchased from us to be true to name. If any stock does not prove true to name and as represented, we will make good your loss or damage any time within ten years after date of purchase. If for any reason we cannot agree on adjustment, we are each to appoint an arbiter, who shall choose a third party, and we shall accept the award of the majority as binding on us. We guarantee our stock to reach our customers in good growing condition and to be free from San Jose Scale, Peach "Yellows," or other injurious pest or pests. Our guarantee means something to you, for it is backed by a firm with an established national reputation. If any mistakes occur on our part in regard to stock shipped you, tell us about it. (It is up to you to be satisfied).

DIRECTIONS FOR PLANTING

CARE OF THE YOUNG TREES AND PLANTS BEFORE PLANTING—

And Care of Trees and Plants when first Received from the Nursery. Immediately after receiving the trees or plants from the nursery, they should be thoroughly moistened and wrapped or covered to prevent drying out. Bring them home at once and heel in without delay. The trench should be dug at least 15 or 18 inches deep. Loosen the lower band of the bundle, wet the trees thoroughly and place them in a trench. Cover the roots and press the ground down firmly around them. Trees which are to remain in trenches for more than a week or ten days should be frequently watered and soil should be carefully placed around the roots to exclude all the air, and the trees well banked for protection. For heeling-in over winter, select a place where water will not stand, away from buildings and meadows out in the open field, where mice will not injure them.

THE SOIL:—Any good garden soil is suitable, Avoid excess of sand or gravel, provide a liberal depth of loam mixed with manure, but the roots should be allowed to come in contact with the fertilizer used.

PLANTING:—Dig holes large enough to accommodate roots without crowding, and set trees or plant the same depth they were standing in the nursery. (This is usually shown by soil marks on trunk or stem or plant, however the surest way to judge is by surface roots on tree or plants) Good loam should be worked in among the roots and carefully compacted. In case of evergreen trees or other plants received with compact ball of earth on roots, the roots should not be unnecessarily disturbed or balls broken.

WATERING:—After planting it is well to apply sufficient amount of water to penetrate the soil to a depth of 1 to 2 feet, and it is well to remember that one heavy application of water is more beneficial than frequent light applications. Frequent cultivation of the surface soil reduces loss of moisture by evaporation. We advise the spading around each tree or plant frequently for a depth of from 1 to 1½ feet deep, spading 2 to 3 feet each way around tree, and in protracted droughn water frequently, have ground well drained.

PRUNING:—The heads of all fruit trees should be shortened in severely and all limbs cut back within one or two buds of the trunk, this also applies to Pecan and other Nut Trees. Roses should at once after planting to be cut to within 4 or 5 inches of the ground. From deciduous trees and shrubs one-third to one-half of the growth of the previous summer should be removed. Trim all switch or side roots of all trees or plants within 3 inches of the tap root.

The first cost of a tree or plant is but a trifle, and no planter, to save a few cents on the start, can afford to give his land and his time to an orchard or garden and in a few years to find that he has only worthless stuff. Inferior stock is usually sold at a so-called "cheap" price, but it is dear at any price. Bitter disappointment is a large part of the cost.

CONSOLIDATED NURSERIES,

HOUSTON, TEXAS

BEAUMONT

Beaumont,
Texas.

May 28, 1945

Consolidated
Nurseries
Houston, Texas

Dear Sirs:

Here is a photograph of one of the specimen size

MISSING LINK pear trees which you delivered to me November 22nd, 1944. Picture taken second week in May 1945. This tree has fifteen fine pears thereon.

Will also state that the peach tree received from you with the above mentioned pear, bloomed heavily

this spring and now has several peaches on it. A (free) replaced Satsuma orange tree which was delivered to me December the 23rd 1944, is a much heavier tree than the original tree bought from you, bloomed heavily this spring and now has many small oranges on it. Will further state that before buying from you, that I bought from time to time, trees from the _____ and to this late date have my first fruit to see from any of them.

John Duckles
1155 Sherman Street

S. H. WEAVER

District Sales Manager
Nursery Business since 1899



IT'S NOT WHAT WE SAY
THAT COUNTS—
RESULTS WHICH COUNT

"PROOF" OF THE PUDDING IS IN THE EATING

"WHY" WASTE YOUR TIME AND MONEY ON SO-CALLED CHEAP NURSERY PRODUCTS, WHICH REQUIRE MANY YEARS GROWTH AFTER TRANSPLANTING TO COME INTO BEARING, AND IF THESE SO-CALLED BARGAIN TREES EVER BEAR, THE CHANCES ARE SLIM THAT THE FRUIT OR NUTS WILL BE WORTH ANYTHING.

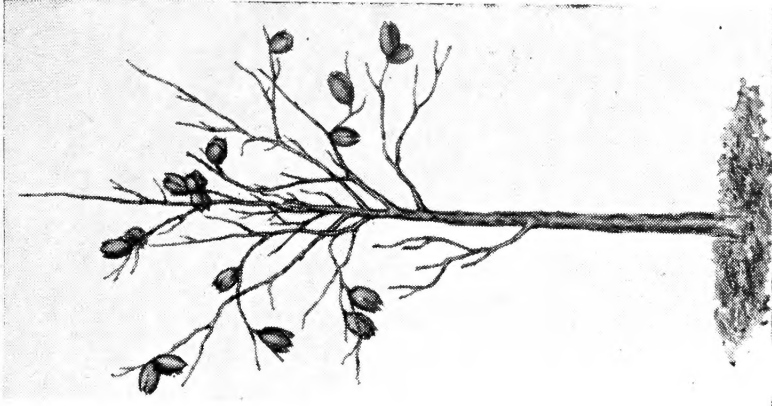
PRICES ON MISSING LINK PEAR TREES

MISSING LINK PEAR—Of dwarf habit, Blight proof Quality extra good, Fruit is large yellow with bluish, ripens in August, Also one of the best canning and preserving pears if gathered before fully ripe, Prices Mammoth Size —\$5.00 each. Specimens \$3.75 each 4 to 6 ft Selected \$3.00 each.

TERMS AND CONDITION OF SALE—No order accepted for less than \$3.00 and \$2.00 deposit on orders of \$8.00 and under, over that amount at least 25 per cent to accompany order. All prices F. O. B. nurseries or shipping point.

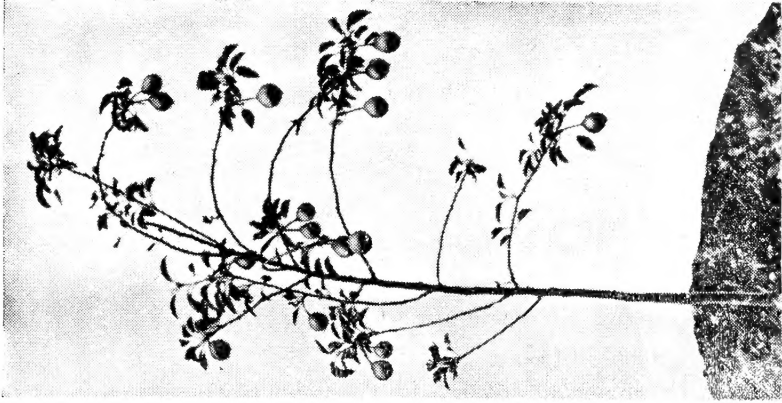
If you do not have a copy of our general catalogue listing a complete line of nursery stock, write for it.

S. H. WEAVER & CO.
Consolidated Nurseries
Beaumont, Texas



PAPER SHELL PECAN, 8 to 10 ft. Extra Special grade, ten months after transplanting, branched more or less. This grade while they last, Special at \$15.00 each. In case we are sold out when your order reaches us, we reserve the right to refund any money paid by you.

VARIETIES—Stuart, Moneymaker, Success and Schley.



Beaumont, Texas, June 12, 1945
 Consolidated Nurseries Houston, Texas
 Gentlemen:

This is a picture of one of the specimen **MISSING LINK** pear trees which was received from you November the 15th, 1944. Photograph taken June 6th, 1945. On receiving, thought possible, would have two or three pears per tree the first year. To say that I am perfectly delighted with the sixteen fine pears which this tree has produced within a few months after transplanting, is putting it mildly. You will get all of my orders from now on.

Mrs. Orelia Little
 2194 Washington Blvd.



Beaumont, Texas, May 28, 1945
 Consolidated Nurseries
 Gentlemen:

This is a picture of the Mammoth size **MISSING LINK** pear tree received from you November 21st, 1944. Photograph taken May 15th, 1945. You will note that it has nine pears on one limb. This tree would not doubt have had twice as many pears, had I not removed at least one-half of the limbs before transplanting. The least that I can say, is that I am well pleased with my tree, and would not take several times the amount which I paid for same. In my many years of dealing with you, have always found you ready and willing to make good any stock failing to live and grow or to be true to name without charge, and willing to go further on your part than agreed by you in your guarantee. G. C. STEWART
 4105 Ector St.

Beaumont,
 Texas,
 May 1, 1945

Consolidated
 Nurseries,
 Gentlemen:

This is a picture of 4 to 6 ft. selected grade **MISSING LINK** pear tree, transplanted on or about December 30th, 1943. Photograph taken June 3rd, 1944. A short while before picture was taken, four of the pears were accidentally knocked off the tree. Will also state that I have much

older **Missing Link** pear trees bought from you which are loaded with fine pears yearly. Where your prices are some higher than some of the other nurseries and tree dealers, I find that if your trees were twice the price you charge for them, that they would be a much better buy than trees offered at so called cheap prices, which are really dear at any price. Have also, always found you ready and willing to replace any stock failing to grow and make good in accordance to the guarantee given by you.

Mrs. Viola Cebron
 1460 Concord Street

A WORD TO THE WISE—Getting the most for one's money is an ancient and honorable practice, it is likewise a modern and sensible one. Be sure you get the most for your money, there are certain fundamental ways of getting the most for your money when buying nursery products—good stock from a reputable concern, planting at the correct time. Proper care after planting, all these are essential components, Don't forget that your time is really part of your expense. Don't waste it on inferior stock. Inferior stock is usually sold at so-called bargain prices.

PECAN TREES

The following is the leading varieties, propagated and grown especially for early bearing. **MONEYMAKER, STUART, SUCCESS AND SCHLEY.**



PAPERSHELL PECAN—

Photograph taken eight months after transplanting. Note the pecans. This a special budded tree 4 to 5 ft. in height which we are offering at \$5.50 each under our usual guarantee that tree will live, grow and bear.



GRADE	PRICE EACH
EXTRA LARGE 12 to 16 ft. Bearing age	\$17.50
BEARING AGE 10 to 12 ft.	15.50
BEARING AGE 9 to 10 ft.	12.50
BEARING AGE 7 to 8 ft.	10.50
BEARING AGE 6 to 7 ft.	7.50
3 to 4 ft.	3.00
2 to 3 ft.	2.50

WALNUT—All kinds and varieties same price as pecans, a few of the Walnuts of certain varieties on account of their habit of growth, will not be as tall as pecan trees of the larger grades, but will be larger in caliber making up for shortage in height. If interested in walnut trees, write us stating kind and grade desired, and we will advise as to what we can supply.

PRICES OF PLUMS, PRUNES, APRICOTS, NECTARINES AND APPLES

Budded on hardy French Plum stock. Strong Vigorous		
	EACH	DOZ.
Giant Quick-Bearing Size	\$3.50	\$40.00
4 to 6 ft. Selected	2.50	28.00
4 to 5 ft. No. 1	2.00	22.00
3 to 4 ft.	1.50	16.00

PLUMS

ABUNDANCE—Very large, oblong; amber color nearly covered with red. June.

BURKBANK—Large; cherry-red with thin lilac bloom. July.

GREEN GAGE—Greenish yellow rounded fruits with rich, sweet, firm flesh. August.

SATSUMA—Deep blood red fruits in quantity. August.

SIX WEEKS—Large, oblong, brilliant red. Hybrid, well tested, good, most valuable. The finest earliest plum. Tree vigorous. May.

GONZALES—Large, pointed, yellow, high flavor, good quality. June.

EXCELSIOR—Like all native plums. It is abundantly productive; deep rich red, fair quality. June.

RED JUNE—Fruit medium to large, cordate and very prominently elongated at the apex. Deep vermilion-red all over. Flesh light lemon yellow or whitish. June.

BRUCE—Large, red. Very productive; well suited for North Texas, the Pandhandle, and Oklahoma. June.

MONARCH—One of the earliest bearing plums. Real dark blue fruit. Finest blue plum for canning. Vigorous grower and one of the best 'all round' plums. September.

PRUNES

GERMAN PRUNE—An excellent purple prune; good for canning and drying. August.

SUGAR—Bears well in all sections and a good variety for home planting, fruit of good size, dark purple in color. Flesh very sweet and juicy; amber colored. Excellent for canning. Large. July.

APRICOTS

CLUSTER—Fruit medium sized, yellow with occasional fleck of red. May.

MOORPARK—Large round deeply colored fruits. Best for eating. Fine along the coast. Shy bearer. July.

ROYAL—Sweet deep orange flesh. Excellent variety for home use. June

NECTARINES

RED ROMAN—One of the richest and best of clingstones. Tree healthy and productive. Flesh rich; high vinous flavor. August.

GOWER—Large firm pale green fruits with deep red blush. June.

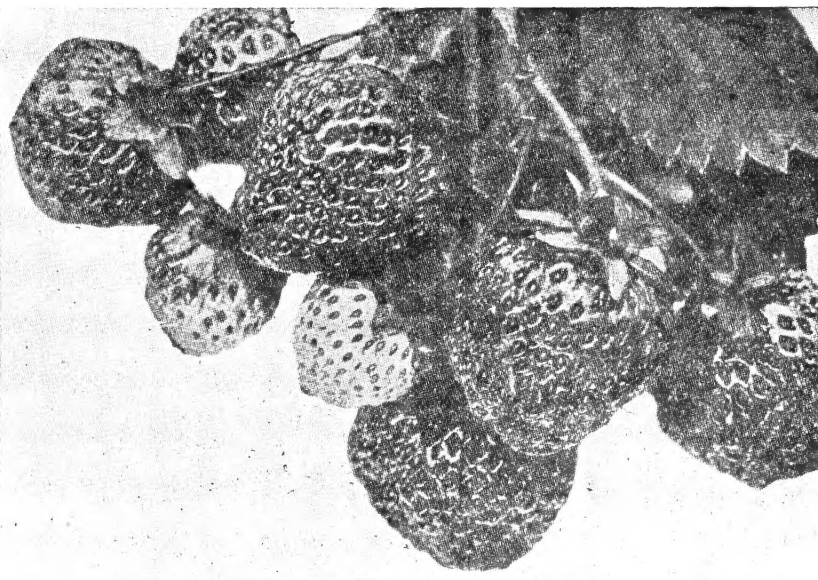
APPLES

MISSING LINK APPLE—Is a vigorous grower. Fruit large oblong, flattened at ends, red and green when picked; green turning to rich golden yellow as the fruit comes into season for use. The only sure cropper for Central and South Texas. Introduced and for sale exclusive by Consolidated Nurseries.

BECKER—Introduced from Germany about the year 1854, by Dr. F. Becker, a vigorous grower and an early and prolific bearer. Medium to large, of pleasant and vinous flavor. July.

HEYER—Originated on the premises of Mr. Owen Heyer of Weimar, Texas. Seedling of Ben Davis. Size of fruit 9 inches in circumference. Good quality. May.

LOCKHART—Originated in Tyler County, Texas. Is yellow striped with red. One of the best apples for Southeast Texas. July.



STRAWBERRIES

LONE STAR PERPETUAL (PER)—The only really Everbearing Strawberry in existence to our knowledge. High quality, uniform in shape. Brings fancy prices much above ordinary berries, if properly planted and given the proper care and attention, we guarantee this berry to produce fruit through June, July, August, September and October, and in the lower South this berry usually continues to fruit up until Christmas. If planted in either fall or Spring, will produce full crop the following season. \$1.50 per dozen; \$2.25 per 25; \$3.75 per 50; \$6.00 per 100; \$25.00 per 500; \$40.00 per 1000. We also offer the following varieties until sold. Klondike, Gandy, Excelsior, Blake-more, Mastodon, Gem, Lupton. If interested in these later varieties, write us advising variety and number of plants wanted, and we will make quotations, should we have them in stock at said time.



NO CHEAP NURSERY PRODUCTS Offered on this folder, "Cheap" as applied to nursery stock, live stock or merchandise means "common—of small value" yet occasionally one will find an uninformed person who wants "cheap" trees. We do not offer "common—of no value" products. We offer only finest possible quality of stock, charge a live and let live price for it and prefer to do business with only those who are interested in having the best quality so as to succeed. Whether it be cows, mules, horses, corn or fruit trees and plants—intelligent thoughtful people know there is a vast difference in highest quality and in poorest quality, Runt hogs produce "runt" returns. So do fruit trees, plants, shrubbery and ornamentals.

PRICES, VARIETIES, PERSIMMON TREES

	EACH	DOZ.
Giant Quick-Bearing Size	\$3.50	\$40.00
3 to 4ft. Selected	2.25	25.00
2 to 3 ft. No. 1	1.90	21.00

HACHKEYA—Large, dark red, yellow meat, oblong, pointed; abundant bearer.

TRIUMPH—Bright yellow, medium size, shape of tomato; best quality; one of the most productive.

YEMON—(Seedless) Very large, flat, lemon yellow.

ZENGI—Tomato shaped, color bright yellow, dark meat; another good edible persimmon, and very productive.

NATIVE OR AMERICAN PERSIMMON—Fruit is somewhat similar to the plum, yellow when ripe, sweet and good after exposure to frost.

TERMS AND CONDITION OF SALE

No order accepted for less than \$3.00 and \$2.00 deposit on orders of \$8.00 and under; over that amount at least 25 per cent to accompany order. Compare our guarantee with other reputable nurseries.

MISCELLANEOUS FRUITS

MULBERRY—Hicks Improved Everybearing—Bearing three or four months during the Spring and Summer. Fruit large, sweet and refreshing. 4 to 6 feet. Selected \$2.00 each.

LOQUAT ('Medlar or 'Japan' Plum) Evergreen, A most valuable winter and spring ripening fruit. Yellow; size of plums; deliciously flavored, and fine for preserving. This should be grown extensively for both home and market and for shipping. As the flowers are sometimes frostbitten, grow in protected places. The tree is evergreen, with handsome large rough leaves, worthy of being grown simply as an ornamental, both in pots and outdoors. 2 to 3 feet \$3.50 each. Specimens large \$5.00 each.

AVOCADO-SUBTROPICAL FRUIT—The lower two-thirds of each tree trunk should be wrapped with a 2-inch-wide strip of burlap immediately after planting, to protect from the sun. \$5.00 each, unless otherwise noted.

GUAYA—(Feijoa) Bears large crops of refreshing rich-flavored fruit that is highly desirable for preserving or eating out of hand. A single plant will bear satisfactorily. Forms a shrub of outstanding ornamental value in both foliage and bloom. B. 2 to 2½ ft. \$5.00 each. 1½ to 2 ft. \$4.00 each.

ROSE APPLE—Eugenia Jambos. Not only the dense lathery green and bronze foliage present a neat cool appearance in the garden but the large white flushed pink, fruit makes excellent rose scented jelly. Large fluffy white flowers, too. Semi-hardy \$5.00 each.

CALAMONDIN—A dense glossy small-leaved citrus shrub that produces incredible quantities of small fruit, Orange-red within and without. The juice is greatly prized for use in drinks. Highly valuable either in the garden or for pot culture. Specimens \$5.00 each.

CRABAPPLE—Red Siberian, small, tart; bright red fruits. Very showy and good quality. 4 to 6 ft. Selected \$2.25 each.

POMEGRANATE—Wonderful. Attractive large shrub with red flowers and attractive odd shaped fruits. Easy to grow. Doing very well in dry hot places. \$2.50 each.

OLIVE—Mission. Excellent variety for fruits. Beautiful ornamental tree with gnarled trunks and silvery foliage. Withstands dry conditions and heat. \$2.50 each.

ALMONDS—Texas. Kernals small; very tasty. Much used in candy and other culinary purposes calling for almond meats. \$3.00 each.

CONSOLIDATED NURSERIES

HOUSTON, TEXAS
BEAUMONT

Scientifically

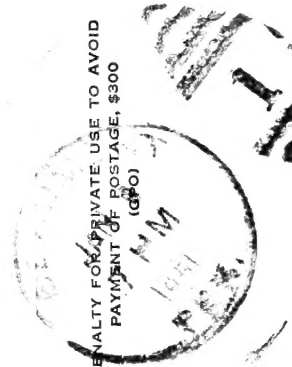
**IT'S
YOUR
HEAT**



U. S. DEPARTMENT OF AGRICULTURE
LIBRARY
WASHINGTON 25, D. C.

LIBRARY RECEIVED
★ JAN 3 1 1951
U. S. Department of Agriculture
PRINTED MATTER

OFFICIAL BUSINESS
PRINTED MATTER



PENALTY FOR PRIVATE USE TO AVOID
PAYMENT OF POSTAGE, \$300
(GPO)

Library, U. S. Dept. of Agriculture
WASHINGTON 25, D. C.