

## **Historic, Archive Document**

Do not assume content reflects current scientific knowledge, policies, or practices.



# HARNDEN'S BULBS

for Fall Planting 1951

GARDEN SUPPLIES



MADONNA LILIES

*Our 65th Year*

## HARNDEN SEED CO.

*Bulbs*

507 Walnut Street

*Grass Seeds*

Kansas City 6, Mo.

*Fertilizers*

Victor 1618-1488

# TULIPS

HOLLAND GROWN TULIPS

## *Colorful Darwin Tulips*

MAY FLOWERING



### TOP SIZE BULBS—12 CM AND UP

**AFTERGLOW.**—26 in. All the splendor of a glorious sunset seems to be reproduced in this wonderful tulip with its deep orange tints suffused with salmon, and edged apricot orange. Tall, stately grower, and a very popular variety. 3 for 40c; per Doz., \$1.45; 100, \$10.50.

**ALL BRIGHT**—30 in. A new variety, this fiery scarlet Darwin with light magenta edges embraces all the good qualities of the well-know Bartigon, of which it is a sport. A sturdy growing Tulip most effective when planted in masses along pathways or walks in the garden. 3 for 40c; Doz., \$1.25; 100 for \$9.00.

**BARON DE LA TONNAYE.**—27 in. bright rose margined blush rose. 3 for 40c; per Doz., \$1.25; 100, \$9.00.

**BARTIGON.**—22 in. Large flowers of fiery crimson with bright scarlet margin. One of the best of its color. 3 for 40c; per Doz., \$1.45; 100, \$10.50.

**THE BISHOP**—29 in. The finest variety in its color class. An impressive bishop's purple flower of excellent height and sturdy growth. Particularly effective against a white background. 3 for 45c; Doz., \$1.60; per 100, \$12.00.

**CITY OF HAARLEM**—27 in. Cardinal red, shading to scarlet at edges. Blue base circled with white. 3 for 45c; per Doz., \$1.60; per 100, \$11.00.

**CLARA BUTT.**—20 in. Newer and superior tulips may be found, but Clara Butt remains a favorite. It is a true pink, wholly free from lavender, a rare color and a charming flower. 3 for 40c; per Doz., \$1.40; per 100, \$10.00.

**DREAM**—27 in. Bright lavender shaded lilac; inside deep violet; bright blue base. The best lavender tulip. 3 for 45c; Doz., \$1.60; 100, \$11.00.

**FARNCOMBE SANDERS.**—25 in. Fiery vivid cerise-scarlet with white center marked blue; flowers perfect shape. 3 for 40c; per Doz., \$1.25; per 100, \$9.00.

**GLACIER**—30 in. Huge white flowers with pure white anthers and a solid white base, this Darwin oval-shaped bloom will last for three weeks in your garden. Sturdy, straight stems. 3 for 50c; Doz., \$1.75; 100 for \$13.50.

**GLORIA SWANSON**—32 in. An enormous crimson-red flower with blush base. Considered the largest darwin red tulip, thick glossy petals carried on lovely slender stems. 3 for 40c; Doz., \$1.30; 100, \$9.00.

**KING HAROLD**—25 in. Deep Mahogany-red with a purple black base. 3 for 45c; per Doz., \$1.60; per 100, \$11.00.

**LA TULIPE NOIRE.**—24 in. (The Black Tulip.) Rich, velvety maroon so dark to appear almost black. The darkest of all. 3 for 40c; per Doz., \$1.35; per 100, \$9.50.

### BONE MEAL

THE BEST FERTILIZER FOR BULBS

5 lbs., 60c; 10 lbs., \$1.00; 25 lbs., \$2.35;

50 lbs., \$4.00; 100 lb. Bag, \$7.00

PRICES ON BULBS ARE PREPAID

# TULIPS

## DARWIN-TULIPS

(CONTINUED)

**PRIDE OF HAARLEM.**—28 in. Vivid rose. An old standby that is deserving of a place in the best of gardens. Unsurpassable for fine color, reliable performance and enormous flower. 3 for 40c; per Doz., \$1.45; per 100, \$10.50.

**PRINCESS ELIZABETH.**—26 in. Large flower; soft rich rose toning to silvery rose at edges. Inside deep rose, white base. Highly recommended. 3 for 40c; per Doz., \$1.25; per 100, \$9.00.

**PURPLE GIANT**—28 in. large dark purple. 3 for 45c; per Doz., \$1.60; per 100, \$11.00.

**WM. PITT.**—24 in. Velvety Crimson Flower of beautiful form. Reliable garden variety. Distinct color and a magnificent tulip. 3 for 40c; per Doz., \$1.45; per 100, \$10.50.

**YELLOW GIANT.** 29 in. A golden yellow tulip of great beauty and size; a large flower with black anthers. Tall and strong stem. This is the best of the several yellow Darwin tulips offered. 3 for 40c; Doz., \$1.25; 100, \$9.50.

**ZWANENBERG**—28 in. beautiful pure white tulip. A few should be in every garden. 3 for 45c; per Doz., \$1.60 per 100, \$11.00.

**ALL COLORS MIXED.**—A special mixture made from choice named varieties in a wide assortment of colors. Bulbs are of the highest quality and top size. 3 for 40c; per Doz., \$1.25; per 100, \$8.50.

## BREEDER TULIP

May Flowering

These are the parents of the world's most expensive tulips. They were raised in Holland for their unusual Breaks, which brought such fabulous prices on the Holland market during the 17th century. They are unexcelled in size. Their colorings are all soft, they all have yellow bases, and are all cup-shaped. The finest gold bronze, and buff tulips are found in this class.

**J. J. BOUMAN**—29 in. An exquisite flower which might be described as tomato-red, with claret-red flush, edges of petals delicately tinted yellowish bronze. Interior red-bronze and pure yellow base. Without question is one of the finest Breeder Tulips in this color. 3 for 40c; Doz., \$1.40; per 100, \$10.00.

**DILLENBURG**—28 in. Giant flowers of brilliant salmon-orange, deep at the center and turning brighter at the edges. Intensely black anthers. Startlingly lovely as cut flowers in a bowl. 3 for 40c; Doz., \$1.40; per 100, \$10.00.

**INDIAN CHIEF**—30 in. reddish mahogany, flushed purple, extra large. 3 for 45c; per Doz., \$1.60; per 100, \$11.00.

**LOUIS XIV**—28 in. dark rich purple, flushed bronze, with broad margin of golden brown. 3 for 45c; per Doz., \$1.60; per 100, \$11.00.

**VELVET KING**—26 in. dark royal purple. 3 for 40c; per Doz., \$1.40; per 100, \$10.00.

**YELLOW PERFECTION**—26 in. bronze yellow, purple shaded. 3 for 45c; per Doz., \$1.60; per 100, \$11.00.

## COTTAGE TULIPS

TOP SIZE

May Flowering. Slender, Graceful  
Stems. Medium Size

**ADVANCE**—25 in. fiery red, shaded blue, extra large. One of the best cottage tulips. 3 for 45c; per Doz., \$1.60; per 100, \$11.00.

**ALBINO**—22 in. Large full flowers of pure, clear white with ivory-colored anthers. Of excellent substance and perfect for cutting. 3 for 40c; Doz., \$1.40; 100 for \$10.00.

**CARRARA**—25 in. Hybrid. The perfect white. Flower is of good size and heavy substance, has white base, and the stamens are yellow. Very long lasting in the garden. 3 for 40c; per Doz., \$1.25; per 100, \$9.00.

**DIDO**—26 in. deep rich pink with salmon lights, slightly edged orange; stands erect on straight stem. Very fragrant. 3 for 45c; per Doz., \$1.25; per 100, \$9.00.

**INGLESCOMBE YELLOW**—28 in. Glossy canary yellow, large globular flower of perfect form. Often bedded with the Darwins, which it resembles. 3 for 40c; per Doz., \$1.25; per 100, \$9.00.

**MRS. MOON**—25 in. Rich golden yellow. When closed, the blooms are quite long and narrow with tips recurved, but when open, the flowers are quite large. 3 for 40c; per Doz., \$1.40; per 100, \$10.00.

**MARSHAL HAIG**—30 in. Vivid scarlet, the broad-petalled flowers make Hybrid Tulip Marshal Haig a brilliant torch in your garden. The base is yellow rather than blue, lighting the whole flower almost into incandescence. 3 for 45c; Doz., \$1.60; 100 for \$11.00.

**OSSI OSWALDA**—28 in. One of the new hybrids uniting the brilliant color of the Cottage clan with the size and shape of the Darwin, this is a variety of extraordinary size and beauty. It is pure white, with a picotee edging of bright cherry red, and attracts instant attention and admiration. The flowers are of true Darwin shape, and have lasting quality when cut. 3 for 45c; Doz., \$1.60; 100, \$11.00.

**ROSABELLA**—26 in. Beautiful carmine rose with broad white edge and inside shell pink. The opening flowers resemble rosebuds. 3 for 45c; per Doz., \$1.60; per 100, \$11.00.

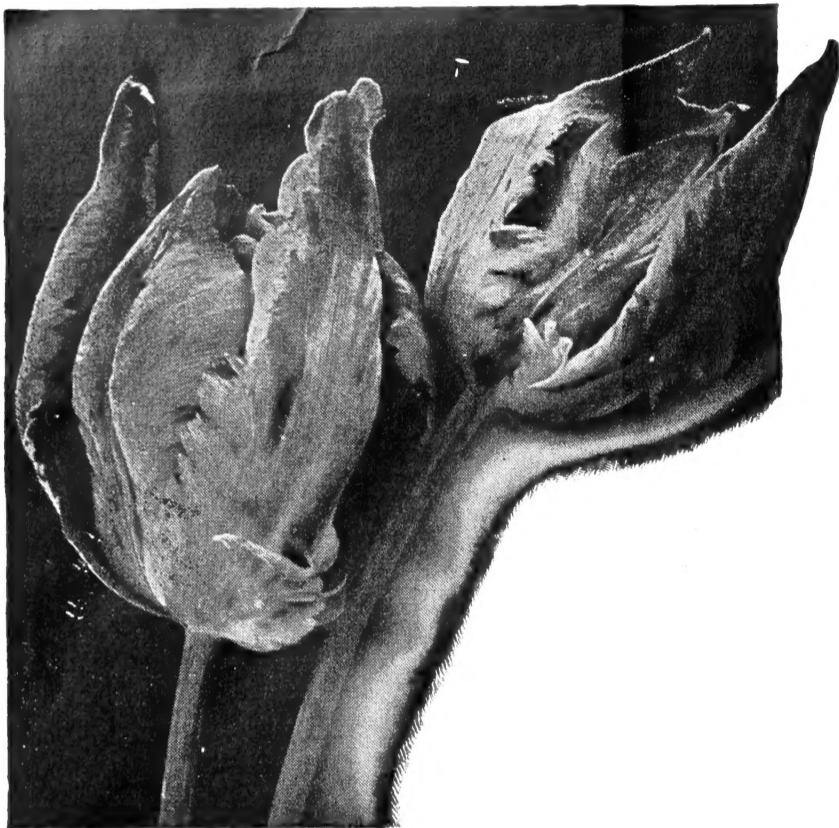
**GOLDEN HARVEST**—28 in. Elegantly formed, oval-shaped, large flowers of deep golden yellow, very clear of color, are carried on tall, thick sturdy stems. The entire plant is of the strongest development. The blooms are enormous with petals of unsurpassed substance and of fine lasting quality. A real giant among Tulips. 3 for 40c; Doz., \$1.40; 100 for \$10.00.

PRICES ON BULBS ARE PREPAID

# TULIPS

## PARROT TULIP

May Flowering



Parrot Tulips are becoming very fashionable. Their petals are huge, thick fleshed, fringed and the flowers keep well when cut. They must be planted shallow and in full sunlight.

**ADMIRAL DE CONSTANTINOPLE**—Large bright scarlet blooms shaded orange, with deeply slashed petals oddly twisted and feathered. 3 for 40c; Doz., \$1.40; 100, \$10.00.

**BLUE PARROT**—A glorious Parrot Tulip of bright violet shaded steel-blue. The unusual flower is large and carried erect on a strong 30-inch stem. A rare novelty. 3 for 40c; Doz., \$1.40; 100, \$10.00.

**FANTASY**—This is an exceedingly beautiful Tulip of glistening pink color, shaded with orange and pink on the wide, ragged petals. The flowers are stained with brownish green on the outsides. It is a vigorous, tall-growing variety, producing very large flowers. 3 for 40c; Doz., \$1.40; per 100, \$10.00.

**LUTEA MAJOR**—Rather loosely made flower of rich yellow striped with red, and the usual parrot green. This is a gay colored flower. 3 for 40c; Doz., \$1.40; 100, \$10.00.

**MARKGRAAF VON BADEN**—With shades of yellow, scarlet, purple, and green beyond understandable description. 3 for 40c; Doz., \$1.40; 100, \$10.00.

**ORANGE FAVORITE**—Rosy carmine, blotched green, orange fringed edges; inside bright orange with yellow base. Flowers are very large. Strong grower. 18 in. 3 for 40c; Doz., \$1.50; 100, \$11.00.

**RED CHAMPION**—A large cochineal-red, flushed with scarlet. This radiant flower is a sport of the reliable old favorite, Bartigon. Excellent for pot culture. Decorative in the home as well as the garden. Height, 24 inches. Ea. 20c; 3 for 45c; Doz., \$1.60; 100, \$12.00.

**SUNSHINE**—The finest golden yellow Parrot Tulip we know of that will hold its bloom for a long time. Deeply lacinated and cut, it is sometimes enhanced with a lovely marking of green at the base of the petals. Height 18 inches. 3 for 60c; Doz., \$2.20; per 100, \$15.00.

**VIOLET QUEEN**—Here we come close to perfection. A flower of remarkable size, colored a delicate and beautiful pearly blue. The stem is 27 inches tall and carries the flower very gracefully. 3 for 45c; Doz., \$1.60; 100, \$12.00.

## SINGLE EARLY TULIP

April Flowering

**COLEUR CARDINAL**—12 in. Rich deep crimson scarlet shaded plum crimson; good bedder and late forcer. Excellent for pots. 3 for 45c; Doz., \$1.60; per 100, \$11.00.

**KEIZERSKROON**—16 in. Vivid crimson-scarlet broadly edged golden yellow. Large flowers; strong stems. A favorite for bedding or late forcing; one of the showiest for masses of color. 3 for 45c; Doz., \$1.60; per 100, \$11.00.

**PINK BEAUTY**—13 in. Deep rose with broad stripe of white on center of petals; a bi-colored Tulip; very large stately flower of pleasant appearance on strong stem. Excellent bedder. 3 for 60c; per Doz., \$2.00; per 100, \$15.00.

**RISING SUN**—16 in. Golden yellow; medium sized oval flower of great substance on stout stem. Good for forcing. Excellent bedder. 3 for 40c; Doz., \$1.40; per 100, \$10.00.

## TRIUMPH - TULIPS

April Flowering

A hybrid of the Darwin and single early class. Have the bright colors of the Darwins which make them so valuable and at the same time come in flower 10 days earlier.

**KORNEFORUS**—22 in. Brilliant red; strong flower and stiff stems. 3 for 45c; per Doz., \$1.60; per 100, \$11.00.

**DENBOLA**—20 in. Bright red with cream white edge. 3 for 50c; per Doz., \$1.75; per 100, \$12.00.

**KANSAS**—White with yellow base and center. 3 for 40c; per Doz., \$1.40; per 100, \$10.00.

**URSA MINOR**—Even golden yellow; cup-shaped flower on medium sized strong stem. Early forcing variety. 3 for 40c; per Doz., \$1.40; per 100, \$10.00.

## BOTANICAL OR SPECIES TULIPS

Sometimes called the Rock Garden Tulips or can be used as a border or in front of evergreens, or any little nook where its gay flowers can show themselves.

**CLUISIANA**—10 inches, produces a clear glistening white blossom with flaming of carmine on the tips of the petals. A fine long-pointed flower of great beauty. 3 for 45c; Doz., \$1.60.

**KAUFMANNIANA**—Has remarkable cream colored, scarlet and gold marked, yellow centered blossoms carried flat on the stems that are about one foot high. Plant bulbs deep, about 7 inches. 3 for 50c; Doz., \$1.75.

**RED EMPEROR**—Enormously long petals of the brightest scarlet; large black base bordered yellow. For size and brilliance this species tulip from Bokhara cannot be surpassed. Blooms in mid-April. When fully open, flowers are often more than 9 in. across. An unusually fine, strikingly beautiful, extremely early, giant tulip at special low prices. 18 in. 3 for 45c; 12 for \$1.70; 100 for \$12.00.

PRICES ON BULBS ARE PREPAID

## DOUBLE EARLY TULIPS

Following the Narcissus and before the May Tulips start, come the Double Early Tulips and their bright colors. Stay in flower longer, and bulbs will outlive any other class.



### April Flowering

**VUURBAAK**—12 in. Excellent scarlet for bedding and forcing; still remains among the best of the older varieties. 3 for 50c; per Doz., \$1.75; per 100, \$12.00.

**MR. VAN DER HOFF**—12 in. A yellow sport of Murillo with all its superb qualities. One of the very finest of the primrose-yellow double tulips. A very lovely flower. 3 for 50c; per Doz., \$1.75; per 100, \$12.00.

**PEACH BLOSSOM**—12 in. Bright rose-pink, flushed white deepening with age to carmine-rose; large. Excellent for pots. 3 for 50c; per Doz., \$1.75; per 100, \$12.00.

**SCHOONOORD**—12 in. A beautiful pure white sport of Murillo with the same excellent forcing qualities. One of the best double white varieties, if not the best. 3 for 50c; per Doz., \$1.75; per 100, \$12.00.

## DOUBLE LATE TULIPS

Peony Flowered or Double Cottage Tulips

### May-Flowering

**EROS**—20 in. Very large flower of clear old rose. A very interesting Tulip, as the flower resembles a Peony flower very closely. One of the best doubles for the American garden as the flower has fine substance. 3 for 55c; Doz., \$1.85; 100, \$13.00.

**MOUNT TACOMA**—18 in. A magnificent giant double white Tulip which reminds one of a Peony in full bloom; superb for beds. 3 for 50c; Doz., \$1.75; 100, \$12.00.

**UNCLE TOM**—20 in. Huge flower of deepest, dark glossy red; resembles a dark red Paeonia when it is in full bloom. Most unusual Tulip, which gives a big blotch of color. 3 for 60c; Doz., \$2.20; 100, \$15.00.

## HYACINTHS HOLLAND BULBS

**CULTURE**—The bulbs may be planted almost at any time from October until the ground is frozen solid, but it is advisable to purchase early before our stocks are depleted. They succeed in any good, well-drained garden soil, which should be well spaded, and will do better if some bone meal is mixed through it.

Set the bulbs so that the tops will be between three and four inches below the surface and six to ten inches apart. Pack a little sand under about them if it is convenient, being careful that no fertilizer comes in direct contact with the bulbs.



## TEN NAMED VARIETIES Forcing and Bedding Size Bulbs

**KING OF THE BLUES**—Dark Blue.

**CITY OF HAARLEM**—Pure Yellow.

**GRAND MAITRE**—Deep Porcelain Blue.

**GERTRUDE**—Rose Pink.

**L'INNOCENCE**—Pure White.

**PINK PEARL**—Deep Rose Pink.

**QUEEN OF THE BLUES**—Light Blue.

**QUEEN OF THE PINKS**—Bright Pink.

**VICTORY**—Bright Rosy Red.

**LARGE FORCING SIZE BULBS**—Each, 35c; 3 for 95c; per Doz., \$3.50; per 100, \$24.00.

**BEDDING SIZE BULBS**—Each, 25c; 3 for 60c; per Doz., \$2.20; per 100, \$15.00.

PRICES ON BULBS ARE PREPAID

# HARDY OUTDOOR BULBS

## Fall Flowering Bulbs

### COLCHICUM

Colchicum are autumn-flowering bulbs with large Crocus-like blossoms which appear during the months of September and October, without foliage. The foliage, however, appears early in the spring about the same time the Tulips and Hyacinths are in bloom and disappears in June. They are especially recommended for planting between the taller growing rock plants.

**AUTUMNALE MAJOR**—A large variety with massive flowers of rosy purple. Each, 40c; 3 for \$1.10; dozen, \$4.00.

### CROCUS

#### Fall Flowering

Are very similar to the spring flowering crocus only that they flower in the fall; are perfectly hardy and bloom after most all summer flowers are gone.

**ZONATUS**—Rose-lilac, yellow center and orange zone; ethereal in lovely coloring. Doz., 75c; 100, \$5.50.

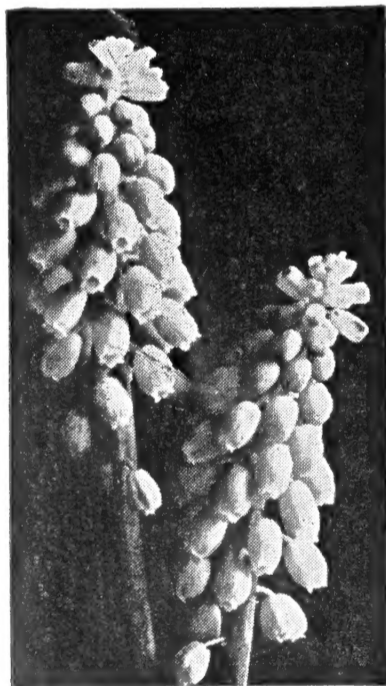
### CHIONODOXA (Glory of the Snow)

These are among the most beautiful of our spring-flowering bulbs, coming into bloom soon after the snow is gone. Grows well in any good garden soil, and when once planted requires no further care. Looks best when planted in lines or clumps.

**LUCILLAE**—Flowers of brilliant sky-blue color with white center. Doz., 60c; 100, \$4.00.

### MUSCARI

**GRAPE HYACINTHS**—Flower in Early May



GRAPE HYACINTH

**HEAVENLY BLUE**—While there are several kinds of Muscari, we consider this variety the best for mass planting. Their flowers open just about the time that the Chionodoxas and Crocuses are going. They do very well in the wild garden and also in the grass if it is not too rank. They are nice under trees and along the borders where they may be left undisturbed. Dozen, 65c; 100, \$4.50.

## Flower in March

Regardless of snow or cold, rain or shine these little flowers will come forth in March and bloom before anything else has hardly started. The first signs of spring after a dreary winter; plant among shrubbery and rockery, once planted will come every March.

### CROCUS

#### SPRING FLOWERING

These are the cheerful messengers of Early March Winds. After the long winter months we look anxiously for the first sign of spring blossoms and these are in the great majority of times the ones that reward our patience. Peeping, as they often do, through the last snows of the season, we are always glad to accord them a welcome that seems to be in itself sufficient reward.

	Per Doz.	Per 100
<b>JULIA CULP</b> —Purplish blue.....	\$ .65	\$4.50
<b>OTHELLO</b> —Dark blue .....	.65	4.50
<b>SIR WALTER SCOTT</b> —White striped violet	.65	4.50
<b>MT. BLANC</b> —White .....	.65	4.50
<b>YELLOW</b> —Mammoth .....	.65	4.50
<b>MIXED</b> —Named varieties per above.....	.60	4.00

### GALANTHUS (Snowdrops—Hardy)

These are particularly effective under hedges, under cedar trees and in thin woodland. They are the first to open in the spring and are very lovely. They dislike being moved and should be left alone to naturalize themselves. Plant two inches deep; mulch in winter with straw, hay, leaves or well-decayed manure. The single-flowering Snowdrops, if they are left alone, soon take to producing double flowers. The differences in varieties of Snowdrops are so comparatively small that it does not seem worth while to offer them in variety.

**GALANTHUS NIVALIS**—Per Doz., 75c; per 100, \$5.50.

### SCILLAS (Squills—Hardy)

These flourish in sun as well as in shade under trees. They are not particular about the soil in which they grow. They are ideal for the wild garden but they are not to be despised in the border, especially if they are left alone for two or three years without being disturbed in any way. They are splendid in the rock garden. Produce drooping bell-like flowers.

**SIBIRICA BLUE (The Siberian Squill)**—The earliest to flower, connecting the flowering of the Crocuses with that of the Narcissi. Fine for naturalizing under trees or in open woodland, producing drooping, bell-like flowers on stems 3 to 4 inches high. Succeed well in the rock garden. Color bright blue. Plant 3 inches deep in shade, half shade or in full sun. Per Doz., 75c; per 100, \$5.50.

**SCILLA CAMPANULATA**—(Wood Hyacinth or Spanish Blue Bell)—Erect flower-spikes, about 15 in. high, with attractive Bellflower-like blooms during May and early June. Will grow in sun or shade, even under trees, but do best in partial shade in good rich soil. Set bulbs 3 in. deep and 6 in. apart. Ideal for naturalizing.

**CAMPANULATA BLUE**—Porcelain blue, candelabra-shaped bells, blooming with the May-flowering Tulips. Per Doz., 75c; per 100, \$5.50.

**CAMPANULATA ROSEA**—This is a soft lilac-rose form of this type. Per Doz., 75c; per 100, \$5.50.

**CAMPANULATA WHITE**—The pure white form. Per Doz., 75c; per 100, \$5.50.

PRICES ON BULBS ARE PREPAID



# HARDY OUTDOOR BULBS

## BLEEDING HEART DIELYTRA (Spectabilis)

**BLEEDING HEART.**—One of the most beautiful hardy border plants. Flowers in early spring with rose-colored heart-shaped flowers on under side of stem. Perfectly hardy; 2 to 3 feet. Plants, Each, 75c; 3 for \$2.10; dozen, \$9.00.

## SPRING SNOWFLAKE (LEUCOJUM VERNUM)

A favorite little early spring flower having drooping, bell-shaped flowers, white, with small green tips. Once planted in a favorable environment, they come up every spring, bearing more flowers each time. Excellent for rock gardens and naturalizing. Each, 12c; Dozen, \$1.15; 100, \$8.00.

## DUTCH IRIS



This distinct group is one of recent origin and has become in a few years quite important. The colors are very brilliant and pure. Are unsurpassed for cut flowers.

**IMPERATOR.**—27 in. Large dark blue with a brilliant orange blotch, very strong grower. Doz., 75c; 100, \$5.50.

**VAN VLIET**—27 inches. One of the best and showiest varieties of a magnificent deep blue with orange-yellow central blotch. Very substantial flowers. Doz., 90c; 100, \$6.50.

**YELLOW QUEEN.**—Standards and falls golden yellow. best medium priced yellow. 28 inches. Dozen, 90c; 100, \$6.50.

**WHITE EXCELSIOR.**—Uniform pure white; falls very broad, very good form and substance; very early forcer; the best medium priced white. 22 inches. Dozen, 90c; 100, \$6.50.

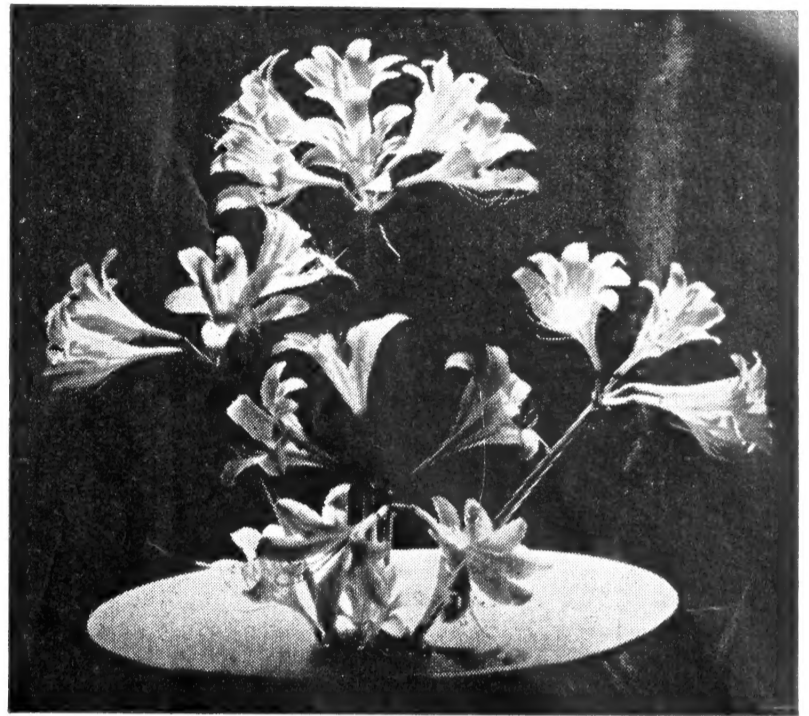
**WEDGEWOOD 9-10 CTMS**—Standards blue; falls lighter blue; excellent forcer. 24 inches. Dozen, 90c; 100, \$6.50.

## BRODIAEA

Plant them about three inches deep and leave them alone in the rock garden, or in rough, gritty soils.

**MIXED.**—This mixture contains the following colors: blue, red, yellow, white. Bulbs self-sow and increase quite rapidly. Each, 10c; Doz., \$1.00; 100, \$7.50.

## HARDY AMARYLLIS (Hallii)



MAGIC OR RESURRECTION LILY

Produces in early spring attractive green foliage which grows until May when it ripens off and disappears and one not familiar with its habits would think the bulb had died, but about a month later as if by magic, the flower stalks spring from the ground to a height of two or three feet, developing an umbel of large and beautiful lily-shaped flowers three to four inches across and from eight to twelve in number, of delicate lilac-pink shades with clear blue. Each, 60c; 3 for \$1.65; Dozen, \$6.00.

## ERYTHRONIUMS (Dog Tooth Violets)

If they had no other beauty than that of their richly mottled leaves, they would be well worth a place in the shady corner. Their flowers are 3 inches across, with stems 6 to 18 inches high. The colors run in delicate tints of white, pink, cream, bright yellow and rose.

Mixed colors. Each, 10c; Dozen, \$1.00; 100, \$6.00.

## CALOCHORTUS

### True Mariposa or Butterfly Tulips

Cup-shaped flowers, one to many on a stem, wonderfully marked with eyes and dots and pencilings in rich colors, are characteristics. The bulbs are small and should be planted about 2½ inches deep and covered during winter. Mixed colors. Each, 10c; dozen, \$1.00; 100, \$6.50.

## CALOCHORTUS (Globe Tulip)

**CALOCHORTUS (Globe Tulips)**—Often referred to as Fairy Lanterns; the shape of the flowers and the way they hang on the stem suggest the name. Plants are much branched and bear a number of exquisitely tinted flowers on long, leaf-wrapped stems. Doz., \$1.00; per 100, \$7.50.

## SPARAXIS, Mixed

Graceful spikes 6 to 8 inches high; flowers of the brightest colors, tigered, streaked and flushed—a riot of color. Excellent for indoor winter flowering—about 12 bulbs to a 6-inch pot. Do not plant outdoors in cold sections. In cool localities, give winter protection. For southern gardens, especially in rockeries, Sparaxis are indispensable. Doz., 75c; 100, \$5.50.

PRICES ON BULBS ARE PREPAID

# BULBS for Indoor Planting

## CALLA LILIES

Ready in September

Jumbo-size Bulbs

**WHITE CALLA (Aethiopica).**—The White Calla, or Lily of the Nile, is a well known plant of easy culture, and in winter is one of our best window plants. To aid profuse blooming keep them dormant from the middle of June until the last of August; repot in good, rich soil, using 6- to 8-inch pot; give water, light and heat in abundance, and result will be most satisfactory. Selected Bulbs. Each, 65c; 3 for \$1.75; dozen, \$6.50.

Ready in November

**YELLOW CALLA (Elliottiana).**—The flowers are a magnificent deep golden yellow and the green foliage is spotted creamy white. Unquestionably the most beautiful of the Calla Lilies. Select bulbs. Each, 50c; 3 for \$1.35; dozen, \$4.50.

## NARCISSUS for Growing in Water

Ready in September

Easy to grow, all that is needed is a bowl, some pebbles, a little water, and fragrant flowers can be had inside all winter. Set in dark for two weeks then bring to light and they will come into flower in about six weeks. Plant a few every ten days and flowers can be had during the entire winter. Special prices will be made to schools and in large quantities.

**PAPER WHITE GRANDIFLORA**—Large bulbs. Each, 10c; dozen, \$1.00; 100, \$8.00.

**EXTRA LARGE BULBS.**—Each, 15c; dozen, \$1.50; per 100, \$10.00.

**GRAND SOLEIL D'OR.**—Bright yellow, orange cup; free bloomer. Each, 15c; dozen, \$1.50; 100, \$10.00.

**CHINESE SACRED NARCISSUS.**—Also called Jos Flower, Water Fairy Flower and Oriental New Year's Lily. The flowers of this variety of Polyanthus Narcissus, introduced from China, are satiny white, with golden yellow cup. They are borne profusely in clusters and are very fragrant. Price, each, 15c; dozen, \$1.50; 100, \$10.00.

## PEARL CHIPS

Used for bulb bowls, aquariums, Japanese gardens. Brightly polished.

White.—Pound, 10c; 3 lbs., 25c; 10 lbs., 75c.

Colored.—Pound, 15c; 2 lbs., 25c; 10 lbs., \$1.00.

## RANUNCULUS

(Buttercup)

Ready in October

Hardy in Southern States, in Missouri and north. Start in cold frame and set out in early Spring.

Plant in November for early spring bloom in frames. Set 3 to 4 inches apart, pressing firmly into the soil, claws downward, and cover them with sand, then with soil; keep the crown of the tubers four inches under the surface. Water them well.

**MIXED.**—Far superior to any ranunculus that we know. Flowers are double and large. 3 for 40c; dozen, \$1.00; 100, \$7.00.

## AMARYLLIS



AMARYLLIS—Giant Hybrids

Ready in October

**GIANT HYBRIDS.**—The strain we offer are the finest strong bulbs throwing vigorous stems with from two to four gigantic blooms ranging in color from pure white grounds with varied markings of rose, red and crimson to the richest self colors as scarlet, crimson, bright red, cherry and almost maroon.

**LARGE BULBS, MIXED COLORS.**—Each, 55c; 3 for \$1.50; dozen, \$5.75.

**DARK RED**—Each, \$1.00; 3 for \$2.75; dozen, \$9.60.

**WHITE**—Each, 90c; 3 for \$2.50; dozen, \$9.00.

## OXALIS

Ready in September

**BERMUDA BUTTERCUP.**—Yellow. Each, 6c; dozen, 60c; per 100, \$4.00.

**GRAND DUCHESS.**—Lavender. Each, 6c; dozen, 60c; per 100, \$4.00.

**GRAND DUCHESS.**—Pink. Each, 6c; dozen, 60c; per 100, \$4.00.

**GRAND DUCHESS.**—White. Each, 6c; dozen, 60c; per 100, \$4.00.

## FREESIA

Ready in August

This is one of the most beautiful of all Cape bulbs, possessing a peculiar grace of form, and its fragrance is most delightful, one pot of a dozen bulbs being sufficient to perfume a whole house.

**PURITY (Super Flora).**—Flowers are a magnificent snowy white, of very large size and great fragrance. Mammoth size. Dozen, 65c; 100, \$4.50.

**GOLDEN DAFFODIL.**—A great improvement over any other yellow sort, the color is rich daffodil yellow. The large flowers are borne on long rigid stems. Dozen, 65c; 100, \$4.50.

**RAINBOW MIXTURE.**—All colors mixed. Dozen, 65c; 100, \$4.50.

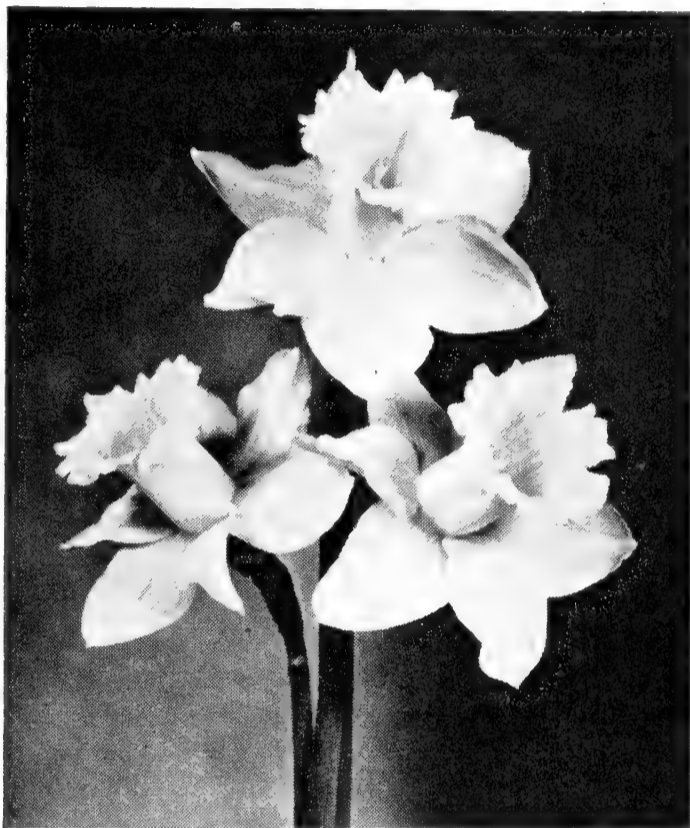
# NARCISSUS OR DAFFODILS

**CULTURE:** The Narcissus thrives best if planted in a cool, moist soil, with good drainage. A small amount of sand under each bulb will provide all the drainage necessary. Like the tulip, it is very susceptible to fertilizer, and stable manure should come in contact with the bulb. Bone Meal only should be used.

Plant about six inches deep and the same distance apart, and excellent results will be had. The double and single Narcissus are equally hardy, and need not be disturbed for three or four years.

ALL NARCISSUS ARE NO. 1 ROUND BULBS  
EXCEPT AS NOTED

## TRUMPET, YELLOW—(Large)



KING ALFRED

**ALASKA**—Giant Flower of deepest gold more graceful than most of the giant varieties as the trumpet is deeply frilled and recurved. Each, 20c; Doz., \$2.00; 100, \$14.00.

**AEROLITE**—Broad, flat primrose perianth petals; pure rich yellow trumpet. Extra large long lasting flowers. Each, 20c; Doz., \$1.75; 100, \$12.00.

**GOLDEN—HARVEST**—A magnificent sort. The entire flower is a rich yellow trumpet of immense size and petals so broad that they overlap. Each, 25c; dozen, 2.50; 100, \$15.00.

**KING ALFRED**—Golden yellow perianth and trumpet, the latter of beautiful form with deeply frilled mouth, large bold flower, strong grower. Each, 15c; dozen, \$1.40; 100, \$10.00.

**Double Nose Bulbs**—Best for forcing. Each, 25c; dozen, \$2.55; per 100, \$15.00.

## THE PINK DAFFODIL

**MRS. R. O. BACKHOUSE**—Perianth of ivory white, and long trumpet of apricot pink, changing to shell pink at the deeply fringed edge; exceptional substance; long lasting. Grow in greenhouse or plant in partial shade to bring out the pink color. Each, 45c; dozen, \$4.50; 100, \$30.00.

## WHITE TRUMPET

**MRS. E. H. KRELAGE**—Probably the most famous of white Daffodils with its large overlapping perianth of soft creamy white and its long trumpet of pale primrose, so light that it is placed in the white trumpet class. Each, 25c; Dozen, \$2.30; 100, \$16.00.

**BEERSHEBA**—A magnificent ivory white flower. Large, perfectly flat perianth, trumpet long and beautifully flanged at mouth. A flower of great size, measuring nearly five inches across; a vigorous grower and a grand exhibition variety. Each, 55c; 3 for \$1.50; Dozen, \$5.35.

## POETICUS

**ACTAEA**—The largest Poeticus; broad, snow-white perianth, with large eye broadly margined with dark red. Each, 20c; Dozen, \$1.50; 100, \$11.00.

**POETICUS ORNATUS MAXIMUS**—(The old Pheasant's eye). Pure white perianth, cup deep orange-red. Each, 15c; Dozen, \$1.35; 100, \$9.00.

**ALBA PLENA ODORATA**—(Double White Poeticus.) Large, double, snowy white, sweet scented, gardenia-like blossoms; much prized for cutting. To obtain fine, handsome flowers this Narcissus should be planted early in a deep, cool, moist soil. Each, 15c; Dozen, \$1.50; 100, \$9.50.

## DOUBLE TRUMPET

**TWINK**—Attractive double flowers, the petals alternating soft primrose and clear orange. The long petals are primrose with the orange ones only half their length so arranged as to make the flower appear as if composed of several orange cups with the primrose petals growing out between them. Unusual and striking. Quite early. Each, 25c; Dozen, \$2.20; 100, \$15.00.

**INDIAN CHIEF**—Very large fully double flowers with petals curled and twisted. Bright yellow interspersed with orange. Unusually striking, fine for the garden. Each, 20c; Dozen, \$2.00; 100, \$14.00.

## TRUMPET BICOLOR—(Large)

**SPRING GLORY**—(Bicolor Trumpet). Clear white perianth, with long petals of fine form; long trumpet of deep chrome-yellow, reflexing at the brim. A very large flower of fine character. Height, 16 inches. Each, 20c; Dozen, \$2.00; 100, \$14.00.

**LOVENEST**—One of the very few members of the "pink Daffodil" class; among the daintiest of all the trumpets; medium in height with a starry shaped perianth of informal type; nicely proportioned trumpet of saffron yellow turning to apricot pink; delightfully charming at all stages; very early. Each, 35c; Dozen, \$3.00.

PRICES ON BULBS ARE PREPAID

# NARCISSUS (continued)

## POETAZ



**LAURENS KOSTER.**—Clusters of 5 to 7 large pure white deliciously fragrant blooms with prettily fluted, deep orange yellow cups. An old standby. Each, 15c; Dozen, \$1.50; 100, \$10.00.

**CHEERFULNESS.**—The double, Elvira, a very pleasing double white Poetaz, good stems, a fine garden and show flower. Each, 15c; Dozen, \$1.50; 100, \$10.00.

## LEEDSII

Have white perianths with white or sulphur trumpets. Most beautiful class for cutting.

**SILVER STAR.**—Perfect broad-petalled star-shaped perianth of pure cream-white, with finely proportioned, wide mouthed trumpet of primrose, changing to cream white, just a shade deeper than the perianth; extra fine, and very free-flowering. Each, 20c; Dozen, \$2.00; 100, \$14.00.

**GERTIE MILLAR.**—Wonderful flower of the new Giant Leedsii type with pure white perianth similar to and as large as Van Waveren's Giant, with a beautifully proportioned pale primrose cup deeply fluted and frilled and of translucent texture; unusually long pistils and anthers match these colors perfectly; a most handsome flower. Each, 20c; 3 for 55c; Dozen, \$2.00; 100 for \$14.00.

## BARRII

Thanks to the brilliant contrast effects due to color in the cup, the Barrii type is contributing many improved varieties to the daffodil list and it is here that further progress may be expected. The flowers have a character and grace which make them charming either for cutting or garden display.

### BONE MEAL

THE BEST FERTILIZER FOR BULBS  
5 lbs., 60c; 10 lbs., \$1.00; 25 lbs., \$2.35;  
50 lbs., \$4.00; 100 lb. Bag, \$7.00

**DIANA KASNER.**—A pure white perianth and a large fluted yellow cup with blood-red frill, very free-flowering and an excellent forcer. We consider this variety as one of the most valuable introductions and cannot recommend it too highly for show purposes. Each, 20c; Dozen, \$1.85; 100, \$11.00.

## INCOMPARABILIS

This class includes many of the most beautiful and useful Daffodils for bedding, naturalizing and border planting. Strong growers, hardy and free bloomers. Forced for winter flowers, they are splendid.

**ADLER.**—A universal favorite both among exhibitors and amateurs; a really marvelous flower with perianth of the purest white overlapping and opening nearly flat, circular in outline and 4 inches across, with a beautifully proportioned cup of pure chrome yellow, shading to blood-orange at the deeply frilled edge; the most admired flower in many large collections. Each, 25c; Dozen, \$2.50.

**DICK WELLBAND.**—Very strong grower and exceptionally free-flowering. The perianth is pure white and the cup flame-orange. Color does not fade but rather intensifies with age. The flower lasts unusually long. Its great beauty lies in the startling contrast between petals and cup which makes it stand out in the largest collection of Daffodils. Each, 20c; Dozen, \$1.60; 100, \$12.00.

**FRANCISCA DRAKE.**—The pure white perianth petals are of unusual substance, an inch and a half wide, and tinted gold at the base, which shows through on the outside. The cup, wide and deep, is golden yellow at the base; changing gradually to flame-orange at the densely frilled edge. Each, 20c; Dozen, \$1.75; 100, \$12.00.

**JOHN EVELYN.**—White, round overlapping perianth petals; large soft lemon-chrome crown flush with tangerine orange. Each, 20c; Dozen, \$1.75; 100, \$14.00.

## JONQUILS

(Narcissus Jonquilla)

**SINGLE CAMPERNELLE.**—Single, large yellow florets, about one and one-half inches across. Fine for cutting. Each, 15c; Dozen, \$1.25; 100, \$9.00.

**DOUBLE CAMPERNELLE.**—The true and rare form of double Campernelle. Flowers fragrant, quite double, and are borne on tall, sturdy stems. A very handsome and desirable sort. Each, 20c; Dozen, \$1.50; 100, \$10.00.

**GOLDEN SCEPTRE.**—One of the finest of the new Jonquil Hybrids. Flowers are deep Jonquil-yellow, 3 in. or so across. The perianth is star-shaped, just a shade lighter in color than the trumpet, which is slightly rolled and flaring at the brim. Ideal for garden cutting. Each, 15c; Dozen, \$1.40; 100, \$10.00.

**SIMPLEX.**—The true single sweet jonquil, of light elegant growth, bearing out of doors in May clusters of numerous small, rich yellow flowers of delicious scent. Each, 15c; doz., \$1.60; 100, \$10.00.

# HARDY GARDEN LILIES

FALL IS THE BEST TIME TO PLANT HARDY LILY BULBS

## LILIUM REGALE

Ready Last of October



### REGAL LILY

The large, trumpet-shaped flowers are snowy white, with a pure yellow center, while the exterior of the petals is slightly tinged pink. It is a strong grower, attaining the height of three or four feet. The flowers are beautiful, possessing a delightful fragrance. The bulb, which should be given good, sharp drainage (as should all lilies), is perfectly hardy.

**LARGE BULBS**—7 to 8 in. Each, 25c; 3 for 65c; dozen, \$2.50; 100, \$18.00.

**JUMBO SIZE BULBS**—9 to 10 in. Each, 50c; 3 for \$1.35; for \$2.50; dozen, \$8.50; 100, \$65.00.

**EXTRA JUMBO SIZE BULBS**—11 to 12 in. Each, 90c; 3 for \$2.50; dozen, \$8.50; 100, \$85.00.

## HARDY LILY BULBS

Ready in November

**SPECIOSUM ALBUM**—A pure white hardy lily with beautiful re-curved petals. Very fragrant. Each, \$1.25; 3 for \$3.50; Doz., \$12.50.

**AURATUM**—The glorious, gold-banded Lily of Japan. Ivory flowers are thickly studded with yellow, each petal has a golden band. Each \$1.25; 3 for \$3.50; Dozen, \$12.50.

**HENRII** (The Yellow Speciosum)—A superb new Lily, A heavy bloomer, its 3- to 5-foot flower stalks often carry 7 to 9 flowers of deep apricot-yellow, spotted with brown. July and August. Each, 50c; 3 for \$1.35; Dozen, \$5.00.

**CENTIFOLIUM HYBRIDS**—Immense white, fragrant flowers, the outside varying from emerald-green through tints of pink to brownish purple. These gorgeously colored hybrids bloom in July and August. They grow 6 ft. tall. Each, 50c; 3 for \$1.35; Dozen, \$5.00.

## CROFT EASTER LILY

Very large, pure waxy white, long, trumpet-shaped flowers of such wonderful texture as to be extremely long lasting. Plants are strong growing and prolific bloomers, the flowers having a most pleasing fragrance. Stem is short, making it an ideal pot plant.

**LARGE BULBS**—Each, 50c; 3 for \$1.35; Dozen, \$5.00.

**ESTATE-LILY**—A new lily of recent introduction with very large pure white, long trumpet-shaped flowers of such wonderful texture as to be extremely long lasting on the plant or when cut. Plants are strong growing and prolific bloomers, the flowers having a most pleasing fragrance. Referred to as "THE HARDY EASTER LILY". Each, 65c; 3 for \$1.80, Doz., \$5.75.

**PHILIPPINENSE FORMOSANUM (FORMOSA)**.—A very graceful Lily, growing 2 to 3 feet high with grassy foliage and slender stem; flowers very long and trumpet-shaped, white with reddish brown shading on exterior, tips of petals elegantly recurving. Very fragrant. Each, 40c; 3 for \$1.10; dozen, \$4.00.

**PARDALINUM GIGANTEUM**—The petals are large, strongly recurved, deep orange, maroon spotted; tips of petals intense scarlet. Hardy and robust, does well in any good garden loam, well drained soil in sun or partial shade. July flowering. Each, 45c; 3 for \$1.25; Dozen, \$4.50.

**RAINBOW HYBRIDS MIXED**—A most desirable mixture of these fine upright lilies, in colors that range from straw yellow to deepest mahogany-red. Each, 50c; 3 for \$1.35; Dozen, \$5.00.

**SPECIOSUM RUBRUM**—Its broad white or pink petals are thickly dotted with rose or carmine spots. Height outdoors in the open usually 2 to 4 feet. July and August. Each, 75c; 3 for \$2.10; Dozen, \$7.50.

**TENUIFOLIUM** (Coral Lily).—A dainty little Lily with slender stem and grassy foliage, bearing in early June, numerous showy, glossy scarlet flowers with reflexed petals. Height 1½ feet. This Lily should be planted in a sunny situation in light, sandy, well drained soil. Each, 35c; 3 for 95; Dozen, \$3.50.

**TENUIFOLIUM, GOLDEN GLEAM**.—A beautiful, robust and floriferous hybrid of this type, bearing numerous flowers of a pure apricot-yellow. June flowering. Each, 35c; 3 for 95c; Dozen, \$3.50.

**TIGRINUM SPLENDENS**.—This is a development of the Tiger Lily. It is sturdier, has better form and longer flower spikes. It blooms during July and August. Each, 40c; 3 for \$1.00; Dozen, \$3.60.

**UMBELLATUM**.—An early flowering group of hybrids from *Lilium davuricum* with large umbellate heads of flowers with shadings of yellow, orange and crimson. They are easy of cultivation and take kindly to limestone. Should be planted 8 inches deep. Height 2 to 2½ feet. June. Each, 50c; 3 for \$1.35; dozen, \$5.00.

## LILIUM CANDIDUM

(The Madonna Lily)—Bulbs Ready in September

Plant 2 to 3 inches deep. It is one of the oldest, loveliest and best known lilies. They are snow white, with heavy yellow stamens, and of the most delightful fragrance. It is hardy and will thrive in any ordinary soil, preferring plenty of light and air. Blooms in the open ground about June 20th.

**EXTRA LARGE BULBS**—8 to 10 in. Each, 50c; 3 for \$1.35; Doz., \$5.00.

**JUMBO SIZE BULBS**—10 in. and up. Each, 75c; 3 for \$2.10; Doz., \$7.50.

PRICES ON BULBS ARE PREPAID

# PEONIES



PEONY PLANTING

## PINK AND ROSE

**MONS. JULES ELIE.**—The peerless pure pink. Broad reflexing guards with a high pyramidal body of semi-quilled petals converging to an apex. Each, \$1.25; 3 for \$3.45.

**THERESE.**—A wonderful Peony of perfect habits and with immense, flat blooms of delicate texture. Color violet rose, changing to lilac-white. Early midseason. Each, \$1.50; 3 for \$4.20.

**SARAH BERNHARDT.**—The color is a dark rose-pink, edged lighter pink; center flecked crimson. An extra good cut-flower variety, it is always found in the winning classes of every show room. Late mid-season. Each, \$1.25; 3 for \$3.45.

**WALTER FAXON.**—Semi-rose type; midseason. A very distinct, delicate rose-colored flower. Tall, free-bloomer. Each, \$1.50; 3 for \$4.20.

**EDULIS SUPERBA.**—A striking bright rich pink color and the blooms are noted for their exquisite fragrance. Each, \$1.00; 3 for \$2.70.

**MARTHA BULLOCK.**—Immense cupped shape flowers of bright old-rose pink that are often 9 to 12 inches in diameter, on tall, stout stems. Very beautiful; fragrant; late. Good cut-flower variety. Each, \$1.75; 3 for \$4.95.

**CLAIRE DUBOIS.**—Very large double, globular flowers; color rich clear satiny pink, with glossy reflex. Late midseason. Each, \$1.00; 3 for \$2.70.

## SINGLE PEONIES

**THE BRIDE**—(Single). Large, pure white; midseason. Each, \$1.75; 3 for \$4.95.

**MIKADO**—(Single). Guards velvety crimson, forming a cup enclosing a filigree cushion of crimson petaloids, edged and tipped gold. Each, \$1.50; 3 for \$4.20.

**SEA SHELL** (Single). Bright, flesh-pink. Large flowers. Golden stamens. A very fine variety. Each, \$1.75; 3 for \$4.95.

## RED AND CRIMSON

**KARL ROSEFIELD.**—Large, rich, velvety-crimson flowers of ball-like form when fully open. Sturdy and free blooming, it is about the best all-around red Peony. Early midseason. Each, \$1.00; 3 for \$2.70.

**FELIX CROUSSE.**—Very brilliant red. Medium to large globular, typical bomb shape; fragrant; strong growth. Midseason. Each, \$1.00; 3 for \$2.70.

**OFFICINALIS RUBRA PLENA.**—The old-fashioned early red; often blooms before Decoration Day. Has been a favorite for years. Each, \$1.50; 3 for \$4.20.

**RICHARD CARVEL.**—Large globular flowers, all one shade of bright crimson. Tall, very stout stems, annual and profuse bloomer. Delicate fragrance. Early, usually bloom for Decoration Day. Each, \$1.75; 3 for \$4.95.

**PHILIPPE RIVOIRE.**—Perfectly formed flowers of very dark crimson; velvety sheen; fragrant; late. Each, \$2.25; 3 for \$6.45.

## WHITE

**BARONESS SCHROEDER.**—White with shadings of flesh. Immense flowers with high chalice-shaped center. June rose fragrance; late. Each, \$1.25; 3 for \$3.45.

**FESTIVA MAXIMA.**—One of the old varieties which should be in every garden. Flowers of white, dotted with carmine are often 7 to 8 inches in diameter. Each, \$1.00; 3 for \$2.75.

**KELWAY'S GLORIOUS.**—Fragrant glistening white petals slightly crinkled and curved inward. Late mid-season. Each, \$2.75; 3 for \$8.00.

PRICES ON PEONIES ARE NOT PREPAID

# Harnden's Annual Flower Seeds

## FOR FALL PLANTING

Some annual flowers, known as "HARDY ANNUALS," will produce stronger and sturdier plants and earlier bloom. seeds are sown in the fall, just before the ground freezes for the winter. About November 15 is the ideal time for planting. The beds should be well prepared in advance, soil well pulverized and fertilized.

Some classes of seeds will germinate in the fall, others will lay dormant all winter in the soil and come up early in the spring. Those that come up in the fall should be given winter protection of straw during the cold months. Those that lay dormant will come up much earlier than you could possibly get them up by waiting until spring to plant.

\*Varieties preceded by star (\*) are especially recommended for sowing in the fall above your bulbs. They will grow in the spring and blossom after the bulbs. Their shallow roots will not interfere with the bulbs maturing properly; their growth will conceal the bulb foliage after it grows yellow and unsightly.

### \*ALYSSUM (Mad Wort)

Pretty little plants for beds, vases, baskets, edging or rock work, blooming profusely all summer; useful also for winter flowering. Very sweet-scented. June until frost.

**LITTLE GEM.**—5 in. dense flower heads but not spreading. Oz., \$1.40; ¼ Oz., 40c; Pkt., 10c.

**CARPET OF SNOW (Procumbens Snowcloth).**—Well named. Very dense flat masses of white flowers, 3 to 4 in. high by 8 in. wide. Exceptionally even strain. Pkt., 10c; ¼ Oz., 40c.

### ANTIRRHINUM (Snapdragon)

For gorgeous coloring, few flowers can match Snapdragon. The flowers are large size, are very fragrant and are produced on immense long spikes, which render them extremely well adapted for cut flowers. They are easily raised from seed in any rich, sunny bed.

**MAXIMUM SUPER GIANTS (Rust Resistant).**—In habit these are taller, grow to a height of 2¾ feet, and the flowers are much larger. Best outside bedding kinds. Mixed all colors: ⅛ Oz., 70c; Pkt., 20c; 3 Pkts., 50c. Also separate colors in many colors and kinds, white, rose, pink, yellow, copper, crimson, pure pink, scarlet. Any of the above: ⅛ Oz., \$1.00; Pkt., 20c; 3 Pkts., 50c.

### \*CANDYTUFT

Showy, branching plants, 12 to 15 inches high, and bearing in profusion terminal clusters of beautiful single cruciform flowers in a wide range of colors. Considered indispensable for cutting and very effective in beds, masses or rockeries. Larger flowers are obtained if some of the branches are removed, and an abundance of water is desirable. Hardy annual.

**GIANT HYACINTH-FLOWERED.**—Large, pure white flower. Oz., \$1.25; ¼ Oz., 40c; Pkt., 10c. Mixed colors: ¼ Oz., 25c; Pkt., 10c; Oz., 85c.

### \*CENTAUREA CYANUS (Double)

**CORNFLOWER OR BACHELOR BUTTON.**—3-ft. Annual special strains; the flowers of these strains are large, fully double and the colors intensified. Long stems for cutting. Blue Boy, Red Boy, Pinkie, Snowman White, or all colors mixed. Oz., 75c; ¼ Oz., 25c; Pkt., 15c.

### COSMOS

These are monstrous white flowers with flecked and pinked edges; the dark crimson flowers resemble large single dahlias, the tinted varieties are charming and others again are flushed with mauve and pink. The flowers measure from 3 to 4 inches across.

A very effective flowering plant. Quite hardy and rapid-growing, forming bushes often 4 to 6 feet high and covered with large single dahlia-like flowers.

**SENSATION.**—The flowers are mammoth in size, 4 to 5 inches in diameter, with broad, heavy fluted petals carried on very long, strong stems. It is extremely early flowering, blooming in 10 weeks from the time of seeding. Pink, White or mixed. ⅛ Oz., 50c; Pkt., 25c.

### \*LARKSPUR

This is one of the best known garden flowers. They make handsome beds or lines, and their free, graceful habit and bright colors are very effective when interspersed in the old-fashioned flower or shrubby border.

**GIANT IMPERIAL MIXED, ALL COLORS.**—Pkt., 15c; ¼ Oz., 50c; Oz., \$1.60.

### PANSIES

May be sown in early spring or fall.

A soil containing a good proportion of leaf mould, well enriched with decayed manure will be the most satisfactory for the growing of Pansy plants. The ground should be well dug and made fine and level.

Thorough cultivation should be given from the start as they thrive best in rich, loose soil.

**SUPER SWISS GIANT MIXTURE.**—The flowers are gigantic size, perfectly round, fine substance of flower and good form of plant, and exhibit shades previously unknown in this family. They bloom early in the spring, continuing in flower all summer until late in fall. Pkt., 25c; 1/16 Oz., \$1.25.

**SUPER MAPLE LEAF GIANT MIXTURE (Canadian Giants).**—The leaves are of giant size and flowers up to 4 inches across, of wonderful substance and fine form. Many charming colors. Pkt., 25c; 1/16 Oz., \$1.50.

**JUMBO MIXTURE.**—Extra large flowered strain of Giants with strong growth and long stems. Pkt., 50c; 1/16 Oz., \$1.50; ⅛ Oz., \$2.75.

### PETUNIA

In warm open and sunny places, there is hardly an annual plant to be found which can excel the Petunia in freedom of bloom, variety and brilliancy of colors and markings, and general usefulness.

### DWARF HYBRIDS

This dwarf compact class is the most popular for bedding. Make a vigorous growth and do well under the most trying conditions; also are grown in flats and pots.

**DWARF HYBRIDS MIXED.**—A special mixture of the above and many others, many dark colors giving a combination of colors which make a beautiful showing when planted in beds or borders. Pkt., 25c; ⅛ Oz., 75c; ¼ Oz., \$1.25.

### \*POPPIES, SHIRLEY

Poppies are charming subjects in the garden because of their brilliantly colored flowers and the freedom with which they are produced. They are easy to grow in ordinary soil exposed to the sun; seed should be sown where intended to flower.

**IMPROVED SINGLE SHIRLEY MIXED.**—Large single flowers with papery, silk-like petals in dainty shades of pink, salmon, terra-cotta, apricot, etc.; many shaded and edged with other colors. Hardly any two plants with flowers exactly alike. 1½ ft. Pkt., 10c; ¼ Oz., 30c; ½ Oz., 50c.

### \*PORTULACA (Rose Moss)

**SINGLE MIXED.**—All colors. Pkt., 10c; ⅛ Oz., 50c; ¼ Oz., 90c; Oz., \$3.25.

**DOUBLE MIXED.**—A large percentage of the flowers will come perfectly double, or the most brilliant scarlet, crimson, white, yellow, etc. Pkt., 15c; ⅛ Oz., 75c; ¼ Oz., \$1.25; Oz., \$4.00.

### VIOLAS, or TUFTED PANSIES

The improved forms of Viola Cornuta are rapidly growing in favor. They flower continuously for nearly eight months in the year; and while their flowers are not so large as those of the Pansy, their bright colors and floriferousness make them welcome additions to any garden.

**ALL COLORS MIXED.**—Pkt., 25c; 2 Pkts., 45c.

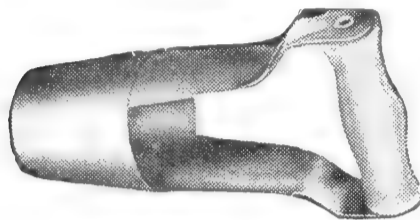
FLOWER SEEDS ARE PREPAID

# GARDEN SUPPLIES

## GARDEN STAKES BAMBOO CANE PLANT STAKES

Light, strong cane stakes for supporting flower and vegetable plants. Run from 1½ to 4 feet in length. Can be cut in half and used for gladiolus and smaller plants.

	Per Doz.	Per 100
1½-ft., dyed green .....	.25	1.25
2 -ft., dyed green .....	.35	1.70
3 -ft., dyed green .....	.45	2.50
4 -ft., dyed green.....	.55	3.00



## HOLE-IN-ONE BULB AND PLANT SETTER

This handy tool makes the type of hole best suited for bulbs. They do best when planted with their roots resting on a firm flat base free from air pockets. Merely cut the tool into the soil, remove it with a slight twisting motion and the soil comes with it, leaving a clean flat bottomed hole in which plants or bulbs may be set. Each, 85c.

## EEZYWEAR GARDEN GLOVES



"Just the Garden Glove I've been looking for!"

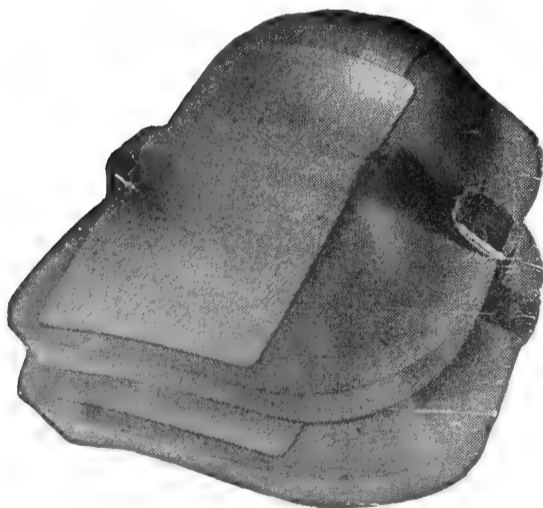
That's what you'll say, too, when you put on this new and different glove which has been specially designed for garden wear. Its unique qualities have made it nationally popular with both men and women.

**WASHABLE!**

Sizes for women: "Small," "Medium," "Large." Price, \$1.40 a pair.

For men: "Medium" and "Large." Price, \$1.50 a pair.

## NEEGARDS



NEEGARDS are a necessity for men and women who do any work that requires kneeling on the ground or floor . . . such as gardening, floorwork, etc.

NEEGARDS are completely adjustable in order to fit any size knees, and are made of the

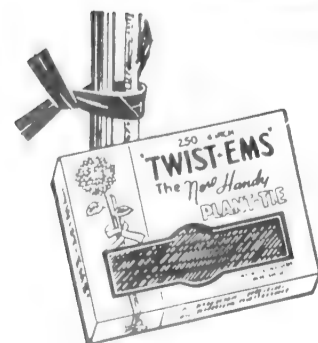
finest grade, thick, sponge rubber. Per pair. \$2.10, Prepaid, \$2.25.

## "TWIST-EMS"

### THE PERFECT PLANT TIES

For plants, shrubs, vines, vegetables and for arranging flowers. Just a simple twist of the wrist and the plant is tied.

8-inch—Package of 250.....	\$ .65
8-inch—Package of 125.....	.35
16-inch—Package of 250.....	1.30



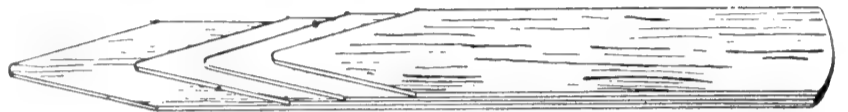
# GARDEN MARKERS

## GARDEN MARKERS WOOD LABELS—POT AND TREE WIRED TREE AND PLANT LABELS



**TREE LABELS.** 3½ inches; notched and copper wired. Plain. Per 100, 60c; per 1000, \$3.85. Painted. Per 100, 75c; per 1000, \$4.75.

## POT AND PLANT LABELS



### POT LABELS

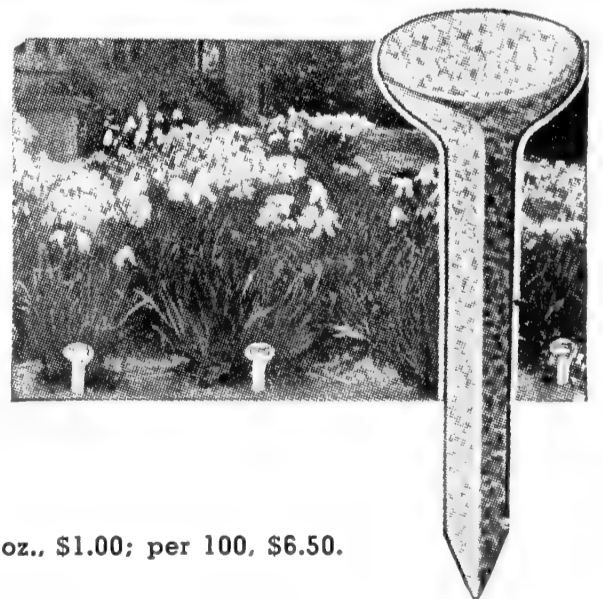
	Per Doz.	Plain Per 100	Painted Per 100
4-in. Wooden .....	\$ .10	\$ .50	\$ .65
5-in. Wooden .....	.12	.55	.70
6-in. Wooden .....	.15	.60	.75
8-in. Wooden .....	.17	.80	.90
10-in. Wooden .....	.19	1.00	1.15
12-in. Wooden .....	.25	1.40	2.00

## GARDEN STAKES

	Per Doz.	Plain Per 100	Painted Per 100
8-inch .....	\$ .25	\$1.00	\$1.15
10-inch .....	.30	1.25	1.40
12-inch .....	.35	1.75	2.00

## GARDEN MARKER

9-in. plant labels with 3x1 in. space for plant name at the top. Metal ink or waterproof pencil may be used. The finest label on the market.



Galvanized, Doz., \$1.00; per 100, \$6.50.

## WEATHERPROOF PENCILS

For marking wood labels to be used either out or indoors. Will not rub off. Each 20c.

**JUTE TWINE**—Two ply jute twine for tying plants. ½ lb. balls. Each, 50c; 3 for \$1.40.



# Harnden's Chile Supplies

## PEPPERS

### HERBS

### SHRIMP SPICES

## SPICES

### GARLIC

### POPCORN

## TAMALE SUPPLIES

### CHILE BEANS

### BARBECUE POWDER



## HARNDEN'S K. C. BRAND CHILE POWDER

It has the good red color, the Just Right Chile Powder. A perfect blend of genuine Mexican Chile Peppers with all the spices ground in for making Chile, Tamales and other Mexican dishes without the use of other spices. Nothing to add but Meat and Beans.

### NEW FRESH STOCK

1½ oz. Package	\$ .15
¼ lb. Package	.25
½ lb.	.45
1 lb.	.85

### NOW READY

## CHILE SUPPLIES

Whole and Ground

	Pkg.	Per lb.
Large Mexican Chile Peppers	2 oz.	\$ .15 \$ .75
Ground Mexican Chile Peppers	2 oz.	.15 .85
<b>Oriente Chile Peppers or</b>		
<b>Red Hots</b>	1 oz.	.10 1.00
Ground Oriente Chile Peppers		
or Red Hots	1 oz.	.10 1.00
Comino Seed, Whole	1½ oz.	.10 .80
Comino Seed, Ground	1½ oz.	.10 .90
Oregano, Whole (Mexican Sage)	2 oz.	.10 .55
Oregano, Ground (Mexican Sage)	1½ oz.	.10 .60
Garlic, Whole Bulbs, Ea.		.10 .40
Garlic, Ground	1 oz.	.15 1.50

## BEANS

	Per lb.	10 lbs. Per lb.
Red Mexican Beans	\$.17	\$ .16
California Pink Beans	.17	.16
Pinto Beans	.15	.14
Great Northern	.15	.14
Navy	.15	.14

## BARBECUE POWDER—K. C. BRAND

Make Your Own Barbecue Sauce

Mix eight teaspoonfuls (2 ounces) K. C. Brand Barbecue Powder with four teaspoonfuls of vinegar, then add eight ounces tomato sauce or tomato catsup. Mix thoroughly and serve hot or cold.

2 oz. pkg.	\$.15	Per lb.	\$.85
------------	-------	---------	-------

## WRIGHT CONDENSED SMOKE

FOR BARBECUING AND SMOKING MEAT

3 oz. Bottle Wright's Condensed Smoke—Each	\$.25
1 pt. Bottle Wright's Condensed Smoke	.80
Smokes 150 pounds Meat	
1 qt. Bottle Wright's Condensed Smoke	1.25
Smokes 300 pounds Meat	

## TAMALE SUPPLIES

### CORN SHUCKS

Large, Clean Corn Shucks

1-lb. Package (Plain)	\$.80
Always use K. C. Chile Powder to season the Tamales	

### TAMALE PAPERS

Made of vegetable parchment paper; clean, sanitary, water and grease proof. Size 5x7 inches.

Crinkled—125 in Package	¼ lb., 25c; per lb., 75c
Plain (About 400 to the pound)	¼ lb., 30c; per lb., 80c

# SPICES — PEPPERS — FLAVORING SEEDS

## SPICES—Whole and Ground

	Pkg.		Per lb.
Allspice, Whole	1½ oz.	\$ .10	\$ .65
Allspice, Ground	1½ oz.	.10	.75
Cassia Buds	1 oz.	.10	.85
Cinnamon, Ground	1 oz.	.10	1.00
Cinnamon, Stick	1 oz.	.10	.90
Cloves, Whole	1½ oz.	.10	.90
Cloves, Ground	1½ oz.	.10	1.25
Ginger, Ground	1 oz.	.10	1.35
Ginger Root	1 oz.	.10	1.15
Mixed Shrimp Spices, Whole	1½ oz.	.10	.85
Mace, Ground	1 oz.	.15	2.25
Nutmeg, Whole	1 oz.	.15	1.40
Nutmeg, Ground	1 oz.	.15	1.25
Paprika, Ground	1 oz.	.10	1.00
Pumpkin Pie Spice	1 oz.	.15	1.10

## PEPPER—Whole and Ground

	Pkg.		Per lb.
Black Pepper, Whole	1 oz.	\$ .25	\$3.00
Black Pepper, Ground	1 oz.	.30	3.25
Cayenne Pepper, Ground	1 oz.	.10	.90
Orientele Chile Pepper, Whole	1 oz.	.10	1.00
Orientele Chile Pepper, Ground	1 oz.	.10	1.00
Mexican Chile Pepper, Whole	1½ oz.	.15	.75
Mexican Chile Pepper, Ground	2 oz.	.15	.85
Petine Chile Pepper, Whole	1 oz.	.30	3.75
White Pepper, Ground	1 oz.	.35	4.75
White Pepper, Whole	1 oz.	.35	4.60

## MEAT SEASONING

	Pkg.		Per lb.
Hamburger Seasoning	2 oz.	\$ .15	.85
Pork Sausage Seasoning (With Salt)	2 oz.	.15	.85
Poultry Seasoning	1 oz.	.15	1.50

## FLAVORING SEEDS—Whole and Ground

	Pkg.		Per lb.
Anise, Star, Whole	1 oz.	\$ .10	\$ .65
Anise, Seed, Whole	1½ oz.	.10	.65
Celery Seed, Whole	1½ oz.	.15	.75
Celery Seed, Ground	1½ oz.	.15	.80
Cardamon Seed, Whole	1 oz.	.45	5.65
Cardamon Seed, Ground	1 oz.	.45	5.65
Caraway Seed, Whole	1 oz.	.10	.60
Caraway Seed, Ground	1 oz.	.10	.65
Celery Salt, Ground	2 oz.	.10	.50
Coriander Seed, Whole	2 oz.	.10	.45
Coriander Seed, Ground	2 oz.	.10	.65
Comino Seed, Whole	2 oz.	.10	.75
Comino Seed, Ground	1½ oz.	.10	.85
Dill Seed, Whole	1½ oz.	.10	.50
Fennell Seed, Whole	2 oz.	.10	.55
Mustard Yellow Seed, Whole	2 oz.	.10	.50
Mustard Yellow Seed, Ground	1½ oz.	.10	.65
Poppy Seed, Whole	1 oz.	.10	.65
Sesame Seed, Whole	2 oz.	.10	.75

## HERBS—Whole and Ground

	Pkg.		Per lb.
Bay Leaves, Whole	1 oz.	\$ .10	\$ .55
Curry Powder, Ground	1 oz.	.10	1.00
Marjoram, Ground	1 oz.	.15	1.25
Rosemary Leaves	1 oz.	.10	.50
Sage, Ground	1 oz.	.20	2.00
Thyme, Ground	1½ oz.	.15	.75
Savory, Ground	1½ oz.	.15	.75
Tumeric, Powder	1½ oz.	.10	.75

## CREOLE SEASONING AND GUMBO FILE

	Pkg.		Per lb.
Creole Gumbo File	1½ oz.	.15	\$1.00

## POP CORN

	Per Lb.	10 lb. Lots
Yellow Hybrid	\$ .20	\$ .18

Keep in cool place. When Pop Corn becomes too dry it will not pop.

## MEXICAN CHILE RECIPE

### With Separate Ingredients, Whole or Ground

One-fourth pound Chile Peppers (chopped fine without seed).

One teaspoonful Japanese Chile Pepper or Red Hots.

Two teaspoonful Comino, one teaspoonful Oregano, four small pieces of Garlic, one teaspoonful Ground Coriander.

Two pounds of Boiling Beef, chopped fine, and a small piece of suet.

Mix all together; add a little water and boil until thoroughly done.

Cook two pounds of Beans separately, as follows: Soak the beans overnight in water, to which a little baking soda has been added, pour off the old and add fresh water, salt and some lard, or a piece of bacon; boil until tender.

When serving, put the beans in a dish, then pour the chile over them.

## MEXICAN CHILE RECIPE

### With Harnden's K. C. Brand Chile Powder

Put one-half pound of ground beef suet in kettle, let render for five minutes. Then add 2½ pounds of lean ground beef (not ground too fine); salt to suit taste, let cook slowly for two hours, using about four tablespoonfuls of Harnden's K. C. Brand Chile Mixture or Powder about 30 minutes before meat is through cooking; use but little water until the mixture has been added and then a small quantity only, as too much water destroys the true flavor of Chile Con Carne. Cook beans separately and mix when ready to serve; use about one-third as many beans as chile. If Red Mexican or California pink beans cannot be had use either canned or dried kidney beans.

# GARDEN SUPPLIES

## WATER WAND

Time Saver for Gardeners—Life Saver for Flowers



Every gardener will appreciate its value, the ease and speed with which gardens can be thoroughly irrigated. Waterwand weighs only one pound. Since the unit is balanced by the weight of the hose it can be held with little effort. Its overall length of 52 inches makes it easy to reach the back of large flower beds. Waterwand fits directly on your garden hose; delivers up to 15 gallons per minute; is beautifully finished in bright cadmium; will give

you years of useful service. You owe it to your gardens to have a Waterwand. Each, \$3.25.

## SOIL SOAKERS

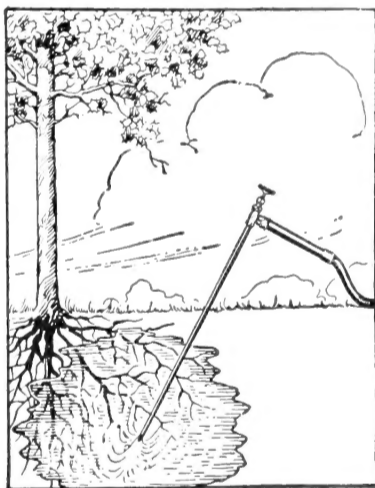
SOIL-SOAKER, open only at one end, screws to the end of the water hose, replacing the nozzle or sprinkler. When the water is turned on, SOIL-SOAKER fills with water—and normal pressure forces water through the pores of the entire surface of SOIL-SOAKER, uniformly without spray. Easily moved without shutting off water, or getting wet. Self-cleaning.

Made in 4 sizes:

No. 0—12 ft., each.....	\$1.65
No. 1—18 ft., each.....	2.20
No. 2—30 ft., each.....	3.40
No. 3—50 ft., each.....	5.50

## TREE IRRIGATOR

For watering the roots and developing and guarding the life of trees, shrubs and plants. In two minutes time the tree or shrub receives directly at their roots more water than could be secured by two hours of surface soaking. Each, \$3.50.



## HAYES JR. IV SPRAY GUN

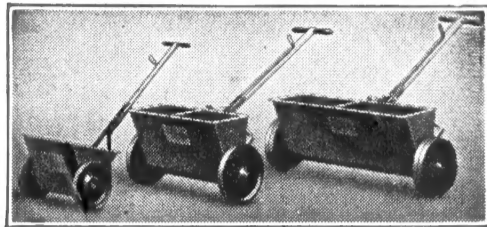
A Garden Hose Sprayer



HAYES JR. IV SPRAY GUN

Famous all-purpose sprayer makes 3 gallons of mixed spray material at a time. Sprays liquids and most wettable powders, up, down, sideways. Light, easy to use. Just attach HAYES JR. to garden hose, turn on the hydrant, lightly press the conveniently long lever—and Hayes Jr. sprays! Gives efficient performance of heavy, expensive equipment. Operates on water pressure from 30 to 175 lbs. No moving parts to wear out or break—insures long life and satisfactory service. Each, \$8.45.

## GRASS & FERTILIZER SPREADERS

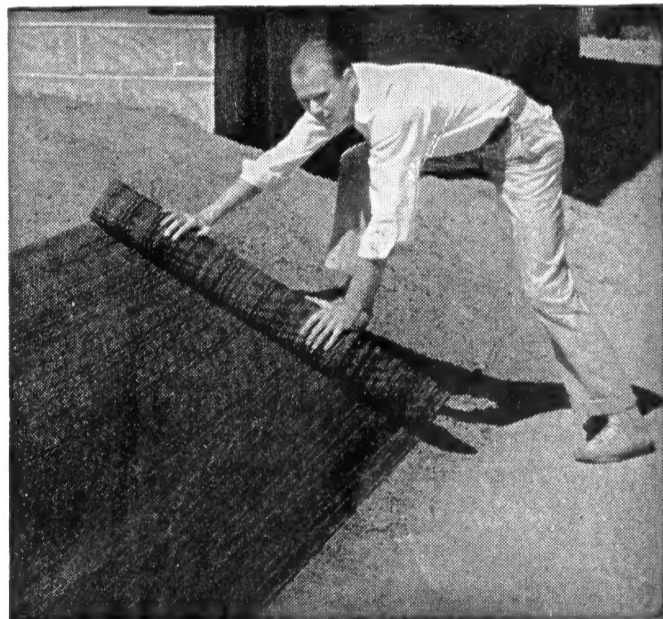


**Model BR**—Just the right size for the small home owner. Spreading width 14 inches, hopper capacity 15 pounds. So light weight and convenient for the lady gardener. Each, \$7.85.

**Junior**—A large hopper, 16 inches spreading width and 35-pound capacity. Convenient size for the average home. Sturdy, lasts a lifetime. A very popular model Each, \$12.00.

**Standard**—The spreading width of this model is 24 inches and the hopper capacity is 65 pounds. The man with fair sized property will welcome it. A favorite on school, hospital, factory grounds, etc. A great time saver. Each, \$28.00.

## EROSIONET for Stubborn Terraces



EROSIONET is a strong, economical, open-mesh fabric made of tightly twisted, paper twine. When placed over any seeded surface, its 1/4-in. square mesh forms millions of tiny dams which catch and hold your seed and sod firmly in place. Thus, damaging "washouts" from heavy rains are effectively checked without cutting off the sunlight.

Erosionet also catches and holds moisture. It helps overcome seed losses and lawn disappointments from poor germination. Erosionet never presents an unsightly appearance, clover and grasses soon rendering it invisible. Erosionet is rot-resisting and can easily be removed when grass becomes 2 1/2 in. high. Comes in rolls 45 in. wide and can be purchased in any length. Yard, 20c.

# Lawn Grass Fertilizers & Plant Foods

## ARCHER BRAND MANURES



FOR LAWNS, VEGETABLES OR FLOWER GARDENS  
Packed in 50 lb. bags

### Lawns

ARCHER BRAND is positively WEEDLESS, easily applied and just what nature needs to make plants grow and thrive.

NEW LAWNS—Pulverize the surface soil well and broadcast "Archer Brand Sheep Manure" at rate of 6 to 7 lbs. per 100 sq. ft. Rake well into surface soil. Sow seed, roll and water.

ESTABLISHED LAWNS—Use 6 lbs. "Archer Brand" per 100 sq. ft., and rake into the surface soil previous to sowing seed.

### SHEEP MANURE

Archer Brand pulverized sheep manure which is treated to kill weed seeds which are so often found in natural manures. Put up in paper lined bags. Gives immediate results, easy to apply and is a well balanced lawn fertilizer. Analysis: 2% Nitrogen; 1% Phosphoric Acid; 2% Potash. 5 lb. bag, 35c; 50 lb. bag, \$1.75; 100 lbs., \$3.35.

### ADCO FOR MAKING ARTIFICIAL MANURE

Mix ADCO with leaves, weeds, vines, clippings, cuttings, straw, cornstalks, etc., and turn them into rich plant food. It's easy—anybody can do it—and every pound of ADCO makes 40 pounds of splendid fertilizer. 5 lb. carton, \$1.25; 20 lb. bag, \$3.00.

### BONE MEAL

Fine ground Bone Meal. Has been used for years and is still popular. Analysis: 2% Nitrogen; 27% Phosphoric Acid. 5 lbs., 60c; 10 lbs., \$1.00; 25 lbs., \$2.35; 50 lbs., \$4.00; 100 lbs., \$7.00.

### HYDRATED LIME

Will correct and prevent sour soil if used as a top dressing on lawns in fall or early in spring. 10 lb. pkg., 50c; 50 lb. bag, \$1.50; 5 50-lb. bags, \$6.75.

### MILORGANITE

Lawn Fertilizer. 6 per cent Nitrogen, 2 per cent Phosphoric Acid. 25-lb. bag, \$1.50; 50 lbs., \$2.40; 100 lbs., \$4.00.

### PEAT MOSS

Horticultural Grade

Peat moss is not a fertilizer, but when used on the lawn as a top dressing, prevents soil from baking and crusting in hot weather.

Canadian—Lb., 15c; 2 bu. bag, \$1.80; ½ bale, \$3.25; per bale, \$5.50; 5 bales or over, \$5.25.

## TRIOGEN ROSE FOOD

5% Nitrogen, 10% Phosphoric Acid, 5% Potash. A 5-10-5 Rose Food made from organic (long lasting) and inorganic (quickly available) materials. 5 units of Nitrogen to give healthy green foliage; 10 units of phosphorus for healthy, sturdy plants and roots; 5 units of potash for bigger and better flowers. 5 lb. bag, \$1.25, 10 lb. bag, \$1.75, 25 lb. bag, \$3.25.

## SUP-RO

The Triple Purpose Plant Food. Natural Mulch—Soil Conditioner. Analysis: 4% Nitrogen, 4% Phosphoric Acid, 4% Potash. 1½ lb. box, 35c; 8 lb. box, \$1.25; 25 lb. bag, \$2.35; 50 lb. bag, \$4.00.

## VIGORO

A complete plant food for grass, flowers, trees, vegetables and house plants. Contains all the elements. Analysis: 6% nitrogen, 10% Phosphoric Acid, 4% Potash. Also contains the following essentials to plant growth: CALCIUM, SULPHUR, BORON, IRON COPPER, MANGANESE, MAGNESIUM and ZINC.

Vigoro is safe, sanitary, odorless, and easy to apply. And a little of it goes so far! A single 100 pound bag of Vigoro will completely feed an area of 3,000 square feet. 1 lb. pkg., 15c; 5 lb. pkg., 50c; 10 lb. pkg., 90c; 25 lb. pkg., \$1.60; 50 lb. \$2.65, 100 lb. bag, \$4.25; 500 lbs., \$4.00 per 100 lbs.

## HYPONEX

Contains Vitamin B1

When you water your plants—FEED THEM.

Give them Hyponex-and-water, a complete plant food that grows all kinds of vegetation in sand, soil or cinders. You will have stronger, bigger plants; more and larger flowers. Hyponex is a dry, odorless powder. One teaspoonful makes a gallon of plant food. Highly concentrated. Clean, safe, odorless. Easy to handle, will not burn foliage. Contains Vitamin B-1.

3 oz. can. (Makes 18 gal.)	.....\$ .25
7 oz. can. (Makes 42 gal.)	..... .50
1 lb. can. (Makes 100 gal.)	..... 1.00
10 lb. can. (Makes 1000 gal.)	..... 8.00
25 lb. can. (Makes 2500 gal.)	.....15.00

## MISCELLANEOUS PLANT FOODS

NITRATE OF SODA—16% Nitrogen. Lb., 20c; 10 lbs., \$1.35; 25 lbs., \$2.25; 50 lbs., \$3.75; 100 lbs., \$6.50.

SULPHATE OF AMMONIA—20% Nitrogen. Lb., 20c; 10 lbs., \$1.30; 25 lbs., \$2.25; 50 lbs., \$3.50; 100 lbs., \$6.00.

MURIATE OF POTASH—50% Potash. Lb., 20c; 10 lbs., \$1.30; 25 lbs., \$2.25; 50 lbs., \$3.50; 100 lbs., \$6.00.

SUPER PHOSPHATE—20% Phosphoric Acid. Lb., 15c; 10 lbs., \$1.00; 25 lbs., \$1.50; 80 lb. bag, \$3.50.

BLOOD-MEAL—13½% Nitrogen. Lb., 25c; 10 lbs., \$2.00.

# Seed and Fertilize Your Lawn

LATE AUGUST, SEPTEMBER and EARLY OCTOBER, the BEST MONTHS in the YEAR to RECONDITION and SEED a LAWN

NOTICE — Information on LAWNS — Soils, Seeding, Fertilizers, Watering Mowing, Weeds, Bent Lawns. Circular Sent Free

## HARNDEN'S LAWN GRASS SEEDS

=====**ASK FOR PRICES IN LARGER LOTS**=====

### PRICES ON GRASS SEEDS

The quality of Blue Grass Seed is determined by the weight per measured bushel; the heavier the seed the better the germination and purity. With the aid of new, modern cleaning machinery, seed that will weigh 21 lbs. Standard Heavy Seed, 24 lbs. Extra Heavy Seed, and 28 lbs. Super fine seed, to the measured bushel can now be had. Seed that weighs less than 21 lbs. to the bushel is not fit for lawn sowing, on account of the low germination and weed seed contained.

**PLEASE NOTE:** The chaff and light seed and weeds that is cleaned out of Blue Grass is sold to some dealers, who advertise it as "BLUE GRASS" at ridiculously low prices. Do not be attracted by these offers, as there is no seeding value whatever in this off fall from good seed.

### QUANTITY OF SEED TO USE

**ON NEW OR RECONDITIONED LAWNS:** Use one pound to each two hundred square feet and sixty to one hundred pounds to the acre.

**RESEEDING OLD LAWNS:** One pound to each three or four hundred square feet and thirty or fifty pounds to the acre.

### KINDS OF GRASS TO SOW

#### KENTUCKY BLUE GRASS

On Well Established Lawns

For fall sowing in the open places, use high grade, heavy blue grass, with a portion of White Clover, if wanted. Use about three-fourths Blue Grass and one-fourth Clover.

**STANDARD HEAVY SEED** which will weigh about 21 lbs. to the measured bushel. Lb., 85c; 5 lbs., 83c lb.; 10 lbs., \$8.00; 25 lbs., \$19.50.

**EXTRA HEAVY SEED** which will weigh about 24 lbs. to the measured bushel. Lb., 90c; 5 lbs., \$4.40; 10 lbs., \$8.50; 25 lbs., \$20.75.

**SUPER FINE SEED** which will weigh about 28 lbs. to the measured bushel. Lb., \$1.00; 5 lbs., \$4.90; 10 lbs., \$9.50; 25 lbs., \$23.00

**HORMONE TREATED**—Any grass seed can be Hormone Treated at an additional cost of 10c per lb.

### HARNDEN'S EVERGREEN LAWN SEED

For Making New Lawns in the Open Places  
Lb., 80c; 5 lbs., \$3.90; 10 lbs., \$7.50; 25 lbs., \$17.50;  
50 lbs., 68c lb.; 100-lb. bag, 65c lb.

### HARNDEN'S SHADY LAWN GRASS

For Shady Places and Under Trees  
Lb., 90c; 5 lbs., \$4.40; 10 lbs., \$8.50; 25 lbs., \$21.00;  
50 lbs., 83c lb.; 100 lb. bag, 80c lb.

### HARNDEN'S TERRACE LAWN GRASS

For Terraces and Steep Inclines  
Lb., 95c; 5 lbs., \$4.65; 10 lbs., \$9.00; 25 lbs., \$22.00;  
50 lbs., 85c lb.; 100 lb. bag, 80c lb.

### RED TOP

This is a very fine quick growing grass, which is also used in mixtures to thicken up the turf, looks very much like blue grass. Lb., 85c; 5 lbs., \$4.15; 10 lbs., \$8.00.

### SEASIDE BENT GRASS

This is the true, unmixed creeping Bent Grass Seed, certified Oregon grown, of high germination and free from weed seeds. Lb., \$1.60; 5 lbs., \$7.75; 10 lbs., \$15.00; 25 lbs., \$36.25.

### CHEWINGS FESCUE

Chewings Fescue is a fine bladed perennial grass with a spreading deep root system which is very valuable on steep banks; also does well in sandy soils. Lb., \$1.00; 5 lbs., \$4.85; 10 lbs., \$9.50; 25 lbs., \$22.50.

### RYE GRASS

This grass germinates and grows very quickly. Is often used in mixtures as a nurse crop for blue grass and other slow growing grasses. Usually dies out about the second year. Used in the south for winter lawn grass. Lb., 25c; 5 lbs., \$1.15; 25 lbs., \$5.00.

### WHITE DUTCH CLOVER Or Lawn Clover

A small, close growing, useful clover of unusual dwarf habit, used extensively in the making of lawns. Lb., \$1.50; 5 lbs., \$7.25; 10 lbs., \$14.00.

### COMBINATION FERTILIZER DISTRIBUTOR AND SEED SOWER



Sows any kind of grass seed as well as granular fertilizers. Designed with heavy crank, extra heavy gears and brass bushed bearings for hard service and long wear. Full directions for operating on each machine. Each, \$4.50.

