

## **Historic, Archive Document**

Do not assume content reflects current scientific knowledge, policies, or practices.



# FALL 1951 PRICE LIST

**KELSEY NURSERY SERVICE**  
50 Church St., New York 7, N. Y.

WE OFFER here fine nursery stock at low prices. We can do this because we handle the products of more than 30 growers, over 20,000 acres. Plants grown in local nurseries on suburban land worth \$1000. an acre are no whit better than ours, grown on farm land at far lower costs. We sell direct to you as principals, not in anyway as agents.

WE OFFER the most complete list we know of. No one grower can produce all varieties, hence not all parts of a long assorted order can always be shipped together. Indeed it is often advantageous to have some things grown by specialists who grow nothing else: fruits, perennials, roses, and several of the more difficult plants, for example.

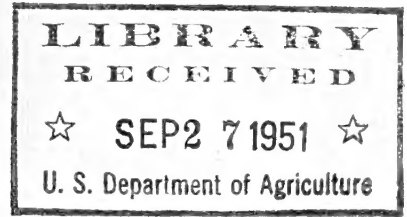
WE OFFER mostly small and medium sizes. Within these limits our prices are usually lower than most local nurseries, even when express charges are allowed for. It pays to plant small, since nursery stock increases in value as it gets older, take hold readily and shape up in a year or two.

WE ASK confidently for your order. We try to be more than fair, always.

CATALOG 149  
ESTABLISHED 1878

62,61 ind. \*

SEC. 34.66, P. L. & R.
U. S. POSTAGE <b>PAID</b> NEW YORK, N. Y. Permit No. 11450



Library  
U.S. Dept. of Agriculture  
Washington 25, D.C.

251

**KELSEY NURSERY SERVICE**  
FIFTY CHURCH STREET  
New York 7, N. Y.

POSTMASTER: This parcel may be opened for postal inspection if necessary  
(RETURN POSTAGE GUARANTEED)

# ORDER FORM

Cut Off Here Or  
Use Separate Sheet 

Use 1951 Guide for items omitted  
Our new Guide ready next February.

## KELSEY NURSERY SERVICE

50 Church St., New York, N. Y.

Please ship me the  
following goods:—

- EXPRESS (Best Method)**  
Pay Express on arrival.
- PARCEL POST (2-3 ft. limit)**  
I enclose 10% additional for  
postage and handling.

Enclosed find \$.....

- Charge my account

SHIP TO: \_\_\_\_\_

## How To Order

Fill in the order form and enclose check. Shipment is made with express charges collected on arrival. You will get a prompt acknowledgment of order indicating approximate shipping time.

## OUR GUARANTEE

We will allow a credit of 50% of the catalog value of any stock that dies the first year. Credit to be used on future orders as you wish.

## Order Now—Don't Wait

Unlike other things you buy, nursery stock must be ordered in advance—long before the right shipping time. Why? Because our whole year's shipments come in a few months' time and there is never enough help. Shipments are scheduled long in advance. Order now, we will ship at proper time later.

## Terms of Sale

**PACKING COSTS—Free** if cash accompanies order, except stock dug with a ball of earth. Otherwise, packing is charged at cost (usually 10% of cost of stock). Balled, heavy evergreens: we will estimate costs in advance if you wish.

**LIMITED RESPONSIBILITY**—We disclaim responsibility for any reason in amounts greater than invoiced.

**PRICES**—Net at the nursery. Transportation to be added at actual cost. Usually 5 sold at rate per 10, 50 at 100 rate.

**CLAIMS** for errors, shortages or other causes must be made within 10 days.

**PARCEL POST**—Must be prepaid. We prefer express but will send by post if instructed and charge you at cost.

**EXPRESS** charges are extra (except in a few prepaid Special Offers). They are paid by you to the Expressman. We will estimate these costs if you like, on your order completely delivered.

Number

KIND AND SIZE

Amount

*Want to be an  
Expert Gardener?*

Read....  
Enjoy...  
Learn...

THE AUTHOR: Laurence Manning is a nationally known nurseryman who has made a lifetime study of plant science. He is President of the Kelsey Nursery Service... long-time contributor of articles to the nation's leading gardening magazines. Himself, an enthusiastic gardener, he has first-hand tips — for you!

How often should plants or shrubs be watered? Must they be "fed" regularly? How severely should deciduous trees or shrubs be pruned? How can I solve my own particular gardening problems without endless research? You find the answer to these and many other pertinent questions about gardening in "The How and Why of Better Gardening" by Laurence Manning.

Here, vividly explained and correlated, are facts you would know about the general nature of plants. Learn the effect of environment... sun and shade, soil structure and acidity, heat and cold. Understand the functions and structure of the root, stem, leaves and flowers.

Carefully assembled for easy reference and reading, is valuable information covering sixteen specialized fields of plant science... including practical gardening suggestions every step of the way. Whether your interest is in flowers, shrubs or vegetables... this book is for you. Reading it takes you out of the beginner's class... puts you well on the road to becoming a gardening expert. For beginners: a must! For experienced gardeners: helpful and interesting!

WHAT THEY'RE SAYING ABOUT THIS VALUABLE BOOK... "Mr. Manning has the almost unique quality of being at the same time highly instructive and enormously entertaining... Once I'd started THE HOW AND WHY OF BETTER GARDENING I found myself virtually incapable of putting it down..."

Theodore A. Weston, Editor  
FLOWER GROWER MAGAZINE

### FAR BETTER THAN CLAY POTS

Ferto-Pots are manufactured from a rich rotted cow manure mixture in automatic pot machines and then kiln dried. The pots soften up in the moist soil and place the plant food where it is readily available to the roots of the growing plants. (No chemical fertilizers whatsoever are used in the manufacture of Ferto-Pots; they are entirely organic.)

Start your seeds, seedling plants, cuttings, bulbs, etc., in Ferto-Pots and insure quicker, better results; no wilt, no setback in transplanting; larger profits in catching the early market; less plant loss. Pot goes into the ground without disturbance or shock to the root system and continues to feed the growing plant.

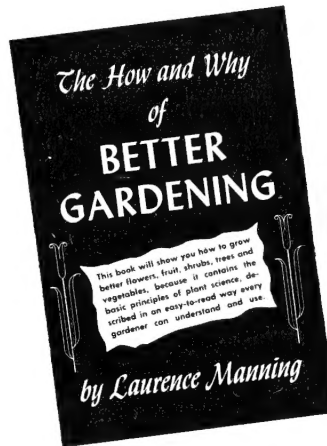
Announcing the publication this fall of the most helpful new book in a decade:-

"THE HOW AND WHY OF

# Better Gardening

by

Laurence  
Manning



300 pages, illustrated.

\$3.00 postpaid. A quick but thorough account of just how plants live and thrive. As entertaining as it is instructive.

Amount

Please send me a copy of Manning's "Better Gardening" for \$3. as per instructions on ORDER FORM attached.....

### ORDER THESE NATURAL FERTILIZERS:

Freight extra on arrival—80c to \$1. per 100 lbs., within 250 miles of shipping point in N. J. Freight is slow, order early. (Express, twice as expensive).

- 50-lb. Bags Shredded Cow Manure, each..... \$1.50  
Well rotted, can be applied as a direct mulch. Feels dry. (Covers 150 sq. feet.) Excellent soil conditioner.
- 50-lb. Bags Mulchnur, each..... \$2.00  
Contains peat-moss, manure, and enough tobacco dust to discourage cutworms, moles, etc. Fertilizing value is high. Clean, dry, shredded, ready to use. Lawns: Use 1 pound to 10 square feet. Beds, etc.: 1 pound to 2½ square feet.
- 50-lb. Bags Hyper-Humus, each..... \$1.50  
Peat, screened and bagged, full of soil bacteria. Fine for Rhododendrons, though only slightly acid.
- Manure Bricks—dried, pressed, cow manure. A one-pound brick readily dissolves in 4 gal. water. Fine plant stimulant. (Postpaid E. of Miss.); 8 bricks for \$2.50.
- (50 bricks not postpaid) for..... \$13.00

Ferto-Pots

(Postpaid)—2-in. diameter, 100 for \$2.50;  
2½-in. diameter, 100 for \$2.75; 3-in. diameter,  
100 for \$3.25.

TEAR OFF and Send with ORDER FORM on facing page.

# RARE PLANTS for your HOME NURSERY



that will in a few years, with little care, be \$10 specimens

**BUY ANY FIVE:** One cannot be sold alone. Minimum order 5 mixed (25 assorted at 10% discount).



Here are some larger sizes. You may include them with plants at left to make up 5 minimum; but the shipment then must go express (charges collect).

**ACER saccharum Monumentale** (columnar form of sugar maple) 2 to 2½ feet B&B..... 7.75

**AZALEA arborescens** (White, July) **kaempferi** (flame, May) **Firefly** (brilliant red, May) **Fedora** (large salmon-rose, May) **vaseyi** (pink, May) Any one of above 4, 12 to 15" B&B 3.40

**Hinocrimson** (red, May) 10 inch B&B..... 5.50 **Maxwelli** (red, May) 10 inch B&B 3.40

**COTONEASTER dielsiana major** (scarlet fruit, autumn show) 18" B&B ..... 3.40

**CORNUS florida** (White Dogwood) 2½ ft. .... 1.90 **rubra** (pink Dogwood) 1½ to 2 B & B ..... 4.40 2½ to 3 ft. B&B..... 6.50

**LEUCOTHOE catesbaei** 12 to 15" B&B ..... 2.90

**MAGNOLIA soulangeana** 18 to 24" B&B..... 4.40 **stellata** 15 to 18 inch B&B..... 6.40 **stell. Waterlily** 18 to 24 in. B&B 7.50

**PIERIS japonica** 9 to 12 inch B&B 2.50 12 to 15 inch B&B..... 3.50

**PRUNUS Yoshino** 5 ft. B&B..... 5.40

**TAXUS**-new narrow forms of **media grandifolia**: quite narrow, to 12' **pyramidalis**: columnar, to 15 ft. **robusta**: columnar to 20 ft. **stricta**: vertical dwarf. to 7 ft. **veridis**: same, grass green needles Any one of 5 above: 2 ft. B&B...12.50

## KIND AND SIZE

## Amount

Minimum order 5. If desired parcel post, add 10% to total amount on this page. (If you can use 25, your quantity discount of 10% pays the postage).

(each)

**ABELIA grandiflora** 12 to 15 inch (4" pot).....\$1.60

**ACER ashibeni** (Redleaf Japan Maple) 1 yr. graft. 2.90 **dissectum purpureum** (4" pot) 1 year graft..... 2.90 **Burgundylace** (red, lacey leaf) 1 yr. graft..... 3.90

**AZALEA** rare and unusual kinds:

**hinocrimson**, evergreen, red dwarf, early May. **Loma**, evergreen, pink, double, late May. **schlippenbachi**, deciduous, pink, large. **Vuykiana palestrina**, evergreen, white, new. **Vuyk. J. Strauss**, salmon rose. **Vuyk. PW Hardyzer**, carmine rose. Any one of 6 above: plant from 3 inch pot..... 1.60

**CHAMAECYPARIS gracilis compacta** 1 yr. graft 2.75 **compacta nana** (dwarf Hinoki) 1 yr. graft (3" pot) 2.75

**COTONEASTER horizontalis** 6 to 10 inch (3" pot) 1.40

**CORNUS rubra** (Pink Dogwood) 12 to 15 in. 2.40 **kousa chinensis** (June) 12 to 15 inch (4" pot).. 2.40

**CRAETAEGUS (Paul Scarlet Thom)** 1 year graft (pot)..... 2.90

**FRANKLINIA** (White, Aug to frost) 9 to 12 in. (pot) 1.90

**HAMAMELIS mollis** (gold, Feb) 12 to 14 in. (4" pot) 2.90

**ILEX opaca** (good female) 4 to 6 in. (2½" pot).. 1.60

**JUNIPERUS pfitzeriana** 6 to 8 inch (3" pot).... 1.40

**LAUROCERASUS Schipka** (Hardy Laurel) 6 to 9 inch..... 1.60

**MAGNOLIA soulangeana**, 10 to 15 inch (4" pot) 2.40 **soul. speciosa** (dwarfer, better) 9 to 12 in. B&B 2.40 **stellata** (Star Magnolia) 10 to 15 inch (4" pot) 2.75 **stell. Waterlily** 10 to 15 inch (4" pot)..... 3.50

**PIERIS japonica** 6 to 9 inch B&B..... 1.90

**PYRACANTHA lalandi** (Firethorn) 8 to 10 inch (pot) 1.90

**TAXUS Vermeulen Yew** 9 to 12 inch XX..... 1.50 **Kelsey Berrybush Yew** 10 to 12 inch XX..... 2.00

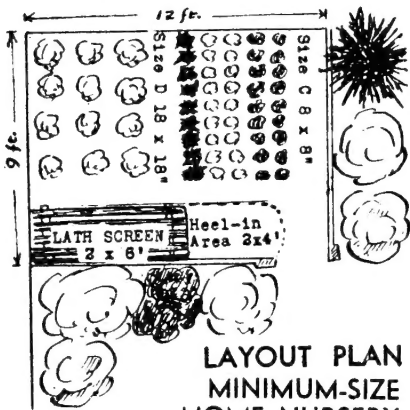
**TSUGA compacta** (Dwarf Hemlock) 1 yr. graft 2.90 **canad. pyramidalis** (semi-dwarf) 1 yr. graft (pot) 3.40 **canad. sargentii** (weeping) 1 yr. graft (4" pot) 2.90

**VIBURNUM Burkwoodi** 6 to 9 inch (3" pot)..... 1.40 **fragrans** 9 to 12 inch B&B..... 2.40

**WISTARIA multijuga** (Japan Long-cluster, purple) **Royal Purple** (extra long clusters) **Praecox** (blue, blooms young, stays dwarf) Any of above 3 kinds, 1 year graft (4" pot)..... 1.60

# Start A HOME NURSERY

1. Save money and labor
2. Save disappointments
3. Save delays
4. Increase your enjoyment
5. Rare and interesting varieties
6. Culture not difficult.



**LAYOUT PLAN  
MINIMUM-SIZE  
HOME NURSERY**

## A—Seedlings or Rooted Cuttings

Must be shaded first two years. Planted 2" x 2", lath-house holds 432. After two years, must be transplanted into next grade.

## B—Once Transplanted Grade

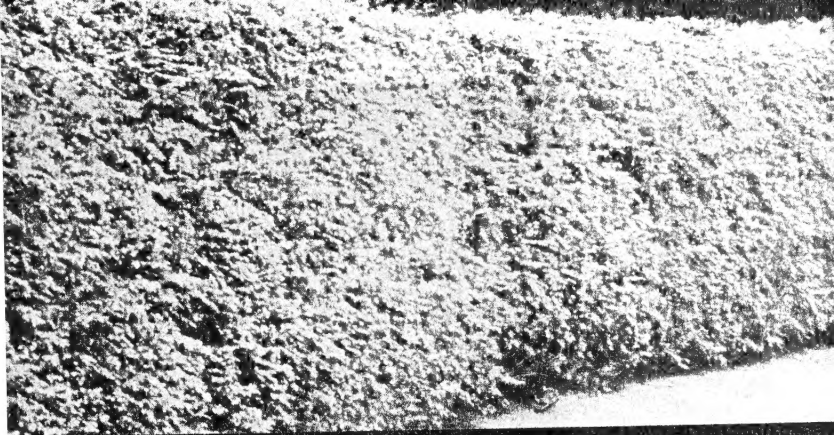
Grown as above, or bought. (Our 2 yr. and 3 yr. Azaleas, e.g.) Space about 4" x 4" (108 in the lath-house pictured). Shaded first year, but the second year shade omitted except in drought. In 2 years, now twice transplants ("XX"), usable as hedge plants, for bedding, etc.

## C—Twice Transplanted Grade

Can be moved into open, spaced 8" x 8" (nursery pictured holds 162) and left two years. They are "shaped"; straggly branches lopped off with sharp knife. Cultivate, fertilize, water, no shade needed. After 2 years, they are XXX (three times transplanted), bushy and shapely

## D—Specimens

Every garden needs some larger, well formed plants. Such specimens are grown 2 or more years spaced 18" x 18" (nursery pictured holds 32).



## Autumn Planting 1951

1. Plants need watering for autumn root-growth.

2. Time of planting is important: Evergreens best from now to early October (they need late Fall for root growth) — deciduous plants from October to frost

3. Birch and Magnolia are best moved only in spring when sap is running. all planting of these can be one: — (a) By digging with an earth ball. (b) By using small sizes only.

4. Very small evergreen seedlings are likely to post-heave. Easily overcome: Simply strew a thin mulch of salt hay in the beds.

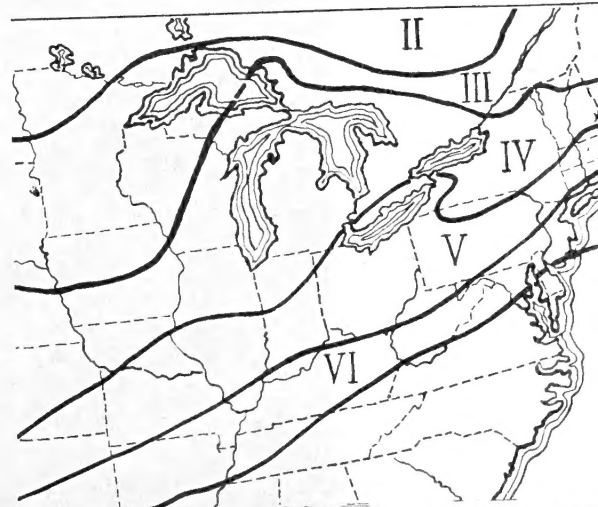
	plant	page
Trees	Oct.-Dec.	7,20
Evergreens	Sep.-Oct.	11,18
Shrubs	Oct.-Dec.	8,22
Broadleaves	Sep.-Oct.	15,17
Roses	Nov.-Dec.	32

BULBS, ETC.	plant	page
Bulbs	Oct.-Dec.	30,31
Perennials	Aug.-Oct.	28,29

FRUITS, ETC.	plant	page
Tree Fruit	Oct.-Dec.	24,25
Bush Fruits	Oct.-Dec.	23,26

## Is it hardy in Your Garden?

There is a northern limit for every plant, beyond which it cannot live. For practical use the map at the right divides the country into zones. Each plant description in this guide has a related Zone limit. Look up your garden on the map and you can select hardy material.



# Kelsey Nursery Service

# RARE PLANTS for your HOME

# Young

Minimum order 5. If desired parcel post, add 10% to total amount on this page. (If you can use 25, your quantity discount of 10% pays the postage).

KIND AND SIZE	Amount
(each)	
<b>ABELIA grandiflora</b> 12 to 15 inch (4" pot).....	\$1.60
<b>ACER ashibeni</b> (Redleaf japan Maple) 1 yr. graft.	2.90
<b>dissectum purpureum</b> (4" pot) 1 year graft.....	2.90
<b>Burgundylace</b> (red, lacey leaf) 1 yr. graft.....	3.90
<b>AZALEA</b> rare and unusual kinds:	
<b>hinocrimson</b> , evergreen, red dwarf, early May.	
<b>Loma</b> , evergreen, pink, double, late May.	
<b>Schlippenbachi</b> , deciduous, pink, large.	
<b>Vuykiana palestrina</b> , evergreen, white, new.	
<b>Vuyk. J. Strauss</b> , salmon rose.	
<b>Vuyk. PW Hardyzer</b> , carmine rose.	
Any one of 6 above: plant from 3 inch pot.....	1.60
<b>CHAMAECYPARIS gracilis compacta</b> 1 yr. graft	2.75
<b>compacta nana</b> (dwarf Hinoki) 1 yr. graft (3" pot)	2.75
<b>COTONEASTER horizontalis</b> 6 to 10 inch (3" pot)	1.40
<b>CORNUS rubra</b> (Pink Dogwood) 12 to 15 in.	2.40
<b>kousa chinensis</b> (June) 12 to 15 inch (4" pot)..	2.40
<b>CRAETAEGUS (Paul Scarlet Thom)</b> 1 year graft (pot).....	2.90
<b>FRANKLINIA</b> (White, Aug to frost) 9 to 12 in. (pot)	1.90
<b>HAMAMELIS mollis</b> (gold, Feb) 12 to 14 in. (4" pot)	2.90
<b>ILEX opaca</b> (good female) 4 to 6 in. (2½" pot)..	1.60
<b>JUNIPERUS pfitzeriana</b> 6 to 8 inch (3" pot)....	1.40
<b>LAUROCERASUS Schipka</b> (Hardy Laurel) 6 to 9 inch.....	1.60
<b>MAGNOLIA soulangeana</b> , 10 to 15 inch (4" pot)	2.40
<b>soul. speciosa</b> (dwarfer, better) 9 to 12 in. B&B	2.40
<b>stellata</b> (Star Magnolia) 10 to 15 inch (4" pot)	2.75
<b>stell. Waterlily</b> 10 to 15 inch (4" pot).....	3.50
<b>PIERIS japonica</b> 6 to 9 inch B&B.....	1.90
<b>PYRACANTHA lalandi</b> (Firethorn) 8 to 10 inch (pot)	1.90
<b>TAXUS Vermeulen Yew</b> 9 to 12, inch XX.....	1.50
<b>Kelsey Berrybush Yew</b> 10 to 12 inch XX.....	2.00
<b>TSUGA compacta</b> (Dwarf Hemlock) 1 yr. graft	2.90
<b>canad. pyramidalis</b> (semi-dwarf) 1 yr. graft (pot)	3.40
<b>canad. sargentii</b> (weeping) 1 yr. graft (4" pot)	2.90
<b>VIBURNUM Burkwoodi</b> 6 to 9 inch (3" pot).....	1.40
<b>fragrans</b> 9 to 12 inch B&B.....	2.40
<b>WISTARIA multijuga</b> (Japan Long-cluster, purple)	
<b>Royal Purple</b> (extra long clusters)	
<b>Praecox</b> (blue, blooms young, stays dwarfer)	
Any of above 3 kinds, 1 year graft (4" pot).....	1.60

No apparent increase of risk and yet 25% or more growth next year if Fall planted Water once or twice only. Plant **after** late October.

	(25)	(100)	(1000)
<b>ACER (Maple)</b>			
<b>dasycarpum</b> (Silver Maple)			
2-3 ft. ....	\$ 8.50	\$ 75.00	
4-5 ft. ....	\$ 5.50	20.00	150.00
<b>platanoides</b> (Norway Maple)			
4 to 5 ft. ....	30.00	100.00	.....
<b>rubrum</b> (Red Maple)			
12-18 in. ....	9.00	65.00	
2-3 ft. ....	5.00	17.50	160.00
<b>saccharum</b> (Sugar Maple)			
12-18 in. ....	9.00	65.00	
2-3 ft. ....	6.50	20.00	180.00
<b>BETULA (Birch)</b>			
<b>populifolia</b> (Gray Birch)			
2-3 ft. ....	6.50	20.00	180.00
<b>papyrifera</b> (Paper Birch)			
12-18 in. ....	12.50	100.00	
2-3 ft. ....	6.50	20.00	180.00
<b>CERCIS (Red Bud)</b>			
12-18 in. ....	8.00	50.00	
18-24 in. ....	10.00	70.00	
<b>CORNUS (Flowering Dogwood)</b>			
<b>florida</b> (White Flowering Dogwood)			
6-12 in. S .....	12.00	65.00	
12-18 in. S .....	6.00	18.00	75.00
18-24 in. S .....	7.50	22.00	150.00
2-3 ft. X .....	15.00	50.00	.....
<b>FAGUS (Beech)</b>			
<b>ferruginea</b> (American Beech)			
12-18 in. ....	7.50	40.00	
18-24 in. ....	3.50	9.50	60.00
<b>GINKGO BILOBA (Maidenhair)</b>			
6 to 12 in. S .....	10.00	30.00	.....
12-18 in. ....	15.00	45.00	.....
<b>HICORIA (Hickory) — any one kind —</b>			
<b>lacinos</b> a (Shellbark Hickory)			
<b>ovata</b> (Shagbark Hickory)			
12-18 in. ....	8.00	28.00	250.00
3-4 ft. ....	60.00	200.00	.....
<b>JUGLANS (Walnut)</b>			
<b>nigra</b> (Black Walnut)			
12-18 in. ....	12.00	85.00	
2-3 ft. ....	6.00	18.00	120.00

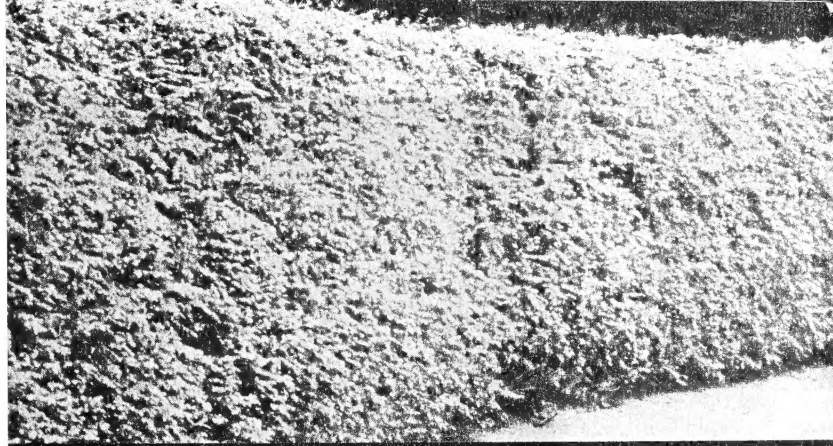


# DECIDUOUS

# Trees

need pruning back upon planting. Trees with a single stem: prune off side twigs when planting.

	(25)	(100)	(1000)
<b>LIRIODENDRON (Tulip Tree)</b>			
<b>tulipifera (Tulip Tree)</b>			
12-18 in. ....	\$ 5.50	\$ 40.00	
3-4 ft. ....	\$ 4.00	12.00	90.00
<b>MORUS (Mulberry)</b>			
<b>alba (Russian Mulberry)</b>			
12-18 in. ....	6.00	35.00	
2-3 ft. ....	5.00	12.00	60.00
<b>PLATANUS (Sycamore)</b>			
<b>occidentalis (American Sycamore)</b>			
18-24 in. ....	3.50	11.00	85.00
<b>POPULUS (Poplar)</b>			
<b>nigra italica (Lombardy Poplar)</b>			
18-24 in. ....	3.50	9.50	70.00
3-4 ft. ....	6.50	19.00	150.00
<b>QUERCUS (Oak)</b>			
<b>alba (White Oak)</b>			
12-18 in. ....	5.50	16.00	95.00
<b>palustris (Pin Oak)</b>			
12-18 in. ....	6.00	20.00	175.00
2-3 ft. ....	11.00	35.00	275.00
<b>rubra (Red Oak, Northern)</b>			
18-24 in. ....	8.00	26.00	220.00
<b>ROBINIA (Locust)</b>			
<b>pseudacacia (Black Locust)</b>			
12-18 in. ....	4.50	35.00	
2-3 ft. ....	3.50	8.50	50.00
<b>SALIX (Willow) — any one kind —</b>			
<b>babylonica (Babylon Weeping)</b>			
<b>pentandra (Laurel-leaf)</b>			
<b>Niobe (Golden Weeping)</b>			
2-3 ft. ....	6.00	20.00	180.00
<b>SORBUS (Mountain Ash)</b>			
<b>aucuparia (European Mtn. Ash)</b>			
12-18 in. ....	5.50	18.00	150.00
18-24 in. ....	8.00	22.00	180.00
2-3 ft. ....	10.00	35.00	.....
<b>ULMUS (Elm)</b>			
<b>americana (American Elm)</b>			
2-3 ft. ....	2.50	6.50	50.00
<b>pumila (Chinese or Siberian Elm)</b>			
2-3 ft. ....	4.00	9.00	70.00



## Autumn Planting 1951

1. Plants need watering for autumn root-growth.

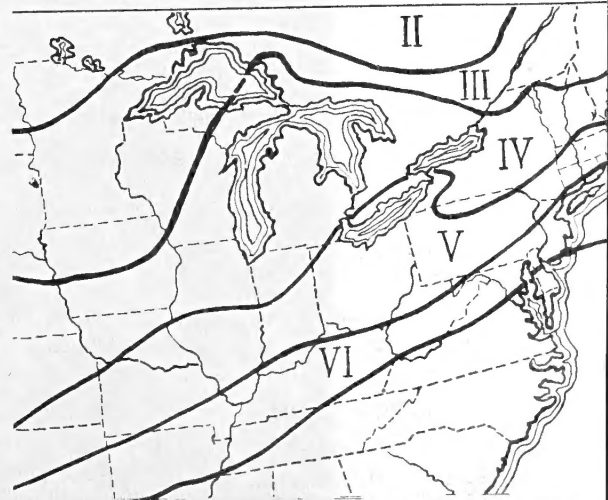
2. Time of planting is important: Evergreens best from now to early October (they need late Fall for root growth) — deciduous plants from October to frost.

3. Birch and Magnolia are best moved only in spring when sap is running. All planting of these can be done: — (a) By digging with an earth ball. (b) By using small sizes only.

4. Very small evergreen seedlings are likely to post-heave. Easily overcome: Simply strew a thin mulch of salt hay in the beds.

Is it hardy in Your Garden?

There is a northern limit for every plant, beyond which it cannot live. For practical use the map at the right divides the country into zones. Each plant description in this guide has a related Zone limit. Look up your garden on the map and you can select hardy material.



	plant	page
Trees	Oct.-Dec.	7,20
Evergreens	Sep.-Oct.	11,18
Shrubs	Oct.-Dec.	8,22
Broadleaves	Sep.-Oct.	15,17
Roses	Nov.-Dec.	32

BULBS, ETC.	plant	page
Bulbs	Oct.-Dec.	30,31
Perennials	Aug.-Oct.	28,29

FRUITS, ETC.	plant	page
Tree Fruit	Oct.-Dec.	24,25
Bush Fruits	Oct.-Dec.	23,26

## Kelsey Nursery Service

# RARE PLANTS for your HOME

# Popular SHRUBS

## For Mass Planting

Minimum order 5. If desired parcel post, add 10% to total amount on this page. (If you can use 25, your quantity discount of 10% pays the postage).

KIND AND SIZE	Amount
(each)	
ABELIA grandiflora 12 to 15 inch (4" pot).....	\$1.60
ACER ashibeni (Redleaf japan Maple) 1 yr. graft.	2.90
dissectum purpureum (4" pot) 1 year graft.....	2.90
Burgundylace (red, lacey leaf) 1 yr. graft.....	3.90
AZALEA rare and unusual kinds:	
hinocrimson, evergreen, red dwarf, early May.	
Loma, evergreen, pink, double, late May.	
schlippenbachi, deciduous, pink, large.	
Vuykiana palestrina, evergreen, white, new.	
Vuyk. J. Strauss, salmon rose.	
Vuyk. PW Hardyzer, carmine rose.	
Any one of 6 above: plant from 3 inch pot.....	1.60
CHAMAECYPARIS gracilis compacta 1 yr. graft	2.75
compacta nana (dwarf Hinoki) 1 yr. graft (3" pot)	2.75
COTONEASTER horizontalis 6 to 10 inch (3" pot)	1.40
CORNUS rubra (Pink Dogwood) 12 to 15 in.	2.40
kousa chinensis (June) 12 to 15 inch (4" pot) ..	2.40
CRAETAEGUS (Paul Scarlet Thom) 1 year graft (pot).....	2.90
FRANKLINIA (White, Aug to frost) 9 to 12 in. (pot)	1.90
HAMAMELIS mollis (gold, Feb) 12 to 14 in. (4" pot)	2.90
ILEX opaca (good female) 4 to 6 in. (2½" pot) ..	1.60
JUNIPERUS pfitzeriana 6 to 8 inch (3" pot)....	1.40
LAUROCERASUS Schipka (Hardy Laurel) 6 to 9 inch.....	1.60
MAGNOLIA soulangeana, 10 to 15 inch (4" pot)	2.40
soul. speciosa (dwarfer, better) 9 to 12 in. B&B	2.40
stellata (Star Magnolia) 10 to 15 inch (4" pot)	2.75
stell. Waterlily 10 to 15 inch (4" pot).....	3.50
PIERIS japonica 6 to 9 inch B&B.....	1.90
PYRACANTHA lalandi (Firethorn) 8 to 10 inch (pot)	1.90
TAXUS Vermeulen Yew 9 to 12 inch XX.....	1.50
Kelsey Berrybush Yew 10 to 12 inch XX.....	2.00
TSUGA compacta (Dwarf Hemlock) 1 yr. graft	2.90
canad. pyramidalis (semi-dwarf) 1 yr. graft (pot)	3.40
canad. sargentii (weeping) 1 yr. graft (4" pot)	2.90
VIBURNUM Burkwoodii 6 to 9 inch (3" pot).....	1.40
fragrans 9 to 12 inch B&B.....	2.40
WISTARIA multijuga (Japan Long-cluster, purple)	
Royal Purple (extra long clusters)	
Praecox (blue, blooms young, stays dwarfer)	
Any of above 3 kinds, 1 year graft (4" pot).....	1.60

50 at the 100 rates shown. 300 of one kind at 20% off 100 rates

**BERBERIS Thunbergii** (Japanese Barberry) Zone IV. Bush to 5 ft. Red berries.

	(10)	(25)	(100)
* 9-12 inch S .....	\$ 4.50	\$113.50	
12-15 inch X	4.00	9.00	35.00
18-24 inch X	6.00	14.00	50.00

**B. thunbergii Atropurpurea.** The same, with purple-red leaves.

* 6-12 inch S .....	6.00	20.00
12-15 inch X	5.50	12.00
	6.00	45.00

**DEUTZIA gracilis** (Dwarf Deutzia)

3 ft. Zone IV. White, May.

12-15 in. X	8.50	18.00	70.00
-------------	------	-------	-------

**Pride of Rochester**  
8 ft. Zone V. Pink-white, May.

* 12-18 in. S .....	4.50	12.00
3-4 ft. X	10.00	22.00
	8.00	80.00

**FORSYTHIA intermedia** (Golden-bell)  
9 ft. Zone IV. Yellow, April.

* 12-18 in. S .....	3.50	9.50
3-4 feet X	9.50	22.00
	80.00	

**spectabilis** Selected form, more larger yellow bloom. 9 ft. Zone V.

* 12-18 in. S .....	5.00	14.00
3-4 feet X	11.00	25.00
	90.00	

**suspensa** (Weeping Forsythia) 6 ft. Zone V. Branch tips root.

12-18 in. S .....	3.50	9.50
3-4 feet X	11.00	25.00
	90.00	

**HYDRANGEA arborescens Grandiflora**, - 10 ft. Zone IV. Huge white, July-Aug.

* 12 to 18 in. S .....	7.50	27.00
2 to 3 feet X	11.00	25.00
	90.00	

**paniculata grandiflora** (Peegee)  
10 ft. Zone IV. Pink, Aug-Sept.

* 12 to 18 in. S .....	7.50	27.00
2 to 3 feet X	9.50	25.00
	85.00	

**LIGUSTRUM amurense** (Amur N. Privet) 12 ft. Zone V. Fine hardy hedge.

* 12 to 18 in. S .....	4.00	12.50
2 to 3 feet X	7.50	28.00

**ibolium** (Hardy Hybrid Privet) 10 ft. Zone V. Best privet for the north.

* 12 to 18 in. S .....	4.50	15.00
2 to 3 feet X	7.50	28.00

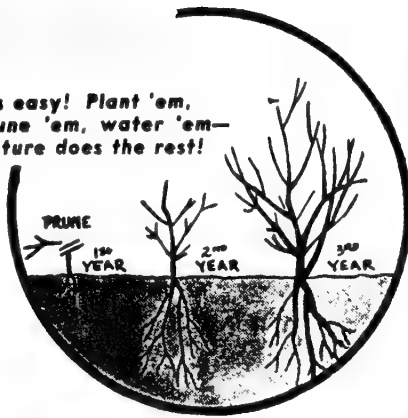
**PHILADELPHUS coronarius** (Syringa)  
9 ft. Zone IV. White, June, fragrant.

* 12 to 18 in. S .....	4.50	15.00
3 to 4 feet X	10.00	25.00
	90.00	

**minn. Snowflake** (Pat. 538) 8 ft. Very durable, white, June. Zone III. New, fragrant.

18 to 24 in. X	12.50	30.00	110.00
----------------	-------	-------	--------

It's easy! Plant 'em,  
prune 'em, water 'em—  
Nature does the rest!



<b>LONICERA</b>	(10)	(25)	(100)
<i>tatarica</i> (Order; Red or White) 8 ft.			
Zone IV. June. Red fruit, July.			
* 12 to 18 in.S	5.00	15.00	
3 to 4 feet X	9.50	22.00	80.00
<b>RHAMNUS cathartica</b> (Buckthorn)			
15 ft. Zone II. Bushy, thorny hedge.			
* 12 to 18 in.S	5.00	15.00	
2 to 3 feet X	7.75	16.00	60.00
<i>frangula</i> (Glossy buckthorn) 15 ft.			
Zone II. Handsome, thorny.			
18 to 24 in.X	6.50	15.00	50.00
3 to 4 feet X	11.00	25.00	90.00
<b>SPIRAEA Anthony Waterer.</b>			3 ft.
Zone V. Rose, June to Aug.			
4 to 8 in.	5.00	18.00	
1½ to 2 feet X	9.50	22.00	80.00
<b>Van Houttei</b> (Modern Bridalwreath)			
6 ft. Zone IV. White, May.			
* 12 to 18 in.S	5.00	15.00	
3 to 4 feet X	9.00	18.00	70.00
<b>WEIGELIA amabilis.</b> (rosea) 9 ft.			
Zone V. Pink, May.			
* 12 to 18 in.S	5.50	18.00	
3 to 4 feet X	11.00	25.00	95.00
<b>Eva Rathke</b> (Hybrid) 7 ft. Zone V.			
Red, June-August.			
2 to 3 feet X	12.50	26.50	100.00

## Living Fence

### ROSA MULTIFLORA

No repairs, no maintenance problems, it just grows. No animals can get through, yet birds and small game can use it for refuge. It does not get out of hand, about 5 feet high, width not over 8 feet.

Plant a single row, 1 foot apart. Cut back roots to 8 inches, tops to 3 or 4 inches on planting. Mulching is very beneficial—leaves, hay, sawdust, or whatever you have. Effective in three or four years, mature in seven.

Supply limited and in heavy demand. Order NOW:

(minimum order 100)	(100)	(1000)
1 yr. (9 to 15 inch)	\$ 7.50	\$ 60.00



## Autumn Planting 1951

- Plants need watering for autumn root-growth.
- Time of planting is important: Evergreens best from now to early October (they need late Fall for root growth) — deciduous plants from October to frost.
- Birch and Magnolia are best moved only in spring when sap is running. All planting of these can be done: — (a) By digging with a earth ball. (b) By using small sizes only.
- Very small evergreen seedlings are likely to post-heave. Easily overcome: — Simply strew a thin mulch of salt hay in the beds.

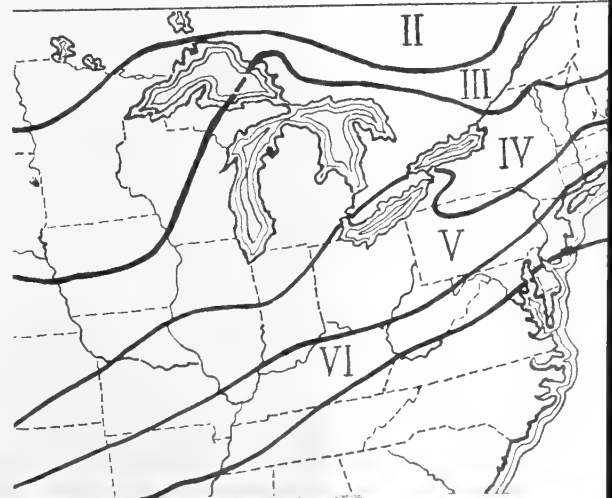
	plant	page
Trees	Oct.-Dec.	7,20
Evergreens	Sep.-Oct.	11,18
Shrubs	Oct.-Dec.	8,22
Broadleaves	Sep.-Oct.	15,17
Roses	Nov.-Dec.	32

BULBS, ETC.	plant	page
Bulbs	Oct.-Dec.	30,31
Perennials	Aug.-Oct.	28,29

FRUITS, ETC.	plant	page
Tree Fruit	Oct.-Dec.	24,25
Bush Fruits	Oct.-Dec.	23,26

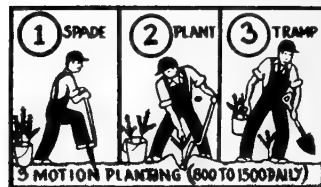
### Is it hardy in Your Garden?

There is a northern limit for every plant, beyond which it cannot live. For practical use the map at the right divides the country into zones. Each plant description in this guide has a related Zone limit. Look up your garden on the map and you can select hardy material.



## Kelsey Nursery Service

# RARE PLANTS for your HOME



**YOUNG**  
**QUANTITY**  
**PRICES**

KIND AND SIZE	Amount
Minimum order 5. If desired parcel post, add 10% to total amount on this page. (If you can use 25, your quantity discount of 10% pays the postage.)	
	(each)
<b>ABELIA grandiflora</b> 12 to 15 inch (4" pot).....	\$1.60
<b>ACER ashibeni</b> (Redleaf japan Maple) 1 yr. graft.	2.90
<b>dissectum purpureum</b> (4" pot) 1 year graft.....	2.90
<b>Burgundy lace</b> (red, lacey leaf) 1 yr. graft.....	3.90
<b>AZALEA</b> rare and unusual kinds:	
<b>hinocrimson</b> , evergreen, red dwarf, early May.	
<b>Loma</b> , evergreen, pink, double, late May.	
<b>schlippenbachi</b> , deciduous, pink, large.	
<b>Vuykiana palestrina</b> , evergreen, white, new.	
<b>Vuyk. J. Strauss</b> , salmon rose.	
<b>Vuyk. PW Hardyzer</b> , carmine rose.	
Any one of 6 above: plant from 3 inch pot.....	1.60
<b>CHAMAECYPARIS gracilis compacta</b> 1 yr. graft	2.75
<b>compacta nana</b> (dwarf Hinoki) 1 yr. graft (3" pot)	2.75
<b>COTONEASTER horizontalis</b> 6 to 10 inch (3" pot)	1.40
<b>CORNUS rubra</b> (Pink Dogwood) 12 to 15 in.	2.40
<b>kousa chinensis</b> (June) 12 to 15 inch (4" pot)..	2.40
<b>CRAETAEGUS (Paul Scarlet Thom)</b> 1 year graft (pot).....	2.90
<b>FRANKLINIA</b> (White, Aug to frost) 9 to 12 in. (pot)	1.90
<b>HAMAMELIS mollis</b> (gold, Feb) 12 to 14 in. (4" pot)	2.90
<b>ILEX opaca</b> (good female) 4 to 6 in. (2½" pot)..	1.60
<b>JUNIPERUS pfitzeriana</b> 6 to 8 inch (3" pot)....	1.40
<b>LAUROCERASUS Schipka</b> (Hardy Laurel) 6 to 9 inch.....	1.60
<b>MAGNOLIA soulangeana</b> , 10 to 15 inch (4" pot)	2.40
<b>soul. speciosa</b> (dwarfer, better) 9 to 12 in. B&B	2.40
<b>stellata</b> (Star Magnolia) 10 to 15 inch (4" pot)	2.75
<b>stell. Waterlily</b> 10 to 15 inch (4" pot).....	3.50
<b>PIERIS japonica</b> 6 to 9 inch B&B.....	1.90
<b>PYRACANTHA lalandi</b> (Firethorn) 8 to 10 inch (pot)	1.90
<b>TAXUS Vermeulen Yew</b> 9 to 12 inch XX.....	1.50
<b>Kelsey Berrybush Yew</b> 10 to 12 inch XX.....	2.00
<b>TSUGA compacta</b> (Dwarf Hemlock) 1 yr. graft	2.90
<b>canad. pyramidalis</b> (semi-dwarf) 1 yr. graft (pot)	3.40
<b>canad. sargentii</b> (weeping) 1 yr. graft (4" pot)	2.90
<b>VIBURNUM Burkwoodi</b> 6 to 9 inch (3" pot).....	1.40
<b>fragrans</b> 9 to 12 inch B&B.....	2.40
<b>WISTARIA multijuga</b> (Japan Long-cluster, purple)	
<b>Royal Purple</b> (extra long clusters)	
<b>Praecox</b> (blue, blooms young, stays dwarfer)	
Any of above 3 kinds, 1 year graft (4" pot).....	1.60

## "S"—EVERGREEN SEEDLINGS

Should be planted about four inches apart in beds, shaded by a lath screen.

## "X"—TRANSPLANTS

1. They are well watered at least twice before frost; and  
2. They are mulched lightly with salt hay, or other suitable material.

**TAXUS (Yew)** See pages 12, 19.

**TSUGA (Henlock)** See pages 13, 18.

**ABIES (Fir)** (25) (100) (1000)  
**balsamea**, (Balsam Fir) Ideal evergreen for wet land. Best for Christmas trees.

3-6 in. S ....	\$10.00	\$ 75.00
4-6 in. X ....	20.00	150.00

### Douglas Fir (Pseudotsuga)

2 yr. S .....	7.00	45.00
8-10 in. XX	20.00	75.00
12-15 in. XX	26.00	95.00
		850.00

### CHAMAECYPARIS (Cypress)

**plumosa** (Plumed Cypress)

6-8 in. X ....	11.00	40.00	350.00
12-15 in. X	14.00	60.00	.....

### plumosa aurea (Golden Plume)

4-6 in. X .....	8.00	30.00	250.00
10-12 in. X..	12.50	45.00	400.00

### JUNIPERUS (Junipers)

**depressa plumosa** (Andorra Juniper)

10-12 in. X...	11.00	40.00	375.00
12-18 in. XX	25.00	90.00	750.00

### excelsa stricta (Greek Juniper)

8-10 in. X ...	12.00	40.00	375.00
----------------	-------	-------	--------

### pfitzeriana (Pfitzer's Juniper)

6-8 in. X ...	11.00	35.00	300.00
8-10 in. X ...	14.00	40.00	395.00
10-12 in. XX	32.50	120.00	950.00

### Pfitzer aurea (Golden Pfitzer)

4-6 in. X .....	9.50	35.00	300.00
12-15 in. XX	50.00	180.00	.....

### virginiana (Red Cedar)

6-9 in. X .....	22.00	200.00
12-18 in. XX	15.00	50.00
18-24 in. XX	25.00	90.00
		750.00

### LARIX (Larch)

#### European Larch (Europa)

9-12 in. S ....	5.50	20.00	180.00
-----------------	------	-------	--------

# EVERGREENS

## PICEA (Spruce) (25) (100) (1000)

### alba (White Spruce)

2-yr. S .....	\$ 7.50	\$ 50.00
6-9 in. X ....	\$ 5.00	16.00 150.00

### canadensis (Black Hills Spruce)

4-6 in. S .....	6.00	50.00
9-12 in. XX ..	18.00	68.00 .....
6-9 in. X .....	5.00	18.00 170.00

### excelsa (Norway Spruce)

4-6 in. X .....	5.00	14.00	120.00
10-12 in. XX	20.00	75.00	650.00
15-18 in. XX	25.00	95.00	850.00

### pungens (Colorado Spruce) color from blue to green.

2-Yr. S .....	8.00	50.00
4-6 in. X .....	5.00	18.00 170.00
9-12 in. X ...	18.00	65.00 575.00
8-12 in. XX	20.00	75.00 650.00

## PINUS (Pine)

### mughus (Mugho Pine)

2-yr. S .....	7.50	60.00
4-6 in. X .....	6.00	20.00 150.00
6-8 in. XX ...	20.00	75.00 600.00

### nigra (Austrian Pine)

2-yr. S .....	45.00
3-5 in. X .....	6.00 20.00 150.00
10-12 in. XX	25.00 80.00 700.00

### resinosa (Norway Red Pine)

6-12 in. XX	10.00	35.00 .....
18-24 in. XX	45.00	150.00 .....

### strobus (White Pine)

Ship into most states.

3-yr. S .....	7.50	65.00
4-6 in. X .....	4.00	13.00 100.00
8-10 in. XX	20.00	75.00 650.00

### sylvestris (Scotch Pine)

3-yr. S .....	8.00	60.00
5-10 in. X .....	7.00	24.00 160.00
12-18 in. XX	12.50	45.00 380.00

## THUJA (Arborvitae)

### occidentalis (American Arborvitae or White Cedar)

4-6 in. S .....	9.00	60.00
6-10 in. X ....	6.00	20.00 175.00
9-12 in. XX	18.00	65.00 480.00
18-24 in. XX	40.00	150.00 .....

### globosa (Glove shaped)

8-10 in. X ....	10.00	36.00 300.00
9-12 in. XX	25.00	85.00 750.00

### elegantissima (Golden tipped A.)

8-10 in. X ....	12.50	40.00 350.00
-----------------	-------	--------------

### pyramidalis (Pyramidal A.)

8-10 in. X ....	8.50	33.00 295.00
9-12 in. XX	21.00	75.00 650.00



## Autumn Planting 1951

1. Plants need watering for autumn root-growth.

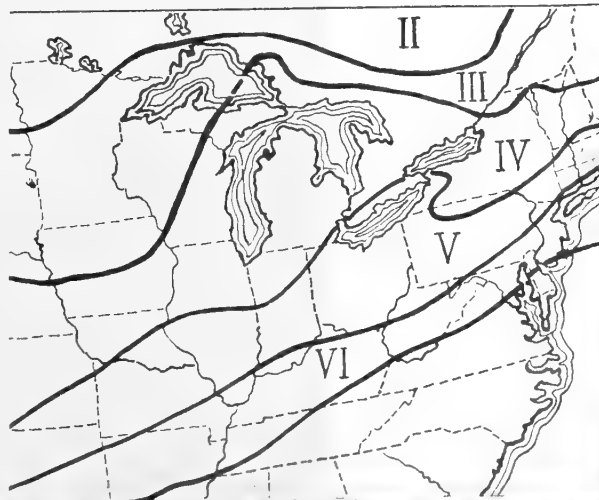
2. Time of planting is important: Evergreens best from now to early October (they need late Fall for root growth) — deciduous plants from October to frost

3. Birch and Magnolia are best moved only in spring when sap is running. All planting of these can be one: — (a) By digging with an earth ball. (b) By using small sizes only.

4. Very small evergreen seedlings are likely to cost-leave. Easily overcome: — Simply strew a thin mulch of salt hay in the beds.

### Is it hardy in Your Garden?

There is a northern limit for every plant, beyond which it cannot live. For practical use the map at the right divides the country into Zones. Each plant description in this Guide has a related Zone limit. Look up your garden on the map and you can select hardy material.



	plant	page
Trees	Oct.-Dec.	7,20
Evergreens	Sep.-Oct.	11,18
Shrubs	Oct.-Dec.	8,22
Broadleaves	Sep.-Oct.	15,17
Roses	Nov.-Dec.	32

BULBS, ETC.	plant	page
Bulbs	Oct.-Dec.	30,31
Perennials	Aug.-Oct.	28,29

FRUITS, ETC.	plant	page
Tree Fruit	Oct.-Dec.	24,25
Bush Fruits	Oct.-Dec.	23,26

# Kelsey Nursery Service

# RARE PLANTS for your HOME

# EVERGREEN HEDGES

KIND AND SIZE	Amount
Minimum order 5. If desired parcel post, add 10% to total amount on this page. (If you can use 25, your quantity discount of 10% pays the postage.)	
	(each)
ABELIA grandiflora 12 to 15 inch (4" pot).....	\$1.60
ACER ashibeni (Redleaf japan Maple) 1 yr. graft.	2.90
dissectum purpureum (4" pot) 1 year graft.....	2.90
Burgundylace (red, lacey leaf) 1 yr. graft.....	3.90
AZALEA rare and unusual kinds:	
hinocrimson, evergreen, red dwarf, early May.	
Loma, evergreen, pink, double, late May.	
Schlippenbachi, deciduous, pink, large.	
Vuykiana palestrina, evergreen, white, new.	
Vuyk. J. Strauss, salmon rose.	
Vuyk. PW Hardyzer, carmine rose.	
Any one of 6 above: plant from 3 inch pot.....	1.60
CHAMAECYPARIS gracilis compacta 1 yr. graft	2.75
compacta nana (dwarf Hinoki) 1 yr. graft (3" pot)	2.75
COTONEASTER horizontalis 6 to 10 inch (3" pot)	1.40
CORNUS rubra (Pink Dogwood) 12 to 15 in.	2.40
kousa chinensis (June) 12 to 15 inch (4" pot)..	2.40
CRAETAEGUS (Paul Scarlet Thom) 1 year graft (pot).....	2.90
FRANKLINIA (White, Aug to frost) 9 to 12 in. (pot)	1.90
HAMAMELIS mollis (gold, Feb) 12 to 14 in. (4" pot)	2.90
ILEX opaca (good female) 4 to 6 in. (2½" pot)..	1.60
JUNIPERUS pfitzeriana 6 to 8 inch (3" pot)....	1.40
LAUROCERASUS Schipka (Hardy Laurel) 6 to 9 inch.....	1.60
MAGNOLIA soulangeana, 10 to 15 inch (4" pot)	2.40
soul. speciosa (dwarfer, better) 9 to 12 in. B&B	2.40
stellata (Star Magnolia) 10 to 15 inch (4" pot)	2.75
stell. Waterlily 10 to 15 inch (4" pot).....	3.50
PIERIS japonica 6 to 9 inch B&B.....	1.90
PYRACANTHA lalandi (Firethorn) 8 to 10 inch (pot)	1.90
TAXUS Vermeulen Yew 9 to 12 inch XX.....	1.50
Kelsey Berrybush Yew 10 to 12 inch XX.....	2.00
TSUGA compacta (Dwarf Hemlock) 1 yr. graft	2.90
canad. pyramidalis (semi-dwarf) 1 yr. graft (pot)	3.40
canad. sargentii (weeping) 1 yr. graft (4" pot)	2.90
VIBURNUM Burkwoodi 6 to 9 inch (3" pot).....	1.40
fragrans 9 to 12 inch B&B.....	2.40
WISTARIA multijuga (Japan Long-cluster, purple)	
Royal Purple (extra long clusters)	
Praecox (blue, blooms young, stays dwarfer)	
Any of above 3 kinds, 1 year graft (4" pot)....	1.60

**Yew.** For any and every purpose in which Evergreens are required the Yew can be recommended Hardy in New England and Ontario, immune to most diseases and pests. Accommodating to an extraordinary degree, withstanding shade or full sunshine.

### Four Yew Hedges

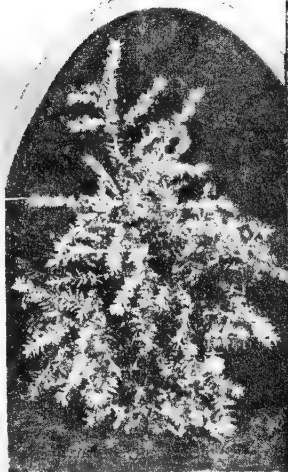
- TALL HEDGE, 5 to 8 ft. high, 3 to 4 ft. wide **Taxus capitata** (Upright Yew)—photo above  
(25) (100) (1000)  
6 to 9 in.X \$15.00 \$50.00 \$400.00  
12 to 15 in.XX 32.00 110.00 .....
- BROAD HEDGE, 2 to 4 ft. high, 2 to 4 ft. wide **Taxus cuspidata** (Spreading Yew)  
9 to 12 in.XX 22.00 80.00 .....
- 12 to 18 in.X 18.00 65.00 550.00
- LOW EDGING, 1 to 3 ft. high, 1 to 3 ft. wide **Taxus nana brevifolia** (Dwarf Yew)  
8 to 10 in.XX 32.00 110.00 950.00  
10 to 12 in.XX 40.00 175.00
- NARROW TALL, 4 to 6 ft. high, 1½ ft. wide **Taxus media Hicksii** (Hicks Yew)  
9 to 12 in.XX 22.00 80.00 700.00  
12 to 15 in.XX 35.00 120.00 850.00

Many of our customers looking ahead a few years, are planting these fine evergreen hedges rather than cheaper barberry and privet.

(below) 15-18 in. Yew spaced 18 in. (right) how it looks 8 years later.



Plant these in Sept. or Oct. safely, and get an earlier start in spring.



(insert) 15-18 inch Hemlock spaced 18 inches and (photo) how it looks 8 years later.



## Autumn Planting 1951

### TSUGA (Hemlock)

*Canadensis* (Northern Hemlock).

One of the most useful of all evergreens. In dry or wet soils,

**Hemlock Hedge** when properly sheared gives a fine, even, smooth dark green surface unlike any other hedge. Thrives in soils ranging from ordinary to damp, and from full sun to full shade, hence is easy to grow. Set plants 1½ feet apart.

	(25)	(100)	(1000)
4 to 6 in.S . . . . .	\$2.25	\$7.00	\$35.00
8 to 12 in.S . . . . .	2.75	9.00	45.00
4 to 6 in.X . . . . .	4.50	15.00	120.00
9 to 12 in.X . . . . .	10.00	35.00	300.00
12 to 18 in.X . . . . .	15.00	55.00	490.00
12 to 15 in.XX . . . . .	18.00	70.00	575.00
15 to 18 in.XX . . . . .	25.00	85.00	675.00

**1.** Plants need watering for autumn root-growth.

**2.** Time of planting is important: Evergreens best from now to early October (they need late Fall for root growth) — deciduous plants from October to frost

**3.** Birch and Magnolia are best moved only in Spring when sap is running. Fall planting of these can be done: — (a) By digging with an earth ball. (b) By using small sizes only.

**4.** Very small evergreen seedlings are likely to frost-heave. Easily overcome: —Simply strew a thin mulch of salt hay in the beds.

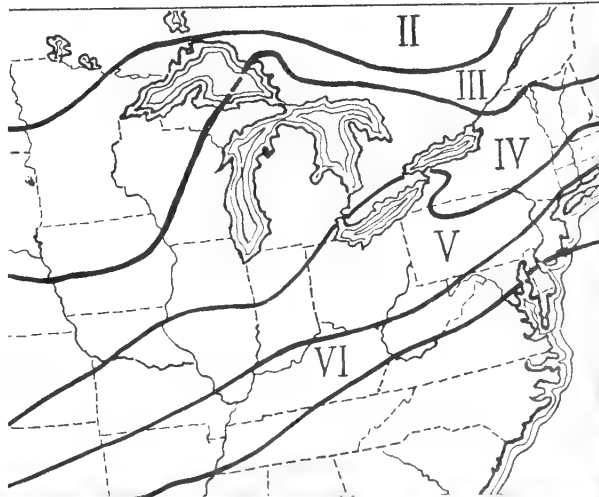
	plant	page
Trees	Oct.-Dec.	7,20
Evergreens	Sep.-Oct.	11,18
Shrubs	Oct.-Dec.	8,22
Broadleaves	Sep.-Oct.	15,17
Roses	Nov.-Dec.	32

BULBS, ETC.	plant	page
Bulbs	Oct.-Dec.	30,31
Perennials	Aug.-Oct.	28,29

FRUITS, ETC.	plant	page
Tree Fruit	Oct.-Dec.	24,25
Bush Fruits	Oct.-Dec.	23,26

### Is it hardy in Your Garden?

There is a northern limit for every plant, beyond which it cannot live. For practical use the map at the right divides the country into Zones. Each plant description in this Guide has a related Zone limit. Look up your garden on the map and you can select hardy material.



**Kelsey Nursery Service**

# GROUND COVERS

## Prevent Erosion on Steep Banks

Steep slopes can be put into grass and mowed. But it is constant work and worry. The following plants do the job better. There are almost no maintenance problems. Four are inclined to get out of hand: *Hedera*, *Lonicera*, *Rose* and *Vinca*. They can, however, be rigorously pruned without the least harm.

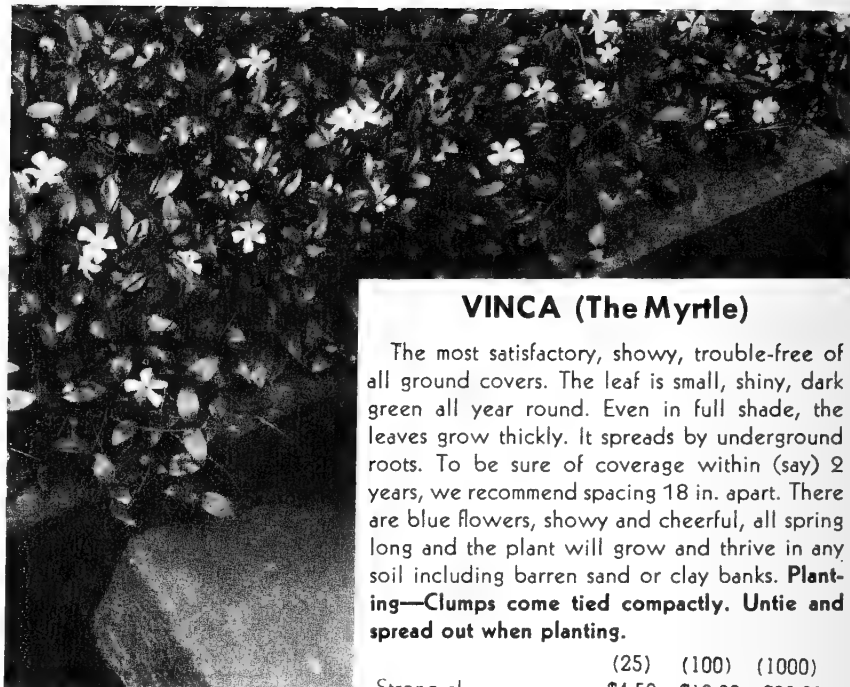


Photo: *Vinca Minor*

### VINCA (The Myrtle)

The most satisfactory, showy, trouble-free of all ground covers. The leaf is small, shiny, dark green all year round. Even in full shade, the leaves grow thickly. It spreads by underground roots. To be sure of coverage within (say) 2 years, we recommend spacing 18 in. apart. There are blue flowers, showy and cheerful, all spring long and the plant will grow and thrive in any soil including barren sand or clay banks. **Planting**—Clumps come tied compactly. Untie and spread out when planting.

	(25)	(100)	(1000)
Strong clumps . . . . .	\$4.50	\$13.00	\$90.00

### PACHYSANDRA terminalis

Tolerant in poor soil and shade. Set 3 to each sq. ft. Zone V.

	(25)	(100)	(1000)
Rooted cuttings . . . . .	\$ 9.00	\$ 80.00	
Asstd. field-grown . . . . .	\$4.00	12.50	95.00

### ROSE wichuriana (Memorial Rose)

Branches grow quickly, droop and root. Thick-set effect. Best in sun. Zone IV.

6 to 18 inch, 1 year . . . . .	3.00	8.50	70.00
--------------------------------	------	------	-------

### ARCTOSTAPHYLOS uva-ursi (Bearberry)

Low matting evergreen. Best cover for sandy banks—succeeds even on sea-shore. Sun, drain.

Pot-grown . . . . .	5 for \$3.50, 100 \$55.00
---------------------	---------------------------

### HEDERA baltica (Hardy English Ivy)

Fine ground cover, in shade or sun. Does not climb readily. Zone V.

	(25)	(100)	(1000)
2¼-in. pots . . . . .	7.50	23.00	180.00
3-in. pots . . . . .	16.00	64.00	.....

### LONICERA japonica (Honeysuckle)

Sun or shade. Any soil. Vigorous.

1-yr. light . . . . .	8.00	35.00
12 to 18 in. X . . . . .	6.50	18.00 14.00

### WILDTHYME (Thymus Serpyllum)

A mat in sun or light shade that blankets the ground. Evergreen. Can be walked on. Zone III. Set 12 in. apart. Well drained soil.

Sturdy plants . . . . .	6.00	20.00	150.00
-------------------------	------	-------	--------

## FERNS

make fine ground covers in the shade

Each kind, \$2.75 for 10 (\$14.00 per 100)  
Five each any three kinds for \$3.95

- Christmasherf.** 12 in. Dry shade. Evergreen.
- Cliff-fern** (Polypody). 6 in. Evergreen, drain.
- Hayscented Fern** (Dunnstaedtia). 18 in. Tolerant.
- Maidenhair** (Adiantum). Rich, moist, but drained soil. Easily grown. Showy and popular.
- Toothed Woodfern.** 18 in. Evergreen. Damp soil.
- Sensitivefern** (Anoclea). Shade, heavy, moist. 12 in.
- Interrupted Fern** (Osmunda). 60 in. Damp, sunny.
- Cinnamonfern** (Osmunda). 60 in. Any moist soil.
- Ostrich Fern** (Pteretis nodulosa). 36 in. Very tolerant.

## RARE EVERGREEN GROUND COVERS

- Hardy Galax (Galax aphylla)**  
Huge bronze and green (10) (25) (100) leaves. Moist shade.  
Clumps with ball . . . . . \$4.50 \$8.00 \$25.00
- Trailing Arbutus (Epigaea repens)**  
Waxy pink, May. Zone II. acid soil, semi-shade.  
Balled clumps . . . . . 6.00 10.00 30.00
- Oconee Bells (Shortia glaucifolia)**  
Rarest of all. Zone V.  
clumps . . . . . 6.00 10.00 30.00
- Box Sand-myrtle (Leiophyllum buxifolium)**  
Tiny spreading evergreen shrub, acid soil, sun.  
Clumps B&B . . . . . 15.00 30.00 100.00



# Young Native ARISTOCRATS

Rhododendrons low as 37½c, in few years, with little care, will be bushy \$10 specimens.

Most people are surprised at the speed and ease of planting. Size 1 holes need a trowel only, 3 in. deep. Even Size 3 holes take but few good shovels full. Soak heavily after planting—and every 3 days for a month. Mulch heavily with old leaves.

**Easy to Plant  
and Care for**



This special "Young Aristocrat" grade measured 12 to 15 inches with a small ball, weighing one or two pounds only. This stock is not to be compared for a minute with ordinary collected plants. It is on the contrary all carefully dug, the greatest pains being taken to preserve the roots. Carefully packed, it is easily planted and makes a quick start. Shipped from North Carolina, express runs only about 8c each (in 100 lots).

Rhododendron	(25)	(100)
maximum.....	\$10.50	\$37.50
carolina.....	16.00	58.00
catawbiense.....	16.00	58.00
Leucothoe		
Catesbaei.....	12.00	42.00
Kalmia (Mountain Laurel)		
latifolia.....	12.00	42.00

**OFFER A:** 2 each above, 10 plants for \$9.25 postpaid.

**OFFER B:** 5 each above, 25 plants \$17.00 (express about \$2.50 on arrival).

PHOTO: A box of Size 3 rhododendrons has just arrived.



## SIZE 2: AS SMALL AS LOOKS SHAPELY.

12 to 15 in. B & B. Clumps, 4 to 6 Stems.

These "Junior Specimens" weigh about 5 pounds per plant, individually burlapped. They are 2 years older than Size 1. Express runs about 25 cents per plant. You can expect some blooms the year after planting. These really "look like something" the day they are planted.

Rhododendron	(10)	(25)	(100)
carolina.....	\$14.00	\$35.00	\$122.00
catawbiense.....	14.00	35.00	122.00
maximum.....	12.00	27.50	100.00
Kalmia (Mountain Laurel)			
latifolia.....	12.00	27.50	100.00
Leucothoe (Fetterbush)			
Catesbaei.....	12.00	27.50	100.00

**OFFER A:** 1 each of above 5 plants for \$9.25 postpaid.

**OFFER B:** 5 each of above, 25 plants, for \$30. (express about \$5.)

Also Size 2 Azaleas:	(10)	(25)	(100)
calendulacea.....	\$13.00	\$27.50	\$100.00
arborescens.....	13.00	27.50	100.00
viscosa.....	13.00	27.50	100.00
nudiflora.....	13.00	27.50	100.00

## SIZE 3: BUSHY, HEAVY CLUMPS. 1½ TO 2 FEET, B & B.

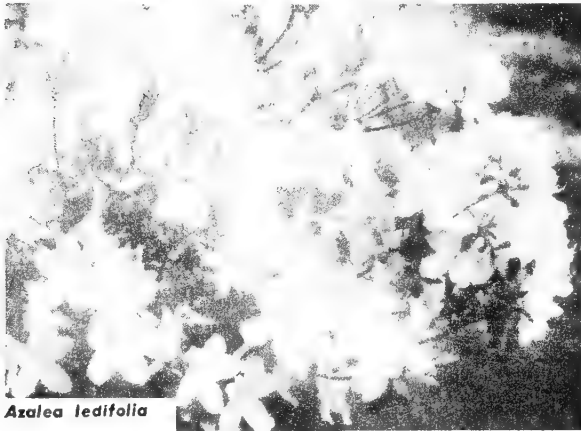
Most are budded for at least some immediate bloom. Large enough to use at once for foundations, shrub borders. Allow about 3-ft. space, which they will fill within next few years. \$4.50 each, singly.

Any five of the following kinds, \$16.75 Express costs about \$4.00 for the 5.

- Azalea calendulacea. Orange, June.
- Kalmia latifolia. Pink-white, June.
- Leucothoe Catesbaei. White, May.
- Rhododendron carolina. Pink, May.
- Rhododendron catawbiense. Rosy purple, June.
- Rhododendron maximum. White-pink, July (shade).

# EVERGREEN SHRUBS

Most kinds are safely planted with ball in Sept.-Oct. We here select ones most suited to fall planting.



*Azalea ledifolia*



Above:— **AZALEA HINOCRIMSON**  
The 3-inch pot grew into the 12-inch specimen in 3 years. There were 463 blooms the 3rd year.

## *Azaleas* for Fall

### New Azalea—HINOCRIMSON (Zone V)

Any of the following kinds, evergreen, showy, hardy, are offered from 3-inch pots, 5 assorted as you wish for \$6.00 (5 of one kind \$5.00; 10 one kind \$9.00)

A better, hardier Hinodigiri. Large, Showy crimson-red, clean color, and does not fade, (as Hinodigiri does) shortly after opening. Fragrant.

	(10)	(25)
3 inch pots . . . .	\$13.50	\$25.00
6 to 8 in. B&B . . . .	two for \$8.50	
8 to 10 in. B&B . . . .	\$6.00 each	
10 to 12 in. B&B . . . .	\$7.50 each	

- **amoena**--rosy purple, 4 ft., Zone V.
- **Hinodigiri**--brilliant red, also dwarf, completely covered with bloom. Zone VI.
- **Kaempferi**--Torch Azalea, brick red in May. 8 foot bush. Zone IV.
- Betty**--form with many pink blooms.
- **Carmen**--large clear rose.
- **Fedora**--large salmon rose.

**ledifolia alba**--pure white, fine evergreen 6 ft. bush. Zone VI.  
--**Magnifica**--same with red markings.

- **maxwelli**--spreading dwarf, carmine red, late May. Zone VI. Striking.
- 6 kinds above so marked, also in B&B bushy 8 to 12 in. clumps, any 5 for \$13.50.

We also offer in the 8 to 12 in. B&B size only, these deciduous kinds:

- **Mollis H. Hardyzer**--red, Zone V.
- **Poukhanense**--early purple, Zone IV.
- **Vaseyi**--showy soft pink, Zone V.  
    And this rare evergreen kind:
- **Hexe (Firefly)**--bright red, Zone V.

### GABLE'S HARDY HYBRIDS

Japanese types of azaleas made hardy in Zone IV.

\***CLARET**--bronze red, single. Unusual and fine.

\***HERBERT**--4 ft. Shapely, showy, magenta-red. Semi-evergreen.

**MILDRED MAE**--vigorous, evergreen Early lavender, red spots.

\***ROSE BUD**--very double, like a little rose. Pearly pink.

\***ROYALTY**--Rich bright purple. Dwarf evergreen shrub.

Any of the above 5 in 3 year XX grade (4 to 9 inch) 5 for \$9.50 assorted as you wish. 5 of one kind for \$8.50. Prices postpaid.

\*The 4 kinds so marked, also in 8 to 10 in. B&B \$4. each (express)

### NEW RACES of HYBRID AZALEAS

#### GLEN DALE HYBRIDS

The Indica azaleas of famous southern gardens, made hardy certainly in Zone VI, possibly even further north. Evergreen, with large bright flowers.

**APHRODITE**--Lovely rose-pink, mid-season. Bushy growth.

\***GAIETY**--Clear pink, one red spot. Spreading. Late.

**GLAMOUR**--Brilliant rose red. Late, compact growth.

\***JOYA**--Late. Like a large, bright pink ledifolia. Fine.

Any of the above 4 in 3 year XX grade (6 to 10 inch) 5 for \$9.00 assorted as you wish. Postpaid.

\*The 2 kinds so marked, also in heavy, bushy 12 to 18 inch B&B specimens at \$9. each (express).

**Boxwood (Buxus)**

**Suffruticosa** (Dwarf "English"). 6 ft. Zone V. A billowy dense mass of dark green. This is the box of collectors. Small plants used for real box edging. Any soil. Sun or part shade. Splendid dense, dark effect.  
 \* 4-6 in. X ... 5 for \$2.75, 100 \$40.00  
 \* 6-8 in. X ... 5 for \$4.00, 100 \$55.00  
 6-8 in. B&B, 5 for \$6.00, 100 \$90.00

**Hollies (Ilex)**

**Opaca (American Holly)**. Zone IV. 40 ft. Damp, some shade. Red berries, dull, evergreen leaf. We offer mixed sexes: (each) (10) (100)  
 2-3 ft. B&B \$5.00 \$40.00 \$300.00

—Males (for pollen)  
 3 inch pots ..... 12.00 85.00  
 —Females (cuttings)  
 3 inch pots ..... 11.50 80.00  
**Offer:**— 2 males, 4 females in 3 inch pot size, ..... \$7.50 postpaid

**Crenata (Japanese Holly)** Zone V. 18 ft. Evergreen leaf and thickset shape. Tolerant. Slow-growing.  
 \* 6-8 in. X .. .... \$6.00 \$45.00  
 2 feet B&B \$6.00 50.00 .....

**DAPHNE cneorum** (Garland Flowers). 1 ft. Zone IV. Perhaps the finest rockgarden evergreen. Very fragrant rose flowers (large) in May and again in September. Needs sun. Spreads. Our special strain tends to bloom through the summer. Makes a foot-high mat of gray-green, topped with flowers. One of the choicest small shrubs:

	(Each)	(10)
6- 8 in. B&B .....	\$1.90	\$15.00
8-12 in. B&B .....	2.50	20.00
12-15 in. B&B .....	3.00	27.50

**Mountain Laurel**

**Kalmia latifolia**. Zone IV. 8 ft. The best evergreen shrub in the north. Compact, with firm thick leaves. A show of pinky white in June. Acid, humus, damp, loose soil.

	(Each)	(10)	(100)
12 in. B&B .....	\$12.00	\$100.00	
18 in. B&B .....	\$4.50	33.50	275.00

**PIERIS floribunda** (Mountain Fetterbush). 3 ft. Zone IV. Evergreen, mound. Upright clusters white in May. Acid, humus, half shade.

12-15 in. B&B ...	\$5.00, 5 for \$20.00
18-24 in. B&B ...	\$9.50, 5 for \$37.00

**Japonica** (Japonica Andromeda). 6 ft. Zone V. Evergreen, upright shrub, with drooping wax-like bells, May. New growth is rosy-wine.

* 6 in. X.....	5 for \$4.00, 100 \$60.00
12-15 in. B&B ...	\$5.00, 5 for \$22.00
9-12 in. B&B ...	\$3.75, 5 for \$10.00

**PYRACANTHA Lalandi** (Laland Firethorn). Evergreen shrub to 15 ft. Zone V. A fuzz of white in May. then orange-red berries. Drain, lime.

	(Each)	(10)	(100)
* 3-in. pots .....	\$9.50	\$75.00	
8-10 in. (Pot)	\$3.00	27.50	.....
18-24 in. B&B	6.00	50.00	.....

# RHODODENDRONS

Evergreen shrubs with fine foliage and gorgeous colors. Range in size from dwarfs to giants; bloom from May to July; all colors. Culture: acid, damp, loose soil. Light shade. Use manure in fall. Do not cultivate, but mulch with very loose leaves or, better, leaf mold. Safe to plant in September and October. They need the rest of the autumn to get established. Water well in fall.

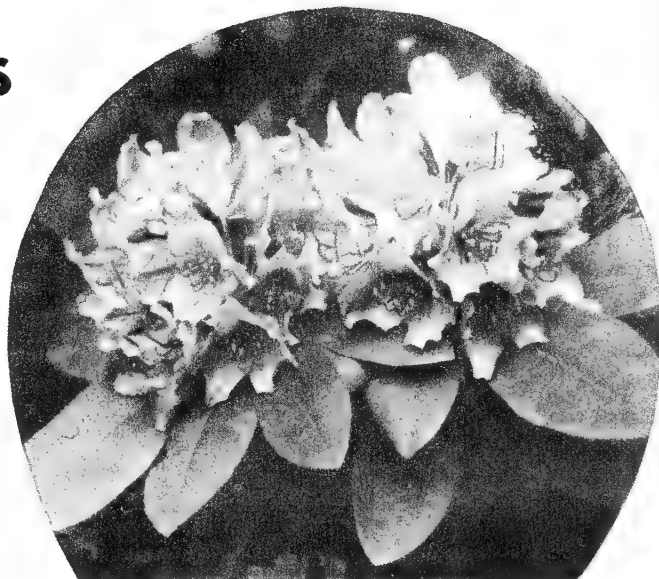
**NATIVE SPECIES**

See "Young Native Aristocrats" on Page 15 in small sizes as well as large.

## BARGAIN IN YOUNG HYBRID RHODODENDRONS

The following own-root hybrids, field grown, 8 to 12 inch B&B are offered:- any two plants for \$6.75. (Minimum two) Additional plants \$3. each (\$30. per 10). Five kinds:-  
**CATAWBIENSE GRANDIFLORUM**-huge purple. Hardy Zone V.

- MAXIMUM ROSEUM**-late, rose pink. Zone V.
- ROSEUM ELEGANS**-Compact, shapely rose-pink. Zone V.
- LEE'S BEST PURPLE**-fine clear color.
- CATAWBIENSE ALBUM**-Grand pure white. Zone V.



**A FEW GRAFTED HYBRIDS**

Two years in the field, bushy 10 to 15 inch B&B. Any two of the following packed for \$12.50. Additional plants \$5.50 each. (\$50.00 per 10).

- Roseum elegans**-rose pink, bushy, shapely. Zone V. hardiness.
- Lee's Dark purple**-very dark, showy.
- Dr. Dresselhuys**-Tall analine red.
- Everestianum**-Fringed rosy lilac. Zone V. Dwarf grower.
- E.S. Rand**-Fine large bright red. Zone V. Compact growth.
- Caractacus**-Compact crimson. Zone V.

# EVERGREENS IN FALL

All are easily planted in September and October—the Yew is particularly easy even in small sizes. No fertilizer until next spring, but water well once a week to freeze-up and mulch smaller sizes unless already in shady locations.

## PICEA (Spruce)

**excelsa NIDIFORMIS** (Bird Nest). 4'ft. Grottesque rock garden dwarf. 12 in.B&B .....\$4.50, 5 for \$17.00  
2 ft. B&B.....\$12.00, 5 for \$50.00

**pungens**. 80 ft. Zone II. Best spruce for dry climates. Very tolerant. Varies from green to silver, as offered here.  
\* 9-12 in. X ..... 25 for \$5.00  
\* 8-12 in. XX.....25 for \$20.00

### Selected Blue

1½-2ft.B&B...\$7.25 ea., 5 for \$35.00

**MOERHEIMI** (Moerheim Blue). Grafted Blue Spruce. Bluest of all.

1 yr. graft (about 8 in.)...\$3.75 each

## Junipers

**chinensis pfitzeriana** (Pfitzer Juniper). 6 ft. Zone IV. Gorgeous bush, a cloud of silver in spring, then bright green. Spreads picturesquely. Stand soot, smoke, and drought in city plantings. Easily grown.

\* 6 in.X .....5 for \$3.00; 25, \$12.50

\* 10in.XX....25 \$32.50, 100 \$120.00

15-18in.B&B...\$6.00, 5 for \$27.50

**communis hibernica** (Irish Juniper) 15 ft. Zone III. Green Column. Popular. This makes a hardy substitute for the thin spires of true Cypress.

\* 9 in.X ..... 25 \$12.00, 100 \$40.00

\* 18-24 in.X..5 for \$6.00, 100 \$90.00

2 ft. B&B ..... \$3.50, 10 \$30.00

**excelsa stricta** (Green Juniper). 6 ft. Zone V. Blue, stiff, fat pyramids. A fine dwarf, very neat, but rather formal.

\* 8-10in.X.....25 \$13.00, 100 \$45.00

15-18in.B&B.....\$5.00, 5 \$22.50

### NOTICE THE "XX" SIZES

XX is twice transplanted, 6 or 7 years old. More are offered on page 11. They are practically landscape specimens, except not balled (B&B). They are the only real bargains left in evergreens these days, when B&B sizes cost 10% to 15% just to pack (XX prices include packing); and about 50% for express (XX grades cost about 10% extra for express).

## Tsuga (Hemlock)

**Canadensis** 60 ft. Stands shade. The most beautiful native evergreen. Zone IV. (Each) (10) (100)

\* 8-12 in.S ..... \$ 9.00

\* 12-15 in.X ..... 55.00

\* 12-15 in.XX ..... \$9.00 70.00

1½-2 ft. B&B \$5.50 50.00 475.00

2-3 ft. B&B 6.50 60.00 575.00

Specimen *Tsuga canadensis* 6 feet

## Thuja (Arborvitae)

**LITTLE GEM**. 2 ft. Zone II. Really dwarf-hugging the ground. Rock-garden plant. Dark green.

\* 6-8 in.X.....5 for \$3.50, 100 \$55.00  
15 in. B&B .....\$4.00, 5 for \$18.00

**PYRAMIDALIS** (Pyramidal). 25 ft. Zone II. This is perhaps the best tall form of American Arborvitae. Formal, narrow hedges.

\* 9-12 in. XX..... 25 for \$21.00  
2 ft. B&B.....\$4.50, 5 for \$37.50

# The Yews

## Taxus Media Varieties 7 Outstanding Introductions

**PYRAMIDALIS** (Pyramid Yew)—narrow, fast growing to 15 feet. Dark green.

**ROBUSTA** (Obelisk Yew) — Even faster growth to 20 ft. Otherwise the same.

**STRICTA** (Narrowbush) — Slow, to 6 feet. Narrow dwarf, compact vertical growth.

**VERIDIS** (Grassgreen Yew) — Same as the *Stricta*, but bright green all winter.

Any one of above four kinds:—

\* 9 to 12 in.(pots).....5 for \$9.50  
2 to 2½ft.B&B ....\$13.25, 5 for 62.50

**COLLECTION**— Any four from above 4 kinds, 2 ft. B&B. for \$50.00 packed.

**PILARIS** (Pillar Yew) — Narrower, with short sloping branches. Dark green. To 12 ft.

**GRANDIFOLIA** (Bingleaf Yew) — Needles are enormous, dark green. Otherwise *Pilaris*.

**SENTINALIS** (Sentinel Yew) — Fantastically narrow, but well leaved. To 12 feet.

Any one of above three kinds:—

\* 6 to 9 in. (Pots).....5 for \$9.50

**COLLECTION**— One each of all seven of these new yews in potted plants as above for \$12.50 postpaid.

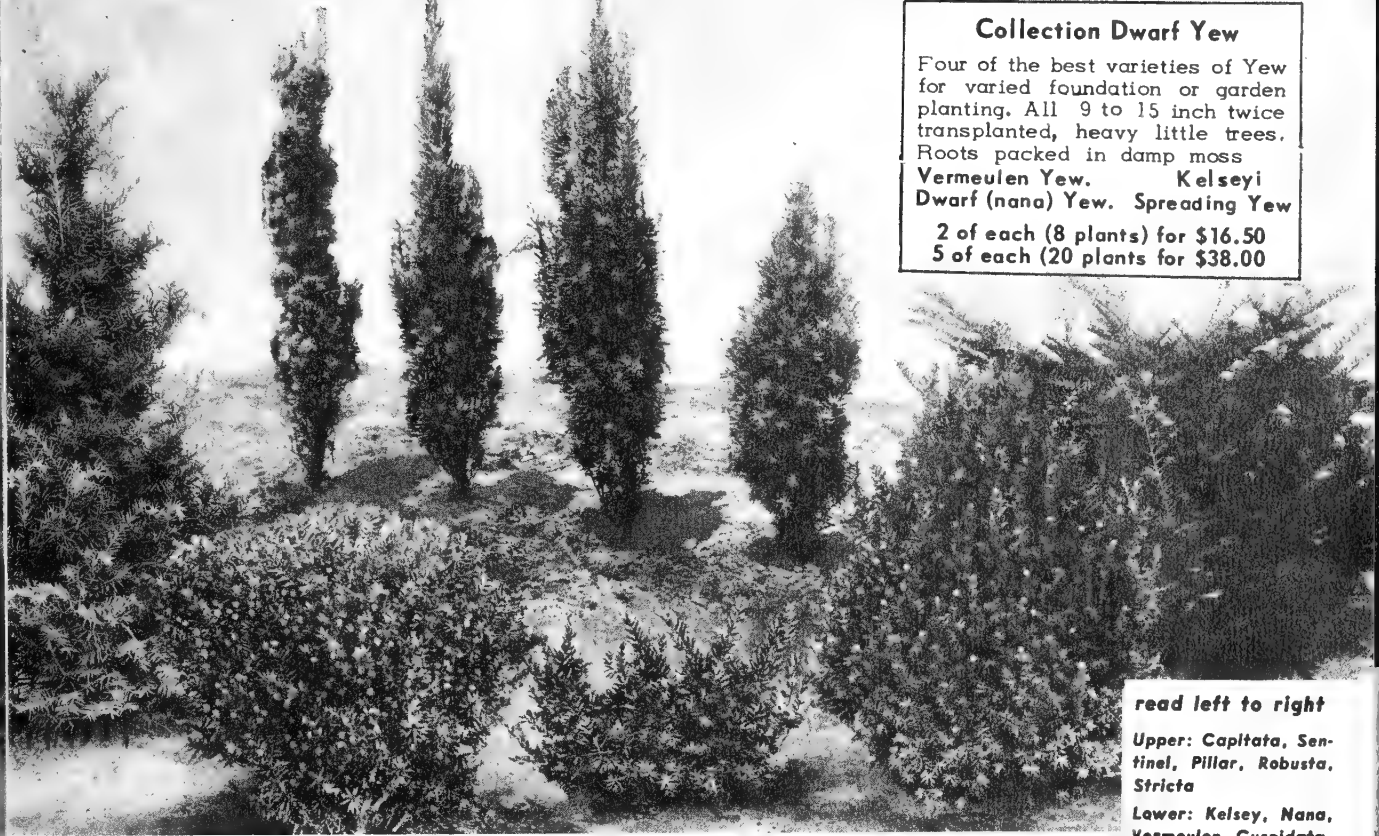


### Collection Dwarf Yew

Four of the best varieties of Yew for varied foundation or garden planting. All 9 to 15 inch twice transplanted, heavy little trees. Roots packed in damp moss

Vermeulen Yew. Kelsey Dwarf (nana) Yew. Spreading Yew

2 of each (8 plants) for \$16.50  
5 of each (20 plants) for \$38.00



read left to right

Upper: *Capitata*, *Sentinel*, *Pillar*, *Robusta*, *Stricta*

Lower: *Kelsey*, *Nana*, *Vermeulen*, *Cuspidata*

### TAXUS CUSPIDATA (Japanese Yew)

**T. cuspidata capitata (Upright Yew)**  
The natural form. Trees to 4 ft. The best type hedge Yew for most purposes.

	(Each)	(10)	(100)
* 6-8 in. X	.....	\$6.00	\$45.00
* 10-12 in. X	.....	6.00	60.00
* 12-18 in. XX	.....	16.00	120.00
2 feet B&B		\$9.50	85.00

**T. cuspidata (Spreading)** Commonly offered as "cuspidata." 6 ft. Zone III. A spreading open bush.

* 6-8 in. X	.....	\$5.00	\$35.00
* 8-10 in. X	.....	6.00	45.00
* 9-12 in. XX	.....	10.00	80.00
12-15 in. B&B		\$5.00	39.00
15-18 in. B&B		6.50	60.00

**KELSEYI** (Berrybush). 8 ft. Zone IV. Our introduction 1936 and attracting favorable comment everywhere. Propagated from the point of view of its wealth of red berries in autumn. Bears young and grows slowly. A dense, full bush. Needles like the Dwarf Yew.

	(Each)	(10)	(100)
* 4-6 in. X	.....	\$5.50	\$45.00
* 9-12 in. XX	.....	10.00	85.00
10-15 in. B&B		\$4.50	39.00

\* = young, unformed. X = transplanted.  
B&B = ball of earth, shapely. Plants not marked: well shaped.

**VERMEULEN** (Vermeulen's Yew). 12 ft. Zone IV. New. Compact and dense. Broad base and narrow top. Beautiful pyramid. Short needles.

	(Each)	(10)	(100)
* 8-10 in. X	.....	\$7.50	\$55.00
* 12-15 in. X	.....	9.00	75.00
* 12-15 in. XX	.....	12.00	90.00
12 in. B&B		\$5.00	18 in. B&B \$8.50

**HICKSII** (Hicks). 10 ft. Zone IV. Narrow, upright. Fine for hedges.

* 6-8 in. X	.....	\$5.50	\$45.00
* 9-12 in. XX	.....	10.00	85.00
12-15 in. XX	.....	15.00	120.00
1-1½ ft. B&B	.....	5.00	39.00
1½-2 ft. B&B	.....	\$7.50 each	

### BARGAIN IN LANDSCAPE SIZE YEWS

5 Bushy Landscape Evergreens packed for \$19.50

One each of Varieties offered below

(or all one kind if you prefer - assort. as you wish)

We have worked out an economical way of packing four evergreens, full landscape grade, bushy, balled and burlapped. You get the benefit if you buy in 5's. All these are 12 to 18 inch, balled (B&B).

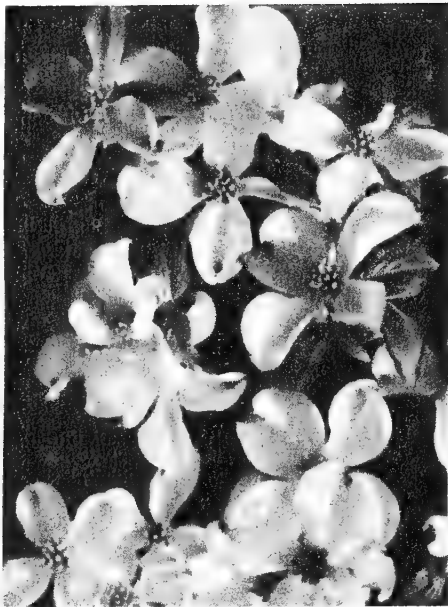
**Kelsey** (Berrybush),  
**Spreading**

**Hicks**  
**Dwarf (nana)**

**Henryi** (a vigorous "nana")

# FLOWERING TREES

Fall planting of these beautiful trees is safe and easy. Failures are seldom reported except in Oriental Magnolias—while we offer small sizes with earth ball only, such as experience shows just as well as in Spring. No special treatment in Fall.



*Flowering Dogwood (C. Florida)*

**ACER palmatum atropurpureum** (Red-Leaved Maple). 10 ft. Wine-red leaves. Bushy, compact. Any sheltered soil. In time, becomes an open tree-like shrub. Zone V.

(grafts) 12 to 18 in. X .....\$4.00 each  
(5 for \$15.00)

**CERCIS canadensis** (Red Bud). 20 ft. Zone IV. Rosy pink buds cover bare branches in April. Humus. Beautiful. Part shade.

\* 2-3 ft. X .....5 for \$7.00, 100 \$72.50  
5-6 ft. ....\$3.00 (5 for \$12.50)

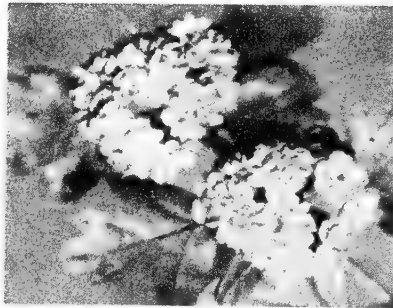
**CORNUS florida** (Flowering Dogwood). 25 ft. Zone IV. Very showy white in May, large red berries October on. Acid, humus. No more sensational sight than a group in bloom.

\* 12 in .....25 for \$6.00, 100 \$18.00  
\* 2 ft .....10 for \$8.00, 100 \$50.00  
3-4 ft ..... \$2.75 each (5 for \$9.00)  
6 ft .....5 for \$12.50, 100 \$210.00

**RUBRA** (Pink Flowering. Pink flowers. No real red is known, but the clear pink is a beautiful tone. Plant in with white for best effect.

\* 12 in. grafts .....5 for \$12.00  
3-4 ft. ....\$7.50 each, 5 for \$35.00

**LABURNUM vossii** (Hybrid Golden Chain). 35 ft. Zone V. Hardier and freer to bloom. A clear yellow color. Line. Bright green stems in winter.  
3-4 ft. \$2.50 .....4-5 ft. \$3.50



**SORBUS aucuparia** (European Rowan Tree). 30 ft. Zone II. Clusters of orange, in August. Showy.

\* 2-3 ft .....5 for \$7.50 (100 \$60.00)  
5-6 ft .....\$2.00 each (5 for \$8.00)

**CRATAEGUS Splendens** (Paul Scarlet Hawthorn) 20 ft. Zone IV. Showy white flower in May, fragrant. Red autumn fruit. An excellent hedge plant.

4-5 ft .....\$7.50, 5 for \$33.00

*Paul's Scarlet Hawthorne*

## Four Rare Trees

**METASEQUOIA** (Dawn-redwood). The new living fossil conifer from western China. Hardiness probably Zone II. 1 to 2 foot transplanted seedlings at \$7.00 each. (Deciduous)

### FRANKLINIA ALATAMAHA Ben Franklin's Tree

35 ft. Zone V. Large white and yellow blooms fragrant from August to frost. Damp; acid, humus, blooms best in sun. An extraordinary native. Leaves bright red in autumn—while white flowers still open. The only flowering tree that blooms in late fall. Unlike most trees, small sizes need more "nursing" than larger.

	(Each)	(10)
18-24 in. ....	.....	\$30.00
2- 3 ft. ....	\$5.00	35.00
3- 4 ft. ....	6.50	55.00
4- 5 ft. ....	7.50	65.00



*Dove-tree blossoms (DAVIDIA)*

**DAVIDIA involucrata** (Dove-tree). Called the most beautiful tree in the world by Dr. Wilson. Covered with large flowers "like white doves" in June. Zone VI.

2-2½ feet ..... \$2.00 each

**TAXODIUM distichum** (Bald Cypress)—80 ft. Zone V. Is not evergreen, but looks like one. Graceful, feathery pyramid. Very fine shade tree. Tolerant. 4 ft.,

5-6 ft ..... \$5.00, 5 for \$40.00

**MAGNOLIA glauca** (Swamp Laurel). 16 ft. Zone V. Prefers moist, but tolerant. Semi-evergreen. White blooms scattered from June to August. Very fragrant.  
 \* 12 in. .... 5 for \$7.50, 100 \$75.00  
 4-5 ft. .... \$5.00, 5 for \$20.00

**soulangeana** (Saucer Magnolia). 20 ft. Zone V. Late April show of large pink blossoms, white inside.  
 \* 10 in. (Pot) ..... 5 for \$12.00  
 18-24 in. BB \$6.00 (5 for \$22.00)

**stellata** (star Magnolia). 12 ft. Shrubby. Zone V. Early April sees ribbony, white, fragrant blooms.  
 \* 10 in. (Pot) ..... 5 for \$13.75  
 15-18 in. BB \$6.00 each 5 for \$22.00

**WATERLILY**. New, hardier pink-tipped form, double blooms in late April. Utterly beautiful.  
 10-in. (Pot) ..... 5 for \$17.50  
 1½-2 ft. B&B \$8.50 (5 for \$37.50)

**FLOWERING CRABS**  
**Flowering Crabs (Malus)**

Zone III to V. Easy to grow. Showy in May. Any one kind:  
 (each) (10) (100)  
 2-3 ft. .... \$15.00 \$ 95.00  
 4-5 ft. .... \$ 3.50 25.00 195.00

- Floribunda**. 18 ft. Pink, opens white.
- Flor. purpurea**, purple leaf form.
- Gloriosa**- purple red flowers, large bright red fruit.
- Parkmanni**-15 ft. Picturesque form. Rosy-red double blooms.
- Lemoine**-18 ft. Dark pink blooms, red fruit.
- And in 2 to 3 ft. size only:-
- Bechtel**. 20 ft. Fragrant, pink, late.
- Sargentii**. 6 ft. Dwarf, late, white.
- Atrosanguinea**. 20 ft. Deep red.



**The rare Franklinia**

# Bargains in Larger Young Trees

All the kinds below in the special sizes offered will succeed fully as well planted in Oct.-Dec. as in spring and they will grow 50% better next summer! Only exceptions are the Birch and Beech, which add perhaps 10% to transplanting risk by fall planting in sizes offered. No special treatment needed.

5 of one kind at 10 rate,  
 50 at 100 rate.

**Plan Ahead—Plant Now**  
 Young trees require little care, less expense and less trouble to plant than large. Order NOW the trees you need in the future.

<b>ACER</b> (Maple	(10)	(100)
<b>Rubrum</b> (Red)..... 4-6 ft.	\$14:00	\$125.00
6-8 ft.	18.00	150.00
<b>sccharum</b> (Sugar).. 4-6 ft.	14.00	125.00
6-8 ft.	20.00	180.00
<b>platanoides</b> (Norway) 6-8 ft.	17.50	150.00
<b>BETULA</b> (White Birch) 4-6 ft.	22.00	195.00
<b>populifolia</b> (Gray) .. 4-6 ft.	15.00	95.00
<b>papyrifera</b> (Paper).. 3-4 ft.	7.00	50.00
<b>CORNUS florida</b> ..... 4-6 ft.	20.00	180.00
(Dogwood) 6-8 ft.	25.00	210.00
<b>GINGKO biloba</b> ..... 4-5 ft.	32.00	.....
<b>JUGLANS nigra</b> ..... 4-5 ft.	16.00	140.00
<b>LIQUIDAMBAR</b> ..... 4-5 ft.	10.00	85.00
<b>MULBERRY tartarica</b> 3-4 ft.	7.50	25.00
<b>POPLAR Lombardy</b> .. 5-6 ft.	6.25	55.00
<b>bolleana</b> ..... 4-5 ft.	11.00	95.00
6-8 ft.	22.00	200.00

<b>QUERCUS</b> (Oak)	(10)	(100)
<b>Palustris</b> (Pin Oak) 5-6 ft.	\$29.00	\$160.00
<b>Rubra</b> (Red Oak).... 1½-3 ft.	6.00	40.00
5-6 ft.	20.00	135.00
<b>ROBINIA</b>		
(Bl. Locust) ..... 4-5 ft.	9.50	85.00
<b>SALIX</b> (Willow)		
<b>Babylonica</b> (Weeping) 4-5 ft.	9.50	85.00
<b>Wisconsin</b> (Weeping) 4-5 ft.	9.50	85.00
<b>Golden Willow</b> ..... 4-5 ft.	9.50	85.00
<b>Golden Weeping</b>		
(Niobe)..... 4-5 ft.	9.50	85.00
<b>Laurel-leaf</b> ..... 4-5 ft.	9.50	85.00
<b>SORBUS</b>		
(Europ. Mt. Ash).... 4-5 ft.	18.50	160.00
<b>TILIA</b> (Amer. Linden) 4-5 ft.	15.00	120.00
<b>ULMUS</b> (Amer. Elm).. 5-6 ft.	13.50	125.00
<b>Pumila</b> (Siberian)... 5-6 ft.	13.50	125.00

# Deciduous Shrubs

Move safely and easily after dormant (Oct. to Dec.).  
Need no attention but watering and pruning back.



Amelanchier

**AMELANCHIER Canadensis.** 20 ft. Zone IV. Thin, bushy shrub or tree. Gay white show in early July.

	(each)	(10)	(100)
2-3 ft.....	\$ 6.50	\$ 45.00	
5-6 ft.....	5.50	45.00	.....

## Cydonia (Hybrid Quince)

4 ft. Zone V. Sun. Bushy dwarf. Scarlet flowers in April. A tolerant ornamental shrub. Slow growth. Can be kept pruned.

**MOERLOOSI** — apple-blossom pink.  
**RUBRA GRANDIFLORA.** Early. Large, deep red blossoms.  
**VERMILION.** Scarlet.  
Any of above three kinds.  
2 yr. grafts \$2.50 5 for \$11.00

## Clethra amifolia Rosea

7 ft. Zone IV. Pink fragrant spikes. vary from July to August. Acid soil. Rare form.  
1 to 1½ feet \$2.75, 5 for \$12.50

**EUONYMUS alatus** (Winged Euonymus). 8 ft. Zone III. Pink-Crimson autumn leaves. Very showy.  
2-3 ft. \$2.50, 10 for \$18.00

**COMPACTA.** Dense dwarf form.  
18 to 24 in. \$2.00, 10 for \$18.00

**HAMAMELIS mollis** (Chinese Witch-hazel). Very showy yellow. Feb. and March. 20 ft. Zone V. (grafts)

	(each)	(10)	(100)
8-12 in.	3.00	24.00	225.00
12-15 in.	4.50	29.00	.....

**ILEX verticillata** (Winterberry). 15 ft. Zone III. Dampness preferred. Many red berries all winter. A show.  
2-3 ft. \$1.35, 10 \$8.00, 100 \$60.00

**Kolkwitzia amabilis** (Beauty Bush). 8 ft. Zone V. Sun, loose. A light green fountain flushed with a cascade of pink in June.

	(each)	(10)	(100)
2-3 ft.	1.25	11.00	100.00

**Myrica carolinensis** (Bayberry) 6 ft. Zone IV. A shapely rounded bush. Good foliage. Barren, sandy soils — seashore — drybanks. Spicy foliage, gray, waxy berries.  
12-18 in. clumps, 5 for \$7.50  
(100 for \$125.00)

## Philadelphus Virginal

8 ft. Double, fragrant, translucent white blossoms load the bush in June. Then more sparsely through summer. Zone V.

6-12 in.....	.....	30.00
3-4 ft.....	1.00	14.00 120.00

**NEVIUSA alabamensis** (Snow Wreath). 5 ft. Zone V. Showy white, odd blooms in masses, June. Drain.  
18-24 in. .... \$2.00, 5 for \$8.00

## VIBURNUM burkwoodi.

5 ft. Zone V. New hybrid, with fragrant pink blooms in May, borne young. Superior to Carlesii though similar. Half evergreen.  
\*3-in. pots 6 to 9 in. 5 for \$11.00  
15-18 in. B&B .... \$5.00, 5 \$22.50

**totentosum** (Doublefile Viburnum). 10 ft. Zone IV. Horizontal strings of snowy blooms in June. Neat.

	(each)	(10)	(100)
* 12-18 in.	\$.....	\$ 5.00	\$ 35.00
18-24 in.	1.50	12.00	80.00

**PLICATUM** (Japan Snowball) Form without fruit, but showier bloom.

* 12-18 in.	.....	.....	20.00
2-3 ft.	2.00	18.00	150.00



## SYRINGA Lilacs

All tolerant, but need extra lime.

**vulgaris** (Old-fashioned Lilac). 15 ft. Zone III. Spreads by suckers to huge clumps. Purple, May. Fragrant.  
18-24 in. 10 for \$9.50, 100 \$80.00  
2-3 ft. .... \$1.25 3-4 ft. .... \$2.00

**ALBA** White form of above.  
18-24 in. 10 for \$9.50, 100 \$80.00  
2-3 ft. .... \$1.50 3-4 ft. .... \$2.50

## NAMED HYBRID LILACS

Huge fragrant trusses in many colors. Both "S" (Single) and "D" (Double) forms are charming. Ratings below are by experts — 10.0 would be perfect. Lilac colors are impossible to describe — notes below are mere indications. Any 5 below.  
12-18 inch for \$7.50 — post-paid.  
(25 for \$16.50)

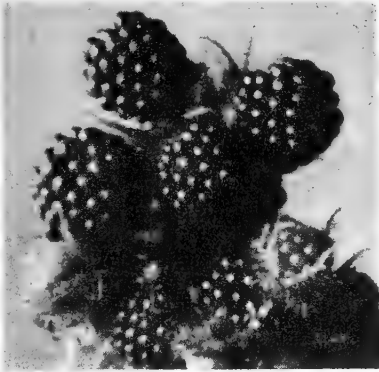
- Hugo Koster** (5.9) — S. Lilac.
- Leon Gambetta.** (7.3) — D. Lilac.
- Mrs. Ed. Harding.** (7.9) — D. Red.
- Pres. Lincoln.** (7.8) — S. Clear Blue.
- Horstenstein.** (7.4) — D. Red.
- Jan van Tol.** (7.5) — S. White.
- Pres. Grevy** (6.9) — D. Bluish.
- Ellen Wilmott** (8.0) — D. White.
- K. Havemeyer.** (7.3) — D. Pinkish.
- Ludwig Spaeth.** (7.8) — S. Purple.
- George Billaire.** (6.4) — D. red-purple.



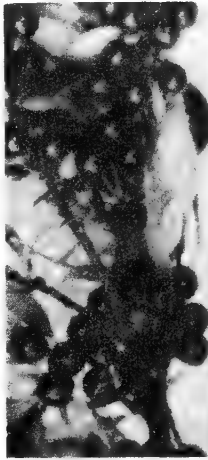
# FRUITS and NUTS for AUTUMN

(see next five pages)  
●—self-unfruitful. Do not plant by itself, but always with another variety of the same fruit.  
(P)—good pollinizer.

All can be planted in Oct.-Nov., almost a year gained over next Spring and identical success. A sod mulch helps. Plant fruits the same as you would any other deciduous trees and shrubs. Sweet Cherries are an exception: Risk is increased 5% to 10%.



Wineberry—Unusual, juicy



Hansen Bush Cherry

## BERRY BUSHES

Berries come on old wood only, so prune after picking.

### BLACKBERRIES

(R. Species) Zone III  
(Each) (10) (100)

**Alfred.** Large, upright and dependable ..... \$.55 \$2.50 \$12.50

**Eldorado.** The standard variety ..... .55 2.50 11.50

**Crystal White.** White Blackberry Novelty, good..... .60 2.75 14.00

### THORNLESS BOYSENBERRY

Huge, 2 in. berry, highest quality of all brambles. Prolific. No better berry known. Zone VI.

1 year ..... .60 2.75 13.00

### WINEBERRY (R. phoenicolasius).

Z. V. Juicy, red, fragrant. Fruit in large clusters. Absolutely laborless. Bears on both old and new wood—so might fruit next summer! Unique.

1 year ..... .75 3.50 18.00

### RED RASPBERRIES

(Rubus Strigosus) Zone I  
(Each) (10) (100)

**Latham.** Old variety, very dependable ..... \$.60 \$2.75 \$15.00

**St. Regis.** Crops spring and autumn ..... .60 2.75 16.00

### BLACK RASPBERRY

(R. occidentalis)

**Black Beauty.** Most dependable "blackcap."  
Zone III ..... .55 2.50 12.50

### PURPLE RASPBERRY

(R. neglectus)

**Sodus.** Heaviest bearer of all raspberries ..... .60 2.75 14.00

### NECTARBERRY

Hugest and tastiest of all the new hybrids. Heavier yields over a longer period. The best. Zone VI.

1 year ..... .60 2.75 13.00

## UNUSUAL FRUITS Native Americans

### Highbush Cranberries

Large fruited, heavy-yielding type of Viburnum trilobum—high in pectin. Zone I. Make sauce or jelly, same as with cranberries, but strain to keep out pits.

(Each) (10) (100)  
2 feet.....\$1.50 \$8.50 \$80.00

### Adams Elderberry

The large berries and extra fruit clusters are a decided improvement for pies, jam and wine. Zone IV.

2 feet ..\$1.25 each, 10 for \$8.00

### Beach Plum

Prunus maritima grows 6 to 8 ft. high, hardy into Zone III. Thrives in gardens better than on sea-shores. Good drainage. Fine, useful plums.

2-3 ft. \$1.75 each, 10 for \$15.00

### Dwarf Juneberry

Amelanchier berries are known as "Bilberries" or "Service-berries". Dark red fruit in July. This form grows to 8 ft., Hardy Zone II.

(Each) (10)  
12 to 18 inch (2 yr.).....\$1.00 \$7.00

### New American Mulberry

Ever-bearing, from June until September. Large, refreshing berries without the mawkish sweetness of most varieties. Zone IV.

4-5 ft. trees....\$3.00 ea., 10 for \$25.00

### Hansen Bush-Cherry

Five-foot shrub, covered with dark red cherries the size of plums. White\* blooms in May. Silvery leaves turn gold and flame in autumn. Bears 4th year. Zone III.

(3) (10)  
1½ to 2 ft. .... \$3.50 \$8.00

# Dwarf Fruits



**Dwarf McIntosh Apple**

A tree whose fruit is as large or larger than ordinary, but which never grows very tall—perhaps ultimately 12 to 15 feet. Space 12 feet apart.

A dwarfed tree can be sprayed, pruned and picked by hand without ladders, equipment or professional skill. It bears much earlier in life, in its third or fourth year at latest—often earlier—and carries amazing loads of fruit. Dwarfed fruits (especially Plums and Peach) are less liable to borers and other pests.

**PRICES: All kinds listed below:**

1 year—Not branched .....	\$2.60	{ Add 50c packing on orders under \$10 }
2 year—Branched .....	3.90	
3 year—Heavier .....	5.25	

All three ages are about the same height. Most are 3 to 4 feet high, but apples often are still dwarfer.

Dwarf fruits are not short-lived, but thrive and produce a generation or more. A space 25 ft. square will hold 4 dwarfs in-

stead of one standard, and the 4 will bear about  $\frac{1}{3}$  more fruit than will one standard tree—and will do it 2 to 4 years quicker!

## Kinds of Dwarfs Available

**Root Stocks:** Apples on Malling types: certain kinds on 1, 2, 3 or 7 for reasons based on long experience.

Also, apples are available on Malling 9—Extra Dwarf, not over 6 ft. Specify if No. 9 desired.

Pears are on Quince; Plums on St. Julien; other fruits on Almond.

### QUINCE

Orange  
Champion.

### PEACHES

Belle of Georgia  
Crawford  
Eclipse  
Elberta  
Golden Jubilee  
J. H. Hale  
Hiley  
Red Bird  
Rochester  
Valiant

### APRICOT

Alexander  
Early Golden  
Moorpark

### PLUMS

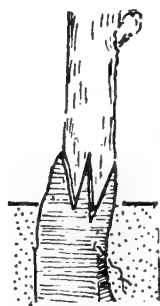
Abundance  
Burbank  
Damson  
German Prune  
Italian Prune  
Red June  
Reine Claude  
Stanley Prune

### APPLES

Cortland  
Cox's Orange  
Duchess  
Oldenburg  
Fameuse (Snow)  
Gravenstein  
Jonathan  
Northern Spy  
Red Astrakhan  
Red Delicious  
Red McIntosh  
R. I. Greening  
Redwin Spy  
Rome Beauty  
Stayman Winesap  
Spitzenberg  
Wealthy  
Yellow Delicious  
Yellow  
Transparent

### NECTARINE

Boston  
Hunter  
Sure Crop  
Red Roman



Planting depth should be so that the graft is just above the ground, or an inch above. If too deep the scion develops its own roots and tree is no longer dwarf. If too high, rootstock suckers.

**Drainage.** Air among the roots is essential; enables a tree to use food. Drainage must always be good in an orchard.

**Watering.** The supply of water determines growth and fruitfulness—particularly in summer. Artificial watering is all right, or a meager water-supply can be eked out by cultivation or mulching.

**Pruning.** Severely prune away branches and twigs when planting young fruit trees. Leave nothing but the main stem and two or three shortened branches. Result: extra vigor next spring.

### PEARS

Bartlett  
Beurre Bosc  
Clapp's Favorite  
Comice (Riviera)  
Duchess  
d'Angouleme  
Duchess Merode  
Easter  
Flemish Beauty  
Gorham  
Kieffer  
Seckel  
Sheldon  
Wm. Nevis

### SWEET CHERRIES

Bing  
Black Tartarian  
Lambert  
Royal Anne  
Windsor



# Standard Fruit Trees

You may use the low 10 rates if your assorted order totals 10 of these fruit trees.

	PRICES		
	(1 to 9) each	(10 to 49) each	(50) each
(Zone IV)— <b>APPLES</b> ... 2-yr. 5 ft. 11/16 in.	\$1.85	\$1.55	\$1.10
(Zone V)— <b>SWEET CHERRIES</b> 2-yr. 5 ft. 11/16 in.	2.45	1.95	1.50
(Zone IV)— <b>SOUR CHERRIES</b> 2-yr. 4 ft. 11/16 in.	2.35	1.80	1.20
(Zone IV)— <b>CRABS</b> ... 2 yr. 5 ft. 11/16 in.	1.85	1.55	1.10
(Zone V)— <b>PEACHES</b> 1-yr. 4-5 ft. 9/16 in.	1.45	1.20	.90
(Zone IV)— <b>PEARS</b> ... 2-yr. 5-6 ft.	1.95	1.60	1.10
(Zone III)— <b>PLUMS</b> ... 2-yr. 5-6 ft.	1.95	1.60	1.10

## PEARS

### (*Pyrus communis*)

Bears 6th year. Space 20 ft.

- **Bartlett.** Large, rich, juicy, golden. Young bearer. Canning, eating.
- **Beurre Bosc.** Very large, rich, juicy. Late Sept.-Nov. Few wind-falls. Eating.
- **Duchess d'Angouleme.** Extra large, greenish yellow, spotted. Excellent. Long-lived. Young bearer.
- **Clapp Favote. (P)** Fruit large, pale, fine-grained, juicy. August.
- **Seckel.** Small, attractive. Blight-resistant. Sept.-Oct. Eating, pickles.

## PLUMS (*Prunus*)

Bear 5th year. Spaces 20 ft. Trifloras and European varieties do not cross-pollinate.

### TRIFLORAS (*P. Salicina*)

- **Abundance.** Red, medium sized. Flesh yellow, juicy. Vigorous, productive. Aug.
- **Burbank.** Red, medium sized. Flesh yellow, very juicy. Late Aug.

### DAMSONS (*P. Insititia*)

**Shropshire Damson.** Small, purple, best for jams. Productive. Sept.

### EUROPEAN (*P. domestica*)

- **German Prune.** Large dark blue. Aug.
- **Lombard.** Medium-size, juicy, dark red. A hardy, prolific bearer. Sept.
- **Reine Claude** (Bavay's Green Gage). Large, yellow. Late Sept.
- **Stanley.** Large dark blue prune. Annual bearer. Late Sept.

## CHERRIES (*Prunus*)

### SOUR (*P. avium*)

Bear 3rd year. Space 18 ft.

- **Early Richmond.** Clear red, medium sized. June. One of the best.
- **Montmorency.** Largest, firm flesh. Disease resistant. Finest quality. June.

### SWEET (*P. cerasus*)

Bear 5th year. Space 20 ft.

- **Black Tartarian. (P—best.)** Purplish black. Juicy, rich flavor. June.
- **Governor Wood. (P)** Yellow or light red, medium sized, sweet, juicy. June.
- **Yellow Spanish.** Large, yellow. Desirable for maraschino. Late June.

## PEACH (*Prunus persica*)

Bear 3rd year. Space 16 ft.

### All are Freestone.

- **Belle of Georgia.** White, rich flavor. Vigorous, productive. Sept. Extra hardy.
- **Carman.** Large white. Fine flavor, quite juicy. Aug. Extra hardy.
- **Champion.** White, firm, sweet, juicy, thin-skinned. Extra hardy. Eating, cooking, canning. Sept.
- **Early Crawford.** Medium sized yellow. Juicy, high flavor. Aug.
- **Elberta.** Yellow. Fruit large, firm, and excellent for canning. Sept. 15.
- **Golden Jubilee.** Yellow. Aug. Extra hardy. Juicy, sweet, yellow flesh.
- **J. H. Hale.** Yellow, large, firm. Not vigorous but very delicious. Sept.
- **Late Crawford.** Yellow. Late Sept.
- **Mikado.** Popular, yellow. Aug.
- **Rochester.** Delicious, large yellow. Prolific bearer. Late August.
- **Valiant.** Yellow, extra hardy. Late August. Large, good fruit.

## APPLES (*Malus pumila*)

Bear 7th year. Space 25 ft.

### EARLY SUMMER

● **Yellow Transparent.** Golden, juicy. Young biennial bearer. Cooking.

● **Lodi.** Larger, better quality. Young annual bearer. Eating. Cooking.

### SUMMER APPLES

● **Red Astrachan. (P)** Large striped red. Young biennial bearer. Eating, cooking.

● **Early McIntosh. (P—best for Northern Spy.)** Like McIntosh. Biennial bearer. Eating, cooking, baking.

### AUTUMN APPLES

● **Gravenstein.** Large striped red. Good quality. Eating and cooking.

● **Fall Pippin.** Striped red, medium sized. Annual bearer. Eating, cooking.

● **King.** Large, crisp, juicy. Light annual bearer. Eating, cooking.

● **McIntosh. (P)** Striped; delicate, aromatic flesh. Young annual bearer. Eating, cooking, baking.

● **Red McIntosh. (P)** Solid red form.

● **Wealthy. (P)** Striped red, wonderful flavor, juicy. Young annual bearer. Eating, cooking, baking.

### WINTER APPLES

● **Baldwin.** Large, red, hardy, good quality. Biennial bearer. Eating, cooking.

● **Cortland. (P—best for McIntosh.)** Larger, late keeping McIntosh. Annual bearer. Eating, cooking.

● **Delicious. (P)** Crimson. Crisp, tender, juicy. Annual bearer. Eating.

● **Golden Delicious.** Large, yellow. Marvelous flavor. Young annual bearer. Eating, cooking.

● **Golden Russet.** Highest quality cider-apple, or for spring eating, baking.

● **Northern Spy. (P—for all but McIntosh.)** Large red, striped, high flavor. Annual bearer. Eating, cooking.

● **Red Delicious. (P)** Solid red strain.

● **Rhode Island Greening.** Large green-yellow. Annual. Eating.

### CRAB APPLES

● **Hyslop.** Large, purplish red. Flesh yellow, pleasant. Biennial bearer.

● **Dolgo.** Handsome flowering crab. Makes ruby red juice. Sept.

**PLANTING  
DISTANCES**

Apple, Standard	30 by 30 ft.
Apple, Dwarf	10 by 10 ft.
Cherry	25 by 25 ft.
Peach or Plum	20 by 20 ft.
Peach, Plum, Dwarf	10 by 10 ft.
Pear, Standard	25 by 25 ft.
Pear, Dwarf	10 by 10 ft.
Apricot	16 by 16 ft.
Blackberry	2 ft. by 6 to 8 ft.
Raspberry	2 ft. by 3 to 4 ft.
Grape	8 by 10 ft.
Blueberry	4 by 6 ft.

# New Hybrid Grapes



No permanent canes needed; only a short trunk or shank. Grapes grow on new wood, which is pruned away each year.

It is astonishing how the public together with the majority of nurserymen are unaware of the tremendous progress that has been made during the last few decades in improving the various strains of grape vines that will grow in the rougher and colder climates of this country.

Throughout North America, from the eastern side of the Rockies to the Atlantic shore, grape vines are grown. But, the grapes they yield have an unpleasant foxy flavor, tough skin, coarse seeds, and other inferior qualities that make them undesirable either as table or wine grapes.

The Caucasian Grape (*Vitisvinifera*) is far superior to our native grape. This grape family, evolved in the milder parts of Europe and Asia, whence they were brought to California where they produced the excellent grapes that are familiar to the average American. However, these species have not the necessary make up to withstand our sub-zero weather and succumb disastrously to the diseases prevailing here; while our hardy Native Grapes remain immune.

Breeders like Seibel, Seyve Villard, Bacco, Rabaud, Oberlin, the Station in Colmar, and others have produced varieties that combine the wanted qualities of both species to produce the ideal grape vine. Namely, resiliency to our cold climate; diseases; and absence of all foxiness identical with the old Concord, etc. These Hybrid Grapes, possessing a pleasant sweetness and a certain native fruitiness, makes them in many respects far superior to the California as either fine table or excellent wine grapes.

They lend themselves to Spur pruning. This quality simplifies the pruning and care of the vines and permits one to easily train them into permanent pleasing patterns. This greatly modifies the yearly pruning without changing the shape or size of the trellis.

Even when grown on a six foot pole, they produce from 10 to 30 pounds of luscious grapes. The clusters are of immense size; some of the varieties have as many as 150 big clusters the second year planted.

Most kinds bear about Concord time. Bacco, Florence, Angele are perhaps two weeks earlier. Siebel 14 and Jacques Wolf, a week late.

STURDY, WELL ROOTED VINES Zone V  
2 Year No. 1 \$2.75 each postpaid.

BACCO No. 1—Fine strong growing plant, excellent for trellises, dark red, medium size berries, good wine and table grape.

SEIBEL No. 1—Black, long clusters, tart, fine for wine and jelly.

SEIBEL No. 14—Enormous big clusters, shouldered cluster, big berries, good table and wine grape.

WESTCHESTER—Roseat white, long clusters, very sweet, finest for table and wine, very abundant bearer, absolutely free of foxiness.

MADELEINE—White Muscat, big berried, long clusters, finest of table grapes.

FLORENCE—Pink, loose cluster, big berries, extremely sweet, very prolific, fine table grape.

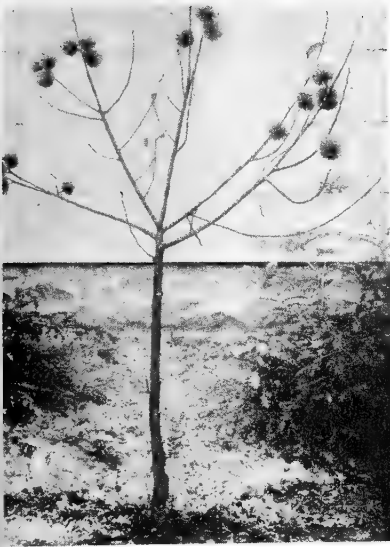
ANGELE—Black medium berries, loose cluster, very sweet, absolutely vinefera, finest table grape.

JACQUES WOLF—Black grape, big cluster, fine for wine and jelly. Aestivalis X St. Jacques. Vinefera.

SEIBEL No. 5860—Good table and wine grape, white, good all around qualities.

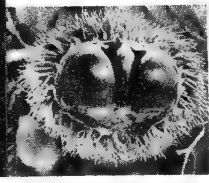
MARGUERITE—Black grape, big cluster, good for table.

ELLEN SCOTT—Red, very sweet, fine table grape, has done



# HARDY NUT TREES

Chinese Chestnut  
3 ft.  
54 chestnuts  
on a baby  
tree!  
3 nuts in  
each bur



## BLACK WALNUTS—Zone IV

One of our most beautiful native trees, growing well in any fertile well drained soil. The grafted sorts bear their first nuts commonly in the third to fifth year.

**Thomas** is a rapid-growing tree. The meat is attractive and tasty, falls out easily in halves

3 to 4 feet ..... \$4.00 each, 5 for \$16.50

## BLIGHT-RESISTANT CHESTNUTS

**Chinese Chestnut** (*Castanea mollissima*). Similar to the dying American, of fine flavor, and sweet. It is inured to the Chestnut blight. Lives and bears Zone V.

2 to 3 feet ..... 3 for \$5.00, 25 for \$35.00

3 to 5 feet ..... 3 for \$7.50, 5 for \$12.00

# Huge Hybrid Blueberries

Really beautiful as specimens or in hedges. Suited for use in small quantities in the small garden. A 100-foot hedge will pay about \$25 worth of berries a year! (Spaced 18 ins.)

### Why Wait? Plant Some NOW!

And enjoy the berries sooner. Not only will they add beauty to your garden but each bush will pay for itself many times over! Hardy throughout U.S.A.



### BLUEBERRY PRICES:

	(Each)	(10)	(25)	(100)
<b>NAMED</b>				
<b>KINDS</b>	2 yr., 6 to 12 in.....	\$1.25	7.00	15.00
	3 yr., 12 to 18 in.....	1.50	8.50	18.00
	3 yr., 18 to 24 in.....	2.00	11.00	22.00
	4 yr., 2 to 3 ft. bearing).....	2.00	15.00	30.00
<b>MIXED:</b>	18 to 24 in. (our selection)....		10.00	20.00
				70.00

Set the plants in beds 4 feet apart each way. Several varieties should be included in every planting, as an exchange of pollen is necessary to produce good crops of berries. Or order "mixed" if you wish—we will assort for good pollenization. **All varieties are almost equally fine.**

A bush should produce 2 quarts (worth 75c wholesale) Planted 6 ft. apart (1200 to the acre) you could safely expect on good land a gross income of \$1200 a year

### Needs only an acid soil

Blueberries require an acid soil containing peat or other rotted vegetable matter. They need a moderate supply of soil-moisture, and good drainage so that the roots can get air during the growing season.

### Prune for Heavy Yield

You will get fruit if you just leave em alone. But more and larger if you cut out all old canes, and keep new shoots coming. Also when in bloom cut away about half each flower cluster Fertilize in May.

**Cabot.** Early, broad spreading bush. Home use.

**Concord.** Hardy, upright, midseason. Fine quality. Large.

**Jersey.** Latest and largest berry. Hardest.

**June.** Erect bush. Earliest, dark blue berries.

**Rancocas.** Early, good quality.

**Rubel.** Late. Tallest, most erect.

**Burlington.** Newest named kind. Later than all others. Good shipper. Large. Good quality.

**Pioneer.** Fairly early, low, bushy. Large berries in heavy clusters. Fine.

# PERENNIALS that Prefer FALL

Iris, Peonies, Poppies, etc., have an autumn rest period for safe planting and dislike being disturbed at all in spring. Early blooming kinds are not sufficiently established after planting to bloom the same year. If set in September-October, their roots are ready and blooms show next spring. Water well once a week until freeze-up, mulch the first winter.



Christmas Rose

## Christmas Rose

**Helleborus Niger.** Tiny evergreen, with white blooms. December to March. \$1.50 each, 3 for \$4.00.

## Lenten Rose

**Helleborus orientalis purpurea.** Red-purple blooms February to April. \$1.35 each, 3 for \$3.75.

## Astilbe Fanal

The name means "lighthouse" and the blazing, fiery spikes brighten any garden. May-June 15 inches high. Space 12 inches Rich, humus, sun or semi-shade 3 for \$2.00; 6 for \$3.75.

## Dianthus Old Spice

A Dianthus that looks and smells like a pink florists' carnation. Hardy. Blooms all summer, pink. 3 for \$1.50.

## True Bleeding Heart

**Dicentra spectabilis** is best moved in early autumn. Showy flowers for months next summer. Fine stock. 3 for \$2.00; 6 for \$3.75.

## Oriental Poppies

Bloom May-June, tolerant, any good soil. Water well. Plant Aug.-Sept.

**Beauty of Livermore.** Crimson, black.

**Gold of Ophir.** Nearly gold.

**Mrs. Perry.** Orange-apricot.

**Barr's White.** Superb white.

**Mrs. J. Hawkins.** Clear shell-pink.

**Snowflake.** (Pat. 365). Upper half flame-orange, lower half of flower white.

All 6 kinds (one each) for \$3.50; 85c each postpaid.

# IRIS

## Modern Tall Bearded Iris — Bright, Huge!

Up to ten blooms on tall stalks; flowers up to 4 or 5 times the size available a mere ten or fifteen years ago!

### 5 RECENT MEDAL WINNERS

(1 of each, all 5, for \$3.50)

**Elmohr.** Huge unusual hybrid Rich mulberry purple. \$1.00.

**Missouri.** Very fragrant. Deep blue 55c each.

**Copper Lustre.** Big red-gold. 55c

**The Red Douglas.** Fine large red, falls deeper color. Uniform tone. 75c each.

**Wabash.** Highest rated. White with violet falls, 70c each.

### 5 OUTSTANDING

#### RUNNER-UPS

(1 of each, all 5, for \$3.25)

**Golden Majesty.** Late. Deep yellow. 75c each.

**Pink Satin.** Outstanding pink. 60c.

**E. B. Williamson.** Copper-red, dusted with gold. 55 each.

**Marquita.** Huge smooth ivory Falls turn red on opening. 60c.

**Great Lakes.** Finest pure late blue Large, rugged. 75c.

### Other Bearded Iris

#### FALL BLOOMERS

Bloom in spring and again in fall! 1½ to 2 ft. 3 of one kind for \$1.35

**Sangreal.** 28 in. Deep yellow.

**Black Magic.** 30 in. Dark blue.

**White Autumn King.** 30 in. Large white.

**October Blaze.** 16 in. Clear purple-red.

#### EVER-BLOOMERS

May, summer, autumn — Fine show until late frost. Fertilize lightly between flowering periods.

**Souv. Lt. Chauvenac.** 15 in. Violet. 3 for \$1.60.

**Jean Siret.** 10 in. Yellow. 3 for \$1.25.

**Paltec.** Crested blue, 2 ft. Rare hybrid. 3 for \$1.25.

## TREE PEONIES \$5.00 each

Because of their novelty and great beauty, Tree Peonies are rapidly becoming one of the most desired plants. They bloom earlier than ordinary Chinese Peonies and their flowers are of immense size. These plants are established in 5 inch pots and can be moved safely at any time.

**Archiduc Ludovico.** Enormous flower, flesh pink.

**Athlete.** Double glazed mauve, shaded rose.

**Baroness d'Ales.** Vivid salmon-pink, deeper in center.

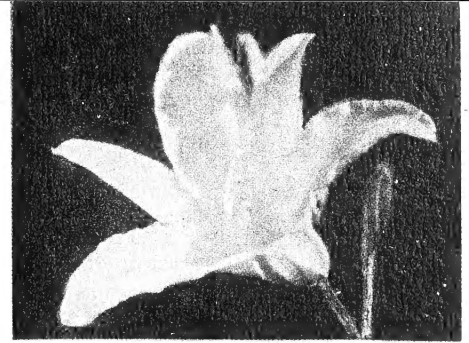
**Jules Pirlot.** Satiny-pink, flushed carmine.

**Reine Elizabeth.** Brilliant salmon-rose.

**Souv. de Ducher.** Reddish-violet with silvery reflex.

# DAY-LILIES (Hemerocallis)

The best in each color and season. Sun or shade; disease-free. Each kind blooms about 4 weeks. These new kinds are sensationally handsomer than old-fashioned day-lilies: larger, brighter, showier.



## 4 REDS and PINKS Collection for \$8.50

## 4 PURPLES Collection for \$7.25

## 4 YELLOWS \$5.70

## 4 ORANGE \$3.05

Baby Tears — rosy red, ruffled . . . . . \$1.50

Old Vintage — purple, yellow throat. . . . . \$1.50

Gaiety — early. Pale yellow. Large . . . . . \$1.60

Dr. Regel — early. Good bright orange . . . . . \$1.55

Rosalind — pinkest of all. Grand . . . . . 2.50

Persian Princess — red, purple . . . . . 2.00

Hyperion — huge, waxy yellow. Best. . . . . .75

Rajah — scarlet orange with red . . . . . 1.10

Craemor Henna — showy henna. Good . . . . . 1.50

Port — fine rosy wine flowers. . . . . 1.75

Pale Moon — a large, pale yellow . . . . . .85

Mikado — a very good orange . . . . . .55

Georgia — pink and buff. Nice . . . . . 3.00

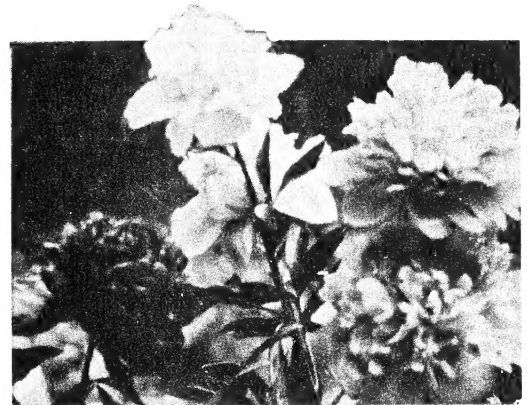
Purple Waters — dark purple . . . . . 2.00

Autumn Prince — late, light yellow . . . . . 2.50

August Pioneer — late, gold orange . . . . . .85

# PEONIES

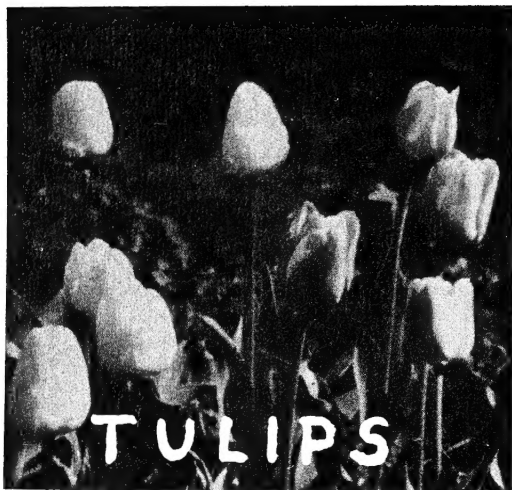
We offer 20 peonies—all double or semi-double—which achieve about all the effects of the thousands or so named kinds. Each is high-rated by American Peony Society (average 9.0; 10.0 would be perfect). Good 3-5 eye divisions. If set in deep, manured bed in sun will last for a generation without any attention. Plant late Aug. to Oct.



**SPECIAL:** World's Highest rated peonies in 3 colors—LeCygne (9.9 white); Therese (9.8 pink); Philippe Rivoire 9.2 red); for \$9.00 postpaid.

6 Weeks of Bloom	5 WHITES Collection for \$8.00	5 PINKS Collection for \$7.30	5 REDS Collection for \$9.50	5 YELLOWISH Collection for \$7.20
Mid-May	Kelway Glorious — 9.8 Frag. huge white \$3.00	Mon. Jules Elie. 9.2 — Fragrant pink . . . . . \$1.30	Phil. Rivoire. 9.2— Crimson, fragrant \$3.00	Duch. de Nemours. 8.7 —White and gold \$1.00
Late May	Mont Blanc. 8.6— Lacy, milky, fragrant . . . . . 1.00	Rosette. 8.8—Clear shell pink . . . . . 1.30	Wm. F. Turner. 8.4— Crimson, gold center . . . . . 2.00	Laura Dessert. 8.8— Light lemon tone. \$2.00
June	Mrs. Ed. Harding — 9.3 —Prolific white. . . . . 1.50	Therese. 9.8—World's best pink . . . . . 2.00	Longfellow. 9.0— Bright crimson . . . . . 2.00	Lucy Shalor. 9.0—Pale yellow center . . . . . 1.50
Mid-June	Mme. J. Dessert. 9.4— Flesh white . . . . . 1.50	Mary W. Shaylor. 9.0— Clear pink, dwarf. 1.50	Felix Crousse. 8.4— Bright red . . . . . 1.00	Primevers. 8.6—White and sulphur . . . . . 1.50
Late June	Avalanche. 8.7—Cream white. Showy . . . . . 1.00	Sarah Bernhardt. 9.0— Apple blossom . . . . . 1.20	The Disc. (New). Brilliant red . . . . . 1.50	Solange. 9.7—Odd buff and cream. . . . . 1.20

# Spring Bulbs for Fall Planting



We have concentrated on the few best kinds of each class now in quantity production. The result is easy, intelligent selection by you and—lower prices, for top size bulbs.

Your bulbs are specially selected for you in Holland. No finer quality exists—no finer varieties—anywhere at any price.

We ask that if possible you order three weeks in advance of your desired planting date—in fact, it is best to order at once on receipt of this catalog.

## Order Tulips Now!

Any tulip on this page is priced \$4.75 per bag of 50. Sold only in bags, 50 of one kind minimum order. This figures out to the low price of - - 9½¢ each.

### Darwin Tulips

(May: 1½ to 3 ft. Lift every 2 years.)  
The showiest tulips. Magnificently large blooms, strong vigorous stems.

- Bartigon**—Fine, fiery red. Large.
- Blue Amiable**—Large heliotrope-blue.
- City of Haarlem**—Immense scarlet, blue base, white edge.
- Clara Butt**—Beautiful soft salmon rose. Most popular color in Darwins.
- Farncombe Sanders**—Famous large scarlet, clear white base.
- Faust**—Purple maroon, blue base.
- Giant**—Large, tall purple-violet with blue and white base.
- Gloria Swanson**—Carmine, with blue.
- La Tulipe Noire**—Very dark maroon, velvety. The "Black Tulip."
- Niphotos**—Cream outside, soft yellow inside. Long flower. Outstanding.
- Pride of Haarlem**—Large, old rose.
- Princess Elizabeth**—Rose-lilac, edged rose. White base.
- Rose Copeland**—Deep rose. Fine shape.
- Victory (d'Oliviera)**—Solid brilliant red with black and white center.
- William Copeland**—Old lavender favorite.
- Yellow Giant**—Large, tall, bright yellow with black base.
- Zwanenburg**—Large, tall. Pure white throughout except for black stamens.

### Cottage Tulips

("May-flowering")

Usually bloom in Mid-May. Easier to grow, need not be lifted every few years. Tall, sturdy stems—the newer kinds as sturdy as Darwins and with large flowers.

- Carrara**—Purest white, ivory stamen.
- Mazeppa**—Extremely brilliant, rich red. White center.
- Mrs. Scheepers**—Stunning tall golden. Long petals. Outstanding.
- World's Fair**—Imposing large, tall, brilliant rose. Cream base.
- Wall Street**—Fine golden yellow.
- Yellow Emperor**—Metallic golden-yellow. Large bloom, strong stem.

### Triumph Tulips

("Early Darwins")

A week before Darwins; stems strong, flowers large. Bright colors and contrasts. Better kinds only:

- Corniferous**—Deep red, sturdy.
- Zimmerman (Tudor City)**—Cream and rose, dark rose edge and white inside center.

### Double Early Tulips

- Orange Nassau**—Orange and scarlet.
- Peach Blossom**—Soft rosy pink.

### HERE'S PROOF OF HOW YOU SAVE . . .

when you buy top-size bulbs



This actual photograph shows two tulip bulbs of the same kind exactly. Only the size of the bulb was different . . . growing conditions were identical. You can see clearly the vast difference in the final result . . . the larger bulb produces a bigger, healthier plant, and a very much larger flower.

### NEWER TULIPS

10 EACH OF 5 BETTER,  
NEWER TULIPS, 10 to 12 cms.  
to MODERNIZE YOUR GAR-  
DEN \$5.

Sold only in bags of 50 as follows: 10 each. . . . .

- Blue Parrott**--gorgeous huge, frilled and lanced and splashed.
- Red Emperor**--huge early blooms, few 12 cm. bulbs available. Brightest red in the garden. Early.
- Duke of Wellington**--pure white, even the anthers. (Darwin)
- Carrara**--pure white, free and long-lived. (Cottage))
- Worlds Fair**--brilliant rose, large imposing bloom. (Cottage).



# Narcissus

A bag of 25 double-nose bulbs of any one kind below priced at \$4.25



## Trumpets

**Dawson City** - Golden yellow, large trumpet, flat perianth.  
**Emperor** - Rich yellow trumpet, primrose perianth. Old favorite.  
**King Alfred** - Bold golden trumpet. Sturdy. Deeply frilled. Popular.

## Short Cups

**Stolberg** - pure white cup on cream.  
**Carlton** ("Nimrod") - Outstanding giant. Clear yellow, huge frilled cup, almost a trumpet.  
**Lady Diana Manners** - Orange-red cup on creamy white perianth.  
**Nette O'Melveny** - Tall white. Crown yellow, orange picotee edge.  
**Scarlet Elegance** - Orange cup on dark yellow.

## Poetaz

Several flowers on each stem, tall, extra hardy, vigorous, fragrant.  
**Scarlet Gem** - Primrose-yellow and deep orange. Good forcer.  
**L'Innocence** - White perianth, large soft orange cup.  
**Geranium** - Large pure white; cup orange-red.

**10 EACH OF 5 NEWER, BETTER NARCISSUS.....the bag of 50 double-nose bulbs. ....\$10.**

**R.O. Backhouse**--the pink daffodil.  
**Fortune** -- copper red, huge.  
**Rembrandt** -- big golden trumpet.  
**Geranium**--Many, fragrant orange on white flowers.  
**Texas**--Huge double yellow-red.

## MIXED TULIPS

### MIXED COLORS for MASSING

Sold only in bags of 100  
 Size of bulb 11-12 cm, the "first-size" of most bulb catalogs.

(100)

**DARWIN TULIPS** . . . . \$7.00  
**COTTAGE TULIPS** . . . 6.75

# CROCUS

(1/2 ft. April— The Dutch Crocus—showiest of all early Spring flowers. PERMANENT when planted in sunny well-drained soil.

9 to 10 cm. bulbs (100)

Blues . . . . . \$3.00  
 Whites . . . . . 5.00  
 Striped . . . . . 4.00  
 Yellow . . . . . 5.00  
 Mixed . . . . . 3.50

All bulbs in this catalogue are (unless otherwise stated) the largest sizes commercially available from Holland. This is very different from such sizes as "Jumbo," "1st size," etc., which are NOT the largest available.

# Bulbs for Naturalizing

It is not generally realized how many kinds of bulbs may be permanently planted—to last for decades if properly set out, giving a yearly show of bloom. There are two kinds of bulbs—those which last 5 to 7 years (like tulips), and those which are permanent, sending up a flower every season from the same bulb for a lifetime. The second group is easily naturalized. It includes Narcissus, Scilla, Muscari, Crocus, even Hyacinths!

## Naturalizing Narcissus

Narcissus are the showiest of the really satisfactory naturalizing bulbs. It might be said that the best place to plant these is not in the garden at all—but scattered among shrubbery, under fences and wherever a drift of April snow is desired. Not all kinds do equally well when naturalized, and we have selected a special assortment for this purpose which we list below.

### Narcissus Naturalizing Mixture

All types represented, including daffodils. (100) (1000)  
 Top size round bulbs \$8.00 \$70.00

## Galanthus

### Snowdrops

(1/4 ft. White, March) One of the earliest bulbs. Remain a lifetime in bloom (100)  
**Single** . . . . . \$5.50  
**Double** . . . . . 6.50

## Muscari

### Grape Hyacinths

(1/2 to 1 ft. April) Dainty. Open with crocus. The drifts of blue are immensely effective. Part shade. Good naturalizers. (100)

**Armeniacum**—Huge \$4.00

## Chionodoxa

### Glory-of-the Snow

(1/4 ft. March) Like blue Snowdrops. Permanent. (100)

**Lucilea**—Clear blue ..... \$4.00

## Scilla

(1 ft. April) Thrive in bare shady places where few other plants will. Any soil but clay. Fine for naturalizing or in rock gardens. (100)

**Siberica (Squill)**—Blue. \$4.50

**Spring Beauty**—Blue, four times larger..... 7.00

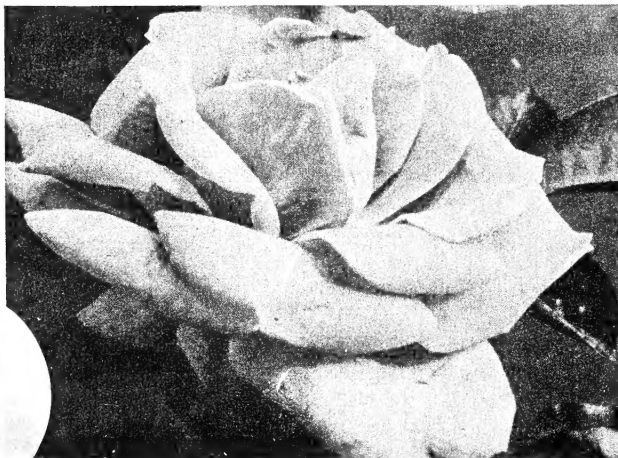
### Campanulata

White ..... 4.50  
 Blue ..... 4.50  
 Pink ..... 4.50

# BROWNELL SUB-ZERO ROSES

PRICES: All types, except as noted,

**\$1.75 each** 3 for \$5.00; \$18.00 per doz.



## Best Brownell Hybrid Teas

Bloom all summer long on hardier, longer-lived bushes. They have many more flowers than ordinary teas. If you want, you can get 10 or more on a stem; or you can disbud for single large blooms on long stems.

★**Pink Princess.** Bud red, flower deep pink. Free from premature defoliation. Blooms all summer.

**Shades of Autumn.** Showy red and yellow beauty.

**V for Victory.** Large, double, yellow, fragrant, profuse.

**Lily Pons.** Cream, large. Vigorous, free bloomer.

**Velvetier.** Velvety, deep, dark red. Sometimes in clusters.

**Curly Pink.** Clusters of large two-toned pink all summer. Vigor, health, and constancy. New.

★**Red Duchess.** Robust, sturdy large red. Outstanding fragrance. Grand new rose. Brilliant, attractive, free to flower. This fine new red has attracted instant friends wherever seen in the past year. All the color and size you could want but extra hardy!

★**Dolly Darling.** Pink, sunset and rose blend. Extra vigor and health. New.

**Queen o' the Lakes.** Sensational large crimson. New.

**Dick Wilcox.** Deep red, magnificent vigor and size. New.

**Tip Toes.** Spicy fragrance. Orange and pink blend. New.

This new race of roses adds to unusual hardiness a character of improving with age, rather than slowly deteriorating as most do. They are exceptionally easy to grow and bring into bloom. Disease-resistant.

**HARDINESS:** About Zone IV, but roots will survive still colder climates and even if tops damaged, new growth will be ready to bloom by rose time. Tops protected by hilling or burlap seldom kill back. Any plant that fails to bloom in 2 years will be replaced free anywhere in U. S. A.

### ★NO MORE BLACK SPOT!

Absolute resistance to this dread disease has been bred into four of these roses:

**Pink Princess**

**Red Duchess**

**Dolly Darling**

**Lafter**

The only four such roses in existence. More coming.

## 4 Brownell Creepers

For ground cover, on walls, on fences.

**Coral Creeper.** All the shades of ocean coral complementing other delightful rose tints. (June).

**Little Compton Creeper.** Deep rose-pink. Single flowers in clusters.

**Creeping Everbloom.** Light crimson. The first all-summer creeper.

**Magic Carpet.** Large, double blooms, yellow and orange tones.

## 5 Brownell Climbers

Vigorous, extra hardy, vivid. Note two ever-blooming.

**Elegance.** Very large, perfect bloom. White with shaded yellow center. Grand show.

**Golden Climber (Mrs. A. C. James).** Best yellow climber. Fragrant. Ideal for cutting.

**Copper Glow.** Deep coppery orange. Delightful spicy fragrance. Sensational color.

## SPECIAL-PRICED ROSES

(sold singly, only)

**Climbing Break O'Day.** Vigorous, everblooming apricot. \$2.00 each.

**Orange Everglow.** Constant copper-orange blooms. Fragrant, vigorous. \$2.00 each.

## 4 Brownell Floribundas

Everblooming, hardy, bushy clumps.

**Tompkins Red.** Semi-double, velvet red all summer.

**Anne Vanderbilt.** Exquisite coppery orange, informal, semi-double, brilliant, fragrant. All summer.

★**Lafter.** Sparkling orange and yellow, semi-double clusters.

**Nearly Wild.** Larger than most wild roses, single pink flowers in clusters. Gives beautiful color all summer.