

Historic, Archive Document

Do not assume content reflects current scientific knowledge, policies, or practices.

62.71

1951

Milton Nursery Co.

A. Miller & Sons, Incorporators

MILTON, OREGON

LIBRARY
 RECEIVED
 ★ FEB 28 1951 ★
 U. S. Department of Agriculture

Over 70 Years
*Growing Trustworthy
 Nursery Stock*



Free
ROSE OFFER
**Edith
 Nellie Perkins**
 See Pages
 16 and 17

Seventy Years

Your Assurance of Satisfactory Service

The Milton Nursery Co. was established at the present location by A. Miller in 1878, and since then has been continuously owned and managed by members of the Miller family. It has the distinction of being one of the oldest and largest nurseries in the Pacific Northwest with continuous ownership by one family at the same location.

Under the experienced management of the two remaining sons, George W. in charge of production, and C. Bert supervisor of sales and distribution, with C. D. Hobbs, an associate since 1904, the firm continues to operate over 400 acres devoted exclusively to the growing of quality nursery stock. Several million trees and plants are shipped annually to all of the United States and various foreign countries.



*Super Red
Delicious*

Member
American Association
of Nurserymen



HOW TO ORDER AND OTHER HELPFUL INFORMATION

We begin shipping in the fall about November 1st, continuing until freezing weather, and usually in the spring from March 1st until the middle of April. Please mark on the order when you prefer the shipment to be made. Otherwise we shall ship when we believe best for your locality.

Specific instructions should be written plainly, giving post office, express and freight address, county and state. State how you wish shipments to be made: by parcel post, express, railway or auto freight.

Terms. All orders are cash before shipment. We do not favor C. O. D. shipments. We prepay all shipments, except on Evergreens, or where otherwise mentioned, on orders accompanied by cash, amounting to \$5.00 or more, in Idaho, Oregon, Washington and Western Montana, and one-half to other points west of the Rocky Mountains.

All prices herein are subject to change without notice.

Our Guarantee. All of our nursery stock is guaranteed to reach you in good, healthy and growing condition, of the grade standard as represented and to pass State Inspection. Although we take all possible care to supply only such stock as will, under proper conditions, produce satisfactory results, we give no warranty, expressed or implied, as to life, description, quality or productiveness or any other matter pertaining to any nursery stock, seeds, plants or bulbs we sell. It is mutually agreed that our total liability for errors, should such stock prove untrue to name as labeled by us, shall be limited, upon satisfactory proof, to our replacing free or refunding purchase price thereof. We are licensed in each state to which we ship.

Replacements. All nursery stocks purchased from us, which fail to live after being planted by the customer, we will replace at one-half of the purchase price the following season, providing that we are notified by June 15th after planting.

Claims. On the arrival of your shipment, examine it carefully, and if there is any apparent damage, call it to the attention of the transportation agent, have him make a notation on the shipping bill and notify us immediately.

Substitutions. We reserve the right, in case we are out of any variety ordered, to substitute another one of equal merit, when it can be done (always labeling each substitution with the correct name) unless the one ordering specifies on the order "no substitutions," in which case we will fill the order as completely as possible and refund balance of the purchase.

Planting Instructions are sent with each shipment of our nursery stock, telling you just how to plant, prune and care for your trees and plants. You will find these within an envelope tag on the outside of your bale or box. Any further instructions or advice you may wish we shall be glad to send if you will write us.

USUAL DISTANCES FOR PLANTING

Almonds, Apricots, Filberts, Nectarines, Peaches, Pears, Plums, Prunes, and Sour Cherries. 20 to 22 feet.

Apples and Sweet Cherries. 30 to 40 feet.

Grapes, Boysenberry, Dewberry, Loganberry, and Youngberry. 6 feet in row; 5 to 6 feet between rows.

Blackberries and Raspberries. 2½ feet in row; 5 to 6 feet between rows.

PLANTS OR TREES PER ACRE

2½ by 5 feet	3485	22 by 22 feet	90
2½ by 6 feet	2900	30 by 30 feet	48
5 by 6 feet	1450	30 by 35 feet	41
6 by 6 feet	1210	35 by 35 feet	36
20 by 20 feet	109	35 by 40 feet	31
20 by 22 feet	99	40 by 40 feet	27

Rule. Divide 43,560 (the number of square feet in an acre) by the number of square feet for each plant. The result is the number required for an acre. Example: Trees planted 20 feet apart each way equals 400 square feet; 43,560 divided by 400 equals number of trees per acre.

If trees are planted on the Triangular system, 15 per cent more than for the Square system will be required.

APPLE TREES

Prepaid Prices, See Enclosed Pink Leaflet.

Summer Varieties

Red Astrachan. Rich, juicy and acid. Excellent for sauce or pies. Tree hardy and productive. July.

Red June. Always a favorite dessert variety. Skin attractive red; flesh juicy, somewhat tart flavored. Hardy and productive. July and early August.

Yellow Transparent. Earliest summer Apple; always in demand for sauce or pies. Skin golden yellow; flesh white, fine grained, juicy, crisp, tender and sub-acid.

Autumn Varieties

Gravenstein. An old-time favorite cooking Apple in any form, especially fine for pies; crisp and juicy. Hardy and bears young. September to October.

Jeffries. ^{e-r-i-s}Flesh white, juicy, tender and mild sub-acid flavor. One of the best eating Apples in its season. September to October.

Red Gravenstein. Has all the excellent qualities of the other variety of Gravenstein, plus a very attractive red skin.

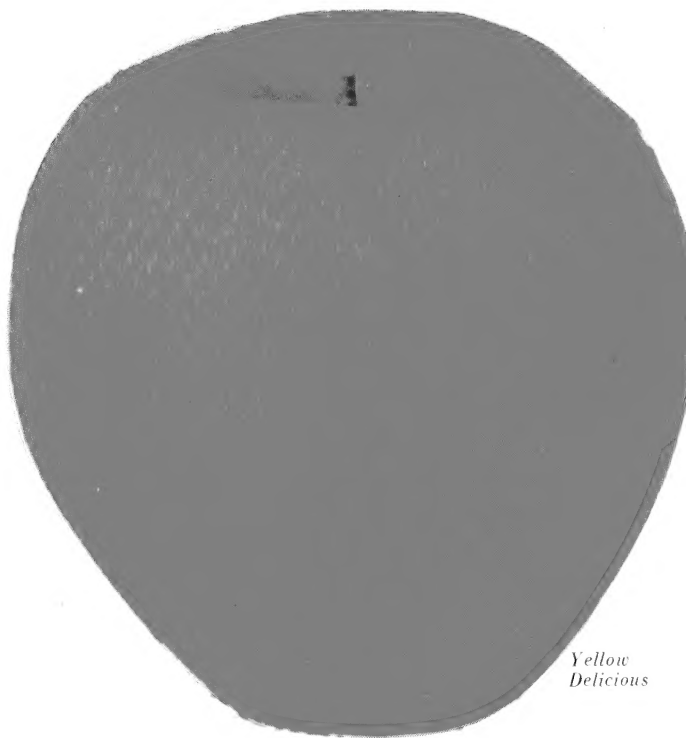
Winter Varieties

Delicious. This is the original Delicious and all that is claimed for it. It is a thrifty grower, hardy and prolific bearer. Highly flavored and excellent quality, and a good keeper. It is yet a favorite of some persons.

Fameuse or Snow Apple. Flesh snowy white, juicy, crisp and mild, pleasant flavor. Hardy and productive bearer. October to November.

Jonathan. Bright red skin; flesh fine grained, tender, juicy and rich flavor. Excellent for cooking or market. Trees hardy and productive. December to February.

McIntosh Red. Valuable for eating fresh, cooking or market. Skin dark red; flesh snowy white, juicy and refreshing. Adapted for high altitude or all conditions.



*Yellow
Delicious*

WINTER APPLES—Continued

Red Rome Beauty. A selected strain of the ordinary Rome Beauty, identical in vigor and production, darker and more solid red color. One of the favorites for commercial and home purposes.

Ruby Red Rome. This wonderful red Apple was originated by our firm and is recognized as one of the best cooking or commercial varieties. Tree bears young and is very productive. Has all the qualities of the old Rome plus the extreme high color, producing almost one hundred per cent extra fancy grade. This was originally called Black Rome Beauty and later renamed as above. See illustration.

Stayman Winesap. One of the outstanding commercial Apples or for home use. A seedling of the old Winesap; large and of excellent quality. Long keeper.

Super Red Delicious. From the fifty-three different bud sports of the Delicious Apple, we, as the large majority of commercial planters and home consumers, have selected this as the superior Red Delicious of all. It has solid, brilliant red skin and its yellowish flesh is tender, firm, juicy and of most pleasant, rich flavor. Good keeper. November to March. Trees make thrifty growth and bear young. See colored illustration.

Wagener. A bright red Apple of excellent quality. Especially adapted to high altitudes and matures well. Very productive and a good keeper. October to late January.

Winesap. One of the standard commercial varieties due to its excellent keeping qualities. Dark red skin; juicy, sub-acid flavored flesh. December to May or later.

Yellow Delicious. An Apple of unusually fine flavor and rich golden skin. In fact, it is all the name implies. One of the finest all-around cooking and dessert varieties grown. Splendid keeper and always remains juicy and crisp. November to May. See colored illustration.

Yellow Newtown Pippin. This stands as high as any Apple for a market and cooking variety. One of the best keepers known. Flesh rich, juicy and crisp. January to June.



Miller's Ruby Red Rome

For Prices of Fruit Trees, See Enclosed Pink Leaflet

PEARS

Prepaid Prices, See Enclosed Pink Leaflet.

Summer Varieties

Bartlett. A well known favorite for eating fresh or canning. Large size, buttery, juicy and high flavored. August to September. See colored illustration.

Clapp's Favorite. Fruit large; skin thin, pale yellow; flesh white, fine grained, rich and sweet. Ripens two weeks earlier than Bartlett.

Autumn and Winter Varieties

Beurre d'Anjou. A fine Pear; rather large; flesh yellowish white, rich and vinous flavored. Tree good grower and productive. October and November.

Beurre Bosc. Large, deep yellow, russet colored and long neck. Half melting, juicy, delicious with pleasant odor. Good shipper. September.

Doyenne du Comice. Skin rich yellow at maturity, often lightly shaded with crimson. Flesh white, fine grained and melting, sweet and rich. Very good. October to November.

Flemish Beauty. Large fruit; pale yellow, becoming reddish brown at maturity on the sunny side. Flesh yellowish white and juicy. Excellent for canning. Late September.

Seckel. Often called the Sugar Pear due to the rich sweet flavor. Small size, juicy and melting. One of the finest for spiced pickles, nothing better for that purpose. October.

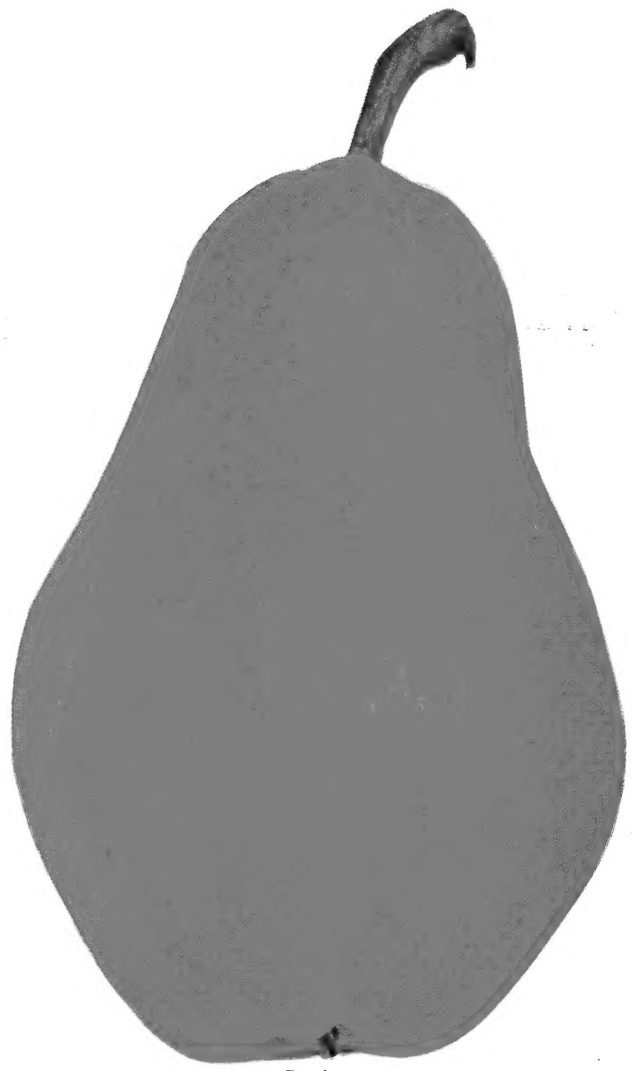
Winter Nelis. Tree hardy and thrifty. A delicious winter Pear of medium size; flesh yellowish white, very juicy when ripe. One of the very finest for eating fresh. December to February.

CRAB APPLES

Prepaid Prices, See Enclosed Pink Leaflet.

Transcendent. A handsome Crab Apple for dessert or preserving. Early autumn.

Whitney No. 20. One of the largest Crab Apples; glossy green, splashed with carmine; juicy and pleasant flavor. August.



Bartlett

QUINCES

Prepaid Prices, See Enclosed Pink Leaflet.

Champion. A very prolific bearer. Fruit large and of high quality, spicy Quince flavor.

Pineapple. Suggestive of the pineapple. Makes a superior jelly. May be eaten raw or cooks tender quickly. A most delicious flavor.

APRICOTS

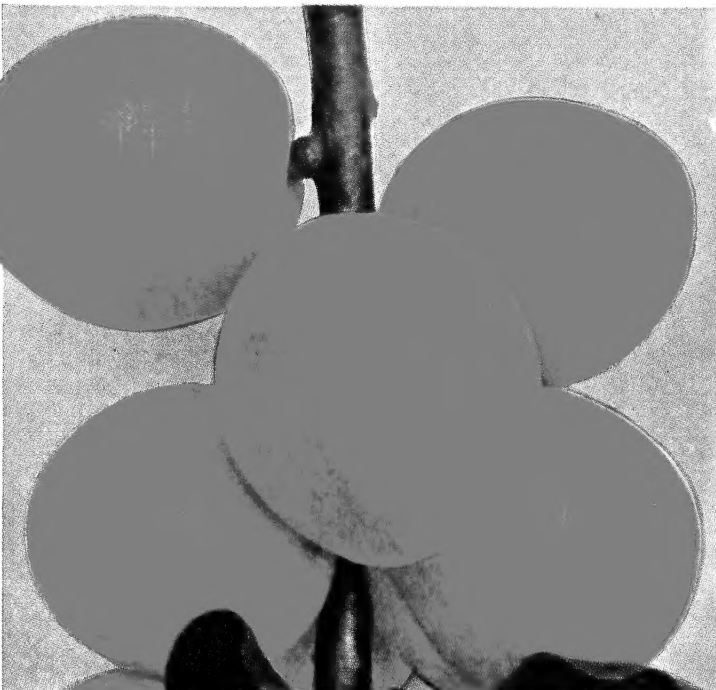
Prepaid Prices, See Enclosed Pink Leaflet.

Chinese. This is a comparatively new Apricot; is well established for home use, commercial shipping and canning, and also for its hardiness. The fruit is large size, firm, fine grained texture, exceptionally sweet flavor and retains its rich Apricot color when canned. See colored illustration.

Perfection. An exceedingly large size Apricot, good flavor, sweet and juicy. Trees bear abundantly at an early age.

Tilton. Very large size, rich apricot-yellow with flavor of the highest quality. Trees very productive. August.

Wenatchee Moorpark. One of the largest size Apricots, about 2¼ inches in diameter. Flesh firm, juicy and parting from the pit, pleasant sweet flavor. One of the very best canning and commercial varieties. August.



Chinese Apricot—Illustration two-thirds actual size of fruit

CHERRIES

Prepaid Prices, See Enclosed Pink Leaflet.

SWEET VARIETIES

Bing. Flesh very solid, flavor of the highest quality; tree thrifty, hardy and productive; a fine shipping and market variety. First of July. See colored illustration.

***Black Republican.** Fruit large, very dark color when ripe; very rich and solid. Middle of July. A popular pollinizer.

***Black Tartarian.** Very large, purplish black, half tender; flavor mild and pleasant. Tree vigorous, erect and beautiful grower, an immense bearer. Ripe last of June and beginning of July. Extensively used as a pollinizer.

***Centennial.** Very much like the Royal Ann in shape and color. As large, sweet and good. Ripens a few days later. Extensively used as pollinizer.

***Deacon.** Similar to Black Tartarian in color and size, but superior in texture and shipping qualities. One of the most satisfactory for pollinizing.

Lambert. Size very large; form roundish, heart-shaped; skin dark purplish red; flesh dark purplish red, meaty and of fine texture; semi-cling, small seed for so large a fruit; flavor sweet or very mild sub-acid, aromatic, rich.

Royal Ann (Napoleon). Fruit large; very dark golden or tinted red colored skin when ripening in bright sunlight; very rich and solid, and an excellent keeper. Middle of July.

In large commercial plantings, for more prolific fruiting, Bing, Lambert and Royal Ann require pollinizers. Varieties marked (*) are recommended in proportions of one to 8 or 10. For small home orchards pollinizers are not necessary or advised.



Bing

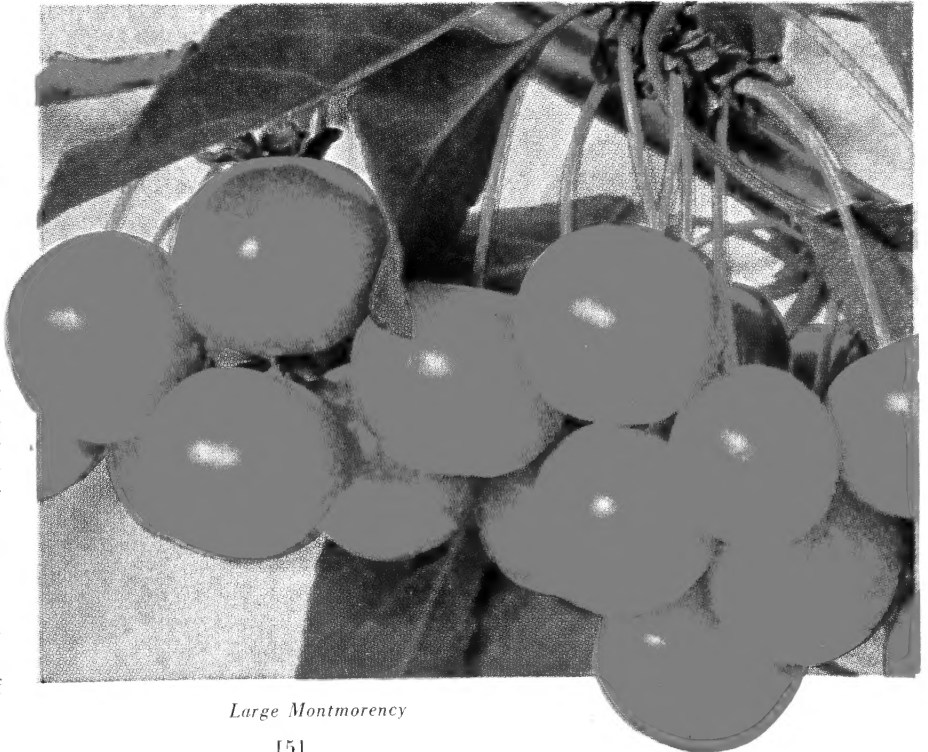
Tart "Pie" Varieties

Late Duke. Fruit large, roundish, rich, dark red, sub-acid. Tree hardy; very valuable. Ripens last of July.

May Duke. This is one of the best hardy Cherries; medium size, dark red, melting, rich and juicy, sub-acid and sweetest of all tart varieties. First of June.

Montmorency. Large. Tree very hardy and immense bearer, fruiting when young and is a regular bearer of fine crops; fruit large, fine flavor, shining red, valuable everywhere, especially in coast sections where it is planted for commercial canning purposes. One of the finest pie Cherries. See colored illustration.

Olivet. Tree hardy; fruit very large; a shining deep red sort; tender, rich and good. Last of June.



Large Montmorency

PRUNES

Prepaid Prices, See Enclosed Pink Leaflet.

Date Prune. Also sometimes called Coates 1418 or Improved French Prune. This variety is sweeter and larger than the regular French Prune; very fine grained and excellent for drying for those who favor a sweet dried Prune. Skin reddish purple.

French or Petite. This is a medium sized sweet Prune. Fine texture and extensively used for a commercial drying Prune. A prolific bearer.

Italian (Fellenberg). Probably the best known commercial and all-around Prune in the Northwest. It is used extensively for drying and fresh market. Large size, oval-shaped, dark purple skin, rich amber, tart-sweet flavor; fine shipper. Trees very prolific. August to September.

Sugar. A very large Prune with dark purple skin; rich yellow, juicy and very sweet flavored flesh. Ripens early.

Weatherspoon. Well known commercially as the Early Italian. It is a seedling of the old Italian and introduced to the trade by us several years ago. Fruit very similar in shape and color but is larger in size and sweeter; and matures seven to ten days earlier than Italian. Keeping and shipping quality surpasses any other Prune. Trees very hardy and practically immune to red spider or other insect pests. We recommend planting 8 to 10 per cent Italian for pollinizers. See colored illustration.



Weatherspoon Prune--A New Money Maker

PLUMS

Prepaid Prices, See Enclosed Pink Leaflet.

Blue Damsion. Small fruit; skin dark purple, covered with blue bloom; sweet and rich flavored; used much for preserves.

Climax. (Japanese.) One of the finest eating Plums and much in demand for home use or commercial shipping purposes. The fruit is large, heart-shaped and cherry-red in color; flesh sweet, juicy and rich. The tree bears at an early age.

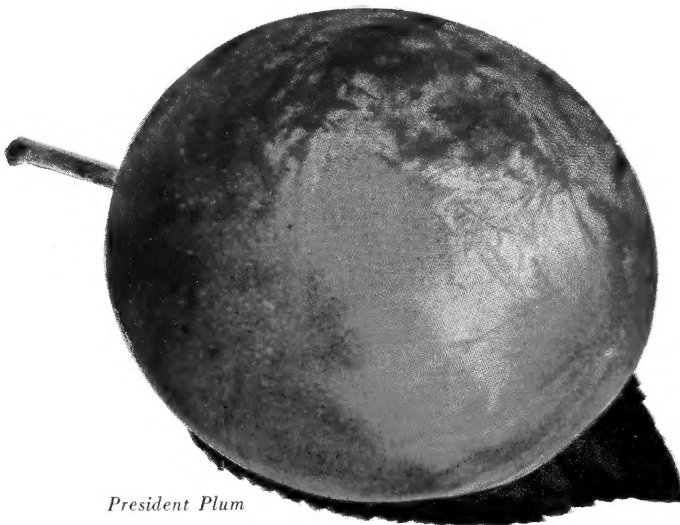
Duarte. A Japanese variety; however, hardier than most of that type of Plum. Blood-red flesh; small pit; rich flavor and juicy; unsurpassed for preserves or jelly.

Formosa. Unusually handsome fruit; large; skin shading from light to deep red; flesh firm, sweet and juicy. Tree thrifty grower and prolific.

Peach Plum. Fruit large size and ripens early; skin rich red; flesh amber-yellow, rich, juicy and extremely pleasant flavor. One of the finest Plums for eating fresh or cooked. Middle of July.

President. (European.) The latest commercial shipping variety, popular and profitable, with increasing favor with planters. The fruit is large, roundish, purplish red in color. The flesh is golden yellow and fine texture. It is an excellent shipper. See colored illustration.

Santa Rosa. Large; purplish crimson; flesh yellow, mottled crimson; very good quality. Excellent for all purposes. Early July.



President Plum

Plums and Prunes

Are Real Money Makers. Hardy, heavy bearing; usually require only one spraying and no thinning; easy to harvest. Three outlets for market: Fresh, Canned or Dried. Use them liberally for home use.



Hale-Haven—This illustrates two-thirds actual size of fruit

PEACHES

Prepaid Prices, See Enclosed Pink Leaflet.

Early Crawford. So well known and popular, hardly needs description. Large Peach of fine quality. Excellent for table use or market. Freestone. August.

Elberta. Very large; skin golden yellow where exposed to the sun. Flesh yellow, juicy and well flavored; frees from the pit. One of the fine market varieties. September.

Early Elberta. Large size; rich yellow flesh and freestone; sweet and juicy. One of the very finest for canning or market. Ripens ten days before the Elberta.

Golden Jubilee. One of the finest newly introduced Peaches. Large size, golden yellow, juicy, firm flesh. Yellow skin with red cheek. Ripens three to four weeks before Elberta.

Hale-Haven. Introduced by the Michigan Experiment Station. A cross of the South Haven and J. H. Hale. Has the prolific bearing quality of the former and the unexcelled shipping quality of the Hale. Freestone, strong grower, very hardy and heavy bearer with fine flavor. Ripens ten days earlier than Elberta. You cannot make a mistake by planting this grand variety for home use or market.

Hale's Early. One of the very best early white Peaches. Skin greenish, splashed with red. Flesh white, juicy and sweet.

Improved Elberta. This Peach is the "Queen" of all canning Peaches. Fruit is a beautiful golden yellow, blending to deep pink on the sunny side; a strong protecting skin; heavy bearer and a wonderful pollinizer for the J. H. Hale. Ripens about two weeks earlier than Elberta.

J. H. Hale. Well known for its solid, juicy, sweet flesh of excellent shipping quality. Large size, round-shaped, attractive golden color and considered one of the best commercial Peaches. Ripens three days to a week before Elberta.

Lemon Cling. Well known for its fine canning quality. Large size, golden skin and flesh; very firm. September.

Orange Cling. One of the very highest quality of the cling Peaches. Fruit large, rich yellow, juicy, sweet flesh; tree heavy bearer and hardy. Late September.

Redhaven. A new Peach and the earliest yellow freestone, ripening seven to ten days before Golden Jubilee. The golden yellow flesh is firm, fine grained and richly flavored. It colors early before ripening with a brilliant red and yellow background. Hardy and prolific fruiting.

Rochester. Early midseason; good size, yellow freestone. Very fine quality, sweet and juicy. Very popular for market. Trees hardy and prolific. Ripens three weeks before Elberta.

Salway. A large English Peach with deep yellow flesh; juicy, melting and rich. One of the latest ripening Peaches and a good market variety.

Slappay. Fruit is rich, yellow colored flesh and skin, and excellent flavor; very fine for canning or fresh table Peach. Ripens about ten days before Elberta.

South Haven. Another very fine canning and table Peach. Golden yellow flesh, also skin, which has attractive red cheek. Fine grained and splendid flavor. Hardy and very prolific bearer. Ripens about two weeks before Elberta.

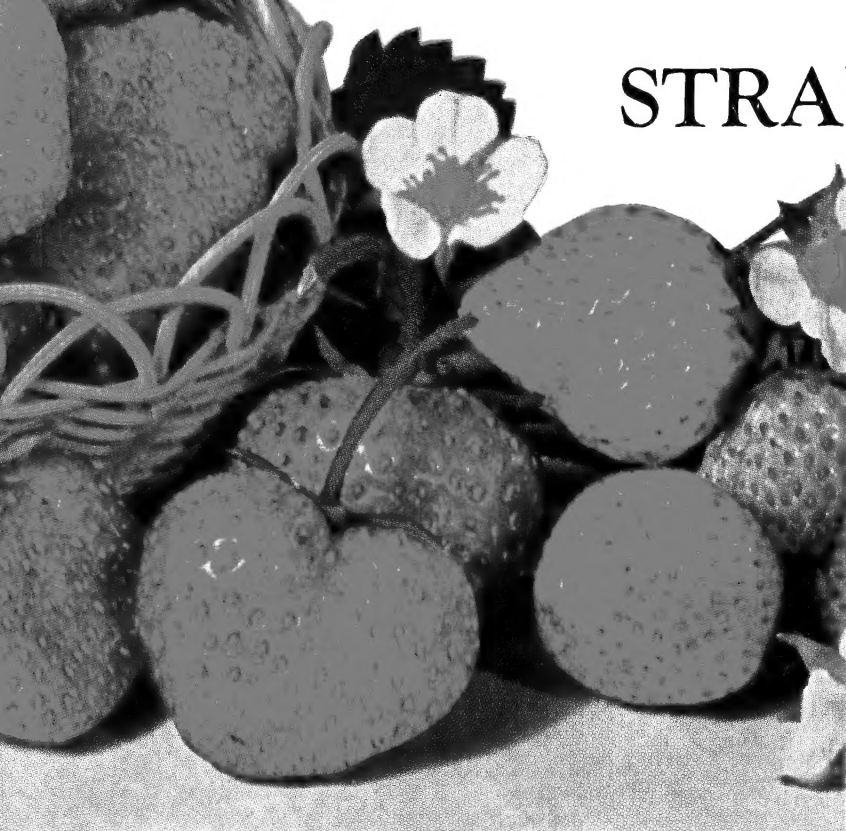
NECTARINES

Prepaid Prices, See Enclosed Pink Leaflet.

Boston. Medium; deep yellow, with a bright blush and deep mottlings of red; flesh yellow without any red at the stone; sweet. Freestone.

Stanwick. Extremely large fruit, skin pale green, shaded purplish red; flesh white and juicy, with a most delicious flavor.

STRAWBERRIES



STREAMLINER—Everbearing

Streamliner. Everbearing. A new variety already established as one of the best Everbearing Strawberries for its rich flavor, bright red color, firmness, unusual hardiness, size and splendid yielding quality from early season until frost. **Prepaid prices: 25 for \$1.75; 100 for \$6.00.**

Marshall. This is considered the finest June bearing Strawberry, for either home or commercial purposes. The berries are a beautiful dark red, and a rich sweet flavor; of a large size, which is retained throughout the fruiting season. **Prepaid prices: 25 for \$1.25; 100 for \$3.00.**

CURRENT

Red Lake. One of the newer Currants originated recently by the Minnesota State Fruit Breeding Farm. The plants are prolific, vigorous and resistant to mildew; fruit bright Currant-red. **Prepaid prices: Strong 2-yr. plants, 35c each; 10 for \$3.00.**

NUT TREES

ALMOND

I. X. L. Standard commercial variety. Hulls easily. Nuts are large and symmetrical. Shell soft, smooth, kernel large and well filled, tree a strong grower. 4-6 ft., \$1.75; 3-4 ft., \$1.25, each, prepaid.

CHESTNUT

American Sweet. Forms a low, round-topped head of slightly pendulous branches. Nuts are sweet and agreeable in flavor, the best among the Chestnuts. 4-6 ft., \$1.75; 3-4 ft., \$1.50, each, prepaid.

FILBERT

Barcelona. Most widely planted commercial variety. A large, round nut, rich in flavor, kernel uniform in size, clean of pellicle and very prolific when pollenized with about 15 per cent DuChilly. Tree a strong upright grower. **Transplants: 4-5 ft., \$1.25; 3-4 ft., \$1.00, each, prepaid.**

DuChilly. A large, long nut, finest of quality demanding a premium over Barcelona, often used as a main commercial crop. It is self-fertile, therefore needs no pollinizer when planted by itself. **Transplants: 4-5 ft., \$1.25; 3-4 ft., \$1.00, each, prepaid.**

Note.—Write for Commercial Prices on 50 or more trees.

WALNUT

Black Walnut. A well known nut tree which is much used for shade; it is also valuable for timber and nuts. Very hardy. 6-8 ft., \$2.50; 4-6 ft., \$2.00, each, prepaid.

Franquette English Walnut. This is the best and most satisfactory variety for the Pacific Northwest. It is a good bearer, thrifty grower, and reasonably hardy in most localities. **Grafted: 6-8 ft., \$3.50; 4-6 ft., \$3.00, each, prepaid.**

Note.—Write for Commercial Prices on 50 or more trees.

HORSERADISH

Horseradish does best planted in rich, loose soil. Set the plants slanting and cover with about 2 inches of soil. Especially desirable as an appetizer. **Prepaid prices: 25c each; 10 for \$2.25.**

RHUBARB

Strawberry. This is a favorite of all varieties of Rhubarb. It is early, tender, mild acid flavor. Delicious for sauce, jam and pies. **Prepaid prices: 25c each; 10 for \$2.25.**

GOOSEBERRY

Oregon Champion. A proven variety and favored for its merits. The berries are medium to large size, round, smooth, greenish white with thin transparent skin; good quality and early. The plants are vigorous and free from mildew. **Prepaid prices: Strong 2-yr. plants, 35c each; 10 for \$3.00.**



Oregon Champion

GRAPES

American Varieties

The American varieties of Grapes are very hardy and need no special winter protection in most localities. Especially suitable for covering fences or arbors; splendid for juices and jellies, as well as eaten fresh.

Caco. The new red Grape. Of exceptional merit. Earlier than Concord. Wine-red, compact bunch, good size, hardy, thrifty grower. Good arbor variety.

Concord. The old, unsurpassed "slipskin" variety, too well known to need a recommendation. Succeeds everywhere Grapes grow. Good arbor variety.

Fredonia. This new blue-black Grape was originated and thoroughly tested by the New York Experiment Station. Ripens 15 days before Concord. Very large berries on compact bunches; spicy, sweet flavor and fragrant. Vines are hardy, thrifty, and heavy producers. See colored illustration.

Golden Muscat. Our choicest golden amber-white Grape for your fancy desserts and wines. Large, somewhat oblong berries in large, compact bunches. Rich, sweet, mellow, aromatic Muscat flavor. Wonderful keeper, shipper and producer. Ripens late. See colored illustration. Do not confuse this variety with the Muscat of Alexander.

Portland. Earliest of varieties to ripen. Produces a large, white fruit with spicy and luscious flavor. A very hardy, popular, money-making variety. Usually ripens a few days ahead of Fredonia. The amber-white color of the fruit makes it one of the most popular Grape varieties.



*Fredonia—
A New
Early
Grape*

European Varieties

Distinguished by the solid, firm, crisp grape, with skin adhering to pulp. Not as hardy as the American varieties, needing some protection in colder sections.

Black Prince (Rose of Peru). Very large, oval, firm, crackling flesh.

Muscat of Alexander. Large, long, somewhat loose bunch; grape elongated, slightly oval, amber color when ripe; flesh firm and brittle, sweet, rich, sugary. Used largely for raisins. September.

Thompson Seedless. The best known seedless Grape; widely planted for raisins, market and home fruit as well. Large bunch of medium size, amber-yellow grapes, sweet and mild.

Tokay. Very large bunch and grape, thick skin, pale red covered with bloom; firm, sweet flesh. An old standard table variety. October.

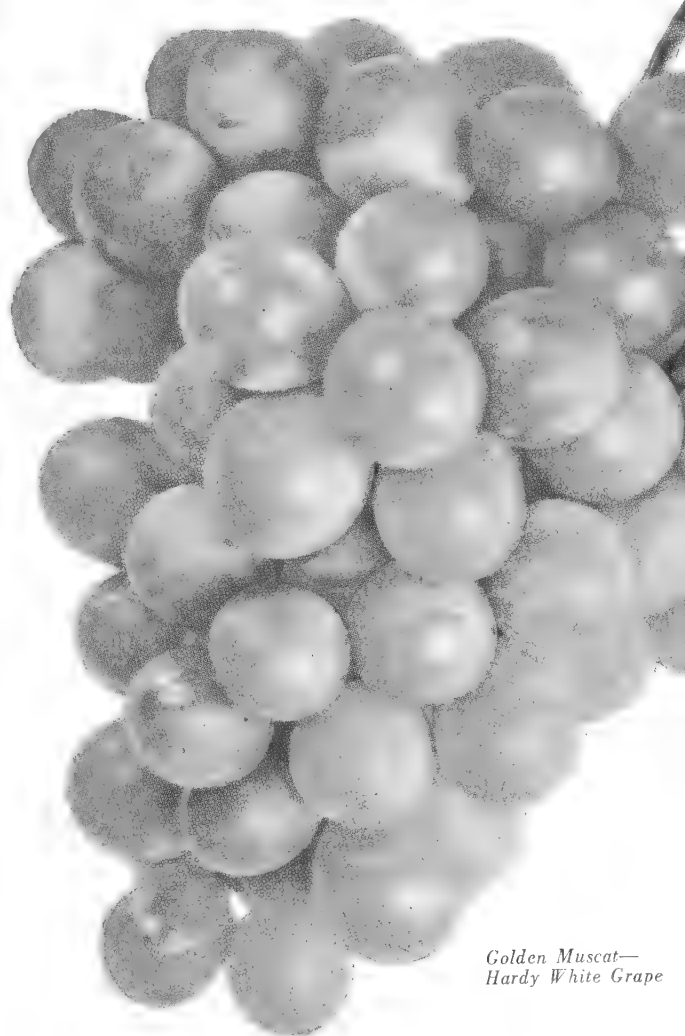
PREPAID PRICES

Strong 2-Yr., No. 1 Plants

All, except Golden Muscat, 50c each; 10 for \$4.00.

Golden Muscat, 75c each; 10 for \$6.50.

Write for Special Prices on 100 or more plants.



*Golden Muscat—
Hardy White Grape*

Black Raspberry

Cumberland. The largest of all Blackcaps and best for mid-season crops, for either home or market. Berries are large, attractive, firm and of the highest quality; rich, sweet and produced in abundance. Bush is hardy and vigorous grower. This wonderful variety should always be included in the list. See colored illustration.

New Logan Blackcap. A dependable early Black Raspberry. This variety ripens one week earlier than the Cumberland, giving the grower an opportunity to make real money before the main crop Cumberland ripens. An extra heavy bearer with berries of large and fine quality.



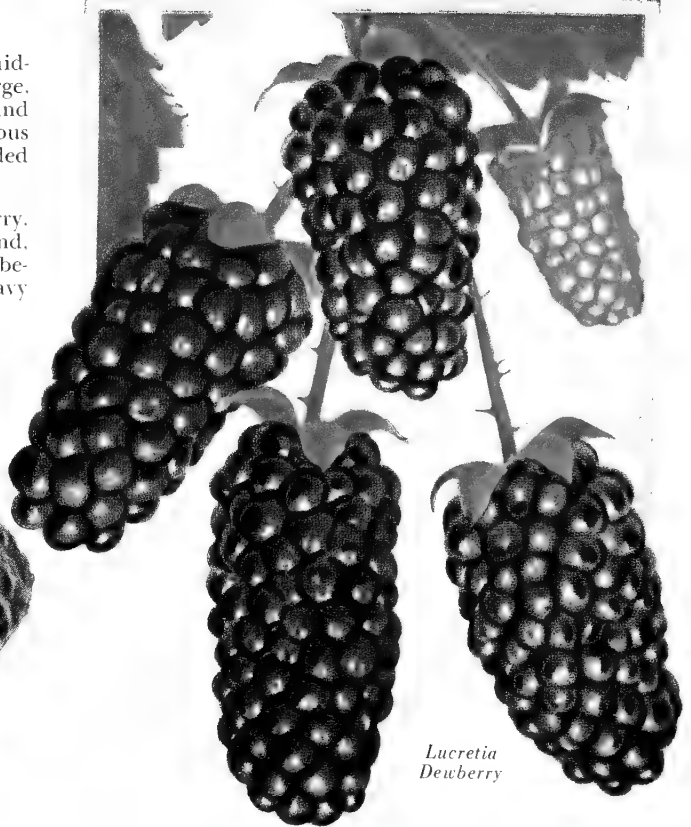
Cumberland Black Raspberry

Red Raspberries

Indian Summer. A new two-crop Red Raspberry. Bears in the summer and also in the fall, continuing until frost. The berries are large, medium red and of high quality. Is superior to all so-called Everbearing Red Raspberries. See colored illustration.

Latham. A splendid main season Red Raspberry for home or market. Extra large, rich red berries, some measuring an inch in diameter; unusually prolific bearer. Very firm and suitable for canning or shipping. Retains its high color when canned.

Washington. This new variety has rapidly increased in popularity and now ranks with the best Red Raspberries. For its high qualities, it is often called the Improved Cuthbert and has replaced the old Cuthbert, which for many years was considered the best. Has a record yield of more than eight tons of berries per acre. It is outstanding for resistance to diseases, extra large berries, firmness, excellent flavor and its rich, brilliant red color when canned. See colored illustration.

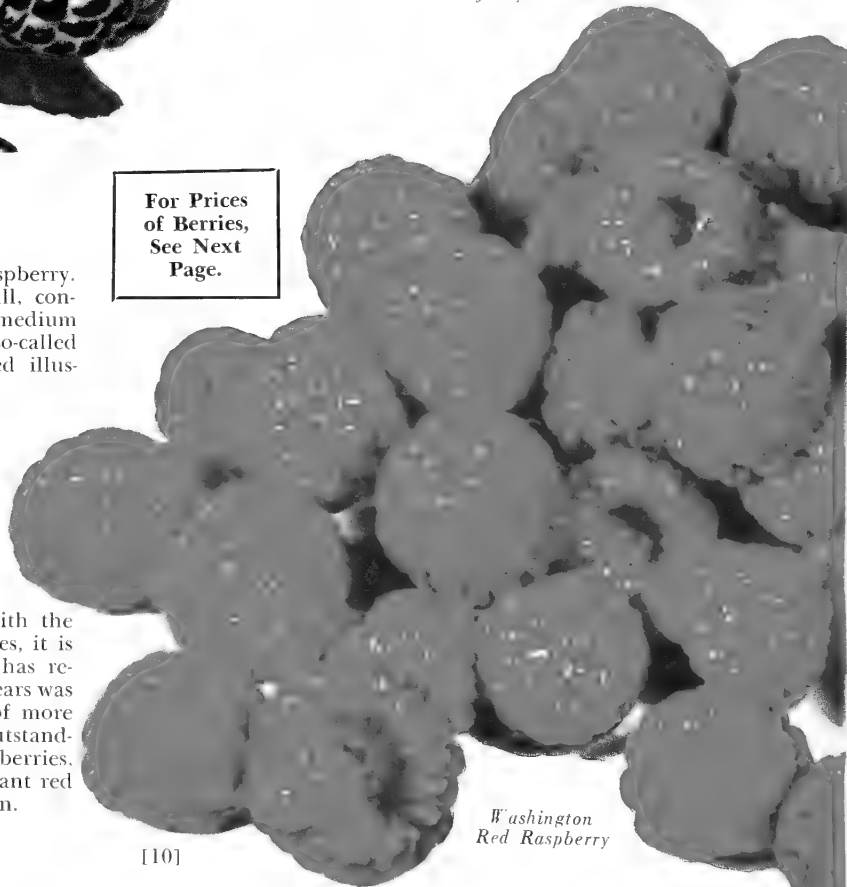


Lucretia Dewberry

Dewberries

Lucretia. Ripens ten days earlier than Blackberries. Produces large quantities of fruit and has ready sale on the market. Fine for home use, either fresh or canned. Berries very large, jet black, sweet and juicy. See colored illustration.

For Prices
of Berries,
See Next
Page.



Washington Red Raspberry

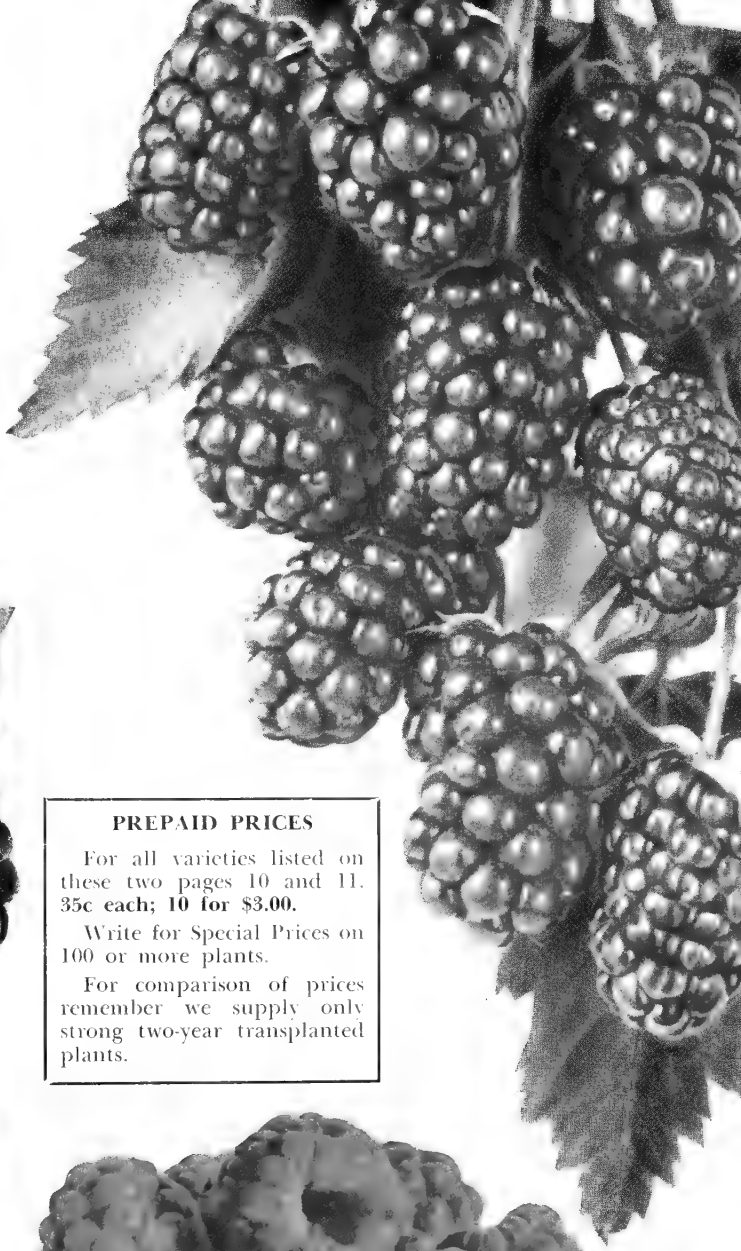
Blackberries

Alfred. The Blackberry without a core. Ripens early, about a week before other varieties. Berries large size, often nearly two inches in length. Flavor sweet and delicious. Very hardy.

Eldorado. The best commercial Blackberry. Bears young, providing a full crop the year after planting. Very hardy and never winter-kills. Vigorous grower; large berries of fine flavor and excellent firm quality. See colored illustration.

Boysenberry →

This sensational new berry is probably the most popular of all berries. Large size, often 2 inches in length; wine colored; flavor unsurpassed; excellent for canning, jellies or pies and a good shipper. This is the original Thorny Type and is considered the most profitable for commercial purposes.



PREPAID PRICES

For all varieties listed on these two pages 10 and 11. 35c each; 10 for \$3.00.

Write for Special Prices on 100 or more plants.

For comparison of prices remember we supply only strong two-year transplanted plants.



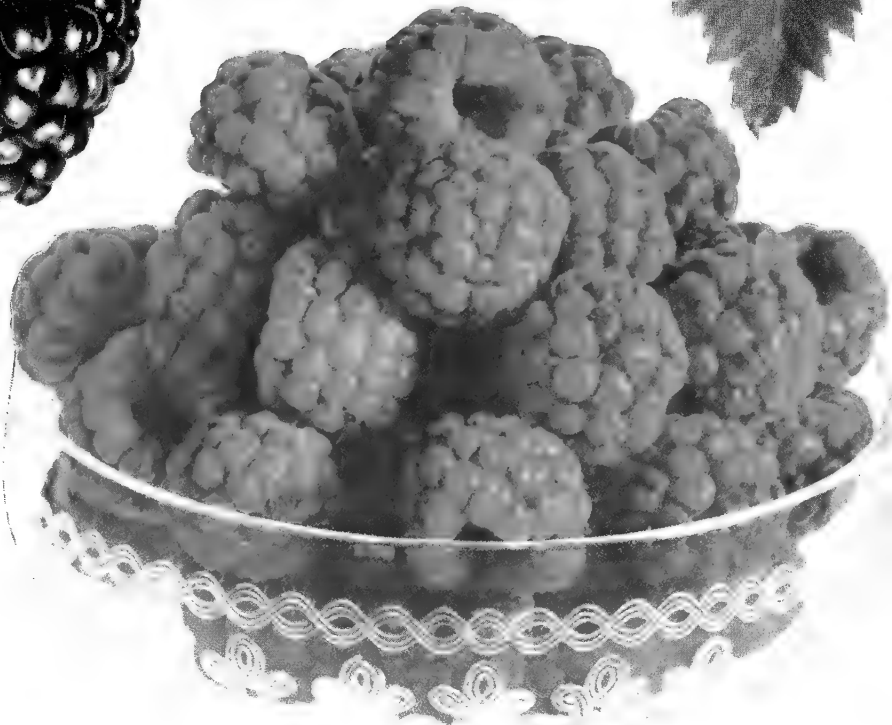
*Eldorado
Blackberries*

Loganberry

Loganberry is a cross between the Blackberry and Raspberry, and a favorite of many for fresh, canned, jellies, juices or pies. Flavor is a luscious tart-sweet.

Youngberry

Ripens earlier than the Dewberry. The berries are very large, highly flavored, juicy, sweet and delicious. Excellent for table use, jellies and pies.



Indian Summer--The Two-Crop Red Raspberry



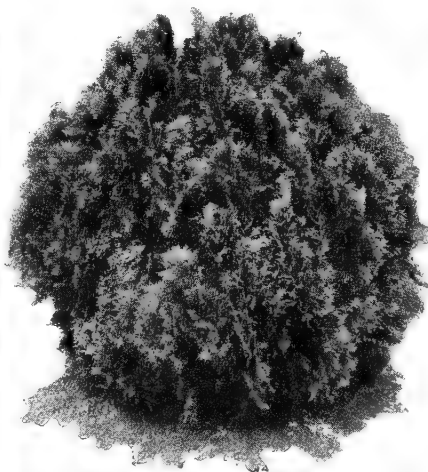
Think of the Increase in Satisfaction That These Evergreens Add to This House!

Coniferous Evergreens

The Coniferous Evergreens are indispensable in all ornamental plantings. They impart a finish to the landscape whether planted as single specimens on the lawn, or grouped together in mass, or for foundation plantings. The various uses give a living effect in summer and winter.



American Pyramidal Arbor-Vitae



Woodward's Globe Arbor-Vitae



Berckmann's Dwarf Golden Arbor-Vitae

ARBOR-VITAE (Thuja)

American Arbor-Vitae (*T. occidentalis*). The common, upright, flat-leaved Evergreen; commonly used as single specimens, hedges or windbreaks. The form is broad and spreading at the base, tapering to a point. 20 to 30 feet. 4-5 ft., \$6.00; 3-4 ft., \$5.00, each, not prepaid.

American Pyramidal Arbor-Vitae (*T. pyramidalis occidentalis*). A compact, narrow columnar form; flat-leaved, dark green foliage. Very attractive and popular variety for accent features, in group or base plantings. Always hardy. 15 to 20 feet at maturity. 4-5 ft., \$6.00; 3-4 ft., \$5.00, each, not prepaid.

Berckmann's Dwarf Golden Arbor-Vitae (*T. aurea nana orientalis*). A gem of the dwarf evergreens; compact, roundish shape, slightly pointed at top; warm golden yellow foliage. Excellent for use in formal gardens and edgings. 3 to 4 feet at maturity. 18-24 in., \$4.50; 15-18 in., \$4.00, each, not prepaid.

Bonita Oriental Arbor-Vitae (*T. occidentalis Bonita*). A broad, cone-shaped Arbor-Vitae of medium dwarf, compact form with delicate, soft, fern-leaved foliage, retaining its rich dark green color throughout the year. 4 to 5 feet at maturity. 18-24 in., \$4.50; 15-18 in., \$4.00, each, not prepaid.

Woodward's Globe Arbor-Vitae (*T. globosa occidentalis Woodwardi*). A dwarf evergreen, with compact, round or globe-shaped form; deep green, flat-leaved foliage. Hardy, 3 to 4 feet diameter, globe at maturity. 18-24 in., \$4.00; 15-18 in., \$3.50; 12-15 in., \$3.00, each, not prepaid.

EVERGREENS

to Beautify Your Home

JUNIPER (*Juniperus*)

Colorado Silver Juniper (*J. scopulorum*). A refined variety with compact, columnar to conical, upright growth, retaining its attractive light blue-green during hot summer and is extremely hardy. 15 to 20 feet at maturity. 5-6 ft., \$7.50; 4-5 ft., \$6.00; 3-4 ft., \$5.00, each, not prepaid.



Pfitzer's Chinese Juniper

Columnar Masculine Chinese Juniper (*J. chinensis columnaris mascula*). A variety forming a narrow column, with attractive bluish gray-green foliage. One of the best pyramidal form Junipers. 12 to 15 feet at maturity. 5-6 ft., \$7.50; 4-5 ft., \$6.00; 3-4 ft., \$5.00, each, not prepaid.

Columnar Blue Chinese Juniper (*J. chinensis columnaris glauca*). Similar form and foliage to the above except has very attractive steel-blue color. 12 to 15 feet. 5-6 ft., \$7.50; 4-5 ft., \$6.00; 3-4 ft., \$5.00, each, not prepaid.

Pfitzer's Chinese Juniper (*J. chinensis pfitzeriana*). Wide, spreading, bushy habit; gray-green foliage with feathery appearance. A most adaptable and highly recommended, hardy variety. 4 to 6 feet at maturity. 24-30 in., \$5.00; 18-24 in., \$4.50; 15-18 in., \$4.00, each, not prepaid.

Red Cedar (*J. virginiana*). Upright growth with dark reddish green foliage. May be sheared to any form desired. 20 to 30 feet at maturity. 5-6 ft., \$7.00; 4-5 ft., \$5.50; 3-4 ft., \$4.50, each, not prepaid.

Savin Juniper (*J. sabina*). A half-erect or partly spreading, fanlike shape with rich, unchanging dark green foliage. Useful for rock gardens or foreground group plantings. 3 to 4 feet at maturity. 24-30 in., \$5.00; 18-24 in., \$4.50; 15-18 in., \$4.00, each, not prepaid.

Silver Red Cedar (*J. virginiana glauca*). This well known variety continues to gain favor due to its unusual silver-blue foliage, always reflecting a most beautiful appearance. 15 to 20 feet at maturity. 5-6 ft., \$7.50; 4-5 ft., \$6.00; 3-4 ft., \$5.00, each.

Spiny Greek Juniper (*J. excelsa stricta*). Dwarf, compact, pyramidal or conical form, with bright blue-green foliage. Very useful for formal effects. 4 to 6 feet at maturity. 3-4 ft., \$5.50; 2-3 ft., \$4.50, each, not prepaid.

Tamarix Juniper (*J. sabina tamariscifolia*). One of the most beautiful trailing forms of Savin, with blue-green, feathery foliage, forming a dense velvety carpet. Unexcelled for rock gardens, slopes or banks. 12 to 18 inches high, 3- to 4-foot spread at maturity. 18-24 in., \$5.00; 15-18 in., \$4.00, each, not prepaid.



Colorado Silver Juniper



Savin Juniper

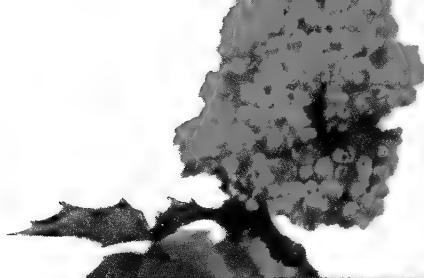


Tamarix Juniper

OREGON GRAPE

(*Mahonia Aquifolium*)

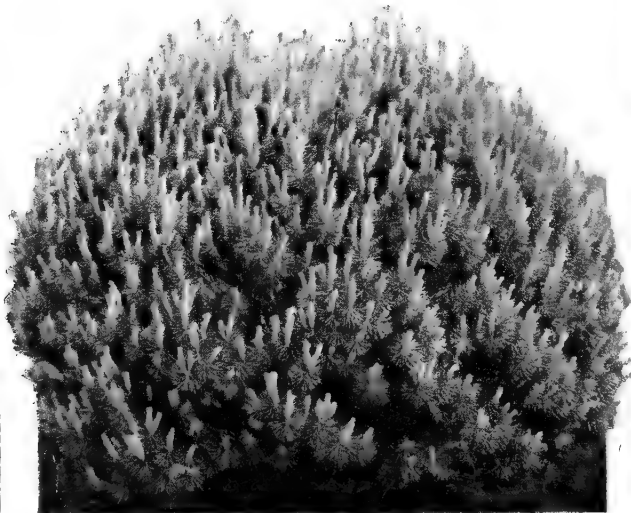
A beautiful semi-evergreen shrub with shiny dark green, Holly-like foliage; bright yellow flowers in May followed by blue berries. 4 to 6 feet at maturity. Dug with roots in a ball of earth. 24-30 in., \$3.75; 18-24 in., \$3.00; 15-18 in., \$2.50, each, not prepaid.



Oregon Grape

PINE (Pinus)

Mugho Pine (*P. montana mughus*). The only dwarf Pine. It has rich green foliage and is especially adapted for rock gardens and foundation planting. 3 to 4 feet at maturity. 18-24 in., \$4.50; 15-18 in., \$3.50; 12-15 in., \$3.00, each, not prepaid.



Mugho Pine



YEW (Taxus)

The rich appearance of the Yews makes them distinct from all other types of Evergreens. The heavy, short, flat needles maintain a rich dark green, almost black color throughout the year. They thrive in any location, shade or sun, moist or dry, extreme heat or cold. May be sheared to any desired shape.

Hicks' Yew (*T. media Hicksi*). Distinctly true columnar form with branches entirely erect in habit. Foliage exceptionally dark green. A splendid formal plant. 8 to 10 feet at maturity. 24-30 in., \$5.50; 18-24 in., \$4.50; 15-18 in., \$4.00, each, not prepaid.

Upright Yew (*T. cuspidata capitata*). This variety has an upright or pyramidal form with slightly open growth, with the typical dark green foliage of the Yews. 8 to 10 feet at maturity. 24-30 in., \$5.50; 18-24 in., \$4.50; 15-18 in., \$4.00, each, not prepaid.

Spreading Yew (*T. cuspidata*). Gracefully spreading, bushy growth, dark green foliage, often having brilliant crimson berries. 6 to 8 feet at maturity. 24-30 in., \$5.50; 18-24 in., \$4.50; 15-18 in., \$4.00, each, not prepaid.

Hicks' Yew



Upright Yew

Spreading Yew



Monsieur Jules Elie

Richard Carvel

Dependable PEONIES

The Peony is one of the most popular and satisfying flowering plants. Their gorgeous and colorful blossoms appear early in the spring at Memorial Day time, and the month of June. We have selected the very best with exceptionally high ratings. A score of 10 points is a perfect rating.

All Peonies offered are strong, 3- to 5-eye divisions. Prices quoted are PREPAID.

WHITE

- Duchesse de Nemours.** 8.1. One of the very best white Peonies we have. White tinged with sulphur, making it a clean fresh flower. **Each 75c.**
- Festiva Maxima.** 9.3. Large white, with crimson markings in center. One of the best. **Each 75c.**
- Frances Willard.** 9.1. White. This is a very fine white variety universally satisfactory. Opens blush-white with carmine tints, changing to pure white. **Each \$1.00.**

CREAM

- Couronne d'Or.** 8.1. White, reliable in all respects. Ring of yellow stamens arranged around a tuft of center petals. Dependable. **Each 85c.**
- Marie Lemoine.** 8.5. Ivory-white, large, full blossoms, strong stems. Good cut flower sort. **Each 75c.**
- Mons. duPont.** 8.3. Double type, large, late midseason. White with yellow glow. **Each 75c.**

FLESH

- Baroness Schroeder.** 9.0. A most excellent late white coming into bloom just before Marie Lemoine. Opens pale pink but soon fades to pure white. Desirable. **Each 85c.**
- James Kelway.** 8.7. Early midseason. Tall, vigorous plant. Double and full. Pure white overlaid with flush of delicate bridesmaid pink. Surpassingly fragrant. One of the best. **Each 75c.**
- Walter Faxon.** 9.3. One of the most vivid of all pink Peonies. Flowers medium size, attractive form. Unique for show purposes or home decoration. **Each \$1.00.**

LIGHT PINK

- Albert Crousse.** 8.6. Compact, shell-pink center slightly flecked with crimson. **Each 75c.**

- Asa Gray.** 8.1. Semi-rose type; midseason. Very large, imbricated bloom; color delicate lilac. **Each 75c.**

DEEP PINK

- La Perle.** 8.5. Large, double, midseason. Old-rose-pink, center flaked with red. Spicy fragrance; good stems and foliage. **Each \$1.00.**
- La France.** 9.0. Rose type; midseason. In a class pre-eminently by itself. Enormously large flowers, full, rather flat. **Each 75c.**
- Mons. Jules Elie.** 9.2. Deep shell-pink with silvery reflex. One of the finest. **Each 85c.**

RED

- Adolphe Rousseau.** 8.5. Very tall, strong grower bearing loose, semi-double flowers of deep garnet. Early mid-season. **Each 75c.**
- Karl Rosenfield.** 8.8. Red. A brilliant and striking variety; blooms early midseason. Flowers very large, semi-rose type; slightly fragrant. Desirable cut flower. **Each 85c.**
- Longfellow.** 9.0. Large, double, midseason. Bright crimson with golden stamens near the center. Strong stems and excellent foliage. **Each \$1.00.**
- Richard Carvel.** 8.8. Considered the Mons. Jules Elie among the reds. Early, large, lasting blooms. Pleasing odor. **Each \$1.00.**

EARLY BLOOMING

- This type of Peonies is often known as the old-time "Piney" and is the earliest to bloom in the spring.
- Officialis Rubra.** The early red flowering type. **Each 75c.**

SINGLE PEONIES

- Duchess of Portland.** Rich pink and flesh. Free bloomer; medium early. **Each 75c.**
- King of England.** 8.6. A rich uniform shade of red. Center a large tuft of self-colored petaloids, prominently edged with gold. **Each 85c.**
- Mikado.** 8.6. Cupped petals are deep rich crimson, center a glow of golden staminodes. A long keeping cut flower. **Each \$1.00.**

Cynthia

"Popular Rose Collection"

Large Size Two-Year Nursery Grown Plants. Regular Price \$1.00 Each.

- 1. Cynthia. Attractive Oriental red.
- 2. Mrs. Sam McGredy. Scarlet-copper-orange.
- 3. Golden Rapture. Clear golden yellow.
- 4. Ami Quinard. Darkest crimson.
- 5. Mme. Jules Bouche. White.
- 6. Poinsettia. Bright unfading scarlet.
- 7. Picture. Velvety rose-pink.
- 8. Mrs. Pierre S. du Pont. Golden yellow.
- 9. Duquesa de Penaranda. Coppery apricot.
- 10. Christopher Stone. Velvety crimson.

FREE ROSE

EDITH NELLE PERKINS
(The Gorgeon's Rose on Front Cover)

ALL 11 FOR PRICE OF 10

Just write "Popular Rose Collection" on your order.

All 11 for
\$10.00
PREPAID

Poinsettia

Mrs. Sam McGredy

Golden Rapture

Picture

Mrs. Pierre S. Du Pont

Christopher Stone

Duquesa de Penaranda

Mme. Jules Bouche

Ami Quinard



"ALL-AMERICA" PATENTED ROSES

Our list was selected for those who wish the very latest and choicest patented varieties. All Roses listed on this page are "All-America" which indicates they were especially awarded by the All-America Rose Council as being one of the outstanding Hybrid Tea Roses for the year in which it was introduced.

Strong Two-Year, Field-Grown Plants.

Apricot Queen. (Pat. No. 464). Orange and apricot at the base of the petals merge to a salmony rose and phlox-pink in the perfectly formed buds and open blooms. **\$1.50 each.**

Charlotte Armstrong. (Pat. No. 455). \$1.50 each. See colored illustration.

Diamond Jubilee. (Pat. Pend.). A warm glowing buff-orange Rose of surpassing loveliness. The shapely, heavy textured petals do not fade or burn, rather intensify in color as they open. **\$2.00 each.**

Fred Edmunds. (Pat. No. 731). Named in honor of the curator of the Portland International Test Gardens. Long-shaped buds of burnt-orange open to glorious orange-apricot blooms. Rich fruit fragrance. **\$1.50 each.**



Horace McFarland (Pat. No. 730)



Heart's Desire (Pat. No. 501)

Grande Duchesse Charlotte. (Pat. Pend.) Long, streamlined buds of burnt-orange, open to firm-petaled blooms which gradually change to a lovely begonia-rose, a color not known in any other Rose. **\$1.50 each.**

Heart's Desire. (Pat. No. 501). **\$1.50 each.** See colored illustration.

Horace McFarland. (Pat. No. 730). **\$1.50 each.** See colored illustration.

Katherine T. Marshall. (Pat. No. 607). Long and pointed buds of deep coral-pink open slowly to a warm, glowing pink Rose of rare beauty and delicacy of form. Blooms are 5 inches across and are cupped. Rain, heat and disease-resistant. **\$1.50 each.**

Lowell Thomas. (Pat. No. 595). **\$1.50 each.** See colored illustration.

Mary Margaret McBride. (Pat. No. 537). A lovely exhibition Rose with long, pointed, deep coral-pink buds and blooms of clear, deep coral-pink suffused with shimmering gold at the base of the petals. **\$1.50 each.**

Mirandy. (Pat. No. 632.) Displaying new beauty of form as the deep, rich, dark red petals unfold, this Rose opens to a lovely Chrysanthemum-red color such as the perfect red Rose should have. A full-bodied, delicious fragrance and is a free bloomer. **\$1.50 each.**

Nocturne. (Pat. No. 713). Large pointed buds open to semi-double blooms of cardinal-red shading to deeper crimson. Strong fragrance. **\$2.00 each.** NEW PRICE \$1.50 EACH

Peace. (Pat. No. 591). Buds of yellow, cerise edged, disclose new iridescent beauty. The flowers are unusually large and borne on heavy stems, vigorous, shining foliage. **\$2.00 each.**

Taffeta. (Pat. No. 716). Perfectly formed, fragrant buds of rich camine-rose changing to begonia-rose in the open flower; glossy dark green leaves. **\$2.00 each.**

New Patented Hybrid Tea Roses

Many varieties on this page are also
"All-America" Awarded Roses.

Crimson Glory. (Pat. No. 105). Easily recognized by its large buds of urn-shape which open into full, well-formed, fragrant blooms of a deep vivid crimson-red. **\$1.50 each.**

Debonair. (Pat. No. 677). The tightly rolled bud, which is a mimosa-yellow, opens to a many-petaled, high-centered full bloom of primrose-yellow, becoming paler as the bloom opens out flat. **\$2.00 each.**

Dickson's Red. (Pat. No. 376.) A glowing scarlet-red Rose; large, beautifully cupped, high-centered form; rich fragrance; early, abundant, continuous bloom. Flowers erect on long strong stems. **\$1.25 each.**

Eclipse. (Pat. No. 172.) Long, streamlined buds of deep gold; profuse bloomer. It ranks among the ten most favorite Roses of America.



Charlotte Armstrong (Pat. No. 1)

McGredy's Sunset. (Pat. No. 317.) Tinted delicate orange and rich scarlet, the saffron blooms open in glorious grandeur and hold their perfect form and sweet fragrance long after cutting. **\$1.25 each.**

Rex Anderson. (Pat. No. 335). A delicate ivory-white Rose perfectly formed. An outstanding exhibition Rose. **\$1.50 each.**

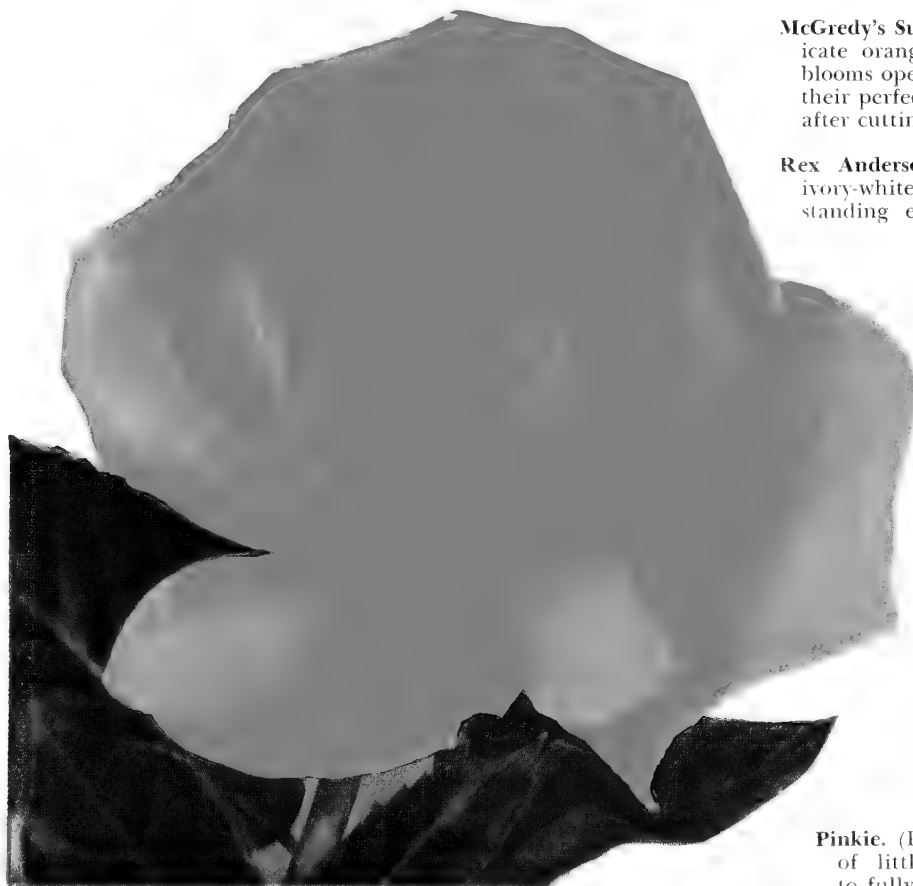
Saturnia. (Pat. No. 349.) Brilliant cardinal-red with reverse of salmon-yellow and copper, creating a warmth of tone difficult to describe. **\$1.50 each.**

Show Girl. (Pat. No. 646.) Rich, deep phlox-pink, lightening as the flower opens to a softer tone but always deep pink. **\$1.50 each.**

New Patented Floribundas

Pinnocchio. (Pat. No. 484.) Quantities of beautiful buds, salmon-pink, flushed with gold, literally cover the plants from spring to frost. **\$1.25 each.**

Pinkie. (Pat. No. 712.) A great profusion of little slender pink buds, opening to fully double flowers about two inches across. **\$1.50 each.**



Lowell Thomas (Pat. No. 595)



Etoile de Hollande

Favorite Hybrid Tea Roses

Strong Two-Year, Field-Grown Plants
\$1.00 each; 6 for \$5.85; 10 for \$9.65, prepaid.

Condesa de Sastago. You will admire the brilliant colors of this Rose. The bud is gold with red stripes. Fully open it is fiery copper and rich gold.

Dame Edith Helen. The blooms are brilliant yet soft rose-du-barry-pink; very free bloomer and strong grower.

Editor McFarland. Long, pointed, pink buds with a glow of amber and a paler edge. Delightful fragrance. Flowers hold their form and color for days when cut.

Etoile de Hollande. One of the most popular brilliant crimson-red Roses, with a velvety sheen when open. See colored illustration.

Hinrich Gaede. An unusual combination of colors; pointed buds, nasturtium-red; high-centered open blooms of orange-yellow.

Joanna Hill. A charming orange-yellow; vigorous growing, free blooming, fragrant Rose.

President Herbert Hoover. A glorious Rose. One of the finest ever produced. Charming color combinations of cerise-pink, flame, scarlet and gold.

Sister Therese. The long, pointed buds are chrome-yellow, heavily marked with carmine; the open flowers are rich daffodil-yellow.

Talisman. One of the most popular Roses for garden or cut flowers. A color combination of orange, yellow, rose-red and scarlet on a background of rich old gold.

Victoria Harrington. Pointed buds of blackish red, slowly opening to high-centered flowers of non-fading, velvety dark red. In form and texture quite different from other red varieties.

Climbing Roses

Strong, Two-Year Plants, \$1.00 Each
(Except Where Noted)

Cl. Etoile de Hollande. Flowers identical with Hybrid Tea type. See colored illustration on this page.

Cl. Mrs. E. P. Thom. Rich, clear yellow blooms identical with Hybrid Tea type.

Paul's Scarlet. Vivid scarlet blossoms of large size, in clusters, very similar to Blaze.

Cl. Talisman. Flowers identical with the Hybrid Tea type described on this page.

PATENTED CLIMBERS

Blaze. (Pat. No. 10). Large, double, blazing scarlet produced in large clusters. See colored illustration. **\$1.50 each.**

Heart's Desire. (Pat. No. 501). Flowers identical with Hybrid Tea type shown in color on page 18. **\$1.50 each.**

High Noon. (Pat. No. 704). A 1948 Sensational Winner of the "All-America" Award. Brilliant yellow, well shaped buds and semi-double flowers of the Hybrid Tea type. **\$2.50 each.**

Picture. (Pat. No. 524). Dozens of blooms, each a "perfect picture" in clear rose-pink with warm salmon undertones. Enchantingly fragrant. **\$1.50 each.**



Blaze (Pat. No. 10)

Up-to-the-Minute 1950 Roses

PRESENTING for your 1950 Rose Garden the choice Roses on the following pages. These varieties are of the latest All-America Rose Selection and to have them in your own Rose garden will give you an indescribable satisfaction.

The following price schedule applies to all Patented Roses on pages 18, 19, 20, 20a, 20b, 20c, and 20d.

Regular Price.	Three of same variety or assorted varieties in their respective price groups.	Assorted varieties and prices, 3 or more.
Each \$2.50	\$6.25	Each \$2.10
2.00	5.00	1.70
1.50	3.75	1.25
1.35	3.40	1.15
1.25	3.15	1.05

Any quantity may be purchased on the same basis.

The following seven Roses are 1949 and 1950 winners of the All-America Rose Selection Award excepting Peace, which received the same award in 1946 and continues to be one of the most popular varieties.

FASHION

(Pat. No. 789.) 1950 Award

Fashion is definitely the finest Floribunda Rose ever created. Surpasses all others for its gay new color, enormous clusters of continuous blooms, which persist without interruption from their first June display through the season until frost. The warm Oriental red buds appear freely, giving your garden an all-season panorama of sparkling new coral-pink suffused with gold. This wonderful Rose is predicted to become as popular a Floribunda as Peace is the outstanding Hybrid Tea Rose of all times.

Each \$2.00; 3 for \$5.00

Fashion



Peace



PEACE

(Pat. No. 591.) 1946 Award
 One of the most popular Roses of the decade. The ovoid buds are golden yellow, etched with pink. As they open, they change from canary-yellow to pale gold to iridescent cream. The petals are edged with apple-blossom-pink that deepens as the flower slowly opens to glorious 5-inch blooms. As the flower matures, the petals roll gracefully outward to form a very double bloom, attractively cupped and with a high-centered golden heart. Individual petals are large, numbering from 40-45.

Each \$2.00; 3 for \$5.00



FORTY-NINER

(Pat. No. 792.) 1949 Award
 This is probably the most brilliantly bi-colored Rose ever introduced. The outside of the petals is rich chrome-yellow, changing to straw-yellow in open bloom. The inside face of the petals is a vivid Oriental red changing to cherry-red with age. The long, pointed buds have a mild, pleasant fragrance and are borne on long, straight, sturdy stems with few thorns. The foliage is dark green and is very vigorous. Unlike most bi-colored Roses the colors of Forty-niner are lasting and beautiful until the last petal drops.

Each \$2.00; 3 for \$5.00



Forty-niner



Mission Bells

MISSION BELLS

(P.A.F.) 1950 Award

An exceptionally beautiful shade of deep salmon-pink changing to a clear shrimp-pink. The full blooms often measure up to 5 inches when open, and retain their brilliant color and fine form to the end. Free branching plants produce many long, pointed buds with pleasing Tea-scented fragrance. Attractive coppery green foliage is abundant and disease resistant. Mission Bells is a Rose of outstanding merit . . . strikingly brilliant in color; large and perfect in form; remarkable for vigor, length of stem and the appearance and texture of its foliage.

Each \$2.50; 3 for \$6.25

SPECIAL OFFER

One Each of These Four Roses

"A.A.R.S. Winners"

(Order by this name)

Regular Value \$9.50—for

Only \$7.50



SUTTER'S GOLD

(P.A.F.) 1950 Award

The only Rose ever to have won the Gold Medal of the famous Bagatelle Trials, at Paris, France, and an All-America Award as well. Beautiful golden buds shot with orange and red open to spectacular flowers with more fragrance than any other yellow Rose. In all pre-introduction showings, this Rose has been a sensation.

Each \$2.50; 3 for \$6.25

[20c]



Sutter's Gold

[20b]

AARS TALLYHO

(Pat. No. 828.) 1949 Award

The color of Tallyho, which is entirely new in Roses, is quite unusual, varying somewhat with the weather and planting location. The inside of the petals is a delightful shade of phlox-pink and the outside of the petals varies from crimson to cardinal-red. Although it is a bi-color, the contrast is not great. Ovoid buds open to flowers of a spicy fragrance. The cut flowers last well. The plant is of robust growth.

Each \$2.00; 3 for \$5.00



Tallyho



Capistrano

AARS CAPISTRANO

(P.A.F.) 1950 Award

Produces unusually large buds and flowers on long, stiff-necked stems. The flowers sometimes reach a full six inches across and are a rich glowing rose-pink that does not fade. A rich, heavy fragrance is present. Under favorable conditions this leathery-leaved, disease-resistant Hybrid Tea reaches five feet high.

Each \$2.50; 3 for \$6.25

~~Each \$2.00; 3 for \$5.00~~

Climbing Vines

Vines always give pleasing, colorful and ornamental effects for walls, trellises or pergolas.

Strong Two-Year Plants
 \$1.00 each; 3 for \$2.75 Prepaid
 (Except Wisteria)

AMEPELOPIS and HEDERA

American Ivy or Virginia Creeper. (*A. quinquefolia*). A native vine of hardy, rapid growth, with large, luxuriant foliage, which in autumn takes on the most gorgeous coloring.

Boston Ivy or Japanese Creeper. (*A. Veitchi*). Leaves a little smaller and more ivy-like in form than the foregoing. The plant requires some protection until it is established.

English Ivy. (*H. helix*). Leaves are dark shiny green. Used for covering walls, trunks of trees, or undesirable objects; also giving a beautiful effect.

CLEMATIS, Small Flowering

Paniculata (New, Sweet Scented Clematis). It is a very hardy and rapid grower. When in bloom it is practically covered with large clusters of pure and delightfully fragrant flowers.

HONEYSUCKLE VINES

(*Lonicera*)

Hall's Honeysuckle (*L. Halliana*). A new, hardy variety and has proved to be one of the best Honeysuckles. Blooms from June to November. It is almost evergreen and one of the most fragrant. White, changing to yellow. See colored illustration.

Scarlet Trumpet Honeysuckle. (*L. sempervirens*). Blooms from June to September. The blossoms are of bright scarlet, trumpet-shaped and very showy. Vine is a strong grower.



SILVER LACE VINE (*Polygonum Auberti*)

A rapid growing, hardy vine with tiny white flowers borne abundantly in feathery sprays. July to September.

WISTERIA

Purple Chinese Wisteria (*W. sinensis*). Most beautiful climber; of rapid growth, producing large clusters of lovely blue in great masses. Ours are propagated from blooming wood which assures their blooming. See colored illustration. \$1.75 each, prepaid.

*Wisteria,
 Chinese Purple*
 ←



CLEMATIS, Large Flowering Varieties

This type of Clematis grows 8 to 12 feet in height, and the flowers are 2 to 2½ inches in diameter.

Henryi. White. **Mme. Edouard Andre.** Red.
Jackmani. Purple. **Ramona.** Pink.



Hall's Honeysuckle (L. Halliana)

Ornamental and Flowering Trees

BIRCH (Betula)

Cutleaf Weeping Birch (*B. alba pendula laciniata*). The Queen of all Birches is this unusually graceful, drooping tree; particularly adapted as a lawn specimen or in groups of three trees for outstanding background. The bark is very white. 50 feet at maturity. See colored illustration. 6-8 ft., \$3.00; 5-6 ft., \$2.50 each, postpaid.

European White Birch. (*B. alba*). A tall, graceful tree with spraylike branches and white bark which makes pleasing contrast in summer or winter. 40 feet at maturity. 6-8 ft., \$2.00; 5-6 ft., \$1.50, each prepaid.

European White Birch (Clump Form). This variety is identical with the above except it is grown, in our nursery, with three treelike leaders or stems branched at the ground, giving a naturalistic effect as often seen in the woods. Very distinctive. 30 feet at maturity. 5-6 ft., 3 sprouts, \$2.50, each, prepaid.

European Pyramidal White Birch. (*B. alba fastigiata*). This is the pyramidal form of the regular *Betula alba*, having same foliage and bark excepting grows in a slender, upright form similar to Poplars, but more admired. 30 feet at maturity. 6-8 ft., \$3.00; 5-6 ft., \$2.50 each, prepaid.

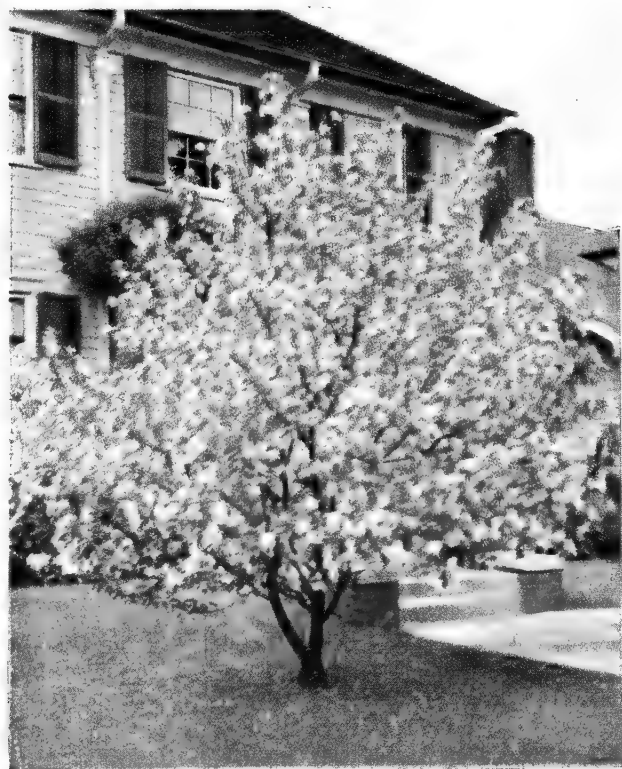
DOUBLE FLOWERING CHERRY

(See Colored Illustration on Back Cover)

The Double Flowering Cherry is one of the most popular ornamental trees. The bright pink, double blossoms appear among the first in the spring and the heavy bronze-green foliage continues the ornamental effect through the season. They are very desirable for street parkings or single specimens on the lawn. 12 to 15 feet at maturity. See colored illustration on back cover. 4-5 ft., \$2.75; 3-4 ft., \$2.25 each, prepaid.



Cutleaf Weeping Birch



Bechtel's Crabapple

WEeping FLOWERING CHERRY

One of the finest weeping trees for lawns and small grounds. They are grafted on a hardy variety of Cherry, about 5 feet from the ground. The branches grow in a graceful, drooping form, and early in the spring are covered with bright pink blossoms the same as shown on back cover for the upright Double Flowering Cherry. \$4.50 each, prepaid.

FLOWERING CRABAPPLE (Malus)

Bechtel's. The finest of the medium growing Flowering Crabs. The blossoms are very double, delicate pink, in profusion. Hardy. 10 to 15 feet. See colored illustration. 3-4 ft., \$1.75; 2-3 ft., 1.25, each, prepaid.

Eleyi. Brilliant purplish red foliage, purplish red flowers followed by spectacular dark red fruits. 15 to 20 feet.

Hopa. One of the strong growing varieties; purplish tinged leaves; large, single blossoms of a beautiful pink. Attractive dark red fruits in the fall. 20 to 25 feet.

Prices on all Flowering Crabapples, except Bechtel's: 5-6 ft., \$2.00; 4-5 ft., \$1.50, each, prepaid.

DOGWOOD (*Cornus*)

The Dogwood group is used for the brilliancy of their bark and berries. The fruit, maturing in the fall, is not alone attractive to the human eye, but to the appetite of the birds as well.

Florida (Flowering Dogwood). A "three season" tree. Spring brings large white flowers before the leaves; late summer has red berries to attract the birds; and fall the rich scarlet colored foliage. One of the nicest tall growing varieties. 15 to 25 feet at maturity. 4-5 ft., \$3.00; 3-4 ft., \$2.50 each, prepaid.

Florida rubra (Pink Flowering Dogwood). Considered the "aristocrat" among the Dogwood family. Its flowers vary from bluish-pink to deep rose, making a lovely sight in May and June, and the fruit in September almost equal in beauty. 15 to 25 feet at maturity. See colored illustration. 3-4 ft., \$5.00; 2-3 ft., \$4.00 each, prepaid.

ELM (*Ulmus*)

American (*U. americana*). This Elm is tall growing, lofty and spreading, with drooping branches. At maturity it attains individual beauty. 100 feet. 8-10 ft., \$3.00; 6-8 ft., \$2.50; 5-6 ft., \$2.00 each, prepaid.

Chinese (*U. pumila*). This is the newest variety of Elm, having become very popular for its rapid growth, adaptability to dry soils and attractive foliage. 50 feet. 8-10 ft., \$2.75; 6-8 ft., \$2.00; 5-6 ft., \$1.50 each, prepaid.

HAWTHORN (*Crataegus*)

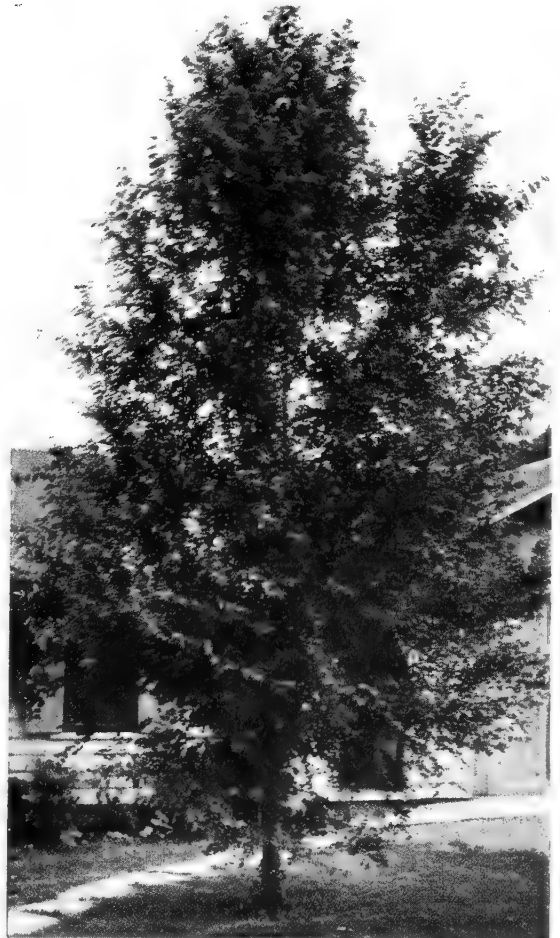
Paul's Scarlet (*C. oxyacantha pauli*). This is a very attractive tree in the early spring when covered with a mass of double, brilliant scarlet blossoms and red berries in the fall of the year. 30 feet. See colored illustration. 5-6 ft., \$3.00; 4-5 ft., \$2.50 each, prepaid.



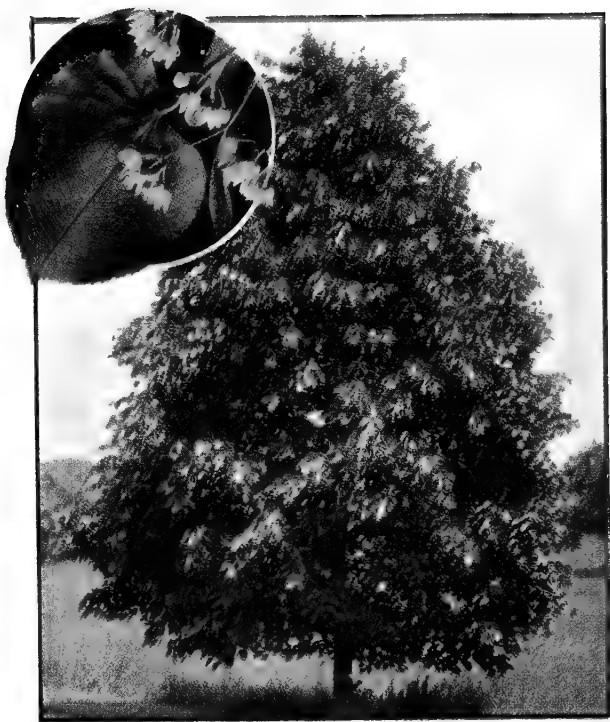
Flowering Dogwood



Paul's Scarlet Hawthorn



Chinese Elm (Ulmus Pumila)



American Linden (Tilia Americana)

LINDEN (*Tilia*)

American (*T. americana*). An American species, with intense, fragrant yellow blossoms; very large leaves and broad, round formed top, which gives plenty of shade. Suitable for lawns, parks and streets. 70 feet. 6-8 ft., \$2.50; 5-6 ft., \$2.00 each, prepaid.

Pyramidal Linden (*T. pyramidalis*). This is naturally a narrow growing, pyramidal form of Linden with foliage similar to the American variety. Suitable for planting in a limited area; also effective for background or screen purposes. 30 feet at maturity. 6-8 ft., \$3.00; 5-6 ft., \$2.50 each, prepaid.

LOCUST (*Robinia*)

Black Locust (*R. pseudoacacia*). This is a well known hardy, rapid growing Locust. Adapted to heat and dry soils. 60 to 70 feet. 8-10 ft., \$2.50; 6-8 ft., \$2.00 each, prepaid.

Globe or Umbrella Locust (*R. umbraculifolia*). Attractive globe-shaped top. Light green foliage; does not bloom; very nice for formal effects. Size of top at maturity, 5 to 6 feet in diameter. \$4.50 each, prepaid.

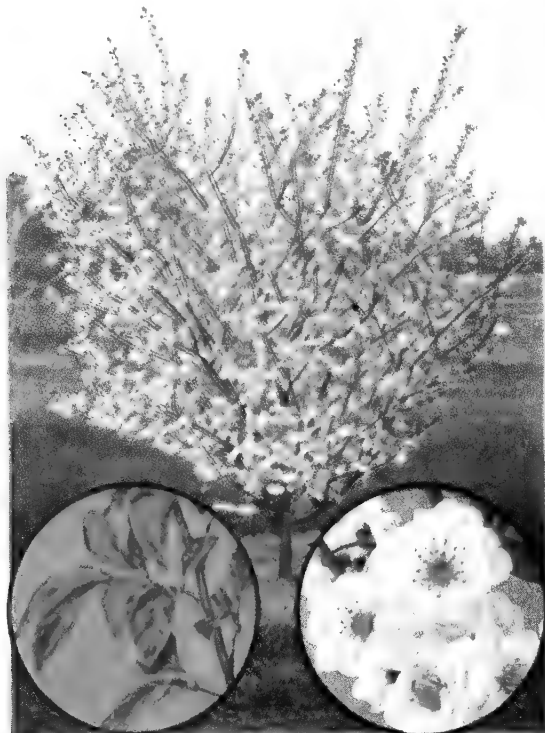
Pink Flowering Locust (*R. hispida*). A beautiful ornamental tree with attractive bright pink blossoms. The bark is covered with a soft, prickly formation with the appearance of moss. \$4.50 each, prepaid.

MAPLE (*Acer*)

Norway (*A. platanoides*). One of the most popular shade trees, having a broad, round top; large dark green foliage. 50 feet. 8-10 ft., \$3.00; 6-8 ft., \$2.50 each.

Schwedler (*A. platanoides Schwedleri*). Similar to the Norway Maple except it has attractive purple-red foliage in the spring which turns to a rich bronze-red. 40 feet. See colored illustration. 8-10 ft., \$4.00; 6-8 ft., \$3.00; 5-6 ft., \$2.50 each, prepaid.

Silver (*A. dasycarpum*). Also commonly known as Soft Maple. One of the fastest growing Maples, with wide spreading branches, and does well in all soils. 60 to 70 feet. 8-10 ft., \$3.00; 6-8 ft., \$2.50; 5-6 ft., \$2.00 each, prepaid.



Blireana Plum



Schwedler Maple

FLOWERING PLUM (*Prunus*)

Blireana. Upright growth with dark foliage. The blossoms, appearing in May, are deep pink, very double, large and fragrant; shape and size resembling the Flowering Almond. 5-6 ft., \$1.50; 4-5 ft., \$1.25 each.

Newport. Foliage is a maroon-purple which deepens as the season advances. In early spring it is covered with light pink, single blossoms. 15 feet. 5-6 ft., \$1.50; 4-5 ft., \$1.25, each.

Triloba. This is the smallest growing of all Ornamental Plums. It is upright, spreading, of bushy form with dark foliage. The branches are entirely covered early in the spring with large, double, bright pink blossoms before the foliage appears. It is one of the most attractive varieties. 5 to 7 feet. See colored illustration. 3-4 ft., \$1.25; 2-3 ft., \$1.00 each.

MOUNTAIN ASH (*Sorbus*)

European (*S. aucuparia*). A medium sized tree bearing large, flat heads of white blossoms in the spring and clusters of brilliant scarlet berries in the autumn, remaining most of the winter. Excellent parking trees or for the lawn. 30 feet. See colored illustration. 8-10 ft., \$3.00; 6-8 ft., \$2.50; 5-6 ft., \$2.00 each, prepaid.

POPLAR (*Populus*)

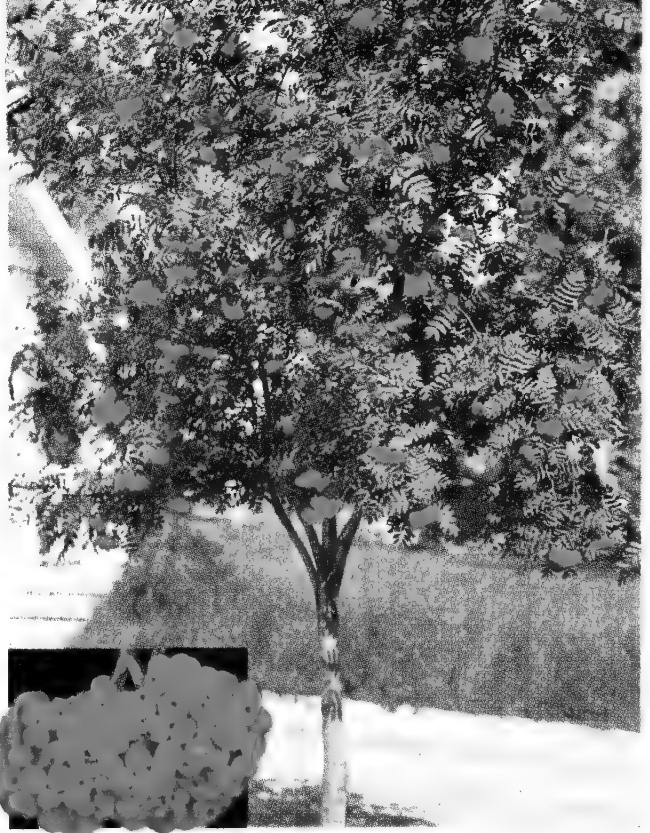
Carolina (*P. eugenci*). A popular tree where shade is wanted quickly. It thrives in all soils, but is especially suitable for dry conditions. Is of broad spreading form with gray-green bark and bright green, small foliage.

Lombardy (*P. nigra italica*). A well known tree of narrow columnar form and rapid growth, with light green, small foliage. Used for quick accent effects. 60 feet.

Silver-Leaved (*P. bolleana*). A tall columnar Poplar similar to the Lombardy. Foliage glossy green on upper side and silvery beneath; bark of bluish hue; rapid growing. Used for quick accent effects.

Prices on all Poplars:

8-10 ft., \$2.25; 6-8 ft., \$1.75; 5-6 ft., \$1.25 each, prepaid.



European Mountain Ash

WILLOW (*Salix*)

Babylon (*S. babylonica*). The tallest growing of weeping forms of Willows; splendid for waterside plantings; drooping, long, slender, olive-green branches. 50 feet.

Golden Weeping (*S. niobe*). True weeping type with branches sweeping to the ground; bright golden yellow branches and light yellowish green foliage. 30 feet.

Wisconsin (*S. blanda*). It has a very symmetrical round-shaped form with branches drooping to the ground. Branches and foliage a bright green color. 30 feet. See colored illustration.

All Willows: 6-8 ft., \$2.25; 5-6 ft., \$1.75 each, prepaid.



European Sycamore

SYCAMORE or PLANE TREE (*Platanus*)

European Sycamore (*Platanus orientalis*). A rapid growing shade tree with open, spreading branches; light olive-green bark; leaves six inches across, of a light green color. A very popular tree and planted extensively. 60 to 70 feet. See colored illustration. 8-10 ft., \$3.00; 6-8 ft., \$2.50; 5-6 ft., \$2.25 each, prepaid.



Wisconsin Weeping Willow

Hardy Ornamental and Flowering Shrubs

SHRUBS, with their variable blooming periods, produce a continuation of BEAUTIFUL and FRAGRANT flowers through the spring, summer and fall.

Prepaid Prices on All Shrubs

(Except for Special Varieties as Indicated)

Each \$1.25 6 for \$6.75

12 for \$12.50

Assorted varieties if desired at above quantity price rates.

ALL OF OUR SHRUBS ARE
2-YR., FIELD-GROWN, HEAVY
ROOTED, BLOOMING SIZE
—REAL SHRUB VALUES—



Butterfly Bush (Buddleia)

ALMOND, Flowering (*Prunus glandulosa*)

A well known bushy shrub producing a profusion of double, pink, roselike blossoms early in the spring before the leaves appear. 3 to 5 feet at maturity.

ALTHEA, Rose of Sharon (*Hibiscus syriacus*)

A free flowering, treelike shrub blooming in August and September after the other shrubs are through. Flowers similar to the Hollyhock and are very showy. 6 to 10 feet at maturity. Choice of Double Violet, Double Red, Double Rose, Double White. See colored illustration on the back cover. Order by color desired. \$1.50 each; any 3 for \$4.00; all 4 for \$5.00, prepaid.

BARBERRY (*Berberis*)

Green-Leaf Barberry (*B. Thunbergi*). Bright green foliage in summer turning to brilliant autumn colors and shades in fall, and a handsome covering of scarlet berries that last into winter. Hardy, and thrives in shade or sunlight. 3 to 5 feet at maturity.

Red-Leaf Barberry (*B. Thunbergi atropurpurea*). Very similar in growth and habit to the Japanese Barberry except the foliage is a rich bronze-red throughout the season, more pronounced when planted in open sunny places. 3 to 4 feet at maturity. See color illustration



Red-Leaf Barberry

BUTTERFLY BUSH

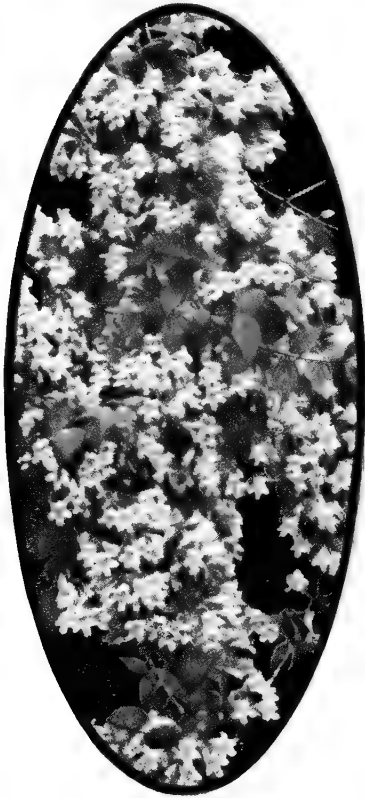
(*Buddleia*; Summer Lilac)

An attractive shrub of spreading pendulous habit of growth; the branches tipped with long spikes of charming blossoms, pleasingly lilac perfumed. June to October. 5 to 6 feet at maturity. See color illustration at left.

BEAUTY BUSH

(*Kolkwitzia Amabilis*)

Charming new hardy shrub recently introduced from China. Center stems are upright, the outer branches gracefully arching. Very attractive foliage. Blooms profusely in May. Flowers are bell-shaped pale pink with orange veins, and are borne in long clusters along the branches. Does well in shade and grows rapidly. 5 to 6 feet at maturity. See color illustration below.



Beauty Bush



Forsythia (Golden Bell)

FORSYTHIA (Golden Bell)

Intermedia spectabilis (Showy Border Forsythia). Considered the best of the Forsythias, having larger and richer yellow blossoms, completely covering the spreading branches in early spring. 6 to 8 feet at maturity. See color illustration.



Deutzia Gracilis

CORALBERRY (*Symphoricarpos*)

Chenaulti. Always a neat appearing plant and strikingly handsome with the slender, drooping branches; red flowers in summer, followed with a wealth of coral-red berries which hang on all winter. Does well in dry soil and shade. 3 to 4 feet at maturity. If you want something for a shady place, here it is.

DEUTZIA

Few shrubs are of such easy culture and universal satisfaction. Beautiful red, white and soft pink, bell-shaped flowers yield handsome effects in garden or border arrangements. They prefer medium to dry soils and full sun.

Gracilis alba (Slender Deutzia). A graceful dwarf grower; dense, bushy, arching branches wreathed with pure white, Lily-of-the-Valley-shaped blossoms in May. Valuable for low hedges, borders or in front of taller shrubs. 2 to 4 feet at maturity. See color illustration.

Pride of Rochester. Deservedly popular, this husky variety produces masses of miniature bell-shaped blossoms in May which last several weeks. Blush color present sometimes turning to pink. 8 to 10 feet at maturity.



Bush Honeysuckle, Pink Tartarian

Colorful SHRUBS for Modern Homes

ADD NEW SPARKLE TO YOUR GROUNDS

HONEYSUCKLE BUSH (*Lonicera*)

Handsome shrubs that combine fragrance, dainty flowers in May and June, showy fall and winter fruits, and good foliage with hardiness. Grow in either sun or shade. Are invaluable for border or mass plantings, and as a sheared, flowering hedge, they make a charming effect.

Pink Tartarian (*L. tatarica rosea*). Strong, upright grower with bright green foliage and delicate pink blossoms; in late summer produces rich orange and red berries; very suitable for hedges or group plantings. 7 to 10 feet. See colored illustration.

Red Tartarian (*L. tatarica rubra*). Same as the above except flowers are light crimson color.

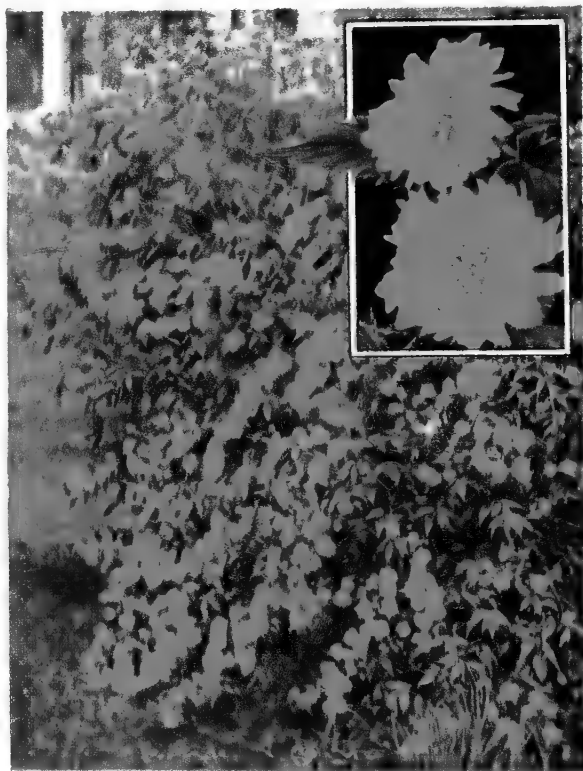
HYDRANGEA

Arborescens grandiflora (Hills of Snow). Probably the best flowering shrub for shady positions or north side of buildings. It is a compact grower with large, showy leaves and an abundance of double, white blossoms following just after most of the other spring blooming flowers and continues until August. Has the appearance of a low growing Snowball and is sometimes called the Snowball Hydrangea. When in doubt for a shady place, do not hesitate to select this wonderful shrub. 3 to 5 feet at maturity.

Paniculata grandiflora (Pee Gee Hydrangea). One of the most popular landscape shrubs. From August until late autumn, these shrubs are loaded with large, globe-shaped blossoms of pure white changing to delicate shades of pink. Best in sunny locations. 4 to 6 feet at maturity.



Hydrangea "Pee Gee"



Kerria Japonica Flore-Pleno

KERRIA (*Corchorus*)

Flore-Pleno (Globe Flower). Both leaves and stems are bright green. Borne upon the upright, spreading branches are numerous globe-shaped flowers resembling balls of gold. Flowers in June and again in September. 4 to 6 feet at maturity.



President Loubet

President Grevy

Mme. Casimir Perier

Chas. Joly

FRENCH LILAC (*Syringa*)

The newer grafted French named varieties of Lilacs have richer colored and more double blossoms of unusual fragrance. 5 to 8 feet at maturity.

Chas. Joly. Purple.

Mme. Casimir Perier. Pure white.

President Grevy. Light blue.

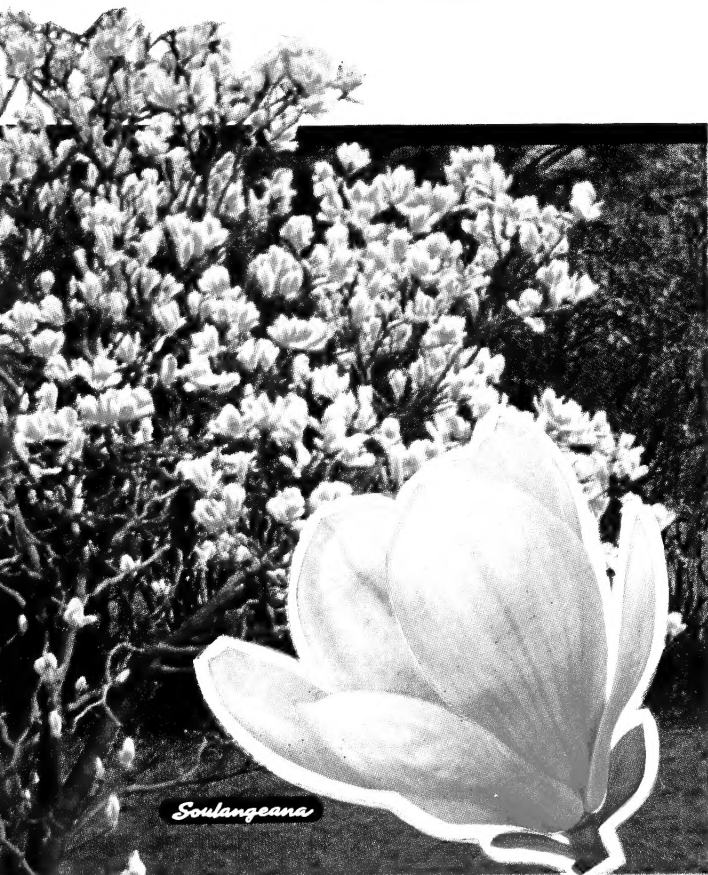
President Loubet. Red.

Strong branched specimens: \$2.50 each; all 4 for \$9.00. Medium size, not branched: \$1.75 each; all 4 for \$6.50. 4 of any one variety at group prices. All prices prepaid.

MAGNOLIA

Soulangeana. An aristocrat of flowering shrubs. Deep rose blossoms with creamy white inside, and 3 to 5 inches across.

Soulangeana nigra. Similar to the above, except it is dark purple on outside and shades of pink inside. Either variety: 4 to 5 ft., \$11.00; 3 to 4 ft., \$9.00 each, not prepaid.



Soulangeana Magnolia



Virginal Mock Orange

MOCK ORANGE (*Philadelphus*)

This well known shrub hardly needs describing. The upright massive growth, and waxy white flowers, with pleasing fragrance, commend it for liberal use. The flowers of some varieties are more double than others.

Coronarius (Sweet Mock Orange). Flowers most fragrant of the Mock Oranges, are creamy white and produced in May and June. 8 to 10 feet at maturity.

Virginal (*P. virginalis*). A comparatively new variety, considered one of the finest Mock Oranges, with extra large, semi-double, pure white flowers, deliciously fragrant, continuing nearly throughout the season. 6 to 8 feet at maturity.

SPIRAEA (Spirea)

This family of shrubs furnishes a variety of form, size, foliage and blossoms. All varieties are hardy and adapted to almost any location, always forming an important part in shrub beautification.

Anthony Waterer. This dwarf variety has showy clusters of crimson flowers in July, and if cut as they fade, will continue to bloom until frost. 2 to 3 feet at maturity.

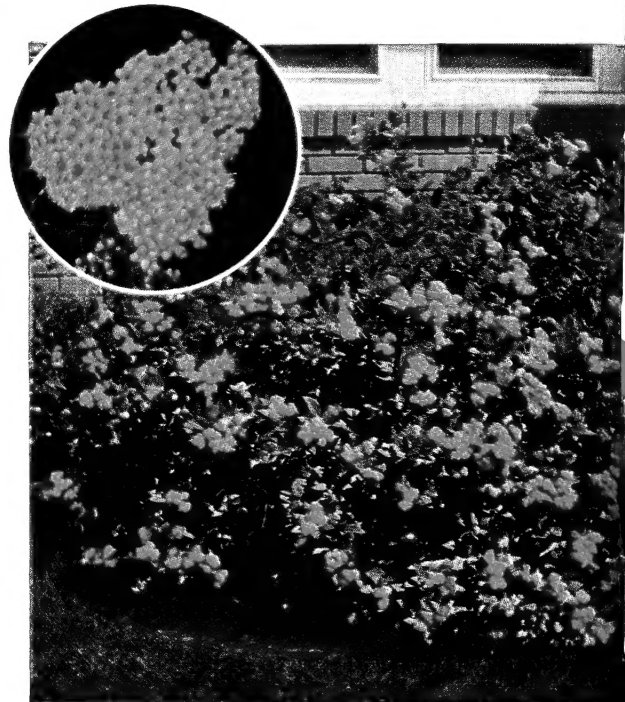
Bridal Wreath (*S. prunifolia*). Blooms early in spring, even before *Spirea van Houtte*, with clusters of button-like white flowers. Early in the fall the foliage turns beautiful tones of red and bronze. 6 feet at maturity.

Thunberg's (*S. Thunbergi*). One of the finest low growing shrubs, with fine, delicate foliage which is light yellowish green, changing to brilliant red and orange in autumn. Very desirable for low, untrimmed hedges or group plantings. Does well in shade or open light. 2 to 3 feet at maturity.



Spiraea Van Houtte

Van Houtte (*S. van Houttei*). Indispensable in grouping of shrubbery with its graceful arching slender branches and "maidenhair" foliage. A fountain of white in May. Splendid for untrimmed hedges, and may be planted in the shade. 4 to 6 feet at maturity.



Spiraea Anthony Waterer



Fragrant Viburnum (Viburnum Carlesii)

SNOWBALL (Viburnum)

Common Snowball (*V. opulus sterile*). A large shrub producing large balls of snow-white flowers in May. 8 to 10 feet at maturity.

European Cranberry Bush (*V. opulus*). Upright, spreading habit, dense green foliage. Single, flat, white flowers in May, succeeded by red cranberry-like berries that cling to the leafless branches all winter. 8 to 10 feet at maturity.

Fragrant Pink Snowball (*V. Carlesii*). This valuable recent introduction from Korea is a dwarf, compact shrub, bearing delicate pale pink blossoms, tinted white, with clover-scented fragrance. 3 to 4 feet at maturity. See colored illustration.

Prices on Fragrant Pink Snowball: 24 to 30 in., \$4.50;
18 to 24 in., \$3.50, each, not prepaid.



Spiraea Thunbergii

SUMAC (*Rhus*)

All varieties of Sumac are suitable where dry, hot or dusty conditions prevail. They have bright colorful foliage effects in the fall.

Aromatic Sumac (*R. canadensis*). Low, spreading shrub, with yellow flowers in spring and coral-red fruit. The fragrant, aromatic foliage turns brilliant orange and scarlet in autumn. 5 to 7 feet at maturity.

Staghorn Sumac (*R. typhina*.) As the name implies, the growth is rugged and irregular, giving a very picturesque effect for heavy mass planting. 12 to 15 feet at maturity.



Weigela Floribunda

Floribunda. The everblooming red Weigela Floribunda surpasses all other red-flowering shrubs. Commences blooming early in spring and continues all summer long. Leaves are a rich glossy green and densely cover the branches. A necessity in every border planting. Will reach 5 feet in height.

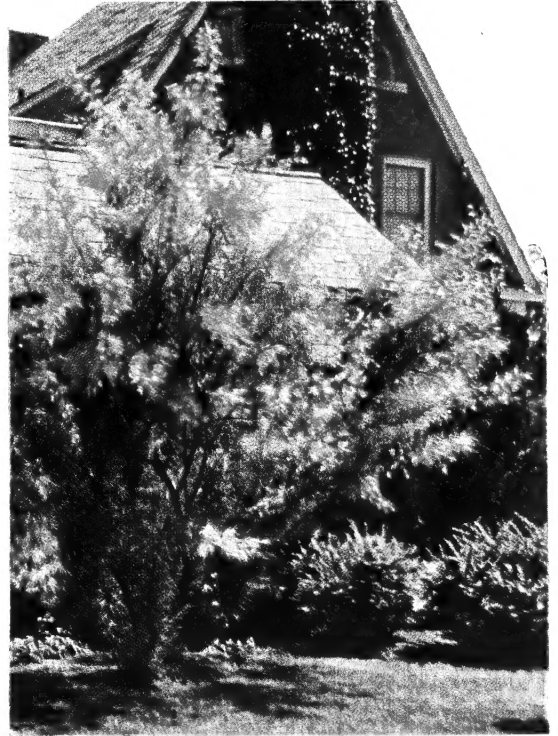
PRIVET (*Ligustrum*)

English Hardy Privet (*L. vulgare*). It has dark green foliage and when sheared grows into a very dense hedge. For a good thick hedge plant 2 rows 12 inches apart and 12 inches apart in each row in a staggered manner. **Prices prepaid, 10 to 50 plants, 25c each; 50 to 100 plants, 22½c each; 100 or more, 20c each.**

FLOWERING QUINCE

(*Cydonia japonica*)

Crimson Beauty. A new variety introduced by us. It has dazzling crimson petals with bright golden stamens. See colored illustration on the back cover. \$1.85 each, prepaid.



Tamarix Pentandra

TAMARISK (*Tamarix*)

Pentandra (*T. hispida aestivalis*). A superior variety; hardy, tall-growing shrub, with fine feathery foliage. Blooms in July with numerous bright carmine-pink flowers. Thrives in dry locations. 8 to 10 feet at maturity.

WEIGELA (*Diervilla*)

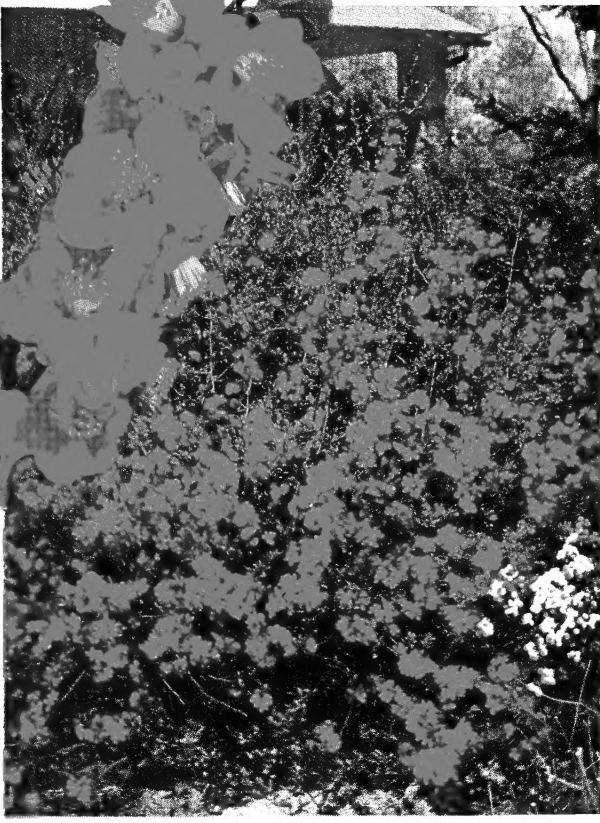
These shrubs make a strong, upright, spreading growth. The flowers are wide trumpet-shaped, borne in clusters thickly along the branches.

Eva Rathke. One of the most attractive varieties of medium height, with graceful spreading habit; foliage bronze-green; flowers of brilliant crimson. 3 to 5 feet at maturity.

Rosea. A vigorous, dense, erect growth, covered with an abundance of large, rosy pink flowers. This is one of the most popular varieties. 5 to 6 feet at maturity.

ATTRACTIVE AND COMFORTABLE HOMES

Beautiful home surroundings really cost you nothing. Every tree, shrub, and plant adds many times more to the value of your home than it costs.



CRIMSON BEAUTY FLOWERING QUINCE

Remarkable new shrub of dazzling brilliancy. For further description, see page 31. \$1.75 each, prepaid.



DOUBLE FLOWERING CHERRY

A very attractive tree with gorgeous bright pink, double blossoms. For further description, see page 22. 4 to 5 ft., \$2.75; 3 to 4 ft., \$2.25, each, prepaid.

ALTHEA (Rose of Sharon)

These colorful shrubs are very desirable for single specimens or groups. For further description, see page 26. Order by colors. \$1.50 each; any 3 for \$4.00; all 4 for \$5.00, prepaid.



MILTON NURSERY CO.

MILTON, OREGON