

## **Historic, Archive Document**

Do not assume content reflects current scientific knowledge, policies, or practices.





1.

2.

3.

4.

5.

LIBRARY  
 RECEIVED  
 ★ JAN 31 1951 ★  
 U. S. Department of Agriculture

*Hardy Phlox*  
*Special Offer*  
 40c each

No. 1 Leo Schlageter  
 No. 2 Blue Boy  
 No. 3 Count Zeppelin  
 No. 4 Daily Sketch  
 No. 5 Flash

3 of one kind \$1.10  
 5, one of each \$1.75

Full descriptions  
 on page 14

**Richards'**  
**Gardens**

1951

Plainwell, Michigan  
 Telephone 3941

Spring and  
 Fall Catalog



**LONG SPURRED HYBRID AQUILEGIA**

**MRS. SCOTT ELLIOTT'S HYBRIDS** Unquestionably the finest color mixture grown; colors cover all shades of lavender, purple, red, white, yellow, blue and pink. Flowers are of magnificent size with unusually long spurs.

3 for 60c      6 for \$1.00      12 for \$1.75

**SPECIAL OFFER** 6 assorted varieties **\$1**  
our selection

**PYRETHRUM (Painted Daisies)**

No other perennial flower seems to have the general usefulness, beauty, color, hardiness and easy culture that belongs to these gorgeous flowers. Foliage is fernlike and ornamental. Stems are strong and erect. Plants transplant easily and each one produces a liberal number of blooms during the season.

**ROBINSON'S HYBRIDS, MIXED** The finest strain of painted daisies in a wide range of mixed colors. Plants carry beautiful blooms of single overlapping petals on tall, strong stems. We consider this strain so superior we have discontinued growing any of the others.

3 for 70c      6 for \$1.15      12 for \$2.00

**ROBINSON'S ROSE AND PINK** Colors cover a wide range from pastel pink to deepest pink and rose. We recommend them highly.

3 for 70c      6 for \$1.15      12 for \$2.00

**ROBINSON'S CRIMSON** Colors range from red to deepest crimson; considered the finest of all reds.

3 for 70c      6 for \$1.15      12 for \$2.00

*Two Outstanding*  
**BOUQUET FLOWERS**  
**AQUILEGIA**

These are among the most beautiful of hardy plants. They are especially desirable for partially shaded areas in the perennial border. Their presence will lighten up even the most formal plantings and their colorful blooms are unexcelled for cutting. Blooms during May and June.

**CRIMSON STAR** One of the finest and most striking Aquilegias we know of. Magnificent large blooms of bright crimson outside, waxy white inside. These are excellent for cutting as blooms keep exceptionally well.

3 for 80c      6 for \$1.30      12 for \$2.25

**LONGISSIMA** Very distinctive type. Sparkling yellow blooms that blend gracefully with other flowers. They will make a beautiful show in a spring garden.

3 for 90c      6 for \$1.45      12 for \$2.50

**LONG SPURRED BLUE** A heavy blooming type with large flowers and extremely long spurs. Exquisite colorings in all shades of blue. A sturdy grower.

3 for 60c      6 for \$1.00      12 for \$1.75

**ROSE QUEEN** Beautifully formed blossoms of a rich deep rose color. Very striking in the perennial border and an excellent cutting variety.

3 for 60c      6 for \$1.00      12 for \$1.75

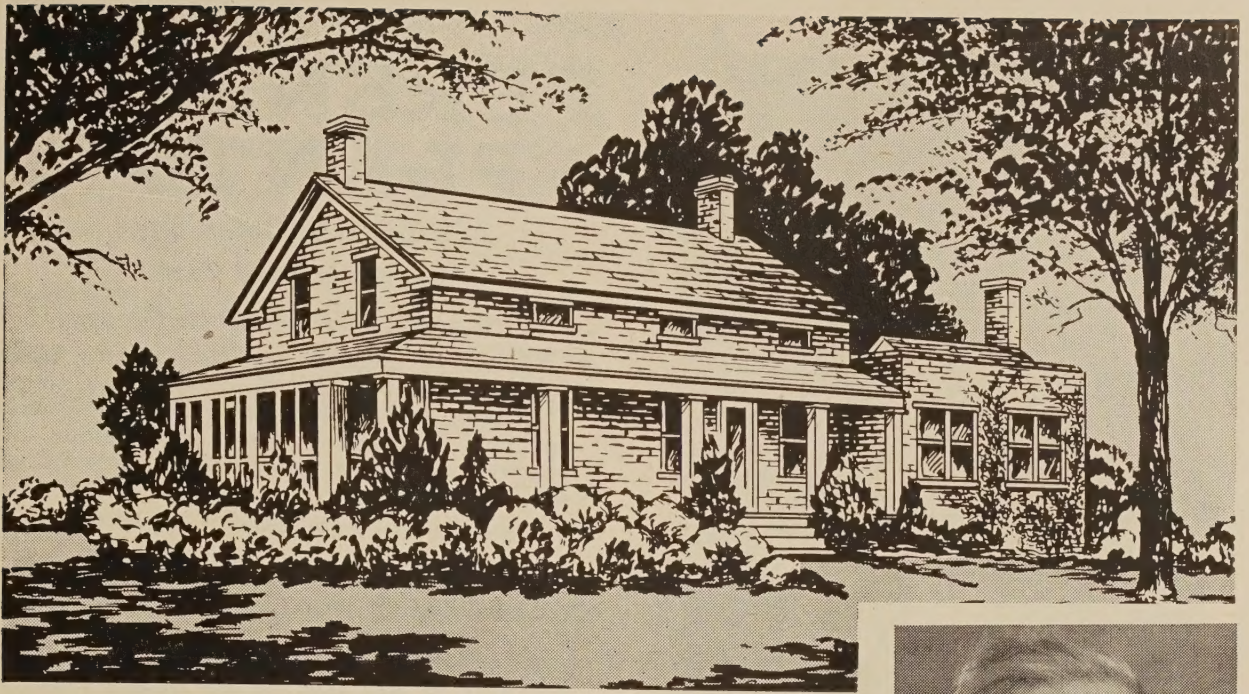
**SILVER QUEEN** A favorite variety, well-loved for its silvery white blooms and finely formed florets. Lovely for use in mixed bouquets.

3 for 60c      6 for \$1.00      12 for \$1.75

One each of the five colors listed above for \$1.00



**PYRETHRUM**



## "THE OLD HOMESTEAD"

A Familiar Landmark to Travelers on US.131 — The Home of One-Year, Field-Grown Perennials. Also well known as "The Red Brick Tavern" — Recommended by Duncan Hines as One of Michigan's Most Famous Eating Places — Distinguished for Its Excellent Chicken and Steak Dinners. Just North of Plainwell, about half-way between Kalamazoo and Grand Rapids — Visitors are always welcome at any time. For Lunch or Dinner Reservations, Phone Plainwell 3943.

## Buy RICHARDS' — "Old Homestead" PLANTS and Save 70%

When you stop to consider that you can get a dozen of Richards' fine field-grown, 1-yr. old untransplanted plants for about the price you ordinarily expect to pay for three regular field-grown plants, you get an idea of the tremendous saving you can make by buying our plants. Remember, these 1-year untransplanted plants will bloom the first year.

You can increase your garden planting with the money that you will save in buying the 1-year untransplanted plants and your garden will be a greater source of pleasure to yourself and of admiration by your friends and neighbors.

**MAKE YOUR GARDEN DOLLAR BUY MORE  
BY BUYING RICHARDS' GARDENS 1-YEAR  
UNTRANSPLANTED PLANTS**

## SAVE This Catalog —

This is our only 1951 catalog. Use it to order both spring and fall plants.



Charles Thomas Richards  
Owner and Manager

### ALL PRICES IN THIS CATALOG ARE POSTPAID

Remittance must accompany order. You may send check, money order or bank draft. Do not send currency unless by registered mail. We cannot be responsible otherwise.

### OUR GUARANTEE

We absolutely guarantee our plants to arrive in good condition and to be true to name. If these plants fail to arrive in good condition, we must be notified within ten days or we cannot replace them. Use your order number in all correspondence concerning your order.

# "Old Homestead"

HEAVY ROOTED, ONE-YEAR FIELD GROWN

## PERENNIAL PLANTS

**AQUILEGIA (Columbine)**

(See Inside Front Cover)

**ARABIS (White Rock Cress)**

**ALPINA** A splendid creeping plant which seldom grows more than 12 inches high. Produces masses of white blossoms in early spring. Foliage is very ornamental remainder of the year; very good for edgings and in the rockery.

3 for 60c      6 for \$1.00      12 for \$1.75

**ASCLEPIAS (Orange Butterfly Weed)**

**TUBEROSA** This attractive plant produces an immense number of brilliant-orange flowers during July and August. Will grow successfully in any type of soil in any locality. Plants reach a height of 2 to 2½ feet; withstand the most severe winters and hottest summers, producing flowers year after year with no special care.

3 for 60c      6 for \$1.00      12 for \$1.75

**ASTER (Michaelmas Daisy)**

Hardy Asters are considered by many to be the loveliest of autumn-flowering perennials. Their wide range of colors and prolific blooming habit make them invaluable for borders and cut flowers. They thrive in any soil and withstand most weather conditions.

**BEECHWOOD CHALLENGER** One of the finest of all reds! This is a free-flowering variety of medium height, producing flowers of the most striking, brilliant, crimson-red color. A "must" in every garden.

EACH 45c      3 for \$1.25

**HARRINGTON'S PINK** Beautiful deep rose-pink blooms are produced in great abundance and make a truly striking picture in the perennial bed. Plants attain a height of 4 feet; excellent for cutting. Hardy, vigorous grower.

EACH 45c      3 for \$1.25

**ROYAL BLUE** An early blooming variety, producing an abundance of lovely, rich deep blue flowers. Good strong grower; plants grow to a height of 3 feet.

EACH 45c      3 for \$1.25

**WHITE LADY** One of the loveliest white Asters. Plants are strong growers and bear masses of large, dazzling white flowers. Should be included among other Asters.

EACH 45c      3 for \$1.25



Anemone

**ALYSSUM (Rock Madwort)**

**SAXATILE COMPACTUM (BASKET OF GOLD)** One of the showiest spring flowers with its large clustered blooms of bright yellow. Excellent for the rockery or borders. Grows 10 to 12 inches high. Very hardy; blooms during April and May.

3 for 60c      6 for \$1.00      12 for \$1.75

**ANCHUSA (Sea Bugloss)**

**ITALICA DROPMORE (ALKANET)** A splendid background plant; grows 5 to 6 feet tall. Bears a profusion of true gentian flowers on sturdy stems. Blooms in June. Very hardy.

3 for 60c      6 for \$1.00      12 for \$1.75

**ANEMONE (Pasque Flower)**

**PULSATILLA** Grows only about 10 inches high. Ideal for the rock garden or borders. Lovely mauve flowers with golden stamens. Blooms late April and May.

3 for 60c      6 for \$1.00      12 for \$1.75

**ARTEMISIA (Southernwood)**

**SILVER KING** A striking contrast plant with light silvery-gray foliage. Much in demand for setting off bouquets and floral arrangements; may be cut and dried for winter bouquets.

3 for 60c      6 for \$1.00      12 for \$1.75

For the most beautiful effect we advise that you set 3 plants of a variety in your garden. However, if you do wish to purchase only one plant the cost is ½ the price of 3 plants.

**SPECIAL OFFER** One each of the four varieties listed above. **\$1.50**

## ASTERS (Cont.)

**PEACE** A companion variety to PLENTY this Aster will replace varieties of similar color. The delicate pinkish lavender blooms make a lovely showing from early September until late October. Produced in immense quantities, the semi-double flowers are two inches across.

EACH 75c 3 for \$2.00

**PLENTY** A magnificent new hardy Aster from England. These lovely soft blue flowers are semi-double and two inches in diameter. They commence to bloom in early September and last well into October. Exceptionally fine for cutting and a superb plant for the garden.

EACH 75c 3 for \$2.00

**PROSPERITY** Large, deep rosy pink flowers in great wavy masses on plants about 3½ to 4 feet high. Commencing to bloom early in September and lasting well into October, it is one of the finest of the pink Novi-Belgi type. A magnificent plant for the garden.

EACH 75c 3 for \$2.00

**SPECIAL OFFER** One each of the three varieties listed above. **\$2.00**



Aster Beechwood Challenger

## AUBRIETIA

**MONARCH MIXED** Only by a very fortunate circumstance are we able to offer this superb NEW ENGLISH STRAIN to our friends at these low prices. One of the most glorious color mixtures we have ever seen. Almost every conceivable shade of red, violet, rose, lavender, mauve, pink, and purple. Make your bed borders a riot of early color with this surprising color mixture. Also appealing subjects for carpeting the surface of beds planted with spring bulbs. Be sure to order some of these MONARCH MIXED aubrietias.

3 for 80c 6 for \$1.30 12 for \$2.25

## BLEEDING HEART (Old Fashioned Variety)

**DICENTRA SPECTABILIS** An old-fashioned favorite popular with all generations since our grandmother's day. Lovely pink, heart-shaped flowers hang gracefully from tall sturdy stems. Plants are very hardy and bloom over a long period. Its ornamental foliage makes this perennial desirable both for the border and interior decoration.

EACH 75c 3 for \$2.00

## CALLIRHOE (Poppy Mallow)

**INVOLUCRATA** This is an excellent plant for the rock garden or retaining wall, because of its trailing habit of growth. Plants grow only 6 inches high and bloom through most of the summer and fall. Large, saucer-shaped blossoms of bright crimson with white spots and fine lacy foliage make an attractive addition to any garden.

3 for 60c 6 for \$1.00 12 for \$1.75

## CAMPANULA (Bellflower)

**CALYCANTHEMA (Cup and Saucer)** One of the most desirable cut flowers. Large cup and saucer-shaped flowers in a variety of colors, on long, strong stems, make a very showy display in garden and bouquets. Blooms during late May and June.

3 for 60c 6 for \$1.00 12 for \$1.75

**CARPATICA (Dwarf Blue Bells of Scotland)** Excellent for rockeries or edging. Plants form rounded clumps 6 to 8 inches high; produce bright green foliage and beautiful dark, clear blue, bell-shaped blossoms of large size. Blooms June until October.

3 for 80c 6 for \$1.30 12 for \$2.25

## MEDIUM (Old Favorite "Canterbury Bells")

A favorite with all flower lovers. A thrilling sight in June and July when its many branches are loaded with deep bells, the edges of which are softly rolled and fluted. Grows 2 to 3 feet high. Four outstanding colors: Blue, Pink, White, and Double and Single mixtures.

3 for 60c 6 for \$1.00 12 for \$1.75

## CHEIRANTHUS (Siberian Wallflower)

**ALLIONII, GOLDEN BEDDER** For a rich color display in the rockery or border be sure to include this charming plant. Plants reach a height of 12 inches and produce masses of bright golden yellow flowers during May and June.

3 for 60c 6 for \$1.00 12 for \$1.75

Michigan Customers Please Add 3% Sales Tax



Carnation  
Crimson King

### CARNATION

These hardy outdoor carnations are one of the most popular and useful flowers and should have a place in every garden. For spots of bright color, for delightful fragrance and for superb bouquets, they are unexcelled. Bloom practically all summer long.

**BEATRICE** The Everblooming Cluster Carnation. The color of salmon pink, these flower clusters measure 3 to 4 inches across. They are very fragrant and bloom from June until frost.

EACH 50c

**CRIMSON KING** Dazzling crimson flowers are borne on tall, stocky stems; an ideal cut flower type. Plants bloom freely and almost continuously from spring until fall. Hardy.

EACH 50c

3 for \$1.25

**SILVERMINE** The finest of all double white carnations. This silvery-white flower blooms intermittently all summer long. Wonderfully fragrant and excellent for cutting

EACH 50c

## SPECIAL OFFER

One each of the three varieties listed above

**\$1.25**

### Carnation Grenadin

**KING OF THE BLACKS** One of the most outstanding Carnations. Large flowers of deepest maroon color and satiny black sheen. Delightfully fragrant.

3 for 60c      6 for \$1.00      12 for \$1.75

**GOLDEN SUN** Magnificent large flowers of clear golden yellow. Exquisite sweet fragrance. Plants are free-flowering and attain a height of 18 inches.

3 for 60c      6 for \$1.00      12 for \$1.75

**PINK** We highly recommend this Carnation for its outstanding clear pink color. Very free-flowering; spicily fragrant. A splendid cut flower type.

3 for 60c      6 for \$1.00      12 for \$1.75

ALL PRICES ARE PREPAID PRICES

**RED** A truly striking brilliant red color; makes a very showy display in the garden. Produces an abundance of magnificent blooms during June and July. Much desired for garden and bouquets.

3 for 60c      6 for \$1.00      12 for \$1.75

**WHITE** Every Carnation planting should include this sparkling white variety to complete the color range. Plants are extremely hardy; free-flowering.

3 for 60c      6 for \$1.00      12 for \$1.75

**MIXED SHADES** A veritable rainbow of colors! Delightfully fragrant flowers are produced in great abundance during June and July.

3 for 60c      6 for \$1.00      12 for \$1.75



Coreopsis

### COREOPSIS (Tickseed)

**DOUBLE SUNBURST (New Gold)** A new variety which bears double flowers of large size and superb gold color. This is one of the most useful perennials for borders and cutting; easy to grow; blooms profusely from June until frost. Grows 3 feet tall.

3 for 60c      6 for \$1.00      12 for \$1.75

### DIANTHUS PLUMARIS (Clove Pinks)

New strains of the old-fashioned Hardy Pinks have brought this grand flower back into favor. Desirable for their exquisite fragrance and profusion of beautiful flowers, they deserve a place in every perennial planting.

**DOUBLE MIXED** Old-fashioned hardy pinks in assorted mixed colors. Extremely hardy and will thrive almost anywhere.

3 for 60c      6 for \$1.00      12 for \$1.75

### HIGHLAND QUEEN, ROSE HYBRIDS

One of the best perennial Dianthus offered today. Bright rose colored blooms with red center, are produced continually from May to November. Ideal for bedding, border or rockery. Delightfully fragrant.

3 for 60c      6 for \$1.00      12 for \$1.75

**SPRING BEAUTY** Large size, double blooms; typically carnation in form and fragrance. Wide range of mixed colors.

3 for 60c      6 for \$1.00      12 for \$1.75



## DIANTHUS (Con't.)

### DIANTHUS BARBATUS (Sweet William)

An old-fashioned favorite of which we never tire. Plants are very hardy; easy to grow and produce masses of colorful blooms during June. Excellent for beds and cut flowers; grow 1½ to 2 ft. tall.

**MIDGET MIXED** Dwarf variety much used for borders. Mixed colors of wide range. Long blooming season. Perfectly hardy.

3 for 60c      6 for \$1.00      12 for \$1.75

**NEWPORT PINK** Beautiful salmon-pink color. A very effective single type; a vigorous grower.

3 for 60c      6 for \$1.00      12 for \$1.75

**SCARLET BEAUTY** Brightest scarlet color. Excellent for cutting and for massed display.

3 for 60c      6 for \$1.00      12 for \$1.75

**VAUGHAN'S SPECIAL MIXED.** Excellent strain of vigorous growing plants in a wide range of brilliant colors.

3 for 60c      6 for \$1.00      12 for \$1.75

### DIANTHUS (Everblooming)

**LATIFOLIUS ATROCOCCINEUS FLORA PLENA** A beautiful summer blooming variety. Bears brilliant, fiery crimson flowers throughout the summer. Very hardy and a vigorous grower.

3 for 60c                      6 for \$1.00                      12 for \$1.75

### DIANTHUS (Species)

**SWEET WIVELSFIELD** The true perennial type; single flowers in a great variety of colors; Height 18".

3 for 60c                      6 for \$1.00                      12 for \$1.75

### DIGITALIS (Foxglove)

**GIANT SHIRLEY HYBRIDS** This elegant strain of an old-fashioned flower attains a height of 4 feet and is ideal for tall, colorful backgrounds. The color mixture is superb, ranging from white to pink to deepest rose. We highly recommend this variety.

3 for 60c                      6 for \$1.00                      12 for \$1.75

### GAILLARDIA (Blanket Flower)

For general hardiness and profusion of colorful blooms, the Gaillardias are in a class by themselves. Plants require only the very simplest of care and will make a bright color display in the perennial border. Blooms keep extremely well after cutting, which makes them very desirable for bouquets.

**BURGUNDY** Outstanding for its vigorous growth and long blooming period. Plants produce a profusion of warm, rich dark red blossoms with high-tufted centers. Very colorful and very desirable in the mixed border.

3 for 60c                      6 for \$1.00                      12 for \$1.75

**DAZZLER** One of the most brilliant of the Gaillardia family. Large flowering type with blooms of bright golden-yellow, centered with a disc of satiny maroon. Plants grow 2 feet tall.

3 for 60c                      6 for \$1.00                      12 for \$1.75

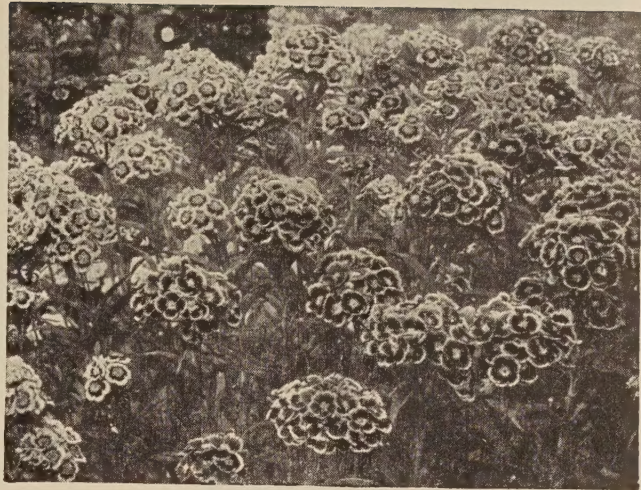
**GOBLIN, DWARF** A true dwarf Gaillardia which deserves a place in every garden. Plants grow only 12 to 15 inches high in very compact shape. Foliage almost disappears under the mass of large, deep-red and gold blooms.

3 for 60c                      6 for \$1.00                      12 for \$1.75

**PORTOLA HYBRIDS** Extremely large flowering strain and noted for the wide range of deep colors which vary from reddish brown to deep gold. The 2-ft. tall plants make colorful bouquets.

3 for 60c                      6 for \$1.00                      12 for \$1.75

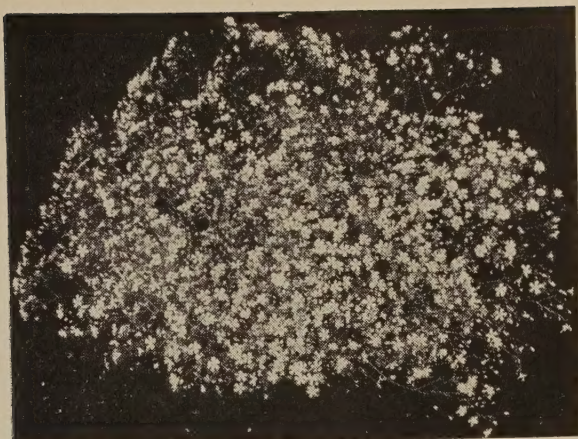
Michigan Customers Please Add 3% Sales Tax



DIANTHUS BARBATUS  
(Sweet William)



Digitalis  
Shirley Hybrids



## GYPHOPHILA (Baby Breath)

One of the best known perennials and much loved for the delicacy of its blooms. For misty garden beauty and for use in mixed bouquets, it has no equal.

**BRISTOL FAIRY** Conceded to be the best double white Baby's Breath. We highly recommend this variety for its graceful beauty and wide popularity. We offer strong grafts from 2¼-inch pots.

Each 60c

4 for \$2.00

**PACIFICA** Beautiful pearly-pink blooms in branching panicles; excellent for use in fall bouquets. Plants grow 18 inches tall and bloom during September and October.

3 for 70c

6 for \$1.15

12 for \$2.00

Gypsophila

Bristol Fairy

**PANICULATA** Dense, spreading, bushy type which reaches a height of 3 feet. Countless tiny white blossoms completely hide the plant during the long flowering season from July until frost. Foliage is fine in texture and ornamental; may be dried for winter use.

3 for 60c

6 for \$1.00

12 for \$1.75

**SNOW WHITE, DOUBLE** Grows only about 3 feet high and produces masses of small white flowers, mostly double. Much used at the ends of perennial borders for its misty, delicate atmosphere. Good for all types of bouquets. Blooms from July until frost.

3 for 70c

6 for \$1.15

12 for \$2.00

## HELIANTHEMUM (Hardy Sun Rose)

No plant is more beautiful or colorful for the rock garden, border or wherever a very low-growing plant is desired. The brilliant colors and blooms attract attention wherever used.

**MUTABILIS, MIXED** Beautiful hybrids of rose, white, and yellow. Plants grow 6 to 10 inches high; bloom during May and June.

3 for 60c

6 for \$1.00

12 for \$1.75

## HELIOPSIS (Hardy Zinnia)

Outstanding for their hardiness and fine color. Plants are of compact growing habit with strong straight stems. Very free flowering; valuable for cutting.

**LEMOINE'S GIANT** Large, double blooms of golden yellow color. Flower from July until frost; plants 2 to 3 feet tall.

3 for 60c

6 for \$1.00

12 for \$1.75

## HEUCHERA (Coral Bell)

Neat growing, graceful flowering plants which bear an abundance of dainty, bell-like blossoms. Plants have rosette-like clumps of attractive foliage from which stems arise to a height of 18 inches and carry their blooms in graceful panicles. These plants are delightful for edgings, borders and rock gardens.

**ROSEA** Outstanding beautiful deep pink color; very lovely contrasted with attractive foliage. Blooms over a long period and makes delightful bouquets.

Each 50c

3 for \$1.25

**ROSAMUNDI** One of the best coral-pink sorts. The plants are vigorous growers and produce an abundance of richly colored blossoms on tall stems which last over two months.

Each 60c

3 for \$1.50

**SANGUINEA** Extremely bright crimson flowers are borne on tall, graceful spikes 18 inches tall. Very free-flowering; bloom from June to September.

Each 60c

3 for \$1.50



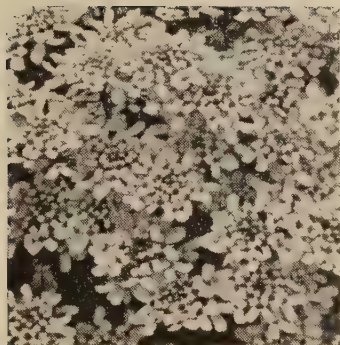
Heliopsis-Lemoine's



Heuchera-Rosamundi

## SPECIAL OFFER

One each of the above varieties for \$1.50



Iberis  
Gibraltarica



Hibiscus



Hollyhock

### HIBISCUS (Giant Mallow)

Unequaled for tall backgrounds or for specimen plants. Their large-leaved ornamental foliage is very desirable in the border. Tall, erect canes bear large, bell-shaped flowers which often measure 7 or 8 inches across. Plants are easily grown and very hardy; attain a height of 4 feet; bloom August. We offer the following varieties: Mixed; Mallow Marvel, Pink; Mallow Marvel, Jumbo Red.

3 of one variety 60c

6 of one variety, \$1.00

12 of one variety \$1.75

### HOLLYHOCKS

No flower has more sentiment or is more closely associated with our early memories than the Hollyhock. Their colorful charm has a definite place in every garden; they are invaluable for screening purposes, and equally useful as a background in borders.

**NEWPORT PINK** Magnificent double flowers of a rich shimmering pink color. They have tall and extremely strong stems.

3 for 60c

6 for \$1.00

12 for \$1.75

**SCARLET BEAUTY** Gorgeous, brilliant scarlet color; valuable for bold backgrounds.

3 for 60c

6 for \$1.00

12 for \$1.75

**CHATER'S PRIZE MIXTURE** Extremely large flowers with frilled outer petals and a double rosette in the center. Their complete range of shades add a riot of color in background borders. They are a must for every garden.

3 for 60c

6 for \$1.00

12 for \$1.75

### IBERIS (Hardy Candytuft)

These delightful plants have a very distinct place in the rockery or wherever a dwarf plant with evergreen foliage is needed. Plants are very hardy and rarely exceed 18 inches in height; produce dense heads of blooms in early spring. Be sure to plant some this year.

**GIBALTARICA** Masses of lavender blossoms, with evergreen foliage, in early spring. Dwarf growth; splendid for edgings.

3 for 60c

6 for \$1.00

12 for \$1.75

**JUCUNDA** Dwarf, bluish-green plants are covered with dainty pink flowers during May and June. Ideal for rockery or low border.

3 for 70c

6 for \$1.15

12 for \$2.00

**SEMPERVIRENS** Glistening white flowers cover dwarf plants in early spring; attractive evergreen foliage.

3 for 60c

6 for \$1.00

12 for \$1.75

### IRIS SIBERICA (Siberian Iris)

Somewhat like Kaempferi in habit of growth and appearance of blooms, but each plant throws up from 15 to 30 stems, each topped by a magnificent bloom. Grow from 3 to 4 feet tall and are fine for background in the perennial border. Bloom during July.

**BLUE CHARM** Light blue of medium height.

**NORA DESTIN** Medium height, deep blue edged in white.

**CAESAR** Tall, dark purple. Good for cutting.

**RED RAIDER** Large, frilly, deep purple on the reddish cast.

3 for 60c

6 for \$1.00

12 for \$1.75

**CAESAR'S BROTHER** This is the best of all dark blue Siberian Iris. The flowers are an unusually rich, black pansy-violet color. Plants grow 30 inches high; the beautiful depth of color and superb form of this variety has won it an Honorable Mention award by the American Iris Society.  
Each 30c 3 for 75c

### IRIS DICHOTOMA (Vesper Iris)

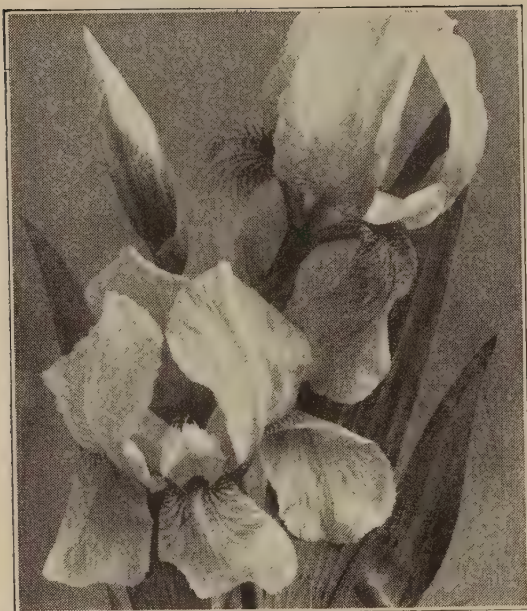
Large, fragrant blooms come in tall branching sprays in late July and continue through August. Flowers open each evening and make a rich display of color when planted in groups.

**MIXED** Colors run from light cream through blues, purples and red shades.

3 for 60c

6 for \$1.00

12 for \$1.75



**German Iris  
PRIZE-WINNING IRIS**

We list here 4 outstanding **DYKES MEDAL** Winners. These are considered the ultimate in fine Iris.

**GREAT LAKES** This is about the finest light, pure blue.

Each \$1.00 3 for \$2.75

**PRAIRIE SUNSET** Tints of pink, rose, apricot and peach blended with gleaming gold. The loveliest combination of colors imaginable.

Each \$1.00 3 for \$2.75

**SPUN GOLD** A large, rich, deep golden-yellow.

Each \$1.00 3 for \$2.75

**WABASH** Snow-white standards with ultramarine falls. A masterpiece of the two-toned varieties.

Each \$1.00 3 for \$2.75

**IRIS OFFER NUMBER 2**

One each of the above 4 **DYKES MEDAL** Winners. Postpaid for only **\$3.00**

**DWARF IRIS (Pumila)**

Short stemmed dainty little Iris that bloom in April and May. Make wonderful edges for perennial and shrub borders. We offer the following colors only:

<b>BLUE</b>	<b>WHITE</b>	<b>YELLOW</b>
Each 30c.	3 for 75c	6 for \$1.25

**PLEASE NOTE**

German and Dwarf Iris will be shipped from mid-July to mid-October only.

**LATHYRUS LATIFOLIUS**

Hardy Perennial Sweet Pea

A climbing form of Sweet Pea which should be more generally planted in this country. Will quickly cover trellis, fence or arbor. Blooms continuously from spring until fall. Colorful sweet pea blossoms are fragrant and make dainty cut flowers.

**MIXED** 3 for 60c    6 for \$1.00    12 for \$1.75

**TALL BEARDED (German) IRIS**

Iris are among the most popular of our spring flowers and probably no other plant will provide such gorgeous display with so little attention. The varieties listed below will provide large showy flowers.

**CHRISTABEL** A sheer brilliant red.  
Each 50c 3 for \$1.25

**GOLDEN HIND** Yellow tinted with orange.  
Each 40c 3 for \$1.00

**INDIAN HILLS** Rich true purple.  
Each 40c 3 for \$1.00

**MATTERHORN** The finest pure white in existence.  
Each 40c 3 for \$1.00

**NIGHT FALL** Rich dark pansy purple.  
Each 75c 3 for \$2.00

**PINK OPAL** Tall, large orchid-pink.  
Each 40c 3 for \$1.00

**IRIS OFFER NUMBER 1**

One each of the above 6 varieties of fine Iris. Postpaid for only **\$2.25**



**Lathyrus Latifolius**

**LAVENDULA (Lavender)**

**VERA (Munstead Strain)** The real Sweet Lavender used and grown in our grandmother's day. A dwarf variety which grows in compact form, and bears exquisitely fragrant blue flowers. Its fragrant flowers are highly valued for drying and the use in nosegays or potpourri.

3 for 90c    6 for \$1.45    12 for \$2.50

**LIATRIS (Blazing Star or Gayfeather)**

One of the taller growing perennials and very useful for perennial bed background. Does well in any type of soil and under adverse moisture conditions.

**KOBOLD** A new improved variety of the Scariosa, imported from the Netherlands. Extremely large orchid-purple flowers on tall spikes. Excellent cut flowers.

Each 40c 3 for \$1.10

**PYCNOSTACHYA** Flower stems rise to a height of 6 feet, each topped by a foot-long flower spike of richly colored rosy-purple bloom. Blossoms during July and August; excellent for cutting.

Each 35c 3 for \$1.00    6 for \$1.85

## LILY-OF-THE-VALLEY (Convallaria)

One of the most familiar and most loved of all perennials. Will grow in shade or in spots where nothing else seems to grow. Exquisite, waxy white, bell-shaped blooms hang from 8 to 10-inch stems. Foliage is ornamental all season. Blooms are dainty and delightfully fragrant.

3 for 60c      6 for \$1.00      12 for \$1.75

## LILIUM REGALE (Regal Lily)

One of the loveliest and hardiest lilies grown. The large, extraordinarily beautiful flowers make a colorful addition to any garden; center of flower flushed with yellow, shading to white at outer edges; outside of petals are streaked with brown on the ribs, shaded through the petals with a delightful pearly tint. Plants are vigorous; reach a height of 4 to 6 feet and are densely covered with fine foliage.

Each 30c      3 for 80c      6 for \$1.40

## LILIUM TENUIFOLIUM (Coral Lily)

A charming, colorful, early flowering lily. Plants produce flowers in clusters of 9 to 12 blooms on strong stems about 1½ feet tall. Flowers are a deep scarlet color with strong recurved petals of waxy texture. Plants bloom during June and are ideal for rock gardens or borders.

3 for 60c      6 for \$1.00      12 for \$1.75

## LINUM (Perennial Hardy Flax)

**HEAVENLY BLUE** A valuable plant for perennial borders. Grows about 2½ feet high, with finely cut ornamental foliage. From May to August you have a fresh crop of beautiful, clear light blue blooms each morning. Very desirable for mixed bouquets.

3 for 60c      6 for \$1.00      12 for \$1.75

## LOBELIA

**CARDINALIS (Cardinal Flower)** Most often called "Indian Fire Stick". Plant is of dwarf growth habit but each summer sends up 18 to 24-inch stems from a rounded clump of foliage, each stem topped with an 8 to 10-inch spike of brightest Cardinal red bloom. Excellent for mass planting; fine for cutting. Very hardy and prolific.

3 for 60c      6 for \$1.00      12 for \$1.75

## LYCHNIS (Campion or Catchfly)

An artistic perennial which has been cultivated for centuries in some parts of the world. Noted for its brilliantly colored flower heads and extreme hardiness. Ideal for lively color in your border during late summer and early autumn.

**CHALCEDONICA (Maltese Cross)** Vivid scarlet flowers in flat heads come over a long blooming period. For bright spots of color in the perennial border, be sure to include this fascinating plant. Attains a height of 2½ feet and is easy to grow; very hardy.

3 for 60c      6 for \$1.00      12 for \$1.75



Lilium Regale

## MATRICARIA (Feverfew)

This splendid plant is much used for low growing beds. Very compact in growth, with strongly scented ornamental foliage. Produces masses of blooms in late summer and early fall. Grows 10 to 15 inches high. Its attractive foliage and lovely flowers make perfectly charming bouquets.

**BALL'S DOUBLE WHITE** This is the only fully double flowering, pure white strain. We guarantee 98% true to description and highly recommend this variety.

3 for 60c      6 for \$1.00      12 for \$1.75

**BALL'S DOUBLE GOLDEN** This new variety is similar in growth habit to the Double White described above, except it produces masses of rich, golden colored blooms.

3 for 60c      6 for \$1.00      12 for \$1.75

## MYOSOTIS (Forget-me-not)

Most people are familiar with these dainty flowering Forget-me-nots which bring so much beauty and charm to the spring landscape. For the rockery, or walk edgings or around the pool, they are equally delightful.

**ALPESTRIS** Grows only 12 inches high and is universally loved for its tiny, clear blue flowers in early spring.

3 for 70c      6 for \$1.15      12 for \$2.00



MYOSOTIS (Forget-me-not)

ALL PRICES ARE PREPAID PRICES



Super Swiss Pansy

## SUPER SWISS PANSIES

These are the giant flowering sorts with size and color of almost unbelievable beauty. Attractive foliage is luxuriant; plants are strong growers and bloom abundantly. When you buy Pansy plants it pays to buy the best. You will be highly pleased with these Giant Swiss varieties.

**ALPENGLOW** Richest wine-red coloring. Large blooms in abundance. Ideal for bedding or borders.

6 for 90c      12 for \$1.50      24 for \$2.50

**BLUE (Ullswater)** Giant blooms of rich, satiny ultramarine color. Blooms in great profusion until late fall.

6 for 90c      12 for \$1.50      24 for \$2.50

**CORONATION GOLD** Enormous blooms of clear gold color, lower petals flushed with rich golden orange. A bed of these makes a thrilling spectacle of beauty and color.

6 for 90c      12 for \$1.50      24 for \$2.50

**GIANT, MIXED** The largest flowers in a veritable rainbow of colors. For gay borders and bedding these well-balanced shades are truly ideal.

6 for 90c      12 for \$1.50      24 for \$2.50

**MAPLE LEAF MIXED** Giant-size blooms combined with beautifully formed foliage make this an outstanding variety. Plants are very free-flowering, of compact growth habit; the color range is marvelous.

6 for 90c      12 for \$1.50      24 for \$2.50

**PURE WHITE** Large, beautifully shaped blooms of purest white. Splendid for low bouquets and table centerpieces, and for blending with contrasting shades.

6 for 90c      12 for \$1.50      24 for \$2.50

**RASPBERRY ROSE** Color of a ripe raspberry with some petals of a lighter shade. Darker center. A popular variety for beds and borders.

6 for 90c      12 for \$1.50      24 for \$2.50

## PERUVIAN DAFFODIL

(ISMENE CALATHINA)—Flowers are pure white; borne three or four on a stem and are very fragrant. Not hardy.

Each 55c

3 for \$1.50



Papaver Orientale

## PAPAVER ORIENTALE

For best results Oriental Poppies should be planted in September and October. And we will ship them at that time. Poppies make excellent cut flowers if the stems are crushed a length of 6 to 8 inches from the end and put in water. We offer strong, field-grown plants.

**FAIRY** Pale pink; a prolific bloomer.

Each 60c

3 for \$1.65

**JOYCE** Soft-red flowers, produced in abundance.

Each 60c

3 for \$1.65

**MRS. PERRY** Salmon-pink, huge blooms. very free flowering.

Each 60c

3 for \$1.65

**SALMON GLOW (Double)** Large blooms of clear lustrous salmon-pink. Usually blooms single the first year, but double as a peony on established plants.

Each 60c

3 for \$1.65

### SPECIAL POPPY OFFER

**4** One each of the above named varieties, postpaid for only **\$2.00**

### PHYSALIS (Chinese Lanterns)

An attractive perennial noted for its large, showy lantern-shaped fruits which turn a bright red color when ripe. Especially desirable for drying for winter bouquets.

3 for 60c

6 for \$1.00

12 for \$1.75

Renton, Wash.

Dear Sir:

The flower roots and bulbs arrived safely and they are wonderful.

Respectfully,

Charles Stone Wilson

## PLATYCODON (Balloon Flower)

**EARLY GIANT BLUE** Large flowering and extra rich in color. One of the most showy and unique of garden flowers. Odd balloon-like buds open into ball-shaped blooms. Very hardy and will grow under adverse conditions. Grows 2 feet high.

3 for 60c

6 for \$1.00

12 for \$1.75

## PYRETHRUM (Painted Daisies)

No other perennial flower seems to have the general usefulness, beauty, color, hardiness and easy culture that belongs to these gorgeous flowers. Foliage is fernlike and ornamental. Stems are strong and erect. Plants transplant easily and each one produces a liberal number of blooms during the season.

**ROBINSON'S CRIMSON** Colors range from red to deepest crimson; considered the finest of all reds.

3 for 70c

6 for \$1.15

12 for \$2.00

**ROBINSON'S ROSE AND PINK** Colors cover a wide range from pastel pink to deepest pink and rose. We recommend them highly.

3 for 70c

6 for \$1.15

12 for \$2.00

**ROBINSON'S HYBRIDS, MIXED** The finest strain of painted daisies in a wide range of mixed colors. Plants carry beautiful blooms of single overlapping petals on tall, strong stems. We consider this strain so superior we have discontinued growing any of the others.

3 for 70c

6 for \$1.15

12 for \$2.00

## RUDBECKIA (Cone Flower)

For tall backgrounds in the hardy perennial border these showy plants are indispensable. Easy to grow, they thrive in sunny or partially shaded borders; very free-flowering; splendid for cutting.

**PURPUREA** The best known Rudbeckia. Rosy, red-purple petals with high cone-shaped center of dark brown. Three to four foot stems are rugged and withstand high winds. Blooms freely from July until frost. A splendid plant for the border. Be sure to order this plant.

3 for 60c

6 for \$1.00

12 for \$1.75

## SAPONARIA (Soapwort)

**OCYMOIDES SPLENDENS** — Trailing vine-like plant which is a necessity in every rockery. From May until July plants are a mass of rosy-pink small blooms.

3 for 60c

6 for \$1.00

12 for \$1.75

## SCABIOSA (Pincushion Flower)

Strong and vigorous growing plants with an unusually free blooming habit. Handsome as border plants and fine as cut flowers.



Scabiosa

**CAUCASICA (Perfecta)** Do well in any ordinary garden soil. Stems 18 to 24 inches long topped by charming flowers in a soft lilac lavender shade. In bloom from June to September. Charming perennials for border culture and for cut flowers. Most desirable to grow in sunny spots.

3 for 80c

6 for \$1.30

12 for \$2.25

**ISAAC HOUSE HYBRID** Extra large flowering strain noted for the variations of coloring in its bloom. All shades from light blue and lavender to deep blue appear throughout the blooming season. June to September.

3 for 90c

6 for \$1.45

12 for \$2.50



Pyrethrum



Rudbeckia



Mt. Shasta



Stokesia

**STOKESIA (Cornflower Aster)**

Rich green ornamental foliage from which 12-inch stems arise, each topped by an exquisite aster-like bloom with finely divided petals. This handsome perennial should be included in every garden, for its beauty of form and color during late summer.

**CYANEA, BLUE** Immense flowers of a clear azure blue are outstandingly beautiful against the rich green of the foliage. An excellent cutting variety. Plant blooms from July to September. A vigorous-growing and free-flowering variety of exceptional merit and distinction. A most worthwhile addition to the hardy plant garden. Be sure to plant some this year.

3 for 60c      6 for \$1.00  
12 for \$1.75

**NOTICE**  
ALL PRICES ARE  
POSTPAID  
TO YOUR DOOR  
in Continental U.S.

**SHASTA DAISY (Moonpenny)**

One of the most widely known and used of all perennials. Constant improvements and the introduction of new strains have made them one of the most beautiful and sure-to-grow plants that you can have in your garden. Always showy in mass plantings and equally desirable as cut flowers.

**ALASKA** The best known variety. Improvements in the strain now results in longer, stronger stems and larger flowers. Glistening white blooms with large golden centers are produced freely throughout summer.

3 for 60c      6 for \$1.00      12 for \$1.75

**DIENER'S DOUBLE FRINGED WHITE**

Immense white blooms with very attractive fringed edge; nearly all double. Vigorous, tall growing with strong stems.

3 for 70c      6 for \$1.15      12 for \$2.00

**MAJESTIC** Wonderfully large flowers, 5 to 6 inches across, with a small yellow center. Blooms have a double row of straight, overlapping petals making the flowers full and compact. The 30-inch stems are straight and strong, which makes this a splendid cut flower variety. These are real beauties and should be included in every garden.

EACH 75c      3 for \$2.00

**G. MARCONI** This is the largest of the frilled Shasta Daisies. Fully double flowers measure 4 inches or more in diameter. Strong, stiff stems. Exceptionally good for cutting.

EACH 50c      3 for \$1.25

**MT. SHASTA** Pure white, fully double flowers with high-crested center, often measure 4 inches or more across. Flowers are very compact and come singly on strong, 24-inch stems. Considered by many to be the outstanding Shasta Daisy.

Each 60c      3 for \$1.50

**SPECIAL OFFER** One each of the three varieties listed above. **\$1.50**

**STATICE**

(Great Sea Lavender)

**LATIFOLIA** Grows in fine lace-like form with a profusion of misty purplish-blue blossoms. This perennial has almost year-around usefulness since it may be dried and used for winter decoration; it will keep for months. Unexcelled for filler in floral arrangements; valuable for the rockery. Plants grow 18 inches high.

3 for 60c      6 for \$1.00

12 for \$1.75



Shasta Daisy; Alaska





Violas

**TRITOMA (Red Hot Poker)**

**PFITZERI** This spectacular plant with foliage resembling that of the Yucca, will make a brilliant display of color in the autumn garden. Strong, 24-inch stems are topped with a large cone-shaped spike of dazzling orange. Use them generously to highlight your garden. They are exceptionally good for cutting too because of their long-lasting qualities and for the unusually beautiful floral arrangements possible when combined with other flowers. You will be pleased with this graceful plant.

**EACH 40c**                      3 for \$1.10  
     6 for \$2.00

**VALERIANA**

(Garden Heliotrope)

**COCCINEA RUBRA** Bright red flower heads are borne in abundance on 12-inch stems all through the summer months. Rich green foliage.

**3 for 60c**                      6 for \$1.00  
     12 for \$1.75

**VIOLAS (Hardy Tufted Pansies)**

One of the most popular edging and bedding flowers. In bloom nearly eight months of the year! Loved for their dwarf size, colorfulness and free-blooming habit.

**ARKWRIGHT RUBY** Rich ruby-red color with satiny sheen. Free-flowering; fragrant; excellent for cutting.  
     3 for 60c                      6 for \$1.00                      12 for \$1.75

**BLACK IMP** Quaint little flowers of a rich glossy black with bright yellow eye. Very showy.  
     3 for 60c                      6 for \$1.00                      12 for \$1.75

**CHANTREYLAND** Beautiful blooms of purest apricot without any shading of orange. Blooms all summer.  
     3 for 60c                      6 for \$1.00                      12 for \$1.75

**JERSEY GEM** Rich, shimmering violet-blue color. Blooms from April until snow falls. Its exquisite fragrance, free-flowering habit and extreme hardiness make this one of the finest Violas.  
     3 for 60c                      6 for \$1.00                      12 for \$1.75

**WALLER FRANKLIN MIXED** Mixture of gay blues and yellows. Especially desirable for bedding or colorful edgings. Plants produce a profusion of blooms.  
     3 for 60c                      6 for \$1.00                      12 for \$1.75

**VIOLET**

**ROYAL ROBE** The lustrous deep violet-blue blossoms are delicately fragrant and open out flat like a Pansy.  
     **EACH 50c**                      3 for \$1.25



*Field Grown*

# HARDY PHLOX

No flower will lend more color and beauty to your garden than a mass planting of Hardy Phlox. They thrive under average conditions, bloom freely over a long period of time and are equally satisfactory when used in beds or borders.

We are growers of Phlox and have an unusually fine assortment of field grown plants. These are one-year plants, the best size for transplanting. All are well rooted and have bloomed in our fields, so we know they are all true to name. Phlox will start blooming early in July and continue through August into September.

## VARIETIES

**AETNA** Excellent new variety which is highly resistant to rust. Tall, strong grower and of superb deep scarlet color.

**AFRICA** The favorite deep red. Good grower and sure, heavy bloomer.

**BLUE BOY** Near blue color with violet cast. Good, strong grower; of medium height. See illustration on front cover.

**BORDER QUEEN** Massive flower heads of deep watermelon pink. Individual florets are unusually large.

**CHARLES CURTIS** Brilliant cherry-red. The color is outstanding and makes a very showy display in the garden. A vigorous grower.

**CHIEFTAIN** Brilliant red. Enormous flower heads.

**COUNT ZEPPELIN** Pure white flowers with vivid, bright red eye. Very striking; very free flowering. See illustration on front cover.

**DAILY SKETCH** Extra large flowers of light pink with carmine eye. Vigorous grower. See illustration on front cover.

**E. I. FARRINGTON** A Phlox of distinctive beauty. Flower trusses are extremely large and color is a delightful salmon shade with slightly darker eye.

**FLASH** Large flower heads of rich carmine-rose with orange-scarlet center; very effective combination. Vigorous; free-flowering. See illustration on front cover.

**GEORGE STIPP** A truly outstanding Phlox of glowing salmon-coral with shaded lighter eye.

**HARVEST FIRE** Striking salmon-orange shade. Flower heads are extra large, carried on tall strong stems.

**JULY LIGHTS** A brilliant carmine-red with blood red eye. Strong, vigorous grower.

**LEO SCHLAGETER** One of the brightest and flashiest of all red Phlox. Sturdy grower; very free flowering. See illustration on front cover.

**LILLIAN** One of the most distinctive new Phlox ever introduced. Unusually large trusses of charming soft pink.

**MARY LOUISE** Large, conical heads of pure white. A fine new variety that blooms throughout the summer.

**PRIME MINISTER** Large trusses of a clear, pure white with brilliant red eye.

**ROSEA SUPERBA** Magnificent flower heads of a glowing rosy-pink. Very outstanding.

Your choice of the above varieties, each 40c; 3 of one variety for \$1.10

### PHLOX COLLECTION NO. 1

One each of the 22 varieties listed on pages 14 and 15. **\$7.50**

### PHLOX COLLECTION NO. 2

**6** PHLOX ALL LABELED **\$2.00**  
OUR SELECTION

## HARDY PHLOX (Cont'd.)

**SALMON BEAUTY** Delightful shade of salmon-pink with large, white eye. Individual florets are extra large and well formed.

**SALMON GLOW** Teamed with Daily Sketch this variety has swept to a high place in the Phlox world. Its robust growth and blooms of deep salmon recommend it to all.

**SAN ANTONIO** Extra large heads and florets of vivid flaming carmine, shaded plum. One of the very best new tall Phlox. Outshines all others for brilliancy.

**THOR** Deep salmon-pink with an unusual scarlet overtone. Nicely shaped trusses on strong stems.

Your choice of the above varieties.

Each 40c; 3 of one variety for \$1.10.

## TUBEROUS BEGONIAS

Perhaps no other plant is so valuable as the tuberous-rooted Begonia, for those hard-to-fill shady areas in the garden. Their lovely colors range from pastel shades to bright yellows, salmon and deep crimsons. Magnificent flowers often measuring 4 inches or more across, are borne well above the attractive foliage. In addition to their use in the garden, they make excellent plants in pots for indoor bloom.

**PICOTEE** A camellia-type blossom with the edges of the petals in a different shade of color. Available in a mixture of pastel shades only.

Large bulbs, each 30c; 3 for 80c; 6 for \$1.50; 12 for \$2.75.

**RED TRIUMPH** A ruffled camellia-type of ruby-red with a velvety texture. This is the beautiful new Red Triumph that was featured in Life Magazine of Sept. 18th. The blooms are very large and make a most effective display.

Prices: Large bulbs, each \$1.10; 3 for \$3.00; 6 for \$5.50; 12 for \$10.00.

## MINT PLANTS

A nice mint bed in your garden is one of the most useful things you can have for your kitchen enjoyment. These can be used for garnishing lamb and other meats, for ice tea, and if you like the mint julep, we have the genuine spearmint that is best for this purpose.

6 Runners for 50c;  
12 for \$1.00, postpaid.

After June 1st plants can be had with tops.

3 for 50c      7 for \$1.00



Tuberous Begonia

### SPECIAL OFFER MIXED BEGONIAS

We have a special mixture of Begonias including camellia, carnation, rosebud and hanging types in all colors. In this offer we cannot of course send you any one color or type. For separate colors see other listings of Begonias.

**10 Bulbs** Special Mixture for only **\$1.00**  
Postpaid

**COMMERCIAL BULBS** We offer a smaller commercial size bulb that will bloom this year. But they will not have as many flowers on each plant as the larger size bulbs. We offer the following colors:

<b>PINK</b>	<b>RED</b>	<b>WHITE</b>
<b>SALMON</b>	<b>YELLOW</b>	
Each 18c	3 for 50c	7 for \$1.00

## Richard's HAND-HOE MAKES ALL your weeding

**QUICK, SAFE and EASY**

CHECK THESE FEATURES:

- The razor sharp, double edged blade can be used both frontwards and backwards.
- Efficient design, cleans itself during use.
- The U-shaped blade makes close weeding safe, prevents accidental cutting of plants.
- Square type handle gives sure control plus comfort.

This HAND HOE is the result of several years experimentation in search of a tool which would do our work most efficiently. It fulfills our requirements so well that now we offer it to you. Don't delay, order yours today.

**HAND HOE only 75c each**

**GUARANTEE**—You must be completely satisfied, or your money back.



# DELPHINIUM

(Perennial Larkspur)

Here is one of the best loved and most popular of the world's perennials. New introductions have widened the colors available and have produced better growth and blooms. Our reputation has been founded on the high quality of the delphiniums we grow. These are all healthy, field-grown plants that will bloom in your garden this summer.

**BELLADONNA, IMPROVED CLIVEDEN BEAUTY** Enchanting soft light blue in color. A strong grower and heavy bloomer. Superior to the old types of Belladonna; better stems and color. Height 3 feet.

3 for 60c      6 for \$1.00      12 for \$1.75

**BELLAMOSUM** Identical in habit of growth and characteristics with Belladonna described above, except for its rich, deep blue color so much loved in delphiniums. Height 3 feet.

3 for 60c      6 for \$1.00      12 for \$1.75

**CHINESE** Graceful habit of growth and finely cut foliage makes this variety very desirable for garden and display. Flower



**Belladonna Delphinium**  
(Improved Cliveden Beauty)

spikes are loosely arranged, attain a height of 2 feet, and are a lovely clear, light-blue color. Excellent for bouquets.

3 for 60c      6 for \$1.00      12 for \$1.75

**LAMARTINE** Well formed spikes of the deepest blue flowers, each with a distinct white eye. The real Gentian-blue color is rare in flowers; here is one of the outstanding cutting varieties.

3 for 60c      6 for \$1.00      12 for \$1.75

## GORGEOUSLY COLORED HYBRID

### DELPHINIUM

Recent introductions in the field of Hybrids have added rare new colors and variations never thought possible in Delphiniums. Individual florets are now double and semi-double, as well as single. Spikes are unbelievably large. No Delphinium planting is complete without some of these Hybrids for a gorgeous display next summer.

### BLACKMORE and LANGDON HYBRIDS

Superb color range which includes shadings from pale blue through delicate lavender and rose variations. Very strong grower with strong stems 4 to 5 feet tall. Flowers in June; florets run a large percent double.

3 for 60c      12 for \$1.75      6 for \$1.00

### WREXHAM STRAIN HOLLYHOCK FLOWERED

Extremely long, spire-like spikes, thickly studded with individual florets of large size. Color variations including all shades from deepest blues and purples to the delicate pastels in rose, orchid and pale blue. A wonderful grower and producer with very strong stems. 5 ft. June.

3 for 60c      6 for \$1.00      12 for \$1.75

Corsicana, Texas

This is to say my plants came days ago, all in perfect condition and especially nice ones, too — thanks for the generous count.

Mrs. Hawkins Scarborough



**Hybrid Delphinium**  
Wrexham Strain

# *Pacific Hybrid*

## DELPHINIUM

### The World's Finest

This elegant strain of Delphinium is almost beyond description. Stately flower stalks 3 to 5 feet tall are profusely bloom-laden; individual flowers are 2 to 3 inches across, many are double, semi-double, some single. The plants are resistant to mildew and stems are wiry and strong enough to resist high winds. These are all strong, well-rooted plants that will bloom in your garden during June and July.

**BLACK KNIGHT** Large flowers of darkest royal violet shades; a remarkably rich color.

**BLUE BIRD** Superbly tall spikes set with clear medium blue flowers with white bee.

**BLUE JAY** Intense shades from medium to dark blue, all with darker bee.

**CAMELIARD** Clear soft lavender with white bee. Very large, round florets of perfect form.

**GALAHAD** Glistening pure white flowers of enormous size; individual florets measuring 3" across.

**GUINEVERE** Light pink-lavender self with white bee. Excellent branching habits; beautiful large blooms.

**KING ARTHUR** Rich, deep royal violet with large white bee. Long, graceful spikes; very large florets.

**PERCIVAL** An outstanding new variety; clear white with brown bee.

**SUMMER SKIES** As beautiful as the name indicates; clearest light blue with white bee.

**ROUND TABLE** A superb mixture comprising all available shades. For sheer beauty, vigor and quality they are unequalled.

3 of one kind . . . . .	\$ .90
6 of one kind . . . . .	1.45
12 of one kind . . . . .	2.50

**30** plants, 3 of each kind, \$9.00 value for only **\$6.50**

#### SPECIAL GET ACQUAINTED OFFER

5 ROUND TABLE \$1.00  
shipped at planting time

#### DELPHINIUM by color

Dark Blue	Light Blue	
Lavender Pastel	Violet	White
3 of one color for 80c; 6 of one color for \$1.30; 12 of one color for \$2.25		
Mixed — 3 for 70c; 6 for \$1.15; 12 for \$2.00		



# Richards' MID-CENTURY Anniversary BARGAINS



## PERENNIAL COLLECTION No. 1

- 1 Lobelia
- 1 V & R Delphinium, Violet
- 1 Phlox, Daily Sketch
- 1 Linum, Perenne
- 1 Rudbeckia, Purpurea
- 1 Gaillardia, Dazzler

**6**  
PLANTS  
FOR  
**\$1.00**  
POSTPAID

Please Order By Collection Number

## PERENNIAL COLLECTION No. 2

- 1 Phlox, Charles Curtis
- 1 V & R Delphinium, Light Blue
- 1 Aquilegia, Longissima
- 1 Carnation, Red
- 1 Pyrethrum, Robinson's  
Pink & Rose
- 1 Campanula, Blue
- 1 Dianthus, Newport Pink

**7**  
PLANTS  
FOR  
**\$1.00**  
POSTPAID

Please Order By Collection Number

## PERENNIAL COLLECTION No. 3

- 1 V & R Delphinium, Lavender  
Pastel
- 1 Aquilegia, Crimson Star
- 1 Carnation, Pink
- 1 Pyrethrum, Robinson's Crimson
- 1 Campanula, Medium Pink
- 1 Dianthus, Scarlet Beauty

**6**  
PLANTS  
FOR  
**\$1.00**  
POSTPAID

Please Order By Collection Number

## ROCK GARDEN COLLECTION No. 4

- 1 Alyssum Saxatile
- 1 Callirhoe
- 1 Aubrietia, Monarch Mixed
- 1 Iberis, Sempervirens
- 1 Saponaria
- 1 Dianthus, Midget Mixed
- 1 Helianthemum

**7**  
PLANTS  
FOR  
**\$1.00**  
POSTPAID

## PERENNIAL BACKGROUND COLLECTION No. 5

- 1 Hollyhock, Scarlet Beauty
- 1 Hibiscus, Pink
- 1 V & R Delphinium, Dark Blue
- 1 Liatris, Pycnostachya
- 1 Heliopsis
- 1 Anchusa, Italica

**6**  
PLANTS  
FOR  
**\$1.00**  
POSTPAID

## SURPRISE! COLLECTION No. 6

- 8** PLANTS **\$1.00**  
Eight Plants Each a Different Variety,  
unlabeled.  
Sturdy 1 yr. Field Grown.

## BULB COLLECTION No. 7

- 3 DAHLIAS, Assorted
- 3 TUBEROUS BEGONIAS,  
Assorted
- 6 GLADIOLUS, Assorted

**12**  
BULBS  
FOR  
**\$1.00**  
POSTPAID

All Large Blooming Size Bulbs

**All 7 Collections offered on This Page only \$6.00**



1.

2.

3.

4.

5.



See  
Page 25  
for  
More  
Bargains

## *Brilliant Fall Loveliness*

WITH THESE FAVORITE HARDY  
**CHRYSANTHEMUMS**

**NO. 1 MISS LACE** Clear light pink. Large flowers fully 3" across. Strong vertical stems 30 inches high. Blooms in September.

**NO. 2 POLAR ICE** Sparkling ice-white, large, double blooms from early September on. Plants are very free flowering producing full 3" blooms.

**NO. 3 CHARLES NYE** This is one of the best of all the yellows. Large, 3" fully double flowers of rich buttercup yellow. For border and cutting.

**5** One of Each Variety Described Below **\$1.75**

**NO. 4 RED VELVET** Lives up to its name. A strikingly beautiful velvety crimson flower of large proportions. A cross between Mrs. Dupont and Caliph retaining all the best features of both. All blooms are fully double on 24" stems. Blooms in October. The best of all crimsons.

**NO. 5 CARNIVAL** A large, gleaming burnt-orange flower on an excellent plant with vibrant green foliage. Blooms from early October on. Has strong upright stems thirty inches in height. One of the best of all 'mums for cutting.



# RICHARDS'

## *Futuristic* 'MUMS

Due to danger of frost, all 'mum plants will be shipped to the northern states only after May 1st. unless otherwise specified. Shipments to southern states after January 1st.

**ALERT** (Becker, 1948) Large, fully double, 3-inch dark purple flowers that do not fade, borne in abundance on sturdy stems. Very showy.

**BLACK VELVET** (Becker, 1945) Rather late dark red double flowering cushion. Very hardy. They are always dependable—always make a show.

**EARLY ROBIN** (Becker, 1948) A very early compact mount completely smothered by two-toned flowers of bronze-yellow, with a mahogany-red center.

**GLADWIN** Lovely pink 'mum which resembles the English Leda. The many long fluffy petals gradually lighten with age yet stay attractive and fully double. The 32-inch bush branches from the ground making very large sprays. Very hardy.

**ORCHID HELEN** A sturdy 18-inch bush, completely covered with 3-inch double pink-

orchid flowers. The petals are unusually stiff, adding to its beauty.

**WHITE TOWER** (Becker, 1947) A sturdy perfect pompon with broad petals, first creamy white, then opening pure white. A good cutting variety. Very free.

Prices on above varieties in 2½" pots, Each 60c; 3 of one variety \$1.50.

### GOLDEN ISLE

An early splash of color in the Fall garden. Largest early 'Mum to make a mass effect that we know of. In bloom by September 15th and continuing until snow. Color varies according to season from reddish orange, bronze, tan to a golden yellow. Plant is completely covered with 4 to 4½" blooms.

Each 75c

3 for \$2.00

## *Patented* 'MUMS

Here we are offering some entirely new creations. Each one possessing qualities which makes them outstanding and different from anything now in existence. We know you'll be highly pleased and delighted with these glamorous, new introductions.

**FRED F. ROCKWELL** (Plant Patent No. 718) The most gorgeous blending of bronze and orange scarlet tones ever seen in a pompon; retains its full brilliance far into the 'Mum season.

**KOREAN PRINCESS** (Plant Patent No. 640) The first anemone-flowered Korean Hybrid. Color is a rich bronze red changing to soft strawberry crimson; the inner petals tipped golden bronze—a charming tapestry effect.

**SUMMERTIME** (Plant Patent No. 689) Bred specifically for summer flowering, it does just that. Masses of fragrant, glistening yellow blossoms from late July on. Single blossoms, 2" across, bright lemon to bronze yellow, are produced in great abundance.

All potted plants. Each 75c; 3 for \$2.00; 12 for \$7.50

Note: Chrysanthemums Fred F. Rockwell, Korean Princess, and Summertime are being grown under license from the patent owner and sold subject to all patent restrictions.

### THE POPULAR SPOON 'MUMS

Unusual new type of hardy Chrysanthemum that deserves a place in every 'mum planting. Their unique appearance and brilliant color combinations will add a note of "delightful novelty" to your garden. Individual flower petals are quilled or tubular most of their length, flattening out near tip to resemble a tiny spoon. Bear loads of blooms during late fall; plants are hardy, vigorous growers. We offer the following varieties:

CHARM SPOON      IVORY SPOON  
LOVELINESS SPOON  
MAGENTA SPOON

Prices on above varieties in 2¼" pots; Each 45c; 3 for \$1.10.

### SEPTEMBER SERIES 'MUMS

**SEPT. BRONZE** The most colorful of the early 'mums; loads of lovely little pompon-shaped flowers in the warmest tints from mid-September to latest frosts.

**SEPT. SHELL** Lovely soft pink flowers from Sept. 1st on. A Mt. Ranier Hybrid 24 inches high. Flowers 2 inches. Double.

**SEPT. SUNSHINE** Brilliant yellow blooms completely cover compact, well-rounded plants from mid-September until frost. Fine for low border and cutting.

Prices on the above varieties in 2¼" pots, Each 45c; 3 for \$1.10.

## Choice Newer Varieties OF HARDY 'MUMS

**BOKHARA** Charming soft crimson and wine flowers fully double. New 1947. Strong, sturdy growth, very free-flowering.

**BEACON** Fully double blooms of coral-apricot shading to flaming nasturtium-orange at center. Splendid for cutting, with its large 4-inch flowers and tall, strong stems.

**CARNIVAL** New 1948! A large, gleaming burnt-orange flower on an excellent plant with lusty green foliage. This is an ideal plant for cutting.

**FRANCIS DE SALES** Large yellow flowers slightly tinted with orange turning to pure yellow when in full bloom. Its full flowers measure 3½ inches across.

**GOLDEN CARPET** Imagine a rug made of glowing golden pompons! A creeping mound, 2" or more across, glittering in the fall sun—only 1" high. Ideal for bedding.

**JAYEFF** Deep positive pink with a dazzling sheen. No other color or flower form like it. Flowers are huge, 4" or more without disbudding. Blooms in September.

**KATHLEEN LEHMAN** Brightest orange-gold, deepening to red-gold at center. One of the very best new things.

**HUNTSMAN** Vivid scarlet orange overlaid with bronze tints; an outstanding color for your fall garden. Rugged, hardy plants are simply loaded with 3-inch double blooms.

**MISS LACE** True light pink. Three-inch blooms on strong upright stems; 30 inches high. Blooms in September.

**PATRICIA LEHMAN** Sparkling geranium-pink with peach center. Recurved and twisted petals give fluffy, feathery effect. Strong, upright grower.

**PAPER WHITE** Very pure white flowers on dwarf plants. Wide, flat petals with excellent textures. Very early and exceptionally fine in the north.

**RED COAT** Flowers are a really new red in 'Mums. Vermilion is the closest comparison. Fully double, they appear on strong yet succulent stems. Certain to be a leader for years to come.

**VIOLET** One of the newest purples. Dahlia-like blooms, fully double, of good color and substance. Grows 24 inches tall; blooms late August.

**WINTERSET** Large, fully double blooms of glistening snow-white. Very effective in combination with Mrs. du Pont and Red Velvet, which bloom the same time. Plants are hardy and strong-growing.

**YELLOW CACTUS** A large sulphur yellow 'mum with flowers measuring over 3 inches in diameter. A flowery mass that blooms about October 5.

**YELLOW AVALANCHE** A sensational new yellow. Big, fluffy bloom of a rich, golden-yellow shade. A bud sport of the white variety.

Prices on Choice Newer Varieties of Hardy 'Mums in 2¼" pots, Each \$.50; 3 for \$1.25.

## Favorite 'Mums

**APPLEBLOSSOM** An appleblossom pink, fading to a clear white with cactus-like petals. Produces an abundance of 2½" flowers. Strong stems; height 26". Blooms in September.

**AVALANCHE** Big, fluffy, white flowers, measuring 5 inches across. Truly Queen of the Whites. Perfectly formed blooms in profusion from Sept. on.

**BETTY** Splendid upright plant; double flowers of rose-pink without a trace of magenta. One of the finest new pinks.

**CHIPPEWA** A universal favorite! Enormous double flowers of aster-purple; petals slightly incurved. Does especially well in northern sections.

**CHRIS COLUMBUS** New, outstanding ivory-white. Large, double blooms from late September on; excellent for cutting.

**EGGSHELL** Large, double flowers of a distinct eggshell-white, slightly deeper at center. Flowers 3 to 4 inches across. Early blooming.

**FLASHLIGHT** Attractive dark red with golden reverse. Large, double blooms. Early flowering.

## OLD and NEW

**JACKIE** A rich wine-red. Blooms late, but will always come into bloom after it has been severely frosted.

**JEWELRY** A lovely deep pink pompon. The flowers are well formed and hold their color after several frosts. Very hardy. Blooms in October.

**LAVENDER LADY** Immense double flowers, in a beautiful silvery lavender shade. Blooms are 3 inches or more across. Unusually hardy.

**MARTIN'S WHITE** Immense, pure white flowers; fully double, about 4 inches across. Plants are bushy, of compact growth.

**MRS. DUPONT** Large, double blooms of peach-pink tinted rosy-salmon bronze. Long, strong stems are ideal for cutting.

**PINK RADIANCE** Masses of luminous, soft-pink blooms cover plants from late September on. Make beautiful bouquets.

**POLAR ICE** Clear ice-white, large, double blooms from early September on. Very free-flowering.

**RED VELVET** An outstanding velvety-crimson. Fully double blooms, fine healthy foliage.

Prices on Favorite 'Mums in 2¼" pots, Each 45c 3 for \$1.10

# Gorgeous English 'MUMS

These sensational new 'mums originated in Canada and have quickly gained great favor among lovers of fine flowers in this country. These varieties all bear enormous blooms on tall, stiffly erect stems. Excellent for cutting. Disbudding will produce some real exhibition blooms.

**ALABASTER** An early white of large size and good substance; slightly incurved. Blooms will grow 5" across if disbudded.

**BRONZE EARLY BUTTERCUP** Rich deep bronze with golden buff reverse. One of the very finest bronze English 'mums. Disbud for best results.

**COPELAND'S COPPER** Blossoms are soft copper-bronze. A perfect color for your garden. We consider this one of the finest of the English strain. Remarkable attractive.

**COPPELIA** Striking Indian-red or ripe tomato color. Strong grower, heavy textured. Blooms late September. Height 36 inches. Double, free-flowering.

**CRUSADER** An immense white, slightly overlaid with pink. Tall, straight stiff stems; large blooms brushed pink on the tips.

**ELDORADO** Large blooms that measure five inches across. They are a most charming yellow shade. Very free-flowering; should be disbudded for best results.

**JEAN HARLOW** Large, double blooms of semi-incurved form. Beautiful bright golden-yellow color.

## YELLOW ALABASTER

The discovery of this beautiful 'Mum was made by Mrs. Elmo Wierenga of Grand Rapids, Michigan, and graciously presented to us for introduction so that every garden enthusiast may see it and enjoy it. We believe that it is destined to become one of the most popular mums in existence. The color is a soft yellow. Produced in abundance on strong, straight stems. A wonderful cut flower.

Each 75c

3 for \$2.00



Crusader

**LEDA** Gorgeous rolled petals of heliotrope-pink. Flowers are 6" across if disbudded. We consider this one of the finest of the English strain.

**MRS. T. GUTHRIE** A very large, chestnut-red with bronze reverse, broad reflexing petals. Will make a 6" bloom if disbudded.

**ORANGE GLOW** Orange-bronze with golden reverse. Large well-formed blooms.

**WENDY** A distinctive bright orange bronze. Blooms in September.

Prices on the above varieties in 2 1/4" pots, Each 50c; 3 for \$1.25.

Middleboro, Mass.

Dear Sir:

I am sending you a line to let you know the Mums I got from you this spring are very nice plants and I hope to see some nice blooms on them any time now.

Mr. Frank Williams

ALL PRICES ARE PREPAID PRICES  
Michigan Customers Please Add 3% Sales Tax

# University of Chicago Strain 'MUMS

For years Dr. Kraus of the University of Chicago has been growing 'mums from selected seeds. They have been tested for winter hardiness, color and form of flower; earliness and disease resistance. We offer to you the cream of the crop. We know that you will be pleased.

**AUTUMNSONG** A delightful new color in 'mums; large flowers of a beautiful shade of wine-rose shading to carmine.

**CHARLES NYE** One of the best yellows to date. Large, 3" fully double flowers of rich buttercup yellow. For border and cutting.

**CHIQUITA** Lovely dome-shaped pompon flowers of a deep lemon-yellow shade. Very desirable both for the garden and bouquets.

**COURAGEOUS** Bright, dark ruby-red. Large double flowers, 3½ inches in diameter. Its striking color and vigorous growth are outstanding.

**DAWNROSE** Grenadine-pink to bittersweet-pink, lightening to clear, bright flesh-color at margin. Excellent flower for cutting. A 1950 must for your garden.

**DEFIANCE** A bold flower of intense golden yellow with twilled petals. Exceptionally firm substance. Strong, upright plant with excellent cutting stems.

**EARLY HARVEST** A mass of charming mahogany-orange flowers for two months. Superior to any known cushion variety. We know you'll like it.

**GLOWING COALS** Bright, deep cherry red with orange reverse. One of the best early reds. Plants are vigorous growers; produces a profusion of blooms.

**GOLDEN HOURS** Large, fully double flowers of deep lemon-chrome. Broad petals, overlapping and somewhat incurved. Free-flowering, early variety.

**INSPIRATION** New 1948! Large, rich orange-red overlaid with apricot-orange. Bush unusually strong, sturdy and upright. Excellent for cutting. Buds and flowers frost hardy.

**MAGNIFICENT** New 1949! Glorious 4-inch flowers of plum-red or rosy cardinal with coppery cast. Extremely strong branches, excellent for cutting.

**MEDITATION** Magnificent, 3-inch fully double flowers of soft light jasper-red and maize-yellow with orange reverse. An outstanding new 'mum.

**NANOOK** Masses of charming white flowers with cream center, completely cover compact, dwarf plants. Excellent for the low border.

**OLIVE LONGLAND** Three-inch, apricot-toned, salmon-pink. One of the "Master Six." The best of the pastel colors. Perfect plant habits and excellent healthy foliage.

**SOUTHWIND** Masses of large Chinese-red flowers toned salmon-buff, borne on sturdy, well-branched plants. Blooms in September to a height of 22 inches.

**ZANTHA** Large, double, ball-shaped flowers of a clear, canary-yellow shade. Blooms freely over a long period from early September until late frost.

Prices on above varieties in 2¼" pots, Each 50c; 3 for \$1.25.

## Famous Cushion Chrysanthemums

Dwarf in height, hardy, colorful and the most prolific bloomers we know of among plants. Begin blooming in July and each plant produces actually hundreds of buds and flowers from then on until the last fall freezes. Unexcelled for borders or for planting in front of shrubs or evergreens. Showy and beautiful in mass plantings. One plant alone is a small flower garden in itself!

We offer the following colors —

RED CUSHION  
PINK CUSHION  
BRONZE CUSHION  
YELLOW CUSHION

Prices on above varieties in 2¼" pots, Each 35c; 3 for \$1.00.

## SPECIAL MONEY-SAVING BARGAIN ON CHRYSANTHEMUMS

If you do not care for names of your mums, but are interested in a beautiful splash of fall colors, we believe you will want to take advantage of this special MONEY-SAVING OFFER.

In our display gardens we grow our very finest varieties. This year we had a surplus of plants—something like 50,000—and so we can offer you assorted, unlabeled root divisions THAT WILL BLOOM THIS FALL.

### LOW POSTPAID PRICES

10	unlabeled root divisions, assorted colors, for only	\$1.25
25	unlabeled root divisions, assorted colors, for only	\$2.50
50	unlabeled root divisions, assorted colors, for only	\$4.00
100	unlabeled root divisions, assorted colors, for only	\$6.75

## NAMED VARIETIES OF CUSHION TYPE 'MUMS



Joan Helen

**CANDY** Color is a prominent, full pink with a sugar-sheen and individually average more than 2 inches. Blend is just enough salmon and gold in center to spotlight each blossom. Beautiful cut flower.

**CAMILLA** A new, rich cherry red. One of our introductions.

**DWARF JEWEL** At last, a jewel type flower on a compact cushion-shaped plant. Color is a very pleasing soft lavender.

**EXETER** Beautiful new bronzy yellow. Very branchy growth and luxuriant green foliage.

**JOAN HELEN** Sparkling garnet-red shading to purple; bright yellow center. Masses of beautiful blooms almost completely hide the foliage.

**OMAHA** Double to semi-double blooms with quilled petals of a light copper shade. Blooms mid-September; extremely hardy.

Prices on above varieties in 2 1/4" pots; Each 45c; 3 for \$1.10.

Onawa, Iowa

I received shipment of plants. They were splendid plants and in fine shape. I appreciate this very much.

Ethel Gierman

## SPECIAL BALANCED COLLECTIONS

The Chrysanthemums offered in these Special Balanced Collections are all listed and described on the preceding pages.

Your choice of any one of these Collections postpaid, **\$2.25** for only

Your choice of any 3 of the above Collections postpaid, **\$6.25** for only

All 5 of the Special Balanced Collections, postpaid, **\$10.00** for only

We cannot split up Collections at the above prices. When ordering, please order by collection number.

### COLLECTION No. 1

ORCHID HELEN	YELLOW AVALANCHE	JAYEFF	<b>\$2.25</b>
AUTUMNSONG	CHARLES NYE	WINTERSET	

### COLLECTION No. 2

YELLOW CACTUS	VIOLET	GLADWIN	<b>\$2.25</b>
CARNIVAL	WHITE TOWER	OLIVE LONGLAND	

### COLLECTION No. 3

ALERT	MISS LACE	MAGNIFICENT	<b>\$2.25</b>
ZANTHA	HUNTSMAN	MARTIN'S WHITE	

### COLLECTION No. 4

ALABASTOR	MRS. T. GUTHRIE	LEDA	<b>\$2.25</b>
COPPELA	JEAN HARLOW	CRUSADER	

### COLLECTION No. 5

CHARM SPOON	SEPT. SHELL	CANDY	<b>\$2.25</b>
CAMILLA	SEPT. SUNSHINE	EARLY ROBIN	

## ROOTED CUTTINGS

**3** of 1 variety for only **85c**

**6** of 1 variety for only **\$1.50**

We offer rooted cuttings in the following varieties only:

ALABASTER	LAVENDER LADY
CHARLES NYE	MRS. DUPONT
CHRIS COLUMBUS	ORCHID HELEN
JACKIE	RED VELVET
JEAN HARLOW	SEPT. SUNSHINE
JOAN HELEN	WHITE TOWER

### SPECIAL OFFER OF ROOTED CUTTINGS

One each of the above varieties, unlabeled, postpaid, for only **\$2.25**

# Richards' Quality

## SPRING ORDERS ONLY

These are all finest quality bulbs which will bloom for you this summer. Sold only in quantities listed below, or multiples thereof.

**ABU HASSAN** Clear dark blue. The most popular dark blue grown today.

2 for 30c                      6 for 75c                      12 for \$1.25

**BLACK OPAL** Deep glistening maroon-red. Opens up to ten large well-placed blooms on large spike.

6 for 40c    12 for 75c

**BOULOGNE** Deep reddish rose or wine-red. Opens 8 well-placed blooms on a plant about 4 ft. tall.

2 for 30c                      6 for 75c                      12 for \$1.25

**CORONA** Delicate creamy white with pink edging. Most unusual and daintily colored of Glads. A superb new kind which will be grown by everyone.

6 for 40c    12 for 75c

**ELIZABETH THE QUEEN** Beautiful clear mauve with darker lines in throat. Large, beautifully ruffled blooms. Most beautiful lavender available.

EACH 15c                      6 for 75c                      12 for \$1.25

**GENERAL EISENHOWER** Brilliant, clean shade of begonia-rose. Huge blooms up to 7" across. This variety has had a lot of publicity and is living up to it.

Each 25c                      6 for \$1.00                      12 for \$1.75

**HIGH FINANCE** A light smoky orange gray bloom, with a rich cream throat. The flower is well placed on a tall stem. An excellent cut flower.

EACH 15c                      6 for 75c                      12 for \$1.25

**KING BEE** Beautiful salmon scarlet. Truly a king among the other "glads." A good bloomer and a superb cut flower.

6 for 40c    12 for 75c

**LEADING LADY** A sport of Picardy having the same strong constitution and excellent habit but the blooms are an appealing cream-white with canary yellow throats. A superb variety for the garden, cutting, and exhibition.

EACH 15c                      6 for 75c                      12 for \$1.25

**MAGNOLIA** Light, soft creamy-rose. A beautiful clear color, though it sometimes flecks a little.

6 for 40c    12 for 75c



Elizabeth  
The Queen

### OFFER NUMBER 1

- 6—BOULOGNE Wine red (new).
- 6—BUCKEYE BRONZE Smoky bronze (ruffled)
- 6—CAPEHART Light salmon-rose.
- 6—MAUVE MAGIC Bright lavender.
- 6—OREGON GOLD Ruffled light yellow.
- 6—SNOWBANK Ruffled creamy white.

**36** Bulbs, 6 of each of the beautiful Glads, described above. Each variety **\$2.50** labeled. Postpaid for

**SPECIAL FREE GIFT** With each order for the collection of 36 bulbs described above, we will include **ABSOLUTELY FREE** 6 bulbs of **PICARDY**, often called the greatest Glad of all time.

### OFFER NUMBER 2

For those who do not want as many as 36 bulbs, we will make the following offer:

**18** Bulbs. 3 of each of the six varieties listed on Offer Number 1. **\$1.50**

Each variety labeled. Postpaid  
**SPECIAL FREE GIFT** With each order for this collection of 18 bulbs, we will include **ABSOLUTELY FREE** 3 bulbs of the popular **PICARDY**.

### OFFER NUMBER 3

**25** Fine bulbs of mixed varieties. **\$1.00** There are some beautiful varieties in this mixture but to save separation and labeling, we make this value giving offer.



# DAHLIAS

This spring we are again offering our customers a selection of fine Dahlia Tubers.

These tubers are of healthy, vigorous stock. Plant this spring and have gorgeous blooms this summer and fall. We offer the outstanding varieties listed below. Each tuber labeled and an exceptional Dahlia value.

## HONOR ROLL VARIETIES

**COMMANDO** Medium height plants with clear lavender blooms held well above the foliage on very stiff stems. Flowers 10 to 14 inches in diameter.

**INCANDESCENT** Fine bronze suffused pink decorative similar to Jane Cowl except that it has this glowing pink shading with a golden sheen over all.

**MRS. T. EDISON** Another outstanding variety is this rich ruby and silver blossom. Its outstanding beauty shows up well in the garden.

**PINK GIANT** Gorgeous mammoth blooms of bright Tyrian pink color carried erect on long, strong stems well above the foliage. Grows 5½ ft. tall.

**ZANT'S PURPLE** Large true purple flower. It is a husky, tall plant with straight stems and healthy foliage. Very decorative in your garden.

The Above Varieties 75c each.

## HONOR ROLL COLLECTION

1 each of the 5 varieties listed **\$3.00**  
postpaid for . . . . .

## DAHLIA COLLECTION NO. 3

**CATHERINE** Lovely small blooms of an orange-pink. Always much admired by everyone. Splendid for garden display and for cutting.

**LIBELLE** One of the finest cactus Dahlias with large royal purple flowers on long stems. Always very much admired for its bright color.

**MARGARET WILSON** A refined, magnificent, large, creamy white Dahlia, attractively shaded with pink. Splendid for exhibition and fine for the garden.

**PRIDE OF CALIFORNIA** A brilliant glowing cardinal red. Often called "The American Beauty" Dahlia. The flowers are of huge size, and are produced well above the foliage.

**STORM KING** Lovely clear white Decorative Dahlias. This is a hardy and free blooming variety. A charming plant for your garden.



Yellow Collosse

**YELLOW COLLOSSE** One of the most excellent yellow Decorative Dahlias with large, deep flowers on long stems. A charming plant for your garden.

**SPECIAL OFFER** One each of the above six varieties only **\$1.25**

## DAHLIA COLLECTION NO. 1

**AVALON** Great garden Dahlia of fine form and a rich lemon-yellow color. This plant is a profuse bloomer. It should be in every garden.

**MRS. GEO. LE BOUTILLIER** Very large rich cardinal red. Decorative flowers 10 to 12 inches in diameter. Medium height, healthy dark green foliage.

**JEAN TRIMBEE** Tall strong grower hybrid cactus. Flowers are 10 to 12 inches of petunia violet color with excellent stems.

**JOSEPHINE G.** Medium height plants which are literally covered with good size bright salmon pink flowers. Base of petals yellow. Fine cut flowers.

**KEMP'S WHITE WONDER** Huge, clear white Informal Decorative Dahlias. The blooms are on long stems with dark and healthy foliage.

**MONARCH OF THE EAST** Mammoth warm deep golden buff Decorative Dahlia. Flowers 12 to 14 inches in diameter without disbudding.

One each of the above varieties for only **\$2.50**

**FREE GIFT** — One **RED BALL** with each order for this collection.





Daylily Hyperion

## DAHLIA COLLECTION NO. 2

**COMMODORE** Sparkling yellow Decorative type Dahlia. Very hardy and free blooming. Splendid for garden display and for cutting.

**GLAMOUR** An immense true purple with each petal edged amaranth-pink; a striking color combination. Strong, heavy grower; blooms have measured 14 inches across. Winner of many prizes.

**JANE COWL** Deep massive blooms of a bronze buff and old-gold blending darker toward the perfect center. A stem of unusual strength holds this giant Decorative Dahlia.

**KING ALFRED** Ruby-red with silvery reverse. The color combination of this very large flower is both distinctive and beautiful.

**MARIE** Tall, light pink Formal Decorative. Fine stem making it an excellent cut flower. Blooms are 8 to 10 inches in diameter. Shows up well in the garden.

**WHITE GIANT** Here is probably the best of all white informal decoratives. Its many outstanding qualities have won it a place on the Honor Roll.

One each of the above varieties for only **\$2.50**

**FREE GIFT** — One **RED BALL** with each order for this collection.

### SPECIAL DAHLIA OFFER

**6** Mixed Dahlias, our choice unlabeled, postpaid for only **\$1.00**

# DAYLILLIES

(Hemerocallis)

One of the Easiest to grow of All Plants

Valuable for their large, showy flowers and variety of bright colors; for use in borders, shady areas and cutflower garden. We have been propagating and increasing our stock of these splendid plants for several years and now have a sufficient stock to offer them to our customers. These are some of the best varieties offered by any grower and many of them are very new. The plants below are all 2-year field grown.

**CALYPSO** Large blooms of light cadmium yellow. Height 40 inches; blooms July and August. Each 35c

**FULVA** Bright orange-yellow. Height 40 inches. Blooms in July. Each 25c

**GOLD DUST** Rich golden yellow. One of the earliest to bloom; May and June. Height 24 inches. Each 35c

**HYPERION** The finest citron-yellow available. Delightfully fragrant. Blooms in July and August. Height 40 inches. Each \$1.00

**KWANZO FLORA PLENA** Large, double golden bronze blooms. A really unique variety. Height 36 inches. Blooms July and August. Each 50c

**MARGARET PERRY** Brilliant orange-scarlet lined with red. Blooms July and August. Height 48 inches. Each 40c

**MODESTY** Large flowering; pale yellow color. Blooms June and July. Height 30 inches. Each 50c

**SERENADE** A subtle pastel combination of yellow and pink with petals that are twisted and crinkled. Blooms June and July. Height 4 to 5 ft. Each 50c

**SOVEREIGN** Satiny orange-yellow; fragrant. Blooms May and June. Height 30 inches. Each 25c

### SPECIAL OFFER

One each of the above varieties for only **\$3.50**



# PEONIES

Peonies are for Fall Delivery only.

This year we are offering our large list again. Varieties that we have selected as being outstanding in their various color classes. We do not try to grow every variety in existence but we do try to have the best ones. We want to say just a word about the quality. We send out as always nice clean three to five eye divisions, all from two and three year plants. You will find no clubby stock in our peonies.

**ADOLPHE ROUSSEAU** Double type; very large; early midseason. Dark lustrous red, shaded maroon, showing yellow stamens and light red stigmas in center. Tall; stems very strong.  
Each \$1.00

**ALBERT CROUSSE (8.6)** Double type; large; midseason. Light rose-pink with a creamy undertone, richly tinted with flesh pink in a deep rose-like center when fully open; mildly fragrant. Tall, a profuse bloomer; strong stems and good foliage.  
Each 60c

**ALBIFLORA (8.4)** Single type; large; early. Pure white, saucer-like blooms with long petals rounded at the ends and a center of long yellow stamens. Medium height; very prolific; good foliage.  
Each 75c

**ALSACE-LORRAINE** Large, double; mid-season. Pure white tinted with cream and buff in center.  
Each 75c

**AUGUSTE DESSERT** Color an intense pink; petals edged with silver. Large, double blooms. Midseason. Good grower.  
Each 75c

**BARONESS SCHROEDER** Large; double; midseason. Flesh-white tinted creamy pink.  
Each 75c

**CATHEDRAL (8.1)** Japanese type; large; midseason. Vivid dark rose-pink guard petals with narrow, lighter edges. Tall; free blooming.  
Each 75c

**CHESTINE GOWDY (8.4)** Double type; large; late. Light rose, tall; strong grower. Very distinct.  
Each 60c

**CLAIRE DUBOIS** Large; double; late. Bright rose-pink with enormous buds and flowers. Strong stems; good cut-flower.  
Each 75c

**CORONATION (8.5)** Double type; very large; late midseason. Pale rose-pink flecked with crimson on the edges, but the center is much darker; delicate fragrance. Medium height.  
Each 60c

**DUCHESS DE NEMOURS (8.1)** Double type; large; early. Cupped white guards and moderately full center of light canary-  
Each 60c

**EDITH FORREST** Double type; large; late midseason. A very good deep pink which flowers heavily and is especially effective in border plantings.  
Each 50c

**EDULIS SUPERBA** A fine Peony in the dark pink class. Early blooming; free flowering. Good cutting variety.  
Each 60c

**ELWOOD PLEAS** Large; late, pink Peony on the order of Therese.  
Each 75c

**FELIX CROUSSE (8.4)** Double type; large; late midseason. Brilliant crimson of even tone and good silky luster; medium height, good foliage.  
Each 60c

**FESTIVA MAXIMA (9.3)** Double type; very large; early. White with prominent crimson flecks on a few central petals; tall good foliage.  
Each 75c



Felix  
Crousse

**FRANK E. GOOD** Double type; large. Cream-white with a suffusion of buff. Improved Solange. Each \$2.50

**GEORGIANA SHAYLOR** Very large; double; late midseason. Light rose-pink with odd crimson streaked petals around center. Free blooming. Each 75c

**GIGANTEA** Very large; double; early. Clear rose-pink with silver tipped petals. Grows quite tall and slightly sprawling. Pleasing fragrance. Each \$1.00

**GRACE BATSON (8.8)** Double type; large; late. Deep rose pink. Medium height, good foliage. Each \$1.00

**ISANI GIDUI (9.3)** Japanese type; very large; midseason. Two rows of very broad, rounded smooth guard petals of pure white. Medium height. Each \$2.50

**KARL ROSENFELD** Red, large flower; blooms midseason. This is not the ordinary red but it has a light touch of crimson. A reliable bloomer. Does not open well when cut in bud. Each 75c

**KATHERINE HAVEMEYER** A large, flesh-pink of true rose type; guard petals are broad and rounded, center petals narrow and fringed. Blooms late; tall vigorous grower. Fragrant. Each \$1.00

**KELWAY'S GLORIOUS** Very large; double; midseason. Creamy-white, crimson streaks. Each \$1.50

**LA FEE** Large, compact flowers; guard petals are mauve-rose with a crown of lighter creamy-pink petals. Pleasingly fragrant. Blooms early midseason. Each \$1.00

**LA PERLE** Large, double; mid-season. One of the really good lilac-white varieties. Center is slightly darker, flaked with red. Fragrant. Each 75c

**LADY ALEX DUFF** Large, double, mid-season. Blush-pink blooms in clusters. Each 75c

**LADY KATE** Large, double, late. Solid light pink color. Tall grower with strong stems. Long blooming season. Each \$1.00

**LAURA DESSERT** Anemone type. The outer petals of white with center of canary-yellow, considered to be nearest to a yellow Peony. Early. Each \$1.00

**LILLIAN GUMM** Very large, deep rose-pink flower; a real beauty. Blooms mid-season. Fine for cut flowers. Each 75c

**LORCH** Large, pure snow-white outer petals with center petals lemon and cream. Rose fragrance. A beautiful flower when well grown. Midseason. Each \$1.00.

**LOVELINESS** Double type; large; very late. Pale flesh-pink. Medium tall; strong stems. Each 75c

**MME. JULES DESSERT (9.4)** Double type; very large; late midseason. Long, smooth petals of flesh-white graduated symmetrically about a hollow, funnel-like center, with a few stamens in its depths, which reflect a yellow glow through its translucent texture; tall, good foliage. This exquisite and charming peony is an added attraction to your garden. Each 90c

**MARIE CROUSSE (8.9)** Double type; very large; midseason. Central petals broad, forming an immense globular bloom; pale-pink, shaded rose in the center, overspread with a glowing suffusion; moderately fragrant, medium height. Each 60c

**MARTHA BULLOCH** Double type; very large; late. Bright old-rose pink. Tall, strong stems. Each \$1.25

**MARY BRAND (8.7)** Rose type; large midseason. Dark clear crimson, with a very brilliant sheen, notably fragrant for a red variety. Medium height. Outstanding variety. Each \$1.00

**MARY B. VORIES** Double type; very large; late. Pure white with creamy depths, the petals regularly overlapping to build a perfect, round center which bears a few crimson splashes. Each \$1.50

**MONS. JULES ELIE (9.2)** Double type; very large; early. Light rose-pink of the dull, opaque quality seen in pink chrysanthemums. Broad, smooth, guard petals; center incurved and silvered with grayish pink; fragrant. Moderately tall. Each 75c



**Festive Maxima**

## HOW TO PLANT PEONIES

Peonies are heavy feeders and should be planted in soil which has been thoroughly prepared by deep spading and the addition of well rotted manure or good commercial fertilizer.

Peonies should be planted with eyes **NOT MORE THAN TWO INCHES** below surface of the soil.

Most of the trouble that gardeners experience in not having their peonies bloom comes from planting too deep.

Have holes generously large to accommodate the roots. Sift in finely pulverized soil around roots until nearly covered, and then fill hole with water and allow to settle. This eliminates any air pockets. Fill in balance of earth to proper depth and pack firmly.

Peonies planted in this manner will seldom fail to grow and bloom the following year. Well rotted manure applied as a mulch in late fall and then worked into the soil the following spring will help promote luxuriant growth and blooms.

**MYRTLE GENTRY** Large, double, late. Rosy white with salmon tints. Strong stems. Each \$2.00

**NINA SECOR** Medium, double, mid-season. Pure white with yellow glow, red flecked. Each 75c

**OFFICINALIS RUBRA PLENA** Large, brilliant red; popularly known as the Decoration Day Peony because it is always in bloom by June 1st or earlier. Rich, spicy fragrance. Each \$1.00

**OFFICINALIS ROSEA SUPERBA** Large, pink Peony with all the good qualities and characteristics of Rubra Plena. Each \$1.00

**OFFICINALIS MUTABILIS** Another Decoration Day Peony — similar to Rubra Plena except the flowers are white. Each \$1.00

**PHILIPPE RIVOIRE** Medium, double mid-season. Very deep crimson with blackish glow. Each \$1.50

**PHOEBE CARY** Pale old-rose pink. Very late, double type, profuse bloomer. A fine Peony of good color and no serious fault. Each 75c

### SPECIAL OFFER NO. 1

9.0	Baroness Schroeder	Mary Brand
8.5	Coronation	9.2 Mons. Jules Elie
	Edith Forrest	9.0 Sass Late Red
9.0	June Day	9.3 Walter Faxon
8.8	Lillian Gumm	8.8 W. F. Christman

One each of the above 10 high rated varieties, regular catalogue value \$7.30 for **\$5.75**

**PHYLLIS KELWAY** Very large; semi-double; midseason. Rose-pink with light center. Good stems. Each 75c

**REINE HORTENSE (8.7)** Double type; very large; midseason. Rose-pink with crisp, fluffy petals of translucent texture, notched and silvered at the tips and occasionally flecked with crimson in the center. Each 75c

**SARAH BERNHARDT (9.0)** Double type; very large; late. Dark rose-pink, edged a trifle lighter with inconspicuous red edges on a few central petals, and an occasional golden yellow anther in the collar; agreeably fragrant. Medium height. Probably the most popular peony grown. Each 75c

**SASS LATE RED** Double type; large; late. A very clear red. One of the latest red Peonies. Medium height; good foliage. Each 75c

**TOURANGELLE (9.4)** Double type; large; late. A compact, almost bomb-like flower of many irregularly disposed petals; pale cream-white with a tan suffusion in the depths, toning to flesh-pink in the center, mildly fragrant. The color might better be described as a pale apple-blossom pink. At its best Tourangelle is one of the most beautiful peonies in existence. Medium height. Each 75c

**WALTER FAXON (9.3)** Double type; medium size; midseason. Vivid shell-pink of a luminous intensity, unique in peonies, mildly fragrant. Medium height. Each 60c

**W. F. CHRISTMAN (8.8)** Double type; large; midseason. Large outer petals of blush-white, shaded with pink, rose-like fragrance. Medium height, free flowering. Each 60c

**SPECIAL OFFER No. 2**

Festiva Maxima	Hazel Kinney
Kelway's Glorious	Mons. Jules Elie
Lady Alex Duff	Philippe Rivoire
Martha Bulloch	Sarah Bernhardt
Mary Brand	Walter Faxon

One each of the above fine peonies. A regular catalog value of \$10.00 for only..... **\$7.50**  
Postpaid anywhere in the continental United States.

**SPECIAL OFFER No. 3**

Kelway's Glorious	Mary Brand
Martha Bulloch	Mons. Jules Elie
Walter Faxon	

One each of the above fine peonies. A regular catalog value of \$5.25 for only..... **\$3.75**  
Postpaid anywhere in the continental United States.

**THE WORLD'S HIGHEST RATED  
PEONIES**

**AT RICHARD'S MONEY SAVING PRICES**

From our list of peonies we have selected 25 of the best, all rating 9.0 or better. These are unquestionably the aristocrats of the peony world. All grown from two and three year stock. One each of the supreme peonies listed below; all strong 3 to 5 eye divisions. A real bargain at the catalog value of, \$25.35, postpaid to your door for **\$20<sup>00</sup>** only .....

- A. M. Slocum — Light Rose Pink
- Baroness Schroeder — Milky White
- Daphne — Pink
- Festiva Maxima — White, Flecked Red
- Georgiana Shaylor — Light Rose Pink
- Gloriana — Bright Rose-Pink
- Hazel Kinney — Hydrangea Pink

- June Day — Pink, Lavender Shading
- Kelway's Glorious — White
- Lady Alex Duff — Pale Blush Pink
- Mable L. Franklin — White, Pink Center
- Martha Bulloch — Old Rose Pink
- Mary Brand — Dark Clear Crimson
- Mons. Jules Elie — Light Rose Pink
- Mrs. A. M. Brand — Glistening White
- Mrs. Edward Harding — White
- Mme. Jules Dessert — Flesh White
- Myrtle Gentry — Light Pink
- Philippe Rivoire — Dark Crimson
- Sarah Bernhardt — Dark Rose Pink
- Souv. Louis De Bigot — Salmon Pink
- Solange — Buff, Salmon Shading
- Tourangelle — Pale Cream White
- Therese — Pink, Golden Center
- Walter Faxon — Vivid Shell Pink

**SPECIAL OFFER No. 4  
5 MIXED PEONIES**

We will select 5 peonies, our choice in balanced colors for only \$1.50. Just the bargain you are looking for. 5 Peonies **\$1<sup>50</sup>** postpaid for only.....

**SPECIAL DECORATION DAY OFFER**

1 — OFFICINALIS RUBRA PLENA  
1 — OFFICINALIS ROSEA SUPERBA  
1 — OFFICINALIS MUTABILIS

**3** Outstanding Decoration Day Peonies, one each of the above, catalog value \$3.00, postpaid for only..... **\$2<sup>50</sup>**

# Spring Flowering Bulbs



Crocus

FOR FALL PLANTING ONLY

## SPRING FLOWERING CROCUS

One of the earliest flowers to bloom in the spring. The Crocus makes an effective show when planted in masses or arranged in groups in a border. Their beauty and brilliant coloring so early in the spring are a delight to all who view them. They are perfectly hardy and can be left in the ground for several years without being disturbed. Plant 1 inch deep.

**MIXED COLORS** Includes all shades from white, yellow, light blue, dark blue, lilac to deep violet. For a glorious display of color, use them generously.

3	6	12	25	50	100
.20	.35	.50	.90	\$1.75	\$3.25

## HYACINTHS

Another of the "first flowers of spring" so popular and well-loved for their gorgeous colors, beauty of bloom and delightful fragrance. Plant them informally among other flowers, in beds of solid colors, use them for special patterns or designs; their exquisite beauty in early spring will enhance any landscape. We offer them in the following colors:

### BLUE

3	6	12	25
.80	\$1.50	\$2.25	\$4.50

### PINK

3	6	12	25
.80	\$1.50	\$2.25	\$4.50

### WHITE

3	6	12	25
.80	\$1.50	\$2.25	\$4.50

### YELLOW

3	6	12	25
.80	\$1.50	\$2.25	\$4.50



Hyacinth White

### SPECIAL OFFER

4 Bulbs, one each of the above  
Hyacinths, postpaid  
for ..... **\$1.00**

# DAFFODILLS

These gay, colorful and sturdy flowers are a real asset in any garden. They are easy to grow, require very little care and multiply with amazing rapidity. Their persistent growth and ability to withstand severe cold spells, make them one of the most popular of early spring flowers.

**DICK WELLBAND** A hardy, strong-growing variety. Pure white perianth and medium-sized flaming orange-red trumpet.

3 for 50c

6 for 90c

**GARDENIA FLOWERED** (Fragrant) Snowy white, sweet scented, double flowers resembling gardenias. One of the last to bloom.

3 for 50c

6 for 90c

**INSURPASSABLE** The world's largest Daffodill. Flowers often measure from 4 to 4½" across. Broad perianth and broadly ruffled trumpet of clear bright yellow.

3 for 90c

6 for \$1.70

**JONQUIL** This is the old-fashioned Jonquil. The pure golden yellow flowers are miniature daffodils, produced in clusters of 2 to 4 flowers on each stem, and are very sweet scented.

3 for 50c

6 for 90c

**KING ALFRED** This remarkably beautiful variety has remained at the head of its color class for years. Its color of lustrous deep yellow is outstanding. One of the earliest bloomers.

3 for 45c

6 for 80c

**QUEEN OF THE BI-COLORS** Purest white perianth. Wide open trumpet of very dark yellow. Nearly as large as Insurpassable.

3 for 70c

6 for \$1.30

**DOUBLE TWINK** Large flowers with creamy yellow and red petals intermingled.

3 for 50c

6 for 90c

**WHITE KING ALFRED** A sport of the popular King Alfred. An unusual large, all-white Daffodil. Blooms early in the spring.

3 for 70c

6 for \$1.30



King Alfred

Double Twink

## THE PINK DAFFODIL

**MRS. R. O. BACKHOUSE** Here is the famous Pink Daffodil that belongs in every collection. Perianth of ivory white, long trumpet of apricot pink, changing to shell pink at the deeply fringed edge. Beautiful, of excellent substance; long lasting and early.

Each 40c    3 for \$1.10    6 for \$1.80;  
12 for \$3.00.

## DAFFODIL COLLECTION

This collection contains 1 each of the Daffodils listed above, including The Pink Daffodil. They would cost you \$2.00 if purchased separately. An outstanding value — all 9 (unlabeled) for

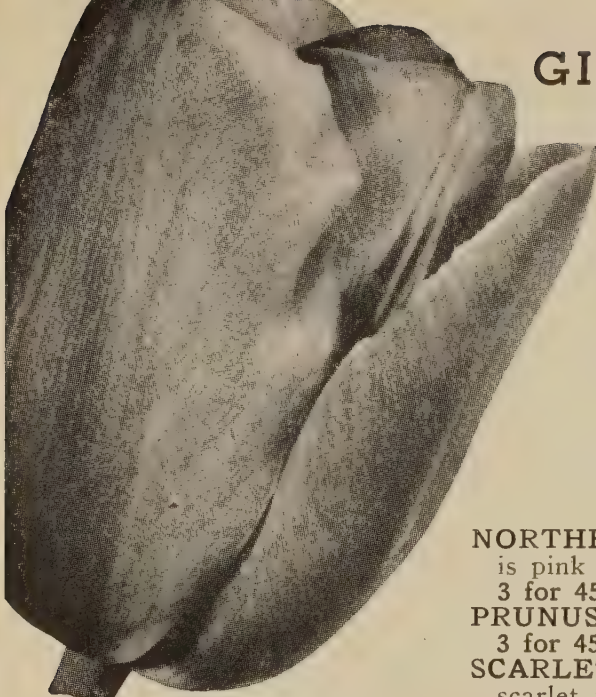
**\$1.50**

## SPECIAL Show Garden COLLECTION A Sensational Offer

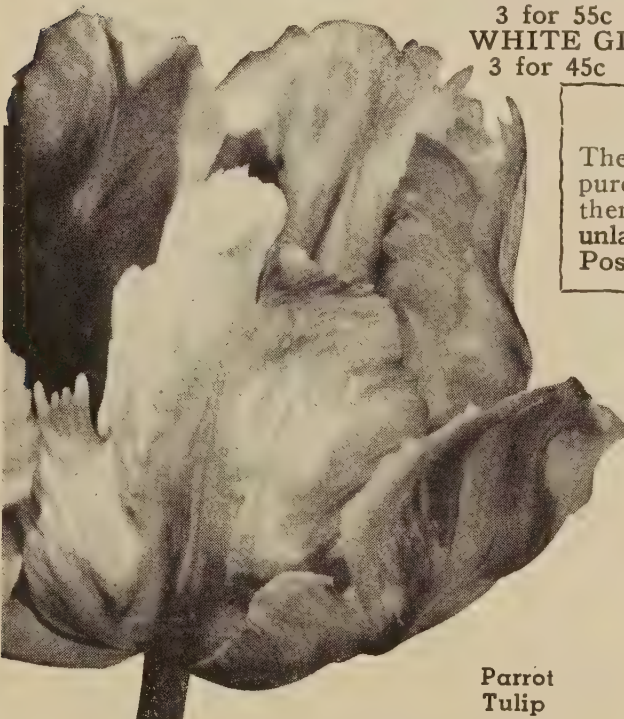
We have contacted one of the largest growers of Daffodils in the United States to supply us with bulbs for this Collection, from his famous Show and Trial Gardens. Every year he plants the finest varieties of Daffodils known. He compares and tests all of the best (over 200 varieties) sent to him by his Holland associates. When they are harvested they go to make up our SHOW GARDEN COLLECTION. Be sure and try some.

- |          |   |               |
|----------|---|---------------|
| <b>1</b> | Collection of 10 Bulbs postpaid, for only | <b>\$1.25</b> |
| <b>2</b> | Collection of 20 Bulbs postpaid, for only | <b>\$2.00</b> |

# GIANT FLOWERED DARWIN TULIPS



Darwin Tulip



Parrot Tulip

- GIANT PEONY-FLOWERED TULIPS**
- LIVINGSTONE** Brilliant carmine-red double flowers with yellow centers.  
3 for 50c                      12 for \$1.75
- EROS** Double flowers of lilac-rose. Tinted silvery rose toward the edge of the petals.  
3 for 50c                      12 for \$1.75
- MOUNT TACOMA** Large, white, double flowers that make excellent cut flowers.  
3 for 50c                      12 for \$1.75

- BLUE EAGLE** Extra large cup-shaped flowers of brilliant purple.  
3 for 45c                      12 for \$1.60
- CITY OF HAARLEM** Very large, brilliant vermilion-scarlet. One of the best in its color and most popular for garden and cutting.  
3 for 45c                      12 for \$1.60
- EDITH EDDY** A flower of smooth carmine-red with white edges.  
3 for 45c                      12 for \$1.60
- GOLDEN HARVEST** Immense, light lemon-yellow. Highly recommended.  
3 for 45c                      12 for \$1.60
- NORTHERN QUEEN** A sturdy and vigorous grower. Color is pink with white edge.  
3 for 45c                      12 for \$1.60
- PRUNUS** A very fine globular flower of salmon-pink.  
3 for 45c                      12 for \$1.60
- SCARLET LEADER** (New) This is an aristocrat among the scarlet tulips. It produces immense flowers of stately form and habit. Its color is a beautiful one-toned shade of geranium-scarlet.  
3 for 55c                      12 for \$2.00
- WHITE GIANT** This is the most perfect, purest white of all.  
3 for 45c                      12 for \$1.60

## COLLECTION No. 1

The named varieties of Tulips described above, if purchased separately would be about \$1.75. We offer them in a Collection of 1 each of the above 8 varieties, unlabeled for only \$1.00, or 2 Collections for \$1.85. Postpaid.

## GIANT PARROT TULIPS

- BLUE PARROT** Violet shaded steel blue. Flowers are extra large.  
3 for 45c                      12 for \$1.60
- ORANGE FAVORITE** Bright orange, blotched green at the base.  
3 for 45c                      12 for \$1.60
- SUNSHINE** Bright golden yellow with deeply fringed edges.  
3 for 60c                      6 for \$2.10
- THERESE** Cherry-scarlet; inside of bloom is a vivid scarlet. One of the most beautiful of the parrot tulips.  
3 for 45c                      6 for \$1.60

## COLLECTION No. 2

3 Each of the above varieties of Parrot Tulips, unlabeled for **\$1.50**

## SPECIAL COLLECTION No. 4

One each of the 15 varieties of Tulips listed in this catalog, unlabeled, for only **\$1.75**

## COLLECTION No. 3

4 Each of the above varieties of Peony Flowered Tulips, unlabeled, for only **\$1.60**

postpaid

## OUR GUARANTEE

We exercise great care in keeping our stock true to name, and we will replace any variety that proves untrue to name, three years from date of sale.









HARDY CARNATIONS

## HARDY CARNATION GRENADIN

**PINK**, outstanding clear pink color.  
**KING OF THE BLACKS**, large flowers of deepest maroon.

**RED**, a truly brilliant red color.

**WHITE**, sparkling white variety.

**GOLDEN SUN**, magnificent large flowers of clear golden yellow.

3 of one variety 60c, 6 for \$1.00, 12 for \$1.75

**5** One each of the five colors listed for **\$1.00**

**MIXED**, a veritable rainbow of colors.

3 for 60c, 6 for \$1.00, 12 for \$1.75

See page 4 for further description.

1.

## Special PEONY Offer

**No. 1 FESTIVA MAXIMA** Very large early double. Pure white flecked with crimson; tall, good foliage.

**No. 2 MARY BRAND** Outstanding. Fragrant large rose type. Very brilliant clear crimson.

**No. 3 MONS. JULES ELIE** Huge double; early; fragrant. A quality Pink Peony.

1 each of the above for **\$1.50** only

2.

3.



*New, Lovely, and Easy to Grow*

# CAMELLIA FLOWERED TUBEROUS BEGONIAS

## *Special Offer*

One each of the five colors illustrated plus one bulb of Picotee, a large two toned begonia. 6 large 1½" to 2" exhibition size bulbs for only . . . . .

Or 30c each.

**\$1.50**

See page 15 for complete descriptions and additional Begonia offers.



RICHARDS'  
GARDENS  
SPRING  
FALL