

Historic, Archive Document

Do not assume content reflects current scientific knowledge, policies, or practices.

2.61

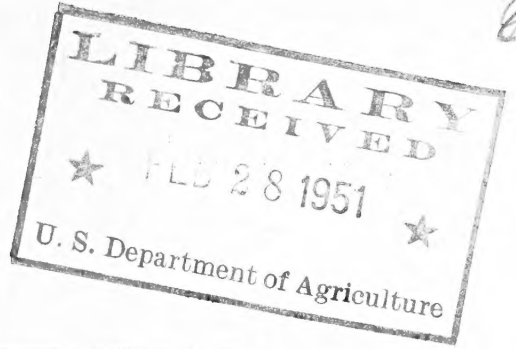
ll

ROGERS'



GLAD

GARDENS



W. H. ROGERS

GREENLAWN, LONG ISLAND, NEW YORK

Spring 1951

I am limiting my remarks in this catalog to just a "Thank You" to all my customers, both old and new. There is great satisfaction in receiving so many fine orders year after year from the same ones. My special list of miniature and small flowering varieties, sent out in December, had in it cultural and other information not necessary to repeat here. If this has not already been mailed you, I am sending it along with this list. If for any reason you have not received it, have mislaid it, or just want another, please ask for it.

* * * *

TERMS, PRICES AND SHIPMENT — On all orders for \$5.00, or less, cash with order — over \$5.00, 25% cash with order and balance before shipment. Minimum order \$3.00. Minimum foreign or Canadian order \$5.00.

I cannot accept orders for less than the smallest unit quoted. For instance, where listed 2 for 30, one cannot be had for 15. Five bulbs can be had at the 10 rate and 50 bulblets at the 100 rate only when the price is \$1.00 or more per 100. Transportation to points within the United States will be prepaid when shipment is made at my option as to parcel post or express. Parcel post shipments cannot be made safely until spring but if shipment is desired before then, I will ship express immediately, charges collect, and include extras to help in paying such charges. As is the custom of all shippers, I will include extras anyway and in place of many complicated, discount offers, I will give additional overcount or extras depending on size of order when cash in full accompanies the order. You might suggest which you prefer. You may be sure these extras will fully cover these discounts and then some. If you have ever ordered from me you know about my generosity and if you are to place your first order you will soon be convinced.

* * * *

SUBSTITUTION — All stock offered subject to prior sale. Remember I sell only the bulbs I have grown myself and therefore supply is limited and on some varieties quite limited, so you should order early. I will not substitute either size or variety without your direct and will refund immediately on any item I cannot supply. If you wish substitution, I would appreciate your second choice with your order.

* * * *

GUARANTEE — It is my intention to send out only good, clean, healthy bulbs and bulblets and true to name. I make no guarantee as to growth and will in no way be responsible for the crop. If upon receipt of bulbs, you find them unsatisfactory, return at my expense and I will cheerfully refund the full purchase price. And furthermore if you later find any not true to name, I am ready to replace, refund, or make adjustment.

INSPECTION — My glads have been inspected by the New York State Department of Agriculture and Markets and are shipped under its certificate of inspection. No. 2602.

NOTE — I have received a number of Post Office money orders drawn on the Post Office, "Long Island, N. Y." There is no such Post Office but mine is "Greenlawn, N. Y."

WHOLESALE I do not have sufficient quantities of various varieties to justify the issuance of a wholesale list. However, I do have sufficient quantities of some varieties so that I can offer wholesale lots of 50 to 100 bulbs and in a few instances several hundred, Snow Princess and Surfside by the 1000. Likewise in some varieties I can offer bulblets in half pints to quarts and in a few instances several quarts. Those varieties in which I have the larger amounts of bulbs to offer are marked (*) by the name of the variety and those where I have bulblets by measure are marked (*) by the bulblet prices. If interested in any of these, please write for prices stating particular varieties and amounts in which you are interested. These prices will be most attractive, especially on bulblets of the newer varieties. Some real bargains here.

			large 1 1/4" & up	medium 3/4"-1 1/4"	small under 3/4"	bulblets per
ABIGAIL (466) light lavender with darker markings on a cream throat.	per 1		.25	2-25	3-25	15-25
* ABU HASSAN (378) one of the best dark velvety blues—very popular.	2 10	.25 1.00	3-25 .70	4-25 .60	40-25 100-50	
AIRY DREAM (440) apple blossom pink.	2 10	.25 1.00	.20			
ALADDIN (532) bright-reddish soft salmon with cream throat—heavily ruffled.	2	.30	.20	3-20	15-25	
* ALGONQUIN (536) very popular scarlet.	3 10	.25 .70	5-25 .50		50-25 100-35	
ALL GLORY (423) deep orange with striking purple blotch—ruffled.	1 10	.25 2.00	2-30 1.20	2-20 .80	15-25 100-1.50	
A. L. STEPHEN (433) deep salmon with deeper blotch. Much in demand.	1 10	.20 1.60	2-30 1.20	2-20 .80	10-25	
APACHE CHIEF (490) bronze and brown-late dark smoky.	2	.30	.25	.20	20-25	
* APRIL (430) very light clear pink with faint lines in throat.	2 10	.30 1.20	.20 .80	4-25 .60	*50-25 100-35	
* ARIADNE (401) white with deep red blotch—excellent—commercial.	3 10	.25 .70	.20 .60	5-25 .50	40-25 100-50	
ATHLONE (416) very light-creamy buff—an excellent pastel.	2	.25			15-25	
AURORA (532) deep salmon with diffused cream throat.	2 10	.25 1.00	3-25 .70	4-25 .60	20-25	
BADGER BEAUTY (466) fine light lavender with lighter throat.	3 10	.25 .70			40-25	
* BANCROFT WINSOR (423) beautiful orange with deeper plume.	2 10	.25 1.00	3-25 .70		50-25 100-35	
* BEACON (437) scarlet with cream throat.	3 10	.25 .70	4-25 .60	5-25 .50	*50-25 100-35	
* BEAUTY'S BLUSH (440) beautiful blush pink.	2 10	.20 .80			50-25 100-35	
* BELMAR (541) large light pink-cream throat and bright feather.	3 10	.25 .70			50-25 100-35	
* BELTRAMI (480) smoky rose—excellent.	3 10	.25 .70	4-25 .60		*50-25 100-35	
* BETSY BOB UP (316) buff sport of Betty Nuthall—excellent late variety.	2 10	.25 1.00	.20 .80	3-25 .70	40-25 100-50	

	per	large 1 1/4" & up	medium 3/4"-1 1/4"	small under 3/4"	bublets per
* BETTY NUTHALL (320) light orange pink —an old variety—excellent for late cutting.	2 10	.20 .80	3-.25 .70	4-.25 .60	50-.25 100-.35
* BIG TOP (541) giant light pink with car- mine feather.	3 10	.25 .70			*50-.25 100-.35
BILL BOTH (490) velvet-brown with red blotch—many open.	2 10	.30 1.20	.20 .80	4-.25 .60	40-.25 100-.50
* BINGO (517) excellent buff sport of Pic- ardy—florists like this.	3 10	.25 .70	4-.25 .60	5-.25 .50	*50-.25 100-.35
BIRCH RED (552) beautiful clear deep red—very rich color and much in demand.	1	.35	.25	2-.30	5-.25 10-.40
BLACK CHERRY (544) giant black red—a great show winner.	1	1.50	1.00	.75	2-.25
BLACK DIAMOND (354) intensely ruffled black red—very good.	2 10	.25 1.00	.20 .80		25-.25
* BLACK OPAL (354) very dark red that opens many on a long flower head.	3 10	.25 .70	4-.25 .60	5-.25 .40	50-.25 100-.35
* BLACK PANTHER (554) very popular black red—large florets .	2 10	.30 1.20			15-.25
BLACK PHANTOM (454) an excellent very dark red—many open.	1	.25	2-.30		
BLAZE (Lins) (450) very bright light red.	3 10	.25 .70	5-.25 .50		*50-.25 100-.35
* BLEEDING HEART (341) very light pink with large red blotch—popular old variety.	2 10	.25 1.00	.20 .80		40-.25
BOISE BELLE (343) pink and yellow— heavily ruffled—tall.	1	.75	.50	.35	
BRONZE KING (582) bronze smoky with orange blotch—late.	1 10	.35 2.80			
* BUCKEYE BRONZE (490) very popular rosy bronze—fine commercial.	3 10	.25 .70	4-.25 .60	5-.25 .40	*50-.25 100-.35
* BURMA (562) very large deep rose—opens many—heavily ruffled and very popular.	3 10	.25 .70	4-.25 .50	5-.25 .40	*50-.25 100-.35
BUTTERSCOTCH (517) soft salmon buff with diffused rose blotch.	1 10	.25 2.00	.20 1.60	2-.25 1.00	15-.25
* CAMELLIA (341) blush white tinted pink —slight scarlet blotch.	3 10	.25 .70	4-.25 .60		*50-.25 100-.35
CANDY CANE (461) light rose with large diffused blotch.	2 10	.20 .80			40-.25
CANDY FUDGE (390) blend of white, pink and yellow—quite unusual.	1 10	.25 2.00	2-.25	3-.25	20-.25 100-1.00
* CANDY HEART (541) soft flesh pink with bright red blotch—good for the florists.	2 10	.25 1.00	.20 .80	4-.25 .60	*50-.25 100-.35
* CAPEHEART (440) light salmon rose with deeper feather—good early commercial.	3 10	.25 .70			*50-.25 100-.35
CAPTAIN BOYNTON (366) light lavender with diffused blotches—an old one.	2	.25	3-.25	4-.25	
* CARILLON (442) good deep pink with white throat—early.	3 10	.25 .70	4-.25 .60		*50-.25 100-.35
CARNIVAL (437) bright scarlet with clear white throat.	1 10	.20	2-.30 1.20	2-.20 .80	
CAROLINE W. GANNETT (583) giant smoky salmon flecked with slate.	1	.25	.20	2-.30	
* CASABLANCA (400) a nice white—quite ruffled.	3 10	.25 .70	5-.25 .50		50-.25 100-.35
* CHAMOUNY (360) deep rose with silver edge—unusual color and very attractive.	3 10	.25 .70			50-.25 100-.35
CHARMOLUCK (416) ruffled orange buff- yellow throat—petals slightly edged violet —a beauty.	1 10	.40 3.20	.25 2.00	2-.30 1.20	15-.25 100-1.50
* CHIEF MULTNOMAH (480) dark reddish purple smoky—large crimson blotch.	2 10	.20 .80			40-.25 100-.50

	per	large 1 1/4" & up	medium 3/4"-1 1/4"	small under 3/4"	bulblets per
CHUNKING (523) large orange and cream —yellow lip—crimson feather—unusual.	1	.20	2.25	3-.25	
* COLONIAL MAID (366) tall light lavender that is excellent for the florist.	3 10	.25 .70	4.25 .60	5-.25 .50	50-.25 100-.35
COLOSSUS (530) large light pink—cream throat—purple feather—a grand one.	2 10	.25 1.00	.20 .80	3-.25 .65	
COMMANDO (536) tall, large light scarlet.	2 10	.20 .80			25-.25
CONNECTICUT YANKEE (441) beautiful light pink with red blotch—very popular.	1 10	.20 1.60	2.30 1.20	2-20 .80	
* CONQUEST (430) very tall light pink with cream throat—a shade the florists like.	3 10	.25 .70	4.25 .60		40-.25 100-.50
* COONEY LASS (430) quite similar to Pic- ardy but very large and tall.	2 10	.20 .80			40-.25 100-.50
CORALEEN () coral with deeper throat blotch.	3 10	.25 .70			*50-.25 100-.35
* CORONA (560) creamy white with petals edged rose—very popular.	3 10	.25 .70	4.25 .60	5-.25 .40	*50-.25 100-.35
COVENTRY (411) creamy yellow with modified orange blotch.	1 10	.25 2.00	2.30 1.20	2-20 .80	25-.25 100-.75
COVER GIRL (542) very tall clear medi- um pink—many open.	3 10	.25 .70			50-.25 100-.35
CRIMSON TIDE (452) heavily ruffled rich crimson with small white center—grand.	1 10	.25 2.00	.20 1.60	2-.25 1.00	15-.25
* CRINKLECREAM (410) outstanding clear light yellow—slightly ruffled.	2 10	.20 .80	4.25 .60		50-.25
DAISY MAE (521) orange salmon with cherry throat blotch.	2 10	.25 1.00	3-.25 .70	4-.25 .50	40-.25 100-.50
DEBORAH SAMPSON (440) light pastel pink with creamy buff throat.	1	.20		3-.25	
* DIEPPE (436) dazzling deep salmon red —somewhat ruffled.	2 10	.20 .80	3-.25 .70	4-.25 .50	*50-.25 100-.35
* DISCOVERY (511) very tall, heavily ruf- fled light yellow with red throat star.	2 10	.25 1.00	3-.25 .70	4-.25 .50	*50-.25 100-.35
DIXIE MISS (440) light pink—cream throat and small feather very good early variety.	2 10	.30 1.20	.20 .80	4-.25 .60	
* DONELLA (340) medium size pink but about the first variety to bloom.	3 10	.25 .70	5-.25 .50		*50-.25 100-.35
DONNA (416) beautiful tall golden buff— ruffled—late.	2 10	.20 .80	3-.25 .70	4-.25 .60	
DR. WHITELEY (516) large clear buff with golden throat.	2 10	.20 .80	3-.25 .70	4-.25 .60	
DUSTY MILLER (486) smoky old rose with small red blotch and cream lines— extremely popular.	2 10	.25 1.00	3-.25 .70	5-.25 .50	40-.25 100-.50
* EARLY ROSE (362) very early two tone rose—excellent commercial—one of the first to bloom every year.	3 10	.25 .70	4.25 .50		*50-.25 100-.35
EDITH GRACE (401) large white with viv- id purple blotch—very good—quite late.	2 10	.25 1.00	3-.25	4-.25	40-.25 100-.50
* ELANORA (470) beautiful rich rose red violet—opens many.	2 10	.20 .80	3-.25 .70		*50-.25 100-.35
ELEGANT LADY (401) white with slight tint and distinct lemon yellow blotch— heavily ruffled—a beauty.	2 10	.30 1.20	.20 .80	4-.25 .60	25-.25
ELIZABETH MAIER (312) tall medium yellow that opens many.	2 10	.25 1.00	3-.25 .70		40-.25
* ELIZABETH THE QUEEN (566) beautiful large lavender mauve with darker feather.	2 10	.20 .80	4.25 .60	5-.25 .40	*50-.25 100-.35
EUREKA (500) new white sport of Pic- ardy.	2 10	.25 1.00	3-.25 .70	4-.25 .50	40-.25

	per	large 1¼" & up	medium ¾"-1¼"	small under ¾"	bulblets per
* FAY (Jack) (440) excellent ruffled pink with cream throat—quite early.	2 10	.20 .80	4.25 .60	5.25 .40	40-.25
* FIREBRAND (Butt) (452) brilliant medium red that opens many.	2 10	.25 1.00	3.25 .70		40-.25 100-.50
FLAMING VELVET (550) a good light red that is quite late.	2 10	.25	.20	4.25 .60	40-.25
* FLORENCE NIGHTINGALE (400) excellent glistening white that wins at the shows.	1 10	.20 1.60	2.30 1.20	2.20 .80	10-.25 100-2.00
FLYING FORTRESS (586) huge smoky gray with red feather—one spike a whole bouquet.	2	.30	.20	3.25	
FRIENDSHIP (440) beautiful shade of pure pink with cream throat—nicely ruffled and a beauty.	1 10	.35 2.80	.25 2.00	2.30 1.20	8-.25
FUSCHIA BELLE (462) clear pure deep rose—opens many and is excellent.	1 10	.25 2.00	2.30 1.20		15-.25
FUSCHIA MAID (370) excellent reddish purple.	2 10	.30 1.20			25-.25
* GAVOTTE (430) blend of light salmon, pink and cream.	2 10	.25 1.00	3.25 .70		40-.25 100-.50
* GLAMIS (530) beautiful clear light salmon rose with cream blotch—pointed florets.	2 10	.20 .80	4.25 .60	5.25 .40	50-.25
* GLENOLDEN (480) chamois with buff and yellow throat—something different—very good.	1 10	.25 2.00	2.35 1.40	2.25 1.00	20-.25 100-1.00
* GLOAMING (370) very tall bright purple with white throat—good commercial.	3 10	.25 .70			50-.25 100-.35
GLOW (420) a glowing salmon orange—quite early.	1 10	.25 2.00	2.30 1.20	2.20	
* GOLD DUST (412) deep rich yellow—best early yellow commercial.	3 10	.25 .70	4.25 .50	6.25 .40	*50-.25 100-.35
GOLDEN ARROW (510) excellent clear light medium yellow.	2 10	.25 1.00	3.25 .70	4.25 .50	*40-.25 100-.50
GOLDEN BEAUTY (412) beautiful deep golden yellow best described by its name.	1	.20	2.25	3.25	
GOLDEN STATE (512) large clear quite deep yellow—quite late and very good.	2 10	.25 1.00	3.25 .70		40-.25 100-.50
GOLDEN YELLOW (412) deep yellow sport of Betty Nuthall—very late.	2 10	.25 1.00			40-.25
GRATITUDE (424) beautiful deep orange—bright yellow throat—ruffled.	2 10	.25 1.00	.20 .80		40-.25
* GRETA GARBO (440) beautiful soft light pink blending to cream.	3 10	.25 .70	4.25 .60		50-.25 100-.35
GUERDON (462) clear deep rose—very good.	2 10	.25 1.00	3.25 .70		40-.25 100-.50
* GUNPOWDER (416) clear light buff sport of Picardy—excellent commercial.	3 10	.25 .70	4.25 .60		*50-.25 100-.35
* HARMAU (533) orange red with rosy overtone—exceptionally good early commercial.	3 10	.25 .70	4.25 .60	5.25 .50	*50-.25 100-.35
HAVELOCK (370) clear rich blue-violet-toned purple—very good show winner.	2 10	.30 1.20			25-.25 100-.75
* HAWKEYE RED (450) bright red sport of Vagabond Prince—a grand red.	2 10	.20 .80	4.25 .60	6.25 .40	50-.25 100-.35
HEART'S DESIRE (540) large heavily ruffled light pink with creamy white throat.	1	.40	.30	.20	5-.25
HELEN OF TROY (517) beautiful soft light pinkish buff with nice harmonizing blotch. For me one of the most outstanding.	1 3 12	.35 1.00 3.00	.25 5-1.00 2.25		Patented so increase cannot be sold
HIGH COMMAND (440) tall medium light pink—excellent late mid-season variety.	2 10	.25 1.00	3.25 .70		40-.25 100-.50

	per	large 1 1/4" & up	medium 3/4"-1 1/4"	small under 3/4"	bulblets per
* HIGH FINANCE (582) smoky light orange gray—a gorgeous smoky.	2 10	.20 .80		5-.25 .40	*50-.25 100-.35
HILDRED (366) beautiful light lavender—a bit darker than Minuet—a ribbon of bloom.	2 10	.25 1.00	.20 .80		40-.25 100-.50
HILLCREST (563) rich medium deep rose —much deeper rose markings — heavily ruffled.	1 10	.25 2.00	2-.30 1.20	2-.20 .80	15-.25
* HUNTRESS (466) a grand light pinkish lavender—opens many, an excellent early commercial and can win in the show.	2 10	.20 .80	3-.25 .70	5-.25 .40	*50-.25 100-.35
INDIAN SUMMER (482) smoky lavender with feathery rose blotch in gold throat—slightly ruffled—an unusual color.	1	.35	.25	2-.30	5-.25
* INTERMEZZO (407) cream with dusting of rose violet in throat—grand late commercial.	2 10	.20 .80	4-.25 .60	5-.25 .40	50-.25 100-.35
INVICTUS (441) white tinted pink with red feathery blotch—excellent and early.	2 10	.30 1.20	.20 .80		
* IVY ROBERTSON (440) very light pink, cream throat and small scarlet blotch—extremely long flower head and opens many.	2 10	.25 1.00	.20 .80		40-.25 100-.50
JANET LEE (420) bright orange-yellow throat—nicely ruffled—very many open.	1	.35	.25	2-.30	
* JASMINE (410) ruffled clear pale lemon yellow.	3 10	.25 .70			50-.25
JEANEL (440) peach colored sport of Picardy.	3 10	.25 .70	4-.25 .60	5-.25 .50	50-.25 100-.35
JIM HOLLAND (410) light yellow sport of Betty Nuthall with the Nuthall throat markings. Excellent late commercial.	2 10	.30 1.20	.25 1.00		25-.25
* JUNE DAY (441) beautiful bright pink with small cherry blotches—outstanding early variety.	1 10	.25 2.00	2-.30 1.20		20-.25
KAWATIRI (516) rich creamy buff with yellow throat—nicely ruffled.	1 10	.25 2.00	.20 1.60	2-.30 1.20	20-.25
* KING CLICK (552) one of the very best bright reds—opens many.	2 10	.20 .80	4-.25 .60	6-.25 .40	*50-.25 100-.35
* KING LEAR (570) excellent large purple with slight silver edging—early and tall.	3 10	.25 .70			*50-.25 100-.35
* KING TAN (590) large rosy tan or rust-petals slightly edged slate.	2 10	.25 1.00	.20 .80	4-.25 .60	*40-.25 100-.50
* KING WILLIAM (530) tall clear light salmon with cream throat.	3 10	.25 .70			50-.25 100-.35
KITTYHAWK (366) delicate lavender with diffused deeper blotch—opens 9 or 10.	1 10	.25 2.00			10-.25
LA BELLE (406) heavily ruffled creamy white—recent introduction.	1	.75	.60	.40	3-.25
LADDIE (440) baby pink with small rose blotch—grows tall and large.	2 10	.20 .80		4-.25 .60	50-.25 100-.35
LADRONE (433) clear deep salmon with gold throat—slightly ruffled and pointed petals.	2 10	.25 1.00	3-.25 .70	5-.25 .50	40-.25 100-.50
LADY ANNE (400) new white with a touch of lemon in throat.	2 10	.25 1.00			40-.25 100-.50
LADY HELEN (530) light salmon with cream throat and slight feather.	1 10	.20 1.60	2-.25 1.00		20-.25 100-1.00
LADY LUCK (440) beautiful light pink sport of Picardy—tall and very good.	2 10	.20 .80	3-.25 .70	5-.25 .50	50-.25 100-.35
LAKE PLACID (406) splendid tall cream with yellow throat—late mid-season.	2 10	.30 1.20	.20 .80	4-.25 .60	40-.25 100-.50

	per	large 1 1/4" & up	medium 3/4"-1 1/4"	small under 3/4"	bulblets per
* LAVENDER PRINCE (466) distinct and unusual shade of lavender—a beauty.	2 10	.25 1.00	3-.25 .70		40-.25 100-.50
* LAVENDER QUEEN (366) deep lavender mauve—many open and grand commercial.	3 10	.25 .70	4-.25 .60	5-.25 .50	50-.25 100-.35
* LEADING LADY (506) this beautiful cream (almost white) sport of Picardy just about leads the parade both in the show room and as a commercial.	2 10	.20 .80	4-.25 .60	6-.25 .40	*50-.25 100-.35
LEORA (460) rosy mauve with full cream throat—beautiful shade—ruffled.	1		.35	.25	10-.25
LIPSTICK (441) attractive light pink with striking bright red blotch.	2	.25			
LOVELY LADY (442) beautiful ruffled pure pink with cream throat.	2 10	.30 1.20			25-.25
LUCINDA (490) smoky old rose with diffused bright blotch.	2	.30			25-.25
* MADELEINE BROWN (432) fine salmon—very similar to Picardy.	2 10	.20 .80			50-.25 100-.35
* MAGNOLIA (540) soft creamy light rose—large and tall.	2 10	.20 .80	4-.25 .60		50-.25 100-.35
* MAMIE (430) salmon pink—a shade deeper than Picardy.	3 10	.25 .70	4-.25 .50		50-.25
MARGARET BARRETT (401) slightly ruffled white with diffused scarlet blotch.	2 10	.25 1.00	3-.25 .70	4-.25	40-.25 100-.50
* MARGARET BEATON (501) snow white with tiny orange blotch—beautiful.	3 10	.25 .70	4-.25 .60		50-.25 100-.35
* MARGARET PETER (401) tall white with large crimson blotch—whole spike open—most striking variety in my garden.	2 10	.25 1.00			40-.25 100-.50
* MARGUERITE (533) watermelon pink with cream throat and slight feather.	3 10	.25 .70	4-.25 .50		50-.25 100-.35
MARION PEARL (532) light salmon shading to lighter throat—excellent.	2	.30	.20	3-.25	
* MARLEEN (406) very heavily ruffled cream—many open—good commercial.	3 10	.25 .70			50-.25 100-.35
MARLENE BOTH (430) delicate salmon with creamy buff throat—early and a beauty.	2 10	.25 1.00	3-.25 .70		40-.25
* MARSEILLAISE (436) rich velvety scarlet with cream buff lines on lower petals—grand.	2 10	.25 1.00	.20 .80		*50-.25 100-.35
* MASTER MYRON (550) very large clear glistening light red.	2 10	.20 .80	4-.25 .60		50-.25
* MERCURY (436) very distinctive shade of red—brilliant and beautiful.	2 10	.25 1.00			40-.25 100-.50
MEXICALI ROSE (462) very deep solid rose—somewhat ruffled—very good.	1 10	.25 2.00	.20 1.60	2-.30 1.20	15-.25
MIDNIGHT SUN (480) pale peach—smoky overcast—unusual color.	2	.30	.20	3-.20	25-.25
* MINUET (466) the old standard light lavender and still a good one.	2 10	.20 .80	3-.25 .70	4-.25 .60	40-.25 100-.50
* MISS WISCONSIN (460) distinctive and unusual shade of lavender rose—excellent commercial and a favorite of most everyone.	2 10	.25 1.00	3-.25 .70		40-.25 100-.50
MISTY DAWN (580) very large smoky gray with orange blotch.	3 10	.25 .70			50-.25
MORNING STAR (500) clear creamy white with deeper cream throat—very large.	1	.40	.30	.20	5-.25
MOTHER MACHREE (480) smoky salmon—yellow throat purple feather—a grand old variety.	1	.25	.20		

	per	large 1¼" & up	medium ¾"-1¼"	small under ¾"	bublets per
MOUNTAIN GEM (436) bright scarlet with brighter blotch and slightly darker edge.	2 10	.30 1.20	.20 .80		
MRS. MARK'S MEMORY (570) large red violet with darker markings in throat.	3 10	.25 .70			40-.25
MYRNA FAY (466) rich orchid lavender—early—opens many—good commercial.	2 10	.25 1.00	3-.25 .70	5-.25 .50	*50-.25 100-.35
MYSTERY (541) pure pink with creamy white throat and cherry blotch—grand.	2 10	.30 1.20	.20 .80	4-.25 .60	25-.25
NANCY (452) new rich medium red with excellent trial garden reports.	1 10	.25 2.00	2-.30 1.20		15-.25 100-1.50
NATALIE ANNE (462) deep rose with feathery blotch in a diffused yellow throat.	1	.25	.20	2-.30	15-.25
OCTOBER SUNSHINE (420) bright orange buff shading to yellow throat—fine commercial.	1 10	.25 2.00			
OHIO NONPAREIL (550) beautiful light red—large florets—tall and many open.	2 10	.20 .80			
OLD GOLD (422) rich buff orange—yellow throat and slight feather.	3 10	.25 .70	4-.25 .50		*50-.25 100-.35
* ORANGE GOLD (422) brilliant golden orange—large florets, tall and outstanding.	2 10	.25 1.00		5-.25 .40	*50-.25 100-.35
ORANGE PRINCE (324) red orange sport of Vagabond Prince with the same flame blotch—excellent.	2 10	.30 1.20	.20 .80	4-.25 .60	
* OREGON GOLD (410) an excellent late medium light yellow.	2 10	.20 .80	4-.25 .60		*50-.25 100-.35
OREGON RED (552) nice deep red with peppery creamy blotch.	2 10	.25 1.00			40-.25
OREGON ROSE (460) a beautiful rose of different shades—outstanding.	2 10	.20 .80	3-.25		20-.25
* ORIENTAL PEARL (506) an excellent cream that grows tall and produces exceptionally large florets.	2 10	.20 .80	4-.25 .60	6-.25 .40	*50-.25 100-.35
ORPHEUS (423) deep orange-greenish yellow throat—large bright red blotch—very striking.	1	.40	.30	.20	
* PACIFICA (406) fine lightly ruffled creamy white opens, many fine commercial.	3 10	.25 .70			*50-.25 100-.35
* PALERMO (521) fiery orange with red orange blotch—excellent late commercial.	2 10	.25 1.00	3-.25 .70		50-.25 100-.35
PANDORA (442) clear soft geranium pink—opens many—has won many ribbons.	3 10	.25 .70	4-.25 .60		50-.25
* PARMA (401) soft creamy white with purple lines in throat—early.	3 10	.25 .70	4-.25 .50		50-.25 100-.35
PARTHIENA (566) beautiful deep lavender with slightly darker feather—outstanding.	1	.50	.35		5-.25
* PATRICIAN (566) large clear medium shade of lavender—fine commercial.	1 10	.40 3.20	.30 2.40	.20 1.60	15-.25 100-1.50
PEGGY (366) soft lavender with cream throat and darker lavender feather.	1 10	.25 2.00	2-.30 1.20	2-.20	
* PEGGY LOU (442) a beautiful deep pink—an old variety very worthwhile.	3 10	.25 .70	4-.25 .60		50-.25 100-.35
PHANTOM BEAUTY (440) clear light rosy pink that opens a ribbon of bloom.	2	.25	3-.25	4-.25	
* PICARDY (530) beautiful salmon—most popular variety ever introduced.	3 10	.25 .70	4-.25 .50	6-.25 .40	*50-.25 100-.35
PINK JEWEL (440) delicate shade of soft-shell pink—cream throat—rose feather.	2 10	.30 1.20	.20 .80		

	per	large 1 1/4" & up	medium 3/4"-1 1/4"	small under 3/4"	bublets per
PINK PICARDY (542) a slightly darker and pinker Picardy—a beauty.	2 10	.20 .80	4.25 .60	6-.25 .40	*50-.25 100-.35
PIONEER (532) deep salmon with creamy yellow throat—large and beautiful.	2 10	.20 .80			
POCAHONTAS (460) deep old rose—silver mid-ribs and silver edging.	1 10	.40 3.20	.25 2.00		10-.25 100-2.00
POMPEII (480) smoky old rose with bright red feather—very early and popular.	3 10	.25 .70	4.25 .60	5-.25 .50	50-.25 100-.35
PORCELAIN BLUE (478) pansy blue with small creamy white throat spots. A different blue and a dandy.	1 10	.35 2.80	.25 2.00	2-30 1.20	15-.25
PROSPERITY (540) excellent light rose sport of Picardy—ruffled.	2 10	.25 1.00	3-.25 .70	5-.25 .50	
PURPLE SUPREME (470) tall bright rich purple—silver edge—won many blues in 1950.	3 10	.25 .70	4.25 .50		50-.25 100-.35
QUEEN BESS (401) ivory white with diffused lavender blotches—very good.	1 10	.25 2.00	2-30 1.20		20-.25
RED BANK (436) beautiful bright scarlet-white throat and dark red feather.	2 10	.30 1.20	.20 .80		
* RED CHARM (452) outstanding clear deep red—opens many—excellent commercial.	3 10	.25 .70	4.25 .50		*50-.25 100-.35
RED CHERRY (436) smooth bright scarlet with small cherry blotches—very popular new variety.	1 10	.25 2.00	.20 1.60	2-20 .80	*15-.25 100-1.50
RICH RED (554) rich velvety blood red flaked black—richest red color of any glad I know—opens many and a real beauty.	1	.25	.20	2-20	
* ROBERT BURNS (478) very good deep blue—produces almost 100% good spikes that are liked by florists.	2 10	.20 .80	3-.25 .70	4.25 .60	50-.25 100-.35
ROBINSON CRUSOE (490) tan heavily marbled rose chocolate—very odd color.	1 10	.20 1.60	2-30 1.20	2-20 .80	20-.25
* ROCKET (450) excellent even shade of vivid red—opens many—grand commercial.	3 10	.25 .70	4.25 .60		*50-.25 100-.35
* ROMAN GOLD (322) bright orange—bright yellow throat—early and good commercial.	3 10	.25 .70	4.25 .50		*50-.25 100-.35
ROSE DAWN (463) very tall variegated rose—early and good.	2 10	.25 1.00			25-.25
ROSE DEFIANT (462) very beautiful old rose with fine silver edge to petals.	2 10	.30 1.20	.20 .80	4.25 .60	25-.25 100-.75
* ROSE DELIGHT (460) nice medium rose—deeper blotch—good early commercial.	3 10	.25 .70	4.25 .60	5-.25 .50	*50-.25 100-.35
* ROSEA (560) beautiful bright rose with darker feather—many open and a grand one.	2 10	.25 1.00			*40-.25 100-.50
ROSEGLOW (560) new bright sparkling unflecked rose—slightly darker in throat.	2 10	.25 1.00	3-.25 .70		25-.25 100-.75
* ROSY RED (362) very deep rosy red—deeper than any of the above.	2 10	.25 1.00			40-.25 100-.50
ROSY TORCH (462) bright clear cerise rose—lightly ruffled—very good.	1	.20	2-30	2-20	15-.25
* ROYAL GARNET (454) very deep velvety red with darker flecking—fairly early and I consider it the best black red commercial.	2 10	.25 1.00	3-.25 .70	4.25 .50	*50-.25 100-.35
* ROYAL PINK (443) bright deep pink with small red blotch—good early commercial—should be cut tight and opened inside.	3 10	.25 .70	4.25 .50		
RUFFLED NIGHT (454) clear sparkling velvety black red with white pencil lines on throat petals—nicely ruffled—a beauty.	1	.50	.35	.25	8-.25

	per	large 1 1/4" & up	medium 3/4"-1 1/4"	small under 3/4"	bubbles per
RUTH ELAINE (440) true light pink sport of Picardy—ruffled and lacinated.	1	.35	.25	2-30	10-25
SAHARA (490) light russet with soft cream blotch and red penciling—a different one.	2 10	.20 .80			
SALMAN'S GLORY (507) rich creamy white—showy red blotch edged yellow—very good.	2 10	.20 .80	3-25 .70		40-25 100-50
SEASHELL (540) very nice clear soft pink with full white throat ruffled.	1	.50	.35	.25	5-25
SHIRLEY TEMPLE (406) large heavily ruffled light cream—plant late and avoid crooking.	2 10	.25 1.00			25-25
SIBONEY (566) tall, large, medium lavender—slightly darker diffused blotch—slightly ruffled pointed petals—grand.	1	.50	.35	.25	10-25
* SILENTIUM (401) pure white with small feathery scarlet blotches—good commercial.	3 10	.25 .70	5-25 .50		*50-25 100-35
SILVER STAR (401) silvery white with fairly large dark lavender or purple blotch a beauty.	2 10	.25 1.00			50-25
* SILVER WINGS (500) lightly ruffled white sport of Picardy.	2 10	.20 .80	4-25 .60		50-25 100-35
SIR GALAHAD (511) soft creamy yellow with diamond shaped crimson blotch.	1 12	.25 2.25			Patented so increase cannot be sold
* SNOWBANK (400) beautiful snowy white—nicely ruffled.	3 10	.25 .70	5-25 .50		50-25 100-35
SNOW FLURRY (400) a slightly buffish white sport of Picardy.	2 10	.25 1.00			25-25
* SNOW PRINCESS (400) white with slightly creamy throat—grows tall and straight—an outstanding early commercial.	3 10	.25 .70	5-25 .40		*50-25 100-35
* SNOW WHITE (400) large pure white as name implies.	3 10	.25 .70	4-25 .50		*50-25 100-35
SPARKS (507) tall creamy yellow with a sort of explosive blotch of orange scarlet—very striking and attractive.	2 10	.30 1.20	.25 1.00	3-25 .70	25-25 100-75
SPIC AND SPAN (442) lightly ruffled deep pink with salmon shadings—exceptionally good for show or cut flower.	1 10	.25 2.00	.20 1.60	2-25 1.00	20-25
* SPOTLIGHT (413) bright deep yellow with scarlet blotch—outstanding and good commercial.	3 10	.25 .70	4-25 .50	5-25 .40	*50-25 100-35
SPRING SONG (466) slightly ruffled medium lavender with deeper lavender throat markings—excellent—early commercial.	1 10	.20 1.60	2-30 1.20	2-20 .80	20-25
* SPUN GOLD (312) clear deep golden yellow—beautiful shade—excellent cut flower.	2 10	.25 1.00	3-25 .75	4-25 .50	*50-25 100-35
* STOPLIGHT (450) dazzling light red—slightly darker in throat—very good.	3 10	.25 .70	4-25 .60	5-25 .40	*50-25 100-35
STRUTTER (442) slightly ruffled peach pink with buff throat and faint feather.	2 10	.25 1.00	.20 .80		40-25 100-50
SUMMERWEALTH (542) very distinctive shade of deep pink with cream throat and bright red feather—very attractive.	2 10	.25 1.00	3-25 .75		40-25
SUNSET ORANGE (537) clear orange scarlet with clear creamy yellow throat—large and late and very good.	1	.35	.25		10-25
* SUN SPOT (417) beautiful ruffled apricot buff with rose throat blotch—wonderful for both show and commercial.	1 10	.25 2.00	2-30 1.20		*20-25 100-1.00

	per	large 1 1/4" & up	medium 3/4"-1 1/4"	small under 3/4"	bublets per
* SURFSIDE (400) beautiful ruffled white—late mid-season variety and very good late—one of the best commercials.	3 10	.25 .70	4.25 .50		*50-.25 100-.35
SWAMPFIRE (480) peculiar mixture of purple and brown with crimson blotch on a peppery creamy white throat.	1 10	.25 2.00			10-.25
TECUMSEH (480) ruffled needlepoint smoky salmon.	1	.25	.20	2.30	
TEXAS (500) very large, heavy textured pure white.	2 10	.25 1.00			25-.25
TONY (590) brown or light chocolate with orange red blotch and petals edged cream.	1	.35	.25	2.30	15-.25
TREASURE ISLAND (540) very large lovely medium pink—nicely ruffled.	1	.25	.20		5-.25
TROCADERO (422) distinctive shade of orange called carrot-orange—slightly darker in throat—very good.	1	.25		2.25	10-.25
TUNIA'S DELIGHT (522) beautiful clear orange with slight metallic cast petals slightly edged slate.	1	.20	2.20		
* TUNIA'S MAHOMET (586) very large, beautiful, and popular smoky-dark velvety smoky plum with orange scarlet in throat.	2 10	.20 .80	4.25 .60		40-.25 100-.50
* TUNIA'S MARVEL (536) unusual shade of scarlet with petals edged slate—large and very early—one of the first to bloom.	2 10	.30 1.20	.20 .80		20-.25 100-.75
* TUTS BOTH (422) beautiful glistening deep orange with small blue marking.	2 10	.25 1.00	3.25 .75	4.25 .50	
* UNCAS (423) large burnt orange with darker splashing and yellow throat.	2 10	.25 1.00	3.25 .75		*50-.25 100-.35
* VAGABOND PRINCE (391) mahogany brown—flame blotch—distinctive and popular.	3 10	.25 .70			*50-.25 100-.35
* VANGOLD (312) clear deep golden yellow—a good early commercial.	3 10	.25 .70	4.25 .50	6.25 .40	*50-.25 100-.35
VANTAN (317) tan with rose splotches—darker in throat with slight feather.	2 10	.25 1.00			40-.25 100-.50
VICTORY QUEEN (430) clear orange salmon with cream throat nicely ruffled.	2 10	.20 .80	4.25 .60		50-.25 100-.35
* VISTA BONITA (532) immense strong growing geranium pink—very tall.	3 10	.25 .70			50-.25 100-.35
VOODOO (486) distinctive smoky with ruffled and needlepoint florets—grayish rose with bronze veining—very odd.	2 10	.30 1.20			25-.25 100-.75
* WANDA (406) beautiful cream sport of Picardy with slight purple feather.	3 10	.25 .70			*50-.25 100-.35
WATERMELON (432) deep pinkish salmon with small cream mark in throat—a beauty.	1 10	.35 2.80	.25 2.00	2.30 1.20	
WHITE GODDESS (500) a lovely ruffled slightly creamy white shading to a cream throat—new and outstanding.	1 10	.40 3.20	.25 2.00	2.30 1.20	10-.25
* WHITE GOLD (506) mammoth clear cream blending to a deeper cream in throat—excellent and popular.	3 10	.25 .70	4.25 .50	5.25 .40	*50-.25 100-.35
* WINGS OF SONG (443) deep pink with petals edged slate and light cream throat—grows very tall—excellent.	2 10	.20 .80	4.25 .60		*50-.25 100-.35
WINSTON (406) clear light cream with a trifle darker throat—a nicely ruffled, very beautiful cream.	2 10	.20 .80			
* YELLOW BEAUTY (310) very tall light yellow—quite early and an excellent commercial—can also win a ribbon.	3 10	.25 .70			40-.25

	per	large 1 1/4" & up	medium 3/4"-1 1/4"	small under 3/4"	bublets per
ZACATEY (490) very light pinkish lavender splashed darker with feathery carmine blotch on creamy yellow throat—nothing like it.	2	.30	.25	.20	25-25
ZAUBERFLOTE (441) light pink with attractive red blotch—an old variety that I like very much—early.	2 10	.25 1.00			

MIXED BULBS

Since a great many people do not care to bother with the names of the various varieties, but just want something that will give them a fine lot of blooms, I will make up mixtures containing many colors and shades. These will NOT be labeled and they will not be just a few varieties of mostly two or three colors, as is many times the case. I do not grow or have ready mixed bulbs but make the mixtures for each order separately after order is received. If there is any color you do not like, just tell me and I will gladly leave it out. These are the same bulbs you would buy if you ordered by name only at a much lower price, since individual packing takes time and costs money. I sell a great many of these mixtures each year and have received many compliments. Many tell me that they and their friends have never seen anything like them.

PRICES FOR MIXED BULBS

Large \$5.00 per 100
 Medium 3.50 per 100
 Small 2.50 per 100
 50 bulbs at the 100 rate.

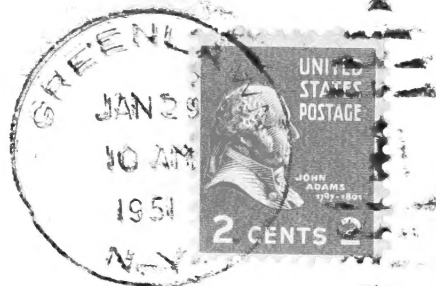
I will include as an extra something labeled with each order for mixed. These mixtures will not have any miniatures in them. Be sure to mention you are ordering a mixture of large varieties and not a mixture of miniatures.

ROGERS' GLAD GARDENS

W. H. Rogers

GREENLAWN, LONG ISLAND, N. Y.

Return Postage Guaranteed



Librarian

U. S. Dept. of Agriculture

Washington 25

D. C.

ORDER SHEET

Rogers' Glad Gardens

W. H. ROGERS

GREENLAWN, LONG ISLAND, N. Y.

Ship to..... Date.....
Please Print Name and Address Plainly

Street & No. or R.F.D..... Ship When?.....

Post Office..... State.....

Express Office..... Ship via express () Parcel Post ()
If Different from Post Office

If I am out of what you order, shall I () Refund Sub () Nearest Size () Similar Color
Please Check

QUANTITY	SIZE	VARIETY NAME	RATE	AMOUNT

SEE SPECIAL OFFER ON BACK OF THIS ORDER SHEET

Send Check or Money Order — Currency Is Unsafe

Make P. O. Money Orders Payable at "Greenlawn, N. Y." Post Office

(over)

