

Historic, Archive Document

Do not assume content reflects current scientific knowledge, policies, or practices.

62.67

LIBRARY
RECEIVED
★ AUG 30 1951 ★
U. S. Department of Agriculture



ROCKNOLL NURSERY
MORROW, OHIO

Fall 1951 - Hardy Plant Guide

LIBRARY,
U.S. DEPT. OF AGRICULTURE
WASHINGTON 25, D. C.
C-1-F

Sec. 34.66, P. L. & R.
U. S. POSTAGE
PAID
Morrow, Ohio
Permit No. 2

Return Postage Guaranteed

WILD FLOWERS AND FERNS

WILD FLOWERS

3 for 60c \$2.00 doz. \$16.00 hundred

HEPATICAC ACUTILOBA — Beautiful anemone-like flowers in earliest spring. Leaves are evergreen.

WILD COLUMBINE — *Aquilegia Canadensis* — Red and yellow bell-like flowers appear on 2-ft. stems in April and May.

BLOODROOT — *Sanguinaria canadensis* — About 6 inches high with large, flat, pure, white flowers in early spring.

SHOOTING STAR — *Dodecatheon Meadia* — Ohio's wild flower. Beautiful white flowers touched yellow on 18-inch stems.

VIRGINIA BLUE BELLS — *Mertensia* — Beautiful blue flowers make this the best loved and best known of all wild flowers in garden use.

P. DIVARICATA — Wild Blue Phlox — Pale lilac blue flowers on 15-inch stems. Evergreen foliage.

GIANT BELLWORT — *Uvularia Grandiflora* — Shiny, waxy leaves circle the stem. Flowers yellow, hanging, petals twisted.

GREEK VALERIAN — *Polemonium Reptans*, Jacob's Ladder — Divided leaves almost fern-like. Flowers numerous in loose heads, bright blue in color.

IRIS CRISTATA — Crested Iris — A tiny fellow with creeping rootstock. Flowers blue, white crest.

JACK IN THE PULPIT — *Arisaema Triphyllum* — The Indian Turnip has an unusual flower of green, followed by a handsome red seed pod.

CELANDINE POPPY — *Stylophorum Diphylum* — One of our finest wild flowers, blooming all season long with large yellow poppy-like flowers.



SMALLER FERNS

Those growing 18 inches to 26 inches in height. Best for average garden use.

42c Each 3 for \$1.00 \$3.50 doz.

LADY FERN — *Athyrium Felixfemina* — Large handsome fern, 2-3 feet high.

MAIDEN HAIR FERN — *Adiantum Pedatum* — The most graceful hardy fern.

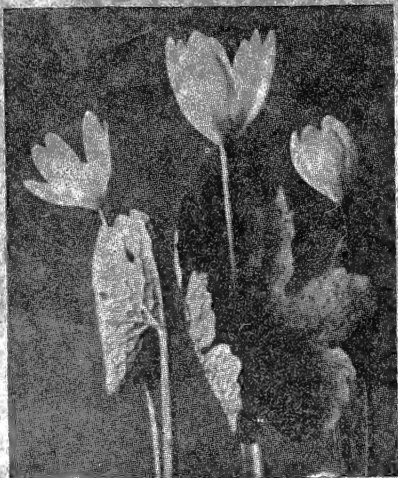
NARROW LEAVED SPLEENWORT — *Athyrium Pycnocarpon* — Lovely fern to 26 inches high with fronds like a Boston fern.

SILVER SPLEENWORT — *Athyrium Thelypteroides* — A fully divided fern with silver spore cases.

XMAS FERN — *Polystichum Acrostichoides* — An evergreen variety growing a foot high.

10 Smaller Hardy Ferns \$3.00

2 each of those described above. Each variety labeled.



TALL FERNS

Best planted in a shady wet spot

42c Each 3 for \$1.00 \$3.50 doz.

CINNAMON FERN — *Osmunda Cinnamomea* — Large fronds often 5 ft. high.

OSTRICH PLUME FERN — *Pteritis nodulosa* — The best garden fern. Long graceful fronds. Spreads rapidly from underground runners.

INTERRUPTED FERN — *Osmunda Claytonian* — Will thrive in rather dry shady places.

ROYAL FERN — *Osmunda Regalis* — Another very tall fern that must have a moist place. Will even grow in an inch or two of water.

8 Tall Hardy Ferns \$2.40

2 each of those described above. Labeled.

THE TRILLIUMS

3 for 60c \$2.00 doz. \$16.00 per 100

Interesting native plants with a bulb-like root that branches and divides, helping in propagation.

TRILLIUM GRANDIFLORUM — White.

TRILLIUM ERECTUM — Purple Trillium.

TRILLIUM UNDLATUM — Painted Trillium.

12 Showy Trilliums \$1.69

4 each of above.

24 Wild Flowers \$4.00

3 each of any eight varieties above.

LADY SLIPPER ORCHID

Cypripedium Pubescens

The Yellow Lady Slipper Orchid is the only one of the native orchids that will adapt itself well enough to garden culture to thrive and multiply.

Small Sods, 50c Each 3 for \$1.39

Large Sods, 75c Each 3 for \$2.00

SHADE LOVING HARDY PLANTS

PLUMY or DWARF BLEEDING HEART

DICENTRA EXIMEA

50c Each

3 for \$1.39 \$5.00 doz.

A showy plant with rosy pink flowers on foot high stems, all season through, sun or shade.

6 SHADY WALL PLANTS

\$2.00

- 2 Dwarf Bleeding Heart.
- 2 Serbian Bell Flower.
- 2 Sedum Sieboldii.

OLD FASHIONED BLEEDING HEART

DICENTRA SPECTABILIS

75c Each

3 for \$2.00 \$7.00 doz.

The old fashioned bleeding heart plant with graceful spires of blood-red hearts. Thrives well in a shady spot.

EXOTIC HELLEBORUS

ORIENTALIS — Lenten Rose. Flowers in February and March in a wide range of blends of pink, purple, greenish and white. Loves a cool damp shaded location. Flowering plants.

60c Each 3 for \$1.69 \$6.00 doz.

★ FRAGRANT VIOLETS

The country has become fragrant violet conscious at last. Stock of these is very scarce. Better order yours early.

50c Each 3 for \$1.39 \$5.00 doz.

This price is for nice large flowering plants.

PRINCE OF WALES — Fragrant deep rich purple flowers of larger size in spring.

ROSINA — Raspberry Violet. Lovely pink and rose violets in spring and again in fall. Fragrance of crushed red raspberries.

ROYAL ROBE — New deep purple violet. Vigorous grower, fine fragrance.

FREY'S FRAGRANT — Lovely old variety from England; very long stemmed and sweet.

5 Fragrant Violets \$2.00

NEW TRADESCANTIAS SPIDERWORTS

42c Each 3 for \$1.00 \$3.50 doz.

Everblooming perennials of great beauty and easiest culture. Tolerant of wet or dry soil, perfectly hardy. They bloom day after day, even month after month.

LENORA — Very fine flowers of a deep rich glowing violet.

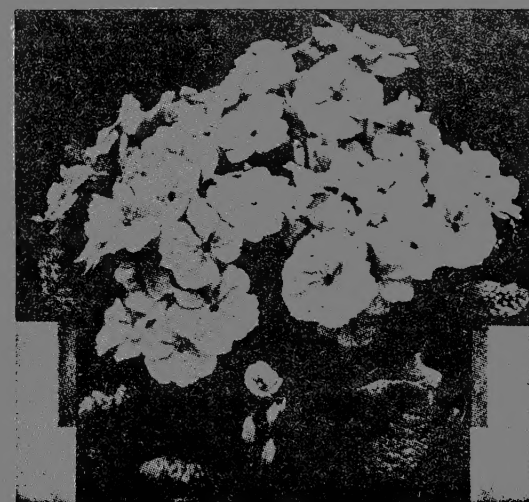
G. WEUGLIN — Porecelain blue flowers from June to September.

OSPREY — White with faint blue veining.

PAULINE — Deep wine red flowers.

4 New Tradescantias \$1.25

1 each of the above



★ PRIMROSE PRIMULA

Everyone loves primroses and can grow them. They require shade, good soil and plentiful moisture. They lend an unbelievable charm to those shady nooks in April and May.

42c Each 3 for \$1.00 \$3.50 doz.

WHITE CLOUD — White yellow eye.

YELLOW CARPET — Butter yellow.

RED WINGS — Showy red tones.

ORANGE BEAUTY — Showy orange.

8 PRIMROSES TO COLOR

\$2.50

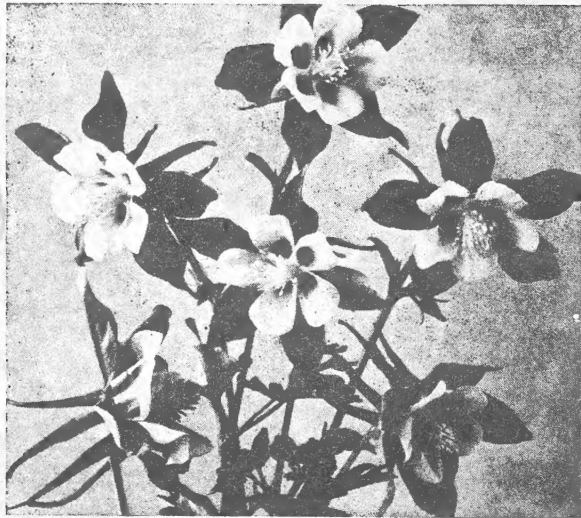
2 each color above.

HURSTS ENGLISH MONARCH STRAIN

This strain combines the largest flowers and most brilliant coloring known to the hardy primroses.

42c Each 3 for \$1.00 \$3.50 doz.

ROCKNOLL'S "WEATHER PROOF"



COLUMBINE CRIMSON STAR

★ **ARMERIA — SEA THRIFT**

A. LAUCHEANA — MIDGET SEA THRIFT
42c Each 3 for \$1.00 \$3.50 doz.
Rosy red flowers on emerald green mounds. Always in bloom if kept picked. Sun only. 6 inches high.

A. CEPHALOTES RUBRA

42c Each 3 for \$1.00 \$3.50 doz.
Large deep rose flowers on 12 inch stem. A handsome new rock plant.

★ **SAPONARIA OCYMOIDES**

Large showy mats of bright rose in late May and June. Loves sunny rock work where it can tumble about. If cut back it will often flower again.

42c Each 3 for \$1.00 \$3.50 doz.

★ **BLUE FLAX**

Handsome everflowering perennial for the rock garden or border.

L. PERENNE — Delightful both in flower and foliage. Flowers bright blue on graceful 2 ft. stems.

42c Each 3 for \$1.00 \$3.50 doz.

WEATHER PROOF PERENNIALS — Rocknoll is located 22 miles north of the Ohio River in Southwestern Ohio. We have severe cold winters often without a protecting snow blanket and hot dry summers. Temperatures range from 20 degrees below zero F. in winter to 100 degrees in the shade in summer. We have periods of heavy rainfall and periods of drought just the same as you do. Our soil while very fertile and productive is only good farm land used for growing corn before we took it over. We do not have deep black celery soil or sandy old lake bottoms to force fast growth on plants that often fail to hold up when moved to your garden soils. ★ Denotes Plants Suitable for Rock Garden.

ROCKNOLL GIANT LONG SPURRED COLUMBINE

This is a superb strain of giant flowered varieties in every imaginable shade and color blend to be found in columbine. The stems are all long and graceful and the flowers abundantly produced on the stems. We find the best columbines to transplant are one year old field grown plants, as these still have the vigor of their first full flowering period just ahead of them.

COLUMBINE TO COLOR NAMED VARIETIES

42c Each 3 for \$1.00 \$3.50 doz.
BARN SWALLOW — Bright blue and creamy white.
CHRYSANTHA — Soft yellow throughout.
PINK FAIRY — Pink and rose shades.
CRIMSON STAR — Fiery red with white throat.
WHITE QUEEN — Fragrant clear, clean white.

ROCKNOLL GIANT COLUMBINE

50c Each 3 for \$1.39 \$5.00 doz.
A superb blend, embodying all of the colors known to Long Spurred Columbine. These Giants are larger and showier than the named varieties.

<p>5 Named COLUMBINE Select Long Spurred 1 each color described above.</p> <p>\$1.50</p>	<p>5 ROCKNOLL GIANTS Superb blend of colors.</p> <p>\$2.00</p>
--	--

★ **AQUILEGIA FLABELLATA NANA**

50c Each 3 for \$1.39 \$5.00 doz.
An interesting alpine columbine from Europe. The flower stems are not over a foot high. The dainty flowers are short spurred and of the purest white.

★ **HARDY CARNATIONS EVERBLOOMING TYPES**

For quite a few years we have been testing and trying the hardy carnations both for hardiness and everflowering qualities. Honestly we do not believe there is a better selection of really hardy everblooming carnations available elsewhere in this country.

The following are
GROWN FROM CUTTINGS
Sure True to Color

42c Each 3 for \$1.00 \$3.50 doz.
FALLS QUEEN — Spicy double white.
LUCIA — Showy rosy red carnations on long stems.

THE LYTHRUMS

Plants that reliably bloom from late June till frost. Have neat spikes of flowers up to 4 ft. tall followed by side spikes flowering almost to the ground.

50c Each 3 for \$1.39 \$5.00 doz.

THE BEACON — Deep carmine red.
MORDEN'S PINK — True soft pink.
MORDEN'S PURPLE — Mallow purple.
ROSALIE — Late rosy pink.

6 Reliable Lythrums \$2.00

2 each of the 3 kinds shown above, except Rosalie.

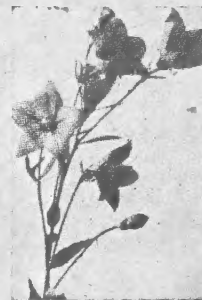


★ **DWARF ALPINE IRIS I. PUMILA**

Tiny Iris for the rock garden 6-in. high.
42c ea.; 3 for \$1.00; \$3.50 dozen
Citrea — Yellow.
Cyanea — Purple.
Fairy — White.
5 Dwarf Iris \$1.25
Assorted colors.

SHOWY BALLOON FLOWERS

PLATYCODON GRANDIFLORA HYBRIDS



SHELL PINK — Soft pink flowers on 2 ft. stems in July and August. Likes some shade.

42c Each
3 for \$1.00 \$3.50 doz.
DOUBLE WHITE — The new rare double white hybrid.

50c Each
3 for \$1.39 \$5.00 doz.

GRANDIFLORA — Large showy blue balloons — very hardy.

42c Each
3 for \$1.00 \$3.50 doz.

6 Showy Balloon Flowers \$2.00

2 each of the 3 kinds shown above.

★ **ALPINE ASTER**

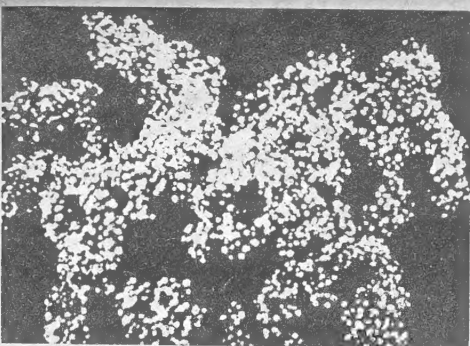
42c Each 3 for \$1.00 \$3.50 doz.

BLUE STAR — Lovely blue daisies, the size of a half dollar, with light yellow centers. Stems 8 to 10 inches high. Plant forms a mat.

NEW GOLD COREOPSIS

42c Each 3 for \$1.00 \$3.50 doz.

Large glorious double and semi-double golden daisies on 30 in. stems freely produced all through the season.



BRISTOL FAIRY GYPSOPHILA

BABY BREATH

Indispensable for Cutting
GYPSOPHILA

Adds grace and charm to the hardy border. Given sun and good soil these Baby Breath will furnish endless sprays for cutting.

WHITE QUEEN — Double and semi-double flowers of clear white. Ideal as a filler for summer bouquets.

42c Each 3 for \$1.00 \$3.50 doz.

DOUBLE BRISTOL FAIRY

50c Each 3 for \$1.39 \$5.00 doz.

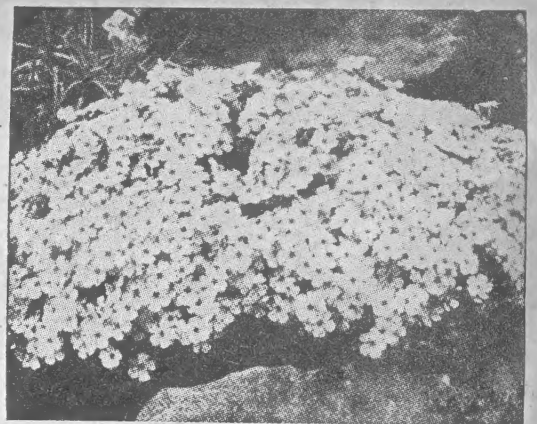
Double pure white flowers twice the size of any other Baby Breath. Ideal to cut and to dry for winter.

HARDY SWEET PEA

LATHYRUS

50c Each 3 for \$1.39 \$5.00 doz.

Trailing or hanging plants suitable for growing on fences or tumbling over large rocks, etc. Flowers nearly all summer long. Very showy. Red and pink.



★ **CREEPING OR MOSS PHLOX PHLOX SUBULATA**

Best loved rock plant, green mats smothered in spring with flowers. Sun.

42c Each 3 for \$1.00 \$3.50 doz.

ATROPURPUREA — Deep wine red.

AMOENA — Deep rose.

LILACINA — Light lavender.

ALBA — Clean white.

ROSEA — Nice rose pink.

BLUE EMERALD CUSHION — Steel blue.

6 Select Phlox Subulata \$1.89

1 each of those listed above.

GAILLARDIA

The Blanket Flower

One of the very best perennials. Flowering from May till November.

42c Each 3 for \$1.00 \$3.50 doz.

PORTOLA HYBRIDS — A select English strain with large flowers of coppery red with faint edge of yellow.

4 Newer Gaillardia \$1.25

PROOF " HARDY PERENNIALS

PACIFIC GIANT HYBRID DELPHINIUM

For the gardener who is looking for giant flowering delphinium on tall stately stems, these very hardy hybrids are the answer. All are fully double.

50c Each 3 for \$1.39 \$5.00 doz.

5 Pacific Hybrid Delphinium \$2.00

1 each series described below.
15 — 3 of each — \$4.89

BLACK KNIGHT SERIES — Giant flowers in deepest shades of blue and purple.

CAMEILARD SERIES — Fully double flowers of pure soft lavender.

GALAHAD SERIES — Simply immense flowers of pure glistening white.

GUINEVERE SERIES — Unusual light pinkish lavender self colored flowers.

KING ARTHUR SERIES — Brilliant royal violet with showy white bee.

OTHER VARIETIES OF HARDY DELPHINIUM

42c Each 3 for \$1.00 \$3.50 doz.

WREXHAM HOLLYHOCK — Double flowers ranging from light to dark blue.

BELLADONNA — Light sky blue — 30 in.

BELLAMOSUM — Deep cobalt blue — 4 ft.

DUTCH HYBRIDS — Large double flowers — all colors.

PACIFIC — Round table strain, wonderful colors—resistant to mildew.

5 Stately Delphinium \$1.50

1 each of those listed above.



★ POPPY MALLOW CALLIRHOE INVOLUCATRA

A truly everblooming rock plant, covered with red cup-shaped flowers on creeping stems all summer long.

42c Each 3 for \$1.00 \$3.50 doz.

GAS PLANT DICTAMNUS FRAXINELLA

This interesting, showy, long lived perennial should be in every garden. The showy, rosy, red flowers exude a pungent gas that is inflammable on a still summer evening. Very hardy and free of disease and insect pests.

50c Each 3 for \$1.39 \$5.00 doz.

Large 2 year old field plants.

RUBRA — Bright rosy red.

ALBA — Clear pure white.

FOXGLOVES

DIGITALIS SHIRLEY FOXGLOVE —

Giant flowered hybrids in brightest shades of yellow, lavender, rose, pink and white on 30 inch spikes. Moisture, semi-shade.

42c Each 3 for \$1.00 \$3.50 doz.



BUTTERFLY FLOWER ASCLEPIAS TUBEROSA

One of the finest permanent hardy flowers. Bears numerous heads of bright orange flowers on 3 ft. stems from July through September. Picking encourages new flowers.

42c Each 3 for \$1.00 \$3.50 doz.

THE PERENNIAL CORNFLOWERS CENTAUREA

Much neglected perennials that flower practically all summer through. They are very tough and hardy; excellent for cutting.

42c Each 3 for \$1.00 \$3.50 doz.

Unless Otherwise Noted

MONTANA — Deep blue flowers 2½ in. across on 15 in. stems. From Armenia.

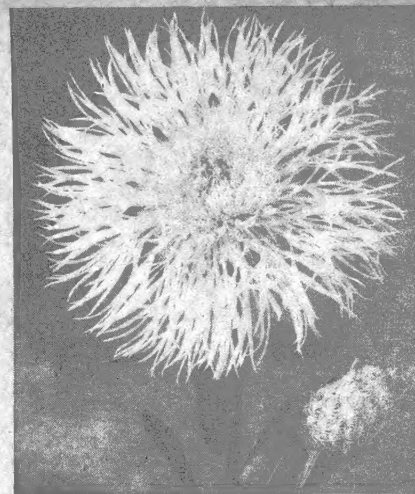
MACROCEPHALA — Tall stiff 3 ft. stems with large showy golden yellow flowers — From Armenia.

ROSE BEAUTY — (Popyleuca) New deep rose from the highest mountains of Persia.

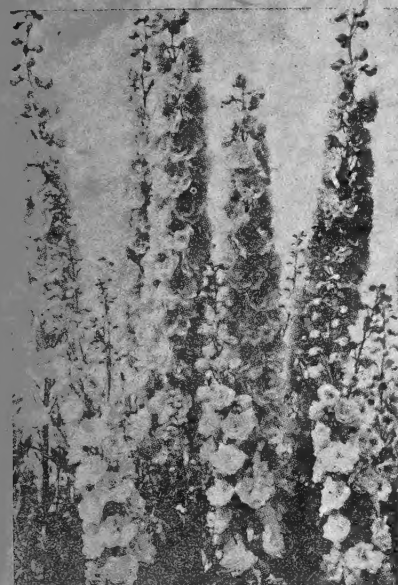
RUTHENICA — 63c each; 3 for \$1.50; \$5.00 dozen. Deep almost black red flowers — from Hungary.

6 Perennial Corn Flowers \$1.89

2 each Blue, Yellow and Pink.



CENTAUREA ROSE BEAUTY



DELPHINIUM SEED

There are many good gardeners who wish to grow their own delphinium from seed, but fail, due not to any fault of their own, but to old seed. Delphinium seed must be fresh.

Large Packet ¼ Oz. Oz.
Pacific Hybrids \$1.00 \$4.00 \$15.00

EUPATORIUM COELESTINUM

42c Each 3 for \$1.00. \$3.50 doz
A late summer perennial. Tufts of soft blue on 18 inch stems. Sometimes called the hardy ageratum.



RUSSELL LUPINES

HYBISCUS MALLOW MARVEL

42c Each 3 for \$1.00 \$3.50 doz.

GIANT RED — Tall shrub like perennials with huge red flowers in July and August.

RUSSELL LUPINES

Superb new strain from England incorporating shades and colors never before seen in Lupines. A bit hard to grow but more than worth any effort. 2 year old field grown plants.

42c Each 3 for \$1.00 \$3.50 doz.

Try 5 Russell Lupines \$1.50

See for yourself.

NEW PURPLE CONE FLOWER

RUDEBECKIA PURPUREA — THE KING

A summer flowering perennial producing long lasting cut flowers. A reddish purple daisy. 2 ft. high with black cone shaped center.

42c Each 3 for \$1.00 \$3.50 doz.

POTERIUM OBTUSUM FLEECE FLOWER

A really new hardy flower that blooms all summer long. The plant is formed of divided, somewhat fern like leaves with showy pink plume like flowers on stems up to 30 inches long. It is an excellent cut flower, easily grown and useful in sun or half shade.

75c Each 3 for \$2.00 \$7.00 doz.

SEA LAVENDER STATICE LATIFOLIA

Heads of tiny lavender flowers in August and September on 15 inch stems. This is a flower that will dry well for winter bouquets.

42c Each 3 for \$1.00 \$3.50 doz.

ROCK GARDEN VERONICAS

Low growing tight compact plants covered with showy flowers in miniature spikes.

42c Each 3 for \$1.00 \$3.50 doz.

V. ARMENA — Finely divided leaves — light blue flowers in May.

V. INCANA — Silver foliage, spikes of deep blue. 8 in. high.

V. INCANA RUBRA — Silver foliage flowers — reddish pink. 6 in. high.

NOTE — We can supply most of the Hardy Perennials, Rock Plants and Shade Plants listed in our Spring 1951 catalogue at last Spring's prices.

POTTED HARDY CHRYSANTHEMUMS

NEW DUTCH and JAPANESE MUMS



Late summer and fall is an ideal time to plant hardy chrysanthemums. After several years of trial we have decided that the most satisfactory plant to use at this time is a well grown potted plant. These will be available all summer and fall and will be sent to you in bud or in bloom as the season progresses.

NEW JAPANESE MUMS

Interesting and vigorous varieties imported from Japan the home of chrysanthemums.

50c Each 3 for \$1.39 \$5.00 doz.
All these are doubles.
KAN-HI — Showy bright purple.
KIOUM — Good early soft yellow.
SERI GINGO — Giant flowers purest white whorled centers.
SHEO-GA — Silver white with cream yellow centers.

TINY JAP BUTTONS

Really tiny ones 1/4 in. across.
BENI-KAANOI — Deep amaranth purple.
KIN TUBA — Bronze turning yellow.
SAZARII ISLII — White with yellow center.

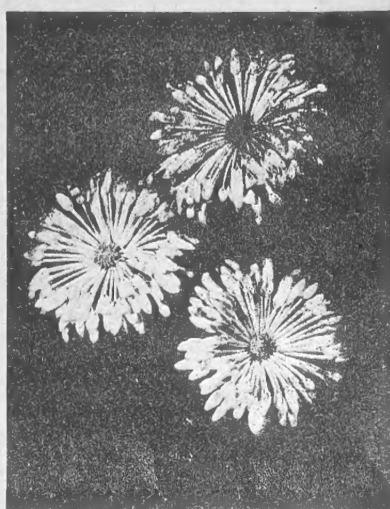
3 Tiny Jap Buttons \$1.39 1 each of those listed above.
3 Showy Jap Mums \$1.39 1 each Kan-Hi, Kioum, Seri Gingo.

5 New Giant Dutch Mums \$3.00

Your selection of any of above except Hurricane.

5 Exotic Spoon Mums \$2.00

1 each of the 5 listed at right.



ORCHID SPOON

EXOTIC SPOON MUMS

Interesting new hybrids with quilled petals ending in a tiny spoon.
50c Each 3 for \$1.39 \$5.00 doz.
BRONZE SPOON — New deep bronze.
CRIMSON STAR — Showy crimson.
GOLDEN SPOON — New large flowered.
ORCHID SPOON — Large orchid pink.
WHITE SPOON — Lovely pure white.

DECORATIVE POMPONS

The full double garden mums with flowers from 1 1/4 to 3 1/2 in. across. The most common and most successful of garden mums.

50c Each 3 for \$1.39 \$5.00 doz.
AGATE — Pink and white blend.
ALERT — Deep showy purple.
CANDLELIGHT — Soft lemon yellow.
CHAS. NYE — Large golden yellow.
EARLY JOAN HELEN — Early purple.
GOLDEN PAGEANT — Double tall gold.
HUNTSMAN — Showy terra cotta red.
LAVENDER LADY — Silvery lavender.
MICHIGAN WHITE — Good tall white.
ORIENTAL GLORY — Bright Chinese red.
SEPTEMBER BRONZE — Prolific bronze.
WINTERSET — The best white grown.

5 Select Pompoms \$2.00

Your selection of any 5 of the above.

CUSHION MUMS

Showy dwarf varieties 15 to 18 inches high used for edgings, rock gardens and in front of the taller varieties. Established plants bloom from June till frost in most cases.

50c Each 3 for \$1.39 \$5.00 doz.
BRONZE CUSHION — Deep showy bronze.
DARLIAMUM — Early quilled purple.
EARLY WORM — Bright golden yellow.
FLAMING BEAUTY — New early red.
PINK CUSHION — Clear pink.
PURPLE CARPET — Low mallow purple.
ROSE MOUND — Deep rose.
SANTA CLAUS — Early showy red.
Serene beautiful white.

9 Dwarf Cushion Mums \$3.75

1 each of those listed above.

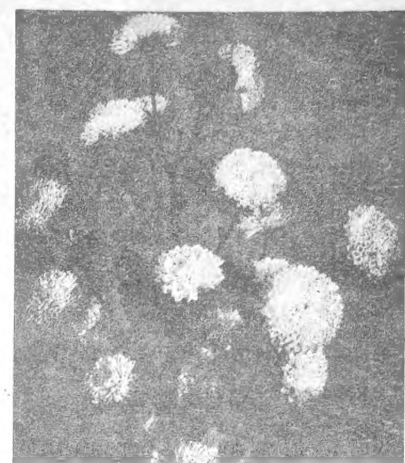
5 Select Cushion Mums \$2.00

Your selection of any 5 of the above.

THE HIT PARADE OF 1951

For our cash and carry retail customers we flowered some 15,000 field clumps in over 100 varieties last fall. Judging by the speed in which a variety was sold out as it came into bloom we have established these following 12 varieties as the hits of 1951: 1, Winter; 2, Judith Anderson; 3, Purple Carpet; 4, Rosemound; 5, Charles Nye; 6, Early Worm; 7, Huntsman; 8, Gold Lode; 9, Stoplight; 10, Michigan White; 11, Oriental Glory; 12, Orchid Spoon.

12 Mums on the 1951 Hit Parade — \$5.00



GROWN UP MUM BARGAIN

Last spring we offered a terrific \$2.00 Mum bargain consisting of 17 plants made up as follows:
8 Dwarf Early Cushions.
3 Spectacular English.
5 Best Mums for cutting.
1 New red mum stoplight.
This fall we offer you the same thing in grown up potted plants.
17 Different Potted Plants, \$5.00
We select varieties. Named only as to type — Cushion, English, etc.



WESTBOURNE

RAYONETTES

The Rayonette chrysanthemums are large showy flowers up to 8 in. across, composed of hundreds of ray or tubeshaped flowers. They are quite hardy but flower rather late so should be protected from fall frost damage to their flowers.

50c Each 3 for \$1.39 \$5.00 doz.
BUFF PINK SALMON WHITE YELLOW

5 Rayonettes — 1 of each color \$2.00

SPECTACULAR ENGLISH MUMS

Grow mums of greenhouse size outdoors. Giant flowered mums that will produce double flowers 5 to 7 inches across when well fertilized and disbudded to 1 or 2 flowers to a branch.

50c Each 3 for \$1.39 \$5.00 doz.
Unless otherwise noted.
GOLD STANDARD — Giant golden yellow.
OLD DOMINION — Semi-double red.
OLDLAND BRONZE — Bright bronze.
RED SWEETHEART — Carmine red.
SAMARIA — Startling gold and pink.
SEPTEMBER GIANT — Outstanding white.
SWEETHEART — Showy clear pink.
WESTBOURNE — Deep garnet red.
COLORADO LAVENDER LADY — Gleaming deep lavender.
75c Each; 3 for \$2.00

The 5 Largest English Mums \$2.00

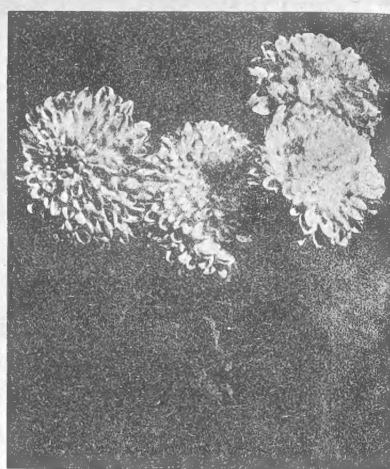
1 each of Gold Standard, Westbourne, Old Dominion, Silver Sheen, Oldland Bronze.

The 5 Earliest English Mums \$2.00

1 each of Una, Sweetheart, Red Raspberry, Sept. Giant, Samaria

ROCKNOLL'S 6 FAVORITE MUMS \$3.50

A real job to select but from the hundreds of varieties we have grown these 6 seem outstanding. Hurricane, Huntsman, Judith Anderson, Winter, Lavender Lady, Rose Mound.



YELLOW BASKET

BUTTON MUMS

Varieties with small double flowers, 3/4 to 1 1/2 inches in diameter.
50c Each 3 for \$1.39 \$5.00 doz.
GOBLIN — Deep bronze. Frost resistant.
JUDITH ANDERSON — Deep yellow.
PINK FLARE — Tall deep pink.
WHITE FLARE — Tall clear white.
4 Button Mums listed here \$1.50

PEONIES AND ORIENTAL POPPIES



Strong 3 to 5 eye plants ready for planting from September on.

75c Each 3 for \$2.00 \$7.50 doz.
DUTCHESS DE NEMOURS — Creamy white.
EDULIS SUPERBA — Early bright rose.
FELIX CROUSSE — Deep rich red.
FESTIVA MAXIMA — White.
HAZEL KINNEY — Light flesh pink.
LA PERLE — Flecked pink.
MME. DE VERNVILLE — Pure White.
PFEIFFER'S PRIDE — Light pink.
RUBRA SUPERBA — Late red.
SISTER ANNIE — Deep red.

5 Peonies \$3.25 3 Peonies \$1.50

Your selection of the above. Our selection, 1 each red, pink, white.



2 year old flowering roots. Ready from early September on.

60c Each 3 for \$1.75 \$6.00 doz.
BARR'S WHITE — Large white.
BEAUTY OF LIVERMORE — Rosy red.
HELEN ELIZABETH — Pink.
HENRY CAYEUX — Lavender.

5 Oriental Poppies \$2.85

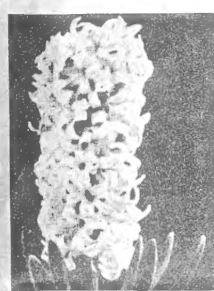
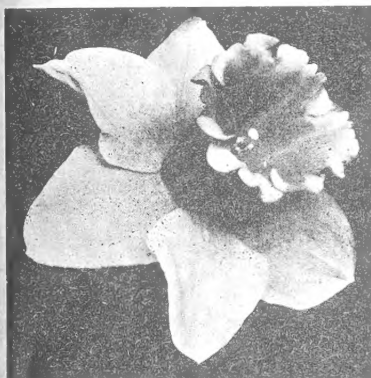
Your selection from the above.

3 True Red Poppies \$1.75

No orange, 1 each Beauty Livermore, Toreador, Wurtembergia.

IMPORTED DUTCH BULBS

NARCISSUS AND DAFFODILS



FRAGRANT DUTCH HYACINTHS

IN FIVE LOVELY COLORS • PINK • PURPLE • WHITE • RED • BLUE

Giant Topsize Hyacinths

3 inches and up in diameter

The ideal size for inside forcing or exhibition blooms outside.

Large size hyacinth bulbs will force easily in your home.

50c Each 3 for \$1.39 \$5.50 doz. \$35.00 hundred

5 Fragrant \$2.25 Hyacinths 1 each color listed above

15 Outdoor \$3.39 Hyacinths 3 each color described above

2" to 2 1/2" inches in diameter. These smaller bulbs are recommended for outside planting. They will produce beautiful flowers with little care.

3 for 69c \$2.75 doz.

3 for 69c \$2.75 doz.

3 for 69c \$2.75 doz.

3 for 69c \$2.75 doz.

3 for 69c \$2.75 doz.

3 for 69c \$2.75 doz.

3 for 69c \$2.75 doz.

3 for 69c \$2.75 doz.

3 for 69c \$2.75 doz.

3 for 69c \$2.75 doz.

3 for 69c \$2.75 doz.

3 for 69c \$2.75 doz.

3 for 69c \$2.75 doz.

3 for 69c \$2.75 doz.

3 for 69c \$2.75 doz.

3 for 69c \$2.75 doz.

3 for 69c \$2.75 doz.

3 for 69c \$2.75 doz.

3 for 69c \$2.75 doz.

3 for 69c \$2.75 doz.

3 for 69c \$2.75 doz.

3 for 69c \$2.75 doz.

3 for 69c \$2.75 doz.

3 for 69c \$2.75 doz.

3 for 69c \$2.75 doz.

3 for 69c \$2.75 doz.

3 for 69c \$2.75 doz.

3 for 69c \$2.75 doz.

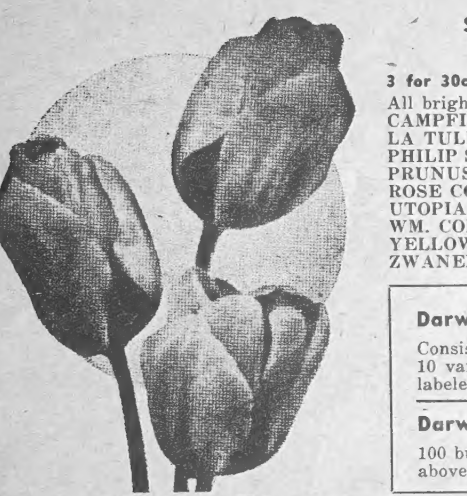
3 for 69c \$2.75 doz.

3 for 69c \$2.75 doz.

3 for 69c \$2.75 doz.

3 for 69c \$2.75 doz.

3 for 69c \$2.75 doz.



SHOWY DARWIN TULIPS

Long stemmed mid-season

3 for 30c 10 for \$1.00 \$9.00 per 100

All bright — showy bright red.

CAMPFIRE — Deep blood red.

LA TULIPE NOIRE — Purple black.

PHILIP SNOWDEN — Carmine rose.

PRUNUS — Salmon pink.

ROSE COPELAND — Soft lilac.

UTOPIA — Large cardinal red.

WM. COPELAND — Bright lavender.

YELLOW GIANT — Yellow.

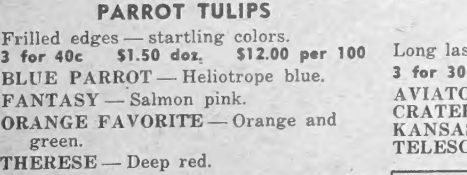
ZWANENBURG — Large white.

Darwin Tulip Bed No. 1 \$5.00

Consists of 5 each of the above 10 varieties each carefully labeled bulbs.

Darwin Tulip Bed No. 2 \$9.00

100 bulbs — 10 each of the above kinds each carefully labeled.



PARROT TULIPS

Frilled edges — startling colors.

3 for 40c \$1.50 doz. \$12.00 per 100

BLUE PARROT — Heliotrope blue.

FANTASY — Salmon pink.

ORANGE FAVORITE — Orange and green.

THERESE — Deep red.

8 Unique Parrot Tulips \$1.10

2 each of above labeled.

8 Long Lasting Triumph Tulips 75¢

2 each of above labeled.

12 Double Early Tulips \$1.00

2 each of the above.

12 Breeder Tulips \$1.25

3 each of the above labeled.

10 Single Early Tulips \$1.00

2 each of the above.

12 Double Early Tulips \$1.00

3 each of above 4 varieties.

12 Double Early Tulips \$1.00

3 each of above 4 varieties.

12 Double Early Tulips \$1.00

3 each of above 4 varieties.

12 Double Early Tulips \$1.00

3 each of above 4 varieties.

12 Double Early Tulips \$1.00

3 each of above 4 varieties.

12 Double Early Tulips \$1.00

3 each of above 4 varieties.

12 Double Early Tulips \$1.00

3 each of above 4 varieties.

12 Double Early Tulips \$1.00

3 each of above 4 varieties.

12 Double Early Tulips \$1.00

3 each of above 4 varieties.

12 Double Early Tulips \$1.00

3 each of above 4 varieties.

12 Double Early Tulips \$1.00

3 each of above 4 varieties.

12 Double Early Tulips \$1.00

3 each of above 4 varieties.

3 each of above 4 varieties.

ROCKNOLL'S SELECTED HARDY LILIES

PHILIPPINE LILY — L. Formosanum

Wilson's Variety — Late

GOOD FLOWERING BULBS — Plants, flowers and bulbs extremely resistant to cold. Plant 4 inches deep. Long trumpet-like flowers of pure white, blooming in August, September and October.

42c Each 3 for \$1.00 \$3.50 doz.

75c Each 3 for \$2.00 \$7.00 doz.

Try 3 Philippine Lilies for \$1.00 for a Garden Surprise

L. COBELLATUM

ORANGE TRIUMPH

A new hybrid lily produced in Holland recently by crossing L. Croceum with L. Umbellatum. The large erect flowers are orange-yellow, flushed salmon-orange and are carried on strong 3 to 4 foot stems.

42c Each 3 for \$1.00 \$3.50 doz.

MADONNA LILY

L. Candidum

Large fragrant pure white flowers in June. Best planted in group of 3 or more. Delivery in September and October.

50c Each 3 for \$1.39 \$5.00 doz.

5 Madonna Lily \$2.25

1 each of those listed above.

LILIUM CENTIFOLIUM

A beautiful white lily flowering several weeks later than the Regal but like it in most respects. Very hardy and easy to grow. As this bulb does not come up as early in the spring as Regal lilies, they are not injured by late spring frosts.

50c Each 3 for \$1.39 \$5.00 doz.

POLKA DOT LILY

L. WILMOTTIAE

A showy lily growing 4 ft. high, flowering in July and August with scarlet flowers dotted brown.

50c Each 3 for \$1.39 \$5.00 dozen

5 Polka Dot Lilies \$2.25

1 each of those listed above.

LILIUM CENTIFOLIUM

A beautiful white lily flowering several weeks later than the Regal but like it in most respects. Very hardy and easy to grow. As this bulb does not come up as early in the spring as Regal lilies, they are not injured by late spring frosts.

50c Each 3 for \$1.39 \$5.00 dozen

50c Each 3 for \$1.39 \$5.00 dozen

LYCORIS — FAIRY LILIES

FAIRY LILY

Lycoris squamigera — Hardy Amaryllis. Beautiful pink amaryllis flowers on 3 ft. stems appear as if by Fairy Magic without foliage in mid-summer. Foliage Daffodil-like in spring. Shade loving. Rare.

35c Each 3 for \$1.00 \$3.50 doz.

RED MONARCH LILY

L. UMBELLATUM VAR. MONARCH

A showy open flowered red lily flowering at Decoration Day and several weeks after. Grows about 2 ft. high.

35c Each 3 for \$1.00 \$3.50 doz.

CORAL LILY

LILIUM TENUIFOLIUM — The Siberian coral lily. Dwarf — good for rockeries nodding coral red bells. Very easy to grow.

35c Each 3 for \$1.00 \$3.50 doz.

OLD FASHIONED TIGER LILY — Aug.

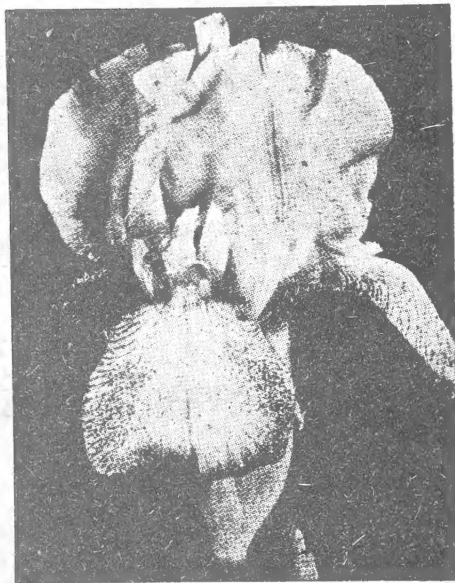
SINGLE L. TIGRINUM

Flourishes almost anywhere in any soil. Deep salmon orange flowers spotted black.

35c Each 3 for \$1.00 \$3.50 doz.

REGAL LILIES

TALL BEARDED IRIS



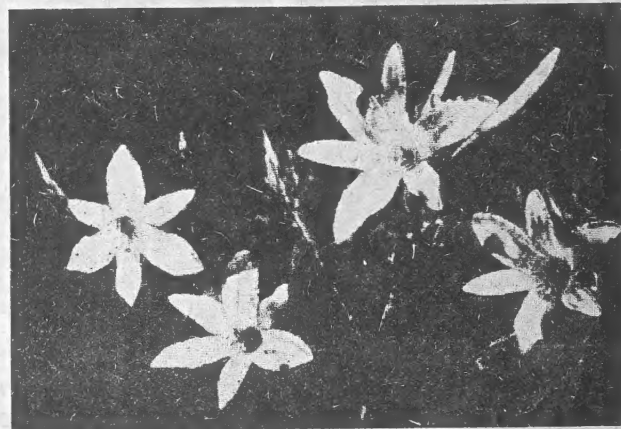
We are presenting here a group of tall bearded Iris that we have tried and selected as the best general garden varieties in their color categories. Garden usefulness rather than price or newness has been our guide.

Prices are for nice plump divisions that will flower well in 1952.

	Each	3
COPPER LUSTRE — Copper and gold blend.....	\$.45	\$1.25
DAYBREAK — Huge golden pink	1.00	2.50
ELKHARDT — Chestnut red30	.75
EL MOHR — Rich mulberry50	1.39
FRIEDA MOHR — Large pink bicolor30	.75
GREAT LAKES — Clearest blue iris65	1.75
JAKE — Giant pure white45	1.25
MAJESTIC — Bright amethyst25	.69
OLA KALA — Deep yellow	1.00	2.50
ORMOHR — Huge grey purple50	1.39
PRAIRIE GOLD — Rich yellow25	.69
SABLE — Black velvet65	1.75
SIERRA BLUE — Clear blue65	1.75
SELENE — Large pure white25	.69
WABASH — White and violet45	1.25

HEMEROCALLIS — DAY LILIES

Fall planting of day lilies is especially recommended as they will establish a strong root system and assure an abundant crop of flowers next year.



	Each	3
APRICOT — Giant apricot	\$.35	\$1.00
AUGUST PIONEER — Orange tipper red50	1.39
DAUNTLESS — Large soft yellow50	1.39
DAWN — Rose buff and yellow35	1.00
HYPERION — Large lemon yellow69	1.75
IMPERATOR — Orange red35	1.00
MIKADO — Orange and purple35	1.00
PURPLE WATERS — Deep purple50	1.39
RAJAH — Scarlet deep red throat35	1.00
SERENADE — Pinkish red and yellow50	1.39

<p>Make Your Own Group Select any 6 of the above Hemerocallis for Order as Group H \$2.75</p>	<p>6 Distinct Hemerocallis To Bloom All Season Thru Our Selection \$1.25</p>
--	---

<p>5 Outstanding Iris \$3.25 1 each of Daybreak, Great Lakes, Jake, Wabash, Ola Kala.</p>	<p>12 Large Flowering Iris \$2.00 12 newer colors.</p> <p>25 Large Iris \$3.75 15 colors.</p>
---	---