

Historic, archived document

Do not assume content reflects current scientific knowledge, policies, or practices.

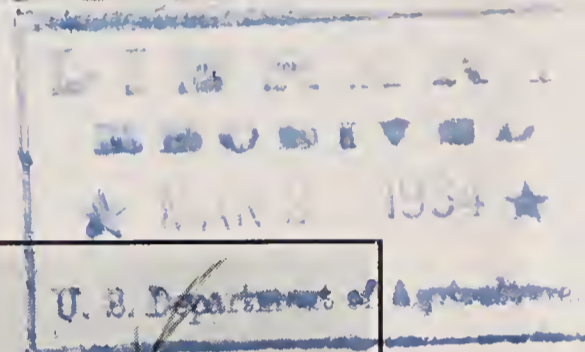
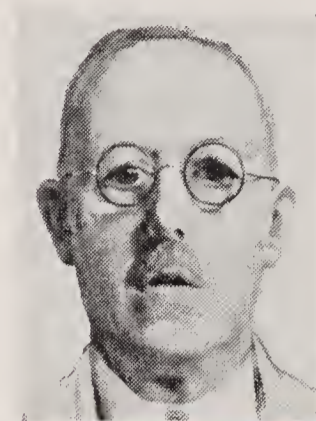
1234

10075 Sep 1934

Glad Greetings *from* New England



CLOSE UP OF LADY DAINTY



LADY DAINTY

Wm. Edwin Clark

“Sunnymede” Sharon, Massachusetts, U. S. A.

GLAD GREETINGS FROM NEW ENGLAND

Favorite New England Originations

New England growers have produced many varieties of gladiolus in which the beautiful primulinus types of medium size are most prominent, many of which are consistent prize winners at the great Boston Shows. Some of the FAVORITES are:

(25 bulbs at same rate as per 100)

	Price Per 100		
	No. 1	No. 2	No. 3
ADONIS, (Brown-Clark) Geranium Pink	3.00	2.50	2.00
ALMA GLUCK, (Gage) Bright Peach-Red	3.00	2.50	2.00
ANNABELLE, (Brown) Rose, Cream Throat	2.00	1.60	1.30
AMELITA GALLI-CURCI, (Clark) Dainty, deep orange	8.00	6.40	5.12
ANNIE LAURIE, (Brown-Stephen) Pink	3.00	2.00	1.40
APRICOT GLOW, (Palmer-Gove) Apricot	3.00	2.40	1.40
ARLINGTON, (Brown) Salmon	15.00	12.00	10.00
BENITO MUSSOLINI (1929) (Clark) Pink	4.00	3.20	2.56
BETTY, (Brown) Salmon	3.00	2.40	1.92
BLEEDING HEART, Pink	on application		
COIT COLBURN, (Fischer) Cream	on application		
CORAL BELLS, (1930) (Clark) Coral	10.00	8.00	6.40
DR. JACKSON, (Fischer) Dark velvety red	5.00	4.20	3.20
E. I. FARRINGTON, (Rowe) Self yellow	8.00	6.40	5.12
ETHELYN, (Fischer) Choice Orange Yellow	2.00	1.60	1.00
ELVIRA, (Fischer) White, Dainty	5.00	4.00	3.20
FLUFFY RUFFLES (Brown) Fluffy pale yel.	20.00	16.00	12.00
F. O. SHEPARDSON (1933) (Fischer) Pink with blotch	on application		
HARMONIA, (Fischer-Clark) Salmon	5.00	4.00	3.20
HENRY C. GOEHL, (Fischer) White, red blotch	4.00	3.20	2.56
LADY DAINTY, (1929) (Clark) Warm pink	25.00	20.00	16.00
MARY CAPEN, (1929) (Fischer) Deep orange	10.00	8.00	6.40
MELBA, (Brown) Creamy Salmon	6.00	5.00	4.00
MINTON ROSE (Brown) Pink, purple blotch.....	12.00	9.00	7.50
MISS T. ROSE (Fischer) Tea rose color	5.00	4.00	3.20
MRS. A. MANNING (Fischer) Bright yellow	8.00	6.40	5.12
MRS. F. C. PETERS (Fischer) Rose lilac	4.00	3.20	2.56
MRS. VIOLET WYMAN (Fischer)	on application		
PRIMADONNA, (Fischer) Pure primrose yel.	5.00	4.00	3.20
PRIM QUEEN, (Fischer) Pure deep yellow	6.00	4.00	3.20
PRINCESS IOLANDE (Clark) Pale red orange	20.00	16.00	10.00
PRINCESS MAFALDA, (1929) (Clark) Flesh	20.00	16.00	10.00
PRINCESS MARIA (1933) (Clark) Pink	8.00	6.40	5.42
PRINCESS GIOVANNA, (Clark) Pale red orange	8.00	6.40	5.42
PRISCILLA ALDEN (Fischer) Orange yel.	2.50	2.00	1.50
ROSE MIST, (Fischer) Deep rose	5.00	4.00	3.20
SATELLITE (Brown) Pure Yellow	3.00	2.40	1.50
SUNNYMEDE (Fischer) Rare Orange bl.....	3.00	2.40	1.50
TWIN FIRES (Fischer) Lt. pink, two blotches	4.00	3.20	—

African Gladiolus Species

There are over 100 African Gladiolus Species. Psittacinus, meaning parrot's head; Dracocephalus, dragon's head; and Primulinus grow well in New England and are a source of delight in the garden and get much comment and many medals at Exhibitions.

AFRICAN SPECIES	Each	Dozen
PSITTACINUS, red and yellow, hooded	\$.20	\$2.00
DRACOCEPHALUS, green, veined purple10	1.00
PRIMULINUS, primrose yellow, hooded10	1.00

Wm. Edwin Clark

“Sunnymede”

Sharon, Massachusetts



SUNNYMEDE

WILLIAM E. CLARK, "Sunnymede," Sharon, Mass.

Exquisite Beauty in Medium Size Varieties of New England Origin

For true charm and color one naturally turns to the primulinus types and usually those of medium size. New England growers have produced many beautiful, artistic and outstanding varieties. Prices today are very low. You will find much pleasure in growing any of the following.

Lady Dainty (Clark) (1929)

A primulinus *Saundersii* hybrid, having the long segments or petals and light lower segments of *Saundersii*. The incurved upper segment and yellow base are derived from the primulinus species. At the 1928 Annual Exhibition of the New England Gladiolus Society this, then unnamed seedling, won the N. E. G. S. Silver Medal as the best primulinus seedling in the Show, and the A. G. S. Silver Medal as the best seedling of all types in the show, and an Award of Merit.

Each .35; per doz. \$3.50; per 100 \$25.00

“LADY DAINTY, I would say, is the most beautiful Gladiolus as a cut flower that I have ever seen.”—FRANKLIN B. MEADE.

Princess Majalda (Clark) (1929)

Blossoms orange pink, shading into light coral red, lower lip yellow shading into coral red, and striped with narrow red lines. A most artistic primulinus variety that makes up into an exquisite bouquet or into a prize winning basket. One of the best, both for exhibitions and as a florist's variety.

Each .25; per doz. \$2.50; per 100 \$20.00

Sarah Palfrey (Clark) (1929)

Flower of good substance with undulated or wavy segments showing primulinus blood but more open than primulinus hybrid, measuring $3\frac{1}{8}$ inches. Color is of an even light sulphur yellow, lower segment light yellow with fine red streak. According to Ridgeway, the color is Sulphur Yellow. Very dainty and makes a beautiful basket or bouquet.

Each .25; per doz. \$2.50

La Argentina (Clark) (1929)

Is a primulinus variety on tall slender spike with a good number of florets of the deepest orange red, most unusual.

Each .25; per doz. \$2.50

Princess Giovanna (Clark) (1930)

Pale red orange (R.O.3), streaked lightly with pale and lighter orange red (O. R. 2 & 3). Open, 16 in all. Loose flowers. Four hooded, 3 inch florets. Petals somewhat curved. Lower 3 petals streaked with lighter yellow blotch (O. R. 1 on Y. 2).

Each .10; per doz. \$1.00; per 100 \$8.00

Princess Iolande (Clark) (1933)

Pale red orange, a little darker at tips (R. O. 3x4). Loose spike, 20" long; about 3 flowers opened at one time, 14 in all. 3 inch, hooded florets. Petals elliptic. Pale yellow blotch, extending into throat (Y. 3).

Each .25; per doz. \$2.50; per 100 \$20.00

Princess Maria (Clark) (1933)

Pink. Very early. Wonderful propagator. Most satisfactory as a cut flower.

Each .10; per doz. \$1.00; per 100 \$8.00

All of the above seven varieties seem to us at Sunnymede most desirable varieties for cut flowers and home decorations for those who like flowers of beautiful color and refined characteristics. We also have for sale bulbs of three South African Species that grow well in New England, *Primulinus*, *Dracocephalus* and *Psittacinus*.

Wm. Edwin Clark

“Sunnymede”

Sharon, Massachusetts



SAUNDERSII SPECIES



PRIMULINUS SPECIES



DRACOCEPHALUS SPECIES



PSITTACINUS SPECIES

Some interesting South African Species that grow in New England