

Historic, Archive Document

Do not assume content reflects current scientific knowledge, policies, or practices.

LIBRARY
RECEIVED

☆ SEP 27 1951 ☆

U. S. Department of Agriculture

WHOLESALE PRICE LIST

FALL, 1951



Plant America!

WHOLESALE ONLY.
NOTHING SOLD AT RETAIL.

SNEED NURSERY CO.

P. O. BOX 798

OKLAHOMA CITY 1, OKLAHOMA

Office Telephone — 79-2888

After December 1, 1951, Our
Telephone Number will be

REgent 92888

Night, Sundays and Holidays Call:

J. Frank Sneed, Res. 5-9359

Richard R. Bloss, Jr., Res. 8-5249

Jack F. Sneed, Jr., Res. 9-8021

(After Dec. 1, 1951 — Windsor 38021)

WHOLESALE PRICE LIST

This list cancels all previous lists. Prices are for Fall 1951 and are subject to Change Without Notice.

STOCK

All stock listed herein is first class nursery stock, having been inspected and declared apparently free from all disease. Same will be uniformly graded according to "Standards of Grading" of the American Association of Nurserymen.

GUARANTEED

We give no guaranty, expressed or implied, as to description, quality or productiveness of any stock. All stock is guaranteed to be true to name and variety. If any stock proves otherwise we will not be liable for an amount greater than the original purchase price.

TERMS

All terms are CASH with order, less 2% discount. Boxing and baling additional at cost. Where credit is established the following terms will apply:

2% discount10 days
Net30 days

SHIPPING

Wherever possible we will ship by Motor Freight. This method of transportation gives you door-to-door delivery, and stock can be handled without boxing, tops properly tied. Our location gives us access to almost all trucking lines. Please state what line you want to handle your order. See special notice on pages 12-16 in regard to B&B Evergreens.

PERSONAL SELECTION

Where customer desires to select certain specimens other than the regular grade, we reserve the right to specifically price such specimens according to size and quality.

QUANTITY PRICES ON EVERGREENS

1 to 4 of a size and variety at each rate
5 to 24 of a size and variety at 10 rate
25 to 249 of a size and variety at 100 rate
250 or more of a size and variety at 1000 rate

QUALITY PRICES ON FRUIT TREES, SHADE TREES, SHRUBS, HEDGES AND VINES

Less than 10 at Each Rate.
10 to 30 at 10 rate.
30 to 300 at 100 rate.
300 or more at 1000 rate
where published.

SNEED NURSERY COMPANY

FRUIT TREES

PEACH—CERTIFIED—1 Year

True to variety, and free from virus diseases. These peach trees will be certified as to trueness to variety by the Oklahoma Crop Improvement Association, and freedom from virus diseases by the State Board of Agriculture.

	Each	Per 10	Per 100
11-16 inch to 1 inch.....	.70	6.00	55.00
9-16 to 11-16 inch.....	.60	5.50	45.00
7-16 to 9-16 inch.....	.50	4.50	35.00

Varieties

- | | |
|------------------------------------|-----------------------------------|
| ✓ Belle of Georgia | ✓ Golden Jubilee |
| ✓ Carman | ✓ Heath Cling |
| ✓ Champion | ✓ Hale Haven |
| ✓ Chinese Cling
(Not Certified) | ✓ J. H. Hale |
| ✓ Early Elberta | ✓ Indian Cling
(Not Certified) |
| ✓ Early Wheeler | ✓ Mayflower |
| ✓ Elberta | ✓ Red Haven |

CHERRY—2 Year Buds

11-16 inch to 1 inch.....	.90	8.50	80.00
9-16 inch to 11-16 inch.....	.80	7.50	70.00
7-16 inch to 9-16 inch.....	.70	6.50	55.00

Varieties

- | | |
|------------------|---------------------|
| ✓ Early Richmond | ✓ Large Montmorency |
|------------------|---------------------|

APRICOT—1 Year Buds

11-16 inch and up.....	.90	8.50	80.00
9-16 to 11-16 inch.....	.80	7.50	70.00
7-16 to 9-16 inch.....	.70	6.00	50.00

✓ Moorpark

PLUM—1 and 2 Yr. on Peach

11-16 inch to 1 inch.....	.70	6.50	60.00
9-16 to 11-16 inch.....	.60	5.50	50.00
7-16 to 9-16 inch.....	.50	4.50	40.00

Varieties

- | | |
|-----------|----------|
| ✓ America | ✓ Hanska |
| ✓ Bruce | ✓ Opata |
| ✓ Compass | ✓ Sapa |
| ✓ Gold | |

PEAR—2 and 3 Yr. Grafts

1 inch and up.....	.90	8.00	75.00
11-16 inch to 1 inch.....	.75	6.50	60.00
9-16 to 11-16 inch.....	.65	5.50	50.00
7-16 to 9-16 inch.....	.55	4.50	40.00

(Continued on next page)

This list cancels all previous lists, and orders are booked subject to stock being unsold and field counts. Selected specimens priced according to quality.

Varieties

\ Bartlett
 \ Douglass

\ Garber
 \ Keiffer

ORNAMENTAL SHADE TREES

ELM AMERICAN

	Each	Per 10	Per 100
5 to 6 feet.....	.75	6.00	50.00
6 to 8 feet.....	1.00	9.00	75.00
8 to 10 feet.....	1.60	15.00	125.00

ELM, CHINESE (*Ulmus Pumila*)

4 to 5 feet.....	.50	4.00	35.00
5 to 6 feet.....	.65	5.50	50.00
6 to 8 feet.....	1.10	9.50	85.00
8 to 10 feet.....	1.35	12.00	110.00
1½ to 1½ inch Cal.....	1.60	15.00	135.00
1½ to 1¾ inch Cal.....	2.00	18.50	160.00
1¾ to 2 inch Cal.....	2.50	22.00	200.00
2 to 2½ inch Cal.....	3.00	28.50	260.00

ELM, HYBRID—Large Leaf Chinese

Budded on Chinese Elm understock, Our supply is limited and we will not accept orders for over 50 of a grade.

5 to 6 feet.....	1.30	12.50	100.00
------------------	------	-------	--------

ELM, MOLINE

4 to 5 feet.....	1.00	9.00	75.00
5 to 6 feet.....	1.30	12.00	100.00
6 to 8 feet.....	1.85	17.50	150.00

LOCUST, MORaine, PLANT PATENT No. 836

See back page of price list:

OAK, PIN (*Quercus Palustris*)

3 to 4 feet.....	.90	7.50	60.00
4 to 5 feet.....	1.10	10.00	80.00
5 to 6 feet.....	1.60	14.00	125.00

MAPLE SILVER (Soft)

5 to 6 feet.....	.85	7.50	70.00
6 to 8 feet.....	1.30	12.50	110.00
8 to 10 feet.....	2.00	18.50	160.00

MIMOSA (Weeping Silk Tree)

3 to 4 feet.....	.60		
4 to 5 feet.....	.80		
5 to 6 feet.....	1.00		
6 to 8 feet.....	1.50		

This list cancels all previous lists, and orders are booked subject to stock being unsold and field counts. Selected specimens priced according to quality.

RED-BUD—American (Root-pruned and bushy)

	Each	Per 10	Per 100
2 to 3 feet, heavy.....	.75	6.00	50.00
3 to 4 feet, heavy.....	1.00	8.50	75.00
4 to 5 feet, heavy.....	1.50	12.00	100.00
5 to 6 feet, heavy.....	1.80	17.00	150.00
6 to 8 feet, heavy.....	3.00		
8 to 10 feet, heavy.....	4.00		

SYCAMORE (Platanus Occidentalis)

4 to 5 feet.....	1.00	9.00	75.00
5 to 6 feet.....	1.30	12.00	100.00
6 to 8 feet.....	1.80	17.00	150.00

WILLOW, BABYLONIAN WEEPING

4 to 5 ft., heavy tops.....	.75	6.00	50.00
5 to 6 ft., heavy tops.....	.90	8.50	65.00
6 to 8 ft., heavy tops.....	1.35	12.50	110.00

HEDGE PLANTS**PRIVET, SINENSIS (Ligustrum Sinensis)**

Seedling grown — Evergreen — Hardier, smaller leaf, and bushier than Amur South

	Per 10	Per 100	Per 1000
9 to 12 inch, well br.....	1.50	8.00	60.00
12 to 18 inch, well br.....	2.00	10.00	75.00
18 to 24 inch, well br.....	2.50	13.00	100.00
2 to 3 ft., well br.....	3.00	15.00	120.00
4 to 5 ft., well br.....	4.50	35.00	

PRIVET, REGELS

12 to 18 inch.....	3.00	25.00	
18 to 24 inch.....	4.00	35.00	

FLOWERING SHRUBS

Our shrubs are grown on rich bottom lands, and are much heavier than regular grown shrubs on the upland. All young thrifty plants. No cutbacks. All priced barerooted unless otherwise specified.

ALMOND, PINK FLOWERING (Prunus Glandulosa)

	Each	Per 10	Per 100
18 to 24 inch.....	.55	4.50	40.00
2 to 3 feet.....	.70	6.00	50.00

This list cancels all previous lists, and orders are booked subject to stock being unsold and field counts. Selected specimens priced according to quality.

ALTHEA (Bush Form)

Anemonaeflorus—Double Pink
 Ardens—Double Violet
 Coelestis Single Blue (10c per plant higher)
 Double Rose
 Purpurea Semi-Plena (purple)
 Rubis—Single Red
 Snowdrift—White

	Each	Per 10	Per 100
18 to 24 inch.....	.35	3.00	22.50
2 to 3 feet.....	.40	3.50	30.00
3 to 4 feet.....	.50	4.00	35.00

BERBERIS ATROPURPUREA**(Red Leaf Barberry)**

12 to 18 inch, 2 yr.....	.50	4.50	40.00
18 to 24 inch, 2 yr.....	.60	5.50	50.00
15-18 in. spec. B&B.....	1.25	12.00	100.00
18-24 in. spec. B&B.....	1.50	14.00	125.00

BERBERIS MENTORENSIS**(Plant Patent No. 99)**

15 to 18 inch, heavy.....	.65	6.00	50.00
18 to 24 inch, heavy.....	.75	7.00	60.00

**Evergreen and adapted to the Southwest.
 Double the above prices for retail sales.**

CORNUS FLORIDA (White Flowering Dogwood)

18 to 24 inch, B&B.....	1.50	12.00
2 to 3 feet, B&B.....	1.75	15.00
3 to 4 feet, B&B.....	2.00	18.00

CRAPE MYRTLE—Watermelon Pink

This Pink variety should be planted in Kansas and Missouri where other varieties freeze. All plants are bushy and well rooted.

12 to 18 inch, heavy.....	.30	2.50	20.00
18 to 24 inch, heavy.....	.35	3.00	25.00
2 to 3 feet, heavy.....	.50	4.00	35.00
4 to 5 feet, hy. B&B.....	2.00	19.00	150.00
5 to 6 feet, hy. B&B.....	2.25	21.00	175.00

CRAPE MYRTLE—Watermelon Red

All B&B plants are transplants. All sizes are bushy and well rooted. Barerooted plants were root-pruned Spring 1950.

12 to 18 inch, heavy.....	.30	2.50	20.00
18 to 24 inch, heavy.....	.35	3.00	25.00
2 to 3 feet, heavy.....	.50	4.00	35.00

This list cancels all previous lists, and orders are booked subject to stock being unsold and field counts. Selected specimens priced according to quality.

	Each	Per 10	Per 100
3 to 4 feet, heavy.....	.70	6.00	50.00
2 to 3 feet, hy. B&B.....	1.75	16.50	125.00
3 to 4 feet, hy. B&B.....	2.00	19.00	150.00
4 to 5 feet, hy. B&B.....	2.40	21.00	180.00
CYDONIA JAPONICA (Japan Quince)			
Upright Red.			
12 to 18 inch, heavy.....	.35	3.00	25.00
18 to 24 inch, heavy.....	.40	3.50	30.00
2 to 3 feet, heavy.....	.45	4.00	35.00
FORSYTHIA—Intermediate Spectabilis			
18 to 24 inch, heavy.....	.40	3.50	30.00
2 to 3 feet, heavy.....	.50	4.50	40.00
3 to 4 feet, heavy.....	.60	5.50	50.00
4 to 5 feet, heavy.....	.90	8.50	75.00
HONEYSUCKLE BUSH—Lonicera Fragrantissima			
18 to 24 inch.....	.45	4.00	35.00
2 to 3 feet.....	.50	4.50	40.00
3 to 4 feet.....	.70	6.50	55.00
HONEYSUCKLE BUSH—Tartarica Rubra			
Zabeli Strain—Red Flower. Red Fruit.			
12 to 18 inch.....	.35	3.00	25.00
18 to 24 inch.....	.50	4.00	35.00
2 to 3 feet.....	.60	5.00	45.00
3 to 4 feet.....	.70	6.50	60.00
HYDRANGEA P. G.			
18 to 24 inch.....	.60	5.00	45.00
24 to 30 inch.....	.75	6.50	60.00
LILAC ROTHOMAGENSIS (Chinese Purple)			
(Generally grown and sold for Persian Lilac)			
18 to 24 inch, heavy.....	.45	4.00	35.00
2 to 3 feet, heavy.....	.60	5.00	45.00
3 to 4 feet, heavy.....	.70	6.00	55.00
4 to 5 feet, heavy.....	.90	8.00	75.00
PHILADELPHUS—MOCK ORANGE			
P. CORONARIUS (Sweet Scented)			
18 to 24 inch.....	.35	3.00	25.00
2 to 3 feet.....	.45	4.00	32.00
3 to 4 feet.....	.50	4.50	40.00
PHILADELPHUS VIRGINALIS			
Semi-double White Flowers. Bloom from May till Frost.			
12 to 18 inch.....	.40	3.50	30.00
18 to 24 inch.....	.50	4.50	40.00
2 to 3 feet.....	.60	5.50	50.00
3 to 4 feet.....	.80	7.00	65.00

This list cancels all previous lists, and orders are booked subject to stock being unsold and field counts. Selected specimens priced according to quality.

PRUNUS PERSICA RUBRA
 (Red Flowering Peach)

	Each	Per 10	Per 100
2 to 3 ft., well br.....	.60	5.50	50.00
3 to 4 ft., well br.....	.75	7.00	65.00
4 to 5 ft., well br.....	.85	8.00	75.00
5 to 6 ft., well br.....	1.00		

PRUNUS NEWPORT

3 to 4 feet.....	.85		
4 to 5 feet.....	1.00		

RED BUD (Cercis Canadensis)

18 to 24 inch.....	.50	4.00	35.00
2 to 3 feet.....	.75	6.00	50.00
3 to 4 feet.....	1.00	8.50	75.00
4 to 5 feet.....	1.50	12.00	100.00

RUSSIAN OLIVE

2 to 3 feet.....	.50	4.50	40.00
3 to 4 feet.....	.70	6.00	50.00
4 to 5 feet.....	.80	7.00	65.00

SNOWBALL (Common)

12 to 18 inch.....	.55	4.50	40.00
18 to 24 inch.....	.65	5.50	50.00
2 to 3 feet.....	.80	7.00	65.00

SPIREA BILLARDI (Pink Flowers)

18 to 24 inch.....	.35	3.00	25.00
2 to 3 feet.....	.40	3.50	30.00

SPIREA FROBELIA (Dwarf, Red Flowers)

12 to 18 inch.....	.35	3.00	25.00
18 to 24 inch.....	.40	3.50	30.00
24 to 30 inch.....	.45	4.00	35.00

SPIREA PRUNIFOLIA PLENA
 (Double Bridalwreath)

18 to 24 inch.....	.40	3.50	30.00
2 to 3 feet.....	.50	4.50	40.00
3 to 4 feet.....	.65	6.00	50.00

SPIREA REEVESIANA PLENA
 (Double Reeves)

18 to 24 inch.....	.35	3.00	25.00
2 to 3 feet.....	.45	4.00	35.00
3 to 4 feet.....	.60	5.00	45.00

SPIREA THUNBERGII

18 to 24 inch.....	.40	3.50	30.00
24 to 30 inch.....	.45	4.00	35.00
30 to 36 inch.....	.60	5.00	45.00

This list cancels all previous lists, and orders are booked subject to stock being unsold and field counts. Selected specimens priced according to quality.

SPIREA VAN HOUTTEI

18 to 24 inch, heavy.....	.35	2.80	22.00
2 to 3 feet, heavy.....	.40	3.20	28.00
3 to 4 feet, heavy.....	.50	3.80	33.00

TAMARIX HISPIDA**(Silvery Foliage, Deep Pink Flower)**

2 to 3 feet.....	.40	3.50	30.00
3 to 4 feet.....	.50	4.50	40.00
4 to 5 feet.....	.60	5.50	50.00

VITEX—Macrophylla (Purple)

2 to 3 feet.....	.45	4.00	35.00
3 to 4 feet.....	.55	5.00	45.00
4 to 5 feet.....	.70	6.50	60.00

WEIGELIA HENDERSON**(Rosy-Carmine Flowers)**

18 to 24 inch.....	.40	3.50	30.00
2 to 3 feet.....	.50	4.50	40.00
3 to 4 feet.....	.65	6.00	55.00

WILLOW, PINK FLOWERING (Desert)

2 to 3 feet.....	.35	3.00	25.00
3 to 4 feet.....	.40	3.50	30.00
4 to 5 feet.....	.50	4.50	40.00

WILLOW, SALIX DISCOLOR (Pussy Willow)

2 to 3 feet.....	.40	3.50	30.00
3 to 4 feet.....	.50	4.50	35.00
4 to 5 feet.....	.60	5.00	45.00

WILLOW, SALIX PURPUREA**(Dwarf blue leaf Artic Willow)**

15 to 18 inch.....	.30	2.50	20.00
18 to 24 inch.....	.40	3.50	30.00
24 to 30 inch.....	.50	4.00	35.00

VINES

LONICERA JAPONICA PURPUREA (Evergreen)**Purple foliage in Fall. Blooms throughout the Summer**

	Each	Per 10	Per 100
2 Yr. No. 1.....	.60	5.50	45.00

LONICERA HECKROTTI**Brilliant Golden Flowers**

2 Yr. No. 1.....	.60	5.50	45.00
------------------	-----	------	-------

This list cancels all previous lists, and orders are booked subject to stock being unsold and field counts. Selected specimens priced according to quality.

BROADLEAF EVERGREENS

SPECIAL NOTICE—On all orders for B&B evergreens and broadleaf evergreens to be shipped by express, freight, or truck lines the 10 rate will be charged on quantity orders that ordinarily fall in the 100 rate class to take care of the cost of wrapping and roping.

All plants priced per each are balled and burlapped unless otherwise noted.

All large plants have been sheared and root-pruned within the past eighteen months.

ABELIA GRANDIFLORA

	Each	Per 10	Per 100
12 to 18 inch, heavy.....	1.60	1.50	1.25
18 to 24 inch, heavy.....	2.00	1.85	1.60

BERBERIS ATROPURPUREA (Red Leaf Barberry)

15 to 18 inch, heavy.....	1.25	1.20	1.00
18 to 24 inch, heavy.....	1.60	1.50	1.25

BERBERIS MENTORENSIS (Plant Patent No. 99) Evergreen and especially adapted to the southwest.

15 to 18 inch, heavy.....	1.60	1.50	1.30
18 to 24 inch, heavy.....	2.00	1.85	1.60

COTONEASTER DIVARICATA

(Hardy and usually evergreen)—Pink flowers and abundance of rich red berries. Spreading habit.

24 to 30 inch.....	2.00	1.85	1.60
30 to 36 inch.....	2.30	2.15	1.90
3 to 4 feet.....	3.00	2.85	2.50

EUONYMOUS JAPONICA (Bare-root and puddled)

4 to 6 inch, Bedgown.....	.25	.20	.18
6 to 9 inch, Bedgown.....	.35	.30	.25
9 to 12 inch, Bedgown.....	.50	.45	.40
12 to 15 inch, Bedgown.....	.60	.55	.50

EUONYMOUS PATENS

Hardest and most dependable evergreen shrub. Large glossy green leaves, good for massing and trimming in low hedge or specimens

12 to 15 inch, heavy.....	1.55	1.45	1.20
15 to 18 inch, heavy.....	1.85	1.75	1.50
18 to 24 inch, heavy.....	2.15	2.00	1.80
24 to 30 inch, heavy.....	2.60	2.50	2.25

Bare-root plants at one half the B&B price.

This list cancels all previous lists, and orders are booked subject to stock being unsold and field counts. Selected specimens priced according to quality.

EUONYMOUS RADICANS (Upright grower)

	Each	Per 10	Per 100
12 to 18 inch.....	1.30	1.20	1.00
18 to 24 inch.....	1.70	1.60	1.35

JASMINE FLORIDUM (Humile)

18 to 24 inch, heavy.....	1.60	1.45	1.25
24 to 30 inch, heavy.....	1.85	1.75	1.50

**LONICERA HECKROTTI
(Brilliant Golden Flowers)**

18 to 24 inch.....	1.50	1.40	1.20
24 to 30 inch.....	1.85	1.75	1.50

**LONICERA JAPONICA PURPUREA (Globes).
(Evergreen Honeysuckle)**

12 to 18 inch.....	1.50	1.40	1.20
18 to 24 inch.....	1.80	1.70	1.50

MAHONIA AQUIFOLIUM (Oregon Holly Grape)

12 to 15 inch, heavy.....	2.10	2.00	1.75
15 to 18 inch, heavy.....	2.35	2.25	2.00
18 to 24 inch, heavy.....	2.85	2.75	2.50

NANDINA DOMESTICA

12 to 15 inch, heavy.....	1.85	1.75	1.50
15 to 18 inch, heavy.....	2.25	2.10	1.75
18 to 24 inch, heavy.....	2.50	2.40	2.00

PYRACANTHA COCCINEA

(Bushy spreading Firethorn) (Propagated from berried plants) (Root-pruned or transplanted)

1 gal cans, 9-12 in., hvy.....	1.00	.90	.75
1 gal cans, 12-18 in., hvy.....	1.25	1.20	1.00
18 to 24 inch, field grown...	2.00	1.90	1.70
24 to 30 inch, field grown...	2.40	2.30	2.00

PYRACANTHA LALANDI (Upright Firethorn)

18 to 24 inch, heavy.....	2.00	1.90	1.60
2 to 3 feet, heavy.....	2.50	2.40	2.00

EVERGREENS

SPECIAL NOTICE—On all orders for B&B evergreens and broadleaf evergreens to be shipped by express, freight or truck lines the 10 rate will be charged on quantity orders that ordinarily fall in the 100 rate class to take care of the cost of wrapping and roping.

This list cancels all previous lists, and orders are booked subject to stock being unsold and field counts. Selected specimens priced according to quality.

All large plants have been sheared and root-pruned where necessary. All plants priced per each B&B.

ARIZONA CYPRESS GAREII

(Cupressus Arizonica) Rich silvery blue color. Compact grower. Grafted on Biota understock and well sheared.

	Each	Per 10	Per 100
2 to 3 feet.....	3.35	3.25	3.00
3 to 4 feet.....	3.85	3.75	3.50

BIOTA AUREA CONSPICUA

(True Goldspire Grafts). Sheared full, and grafted on Biota understock.

24 to 30 inch.....	2.90	2.80	2.60
30 to 36 inch.....	3.40	3.30	3.00

BIOTA AUREA NANA (Berckman's Golden)

Compact, vigorous plants.

15 to 18 in., well filled.....	2.00	1.90	1.75
18 to 24 in., well filled.....	2.40	2.35	2.10
24 to 30 in., well filled.....	2.75	2.65	2.35
30 to 36 in., well filled.....	3.10	3.00	2.75

BIOTA BONITA (Dwarf Globe)

True globe and hardiest type.

12 to 15 inch, specimen.....	1.75	1.70	1.50
15 to 18 inch, specimen.....	2.00	1.90	1.75
18 to 24 inch, specimen.....	2.40	2.35	2.10
24 to 30 inch, specimen.....	2.85	2.75	2.50

BIOTA BREWER'S HYBRID

18 to 24 inch.....	2.10	2.00	1.75
24 to 30 inch.....	2.35	2.25	2.00
30 to 36 inch.....	2.75	2.60	2.35

BIOTA EXCELSA (Best Green Arborvitae)

Compact pyramidal grower, with rich green foliage the entire year.

18 to 24 inch, heavy.....	2.00	1.95	1.75
24 to 30 inch, heavy.....	2.35	2.25	2.00
30 to 36 inch, heavy.....	2.70	2.60	2.35
3 to 4 feet, heavy.....	3.15		

BIOTA ORIENTALIS COMPACTA

Compact Chinese Arborvitae, or sheared compact.

24 to 30 inch, heavy.....	2.10	2.00	1.75
30 to 36 inch, heavy.....	2.35	2.25	1.90
3 to 4 feet, heavy.....	2.75	2.65	2.35

This list cancels all previous lists, and orders are booked subject to stock being unsold and field counts. Selected specimens priced according to quality.

JUNIPER CHINENSIS ARMSTRONG

Very compact Dwarf Spreader. Rich green color

	Each	Per 10	Per 100
15 to 18 inch.....	3.10	3.00	2.75
18 to 24 inch.....	3.60	3.50	3.25

JUNIPER CHINENSIS Densa GLAUCA

(Viridifolia) Compact pyramidal grower, blue-gray foliage.

18 to 24 inch.....	2.10	2.00	1.75
24 to 30 inch.....	2.40	2.30	2.00
30 to 36 inch.....	2.75	2.70	2.50
36 to 42 inch.....	3.35	3.25	3.00

JUNIPER CHINENSIS EXCELSA STRICTA

(Spiny Greek Juniper) Compact plants.

18 to 24 inch.....	2.25	2.20	1.90
24 to 30 inch.....	2.60	2.50	2.25
30 to 36 inch.....	3.10	3.00	2.75

JUNIPER CHINENSIS KETELEERI

Bright green color, upright, pyramidal grower.

36 to 42 in., well filled.....	4.35	4.25	4.00
42 to 48 in., well filled.....	4.90	4.80	4.50
4 to 5 ft., well filled.....	6.00	5.85	5.50

JUNIPER CHINENSIS MASCULA

(Good Pyramidal)

30 to 36 inch, full.....	3.60	3.50	3.25
36 to 42 inch, full.....	4.10	4.00	3.75
42 to 48 inch, full.....	4.65	4.50	4.25

JUNIPER CHINENSIS PFITZERIANA

(Pfitzer Juniper) (Sheared throughout the season)

12 to 15 inch, heavy.....	2.50	2.45	2.25
15 to 18 inch, heavy.....	2.80	2.75	2.50
18 to 24 inch, specimen.....	3.35	3.25	3.00
24 to 30 inch, specimen.....	3.85	3.75	3.50
30 to 36 inch, specimen.....	4.50		

JUNIPER CHINENSIS PFITZERIANA GLAUCA

(Silver Pfitzer)

12 to 15 inch, heavy.....	2.80	2.75	2.50
15 to 18 inch, heavy.....	3.10	3.00	2.75
18 to 24 inch, heavy.....	3.65	3.50	3.25
24 to 30 inch, heavy.....	4.00		

JUNIPER COMMUNIS HIBERNICA FASTIGIATA

(Compact Western Irish)

18 to 24 inch.....	2.10	2.00	1.75
24 to 30 inch.....	2.35	2.25	2.00
30 to 36 inch.....	2.85	2.75	2.50

This list cancels all previous lists, and orders are booked subject to stock being unsold and field counts. Selected specimens priced according to quality.

JUNIPER SABINA VON EHRON

Well sheared and compact. Rich green color,
Winter and Summer.

15 to 18 inch, heavy.....	2.75	2.65	2.40
18 to 24 inch, heavy.....	3.30	3.20	2.90
24 to 30 inch, heavy.....	3.80	3.65	3.40
30 to 36 inch, heavy.....	4.40	4.30	4.00

JUNIPER SCOPULORUM—Sheared and Compact

18 to 24 inch.....	2.35	2.25	2.00
24 to 30 inch.....	2.60	2.50	2.25
30 to 36 inch.....	3.35	3.25	3.00

JUNIPER SCOPULORUM FAINI AND GAREII

Faini—Silvery blue color. Prostrate type.
Gareii—Silvery color. Semi-prostrate type.

15 to 18 inch.....	3.35	3.25	3.00
18 to 24 inch.....	3.85	3.75	3.50
24 to 30 inch.....	4.40	4.30	4.00

**JUNIPER SCOPULORUM GLOBOSA
(Sheared Globes)**

12 to 15 inch.....	2.60	2.50	2.25
15 to 18 inch.....	3.10	3.00	2.75
18 to 24 inch.....	3.50	3.40	3.10

JUNIPER SCOPULORUM PATHFINDER

Rich blue color, upright grower.

24 to 30 inch.....	3.35	3.25	3.00
30 to 36 inch.....	3.60		
36 to 42 inch.....	4.25		
42 to 48 inch.....	4.60		
4 to 5 feet.....	5.75		

**JUNIPER SCOPULORUM COLUMNARIS SNEEDI
Compact Columnar grower. Silver blue color.**

24 to 30 inch.....	3.35	3.25	3.00
30 to 36 inch.....	3.60		
36 to 42 inch.....	4.25		
42 to 48 inch.....	4.60		
4 to 5 feet.....	5.75		

JUNIPER VIRGINIANA

Well Sheared.

24 to 30 inch, full.....	1.90	1.80	1.60
30 to 36 inch, full.....	2.30	2.25	2.00
3 to 4 feet, full.....	2.90	2.80	2.50
4 to 5 feet, full.....	4.00	3.85	3.50

JUNIPER VIRGINIANA (Western Type)

(These have been kept well sheared and root-pruned).

30 to 36 in., broad spec'ms...	2.85	2.80	2.50
3 to 4 ft., broad spec'ms.....	3.40	3.30	3.00
4 to 5 ft., broad spec'ms.....	4.50	4.40	4.00
5 to 6 ft., broad spec'ms.....	5.75	5.65	5.25

This list cancels all previous lists, and orders are booked subject to stock being unsold and field counts. Selected specimens priced according to quality.

JUNIPER VIRGINIANA CANAERTI DARK

Darker color and thriftier grower.

36 to 42 inch.....	4.00	3.90	3.60
42 to 48 inch.....	4.50	4.40	4.00
4 to 5 feet.....	6.00	5.80	5.50

JUNIPER VIRGINIANA CUPPRESSIFOLIA

Cannarti color, better grower.

36 to 42 in., well sheared.....	4.00
42 to 48 in., well sheared.....	4.50

JUNIPER VIRGINIANA GLAUCA

(Silver Red Cedar)

24 to 30 inch.....	3.00
30 to 36 inch.....	3.50
3 to 4 feet.....	4.00

JUNIPER VIRGINIANA HILLI

(Hill's Dundee Juniper)

30 to 36 inch.....	3.60
36 to 42 inch.....	4.00
42 to 48 inch.....	4.50
4 to 5 feet.....	5.50

JUNIPER VIRGINIANA SCHOTTI

3 to 4 feet.....	4.50
4 to 5 feet.....	5.50

LINING OUT STOCK

FALL, 1951

BROADLEAF EVERGREENS

Per 100 Per 1000

Aristida Glauca (Glaucous Grass)
(Dwarf silvery foliage and evergreen)

2¼ inch Pots.....	\$17.00
-------------------	---------

Euonymus Japonica (Evergreen)

4 to 6 in. 1 Yr., bed grown.....	18.00
6 to 9 in. 1 Yr., bed grown.....	25.00
9 to 12 in. 2 Yr., bed grown.....	40.00
12 to 15 in. 2 Yr., bed grown.....	50.00
2¼ inch Pots.....	18.00

Euonymus Patens (Spreading)

6 to 9 inch, bed grown.....	15.00
9 to 12 inch, bed grown.....	20.00
12 to 18 inch, bed grown.....	25.00

Euonymus Radicans (Upright)

6 to 9 inch, bed grown.....	12.00
9 to 12 inch, bed grown.....	18.00

This list cancels all previous lists, and orders are booked subject to stock being unsold and field counts. Selected specimens priced according to quality.

Nandina Domestica

	Per 100	Per 1000
3 to 6 inch, transplants.....	14.00	120.00
6 to 9 inch, transplants.....	17.00	150.00
9 to 12 inch, transplants.....	20.00	180.00
12 to 15 inch, transplants.....	25.00	
2¼ inch pots, heavy.....	20.00	180.00
2¼ inch pots, light.....	16.00	140.00

Pyracantha Coccinea

2½ inch pots, hvy. plants.....	18.00	160.00
9 to 12 inch, 1 gal. cans.....	75.00	
12 to 18 inch, 1 gal. cans.....	100.00	

EVERGREENS**BIOTA AUREA NAN (Berckman's Golden)**

2¼ inch pots, extra heavy.....	25.00	
--------------------------------	-------	--

BIOTA BONITA (Dwarf Globe)

2¼ inch pots, extra heavy.....	22.50	
--------------------------------	-------	--

BIOTA EXCELSA

2¼ inch pots, extra heavy.....	25.00	
--------------------------------	-------	--

BIOTA ORIENTALIS (Chinese Arborvitae)

12 to 18 inch, root-pruned.....	9.00	70.00
18 to 24 inch, root-pruned.....	12.00	100.00

**JUNIPER CHINENSIS EXCELSA STRICTA
(Spiny Greek)**

2¼ inch pots, extra heavy.....	20.00	
--------------------------------	-------	--

**JUNIPER CHINENSIS Densa GLAUCA
(Viridifolia)**

2¼ inch pots, extra heavy.....	20.00	
--------------------------------	-------	--

**JUNIPER CHINENSIS PFITZERIANA
(Pfitzers)**

2¼ inch pots, extra heavy.....	22.50	200.00
--------------------------------	-------	--------

JUNIPER CHINENSIS PROCUMBENS

2¼ inch pots, heavy.....	22.50	
--------------------------	-------	--

JUNIPER CHINENSIS SARGENTI (Blue)

2¼ inch pots, heavy.....	25.00	
--------------------------	-------	--

JUNIPER SABINA (Savin)

2¼ inch pots, heavy.....	20.00	
--------------------------	-------	--

JUNIPER SABINA TAMARISCIFOLIA

2¼ inch pots, heavy.....	27.50	
--------------------------	-------	--

JUNIPER SABINA VON EHRON

2¼ inch pots, extra heavy.....	25.00	225.00
--------------------------------	-------	--------

**JUNIPER HORIZONTALIS PLUMOSA
(Andorra Juniper)**

2¼ inch pots.....	18.00	
-------------------	-------	--

This list cancels all previous lists, and orders are booked subject to stock being unsold and field counts. Selected specimens priced according to quality.

JUNIPER COMMUNIS HIBERNICA FASTIGIATA
(Compact Irish)

	Per 100	Per 1000
2¼ inch pots.....	18.00	

JUNIPER SCOPULORUM

6 to 9 inch, root-pruned.....	12.00	100.00
9 to 12 inch, root-pruned.....	14.00	120.00
12 to 18 inch, root-pruned.....	17.00	150.00
18 to 24 inch, root-pruned.....	20.00	180.00

JUNIPER VIRGINIANA

2 to 4 inch, seedlings.....	4.50	35.00
4 to 6 inch, seedlings.....	6.50	50.00
6 to 9 inch, seedlings.....	7.50	60.00

PINES

PINUS MUGHUS (Mugho Pine)

3 to 4 inch, root-pruned.....	10.00	80.00
4 to 6 inch, root-pruned.....	12.00	100.00
6 to 9 inch, root-pruned.....	17.00	150.00

PINUS NIGRA (Austrian Pine)

4 to 6 inch, transplants.....	15.00	130.00
6 to 9 inch, transplants.....	18.00	160.00

JUNIPER GRAFTS

On Juniper Virginiana Understocks unless otherwise specified. Those understocks have been transplanted to 2¼ inch pots and repotted in 2½ inch pots before grafting.

(Delivery Spring 1952)

\$ 55.00 per 100

500.00 per 1000

- *Juniper Chinensis Pyramidalis
(Blue Column Juniper)
- *Juniper Chinensis Keteleeri
- *Juniper Chinensis Mascula
- Juniper Scopulorum Chandleri
- Juniper Scopulorum Columnaris
- Juniper Scopulorum Columnaris Sneedi
(Sneed's Silver Column)
- Juniper Scopulorum Faini
(Silvery Blue Spreader)
- Juniper Scopulorum Gareii
(Semi-Prostrate, Blue Green)
- Juniper Scopulorum Pathfinder

This list cancels all previous lists, and orders are booked subject to stock being unsold and field counts. Selected specimens priced according to quality.

- Juniper Scopulorum P. G. Green
- Juniper Scopulorum Sneedi
(Sneed's Silver Juniper)
- Juniper Virginiana Burki
- Juniper Virginiana Canaerti
- Juniper Virginiana Cupressifolia
(Hillspire Juniper)
- Juniper Virginiana Glauca
- Juniper Virginia Hilli (Hill's Dundee)
- *Biota Aurea Conspicua (True Goldspire Arborvitae)
- *Arizona Cypress Gareii (Cupressus Arizonica)
Arborvitae).
- *Varieties are grafted on Biota Orientalis (Chinese
Arborvitae)

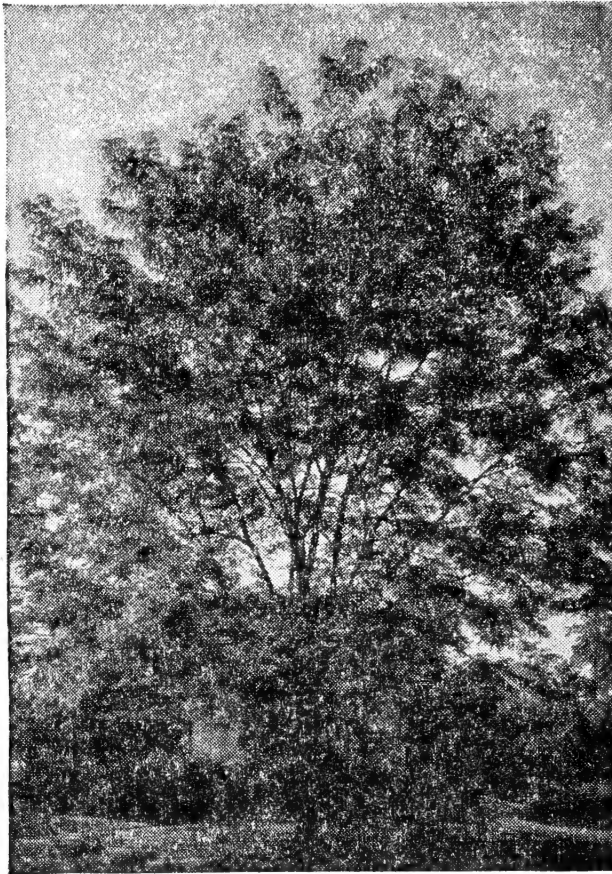
INDEX



	Page
Fruit Trees	3-4
Ornamental Shade Trees	4-5
Hedge Plants	5
Flowering Shrubs	5-6-7-8-9
Vines	9
Broadleaf Evergreens	10-11
Evergreens	11-12-13-14-15
Lining Out Stock	15-16-17
Pines	17
Juniper Grafts.....	17-18



Moraine Locust, Plant Patent No. 836



WHOLESALE PRICE

	Each 10	Lots of 100
5 to 6 feet, Whips.....	\$2.25	\$2.00
6 to 7 feet, Whips.....	2.75	2.50
7 to 8 feet, Whips.....	3.50	3.25

SUGGESTED RETAIL PRICE

	Each 10	Lots of 100
5 to 6 feet, Whips.....	\$5.00	\$4.50
6 to 7 feet, Whips.....	6.00	5.50
7 to 8 feet, Whips.....	8.00	7.25