

## **Historic, Archive Document**

Do not assume content reflects current scientific knowledge, policies, or practices.





62.11

LIBRARY  
RECEIVED  
★ JAN 31 1951 ★  
U. S. Department of Agriculture

# Woodside

# VINE SEEDS

1951



**WOODSIDE SEED GROWERS COMPANY**

**GROWERS OF HIGH QUALITY VINE SEEDS**

**200 South Main Street -:- Rocky Ford, Colorado**



## **To Our Customers:**

WE HAVE TRIED each year to raise the standard of quality of the seeds we grow and sell and are constantly improving our melons, each year breeding out any faults that may show in them. This is something no one could afford to do who is growing for the markets only.

It is with a great deal of pleasure that we send you this catalog, and are confident that you will be more than pleased with the crops grown from our seed regardless of the variety or varieties you may decide to plant.

---

### **OUR MOTTO:**

*"Quality, Service and a Square Deal to All"*

**Quality . . .** Our desire to make "QUALITY" the first consideration; next to make our prices as low as good seed can be sold; our policy has always been, the best is not quite good enough.

**Service . . .** Seed will be shipped same day order received.

**Square Deal to All . . .** Your order, either large or small, will be appreciated, receive PROMPT ATTENTION and filled from select hand-cut seed.

While we do not claim to have the only GOOD SEED on the market, we do claim that THERE IS NONE BETTER THAN THE GRADE WE OFFER.



# Planting - Culture - Harvesting Directions

The cantaloupe thrives best on a well-drained sandy loam soil. Alfalfa sod, plowed under in the fall, has shown the best results in the West and Southwest, frequently doubling the yield. Clover sod in sections where it is grown, and cow peas in the South have shown like results. Well-rotted barnyard manure has generally given better results than commercial fertilizers. The cantaloupe seems to produce better on a medium fertile soil. If too much fertilizer is used the vines grow very rank and the melons are likely to be over-sized and poorly netted, and flesh coarse and of poor quality. If planted on poor soil the melons are undersized and yield generally light. The size of the melon is undoubtedly governed by the fertility of the soil as well as by climatic conditions. Crop rotation is essential to retain the necessary plant food, and is a safeguard against disease, infected soil and insect pests.

In preparing the soil, ever bear in mind that the cantaloupe should be planted and cultivated as a garden crop rather than a field crop, as **IT WILL NOT RESPOND** readily to the rough treatment usually given to general field crops. The grower will be well repaid for the extra labor and time consumed in the thorough preparation of the soil.

Select, if possible, suitable land, sloping to the south or east. Such land warms up quickly in the early spring and is preferable where an early crop is desired.

If plowing is done in the fall, plow from 8 to 10 inches in depth; if in the spring plow only as deep as the land has been plowed before. When plowing under alfalfa and like crops, fall plowing is the best and under most conditions shows best results. In irrigated districts, if the land is dry, irrigate by flooding before plowing, using care not to plow while land is wet, nor yet too dry; for either will prevent reducing the soil to the mellow, ashy condition so essential to the best results and the easy cultivation of the crop. If the land was in cultivation the previous year, discing is very beneficial, as it not only mixes any compost or manure that may have been applied, but insures a deep pulverized seed bed.

The land should be prepared and allowed to settle a few days before planting. If crop is to be grown by irrigation, select slope of the land so it can be irrigated without washing or flooding.

Do not plant near any other vine crop. Do not plant more than one season in succession on the same soil. Plant as soon as danger of frost is past. When the plant has from five to six leaves and danger from beetles is past, thin to one plant about two feet apart. Thinning should be governed by strength of the soil. If the plants are left too thick on rather poor soil, many of the melons will likely be small; on the other hand, if thinned too closely on rich soil, over-sized melons will be the result.

Give frequent shallow cultivation as long as possible to get between the rows without disturbing the vines or roots. Keep a fine dust mulch to aid in retaining moisture. The cantaloupe, to produce best results, should have a continuous healthy growth. The slightest check or setback in growth will retard the early development and reduce the yield.

The cantaloupe begins ripening on the inside. When ripening process begins it requires some experience to tell from the outward appearance when it is ready to pick, the change being so slight that the inexperienced will scarcely detect it. The skin between the netting gradually assumes a peculiar gray cast; the netting becomes more prominent and of a silvery whitish color. On close examination, a slight crack about the stem will be found, and with a little pressure on the stem with the thumb or forefinger it should part or slip from the melon without breaking the stem or melon, leaving a smooth, natural cup where detached. When picked at this, the proper stage, the melon has its natural sweetness and flavor, and if carefully handled, with proper refrigeration and good transportation service, will carry to most any market in first-class condition. The stem will not slip from a green melon but will break or force a piece out of the melon, and if picked in this manner are likely to be of inferior quality, without flavor, and show up in a wilted, spongy condition on the market.

The picking should start early in the morning while the melons are cool, yet in case the vines are wet from heavy dews or rains, it is not advisable to start picking before vines are fairly dry, as tramping and handling when wet is injurious to the vines and melons picked and handled while wet lose much of their fine appearance, being more or less covered with mud, and the netting becomes badly ruffled.



## WHEN TO ORDER

We strongly advise our customers to send in their orders immediately upon receipt of this catalog, as they will then have the seeds on hand when they need them, and avoid unnecessary delay often caused by the rush of the busy season. It is advisable to order early while our stock is complete—thus avoiding any disappointment.

## USE OUR ORDER SHEET

Carefully fill out the blank spaces at the top for shipping directions. Use one line for each kind of seed ordered.

Always carry out the price of each item and keep a copy of your order.

## HOW TO ORDER

Be sure to give your full name, post office, with street number or rural route. Remittance may be made in stamps (if one dollar or less), certified check, bank draft or postoffice money order. We will also ship C.O.D. when one-fourth of the remittance accompanies order.

## CO-OPERATION

We want to supply growers who appreciate good seed. If after ordering from us you have any cause for complaint, write us fully at once. Just criticism is an aid to improvement and satisfied customers are our pride.

## WHY NOT BUY ROCKY FORD CANTALOUPE SEED AT ROCKY FORD?

The Rocky Ford district produces and supplies more than 90 percent of the cantaloupe seed in the entire country. Practically all of the cantaloupe seed handled by the seed trade is secured either directly or indirectly from this district. Therefore would it not be good business policy to buy your Cantaloupe Seed direct from Rocky Ford, and direct from the producers before it passes through so many hands?

Please think this over and give us a trial order.

## HELPFUL SUGGESTIONS

We are at all times willing to offer any assistance in our power regarding culture, best varieties for your district, etc., if you will explain your climatical and market conditions, also average growing season. Do not hesitate in writing us for information.

## SELECTION, GROWING AND WARRANTY

Our planting stocks are kept up to the highest standard by systematic selection. Our seed-growing is carried on in the most up-to-date manner. The seed we offer is the best selection from fields grown exclusively for seed purposes; was saved from stock true to type, from well netted, fully matured, standard-sized melons of the best seed quality. Our seed is all cut by hand, well-cured, is thoroughly cleaned; all light seed fanned out, and is of the highest germination. While we use every precaution in sending out pure and reliable seed, we, in common with other responsible seed houses, sell our seed subject to the following disclaimer, it being adopted by the American Seed Trade Association. **DISCLAIMER:** We, Woodside Seed Growers Company, give no warranty, express or implied, as to description, productiveness or any other matter of any seed we sell, and will not be responsible for the crop.

## REFERENCES

The Rocky Ford National Bank, any business firm of Rocky Ford, the Packer Produce Mercantile Agency (The Red Book) of Kansas City, Missouri; The Produce Reporter Company (The Blue Book) of Chicago, Illinois; Dun & Bradstreet, Denver, Colorado.



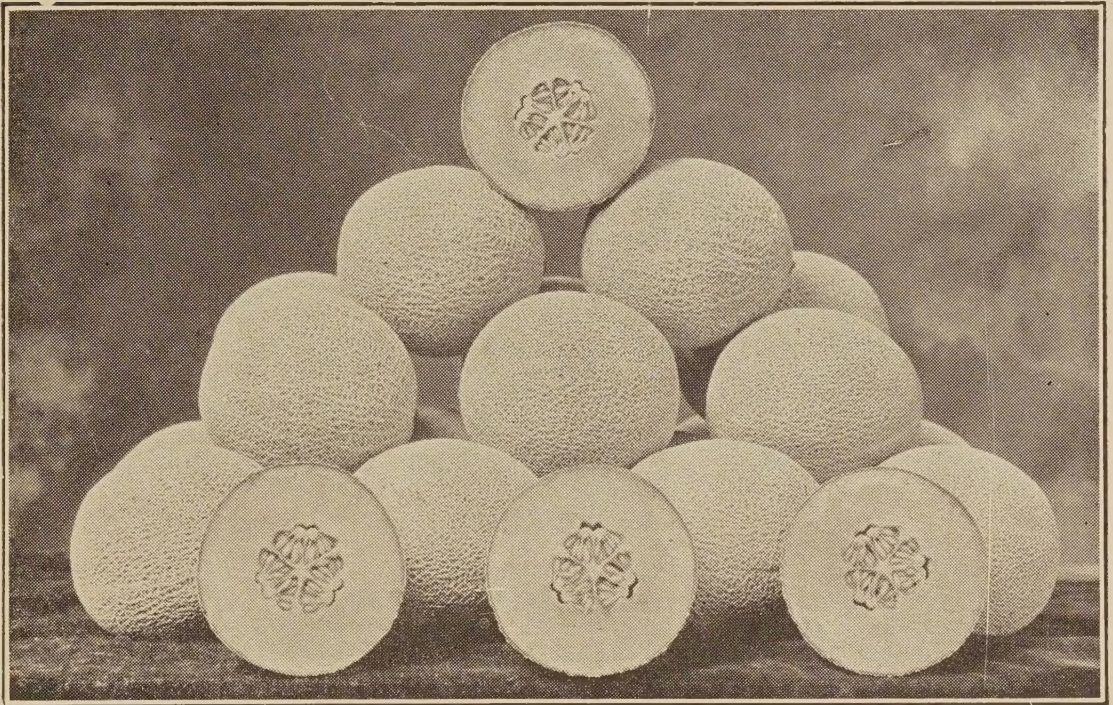
# Woodside's Winner Cantaloupe

## A SUPERIOR STRAIN FOR THE EARLY MARKET

One of the finest Hale's Best strains. Our boosters for this melon are actual farmers and growers. Many write to us stating, "I grew the 'Winner' in the same field with other strains of the Hale's Best and find the 'Winner' about one week earlier, an unusually heavy yielder and highly disease resistant."

The melons run uniform in size, average about twelve pack flat, have heavy solid net showing practically no stripe or rib, small seed cavity, the flesh being of a deep pink color. The vines are very prolific which eliminates cull and slick, inferior melons. It is a splendid shipper.

**PRICE:** Pkt. 10c; oz. 15c;  $\frac{1}{4}$  lb. 50c;  $\frac{1}{2}$  lb. 90c; 1 to 5 lbs. @ \$1.65 per lb.  
5 to 25 lbs. @ \$1.50 per lb.; 25 lbs. or more @ \$1.35 per lb. Prepaid.



WOODSIDE'S WINNER

# New Ideal Cantaloupe

By careful selection this improved strain of Hale's Best has become another of the outstanding melons in districts where a large, uniform, early melon is desired; on an average they will produce within 80 to 85 days from the date of planting.

Vines are unusually healthy, vigorous and very prolific; the melons run Jumbo in size and oval in shape, practically all solid net; the flesh is a deep salmon color, very firm and fine grained. Has an excellent flavor, and small seed cavity.

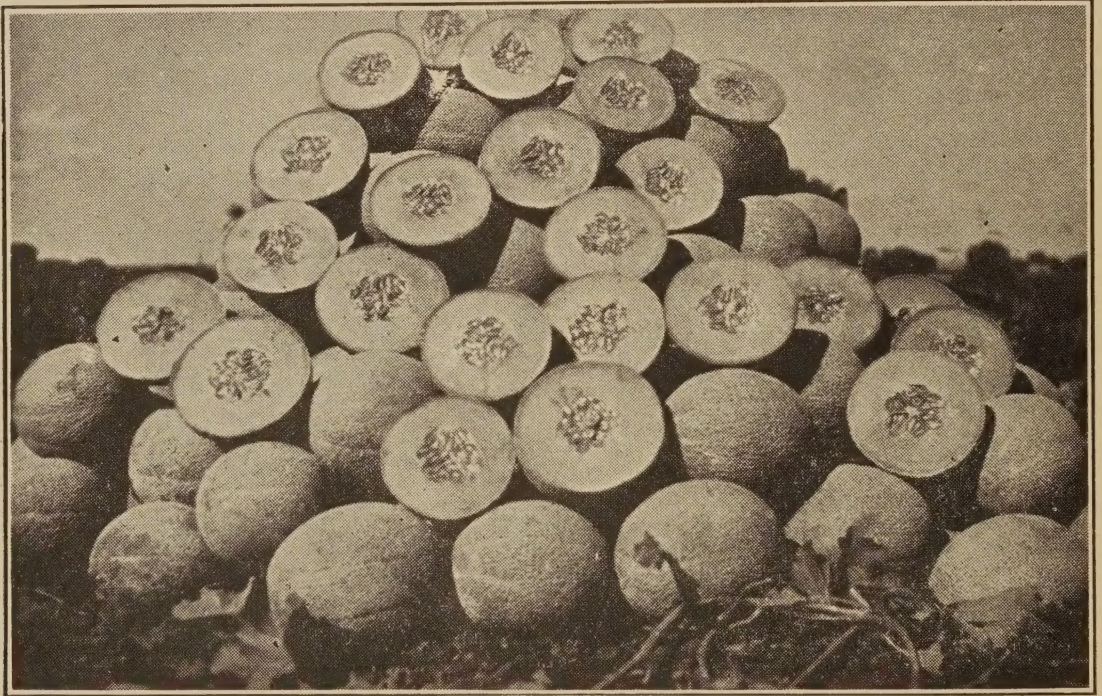
**PRICE:** Pkt. 10c; oz. 15c;  $\frac{1}{4}$  lb. 50c;  $\frac{1}{2}$  lb. 90c; 1 to 5 lbs. @ \$1.65 per lb.  
5 to 25 lbs. @ \$1.50 per lb.; 25 lbs. or more @ \$1.35 per lb. Prepaid.



# Mildew Resistant Cantaloupe No. 45

The Mildew Resistant Cantaloupe is no longer an experiment; the production and shipping qualities, due to the fact No. 45 must be picked only on a FULL

SLIP and will then carry to the far distant markets, arriving in perfect condition, has won its fame for being one of the most popular of the Mildew Resistant Strains.



## RESISTANT NO. 45

It has as heavy a net as the improved Hale's Best varieties, is similar in shape and very uniform; the melons run largely to Jumbo in size.

The No. 45 has a thick salmon-colored flesh, is well flavored. The melon has a small seed cavity and is perhaps one week later in maturing than the Hale's Best. If you want a melon with proven shipping and carrying qualities, a melon that **MUST BE VINE RIPENED**, we advise giving the Mildew Resistant No. 45 a trial. Will mature in 90 to 95 days.

**PRICE:** Pkt. 10c; oz. 15c;  $\frac{1}{4}$  lb. 50c;  $\frac{1}{2}$  lb. 90c; 1 to 5 lbs. @ \$1.65 per lb.  
5 to 25 lbs. @ \$1.50 per lb.; 25 lbs. or more @ \$1.35 per lb. Prepaid.

# Mildew Resistant D-2 Cantaloupe

This introduction is one of the earliest of the Mildew Resistant Strains, is slightly larger than the Resistant No. 45 and will mature a week later than the Hale's Best Strains. The melons are heavily netted, very firm, and will hold up under shipping for long distances. The flesh is a salmon color, of fine quality, and the vines are vigorous and heavy yielding. This, like the No. 45, should not be picked until it will slip freely from the vine.

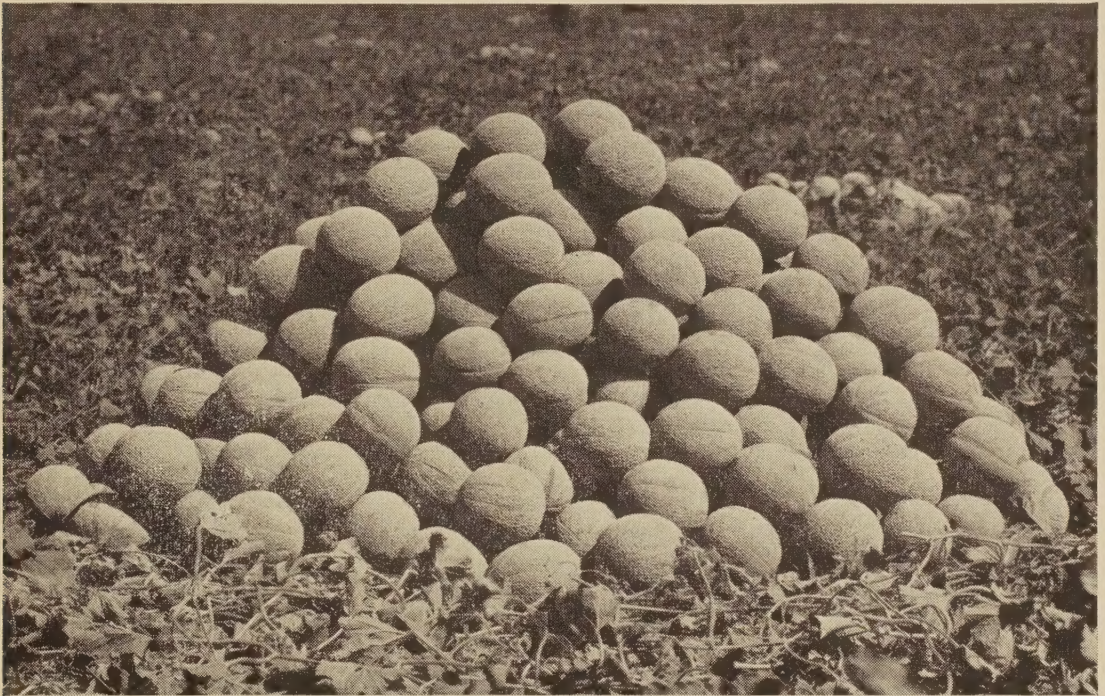
**PRICE:** Pkt. 10c; oz. 15c;  $\frac{1}{4}$  lb. 50c;  $\frac{1}{2}$  lb. 90c; 1 to 5 lbs. @ \$1.65 per lb.  
5 to 25 lbs. @ \$1.50 per lb.; 25 lbs. or more @ \$1.35 per lb. Prepaid.



# Hale's Best Cantaloupe No. 36

One of the oldest Improved Selections made from the Hale's Best Variety, being introduced in 1932, yet the Number 36 is still one of the largest selling varieties of this

strain and is known in every district where cantaloupes are produced. It can be grown for almost any purpose, home garden, roadside stands, hauling by truck or packing for distant markets.



HALE'S BEST NO. 36

The melons run large and very uniform in size, have slightly oval shape, the flesh is salmon color of an excellent flavor; seed cavity being much smaller than the original Hale's Best. The Number 36 is an extra heavy yielder due to the vines being strong and hardy, and is among the earliest to mature for the market. Will mature in 85 to 90 days.

**PRICE:** Pkt. 10c; oz. 15c;  $\frac{1}{4}$  lb. 50c;  $\frac{1}{2}$  lb. 90c; 1 to 5 lbs. @ \$1.65 per lb.  
5 to 25 lbs. @ \$1.50 per lb.; 25 lbs. or more @ \$1.35 per lb. Prepaid.

---

# Hale's Best Cantaloupe No. 936

A selection made from the No. 36, is very uniform in size and perhaps on an average taking the field over will run a little larger than the No. 36. The melons are well netted, have an excellent flavor, the flesh is thick and salmon color with small seed cavity.

**PRICE:** Pkt. 10c; oz. 15c;  $\frac{1}{4}$  lb. 50c;  $\frac{1}{2}$  lb. 90c; 1 to 5 lbs. @ \$1.65 per lb.  
5 to 25 lbs. @ \$1.50 per lb.; 25 lbs. or more @ \$1.35 per lb. Prepaid.

---



# Jumbo Hale's Best Cantaloupe

The Jumbo Hale's Best Cantaloupe is a large and popular variety; exceptionally well adapted for roadside markets and bulk hauling in trucks; because of the large sizes is not a melon for best commercial purposes when crating is essential. Is well netted but shows a distinct stripe. The vines are prolific and well able to mature the large melons they produce. The flesh is thick,

deep salmon in color, flavor sweet and of excellent eating qualities; because of its firm flesh, holds up and keeps longer than the average Hale's Best Strain.

**PRICE:** Pkt. 10c; oz. 15c;  $\frac{1}{4}$  lb. 50c;  $\frac{1}{2}$  lb. 90c; 1 to 5 lbs. @ \$1.65 per lb.  
5 to 25 lbs. @ \$1.50 per lb.; 25 lbs. or more @ \$1.35 per lb. Prepaid.



JUMBO HALE'S BEST

## Arizona No. 13 Cantaloupe

This variety was introduced through the careful breeding of the Horticultural Department of the University of Arizona. Has the desirable eating quality of the Perfecto with the firm flesh shipping characteristics of the No. 45. It is a small melon, pack on the average of 70 to 80 per cent of 45's and never run larger than the No. 36 in size. Land of high fertility should be used to avoid unduly small sizes. Melons are slightly elongate, some almost globe. Has a coarse, close, ropy net, bright orange to salmon color flesh, which is juicy and very sweet. Cavity, medium to small. Will ship and carry well when picked on a full slip, firm yellow stage. Matures 5 to 7 days earlier than the No. 45.

**PRICE:** Pkt. 10c; oz. 15c;  $\frac{1}{4}$  lb. 50c;  $\frac{1}{2}$  lb. 90c; 1 to 5 lbs. @ \$1.50 per lb.  
5 to 25 lbs. @ \$1.35 per lb.; 25 lbs. or more @ \$1.25 per lb. Prepaid.

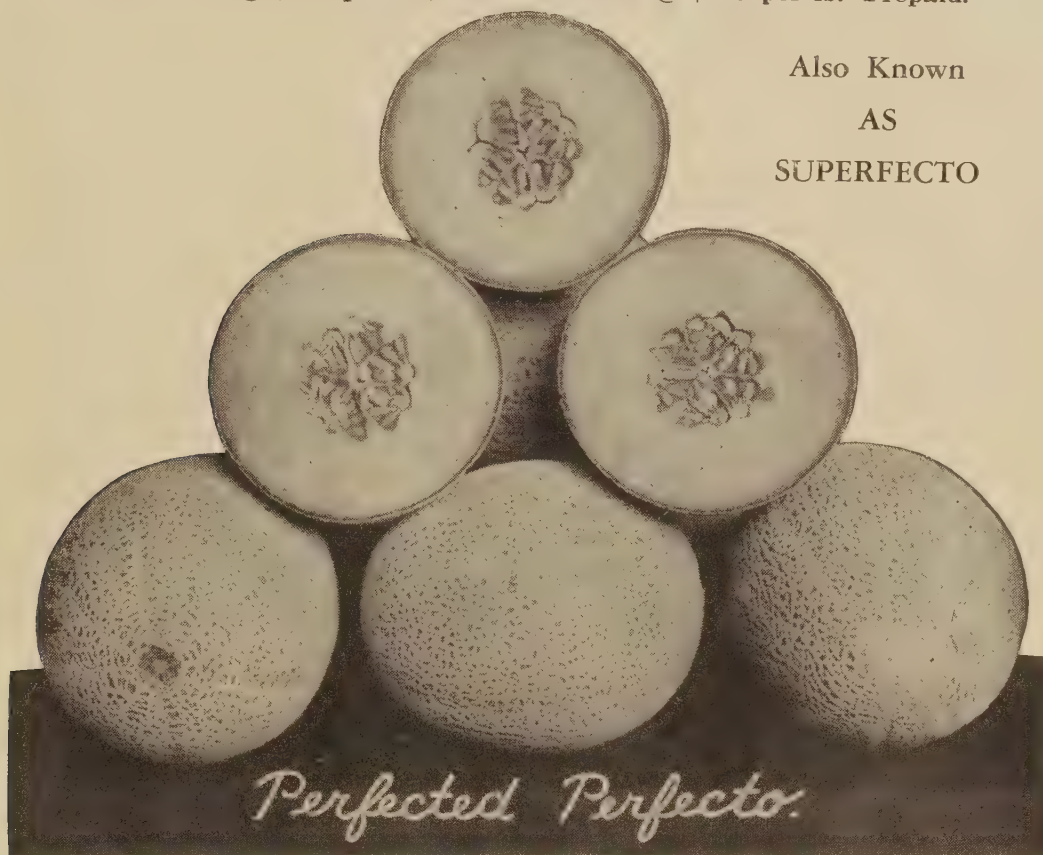


# "Perfected Perfecto" Cantaloupe

The Perfecto ripens evenly and for a long period; melons run fairly large, up to twelve pack Jumbo flat, very uniform in size; coarse, solid, heavy net, being perfect in appearance. The flesh is a very dark salmon color, fine grained and of an excellent flavor; the seed cavity averages much smaller than any other Rocky Ford variety, the

rich colored flesh extending to the rind. The vines make an extra strong, vigorous growth, and are highly disease resistant; due to this fact hills should be spaced farther apart than other cantaloupe varieties. For a later maturing melon, we urge you plant the Perfected Perfecto.

**PRICE:** Pkt. 10c; oz. 15c;  $\frac{1}{4}$  lb. 50c;  $\frac{1}{2}$  lb. 90c; 1 to 5 lbs. @ \$1.65 per lb.  
5 to 25 lbs. @ \$1.50 per lb.; 25 lbs. or more @ \$1.35 per lb. Prepaid.



Also Known  
AS  
SUPERFECTO

## Hearts of Gold Cantaloupe

The melons run from oval to oblong in shape; very uniform in size, averaging a little larger than the Rocky Ford varieties. While it is a ribbed melon, the ribs are not prominent and are very heavily netted. The seed cavity is small. The melon does not turn yellow when ripe but it retains its natural color and remains solid and firm for days after it is picked from the vine. The flesh is a rich orange color, fine-grained and of excellent flavor.

**PRICE:** Pkt. 10c; oz. 15c;  $\frac{1}{4}$  lb. 50c;  $\frac{1}{2}$  lb. 90c; 1 to 5 lbs. @ \$1.65 per lb.  
5 to 25 lbs. @ \$1.50 per lb.; 25 lbs. or more @ \$1.35 per lb. Prepaid.



# Queen of Colorado

One of the best all around varieties of Muskmelon yet introduced. It is very productive, bearing fruit with a very thick, firm, dark pink flesh. Melons have a very coarse, loosely laced netting and are slightly ribbed. Is similar in appearance both inside and out to the Honey Rock, but much improved as to uniformity. Holds up well for several days allowing plenty of time for marketing. Will mature in 85 to 90 days.

**PRICE:** Pkt. 10c; oz. 15c;  $\frac{1}{4}$  lb. 50c;  $\frac{1}{2}$  lb. 90c; 1 to 5 lbs. @ \$1.65 per lb. 5 to 25 lbs. @ \$1.50 per lb.; 25 lbs. or more @ \$1.35 per lb. Prepaid.



QUEEN OF COLORADO

# Pearl Pink Cantaloupe

(ALSO KNOWN AS ABBOTT'S PEARL)

This melon is a favorite in many sections. The vines are hardy and vigorous. The shape is slightly oval, almost round. The color is a whitish-green. It shows no ribs and has a wide, coarse netting. The flesh is a deep salmon color to the rind, fine-grained and very firm. The seed cavity is extremely small, therefore it is one of the best keepers and an excellent shipping melon.

**PRICE:** Pkt. 5c; oz. 10c;  $\frac{1}{4}$  lb. 30c;  $\frac{1}{2}$  lb. 55c; 1 lb. \$1.10; 5 to 10 lbs. @ \$1.00 per lb. 25 lbs. or more @ 90c per lb. Prepaid.



# Golden Rind Honey Moon

This melon is very attractive. The rind is a rich golden color even on the under side. The melon does not spot or sunburn like the Honey Dew. It is very prolific and runs very uniform in size. Averages smaller than the Honey Dew and is about two weeks earlier. The flesh is a bright emerald-green to the rind. It does not have the excessive sweet flavor of the Honey Dew but a distinct flavor which is praised by all. The vines make a vigorous growth and are remarkably disease resistant, and the melon is a splendid shipper and keeper.

This melon should not be picked until it will slip easily off the vine for when they are dead ripe the flavor is at its best.

**PRICE:** Pkt. 10c; oz. 15c;  $\frac{1}{4}$  lb. 50c;  $\frac{1}{2}$  lb. 90c; 1 to 5 lbs. @ \$1.65 per lb.  
5 to 25 lbs. @ \$1.50 per lb.; 25 lbs. or more @ \$1.35 per lb. Prepaid.



GOLDEN RIND HONEY DEW HONEY MOON

---

# Honey Rock Cantaloupe

(ALSO KNOWN AS SUGAR ROCK)

It is early and prolific. Size, medium. Shape, mostly round. The rind is hard and is of a light slate color, covered with a coarse, irregular netting. The thick salmon-colored flesh is firm and has a distinct, pleasing flavor that appeals to all who enjoy a good cantaloupe. It should be picked on a full slip. It is a fine home garden melon. Our seed is Colorado grown and of the best quality.

**PRICE:** Pkt. 10c; oz. 15c;  $\frac{1}{4}$  lb. 50c;  $\frac{1}{2}$  lb. 90c; 1 to 5 lbs. @ \$1.65 per lb.  
5 to 25 lbs. @ \$1.50 per lb.; 25 lbs. or more @ \$1.35 per lb. Prepaid.

---



# Green Meat Honey Dew

The Honey Dew, although classed as a fall and winter melon, has become popular all during the shipping season of cantaloupes. Although there have been many different selections made in trying to introduce a melon superior, very few have proven desirable for any length of time.

The Honey Dew requires a longer growing season than the cantaloupe and in the fall of the year if stored away from freezing temperature can be kept for quite a long period, in many cases until Christmas.



## GREEN MEAT HONEY BALL

The average size is about 6 inches in diameter and 7 to 8 inches long; with a creamy white, smooth skin and turning at maturity to a light golden color; green flesh, fine grained and extra sweet to the extreme rind. The quality of our Honey Dew was extra fine the past season.

**PRICE:** Pkt. 10c; oz. 15c;  $\frac{1}{4}$  lb. 50c;  $\frac{1}{2}$  lb. 90c; 1 to 5 lbs. @ \$1.65 per lb.  
5 to 25 lbs. @ \$1.50 per lb.; 25 lbs. or more @ \$1.35 per lb. Prepaid.

## Golden Melodew

It resembles the Honey Dew in color of rind and flesh. The true type runs oval in shape and medium size; the golden rind is covered by a pearly-grey netting which gives it a most attractive appearance. The rich, spicy flavor appears to be a combination of the Honey Dew and cantaloupe and is highly praised by all lovers of melons. It can be picked and shipped about the same as the Honey Dew and is fully two weeks earlier than that variety.

**PRICE:** Pkt. 5c; oz. 10c;  $\frac{1}{4}$  lb. 35c;  $\frac{1}{2}$  lb. 65c; 1 lb. \$1.25; 5 to 10 lbs. @ \$1.10 per lb.  
10 to 25 lbs. @ \$1.00 per lb.; 25 lbs. or more @ 90c per lb. Prepaid.

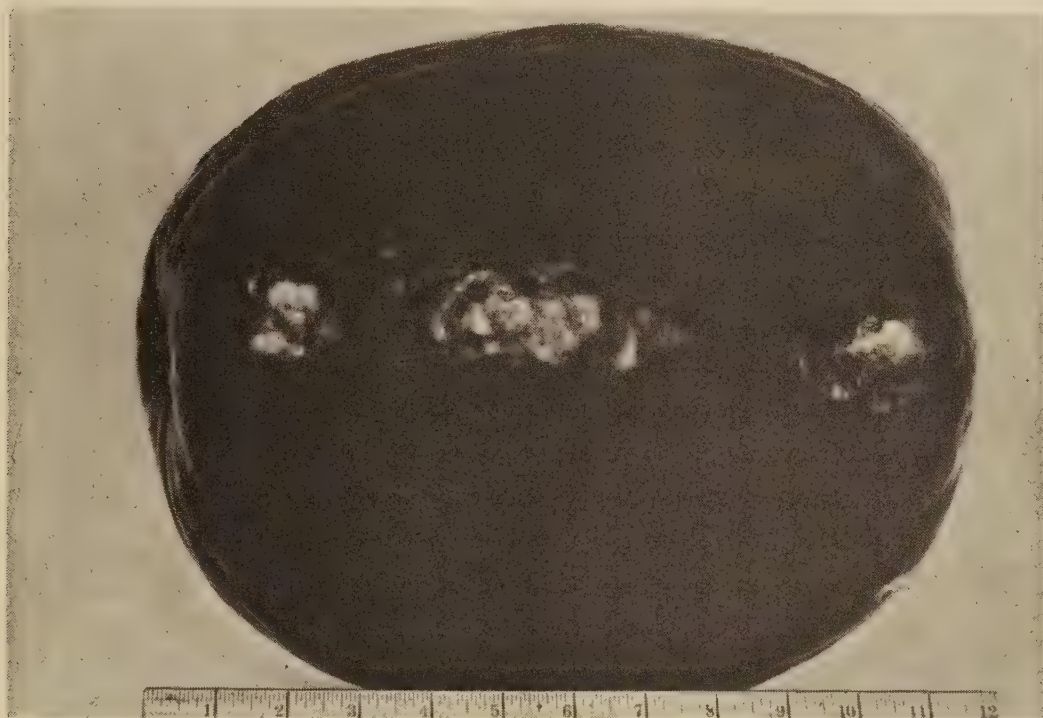


# Black Diamond Watermelon

This melon is an improved strain of the Florida Giant. It is a large, nearly round melon with a shiny and glossy rind having no stripe; just solid, smooth, black green.

The flesh is blood red, tender and very sweet. The seeds are grayish black, rind is very thin and tough and they can be hauled a long distance without damage to the melons; for this reason it is in high demand by truckers and shippers.

**PRICE:** Pkt. 10c; oz. 15c; ¼ lb. 50c; ½ lb. 90c; 1 to 5 lbs. @ \$1.65 per lb.  
5 to 25 lbs. @ \$1.50 per lb.; 25 lbs. or more @ \$1.35 per lb. Prepaid.



BLACK DIAMOND WATERMELON

## Certified Blue Tag Black Diamond Watermelon

This is also a selection made from the Florida Giant, but has a tendency to be slightly oblong rather than bell-shaped, which makes it an easier melon to load. Quality is excellent, rind is thin but tough with solid, dark red flesh throughout completely to the rind. All of this seed will be packed in one-pound sealed bags with the blue tag attached to each. The requirements for seed approved for certification are: that the field be isolated to prevent any possible chance of contamination by other varieties. In addition, fields must pass two inspections during the growing season at which time inspectors look for off-type melons. These precautions are for the purpose of eliminating mixtures which would assure growers of a pure strain.

**PRICE:** 1 lb to 5 lbs. @ \$2.75 per lb.; 5 lbs. to 10 lbs. @ \$2.50 per lb.  
10 lbs. or more @ \$2.35 per lb. Prepaid.

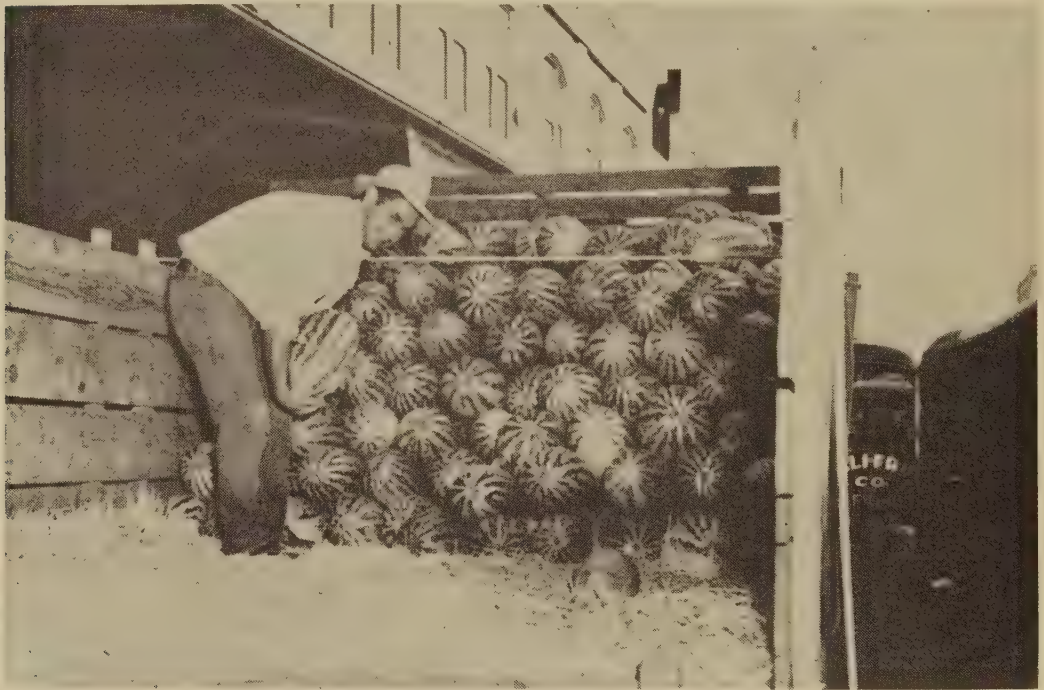


# Klondike Striped Blue Ribbon Watermelon

We feel this to be the best small melon yet introduced considering both eating and shipping qualities. The flesh is a deep red, sweet, stringless, and melting. The rind is light green, conspicuously striped with a darker green. Rind is thin, hard, and tough, making it very desirable

for shipping. The firm flesh will keep for many days. It is not a large melon, the average weight being about 25 pounds. All indications are that this variety is rapidly becoming one of the most popular, and another outstanding feature this strain has, it is resistant to wilt. Feel confident that a trial will prove to your satisfaction, the merits of this melon.

**PRICE:** Pkt. 10c; oz. 15c; ¼ lb. 60c; ½ lb. \$1.10; 1 to 5 lbs. @ \$2.00 per lb. 5 to 25 lbs. @ \$1.85 per lb.; 25 lbs. or more @ \$1.75 per lb. Prepaid.



**KLONDIKE STRIPED BLUE RIBBON**

# Blacklee Watermelon

(WILT RESISTANT)

This new melon was developed originally by the Florida Experimental Station. Our stock seed for planting here in Colorado comes from a prominent watermelon grower in the Florida section and our growers here feel it is one of the outstanding melons yet to be put on the market. It apparently is free from wilt, oblong in shape; rich, dark green, solid color; dark red flesh with thin but tough rind. The melons average 30 to 35 pounds in weight and are excellent shippers or for long distance hauling.

**PRICE:** Pkt. 10c; oz. 15c; ¼ lb. 50c; ½ lb. \$1.00; 1 to 5 lbs. @ \$1.75 per lb. 5 to 25 lbs. @ \$1.65 per lb.; 25 lbs. or more @ \$1.50 per lb.



# Dixie Queen Watermelon

This improved strain is slightly oblong; average weight being from 35 to 40 pounds, but in many cases will grow to as large as 60 pounds. Flesh is a very bright red and seeds are extremely small and are white. Rind is a

light green with a darker mottled stripe, presenting a very beautiful appearance. Melon is mostly heart and it ripens clear through with no hard centers. The quality is excellent in every respect. It has a medium thin rind and is tough enough to ship far distances. It is a medium early melon maturing in about 80 to 85 days.

**PRICE:** Pkt. 10c; oz. 15c;  $\frac{1}{4}$  lb. 50c;  $\frac{1}{2}$  lb. 90c; 1 to 5 lbs. @ \$1.75 per lb.  
5 to 25 lbs. @ \$1.65 per lb.; 25 lbs. or more @ \$1.50 per lb. Prepaid.



DIXIE QUEEN WATERMELON

---

## Kleckley Sweet No. 6 Watermelon

“WILT RESISTANT”

This improved wilt resistant strain was developed by the College of Agriculture at Ames, Iowa, and is very outstanding. It is a medium sized melon having a dark green tough rind, bright red flesh and large white seeds. Vines are vigorous and prolific.

**PRICE:** Pkt. 10c; oz. 15c;  $\frac{1}{4}$  lb. 50c;  $\frac{1}{2}$  lb. 90c; 1 to 5 lbs. @ \$1.65 per lb.  
5 to 25 lbs. @ \$1.50 per lb.; 25 lbs. or more @ \$1.35 per lb. Prepaid.



# New Hampshire Midget

## (TRUE BLACK SEEDED STRAIN)

This new introduction developed by Dr. A. F. Yeager, head of the department of Horticulture at the University of New Hampshire, is the 1951 "All America" Gold Medal Winner.

This high award of merit is due to the appealing size of the melon which is comparable in size to an average Jumbo Cantaloupe. The New Hampshire Midget is sweet, with a bright red flesh extending clear to the outer rind. Seeds are dark brown or black in color. The outer shell is very lightly striped and color is a light green, a little on the grey side. Excellent for individual servings. This melon is new but where it has been tried out by market gardeners has proven an extremely successful money-maker. The melons are approximately 5 inches in diameter and 6 inches long and ripen from 60 to 65 days after planting, depending on the season. Our supply is limited.

**PRICE:** Pkt. 20c; oz. 50c;  $\frac{1}{4}$  lb. \$1.50;  $\frac{1}{2}$  lb. \$2.50; 1 to 5 lbs. @ \$4.00 per lb. Prepaid.

# Winter Queen Watermelon

(ALSO CALLED KING AND QUEEN)



## FIELD SCENE OF WINTER QUEEN WATERMELON

**BLACK-SEEDED**—This variety has generally been known as a Winter Melon. Wherever introduced have sold at good prices, far outselling ordinary melons. The melon is round; color a very light green, faintly striped with a darker green. When fully ripe, closely resembles the Honey Dew in color, except for the light stripe. It has a thin, tough rind. The flesh is a bright pink, solid and stringless, with a few small, black, shiny seeds set firmly near the rind. The flavor is delicious.

**PRICE:** Pkt. 10c; oz. 15c;  $\frac{1}{4}$  lb. 50c;  $\frac{1}{2}$  lb. 90c; 1 to 5 lbs. @ \$1.75 per lb.  
5 to 25 lbs. @ \$1.65 per lb.; 25 lbs. or more @ \$1.50 per lb. Prepaid.



# Garrison Watermelon

The Garrison is a large, oblong, uniform shaped melon. Very sweet, flesh brilliant red color, rind thin and tough. Is a light green color with darker green mottled stripes. An excellent melon for roadside markets. Has heavy foliage and strong

prolific vines and is considered by some of the larger watermelon growers to be less susceptible to Anthrachnose than most varieties and practically immune to sunburn.

**PRICE:** Pkt. 10c; oz. 15c;  $\frac{1}{4}$  lb. 60c;  $\frac{1}{2}$  lb. \$1.10; 1 to 5 lbs. @ \$2.00 per lb.  
5 to 25 lbs. @ \$1.85 per lb.; 25 lbs. or more @ \$1.75 per lb. Prepaid.



GARRISON WATERMELON (Also Called COKER)

---

## Congo Watermelon

The Congo Watermelon seems to be proving very satisfactory in all areas. It has an extremely strong, thick rind which is an advantage to long distance shipping or by truck hauling. Highly resistant to Anthrachnose. Has red flesh, excellent flavor and high in sugar content. Seeds medium size and greyish color. Its quality along with the resistance is very valuable to all commercial growers.

**PRICE:** Pkt. 10c; oz. 20c;  $\frac{1}{4}$  lb. 75c;  $\frac{1}{2}$  lb. \$1.40; 1 to 5 lbs. @ \$2.50 per lb.  
5 to 25 lbs. @ \$2.35 per lb.; 25 lbs. or more @ \$2.25 per lb. Prepaid.

---

## Certified Congo Watermelon

This Certified Congo Anthrachnose resistant seed was produced for us the past season by one of the oldest and largest certified watermelon seed growers in the Southeast where Anthrachnose is prevalent every year. You can be certain that this seed retains its resistance. The melons are large, tough rind, excellent shipper, fiery red heart and sweet flesh.

**PRICE:** 1 to 5 lbs. @ \$3.50 per lb.; 5 to 10 lbs. @ \$3.25 per lb.  
10 lbs. or more @ \$3.00 per lb. Prepaid.

---

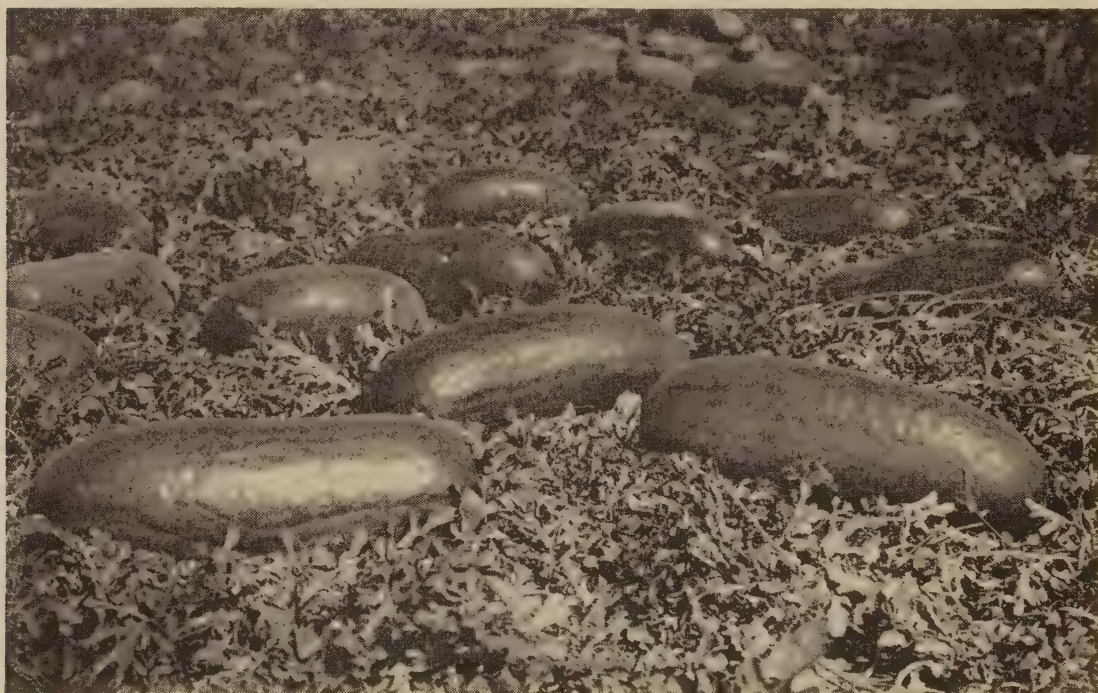


# Cut-Red Tom Watson Watermelon

A favorite old standby in districts demanding a large size, wonderful shipping melon; the rind is thin but very tough; has a dark green color, prominent veins as it ripens to a lighter shade. The flesh is fine grained, of a deep red color and very juicy and sweet; melons are

oblong in shape with rounded ends. The seed we offer this season was saved from select melons weighing from 25 to 50 pounds each.

**PRICE:** Pkt. 10c; oz. 15c;  $\frac{1}{4}$  lb. 50c;  $\frac{1}{2}$  lb. 90c; 1 to 5 lbs. @ \$1.65 per lb.  
5 to 25 lbs. @ \$1.50 per lb.; 25 lbs. or more @ \$1.35 per lb. Prepaid.



CUT-RED TOM WATSON

## Stone Mountain Watermelon

(ALSO CALLED "DIXIE BELLE")

This melon is a great favorite in many sections of the South, Middle West and South West. It is a great seller in the roadside markets. It grows large; rather round in shape and is dark green in color. The flesh is a deep red, has but few seeds and the flavor is all that could be desired. For home and nearby markets (where a round melon is favored) it has proven a winner.

**PRICE:** Pkt. 10c; oz. 15c;  $\frac{1}{4}$  lb. 50c;  $\frac{1}{2}$  lb. 90c; 1 to 5 lbs. @ \$1.65 per lb.  
5 to 25 lbs. @ \$1.50 per lb.; 25 lbs. or more @ \$1.35 per lb. Prepaid.



# Early Kansas Watermelon

This melon is rapidly gaining popularity in all the midwestern markets; for local markets, also truck hauling, is one of the favorites, due to the outstanding appearance; being a large oval, almost round, with block ends; the rind

is a dark green color with alternate stripes of a lighter shade. The flesh is a rich red color nearly to the rind and has a wonderful flavor. The Seed we offer was grown in this district the past season and saved from melons that averaged thirty-five to forty pounds. The average maturity is from 80 to 90 days.

**PRICE:** Pkt. 10c; oz. 15c;  $\frac{1}{4}$  lb. 50c;  $\frac{1}{2}$  lb. 90c; 1 to 5 lbs. @ \$1.65 per lb.

5 to 25 lbs. @ \$1.50 per lb.; 25 lbs. or more @ \$1.35 per lb. Prepaid.



EARLY KANSAS WATERMELON

# New Wonder Watermelon

(AN IMPROVED KLECKLEY SWEET)

This splendid variety is the finest flavored melon introduced in recent years. No other melon has ever attained such popularity for home use and near-by markets. The melons grow 18 to 24 inches in length, 10 to 12 inches through, averaging about 35 pounds in weight, oblong in form, with very dark-green skin, flesh deep scarlet red, with solid heart, stringless, with few seeds, set near the rind.

It grows larger than the "Kleckley" and has produced melons weighing 60 pounds. Shape is similar to the Watson. The skin is a dark glossy-green.

**PRICE:** Pkt. 10c; oz. 15c;  $\frac{1}{4}$  lb. 50c;  $\frac{1}{2}$  lb. 90c; 1 to 5 lbs. @ \$1.65 per lb.

5 to 25 lbs. @ \$1.50 per lb.; 25 lbs. or more @ \$1.35 per lb. Prepaid.



# Yellow Sweet Spanish Onions

This strain of Yellow Sweet Spanish Onion was originated in Utah. Seeing its merits, Pieters-Wheeler, an established seed growing firm in Northern California, who we feel are one of the leaders in careful selection of the type of bulbs necessary to produce the quality of seed we are glad to ship and recommend to our customers, have for the past several seasons made further developments through selection and breeding and is now one of the outstanding Yellow Sweet Spanish Strains.



AN ONION FIELD PLANTED FROM OUR SEED

Is a very large globe shape, four and five heavy golden brown outside skins and white flesh, being one of the mildest onions known today. Thousands of acres of this variety are grown in the Western States each growing season and shipped from coast to coast. When properly and thoroughly cured, is a good keeper and a splendid shipper. Many growers report a yield of 1000 up to 1400 crates per acre, the average weight per crate being 42 to 44 pounds. An average of 2½ pounds of seed are planted per acre. A trial of this strain of Valencia Onion Seed will be convincing.

**PRICES:** Oz. 40c; ¼ lb. \$1.50; ½ lb. \$2.75; 1 lb. \$5.00; 5 to 25 lbs. @ \$4.50 per lb.  
25 lbs. or more @ \$4.25 per lb. Prepaid.



# Jumbo White Sweet Spanish Onions

This new strain was released to us by Pieters-Wheeler for the 1948 planting, and while in the past there has been introductions

of a Jumbo White by other concerns, this is the first instance all reproductions were satisfactory and jumbo size. One grower on an 8 acre field produced from this seed 8,003 50-pound bags which in yield is equal to the Yellow Sweet Spanish, Utah Strain, and were sold on the market at a much higher price. It also is a globe shaped onion with a mild flavor and matures in practically the same length of time as the Yellow strain.

**PRICES:** Oz. 65c;  $\frac{1}{4}$  lb. \$2.25;  $\frac{1}{2}$  lb. \$4.00; 1 lb. \$7.00; 5 lbs. or more @ \$6.50 per lb. Prepaid.

## Early White Sweet Spanish Onions

This is the original White Onion, globe shaped and mild flavor, somewhat lighter in yield than either the Yellow or Jumbo White but planted at the same time will mature 10 days to 2 weeks earlier than the two above mentioned strains. This factor is an asset for in many cases the early and first maturing crops will hit a high market and pay dividends.

**PRICES:** Oz. 60c;  $\frac{1}{4}$  lb. \$2.00;  $\frac{1}{2}$  lb. \$3.50; 1 lb. \$6.00; 5 lbs. or more @ \$5.50 per lb. Prepaid.



## Great Lakes Lettuce

“ALL AMERICA WINNER”

Especially valuable as a home garden summer lettuce as it stands the heat and sun having an increased resistance to tip burn injury and greater ability to produce solid heads under adverse conditions. Heads are medium to large in size, deep green color and will mature in 80 to 85 days.

**PRICE:** Pkt. 15c; oz. 35c;  $\frac{1}{4}$  lb. \$1.35;  $\frac{1}{2}$  lb. \$2.50; 1 lb. \$4.50; 5 to 10 lbs. @ \$4.00 per lb. Prepaid.



# Popular Cucumber Varieties



A CUCUMBER SEED FIELD

## Earliest Of All Cucumbers

This is an exceptionally early variety having a dark green color, uniform sizes, flesh is white and crisp. Gained its popularity with shippers because of earliness and quality. One of the most popular varieties for home garden and local market.

**PRICE:** Pkt. 10c; oz. 15c;  $\frac{1}{4}$  lb. 40c;  $\frac{1}{2}$  lb. 75c; 1 lb. \$1.25  
5 to 10 lbs. @ \$1.10 per lb. Prepaid.

## National Pickling Cucumber

This is one of the finest pickling varieties. Vines are rather small, fruits straight, symmetrical, full at the ends. Is a black spinal variety and recommended for production of high grade small pickles. A good yielder.

**PRICE:** Pkt. 10c; oz. 15c;  $\frac{1}{4}$  lb. 40c;  $\frac{1}{2}$  lb. 75c; 1 lb. \$1.25  
5 to 10 lbs. @ \$1.10 per lb. Prepaid.

## A. & C. Cucumber

A very fine dark green slicing variety, being popular with shippers; retains dark green color for some time after reaching the market. They vary in length but average about 10 inches, straight and symmetrical. Is one of the leading slicing varieties.

**PRICE:** Pkt. 10c; oz. 15c;  $\frac{1}{4}$  lb. 45c;  $\frac{1}{2}$  lb. 85c; 1 lb. \$1.50  
5 to 10 lbs. @ \$1.40 per lb. Prepaid.



## Imperator Carrot

For the large commercial growers, the shippers, and also the market gardeners, Imperator is an outstanding type. Has medium tops, but plenty strong enough for good bunching. Roots are 7 to 8 inches long, have sloping shoulders which is on an average of 1½ to 2 inches that are smooth, having a deep, rich, orange color, very uniformly tapered to a semi-blunt end. The orange color extends to the center of root with indistinct core, being fine-grained, tender and of excellent quality and flavor.

**PRICE:** Pkt. 10c; oz. 15c; ¼ lb. 50c; ½ lb. 75c; 1 to 5 lbs. @ \$1.35 per lb. Prepaid.

---

## Improved Pearson Tomato

This variety is very popular in Central and Western States, exceedingly so in California due to the fact a large percentage of the tomatoes in that district are packed in lugs and shipped by rail and trucks to the Eastern markets. Skin being very tough, fruit will stand the abuse of rough treatment in transit. They are medium large, semi-globe, rich red color and due to the plants having foliage for proper fruit protection it is one of the heaviest yielders yet introduced.

**PRICE:** Pkt. 20c; 1 oz. 65c; ¼ lb. \$2.50; ½ lb. \$4.50; 1 lb. \$8.00. Prepaid.

---

## Golden Acre Cabbage

THE EARLIEST ROUND HEAD CABBAGE YET INTRODUCED

One of the most popular early varieties. Heads are round, small to medium in size, very solid, all maturing about the same time and of excellent quality. Outstanding for early market and home use. The plants may be spaced from 10 to 12 inches apart in order to produce heavy tonnage.

**PRICE:** Pkt. 10c; oz. 20c; ¼ lb. 75c; ½ lb. \$1.35; 1 lb. \$2.50. Prepaid.

---

## Copenhagen Market Cabbage

MARKET GARDENER'S FAVORITE

The heads are round, very solid and exceptionally large for an early variety, averaging from 5 to 8 pounds in weight. It is short stemmed but makes a vigorous, compact growth, with but a few outer leaves, which are medium light green. The solidity of the head, excellent flavor and extreme earliness all combine to make it one of the most desirable early cabbage.

**PRICE:** Pkt. 10c; oz. 20c; ¼ lb. 75c; ½ lb. \$1.35; 1 lb. \$2.50 Prepaid.

---





for

Superior Quality

order

Woodside Seed

