

## **Historic, Archive Document**

Do not assume content reflects current scientific knowledge, policies, or practices.



62.17

1951

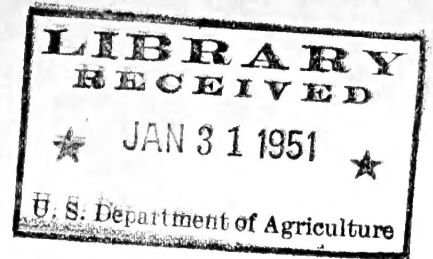
WILSON

NURSERIES

QUALITY PLANTS - BULES - NURSERY STOCK

7165 - 103rd St - Phone 2-3335

Jacksonville 5, Fla.



"WHEN YOU PLANT - PLANT THE BEST"

HIBISCUS AND OTHER PLANTS

Our aim is to ship quality merchandise, because it is our sincere pleasure to have satisfied customers.

This list of Hibiscus and other plants is mailed you in the hope that we will be able to supply your needs in these plants.

We have been growing Hibiscus in Florida for over 10 years and we honestly believe that our plants are superior in quality to most plants offered for sale in Florida. Through our experiments with the growing of Hibiscus over the last ten years we have the Know-How for raising Hibiscus. We have experimented until we have the right soil for the growing of Hibiscus, especially for Northern Florida and States where frost is liable to cut your plants back in the Winter.

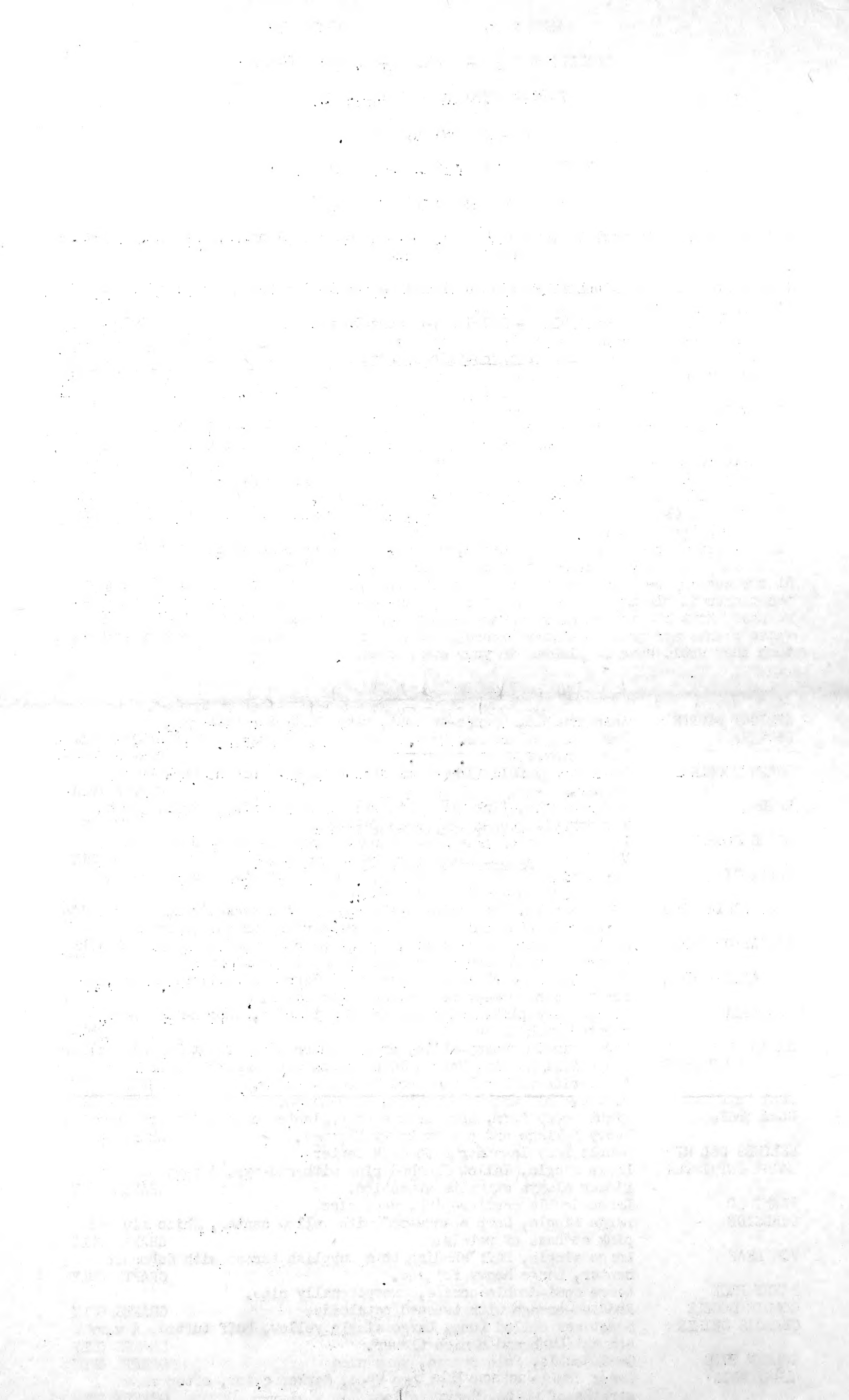
To have a plant that will make a quick comeback from a heavy frost it is necessary to grow from the start a plant that is hardier than plants grown in localities where no frost is to be found during the Winter months. This we do, by growing in soil that is made especially for Hibiscus, the plant that you buy from the Wilson Nurseries has been nourished and feed right from the time that it leaves the cutting bed until it reaches you. This means that you have a plant that has the strength to make a quick comeback after a frost.

Our Nursery is always open to visitors, you are always welcome at the WILSON NURSERIES, come - see our Hibiscus and other plants in bloom.

At our Nursery we have a Hibiscus Garden that is kept for the purpose of showing you the plants in bloom, in conditions the same as found in your own garden. In this bed we have about 170 varieties of Hibiscus growing, Grafts and plants on their own roots. These plants are grown the year around in the open ground, they have no more protection than they would have if planted in your own garden.

VARIETY LIST

APRICOT DOUBLE BUTTERFLY	Anderson 315, Orange-apricot, very full of petaloids, Sometimes called Mrs Blair, Very large double, butter-yellow with light center.	Sometimes
BROWN DOUBLE	Medium very full flowers of dark orange to brown. Dark brown center.	GRAFTS ONLY
BRIDE	Large single, Pink fading to white, overlapping petals, crepy, Two day bloomer. A very nice flower.	GRAFTS ONLY
BRIDE DOUBLE	Large double creamy-white flowers sometimes flushed with pink. Very compact bush and a very heavy grower.	GRAFTS ONLY
BAPTISTI	Sometimes called Raggerdy Ann. Double varigated red & white , petals narrow and intermingled.	
CALIFORNIA GOLD	Large single, Dark golden yellow, throat streaked red, veins white a very striking color and a favorite with our customers	
CARNATION PINK	Double pinkish terra-cotta, Center petals stand up very much like a carnation. A very bushy plant and a heavy bloomer.	
CARNATION RED	Small double dark red, Flower built like a carnation, a favorite for the men to wear or for making corsages.	
COLUMBIA	Double dark pink, Heavy center of petaloids, dubonnet center spotted with white.	GRAFTS ONLY
CREAM	Large single creamy-white, crepy, outer edge of petals pale yellow.	
CROWN OF BOHEMIA	Large full double, Deep golden yellow with reddish throat. A favorite with all visitors to our Nursery.	GRAFTS ONLY
GEN: McARTHUR	Double, Buff with red center, Very large.	GRAFTS ONLY
DORA McGEE	Tight peony form, Dark orange with lighter center, Upright growth, Heavy foliage and a very heavy bloomer.	GRAFTS ONLY
DELORES DEL RIO	Double rosy lavender with dark center	
DAISY ENTWISTLE	Large single, Yellow flushed pink with red eye. A very striking flower always attracts attention.	GRAFTS ONLY
FLAMINGO	Large double carmine-pink, very nice.	
FIRESIDE	Large single, Deep orange-red with yellow center, White flushed pink at base of petals.	GRAFTS ONLY
FIG LEAF	Large single, Buff shading to a purplish throat with dubonnet center, Large heavy foliage.	GRAFTS ONLY
FANNY PECK	Large semi-double cerise, exceptionally nice.	
GOLDIE DOUBLE	Reddish-orange with twisted petaloids.	GRAFTS ONLY
GEORGIS GRIMES	Sometimes called Luna, Large single yellow, buff tufted. A very compact bush and a nice flower.	GRAFTS ONLY
GOLDEN PETE	Semi-double, Pale orange, very nice	GRAFTS ONLY
HURRICANIA	Large double of the Flamingo type, darker color, often shows streaks of white, Heavy foliage.	GRAFTS ONLY



HAWAIIAN GOLDEN	Large double bronze with light center	GRAFTS ONLY
HENDRY'S #3	Large double purplish red.	
JEANNE	Ruffled single, White with violet eye, Petals streaked irregular with violet-pink, Sometimes has yellow streak down center of each petal.	GRAFTS ONLY
JAMES BLUE	Medium single, Light blue slightly pink eye. Grown in full sunlight color is lighter.	GRAFTS ONLY
JAMES YELLOW	Golden yellow with brown throat. Brown veins, Upright growth Heavy foliage	GRAFTS ONLY
KONA	Very large double clear pink, Peony type.	GRAFTS ONLY
KILAUEA	Dark golden yellow single, White center with light pink veins. Not recommended for wet ground.	GRAFTS ONLY
LOTTIE MAY	Large single, Yellow heavily veined with red, throat red	
LORD BELFORD	Large single, Orange shading to violet with white eye, Veins dark orange.	GRAFTS ONLY
MYRNA LOY	Double lavender-purple fading to bluish lavender. Color lighter in full sun	GRAFTS ONLY
MRS Wm WHITE	Sometimes called Talisman. Color similar to a Talisman Rose Orange-scarlet flushed yellow.	
MRS LOWREY	Large single, Ruffled overlapping petals, Blend of yellow apricot-orange and red shaded violet at the throat. A very pretty Hibiscus.	GRAFTS ONLY
MRS JOHNSON	Very large single, Creamy rose-pink blending to a lighter shade at end of petals, sometimes shows petaloid at end of style, A very heavy bloomer.	GRAFTS ONLY
NEUTRALITY	Large single, Orange-vermillion; Dark orange veins, yellow throat, Heavy foliage.	GRAFTS ONLY
OLD GOLD	Large single, Old gold shading to violet with rose center Heavy foliage and bloomer.	
PEACHBLOW	Double soft peach-pink with darker center.	
PINK & WHITE DOUBLE	Varigated pink and white, Heavy bloomer, Large loose flower.	
PUMPKIN YELLOW	Pale yellow shaded pink, light yellow eye, Orange veins, Compact grower and very heavy bloomer. We consider this our best yellow both in bloom and growth.	GRAFTS ONLY
PEACHBLOW IMPROVED	Double apricot-peach with the outside tips of the petals yellow, not as heavy a bloomer as Peachblow.	
ROSE DOUBLE	Large double dark rose-pink with dubonnet center.	
RED DOUBLE	Medium sized flowers of brilliant red, Heavy bloomer.	
STELLA LYKES	Single golden apricot with a single row of true petals and a center of petaloids.	GRAFTS ONLY
SUPERBA	Large 7 inch blooms, Golden yellow with white throat, veins white, slightly ruffled.	GRAFTS ONLY
SOPHISTICATE	Single pink with white center, outer edges of petals yellow White veins, Large bloom.	GRAFTS ONLY
ST HELENA	Large single, Buff with pink center, Heavy bloomer and upright growth.	GRAFTS ONLY
SERENE	Medium sized flowers of rich orange with violet eye, a very striking color and heavy bloomer.	GRAFTS ONLY
SEÑORITA	Double tan shading to a pink throat.	GRAFTS ONLY
SEACLIFF	Medium sized single, Yellow with white center.	
TAHITI	Large single, Deep orange-yellow shading to white and flushed pink.	GRAFTS ONLY
WILSON'S YELLOW	Medium sized single, Ruffled dark yellow with mahogany throat Veins orange, Upright growth, Heavy bloomer.	GRAFTS ONLY
WAKE ISLAND	Very large single, Rich rose color with dubonnet throat with gold markings.	GRAFTS ONLY
WILSON'S GOLDEN	Deep golden yellow with pink center, Flowers ruffled 6 inches across, sometimes shows white at center.	GRAFTS ONLY
WHITE DOUBLE	Single row of ruffled creamy-white petals with heavy center of petaloids, center light yellow.	GRAFTS ONLY
WHITE POMPON	Double medium sized five parted flowers, creamy-white with pinkish base, Strong grower.	
YELLOW DOUBLE	#50, Golden yellow, Full double, Rosette center.	
YELLOW DOUBLE	#105, Very full double color of rich butter.	
LEMON YELLOW	Large double of clear lemon yellow almost white center.	

Prices of the above Hibiscus as follows:-

Gallon cans blooming size ..... each \$2.50  
 Quart cans ..... " 1.50

The following Hibiscus are new varieties that have been tried and found to be exceptionally good. All were grown at our Nursery last season and they are the pick of all varieties that we tried during 1950 .  
 For the customer wanting a Hibiscus out of the usual and one that will attract attention in your garden we suggest any of the following list.  
 Our supply of these varieties will be very limited this season and for that reason we suggest that you order early.

Large double doors, with a small window above them, lead to the rear garden. The garden is well maintained and contains a variety of plants and flowers. The house is situated on a quiet street and is surrounded by trees and shrubs.

we suggest that you order early.

The house is built of brick and has a tiled roof. It is a two-story building with a front porch. The interior is finished with wood paneling and has a cozy atmosphere. The kitchen is equipped with modern appliances and the bathroom is clean and bright.

The house is in a good location, close to schools and shops. It is a well-known area and is considered to be a safe and desirable place to live. The house is available for sale at a reasonable price and is a great opportunity for anyone looking for a new home.

we suggest that you order early.

The house is built of brick and has a tiled roof. It is a two-story building with a front porch. The interior is finished with wood paneling and has a cozy atmosphere. The kitchen is equipped with modern appliances and the bathroom is clean and bright.

The house is in a good location, close to schools and shops. It is a well-known area and is considered to be a safe and desirable place to live. The house is available for sale at a reasonable price and is a great opportunity for anyone looking for a new home.

we suggest that you order early.

The house is built of brick and has a tiled roof. It is a two-story building with a front porch. The interior is finished with wood paneling and has a cozy atmosphere. The kitchen is equipped with modern appliances and the bathroom is clean and bright.

The house is in a good location, close to schools and shops. It is a well-known area and is considered to be a safe and desirable place to live. The house is available for sale at a reasonable price and is a great opportunity for anyone looking for a new home.

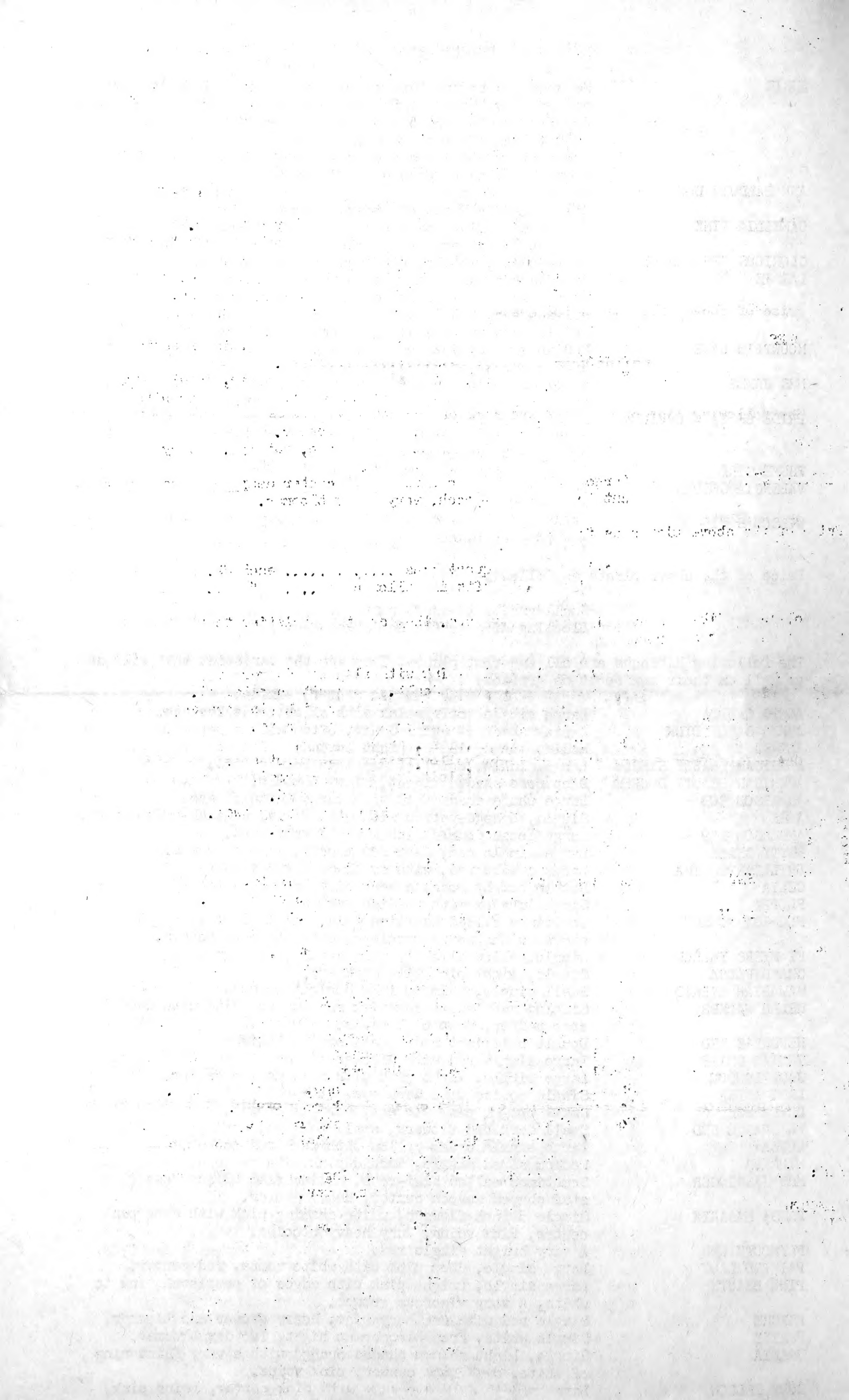
ANGIE	We urge you to try this variety it is exceptionally good and we know that you will be pleased. An improved Chas James Jr. Flower similar to Chas James Jr, a little larger and with brighter colors, where the foliage on Chas James Jr is poor this variety has a very heavy and dark green foliage a quick and heavy grower and bloomer.
ANN BALDWIN DOUBLE	Large double same color as the Ann Baldwin single, Claret & Gold, compact bush and heavy bloomer.
CAMELLIA PINK	Double camellia shaped flower of bright rose-pink, Very compact and a very heavy bloomer.
GLORIOUS "B" DOUBLE LASSIE	Semi-double, mottled pink and yellow, large flower. This is a seedling of unknown origin. Single 5 inch flower of bronzy-gold lighter towards edges of petals, brilliant crimson eye, petals slightly shaded crimson at base, very ruffled and tufted, Upright growth and heavy foliage.
MOUNTAIN LAKE	Medium single, Deep pink shading to a white zone, a most unusual shade of pink.
MRS JAMES	Double red with creamy-white and yellow petaloids rosette shaped, Flower very full, a heavy grower.
PRIDE OF JACKSONVILLE	Seedling of Carmen. Large saucer shaped flower, petals edged gold shading to rich cadmium red to violet at center with red throat, Veins white.
THEME GIRL	A very bright orange-yellow, solid color.
VALENCIA GOLDEN	Very large dark orange with brown eye, ruffled, A very compact bush and heavy bloomer.
WILSON'S #15	Large double peach to rose color, center deep rose shading out to a apricot-peach, very heavy bloomer.

Price of the above plants as follows:-

Small grafts in quart cans .....	each \$2 00
Blooming size grafts in Gallon cans ....	" 3.50

The following Hibiscus are all Own-root plants. They are the varieties that will do as well on their own roots as grafted.

AGNES GAULT	Large single satiny-pink with slightly darker eye.
AGNES GAULT PINK	A pink shade of Agnes Gault, often with a petaloid.
ALTHEA	Medium sized single, Light lavender with pink center.
AMERICAN BEAUTY SINGLE	Large single, color of American Beauty Rose.
AMERICAN BEAUTY DOUBLE	Deep rose shaded violet, Heavy bloomer.
ANDERSON 303	Large white shaded red with large dubonnet eye.
APEX	Single, Orange-yellow with pink veins, reddish-pink center.
ANDERSON 159	Large loose double pink & white varigated.
BETTY CHALK	Large single red, deep red throat, strong grower.
BRILLIANTISSIMA	Large single red, with small dark red eye.
CELIA	Double bright rose, a very nice bloom.
FLOPPY	Single orange with reddish markings.
FLORIDA SUNSET	Sometimes called Hawaiian Gold, Small single, bright sunset shades with bronze margin on outer edge of petals.
FT MYERS YELLOW	Single yellow slightly tinged pink, fast grower.
GRANDIFLORA	Single, light pink with dark eye.
HAWAIIAN HYBRID	Small single, Salmon-pink, Upright growth.
HELEN WALKER	Single, ruffled, peach-pink shading to white with dubonnet star center, deep pink veins.
HENDRY'S RED	Double brilliant red, Small bright foliage.
INDIAN CHIEF	Large single red with lighter shades at base of petals.
JACK LONDON	Large single, light pink with deep maroon center.
LADY ASTER	Single cerise with dark eye, Serrated foliage.
LA FRANCE	Small bright pink flowers, Upright growth.
LA FRANCE RED	Small dark red flowers, small foliage, upright growth.
LUTEA	Large single cream-yellow with dark red center.
MINERVA	Medium sized single, Orchid-pink with red eye, Veins red.
MRS HASSINGER	Sometimes called Figi-rose. Medium flat bright rose with star shaped maroon center, Heavy grower.
PRES; MASARYK	Single 5 inch flowers, white shading pink with dark pink center, Pink veins, Very heavy bloomer.
PLYMOUTH RED	A very bright single red.
PAINTED LADY	Large single, deep pink with white veins, red center.
PINK BEAUTY	Large single, Bright pink with edges of petals shading to white, A very vigorous grower.
PSYCHE	Single red with feathery edge, Heavy grower and bloomer.
PURITY	Single white, Free bloomer at night, Two day bloomer.
URANIA	Single, Light salmon shaded orange with a very faint ring of white, dark pink center, pink veins.
RUBY YELLOW	Large single golden-orange with pink center, veins pink.





RED WING	Large white with deep red center, Heavy bloomer.
RAINBOW	Small ruffled tan shading violet at center with dubonnet throat, Veins pink, Upright branches.
SCHIZOPETALUS	Bright coral-red pendant flowers with narrow thread-like petals, small narrow foliage, Sometimes called Fuchsia or Chinese Hat.
SHIRLEY TEMPLE	Small satiny-pink flowers on upright branches.
SPANISH BEAUTY	Bright red with dark red throat, Free bloomer.
SUNSET	Medium sized flowers, single, deep yellow shaded red, very heavily veined.
VALENCIA	Light pinkish terra-cotta, reflexed, center petals raised.
WILSON'S SUNSET	Single 5 inch flowers of Autumn shades suggesting a Fall sunset.
WILSON'S CREPE	Large ruffled and fringed, Buff with heavy red veins and dark red eye. Low spreading bush with small foliage.
WHITE WINGS	Large single, White with deep red throat.

Price of above Hibiscus as follows:-

2½ inch pots .....	each	35¢
Quart cans .....	"	50¢
Gallon cans .....	"	1.00
Gallon cans, Heavy blooming size .....	"	1.50

The following list of Hibiscus are some of the newer varieties that have proven their worth. They are truly the aristocrats of Hibiscus. Each variety has been selected for its outstanding color, they will indeed make truly remarkable specimen plants and will be the center of attraction in your garden. All are grafted plants unless otherwise stated.

ANN BALDWIN	Large single, Light claret with gold edges, a very striking flower and heavy bloomer.
BELLE MEAD	Single 6 inch flowers of white heavily crisscrossed with pink vein-like markings, dark pink eye, Petals edged gold, Ruffled.
BETTY KERSEY	Large single golden orange flushed gold shading to violet with dark pink throat, reverse of petals gold.
CHOCOLATE	Double medium sized flowers of a real chocolate color, a very unusual Hibiscus.
CANARY	4 to 5 inch flowers, ball shaped, Rich butter yellow with reddish-orange glow at center, Upright center.
CARMEN	Large golden orange with pinkish center, Single.
CHARLES JAMES JR	Large double reddish orange, outside of petals tipped golden yellow, a very fine flower but foliage poor.
CHIANG KAI SHEK	Large double. Orange with reddish base.
CLAUDETTE COLBERT	Single row of light yellow petals with pink center. A heavy center of rosette petaloids yellow streaked with pink & white.
COOPERS RANCH	Large flat single, Pinkish gold with a grained effect.
GLORIOUS "B"	Large single, yellow at outer edge of petals shading to burnt orange with glowing sunset tints and a mauve center.
GLORIOUS "C"	Large single, yellow with pink splotches.
HALEAKALA	Large single, Golden yellow with flaming red throat, each petal tufted, very ruffled and crepy. This is a very outstanding Hibiscus. At our Nursery last season this variety attracted more attention than any other variety.
HALLOWEEN	Large single, Dark orange flushed golden yellow, white veins and yellow center.
JOGORA	Large double dark golden orange with shadings of crimson and vermillan at base of petals. A remarkable blending of colors.
KELLY'S PRIDE	Deep golden yellow double with a white center. This is the best double yellow that we have found. Our supply is very limited owing to it being very hard to propagate, but once started it is a very strong grower and heavy bloomer.
McINTYRE	Very large single, Apricot-bronze with light center and deep pink throat, ruffled, One of the best singles.
NAN PATERSON	Large semi-double. light cream shading to orchid at center, veins orchid, cream petaloids on staminal column.
PAULAS PRIDE	Large single golden yellow, violet center with red throat, veins violet, ruffled, Cut-leaf foliage.
PRINCESS	One of the heaviest bloomers that we have seen. Large single golden yellow fading to almost white with a pinkish violet throat veins silver, two day bloomer. When plant is well established blooms appear close to the branch from base of branch to the top very much like a Hollyhock. Upright growth. Foliage very heavy. You will be proud to have this Hibiscus growing in your garden.
RUFFLED GIANT	Very large single, Blooms often measure 7 inches across, very crepy and ruffled, creamy-white with pale yellow shadings.
SARAH DE SCHAZEN	Large semi-double flowers of glowing Apricot-orange, Petaloids at end of style. You must see this flower to fully appreciate the rich glowing color and fine formation of its bloom. This variety should be in every garden if you like Hibiscus.

Faint, illegible text at the top of the page, possibly a header or introductory paragraph.

Second section of faint, illegible text, appearing as several lines of a paragraph.

Third section of faint, illegible text, continuing the narrative or list.

Fourth section of faint, illegible text, showing some structural elements like a list or sub-sections.

Fifth and final section of faint, illegible text at the bottom of the page.

TANGERINE Medium sized single flower of rich tangerine color with some shadings of darker color, a very striking color.  
 WILSON'S RED Very large dark red with a purplish sheen, Flowers are sometimes single, sometimes with a petaloid and often semi-double. A well established plant will often the three different types of flowers blooming at the same time. Our supply of this variety is limited to a very small number for this season and we advise you to order early and not be disappointed.

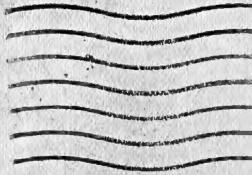
Prices of the above Hibiscus as follows:-

Grafts in Quart cans ..... Each \$1.75  
 Blooming size .... Grafts in Gallon cans ..... " 3.00

We do not advise shipping the above plants by Parcel Post, If wanted by Parcel Post we will pack as safely as we can and ship at your risk. We advise shipping by Railway Express or Truck Lines. You will find that the cost is very little more and you will be more than repaid by the condition of the plants when you receive them. Shipped in the containers they will reach you in the same condition as when packed for shipment and will receive no set-back in the shipping and transplanting if planted according to instructions sent you with order. With each order sent out we include a pamphlet on the culture and care of Hibiscus, also how to remove plant from container for planting in the ground. We are continually striving for new hybrids in Hibiscus, when we obtain these we have a very limited supply for the first season and for that reason we do not list them. If you are interested in the newer hybrids send us your name and address asking to be put on our mailing list for the newer varieties, you will then receive a description of the plants as they become available for sale. We grow a large variety of Flowering Trees, Shrubs and Plants. Some of these we are listing below. If you are looking for a new or unusual plant not listed, write us, most likely we can supply you with the plant, if not we may be able to obtain one for you.

FLOWERING SHRUBS - PLANTS - VINES

		Price each
ACACIA	Deep golden yellow flowers, fine foliage.	.75
ALLAMANDA	Deep yellow flowers, Bush type, large flowers	1.50
ALLAMANDA	" " " Vine type, medium flowers	1.00
ARDISSIA	Evergreen low bush, Red berries most of the year.	.75
ALBIZZIA	Silk Tree or Mimosa Tree. Pink flowers in summer.	1.00
BRUNSFELSIA	Lady of the night. Sweet smelling at night.	1.50
BOUGAINVILLEA	Afterglow, Yellow-orange to rose.	1.00
"	Crimson Lake, Brilliant crimson.	1.00
"	Spectabilis, Rich purple.	1.00
"	Panama Pink, Mauve-pink.	1.00
"	Golden Glow, Golden yellow.	1.25
BAUHINA	Orchid tree, Orchid shaped blooms	1.00
CROTONS	All colors	1.00
ERYTHRINA	Crista Galli, Coral Tree or Cry Baby Tree	1.50
CASSIA	Bearreana, Yellow flowers, Fall blooming.	.50
IXORA	Flame of the Woods, Blooming size.	1.00
LIROPE GRASS	Ribbon Grass, Blue flowers, Black berries.	.05
" "	Muscari Grass, Blue flowers, Varigated foliage.	.10
LAVATERA	Morning Glory Tree, Lavender flowers.	1.00
MALVAVICUS	Sleeping Hibiscus, Colors Red & Pink.	.50
PENTAS	Ever-flowering, Dark red flowers.	.50
POINCIANNA	Gilliesi, Bird of Paradise Tree.	1.50
PAPAYA	Ethel, Should bear fruit this season, order two a male plant and a female plant.	.75
PEPPER	Ornamental, Round fruit red, green white & yellow.	.50
THUNBERGIA	Erecta, Shiny foliage, Flowers White or Blue.	1.00
JACOBINIA	Cocconeia, Scarlet Flowers.	.50
THRYALLIS	Very much like Plumbago, Yellow blooms.	1.00
THEVETIA	Yellow Oleander.	1.50
JASMINE	Grand Duke, Sweet smelling double white blooms.	.75
TABERNMONTANA	Crepe Jasmine, Sweet smelling, ever-blooming.	1.00
BIGONIA	Vine, Purplish blooms.	1.00
SENECIO	Vine, Orange-scarlet blooms, Mexican Flame Vine.	.75
PETREA	Vine, Purple flowers in clusters, Queens wreath vine,	1.00
SOLANUM	Vine, White & Blue, Paradise Flower Vine. Ever-blooming	1.00
DAY*LILIES	Write for list of named varieties	
EUCHARIS	Amazon Lily, Blooming size from 4 inch pots.	.50
CALLA LILY	White, Blooming size, from 4 inch pots.	.50
CURCUMA	Ginger Lily, Broad leaves, Hyacinth shaped flowers	.25
BUTTERFLY LILY	White, very fragrant, tubers.	.10
MARICA	Creeping Iris, Tubers, Blooming size.	.10
BELOPERONE	Shrimp Plant, Blooming size	.50
JACOBINIA	Coccinea, Scarlet flowers, Blooming size.	.50



**U. S. DEPARTMENT OF AGRICULTURE**  
**LIBRARY**  
**WASHINGTON 25, D. C.**  
**OFFICIAL BUSINESS**  
**PRINTED MATTER**

**PENALTY FOR PRIVATE USE TO AVOID  
PAYMENT OF POSTAGE, \$300  
(GPO)**

**Library, U. S. Dept. of Agriculture,  
WASHINGTON 25, D. C.**