

## **Historic, Archive Document**

Do not assume content reflects current scientific knowledge, policies, or practices.



★ JAN 31 1952 ★

Department of Agriculture

# SILHOUETTE

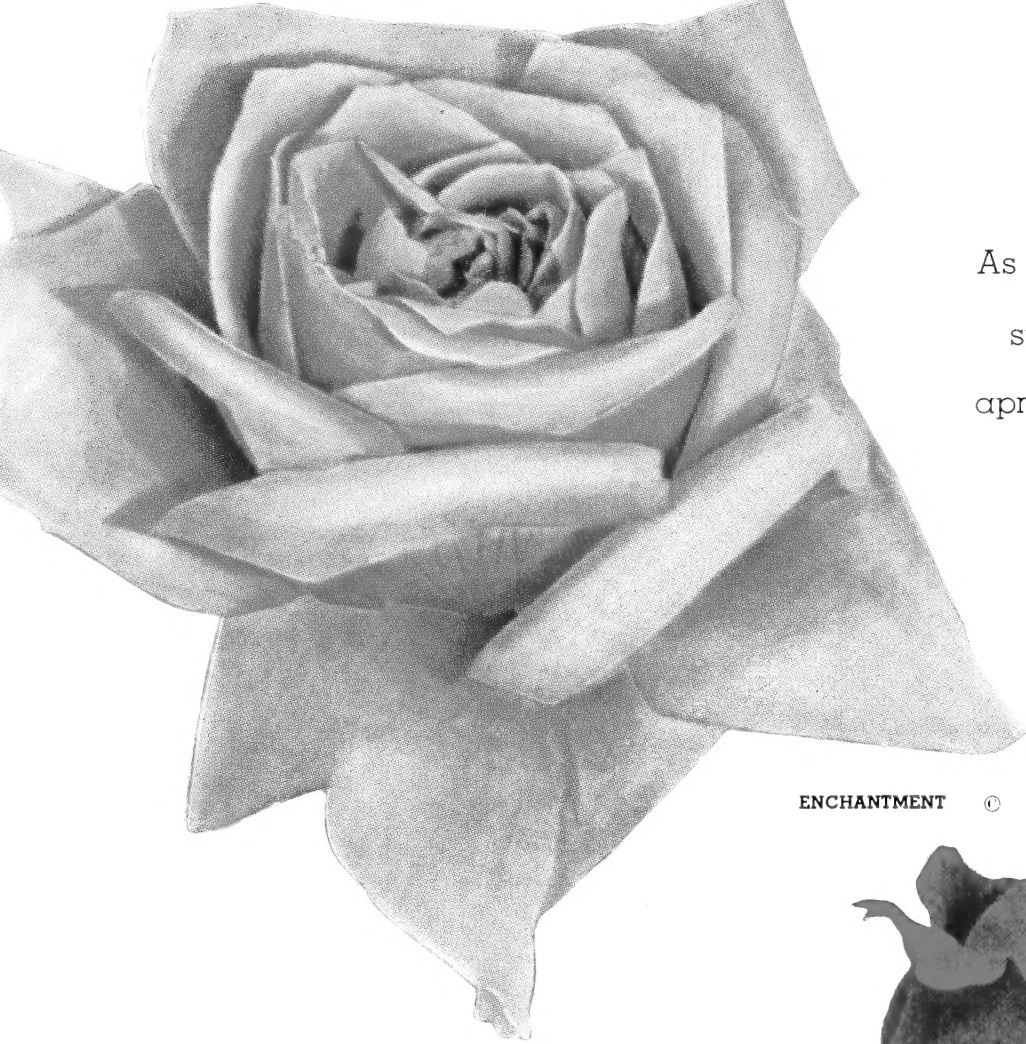
**OF ROMANCE AND MEMORIES**BY BREEDLOVE NURSERIES*Tyler, Tex.***PEACE**

(Plant Pat. 591)

This is the first rose to be awarded the  
 American Rose Society Gold Medal, based  
 on two-year tests in AARS trial gardens.  
 Peace won all top National Awards in  
 France, England and America. Strong,  
 healthy, with leathery foliage  
 and long-lasting blooms, the  
 "Queen of the Show"  
 is easy to grow.

**\$2.50 each; 3 for \$6.60;****12 for \$26.40 Postpaid**

PEACE



## ENCHANTMENT

(Plant Pat. 737)

As bewitching as its name, large, stately, golden-glow pink buds, apricot tinged outside, deepening to clear yellow at the base. Enormous, high-centered blooms. Delicate, all-pervading fragrance...

**\$2.00** each; **3 for \$5.25;**

**12 for \$21.00**

ENCHANTMENT ©

## FLAMBEAU

(Plant Pat 374)

Bright, glowing wood fire is captured in the flame of deep carmine buds and the peculiar sheen of the petals. Long, strong stems bear trim, slender buds. **Healthy, hardy plants.**

**\$1.75** each; **3 for \$4.65;**

**12 for \$18.60.**



FLAMBEAU ©





## ROME GLORY

(Plant Pat. 304)

Here is a fiery hussy . . . enticing, glowing, scarlet-red . . . voluptuous, full-bodied form . . . exotic, intoxicating fragrance . . . continuous, abundant bloom.

**Strong vigorous bush.**

**\$1.75 each; 3 for \$4.65;**

**12 for \$18.60.**



ROME GLORY ©

## FANTASIA

(Plant Pat. 590)



FANTASIA ©

A wood sprite's golden velvet gown for fairy dances . . . Fantasia is a fragrant, daffodil-yellow throughout the Spring, Summer and Fall . . . with bright tints of gold always present. A most dependable bush.

**\$1.75 each; 3 for \$4.65 12 for \$18.60.**

### GROUP No. 1

For one of each variety illustrated on pages 2 and 3

**\$6<sup>05</sup>**



©

CRIMSON GLORY

### CRIMSON GLORY

(Plant Pat. 105)

Time after time one of the ten most popular in America. Beautiful form, delightful fragrance, rich color—a magnificent rose—an instant favorite wherever shown. Dependable, productive, it deserves a place in your garden.

**\$1.75** each; **3 for \$4.65;**  
**12 for \$18.60.**

### GROUP No. 2

For one of each variety illustrated on pages 4 and 5



### TEXAS CENTENNIAL

(Plant Pat. 162)

A sport of the famous President Herbert Hoover, this rose has inherited the fine qualities of its parent. It was chosen as the Centennial Rose for Texas and is vigorous in growth with fine form and fragrance. Buds on long, strong stems.

**\$1.50** each; **3 for \$3.75;** **12 for \$15.00.**

TEXAS CENTENNIAL

## NOCTURNE

(Plant Pat. 713)

A dreamy, pensive beauty . . . a lovely serenade to the night and her ageless mystery is this deep velvety, sunset-red rose. Long-stemmed, extra heavy buds . . .

**\$1.75 each; 3 for \$4.65; 12 for \$18.60.**



NOCTURNE

**\$6<sup>05</sup>**



FIRST LOVE

## FIRST LOVE

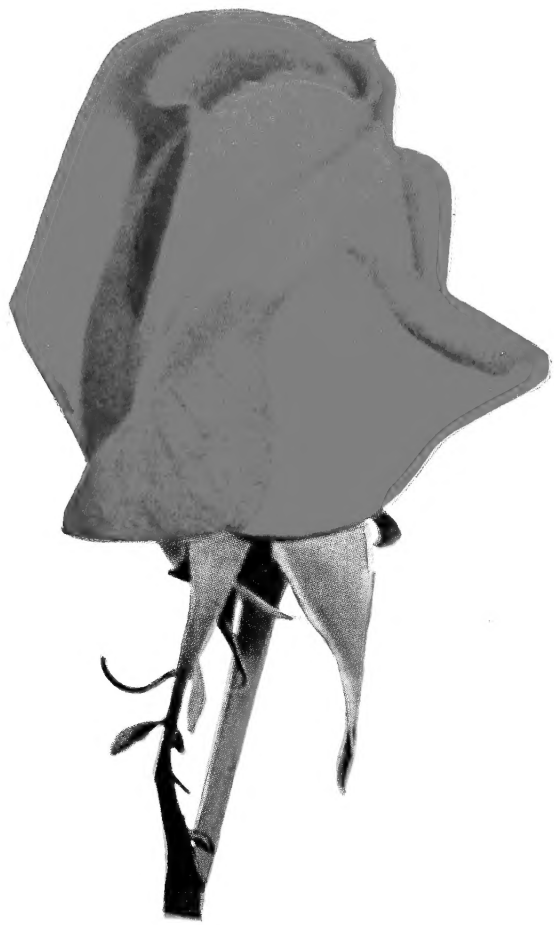
(Plant Pat. 921)

Starry-eyed, blushing beauty most aptly named. Long, slender buds of pale Dawn-pink . . . softly washed with pastel tints of salmon, orchid and rose . . . outer petal tips delicately pointed. Each flower has its own long, slender stem.

Blooms throughout the season and thrives in hot weather.

**\$2.25 each; 3 for \$6.00;**

**12 for \$24.00.**



RUBAIYAT ©

## RUBAIYAT

(Plant Pat. 758)

"A loaf of bread, a jug of wine and thou" . . . could this have been the regal-red beauty that inspired Omar Khayyam? . . . for here is petal poetry that sets a heart in rhythmic rapture . . .

**\$1.75 each; 3 for \$4.65; 12 for \$18.60.**

## ECLIPSE

(Plant Pat. 172)

Here is dainty, graceful streamlining, as modern as this morning. The fragrant golden yellow, tapering buds, often two inches long, are as near perfection as you will ever find. Universally popular.

**\$1.75 each; 3 for \$4.65; 12 for \$18.60.**



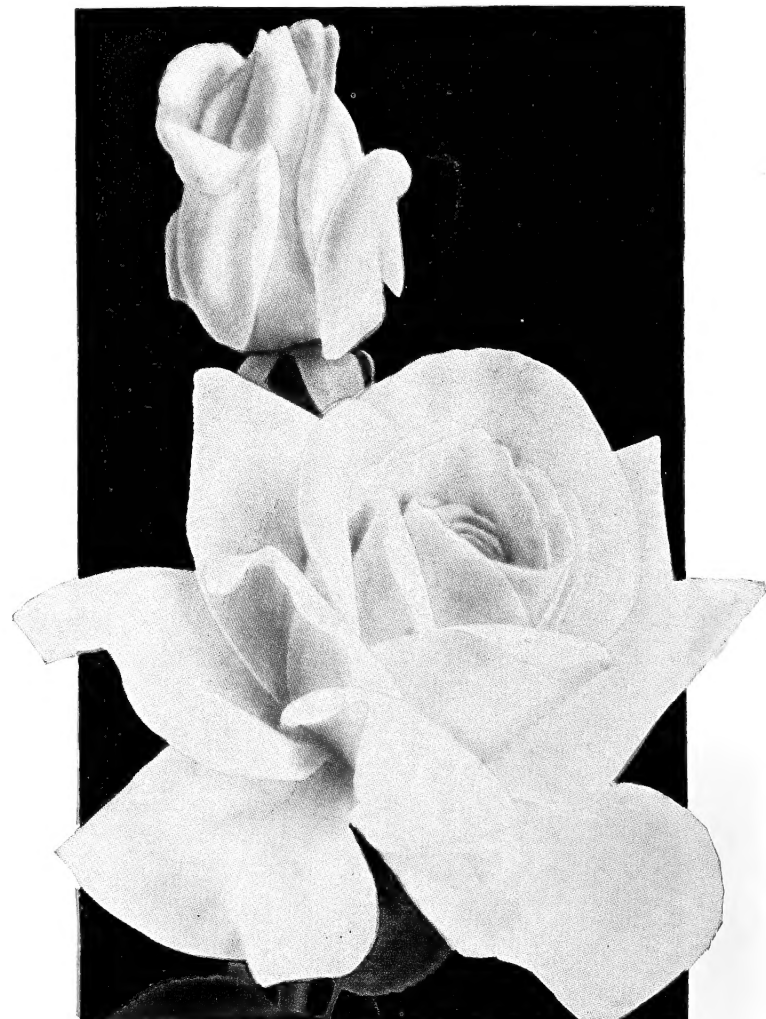
ECLIPSE ©

## REX ANDERSON

(Plant Pat. 335)

Buds are perfect in form with an abundance of grey-green foliage. Opens into massive, double, ivory-white blooms. A grand exhibition rose for accent in any flower arrangement. Exceptionally vigorous and freely branching bush.

**\$1.75 each; 3 for \$4.65; 12 for \$18.60.**



REX ANDERSON ©

BREEDLOVE NURSERIES, TYLER, TEXAS



## McGREY'S SUNSET

(Plant Pat. 317)

Begorra, and here is a lush-blooming Irish rose with the sunsets of Killarney in its veins. Saffron blooms with delicate tints of orange and rich scarlet grow in lovely candelabra effect.

\$1.75 each; 3 for \$4.65; 12 for \$18.60.

### GROUP No. 3

For one of each variety illustrated on pages 6 and 7

**\$885**



McGREY'S SUNSET ©



AMERICAN FLAGSHIP  
(Plant Pat. 676)



KATHERINE T. MARSHALL  
(Plant Pat. 607)

### KATHERINE T. MARSHALL.

The loveliest possible shades of coral pink, underlaid with soft gold, contribute to the unusual attractions of this wholly beautiful rose. Blooms are slow-opening, heavy-petaled and sun-resistant. All-American winner, 1944.

\$1.75 each; 3 for \$4.65;  
12 for \$18.60.

**AMERICAN FLAGSHIP.** A banner rose, good as the name it bears. Great, rich dark buds to delight the eye. You will love its marvelous coloring and the sturdy bushes.

\$1.75 each; 3 for \$4.65;  
12 for \$18.60.





MIRANDY

## MIRANDY

(Plant Pat. 632)

First-place, All-America

Winner in 1945, this rose has the deep, dark, velvety petals and heady, permeating fragrance that sets it apart . . . regally . . . among the reds.

Free-branching, disease-resistant plants produce great, long-pointed, ovoid buds that open to 50-petaled blooms.

**\$1.75 each; 3 for \$4.65;  
12 for \$18.60.**

## LOWELL THOMAS

(Plant Pat. 595)

A great name and a great rose. Glowing lemon-chrome yellow flowers are 4 inches across, are perfect for cutting.

**\$2.00 each; 3 for \$5.25;  
12 for \$21.00.**



LOWELL THOMAS

BREEDLOVE NURSERIES, TYLER, TEXAS





## DIAMOND JUBILEE

(Plant Pat. 824)

The yellow rose you have dreamed about has stately form, heavy, unfading, long-lasting petals. The perfect rose of its color. All this and a strong attractive bush.

**\$2.00** each; **3** for **\$5.25**; **12** for **\$21.00**.



DIAMOND JUBILEE ©

## GROUP No. 4

For one of each variety illustrated on pages 8 and 9

**\$6<sup>70</sup>**



©  
NEW YORKER

## NEW YORKER

(Plant Pat. 823)

Tremendous! Colossal! Superb!  
A sparkling glass of Burgundy wine in sunlight... there's the color; crushed raspberries... that's the scent.

**\$2.00** each; **3** for **\$5.25**;  
**12** for **\$21.00**.

## SHOW GIRL

(Plant Pat. 646)

Long stemmed, graceful, gorgeously formed... the most beautiful of all the pinks. Heavy-textured, slender buds open to firm, full-blown flowers.



Bushes are tall, strong, rather slender with heavy canes... withstand heat and cold better than most pinks.

**\$1.75 each;**

**3 for \$4.65;**

**12 for \$18.60.**



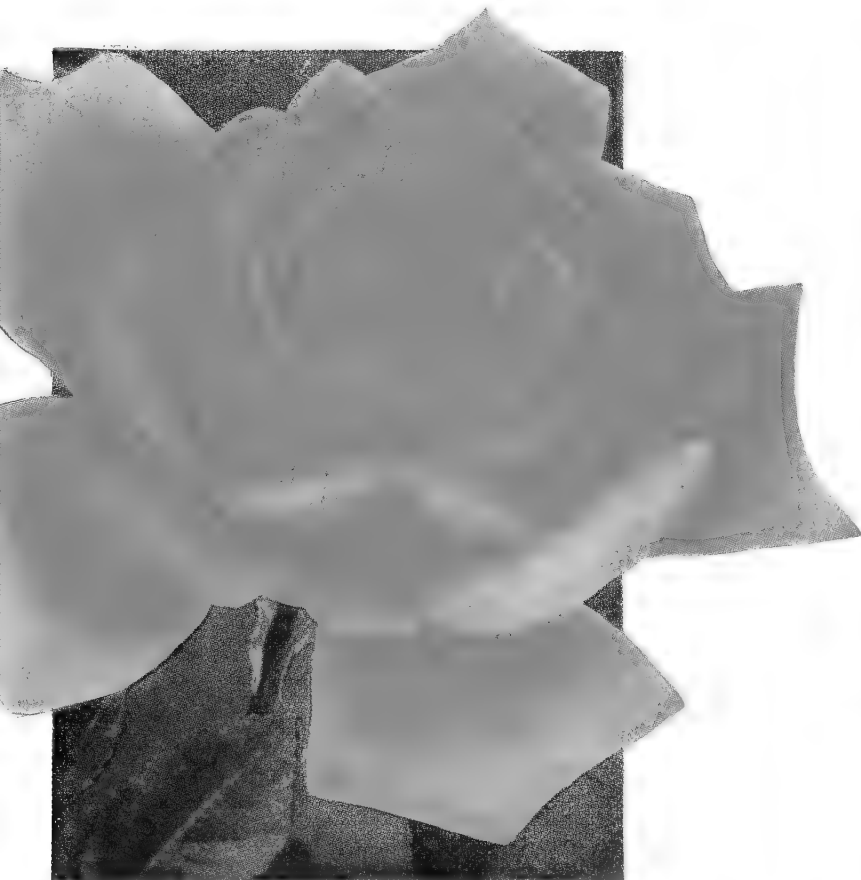
SHOW GIRL

**GOLDEN ANNIVERSARY.** A sport of "Good News," with all of the sturdiness, shapeliness and leaf mass of its parent... same handsome formation... but coloring varies between mellowed gold and flushed apricot. Plant blooms profusely and continuously.

**\$1.75 each; 3 for \$4.65; 12 for \$18.60.**

**WHITE BRIARCLIFF.** The measured cadence of Lohengrin... the slender, flickering altar tapers... the treasured memory of a young bride's "I do"... all these in a rose. Satiny white, Hybrid Tea with sleek, graceful buds and a wealth of perfect blooms all season long.

**\$1.75 each; 3 for \$4.65; 12 for \$18.60.**



GOLDEN ANNIVERSARY  
(Plant Pat. 806)



WHITE BRIARCLIFF ©  
(Plant Pat. 108)



## CHARLOTTE ARMSTRONG

(Plant Pat. 455)

Other roses are judged by Charlotte Armstrong. Its outstanding quality definitely places it among the great leaders of Rosedom. By all means include it in your order.

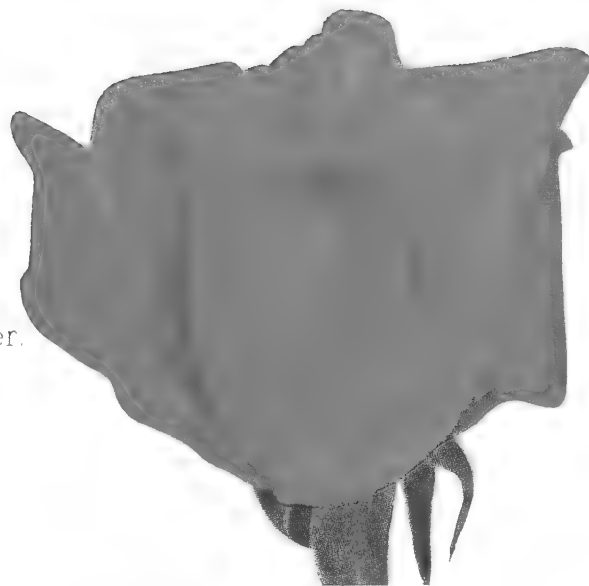
**\$2.00** each; **3** for **\$5.25**; **12** for **\$21.00**.

## WILL ROGERS

(Plant Pat. 256)

All of lovable Will's genuine warmth and bigness of heart is in this rose. In the Fall of the year petal edging approaches black. Full carnation-like centers. A profuse, monthly bloomer... long stemmed. Free growing plants.

**\$1.75** each; **3** for **\$4.65**; **12** for **\$18.60**.



CHARLOTTE ARMSTRONG



CLIMBING HINRICH GAEDE

## CLIMBING HINRICH GAEDE

(Plant Pat. 244)

All the soft, beautiful hues of the superb bush rose are now perpetuated in the climber. No other rose is quite so rich in perfectly blending colors.

**\$2.00** each; **3** for **\$5.25**; **12** for **\$21.00**.

### GROUP No. 5

One each of roses on pages  
10 and 11

**\$9.25**



WILL ROGERS



**CLIMBING CRIMSON GLORY** ©  
(Plant Pat. 736)

**GROUP  
No. 6**  
One each of roses  
on pages 12  
and 13  
**Only \$10.25**



**DR. J. H. NICOLAS** ©  
(Plant Pat. 457)

**CLIMBING CRIMSON GLORY.** At last a climbing rose with the great qualities of the bush Crimson Glory. Rich, very dark crimson blooms, intriguing fragrance, added to vigorous growth, mean an outstanding red climber. We gladly recommend it.

**\$2.00 each; 3 for \$5.25; 12 for \$21.00.**

**CLIMBING PEACE.** A rambler version of the World's favorite. Beautiful in bloom as well as leaf coloring and texture, the Peace Climber is the answer to your expression of exterior decoration as the Peace bush answers your needs in interior arrangements of cut flowers.

**\$2.50 each; 3 for \$6.60; 12 for \$26.40.**

**DR. J. H. NICOLAS.** A rose-pink cascade of fragrant flowers, very double, that bloom in unabated profusion throughout the season. If you have an eye to covering an unsightly wall or fence, give careful thought to the magic of camouflage with this rose.

**\$2.00 each; 3 for \$5.25; 12 for \$21.00.**

# CLIMBING

EVERBLOOMING



**CLIMBING PEACE**  
(Plant Pat. 932)

BREEDLOVE NURSERIES, TYLER, TEXAS

**HIGH NOON.** This golden goddess of a rose is our best yellow climber. Its exceptionally long stems and tight, shining buds make it more suitable for cutting than most climbers. A great abundance of blooms.

\$2.00 each; 3 for \$5.25; 12 for \$21.00.

**CLIMBING TEXAS CENTENNIAL.** A climbing variety of the famous Texas Centennial bush rose. This rose has the fine qualities of its parent. Vigorous in growth, with fine form and fragrance.

\$1.75 each; 3 for \$4.65; 12 for \$18.60.

**CLIMBING SUMMER SNOW.** A pillar of Summer Snow, glistening glacier-white, with sparkling petals, all the season long. Most prolific in bloom.

\$2.00 each; 3 for \$5.25; 12 for \$21.00.

# ROSES

PATENTED



CLIMBING TEXAS CENTENNIAL  
(Plant Pat. 565)



HIGH NOON  
(Plant Pat. 704)



CLIMBING SUMMER SNOW  
(Plant Pat. 401)



### E. G. HILL

←← Heavy petaled, scarlet-crimson flowers ... beautiful buds ... faint but pleasant perfume ... large double blooms ... good, strong stems ... excellent plants.

\$1.25 each; 3 for \$3.25; 12 for \$12.00

### BRIARCLIFF

For pure beauty and dependability this Rose cannot be surpassed. The extra-large, pink blooms are perfect in form; the buds are excellent, and it is practically thornless.

\$1.35 each; 3 for \$3.50; 12 for \$13.50



### QUEEN LOUISE

↑ A white you don't forget, lovely as a June bride.

\$1.25 each; 3 for \$3.25; 12 for \$12.00

### CYNTHIA

↓ An entrancing pink with a touch of delicate gold at petal bases. Lovely in formation of stem and bloom.

\$1.25 each, 3 for \$3.25; 12 for \$12.00

### LUXEMBOURG

↓ Deep orange flowers ... long-pointed buds on graceful stems ... beautiful foliage ... strong, thrifty grower.

\$1.15 each; 3 for \$3.00; 12 for \$11.00



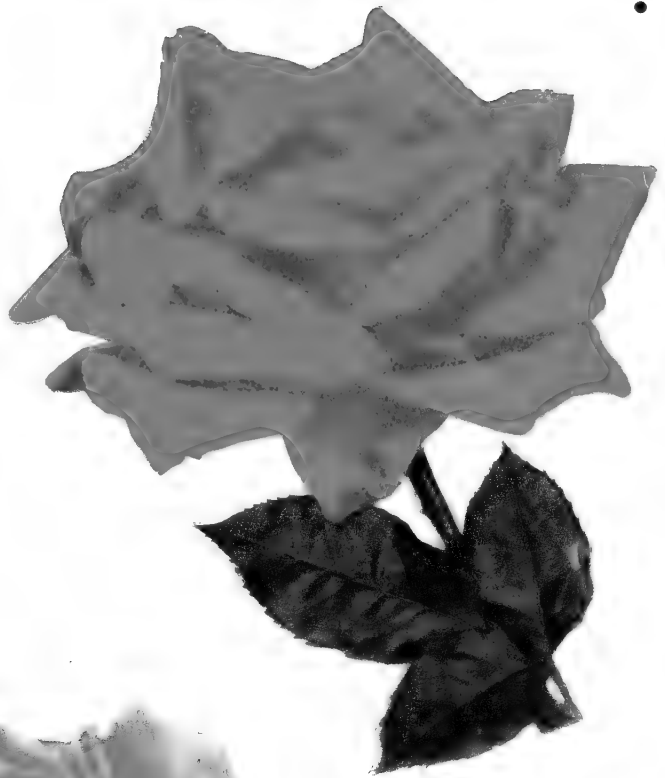
**JESSE BREEDLOVE'S TIME-TESTED NINE . . . . .**

**TIME TESTED NINE**  
 Only **789**  
 Reg. \$11.15 Value  
 Order JB9

**GRENOBLE** ➤➤➤

Beautiful crimson buds that unfold to lovely scarlet flowers . . . unusually long stems excellent for cut flower arrangements . . . plant is very vigorous.

\$1.15 each; 3 for \$3.00;  
 12 for \$11.00



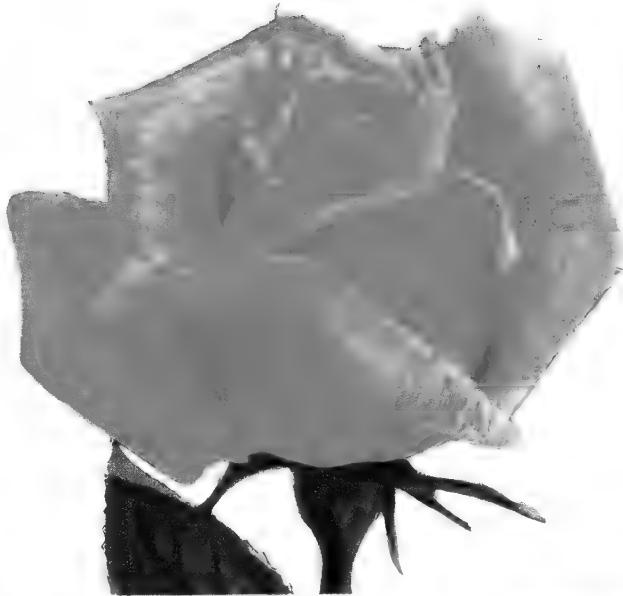
**TIME-TESTED NINE**

Here are nine roses, chosen for their high quality, beautifully contrasting, yet perfectly blending colors. Time has tested and so proven them that they remain, everyone, all favorites.

**PRESIDENT HERBERT HOOVER**

A blending of copper, yellow and flame . . . with strong stems and remarkably lasting qualities. Excellent for cutting or for garden.

\$1.25 each; 3 for \$3.25; 12 for \$12.00



← **GOLDEN OPHELIA**

A golden-hearted delight. Strong-growing bushes add to the attractiveness of another old friend.

\$1.25 each; 3 for \$3.25;  
 12 for \$12.00



**HADLEY** ➤➤➤

Lively dark red of fine quality. Big in size, beautiful in texture.

\$1.25 each; 3 for \$3.25;  
 12 for \$12.00

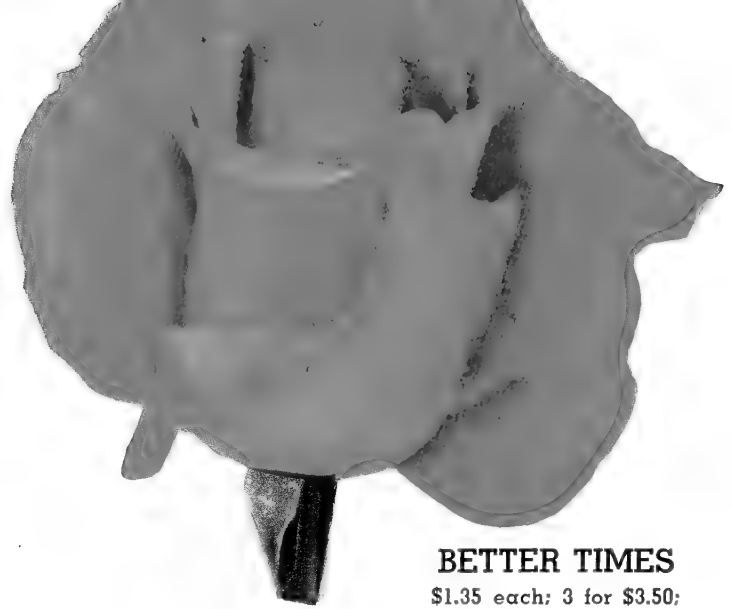






**KAISERIN AUGUSTE  
VIKTORIA**

\$1.25 each; 3 for \$3.25; 12 for \$12.00.



**BETTER TIMES**

\$1.35 each; 3 for \$3.50;  
12 for \$13.50



**ROUGE  
MALLERIN**

\$1.25 each;  
3 for \$3.25;  
12 for \$12.00



**EDITOR  
McFARLAND**

\$1.15 each;  
3 for \$3.00;  
12 for \$11.00

ALL ROSES  
PREPAID

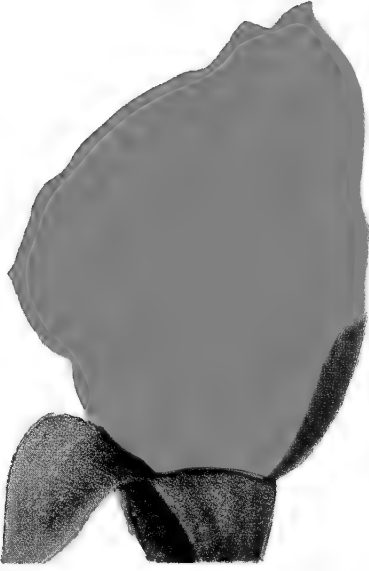
**GENERAL  
MacARTHUR**

\$1.35 each; 3 for  
\$3.50; 12 for \$13.50



**TALISMAN**

\$1.15 each; 3 for \$3.00;  
12 for \$11.00



**SOEUR THERESE**

\$1.35 each; 3 for \$3.50;  
12 for \$13.50



**ETOILE DE HOLLAND**

\$1.35 each; 3 for \$3.50; 12 for \$13.50

*Mrs. Breedlove's*  
**FAVORITE DOZEN**  
 . . . for arranging, for color contrasts and accents, for range of hue . . . all as important as the pigments on your palette before you take up your brush to make the first stroke on canvas . . . these are the roses you will use for striking effects in shadow-box display or table placings.

One each of all twelve roses

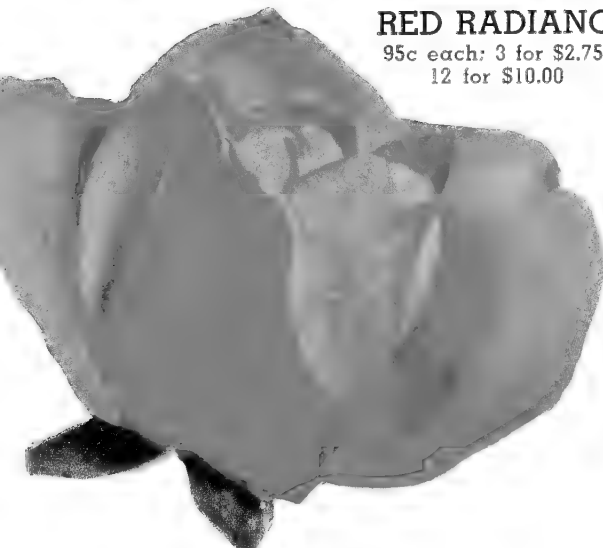
Only **\$9<sup>95</sup>**

Regular \$14.40 value  
 Order MB 12



**CONDEZZA DE SASTAGO**

\$1.15 each; 3 for \$3.00; 12 for \$11.00



**RED RADIANCE**

95c each; 3 for \$2.75;  
12 for \$10.00



**GOLDEN CHARM**

\$1.15 each; 3 for \$3.00;  
12 for \$11.00



**RADIANCE**

95c each; 3 for \$2.75; 12 for \$10.00

# Floribundas.....

## GROUP 7

One each of Roses on  
Pages 18 and 19

Only \$7.98

**FASHION.** Hong-Kong, Mandalay, Siam . . . here is Asiatic mystery. Coral pink blossoms overlaid with gold are borne profusely from spring to frost. Late Summer and early Fall color, two shades deeper. The finest Floribunda ever created.

**\$2.00 each, 3 for \$5.25, 12 for \$21.00.**

**WORLD'S FAIR.** A glorious, red Floribunda; large, double, rich scarlet flowers with a fine velvety sheen; continuously in bloom from Spring to first frost. A fine, bushy, very hardy plant with luxurious dark foliage.

**\$1.50 each; 3 for \$3.90; 12 for \$15.60.**



**FASHION** ©  
(Plant Pat. 789)



**WORLD'S FAIR** ©  
(Plant Pat. 362)

**RED PINOCCHIO.** A rich, unforgettable carmine, with all the splendid qualities of the remarkable Pinocchio family. Exceptionally free flowering, with magnificent clusters on long and heavy stems. Colors are unfading; perfume delightful. Vigorous, broad, healthy plants ideally suited for borders, beds and base plantings for evergreens.

**\$1.50 each; 3 for \$3.90; 12 for \$15.60.**



**RED PINOCCHIO**  
(Plant Pat. 812)

**SUMMER SNOW.** Best, most prolific of all white Floribundas, Summer Snow is a bank of cool, gleaming, pure white the summer long.

**\$1.50 each; 3 for \$3.90;  
12 for \$15.60.**

Floribundas yet to appear.

**\$1.50 each; 3 for \$3.90;  
12 for \$15.60.**

**PERMANENT WAVE.** Rare color, crinkled and fluted blooms appearing in constant profusion—a splendid Floribunda.

**\$1.50 each; 3 for \$3.90;  
12 for \$15.60.**

**HOLIDAY.** Masses of gay colors in harmonious combination make Holiday one of the most appealing



**SUMMER SNOW**  
(Plant Pat. 416)



**HOLIDAY** ©  
(Plant Pat. 915)



**PERMANENT WAVE** ©  
(Plant Pat. 107)





GOLDBLOCKS ©

**GOLDBLOCKS**

(Plant Pat. 672)

"Stardust refined to Gold." Here at last is our true, golden Floribunda. Always colorful... always showy... always a crop of buds coming on as the older flowers fall.

\$1.50 each; 3 for \$3.90; 12 for \$15.60.

**PINOCCHIO**

(Plant Pat. 484)

The "Wonder of Rosedom" glows with bewitching gay blooms from spring to heavy frost—unusually good. \$1.50 each; 3 for \$3.90; 12 for \$15.60.



PINOCCHIO ©



DONALD PRIOR ©

**DONALD PRIOR**

(Plant Pat. 377)

Dependable always, great quantities of sparkling dark red blooms all season through. \$1.50 each; 3 for \$3.90; 12 for \$15.60.

**BETTY PRIOR**

(Plant Pat. 340)

Perpetual pink throughout the warm months. The flowers resemble red dogwood blooms and are very, very freely borne on husky little bushes. \$1.50 each; 3 for \$3.90; 12 for \$15.60.



BETTY PRIOR ©

**GROUP 8**  
One each of Roses on this page  
**Only \$5.00**



# ALL-AMERICA WINNERS for 1952

## VOGUE

(Plant Pat. 926)

Awarded gold medals in Switzerland, Oregon and Connecticut and now, AARS for 1952.

The color is superb—dark cherry in the bud; cherry coral in the 3 to 4-inch open flower with a fascinating carnation perfume—a wholly delightful and thoroughly good rose—as new as 1952.

\$2.25 each; 3 for \$6.00; 12 for \$24.00

## HELEN TRAUBEL

(Plant Pat. applied for)

Here is a magnificent rose to win your heart. Fascinating shades of light, sparkling pink, darkening to luminous apricot lend a touch of real and unusual distinction. Helen Traubel richly merits inclusion among the three all-American winners for 1952. As up-to-date as the latest news broadcast, it will be the newest sensation in your flower arrangements

\$2.75 each; 3 for \$7.20; 12 for \$28.80



The Three 1952 Winners  
Only \$6.50  
Regular \$7.75 Value  
Group No. 9

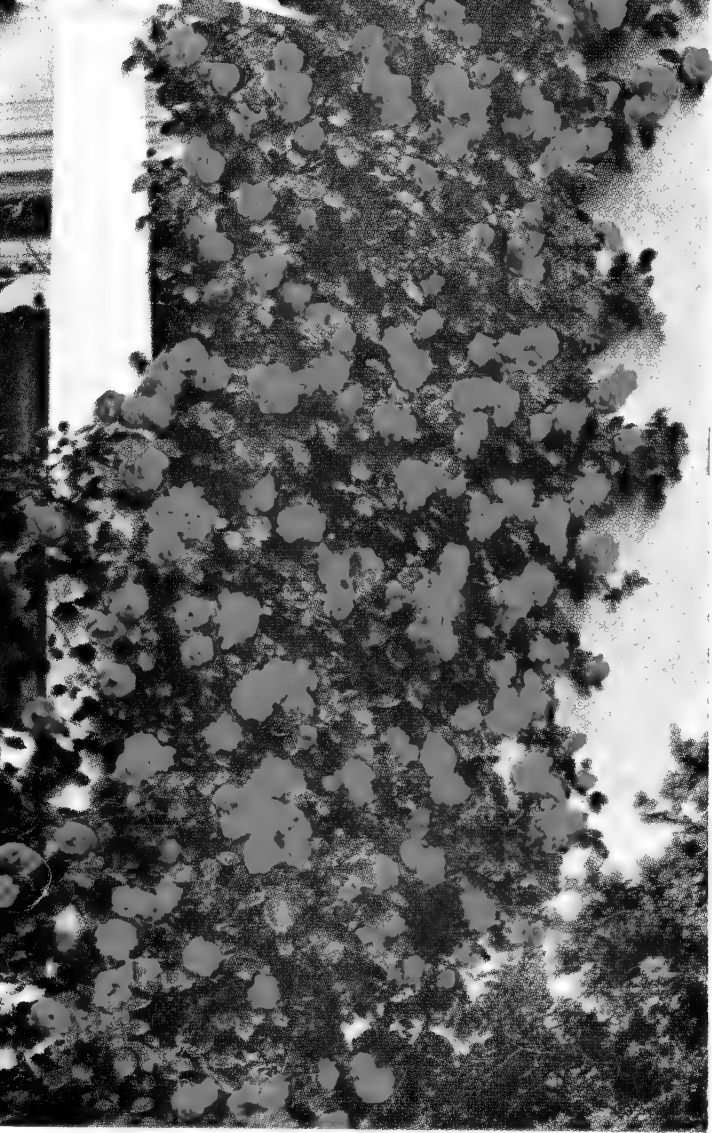
## FRED HOWARD

(Plant Pat. 1006)

As up-to-the-minute as today, this latest creation of a great rosarian has long, yellow buds, softly penciled with pink at the tips, opening to perfectly formed, fully double blooms of great beauty.

\$2.75 each; 3 for \$7.20; 12 for \$28.80





**CLIMBING BRIARCLIFF.** The same supreme quality of buds and open flowers as the bush variety. Few thorns on a fine plant result in a very desirable pink climber. **\$1.35 each; 3 for \$3.50 12 for \$13.50.**



**CLIMBING BRIARCLIFF**

# EVERBLOOMING

A fence all covered with red, pink or bi-color roses, interspersed with white if you like, can be season-long beauty for you. A pillar or trellis smothered under a profusion of eye-stopping, glorious blooms can easily be the center of attraction about your home.

Here are nine monthly blooming climbing Roses, a

## 3 EVERBLOOMING CLIMBERS

2 Red—1 Pink  
Our Selection **\$2<sup>99</sup>**  
Group 10



**BLAZE.** America's favorite climbing Rose. This velvety, vivid-scarlet climber, blooms prolifically. Exceptionally hardy and easy to grow... luxuriant foliage and a riotous display of color from late spring to first frost. **\$1.25 each; 3 for \$3.25; 12 for \$12.00.**

*Special*

1 Each of 9 Varieties Listed

Only **\$8<sup>99</sup>**

Regular \$11.15 Value

Group 11

**CLIMBING RED RADIANCE.** One of the many sports developed from Radiance. Has the same general characteristics as to petal structure and fragrance but is a much deeper red. **\$1.15 each; 3 for \$3.00; 12 for \$11.00.**



BREEDLOVE NURSERIES, TYLER, TEXAS

# CLIMBING ROSES

choice of any color you prefer, plus all the quality we grow into the strong healthy plants from "The Rose Garden of the World," where Breedlove's Roses are produced.

Make your selection now for early planting.

## SIX BUSHES

On This Page  
Reg. \$7.40 Value **\$6.66**  
Group 12

**CLIMBING TALISMAN.** A multi-color of world-wide recognition and acceptance.

\$1.15 each; 3 for \$3.00;  
12 for \$11.00

**CLIMBING SUNKIST.** Rivals the noontday sunshine in its clear pure yellow tints. A fine double rose on a vigorous plant.

\$1.35 each; 3 for \$3.50;  
12 for \$13.50

**CLIMBING RED TALISMAN.** A sport developed from the Talisman. This cerise-red beauty has beautiful buds for cutting and arranging.

\$1.25 each; 3 for \$3.25;  
12 for \$12.00

**CLIMBING RADIANCE.** Globular sweet-scented, clear clear pink blooms.

\$1.15 each; 3 for \$3.00;  
12 for \$11.00

**CLIMBING CALEDONIA.** Large, free-blooming, pure white roses that lift their heads with hauteur from the midst of a dark, leathery foliage.

\$1.25 each; 3 for \$3.25  
12 for \$12.00

**CLIMBING MRS. P. S. du PONT.** A bright, unfolding yellow of the deeper variety. Beautifully shaped flowers, known for its prolific bloom and healthy habit.

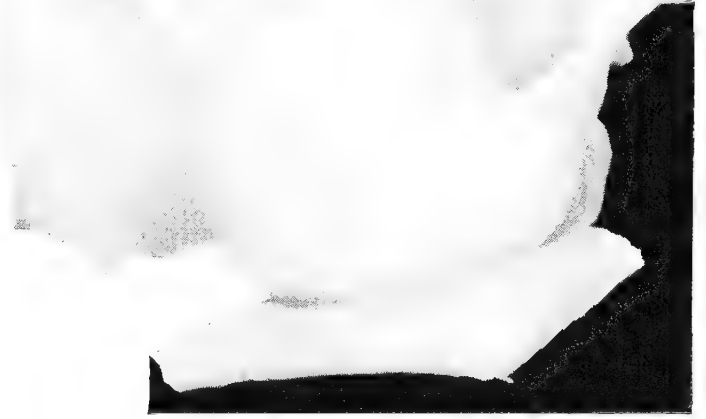
\$1.25 each; 3 for \$3.25  
12 for \$12.00



**PAUL'S SCARLET CLIMBER**

Brilliant, richly colored rose that just can't be equalled. The flowers are medium size, semi-double, scarlet and very free blooming. Makes an ideal pillar rose when trained to a stake. 95c each; 3 for \$2.75; 12 for \$10.00.

# Every Garden Needs these Two Roses



**FRAU KARL DRUSCHKI**

The world's greatest white rose. It is a Hybrid perpetual, pure white, free blooming and strong growing—often reaches 8 feet in height. 95c each; 3 for \$2.75; 12 for \$10.00.

## Plant America!

# VINES for FENCES, WALLS, TRELLISES

SCREEN UNSIGHTLY PLACES WITH BEAUTIFUL PLANTS

### *Breedlove's Wistaria*

**WISTARIA FLOWERING** vines are very useful plants because they give so much color and yet use very little ground space. Among the most beautiful of all is the Wistaria.

\$1.00 each; 3 for \$2.75

**HALL'S HONEYSUCKLE.** A splendid plant for covering banks to prevent erosion; will grow well in sun or shade. Constant, fragrant bloom. 18 to 24 in., each 75c; 3 for \$2.00; 12 for \$6.00.

**CAROLINA JASMINE.** Vigorous climbing evergreen vine, literally covered with yellow flowers in Spring. Heavy 2 year blooming size, each \$1.50.



**HALL'S HONEYSUCKLE**



**BREEDLOVE'S WISTARIA**

BREEDLOVE NURSERIES, TYLER, TEXAS



## A PERSONAL MESSAGE FROM JESSE BREEDLOVE

If catalogs were free we would send one to every home in the Nation, but since they are expensive under present conditions, we mail copies to a select list of our friends and prospective customers. Therefore we hope you will preserve this Book for reference, and perhaps pass it on to friends.

We founded our business twenty-four years ago on the principles of honesty, reliability, service and high-class products. We expect to continue on that basis. Our increasing experience enables us to furnish better and better plants and to back them up with the guarantee printed elsewhere on these pages.

Our stock is produced in the great nursery region of East Texas, where soil, climate and other factors combine to make the finest plants that money can buy. Two thirds of all the outdoor-grown roses produced in America are grown in a radius of fifty miles from our Nurseries. We use the most up-to-date methods in cultivating, storing and shipping our plants. That we ship to customers in every state, many of them of many years standing, evidences the high quality of our stock.

This is a lifetime business with us and many of our highly trained assistants. We put a lot of care and work into the plants we ship you and always undertake to supply you with the very best that can be produced anywhere. Beauty is our business and we are in business to please you.

An Order Blank for your convenience and ours is furnished. If you will look carefully through this Catalog and indicate what you need on the handy Order Blank, we will send you choice plants to beautify your home and add to the pleasure of living in it.

You will see that we have Roses, Evergreens, Shade and Ornamental Trees, Nut Trees, Vines, Fruit Trees and Berries. This Catalog is far too small to list all our plants. Should you need anything that is not pictured here, let us know, and we will help you if we can.

We earnestly make every effort for your convenience and service and we are as near as your mail box. Call on us for what you need in nursery stock.

You will find the seal of the American Association of Nurserymen in our pages and we urge you to help carry out the slogan of that great organization, "PLANT AMERICA," for greater beauty and fruitfulness.

Jesse Breedlove  
Founder and General Manager

## GUARANTEE

Breedlove Nurseries will exercise every care to furnish you with plants true to name, healthy and free from disease, that will meet the American Association of Nurserymen's Standards of Grading. In the event any plant proves untrue to name, it will be replaced without charge. Should your plants reach you in an unsatisfactory condition, if notified within five days, we will, at our option replace the plants or refund the purchase price. However, it is mutually agreed that in no case will we be liable for more than the purchase price of the plants. It is understood and agreed between the buyer and ourselves that the purchaser's order and our acknowledgement of its receipt shall constitute a mutual acceptance of all the terms of this guarantee.

We guarantee our plants to live and grow and will replace any that die at half the Catalog price if notified by June 1, following planting. All tags and labels must be returned when replacements are requested.

We urge you to follow the PLANTING INSTRUCTIONS in this Catalog or those inclosed with each order. Most plant failures are due to insufficient watering before and after planting, poor methods of planting, freezing, overfertilization, etc. By avoiding these mistakes you will reduce your losses to a minimum.

# The Planting and Care of Breedlove's Roses

It is not difficult to grow fine roses for these plants are hardy and will grow in any good soil where other common plants thrive. Select the best available ground, remove all trash and be sure that your roses will have at least half a day of sunshine. Avoid planting too near large trees or shrubs, which will not only sap the ground of the necessary moisture but rob it of essential fertility. Should it become necessary to place them near large plants, be sure that your roses have plenty of water and food in the form of the best fertilizer you can secure.

## HOW FAR APART?

Roses may be placed as close as 18 inches in rows  $3\frac{1}{2}$  feet apart, or if planted in beds, they may be as close as  $2\frac{1}{2}$  feet each way. Wherever possible provide room to cultivate between the bushes to let sunshine and air in all about the plants. Don't crowd fine plants; give them adequate living room to promote their health and beauty.

## PLANTING

Unwrap the plants as soon as you receive them and soak the roots in water from 2 to 12 hours, then rewrap them unless you can plant at once. Note carefully the illustrations on this page which show successive steps in correct planting.

Dig holes 18 by 18 inches about 18 inches deep. Stand the bushes in water while you are planting. They must not become dry. Cut off all broken or damaged roots or branches. Turn the bush upside down and cut all roots back to 8 to 9 inches, holding the bush in one hand and making the cut toward you so that the cut will be parallel with the ground when the rose is placed in the hole.

Good soil promotes healthy growth. If your ground is tight and inclined to bake, it is well to add peat moss, well rotted cattle manure or some good humus to aid in holding moisture and to condition the soil for best results.

Partly fill the hole, leaving a cone shaped mound in the middle. Set the bush over the mound of soil, letting the roots slope downward in the way they naturally grew. Never crowd or bend the roots. Give them plenty of room to grow.

Fill the hole a little at a time, packing the dirt firmly about the roots. When half full tramp the dirt about the

plant. Soak with water, then fill and tramp again. Make a low ridge about the planted bush at the edge of the hole and fill the resulting basin with water. Be sure the ground is thoroughly wet.

## HOW DEEP TO PLANT?

We have found that roses do best when the bud union, sometimes called the graft, is left just above ground level. All our cuttings are de-eyed below the bud union to prevent suckering. You will have healthier bushes by following this method of planting.

When you have completed your planting, hill dirt about each bush to a height of six inches or more, leaving an inch or so of stems above the dirt. This will prevent dehydration of the bushes, one of the greatest dangers to new-planted roses. Leave the mound of dirt for a few weeks, or if the winter is severe and the ground remains frozen for long periods, leave it until spring. Then remove a little at a time through a week.

## PRUNING

Your roses have been pruned by our experienced packers. But after planting them, cut them back to ten inches from the union. This method causes them to branch near the ground and to grow into well balanced, sturdy bushes.

So many methods of pruning established rose bushes are advocated that it is impossible to establish a set of general rules. We advise you to prune to your own satisfaction. However, it is best not to cut below a foot from the ground. Polyanthas and Floribundas may be pruned lower, of course. Climbers may be thinned by removing the weaker canes. If they must be pruned to keep them within a prescribed limit, it should be done early enough so that the new growth will be ready for spring blooming. Hybrid-Perpetuals may be pruned in a similar way. We try to prune our bushes just before the spring growth begins.

## WATERING

Roses, like most other plants, do best in good soil, with plenty of moisture, but they do not need excessive watering. Always soak the ground to the lowest roots by running a



trickle of water from a hose or a soil soaker. Sprinkling spreads black spot fungi and encourages mildew in humid weather.

### FERTILIZATION

Soils vary in fertility so much that it is not possible to establish a general rule. Perhaps nothing is better than well-rotted cattle manure for both humus and plant food. However certain soils may be deficient in trace minerals, which the better brands of chemical fertilizers have. It is always well to consult local agricultural and horticultural people about your fertilizer problems. When you fertilize, follow directions carefully, don't use too much and damage your plants.

### CULTIVATION

Avoid deep cultivation but keep the ground loose to a depth of 1½ inches, and during hot, dry weather keep a dust mulch about your plants. A better method of mulching is to use peat moss, dry grass cuttings, cotton burs, cottonseed hulls, grain hulls. These mulches will hold moisture in the soil and will eventually improve the soil as they decay.

### WINTER PROTECTION

Very little protection is needed in the South unless the winter is unusually severe. On the other hand roses need to be protected in the North by hilling soil 10 inches high about the plants. The spaces between hills should be filled in with straw or hay. Remove mounds of soil just before the spring growth is due. Take tender climbing roses off the trellises, wrap them in straw and protect as bush roses.

### INSECTS AND DISEASES

Black spot and mildew are the worst enemies of your roses but both can be prevented or controlled with a good fungicide. It is best to prevent rather than to undertake a cure. Dust or spray with your favorite fungicide regularly, following directions on the package.

At the first sign of insect damage, begin spraying or dusting with a good insecticide and continue as long as there is danger of an infestation. If your dealer can not supply you with fungicides and insecticides, call on us and we will supply you with our best products.

Buy the best plants you can secure and keep them healthy. They will repay you with great beauty in which you will take a deep pride.

For further information write us or call on the Agricultural Agent for your locality, your Agricultural Colleges, the State or National Departments of Agriculture. We especially refer you to THE AMERICAN ROSE SOCIETY of Harrisburg, Pennsylvania, from which you can secure invaluable information.

### THE PLANTING AND CARE OF TREES

Trees need room to grow into the form and beauty that nature designed for them. Visualize the trees you are planting, ten, twenty, fifty years from now. Have you given them room to grow into the great, spreading trees you desire for your pleasure and that of those who will inherit your estate?

Like other plants, trees need soil that is adapted to their particular requirements. Poor soils can be greatly improved by adding humus and water, along with the best of fertilizers, thus creating a favorable environment for trees. Good trees need and deserve good ground.

Unwrap your trees as soon as you receive them, moisten the roots and cover them with wet burlap or newspaper. If they are not to be planted at once, heel them in the ground at a 45 degree angle, soaking the ground about the roots with water.

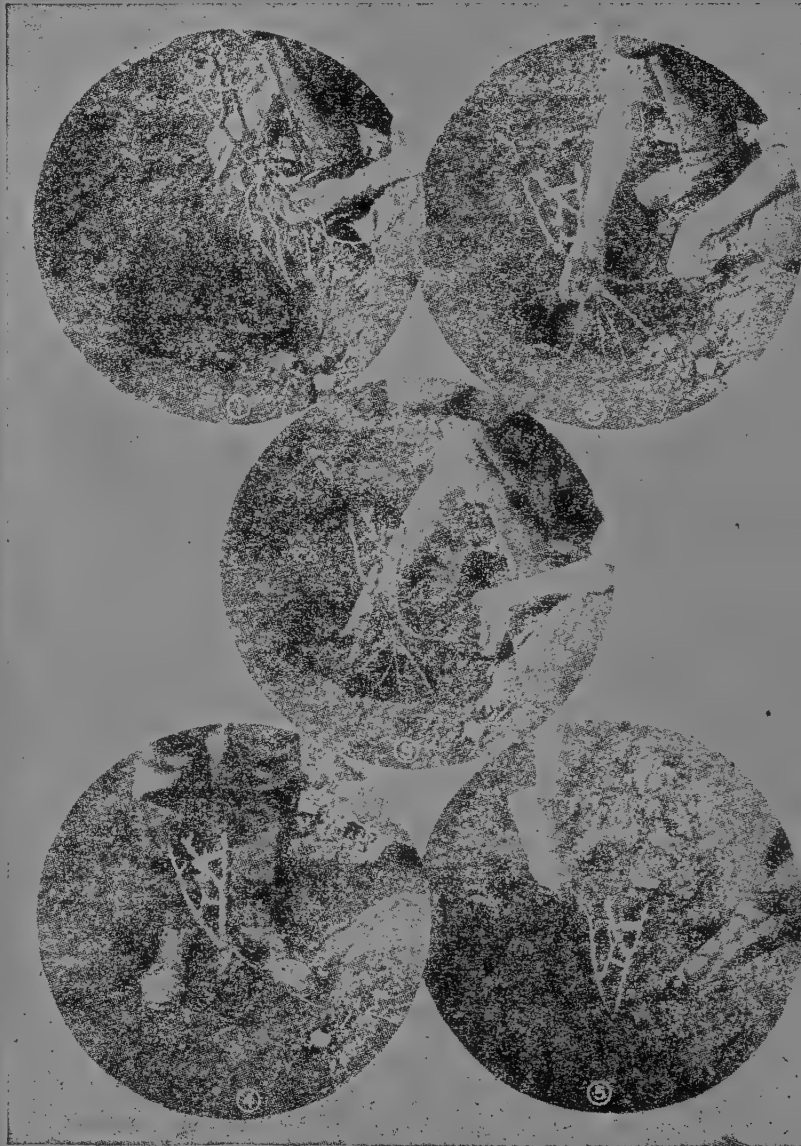
Dig holes large enough and deep enough so that the roots will have ample room to grow. Set the trees about one inch deeper than they grew in the nursery. Tramp the dirt about the roots as you fill the hole. When the hole is about half filled, soak with water. Then finish filling, make a low ridge about the hole and fill the resultant basin with water until the ground is thoroughly soaked. Afterward, keep the ground moist.

Trees need food. Well-rotted manure or other organic fertilizers may be added to the soil. Chemical fertilizers should be applied in a shallow trench at the edge of the filled hole, watered down and covered by filling the trench. Follow directions on fertilizer packages. Do not use too much.

The chief objective in pruning is to develop a well balanced, symmetrical growth. Small trees sometimes are not branched when you receive them. Cut them back to the point where you wish the lowest branches to grow. As your trees grow prune only when it is necessary to shape them to your fancy. There are bulletins and tree service agencies from which you can secure a wealth of information about tree pruning.

### PLANTING DISTANCES

Peach and Plum, 20 to 25 feet  
Pear, 25 to 30 feet  
Pecan and Walnut, 40 to 60 feet  
Strawberries, 1 foot apart in beds or rows  
Texas Everbearing Figs, 12 to 15 feet  
Grapes, 6 to 8 feet



*Plant America!  
with Breedlove's Plants*

# Breedlove's Evergreens Will Brighten Your Winter Garden



**GARDENIAS**

**GARDENIAS.** Widely known as a most ornamental evergreen with large, glossy-green leaves and sweetly fragrant, waxy white blooms. Here in the South we are fortunate to be able to grow these glorious flowers outdoors. Plants grow 2 to 4 feet tall.

	Each	3 for
12-15 inches .....	\$1.00	\$2.70
15-18 inches .....	1.25	3.00
18-24 inches .....	2.00	5.25

**NANDINA DOMESTICA.** The foliage is remarkable for the number of different colors it assumes at various seasons. Clusters of tiny white flowers become great, showy red berries in winter.

	Each	3 for
12-15 inches .....	\$1.50	\$3.75
15-18 inches .....	2.00	5.25
18-24 inches .....	2.50	6.75

**LIGUSTRUM, WAXLEAF.** One of the most desirable of all evergreen shrubs for the South. Leathery, polished, very dark green leaves. Dense compact growth that makes a splendid hedge or foundation planting.

	Each	3 for
12-15 inches .....	\$1.25	\$3.00
15-18 inches .....	1.50	3.75
18-24 inches .....	2.00	5.25

**PRIVET HEDGE.** Dark, glossy-green leaves . . . waxlike . . . thick hedge, easily shaped.

	Per 10	Per 50
18/24 inches .....	25c each	20c each
2/3 foot .....	35c each	30c each
3/4 foot .....	50c each	45c each

**PRIVET HEDGE**



Broad-leaved evergreen shrubs provide some very choice plant material with the advantage of beautiful decorative foliage all the year round, plus colorful blooms and berries in season. By choosing varieties carefully, it is possible to have some plant at an interesting stage at all seasons. Use these plants in shrub borders, foundation plantings and as screens for any unwanted views that may be nearby. They are not hard to grow and they stand pruning well, so that you can keep them at any desired height without ruining them.



**ABELIA GRANDIFLORA**

**ABELIA GRANDIFLORA.** An extremely attractive small evergreen with arching branches. The dark glossy green leaves turn bronzy in winter. The plant is covered from spring to late fall with clusters of acinty little pinkish white flowers, delicately scented. 15-18" \$1.50.



**NANDINA**

**WAX LEAF LIGUSTRUM**



# FIELD GROWN **FLOWERING**



SPIREA REEVESIANA

HYDRANGEA P. G., immense clusters of flowers... creamy white turning to bright pink and rose and finally bronze. 18 to 24 in., 75c each; 3 for \$2.00.

## BARGAIN GROUP 15

Strong, Extra Heavy, Field Grown. 2 to 3-ft. High.

2 Rose of Sharon  
2 Bridal Wreath  
2 Weigela, Pink  
2 Vitex  
2 Honeysuckle

Only  
**\$4.95**

ALTHEA (Rose of Sharon), double pink, purple, red or white, 2 to 3 ft 75c each 3 for \$2.00.



WEIGELA

## HIBISCUS (Rose of Sharon)

HARDY TO THE CANADA LINE

3 Heavy Field-Grown Plants that bloom double blue. 2 to 3 ft. plants

Only \$2.00 Prepaid  
Group 14

WEIGELA (Red), deep carmine-red flowers, 2 to 3 ft., 75c each; 3 for \$2.00.

WEIGELA (Rosea), rose-pink blossoms... round bush form... 2 to 3 ft., 75c each; 3 for \$2.00.

CYDONIA JAPONICA (Salmon Flowering Quince), scarlet-red flowers... tall slow-growing bush-form shrub... 18 to 24 in., 75c each; 3 for \$2.00.

CYDONIA JAPONICA (Red Flowering Quince), jewels of reddish bloom... profuse and arresting... 18 to 24 in., \$1.00 each; 3 for \$2.75.

SPIERA (Van Houttei), a snowbank of small, dainty white flowers, 2 to 3 ft. 75c each; 3 for \$2.00.

SPIERA (Reevesiana), double white flowers borne in clusters. \$1.00 each; 3 for \$2.75.

CREPE-MYRTLE, lavender, pink, red or white blooms... beautifully formed, strong bush. 2 to 3 ft. \$1.00 each; 3 for \$2.75.

FORSYTHIA (Golden Bell), a profusion of pure golden flowers over long branches... 2 to 3 ft. 75c each; 3 for \$2.00.

POMEGRANATE (Red Flowering), large, double orange-red flowers... glossy foliage... large red fruit... 2 to 3 ft., 75c each; 3 for \$2.00.

DEUTZIA (Pride of Rochester), spring flowering, double white blooms... Well-rooted plants... 2 to 3 ft., 75c each; 3 for \$2.00.

## BARGAIN GROUP 13 10 Plants

5 Spirea  
2 Deutzia  
3 Weigela

Only  
**\$4.95**  
Reg. \$7.50 Value



ALTHEA (Rose of Sharon)



CYDONIA



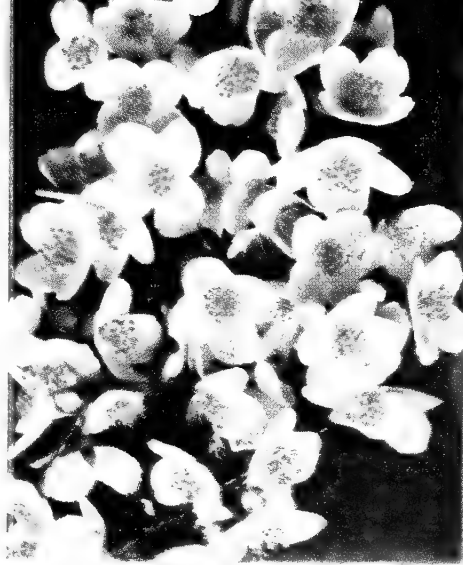
LILAC



# SHRUBS

**VITEX (Chaste Tree)**, star-shaped, grayish-green leaves... beautiful blue or lavender flowers in long spikes... 2 to 3 ft., \$1.00 each; 3 for \$2.75.

**MOCK ORANGE (Sweet Scented)**, graceful sprays of large, white, fragrant flowers... 2 to 3 ft., 75c each; 3 for \$2.00.



MOCK ORANGE



CREPE MYRTLE

## BARGAIN GROUP 16

10 2-year-old, Heavy Branched  
2 to 3 ft. High  
Field Grown Bridal Wreath  
Regular \$7.50 Value  
Only \$3.95 Postpaid

**BUTTERFLY BUSH**, graceful plumes of lavender-violet flowers in summer on a bush 5 to 10 feet tall, fragrant and lovely. Will need to be severely pruned each spring, for blooms are produced on new wood. 2 to 3 ft., 75c each; 3 for \$2.00.

**TAMARIX**, light green, feathery foliage. Racemes of pink flowers, adapted to almost any soil. Does well in many difficult locations. 3 to 4 ft., 75c each; 3 for \$2.00.

**BUSH (Red Ozier) DOGWOOD**, well rounded bush, easily transplanted. Blooms similar to white Dogwood but smaller. Foliage turns rich red in fall... 2 to 3 ft., 75c each; 3 for \$2.00.

**PUSSY WILLOW**, delightful large growing shrub, very ornamental, especially in early spring before foliage appears. Stems used widely as interior decorations... 2 to 3 ft., 75c each; 3 for \$2.00.

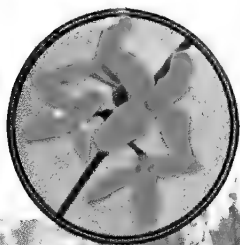
**LILAC, PERSIAN PURPLE**, huge clusters of rich purple flowers with pleasing fragrance. Grows 6 feet tall and has rather small foliage. Makes very fine hedge... 2 to 3 ft., \$1.00; 3 for \$2.75.



VITEX



SPIREA VAN HOUTTEI



FORSYTHIA



POMEGRANATE



PUSSY WILLOW

# ORNAMENTAL, NUT



WALNUT  
(Thin Shell)

## ORNAMENTAL AND SHADE TREES

**FLOWERING CRAB (Red or Pink)**, profusion of delicate pink or red blooms... 4 to 5 ft., **\$1.45** each.

**DOGWOOD (Pink)**, smothered with deep pink flowers before leaves come in Spring... 2 to 3 ft. size, root wrapped, **\$2.50** each.

**DOGWOOD (White)**, same general characteristics but pure white flowers... 2 to 3 ft. size, root wrapped, **\$1.50** each; 3 to 4 ft., **\$2.00** each.

**LOMBARDY POPLAR**, very slender, quick growth, 50 to 60 ft... 4 to 5 ft., **\$1.00** each.

**RED BUD**, red blooms that soften to orchid-pink before leaves appear. 3 to 4 ft., **75c** each; 4 to 5 ft., **\$1.25** each; 5 to 6 ft., **\$2.00** each.

**CHINESE ELM**, fastest growing shade tree... 3 to 4 ft., **75c** each; 4 to 5 ft., **\$1.25** each.

**AMERICAN ELM**, fast growing good shape, beautiful foliage, lives to great age... 3 to 4 ft., **\$1.50** each; 3 for **\$4.00**.

**WHITE BIRCH**: 3 to 4 ft., **\$1.00** each.

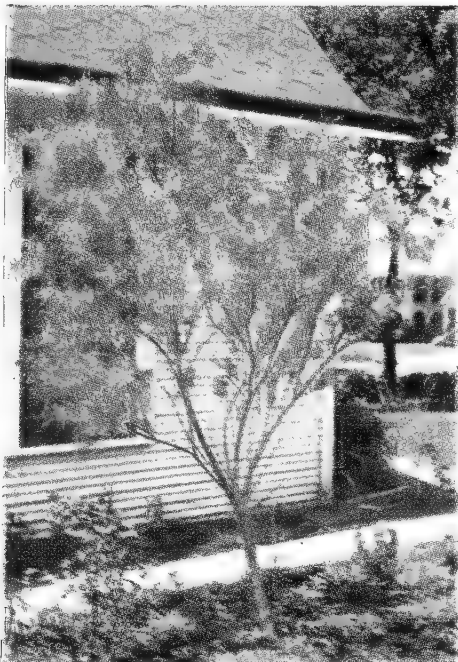
**RED LEAF MAPLE**: 2 to 3 ft., **\$1.00**; 3 to 4 ft., **\$1.50**.

**WEeping WILLOWS**. The arching branches of this tree, covered with slender leaves, makes it a wonderful specimen for lawn or park. 3 to 4 ft., **\$1.00**.

**MIMOSA**. One of the most beautiful of the ornamental flowering trees. A rapid grower and a profuse bloomer in the summer. Its foliage is fern-like and the flowers are a delightful shade of pink. An excellent tree for your lawn as a specimen. Very colorful. 3 to 4 ft., **\$1.10**; 4 to 5 ft., **\$1.40**.



AMERICAN ELM



MIMOSA (Silk Tree)



LOMBARDY POPLAR



REDBUD

BREEDLOVE NURSERIES, TYLER, TEXAS



# AND SHADE TREES

**SILVER LEAF MAPLE:** 2 to 3 ft., \$1.00 each; 3 to 4 ft., \$1.50 each.

**SYCAMORE:** 2 to 3 ft., 90c each; 3 to 4 ft., \$1.25 each.

**THORNLESS HONEY LOCUST:** 2 to 3 ft., \$1.00 each; 3 to 4 ft., \$1.50 each.

**TULIP-TREE (*Liriodendron Tulipifera*).** A tall, pyramidal tree rising to a great height. Large, glossy leaves; hue, tulip-shaped flowers in spring. Handsome and distinctive.

4 to 5 ft., \$1.25 each; 10 for \$11.00

5 to 6 ft., \$1.75 each; 10 for \$15.00

6 to 8 ft., \$2.25 each; 10 for \$20.00

**PEACH, Double Red-flowering (*Prunus Persica*).** Very double flowers like little roses. Suitable for specimen or large group planting.

4 to 5 ft., \$1.50 each

## NUT BEARING TREES

### PAPER SHELL PECANS

**STUART, SUCCESS, BURKETT AND MOORE**

2 to 3 ft., \$2.25 each; 3 or more, \$2.00 each.

3 to 4 ft., \$2.95 each; 3 or more, \$2.75 each.

**HARDY PECANS**

2 to 3 ft., \$1.50 each; 3 or more, \$1.25 each.

3 to 4 ft., \$1.95 each; 3 or more, \$1.75 each.

**ENGLISH WALNUT, WILSON WONDER**

**THIN SHELL WALNUT, THOMAS BLACK**

4 to 5 ft., \$2.95 each; 3 or more, \$2.75 each.

**HARDY BLACK WALNUTS**

2 to 3 ft., \$1.50 each; 3 or more, \$1.25 each.

3 to 4 ft., \$2.00 each; 3 or more, \$1.75 each.



PECAN (Paper Shell)



FLOWERING CRAB



CORNUS FLORIDA RUBRU  
(Pink Flowering Dogwood)



CHINESE ELM

# SUPERB FRUITS—TWO

THEY WILL

There is a phrase in a modern song that sums it up very well... "When you work for Mother Nature you get paid by Father time." What poor economy it is, therefore, to



BRUCE PLUM



DIXIE GEM PEACH

## PLUMS

**Bruce**... hen egg sized red plums... ripens in early June.  
4-5 ft. size, \$1.00 each; 10 for \$9.00.

## PEACHES

**Augberta**... similar to Elberta but about three weeks later.

**Belle of Georgia**... mid-season white freestone.

**Dixie Gem**... bright yellow with red overcast... fine-texture, flavor.

**Early Elberta**... large, pure golden yellow, tinted red... sweet and juicy.

**Early Hiley**... earlier ripening strain of Hiley.

**Elberta**... large, round, yellow with pink blush... freestone, bears young.

**Golden Jubilee**... extra early yellow freestone... flesh medium firm.

**Hale Haven**... early yellow freestone... wonderful for canning.

**Heath Cling**... white clingstone... very large... for pickling and canning.

**J. H. Hale**... mammoth size... solid, free from stringiness

**Mayflower**... very early white semi-cling... medium size.

**Red Haven**... very early yellow freestone... delicious flavor.

**Red Indian Cling**... mid-season cling... flesh blood red.

**South Haven**... very vigorous, hardy, productive... medium size fruit.

4 to 5 ft. . . . . \$1.00 Each \$9.00 for 10

## STRAWBERRIES

### STANDARD VARIETIES

**Blakemore.** The best early shipping variety for the South. It does well as far north as Maryland. Medium to large, very firm and perfect for long-distance shipping.

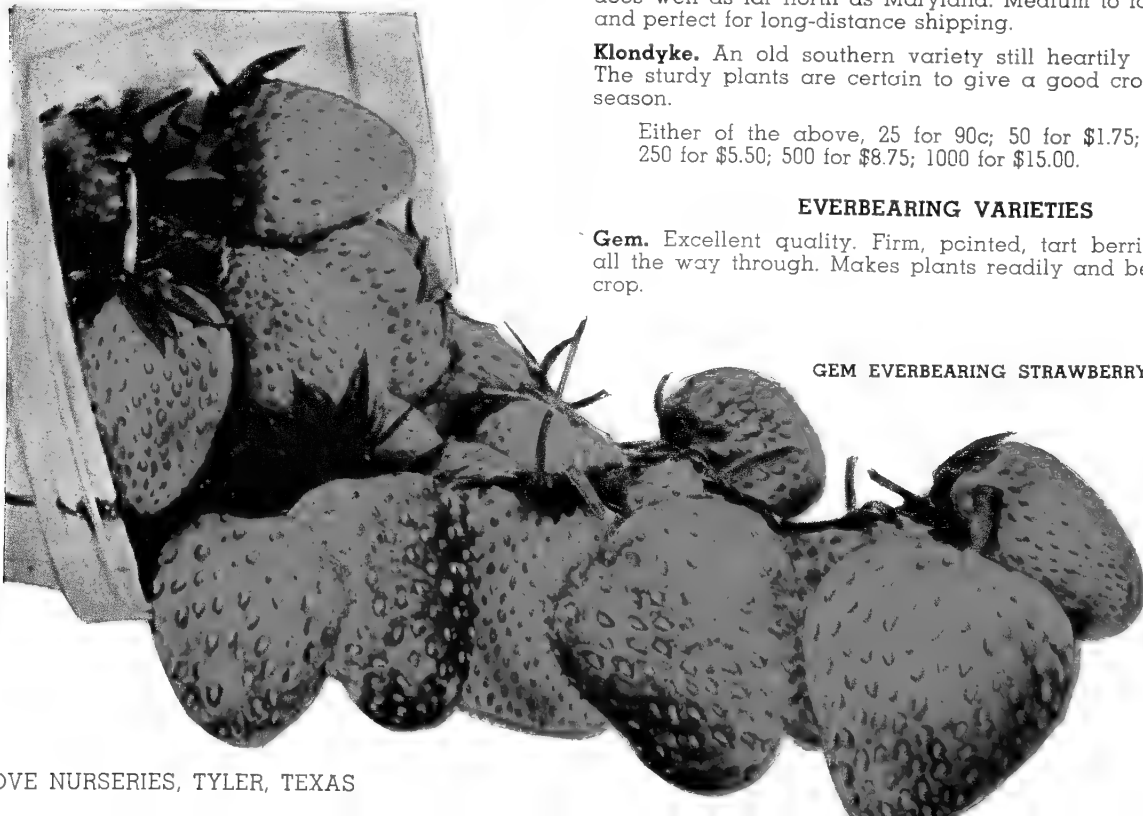
**Clondyke.** An old southern variety still heartily recommended. The sturdy plants are certain to give a good crop early in the season.

Either of the above, 25 for 90c; 50 for \$1.75; 100 for \$3.00; 250 for \$5.50; 500 for \$8.75; 1000 for \$15.00.

### EVERBEARING VARIETIES

**Gem.** Excellent quality. Firm, pointed, tart berries, bright red all the way through. Makes plants readily and bears a big fall crop.

GEM EVERBEARING STRAWBERRY





**BREEDLOVE  
NURSERIES  
TYLER, TEXAS**

*Big Daddy*

Great blooms up to 4½" are a very dark red and attract instant attention. The remarkably thick, wide, heavy petals give unusual substance to the huge flowers, making Big Daddy one of the greatest roses of all time. There is a rich velvety sheen to the petals which reminds one of the rich patina found on the choicest of old furniture. Beautifully formed, long-pointed buds last exceptionally well after cutting. The fragrance is remarkable, sweet and exotic, yet having a penetrating, spicy tang.

The stems are long, strong, and with few thorns widely spaced, making the buds admirably adapted for arrangements. A wealth of dark green foliage, leathery in texture, disease resistant, and quite ornamental, enhances the beauty of the plants.

The bush is upright, heavy, vigorous in growth, well branched, shapely, and produces great numbers of flowers all through the season. 2.50 ea.



Pat. Pending

**BE FIRST IN YOUR COMMUNITY TO GROW THESE 1952 ROSES. WE HAVE GROWN THEM FOR TWO YEARS AND KNOW THEIR EXTRA-ORDINARY QUALITY. A LIMITED SUPPLY IS BEING DISTRIBUTED AMONG OUR CUSTOMERS. ALTHOUGH TIME PROHIBITS COLOR PRINTING, YOU WILL HEAR MUCH OF THESE ROSES IN THE FUTURE.**

Pat. Pending



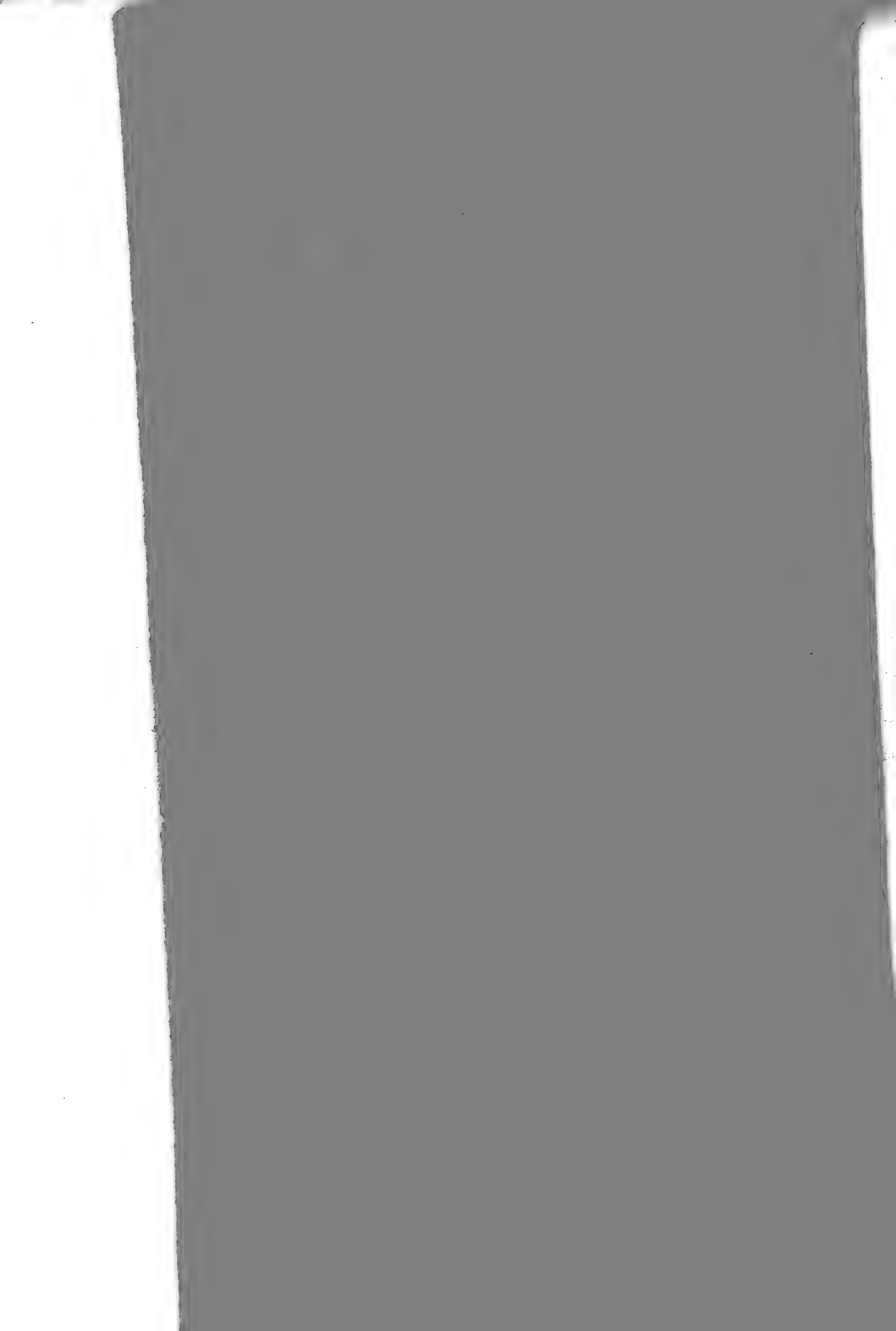
*Gay Lady*



Cheerful Campfire scenes are recalled by the brilliant coloring of Gay Lady. There is a glowing sheen in the long petals that is truly inspiring.

Long urn-like buds open to large flowers with a faint but hauntingly sweet fragrance. Good stems support the lovely buds.

A strong, upright growth and unusual vigor makes the bush itself a beautiful shrub. The shiny, dark green leaves, underlaid with bronze tints on the upper surface and definitely rosy underneath, have exceptionally enduring qualities. Large and delicately serrated, they are attractive enough to justify the planting of Gay Lady even if there were no blooms. And the foliage is remarkably disease resistant. 2.50 ea.







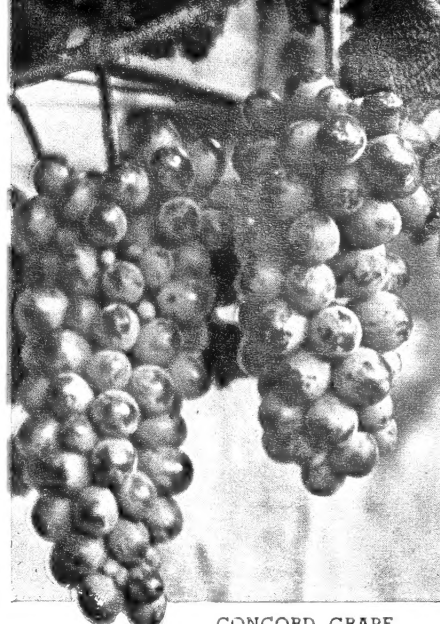




# YEARS IN THE FIELD

## BEAR EARLIER

think of saving a few cents when you buy. The years invested are the same... the work and cultivation are the same... but the yield is tremendously different.



CONCORD GRAPE

### STRAWBERRIES (Continued)

**Mastodon.** The most popular and widely planted ever-bearing variety. Produces a good crop in spring and again through summer and fall.

Either of the above 25 for \$1.75; 50 for \$2.90; 100 for \$4.60; 250 for \$9.20; 500 for \$14.40; 1000 for \$23.00.

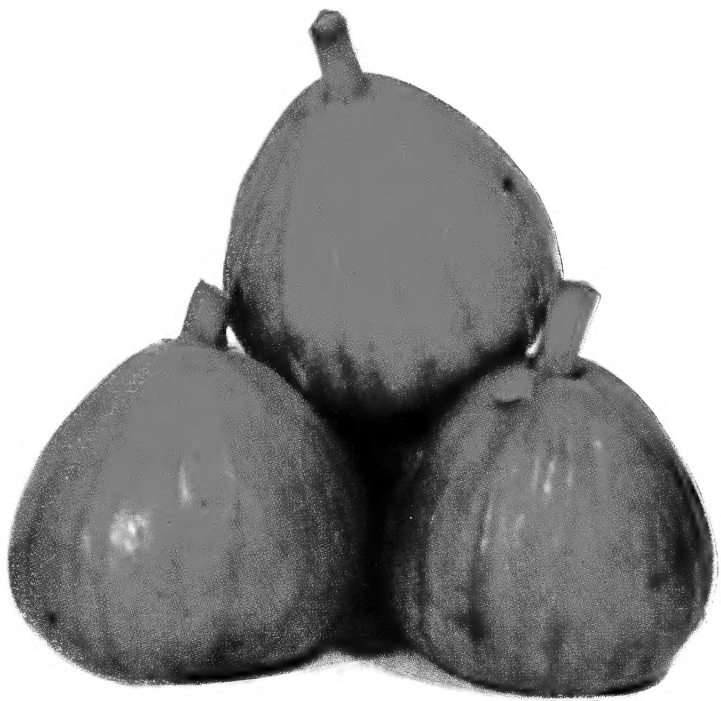
### GRAPES

- Carman**... medium sized, dark red... large clusters.
- Concord**... large black grapes... hardy.
- Fredonia**... blue-black... medium-sized clusters.
- Niagara** (Sport of Concord)... large, greenish white... changes to pale yellow when fully ripe... thin tough skin.  
75c each      10 for \$6.50

### FIGS

**Breedlove's Texas Everbearing**... hardy, noncracking... bears medium to large fruit continuously from June until frost.

2 ft. . . . .	\$0.75 ea.	\$ 6.50 for 10
3 ft. . . . .	1.00 ea.	8.50 for 10
4 ft. . . . .	1.50 ea.	12.50 for 10



TEXAS EVERBEARING FIG

### PEARS

- Douglas**... early and prolific bearing... eating, canning or preserves.
- Garber**... large, bright yellow with red blush... juicy and rich.
- Keiffer**... large... ripens in Fall... excellent for cooking and canning.
- Le Conte**... large, smooth yellow skin... juicy and firm.  
3 to 5 ft., \$1.50 each.



KEIFFER PEAR



A stylized logo consisting of the letters 'B' and 'N' in a white, cursive font, set against a black silhouette of a rose. The rose is positioned in the upper left corner of the page, with a stem and leaves extending downwards and to the left.

BN

# BREEDLOVE NURSERIES

**TYLER, TEXAS**

ROSE CAPITOL OF THE WORLD

A detailed black and white photograph of a single rose bud, showing the tightly packed petals and the stem with a few leaves. It is located on the left side of the page, above the main rose image.

**FORTY-NINER**

(Plant Pat. 792)

The most brilliant hues of any bi-color rose are flaunted by this exotic, new creation. Even in the bud the startling contrast can be seen. When the rose is half open the colors are magnificently grandiose. Petals are orient red on the inside, while the outside is chrome-yellow.

**\$2.00 each; 3 for \$5.25; 12 for \$21.00.**

