

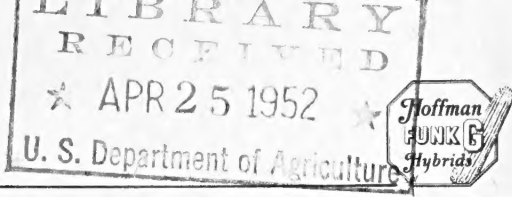
## **Historic, Archive Document**

Do not assume content reflects current scientific knowledge, policies, or practices.



62.73

# Hoffman FARM SEEDS



A. H. HOFFMAN, Inc. LANDISVILLE (Lancaster County) PA.

March 21, 1952.

To our farm friends:

Why do so many 'particular' farmers...the folks who take a real pride in their fields...prefer Hoffman Seeds and Funk G Hybrids? One friend looks at seed-buying this way:

"I consider myself as a manufacturer. My farm is my plant. My family and I the stockholders. The fertilizer, the lime, and the seed are my raw materials.

I have two aims in my business. I want to produce a good-quality product. And a profit in return for our labors.

I know that if my raw materials are not right to start with, crops are going to disappoint us. We stockholders will have to suffer, because of less dividends.

That's why I depend on Hoffman Seeds. They help our farming operations show good profits - year after year."

That is our mission here - doing whatever we can to furnish better seeds to help our customers grow bigger, better-paying crops. Crops that outshine those on neighboring farms.

What can we do for you this spring? Command us with your seed-order now. Thank you!

*A. H. Hoffman*  
President



## SEED OATS bred to grow profitable crops for you

Plant oat-strains that yield MORE bushels. An extra 6, 8, or 10 bushels from each acre counts fast! It's a profit you might as well get. Let these strains help you:

### "CLINTON ELEVEN" (Certified seed)

Most popular, leading producer on many hundreds of eastern and northern farms. For past several years has made higher yields than the original Clinton and other varieties of equal ability. "Clinton Eleven" is a great fighter against diseases that used to take heavy tolls. Tillers well. Good strong straw. Does not shatter. Ripens in good time. Thin hulled. Meaty kernel. Makes fine feed. Carries the combination of good traits that make real crops . . . year after year. ("Clinton 11" is also offered in non-certified seed of fine quality too, at lower cost.)

This "Clinton Eleven" strain has been making those EXTRA bushels - year after year. Is recommended for your use this spring. Order it today. Start right for an extra-good oats crop this harvest.

### "AJAX" (Certified seed)

Another splendid strain. Gaining more users right along. Dependable for good yields. Has stood up fine against many disease attacks. Please refer to Catalog for full details on both above and other varieties. All are of fine quality. Priced bag-free and freight-paid.

## CLOVERS ... TIMOTHY

	Lbs. per bu.	Per lb.	Per bu.
Mammoth Clover	60	\$.48	\$27.50
Red Clover	60	.50	28.90
"Pennscott" Clover	60	.65	38.00
"Kenland" Clover (Certified)	60	.70	41.00
Alsike Clover	60	.61	35.50
Sweet Clover (Yellow Blossom)	60	.22	12.20
Sweet Clover (Mostly White Blossom)	60	.21	11.90
Sweet Clover (Hubam)	60	.24	13.50
Crimson Clover	60	.26	14.20
Timothy ("Farmers Choice" brand)	45	.19	8.00
Timothy & Alsike	45	.26	10.90
Economical Mixture	56	.43	23.00
"Bumper Crop" Hay Blend	@ 44c per pound		

	1 to 14 lbs.	15 to 49 lbs.	50 lbs. & over
Ladino U. S. Grown (Certified)	\$.90	\$1.85	\$1.80
Ladino Clover	@ 1.55	1.50	1.45
Birdsfoot Trefoil	@ 1.10	1.05	1.00
Birdsfoot Trefoil (Cert. "Empire")	@ 1.95	1.90	1.85
White Dutch Clover	@ 1.00	.95	.90
Wild White Clover	@ 1.15	1.10	1.05
	Under 200 lbs.	200 to 800 lbs.	800 to 2000 lbs.
Korean Lespedeza	@ \$.24	\$.23½	\$.23
Sericea Lespedeza	@ \$.32	\$.31½	\$.31

## ALFALFA

(60 lbs. per bushel)

	Per Lb.	Per Bu.
"Northwest" brand	\$.74	\$42.50
Grimm Type	.76	44.00
Arizona Alfalfa	.42	24.50
"Ranger" (Certified)	.90	52.00
"Buffalo" (Certified)	.91	53.00
"Atlantic" (Certified)	1.05	60.00

## RYE GRASS (Finest Domestic Seed)

	Up to 300 lbs.	300 to 800 lbs.	800 lbs. & over
(99% Purity, 90% Germination)	@ \$.16	\$.15½	\$.15

## PASTURE GRASSES

	Lbs. in Bu.	Per Lb.	Per Bu.
Brome Grass (Lincoln)	14	\$.39	\$5.30
Orchard Grass	14	.36	4.90
Kentucky Blue Grass	14	.77	10.40
Fancy Red Top	32	.55	16.80
Meadow Fescue	24	.43	9.85
Perennial Rye Grass	24	.29	6.80
Permanent Pasture (Highland Mixture)	32	.51	15.40
Permanent Pasture (Lowland Mixture)	32	.49	14.90
Tall Meadow Oat Grass	14	.51	6.85
Canada Blue Grass	14	.83	11.40
Alta (Tall) Fescue	.. (per pound)		.95
Poa Trivialis	.. (per pound)		.82
Chewings Fescue	.. (per pound)		1.20
Reed Canary Grass	.. (per pound)		.60

## HOFFMAN LAWN SEED

Hoffman Lawn Seed	.. (per pound)	\$.90
Hoffman Shady Lawn	.. (per pound)	.95

## SEED POTATOES (Certified)

	2 to 5 bags	6 to 14 bags	15 bags or more
100 Lb. Bags			
"Irish Cobbler"	@ \$6.20	\$6.10	\$6.00
"Katahdin" or "Green Mountain"	6.10	6.00	5.90
"Kennebec"	6.40	6.30	6.20
"Russet" Michigan	6.30	6.20	6.10

NOTE: "Freight-paid" terms do NOT apply on Seed Potatoes, which will be shipped 'freight collect'. (Specify only a station where there is a Freight Agent.)

## OATS

	Up to 14 bu.	15 to 49 bu.	50 bu. & over
"Clinton Eleven" (Certified)	@ \$2.65	\$2.60	\$2.55
"Clinton Eleven Type"	2.35	2.30	2.25
"Andrew" (Certified)	2.60	2.55	2.50
"Ajax" (Certified)	2.70	2.65	2.60

## FUNK G HYBRIDS

	All G Hybrids (except G-10, and G-30)	G-10, and G-30
Flat Kernels	@ 11.90	\$12.90
Regular and Small Rounds	@ 9.50	Sold Out
Large Rounds	@ 8.50	Sold Out

NOTE: G-188, G-6, G-13, G-15, G-18, and G-68 are now sold out in all kernel types

## FORAGE CROPS

	Up to 200 lbs.	200 to 600 lbs.	600 lbs. & over
"Sweet" Sudan	@ \$.17	\$.16½	\$.16
Regular Sudan	@ .17	.16½	.16
Hog Pasture Mixture	.. (per pound) .12		
Rape (Dwarf Essex)	.. (per pound) .26		
Atlas Sorgho	.. (50 pounds) 8.90		
Sorghum (Cane)	.. (50 pounds) 8.90		
Hegari	.. (50 pounds) 7.90		
Spring Vetch	.. (50 pounds) 7.65		
Winter (Hairy) Vetch	.. (60 pounds) 15.30		
Japanese Millet	.. (32 pounds) 4.35		
Golden Millet	.. (48 pounds) 6.10		

## BARLEY — GRAINS

	Per Bu.
"Moore" Barley	\$3.65
"Wisconsin 38" Barley	3.65
"Alpha" Barley	3.70
"Henry" Spring Wheat	4.90
Buckwheat	3.10

## SOY BEANS—PEAS

	Up to 9 bu.	10 to 29 bu.	30 bu. & over
"Wilson Black" Soys	@ \$4.80	\$4.75	\$4.70
"Hawkeye" Soys	5.20	5.15	5.10
"Lincoln" Soys	5.15	5.10	5.05
Canada Field Peas	.. (per bu.) @ 7.40		

## SWEET CORN (Postpaid Prices)

	1 lb.	2 lb.	5 lb.	10 lb.
Golden Cross Bantam (Hybrid)	\$.70	\$1.30	\$3.00	\$5.50
Golden Rocket (Hybrid)	.70	1.30	3.00	5.50
Ioana (Hybrid)	.70	1.30	3.00	5.50
Evergreen White (Hybrid)	.70	1.30	3.00	5.50
Golden Bantam	.45	.85	1.85	3.85
Stowell Evergreen	.45	.85	1.85	3.85

## HOFFMAN INOCULATOR

	(Postpaid Prices)
Alfalfa	... for 1-bu. 50c.
Clovers	... for 1-bu. 50c. 2½-bu. \$1.00
Birdsfoot Trefoil	... for 10 Lbs. 25c
Lespedeza	... for 100 lbs. 50c
Soy Beans	... for 2-bu. 30c. 5-bu. 55c. 25-bu. \$2.50
Peas & Vetch	for 1 bu. 35c. for 100 lbs. 55c

## ARASAN (Postpaid Prices)

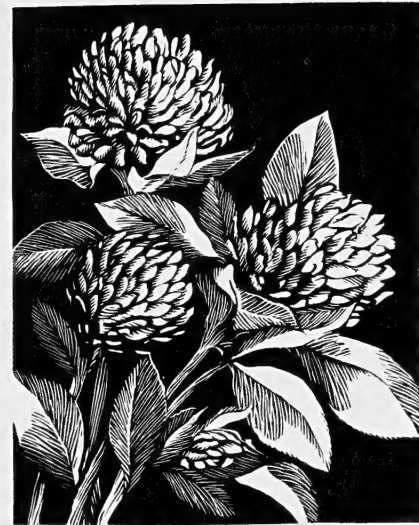
8-oz. can,	\$1.10	4-lb. can,	\$6.20
		¾-oz. 30c	

## CERESAN M (1 lb. treats 32 bu.)

14 oz.	\$1.40	3 lb.	\$3.75	4 oz.	55c
--------	--------	-------	--------	-------	-----

## SEMESAN BEL

(1 lb. treats 60 bu. Potatoes)			
1 lb.	\$2.45	2 oz.	55c



**BIRDSFOOT TREFOIL** — fine in hay mixtures. Grows in spots once thought too poor for other legumes to succeed. Seed demand heavy.

Include Hoffman SWEET CORN with your other seed order. Enough for several plantings through the season. These new hybrids make fine eating — they have the flavor.

Home-grown grain can often help cut costs on bought feed. A few acres sown to "MOORE" BARLEY this spring might come in handy. Makes fine yields.

Wise planners use RYE GRASS. To help stop soil erosion. Provide green-manuring crops. Make quick emergency pasture. It's a 'must' at last cultivation of corn. Helpful after potato crop is dug. Price reasonable. Demand strong.

**MONEY-BACK** terms and complete conditions — Catalog page 23.

**FREIGHT PAID** by Hoffman when — shipments weigh 100 pounds or more, to Railroad freight stations in either — Pa., N. J., Md., N. Y., West Va., Del., Conn., Va., Ohio, R. I., or Mass. This does not apply to Seed Potatoes, which are shipped 'charges collect'.

**BAGS** supplied FREE. Today's bag cost is terrific. Yet you must not figure 'extra' for the bags needed to bring you Hoffman Seeds.

(Note — Customers asking to have seeds sent by Mail or Express will be expected to bear the shipping costs.)

## HOW TO PAY

Most folks send their check with order. Thus no extra fee or cost is involved.

Folks who prefer to pay their Freight Agent when seed arrives, are charged a 'collection-fee' by the railroad.

## Heavy-cropping **CLOVERS**

Through many years, thousands of you have been depending on our "Extra" strain of regular Red Clover . . . and still do! It is here for your call in splendid quality. In addition:

### "KENLAND" (Certified) **RED CLOVER**

Gaining eastern users at a fast rate, replacing strains formerly sown. Today's leader among the new disease-resistant strains. Here is top-quality genuine Kenland seed, while it lasts. Stocks are diminishing rapidly. No question of its ability to produce fine crops.

### NEW "PENNSCOTT" **RED CLOVER**

Excellent quality. Small quantity. Whenever Lancaster County farmers could get this local Scott strain clover, they would produce better stands. Never was there enough Scott seed. Two years ago, we sent some to Idaho for multiplication. It has been carefully supervised. Here is that product for you who order instantly. Has been given the name Pennscott.

## Long-lasting **ALFALFAS**

The old standbys . . . Hoffman "Northwest" Brand and Hoffman "Grimm-type." Proven dependable through many years. Produced in areas whose very climates breed hardiness. Often in high altitudes — extreme low temperatures — sudden weather changes. Every bag verified as to state of origin by U. S. Government authorities. Clean . . . tested . . . sound.

The newer strains . . . the wilt-resistant types . . . "Ranger" and "Buffalo". Many folks in the northern sections are having good luck with "Ranger". In southeastern Pennsylvania and similar sections, "Buffalo" is in demand.



### **LADINO PASTURES PAY!**

Good pasture is the cheapest livestock feed you can grow. Today's best, longest-lasting, most nutritious pastures contain Ladino. This year you can buy top-quality Hoffman Ladino seed for less money. Now is the time to start new pastures, or "doctor up" old ones. Consult your Hoffman Catalog for details on Ladino and its companion grasses, including Orchard, Brome, Blue Grass, Fescues, etc.

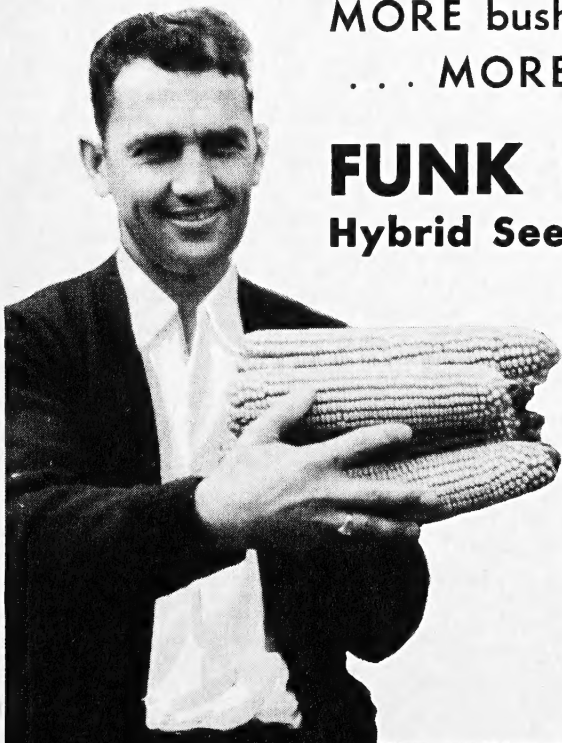
### **SEED-BLENDS THAT SAVE MONEY**

Hundreds buy "Economical Mixture" — get fine hay crops each year. Comprises about half Red Clover, quarter each Alsike and Timothy — as catalog describes in more detail . . . Many sow Timothy & Alsike (20%) Mixture.

"Bumper-Crop Hay Blend": Contains over half Red Clover (25%) and Alfalfa (27%). Plus Alsike (13%), Timothy (18%), Orchard (14%). With 3% Ladino too! Beside its hay value, could be pastured after hay is cut.

**MORE bushels of BETTER husking-corn**  
**. . . MORE tons of Nutritious Ensilage!**

**FUNK G**  
**Hybrid Seed**



Did you ever figure what it costs to grow an acre of corn? The New Jersey Experiment Station recently made an interesting analysis: They included fertilizer, land, labor, tractor use. Also harvesting storing, selling expense. And arrived at \$71.85, without counting seed cost, to grow an acre of corn.

Such costs face you today. Since cost of seed corn is so small a part of your total investment, isn't it just good business to plant the very best you can buy? Certainly it's not wise to choose your hybrid on the basis of seed cost. The right way to figure is what the seed will **MAKE FOR YOU** in yield.

And for consistently higher yields . . . of ear corn or silage . . . you just can't beat Funk G Hybrids. That fact has been proven in careful tests through the last 15 years.

There is Funk G seed here that's "tailor-made" to do a wonderful job on YOUR farm this year. From the time you open the bag this spring, until you finish harvesting this fall . . . you'll never be sorry for one minute that you planted Funk G Hybrid Seed.

• • • **GROW YOUR "BEST YET" CORN CROP . . . PLANT FUNK G SEED!** • • •

LIBRARY, U. S. DEPT. OF  
 WASHINGTON 25  
 D. C.

**MORE Farm-Profit  
 from BETTER Seed!**

Sec. 34.66 P. L. & R.  
 U. S. Postage  
**PAID**  
 Landisville, Pa.  
 Permit No. 1

DATE \_\_\_\_\_

**ORDER for HOFFMAN SEEDS**

NAME  
 (Please Print)

MAIL ADDRESS \_\_\_\_\_ R. F. D. NO. \_\_\_\_\_

COUNTY \_\_\_\_\_ STATE \_\_\_\_\_

SHIP TO (Name of Place) \_\_\_\_\_ COUNTY \_\_\_\_\_ STATE \_\_\_\_\_

SHIP BY (Mark which) → **FREIGHT**  **MAIL**  **EXPRESS**   
 SHIP WHEN \_\_\_\_\_ (Date) For freight paid offer and terms see Price List Remit for postage except on items quoted postpaid. Customer pays express charges. (Rates very high).

**IMPORTANT:** If you have another order on file here, is it to be shipped with this order? YES  NO .  
 To avoid duplication, do not enter any item on this sheet that you had engaged earlier.

QUANTITY	NAME OF ITEM	AMOUNT

**NOTE:** If we shall select your Funk "G" Hybrid numbers . . . specify whether for husking or silage. Also tell kind of soil, how long your corn season is, when you plant corn, when fall frosts usually come, your elevation above sea level, and variety of husking corn you have been planting.

Mail to A. H. HOFFMAN, Inc., LANDISVILLE (Lancaster County), PA.