

Historic, Archive Document

Do not assume content reflects current scientific knowledge, policies, or practices.

62,09

3 Gorgeous Water Lilies

Collection Q 13

Panama - Formosa - Gloriosa

Postpaid - \$7.00

1952



Left: Panama Pacific
 Center: Formosa
 Top: Gloriosa

LIBRARY RECEIVED
 ★ MAR 31 1952 ★
 U. S. Department of Agriculture

Sec. 34.66, P. L. & R.
 U. S. POSTAGE
PAID
 Paramount, Calif.
 Permit No. 1

JOHNSON WATER GARDENS
PARAMOUNT,
CALIFORNIA

The Best Aquatic Plants Since 1876

RETURN POSTAGE GUARANTEED

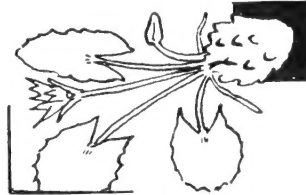
Tropical Blue Triumph

-A "Royal Blue" for Every Pool ★

If your summers are short and cool Blue Triumph will bloom in June

OUR 2-year-old plants of Blue Triumph are unequalled for vigor and ease of culture. This is admittedly boasting on our part for we are proud of our own production. Blue Triumph was produced by our firm many years ago and has established itself as a favorite over the years. The young plants, raised first in pots, are planted in outside pools in spring of their first year. Under our warm California sun they have a whole summer to luxuriate in and form their characteristic hard rhizome. This heavy rhizome makes it possible to transplant them with no loss of leaves or flowers. They spend the following winter in the same outside pools, fully exposed, and are ready for shipment to you in spring. This treatment produces hard, healthy plants that are able to withstand long transshipment and arrive at your door as fresh as though they had just been dug. They are full of buds and often flower the day after planting!

The lovely blue blossoms have a delicious fragrance, and a bouquet (they make excellent cut flowers) will scent a whole room. Each flower, on the first day, has a bright yellow cup filled with sparkling liquid. The flowers are contrasted against dark green leaves, lightly flecked. With sufficient room the flowers will often reach 14 inches across and bear huge leaves. However, they will accommodate themselves equally well to a tub 3 feet in diameter and produce an abundance of flowers all summer until late fall.



Note the strong woody rhizome our 2 year old plants bear. This is what gives them their vigor and early flowering qualities. It requires a year of growth to produce this type of rhizome which during the second year often branches into several crowns for you. You will enjoy these extra flowering crowns.



BLUE TRIUMPH

EACH \$3.50

OUR TERMS AND GUARANTEE

No orders accepted for less than \$2.00.

Orders of \$5.00 or more are sent postpaid.

Orders for less than \$5.00 must be accompanied by 50c additional for postage and packing.

Due to the increase of Parcel Post rates by the Federal Government, our postage bill has exactly doubled. For this reason we have had to raise the minimum order for free delivery to \$5.00.

To avoid confusion, please use order blank attached.

NO PLANTS SHIPPED C.O.D. Owing to their perishable nature plants are not shipped C.O.D.

CALIFORNIA CUSTOMERS MUST INCLUDE 3% SALES TAX.

SHIPPING DATES. You will find approximate shipping dates listed opposite the order blank. Order early and you may leave the proper shipping date to our judgment. We are, of course, glad to ship on any date you specify.

WE GUARANTEE to ship you only our finest, most vigorous plants true to name and assume full responsibility that they reach you in a fresh and satisfactory planting condition. We will replace without cost any not so received if notified within 10 days.

GROWTH GUARANTEED. If any plant fails to grow and we are notified within 30 days we will replace same free of charge, customer to pay shipping charges only. At time of complaint remit 75c per Tropical Lily, 50c for Hardy Water Lilies and other aquatics. To prevent loss of flowering time replacements are made of strong flowering plants. Replacements are made free with new order.

Our Shipping Dates

READ CAREFULLY

HARDY LILIES

Our Hardy Lilies and aquatics are ready to be shipped at special request any time during the year. We ordinarily ship to warmer parts from March and April on. In the latitude of Chicago and New York from middle of April to September 1st.

TROPICAL LILIES

SHOULD NOT BE PLANTED TOO EARLY FOR BEST RESULTS

To warmer South and West we ship from May 1st on, Chicago and New York area May 25th to June 1st.

BLUE TRIUMPH and Blue Beauty are far hardier than other varieties, and we ship up to 10 days earlier.

July 6, 1951

Gentlemen:

I am well pleased with the lilies and especially the Blue Triumph which has over two dozen blooms already and it was planted less than a month ago. It is most beautiful and apparently is going to be a prolific bloomer.

Very truly yours,

E. M. BEIDLEMAN
San Diego, Calif.

April 19, 1951

Dear Mr. Johnson:

Thanks for the fine plants you sent me last year, especially Blue Triumph. It blossomed the day after planting and every day till frost.

Sincerely,

L. L. SHIPPY
Niagara Falls, N. Y.

June 16, 1951

Dear Mr. Johnson:

My Blue Triumph has 10 leaves and several buds on surface of water after being planted only three days.

Sincerely,

MRS. WILL PARKER
Dermott, Ark.

June 28, 1951

Gentlemen:

Blue Triumph is holding its buds erect this morning (the morning after receiving same) as though it had never taken a trip by mail.

Yours truly,

MRS. C. N. ARNETT
Tucson, Ariz.



BLUE TRIUMPH IN A SMALL POOL

This lily is really a must in every collection. It's brilliant color contrasts beautifully with your other varieties.

Sensible Folks Plant Johnson's *Full-o-Bloom* California Water Lilies because they are *Sunshine Grown* to Insure More Vigorous Plants

TROPICAL WATERLILIES

Tropical Waterlilies offer you a full selection of colors from blue and purple to red, pink and white. Their lovely blossoms carried above the water on strong, straight stems make them excellent for cut flowers and also interest to your pool. When placed in a tall vase they will last 3 to 4 days and as a further inducement the flowers have a wonderful fragrance.

The lush quick growth of their unfolding leaves and budding flowers will delight you as no other plant can. There is an aura of mystery that such beauty can rise from the water. From India, Australia, Africa and South America have come the species that hybridists have used to give us this stellar group. From quiet backwaters of these far off places to our own backyard!

Our plants are carefully packaged in outside pools to insure quick growth under your conditions. See order blank insert for shipping dates. Send your order early and we will ship at the proper time.

LISTING OF TROPICAL WATERLILIES

- | | |
|---|--|
| Pamela. Sky blue flowers 8 to 10 inches in diameter. The buds and leaves are mottled with brown. Our own introduction and one we are sure you will enjoy.
Each \$2.75 | Gen. Pershing. A large pink with dark green leaves.
Each \$2.75 |
| Mrs. Ed. Whittaker. A particularly soft blue with the flowers opening out like dinner plates.
Each \$2.75 | Golden West. Flowers of a delicate apricot color with the interesting habit of becoming darker as the season advances.
Each \$2.75 |
| Los Angeles. A bright pink variety introduced by us many years ago. Handsome mottled leaves. A very prolific bloomer with as many as 6 blossoms open at one time.
Each \$2.75 | Pink Pearl. Shell pink flowers with pale green leaves. A sturdy plant and a sure bloomer.
Each \$2.50 |
| | Mrs. Geo. H. Pring. White blossoms with light green leaves. A splendid contrast when planted with your other lilies.
Each \$2.75 |

☆ STAR LILIES ☆

These are amongst our most enjoyable lilies. They grow freely even in small pools, producing an endless succession of their beautiful starry blossoms. One may reasonably expect a hundred flowers in a season from a box of them. Customers have written they have had more than 150. The blossoms have a grace and attractiveness quite their own, being borne high above the water on slender arcuate stems.

HOW THEY ARE SHIPPED

Star Lilies are always sent as dormant tubers and thus may be planted out early along with your Hardy Waterlilies. They will sprout when the water becomes warm—68 degrees or more.

Blue Star. The starry, brilliant purple-blue blossoms are scented with the fragrance of Lily of the Valley. When planted alone give them a box 15 to 18 inches across and preferably a clayey garden loam for soil.
Each \$2.25

Rose Star. Brilliant luminous pink. All the Star Lilies are quite similar in growth, varying only in color. Their care is exactly the same. Choose a warm sunny spot in the pool with water 6 to 8 inches deep. The cold of the deep water retards their early growth.
Each \$2.25

STAR TRIO Collection Q 9

3 Blue and Rose Star Lilies (four selection). Plant the 3 together in the same box for a charming effect. The blue and rose colors harmonize perfectly. Use a box to 2 to 3 feet across. An arresting trio in any pool.
Postpaid \$5.00

HOW TO WINTER STAR LILIES

The tubers will sprout again each spring for several years! These old tubers may be pulled off from beneath the young plants any time after midsummer. Store in a box of moist sand or soil in a frost free cellar until the following spring, when they may be planted once again.

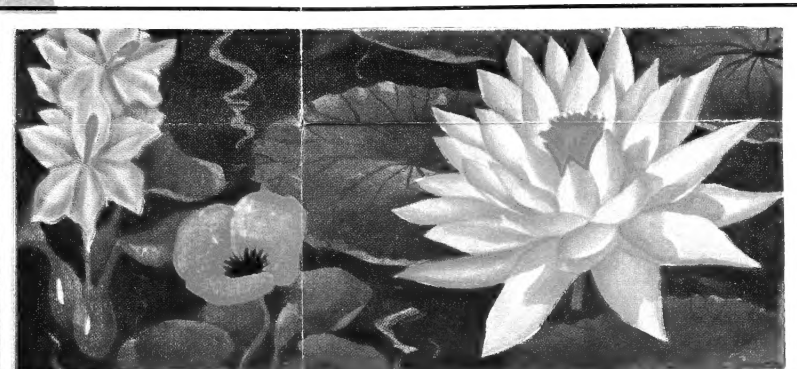
PLANTING STAR TUBERS

As shown at the left the tuber is a rough "bulb" about the size of a walnut. At the top the bud is closely covered with brown wool which if spread will show the yellow tips of the new leaves. Plant with bud end up 1/2 inch deep in soil in 6 inches of water or sprout in pail of water in a warm window in early May.



CHARMING STAR LILIES

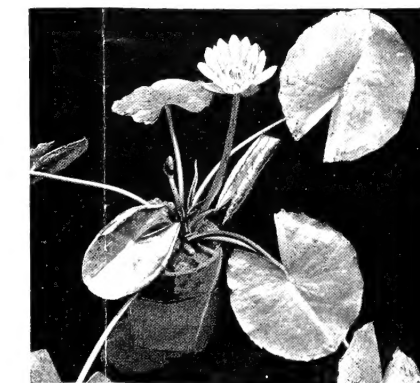
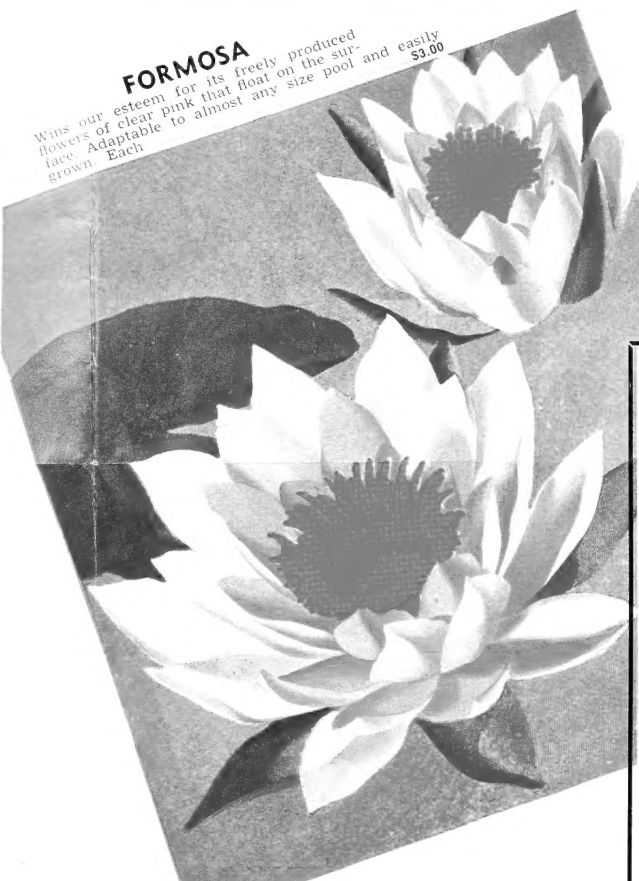
Growing in the pool of Mr. Walter Jones of Arizona. We think they are among the most colorful and satisfactory of all lilies.



WATER HYACINTH 3 for 50c WATER POPPY 2 for 35c VENUSTA Fragrant Waterlily, \$2.25

CHARMING TRIO — Collection Q 14

This is an excellent selection for a very small pool. Venusita, a hardy waterlily, is a pure unblemished pink with a delicious fragrance. The dark, almost mahogany leaves seldom crowd above the water. Water Poppy is considered one of the finest of the small aquatics. In habit and appearance it is like a small waterlily with citron yellow blossoms and floating leaves. Water Hyacinth, so well known it hardly needs introduction, is a floating plant with bladder-like leaves and lovely spikes of blue flowers. Its feathery roots are a favorite with gold fish to lay their eggs on these. These three splendid plants for \$2.50



OUR POTTED TROPICAL LILIES

The above photo shows one of the plants from our shipping stock. These vigorous ready to bloom plants are all raised in outdoor tanks where they gather strength and vigor.

JOHNSON CACTUS GARDENS

In addition to our large collection of aquatics we also have a very large collection of cacti and succulent plants. Our Diamond Jubilee Handbook, 48 pages of black and white and color photos with much cultural information is available at 50c per copy.

Box 300 JOHNSON CACTUS GARDENS Paramount, Calif. Postpaid for \$25.00

TUB GARDEN

Grow a Complete Water Garden in a Tub Collection Q 11

You may enjoy this pool on a porch, roof garden, or an odd nook in any backyard. Complete directions are sent with every order to insure your success with this water garden in miniature. Place three of these tub gardens together for a charming effect.

1 WATERLILY, PAUL HARIOT
10 SHALLOW WATER AND BORDER PLANTS

How to plant it. Secure a No. 3 galvanized tub. Fill half full of loam soil and plant according to instructions. Place some rocks about the tub and plant the border plants around the rim. Collection Price \$3.00

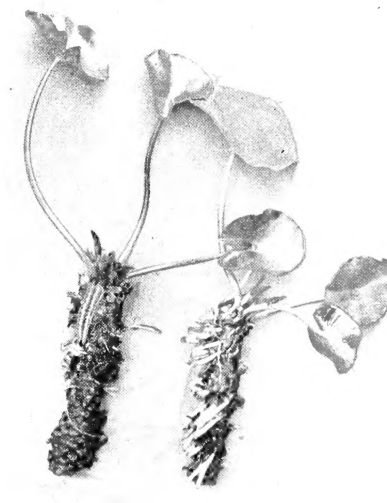
10 Finest Hardy Lilies Collection Q 12

- Gonner
- Gloriosa
- Attraction
- Robinsoni
- Escarboucie
- Sunrise
- Comanche
- Rosy Morn
- Neptune
- Formosa

Dear Mr. Johnson:

The two lilies I bought from you last spring while in California (a pink and a dark red) both survived the most severe winter Ohio has had in many years and are again ready to bloom! Our little pool was frozen solid yet your wonderfully hardy lilies are flowering out strong.

Sincerely,
MRS. E. S. FORNWALT
MacArthur, Ohio



RHIZOMES OF OUR HARDY LILIES

The photo above shows the roots of our Hardy Waterlilies as they are shipped to you. They average 6 to 8 inches in length.

A LOW PRICE COLLECTION for a DELUXE POOL (13 Plants)

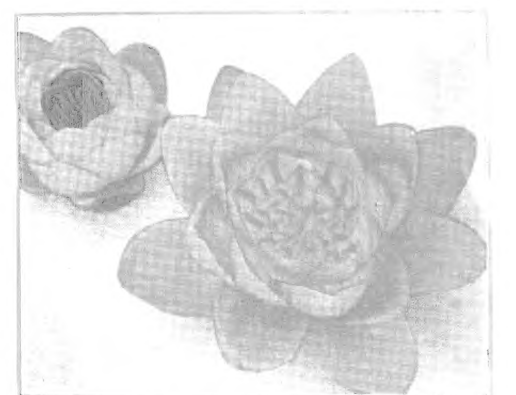
Mr. Masen of Mt. Clemens, Mich., admires his charming small pool.

Collection Q 19
For a pool 5 to 6 feet across

3 BEAUTIFUL WATER LILIES
Paul Hariot
Sunrise
Gloriosa

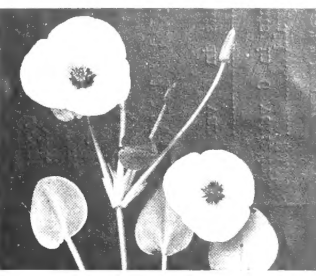
PLUS 10 AQUATIC PLANTS
2 Tall Plants for Sides or Ends
2 Plants for Centerpiece
2 Oxygenating Plants
2 Floating Plants
2 Shallow Water Plants

Postpaid \$7.50



PAUL HARIOT

Radiant apricot colored flowers 3 inches across. Each \$2.50



See the order blank insert for the proper shipping dates of tropical and hardy lilies to your locality.

WATER POPPY

One of the finest small aquatics. Bright yellow blossoms 2 ins. across freely borne all summer. 2 for 35c

SHALLOW WATER and BOG PLANTS

To create charming effects in your pool use these plants of varied form. Where the pool is viewed from one side only they may be used for a background. Plants such as Pickerel Rush, Umbrella Palm, and Water Canna are fine for this purpose. Pymy Papyrus, and Double Flowered Arrowhead are excellent when used for a centerpiece. Water Poppy and Floating Heart may be planted like waterlilies.

They are best planted to themselves in boxes, pots, or even pails. If the water is too deep the container can be raised with bricks. They prefer a heavy clayey soil and the addition of a food fertilizer several times during the summer will greatly increase their vigor.

PLANTING DEPTH—Those marked with † do best in water 6 ins. or so in depth. An asterisk * means 2 to 3 ins. Some marked ‡ do equally well in water from 2 ins. to 12 ins.

- †South American Giant Arrowhead. Bold sagittate leaves and spikes of papery white blossoms. Grows 2 to 2 1/2 feet high. Excellent for a corner or a centerpiece. Each 35c, 2 for 60c
- *Azure Pickerel Rush. Very similar to Pickerel Rush pictured below but flowers azure instead of purple and leaves darker green. The buds are covered with shining wool. Each 35c, 2 for 60c
- †Primrose Creeper. A creeper with woolly leaves when mature and bearing bright yellow flowers like a primrose to which it is related. Must be crowded in shallow water to flower. 2 bunches 35c
- †Floating Heart. Waterlily-like in habit with mottled heart-shaped leaves and fringed yellow flowers. Best planted by itself. 2 for 35c
- Parrot Feather. A trailing plant with green feathery foliage. An especially valuable plant for fountains and covering cement work. 2 bunches for 35c
- Water Hyacinth. A floating plant with bladder-like leaves which support it, spikes of blue flowers, and long feathery roots. The roots are a favorite with gold fish to lay their eggs on and for the small fry to hide in. \$1.50 per dozen, 3 for 50c
- *Purple Water Iris. Slender leaves up to 2 1/2 feet tall and spikes of purple blossoms borne in late spring. Not a rank grower. Each 35c, 2 for 60c
- *Water Canna. Long a favorite with us with its canna-like leaves of glaucous green and graceful spikes of purple flowers. A plant with real character 3 to 4 feet tall. Each 75c
- †Chinese Water Chestnut. The edible Chinese vegetable. A rush-like plant about 2 feet high. The edible tubers are formed at the base of the roots in the autumn. Each 35c
- Japanese Arrowhead. Similar to Giant Arrowhead. Pale green leaves making a lush growth. Best confined to a separate container. Each 35c
- *Double Flowering Arrowhead. Very double flowers like little snowballs. One of the best aquatics. See illustration. Each 40c
- *Spiral Palm. An excellent plant for filling up that bare corner. Does equally well in shallow water or damp ground. A grass-like plant forming clumps above which the rust-brown plumes rise. Each 35c
- †Peacock Hyacinth. Related to the water hyacinth but of very different habit. It is a trailing plant, rooting in the soil and creeping out over the water surface. Spikes of purple-blue flowers with a peacock eye on the upper petal. Each 50c
- *Water Amaryllis. This is the Southern swamp Crinum with strap-shaped leaves and heads of fragrant white flowers. Tender, but may be lifted in the fall and grown in a pan of water as a house plant. Each 75c
- †Water Poppy. The most popular of small aquatics. Grows like a small waterlily, with bright yellow blossoms. Plant several of them in a box for a charming effect. \$1.50 per dozen, 2 for 35c
- *Imperial Taro. Note illustration below. Handsome colored foliage 2 to 3 feet tall. Tender but may be easily wintered as a house plant in a pan of water. Each 75c
- *Blue Spoonflower. Similar to the Imperial Taro but purple stems and bluish-green leaves. Each \$1.00



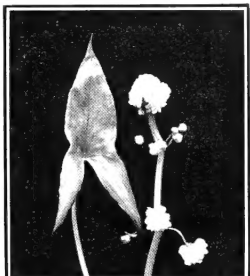
PRIMROSE WILLOW

Coppery leaves with bright yellow blossoms. Best in 3 inches of water. Up to 5 feet tall. Each 35c



PYMGY PAPYRUS

Small, bright green heads. 1 to 2 feet tall. Should be in every pool. Each 40c, 2 for 70c



ARROWHEAD

DOUBLE FLOWERED
A very choice aquatic. Does best in water 2 to 3 inches deep. 2 or 3 feedings of fertilizer during the summer will keep the blossoms coming. Each 40c



WATER HAWTHORNE

A native of South Africa this fine small aquatic is very floriferous, blooming all summer long. Grows like a miniature lily in water 4 to 12 inches deep. Give it good rich soil. Delicious Hawthorne fragrance. Each 50c

10 BOG PLANTS FOR SMALL POOL **20 BOG PLANTS FOR MEDIUM POOL**

Collection P 11 Collection P 12

Giant Arrowhead
Pickerel Rush
2 Floating Heart
2 Parrot Feather
2 Water Hyacinth and 2 Water Poppy \$1.75

Giant Arrowhead, Pickerel Rush, 2 Floating Heart, 2 Parrot Feather, 2 Water Hyacinth, 2 Water Poppies, Yellow Flag, Azure Pickerel, Purple Water Iris, 2 Primrose Creeper, Pymy Papyrus, Eel Grass, Fish Grass, Butterfly Rush, Water Chestnut \$3.25

VALLEY OF THE NILE COLLECTION Q 10

A complete collection for a pool of about 4x6 feet that includes Sacred Lotus, Gloriosa, Pymy Papyrus, Water Hyacinth and Water Poppy. Our customers are more than pleased when they receive this collection. Shipped Postpaid \$5.00

NIGHTBLOOMING WATERLILIES

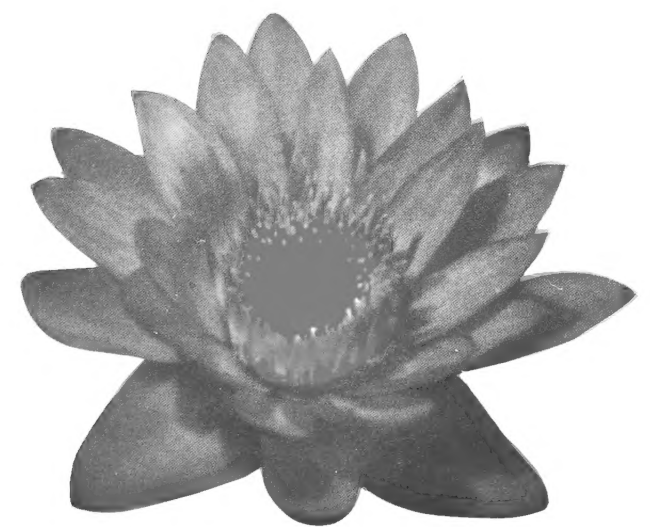


During the sunny morning hours these fascinating night flowering waterlilies are among the most delightful flowers in the garden. Their gorgeous coloring and exotic appearance give them an irresistible appeal and make them favorites with all who are familiar with them. The descriptive name "night blooming" really does not do them justice, for they form one of the most striking features of the pool during the early part of the day. The flowers are quite large, from 6 to 12 inches across, depending on culture. Some are cup-shaped, while others open their petals flat, the cone of yellow or carmelian stamens standing upright in the center. The flowers unfold in the evening and remain open until shortly before noon the following day, but opening on 3 to 4 evenings. They should not be planted until the weather is settled and warm.

- Juno. A beautiful white variety with huge 10 inch blossoms. The large glossy green leaves have coarsely toothed margins and are very ornamental. Each \$2.75
- Missouri. Broad rounded petals of white. Leaves lightly marked with brown. Each \$2.75
- Rubra Rosa. Dark rose blossoms up to 12 inches across. A vigorous grower. Each \$2.75

- Emily Grant Hutchings. Curved petals of amaranth pink. It is an excellent plant with as many as 5 to 6 blossoms open at once. Each \$2.75
- Haarstick. Dark red blossoms with leaves almost black. Each \$2.75

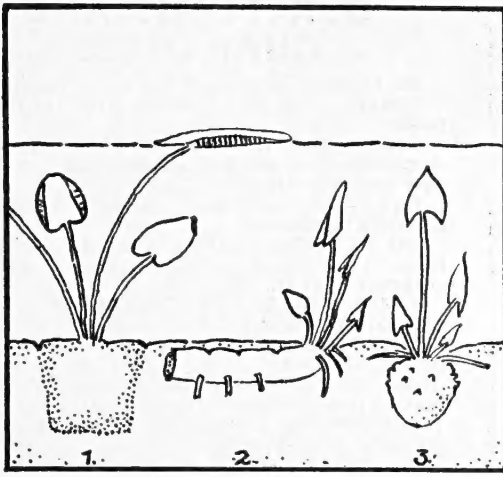
PANAMA PACIFIC — A Viviparous Tropical Lily



PANAMA PACIFIC — A Viviparous Tropical Lily

The color plate above, although very faithful, fails to convey the dazzling beauty of this royal purple waterlily. Its rich, dark hue is hard to reproduce.

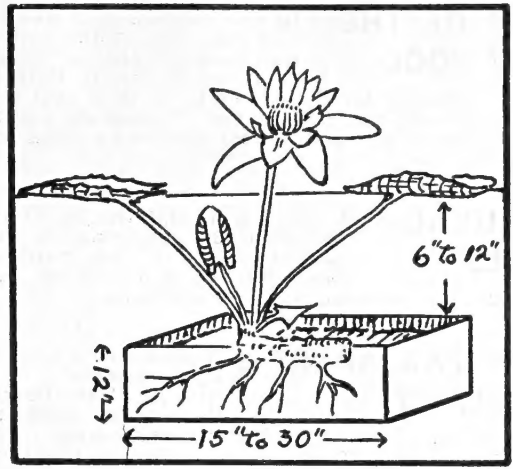
The bright fragrant blossoms are from 5 to 8 inches in diameter and remain open until quite late in the afternoon. It is a sure and continuous bloomer and often has several flowers open at the same time. It has the interesting habit of bearing small plants at the center of the leaf on the old leaves. Give it a box 15 to 18 inches across and from 6 to 10 inches of water for best results. Each \$2.50



THE KINDS OF WATER LILY ROOTS

This drawing explains the three main kinds of Water Lily rhizomes or "roots." Note particularly how you should plant them in the soil—upright or horizontal.

- Fig. 1. A pot grown Tropical Lily.
- Fig. 2. The rhizome of all Hardy Lilies.
- Fig. 3. The tuber of our Star Lilies.



PLANTING THE NEW LILY

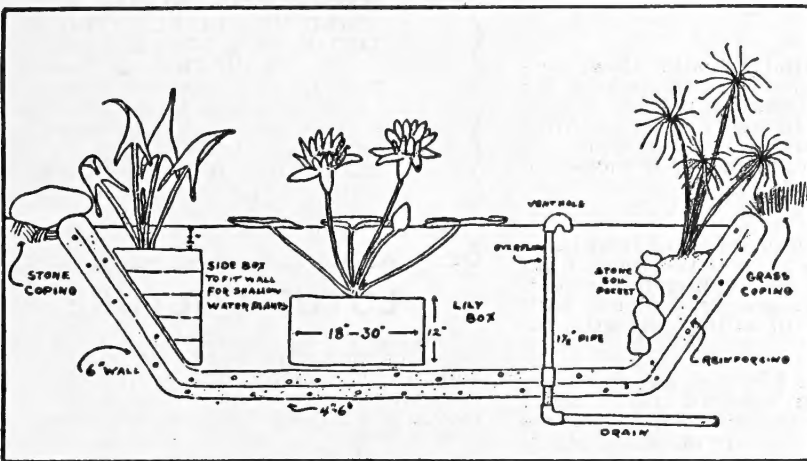
When preparing the soil for planting do not lay the plants in the sun but keep them wrapped or place in a pail of water. After the boxes are ready you may plant before turning the water in if you cover them with wet newspapers. Perhaps the safest way is to delay planting until the water rises above the boxes. We generally fill the pool several days before planting so the sun may warm the water.

It's Great Fun to Build a Pool — Easy, Too!

The above illustrations and explanations will show you how to plant your lilies. It is important that immediately upon receiving your lilies you should remove them from the mailing box and place in water until you can plant them. A complete Culture Pamphlet is packed with every order and should answer all your questions. If, however, you have questions that are not answered to your satisfaction, please feel free to write us. A self-addressed, stamped envelope is appreciated. You will find additional cultural directions at the beginning of each group of plants listed in this catalog.

BOX CONSTRUCTION. Boxes should be at least 15 inches square and, if pool is deep enough, 12 inches in depth. Larger boxes up to 2 or 3 feet square will give you prize winning blossoms. Make them of pine wood and they will last 20 years. **Never use redwood!**

SOIL. The best soil is a good garden loam such as roses do well in. A clay or heavy loam is better than a sandy, one, as it has enough fertility to carry the plants through a vigorous season's growth. Lilies, however, are not particular and we have grown show specimens in every type of soil.



How to Build a Pool

Pools are very simply built, the principal thing to remember being to have them about 2 feet deep, which allows a foot for the boxes or soil in which lilies are planted and 8 to 12 inches of water. Such a pool will give optimum results, though of course pools much shallower or much deeper are perfectly satisfactory. About 12 hours after the concrete is poured it may be water-proofed by painting it with pure cement mixed with water to the consistency of cream. The pool may then be filled with water and left for a week or so to cure.



My Little Book on Pools...

If you have not built your pool this little booklet will be of great

help to you. Many pools that have been built by our customers are illustrated, which will give you a general idea of the various types. Detail drawings showing how a pool is built as well as instructions on how to mix the concrete, water-proof the surface, put in drainage pipes and other useful data are included.

We have been building pools for over 75 years and have accumulated information on every sort of pool under all conditions. You can rely on our designs for success.

BOOKLET SENT FOR..... **10c**

CARE OF THE NEW POOL

In tub gardens and small pools (3-4 feet square) put the soil directly in the pool. There is room in most pools for from 6 to 12 inches of soil and as much water. In larger pools it is best to plant the lilies in boxes, for this makes it easier to clean the pool or to supply fresh soil, which should be done occasionally in the spring.

NATURAL POOLS

If you intend planting in a natural pond it is best first to establish the lilies in small baskets of rich garden loam in water 6 to 12 inches deep and to later set them in their permanent positions.

HOW FAR APART TO PLANT

A pool 4 or 5 feet square will accommodate 3 or 4 lilies as well as Water Poppies, Water Hyacinths, Buttercup Bush, Pickerel Rush, etc. A pool 6 to 8 feet across will need 5 to 8 lilies and afford room for a generous planting of other small shallow water plants.

FERTILIZER

Cow manure is very good used at the rate of 1 shovelful to 4 of soil, mixing well and packing moderately firm in the boxes. We have developed a very effective chemical fertilizer that will not foul the water as animal fertilizers are liable to do. Used at the rate of one-half pound to the bushel of soil at planting time and later applied once or twice about the roots of each plant during the summer will assure a luxuriant growth and many blossoms. 5 lbs. \$1.60 postpaid.

PLANTING HARDY LILIES

In planting simply scoop a small hole out and push the plant into place, drawing the soil up about it so it will not float away. In very loose soil a small rock placed on the root will keep it down. The rhizomes of Hardy Lilies should always be planted as in the picture—HORIZONTALLY and never vertically. Do not cover them with more than an inch of soil and always see the growing tip is just showing through the soil.

PLANTING TROPICAL LILIES

It is not necessary or advisable to drain the water down below the boxes at planting time, as there is far less danger of the sun scorching the leaves when planting in water. Plant upright as in picture. My Blue Triumph and Blue Beauty you will receive as vigorously growing, tuber-bearing plants, which may be simply shoved down into the mud up to the base of the new leaf stems. Our potted Tropicals and Night Bloomers are strong, lusty plants which quickly root into the fresh soil in your boxes.

WATER DEPTH

New plants of all kinds should always be started in about 6 inches of water where the sun's warmth reaches them. If planted in cold, deep water they may be badly checked. After they have 2 or 3 leaves on the surface they may be removed to deeper water. Lilies will grow in 6 inches to 2 feet deep, but prefer 8 to 12 inches.

WINTER CARE

The ideal way to winter aquatics is to leave them in the pool. To prevent the water from freezing too deeply and cracking the cement, cover the pool with boards, heaping with leaves or straw. In this way they will winter perfectly, for very little freezing takes place.

If the pool must be drained the lily boxes may be removed to a cool basement and kept covered and moist or they may be placed in a deep trench and be well covered with soil. Since dry rot is the worst enemy of stored plants it is best to leave them under natural conditions in the pool.

TROPICAL LILIES may be wintered in a greenhouse pool where they will flower all winter. Unless you have these facilities it is best to replace them each spring.

GOLDFISH will control mosquitos and there will be none where these hardy scavengers are kept. Keep them in good health with regular feedings of our Natural Goldfish Food. They may be wintered in a tub in the basement.

OUR TERMS AND GUARANTEE

No Orders Accepted for Less Than \$2.00. Orders of \$5.00 or More Are Sent Postpaid.

Orders for Less Than \$5.00 Must Be Accompanied by 50c Additional for Postage and Packing.

To avoid confusion, please use order blank attached.

NO PLANTS SHIPPED C.O.D. Owing to their perishable nature plants are not shipped C.O.D.

CALIFORNIA CUSTOMERS MUST INCLUDE 3% SALES TAX.

SHIPPING DATES. You will find approximate shipping dates listed opposite the order blank. Order early and you may leave the proper shipping date to our judgment. We are, of course, glad to ship on any date you specify.

WE GUARANTEE to ship you only four finest, most vigorous plants true to name and assume full responsibility that they reach you in a fresh and satisfactory planting condition. We will replace without cost any not so received if notified within 10 days.

GROWTH GUARANTEED. If any plant fails to grow and we are notified within 30 days we will replace same free of charge, customer to pay shipping charges only. At time of complaint remit 75c per Tropical Lily, 50c for Hardy Water Lilies and other aquatics. To prevent loss of flowering time replacements are made of strong flowering plants. Replacements are made free with new order.

Our Shipping Dates

READ CAREFULLY HARDY LILIES

Our Hardy Lilies and aquatics are ready to be shipped at special request any time during the year. We ordinarily ship to warmer parts from March and April on. In the latitude of Chicago and New York from middle of April to September 1st.

TROPICAL LILIES SHOULD NOT BE PLANTED TOO EARLY FOR BEST RESULTS

To warmer South and West we ship from May 1st on. Chicago and New York area May 25th to June 1st.

BLUE TRIUMPH and Blue Beauty are far hardier than other varieties, and we ship up to 10 days earlier.

LOTUS CULTURE

The plants will look, as you unpack them, like a banana with a growing point on one end. In unpacking be careful NOT TO BREAK them. Plant them horizontally (never put them in upright) and cover with 1 or 2 inches of soil, leaving the growing tip just at the soil surface. They should not be covered with more than 6 inches of water until growth starts. When they are growing well the water depth may be increased to a foot if necessary. Plant in a rich heavy soil free from animal fertilizers for best results.

We don't like to ship them too early in the season, for they will often fail to grow if the weather is too cold.

FREE with All Orders! My booklet, "The Culture of Water Lilies."

JOHNSON'S NATURAL GOLDFISH FOOD

Goldfish need a well balanced ration to remain in good health. Feed them regularly and they will become very tame. For best results feed a small portion every day.

Johnson's Natural Fish Food. A properly balanced food for aquarium or pool. Per pound bag **Postpaid \$1.00**

VOLCK OIL SPRAY

Can be safely used to kill aphid on waterlily pads and will not poison your fish. 4-oz. bottle prepaid (with orders only) with instructions **50c**

Sussex, N. J.
Sept. 14, 1950

My Dear Mr. Johnson:

I wish to thank you for sending me such splendid vigorous waterlily roots. I never have had any other waterlilies that gave me so much satisfaction and pleasure.

I surely am anticipating ordering additional varieties from you next spring.

Yours very truly,
P. H. CAPEWELL

1600 Woodbury St.
Miles City, Mont.

We have many other varieties of Hardy Waterlilies and some Tropical Waterlilies and Bog Plants for which we had no room for listing in this catalogue. **If interested, send 10c for this list.** The 10c may be deducted from your first order from this list.

BUTTERFLY TRIO COLLECTION N 18

The Butterfly Waterlilies are small to medium in growth, being small editions of the largest Waterlilies with all their good qualities of hardiness and free flowering. Try this collection for a box 24 inches square in a large pool or as a complete planting in a small pool.

- 1 WHITE BUTTERFLY
- 1 RED BUTTERFLY
- 1 ORANGE BUTTERFLY

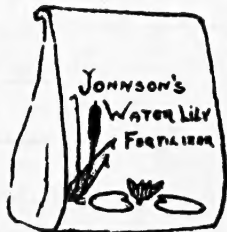
Postpaid **\$5.00**

VISIT OUR NURSERIES

You are cordially invited to visit our nurseries. You will find our pools a glorious sight in June when our lilies reach their peak. We are open weekdays 8-5 and Sundays 9-4. The directions at right will help you to find us.

JOHNSON'S WATERLILY FERTILIZER

The ease with which chemical fertilizers may be used and the concentrated form give them a distinct advantage over animal fertilizers. To fertilize, merely place a small handful in a paper sack and push it down in the mud a few inches from the waterlily root. Instructions sent with order.



2½ lbs., postpaid, \$1.00; 5 lbs., postpaid, \$1.60

CACTI & SUCCULENTS

DIAMOND JUBILEE HANDBOOK 50c

48 Pages of Cactus and Succulent Lore

*Hundreds of Plants Illustrated in
Color and Black and White*

Our Diamond Jubilee Handbook is the culmination of over 30 years of experience in growing cactus and succulent plants. The Handbook is a complete listing of the available plants in our extensive collections. We can say with all sincerity that there is no other collection in America that can compare with it. Succulent plants from all over the world and Cacti from the plains of Patagonia to the Canadian border.

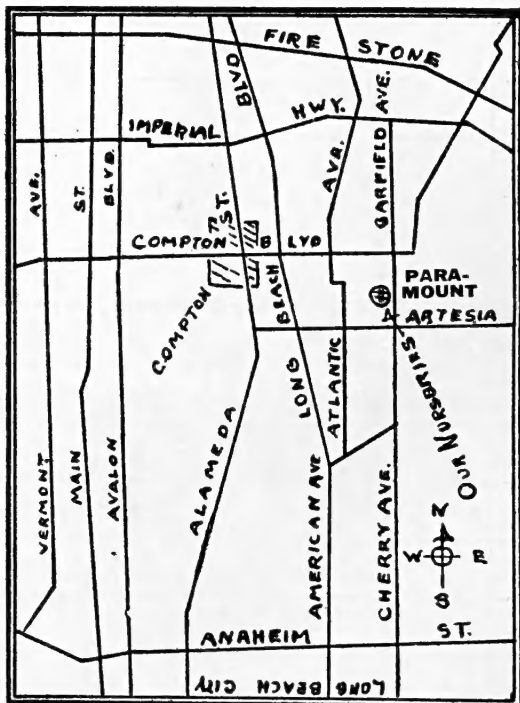
Cacti and Succulent plants have a deserved popularity for their endless variations of form, exquisite flowers, and their adaptability to pot culture in apartment and home windows. You will find an extensive listing of the popular Orchid Cacti in our Handbook too.

Send 50c for our Diamond Jubilee Handbook to:

JOHNSON CACTUS GARDENS

Box 300

Paramount, California



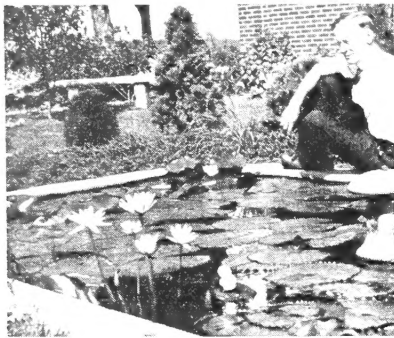
HOW TO REACH OUR GARDENS

We are situated in Paramount, 15 miles southeast of Los Angeles, near Long Beach. If in Los Angeles drive out Alameda Street or Atlantic Avenue to Compton Blvd., turn left (east) about 3 miles or from Atlantic 1 mile, crossing bridge over Los Angeles River (!) to Garfield Avenue. Then right (south) a mile to our nurseries. We are on Garfield Avenue between Olive and Artesia Streets. Our telephone number is Metcalf 3-1515. Our street address is 16613 South Garfield Avenue.

HARDY WATER LILIES — Winter Hardy Everywhere

PHOTOGRAPHS

We are always pleased to receive photographs of our customers' pools. Everyone likes to hear of your success and how it was achieved. For any photographs used in our catalogue or advertising we offer a free Hardy Waterlily of your choice.



Tropical and Hardy waterlilies grown together add interest and balance to your pool. Mr. Strine of Harrisburg, Pa., has successfully grown them together with beautiful results.



The pool of Mr. and Mrs. Burns of Hawaii is an excellent example of what background planting can do for your pool. Umbrella Palm, Iris, and Egyptian Papyrus form an effective backdrop.

Johnson's Waterlily Fertilizer

Place a tablespoonful of this fertilizer in a small paper bag and push it into the mud a few inches from the lily rhizome and watch it grow! Especially prepared for waterlilies.

2 1/2 lb. bag, postpaid \$1.00
5 lb. bag \$1.60

Johnson's Goldfish Food

A food especially prepared for goldfish. To use in either pool or aquarium.
1 lb. bag \$1.00

May 16, 1951

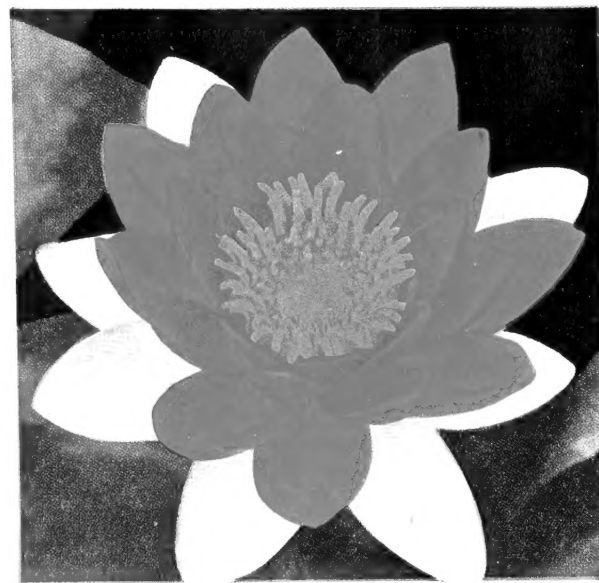
Gentlemen:
The packages arrived containing snails and plants. They were packed perfectly. Thank you very much.

Yours sincerely,
Mrs. Harold Plummer
La Jolla, Calif.

August 23, 1951

Dear Mr. Johnson:
Last spring I ordered a few waterlilies of you. April 20th you sent me the Blue Triumph. It has done remarkably well and is one of the most striking and satisfactory waterlilies I have ever seen. It has three or more large blooms all the time.

Yours very truly,
E. A. Ross
Santa Barbara, Calif.



ATTRACTION

Bright red verging on crimson with white sepals. Robust in growth and one of the first to flower in spring. Choice.
Each \$3.00

BARGAIN COLLECTIONS

LOS ANGELES TRIO Collection Q 5

Blue Triumph, 2-yr.-old plant
Escarboucle
Gonnere
Postpaid \$8.50

THRIFTY DUET Collection Q 6

Marliac Yellow
Marliac Pink
The Two \$3.25

BUTTERFLY TRIO Collection Q 7

Red Butterfly
Orange Butterfly
White Butterfly
Postpaid \$5.00

IMPERIAL TRIO Collection Q 8

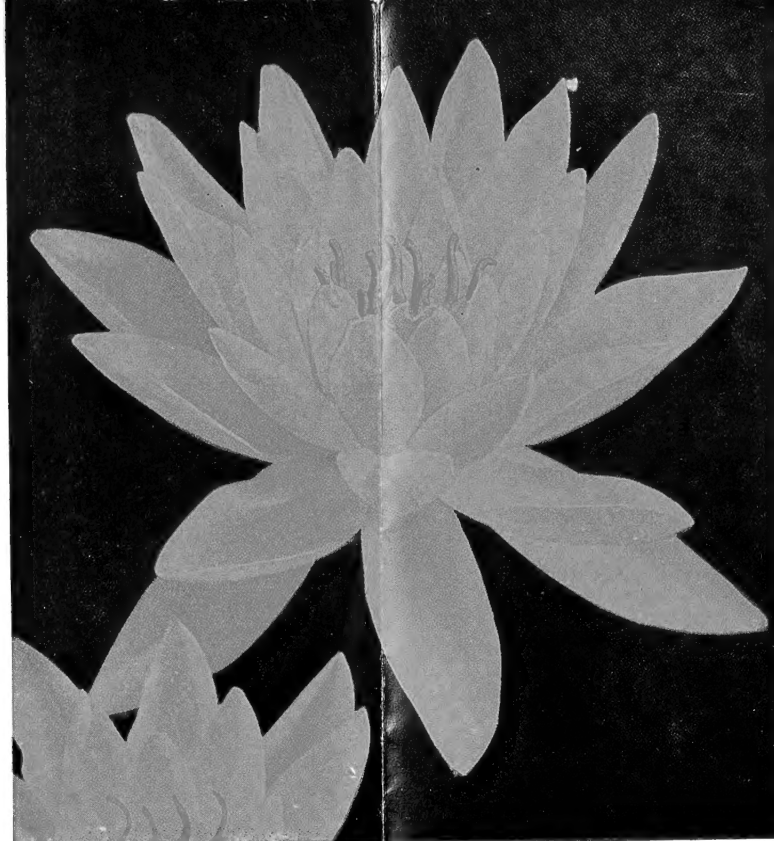
Sunrise
Gonnere
Attraction
Postpaid \$7.50



GONNERE

Snowball flowers up to 5 inches across. Pale green leaves. An outstanding novelty and long a favorite. Excellent.
Each \$3.00

JOHNSON SUNSHINE GROWN LILIES



SUNRISE

Enormous yellow flowers with graceful lax petals. Bears the largest flowers of all hardy waterlilies. A superb addition to your pool.
Each \$2.75

35

Beautiful Water Plants

Collection Q4

This collection includes all the aquatics necessary for a beautiful pool together with such supplies as are necessary for complete success.

Complete planting including Hardy and Tropical waterlilies, Shallow Water and Bog Plants, Scavengers and Fertilizer. For a pool 7x10 to 8x12 or larger. Approximately 75 to 100 square feet of surface.

<p>5 WATERLILIES Panama Pacific, Gloriosa, Sunrise, Paul Hariot, and Gonnere.</p> <p>15 SHALLOW WATER AND BOG PLANTS Water Poppy, Pickerel Rush, Floating Heart, etc.</p>	<p>10 OXYGENATING PLANTS Eel Grass, Fish Grass, Ludwigia, etc.</p> <p>6 WATER HYACINTHS (Floating plant.)</p> <p>12 ASSORTED WATER SNAILS</p> <p>2 1/2 LBS. JOHNSON'S WATERLILY FERTILIZER</p>
---	--

Special Collection Price. 'Postpaid \$15.00

— The Earliest to Bloom in the Spring!



SPLENDIDA

A delightful cherry red, lighter at the petal tips and shading darker towards the center. Very fine.
Each \$3.00

GENERAL LISTING OF HARDY WATERLILIES

Hardy Waterlilies should be the mainstay of every pool. Their permanence and the fact that they bloom so early in the spring make them a "must" in every water garden. The plants are perfectly winter hardy in even the coldest weather, standing temperatures of 50 degrees below zero if given a little protection. They commence blooming very early, almost as soon as the ice melts away, and continually produce a display until early fall. Full planting instructions on order blank insert.

WHITE

Virginalis. Broadly cup shaped blossoms of purest white, perfectly contrasted by pale green leaves. Its flowers range from 5 to 7 inches in diameter and is the earliest waterlily to flower in spring. Continues to bloom until late fall, often until December with us.

Each \$5.00

Hermine. Tulip shaped white blossoms borne in profusion throughout the summer. Its medium habit makes it fine for small pools or planted in groups in larger pools.

Each \$2.00

Marliac White. Broad rounded petals with sepals faintly flushed with pink. Vigorous growth.

Each \$1.75

RED

Gloriosa. A favorite over many years. Each flower a glowing cup of bright red, 5 to 6 inches in diameter. It often flowers within 3 weeks of planting. See inside page for illustration.

Each \$3.00

Red Butterfly. A dwarf variety with crimson flowers up to 3 inches across.

Each \$2.50

Conqueror. A lusty grower with huge garnet red flowers.

Each \$2.75

Robinsoni. Beautifully mottled leaves and warm red blossoms. Different and outstanding.

Each \$3.00

James Brydon. Many petalled, fully open flowers of rosy carmine. One of the loveliest waterlilies I know of.

Each \$3.00

William Falconer. Velvety red-black. Considered the darkest red of all hardy waterlilies.

Each \$3.50

Escarboucle. See picture below. Dark red.

Each \$3.00

YELLOW

Marliac Yellow. Radiant sulphur yellow blossoms with handsome mottled leaves. Flowers 4 to 6 inches across with rounded petals.

Each \$2.00

(continued above right)

Moorei. Considered the brightest yellow. Rare.

Each \$3.00

Yellow Pigmy. The most dwarf of all waterlilies. Speckled leaves and bright yellow blossoms the size of a half dollar.

Each \$1.25

SUNSET SHADES

Comanche. A changeable color, opening reddish yellow and becoming darker red on successive days. Brown flecked leaves. Free flowering and easy to grow.

Each \$3.00

Paul Hariot. See illustration on inside page. Of medium habit, with apricot colored flowers.

Each \$2.50

Seignoretii. A magnificent waterlily with flowers of sunset color borne above the water.

Each \$5.00

Aurora. A sprightly dwarf variety. Pale apricot changing to almost crimson.

Each \$1.75

PINK

Marliac Pink. Lovely shell pink blossoms with rounded petals. A vigorous plant and a steady bloomer.

Each \$1.75

Amabilis. Star shaped flowers, dark pink at center and shading to almost white at petal tips. A striking lily.

Each \$2.50

Rosy Morn. Flowers with sharply pointed petals, lighter at tip and shading to deep pink at center. Stems mahogany color with dark green leaves. Our own introduction.

Each \$3.00

Neptune. The most free flowering of all hardy waterlilies. Cherry red, shading darker towards center.

Each \$3.00

Splendida. See picture above.

Each \$3.00

Formosa. See illustration on inside page. We particularly recommend it as one of the most satisfactory and free flowering in our collection.

Each \$3.00

Venusta. See picture on inside page. Spreading petals of warm luminous pink of a particularly velvety smoothness. Rich fruity fragrance.

Each \$2.25

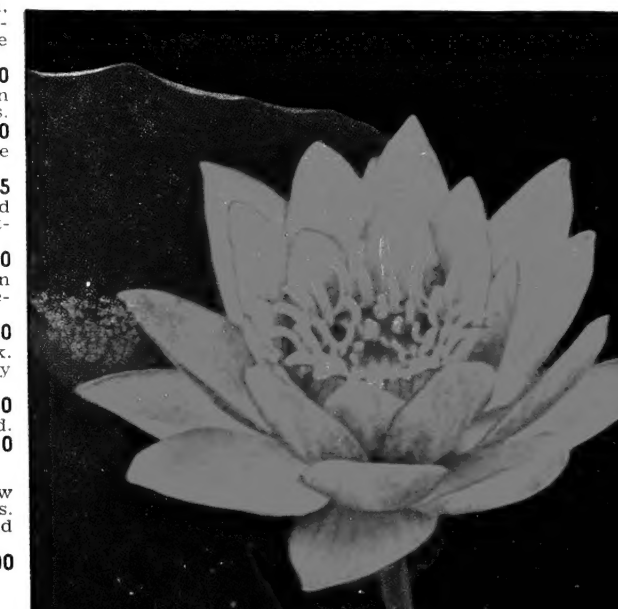
Mrs. Richmond. A massive flower; rose deepening toward the center to strawberry red. Considered the finest hardy lily. Does well in small pools.

Each \$5.00

ESCARBOUCLE

Brilliant flaming red. The darkest red and free flowering. It has our sincere recommendation.

Each \$3.00

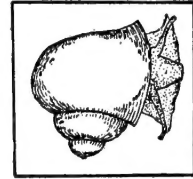


Oxygenating Plants Will Help Keep Your Pool Clean and Add to Its Beauty and Interest

In most natural ponds various underwater plants are common. Fish rely upon them for food and protection and also, in many cases, to lay their eggs upon. They do not necessarily keep the pool clean by themselves, but they do aid in maintaining the balance that is necessary for a clean pool.

They may be planted in pots or boxes by themselves, or with the waterlilies.

POOL SCAVENGERS



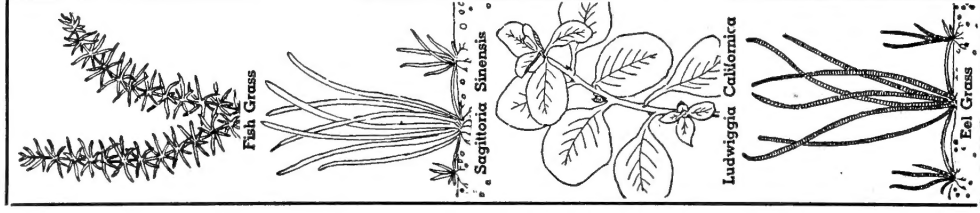
Water snails aid in maintaining a clean pool. Their diet consists of decaying vegetation and algae or green scum. Some reproduce by laying eggs while others are live-bearers. The elongated gelatinous masses you find on the undersurface of lily leaves and on stems are their eggs.

DUE TO HOT WEATHER SNAILS CANNOT BE SHIPPED DURING THE MONTHS FROM JUNE 15TH TO OCTOBER 15TH.

Black Ramshorn Snails. Particularly prolific breeders, laying their eggs in jelly-like spots on back of lily leaves. Splendid workers in keeping pool clean.
6 for 35c, per dozen.....60c

Coral Snails. Similar to Black Ramshorn but with red body. Best aquarium snail. Fine for pool.
25c per pair, per dozen.....\$1.15

Japanese Trapdoor Snails. Large live-bearing snails that are voracious feeders on green scum. Should be in every pool.
25c per pair, per dozen.....\$1.15



OXYGENATING PLANTS

Fish Grass. Bright green chains of leaves. One of the best all around varieties.
2 bunches for.....35c

Sagittaria subulata. Grass-like leaves about 6 inches long. Increases by runners like a strawberry.
6 for.....35c

Eel Grass. Ribbon-like leaves 2-3 feet long. Also sends out runners. Popular.
6 for.....35c

Hair Grass. Forms a velvety lawn in pool or aquarium.
Per portion.....35c

Ludwigia multertii. A creeping or submerged plant. Copper colored leaves, pink beneath. Fine for pool or aquarium.
2 bunches for.....35c

Sagittaria sinensis. Broad ribbon leaves 6-9 inches long. In shallow water it bears aerial leaves and white blossoms.
3 for.....35c

Cryptocoryne Willisii. Makes the finest aquarium plant. Lance shaped leaves with crisped margins.
Each.....35c

Cryptocoryne Beckettii. Aquarium plant. Dark green lance leaves.
Each.....35c

Cryptocoryne cordatum. Aquarium plant. Wider leaves than C. Willisii. Green on top, reddish beneath.
Each.....40c

OXYGENATING PLANT

Collection Q 15 —
20 Oxygenating plants in 6 varieties.
For a 6x8 pool.....\$1.50

Collection Q 16 —
45 Oxygenating plants in 6 varieties.
For a 10x12 pool. Postpaid.....\$3.00

SCAVENGER COLLECTIONS

Collection Q 17 —
For a pool 4x5 feet.
12 assorted snails.....\$1.00

Collection Q 18 —
For a pool 6x8 feet.
50 assorted snails. Postpaid.....\$3.00