

Historic, Archive Document

Do not assume content reflects current scientific knowledge, policies, or practices.

62.39

LIBRARY
RECEIVED
★ APR 25 1952 ★
U.S. Department of Agriculture



*Gardening
in New England*
1952

LEXINGTON NURSERIES

INC.

1265 MASSACHUSETTS AVENUE
LEXINGTON 73, MASS.



Daphne (Garland Flower)

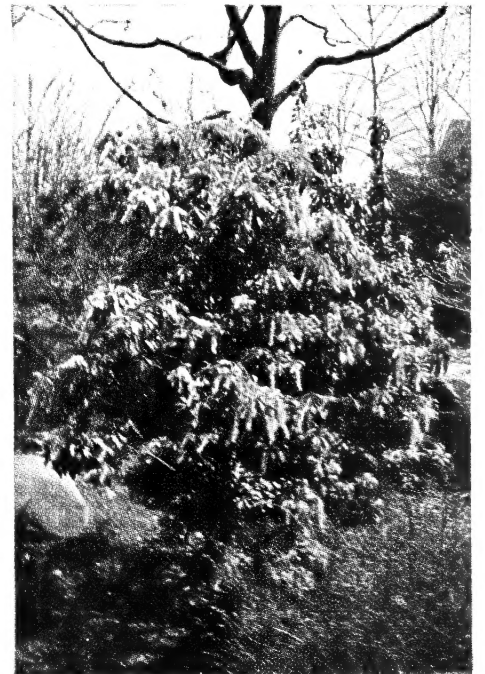


Mountain Laurel (Kalmia)



Azalea Kaempferi

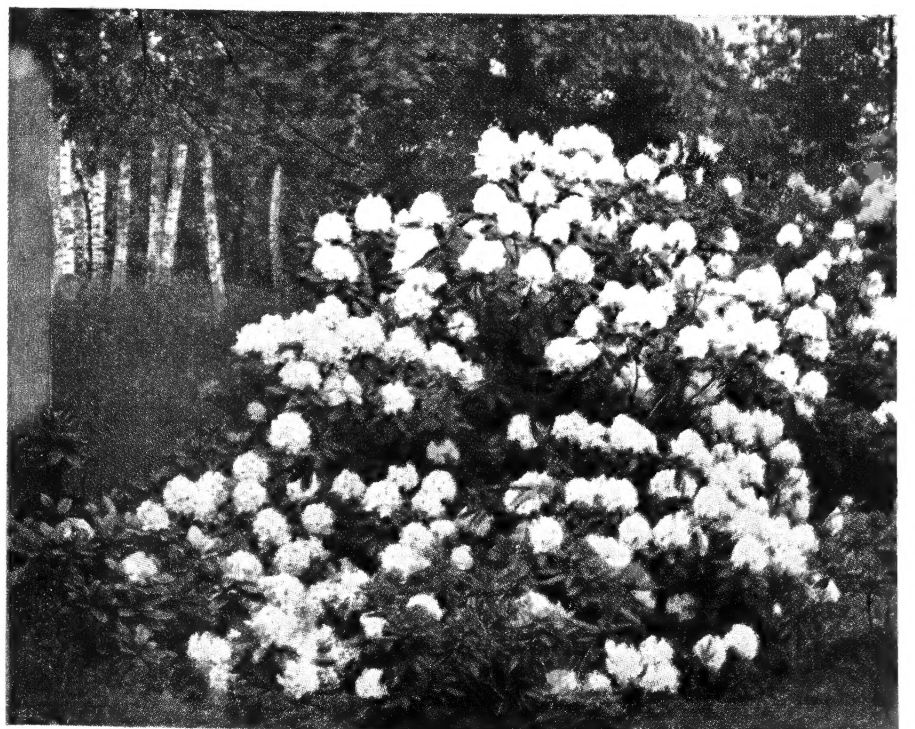
*Broadleaf
Evergreen Shrubs
A
Lexington
Specialty
Unsurpassed
for
Shady Locations*



Pieris Japonica



Pachysandra (Spurge)



Catawbiense Rhododendron



Rhododendron Planting

Evergreen Shrubs

In this group fall those desirable plants that bloom, yet remain green all Winter. Most are slow-growing and do not attain great height. All will do well in the shade.

RHODODENDRONS

Handsome evergreen, flowering shrubs of unrivalled beauty and charm without which no garden is complete. There are interesting native and hybrid varieties ranging in colors from white and pink to lilac, purple, and red shades. Of easy culture under proper soil conditions, which should be acid and moist but well-drained. Some varieties prefer shade while many others will flower best in a partly sunny but protected location.

Carolinianum (*Carolina Rhododendron*). Of somewhat dwarf growth, this native variety combines well with the others in groups or borders. Flowers vary from almost white to deep pink, opening in late May. 12-18 in., \$5.50 each; 18-24 in., \$7.50 each.

Catawbiense (*Catawba Rhododendron*). One of the best of our native Rhododendrons. Excellent dark green foliage studded with large, lilac-purple flowers in early June. Will bloom best if planted in a partly sunny location. 15-18 in., \$5.50 each; 18-24 in., \$7.00 each; 2 to 2½ ft., \$9.00 each.

Maximum (*Rosebay Rhododendron*). The largest of our native types with long, pointed leaves and white flowers. An excellent variety for naturalizing. It prefers complete shade, where the foliage will assume a rich, dark green. The blossoms are generally partly obscured by the new foliage, opening, as they do, in late June. 2-2½ ft., \$7.00 each; 2½-3 ft., \$9.00 each; 3-3½ ft., \$11.00 each; 3½-4 ft., \$14.00 each; 4-5 ft., \$16.50 each.

VINCA (Myrtle)

Minor. Evergreen ground-cover for shady places. Violet-blue flowers in June. 10 for \$3.00, \$24.00 per 100.



Pachysandra

DAPHNE (Garland Flower)

Cneorum (*Rose Daphne*). More familiarly known as the Garland Flower, this low, bushy shrub bears a profusion of sweetly scented, bright pink flowers in clusters in May and often during the Summer and Autumn. 9-12 in., \$3.50 each.

EUONYMUS

This family includes these popular Wintercreepers, our hardiest Evergreen vines, suitable for covering walls and as evergreen ground-covers.

\$1.00 each, 3 for \$2.70, 10 for \$8.00

Radicans (*Wintercreeper*). A good clinging variety, less shrubby and woody than other forms. Dull green foliage.

Radicans carrierei (*Glossy Wintercreeper*). An attractive, shrubby variety prized for its handsome glossy foliage.

Radicans coloratus (*Bronze Wintercreeper*). Valued for its bright red Winter foliage. An interesting form very similar to "radicans" in habit. \$1.25 each, 3 for \$3.45, 10 for \$11.00.

Radicans minimus (*Baby Wintercreeper*). A small leaved variety, excellent in the Rockery or as a light ground-cover. Somewhat slow in growth.

Radicans vegetus (*Bigleaf Wintercreeper*). Considered, by many, as the best variety. Quite shrubby and woody, with round, glossy leaves and bearing orange-scarlet fruits in the Autumn. Makes a good, heavy vine or may be easily grown and trimmed into shrub form. Excellent for a low, evergreen hedge.

HEDERA (Ivy)

Helix (*English Ivy*). Generally hardy in Massachusetts when grown on the north side of a building or shaded from the Winter sunlight. Also an excellent, rapid-growing ground-cover under shrubbery or evergreens. 4 in. pots, \$1.00 each, 3 for \$2.70, 10 for \$8.50.

ILEX

Glabra (*Inkberry*). A compact, upright shrub with dark green oval foliage much like Boxwood in appearance. Small flowers followed by inky-black fruits in the Fall. 18-24 in., \$6.00 each.

Convexa. Very bushy, completely covered with shiny, boxwood-like foliage. Showy. Grows anywhere. 15-18 in., \$7.00 each; 18-24 in., \$9.00 each.

KALMIA (Laurel)

Latifolia (*Mountain-Laurel*). This, our native Laurel needs no introduction. A very fine shrub thriving in either sun or shade. Requires acid soil and moderate moisture. Pink and white flowers in June. 15-18 in., \$4.00 each; 18-24 in., \$5.50 each; 2-2½ ft., \$6.50 each; 2½-3 ft., \$8.00 each; 3-4 ft., \$12.00 each.

Special quotations on quantities.

PACHYSANDRA

(*Japanese Spurge*)

Terminalis. Erect, evergreen ground-cover for shady places. 25 for \$7.00, \$27.00 per 100. 3 inch pots.

PIERIS (Andromeda)

Japonica (*Japanese Andromeda*). A lovely glossy foliaged variety bearing drooping sprays of Lily-of-the-valley flowers. Of upright habit, it works in beautifully in broadleaf plantings. 15-18 in., \$5.50 each; 18-24 in., \$6.75 each; 2-2½ ft., \$9.00 each.

PYRACANTHA COCCINEA

(*Firethorn*)

Coccinea (*Firethorn*). Showiest of evergreen shrubs, bright scarlet berries from September through Winter. Tender; plant only in sheltered locations, and protect during Winter. This finest of plants is well worth additional care necessary for culture here in New England. 4½ in. pot plants, \$2.75 each.

Evergreens

Most commonly used for foundation plants, Evergreens serve a great many other purposes. Taller-growing varieties make ideal wind-breaks and screens, or serve as stately specimens to accentuate focal points in landscape. Because of their many textures and types of foliage, as well as the great variety of colors, a planting of Evergreens is attractive during all twelve months of the year. Lexington plants are of superb quality, transplanted many times to promote fibrous root growth, and are dug with a firm ball of earth to insure transplanting success.



Thuja Occidentalis

CHAMAECYPARIS

(*Retinospora*)—(*The Cypresses*)

An outstanding family of ornamental evergreens highly esteemed for their graceful, feathery foliage and interesting variety of form. They make excellent subjects for foundation plantings as their growth and individual forms are easily checked by periodic pruning.

Pisifera plumosa (*Plume Retinospora*). A very popular and beautiful form of the Sawara *Retinospora* with soft, feathery foliage. Upright in growth. We recommend regular pruning to retain its compact, symmetrical form.

15-18 in. \$3.00 | 2-2½ ft. \$5.50
18-24 in. 4.50 | 2½-3 ft. 6.50
3-4 ft. \$8.00

Pisifera plumosa aurea (*Golden Plume Retinospora*). An attractive, golden foliaged variety with the same general characteristics as the *Plume Retinospora*.

15-18 in. \$3.00 | 3-4 ft. \$8.00
18-24 in. 4.50 | 4-5 ft. 10.00
5-6 ft. \$12.00

JUNIPERUS (*The Junipers*)

Natives of rocky pastures and dry, barren hillsides, the Junipers play a very important role in our New England landscapes. Interesting in foliage and form—some tall stately trees, others spreading, prostrate, or semi-prostrate shrubs. An abundance of sunlight and good drainage are their only requirements.

Chinensis pfitzeriana (*Pfitzer Juniper*).

An outstanding shrubby variety with gray-green foliage and horizontal, spreading branches. Attractive as a specimen or in group plantings. Withstands shade better than any other variety of Juniper.

18-24 in. \$6.75 | 2-2½ ft. \$8.50

Columnaris (*Columnar Juniper*). Of narrow, pyramidal habit, needles fine; bluish-green in color. Ultimate height 15 to 20 feet.

4-5 ft. \$10.00

Communis depressa plumosa (*Plumed Prostrate Juniper*). At its best in an under-planting or as ground cover at the edge of shrub borders or on rocky banks, this handsome variety may be highly recommended. Compact, blue-green foliage.

18-24 in. \$5.50 | 2-2½ ft. \$7.50

Excelsa stricta (*Spiny Greek Juniper*). Generally used in foundation plantings where it grows as a bushy pyramid from two to four feet high and almost as broad. Attractive spiny, gray-green foliage.

15-18 in. \$4.50 | 18-24 in. \$5.50

PICEA (*The Spruces*)

The Spruces, as a family, comprise one of the most adaptable and useful groups of hardy evergreens. Except for a limited number of dwarf forms, they naturally grow into large trees; and this fact should be carefully weighed before including them in foundation plantings. On the other hand, when planted in a hedge and closely sheared, the White and Norway Spruces become dense walls of green.

Canadensis (*White Spruce*). A native of our North woods and a handsome symmetrical tree of compact, dense growth and silvery-green foliage. Makes an excellent specimen subject and also used for hedges.

2-3 ft. \$5.00 | 3-4 ft. \$7.50

PICEA—Continued

Excelsa (*Norway Spruce*). Rugged in outline with arching branches becoming pendulous with age. Dark green, shiny foliage. An outstanding variety for exposed locations and windbreaks.

2-3 ft. \$5.00 | 3-4 ft. \$7.50
4-5 ft. \$10.00

Pungens glauca (*Colorado Blue Spruce*). This variety holds its blue color throughout the year. Grows into a tall, shapely specimen tree.

18 to 24 in. \$7.50

PINUS (*The Pines*)

Here again, we have a group of hardy evergreens that displays not alone an ornamental, but even more, an intrinsic economic value. The dwarf forms make good subjects for the foundation-planting; but the others are chiefly timber trees that, if given opportunity, make big specimens of forest proportions. They may, however, be confined by pruning and thus adapted to many special purposes.

Resinosa (*Red Pine*). Long, glossy green needles in clusters of two. Symmetrical growth reaching 25 feet at maturity; reddish brown bark. Excellent for wind-breaks and screens.

3-4 ft. \$7.50

Strobus (*White Pine*). A native of New England and much valued for its lumber. A handsome evergreen with soft, silvery-green foliage and very rapid in growth. Excellent for naturalizing and much used for hedges and windbreaks as it withstands considerable pruning.

5 to 6 ft. \$12.00

PSEUDOTSUGA (*Douglas Fir*)

Stately magnificent trees from our Western States where they are highly valued for lumber. Related somewhat to the Spruces which they resemble in appearance, their habit of growth is less broad and their rate of growth much more rapid. They make excellent specimens and may also be used for screening purposes.

Douglasi (*Douglas Fir*). A magnificent specimen tree with blue-green foliage and very symmetrical form. A valuable fast-growing Evergreen deserving of wide popularity.

18-24 in. \$4.00 | 2-3 ft. \$6.00
3-4 ft. \$7.50

The varieties and sizes listed represent but a few of our wide selection of choice Evergreens

OPEN SUNDAYS AND EVENINGS DURING APRIL, MAY AND JUNE

EVERGREENS—Continued



Tsuga Canadensis

TAXUS (The Yews)

All except one of these Yews are of foreign origin; but they have assumed a place of importance amongst our hardy planting material. Of relatively slow growth, with good substance and color that remains unchanged throughout the Winter, the Japanese varieties can be depended upon to grow successfully in many difficult spots where other evergreens would be unreliable.

Cuspidata (Japanese Yew). Spreading Variety—Native of Japan but one of our finest evergreens. Really a plant investment appreciating in value with age, of compact spreading habit and handsome black-green foliage the year round. At home in either sun or shade and extremely tolerant of unfavorable soil or atmospheric conditions.

15-18 in....\$5.00		2-2½ ft....\$9.00
18-24 in.... 6.50		2½-3 ft....12.00
3-4 ft.....\$15.00		

Cuspidata capitata (Upright Japanese Yew). A handsome broad-pyramidal form of the Japanese Yew with all the fine characteristics of the latter plant. Superb for foundation or group planting and a hedge-subject par excellence.

2-2½ ft....\$9.50		3-3½ ft....\$17.00
2½-3 ft....12.00		3½-4 ft.... 21.00
4½-5 ft.....\$30.00		

Cuspidata densiformis. An improved form of the spreading type. Compact, bushy growth and heavy foliage.

18-24 in.....\$7.50

Cuspidata nana. Spreading type; short branchlets covered with dark foliage; irregular shape; slow growing.

15-18 in....\$7.00 | 18-24 in...\$10.00

TAXUS—Continued

Media browni (Brown's Yews). Very full, globular habit of growth. Ideal for medium height hedges and foundation plantings. Extremely hardy; holds color well. One of the finest yet most economical of all Yews.

15-18 in....\$5.00 | 18-24 in....\$6.00

Media hatfieldi (Hatfield Yew). An upright Yew of slow growth, with ascending branches that give it a broadly columnar shape. Dark green, rather coarse foliage; hardy.

15-18 in.....\$5.50	
18-24 in..... 6.50	
2-2½ ft..... 9.50	
2-2½ ft., heavy.....11.00	
2½-3 ft.....14.00	

Media hicksi (Hick's Yew). More vase shaped than the preceding, attractive red fruit in Fall. Excellent medium height hedge.

15-18 in....\$5.00		2-2½ ft....\$9.00
18-24 in.... 6.00		2½-3 ft....13.00
3-3½ ft.....\$16.00		

Media Vermeulen. Broad pyramid shaped; heavy foliage and berry growth; excellent for specimen planting.

15-18 in....\$7.50 | 18-24 in....\$9.00

THUJA (The Arborvitae)

The Arborvitae hardly needs an introduction, so familiar has it become to garden lovers everywhere. As a family it is versatile in the many handsome forms and varieties it offers for the beautification of our New England homes and gardens. Ample moisture and sunlight are its chief requisites.

Occidentalis (American Arborvitae) (White Cedar). A native variety of upright, bushy growth extensively used for foundation planting; also a fine hedge or screen material.

2-3 ft.....\$4.00		4-5 ft.....\$7.50
3-4 ft..... 5.50		5-6 ft..... 12.00

Occidentalis biota nana (Golden Biota). A small globelike plant, compact in form with golden yellow fronds.

12-15 in.....\$3.90

THUJA—Continued

Occidentalis globosa (American Globe Arborvitae). Perfectly globular in shape and very popular as a dwarf plant for specimens or in group plantings.

15-18 in....\$3.00		18-24 in....\$4.5
2-2½ ft.....\$5.50		

Occidentalis pyramidalis (American Pyramidal Arborvitae). This narrow, columnar form is essential for many restricted locations where slender height is desired. Its foliage is a deep, rich green which seldom "browns" in Winter. Unsurpassed for formal evergreen groups.

2-3 ft.....\$4.50		3-4 ft.....\$7.00
4-5 ft.....\$9.00		

Occidentalis wareana (Ware Arborvitae). The Ware or Siberian Arborvitae is an outstanding variety of slow, compact growth and broad conical form. Attractive thick, glaucous-green foliage all season. Makes an excellent hedge.

3-4 ft.....\$9.00

TSUGA (The Hemlocks)

Of all our native evergreens, the Hemlock is outstanding for a certain graceful elegance that adapts it to a wide range of uses, ornamental as well as utilitarian. When given room to develop, it grows into a big, shapely tree; but it may be confined by shearing to conform with the heavier parts of a foundation-group, under which conditions it becomes compact and dense. Hemlock is one of the best evergreens for a hedge. Naturally a tree of the deep woods, the Hemlock is not always a success when planted in a wind-swept situation.

Canadensis (Canada Hemlock). The native Hemlock of the northern states, commonly used for ornamental planting, hedges, and screens. Symmetrical, rapid growth; responds readily to pruning or close shearing.

18-24 in.....\$4.50
2-3 ft..... 6.50
3-4 ft., heavy.....11.00
4-5 ft., heavy.....14.00
6-7 ft., heavy.....28.00



Taxus Cuspidata

Flowering Shrubs

To this popular group belong many of the old standby New England plants. They are economical to plant, yet one can, by careful selection, have a border or group of these plants that will bloom from early Spring until well into the Fall. Many have colorful foliage, and bear attractive fruit in addition to their lovely blossoms.

Although we list only one size and price for each variety, we do offer smaller and larger plants than those listed.

ACANTHOPANAX

Pentaphyllum (*Five-leaved Aralia*). Arching shrub of medium growth; rich green foliage on spiny branches; useful for hedging. 2-3 ft., \$1.50 each.

ARONIA

Brilliantissima (*Chokeberry*). Tall growing; dark green, shining foliage; white or pink flowers followed by bright red fruits. 2-3 ft., \$1.50 each.

AZALEAS

This group of shrubs, closely related to the Rhododendrons, is notable for masses of brilliantly-colored bloom in early Spring. The Azaleas should be planted in sheltered spots, preferably in soil that is slightly acid and moist.

Calendulacea (*Flame Azalea*). Upright growth; large clusters of blooms ranging from flame-yellow and orange to scarlet. 18-24 in., \$6.75 each; 2-3 ft., \$7.50 each.

Gandavense (*Ghent Hybrid Azalea*). Upright habit; a vivid range of coppery red, creamy pink, and white. Late May and June. 15-18 in., \$5.50 each; 18-24 in., \$6.50 each.

Hinodegiri (*Hinodegiri Azalea*). Vivid carmine-pink blossoms; semi-evergreen leaves; broad habit of growth. 8-10 in., \$3.00 each; 10-12 in., \$4.00 each.

Kaempferi (*Torch Azalea*). Japanese variety; flowers varying from vivid torch-red to salmon-pink. 18-24 in., \$7.50 each.

Mollis (*Chinese Azalea*). Low plant laden with large bright flowers of yellow and orange. Perfectly hardy. 15-18 in., \$5.50 each; 18-24 in., \$6.50 each.

Mucronulatum (*Mongolian*). Tall, upright; rosy-purple; early. 18-24 in., \$6.00 each.

Vaseyi (*Pinkshell Azalea*). Tall-growing; hardy. Profusion of shell-pink blossoms in May. 15-18 in., \$5.50 each; 18-24 in., \$6.50 each.

Yedoensis Poukhanensis (*Orchid Azalea*). A compact low-growing Azalea blooming with a profusion of fragrant orchid-like flowers from middle of May to late May; attractive foliage. 15-18 in., \$6.75 each.

BERBERIS

Thunbergii. Regular Japanese Barberry used mainly for hedging; also valuable as dwarf shrub. Slow, compact habit of growth; needs little pruning. 18-24 in., \$6.50 per 10, \$55.00 per 100

Thunbergii atropurpurea (*Red-leaved Japanese Barberry*). Bright red foliage; of robust growth; prefers sun. 15-18 in., \$1.10 each; 18-24 in., \$1.25 each.

BUDDLEIA

The Buddleias are invaluable shrubs for Midsummer bloom, bearing spikes of showy flowers from June until frost. They prefer a sunny location with rich soil.

3-year, \$1.25 each. One each of following varieties \$3.00

Charming. New pink variety of great merit.

Ile de France. Improved variety with rosy purple flowers.

Dubonnet. Glowing dark red spikes, unusually pleasing.

CALYCANTHUS

Floridus (*Common Sweetshrub*). Old-fashioned shrub; pineapple-scented, chocolate-colored flowers. 18-24 in., \$1.35 each.

CORNUS

Alba (*sibirica*) (*Red-barked Dogwood*). Coarse upright shrub valued for bright red branches; clusters of bluish-white fruit. Good for mass plantings with Golden-twig Dogwood. 3-4 ft., \$1.75.

Stolonifera flaviramea (*Golden-twig Dogwood*). Wonderful contrast for Red-twigged variety. Golden yellow branches, particularly attractive in Winter. 3-4 ft., \$1.75 each.

CLETHRA

Alnifolia (*Summersweet*). Native shrub; glossy leaves; very fragrant white flowers in late Summer. Good for shady, moist places. 2-3 ft., \$1.75 each.

CYDONIA (*Chaenomeles*)

Japonica (*Flowering Quince*). Bright flowers from orange-scarlet to pink and rose; clean, glossy foliage; spreading habit of growth; good for hedge. 18-24 in., \$1.75 each.

DEUTZIA

Gracilis (*Slender Deutzia*). Dwarf shrub; graceful habit of growth; mass of snow-white flowers in June. 15-18 in., \$1.75 each.

Lemoinei (*Lemoine Deutzia*). Medium-growing; prized for abundance of creamy-white clusters of blooms. 18-24 in., \$1.75 each.

Scabra (*Pride of Rochester*). Tall habit of growth; sprays of delicate white and pink, double flowers in June. 3-4 ft., \$1.50 each.

FORSYTHIA

Intermedia spectabilis (*Showy Forsythia*). Unrivalled for profusion of bright golden blossoms; upright growth neater than older varieties. 3-4 ft., \$1.75 each.

Intermedia Spring Glory. A new improved variety with more blossoms of a glowing lemon yellow. 3-4 ft., \$2.50 each.

HIBISCUS

Syriacus (*Rose of Sharon*). Handsome shrub with excellent foliage; very showy bloom; desirable for late Summer bloom. Double and single varieties in white, pink, red, blue, or purple. 3-4 ft., \$1.75 each.

HYDRANGEA

Arborescens grandiflora (*Snowhill Hydrangea*). Much-branched low shrub; masses of snow-white flowers in Midsummer; valued for exceptionally long period of bloom. Grows in sun or shade. 2-3 ft., \$1.65 each.

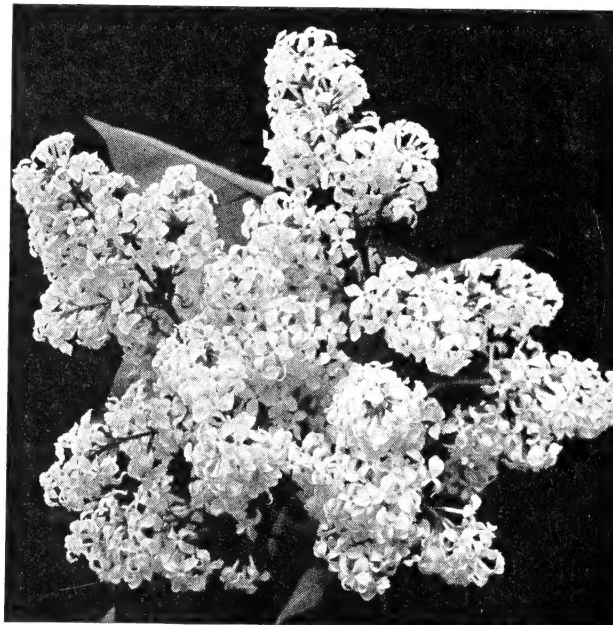
Paniculata grandiflora (*"Pee Gee" Hydrangea*). Enormous cone-shaped blooms pure white, later turn to shades of pink and purple; will grow in poor soil. 2-3 ft., \$1.75 each.

ILEX

Verticillata (*Winterberry*). Glossy green foliage; tall-growing; valued for bright red berries in Fall. 2-3 ft., \$1.50 each; 3-4 ft., \$2.00 each.

KOLKWITZIA

Amabilis (*Beauty Bush*). Beautiful graceful shrub wreathed in pinkish-yellow trumpet-shaped blooms in June. 3-4 ft., \$2.25 each; 4-5 ft., \$3.00 each.



Hybrid Lilacs

VISIT OUR NURSERY
WHERE EXPERT HELP
IN SELECTING JUST
THE RIGHT PLANTING
MATERIAL IS ALWAYS
AVAILABLE



Lonicera Fragrantissima

LIGUSTRUM (Privet)

- Ibolum** (*Ibolum Privet*). Very hardy; dark green glossy leaves; bushy growth. Excellent for hedges; makes effective specimen plant.
- | | | |
|-----------|--------|---------|
| | 10 | 100 |
| 18-24 in. | \$3.50 | \$25.00 |
| 2-3 ft. | 5.00 | 36.00 |
- Ovalifolium** (*California Privet*). Common well-known hedge plant with narrow habit of growth; oval green leaves.
- | | | |
|-----------|--------|---------|
| | 10 | 100 |
| 18-24 in. | \$3.50 | \$25.00 |
| 2-3 ft. | 5.00 | 36.00 |

LONICERA

- Fragrantissima** (*Winter Honeysuckle*). Fragrant, creamy-white flowers; develops into large spreading bush; will grow in poor, dry soil. 2-3 ft., heavy, \$3.00 each.
- Morrowi** (*Morrow Honeysuckle*). Decorative, downy foliage; bright red fruits. Flowers creamy-white, sometimes yellow. 3-4 ft., \$1.75 each.
- Tatarica rosea** (*Tatarian Honeysuckle*). One of first shrubs to leaf out in Spring. Flowers pink, followed by light red fruits; excellent for shade or poor soil. 3-4 ft., \$1.75 each.

PHILADELPHUS

- Coronarius** (*Sweet Mockorange*). Tall growing plant with attractive pure white flowers of exquisite fragrance. 3-4 ft., \$1.75 each.
- Lemoinei** (*Lemoine Mockorange*). Medium growing hybrid; profuse bloomer with very fragrant white flowers. 18-24 in., \$1.25 each.
- Virginal** (*Virginal Mockorange*). Tall growing; double, snow-white, orange-blossom scented flowers of rare beauty. 3-4 ft., \$2.25 each.

PRUNUS

- Glandulosa rosea** (*Double Pink Almond*). Double, pink, rose-like flowers closely set among the branches in early Spring; medium growth. 18-24 in., \$1.75 each; 2-3 ft., \$2.25 each.

RHODOTYPOS

Kerrioides (*Jetbead*). Bushy, medium growing shrub; attractive foliage; single white flowers during Summer followed by shining black seeds. 2-3 ft., \$1.75 each.

ROSA RUGOSA

Rosa rugosa (Species). The original wild type from northern Japan. The large single flowers are usually reddish-pink, but somewhat variable in color. Foliage luxuriant, deep green. Showy red seed-hips in late Summer and Fall. This shrub-rose much used for hedges. 18-24 in., \$1.50 each.

SPIREA

- Bumalda** (*Anthony Waterer*). Dwarf pink variety. Bushy, compact growth, occasional blooms through Summer. 18-24 in., \$1.75 each.
- Vanhouttei** (*Vanhoutte Spirea*). Popular variety commonly called Bridalwreath. Clusters of tiny white flowers in May, completely covering the graceful, arching branches. 2-3 ft., \$1.50 each; 3-4 ft., \$1.75 each.

SYMPHORICARPOS

- Racemosus** (*Common Snowberry*). Bushy habit of growth; small pink flowers followed by showy, white fruits. 3-4 ft., \$2.00 each.
- Vulgaris** (*Coralberry or Indian Currant*). Medium growing shrub with attractive foliage; clusters of purple-red fruit. Will grow in sun or partial shade. 3-4 ft., \$2.00 each.

SYRINGA (Lilac)

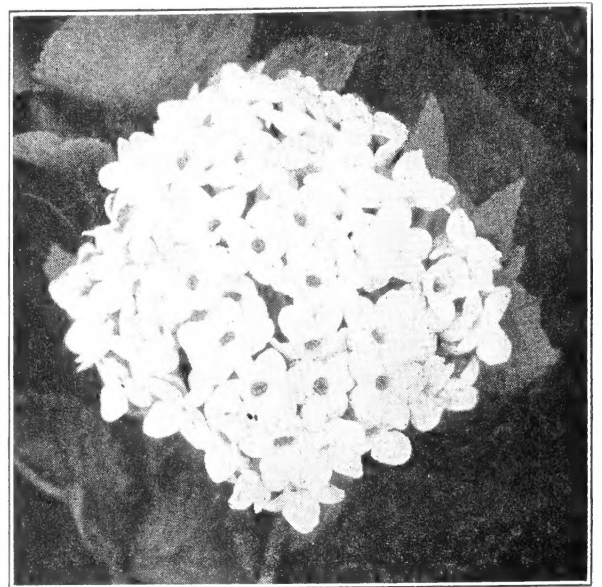
- Vulgaris** (*Common Lilac*). Clean, upright growth with fragrant Lilac flowers in May or early June. 3-4 ft., \$2.25 each.
- Vulgaris alba** (*Common White Lilac*). Same as above with white flowers. 2-3 ft., \$2.50 each.

HYBRID LILACS

- Alphonse Lavalle**. Double; light red purple.
- Belle de Nancy**. Double; light violet-red.
- Charles Joly**. Double; medium violet-red.
- Congo**. Single; deep violet-red.



Philadelphus Virginal



Viburnum Carlesi

HYBRID LILACS—Continued

- Florent Stepman**. Single; white, large flower.
- Jan Van Tol**. Single; white.
- Katherine Havemeyer**. Double; light violet purple.
- Mme. Lemoine**. Double; white.
- President Poincare**. Double; clear red-purple.
- William Robinson**. Double; red violet purple.

3-4 ft., \$4.00 each

VIBURNUM

- Carlesi** (*Fragrant Viburnum*). Outstanding dwarf shrub, known as Mayflower Viburnum; bears a profusion of rosy-white flower clusters in early Spring; very fragrant. 18-24 in., \$5.00 each.
- Cassinoides** (*Withe-rod*). Long, narrow leaves, white flowers June and July. Blue-black fruit attractive to birds. 2-3 ft., \$1.75 each.
- Dentatum** (*Arrowwood*). Large shrub; glossy foliage; white flowers in June, followed by blue berries. Will thrive in partial shade. 3-4 ft., \$1.75 each.
- Lentago** (*Nanny Berry*). Creamy white flowers in May; glossy black fruit in Fall. 3-4 ft., \$1.75 each.
- Opulus sterile** (*Common Snowball*). Old-fashioned Snowball; large shrub with ball-shaped clusters of pure white flowers in May. 2-3 ft., \$1.75 each; 3-4 ft., \$2.50 each.
- Sieboldi** (*Siebold's Viburnum*). Best of all screen plants; scarlet fruit turning to black; vigorous grower. Like all Viburnums, it thrives in shady spots. 2-3 ft., \$2.50 each.

WEIGELA

- Bristol Ruby**. Soft ruby-red blossoms during Summer and Fall. Very hardy and perfectly formed shrub. 3-4 ft., \$2.50 each.
- Eva Rathke**. Dwarf, spreading habit, bearing dark red flowers. 18-24 in., \$1.50 each; 2-3 ft., \$2.00 each.
- Feeri**. Grows to 6 feet; masses of pink flowers. 2-3 ft., \$1.75 each.
- Floribunda** (*Crimson Weigela*). Well known. Attractive leafy shrub. Abundance of crimson flowers in June. 3-4 ft., \$1.75 each.
- Rosea** (*Pink Weigela*). Upright habit of growth with pink flowers. 2-3 ft., \$1.50 each; 3-4 ft., \$2.25 each.

What Will It Cost to Plant the Front of Your House?



\$95.00 to \$135.00

Price includes planting, using all EVERGREEN plants!

The following 10 points insure an individually designed planting of choice Evergreens for the front of an average \$10,000 to \$15,000 home.

1. Preliminary survey by landscape designer to check on growing conditions governing choice of material.
2. Selection of varieties, sizes and quantities best suited for particular type of house.
3. Establishment with you of exact price for complete job including Furnishing, Planting and Guarantee.
4. Selection of choice plants in our fields for your job, dug just prior to delivery and not exposed to rough handling.
5. Planting by experienced men who know how to get the best from every plant.
6. All plantings left workmanlike, beds edged, plants pruned, soil loosened, fertilized, watered, and raked smooth ready for you to take over.
7. ALL PLANTS GUARANTEED for one season, and SATISFACTION WITH WORK guaranteed. We send invoice when job is completed.
8. Supervision by landscape designer. The completed job will frame the house and tie it to the ground.
9. Extended Payment to Fit Your Purse.
10. LOCALLY GROWN, HARDY, ACCLIMATED PLANTS.

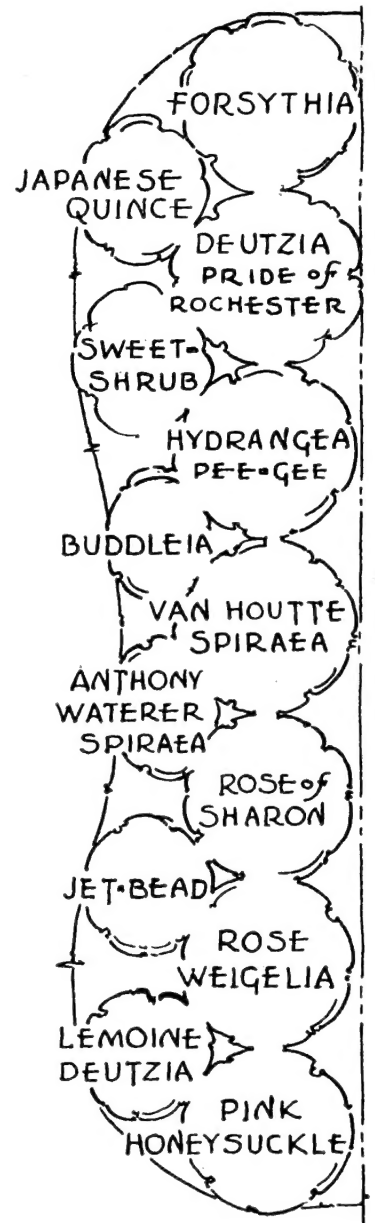
Write or phone today. We will make a preliminary survey at your convenience.

Colorful Shrub Border

\$17.50

This hardy, colorful shrub border will cut a gay swathe along your property. Designed for an area 25 feet long, the following Shrub Collection will act as a decorative screen all season, or as a vivid background for lawns and flower beds.

- Forsythia spectabilis.**
Bright yellow, early April.
3-4 ft. \$1.75
- Pink Honeysuckle.**
Soft pink, early May.
3-4 ft. 1.75
- Spiraea Van Houttei.**
Dazzling white, late May.
3-4 ft. 1.75
- Deutzia P. of Rochester.**
Pinkish white, early June.
3-4 ft. 1.50
- Weigela rosea.**
Delicate pink, June.
3-4 ft. 2.25
- Rose of Sharon.**
Large red, late July.
3-4 ft. 1.75
- Hydrangea Pee Gee.**
Pink shading to lavender, August. 2-3 ft. 1.75
- Japanese Quince.**
Fiery salmon red, early April. 18-24 in. 1.75
- Deutzia Lemoine.**
Creamy white, late May.
18-24 in. 1.75
- Calycanthus floridus.**
Chocolate colored, May and June. 2-3 ft. 1.35
- Spiraea A. Waterer.**
Pinkish red, all Summer.
18-24 in. 1.75
- Rhodotypos kerrioides.**
White, July; black fruit.
2-3 ft. 1.75
- Buddleia Charming.**
Pink, all Summer.
3 yr. 1.25



Guarantee

We guarantee the plants we sell to be healthy, free from injurious pests, true to name, and to meet all the standards of the American Association of Nurserymen. Any complaints on the above score must be made immediately on receipt of the goods. In no case do we assume liability for more than the purchase price. Plants planted by our Landscape Department are guaranteed for one transplanting season, provided they receive reasonably proper care. Plants purchased from us and planted by others will be replaced at one half our retail price if they fail to grow within sixty days. All guarantees are contingent upon the original invoice being paid in full within thirty days after date of invoice, unless other contract arrangements have been made. GUARANTEE applies only on plants purchased at retail prices.

Conditions of Sale

Our terms are net cash. Charge accounts for 30 days credit may be opened upon receipt of satisfactory credit arrangements. On landscape plantings, special deferred payments may be arranged. All prices F.O.B. Lexington, Mass., except for limited free delivery area as shown. All orders accepted subject to stock being sold. Prices subject to change without notice.

Vines and Climbers

Every garden should have one or more vines. They take up little space, blossom profusely, and in addition, many varieties are fragrant and flower when most shrubs are through blooming. Their use is extremely varied, such as covering walls, garages, fences, trellises, and providing privacy. Plant one or more this year. It will prove a wonderful garden investment.



Ampelopsis

AMPELOPSIS (*The Woodbines*)

Heterophylla (*Porcelain Ampelopsis*). A handsome vine prized for its attractive, grape-like foliage and exquisite porcelain-blue berries. Not a heavy grower, it is admirably suited for light trellising. 90c. each, 3 for \$2.50, 10 for \$6.50.

Quinquifolia engelmanni (*Engelmann Creeper*). Rapidly taking the place of the Common Woodbine to which it is much superior. Smaller, neater foliage and better clinging properties than the common variety. 90c. each, 3 for \$2.50, 10 for \$6.50.

Tricuspidata (*Japanese Creeper or Boston Ivy*). The Boston Ivy requires no introduction. Perhaps the best and most popular vine for covering brick or masonry walls, to which it clings tenaciously. Very quick growing and tolerant of adverse conditions. \$1.10 each, 3 for \$3.00, 10 for \$9.50.

ARISTOLOCHIA (*Sipho*)

Aristolochia sipho (*Dutchman's Pipe*). Vigorous vine with huge heart-shaped leaves; excellent for creating shady porches, etc. Purple flowers of curious pipe-like form. \$2.00 each.



Bignonia Radicans

BIGNONIA (*Trumpet Vine*)

Radicans (*Trumpet-creeper*). Better known as the Trumpet Vine. An excellent old-timer with good foliage and handsome, orange-red, trumpet-shaped flowers in August. 90c. each, 3 for \$2.50, 10 for \$6.50.

Madame Gallen. Blossom continuously throughout Summer and Fall, producing enormous flowers of spectacular tawny orange. Easy to grow, hardy. \$1.10 each, 3 for \$3.00, 10 for \$9.50.

CELASTRUS

Orbiculatus (*Oriental Bittersweet*). Superior, as a climber, to the common variety. Attractive in foliage and with familiar orange-scarlet fruits in clusters close to the stems. Showy after the foliage falls in Autumn. \$1.00 each, 3 for \$2.75, 10 for \$8.50.

CLEMATIS

Clematis of all types like rich soil and plenty of sunlight.

Paniculata (*Sweet Autumn Clematis*). The handsome, well known White Clematis and one of our showiest vines. Pure white, fragrant flowers in greatest profusion completely covering the foliage in September. \$1.00 each, 3 for \$2.75, 10 for \$8.50.

Large-Flowered Clematis

To insure success with Clematis, especially the Hybrids, stake the slender stems as soon as they are set out and provide a well-drained, sweet soil by mixing sand and lime into the planting areas.

\$1.75 each

Henryi. An excellent variety with large, creamy-white flowers.

Jackmani. Perhaps the most popular variety with broad, velvety purple flowers all Summer.

Madame Edouard Andre. A free bloomer with rich, purplish carmine flowers.

Ramona. Handsome, light blue flowers

POLYGONUM (*Fleecevine*)

Auberti (*Chinese Fleecevine*). Unexcelled for rapidity of growth combined with attractive foliage and feathery, white sprays of flowers. An excellent vine for trellis or fence. \$1.25 each, 3 for \$3.50, 10 for \$11.00.



Clematis Paniculata

LONICERA (*Honeysuckle*)

Japonica halliana (*Hall's Japanese Honeysuckle*). An old-fashioned favorite, prized for its very fragrant, white and yellow flowers and almost evergreen foliage. Makes an excellent ground-cover for difficult slopes and banks. \$1.00 each, 3 for \$2.75, 10 for \$8.50.

Heckrotti (*Trumpet Honeysuckle*). A fine everblooming variety, with showy, orange-scarlet flowers in clusters at the tips of the branches. Attractive foliage. \$1.10 each, 3 for \$3.00.

WISTERIA

Sinensis (*Chinese Wisteria*). The familiar, popular variety with pendant, pea-shaped clusters of bluish-violet blooms. A very vigorous climber which requires a substantial support on which to grow. 5 yr. heavy, \$3.00 each.



Wisteria Sinensis

OPEN SUNDAYS AND EVENINGS DURING APRIL, MAY AND JUNE

LEXINGTON ROSES

HYBRID TEA ROSES

Good Roses are very scarce this year, so please order early to avoid disappointment. We will reserve the right to substitute unless notified to the contrary.

Brandywine (Pat. No. 530). Buff-yellow opening to light yellow; pointed buds; very tall plants. \$1.50 each.

Capistrano (Pat. No. 922). Deep glowing rose-pink; non-fading; lovely rich fragrance. \$2.50 each.

Charlotte Armstrong (Pat. No. 455). Deep red, long-stemmed buds and blossoms; very long-lasting and prolific. \$2.00 each.

Countess Vandal (Pat. No. 38). Salmon pink; rich fragrance; profuse, long-lasting blossoms. \$1.50 each.

Crimson Glory (Pat. No. 105). Very popular; deep crimson blossoms on healthy bushes; wonderful fragrance. \$1.75 each.

Diamond Jubilee (Pat. No. 824). Enormous, non-fading buff-orange; long-stemmed; exceptionally long-lasting. \$2.00 each.

Eclipse (Pat. No. 172). A welcome addition to the list of yellows. Pure golden yellow; especially lovely when in bud. \$1.75 each.

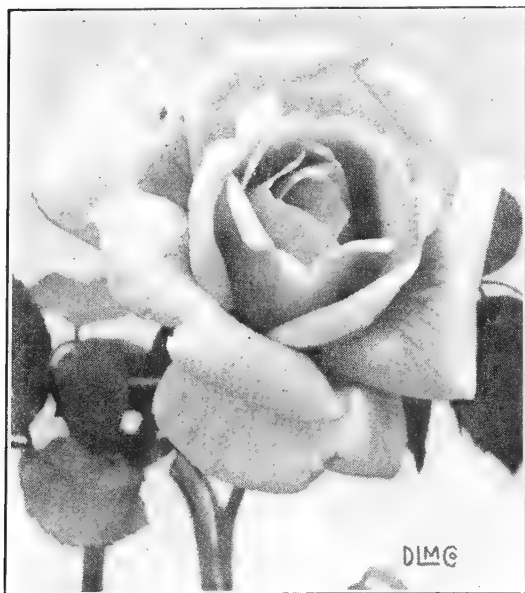
Forty-Niner (Pat. No. 792). Red for courage, yellow for gold—this gorgeous bicolor Rose symbolizes the bravery of our early prospectors; long stems almost thornless. \$2.00 each.

Golden Scepter (Pat. No. 910). Wonderful yellow; disease-resistant plants; high centered blossoms. \$2.50 each.

Katherine T. Marshall (Pat. No. 607). Warm, clear pink; large flowers and buds; tall plants; rich fragrance. \$1.50 each.

Mandalay (Pat. No. 775). Largest of all yellow Roses; hardy, prolific grower; non-fading. \$2.00 each.

Mary Margaret McBride (Pat. No. 537). Deep coral-pink; gold at base of petal. Very fragrant. \$1.75 each.



Sunset Glory (Pat. No. 732)

McGredy's Sunset (Pat. No. 317). A beautiful blend of yellow, salmon, and buff; sturdy grower. \$1.75 each.

Mirandy (Pat. No. 632). Deep maroon-red; huge blossoms in abundance; lovely scent. \$1.75 each.

Misson Bells (Pat. No. 923). Salmon to shrimp-pink; one of the most beautiful; disease-resistant. \$2.50 each.

New Yorker (Pat. No. 823). Immense, sparkling red blossoms; non-fading; tall habit of growth; disease-resistant. \$2.00 each.

Peace (Pat. No. 591). Extraordinarily beautiful in blending of shades from canary-yellow through to palest pink. Unusually large blossoms on long stems; sturdy plants. Truly one of the outstanding Roses. \$2.50 each.

Rex Anderson (Pat. No. 335). Pure ivory-white; perfectly formed buds and blossoms. Enormous flower with soft fragrance. \$1.50 each.

Rubaiyat (Pat. No. 758). A long-stemmed Irish beauty; plenty of rose-red flowers for cutting; long, upright stems; damask rose scent. \$1.70 each.

Serenade (Pat. No. 852). Luscious coral-orange blossoms on tall, open plants. Buds high centered and slow opening. An exquisite new variety. \$1.75 each.

Sonata (Pat. No. 732). Deep pink to red; as lovely and stately as the name implies. \$1.75 each.

Sunset Glory (Pat. No. 732). Beautiful blending of yellow, pink, and bronze. Medium-sized plants produce enormous quantities of blooms. \$1.50 each.

Sutter's Gold (Pat. No. 885). Endowed with all the excitement of the Gold Rush; yellow shaded with red and orange. \$2.50 each.

White Briarcliff (Pat. No. 108). Pure white; blossoms profusely all season. \$1.75 each.

FLORIBUNDA ROSES

Particularly suited to mass plantings and hedge effects.

Betty Prior (Pat. No. 340). Always a mass of red buds opening to shell-pink blossoms shaped like Dogwood blossoms; tall, sturdy plants. \$1.50 each.

Chatter (Pat. No. 739). Long-lasting, bright crimson clusters; wonderful for massing. \$1.50 each.

Fashion (Pat. No. 789). A welcome newcomer to the field of Floribundas; brilliant salmon-orange blossoms borne in profusion on medium height plants. \$2.00 each.

Geranium Red (Pat. No. 811). Unique in Geranium red color and fragrance; very bushy. \$1.50 each.

Goldilocks (Pat. No. 672). A truly fine compact bush loaded with perfect rich golden buds and flowers. \$1.50 each.

Permanent Wave (Pat. No. 107). Petals crinkled and fluted; rich red, crisp clusters; long-lasting and fragrant. \$1.50 each.



Rochester

FLORIBUNDA—Continued

Pinocchio (Pat. No. 484). Beloved miniature Rose borne in immense clusters; soft pink flecked with gold; a "must" for every garden. \$1.50 each.

Red Pinocchio (Pat. No. 812). Gorgeous carmine clusters; unusually attractive. \$1.50 each.

Rochester (Pat. No. 131). Blooms continuously from June till late Fall. Double blossoms of rosy pearl and gold; truly outstanding. \$1.50 each.

Summer Snow (Pat. No. 416). Constant masses of pure white clusters. Snowy whiteness intensifies other colors in borders; particularly effective when combined with Fashion. \$1.25 each.

World's Fair (Pat. No. 362). Velvety crimson, large blossoms; flowers continuously; well adapted for mass plantings; neat habit of growth. \$1.35 each.

Yellow Pinocchio (Pat. No. 992). Same wonderful characteristics of original Pinocchio; apricot-yellow. \$1.50 each.

CLIMBING ROSES

Aloha (Pat. No. 948). Everblooming pink clusters on long stems. One of the most beautiful Climbers ever seen. \$2.50 each.

Blaze (Pat. No. 10). Unequaled for brilliance and quantity of flowers; literally ablaze with double scarlet blooms in the Spring, followed by some blossoms all season. \$1.50 each.

Climbing Crimson Glory (Pat. No. 736). Lovely red Climber with huge red, tea-rose shaped blooms. \$2.00 each.

Climbing Summer Snow (Pat. No. 400). A cascade of pure white in June followed by blooms all Summer and Fall. \$2.00 each.

Dr. J. H. Nicolas (Pat. No. 457). An outstanding everblooming climber; enormous rose-pink, double blossoms on canes reaching 8 to 10 feet in length. \$1.75 each.

Doubloons (Pat. No. 152). Best yellow Climber; hardy and prolific; tremendous growth. \$2.00 each.

Dr. Van Fleet. Large, pale pink blossoms; ideal for cutting; a popular variety. \$1.25 each.

New Dawn. Very hardy. Shell pink blossoms on vigorous, healthy canes. Easy to grow. \$1.50 each.

Silver Moon. Snowy masses of pure white flowers with striking golden stamens. \$1.50 each.

*Lexington Roses
for New England
Gardens*



New Yorker
(Hybrid Tea)
(Pat. No. 823)



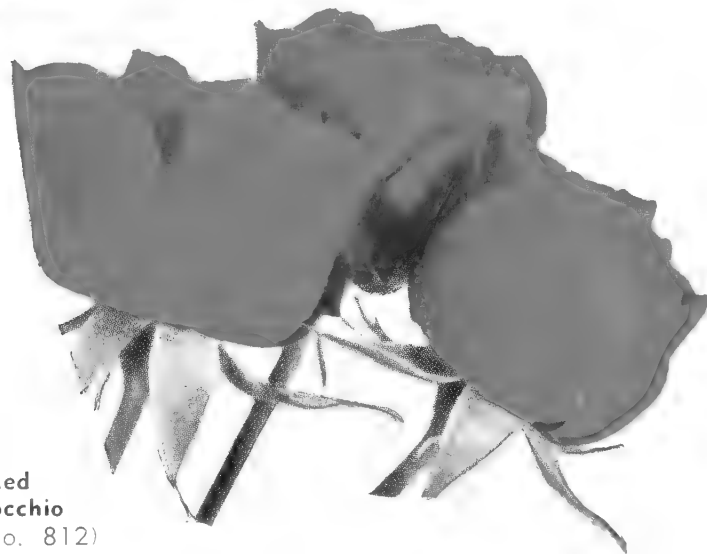
Peace
(Pat. No. 591)



Fashion
(Pat. No. 789)



Rex Anderson (Pat. No. 335)

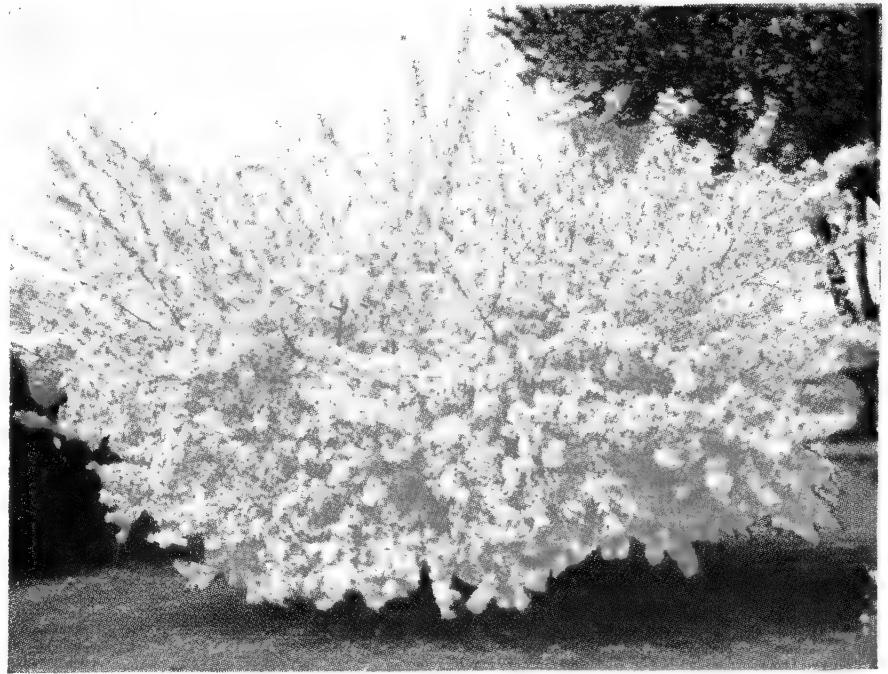


**Red
Pinocchio**
(Pat. No. 812)

Lexington Ornamentals for Color



Weigela, Bristol Ruby



Flowering Crab



Kolkwitzia, Beauty Bush



Lonicera, Heckrottii Vine

See page 9 for
Vine Descriptions



Forsythia (Golden Bell)



Hydrangea, P. G.



Flowering Dogwood

in the Home Planting



Buddleia, Charming, Ile de France, Dubonnet



Paul's Double Scarlet Hawthorn



Flowering Cherry



Purple Rose-of-Sharon

See pages 6 and 7
for Shrubs
•
See pages 16 and 17
for Trees
•



Dogwoods

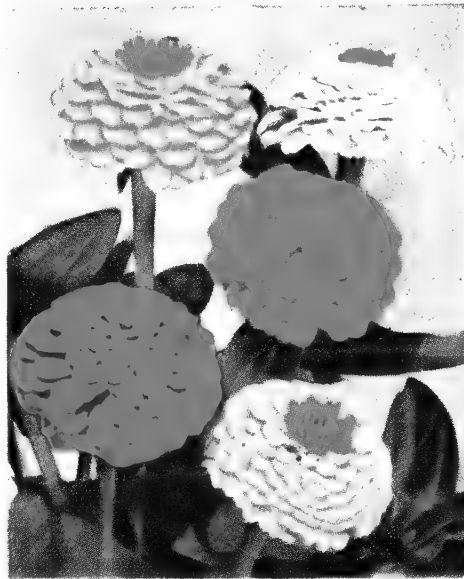


Magnolia Soulangiana

Lexington Annual Plants



Double Petunias



Lilliput Zinnias



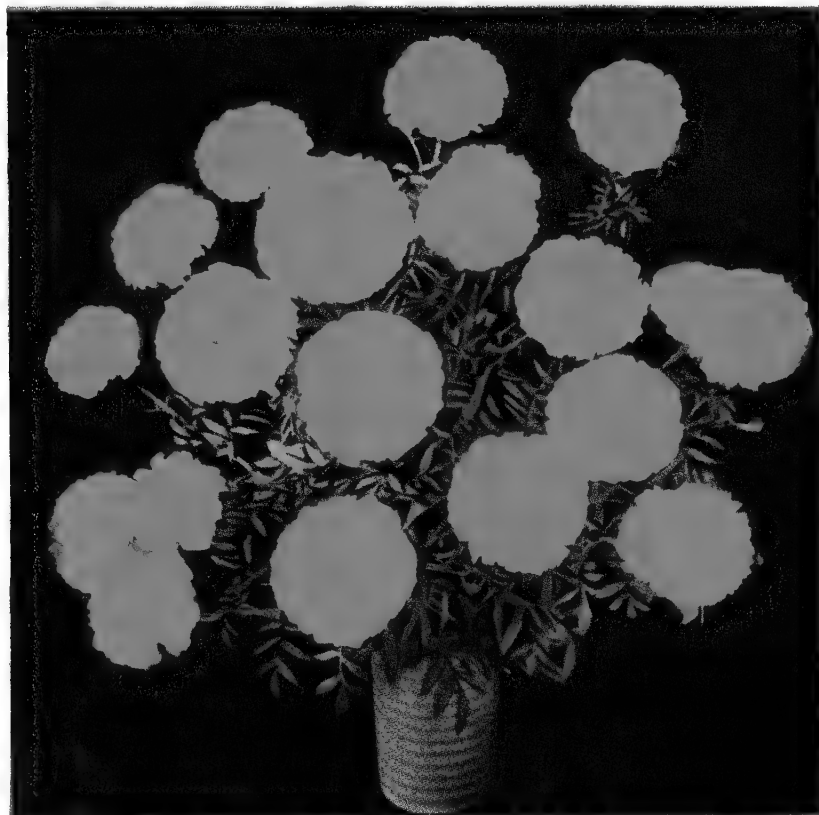
Morning Glory, Heavenly Blue



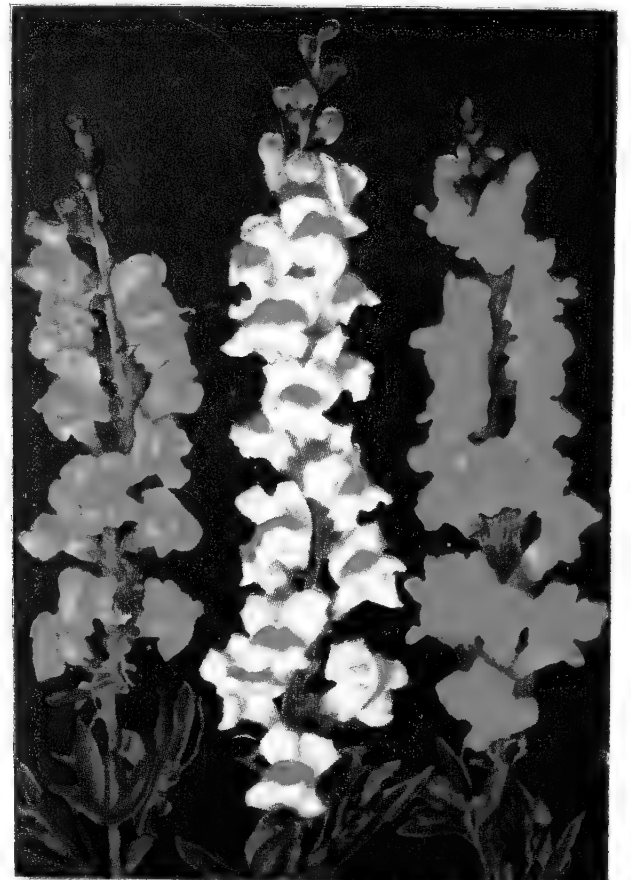
Unwin's Dahlias



Salpiglossis



Marigolds



Snapdragons

Summer Flowering Annual Plants

Color-bearers in the parade of garden blossoms, Annuals easily fill in the gaps left when perennials stop blooming. Of equal importance is the readiness with which Annuals lend themselves to cutting and arranging for indoor bouquets. A planting of Annuals here and there in your garden will provide a whole Summer's enjoyment of their brilliant color both outdoors and in the home.

- AGERATUM, Dwarf Blue.** Deep blue; 8 inches. \$1.50 per doz., \$10.00 per 100.
- ALYSSUM, Little Gem.** Pure white, for edgings. 6 inches. \$1.50 per doz., \$10.00 per 100.
- ASTERS (Annual).** Plants from flats, not potted.
American Branching. White, pink, blue, crimson. Above: 75c. per doz., \$5.00 per 100
- BEGONIAS.** For bedding.
Gracilis. For sun or shade. 10 inches. White, red, and pink. \$3.50 per doz., \$30.00 per 100.
Tuberous-rooted. Best flowering plants for deep shade. Double flowers in many bright colors. 3 for \$1.75, \$6.50 per doz.
- BACHELOR BUTTON.** Red, white and blue.
Jubilee Gem. Dwarf, deep blue. Above: \$1.50 per doz., \$10.00 per 100
- BROWALLIA speciosa major.** Beautiful; perpetual flowering; bright violet-blue flowers. \$3.00 per doz., \$22.00 per 100.
- CALENDULA, Lemon Queen, and Apricot Queen.** \$1.50 per doz., \$10.00 per 100.
- CLEOME, Pink Queen.** Blooms from June to frost. Huge heads known as Spider Plant. \$1.50 per doz., \$10.00 per 100.
- COLEUS.** Foliage crimson edged with green, golden yellow, crimson with golden edge, and crimson. \$1.50 per doz., \$10.00 per 100.
- COSMOS, Mid-summer Giants.** White, pink, red.
Sensation. Giant pink and white flowers; all Summer.
Fiesta. New; exotic orange and yellow; outstanding. Above: \$1.50 per doz., \$10.00 per 100
- CYNOGLOSSUM amabile (Chinese Forget-me-not).** Blue flowers resembling Forget-me-nots. 18 inches. \$1.50 per doz., \$10.00 per 100.
- DAHLIA, Unwin Hybrids.** Unexcelled for bedding; single and double flowers in fine mixture of colors. 18 inches. \$2.00 per doz., \$15.00 per 100.
- DIDISCUS (Blue Lace Flower).** \$1.50 per doz., \$10.00 per 100.
- DRACAENA.** Ornamental palm-like foliage. 5 inch pots. \$1.25.
- FUCHSIA.** Various colors, double and single. \$3.50 per doz.
- HELIOTROPE, Mrs. Bushinger.** Enormous heads of dark purple flowers; very fragrant.
Old-fashioned Sweet-scented. Above: \$2.50 per doz., \$18.00 per 100
Standard or Tree Form. \$4.50.
- GERMAN IVY.** For hanging-pots or window boxes. \$1.50 per doz.
- IMPATIENS.** Soft pink flowers in constant bloom. \$2.50 per doz.
- LARKSPUR, Imperial.** Blue, pink, or white. \$1.50 per doz., \$10.00 per 100.
- LEMON VERBENA.** Fragrant foliage. \$4.50 per doz.
- LOBELIA, Blue Gown.** Dwarf. Dark blue.
Sapphire. Trailing. Dark blue. Above: \$1.75 per doz., \$12.00 per 100
- MARIGOLD, Yellow Supreme.** Moonlight yellow.
Limelight. Primrose yellow.
Dwarf French, Mixed.
Harmony. Orange and maroon.
Spry. Golden orange.
Yellow Pygmy. Free flowering dwarf. Above: \$1.50 per doz., \$10.00 per 100
- MIGNONETTE, Selected Machtet.** Sweet-scented. \$1.50 per doz., \$10.00 per 100.
- MORNING-GLORY, Crimson Rambler.** Bright crimson.
Heavenly Blue. Blue.
Pearly Gates. White. Above: 30c. each; \$3.25 per 12.
- NICOTIANA (Tobacco Plant).**
Crimson Bedder. Rich wine-red.
Snowstorm. Pure white. Above: \$1.50 per doz., \$10.00 per 100
- NEMESIA.** Mixed colors, early blooms, large flowers. \$1.50 per doz., \$10.00 per 100.
- PETUNIA.**
Prices unless otherwise noted
\$1.50 per doz., \$10.00 per 100
California Giant Rainbow Strain. \$2.00 per doz., \$15.00 per 100.
Canadian All-Double. Superior to all other doubles. \$3.00 per doz., \$25.00 per 100.
Cheerfulness. Lovely salmon pink.
Dwarf Giant. Huge flowers on neat, low plants. \$2.00 per doz., \$15.00 per 100.
Elk's Pride. Velvety purple.
Fire Chief. One of the most striking red Petunias. Always in masses of bloom. \$2.00 per doz; \$15.00 per 100
Salmon Supreme.
White Cloud. White.
White Queen. Huge wavy white.
Giant Rainbow Strain. Mixed colors.
- PHLOX DRUMMONDI, Art Shades Mixed.** \$1.50 per doz., \$10.00 per 100.
- SALPIGLOSSIS.** Large, trumpet-like flowers in gorgeous, iridescent colors with gold markings. \$1.50 per doz., \$10.00 per 100.
- SALVIA, Bonfire.** Scarlet. Above: \$2.00 per doz., \$15.00 per 100
- SCABIOSA (Mourning Bride).** Blue, white and cherry red. \$1.50 per doz., \$10.00 per 100.
- SCHIZANTHUS (Butterfly Flower).** Ideal for cutting. \$1.50 per doz., \$10.00 per 100.
- SNAPDRAGON.** Tall rose, scarlet, white, and yellow. 2-2½ feet. \$1.50 per doz., \$10.00 per 100.
- STOCKS, Perfection ("Cut-and-come-again").** Yellow, dark violet, pale blue, pink, white, and Apricot Beauty. \$1.50 per doz., \$10.00 per 100.
- TORENIA Fournieri.** Dwarf blue; for edging. \$1.50 per doz., \$10.00 per 100.
- VERBENA, Mammoth.** Pink, white, blue, scarlet. \$1.50 per doz., \$10.00 per 100.
Mayflower. Exquisite pink. \$3.00 per doz., \$22.00 per 100.
- VINCA, Major variegata (Periwinkle).** Variegated-leaved trailer for vases and boxes. 4-inch pots. 50c. each, \$5.50 per doz.
- ZINNIAS.** Bold, bright colors all Summer.
Burpee Hybrids. Gorgeous large blossoms in pastel shades; mixed. \$2.00 per doz., \$15.00 per 100.
Giant Mammoth: Golden Queen, Scarlet Queen, Miss Wilmott (Rose), Purity (White).
Pastel Shades Mixed.
Lilliput. Yellow, crimson, salmon, white. 2 feet.
Dahlia Flowered. Yellow, crimson, rose and white. Above: \$1.50 per doz., \$10.00 per 100

CANNAS. Red, yellow, and pink. Potted plants. \$3.50 per doz.

GERANIUMS

Olympic Red. Finest of all reds. Clean, compact bushy grower.

Ricard. Semi-double; bright vermilion-scarlet.

Beaute Poitevine. Semi-double; light salmon-pink.

Pride of Galway. Deep pink.

Mrs. Laurence. Soft pink.

Radio Red. Double; dazzling, dark scarlet.

Pink Fiat. Lovely soft pink.

Wallingford. Deep salmon-pink.

Above varieties, grown in 3½-in. pots 60c. each, \$6.50 per doz., \$50.00 per 100

Shade and Flowering Trees

In order to preserve and promulgate one of the chief scenic attractions of New England, it behooves all of us to plant trees. We owe it to ourselves and to future generations to plant these beautiful living memorials which will keep our memories alive far more vividly than anything else could do. The old Colonial custom of joyfully planting a tree at the birth of each child, and having the child's progeny play among its branches, is one which is richly deserving of being revived.



Acer Saccharum

ACER (The Maples)

Platanoides (Norway Maple). Widely used for lawn and street planting; outstanding for hardiness, symmetry, and dense green foliage; resistant to disease and insects; yellow-bronze foliage in Fall. 10-12 ft., \$12.50 each; 12-14 ft., \$17.00 each; 14-16 ft., \$25.00 each.

P. Schwedleri (Schwedler's Maple). A Norway Maple with distinctive foliage, deep red first, gradually changing to bronzy-green; becomes very shapely with maturity. 8-10 ft., \$12.00 each.

Rubrum (Red Maple). Showy clusters of red blossoms in early Spring; bright scarlet foliage in Fall; irregular habit of growth; develops into rugged broad tree. Will grow in dry or wet soil. 8-10 ft., \$7.50 each; 10-12 ft., \$9.00 each; 12-14 ft., \$12.00 each.

Saccharum (Sugar Maple). Bright yellow Fall foliage; round-headed tree for lawn or street planting; somewhat slower grower than other Maples. 10-12 ft., \$12.50 each; 12-14 ft., \$18.50 each.

BETULA (The Birches)

Alba (European White Birch). Handsome, rapid growing tree of graceful habit; silvery white bark at maturity. 5-6 ft., \$3.50 each.

Alba pendula gracilis (Cutleaf Weeping Birch). Shapely tree with pendulous branches and lacy cutleaf foliage; excellent for specimen planting; rapid growing. 5-6 ft., \$7.50 each; 6-8 ft., \$9.00 each.

CORNUS (Dogwood)

Florida (Flowering Dogwood). Beautiful both in flower and foliage. Medium height with masses of white flowers in early Spring before leaves appear; spreading, open habit; likes partial shade. 3-4 ft., \$5.50 each; 4-5 ft., \$7.50 each; 5-6 ft., \$9.50 each; 6-8 ft., \$12.50 each; 8-10 ft., \$17.50 each; 2-3 in. cal., \$26.00 each.

Florida rubra (Pink Flowering Dogwood). Lovely pink-flowered form; habit of growth and foliage similar to White Dogwood. 3-4 ft., \$11.00 each; 4-5 ft., \$14.00 each.

CRATAEGUS (Hawthorn)

Oxyantha splendens (Paul's Scarlet Hawthorn). Fine luxuriant foliage and very double scarlet flowers. Likes sunlight and sweet, rich soil. 4-5 ft., \$5.50 each; 5-6 ft., \$9.50 each.

GINGKO (Maidenhair-Tree)

Biloba (Maidenhair-tree). Fine ornamental tree for specimen or for street planting; develops into magnificent broad specimen; lovely green foliage resembling Maidenhair Fern changing to soft yellow in Fall. 8-10 ft., \$12.00 each.



Oxydendrum (Sourwood)



Shade Trees Growing in our Nursery

LABURNUM (Goldenchain)

Vossi. Beautiful, small, dainty, tree-bearing long racemes of yellow pea-shaped flowers in June. 6-7 ft., \$12.50 each; 7-8 ft., heavy, \$20.00 each.

MAGNOLIA (Magnolia)

Soulangiana (Saucer Magnolia). Vigorous medium sized tree; covered with a profusion of large pink shading to purple blossoms in early Spring; leaves large and shiny. 2½-3 ft., heavy, \$9.25 each; 3-4 ft., \$11.00 each; 4-5 ft., \$14.00 each.

MALUS (Crab)

Arnoldiana (Arnold Crab). Very compact grower; small tree covered with white blossoms. 4-5 ft., \$5.50 each.

Atrosanguinea (Carmine Crab). Small tree covered with single, rich crimson flowers; excellent where bright color is desired. 4-5 ft., \$5.50 each.

Floribunda (Japanese Flowering Crab). Deep pink flowers followed by pinkish-red fruits; early blooming. 4-5 ft., \$5.50 each.

Eleyi (Eley Crab). Red foliage, very attractive; clusters of dark red flowers; apricot-colored fruits. 5-6 ft., \$6.50 each.

Hopa (Hopa Crab). Single, rich pink flowers; foliage tinged with purple; taller growing than most Crabs. 4-5 ft., \$5.50 each.

Scheideckeri (Scheidecker Crab). Early flowering; semi-double, pale pink flowers followed by showy yellow fruits. 4-5 ft., \$5.50 each.

OXYDENDRUM (Sourwood)

Arboreum. Beautiful specimen tree with 6 in. shiny green foliage which turns to brilliant scarlet in Fall. Pure white racemes of Lily-of-the-Valley like blossoms in late Summer. 2-3 ft., B&B, \$7.50 each.

FRUIT TREES

Lexington offers only the hardiest and finest fruits for New England, all certified top quality true to name trees and plants. Every garden large or small should have some of these plants for their lovely fragrant blossoms and delicious fruits.

APPLES

2 year, \$1.50 each, 10 for \$13.50

Quantity prices to orchardists on application

SUMMER

Red Astrachan. Crimson, 2 year.

AUTUMN

Gravenstein. Striped. 2 year.

McIntosh Red. Waxy red. 2 year.

WINTER

Baldwin. Bright red. Fine keeper. 2 year.

Cortland. Red. Fine new variety. 2 year.

Delicious. Dark red. Fine quality. 2 year.

DWARF FRUIT TREES

Even the smallest yard can accommodate two or more dwarf fruit trees. These small trees which do not grow over 8 feet in height yield astonishing quantities of large delicious fruit, and never take up too much room. We offer the following varieties.

DWARF APPLES

$\frac{3}{4}$ in. caliper, \$3.00 each.

Cortland. Beautiful, tasty red.

Delicious. Sweet-flavored, very crisp.

Red McIntosh. Best of the Fall Apples.

CRAB APPLES

Hyslop. 2 year. Yellow with crimson overlay. Late September to October.

2 year, \$2.00 each, \$17.50 for 10;

3 year, \$2.75 each, \$25.00 for 10.

CHERRIES

\$3.00 each, \$27.50 for 10

Black Tartarian. Early, very large black juicy fruit, sweet rich flavor, prolific bearer.

Governor Wood. Large, pale yellow with red markings; very sweet.

PEACHES

\$1.50 each, \$13.50 for 10

Champion. Early August. A white Peach of superior quality.

Elberta. Early August. Orange-yellow, flushed red. A fine commercial Peach.

Hale Haven. Early midseason. Yellow freestone.

J. H. Hale. Early August. Large golden-yellow fruit of high quality.

PEARS

\$2.50 each, \$22.50 for 10

Bartlett. Yellow and red.

Beurre Bosc. Russet.

Seckel. Brown.

DWARF PEARS

$\frac{5}{8}$ in. caliper, \$2.50 each.

Bartlett. Yellow and red; very juicy.

Clapp's Favorite. Early, large, tasty Pears; hardy and easy to grow.

Duchess. Large greenish yellow; October.

Seckel. Delicious, small sweet Pear. Excellent for preserving and pickling.

PLUMS

\$2.50 each, \$22.50 for 10

Abundance. Dark red, yellow flesh, juicy and tender. Adaptable to many soils.

Fellenberg. Dark purple, medium size, freestone, delicious eating. Late.

ASPARAGUS ROOTS

2-year roots, 25 for \$2.00, 50 for \$3.00, 100 for \$5.00

Mary Washington. A rust-resistant, tender variety considered the standard home-garden sort. Roots should be set about a foot apart and 12 inches or more deep. Light, sandy loam is best for growing Asparagus. Dress with a good vegetable fertilizer each Summer after the cutting season.

BLACKBERRIES

\$1.75 for 10, \$15.00 per 100

Eldorado. Tall, spreading plants; fruit large, jet black, pleasantly flavored. Quality very good. Early midseason.

RASPBERRIES

\$2.00 for 10, \$18.00 per 100

Indian Summer. Fine, large red; ever-bearing. A recent introduction of merit.

Latham. Very large, bright red, the preferred berry for home use. Late.

GRAPE VINES

In proportion to the small space they occupy Grapes yield unusual dividends in fruit that has many uses. The ideal soil for Grapes is a gravelly clay; but they grow well in any good loam which does not dry out in Summer. Bonemeal or crushed bone is the best fertilizer. Set the vines at least 10 feet apart, in a sunny place. Grapes are a good source of Vitamin B-1.

2-year plants, 75c. each, 3 for \$2.00

Brighton. Red; midseason. Large fruit of pleasing sweetness.

Concord. Black; late. An old and popular variety.

Fredonia. Black; early. Extra good quality.

Niagara. White; late. Best white Grape for New England.

Worden. Black; early. Fine quality.

STRAWBERRIES

25 for \$1.50, 100 for \$4.50

except where noted

To many of us, Summer is incomplete without dishes of luscious Strawberries and cream. Since this fruit is of such easy culture, almost anyone can have a "berry patch." The following are the varieties most successful in New England. Runner plants sold in April and May only.

Catskill. Midseason. Yields heavily in all sections of New England. Berries of good size, excellent quality.

Dorsett. Early; very prolific bearer; large, sweet berries. Can be grown on fairly poor soil.

Fairland. Midseason. Grows best in warm, sandy loam, not too dry. Large, dark red berries unexcelled in rich, sweet flavor.

Streamliner. Sensational new "ever-bearing" Strawberry. One of the finest ever produced. Large, sweet, delicious fruit from July to frost. 25 for \$2.50, 100 for \$8.00.

graceful racemes. The fruit is large, firm, and abundant. Order some each of early, midseason, and late varieties to provide fruit during the entire season. We offer 3-year, bearing-age plants.

Cabot. Early; low-growing type; large berries. 2-3 ft. \$1.50 each, 3 for \$4.25, 10 for \$13.50.

Stanley. Midseason; tall-growing; unusually large berries. 2-3 ft. \$1.50 each, 3 for \$4.25, 10 for \$13.50.

Rancocas. Midseason; slender upright habit; sweet berries. 2-3 ft. \$1.50 each, 3 for \$4.25, 10 for \$13.50.

Rubel. Fruits first week in July; sturdy bushes; prolific bearer. 2-3 ft. \$1.50 each, 3 for \$4.25, 10 for \$13.50.

Cultivated BLUEBERRIES

Too few people are aware of the two-fold use for Cultivated Blueberry Plants. In addition to bearing delicious fruit, they are delightful shrubs for ornamental planting. The leaves which are a lustrous bright green in Summer assume gorgeous hues at the first approach of Fall. The blossoms, similar to Lily-of-the-Valley, are borne on

GROUP OFFER

1 plant each of the 4 varieties listed \$5.75

2 plants each of the 4 varieties listed \$11.25

Perennials

These perennial and biennial plants cover a wide range of types, colors and heights of growth. Descriptions are condensed; but we have endeavored to state the essential characteristics. Varieties marked with a (*) are suitable for rock-garden planting. **PRICES, except as otherwise noted 50c. each, 3 for \$1.40, 10 for \$4.00.**

ACHILLEA (*Yarrow*).

Ptarmica "Perry's White." Double white flowers; June to August.

ACONITUM (*Monkshood*).

Fischeri. Flowers pale blue; waxy foliage. 18 in. 60c. each, 3 for \$1.50.

Napellus. Tall, dark blue; June. 60c. each, 3 for \$1.50.

ALYSSUM (*Gold Dust or Golden Tuft*).

***Saxatile compactum.** Gray-green foliage, yellow flowers in May. 8 in.

ANCHUSA (*Bugloss*).

Dropmore. Tall spikes of rich blue flowers.

***Myosotidiflora.** Low-growing plants with flowers like Forget-me-nots. 1 ft.

ANEMONE (*Windflower*)

***Whirlwind.** Pure white.

AQUILEGIA (*Columbine*)

***Caerulea.** Dwarf; blue and white flowers. 12 in.

***Chrysantha.** Long-spurred yellow flowers. 2½ ft.

Long-spurred Hybrids. Mixed colors; large flowers in May and June. 2½ ft.

Snow Queen. Extra large pure white flowers. One of the outstanding long-spurred hybrids.

ARABIS (*Rock-cress*)

***Alpina.** Dwarf edging or rock-plant, clusters of white flowers in April. 8 in.

ARMERIA (*Sea Pink or Thrift*)

***Maritima.** Grassy foliage; flowers purplish-pink, in May. 6 in.

ARTEMESIA (*Ghost Plant*)

***Silver King.** Silvery gray foliage, 2 ft.

HARDY ASTERS

Beechwood Challenger. Crimson. 2½ ft.

Blue Gown. Rich blue. 3 ft.

Harrington's Pink. Deep rose-pink; a new, true shade. 75c. each, 3 for \$1.65.

Mount Everest. Dense pyramidal growth, a mass of pure white Daisies in late August. 3 ft.

Peggy Ballard. Rose mauve. 3 ft.

Red Rover. Rosy-red; vivid and effective. 3 ft.

Dwarf Hybrid Asters. Low, spreading plants smothered in bloom in late August and September. Finest of the late flowers.

Lady Henry Maddocks. Pale pink.

Nancy. Pearly pink to gray.

Victor. Clear violet-blue.

Any 4 of above Asters, except as noted, \$1.70

ASTILBE (*Spirea*). One of the most striking perennials. Large, graceful plumes of feathery florets provide gorgeous background colors.

Europa. Lovely clear pink.

Fanal. Intense red.

Peach Blossom. Soft rose.

\$1.75 each

CAMPANULA (*Bell-flower*)

***Carpatica.** Tufted foliage; blue-bell flowers on 10-in. stems.

***Carpatica alba.** Flowers white.

Medium (Canterbury Bells). In colors: Blue, white, pink. 3 ft.

Medium Calycanthema (Cup-and-saucer). Blue, White, and pink. 3 ft.

***Rotundifolia.** Blue Bells of Scotland. June. 12 in.

Persicifolia. Long stems covered with lavish delicate blue double flowers; exceptionally good for cutting as well as color in the border.

Persicifolia White. Double white bells on 2½ to 3 foot stems. Very hardy; good for sun or light shade. A must for the all-white garden or effective contrast for other colors.

CENTAUREA (*Cornflower*)

Montana. Showy; easily grown. Large violet-blue flowers from July to September.

CELASTIUM (*Snow-in-Summer*)

***Tomentosum.** Woolly leaves; small white flowers; a trailing ground-cover.

CHIVES. A herb used for seasoning soups, salads, cheeses. A delicate Onion flavor.

CONVALLARIA (*Lily-of-the-valley*)

Majalis. For bedding in shady spots. 3-inch pots.

COREOPSIS (*Tick-seed*)

Grandiflora. Bright yellow, good for cutting. All Summer. 2 ft.

Double Sunburst. Extra-large flowers with faint fragrance. 2 ft.

DELPHINIUM (*Larkspur*)

Belladonna. Light blue. 3 ft.

Bellamosa. Cobalt-blue. 2½ ft.

Chinense. Dwarf, clear dark blue; fine-cut leaves.

Chinense album. Dwarf, with white flowers.

Pacific Hybrids. Extra-long spikes of variably-double flowers in mixed shades of blue, pink, and white. 75c. each, 3 for \$1.85.

DIANTHUS (*Hardy Pinks*)

***Alpinus.** Tufted foliage; large pink flowers.

Barbatus (*Sweet William*). Clusters of showy flowers, single or double, in pink, crimson, white, and scarlet.

DIANTHUS—Continued

***Plumarius (*Scotch Pink*).** Low growth; pink and white flowers.

***Semperflorens.** Everblooming; fragrant dark pink.

HARDY HYBRIDS

***Abbotsford.** Rich crimson with white markings.

Beatrix. Lovely soft pink.

***Furst Bismarck.** Deep lilac-pink.

***Her Majesty.** Double white, large flowers.

***Old Spice.** Deep, clear pink; large flowers. 60c. each, 3 for \$1.60.

DICENTRA (*Bleeding Heart*)

Spectabilis. Long sprays of well-known heart-shaped, pendulous deep pink flowers in May. Field grown plants, \$1.00 each.

DIGITALIS (*Foxglove*)

Purpurea. Tall; spikes of flowers in shades of purple and white.

Purpurea alba. Pure white flowers.

Purpurea rosea. Pure pink flowers.

Shirley Hybrids. Giant spikes of immense flowers ranging from white to deep rose; many with crimson blotches.

ECHINACEA (*Coneflower*)

Purpurea. Huge, dark purplish-pink Daisies in late Summer.

GAILLARDIA (*Blanket Flower*)

Grandiflora. Large; crimson and gold. All season. 2 feet.

Portola Hybrids. Coppery-scarlet, margined golden yellow.

Dwarf Hybrids. Same as above, but very low growing. Blooms all Summer. 9 inches.

GEUM (*Avens*)

Lady Strathedon. Semi-double; golden yellow; July-August. 18 inches.

***Mrs. Bradshaw.** Deep scarlet-crimson. June to September. 15 inches

GYPSOPHILA (*Baby's Breath*)

Paniculata. Sprays of misty white flowers.

Paniculata, Bristol Fairy. Finest variety. Flowers, large, double, and white. Field-grown plants, \$1.00 each.

HELIANTHEMUM (*Sunrose*)

***Aureum.** Wiry little shrub with dazzling double yellow flowers.

***Rose Queen.** Large, single pink flowers.

HEMEROCALLIS (*Day-Lily*)

Flava (*Lemon Day-Lily*). Fragrant, lemon-yellow flowers in June.

Thunbergii. Tall; buttercup-yellow flowers.

(Continued on page 22)

PERENNIAL BORDER COLLECTION . . . Price: 30 plants, \$10.95

This group of plants is designed for an area of approximately 40 square feet. In selecting the list, contrasts in heights, blooming season, and colors were the primary consideration.

3 *Aquilegia Chrysantha*. Yellow.
3 *Aster Red Rover*. Red.
3 *Chrysanthemums Pygmy Gold*. Yellow.

3 *Dianthus Semperflorens*. Pink.
3 *Gaillardia*. Crimson and Gold.
3 *Heuchera sanguinea*. Rose.

3 *Iberis semperflorens*. White.
3 *Phlox Daily Sketch*. Pink.
3 *Platycodon*. Blue.
3 *Pyrethrum*. Pink, red and white.

Hardy Chrysanthemums

In the season's flower parade, the Chrysanthemums march as a major section. They are the outstanding glory of the late Summer and Fall garden. For Spring planting we supply pot-grown stock which will bloom the following Fall; and of our thirty or more varieties we suggest the following as especially pleasing.

Price: 50c. each, 3 for \$1.40, 10 for \$4.00

YELLOW

Algonquin. Very double; 18 inches; September. An early, brilliant yellow of exceptional hardiness.

Eugene A. Wander. Full, double; 2 feet; early September. The golden yellow flowers are large and of graceful, informal shape.

Golden Dream. Gorgeous large, golden yellow blossoms which keep their color under adverse conditions. Neat habit of growth, and prolific bloomer.

Judith Anderson. Button Pompon; 18 inches; October. The best yellow "button" Chrysanthemum for late bloom. Free-flowering.

King Midas. Large fully double soft yellow, tinted bronze; very profuse bloomer. Late September.

My Lady. Double flowers of yellow shading into orange. Distinctive because of its warm coloring.

Pygmy Gold. Double; 16-18 inches; early September. The low, spreading growth of this bright yellow variety and its long season of bloom, make it of distinct value for borders and for the rock garden.

Treasure Trove. Absolutely hardy; beautiful double clear yellow, rich foliage, vigorous growth. A treasure among Mums.

PINK AND LAVENDER

Dean Kay. Medium sized double blossoms of a pink seldom found among flowers. Very popular.

Jayeff. A beautiful true deep pink flower; very long-lasting; Sept. 15; 24 inches.

Lavender Lady. Full-double; 2½ feet; early October. Pure lavender, large, perfect flowers. Rugged, hardy growth. One of the most distinguished Chrysanthemums ever produced.

Lavender Princess. Finest cutting Mum; pastel shade of eye-catching beauty; tremendous bloomer.

Mrs. P. S. Du Pont III. Double; 2½ feet; October. A gorgeous blend of peach-pink; rosy salmon and fawn. Flowers fully double and finely formed. The favorite of all the recent hybrids.

Salute. Unique in Mums; deep purple; large double blossoms on 12 inch plants; Sept. 1.

Symphony. Beautiful coppery pink and soft lavender. Flowers very large, double. One of the finest Mums in this color class. Wonderful keeping qualities, both in garden and as cutflowers.

RED SHADES

Burgundy. Large double; 2½ feet; early October. A rare shade of glowing wine-red. Long, strong stems; a prolific bloomer.

Carnation Rose. Literally covered with hundreds of small blossoms of a unique shade of rose. One of the finest cushions.

Hillcrest. English variety of real bright red; early bloomer.

Red Velvet. Soft, shapely velvety red blossoms, fully double. Strong heavy plants; blooms in mid-season.

WHITE

Ruth Hatton. Double Pompon; 2 feet; late September. Ivory white touched with lemon-yellow. The blossoms are of medium size but well-formed and borne in great numbers until the end of the season.

White Doty. Pure white Pompon; 18 inches. September.

BRONZE

Apollo. Single Korean; 2½ feet; October. Sparkling orange-bronze flowers with gold centers, like glorified Daisies.

Autumn Lights. Semi-double; 2 feet; September. Coppery, dull bronze with orange shadings. One of the new, hardy introductions.

Bronze Beauty. Highly attractive; profusely covered with hundreds of tawny blossoms; wonderful border plant.

Early Bronze. Pompon; 18 inches; late August. An improved strain, one of the earliest of the hardy 'Mums. Rich, golden bronze.

Ember. Combination of coral and orange shades changing with light; early October; 2½ feet.

Louise Schling. Outstanding among bronze Mums. Plants are covered with semi-double blooms of a most attractive shade.

Marjorie Mills. Profuse blooms of red shading to orange; highly attractive; early.

Sunset. A new Chrysanthemum of exceptionally brilliant orange-bronze, with the glow of an Autumn sunset. The flowers are large, Pompon-type, borne profusely in long, upstanding sprays. 2½ feet; late September.

CUSHION CHRYSANTHEMUMS

This interesting group of low-growing Chrysanthemums is marked by an unusual wealth of bloom, on plants that are of broad, mounded habit and less than 2 feet high. A mature plant, with its hundreds of blossoms, has the appearance of an exhibition Azalea.

Pink Cushion (Amelia). Varying shades of pink; September.

Red Cushion. Coppery red.

Bronze Cushion. Reddish bronze.

Yellow Cushion. Golden yellow.

White Cushion. Covered with snow-white flowers.

Bronze Beauty. Cushion type with orange-yellow flowers turning to yellow.

GROUP OFFER

All 6 (One Each of List) \$2.45

ALL SEASON CUT-FLOWER GARDEN

This collection has been selected to provide cutflowers all season long for the average home. Each variety has been selected for its blooming qualities, neatness of growth, keeping qualities after cutting, and hardiness. This collection planted now should provide you with cutflowers for many years to come. Approximately 25 square feet of area should be used.

3 **Coreopsis Double Sunburst.** Yellow.

3 **Chrysanthemums Lavender Lady** Lavender.

2 **Gaillardia grandiflora.** Dazzling scarlet and orange.

3 **Liatris pycnostachya.** Lavender.

3 **Pyrethrum roseum.** Pink.

3 **Shasta Daisy Mayfield Giant.** White.

3 **Phlox E. I. Farrington.** Pink.

Price: 20 plants, \$8.00

HARDY PERENNIALS—Continued

Prices, except as noted: 50c. each, 3 for \$1.40, 10 for \$4.00

HEMEROCALLIS—Continued

Ophir. Tall. Deep yellow. July and August. 75c. each.**Cressida.** Bronzy orange. July and August. 75c. each.**Mrs. W. H. Wyman.** Pale lemon-yellow. July to late August. 75c. each.HEUCHERA (*Coral Bells*)♦**Sanguinea.** Graceful sprays of scarlet flowers.HIBISCUS (*Mallow*)**Mallow Marvels.** Shrubby plants with enormous flowers. Crimson, pink, and white.HOLLYHOCKS (*Althaea Rosea*)

Double-flowered. Pink, red, salmon, white and yellow.

IBERIS (*Candytuft*)♦**Sempervirens.** Shrubby plants covered with pure white flowers in Spring.♦**Sempervirens, Snowflake.** Compact type for rock garden.

IRIS, GERMAN

Desirable plants for sunny banks and borders. The erect petals are called the Standards; the drooping petals, the Falls. **Alta California.** Yellow.**Autumn King.** Bi-color blue.**Blended Beauty.** Golden bronze.**Crystal Beauty.** Icy white.**Eleanor Roosevelt.** Purple.**Ethelwyn Dunbar.** Pink.**Indian Chief.** Red.**White Autumn King.** White.**JOHNNY JUMP-UPS.** Small, dainty foliage. Plants always covered with tiny, Pansy-like blooms. Perfect for rock gardens and edgings. Black, blue, violet, yellow.LAVANDULA (*Lavender*)**Officinalis (Vera).** Fragrant, lavender **Spica (Spike Lavender).** Later flowering, less shrubby.LIATRIS (*Gay Feather*)**Pycnostachya.** Spikes of purple flowers in July and August. 5 feet.**Scariosa.** Same as above. Blooms August and September.

LILIUM

Candidum (Madonna Lily). Started plants in 5 in. pots. \$1.25 each.LINUM (*Flax*)♦**Perenne.** Bright blue flowers.LOBELIA (*Indian Paintbrush*)**Cardinalis.** One of the showiest perennials. Brilliant crimson spikes of flowers 24 to 30 inches long. Likes plenty of moisture.LUNARIA (*Honesty*)**Biennis.** Lavender flowers followed by large silvery pods resembling coins. Excellent for Winter bouquets, and for unusual effects in the border.LUPINUS (*Lupin*)**Downers Hybrids.** Enormous spikes of gorgeous flowers.

60c. each, 3 for \$1.50

LYCHNIS (*Campion*)♦**Viscaria splendens fl.pl.** Rose-pink flowers in clusters.MERTENSIA (*Virginia Bluebells*)♦**Virginica.** Drooping, bright blue flowers in early Spring.MONARDA (*Bee-Balm*)**Didyma.** Large, ragged scarlet flowers. 3 feet.**Cambridge Scarlet.** Brighter and larger than above.NEPETA (*Catnip*)♦**Mussini (Six Hills Giant).** Velvety foliage. Lavender flowers.PACHYSANDRA (*Japanese Spurge*)♦**Terminalis.** Erect, evergreen ground-cover for shady places. 25 for \$7.00, \$27.00 per 100. 3 inch pots.PENTSTEMON (*Beard-Tongue*)**Pink Beauty.** Beautiful shell pink.PLATYCODON (*Balloon Flower*)**Grandiflora.** Large; showy; deep blue. 3 feet. July.**Grandiflora alba.** Same as above. Flowers white.

PEONIES

Price of Peonies (strong divisions)
\$1.50 eachDouble Pink, Double Red,
Double White

When planting Peonies, plan on 2 inches of soil above the crown.

HARDY PHLOX

Selected varieties of these popular garden flowers, invaluable for late Summer bloom. All are hardy and of easy culture.

Bridesmaid. White, light pink eye.**Count Zeppelin.** White, vermilion-red eye.**Daily Sketch.** Extra-large flowers; light salmon-pink.**E. I. Farrington.** Light pink.**Frau von Lassburg.** Pure white.**Hauptman Koehl.** Blood-red.**Miss Lingard.** Early. White.**Rheinlander.** Salmon-pink, claret-red eye.

MISCELLANEOUS PHLOX

♦**Divaricata.** Charming soft blue in early Spring.♦**Subulata (Moss Pink).** Bright rose.♦**Subulata alba.** White.♦**Subulata lilacina.** Lavender-pink.

For Rust on Phlox use No. 3 of Triogen or Bordeaux or Sulphur. Treat the soil

PYRETHRUM (*Feverfew*)**Roseum.** Bright pink, red, and white Daisies on long stems. Early.ROSMARINUS (*Rosemary*)**Officinalis.** Herb used for seasoning. 60c. each.SALVIA (*Meadow Sage*)**Officinalis.** Sage, an Herb used for seasoning.SANTOLINA (*Lavender Cotton*)**Incana.** Dwarf, gray foliage, blue flowers.SCABIOSA (*Pin Cushion Flower*)**House Hybrids.** Soft violet flowers on long stems; June to September.**TARRAGON.** Herb used for seasoning and making vinegar. 60c. each. 3 for \$1.35.**SHASTA DAISY** 60c. each, 3 for \$1.50**Mayfield Giant.** Immense Daisy-like flowers. Wonderful for cutting.**Chiffon.** Dainty ruffled Daisies; yellow center.**Esther Reed.** Frothy pure white double flowers; always in bloom.TEUCRIUM (*Germander*)♦**Chamaedrys.** Evergreen, shrubby plant which can be clipped any height. Flowers purple. Excellent dwarf hedge. Larger plants available. 60c. each.

THERMOPSIS

Caroliniana. Sometimes called Yellow Lupin. Long spikes of bright yellow pea-shaped flowers in June and July. 4 feet.THYMUS (*Thyme*)**Citriodorus.** Dark pink flowers. Fragrant foliage.♦**Serpyllum lanuginosus.** Downy gray-white aromatic foliage. A trailer.**Vulgaris.** A sweet herb with purplish flowers and fragrant foliage.TRILLIUM (*Wood-Lily*)**Grandiflorum.** Large, three-petaled white flowers.**Stylosum.** Pink flowers.VERONICA (*Speedwell*)**Longifolia Blue Fay.** Heavy grower, lovely blue spike. Excellent for cutting.**Spicata.** Well-known popular violet-blue flowers on stems two feet tall. Blooms all Summer.VINCA (*Myrtle*)**Minor.** Evergreen ground-cover for shady places. Violet-blue flowers in June. 35c. each, 10 for \$3.00, \$24.00 per 100.VIOLA (*Violet*)**Arkwright Ruby.** Flowers all Summer, ruby red.**Chantreyland.** Soft apricot-orange, exceptionally free-flowering.**Floraire.** Pale blue. Flowers all Summer.♦**Jersey Gem.** Pure violet-blue flowers produced freely on 6-inch stems. Blooms profusely from early Spring to frost.**White Perfection.** One of the prettiest of the Violas, and faintly scented.

ROCK GARDEN COLLECTION . . . Price: 10 plants, \$3.65—20 plants, \$6.95

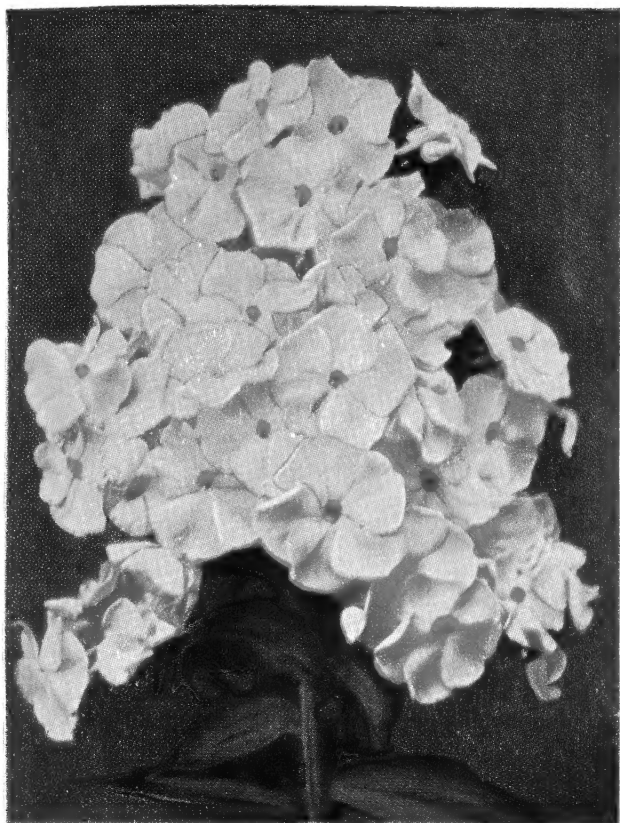
An ideal collection for filling the empty spaces in established Rock Gardens.

1 *Alyssum saxatile compactum.* Yellow.1 *Arabis alpina.* White.1 *Armeria maritima.* Pink.1 *Campanula carpatica.* Blue.1 *Dianthus Beatrix.* Pink.1 *Geum Mrs. Bradshaw.*

Burnt orange.

1 *Iberis Sempervirens Snowflake.* White.1 *Sedum acre.* Yellow.1 *Thymus vulgaris.* Purple.1 *Viola Jersey Gem.* Blue.

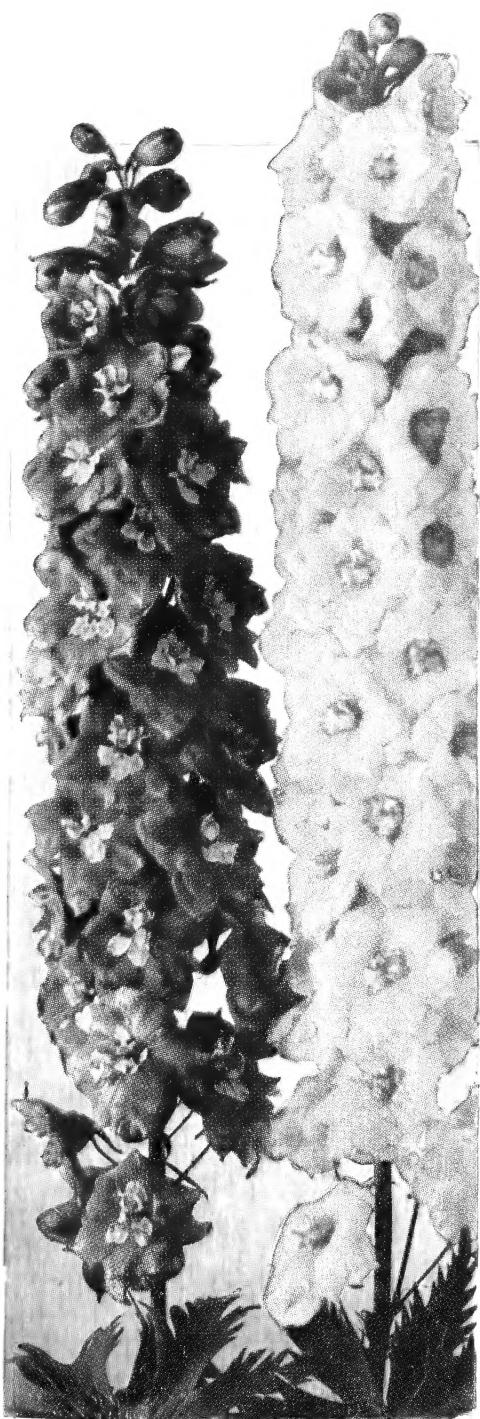
Lexington
Perennials
for
Years of Beauty
In Your Garden



Hardy Phlox



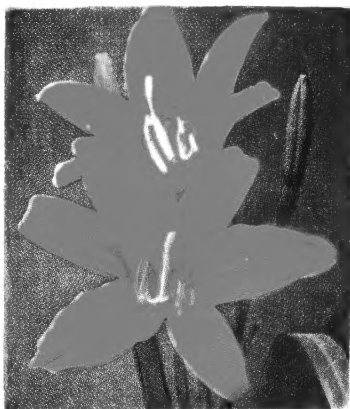
Aster, Harrington's Pink



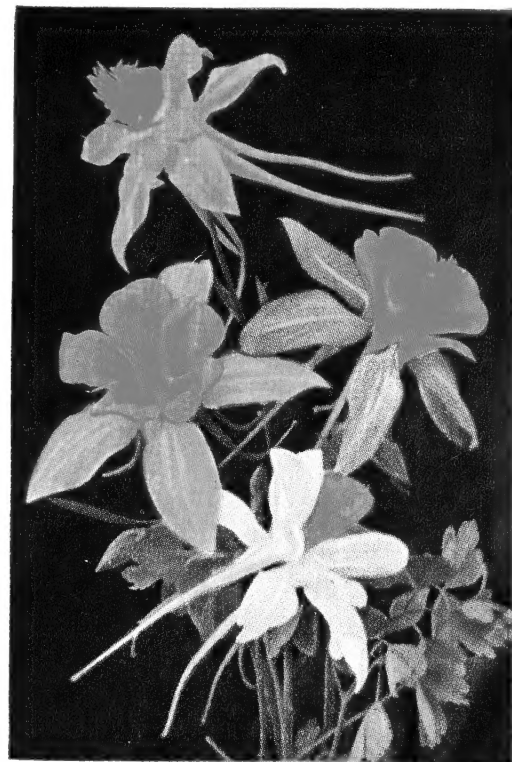
Delphinium



Hardy Chrysanthemums



Hemerocallis (Daylilies)



Aquilegia (Columbine)

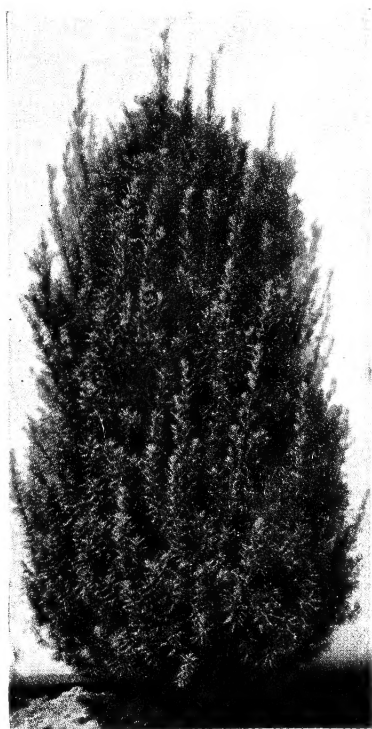
LEXINGTON
Evergreens
for
Year 'Round
Beauty



Hatfield Yew (*Taxus hatfieldi*)



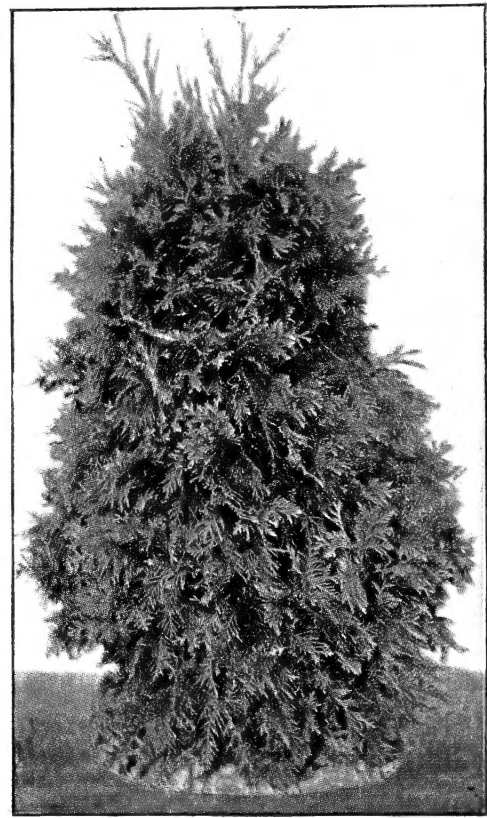
Upright Japanese Yew



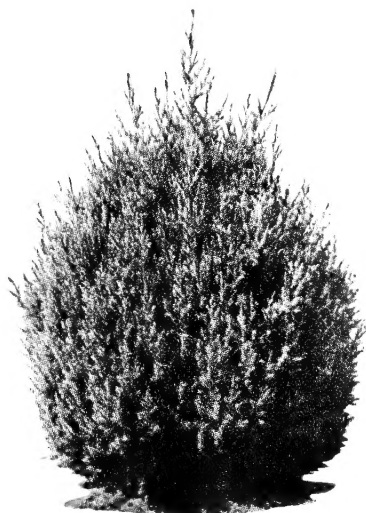
Hick's Yew



Norway Spruce



Pyramidal Arborvitae



Greek Juniper
(*Juniperus excelsa stricta*)



Japanese Yew—Spreading



Globe Arborvitae