

Historic, Archive Document

Do not assume content reflects current scientific knowledge, policies, or practices.

62.79

RECEIVED
★ FEB 29 1952 ★
U. S. Department of Agriculture

MCMAHON'S

1952

Seed Annual

OUR 56th YEAR



OUR MODERN CLEANING AND TREATING PLANT

XL
W
OJ
R
N
Z
A
E
I
3E
A
E



W
h
h
D
W
K
E
G
H
N
U
X
O
X
D
E
L
W
L

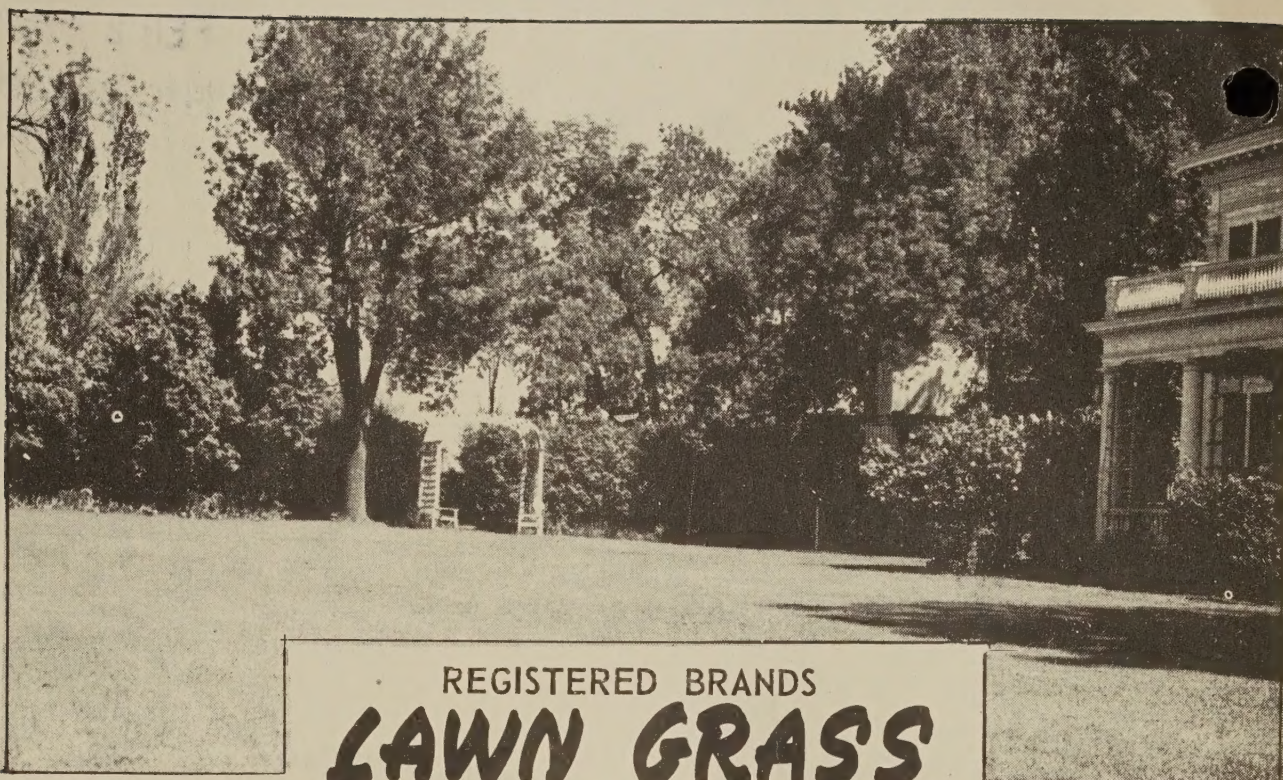
AGRICULTURAL CHEMICALS

MCMAHON COMPANY, INC.

Two Fine Stores to Serve You

RAPID CITY S. Dak.

STURGIS



REGISTERED BRANDS
LAWN GRASS

Postage Prepaid

TOP LAWN MIX

A mixture, of the finest quality seeds, that we have developed after years of experience. All of the grasses in it are fine bladed and deep rooting. There just isn't a better combination for this area. Sow 5 lbs. per 1,000 sq. ft.

1 lb. \$.95 5 lbs. \$4.50 10 lbs. \$8.50

WESTERN LAWN MIX

Made up of fine grades of Kentucky Blue Grass, Rye Grass, Red Top Grass, and White Dutch Clover for planting a desirable lawn.

1 lb. \$.75 5 lbs. \$3.50 10 lbs. \$6.50

KENTUCKY BLUE GRASS

Produces a deep dark green lawn of close thick turf. Maintains its green color until late in fall. Roots are deep, and plants are very hardy.

1 lb. \$.90 5 lbs. \$4.25 10 lbs. \$8.00

RED TOP

A fast growing grass that is ideal for use in mixtures and is highly adapted to a wide variety of soils and conditions.

1 lb. \$.70 5 lbs. \$3.25 10 lbs. \$6.00

WHITE DUTCH CLOVER

A small, close growing, dwarf clover used extensively in making lawns. It is a rapid grower with spreading habits, and can be cut close to the ground without injury to the plant.

1 lb. \$1.00 5 lbs. \$4.60 10 lbs. \$9.00

SHADY NOOK MIX

A mixture of grasses that is best to use in shade under trees and north of buildings. Will also do good in the sun.

1 lb. \$1.00 5 lbs. \$4.75 10 lbs. \$9.00

POA TRIVIALIS

Especially for shady places where it is difficult to get a satisfactory lawn. Requires frequent watering.

1 lb. \$1.05 5 lbs. \$5.00 10 lbs. \$9.50

BUFFALO GRASS

A low growing perennial grass that spreads by surface runners. For dryland lawns sow 1 lb. per 400 sq. ft. Treated for quick germination.

1 lb. \$1.25 5 lbs. \$6.00 10 lbs. \$11.50

FAIRWAY STRAIN, CRESTED WHEATGRASS

The dryland lawn grass that can be used to a fine advantage in lawns, fairways, school yards, parks, and farm lawns. This is shorter, has more leaves than the regular strain. Sow 1 lb. to 100 sq. ft.

1 lb. \$.75 5 lbs. \$3.50 10 lbs. \$6.50

RYE GRASS

An excellent "nurse" grass where a quick growth is wanted. Not long lasting. Good in moist soils.

1 lb. \$.30 5 lbs. \$1.35 10 lbs. \$2.50

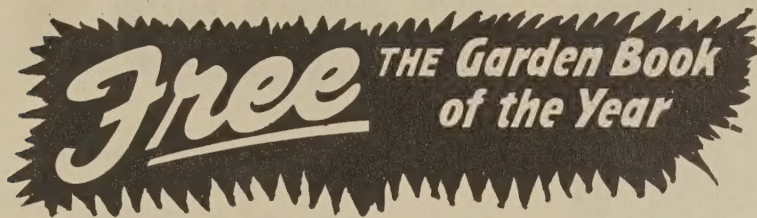
HIGHLAND BENT GRASS

It is fine leaved, bright green in color, and creeps both below and above the ground. The hardiest of all Bent grasses.

1 lb. \$1.40 5 lbs. \$6.75 10 lbs. \$13.00

REGISTERED BRANDS GARDEN SEEDS

Garden seeds are all quoted POSTAGE PAID, and shipments will be made the same day your order is received. All our garden seeds are selected and grown under climatic conditions suited to this climate and will give excellent results under average conditions.



A COMPLETE GUIDE FOR THE HOME GARDENER—Containing more real, down to earth information than any seed catalog you've ever read. Write or ask for yours now.

25¢ package Hybrid Tomato Seeds with purchase of \$2.00 or more of Garden Seeds.

All Garden Seeds available in 10¢ packets. Add 2% Sales Tax to all Garden Seed Orders.

BEANS

	½-lb	1-lb	3-lb
Improved Golden Wax	.30	.50	1.30
Pencil Pod Blk. Wax	.25	.45	1.10
Tendergreen	.25	.45	1.10
Burpee's Stringless	.22	.40	1.00
Kentucky Wonder	.22	.40	1.00
Henderson Bush Lima	.22	.40	1.00
Navy Beans	.15	.25	.70

BEETS

	Oz.	¼-lb	½-lb
Early Blood Turnip	.15	.45	.75
Crosby's Egyptian	.15	.45	.75
Detroit Dark Red	.15	.45	.75
Swiss Chard Silver	.15	.40	.65

BRUSSELS SPROUTS

	Pkg.	Oz.
Dwarf Improved	.10	.30

CABBAGE

	Oz.	¼-lb
Golden Acre	.20	.60
Copenhagen Market	.20	.60
Ferry's Hollander	.25	.75
Late Flat Dutch	.25	.75

CARROTS

	Oz.	¼-lb	1-lb
Chantenay	.15	.50	1.60
Danvers Half Long	.15	.50	1.60
Ox Heart	.15	.50	1.60
Nantes Coreless	.15	.50	1.60

CAULIFLOWER

	Pkg.	Oz.
Snowball	.25	1.60

SWEET CORN

	½-lb	1-lb	5-lb
Golden Hummer	.20	.35	1.50
Golden Bantam	.20	.30	1.20
Golden Sunshine	.20	.35	1.50
Tendergold Hybrid	.30	.50	2.25
Golden Bantam Hybrid	.30	.50	2.25
Midgolden Hybrid	.30	.50	2.25

CUCUMBERS

	Oz.	¼-lb	1-lb
Everbearing	.20	.60	1.80
Chicago Pickling	.20	.60	1.80
Imp. Long Green	.20	.70	2.10
Early White Spine	.20	.60	1.80
Straight 8	.20	.70	2.10

LETTUCE

	Oz.	¼-lb
Blk. Seeded Simpson	.20	.60
Prizehead	.20	.60
New York 515 (Head)	.35	1.00

MUSKMELON

	Oz.	¼-lb	1-lb
Rockyford (green)	.20	.60	1.80
Hales Best	.20	.60	1.80
Honey Rock	.20	.60	1.80
Hearts of Gold	.20	.60	1.80

NASTURTIUMS

Sweet Peas

	Oz.	¼-lb	1-lb
Tall Mixed Nasturtiums	.25	.75	
Spencer Giant Sweet Peas	.25	.75	2.25

ONION SETS

	1-lb	5-lb
White Onion Sets	.20	.90
Yellow Onion Sets	.20	.90

ONIONS

	Oz.	¼-lb
So. Port White Globe	.60	1.80
Yellow Globe	.50	1.50
Yellow Sweet, Spanish	.50	1.50

BERMUDA ONIONS

	100 Plants	500 Plants	1000 Plants
	.20	.90	1.75

PARSNIPS

	Oz.	¼-lb
Hollow Crown	.10	.35

PEAS

	½-lb	1-lb	3-lb
American Wonder	.20	.35	.95
Little Marvel	.20	.35	.95
Everbearing	.20	.35	.95
Laxtonian	.20	.35	.95
Alaska	.17	.30	.80
Dwarf Telephone	.20	.35	.95
Dwarf Grey Sugar	.20	.35	.95

PEPPERS

	Oz.	¼-lb
Bell or Bull Nose	.50	1.75

HERBS

	Oz.	¼-lb
Dill	.15	.40

PUMPKINS

	Oz.	¼-lb	1-lb
Connecticut Field	.15	.50	1.50
Sugar Pie	.15	.50	1.50
Cheyenne Bush	.20	.60	1.80

RADISHES

	Oz.	¼-lb	1-lb
Early Scarlet Globe	.10	.30	.90
French Breakfast	.10	.30	.90
Crimson Giant	.10	.30	.90
White Icicle	.10	.30	.90
Early Sc. Turnip	.10	.30	.90
Rose Winterlong	.10	.35	1.00

RUTABAGAS

	Oz.	¼-lb	1-lb
Imp. Am. Pur. Top	.10	.30	.80

SPINACH

	Oz.	¼-lb	1-lb
Bloomsdale	.10	.25	.65
King of Denmark	.10	.25	.65

SQUASH

	Oz.	¼-lb	1-lb
Warty Hubbard	.20	.60	1.75
Table Queen	.20	.60	1.75
Yl. Sum Cr'kneck	.20	.60	1.75

TOMATOES

	½-Oz.	Oz.
Ground Cherry	.40	.70
John Baer	.40	.70
Earliana	.40	.70
Marglobe	.40	.70
Sioux	.50	.90
Bonny Best	.40	.70

TURNIPS

	Oz.	¼-lb	1-lb
Purple White Globe	.10	.30	.90
White Egg	.10	.30	.90

WATERMELONS

	Oz.	¼-lb	1-lb
Dixie Queen	.20	.55	1.60
Coles Early	.15	.45	1.20
Kleckley's Sweet	.15	.50	1.40
Early Kansas	.20	.55	1.60
New Hampshire	.40	1.20	3.50

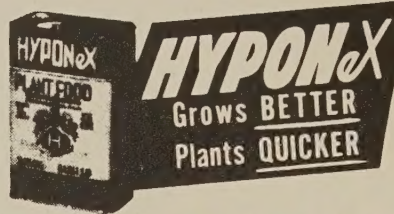
LAWN and GARDEN SEEDS

New Process Vigoro*
Supplies Flowers, Shrubs,
Trees, Vegetables, and
Grass with the Plant Food
Nutrients Needed from Soil!

Millions of gardeners the nation over have found that gardening success came easier when they fed everything they grew with Vigoro. It is complete plant food, clean, odorless, easy to use . . . but most important of all, scientifically formulated to feed plants right. It encourages balanced growth . . . plants with fine sturdy roots, thrifty stem and leaf-growth, that bear beautiful flowers or a happy harvest of extra tasty vegetables. Order enough for everything you grow . . . 3 pounds per 100 square feet for lawns . . . 4 pounds per hundred square feet of flowers, vegetables, etc.



100-lb. bag . . .	\$5.25
50-lb. bag . . .	3.15
25-lb. bag . . .	1.85
10-lb. bag95
5-lb. bag53
1-lb. bag15



A clean, odorless, soluble powder that makes complete plant food immediately available! 1 oz. makes 6 gallons balanced liquid food. Non-burning.

1 oz. pkg.	10¢	7 oz. can	50¢
3 oz. can	25¢	1 lb. can	1.00

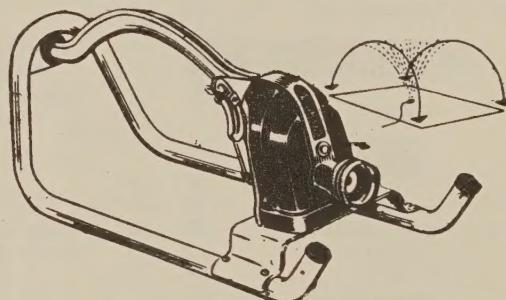
ROWE'L-EZY
 All purpose lawn and garden edger. \$4.95



RED STEER PLANT FOOD

The answer to a ready source of Nitrogen and Phosphorus for lawns, gardens, and field crops. The analysis is 10-20-0.

Price f.o.b. Rapid City
 Ton Lots \$93.40
 Less than ton lots (80lb. bag) 3.80



METCO SPRINKLER

Metco's curtain of rain uniformly waters extra large rectangular plots with one or two settings without overlapping.

Model	M	\$12.95
Model	J	9.95

RAP-ID-GRO

The 100% usable plant food that contains hormones that control growth and the essential chemicals and 11 vital food elements. One pound of this equals 176 lbs. of liquid fertilizer or 100lbs. of other fertilizers. Mix 1 lb. to 22 gal. water.

2 oz. pkg.	\$.25
1 lb. can	1.25
5 lb. can	4.50
10 lb. can	8.75

Good News for Gardeners

FROM THE MAKERS OF VIGORO

Endo Pest

EndoPest gives you three-way control over most garden pests . . . with one easy-to-use product. Just a few strokes with the exclusive, cartridge refillable dust gun and you have all the protection most gardens need.

Prices

Applicator Gun	\$.98
Refill (10 oz.)	.75
2-lbs.	1.98

VIGORO SPREADER

For the perfect distribution of Vigoro and Grass Seed.

Price \$9.95

COLORADO .44 GARDEN DUSTER

Chlordane 5% Dust

\$.89





ROSETONE a combination of hormones and vitamins specially prepared to make your rose bushes flourish.

1/2 oz. 25¢ 3 oz. \$1.00

FRUITONE for tomatoes produces earlier crop and more and bigger tomatoes.

2/5 oz. 25¢ 2 oz. \$1.00

ROOTONE for increased rooting of cuttings, seeds, and bulbs.

Trial package 25¢ 2 oz. \$1.00

TRANSPLANTONE a hormone vitamin powder for stimulating roots in transplanting.

Trial Pkg. 25¢ 3 oz. \$1.00



CRABGRASS KILLER

Will kill crabgrass and mouse-ear chickweed without killing clover, blue grass, fescue and other deep rooted perennial grasses.

6 1/2 oz. can (will treat 500 sq. ft. of mature crabgrass or 1,000 sq. ft. of seedling) \$1.00
 26 oz. can 3.00

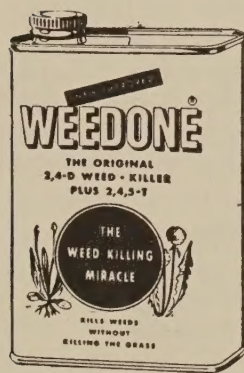
PREMIER
Swedish & Northland
PEAT MOSS

CERTIFIED - VACUUM CLEANED

The highly absorbent, weed-free, odorless, organic soil conditioner. Lightens heavy clay. Holds moisture and plant food near roots in sandy soils. Gives all soils a more loam-like texture. Grows stronger roots that develop lovelier plants. Excellent, too, for mulching and transplanting.

Large Bale \$4.90
 Small Bale 3.45

Also available in 1 bu. and 3 bu. bags.



BARWEED Dandelion Killer 8 oz. 79¢

NEW IMPROVED WEEDONE

Kills lawn weeds, brush and stumps. Does not give off vapors that injure flowers, vegetables or shrubs. No residue harmful to humans or animals.

8 oz. can \$1.00 Qt. \$2.75

ACP GRASS KILLER

A new grass killer offering effective control of certain noxious grasses in crop land, pastures, driveways and cobbled walks. Also for controlling perennial grasses such as Johnson, quack, Bermuda and para. Leaves the ground dormant for a period of 90 days. Lower dosages will suppress both annual and perennial grasses such as crabgrass, foxtail, chess, blue grass and red top, leaving a grass cover where desired.

10 pound drum \$5.40

HOTKAPS

Start your Garden Earlier this year—with HOTKAPS

25 pkg. \$.95
 100 pkg. 3.15

REGISTERED BRANDS ALFALFA



Our Alfalfa Seed is all Northern grown. It was grown in Western South Dakota, Wyoming and Montana. This is the hardest seed available. FREE SAMPLES upon request.

DAKOTA NO. 12

This is alfalfa from long established stands which has proven to be superior, and which has survived the extremes in climate during the past 20 years or more.

	Per bu.	100 lbs.
Dak. 12 (96% Pure)	\$36.25	\$59.50
Dak. 12 (98% Pure)	42.60	70.50
Dak. 12 (99% Pure)	43.80	72.50

GRIMM

This variety is one of the earliest and best known of the pedigreed varieties. It has proven its ability to withstand drought and winter-killing.

	Per bu.	100 lbs.
Dakota Grown (98% Pure)	\$43.20	\$71.50
Dakota Grown (99% Pure)	44.50	73.50

COSSACK

This is a very vigorous growing variety, that is second only to Ladak in hay production. Cossack produces a fine stemmed hay and is particularly well adapted to those areas in S. Dak. where two or three cuttings of hay are obtained. The most popular alfalfa in western S. Dak.

	Per bu.	100 lbs.
Dakota Grown (98% Pure)	\$43.90	\$72.50
Dakota Grown (99% Pure)	45.00	74.50
Certified Blue Tag	52.50	

NOTICE

The 1952 Agricultural Conservation Program for Pennington County calls for payments for the establishment of additional acreage of perennial grasses and legumes.

(a) Seeding Alfalfa or Alsike Clover	\$.45
(b) Seeding Brome Grass	.20
(c) Seeding Wheatgrasses	.25
(d) Red Clover	.30

See your county committee for full details

NOTICE — Prices include bags and are subject to market changes.

RANGER

Ranger is a new variety developed by the U. S. Dept. of Agriculture by combining several superior strains. It is wilt resistant, winter hardy and adapted to our western climatic conditions. Our Registered Ranger is from foundation stock grown in S. Dak. Plant Registered Ranger for seed production as you can certify the seed produced from this seed.

	Per bu.	100 lbs.
Ranger (99% Pure)	\$48.20	\$79.50
Registered Blue Tag	62.75	

(From Foundation Stock)

LADAK

The parent material of this variety was introduced in 1910 from Northern India where it had developed for many generations under conditions of low winter temperatures and low annual rainfall. Ladak ranks first in hay yield and first in cold and drought resistance, and is resistant to bacterial wilt.

	Per bu.	100 lbs.
Dakota Grown (99% Pure)	\$45.50	\$75.50
Certified Red Tag	52.80	
Certified Blue Tag	54.00	



Alfalfa & Clover increases land value; it puts nitrogen into the soil, especially when the seed is inoculated with Nitrugin before planting. AB Culture Group

1 bu. size (Inoculates 60 lbs.)	\$.50
2 bu. size (Inoculates 120 lbs.)	.90
Garden size (Peas, Sweet Peas, Beans, Lima Beans, Lupines and Soybeans)	
Inoculates up to 8 lbs. seed	.15

All seeds are tested and tagged in compliance with State Seed laws.

Less than 60 lbs. add 5¢ per lb.

R.B. GRASSES ^{and} CLOVER



BROME GRASS

BROME GRASS

A hardy, smooth, erect drought resisting Perennial grass. Forms an excellent sod for pasture. Resistant to extreme cold and heat. It begins growth early in the spring and grows throughout the summer, continuing growth until late in the fall. Seed from old fields in S. D. give superior yield of forage. Plant Dakota grown seed.

	100 lbs.
Dakota No. 1	\$28.50
Lincoln Type	32.50

TIMOTHY & ALSIKE

80 - 20 mixture
100 lbs. \$26.50

STANDARD CRESTED WHEATGRASS

A hardy, drought resistant perennial bunch grass. It is very early in spring growth but during hot dry spells it becomes dormant and resumes growth with cooler weather and more favorable moisture conditions.

	100 lbs.
Top Grade	\$44.50
Second Grade	24.50

INTERMEDIATE WHEATGRASS

This grass is more drought resistant than Brome and somewhat less hardy and drought resistant than crested wheatgrass. The plants begin in early spring and grow from 3 to 4 feet tall. Relished by all classes of livestock.

100 lbs. \$95.00

WESTERN WHEATGRASS

A perennial that is very drought resistant, but slow growing, produces good hay, and is one of the best for this part of the country. It is palatable.

100 lbs. \$55.00

SLENDER WHEATGRASS

Another good perennial grass with drought resisting habits. Similar to Western Wheatgrasses. It is well adapted for planting in Wyoming, Montana, Nebraska and the Dakotas.

100 lbs. \$38.50

TIMOTHY

One of the most universally known grasses especially adapted to cool, moist soils.

100 lbs. \$18.75

50 lbs. to 100 lbs. add 2¢ per lb.
Less than 50 lbs. add 5¢ per lb.

YELLOW BLOSSOM SWEET CLOVER

A biennial that is not as tall as the White but is about two weeks earlier. It is very drought resistant and desirable for hay, pasture and forage. Not to be confused with the annual Yellow Blossom which is of very little value.

99% Pure	100 lbs.	\$ 17.50
98% Pure	100 lbs.	16.00

WHITE BLOSSOM SWEET CLOVER

This is the standard Sweet Clover of the country. It is a biennial, grows from 4 to 6 feet tall, vigorous grower, extremely hardy and produces abundant hay and pasture.

99% Pure 100 lbs. \$ 19.50

MEDIUM RED CLOVER

Makes a good hay and pasture. Adapted for planting with numerous grasses for either hay or pasture.

100 lbs. \$ 54.50

ALSIKE CLOVER

This is a valuable forage crop sown alone or with timothy. Excellent at high altitudes.

99% Pure 100 lbs. \$ 59.50

HUBAM CLOVER

An annual White Sweet Clover. It produces a good growth early and makes excellent pasture the first year. Also very valuable for plowing under for green manure.

100 lbs. \$ 19.00

REGISTERED BRANDS PASTURE MIX

Registered Brands Pasture Mix is a careful blend of high quality grasses and legumes. Increase the value of your land by planting a good pasture mix. Beef prices are high and good pasture will increase your cattle gains. Contains the following:

30% Brome Grass	10% Sweet Clover
30% Wheatgrass	5% Alfalfa
20% Rye Grass	5% Other Clovers
100 lbs. \$35.50	

RYE GRASS (Domestic)

A very quick growing grass that produces a large amount of nutritious foliage, but not as hardy as the Wheatgrasses.

100 lbs. \$17.50

FIELD CROP SEEDS

All seeds are tested and tagged in compliance with State seed laws.
 NOTICE--PRICES INCLUDE BAGS AND ARE SUBJECT TO MARKET CHANGES

WHEAT

RUSHMORE WHEAT

A bearded variety developed at the S. Dak. Experiment Station from the cross between Rival and Thatcher. It is rust resistant and less likely to shatter than Rival or Mida. \$3.10 per bu.

20 bu. or more @\$3.00

MIDA WHEAT

Bearded, spring variety that is high-yielding with high test weight. Resistant to bunt, stem rust and most leaf rusts.

\$ 3.00 per bu. 20 bu. or more @\$ 2.90

PILOT WHEAT

Bearded, rust resistant, non-shattering variety. It is an excellent yielder.

\$ 3.00 per bu. 20 bu. or more @\$ 2.90

DURUM WHEAT

Producers claim that it is the surest crop of wheat that can be raised.

\$ 2.90 per bu. 20 bu. or more @\$ 2.80

BARLEY

SPARTAN BARLEY

A two-rowed, smooth-awned, stiff strawed feed barley. It is very early with a high test weight and high protein.

\$ 2.20 per bu. 20 bu. or more @\$ 2.10

WISCONSIN No. 38

A smooth-awned, six-rowed, high-yielding malting type barley.

\$ 2.20 per bu. 20 bu. or more @\$ 2.10

L or KINDRED

A rough-awned, six-rowed, barley of high malting qualities.

\$ 2.30 per bu. 20 bu. or more @\$ 2.20

FEEBAR BARLEY

A new early maturing, strong straw, drought resistant, high-protein, feed type barley. A six-row barley.

\$ 2.20 per bu. 20 bu. or more @\$ 2.10

SPELTZ

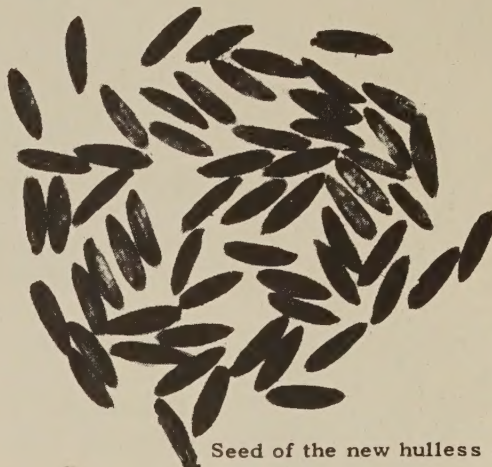
A dry land grain that withstands more drought, unfavorable soil, and weather conditions than most grains. It is a short-season, early-maturing crop.

\$ 2.35 per bu. 20 bu. or more @\$ 2.25

FALL RYE

\$ 2.25 per bu. 20 bu. or more @\$ 2.15

RYE



Seed of the new hullless oat.

OATS

JAMES HULLESS OATS

It is a stiff-strawed, mid-early variety of hullless oats. It is resistant to smut and and stem rust. Comparing yields in the past few years they have been higher than other oats.

\$ 3.50 per bu. 15 bu. or more @\$ 3.40

CHEROKEE OATS

A new variety that is somewhat earlier than Clinton oats. Its kernels have a reddish cast, otherwise resemble Clinton.

\$ 1.75 per bu. 15 bu. or more @\$ 1.70

BOONE OATS

Medium early, yellow variety with a good strength of straw and resistant to most rusts and smuts. Well adapted to Central and Western S. Dak.

\$ 1.55 per bu. 15 bu. or more @\$ 1.50

BRUNKER OATS

A very early red oat. This variety is adapted to the central and western areas of S. Dak. where early maturity is essential because of drought and grasshoppers.

\$ 1.65 per bu. 15 bu. or more @\$ 1.60

CLINTON OATS

Resistant to stem and leaf rust. Resistant to blight and root-rot disease. Has a stiff straw, therefore, is a good oats for combining. A higher yielder, kernels are plump and more valuable for feeding.

\$ 1.55 per bu. 15 bu. or more @\$ 1.50

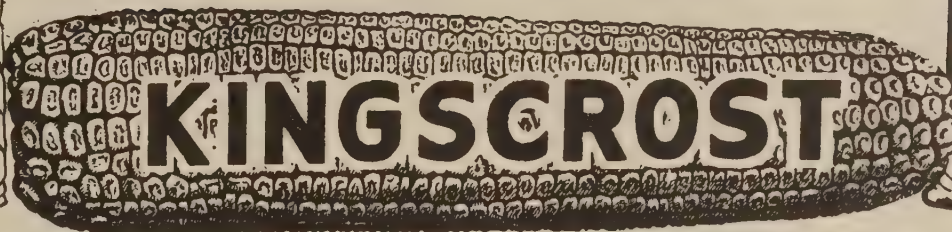
GOPHER OATS

An early white variety that is always a good yielder.

\$ 1.65 per bu. 15 bu. or more @\$ 1.60



SEED CORN



NOTICE—Prices include bags and are subject to market changes.

REGISTERED BRANDS SEED CORN

REGISTERED BRANDS EARLY HYBRID, Wisc. 335

This Hybrid is earlier and yields better than flint corns. It is a reddish colored corn similar to the old Northwestern Dent. Matures in 85 to 90 days.

\$ 10.75 per bu. 5 bu. @ \$ 10.25 per bu.

REGISTERED BRANDS HYBRID, Wisc. 341-A

This is a new improvement from the old Wisconsin 355. A 90 day hybrid that has been grown successfully in this part of the country.

\$ 10.75 per bu. 5 bu. @ \$ 10.25

KINGSCROT HYBRIDS

KINGSCROT KF-1

A semi-dent hybrid crossed between flint and dent. This 80 day corn combines the best features of both.

\$ 12.90 per bu. 5 bu. @ \$ 12.50 per bu.

KINGSCROT KE-3

This is the earliest Kingscrot pure yellow dent Hybrid in the 80 day class.

\$ 12.90 per bu. 5 bu. @ \$ 12.50 per bu.

KINGSCROT KE-2

This 85 day Hybrid is a quick starter in the spring and rapid ripener in the fall. It has an exceptionally tall plant growth and high ear placement for a corn of such early maturity.

\$ 12.90 per bu. 5 bu. @ \$ 12.50 per bu.

KINGSCROT KE-1

This 90 day Hybrid features large dark green plants with ears that ripen ahead of the rest of the plant. This pure dent variety is a great favorite with those who use mechanical pickers because of the high ear placement.

\$ 12.90 per bu. 5 bu @ \$ 12.50 per bu.

KINGSCROT WHEATLAND BLEND

A blend of extra early maturing hybrids. This is an outstanding blend of round kernels for this section of the country. \$ 7.00 per bu.

JACQUES 853

Matures in 85 days. (Flats) per bu. \$12.85

JACQUES 854

Matures in 85 days. (Flats) per bu. \$12.85

JACQUES 907

Matures in 90 days. (Flats) per bu. \$12.85

JACQUES "KOW SALAD"

The perfect silo corn. (Flats) per bu. \$ 9.90

SIB-BRED No. 1

Similar in maturity to Minnesota 13. This is not a hybrid. "Sib-Bred" gives you the strong stalk, root system and disease resistance of good hybrids and a yield of grain and forage much better than that of open pollinated varieties.

Flats per bu. \$ 8.85

OPEN POLLINATED CORN

	5 bu. or more	Per bu.
Black Hills Yellow Dent	\$7.75	\$ 8.25
Early White Dent	7.75	8.25
Falconer Dent	7.75	8.25
Rainbow Flint	8.25	8.75
White Flint	8.00	8.50
Gehu Flint	8.25	8.75
Blue Squaw	7.75	8.25

FLAX

SHEYENNE FLAX

Early maturing, wilt and rust resistant. It produces high quality oil and is adapted for areas where early maturing is essential. per bu. \$ 6.75

REDWING FLAX

A medium early, medium tall flax. It is resistant to wilt. per bu. \$ 6.50

REGISTERED BRANDS MILLET, SUDANS and FORAGE

MILLETS



MILLET

EARLY FORTUNE (Red Proso)

A very early grain millet that matures in 60 to 70 days.

100 lbs. \$ 6.50

WHITE PROSO

A hardy and disease resistant strain.

100 lbs. \$ 6.50

SIBERIAN

A hardy, drought resistant variety that matures in 65 to 70 days. The forage is quite palatable, and the seed has a high feeding value.

100 lbs. \$ 5.50

GERMAN MILLET

Has long heads, stems are small, luscious, and highly palatable. This is a variety very valuable for hay and forage.

100 lbs. \$ 6.75



SUDAN GRASS

SUDAN GRASSES

SWEET SUDAN GRASS

A newer variety that has a high sugar content. It is leafier, higher yielding, more disease resistant, and more vigorous in growth than common sudan.

100 lbs. \$ 14.50

SUDAN GRASS (Colo. grown)

An excellent forage crop grown for both hay and pasture. Will produce several cuttings.

100 lbs. \$ 16.00



NORGHUM

GRAIN SORGHUMS

MARTINS COMBINE MILO

About the same maturity as Early Kalo but is more lodge resistant. Grows 30 to 40 inches tall. It has long, semi-compact heads with fairly large, orange-brown colored seeds.

100 lbs. \$ 8.50

NORGHUM

An extra early, high yielding, drought resistant, new variety of grain sorghum released from the S. Dak. Experiment Station in 1949. It is a combine type which grows from 36 to 46 inches tall.

100 lbs. \$ 9.50

FORAGE SORGHUMS

HONEY DRIP CANE

Large, leafy, sweet variety producing good forage.

100 lbs. \$ 14.50

SUMAC CANE

It is very leafy, sweet and has high feed value. A good forage crop.

100 lbs. \$ 14.50

BLACK AMBER CANE

Matures in 80 to 100 days. Will stand hot, dry weather.

100 lbs. \$ 14.00

KANSAS ORANGE CANE

Sweet, leafy cane that matures in 100 to 110 days.

100 lbs. \$ 14.50

ROX ORANGE

A very sweet stalk sorgho that matures in mid-season.

100 lbs. \$ 14.50

SWEET STALK KAFFIR

An early maturing white Kaffir growing on a white stalk. A dual purpose crop providing good grain and palatable fodder.

100 lbs. \$ 8.75

NORKAN

A cross between Atlas and Early Sumac. Semi-sweet stalk. Seeds white, palatable. About 10 days earlier than Atlas. Grows about 60 to 70 inches tall.

100 lbs. \$ 11.50

DWARF ESSEX RAPE

Contains the necessary elements to give young stock proper growth.

100 lbs. \$ 21.50

COES SORGO

35 to 50 inches tall, leafy, slender stalk, semi-juicy, very early. Seed heads long erect and semi-compact, seeds white. A dual purpose sorghum.

100 lbs. \$ 7.25

CHICKS *and* SANITATION SUPPLIES



GET GOOD CHICKS NOW

Early chicks are easy to raise and should make you more money because they lay more early fall eggs when prices are highest. Our chicks are very high in quality. They are:

1. Bred for production
2. From disease-inspected flocks
3. Producing flocks are fed for chick vigor.

1952 Prices on Day Old Chicks:

BREEDS	Straight Run Per 100
White Leghorns	\$ 16.90
Austra Whites	16.90
White Rocks	16.90
New Hampshires	18.50
Rhode Island Reds	16.90
Wyandotte x Hamps	16.90
Delaware x Hamps	17.00
Delawares	30.00
Vantress	19.50
Hamp x Leghorn	16.90

TERMS: \$2.00 per 100 chicks when order - balance upon arrival. Add one cent per chick on orders of less than 100. Prices on sexed chicks will be furnished upon request. Special Broiler or Fryer Breeds. We guarantee 100% live delivery. Prices are subject to change without notice.

MAKE THE *Water Safe*

with **PURINA CHEK-R-TABS**

150 Tablet size	1.00
600 Tablet size	3.00

Knock out lice with Purina Roost Paint. Just paint on the roosts. Fumes penetrate feathers and kill lice. Won't harm birds.



Half Pint size	.85
Pint size	1.35

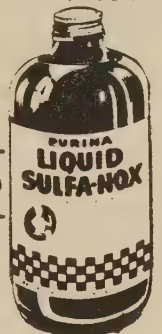
FEEDERS & FOUNTS

Rabbit Feeder	\$ 1.50
Chowder hopper and Guard (hanging feeder)	
25 lb. Capacity	3.45
12 lb. Capacity	2.50
48 inch all metal growing feeder	3.30
36 inch all metal growing feeder	1.75
24 inch all metal chick feeder	.40
3 gallon poultry waterer	2.45
Chick founts, glass	.18
Electric automatic water warmers	5.80
Brooder thermometers	.55

SULFA-NOX - LIQUID

Purina Sulfa-Nox is a new "Wonder-Drug" product that will stop either Coccidiosis or Fowl Cholera, when used properly.

½ Pint \$.65



CHEK-R-TON Poultry Wormer

1 lb.	\$.50
3 lbs.	1.45
6 lbs.	2.75

POULTRY LICE POWDER

1 lb. can \$.45

INSECT OIL

Wood Preserver-Mite Killer

1 Gallon size 2.45



CHLORENA POWDER
Use Chlorena Powder to keep feeders and founts sweet and clean and for general use whenever a fast-acting chlorine type product is desirable.

1 Pound	\$.85
3 Pounds	2.00



DISINFECTANT

The one powerful tool for all sanitation needs.
Pint \$.75 Gallon \$4.85



PREMIER PEAT LITTER

One Large Bale Covers Approximately 300 Sq. Ft. One Inch Deep.

Large Bale	\$4.90
Medium Bale	3.45

Also available in 1 bu. and 3 bu. bags.

INSECTICIDES *and* POISONS



CERESAN M to control smut and other seed-borne diseases on wheat, oats, barley, flax and sorghum seeds.

1 lb. treats 32 bu. of grain.

14 oz. \$1.25 3 lbs. \$3.55 40 lbs. \$35.85

ARASAN to reduce seed decay, root rot, damping off and other disease organisms in corn, sorghums, grasses and legumes.

3/4 oz. \$.25 8 oz. \$1.00

SEMESAN BEL for Irish and Sweet potatoes. Treat Irish potatoes to reduce seed rotting, surface seed-borne Rhyoctonia and scab.

2 oz. pkg. \$.50 1 lb. can \$2.30

PURINA DDT FLY SPRAY

For the Farm Buildings and Stock Cattle.

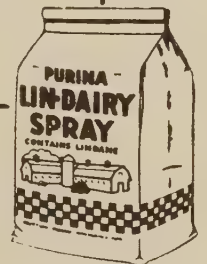
1 lb. Canister \$1.00
4 lb. Bag 3.05



LIN-DAIRY SPRAY

Approved by the Livestock Sanitary Committee for use on Dairy Cattle.

1 pound \$3.60



PURINA HOME FLY SPRAY

Pint .40 Quart .75

JET POWER INSECT KILLER

With DDT and Pyrethrins \$1.49

INSECTICIDE BOMB

\$.98

COWLEY'S LIQUID RAT AND MOUSE POISON

6 oz. bottle 50¢

CYANO GAS A-Dust kills ants, rats, moles, woodchucks - (Groundhogs), Prairiedogs, wasps, gophers, hornets, diseased bees, and other pests.

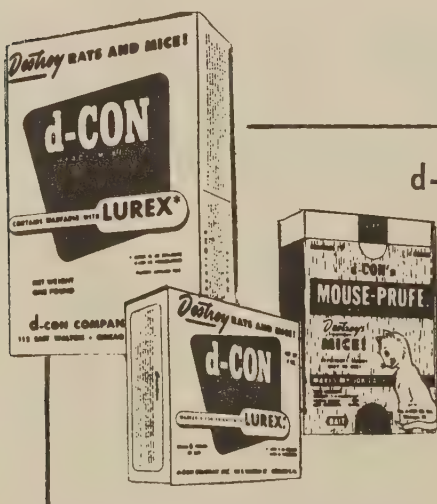
1 pound can \$1.00



d-CON RAT AND MOUSE POISON

Contains Warfarin & Lurex (rat attractant). Rodents die gradually from internal hemorrhages generally within 3 to 6 days after first feeding, thus eliminating bait shyness.

Mouse Prufe \$.89
Ready Mix 1.69
Concentrate 2.98





INSECTICIDES



Prices Subject To Change Without Notice.

COLORADO .44 EMULSIFIABLE CHLORDANE CONCENTRATE

Controls agricultural insects. Can be diluted with either water or oil. Contains 4 full pounds of Chlordane in each gallon. Easy to use in high or low volume application with airplane, ground or hand equipment.



8 oz.	1.25
Pint	1.95
Quart	3.25
Gallon	6.80
5 Gallon Drum	32.25
30 Gallon Drum	186.00

GOLD STAR LIVESTOCK SPRAY

Has 100% active ingredients. Has combination of four killing agents and should kill what you have.

Pints \$1.95 Quarts \$3.75
Gallons \$11.62



50% WETTABLE DDT

Is in powder form readily soluble in water for spraying or as a dip. It is good for killing flies and many other insects.

4 lb. Bag \$ 2.00
50 lb. Bag 22.00

COLORADO .44 SUPERSPRAY CHLORDANE CONCENTRATE

Contains 8 full pounds of chlordane in each gallon. Mix with water or oil. May be used in high or low volume application with airplane, ground or hand equipment. Highly effective control of certain insects.



Gallon	\$ 11.50
5 Gallons	55.50
55 Gallons	588.50

BENZENE HEXACHLORIDE

A wettable powder, containing 12% Gamma Isomer, which forms a suspension spray when mixed with water. There is a good residual kill. It kills DDT resistant flies and may be used in dairy barns and milk rooms in accordance with U. S. Department of Agriculture recommendations.

4 pound bag \$2.40



ALDRIN

(Contains 2lbs. Aldrin per gallon) A liquid concentrate recommended for grasshopper control. — Keeps killing for a week.

1 gal.	\$ 7.80	5 gal.	\$ 38.25
30 gal.	220.50	55 gal.	401.50



TOXAPHENE

Effective as an insecticide for grasshoppers and many others.

Gallon	\$ 5.35
5 Gallon Drum	25.30
30 Gallon Drum	145.20



ROTRATE

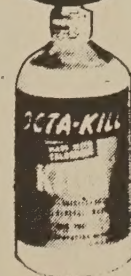
Rotrate 5 is a non-fibrous wettable rotenone concentrate powder containing 5% rotenone and other cube resins. It comes in powder form ready to mix with water for spraying grubs, lice and sheep ticks.

7½ lb. bag \$ 4.88
50 lb. bag 31.00

COLORADO .44 OCTA-KILL

Outdoor insect control, ready-mixed — nothing to add. A lasting control containing 2½% chlordane in a water base.

\$.79 per pint



COLORADO .44 KILZIT

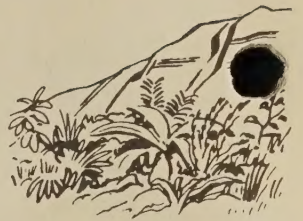
Contains 2% Chlordane in a refined oil base, fortified with a quick knockdown agent. Excellent for indoor insect control.

\$.59 per pint





WEED KILLERS



WEED SEEDS LIVE SIXTY YEARS

Research information recently released from the University of Tennessee, proves that when noxious weeds are permitted to produce mature seed on the soil one is planting, that seed may be with you for 60 years.

Spray these weeds and get rid of them so they don't stay with you.

COLORADO 44 SUPER '80' BUTYL ESTER

A "super" killer containing 6.4 lbs. of 2,4-D acid per gallon — .8 lbs. per pint, in the form of the butyl ester. Completely water emulsifiable in hard or soft water. Mix with water or oil for high or medium volume application by air. Available in 5 gal. pails, 30 gal. drums, and 55 gal. drums.

1 gallon	\$9.55	5 gallon pail	\$46.25	30 gallon drum	\$268.50
55 gallon drum	\$489.50				

WEEDAR 64

Weedar 64 is an amine salt formulation containing 4 pounds of 2,4-D acid equivalent per gallon. It is completely soluble in water and will not clog nozzles. Particularly useful for treating weeds in crops near susceptible plants and for treating small annual weeds that are growing actively. Easier on crops than ester formulations. Will not injure adjoining crops except in case of drift.

1 gallon	\$5.95	5 gallons	\$28.50	30 gallons	\$163.50
----------	--------	-----------	---------	------------	----------

WEEDONE Concentrate 48

Weedone 48 is an ethyl ester formulation containing 3 pounds of 2,4-D acid equivalent per gallon. It has proved more effective than salt formulations in treating perennial weeds and annuals in late stages of growth, during dry weather, and under other adverse conditions. It sticks rain or shine. Can be mixed with any amount of water for high or low volume application. Requires lower amounts of acid per acre for equal results.

1 gallon	\$5.65	5 gallons	\$27.00	30 gallons	\$154.50
----------	--------	-----------	---------	------------	----------

WEEDONE BRUSH KILLER 32

Weedone Brush Killer 32 contains the powerful 2,4,5-T and 2,4-D. Here is the solution to killing those hard to kill woody plants such as brambles, poison ivy, poison oak, willows, buckbrush, and many others. It is a butoxy ethanol ester formulation which means there is no vapor injury to near by susceptible plants. Mix one gallon to 100 gallons of water.

Quart	\$4.00
-------	--------

WEEDONE BRUSHKILLER 64	--	DOUBLE STRENGTH BRUSHKILLER	--
		Gallon	\$11.20

FIELDS

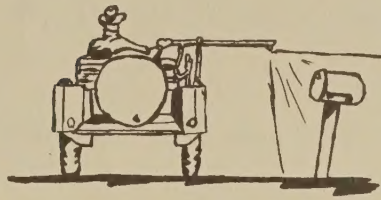
SPRAYERS

LIVESTOCK

ROADSIDES & FENCE ROWS



Get the job done with swaths up to 44 feet. No clogging - No dripping.



No more broken booms or tedious work.



Spray your stock in a jiffy with high or low pressures.

HANSON BRODJET

FARM AND ROADSIDE SPRAYER

DESCRIPTION

- Brodjet Boom (Two-way Spray, up to 44 ft. Swath)
- Brodjet Boom (Hy-Way Roadside, up to 40 ft. Swath)
- Brodjet Boom (One-Way Spray, up to 20 ft. Swath)
- PTO Pump Kit (Medium Pressure, Power take-off Driven)
- PTO Pump Kit (High Pressure, Power take-off Driven)
- Tommyjet (Single Tip Hand Gun with choice of Tip)

CODE

PRICE

BJT	\$ 69.00
BJH	62.20
BJO	52.70
GM	75.40
GP	100.00
TJ	12.50

ACCESSORIES

- Double Swivel Assembly (Brodjet) Complete W/Center Tip, 2 caps & orifices
- Double Swivel Assembly (Conversion Kit) "BJO" or "BJH" to "BJT" Complete W/Center Tip, 1 cap & orifice
- Single Swivel Assembly (Conversion Kit) "BJO" to "BJH" Complete W/Center Tip & 1520 Extension Hy-Way Tip
- Single Swivel Assembly (3/4" Pipe) Complete W/Center Tip, 1 cap & orifice
- Single Body (3/4" Pipe) Complete W/cap & orifice

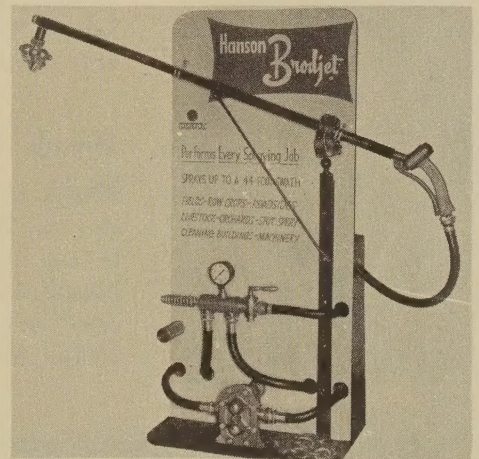
B-388-A	\$ 25.00
B-388-CK	15.29
B-405-CK	10.89
B-406-A	17.27
B-407-A	9.02

TIPS

CODE

PRICE

Flies & Lice	6504	\$.40
Grub	2510	.40
Orchard	4006	.40
Cleaning	U0010	.40
Extension Hy-Way	U1520	.40
Blank Disc, Large	B-401	.20
Blank Disc, Small	B-402	.15
Strainer	B-403	.40



We will send you a Free Book with complete information - just write.

HAND SPRAYERS, PRESSURE SPRAYERS AND DUSTERS

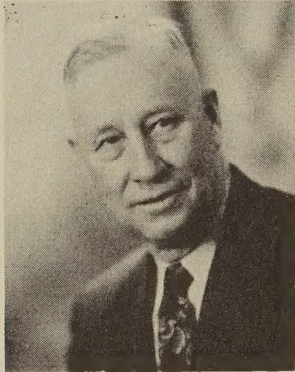
5 oz. all-purpose Household Sprayer with glass container	\$.29
1 pt. nebulizer-type Sprayer	.60
1 qt. continuous-type Sprayer	1.10
Dobbins Super Built Sprayer	1.95
3 1/2 gal. Hudsons pressure tank Sprayer	11.20

DOBBINS SPRAYER THE MIGHTY MIDGET OF THE SPRAYING WORLD

The Dobbins Sprayer is a trombone sprayer of simple design and sturdy construction. It's double throw action gives a continuous spray. This sprayer has an adjustable spray nozzle. The extension for spraying shrubs and foliage is included. Price \$7.65

Let's Meet McMahon Company

For more than a century our firm has been selling to farmers. Since the proof of the product is in the job it does, all of our products have been selected for performance. We handle Feeds, Seeds and Agricultural Chemicals. Meet the people who bring you the finest first.



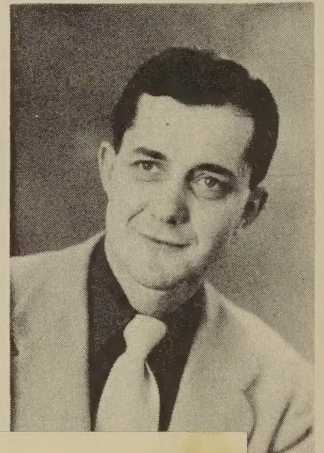
J. R. McMAHON

J. R. McMahon -- The Boss

The old timers call him "Mac". He was born and raised in this country—going through the dry years, rough winters, bad times and good times with you. Who is better capable of understanding the problems of the farmers and ranchers and being responsible for the high quality products we offer.

Harold Bruns -- Manager

Harold has made many friends with the seed growers of this area by furnishing a ready market and securing new varieties. Do you have a seeding problem?—We can help.



Ray Mill -- Sales Manager

Ray specializes in farm chemicals, but has a working knowledge in all fields. He spends a lot of time in the country.



U. S. DEPARTMENT OF AGRICULTURE
LIBRARY
WASHINGTON 25, D. C.

OFFICIAL BUSINESS
PRINTED MATTER

PENALTY FOR PRIVATE USE TO AVOID
PAYMENT OF POSTAGE, \$300
(GPO)

Library, U. S. Dept. of Agriculture,
WASHINGTON 25, D. C.

RETURN POSTAGE GUARANTEED
McMAHON COMPANY, INC.
Rapid City, S. D. and Sturgis, S. D.

Sec. 34.66 P. L. & R.
U. S. Postage
PAID
Rapid City, S. D.
Permit No. 5