

## **Historic, Archive Document**

Do not assume content reflects current scientific knowledge, policies, or practices.



62.71

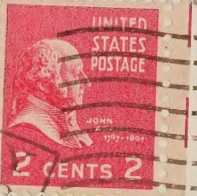
1952

**McDONALDS BULB FARM**  
8416 N. E. Going Street  
Portland 20, Oregon



Bulbs  
for Fall Planting

**LIBRARY RECEIVED**  
★ JUN 27 1952 ★  
U. S. Department of Agriculture



**U. S. DEPARTMENT OF AGRICULTURE**  
LIBRARY  
WASHINGTON 25, D. C.  
**OFFICIAL BUSINESS**  
**PRINTED MATTER**

PENALTY FOR PRIVATE USE TO AVOID  
PAYMENT OF POSTAGE, \$300  
(GPO)

**Library, U. S. Dept. of Agriculture,**  
**WASHINGTON 25, D. C.**

KEIZERSKROON (Single Early)

POSTMASTER: Return Postage Guaranteed



## 1952 PRICE LIST

All orders of \$2.00 or more Postpaid  
For orders of less than \$2.00 please add 10c for postage

Our entire stock of bulbs is domestic, grown in Washington and Oregon by nurserymen who pride themselves in producing only the finest bulbs. Order now for superior bulbs at reasonable prices. Shipment will be made at proper planting time.

**Any 6 \$1.00 Offers  
for \$5.00 Postpaid**



TULIP QUEEN OF THE NIGHT

## TULIPS

(Every bulb guaranteed top size)

### POPULAR SINGLE EARLY TULIP

**Keizerskroon** An old favorite. Brilliant scarlet, broadly edged in yellow. Most effective when used as a border. 16 inch stems. **3 for 45c; 8 for \$1.00; 100 for \$10.50.**

**GAY DARWIN TULIPS.** With their vivid colors, fine form, and good growth, these are the most popular of all tulips. Lovely for your spring flower garden, they are also effective as potted plants. Ideal for forcing.

**Duke of Wellington** Magnificent creamy-white bloom on a tall strong stem. Large graceful flower with yellow anthers. **3 for 45c; 11 for \$1.00; 100 for \$8.00.**

**Aristocrat** Soft rose shading to silvery pink at edge of petals. Goblet shaped blooms. Outstanding in every respect. **3 for 45c; 8 for \$1.00; 100 for \$10.50.**

**Queen of the Night** "Satin and velvet" aptly describes this finest of all black tulips. Large purple-maroon blooms on sturdy 24-30 inch stems. **3 for 35c; 11 for \$1.00; 100 for \$8.50.**

**Yellow Giant** Bright yellow in color, this true Darwin shaped flower is ideal for needed contrast when arranged with other Darwins. 24-30 inch stems. **3 for 25c; 14 for \$1.00; 100 for \$6.00.**

**Eclipse** Brilliant, dark, blood-red bloom with steel blue base. Tall, strong and one of the finest of the Darwin tulips. 24-30 inch stem. **3 for 35c; 11 for \$1.00; 100 for \$8.00.**

**Clara Butt** A favorite with flower lovers for over 50 years! A dainty flower with a clear pink, flushed salmon rose bloom. 18-20 inch stem. **3 for 25c; 14 for \$1.00; 100 for \$6.00.**

**William Copeland** Delicately colored magenta-lavender bloom. Highly recommended. **3 for 25c; 14 for \$1.00; 100 for \$6.00.**

**City of Haarlem** Large, intense dark scarlet; steel blue base with white halo. Lovely cup-shaped flower. 24-30 inch stem. **3 for 35c; 11 for \$1.00; 100 for \$8.50.**



PARROT TULIP FANTASY

**SPECTACULAR PARROT TULIPS!** These fine tulips are highly ornamental with their large blooms of brilliant coloring and unusual form. The petals are deeply lacinated and the vivid green markings add to the flower's exotic appearance. Plant 6-8 inches apart for best results.

**Blue Parrot** A glorious tulip of bright violet shaded steel blue. Blooms are often 8-9 inches across. Long sturdy stems. A novelty which we highly recommend. **3 for 35c; 11 for \$1.00; 100 for \$8.00.**

**Fantasy** Large blooms of striking color; salmon pink with shades of green! A joy to behold! 18-24 inch stem. **3 for 35c; 11 for \$1.00; 100 for \$8.50.**

**Orange Favorite** Huge, exotic flowers of glowing orange with green markings. Deep orange inside with yellow base. 18-20 inch stem. **3 for 35c; 11 for \$1.00; 100 for \$8.50.**

**Red Champion** Truly a champion! Crimson blooms sometimes 8 inches across. **3 for 60c; 6 for \$1.00; 12 for \$1.85; 100 for \$14.00.**



CROCUS

## CROCUS

(Guaranteed first size)

The traditional herald of spring. Effective planted in rows or groups, or when used as borders. Yellow, blue, striped, white and purple.

**Mixed lot: 12 for 60c; 22 for \$1.00; 100 for \$4.00.**



REGAL LILY

## KING ALFRED → DAFFODILS

(Blooming size)

Add grace to your garden with this lovely flower, most popular of daffodils. Rich chrome yellow, beautifully fluted. A must in every spring flower bed.

3 for 45c; 8 for \$1.00; 100 for \$10.50.

## ← REGAL LILIES

(5-6 inch)

The regal lily is significant for its easy culture and the heavy fragrance of the tall stately flowers. Blooms are white with lilac pink on the outside. Hardy bulbs of superior quality. Shipped with long healthy roots.

3 for 60c; 6 for \$1.00; 12 for \$1.85; 100 for \$14.50.



KING ALFRED DAFFODIL

EVERY BULB GUARANTEED TO BLOOM!



A Picture of Spring: A PLANTING OF MIXED HYACINTHS

## HYACINTHS

(15-16 cm)

Don't be without these delightfully fragrant flowers in your spring garden. The healthy bulbs are ideal for potted plants and for forcing—you can have hyacinths blooming in the house in January!

Pink

Blue

Yellow

Rose

White

3 for 60c; 6 for \$1.00; 12 for \$1.85; 100 for \$14.50.