

Historic, Archive Document

Do not assume content reflects current scientific knowledge, policies, or practices.

62, 13

21952

U. S. DEPARTMENT OF AGRICULTURE

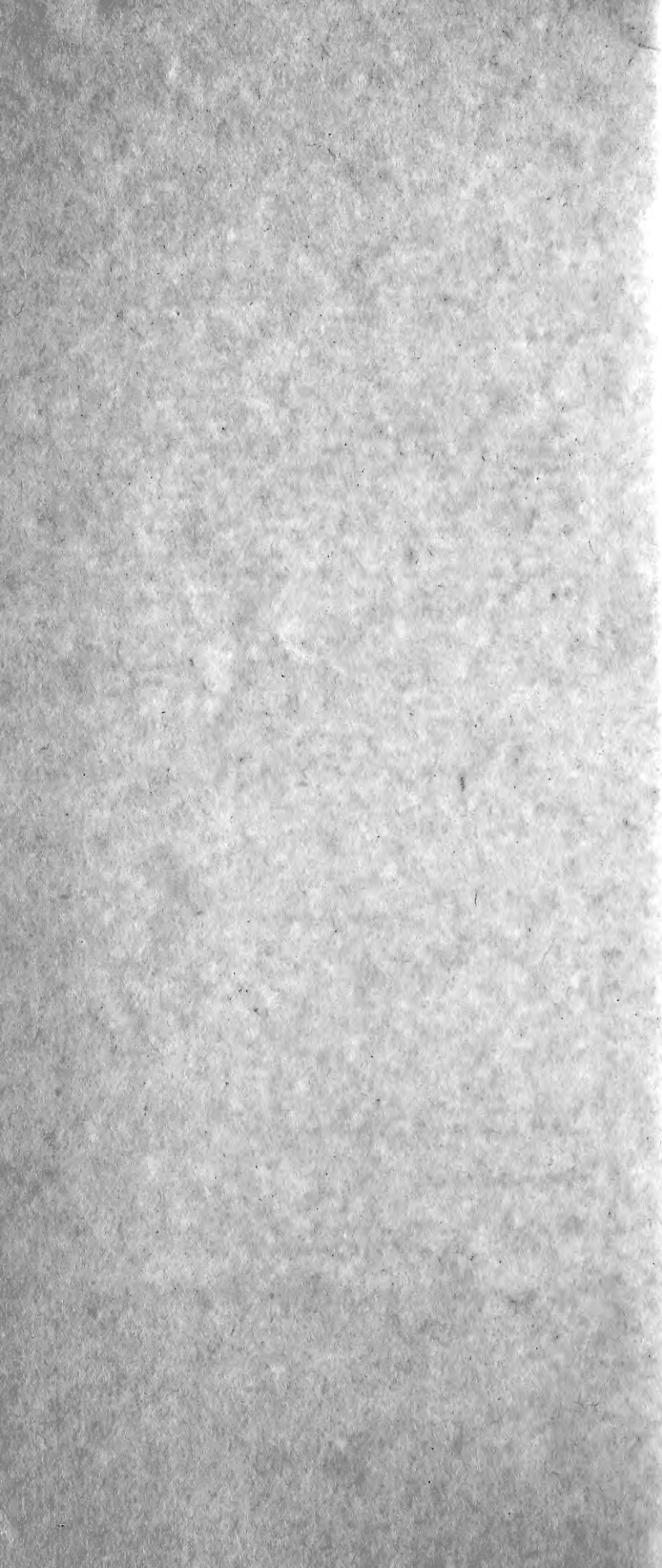
RECEIVED

★ JAN 31 1952 ★
U. S. Department of Agriculture

BEGONIAS
GERANIUMS
and
RARE PLANTS



LOGEE'S
NORTH STREET GREENHOUSES
Danielson, Connecticut



We would like to take this opportunity to thank those who have favored us with their orders in the past and to welcome all new customers to our ever growing list of satisfied patrons.

A friendly invitation is extended to all who wish to visit our greenhouses which are located one mile from the center of Danielson, Connecticut, on North Street off Connecticut Route 12 (open weekdays, Sundays, and holidays). Visitors will find much of interest. We have devoted over twenty-five years to our collection of Rex and Fibrous Rooted Begonias of which we have over 300 varieties, the largest collection of Begonias in the East. Our greenhouses also afford the opportunity to see a large collection of rare and unusual plant material. Of special interest is the Ponderosa Lemon Tree, Guava Trees, Bird of Paradise, and many other interesting horticultural specimens.

We hope this catalog will help you in making your selections and we await the opportunity to be of service.

Sincerely yours,

Logee's North Street Greenhouses

Terms:

Minimum order \$3.00, plus 50c for packing and postage.
Orders \$5.00 and over postage prepaid.

Cash with order.

Plants will be skillfully packed and sent via the best method. Plants are in 2½" pots.

THIS CATALOG CANCELS ALL PREVIOUS PRICE LISTS.

REX BEGONIAS

Large-Leaved

- EMERALD GIANT. Leaves of light green with irregular silver markings. 50c.
- FIESTA. Exceptionally strong grower. Typical rex leaf of olive green with raised silver blotches, turning rose color in bright light. \$1.00.
- LESOUDSII. A strong grower. Large maple-leaf type, dusky olive green, irregularly zoned, spotted with pea green. 50c.
- LORD PALMERSTON. Olive green leaves with lighter green zone. Stipuled with sage green. 50c.
- MARLBOROUGH BEAUTY. A new Rex introduced by Mrs. Mary Kennedy. Silver leaves with green marking. Very striking. 50c.
- MONTALVO. A large silver leaf with palmate center, and dark green edge. 75c.
- MRS. JOHN BURNHAM. Silver leaves lightly covered with pink hairs. 50c.
- PERLE DE PARIS. Beautiful large leaves of silver metallic green. Flowers striking lemon color. True elephant ear begonia. 75c.
- CARNOT. Round leaf, dark olive with raised blotches of silver, an old favorite. 50c.
- QUEEN WILHEMENA. A popular variety. Silver leaves bordered with light green. 50c.
- RUBENA. Dark green background overlaid with blotches of silver, pink flushed when grown in sunlight. 50c.
- STAR DUST. Large dark olive green, entirely dusted with silver. 50c.

Medium Leaved

- A. D. DAVIS. Medium grower with rounded leaves of silver. Center and border dark olive green. 50c.
- ALEXANDRA. Dark green leaves with silver edging. 50c.
- CHILDS SPOTTED. Very dark brown leaf with gray spots. 50c.
- COON'S EYE. Crinkly, green edge, silver leaf. \$1.00.
- DREW. Small center and edge grass green. Zone gray green so formed as to give a perfect illusion of a leaf within a leaf. 50c.
- ELLA MARGUERITE. A strong grower with grey green leaves. Dark green palmate center and edges. \$1.00.
- EMERAUD. Typical rex leaf of grass green. Very desirable. 50c.
- EMPEROR. Silver gray rounded leaf, flushed purple: slightly hairy. 50c.
- EVERGREEN. A new greenleaved type with slight silver marking at tip of leaf. 50c.
- FAIRY. Pointed silver leaf, veined with gnaphalium green, tinted with pink. \$1.00.
- GREEN BERRY. Dark olive green leaves heavily stipuled with silver. Strong grower. 50c.
- GRIFFITHII. New species from India. Velvet plush leaves. green with silver band. \$3.00.
- HELEN TUPPEL. Recent introduction from Holland. Beautiful pointed leaves of dark garnet, touched with silver. \$1.00.
- HERMAN TUPPEL. Like the above, leaves more rounded. \$1.00.
- HUNTINGTON LAKE. Wavy leaves of dark maroon, sparsely covered with hairs and silver spots. 50c.
- INIMITABLE. Upright pointed leaf of shiny tea green, covered with coarse hairs of vinaceous purple. 50c.
- IMPROVED MODESTY. Strong grower, dull silver leaf peppered with dark spots, entire leaf flushed with daphne pink. 50c.

- KING HENRY VII.** Changeable maroon leaves with irregular silver markings. 75c.
- METEOR.** The most lovely, and changeable, compact grower, silver leaves beautifully flushed with pink. \$1.00.
- PEACE.** Entire leaf silver, overflushed with rose. A strong grower. Much used in flower arrangements. \$1.00.
- MODESTY.** A striking variety with green background and markings of silver, over all a pink flush. Strong grower. 50c.
- MOONBEAM.** Typical rounded leaf of light grey green. Strong silvery sheen. The lightest of all the rex. 75c.
- MRS. FREVERT.** Maple leaf, center and border dark olive, irregular zone of light elm green. 50c.
- PETER PAN.** An excellent type with rounded green leaves stipuled and irregularly marked with silver. 50c.
- POMO.** Light green covered with reddish hairs. \$1.00.
- QUEEN OF HANOVER.** One of the oldest and best rex. Rounded leaves of olive green with pea green edge. Leaf and stem covered with corinthian pink hairs. 75c.
- ROSE DURGIN.** A dark olive green with silver marking and metallic sheen over all. 50c.
- SALAMANDER.** Medium leaf of cress green, spotted silver. A fine, compact grower. \$1.00.
- SEA NYMPH.** Dark maroon leaves with silver markings. Edge light green. 75c.
- SILVER CLOUD.** A lovely light silver green. 50c.
- SILVER CORD.** Ground color grey green irregularly marked with silver between veins. Sometimes flushed with pink in sunlight. 50c.
- SILVER KING.** One of the loveliest of silver rex. 75c.
- SILVER QUEEN.** A soft silver grey with overcast of metallic purple in center. 50c.
- SOLID SILVER.** Most outstanding all over silver leaf, under side dark red, compact grower. \$1.00.
- SPIDER WEB.** Pointed leaves of silvery green, slightly hairy. 50c.
- TIOGA.** Dark bronze with overcast of grey. 50c.

Upright or Branching Rex

- ABEL CARRIERE.** An old favorite with silver leaves, flushed pink in sunlight. 75c.
- ALFREANA.** A new Rex, one of Robinson's Hybrids, pointed medium size leaves of silver slightly flushed with pink; outstanding flowers of ivory pink in large cluster. \$1.00.
- BERTHA MCGREGOR.** Old favorite, leaves large palmate, center and edges oliveaceous black, long blotches of silver and irregular spots running out at ends of points. 50c.
- CHARLES SCHMIDT.** Pointed leaves of brownish green, silver blotched. 50c.
- MRS. A. G. SHEPARD.** Ivy leaved small center dark olive, indented edge of dark green, field tea green. 50c.
- MRS. MOON.** Lovely compact grower, silver leaves with metallic sheen. 50c.
- NIGGER TREE.** A Cathayana hybrid, leaves medium dark red with green zone. \$1.00.
- PEARL HUME.** Often called Adrien Schmitt; many pointed leaf, olive green, blotched with silver, flowers-white. 50c.
- PINKIE.** Introduced by Leslie Woodriff. Small rounded leaves of silver entirely flushed with purple. \$1.50
- ROBERT GEORGE.** Maple leaf of silver, center and edge olive green. 75c.

SILVER FLEECE. Small grape leaves of silver green, an old favorite. 50c.

SILVER SWEET. A beautiful compact grower, silver leaves with metallic sheen 75c.

VAN EX. Lovely type, green leaves overlaid with silver. 75c.

Brilliant Colored Leaved

BLACK DIAMOND. New. Outer zone dark maroon, silver center with metallic overcast. A strong grower. \$1.50.

CARDOZA GARDENS. Leaves of bright green edged with silver and silver spots, flushed over all with pink. \$1.00.

CHRETIEN. Medium leaves of silver palmate marked with olive green and edged with dark green; whole leaf overflushed with crimson. 75c.

CRIMSON GLOW. Silver pointed leaf sprinkled with rose metallic. 50c.

DUSKY ROSE. New. Pointed leaf of dark green, sparsely silvered, overflushed with rose. Very striking. \$1.50.

FIREFLUSH. One of the finest of Rex; leaves dark green edged with black, entire leaf covered with red hairs; new leaves resemble red velvet, flowers white and very fragrant. \$2.00.

GLORY OF ST. ALBANS. Leaves bright rose overlaid with silver, named for the Cathedral windows in St. Alban's. \$1.50.

GREEN FIREFLUSH. Like Fireflush with greener cast. \$1.00.

HER MAJESTY. Beautifully flushed dark olive green leaves. \$1.00.

KING EDWARD. Leaves dark, overlaid with purple. \$1.00.

MAIDEN'S BLUSH. New. Beautiful pointed leaves, outer edge silver, center zone maroon, overall flushed with crimson. \$1.50.

MIKADO. Large leaves of silver overlaid with bright rose. \$1.50.

MOUNTAIN HAZE. Large beautiful silver flushed pink leaves. \$1.00.

OUR INDIAN. New. Medium rounded leaves, edge dark olive green, brilliant rose center, strong and very striking. \$2.00.

PACIFIC SUNSET. Rather dwarf grower, silver leaf with purple. \$1.00.

PAINTED LADY. New. Medium leaf, bright green edge, with opalescent mixture of silver and rose. A very colorful, strong grower. \$2.00.

PATSY. New. Large pointed leaves of deepest purple, silver blotches, overcast with bright rose. Beautiful form and strong grower. \$1.50.

PURPLE GLORY. New. Very dark, almost black outer edge, zone silver, overcast with royal purple. \$1.50.

SILVER GLOW. New. Ruffled leaf of olive green, covered with rose flushed silver. \$1.50.

WADSWORTH MT. HAZE. Even more brilliant than Mt. Haze \$2.00.

Dark Leaved

BEARDED. A favorite Rex, dark green with silver markings, overall a thick matting of silver hairs. 75c.

BLACK KNIGHT. Lovely dark red leaf, zoned with silver spots. \$1.50.

BURVEL. Rounded leaf of dark red, overall distinct silver spots, round stems very hairy. 75c.

JECOCK MIDNIGHT. Very dark olive green. 50c.

MAGNIFICA OR HELEN LEWIS. Leaves dark red with distinct silver zone, overflushed with purple. \$1.50.

MIDNIGHT. Overall a dark reddish green, stipuled with red hairs. \$1.00.

RAJAH. Rather long pointed leaf with lustrous black center, overcast with purple. \$1.00.

Spiralled or Erdody Group

BALLET GIRL. New. Very curly all over silver with metallic lustre of rose. \$2.00.

BRONZE KING. Leaf very curly, bronze color overlaid with silver spots. \$2.00.

CAPTAIN NEMO. Center leaf silver green, with outer edge a bright green. \$1.50.

CAROLYN MARTIN. Silver spiralled leaves with dark green edge. \$2.00.

CARMELITA. Leaf dark green with brown markings and silver bands. \$2.00.

COUNTESS LOUISE ERDODY. Silver leaf with pink overcast. \$2.00.

CURLY CARNOT. Leaf dark green, heavily marked with silver. \$2.00.

CURLY FIREFLUSH. New. A beautiful curly type with the same striking velvet leaves of Fireflush. \$2.00.

CURLY LORD PALMERSTON. New. Olive green zone, same strong grower and color of Lord Palmerston. \$1.50.

CURLY SILVER SWEET. New. Very curly, all over silver veined garnet. \$2.00.

CURLY STARDUST. Leaf dark green, sprinkled with silver. \$2.00.

NEW ERDODY. Entire leaf silver: very striking. \$2.00.

OKEFINOKE. Largest in this class, leaf and edge dark green with silver band and spots. \$1.50.

OREGON SUNSET. New. Edge light green, silver zone, pink flush overall. Very colorful and strong grower. \$1.50.

PRINCESS OF HANOVER. Typical curly leaf, very papillary, zone pea green, border ivy. \$2.00.

PURPLE CURLY STARDUST. New. The most beautiful color and strong grower. Purple leaves heavily stipuled with silver, which turns pink and rose. \$2.00.

SEED TWIST. New. Very curly pointed leaf with dark veins, silver markings are edged with pink. \$1.50.

TWISTY SPOT. Cork-screw leaf, dark background, stipuled with silver spots. \$2.00.

Small Leaved or Dwarf Group

ANNIE ROBINSON. Beautiful serrate leaves of brilliant crimson. \$1.50.

BABY RAINBOW. Just what the name implies; a miniature Rex with rainbow hues; rare. \$2.00.

CALICO. Round leaves of dark green with raised silver spots; overall flushed purple; very choice. \$1.00.

FLAPPER. Pointed leaves of dark green, heavily striped with silver. 75c.

HUSBANDS FAVORITE. Round leaves of silver overlaid with pink to give an opalescent effect; choice. \$1.50.

IRISH COLLEEN. A small leaved upright Rex with bright grass green leaves. \$1.00.

IT. A Rex hybrid, green leaves striped with silver; flowers freely, bright pink. \$1.00.

KATHLYANA. Maple shaped leaves of olive brown heavily spotted with silver; very compact grower. \$1.50.

LOUISE CLOSSON. Leaf, very dark, large spot of purple, metallic overcoat. \$1.50.

LUCILLE CLOSSON. Dark red miniature with metallic sheen. \$1.50.

LUCY CLOSSON. Dwarf black leaf with tiny flecks of purple at tip of leaf. \$2.00.

- MARIAN LOUISE.** Center and edges brownish black running into spots and blotches of pink, purple zone, bright green heavily spotted with light grey green. \$1.00.
- MULBERRY.** Edge and center dark red with band of silver, overall a suffusion of Mulberry; very striking. \$1.00.
- PANSY.** Unusual metallic green with distinctly marked center of dark green; flowers rose. \$1.00.
- PEACOCK.** Rounded leaves with black palmate center and edges, with touches of silver, entire leaf suffused with iridescent rose. \$1.50.

Grape-Leaved Group

- ACIDA.** A low growing type with large cedar-green leaves, coarsely veined. Flowers on long stems, pinkish white in winter \$1.00.
- ILLUSTRATA.** Small compact grower, leaf round with one point, rough and crinkly green, sunken markings along veinings that make a regular network pattern. 50c.
- PEARLI.** A dwarf grower with shiny very light green leaves glossed with darker green between the veins. 50c.
- SPECULATA.** The grape leaf begonia, crinkly brown leaves, flowers in racemes above the foliage, pink. 50c.

FIBROUS ROOTED BEGONIAS

New and Rare

- ALNIFOLIA.** New species from Costa Rica. Bushy growth, leaves like the alder tree. \$1.00.
- ALTO-SCHARFF.** New. A beautiful, bushy type. Leaves similar to the lovely texture of Scharffiana, edges red, angel wing form. Flowers are two-toned, white and pink. \$2.00.
- ALZASCO.** Leaves of darkest green silver-spotted and silver-tipped; under side dark maroon with pale green veins; blooms dark red. \$1.00.
- ARTHUR MALLET.** One of most richly colored; dark red-bronze leaves overlaid with silver-pink dots; large clear rose-pink flowers. \$2.00.
- ASCETOSA.** New. A beautiful species from Brazil. Rounded leaves, thickly covered with hairs, upper side light green, under brilliant red; entire leaf like velvet. Flowers white, above the foliage. A bushy, low growing type. \$2.00.
- BOWERI.** New. A petite rhizomatous miniature. Leaves light green with dark brown markings, numerous erect hairs at leaf margins. Petioles red. Flowers white on red stems, well above the foliage in winter. \$2.00.
- COOPERI.** Beech leaf Begonia. Interesting species with pleated, light green leaves. \$1.00.
- CATHAYANA.** Leaves of emerald-green with ruby-red veins and a zone of lighter green; under side deep ruby velvety, flowers most unusual, soft orange. \$2.00.
- CRESTABRUCKI.** Rare rhizomatous. "Lettuce leaved Begonia". Large bright green leaves, very curly and ruffled on edges. Pronounced white veins. \$2.00.

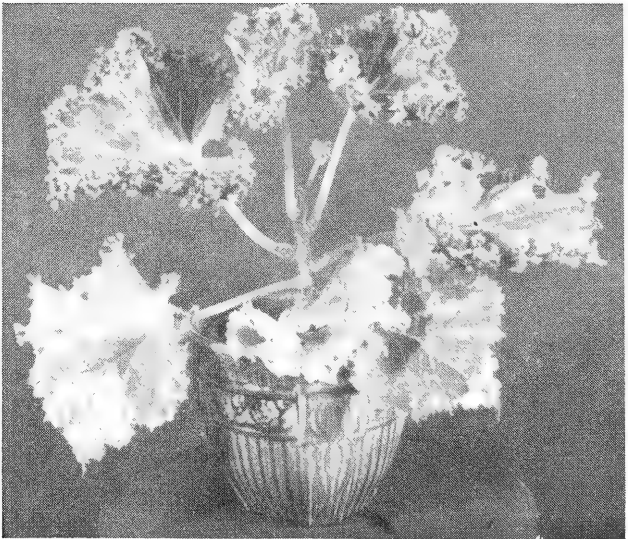
ON OPPOSITE PAGE

Picture of FIRST PRIZE EXHIBIT at Harvest and House Plant Show of the Massachusetts Horticultural Society in Boston, Massachusetts. First Row left to right: Venosa, Evergreen, Mazae, Illustrata, Herman Tuppel, Di-Erna, Joe Hayden. Second Row: King Edward, Bronze King, Acida Peace. Third Row: Mrs. Moon, Helen Lewis, Dichroa, Helen Tuppel. Top Row: Bunchi, Ricinifolia, Haageana, Princess of Hanover, Deuchartrei, Silver Sweet Sunderbrucki, Incana.





GOEGOENSIS



MANICATA
AUREO CRISTATA

- DANCING GIRL.** Dwarf growing angel wing type, leaves much silvered, each leaf a different cut and size. No two leaves alike. Very interesting. Flowers red. \$2.00.
- DAWN.** Small leaves of clear silver, veined with dark green; serrated red edge. 75c.
- DICHROA.** Leaves dark green, silver-spotted with raised veins; flowers glorious orange-scarlet color, rare in begonias. \$2.00.
- ELAINE.** Long narrow ruffled leaf of olive green; large clusters of rose-pink flowers. \$1.00.
- ELSIE M. FREY.** Heart shaped leaves dark glossy green with light red beneath; flowers rose-red. \$1.00.
- ENGLERI.** Very furry stem; emerald-green leaves red veined and glistening with white hairs; flowers pink on long peduncles. \$1.00.
- EPIPSILA.** New. Species from Brazil. Leaves thick, green enamelled above, woolly beneath, smooth margins. Dwarf growth. Flowers white. A collectors item. \$2.50.
- GOEGOENSIS.** Large egg shaped leaves dark olive-green with bronze blotches; rose colored flowers. Very rare \$3.00.
- HUGELI.** Rare species from Brazil. Soft hairy leaves, bright green above, rose beneath and red veined. Flowers pure white and bearded, like Haageana in growth and vigor. A collectors plant. \$1.00.
- IMPERIALIS.** Leaves olive-brown with irregular bands of bright green thickly set with tiny white hairs; two-petaled white flowers. \$2.50.
- IMPERIALIS MACULATA.** Bright green leaves spotted with white. \$2.50.
- JOE HAYDEN.** New. Outstanding hybrid of Mazae. Satiny dark brownish green leaves. Red under. Flowers pink on tall stems. Excellent grower. Selected stock. \$2.00.
- LIEBMANNI.** Lobed green leaves splashed with silver and purplish beneath; flowers white. \$1.00.
- LUXURIANS.** Compound leaves resemble an umbrella; small cream-colored fragrant flowers. \$1.00.
- MALABARICA.** One of the oldest known; deeply toothed leaves, covered with short white hairs; flowers pale pink. \$1.00.
- MANICATA AUREO CRISTATA.** Large curly edged leaves, mottled yellow. \$3.00.
- MAZAE.** Species from Mexico. Upright growth. Leaves rounded, bronzy red above, rich maroon beneath. A striking plant and strong grower. Flowers above the foliage, pink, in winter. \$1.00.
- Mme. FANNY GIRON.** Dark green leaves, compact growth with excellent scarlet blooms. \$1.00.
- ORANGE RUBRA.** Leslie Woodriff's hybrid of Dichroa. Extra strength and vigor. Glossy green foliage, flowers the same glowing orange. A free bloomer and bushy growth. \$2.00.
- PLEBIA.** Rhizomatous type with medium leaves of light green, and very dark chocolate markings. Flowers pink. \$2.00.
- RED-VEINED NELUMBIFOLIA.** Erect grower. Leaves roundish, peltate, with conspicuous red veining. Flowers white, above the foliage. Smaller plant than the species. \$2.00.
- RICHARD ROBINSON.** Leaves deeply and irregularly cut with beautiful silver markings. \$1.00.
- SCHULZIANA.** Kidney-shaped leaves, shallow lobed with crenate edge; small flowers of palest pink. \$1.00.
- TENUIFOLIA.** One of the oldest known; leaves thick, deep green above, lighter beneath with light red veins; flowers profusely, delicate pink. \$1.00.

VESTITA. New species from Costa Rica. Leaves thick on short stems. Heart shaped, light green edged with pink. Flowers soft pink. \$2.00.

OTHER INTERESTING TYPES

- ACONITIFOLIA var. HILDEGARDE SCHNIEDER. A tall growing type with deeply lobed, silver blotched leaves. Flowers white, covering the entire plant in the Fall. \$1.00.
- ALMA M. A wavy edged leaf like the Lucerne type, flushed with silver, red beneath. Flowers pink. \$1.00.
- ALPHA GERE. Shiny bright green leaves, like a grape leaf. A vigorous grower. \$1.00.
- DELICIOSA. Species from Borneo with red stems. Leaves not as deeply cut as Diadema. \$1.50.
- DIADEMA. An interesting plant with deeply cut silver streaked leaves. Upright growth. Flowers white, flushed pink. \$1.00.
- DICHOTOMA. A strong shrubby plant, with bright green leaves and rough texture. Flowers white in fine feathery clusters above the foliage. 50c.
- DORA SWISHER. Dentate angel wing, edged with pink, light green with outstanding silver spots, flowers light pink. \$1.00.
- LOLITA G. Rather tall growing with deep red leaves, flowers deep rose. \$1.00.
- MARGARITACEA. A lovely dwarf grower, Leaves similar to Arthur Mallet, steel gray covered with short red hairs. Flowers soft rose pink. \$2.00.
- MARJORIE GIBBS. The well known "Christmas Begonia," with a profusion of deep rose flowers from December to April. \$1.50.
- MRS. KIMBALL. Rather tall grower, leaves finely toothed, green flushed red, covered with minute hairs. Flowers in winter, pink. 75c.
- NITIDA. A dwarf type with glossy green leaves, very free flowering. Flowers white. 50c.
- OADI. Very free flowering, upright type, similar to the Semperflorens with much larger flower clusters in a lovely soft pink. 50c.
- ODORATA ALBA. Taller growing than the above, with sweet scented white flowers, borne in clusters above the foliage. 75c.
- ODORATA ROSEA. Thick, glossy green leaves, with rose colored flowers. Fragrant. \$1.00.
- OLBIA. A beautiful maple like leaf with tints of Autumn colors. Flowers white tinged pink. \$1.00.
- ROEZLI. Fine winter flowering type with glossy green leaves and orchid rose flowers in large clusters above the foliage. \$1.00.
- RED KIMBALL. Like Evansiana with deep red leaves. 50c.
- ROSEA-GIGANTEA. Very free flowering, from December to March, rose red, covering the entire plant. Bushy growth, leaves shiny green. \$1.00.
- TEA ROSE. An everblooming begonia with flowers of rose pink, very fragrant. 75c.
- RUBRO-VENIA. An interesting species from India. Very dwarf, with pointed tapering leaves, satiny green on the upper side dark red under. Flowers white tinged pink. 50c.
- SILVER RUBRO-VENIA. Leaves a lovely silver sheen, very dark red under. A striking plant. \$1.00.
- MACROCARPA. African species. Strong, dwarf growing type with narrow slightly wavy leaves of rust green, very dark red under. Excellent as a basket plant. \$1.00.
- SPOTTED RUBRO-VENIA. Same as Rubro-Venia with much spotted leaves. 75c.

SUBVILLOSA. A fast growing type with green plush-like leaves, flowers very freely, in white feathery clusters. 50c.

ULMIFOLIA. Leaves the color and texture of an Elm leaf. Very shrubby growth. Flowers white in great profusion. 50c.

UNDINE. Crinkled leaves of green with sweetly scented white flowers. 50c.

Hanging Basket Types

ALBA SCANDENS. Compact basket type with shiny crinkled green leaves. Blooms in feathery bunches like Baby's breath, snowy white. 75c.

GLAUCOPHYLLA SCANDENS. A rare and beautiful plant with pointed light green leaves, flowers a true salmon at the ends of the drooping stems. Winter flowering. \$1.50.

GLAUCO-DAW. A hybrid of the above, more compact grower with heavy dark green leaves, deeply veined and ruffled. Flowers infrequently, bright pink. \$1.00.

GLABRA. Leaves larger than above, very glossy green, flowers white, strong grower. \$1.00.

IVY-EVER. A recent introduction, with small pointed leaves, veining dark red, flowers pink, a lovely begonia. \$1.00.

MANNI. "Rose Leaf Begonia". African Species. Very easy-culture. Foliage resembles a rose leaflet, bright green. Flowers white, striped red. Seedpod is of great interest, cylindrical and wingless. A collectors plant. \$2.00.

MARJORIE DAW. Larger leaved but pendant growth, bright green leaves, very strong growth. Flowers infrequently, deep pink. 50c.

Angel Wing Group

ACUTANGULARIS. Stems deeply grooved with larger leaves than the above with the same beautiful silver sheen. 50c.

ANGULARIS. Sometimes called Zebrina. Leaves gray striped, with a satin grey sheen over all. A bushy grower, stem dark red, flowers very small in close clusters, white. 50c.

ANNABELLE. A beautiful plant with clear green leaves and large silver spots. Blooms profusely in large drooping clusters of rose pink. \$1.00.

ARGENTEA GUTTATA. The well-known trout leaf begonia with slightly lobed heavily spotted leaves; flowers white often tinged pink. 50c.

COCCINEA. Rubra or Angel wing Begonia. Glossy green leaves, salmon pink flowers in drooping clusters. 50c.

CORALLINA DE LUCERNA. Perhaps the best known in this group. Large smooth dark green leaves spotted with silver; flowers rose red in long pendulous clusters. 50c.

CORINTHIAN PINK. Small leaved angel wing type, leaves flushed pink. Light pink flowers, blooms freely. 50c.

COMPTA. A taller grower than the last named, with silver stripes and under side red, slightly wavy and irregular. Flowers white, a scarce bloomer. 50c.

DI-ANNA. A wonderful free flowering plant. Seedling of the orange flowered Dichroa, produced by the late Alfred D. Robinson. Rather dwarf grower, leaves a bronzy green, with faint silver spots. Blooms light salmon-orange. \$1.50.

DI-ERNA. Similar to above with greener leaves, narrow and slightly wavy. Flowers a deep salmon. Blooms continuously. \$1.50.

GREY FEATHER. Well named for the leaves are pointed and irregular silver grey and shiny like Compta. Flowers creamy white. 75c.

- HELEN.** A graceful plant with greenish bronze leaves, pure white flowered Lucerna. 50c.
- HELEN W. KING.** Of medium growth with dark metallic leaves, sometimes silver spotted. Flowers pink, close to the main stems, as in fruit blossoms. Very striking. \$1.00.
- INTERLAKEN.** A striking type, with dark wavy green leaves, winter blooming having large clusters of dark crimson flowers. \$1.00.
- LOBATA VARIEGATA.** A low branching plant with serrated leaves, heavily silver spotted. Grows best in heat. 50c.
- LOBULATA.** Grape leaf, large cluster of small whitish-pink flowers, handsome winter bloomer. 75c.
- LUGANO.** Dark green finely serrated leaves, plant of well branching habit, flowers deep pink produced in great profusion. \$1.00.
- MACULATA.** Light green leaves, silver spotted. Flowers pink. \$1.00.
- MAYBELLE E.** Another silver spotted, well branched type, with pink flowers. \$1.00.
- MME. DE LESSEPS.** A beautiful plant of easy culture; flowers in large clusters white tinged pink. 50c.
- ORRELL.** Usually dwarf growing light green, ruffled leaves, heavily spotted with silver, bright red flowers in winter. \$1.00.
- PINK SHASTA.** A splendid winter bloomer. Leaves slightly ruffled and pointed on the lobe. Flowers bright begonia rose. Rather dwarf grower. \$1.00.
- PRESIDENT CARNOT.** Light green leaves and faint silver spots; flowers bright red. 75c.
- QUERCI.** Tall irregular leaves, red, with silver spots. \$1.00.
- RED ARGENTEA.** A seedling of *Argentea guttata* with large clusters of deep pink flowers; tall grower. \$1.00.
- RED RUBRA.** Brilliant scarlet flowers. \$1.00.
- ROSIE MURPHISKI.** Very dwarf bushy growth, leaves bronzy red, with wrinkled edges. Flowers pink on short stems, close to the red stems. 50c.
- SARA BELLE.** A seedling of *Maybelle E.* Medium small leaves of cress green thickly silver spotted, veins red. Flowers very deep rose, with white center to the seed-pods. Blooms constantly and likes sun. \$1.00.
- SHASTA.** A large flowered white in the *Coccinea* class. Leaves faintly spotted with silver. Flowers fragrant. \$1.00.
- SURETTA.** A pretty low growing plant with shiny maple shaped leaves, light green suffused with pink and silver spotted; flowers light pink. \$1.00.
- WHITE RUBRA.** Leaves, narrower and slightly silver spotted, flowers white. 50c.

Hairy Leaved Group

- ALLERYI.** A compact grower, leaves dark green, red veined beneath; flowers beautiful deep rose appearing, covered with rose hairs. 50c.
- CYPRAEA.** Leaves light green, hairy; flowers pink. 50c.
- DUCHARTREI.** Leaves light green, large waxy white flowers. 50c.
- HAAGEANA.** Of easiest culture; stems, leaves and flowers thickly set with red hairs; a constant bloomer. 50c.
- HAAGEANA** var. **DROSTII.** Rounded dark olive green leaves, flowers very large, white with thick deep red hairs. \$1.00.
- LAETIVIRIDES.** Leaves green, dark red under, covered with fine white hairs to give the effect of velvet. A dwarf grower, well branched, flowers white. \$1.00.

- LOMA ALTA. Introduced in 1935 by Mrs. E. M. Fewkes. A beautiful plant with large dark red leaves, and huge sprays of white flowers. 75c.
- MARGUERITE. Hairy foliage with dark green metallic lustre, flower blush-pink; a free bloomer. 75c.
- METALLICA. An old favorite. Leaves bright green with metallic lustre and hairy; flowers in short clusters, white with pink hairs. 50c.
- Mrs. FRED T. SCRIPPS. Leaves peculiarly divided into lobes, sometimes deeply cut and rounded, flowers in loose sprays; very striking and a good grower. \$1.00.
- NELLIE BLY. Small dark olive green leaves, buds and flowers, deep red, bushy growth and free bloomer. 50c.
- PRUNIFOLIA. Leaves dark green, red under; flowers ivory in large drooping clusters; very striking. 50c.
- RUFIDA. Leaves bright olive green, red under; covered with thick white hairs; flowers white, thickly set with red hairs. 75c.
- SCHMIDTIANA. A cunning dwarf begonia with rounded leaves of dark green; flowers white. 50c.
- SCHARFFIANA. A beautiful plant with large fleshy leaves, flowers white, on long drooping stems. \$3.00.
- UNDEMILLE. Similar to above; flowers are borne on long drooping stems, very large white, set with red hairs. \$1.00.
- UROPHYLLA. Very dwarf. The plant is stemless, leaves rising directly from the root; flowers in loose panicles, white flushed pink. 50c.
- VIAUDE. Leaves long, dark green; flowers profusely borne on long stems, very large, pure white with gorgeous golden stamens. \$1.00.

Red Leaved Group

- BRAEMAR. A beautiful large rounded incurled leaf of dark red; flowers white in long loose panicles. \$2.50.
- CHIALA-ROSEA. Like the above with smaller leaves; flowers pink. 50c.
- DOROTHY GRANT. A larger plant than above; leaves dark red under, flowers white in large loose sprays. \$1.00
- DWARF FRUTICOSA. Like Fruticosa in miniature; charming plant. 50c.
- FRUTICOSA. A dwarf thick leaved type well branched with dark green leaves, red under; small white flowers. 75c.
- FRUTESCANS. A seedling of Fruticosa, with the same low spreading habit. The leaves are cupped showing the dark red under surface; flowers are white. \$1.00.
- FRUTISCARIA. Another Fruticosa seedling with green thick leaves slightly flushed with red when grown in sunlight. \$1.00.
- MRS. W. A. WALLOW. Long narrow olive green leaves, under side deep red; flowers deep pink. 75c.
- RED COMPTA. A dwarf bushy dark red plant sometimes used as a basket begonia; flowers red. 50c.
- ROGERI. Like Thurstoni with irregular leaves. 75c.
- SANGUINEA. A brilliant Brazilian species with thick ever-green leaves, glossy green above blood red beneath; small white flowers. \$1.50.
- THURSTONI. An old favorite, hardy grower. Leaves metallic green with dark red veins and under; flowers pink. 50c.

Small Leaved Group

- CARPINIFOLIA. Beech leaf Begonia. Interesting species, with pleated, light green leaves. \$1.00.

- CORBELLE DE FEU.** Upright growth, glossy green leaves. Flowers a brilliant coral red. Winter 50c.
- DECKERS SELECT.** Like Fuchsioides with larger leaves and heart shaped red buds, turning to pink as they open. 50c.
- DIGSWELLIANA.** A low bushy grower with light green serrated foliage and drooping scarlet flowers. 50c.
- DREGEL.** One of the so called "Maple Leaf" group, with bronze foliage and white flowers. Semi-tuberous. 50c.
- FOLIOSA.** The tiniest leaved begonia, often called the "Fern-leaved." A beautiful plant with notched, miniature foliage, and very small white flowers at the ends of the drooping branches. 50c.
- FUCHSIOIDES.** The fuchsia begonia, Small green foliage, with scarlet drooping fuchsia like flowers in late winter. 50c.
- FUCHSIOIDES ROSEA.** Smooth, shiny green leaves, slightly larger than Foliosa, Beautiful for its pendulous rose pink flowers, borne profusely in winter. 50c.
- INCARNATA** var. **SANDERSI.** Light green foliage of bushy growth, lovely large bright pink flowers throughout the winter. \$1.00.
- INGRAMI.** Small red edged leaves, very strong bushy growth, flowers pink to red in pendulous clusters. 50c.
- JINNIE MAY.** A miniature rubra type with red tinged foliage and dark rose flowers on long wiry stems. Different and interesting. 50c.
- LADY WATERLOW.** A graceful plant with slightly hairy, glossy green leaves, flowers white tinged pink in late winter. 50c.
- LULANDI.** Another recent introduction of the basket type. Flowers salmon pink in summer. \$1.00.
- MAY QUEEN.** Narrow glossy green leaves with silver spots, flowers white in profuse drooping clusters. 50c.
- MEDORA.** Called the miniature Trout Leaf begonia. Very bushy, heavily silver spotted leaves. Light pink flowers in lovely drooping clusters in Autumn. 50c.
- MULTANGULA.** Very bushy growth, leaves cress green, white flowers. 50c.
- PERFECTIFLORA.** A beautiful dwarf well branched plant, covered with white flowers in Autumn. 50c.
- PICTA ALBA.** Narrow small dark green foliage, heavily spotted with silver. Flowers creamy white. 50c.
- PICTA ROSEA.** Sometimes called the Baby Rubra, rose colored flowers freely produced in winter. \$1.00.
- PREUSSEN.** Very bushy habit with small pink tinged foliage flowers in small clusters of rose pink. 50c.
- SACHSEN.** Like the above with bronze foliage, making a lovely contrast to the coppery red blooms. 50c.
- UNDULATA.** Glossy green leaves with wavy edge, fragrant white flowers. 75c.
- VEITCH'S CARMINE.** Leaves notched, light green, edges flushed pink. Flowers brilliant scarlet in small drooping umbels. Bushy growth. Excellent winter bloomer. \$1.00.
- WASHINGTON STREET.** Leaves the size of the small peach leaf and as glossy. Flowers in showers of white in mid-winter. 50c.
- WELTONIENSIS ROSEA.** Another semi-tuberous, with small pointed serrated leaves and red stems. Flowers pink. 50c.
- WINTER JEWEL.** Low bushy growth with satiny foliage and pink flowers. \$1.00.

THICK STEMMED AND PROCUMBENT GROUP

- BESSIE BUXTON.** An upright pond lily type. The specimen plants are the most beautiful winter bloomers, covered from December to March with showers of pink. \$1.00.

- BUNCHI.** A ruffled and crested type like the Feasti, very fine for indoor culture. Winter flowering. Pink. \$1.00.
- CAROL STAR.** New. A strong growing "Star" type, with seven pointed leaf of glossy green, developed by Leslie Woodriff. Flowers large, deep rose. \$1.50.
- CHIMBORAZO.** New. A strong growing species from the mountains of Brazil. Leaves light green, smooth, petiole. Bushy growth. Flowers one winged, coral in small clusters above the foliage. \$1.00.
- CONCHAEFOLIA.** A curled leaf Feasti, with the same habit and blood, Choice. \$1.00.
- FEASTI.** The old fashioned "Pond Lily" or "Beefsteak" Begonia. A handsome plant with round pond lily like leaves, arising from the thick stems, low growing and profuse winter flowering with showers of light pink blooms on erect stems above the foliage. 50c.
- FUSCOMACULATA.** Ricinifolia type with interesting chocolate markings. A strong grower. \$1.00.
- GILSONI.** Dark green leaves deeply serrated, with dark brown markings along the veins. Flowers light pink and appear to be double. Winter bloomer and dwarf growing. \$1.00.
- HERACLEICOTYLE.** syn. Mrs. Townsend. Dark thick leathery maple shaped leaf, compact grower, large lacy shell pink flowers, borne on strong stems well above foliage. \$1.00.
- HERACLEIFOLIA.** An old Mexican species, and parent of the so called "Star-Begonias." Leaves deeply lobed a dark green, reddish beneath and hairy, stems covered with long red hairs. Umbels of pale pink flowers from February to April. \$2.00.
- HYDROCOTYLIFOLIA.** The pennywort begonia, or miniature pond lily, a cunning plant with round thick leaves, dark almost black markings along the veins when mature. Flowers pink in winter, stock very rare. \$1.00.
- INVOLUCRATA.** Upright growing, coarse green leaves, native of Central America. Flowers in nodding clusters above the foliage. \$2.00.
- JESSIE.** The green leaved type of Templini. Free bloomer in winter. 75c.
- MARION.** A smaller leaved type with bronzy red foliage, flowers pink. \$1.00.
- MANICATA.** Leaves larger than Feasti, lighter green, and not as compact a grower. Flowers rose pink in tall clusters. \$1.00.
- MANICATA AUREO MACULATA.** As above with mottled yellow and white foliage. \$2.00.
- MRS. MARY PEACE.** A deeply cut star begonia, with light green, very hairy leaves and stems. Flowers light pink. \$1.00.
- PAUL BRUANT.** Upright growth, very serrated bronzy foliage with huge clusters of pink flowers. Winter blooming. \$1.00.
- PERLE LORRAINE.** Upright growth with leaves of medium green and interesting chocolate markings, flowers pink. \$1.00.
- RICINIFOLIA.** Another large growing type, with bronze leaves, resembling the foliage of the castor-bean. New leaves deep red, flowers rose pink on tall upright stems. \$2.00.
- SILVER STAR.** A lovely all over silver leaf of the "Star" type. A vigorous grower. \$1.50.
- SKEEZAR.** New. Interesting dentate leaf of olive green prominently marked with silver. Of easiest culture. \$1.50.
- STRIGILLOSA.** A Mexican species of upright growth, large light green leaves, fringed with silky hairs and mottled with dark spots. Flowers light pink. New. \$2.00.

- SUNDERBRUCHI.** The "Star", "Poinsettia" or "Lady Finger" begonia. Deeply cut long lobed leaves of dark green, almost black along the middle of the ribs, under side dark red. Stems and under leaves covered with white hairs. Flowers in thick upright bunches. \$1.00.
- TEMPLINI.** A beautiful plant with mottled green leaves, tinged red when grown in full sun. Spots are rose to yellow. Covered with rose pink flowers in winter. \$1.00.
- VERSCHAEFELTI.** Very large glossy green, lobed leaves on long fleshy stems. Huge clusters of bloom in upright clusters in winter. 50c.
- WADSWORTH SUNDERBRUCHI.** A much smaller grower. A new dwarf hybrid and leaves with more red along the veins. Flowers pink. \$2.00.

MULLEN LEAVED TYPES

- BARKERI.** Large, thick leaves, hairy beneath. Flowers pink. Excellent winter bloomer. \$1.00.
- CORIACEA.** Thick glossy leaves, with very succulent growth. Flowers white. 50c.
- INCANA.** This is better known as Peltata. Round thick mul-len like leaves. Low growing, flowers creamy white, tinged pink. \$2.00.
- KELLERMANI.** Foliage much like Peltata but not as thick, as the leaves mature they turn pink and very fleshy. Flowers light pink in winter. \$1.00.
- VENOSA.** Leaves thickly covered with silvery hairs. New leaves produced from paper-like sheaf, pleated, gradually unfolding to a flat rounded leaf. Will take much sun in winter. Very free flowering, ivory white and spice scented. \$1.00.
- WOOLLY BEAR.** Very dwarf, free flowering plant, with round leaves, stems and underside, brown and wooly. Flowers white. 50c.

CALLA LILY BEGONIAS

- CALLA LILY.** Old fashioned variety with single red flowers. Green and white leaves. \$2.00.
- CALLA LILY DOUBLE PINK.** New. Beautiful green and white foliage with luscious all double light pink blooms. Very striking. \$3.00.
- CALLA QUEEN.** New. Extra strong grower. Large green leaves at base of plant, new leaves pure white, forming a perfect miniature calla lily. Large single rose pink flowers. Must be pinched, to keep plant bushy, strong and healthy. \$2.00.
- RUBY JEWEL.** Small white leaves. Flowers in profusion in summer, double red. A striking variety. \$2.00.

ROSE BEGONIAS.

GREEN LEAVED DOUBLE SEMPERFLORENS

The forerunner of this group is the first double pink wax Begonia, Westport Beauty or Gustav Lind. We offer the following kinds which we consider the finest selections, both for their free flowering habit and large double flowers.

- DAINTY MAID.** New. Striking two-toned color, center of all double flower, pure white, outer petals and edges tipped with rose pink. A strong grower. \$1.00.
- GREEN LEAVED THIMBLEBERRY.** New. A special hybrid, originated by Ernest K. Logee, for those who like the plain green leaf and the same beautiful thimbleberry type flower. A strong grower and profuse bloomer. \$2.00.
- NEW HAMPSHIRE HYBRIDS.** Originated at the University of New Hampshire by Prof. W. D. Holley. All double semi-dwarf, free flowering. Separate colors. Red, rose blush. 75c.

- PINK WONDER.** Dwarf upright, compact habit, green foliage. Gorgeous double pink flowers of immense size. Most spectacular begonia in this class. \$2.00.
- RUFFLES.** A lovely soft, fluffy pink. Exceptional winter bloomer. \$1.00.
- SNOW WHITE.** Very dwarf, double white flowers with green foliage. 75c.

RED LEAVED DOUBLES

Ernest Kimball Logee Hybrids

- BALLET.** Finest double white. Beautiful contrast to the bronze foliage. Plants are neat and compact. Extra strong grower and very free flowering. \$2.00.
- BO PEEP.** A gem in this class. Dark bronze leaves with dark pink, extra double flowers. Very free flowering. \$2.00.
- ERNEST K. New.** Best of the camellia flowered types. Large camellia formed; flowers of bright rose red. In this selection, flowers and foliage are richly contrasted. Foliage is the darkest in this group. Strong plants \$3.00.
- JOAN STRONG.** Semi-dwarf, bushy plant with red foliage. Large double pink flowers. Very showy. \$1.50.
- OLD LACE.** New. Large rose pink blooms, with many lacey petals. Profuse winter flowering. \$2.00.
- WINKIE.** New. Very bushy and dwarf in habit. Covered the year around with large old rose double and multiple double flowers. One of the best in this class. \$2.00.
- LUSCIOUS.** New. Graceful plant with airy light pink flowers, shading to white in center. Foliage has a slightly green overcast, lending a striking contrast. \$2.00.
- JACK HORNER.** New. Extra strong free flowering type. Dark rose camellia form flowers which completely cover the plant. Copious winter blooming. \$2.00.
- PINK CAMELLIA.** Red leaved semi-dwarf with the loveliest double pink flowers, opening like a rose. Resembles a perfect miniature camellia. New. \$2.00.

RED LEAVED THIMBLE HYBRIDS

- CINDERELLA.** New. Sport of Firefly. Blossoms glowing pink, crested, varying in season to pink overlaid with yellow. Tips of blooms cherry red. Plant branches well and very free flowering. \$2.00.
- CURLY LOCKS.** Dark bronze foliage, semi-upright habit. Flowers shaped like a thimble, bright sulphur yellow with bracket of pink on upper petals. \$1.00.
- FIREFLY.** New. Crested coralred flowers, covering the entire plant. A beautiful contrast to the dark bronzy red foliage. \$2.00.
- GOLDIE LOCKS.** New. Center of thimble golden yellow, outer petals light pink. Color more pronounced during winter. Foliage light bronze. Very striking. \$2.00.
- PERRYANN.** Dark red foliage, Thimble shaped flowers of large exquisite pink. Very showy. \$2.00.
- PIED PIPER.** One of the loveliest new creations. Dwarf bushy plant with very dark foliage, covered with clusters of crested pink flowers. \$1.00.
- PISTACHIO.** New. Very dwarf. Center of thimble lovely light green, changing to yellow as the blossoms mature. Outer petals light pink. Most interesting type \$2.00.
- ROBIN HOOD.** A gem in this class. Bronze foliage, dwarf habit. Soft pink flowers with red eye, completely cover the plants. \$1.50.
- THIMBLEBERRY.** Glossy dark foliage, dwarf habit. Flowers hang in rich clusters resembling red ripe fruit, color changes from dark red to light red and yellow as the season changes. \$1.00.

TUBEROUS SPECIES

- EVANSIANA.** One of the oldest in this class. Tall growing with red veined leaves and showers of pink flowers. 50c.
- FROEBELLI.** A stunning plant producing during the winter months, scarlet flowers from the center of dark green velvet leaves. Very choice. \$3.00.
- MARTIANA.** Well known as the Hollyhock Begonia, with leaves like a miniature hollyhock and mallow pink flowers. \$1.00.
- PEARCEI.** Lovely canary yellow flowers, produced freely in Summer and Fall. Often used for hanging baskets. \$1.00.
- SOCOTRANA.** Peltate green leaves with single pink flowers, one of the parents of the winter blooming "Christmas Begonias." \$1.00.
- SUTHERLANDI.** Beautiful orange flowered form of this semi-tuberous group. Leaves edged red. Good for hanging baskets. \$1.00.

SCENTED-LEAVED GERANIUMS

Rose Scented Group

- | | Price |
|--|---------|
| GREY LADY PLYMOUTH, <i>P. graveolens</i> . Regular rose leaf with silver gray cast. | 50c. |
| LADY PLYMOUTH, <i>P. graveolens</i> . Variegated, irregular shaped leaf. | 50c. |
| LARGE-LEAVED ROSE, <i>P. capitatum</i> . Large coarse deeply lobed leaf with rose scent. | 50c. |
| MINT-SCENTED ROSE, <i>P. graveolens</i> var. <i>variegatum</i> , The variegated rose geranium | \$1.00 |
| ROBER'S LEMON ROSE, <i>P. graveolens</i> . Strong rose scent. Irregularly lobed leaf. | 50c. |
| SNOWFLAKE. Similar to above but with white flecks in leaf | 50c. |
| TRUE CAPITATUM, <i>P. capitatum</i> . A New variety from South Africa. Round tomentose, dentate leaf with strong rose scent. | \$1.00. |
| TRUE ROSE, <i>P. graveolens</i> , Old fashioned rose. Lavender blooms. | 50c. |

Lemon Scented Group

- | | |
|--|------|
| DR. LIVINGSTON (Skeleton Rose), <i>P. graveolens</i> . Deeply cut rose leaf with strong lemon scent. | 50c. |
| GOOSEBERRY-LEAVED, <i>P. grossularioides</i> . Crispum leaves mottled yellow. Strong fragrance. | 50c. |
| LEMON CRISPUM, <i>P. crispum</i> . Tiny crinkled leaves, pyramidal shaped. Strong lemon scent. The finger bowl geranium. | 50c. |
| <i>P. crispum</i> minor. Smaller leaves than above. | 75c. |
| LEMON, <i>P. limoneum</i> . Extra strong lemon scent. Attractive rose pink blooms. | 50c. |
| PRINCE RUPERT, <i>P. crispum</i> . The largest leaved in Crispum group. Strong lemon scent. | 50c. |
| VARIEGATED PRINCE RUPERT, <i>P. crispum</i> var. <i>variegatum</i> . Beautiful cream and white leaf. | 75c. |

Fruit and Spice scented Group

- | | |
|---|------|
| APPLE, <i>P. odoratissimum</i> . Round leaf trailing variety. Delightful fragrance, tiny white blooms. | 75c. |
| APRICOT, <i>P. scabrum</i> . Deeply cut glossy leaf. Strongly scented. Lovely dark rose blooms. | 75c. |
| COCOANUT, <i>P. parviflorum</i> . Small round leaves. Trailing habit. Tiny magenta flowers. | 50c. |
| FILBERT, <i>P. Concolor</i> . Small deeply lobed tomentose leaf. Crimson blooms in profusion in Spring. Strong filbert scent. | 50c. |

- GINGER, *P. torento*. Small round dentate leaf with grey cast. Beautiful large lavender blooms. Very pleasing fragrance. 50c.
- LIME, *P. nervosum*. Similar to the above. Leaves smaller and more dentate. 50c.
- LOGEEI, *P. fragrans* x *odoratissimum* hybrid. Compact upright growth. Deeply lobed grayish leaf with old-spice fragrance. 75c.
- NUTMEG, *P. Fragrans*. Small grayish strongly scented leaf. Small white blooms. A very popular variety. 50c.
- ORANGE, *P. citrodorum*. Medium crenate leaves. Marvelous scent and beautiful blooms of white, lavender, and maroon. 50c.
- SOUTHERNWOOD LEAVED, *P. abrotanifolium*. Feathery — like leaves on tall stems. Fragrance and growth like old fashioned Southernwood. Small white and red blooms. \$1.00.
- STRAWBERRY (Countess of Scarborough) *P. scarboroviae*. Small glossy deeply cut leaf. Bright rose blooms. Choice. 75c.
- UPRIGHT COCOANUT, *P. patulum*. New specie from South Africa. Small deeply lobed leaves with dark zone. Yellow flowers freely produced on long stems. Pleasant cocoanut fragrance. 50c.

Peppermint Scented Group

- JOY LUCILLE, *P. tomentosum* x *graveolens*. Large deeply lobed leaf with same velvety texture as peppermint with strong mint scent and pink flowers. A tall vigorous grower. One of our own hybrids. 75c.
- PEPPERMINT, *P. tomentosum*. Old fashioned peppermint geranium. Large, lobed velvety leaf with strong peppermint odor. Feathery white blooms. 50c.
- PUNGENT PEPPERMINT, *P. denticulatum*. Deeply cut skeleton-like leaf with grey velvety appearance. Taller grower. Flowers white, like peppermint. Mint scent. A very lovely variety. 50c.

Pine Scented Group

- FERN-LEAF, *P. filicifolium*. Leaf finer cut and fragrance stronger. 75c.
- PHEASANTS FOOT, *P. viscosum*. Cut-leaf with toothed edge. Bright attractive rose blooms, pine fragrance. 75c.
- PINE SCENTED, *P. denticulatum*. Finely-cut and dentate leaf. Lavender blooms and strong odor. An attractive variety. 50c.

Pungent Scented Group

- BEAUTY, *P. quercifolium*. Pretty deeply lobed leaf with dark center. Lavender rose flowers freely produced. 50c.
- BLANDFORDIANUM, *P. graveolens* x *echinatum*. Deeply cut grey leaf. Wiry growth. Attractive white blooms with dark markings. An interesting variety. 50c.
- BRILLIANT. Another beautiful flowering variety with large toothed leaves and crimson blooms. Compact growth. 50c.
- COLORINDA. Lady Washington type. Large rose pink blooms with carmine dark markings. Leaves large slightly lobed, pleasant pungent. 50c.
- CROWFOOT, *P. radula*, cut leaf variety with greyish cast. Blooms freely, attractive lavender pink 50c.
- FAIR ELLEN, *P. quercifolium*. The best of the oak-leaf varieties. Medium sized oakleaf with dark zone. Shrubby growth. Attractive rose blooms. 50c.
- GIANT OAK, *P. quercifolium giganteum*. Large, lobed, coarse leaf. Tall growth. Bright rose blooms. 50c.

- GODFREY'S PRIDE. Fairly large lobed light green leaf. Coarse texture. Sweet apple-mint fragrance. Lavender rose blooms. 50c.
- GRAPE-LEAF, *P. vitifolium*. An interesting variety with large grape-leaf foliage. Lavender flowers. 50c.
- MRS. KINGSLEY, *P. rapaceum*. Similar to the above. Leaves more curled. A choice variety. \$1.00.
- MRS. TAYLOR, *P. ignescens*. Deeply lobed cut leaf. Free blooming scarlet. One of the best. 50c.
- OLD SCARLET UNIQUE, *P. fulgidum*. Beautiful deeply cut grayish leaf, oblong shape. Brilliant red blooms on long stems. 75c.
- PRETTY POLLY (Almond-scented), *P. quercifolium*. Attractive deeply lobed green leaves, with dark center. Lovely pink blooms. 50c.
- ROLLINSON'S UNIQUE. A beautiful variety with slightly curled and ruffled leaves. Showy magenta blooms. Balm fragrance. 75c.
- SKELTON'S UNIQUE, *P. quercifolium*. Leaf wavy and slightly lobed with dark center. Prostrate growth. Lavender blooms. 50c.
- STAGHORN OAK, *P. quercifolium*. Deeply lobed medium leaf with purple veining. Pink blooms. A fine variety. 50c.
- VILLAGE HILL OAK, *P. quercifolium*. Deeply lobed crenate leaf with pleasant scent. Blooms small lavender. 50c.

FANCY-LEAVED GERANIUMS

- ALPHA. Golden dentate leaf with narrow brown ring. Dwarf compact growth. Free blooming single red. Extra fine for the house. 75c.
- BECKWITH PRIDE. Mottled green and white foliage. Flowers large semi-double salmon red. Unique. 75c.
- CLOTH OF GOLD. Pure gold leaf. Single dark pink blooms. Choice. 75c.
- CRYSTAL PALACE GEM. Gold leaf with light green center. Blooms same as above. Very pretty. 75c.
- DISTINCTION. Dark green leaf with crinkled and dentate edge with a very distinct brown ring. Umbels of bright red blooms. A truly distinctive variety. 75c.
- FLOWERS OF SPRING. The variegated green and white geranium. Blooms single red. 50c.
- FRUTETORUM. A pretty dark zoned variety with beautiful single salmon pink flowers in abundance. 50c.
- HAPPY THOUGHT RED. Ruffled leaf with yellow center and white-green margins. Single red blooms. An old favorite. 50c.
- HAPPY THOUGHT PINK. Pink flowered variety of the above. Rare. \$3.00.
- HILLS OF SNOW. Silver grey leaf with narrow white margin. Blooms double light pink. A free bloomer. 50c.
- JUBILEE. Yellow green leaf with wide chocolate zone. Single salmon pink blooms. A very beautiful variety. 75c.
- LADY POLLOCK. Beautifully colored tricolor leaf of green, red, orange, and yellow. An old popular variety. \$1.50.
- MARECHAL MacMAHON. Blooms single red, yellow-green leaf with narrow chocolate zone. 50c.
- MARECHAL MacMAHON. Leaf a lighter yellow, with narrow zone darker than above. Blooms single pink. 50c.
- MARY ANN. Pretty green and white variegated leaf. Blooms single red. 50c.



CAILA LILY



SUNDERBRUCKI



PAUL BRUANT



HYDROCOTYLIFOLIA

- MISS BURDETT COUTTS.** The most beautiful of the tricolors. Leaf with cream edge and green center, purple zone splashed with pink. Very choice. \$2.00.
- MOUNTAINS OF SNOW.** Similar to the above. Leaves smaller, crinkled and cupped. 50c.
- Mme. SALLEROI DWARF.** Another variegated leaf dwarf variety much used for edging. 50c.
- Mme. SALLEROI UPRIGHT.** A taller growing variety of the above. Small single pink blooms. Very pretty. 75c.
- MRS. COX.** New. Brilliant zones of yellow, red and pink. \$3.00.
- MRS CULLUM.** Leaf similar to the above. \$1.00.
- MRS. LANGUTH.** A fine variegated cream and white variety with double cherry red blooms. 75c.
- MRS. PARKER.** Blooms double light pink. A beautiful choice variety. 75c.
- SKIES OF ITALY.** Most brilliantly colored of the tricolors. Distinguished from Mrs. Pollock by its irregularly lobed leaf. Single orange red blooms. \$1.50.
- VARIEGATED S. A. NUTT.** The variegated form of the double dark red flowered commercial variety. Green leaf splashed with white. 50c.

DWARF GERANIUMS

- BLACK VESUVIUS.** Small leaves of dark olive color. Medium single vermillion blooms. \$2.00.
- LITTLE DARLING.** Small green leaves. Tiny single pink flowers in profusion. 75c.
- Mme. FOURNIER.** Similar to the above. Leaf olive green. \$1.50.
- PIGMY.** The tiniest of all geraniums. Small green leaves. Small double scarlet blooms. \$1.00.

Other Interesting Types

- APPLE BLOSSOM.** A pink and white rosebud. Very beautiful. \$1.00.
- BIRDS EGG.** Lavender pink with dark pink dots. \$2.00.
- DOUBLE NEW LIFE.** Semi-double blooms striped red and white. Also called Stars and Stripes and Flag of Denmark. \$1.00.
- JEANNE.** Similar to the above. Flowers white with pink-blush. 75c
- NEW LIFE.** Three different types of blooms often seen on the same plant. Blooms usually red with white flecks sometimes white with red or white with pink center. \$1.00.
- NOEL.** A new fine white in the poinsettia group. Wonderful winter bloomer. \$1.00.
- PINK ROSEBUD.** As above, blooms pink. \$1.00.
- POINSETTIA.** Scarlet, shaggy blooms like a miniature pinsettia. 75c.
- POINSETTIA PINK.** Like the above with shell pink flowers. 75c
- RED ROSEBUD.** Clusters of tiny double blooms, like miniature roses. \$1.00.
- ROSETTE.** Blooms as above but of a magenta color. \$1.00.
- SWEET WILLIAM OR JEANNE.** Single pink blooms with picotee edge. Leaves ivy-green. Dwarf compact growth. 75c.

Ivy Geraniums

- SUNSET IVY (L'Elegante).** Variegated ivy leaf with tints of pink when grown in the sun. Very choice. Lavender pink blooms. \$1.00.
- VARIEGATED IVY.** A lovely variegated ivy geranium with single pink blooms. 75c.

CACTUS, TUBEROUS ROOTED AND RARE

Very interesting group. Most of the species grow from so called tubers, or fleshy roots. Dormant during the summer months for us, and through this period they should be kept dry. Growth starts in the early Fall. Water sparingly, gradually increasing the amount until full growth. Requires copious watering in flowering period, which for us is from January to June on most varieties. The tubers can be repotted as required in sandy soil, adding bone meal for fertilizer.

ECHINATUM. The Sweetheart Geranium. The most popular in this class. Leaves grey green, tomentose under, short fleshy stems with spine like stipules. Flowers on slender stems, single white, each petal marked with red. Splendid for house culture. \$1.00.

GIBBOSUM. The Knotted Storksbill. Lovely grey green foliage, stems fleshy and knotted at the joints. Greenish-yellow flowers. Evening scented. Choice. \$1.00.

GLAUCIFOLIUM. The Black Flowered Geranium. Leaves large and ruffled, pinnately divided. Flowers on long stems above the foliage, striking maroon color, edged with gold, sweetly scented in the evening. Rare. \$2.50.

CHOICE PLANTS FOR THE HOME AND CONSERVATORY

ABUTILON. Flowering Maple. We offer our own special selection of large flowered hybrids. Maple leaf foliage, bell shaped flowers. Red, yellow, orange, copper, salmon, pink, old rose and white. \$1.00.

ACHIMENES. Old fashioned hanging plant. Small hairy leaves. Flowers, like pansies, of satiny texture and bloom in profusion in late summer and early autumn. Pink, white, purple, sky blue. 3 bulbs \$1.00.

AECHMEA HYBRID. "Forsters Favorite". One of the finest of the "living vase plants". Wine-red, shiny leaves; Drooping flowers of amazing color, brilliant red berry with deep blue flowers, in winter. \$2.00.

AFRICAN VIOLETS. We offer over 50 named varieties and invite your inquiries. New and choice kinds. \$2.00 each.

ALSTROMERIA PULCHELLA. Brazilian Lily. Small lily like flowers of amazing color; green and red in upright umbells. Soft bright green foliage. Flowers in the Spring and early summer. Hardy out of doors with protection. Generous clump of fleshy bulbs. \$1.00.

ANTHERICUM VARIEGATUM. Spider plant, St. Bernard lily, hardy decorative house plant. 50c.

BELOPERONE. Shrimp Plant. Everblooming, golden bronze sheaf, protruding tiny shrimp flowers. 50c.

BILLBERGIA NUTANS. The friendship plant. Flowers emerge from the crown of spathe like leaves, sheath bright rose, flowers green and yellow striped. One of the most interesting early spring flowers. 75c.

BORONIA MEGASTIGMA: Scented Boronia. This rare gem from Australia has sweetly scented blossoms of purple-brown externally, inside petals, old-gold. Fern-like foliage. Must have cool growing conditions, sun and acid soil. Strong plants. \$5.00.

BOWEIA VOLUBILIS. The Climbing Onion. Succulent bulbs, producing during winter feathery green tendrils. Rare. \$2.00.

CAMPANULA ISOPHYLLA. Star of Bethlehem. Trailing plant with star shaped blue flowers. 75c.

CAMPANULA ISOPHYLLA ALBA. Same as above with white flowers. 50c.

CEROPEGIA WOODI. The Rosary Vine, small succulent, heart shaped, grey leaves of trailing habit. Interesting flowers of maroon. Fine for the window garden. \$1.00.

- CHORIZEMA CORDATUM. Australian Flame Pea or Flowering Oak. Small holly-like leaves. Flowers orange-red with purplish keel in open loose racemes. Very choice. \$2.00.
- CYCLAMEN NEOPOLITANUM. Baby Cyclamen—tiny rose pink flowers, often sweetly scented. Leaves mottled. Rare. \$1.00.
- CYPRIPEDIUM INSIGNE. Brown orchid or lady slipper or chid. \$2.00.
- EPIPHYLLUM. Orchid cactus, large red flowers. \$1.00.
- FATSHEDERA. "Tree-Ivy". A splendid plant for shade. Beautiful glossy leaves, perfect ivy-shape, on upright stems. Of easiest culture. \$1.50.
- FICUS REPENS. Trailing fig, miniature like ivy leaves, fast grower, clings to walls. 50c.
- FUCHSIA. Little Jewel. Finest of all the small flowered fuchsias. 50c.
- FUCHSIA. Sun Ray. Foliage in sunset colors, flowers red and maroon \$1.00.
- FUCHSIA "HONEYSUCKLE". The old fashioned red-leaved fuchsia, with elongated orange-red bells. Profuse flowering throughout the winter. \$1.50.
- GREVILLEA WILSONI. Fire Wheel. A west Australian plant with fern like foliage. Flowers red and yellow. Rare. \$2.00.
- GYNURA AURANTIACA. Royal Velvet Plant. Beautiful royal velvet purple foliage plant. Choice. \$1.00.
- HOYA CARNOSA. The old fashioned Wax Plant. Flowers in umbels, light pink with star shaped center of rose. \$1.50.
- HOYA CARNOSA VAR. VARIEGATA. Like the above, with creamy edged leaves, turning pink in sunlight. Very rare. \$3.00.
- HOYA BELLA. Miniature Wax Plant. Flowers white, center blush pink. Very fragrant. \$2.00.
- INCH PLANT. Red, variegated, green. 50c.
- ISOLOMA ERIANTHUM. Rare. Soft velvet green leaves. Flowers tubular, like foxglove, orange-red, the lower lobes spotted. Excellent winter flowering for partial shade. \$2.00.
- JUSTICIA. Plume plant, pink and red. \$1.00.
- LEMON VERBENA. Fragrant lemon scented foliage. 50c.
- LIGULARIA KAEMPFERI var. aureo-maculatus. LEOPARD PLANT. Very old, extra fine house plant. Rounded glossy green leaves, mottled yellow. \$2.00.
- MARANTA ARUNDINACEA AUREA. Bermuda Arrow Root. Decorative foliage plant, yellow and green variegated leaves. Excellent for shady windows. Moisture loving plant. \$1.00.
- MARANTA BICOLOR. The prayer plant, so called because it closes the leaves at eventide. Fine for table plant in shade. Leaves bright green with maroon spots. 50c.
- MARANTA TRICOLOR. The most brilliant of dwarf marantas. Rare. Leaves of rainbow hue, under side bright rose. \$2.50.
- MORAEA GRACILIS. Twelve Apostles, iris like foliage, white and blue flowers. 50c.
- MYRTUS COMMUNIS. The legendary myrtle of the old world. Fine for the cool and shady room. Leaves glossy green, fragrant when crushed. \$1.00.
- MYRTUS COMMUNIS VARIEGATED. Same as above with lovely white edged leaves. \$2.00.
- NERINE FOTHERGILLI. Guernsey Lily. Flowering bulbs from Africa. Large umbels of scarlet flowers in Autumn. \$1.00.
- NIGHT BLOOMING CEREUS. Epiphyllum, large white flowers opening at night, very fragrant. \$1.00.

- OSMANTHUS FRAGRANS.** The rare "Sweet Olive". An evergreen plant, having clusters of cream colored miniature flowers with the fragrance of orange blossoms, during Fall and Winter. Best growth in partial shade and cool. \$3.00.
- OSMANTHUS ILLICIFOLIUM.** The Chinese Holly; Variegated holly, small cream colored edged leaves. Excellent house plant. \$2.00.
- OXALIS BOWIEI.** Giant pink flowers, large leaves, fall flowering, bulbs, three for 50c.
- OXALIS CARNOSA.** Rhizomatous root stock, leaves small lettuce green, flower yellow in spring. 75c.
- OXALIS ORTGIESII.** Tree Oxalis—bushy upright growth, dark maroon purple under, flowers yellow. Rare. \$1.00.
- OXALIS PEDUNCULARIS.** Upright habit, small fleshy leaves, showy, orange-yellow flower. \$1.00.
- PITTIOSPORUM.** Australian Laurel, glossy, green shrubby growth, very fragrant white flowers. \$1.00.
- PITTIOSPORUM.** Var. Variegata. \$1.50.
- PLECTRANTHUS.** "Prostrate Coleus". Succulent green leaves with lavender tinted edges. Of easiest culture. 50c.
- PLUMBAGO CAPENSIS.** Shrubby plant with true blue Phlox flowers. \$1.00.
- RONDELETIA.** Attractive bushy growth, showy red flowers, fall and winter bloomer, choice. 50c.
- RUPELLIA-MAKOYANA.** Flowers deep rich pink and tubular interesting decorative foliage, underside purple. 50c
- SAXIFRAGA SARMENTOSA.** Strawberry begonia, beautiful hanging basket plant, small plants born on runners, flowers fluffy white. 50c.
- SETCREASIA.** Striped inch plant, new. 50c.
- SPATHIPHYLLUM CLEVELANDII.** Shiny lance shaped green leaves. Beautiful pure white lily-like flowers which last for weeks. Very choice. \$3.00.
- STENOTAPHRUM.** St. Augustine Grass. Beautiful hanging basket plant. 50c.
- STROBILANTHES DYERIANUS.** Beautiful foliage plant, with leaves variegated with iridescent tints of blue and lilac, purple beneath. Requires warmth, abundance of moisture on plant and foliage. \$2.00.
- TIBOUCHINA.** Princess Flower. Wonderful royal purple flower. Interesting shrub. \$1.00.
- TOLMIEA MENZIESII.** Pick-a-back, or Mother of thousands. Excellent as a table plant in partial shade. Requires copious water. 50c.
- TRADESCANTIA FUSCATA.** A stemless plant. Leaves brown and hairy. Bright blue flowers, an inch across, borne in the midst of the brown hairy leaves. A collectors item. \$2.00.
- ZINGERBER OFFICINALIS.** True Ginger. Excellent house plant for shade. Foliage fragrant and spicy. \$1.00.

CHOICE VINES

- CISSUS ADENOPODUS.** Of easiest culture. Three foliate leaves, red and hairy. The new leaves look like crimson velvet. A fast growing tendril climber. \$1.00.
- CISSUS DISCOLOR.** A lovely tendril climber. Leaves oval, tapering, rich green with mottled silvery mettalic lustre; red beneath. A sprinkling of crimson dispersed over prime leaves. Shade. Excellent for winter, rests in summer. \$2.00.
- CISSUS RHOMBIFOLIA.** The Grape-Ivy. Strong growing ivy with glossy three leaflets. 50c.
- CISSUS STRIATA.** A miniature grape ivy, with lacey small five lobed leaves. Choice. \$2.00.
- CONVOLVULUS.** Mauritanicus. Prostrate growth, leaves round-ovate, small heavenly blue morning glory flowers. Rare. \$1.00.

- ENGLISH IVY, SILVER KING. Fast growing small leaved variegated ivy, beautiful hanging plant. Choice. 75c.
- EPISCIA CUPREATA. Brazilian Coleus. Rich coppery colored softly hairy leaves scarlet flowers, basket plant. \$1.00.
- HETEROCENTRON ROSEUM. Spanish Shawl. Fine for the sunny location. Creeping plant with small pointed leaves, red stemmed. Flowers bright rose in early winter. 50c.
- LOTUS BERTHELOTII. Winged Pea. Beautiful pea like dark red flowers lacy silver foliage, choice. \$1.00.
- MAHERNIA VERTICILLATA. Honey Bells, trailing plant with fine lacy foliage, flowers tiny bells, honey yellow and sweetly scented. \$1.00.
- MANETTIA. BI-COLOR. Twining Fire-cracker Plant, scarlet flowers, with yellow tips. \$1.00.
- MUEHLENBECKIA COMPLEXA. Wire Plant. Vining plant with tiny glossy green leaves, stems almost black, Fruit which follow the tiny green flowers look like white pearls. Enjoys sun and dryness. \$1.00.
- PASSIFLORA. Grandiflora. Passion Flower Vine. Purple flowers. More exotic than Clematis; excellent house plant. \$2.00.
- PELLIONIA. Known by some as Trailing Watermelon begonia, narrow pointed green centered dark edge leaf, very attractive. \$1.00.
- STAR JASMINE. Lovely variety with sweetly scented double white flowers. \$1.00
- TRADESCANTIA BLOSFELDIANA. Velvet purple leaves, flowers delicate rose-lavender in close racemes. Choice. \$1.00.
- VARIEGATED IVY, GLACIER. New, Miniature. \$1.00.

FERNS

- ADIANTUM BELLUM. "Bermuda Maidenhair". A striking little miniature maidenhair fern, growing about six inches above the pot. Requires very lime soil, shade and ample water during the growing period, the winter months. Rests in summer. \$2.00.
- ASPARAGUS SPRENGERI. One of the few ferns with blooms fragrant, nearly white flowers, red berries at Christmas time. 50c
- ASPARAGUS CRISPUS. The Bride's Bouquet Fern, tiny white flowers, red berries. \$1.00.
- DAVALLIA CANARIENSIS. Deer Foot fern, soft silvery grey rhizomes, glossy fronds. Very choice. \$1.00.
- DAVALLIA MARIESII. Squirrels-foot fern, same as above with brown rhizomes and slightly longer fronds. \$1.00.
- DAVALLIA TENUIFOLIA. Carrot-fern, leathery fronds, short creeping rhizomes. \$1.00.
- ENGLISH HEDGE FERN. Interesting heavy fronds of graceful habit, one of the hardest house ferns. \$1.00.
- HOLLY FERN. A strong upright holly-like leaves. 50c.
- KING AND QUEEN FERN. Parsley fern, similar to Bird's Nest fern, little fern balls growing on lacy fronds. \$1.00.
- LACE FERN. Very fine lace like fronds. \$1.00.
- PLUME FERN. Double edged fern. \$1.50.

HERBS

- CAMPHOR OFFICINALIS. Semi-hardy shrub, the leaves when pinched smell of cinnamon or camphor. Choice. \$1.00.
- CHAMAELAUCIUM Ciliatum, Cameo Pink, GERALTON Wax Flower, shrubby fragrant foliage, showy pink and white flowers. Rare. \$2.00.
- DITTANY OF CRETE. The true Dittany of herb lore and legend. Excellent cool house plant. \$1.00.
- PINEAPPLE SAGE. A Salvia with fragrant foliage, refreshing pineapple scent. Flowers scarlet in the Autumn, and throughout the winter. Fine for the garden and window-box. 50c.
- ROSEMARY OFFICINALIS. Strong plants, excellent for garden and house culture. This is the heavenly blue flowered type. \$1.00.
- SWEET BAY. Fresh bay leaves used in soups. \$1.00.
- TUNISIAN THYME. Another new Herb, collected during the North African Campaign. Unusual lavender fragrance, fine gray foliage. \$1.00.

PLANT FOOD

CAST-ERTH. Nature's best plant food. Pure earthworm castings. Fine for Begonias and all other house plants. Order direct from E. and W. Products, Box 63, Wauregan, Conn. — 1 lb. 70c prepaid.

...

...

...

...

...

...

...

...

...

...

...

...

...

...

...

...

...

...

...

...

...

...

...

...

...

...

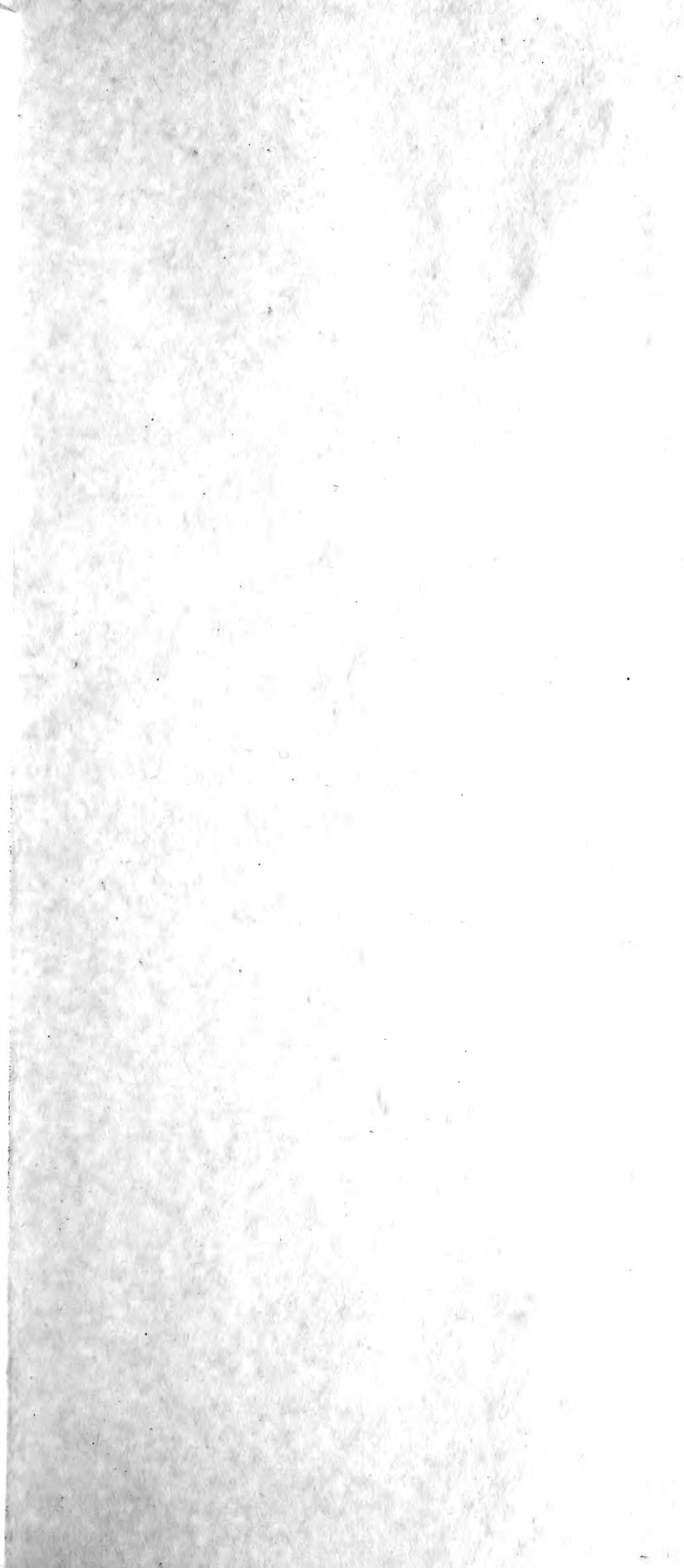
...

...

...

...

...



U. S. DEPARTMENT OF AGRICULTURE

LIBRARY

WASHINGTON 25, D. C.

OFFICIAL BUSINESS

PRINTED MATTER

PENALTY FOR PRIVATE USE TO AVOID
PAYMENT OF POSTAGE, \$300
(GPO)

Library, U. S. Dept. of Agriculture,
WASHINGTON 25, D. C.

