

Historic, Archive Document

Do not assume content reflects current scientific knowledge, policies, or practices.

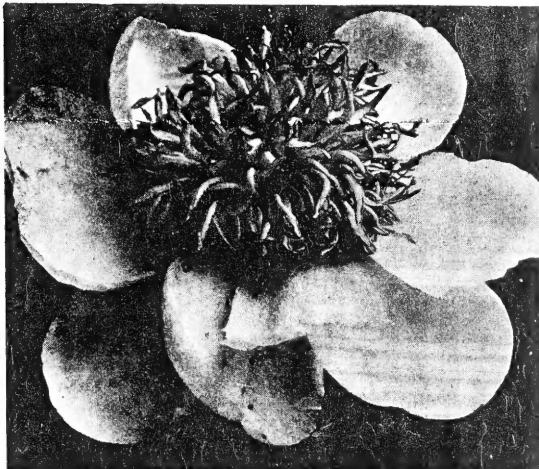
SARCOXIE NURSERIES
PEONY FIELDS

WILD BROS. NURSERY CO.
SARCOXIE, MISSOURI

Return Postage Guaranteed.

Summer & Fall 1952

OUR 78th YEAR



JAPANESE PEONY

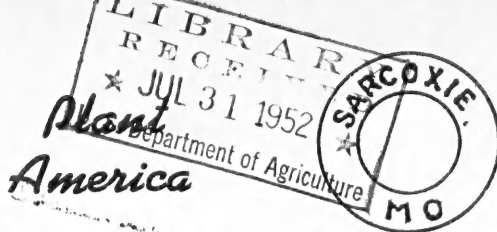
PEONIES IRIS & HEMEROCALLIS

Grown in the Beautiful Ozarks

THE SARCOXIE NURSERIES

Wild Bros. Nursery Co.

SARCOXIE, MISSOURI



Librarian
U. S. Dept. of Agriculture
Washington 25, D. C.

Now is the Time to Order

Your Order will be sent you at the proper time for planting.

PEONY deliveries begin late August or early September.

IRIS & HEMEROCALLIS are ready for delivery now.

IMPORTED BULBS—Deliveries beginning late September.

ALL ORDERS ARE SENT PREPAID IN U. S. A. IF FOR \$200 OR MORE.

Orders of less please add 25c for postage and packing. Missouri customers please add 2% sales tax.



SARCOXIE PEONIES

From the World's Peony Center
Easily Grown - Hardy as the Oak

DELIVERIES BEGINNING SEPTEMBER FIRST

Hardy as the Oak, Peonies are easily grown. We furnish good strong 3 to 5 eye divisions, the finest plants from the nursery row. Our plants listed are blooming size standard divisions. Should you want larger size, we can supply plants of 6 to 10 eyes at double the printed price. Peonies may be planted from mid-August to April, however fall planting is preferred. **PRICES ARE PREPAID.**

BARONESS SCHROEDER. (9.0) Large, delicate flesh, becoming white; globular, compact, rose type flowers; fragrant; midseason; blooms freely. **\$1.00 each; 3 for \$2.50.**

CANARI. Guards barely tinted flesh, center sulphur-white, becoming pure white; large, fragrant; bomb; late midseason; tall. **75c each; 3 for \$1.50.**

CHOICE RED. Correctly named, a "choice" among the reds. Very double dark red flowers on tall, straight stems. Excellent for garden or cut flower use. **\$1.00 each, 3 for \$2.50.**

CROWN OF GOLD. (8.1) Snowy white, reflecting golden stamens and lighting up the flower; center petals flecked and edge carmine; large; semi-rose type; fragrant; late; upright, vigorous with strong stems. **75c each; 3 for \$1.50.**

DUC DE CAZES. Broad carmine-red guards, center deep rose; crown type; midseason; medium size but blooms freely. **75c each; 3 for \$1.50.**

DUCHESS DE NEMOURS. (8.1) Superb ivory-white, greenish markings toward center, becoming pure white; beautiful in the bud; medium to large; crown type; medium early; strong; vigorous; good stems; blooms freely. **75c each; 3 for \$1.50.**

DUCHESS D'ORLEANS. Large carmine-pink guards, center soft pink and salmon, becoming amber-yellow; medium to large; bomb type; fragrant; midseason; strong; vigorous; very tall; blooms freely. **75c each; 3 for \$1.50.**

DUKE OF WELLINGTON. (7.8) Broad white guards, center very full, sulphur-white, becoming pure white; fragrant; bomb type; late; blooms freely; vigorous; long, strong stems; very large. **75c each; 3 for \$1.50.**

EDULIS SUPERBA. Beautiful bright, deep rose pink; very fragrant; large good form; early, crown type; strong; vigorous; blooms freely. **\$1.00 each; 3 for \$2.50.**

ELSA SASS. (9.46) Full double lovely white, veiled pink. Stems stiff and strong, rose type. **\$3.00 each.**

FELIX CROUSSE. (8.4) Brilliant, rich, even dazzling ruby-red; large; globular, solidly and compactly built; bomb type; fragrant; midseason; vigorous; blooms freely; fine. **\$1.00 each; 3 for \$2.50.**

FESTIVA MAXIMA. (9.3) Large; pure paper-white, some center petals flecked purplish carmine; early; rose type; very fragrant; vigorous; very long; heavy stems. **\$1.00 each; 3 for \$2.50.**

HANS P. SASS. (9.19) Shell-pink, deep in center; late. **\$1.50 each; 3 for \$3.00.**

JEANNE D'ARC. Broad soft pink outer petals, center sulphur white and blush, striped light crimson; mid-season. **75c each; 3 for \$1.50.**

KARL ROSENFELD. (8.8) Rich velvety crimson; very tall, compact grower of stately habit; late. **\$1.00 each; 3 for \$2.50.**

LE CYGNE. (9.42) Large, globular, semi-rose type; pure white; delightfully fragrant; erect; medium tall, stiff stems; midseason. **\$2.00 each; 3 for \$5.00.**

LILLIAN WILD. First certificate award winner 1950 American Peony Society Show. Lovely, delicate, flesh-pink becoming white, very large, compact rose type. Late. Originated and introduced by us. **\$2.00 each; 3 for \$5.00.**

LORD KITCHENER. Early bright to deep red, outer petals having rather waxy sheen; very double flowers produced on heavy stems of good length. **\$1.00 each; 3 for \$2.50.**

MME. DUCEL. Very large, very double; perfectly formed, globular bloom, the center petals as beautifully incurved as in a Chrysanthemum. Bright silvery-pink; fragrant; bomb type; midseason to late, vigorous; blooms freely. **75c each; 3 for \$1.50.**

MME. DE VERNEVILLE. Very fine, large, compact flowers literally packed with petals; broad white guards; center slightly blush, becoming pure white, flecked carmine; delightfully fragrant; bomb type; early; vigorous; medium height; good stems. **\$1.00 each; 3 for \$2.00.**

MARGUERITE GERARD. Large; light hydrangea-pink, becoming almost white; fragrant; semi-rose type; late. **\$1.00 each; 3 for \$2.50.**

MARIE JACQUIN. (8.3) Semi-double white with a cluster of yellow stamens in the center. Often called the Water Lily Peony. **\$1.00 each; 3 for \$2.50.**

MINUET. (9.19) Very large; rose type; light pink; stiff stems; vigorous; late. **\$2.00 each; 3 for \$5.00.**

MODESTE GUERIN. Lively, bright, very deep pink with a purplish cast; very fragrant; bomb type; excellent form; midseason; upright habit; blooms freely. **75c each; 3 for \$2.00.**

MONS. JULES ELIE. (9.2) Immense, globular, very full, bomb type flowers on strong stems; glossy flesh-pink shading to deeper rose at base; very fragrant; early midseason; blooms freely. **\$1.00 each; 3 for \$2.50.**

MYRTLE GENTRY. (9.06) A beautiful late light pink, fading to nearly pure white with age; a perfect rose form flower, tints of flesh and salmon show throughout the petals; good grower. **\$2.00 each; 3 for \$5.00.**

OFFICIALIS RUBRA. (8.6) Vivid crimson; large round bloom. **\$1.00 each; 3 for \$2.50.**

OZARK BEAUTY. Exquisite radiant pink of compact rose type. Late free bloomer on heavy stems. Originated by us and received honorable mention, as one of the new introductions at the 1950 American Peony Society Show. **\$1.00 each; 3 for \$2.50.**

PHILIPPE RIVOIRE. (9.2) Early midseason; very dark crimson with blackish sheen; double; medium height. **\$2.00 each, 3 for \$5.00.**

PRIMIVERE. (8.6) One of the best of the yellow varieties. Guard petals are a creamy white, enclosing a central ball of sulphur yellow. Cut in the bud and open inside to get the true color. **\$1.00 each; 3 for \$2.50.**

QUEEN EMMA. A very large, very full, fragrant; bright light pink rose type flower; midseason to late; blooms freely; compact grower; the flowers keep and ship well. **\$1.00 each; 3 for \$2.50.**

RED ROCKET. Bright red, very large bomb type. A free bloomer on tall stems. **\$1.00 each; 3 for \$2.50.**

REINE HORTENSE. (8.7) Large hydrangea-pink, minutely splashed on a white background, center flecked crimson; fragrant; semi-rose type; tall; midseason. **\$1.00 each, 3 for \$2.50.**

SARAH BERNHARDT. (9.0) Apple-blossom pink, the petals tipped white; compact, semi-rose type; fragrant; late midseason. **\$1.00 each, 3 for \$2.50.**

SARCOXIE. A lustrous dark rich red; broad guards, center petals narrow; tall; thrifty; long stems. **\$1.00 each, 3 for \$2.50.**

THERESE. (9.8) Very large, rich satiny pink, center becoming lilac-white; compact, rose type; very fragrant; midseason; medium tall. **\$1.00 each.**

VENUS. (8.3) Very large; hydrangea-pink; fragrant; crown type; midseason; tall; blooms freely. **\$1.00 each, 3 for \$2.50.**

WALTER FAXON. (9.3) Uniform bright rose, deepening toward center; medium size; globular semi-rose type; extra fine; midseason. **\$1.00 each; 3 for \$2.50.**

WE GROW MANY VARIETIES OF PEONIES AND IRIS NOT LISTED IN THIS FOLDER. Write us for special varieties, no doubt we can supply.



A field of Peonies in bloom at Sarcoxie Nurseries.

THE SARCOXIE NURSERIES

Wild Bros. Nursery Co.

SARCOXIE, MISSOURI

Members of the American Assn. of Nurserymen, Western Assn. of Nurserymen and Missouri State Nurserymen's Assn.

Japanese Peonies

Of Oriental origin, these Peonies are always exciting to grow, their brilliant guard petals nesting the center of staminodes ranging from chamois to yellow and buff. Exquisite fragrance.

DR. JEKYL. A late brilliant dark red with center flushed distinctly lighter. **\$1.00 each; 3 for \$2.50.**

MIKADO. (8.6) One of the best with crimson guards surrounding a center of chamois. **\$1.00 each.**

MRS. WILDER BANCROFT. (9.08) Brilliant dark red with red staminodes tipped yellow. We consider this one of the best early Japs. **\$2.00 each; 3 for \$5.00.**

NEON. Midseason, unusual radiating rose pink guards, bright yellow stamens. **\$2.00 each; 3 for \$5.00.**

NIPPON BEAUTY. (9.27) Rich deep red with some yellow edges on center petals; strong growing. **\$1.00 each; 3 for \$2.50.**

NIPPON SPLENDOR. (9.06) Dark red Jap, extra fine, yellow edges on center petaloids. Midseason; tall, stiff stems. **\$1.00 each.**

RED STAR. Tall, deep brilliant red with red stamens tipped gold. An exceptional value for the price. **\$1.50 each.**

Single Peonies

Single Red Peony **\$1.00 each; 3 for 2.50**

Peony Collection "A"

Five good named varieties early to late, assorted colors individually labeled.

This **\$4.25** value **\$3.50**
All 5 plants prepaid for only

Peony Collection "B"

Ten good named varieties, early to late, assorted colors individually labeled.

This **\$8.75** value **\$6.00**
All 10 plants prepaid for only

Red, White and Pink "C"

Three of the most popular Peonies.

- 1 Felix Crousse—Brilliant rich red.
- 1 Festiva Maxima—Large white, red markings.
- 1 Edulis Superba—Beautiful bright deep pink.

This **\$3.00** value **\$2.50**
All 3 prepaid for only

Pennant Brand Mixed Peonies

This is not a cheap lot of undesirable varieties, but a really good mixture of named Peonies, the leading commercial varieties predominating. Grown mixed. **5 for \$3.00; 10 for \$5.00; 25 for \$10.00.**



SARCOXIE NURSERIE'S IRIS GROWN IN THE BEAUTIFUL OZARKS

*Ready for
Delivery Now*

In the fertile soils of the Ozark foothills where the warm sun and the gentle summer rains go together to produce the best plants obtainable

Plant Iris beginning July 1st.

Iris Prices are Prepaid

ALTA CALIFORNIA. A very large, tall canary-yellow; well branched; fragrant. **50c each; 3 for \$1.00.**

ARAB CHIEF. Rich burnt orange, almost henna tone. **\$1.00 each; 3 for \$2.50.**

AUTUMN KING. Standards violet-blue, falls deep reddish purple; large; vigorous; blooms in May and a lighter crop in the fall. **50c each; 3 for \$1.00.**

AZURE SKIES. A ruffled self of pale lavender-blue who fringed, domed standards and almost horizontal falls are accented by a white beard. **75c each; 3 for \$1.50.**

BLACK DOUGLAS. Very large; intense deep blackish pansy violet. **35c each; 3 for 75c.**

BLACK WINGS. One of the darkest of the moderate priced Iris; falls almost purple-black; standards slightly tinted reddish purple. **35c each; 3 for 75c.**

BLUE RHYTHM. New soft medium blue with a silvery tone. **\$1.75 each; 3 for \$4.00.**

BLUE SHIMMER. Shimmering white dotted and dappled with the clearest tones of blue. **\$1.00 each; 3 for \$2.00.**

BRYCE CANYON. A distinctive and warm shade of henna-copper; very large flower on 3 ft. stems. **\$1.50 each; 3 for \$4.00.**

BUECHLEY'S GIANT. A very large, brilliant medium blue Iris; tall; early. **35c each, 3 for 75c.**

CALIFORNIA PEACH. A pink-peach blend, has much more gold and yellow in it than China Maid. **50c each; 3 for \$1.25.**

CAPRI. An unusual blend of yellow, buff and tan tones; good form and substance; medium height. **50c each; 3 for \$1.00.**

CASA MORENA. Glowing deep rich coppery brown. Large, gone flower; solid self. **\$1.50 each; 3 for \$4.00.**

CASCADE SPLENDOR. Blend of pink, apricot and tan; ruffled in both standards and falls; sturdy stalks. **\$2.00 each; 3 for \$5.00.**

CHINA MAID. An excellent Iris in shades of pink with a slight trace of copper and lilac smoothly blended. An Iris of large size and high quality. **75c each; 3 for \$1.50.**

DAUNTLESS. Large; standards bronze-red, falls velvety rose-red; fragrant; tall; fine. **50c each; 3 for \$1.00.**

DAYBREAK. Hugh golden pink with slight undertones of copper; closed standards and falls that are semi-flaring; well branched; tall. **\$1.00 each; 3 for \$2.00.**

EL CAPITAN. Immense; violet-blue; unusual fragrance; well branched; very fine. **50c each; 3 for \$1.00.**

ELMOHR. Very rich, red-violet; large flowers; free blooming on tall stems. **\$1.00 each; 3 for \$2.00.**

FRIEDA MOHR. Large lilac rose; standards ruffled; fragrant; tall. **50c each; 3 for \$1.00.**

GARDEN MAGIC. A rich, vivid, glowing red; good form; blooms late. **75c each; 3 for \$1.50.**

GOLDEN EAGLE. Large; brilliant light yellow; free blooming on strong 36 inch stems. **75c each; 3 for \$1.50.**

GOLDEN FLEECE. Lemon-colored with creamy falls edged gold; wholly unlike any other yellow Iris. Ruffled; tall and good grower. **\$1.00 each; 3 for \$2.00.**

GOLDEN MAJESTY. A pure deep yellow; its colors outstanding in any planting; large flowers on tall stems. **50c each; 3 for \$1.00.**

GRAND CANYON. A blending of deep canyon colors, plum, copper and gold, with a light form of ruffling. **75c each; 3 for \$1.50.**

GREAT LAKES. Pure clear blue with almost white beard. **75c each; 3 for \$1.50.**

GUDRUN. A creamy white with brilliant orange beard and a slight gold dust sprinkling over the entire bloom. **50c each; 3 for \$1.00.**

HELEN MCGREGOR. Hugh lobelia violet self. Beautiful under artificial light or indoors. **\$3.00 each; 3 for \$7.50.**

INDIAN CHIEF. Very large; standards suntan tinged lavender and pink; falls velvety crimson; fragrant; tall; low and well branched; midseason. **40c each; 3 for 90c.**

INDIAN HILLS. Large; standards ruffled bright purple, falls deeper shaded red; fragrant; tall; well branched. **50c each; 3 for \$1.00.**

JAKE. Large; standards ruffled glistening pure white, falls glistening white edged yellow at extreme base; fine; fragrant; tall; well and low branched; blooms freely. **75c each; 3 for \$1.50.**

KANSAS INGLESIDE. Early flowering warm-toned brown-red self; first of the reds to bloom. **50c each; 3 for \$1.00.**

LADY MOHR. Standards oyster white, hugh and slightly fluted, with strong mid-ribs; falls pale chartreuse or greenish yellow; dark patch surrounding the beard. **\$1.00 each; 3 for \$2.00.**

LIGHTHOUSE. Closed standards of bronzy rose semi-flaring falls of rose, edged bronze; slightly fragrant. **50c each; 3 for \$1.00.**

LILAMANI. Velvety, blackish violet self. One of the very best of the "blacks." Gives an outstanding effect in garden or border. **50c each; 3 for \$1.00.**

MATTERHORN. Very large; glistening pure white; fragrant; tall; strong; well branched. **50c each, 3 for \$1.00.**

MELANIE. Fine orchid pink, close to true pink; large; midseason. **50c each; 3 for \$1.00.**

MISSOURI. Strong, medium blue; large; flaring flowers. **50c each; 3 for \$1.25.**

MORNING GLORY. Large; red-violet to amethyst; fine form; vigorous; well branched, blooms freely. **35c each, 3 for 75c.**

MORNING SPLENDOR. Fine, very large; standards deep lavender-violet; falls velvety reddish-purple; fragrant. **50c each; 3 for \$1.00.**

MOROCCO ROSE. Pink-rose self with a soft yellow glow at the heart; bright gold beard. **50c each; 3 for \$1.00.**

MULBERRY ROSE. Deep radiant mulberry rose self showing a brown shade; beard is a heavy bronze; large; tall. **\$1.00 each; 3 for \$2.00.**

OLA KALA. Very dark yellow self; medium large ruffled flowers on 36 in. well branched stem. **\$1.00 each; 3 for \$2.00.**

PAINTED DESERT. Very tall, almost 4 ft., a mingling of brown, tall and violet. **\$1.00. each.**

PEG DABAGH. Clear blue violet flowers on tall 50 in. stalks; vigorous; early. **\$6.00. each.**

RANGER. An outstanding late blooming Iris of the red shades; large flowered self of distinctive coloring. **\$1.50 each; 3 for \$3.00.**

ROCKET. Vivid, most brilliant smooth deep orange; large; wide petaled; 36 in. **\$3.00 each.**

SABLE. A uniform shade of blue-black-violet with blue beard; large flower on tall stalks. **\$1.00 each; 3 for \$2.00.**

SNOW FLURRY. Standards pure icy white, ruffled, falls big, broad and pure white; waved and crimped at the edges, semi-flaring; early. **\$1.00 each; 3 for \$2.00.**

SNOW WHITE. Excellent medium priced white. **50c each; 3 for \$1.00.**

SOLID MAHOGANY. One of the darkest mahogany-reds; large flowers of good substance. **\$1.50 each; 3 for \$3.00.**

SONRISA. Coppery pink with yellow undertone having a metallic finish. **\$1.00 each; 3 for \$2.00.**

SOUTHLAND. A new deep golden yellow variety with large flowers on fine form and heavy substance on well branching stalks. **50c each; 3 for \$1.25.**

STARDOM. Rapturous salmon shading to apricot buff. Bright orange beard, extremely vigorous. **50c each; 3 for \$1.00.**

TAPESTRY. Smoky mulberry and purple. **35c each; 3 for 75c.**

TEA ROSE. Tea rose and buff shadings; mellow pink with a coppery shading giving an effect of a copper pink. **\$1.00 each; 3 for \$2.00.**

THREE OAKS. Glowing rose pink blend; deep rich mellow pink with overlay of rosy copper; large; long flowering period. **\$1.50 each, 3 for \$3.00.**

TIFFANJA. Standards creamy colonial buff with more white cast, falls both speckled and sprinkled light golden brown. **75c each; 3 for \$1.50.**

WABASH. Clean white standards and bright purple falls; large on well branched stalks. **50c each; 3 for \$1.00.**

WAR EAGLE. Large; daphne-pink in standards; falls dahlia-carmine; general effect deep red; large; tall. **50c each; 3 for \$1.00.**

DWARF IRIS

The earliest blooming Iris—excellent for borders and in the rockery. **35c each; 3 for 90c; 10 for \$2.50.**

DWARF BLUE **DWARF PURPLE**
DWARF YELLOW **DWARF WHITE**

SIBERIAN IRIS

A fine Iris for rock gardens, border planting or mass planting. Flowers resembling Japan Iris but smaller, borne on wiry stems 12 to 18 inches. Foliage narrow and blade-like. **35c each; 3 for 90c; 10 for \$2.50.**

SIBERIAN BLUE **SIBERIAN WHITE**

JAPANESE IRIS (Kaempferi)

Blooms after other Iris are gone, producing large flat flowers on graceful stems. **60c each; 3 for \$1.50; 10 for \$5.00.**

GOLD BOUND. Pure white with a golden band on each petal.

MOUNT HOOD. A double light blue shaded darker.

PURPLE AND GOLD. Velvet purple with prominent golden throat.

A New Idea

MAKE YOUR OWN

BARGAIN COLLECTIONS

Save up to 20%

Frequently customers say, "I like all of the varieties in your collection except one. May I substitute?"

NOW you may make your own BARGAIN COLLECTION at a saving of as high as 20%.

ANY 6 IRIS-Figure the total of your selection based on the each price and deduct **15%**.

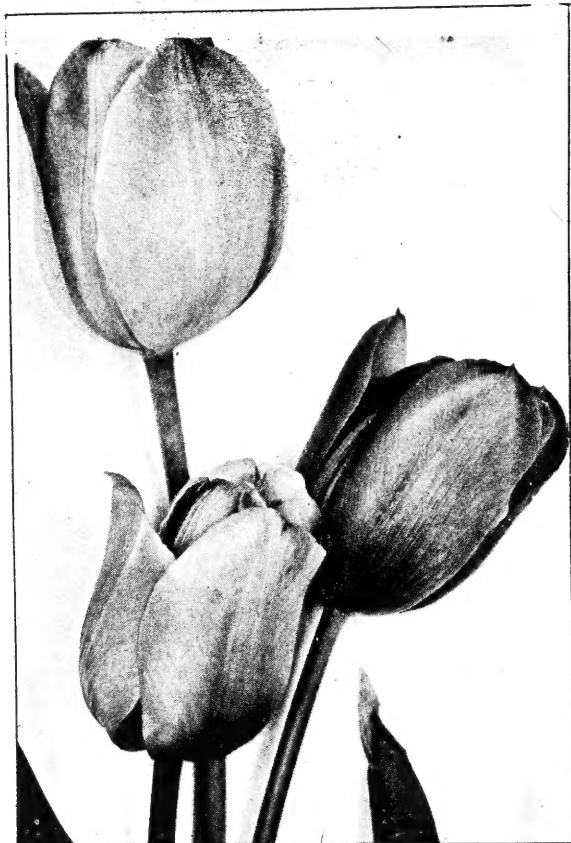
ANY 12 IRIS-Figure the total of your selection based on the each price and deduct **20%**.

WE GROW MANY VARIETIES OF PEONIES AND IRIS NOT LISTED IN THIS FOLDER. Write us for special varieties, no doubt we can supply.

AGAIN WE BRING YOU DIRECT FROM HOLLAND

"The Aristocrats of Spring"

Magnificent TULIPS, fragrant HYACINTHS
NARCISSUS and colorful CROCUS



SPECIAL TULIP PRICES

RED EMPEROR. Most spectacular early Tulip of them all. The largest and most brilliant. 10 top size bulbs for \$1.25, postpaid.

RAINBOW TULIP MIXTURE. A rainbow of mixed colors. 10 for \$1.00; 25 for \$2.25; 50 for \$4.25; 100 for \$8.00, postpaid.

*Imported Bulb Deliveries
Beginning Late September*

Missouri Customers Add 2% Sales Tax.

DARWIN TULIPS

- ALL BRIGHT.** Intense brilliant red.
- BARTIGON.** Brilliant fiery crimson.
- FARNCOMBE SANDERS.** Rose-scarlet.
- YELLOW GIANT** Golden yellow.
- LA TULIPE NOIRE.** The black Tulip.
- NIPHETOS.** Soft sulphur yellow
- PHILIP SNOWDEN** Carmine rose
- PRIDE OF HAARLEM.** Cerise-scarlet.
- WM. COPELAND.** Lovely lilac.
- ZWANENBURG.** Snowy white.

DARWIN TULIP PRICES Postpaid

6 of one variety, 60c; 10 of one variety, \$1.00.

25 of one variety, \$2.50; 50 of one variety, \$4.50

Large size (11-12 centimeter), the best size for outside planting to bloom next spring.



NARCISSUS (Daffodils)

- GLORY OF SASSENHEIM.** Perianth snowy white, cup bright lemon-yellow.
- KING ALFRED.** Perianth and cup are both waxy golden yellow, large.
- MRS. E. KRELAGE.** Opening cream color, changing to white.
- ORANGE GLOW.** Sulphur-yellow perianth, dark orange cup.

3 for 40c; 10 for \$1.25; 20 for \$2.25.

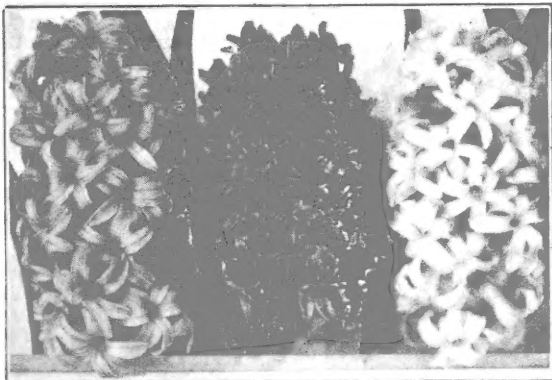
THE ARISTOCRATS OF SPRING

At This Year's Lower Prices

When the leaves come

IN THE FALL

Is the Time to Plant Bulbs



GIANT HYACINTHS

Large size bulbs.

CITY OF HAARLEM. Golden yellow.

GERTRUDE. Rose-pink.

GRAND MAITRE. Deep blue.

L'INNOCENCE. Pure white.

Any of above: 5 for \$1.00; 12 for \$1.90;

16 for \$3.00, POSTPAID.



—Regal Lily—

REGAL LILIES

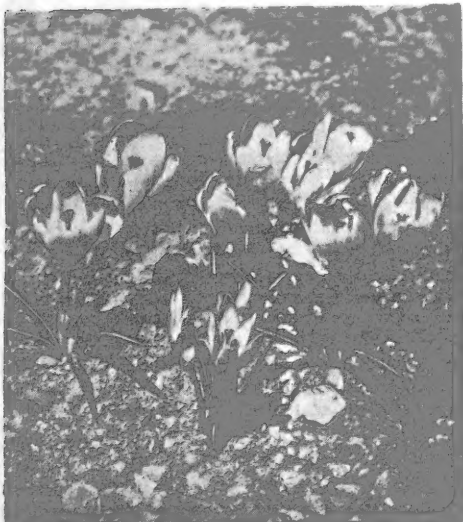
Regal Lilies (Lilium Regale). One of the easiest lilies to grow. Inside white with yellow throat, outside pink. When mature they will often produce 15 to 18 flowers per stalk.

40¢ each; 3 for \$1.00; 6 for \$1.75.

MADONNA LILIES

Madonna Lilies. This is one of the loveliest of white lilies. Its delightful fragrance and lovely white flowers have made it a favorite everywhere.

40¢ each; 3 for \$1.10; 6 for \$1.90; 12 for \$3.50.



—Crocus—

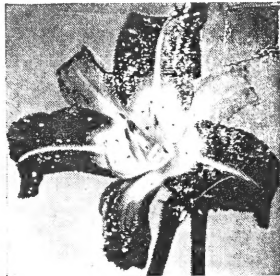
CROCUS, Giant Flowering

BLUE, PURPLE, STRIPED, WHITE, YELLOW.

Any of above: 25 bulbs for \$1.25 50 for \$2.00; 100 for \$3.90. Mixed, 25 for \$1.00; 100 for \$3.50

HEMEROCALLIS - Daylilies

READY FOR YOU NOW MAILED PREPAID



Daylilies—for spring, summer, fall flowers.

Heemerocallis-Daylilies

No plant is more easily grown. It thrives most everywhere and seems equally happy in full sun or partial shade. For those "hard to grow" places and for bright color spots in the garden these plants afford a wide range of color and a long blooming season. Not bothered by disease or insect pests.

- AUGUST PIONEER.** Chrome yellow with outer half of petals flushed red; blooms August and September. 34 inches. 50c each; 3 for \$1.00.
- BAGDAD.** A gay combination of several colors—orange, red, yellow and brown. 42 inches. June-July. 50c each; 3 for \$1.00.
- BABY TEARS.** Very dainty. Its background is gold, its petals are deeply marked toward the end a true rosy red. The whole flower is fully ruffled. Height 3 feet, blooms June and July. 50c each; 3 for \$1.00.
- CINDERELLA.** Petals copper red, sepals lemon yellow; blooms late afternoon, remaining open all night and into the heat of the following day. Different. Blooms July. 28 inches in height. 50c each; 3 for \$1.00
- D. D. WYMAN.** One of the largest and finest Daylilies. The individual flowers measure 6 inches across. The plant is a very free bloomer; flowers are deep rich golden yellow with a brick red spot on each petal. July and August. 44 inches in height. 50c each; 3 for \$1.00.
- DELIGHTFUL DUET.** Bicolor, red and yellow; a delightful combination of sunset colors. 28 inches. July. 50c each; 3 for \$1.00.
- GLORIA.** Medium size orange flowers on much branched stems. June. 50c each; 3 for \$1.00.
- HARVEST MOON.** Orange edged lemon; fragrant; large; tall; many buds. 3 ft. July and again in Sept. 50c each; 3 for \$1.00.
- LINDA.** Pink. Long blooming season. The whole flower is fully ruffled. 50c each; 3 for \$1.00.
- MIDDENDORFI.** Rich orange yellow, very fragrant. Early to midseason. 35c each; 3 for 75c.
- MIKADO.** Large flower on rich orange with deep mahogany-red throat. 3 ft. June and July. 50c each; 3 for \$1.00.
- MINOR, DWARF LEMON LILY.** Small delightfully fragrant, deep golden yellow starry flowers in May and at intervals during summer. It forms dense clumps 12 to 15 inches high. 50c each; 3 for \$1.00
- PURPLE WATERS.** Strong wine purple, full open flowers, long season of blooms. 36 inches. \$1.00 each; 3 for \$2.50
- RAJAH.** Mahogany-red, shading to orange throat; delicate fragrance; very large; blooms profusely. One of the best of this color. 48 inches. July-Aug. 50c each; 3 for \$1.25.
- SOVEREIGN.** Soft chrome yellow, shaded brown on outside. Early. 35c each; 3 for 90c.
- THUNBERGII.** Rich buttercup yellow, flowering later than Sovereign. 35c each; 3 for 90c.

DAYLILY SPECIAL

A good selection of color—early to late bloomers.

- AUGUST PIONEER.** Yellow and red. Aug. and Sept.
- BAGDAD.** Orange, red and yellow. June and July.
- D. D. WYMAN.** Yellow spotted red. July and Aug.
- GLORIA.** Orange. June.
- LINDA.** Pink. Long blooming season.
- PURPLE WATERS.** Purple. Long blooming season.
- RAJAH.** Mahogany red. July and Aug.
- SOVEREIGN.** Chrome yellow. July.

CATALOG
VALUE \$4.35

YOURS FOR \$3.50

ALL 8 PLANTS
EACH LABELED

FREE WITH ORDERS OF
\$5.00 OR MORE

One beautiful white Oriental Iris. Native of Asia Minor, this iris is very prolific and excellent in naturalizing. Rather flat top similar to Japanese Iris. Grows 16 to 18 inches.

THE SARCOXIE NURSERIES
Wild Bros. Nursery Co.
SARCOXIE, MISSOURI