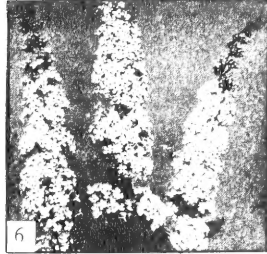


Historic, Archive Document

Do not assume content reflects current scientific knowledge, policies, or practices.



Althea; Rose of Sharon

Butterfly Bush

Sarcoxie Nurseries Hardy Flowering Shrubs

Flowering shrubs add much to the beauty of your home grounds at a low cost

ALL SHRUBS PREPAID EXCEPT WHERE NOTED

MAGNOLIAS

Almond, Double Flowering Pink. One of the most showy flowering shrubs in April. Dwarf in habit and is covered with double pink flowers resembling double peach blossoms. 18 to 24 in. ---- \$1.00 ea; 3 for \$2.75

Althea; Rose of Sharon. (1) Hollyhock-like flowers during summer to late fall. Colors: Double Red, Dble Pink, Dble White 2 to 3 ft. ----- 85¢ ea; 3 for \$2.40

Barberry, Japanese Dwarf Leaf. (3) One of the most popular dwarf shrubs. May be used as a foundation plant, in mass groups or as a hedge plant. Has green leaves and produces red berries in the fall. 15 to 18 in. ----- 60¢ ea; 3 for \$1.65
18 to 24 in. ----- 75¢ ea; 3 for \$2.10

Barberry, Red-Leaved Japanese. (3) The same as the green barberry, except foliage is a lustrous metallic or bronzy-red when planted in full sun, bronzy-green in shade. 15 to 18 in. ----- 75¢ ea; 3 for \$2.10
18 to 24 in. ----- 90¢ ea; 3 for \$2.55

Beautybush, Kolkwitzia. Long branches arch gracefully with clusters of weigelia like flowers in May. Grows 4 to 6 feet. 18 to 24 in. ----- 95¢ ea; 3 for \$2.70
2 to 3 ft. ----- \$1.25 ea; 3 for \$3.50

Butterfly Bush. (6) Covered from summer till fall with fragrant, lilac-like flowers. Offered in the following varieties;

Canning. Flowers lavender tinged pink.
Dubonnet. Rich wine red flowers.
Royal Red. Royal purple-red flowers. No. 1 plants 85¢ ea; any 3 for \$2.40

Besnoodium, Purple Bush Clover. Graceful arching branches, covered in late summer with rose-purple small pea-shaped flowers. 2 year plants ---- \$1.00 ea; 3 for \$2.75

Deutzia, Pride of Rochester. (4) Double tassel-like flowers, white, outer petals rose, in spikes 4 to 6 in. long in May. 18 to 24 in. ----- 75¢ ea; 3 for \$2.10

Forsythia; Golden Bell. Golden yellow four-petaled flowers produced very early in the Spring before the leaves mature. It is a showy shrub growing 6 to 8 feet. 18 to 24 in. ----- 75¢ ea; 3 for \$2.10
2 to 3 ft. ----- 90¢ ea; 3 for \$2.55

Honeysuckle; Bush, Variety Zabeli. A new improved variety, producing a well formed bush with beautiful red flowers, followed by brilliant red berries. Grows 6 to 7 ft. 18 to 24 in. ----- 85¢ ea; 3 for \$2.40
2 to 3 ft. ----- \$1.00 ea; 3 for \$2.85

Hydrangea, Hills of Snow. Well named for its profusion of snow-white flowers born in large clusters from June to mid-summer. Grows 3 to 4 ft. Full sun or partial shade 12 to 15 in. ----- 85¢ ea; 3 for \$2.70
18 to 24 in. ----- \$1.10 ea; 3 for \$3.00

Hydrangea Pee Gee. Flowers in great cone shaped clusters, white assuming rose tints. Blooms in Aug. and Sept. Grows 5 to 6 ft. 15 to 18 in. ----- 95¢ ea; 3 for \$2.70
18 to 24 in. ----- \$1.10 ea; 3 for \$3.00

Lilac, French Hybrid. The hybrid lilacs bloom earlier than the old common lilacs, often the year after planting. Supplies in glorious colors in the following varieties
Chas. Joly. Double purplish wine red.
Charles X. Single purplish-red. Large.
Ellen Willmott. Double seafoam yellow.
Katherine Havemeyer. Dble. violet pink
Madame Lenore. The best double white.
Pascal. Single dusty lavender.
Wm. Robinson. Large double lilac pink. 18 to 24 in. \$1.50 ea; any 3 for \$4.25

Lilac, Persian Purple. Single lilac pink blossoms, blooming 3 to 5 days later than ordinary lilac. Excellent in shrub groups or in hedge plantings. Grows 6 to 8 feet. 18 to 24 in. ----- 90¢ ea; 3 for \$2.55
2 to 3 ft. ----- \$1.10 ea; 3 for \$3.00

Mock Orange, Sweet Scented. This popular well known shrub with large, single white fragrant flowers resembling orange blossoms, has a place in most every garden. It grows 6 to 8 feet. Sun or partial shade. 2 to 3 ft. ----- \$1.00 ea; 3 for \$2.75

Mock Orange, Virginal. Large, fragrant, semi-double white flowers in Spring, and frequently during the summer. Thrives in sun or partial shade. Grows 6 to 7 feet. 18 to 24 in. ----- 95¢ ea; 3 for \$2.70
2 to 3 ft. ----- \$1.15 ea; 3 for \$3.15

Quince, Japan. (5) Often called japonica this shrub is covered with scarlet flowers in March before the leaves appear. 18 to 24 in. ----- 80¢ ea; 3 for \$2.25
2 to 3 ft. ----- 95¢ ea; 3 for \$2.70

Snowball, Common. Covered in early May with clusters of white snowballs about 4 inches across. Sun or partial shade. Will attain a height of 6 to 8 feet. 18 to 24 in. ----- \$1.10 ea; 3 for \$3.00
2 to 3 ft. ----- \$1.35 ea; 3 for \$3.75

Spirea Anthony Waterer. Red summer spire. Produces red to crimson flowers in flat clusters May until Fall. Grows 3 ft. 15 to 18 in. ----- 85¢ ea; 3 for \$2.40
18 to 24 in. ----- 90¢ ea; 3 for \$2.55

Spirea Froebelli. Similar to Spirea Anthony Waterer (above) but with broader, and darker foliage, and grows to about 4 feet. 18 to 24 in. ----- 95¢ ea; 3 for \$2.70
2 to 3 ft. ----- 65¢ ea; 3 for \$1.80
24 to 30 in. ----- 75¢ ea; 3 for \$2.10

Spirea Van Houttei. A fountain of white in May with dense drifts of flowers covering the graceful arching branches. 18 to 24 in. ----- 50¢ ea; 3 for \$1.40
2 to 3 ft. ----- 65¢ ea; 3 for \$1.75

Tamarix Hispida, Kashgar Tamarix. Grown mainly for its delicate, feathery foliage and showy pink flowers which bloom nearly all summer. Grows 12 to 15 feet and should be used in the background or as a screen. 18 to 24 in. ----- 60¢ ea; 3 for \$1.65
2 to 3 ft. ----- 75¢ ea; 3 for \$2.10

Weigelia Eva Rathke. Brilliant carmine-red, grows about 4 feet, succeeds in partial shade. Blooms in May. 18 to 24 in. ----- \$1.00 ea; 3 for \$2.75

Weigelia Rosea. (2) Very showy in May when covered with a profusion of pink trumpet-shaped flowers. Red buds opening rose-pink outside, lighter within. Is a free bloomer, grows 5 to 6 feet, and succeeds in full sun or partial shade. 18 to 24 in. ----- 85¢ ea; 3 for \$2.40
2 to 3 ft. ----- \$1.00 ea; 3 for \$2.85

Magnolias are dug with the soil (B&B) as they do not transplant safely bare root. They may be shipped truck freight or express and are not priced prepaid. Shipping weight 30 pounds each approximately.

Magnolia glauca, Sweet Bay Magnolia. A large semi-evergreen shrub, with glossy dark green foliage, is more hardy than the evergreen magnolia of the South, and produces smaller pure white fragrant flowers. 18 to 24 in. (B&B) ----- \$2.50 ea.
2 to 3 ft. (B&B) ----- \$5.00 ea.

Magnolia liliiflora nigra, Purple Magnolia. One of the hardiest of the Magnolias, and blooms early in the spring and repeatedly through the summer. Large flowers, purple outside and pink inside. Not evergreen. 2 to 3 ft. (B&B) ----- \$6.00 ea.

Magnolia soulangeana, Saucer Magnolia. The most popular early flowering Magnolia. Produces large tulip-shaped flowers, pink outside, white inside before leaves appear in the Spring. Truly a specimen. 2 to 3 ft. (B&B) ----- \$6.00 ea.

Magnolia stellata, Star Magnolia. This dwarf plant (4 to 6 ft) produces quantities of white star-shaped flowers early in the Spring just as new leaves appear. Rare. 18 to 24 in. (B&B) ----- \$10.00 ea.

In January . . .
You will receive our new large color illustrated Spring Catalog with more complete descriptions, and many additional items listed.
Roses and many other plants supplied for Spring delivery will be included

Missouri Customers—Please add 2% Sales Tax

Fruit

The following Fruit Trees, Berries, Grapes, and Vegetable plants ARE PREPAID to your door.

XX Grade Fruit trees are 2 year 11/16 in. caliper, 4 1/2 ft. and up.
Standard Grade trees are 2 year 7/16-9/16 in caliper 3 to 4 feet.

Fruit

Peach Trees

XX Grade \$1.50 ea; any 5 or more \$1.35 ea
Standard \$1.00 ea; any 5 or more .90 ea

Belle of Georgia. Delicious sweet, white freestone with red cheek. Mid-August.

Champion. Mid-season white freestone. An ideal peach for home use. Ripens Aug. 1st.

Golden Jubilee. A new large early peach. A yellow flesh freestone of high quality.

Elberta. Very large, flesh yellow, freestone. Always a good producer. Mid-August.

Hale Haven. Very large yellow freestone. Ripens 8 days to 2 weeks ahead of Elberta.

J.H. Hale. Exceptionally large and of high quality. Mid-season freestone, yellow flesh

Cherry Trees

XX Grade \$1.95 ea; any 5 or more \$1.75 ea
Standard \$1.45 ea; any 5 or more \$1.30 ea

Early Richmond (May Cherry) Bright red, bears May or early June. Hardy, productive.

Montmorency. Bears about one week later than Early Richmond. Large dark red fruit.

Apple Trees

XX Grade \$1.95 ea; any 5 or more \$1.75 ea
Standard \$1.45 ea; any 5 or more \$1.30 ea

Grimes Golden. Beautiful yellow, fine quality and aroma. Excellent table apple.

Red Delicious. Colors early and is red all over. Excellent large juicy fruit.

Red Jonathan. Deep red, fine quality, juicy and full-flavored. A good keeper.

Red Winesap. This improved Winesap is a good keeper, firm and juicy. Bears young.

Yellow Delicious. Large golden yellow, wonderful flavor, good keeper. Bears young.

Yellow Transparent. Bears in mid-June. Fruit yellowish-white, fine grained, juicy.

Whitney Crab. Crabapple. A large fruited crabapple. Excellent flavor, makes perfect apples for pickling, apple butter or jelly.

APPLE TREE SPECIAL
Have apples at home from June to October
One each of the above listed apples will give you fruit from early to late season
ALL 7 STANDARD GRADE TREES \$6.00 PREPAID

Plum Trees

XX Grade \$1.95 ea; any 5 or more \$1.75 ea
Standard \$1.45 ea; any 5 or more \$1.30 ea

Abundance. Brilliant cherry red in color and has firm, sweet juicy flesh. Ripens in early August. A heavy producer.

Burlank. Large purplish-red fruit with very sweet amber flesh. Ripens early Aug.

Gold. Golden yellow with red cheek, this tasty plum should not be overlooked where a firm golden fruit is desired. Late July.

Stanley Plum. Beautiful purple-blue skin with sweet golden flesh. A freestone that ripens early. A good canner or table fruit.

Pear Trees

XX Grade \$1.85 ea; any 5 or more \$1.60 ea
Standard \$1.25 ea; any 5 or more \$1.10 ea

Bartlett. A large waxy yellow fruit with red blush; juicy, fine grained, rich and of good quality. Bears young, latter Aug.

Douglas. Golden yellow flushed with pink. Excellent flavor tender and juicy. Bears young, is resistant to blight. Late Sept.

Grape Vines

Concord. The most popular large black sweet grape. A good commercial variety.

Fredonia. Large, very black, of good flavor, and bears early. A favorite in Mo.

Moores Early. Comes into production two weeks ahead of Concord. Large, productive.

Niagra. Greenish-white to pale yellow. Very sweet and productive.

Prices of above 2 Yr. No 1 Grapes

	Each	5 at	10 at	25 at
Concord	.35	.25	.23	.20
Fredonia	.40	.35	.30	.28
Moores Ey.	.40	.35	.30	.28
Niagra	.45	.40	.35	.30

Raspberries

Cumberland (Black) One of the best black raspberries for the Midwest section, large firm, of excellent quality.

Latham (Red) Large attractive brilliant red. Good quality, productive.

	Per 10	Per 25	Per 50	Per 100
Cumberland	\$1.75	\$3.25	\$6.00	\$10.50
Latham	\$2.00	\$4.00	\$7.50	\$15.00

SARCOXIE NURSERIES
PEONY FIELDS

WILD BROS. NURSERY CO.
SARCOXIE, MISSOURI

Return Postage Guaranteed.

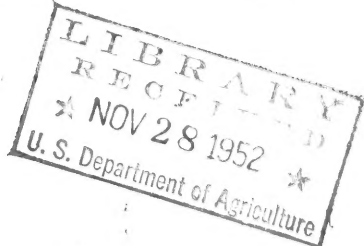
Fall 1952

OUR 78th YEAR

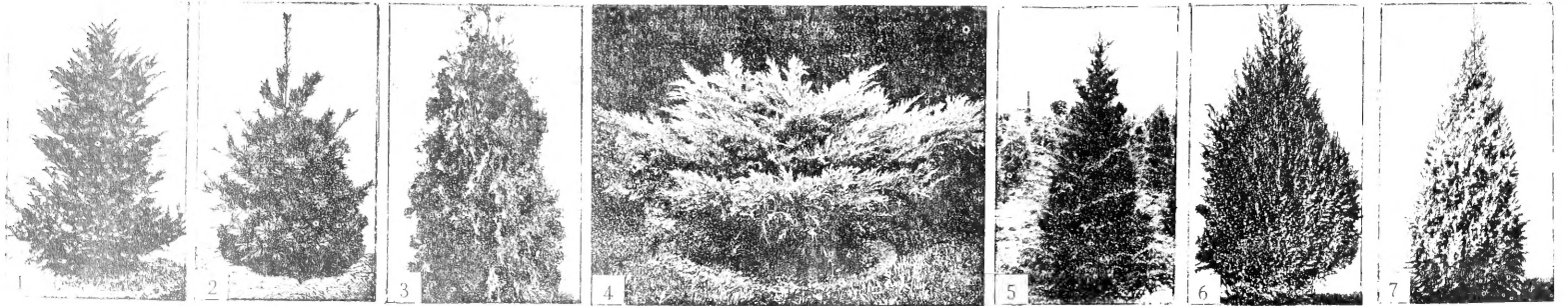
NOW IS THE TIME TO ORDER

and Fall is a good time to plant when cool nights are followed by warm days, and moisture is plentiful. If items needed are not listed please refer to our last Spring Catalog. Thank you.

Plant this Fall
Be ahead next Spring



Librarian
U. S. Dept. of Agriculture
Washington 25, D. C.



Sarcoxie Nurseries Beautiful Evergreens

SPECIMENS EVERYONE

Evergreens priced roots packed in moss are Prepaid. Larger sizes balled and burlapped (B&B) are Not Prepaid.

Arborvitae, American Pyramidal. (3) Compact and pyramidal. Foliage deep rich green seldom requires trimming. Grows 6 to 10 ft. 15 to 18 in. Roots in moss Ppd. \$1.50 ea. 18 to 24 in. B&B Not prepaid. 2.75 ea. 2 1/2 to 3 ft. B&B Not prepaid. 4.25 ea.

Arborvitae, Berkman's Golden. (9) Dwarf, somewhat ovate in form. Flat foliage, gold suffused with green. Grows 6 to 7 feet. 10 to 12 in. Roots in moss Ppd. \$1.25 ea. 15 to 18 in. B&B Not prepaid. 3.25 ea. 18 to 24 in. B&B Not prepaid. 4.25 ea.

Arborvitae, Bonita. Not illustrated. A fine dwarf evergreen of compact habit. Grows 3 to 3 1/2 feet. Foliage dark green. 10 to 12 in. Roots in moss Ppd. \$1.00 ea. 15 to 18 in. B&B Not prepaid. 3.25 ea. 18 to 24 in. B&B Not prepaid. 4.00 ea.

Arborvitae, Excelsa. Not illustrated. An Oriental type with flattened upright branches, attaining a height of 7 to 8 feet, is a desirable plant for foundation use. 12 to 15 in. Roots in moss Ppd. \$1.25 ea. 2 1/2 to 3 ft. B&B Not prepaid. 4.00 ea.

Arborvitae, Woodward Globe. (8) A low compact form, naturally globular in outline, growing 3 to 3 1/2 feet. 10 to 12 in. Roots in moss Ppd. \$1.00 ea. 12 to 15 in. B&B Not prepaid. 2.50 ea.

Juniper, Camart. (5) One of the best pyramidal junipers. Foliage soft in texture, deep green in color. Silver berries produced in late summer. Grows 12 to 15 feet. Full sun or partial shade. 2 1/2 to 3 ft. B&B Not prepaid. \$6.50 ea. 3 to 4 ft. B&B Not prepaid. 7.50 ea.

Juniper, Irish. Not illustrated. Its finely-cut bluish-green foliage is attractive, and its dense, slender conical form makes it an ideal plant for use in foundation groupings. Does well in light shade however is best in full sunlight. 12 to 15 in. Roots in moss Ppd. \$1.00 ea. 18 to 24 in. B&B Not prepaid. 3.25 ea. 2 1/2 to 3 ft. B&B Not prepaid. 3.75 ea. 2 1/2 to 3 ft. B&B Not prepaid. 4.50 ea.

Juniper, Keteleer. Not illustrated. This new variety of juniper is very hardy, and does well in partial shade or full sun. It has bright green foliage, is pyramidal in growth, and compact. Grows 10 to 12 feet. 2 1/2 to 3 ft. B&B Not prepaid. \$6.50 ea. 3 to 4 ft. B&B Not prepaid. 7.50 ea.

Juniper, Pfitzer. (4) Wide spreading horizontal branches. Foliage olive-green. Thrives in almost every location. 12 to 15 in. Roots in moss Ppd. \$1.00 ea. 15 to 18 in. B&B Not prepaid. 3.50 ea. 18 to 24 in. B&B Not prepaid. 4.50 ea.

Juniper, Silver. Variety Pathfinder (7) A pyramidal, compact type of Colorado juniper. Soft bluish-silver foliage. 2 1/2 to 3 ft. B&B Not prepaid. \$6.50 ea. 3 to 3 1/2 ft. B&B Not prepaid. 7.50 ea.

Juniper, Spiny Greek (6) Dense and narrowly conical. Spiny greyish-green foliage. 15 to 18 in. B&B Not prepaid. \$3.25 ea. 18 to 24 in. B&B Not prepaid. 4.00 ea.

Pine, Mugo. (8) A many-stemmed, low branched, dwarf dense tree. The new growth resembles candles on the tree. 3 to 5 ft. 12 to 15 in. B&B Not prepaid. \$3.50 ea.

Pine, White. (2) A symmetrical pyramidal tree, with regular whorls of horizontal branches. Needles in 5's, soft bluish-green. 2 to 3 ft. B&B Not prepaid. \$6.00 ea. 3 to 4 ft. B&B Not prepaid. 7.50 ea.

Spruce, White. Not illustrated. A handsome symmetrical tree with silvery-green foliage, branches spreading drooping with age. Excellent as a living Christmas tree. 18 to 24 in. B&B Not prepaid. \$5.00 ea. 2 to 2 1/2 ft. B&B Not prepaid. 6.00 ea.

Yew, Japanese Upright. (1) Dark, rich green foliage. Does well in dense shade. 18 to 24 in. B&B Not prepaid. \$7.50 ea.

Yew, Japanese Spreading. Not illustrated. A low spreading form, similar to Pfitzer juniper. Best in moist shaded areas. 15 to 18 in. B&B Not prepaid. \$5.75 ea. 18 to 24 in. B&B Not prepaid. 7.50 ea.

BROADLEAF EVERGREENS.

Abelia Grandiflora. Light pink fragrant weigelia-like flowers, summer until fall. Small, glossy, dark evergreen foliage. Is a good foundation plant. Grows 4 to 6 feet. Does well in shade or full sunlight. 15 to 18 in. Roots in moss Ppd. \$1.50 ea. 18 to 24 in. B&B Not prepaid. 2.75 ea.

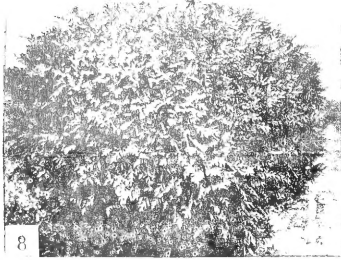
Euonymus patens. Sometimes called evergreen bittersweet, as it produces bitter-sweet like berries in the fall. Excellent as a base or foundation plant. Has glossy dark green foliage. Grows 4 to 5 feet. 10 to 12 in. Roots in moss Ppd. \$1.25 ea. 15 to 18 in. B&B Not prepaid. 2.25 ea. 18 to 24 in. B&B Not prepaid. 3.00 ea.

Euonymus Upright Radicans. (New) One of the best evergreen shrubs. Holds its dark glossy foliage throughout the winter, and is just as happy in the shade as in sun. Grows 3 to 4 feet, is upright and compact. 15 to 18 in. Roots in moss Ppd. \$2.25 ea. 15 to 18 in. B&B Not prepaid. 2.50 ea. 18 to 24 in. B&B Not prepaid. 3.50 ea.

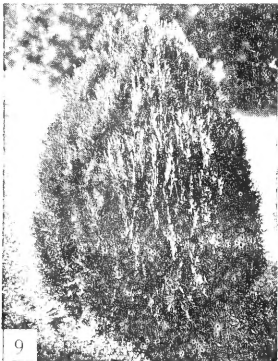
Nandina (Heavenly Bamboo) An erect shrub with bamboo-like stems producing clusters of bright red berries, which are at their best during Christmas season. Foliage dark green turning scarlet in winter. 3 to 4 ft. 12 to 15 in. Roots in moss Ppd. \$1.75 ea. 12 to 15 in. B&B Not prepaid. 2.25 ea. 15 to 18 in. B&B Not prepaid. 2.75 ea.

Pyracantha Lalandi. (Scarlet Firethorn) A picturesque, upright, thorny shrub with small evergreen foliage. White flowers, followed with fiery orange-red fruit that lasts well into the winter. Excellent as a specimen or trained against a wall. 18 to 24 in. B&B Not prepaid. \$3.25 ea. 2 to 2 1/2 ft. B&B Not prepaid. 4.25 ea.

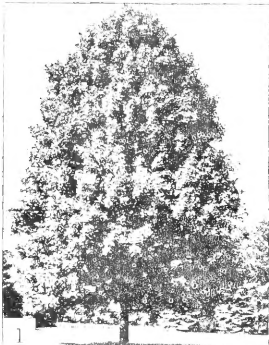
If interested in other varieties or larger sizes please write us. Our large, complete Spring Catalog with illustrations in color will be sent you in early January.



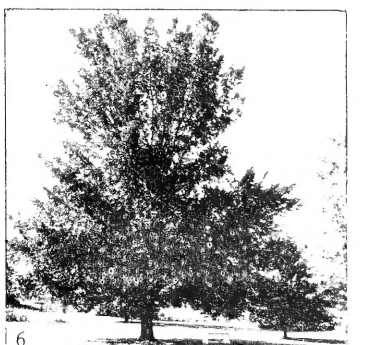
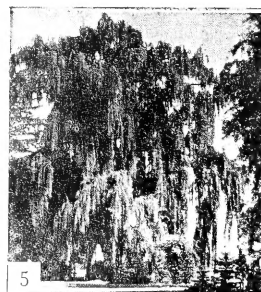
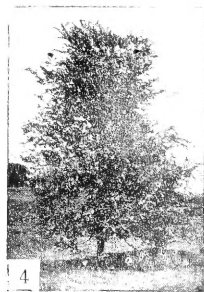
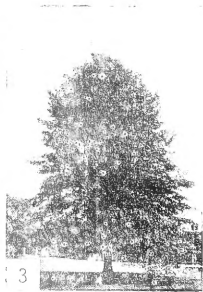
Globe Arborvitae



Berkman's Arborvitae



Hard Maple



Coolshade Elm

Bird, European White. A graceful tree of regular charm with chalky white bark and delicate light green foliage. 3 to 4 feet Prepaid ----- \$1.75 ea. 4 to 5 feet Prepaid ----- 2.50 ea. 5 to 6 feet Not prepaid ----- 3.00 ea. 6 to 8 feet Not prepaid ----- 3.95 ea.

Crab, Hopa. An ornamental flowering tree with carmine-rose flowers, 1 1/2 - 1 3/4 inches across covering the tree in latter April. New foliage and fruit is red. 12 to 18 ft. 3 to 4 feet Prepaid ----- \$1.50 ea.

Dogwood, White Flowering. Show four petaled white flowers 3 to 4 in. across in latter April. Attractive red berries and scarlet foliage in Autumn. 2 to 3 feet Prepaid ----- \$1.75 ea. 3 to 4 feet Prepaid ----- 2.25 ea.

Dogwood, Red Flowering. Flowers like the native white, but a decided pink to red. 2 to 3 feet Prepaid ----- \$3.75 ea. 3 to 4 feet Prepaid ----- 4.95 ea.

Nut Trees

Chestnut, Chinese. Blight resistant, this variety produces large sweet nuts, and is resistant to disease. Bears young, is hardy and makes a beautiful shade tree. 3 to 4 feet Not prepaid ----- \$2.50 ea. 4 to 5 feet Not prepaid ----- 3.25 ea.

Pecan, Stuart Paper Shell. Hardest of all paper-shell varieties. Exceptionally tough, makes an excellent shade tree. The nuts are large and very meaty. 3 to 4 feet Not prepaid ----- \$2.95 ea.

Walnut, Thomas Black. This grafted walnut produces giant size nuts at an early age, often the second year. Valuable as a shade tree as well as for nut production. 3 to 4 feet Not prepaid ----- \$2.75 ea.

Elm, Chinese. (4) Rapid growth, slender branches, leaves much smaller than those of American Elm. Disease resistant. 5 to 6 feet Not Prepaid ----- \$1.25 ea. 6 to 8 feet Not Prepaid ----- 1.75 ea. 8 to 10 feet Not Prepaid ----- 2.75 ea.

Elm, Coolshade. (6) The most beautiful Elm we know, is a most practical all-purpose shade tree. This hardy, rapid growing Elm is tough, and does not break under strain of ice or wind like many soft wood trees. 6 to 8 feet Not prepaid ----- \$3.75 ea. 8 to 10 feet Not prepaid ----- 5.00 ea. 10 to 12 feet Not prepaid ----- 8.50 ea.

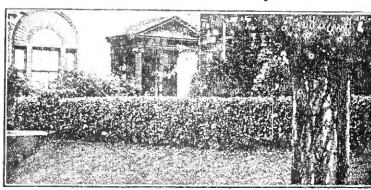
Maple, Hard or Sugar. (1) Our most beautiful shade tree, with Autumn foliage that is orange to fiery-red. Very hardy. 4 to 5 feet Not prepaid ----- \$2.75 ea. 5 to 6 feet Not prepaid ----- 3.50 ea. 6 to 8 feet Not prepaid ----- 5.00 ea. 8 to 10 feet Not prepaid ----- 7.50 ea. 10 to 12 feet Not prepaid ----- 10.00 ea.

Mimosa, Chinese Silk Tree. This unusual, rapid growing Asiatic tree produces tropical effects in the garden. The tips of the branches are covered with Acacia-like pink feathery flowers from June throughout September. Foliage fern-like. 2 to 3 feet Prepaid ----- \$1.15 ea. 3 to 4 feet Not prepaid ----- 1.50 ea. 4 to 5 feet Not prepaid ----- 2.00 ea. 5 to 6 feet Not prepaid ----- 2.75 ea.

Oak, Pin. Pin Oak. (3) One of the best and rapid growing Oaks, pyramidal and very symmetrical in form. Glossy green foliage. 5 to 6 feet balled in earth. \$5.00 ea. 6 to 8 feet balled in earth. 7.50 ea. 8 to 10 feet balled in earth. 15.00 ea.

Poplar, Lombardy. (2) Tall and columnar, rapid growth, useful as an accent tree and to screen objectionable views. 5 to 6 feet Not prepaid ----- \$.85 ea. 6 to 8 feet Not prepaid ----- 1.10 ea. 8 to 10 feet Not prepaid ----- 1.50 ea.

Privet the Living Fence



Privet, Amur River North. The hardiest of all privet, and most used variety. Foliage is dark green, and held until late fall. 12 to 18 in. 25 for 50 for 100 for \$5.00 \$9.50 \$17.00 18 to 24 in. 6.50 12.00 20.00

Privet, Continued

ALL PRIVET PRICES PREPAID

Privet, California. Glossy, dark green leaves retained well into winter. 6 to 12 in. 25 for 50 for 100 for \$3.00 \$5.50 \$10.00 12 to 18 in. 3.75 6.75 12.50 18 to 24 in. 5.50 10.00 18.50

Privet, Chinese No. 6 This new privet is practically evergreen, holding its leaves all winter except when conditions are extremely severe. Densely foliated, this variety makes an excellent trimmed hedge, or untrimmed provides all-year privacy, as it will rapidly grow six to eight feet. 12 to 18 in. 25 for 50 for 100 for \$4.75 \$9.00 \$17.50 18 to 24 in. 6.50 12.00 20.00

Red Bud. Tiny pea-shaped rose-pink flowers cover the leafless branches in early April. Foliage is bright yellow in Autumn. 2 to 3 feet Prepaid ----- \$1.00 ea. 3 to 4 feet Prepaid ----- 1.35 ea.

Willow, Weeping. (5) A graceful tree; slender drooping branches. Leaves lustrous green. Beautiful as a specimen or used as a background plant. Hardy, rapid in growth. 3 to 4 feet Prepaid ----- \$.75 ea. 5 to 6 feet Not prepaid ----- 1.50 ea. 6 to 8 feet Not prepaid ----- 2.50 ea.

Hardy Vines

Bittersweet, American. Produces orange-yellow seed pods in clusters. Two plants needed to assure proper pollination. 2 yr. No.1 plants 2 for \$1.40 Ppd.

Clematis paniculata, Japanese Clematis. Thousands of pure white fragrant flowers 1 to 1 1/2 inches across produced in Sept. 2 yr. No.1 plants 75c 2 for \$1.40 Ppd.

Honeysuckle Goldflame. An evergreen vine blooming almost all summer. Flowers yellow inside, deep rose outside. Very fragrant. 2 yr. No.1 plants 85c 2 for \$1.60 Ppd.

Silver Lace Vine. Covered with lacy white flowers from summer to fall. Ideal cover for porch, pergola or fence. Fast grower. 2 yr. No.1 plants \$1.00 2 for \$1.90 Ppd.

Wisteria, Chinese Blue or White. Produce immense clusters of beautiful flowers in April. Very fragrant. State color please. Grafted plants \$1.50 ea. Ppd.

We grow many plants not listed in this Fall Price List. If you do not find what you require, please write us. Our large Spring Catalog will be mailed you in January.