

## **Historic, Archive Document**

Do not assume content reflects current scientific knowledge, policies, or practices.



62.17

LIBRARY  
RECEIVED  
★ SEP 26 1952 ★  
U. S. Department of Agriculture

# WINTER HAVEN NURSERIES, INC.

1320 LAKE SHIPP DRIVE

Phone 29-193

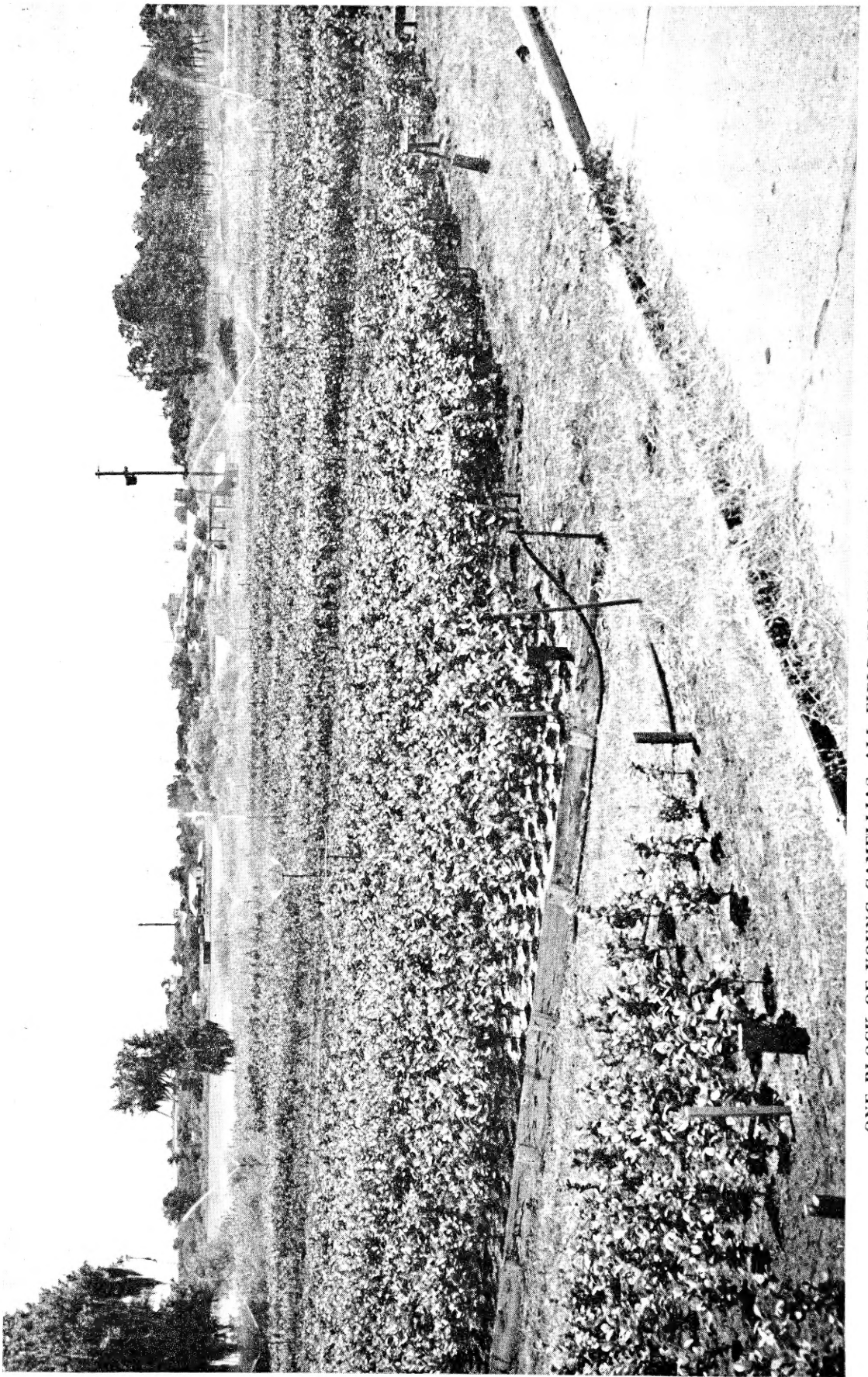
WINTER HAVEN, FLA.

R. O. Blackwell, Jr., Pres. : D. K. Stabler, Mgr.

1952 - 1953

WHOLESALE ONLY





ONE BLOCK OF YOUNG CAMELLIAS. ALL FIELD GROWN AND NOT LATH HOUSE GROWN

# **To Our Customers**

This little booklet is being published for the convenience of the wholesale trade in this area. It will give an idea of our Camellia and Azalea stock, and we solicit orders on the basis of this stock. Every plant we sell is produced under the best conditions possible and is guaranteed to be true to name and free of disease when we send it out.

This year we have a better selection of Camellias, and have added a few more items to our list. We have a wonderful lot of canned stock to offer and invite you to visit our nursery to make your selection.

Certain varieties of Camellias are a little scarce, but if you will come to see us early we feel sure that we can serve you without any trouble. Please let us know what you need, and if we do not have it we will try to find it for you.

**LOCATION OF NURSERY.** Our nursery is located three miles south of Winter Haven. Follow U. S. 17 south to the traffic light at Eloise; turn west for  $\frac{1}{4}$  mile. We are on the south shore of Lake Shipp.

## **Our Business Terms**

**PRICES.** All prices are net, and when cash accompanies the order, no charge will be made for packing. Otherwise a charge will be made for packing based on cost of time and material. For "cash and carry," that is when you bring your truck and pay cash for your stock, we will allow a discount of 20% from catalog prices, on balled and burlapped stock only.

This is the only discount we can allow and you can understand this when you see our stock.

**C.O.D. SHIPMENTS.** Must be accompanied by 25% of order and balance to be paid on delivery.

**SHIPMENTS.** Please specify how you want your order to be shipped. We will endeavor at all times to send out all orders as near the date specified as possible. We will do everything in our power to insure satisfactory delivery to our customers, but our responsibility ceases upon delivery to carrier in good condition, in so far as damages in transit are concerned. We are willing to assist in filing claims for damages if you will call on us should the occasion arise.

If there are any mistakes in filling your order, please let us know on receipt of goods so that we can rectify the mistake.

It is to be thoroughly understood that we accept any and all orders with the provision that they shall be void if any injury befalls our stock over which we have no control. All orders are subject to any new Government regulations.

**WINTER HAVEN, FLORIDA. Wholesale Only**

# **Camellias - Group One**

## **DAIKAGURA.**

One of the very earliest Camellias to bloom. Deep rose-pink flowers, sometimes streaked and blotched with white. 8-12 in., 12-18 in.

## **EMPRESS (Lady Clare; Grandiflora Rosea).**

Clear rose-pink, with two rows of petals and golden stamens. One of the largest, sometimes measuring 6 inches across. Dark green foliage; spreading growth. 8-12 in., 12-18 in.

## **EMPRESS VARIANT.**

Like the above but with white variegations in the flower. 8-12 in., 12-18 in.



**A FIELD OF CAMELIAS PLANTED ABOUT SIX MONTHS. ALL OUR STOCK IS GROWN IN FULL SUN, WHICH PRODUCES A MASS OF ROOTS.**

## **K. SAWADA.**

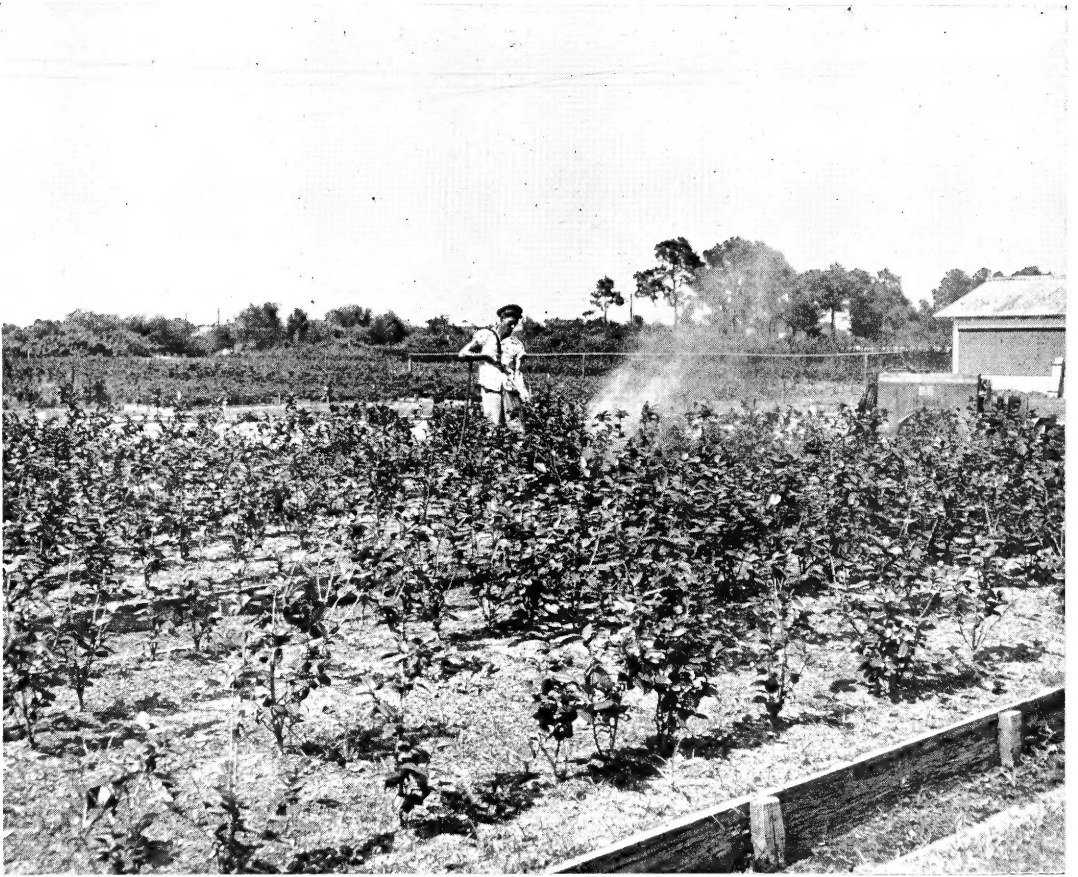
Plant Pat. 431. Pure white, very double flower. Fast, upright grower and prolific bloomer. An excellent variety that should be in every collection. 12-18 in., 18-24 in.

## **LA REINE.**

Semi-double flower 5 to 6 inches in diameter, deep pink to red, blotched with white. Very attractive and outstanding Camellia. 12-18 in., 18-24 in.

## **MATHOTIANA RUBRA. (Purple Emperor; Purple Dawn; Wm. S. Hastie).**

Very large, deep red flowers turning purple as they age, and showing stamens when fully open. A fast grower with large, dark green foliage. 8-12 in., 12-18 in., 18-24 in., 24-30 in., 30-36 in.



**Spraying Block of Our Larger Well-budded Mathotiana Rubra.**

**MATHOTIANA VARIANT (C. M. Hovey).**

Very large-flowering. Like the foregoing except for the white blotches through the flower. One of the very best in flowering as well as in growth. Large, dark green foliage with some variegation. 8-12 in., 12-18 in., 24-30 in., 30-36 in.

**ROSE DAWN.**

A very beautiful rose-pink Camellia of large size. Very vigorous grower with dark green foliage. Much in demand. 8-12 in., 12-18 in.

**ROSEA SUPERBA.**

Very large deep pink, vigorous grower. Very much like Mathotiana Rubra in foliage. 8-12 in., 12-18 in., 18-24 in., 24-30 in.

**ROYAL WHITE.**

Pure white late bloomer, very large. From semi-double to full double. Large foliage and good compact grower. 12-18 in.

**VICTORY WHITE.**

Semi-double peony type, large pure white with yellow stamens. Mid-season bloomer and an excellent variety. 12-18 in.

**WINTER HAVEN, FLORIDA. Wholesale Only**

**WHITE KING.**

Very nice snowy white seedling of good growth. Foliage large and excellent grower. 12-18 in.

**WHITE EMPRESS.**

Large semi-double, pure white with a mass of yellow stamens. Very popular variety. 8-12 in., 12-18 in.

**PRICES OF GROUP ONE CAMELLIAS**

|                       |         |
|-----------------------|---------|
|                       | 10      |
| 8-12 inch, B&B .....  | \$20.00 |
| 12-18 inch, B&B ..... | 25.00   |
| 18-24 inch, B&B ..... | 35.00   |
| 24-30 inch, B&B ..... | 50.00   |
| 30-36 inch, B&B ..... | 75.00   |

***Camellias - Group Two***

**ALBA PLENA.**

One of the oldest and best-known Camellias. A pure white, full double sort that is preferred for corsage use. Susceptible to cold damage. 8-12 in., 12-18 in., 18-24 in., 24-30 in.



**Budded Alba Plena and Texas Star.**



### **ASPACIA.**

Variegated form of Emperor of Russia. Bushy compact grower. Large red and white flowers. 12-18 in.

### **CARDINAL RICHELIEU.**

A very hardy variety that blooms well in cold weather. Loose, peony-form flowers with stamens and petaloids intermixed. Rose-red in color. 12-18 in., 18-24 in.

### **COLONEL FIREY.**

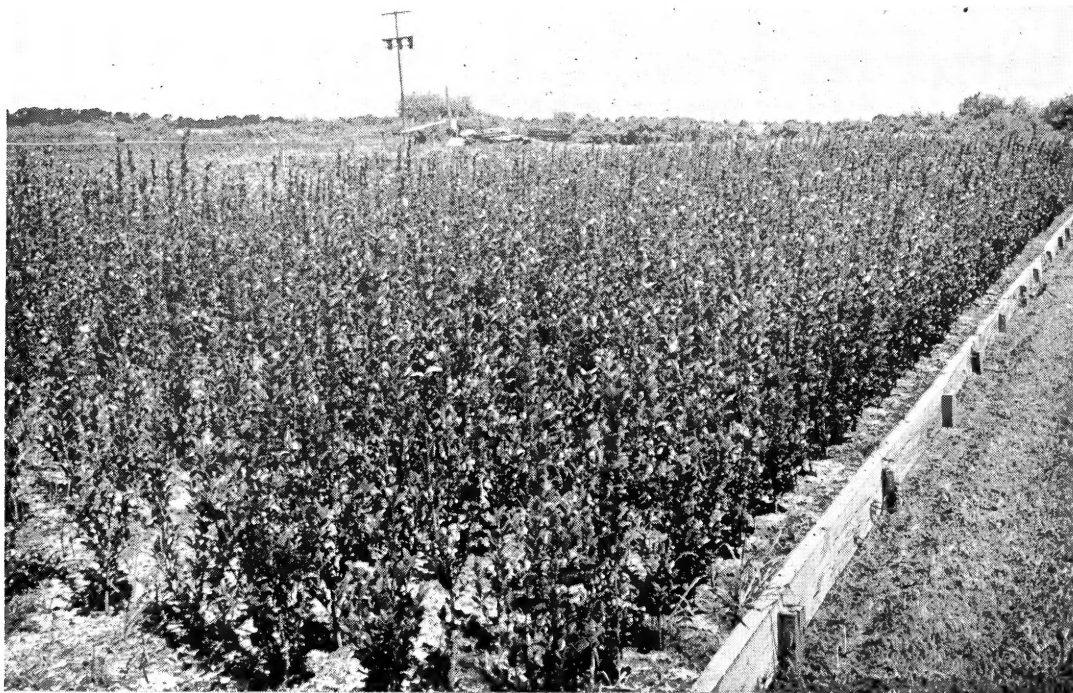
Very double, well-shaped flower, 5 to 6 inches across, of brilliant crimson. One of the best red Camellias. Said to be true C. M. Hovey. 12-18 in., 18-24 in.

### **DEBUTANTE (Sara C. Hastie).**

Large, peony-form, light pink, blooms early. Fast grower with large serrated leaves of dull green. Very desirable. 8-12 in., 12-18 in., 18-24 in., 24-30 in.

### **ELEANOR HAYGOOD.**

Pale pink, almost blush-color, medium to large flower and when fully open, has a few stamens. 12-18 in., 18-24 in.



**A FIELD OF 12-18 IN. AND 18-24 IN. CAMELLIAS SASANQUA.**

### **EMPEROR OF RUSSIA.**

Very large, deep scarlet, peony-form flower, with stamens intermixed. Large, dark green foliage. Excellent grower. 12-18 in., 18-24 in.

### **FANNY BOLIS.**

Very large, almost single, red flowers blotched with white. Large, dark green foliage; good grower, 12-18 in.

**WINTER HAVEN, FLORIDA. Wholesale Only**

**GOV. MOUTON.**

Flowers of medium size and blood-red color, often blotched with white. A vigorous grower, rather spreading in habit, with twiggy branches. 12-18 in., 18-24 in.

**KUMASAKA.**

Large, semi-double, deep pink, showing stamens. Good growth and bloom. 12-18 in.

**LAUREL LEAF.**

Large, full double variety of beautiful texture. Most flowers have rose pink centers and fade into deeper pink at edge, but sometimes come with white blotches. 8-12 in., 12-18 in.

**MRS. CHAS. COBB**

One of the darkest red Camellias we know — almost black. Rich golden stamens intermixed with petals. Very fast grower with rounded, light green foliage. We highly recommend this variety. 8-12 in., 12-18 in., 18-24 in.

**QUEEN BESSIE.**

A lovely semi-double variety of white with a slight flush of pink in the center. A vigorous grower with medium green foliage. 12-18 in.

**SHIRO-BOTAN.**

Large white flower with medium-sized light green foliage. A good grower. 12-18 in., 18-24 in.

**PRICES OF GROUP TWO CAMELLIAS**

|                       |         |
|-----------------------|---------|
|                       | 10      |
| 8-12 inch, B&B .....  | \$10.00 |
| 12-18 inch, B&B ..... | 15.00   |
| 18-24 inch, B&B ..... | 25.00   |

***Camellias - Group Three***

**BRILLIANT.**

Local name. An excellent variety. Large, very double, bright red. Compact grower with dark green foliage. 8-12 in., 12-18 in.

**DIXIE.**

Large, full double flowers of deep rose-pink. A profuse, late bloomer and strong grower. 12-18 in.

**ELEGANS (CHANDLERI).**

Rich cherry-red with white variegation. Large flower, 5 to 6 inches in diameter, some of loose peony form and others with thick peony flowers, all on the same plant. Leaves are rich shiny green. 8-12 in., 12-18 in.

**ELIZABETH ARDEN.**

Medium to large; striped rose color, sometimes sporting a solid pink flower. Dark green foliage. A fast grower and late bloomer. 12-18 in.

**GLOIRIE DE NANTES.**

Medium to large, semi-double cerise flower. A very attractive plant, even without the flowers, as it has such dark green foliage and is such a strong grower. 12-18 in.

**GOSHOGURUMA.**

Single deep velvety red with golden stamens. Medium-sized dull green foliage. Slow, very upright growth. 12-18 in.

**JARVIS RED.**

Large, semi-double, deep red flower with the stamens showing very prominently. Dark green foliage. 8-12 in.

**MONARCH.**

Very large, deep pink with white variegation. The stamens are so intermixed that often one single flower will resemble a bouquet. Very compact, dark green foliage. 8-12 in., 12-18 in.

**PINK PERFECTION (FRAU MINNA SEIDEL).**

Very popular shell-pink that is early and blooms very freely. 8-12 in., 12-18 in.

**POPE PIUS IX.**

Very double, large, scarlet flowers. Blooms from early to mid-season. Compact growth. 8-12 in., 12-18 in., 18-24 in.

**PROFESSOR C. S. SARGENT.**

Crimson flowers of peony form. Excellent grower, early blooming. 8-12 in., 12-18 in., 18-24 in.

**VICTOR EMMANUEL.**

Unusually large, peony form, very deep red. Very spectacular red Camellia and probably one that will sell at higher price for many years to come. Excellent grower and late bloomer. We have some exceptionally good buys in this variety. 8-12 in., 12-18 in.

**PRICES OF GROUP THREE CAMELLIAS**

|                                  |                |
|----------------------------------|----------------|
|                                  | <b>10</b>      |
| <b>8-12 inch, B&amp;B</b> .....  | <b>\$ 7.50</b> |
| <b>12-18 inch, B&amp;B</b> ..... | <b>10.00</b>   |
| <b>18-24 inch, B&amp;B</b> ..... | <b>12.50</b>   |

# ***Azaleas***

## **DUC DE ROHAN.**

Beautiful salmon-pink. A compact plant with small foliage; very free flowering. Very fine for growing in pots.

## **ELEGANS.**

Light pink. Heavy foliage; fast-growing, well-shaped plant. Early bloomer.

## **FIELDER'S WHITE.**

One of the best whites among the Indicas. Dark green, hairy foliage; excellent growth.



**A FIELD OF FORMOSA AZALEAS FOR FALL AND WINTER SALES**

## **FISHER PINK.**

Light pink. Blooms about the same time as Pride of Mobile. Very good, compact growth.

## **FORMOSA.**

Large purple flowers, somewhat lighter than Phoenicia. Large, thick foliage; probably the fastest grower of all the Azaleas.

**WINTER HAVEN NURSERIES, INC.**

**JUDGE SOLOMON.**

A pink sport of Formosa. Same growth and blooming habits.

**KINGS WHITE.**

Mid-season to late bloomer. Large white and very good.

**MRS. G. G. GERBING.**

A new white that is very good. A sport of George L. Tabor, brought out by Gerbing Camellia Nursery.

**PRESIDENT CLAY.**

Orange-red. Fast, upright growth; mid-season bloomer. Very good.

**PRICES OF ABOVE AZALEAS**

|                                 | 10     | 100     |
|---------------------------------|--------|---------|
| 8-10 inch, Budded Plants .....  | \$4.00 | \$35.00 |
| 10-12 inch, Budded Plants ..... | 5.00   | 45.00   |
| 12-18 inch, Budded Plants ..... | 7.00   | 60.00   |

***Gardenia Veitchi***

Pot plant variety for green house growing. All our benches, pots and soil are steam sterilized and no danger of nematode infection in your houses.

|                              |         |
|------------------------------|---------|
|                              | 100     |
| Strong rooted cuttings ..... | \$ 7.00 |
| 3 inch pots .....            | 20.00   |

***Camellia Sasanqua***

**ANNETTE.**

A two-toned variety, similar to Cinderella except more dense in growth and flowers are a deeper pink. .

**CINDERELLA.**

Very fast grower of pyramidal habit. Flowers are single, two-toned, white in center shading to pink at edges of petals.

**CLEOPATRA.**

Large, single to semi-double, red flowers. Very dark, thick foliage. Compact. Fine for hedges.

**DAWN.**

Hardest of all Sasanquas. Semi-double white with flesh pink at the margins of petals. Slow grower but very desirable. 12-18 in, 18-24 in.

**WINTER HAVEN, FLORIDA. Wholesale Only**



Camellias and Sasanqua in Cans

**DAYDREAM.**

Flowers are extremely large, white at the base, shading to deep pink at the outer edge, with a beautiful cluster of golden yellow stamens in center. Excellent for hedges or screen work. 12-18 in.

**MINE-O-YUKI. (Double White, Snow-on-the-Mountain.)**

Large double white flower of waxy texture. When an old tree comes in bloom it resembles a mountain of snow. One of the very best. 12-18 in., 18-24 in.

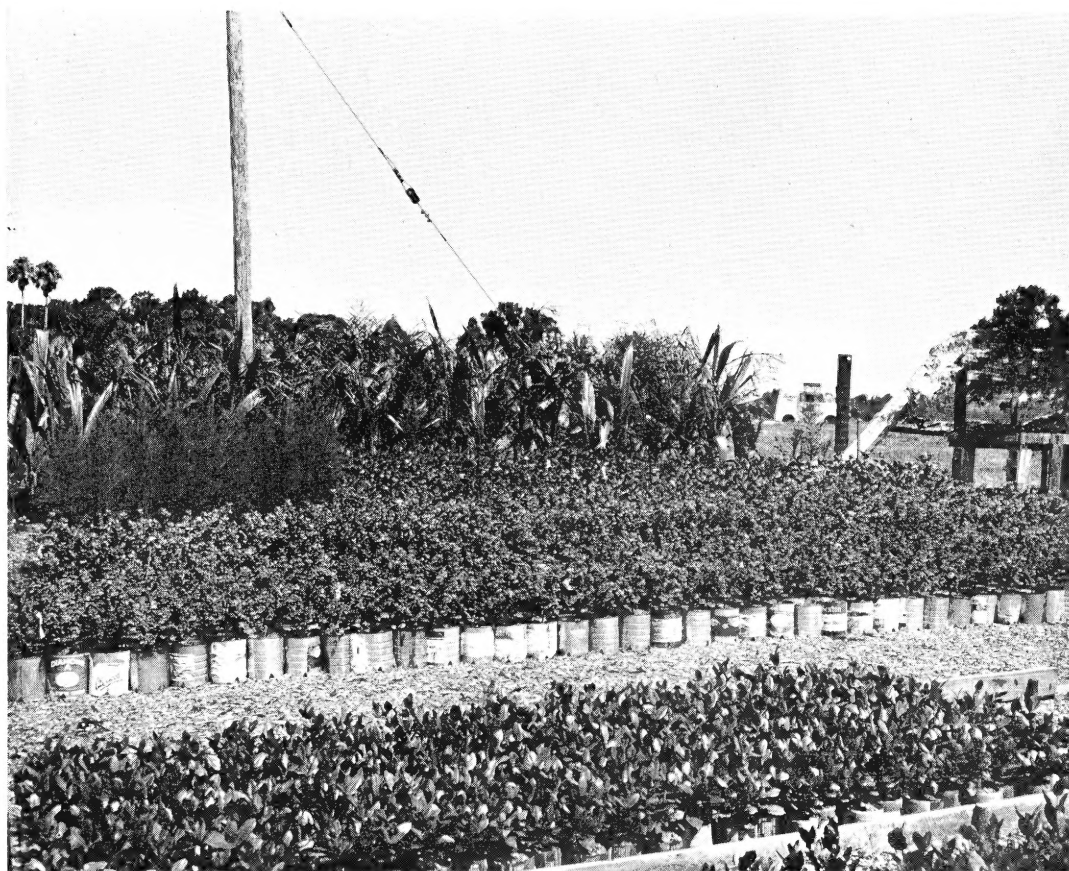
**ROSEA.**

Single, large, rose-pink flower. Very fast grower.

**TEXAS STAR.**

A new variety introduced by Mr. Price Magee, a Louisiana nurseryman. Very symmetrical growth and very dense. Medium size, light pink flower.

|  |         |
|--|---------|
|  | 10      |
| 12-18 inch, B&B .....                                  | \$12.50 |
| 18-24 inch, B&B .....                                  | 15.00   |
| 24-30 inch, B&B .....                                  | 17.50   |
| 30-36 inch, B&B .....                                  | 20.00   |
| 3- 4 foot, B&B (Texas Star and<br>Cleopatra Only)..... | 25.00   |



**Ixora, Holly, Hibiscus, Palms**

This year we are offering all our Camellia Sasanquas in gallon cans at the same price as balled and burlapped. These are especially nice for sales yards. If you will let us know what your requirements are, we will be glad to take care of your needs.

**LIGUSTRUM LUCIDUM COMPACTUM. (Wax Privet.)**

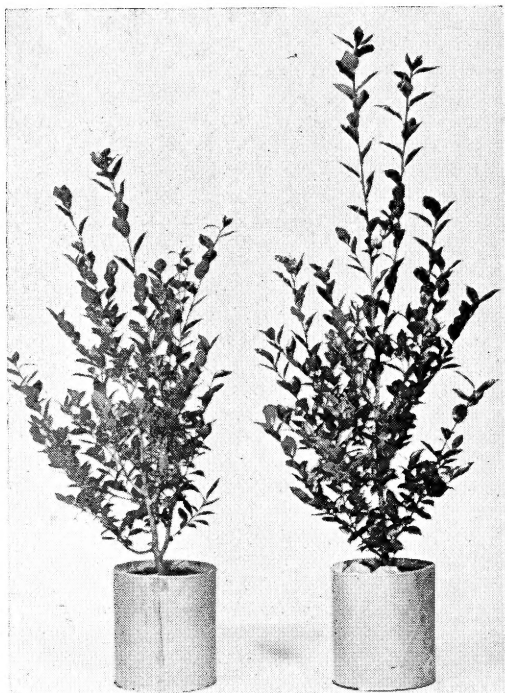
Bushy and compact with very glossy leaves. Not such a fast grower as Japanese Privet.

|                                   |                |
|-----------------------------------|----------------|
|                                   | <b>10</b>      |
| <b>18-24 inch, Own root</b> ..... | <b>\$10.00</b> |

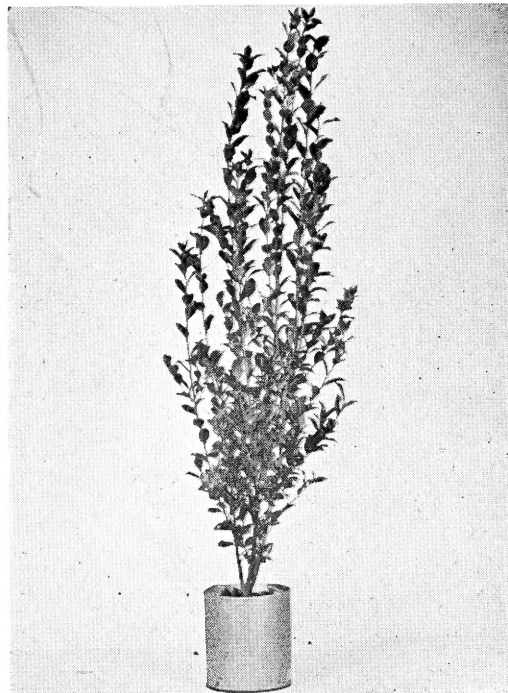
**IXORA.**

Long-stemmed flowers with large, deep green, contrasting leaves. Our plants are well-established and sure to please.

|                            |                |
|----------------------------|----------------|
|                            | <b>100</b>     |
| <b>2½ inch, pots</b> ..... | <b>\$17.50</b> |
| <b>3 inch, pots</b> .....  | <b>20.00</b>   |
| <b>Quart cans</b> .....    | <b>35.00</b>   |



**CAMELLIAS SASANQUA ANNETTE  
AND CINDERELLA**  
18-24 in. in One Gallon Can



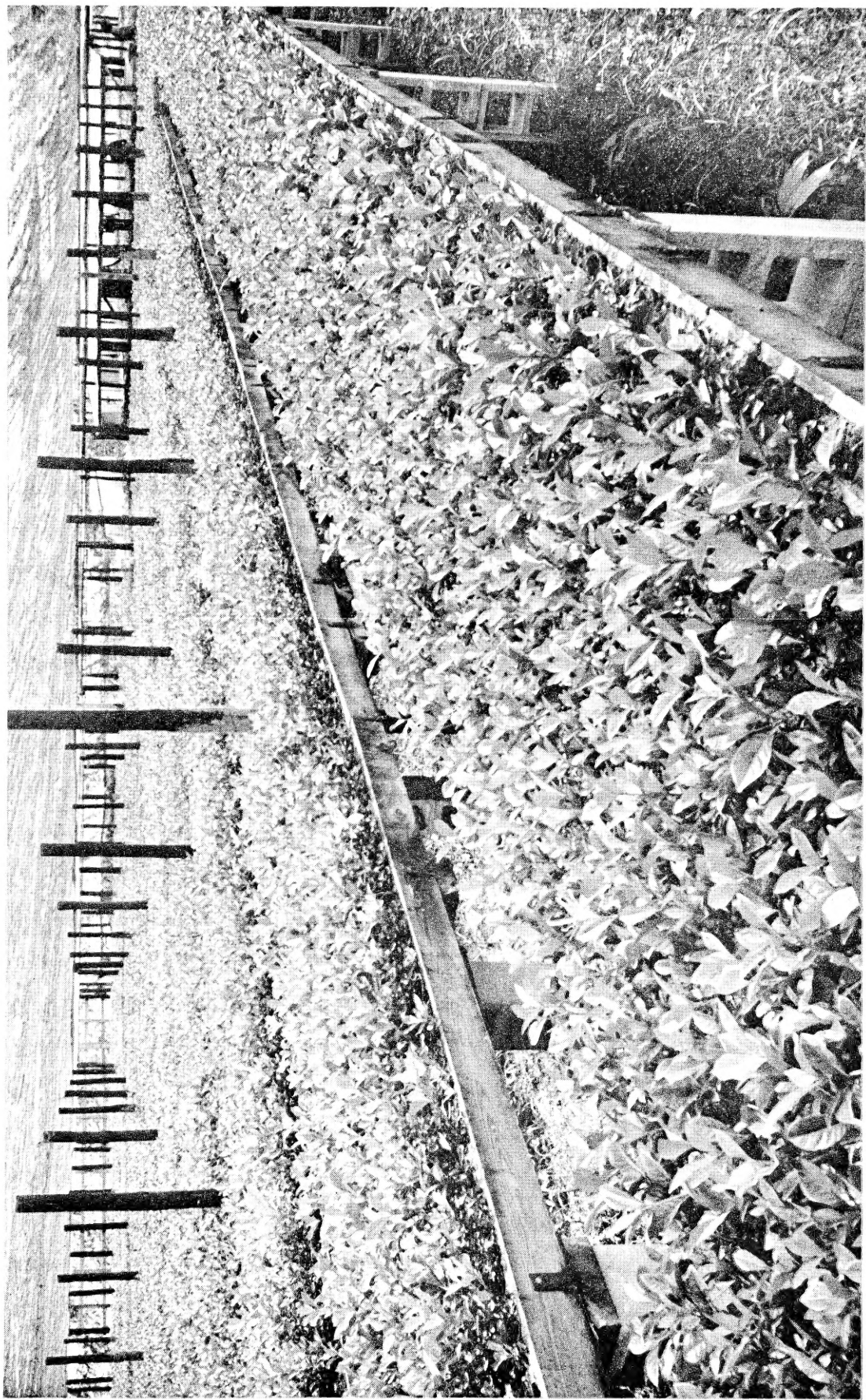
**CAMELLIAS SASANQUA TEXAS  
STAR**  
18-24 in. in One Gallon Can

**CAMELLIA  
SASANQUA  
ROSEA**  
18-24 in. in  
One Gallon  
Can



**CAMELLIA  
SASANQUA  
CLEOPATRA**  
18-24 in. in  
One Gallon  
Can





75,000 POTTED 3-INCH GARDENIA VEITCHI. BENCHES, POTS AND SOIL STEAM STERILIZED

