

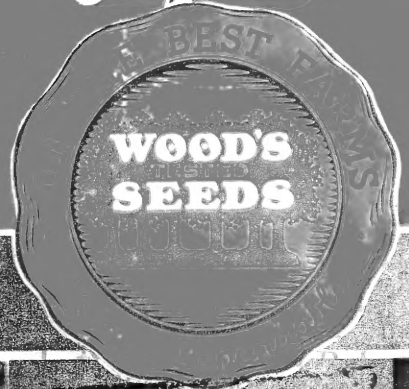
## **Historic, Archive Document**

Do not assume content reflects current scientific knowledge, policies, or practices.



# WOOD'S

*Preferred*



*Fall Catalogue 1952*



LIBRARY  
RECEIVED  
SEP 26 1952  
Department of Agriculture

# T. W. WOOD & SONS

*Seedsman Since 1879.*

*RICHMOND, VIRGINIA*

# WOOD'S HYACINTHS

**CULTURE IN POTS:** Use any good soil, mixed with sand, potting so as to leave the top of the bulb even with the soil. For a single plant, use 4 or 5-inch pot, but the effect will be prettier if several bulbs are planted in a larger pot, and still more effective if all are of one color. Press the soil firmly around the bulbs, but do not pack it underneath. Sink the pot in the earth about 6 inches, covering with soil, choosing a location that is not too wet. For a succession of blooms, bring the first out about December 1st, and every two weeks thereafter, until February 1st. Keep moderately warm and when they begin to bloom, give plenty of water and as much fresh air as possible. Too much heat dries up the flower and shortens the blooming period.

**CULTURE IN OPEN GROUND:** Any good garden soil will suit. If clay or very heavy, do not cover more than 3 inches; if light, from 4 to 6 inches. Protect with manure, leaves or coarse litter to prevent freezing.

**ANNE MARIE.** A beautiful tall, pure pink spike, very early, easily forced.

**CITY OF HAARLEM.** A very beautiful, large, pure yellow, compact bloom of fine form and substance; the best yellow Hyacinth for bedding and pots.

**GRAND MAITRE.** Very pleasing shade of deep lavender-blue, the immense large and broad truss is of great beauty and substance; one of the best blue Hyacinths under cultivation; recommended for all purposes.

**KING OF THE BLUES.** A very dark blue, bearing a splendid spike with large bells, excellent for late forcing or bedding.

**LA VICTOIRE.** Brilliant rose-crimson, when forced a fine dark pink. This variety grows a large spike of perfect form and is unsurpassed for all purposes.

**L'INNOCENCE.** Pure white, fine large truss, produced on a strong stem with large bells of great beauty and substance; the best white Hyacinth for massive bedding and forcing.

**MARCONI.** Bright deep rose, faintly shaded rosy-white, producing a large broad spike, borne on a stiff stem, particularly good for bedding.

**OSTARA.** Pure blue all over; lightly tinted violet inside; easy and excellent Christmas forcer; good spike.

**PERLE BRILLANTE.** A very fine lavender-blue, produces large broad spike on stiff stem; good form.

**PINK PEARL.** One of the finest new clear pink Hyacinths. It is a valuable improvement of Gertrude, a large spike with closely set bells of a very distinct rose-pink; a splendid bedder and a very good one for indoors.

The above Hyacinths may be had in two sizes:

## WOOD'S EXHIBITION HYACINTHS

### EXTRA LARGE BULBS

30c. each; \$3.00 per dozen; \$21.50 per 100

### WOOD'S SUPERIOR BEDDING HYACINTHS

3 for 60c.; \$1.85 per dozen; \$12.50 per 100

## BULB PLANTER

The "Hole-in-One Bulb Planting Tool." Removes the soil up to a depth of five inches, making a perfect planting hole for many kinds of bulbs.



Postpaid, \$1.00  
Not postpaid, 85c.

## Roman Hyacinths

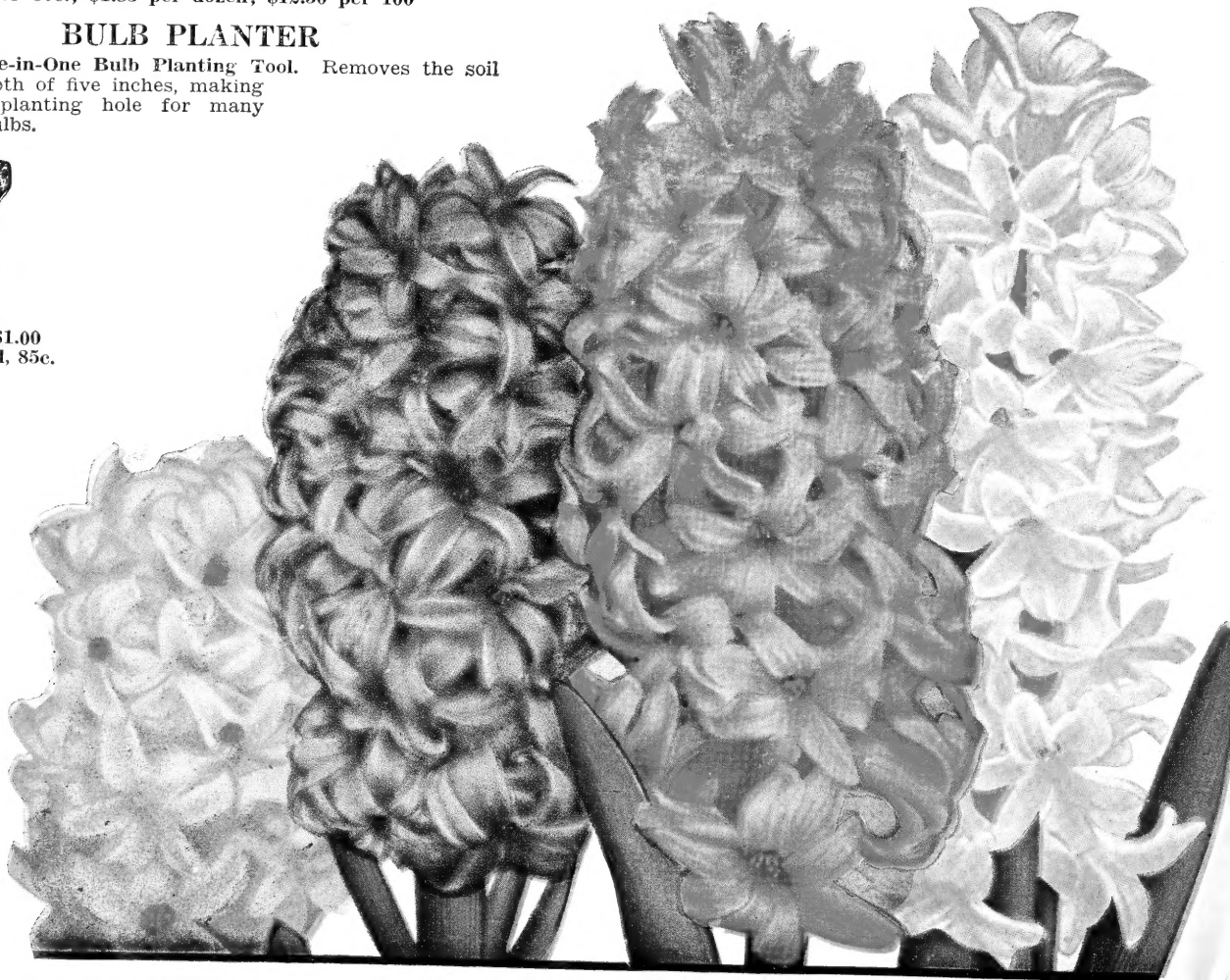
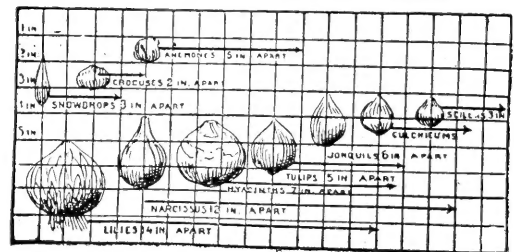
### BLUE, WHITE AND PINK

The flowers, while smaller than those of the Dutch Hyacinths, are borne in much greater abundance, each producing about 6 graceful spikes of blooms, which makes it a most valuable sort for cutting. They can be forced very easily, and if planted early and brought into the house at intervals of about two weeks, will yield a succession of blooms from Christmas to Easter. 3 for 55c.; \$1.75 per dozen; \$12.00 per 100.

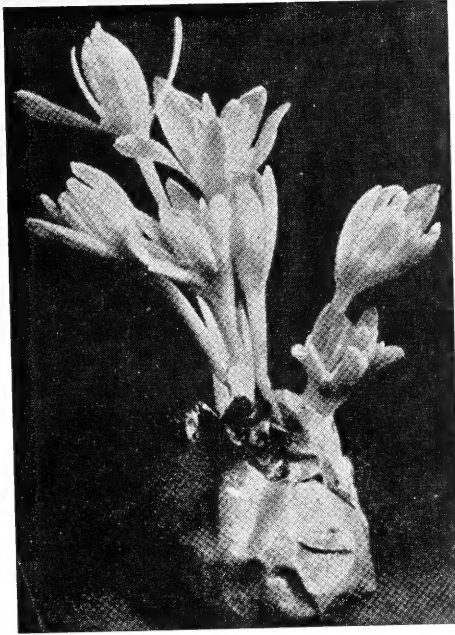
## BLEEDING HEART

(*DIELYTRA SPECTABILIS*). One of the most showy of the old-fashioned flowers. The flowers are heart shaped, vary from light pink to a rosy crimson color, and are produced in sprays along the stem. They can be grown in either shady or sunny places, although they are more at home in the shade. Ready November 15th. Large roots, 75c. each; \$7.50 per dozen.

## Planting Chart for Bulbs



# Bulbs for Indoor Culture



Colchicum

## FRENCH GROWN GIANT WHITE NARCISSUS

The Most Satisfactory Winter-Blooming House Plant

They will bloom in water from 6 to 8 weeks from time of planting, if not planted too early. The flowers are large, attractive in color and very fragrant. A very unique and simple way to grow them is to place 6 or 8 bulbs in a shallow bowl with water; support the bulbs with pebbles, and place the bowl in the dark until the roots have started, when they should be brought into the light. Change the water occasionally to keep it pure. From our experiments November, December and January plantings give best results.

3 for 50c.; \$1.50 per dozen; \$10.50 per 100

## FRENCH GROWN RISING SUN NARCISSUS

This is a yellow Narcissus exactly like the Giant White, except the flowers are large yellow instead of white; requires about two weeks longer to bloom. Give the same treatment as the Giant White Narcissus. 3 for 60c.; \$1.85 per dozen; \$12.50 per 100.

## FRENCH GROWN PAPER-WHITE NARCISSUS

Give the same treatment as the Giant White Narcissus. The flowers are a little smaller and not quite so tall. 3 for 45c.; \$1.25 per dozen; \$8.00 per 100.

## COLCHICUM

A bulb that you don't have to plant. Will bloom in from two to three weeks. Just place the bulb on window sill and they will produce beautiful lavender-pink, crocus-like blossoms, 1½ to 2 inches in diameter. After blooming the bulbs may be planted outside, where they will make very pretty foliage in the spring. Order early, as our supply is limited. 30c. each; 3 for 75c.; \$2.75 per dozen.

## LILIES

**CALLA LILIES.** Well known house plants of great popularity. Our bulbs are large California dry roots, which are best for forcing. Mammoth roots, 40c. each; \$4.00 per dozen.

**YELLOW CALLA LILIES.** A beautiful yellow blooming Lily, for growing indoors during the winter months. May be safely planted outside in the spring after danger of frost. Ready for delivery during December. 35c. each; \$3.50 per dozen.

## OXALIS

One of the finest winter-flowering bulbs grown. A single plant well grown will fill a 6-inch pot, throwing up 50 to 70 stems, which bear an immense number of flowers.

**BERMUDA BUTTERCUP.** Bright yellow. 3 for 20c.; 50c. per dozen; \$3.50 per 100.

**GRAND DUCHESS.** Pink, Lavender and White. 3 for 20c.; 50c. per dozen; \$3.50 per 100.

## FREESIAS

One of the most charming bulbs known for winter flowering and cut flowers. The blooms are grown on long, graceful stems and are delicately scented and very pretty. They force very easily and can be brought into bloom by Christmas

**TECOLOTE GIANT HYBRID FREESIAS.** Flowers of immense size, wide open and delightfully fragrant. Plants of unusual strength and vigor. Tall, strong stems. Much finer than the standard commercial varieties. May be had in the following colors: Pink, Talisman, Lavender, Red, White and Yellow. 3 for 30c.; 80c. per dozen; \$5.00 per 100.

## GIANT HYBRID AMARYLLIS

A reselected strain of the very largest flowered sorts, ranging in color from almost pure white through various shades of pink, to the deepest scarlet; some with beautiful markings and mottled throats. Can supply in mixed colors only. Ready November 1st. 35c. each; \$3.75 per dozen.

# Bulbs for the Rock Garden

## CHIONODOXA

**GLORY OF THE SNOW.** One of the earliest of our spring flowers. Bright blue, with large clear white center. 45c. per dozen; \$2.50 per 100.

## SNOWDROP

The first flower to proclaim the coming of spring; frequently blooming in the snow. The pure white, bell-shaped blooms come before winter departs. 75c. per dozen; \$4.50 per 100.

## FRITILARIA MELEAGRIS

The Fritillaria Meleagris produces a very fine effect when naturalized in grass on banks, in shady glens or under large trees. They may also be planted to obtain charming effect in groups in the border and clumps in the rock garden. Plant 3 inches deep. Mixed colors, 65c. per dozen; \$4.00 per 100.

## ANEMONES

Anemones should be planted the latter part of October, 3 inches deep and about 6 inches apart. They will do well on any well drained loam soil so long as it is not lacking in lime.

**ST. BRIGID (Semi-Double).** Mostly double with finely divided petals, and the most brilliant and varied shades, all having a handsome blue-black central base. Very graceful. 75c. per dozen; \$5.00 per 100.

**DE CAEN.** Taller in growth than the St. Brigid and more single. They contain many fine shades of blue, white and scarlet. 65c. per dozen; \$4.50 per 100.

## LEUCOJUM

**VERNUM (Snowflake).** A white flower, resembling the Snowdrop, but much larger. Plant in clumps, 3 inches deep. 85c. per dozen; \$4.50 per 100.

## MUSCARI

**ARMENIACUM.** Bright deep blue, larger than the well-known Heavenly Blue. A good variety for planting outdoors or forcing. 55c. per dozen; \$3.00 per 100.

**BOTRYOIDES ALBUM (White Grape Hyacinth).** Bearing pretty, little fragrant pure white flowers, valuable for the garden and for pot culture. 55c. per dozen; \$3.00 per 100.

**PLUMOSUM (Ostrich Feather).** Producing in May splendid spikes of a violet-blue color; the flowers have the appearance of a feather plume, very attractive and interesting. 55c. per dozen; \$3.00 per 100.

## SCILLA

**CAMPANULATA (Wood-Hyacinth).** Bears spikes 15 inches high of bell-like flowers, during early May. Plant 5 or 6 inches deep in shady situation. Very effective for borders; will grow under fir or pine trees. White, Blue and Rose. 55c. per dozen; \$3.25 per 100.

**SCILLA SIBERICA.** Spring Beauty. Large delft blue blooms on spikes 4 to 5 inches high, fine for massing in borders or naturalizing. Plant 3 to 4 inches deep. Blooms outside in April. 65c. per dozen; \$4.00 per 100.

## RANUNCULUS

Plant and treat same as Anemones. Mixed Colors, 75c. per dozen; \$4.50 per 100.

ALL BULBS IN THIS CATALOG WILL BE SENT POSTPAID

# Daffodils and Jonquils

Among early spring flowers these are in the front rank of popularity. Appearing just after winter, they animate our gardens with masses of gold and silver, while their fragrant blossoms in the home are invaluable for decorative purposes.

**Culture Out-of-Doors.** All varieties of *Narcissus* should be grown in clumps and patches in every suitable spot, and there is not a spot where grass will grow in which *Narcissus* will not succeed. In planting be guided by the size of the bulb, allowing 4 to 5 inches between small sorts and 6 to 8 inches between large varieties. The bulbs will soon completely fill the space, forming a compact mass, and it is then their flowers are produced the most freely. Plant about 5 inches deep, according to the size of the bulb.

**BEERSHEBA.** Perianth and trumpet of magnificent proportions. Sturdy foliage and stem, height 20 to 22 inches. Its color is pure white and expressive of purity in the highest sense. Those who are forming collections of fine *Narcissus* rate Beersheba at the top of the large white Trumpets. Large size, 35c. each; 3 for 85c.; \$2.75 per dozen; \$18.00 per 100.

**ALASKA.** Very large golden yellow flower on long stiff stems; medium early. 3 for 60c.; \$1.80 per dozen; \$12.50 per 100.

**FLOWER CARPET.** One of the largest deep golden yellow trumpet varieties; a great improvement of the King Alfred. 3 for 60c.; \$1.75 per dozen; \$11.50 per 100.

**GOLDEN HARVEST.** An all golden yellow trumpet variety, of fine form. An improvement over the older variety. Golden Spur. Very early blooming, both in the garden and for forcing. Large size, 3 for 50c.; \$1.50 per dozen; \$10.00 per 100.

**INSURPASSABLE.** An outstanding novelty. Extremely large, golden yellow flower of bold carriage. It is one of the finest of the big flowered golden trumpet Daffodils. It grows well, blooms freely, and has long stems, altogether a great Daffodil of recent introduction. 3 for 65c.; \$1.80 per dozen; \$12.50 per 100.

**KING ALFRED.** One of the finest and largest deep golden trumpet varieties. A tall, strong grower, with magnificent frilled trumpet and large perianth. All of a rich golden yellow. Jumbo size, 3 for 60c.; \$1.80 per dozen; \$12.75 per 100. Large size, 3 for 45c.; \$1.20 per dozen; \$8.25 per 100.

**MUSIC HALL.** A very large bicolor, with pure white perianth, golden yellow trumpet; medium yellow. 3 for 50c.; \$1.50 per dozen; \$10.00 per 100.

**ROXANE.** A large flower of splendid form and carriage, with white overlapping perianth and a beautiful broad trumpet, vigorous grower. Can be forced after January 20th. Large size, 3 for 65c.; \$1.80 per dozen; \$12.50 per 100.

**LARGE FLOWERING MIXED.** Made up of named sorts. Excellent for growing in masses for garden decorations and fine for cut flowers. \$1.10 per dozen; \$7.00 per 100.



**LORD WELLINGTON.** Very large, magnificent deep golden yellow flower, with broad petals and a large trumpet; tall stiff stem. Much larger and ten days later than King Alfred. Large size, 3 for 50c.; \$1.50 per dozen; \$10.00 per 100.

**MRS. E. H. KRELAGE.** The perianth and trumpet are pure white and this is one of the finest white Daffodils. Large size, 3 for 50c.; \$1.40 per dozen; \$9.50 per 100.

## JONQUILS

**CAMPERNELLE REGULOSUS.** Rich, deep yellow flowers, broad imbricated perianth with straight wrinkled cup. 3 for 35c.; \$1.10 per dozen; \$7.00 per 100.

**JONQUILLA SIMPLEX.** Dainty heads of small, rich, golden yellow flowers; much praised for their delicious scent. 3 for 35c.; \$1.00 per dozen; \$6.50 per 100.

**TREVITHIAN.** Broad overlapping perianth and short cup, both of pale lemon. Tall stems and one of the best hybrid Jonquils. 3 for 45c.; \$1.20 per dozen; \$8.00 per 100.

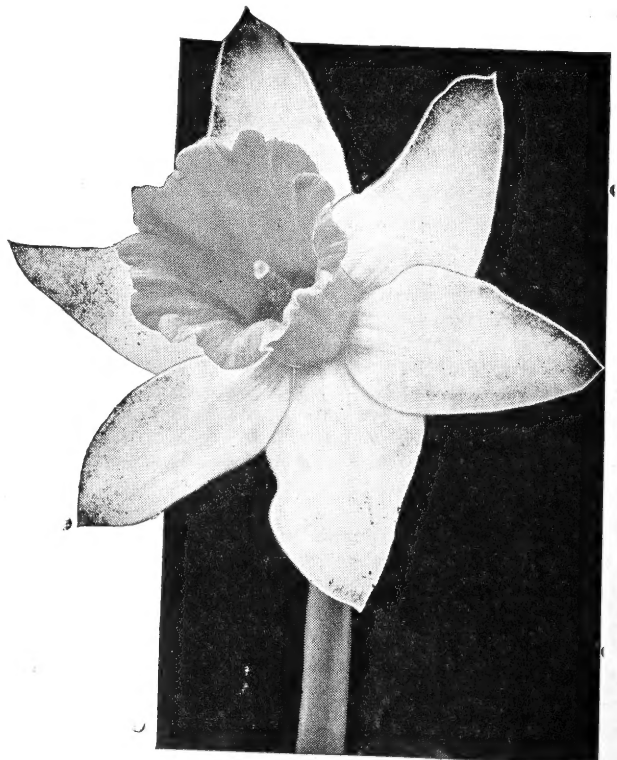
## DAFFODILS FOR NATURALIZING

Suitable for garden display, woodland plantings or cutting. Practically any soil has been found suitable, and they are grown equally well in the open as among trees and in woodland. Contains a mixture of large Trumpets, Leeds, Barri, Poeticus and Poetaz types, making a mixture that cannot be beaten for value.

80c. per dozen! \$5.00 per 100

## TERRA-LITE

Aids in creating a dependable reservoir of plant root moisture; air-conditions the ground; fluffs stiff soil to prevent cooking, packing and hardening; tends to reduce need for watering and cultivation; provides a satisfactory medium for cuttings, seedlings and transplantings. Ideal for storing bulbs, particularly dahlias and for vegetable winter storage. Postpaid, 4-qt. pkg., 65c.; 1/2-bus. bag, \$1.25. Not postpaid, 4-quart bag, 40c.; 1/2-bushel bag, 80c.; 2-bushel bag, \$1.75; 3-bushel bag, \$2.25.



# NARCISSUS

## BARRI TYPE

**ELLY NEY.** Pure white perianth with very broad petals, fine lemon yellow cup with picoted edge of deep red. Remarkable flower of perfect form. 3 for 45c.; \$1.20 per dozen; \$8.00 per 100.

**LATONIA.** Large round pure white perianth with flat crown of deep orange red; one of the best of its color. 3 for 50c.; \$1.50 per dozen; \$10.50 per 100.

**MANGONSTEEN.** Deep yellow perianth; the widely expanded frilled crown is a brilliant deep orange scarlet. 3 for 50c.; \$1.35 per dozen; \$9.00 per 100.

## INCOMPARABILIS TYPE (Short Cup)

**CALEDONIA.** Large starry white perianth, the rather large flat yellow cup has a broad band of orange red, heavily frilled. A much improved Lady Moore. 3 for 60c.; \$1.80 per dozen; \$12.50 per 100.

**CARLTON.** A fine clear yellow of great size. Flat overlapping perianth and a large expanded cup frilled at the brim. Sturdy plant of great vigor. 3 for 45c.; \$1.25 per dozen; \$8.50 per 100.

**DICK WELLBAND.** White semi-overlapping perianth, deep orange red cup of remarkable quality; does not fade. 3 for 50c.; \$1.40 per dozen; \$9.50 per 100.

**FANCHEON.** Creamy white petals with exceptionally large cup, which lies flat on the petals; the cup of orange color, one of the best Narcissus in its class. 3 for 60c.; \$1.50 per dozen; \$10.50 per 100.

**FORTUNE.** Recognized as the best Daffodil of its type that has yet been produced. It has a beautiful color of clear deep lemon-yellow and a splendid flat, overlapping perianth with a very large and long bold cup of coppery red orange; is of good substance, a two foot stem and perfect carriage. 3 for 50c.; \$1.40 per dozen; \$10.00 per 100.

**MERKARA.** Perfectly flat overlapping perianth, pure yellow, large, broad, deep orange-red cup; heavily frilled. 3 for 45c.; \$1.25 per dozen; \$8.50 per 100.

**ORANGE FLYER.** An outstanding variety with pure white perianth and a cup of fiery red. 3 for 50c.; \$1.50 per dozen; \$10.50 per 100.

## LEEDSI TYPE

**GERTIE MILLAR.** Wonderful flower of the new Giant Leeds type with pure white perianth similar to and as large as Van Waveren's Giant; a beautiful proportioned pale primrose cup, deeply fluted and frilled, and of translucent texture. 3 for 55c.; \$1.65 per dozen; \$11.50 per 100.

**MRS. R. O. BACKHOUSE.** This is the famous "Pink Daffodil." Fine informal perianth of ivory-white, and beautifully proportioned slim, long, trumpet of apricot-pink, changing to shell-pink at the deeply fringed edge, delicately beautiful but of exceptional substance, long lasting, early. Belongs in every collection. 35c. each; 3 for 60c.; \$1.80 per dozen; \$12.50 per 100.

## POETAZ TYPE

**CHEERFULNESS.** Clearly defined perianth of good white, semi-double cup of white and yellow. Two to five flowers per stem. 3 for 40c.; \$1.10 per dozen; \$7.00 per 100.

**GERANIUM.** Large, pure white perianth with beautiful orange-red cup. Four to six flowers on a stem. 3 for 45c.; \$1.20 per dozen; \$8.00 per 100.

**LAURENS KOSTER.** Bearing on tall, graceful stems heads of 5 to 6 large flowers with solid rounded perianth and pale yellow cup. 3 for 35c.; \$1.00 per dozen; \$6.50 per 100.

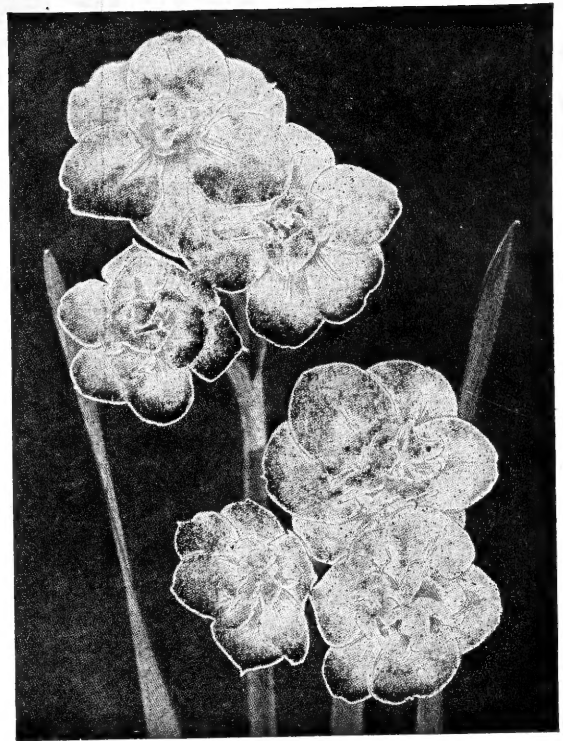
**MRS. GORDON I. PIRIE.** Creamy white broad overlapping perianth, clear lemon yellow cup. The most unusual flower of its type; the contrast between perianth and cup is most striking; a really fine triandrus hybrid on a tall stem. 3 for 60c.; \$1.75 per dozen; \$12.00 per 100.

## DOUBLE VARIETIES

**DAPHNE.** Magnificent double pure white flower with exquisite fragrance. 3 for 45c.; \$1.20 per dozen; \$8.00 per 100.

**INGLEScombe.** The outstanding Double Daffodil. Its color is of the purest yellow, without blemishes of any kind, unlike the older types which were marred with green in the petals. It keeps its pure color to the very last. Of the doubles, we feel we are offering you the best there is to be had. 3 for 45c.; \$1.10 per dozen; \$7.50 per 100.

**TWINK.** A double of the semi-full type with alternating petals of soft primrose and clear orange and so arranged as to give the flower a most attractive appearance. 3 for 45c.; \$1.25 per dozen; \$8.50 per 100.



## POETICUS TYPE

**ACTAEA.** Broad overlapping white perianth of great substance and fine form. The large flat cup has a broad margin of the deepest red. Rated the largest and best Poeticus. 3 for 45c.; \$1.20 per dozen; \$8.00 per 100.

## WOOD'S GIANT EXHIBITION DARWIN TULIPS

This group is composed of new and outstanding varieties, many of them offered for the first time in this country in 1951. The blooms, in most instances, are larger and of better substance, the stems taller and stronger. They usually begin to bloom several days earlier than the regular Darwins and often last for a longer time. The large flowers are truly magnificent and we unhesitatingly recommend them to those who want the very best in Tulips. A little higher in price, perhaps, but once you try them and enjoy their sparkling beauty, you will agree that they are truly superior and are worth the difference.

**ANKARA**—25 inches. Primrose yellow, inside somewhat deeper yellow; a large, fine bedding Tulip. 3 for 60c.; \$1.80 per dozen; \$12.00 per 100.

**ARLINGTON**—26 inches. Blood red, blue base with narrow white margin; pointed flower; tall, strong stem. 3 for 65c.; \$2.00 per dozen; \$15.00 per 100.

**BLUE RIBBON**—28 inches. Dark purple mauve, very tall and large, on strong, stiff stems. 3 for 65c.; \$2.00 per dozen; \$15.00 per 100.

**DESIRE**—26 inches. Sparkling scarlet red, large broad flower; very early. 3 for 65c.; \$2.00 per dozen; \$15.00 per 100.

**FLORENCE NIGHTINGALE**—26 inches. Inside light geranium red with pale yellow base, outside crimson. 3 for 90c.; \$2.75 per dozen; \$20.00 per 100.

**SOVEREIGN**—25 inches. Cardinal red flushed with carmine pink. Large, long shaped flowers on strong, stiff stems. 3 for 80c.; \$2.50 per dozen; \$18.00 per 100.

**RELIANCE**—26 inches. Large violet blue with silver shadings; a very beautiful flower. 3 for 65c.; \$2.00 per dozen; \$15.00 per 100.

**RED SUPREME**—28 inches. Brilliant scarlet; a giant Darwin on very tall, strong stems; a very beautiful Tulip. 50c. each; 3 for \$1.35; \$4.90 per dozen.

**BLACK PARROT**—24 inches. A rare and unique purple-black flower, gracefully borne on strong, erect stems. 50c. each; 3 for \$1.35; \$4.90 per dozen.

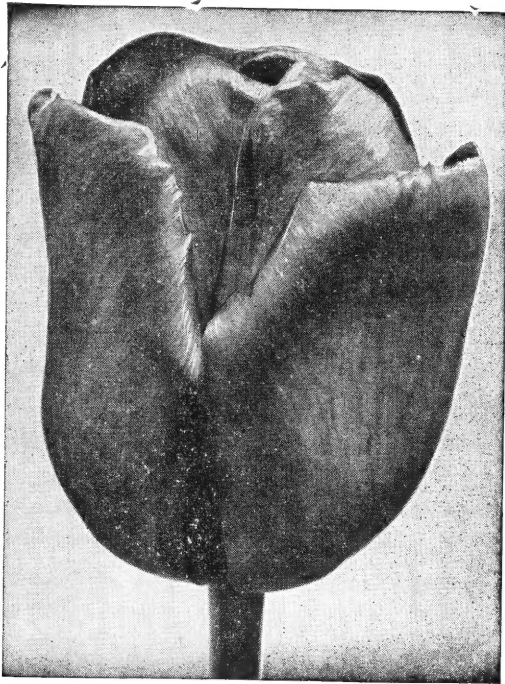
**SMILING QUEEN COTTAGE TULIP**—24 inches. Beautifully formed oval shaped flowers of clear rose-pink, edged silvery rose; inside brighter rose with white base and yellow anthers. 3 for 90c.; \$2.75 per dozen; \$20.00 per 100.

All Bulbs In This Catalog Will Be Sent Postpaid

# Wood's Giant May-Flowering Tulips

TOP SIZE BULBS—GROWN IN HOLLAND

These gorgeous new late or May-flowering Tulips are very stately and beautiful, producing immense flowers on tall, sturdy stems, and bearing beautiful globular flowers of remarkably heavy texture, in a large range of colors. They embrace almost every conceivable tint in rose, heliotrope, claret, maroon, crimson and other rich and rare shades. Unsurpassed for bedding and cutting. Letter after variety denotes class of Tulip. (B) Breeder (C) Cottage (D) Darwin



## Tulips of Special Merit

The Tulips listed below are new varieties, introduced by the growers in Holland just before the war and were quoted at considerably higher prices than we are asking today:

**AMERICAN FLAG (Rembrandt)**—28 inches. Dark red with broad white lines. Large long flower of good substance. Each flower has similar markings. Straight strong stem. Outstanding novelty. 3 for 50c.; \$1.50 per dozen; \$10.00 per 100.

**ARISTOCRAT (D)**. 32 inches. Enormous, strong and tall Tulip, soft purplish violet-rose, lighter edged. Really an aristocrat. 3 for 50c.; \$1.50 per dozen; \$10.00 per 100.

**CHARLES NEEDHAM (D)**. 26 inches. Brilliant scarlet red with blue base; strong, tall stem, large flower. The best of the red Darwin Tulips. 3 for 45c.; \$1.30 per dozen; \$8.50 per 100.

**DEMETER (D)**. One of the largest Darwins ever seen, reaching a height of at least 30 inches and carrying an enormous violet flower. 3 for 60c.; \$1.50 per dozen; \$9.75 per 100.

**DUKE OF WELLINGTON (D)**. 26 inches. An outstanding pure white flower of perfect form, cream anthers and base. The flowers are borne on long stiff stems. 3 for 45c.; \$1.30 per dozen; \$8.50 per 100.

**ECLIPSE (D)**. 28 inches. Glowing deep blood red with white margined dark blue base. An elegant, very attractive large flower. 3 for 45c.; \$1.35 per dozen; \$9.00 per 100.

**INSURPASSABLE (D)**. 24 inches. Lovely lilac, turning slightly lighter toward edges. Very large flower of great substance. Far superior To Wm. Copeland. 3 for 45c.; \$1.35 per dozen; \$9.00 per 100.

**MR. VAN ZYL (D)**. 26 inches. This Tulip reminds one of the favorite Rosabella, but is of deeper color. Has long-lasting qualities and a fine strong stem. One of the choicest pinks. 3 for 45c.; \$1.35 per dozen; \$9.00 per 100.

**THE BISHOP (D)**. 30 inches. A very tall variety with medium size cup of a lively tone of purple. Fawn colored on reverse side of the petals and a white interior base; black anthers. 3 for 40c.; \$1.35 per dozen; \$9.00 per 100.

**WHITE CITY (C)**. 26 inches. A very large pure white flower on strong, stiff stems; white anthers. 3 for 45c.; \$1.35 per dozen; \$9.00 per 100.

**WILDLUST (Glacier) (D)**. 26 inches. Pure white; white base, with yellow anthers; long, oval flower of gigantic size with lasting qualities. The largest white Tulip. 3 for 50c.; \$1.50 per dozen; \$10.00 per 100.

**MRS. JOHN T. SCHEEPERS (C)**. 24 inches. Pure yellow with yellow anthers. A giant flower on a tall, sturdy stem. The largest and best yellow Tulip. 3 for 45c.; \$1.30 per dozen; \$8.50 per 100.

**PRIDE OF ZWANENBURG (D)**. 26 inches. Very pleasing old rose, turning lighter towards the edges; inside pink, with base and purplish black anthers. Very large, attractive flower of great merit. 3 for 45c.; \$1.30 per dozen; \$8.50 per 100.

**QUEEN OF SPAIN (C)**. 27 inches. Pale yellow flower flushed pink on edge of petals. The pink shading increases as the flower ages; yellow anthers. 3 for 45c.; \$1.30 per dozen; \$8.50 per 100.

## Lily Flowering Tulips

3 FOR 50c.; \$1.50 PER DOZEN; \$10.00 PER 100

**ALASKA**—Golden yellow, large elongated flower with pointed petals; sweet scented.

**CAPTAIN FRYATT**—Dark ruby-violet with violet-blue center, strong reflexed petals. The only Tulip of this color. This is a most attractive lily flowered Tulip.

**GOLDEN DUCHESS**—Large, long pointed flower with golden yellow reflexing petals on stiff stem.

**MARCELLINA**—Glorious rosy red with pure white center, reflexing petals. A very graceful novelty.

**STANISLAUS**—Vivid salmon orange with yellow centre and yellow anthers, outside with a hush of soft carmine rose. Large, fine shaped flower.

**WHITE CROSS**—A snow-white lily flowering Tulip of excellent size and most graceful form. The white anthers and white base all help to make a perfect picture of purity.

## New Parrot Tulips TOP SIZE—GROWN IN HOLLAND

The New Parrot Tulips are a great improvement upon the older family. They are all of free-flowering and erect habit. We strongly recommend them to Tulip lovers and some are now within the reach of every garden.

**BLUE PARROT**. 24 inches. A noble flower of old rose, turning lighter towards the edges, inside reddish pink, with base and purplish black anthers. Very large. 3 for 40c.; \$1.10 per dozen; \$7.00 per 100.

**FANTASY**. 20 inches. A remarkably beautiful Parrot sport of the famous Clara Butt Tulip; color beautiful soft rose with faint stripes and featherings of apple-green on outer petals. The flowers expand to an enormous size and attract great attention. Of very free-flowering habit, highly recommended. 3 for 45c.; \$1.20 per dozen; \$8.00 per 100.

**ORANGE FAVORITE**. 22 inches. Bright orange, green blotches, yellow base. Flower has good substance, strong erect stem. Sport from Cottage Tulip Orange King. Sweet scented. 3 for 45c.; \$1.25 per dozen; \$8.50 per 100.

**RED CHAMPION**. 24 inches. A fine Parrot sport of the good Darwin Tulip Bartigon; the flowers are of quaint yet beautiful form with both inner and outer petals heavily lacinated, opening to enormous size when fully developed. Its color is a uniform warm deep blood-red with only tiny faint white markings at the top of outer petals; strong grower. 3 for 50c.; \$1.40 per dozen; \$10.00 per 100.

**SUNSHINE**. 14 inches. Clear golden yellow deeply lacinated and cut, sometimes a slight marking of green, which enhances the beauty of this unusual flower. 3 for 50c.; \$1.40 per dozen; \$9.50 per 100.

**THERESE**. 30 inches. Bright cochineal-carmine with green markings on outside. Inside of the flower is a vivid cerise scarlet with center tinted blue. A brilliant and most interesting Parrot Tulip. 3 for 50c.; \$1.40 per doz.; \$10.00 per 100

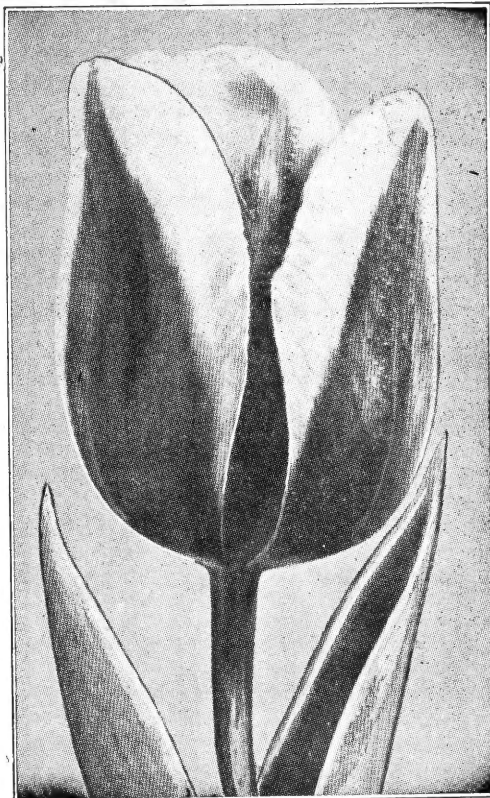


# Wood's Standard May-Flowering Tulips

TOP SIZE BULBS—GROWN IN HOLLAND

## GROUP I—3 for 40c.; \$1.15 per dozen; \$6.75 per 100

- AFTERGLOW (D).** 24 inches. A cup-shaped flower of clear dark salmon, edged light orange. This excellent variety makes a gorgeous effect if planted in masses with blue ground cover.
- ARGO (C).** 24 inches. Golden yellow, spotted orange passing to bronze red.
- BARTIGON (D).** 22 inches. Fiery crimson with white base; very strong grower. One of the best in this color.
- BLUE EAGLE (D).** .26 inches. Shining deep purple. An outstanding variety. Improvement over Blue Amiable.
- CARRARA (C).** 24 inches. Pure white with ivory anthers. Large globular flower. An outstanding variety.
- CLARA BUTT (D).** 20 inches. Clear salmon-pink; a beautiful and charming bedding Tulip.
- FARNCOMBE SANDERS (D).** .24 inches. Scarlet, with a rosy gloss; broad petaled flowers of perfect shape.
- FIRESIDE (C).** Yellow, striped and flushed red, sport of Inglescombe yellow.
- INGA HUME (C).** 26 inches. Large red flower flushed with yellow. Inside deep yellow flushed red.
- INGLESCOMBE YELLOW (C).** 20 inches. Clear golden yellow. One of the best May-flowering, has given universal satisfaction.
- JESSIE (B).** 28 inches. Coffee brown and bronze. Large.
- OSSI OSWALDA (C).** 24 inches. A striking new novelty, of creamy white, edged rose, resembling Picotee, changing by the day until at its height it is a pure rose.
- MRS. MOON (C).** 24 inches. This is beyond a doubt one of the finest late yellow Tulips, vase-shaped, with pointed petals; distinctly perfumed.
- PRIDE OF HAARLEM (D).** 25 inches. Brilliant American Beauty red; most popular Darwin, sweet scented.
- PRINCESS ELIZABETH (D).** 24 inches. Clear deep pink, changing to rose-pink. A well shaped flower, giving it added attraction.
- PRINCESS MARGARET ROSE (C).** 22 inches. A glowing old rose, white flushed on outside.
- NORTHERN QUEEN (C).** 25 inches. Enormous flower on strong stem. Rose-lilac with white base and white margin.
- QUEEN OF THE NIGHTS (D).** 26 inches. The darkest black of all black Darwins, most outstanding of all the black Tulips.



- SCOTCH LASSIE (D).** Pure deep lavender with darker shade on inside and dark blue base. Will last three to four weeks in the garden.
- YELLOW EMPEROR (C).** 28 inches. A brilliant yellow Tulip of great beauty; well shaped flower with strong stiff stems.

## GROUP II—3 for 40c.; \$1.20 per dozen; \$8.00 per 100

- ADVANCE (C).** 24 inches. Orange scarlet with salmon-orange flush and lilac bloom on outer petals; the base is very dark blue, almost black.
- CHAPPAQUA (B).** 28 inches. Inside carmine rose, outside violet rose, edged with carmine rose; very strong stem.
- GOLDEN AGE (D).** 24 inches. Deep yellow, inside slightly lighter; yellow base and yellow anthers. Large flowers of true Darwin shape, on tall, strong stem. An outstanding variety.
- GEORGE GRAPPE (B).** 30 inches. Enormous uniform lavender-blue flower, distinct heavenly-blue base, straight tall stem. A great favorite in all gardens.
- WOOD'S SPECIAL MIXED DARWIN TULIPS.** Composed entirely of named sorts and contains a great variety of all colors and shades. 85c. per dozen; \$5.50 per 100.
- LOUIS XIV (B).** 30 inches. Rich purple, with an edge of golden bronze, producing a fine blending of tone. Immense flower and a great favorite.
- MARSHALL HAIG (C).** 28 inches. Bright scarlet red with small yellow base; a beautiful Tulip.
- NIPHETOS (D).** .27 inches. A glorious soft yellow flower with lighter base and anthers, the reflexing petals are of a remarkable texture. The flower is carried on a strong, erect stem.
- TANTALUS (B).** 28 inches. Outer petals dull lilac on yellow ground, passing to yellow towards edges. Inside is the yellow color predominating. Very large cup-shaped flower on tall stem.
- ZWANENBURG (D).** 27 inches. A pure white Tulip with black anthers. A good white for many purposes.

## Triumph Tulips—Top Size—Grown in Holland

They are exceedingly valuable for the flower garden in borders, etc., on account of their strong stems, vigorous habit and wonderful colors. **Triumph Tulips** flower about ten days later than Early Single Tulips, thus bridging the gap between the early and late varieties nicely.

### 3 for 40c.; \$1.20 per dozen \$7.25 per 100

- AVIATEUR.** 22 inches. Brilliant carmine red bordered silver; flowers are of good size. A very fine bedding Tulip.
- CROWN IMPERIAL.** 20 inches. Bright mahogany, with golden yellow edge. Very attractive.
- ELIZABETH EVERS.** 24 inches. A tremendously large flower of Fuchsia-red, flushed with lines of silver and white, and a white base. Very strong grower, and the flowers last a long time.
- KANSAS.** 22 inches. Snow white, with lemon-yellow base and yellow stamens. One of the best white Tulips for outdoor planting.
- ELMUS.** A grand Tulip, producing very large globular flowers of a pleasing shade of warm cherry-red, deeply edged pure white, really a happy combination of color; large, pure white base, tall sturdy grower.
- TELESCOPIUM.** 20 inches. A very elegantly shaped flower of a reddish-violet, of large size and great beauty; the blooms are borne on tall stems.
- WISCONSIN.** 18 inches. Magenta red, the broad red edge turns from the top to the base of the flower to a pure white.

## Late Double Tulips—PEONY FLOWERED

They are May-flowering Tulips and represent almost an entirely new group. Much time has been devoted to the production of new colors and the result has been the creation of very beautiful varieties, which are delightful for bedding or planted in groups in the border or among evergreens, etc. They are 18 inches to 22 inches in height.

**3 for 50c.; \$1.50 per dozen; \$10.00 per 100**

**MOUNT TACOMA.** Resembling a large, double white Chinese Peony, immense large flowers, which are produced on fairly tall, strong stems.

**LIVINGSTONE.** Bright red with light yellow base. Very strong grower. One of the best of this color.

**COXA.** Carmine-red, edged vermillion, very small white border, large flower; extra for border or bedding.

**EROS.** Very large, substantial flowers of a clear old rose color. This is indeed one of the best doubles under cultivation and will certainly command attention when flowering in the garden.

**ROYAL YELLOW.** Very large, deep golden yellow. One of the best double yellows.

**SYMPHONIA.** Brilliant rosy carmine with blue base. Very large double flower on tall, strong stem.

## Hardy Lilies

These are unsurpassed by any of the class of hardy plants. They begin flowering in May, and the various species continue in uninterrupted succession until autumn. Can be planted in the garden either in the fall or early spring; fall planting is better.

**SPECIOSUM ALBUM.** The best late flowering pure white with greenish band through center of each petal; flowers late August and September. Ready December 1st. 90c. each; \$9.00 per dozen.

**CANDIDUM (Annunciation, Madonna, or St. Joseph's Lily).** An old favorite garden Lily, with snow white fragrant blooms. It is good for forcing and blooms in the open ground in May. Ready in September. 35c. each; \$3.50 per dozen.

**ESTATE (the Outdoor Easter Lily).** A pure white Lily of Easter Lily type, growing 3 to 4 feet in height, producing 4 to 6 large blooms. Ready November 1st. 50c. each; \$5.00 per dozen.

**GUERNSEY (Spider).** Bears from 10 to 20 bright crimson flowers on stems 10 to 15 inches long. Blooms in early fall, the leaves appearing after the flowers. Easily grown in the south in ordinary garden soil. Ready in September. 15c. each; \$1.50 per dozen.

**HENRYI (Yellow Speciosum).** Gorgeous rich apricot-yellow flowers, 6 to 8 in a bunch, carried on stalks 4 to 5 feet high. Blooms July and August. Ready in December. 40c. each; \$4.00 per doz.

**PARDALINUM GIGANTEUM.** This is one of the easiest lilies to cultivate. It is vigorous, dependable, very hardy and multiplies rapidly. The base of the flower is yellow with petals of sunset red, spotted with small brown dots. Height 5 to 6 feet. Blooms in July. Ready December 1st. 40c. each; \$4.00 per dozen.

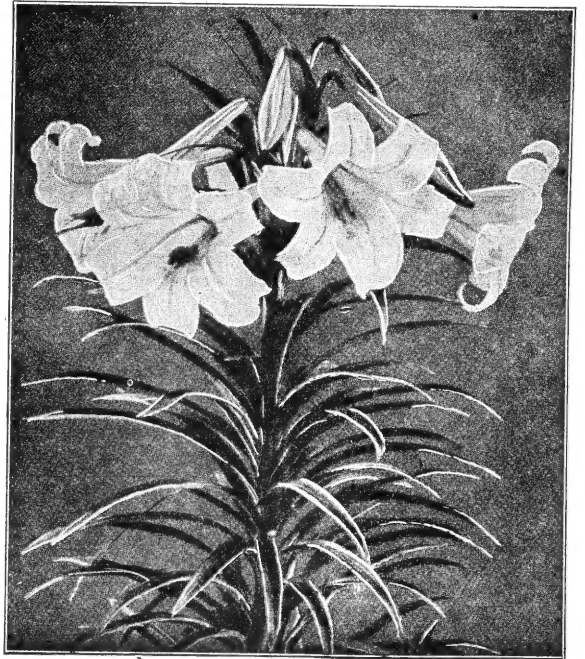
**PHILIPPINENSE FORMOSANUM.** This Lily bears 3 to 5 blooms at a time, of beautiful white flowers with emerald green throat. Blooms from August until frost. Ready December 1st. 25c. each; \$2.50 per dozen.

**REGALE.** Pure waxy white with yellow throat. One of the finest of all hardy Lilies. Blooms June and July. Ready in November. 35c. each; \$3.50 per dozen.

**SPECIOSUM RUBRUM.** Delicate pink, almost white, spotted with red, flowers in August. Ready December 1st. 45c. each; \$4.50 per dozen.

**TENUIFOLIUM (Coral Lily).** Handsome bright scarlet flowers, borne on slender stems. Excellent for rock gardens. Blooms May and June. Ready December 1st. 20c. each; \$2.00 per dozen.

**UMBELLATUM-ERECTUM.** Produces very large deep red flowers, much darker than most of the Umbellatum Lilies. Height 24 to 27 inches. Blooms in June. 30c. each; \$3.00 per dozen.



**UMBELLATUM.** Orange. A very free flowering Lily of easy culture. Carries large blooms of light orange-red flowers. Blooms in June. Ready December 1st. 30c. each; \$3.00 per dozen.

**TIGRINUM SPLENDENS (Improved Tiger Lily).** Very hardy Lily; bright orange-red, spotted black. Blooms August. Ready December 1st. 30c. each; \$3.00 per dozen.

**TIGRINUM FLORE PLENO (Double Tiger Lily).** Handsome double flowers, the same color as the above. Blooms August. Ready December 1st. 25c. each; \$2.50 per dozen.

**WILLMOTIA IMPROVED.** Has large flowers of vivid orange red, covered with small dark brown spots. Height 5 to 6 feet; blooms in August. Ready November 1st. 30c. each; \$3.00 per dozen.

## Peonies

The best time for planting Peonies is during October. The roots should be set so that the top or upper eyes are about 1 or 2 inches below the level of the soil, from 3 to 4 feet apart each way.

**90c. each; 3 for \$2.35; \$8.50 per dozen**

**EDULIS SUPERBA.** Very early, crown type; clear, mauve-pink, with a beautiful silvery sheen.

**FELIX CROUSSE.** Rose type, brilliant ruby-eyed. One of the best and most popular kinds.

**FESTIVA MAXIMA.** Paper-white, crimson markings to center; very large and full rose type; very tall. Early.

**KARL ROSENFELD.** Very large flower; globular, semi-rose type. Extremely vigorous grower; tall and free flowering. As an early red it has no equal.

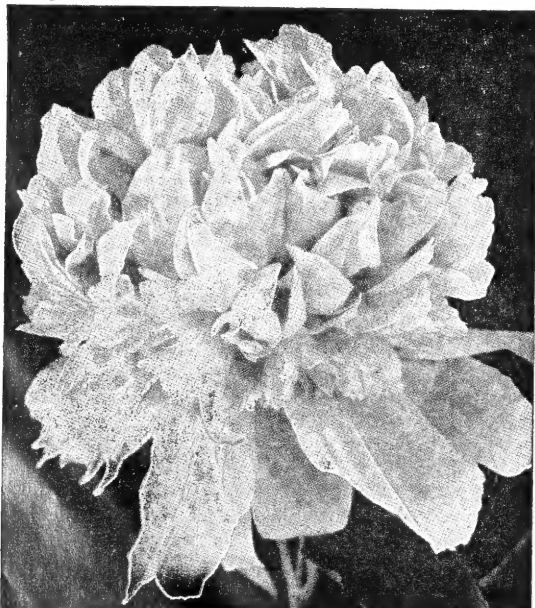
**MME. DE VERNEVILLE.** Pure white with crimson spots; very early.

**MME. DUCEL.** Pale old rose with lustrous silver sheen.

**MONS. JULES ELIE.** The peerless pure pink. Broad reflexing guards with a high pyramidal body of semi-quilled petals converging into an apex. One of the largest, handsomest and most lasting cutting sorts in existence.

**SARAH BERNHARDT.** A late blooming semi-rose type; flowers of remarkable size. Beautiful mauve-rose with silvery tips.

**PEONIES BY COLOR.** Red, white and pink. 75c. each; 3 for \$2.00; \$7.00 per dozen.



# Wood's RAINBOW Collection DARWIN TULIPS

FIVE EACH, SEPARATELY BAGGED AND LABELED  
OF 10 FAMOUS VARIETIES, FOR ONLY

## 50 Bulbs

AFTERGLOW—Rosy Orange  
BLUE EAGLE—Purple  
CAMPFIRE—Red  
CLARA BUTT—Pink  
GOLDEN MEASURE—Deep Yellow

MRS. GRULLEMAN'S—White  
NIPHETOS—Light Yellow  
PRIDE OF HAARLEM—Rose  
PRINCESS ELIZABETH—Pink  
QUEEN OF THE NIGHT—Black

## \$3.25

100 Bulbs, 10 Each of the Above, for \$6.25

## Botanical Tulips

The following Tulips are all wild species. They are beautiful and will be highly appreciated by lovers of hardy bulbous plants. Their right place is the rock garden, where their flowers are seen to advantage.

**CLUSIANA (The Lady Tulip).** 8 inches. A charming little Tulip; outer petals cherry red with inner petals white; violet base. Plant in a warm and sheltered position. 3 for 35c.; \$1.00 per dozen; \$6.00 per 100.

**FOSTERIANA (Red Emperor).** 22 inches. Positively the most beautiful Tulip under cultivation; it produces colossal blooms on erect strong stems; color is fascinating and is of the loveliest shade of glowing scarlet imaginable; base yellowish. Very sturdy grower. Strongly recommended. 3 for 45c.; \$1.35 per dozen; \$9.00 per 100.

**CHRYSANTHA.** 6 inches. A pretty little species similar to *Tulipa Clusiana*. Color yellow with red on outside of outer petals. Recommended. 3 for 35c.; \$1.00 per dozen; \$6.00 per 100.

## Dutch Iris

The flowers of Dutch Iris are broader; the falls usually wider apart, and the lips larger than the Spanish type. They are about two weeks earlier, blooming right after the Cottage Tulips. They are wonderful for cutting, opening nicely even if cut in bud, and lasting a long time.

All Varieties: 3 for 25c.; 75c. per dozen; \$4.50 per 100

**A. BLOEMAARD.** Standards dark purple, falls lighter blue. Very large flower. Early.

**D. HARING.** Grayish white, tinted lilac; falls pure white. Large flower. Early.

**H. C. Van VLIET.** Deep violet blue standards, pearl blue falls with a white shade and a yellow central ridge.

**IMPERATOR.** The finest, largest Iris for all purposes. A strong growing; free blooming, clear blue Iris.

**POGGENBEEK.** Standards and falls uniform, dark blue. Very early.

**WEDGEWOOD.** Standards blue, falls beautiful pale blue with a yellow blotch.

**WHITE EXCELSIOR.** Extra large, snow-white; lips carry feathers of golden orange.

**GOLDEN HARVEST.** Deep golden yellow, extra large. Very early.

**VAN EVERDINGEN.** White blotched with yellow. A very fine Iris.

**WOOD'S SPECIAL MIXED DUTCH IRIS**—65c. per dozen; \$4.00 per 100.

## CROCUS—Large Bulbs

One of the earliest blooming spring flowers and very effective in lawns and borders. They are also very useful to plant in Hyacinth or Tulip beds between the rows. Set the bulbs 2 inches deep and 2 to 3 inches apart and plant as early in the fall as possible.

All Varieties: 3 for 25c.; 75c. per dozen; \$4.50 per 100

**MONT BLANC.** Pure white, tall; very fine. 70c. per dozen; \$4.50 per 100.

**PURPUREA GRANDIFLORA.** Purple. The largest in this color. 65c. per dozen; \$4.25 per 100.

**KAUFMANNIANA (Waterlily Tulip).** 6 inches. A charming species, producing in March large flowers of elegant form and remarkable beauty, opening out to a great size in the sun; color soft creamy white centre slightly marked with carmine-red; strongly recommended for planting in groups in borders and in rock gardens. 3 for 40c.; \$1.30 per dozen; \$9.00 per 100.

**EICHLERI.** 11 inches. A very beautiful species with fairly large blooms of a lovely crimson-scarlet color and a glistening base, golden margined. 3 for 35c.; \$1.00 per dozen; \$6.00 per 100.

**MARJOLETTI.** 18 inches. Producing pretty little flowers of a creamy-white flaked with pink. Very fine for cutting. 3 for 40c.; \$1.20 per dozen; \$8.00 per 100.

**TURKESTANICA.** 10 inches. Miniature Tulip, many flowered white, yellow center; a lovely rock garden bulb. 3 for 35c.; \$1.00 per dozen; \$6.00 per 100.



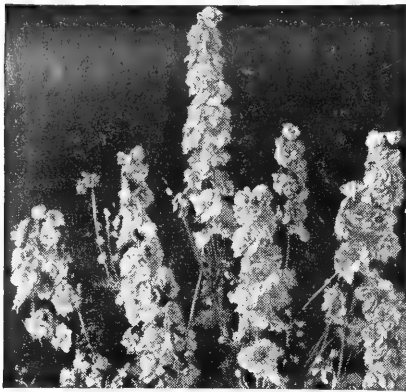
**QUEEN OF THE BLUES.** A very fine light blue. 65c. per dozen; \$4.25 per 100.

**SIR WALTER SCOTT.** Striped. 70c. per dozen; \$4.50 per 100.

**MAMMOTH YELLOW.** Golden yellow. Very large. 80c. per dozen; \$5.25 per 100.

**MIXED CROCUS**—65c. per dozen; \$4.00 per 100

# HARDY ANNUALS FOR FALL PLANTING



Giant Imperial Larkspur

## CALENDULA

- No. 658. **Sunshine or Chrysantha.** The large double flowers are an exquisite clear buttercup yellow, with long, loosely arranged drooping petals. Pkt. 10c.; 1/2 oz. 25c.; 1/2 oz. 40c.; oz. 70c.
- No. 657. **Campfire or Sensation.** The largest of all Calendulas; brilliant orange with a scarlet sheen and full yellow center. Pkt. 10c.; 1/2 oz. 30c.; 1/2 oz. 50c.; oz. 90c.
- No. 660. **Double—Mixed Varieties.** A fine mixture of all the best varieties. Pkt. 10c.; 1/2 oz. 25c.; oz. 40c.

## Flowering Centaureas

(RAGGED ROBIN or CORNFLOWER)  
Universal favorite for cut flowers, deliciously scented; long stemmed; will last for days. Sometimes called Bachelor's Button. Hardy annual.

- No. 710. **Cyanus Double Rose Pink.** Pkt. 10c.; 1/2 oz. 25c.; 1/2 oz. 35c.; oz. 60c.  
**Cyanus Red Boy—Double Red.** Pkt. 10c.; 1/2 oz. 25c.; 1/2 oz. 35c.; oz. 60c.  
No. 711. **Cyanus Blue Boy—Double Blue.** Pkt. 10c.; 1/2 oz. 25c.; 1/2 oz. 35c.; oz. 60c.  
No. 712. **Cyanus Double Mixed Colors.** Pkt. 10c.; 1/2 oz. 20c.; 1/2 oz. 30c.; oz. 50c.

## LARKSPUR

For bedding among shrubbery and as cut flowers, Larkspurs are strikingly beautiful. Germination is improved if refrigerated for several days.

### GIANT IMPERIAL LARKSPURS

The most advanced strain in size of flower, foliage of spikes and color shades. The intensified branching habit gives a greater number of branches, each producing a solid mass of color, 3 to 4 foot spikes make ideal long-lasting cut flowers.

- |                              |   |
|------------------------------|---|
| 931. Rose King               | } Pkt. 10c.<br>1/2 oz. 40c.<br>1/2 oz. 70c.<br>Oz. \$1.25 |
| 932. White King              |   |
| 933. Carmine King            |   |
| 934. Dark Blue Spire         |   |
| 941. Lilac or Lavender Spire |   |
| 942. Mixed Colors.           | Pkt. 10c.; 1/2 oz. 35c.; 1/2 oz. 60c.; oz. \$1.00.        |

### STOCK FLOWERED LARKSPURS

940. **Rosamond.** Pure pink; yields a fine cut flower two weeks before others. Numerous flower spikes, heavily covered with fully double blooms. Pkt. 10c.; 1/2 oz. 35c.; oz. 60c.
- |                           |  |
|---------------------------|--|
| 936. Double Dark Blue     | } Pkt. 10c.<br>1/2 oz. 35c.<br>1/2 oz. 60c.<br>Pkt. 10c.; 1/2 oz. 25c.; 1/2 oz. 40c.; oz. 70c. |
| 938. Double Light Blue    |  |
| 937. Double Pink          |  |
| 939. Double Mixed Colors. |  |

## ESCHOLTZIA

(CALIFORNIA POPPY)

Easily grown annuals, producing bright, poppy-shaped flowers from spring till frost. Bed in full bloom makes brilliant effect.

834. **Sunset.** Rich deep golden orange. Pkt. 10c.; 1/2 oz. 30c.; 1/2 oz. 50c.  
836. **Golden West.** Pkt. 10c.; 1/2 oz. 25c.  
837. **All colors mixed.** Pkt. 10c.; 1/2 oz. 30c.; oz. 50c.

## ANNUAL POPPIES

No. 1140. **WOOD'S SUPERB POPPY MIXTURE.** A grand mixture of all the newest and best double and single annual Poppies, all varieties and every color. The wonderful variety and brilliant coloring make an effective display. Pkt. 10c.; 1/2 oz. 30c.; oz. 50c.

No. 1141. **Special Mixed Single Poppies.** contains only select varieties that will give a dazzling display of colors. Pkt. 10c.; 1/2 oz. 20c.; 1/2 oz. 30c.

No. 1142. **Special Mixed Double Poppies.** An elegant collection of the largest blooms and most gorgeous colors. Pkt. 10c.; 1/2 oz. 20c.; 1/2 oz. 30c.

No. 1144. **Tulip Poppy.** Large single bright scarlet blooms, 3 inches across; as dazzling as scarlet tulips; brilliant in massed beds. Pkt. 10c.; 1/2 oz. 25c.

**SHIRLEY POPPIES.** Remarkably brilliant and free flowering, delicately fringed.

No. 1139. **Scarlet.** Pkt. 10c.; 1/2 oz. 25c.; 1/2 oz. 40c.

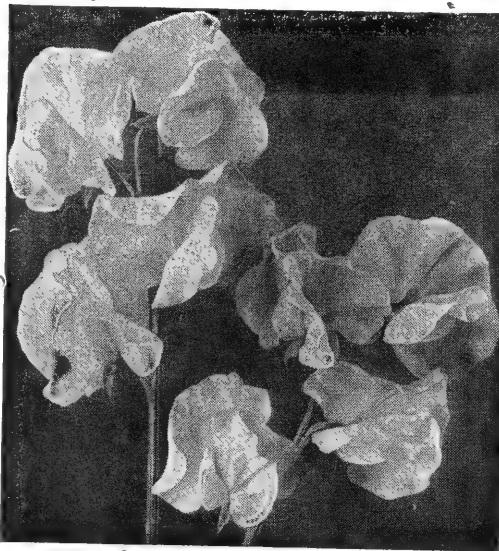
No. 1145. **Mixed Colors.** Pkt. 10c.; 1/2 oz. 25c.; 1/2 oz. 35c.; oz. 60c.

No. 1148. **Double Shirley.** Double and semi-double in an endless variety of color. Pkt. 10c.; 1/2 oz. 25c.; 1/2 oz. 40c.

# Wood's Spencer or Orchid Flowering Sweet Peas

ALL VARIETIES: Pkt. 10c.; oz. 25c.; 1/2 lb. 75c.; lb. \$2.50, postpaid

1329. **Avalanche.** No pure white sweet pea makes as large a flower, nor blooms that will last as long; a strong grower and a profuse bloomer.
1332. **Black Diamond.** Dark maroon. The largest and best of its color.
1331. **Capri.** An outstandingly fine light blue; the color is clear, the flower is large and long stemmed.
1330. **Charming.** Bright glowing cerise with a scintillating salmon sheen; large flower.
1335. **Chieftan.** A showy and attractive pure satiny mauve. Free from purple shading.
1350. **Crony.** Soft golden salmon. An "Award of Merit" winner.
1341. **Elstree.** Bright salmon pink on cream ground. The frilled blooms have extra long, strong stems, profuse bloomer.
1343. **Flagship.** Deep navy blue. The large blooms are borne on long-stems.
1337. **Fortune.** A brilliant waved flower with violet standard and dark blue wings; a lovely combination.
1333. **Grand National.** The large frilled flowers are a rich deep cream; an "Award of Merit" winner.



Spencer Sweet Peas.

1345. **Highlander.** A perfectly formed, lovely, pure, clear lavender.

1338. **Mastercream.** Rich deep cream without a trace of pink; flowers duplexed, large and beautifully frilled.

1334. **Olympic.** Large, waved royal purple flower; deep and rich, vigorously and free bloomer.

1347. **Pinkie.** The largest and finest rich rosy pink; beautifully waved flowers.

1348. **Prince of Orange.** Unquestionably the finest in its color class. Large and beautiful rich glistening orange.

1340. **Red Boy.** Pure rich deep crimson flower; four blooms on long stems; does not sunburn.

1339. **Sweet Afton.** A sparkling shade of deep silvery pink.

1344. **Welcome.** The most dazzling and glowing scarlet; the large bold flowers are sunproof.

1375. **Cuthbertson Hot Weather Sweet Peas.** Ideal for southern growing, for they are heat resistant and yield a profusion of very fragrant blooms before the Spencers come into flower. Mixed colors. Pkt. 10c.; oz. 25c.; 1/2 lb. 70c.; lb. \$2.25, postpaid.

## Early Flowering Spencer Sweet Peas

These bloom weeks earlier and remain in bloom longer than other Spencers. The blooms are equally as large, are beautifully waved and are borne on long stems. They are especially well adapted for outdoor planting in the South as well as for greenhouse culture. We have had spring plantings bloom earlier than fall plantings of other kinds, yielding plenty of blooms before hot weather arrives.

All Varieties: Pkt. 15c.; oz. 40c.; 1/2 lb. \$1.20; lb. \$3.50, postpaid.

1361. **American Beauty.** So named because the color is the same as the American Beauty rose, glowing crimson rose.
1360. **Cascade.** A beautiful pure white flower; borne on long stems.
1363. **Giant Rose.** An unusually large flower; a beautiful rose pink; a robust grower.
1362. **Memory.** The large waved blooms are clear rosy lavender.
1364. **Mrs. Herbert Hoover.** "The California Blue." Clear deep blue.
1365. **Iris Blue.** A beautiful deep blue.

## Sweet Peas in Mixture

1374. **WOOD'S EARLY FLOWERING SPENCER MIXTURE**  
They bloom 3 to 4 weeks earlier than the summer flowering Sweet Peas and are especially recommended for growing in the didly in the greenhouse. In cold climates they do splendor all colors from pure white to deep maroon. Pkt. 10c.; oz. 25c.; 1/2 lb. 90c.; lb. \$2.50, postpaid.

1376. **WOOD'S SUPERB SPENCER MIXTURE**  
The Spencers are the finest type of Sweet Peas in cultivation. Our mixture is a well-balanced blend of colors from the purest white to the deepest maroon; one that will please the most exacting lover of Sweet Peas. It will give a lavish display in an almost endless range of colors. Pkt. 10c.; oz. 20c.; 1/2 lb. 60c.; lb. \$2.00, postpaid.

1378. **PERENNIAL or EVERLASTING SWEET PEAS**  
Once planted, these live year after year, bearing magnificent clusters of hardy spring flowers, before the annual kinds begin to flower. 8 to 10 feet high. Mixed colors. Pkt. 20c.; 1/2 oz. 50c.; oz. 90c.



## WOOD'S PERMANENT PASTURE and HAY MIXTURES Make Bumper Forage Crops

More Economical, Productive, Nutritious and Palatable Than Ladino with Orchard Grass or Tall Fescue. Sow 25 lbs. Acre

Experiment station tests show yields of pasture and hay increase as more seed per acre is sown, up to 25 lbs., and as more different compatible clovers and grasses are added. Mixtures of many grasses and clovers, including Ladino, Orchard, Alfalfa and Red Clover yielded about a third more than one clover and one grass. Ladino with Ky. 31 yielded 5,435 lbs. dry weight in 1950 but only 1,561 lbs. in 1951, as the Ladino winterkilled, leaving no legume to furnish nitrogen to the grass. The quality and feeding value was also cut. They concluded: "Using more than one legume in a mixture is a good insurance investment because species differ in adaptability to soil, climate and biological growth factors."

Our mixtures, proved superior for 3 generations, contain 7 legumes and 9 grasses, with Ladino Clover and Orchard Grass as a base. Disease Resistant Red Clover, Alfalfa, Alsike, Dixie White, Bur and Reseeding Crimson Clovers, Paspalum, Kentucky Blue, Red Top, Ky. 31 or Alta and Meadow Fescue, Timothy, Perennial and Domestic Rye Grass. They grow off faster and flourish in dry summers, crowding out weeds that retard Ladino, Orchard or Tall Fescue sown alone. They bear abundantly many years, minimizing the seeding cost. They are well balanced, high in protein, extremely nutritious and palatable. Animals eat more and grow faster or produce more milk, saving feed bills.

### LADINO CLOVER—California Grown

The most nutritious, palatable and productive year round pasture legume. Its peak growth is in early spring and fall when native grasses are short. It is so rich it may cause bloating unless grasses are grown with it. Sow 1 to 2 lbs. Ladino with 10 lbs. of orchard grass or tall fescue, in early fall. Add 2 lbs. of Red Clover and 5 lbs. of Alfalfa for more summer pasture. Wood's Permanent Pasture and Hay Mixtures contain all these with additional grasses and clovers for maximum year 'round production and highest feed value, but can not cause bloat.



80 Acre Field of **ATLAS 66** making enormous yield in eastern Virginia where it has outyielded all wheats for 2 years in experiment station tests, including it's sister Atlas 50. In Essex Co. Va., a 95 acre field of poor light sandy soil that never yielded over 1,800 bu. made 2,800 bu. of Atlas 66.

Atlas has made record yields and is recommended from Ala. to Md., except in high elevations. It has very dark green foliage, vigorous fall and winter growth, and is the best wheat for winter pasture. It has stiff medium tall straw, easy to combine. It stands up on rich land where other wheats lodge. It is beardless, has large solid heads packed with big sound grain, high in food value. It is medium early, rust and mildew resistant. Atlas 66 is more rust proof, has stronger straw, better milling quality, is earlier and more winter hardy than Atlas 50 which is more mildew resistant.

Price f.o.b. \$39.00 per 100-lb. bag; 25 to 99 lbs. 41c. per lb.

### PERMANENT PASTURE MIXTURES 1 to 3

Contain grasses and clovers which make their maximum growth at different times throughout the year for abundant nutritious year-round grazing. They cannot cause bloating. Thousands of prize cattle have died bloating when one grass was planted and disappeared, leaving only Ladino to graze.

- No. 1. For light gravelly or sandy soil
- No. 2. For good loam soil
- No. 3. For moist bottom land

### WOOD'S PERMANENT HAY MIXTURES 6 to 8

Contain grasses and clovers which mature at the same time, making bumper hay crops, which are easily cured. They recover quickly, giving several big cuttings of the finest hay every year.

- No. 6. For light gravelly or sandy soil
- No. 7. For good loam or clay soil
- No. 8. For moist bottom land

**WOOD'S SOUTHERN PERMANENT PASTURE and HAY MIXTURE No. 12** produces tremendous yields of the finest pasture and hay on both light and heavy soils in the Southern Coastal Area from Virginia to the Gulf.

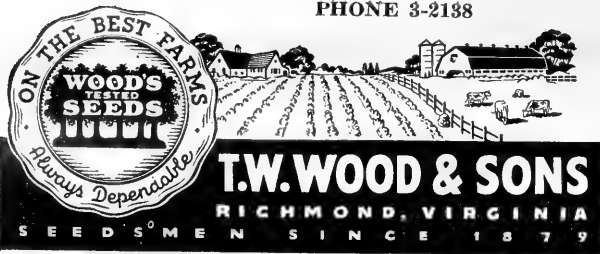
### CRIMSON CLOVER

The best winter legume for soil improvement, hay and pasture, nutritious, high in protein, relished by all livestock. It conserves soil fertility. Turned under it adds valuable nitrogen and humus, holds moisture during droughts, and improves following crops tremendously. We handle only the brightest, highest quality seed, purer, freer of weed, with stronger germination, producing better stands and more vigorous crops. Our imported and Tenn. seed both meet P.M.A. requirements. Inoculate and sow 25 pounds per acre, August to October. It may

cause bloat if grazed alone. It is in **Wood's Grain Pasture Mixture**. A highly nutritious, balanced diet that cannot cause bloat and is better for winter grazing as small grains make more growth in cold weather.



**Arlington Oats** sown thinly in 3-ft. rows stood out vigorously, almost touching rows. For 6 years it has made outstanding yields of grain, hay and pasture in U.S.D.A. and State tests from Piedmont Georgia to Va. and Md., making 170 bu. per acre in one test.



**Bags Free. Price List 523 SEPTEMBER 9, 1952**

Postpaid Prices apply to Va., N. C., W. Va., Md., Del., N. J. and Pa. Postage on Field Seed to Other States: S. C., Ga., Ky., Tenn., Ohio, Ind., N. Y., New England and Mich., add 5c. per lb.

To Ala., Ark., Fla., Ill., Iowa, La., Miss., Mo., Wisc., add 7c. lb. To Texas, Okla., Kan. and Neb., add 9c. per lb. to postpaid prices.

Postage Does Not Cover Express or Freight Charges

T. W. Wood & Sons warrant to the extent of the purchase price, that Seeds, Bulbs and Plants sold are as described on the container, within recognized tolerances. We give no other or further warranty express or implied.

**Clover and Grass Seeds**

|  | Prices per lb. F.O.B. |          |         |        | Postpaid Prices |         |        |       |
|--|-----------------------|----------|---------|--------|-----------------|---------|--------|-------|
|  | 100 lbs.              | 25 to 99 | 3 to 24 | 1 to 2 | 25 lbs.         | 10 lbs. | 5 lbs. | 1 lb. |
| <b>CRIMSON CLOVER</b> —Imported                          | .21                   | .22      | .24     | .30    | \$6.55          | \$2.90  | \$1.55 | \$.50 |
| Tennessee Grown  | .23½                  | .24      | .26     | .30    | 7.05            | 3.10    | 1.65   | .50   |
| Affidavit Reseeding                                      | .29                   | .31      | .33     | .40    | 8.80            | 3.80    | 2.00   | .60   |
| <b>RED CLOVER</b> , 12 lbs. acre..                       | .45                   | .47      | .49     | .55    | 12.85           | 5.40    | 2.80   | .75   |
| Registered Kenland                                       | .62                   | .64      | .67     | .70    | 17.05           | 7.20    | 3.70   | .90   |
| <b>ALSIKE CLOVER</b> , 8 lbs. acre                       | .53                   | .55      | .58     | .65    | 14.80           | 6.30    | 3.25   | .85   |
| <b>MAMMOTH CLOVER</b> —Sapling                           | .44                   | .46      | .48     | .55    | 12.55           | 5.30    | 2.75   | .75   |
| <b>ALFALFA</b> —Oklahoma approved                        | .46                   | .48      | .50     | .55    | 12.80           | 5.50    | 2.85   | .75   |
| Kansas Grown   | .50                   | .52      | .53     | .55    | 14.05           | 5.80    | 3.00   | .75   |
| Certified Buffalo Alfalfa                                | .75                   | .78      | .81     | .85    | 20.55           | 8.60    | 4.40   | 1.05  |
| Certified Atlantic Alfalfa—Sold Out                      |                       |          |         |        |                 |         |        |       |
| Our Alfalfa is U. S. Verified Origin and Premium Quality |                       |          |         |        |                 |         |        |       |
| <b>WHITE SWEET CLOVER</b>                                | .19                   | .20      | .22     | .25    | 6.05            | 2.70    | 1.45   | .45   |
| <b>WHITE DUTCH CLOVER</b>                                | .67                   | .69      | .72     | .75    | 18.30           | 7.70    | 3.95   | .95   |
| <b>DIXIE WHITE CLOVER</b>                                | .75                   | .78      | .81     | .85    | 20.55           | 8.60    | 4.40   | 1.05  |
| <b>CERTIFIED PERMANENT PASTURE WHITE CLOVER</b>          | .70                   | .72      | .75     | .80    | 19.05           | 8.00    | 4.10   | 1.00  |
| <b>LADINO CLOVER</b> —California Grown                   |                       |          |         |        |                 |         |        |       |
| Affidavit, 99½% pure                                     | 1.20                  | 1.23     | 1.27    | 1.30   | 31.80           | 13.20   | 6.70   | 1.50  |
| Certified Blue Tag                                       | 1.45                  | 1.49     | 1.53    | 1.60   | 38.30           | 15.80   | 8.00   | 1.80  |
| <b>BIRDSFOOT TREFOIL</b> —Sold Out                       |                       |          |         |        |                 |         |        |       |
| <b>BICOLOR LESPEDEZA No. 101</b>                         | 2.00                  | 2.05     | 2.10    | 2.15   | 52.30           | 21.50   | 10.85  | 2.35  |
| <b>HAIRY VETCH</b>                                       | .21                   | .22      | .24     | .30    | 6.55            | 2.90    | 1.55   | .50   |
| <b>AUSTRIAN WINTER PEAS</b>                              | .08                   | .09      | .11     | .15    | 3.30            | 1.60    | .90    | .35   |
| <b>DWARF ESSEX RAPE</b>                                  | .14½                  | .16      | .18     | .25    | 5.05            | 2.30    | 1.25   | .45   |

|  | Prices per lb. F.O.B. |          |         |        | Postpaid Prices |         |        |       |
|--|-----------------------|----------|---------|--------|-----------------|---------|--------|-------|
|  | 100 lbs.              | 25 to 99 | 3 to 24 | 1 to 2 | 25 lbs.         | 10 lbs. | 5 lbs. | 1 lb. |
| <b>GRASS SEEDS</b>   |                       |          |         |        |                 |         |        |       |
| <b>TIMOTHY</b> , 15 lbs. acre                                  | .23                   | .24      | .26     | .30    | 7.05            | 3.10    | 1.65   | .50   |
| <b>RYE GRASS</b> , Domestic                                    | .12½                  | .14      | .16     | .20    | 4.55            | 2.10    | 1.15   | .40   |
| Perennial Rye Grass  | .17                   | .18      | .20     | .25    | 5.55            | 2.50    | 1.35   | .45   |
| <b>ORCHARD GRASS</b> , onion free                              | .28½                  | .30      | .32     | .35    | 8.55            | 3.70    | 1.95   | .55   |
| Virginia Grown, Trace Onion                                    | .26                   | .28      | .30     | .35    | 8.05            | 3.50    | 1.85   | .55   |
| <b>KENTUCKY BLUE</b> , 85% pure                                | .64                   | .66      | .69     | .75    | 17.55           | 7.40    | 3.80   | .95   |
| <b>RED TOP or HERDS</b> , 92% pure                             | .52                   | .54      | .57     | .60    | 14.55           | 6.20    | 3.20   | .80   |
| <b>POA TRIVIALIS</b>   | .52                   | .54      | .57     | .60    | 14.55           | 6.20    | 3.20   | .80   |
| <b>CHEWINGS FESCUE</b>   | .80                   | .83      | .86     | .90    | 21.80           | 9.10    | 4.65   | 1.10  |
| <b>CREEPING RED FESCUE</b>                                     | .75                   | .78      | .81     | .85    | 20.55           | 8.60    | 4.40   | 1.05  |
| <b>ALTA FESCUE</b> , 98% p., 90% g.                            | .32                   | .34      | .36     | .40    | 9.55            | 4.10    | 2.15   | .60   |
| <b>ALTA FESCUE</b> —Certified                                  | .42                   | .44      | .46     | .50    | 12.05           | 5.10    | 2.65   | .70   |
| <b>KY. 31 FESCUE</b> —Certified                                | .42                   | .44      | .46     | .50    | 12.05           | 5.10    | 2.65   | .70   |
| <b>KY. 31 FESCUE</b> , 98/90                                   | .32                   | .34      | .36     | .40    | 9.55            | 4.10    | 2.15   | .60   |
| <b>MEADOW FESCUE</b>   | .23                   | .24      | .26     | .30    | 7.05            | 3.10    | 1.65   | .50   |
| <b>BENT, Astoria Cert. Blue Tag</b> —Available late September. |                       |          |         |        |                 |         |        |       |
| Highland Bent, cert. blue tag                                  | 1.05                  | 1.08     | 1.12    | 1.15   | 28.05           | 11.70   | 5.95   | 1.35  |
| <b>BERMUDA GRASS</b> , Unhulled.                               | .53                   | .55      | .58     | .65    | 14.80           | 6.30    | 3.25   | .85   |
| Hulled   | .75                   | .78      | .81     | .85    | 20.55           | 8.60    | 4.40   | 1.05  |
| <b>SUDAN GRASS</b> , 25 lbs. acre..                            | .16½                  | .18      | .20     | .25    | 5.55            | 2.50    | 1.35   | .45   |
| <b>BUCKWHEAT</b> , Japanese. 50 lbs.                           | .07¾                  | .09      | .11     | .15    | 3.30            | 1.60    | .90    | .35   |
| <b>SUNFLOWER</b> —Mammoth Russian—100-lb. bags                 |                       |          |         |        |                 |         |        |       |
| Large Gray Striped, for seed                                   | .25                   | .27      | .29     | .35    | 7.80            | 3.40    | 1.80   | .55   |
| Medium Gray Striped, for seed                                  | .20                   | .21      | .23     | .30    | 6.30            | 2.80    | 1.50   | .50   |
| Sunflower for feed, dark striped                               | .16                   | .17      | .19     | .25    | 5.30            | 2.40    | 1.30   | .45   |

|   | 100 lbs. | 25 to 99 | 3 to 24 | 1 to 2 | 25 lbs. | 10 lbs. | 5 lbs. | 1 lb. |
|---|----------|----------|---------|--------|---------|---------|--------|-------|
| <b>WOOD'S PERMANENT PASTURE and HAY MIXTURES:</b> |          |          |         |        |         |         |        |       |
| Permanent Pasture Mixt. 1 to 3                    | .39      | .41      | .43     | .50    | 11.30   | 4.80    | 2.50   | .70   |
| Permanent Hay Mixtures 6 to 8                     | .39      | .41      | .43     | .50    | 11.30   | 4.80    | 2.50   | .70   |
| Southern Permanent Mixture 12                     | .39      | .41      | .43     | .50    | 11.30   | 4.80    | 2.50   | .70   |
| <b>GRAIN-HAY MIXTURE</b>                          | .09      | .10      | .12     | .15    | 3.55    | 1.70    | .95    | .35   |
| <b>GRAIN PASTURE MIXTURE</b>                      | .09      | .10      | .12     | .15    | 3.55    | 1.70    | .95    | .35   |

|                            | Prices per lb. F.O.B. |          |         |        | Postpaid Prices |         |        |       |
|----------------------------|-----------------------|----------|---------|--------|-----------------|---------|--------|-------|
|                            | 100 lbs.              | 25 to 99 | 3 to 24 | 1 to 2 | 25 lbs.         | 10 lbs. | 5 lbs. | 1 lb. |
| <b>LAWN GRASSES</b>        |                       |          |         |        |                 |         |        |       |
| <b>WOOD'S SUPER-GREEN</b>  | 1.10                  | 1.13     | 1.17    | 1.25   | 29.30           | 12.20   | 6.20   | 1.45  |
| <b>WOOD'S SHADY PARK</b>   | .91                   | .94      | .97     | 1.05   | 24.55           | 10.20   | 5.20   | 1.25  |
| <b>WOOD'S EVERGREEN</b>    | .80                   | .83      | .86     | .95    | 21.80           | 9.10    | 4.65   | 1.15  |
| <b>WOOD'S EMERALD PARK</b> | .55                   | .57      | .60     | .65    | 15.30           | 6.50    | 3.35   | .85   |
| <b>WOOD'S MAYFAIR</b>      | .37                   | .39      | .41     | .45    | 10.80           | 4.60    | 2.40   | .65   |
| <b>WOOD'S WINTER GREEN</b> | .32                   | .34      | .36     | .40    | 9.55            | 4.10    | 2.15   | .60   |
| <b>WOOD'S DIXIE</b>        | .55                   | .57      | .60     | .65    | 15.30           | 6.50    | 3.35   | .85   |

**ONION SETS**

Open Mesh ½ Peck, Peck, Bu., 5-bu. 1-bu. Bags. 4 lbs. 8 lbs. 32 lbs. lots  
 Silver Skin ... \$ .75 \$1.20 \$4.00 \$3.90  
 Yellow Ebenezer .70 1.15 3.75 3.65  
 30c. per lb. Postpaid, 50c. per lb.  
 White Multiplier 1.75 3.25 .....  
 Yellow Potato .70 1.90 3.60 .....  
 45c. per lb. Postpaid 65c. per lb.

**Alta and Ky. 31, Tall Fescues**

Alta and Ky. 31 Fescues are identical in growth, adaptation and production. They are heavy yielding, deep rooted, long lived, excellent for permanent pastures, forming dense sods in one year that hold livestock up in wet weather. In the Southern Coastal Area they produce the year round, except in extreme Cold. Sow in the early fall 20 lbs. per acre or 10 lbs. with 1 to 2 lbs. of Ladino.

**Wood's Grain Pasture Mixture**

Furnishes more grazing in less time and at less cost than any other crop. It keeps more animals per acre in good healthy condition in winter, when feed costs are high, and permanent pastures short and need a rest. Saves expensive labor in feeding. It is highly nutritious and relished by all livestock and poultry. The grains are balanced with legumes for protein, growth and warmth, but cannot cause bloat. For continuous fall, winter and spring grazing, it has ideal proportions of Rye Grass, Crimson Clover, Rape, Hairy Vetch, Austrian Winter Peas, Abruzzi Rye, Beardless Barley, Winter Oats and Smooth Wheat. Sow early, 100 lbs. acre, with 400 lbs. 5-10-5. Top dress with 200 lbs. Nitrate Soda. Do not graze under 3 inches. 100-lb. bag, \$9.00; in 5-bag lots, \$8.75.



Wood's Grain Pasture Mixture, the most economical feed relished by all livestock. Tests show 100% more profit from steers on a good winter pasture than feeding grain with protein supplement.

**Wood's Grain Hay Mixture**

Makes bumper crops of nutritious hay, easy to cure and relished by all livestock. It is much more productive and palatable than oats or any other crop sown alone. Excellent nurse crop for seeding permanent grass and clover as it comes off early. It contains Winter Oats, Smooth Wheat, Beardless Barley, Hairy Vetch, Austrian Winter Peas and Crimson Clover, furnishing a balanced ration of proteins, vitamins and other food elements. Sow 100 lbs. acre. Fertilize well. 100 lbs. \$9.00; in 5-bag lots \$8.75.



**WOOD'S FULGRAIN 3**, heavy yield of grain on short stiff straw, easy to combine. In experiment station tests our improved Fulgrain outyielded Fulgrain 1952 11 bu. per acre and Victorgrain 48-93 14 bu. per acre at Clemson, S. C., and also at Blackville, S. C., making 15 bu. more than Fulgrain 1952 B.R.S. In a 1952 N. C. test our Fulgrain made 120.6 bu. per acre to 75.5 for Fulgrain 1952, and 100.5 for Victorgrain 48-93 with 12 and 9% more winter survival. It was as cold proof as Lee, had higher yield, much stiffer straw, 11 inches shorter.

### WOOD'S WINTER OATS

Sow 2 bu. per acre. 30-bu. Per bu., Treated. New 3-bu. bags. lots 32 lbs.

|                                |        |        |
|--------------------------------|--------|--------|
| <b>ARLINGTON</b> .....         | \$1.85 | \$1.90 |
| <b>CERT. ARLINGTON</b> .....   | 2.00   | 2.05   |
| <b>*C.S.S. ARLINGTON</b> ..... | 2.10   | 2.15   |

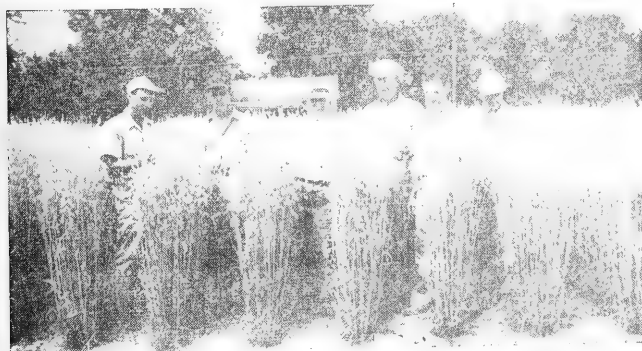
Highest grain and hay yield in N. C. tests 4 years averaging 112 bu. per acre in 10 tests and 10,200 lbs. hay in 6 tests.

|                                 |      |      |
|---------------------------------|------|------|
| <b>LEE COLD PROOF</b> .....     | 1.85 | 1.90 |
| <b>CERT. LEE Cold Proof</b> ... | 2.00 | 2.05 |
| <b>WINTER TURF</b> , onion free | 1.75 | 1.80 |

Most winter hardy, dependable oat.

|                               |      |      |
|-------------------------------|------|------|
| <b>FORKEDEER</b> .....        | 1.85 | 1.90 |
| <b>LETORIA</b> .....          | 1.70 | 1.75 |
| <b>STANTON</b> .....          | 1.70 | 1.75 |
| <b>VICTORGRAIN 48-93</b> .... | 1.75 | 1.80 |
| <b>FULGRAIN</b> .....         | 1.75 | 1.80 |
| <b>CERTIFIED FULGRAIN</b> ..  | 1.90 | 1.95 |
| <b>WOOD'S FULGRAIN 3</b> ...  | 1.80 | 1.85 |
| <b>CERTIFIED FULGRAIN 3</b>   | 1.95 | 2.00 |

Earliest oat. Outyielded Victorgrain, Arlington, and all others in Eastern Shore, Va., test, 15 bu. more than Fulgrain. Tops 3 years in Pee Dee, S. C. tests, 10.5 bu. more than Fulgrain B.F.S.



Dr. T. R. Stanton, U.S.D.A. and our breeding staff studying our oat plots. He says **Wood's Fulgrain 3** is much more vigorous than ordinary Fulgrain. It is ten days earlier, maturing before hot weather and rust damage. Bred 11 years thru severe Va. winters, it is more winter hardy. It resists storms, smut and the dread Victoria blight, which can wipe out other Fulgrains. It can be planted earlier and is better for winter pasture. It stools profusely, has wide dark green leaves, short sturdy erect straw, ideal to combine. Long, well balanced heads fruit heavily. Big plump grains, low in hull, high test weight and feed value.

## Seed Grains

**99% Pure. High Germination. New Bags Double Cleaned. We Hot Water Treat** our foundation seeds of wheat and barley to prevent loose smut. We **Ceresan treat** all wheat, oats and barley to insure better stands of disease free crops. We are the largest Southern breeders and growers of small grain seed, growing 8,000 acres from the finest Registered or Certified stock. To avoid mixing, only one variety is grown on any one farm. No crop is planted in a field where other small grain was grown last season. All fields are carefully rogued and must pass Certified Field Inspection.

\*C.S.S. means Certified Stock Seed Same as Registered Seed elsewhere

### SEED RYE Stocks Short

|                             |                 |
|-----------------------------|-----------------|
| New 2-bu. bags              | 20-bu. Per bu., |
| Sow 1½ bu. acre.            | lots 56 lbs.    |
| <b>BALBOA RYE</b> .....     | \$3.50 \$3.60   |
| <b>ROSEN WINTER RYE</b> ... | 3.40 3.50       |
| <b>ABRUZZI RYE</b> —Scarce  | ..... 3.60      |



Thorne is the most popular and highest yielding wheat in the Upper South and East. It is smut, mosaic and winter resistant. Stands up better, combines easier. It has large heads, big, plump grain, good milling quality. Only wheat recommended in N. C. Mountains.

### WOOD'S SEED BARLEY

|   |                 |
|---|-----------------|
| Treated. 2-bu. bags.  | 20-bu. Per bu., |
| Sow 2 bu. per acre.   | lots 48 lbs.    |
| <b>BEARDLESS</b> .....  | \$2.60 \$2.70   |
| <b>WONG</b> , grown from hot water treated foundation stock.. | 2.90 3.00       |
| <b>CERTIFIED WONG</b> .....                                   | 3.15 3.25       |
| <b>*CERTIFIED S.S. WONG</b> .                                 | 3.30 3.40       |
| <b>COLONIAL 2</b> , smut free..                               | 3.00 3.10       |
| <b>CALHOUN</b> .....  | 2.60 2.70       |



ATLAS 66 has big yield, stiff straw

### BEARDLESS WHEAT

|                                  |                 |
|----------------------------------|-----------------|
| Plant 1½ bu. acre.               | 20-bu. Per bu., |
| 2-bu. bags. Treated.             | lots 60 lbs.    |
| <b>ATLAS 66</b> .....            | \$3.20 \$3.30   |
| <b>CERTIFIED ATLAS 66</b> ...    | 3.45 3.55       |
| <b>*C.S.S. ATLAS 66</b> .....    | 3.60 3.70       |
| <b>ATLAS 50</b> .....            | 3.20 3.30       |
| <b>THORNE</b> .....              | 3.35 3.45       |
| <b>CERTIFIED THORNE</b> ...      | 3.60 3.70       |
| <b>*CERTIFIED S.S. THORNE</b>    | 3.75 3.85       |
| <b>SENECA, Improved Thorne</b> . | 3.90 4.00       |
| <b>VAHART</b> .....              | 3.35 3.45       |

Va. recommends it for high yields and milling quality, stiff straw and resistance to mildew, cold and smut.

|  |           |
|--|-----------|
| <b>REDHART</b> .....                       | 3.35 3.45 |
| <b>CERTIFIED REDHART</b> ..                | 3.60 3.70 |
| Earliest wheat. Stiff straw. Resists rust. |           |
| <b>HARDIRED</b> .....                      | 3.35 3.45 |
| <b>LEAP'S PROLIFIC</b> .....               | 3.35 3.45 |

Top milling quality. Most cold and smut resistant. Stiff straw. Big, heavy head and grain. Top yields in Va. tests west of Blue Ridge, in N. C. Piedmont tests and made 49.8 bu. per acre, the record in 19 U.S.D.A. Wheat tests.

|                             |               |
|-----------------------------|---------------|
| <b>FORWARD</b> .....        | \$3.35 \$3.45 |
| <b>CERTIFIED FORWARD</b> .. | 3.60 3.70     |
| <b>NURED</b> .....          | 3.35 3.45     |

### BEARDED WHEAT

|                         |               |
|-------------------------|---------------|
| <b>V.P.I. 131</b> ..... | \$3.35 \$3.45 |
| <b>FULCASTER</b> .....  | 3.35 3.45     |
| <b>STONER</b> .....     | 3.35 3.45     |
| <b>NUDEL</b> .....      | 3.35 3.45     |

New Fulcaster strain. Far outyielded other bearded wheats in Va. tests 5 years with 17.2 to 28.8% less lodging.

|                                |           |
|--------------------------------|-----------|
| <b>NITTANY (Penn. 44)</b> .... | 3.35 3.45 |
|--------------------------------|-----------|

Improved Fulcaster, like V.P.I. 131, outyielded it, is more resistant to lodging, cold, smut, mildew and rust. Made 67.3 bu. per acre, highest yield in any 1952 N. C. experiment station test.



38 acres of our **Colonial 2 Barley** near Richmond, yielding nearly 2,000 bus. Our other field averaged 61 bus. per acre, ½ more than other varieties and had much higher test weight per bu. It has no smut or disease, is tolerant to rust and resists mildew. It is awnless, has short, stiff straw, ideal to combine. In 6 N.C. tests it averaged 72.3 bus. per acre to 46.5 for Wong and winter killed 12% less. It made 62 bu. per acre, highest at Clemson, and is recommended in S. C.

# WOOD'S SEED INOCULATION

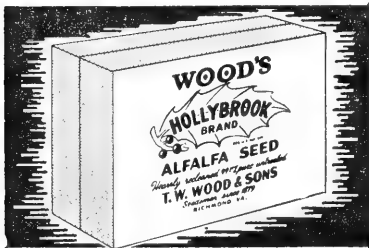
Specify the Group Wanted

|                             |                |        |
|-----------------------------|----------------|--------|
| <b>GROUP 1</b>              | f.o.b. Postp'd |        |
| Alfalfa, Sweet Clover,      | 1 bu. \$ .50   | \$ .70 |
| Bur Clover, Black Medic     | 2 1/2 bu. 1.00 | 1.25   |
| <b>GROUP 2 Clovers:</b>     | 1 bu. .50      | .70    |
| Ladino, Red, Mammoth,       | 2 1/2 bu. 1.00 | 1.25   |
| Crimson, Dixie White,       |                |        |
| White Dutch, Alsike         |                |        |
| <b>LADINO CLOVER</b>        | 10 lbs. .25    | .25    |
| <b>GROUP 7 Vetch, Peas:</b> | 1 bu. .35      | .55    |
| Austrian, Garden, Sweet,    | 100 lbs. .55   | .75    |
| Canning, Canada Peas        |                |        |
| <b>GROUP 8 All Garden</b>   | 5 lbs. .15     | .20    |
| <b>BIRDSFOOT TREFOIL</b>    | 10 lbs. .25    | .30    |
|                             | 1 bu. .90      | 1.10   |

## FERTILIZERS

- MILORGANITE**—All Organic Fertilizer. Nitrogen 6%; Phosphoric Acid 2%. Will not burn. Best for lawns. 25 lbs. \$1.50; 50 lbs. \$2.50; 100 lbs. \$4.00.
- WOOD'S SPECIAL ALL CROP 5-10-5.** 25 lbs. \$1.10; 100 lbs. \$2.90.
- WOOD'S HIGH-GRADE SHEEP or COW MANURE**—The Great Natural Fertilizers. 25 lbs. \$1.15; 50 lbs. \$2.00.
- RAW BONE MEAL**—25-lb. bag, \$1.50; 50-lb. bag, \$2.75; \$5.00 per 100 lbs.
- HYDRATED LIME**—Prices f.o.b. Richmond; 10 lbs. 25c.; 50 lbs. 75c.
- VIGORO**—For Lawns and Flowers, 6-10-4. 5 lbs. 53c.; 10 lbs. 95c.; 25 lbs. \$1.70; 50 lbs. \$2.80; 100 lbs. \$4.55.
- PEAT MOSS**—10-lb. bag, \$1.00; 1/2 bale, \$2.90; large bale, \$4.25.
- FARMANURE**—7 1/2-lb. bag, 65c.; 25-lb. bag, \$1.40; 50-lb. bag, \$2.50.

## People Afflicted With Arthritis or Rheumatism



Have been writing us for Alfalfa Seed for making Alfalfa Tea, saying it gives great relief. To supply this demand, we selected the finest bright golden seed, untreated, of the highest quality, over 99 1/2% pure. Directions for making the tea are in each pound package, double boxed to prevent contamination.

**Hollybrook Brand Alfalfa Seed**  
Price, \$1.75 per pound box, postpaid

## Strawberry Plants—READY FOR OCTOBER 1st DELIVERY

Plant in Rows 3 to 3 1/2 Feet Apart, 12 to 18 inches  
Apart in Row

100 plants of 4 varieties must be ordered at the 25-plant rate.  
100 plants of 2 varieties must be ordered at the 50-plant rate.

Prices of Early, Mid-Season and Late Varieties: Postpaid, 25 plants, \$1.25; 50 plants, \$2.25; 100 plants, \$3.40; 200 plants, \$5.75; 300 plants, \$7.25; 400 plants, \$8.75; 500 plants, \$10.25. Not postpaid, 25 plants, \$1.00; 50 plants, \$1.90; 100 plants, \$3.00; 200 plants, \$5.25; 300 plants, \$6.75; 400 plants, \$8.00; 500 plants, \$9.40; 1,000 plants, \$15.00; 5,000 lots, \$14.00 per 1,000.

- EARLY VARIETIES**—Premier and Blakemore  
**MID-SEASON VARIETIES**—Catskill and Big Joe  
**LATE VARIETIES**—Chesapeake, Red Star and Lupton  
**EVERBEARING VARIETIES**—Mastodon, Gem and Streamliner.

# Feeds and Baby Chick Prices

WOOD'S FEEDS—Mash and Mixed Feeds in Print Cloth Bags

FOR MAKING DRESSES, CURTAINS, ETC. WORTH ABOUT 75c. EACH

Store Door Delivery 10c. per bag less on Mash and Mixed Grain Feed

|  | F.O.B. Richmond:    |         |                     |
|--|---------------------|---------|---------------------|
|  | 10 lbs.             | 50 lbs. | 100 lbs.            |
| <b>CHICKEN FEEDS</b>   |                     |         |                     |
| HOLLYBROOK LAYING MASH, with dried milk  | .60                 | \$2.65  | \$5.20              |
| HOLLYBROOK GROWING MASH  |                     |         |                     |
| With dried milk and cod liver oil  | .60                 | 2.70    | 5.30                |
| HOLLYBROOK STARTING MASH   |                     |         |                     |
| With dried milk and cod liver oil  | .60                 | 2.70    | 5.30                |
| PAMUNKEY SCRATCH   | .50                 | 2.20    | 4.25                |
| Includes cracked corn, wheat, etc., but no grit.   |                     |         |                     |
| HOLLYBROOK CHICK GRAINS  | .60                 | 2.65    | 5.15                |
| HOLLYBROOK DEVELOPING FOOD   | .60                 | 2.25    | 4.35                |
| PAMUNKEY PIGEON, With Corn   | .65                 | 3.00    | 5.80                |
| HOLLYBROOK PIGEON, No Corn   | .75                 | 3.60    | 6.95                |
| CRACKED YELLOW CORN  | .60                 | 2.35    | 4.50                |
| <b>MISCELLANEOUS FEEDS</b>   |                     |         |                     |
| POULTRY GRIT—Coarse, Fine, Medium  | .20                 | .60     | 1.10                |
| OYSTER SHELLS—For Poultry  | .20                 | .75     | 1.50                |
| FAUST PIGEON HEALTH GRIT   | .35                 | 1.50    | 2.90                |
| CHARCOAL—Medium, Fine, Coarse  | .65                 | 2.50    | ....                |
| RABBIT PELLETS   | .75                 | 2.90    | 5.60                |
| <b>BIRD SEED</b>   |                     |         |                     |
|  | (F.O.B. Richmond)   |         | (Postpaid Prices)   |
|  | Lb. 5 lbs. 10 lbs.  |         | Lb. 5 lbs. 10 lbs.  |
| Songster Food  | \$.25 \$ .95 \$1.80 |         | \$.45 \$1.30 \$2.30 |
| Canary Seed  | .25 .95 1.80        |         | .45 1.30 2.30       |
| Love Bird, Parakeet Seed   | .25 .95 1.80        |         | .45 1.30 2.30       |
| Bird Millet  | .20 .70 1.25        |         | .40 1.05 1.75       |
| Sunflower for feed, dark striped   | .25 .95 1.90        |         | .45 1.30 2.40       |
| <b>WOOD'S BIRD SCATTER FOOD</b> —2 lbs. 35c.; 5 lbs. 75c.; 10 lbs. \$1.50; 50 lbs. \$6.50; 100 lbs. \$12.00. |                     |         |                     |
| <b>HEAVY WHITE OATS</b> —\$1.50 per bushel, 32 lbs.  |                     |         |                     |
| <b>POULTRY WHEAT</b> —\$4.50 per 100-lb. bag.  |                     |         |                     |
| <b>DOG FOODS</b> F.O.B. Richmond   | 5 lbs.              | 10 lbs. | 25 lbs.             |
| HUNT CLUB CUBES  | \$.65               | \$1.25  | \$2.65              |
| HUNT CLUB DOG FOOD MEAL  | .65                 | 1.25    | 2.65                |
| PAR DOG FOOD—Swift's; 1-lb. can 17c.; 1 doz. cans \$1.90; case of 48 cans, \$7.40                            |                     |         |                     |
| SERGEANT'S SKIP BATH—16 ozs. 79c.; postpaid \$1.00.  |                     |         |                     |

## WOOD'S BABY CHICKS

100% LIVE DELIVERY GUARANTEED. Hatch Days: Tuesdays and Fridays  
GOOD HEALTH, STURDINESS, AND QUICKNESS IN REACHING MARKET SIZE OR BREEDING STAGE ARE FAR MORE IMPORTANT THAN FIRST COST

Our high quality Chicks are from blood-tested flocks, and the parent flocks are carefully culled to select birds for laying characteristics and for sturdy, healthy bodies. The many repeat orders we receive every year prove that our Chicks give satisfaction.

|                    | Postpaid Prices: |        |         |  |
|--------------------|------------------|--------|---------|--|
|                    | Per 25           | Per 50 | Per 100 |  |
| BARRED ROCKS       | \$4.65           | \$8.75 | \$16.50 |  |
| NEW HAMPSHIRE REDS | 4.65             | 8.75   | 16.50   |  |

We hope to be able to supply all the regular breeds next spring

Eggs are advancing. We urge you to place your order now to have an egg supply next spring. Chicks may be even higher in the fall. Orders booked now for fall shipment subject to change in price. The demand is heavy—Place your order now.

## VEGETABLE PLANTS

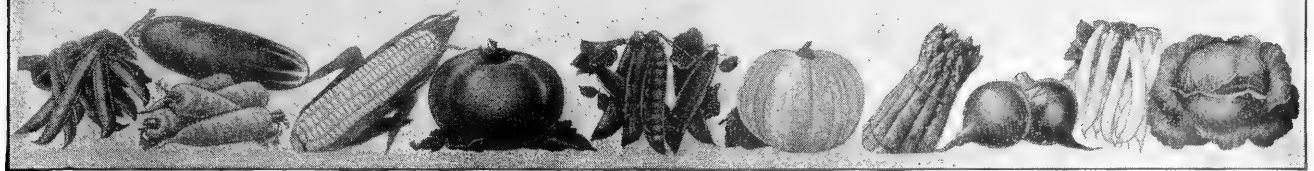
READY FOR IMMEDIATE DELIVERY

**CABBAGE PLANTS**—Late Flat Dutch. 75c. per 100; 500 for \$3.10; \$5.50 per 1,000, postpaid. Not postpaid, 50c. per 100; 500 for \$2.40; \$4.50 per 1,000.

**COLLARD PLANTS**—75c. per 100; 500 for \$2.95; \$5.00 per 1,000, postpaid. Not postpaid, 50c. per 100; 500 for \$2.25; \$4.00 per 1,000.



# WOOD'S High Grade GARDEN SEEDS



For Prices on Larger Quantities, Write for Market Gardeners' Price List

| GARDEN BEETS                  | Plant now for winter storage. 1 oz. will plant 50 ft. row. 6 to 8 lbs. one acre. |     |         |
|-------------------------------|--|-----|---------|
|                               | Pkt.   | Oz. | 1/2 lb. |
| Early Wonder, 50 days         | .10  | .25 | .60     |
| Crosby's Egyptian, 50 days    | .10  | .25 | .60     |
| Improved Early Blood, 55 days | .10  | .25 | .60     |
| Detroit Dark Red, 55 days     | .10  | .25 | .60     |
| Crimson Globe, 55 days        | .10  | .25 | .60     |
| Extra Early Egyptian, 45 days | .10  | .25 | .60     |



Copenhagen Market

| CABBAGE                                  | One ounce will plant 100-foot row and will produce about 2,000 plants; 6 to 8 ounces will make enough plants for 1 acre. |     |         |
|--|--|-----|---------|
|  | Pkt.   | Oz. | 1/2 lb. |
| Copenhagen Market, 70 days               | .10  | .40 | .90     |
| Selected Early Jersey Wakefield, 65 days | .10  | .50 | 1.10    |
| Charleston Wakefield, 75 days            | .10  | .50 | 1.10    |
| All Head Early, 85 days                  | .10  | .40 | .90     |
| Early Flat Dutch, 85 days                | .10  | .40 | .90     |
| Chieftan Drumhead Savoy, 90 days         | .10  | .55 | 1.20    |

| YELLOWS RESISTANT CABBAGES | Pkt. | Oz. | 1/2 lb. |
|----------------------------|------|-----|---------|
| Marion Market, 75 days     | .10  | .55 | 1.20    |

| CARROTS                              | One ounce will plant 100 feet of drill, 3 to 4 pounds to the acre. |     |         |
|--------------------------------------|--|-----|---------|
|                                      | Pkt.   | Oz. | 1/2 lb. |
| Red Cored Chantenay, 70 days         | .10  | .25 | .60     |
| Danvers Half Long, 75 days           | .10  | .25 | .60     |
| Wood's Scarlet Intermediate, 75 days | .10  | .30 | .70     |
| Imperator, 75 days                   | .10  | .25 | .60     |
| Improved Long Orange, 85 days        | .10  | .25 | .60     |

| COLLARDS                           | Postpaid |     |         |
|------------------------------------|----------|-----|---------|
|                                    | Pkt.     | Oz. | 1/2 lb. |
| Carolina Header                    | .10      | .35 | .80     |
| North Carolina Short Stem, 80 days | .10      | .30 | .70     |
| White or Cabbage, 80 days          | .10      | .25 | .60     |
| Georgia or Southern, 80 days       | .10      | .25 | .60     |
| Vates, 80 days                     | .10      | .35 | .80     |

| CRESS                           | Postpaid |      |         |
|---------------------------------|----------|------|---------|
|                                 | Pkt.     | Oz.  | 1/2 lb. |
| Curled or Pepper Grass, 40 days | .10      | .25  | .60     |
| Water Cress, 50 days            | .15      | 1.45 | 3.20    |
| Upland, 60 days                 | .10      | .35  | .80     |

| ENDIVE                         | Postpaid |     |         |
|--------------------------------|----------|-----|---------|
|                                | Pkt.     | Oz. | 1/2 lb. |
| Green Curled, 90 days          | .10      | .25 | .60     |
| Broad Leaved Batavian, 95 days | .10      | .25 | .60     |

| KOHL RABI          | Postpaid |     |         |
|--------------------|----------|-----|---------|
|                    | Pkt.     | Oz. | 1/2 lb. |
| Early White Vienna | .10      | .65 | 1.40    |

| LEEK       | Postpaid |     |         |
|------------|----------|-----|---------|
|            | Pkt.     | Oz. | 1/2 lb. |
| Large Flag | .10      | .90 | 2.00    |

| LETTUCE                       | One ounce produces about 1,500 plants; 2 lbs. an acre. |     |         |
|-------------------------------|--|-----|---------|
|                               | Pkt.   | Oz. | 1/2 lb. |
| Wood's Cabbage, 65 days       | .10  | .35 | .80     |
| Improved Big Boston, 75 days  | .10  | .30 | .70     |
| Iceberg, 80 days              | .10  | .45 | 1.00    |
| Great Lakes, 82 days          | .10  | .90 | 2.00    |
| Imperial 44                   | .10  | .60 | 1.30    |
| Imperial 44                   | .10  | .30 | .70     |
| Cos or Romaine, 65 days       | .10  | .30 | .70     |
| Early Curled Simpson, 50 days | .10  | .30 | .70     |
| Grand Rapids, 45 days         | .10  | .30 | .70     |
| Black Seeded Simpson, 50 days | .10  | .30 | .70     |
| Chickened Lettuce, 55 days    | .10  | .30 | .70     |

| MUSTARD                                 | One ounce will plant 100 feet of row. 5 to 6 pounds per acre |     |         |
|---|--|-----|---------|
|   | Pkt.   | Oz. | 1/2 lb. |
| Southern Giant Curled, 35 days          | .10  | .25 | .55     |
| Old Fashion                             | .10  | .30 | .70     |
| Florida Broad Leaved, 40 days           | .10  | .25 | .55     |
| Tendergreen or Mustard Spinach, 25 days | .10  | .25 | .55     |
| Fordhook Fancy, 45 days                 | .10  | .25 | .55     |

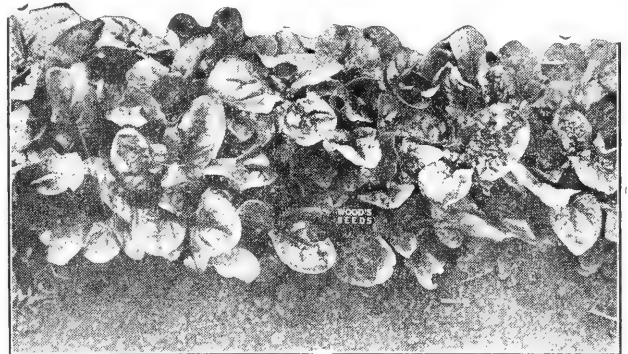
| KALE                                  | One ounce plants 100 feet of drill; 8 pounds to the acre broadcast; 4 to 5 pounds in drills. |     |         |
|---------------------------------------|--|-----|---------|
|                                       | Pkt.   | Oz. | 1/2 lb. |
| Early Curled Siberian, 65 days        | .10  | .25 | .50     |
| Dwarf Blue Curled Scotch or Norfolk   | .10  | .25 | .60     |
| Spring Kale or Hanover Salad, 30 days | .10  | .25 | .20     |

| ONION                                   | Postpaid |     |         |
|---|----------|-----|---------|
|   | Pkt.     | Oz. | 1/2 lb. |
| Prize Taker or Spanish King, 100 days   | .10      | .65 | 1.40    |
| Valencia Sweet Spanish                  | .10      | .65 | 1.40    |
| Yellow Globe Danvers, 110 days          | .10      | .65 | 1.40    |
| Silver Skin or White Portugal, 100 days | .10      | .70 | 1.50    |
| Extra Early White Pearl, 85 days        | .10      | .65 | 1.40    |

| PARSLEY                         | One ounce will plant 100 feet. |     |         |
|---------------------------------|--------------------------------|-----|---------|
|                                 | Pkt.                           | Oz. | 1/2 lb. |
| Champion Moss Curled, 70 days   | .10                            | .25 | .55     |
| Plain or Single, 70 days        | .10                            | .25 | .55     |
| Hamburg Parsnip Rooted, 90 days | .10                            | .25 | .55     |

| GARDEN PEAS                            | Postpaid |         |       |                |
|--|----------|---------|-------|----------------|
|  | Pkt.     | 1/2 lb. | 1 lb. | 5 lbs. 10 lbs. |
| Thomas Laxton, 55 days                 | .10      | .35     | .60   | 1.85 2.90      |
| Laxton's Progress, 53 days             | .10      | .35     | .65   | 2.05 3.40      |
| Laxtonian or Hundredfold, 53 days      | .10      | .35     | .65   | 2.05 3.40      |
| Early Bird or Laxton's Superb, 55 days | .10      | .25     | .60   | 1.90 3.10      |
| Little Marvel, 55 days                 | .10      | .35     | .65   | 2.05 3.40      |

| WINTER RADISHES               | One ounce will plant 50 feet 8 to 10 pounds an acre. |     |         |
|-------------------------------|--|-----|---------|
|                               | Pkt.   | Oz. | 1/2 lb. |
| Rose China Winter, 60 days    | .10  | .25 | .50     |
| Chinese or Celestial, 60 days | .10  | .25 | .50     |
| Long Black Spanish, 60 days   | .10  | .25 | .50     |



| SPINACH                              | Two ounces will plant 100 feet of drill; 12 to 15 lbs. one acre |     |         |
|--------------------------------------|---|-----|---------|
|                                      | Pkt.  | Oz. | 1/2 lb. |
| New Zealand, 55 days                 | .10   | .20 | .40     |
| Norfolk Savoy or Bloomsdale, 45 days | .10   | .15 | .30     |
| Long Standing Bloomsdale, 50 days    | .10   | .15 | .30     |
| Virginia Blight Resistant            | .10   | .15 | .30     |

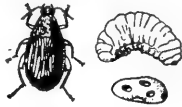
| TURNIP                          | One ounce plants 100 feet of drill; 1 1/2 lbs. plants 1 acre in drills; 2 lbs. 1 acre broadcast; salad varieties, 3 pounds to the acre. |         |       |
|---------------------------------|---|---------|-------|
|                                 | Oz.   | 1/2 lb. | 1 lb. |
| Improved Purple Top White Globe | .25   | .50     | .60   |
| Mammoth Purple Top White Globe  | .25   | .50     | .60   |
| Purple Top Strapleaf            | .25   | .50     | .60   |
| Early White Flat Dutch          | .25   | .50     | .60   |
| Pomeranian White Globe          | .25   | .50     | .60   |
| Long White Cowhorn              | .25   | .50     | .60   |
| White Egg                       | .25   | .50     | .60   |
| Purple Top Yellow Aberdeen      | .25   | .50     | .60   |
| Large Amber or Yellow Globe     | .25   | .50     | .60   |
| Golden Ball                     | .25   | .50     | .60   |
| Seven Top (Salad Variety)       | .25   | .50     | .60   |
| Southern Prize (Salad Variety)  | .25   | .50     | .60   |
| Shogoin (Japanese Salad)        | .25   | .50     | .60   |

| RUTABAGA                   | Postpaid |         |
|----------------------------|----------|---------|
|                            | Oz.      | 1/2 lb. |
| Improved Purple Top Yellow | .25      | .60     |
| Purple Top Yellow          | .25      | .60     |

# INSECTICIDES AND FUNGICIDES



GARDEN DUSTS AND SPRAYS



WEEVILS  
(Typical)



PEACH TREE  
BORER



DAIRY AND LIVESTOCK SPRAYS

**Arsenate of Lead** For all Leaf-Eating Insects. Sticks to the leaf. Use 1 to 2 pounds to 50 gallons of water (one level tablespoon to gallon); for General spraying. Postpaid, 1-lb. bag 75c.; 4-lb. bag, \$1.80. Not postpaid, 1-lb. bag 60c.; 4-lb. bag \$1.50.

**Black Leaf 40** For Sucking Insects and Poultry Lice. Kills plant lice on roses, shrubbery, fruits and vegetables. A concentrated solution of nicotine sulphate. Dilute 1 to 2 teaspoonfuls to a gallon of water, as directed. Postpaid, 1-oz. size, 45c.; 5-oz. size, \$1.20; 1-lb. size, \$2.60; 2-lb. size, \$4.40; 5-lb. size, \$7.70; 10-lb. size, \$13.15. Not postpaid, 1 oz. 36c.; 5 ozs. \$1.05; 1 lb. \$2.42; 2 lbs. \$4.15; 5 lbs. \$7.40; 10 lbs. \$12.65; 50-lb. drum, \$53.90.

**Blue Stone** Copper Sulphate or Blue Vitriol (Pulverized Snow). For early spraying, for making Bordeaux mixture and copper solution. Postpaid, 1 lb. 45c.; 5 lbs. \$1.65; 10 lbs. \$3.10; 25 lbs. \$7.35. Not postpaid, 5 lbs. \$1.40; 10 lbs. \$2.70; 25 lbs. \$6.50; 50 lbs. \$12.00; 100 lbs. \$23.00.

**Carbon Bisulphide** Kills weevil, bugs and insects generally on beans, peas and grains while in storage. When placed on top of either bulk or sacked grains the fumes permeate the entire bulk. 1-lb. can 55c.; 2½-lb. can \$1.00; 5-lb. can \$1.85. Cannot be mailed—express or freight only.

**Copper Carbonate** For Treating Wheat. 2 to 3 ounces will treat one bushel. By mail, postpaid, 1-lb. pkg. 65c.; 5-lb. pkg. \$2.20. Not postpaid, 1-lb. pkg. 50c.; 5-lb. pkg. \$1.85.

**Cyanogas A Dust** Kills field mice, moles, rats, cray fish, ground hogs, bed bugs, clothes hopper, locusts, etc. Postpaid, 1-lb. can \$1.25; 5-lb. can \$4.25. Not postpaid, 1-lb. can \$1.00; 5-lb. can \$3.85; 25-lb. drum \$12.90; 100-lb. drum \$31.00.

**Cyanogas Ant Killer** For ants in the garden and lawn. Kills millions. By mail postpaid, 4-oz. puffer can 50c.. Not postpaid, 4-oz. can 40c.

**"Dogzoff"** Repels dogs, cats, moles, mice and rabbits. Protects shrubs, plants, porch furniture and trees. A single application lasts several weeks. Postpaid, 3-oz. bottle 90c.; 1-pt. bottle \$2.75. Not postpaid, 3-oz. bottle 75c.; 1-pt. bottle \$2.50.

**Para-Scalecide** For controlling peach tree borers. Para-Scalecide is applied in the early fall or in the spring when the ground temperatures are not colder than 60 degrees F. Dilute one gallon Para-Scalecide with 7 gallons of water. One gallon treats approximately 125 one to two-year-old trees; 64 three or four-year-old trees. Postpaid, 1-qt. can, \$1.50; 1-gallon can, \$3.50. Not postpaid, 1-qt. can, \$1.25; 1-gallon can, \$3.00; 5-gallon can, \$9.50; 15-gallon drum, \$23.30.

**Para-di-Chloro-Benzene** For controlling peach tree borer. Apply when the ground is dry in September or October. This will have to be used at once when ordered, on account of evaporation. One pound treats ten trees. By mail postpaid, 1 lb. 70c.; 2½ lbs. \$1.50; 5 lbs. \$2.35. Not postpaid, 1 lb. 50c.; 2½ lbs. \$1.25; 5 lbs. \$2.00.

**.75 Rotenone Dust** Kills insects on vegetation, but leaves no poisonous residue. Controls bean beetle, cabbage worm, asparagus, cucumber and flea beetles, potato bug, tomato worm, rose slug, leaf hopper, thrips, red spider, plant lice and other garden pests. Apply 15 to 20 pounds per acre. May be applied either as a dust or spray. Postpaid, 1-lb. sifter top can 65c.; 4-lb. pkg. \$1.25. Not postpaid, 1-lb. size 45c.; 4-lb. size 90c.; 50-lb. bag, \$8.75.

**Spray Spreader** It spreads the spray; makes it stick to the leaf. Use 2 lbs. to 100 gallons of spray. Postpaid, 2-lb. pkg. \$1.10. Not postpaid, 2-lb. pkg. 85c.

**Dry Lime-Sulphur** For San Jose Scale. The most generally used and very effective remedy for San Jose Scale. Exactly like lime-sulphur solution, except that the water has been taken out. For fall and spring spraying use 12 to 15 lbs. to 50 gallons water. Summer spraying, 2½ to 3 lbs. to 50 gallons water. Postpaid, 1 lb. size 75c.; 5-lb. can \$2.75. Not postpaid, 1-lb. size 60c.; 5-lb. can \$2.50; 12½-lb. bag \$3.50; 100-lb. drum \$25.00.

**Scalecide** For San Jose Scale. It is especially recommended for spraying trees, shrubs, etc., while in the dormant state. Kills aphids and red mites and destroys the eggs and larvae wintering in inaccessible places on the bark of trees. It spreads rapidly into cracks and crevices and covers rough bark thoroughly. Mix one part Scalecide with 15 parts water. Postpaid, 1-qt. can \$1.35; 1-gal. can \$3.00. Not postpaid, 1-qt. can \$1.00; 1-gal. can \$2.50; 5-gal. drum \$8.50; 15-gal. drum \$20.50. Deposit of \$4.00 on 15-gal. drum.

**Dusting Sulphur** 325 MESH. Apply it for red spider, brown rot, scab, mildew, leaf-spot, rust and other fungus diseases. Use it on potatoes when cut for planting to prevent scab and bleeding. Postpaid, 5 lbs. 85c.; 10 lbs. \$1.45. Not postpaid, 5 lbs. 55c.; 10 lbs. \$1.00; 25 lbs. \$2.00; 50 lbs. \$3.75; 100 lbs. \$6.50.

**Triogen** Destroys leaf-eating insects like rose slugs, caterpillars, webworm, red spider, plant lice, aster beetles, etc., controls mildew, black spot, canker, and rust on roses and other plants; yellows and fungus diseases on many flowering plants.

|                               | By mail postpaid | Not postpaid |
|-------------------------------|------------------|--------------|
| Economy Kit, makes 8 quarts   | \$1.50           | \$1.35       |
| A—Small Kit, makes 16 quarts  | 2.50             | 2.25         |
| B—Medium Kit, makes 64 quarts | 6.40             | 6.00         |
| C—Large Kit, makes 32 gallons | 9.50             | 9.00         |

**Volck Oil Spray** For scale insects, mealy bugs, white flies, red spiders, rust mites and similar insects. May be used on tender plants in leaf with perfect safety; a suitable spray for all plants, flowers, vegetables, berries and shrubs. Postpaid, 4-oz. size 45c.; 1-quart size \$1.55; 1 gallon size \$3.35. Not postpaid, 4-oz. size 35c.; 1-pint size 70c.; 1-quart size \$1.25; 1-gallon size \$2.85; 5-gallon drum, \$9.95.

**Zinc Sulphate** For control of peach bacterial spot and possibly brown-rot and scab. The recommended formula is 4 pounds each of zinc sulphate and fresh hydrated or slaked lime to 50 gallons water. The addition of 1 pound zinc sulphate to 100 gallons lead arsenate spray corrects the spray injury. Postpaid, 5-lb. bag \$1.30; 10-lb. bag \$2.30; 25-lb. bag, \$4.85. Not postpaid, 5-lb. bag \$1.00; 10-lb. bag \$1.85; 25-lb. bag \$4.00.

## SEED TREATMENTS

**Ceresan-M** For Oats, Barley, Wheat and Cotton. Used for all purposes for which 2% Ceresan and New Improved Ceresan have been used. When properly used greatly reduces the hazard of skin irritation and it is odorless. Effective in controlling smut and stripe of barley, oat smuts bunt or stinking smut of wheat. 1 lb. will treat 32 bushels. Postpaid, 14-oz. size \$1.40; 3-lb. size \$3.80. Not postpaid, 14-oz. size \$1.25; 3-lb. size \$3.55; 40-lb. pail \$35.85; 100-lb. drum \$85.00.

**Pyrenone**  
\*Reg. U. S. Pat. Off.  
**GRAIN PROTECTANT**



©N.D.P.C.

**Pyrenone Grain Protectant** For the prevention and control of insect infestation of Southern corn in storage; also other types of grains and seeds. Postpaid, 10-lb. bag \$3.45; 25-lb. bag \$7.60; 50-lb. bag \$14.50. Not postpaid, 10-lb. bag \$2.90; 25-lb. bag \$6.60; 50-lb. bag \$12.50.

**Pyrenone Wheat Protectant** For Wheat only. Grains treated with Pyrenone can be used for the preparation of flour and other cereal products without resorting to other than normal production procedures, and can be fed directly to livestock or used in the preparation of animal feeds without hazard. Postpaid, 50-lb. bag \$17.00. Not postpaid, 50-lb. bag \$15.00.

Write for Pamphlet describing PYRENONE PROTECTANTS

## PLANT HORMONES

### FULTON'S Plantabbs

ODORLESS PLANT FOOD TABLETS  
 pleate plant food in odorless, ready to use tablet form. 30 tablets 25c.; 75 tablets 50c.; 200 tablets \$1.00; 1,000 tablets, \$3.50, postpaid.

Contains Vitamin B1 and analyzes 11% nitrogen, 15% phosphoric acid and 20% potash, just the proper plant food to encourage a vigorous healthy growth. A complete plant food to encourage a

### FRUITONE

of water, one level teaspoon to a gallon of water. By mail postpaid, trial pkg. 25c.; 2-oz. can, \$1.00; 12-oz. size, \$5.00.

Prevents dropping of apples, pears, peaches and cherries. Recommended to increase the crops of beans, peas, tomatoes and other crops. Mix  $\frac{1}{2}$  lb. Fruitone with each 100 gallons to a gallon of water. By mail can, \$1.00; 12-oz. size, \$5.00.

### ROOTONE

Reg. U. S. Pat. Off.

reduces damping off and wards off fungus attack. 1-oz. pkg. (treats 400 cuttings), 25c.; 2-oz. jar, \$1.00; 1-lb., \$5.00, postpaid.

Makes Cuttings Easy to Root. Dip cuttings in Rootone before planting to give faster and better rooting. Stimulates root growth on cuttings; quickens germination of seed and bulbs; reduces damping off and wards off fungus attack. 1-oz. pkg. (treats 400 cuttings), 25c.; 2-oz. jar, \$1.00; 1-lb., \$5.00, postpaid.

### TRANSPANTONE

Reg. U. S. Pat. Off.

moved or transplanted; also beneficial to shrubs; multiplies roots and makes plants take on new life when watered with transplanted every ten days.  $\frac{1}{2}$  oz. makes 50 gallons. 1-oz. can, 25c.; 3-oz. can, \$1.00; 1-lb., \$4.00.

A water soluble powder containing Vitamin B1 to repair root growth when seedlings, flowering plants, shrubs or trees are established plants and shrubs; multiplies roots and makes plants take on new life when watered with transplanted every ten days.  $\frac{1}{2}$  oz. makes 50 gallons. 1-oz. can, 25c.; 3-oz. can, \$1.00; 1-lb., \$4.00.

### Hyponex

With Hyponex and water, plants grow luxuriantly, flower abundantly and develop sturdy growth, regardless of the poorness or sterility of the soil. With Hyponex they will grow and flourish in clean sand, cinders or barren earth. Hyponex is ideal for hydroponics. Postpaid, 3-oz. pkg. 30c.; 1-lb. can \$1.25; 10-lb. can \$8.50. Not postpaid, 3-oz. pkg. 25c.; 1-lb. can \$1.00; 10-lb. can \$8.00.

## TERRA-LITE

Aids in creating a dependable reservoir of plant root moisture; air-conditions the ground; fluffs stiff soil to prevent cooking, packing and hardening; tends to reduce need for watering and cultivation; provides a satisfactory medium for cuttings, seedlings and transplantings. Ideal for storing bulbs, particularly dahlias and for vegetable winter storage. Postpaid, 4-qt. pkg., 60c.; 1-bus. bag, \$1.25. Not postpaid, 4-qt. pkg. 40c.; 1 bus. bag 85c.; 2 bus. bag \$1.75; 3 bus. bag \$2.25.

## WEED KILLERS

### Ammate Weed Killer

Kills Poison Ivy. Exterminates weeds in walks, driveways, tennis courts, etc. Deadly to vegetation but harmless to humans, animals and birds. Entirely free from fire and explosion hazards, and exerts only temporary soil sterilization. 1 lb. to a gallon of water kills poison ivy; 1 to 3 lbs. to a gallon kills deep rooted perennials and is enough for 100 square feet of heavy growth. By mail postpaid, 2-lb. size, \$1.35; 6-lb. size \$3.20. Not postpaid, 2-lb. size \$1.00; 6-lb. size \$2.70; 50-lb. drum \$13.75; 75-lb. bag \$20.00.

### New Improved Weedone—2-4-D Weed Killer

#### Plus 2, 4.5-T

Kills weeds under ground as well as above ground, right down to the root tips. Kills poison oak poison ivy, wild morning glory, Japanese honeysuckle, sassafras, black locust, choke cherry and many other weeds. Postpaid, 8-oz. size \$1.25; 1-qt. can \$3.15; 1-gal. can \$7.60. Not postpaid, 8-oz. size \$1.00; 1-qt. can \$2.75; 1-gal. can \$6.95; 5-gal. drum \$25.00; 30-gal. drum \$142.50.

## DDT SPRAYS and DUSTS

### 25% DDT Spray

Kills caterpillars, thrips, leaf roller, potato beetle, flea beetle, Japanese beetle and oriental peach moth. Pratt's 25% DDT dilutes with 4 parts of water for spraying barns, dairies, kennels, making a powerful and long lasting 5% residual fly spray. By mail postpaid, 1-pint size, \$1.00; quart size, \$2.05; 1 gallon size, \$5.80. Not postpaid, 1-pint, 85c.; quart size, \$1.75; 1 gallon size, \$5.30; 5-gallon drum, \$19.50.

### 50% DDT Dry Wettable Dust

A dry wettable 50% DDT powder that mixes readily. 2 lbs. of Pratt's 50% DDT in 100 gallons of water is generally used to control codling moth, Japanese beetles, oriental peach moth and other insects. Postpaid, 1-lb. pkg. \$1.10; 4-lb. bag \$2.85. Not postpaid, 1-lb. pkg. 90c.; 4-lb. bag \$2.50.

## WOOD PRESERVATIVE

Is becoming increasingly important to the farmer as a chemical preservative of wooden fence posts and farm buildings against rot, decay and destruction due to wood-eating insects. One gallon added to ten gallons of light fuel oil or kerosene solvent makes eleven gallons of a 5% solution, ready to use. By mail postpaid, 1-gal. can \$4.50. Not postpaid, 1-gal. can \$3.90; 5-gal. drum \$18.75; 55-gal. drum \$181.50.

## SoiLoam "GIVES BREATH TO SOIL"

### LIQUID SOIL CONDITIONER

#### SOILOAM TREATMENT

- Prevents soil compaction
- Converts clay or poor soil into permanently loose, porous material.
- Improves soil structure by transforming it into pulverized soil aggregates.
- Increases and maintains desirable aeration in the soil.
- Checks erosion in new seedings
- Gives better drainage. Soils stay moist as water-carrying capacity is greatly increased.
- Convenient liquid form. NOT A POWDER. Easy to use.
- Dilute with water and spray when soil is dry.

#### RECOMMENDATIONS FOR USE

**For Soil, Lawns, Greens or Fairways:** Dilute 1 gallon of SOILOAM with approximately 20 gallons of water and apply by spraying to 250, 500, or 1,000 square feet, depending on the present tightness of the soil. Following application with additional watering, if necessary, to give thorough penetration to a depth of approximately 2 to 3 inches. Treat soil preferably before seeding or planting; however, SOILOAM is effective any time of year.

**For Indoor Plants, Nurseries and Small Garden Plots:** Dilute 1 pint of SOILOAM in a two-gallon watering can and apply until soil is thoroughly penetrated.

SOILOAM is a watering solution of a resin which, chemically combines with clay permanently converting it to a fine porous, granular texture. Changing clay and sandy soil into good tilth, thereby preventing slaking and subsequent compaction of the soil.

Postpaid, 1 gallon, \$10.00. Not postpaid, 1 gallon, \$9.50



## For Better Gardens, Finer Lawns, Healthier House Plants, Use KRILIUM

NOW—in your vegetable gardens, flower beds, house plants and around shrubs—MERLOAM will turn hard clay into loose loam-like soil at once. And MERLOAM will help you make new lawns on raw-graded clay, too!

#### HERE'S WHAT MERLOAM WILL DO

Mixed thoroughly in the soil, MERLOAM will turn clay into a loose, porous mass of little spongy balls. Mixing MERLOAM into your soil sets up "bonds" all through the soil. These tiny bonds turn hard-packed clay into loose, easy-to-spade soil with a "structure" like loamy topsoil. Good mixing is highly important; you must make sure that MERLOAM really gets "worked in." All lumps and heavy clods must be broken up so MERLOAM can go to work. Once MERLOAM is well mixed into your garden the soil won't pack down and get hard again.

Five pounds of KRILIUM will treat 40 square feet of garden soil to a depth of 6 inches, or 80 square feet of garden soil to a depth of 3 inches.

Postpaid, 1-lb. pkg. \$1.95; 5-lb. pkg. \$7.45

Not postpaid, 1-lb. pkg. \$1.69; 5-lb. pkg. \$6.95

# Sprayers, Dusters, Etc.

## SPRAYERS



### Black Leaf Warfarin— Ready Mixed Bait

Is the convenient form of warfarin rat and mouse killer. There's nothing to add. It's ready to use. With specially selected and processed grain that never becomes rancid or sour. Rats and mice like it and continue to eat it until they die. Quickly destroys entire colonies. **Postpaid, lb. pkg. \$1.00; 5-lb. pkg. \$3.30. Not postpaid, lb. pkg. 80c.; 5 lbs. \$2.98.**

### Black Leaf Warfarin—Concentrate

Is the economical form of warfarin rat and mouse killer. It makes 20 times its weight in rat or mouse killing bait. Save money by mixing your own bait—one part with 19 parts of corn meal, cereal, meat, fish or other acceptable bait material available locally. Tasteless, odorless. **Postpaid, 4/5 oz. pkg. 55c.; 1-lb. pkg. \$1.90; 1/2-lb. pkg. \$3.15; 1-lb. pkg. \$5.25. Not postpaid, 4/5 oz. 52c.; 1/2 lb. \$1.75; 1 lb. \$3.00; 1b. \$5.00.**

### Rat-Killer

Contains ANTU, the new deadly and safer-to-use killer of rats. Small doses required for easy, quick and economical results. **Postpaid, 1 1/2-oz. size 70c.; 4-oz. size \$1.65; 8-oz. size \$2.75.**

### Rat and Mouse Bait

(Contains Red Squill). Not poisonous, but deadly to rats and mice; they go into the open air to die. **By mail postpaid, 30c. per pkg. of 10 baits. Not postpaid, 25c. per pkg.**

### Mouse Seed

Kills mice. Clean, ready to use; no bait, no muss; a saucer and Mouse Seed is all you need. **By mail postpaid, 30c. Not postpaid, 25c.**



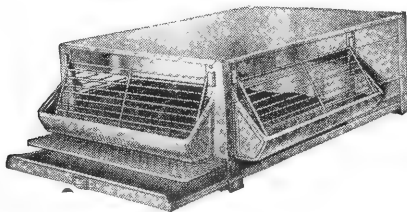
### "DOGZOFF"

Copyright 1933

Repels dogs, cats, moles, mice and rabbits. Protects shrubs, garden plants, porch furniture and trees. **By mail postpaid, 3-oz. bottle 90c.; 1 pint size, \$2.75. Not postpaid, 3 ozs. 75c.; 1 pint, \$2.50.**

Dogs are creatures of habit. -Correct the habits of the dog and you will have no further trouble. DOGZOFF makes this training possible. If you wish to keep the dogs away from trees or flower beds, off porches or furniture, simply spray DOGZOFF. One application lasts several weeks—long enough usually to break even the most stubborn dog of his bad habits.

### No. 50 Hudson-Lektrik-Chick-Brooder



A brooder made especially for back-yard poultry raisers and smaller operators. It is a full size brooder, 24x36 inches inside with standard 9 1/2 inch head room, has radiant heat from a 150-watt Richrome element incased in heavy box type radiator placed in compartment in rear of brooder, regulator thermostat holds temperature within narrow limits, dropping pan easily removable, capacity 100 day-old chicks. **By mail postpaid, \$20.60. Not postpaid, \$19.00.**

### Cyclone Seed Sower

The Cyclone is a splendid seed sower that will pay for itself in a few days in the time it will save, besides sowing grass and clover seeds and grain of all kinds faster and more evenly and uniformly than is possible by hand. It will sow as fast as you can walk, and the quantity can be regulated to any amount to the acre. **By mail postpaid, \$4.50. Not postpaid, \$4.15.**



### Ken-Sprayall

#### Bucket Spray Pump

The all-purpose double action continuous sprayer so easy to operate that even a child can use it. No tank to clean, no tank to leak. Rotate nozzle cap to vary spray from fog mist to full stream. **By mail postpaid, \$9.20. Not postpaid, \$8.95.**



#### No. 201-G Booster Sprayer

For those who prefer a sprayer of somewhat greater capacity and a long pump, the booster is the sprayer we recommend. Sprays insecticide, whitewash, cold water paint, etc. Has 3 1/2-gallon galvanized funnel top tank, 18-inch curved brass extension rod. **By mail postpaid, \$8.00. Not postpaid, \$7.60.**

#### No. 220-G Bugwiser Sprayer

An economical, efficient sprayer for all small home and garden spraying. 2 1/2 gallon capacity, seam welded tank with funnel top and comfortable carrying strap. **By mail postpaid, \$7.30. Not postpaid, \$6.96.**

#### No. 4 King Barrel Spray Pump

A heavy duty unit maintains working pressure of 200 lbs. successfully. Handles heaviest spray solutions. Positive agitation, clog-proof, steel dasher cleans intake screen at each stroke. Equipped with 10 ft. 3/4-inch hose and 3-ft. extension rod. Can be mounted in a fifty gallon or similar barrel. **By mail postpaid, \$23.25. Not postpaid, \$22.40.**



#### No. 433 Mercury Continuous Sprayer

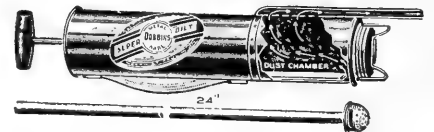


A popular all purpose quart-size continuous sprayer equipped with the new two-way spray nozzle. Highly efficient for pest control jobs in home and garden. **By mail postpaid, \$1.75. Not postpaid, \$1.50.**

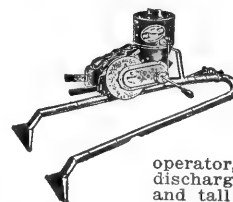
## DUSTERS

#### No. 132 Garden Duster

A serviceable duster for small gardens, one that distributes dry powder insecticides perfectly to the last particle, either on top or under the leaves. The filler cap is easy to remove for refilling. **By mail postpaid, \$2.45. Not postpaid, \$2.10.**



#### No. 200 Crank Duster



The ideal duster for large areas of vegetables, tobacco, cotton and fruit trees. It develops powerful air blast, delivering enough air at the nozzle to prevent clogging and breaks the powder into a fine floating dust. It can be adjusted to feed exactly the amount of insecticide required. Will handle any powder, light or heavy. Dusters either in front or behind the discharge tubes are adjustable for low growing and tall plants. The gears are steel, run in oil and are dustproof; the bearings are bronze. The indicator can be quickly and accurately adjusted for either large or small quantities of insecticide. The tubes are long enough to reach into fairly large trees. **By mail postpaid, \$26.25. Not postpaid, \$25.55.**

From \_\_\_\_\_

\_\_\_\_\_  
Always register letters containing money

# T. W. WOOD & SONS

SEED GROWERS AND MERCHANTS

P. O. BOX 6--0

RICHMOND 19, VA.

## **BEFORE SEALING THIS ENVELOPE**

Be sure you have written your name,  
postoffice and shipping point plainly on  
your order.









## Wood's High-Grade Lawn Grass Seed

New Lawns sow 1 lb. per 200 sq. ft. Reseeding Old Lawns 1 lb. per 400 sq. ft.

### HOW TO MAKE A LAWN

**TIME.** It is best to seed lawns in the fall or early spring so the seedlings can develop deep roots during mild weather and be able to stand summer heat, drought and competition of weeds. If summer seeding is necessary, spread a thin layer of straw to protect the tender seedlings from the blistering sun, and water frequently.

**NEW LAWNS.** A well prepared but firm seed bed is most important. See that it is well drained, both surface and subsoil. Poor drainage often causes lawn failures. Break the ground and pulverize it thoroughly 4 to 6 inches deep. This brings some weed seeds to the surface, which quickly germinate, and may be killed by repeated raking every several days before seeding the grass, or by a heavy application of 2-4-D several days after seeding the grass, but before it comes up.

**LIME.** Most fine grasses require lime. It also helps soils in the same way as soil conditioners, but not to the same extent. Dig in 50 lbs. of our **HYDRATED LIME** per 1,000 sq. ft. of new lawn, or spread over 2,000 sq. ft. of old lawn. It may be applied with Krilium, but avoid mixing it directly with fertilizer or seed. Dig it in when breaking the soil for a new lawn. It is best to water thoroughly, then wait for the soil to dry before applying fertilizer and seed.

**FERTILIZER.** A day or two before seeding apply 5 lbs. per 100 sq. ft. of organic plant food, like Milorganite or Sheep Manure, and 5 lbs. of fertilizer, like Vigoro or Wood's Special All Crop Fertilizer. Work it into the top 3 inches of soil. Each spring and fall top dress the lawn again. Fertilize when the lawn is dry, then water thoroughly.

**SEEDING** may be done the day lime and fertilizer are applied if they are worked in separately. Broadcast seed evenly, half one way, half the other, 1 lb. to 200 sq. ft. Use a Cyclone Seed Sower, \$4.50, postpaid. Cover lightly with a rake or drag. Roll firm. Keep moist with a fine spray until seed comes up. Pull out weeds.

**RESEED** every fall and spring, 1 lb. to 400 sq. ft. Cut close, rake, broadcast the seed, heaviest on bare spots, then rake again or drag, and water. If the soil has packed hard, or has hard spots, treat with **SOILLOAM** before reseeding; dilute 1 gal. with about 20 gallons of water and spray on 250 to 1,000 square feet.

**CUT** regularly when 2 to 3 inches high. Raise the mower blade to leave grass taller in late fall, hot summer and June, when crab grass sprouts. Don't remove clippings unless long and heavy. They add valuable mulch and fertility. Keep mower sharp. Dull mowers injure grass. Power mowers cut smoother. Write for circular on the famous **Moto-Mowers**, \$100.00 up.

**WHAT TO SOW.** No one grass variety grows in all seasons, climates, soils, etc. Permanent year-round lawns need a mixture of many grasses. **Wood's Lawn Grass Mixtures** are based on 4 generations of experience and study of lawn problems. They contain only the finest quality seeds, producing velvety lawns that last many years. Their true value is far greater than mixtures cheapened with worthless ingredients like timothy.

Under trees and in shade use **Wood's Shady Park Lawn Grass**. On open lawns in the Southern Coastal area and on sandy soils sow **Wood's Dixie Lawn Grass**. Elsewhere use **Wood's Super-Green** where particular care can be given; **Wood's Evergreen** is best for average conditions; **Emerald Park** for moderate cost lawns, parks, etc.; **Mayfair** is best for lowest cost permanent lawns and to renovate established lawns for green growth all winter. In the Fall sow **Wood's Winter-Green** on summer lawns.

### WOOD'S FERTILIZERS

**MILORGANITE**—The All Organic Fertilizer. Nitrogen 6%; Phosphoric Acid 2%. 25-lb. bag, \$1.50; 50-lb. bag, \$2.50; 100-lb. bag, \$4.00. Will not burn.

**WOOD'S SPECIAL ALL CROP FERTILIZER**—Analysis: 5% Nitrogen; 10% Phosphoric Acid; 5% Potash. Prices: 25 lbs. \$1.10; 100 lbs., \$2.90.

**WOOD'S HIGH-GRADE SHEEP or COW MANURE**—The Great Natural Fertilizer. Prices: F.O.B. Richmond: 25 lbs. \$1.15; 50 lbs. \$2.00.

**HYDRATED LIME**—Prices F.O.B. Richmond: 10 lbs. 25c.; 50 lbs., 75c.

**VIGORO**—Regular Stock for Lawns and Flowers. Analysis: 6-10-4. Prices F.O.B.: 5 lbs. 53c.; 10 lbs. 95c.; 25 lbs. \$1.70; 50 lbs. \$2.80; 100 lbs. \$4.55.

**FARMANURE**—7½-lb. bag, 65c.; 25-lb. bag, \$1.40; 50-lb. bag, \$2.50.

**RAW BONE MEAL**—25-lb. bag, \$1.50; 50-lb. bag, \$2.75; 100-lb. bag, \$5.00.

### Wood's "Super-Green" Lawn Grass

For the particular home owner who takes a keen interest in his lawn we have prepared a special mixture of the very finest domestic and imported grasses. This mixture is a blend of Highland Bent Grass, Creeping Red Fescue, Chewings Fescue, Kentucky Blue Grass, Poa Trivialis and Red Top, all of the finest triple cleaned quality and of the highest germination. These grasses are recognized as being the finest turf makers known and will produce a thick velvety sod of even texture. This mixture contains only the above listed grasses without any clover. We consider this mixture as being the very finest combination of turf grasses that can possibly be secured. We confidently offer it where the highest quality of lawn is wanted in Virginia, Piedmont and Mountain Sections of the South and the North.

### Wood's Shady Park Lawn Grass

All grasses will not thrive in shady locations, so for this mixture we have selected grasses that will grow in shade and produce a fine lawn. For shady locations, sow heavier than in the open and under trees apply a double quantity of fertilizer.

### Wood's Evergreen Lawn Grass

Always the Standard Lawn Grass for Virginia, Piedmont and Mountain Sections of North Carolina and the Middle Atlantic States. Composed of fine quality turf producing grasses, blended with a small quantity of White Dutch Clover and will produce a fine year round lawn. **Wood's Evergreen Lawn Grass Seed** is put up under our own particular formula in use sixty years. Contains no timothy or coarse grasses, but only the finest turf producing kind. **Wood's Evergreen Lawn Grass** will form a rich, deep green velvety lawn in a few weeks' time.

### Wood's Emerald Park Lawn Grass

A splendid mixture of fine quick-growing grasses that are adapted to the Middle and South Atlantic States. It contains none of the coarse grasses, nor those that grow in tufts. It is a good, all-around, general purpose lawn mixture for large areas, parks, athletic fields, etc.

### Wood's Mayfair Lawn Grass

A good lawn grass mixture. Our formula is based on the advice of highest grass authorities of the U. S. and Southern Experiment Stations. It does not contain coarse grasses like timothy. Mayfair contains perennial and domestic rye grasses to quickly establish new lawns and stay green all winter, combined with the best fine grasses for permanent lawns in sun and shade. It is ideal for renovating old lawns.

### Wood's Dixie Lawn Grass

In the eastern section of the Carolinas and the Southern States, where the finer grasses will not stand the hot summer months, our **Wood's Dixie Lawn Grass** is just what is needed to give a year-round beautiful green lawn. **Wood's Dixie Lawn Grass** is what its name implies, a lawn grass for the Southern States, where long hot and frequent dry summers prevail. This mixture contains grasses that will thrive during the fall, winter and spring months, together with Carpet and Bermuda Grass, which will take possession during the summer. For putting in a new lawn, you will find that this lawn grass will give you better results than any other combination of grasses.

### Wood's Winter-Green Lawn Grass

As its name implies this Lawn Mixture will produce a beautiful green lawn through the winter months when many other grasses are dormant or not at their best. Especially recommended for broadcasting on top of established lawns to freshen them up during the cold months. To seed, simply cut the existing lawn close, rake with a sharp rake, broadcast one to two pounds of Wood's Winter-Green Lawn Grass per 100 square feet and again run the mower over the lawn. The result will be a velvety green lawn through the winter months. For best results, seeding should be done not later than through October.

FOR PRICES OF ALL LAWN GRASSES, SEE PAGE 10 OF THIS CATALOG

**PEAT MOSS**—10-lb. bag, \$1.00; ½ bale, \$2.90; large bale, \$4.25.

# T. W. WOOD & SONS,

SEEDSMEN SINCE 1879

Richmond, Virginia

**WOOD'S  
SEEDS**

*The Sign of  
Good Seeds*

RETURN POSTAGE GUARANTEED

Section 34:66 P.L.&R.

U. S. POSTAGE

**PAID**

**RICHMOND, VA.**

Permit No. 142

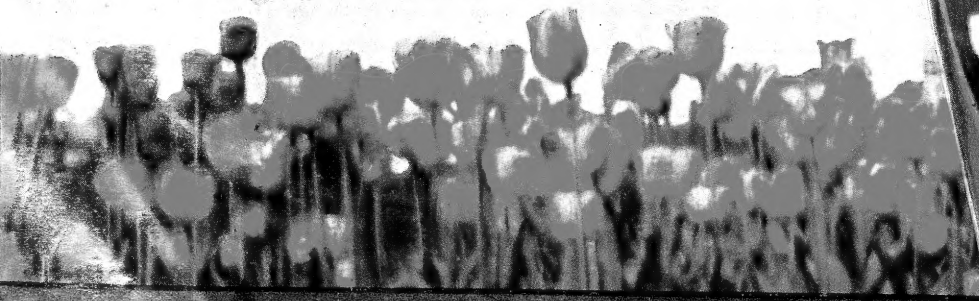
LIBRARIAN, U.S. DEPT. OF AGRI.  
WASHINGTON, 25, D.C.



MRS. R. O.  
BACKHOUSE



BEERSHEBA



# T. W. WOOD & SONS

Seedsman Since 1879.

RICHMOND, VIRGINIA