

Historic, Archive Document

Do not assume content reflects current scientific knowledge, policies, or practices.

62.67 Index *

1953

LIBRARY
RECEIVED
★ FEB 17 1953 ★
U. S. Department of Agriculture

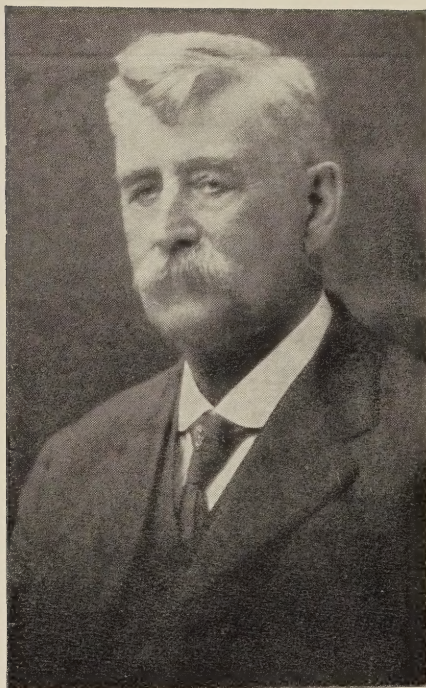
PLANTING GUIDE



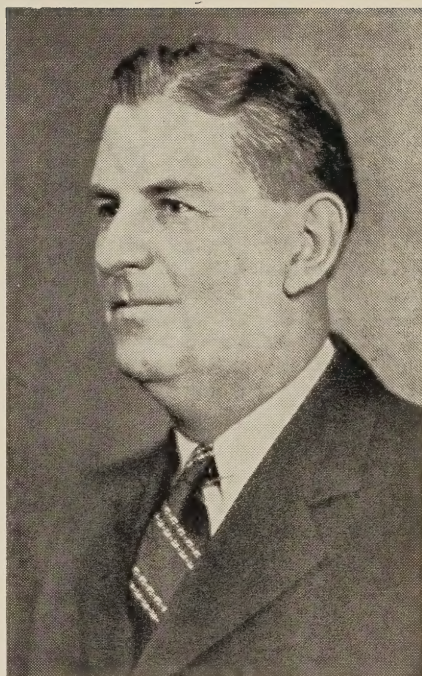
ROSES • **VINES** • **SHRUBS**
SHADE TREES • **FRUIT TREES**

CHAMPION NURSERIES

Phone — **PERRY, OHIO** — 2451



HARTWELL J. CHAMPION
Founded the Business



ARTHUR N. CHAMPION
Built the Business

NOTICE TO OUR CUSTOMERS

We are closed on **SUNDAY** and open from 8:00 A.M. until 4:30 P.M. the rest of the week. Orders which are placed three days in advance may be called for on Sunday. For the convenience of our customers in the Cleveland area we will have a truck making deliveries one day each week throughout the planting season. The average cost of this delivery service is 10% of the amount of the order.

IMPORTANT — PLEASE ADD POSTAGE

When you wish to receive your plants by Parcel Post please add 10% for packing and postage. If you do not include postage your plants will be sent express collect or we will bill you for the postage. Trees larger than the 4-5' size will be shipped by express.

SALES TAX NOTICE

All Ohio Customers must include 3% Ohio sales tax on all items except fruit trees and small fruit plants, such as strawberries, asparagus, raspberries, etc.

SATISFACTION GUARANTEED

We guarantee the delivery to you, our customer, of your order in first class condition. If for any reason at all, the shipment does not arrive in first class condition, notify us at once and we will make prompt, satisfactory adjustment. Our stock is healthy and vigorous and if properly planted and cared for will grow. However if due to unfavorable weather or other conditions over which we have no control they fail to grow we will replace them at one half price. You must notify us of the failure to grow not later than July 10th following the season in which they were purchased. However you must at the time of replacement present a copy of your order.

ORDERS ACKNOWLEDGED

As soon as we receive your order we will mail you a copy of it. Be sure and keep this copy. In case you require an adjustment or replacement it will be necessary for you to present this copy of your order.

HYBRID TEA PATENTED ROSES

... In Rose Plants There Is No Substitute for Quality

Applause, Plant Pat. No. 829. Large fragrant buds are sparkling light red in color, opening slowly to perfectly shaped fifty-petaled open blooms, heavy with fragrance. Prolific bloomer.

\$2.00 each; 3 for \$5.25

Charlotte Armstrong, Plant Pat. No. 455. Magnificent open blooms of vivid cerise, lovely, long, carmine-red buds. Produces its flowers singly and always on long stems. The foliage is semi-glossy, deep green and highly resistant to mildew, also an all climate rose.

\$2.00 each; 3 for \$5.25

Crimson Glory, Plant Pat. No. 105. Beautifully formed blooms of deep, vivid crimson, shaded oxblood-red. This plant branches freely, forming a well-shaped, compact bush of good symmetry. It is not only beautiful but dependable, and its outstanding characteristic is its captivating fragrance. Plant this in your garden and it will be one of your favorites.

\$1.75 each, 3 for \$4.65

Diamond Jubilee, Plant Pat. No. 824. One of the longest lasting of the hybrid tea roses. The warm, glowing buff-orange blooms open slowly, providing many thrilling hours as you watch the buds gradually unfold. The plant is sturdy and full, well covered with rich, dark green foliage.

\$2.00 each; 3 for \$5.25

Forty-Niner, Patent No. 792. Brilliantly hued bi-color that justly secured an A.A.R.S. Award for 1949. Its contrasting colors are startling in their brilliance, and yet they blend together beautifully. Inside of petals is a vivid Orient-red, while the outside is a chrome-yellow, changing to straw-yellow. Colors are lasting and

bright. The long bud opens to a well-shaped bloom of 25 to 40 petals. Mildly fragrant.

\$2.25 each, 3 for \$6.00

Grande Duchesse Charlotte, Plant Pat. 774. A delightfully different shade of red; long buds of burnt-carmine, and firm-petaled blooms of a lovely begonia-rose. Plants are tall, graceful in growth, and the foliage shows good resistance to disease.

\$1.75 ea.; 3 or more, \$1.55 each.

Horace McFarland, Patent No. 730. Named in honor of Dr. J. Horace McFarland. An upright growing, vigorous plant producing an abundance of large deep apricot ovoid buds opening to beautifully formed, buff-salmon, spicy scented blooms of 45 petals. A.A.R.S. award for 1945.

\$1.75 each; 3 for \$4.65

Katherine T. Marshall, Plant Pat. 607. A sparkling, warm pink rose on erect, hardy plants. The large, cupped flowers have heavy petals of coral-pink, with a golden glow. Fruity fragrance.

\$1.75 ea.; 3 for \$4.65

Mary Margaret McBride, Plant Pat. 537. Shining rose-pink. The long, firm buds open slowly to large, 45-petaled blooms, the outer petals gracefully recurved around the high, closed center.

\$1.75 ea.; 3 for \$4.65

Mirandy, Patent No. 632. First place winner of All-American rose competition for 1945. A strong free-branching plant producing large, long-pointed ovoid buds of rich dark red with black shadings, opening to chrysanthemum-red. The flower of 50 petals displays new beauties of form and is long lasting. Marvelously fragrant.

\$2.00 each; 3 for \$5.25

Hybrid Tea Patented Roses (Con't.)

New Yorker. Plant Pat. 823. A bright fiery red that literally shines in the garden, and does not blue. Large, well-formed, high-centered buds, excellent for cutting. Long lasting; fragrant. Good vigorous plants, continually in bloom, with handsome, disease-resistant foliage. New Yorker holds its color in all kinds of weather. A reliable variety with flowers that are consistently good and often enormous.

\$2.00 ea.; 3 for \$5.25

Nocturne. Plant Pat. 713. Long-pointed buds of perfect form open slowly to blooms of bright cardinal-red with dark shadings. Coppery red during very hot weather. Blooms of show shape, with unique form and wavy petal style. Fragrant. Vigorous plants, resistant to black-spot.

\$1.75 ea.; 3 for \$4.65

Peace. Plant Pat. No. 591. Peace is the first rose to be awarded the National Gold Medal of the American Rose Society, the highest rose honor in America. It also received top national awards in France and England. Flowers are extra large and long lasting, their tints of yellow, pale gold, cream and ivory having a varying blush of pink on the ruffled petal edges. The plant has great tall stems and handsome foliage. No such amazing combination of long stems, fine lasting qualities and huge, perfectly formed flowers has ever existed before.

\$2.50 each; 3 for \$6.60

Rex Anderson, Patent No. 335. An outstanding exhibition rose of delicate, lovely ivory-white. Perfectly formed, slow opening, one of the few successful whites. Flowers fully double and of enormous size.

\$1.75 each, 3 for \$4.65

Sutter's Gold, Pat. No. 885. Large quantities of long-pointed buds, richly shaded with orange and red, are produced singly at the end of long straight stems. Ideal for cutting. The buds open to a rich deep orange and various shades of yellow. This variety excels all other yellow roses in the richness of its perfume. This outstanding rose was named in commemoration of the 100th anniversary of the discovery of gold at Sutter's Mill in California.

\$2.25 each; 3 for \$6.00

Taffeta, Patent No. 716. Rich carmine-rose in the bud, changing to begonia-rose in open flower. Reverse of petals is yellow. Medium to large buds are perfectly formed with edges of the petals often frilled. They open to form double flowers with 21 well textured petals. A.A.R.S. award for 1948.

\$1.75 each, 3 for \$4.65

Tallyho, Plant Pat. No. 828. 1949 All-America Winner. A delightful and unique shade of pink, with the outside of the petals a rich crimson. Before the buds unfold, they are a deep cardinal-red. The long-stemmed buds open slowly and last exceedingly well because they have such heavy substance. Tallyho has nearly all of the characteristics that planters want in a rose—easy growth, a beautiful bud, remarkably handsome open flowers, rich spicy fragrance, and a delightful color scheme never before seen in a rose.

\$2.00 each, 3 for \$5.25

REMITTANCE

All orders should be accompanied with remittance by Post Office money order, Express money order or personal check. We can not accept C. O. D. orders unless they are accompanied by 25% of the total amount of the order. Due to our heavy overhead expense we can not accept orders less than \$2.50.

Hybrid Tea Roses

2 year No. 1—\$1.49 each; 3 for \$3.98

Edith Krause. One of the loveliest of the pure white roses. No garden is complete without this outstanding rose.

Condessa de Sastago. A new rose sensation, bearing large flowers of rich copper-red inside, outside a golden yellow.

Etoile De Holland. Of delightful crimson color. Produces fine long cutting stems, a free bloomer with intense true rose perfume.

Joanna Hill. Yellow. Another variety popular for cut flowers. Beautifully formed buds of apricot opening to large full flowers, center orange, paling to cream at edges.

Jos. Peraud. The long pointed, opening buds have delightful glowing yellow sunset shades that change to nasurtium buff as the fragrant flowers slowly unfold.

K. A. Victoria. Superb ivory-white flowers of perfect form and sweetest fragrance. Very double flowers on plants of medium height.

Margaret McGredy. Large, full flowers of brilliant orange-scarlet blending to luminous carmine-rose. Vigorous plants give a constant production of blooms from June until hard frost.

McGredy's Scarlet. Large, perfect shaped flowers of scarlet beauty. A very popular highly rated rose; and very nice for cut-flowers.

Mrs. E. P. Thom. The buds are long pointed and open to well formed blooms of clear yellow without any carmine markings. Very nice for bedding and for cut-flowers.

Poinsettia. Well formed, lovely long buds and richly colored flowers of poinsettia-scarlet.

Pres. Hoover. Multicolored. The large, well modeled, fragrant blooms of scarlet, yellow, cerise, and flame colors come singly on erect firm stems. Tall, vigorous plant.

Soeur Therese. Buttercup-yellow. This is the most astonishing variety in the yellow class for it blooms in candelabras (not clusters) of from 5 to 15 flowers, forming on top of sturdy canes that hold the blooms erect.

Talisman. Great favorite and a great beauty. At its gayest it is a glorious combination of orange, yellow, and rose-red. One of the finest of all garden roses for cutting, with its choice, distinctive form.

HYBRID PERPETUAL ROSE

F. K. Druschki. The long pointed snow-white buds open to handsome flowers of immaculate white with plenty of big, substantial, waxy textured petals. Give it lots of room, for the vigorous bush, with its handsome dark green foliage, will sometimes grow as much as 6 feet in a single season. Does well everywhere.

\$1.49 each; 3 for \$3.98

FLORABUNDA

Floradora. Constantly in bloom and an entirely new shade in Roses—a brilliant geranium or cinnabar-red, as arresting under artificial light as in the garden. Floradora blooms are always the eye-catchers. 2½ to 3 ft. Highly rated by the American Rose Society, with a rating of 8.2 out of 10.

2 year No. 1 — \$1.49 ea.; 3 for \$3.98

Improved Lafayette. Sturdy, upright plants grow 2½ to 3 feet. Glowing red blooms, deeply suffused a vivid crimson. Fine bedding rose; free flowering.

2 year No. 1 — \$1.49 ea.; 3 for \$3.98

CHAMPION NURSERIES, PERRY, OHIO

Florabunda Roses

Fashion. Plant Pat. 789. Not even among the Hybrid Teas is there a color quite like this new Floribunda. Fashion blooms are bright coral-peach, a most amazing color because it is so brilliant and, at the same time, so soft and lovely. Add to this the exquisite form of both the bud and open flower, and you will see why this Rose is being hailed with such enthusiasm. The open blooms are about 3 inches across, or larger. Buds open slowly to a wide-open flower with gracefully waved petals, a rich display of golden yellow stamens and pleasing old-Rose fragrance. Plants are good and vigorous, bushy, with neat, small, glossy foliage. It reaches a height of 2½ to 3 feet, with few thorns.

\$2.00 each, 3 for \$5.25

Red Pinocchio. Plant Pat. 812. A velvety, deep red, sometimes with traces of black. Popular in all climates, it is rated 8.4 by the American Rose Society. Some call it even better than Pinocchio. 2 to 2½ feet.

\$1.50 each, 3 for \$3.90

Pinocchio. Patent No. 484. A hardy plant producing an abundance of pointed buds of salmon-flushed gold, opening to miniature hybrid-tea like roses of soft clear pink.

\$1.50 each, 3 for \$3.90

World's Fair, Patent No. 362. First Award "All-America Rose Selections" for Floribundas, 1940. Produces large clusters velvety blooms of fragrant blackish-scarlet with glowing mass of golden stamens.

\$1.50 each, 3 for \$3.90

Climbing Patented Roses

Dr. J. H. Nicolas, Patent No. 457. Vigorous plant carrying dark green foliage produces fully double deep rose-pink flowers, 5 to 6 inches across with about 50 petals. Grows 8 to 10 feet in height and is ever-blooming.

\$2.00 each, 3 for \$5.25

High Noon, Pat. No. 704. A bushy 8 to 10 foot pillar of bright green foliage covered with buds and flowers of non-fading sunshiny yellow. Blooms continuously.

\$2.25 each, 3 for \$6.00

Climbing Roses

Blaze. Hardy, everblooming rose, which inherits the blazing color of Paul's Scarlet Climber and the everblooming habit of Gruss an Teplitz, thus combining the most attractive features of both its parents. A vigorous climbing variety that will grow to a considerable height.

\$1.49 each; 3 for \$3.98

Cl. American Beauty. Large, sweet-scented, deep rose-pink. You can cut quantities of the long-stemmed, fully double blooms without spoiling the outdoor display.

2 year No. 1 — \$1.49 each; 3 for \$3.98

Jacotte. A lovely yellow, noted also for hardiness and vigorous, healthy growth. Shapely buds and large, firm-textured blooms of buff-yellow flushed apricot.

\$1.49 each; 3 for \$3.98

Mary Wallace. Mid-season. Vigorous plants are covered with large, cup-shaped flowers of glowing rose-pink. Very hardy.

\$1.49 each; 3 for \$3.98

New Dawn. Everblooming Dr. Van Fleet. A lovely soft pink. Blooms throughout the summer and fall.

2 year No. 1 — \$1.49 each; 3 for \$3.98

HARDY FLOWERING SHRUBS

Flowering Almond

Almond. A very charming, attractive shrub in early spring, being in full bloom before its leaves appear. The flowers are small double and light pink and a mass of these in the right spot certainly will draw many well deserved compliments.

2 to 3 ft. \$1.29 each

Althea

Rose of Sharon. Blooms late in August and September, with a profusion of large and brightly colored flowers, much like the tender hibiscus in form. Double rose, double white, double purple, double red, single red and single white.

2 to 4 ft. \$1.39 each

Aralia

Pentaphylla. (Five-leafed Aralia). Long, slender, gracefully drooping branches a rich shiny green. Unique among shrubs in that it does not change color.

2 to 3 ft. \$1.29 each

Beautyberry

Callicarpa Purpurea. Gracefully curving branches, covered in August with thousands of closely set small pink tinted flowers. These are followed in late September by masses of violet-purple berries which last until mid-winter.

18 to 24 in. \$1.49 each

Beautybush

Kolkwitzia Amabilis. (Beauty Bush). A charming shrub with attractive leaves and gracefully arching branches. The beautiful flowers appear in great profusion in June, in pairs which cluster closely in cymes of about twenty-five; bell shaped and somewhat lipped, pale pink with orange veins in the throat.

2 to 3 ft. \$1.49 each

Blue Mist

Caryopteris. This low growing plant is one of the best of the border plants. It is covered from August till frost with clusters of powdery blue fringed flowers. It attains a height of from 18-24 inches and remains perfectly rounded, making a small mound about two feet in diameter. The foliage is toothed and silvery green in color. It is a gorgeous asset to the flower border or in front of the shrub border.

2 to 3 ft. \$1.39 each

Butterfly Bush

Buddleia. A sensational group of late summer bloomers, long spike flowers which give a gorgeous show. They may be purchased in white, purple, pink, and red.

2 yr. No. 1 — \$1.29 each

Sweet Pepper Bush

Clethra Alnifolia. A small shrub very fragrant in August and September, when covered with long snowy wands of creamy white flowers. It is used well in a border close to a house where the fragrance may drift in through the window.

18 to 24 in. \$1.49 each

Garland Flower

Daphne Cneorum. A hardy dwarf shrub with spreading branches seldom growing taller than 10 to 12 inches. The masses of bright pink fragrant flowers appear in May and again at intervals during the summer and fall.

10 to 12 in. \$2.79 each

Calycanthus

Floridus. (Carolina Allspice). The strong reddish brown shoots are covered with large glossy leaves from the axils of which spring odd double spicy flowers of chocolate red which are quite fragrant.

2 to 3 ft. \$1.49 each

Deutzia

Gracilis. (Slender Deutzia). An excellent shrub for border planting and very attractive when covered with its many bead-like buds which open into pure white flowers in June. Two feet.

12 to 15 in. \$1.19 each

Lemoinei. (Lemoine's Deutzia). Medium large flowers of pure white borne in cone shaped heads, attains a height of four feet.

18 to 24 in. \$1.39 each

Scabra. (Pride of Rochester). Grows more bushily and blooms in May before the others. The flowers are large, free and double white.

2 to 3 ft. \$1.49 each

Forsythias

Golden Bells

Spectabilis. A type very similar to *Intermedia*, in growth and habit, but having a much larger flower and many more blooms on each plant.

2 to 3 ft. \$1.39 each

Suspensa. This is the only weeping form of the golden bells. Slender drooping branches strung with yellow flowers and followed by many shiny dark green leaves. May be used to good advantage on trellis and along the top of rock walls. Can be planted on banks, where it is difficult for other plants to grow.

2 to 3 ft. \$1.39 each

Fringe Bushes or Trees

Purple Fringe. (*Rhus Cotinus*) (Smoke Tree). A spreading shrub or small tree covered with large clusters of round leaves, overhung in summer by mist-like clouds of tiny flowers. These are light lavender when they first appear and give the impression of smoke from the distance.

2 to 3 ft. \$1.98 each

Dogwood

Cornus Lutea. (Yellow Twig Dogwood). A striking yellow branched form of dogwood much used as a contrast.

2 to 3 ft. \$1.39 each

Cornus Siberica. (Red Twig Dogwood). A useful filling shrub with clusters of fine white flowers, white berries; with branches turning to a blood red in winter.

2 to 3 ft. \$1.39 each

Honeysuckle

2 to 3 ft. \$1.39

Lonicera Fragrantissima. (Winter Honeysuckle). Early pink and white fragrant flowers with its bright green foliage retained all winter if somewhat sheltered.

Lonicera Tatarica Rubra. (Red Tatarian Honeysuckle). Light crimson flowers in early summer, with abundant red fruits following the flowers.

Lonicera Zabelli. A new honeysuckle to the gardener. Leaves are glabrous and the flowers are much redder than any of the other varieties which we have to offer. This variety is a good grower and is well used in border or group planting.

Hydrangea

Arborescens Grandiflora. (Hills of Snow). In a mass planting the large bunches of flowers resemble a bank of snow, and are in bloom from July to September. By cutting back to the crown each year they may be kept round and dense.

2 to 3 ft. \$1.39 each

Paniculata Grandiflora. (Pee-Gee Hydrangea). Fine for tall hedges or may be pruned to compact round clumps. Very attractive when laden with their massive blooms which are first snow white and then pink, finally becoming reddish bronze.

2 to 3 ft. \$1.39 each

Hydrangeas (Con't)

Paniculata Grandiflora, Tree Type.

Same as above but on stem about 3 to 4 feet forming a bushy head with its giant showy blooms.

3 to 4 ft. \$2.79 each

Gorgeous Blue Hydrangea

Nikko. The only hardy Blue Hydrangea which we have seen. It has withstood the last twenty winters here at our nursery and during that time we recorded a temperature of 22 degrees below zero. Its flowers stay bright and fresh for a long time after blooming. The plants develop into broad clumps bearing in August a profusion of intense blue flowers. These showy plants attract attention and admiration wherever used.

2 yr. heavy clumps \$2.79

Hypericum

Aureum. Large brilliant double golden yellow flowers in spring on a dwarf shrub. Foliage dark green.

18 to 24 in. \$1.49

Calycinum. Similar to Moserianum, except that it makes underground runners, which, when they come up, produce a beautiful carpet of green covered with large, yellow blossoms. Is used a great deal as a ground cover hardiest of all. 20 inches.

2 yr. No. 1, \$1.49

LILACS

Syringa Persica. (Persian Lilac). Medium growing with slender branches topped with a purple spiked flower.

2 to 3 ft. \$1.39 each

Syringa Vulgaris. (Common Purple Lilac). The old fashioned but still beautiful light purple lilac, very fragrant and prolific bloomer.

2 to 3 ft. \$1.49 each

French Hybrid Lilacs

2 to 3 ft. \$2.79 each

Belle de Nancy. Large double flowers of rose satiny pink.

Chas. Joly. Beautiful large double red flowered lilac.

Leon Gambetta. Double, lilac rose to purplish lilac; both the individual flowers and the trusses are very large. An outstanding variety.

Ludwig Spathe. Darkest of the reds, a deep purplish red shade.

Pres. Grevy. A compact flower of deep blue. Double.

Pres. Poincaire. An extra large flower of deep bluish purple, which does not fade when coming into full bloom. Double.

Von Horstenstein. It produces large spikes of clear lavender flowers which have a fragrance all their own.

Ellen Willmot. Large double flowers of pure white.

Flowering Quince

Cydonia Japonica. Scarlet flowers early in the spring followed by small quince shaped fruit that is quite fragrant. The foliage is shiny and the growth is dense, making it desirable as a planting specimen.

18 to 24 in. \$1.39 each

Rhodotypos

Rhodotypos Kerriodes. (Jet Bead). Often called white Kerria. A well rounded shrub covered with light green leaves and large single white flowers in May. Shiny black seeds in clusters follow the flowers and remain on the plant all winter.

2 to 3 ft. \$1.49 each

Mock Orange

Phiadelphus Coronarius. (Old Fashioned Mock Orange). Blooms in very graceful sprays in May. Flowers white and slightly scented. May be used for tall screens.

2 to 3 ft. \$1.39 each

Mock Orange (Con't.)

Philadelphus Virginalis. (New Virginal Mock Orange). A magnificent new variety with good foliage and a compact habit of growth. The flowers are double, semi-double, and single, the flowers being of the largest, most beautiful and sweetest scented of all the mock oranges. It blooms the earliest and also the longest. It is without question the leader of the mock oranges.

2 to 3 ft. \$1.49 each

Golden Syringa

Golden Mock Orange. Very valuable to use in contrast with green foliage shrubs. Its foliage is small, refined, and a very brilliant yellow. The white flowers are very sweetly scented.

15 to 18 in. \$1.79 each

Snowberries

Symphoricarpos Chenaulti. (Pink Snowberry). A new improved snowberry with large pink berries, that are very shiny and attractive throughout the winter. Very profuse in its production of flowers and fruit.

2 to 3 ft. \$1.49 each

Symphoricarpos Racemosus. (White Snowberry). Small pale rose colored blooms followed by large clusters of pure white berries which hang on the plant all winter.

2 to 3 ft. \$1.49 each

Symphoricarpos Vulgaris. (Red Snowberry). (Indian Currant). (Coral Berry). More compact than white snowberry. The narrow oval leaves are dull red and cluster tightly together along the drooping branches, a very good plant for foundation or steep bank planting.

2 to 3 ft. \$1.49 each

VIBURNUM

2 to 3 ft. \$1.49 each

Viburnum Americanum. (American Cranberry). Covered with many bright red berries which hang on through the winter. Broad flower clusters with usually only the outer fringe fully open.

V. Dentatum. (Arrow Wood). May and June flowers of creamy white. The fruits are bluish black and appear in autumn.

V. Lantana. (Wayfaring Tree). Beautiful wrinkled leaves, with white flowers in May and June. The fruit varies in color from crimson to black.

V. Lentago. (Nannyberry). Flowers of pure white in great clusters through May and June, with large bluish black fruit.

V. Opulus. (European Cranberry). Beautiful dense brilliant green foliage, with large bunches of crimson berries all winter. The flowers are dense clusters about four inches across and pure white.

SNOWBALL

V. Sterilis. (Snowball). The old fashioned snowball that is in full bloom Decoration Day. Its large dazzling creamy white blooms, that when planted alone or in a mass give a wonderful show.

2 to 3 ft. \$1.49 each

SPIREA

Anthony Waterer. Dwarf plant with beautiful dark green foliage, well rounded shrub, with large brilliant rosy crimson flowers which last over a long season, but is at its best in midsummer.

12 to 18 in. \$1.29 each

Froebeli. A fast growing Anthony Waterer type in both color of flower and foliage, but attains a height of four feet.

18 to 24 in. \$1.39 each

Spirea (Con't.)

Thunbergi. Forms a dense feathery bush, with pale yellow-green foliage, changing in fall to a bright red and orange. Is covered with small white flowers in early spring.

2 to 3 ft. \$1.39 each

Van Houttei. The old favorite white spirea. Quite common but yet one of the best of the shrubs. A good grower with good foliage and masses of large white flowers. A perfect fountain of pure white blooms in May and June.

2 to 3 ft. 79c each

Weigela Bristol Ruby

Pat. No. 492

(Improved Eva Rathke)

Hardier and more vigorous

Color is a soft ruby-red shading to garnet-crimson. Makes a shapely, thrifty plant with attractive green foliage. Excellent reports from Vermont and other difficult regions fully substantiate our own estimate of its unusual hardiness.

2 to 3 ft. \$1.59 each

WEIGELA

Eva Rathke. The most distinct variety blooming later in July and most showy with its abundance of deep carmine flowers.

2 to 3 ft. \$1.49 each

Hendersoni. A good rank grower and is well used as a screen plant and it often attains a height of twelve feet. A good bloomer being covered with beautiful pink flowers.

2 to 3 ft. \$1.49 each

Rosea. A good rank grower and is well used as a screen plant and it attains a height of twelve or eighteen feet. It is a good bloomer being covered with beautiful pink flowers.

2 to 3 ft. \$1.49 each

Nana Variegated. (Dwarf Variegated Weigela). Leaves margined and streaked creamy white. A fine shrub for contrast or foreground planting. It bears many pink flowers in June.

2 to 3 ft. \$1.39 each

Russian Olive

Eleagnus Angustifolia. Attractive silver gray leaves, white berries. Used frequently for hedges and wind-breaks. Very hardy.

2 to 3 ft. \$1.49 each

Tamarix

Tamarix Summer-Glow. The newest, and by far the best variety. Great profusion of wine-red flowers produced all summer. Lacy, silvery-blue evergreen-like foliage, grows ten feet tall but can be easily pruned lower. Thrives in sun or part shade, in even the dryest soils.

2 to 3 ft. \$1.49 each

HEDGE PLANTS

ARCTIC WILLOW

Salix Purpurea Nana. A new dwarf plant that will most likely become one of the leaders in this field. A blue leaf, low growing willow, suited for hedges and borders. Very hardy.

12 to 18 in. 49c each, 20 or more 33c

BARBERRIES

Berberis Atropurpurea. (Red Leaf Barberry). A brilliant accent shrub as a solitary specimen or in a close group among duller foliage. This variety starts in its spring foliage a warm bronzy red brilliancy, the heat of summer bringing out a red brilliancy, with autumn adding other tints to its richness. The abundant scarlet berries persist throughout the winter. A sunny exposure is required for the best color effect.

12 to 15 in. 69c each

Hedge Plants (Con't.)

Berberis Thunbergi. (Japan Barberry). The ideal low hedge plant, hardy, tough and of compact growth, adapted to shearing. The leaves are a beautiful green in the summer turning to a reddish bronze in autumn and being covered with shiny red berries all winter. It is customary to plant about 12 to 15 inches apart for a thick hedge, but 2 feet is close enough where individual expression is desired.

12 to 15 in. 49c each, 20 or more 39c

PRIVETS

Ligustrum Amurense. (Amur River Privet). A hardy northern group type, upright and tall growing, the

leaves a good dark green and makes an ideal hedge.

18 to 24 in. 39c ea., 20 or more 29c ea.
Ligustrum Ibolium. (Ibolium Privet). The ideal hedge plant, with the beauty of California Privet and the hardiness of Iboeta Privet. Its semi-evergreen foliage makes it an attractive all-round hedge plant.

18 to 24 in. 35c ea., 20 or more 24c ea.
Ligustrum Ovalifolium. (California Privet). Quick growing, dense, straight, well clothed shoots. A dark shiny green, most used where hardy.

18 to 24 in. 32c ea., 20 or more 21c ea.
Ligustrum Regalianum. (Regal's Privet). Strong very hardy type with dark shiny leaves. The branches are stiff and horizontally spreading gracefully, drooping at the ends.

12 to 18 in. 79c each

SHADE TREES

BIRCH

Betula Alba Lacinata. (Cut Leaf Weeping Birch). The bark is similar to the white birch in color. The tree is tall and slender, but a vigorous grower with graceful and weeping habit, together with the cut leaf foliage presents such beauty as has never been seen before in a single tree. Wonderful lawn specimen often planted in a row to edge the drive.

5 to 6 ft. \$4.98 each

ELMS

Ulmus Pumila. (Chinese Elm). A type especially adapted to dry locations

but does well under any normal conditions. In this section we consider it a partial dwarf and it develops into a small compact tree.

6 to 8 ft. \$4.98 each

MAPLES

Acer Dasycarpum. (Silver or Soft Maple). A hardy rapid growth and large size is valuable for quick shade. Its leaves are good sized light green above and silvery beneath, turning to a light red and bronze in autumn. It produces shade quicker than any other variety.

6 to 8 ft. \$3.98 each

Norway Maple

The Best All Around Shade Tree

Recognized as the finest tree for all generations. Strongly resistant to storm, very clean in habit, the leaves will withstand smoke, soot and attacks from insects. Its dense leaves are a rich green in color, and hold on the tree longer in the fall than most Maples. A good tree for street or lawn specimen plantings where good form and shade are needed.

6 to 8 ft. \$6.79 each

Shade Trees (Con't.)

Acer Saccharum. (Sugar Maple). A native and one of our best shade trees. Rather slow growing but one is well repaid for waiting as it develops into a large spreading tree which colors beautifully in the fall.
6 to 8 ft. \$4.98

Schwedler Maple

This is a beautiful tree in all seasons. In the spring, the foliage is a reddish purple, followed by a bronzy green color in the summer. It is very attractive in the fall when its foliage is a golden yellow. It is recommended for specimen planting in lawns. Symmetrical in growth. Not a fast growing tree.

6 to 8 ft. \$6.98

Crimson King. (Plant Pat. 735). (*Acer Platanoides Schwedleri nigra*). This is a beautiful form of the schwedleri maple. It is a brilliant crimson and retains its color all through the summer months. One of the most outstanding ornamental shade trees ever produced.

6 to 8 ft. \$7.95

POPLAR

Bolleana Poplar. Will grow quickly to a tall spire. Its leaves are glossy green, silvery beneath, creating a pleasing effect when stirred by the breezes.

6 to 8 ft. \$2.98

Populus Nigra Italica. (Lombardy Poplar). Often attains the height of 100 feet or more. Old trees that were well placed when planted are today outstanding landmarks. The leaves are a rich shiny green with the under side slightly lighter. A good tree for accent.

6 to 8 ft. \$1.69 each; 3 for \$4.49

MOUNTAIN ASH

Sorbus Aucuparia. (European Mountain Ash). A large ornamental tree with compound ornamental leaves; white flowers in spring and clusters of bright orange red berries in the fall. Grows to a large size. Very attractive.

6 to 8 ft. \$5.98

WEEPING WILLOW

Salix Babylonica. (Weeping Willow). Tall, upright, massive in form, with its long slender branches growing straight downward. Weeping Willow is always attractive. It is especially so in summer when the pendulous branches sway gently in the breeze, and the long, slender lustrous green leaves show a bright silver reflex. Willows grow rapidly, will thrive in wet places and like to be near water, but do not mind being planted elsewhere, as they grow heartily in almost any location.

6 to 8 ft. \$3.98

PLANE TREE

Platanus Orientalis. (Sycamore). Often called oriental plane tree. Usually used along streets and new allotments where quick shade is required. A lofty wide spreading tree with deeply lobed leaves. The bark is grayish green in the summer, but it sheds its bark in spots, giving it a mottled appearance as the spots of its trunk that are revealed are a creamy white.

6 to 8 ft. \$4.98

PROPER PLANTING DISTANCES SHADE TREES

Large trees, such as Elm, Ash, etc. 30 to 50 ft. Medium trees, such as Linden, Birch, etc. 25 to 40 ft.

FLOWERING TREES

Flowering Cherry

Kwanzan Flowering Cherry. We have seen the spectacular Flowering Cherries in Washington, yet this one superb variety is always the most impressive. Trees bloom a year or two after transplanting. Grow 20-30 ft. tall. Double, bright rose-pink flowers completely clothe the branches in early spring.

3 to 4 ft. \$4.98

Weeping Flowering Cherry

Weeping heads grafted on straight trunks about 6 feet tall. Flowers are small, single and pale pink.

5 to 6 ft. \$7.98

Flowering Crabs

Malus Eleyi. (Red Flowering Crab). The young shoots are fuzzy and covered with red foliage resembling the Japanese maple. The flowers are rich red in color and appear in clusters much like apple blossoms, followed in the fall by red fruits in large clusters which are very attractive.

3 to 4 ft. \$2.98 each

Malus Hopa. (Hopa Crab). A very attractive variety of strong upright growth. It bears a profusion of very large double flowers of an unfolding rose-red. The fruits are large, edible, with a distinctive red flesh.

3 to 4 ft. \$2.98 each

Malus Ioensis Plena. (Bechtel's Crab). The only perfectly double flowered crab. Its many delicate pink blooms appearing like small pink roses of delightful fragrance. A very popular tree and much desired for the home grounds.

3 to 4 ft. \$2.98 each

Flowering Dogwood

Cornus Florida. (White Flowering Dogwood). The flowers are three to four inches across and appear in great profusion in spring before the leaves are out. The foliage is grayish green and is very handsome and in the autumn turns to a rich crimson hue.

3 to 4 ft. \$3.98 each

Cornus Florida Rubra. (Red Flowering Dogwood). A slow grower making small compact growth covered with large red flowers in early spring. And like the Florida its leaves turn crimson red in autumn.

2 to 3 ft. \$4.79

Flowering Hawthorns

Paul's Scarlet. Deep crimson-scarlet, very double. This is one of the most attractive small trees for specimen planting.

3 to 4 ft. \$3.98

Flowering Plum

Prunus Triloba. The flowering plum blooms in May, before the leaves come out. The delightful double, bright pink flowers on every twig so thick that no wood is visible. A gorgeous sight in spring.

3 to 4 ft. \$2.98

Red Leaf Plum

Prunus Cistena. A small tree which has small pinkish white flowers, but being used largely for its bright red leaves.

3 to 4 ft. \$2.49

Prunus Newport. Similar to the above variety, but grows a little larger and the color of the leaves is a trifle darker, and may be used where a little larger tree is desired.

3 to 4 ft. \$2.49

Flowering Trees (Con't)

Flowering Peach

Amygdalus Persica. (Double Red Flowering Peach). A beautiful red flowering small tree which is indeed one of the showiest when it breaks into full bloom in the early spring. Its flowers are large and double.

3 to 4 ft. \$2.49 each

Magnolia

Magnolia Soulageana. (Saucer Magnolia). One of the hardiest and finest of all the magnolias. Its blooms are

from three to five inches across, cup shaped, white and rosy violet, opening before its leaves, which are massive and glossy green.

2 to 3 ft. \$5.98 each

Red Bud

Cercis Canadensis. (Red Bud or Judas Tree). A small tree of irregular form with attractive heart-shaped leaves. When the great quantities of small rose-colored blooms appear before the leaves, it gives one the impression of a cloud of pink smoke from the distance.

3 to 4 ft. \$3.98

VINES

Boston Ivy

Ampelopsis Veitchi. This is one of the finest hardy climbers that we have that will cling to walls and probably the most popular. The color is bright green in summer changing to the brightest crimson and yellow in the autumn.

2 yr. No. 1 \$1.29 each

Clematis

Jackmani. A very deep purple large flowered variety.

2 yr. No. 1 plants \$1.49 each

Mad. Andre. The best crimson red we have seen, of the large flowered varieties.

2 yr. No. 1 plants \$1.49 each

Ramona. A very large, deep blue flower.

2 yr. No. 1 plants \$1.49 each

Henryi. Large flower, pure white.

2 yr. No. 1 plants \$1.49 each

Dutchman's Pipe

Aristolochia Durior. (Sipho). The old favorite with the white pipe-like flower and the large elephant-ear

leaves. Our vines are grafted to insure these fine large leaves.

2 yr. grafts \$1.79 each

English Ivy

Hedera Helix. (Hardy Strain). A lovely evergreen as well as a ground cover. Does well in dense shade.

Field grown \$1.29 each

Honeysuckle

Lonicera Halliana. Hall's Honeysuckle. A very dense vine used either as a ground cover or on a wall. It has creamy white flowers.

2 yr. No. 1 plants 69c each; 10 for \$5.98

Lonicera Heckrotti. An exquisite new variety. Immense, showy clusters of trumpet-shaped buds with fragrant flowers, measuring up to 2 inches across. Outside petals brilliant flame-pink, inside a creamy golden yellow. Dark glossy foliage. Can be sheared to form a hedge or shrub or allowed to grow naturally as a vine. Blooms freely from early spring until heavy frost.

2 yr. No. 1 plants \$1.29 each

Vines (Con't)

Scarlet Trumpet. This outstanding vine is well recommended where the space to be covered is not too large. The most brilliantly colored of all the honeysuckles it is indeed a fine show with its many coral-red blooms backed by beautiful blue-gray-green foliage.

2 yr. No. 1 plants \$1.29 each

Silver Lace Vine

Polygonum Auberti. A very rapid growing vine averaging 25 feet in a

single season, producing a great profusion of silvery sprays from late summer into fall. The leaves are small and bright.

2 yr. No. 1 plants \$1.19 each; 3 for \$3.49

Wisteria

Wisteria Magnifica. Noblest and oldest of the vines. Often attains a great age with large woody trunk. The long flowers which are lilac blue with faint yellow spots, hang in large racemes.

2 yr. No. 1 plants \$1.49 each; 3 for \$4.29

BROADLEAF EVERGREENS

Chinese Azalea

Azalea Mollis. A small bushy plant covered in spring with large bright pink or yellow flowers. Very desirable for cemetery planting as it is usually in bloom over Memorial Day.

12-15 in. \$2.79 each

Euonymus

Coloratus. (Purple Leaf Creeping Euonymus). A purple leaf form of *E. Radicans*. This plant carries a rich green color throughout the summer and in the autumn turns to a purplish-red color which remains with it until spring. A wonderful plant for mass planting on banks and on stonework.

18-24 in. 4 yr. Extra Heavy plants
\$1.19 each

Patens. (Sieboldi). A spreading evergreen shrub with bright green foliage which carries the rich green color throughout the year. Best used in group planting and is an ideal plant for border work.

18-24 in. \$1.49 each

Vegetus. (Big Leaf Wintercreeper). Bushy with round dull green leaves. This plant is a sight in winter when it is covered with its bright scarlet fruit.

15-18 in. \$1.49 ea., 18-24 in. \$1.98 ea.

Japanese Pieris

Pieris Japonica. This plant creates attention wherever used. The glossy green leaves appear crowded at the ends of the branches. The graceful clusters of creamy white flowers appear in April and are very fragrant.

12-15 in. B&B \$4.00 each

Holly

Ilex Crenata Bullata. (Convexleaf Japanese Holly). The glossy small, convex leaves are so numerous that the twigs are invisible. As an accent plant it is unexcelled and planted in group plantings it blends well. It is semi-formal. It is also beautiful as a dwarf hedge.

12-15 in. B&B \$3.50 each

Ilex Crenata Latifolia. (Bigleaf Japanese Holly). Large glossy leaves contrasted with the lighter gray green bark makes this plant a beauty wherever used.

15-18 in. B&B \$4.00 each

Ilex Crenata Rotundifolia. Similar to the above with more round leaves, thicker and more compact.

15-18 in. B&B \$4.00

Ilex Glabra. (Inkberry). A loose spreading shrub maturing at 3½ ft. The shining dark green leaves and small dark berries make it outstanding. Is excellent in shady spots.

15-18 in. B&B \$4.00

EVERGREENS

ARBORVITAE

18-24 in. \$2.49, 2-3 ft. \$3.49, 3-4 ft. \$4.98

Thuja Occidentalis Nigra. (Dark green American Arborvitae). Upright, broad based dark green foliage, dense from ground up.

Thuja Occidentalis Elegantissima. A type very similar to the American Arborvitae, but a more compact tree of much darker green color with bright yellow tips on the leaves. This coloring from a distance gives a light yellow cast.

Thuja Pyramidalis. (Pyramidal Arborvitae). A very dense columnar type, with dark green foliage, probably the most compact and erect Arborvitae.

Globes

Thuja Compacta. Dwarf dense little trees which do not require trimming and still retain their round globe shape. Balled and burlapped. Soil intact.

12-15 in. \$1.98; 15-18 in. \$2.49

JUNIPERS

Juniper, Cannarti. Deep lustrous green. Tufted foliage is the distinguishing charm of this hardy and very fine evergreen—holding its rich color the year through. Great favorite for landscaping, developing a beautiful pyramid form. Some trees bear shiny blue berries which remain on the plant most of the winter.

3-4 ft. \$7.98 each

Juniper, Glauca. (Blue Cedar). This well known variety is a popular favorite because of its silvery-blue color. When the new growth comes out in the spring it is steel blue in color and sets the plant off to a great advantage.

3-4 ft. \$7.98 each

Juniper Glauca Hetzi. A spreading type similar to Pfitzer, but more rapid in growth; decidedly blue, stands shearing well, and is a dense grower.

12-15 in. B&B \$3.79 each

Juniper Pfitzer's. Exceptionally beautiful, graceful and hardy. No wonder it is the most popular of all dwarf evergreens. Handsome, feathery, gray-green foliage covers arching, spreading branches as it develops a broad, picturesque form. Resistant to city dust and smoke. Maturity spread 4 ft.

15-18 in. \$3.79; 18-24 in. \$4.98 each

Juniperus Virginiana Keteleri. (Keteler Juniper). A type similar to glauca, but entirely different in color. Tall, upright grower and is always a perfect conical specimen. Fairly broad at the base and always very full and dense. The foliage is fine, a grayish green in color.

3-4 ft. \$6.19

YEW

Taxus Cuspidata. A compact, spreading variety; dark green foliage; scarlet berries in autumn. Can be trimmed or will grow to 6 feet.

15-18 in. \$4.98 each

Taxus Hicksi. Beautiful, dense, columnar form; bright red berries in the fall. Does well under any circumstances. Used in place of the favorite pyramidal Arborvitae.

18-24 in. \$5.49 each

Taxus Intermedia. At first it closely resembles the old Dwarf Japanese Yew (*Taxus cuspidata nana*) as it has the same heavy, deep green waxy foliage. It is, however, a much faster grower, due perhaps in part to the fact that it starts to grow a week or ten days earlier than other Yews.

15-18 in. \$4.98 each

SMALL FRUIT PLANTS

ASPARAGUS

Mary Washington. This is considered one of the best Washington kinds of asparagus. It starts early and produces a heavy crop of very large, tender asparagus. Green in color, and very good quality.

25, \$2.49; 50, \$3.98; 100, \$6.98;

CURRANTS

Wilder. The bush is a strong grower, the fruit is large, red and a good keeper and long shipper.

Red Lake. Originated in Minnesota. It has been well tested and should prove a success in all sections. The berry is very large and a bright red. A heavy yielder and should stand at the top.

2 yr. No. 1 79c each

GOOSEBERRIES

Downing. Fruit is large, handsome pale green and of highest quality. Bush is a good grower.

Red Jacket. Large size with red berries of good quality.

2 yr. No. 1 98c each

RHUBARB

Champion's Red

A market growers' choice. Strong 1 yr. whole roots, 1/2 inch to 1 inch caliper.

2 yr. No. 1 29c each

Chipman's Canada Red

Our newest and best rhubarb. Very sweet. Stalks are deep red clear through. Makes a colorful sauce or pie.

2 yr. No. 1, 69c each

BLUEBERRIES

Easy to Grow

Very Ornamental

Set the plants 5 to 7 feet apart in moist acid soil. Fruit ripens over a period of several weeks. Plant two or more varieties so as to insure proper pollination.

Prices on Hybrid Blueberries of Cabot, Rancocas, Rubel, Jersey. All plants well rooted.

3 yr. No. 1 \$1.69 each

BOYSENBERRY

NEW! SENSATIONAL! THORNLESS

We offer it again this year because of the tremendous large size of the berries; because of its prolific fruits; and lastly, because we think that it has the highest qualities of all bramble fruits.

No. 1 plants, 39c each

BLACKBERRIES

Blower. This berry is claimed to be the hardiest, most productive and finest quality and commands the highest price. The berry is jet black, an excellent shipper.

Eldorado. This is one of the most valuable berries for market and home use, being very large, sweet, and having no hard core.

No. 1 plants, 10 for \$2.49

HORSERADISH

This popular condiment is very easily produced in the home garden, and anyone who has compared the freshly dug article with that sold over the counters can appreciate the value of the good, home-grown products so easily prepared.

Whole Roots, 29c each

Small Fruit (Con't)

Black Raspberries

↪ **Bristol.** A new black variety which is among the best. A heavy yielder of attractive high quality berries. The bushes are hardy and vigorous with the crop ripening just ahead of Cumberland.

↪ **Cumberland.** Black, large and productive, firm and a good shipper. Mid-season.

↪ **New Logan.** Black, earlier than Cumberland and picks heavier over a short season. Resistant to drought and will often produce a crop when other varieties fail. It is also somewhat disease resistant.

↪ **New Morrison.** A giant new black raspberry nearly an inch in diameter. Mid-season, rapid grower, producing enormous crops often where others fail, adapted to a wide range of soils. Disease and drought resistant.

10, \$2.49; 25, \$4.49; 50, \$6.98;
100, \$11.98; 250, \$24.95; 500, \$41.95;
1000, \$79.95

RED RASPBERRIES

↪ Latham

Latham is a tall, vigorous grower, the canes are extra heavy, well able to support the load of fruit. The foliage is healthy, dark green, tough and leathery, highly resistant to insects. The berries are beauties and will cause a sensation wherever they are shown. Many are over an inch in diameter and they hold this size to the end of the season. Color dark, rich red.

Everbearing Raspberry

↪ **Indian Summer (Red).** Indian Summer seems to be meeting with general favor. The berries are much larger than other so-called everbearing raspberries, roundish, conical, medium red, slightly crumbly and of excellent quality. The summer crop ripens very early; the autumn crop

from September on to frost. Plants are hardy, vigorous, about medium height, and bear heavy crops.

PRICES

LATHAM AND INDIAN SUMMER

10—\$2.79; 25—\$4.98; 50—\$7.98; 100—\$13.98; 250—\$28.95; 500—\$45.95; 1000—\$85.95.

PRUNING BEFORE PLANTING

Pruning stock at the time it is transplanted assures more rapid recovery, providing less heavy top to be supported by the roots which themselves are burdened with the task of re-establishing tiny feeding rootlets. Use a sharp knife or shears.

Trees. Remove about one-third of the top from average heavy tops, by clipping branch ends and removing small branches and interfering limbs. Cut off frayed or bruised roots just above the point affected. Leave one branch or stem to develop into a leader.

Shrubs. Thin out the tops of many branched shrubs, removing old wood, and cut back average plants about one-third. Hydrangeas should be cut back to the ground. Remove frayed or damaged roots as directed above for trees.

Fruit Trees. Trim roots as advised for Trees above. Peach, Cherry, Apple, Pear and Plum stocks in branched sizes, should be pruned so that three to five branches well placed about the trees should remain. Leave a leader for developing. One year the desired heading out, usually from 12 grades usually whips, should be topped to to 30 inches.

Raspberry, Blackberry, etc. Are usually supplied cut back. Tops should be removed to about 6 inches from ground when planted.

Grapes. Cut back roots proportionately to development. Tops should be removed, leaving one stem with three to four buds.

Roses. Cut roots as advised for trees and shrubs removing bruised and broken parts. Cut tops back to three to four buds on each stem.

Privet Hedge. Cut tops back to four to six inches above the ground to insure dense base growths. Set slightly deeper than stocks stood in the nursery.

STRAWBERRIES

Superfection

NEW SENSATIONAL EVERBEARER

Will produce berries 90 days after planting. Berries round, of firm texture; dark red color all through. Will ship long distances without losing color or firmness. Bears an abundance of large berries from spring until frost. A hundred plants in your garden will produce enough berries for an average family. Good for the small gardener, as a commercial proposition, and can't be beat for its zippy, sweet flavor.

25, \$2.49; 50, \$4.49; 100, \$7.49
250, \$14.95

Streamliner (EVERBEARING)

Sensational new Strawberry. Everbearing. Increasing in popularity year by year, this new Strawberry is truly sensational. "Sweet as honey"—fine for freezing—tops for shortcake—wonderful for canning. The jumbo sized berries are borne in profusion from July until November. Up to a quart of berries per plant.

25, \$2.49; 50, \$4.49; 100, \$7.49
250, \$14.95

Gem (EVERBEARING)

The most popular and profitable everbearing variety. The bright red berries are large, good quality, ripen evenly without having green tips. Will bear some fruit this summer and a good crop in the fall. Plants hardy and vigorous growers.

25, \$2.49; 50, \$4.49; 100, \$7.49
250, \$14.95

Standard Varieties

25, \$1.59; 50, \$2.98; 100, \$4.29;
250, \$7.98; 500, \$12.49; 1000, \$17.98

BLAKEMORE. Early, freeze, excellent
Early, solid and productive. A great

shipping berry. Highly recommended for southern Ohio, but is well worth a trial in central and northern Ohio.

CATSKILL. Mid-season, freeze, good.
Plant Catskill to follow Premier. It is the next best berry in sections where Premier is king. The berries are large and of a very good quality. In some areas it is more productive than Premier.

FAIRLAND. Mid-season, freeze, good.
A new variety released by the USDA. A very vigorous grower, making plenty of healthy plants that are resistant to Red Stele. The plants are very productive, ranking with Premier and Catskill in total yield.

PREMIER. Early, freeze, good.
Still the king of the strawberries in this part of the country. Under favorable conditions Premier has often produced 10,000 quarts per acre of good marketable fruit and higher yields have often been recorded.

ROBINSON (Scarlet Beauty). Mid-season. Freeze—Good.
A free plant maker being vigorous and free from disease. The berries are large and are quite deeply furrowed or ridged. This berry seems to be much better in some sections than in others.

SPARKLE. Mid-season. Freeze—excellent.
Sparkle has everything a fine berry should have except size and in some sections the fruit is of a good size. Sparkle is highly resistant to Red Stele.

TEMPLE. Early. Freeze—good.
This is a fine variety which is resistant to Red Stele. It is the rankest and most vigorous grower of all present day varieties. It is very productive, berries medium to large and of a very good quality.

GRAPES

There is real satisfaction in seeing your vineyards and orchards thrive and bear abundantly. With the aim of developing and propagating the best and most profitable varieties of grapes and other fruits, we offer the following list. Given good care grapes bear well on almost any soil. They prefer a sandy or gravelly loam.

2 yr. No. 1, 79c each

- ↘ **Caco.** Fruit very large in handsome complete bunches, a rich wine-red over amber, very large bearer. Its flavor is sweet and distinctive. Mid-season.
- ↘ **Catawba.** When fully ripe they are a large dark copper colored fruit, which requires a long season. Ripens in late fall.
- ↘ **Concord.** The standard blue grape and probably the most extensively grown grape in the U. S. When fully ripe it is almost black. Ripens in early fall.
- ↘ **Delaware.** The old fashioned small red dessert grape, but is unexcelled for flavor either of the grape or juice. Ripens early.
- ↘ **Fredonia.** A new productive, very black grape, ripening with Portland. The bunch and berry are large with excellent flavor, and ripens about ten days ahead of Moore's Early and is an excellent shipper as it does not crack. This grape fills a long-felt need. A juicy, delicious black grape on a vigorous and productive vine.
- ↘ **Niagara.** Clusters of large and handsome pale yellow berries. It ripens with Concord and is the best white grape for the home market.

SEEDLESS CONCORD

A new grape that is fast proving a favorite with the home owner. Of high quality being unexcelled when eaten

out of hand. The home garden is not complete without this outstanding grape.

2 yr. No. 1, \$1.29 each

GOLDEN MUSCAT

This comparatively new variety requires a season fully as long as Concord, but deserves a good trial wherever it has a possible chance to ripen. Valuable for home use and roadside market. The berries are large and meaty, having very few seeds, usually one or two, which are easily separated from the pulp. It makes a large, pyramidal, compact, well-filled cluster.

2 yr. No. 1 \$1.29 each

HANDLING UPON ARRIVAL

Receive your stock without delay and plant just as soon as possible. Plants received in freezing weather should not be opened until they have been put in a cool but frost proof cellar and gradually thawed out. The stock will not be injured if gradually thawed out in this way.

Stock which seems somewhat dry upon opening should be buried in wet soil for a day or so. This will quickly liven the stems and make them ready for planting. Small bundles may be placed in tubs of water for the same results.

PROPER PLANTING DISTANCES

FRUIT TREES

- Apples, Cherries 30 to 40 feet apart
- Pears, Plums, Peaches, Apricots,
Quinces 15 to 25 ft.
- Grapes 6 by 6 ft. to 8 by 10 ft. apart
- Currants, Gooseberries,
4 to 6 ft. to 6 by 8 ft. apart
- Blackberries, Raspberries, etc.
3 by 6 ft. to 6 by 9 ft. apart
- Dwarf Fruits
Half the above general distance
- Asparagus 1 ft. apart; rows 3-4 ft.
- Rhubarb 3 ft. apart

FRUIT TREES

POLLINATION: When planting Bing, Lambert or Napoleon be sure to plant one tree of another variety. Windsor is a good variety to use as it is a thrifty, vigorous tree and is a good pollinator.

SWEET CHERRIES

| | EACH | 10 OR MORE EACH |
|--------------------|--------|--------------------|
| 2 yr. 5-6 ft. | \$2.79 | \$2.29 |
| 2 yr. 4-5 ft. | 2.29 | 1.98 |
| 2 yr. 3-4 ft. | 1.98 | 1.79 |

↘ Bing

Very large, dark brown, almost black, flesh firm, sweet and delicious. Fruits hang well on trees and ripen at one time. July.

↘ Black Tartarian

Earlier than most other sweet cherries. It adapts itself to a wide variety of soil and climatic conditions.

↘ Governor Wood

One of the best sweet cherries, very large, light yellow, marbled with red, juicy, rich and delicious, tree healthy, large and a good bearer.

↘ Lambert

Jet black when fully ripe. The fruit is meaty, juicy and has a very rich flavor. Late July.

↘ Napoleon

Royal Ann. A beautiful cherry of large size; pale yellow with bright red cheeks; flesh firm, juicy and sweet; one of the best for market.

↘ Windsor

The fruits are black and large. The tree is vigorous and productive. July.

↘ Schmidt

Fruit large, liver colored and distinctive. Flesh remarkably firm and of high quality. A valuable late variety. July.

↘ Yellow Spanish

The trees are the largest of the sweet cherries. The fruit is large, yellow with red blush. Late June.

SOUR CHERRIES

| | EACH | 10 OR MORE EACH |
|--------------------|--------|--------------------|
| 2 yr. 5-6 ft. | \$2.49 | \$1.98 |
| 2 yr. 4-5 ft. | 2.29 | 1.79 |
| 2 yr. 3-4 ft. | 1.89 | 1.49 |

↘ Early Richmond

Has long been the leading sour cherry of its season. Tree of medium size and bears heavy crops when it is young. The tree thrives well in a wide range of soil and climatic conditions. June.

↘ Montmorency

This is the most popular sour cherry grown in America. Vigorous, productive, and fine quality.

↘ Brassington

A superior semi-sour cherry fast gaining in popularity. Its large size, distinctive flavor and bearing ability recommend it for trial. Include some in your next planting. Tree upright, dense, very productive. Fruit averages one-half to three-quarters inch in diameter, attractive, round, light red color, juicy, sub-acid, pleasant flavor; a faint reddish tinge permeates the yellow flesh.

↘ English Morello

Easily grown, generally producing a heavy crop. Fruit dark red, quality good; rich, acid flavor; late. Hardy for extremely cold climate.

ATTENTION ORCHARDISTS!

Ask for special quotations on large quantities.

Sour Cherries (Con't)

May Duke

One of the oldest and most popular cherries. Finely flavored and often said to be half sweet and half sour. One of the earliest of its class and will often hang on the tree from four to six weeks. It has a long ripening season which is ideal for home use. Large, red, early.

Reine Hortense

Another half sweet and half sour cherry. Excellent in quality, large, round, bright red, and uniform in size. The trees are small to medium in size and in Europe they are much used as a dwarf. We consider it very good for the home garden.

PEAR TREES . . . Produced From Blight-Resistant Strains

| | EACH | 10 OR MORE EACH |
|-----------------------|--------|-----------------|
| 2 yr. 5-6 ft. | \$2.29 | \$1.98 |
| 2 yr. 4-5 ft. | 1.98 | 1.79 |
| 2 yr. 3-4 ft. | 1.79 | 1.49 |

POLLINATION

Two varieties are needed. The only combination that is cross-incompatible is Seckel and Bartlett. A third variety is needed with the above two.

WINTER VARIETIES

Anjou. The fruits are large, uniform greenish yellow, with firm, juicy flesh, and as an early winter pear it has no superior.

Bosc. The fruits of this pear are nearly flawless in every character, extra large, long and tapering russet.

Duchess. Very large and rich and juicy. Pick them before maturity, wrap in tissue paper and pack them away for complete ripening.

Flemish Beauty. A large, beautiful, very juicy and rich pear. September.

Kieffer. The large size, handsome appearance, and remarkable keeping and shipping qualities puts the fruit among the best.

Seckel. (Sometimes called the sugar pear). A small pear of excellent flavor, fine for pickling or dessert, very productive and a profitable commercial pear.

Sheldon. Medium sized, yellow, with a rich shaded cheek, flesh a little coarse, melting and juicy.

SUMMER VARIETIES

Bartlett. The fruits are large, handsome, and of a high quality, keeping and shipping remarkably well making it very desirable for the table or for market use.

Clapp's Favorite. It is the standard summer pear to precede Bartlett, which it much resembles, in size, shape, flavor, and color.

Gorham. The fruit ripens two weeks later than Bartlett and keeps a month longer. The fruit resembles Bartlett in size, color, and shape.

Cope's Seedless Pears

This new variety resembles Bartlett but is seedless and coreless, and shows great resistance to fire blight. It ripens a few days later than Bartlett. Much time is saved by not having to core each pear when preparing it for use.

These trees are like the dwarf apple, created for a special need.

PRICES SAME AS OTHER PEARS

ATTENTION ORCHARDISTS

Ask for special quotations on large quantities.

DWARF PEAR TREES

They are ideal for the home owner with a small lot. They take up very little space and yet are very productive, taking into consideration the miniature size of the tree. The fruit is of standard size.

Bartlett, Duchess, and Seckel

3-4 ft. \$2.98 each

PLUMS AND PRUNES

Prices of Prune, Plum

| | EACH | 10 OR MORE EACH |
|--------------------|--------|--------------------|
| 2 yr. 5-6 ft. | \$2.29 | \$1.98 |
| 2 yr. 4-5 ft. | 1.98 | 1.79 |
| 2 yr. 3-4 ft. | 1.79 | 1.49 |

NOTE—Most American and European Plums seem to be self-fertile and produce fruit on their own pollen, but produce better when inter-planted with other varieties. Oriental varieties have been found to be self unfruitful and should always be interplanted at all times. Abundance is considered one of the general pollinizers.

PRUNES

Italian Prune (Fellenburg). The fruit is fine flavored whether eaten out of hand, prepared for the table or cured as a prune. Fruits very large purplish black with very thick bloom. September.

Stanley Prune. Ripens about September 10th. A medium to large, blue prune-type plum; flesh is greenish yellow. Juicy, firm and of good quality. Stone is free.

German Prune. Large, dark purple, sweet, good, one of the most popular for canning because of its sweetness and lack of acid.

PLUMS

Abundance. (OR.). Medium sized red, with yellow juicy tender flesh. Trees large and hardy, ripening in August.

Burbank, (OR.). Large red fruit on a hardy and productive tree in late August.

Green Gage. (Reine Claude). Large round greenish yellow, excellent for canning, one of the best varieties. Very productive. September.

Lombard. Fruits medium to large, dark red very attractive and tempting to the eye, and readily saleable. August.

Shropshire Damson. Tree is a great producer bearing large crops of good dark purple plums year after year. October.

Yellow Egg. Golden yellow with thick bloom. Flesh yellow and juicy. A very large and beautiful plum, fine for local market. September.

APRICOTS

Prices of Apricots and Nectarines

| | EACH | 10 OR MORE EACH |
|--------------------|--------|--------------------|
| 2 yr. 5-6 ft. | \$2.29 | \$1.98 |
| 2 yr. 4-5 ft. | 1.98 | 1.79 |
| 2 yr. 3-4 ft. | 1.79 | 1.49 |

Popular in all sections where Peaches do well

Hungarian. Grows to an immense size. the fruit large and of a good quality, beautifully colored a deep yellow, with yellow flesh, and a very fine flavor.

NECTARINES

A smooth-skinned Plum - Peach. Tree grows like Peach. Fruit looks like large Plum. The flavor, both Peach and Plum.

Goldmine. A freestone ripening with Elberta, medium in size with good quality, and very attractive yellow flesh.

PEACH TREES

| | EACH | 10 OR MORE EACH |
|-------------------------|--------|-----------------|
| 11/16 in. 5-6 ft. | \$1.98 | \$1.59 |
| 9/16 in. 4-5 ft. | 1.59 | 1.29 |
| 7/16 in. 3-4 ft. | 1.39 | .99 |
| 5/16 in. 2-3 ft. | 1.19 | .89 |
| Whips, 18 in. and up .. | .79 | .59 |

ATTENTION ORCHARDISTS

Ask for special quotations on large quantities.

POLLINATION

With the exception of **J. H. Hale**, all varieties we offer are self-fruitful.

- ↳ **DIXIRED.** The outstanding characteristics of Dixired are its unusual firmness and slow rate of softening for an early peach. It is cherry red to a very dark red and fruit acquires color long before it is ready to pick. Flesh is yellow, medium textured and of a good flavor. Cling. Late July.
- ↳ **ELBERTA.** Best commercial money-making variety. Fifty percent of all peaches planted are Elberta. It has proven its ability to adapt itself to varied climatic and soil conditions. Tree hardy, disease resistant, very productive. Fruit large, oval, yellow and red cheek. Flesh yellow, firm, juicy, of high quality. Splendid shipper and keeper. Mid-September.
- ↳ **EARLY ELBERTA.** The same Elberta quality and ripening earlier to reach the profitable early market. September 6-10.
- ↳ **FAIRHAVEN.** A cross of J. H. Hale and South Haven. Larger than Hale Haven, the fruit being bright golden with red cheek. Skin smooth, flesh firm medium yellow with some red around the pit. Follows Golden Jubilee and precedes Hale Haven in ripening season. August 25-31.
- ↳ **GOLDENEAST.** A large, high colored, good quality peach. September 1-5.
- ↳ **GOLDEN JUBILEE.** A large early yellow peach, free-stone, high quality. Ripening date Aug. 20-25. Always popular. Makes a fine backyard variety.
- ↳ **J. H. HALE Improved.** Large, yellow overlaid with carmine. Flesh yellow, fine grained. Late August.
- ↳ **HALE HAVEN.** Rightfully placed at the top of all yellow free-stone peaches. September 1-5.
- ↳ **LEMON FREE.** The old favorite which is well known. Not too attractive but excellent in quality for canning. September 20-25.
- ↳ **LOUISE.** A large yellow flesh peach. Perfect freestone. Firm, well colored, and of good size. Usually ripening in October.
- ↳ **PROLIFIC HALE.** An improvement of J. H. Hale in that it is a heavy cropper every year. Sept. 5-12.
- ↳ **RED HAVEN.** The best of the early yellow peaches coloring unusually well. Aug. 20-21.
- ↳ **RED ELBERTA.** A large yellow free-stone peach. Sept. 5-12.
- ↳ **REDSKIN.** Ripening slightly ahead or with Elberta it is very productive. Round, yellow flesh, well colored, firm, good sized and of excellent quality.
- ↳ **SHIPPER'S LATE RED.** A large red Elberta type peach ripening 5-10 days after Elberta.
- ↳ **SOUTH HAVEN.** Large, yellow, blotched with red. September 1-5.
- ↳ **SUMMERCREST.** No one wants an Elberta after eating a ripe Summercrest. September 3-5.
- ↳ **SUNHIGH.** Ripening ahead of Golden-east. This peach is well worth a trial. It is outstanding for its hardiness.
- ↳ **TRIOGEM.** We believe this peach to be better in all respects than Golden Jubilee. It ripens one to three days later.

White Peaches

This group of peaches are all white fleshed and are excellent for home use, and are readily saleable at the roadside.

peach which is a heavy bearer. Its flavor and quality are unexcelled. September 3-8.

↘ **BELLE OF GEORGIA.** Very large with red cheek and of excellent quality. September 1-5.

↘ **CUMBERLAND.** Probably the best of the white peaches for market use, as it is a very firm fleshed peach. Early August.

↘ **CHAMPION.** A very large red cheeked

Prices same as Yellow Peaches

APPLE TREES

... FROM TESTED BEARING ORCHARDS

| | EACH | 10 OR MORE EACH |
|-----------------------|--------|--------------------|
| 2 yr. 5-6 ft. | \$1.98 | \$1.79 |
| 2 yr. 4-5 ft. | 1.59 | 1.39 |
| 2 yr. 3-4 ft. | 1.29 | .99 |

ATTENTION ORCHARDISTS

Ask for special quotations on large quantities.

To insure cross-pollination be sure to plant two varieties.

Our apple trees are produced from carefully selected trees in the orchard and the fruit is outstanding for color, quality, and productiveness.

↘ **FRANKLIN.** Produced at Wooster Experiment Station. A cross of McIntosh and Delicious. Flesh faintly yellow, fine grain and delicate texture, mild, moderately juicy, not quite as sweet as Delicious, but with more character than McIntosh.

↘ **GRIMES GOLDEN (Winter).** Good sized, yellow, very productive and of high quality.

↘ **RED ASTRACHAN (Summer).** An excellent summer apple for cooking.

↘ **BALDWIN (Winter).** The old favorite bright red, good quality and an excellent keeper.

↘ **MELROSE (Winter).** A cross of Jonathan and Delicious. Fruits larger than Jonathan — firm, crisp, and juicy and of excellent cooking and dessert quality. Fruits ripen just before Staymens and keeps well in cold storage until April.

↘ **CORTLAND (Winter).** A McIntosh type, large, round, and red. Hangs on the tree longer than McIntosh and because of its tougher skin, makes a better shipper.

↘ **KING OF TOMPKINS COUNTY (Winter).** A tasty sub-acid apple of mild flavor.

↘ **DOUBLE RED DELICIOUS (Winter).** An outstanding apple for table use. Bright red, flesh white and of excellent quality.

↘ **NORTHERN SPY (Winter).** An old favorite which is unexcelled in quality and keeping. Well covered with red, flesh white and tender.

↘ **DUCHESS OF OLDENBURG (Autumn).** Large, white fleshed, red striped fruit. The best general purpose apple of its season.

↘ **RED McINTOSH (Autumn).** A selected type for its solid red color. One of the best all purpose apples and a very good keeper.

Apple Trees (Con't)

- ↘ **RED ROME BEAUTY (Winter)**. A strain of Rome Beauty selected for its intense red color.
- ↘ **RED NORTHERN SPY (Winter)**. Deep red, bears younger, same as Northern Spy in taste and keeping qualities.
- ↘ **RED STAYMAN WINESAP (Winter)**. A quick and large grower, coming into bearing at an early age. A selected red type of the old Stayman Winesap.
- ↘ **ROME BEAUTY (Winter)**. A medium sized tree which bears young. The large handsome red fruits ship and keep exceptionally well.
- ↘ **WEALTHY (Autumn)**. The best of the autumn apples as it bears young and is of exceptional sub-acid quality. Unexcelled for cooking.
- ↘ **YELLOW TRANSPARENT (Summer)**. This tree is extremely hardy and comes into bearing young. The fruit is of good size and of clear yellow color. Ideal for home market and a good seller.
- ↘ **YELLOW DELICIOUS (Winter)**. Same delicious quality as Red Delicious, but the color is a clear yellow. Tastes more mild and even better than Grimes Golden. Firm, crisp and very juicy.

CRAB APPLES

- ↘ **HYSLOP**. The standard American crab apple which is widely cultivated. The apples are brilliant dark red and of excellent quality.

Proper Planting

Trees, shrubs, and flowers require immediate and careful attention for successful results in planting. They must not be exposed to the wind or sun before planting, and should be cultivated and watered after planting to assure quick establishment.

NUT TREES

New Chinese Chestnut

Several years ago chestnut blight destroyed our native chestnut. Since that time the U. S. Department of Agriculture has been searching for a blight resistant strain. After many tests it was found that a type of Chinese Chestnut was not only blight resistant but an early bearer of large, good quality nuts.

15-18 in. \$3.98

American Hazel Nut

Quick bearing, dwarf growing. Easy to crack, large, sweet kernels, shell out whole. Fine for shrub borders or hedges.

18-24 inch \$1.49 each

English Walnut Trees

In 1915, H. J. Champion, the founder of this business, planted several small English walnut trees around the house in which he lived. In a relatively short time these came into bearing and today are large shapely trees bearing annually a goodly amount of nuts which are of good size, thin shell, and of unusually good flavor and quality.

2 to 3 ft. \$2.49

MASSACHUSETTS TRUENESS-TO-NAME INSPECTION SERVICE

A service to nurserymen and fruit growers to promote trueness to name of fruit varieties. Sponsored by The Massachusetts Fruit Growers' Association

Statement of Inspection for Trueness-to-Name

Amherst, Mass., Aug. 20, 1952

To Whom It May Concern:

All of the apple, 1-year pear, and sweet cherry varieties propagated and now growing at Champion Nurseries, Perry, Ohio, have been examined by the Massachusetts Trueness - to - Name Inspection Service. To the best of our knowledge, these trees are true to name as they now stand in the nursery row.

A. P. FRENCH

Multiple Apple Trees

It's a one-tree orchard. We have grown these for years and can recommend them highly. The ideal tree to plant in limited areas.

**A WHOLE ORCHARD
ON A SINGLE TREE
5 VARIETIES ON ONE TREE**

These trees are made possible by budding varieties from the earliest to the latest. An ideal tree where space is limited. The varieties grafted on 5-in-1 Trees will vary, but most generally consist of McIntosh, Yellow Transparent, Double Red Delicious, Yellow Delicious and Northern Spy.

2-3 yr. 11/16 in. up. \$3.98

Dwarf Apple Trees

VARIETIES AVAILABLE

**DOUBLE RED DELICIOUS
RED JONATHAN
RED SPY
RED STAYMEN WINESAP**

**WEALTHY
YELLOW TRANSPARENT
CORTLAND**

On Malling Understock

3 to 4 ft. \$3.98 ea.; 3 for \$10.98

JUMBO FRUIT TREES

For several years the demand has steadily increased for larger, nicer, and quicker bearing trees. We now offer them in limited quantities. These are called JUMBO trees as it is often possible to reduce the time from planting until you pick your first fruit, from one half to three quarters of the time required by most regular grade nursery trees. The SUPPLY of these "Jumbo" trees is limited and if you are anxious to make use of this wonderful opportunity we would suggest that you fill out the enclosed order sheet at once so you will be sure to receive your ORDER of "Jumbo" trees which will be shipped to you at the correct planting time or you may specify the shipping date.

**"JUMBO"
PEACH TREES
\$3.98 each**

**"JUMBO"
APPLE TREES
\$3.98 each**

**"JUMBO"
SWEET CHERRY
\$4.98**

**"JUMBO"
PRUNE AND PLUM TREES
\$4.49 each**

**"JUMBO"
PEAR TREES
\$4.49 each**

**"JUMBO"
SOUR CHERRY TREES
\$4.79 each**

**"JUMBO"
APRICOT TREES
\$4.49 each**

ORANGE QUINCE TREES

For Jelly, Jam and Marmalade

Its pre-eminence as a fruit for jellies and preserves makes the Quince a profitable tree for the fruit grower, the farmer or anyone having a small garden. Fruit is large golden yellow and of excellent quality; ripens early in September. Quince trees do not require much space, as they are of dwarf type, growing about 10 to 15 feet tall.

4 to 6 ft., \$2.49 each

PEONIES

Divisions (3-5 eyes) \$1.39 each

Clumps (whole plants) \$2.79 each B&B

Courronne D'Or. Immense white blossoms with crimson blotches. Late.

Edulis Superba. Very early, crown type, old-rose pink.

Fragrance. Very outstanding, being an off shade of red.

Marchioness of Lansdowne. Large white flowers shaded with pink.

Mons Jules Elie. Glossy lilac shading a deeper pink at the base, the entire flower overlaid with a silver cast.

President Taft. Delicate hydrangea pink, completely enveloped in a halo of white, profuse bloomer.

Sarah Bernhardt. A late bloomer, flat, compact, rose type, rose pink with silver tip. A bright, apple-blossom pink, free flowering.

PREPARATION OF THE GROUND

Spade and plow thoroughly and deeply, raking or harrowing the soil fine and leveling off to facilitate planting. Dig holes generously wide and deep to receive root system without crowding or cramping roots. Loosen the soil in the bottom of the hole so that the roots may grow "in" readily. Poor soil may be benefitted by spading manure in sometime in advance of planting.

HEELING-IN STOCK TEMPORARILY

Dig a trench sufficiently deep and wide to receive roots and at least a third of the top without crowding or breaking roots. Lean the stock bundles or trees at an angle, to save extra digging. Fine soil should be used so that the roots can be packed well to prevent air-pockets and drying out. Water when the ground is dry and heap the soil well about the stems of the stock. If trees or shrubs are to be heeled-in over winter, they should be well covered and all packing material removed to prevent mice from nesting and damaging stock.

AFTER CARE

Frequent cultivation after planting will maintain a dust mulch on top of the soil to conserve moisture and continue growth. Hoeing rather shallow gives best results in this respect and keeps beds free from weeds and orderly in appearance.

In dry spells, artificial watering is strongly advised. Don't sprinkle. Water thoroughly. If a hose is used, remove the nozzle and let the water soak into the ground until saturated down to the roots. No further water is needed for several days if this is followed. Watering in the evening or in early morning is best.

Fertilizing in the fall acts as a winter mulch and enriches the soil for the next season's showing. Manure should be applied on top of the soil. It may be spaded in when well-rotted, but should never be placed next to the roots of plants.

Shrub beds and circles cut about trees look much better when trimmed up with a spade occasionally during the summer. Ragged edges about shrub areas and weedy beds destroy much of the beauty of plantings.

Occasional trimming of rank shoots will keep stock in balanced, compact growth. Trees given early attention in the development of a good head and leader will repay the slight attention necessary.

HYPONEX

RA-PID-GRO

Hyponex is a clean, odorless and soluble powder, using only one teaspoonful with one gallon of water. One pound makes 100 gallons of liquid plant food complete and balanced; yet because it is a powder it can be stored or transported easily and there is no spoilage, for it keeps indefinitely.

Hyponex is extremely valuable for growing plants in the house. It does not matter if the soil around your plants may be impoverished, for Hyponex will grow your plants in sand, cinders or even the poorest soil.

With Hyponex and water, plants grow luxuriantly, flower abundantly and develop sturdy growth regardless of the poorness or sterility of the soil.

1 Lb. Can \$1.29 Postpaid

“The Complete Formula For A Liquid Plant Food” For Better Flowers, Better Lawns, Better Shrubs and Trees, and Better Gardens.

The Miracle Plant Food —Why?

Because within 48 hours after application, you can see your Trees, Roses, Shrubs and Plants grow and improve and it is so easy to use. You simply put RA-PID-GRO in water in a pail or sprinkling can, then pour it around the stock you wish to fertilize. We realize the soil in most yards is not as fertile as it should be, RA-PID-GRO will overcome this and you will be greatly pleased at the increased growth you get. It is marvelous for invigorating lawns. Instructions on every package.

1 Lb. Can \$1.49 Postpaid

CARE AFTER PLANTING

Cultivation: Keep soil loose on top to conserve moisture by hoeing shallowly until the first of August. After this time it is well to allow stock to harden and mature for wintering.

Mulching: Grass clippings, straw manure, or marsh hay will serve instead of a dust mulch to conserve moisture and keep down weeds where cultivation cannot be given.

Watering: Water thoroughly rather than sprinkle lightly. Give the soil all the water it will take at one time. No more need be applied for several days as a rule when this is done.

Fertilizing: Barnyard manure is one of the best mediums of enriching the soil. When this cannot be secured,

a balanced commercial fertilizer may be used with good results.

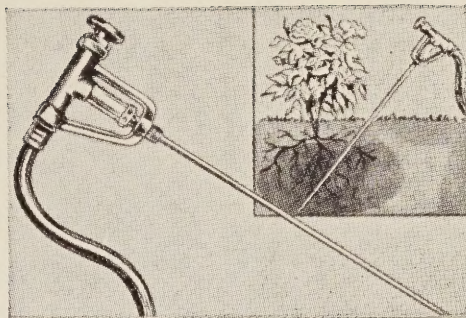
Trimming: Generally, should be done immediately after the bloom fades. In this way no blooming wood for the following year is cut off. Hydrangeas should be cut back severely each fall or spring to increase bloom size and general growth of the plant. Fruit trees should be kept open in the center and pruned yearly to eliminate excess wood. Remove all old wood on currants and gooseberries yearly after fruit is gathered. Raspberries and Blackberries should receive similar treatment, leaving a few vigorous stems for the succeeding crop. Grapes require severe cutting back each spring, early in March before the sap starts. Generally, it is well to pick first year blossoms on fruits to strengthen stocks.

ROSS ROOT FEEDER

- FOR WATERING
- FOR FERTILIZING

\$3.95 EACH
POSTPAID

with one dozen regular fertilizing
cartridges



The Ross Root Feeder puts the fertilizer and water directly to the Roots. Produces healthier and more vigorous growth. Especially fine for roses, shrubs and trees. You can fertilize and water at the same time or you can just water. Needed all season. In the spring it is a quick booster for old and new plantings. In the summer insures food and water during dry spells. In the fall very necessary to put moisture down at the roots to prevent winter damage.

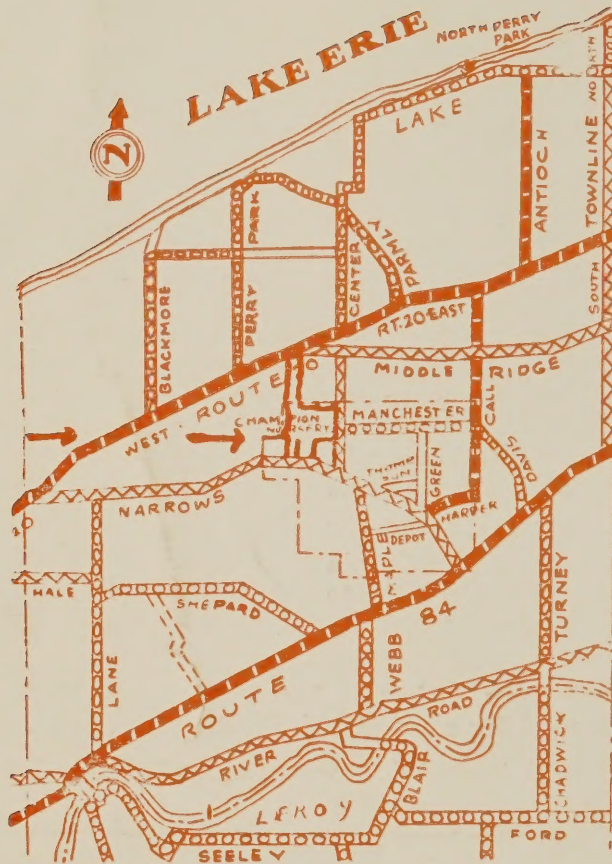
Simple, easy to use, nothing to get out of order and lasts for years. For watering, just attach to hose. For fertilizing, place cartridge in the chamber, attach to hose and turn on the water. Push it into the ground to desired depth. No water or fertilizer is wasted. Feeder puts it DOWN AMONG THE ROOTS WHERE IT IS NEEDED.

Keep a supply of cartridges on hand. Box of 12 for \$1.00 Postpaid. Regular cartridge (8-16-8) is used for most plants, shrubs, roses, trees.

Acid cartridge (10-20-20) is used for evergreens and acid loving plants like Azaleas, Blue Hydrangea, etc.

INDEX

| | | | | | |
|-----------------------------|--------|----------------------|---------|-------------------|-------|
| Apple Trees | 24-25 | Euonymus | 14 | Nectarine Trees | 22 |
| Althea | 5 | Evergreens | 15 | Nut Trees | 25 |
| Apricot Trees | 22 | Forsythia | 6 | Patented Roses | 1 |
| Aralia | 5 | Florabunda Roses | 3, 4 | Peach Trees | 23-24 |
| Arctic Willow | 9 | Flowering Almond | 5 | Pear Trees | 21 |
| Arborvitae | 15 | Flowering Crabs | 12 | Peonies | 27 |
| Asparagus | 16 | Flowering Cherry | 12 | Pieris, Jap. | 14 |
| Azalea | 14 | Flowering Peach | 13 | Plane Tree | 11 |
| Barberries | 9, 10 | Flowering Plum | 12 | Plum Trees | 22 |
| Beautyberry | 5 | Flowering Quince | 7 | Poplars | 11 |
| Beautybush | 5 | Flowering Trees | 12 | Privets | 10 |
| Birch | 10 | French Lilacs | 7 | Prune Trees | 22 |
| Blueberries, Boysenberries, | | Fruit Trees | 20-25 | Quince Trees | 27 |
| Blackberries | 16 | Garland Flower | 5 | Raspberries | 17 |
| Blue Mist | 5 | Gooseberries | 16 | Rhubarb | 16 |
| Boston Ivy | 13 | Grapes | 19 | Roses | 1-4 |
| Broadleaf Evergreens | 14 | Hazel Nut | 25 | Shade Trees | 10-11 |
| Butterfly Bush | 5 | Hedge Plants | 9-10 | Shrubs | 5-9 |
| Cherry Trees | 20, 21 | Holly | 14 | Strawberries | 18 |
| Chestnut | 25 | Honeysuckle | 6, 13 | Vines | 13-14 |
| Clematis | 13 | Horse Radish | 16 | Red Bud | 13 |
| Climbing Roses | 4 | Hybrid Tea Roses | 1, 2, 3 | Red Leaf Plum | 12 |
| Crab Apples | 25 | Hydrangeas | 6, 7 | Russian Olive | 9 |
| Currants | 16 | Hypericum | 7 | Rhodotypos | 7 |
| Daphne | 5 | Hazel Nut | 25 | Snowball | 8 |
| Deutzia | 6 | Hawthorne | 12 | Snowberries | 8 |
| Dogwood | 6, 12 | Junipers | 15 | Sweet Pepper Bush | 5 |
| Dutchman's Pipe | 13 | Lilacs | 7 | Small Fruits | 16-17 |
| Dwarf Apple Trees | 26 | Magnolia | 13 | Tamarix | 9 |
| Dwarf Pear Trees | 22 | Maples | 10, 11 | Viburnum | 8 |
| Elm | 10 | Mock Orange | 7, 8 | Weigela | 9 |
| English Ivy | 13 | Mountain Ash | 11 | Willow | 11 |
| English Walnut | 25 | Multiple Apple Trees | 26 | Wisteria | 14 |
| | | | | Yews | 15 |



Big Enough to Supply Your Needs, But
Not Too Big to Appreciate Your Business



52 YEARS
OF COMPLETE
SATISFACTION

