

Historic, Archive Document

Do not assume content reflects current scientific knowledge, policies, or practices.



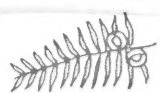
62.67

1953

LIBRARY
D
FEB - 3 1953 ★
Agriculture



GIRARD BROTHERS
NURSERY



Geneva Ohio

Spring 1953

Dear Customer and Friends:

After a terribly dry summer we are now entering another planting season — spring 1953. Many plants throughout most part of the country have suffered for lack of water. Lets hope that this next season will be more favorable and that we will have an average rainfall.

We wish to express our deepest appreciation for the nice orders we have been receiving. It is your orders that make it possible for us to better our methods of growing and bring to you healthy and well grown plants.

If you have not already planted some of our trees, please do so now. You will find great pleasure in growing our trees and shrubs. Some of you are planning on building soon, if you plant now your trees will be ready for when you want them.

Cash in on your spare land. If you have half an acre or more put it in trees. In two or three years you will enjoy a nice profit. Many of our customers have gone into the nursery business and are enjoying their profits along with the pleasure of growing our trees.

Institutions, schools, colleges, city playgrounds and parks are in need of large plantings, but are seldom allowed enough money to carry on such programs.

Many of these places are now buying our small trees. The cost is so small that it makes it much easier to carry on their programs without reaching deep into their funds. It will take a few years longer to raise plants from when small, but if this planting is never started you will never have it.

It has been our practice in the past to help many of our customers get started in the nursery business through suggestions. Many have asked us to give them a list of the best selling varieties. These we have listed on inside back cover which we consider best for reselling along with growers rates. If you are planning to grow trees in large quantities, we suggest you use this list.

Lets Plant America, plant now.

Yours truly,
Girard Bros. Nursery



Location of Our Nursery—Visitors welcome. We are located on U. S. Route 20, in Saybrook, approximately three miles east of Geneva and seven miles west of Ashtabula, Ohio, on north side of road.

If you wish to pick up your order at our Nursery, drop us a line and give us the date you wish to pick up your order and we will have it ready for you.

Our Guarantee—We guarantee our plants to reach you in good, healthy condition and free from injurious pests and disease.

After stock is planted we cannot assume responsibility. **S u c c e s s** and continued growth depend largely on soil and weather conditions, which we have no control over.

Seasons—Our Spring shipping season begins as soon as the frost is out of the ground and trees can be dug. It continues until June, weather permitting. Fall shipping begins about the first part of September and ends when ground is frozen.

Packing and Shipping—All our young trees and shrubs are packed free of charge. We assure you good, clean stock, free from disease and insects, and hardy Northern grown. All bare root plants will be packed with damp sphagnum moss, then wrapped in waterproof kraft paper and carefully

tied. Larger orders will be packed in wire-bound crates or large wooden boxes. Every shipment will bear an inspection certificate.

Unless noted, orders will be shipped express, charges collect. It is best we send larger orders by express, smaller by parcel post. We do not ship plants by freight. When shipment of plants is received, check carefully and report any damage or delay to your agent at once, also notify us.

Making Out Orders—Make sure name is plainly printed or written. P. O. means the City or Town in which your mail is received. A few shipments were lost last season due to the shipment addressed to the County rather than the City. If the shipping point is other than your city, please state. Some towns do not have an express station; if so, please specify the nearest one.

When to Order—Please order early if it is possible. Unlike other things that you buy, trees should be ordered in advance; long before the shipping time is best. There is always some variety we may run short on.

We will not substitute unless we have your permission. However we do prefer a second choice.

THE HOME NURSERY

It is always a wise gardener who will have a few rows of young trees and shrubs growing for future plantings. They know that this is the most reasonable method of keeping on hand some very fine specimens for later use. Do not wait until you need trees (large ones), save yourself from \$2.00—\$5.00 a tree by growing them yourself. You can also get the pleasure of watching these trees grow.

It does not require much space to grow 100 or more trees and shrubs. Look over your grounds. Most of you will find a 12 x 12 ft. space that can be used for this purpose. A home nursery is easily planned.

If you are planning on building a home within the next few years—plant now. If your present planting is getting too large and straggly—plant now, for replacements later.

GROW CHRISTMAS TREES FOR PROFIT

In many sections, one of the most profitable ways to utilize unprofitable ground is to establish a plantation of cultivated Christmas trees. You can start by three methods: (1) growing trees from seed, (2) from seedlings, and (3) from transplants. The transplanted trees will advance your tree growths from 2 to 5 years. Cultivated trees command a better price than wild grown stock. There is a big demand in practically every city and town for nursery grown or cultivated Christmas trees. The trade is asking for them. Wild stock is brought in from such long distances that the trees shed needles before they are set up. In the last few years there has been a great demand for live trees as these trees can serve two purposes: (1) for decorating during the holiday season and (2) later used for decorating lawns. Selling of Christmas trees can begin when trees are 12 to 15 inches in height. If trees are cultivated the first two years, returns begin within two or three years after the plantations are established. A spacing of 3 feet by 3 feet allows for 5600 trees per acre. A planting of 4 feet by 4 feet allows 2720 trees per acre.

The land should be plowed and prepared the same as for a field crop. Almost any soil of good texture will grow Conifers. Trees most suitable for this purpose are: Norway Spruce, White Spruce, Black Hill Spruce, Colorado Blue Spruce, Scotch Pine, Austrian Pine, American Red Pine, Balsam Fir and Douglas Fir.



SEEDLINGS are those propagated by the method of sowing the seed. This method is done at a reasonable cost. Therefore prices of seedlings are lower than others mentioned. Most Pines, Firs, Spruce and Deciduous trees are only propagated by sowing of seed. Seedlings can be bedded 4 by 4 inch and shaded the first year. They can be set out in field rows the following year.

CUTTINGS are tips of branches cut from the mother tree. Tips are usually 4-8 in. long, these are carefully placed in sand or a mixture of sand and peat. Cuttings are started either outdoors in hotbeds or in greenhouse. In greenhouse, benches contain about 4-5 in. depth loam sand, heated with pipes of steam or hot water. It may take as long as 10 months for these cuttings to root.

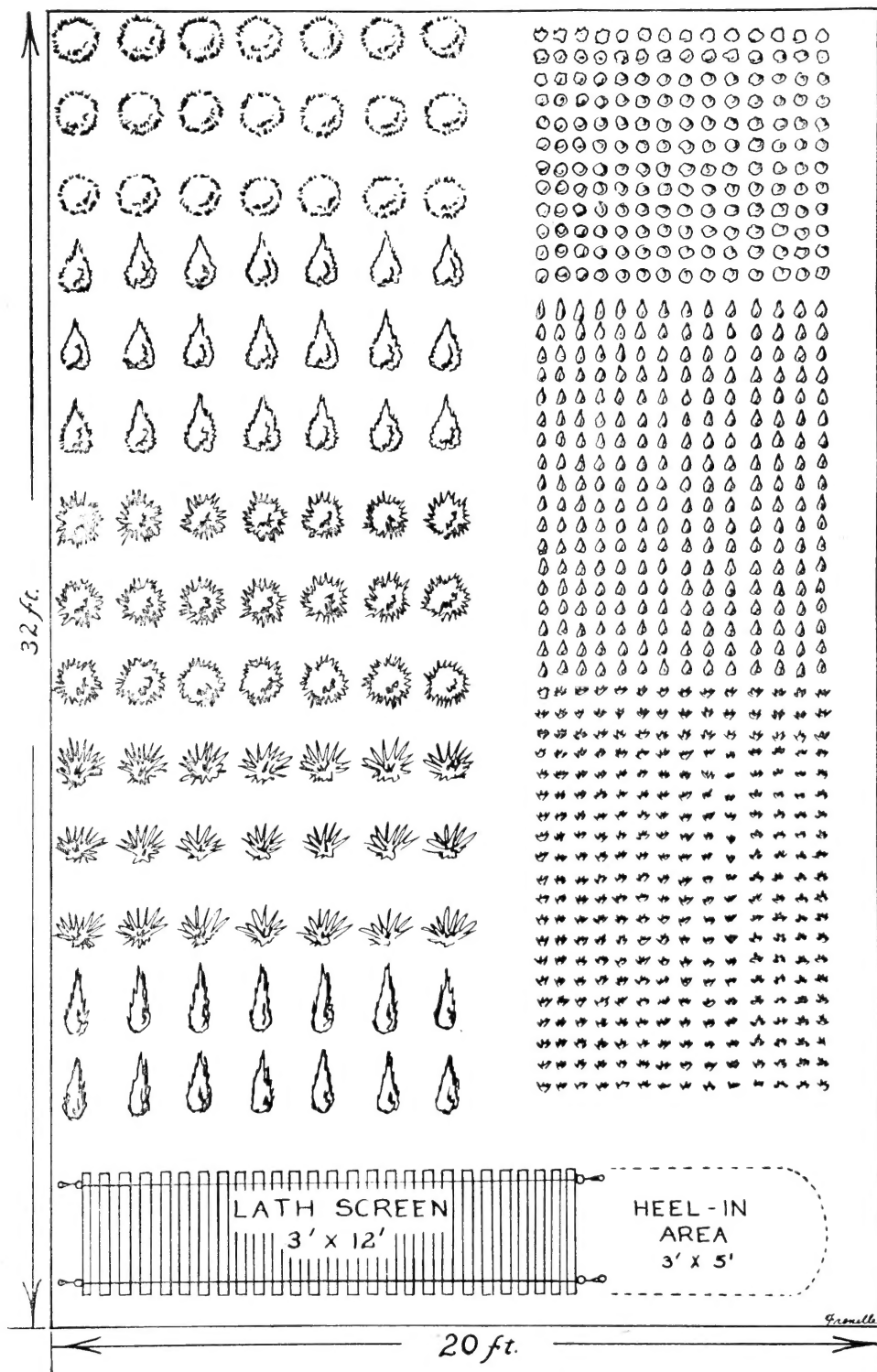
Rooted cuttings may be planted in beds 4 by 4 inch and shaded for one year. (Do not allow rooted cuttings to dry out.)

GRAFTING—This method is one of the most complicated and expensive problems. Practically all grafting is done in the greenhouse. Grafting is done mostly in cases where it is impossible to sow the seed and hold true to its parent and not possible to root by cuttings. Potted grafts can be planted in permanent locations or field rows.

LAYERING—This is a method used by many Nurserymen. Many of the low growing evergreens are easily rooted by this method. A branch is bent down, buried in the soil, leaving the tips of the branches out. In some cases it is necessary to take a small fork of a tree or a U bent wire to hold these branches in the ground.

TRANSPLANTS are trees which have been taken from seed beds and replanted in field rows or other beds. These can be planted in permanent places.

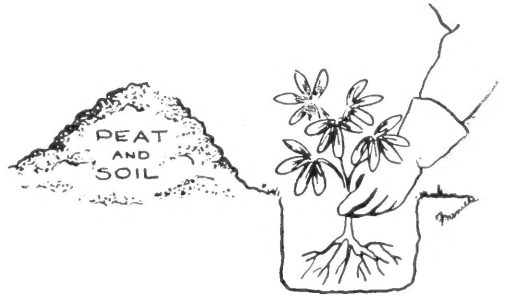
B. B. . . Indicates balled and burlaped.



It does not require much space to grow 100 or more trees or shrubs. Look over your grounds. Most of you will find a 12 x 12 ft. space that can be used for this purpose. A home nursery is easily planned.

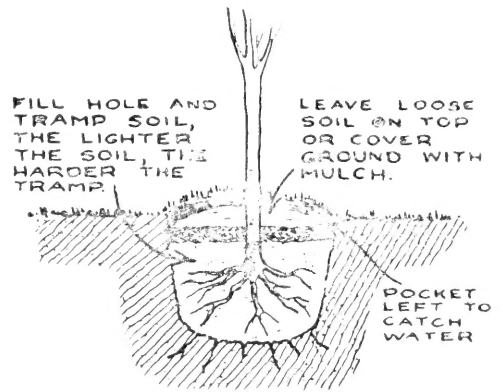
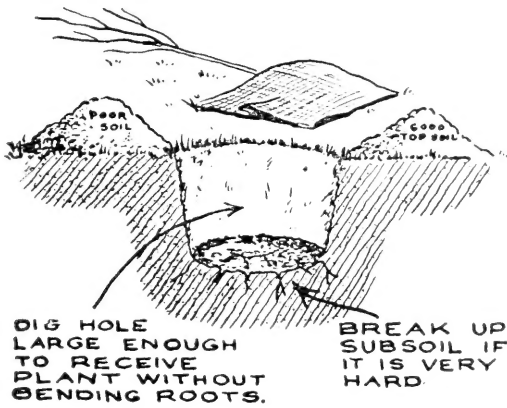
If you are planning on building a home within the next few years — plant now. If your present planting is getting too large and straggly — plant now, for replacements later.

Planting Methods

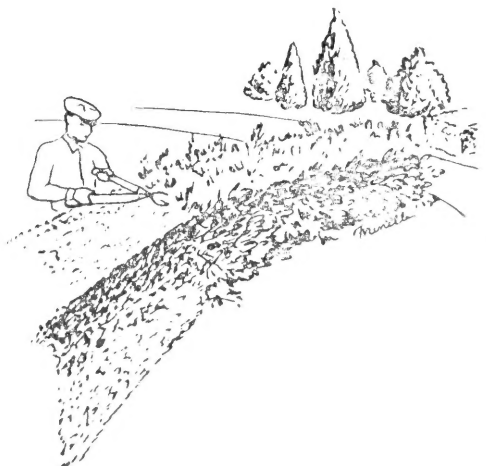


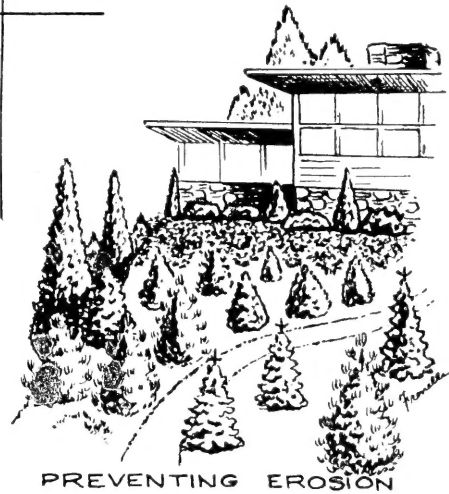
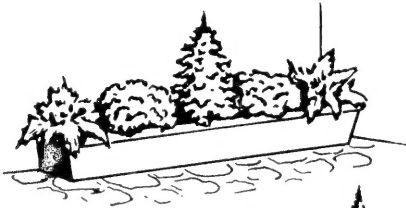
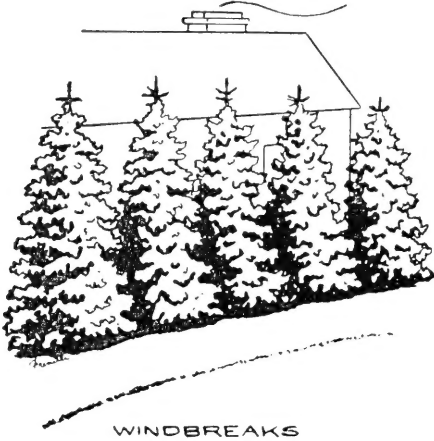
Heeling in—If for any reason plants cannot be planted immediately, dig a trench and plant as above sketch.

Acid Loving Plants—Such as Azaleas, Rhododendrons, Ilex, and evergreens will do better if peat or leaf mold is mixed with soil.



NOTE: MANURE, UNLESS WELL ROTTED AND THOROUGHLY MIXED WITH THE SOIL, SHOULD BE USED ONLY ON TOP, IF USED AT ALL.



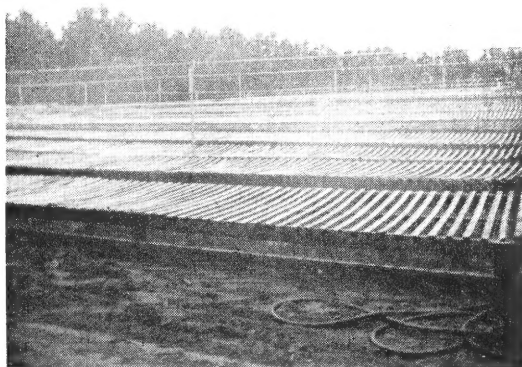


USES FOR EVERGREENS

There are many uses for evergreens, they can be used for windbreaks, screening, borders, hedges, landscaping home grounds, preventing soil erosion, lumber and Christmas tree uses.



2 Yr., 4 Yr., 5 Yr., 6 Yr.
Colorado Blue Spruce



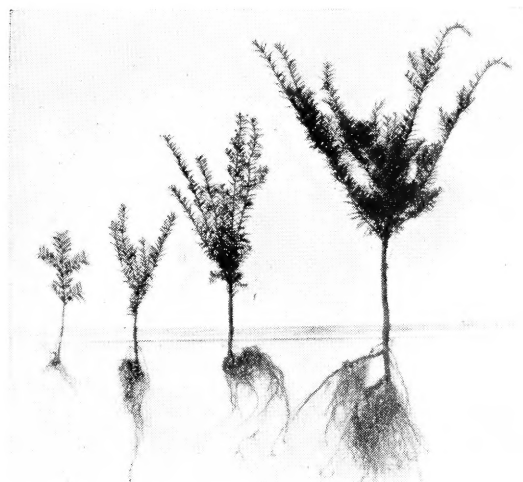
Seed Beds



2 Yr., 3 Yr., 5 Yr., 6 Yr.
White Pine



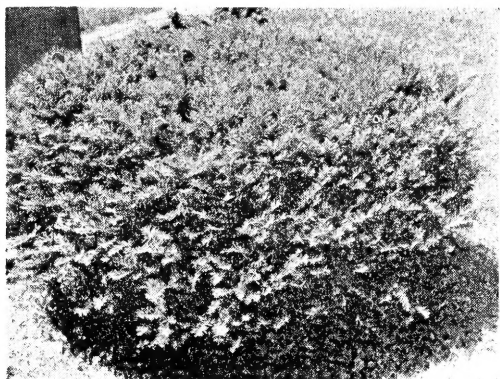
3 Yr. Seedling Beds



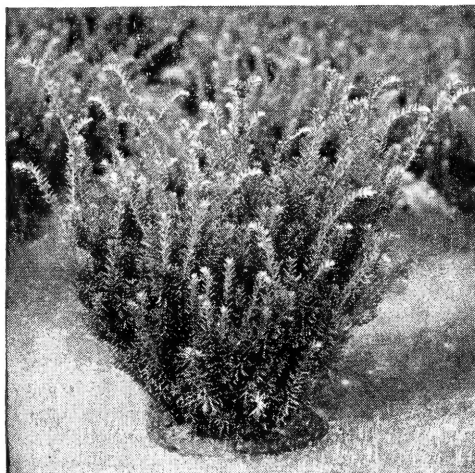
R. C. 1 Yr., 2 Yr., 3 Yr.
Taxus Cuspidata



11 Yr. old Forest
Norway Spruce



Spreading Japanese Yew
(*TAXUS CUSPIDATA*)



INTERMEDIA YEW (*Taxus Intermedia*)

TAXUS - YEWS

Yews are strictly ornamental and have a wide range of uses. Best for shady spots. Foliage is rich and attractive. The coldest winters or the bitterest of winds never injure their foliage. Best subject for hedges. If not allowed to suffer from dry weather, development is rapid. Most varieties of Yews produce a quantity of red berries in late fall. Trees shear easily and can be trimmed in many forms without injury to plant. Yews are important in landscape purposes.

There are from 150 to 200 varieties of yews known to be in existence. We are listing 9 of the very best type for landscape purpose.



UPRIGHT YEW
(*Taxus Capitata*)

Transplanted Trees	Size	5	10	25
Brown—broad upright	6-9 in.	\$2.50	\$4.50	\$10.00
Cuspidata—bushy low spreading	6-9 in.	2.25	4.00	9.00
*Capitata—pyramid type	6-9 in.	2.50	4.50	10.00
Intermedia—medium spreader	5-8 in.	2.50	4.50	10.00
Hatfield—upright vase type				
*Hicksi—narrow upright	7-10 in.	2.50	4.50	10.00
Andersoni—graceful spreading	6-9 in.	2.50	4.50	10.00
Kelseyi—dense upright—berries	6-9 in.	2.50	4.50	10.00
Brevifolia—dwarf bushy	4-7 in.	2.50	4.50	10.00

*Best for hedge purposes

SPECIAL COLLECTION—10 each of the above 9 varieties (90 trees) for \$34.00.
Rooted cuttings of the above \$15.00 per 100, Ready May 15.



MUGHO PINE

MUGHO COMPACTA PINE

Girard Brothers' Mugho Pine is grown from a selected strain of seed which produces the true, many stemmed, low branched, dwarf type. The color is a deep green, summer and winter. Mugho seldom grows over 4 to 5 feet tall even if never pruned, but spreads out. If sheared annually it can be kept as small as desired. Shearing produces a thick dense foliage, as thick and as green as a bluegrass lawn. Mugho does well in shade growing on the north side, or shady side of a building without getting ragged. Without question, it is the outstanding dwarf evergreen for all-around use. In the spring when the new needles come, they are beautiful. Especially adapted for planting in front of taller evergreens, entrances to walks, low informal hedges, and on terraces.

SEEDLINGS—2-4 in., 25 for \$2.20; 100 for \$3.00; 500 for \$36.00.

TRANSPLANTS—4-6 in., 10 for \$3.75, 100 for \$16.50.

YOUNG CANADIAN HEMLOCK TREES

Most graceful of all evergreens is the title often bestowed on the Hemlock. Its long branches droop gracefully to the ground. Needles are soft and delicate. Does well in full sun or half shade, but prefers a rather moist place, a little sheltered from sweeping winds and partial shade. We secure our Hemlock seed from the far North securing a hardy, superior type. Do not confuse our Canadian Hemlock with the Hemlock species found growing wild in Tennessee.

SEEDLINGS—3-6 in., 10 for \$1.30; 25 for \$2.50; 100 for \$8.50.

TRANSPLANTS—4-8 in., 10 for \$2.00, 25 for \$3.75, 100 for \$14.00, 1000 for \$120.00.

TRANSPLANTS—10-12 in., 3 for \$1.95, 10 for \$6.00.



GOLD PLUME CYPRESS

EUROPEAN LARCH

This tree is peculiar among evergreens in that its needle-like leaves are shed each year. The lone species of the north-eastern United States is the Tamarack. Unlike this variety the European Larch is a rapid growing pyramidal tree of wonderful beauty. In the spring the needles are soft light green, which turn golden yellow when they mature and drop off in the fall.

TRANSPLANTS—18-24 in., 10 for \$4.00; 2-3 ft., 3 for \$1.80; 10 for \$5.00.

SEEDLINGS—6-8 in., 10 for \$1.20; 100 for \$3.00.

FIRS - (Abies)

DOUGLAS FIR (Abies Douglasi)

Unexcelled for all purposes, well adapted for trimming, suitable for Christmas tree or specimen plantings. Needles not heavy and coarse as most firs. Branches are graceful and quite uniform.

SEEDLINGS—5-7 in., 25 for \$2.25; 100 for \$6.50; 500 for \$25.00; 1000 for \$42.00.

TRANSPLANTS—6-10 in. 25 for \$5.00; 100 for \$18.00.

BALSAM FIR (Abies Balsamea)

Rich, dark green needles, best for shade, Christmas tree, and forestry planting. Can be sheared into fine specimens.

SEEDLINGS—3-5 in., 25 for \$2.25; 100 for \$6.50; 500 for \$25.00; 1000 for \$42.00.

TRANSPLANTS—4-7 in., 25 for \$4.00, 100 for \$15.00, 500 for \$65.00.

CONCOLOR FIR (Colorado Silver Fir)

A beautiful pyramidal upright growing tree. Colors vary from silver, blue to green. Attractive for lawn specimen, windbreak or screen.

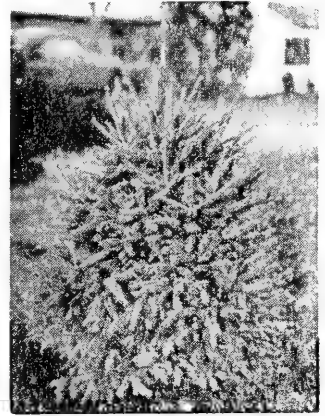
SEEDLINGS—4-7 in., 10 for \$1.30; 100 for \$10.00.



WHITE SPRUCE
(*Picea Glauca*)



NORWAY SPRUCE
(*Picea Excelsa*)



BLACK HILL SPRUCE
(*Picea canadensis albertiana*)

SPRUCE (*Picea*)

Spruce are unsurpassed for their ornamental qualities. They are conical or pyramidal evergreens of great hardiness. Widely used for ornamental, forestry, windbreak and Xmas tree planting.

Norway Spruce—Norway has been more widely used for Christmas tree planting and for windbreaks than any other species. Norway in seedlings will be limited in supply for some time.

Colorado Blue Spruce—One of the handsomest native trees growing in the Rocky Mountains. Use this tree for background and individual specimen planting. Trees grow quite slowly when young, but when six or seven years old, after becoming established in a new planting, grow surprisingly fast. The fine blue color comes as the trees get older. Prefer heavy soil.

Black Spruce—A rapid growing tree, suitable for Christmas trees and dense forestry.

White Spruce—Makes a more dense Christmas tree than Norway and grows

just as fast. Closely related to Black Hills. Fine also for windbreak and forestry planting.

Black Hills Spruce—Very compact, deep bluish-green foliage. Best Spruce for dry country planting. Also the best Spruce for planting in yards, as it stays small for many years and is highly ornamental. Often used in window boxes when young because of its dense, shapely habit. We know of no better table Christmas tree.

Engelmann Spruce—Steel blue foliage. Has slender pyramidal branches which form a dense, narrow pyramid. Rapid growing. Most valuable tree for forestry planting, background use, ornamental purposes. Its blue color comes in the winter and makes this tree command a premium price among Christmas buyers.

SPRUCE SEEDLINGS and TRANSPLANTS

Variety	Age	Size	25	100	500	1000
Black Spruce	4 yr. T	3-12"	5.00	17.00	80.00	125.00
Black Hill Spruce	2 yr. S	3-6"	2.50	6.50	27.00	45.00
Black Hill Spruce	6 yr. T	3-10"	7.00	25.00	80.00	
Black Hill Spruce	4 yr. T	4-6"	4.50	16.00	65.00	110.00
Colorado Blue Spruce	2 yr. S	3-6"	2.50	6.50	27.00	45.00
Colorado Blue Spruce	4 yr. T	5-8"	4.50	16.00	65.00	125.00
Colorado Blue Spruce	5 yr. T	6-8"	6.25	22.00		
Engelman Spruce	4 yr. T	4-6"	6.00			
Norway Spruce	2 yr. S	4-6"	2.50	6.50	26.00	40.00
Norway Spruce	4 yr. T	6-10"	4.50	16.00	70.00	130.00
Norway Spruce	5 yr. T	10-12"	6.25	22.00		
White Spruce	2 yr. S	3-6"	2.50	6.50	26.00	40.00
White Spruce	4 yr. T	5-7"	5.00	16.00	65.00	120.00
White Spruce	5 yr. T	8-12"	5.50	19.00	80.00	130.00
White Spruce	5 yr. T	12-14"	12.50	40.00		

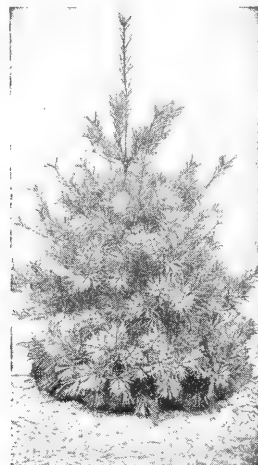
We recommend transplants for fall planting. Seedlings are available at \$6.00 per 100 in above varieties.
T Indicates Transplants



SCOTCH PINE
(*Pinus Sylvestris*)



AUSTRIAN PINE
(*Pinus Nigra*)



WHITE PINE
(*Pinus Strobus*)

THE PINE FAMILY (*Pinus*)

Pines are widely wanted everywhere. All pines are hardy. Many of the species are valuable for wood, fuel, reforestation, windbreaks, soil erosion prevention, Mugho is the main dwarf ornamental species.

Banksiana (Jack)—Makes quick, dense windbreaks. Grows on poor soil. Picturesque tree. Native of the West.

Austrian (Nigra) —Sturdy, upright tree of compact symmetrical growth. Ornamental and good Christmas tree.

White Pine (Strobus)—Soft bluish-green needles. Fine timber species. Makes fine lawn specimens.

American Red or Norway—Deep green all year. Best of all Pines for timber and Christmas tree planting. Produces valuable wood for fuel. Grows fast.

Western Yellow Pine (Pinus Ponderosa) —Symmetrical variety with long bluish-green needles. Best for ornamental and windbreak planting. Also, good timber variety. Very hardy.

Scotch Pine (Sylvestris)—Stately upright tree. Needles green to blue-green in color, a good Christmas tree variety. Grows dense, can be sheared easily, grows well in poor soil, easily adapts itself to most any type soil. Also valuable for windbreaks and timber purposes. Very hardy.

Variety	Age	Size	25	100	500	1000
American Red Pine	2 yr. S	4-6"	2.00	5.00	22.00	38.00
American Red Pine	4 yr. T	6-10"	4.50	12.00	40.00	80.00
American Red Pine	4 yr. T	12-16"	5.00	18.00	80.00	140.00
Austrian Pine	4 yr. T	8-10"	5.00	17.00	65.00	120.00
Austrian Pine	2 yr. S	4-6"	2.50	6.50	26.00	45.00
Austrian Pine	5 yr. T	12-16"	6.00	20.00	90.00	
Scotch Pine	4 yr. T	12-16"	5.00	17.00	65.00	120.00
Scotch Pine	2 yr. S	5-8"	2.50	6.50	26.00	45.00
Western Yellow Pine	2 yr. S	4-6"	2.50	6.50	26.00	45.00
Western Yellow Pine	4 yr. T	8-12"	5.00	17.00	65.00	120.00
White Pine	2 yr. S	3-5"	2.00	5.00	22.00	35.00
White Pine	3 yr. T	5-8"	4.00	14.00	60.00	
White Pine	5 yr. T	12-16"	5.00	17.00	65.00	120.00
Jap Red Pine	5 yr. T	15-18"	10.00	30.00		
Jack Pine	2 yr. S	8-10"	2.50	6.50	26.00	40.00

T—Indicates Transplants

S—Indicates Seedlings

**THREAD CYPRESS**

Cypress Chamaecyparis

Strictly ornamental species, graceful branches, all easily trimmed, all hardy and good landscape varieties.

THREAD CYPRESS

(Filifera, green). Slender olive green foliage, makes a broad low bush. Especially useful around corners of low houses.

TRANSPLANTS—6-10 in., 10 for \$4.50.

THREAD CYPRESS

(Filifera golden). Same as Filifera green, only a beautiful golden yellow, a valuable ornamental.

TRANSPLANTS—6-9 in., 10 for \$4.50.

GREEN PLUME CYPRESS

Feathery, fern-like, deep green foliage. The more it is pruned, the more beautiful it becomes. We trim it mostly into dense round balls.

TRANSPLANTS—9-12 in., 10 for \$4.50, 25 for \$10.00.

SILVER MOSS CYPRESS

Same type and growth of fine feathery foliage as Green and Golden Plume, except color, which is silver. One of the very finest of all silvery evergreens and perfectly hardy everywhere, even in Canada. Prefers sun.

TRANSPLANTS—6-8 in., 10 for \$5.00.

JUNIPERUS MEYERI. An upright tree of irregular form. Makes a dense heavy growth of plume like branches. Color of foliage vary from deep blue to bronze. Very interesting evergreen, one that attracts attention.

TRANSPLANTS—6-9 in., 10 for \$6.50.

**JUNIPERUS HORIZONTALIS****GOLDEN PLUME CYPRESS**

Same type of foliage as Green Plume, except it is a bright golden yellow. Unexcelled for low, dense hedges, individual specimens, or foundation planting in full sun.

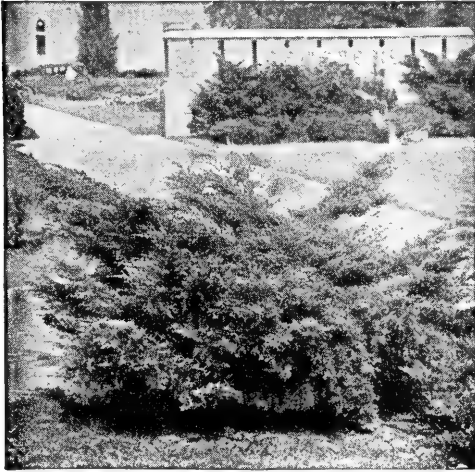
TRANSPLANTS—5-8 in., 10 for \$3.50, 25 for \$7.50.

DWARF GOLD PLUME Cypress

(Ret. Sulphuriana) Slow growing. Makes a very dense cone shaped growth. Needs no trimming. Ideal for rock-gardens and foundation plantings.

TRANSPLANTS—4-6 in., 10 for \$3.50.

**Meyers Juniper**



PFITZER JUNIPER

THE JUNIPER FAMILY

The Juniper family is ornamental. The upright forms make beautiful specimens, and the lower growing varieties are used for ground covers. Junipers are mostly propagated from cuttings and some of the rare forms by grafting. These young trees will make fine specimens in two or three years.

SAVIN JUNIPER (Vase shape)

Spreading Vase shaped evergreen. Grows to height of 2½ to 3 ft., makes fine specimens, good subject for foundation planting, prefers full sun.

TRANSPLANTS—8-12 in., 10 for \$5.00, 25 for \$11.25; 6-8 in. T., 10 for \$4.00.

SAVIN JUNIPER (Low Spreading type)

This is a low spreading form which grows close to the ground. The colors run from steel blue to deep green. Ideal for Rock gardens. Transplants, 4 yrs., 6-10 in., 10 for \$6.00

ANDORRA—Low spreading habit summer foliage, silvery cast; after frost, purple. TRANSPLANTS—7-10 in., 10 for \$5.00; 50 for \$20.00; 5-7 in., 10 for \$3.50.

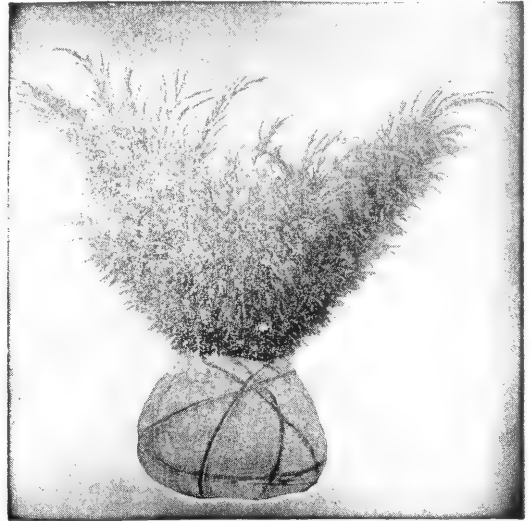
PFITZER—An ornamental-low growing and spreading tree. One that is extensively used by landscapers and gardeners. This variety has been used for many many years. It is just as popular today.

TRANSPLANTS—6-10 in., 10 for \$5.00; 25 for \$12.25.

10-12 in., 10 for \$6.50; 25 for \$15.50.

PFITZER AUREA—A golden Pfitzer. Similar to the above. Medium grower. It possesses a bright golden color during spring and summer. Will color brightest in full sun. It is very effective in plantings with the above.

TRANSPLANTS—8-12 in., 10 for \$7.50.



SAVIN JUNIPER

JUNIPERUS-GLAUCA HETZI

A beautiful fast growing spreading type juniper. Color silvery blue. Grows same as Pfitzer. A new addition to the family.

TRANSPLANTS—10-15 in., 10 for \$5.50, 5-7 in., 10 for \$4.00, 25 for \$8.75.

JUNIPERUS HORIZONTALIS DOUGLASI

(Creeping Waukeegan Juniper). Ideal for terraces, borders and rock gardens.

TRANSPLANTS—5-9 in., 6 for \$3.00.

JUNIPERUS HORIZONTALIS GLAUCA

(Blue Creeping Juniper). Very attractive on sloping lawns, terraces, overhanging walls and the like, where they can be used.

TRANSPLANTS—9-10 in., 10 for \$5.00.



ANDORRA JUNIPER



SPINY GREEK JUNIPER
(*Juniperus excelsa stricta*)



REDCEDAR
(*Juniperus virginiana*)



IRISH JUNIPER
(*Juniperus communis hibernica*)

JUNIPERUS VIRGINIANA

(Redcedar). This is the mother plant from which numerous horticultural varieties have been developed over many years. Several varieties offered in this catalog are horticultural forms of Redcedar. TRANSPLANTS—6-8 in., 25 for \$5.00.

JUNIPERUS COMMUNIS HIBERNICA FASTIGATA

(Narrow Irish Juniper). A form very superior to the common Irish Juniper. Grows into a dense, narrow column. A healthy, vigorous grower. TRANSPLANTS—8-12 in., 10 for \$5.00, 25 for \$10.00.

JUNIPERUS EXCELSA STRICTA

(Spiny Greek Juniper). Grows very dense, symmetrical, especially adapted to urns, tubs, rock gardens. Dwarf, cone shaped, grayish green foliage all year. TRANSPLANTS—6-10 in., 10 for \$5.00, 25 for \$10.00.

JUNIPERUS SCOPULORUM

(Silver Cedar) An upright form of Juniper, dense pyramidal habit. Usually silvery blue. Ideal for landscape and foundation planting. This variety is grown from seed and plants may vary in color. Will grow best in full sun. Not particular to soil. 4-6 in., 2 yr. seedlings 10 for \$2.00; 25 for \$4.50; 100 for \$14.00.

JUNIPERUS VIRGINIANA GLAUCA

(Silver Cedar). This is a favorite with many customers. It is a shapely, pyramidal tree of moderate size. Outstanding silvery-blue. Brightest in early spring, darkening to a deep blue as season progresses. Trims well. GRAFTS—12-15 in., 1.00 each; 3 for \$2.75.

GRAFTED JUNIPERS

The fine Junipers listed below are all grafted Junipers. Stock was carefully selected for color and growth. These will grow as easily as *Juniperus Virginiana*. Suggest staking the first year.

JUNIPERUS CHINENSIS KETELEERI

(Keteleer Juniper). This tree has a good rich green color, is a good grower, and has an abundance of berries. GRAFTS—12-14 in., \$1.00 each, 3 for \$2.75.

JUNIPERUS CHINENSIS COLUMNARIS

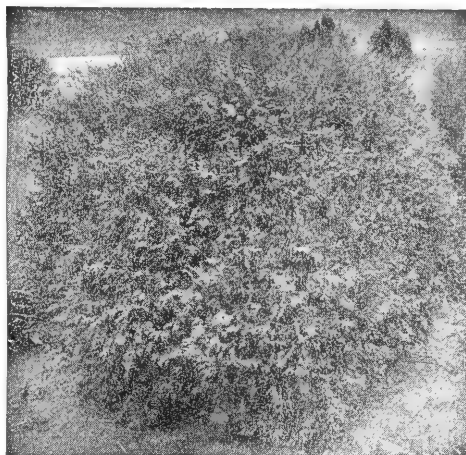
(Blue Columnar Chinese Juniper). One of the best known of the horticultural varieties of the Chinese Junipers can be grown into a pyramid or narrow column shape, attractive Glaucas, blue color. GRAFTS—12-14 in., \$1.00 each, 3 for \$2.75.

JUNIPERUS VIRGINIANA CANAERTI

(Canaert Juniper). This horticultural variety of Redcedar has long been one of the leading favorites. It grows in a symmetrical, pyramidal shape, well covered with heavy green foliage. GRAFTS—10-14 in., \$1.00 each, 3 for \$2.75.

JUNIPERUS VIRGINIANA BURKI

(Burk Juniper). A horticultural variety of the Redcedar resembling the *Juniperus virginiana glauca*. The color is somewhat deeper blue, the tree seems to take on a more compact habit than the *Glauca*. GRAFTS—8-10 in., 80c each; 10 for \$1.50. 10-14 in. size, \$1.00 each; 3 for \$2.75.



AMERICAN ARBORVITAE WOODWARD ARBORVITAE PYRAMIDAL ARBORVITAE
 (Thuja occidentalis) (Thuja occidentalis woodwardi) (Thuja occidentalis pyramidalis)

ARBORVITAE

THUJA OCCIDENTALIS

(American Arborvitae). We grow only from seed, the Northern form from Canada. Grows in compact form, pyramidal in shape. Thrives on vigorous pruning, makes fine low hedges or taller windbreaks.

TRANSPLANTS—8-10 in., 10 for \$2.50, 25 for \$5.25.

THUJA OCCIDENTALIS PYRAMIDALS

(Pyramidal Arborvitae). Tall, slender form of American Arborvitae. Always prune trees while young to build the slender form.

TRANSPLANTS—8-12 in., 10 for \$5.00, 12-15 in., 5 for \$3.50, 10 for \$6.50.

THUJA OCCIDENTALIS WOODWARDI

(Woodward Globe Arborvitae). Grows naturally round like a ball and forms a bushy, natural globe shaped tree of very compact form and good color. The best globe shaped evergreen. Small trees show up well in window boxes.

TRANSPLANTS—4-7 in., 10 for \$4.00, 25 for \$9.50.

TRANSPLANTS—Strong 2 yr., field grown, 10 for \$7.00, 25 for \$15.00.

THUJA LUTEA

(George Peabody). A beautiful golden type color very pronounced, makes a very good ornamental. This variety is always scarce.

3 Yr. from field—8-12 in., 3 for \$2.95.

THUJA (Elegantissima)

Upright pyramidal form. Heavy foliage tipped golden. Very hardy. Shapes well.

10 for \$4.50; 25 for \$10.00.

THUJA GLOBOSA VERIDIS. A deep green form of the woodwardi globe. Maintains its good color the year round. Keeps its nice form, needs no trimming.

TRANSPLANTS—5-7 in., 10 for \$4.50, 25 for \$10.00.

THUJA (Hetz Wintergreen). This is a new form of the variety Elegantissima. Has heavy nice green foliage. It is pyramidal in form. We see a great future in this one.

TRANSPLANTS—8-12 in., 10 for \$6.00.

THUJA REINGOLD. A slow growing dwarf type with very fine golden colored foliage. Ideal for rock gardens and small borders. Grows into an attractive small globe.

TRANSPLANTS—5-7 in., 10 for \$4.50, 25 for \$10.00

DWARF CONICAL SPRUCE (Picea Densa-ta Conica) A very dense slow growing spruce, upright. The branches grow so thick that it is almost impossible to see through them. Ideal for rock gardens or lawns as single specimens.

3 Yr. 4-6 in., 3 for \$1.80; 10 for \$5.00



RHODODENDRON HYBRIDS

The Rhododendrons are acid soil loving plants. As in the case with most broad leaf evergreens the plant grows best in protected areas. Windswept locations should be avoided. Rhododendrons like rich, well drained soil that is rich in organic matter. Neutral or sub-acid soil can be improved by use of Aluminum Sulphate. An acid peat, pine needles and oak leaves are all recommended as mulching material. Many varieties of Rhododendrons are found in the United States. Some are Natives of the Eastern Mountain chain from Pennsylvania to Florida. Many of the hybrids are from crosses of our well known R. Catawbiense and a large flowering Oriental species R. Arboreum. More than fifty varieties in shades of white, pink, lavender and red are known among nurserymen.

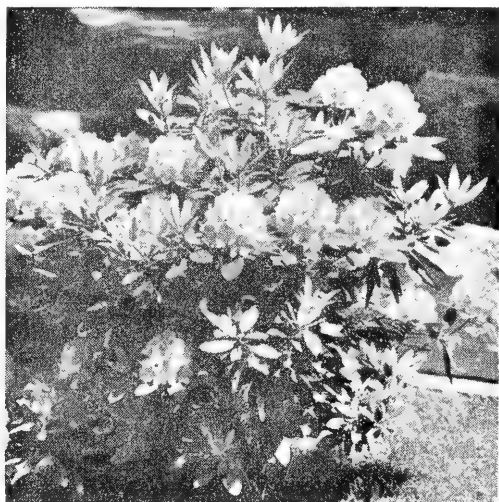
RHODODENDRON MAXIMUM (Rosebay Rhododendron)

Evergreen shrub with large showy leaves and bluish-white flowers in July. Does well under Oak, Cherry, and Birch trees, but avoid Beech and Maple. To get the required acid condition on lime or sweet soils use a quantity of peat around the roots when planting, or plant all in peat. This is a wonderful shrub for mass effects.

TRANSPLANTS—8-10 in., 60c each; 10 for \$7.00.

HYBRID SEEDLINGS. These are seedlings from named varieties and others. In selecting our seed we have obtained some very fine varieties from our crosses. These run in shades of white, pink and reds. We do not guarantee the colors.

TRANSPLANTS—3-4 in., 3 for \$1.00, 10 for \$3.00, 100 for \$28.00.



SELECTED RHODODENDRON HYBRIDS

This list contains some of the finest in the hybrid family. Selected from good color, sturdy growing habits and hardiness.

ABRAHAM LINCOLN—Bright pink, rugged grower, very hardy.

AMERICA—Brilliant red, one of the hardiest.

CARACTACUS—Brilliant purplish red, rugged grower.

CAUTABIENSE ALBA—Clear white, good grower.

CAUTABIENSE BORSALUT—Good purple, good grower.

CUNNINGHAMIANA—White, waxy long foliage.

DR. DRESSSELHUYS—Brilliant red, tall grower.

DR. RUTGERS—Many large flowers of Brilliant red.

DR. F. D. GODMAN—Large flowers, deep red, good grower.

CHAS. DICKENS—Pleasing red, good grower.

LEE'S DARK PURPLE—Large trusses deep purple, tall

E. S. RAND—Compact grower, Bright Red.

ROSEUM ELEGANS—Fine medium pink, good grower.

VAN DER HOOP—Good deep rose pink good grower.

12-18 in., B. B. plants \$3.25 each, 10 for \$30.00.

8-10 in., B. B. plants, \$2.25 each, 10 for \$20.00.



Azaleas in foreground, Concolor Fir in background

AZALEAS ARE BECOMING MORE POPULAR EACH YEAR. NO PLANTING SHOULD BE WITHOUT AZALEAS, IF THE CLIMATE WILL PERMIT. MOST VARIETIES LISTED IN OUR CATALOGUE HAVE BEEN GROWN IN OUR NURSERY FOR AT LEAST TWO YEARS OR MORE.

Our temperatures here have dropped to 10° below zero, and sometimes lower. All varieties that do not take our climate are eliminated.

Azaleas thrive well in acid soil. Lime should not be used. If soil is alkaline use large quantities of acid peat moss. An application of aluminum sulphate once a year also will help acidify. Leaf mold from near by woods can be used.

Azaleas can be used for borders on foundation planting. Many Azaleas are evergreen and many are deciduous. Each year we are adding a few more to our list. We also are developing some very fine varieties of our own, which we will introduce soon.

GABLE HARDY AZALEAS

WE HAVE GROWN GABLE AZALEAS FOR A NUMBER OF YEARS AND FOUND THESE TO BE SATISFACTORY FOR HARDINESS, GROWING HABITS AND COLOR. LISTED ARE THE ONES WE CONSIDER BETTER.

BOUDOIR—large watermelon pink. Flowers freely. Attractive foliage. Vigorous in growth. Very hardy, you will like this one. TRANSPLANTS—65c each, 3 for \$1.75. 2 in. pot plants 3 for \$1.50, 10 for \$4.50.

CORSAGE—A beautiful shade of lavender or orchid. Blooms large flowers freely on compact plants.

TRANSPLANTS—6-8 in., 65c each, 3 for \$1.75; 2 in. pot plants 3 for \$1.50; 10 for \$4.50.

ELIZABETH GABLE—This one attracts a lot of attention wherever shown. Height about 5 ft. Blooms double clear pink. Foliage deep glossy green. One of my favorites.

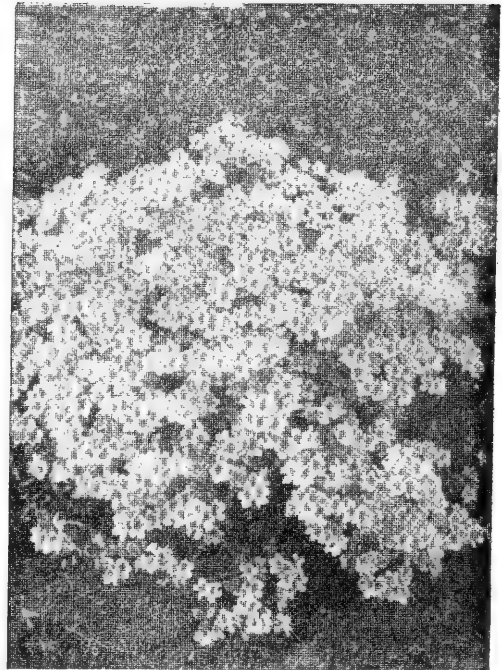
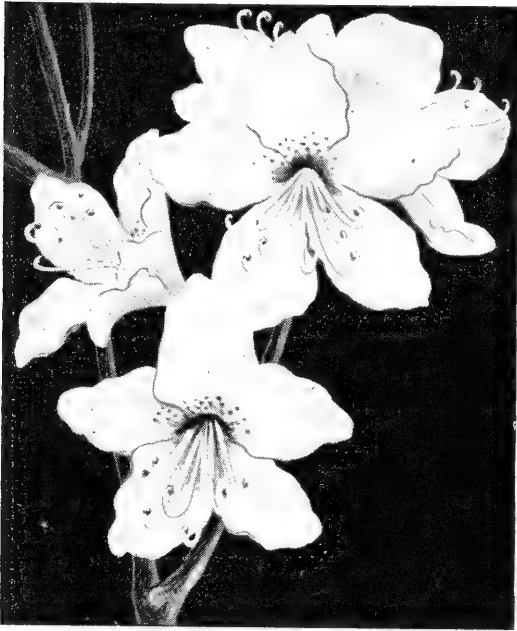
TRANSPLANTS—5-8 in., 65c each, 3 for \$1.75. 2 in. pot plants 3 for \$1.50; 10 for \$4.50.

HERBERT—Deep purple, flowers hose on hose type, large frilled and ruffled. A good grower. You will like this one. Always in demand.

TRANSPLANTS—5-8 in., 65c each, 3 for \$1.75. 2 in. pot plants 3 for \$1.50, 10 for \$4.50.

MARYANN—Double Salmon pink. A good evergreen type Azalea. Foliage deep glossy green. Easy to grow. A good variety.

TRANSPLANTS—5-8 in., 65c each, 3 for \$1.75. 2 in. pot plants 3 for \$1.50, 10 for \$4.50.



**AZALEA SCHLIPPENBACHI
KAEMPFERI HYBRID AZALEAS**

THESE NEW HYBRIDS HAVE BEEN ACHIEVED BY CROSSING KAEMPFERI WITH AZALEA MALVATICA. THERE HAS BEEN OBTAINED SOME VERY HARDY EVERGREEN TYPE AZALEAS WITH A LONG RANGE OF COLORS. THEY ARE FAST GROWERS.

AZALEA KAEMPFERI—These azaleas reach a height of 6-8 ft., a very fast grower. Evergreen in warmer climate but will loose foliage further north. A good free bloomer. Flowers bright scarlet shades. These azaleas grown from seed.

TRANSPLANTS—5-8 in., @ 40c each; 10 for \$3.50.

FEDORA—Phlox Pink flowers. Very attractive. Outstanding variety of proven merit. Very hardy, large flowers and vigorous grower.

10-12 in., B. B. \$3.00 each. 2 in. pot plants 3 for \$1.50.

KATHLEEN—Large beautiful rose colored flowers. One of the best of the Kaempferi. Through many tests this variety has proven to be almost faultless. A good one.

10-12 in., B. B. plants \$3.00 each. 2 in. pot plants, 3 for \$1.50.

ETNA—Beautiful shade of rosy red. Deep green foliage. Good compact grower. Ideal for foundation plantings.

15-18 in., B. B. \$4.00 each, 3 for \$11.25. 2 in. pot plants, 3 for \$1.50.

OTHELO—Flowers fiery red. Leaves glossy green. Upright grower.

10-12 in., B. B. \$2.00 each, 3 for \$5.50. 2 in. pot plants, 3 for \$1.50.

AZALEA KAEMPFERI

JOHN CAIRNS—A striking brilliant scarlet color. Plants grow compact, deep green foliage. One of the newer Kaempferi type. 8-12 in., B. B. plants, \$3.00 each. 2 in. pot plants, 3 for \$1.80.

GLOWORM—Bright orange flower completely cover the neat compact plants. Lustrous deep green foliage, adds much to the beauty of the plant.

8-12 in., B. B. \$3.25 each. 2 in. pot plants 3 for \$1.80.

AZALEA MOLLIS

AZALEA MOLLIS—Colors are from yellow to red in color. Very striking. Flowers are large. Grows to a height of 2-3 ft.

12-15 in., B.B. Plants from field rows, well branched, \$1.75 each, 3 for \$5.00.

TRANSPLANTS—7-10 in., 50c each, 10 for \$4.00.

DIRECTOR MOORELAND—Mollis hybrid, a bright golden yellow. Vigorous grower. Ideal for foundation planting.

12-15 in., B.B. \$3.00 ea., 3 for \$8.50.

AZALEA RUSTICA

AIDA—Beautiful rosy lavender. Flowers double, very fragrant. Foliage broad and deep green. Makes a nice compact bush. Suitable for landscape use.

15-18 in., B. B. \$4.00 each, 3 for \$11.25.

(Maxwell Azalea)

Foliage heavy and luxuriant. Plant rather low growing and spreading. Flowers extremely large, carmine red, completely covering the plant.

8-10 in., B. B. \$1.50. 2¼ in. pots 3 for \$1.50, 10 for \$4.50.

QUANTITY	VARIETY AND SIZE	DOLLARS	CENTS
	AMOUNT BROUGHT FORWARD		
TOTAL			

IF YOU HAVE FRIENDS WE WILL BE GLAD TO MAIL THEM CATALOGUES

NAME _____

ADDRESS _____

NAME _____

ADDRESS _____

NAME _____

ADDRESS _____

**NO ORDERS ACCEPTED FOR LESS THAN \$ 3.00
THIS DOES NOT APPLY TO SEED ORDERS**

QUANTITY	VARIETY AND SIZE	DOLLARS	CENTS
	AMOUNT BROUGHT FORWARD		
	TOTAL		

IF YOU HAVE FRIENDS WE WILL BE GLAD TO MAIL THEM CATALOGUES

NAME

ADDRESS

NAME

ADDRESS

NAME

ADDRESS

NO ORDERS ACCEPTED FOR LESS THAN \$ 3.00
THIS DOES NOT APPLY TO SEED ORDERS

AZALEA VUYKIANA (Dutch hybrid)

This is a new race of Azalea. Developed by the Vuyk Van Ness Nurseries of Holland. We have grown this strain for four years, as yet we can not find any fault with them. These are a cross of the Azalea Mollis and much hardier than the Kurume strains. Try some and you will enjoy them as we do.

AZALEA MRS. VUYK VAN NESS — A 1950 introduction from Holland. This is one of the best Azaleas introduced in many years. The flowers are large ruffled bengal red of a heavy texture. Foliage is a glossy deep green. Sturdy compact grower. One that will attract much attention.

TRANSPLANTS—5-7 in., 80c each, 3 for \$2.25; 2 in. pot plants, 3 for \$2.10; 10 for \$6.25.

AZALEA LITTLE BEAUTY — Another 1951 introduction. The beauty of this Azalea is unsurpassed. The flowers are double and fringed which completely cover the plant. The color is a satin deep rose. Branches are upright with deep glossy green foliage.

TRANSPLANTS—5-7 in., 80c each, 3 for \$2.25; 2 in. pot plants, 3 for \$2.10; 10 for \$6.25.

AZALEA BEETHOVEN (Dutch Hybrid). Another import from Europe. Attractive lilac shade. Grows dense, upright and blooms freely. This is another good one.

10-12 in. B.B. \$2.50 each. TRANSPLANTS—5-8 in., 65c each. 3 for \$1.75. 2 in. pot plants 3 for \$1.50; 10 for \$4.50.

AZALEA HELENA VUYK (Dutch Hybrid) Very large deep rose flowers. Foliage attractive deep green. Grows dense.

10-12 in. B.B. \$2.50 each.

TRANSPLANTS—5-8 in., 3 for \$1.75. 2 in. pot plants 3 for \$1.50, 10 for \$4.50.

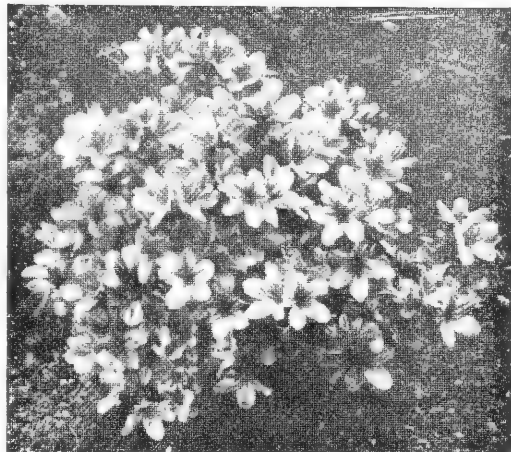
AZALEA SIBELIUS (Dutch Hybrid) A Vuyk azalea, like Beethoven, plants grow dense and bloom freely. Flowers are showy orange red.

10-12 in. B.B. \$3.00 each. 2 in. pot plants 3 for \$2.10, 10 for \$6.25.

AZALEA WILHELMINA VUYK (Dutch Hybrid). New from Europe. Large clear white blooms. When in bloom plants resemble a mound of snow. Compact rapid grower.

12-15 in. plants B.B. \$2.50 each.

TRANSPLANTS—5-8 in., 65c each, 3 for \$1.75. 3 in. pot plants 3 for \$1.50, 10 for \$4.50.

**AZALEA MAXWELLI**

AZALEA GERARDINI VUYK (Dutch Hybrid). A beautiful rose pink azalea. We imported the first of this variety 4 years ago and like it very well. Grows dense, upright and blooms freely. One that will gain great popularity.

10-12 in., B. B. \$2.50 each. 2 1/4 in. pot plants 3 for \$1.50.

AZALEA POUKHANENIS — Compact low growing, produces a profusion of deep rosy lavender flowers in late May. A rugged grower, hardy.

TRANSPLANTS—5-8 in., 65c ea., 3 for \$1.75.

AZALEA CALENDULACIA—Light salmon to deep golden yellow. This one does best in part shade; needs acid soil, best obtained by peat humus or oak leaves.

TRANSPLANTS—3-5 in., 35c each, 10 for \$3.00.

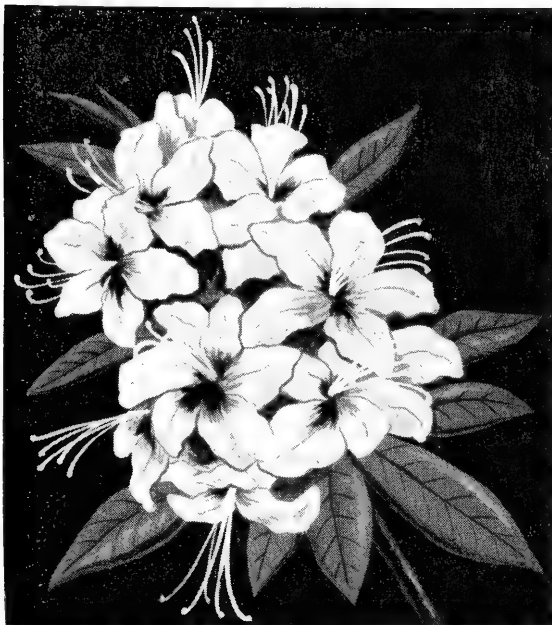
12-15 in., B. B. \$2.25 each, 3 for \$6.00.

AZALEA SCHLIPPENBACHI—Known as Royal Azalea. Beautiful clear pink blooms on a plant that reaches 9 feet when fully matured; easy to grow, very hardy. Requires acid soil.

TRANSPLANTS—10 for \$3.50.

AZALEA YODIGOWA—A malvatica hybrid. Flowers a pretty double pink on compact upright growing plants. A deciduous variety. Very Hardy.

TRANSPLANTS—10-12 in., \$2.00 each, 3 for \$5.50.



HARDY GHENT

AZALEA GHENT HYBRID SEEDLINGS—

These are seedlings of many named varieties. Colors vary from yellow to scarlet.

TRANSPLANTS—4-7 in., 45c each, 10 for \$4.00.

12-15 in. B. B. with buds, \$2.00 each, 3 for \$5.50.

AZALEA NARCISSAFLORE—A double pure golden yellow ghent hybrid. Blooms in profusion. Makes an attractive bushy plant. Dutch Hybrid.

12-18 in. B. B. Plants, \$3.25 each.

AZALEA DAVIESI—A rugged upright growing form. Its white flowers are very fragrant. Foliage deep green of heavy substance. If you like a fragrant azalea try this one.

18-24 in. B. B. Plants, \$4.00 each, 3 for \$11.50.

GLORIA MUNDI—Will attract much attention with flowers of rich fiery orange color. A low compact grower. Good for foundation planting. Very good variety.

18-24 in. B. B. Plants, \$2.50 each.

SANG de GENTBRUGGE—Flowers brilliant red. All other habits same as Gloria Mundi. Ideal for border and foundation planting.

12-15 in. B. B. Plants, \$3.25 each, 3 for \$9.00.

RAPHAEL D. SMET—Fragrant double white flushed rosy pink. Glossy deep green foliage. Compact and very attractive.

15-18 in., B. B., \$4.00 ea., 3 for \$11.00.

KURUME AZALEAS

KURUME AZALEAS ARE VERY SHOWY. USUALLY GROW COMPACT AND LOW. FOLIAGE IS SMALL AND SHINY. THESE ARE EVERGREEN AZALEAS, LEAVES STAY ON ALL WINTER. MASS OF FLOWERS THAT COME IN BRIGHT COLORS. FINE FOR FORCING.

ALADDIN—A bright scarlet with shiny green foliage. Compact grower. One mass of flowers completely cover the plant. A good one. Introduced from Holland in 1949. TRANSPLANTS—5-7 in., 75c each, 3 for \$2.10; 2 in. pot plants, 3 for \$1.75.

AZALEA SHERWOOD ORCHID—A hybrid hinodegiri with flowers of a clear lavender with speckled throat. Flowers are large and completely cover the plant. Good to plant in masses as they harmonize with other colors in gardens. This is a new azalea introduced recently from the Pacific coast. Hardier than Hinodegiri.

TRANSPLANTS—5-7 in., 65c each, 10 for \$6.00.

TRANSPLANTS—8-10 in., \$1.75 each, 3 for \$4.95; 2 in. pot plants, 3 for \$1.50, 10 for \$4.50.

SHERWOOD RED AZALEA—A magnificent azalea. Compact, dwarf and evergreen. Foliage so glossy it shines, bright green turning in cold weather to a fiery red. Better foliage than Azalea hinodegiri from which it was hybridized. Flowers in such abundance that the foliage is almost entirely hidden and of the most brilliant red imaginable. Words utterly fail to describe the Sherwood Red Azalea. We consider Sherwood Red Azalea the finest Azalea ever offered the nursery trade. It has every thing; hardiness, clean habit of growth, easy culture, splendid foliage and almost unbelievable showiness of inflorescence. Fourth year on market.

TRANSPLANTS—8-10 in. B. B. \$2.10 each, 3 for \$6.00. 2 in. pot plants, 3 for \$1.50.

AMOENA—Early flowering rosy purple, flowers are hose in hose. The foliage is a glossy deep green. A hardy dwarf variety. 2¼ in. Pot Plants—50c each, 3 for \$1.30.

TRANSPLANTS—2 yr. 5-8 in., 75c each, 3 for \$2.10. 2 in. pot plants, 3 for \$1.50.

ADDY WERY—Blood Red, oriental color, free flowering habits. Dwarf and compact. This is a nice one. Stock on this one is scarce, only a few hundred to sell this season. Not more than 2 to a customer.

10-15 in. B. B. plants—\$3.00 each, 2 in. pot plants, 3 for \$1.60.



BLEEDING HEART (Dicentra)

Bleeding Heart (Dicentra)—We are listing this 'Old Favorite' by request, from many of our customers. This flower came to be known many years ago. Is a favorite among'st flower lovers. Unlike many varieties that came in the picture and faded away. This flower becomes more popular as years go by.

The heart-shaped flowers are pink with white centers, branches graceful and drooping. Foliage is fern-like. Very hardy and grows the height of 18-24 inches.

Price, 60c each, 3 for \$1.65.

CHRISTMAS ROSE

HELIBOROS NIGRA—A rare plant that will be grown more when better known. Flowers when all other plants are froze out and dormant. The flowers are two to three inches across. White blooms on strong stems that make them suitable for bouquets. For best results these should be planted in part shade. Per clump - \$1.25, 3 for \$3.25.

HELIBOROS Hybrid ATRORUBENS—Purplish red flowers. Vigorous grower. Rare variety.

3-5 eye clump, \$2.00 each, 3 for \$5.75.

HEDIRA BALTICA

(Hardy Baltic Ivy)

A fine ground cover. Will do well in shade or sun.

2 in. pot plants—10 for \$3.00.



PASCHYSANDRA TERMINALIS

(Japanese Pachysandra)

JAPANESE PACHYSANDRA

(*Pachysandra terminalis*)

For ground cover or for grass under trees.

If you have a sandy bank, a terrace, places under trees where grass will not grow, a low border to fill in, plant Spurge. This is the ideal evergreen ground cover. Hardy everywhere in sun or shade. Same attractive green color all winter. Splendid plant for window boxes.

TRANSPLANT—from field rows, 10 for \$2.00, 100 for \$18.00.

VINCA MINOR

(Periwinkle or Trailing Myrtle)

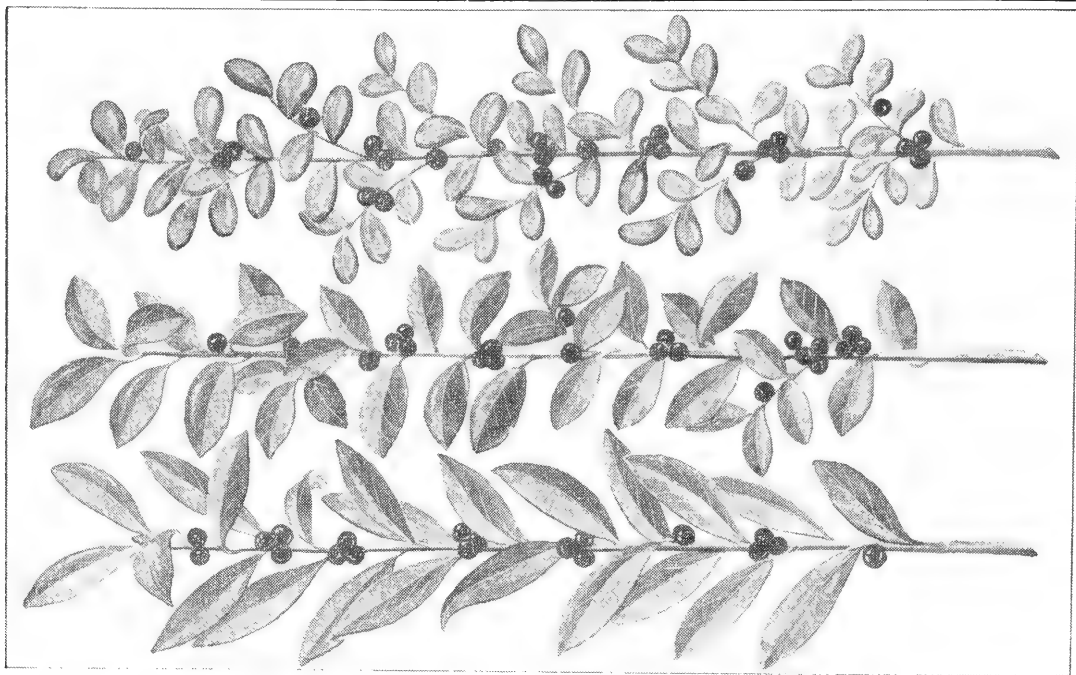
Hardy evergreen trailing herb. Makes a dense, attractive ground cover, and thrives with practically no care. Even does well on dry sand banks. A most suitable plant to grow as edgings to shrubbery borders, carpet the ground under the shade of trees or in shady borders. Hugs the ground.

Strong 1 year old, field grown clumps, 8 to 15 runners, 10 for \$1.80, 100 for \$16.00.

DAPHNE CNEORUM (Garland Flower)

One of the very choicest of all rock garden evergreens. Produces delicate rose-pink clusters of flowers completely covering the plant in early spring and more sparsely at intervals all summer until freezing weather. Flowers rival the carnation for fragrance. Growth not exceeding 8-10 inches in height but spreading out making a mat of grey green. Requires sunny location. Young rooted, field grown plants often in bloom.

TRANSPLANTS—4-6 in., 40c each, 4 for \$1.50.



BROADLEAF EVERGREENS

Broadleaf Evergreens are valuable for their use in landscape work. Some are valuable for their beautiful glossy foliage, others for their fruit such as *Ilex Opaca* and others for their blooms which are quite attractive amongst its deep green foliage. Most will do well in shade as well as sun.

ILEX CONVEXA

A slow growing evergreen with small, glossy, cup-shaped foliage. Useful where small shrubs are necessary. Can be sheared into dense globe or will do well without shearing. Very hardy.

TRANSPLANTS—5-7 in., 3 for \$1.25, 10 for \$3.50.

ILEX CRENATA (Oriental Holly)

A low-growing shrub with small, smooth, dark green leaves, resembling boxwood. Grows very dense with many small branchlets and black berries. Very useful or ornamental planting; makes an artistic hedge. Can be trimmed in any shape desired.

TRANSPLANTS—5-7 in., 40c ea., 10 for \$3.50.

MAHONIA AQUIFOLIA (Oregon Holly Grape)

The leaves are holly-like and bright green. Has long clusters of bright golden yellow flowers in the spring, followed by bunches of bright blue grape-like berries. Most attractive in foliage, flower and fruit. The sprays are fine for interior decoration. In the north the leaves lose their color in late winter but do not fall off. In the spring new life comes back into these leaves. Never winter kills. At its best in group plantings. We grow it in full sun, but it is at its best in half shade. Prefers a rather heavy soil.

TRANSPLANTS—Field grown 8-10 in., 65c each, 3 for \$1.50.

ILEX ROTUNDIFOLIA

A dense, low growing shrub. Waxy deep green foliage. Fine for landscaping. Grows well in sun or shade. Shears easy.

PLANTS—6-10 in., 55c each; 10 for \$5.00.

ILEX OPACA (American Holly)

These plants listed are from fine berried varieties, as—Merry Christmas, Old Heavy Berry and American Bittersweet. Plants are sold in groups of three. Two female and one male.

Heavy 3-yr. plants, B. B., 3 for \$5.50.

KAL LATIFOLIA (Mountain Laurel)

Grows into a compact symmetrical shrub, covered with foliage. Leaves medium sized, glossy throughout the year. When in bloom the plants are literally bouquets of lovely cup-shaped flowers ranging from almost white to deep pink. Effective singly or in mass plantings. Very hardy and desirable. Requires damp, loose, acid soil, humus, considerable shade. Easily the finest flowering evergreen grown.

TRANSPLANTS—8-10 in., 50c each; 10 for \$4.00.

PIERIS JAPONICA—Is a good grower and very handsome in form. The leaves are very delicately tinted when young. Does well in the shade or sun. An aristocrat of the broadleaf evergreen group.

BEDDED TRANSPLANTS—5-8 in., 40c each; 5 for \$1.55.



ILEX CONVEXA
EUONYMUS

Coloratus (Purple Leaf Creeping Euonymus). A purple leaf form of *E. Radicans*. This plant carries a rich green color throughout the summer and in the autumn turns to a purplish-red color which remains with it until spring. A wonderful plant for mass planting on banks and on stone work. **TRANSPLANTS**—6-10 in., 40c each, 10 for \$3.50.

Vegetus (Big Leaf Wintercreeper). Bushy, with round dull green leaves. This plant is a beautiful sight in winter when it is covered with its bright scarlet fruit. **TRANSPLANTS**—6-10 in., 40c each; 10 for \$3.50.

Radicans Erecta—A beautiful little upright growing shrub, suitable for borders or foundation planting. Foliage glossy dark green. Can easily be kept under control. **TRANSPLANTS**—6-10 in., 50c each; 3 for \$1.40.

ALATUS COMPACT—One of the best decorative varieties I know. Makes a dense compact bush. Its beautiful green leaves change to a brilliant red in the fall and early winter. Very hardy. **TRANSPLANTS**—6-10 in., 50c each; 10 for \$4.00.

DROOPING LEUCOTHOE
(*Leucothoe Catesbaei*)

A very ornamental broad leaved evergreen with large, glossy foliage. Foliage turns to beautiful shades of red and bronze in the fall and winter. It produces clusters of white flowers in the spring. Drooping branches make it a good facer or under-cover plant for taller shrubs. Semi-dwarf and hardy. **TRANSPLANTS**—12-15 in., B.B.—\$2.00.



BLUEBERRIES

Blueberry plants are very showy and attractive. The foliage is glossy green in spring, and blazing crimson in autumn. They can be planted in a group in practically any corner of a lot or a field.

We are offering the best fruited varieties developed by the U. S. Dept. of Agriculture.

The plants like acid soil. Soil can easily be made acid by adding rotted leaves, peat humus, or sawdust. Set the bushes 5 to 7 feet apart. A bush grown by itself will not bear fruit. Where 4 or more plants of different varieties are grown in close proximity perfect fertilization of the blossoms will take place, and the result will be abundant crops. Consequently, our blueberries are sold in units of 4 plants (mixed varieties) or in blocks of 8 plants or more (mixed). Each plant bears a name tag. Orders for single plants will not be accepted.

CONCORD — JERSEY — JUNE —
RANCOCAS — PIONEER — BURLINGTON

All varieties are 3 years old. Most will bear the first season. Prices: 12-15 in., 4 for \$4.50; 8 for \$8.00; 12 for \$10.50.

BUXUS SUFFRUTICOSA
(Dwarf English Boxwood)

Dwarf and slow growing. Best known evergreen edging plant. Foliage deep green and dense. Large specimens often used in urns and porch boxes.

TRANSPLANTS—Field Grown, 6-8 in., 60c each, 4 for \$2.00.

FLOWERING SHRUBS

ALTHEA HIBISCUS

(Rose of Sharon)

These are beautiful, upright growing shrubs that sometimes attain the height of 20 feet. Generally bloom in August and September. Very attractive with flowers from white to red. All listed are double varieties.

Ardens—Double Violet.

Boule de Feu;—Double Red.

Jeanne d'Arc—Double Pure White.

Pulcherimus—Double Pink.
2-3 ft., 75c each; 10 for \$6.00.

KOLKWITZIA AMABILIS

(Beauty Bush)

A handsome shrub, with graceful habits. Trumpet shaped pink flowers in June. Nice. 15-18, 75c each, 3 for \$2.40.

ALMOND, PRUNUS GLANDULOSA

Double Pink Flowering Almond

A very beautiful, early spring-flowering shrub, completely covered from the ground to top of the branches by a mass of pink blossoms. 12-18 in. size, 70c each; 3 for \$2.00.

EXOCHORDA GRANDIFLORA

(Pearl Bush)

A beautiful Chinese shrub, growing 6 to 8 feet tall, with large star-shaped white flowers in May, and attractive seed pods in the winter months.
2-3 ft.; 75c each; 3 for \$2.10.

KERRIA (Japonica Flora Plena)

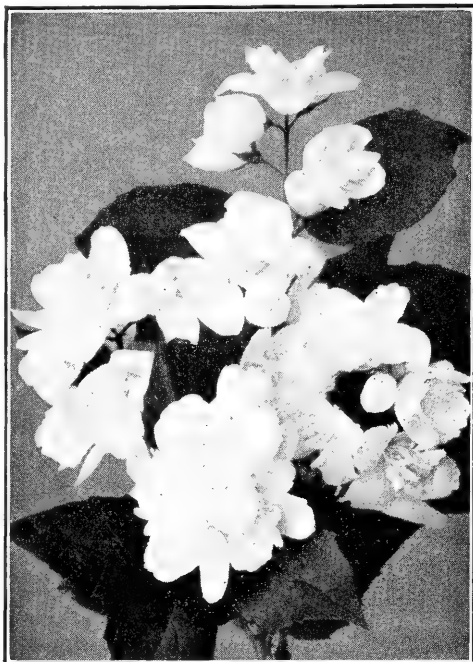
Often heard called the Globe Flower. Ball-shaped golden flowers. Plants grow vigorously and attain a height of 4-5 ft. Bushy and branches bright green. Prefers a sunny location. Attractive yellow blooms all summer.

PLANTS—3 Yr., 75c each; 3 for \$2.10.

SYMPHORICARPOS

Alba (Snowberry White)—An excellent shrub for shady places or on a hillside, bearing clusters of large snowy white berries which remain late in fall and winter. 18-24 in., 75c each; 3 for \$2.10.

HYPERICUM—(Patulum) A hardy well shaped upright growing shrub. Blooms freely throughout the summer. Golden flowers in clusters at end of each branch. Suitable planted single or in groups with other shrub. 3 yr. plants - 14-18 in., 75c each, 3 for \$2.10.



MOCK ORANGE

(*Philadelphus Virginalis*)

SWEET MOCK ORANGE

PHILADELPHUS CORONARIUS—Vigorous grower and very fragrant. It is hardy and a very popular shrub.
18-24 in., branched, 65c each, 3 for \$1.80.

Virginalis—The most showy variety with double white flowers which are sweetly fragrant and have a long blooming season. Good foliage and compact upright growth. 18-24 in., 65c each, 3 for \$1.80.

PHILADELPHUS AUREA—Golden Mock Orange Valuable for its golden color leaves. Flowers white. Growth similar to *Virginalis*. Very much sought by landscapers. Very showy when planted with other shrub.
12-15 in., 75c each, 3 for \$2.10.

PHILADELPHUS ENCHANTMENT—A new double mock orange. Erect grower. Bears large clusters of fragrant white flowers. Very hardy. An unusual and handsome shrub.
12-15 in., plants 75c each, 3 for \$2.10.

PHILADELPHUS BELLE ETOILE—New fragrant mock orange. Its growth is uniform and bushy. It is considered one of the best of the new hybrid mock orange. Flowers are white and tinted purple. Grows to 5 ft. tall.
12-15 in., plants 75c each, 3 for \$2.10.

SPIREA

Callosa Rosea (Fortune) — Flowers are dark pink and is similar to the Frobeli in bloom and upright growth, except it grows to be slightly larger. 50c each; 3 for \$1.25.

Prunifolia (Old-fashion Bridal Wreath). Flowers pure white, double, very numerous. 15-18 in., branched, 50c each; 3 for \$1.30.

Thunbergi Spirea—One of the first of all Spireas to bloom in early spring; small white flowers, feathery foliage. 15-18 in., 40c each; 3 for \$1.05.

Van Houttei Spirea—One of the most popular of all shrubs, with its beautiful arching branches loaded with clusters of snow-white flowers in April and May. 15-8 in., 50c each; 3 for \$1.25.

WEIGELIA

HERE IS A NICE SELECTION OF WEIGELIA A VERY NICE MEDIUM SIZED SHRUB. BLOOMS PROFUSELY IN JUNE AND SOMETIMES AT INTERVALS DURING SUMMER. GOOD IN MASS PLANTINGS.

EVA RATHKE—A pleasing deep red shade of flowers. Foliage deep green during summer, turning to autumn shades of bronze and copper in the fall.

18-24 in. plants, 75c each, 3 for \$2.10.

ROSEA—Similar to the above variety but deep rosy flowers, and lighter color foliage. 18-24 in. plants, 60c each, 3 for \$1.65.

VARIEGATED ROSEA—Grows more compact than other above two varieties. Foliage beautifully variegated green with deep golden edging. Flowers are light pink. A good border shrub.

18-24 in. 75c each, 3 for \$2.10.

NEW PORT RED—A new variety. Better habits than most weigelia. Flowers are ruby red with white stamens. The foliage is a good green color that holds well until frost.

18-24 in. bushy plants 90c each, 3 for \$2.65. 12-15 in., 1 yr. plants 3 for \$1.20.

BOSKOOP GLORY—A new color in weigelia. Large flowering salmon pink. Growing habits are similar to Newport Red. First time introduced in this country.

1 yr. plants, 75c each; 3 for \$2.10.

DEUTZIA SCABRA

Crenata—Vigorous grower; free blooming, produces an abundance of double pink flowers.

Pride of Rochester—Strong growers, free bloomer, double white flowers tinged with pink.

2-3 ft., well branched, 60c each; 3 for \$1.60.

DEUTZIA GRACILIS—Profusion of white flowers bloom in May. The most graceful of the Deutzia. Seldom grows over 3 ft. high. You will like this one. Ideal for edging and borders.

10-12 in. plants 65c each, 3 for \$1.80.

CORNUS ELEGANTISSIMA (Variegated leaf Dogwood)—Bush form, highly variegated foliage. Attracts the eye. Rich red twigs make this bush very valuable for landscape work. One of the richest colored shrub. Always scarce.

15-18 in. branched plants \$1.50 each, 3 for \$4.00.

TAMARIX ODESSANA—A charming shrub with lace like silvery blue foliage. Flowers are borne in clusters of deep rose. Foliage and flowers make up very well in floral designs. Plants grow to 6 ft. but can be kept smaller by pruning. This is an outstanding shrub.

2 ft. plants \$1.00 each, 3 for \$2.75.

HYDRANGEA BLUEBOY—This beautiful variety is very hardy and produces masses of large, round clusters of flowers 8 to 10 inches in diameter. If soil conditions are right, these plants will produce beautiful blue flowers. In order to achieve this color they must be in acid soil. Grows into a bush form, and will reach a height of 3 or 4 feet. Foliage is thick and a very nice green. The blooms sometimes show pink and blue at the same time.

2¼ in. pot plants, 3 for \$1.00, 10 for \$3.00.

HYDRANGEA P. G.

PANICULATA GRANDIFLORA—Can be trained to tree form. Flowers massive and white, turning to pink, bronze and green. Flowers hang on most all winter. Conspicuous and effective. Bush form.

18-24 in. 60c each; 10 for \$5.00.



LILAC (SYRINGA)

LILAC FRENCH HYBRID

CULTURE—is simple. These will grow in most type soil. Does good in full sun.

GRAFTED on privet stock which supplies a good root system. Do not allow suckers to grow from bottom, cut all lower shoots off.

Alphonse Lavell—Double light blue, one of the best in this color.

Belle DeNancy—Double satin pink, a good one.

Charles Jolly—Double dark purplish red, real nice.

Charles X—Single, profuse blooms. Attractive deep red, one of the best single red.

Congo—Single, deep red. Dark green foliage, favorite in many flower beds.

Ludwig Spaeth—Single reddish purple. Large flower heads.

Madam A. Chatney—A double white, good sturdy grower.

President Grevy—Double, bluish lilac. Large flower heads in profusion.

Paul Theirron—Double large clusters of beautiful deep red flowers. When in bloom flowers stand out well above the thick green foliage. One you will like.

PRICES of above varieties—\$1.00 each, 3 for \$2.70.

LILAC-PERSIAN

A dense low growing variety with slender branches and narrow leaves. A very dainty plant. Bears an abundance of purplish pink flowers, in early spring.

2-3 ft. plants, 75c each; 3 for \$2.10.



BUDDLEA (BUTTERFLY BUSH)

SYRINGA PRESTONIAE—New Preston Lilacs, developed by crossing *S. Velloso* with reflexa hybrids. They bear unusually large flowers in June.

HIAWATHA—Flowers are broad and dense lilac rose.

CORAL—Large 8 inch open spikes of beautiful clear pink. The above two varieties, 18-24 in., \$2.75 each, 3 for \$7.90.

MICROPHYLIA SUPERBA—Daphne Lilac—A deliciously fragrant lilac. Blooms spring and fall. Introduced from China a number of years ago and is making a grand showing where ever grown. Buds are a pinkish red opening to lilac pink. The entire plant when in bloom resembles one large bouquet. Plants grow into a neat compact bush not exceeding 5 ft. 18-24 in., \$2.50 each, 3 for \$7.00.

SWEGIFLEXA—A giant flowering variety. Pure pink blooms, sometimes 12 inch long. One blooms makes a bouquet in its self. A new variety.

2 yr. plants, \$2.00 each, 3 for \$6.00.

BUDDLEA (Beauty Bush)

Buddleia—Butterfly bush. Few shrubs can compare with Buddleia for freedom of blooms, vigorous grower, makes compact bush. 5 ft. tall. Suitable for bouquets.

Charming—Clear pink

Dubonnet—Wine Red

Orchid Beauty—Orchid Pink

Ile De France—Red with purple

White Cloud—A true white

65c each, 3 for \$1.80.

ROYAL RED—A new Buddleia a flashy purplish red, one of the very best new imports. First time introduced, habits same as above.

\$1.35 each, 3 for \$3.65.



FLOWER ALMOND

VIBURNUM—An interesting and showy group diversified greatly in character and common names, ranging in size from 2 to 12 feet and blooming profusely in the spring. In the summer their leaves are rich and heavy and aided by bright fruits vividly brighten up the autumn with vivid splashes of color.

American (American Cranberry)—Similar to *Opulus* but more open growth. Berries brighter and more persistent.

15-18 in., 60c each; 3 for \$1.50.

Lentago (Sheepberry) — Grows to be a tree about 25 or 30 feet tall. Glossy dark leaves, green and white cymes of flowers in June followed by large blue-black fruit. 45c each; 3 for \$1.20.

Opulus (High Bush Cranberry) — Dense green foliage, studded with large bunches of crimson berries which last well into the Winter. Matures at 8 to 10 feet into a compact rounded mass.

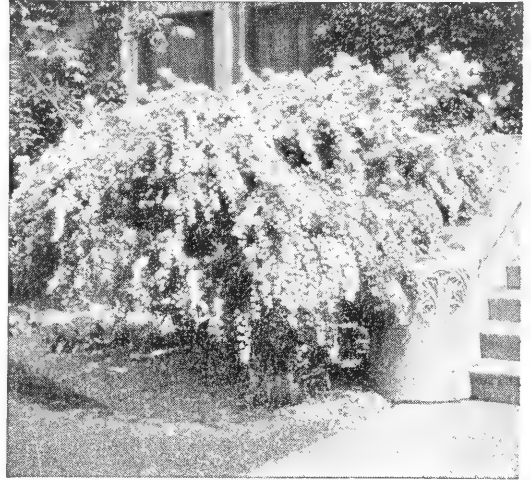
15-18 in., 60c each; 3 for \$1.50.

Opulus Nanum—A dwarf compact plant, seldom reaches 2 ft. high. Suitable for low hedges and borders. Need little or no trimming. Does well in most type soils.

3 yr. plants 75c each, 3 for \$2.10.

Opulus Sterilis (Common Snowball) — Medium sized shrub. Blooms in June with mass of pure white flowers which resemble snowballs.

15-18 in., 60c each; 3 for \$1.50.



Spirea Van Houttei

VIBURNUM BURKWOODI—Flowers of waxy bluish white fragrance. Produced in early spring when leaves are unfolding. Foliage is deep glossy green. Grows into a bush of about 5 ft. high and 4 ft. wide. A garden aristocrat you can not afford to miss.

15-18 in., bushy plants \$2.25 each, 3 for \$5.95. 2 1/4 in. pot plants, 3 for \$1.50.

VIBURNUM RHYTIDOPHYLLUM—Leather leaf viburnum. This is an evergreen variety. Foliage large, 6-8 inches long. Big clusters of cream colored flowers, open in late May, followed by red fruit that later becomes black. Bush grows to 10 ft. Prefer sheltered locations.

12-15 in., branched plants \$1.75 each, 3 for \$5.10. 2 1/4 in. pot plants, 3 for \$1.40.

TOMANTOSUM PLICATUM GRANDIFLORUM—Japanese Snowball. A much neater grower than the common snowball. Foliage is rounder and heavier texture. Flowers grow into perfectly round balls 3-4 inch in diameter.

2-3 ft. trees, \$1.25 each, 3 for \$3.55.

FORSYTHIA (GOLDEN BELL)

Intermedia — Bright yellow flowers; a vigorous grower, with slender, arching branches, narrow leaves.

Fortunei—Upright and often planted as single specimen. Handsome dark green foliage, golden yellow flowers.

Forsythia (Spectabilis) — Blooms in profusion, large rich golden flowers. Very attractive.

Prices on above. 18-24 in., 60c each; 3 for \$1.50.

**DOUBLE FLOWERING PEACHES****(Prunus Persica)****MAGNOLIA SOULANGEANA****ORNAMENTAL AND SHADE TREES****DOUBLE FLOWERING PEACHES**

These beautiful, double Flowering Peaches are far more hardy and showy than Japanese Flowering Cherries.

Double White Flowering—Large petals, fully doubled.

Double Flowering Pink—Blooms fully doubled, of clean, pure pink.

Double Flowering Red—Blooms early, good bright red.

2-2 ft., \$1.00 each 3 for \$2.90.

FLOWERING PLUM

Prunus Newport—Bright red leaves. Very attractive.

3-4 ft., \$1.00 each.

Prunus Triloba—Beautiful double rose flowers. Cover every twig and branch when in bloom. A handsome tree indeed.

3-4 ft., \$1.75 each, 3 for \$4.50.

CRATAEGUS OXYACANTHA—Pauls double scarlet, English Hawthorne, this is the showiest and most popular variety. A good ornamental tree, for lawn planting. Clusters of scarlet flowers, resemble small roses.

3-4 ft. \$2.00 each, 3 for \$5.75.

18-24 in., seedlings, 3 for \$1.50, 10 for \$4.00.

HAMAMELIS MOLLIS BRIVI PETALA—A new shrub or a small tree. Imported from Holland. Its orange ribbon type blooms, boldly stretch along the leafless branches through February in early March. If you want a novelty for your garden we suggest you try this one.

18-24 in., \$4.00 each, 3 for \$11.25.

CORNUS FLORIDUS**(White Flowering Dogwood)**

Flowers 3 to 3½ in. in diameter, produced in Spring before the leaves appear. Spreading and irregular. Makes a beautiful lawn specimen or background tree. 12-18 in. seedlings, 10 for \$2.00, 25 for \$4.00, 100 for \$12.00; 2-3 ft., 10 for \$4.00.

CORNUS FLORIDA RUBRA**(Pink Flowering Dogwood)**

This is a grafted tree. The flowers are a beautiful shade of pink. Does well in shade. The tree blossoms profusely when 3 feet tall. This is a richly colored and very beautiful tree for any yard.

18-24 in. size, \$3.00 each.

CORNUS WELCHI**(Variegated Flowering Dogwood)**

This is a rare novelty seldom listed in catalogs. Slow growing type. Grows into a very dense globe head tree. Its green and cream variegated leaves are attractive throughout the summer, becoming even more showy in the fall when red and coppery shades are added to its rich colored foliage. Flowers quite like Cornus Floridus - white.

18-24 in., 3 yr. tree, well branched \$5.00 ea.

HAMAMELIS VIRGINIA**(Witchazel or Winterbloom)**

Called Winterbloom because of their blooming from October to April, while twigs are bare. Ribbon-like flowers, does well in shady places.

18-24 in., 40c each, 10 for \$3.60.

DECIDUOUS TREES For Shade And Reforestation

\$3.75			
Variety	10	25	100
Red Maple 18-24".....	\$1.50	\$3.50	\$15.00
Silver Maple 18-24"	1.50	3.50	15.00
Sugar Maple 18-24".....	1.50	3.50	15.00
American Beech 18-24" ..	1.75	4.00	15.00
Honey Locust 18-24" ...	1.25	2.50	10.00
American Elm 18-24"....	1.50	3.50	15.00
Chinese Elm 18-24".....	1.50	3.50	15.00
American Linden 18-24" ..	2.50	5.75	20.00
Pin Oak 18-24"	2.50	5.75	20.00
Pin Oak 10-12".....	1.25	2.25	8.00
Red Oak 10-12".....	1.25	2.25	8.00

GINKGO BILOBA (Maidenhair Tree)

This tree was recently classed by a noted authority as one of the finest of shade trees. Another striking advantage, the tree is absolutely disease free, hardy and fast growing. It is immune to all kinds of bugs and scales. It is also known as the living fossil. A specimen planted 53 years ago in Illinois is thriving perfectly 12-18 inch seedlings, 3 for \$1.50 and 10 for \$4.50.

JAP RED MAPLE

Acer-Palmatum Atropurpurea. Beautiful deep red foliage, holds its color well all season. One of the best of the maples. Makes a handsome specimen on lawns. 12-15 in. plants \$3.25 each, 3 for \$9.00.

CHINESE CHESTNUT

A very good quality nut. One of the best substitutes for the native American Chestnut which can be grown in the blight area. Trees bear early. 12-18 in., 65c ea. or 3 for \$1.80; 18-24 in., \$1.25 ea., 3 for \$3.60.

BLACK WALNUT

Black Walnut is one of the most valuable timbers grown in the United States. Grow a black walnut orchard on your farm. 18-24 inch seedlings, 10 for \$2.00; 25 for \$4.00.

HICKORY NUT

Our seedlings are from selected large fruiting varieties. Trees are valuable for fruit and lumber. 8-12 in., 10 for \$2.00; 25 for \$4.00.

MAPLE-CRIMSON KING (Plant Pat. No. 735)

One of the finest creations in many years. This tree was sent to America from Europe, about 10 years ago and created a sensation where ever seen. Its dark purplish red foliage, which glistens in the sun, retains its color all through the summer. It is suitable for shade and street planting. 3-4 ft. whips, \$3.00 ea., 6 ft. lightly branched at \$7.00 each.

MALUS (Flowering Crab)

ALMEY—Has large blossoms of glistening red pedals with white markings at the base of each, giving effects of a five point star. Blooms same year. The scarlet fruit are retained all winter, providing food for our feathered friends.

4-5 ft. size, \$3.00 each.
3 for \$8.25.

MORDEN No. 454—Has an abundance of large flowers, a live radiant red, lasting color, pedals of medium width. A broad spreading tree, vigorous, valuable for shade.

4-5 ft. size, \$3.00 each.
3 for \$8.25.

Hopa Crab—Beautiful rose red flowers followed by clusters of crimson fruit, which can be used for jelly.
3-4 ft., 2.00 each.

RED SILVER—Fruit of rich maroon red, foliage somewhat cut leaved with silver and red color. Flowers crimson. Tree bark attractive brown color.
3-4 ft., \$2.75 each, 3 for \$7.95.

BETCHELS KLEHMS Improved—A beautiful growing tree with attractive double pink fragrant flowers. 3-4 ft. well branched \$2.75 each, 3 for \$7.95.

MORAINÉ LOCUST Plant Pat. No. 836

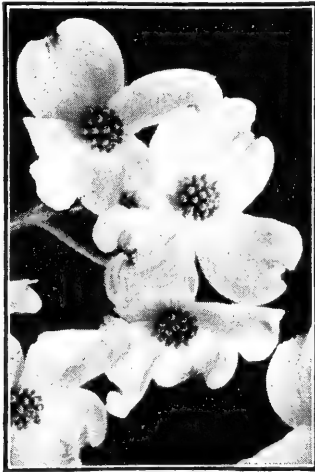
We bring another fine shade tree, the Moraine Locust. A much improved variety of the Honey Locust, has a round head when young, but tall and vase shaped when older, attaining a height of 80 ft. A tidy stately specimen. A fast growing disease resistant shade tree that will be enjoyed where ever planted.
5-6 ft., \$4.25 each, 3 for \$12.00.

FRANKLINIA ALATAMAHA

An exquisite fall flowering tree for small or large gardens. Flowers are of pure white, foliage is rich colored, is unsurpassed as a garden specimen. This tree was brought from the banks of the Alatamaha River in Georgia, to the Bartram garden in the year of 1777. Was named in honor of his good friend Benjamin Franklin. Tree prefers full sun. Has proven hardy in N. Y. City and Cleveland areas, but should be given more tests for areas further north. 12-18 in., transplants \$1.65 each, 3 for \$4.70.

EUROPEAN MOUNTAIN ASH

A stately, upright growing tree, also ornamental. Bears quantities of large clusters of red berries which are very attractive and cling 'till early winter months. Berries are frequently used for floral designs. 12-15 in., 3 for \$1.00, 10 for \$3.00.
3-4 ft., 75c each, 3 for \$2.10.



DOGWOOD

RHUS COTINUS RUBRIFOLIA—Red leaf Smoke Tree. A rare and very interesting smoke tree. The glossy purplish red foliage stays attractive all summer. Makes a bronze plume like blossoms in late summer that last for many weeks. This is quite new and is not seen in many gardens. If you like colored foliage, then by all means try one of these.

18-24 in., branched plants \$1.95 each, 3 for \$5.40.

RED-BUD (Judas Tree)

A very ornamental tree of medium size with perfect heart-shaped leaves. Blooms early in spring, before leaves appear, covering the branches with small rosy-pink, pea-shaped flowers.

18 to 24 in. seedlings, 3 for \$1.00, 10 for \$3.00.

HALESIA

TEPTRAPTERA—(Carolina Silver Bell) sometimes called Snow-drop or Lily-of the Valley tree. Grows into a small round headed tree. Its beauty consists of its many small bells that dangle from the lower side of the small branchlets.

2-3 ft. plants, \$2.25 each.

CYDONIA

PYGMEA—(Dwarf Japanese Quince)—Dwarf spreading shrub to 3 feet. Flowers more salmon in color than Japonica. Excellent for heavy hedges.

12-18 in. plants, 65c each.

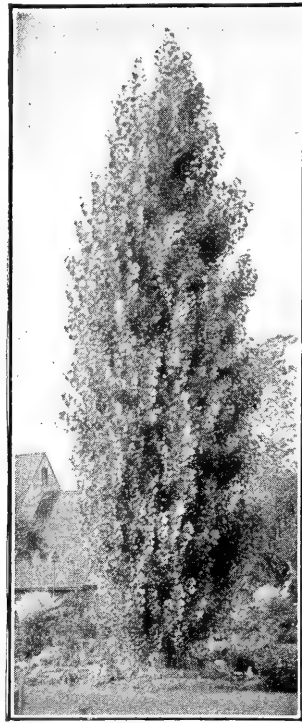
WILLOW

SALIX Dwarf blue Artic willow found north of Artic Circle. Excellent for hedges and borders. Will grow in most type soils. Withstands very low temperatures. For dense hedge plant 8-10" apart. Fine for Rock gardens.

Plants—18-24", 10 for \$6.00.

HONEYSUCKLE

LONICERA TATARICA—Grows into a large upright bush. Rose pink flowers bloom freely in mid summer. Ideal for borders. 18-24 in., plants 65c each, 3 for \$1.60.



LOMBARDY POPLAR

Slim, formal, quick growing columns that branch to the ground. Fine for screens and backgrounds.

3-4 ft., 4 for \$2.00, 10 for \$3.90.

WILLOW

Salamon's Weeping — We consider this variety the best of the weeping willows. It is of rapid growth and makes height quickly.

2-4 ft., 40c each; 4 for \$1.50.

TULIP TREE

(Yellow Poplar)

A beautiful shade tree. Leaves sometime measure eight in. across. Grows upright and well formed. Seed pods hold on till early winter, look like individual florets. You will look far before finding any lumber better than tulip poplar.

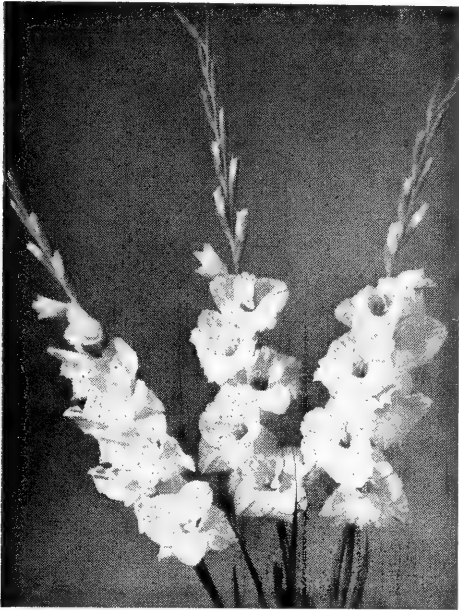
2-3 ft. 10 for \$2.00; 25 for \$4.50; 100 for \$16.00.

ORIENTAL MAGNOLIA

There is nothing as gorgeous as the Oriental Magnolias when in full bloom in early Spring. It is most highly esteemed in England, and it is gaining more popularity in the United States every year.

Soulangeana—Small tree with large 9-petal, pinkish flowers before the leaves in the spring. One of the most beautiful flowering trees. 12-15 in., 1-yr. plants \$1.50 ea., 3 for \$4.25.

Soulangeana Nigra — Blooms later than Soulangeana and is darker in color. 12-15 in. 1-yr. plants \$1.50 each, 3 for \$4.25.



GLADIOLUS

We believe that gladiolus are among the best for cut flower purposes. They make up easily into bouquets which last for many days. They require very little room—the smallest of gardens can hold 100 bulbs. Gladiolus do best in full sun and plenty of moisture with good drainage. Spray if there is any possibility of trips. They require some fertility, but will do well without it, providing there is plenty of moisture.

GIRARD SPECIAL MIXTURE

This collection is made up of the finest mixture of Holland and domestic varieties, including early, medium and late flowers. Giving a long blooming season. We guarantee this mixture to be one of the finest ever marketed. All large bulbs.
100 for \$4.00, 1000 for \$30.00.

FAGUS - Beech

ROHANI—An upright growing tree, with beautiful purple Fern leaf foliage. New and rare.

18-24 in., \$3.25 each, 3 for \$9.25.

SPAETHIANA—A beautiful broad headed tree. Has large purple leaves that glisten. Leaves hold their rich purple color all through the summer.

2-3 ft., \$3.25 each, 3 for \$9.25.



HARDY PERENNIAL PHLOX

No garden is complete without perennial Phlox. The color range is so large, the colors so bright, blooming period so long, every flower garden should find a place for some. Plants begin to bloom in late June. With proper treatment, continuous blooms may be expected until frost. Our list of Phlox is made up of the very best of standard sorts and includes some of the new varieties. These are all heavy one year field grown clumps guaranteed to bloom this year.

PHLOX COLLECTION—J

BRIGHT EYES—Bright Rose Pink.

DAILY SKETCH—Brilliant Salmon Pink, Crimson eye.

FLASH—Dazzling Scarlet Red.

MARY LOUISE—Large glistening snow white.

ROYAL PURPLE—Rich Violet with deeper eye.

SALMON GLOW—Flame Pink and Salmon.

All 6 varieties for \$1.95 Postpaid

NEW VARIETIES

AMERICAN BEAUTY—Clear rose pink.

PURPLEKROME—Deep purple, outstanding.

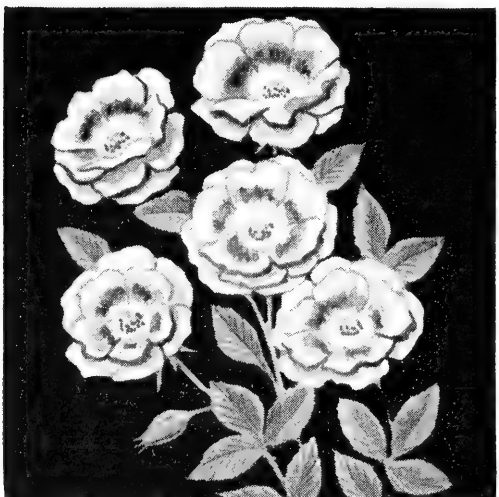
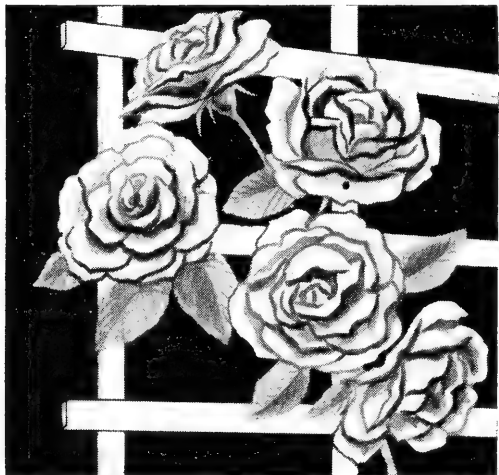
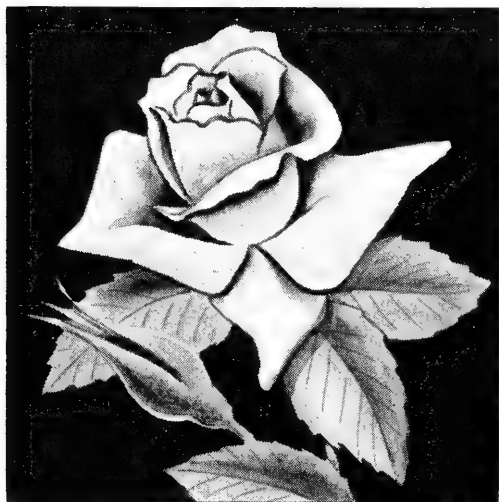
CHIEFTAIN—Deep Crimson.

ADONIS—Bright scarlet crimson.

FIDELIO—White, red eye, gorgeous, has a pink tint.

Above 5 new varieties for \$2.25 Postpaid

Everblooming Tea Rose



Floribunda Rose

EVERBLOOMING ROSES

We are listing some of the very best standard varieties. These will give you an abundance of blooms from early summer until frost. All northern grown and hardy.

EVERBLOOMING TEA ROSES

TAILSMAN—Vigorous and free blooming.

Shades of golden yellow and bronze.

CHRISTOPHER STONE—Always popular. Scarlet crimson with velvet sheen.

JOANNA HILL—Golden yellow with apricot finish. Good grower. Attractive.

K. A. VICTORIA—B'ooms of pure white all summer, a beauty. A nice combination plant with other colors.

McGREDY SCARLET—Rosy red. Long buds. Flower has a velvet sheen.

POINSETTIA—A warm fire red, perfectly pointed buds. Healthy grower.

PRESIDENT HOOVER—Pleasing cerise and gold. Richly perfumed long stem.

PICTURE—One of the finest p'inks. Blooms and buds are excellent. Fragrant.

SCARLET KING—A beauty, the name will describe. Good healthy grower.

SISTER THERESE—One of the best yellows. Pedals edged crimson.

\$1.00 each, 10 for \$9.00

ETOILE de HOLLAND—Fragrant, deep bright red, long stem.

BETTY UPRICHARD—Pink Delicate salmon pink, reverse coppery sheen, vigorous.

EDITOR McFARLAND—Solid glowing pink, yellow tinted long stem, good foliage.

MRS. CHARLES BELL—Shell pink radiance, soft shaded salmon. Has good qualities.

MRS. E. P. THOM—Canary yellow. Large long pointed buds, vigorous.

RAINBOW—A lovely pink blending into a cream, and light shades. Good grower.

QUEEN HELEN—Cerice, scarlet and pink blending. Vigorous grower.

Climbing Rose

FLORABUNDA ROSES

The Forabunda will give everlasting blooms throughout the summer. Bloom from June to frost. Makes a most attractive hedge. Used in corner plantings, landscaping, beds and borders.

IDEAL—Deep red - old and good

GOLDEN SALMON—Name describes. Nice.

TRIUMP DeORLEANS—Orange red.

GLORIA MUNDI—Nice scarlet red.

BABY CHATEAW—Crimson red and garnet.

\$1.00 each, 3 for \$2.75

IMPROVED LAYFAYETTE—Cherry crimson flowers in abundance. Dwarf grower, good foliage.

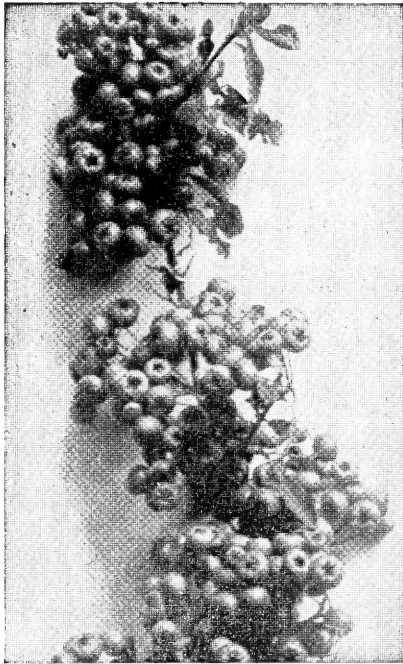
LIPSTICK—Cerise with salmon shadings. A new European variety. Healthy grower.

CLIMBING ROSES

PAULS SCARLET—A lively scarlet.

BLAZE—A blazing red. A beauty.

\$1.00 each, 2 for \$1.85



PYRACANTHA (Coccinea Lilandi)

PYRACANTHA (Coccinea)—is a thorny bush plant noted for its cluster of bright orange red berries. The berries come in the fall and sometimes remain all winter. Growth is vigorous and attains a height of about 12 ft.

PLANTS from 3½ in. pots, 75c each, 3 for \$2.10.

Berberis Atropurpurea (Red-leaf Barberry). Red-purple form. Color not perfect, but fairly steady. Properly pollinated, it comes true from seed.

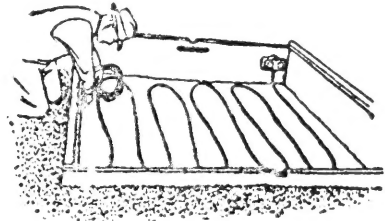
12-15 in., 25 for \$8.75, 100 for \$30.00.

HORMONE POWDER FOR BETTER CROPS

Clean the seed before planting. About 200 diseases affecting plants can be spread by spores present on seeds. Seed disinfection helps to prevent seed-borne diseases. Ramex Hormone is a scientific growth stimulant and seed disinfectant.

Cuttings. Ornamental, deciduous and evergreen cuttings are dipped into the powder about one-half inch and then placed in rooting medium. Yew cuttings made in June hormone-treated, rooted 93 per cent.

Prices: ¼ oz. pkt. 25c, 1 oz. pkt. 50c, 3 oz. tin \$1.00, 1 lb. tin \$4.00, postpaid. The cost is small, the benefits large.



HOTBED KITS

Many of our customers do not know we have one of the finest hotbed kits made.

NO. 10—Home gardener's kit, for 3x6 hotbed. Contains 40 feet of 200 watt insulated cable, 500 watt 115 volt AC thermostat with a connector plug for attaching to outlet, pilot light and control knob for setting temperature. Set of instructions. Protects 3x6 sashes against frost. Postpaid \$6.75.

NO. 20—For 6x6 hotbed. Contains 80 feet of 400 watt insulated electric cable, one 500 watt thermostat as outlined above, set of instructions. Protects six 3x6 sashes against frost. Easy to install. Postpaid. \$9.00.

Cables Only—40 ft. \$2.25; 80 ft. \$4.50.

ELEAGNUS AGUSTIFOLIA

Russian Olive—Leaves silver beneath, flowers greenish color, fruit egg shaped. 4-5 ft. \$1.50 each.

For **EVERGREENS, LAWNS, GARDENS and SEED BEDS**
BEAVER PEAT HUMUS

Beaver Peat is a rich dark brown color. Centuries of time were required to make it. Years of growth of ferns, mosses, grasses and fibrous plants, falling and decaying, aided by nature, completed the task of forming it. In Beaver Peat you get America's finest garden soil organic; a humus source that gives life-giving properties to soils the moment you dig it in — that retains its identity in the soil for many years. It is not to be compared with or confused with muck.

Domestic Peat shipped direct from the pits in Ohio.

- 1—100 lb. bag\$ 1.90
- 2—100 lb. bags 3.50
- 5—100 lb. bags 8.50
- 10—100 lb. bags 15.00
- 20—100 lb. bags 27.00

Order early, then you will have it when needed. Should be shipped by freight. Bags weigh about 100 pounds each.

GROW EVERGREENS FROM SEED

SOWING EVERGREEN SEEDS

Evergreen seeds should never be sown in greenhouses, hot beds, or cold frames, for they need more ventilation. Seed bed soil should be of sandy nature. If the soil is hard dig it up, and mix sand and peat with it so it will be loose and friable. Select a level spot outdoors for a seed bed, where washing will not occur from rains. We give several methods of sowing. Two things cause loss of seedlings, dampening off which is caused by fungi in the soil, and weeds. In a small way seeds are best sown in flats, the flats placed under lath shade in the seed bed outdoors. One packet of the finer seeds like Spruce will sow a flat.

DIFFERENT METHODS OF SOWING

To avoid dampening off trouble sterilize the soil for the flats by cooking moist soil in an oven for 20 minutes. After flats are filled sow seed thinly, broadcast and just cover the depth of the seed with sterilized sand or peat. Larger seeds press down. If one is not fixed to sterilize so much soil, fill flat first 3-4 of depth with soil. Sterilize enough soil for the other 1-4 needed to fill the flat. Cover seeds as shown above. There may be a little dampening off with this latter method; to help avoid this on cloudy days remove shade and sprinkle a little sterilized sand over the seedlings every few days. Don't water every day, water thoroughly and let flats dry out a little. Dampening off occurs more in moist sultry weather.

We think most beginners will have better success with this method. Fill flats with clean sand such as is used for concrete work.

WINTER CARE—After ground freezes mulch with sawdust, leaves, lawn clippings, marsh hay or peat. Evergreen boughs make nice cover.

Orders: All seed orders are subject to previous sale. Delivery cannot be guaranteed unless orders are placed promptly.

Price: 25c per packet; 5 packets your choice \$1.00. Each packet contains sufficient seed to produce 100 to 400 seedlings. Trade packets 75c each; 3 for \$2. Trade packets contain sufficient seed to produce 500 to 1000 seedlings or more depending upon variety. All postpaid.

Mixed Evergreen Seeds, made up from varieties listed, extra large packets 25c; 3 packets 50c postpaid.

EVERGREEN SEED LIST

Abies (Fir)

- Abies Amabilis—White Fir
- Abies Balsamea—Balsam Fir
- Abies Concolor—Concolor Fir or Colorado Silver Fir
- Abies Grandis—Grand Fir
- Abies Fraseri—Fraser Fir
- Pseudotsuga Taxifolia Glauca—Hardy Douglas Fir
- Abies Homolepsia—Nikko Fir
- Abies Pinsepo Glauca—Blue Fir
- Abies Veichi—Veich Fir

Juniperus (Juniper)

- Juniperus Platte—Platte River Juniper
- Juniperus Scopulorum—Silver Juniper
- Juniperus Virginiana—American Red Cedar
- Juniperus Horizontalis—Creeping Juniper
- Juniperus Chinensis—Chinese Pyramidal Juniper
- Juniperus Chinensis Japonica—Japanese Juniper

Picea (Spruce)

- Picea Densata Glauca—Black Hill Spruce
- Picea Engelmanni Glauca—Englemann Spruce
- Picea Pungens—Colorado Blue Spruce
- Picea Mariana—Black Spruce
- Picea Sitchensis—Sitka Spruce
- Picea Glauca—White Spruce
- Picea Excelsa—Norway Spruce

Pinus (Pines)

- Pinus Banksiana—Jack Pine
- Pinus Cembre—Swiss Stone Pine
- Pinus Densiflora—Jap Red Pine
- Pinus Jeffreyi—Jeffrey Pine
- Pinus Nigra—Austrian Pine
- Pinus Pinea—Italian Stone Pine
- Pinus Ponderosa—Western Yellow Pine
- Pinus Mugho—Mugho Pine
- Pinus Strobus—White Pine
- Pinus Sylvestrus—Scotch Pine

Thuja (Arborvitae)

- Thuja Occidentalis—American Arborvitae
- Thuja Occidentalis Wareana—Ware Arborvitae
- Thuja Orientalis—Chinese Arborvitae
- Thuja Orientalis Aurea—Gold Chinese Arborvitae
- Thuja Orientalis Pyramidal—Pyramidal Arborvitae
- Thuja Orientalis Compacta—Compact Oriental Arborvitae
- Thuja Orientalis Nana—Dwarf Oriental Arborvitae

Tsuga (Hemlock)

- Tsuga Canadensis—Canadian Hemlock
- Larix Europea—European Larch

Special Prices for Spring, 1953

Grower's Evergreen Special

● This collection is made up to encourage beginners in the nursery trade. All trees listed here are the best selling varieties. Prices listed on wholesale basis.

All Transplants

	per 100
Taxus Hicksi..... 6- 9"	\$28.00
Taxus Cuspidata..... 6- 9"	25.00
Taxus Capitata..... 6- 9"	28.00
Taxus Intermedia..... 5- 8"	25.00
Globe Arborvitae..... 4- 7"	25.00
Pyramidal Arborvitae..... 5- 8"	28.00
Andorra Juniper..... 8-10"	30.00
Pfitzer Juniper..... 8-12"	40.00
Hetz Juniper..... 6-10"	30.00
Irish Juniper..... 10-12"	35.00
Horizontalis Juniper..... 8-12"	35.00
Savin Juniper..... 8-12"	35.00
Canadian Hemlock..... 6-10"	30.00
Ilex Convexa..... 5- 8"	25.00
Pieris Japonica..... 3- 6"	20.00
Azalea Mollis..... 4- 8"	20.00
Azalea Kaempferi..... 4- 7"	20.00
Azalea Wilhelmena Vuyk... 5- 8"	40.00
Azalea Sherwood Orchid... 5- 8"	35.00
Pieris Japonica..... 5- 7"	30.00
Rhododendron Hybrids... 3- 6"	25.00

50 can be had at the 100 rate. F.O.B. Geneva.

Azalea and Rhododendron Special

● This collection is made up of twelve (12) hardiest Azalea and Rhododendrons. Will give you a good selection of colors. All are transplants.

- 5 Azalea Mollis
- 5 Azalea Kaempferi
- 5 Azalea Ghent
- 5 Azalea Vuyk White
- 5 Azalea Vuyk Pink
- 5 Azalea Corsage
- 5 Azalea Elizabeth Gable
- 5 Azalea Sherwood Red
- 5 Azalea Sherwood Orchid
- 5 Azalea Amoena
- 5 Azalea Herbert
- 5 Azalea Poukanensis
- 5 Azalea Hino-Crimson
- 15 Rhododendron Hybrids

Your Choice

80 Azalea and Rhododendrons — for \$22.00

Grower's Shade Tree Special

	per 100
Pin Oak..... 10-14"	\$ 7.00
Red Oak..... 12-18"	7.00
Sugar Maple..... 12-18"	12.00
Silver Maple..... 12-18"	12.00
Tulip Poplar..... 12-18"	12.00
Black Walnut..... 12-18"	12.00
White Dogwood..... 12-18"	15.00
Red Bud..... 12-18"	18.00
White Birch..... 18-24"	30.00
American Beech..... 18-24"	25.00

No orders accepted for less than 50 of a kind. Shipped express F.O.B. Geneva.

Flowering Shrub Special

Azalea Mollis..... 12-15" BB	\$140.00
Azalea Kaempferi..... 12-15" BB	150.00
Rhododendron Hybrid... 12-15" BB	250.00
Your selection of red, white, pink or purple	
Weigelia Eva Rathke..... 18-24"	45.00
Weigelia Variegated..... 18-24"	45.00
Philadelphus Virginalis.... 18-24"	40.00
Hydrangea Blue Boy..... 8-10"	35.00
Hydrangea P. G..... 2- 3'	50.00
Viburnum Tomentosum.... 2- 3'	50.00
Viburnum Burkwoodi..... 15-18"	225.00
Cornus Elegantissima..... 18-24"	75.00
Viburnum Sterilus..... 2- 3'	50.00
Forsythia Intermedia..... 2- 3'	40.00
Deutzia Pride of	
Rochester..... 3- 4'	40.00
Honeysuckle Zabeli..... 2- 3'	40.00

25 at the 100 rate. Shipped express F.O.B. Geneva.

Windbreak Special

● These larger trees are suitable for windbreak, screening and many other uses. These are from field rows, ready to be planted in permanent locations. All are from five to six years old.

Red Pine..... 15-18"	
Austrian Pine..... 15-18"	
Scotch Pine..... 15-18"	
Jap Red Pine..... 15-18"	
White Pine..... 14-16"	
Norway Spruce..... 14-16"	
White Spruce..... 12-15"	
American Arborvitae..... 14-18"	

Prices—10 for \$5.00, 25 for \$11.50, 50 for \$21.00.



★ \$1.00 SPECIAL ★

YOU have made such fine use of our specials in the past that we are listing them again. This collection includes some very fine evergreen. Each collection is a bargain. Your choice—Any 10 collections for \$9.00. You may order as many of one collection as you wish. Besides saving \$3.00 on 30 collections, we will give 10 Colorado Blue Spruce transplants free if all 35 collections are ordered.

4 American Arbor Vitae T	height	6-10 inches	\$1.00
3 Pyramidal Arbor Vitae T	height	6- 8 inches	1.00
3 Globe Arbor Vitae T	height	5- 7 inches	1.00
6 Colorado Blue Spruce T	height	4- 7 inches	1.00
6 Black Hill Spruce T	height	5- 8 inches	1.00
5 White Spruce T	height	6-10 inches	1.00
6 Norway Spruce T	height	6-10 inches	1.00
6 Mugho Pine T	height	2- 5 inches	1.00
6 Scotch Pine T	height	9-12 inches	1.00
6 Austrian Pine T	height	9-12 inches	1.00
7 American Red Pine T	height	6-10 inches	1.00
6 Jap Red Pine T	height	10-15 inches	1.00
5 Balsam Fir T	height	4- 7 inches	1.00
5 Douglas Fir T	height	6- 8 inches	1.00
3 Hetz Juniper T	height	5- 8 inches	1.00
3 Pfitzer Juniper T	height	5- 8 inches	1.00
2 Spiny Greek Juniper T	height	6- 8 inches	1.00
3 Irish Juniper T	height	8-10 inches	1.00
3 Andorra Juniper T	height	5- 8 inches	1.00
3 Taxus Intermedia T	height	5- 7 inches	1.00
3 Taxus Capitata (Upright) T	height	5- 7 inches	1.00
3 Taxus Hicksi T	height	5- 7 inches	1.00
3 Taxus Cuspidata (Spreading) T	height	5- 7 inches	1.00
3 Ilex Convexa T	height	5- 7 inches	1.00
3 Rhododendron Hybrid T	height	4- 7 inches	1.00
3 Azalea Mollis T	height	4- 7 inches	1.00
3 Azalea Kaempferi T	height	3- 5 inches	1.00
3 Azalea Pontica T	height	4- 7 inches	1.00
3 Pieris Japonica T	height	4- 7 inches	1.00
2 Kalmia Latifolia T	height	6-10 inches	1.00
3 Euonymus Coloratus T	height	4- 7 inches	1.00
3 Euonymus Vegetus	height	5- 8 inches	1.00
3 Hydrangea Blue Boy T	height	5- 8 inches	1.00
10 Biota T	height	4- 6 inches	1.00
2 Daphne Cneorium	height	4- 6 inches	1.00

T — Indicates transplants