

Historic, Archive Document

Do not assume content reflects current scientific knowledge, policies, or practices.



GEO. W. GURNEY, Father



SID GURNEY, Son

Here's Why GURNEY'S NORTHERN-GROWN Seed and Nursery Stock Will Do Better For You

Listen to SID GURNEY Broadcasting from WNAX



Sid Gurney is the third generation in our business, the son of Geo. W. Gurney. He grew up in this business, loves it and knows it. If you live in the vicinity of station WNAX, Yankton, S.D., be sure to listen to his gardening program at 9:15 on Saturday mornings.

WE GROW our own stock, and stock grown here in South Dakota must be extra hardy so that it can stand cold winters and hot, dry summers. If our stock doesn't have the extra vigor and hardiness to stand this severe climate, we don't have it to ship. And this hardiness goes to you no matter where you live. There is nothing so important in a plant as the ability to get started right, and keep on growing, even if climate and soil aren't just right. It costs you no more to get Gurney's extra-hardy, northern-grown seed and nursery stock. So why take less?

GEO. W. GURNEY

GURNEY'S Nursery Stock Guarantee

We guarantee our nursery stock to be state inspected, free from disease, true to name, and first class in every way. Examine the nursery stock carefully when you receive it. If you are not pleased with it, return it promptly at our expense and we will replace or refund in full, as you prefer. After you have planted it, if it fails to grow owing to weather conditions or other factors over which we have no control, we will replace following season at half price if you notify us before October 1, 1952.



USE ORDER BLANK ON PAGE 6

100 2 to 3-ft. Size NORTHERN COTTONWOOD Trees

Northern Cottonwood is the tree that grows big—quick. It is literally the *quick saw log*—the "fire wood tree". Also ideal for shelter belt and erosion control planting. And you should have a few around the edges of your fields to give the stock some shade and protection. FREE GIFT: 2 Hardy Siberian Pea Trees (Caragana). Thickly branched, rugged, hardy, low growing trees.

for only \$359

POST-PAID to your door No. A2706XS

or 200 for only \$689 POSTPAID TO YOUR DOOR

2 Lovely Niobe WEEPING WILLOWS

Both for only

\$198 4 to 6-Foot Size

POSTPAID to your door No. A2731XS

This is the loveliest of all weeping trees. Nothing will add more beauty and enjoyment to your yard and lawn than these two trees with their fine leaves, drooping branches and golden-yellow bark. Ours are hardy, vigorous and easy-to-grow. And they grow fast, giving ample shade in a very few years.

FREE GIFT 1 Carolina or Norway Poplar. (Cottonless Cottonwood — bears no seed.)

FOR WINTER PROTECTION, SUMMER SHADE

Our Suggestion for a 5-Row Windbreak:

- OUTSIDE ROW: Caragana
- 2nd ROW: Chinese Elm
- 3rd ROW: Box Elder
- 4th ROW: Green Ash
- INSIDE ROW: Chinese Elm

ALL HARDY NORTHERN-GROWN

300 12 to 18-In. Size WINDBREAK TREES

Not only are these tree seedlings of great value for windbreaks, they are also useful for shelterbelt or erosion control. And a source of fire wood, lumber and posts; plus the satisfaction of having something green and cooling for both man and animal. This collection is a real value!

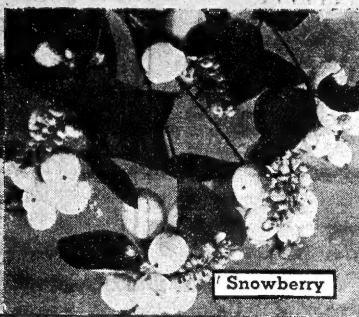
- 100 CHINESE ELMS
- 50 BOX ELDER
- 50 GREEN ASH
- 100 CARAGANA

ALL \$798 for only POSTPAID TO YOUR DOOR (a \$13.37 Catalog Value) No. A2708XS

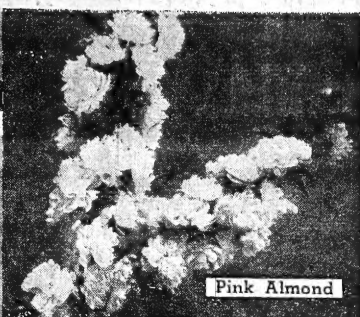
or 2 COLLECTIONS } \$1450 POST PAID (a \$21.10 Catalog Value)



Persian Lilac



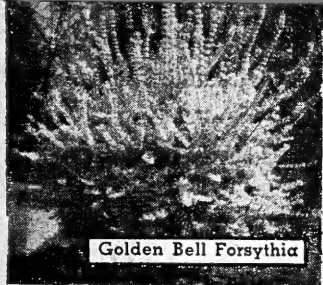
Snowberry



Pink Almond

4 GURNEY'S Beautiful Flowering Shrubs

for only **\$2.29** POST PAID



Golden Bell Forsythia

Here's Beauty for Your Home at a Very Low Price No. A2674XS

Almost every home has need of a few fine shrubs such as these. And if you have a new home, this is your opportunity to do some real landscaping at an extremely low price. Order several collections if you wish.

1 PERSIAN LILAC. 18 to 24-in. Grows 8 to 10 feet high with slender upright branches. Fragrant, lilac-colored blossoms in late spring. Blooms first year.

1 SNOWBERRY. 18 to 24-in. Dainty, rose-colored flowers. Large, white berries far into winter. Grows 3 to 4 feet tall.

1 DOUBLE FLOWERING PINK ALMOND. 12 to 18-in. Every branch covered in very early spring with little rose-like flowers. Very hardy. Blooms first year after planting. Grows 3 to 5 feet high.

1 GOLDEN BELL FORSYTHIA. 18 to 24-in. Golden flowers often against last snows of spring. Grows 4 to 6 feet tall. One of the most popular, and best, shrubs.

FREE GIFT: 1 Tamarix Hispidia. A very hardy, long-blooming variety. Grows 10 to 12 feet tall but can be kept lower by pruning. Foliage fine, feathery, dense, silvery-blue. Flowers coral pink. Grows anywhere.



***** USE ORDER BLANK ON PAGE 6 *****



HYDRANGEA

FOR ONLY **89¢** EACH PPD.

2 to 3-FOOT SIZE

Summer-Flowering Hydrangea A. G.

We are offering you a real buy on this excellent and usually high-priced shrub because we have a fine lot of them and are willing to cut out our profit to make new friends and customers, and at the same time offer a bargain to our old friends.

These are top quality, fully developed, full-sized shrubs. They will bloom and make a fine showing this first summer. Often called the Early Summer Snowball. Grows 3 to 5 feet tall.

No. A3849S

or **3 FOR \$2.39** POST PAID

BARGAIN OFFER
10 Red Cedar, 8 to 12"
10 Bull Pine, 9 to 12"
10 Colo. Blue Spruce, 6 to 10"
All 30 for only \$5.89 POSTPAID TO YOUR DOOR
No. IN55XS

Transplanted Windbreak-Shelter Belt EVERGREENS

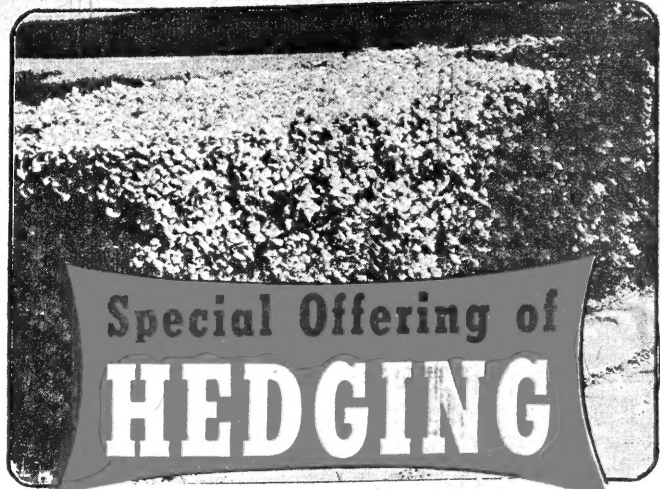
For Protection All Year 'Round

These are of a size just right for setting in the field. All are transplants, freshly dug, and have good root systems that have been dipped in mud right after digging to insure their getting to you in good planting condition. Each of these trees grows

branches clear to the ground to shut out the cold winter winds. There is nothing that will increase the value of your property more than an evergreen windbreak. Plant 8 to 12 ft. apart in the row, rows at least 12 ft. apart.

POSTPAID PRICES

Catalog Number	Name	Size	Per 10	Per 25
IN34S	Red Cedar	8 to 12"	\$1.95	\$4.25
		12 to 18"	2.55	5.75
IN36S	Bull Pine	9 to 12"	2.10	4.75
		12 to 18"	2.75	6.25
IN48S	Colo. Blue Spruce	6 to 10"	2.98	6.98
IN49S	Black Hills Spruce	6 to 10"	2.45	5.75



Special Offering of HEDGING

Use Hedges for Beauty, Protection, Privacy, Lot Dividers

CARAGANA is the drouth lover. One of the hardiest of all hedges. Pea-green color, locust-like leaves. Gives tight hedge. Can be trimmed any height from 1 to 10 feet.

GREEN BARBERRY is a fine, medium-height, extremely hardy hedge that grows about 3 feet high untrimmed. Has shiny red berries in winter. Good stopper of unwanted traffic.

COTONEASTER makes beautiful, dense hedge. May be kept to 18" by trimming; grow to 4 feet un-

trimmed. Dark, glossy leaves in early spring turn red and yellow in fall. White flowers followed by black fruit. Thrives in almost any soil.

CHINESE ELM is the low-cost, quick grower. Can be trimmed any height from 1 to 10 feet. Very hardy. In leaf early and late.

HONEYSUCKLE is ideal for the tall, screening hedge because it grows tall, has beautiful foliage and in spring has beautiful flowers followed by shiny red berries.

Order Number	Name	Size We Ship	Distance to Plant Apart	POSTPAID PRICES			
				Per 12	Per 25	Per 50	Per 100
A3303S	Caragana (Siberian Pea Tree)	18 to 24"	8 to 10"	\$2.69	\$ 4.89	\$ 9.25	
A3302S	Green Barberry	12 to 18"	18"	\$2.19	4.25	7.75	14.98
A3305S	Cotoneaster	2 to 3'	10 to 12"	5.25	9.75	17.50	32.75
A3304S	Chinese Elm	9 to 12"	12 to 15"	.85	1.49	2.49	
A3329S	Honeysuckle	9 to 12"	3 feet	1.39	2.40	4.50	

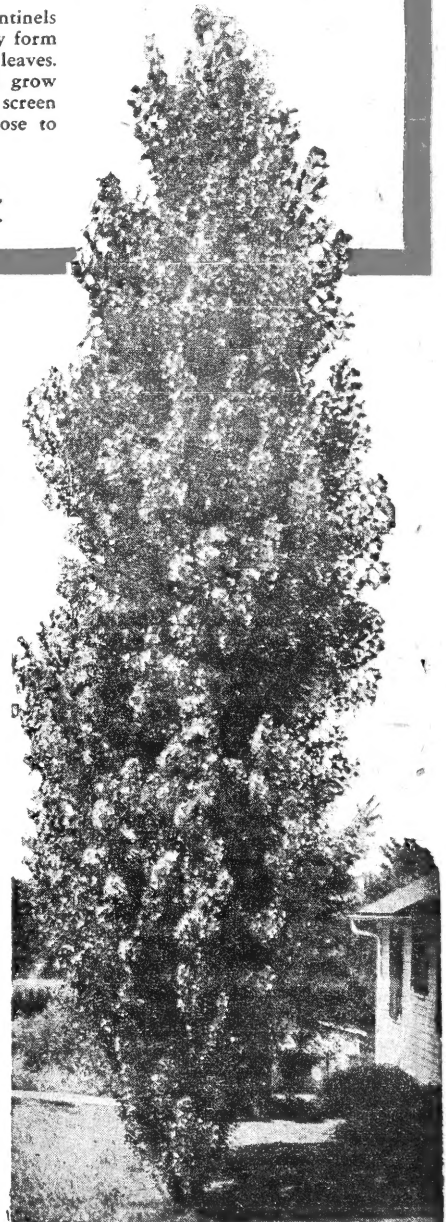
10 Lombardy POPLARS } \$1.79 POST PAID

BEAUTIFUL . . . USEFUL . . . 2 to 3-ft. ECONOMY SIZE

This is the tall, stately tree used so much for avenue or background planting, as a tall screen, to mark a lot line, as sentinels by the yard entrance, to line a driveway. They form tall, stately columns of dark, shiny-green leaves. Succeed on soil too poor for other trees, and grow rapidly. One reason they are so good for a screen or windbreak is that their foliage grows close to the ground.

No. A2733XS

FREE GIFT 1 Silver Leaf Poplar. A beautiful, large-growing, spreading shade tree.



4 5 to 7-Foot JUMBO SIZE APPLE TREES

Use Order Blank on Page 6



ALL FOR ONLY **\$4.29**

EXPRESS NOT PREPAID

No. A2022XS

MONEY-SAVING APPLE BARGAIN

5 for only **\$2.69**

POSTPAID TO YOUR DOOR

2 to 3-ft. Planting Size
No. A2021XS

If you want an apple orchard at very little cost, and at the same time want good varieties that will give you apples over the entire fruiting season and way into the winter, this collection is for you. The size of these trees is 2 to 3-foot, an economical planting size and an extremely good buy.

1 WEALTHY. The good keeper. Has yellow background and covering of

FREE GIFT: 1 Canadian Mount Royal Plum. One of the very few hardy European type plums. Greenish yellow, firm, juicy, sweet flesh. Freestone. For eating fresh or canning.

red. White flesh, very juicy. Very good for pies. Very hardy. Leading commercial and home-orchard apple for north. Keeps well.

1 HARALSON. Described in collection at the right.

1 WHITNEY. Also described in collection at the right.

1 PRAIRIE SPY. The best flavored keeper. Attractive red color, very high quality, productive, and hangs on tree well. Because such a good keeper, and because so much better quality than Winesap and others on the market after Christmas, it is widely planted for home and market.

1 DARK "All-Red" DUCHESS. The best summer cooking apple. Ripens juicy red fruit in August. Delicious in apple pies and for sauce. First degree of hardiness. If you like the old Duchess of Oldenburg, you'll like this new Duchess.

1 HARALSON. Hardest of all winter apples. A big, red, juicy apple that keeps until summer. Bears heavily and annually on a sturdy, strong-branched tree. Bears fruit in three years.

1 FIRESIDE. The new Super Delicious. An apple of Delicious quality yet hardy enough to grow and fruit in the far north. Trees large, vigorous, well-branched. Fruit beautifully striped. Flesh crisp, firm, juicy. Developed at University of Minnesota State Fruit Breeding Farm.

1 WHITNEY CRAB APPLE. A deliciously flavored early. Good eaten fresh, and best for pickling. Fruit is large for a crab apple; sweet and juicy. Color is yellow with lively red stripes. Hardy, vigorous, and heavy bearer.

1 NORTHWESTERN GREENING. A very attractive winter apple with

smooth, waxy, clear pale yellow skin with slight greenish tinge. Flesh is crisp and mild. Very large fruit, often 5" or more across. Popular for good quality and good keeping ability.

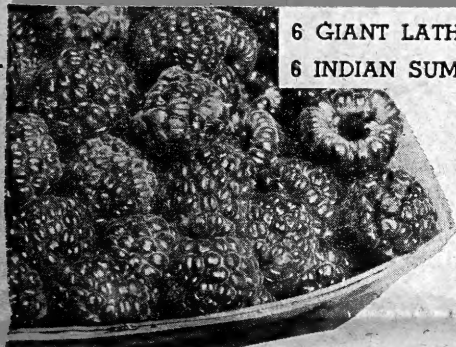
FREE GIFT: 1 Seckel Pear. The "Sugar Pear". Very sweet flavor. Good right off the tree and for desserts. Small in size but large in quality.

Here's Why GURNEY APPLE TREES Are Better

Most apple trees are grafted on common apple seedlings. But we bud (not graft) our apple trees on iron-hardy Baccata root stock. Baccata is an extra hardy Siberian crab apple with heavy, strong roots. Thus Gurney's

apple trees are hardy as far north into Canada as apples can be grown, where ordinary apple trees would not live, and at the same time they are extra hardy for southern planters. And they bear 2 to 4 years sooner.

12 Best RED RASPBERRIES



6 GIANT LATHAM } for **\$2.59** No. A2315XS
6 INDIAN SUMMER } only

POSTPAID TO YOUR DOOR

LATHAM does well anywhere. Fruit is large, many a full inch long. Bears enormous crops. This is Minnesota's great market berry.

INDIAN SUMMER gives you 2 big crops a year! High quality, early, hardy, more disease resistant. This is the finest new everbearer.

FREE GIFT: 2 Gurney's Famous Purple Gem, the hardest of all Raspberries.

YOU'LL LIKE GROWING RASPBERRIES

because they take so little room (plant them along fence or border, if you wish), take little care, and produce big crops of delicious fruit. And if you are looking for

a market crop, something that will bring you in extra cash, they rate right with strawberries as one of the best and surest money makers. —SID GURNEY

12 Best BLACK RASPBERRIES

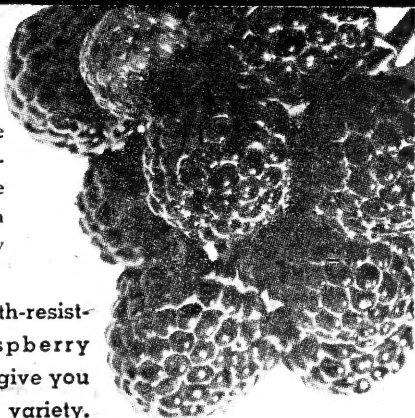
6 CUMBERLAND
6 MORRISON
No. A2281XS

for only **\$2.29**
POSTPAID TO YOUR DOOR

CUMBERLAND produces enormous crops of large, firm berries of the finest flavor. The berries are juicy, not seedy. Fine for shipping, market or home use. The most popular Black Raspberry grown. MORRISON. This is a new, improved black with larger fruit, improved

quality, larger yields. We believe this new improved berry will take the place of the common black raspberry in a few years.

FREE GIFT: 2 drouth-resistant, early, red raspberry "Chief"—enough to give you a start in this good variety.



4 Jumbo
PLUM TREES
ALL 4 **\$5.98**
FOR ONLY



No. A2183XS

Each of these 4 Gurney-grown plums is the best of its kind. Each will do well even in areas where the winters are severe and summers dry. Also, while plum trees planted singly or several of the same variety will ordinarily bear well, to get a really bumper crop you should plant several varieties, at least one of which should be a strong pollinizer. These 4 trees will give you maximum pollinization thus a heavy crop of good plums.

1 KAGA. A cross between a native wild plum and fragrant Chinese apricot-plum.

1 UNDERWOOD. Tree spreading, me-

dium size, productive. Plums are large, red, juicy, of high quality.

1 TECUMSEH. Extra hardy. Long lived. Earliest of all. One of Dr. Hansen's best, and probably the best eating plum in our whole list. Ripens in August. Flesh is yellow, firm, juicy and sweet. Has everything a plum should have for home use.

1 WANETA. The truly delicious, old favorite. Fruit large, reddish-purple. Trees vigorous, spreading, very hardy, exceedingly productive.

FREE GIFT: 1 Oka Plum-Cherry. Makes big bush or low tree. Fruit like large cherries, fine for eating or cooking.

PLUMS
are our
SPECIALTY

For over 70 years we have made a specialty of plums because they bear a sure, heavy crop of delicious fruit almost anywhere. And they are particularly adapted to

the Northwest, where so many of our customers live. All Gurney plum trees are budded on hardy native plum seedlings—not on peach, as is a common practice.

3 HYBRID BUSH CHERRIES

FOR ONLY

Make Beautiful Ornamental Shrubs

\$3.49
POSTPAID TO YOUR DOOR

No. A2096XS

Give Delicious Fruit

FREE GIFT: One Korean Bush Cherry—a beautiful shrub with fine, sweet cherries.

These Hybrid Bush Cherries not only bear delicious fruit but they make beautiful ornamental shrubs or screens. They have pretty foliage all summer and are covered with white blooms in the spring. The fruit of these is much larger and tastier than the old Hansen bush cherries and better growers. You folks who are out of the regular cherry country can grow these new hybrids and enjoy the fruit just as much as you would regular cherries. In fact, they are so good that many people living in regular cherry country plant them too, particularly where they want both fruit and beauty.

1 Gurney's Giant Red-Fleshed Cherry. Plum-sized fruit of dark purplish-red skin and flesh. Grows 4 to 6 feet tall.

Bears very heavily. Actually more like a plum.

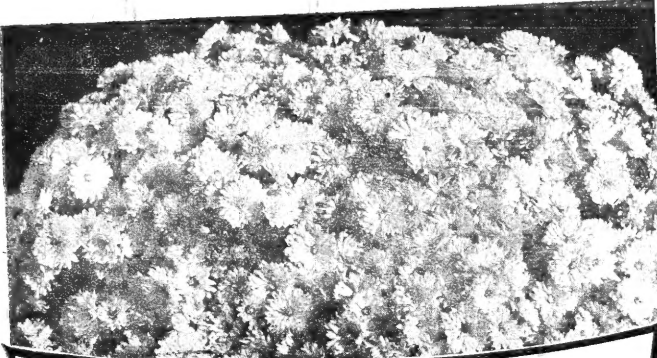
1 Heaver Shrub Plum-Cherry Hybrid. Much like Opata but grows as bush. Green flesh and dark purple skin. Good flavor, better than Opata, and earlier. From Canada.

1 Nanking Hybrid. Most outstanding new fruit introduced in last 10 years. Fruit about size of Montmorency. . . . Grand to eat from hand. Wonderful for pies, canning, preserves or jelly. Berries a deep red; flesh is firm, tender and sweet. Small pit. A beautiful ornamental shrub or screen. Illustrated at far left.

Use Order Blank on Page 6



FRUIT GROWS CLOSE TO BRANCHES. HIDDEN BY FOLIAGE FROM BIRDS.



4 Gurney's HARDY CARNATIONS

"They Bloom in Your Garden Like They Do in the Greenhouse"

- 1 Double Scarlet
- 1 Double White
- 1 Double Yellow
- 1 Double Pink

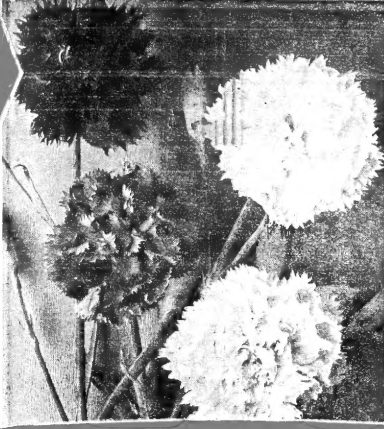
all 4 for only **98¢**

POSTPAID TO YOUR DOOR
No. B3266XS

These are HARDY plants that will grow and bloom outdoors in your garden with the same fine, fragrant flowers that you pay a fancy price for at a greenhouse. These are an improved strain with lustrous flowers on stems often 20 inches tall. Bloom from early summer 'til frost.

FREE GIFT
1 Famous Regal Lily.

USE ORDER BLANK ON PAGE 6



3 "Dinner Plate" DAHLIAS

BIG, BRIGHT and BEAUTIFUL for only **\$100**

These Dahlias actually have blooms 9 to 12 inches across. We had one photographed on a full size dinner plate to try to show you their size. But you have to see them yourself to realize how bright and beautiful they are. And you can grow them yourself with just average garden care.

- 1 GIANT SCARLET. This, as the name implies, is a deep red giant. So bright you can almost hear it.
- 1 COMMODORE. This one is a beautiful, clear, canary yellow. Gorgeous.
- 1 GIANT WHITE WONDER. Extra large, pure white.

POSTPAID TO YOUR DOOR
No. BG558XS

FREE GIFT
One packet of our finest Dahlia-flowered Zinnia seed.



USE ORDER BLANK ON PAGE 6

6 GURNEY'S Famous, Hardy BLAZ-O-MUMS

- 1 Pink
- 1 New Purple
- 1 Copper
- 1 Red
- 1 Yellow
- 1 White

for only **\$189**

POSTPAID TO YOUR DOOR
No. B3105XS

These "miracle mums" start blooming the first year and literally cover themselves with blossoms in the late summer and early fall. By actual count, over 1,000 blooms on some plants the first year and more the second. You never miss bouquets cut for indoors. Plants grow to about 3 feet across and 2 feet high.

FREE GIFT
One brand new Blaz-O-Mum called "Brighter Days". It is a beautiful pale yellow. You'll like it.

4 Super Hardy BROWNELL Tea Roses

Live Year after Year Despite 25° Below Zero Temperature!

No. 1 FIELD-GROWN PLANTS — 4 for only **\$549**

POST PAID
No. A2504XS

These are the Brownell Hybrid Tea Roses (patented) which are becoming more popular every year because they won't kill out even if temperatures dip to 25 degrees below zero. If you are getting tired of replacing Tea Roses every year, plant Brownell's. Best of all, they are free blooming, with beautiful, many-petaled flowers that last a long time. Give far more blooms than ordinary hybrid teas. And since they don't die back so much in winter, after several years they get to be shoulder high. You can keep them cut back if you prefer.

OR
SAME 4 ROSES in XX JUMBO SIZE

\$649 POST PAID
No. A2505XS

- 1 Anne Vanderbilt. Showy orange and bronze suffused with yellow. Semi-double and fragrant.
- 1 Tip Toes. One of the most beautiful of the Brownell's. Long pointed buds of clear salmon. Very delightful fragrance.
- 1 Shades of Autumn. A brilliantly colored rose, combining shades of rich scarlet, golden yellow and deep rose.
- 1 Queen of the Lakes. One of the new Brownell Red Roses. Brilliant crimson with long pointed buds, strong straight stems.

FREE GIFT: With either Brownell Rose offer, two Flame Lily bulbs. This is the brilliant orange-scarlet lily so easy to grow.



Use Order Blank on Page 6

10 Giant-Flowered RAINBOW CANNAS

Here, for only \$1.00, you can get 10 Cannas of all colors of the rainbow—reds, pinks, white, yellows, scarlets and in-between shades. Some plain and some "speckled". Each one will be the great big, giant-flowered kind. And each root we ship you will be a big, healthy one. Cannas make beautiful beds, also a fine tall border, particularly when placed behind shorter flowers.

for only **\$100**

POSTPAID TO YOUR DOOR
No. BG511XS

Use Order Blank on Page 6



5 New, Large-Flowered CHRYSANTHEMUMS

These are some of the newest and best of the garden chrysanthemums. If you are used to the older mums, you will be delighted at the brilliance and beauty of these new varieties. And the size will surprise you, too. Some have individual blooms up to 5 inches across. Chrysanthemums are one of the best cut flowers; last for days and days in the house.

- 1 PINK OPAL. Fully double, 4" flowers of rich rose-pink overlaid with cream tints.
- 1 CHARLES NYE. 4" solid double, brilliant golden yellow blooms on long stems. The finest yellow.
- 1 GLOWING COALS. Double, 2 1/2", glowing red blooms on long stems.
- 1 ERMINE. In our opinion, the very best of all whites. Beautiful fully double with center petals lemon yellow. Flowers very resistant to frost damage.
- 1 TANGERINE. A great, shaggy, tangerine-orange flower that is fully double and often 5" across. Long-stemmed. No. B3117XS

All 5 for only **\$239**

POSTPAID TO YOUR DOOR
FREE GIFT: 1 Chrysanthemum Chippewa—huge, fully double flowers of rich purple. A Minnesota origination.

4 DELPHINIUM (Hardy Larkspur)

- 2 Delphinium Sky Blue (Belladonna)
- 1 Delphinium Deep Blue (Bellamosum)
- 1 Pacific Giant Hybrid

all for **\$100**

POSTPAID TO YOUR DOOR
No. B3271XS

Delphinium are without a doubt one of the most satisfactory of all hardy perennial flowers, and also one of the most beautiful. They are hardy and tolerant just about anywhere and under any soil conditions. The long ant of blooms make wonderful spikes of flowers. And after being cut the plant puts out more spikes of blooms so the flowering season is long.

NO FREE GIFT with this one; we have gone the limit already.

4 All-Time Favorite HOUSE PLANTS

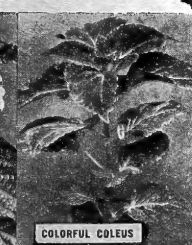
1 Each of ALL 4 only **\$100**

POSTPAID TO YOUR DOOR
No. 2N501XS

With these house plants, some of our most popular ones, you will have a bit of spring in your house all winter. And in the summer you can plant them out in the garden, if you want to. The regular catalog value of these 4 plants is \$1.62, but we want you to find out for yourself that Gurney's House Plants are better than the common run, so we are making these a \$1.00 special to make it easier for you to buy them.



PINK FLOWERED LANTANA



COLORFUL COLEUS



BRANCHING IVY

FREE GIFT... 1 small Cactus, our choice. Cactus growing is fun. Give good soil but don't keep wet.



GERANIUM RED FIAT

"Green Thumb" COLLECTION OF HARDY PERENNIALS

- ... SHASTA DAISY. Has huge, glistening white daisies 4 to 5" across on 2 to 3' stems.
- * 1 SHASTA DAISY "Alaska"
- * 1 FIRE LILY (Red Russian)
- * 1 DELPHINIUM, Deep Blue
- * 1 PINK BLAZ-O-MUM
- * 1 GLOWING GOLD THERMOPSIS

FIRE LILY... One of the easiest of all garden lilies to grow. A dainty reddish orange with large clusters of blooms.



... GLOWING GOLD (Thermopsis). Has 3-ft. spikes of sulfur yellow flowers. Beautiful with blue Delphinium. Bright green foliage; absolutely hardy.

DELPHINIUM... (Hardy Larkspur.) Single flowers of midnight blue. Will grow almost anywhere. Produces a series of blooms if you keep it cut.

PINK BLAZ-O-MUM. A cushion mum that grows 2 feet high, 3 feet across. Flowers so thick they cover the foliage. Always plenty for cutting.

All 5 for only **\$100**

POSTPAID TO YOUR DOOR
No. B3283XS
Here is a group of 5 Hardy (Never Fail) field-grown Perennials—beautiful flowers that are easy to grow. They will add beauty to your garden this year and for many years after. Separately, these 5 Perennials are worth at least \$2.00.

FREE GIFT: One Clove, or Grass, Pink plant. The spicily fragrant, hardy garden pink.

Use Order Blank on Page 6

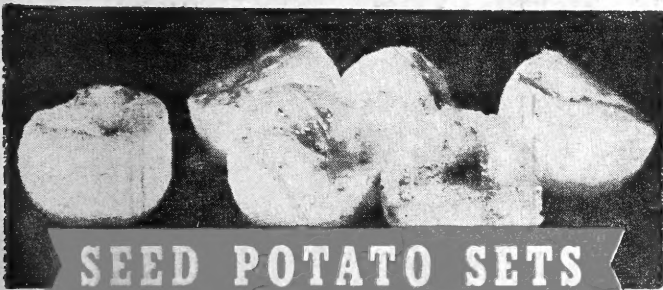
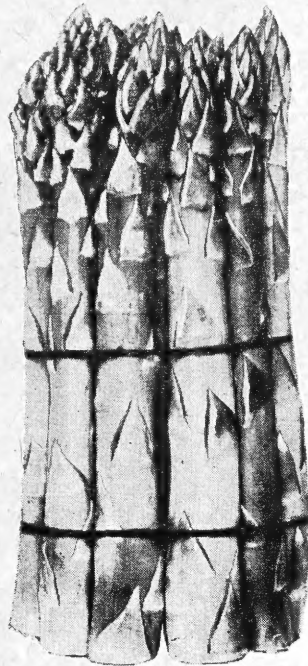
25 Big 3-Year-Old Jumbo Size Mary Washington ASPARAGUS PLANTS

for only **\$1.89** POSTPAID

No. A2355XS

This is the kind that melts in your mouth. It is practically immune to rust. It comes up fresh and tender every year. Picking season is about 3 months. AND — with this Super Jumbo size, you can eat a little the first year!

FREE GIFT: 1 Gurney's "Matchless Pie" RHUBARB Plant.



SEED POTATO SETS

All Ready to Plant . . . No Cutting Necessary

Our already-cut potato seed sets are easier to plant, germinate quicker, produce more and better potatoes. The sets come from the finest basic seed stock in America. Each set has just the right amount of meat with the eye to insure best germination. The sets are treated to eliminate surface fungus, to protect them against soil-borne organ-

isms, and to enable you to plant when ground is still cold.

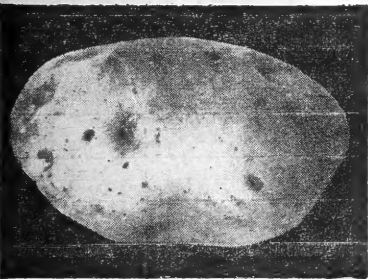
We have three kinds:

(1) **WHITE COBBLER**—260S. Box of 100 sets.....\$1.89, ppd.

(2) **RED PONTIAC**—262S. Box of 100 sets.....\$1.89, ppd.

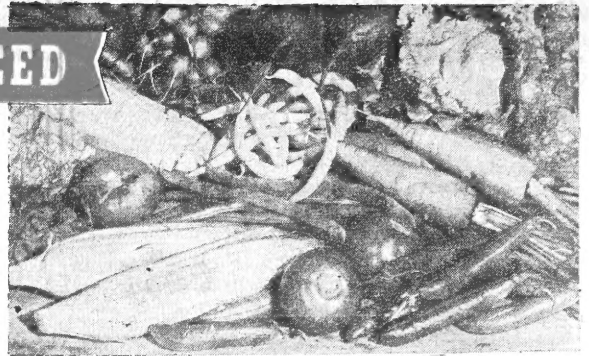
SPECIAL OFFER: 1 Box each or 2 Boxes same kind (applies to White Cobbler and Red Pontiac only)\$3.59, ppd.

(3) **CHEROKEE**—263S. Brand new. Little later than White Cobbler. Resistant to blight and scab. Excellent table quality. Supply limited. **BOX OF 100 SETS.....\$1.98 ppd.**



GURNEY'S VERY BEST GARDEN SEED

We have gone over our entire list of garden seeds and have chosen these Top Varieties for you. There have been some new varieties introduced during the last year, and the better ones of those have been included. These garden seeds will give you the best possible garden . . . at a low price.



Cat. No.	Variety	Pkt.	1/2 Lb.	1 Lb.
BEANS, WAX				
116S	Imp. Golden Wax	\$.02	\$.035	\$.055
118S	Cherokee Wax	.15	.40	.65
BEANS, GREEN BUSH				
107S	Stringless Green Pod	.12	.33	.53
113S	Topcrop	.15	.45	.65
BEANS, POLE				
134S	Kentucky Wonder Green	.15	.35	.50
BEANS, LIMA				
126S	Fordhook Bush	.15	.27	.50
129S	Green Seeded Baby Lima	.15	.35	.60
PEAS				
152S	Little Marvel	.12	.27	.48
157S	Yankton Main Crop	.12	.27	.45
SWEET CORN, HYBRID				
172S	Hybrid Sweet Corn Mix	.15	.25	.48
178S	Early Giant Bantam Hybrid	.15	.33	.55
180S	Y81 Hybrid	.25	.40	.75
185S	Stowell's Evergreen Hybrid	.15	.35	.60

Cat. No.	Variety	Pkt.	1/2 Lb.	1 Lb.
SWEET CORN, Open Pollinated				
177S	Golden Bantam	.12	.25	.45
184S	Stowell's Evergreen	.12	.26	.45

Cat. No.	Variety	Pkt.	1/2 Oz.	Oz.
BEETS				
604S	Detroit Dark Red	.10	.35	.35
605S	Perfected Canner	.10	.35	.35

Cat. No.	Variety	Pkt.	1/2 Oz.	Oz.
CABBAGE				
515S	Earliest of All	.12	.36	.65
531S	Danish Ballhead (Late)	.10	.33	.55
520S	All Seasons Yellows Resistant	.10	.35	.65

Cat. No.	Variety	Pkt.	1/2 Oz.	Oz.
CARROTS				
627S	Danvers Half Long	.10	.38	.38
634S	Early Coreless	.10	.38	.38

Cat. No.	Variety	Pkt.	1/2 Oz.	Oz.
LETTUCE				
509S	Black Seeded Simpson	.10	.29	.29
510S	Grand Rapids	.10	.29	.29
500S	Great Lakes H.	.15	.50	.50
503S	Salad Bowl	.25	.35	.35
507S	New York Wonderful Head	.10	.35	.35

Cat. No.	Variety	Pkt.	1/4 Oz.	1/2 Oz.	Oz.
ONIONS					
303S	Yellow Sweet Spanish	.10	.75	.75	.75
309S	Dakota Red Globe	.10	.65	.65	.65

Cat. No.	Variety	Pkt.	1/2 Oz.	Oz.
RADISHES				
437S	Crimson Giant	.10	.24	.24
440S	Earliest Fireball	.10	.25	.25
444S	Scarlet White Tipped	.10	.20	.20
448S	White Icicle	.10	.20	.20

Cat. No.	Variety	Pkt.	1/4 Oz.	1/2 Oz.	Oz.
TOMATOES					
411S	Earliana	.10	.28	.45	.45
417S	Bounty	.15	.25	.40	.40
429S	Super Sioux	.15	.50	.85	.85
426S	Earlee-Red Hybrid	.25	.25	.25	.25

Cat. No.	Variety	Pkt.	1/2 Oz.	Oz.
CUCUMBERS				
352S	National Pickle	.10	.34	.34

Cat. No.	Variety	Pkt.	1/2 Oz.	Oz.
MUSKMELONS				
333S	Hale's Best Mildew Resistant	.10	.25	.25
337S	Milwaukee Market	.10	.30	.30
341S	Golden Champlain	.15	.30	.30
PUMPKIN				
762S	Dickinson	.10	.20	.20
766S	Small Sugar	.10	.20	.20
SQUASH				
745S	Warted Hubbard	.10	.25	.25
752S	Table Queen	.10	.20	.20
WATERMELON				
722S	Dixie Queen	.10	.27	.27
724S	Kleckley's Sweet Will-Resistant	.10	.29	.29
714S	Earliest and Sweetest	.15	.35	.35
711S	Midget	.25	.35	.35

GURNEY'S DOLLAR Famous 1/2 PRICE GARDEN

No. 100XS. Enough seed for a big family garden. Good varieties, too. Will produce bushels of the finest vegetables, and some flowers besides.

- 1/2 lb. BUSH BEAN, Stringless Green Pod. 30c
- 1/5 lb. BUSH BEAN, Stringless Yellow Pod. 12c
- 1/5 lb. PEAS, Early Marvel. 10c
- 1/2 lb. PEAS, Little Marvel. 27c
- 1/5 lb. SWEET CORN, Hybrid Mixed. 15c
- 1 pkt. SPINACH, King of Denmark. 10c
- 1 pkt. PARSNIP, Hollow Crown. 10c
- 1 pkt. CUCUMBER, Pickling. 9c
- 1 pkt. TOMATO, Earlibel. 15c
- 1 pkt. RADISH, White Icicle. 10c
- 1 pkt. RADISH, Early Scarlet Globe. 10c
- 1 pkt. LETTUCE, Black Seeded Simpson. 10c
- 1 pkt. BEET, Dark Red. 10c
- 1 pkt. CARROT, Early Coreless. 10c
- 1 pkt. TURNIP, Purple Top White Globe. 10c
- 1 pkt. ZINNIA, California Giants Mixed. 10c

REGULAR PRICE \$208

YOU SAVE \$108 ALL 16 PACKETS \$100 for only POST PAID

THIS IS THE YEAR TO PLANT A GARDEN

GURNEY'S FROST-PROOF VEGETABLE PLANTS

- ★ State Inspected
- ★ Grown Outdoors
- ★ Hardy Vigorous Plants

This is what you get:
100 White Bermuda Onion Plants
Pure white flesh. Extremely mild and sweet. None better for table use. Frost-proof.
100 Yellow Sweet Spanish Onion Plants
Most popular of all onions. A large yellow, with mild, sweet flesh. A very good keeper. Frost-proof.

50 Early Wakefield Cabbage Plants
The standard early cabbage. Very solid, pointed heads. Crisp, tender and sweet. Frost-proof.
Being grown outdoors, these plants are tough, healthy and vigorous. We will ship them to you directly from our grower in the south. Safe delivery guaranteed.

250 for only \$139 POST PAID

No. OG51XS

600 VEGETABLE PLANTS

200 White Bermuda Onion Plants
300 Yellow Sweet Spanish Onion Plants
50 Early Jersey Wakefield Cabbage Plants
50 Copenhagen Cabbage Plants (2nd early)

Same fine frost-proof plants as above. Shipped direct from our grower in the south. Safe delivery guaranteed.

for only \$249 POST PAID No. OG60XS

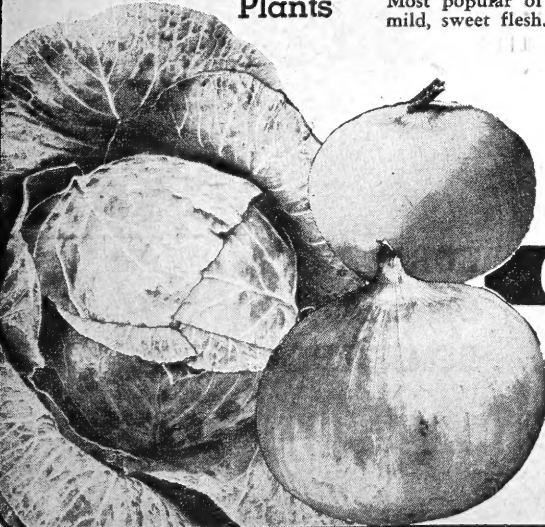
Gurney's All Summer FLOWER GARDEN

- 1 pkt. ZINNIA, Peppermint Stick. 25c
- 1 pkt. ZINNIA, Dahlia Flowered Mixed. 10c
- 1 pkt. NASTURTIUMS, Glorious Gleam Hybrids Mixed. 10c
- 1 pkt. PETUNIAS, Dwarf Globe Mixed. 10c
- 1 pkt. OLD FASHIONED PINKS, Mixed. 10c
- 1 pkt. CORNFLOWER, Jubilee Gem. 10c
- 1 pkt. COSMOS, Early Flowering Mixed. 10c
- 1 pkt. SWEET PEAS, Ruffled Spencer Mixed. 10c
- 1 pkt. ASTERS, American Beauty Mixed. 10c

REGULAR PRICE \$105

Enough seed for a whole flower garden—a riot of color and all kinds and sizes.

ALL 9 PACKETS A \$1.05 VALUE No. 1000XS 69¢ POSTPAID



25 OUR FINEST BLUE RIBBON WINNERS

GURNEY'S GLORIOUS GLADS

Big Blooming Size Bulbs — A Rainbow of Colors

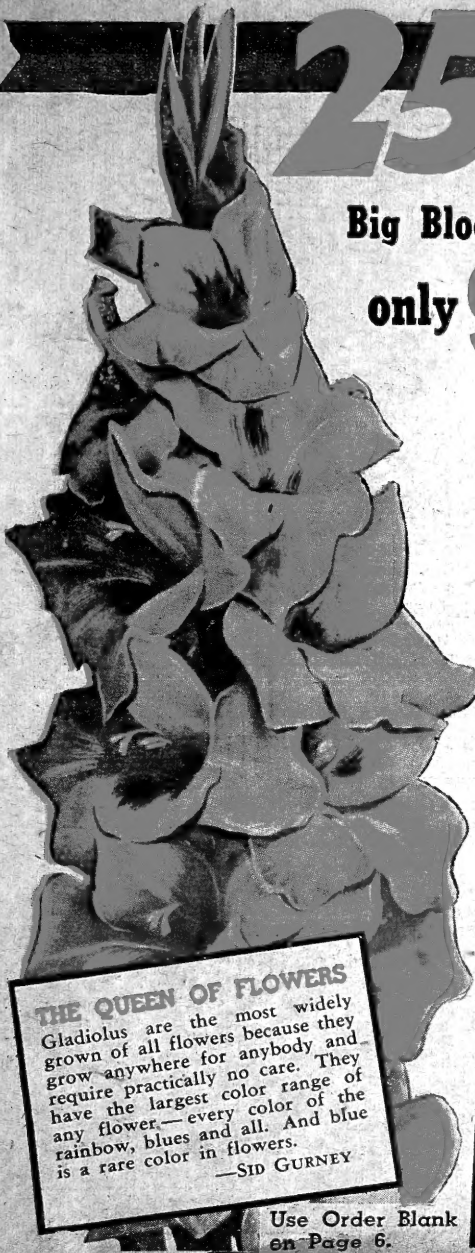
only **98¢** POSTPAID TO YOUR DOOR

No. BG586XS

FREE GIFT

1 Packet large-sized Strawflowers of mixed colors.

This collection will give you a full scale of colors—whites, reds, yellows, oranges, smokies, pinks, and blues. Both plain and ruffled kinds. Each bulb guaranteed to bloom beautifully this summer. And enough of them to make you a beautiful, showy garden of flowers.



THE QUEEN OF FLOWERS
 Gladiolus are the most widely grown of all flowers because they grow anywhere for anybody and require practically no care. They have the largest color range of any flower—every color of the rainbow, blues and all. And blue is a rare color in flowers.
 —SID GURNEY

Use Order Blank on Page 6.

50 BIG 3-FOOT SIZE Gurney's Hardy Siberian Strain CHINESE ELMS

FOR SHADE...FOR HEDGING...FOR WINDBREAK

These are BIG trees priced to sell — not the little seedlings generally offered. And they are the *extra hardy* Siberian Strain, the kind that are now thriving in rich soil and poor all over the United States and 'way up into Canada. You can use these for a wind-break, or for shade trees. If you use them for hedging, cut them back after planting, at least one-half for more bushy growth.

for only **\$4.29** POSTPAID

No. A2709XS

FREE GIFT 5 Russian Olives. The useful, silver leaved tree.



STRAWBERRY BARGAIN OFFER

25 GEM EVERBEARER }
 25 SENATOR DUNLAP }

All 50 **\$1.89** for only

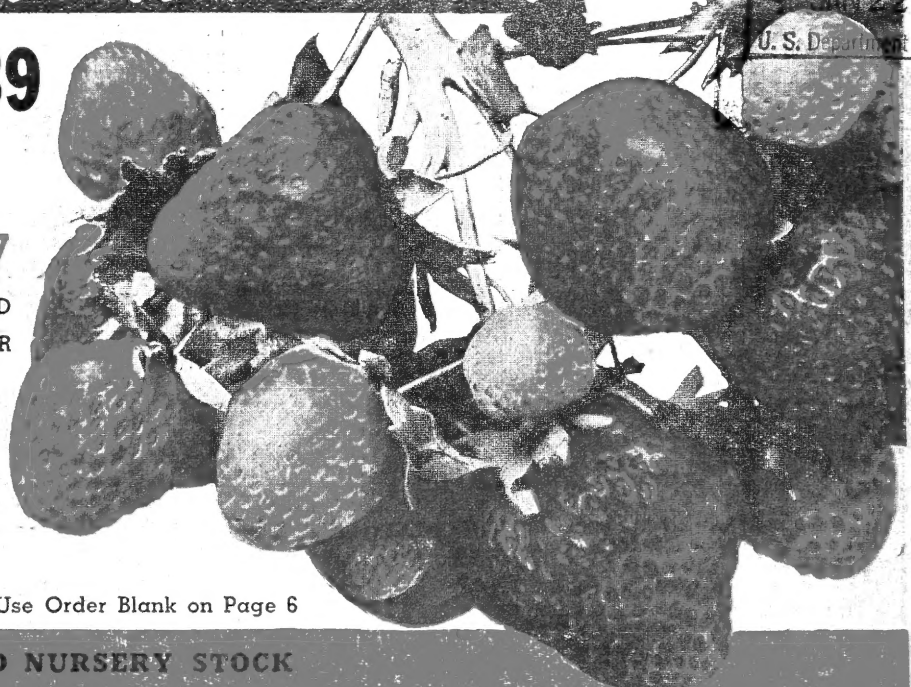
★ ★ ★ ★ ★
 or 100 for only **\$3.49** POSTPAID TO YOUR DOOR No. B4215XS

This is a fine collection, having both Junebearers for canning and freezing, and Everbearers for fresh berries the entire season. All the plants are young and vigorous, with strong, heavy roots. And they are the *best strains* — which makes a big difference in strawberries.

GEM EVERBEARER This is one of our biggest sellers. Fruit is large, rich red. Produces heavily from June until November first season planted. Even the new runners produce the first year. The plants are extra large and thrifty.

SENATOR DUNLAP The popular old favorite of Junebearers. Berries dark crimson with deep red flesh of good quality. Grows in all kinds of soil and extreme cold. Wonderful for canning.

FREE GIFT 5 Superfection, the sensational new Everbearer. We want you to try 5 at our expense.



Use Order Blank on Page 6

EXTRA-HARDY NORTHERN-GROWN SEED AND NURSERY STOCK

GURNEY

SEED & NURSERY CO., YANKTON, SO. DAK.

WE CALL THIS OUR "FRIENDSHIP FOLDER" BECAUSE IT IS MADE UP OF SPECIAL OFFERS WITH WHICH WE HOPE TO WIN NEW FRIENDS. THE PRICES ARE LOW AND ALL THE SEEDS, PLANTS, BULBS AND BABY CHICKS ARE OUR REGULAR, HIGH-QUALITY, NORTHERN-GROWN GRADE. LOOK THROUGH THE FOLDER AND YOU'LL FIND REAL MONEY-SAVING VALUES!

GEO. W. GURNEY



Sec. 34.66, P. L. & R.
 U. S. POSTAGE
PAID
 YANKTON, SO. DAKOTA
 Permit No. 1

RURAL ROUTE
 STAR ROUTE
 BOXHOLDER LOCAL