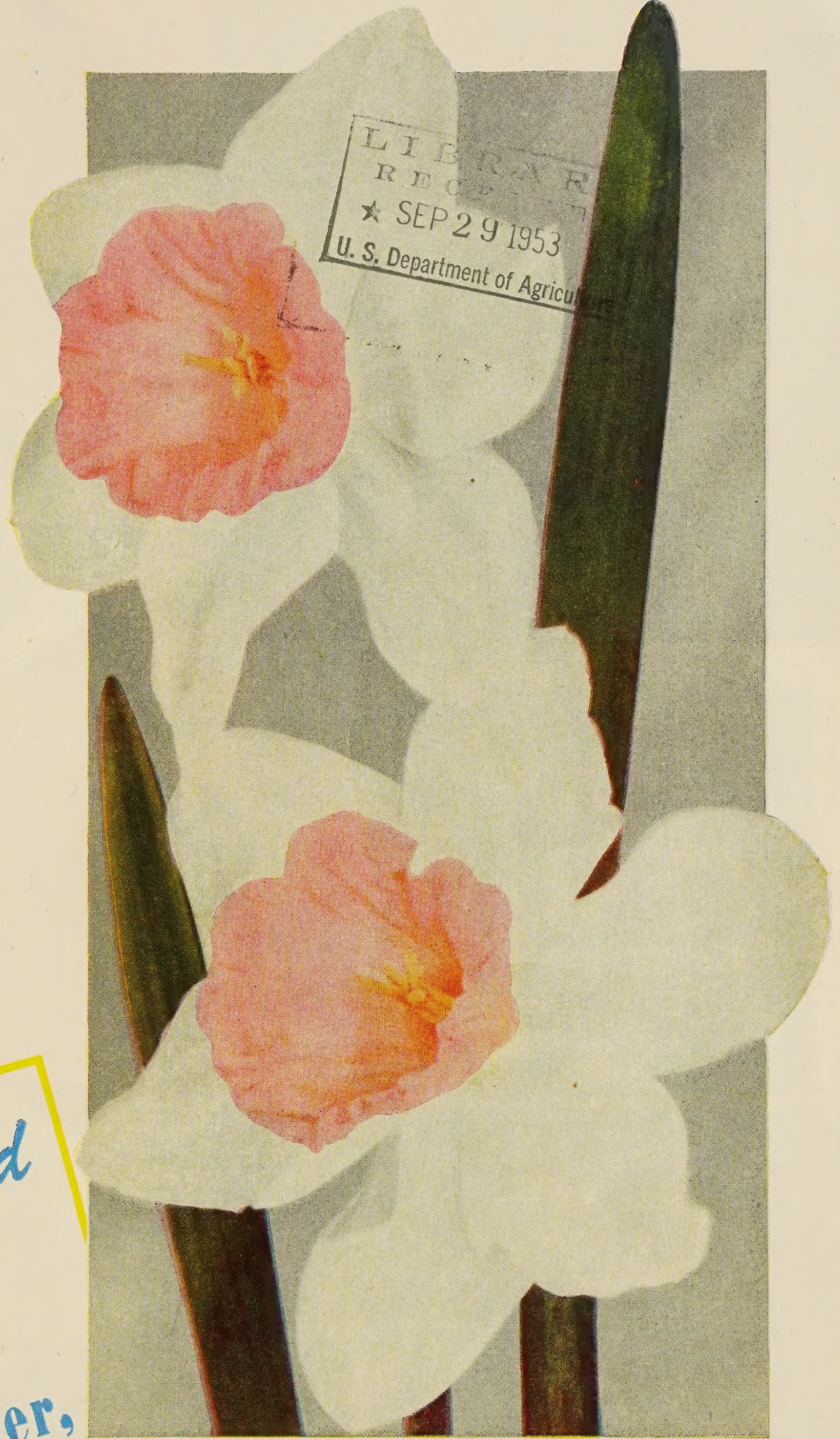


Historic, Archive Document

Do not assume content reflects current scientific knowledge, policies, or practices.

62.61

GARDEN and FLORAL GUIDE



LIBRARY
RECEIVED
★ SEP 29 1953
U. S. Department of Agriculture

*Hart and
Vick
Inc.
Rochester,
N. Y.*

Fall 1953



King Alfred
The Most Popular Giant Trumpet Narcissus.



President Lebrun
Giant flower on a long stem.

Leviathan
A splendid new Large-Cupred Narcissus.



Twink
Double flower with petals alternating primrose and orange.

TOP SIZE—DOUBLE-NOSE BULBS
Grown for us in Holland by the leading bulb growers.

**GOLDEN CUP
COLLECTION OF
DAFFODILS**

15 BULBS for \$3.25
3 Each of These 5 Kinds
(Catalog Price \$3.75)

60 BULBS for \$9.89
12 Each of These 5 Kinds
(Catalog Price \$11.60)

125 BULBS for \$18.45
25 Each of These 5 Kinds
(Catalog Price \$21.75)
Prepaid to You

Mrs. R. O. Backhouse
A Pink Narcissus.



Narcissus - Daffodils

Large Double Nose Bulbs That Should Produce Two, Three and Four Flowers.

Daffodils are very easy to grow, they thrive in any good soil and in just about any location. Plant them in clumps of six to a dozen bulbs among the perennial plants and in the foreground of shrubbery and evergreens. Planted in large masses through woodlands and along hill-sides and in meadows, they give a most pleasing effect. They will increase in beauty and number without any special care and soon become permanently established. Plant Daffodil bulbs about 6 inches deep and 6 inches apart as early in the fall as possible.

THE NEW PINK DAFFODILS

Here are seven of them, reasonably priced, that you will want to add to your Narcissus family.

MRS. R. O. BACKHOUSE. (The Pink Daffodil.) It is one of the choicest that may be seen in the garden, a variety of quite unique coloring, large trumpet-shaped crown of a full shell-pink shaded deep pink at brim, perianth ivory-white and slightly reflexed; it should not be missed in any collection. In color on page 2.

30c each; 75c for 3; \$2.45 for 12; \$4.75 for 25

PINK FANCY. A pale apricot trumpet broadly edged with soft pink, surrounded with pure white petals. A very free flowering kind that multiplies easily and readily.

35c each; 85c for 3; \$2.75 for 12; \$5.25 for 25

PINK GLORY. The "Orchid" among Narcissus. Graceful pure white petals and long trumpet opening light Indian yellow soon taking on pink shades. The inside of the trumpet is deep pinkish apricot.

55c each; \$1.45 for 3; \$5.25 for 12; \$10.35 for 25

PINK RIM. Heavy waxlike, pure white petals and a pale citron-yellow cup with ruffled rims, prettily picoteed with soft pink. Stems tall and strong.

45c each; \$1.20 for 3; \$4.20 for 12; \$8.25 for 25

PINK SELECT. Broad, sparkling pure white petals surround a 2-inch long and 2-inch wide trumpet that opens a pale soft yellow but soon turns a lovely pink with rich apricot markings. A free flowering Daffodil that does well just about anywhere.

40c each; 95c for 3; \$3.50 for 12; \$6.85 for 25

ROSY SUNRISE. Queen of the new Pink Daffodils. Pure white petals of good substance and form; with a lovely, large, strongly fringed trumpet of pure salmon-apricot distinctly shaded rose-pink that turns to a soft Indian yellow on the inside when the flower is fully developed.

90c each; \$2.45 for 3; \$9.40 for 12; \$18.65 for 25

SIAM. A wide flaring apricot-pink trumpet changing gradually to a soft, delicate pink. The petals are white, broad and overlapping. A giant among the Pink Daffodils.

35c each; 95c for 3; \$3.25 for 12; \$6.25 for 25

TRUMPET NARCISSI

COVENT GARDEN. A new Trumpet kind with light yellow petals and a much deeper yellow trumpet. Easily grown indoors or in the garden.

65c for 3; \$2.00 for 12; \$3.75 for 25; \$13.75 for 100

GLORY OF SASSENHEIM. A great flower, long, rich yellow trumpet and broad, pure white petals. A splendid Daffodil.

70c for 3; \$2.25 for 12; \$4.35 for 25; \$16.45 for 100

KING ALFRED. The standard by which all golden yellow Daffodils are judged. Large, refined, golden yellow; popular the world over. In color on page 2.

70c for 3; \$2.15 for 12; \$4.00 for 25; \$14.85 for 100

DUKE OF WINDSOR. First Prize Winner at the New York Daffodil Show. White, overlapping petals and a large and broad soft orange colored trumpet, flaring and short. Cup inside shows a delicate flaking of a broad golden band. Heads all other Narcissus as a general all around satisfactory kind both for garden and for show purposes.

95c for 3; \$3.45 for 12; \$6.55 for 25; \$24.75 for 100

MOUNT HOOD. The very best pure white Daffodil we have ever had in our trial grounds. Large, heavy textured, broad, pure white petals and a long, ruffled edged, cream-white trumpet.

90c for 3; \$3.45 for 12; \$6.55 for 25; \$24.75 for 100

MRS. E. H. KRELAGE. A bold ivory-white trumpet sometimes tinted with cream, and broad, long, overlapping white petals make this an outstanding Daffodil. 65c for 3; \$2.00 for 12; \$3.75 for 25; \$13.75 for 100

PRESIDENT LEBRUN. Overlapping pure white petals and a long, ruffled and fluted cream-white trumpet. A splendid kind to cut for house decoration. Medal winner in 1943. Pictured in color on page 2.

90c for 3; \$2.75 for 12; \$5.25 for 25; \$19.85 for 100

REMBRANDT. Perfectly formed flower with both trumpet and petals of clear golden yellow. Lasts particularly well when cut.

65c for 3; \$2.00 for 12; \$3.75 for 25; \$13.75 for 100

SHORT-CUPPED NARCISSI

FIRETAIL. A horticultural award winner with broad, creamy white petals and a large, bright crimson-scarlet cup. Flowers are of great substance, lasting a long while in the garden and when cut. 19 inches high.

50c for 3; \$1.60 for 12; \$3.00 for 25; \$11.25 for 100

GERTIE MILLAR. Large and most attractive primrose and cream-white Leeds variety. A great favorite with many experienced amateur gardeners. Makes a most attractive spot in the border and is also a splendid flower to cut.

70c for 3; \$2.65 for 12; \$4.00 for 25; \$14.85 for 100

KANSAS. One of the best Narcissus in this attractive class. Petals are long and very pure white. Trumpet flat and lemon-yellow with a cinnamon-colored edge which does not burn.

75c for 3; \$2.45 for 12; \$4.65 for 25; \$17.65 for 100

MRS. BARCLAY. Large, broad, reflexed petals of pale primrose-yellow with a frilled yellow cup daintily edged with orange. A very lovely variety.

50c for 3; \$1.60 for 12; \$3.00 for 25; \$11.25 for 100

ROCK GARDEN DAFFODILS

Exquisitely dainty, perfectly formed miniature Daffodils. Ideal for rock gardens and walls. Leave undisturbed for many years.

BULBOCODIUM CONSPICUUS. Yellow Hoop-Petticoat; dainty rich golden yellow flowers of hoop-petticoat form. Foliage narrow bladed. Grows 6 inches tall. 40c for 3; \$1.20 for 12; \$2.30 for 25; \$8.75 for 100

W. P. MILNER. Small sulphur-white flowers, pure white when forced, on wiry 10-inch stems. One of the very best Daffodils for growing indoors and an attraction in the rockery.

45c for 3; \$1.45 for 12; \$2.75 for 25; \$10.25 for 100



Duke of Windsor

LARGE-CUPPED NARCISSI

EMERALD. Broad, pure white petals and a wide flaring heavily ruffled lemon-yellow cup. Quite an outstanding Narcissus. A new "weather-proof" Narcissus, vigorous, free flowering; wind, rain, hot weather does not seem to mar their beauty.

70c for 3; \$2.15 for 12; \$4.00 for 25; \$14.85 for 100

LEMON CUP. Soft creamy white petals around a wide open, heavily ruffled butter-yellow cup. Edged on the inside with a rather broad band of pale yellow. Bloom very early.

75c for 3; \$2.45 for 12; \$4.65 for 25; \$17.65 for 100

LEVIATHAN. Cream-white petals, thick and waxlike, very flaring pure yellow cup, nicely ruffled and frilled, with a deeper golden yellow edge. Very vigorous growing. Pictured in color on page 2.

70c for 3; \$2.15 for 12; \$4.00 for 25; \$14.85 for 100

MAJARDA. Creamy white, broad petals splendidly formed. Large, flaring flat crown of deep, clear yellow. Free flowering. The effect is that of boldness. Majarda is tall growing, free flowering and multiplies rapidly. Excellent for naturalizing.

70c for 3; \$2.15 for 12; \$4.00 for 25; \$14.85 for 100

MARY BLONK. Rich canary-yellow cup fringed and edged marigold-orange. Broad clear white petals. Strong growing.

70c for 3; \$2.15 for 12; \$4.00 for 25; \$14.85 for 100

MRS. MARGARET ERSKINE. An enormous flower of imposing dignity. The broad overlapping petals are smooth and pure canary-yellow. The trumpet a little deeper in color, beautifully frilled and spread at the mouth.

70c for 3; \$2.25 for 12; \$4.15 for 25; \$15.45 for 100

Bulbocodium Conspicuous



DOUBLE NARCISSI

"Daffodils" to Many Gardeners

For perfection of bloom these varieties should be planted in slight shade.

ALBO PLENO ODORATA. Snowy-white, very double, sweet scented Gardenia-like flowers.

50c for 3; \$1.60 for 12; \$3.00 for 25; \$11.25 for 100

INGLESCOMBE. Large, very double, rich golden yellow flower. Easily grown to perfection both indoors and out in the garden.

70c for 3; \$2.10 for 12; \$3.75 for 25; \$13.75 for 100

TWINK. A very attractive flower, carried on a strong, tall stem. This most unusual variety is a semi-double type, the petals alternating in color, soft primrose and clear orange. Free flowering and very hardy. Good either in the garden or for forcing indoors. Shown in colors on page 2.

70c for 3; \$2.10 for 12; \$3.75 for 25; \$13.75 for 100

SWEET - SCENTED POETAZ NARCISSI

Hardy and strong growing class of Narcissi that bear very freely, large clusters of very fragrant flowers. Leave them in the ground indefinitely, they soon form large, luxuriant clumps.

GERANIUM. Pure white petals and a bright orange-scarlet cup, 4 to 6 flowers on a sturdy stem.

60c for 3; \$1.85 for 12; \$3.50 for 25; \$12.45 for 100

GLORIOUS. A round, flat flower, pure white, broad overlapping petals and a most brilliant orange cup.

50c for 3; \$1.60 for 12; \$3.00 for 25; \$11.25 for 100

L'INNOCENCE. Pure white petals and a large, soft orange cup. Easily grown to perfection either indoors or out in the garden.

50c for 3; \$1.60 for 12; \$3.00 for 25; \$11.25 for 100

POETICUS VARIETIES

Very hardy class of Narcissi producing long-stemmed white flowers with scarlet edged cups. This is the most popular kind for naturalizing in grass or semi-wild places. They multiply very rapidly.

ACTAEA. The largest Poeticus in existence. Broad, snow-white petals and large eye broadly margined with dark red. Very beautiful cut flower.

50c for 3; \$1.60 for 12; \$3.00 for 25; \$11.25 for 100

RECURVUS (Pheasant's Eye). Pure white petals and orange-red cup.

50c for 3; \$1.60 for 12; \$3.00 for 25; \$11.25 for 100

JONQUILS

These are the Very Sweet-Scented Flowers That are So Popular

GOLDEN SCEPTRE. A very beautiful hybrid Jonquil, having large golden yellow flowers of the Trumpet type; very fragrant; an excellent forcing variety. 50c for 3; \$1.55 for 12; \$2.80 for 25; \$10.85 for 100

ORANGE QUEEN. A lovely kind carrying 3 to 4 deliciously scented deep golden orange flowers on a single stem. A low growing variety carrying its flowers on strong, 10-inch stems.

40c for 3; \$1.30 for 12; \$2.50 for 25; \$9.45 for 100

A Mixture of Daffodils and Narcissus for Your Garden

These are the first of the large flowering bulbs to bloom in the spring and are splendid for growing between the plants in the shrub border, in semi-shaded places under trees, or grown in rows in the garden to cut for house decoration. In this mixture you will find equal quantities of Double Narcissus, Trumpets, Incomparabilis, Barri, Leeds, Poeticus, Poetaz, and new seedlings. It's a splendid mixture that we know you will appreciate.

Prices prepaid to you: \$1.55 for 12; \$2.95 for 25; \$11.25 for 100; \$51.85 for 500.



HARDY LILIES

CANDIDUM (Northern France Grown Bulbs). A greatly improved Madonna with much larger, stronger stems and more perfectly formed, pure white flowers evenly spaced. Blooms in June. Plant as early in the fall as possible, 1 inch deep and 8 inches apart. For best results reset every other year.

60c each; \$1.50 for 3; \$5.85 for 12; \$11.25 for 25

REGALE or ROYAL LILY. Large and fragrant, trumpet-shaped flowers with pure white centers, canary-yellow in the throat; outside of petals white with a shading of lilac-pink. Stems grow 4 to 6 feet high and a single plant will often bear from 15 to 20 blossoms. Blooms June and July. One of the most beautiful and easiest grown of all Lilies, individual blooms are 6 inches in length and 4 to 5 inches across the mouth. Plant 5 inches deep in good, well drained soil.

Large bulbs from Oregon: 10 to 11 inches in circumference, 75c each; \$2.10 for 3; \$7.85 for 12; \$14.85 for 25

SPECIOSUM RUBRUM. Best known and liked recurved type. Tall and sturdy 5 ft. plants bear clusters of large, delicately scented flowers of cream-pink speckled crimson in Aug. and Sept. Plant 9 inches deep. Large Pacific Coast grown bulbs.

75c each; \$2.10 for 3; \$7.85 for 12; \$14.85 for 25

Candidum Lilies bloom in June. ➡➡➡

BULBS TO GROW INDOORS IN TERRALITE AND WATER

Excellent for Gifts

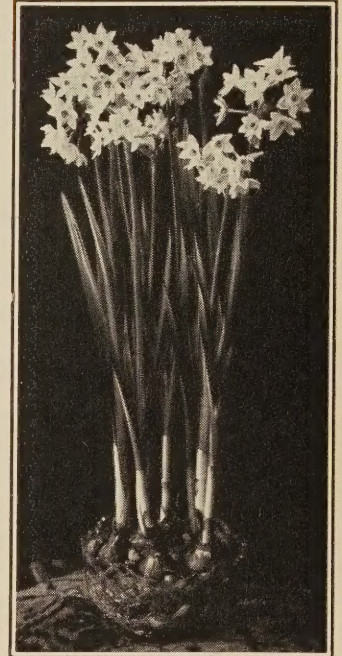
Dishes of these, grown in pebbles and water, may be had in bloom continuously from Thanksgiving until Easter. Plant different lots each three weeks from October 1st until March 1st, and you can then enjoy a constant succession of bloom.

FRENCH-GROWN PAPER-WHITE NARCISSUS.

Most popular and easiest of all bulbs to force into bloom in pebbles, bulb fiber or Terra-Lite and water indoors during the winter. Each bulb will make from one to three stems bearing a cluster of 7 to 9 pure white, very fragrant flowers. Bloom very soon after planting and the flowers last about 10 days. Large bulbs, 18c each; 50c for 3; \$1.75 for 12; \$3.45 for 25; \$12.85 for 100.

SOLEIL D'OR. Resembles the Paper-White Narcissus very much in habit and is of exquisite deep yellow color with an orange-yellow cup. The culture is the same as Paper-White Narcissus. Giant bulbs, 18c each; 50c for 3; \$1.75 for 12; \$3.45 for 25.

CHINESE SACRED LILIES. Similar to the Paper-Whites, but the flowers have a bright yellow center. Extra large bulbs, 18c each; 3 for 50c; \$1.75 for 12; \$3.45 for 25.

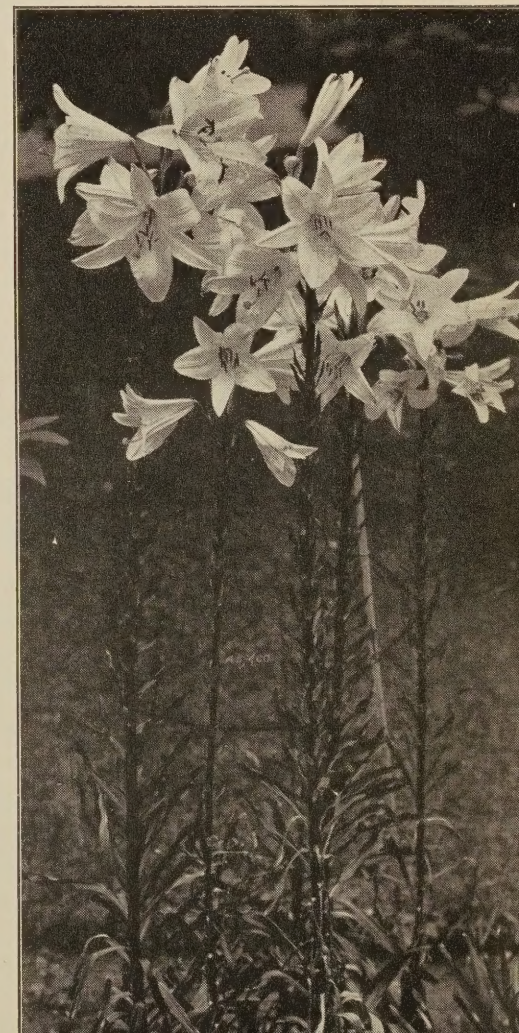


Narcissus in Pebbles and Water. Bloom in from 35 to 60 days

Terralite Makes It Easy to Grow Bulbs Indoors

Clean and light in weight it holds bulbs upright in bowls and dishes, and greatly encourages the root-growth so necessary to make good blooms.

Price: 4 qts. 39c; postpaid 75c. 16-qt. bag 85c; postpaid \$1.30



Distinctive, Unusual PARROT TULIPS

Giant Fringed Flowers on Strong Stems

These Tulips have thrown off the conventional form and bear large, very showy and most interesting flowers with curiously and deeply lacinated petals of rich and varied colors. When fully opened we have 10-inch wide flowers of brilliant colors often shadowed with soft apple-green almost its entire length.

BLACK PARROT. Brilliant velvety maroon-black. The only Parrot Tulip in this color. Strong stem and flower. We offer the true Black Parrot and recommend it as a most unusual flower.

30c each; 80c for 3; \$2.75 for 12; \$5.35 for 25

BLUE PARROT. Bright violet and mauve flower outside, inside purple shaded steel-blue. A large oblong flower, perfectly formed, with heavy waxlike petals that remain in splendid condition for an unusual length of time. The most popular flower at many shows this past spring. Stems strong and straight, 24 inches long.

\$1.25 for 12; \$2.35 for 25; \$8.85 for 100

FANTASY. Another lovable vagabond which has successfully thrown off the conventional Tulip form. Buds are like pointed candle flames of salmon-rose. The edges of the closed flower are informally curved and deeply lacinated, apple-green shadows rise from the outside base almost the entire length of the petals. When fully opened, we have a broad petalled flaring and loosely

built flower of brilliant salmon-rose on a 22-inch stem. A true expression of rhythmic freedom.

\$1.25 for 12; \$2.35 for 25; \$8.85 for 100

ORANGE FAVORITE. One of the most richly perfumed of all Tulips. Long, pointed buds and large open flowers of orange, scarlet and salmon, splashed and feathered with bright apple-green. The large, exotic blooms are carried erect on tall, straight stems about 22 inches long. Don't fail to have this new Tulip in your garden.

\$1.25 for 12; \$2.35 for 25; \$8.85 for 100

TEXAS GOLD. A golden yellow beauty of great size and substance. Some of the petals are edged and flamed with delicate red markings. All of the petals are splashed on the outside with apple-green. This variety is very much better than Sunshine. Larger flowers, better color, stronger growing. 26 inches tall.

30c each; 70c for 3; \$2.35 for 12; \$4.45 for 25

THERESE. A new top-notch Parrot of cherry-scarlet with the same unusually formed and distinctive petals all feathered heavily with bright apple-green. A very attractive flower both in the garden and when displayed in vases indoors. 24 inches tall.

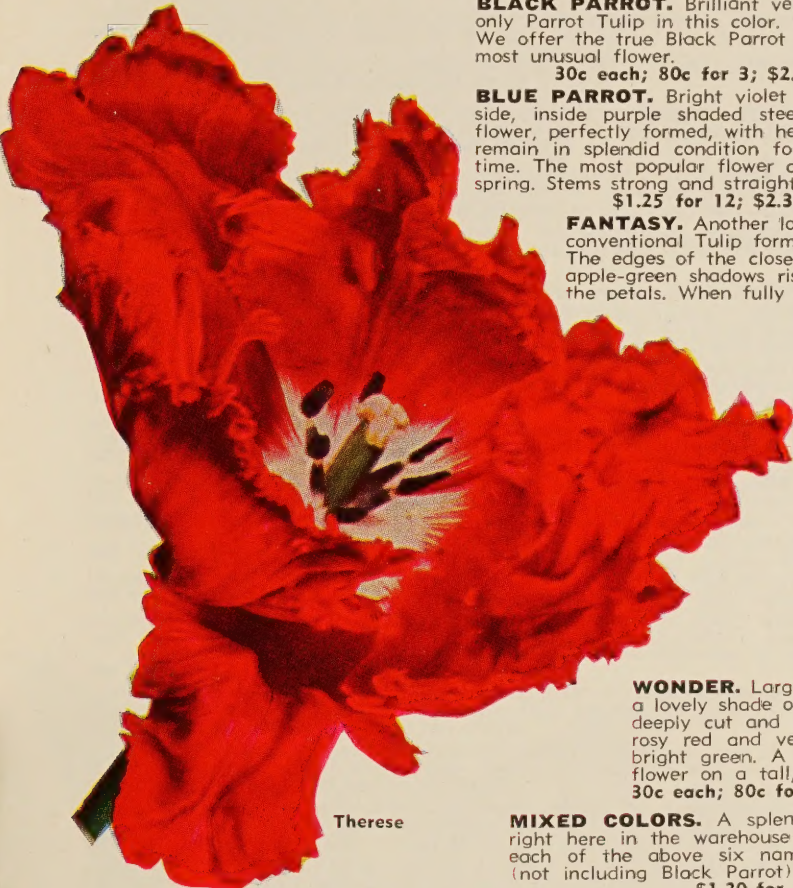
\$1.50 for 12; \$2.80 for 25; \$10.75 for 100

WONDER. Largest of all the Parrot Tulips and a lovely shade of soft old rose. The very large, deeply cut and fringed petals are flamed with rosy red and veined and streaked with fresh, bright green. A tremendously large and exotic flower on a tall, straight stem. 24 inches tall.

30c each; 80c for 3; \$2.75 for 12; \$5.25 for 25

MIXED COLORS. A splendid blend of colors we make right here in the warehouse of nearly equal quantities of each of the above six named varieties of Parrot Tulips (not including Black Parrot).

\$1.20 for 12; \$2.30 for 25; \$8.75 for 100



Therese



The Rare
Black
Parrot

PARROT TULIP COLLECTION

Seven varieties described here. Each kind packed separately and named.

3 bulbs each of 7 kinds
Worth \$3.95—Special \$3.29

6 bulbs each of 7 kinds
Worth \$6.55—Special \$5.95

12 bulbs each of 7 kinds
Worth \$13.10—Special \$10.98

Postpaid to You

DOUBLE PEONY-FLOWERED TULIPS

These tall-stemmed, very double flowering Tulips, with blooms 4 to 5 inches across, deserve a lot more attention than they have been given. They bloom in May and are splendid for growing in solid beds or for planting in groups of six to a dozen in the hardy plant or shrub border or among evergreens. Very sturdy growing and hold their giant flowers very erect. The kinds we list here grow from 22 to 24 inches tall.

BLUE FLAG (Bleu Celeste). Huge flowers of a pleasing shade of violet-blue. Splendid for cutting for house decoration. Grows 20 inches tall.

\$2.15 for 12; \$3.95 for 25; \$14.65 for 100

COXA. Large, very double, rich scarlet flowers daintily tipped with pure white. Most attractive. 22 inches tall.

\$2.00 for 12; \$3.70 for 25; \$13.45 for 100

EROS. Commands attention in every garden where it is grown. One of the very best Tulips in this magnificent class ever introduced. Very substantial flowers of clear old rose color on unusually strong stems even for this variety. 20 inches tall.

\$2.15 for 12; \$3.95 for 25; \$14.65 for 100

MOUNT TACOMA. Resembles a large, double, white Chinese Peony. Flowers are very large, often measuring 5 inches across. The best white of this kind. Grows 18 inches tall

\$1.50 for 12; \$2.80 for 25; \$10.75 for 100

NUGUS. Deep glossy maroon-red flowers; really a distinct shade in Tulips. We recommend this variety for planting in groups between evergreens. Try it. 20 inches tall.

\$2.45 for 12; \$4.55 for 25; \$17.00 for 100

ROYAL YELLOW. Clear golden yellow double flowers without a speck, spot or blemish to mar their sunny beauty. Plant this in combination with the variety Blue Flag. The effect is very pleasing. 20 inches tall.

\$1.75 for 12; \$3.30 for 25; \$12.25 for 100

PEONY-FLOWERED MIXTURE. All of the above kinds in a splendid mixture of colors.

\$1.65 for 12; \$3.10 for 25; \$11.45 for 100

Our bulb growers in Holland send us the cream of their crop of bulbs. Known as riddle 12, they are top-size and top-quality.



The Blue
Parrot Tulip

A leaflet on the planting and care of Spring Flowering Bulbs is sent with every order.

COTTAGE GARDEN OR MAY-FLOWERING TULIPS



Advance

A Carefully Planned Blend of Colors in Cottage Tulips

All the eighteen kinds of Cottage Tulips including the Lily-Flowered described on this page are combined right here in our warehouses to insure a wide range of color and a most unusual display in your garden. **\$1.45 for 12; \$2.75 for 25; \$10.25 for 100.** All bulbs prepaid to you.

These long, pointed flowers of the English Garden or Cottage Tulip type are indescribably graceful and lovely. Cottage Tulips begin flowering as the Single and Double kinds fade and continue to bloom well into the late Darwin and Breeder season. Be sure to include these Cottage Tulips in your planting.

ADVANCE. Truly a remarkable flower, reminding one, when fully opened, of a fiery red Oriental Poppy. It is described by a Holland grower as "stems better than best Darwin, petalage longer than the largest Darwin, two weeks earlier than the earliest Darwin." 32 inches high. **\$1.65 for 12; \$3.25 for 25; \$11.85 for 100**

ASTOR. (Lily-Flowered.) Delightful salmon and rose, shaded buff-pink. 26 inches high. **\$1.50 for 12; \$2.80 for 25; \$10.75 for 100**

CAPTAIN FRYATT. (Lily-Flowered.) Recurved petals of sparkling ruby-red with a blue center. **\$1.50 for 12; \$2.80 for 25; \$10.75 for 100**

GOLDEN DUCHESS. (Lily-Flowered.) Very lovely deep yellow Tulip. Carries its giant pointed petaled flowers on 26-inch stems. In color on page 7. **\$1.50 for 12; \$2.80 for 25; \$10.75 for 100**

GENERAL DE LA REY. Very beautiful flower whose petals on the outside are lilac-rose and cream, and on the inside lighter lilac-rose, shaded to shell-pink. The attractive base is yellow and green. 28 in. tall. **\$1.75 for 12; \$3.35 for 25; \$12.25 for 100**

GOLDEN HARVEST. A good name for a very lovely Tulip. Large, globular, bright lemon-yellow flower with thick, waxlike petals. Tall, stiff, and strong stem 28 inches high. **\$1.15 for 12; \$2.25 for 25; \$8.65 for 100**

GOLDEN MEASURE. Long pointed buds and long egg-shaped flowers of golden yellow with very narrow margin of Chinese red. A very strong, 28-inch stem. In color on page 9. **\$1.35 for 12; \$2.50 for 25; \$9.65 for 100**

IVORY GLORY. Outstanding white Tulip with just enough ivory coloring to put warmth and life into it. The very best white Tulip in our trial plantings of over 200 of the newer kinds. Grows 26 inches tall. In color on page 9. **\$1.75 for 12; \$3.35 for 25; \$12.25 for 100**

LINETTE. (Lily-Flowered.) Clear violet-blue flower with a much darker center. The petals are long and narrow and gracefully twisted. A splendid addition to our Lily-Flowered class. 24 inches tall. **\$2.15 for 12; \$3.95 for 25; \$14.65 for 100.**

MARSHALL HAIG. Brilliant scarlet, glistening red interior and a yellow base. One of the brightest colored of all Tulips. **\$1.50 for 12; \$2.80 for 25; \$10.75 for 100**

MARTHA. (Lily-Flowered.) Delicate cerise-red, reflexed petals, white and blue edged center. Long lasting. 26 inches tall. In color on page 7. **\$1.50 for 12; \$2.80 for 25; \$10.75 for 100**

MILDRED. (Lily-Flowered.) Soft rose-pink. Tall, strong growing. A greatly improved Marcellina. 26 inches high. In color on page 7. **\$2.15 for 12; \$3.95 for 25; \$14.65 for 100**

MONGOLIA. Giant globes of soft yellow flowers of great beauty carried on tall, strong stems. Bulb growers in Holland say it's the very finest late flowering yellow Tulip ever introduced. Lovely in combination with Marjorie Bowen. 30 inches high. **\$1.50 for 12; \$2.80 for 25; \$10.75 for 100**

MRS. JOHN T. SCHEEPERS. Very long-petaled, oblong-shaped flowers of rich golden yellow with ivory stamens. One of the most outstanding of all Tulips. Grows 28 inches high. **\$1.50 for 12; \$2.80 for 25; \$10.75 for 100**

ROSY WINGS. A very choice new Hybrid Cottage Tulip bearing large and most attractively formed long-petaled, cup-shaped, rich rosy salmon flowers on strong, 24-inch stems. **\$1.65 for 12; \$3.25 for 25; \$11.85 for 100**

STANISLUS. (Lily-Flowered.) A glorious flower that attracted unusual attention at a Spring Flower Show this year. Long, curved and reflexed petals of apricot-orange underlaid with creamy yellow. Stems 24 inches long. **\$1.50 for 12; \$2.80 for 25; \$10.75 for 100**

SMILING QUEEN. Clear, rich soft rosy red flowers, beautifully edged with satin-rose and carried erect on a strong, 28-inch stem. An outstanding Tulip that attracts attention in any garden. **\$2.15 for 12; \$4.00 for 25; \$14.85 for 100**

THE BRIDE. (Lily-Flowered.) Pure white petals, long, wavy and reflexed; golden yellow anthers and yellow base. Arranges in vases and bowls most artistically. 26-inch stems. In color on page 7. **\$1.50 for 12; \$2.80 for 25; \$10.75 for 100**

TRIUMPH TULIPS

Grown in Holland

These fine new Tulips find a ready place in the garden because they follow immediately after the earliest flowering Tulips. They come on tall, strong stems, with flowers of great size and substance. We urge you to plant some bulbs of this class in your garden. We are sure you will like them as well as we do.

ALBERIO. Very large bright, clear cherry-red, each petal has a narrow edge of yellow. Blue and yellow center. Grows 24 inches tall. **\$1.15 for 12; \$2.25 for 25; \$8.65 for 100**

CRATER. This very lovely crimson-red Tulip attracted much attention at the Tulip show sponsored by the Rochester Garden Center last spring. The stems are sturdy, 22 inches long and the flower remains in good condition a long time. **\$1.15 for 12; \$2.25 for 25; \$8.65 for 100**

ELIZABETH EVERS. An elegantly shaped Tulip of large size and carried on strong stem; dark rose, white base, yellow anthers. 22 inches tall. **\$1.35 for 12; \$2.55 for 25; \$9.85 for 100**

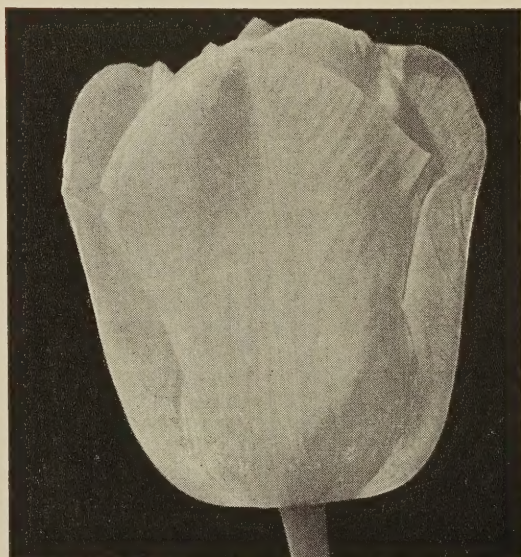
KANSAS. Splendid pure white with white anthers and lemon-yellow center. This is a very fine white Tulip, that because of its white anthers, does not get "dirty" on the inside of the flower. A splendid kind for cutting for vases in the living room. Grows 22 inches tall. **\$1.15 for 12; \$2.25 for 25; \$8.65 for 100**

ELMUS. A large flower with long, thick petals of bright cherry-red, edged narrowly with creamy white. Grows 22 inches high. **\$1.50 for 12; \$2.80 for 25; \$10.75 for 100**

ROSE BEAUTY. Large, cup-shaped flower of rich deep rose with a pure white base. Grows 25 inches tall. **\$1.30 for 12; \$2.50 for 25; \$9.65 for 100**

URSA MINOR. Butter-yellow flowers with yellow stamens. Another splendid Triumph Tulip that does not get soiled inside, because of the yellow stamens. Grows 20 inches high and does well in the garden and when forced. **\$1.30 for 12; \$2.50 for 25; \$9.65 for 100**

TRIUMPH TULIP MIXTURE. All the above kinds in a well balanced mixture of colors. Made right here in our warehouse. **\$1.10 for 12; \$2.15 for 25; \$8.35 for 100**



Kansas



Mildred



Golden
Duchess

GARDEN CLUB COLLECTION of LILY-FLOWERED TULIPS

- 12 BULBS SPECIAL \$1.89
3 each of these 4 varieties
(Catalog price \$2.15)
- 48 BULBS SPECIAL \$5.98
12 each of these 4 varieties
(Catalog price \$6.65)
- 100 BULBS SPECIAL \$10.95
25 each of these 4 varieties
(Catalog price \$12.35)

Postpaid To You



The
Bride



Martha

HART & VICK'S
BULBS
ARE ALWAYS
TOP-SIZE—
TOP-QUALITY—
DEPENDABLE

DARWIN TULIPS

Twenty Splendid Kinds

We Prepay Delivery Charges On All Bulbs

Darwin Tulips generally come in very bright solid colors: reds, pinks, violets, etc. The flowers are very large and of splendid form and substance; stems long and sturdy. They bloom after the Cottage Tulips and at the same time as the Breeders. Most of the Tulips you see growing in gardens are Darwin Tulips.

BARTIGON MAXIMUS. The most popular of the better known crimson Tulips. Very showy flowers on strong stems, fiery crimson with pure white base, ringed deep blue. Height 28 inches. A splendid forcing and outdoor Tulip. In color on page 9. **\$1.15 for 12; \$2.25 for 25; \$8.65 for 100**

CHARLES NEEDHAM. Brilliant scarlet globe-shaped flowers of splendid substance. Plant this with Glacier for contrasting color effect. 28 inches. **\$1.50 for 12; \$2.80 for 25; \$10.75 for 100**

DEBORAH. Soft Clara-Butt-pink, softly touched with light salmon and broadly bordered with apple-blossom-pink. A great improvement both in size and color on Clara Butt. 24 inches tall. **\$1.75 for 12; \$3.30 for 25; \$12.25 for 100**

ECLIPSE. Large, rich crimson-red flowers with waxlike, long-lasting petals. Tall, strong, 29-inch stem. **\$1.50 for 12; \$2.80 for 25; \$10.75 for 100**

FIRE DANCE. Goblet-shaped flowers of rich oxblood-red. One of the most brilliant of all Tulips. A bright spot in any garden. 28 inches high. **\$2.15 for 12; \$3.95 for 25; \$14.65 for 100**

NIPHETOS. One of the finest of the yellow Tulips. A very long-petaled flower; cream-white outside, soft yellow inside with ivory-white stamens. Height 28 inches. Planted in combination with Bacchus the effect is very, very pleasing. **\$1.50 for 12; \$2.80 for 25; \$10.75 for 100**

NOTRE DAME. American-Beauty-red with a violet undertone. Inside of flower claret-red with a blue sheen, brilliant blue base. The pointed flower petals curving slightly outward form a most beautiful and graceful flower. 27 inches tall. **\$1.50 for 12; \$2.80 for 25; \$10.75 for 100**

PRIDE OF ZWANENBURG. Lovely bright pink flowers suffused with rosy red and flushed with salmon. Has black base and white anthers. An outstanding garden variety. Our gardening friends will welcome it as a splendid addition to the Tulip collections. 26 inches high. In color on page 9. **\$1.50 for 12; \$2.80 for 25; \$10.75 for 100**

QUEEN OF THE NIGHT. Purple-black flowers of good size carried on 26-inch stems. We like this the best of all the nearly black Tulips. Splendid when grown with Niphetos or with Glacier. **\$1.15 for 12; \$2.25 for 25; \$8.65 for 100**

ROYAL GUEST. A glorious creamy white long-petaled flower with yellow anthers. This oval flower lasts remarkably well both in the garden and when cut. 29 inches. **\$1.75 for 12; \$3.25 for 25; \$11.65 for 100**

SPANISH BEAUTY. Rich deep red, globe-shaped flower that just seems to glow in the garden. In our trial grounds this past spring it was a busy center of attraction. 30-inch stems. **\$1.75 for 12; \$3.30 for 25; \$12.25 for 100**

SUNKIST. Large, oval-shaped flowers of bright yellow with creamy yellow anthers, borne on tall, strong stems. Lasts a long time and is one of the outstanding Tulips for the garden. Height 29 inches. **\$1.25 for 12; \$2.45 for 25; \$9.25 for 100**

THE BISHOP. A magnificent flower of clear deep violet-blue with blue base and white halo. The best Tulip of this color and highly recommended for garden display and exhibition purposes. Grows 29 inches tall. In color on page 9. **\$1.50 for 12; \$2.80 for 25; \$10.25 for 100**

WILLIAM TELL. Soft buff colored flower shaded on the edge with lighter buff and carried on 28-inch, very strong stems. Plant this with Insurpassable or with Lafayette. **\$2.15 for 12; \$3.95 for 25; \$14.15 for 100**



Deborah

GARDEN CINDERELLA. Cup-shaped flowers of cerise-red that remain in perfect form in the garden for an unusually long time. A splendid cut flower for the house. 28 inches tall. **\$1.75 for 12; \$3.30 for 25; \$12.25 for 100**

GLACIER. A giant among white Tulips, white base and white anthers. Oval-shaped flower of great substance and does not open as wide as other Tulips do. Will last three weeks in the garden and a very long time when cut. May be grown in pots for winter house bloom. 30 inches tall. **\$1.50 for 12; \$2.80 for 25; \$10.75 for 100**

INSURPASSABLE. Unusually large orchid-lavender flower with white center and purple pollen. Stems very heavy and 30 inches tall. A splendid Tulip both in the garden and for growing in pots in the house. **\$1.50 for 12; \$2.80 for 25; \$10.75 for 100**

LAFAYETTE. Petunia-violet flowers with thick, waxy petals that last a long time. This Tulip combines wonderfully with Deborah and with Niphetos. 28 inches tall. **\$1.75 for 12; \$3.30 for 25; \$12.25 for 100**



William Tell

Rainbow Mixture of Giant Flowering Long-Stemmed Tulips

This splendid color mixture is made in our own warehouses from more than 20 tall-stemmed, giant-flowering named kinds covering the widest range of color from pure white through pink, red, lavender, purple, bronze, yellow, and many intermediate shades. These Holland grown bulbs are of top quality, reasonably priced.

**\$1.25 for 12; \$2.35 for 25; \$8.75 for 100;
\$42.50 for 500, prepaid to you**

**The "Genesee Valley" Collection of 5
Giant Flowering Tulips**

Top Left—The Bishop **Top Right**—Pride of Zwanenburg
Center—Ivory Glory
Bottom Left—Bartigon Maximus
Bottom Right—Golden Measure



The "Genesee Valley" Collections of Giant Flowering Tulips

15 bulbs—3 each of these 5 kinds (Catalog price \$2.20)	30 bulbs—6 each of these 5 kinds (Catalog price \$3.65)	60 bulbs—12 each of these 5 kinds (Catalog price \$7.25)	125 bulbs—25 each of these 5 kinds (Catalog price \$13.70)
Special \$1.98	Special \$3.29	Special \$6.35	Special \$11.95

Early Flowering Tulips FROM HOLLAND



We are among the largest importers of bulbs for retail re-sale purposes in the country, and have never imported anything but the very best bulbs that can be purchased. These bulbs are of the finest quality that come out of Holland, grown for us by men who have proven themselves for over a quarter of a century to be among the best growers in Holland. Early Single and Early Double Flowering Tulips are very easily forced into bloom during the winter.

EARLY SINGLE FLOWERING TULIPS

These are the short, sturdy-stemmed, early flowering Tulips that are used in beds and borders where Tulips are to be followed with summer flowers. They are also used for cemetery plantings and for growing in places exposed to strong winds.

COULEUR CARDINAL. Fine rich deep cardinal-red, long lasting qualities. We recommend it very highly both for garden growing and for forcing. 14-inch stems.
\$1.50 for 12;
\$2.80 for 25; \$10.75 for 100

DE WET. Sweet scented. Beautiful deep orange, shaded golden yellow at the base of the petals and stippled bright orange-scarlet. Splendid to force indoors. Height 20 in. \$1.25 for 12; \$2.45 for 25; \$9.45 for 100

DIANA. Immense pure white flowers on strong, 14-inch stems.
\$1.25 for 12; \$2.45 for 25; \$9.45 for 100

IBIS. Giant, long petaled, rich rose-pink flowers on 14-inch stems. Splendid for bedding and forcing indoors.
\$1.25 for 12; \$2.45 for 25; \$9.45 for 100

KEIZERSKROON. Brilliant carmine-scarlet with a broad yellow border. Very popular for forcing indoors or growing in the garden. Height 18 inches.
\$2.00 for 12; \$3.70 for 25; \$13.45 for 100

OLYMPIADE. Very fine golden yellow, size of bloom and length of stem approaching Darwins. Ivory tinted stamens. 20 inches.
\$1.25 for 12; \$2.45 for 25; \$9.45 for 100

VAN DER NEER. Bright plum color; beautiful cups borne on strong, 12-inch stems. Forces indoors easily and is a splendid garden variety.
\$1.95 for 12; \$3.55 for 25; \$12.75 for 100

RAINBOW MIXED. Well balanced mixture of all the above colors. We assemble this mixture from the better named kinds, right here in our warehouse.
\$1.25 for 12; \$2.45 for 25; \$9.45 for 100

We import only Top-Size Tulip bulbs. Carefully selected for both size and quality by expert bulb growers to give you maximum results. This size bulb is known in Holland as riddle 12.

EARLY DOUBLE FLOWERING TULIPS

Double Tulips are used for round or square beds, for bordering walks and drives. Their short sturdy stems also make them ideal for planting on graves. They remain in bloom for a longer period than any other class of Tulips. Splendid for growing indoors.

BONANZA. Bright scarlet petals edged with clear butter-yellow. Long lasting flower. Strong, 12-inch stem.
\$1.50 for 12; \$2.80 for 25; \$10.75 for 100

MARECHAL NEIL. One of the most satisfactory of the double early blooming varieties. Silky soft yellow, tinted salmon. Grows 12 inches tall.
\$1.50 for 12; \$2.80 for 25; \$10.75 for 100

MR. VAN DER HOEF. Deep yellow, very double flower with no markings. Probably the very best clear yellow double. Grows 12 inches tall.
\$1.50 for 12; \$2.80 for 25; \$10.75 for 100

PEACH BLOSSOM. Very double soft rosy pink flowers on strong, 14-inch stems. One of the very best to force indoors during the winter.
\$1.50 for 12; \$2.80 for 25; \$10.75 for 100

SCARLET CARDINAL. Brilliant vermilion-scarlet flowers on 15-inch sturdy stems. Splendid either in the garden or in pots.
\$2.15 for 12; \$4.00 for 25; \$14.75 for 100

SCHOONOORD. Pure white flowers on 12-inch stems. We think this the best early double flowering white.
\$1.50 for 12; \$2.80 for 25; \$10.75 for 100

DOUBLE FLOWERING MIXED COLORS. A good mixture of the above six varieties. Made right here in our warehouses.
\$1.45 for 12; \$2.75 for 25; \$10.75 for 100

Here is the Way We Plant Tulip Bulbs

Dust the ground to be planted with Chlordane, 1 lb. to 200 sq. ft. Spade to a depth of 12 inches, firm down and rake smooth. The bulbs are placed on top of the ground, about 6 inches apart, at the spot where they are to be planted. Better effects are obtained where at least 6 bulbs of a variety are planted together. A Hole-in-One bulb trowel digs out a hole 6 inches deep in which the bulb is set and the hole filled in with earth. Large blooms come from bulbs that have large root crowns, and large roots come from proper feeding. Spread a good fertilizer on the surface of the ground after the bulbs have been set, using 5 pounds to each 100 square feet. Spring flowering bulbs make their roots right after they are set in the fall. It is not at all necessary to take Tulip bulbs out of the ground each year. Plant them 6 inches deep and never move them.

DISTINGUISHED BREEDER TULIPS

Tints of Purple, Bronze, Brown and Old Rose

Nature's happiest color combinations of purple and bronze, gray and lilac, yellow and bronze, brown and orange. Grow as tall as Darwins, flowers as large, and the fine colors produce a most artistic effect.



Cheyenne

ASTRAKHAN. Inside of flower pale mahogany-red, shaded golden bronze. Outside a very pleasing shade of magenta, edged golden yellow. Dark anthers above a yellow and black center. Flower is extremely large on a wiry, 28-inch stem.
\$1.75 for 12; \$3.30 for 25; \$12.25 for 100

BACCHUS. Dark violet-blue, darker bloom on the outside of the petals; inside violet with a white base. Large, egg-shaped flower. Height 32 inches. Plant this near Darwin Tulip Niphetos.
\$1.50 for 12; \$2.80 for 25; \$10.75 for 100

CHEYENNE. Bright crimson flower edged with orange-red. One of the newer Breeder Tulips that has pleased gardeners these past two years. Grows 30 inches tall.
\$1.75 for 12; \$3.25 for 25; \$11.95 for 100

DILLENBURG. Lovely rich orange-red with a border of bronzy yellow. An egg-shaped flower of very large size on a 28-inch stem.
\$1.15 for 12; \$2.25 for 25; \$8.65 for 100

DIXIE SUNSHINE. A rare shade of light bronze with a border of yellow on the large, waxy textured petals. Makes a beautiful picture when planted with Bacchus or with Insurpassable. Grows 30 inches tall. \$2.00 for 12; \$3.70 for 25; \$13.45 for 100

DON EUGO. A great improvement over the old favorite Indian Chief. A three cornered, long pointed flower of chestnut-brown, lighter at the edges. Inside of the flower deeper in color than the outside. Grows 24 inches tall.
\$1.75 for 12; \$3.30 for 25; \$12.25 for 100

DRAGON'S BLOOD. A new variety with large globe-shaped flowers of the deepest, richest scarlet-red on 30-inch stems. Splendid for exhibition and garden display.
\$1.65 for 12; \$3.20 for 25; \$11.85 for 100

GARDEN MAGIC. The clearest and largest of the tan colored Tulips. A goblet-shaped flower on a strong, 30-inch stem. \$1.65 for 12; \$3.20 for 25; \$11.85 for 100

LOUIS XIV. Wondrous blending of dark royal purple with gold margins flushed golden brown; blue base and yellow star, shaded bronze. Delightfully sweet scented. Grows 32 inches high.
\$1.50 for 12; \$2.80 for 25; \$10.75 for 100

OLSON'S FAVORITE. A very large, egg-shaped flower of bright Chinese red flushed with a cloud of orange. A bright spot in the garden or where cut for the house. Grows 28 inches tall.
\$1.75 for 12; \$3.30 for 25; \$12.25 for 100

MIXED COLORS. A splendid mixture containing equal parts of all of the above varieties.
\$1.15 for 12; \$2.25 for 25; \$8.75 for 100



HYACINTH BULBS FROM HOLLAND

Top Size, Top Quality Bulbs—True to Name and Color—The Cream of the Crops of Holland's Leading Bulb Growers

Most dependable source of color and fragrance in the garden, and indoors where they are easily forced into bloom during the winter. No other bulb is more easily grown. Plant out-of-doors in clumps of three, six or twelve. Set 8 inches apart and cover with 4 inches of soil. Don't mix fertilizer with the soil. Spread it on top after you have the bulbs covered.

Here are the six varieties of Hyacinths we import from Holland. They are considered the best of their color.

CITY OF HAARLEM. Large spike of clear yellow bells.

KING OF THE BLUES. Spicy fragrance; dark blue-purple richness.

LA VICTOIRE. Glistening deep carmine-red. Easily grown indoors.

These Hyacinth bulbs come to us in two sizes. The largest, called by our growers in Holland "Exhibition Size," 19 centimeters or more in circumference, are the best for forcing indoors, also for show gardens when particularly large blooms are wanted for display. Our most popular size for the garden, 16 to 17 centimeters, is offered in the same varieties shown above. Hyacinths are easily grown indoors during the winter.

PRICE OF EXHIBITION SIZE BULBS—19 Centimeters and Over
35c each; \$1.00 for 3; \$3.75 for 12; \$7.50 for 25; \$27.50 for 100.

L'INNOCENCE. Large, pure white flowers. Easily grown indoors.

PINK PEARL. Deep rose with lighter edges. Easy to grow.

MYOSOTIS. Large spikes of sweet scented, forget-me-not-blue flowers.

PRICE OF MEDIUM SIZE BULBS—16-17 Centimeters
25c each; 65c for 3; \$2.45 for 12; \$4.65 for 25; \$17.50 for 100.

BOTANICAL TULIPS

Best in rock gardens and low borders. They are a most interesting class of Tulips that are certainly "out of the ordinary." Plant the bulbs 8 inches deep and do not fertilize. Put them in a well drained soil and in a warm location. Let them stay where they are, do not move them. They will flower for many years. Perfectly at home on steep, gravelly slopes. Always plant them in clumps of 3 to 9 bulbs.

CLUSIANA. The "Lady" Tulip. Outer petals cherry-red, inner petals creamy white. Flowers about 1½ inches in diameter on 8-inch stems.

\$1.45 for 12; \$2.75 for 25; \$10.25 for 100

DASYSTEMON. Dainty white flowers with bright yellow eyes. Generally 3 to 5 flowers to a stem. Grows 5 inches tall.

\$1.95 for 12; \$3.65 for 25; \$13.25 for 100

EICHLERI. Crimson-scarlet flowers shaded orange, glistening black center marked with gold. A Lily-type flower. Grows 8 inches high.

\$1.00 for 12; \$1.85 for 25; \$7.45 for 100

FOSTERIANA, RED EMPEROR (Madame Lefebvre). Giant scarlet-red flower, probably the largest red Tulip in existence today. Most unusual. Blooms very early in the spring at the same time as the Daffodils, when one appreciates a spot of color in the garden. Grows 18 inches tall.

\$1.95 for 12; \$3.65 for 25; \$13.25 for 100

KAUFMANNIANA (The Waterlily Tulip). The inside of the flower is pure white, outside is flushed with red. Grows 6 inches high; blooms very early.

\$2.15 for 12; \$3.95 for 25; \$14.45 for 100

KAUFMANNIANA, SCARLET ELEGANCE. A brilliantly colored flower. The inside of the petals brightest scarlet, the outside deep soft red. 8 inches tall.

\$2.75 for 12; \$5.25 for 25; \$20.00 for 100

LINFOLIA. Brilliant vermilion-red flowers in April borne several to a bulb and lasting in bloom a long time. Most brilliant and outstanding of the Botanical Tulips. 7 inches high.

\$3.65 for 12; \$6.85 for 25; \$25.75 for 100

SAXATILIS. Beautiful lavender flower, with a yellow base. Blooms in April. 9 in. high. A very lovely Tulip that should be in every garden.

\$1.55 for 12; \$2.95 for 25; \$10.85 for 100

SYLVESTRIS (Florentina Odorata). A sweet-scented wild English Tulip that is very fine for naturalizing. Blooms very freely. Golden yellow on rather strong, wiry stems about 12 inches tall.

\$1.15 for 12; \$2.25 for 25; \$8.25 for 100

Paul Kaufmanniana, and Scilla, Spring Beauty Together, for Another Beautiful Spot in the Garden



Saxatillis



Kaufmanniana



Clusiana

Collection of Botanical Tulips

"A"—24 bulbs, 3 each of the 9 kinds (regular price \$5.27) \$4.69

"B"—48 bulbs, 6 each of the 9 kinds (regular price \$8.80) \$7.98

"C"—96 bulbs, 12 each of the 9 kinds (regular price \$17.60) \$15.55

Postpaid to You

Miscellaneous



Scilla Campanulata
Rose Queen Blue Queen

AMARYLLIS

GIANT AMERICAN HYBRIDS. One of the easiest and most satisfactory of all bulbs to grow in the house. We offer giant bulbs of one of the finest strains in the country. Will grow from 1 to 2 vigorous, healthy flower stems each carrying 4 giant trumpet-like flowers in a wide range of colors. Offered in a mixture of colors.

\$1.25 each; \$3.45 for 3; \$12.65 for 12

We are bringing in from Holland, bulbs of a very famous strain of Giant Flowering Amaryllis. These are in separate colors, pink, rose, red, salmon and white. The white we offer you at **\$3.50 each**. The other colors at **\$3.00 each**. The supply is rather limited. Please make a second choice of color when ordering.



Chionodoxa

CALLA LILIES

Plant Callas indoors in pots, in late fall; they require little care, except good rich soil, and plenty of water. Only top-size bulbs offered.

AETHIOPICA (Lily-of-the-Nile). The magnificent white Calla.

50c each; \$1.35 for 3; \$4.95 for 12; \$9.25 for 25

ELLIOTTIANA (Yellow Calla). The green foliage is spotted white, with a dazzling golden yellow flower. A lovely house and garden plant.

50c each; \$1.35 for 3; \$4.95 for 12; \$9.25 for 25

CHIONODOXA

(Glory-of-the-Snow)

These brilliant sky-blue flowers showing a white center are most effective with Snowdrops. An early flowering bulb effective when planted freely on the lawn among the shrubbery or in large masses. Set 3 inches deep.

65c for 12; \$1.15 for 25; \$3.85 for 100

CROCUS BULBS

These are about as satisfactory a bulb as you can plant for they do well in any situation. Grow them in clumps under shrubs, evergreens and trees; in rows to border the walk and flower gardens, in solid beds or scattered in the lawn. Plant Crocus 1 inch deep and 3 inches apart. They are perfectly hardy and can be left in the ground for years.

GOLDEN YELLOW. Rich golden yellow.

KATHLEEN PARLOW. Pure white.

MIKADO. Lilac with mauve stripes.

PURPUREA GRANDIFLORA. Deep glossy purple.

MIXED COLORS. A mixture of the above kinds.

Any of the above: 95c for 12; \$1.80 for 25; \$6.25 for 100.

CROCUS ZONATUS. Rosy lilac flowers with yellow centers. Easily grown indoors or will bloom in the fall in the garden.

35c for 6; 65c for 12; \$1.25 for 25; \$4.75 for 100



Giant Crocus



Grape Hyacinths



Scilla Sibirica



Galanthus - Snowdrops

CALOCHORTUS

(Mariposa or Butterfly Tulips)

Graceful, nodding, dainty little Tulips, often 2 and 3 to a stem, marked with eyes and dots like the wings of a butterfly. Our mixture will give you a splendid assortment of colors, mostly cream, white, lilac, purple and pink. Plant 2 1/2 inches deep, cover during winter.

\$1.15 for 12; \$2.15 for 25; \$8.25 for 100

ERANTHIS HYEMALIS

(Winter Aconite)

Earliest of all spring flowers. The golden Buttercup-like blossoms resting on emerald-green cushions of leaves are very beautiful and produce a charming effect in the early days of the garden year. Grow well under trees and in moist places where few other plants will thrive. It likes to be left undisturbed for years.

85c for 12; \$1.65 for 25; \$6.25 for 100

ERYTHRONIUM

(Dog's Tooth Violets)

Charming woodland plants for damp, shady locations, bearing dainty Lily-like flowers in early spring. Fine for rock gardens. Height 7 inches. Mixed colors. Plant 3 inches deep.

\$1.15 for 12; \$2.25 for 25; \$8.50 for 100

Erythronium or Dog's Tooth Violet
For Those Damp, Shady Places



BULBS *and* ROOTS

FREESIAS

Even one single bloom will permeate the living room with its delicate perfume. Easy to grow indoors, but must be kept in a cold, dark place until the roots are formed, and then bring them to the light in a sunny window.

Rainbow Mixture of Colors.
85c for 12; \$1.65 for 25; \$6.45 for 100

PLUMED HYACINTH

(*Muscari Plumosum*)

Handsome feathery plumes of violet colored flowers. Very unusual. Ideal for rock gardens. Blooms in May. Height 7 inches.

\$1.20 for 12; \$2.30 for 25; \$8.75 for 100

GRAPE HYACINTH

(*Muscari*)

The sweet scented Grape Hyacinths are so exquisite that they deserve to be planted by the tens of thousands. Easily forced in the house. Once planted they last year after year.

ARMENIACUM. Lovely deep cobalt-blue flowers that are much larger and clearer in color than Heavenly Blue. 60c for 12; \$1.10 for 25; \$3.85 for 100

DUTCH IRIS

"THE GARDEN ORCHID"

As graceful as Orchids, these Iris are unsurpassed as cut flowers and stand any amount of handling, lasting fully one week in water. The flowers are not only superior in substance, brilliancy and purity of color but also earlier and larger, and of greater refinement than the old Spanish Iris. Plant in clumps of six or a dozen, 4 inches apart, 2 inches deep, in a sunny, well drained spot. In very cold sections protect with a mulch of peat moss, straw or leaves. The bulbs multiply rapidly and enlarge your planting each year.

BLUE HORIZON. (S. de Vlieger.) Very broad and strong light violet-blue standards; falls soft sky-blue. Narrow orange stripe; large, beautiful flower. 27 inches tall.

GOLDEN HARVEST. A very good yellow Iris. Much larger than Yellow Queen.

WHITE SUPERIOR. A pure self colored white of great size and beauty. 24 inches tall.

Any of the above:
\$1.45 for 12; \$2.70 for 25; \$10.25 for 100

These bulbs we offer you are all top-size and of the highest quality. Bulbs that have been grown for us by the most expert growers in Holland, France and our own West Coast. You can rely on them to give you satisfaction.

TINGITANA HYBRID IRIS

WEDGEWOOD. The straight, strong stems carry flowers of a large size. The color is a lovely shade of light blue, with yellow blotch touched with orange on each lower lip. Extremely dignified and appealing. Solely for growing indoors during winter.

\$1.45 for 12; \$2.70 for 25; \$10.25 for 100

ORNITHOGALUM

(*Star of Bethlehem*)

UMBELLATUM. This is a small, white, hardy variety that is seen in great profusion in many of the older gardens. It does well in most parts of the country and blooms abundantly year after year.

60c for 12; \$1.15 for 25; \$4.25 for 100

OXALIS (Shamrocks)

A winter flowering house plant, suitable for pots or hanging baskets. Set bulbs in a 5-inch pot, and keep in the dark for at least 10 days before bringing into the light.

YELLOW LAVENDER PINK MIXED

Any of the above:
65c for 12; \$1.25 for 25; \$4.75 for 100.

SNOWDROPS (*Galanthus*)

There is nothing more pleasing in the garden than a large batch of the snowy, graceful blossoms of the Snowdrops in the early days of the spring. Plant in partly shaded situation.

SINGLE FLOWERING. 75c for 12;
\$1.45 for 25; \$5.75 for 100

SCILLA CAMPANULATA

(*Wood Hyacinths*)

Very beautiful and popular spring flower, flowering in May. They are quite hardy and very fine for naturalizing in woods, wild gardens, shrubberies, borders, etc., where they should be freely planted. They thrive in shady places where other plants die. Grow 12 inches high and resemble loose spikes of Hyacinths.

BLUE QUEEN WHITE QUEEN ROSE QUEEN
55c for 12; \$1.00 for 25; \$3.65 for 100

SCILLA PERUVIANA

(*Peruvian Scilla*)

One of the finest of the winter house flowers. Twelve-inch stems carry hundreds of deep blue blossoms well above the attractive bright green foliage. Very easily grown to perfection.

Bulbs, 95c each; 3 for \$2.65

SCILLA SIBIRICA

A very charming plant for early spring flowering, either planted in masses or for edging. They are of dwarf, compact habit, and excellent for bedding, in pots, bowls, etc., and form a pleasing effect among indoor plants.

SPRING BEAUTY. Greatly improved Sibirica. Bright blue flowers twice the size of the older variety, with larger, stronger stems.

75c for 12; \$1.45 for 25; \$5.75 for 100



Snowflake



Dutch Iris

SNOWFLAKE (*Leucojum Vernum*)

One of the earliest and most attractive spring flowers. Grows from 6 to 8 inches high, and bears dainty nodding flowers which are white tipped with green. Plant 2 inches deep.

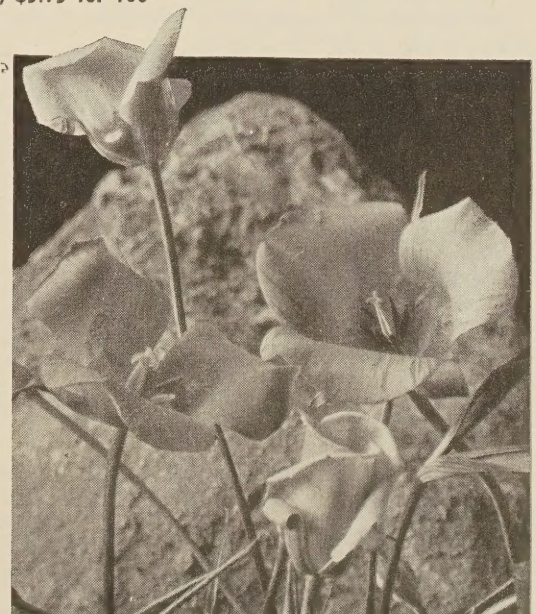
\$1.15 for 12; \$2.15 for 25;
\$7.85 for 100



Amaryllis



Ornithogalum



Calochortus

GARDEN GUIDE Information You Have Asked Us For

PLANTING BULBS IN THE GARDEN

TULIPS: They may be planted any time after the first hard frost right up to the time the ground freezes, making it impossible to dig. They may be grown successfully in any good garden soil and in just about any location providing the spot is not too wet. Do not try to grow them where water stands for any length of time.

There are two methods of planting. The most common is digging a hole for each bulb and placing the bulb in it, making sure that it is right end up and its base firmly on the bottom of the hole. The second way is to take out all the soil in the place to be planted, set the bulbs in position, then replace the soil, using care not to tip the bulbs over.

After you have covered the bulbs with soil spread some good fertilizer or complete plant food over the area planted. One pound of food to each twelve square feet is generally sufficient. If you have trouble with moles, mice or chipmunks, eating the bulbs, dust the surface of the bed with Naphthalene Flakes.

A 2-inch mulch of peat moss, straw, or coarse litter keeps the bulbs from the heaving caused by alternate thawing and freezing. Remove this mulch in the spring when the shoots show above the surface.

If you are going to use your bulbs another year, keep the old flowers picked off. If you dig your bulbs up each year, do it after the foliage has turned brown, dry the bulbs in the shade and store in a cool, dry place. Bulbs may be left right in the ground if you prefer. Just pull up the dry, dead foliage, and do your summer planting right over them. The foliage will dry and be ready to remove much more quickly if you will break it over with a light lawn roller, the back of a rake or by hand.

The late-flowering Tulips will often last for several years. The early kind sometimes two years.

To make the stems of Tulips stiffer and stronger water the bulbs when they are starting to show tops with a solution of 12 grams of Calcium Nitrate to a quart of water. Excellent results may be obtained by putting the stems of freshly cut flowers in this same solution for 12 hours.

NARCISSUS OR DAFFODILS: Plant these the same way you would Tulip bulbs, but earlier in the season if possible. Do not dig Narcissus bulbs up each year, leave them undisturbed in the ground for three or four years, then when the foliage has turned yellow three-quarters of the way from the top, dig, divide, or separate the bulbs and replant immediately.

HYACINTHS: These require about the same care as the Tulips and last about two years.

PLANTING TABLE FOR BULBS: The table at right above shows the number of bulbs required to fill a circular bed of the dimensions given. In planting begin at the outside row. Where bulbs are six inches apart, start three inches from edge of bed; where twelve inches apart, six inches from edge of bed.

It is customary among professionals in planting a bed to set the bulbs somewhat closer together in the two outer rows, giving more space between each bulb toward the center of the bed. A square bed will take about the same number of bulbs. For an oval bed, add length and breadth and divide by 2. For example, an oval bed 9 feet long by 7 feet wide will require the same number as a circular bed 8 feet in diameter.

DIAMETER OF BED	No. of Bulbs Planted	No. of Bulbs Planted	No. of Bulbs Planted
	6 in. apart	12 in. apart	18 in. apart
3 ft.	28	7	
4 ft.	48	12	6
5 ft.	80	20	8
6 ft.	112	28	13
7 ft.	152	38	17
8 ft.	200	50	23
9 ft.	256	64	28
10 ft.	320	80	36
11 ft.	380	95	42
12 ft.	452	113	50
13 ft.	528	132	59
14 ft.	612	153	68
15 ft.	704	176	78
16 ft.	804	201	89
17 ft.	904	226	100
18 ft.	1016	254	113
19 ft.	1132	283	126
20 ft.	1256	314	139

DEPTH AND DISTANCE APART TO PLANT BULBS

	Deep	Apart		Deep	Apart
Early Tulips	4 in.	5 in.	Eranthis	2 in.	3 in.
Late Tulips	6 in.	5 in.	Fritillaria—		
Hyacinths	6 in.	6 in.	Imperialis	6 in.	12 in.
Narcissus—			Imperialis	6 in.	12 in.
Large flowering	6 in.	6 in.	Galanthus	3 in.	3 in.
Small flowering	4 in.	6 in.	Leucojum	3 in.	4 in.
Crocus	3 in.	4 in.	Muscari	3 in.	3 in.
Chionodoxa	3 in.	3 in.	Scilla	3 in.	3 in.

POINTS TO REMEMBER

Positively do not plant bulbs in borders or beds which are badly drained. Perfect drainage is vital and the most important instruction we can give you. Our guarantee does not cover losses from this cause.

Never use any strong commercial fertilizer or fresh manure when planting bulbs.

When picking the flowers do not cut away any more foliage from your bulbous plants than is necessary. Leaves and foliage store up food for next year's blooming.

Do not let seed pods remain on the stems after flowers have faded—it weakens the bulbs.

Do not dig up bulbs before foliage shows signs of dying, changing to yellow or brown.

Never dry bulbs in the sun—always in the shade.

Do not grow Tulips year after year in the same place. Sooner or later they may be attacked with a fungous disease called "fire blight," which attacks both foliage and flowers. Either change the soil or the location; in other words, follow the principle of crop rotation.

Bulbs should not be stored in an air-tight container.

To keep mice and moles from destroying bulbs, dust them with Arsenate of Lead before planting them. Chlordane spread over the bulb bed 1 lb. to 1000 sq. ft. after the bulbs are planted will kill cut worms, wire worms and crawlers that damage the bulb.

FOR VERY EARLY FLOWERS

Sow the seed of these hardy annuals just before the ground freezes so that germination will not take place until spring.

Alyssum	Candytuft	Dianthus
Antirrhinum	Centaurea	Larkspur
(Snapdragon)	(Cornflower)	Portulaca
Calendula	Clarkia	Sweet Peas
California Poppy	Cosmos	Shirley Poppy

Pot up bulbs for winter bloom. Lift a few plants of Parsley for a sunny spot in the kitchen window.

Now is the time to divide your plants and replant the perennial border. September is the best month for planting and moving Peonies. Plant them shallow. Set the tubers only two inches deep; that is to say, let only two inches of earth cover them. Feed them well with bone meal and avoid manure.

Stop the feeding and cultivation of Roses in early September and let them rest so they become thoroughly hardened.

At this time of the year, do not let a single weed go to seed. Don't let the weeds even form seed pods, because many of these will ripen and shell out if they are cut when green; even though the plot is burned over later, it will be too late to prevent their sowing trouble for next year.

As hardy Lilies often are not available until late October or November, it may be necessary to keep the soil where they are to go from freezing with a heavy mulching of manure.

Spray or dust your Roses, just before you hill them up for the winter, with Bordeaux. Use it liberally both on the plant and the ground around it. This helps destroy the black spot spores that might winter over in the soil.

Wait until the ground is well frozen before applying mulch to those plants requiring winter protection. Alternate freezing and thawing and heaving of the soil is what causes winter injury.

HOW TO GROW HYACINTHS IN WATER

Before placing the bulbs in the Hyacinth glass, the hard, corky root base of the bulb must be cut away cleanly. Fill the glasses with clean water until it touches the base of the bulb. The glasses are then put in a cool, dark closet or basement. Best temperature is 50 degrees.

When tops have 4 inches of growth, take the glasses to a window in a warm room and add water if necessary. Never change the water completely. If the air in the room is very dry, it may help to moisten the flower buds once a day with cotton dipped in cool water.

HOW THE DATE OF EASTER IS DETERMINED

Some 1400 years ago the Roman Catholic church decreed that Easter should be the first Sunday after the first full moon after the Vernal Equinox, and that decree has been followed ever since. Easter Sunday can be as early as March 22nd. or as late as April 24th.

Easter Dates

1954—April 18	1960—April 17
1955—April 10	1961—April 2
1956—April 1	1962—April 22
1957—April 21	1963—April 14
1958—April 6	1964—March 29
1959—March 29	1965—April 18

Erect a couple of shelters or feeding stations for those birds that stay with us through the winter—destroying insect eggs and pupae. Place them where they are sheltered from the north winds and protect them from cats and other marauders by using wire screen or an inverted pan over the post on which they are mounted or a wire collar around the trunk of the tree.

If you have not been putting out bird seed and suet for the wild birds this past summer, start doing so at once. The fall and early winter birds are very interesting and easily attracted by a continued food and water supply.

The very best time of year to make a new lawn or reseed an old one is in the fall. This is also the time of year to spread peat moss over the grass. It is remarkable how much winter damage to the lawn can be avoided by spreading a bale of peat to each 600 sq. ft.

TERRA-LITE Vermiculite

The most talked-of product in gardening in years! Composed of countless tiny air cells, Terra-Lite Vermiculite holds and releases air and moisture in just the right quantities. Not a fertilizer, but a superior growing medium—good for all these jobs:

Starting Seeds. Quicker, bigger development, easy to transplant.

Rooting Cuttings. Sure-fire medium for strong fast rooting.

Storing Bulbs. Stops storage rot. Keeps bulbs firm and plump. Price: 4 qts. 39c; postpaid 75c. 16-qt. bag 85c; postpaid \$1.30.



HOLE-IN-ONE PLANTER

A handy tool that makes setting out bulbs and plants easier. Push the tool into the soil, remove with a slight twisting motion and the soil comes with it, leaving a clean, flat-bottomed hole.

95c each; postpaid, \$1.10

CHLORDANE

Protects the Bulb in the Ground

Chlordane kills the Japanese Beetle grubs that are eating the roots of grass in your lawn this fall. One pound will cover 1000 sq. ft. of lawn area. Just dust it on. Kills ants and wire worms that destroy bulbs and plants. Kills cut worms. Easily applied. 1 lb. 55c; postpaid, 85c. 4 lbs., \$1.55; postpaid, \$2.00.

HORTICULTURAL PEAT MOSS

Binds Sand Together—Breaks Up Clay

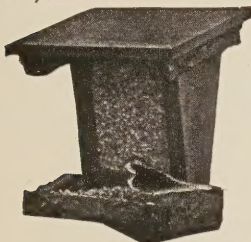
A splendid winter protecting mulch for Roses, shrubs, plants, trees and lawns. Use at rate of 1 bale to 600 sq. ft., when making a new lawn or renewing an old one. The best top-dressing to add humus to the soil. Holds the moisture and keeps the lawn green all summer. Splendid material for storing bulbs in. Large bale \$5.25; junior bale \$3.35.

MICHIGAN PEAT

Finely ground. Color almost black, 98% organic. Weed free. Holds moisture, protects plant roots from hot sun, dry weather. 100-lb. bag \$4.49 (covers 500 sq. ft.); 50 lbs., \$2.49; 25 lbs., \$1.65.

Wild Bird Winter Seed Feeders

Put them up, outdoors, early. Wild birds like company. Place the feeders near some windows in your home.



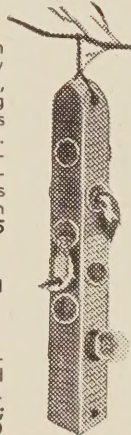
WILD BIRD SEED FEEDER

Of rustic hemlock and southern cypress. Glass front permits clear vision of the food supply. Hinged roof. Height 11 inches.

Price \$3.70; postpaid, \$4.10

CHICKADEE DINER

Just hang it anywhere. Then enjoy the gay, friendly company of Chickadees, Nuthatches, Woodpeckers and other clinging birds. The Chickadee Diner is simply but strongly made, 16 in. long. Will last for years. Convenient paper-cupped Tid Bit refills, irresistible to birds, always available. Complete, filled with Tid Bits, \$1.45; postpaid, \$1.75



TID BIT REFILLS

Assorted Seed Suet and Pressed



Peanut Suet For Chickadee Diner and Festive Board.

Box of 24 assorted \$1.25; postpaid, \$1.50

WILD BIRD SEED

A careful mixture of 10 kinds of seed that wild birds like. Feed these birds both winter and summer. Enjoy seeing them and listening to their songs.

Price: 2 lbs. 40c; postpaid 70c. 5 lbs. 98c; postpaid \$1.45. 10 lbs. \$1.85; postpaid \$2.55.



KNEE PADS

Comfortable cushion for the knee. They prevent moisture from penetrating your clothes. Protect from bruises. Fit any knee and will not slip down when walking. Made of thick, pliable sponge rubber. Will wear a lifetime. \$2.00 per pair, prepaid to you for \$2.25.

Spray the Weeds Out of Your Lawn This Fall

Weedone contains the powerful 2, 4, 5-T and 2, 4-D that kill the weeds without harming the grass. Non-poisonous to animals or humans. 8-oz. can (covers 1250 sq. ft.) \$1.00; 1-qt. can (covers 5000 sq. ft.) \$2.75; 1-gal. can (covers 20,000 sq. ft.) \$6.95

Dirt-Proof, Washable GARDEN GLOVES



ALL LEATHER and DURABLE yet SOFT AS KID and EASY TO WEAR

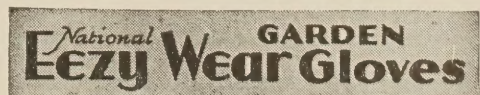
—for Men and Women

Eezy Wear gives you everything you've been wanting in a garden glove:

All-leather protection from dirt, scratches, stains, infection—yet permit almost BAREHAND FREEDOM. Their amazing softness and pliability is the result of a special processing of select lamb skins. Economical, too—outwear 6 pairs of ordinary fabric gloves, are washable and can be used the year round for gardening, housework, yard, painting, furnace, garage, etc.

Sizes for Women: (small, medium, large); for Men: (small, medium, large).

Price: \$1.65 per pair, postpaid.



Fertilizers and Plant Foods

If you wish us to prepay carrying charge, add 10c per pound.

Adco. The addition of Adco to the compost pile, or to other vegetable refuse, grass clippings, leaves, etc., at the rate of two pounds to each wheelbarrow-load of refuse, will produce a clean, odorless manure within three or four months. 5-lb. bag \$1.25; 20-lb. bag \$2.50

Bone Meal. For sweetening the soil in the garden or lawn it is unequalled. Helps grow grass in shady places. A splendid fertilizer to use in the fall of the year. Use 10 lbs. to each 100 sq. ft. 5 lbs. 70c; 10 lbs. \$1.20; 25 lbs. \$2.45; 50 lbs. \$4.00; 100 lbs. \$7.45

Bovung. Dehydrated liquid cow manure. For feeding your bulbs and plants with liquid fertilizer it tops all other kinds. Will absolutely not burn the plants or the grass. No live weed seeds, sterilization has taken care of this. Use on lawns, gardens, bulb plantings, at the rate of 10 lbs. per 100 sq. ft. 5 lbs. 50c; 10 lbs. 95c; 25 lbs. \$1.50; 50-lb. bag \$2.65; 5 50-lb. bags at \$2.45 per bag

Folium. A special concentrated 20-20-20 (nitrogen, phosphorus, potassium) for home use. Scientists have found water-soluble fertilizers sprayed on leaves and stalks feed the plant much more quickly and efficiently. 2-oz. pkg. 25c; (makes 2 gals. liquid plant food); lb. \$1.25; 5 lbs. \$4.50

Hyponex. Grows superior plants indoors in soil, sand or water. Contains Vitamin B-1. Clean, odorless, soluble powder, will not spoil nor lose its vitality. 1 teaspoon makes 1 gal. liquid plant food; 1 lb. makes 100 gals. 1-oz. pkg. 10c; 3 ozs. 25c; 7 ozs. 50c; lb. \$1.00; 10 lbs. \$8.00

Ra-Pid-Gro. Concentrated, complete plant food. When dissolved in water makes a liquid fertilizer immediately available to plants, shrubs, roses, evergreens, trees and lawn grass. 1 teaspoonful makes 1 qt. liquid fertilizer. Analysis: nitrogen 23%, phosphoric acid 21%, potash 17%. 8 ozs. 69c; lb. \$1.25; 2 lbs. \$2.35

Sulphate of Ammonia. For feeding grass, at least 6 months old, in lawns, use 1 oz. per sq. yd., mixed with many times its bulk of soil. Apply water immediately. 5 lbs. 55c; 10 lbs. 95c; 25 lbs. \$2.00; 100 lbs. \$5.85

Vigoro, The Complete Plant Food. Spread it on the surface of the soil after your bulbs are planted, 6 lbs. per 100 sq. ft. Spread on newly made lawns after the grass has made an inch growth, 4 lbs. to each 100 sq. ft., and water immediately. 5 lbs. 53c; 10 lbs. 95c; 25 lbs. \$1.70; 50 lbs. \$2.80; 100 lbs. \$4.55

AFRICAN VIOLET GROWERS' SUPPLIES

Rubber Bulb Sprayer. Waters plants the easy and best way. Heavy ribbed red rubber. pint size, two rose nozzles. Prepaid to you for \$1.35.



Potting Soil. Specially prepared for the growing of African Violets. Quart 20c; 4 qts. 60c; 8 qts. \$1.00. If you want this sent to you add 35c for 1 qt. and 11c for each additional quart.

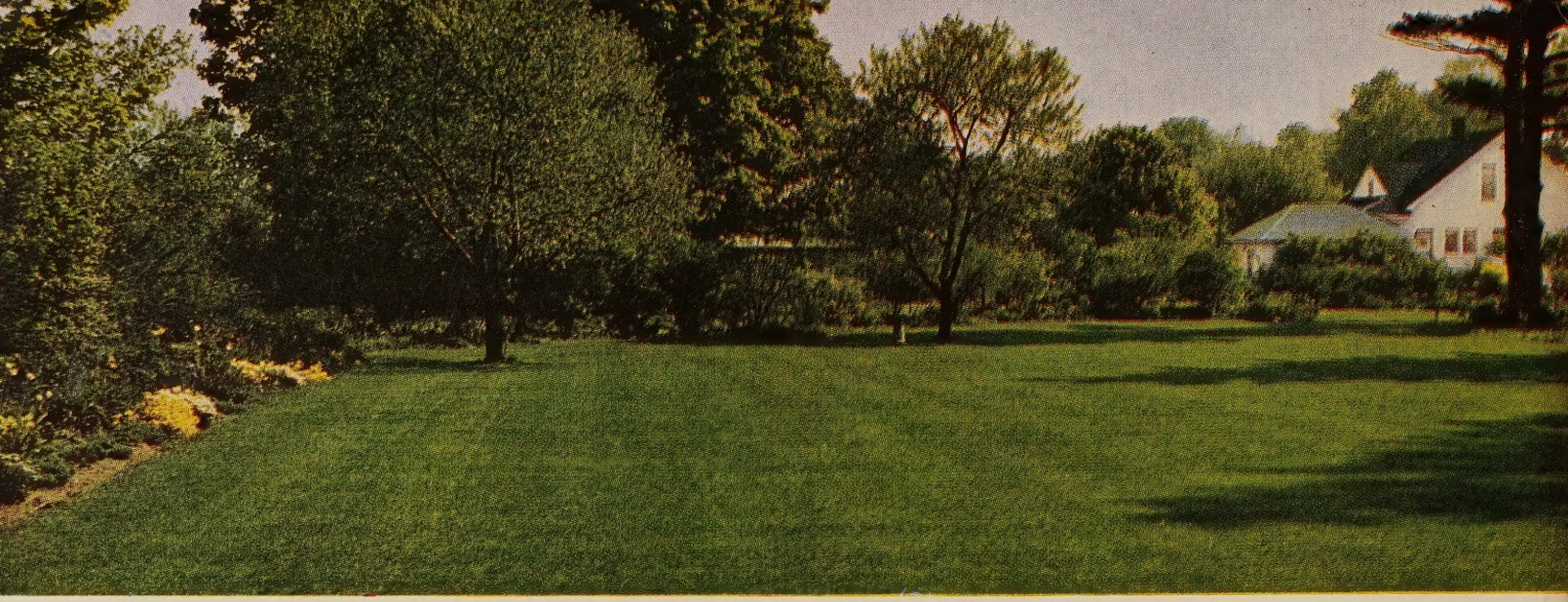
Wik-Fed Pots. Attractive 4-inch plastic flower pots, complete with water reservoir and glass wick for automatic watering. Colors: yellow, green, cream. Prepaid to you for \$1.25 each; \$6.85 for 6; \$12.50 for 12. 5-inch pots, prepaid, \$1.85 each; \$8.35 for 6.



Glaswick. For root-watering plants, seeds and bulbs in pots and flats. 45c per foot prepaid to you.

Charcoal. Put in the bottom of pots and bowls, helps keep the soil and water sweet. 2 ozs. 35c, prepaid to you.

Hyponex. The best food for African Violets. 1 oz. 10c; 3 ozs. 25c, prepaid 35c; 7 ozs. 50c, prepaid 70c; lb. \$1.00, prepaid \$1.25.



THIS FALL IS A GOOD TIME TO MAKE A LAWN

Warm days and cool dewy nights and an abundance of rain give the grass seed a splendid chance to germinate freely and the young plants to make a sturdy root system not bothered by a crop of weeds growing and crowding at the same time.

HIGHLAND PARK GRASS SEED

A careful blending of outstanding reseeded turf-making grasses including Bent grass. It will make a thick, deep-rooted, velvety evergreen sod that will hold the moisture and remain fresh and green during the dry season in summer. It has proved its quality not only on the smaller lawn of the city and suburban home, but has been and is being used with splendid results in many of the city parks, cemeteries, and large estates. The name "Highland Park" is a symbol of quality. Sow at rate of 1 pound to each 250 square feet of new lawn, reseeding 500 square feet of old lawn. Lb. \$1.85; 3 lbs. \$5.45; 5 lbs. \$9.00; 10 lbs. \$17.75; 25 lbs. \$43.75; 50 lbs. \$86.25.

If you wish Clover in your lawn, ask for "Highland Park with Clover," when ordering your grass seed. Same quality. Same price.

VELVET LAWN GRASS SEED

Here is a well balanced, reasonably priced, quick growing lawn seed mixture. It is a blend of grasses that will give you a good lawn in a remarkably short time. This is about the way we have put it together. You will notice please that it is made up of 85% permanent grasses. Here is the formula. 23% Kentucky Bluegrass, dark green, narrow leaves, slightly creeping and very hardy. 41% Creeping Red Fescue, fine leaved, keeps its rich green color the year around; does well in all types of soil, spreads rapidly. 21% Poa Trivialis, sometimes called Shade Bluegrass, narrow, flat, green foliage; does well in heavy soils. 15% Domestic Ryegrass, an excellent nurse grass that comes up quickly and shelters the permanent grasses until they become established. Sow this mixture at the rate of one pound for every 250 sq. ft. of new lawn. Half that amount when reseeding. Lb. \$1.35; 3 lbs. \$3.95; 5 lbs. \$6.50; 10 lbs. \$12.75; 25 lbs. \$31.25; 50 lbs. \$60.00.

MERION BLUEGRASS

Developed by the Greens Section of the U. S. Golf Assn. Stays green all summer. Makes such a dense turf that crab grass cannot possibly thrive in it. Resistant to leaf-spot disease that thins out lawn turf and lets weeds come in. Grows quickly, spreads rapidly, forms a thick, compact, deep green sod that wears well. Does not become dormant and brown in July and August.

Requires less mowing than other grasses to keep the lawn looking well cared for. Some authorities say only one-half the mowing is necessary. A little seed goes a long ways. Use one pound per 1000 sq. ft. to build a new lawn. Half that amount when reseeding. 1/4 lb. \$1.95; 1/2 lb. \$3.75; lb. \$7.25; 5 lbs. \$35.00.

SHADY NOOK LAWN MIXTURE

On many lawns there are unsightly bare spots under trees and between adjoining houses where it is impossible to get the ordinary lawn grass to grow. Our mixture for shade is made up of short-growing, fine-leaved, shade-loving grasses that will give you an evergreen sod in the most densely shaded spots. Sow at rate of 1 pound to each 200 square feet of new lawn; reseeding 350 square feet of old lawn. Lb. \$1.75; 3 lbs. \$5.15; 5 lbs. \$8.50; 10 lbs. \$16.75; 25 lbs. \$41.25; 50 lbs. \$81.25.

BENT, COLONIAL, Astoria (*Agrostis tenuis* var.).
Fine, narrow-leaved, rich dark green variety that is slightly creeping in habit and makes a fine turf for lawns and putting greens. Blue Tag, Astoria. 1/2 lb. 85c; lb. \$1.65; 5 lbs. \$7.75; 10 lbs. \$15.00; 25 lbs. \$36.25, prepaid.

BENT, SEASIDE, Blue Tag (*Agrostis maritima*).
Very fine-leaved, producing runners or stolons that take root when coming in contact with the soil. Makes a thick, matlike, rich green sod that stands close cutting. 1/2 lb. 85c; lb. \$1.65; 5 lbs. \$7.75; 10 lbs. \$15.00; 25 lbs. \$36.25.

BLUE GRASS, KENTUCKY (*Poa pratensis*).
Very high quality, heavy, plump seed. The favorite lawn grass in the North, doing particularly well on the rather sweet soils of New York State. Leaves are narrow, flat and vivid dark green. Plants slightly creeping and very hardy. One pound will sow 200 sq. ft. Very scarce. No seed to offer this season.

FESCUE, CREEPING RED, Illahee (*Festuca rubra*).
A strain that spreads from roots that creep underground, putting up new growth. The texture of the foliage is fine and the color a delightful green. A perennial grass that easily thickens up into a dense carpet of green turf. Does well on poor soil and is resistant to drought and disease. A good grass for areas subject to heavy wear. Lb. \$1.35; 5 lbs. \$6.50; 10 lbs. \$12.50; 25 lbs. \$30.00, prepaid.

FESCUE, CREEPING RED, Certified (*Festuca rubra*).
Similar to Chewing's Fescue but spreads by underground runners that make an extremely tight sod. The leaves are fine, needle-like and have a deep green color. Thrives on all types of soil, even on dry, sandy bottom land. It maintains its color the year round and is excellent for shady places. Lb. \$1.25; 5 lbs. \$6.00; 10 lbs. \$11.50; 25 lbs. \$27.50, prepaid.

POA TRIVIALIS (Shade Blue Grass).
Narrow, flat and dark green foliage on thickly matting plants. Makes a good turf in shaded places on the north side of buildings and under trees. Does best in heavy soil. Lb. \$1.00; 5 lbs. \$4.75; 10 lbs. \$9.00; 25 lbs. \$21.25.

RED TOP, FANCY (*Agrostis palustris*).
Quick growing, fine-leaved, bright green creeping grass. Used as a nurse grass in lawn grass mixture. Superfine, lb. \$1.25; 5 lbs. \$6.00; 10 lbs. \$11.50; 25 lbs. \$27.50, prepaid.

RYE GRASS, DOMESTIC.
An excellent nurse grass when quick thick turf is needed. Sow it in your vegetable garden after the last cultivation. When turned under it makes a splendid green manure. One pound sows 200 sq. ft. Lb. 40c; 5 lbs. \$1.70; 10 lbs. \$3.20; 25 lbs. \$6.75, prepaid.

RYE GRASS, PERENNIAL (*Lolium perenne*).
A mixture of the English and Italian kinds grown in this country. Lb. 50c; 5 lbs. \$2.15; 10 lbs. \$3.80; 25 lbs. \$8.25, prepaid.

CLOVER, DUTCH WHITE.
The well known, low-growing, white Clover widely used on lawns. Not hardy in exposed situations in severe climates. Winter-kills some in lawns here in New York State. 1/4 lb. 40c; 1/2 lb. 70c; lb. \$1.25; 5 lbs. \$6.00; 10 lbs. \$11.50, prepaid.

CLOVER, WILD WHITE (Kent Blue Tag, Certified).
Becoming very popular as a lawn Clover, especially here in the North, for it is perfectly hardy. The foliage is small, low growing and rich, fresh green in color. Blossoms very sparingly, which adds to the value. Does best in well-fed soil. 1/4 lb. 65c; 1/2 lb. \$1.15; lb. \$2.15; 5 lbs. \$10.50; 10 lbs. \$21.00. Transportation paid.