

Historic, Archive Document

Do not assume content reflects current scientific knowledge, policies, or practices.



62191

Index

Kelly's

MAR 24 1953
U. S. Department of Agriculture

ANNUAL CATALOG... 1953



A catalog devoted to the joy of gardening—listing many varieties of lasting charm and beauty. Enjoy your yard, and be thrilled as nature develops her floral masterpieces.

KELLY PLANT GARDENS

EAST 4100 SPRAGUE • LAKEVIEW 6531 • SPOKANE 31, WASH.



PEACE
(Pat. 591)



HELEN
TRAUBEL
(Pat. 1023)



MME. HENRI GUILLOT (Pat. 337)



CHARLOTTE
ARMSTRONG
(Pat. 455)

Kelly's

PREMIUM ROSE COLLECTION

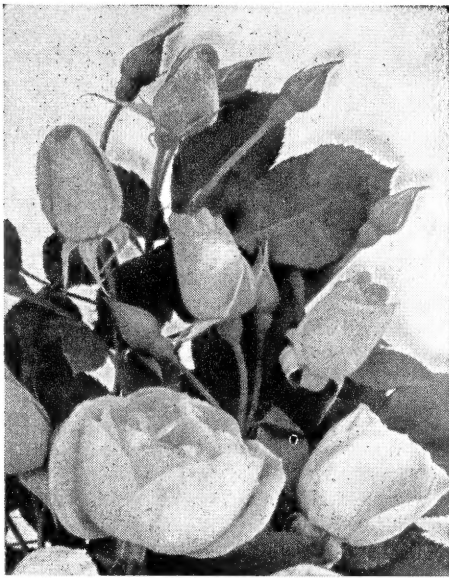
The 5 Roses Shown on This Page

- CHARLOTTE ARMSTRONG
- MME. HENRI GUILLOT
- HELEN TRAUBEL
- NEW YORKER
- PEACE

A regular \$11.00 value
for only \$9.75
Postpaid



NEW YORKER
(Pat. 823)



FLORIBUNDA ROSE, FASHION
(Pat. 789)

America's Finest Patented Roses



CAPISTRANO (Plant Pat. 922)—Capistrano is a rich shade of deep glowing rose pink in the bud and open flower and grows to a height of four to five feet with beautiful leathery foliage. **\$2.25 each.**



CHARLOTTE ARMSTRONG (Plant Pat. 455)—Blood-red in the bud, opening to cerise in hot weather and to spectrum red in cool weather. AARS winner. **\$2.00 each.**

CHIEF SEATTLE (Plant Pat. 1030)—Vigorous growing plant with long-stemmed flowers. Color is rich shade of buff apricot, somewhat ruffled petals. **\$2.50 each.**

CRIMSON GLORY (Plant Pat. 105)—A beautifully modeled rose of deep crimson with a dark velvety sheen. Intensely fragrant. **\$1.75 each.**



CHRYSLER IMPERIAL (Plant Pat. applied for)—The All America winner for '53. Long tapering buds, opening to beautifully shaped flowers of vivid crimson tones. **\$3.00 each.**



FORTY-NINER (Plant Pat. 792)—The outside of the petals is rich chrome yellow, changing to straw yellow in the open bloom. The inside face of the petals is a vivid orient red, changing to cherry red with age. **\$2.25 each.**



FRED HOWARD (Plant Pat. 1006)—Long rich yellow buds are tipped with delicate light pink and when the buds open you see a full double beautifully formed flower. Tall grower, good foliage. **\$2.50 each.**



HELEN TRAUBEL (Plant Pat. 1028)—The color varies from sparkling pink to luminous apricot. Plants are vigorous, producing magnificent buds, which open to glorious blooms that display its lovely color. **\$2.75 each.**



LOWELL THOMAS (Plant Pat. 595)—The long slender buds open to a vibrant lemon-chrome flower with a high cupped center. **\$2.00 each.**



MIRANDY (Plant Pat. 632)—All America winner for 1945. This gorgeous, fragrant red rose has large, ovoid buds entrancing fragrance. **\$2.00 each.**



MISSION BELLS (Plant Pat. 923)—Very large flowers of glowing salmon opening to clear shrimp pink. **\$2.25 each.**

MME. HENRI GUILLO' (Plant Pat. 337)—Beautiful urn-shaped buds of delightful watermelon pink color. Glistening waxy foliage. **\$1.75 each.**

NEW YORKER (Plant Pat. 823)—A brilliant non-fading clear red color. Both buds and blooms display excellent form. Many rosarians have acclaimed this their best red rose. **\$2.00 each.**



PEACE (Plant Pat. 591)—All America 1946. The large gardenia-like blooms open from long, sun gold buds, changing to a pale yellow on through a soft rose and finally burst forth with alabaster white blooms ruffled with pink scallops. **\$2.50 each.**



RUBAIYAT (Plant Pat. 758)—All America 1947. A brilliant flower of rose-red to crimson. Buds are long and shapely; gracefully held on strong stems. The full blooms have an open center and somewhat ruffled petals. **\$1.75 each.**



SAN FERNANDO (Plant Pat. 785)—A glorious scarlet rose of high-centered form and large size. Plentiful blooms are carried on the sturdy plant. **\$1.75 each.**



SUTTER'S GOLD (Plant Pat. 885)—Brilliant deep crimson red overlaid with a rich velvety sheen. **\$2.25 each.**



TALLYHO (Plant Pat. 828)—1949 All-America Winner. A very unusual shade of pink with the outside of the petals almost a crimson. Beautiful buds on long stems unfold slowly to full, many petaled blooms. Rich spicy fragrance. Easy to grow. **\$2.00 each.**

FLORIBUNDA ROSES

CHATTER (Plant Pat. 739)—Velvety crimson blooms in huge clusters appear continuously on compact bushes. **\$1.50 each.**



FASHION (Plant Pat. 789)—The buds of oriental red open slowly into miniature hybrid tea-like blooms of luminous pink, overlaid with gold. Then they soften into a clear coral, at last deepening into an exotic reddish tone. All America Award Winner for 1950 and winner of other high awards. **\$2.00 each.**

GOLDBLOCKS (Plant Pat. 672)—A rich, clear golden yellow showing up to excellent advantage against its dark green foliage. **\$1.50 each.**



MA PERKINS (Plant Pat. applied for)—All America selection for 1953. Cup shaped flowers, light pink with yellow suffusion in the early stages, turning to soft coral as they age. **\$2.25 each.**

PINK BOUNTIFUL (Plant Pat. 601)—A tall vigorous Floribunda which will thrill you with great clusters of lasting soft pink bloom throughout the season. **\$1.50 each.**



PINKIE (Plant Pat. 712)—Cupped, pink flowers of unusual charm. Dwarf, bushy plant that blooms in greatest profusion. **\$1.75 each.**

PINOCCHIO (Plant Pat. 484)—Very easy to grow, always in bloom. Pointed buds are rich salmon, blushed with gold at base, gradually changing to soft clear pink. **\$1.50 each.**

RED PINOCCHIO (Plant Pat. 812)—Masses of clusters, rich carmine colored, fragrant and prolific. **\$1.50 each.**

RED RIPPLES—An intense red that seems to sparkle on the wavy petaled flowers. Magnificent in mass. **\$1.35 each.**

ROSE ELFE—Silvery rose-pink. Gardenia-like flowers about 2½ inches across, extremely double. **\$1.35 each.**



VOGUE (Plant Pat. 926)—Large high centered blooms of brilliant cherry coral. Spicy fragrance. **\$2.25 each.**

PATENTED CLIMBERS

CLIMBING MME. H. GUILLOT (Plant Pat. 788)—Long urn-shaped buds open to large flowers, blended with raspberry pink, and yellow shades. **\$2.00 each.**

CLIMBING CRIMSON GLORY (Plant Pat. 736)—An immense rose, beautifully formed. It is a vigorous grower, bearing an abundance of dark velvety crimson blooms. Very fragrant. **\$2.00 each.**

CLIMBING PEACE (Plant Pat. 932)—The climbing form of the top favorite of all bush roses . . . "Peace". **\$2.50 each.**

CLIMBING PICTURE (Plant Pat. 524)—The popular rose Picture is an outstanding climber. Clear rose-pink buds with warm salmon undertone. Sweetly scented. **\$2.00 each.**

DR. J. H. NICOLAS (Plant Pat. 457)—Immense, very double, deep rosy pink blooms with lasting fragrance. Hardy and vigorous. Makes a fine pillar rose. **\$2.00 each.**

KING MIDAS (Plant Pat. 586)—Large, double flowers, of golden yellow flushed red. Dark foliage. Fragrant. **\$2.00 each.**

SUMMER SNOW (Plant Pat. 400)—Most persistent blooming and purest white of all climbers! Huge clusters of buds become masses of spotless, glacier-white, double blooms, 2 inches and more across. **\$2.00 each.**

ROSES

Your Choice

\$1.25

ANY ROSE LISTED ON THIS PAGE
JUST \$1.25

All are the best No. 1 stock.
Big and beautiful.

BETTY UPRICHARD—Blended copper orange and salmon pink.

CALEDONIA—Exceptionally long, pointed buds, opening to very double, high-centered, pure white, moderately fragrant flowers.

CHRISTOPHER STONE—Fine crimson red.

CONDESA DE SASTAGO—Two-toned. Coppery pink and gold.

DUQUESA DE PENARANDA—Blended apricot-orange with pink.

EDITOR McFARLAND—Pink, long pointed buds.

E. G. HILL—Massive blooms of deep crimson and scarlet; velvety inside.

ETOILE DE HOLLANDE—Brilliant crimson red.

FRAU KARL DRUSCHKI—Large flowered white.

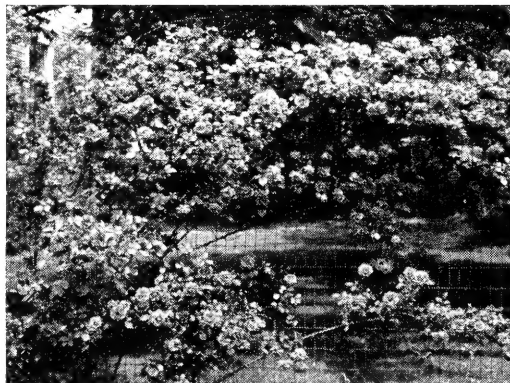
JOANNA HILL—Long pointed buds, creamy yellow.

MARGARET McGREY—Oriental red.

McGREY'S IVORY—Long buds, ivory white, sweet scented.



PICTURE



CLIMBING ROSE, BLAZE

ALL ROSES GUARANTEED
TRUE TO NAME

Wide Variety of Vivid Colors . . .

McGREY'S SCARLET—Vivid deep scarlet buds on long stems; every one long and slender and beautifully shaped.

McGREY'S YELLOW—Sharp clear yellow.

MME. JULES BOUCHE—A splendid double white rose, occasionally tinted with a touch of blush pink.

MRS. SAM McGREY—Beautiful coppery-scarlet-orange, heavily flushed with Lincoln red on the outside of the petals. Delicately perfumed.

PICTURE—Medium size, but exquisite form. Rich pink with warm undertones of salmon which make the color cheerful and glowing. Produces continuous blooms all through the season.

PINK DAWN—Fine pink.

PRESIDENT HOOVER—Beautifully colored buds and blooms blending shades of pink, flame and yellow.

RED HOOVER—A red President Hoover. Exactly like its parent plant except for color. One of the best for cutting.

SISTER THERESE—Fragrant yellow.

STERLING—Lovely pink with just a trace of creamy yellow at the base.

TALISMAN—Blended orange, yellow and rosy red.

THE DOCTOR—Long pointed buds of exquisite silvery pink, open to enormous blooms of the same uniform color, with intense fragrance.

Timely Tips ON ROSE CULTURE

Roses require a plentiful supply of organic matter in the soil and thorough drainage. Excavate the beds at least two feet deep. If your soil does not drain well place a layer of gravel on the bottom, then alternately fill with layers of soil and manure until the bed is filled. Roses like a heavy soil.

The hole should be dug large enough to admit all of the roots without cramping. The graft (i.e., the point where the root joins the top) should be placed at least 3 inches below the ground level. Prune after planting. Cut back to 2 to 3 stems with 3 or 4 buds on each stem. Water heavily until growth starts.

WINTER PROTECTION—In late fall mound up the dirt around each plant, then after ground freezes cover mound with several inches of leaves or litter to prevent alternate freezing and thawing. In the following spring remove the mulch and soil mound gradually. This will permit the soft, protected stems to toughen. After soil has been removed to natural level cut plant back to 3 or 4 stems with 4 or 5 buds on each stem.

Special! 12 ROSES

Select any 12 roses on this page. All are big No. 1 2-year-old stock—the best.

We guarantee true-to-name.

Take advantage of this large saving.

for
only \$12.00

REGULAR \$15.00 VALUE

HARDY CLIMBING ROSES

BLAZE—The everblooming scarlet climber, hardy and strong growing. It has replaced the popular Paul's Scarlet.

DR. W. VAN FLEET—The pointed buds open to large double fragrant blooms of cameo-pink, fading flesh white.

PAUL'S SCARLET (H. W.)—A vivid scarlet crimson. Makes a brilliant display over a long period. One of the very best climbers.

ETOILE de HOLLAND—Blooms are bright crimson red.

K. A. VICTORIA—The blooms are a lovely snowy white.

NEW DAWN—As the sun breaks the day—so are these blooms a softly glowing apple blossom pink.

CLIMBING PRESIDENT HERBERT HOOVER—Cerise-pink, flame, scarlet, and yellow.

SILVERMOON—Large, creamy white, cup-shaped flowers.

CLIMBING TALISMAN—Yellow with copper and red tones.

KELLY'S *Premium* FLOWERING SHRUBS

Prices on all shrubs listed on pages 3, 4 and 5 are, except where noted:

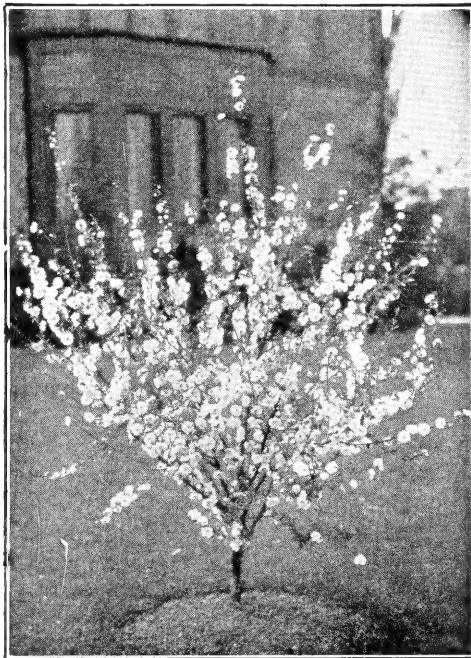
MAILING SIZE (PREPAID)

Each 98c; 3 of a kind for \$2.69; 10 of a kind for \$7.99.

LARGE SPECIMEN SIZE (NOT PREPAID)

Sent by Express or Auto Freight Collect

Each \$1.95; 3 of a kind for \$5.50; 10 of a kind for \$17.50.



ALMOND

PINK FLOWERING—One of the showiest of all flowering shrubs. Plant is compact in growth, blooms with a profusion of pink colored flowers along each stem. Grows 6-8 ft. high.

BERBERRIS (Barberry)

THUNBERGI (Japan Barberry)—Where a dwarf deciduous hedge is wanted nothing equals this beautiful Barberry. Requires but little pruning to keep in shape. The leaves are small, light green, and towards fall assume rich, brilliant colors, the fruit or berries becoming scarlet. Absolutely hardy. Plant 12 to 15 inches apart.

BARBERRY (Japanese Red Leaf)

A valuable recent introduction identical with Thunbergi except the color of its foliage. Instead of the green of Thunbergi it comes out a brilliant bronzy red. The heat of summer intensifies this color and autumn adds many other rich tints.



BARBERRY

CARAGANA

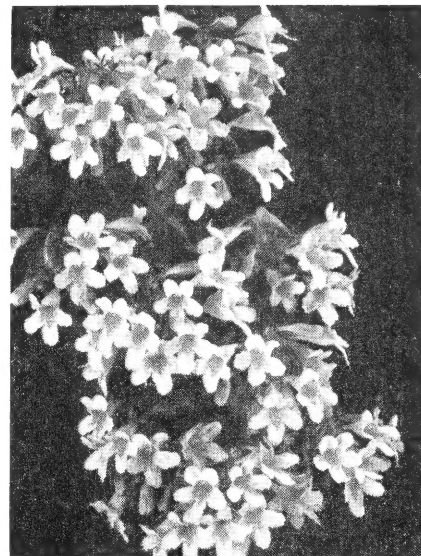
CARAGANA ABORESCENS (Siberian Pea Shrub)—A double green leaved plant with numerous clusters of yellow flowers followed by striking pea pods. This plant is fine for hedges.

SPOKANE, WASHINGTON

Our Advice and Help Is Always Free for the Asking

BEAUTY BUSH

BEAUTY BUSH (Kolkwitzia Amabilis)—A charming new shrub from China's high mountains. Perfectly hardy. Has beautiful trumpet and bell shaped pink flowers with orange veins in June, July. Will be a great companion to our Spireas and a pink bloomer is really a prize in spring shrubs. Every lover of blooming shrubs should have this fine new plant.



FORSYTHIA

(Intermedia)—Among the first to bloom and their bright yellow flowers seem the very spirit of spring, opening before the leaves appear. They attain an ultimate height of 8 or 10 feet. Fine specimen shrubs.

BUDDLEIA (Butterfly Bush)

Plants grow three to four feet and are covered with long racemes of lilac-like flowers in July. The best location is in good, rich, well drained soil in a sunny situation. It attracts the butterflies, and as many as 50 have been counted about a plant in a single afternoon.

CHARMING—New pink Butterfly bush.

ILE DE FRANCE—Large flowers of rich, reddish-purple borne in long panicles.

CONCORD—A new Buddleia with dark red eye, shading lighter toward the edges of the petals.

ELEANOR—Wine purple.

DOGWOOD

CORNUS (DOGWOOD) Sibirica—Most valuable for their brilliant colored bark and foliage variations. They liven the somber winter aspect of leafless shrubbery.

DEUTZIA

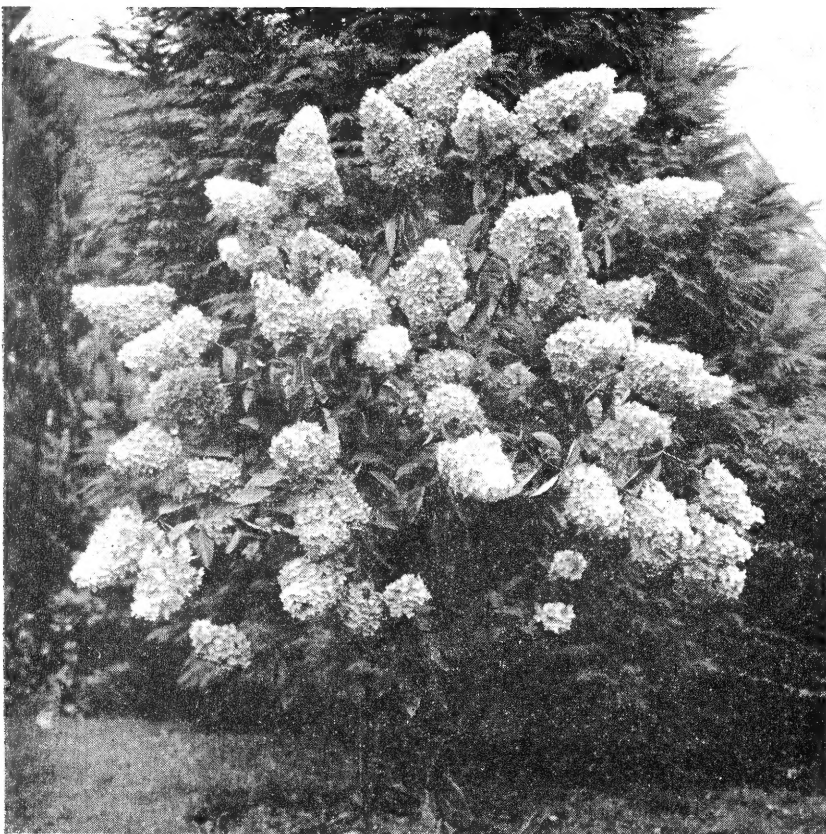
PRIDE OF ROCHESTER—Dainty blooming bell or tassel flowers, borne in wreaths along the branches in June and July. Outer petals tinged with pink. Fine specimen shrubs.

HONEYSUCKLE

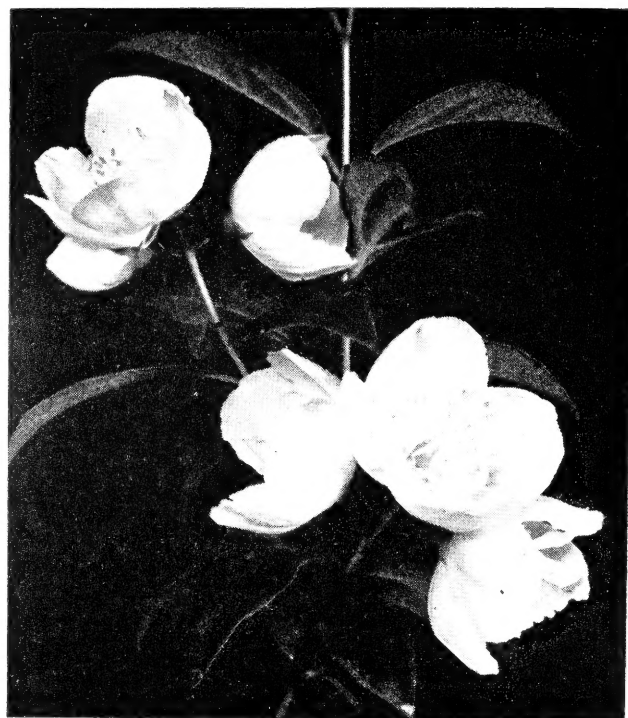
TARTARIAN—A beautiful flowering shrub. One of the hardy growing hedge and screen plants. Probably the most rapid grower of all the hardy shrubs, often attaining a height of 10 or more feet in a few years.

FILBERT

PURPLE LEAVED—A very desirable shrub noted for its colorful purplish leaves.



HYDRANGEA, PANICULATA



MOCKORANGE, PHILADELPHUS VIRGINAL

LILAC (Syringa)

COMMON PURPLE—A harbinger of spring shrub. Easily grown and admired.

COMMON WHITE—An old favorite and a wonderful shrub for screen or hedge.

PERSIAN PURPLE—Dwarf growing, slender branches, narrow leaves. Specimen plants.

LILAC (French Grafted)—There is no comparison between our common Lilac, as pretty as they are, to those of the French Hybrids in the texture, size, color tones, mixture of shades, fragrance and lustre of the blooms. The rather bad habit of suckering in the common Lilac is unknown in the French Lilacs.

Belle de Nancy—Double rose.

Katherine Havemeyer—Double pinkish lavender.

Ludwig Spaeth—Single purplish red.

Mme. Lemoine—Double white. **Pres. Grevy**—Double blue.

Prices of French Lilacs: 2-3 ft., each \$2.50.

HYDRANGEA

PANICULATA—A beautiful, tall shrub, with leaves of bright shiny green; flowers borne in huge panicles from 8 to 12 inches long, light pink, changing to brown later in the fall; blooms in August and September; can be grown in tree form successfully and makes a very desirable lawn ornament. Height about 7 feet.

ARBORESCENS (Hills of Snow)—Conspicuously white and imposing Hydrangea. Mounds of snow white blooms July to September.

MOCK ORANGE (Philadelphus)

VIRGINALIS—A magnificent new variety. The flowers are the largest, most fragrant and longest blooming immaculate white bloom, yellow stamens. Summer blooming.

KERRIA

JAPONICA—Double flowered. A fine shrub for most any location. Abundant double yellow flowers like half opened rose buds.

PRIVET (English Hedging)

PRIVET (Ligustrum Vulgaris)—This hardy privet will make the most beautiful and lasting hedge. Used as a border it will complete the lasting and natural beauty of your home and grounds. 18-24 in., per 10, \$3.00; 100, \$27.50.

QUINCE

CYDONIA JAPONICA (Japan Quince)—This fine old shrub makes a bushy growth and in early spring is covered with scarlet flowers.

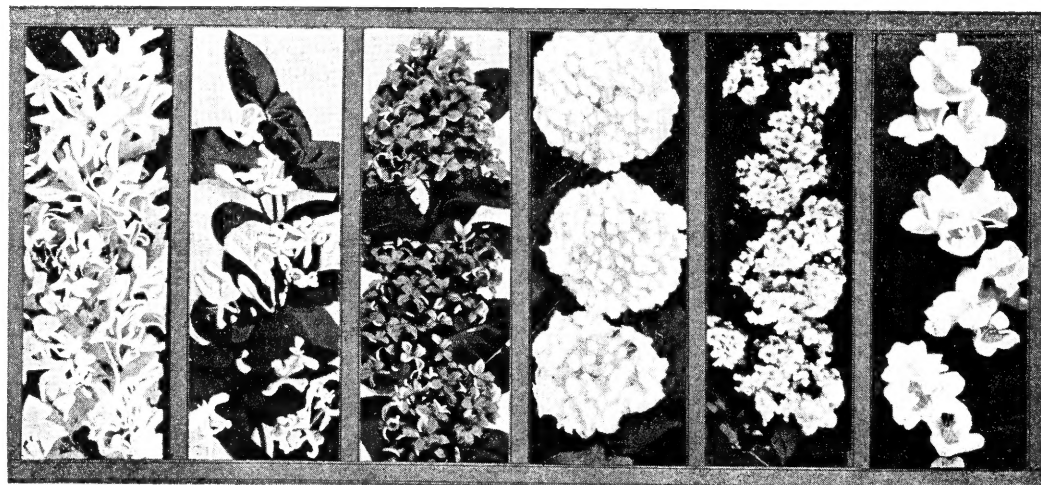
Special Offer

THESE SIX
FLOWERING SHRUBS

- | | |
|--------------|-------------|
| Forsythia | Snowball |
| Honeysuckle | Spirea |
| Common Lilac | Mock Orange |

MAILING SIZE (Prepaid)
\$5.88 value for only **\$4.99**

LARGE SIZE (Not Prepaid)
\$11.70 value for only **\$10.49**



FORSYTHIA HONEYSUCKLE LILAC SNOWBALL SPIREA MOCK ORANGE

SEE PRICE SCHEDULE TOP OF PAGE 3

KELLY PLANT GARDENS

Lovely SPIREA

All the SPIREAS bloom in a riotous extravagance. Style and color differ in varieties which make this plant most acceptable to all. It stays green throughout the season and provides a wonderful screen or background.

ANTHONY WATERER—A fine dwarf Spirea with dark crimson flowers. Height, 2 to 3 feet.

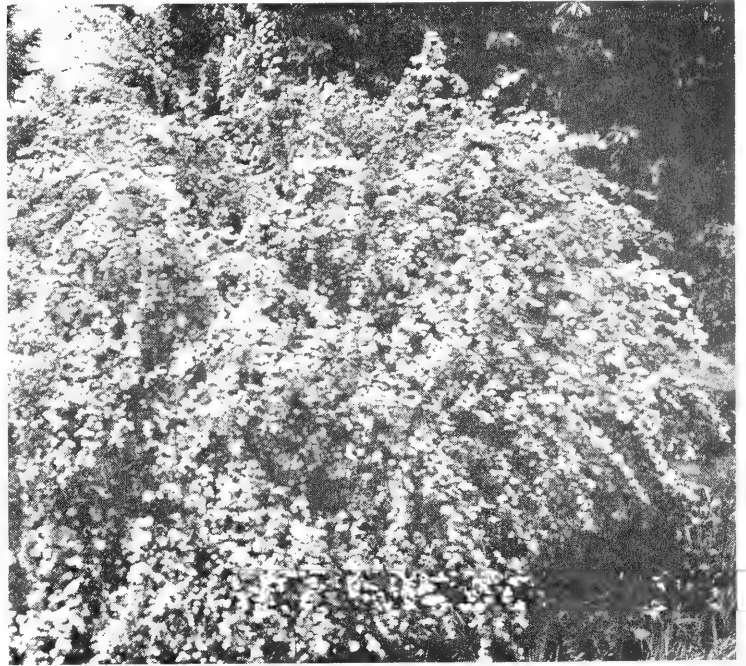
BILLARDI—Erect growing with dense spikes of rose-pink flowers. Blooms from July till September.

PRUNIFOLIA (Bridal Wreath)—One of the earliest to bloom. Plum leaved foliage turning to brilliant red in fall. Double white clustered flowers.

OPULIFOLIA AUREA—Desirable for its golden tinted foliage.

THUNBERGI—A beautiful display of white flowers in the spring ahead of the leaves. Soft leathery foliage.

VAN HOUTTEI—The grandest of all the Spireas, and one of the very best of all shrubs. A complete fountain of pure white bloom in May and June.



SPIRAEA, VAN HOUTTEI

VIBURNUM

COMMON SNOWBALL (V. Opulus Sterilis)—Grows 6 to 8 feet high, the old-fashioned snowball; its large globular clusters of pure white flowers are produced in May and June and make a very attractive appearance. Very ornamental.

OPULUS (Cranberry)—Grows 8 to 10 feet high. Bright crimson berries in clusters all winter. Flowers in dense cymes about 4 inches across, pure white.

BURKWOODI—Truly a garden aristocrat. Compact growing, 4-5 ft. high. Has glossy green leaves which remain on the plant in mild winters. Flowers are 4 to 5 in. across, pinkish white with delightful fragrance. 12-15 in., each \$2.50.



TAMARIX

TAMARIX

AFRICANA—Tall growing slender shrub with feathery foliage and pink flowers in racemes. Blooms in May.

HISPIDA—Similar in growing habit to Africana, but blooms almost continuously during summer.



WEIGELA ROSEA

WEIGELA

Very thrifty shrub with delightful blooms during summer, May to September.

EVA RATHKE—Distinct and most attractive variety. Flowers deep carmine red.

ROSEA—Very popular. Pink flowers.

HEDGE PLANTS

	Each	10	100
Barberry—Green leaf, 12 in. size.....	50c	\$4.50	\$43.50
Barberry—Red leaf, 12 in. size.....	65c	6.00	55.00
Caragana—18 to 24 in.	45c	3.50	30.00
Privet—English, 18 to 24 in.	40c	3.00	27.50
Rosa multiflora—1 year.....	25c	1.75	15.00
Spirea Van Houttei—2 year.....	60c	5.00	40.00

ROSA MULTIFLORA

The current popularity of this shrub is well deserved. It is hardy and tough and grows 4 to 5 ft. in height—bushy—ideal for windbreak, screen or tall informal hedge. It makes an ideal "living fence" for rural areas. Needs little water or care after established. Plant 18 in. to 2 ft. apart.

10 for \$1.75; 100 for \$15.00

VINES—Prepaid

AMPELOPSIS

AMPELOPSIS (Boston Ivy)—For covering cement, brick, stone or wood and clings to smoothest surface. Beautiful foliage. 2 yr., prepaid, each 95c.

ENGELMAN'S IVY OR WOODBINE (A. quinquefolia, var. Englemanni)—A type of quinquefolia which has long been desired. It has shorter joints and smaller and thicker foliage. It is better equipped with tendrils, by which it will climb walls of stone or brick as closely as the Veitchii (Boston Ivy). It should be planted in the Northwestern states, in place of Veitchii, as it is perfectly hardy, withstanding heat and cold much better. 2 yr., prepaid, each 75c.

VIRGINIA CREEPER—A famous and universally used climber. Has pretty cut leaves that turn a brilliant crimson in fall. Prepaid, each 75c.

ARISTOLOCHIA

SIPHO-DUTCHMAN'S PIPE—A fine climber in protected locations. Has immense heart shaped leaves that are unusually attractive. Makes a thrifty, uniform growth. Each \$1.50.

BIGNONIA RADICANS

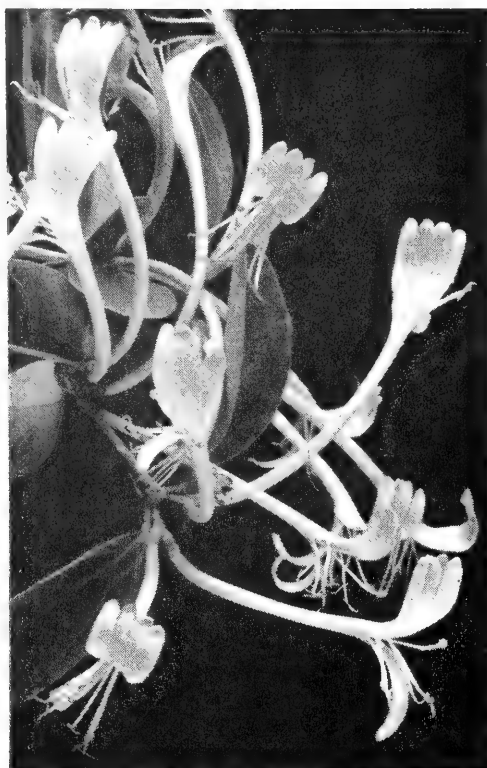
TRUMPET FLOWER—A robust, woody vine, twining tightly with roots along the stems. Its orange-scarlet, trumpet shaped flowers cluster at the tips of branches. The flowers are of large size, and are borne abundantly in the summer after the plants obtain a fair size. A fine climber for every purpose. 2 yr., each 95c.

CELASTRUS SCANDENS

BITTERSWEET—Showy orange fruit from October through the whole winter. 2 yr., each 75c.

ENGLISH IVY

The old Evergreen Ivy. Foliage thick. Prepaid, each 75c.



GOLD FLAME HONEYSUCKLE

CLEMATIS

PANICULATA—Probably the most popular of the small flowering sorts; vine is rapid grower with glossy green foliage; in September the flowers appear in a perfect mass of white, giving the appearance of a bank of snow; the fragrance is most delicious and penetrating. Prepaid, 2 yr., each 95c.

LARGE FLOWERING CLEMATIS—\$1.45

The following are certainly the most beautiful of the flowering vines in our section. Flowers in masses, 5 to 7 inches in diameter.

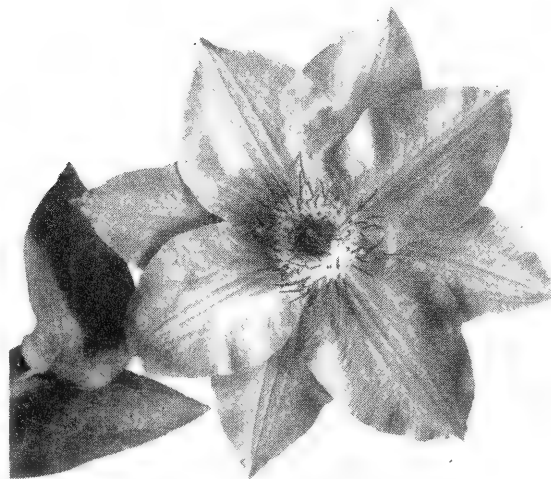
HENRYI—Large, pure white. Extremely popular, especially when planted in between the other colors for contrast. Prepaid, 3-in pots, each \$1.45.

JACKMANI—Immense flowers of an intense violet-purple color; bloom continually all summer. Perhaps the best known Clematis. Prepaid, 3-in. pots, each \$1.45.

RAMONA—Another huge flowered Clematis. Color sky-blue. 3-in pots, each \$1.45.

MME. BARON VEILLARD—Large flowering pink. Prepaid, 3-in pots, each \$1.45.

MME. EDOUARD ANDRE—Large flowering with pretty crimson red flowers. 3-in. pots, each \$1.45.



CLEMATIS RAMONA

HONEYSUCKLE

HALL'S JAPAN—Color an intermingling of white and yellow. Extremely fragrant and most satisfactory. Prepaid, 2-yr., each 75c.

GOLD FLAME—Large cluster of flame pink and golden yellow fragrant blooms. Blooms freely from spring to fall. 2 yr., each \$1.15.

SCARLET TRUMPET—Magnificent large scarlet trumpets. Blooms from spring until frost. 2 yr., each 75c.

SILVER LACE (Polygonum)

AUBERTI (Silver Lace Vine)—A very beautiful, graceful climber. Grows rapidly and needs support. It produces masses of lacy, misty white flowers over the entire plant. The blooming period is longer than the average vine which makes it a plant well worth having. Prepaid, each 95c.

WISTERIA

An old aristocrat that will never lose favor. When grown on a trellis or any other support, will attain great heights. When in bloom it thrills you with large panicles of purple flowers—a great profusion of them hanging gracefully all over the plant. It is a popular plant for an arbor, for the fine flowers hang down through the roof with a beautiful effect. Prepaid, each \$1.15.



SILVER
LACE
VINE

KELLY'S FINE

★ Premium Quality ★

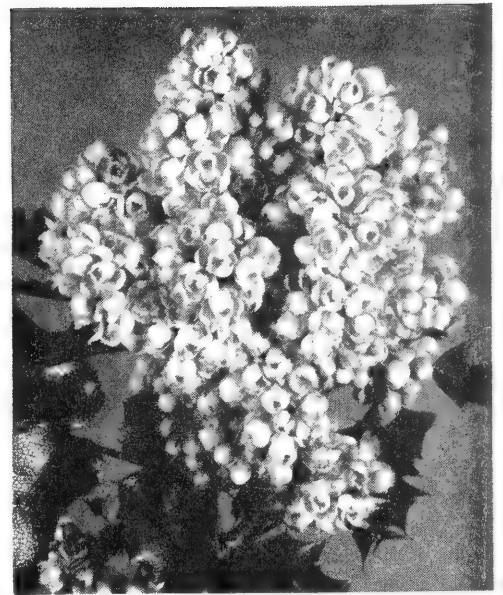
EVERGREENS

To flank an entrance, the taller growing varieties are particularly effective; for rock walls, terraces and rockeries, the prostrate types should be used. As single specimens out in the lawn, there is none more beautiful than the Colorado Blue Spruce. For windbreaks and back-grounds, use the Norway or Colorado Blue Spruce.

Remember our help and advice in beautifying your home is positively free, hence feel free to write us on any of these questions. We are sure that we can assist you.

All of our Evergreens are dug with a large ball of earth about the roots to insure safe transplanting.

All Evergreens sent by express, or auto freight, collect.



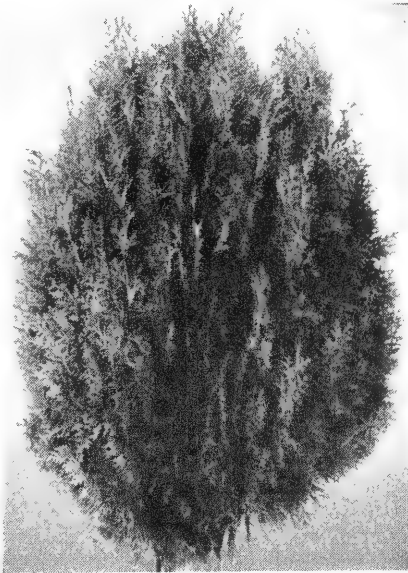
MAHONIA, OREGON GRAPE

ARBORVITAE

BERCKMAN'S GOLDEN—A very compact, dense, slow growing type. This conspicuous plant attracts the eye. The flattened leaf surfaces always face edgewise and the yellow color merging with the green calls for admiration. 10-12 in., each \$3.50. ▶▶

WOODWARD'S GLOBE—Wonderfully attractive in pairs at home entrances or graceful and attractive in tubs or pots. 12-15 in., each \$4.00; 15-18 in., each \$5.00.

PYRAMIDAL—The most compact and erect of the species. Foliage a deep green retaining its color. Always beautiful and always admired. 3 ft., \$5.00; 4 ft., \$7.50; 4-5 ft., \$10.00. ▼



JUNIPER

EXCELSA STRICTA—A dense, cone-shaped mass of bristle-tipped, luminous, blue-green leaves. Tolerant of average garden conditions, though not a fast grower. 18-24 in., each \$5.00.

IRISH—Grows to 20 or more feet high and seldom over two feet in diameter. Bright glaucous green color. Fine for columnar architecture. 3-4 ft., \$6.50.

PFITZER—Low, broad type of irregular form. Used greatly as a filler between other taller growing varieties. 18 in., each \$3.75; 2 ft., each \$5.00.

SAVIN—Grows not more than 2 to 3 feet high. It forms an excellent border to larger evergreens in the background. Dark green color. 18 in., each \$3.75; 2 ft., each \$5.00.

TAMARISCIFOLIA—A creeping dwarf variety. Average height about 1 foot, spreads 6 to 8 feet. Forms a perfect mat. Bluish and gray green. 12-15 in., each \$4.00; 15-18 in., each \$5.00.

RETINOSPORA

PLUMOSA AUREA—One of the most beautiful evergreens related to the cypress. Foliage and form quite distinct. 2 ft., each \$5.00.

PINE

MUGHO PINE—This low, spreading type of pine is very valuable in landscaping. It is compact in growth, rich dark green in color, hardy, fast growing and gives complete satisfaction. 18-24 in., each \$5.00.

SPRUCE

COLORADO SPRUCE—Pyramidal form. Its steel blue foliage a sensation wherever grown. One of the showiest and most impressive evergreens. 2-3 ft., each \$10.00; 3-4 ft., each \$15.00.

COLORADO GREEN—Open pyramidal habit. Its color is a rich dark green. Is commonly used for Christmas trees. 3-4 ft., each \$7.50; 4-5 ft., each \$12.50.

BROADLEAF EVERGREENS

BOXWOOD

Ideal shrub for hedges. The closely set small leaves stand shearing well. Full shade causes lanky growth.

SEMPERVIRENS—Tall upright growth. 12-15 in., each \$2.50.

SUFFRUTICOSA—True dwarf Boxwood. Makes one of the finest low hedges. 4-6 in., each \$1.00; 8-10 in., each \$2.00.

DAPHNE

CNEORUM (Rock Daphne)—Dwarf, spreading, evergreen plant. Covered in spring with fragrant pink flowers. 6 in., each \$1.75.

MAHONIA AQUIFOLIA

OREGON GRAPE (Holly Leaved)—An evergreen shrub with smooth, shining holly leaves changing their color capriciously during the year, from green to reds and bronze. 18-24 in., each \$3.50.

PYRACANTHA

LALANDI—Pointed dark glossy green leaves. White flowers in large clusters in spring. Orange berries in fall and winter. Grows to 15 ft. 18 in., each \$2.50.



KELLY'S ANNUAL FLOWERING PLANTS

ONE DOZEN 60c
 50 for \$2.35 ★ 100 for \$4.50

All Annual Flowering Plants at the above price except where noted.



SNAPDRAGONS

- AGERATUM**—Blue, low growing.
- ALYSSUM, Little Gem**—White, popular for borders.
- ALYSSUM, Violet Queen**—For borders, violet flowers.
- ASTERS, Crego**—Available in rose, crimson, lavender, purple, white or mixed.
- CANNAS** — Giant flowering. Potted plants, each 35c.
- COLEUS** — Brilliant foliage. Potted plants, each 25c.
- CARNATIONS**—Popular for cut flowers. Mixed.
- DAHLIA, Unwins**—Dwarf growing. Pot plants, each 25c.
- GERANIUM**—Pink or red. Pots, each 50c; doz. \$5.00.
- IPEOME**—Blue morning glory climber. Pots, each 25c.
- MARIGOLD**—French dwarf double.
- MARIGOLD**—Tall growing. Large flowers.
- LOBELIA**—Dwarf blue. Best border plant.
- LOBELIA**—Trailing. For window boxes and urns.
- LARKSPUR MIXED**—Fine cut flowers.

PETUNIA FIRE CHIEF

The most important petunia introduction in recent years. Belongs in the dwarf class . . . similar to Celestial Rose, but a new color—THE REDDEST PETUNIA YOU'VE EVER SEEN! It won the gold medal for 1950 All America Selections.

Plants: Doz. 75c; 50, \$2.75

PETUNIA—Ruffled monsters. Single ruffled mixture. Doz. \$1.00; 50, \$3.50.

PETUNIA, Theodosia—Ruffled pink. Doz. \$1.00.

PETUNIA, Elks Pride—Large, rich purple. Doz. \$1.00.

PETUNIA, Celestial Rose—Dwarf deep pink.

PETUNIA, Snow Queen—Dwarf white.

PETUNIA, Blue Bedder—Dwarf blue.

PETUNIA, Mixed—Tall bedding mixture.

PETUNIA, Double Mixed—Pots, each 35c; doz. \$3.50.

PHLOX MIXED—Masses of bright flowers.

PORTULACA — Moss Rose. Splendid creeper.

SALPIGLOSSIS—Trumpet shaped flowers in mixture.

SALVIA—Brilliant red spikes.

SNAPDRAGONS — Available in pink, red, copper, yellow, white or mixed.

STOCKS—Popular cut flower. Mixed.

VERBENAS — Semi-creeping — mixed colors.

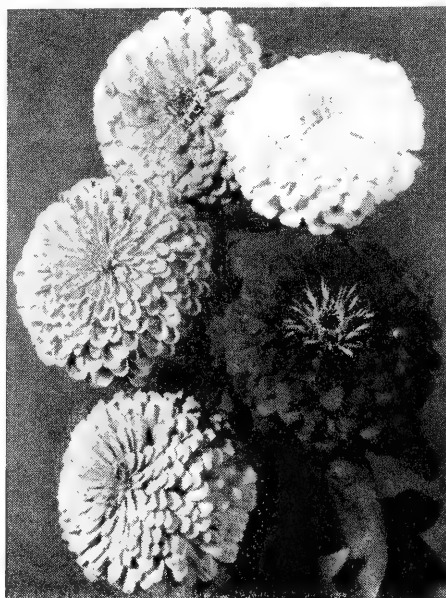


PETUNIA, FIRE CHIEF

VINCA—Variegated vine for window boxes, etc. Pots, each 35c; doz. \$3.95.

ZINNIA—Dahlia flowered, Giant flowered—available in crimson, pink, lavender, orange and mixed.

ZINNIA—Lilliput. Small flowered mixture.



DAHLIA FLOWERED ZINNIA



CREGO ASTERS

PLANT ANNUALS
 AND HAVE COLORFUL
 BLOOMS IN ABUNDANCE
 ALL SUMMER LONG

KELLY'S PREMIUM PRIZE HARDY PERENNIALS

Perennials are hardy, enduring plants and produce in great abundance. Lovely perennials will add beauty and charm to your landscape.

each **45¢**
3 for \$1.20

ALYSSUM

***ALYSSUM SAXATILE**—An excellent perennial covered with masses of bright yellow flowers in early spring.

ARABIS (Rock Cress)

***ALPINA**—Pure white, very useful for rock garden or edging.

ASTER PERENNIAL, Michaelmas Daisy

BEECHWOOD CHALLENGER—Brilliant crimson flowers produced freely on 3-foot stems from September to November.

CLIMAX—The old favorite. Large lavender flowers with golden yellow disc.

HARRINGTON'S PINK—The best pink hardy Aster yet produced.

*ASTER, Dwarf Varieties

NANCY—Lavender pink.

VICTOR—Dwarfest of all. Clear lavender blue flowers.

SNOWSPRITE—Clear white.

CAMPANULA

CANTERBURY BELLS (Cup and Saucer)—This is one of the most popular and hardiest forms. Single cup-shaped flower set in a saucer-like calyx. Entire flower one color. Blue, white, pink.

PERSICIFOLIA BLUE—Tall spikes with open blue flowers.

*CERASTIUM

SNOW IN SUMMER—Charming creeping plant, silver foliage, fine border, white flowers.

BLEEDING HEART

DIELYTRA SPECTABILIS—(Hardy. Grows 24 inches. Plant in sun or shade. Blooms in May.) These pretty spring bloomers with their graceful drooping sprays of heart-shaped pink and white flowers are very ornamental, and bloom freely early in the season. Fine for cemetery plant. Postpaid, each 60c; doz. \$6.00.

DELPHINIUM (Hardy Larkspur)

PACIFIC GIANTS—A mildew resistant strain introduced recently by a Pacific Coast grower. In addition to its mildew-resistant qualities, it possesses a greater variety of colors and shades than any other strain of Delphiniums. Prepaid.

PACIFIC GIANTS, WHITE—The loveliest pure white Delphinium introduced to date. Prepaid.

*Suitable Rockery Plants



AGUILEGIA (Columbine)

AQUILEGIA (Columbine)

LONG SPURRED HYBRID—Thrives luxuriantly in any good soil suitable for the open garden, permanent beds of borders or edges of shrubbery. Blooms during May and later when flowers are scarce. Plants grow 2 to 3 feet high. Prepaid.

PERENNIAL SPECIAL

A special designed to give you continuity of blooms throughout the late spring, summer and early fall.

- 4 DELPHINIUM PACIFIC GIANTS
- 3 ASSORTED HARDY PHLOX
- 3 HARDY CHRYSANTHEMUMS
- 1 PYRETHRUM
- 1 SCABIOSA
- 1 LUPIN
- 1 DIANTHUS ROSE BOWL

\$5.75
\$6.60 VALUE FOR ONLY



PINK CUSHION CHRYSANTHEMUM

HARDY CHRYSANTHEMUMS

A Select List of Early, Free-blooming Varieties

BARBARA—Pleasing light rose pink.

CONQUEROR—Lovely deep red

DAILY EXPRESS—Reddish bronze.

ELLA FRIEND—Large yellow bronze.

EUGENE WANDER—Clear yellow.

GOLD STANDARD—Golden yellow.

HARBOR LIGHTS—White, chartreuse center.

JOAN HELEN—Single red, prolific.

LAVENDER LADY—Finest lavender.

SEPTEMBER DAWN—Favorite pink.

SEPTEMBER WHITE—Popular white.

SEPTEMBER YELLOW—Splendid yellow.

DWARF CUSHION MUMS

Bronze, Pink, Red, White or Yellow

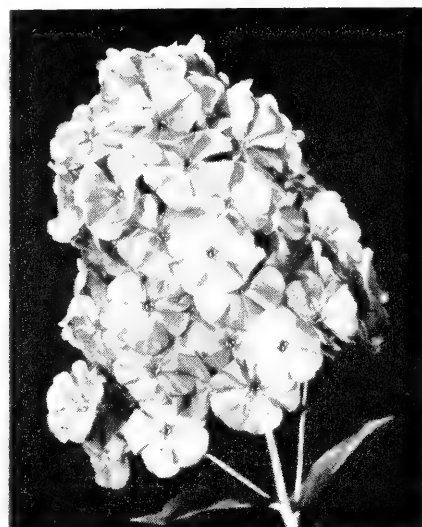
each
45¢

3 for
\$1.20

PERENNIAL HARDY PHLOX

The perennial phlox should have a place in every flower garden. Succeeds in almost any soil with a minimum of care and are long, continuous bloomers.

each **50¢**



AIDA—Bright crimson.

CAROLINE VAN DEN BERG—Lilac blue.

DAILY SKETCH—Salmon pink.

EVA FORESTER—Soft salmon.

JULY GLOW—Fine bright red.

KIRMESLANDER—Snow white.

LEO SCHLAGATER—Scarlet red.

ROYAL PURPLE—Rich purple.

SPITFIRE—Salmon orange.

SWEETHEART—Lovely pink.

Your Choice of Hardy PERENNIALS 45c ea.

DIANTHUS

***PLUMARIUS (Clove Pinks)**—The old favorite for borders, edgings and rockeries. Various shades of pink flowers on graceful stems.

***DELTOIDES**—Beautiful creeper for rockeries with crimson flowers in summer.

DORONICUM

LEOPARD'S BANE—Large bright yellow flowers; one of the most effective early spring flowering perennials.

FOXGLOVE

FOXGLOVE (Digitalis)—Plant in sun or partial shade. Blooms June and July. The strong flower stalks, 4 to 6 feet high, rise from rich and luxuriant masses of leaves. Colors: Purple, rose, mixed.

GEUM

***MRS. BRADSHAW**—A splendid new variety, with large, double flowers of a fiery red, blooming nearly all summer. Peculiarly attractive. 18 inches.

GYPHOPHILA

BABY BREATH—Free flowering plants, the flowers of which are in great demand for cutting or combining with other flowers.

HOLLYHOCKS

CHATERS DOUBLE—Large rosettes of paper-like tissue, very compactly layered. We offer them in the following separate colors: Red, yellow, pink.

RUSSEL LUPINS

This remarkable strain of Lupins, first introduced in 1938, has created more interest than probably any plant in recent years. It has a very wide range of colors, including yellows, pinks, blue and reds. Many of them bicolors.

PYRETHRUM (Painted Daisy)

Nothing can surpass the Pyrethrums in profusion of flowers during the summer.

JAMES KELWAY—Single blood red.

POPPY

***ICELAND POPPY**—A neat dwarf-like plant, from which spring graceful leafless stems with charming cup-shaped flowers.

ORIENTAL POPPY—Nothing in the hardy plant line can compare with the Oriental Poppy for brilliancy and beauty. With their large fiery scarlet flowers, they are conspicuous in any position.

SCABIOSA

Charming flowers for the sunny border.

ISAAC HOUSE HYBRIDS—Deep blue.

SHASTA DAISY

A much improved hardy daisy, bearing a profusion of large, white flowers from early summer until late in the fall. Fine for cut flowers.

ALASKA—Huge, shaggy flowers.

DOUBLE—Profusion of double white flowers.

SWEET WILLIAMS

Hardy; grows 18 inches tall, plants multiply in size yearly. Large fragrant flowers of extreme richness. Pink or red.

THYME

A valuable plant for covering or carpeting exposed areas in the rockery, dry banks, walls or stepping stones.

TRITOMA

RED-HOT POKER, FLAME FLOWER OR TORCH LILY—The early, free and continuous blooming qualities of this variety have made it one of the great bedding plants. Hardy if given protection.

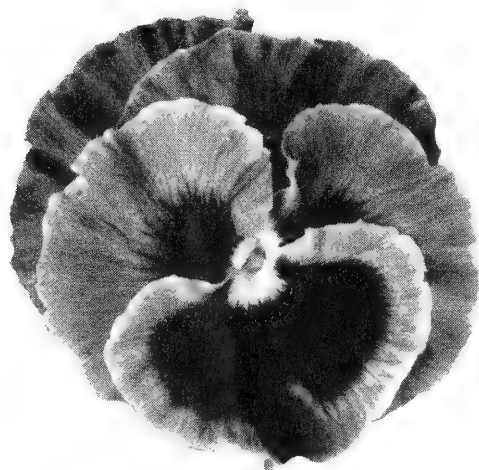
TROLLIUS

EUROPEUS—One of the most popular perennials. Globe shaped yellow flowers. Plants grow 2 ft. high.

*VERONICA

Bushy plants about 2 feet high with dense spikes of deep blue flowers. A beauty in the garden.

SPICATA—One of the best.



PANSIES

DOZEN PLANTS

\$1.25

SWISS GIANTS—This strain is the largest and most floriferous type grown. Flowers are immense, beautifully marked petals in a very large range of colors. Because of their free flowering habit, pansies are one of our most popular blooming plants.

EXPRESS PREPAID: \$1.25 DOZEN

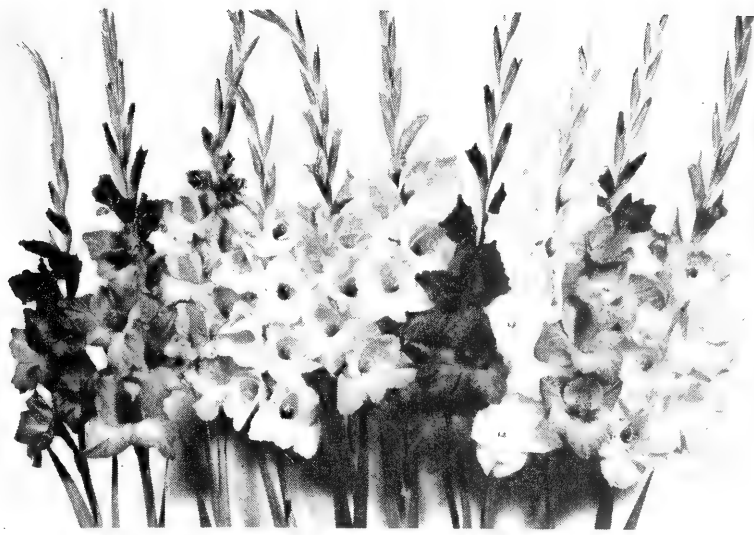
New!

DIANTHUS ROSE BOWL

75¢

EACH

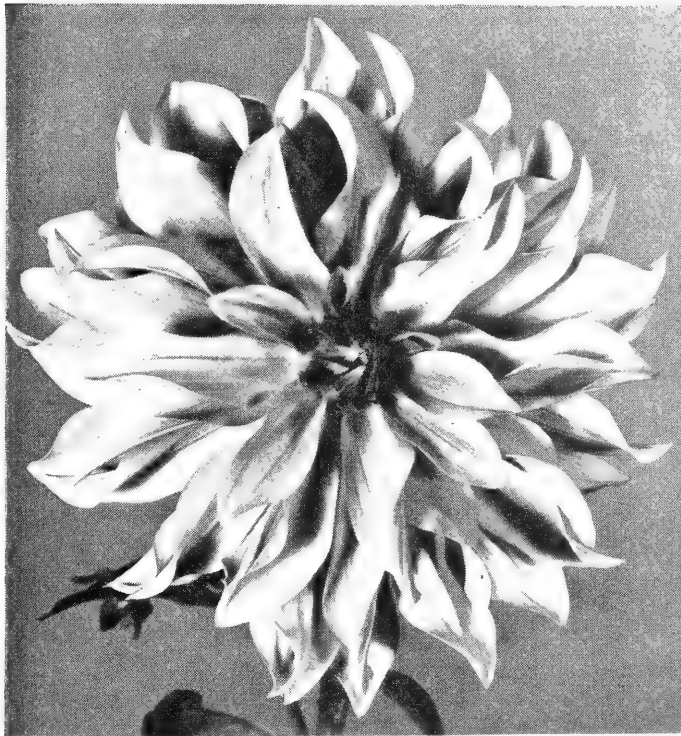
A lovely, low growing member of the Dianthus family. Blooms with bright rose pink flowers literally cover the plant all summer and early fall. Excellent for borders or rockeries.



21 GLAD BULBS \$1.39

This special comprises 3 each of the 7 most beautiful glads we know. All are big No. 1 size bulbs. Each variety is wrapped and marked separately. Below is listed the varieties included.

**BAGDAD • RED CHARM • VULCAN
LADY JANE • ELIZABETH THE QUEEN
PICARDY • SNOW PRINCESS**



DAHLIA, THE COMMODORE

TUBEROUS BEGONIAS

These brilliant colored summer flowering bulbs of easy culture are ideal for shady locations. We start the bulbs for you so that at planting time (May) you receive a partially grown plant almost ready to bloom.

For best results prepare the soil carefully and add liberal quantities of peat moss or well decayed leaves. Keep well watered and fertilized. After light frost in the fall, dig and store bulbs in dry peat moss over winter.

DOUBLE CAMELLIA TYPE—Colors: yellow, white, rose, apricot, crimson. Plant from 3-inch pots. Prepaid. **Each 60c; dozen \$6.00.**

KELLY'S GLADIOLI

each **8c** dozen **85c**

SHIPPED POSTPAID

ABNAKI—Reddish orange.
BAGDAD—Smoky rose.
CORONA—Tall creamy white with cerise edge.
BLUE BEAUTY—Rich deep blue.
EDITH CAVE COLE—Light pink.
ELIZABETH THE QUEEN—Finest lavender.
HARMONA—Scarlet with deeper throat.
LADY JANE—Cream with yellow tip.
MARGARET BEATON—Large white with scarlet blotch.
MRS. MARK'S MEMORY—Wine purple.
PICARDY—Large light salmon pink.
RED CHARM—Brilliant scarlet red.
ROSA VAN LIMA—Tall light rose pink.
SNOW PRINCESS—White.
VULCAN—Fine purple.

MIXED GLADIOLUS

Large Size—Doz. 75c; 50 \$2.75; 100 \$5.00.
Medium Size—Doz. 60c; 50 \$2.25; 100 \$4.25.

DECORATIVE DAHLIAS

The named varieties of dahlias listed below are all the mammoth exhibition type. Select your choice of colors and enjoy these gorgeous flowers.

each **50c**

CITY OF CLEVELAND—Orange, suffused red.
DADDY KEMP—Reddish purple.
GEO. A. RELYEA—Orange, tipped white.
JANE COWL—Bronzy, buff salmon.
KEMP'S WHITE WONDER—Fine clear white.
MRS. GEO. BOUTILLIER—Clear bright red.
MRS. THOS. A. EDISON—Red, lighter reverse.
PENN CHARTER—Buff and tinted apricot.
ROSE GLORY—Rosy lavender.
SANHICAN'S BLUEBIRD—Unusual blue.
THE COMMODORE—Canary yellow.

NOTE: We have a **Dahlia Mixture** containing many choice varieties and in a great many colors. The mixture is prepaid. **Price: DOZEN \$3.50; Each 35c.**



DOUBLE CAMELLIA TYPE TUBEROUS BEGONIA



JAPANESE FLOWERING CHERRY



WEeping WHITE BIRCH



NORWAY MAPLE

SHADE AND ORNAMENTAL TREES

FOR LAWN, STREET AND SHADE PLANTING

(By Express or Auto Freight) — Not Prepaid

ASH

MOUNTAIN ASH—Handsome small tree with pinnate foliage. White flowers in late spring followed by large clusters of attractive red berries all summer and fall. Nice for lawn or curb planting. 6-8 ft., each \$4.45. Mail size \$1.95.

BIRCH

CUTLEAVED WEEPING—Its graceful drooping habit, vigorous growth and silvery bark with nicely cut foliage is rarely met with in a single tree. 6-8 ft., each \$5.95. Mail size \$1.95.

EUROPEAN WHITE—Medium size tree; upright habit; small dense foliage; white bark. 6-8 ft., \$4.95. Mail size \$1.45.

CATALPA

SPECIOSA—A very rapid grower. Large heart shaped downy leaves and panicles of blooms. 6-8 ft., each \$4.95. Mail size \$1.95.

HAWTHORN (English)

PAUL'S DOUBLE RED—Rich brilliant scarlet red flowering tree. Fine for lawns. 6-8 ft., each \$5.45. Mail size \$2.45.

ELM

CHINESE or ASIATIC—A wonderfully rapid growing pyramidal tree. Introduced by U. S. Government especially for semi-arid sections. 25 feet tall and one foot in diameter in five years from plantings is recorded. 5-6 ft., \$2.45; 6-8 ft., \$3.45; 8-10 ft., \$4.95. Mail size 95c.

FLOWERING CHERRY

KWANZAN—Double dark pink blossoms. 30 ft. Attractive foliage. 4-5 ft., \$3.45. Mail size, \$2.45.

FLOWERING CRAB

BECHTEL'S FLOWERING DOUBLE—A medium sized tree of rather upright growth covered in early spring with large clusters of pink double flowers. Each, \$2.50. Mail size, \$1.45.

ATROSANGUINEA—Very profuse bloomer. Graceful habit; carmine flowers; red branches. Each, \$2.50. Mail size, \$1.45.

HOPA—Blossoms in April in a profusion of rose colored flowers. Foliage attractive. Bears small fruit, red inside and out. Each, \$2.50. Mail size, \$1.45.

FLOWERING PEACH

PINK—Large double pink flowers. Strong growing tree. Each, \$2.50. Mail size, \$1.25.

RED—Rich ruby red. Very large blossoms. Each, \$2.50. Mail size, \$1.25.

FLOWERING PLUM

BLIREIANA—The blossoms, appearing early in May, are deep pink, double and fragrant. Dark purple foliage. Upright growth, up to 15 ft. at maturity. Each \$2.50. Mail size, \$1.45.

THUNDER CLOUD—Excels through its most beautiful foliage of rich red, turning gradually darker to a very rich purple. Each, \$2.50. Mail size, \$1.45.

TRILOBA—Similar to flowering almond flower, but this variety makes a small tree. Lovely pink flowers. 3-4 ft., each \$2.00. Mail size, \$1.45.

HORSE CHESTNUT

WHITE FLOWERING—Beautiful with spikes of flowers in spring. It makes a solid compact head though slower growing than some varieties. 5-6 ft., each, \$5.95. Mail size, \$2.45.

PINK FLOWERING—A slow growing dense shade tree with beautiful pyramidal cones of pink flowers. 5-6 ft., each, \$10.00.

LOCUST

BLACK—Native tree of large size. Fragrant small flowers. Fine for windbreak. 6-8 ft., each \$3.45.

GLOBE—Has a beautiful round head which can be sheared each year to keep it small when space is limited. Budded on a straight 6-ft. standard. Each, \$5.95.

MAPLE

NORWAY—Probably the most suitable tree for street planting. Has a general recommendation by landscape architects and park department. 6-8 ft., each, \$4.45; 8-10 ft., 5.45. Mail size, \$1.45.

SCHWEDLER—Especially beautiful in spring when their leaves open up to a brilliant dark red and purple, gradually turning to green in summer. 6-8 ft., each, \$4.95. Mail size, \$2.45.

SYCAMORE

EUROPEAN—A lofty, widespreading tree; highly ornamental; handsome foliage; free from insects and diseases. 6-8 ft., each, \$3.95. Mail size, \$1.45.

WILLOW

WEEPING—A graceful tree. Fresh green tint and wavy branches are very attractive. 6-8 ft., each \$3.45. Mail size, \$1.45.

Kelly's

FRUIT TREES

Kelly's Supreme Fruit Trees are all choice select! They are hardy, healthy, vigorous trees which will grow to produce abundantly.

3-YR. FRUIT TREES SENT AUTO FREIGHT OR EXPRESS—
NOT PREPAID
2-YR. TREES—PREPAID—SENT PARCEL POST

APPLE TREES

Summer and Autumn

- ▷ **DUCHESS OF OLDENBURG**—Medium sized, juicy, white-meated, good flavor. Striped red on yellow.
- ▷ **YELLOW TRANSPARENT**—The earliest and best. White, tender, juicy, sub-acid. August maturing.
- ▷ **RED JUNE**—Red and a delicious early.
- ▷ **GRAVENSTEIN**—Considered the finest quality fall apple.

Winter Varieties

- ▷ **JONATHAN**—A vigorous grower and high quality fruit. Known everywhere.
- ▷ **RED DELICIOUS**—Probably the most favored apple in America.
- ▷ **WAGNER**—Deep red on sunside. Prolific and high quality on many soils.
- ▷ **RED ROME BEAUTY**—One of the most positive croppers of fine quality fruit.
- ▷ **WINESAP**—Late winter. Dark red. A favorite.
- ▷ **McINTOSH**—Dark red fruit. Flesh white, juicy and of fine flavor. Medium size.
- ▷ **WINTER BANANA**—One of the most popular apples in the west. Fruit large yellow with pinkish blush. Fine flavor, and good keeper.
- ▷ **YELLOW DELICIOUS**—A wonderful apple; an early bearer of beautiful yellow apples; good shipper.

CRABAPPLES

- ▷ **RED SIBERIAN**—Heavy producer, fruit medium sized, juicy; fine red color.
- ▷ **TRANSCENDENT**—Fruit is large golden yellow with red cheek. Flesh yellow, crisp and juicy.



MOORPARK APRICOTS

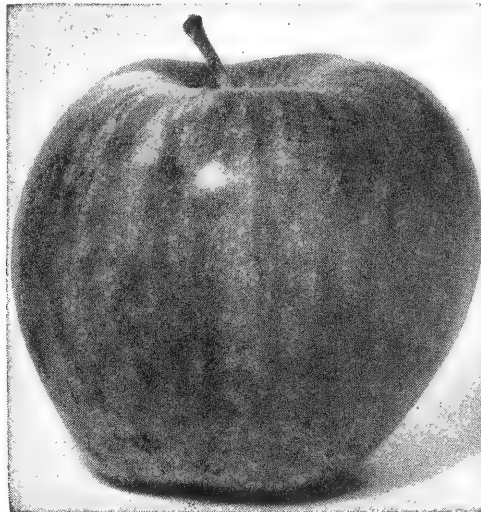
APRICOTS

- ▷ **MOORPARK**—The largest and best known variety. Deep orange color, very juicy.
- ▷ **TILTON**—Fruit is large and of good form. Tree vigorous and productive.

SPOKANE, WASHINGTON

Your Choice Only

2-yr. Trees, prepaid, each . . . \$ **1**.39
3-yr. Trees, not prepaid, each . . . \$ **2**.50



APPLE, DELICIOUS

CHERRY—Sweet

- ▷ **BING**—Very large. Dark brown. Delicious.
- ▷ **LAMBERT**—Heavy bearer. Black when dead ripe and rich quality.
- ▷ **ROYAL ANNE**—A magnificent large yellowish fruit with reddish cheek. Popular everywhere.
- ▷ **BLACK REPUBLICAN**—A fine dark cherry and a valuable pollenizer.
- ▷ **BLACK TARTARIAN**—Fruit dark red, medium size, juicy, good quality. Good for home and nearby markets. Tree vigorous and prolific. Fine pollenizer.

CHERRY—Sour

- ▷ **MONTMORENCY**—A very large red productive fruit that has succeeded to the highest place in a canning or sauce fruit.
- ▷ **LATE DUKE**—Large light red. Flesh tender, mildly acid and better quality than earlier sorts. One of the most popular sour cherries.
- ▷ **MAY DUKE**—Fruit good sized, dark red with small pit. Ripens early. Fruit ships well. Tree is vigorous, hardy and healthy.
- ▷ **EARLY RICHMOND**—Very popular early cherry, medium size.



BING CHERRIES

Add 3% Sales Tax on Washington State Orders

COMBINATION FRUIT TREES

IDEAL WHERE SPACE IS LIMITED! INSTEAD OF
SEVERAL TREES, HAVE MANY KINDS OF
FRUIT ON ONE TREE!

- APPLES**
- Yellow Transparent
 - Gravenstein
 - Spitzenberg
 - Red Delicious
- \$5.00 ea.**

This apple combination is designed to provide fruit all through the season. Early, Fall and Late apples all on one tree!

- CHERRIES**
- Bing
 - Royal Ann
 - Black Republican
- \$5.00 ea.**

This cherry combination eliminates the necessity of planting a pollinizer, because the pollinizing variety, Black Republican, is already grafted on the tree.

PEACHES

➤ **ELBERTA**—Freestone. Considered to be the best in peaches.

➤ **GOLDEN JUBILEE**—An excellent, early canning peach; a good firm shipper. Rich yellow meat and yellow skin with a bright red cheek. Becoming very popular.

➤ **ROCHESTER**—An extremely early peach that has great promise in this vicinity.

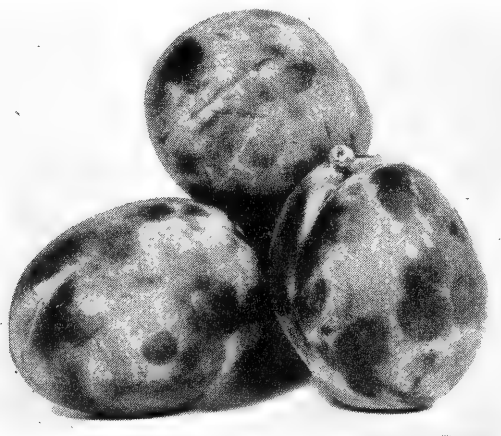
➤ **J. H. HALE**—One-third larger than Elberta. A good keeper and shipper. Fine flavor, juicy and sweet. Freestone.

➤ **SLAPPY**—Fruit yellow, good keeper; excellent flavor, fine grained, rich. Hardy, early yellow peach. Excellent quality.

PEARS

➤ **BARTLETT**—The king of early pears. Nothing better.

➤ **FLEMISH BEAUTY**—Very hardy. Juicy and productive.



PRUNES, ITALIAN

PRUNES

HUNGARIAN—Dark red, juicy and sweet.

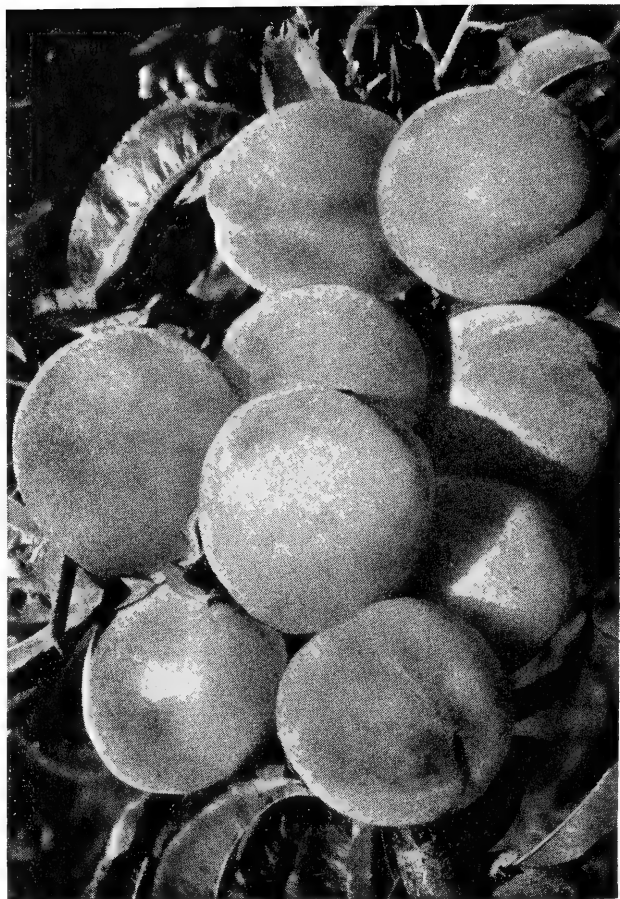
➤ **ITALIAN**—A large oval dark purple freestone. Flesh greenish yellow; best for canning and drying.

➤ **DATE PRUNE**—A much improved Petite. Very sweet. Fruit brownish-red color.

➤ **PETITE**—Universally used for jams. Small and very sweet.

DWARF FRUIT TREES, \$4.00 Each

We have a limited supply of Apples, Pears, Peaches, Apricots in the popular Dwarf Type. Write for list of varieties.



PEACHES, ELBERTA

PLUMS

➤ **BURBANK**—Hardy and prolific. Large, well colored fruit; sweet, aromatic. September.

➤ **GREENGAGE**—An old favorite. Fruit medium sized, sweet and juicy.

➤ **PEACH PLUM**—Very large brownish red. Freestone. Well known.

➤ **YELLOW EGG**—Deep golden colored skin, best quality.

PRICES OF FRUIT TREES (Except Dwarf and Combination)—

2-yr. Trees, prepaid, each \$1.39

3-yr. Trees, not prepaid, each \$2.50



PEAR, BARTLETT

KELLY'S SMALL FRUIT PLANTS

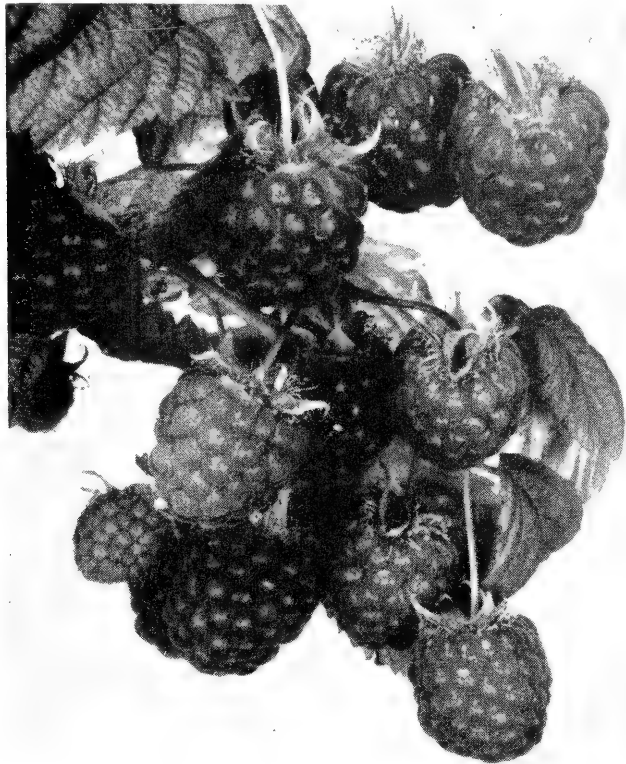
BLACKBERRIES

✓ **SNYDER**—This is the standard early blackberry for the North country. Prepaid, each 35c; 10, \$3.00.

BLUEBERRIES

Plant in partial shade; mix peat moss or leaf mold into soil. Enjoy this delightful "shrub berry".

✓ **RANCOCAS—RUBEL**—Prepaid, each \$1.50; 10 for \$12.50.



WASHINGTON RED RASPBERRIES

✓ THORNLESS BOYSENBERRY

The new Boysenberry is a truly glorified Youngberry. Similar in flavor, but much larger than the Youngberry. It is a triple cross involving the Loganberry, Blackberry and Raspberry. You will be amazed at its enormous size and the wonderful quality of its fine fruit. We know you will agree they are the finest addition to the small fruit class of plants. Prices, prepaid, each 35c; 10 for \$2.50.

CURRANTS

✓ **PERFECTION**—The largest and best red currant. 2-year-old plants. Prepaid, each 35c; 10, \$3.00.

✓ **CHERRY**—A fine, large currant. Very popular for jelly making. Prepaid, each 35c; 10, \$3.00.

✓ **RED LAKE**—This marvelous new currant has the size, color, and quality of Perfection but is unique in its large, long stemmed clusters which increase picking speed to 50%. Berries are resistant to sunburning. The bush is a strong, upright grower, a heavy producer. Each, 50c; 10, \$4.00.

DEWBERRIES

✓ **LUCRETIA**—Best variety for the Northwest. 2-year-old plants. Prepaid, each 35c; 10, \$3.00.

GOOSEBERRIES

✓ **CHAMPION**—The best standard variety. 2-year-old plants. Prepaid, each 50c; 10, \$4.00.

NOTE—Owing to Federal Quarantine regulations, Currants and Gooseberries cannot be shipped after April 1 and before November 1.

LOGANBERRIES

✓ **LOGANBERRY**—This fruit partakes of the blackberry in shape and form and has the flavor of the blackberry and raspberry combined. 2-year-old plants. Prepaid, each 35c; 10, \$3.00.

RASPBERRIES — Black

✓ **CUMBERLAND**—The best black cap. Prepaid, each 35c; 10, \$3.00.

RASPBERRIES — Red

✓ **INDIAN SUMMER**—A new everbearing variety—rich red color and large fruit.

✓ **NEWBURG**—This variety, developed recently, is mosaic resistant. Trials of Newburg show it to be a heavy bearer of large red berries with fine flavor. Plants are strong and stocky. We believe it will prove an ideal garden and commercial variety.

✓ **WASHINGTON**—Valuable commercial variety recently introduced in our own state. Abundant producer of excellent quality fruit and almost everbearing.

Prices all Red Raspberries above: Each 20c; 10, \$1.75, prepaid.

STRAWBERRIES Everbearing Varieties

✓ **GEM**—This is the outstanding commercial everbearing strawberry for Western growers.

Prices, everbearing varieties: 25, \$1.25; 100, \$4.00.

✓ **STREAMLINER**—Firm, radiant red, richly flavored berry with excellent canning and freezing qualities. 25, \$1.75; 100, \$5.50.

✓ **ROCKHILL**—A very productive plant of sweet, rich red berries. Plants bear young and over a long season. Does not produce runners and is propagated by crown divisions. Doz. \$1.50; 100, \$12.00.

✓ **RED RICH**—A new everbearing variety of exceptional promise—husky growing plants heavily yield splendid flavored fruit—large size and rich color. Doz., \$2.95; 25, \$5.00; 100, \$15.00.

Standard or One-Crop Strawberries

✓ **NEW OREGON**—A western variety and seemingly combines the splendid characteristics of the Hood River and Glen Mary types in its fruit. It is grown extensively with complete satisfaction.

✓ **MARSHALL**—A well known popular variety.

✓ **DORSETT**—An early berry, very firm and a heavy producer. Color a bright red, a color the market likes.

Prices all standard varieties: 25, \$1.00; 50, \$1.75; 100, \$3.00.

GRAPES

✓ **AGAWAM**—Ripens early, berries are large, reddish color and thick skin. Pulp soft and sweet.

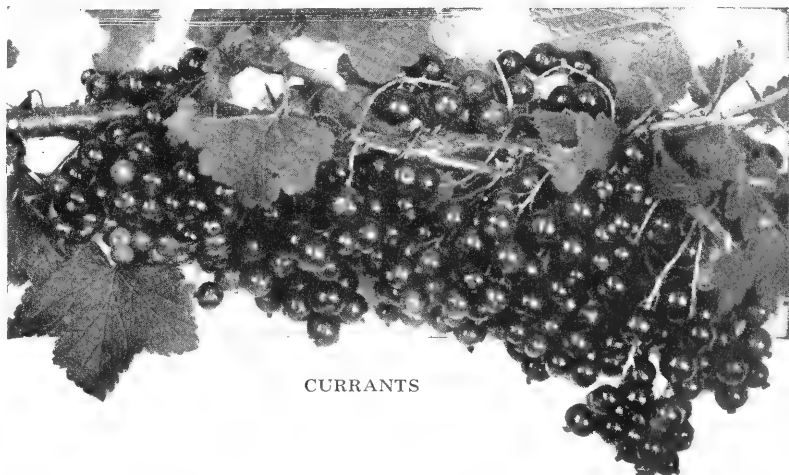
✓ **CONCORD**—A large, black, well known grape. 2 year plants.

✓ **FREDONIA**—Leading new black variety. Similar to Concord but earlier. Highly recommended.

✓ **MOORE'S EARLY**—Earliest best grape for the Inland Empire and Rocky Mountain section. 2-year-old plant.

✓ **NIAGARA**—Earliest, best white grape.

Prices all Grapes. Prepaid, each, 60c; 10 for \$5.00.



CURRANTS

KELLY'S LAWN GRASS SEED

BENT

This wonderful grass produces positively the finest turf that can be formed. Its creeping stolon habit makes a close knit turf, choking all weeds. Bent thrives in an acid soil. If you want the best lawn and the least weed trouble use this seed. Our Bent seed is grown in Washington and is the true creeping type. There are several varieties and the cheaper kinds are not creeping. One pound of our seed sows about 500 to 600 square feet of lawn surface. 1 lb. \$1.50; 5 lbs. \$7.00; 10 lbs. \$14.00.

KENTUCKY BLUE GRASS—A hardy grass and found in all mixtures. It makes an excellent lawn. 1 lb. \$1.20; 5 lbs. \$5.75; 10 lbs. \$11.50.

CHEWINGS FESCUE—Small low growing grass forming a dense turf on all types of soils. 1 lb. \$1.50; 5 lbs. \$7.25; 10 lbs. \$14.50.

CLOVER, WHITE DUTCH—Excellent for lawns when mixed with grasses in right proportions. 1 lb. \$1.35; 5 lbs. \$6.50; 10 lbs. \$13.00.

KELLY'S FINEST MIXTURE

A well balanced blend that will produce a fine turf in a short time. Sow 1 pound to about 300 square feet. 1 lb. \$1.25; 5 lbs. \$6.00; 10 lbs. \$12.00.

KELLY'S SHADY LAWN MIXTURE

This mixture is intended for and will thrive under conditions where there is partial or complete shade, such as under trees or in shadows of buildings. 1 lb. \$1.50; 5 lbs. \$7.25; 10 lbs. \$14.50.

Prices Postpaid by Us



VEGETABLE PLANTS – Prepaid



*Gardening
Is Fun*

Enjoy the thrill of creating a beautiful landscape. Enjoy the pleasure of watching for those first beautiful buds . . . of watching the buds develop into lovely flowers. Taste the mouth-watering goodness of fruit and vegetables grown in your own garden.

ASPARAGUS

	Doz.	50	100	1000
Martha Washington—1 yr.	50c	\$1.50	\$2.50	\$15.00
Martha Washington—2 yr.	75c	2.00	3.50	30.00

CABBAGE

Copenhagen Market—Midsummer	}	50c	1.75	3.00	30.00
Danish Ballhead—Late					
Early Jersey Wakefield—Early					
Golden Acre—Early					
Brussel Sprouts					

CAULIFLOWER

Early Snowball	50c	1.75	3.00	30.00
----------------	-----	------	------	-------

CELERY

Golden Self Blanching	}	50c	1.75	3.00	30.00
Utah Green					

EGG PLANT

Black Beauty	50c	1.75	3.00	30.00
--------------	-----	------	------	-------

LETTUCE

New York Head	50c	1.75	3.00	30.00
---------------	-----	------	------	-------

ONION

	Doz.	50	100	1000
Sweet Spanish			.50	3.00

PEPPERS

Ruby King	}	50c	1.75	3.00	30.00
Pimento					
California Wonder					
Cayenne Hot					

RHUBARB

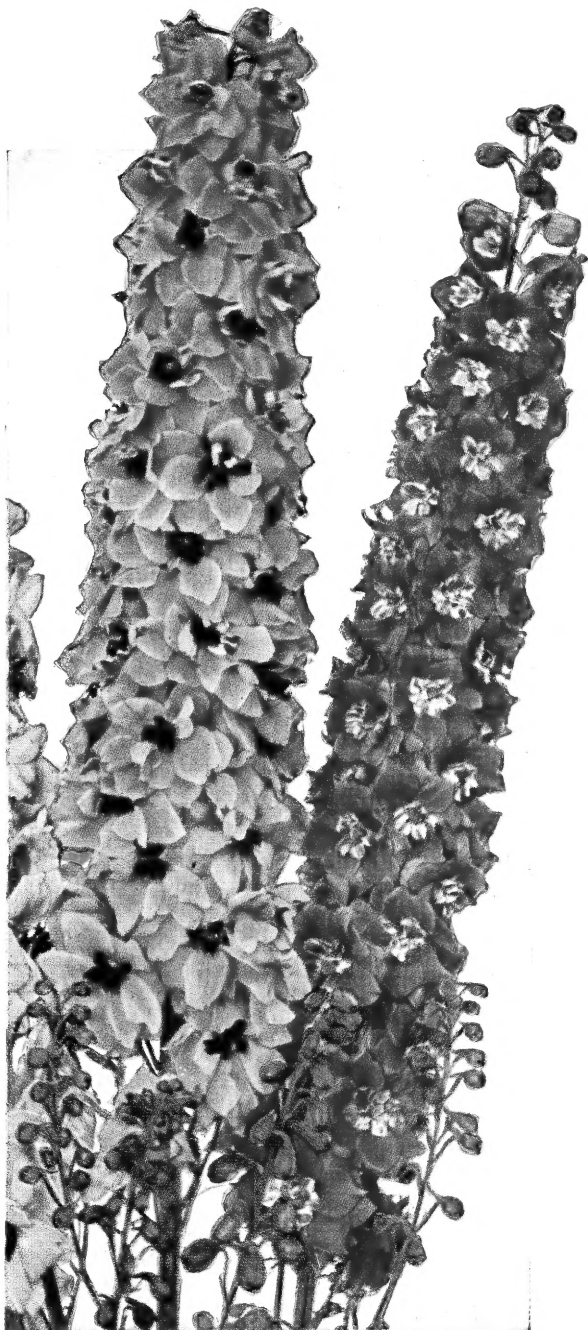
Victoria—2 yr.	each 35c; doz. \$3.50
Strawberry	each 35c; doz. \$3.50
Canada Red—New	each 75c; doz. \$7.50

SWEET POTATOES

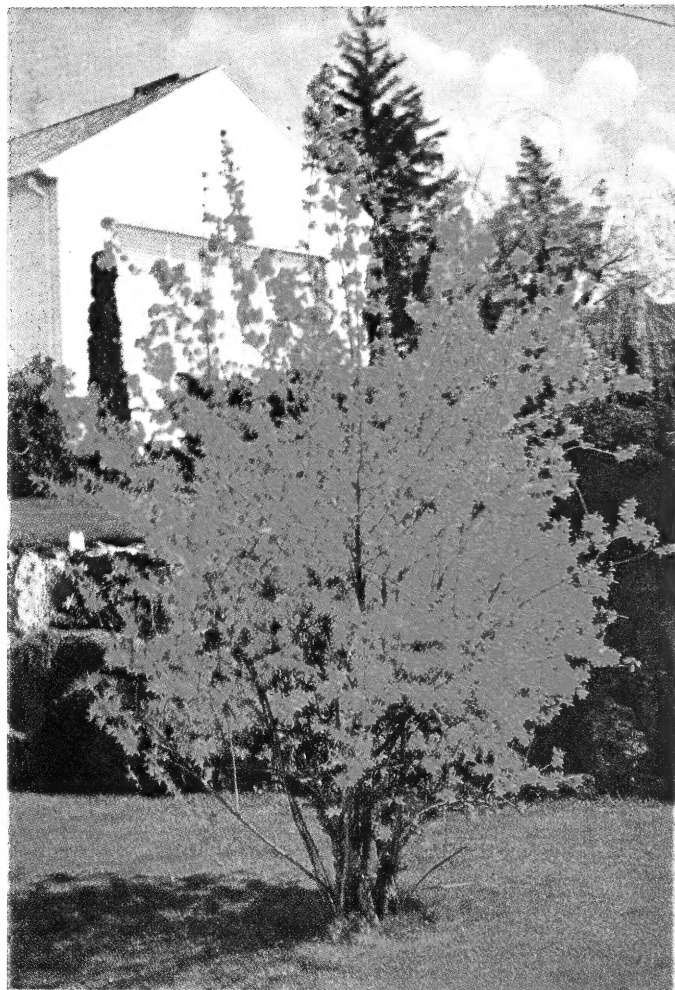
	Doz.	50	100	1000
Nancy Hall—Popular type	35c	\$1.00	\$1.75	\$12.50

TOMATOES

Earliana—Earliest	}	50c	1.75	3.00	30.00
John Baer—Large medium early					
Bonny Best—Early standard					
Wasatch Beauty—New early					

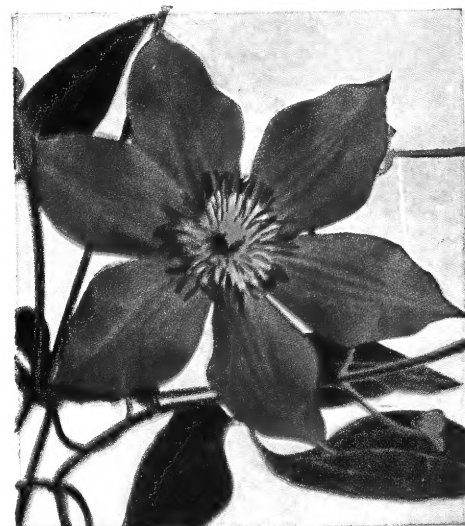


PACIFIC GIANT DELPHINIUM
(See Perennials, page 9)



FORSYTHIA
(See Shrubs, page 3)

FOUR
OUTSTANDING
FAVORITES



CLEMATIS JACKMANI
(See Vines, page 6)



JUNIPER TAMARISCIFOLIA (See Evergreens, page 7)

FORSYTHIA—Among the first spring blossoms of the year.

CLEMATIS Jackmani — Immense violet-purple flowers, in bloom all summer.

DELPHINIUM Pacific Giant — Many-shaded mildew-resistant strain of Delphinium.

JUNIPER tamariscifolia—Greyish-bluish creeping variety, dwarf and spreading 6-8 feet.

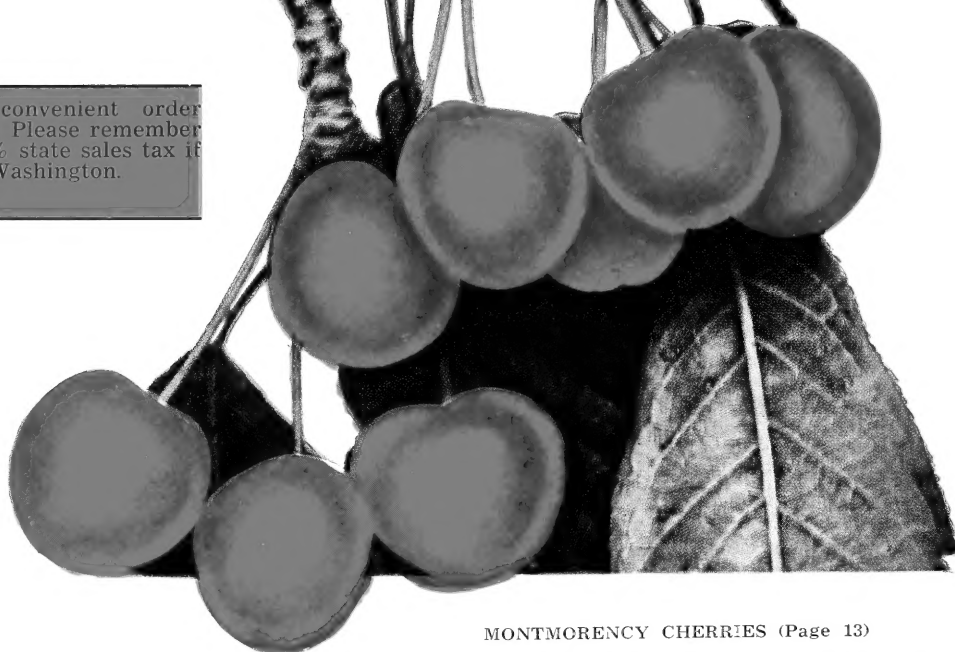
**ORDER BY
MAIL!**

Use the convenient order blank inside. Please remember to include 3% state sales tax if you live in Washington.

Our Flower Shop

Your floral needs for any occasion will be courteously and promptly handled from our modern bonded F. T. D. flower store. Visit, phone or write us when you wish to

"Say it with Flowers"
Telephone KEystone 1277



MONTMORENCY CHERRIES (Page 13)

Kelly's

Small Fruit Special

Just enough for your own table . . . maybe a few for freezing or canning! These will take very little room . . . but what wonderful treats they'll bear for you.

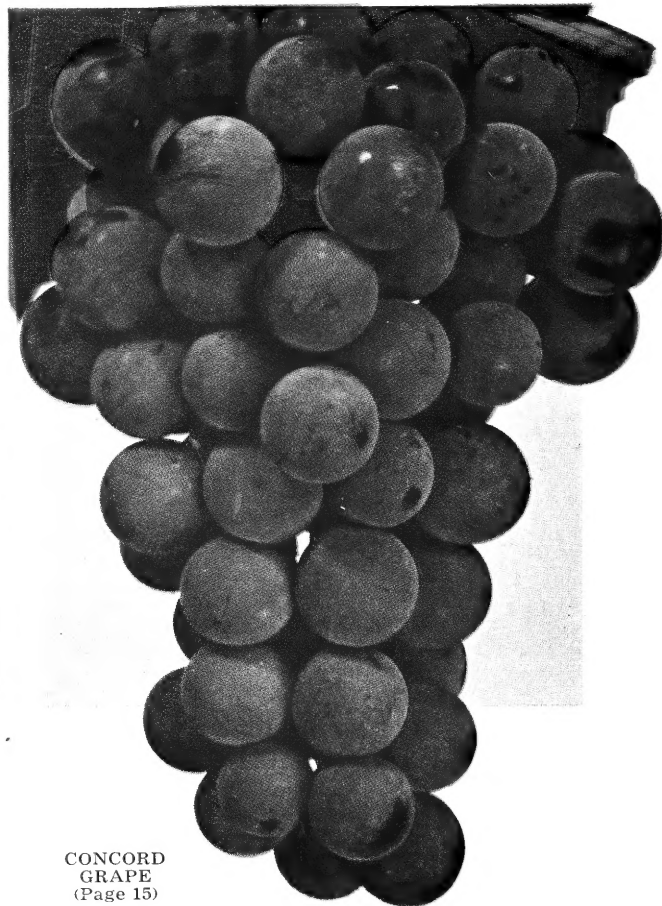
- 2 Thornless Boysenberry \$.70
- 6 Washington Raspberry \$1.20
- 2 Concord Grape Plants \$1.20
- 50 Gem Strawberries \$2.50

A VALUE OF \$5.60

for only . . . **\$4.95**

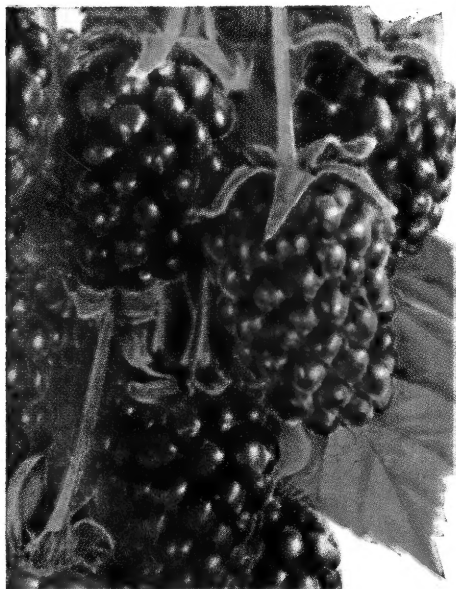


GEM STRAWBERRIES (Page 15)



CONCORD GRAPE (Page 15)

BOYSENBERRY (Page 15)



POSTPAID

KELLY PLANT GARDENS
E. 4100 Sprague
SPOKANE 31, WASHINGTON

Sec. 34.66 P. L. & R.
U. S. POSTAGE
PAID
SPOKANE, WASH.
Permit No. 382

LIBRARY
U.S. DEPT. OF AGRICULT.
WASHINGTON, 25, D.C.

RETURN POSTAGE GUARANTEED