

## **Historic, archived document**

Do not assume content reflects current scientific knowledge, policies, or practices.



62,13

IP: IE:  
★ MAR 11 1936 ★  
U. S. Department of Agriculture.



STARDUST

# CHRYSANTHEMUMS

WHOLESALE TRADE LIST  
LISTING BEST VARIETIES FOR

1936

## STAFFORD CONSERVATORIES

JOSEPH J. BRAUN, Proprietor

STAFFORD SPRINGS, CONNECTICUT

Telephone 158-2

ON MAIN HIGHWAY—BOSTON TO NEW YORK

## TERMS OF SALE

Prices quoted are for the trade only.

Parties outside of the trade add 20% to prices quoted.

Orders from new customers must be accompanied by remittance or satisfactory reference.

Terms—Cash, unless special arrangements are made for credit. All accounts are due 30 days from date of shipment. If unpaid, interest at the rate of one-half per cent per month will be charged.

If shipment is requested to be sent C. O. D. at least one fourth of the amount in cash must accompany the order to insure acceptance.

Register all letters containing Currency.

QUANTITY—We will sell not less than 6 of any one variety at the dozen rate, 25 at the 100 rate and 250 at the 1,000 rate. Orders for less than six of any standard variety will be billed at the retail price of 10 cents each and up, according to list price of variety selected.

We send out first class stock, carefully inspected and packed, and delivered to the Post Office or Express Company in good order, after which plants Travel at Buyer's Risk. We hold ourselves responsible for such errors, as omissions, miscount and misdirected shipment and will gladly rectify same should they occur.

CLAIMS FOR DAMAGES—All claims for damages must be assumed and entered against the carrier by the buyer, the shipper's responsibility ceases upon delivery to such agents in good condition. If shipments forwarded by express are delayed or arrive in damaged condition be sure to have your agent examine the shipment and sign for the extent of the damage and you will have no trouble to collect from the express companies for the same.

PARCEL POST CHARGES—On all charge orders actual postage will be added to the invoice. Paid orders should include postage at the rate of 10 cents for the first hundred cuttings, 4 cents for each additional hundred, Plus Special Delivery Fee when so Requested at the following rate. Up to 100 cuttings 15c—up to 500 cuttings 25c—for each 1,000 cuttings, 35c.

We would consider it a favor to be informed just how stock arrived and to what degree they are satisfactory or otherwise, and in case of any part of shipment not being satisfactory for other reasons than that caused by transportation same should be reported or returned to us at once, for satisfactory adjustment. No claims honored unless postmarked within 24 hours after Receipt of Shipment.

NON-WARRANTY—It is our aim to satisfy our customers by sending good stock at a reasonable price. While we exercise the utmost care to make every shipment satisfactory and profitable to you and keep stock true to name, WE GIVE NO WARRANTY, EXPRESSED OR IMPLIED, on the same, either as to varieties or product, and we are in no way responsible for the crop. All orders Received will be Executed on these conditions only, and they must be accepted by the customer when ordering.

All orders filled in strict rotation and as soon as stock is ready.

We believe Early ordering to be of mutual advantage.

For Plants from 2¼ inch pots add \$1.50 per 100 extra.

## F O R E W O R D

---

With 29 years of Successful business dealings with florists in supplying Chrysanthemum young stock behind us, we begin the season for 1936 with the hope that we will again exceed the previous years business. Thereby adding to the long list of customers we have made by furnishing them with the good quality stock that has made our reputation.

We have increased our space devoted to this end of our business about 25% to enable us to carry the increased quantity of stock needed to fill our orders promptly as in the past the demand for our stock has been far ahead of production on many varieties.

Our greenhouses are regularly inspected by the U. S. Department of Agriculture and to date our record is clean. This allows us to make shipments to any state or country not establishing an embargo.

If you have never tried our stock we solicit your patronage and feel sure that you will be so well pleased with the quality of stock supplied, you too will become one of our repeat customers.

Very truly yours,

**THE STAFFORD CONSERVATORIES.**

It is generally more practical for the Grower or Florist to secure his requirements in Chrysanthemums as Rooted Cuttings and our customers call for such more and more every season. Strong rooted cuttings are easily established and transported at less risk than Potted Stock.

Rooted Cuttings ready for delivery February 15th on.

We will pot up early orders if desired and from June to the end of the planting season generally have around 100,000 in 2 $\frac{1}{4}$  inch pots for your selection.

Prices quoted throughout this list are for rooted cuttings. For plants from pots add \$1.50 per 100, to prices quoted.

### SAVE 10% ON YOUR ORDER

We offer a discount of 10% from prices given in this list for cash with the order.

### HERE IS A 20% SAVING

We offer Rooted Cuttings, our selection of varieties at \$20.00 per 1000. You may select the quantity desired of color, type and blooming season. We will assure you of a good selection, using only good commercial varieties.

## CHRYSANTHEMUMS

### STANDARD VARIETIES

LISTED IN ORDER OF FLOWERING

#### WHITE

Rooted Cuttings, 60c, per dozen, \$3.00 per 100, \$25.00 per 1,000, except where noted. For Plants from 2 $\frac{1}{4}$  inch pots add \$1.50 per 100 extra. Not less than 6 of one variety at doz. rate, 25 at 100 rate, 250 at 1,000 rate.

**EARLY FROST.** A very early commercial white. Height 3 feet. Pure white flowers, perfect in form, and full to the center. May 15th planting matures end of September.

**QUAKER MAID.** Glistening white of incurved form, good stem and fine foliage. Grows 5 feet from early June planting. Best results from buds taken end of August which mature first week in October.

**OCONTO.** A strong grower with a sturdy stem, beautiful foliage and large incurved flower, maturing October 15.

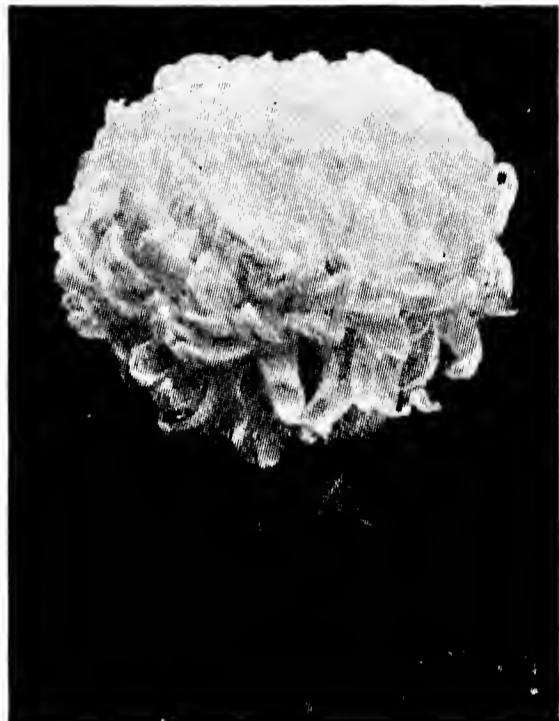
**AMBASSADOR.** A very large, closely incurved and perfectly formed white, maturing October 20th. Flowers held perfectly upright by strong stems.

**SILVER SHEEN.** Pure white, incurved form, maturing October 20. Has wonderful keeping qualities. We recommend this variety to those who do not like Oconto as a second early. Select bud August 30.

**SNOW WHITE.** Incurved. Maturing November 1st. Best Commercial White at this date.

**BETSY ROSS.** A large flower of perfect incurved form, clear white in color, with excellent stem and foliage.

**CHAS. RAZER.** The most reliable white for early November. Bonaffan in form but larger. Good stem and foliage. Very easy doer.



**Wm. Turner**



**December Glory**

**WM. TURNER.** Pure white, very large incurved. One of the finest of the large flowered Chrysanthemums. Also the greatest favorite for exhibition. Matures early November from buds selected August 30. 75c per doz., \$3.50 per 100, \$30.00 per 1,000.

**MEFO.** Large creamy white, maturing November 15th to 20th. Closely incurved with lower petals irregularly reflexed. Select buds September 15th.

**WHITE DISTINCTION.** A pure white sport of Distinction. Identical in habits and growth to its parent. An ideal substitute for White Seidewitz.

**TOM BROWN.** A wonderful pure white. In season November 20th to 30th. Blooms 8½ inches not unusual and as they closely surmount the foliage upon very heavy stems this variety qualifies as one of the best. Height 4 feet.

**DEC. GLORY.** Excellent commercial variety. Petals incurve throughout, forming a perfectly spherical flower 6 inches in diameter. Fine stem and foliage. Height 5 feet from June planting. Maturing December 1st.

**CHATTANOOGA.** Large pure white, with a good stem. Deep or high rounded flower of good substance, its lateness making it exceptionally valuable. Buds selected September 20 will mature from December on. Height 4 feet from June planting.

**IMPROVED WHITE MISTLETOE.** This pure white variety is a sport. The objectionable pink of the original variety is eliminated. The latest flowering Chrysanthemum.

On account of the scarcity of flowers generally prevailing during the end of December and January, late plantings of the late flowering Chrysanthemums have proved profitable, especially for the retail trade.

## STANDARD VARIETIES

LISTED IN ORDER OF FLOWERING

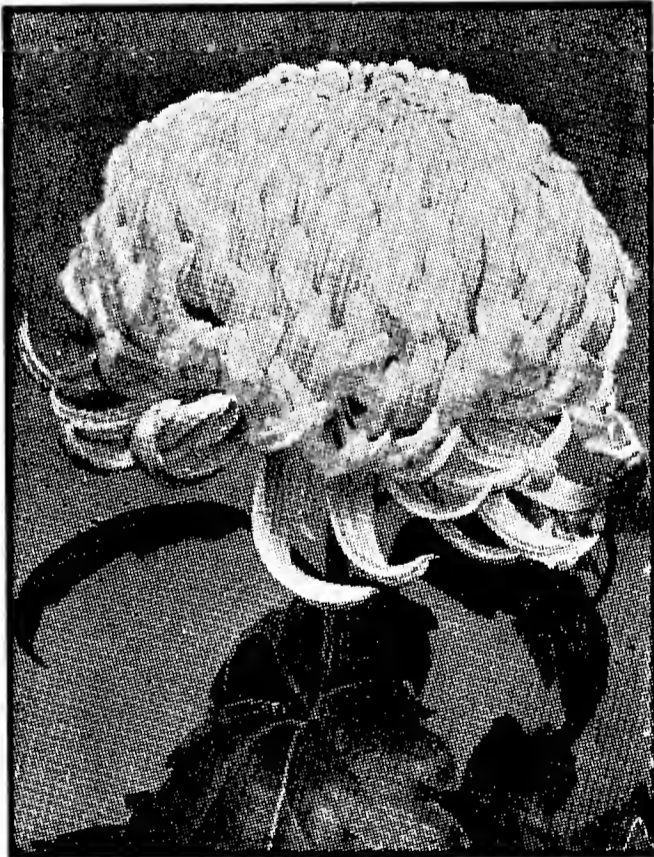
### PINK

Rooted Cuttings, 60c per doz., \$3.00 per 100, \$25.00 per 1,000, except where noted. For Plants from 2¼ inch pots add \$1.50 per 100 extra.

Not less than 6 of one variety at doz. rate, 25 at 100 rate, 250 at 1,000 rate.



Justrite



Chieftain

**LUSTRE.** Fine lavender pink companion for Quaker Maid and Gold Lode. Matures October 10th. Bud last week in August. Height 4 feet from early June planting.

**JUSTRITE.** The most popular of all early Pinks. Perfectly globular in form on very strong stems. Habit of growth ideal. A good shipper. Matures October 15th from terminal bud.

**REALITY.** A very closely incurved variety and as its color is pink might be called Pink Bonafan. Slightly deeper in color than Chieftain with more closely incurved petals. Diameter of flower 5 to 6 inches. Good shipper. Height 4 feet. Good stem and foliage. Select bud August 5th. Matures October 20th.

**ROSE CHOCHARD.** A very early pink, maturing October 20th. Being of dwarf habit and a most pleasing shade, has gained favor with those who have known and grown it. Incurved type. Height 3 feet. Take bud August 15th.

**OSCODA.** (E. D. Smith). This variety produces a very closely incurved bloom showing the reverse side of the petals, an excellent shipper. Color light lavender with a silvery sheen. Flowers 6 inches in diameter. Select bud about September 1st. Height, 4 feet from June planting. Flowers October 30.

**EVENING STAR.** (E. D. Smith). An exceptionally fine mid-season pink variety maturing November 1st. In form it somewhat resembles Rose Perfection, is slightly darker in color and fully double even from



latest buds. Strong growth with good stem and medium sized foliage. Attains five feet from April 20th planting. Select bud about September 5th. Flowers 6 inches in diameter. \$1.00 per doz., \$5.00 per 100, \$45.00 per 1,000.

**CHIEFTAIN.** Clear pink, incurved. On the order of Major Bonaffan. Very fine mid-season pink.

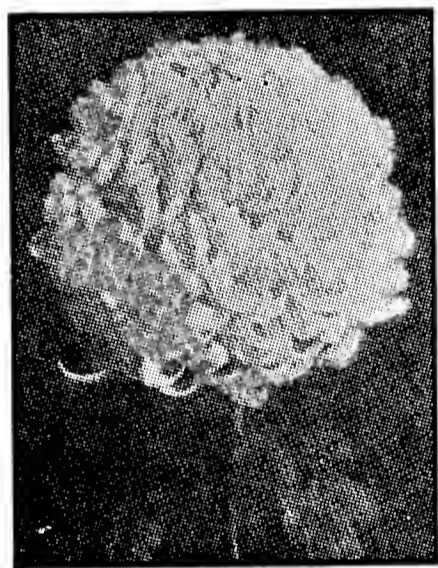
**PINK TURNER.** (Mrs. J. Leslie Davis). A clear lavender pink sport of Turner. Matures early in November. 75c per doz., \$3.50 per 100. \$30.00 per 1,000.

**J. W. PRINCE.** A deep pink sport of Chieftain, same easy grower-maturing early November. Firm closely incurved flower.

**DR. ENGUEHARD.** Bright rose pink. Double from either bud. While those from the late buds are somewhat smaller they are greatly improved in color. Blooms 6 inches in diameter mature November 10. Date of bud, September 5. Height, four feet.

**DISTINCTION.** A fine Commercial incurved pink. Matures November 20th, and later. This variety is grown extensively in place of Pink Seidewitz.

**THANKSGIVING PINK.** Owing to its lateness this variety is very popular. The color is a very dark pink and extensively grown by those who desire late flowers. Blooms 7 inches in diameter mature Thanksgiving and later. Select bud September 20. Height four feet.



Pink Mistletoe

**EDWIN SEIDEWITZ.** One of the very best late pinks, a lighter shade than Enguehard, being inclined to grow tall and never show a tendency of going blind, late planting is to be recommended. Maturing end of November.

**PINK MISTLETOE.** A pink sport from Mistletoe. Best of buds September 30 to October 15. May be had for Christmas and after by planting the end of July or first of August.

## STANDARD VARIETIES

LISTED IN ORDER OF FLOWERING

### YELLOW

Rooted Cuttings, 60c per doz., \$3.00 per 100, \$25.00 per 1,000, except when noted. For Plants from 2¼ inch pots add \$1.50 per 100 to price quoted. Not less than 6 of one variety at doz. rate, 25 at 100 rate, 250 at 1,000 rate.

**GOLD LODGE.** The most popular early yellow of the day. A companion to Quaker Maid. Fine yellow with good stem and foliage, maturing first week in October.

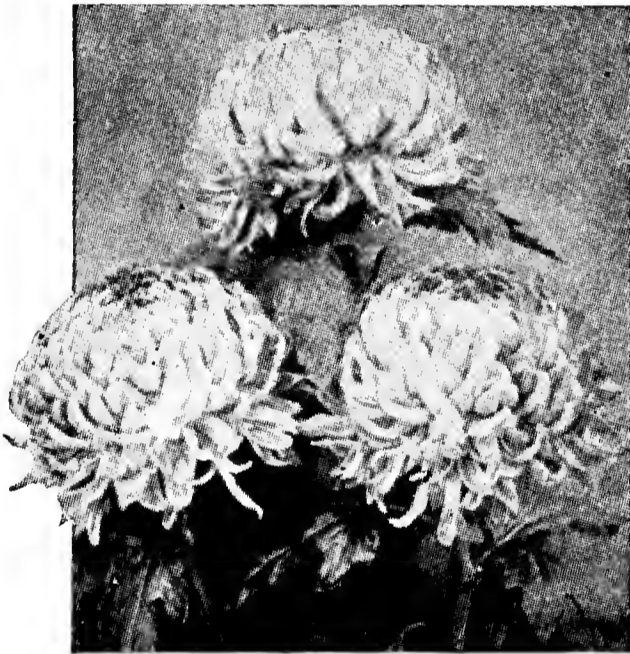
**GOLDEN OCTOBER.** A rich golden yellow. Blooms October 10, from early June planting, from terminal bud.



**Mrs. H. E. Kidder**

eter. C. S. A. Certificate. \$1.00 per doz., \$5.00 per 100, \$45.00 per 1,000.

**MRS. H. E. KIDDER.** (E. D. Smith). An exceedingly early bright yellow, very stiff, upright stem producing flowers seven inches in diameter. Four feet in height from June planting. Ready to cut October 15 from buds selected August 25. We especially recommend this variety to those who desire a good early yellow.



**Sun Glow**



**Corona**

**CELESTRA.** A round Golden Yellow that follows right on the heels of Gold Lode. Height 5 feet from June planting. Rigid stem and fine foliage. Blooms October 10th. A wonderful seller and shipper.

**GOLDEN TINTS.** (E. D. Smith). This early bright yellow may be cut October 10 by selecting the first bud that appears after August 1st. It should be planted by April 15 to secure this bud and to attain a height of three feet. Wonderfully strong stem with foliage close to the bloom. A shade darker than Mrs. H. E. Kidder. Select bud from August 5 to 25. Blooms 8 inches in diam-

**COLUMBUS DISPATCH.** (E. D. Smith). A very large incurved deep yellow, possessing a remarkably strong upright stem. Height 5 feet from early June planting. Reserve bud September 1. Blooms 8 inches in diameter are fully developed October 25. C. S. A. Certificate scoring 87 points.

**SUN GLOW.** Early bright yellow of the Bonaffan type maturing October 25. Fine stem with foliage extending to the bloom, producing a high percentage of perfect blooms. Select bud about August 25.

**CORONA.** A deep golden yellow. Incurved. Can be grown two or more blooms to a plant. Matures November 1.

**YELLOW WILLIAM TURNER.** The yellow sport sent out by Smith is the variety we offer. It was selected by us from many sports of William Turner as being the brightest yellow. It is an excellent variety and ranks as one of the finest for exhibition. 75c per doz., \$3.50 per 100, \$30.00 per 1,000.

**CARDONIA.** (Baur-Steinkamp). One of the finest yellows in point of color, deep, rich, and without a trace of bronze. Solid flower

of good size and texture. Grows four to five feet from June Planting. Blooms first week in November. Take terminal bud.

**SECRETARY NEHRLING.** Very perfect in form, of the true commercial type. Bright yellow, same shade as Mrs. R. M. Calkins. Stem heavy and strong with the foliage extending up to the bloom. Reserve bud August 15th to 20th. Later buds, while fully double, produce less globular flowers, more intense in color. Height from early May planting 4½ feet. Flowers 5½ inches in diameter. Mature November 15th to 20th. C. S. A. Certificate \$1.00 per doz., \$5.00 per 100, \$45.00 per 1,000.

**FRIENDLY RIVAL.** This is acknowledged the finest yellow ever produced considering its size, color, stem and foliage. Maturing November 10th. to 15th. It is the brightest yellow of its season.

**MAJOR BONAFFAN.** Closely incurved, clear yellow of very fine substance. Its perfectly formed flowers are supported on strong stems with good foliage. Matures middle of November and later from buds selected September 10th.

**MARIE DePETRIS.** A wonderful golden yellow, incurved. Matures November 20 from buds selected August 20th. A perfect commercial in every respect.

**YELLOW PEARSON.** Ours is the clear bright yellow sport of the popular bronze variety, Gladys Pearson, introduced to the trade by Baur-Steinkamp Co. Like its parent, it comes just right for Thanksgiving Day and should be planted heavily for that time.

**GOLDEN MRS. ROSS.** (E. D. Smith). This sport is identical in every respect with its parent, except color, which is a much darker yellow, nearly approaching the color of Friendly Rival. Height, four feet. Matures November 28.



Mrs. Nellie T. Ross

**MRS. NELLIE T. ROSS.** Light yellow, possibly a shade lighter than that of Bonaffan. Its late flowering period, November 30 into December greatly enhances its value. A wonderful keeper. Do not reserve bud until early October. Height 4½ feet.

**GOLDEN CHADWICK.** When high-class blooms are the chief object this variety reigns supreme. Its rich yellow color, combined with good characteristics of the Chadwick's places it as one of the best late yellow varieties. Late plantings produce superior flowers from Thanksgiving to Christmas. 75c per doz., \$3.50 per 100, \$30.00 per 1,000.

**YELLOW CHATTANOOGA.** A sport of Chattanooga, identical to its parent in every respect except color, which is an even shade of yellow, about same shade as Mrs. Nellie T. Ross, but blooms one week later from terminal buds.

**GOLDEN MISTLETOE.** A sport of the Mistletoe. It is not a deep golden, but has more of the tints found in Indian Summer and can well be recommended as one to be planted largely, it coming in at a time when there is a brisk demand for high grade flowers.

## STANDARD VARIETIES

LISTED IN ORDER OF FLOWERING

### BRONZE

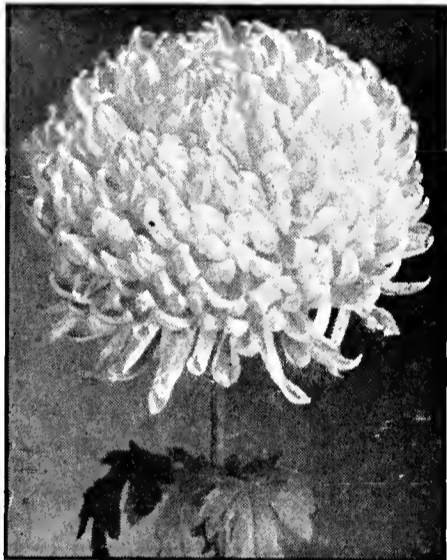
**Rooted Cuttings, 60c per doz., \$3.00 per 100, \$25.00 per 1,000, except where noted. For Plants from 2¼ inch pots add \$1.50 per 100 extra.**

**Not less than 6 of one variety at doz. rate 25 at 100 rate, 250 at 1,000 rate.**

**INDIANOLA.** Early large flowered Bronze. Color a wonderful combination of old gold and bronze. 4 feet from June planting. Take bud last week in August.

**HILDA H. BERGEN.** One of the most useful commercial types of Chrysanthemums. Color is a deep rich mahogany bronze and every bud produces a perfect flower, even when grown four or five to the plant. Strongly recommended as being absolutely 100 per cent perfect in every way. Matures October 8th.

**MOHAWK TRAIL.** A very rich shade of bronze with those reddish tones suggestive of Autumn foliage. Buds September 5th. Matures October 20th.



**Keystone**

**KEYSTONE.** (E. D. Smith). An early bronze larger than Indianola and more decided in color when early buds are reserved. The upper surface of the petals are brownish Chinese orange, reverse side buff. Flowers 8 inches in diameter are double from any bud. Strong upright growth, small foliage. Height 4 feet. Select bud August 30th. Matures end of October.

**DETROIT NEWS.** Matures October 25, and is the best bronze of that season. Incurved, showing golden reverse which gradually reflexes, presenting more of the bronze tone. Wonderful substance and keeping qualities either cut or uncut. Select bud August 30th. Blooms 6 inches in diameter. Height four feet.

**GLITTERS.** Different from anything you now have. The straight petals give it a radiating effect and when the light strikes the wonderful bronze color it fairly glitters, hence the name. Should prove the most useful variety for local trade. Blooms November 1st from terminal bud.

**MRS. A. J. STARELIN.** A good commercial bronze to fill the gap between Detroit News and Gladys Pearson. Color is golden bronze with reverse of petals bright yellow. Unusually rigid stem with small foliage extending to the bloom. Height four feet from early June planting. Maturing November 15th. Flowers 6½ inches in diameter.

**GLADYS PEARSON.** A new shade for Thanksgiving use, maturing November 20th to 25th. The upper surface of the petals is apricot and the reverse buff, which illuminates under artificial light to be bright orange. Strong grower, 5 feet from June planting. Best bud September 30th.



Gladys Pearson

**OAK LEAF.** A deep bronze of Oak leaf shade, hence its name. Habit of growth and characteristics identical with its parent, Gladys Pearson. This variety is truly the most beautiful of the bronze Mums and we recommend planting it heavily for Thanksgiving when it is at its best.

**BRONZE MISTLETOE.** A sport from Pink Mistletoe, identical in every respect except color. Very serviceable where late Bronze flowers are desired. Select bud September 30, and later.

---

## STANDARD VARIETIES

LISTED IN ORDER OF FLOWERING

### RED

Rooted Cuttings, 60c per doz., \$3.00 per 100, \$25.00 per 1,000, except where noted. For Plants from 2¼ inch pots add \$1.50 per 100 extra.

Not less than 6 of one variety at doz. rate, 25 at 100 rate, 250 at 1,000 rate.

**GARNET KING.** The finest red yet produced, color garnet, enhanced by a silken sheen. Very slight contrast between upper and reverse side of the petals. Retains its remarkable color either on the plants or cut unto its end. Fine stem and foliage. Buds selected September 20 mature November 20.

**MOHAWK CHIEF.** The latest crimson to date, its reflexed form showing this color to best advantage. Matures the end of November into December. Buds selected October 1st and later for best color. 7½ inches in diameter. Height 3 feet.

---

## P O M P O N S

Pompons are fast increasing in demand for retail trade for the reason that they are more satisfactory as a cut flower in the modern home, standing up under the change in atmosphere far better than the large flowering type.

The selection is more varied in colors and types, ranging from the smallest button of ½ inch in diameter to the larger and beautiful anemone type, attaining a size of 7 inches in diameter when disbudded.

Keep your customers interested in flowers. They tire of the same things year after year.

In the following pages you will find a very complete and up-to-the-minute selection of all sizes, types and colors.

## NEW POMPONS FOR 1936

For Plants from 2¼ inch pots add \$1.50 per 100 extra.

Not less than 6 of one variety at doz. rate, 25 at 100 rate, 250 at 1,000 rate.

Prices given on these varieties may be reduced later in the season where stock and demand will permit.

### STARDUST

#### A Marvelous New Very Late Pompon

Perfect in every detail. Color, Size, Arrangement, Stem and Foliage. A pompon at last that the trade has been waiting for, one that comes in when most other pompons are off. Color a rich golden yellow. Buds on first opening have golden bronze tints that clears to a beautiful golden yellow.

The individual blooms are perfectly shaped about two inches in diameter. Stem is very strong and flowers are held well apart, with abundance of hard dark green foliage. Makes a heavy well arranged spray attaining a height of four feet. Maturing in December. Grown cool will yield a good crop for Christmas, which we enjoyed this season. Rooted Cuttings, 50c each, \$2.50 per doz., \$15.00 per 100, \$100.00 per 1,000.

### BUTTERCUP

#### (Introduced By Bristol Nurseries.)

The flowers are large, 2½ to 3 inches across—of good form and produced in branching sprays. Color—pure buttercup yellow. Growth—strong and healthy; about 4 feet under average culture. Having fine keeping qualities which characterize November Bronze and The Bristolite. It will prove a popular and highly profitable market variety. It ships well, grows and propagates freely and should be planted 8 in. by 8 in. for best production. Matures December 5th. Rooted Cuttings \$2.50 per doz., \$15.00 per 100.

### GLOW

#### (Introduced By Bristol Nurseries.)

A glowing orange, with deep reddish orange shades at the center; vivid, yet without the harsh tones that are generally found in the orange varieties. The individual flower is about 2 inches across, of perfect rounded form, carried several to a spray and so well placed that each flower appears to advantage. Growth wiry and erect, keeping qualities excellent. Ready to cut for Thanksgiving. It can be grown cool for mid-December cutting. Space 7 in. by 7 in. Height 3½ to 4 feet. Awarded C. S. A. Silver Medal. Rooted Cuttings \$2.50 per doz.; \$15.00 per 100.

### FEZ

#### (Introduced By Bristol Nurseries.)

A distinct variety, the outstanding features of which are perfection in form and color. The flowers are small, about 1½ inches across, and the essence of neatness in form and arrangement. Color a fine chestnut-crimson that commands attention on the market. Growth upright and sturdy, producing well-branched sprays. It keeps splendidly and will prove profitable if you have an outlet that appreciates quality. Height 3½ to 4 feet. Matures November 10th. Rooted Cuttings \$1.50 per doz., \$10.00 per 100.

**STANDARD VARIETIES OF POMPONS**

## LISTED IN ORDER OF FLOWERING

**WHITE**

**Rooted Cuttings:** 60c per doz., \$3.00 per 100, \$25.00 per 1,000, except where noted. For Plants from 2¼ inch pots add \$1.50 per 100 extra. Not less than 6 of one variety at doz. rate, 25 at 100 rate, 250 at 1,000 rate.

**IRENE.** True pompon type. Color pure white. Upright, wiry stems. Height 3 feet. Matures first week in October.

**GRETA.** A pure white Pompon to follow Irene. Blooms October 20th. Free flowering with strong upright stems.

**EVELYN L. BAER.** For description see page 22.

**SNOWCLOUD.** (Baur-Steinkamp). An early flowering white. Makes fine sprays and gives good yield. Foliage is small, which permits close planting. Blooms are round and medium sized. Blooms October 15. Fine for shading.

**WHITE LILLIAN DOTY.** For description see page 19.

**CHICAGO PEARL.** This variety has proved to be the finest white pompon we have ever grown. The bloom is almost ideal in form and is pure white in color. The general plant habit is good. The sprays are large and the flowers carried well apart. The season is November 15 to 25.

**CORDOVA.** (E. D. Smith). A large, very free flowering white pompon coming into perfection after November 25, just right for Thanksgiving. Diameter of flowers, two and one-half inches. Strong upright stem and medium height.

**ROYAL QUEEN.** (E. D. Smith). Strong, upright growth; attains 3 feet in height; has strong stem and ample foliage. True pompon form, 2¼ inches in diameter. Fully developed December 5th. Color pure white. C. S. A. Certificate scoring 94 points.

**STANDARD POMPON VARIETIES****PINK**

**Rooted Cuttings:** 60c per doz., \$3.00 per 100, \$25.00 per 1,000, except where noted. For Plants from 2¼ inch pots add \$1.50 per 100 extra. Not less than 6 of one variety at doz. rate, 25 at 100 rate, 250 at 1,000 rate.

**JEWELL.** A very early bright pink large flowered button pompon. Medium height and blooms October 1st to 15th.

**IRRIDESCENT.** The color is a wonderful combination of the various shades of yellows and pinks. Most effective just before fully matured when all shades are at their height. A good grower, producing strong sprays. Medium in height. Blooms October 15th. Can be cut about two weeks earlier outdoors.

**LEILAH.** A good early Rose-pink. Matures October 10-15. Producing a fine spray.

**LETITIA.** (Baur-Steinkamp). Similar to Pink Dot, light pink with dark pink center. Blooms two weeks earlier than Pink Dot, about October 15. Vigorous grower and gives good yield.



Ardith

**SILVER TIPS.** Bright pink with silver tip at the end of each petal. Gives good yield of fine sprays and blooms second week in November. Unusually good keeper.



Western Beauty

**ROSELEA.** A very late pink and rather peculiar from the fact that the edges of the petals are bright pink, similar to Usona, and the center of the petals is cream color. Flowers  $1\frac{3}{4}$  inches in diameter are spaced sufficient distance apart to show them to their best advantage. Does not flower until after December 1st. Height four feet.

**LILLIAN DOTY.** For description see page 19.

**BLANDUS.** For description see page 18.

**CAZLONIA.** For description see page 19.

**ARDITH.** A lovely soft shade of clear pink. Very double possessing firm textures. Produces large spreading sprays with strong stems. Of the true pom-pom type. Flowers one and three quarters inches in diameter. Height four feet when planted middle of June. Matures November 15. C. C. A. Certificate scoring 89 points.

**CRIMSON SHEEN.** For description see page 18.

**WESTERN BEAUTY.** A fine rose pink. Flowers are of medium size produced on straight rigid stems. Middle of November and Thanksgiving.

**THYRA.** (E. D. Smith). Of the most perfect form, full to the center. Color is dark pink, has excellent stem and foliage. Growth about five feet when planted end of April. Flowers mature November 1st., and are three and one-half inches in diameter. C. S. A. Certificate. \$1.00 per doz., \$5.00 per 100, \$45.00 per 1,000.

**USONA.** A bright pink variety for Thanksgiving. Very productive, with a strong upright growth. Height  $2\frac{1}{2}$  feet.



**STANDARD POMPON VARIETIES****YELLOW**

**Rooted Cuttings:** 60c per doz., \$3.00 per 100, \$25.00 per 1,000, except where noted. For Plants from 2¼ inch pots add \$1.50 per 100 extra.

Not less than 6 of one variety at doz. rate, 25 at 100 rate, 250 at 1,000 rate.

**RODELL.** An early yellow pompon, blooming October 20th. Fine upright growth.

**IMPROVED RODELL.** A Sport of Rodell. A much stronger grower, with larger blooms. \$1.50 per doz., \$10.00 per 100.

**CORA PECK BUHL.** Resembles Golden Climax in growth and form of flowers. Height 3 feet. Ready to cut October 25th.

**MARY LENNON HALL.** Clear rich yellow large flowered pompon vigorous grower. Tall. Matures November 1st.

**GOLDEN BABY.** The smallest of the pompon type. Clear yellow, blooming November 10th. Very prolific and good for pot work.

**YELLOW FELLOW.** Very fine large flowering yellow pompon, coming to bloom November 15th.

**BETTY WATKINS.** The flowers are golden bronze, 1½ inches in diameter, and carried well upon strong sturdy stems. This variety makes nice sprays. Ready for cutting November 15.

**YELLOW BIRD.** A perfectly formed pompon of a rich shade of yellow. Edges of the petals notched, which makes it most attractive and sells readily. Very productive and of firm substance. Matures November 20th.

**YUVAWN.** Very bright yellow blooms on strong stems, makes nicely arranged spray and very desirable for Thanksgiving trade. Matures November 20. Height 3 feet. Makes a fine pot plant.

**UNALGA.** An intense yellow, having large blooms. Matures November 20.

**GOLDEN SCEPTRE.** A perfectly shaped bright yellow pompon of intermediate size, and one of the very best sellers as a cut flower. Produces heavy, well arranged sprays. Height three feet. Matures November 25th.

**MODENA.** (E. D. Smith). Upright growth with stiff, wiry stem. Color, clear yellow. Matures November 30 from June 15 planting. Height 3½ feet. Diameter of flowers 2 inches. C. S. A. Certificate scoring 93 points.

**STANDARD POMPON VARIETIES****BRONZE**

**Rooted Cuttings:** 60c per doz., \$3.00 per 100, \$25.00 per 1,000, except where noted. For Plants from 2¼ inch pots add \$1.50 per 100 extra.

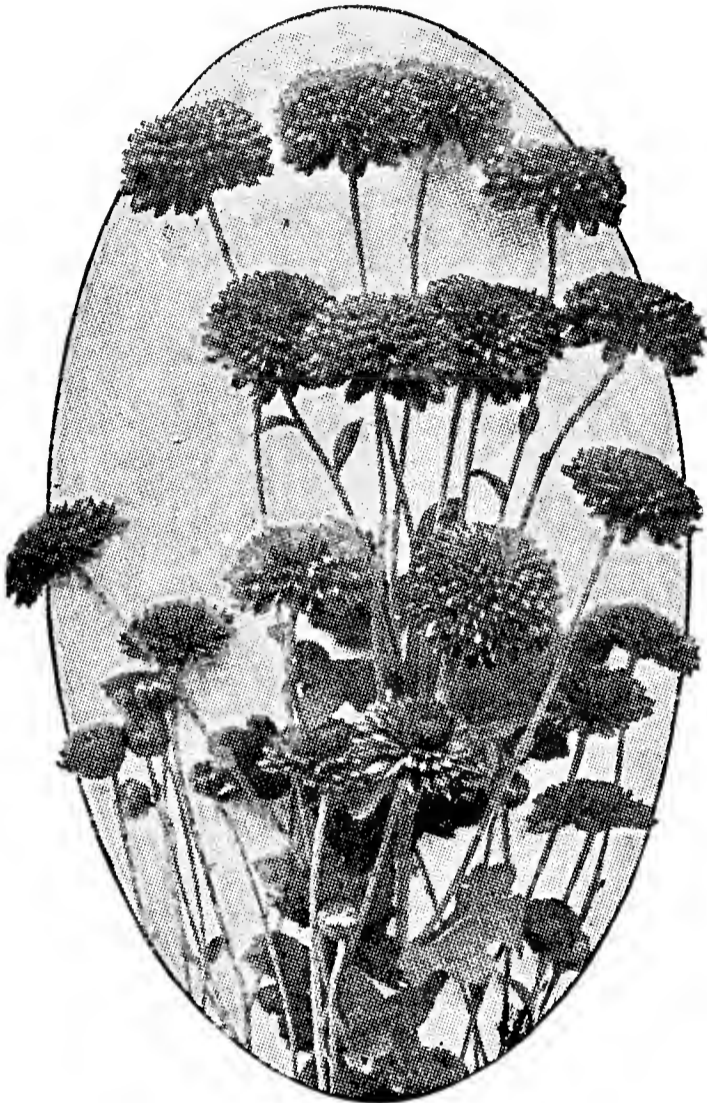
Not less than 6 of one variety at doz. rate, 25 at 100 rate, 250 at 1,000 rate.

**BONNIBEL.** A very distinct pompon of orange buff color. 1¼ inches in diameter. It is very free flowering and of dwarf growth, about two and one-half feet in height. Matures about October 15th.

**FAINA.** A rather dark bronze. Flowers two inches in diameter may be cut October 30th. Strong upright stem. Excellent for pot work. C. S. A. Certificate

**ARIANA.** For description see page 18.

**NEW YORK.** Very attractive bronze pompon of the button type. Maturing early November. Small hard foliage permits close planting.



**New York**

**FRANK WILCOX.** Golden bronze of special merit, being of dwarf and sturdy growth, it makes a fine pot plant and is excellent for cutting. At its best around Thanksgiving.

**ZOE.** (Baur-Steinkamp). A golden bronze of the large button type to follow New York in bloom. Blooms November 20 and later. Grows medium in height and branches well, giving a good yield. We recommend the variety very highly.

**JOAN.** (E. D. Smith). Color, bronzy orange; edge of petals slightly concaved, showing the golden reverse. Is very productive and makes well formed sprays. Height, four feet when planted early in June. Flowers  $2\frac{1}{4}$  inches in diameter. Ready to cut November 20. C. S. A. Certificate scoring 95 points.

**DOROTHY TURNER.** This striking pompon, a lively combination of bronze and old gold, reaches maturity for the Thanksgiving Market. The individual blossoms being well placed and supported by strong stems.

**ROWENNA.** A large flowered pompon of a medium shade of bronze that comes in for Thanksgiving and later. Has strong stem with good dark foliage that sets off the well arranged spray. Good shipper and keeper. Height 3 feet.

**NOVEMBER BRONZE.** A rich and beautiful combination of old gold and bronze, but of even shade. Large perfectly formed flowers on long strong stems. This variety makes a much better spray than its sister variety, Dorothy Turner, but is a distinctly lighter shade. Maturing November 10th.

**LEGAL TENDER.** Color is a combination of bronze and gold which is most attractive. Belongs to the intermediate section. A strong grower and of medium height. Maturing November 20th and later.

**BRISTOLITE.** A perfectly formed pompon on the order of November Bronze but with stronger growing habits. Color is best described as being several shades lighter than the November Bronze, or a rich orange yellow, slightly intensified at the base of the petal. Matures Nov. 20th. \$1.00 per doz., \$5.00 per 100, \$45.00 per 1,000.

**STANDARD POMPON VARIETIES****RED**

**Rooted Cuttings:** 60c per doz., \$3.00 per 100, \$25.00 per 1,000, except where noted. For Plants from 2¼ inch pots add \$1.50 per 100 extra.

**Not less than 6 of one variety at doz. rate, 25 at 100 rate, 250 at 1,000 rate.**

**SHEILA.** A dark mahogany colored pompon of reflexed form, maturing October 30. Flowers 1½ inches in diameter. The color of this variety is distinct from any we have previously offered. C. S. A. Certificate.

**FLAME.** (Baur-Steinkamp). The color is a bright bronze, suffused with yellow, giving it a bright hue, suggesting the name that has been given it. Works in fine on autumn leaf effects. Strong grower. Blooms first week in November.

**FIRE BALL.** For description see page 19.

**PATSY DOWD.** The first red baby pompon to be introduced. Bright and clear in color with splendid upright growth and strong stem. Over two feet in height when planted by the end of April. Flowers are one and one-eighth inches in diameter and mature November 5th. \$1.00 per doz., \$5.00 per 100.

**RED WINGS.** (E. D. Smith). This we believe the best intermediate Red produced. A dark even shade, upright growth, producing wonderful sprays. Maturing November 15 to 20, comes just right for Thanksgiving when the darker shades are in demand. Flowers 1½ inches. Height 3 feet.

**RED BEAUTY.** A clear dark red sport of the very popular Dorothy Turner. This variety sported with us in 1931 and has bloomed constant and true to color each year. It does not fade to the bronze at any stage. Habit and growth identical to its parent.

**HELEN HUBBARD.** The best Crimson decorative grown. In heavy demand for Thanksgiving trade. The color is a rich velvety crimson, which does not fade. Growth is excellent.

**STANDARD ANEMONE CHRYSANTHEMUMS**

**Rooted Cuttings:** 60c per doz., \$3.00 per 100, \$25.00 per 1,000, except where noted. For Plants from 2¼ inch pots add \$1.50 per 100 extra.

**Not less than 6 of one variety at doz. rate, 25 at 100 rate, 250 at 1,000 rate.**

**BLANCHE.** The improved Garza. Color, white with cream center. A very attractive flower and a good grower. Matures October 27.

**BUFF QUEEN.** For description see page 19.

**GRAF VON ORIOLE.** A darker and clearer color than Norma, with full yellow cushion center. Good stem and foliage. Disbudding recommended but makes a good spray. Matures November 20th.

**ROLINDA.** Orange Bronze Anemone. Not a large flower but very prolific. Can be grown in nicely arranged sprays without disbudding. Matures November 20th. and later.

**NORMA.** A large flowering orchid-pink anemone with golden-pink cushion, making a very striking combination. Matures November 25th. Disbudded flowers 4 to 5 inches in diameter. Makes a good spray grown **as pompon.**

**SUSANNE MILLER.** A golden-yellow team mate of Norma. Matures November 25. Disbudded flowers 4 to 5 inches in diameter. Makes a good spray.

**SUNSHINE.** A large flowered yellow anemone of the pompon type, with the cushion center much brighter than the ray petals. Being of dwarf, sturdy growth is ideal for pot culture. Disbudding is recommended, but makes a good spray. Matures end of November.

**BEAUTIFUL LADY.** For description see page 17.

**CRIMSON GLOW.** For description see page 19.

**GARZA SUPREME.** Pure white sport of Garza, coming into bloom during December. Producing very perfect, full rounded flowers on strong stems. The latest flowering anemone. Is in heavy demand owing to its lateness.

**YELLOW GARZA SUPREME.** This is a good clear yellow sport of Garza Supreme, the most popular anemone ever produced owing to its lateness and abundance of bloom.

The Flower Buying Public each year are demanding more of the oddities in Chrysanthemums and the grower who carries a good assortment of the Anemone, Single, and Shaggy Large Flowering Pompons will be well prepared for this demand in "Mum" Season.

---

## POMPONS AND ANEMONES SUITABLE FOR DISBUDDING

**Rooted Cuttings:** 60c per doz., \$3.00 per 100, \$25.00 per 1,000, except where noted. For Plants from 2¼ inch pots add \$1.50 per 100 extra.

**Not less than 6 of one variety at doz. rate, 25 at 100 rate, 250 at 1,000 rate.**

Following are several varieties more suitable for disbudding, than for growing in sprays. While all these are satisfactory grown in sprays, they have been crossed with the large flowering type and do not make the graceful spray for which pompons are so often admired. This type is becoming extremely popular owing to the size and perfectness of the flowers. Every grower should have some of these for variety.

---

## POMPONS

**ARIANA.** A golden buff pompon suitable for disbudding, and maturing about October 20th. Flowers three and one-half inches in diameter.

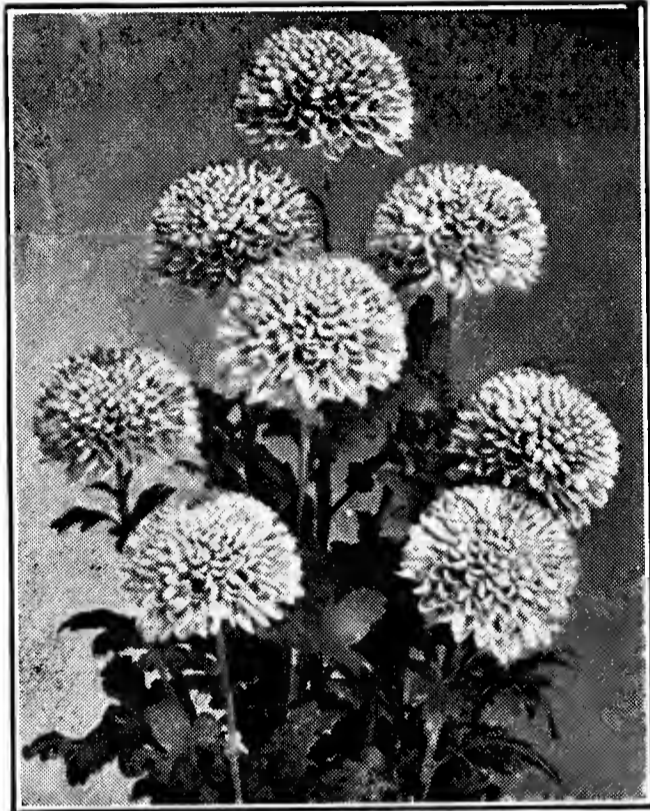
**CRIMSON SHEEN.** Purplish Amaranth of the decorative type. Exceedingly brilliant and unusual in color. Three and one-half to four feet in height, blooms four and one-half inches in diameter. Matures October 20th. C. S. A. Certificate. \$1.00 per doz., \$5.00 per 100, \$45.00 per 1,000.

**BALANDUS.** (E. D. Smith). A light pink with cream reverse, somewhat darker in color than Lillian Doty. Incurved and Globular in form; strong in growth. Height, 4½ feet when planted in early June. Diameter of flower 3½ inches. Ready to cut October 25. This variety and the following we find superior to Lillian Doty.

**CAZLONIA.** (E. D. Smith). Very symmetrical in form—a perfect ball. Color, rose pink with a mauve reverse. Strong, upright growth. Height, 3 feet when planted early in June. Flowers 3 inches in diameter. Cut October 25. C. S. A. Certificate scoring 88 points.

**LILLIAN DOTY.** This variety we have discarded conceding its place to Blandus which we find far superior in all respects.

**WHITE LILLIAN DOTY.** A pure white sport of the well-known variety, Lillian Doty. 3 inches in diameter.



Disbudded Pompon

**THYRA.** For description see page 14.

**FIRE BALL.** The first bright crimson large or disbudded pompon. Possesses Wonderful dark, glossy foliage which extends up to the bloom and the stem is exceedingly rigid. Attains a height of four feet from late April planting. Ready to cut November 2nd. Diameter of flowers three and one-half inches. Will also make an excellent dwarf pot plant. \$1.00 per doz., \$5.00 per 100, \$45.00 per 1,000.

**UNALGA.** Suitable for disbudding. See page 15.

**CORDOVA.** (White). Suitable for disbudding. See page 13.

## ANEMONES

**BUFF QUEEN.** The larger anemone type, 6½ inches in diameter when disbudded. Color of both ray and disc florets is buff. Makes a good spray. Matures November 1st.

**GRAF VON ORIOLE.** For description see page 17.

**NORMA.** For description see page 17.

**SUSANNE MILLER.** For description see page 17.

**BEAUTIFUL LADY.** A very striking anemone flowered variety with exceedingly prominent cushion of creamy white, contrasting with the ray florets, which are of a bright shade of pink. Flowers are 5 inches in diameter with a 3 inch cushion. Early planting is recommended. Height 3½ feet. Matures November 20th.

**CRIMSON GLOW.** Crimson maroon with both ray and disc florets of the same even shade. Excellent stem and foliage. When disbudded matures very perfect flowers four inches in diameter. Matures November 25th and later. Ideal for pot plants, attaining a height of 24 to 28 inches.

### SINGLE CHRYSANTHEMUMS

**Rooted Cuttings:** 60c per doz., \$3.00 per 100, \$25.00 per 1,000, except where noted. For Plants from 2¼ inch pots add \$1.50 per 100 extra.

**Not less than 6 of one variety at doz. rate, 25 at 100 rate, 250 at 1,000 rate.**

**MELBA.** This variety is admirably adapted to pot culture either as a small dwarf plant or a large specimen, depending on the time of propagation and culture. The color is an orange bronze with a distinct circle of yellow at the base of the petals and surrounding the green disc. The flowers, when grown in sprays are about 4 inches in diameter. Matures November 10th.

**VALENCIA.** A splendid new orchid pink single maturing November 30th. \$1.25 per doz., \$7.00 per 100.

### THE GODFREY FAMILY

**Rooted Cuttings.** 60c per doz., \$3.00 per 100, \$25.00 per 1,000.

**For Plants from 2¼ inch pots add \$1.50 per 100 extra.**

**Not less than 6 of one variety at doz. rate, 25 at 100 rate, 250 at 1,000 rate.**



**Vase of Godfrey**

This family of Single Chrysanthemums in 8 distinct colors is one of the most profitable for late flowering, coming in for Thanksgiving and later. Makes a beautiful spray as the flowers are held well apart on long wiry stems. Owing to its height, is especially good for Basket and Decorative work. This flower is a favorite with all who know it, as we find many retail customers ordering it by name. Pinching not later than September 15 will mature middle of December and later.

**Bronze Godfrey.** Beautiful glowing dark bronze.

**White Godfrey**

**Mrs. E. D. Godfrey.** Clear light pink.

**Yellow Godfrey**

**Miss Gladys.** Golden bronze.

**Christmas Cheer.** Red Godfrey

**Marguerite Waite.** Clear deep pink. **Miss Isabelle.** Clear soft bronze.

**CHRYSANTHEMUMS FOR POT CULTURE****The Caprice Family**

**Rooted Cuttings: 60c per doz., \$3.00 per 100, \$25.00 per 1,000.**

**For Plants from 2¼ inch pots add \$1.50 per 100 extra.**

**Not less than 6 of one variety at doz. rate, 25 at 100 rate, 250 at 1,000 rate.**

|                |                                    |
|----------------|------------------------------------|
| Caprice White  | Caprice Butlers, Pink              |
| Caprice Yellow | Caprice, Kathleen Thompson, Bronze |
| Caprice Purple | Caprice Du Printemps, Rose.        |

**The Following Standard Pompons are excellent for pot work.**

|                              |                             |
|------------------------------|-----------------------------|
| Greta. White Pompon          | Bonibelle. Bronze Pompon    |
| Blanche. White Anemone       | Faina. Bronze Pompon        |
| Silver Tips. Pink Pompon     | Frank Wilcox. Bronze Pompon |
| Beautiful Lady. Pink Anemone | Melba. Bronze Single        |
| Yellow Fellow. Pompon        | Rolinda. Bronze Anemone     |
| Yuvawn. Yellow Pompon        | Red Wing. Red Pompon        |

**HARDY EARLY FLOWERING CHRYSANTHEMUMS****Recommended For Outdoor Flowering.**

These are expected to mature their blooms early enough to avoid frost but in our locality require some protection as we often have damaging frost by the end of September. All varieties are equally good for indoor cutting.

**STANDARD HARDY EARLY POMPON VARIETIES**

**Rooted Cuttings, 60c per doz., \$3.00 per 100, \$25.00 per 1,000, except where noted. For Plants from 2¼ inch pots add \$1.50 per 100 extra.**

**Not less than 6 of one variety at doz. rate, 25 at 100 rate, 250 at 1,000 rate.**

**BARBARA CUMMING.** This variety is similar to Yellow Normandie in color. It is more prolific and blooms earlier with a flower larger, but not as full or of as good substance as Normandie. Flowers from late August to October.

**JEAN CUMMING.** A great improvement on older white varieties. Large flowers of purest white, with the softest yellow blush shading at the center of the buds. Growth erect and wiry, height medium. Comes to bloom September 15, has exceptional keeping qualities and is undoubtedly the best white variety to date.

**JEAN TREADWAY.** Distinctiveness in color, of growth, and extreme freedom are the outstanding features in this introduction. The flower is large, fully 3 inches across, of perfect decorative or aster form and of excellent substance. Its color on opening is a lovely sparkling pink, with a dark rose pink center. Plants are medium height, bushy, and very free. In full flower September 30.

**ELENA.** (E. D. Smith). Very attractive. When first opening the color is bright bronzy red which gradually changes to light bronzy brown, with a slight suggestion of yellowish pink. Petals slightly convexed. Very profuse flowering and dwarf growth, twenty inches in height. Two and one-half inches in diameter, maturing September 30. \$1.00 per doz., \$5.00 per 100.

**FLASH LIGHT.** (E. D. Smith). A bright glowing crimson, the first bright red to be included in the early hardy or garden section. Petals convex or roll outward. Matures September 30, with flowers three and one-quarter inches in diameter. \$1.00 per doz., \$5.00 per 100.

**B. MARION HATTON.** Decorative pompon type of intermediate size. Free flowering and the earliest to bloom. Color is a bright canary yellow, maturing late September.

**OCTOBER GIRL.** The most prolific flowering variety, is of vigorous and branchy habit. The semi-double flowers are 2 inches in diameter. Pink on opening, shading to lavender when fully opened. Matures October 1.

**EVELYN L. BAER.** A very pure white, perfectly formed button pompon. A trifle smaller than Irene and much more productive. The individual flowers are held well apart on strong wiry stems. Excellent for cut flowers as it makes a well arranged spray. Height 3 to 4 feet. Matures 1st week in October.

**SONOMA.** A bronze with golden reverse and gold tipped petals. A profuse bloomer, coming into color October 1. Flowers 2½ inches in diameter.

**VIVID.** A very striking and effective variety, the color of which very closely approaches that of the American Beauty Rose, a rosy crimson or amaranth shade new to the earlier flowering Chrysanthemums. Flowering October 1st, it is extremely vigorous and very free.

**FRANCIS WHITTLESEY.** A very decided improvement in this particular color. Habit is stocky and dwarf, averaging 18 inches in height. Color, rich bronze and garnet—just right for the fall garden. It commences to flower in late September and makes a gorgeous showing through October, having the ability to resist considerable frost in the open flowers.

**NORMANDIE.** Delicate pink, changing to nearly white.

**YELLOW NORMANDIE.** A bronze yellow sport of Normandie, which is ample proof of its value.

**NATOMA.** (E. D. Smith). A very fine bright pink, brighter than Eden. Decorative type and very productive. Blooms two and one-half inches in diameter, matures October 10. Height of plant about two feet. \$1.00 per doz., \$5.00 per 100.

**YELLOW GEM.** This very neat and attractive Pompon carries many well formed small flowers, less than an inch across. The color is a bright canary-yellow without shading, and the growth is wiry and compact, averaging 18 inches in height. In full flower in early October.

**RUTH CUMMINGS.** A reddish bronze seedling from Normandie. Is of dwarf compact growth, coming into bloom about October 15. It is also very valuable for indoor growing.

## KOREAN HYBRID CHRYSANTHEMUMS

### Introduced By Bristol Nurseries 1935

Rooted Cuttings: \$1.50 per doz., \$10.00 per 100, except where noted.

These new creations, developed from the extremely hardy Korean Chrysanthemums, natives of Korea, are considered more hardy and should be tried by those in particular who have had difficulty in over-



wintering other types of Hardy Chrysanthemums. The colors are bright and unusual, covering all the shades and mature flowers three inches across during end of September and October. They are very attractive and add much color and character to the fall garden.

These new Korean Hybrids are extremely free flowering. A small cutting will make a plant with a spread of thirty inches and twenty inches high, completely covered with single flowers two and one-quarter inches in diameter. Very strong, wiry stem supports each flower. For garden, cut flower or pot plant work it is excellent.

**APOLLO.** A combination of bronze, red and gold.

**DIANA.** A combination of lilac, rose and salmon.

**CERES.** A combination of chamois—yellow and coppery gold.

**MARS.** Deep Amaranth-red.

**MERCURY.** A combination of coppery bronze and red.

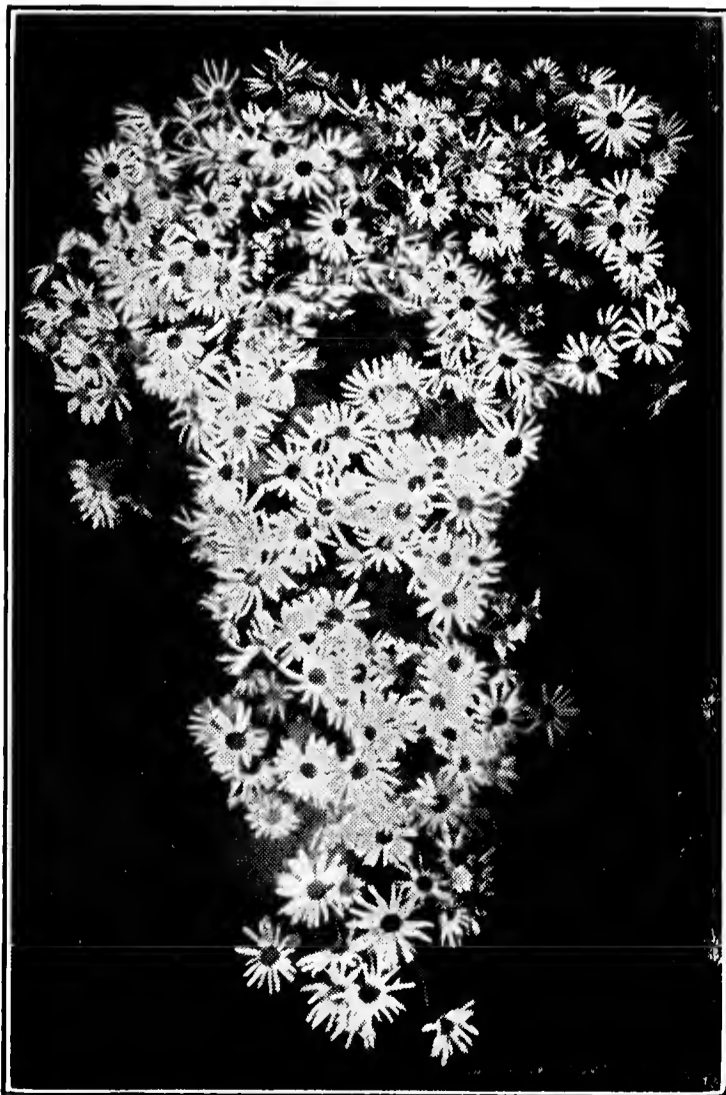
**DAPHNE.** Lovely Daphne-pink.

**DAZIRA.** (E. D. Smith). White with soft pink shading.

**INNOCENCE.** White, changing to soft pink.

**VENUS.** Lilac-pink with rose lavender shadings, \$3.00 per doz.

**ORION.** Brilliant canary-yellow, \$2.50 per doz.



**Cascade Chrysanthemum**

#### **JAPANESE MOUNTAIN OR CASCADE VARIETIES**

These are small single varieties of fairly dwarf growth, very free flowering, and with soft or pliable stems. The term Cascade is given these varieties from the fact that one or more growths may be bent down without injury to the plant, making them acceptable for use on tables or other flat furniture, with one or more growths hanging down and the balance of the plant upright. This of course is all attained by training. The wood is so pliable that it may be tied in nearly any shape desired. This type comes in Red, Yellow, Bronze, Pink, and White.

We will sell an assortment of 5 of each color at the 100 rate. 75c per doz., \$4.00 per 100.

## CARNATIONS—FIELD PLANTS AND ROOTED CUTTINGS

### CLEAN, HEALTHY STOCK, FREE FROM DISEASE

We offer Rooted Cuttings of the following varieties up to May 1st.

|                                   | Per 100 | Per 1,000 |
|-----------------------------------|---------|-----------|
| Ivory, White .....                | \$4.00  | \$35.00   |
| Thos. Joy, White .....            | 4.00    | 35.00     |
| Patrician, White .....            | 6.00    | 50.00     |
| Morning Glow, Soft pink .....     | 4.00    | 35.00     |
| Boston Ward, Deep pink .....      | 5.00    | 45.00     |
| Betty Lou, Deep pink .....        | 5.00    | 45.00     |
| My Love, Deep pink .....          | 8.00    | 75.00     |
| Eldora, Variegated .....          | 5.00    | 45.00     |
| Spectrum Supreme, Scarlet .....   | 6.00    | 50.00     |
| Johnson's Crimson, Dark red ..... | 4.00    | 35.00     |
| Maine Sunshine, Yellow .....      | 6.00    | 50.00     |

## BEDDING AND GREENHOUSE PLANTS

|                                    | Rooted Cuttings |           | 2¼ inch pots |           |
|------------------------------------|-----------------|-----------|--------------|-----------|
|                                    | Per 100         | Per 1,000 | Per 100      | Per 1,000 |
| Alyssium, Double .....             | \$1.25          | \$10.00   | \$4.00       | \$35.00   |
| Ageratum, Fraseri .....            | 1.25            | 10.00     | 4.00         | 35.00     |
| Ageratum, Fraseri, Dwarf .....     | 1.25            | 10.00     | 4.00         | 35.00     |
| Ageratum, Fraseri, Improved .....  | 1.25            | 10.00     | 4.00         | 35.00     |
| Ageratum, Cardinal Mundelein ..... | 1.25            | 10.00     | 4.00         | 35.00     |
| Coleus, Assrt. ....                | 2.00            | 17.50     | 3.50         | 30.00     |
| Erlangia .....                     | 2.50            | 20.00     | 6.50         | 60.00     |
| Heliotrope, Common Sweet .....     | 1.25            | 10.00     | 4.00         | 35.00     |
| Ivy, English .....                 | 1.50            | 12.50     | 5.00         | 45.00     |
| Ivy, German or Parlor .....        | 1.25            | 10.00     | 3.50         | 30.00     |
| Lantanas, Trailing Queen, lavender |                 |           | 4.00         | 35.00     |
| "    Beincourt, Pink and cream     |                 |           | 4.00         | 35.00     |
| "    M. Schmidt, Best Orange       |                 |           | 4.00         | 35.00     |
| Marguerites, Common white .....    |                 |           | 3.50         | 30.00     |
| Neurumbergia .....                 | 1.25            | 10.00     | 4.00         | 35.00     |
| Stevia .....                       | 1.50            | 12.50     | 4.00         | 35.00     |
| Salvia America .....               | 1.25            | 10.00     | 4.00         | 35.00     |
| Swainsona, G. Alba .....           |                 |           | 6.00         | 60.00     |
| Tradescantia, Green and red .....  | 1.25            | 10.00     | 4.00         | 35.00     |

For plants from 3 inch and 4 inch pots ask for prices.