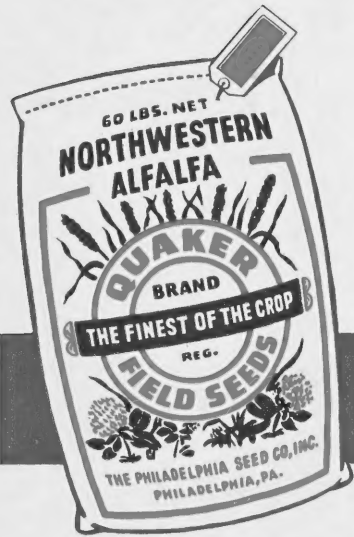


Historic, Archive Document

Do not assume content reflects current scientific knowledge, policies, or practices.





QUAKER BRAND ALFALFA AND CLOVERS

PACKED IN ATTRACTIVE ONE BUSHEL BAGS—NO EXTRA COST!

“The Finest of the Crop”

(7)
INOCULATION



KINDLY ORDER BY GROUP	Size Cans	Cans Per Carton	Dealer Price Per Can
GROUP A For Alfalfa, Sweet Clover.	1 bu.	12	.35
GROUP B For Red Clover, Alsike, Crimson, White, Ladino	1 bu.	12	.35
GROUP AB Combination culture for Clover-Alfalfa Mixture.	1 bu.	12	.35
	2 bu.	12	.64
GROUP C For Vetches, Canada Peas, Garden Peas.	100 lbs.	12	.32
GROUP E For Cowpeas, Lima Beans.	2 bu.	12	.26
GROUP S For Soy Beans.	2 bu.	12	.26
	5 bu.	12	.40
	25 bu.	6	1.73
FOR BIRDSFOOT TREFOIL	1/4 bu.		.13
	1 bu.		.43
GARDEN SIZE.....			1.20 per doz.

PEST CONTROLS

MOUSE SEED—KILLS MICE

No Bait—No Traps—No Muss. Per Doz.
In One Dozen Lots.....\$2.00
Every display carton of one dozen contains 14 packages which retail at 25 cents each.

CROW-FEZ



Size	Net Per Doz.
QUART (Sufficient for 4 bu.)	9.00
PINT (Sufficient for 2 bu.)	5.40
1/2 PINT (Sufficient for 1 bu.)	3.60

Cases contain 1 doz. Cans.

Special Lawn Grass Price List



REG. U. S. PAT. OFF.

Forty-four years' experience stands in back of this famous brand of Lawn Grass Seed. Many thousands of home owners have found it ideal for this section of the country and the dealer will find it advantageous to display the OLD ENGLISH Lawn Package during the sowing season, Spring and Fall.

Our special Lawn Grass wholesale price list describes our various mixtures in greater detail than is possible here. If you do not already receive it we shall gladly place your name on our mailing list.

(8)
DISINFECTANTS



	Units Per Case	Dealer Price Per Case	Retail Price Per Unit
CERESAN, New Improved For Oats, Peas, Barley, Flax, Sorghums, Wheat, Rye and Millet.			
1 lb. can.....	12	10.50	1.30
4 lb. can.....	6	20.00	4.35
40 lb. pail.....	1	29.40	35.85
100 lb. drum.....	1	69.60	85.00
CERESAN M For all grains.			
14 oz. can.....	12	\$10.10	\$1.25
3 lb. can.....	6	16.20	3.55
40 lb. drum.....	1	29.40	35.85
100 lb. drum.....	1	69.60	85.00
ARASAN For Corn, Sorghums and Vegetables.			
8 oz. can.....	24	15.50	1.00
4 lb. can.....	6	25.00	6.00
25 lb. drum.....	1	24.00	30.00
SEMESAN BEL For Irish and Sweet Seed Potatoes.			
2 oz. package.....	144	38.85	.50
1 lb. can.....	12	19.40	2.30
4 lb. can.....	6	35.25	7.50
40 lb. drum.....	1	58.40	70.35
SEMESAN For Vegetable and Flower Seeds.			
2 oz. can.....	36	13.40	.60
12 oz. can.....	12	24.80	2.85
25 lb. pail.....	1	60.95	72.65
100 lb. drum.....	1	238.00	276.20
SPECIAL SEMESAN For Lawns and fine Turf.			
1 1/2 lb. can.....	12	32.85	3.75
4 lb. can.....	6	42.95	8.90
25 lb. pail.....	1	44.00	52.05
100 lb. drum.....	1	171.50	197.60
TERSAN New 75% Thiuram			
3 lb. bags.....	12	50.00	62.00
F-531 An Effective Dollar Spot Control.			
25 lb. drum.....	1	30.00	37.50
100 lb. drum.....	1	112.00	140.00

SUPPLIES

BINDER TWINE

PER BALE (5 lb. and 8 lb. Balls)..... 13.90

BIRD SEEDS

We issue on the first of every month wholesale quotations on:

CANARY SEED BIRD RAPE
SUNFLOWER MILLETS

and other Bird Seeds.

Kindly ask to be put on our mailing list.

(9)
LAWN FERTILIZERS ETC.

ARMOUR VERTAGREEN PLANT FOOD (5-10-5)



For lawns, perennials, trees and shrubs.

	Wholesale	Retail
100 lb. bag.....	\$3.10	\$4.55
50 lb. bag.....	1.95	2.80
25 lb. bag.....	1.12	1.70
10 lb. bag (6 per case).....	.63	.95
5 lb. bag (12 per case).....	.34	.53
1 lb. bag (32 per case).....	.09	.15

F.o.b. Philadelphia



P C CRAB GRASS KILLER

	Dealer Price Per Case	Retail Price Per Bottle
Case 24—7 1/2 oz. bottles ...	\$15.00	\$1.00 bottle
Case 12—30 oz. bottles ...	22.15	2.95 bottle

SOIL CONDITIONER W

For Better Plant Growth

Size	Units Per Case	Dealer Price Per Case	Retail Price Per Unit
4-oz. can....	12	\$13.10	\$1.75
8-oz. can....	6	10.30	2.75
2-lb. can....	4	24.00	9.00

AMMATE WEED KILLER

Kills perennial weeds, particularly recommended for killing poison ivy.

	Dealer Price Per Case	Retail Price
Case 12—2 lb. bottles ...	8.00	1.00 bottle
Case 4—6 lb. bottles	7.20	2.70 bottle
Drum 50 lbs.	9.63	13.75 drum

WILD BIRD FOOD



LYRIC WILD BIRD FOOD

In bulk, 100 lb.....\$ 8.25

*In bulk, 100 lb..... 8.75

*Including 20 empty 5-lb. wax-lined bags. See illustration.

PURGRAIN PIGEON FEED

FOR 44 YEARS THE FAVORITE OF PIGEON FANCIERS

We issue monthly a Wholesale price list devoted to Pigeon Feeds. We shall be glad to send it to you regularly, upon request.

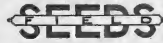
THE PHILADELPHIA SEED CO.

TELEPHONE
MARKET 7-2822
(six trunk lines)

INCORPORATED

WHOLESALE

FOR QUICK SERVICE
Kindly Address Mail
BOX 934
PHILADELPHIA 5, PA



GEORGE H. BEANS, PRESIDENT
J. PAUL KLINGER, TREASURER
G. GARRETT WATTENSCHIEDT, SECY.
ROBERT M. CURRY
GEORGE C. ALLEN
JOSEPH L. REED

MANAGER FEED DEPT.
JOSEPH B. HERTZFELD

ARCH AND FRONT STREETS
PHILADELPHIA 5

FEBRUARY 17, 1953

BRANCH WAREHOUSES LOCATED AT LANCASTER, HARRISBURG, FORKS, BELLEFONTE, MUNCY, GERMANSVILLE, BROOKVILLE AND ELMIRA

Prices quoted below are today's values f. o. b. Philadelphia. Except where definitely described as certified, all varieties and strains are understood to be type. Bags included. Quotations are basis full bag lots: when broken lots are ordered we are obliged to charge a higher price to cover cost of breaking packages. The Philadelphia Seed Co., Inc., warrants to the extent of the purchase price that seeds sold are as described on the container within recognized tolerances. Seller gives no other or further warranty, express or implied.

(1) ALFALFA U. S. Verified Origin.	(2) RED CLOVER ALL CLOVERS SHOULD BE INOCULATED.	(3) OTHER CLOVERS ALL CLOVERS SHOULD BE INOCULATED.
<p>NORTHWESTERN Packed approx. 150 lbs., also 1 bu. bags. Per Bu.</p> <p>COMET \$23.70 ARROW 24.00 ATLAS 24.30 QUAKER 24.60</p> <p>MONTANA QUAKER 27.00</p> <p>KANSAS QUAKER 24.00</p> <p>GRIMM Packed 1 bu. bags. QUAKER UTAH 25.20</p> <p>ATLANTIC Packed 1 bu. bags. QUAKER (Certified Blue Tag) 36.60</p> <p>BUFFALO Packed 1 bu. bags. QUAKER (Certified Blue Tag) 31.80</p> <p>RANGER Packed 1 bu. bags. QUAKER (Certified Blue Tag) 31.20 QUAKER 29.60</p> <p>NARRAGANSETT Packed 10 lb. bags. QUAKER (Certified Blue Tag)..... write</p> <p>WESTERN We do not handle common Arizona, New Mexico, Northwest Texas, California or other unadaptable strain. QUAKER 22.50</p> <p>ARGENTINE ARGENTINE (Stained 10% Orange-Red) . . . write ALFALFA SHOULD BE INOCULATED. SEE INOCULATION PRICES COLUMN 7.</p>	<p>MIDWEST, Medium Per Bu. Packed approx. 150 lbs., also 1 bu. bags. COMET \$23.10 ARROW 23.40 ATLAS 23.70 QUAKER 24.00</p> <p>CANADIAN (Stained 1% Purple) QUAKER 22.80</p> <p>PENNSYLVANIA Packed approx. 150 lbs., also 1 bu. bags. QUAKER 25.80</p> <p>KENLAND Packed 50 lb. bags QUAKER (Certified Blue Tag) 36.60 Packed 1 bu. bags. QUAKER 31.20</p> <p>CUMBERLAND Packed 100 lb. bags. QUAKER (Certified Blue Tag)</p> <p>MAMMOTH Packed approx. 150 lbs., also 1 bu. bags. QUAKER 23.40</p>	<p>ALSIKE Per Bu. Packed approx. 150 lbs., also 1 bu. bags ATLAS \$23.10 QUAKER 23.40</p> <p>SWEET CLOVER Packed approx. 150 lbs. Add 20c per bu. for 1 bu. packing. QUAKER 8.40</p> <p>YELLOW BLOOMING Packed 1 bu. bags. QUAKER 8.40</p> <p>LADINO CLOVER Per 100 Lbs. QUAKER Large bags 85.00 50 lb. bags 90.00 25, 15, 10, or 5 lb. bags 95.00 QUAKER Certified Blue Tag 50 lb. bags* 130.00 25 or 10 lb. bags* 135.00 *If ordered in these sizes, each bag will bear a certified tag.</p> <p>WHITE CLOVER OLD ENGLISH Large bags \$57.00 25 lb. bags 60.00 5 lb. bags 64.00 1 lb. canisters (12 per carton) 67.00 ½ lb. canisters (24 per carton) 77.00 ¼ lb. canisters (48 per carton) 92.00</p> <p>PERMANENT PASTURE WHITE CLOVER For Permanent Pastures. CERTIFIED Large bags 68.00 25 lb. bags 71.00</p> <p>CRIMSON Packed approx. 110 lbs. QUAKER 19.00</p> <p>LESPEDEZA Lespedeza should not be sown in Penna. or New Jersey. KOREAN 26.00</p> <p>TREFOIL BIRDSFOOT TREFOIL 87.00 Trefoil requires special inoculation. See col. 7.</p>
<p>MARKET CONDITIONS</p> <p>The Spring demand for Field Seeds has started early and in good volume. The prospects are favorable basis the attractive prices compared with last season.</p> <p>The attractive 1 bushel cloth QUAKER Brand bag, prominently on display in your store, will serve as an excellent early reminder to your customers to buy their requirements.</p> <p>A Handy Folder: You will no doubt be getting inquiries about Buffalo, Ranger and Atlantic Alfalfa; also Kenland Red Clover. We have issued an attractive and convenient folder describing these varieties and a supply will gladly be sent upon request.</p>		

(4)
SEED GRAINS

OATS Packed approx. 3 bu. Per Bu.
CLINTON (Certified and Treated) \$2.05
CLINTON (Uncertified)
AJAX (Certified)

RYE Packed approx. 2 bu. Per Bu.
BALBO
WINTER

BARLEY Packed approx. 2 bu.
MOORE (Treated) 3.00
WONG (Certified and Treated)
WONG (Treated)

WHEAT Packed approx. 2 bu.
THORNE (Certified and Treated)
THORNE (Uncertified, Not Treated) ..
PENNOLL (Certified and Treated)
SENECA (Certified and Treated)

HYBRID FIELD CORN

RECOMMENDED HYBRIDS

A special bulletin, describing our Hybrids, with recommendations for Pennsylvania and for New Jersey, is available for distribution to your trade. Kindly write for a supply. Each of the hybrids quoted below has a special purpose. Every bag is state certified and sealed.

PENNA. CERTIFIED	FLAT GRAIN
IMPERIAL	
Packed 1 bu. sealed bags	Per Bu.
U.S. 13 (115-120 days)	7.50
Iowa 4059 (110-115 days)	7.50
C12 (110-120 days)	7.50
Iowa 939 (110-115 days)	7.50
K24 (approx. 100 days)	7.50
M15 (90 days)	7.50

FIELD CORN Per Bu.
Packed approx. 2 bu.
LANCASTER SURECROP

BUCKWHEAT Packed approx. 2 bu.
JAPANESE TYPE \$2.50

SORGHUM Per 100 Lbs.
Packed approx. 100 lbs.
AMBER CANE (Sorghum) 17.50

VETCH and RAPE
VETCH SHOULD BE INOCULATED

VETCH Per 100 Lbs.
Packed approx. 100 lbs.
HAIRY \$ 18.00
SPRING 9.00

RAPE
Packed approx. 100 lbs.
DWARF ESSEX 12.50

BEANS & PEAS

SOY BEANS AND PEAS SHOULD BE INOCULATED

SOY BEANS Per Bu.
Packed approx. 2½ bu.
BLACK WILSON 3.90
LINCOLN TYPE 4.15
HAWKEYE 4.15
CANADA FIELD PEAS 5.40

(5)
GRASSES

TIMOTHY

Packed approx. 125 lbs.
Add 20c per bu. for 1 bu. packing

	Purity	Per Bu.
COMET	98.00%	\$
ARROW	99.00%	
ATLAS	99.60%	8.80
QUAKER	99.75%	9.00

TIMOTHY - ALSIKE MIXTURE

STAR (20% Alsike) 10.80

RED TOP

SOLID SEED Per 100 Lbs.
Packed approx. 100 lbs.
Old English \$54.00
IMPERIAL purity 98% 61.00

UNHULLED

Packed approx. 50 lbs.
REX 28.00

BLUE GRASS

Packed approx. 112 lbs.

KENTUCKY Per 100 Lbs.
Old English 67.00
IMPERIAL purity 98% 75.00
MERION Kindly write

BROME GRASS

Packed approx. 50 lbs.

LINCOLN STRAIN (Nebraska grown) ... 39.00
NOTE: Canadian or northern strain is not recommended for Penna. or New Jersey.

ORCHARD GRASS

Packed approx. 112 lbs.

FANCY onion free 26.00

MILLET

GOLDEN write

SUDAN GRASS

Packed approx. 100 lbs.

COMMON 16.00
SWEET SUDAN 18.75

RYE GRASS

DOMESTIC 10.50
PERENNIAL 13.50

FESCUE

MEADOW 17.50
CHEWINGS 62.00
PENN STATE CHEWINGS 75.00
CREEPING RED 51.00
ALTA 31.00
KENTUCKY 31 (Certified Blue Tag) ... 35.00
ILLAHEE 78.00

BENT GRASS

SEASIDE (Certified Blue Tag) 100.00
ASTORIA (Certified Blue Tag) 100.00
HIGHLAND (Certified Blue Tag) 73.00
HIGHLAND 70.00
COLONIAL 70.00
GERMAN

MISCELLANEOUS GRASSES

REED CANARY 40.00
POA TRIVIALIS 45.00

(6)
LAWN MIXTURES

Freight paid
100 lbs.
or
more



In Less Than
50 lb. units
add \$2.00
per 100 lbs.

Old English

CONTAINS BENT SEED Per 100 lbs.
50 LB. BAGS \$65.00
25 LB. " 65.50
10 LB. " 67.00
5 LB. CANISTERS 68.00
1 LB. CARTONS 70.00

Old English Shady Spot

50 LB. BAGS 65.00
10 LB. " 67.00
5 LB. CANISTERS 68.00
1 LB. CARTONS 70.00

STRATFORD GREEN
(Reg. U. S. Pat. Off.)

50 LB. BAGS 53.00
5 LB. " 56.00
1 LB. CARTONS 58.00

SPLENDORLAWN (Reg. U. S. Pat. Off.)

50 LB. BAGS 38.00
10 LB. " 40.00
5 LB. " 41.00
1 LB. CARTONS 43.00

COMET (Reg. U. S. Pat. Off.)

100 LB. BAGS 30.00
50 LB. " 30.50
5 LB. " 33.50
2 LB. " 34.50
1 LB. " 35.50

SPLENDORLAWN SHADY SPOT
(Reg. U. S. Pat. Off.)

50 LB. BAGS 39.00
5 LB. " 42.00
1 LB. CARTONS 44.00

IMPERIAL (Reg. U. S. Pat. Off.)

Air Washed 95% Pure.
50 LB. BAGS 83.00
5 LB. " 86.00
2 LB. " 87.00
1 LB. CARTONS 88.00

PARAGON

(Reg. U. S. Pat. Off.)
100 LB. BAGS 20.50

PASTURE MIXTURES

PERMANENT PASTURE

Packed 50 lbs. Per 100 Lbs.
PILOT BRAND
For Uplands \$34.00
For Meadows 25.00

TRIPLE-PURPOSE PASTURE

Penn. State College Formulæ
PYRAMID BRAND (F) contains alfalfa .. 38.50
PYRAMID BRAND (G) without alfalfa .. 29.00

SPECIAL PASTURE

Pyramid Brand Formulæ
(A) For Good Soil, well drained 50.50
(B) For Poor Soil, well drained 34.50
(C) For Wet Soil, poorly drained 44.25

62.73

FEB 17. 1953

THE PHILADELPHIA SEED CO.

INCORPORATED

WHOLESALE SEED MERCHANTS
OFFICE AND SEED CLEANING PLANT
ARCH AND FRONT STREETS
PHILADELPHIA 5, PA.

POSTMASTER: If unable to deliver notify
THE PHILADELPHIA SEED CO., Inc.
Return Postage Guaranteed

TIME VALUE MAIL

LIBRARY RECEIVED

★ MAR 3 - 1953 ★

U. S. Department of Agriculture

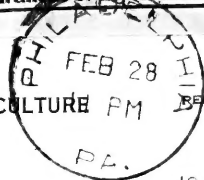
~~SEC. 34.66 P. L. & R.~~

~~U. S. POSTAGE
PAID~~

U. S. DEPARTMENT OF AGRICULTURE
LIBRARY
WASHINGTON 25, D. C.

OFFICIAL BUSINESS

PRINTED MATTER



REMARKS: PENALTY FOR PRIVATE USE TO AVOID
PAYMENT OF POSTAGE, \$300
(GPO)

Library, U. S. Dept. of Agriculture,
WASHINGTON 25, D. C.

BETTER SEEDS!

THE FINEST OF THE CROP

BETTER CROPS!



"QUAKER" brand seeds are selected in the producing sections, re-cleaned in Philadelphia in the largest seed-cleaning plant in the State, by processes devised by experts to attain the highest standard of purity.

Revised 1953 to comply with most recent authoritative recommendations.

Lbs. Per Bu.	SEEDS	Lbs. Per Acre	TIME OF SEEDING
60	Alfalfa {	drilled.....	} Feb.-Apr., July-Sept.
		broadcast.....	
		in mixtures.....	
60	Alsike {	with Oats.....	} Feb.-May, Aug.-Oct.
		alone.....	
48	Barley, Spring {	in mixtures.....	} April-May
		nurse crop....	
48	Barley, Winter.....	96-120	September
14	Bluegrass, in pastures.....	72	Mar.-Apr., Aug.-Oct.
14	Brome Grass, in mixtures.....	14-20	Mar.-May, August
48	Buckwheat, Japanese.....	10-15	May-July
48	Buckwheat, Tartary.....	48-60	May-August
50	Cane {	broadcast.....	} May-June
		drilled wide rows.....	
		with Soy Beans, grain drill.....	
60	Clover, Crimson.....	30-50	July-August
60	Clover, Ladino, in mixtures.....	15-20	March-May, August
60	Clover, Medium, Mammoth {	alone.....	} Feb.-Apr., Aug.-Oct.
		in mixtures.....	
60	Clover, Sweet (hulled).....	8-12	Feb.-April, July-Sept.
60	Clover, Wild White.....	20-25	(add to pasture mixture)
55	Corn {	alone.....	} May-June
		ensilage.....	
24	Fescue, Meadow {	in mixtures.....	} Apr.-May, Aug.-Sept.
		alone.....	
14	Fescue, (except Meadow).....	6-10	Used primarily in lawns
25	Lespedeza.....	12-15	March-April
50	Millet, Golden.....	20-30	May-July
48	Millet, Hungarian.....	40-50	May-July
32	Millet, Japanese.....	40-50	May-July
32	Oats {	alone.....	} March-May
		nurse crop.....	
14	Orchard Grass.....	64-80	April-May, August
25	Permanent Pasture.....	48	Apr.-June, Aug.-Sept.
60	Peas, Canada broadcast.....	20-30	February-April
50	Rape {	broadcast.....	} April-August
		drilled.....	
32	Red Top {	solid, in mixtures....	} Apr.-June, July-Oct.
		unhulled, in mixtures	
44	Reed Canary Grass.....	8-12	Mar.-May, Aug.-Sept.
56	Rye {	Spring.....	} March-May
		Winter.....	
24	Ryegrass.....	50-65	September-November
60	Soy Beans.....	70-90	Apr.-June, Aug.-Oct.
40	Sudan Grass {	for hay.....	} May-July
		pasture.....	
		with Soy Beans..	
24	Sunflower.....	10-15	April-June
45	Timothy {	with grain.....	} Apr.-June, Aug.-Oct.
		in mixture.....	
60	Vetch, Spring.....	25-35	March-May
60	Vetch, Winter {	alone.....	} August-September
		with grain....	
60	Wheat, Winter.....	20	September-October
		90-120	September-October