

## **Historic, Archive Document**

Do not assume content reflects current scientific knowledge, policies, or practices.



# Plumfield NURSERIES-INC.

Evergreen Specialists  
TREES THAT PLEASE



L. A. MOFFET  
VICE-PRES. AND MGR.  
G. A. GRITZMACHER  
SECY AND ASST MGR.  
J. R. WEIR  
SUPERINTENDENT

2105 NORTH NYE AVE  
Fremont, Nebraska  
PHONE 581



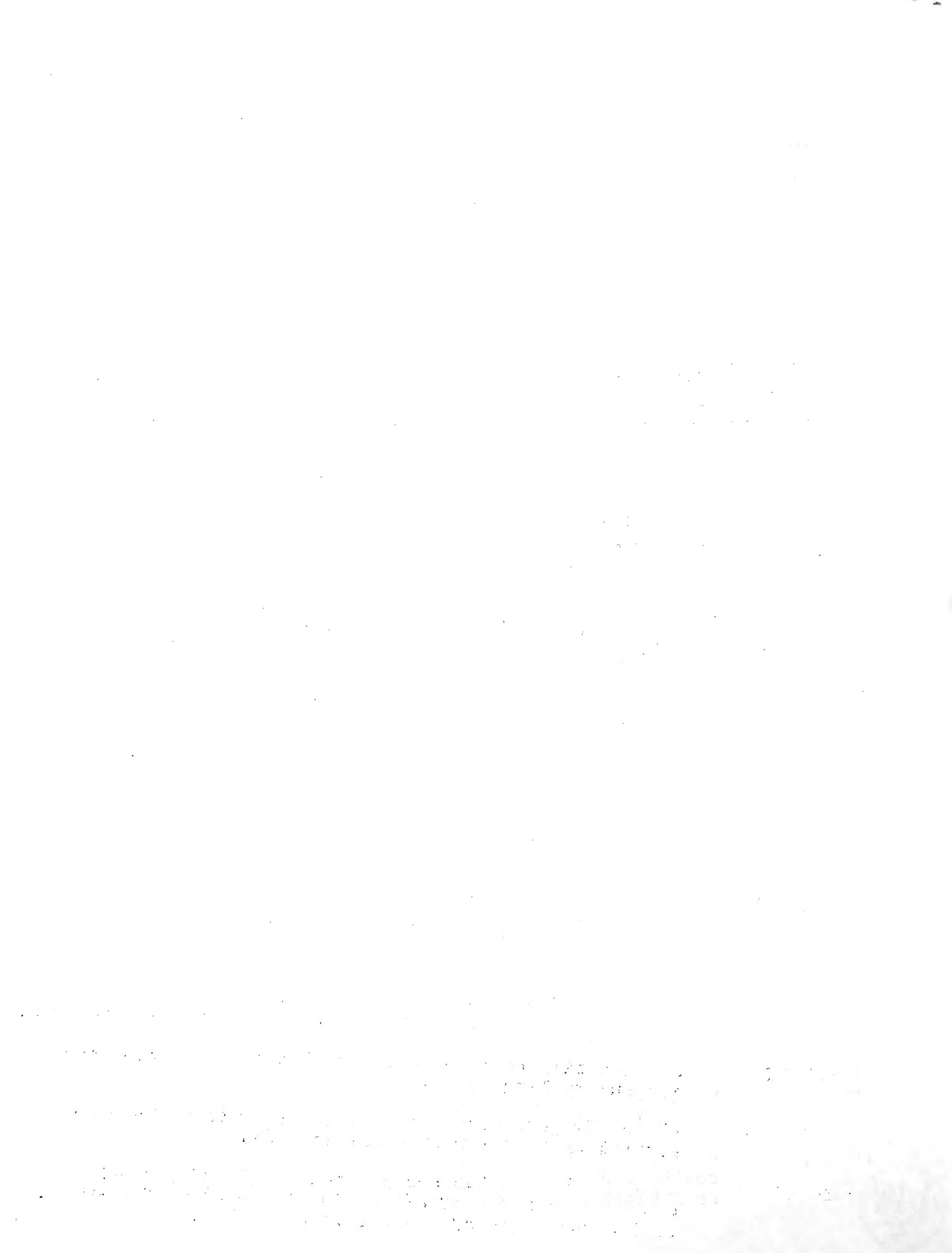
FALL 1953 - SPRING 1954

September 25, 1953

WHOLESALE LIST OF FIELD GROWN LINE-OUT STOCK, bare roots, puddled

- TERMS                    SHIPMENTS made on open account if satisfactory credit is established, otherwise cash should accompany order. No. C.O.D. shipments made.
- PACKING                PACKING costs will be added (on a cost basis) to your invoice. We take every precaution to pack our stock so it will reach you in the best of condition.
- SHIPPING              GIVE US specific instructions: Truck, R.R. Express or Mail. If by truck or R. R. freight, be sure to give names of carriers and routing. This is important. Shipments are made same day they are packed.
- PRICES                 ALL EVERGREENS are priced per each in quantities of 10, 100, and 1000. 25 of any grade or variety at 100 rate. 250 of any grade and variety at 1000 rate.
- HANDLING             BOXES AND SPHAGNUM MOSS are taken to the field and as plants are removed from the soil, their roots are covered with moss and rushed to one of our controlled refrigerated storages, where plants are sorted in an adjoining room where the humidity is very high.
- TRAVEL RISH and CLAIMS        STOCK TRAVELS at purchaser's risk and expense. If containers should be broken or shipment has been delayed, you should make that notation on your freight or express bill before paying the carrier's employee or delivery man. Then file claim with carrier at once (not with Plumfield). However, we will be glad to help.
- SAMPLES              SAMPLES will be charged for at the 100 rate plus packing and mailing costs.
- SURVIVAL              WE CANNOT guarantee survival of stock as we have no control of it after shipment is made.
- LOCATION               OFFICE AND STORAGES are 3 blocks west and 1 block south of Junction of 275 on 30, north edge of Fremont, or 1 block south of Fremont Country Club.





PLUMFIELD NURSERIES, Inc.  
Fremont, Nebraska

FALL 1953, Spring 1954

September 25, 1954

ROOT PRUNED SEEDLINGS

Price each Per <u>10</u>				<u>100</u>	<u>1000</u>	Price each Per <u>10</u>				<u>100</u>	<u>1000</u>
<b>ABIES CONCOLOR</b> (Concolor Fir)						<b>PINUS NIGRA</b> (Austrian Pine)					
2,000	6/9"	R.P.	.20	.15	.12	20,000	12/18"	R.P.	.30	.25	.20
3,000	4/6"	R.P.	.13	.10	.08	30,000	9/12"	R.P.	.12	.10	.08
<b>ABIES DOUGLASI</b> (Douglas Fir)						<b>PINUS PONDEROSA</b> (Bull Pine or Western Yellow)					
2,000	6/9"	R.P.	.10	.08	.06	1,000	18/24"	R.P.	.35	.30	.25
4,000	4/6"	R.P.	.08	.06	.04	5,000	12/18"	R.P.	.30	.25	.20
<b>PICEA CANADENSIS ALBA</b> (White Spruce)						<b>PINUS STROBUS</b> (Northern White Pine)					
1,000	12/15"	R.P.	.18	.15	.12	2,000	18/24"	R.P.	.35	.30	.25
5,000	9/12"	R.P.	.13	.10	.08	2,000	12/18"	R.P.	.30	.25	.20
2,000	6/9"	R.P.	.09	.07	.05	2,000	9/12"	R.P.	.12	.10	.08
<b>PICEA EXCELSA</b> (Norway Spruce)						<b>PINUS SYLVESTRIS</b> (Scotch Pine)					
4,000	9/12"	R.P.	.12	.09	.07	1,000	18/24"	R.P.	.30	.25	.20
10,000	6/9"	R.P.	.09	.07	.05	10,000	12/18"	R.P.	.20	.17	.15
2,000	4/6"	R.P.	.07	.05	.03½	6,000	9/12"	R.P.	.10	.08	.07
<b>PINUS BANKSIANA</b> (Jack Pine)						<b>THUJA OCCIDENTALIS</b> (American Arbor Vitae)					
700	18/24"	R.P.	.25	.20	.15	5,000	9/12"	R.P.	.12	.10	.08
4,500	12/18"	R.P.	.20	.15	.12	3,000	6/9"	R.P.	.10	.08	.06
5,000	9/12"	R.P.	.10	.08	.06	<b>THUJA ORIENTALIS</b> (Chinese Arbor Vitae)					
<b>PINUS EDULIS</b> (Nut - Pinon Pine)						<b>PINUS FLEXILIS</b> (Limber Pine)					
2,000	9/12"	R.P.	.12	.10	.08	700	4/6"	R.P.	.09	.07	.05
5,500	6/9"	R.P.	.08	.07	.06	<b>PINUS MUGHUS</b> (Mugho Pine)					
5,000	4/6"	R.P.	.06	.05	.04	1,000	4/6"	R.P.	.15	.12	.10
<b>PINUS SYLVESTRIS</b> (Scotch Pine)						<b>PINUS MUGHUS</b> (Mugho Pine)					
1,000	18/24"	R.P.	.30	.25	.20	5,000	2/4"	R.P.	.07	.05	.03½
10,000	12/18"	R.P.	.20	.17	.15	(continued on next page)					
6,000	9/12"	R.P.	.10	.08	.07						
10,000	6/9"	R.P.	.08	.06	.05						

THE UNIVERSITY OF CHICAGO  
DEPARTMENT OF CHEMISTRY

PHYSICAL CHEMISTRY  
LABORATORY

1954

1. The first part of the experiment is devoted to the study of the effect of temperature on the rate of reaction. The reaction is carried out in a constant volume calorimeter, and the heat evolved is measured. The rate of reaction is determined from the slope of the curve of heat evolved versus time. The rate constant is calculated from the Arrhenius equation, and the activation energy is determined from the slope of the plot of  $\ln k$  versus  $1/T$ .

2. The second part of the experiment is devoted to the study of the effect of concentration on the rate of reaction. The reaction is carried out in a constant volume calorimeter, and the heat evolved is measured. The rate of reaction is determined from the slope of the curve of heat evolved versus time. The order of reaction is determined from the plot of  $\ln k$  versus  $1/T$ .

3. The third part of the experiment is devoted to the study of the effect of solvent on the rate of reaction. The reaction is carried out in a constant volume calorimeter, and the heat evolved is measured. The rate of reaction is determined from the slope of the curve of heat evolved versus time. The effect of solvent on the rate constant is determined from the plot of  $\ln k$  versus  $1/T$ .

4. The fourth part of the experiment is devoted to the study of the effect of catalyst on the rate of reaction. The reaction is carried out in a constant volume calorimeter, and the heat evolved is measured. The rate of reaction is determined from the slope of the curve of heat evolved versus time. The effect of catalyst on the rate constant is determined from the plot of  $\ln k$  versus  $1/T$ .

PLUMFIELD NURSERIES, Inc.  
Fremont, Nebraska

FALL 1953 - SPRING 1954

September 25, 1953

TRANSPLANTS

Price each Per 10 100 1000

JUNIPERUS ANDORRA PLUMOSA -

Andorra Juniper

3,000 12/15"TTT .75 .70 .65  
1,500 9/12"TTT .60 .55 .50

JUNIPERUS KOSTERI - Koster's Jun.

300 12/15"TTT .80 .75 .70  
200 9/12"TTT .60 .55 .50

JUNIPERUS PFITZERIANA - Pfitzer J.

5,500 12/15"TTT .85 .80 .75  
4,000 9/12"TTT .65 .60 .55

JUNIPERUS SABINA - Savins Juniper

3,000 12/15"TTT .80 .75 .70  
5,000 9/12"TTT .60 .55 .50

ABIES DOUGLASI - Douglas Fir

1,000 9/12"TTT .40 .35 .30  
1,000 6/9"TTT .30 .25 .20

PICEA CANADENSIS ALBA-White Spruce

100 18/24"TTT .80 .75 .70  
150 15/18"TTT .60 .55 .50  
300 12/15"TTT .50 .45 .40

PICEA EXCELSA - Norway Spruce

1,000 12/15"TTT .50 .45 .40  
2,000 9/12"TTT .35 .30 .25

PICEA GLAUCA DENSATA\*Blk.Hill Spr.

2,000 9/12"TTT .45 .40 .35  
3,000 6/9"TTT .30 .25 .20

PINUS MUGHUS - Mugho Pine (dwarf)

3,500 6/9"TTT .50 .45 .40  
1,000 4/6"TTT .35 .30 .25

THUJA OCCIDENTALIS PYRAMIDALIS

(Pyramidal Arbor Vitae)

300 12/15"TTT .60 .55 .50  
300 9/12"TTT .50 .45 .40

THUJA OCCIDENTALIS WOODWARDI

(Woodward's Globe)

1,500 12/15"TTT .85 .80 .75  
5,000 9/12"TTT .50 .45 .40

SHRUBS

The following shrubs are grown from seeds, supply limited. Economical for lining out and growing into useable plants. Priced per 100, late winter or spring delivery. Can be mailed, if desired. Mailing costs are: 35¢ per 100, 50¢ per 200, 75¢ per 500, \$1.25 per 1,000.

Per 100

CARAGANA ARBORESCENS 4/6" \$1.50  
(Siberian Pea)

CORNUS STOLONIFERA 6/9" 2.00  
(Red Dogwood)

CORYLUS AMERICANA 4/6" 2.00  
(Hazelnut)

LONICERA TATARIAN 4/6" 1.75  
(Honeysuckle)

PRUNUS BESSEYI 4/6" 1.75  
(Bushcherry)

PRUNUS JAPONICA 4/6" 2.00  
(Korean Cherry)

PRUNUS MELANOCARPA 4/6" 1.75  
(Black Chokecherry)

PRUNUS PADUS COMMUTATA 4/6" 2.00  
(Mayday Tree)

RHAMNUS DAVURICA 4/6" 1.50  
(Dahurian Buckthorn)

RHUS TRILOBATA 4/6" 1.75  
(Aromatic Sumac)

SHEPHERDIA ARGENTIA 4/6" 2.00  
(Buffaloberry)

SYRINGA JAPONICA 4/6" 2.00  
(Lilac)

SYRINGA VULGARUS 4/6" 2.00  
(Lilac, common)

VINES

Amp. Veitchi, 2 yr. 2/16" 2.50

Amp. Veitchi, 2 yr. 3/16" 3.50

Amp. Veitchi, 2 yr. 1/4" 5.00

