

## **Historic, Archive Document**

Do not assume content reflects current scientific knowledge, policies, or practices.



= 1953 =

05

62,81

LIBRARY  
SEP 23 1953  
U.S. Department of Agriculture

These four seedlings were offered for sale in the August 27th issue of **FLORISTS' REVIEW**. We are now extending the offering to include seven more superior crosses in smaller sizes. All are priced the same as our original offering to commercial growers. We want our regular customers to have the same opportunity of purchasing these seedlings.

Rivermont can make immediate shipment of the following four fine hybrids that will produce nice white with colored lip flowers within nine to twelve months:

**C. SINCERITY** (C. Loranore, alba x C. Harold, alba, Floriferous Variety)  
This cross may be expected to produce prolific whites with dark rose lips for late spring and June. The Loranore is a beautiful, heavy-textured flower with pure white petals of 2 3/4-in. width and 7-in. spread. The bright rose lip is long and lovely, with narrow white border and bright yellow throat. The C. Harold, alba, is a consistent producer of well-formed, heavy-textured blooms having pure white petals 7 1/2-in. in spread. The lip is tipped with deep rose and edged with white, and the throat has bright yellow eyes and veining. Both parents are proven breeders.  
**4-in. Pots . . . . . \$12.00 Each\***

**LC. STONEHOUSE** (Lc. Canhamiana, alba, var. Rivermont x C. Trianae, Reineckiana)  
A floriferous hybrid for the commercial production of Easter whites. Lc. Canhamiana, alba, var. Rivermont, is highly productive of blooms of excellent rating, and has been used repeatedly in our hybridizing program. The heavy-textured, pure white petals measure 2 3/4 ins. in width and 8 ins. in spread. Its lip, large and moderately ruffled, is tipped with vivid rose, and narrowly edged in white; the throat is clear yellow. The flowers of C. Trianae, Reineckiana, are of good proportion and texture, having petals 7 ins. in spread. The lip is moderately ruffled, tipped with dark rose, and has a yellow-orange throat.  
**3-in. Pots . . . . . \$5.50 Each\***

**LC. SURPRISE** (C. Enid, Alba x Lc. Canhamiana, alba, var. Maxine Stillman)  
Outstanding whites with colored lips for late spring to summer. C. Enid, alba, is highly productive of large blooms of excellent form and substance, having pure white petals 7 1/2 to 8 ins. in spread, large bright rose lip, and canary-yellow throat. The Canhamiana, alba, is the same fine Maxine Stillman variety which we have used often in the breeding of our better hybrids, and is described in the preceding cross, Lc. King George V. The seedlings of this cross are rapid, easy growers.  
**3-in. Pots . . . . . \$5.50 Each\***

**LC. KING GEORGE V** (Lc. Britannia, alba x Lc. Canhamiana, alba, var. Maxine Stillman)  
May-June flowering to meet the floral demand created by graduations, weddings and parties. Britannia is a prolific producer of outstanding blooms having heavy white petals of 7 1/2-in. spread, a large lip tipped with bright rose, and a yellow throat. Lc. Canhamiana, alba, var. Maxine Stillman is highly productive of top-quality cut flowers having heavy-textured, pure white petals of 8 1/4-in. spread. Its broad lip is tipped with fuchsia-rose, thinly margined with white, with greenish-yellow throat. Both parents have bloom records of very good to excellent rating.  
**3-in. Pots . . . . . \$5.50 Each\***

\*F.O.B. Signal Mountain, Tennessee

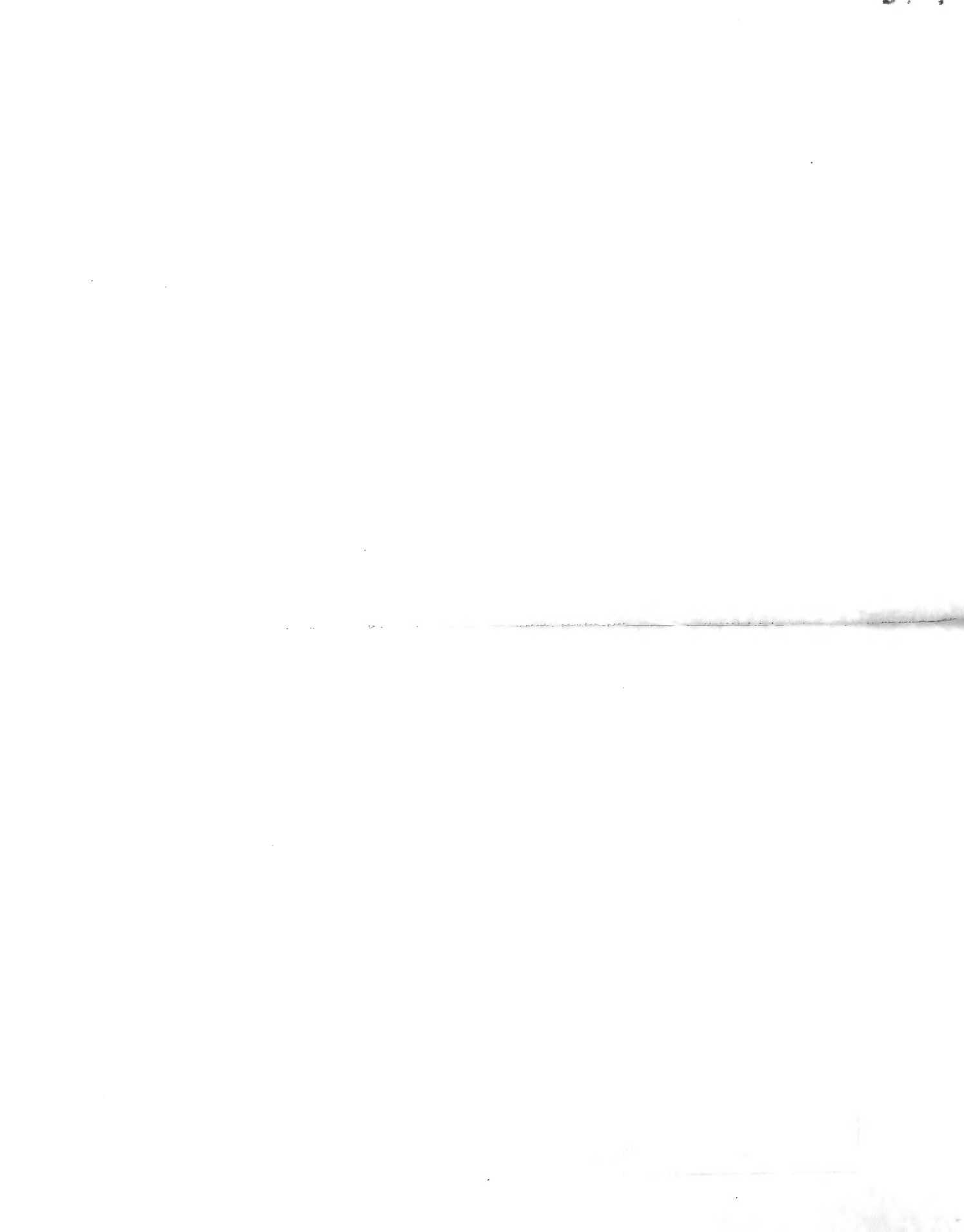
Free cultural instructions furnished with each order.

Mature plants and seedlings in whites, lavenders, yellows and unusuals are also available. Rivermont guarantees complete satisfaction with each order.

<b>SAVE!</b>	
<b>Assortment of these Four Crosses*</b>	
10 Plants	<b>\$50.00</b>
25 Plants	<b>\$112.00</b>
50 Plants	<b>\$200.00</b>



Telephone: Chattanooga 88-2117



# READY FOR SHIPPING

## WHITES

R-1704 - (C. Mlle. Louise Pauwels, variety Orchidhurst x C. Vanir) Timed for Mother's Day and graduation parties, this prolific March-April-May white should be of great economic value to the commercial grower. Cades is a consistent producer of lovely, heavy textured flowers having compact, white petals of 2-3/4" width and 6-3/4" spread and heavily ruffled lips which are centered with golden-yellow. The flowers of Vanir are of very good form and heavy substance, with attractive white petals of 3" width and 8" spread, and long, broad lips with yellow throats. Both parents are free growing and free flowering.

1-3/4" Pot - \$2.00 each

10 or more - \$1.40 each

## WHITES WITH COLORED LIPS

R-1430 - (Lc. Abnaki x C. Trimos, alba) Abnaki, alba, is a lovely flower having pure white petals of 3" width and 7-1/2" spread, with a very outstanding, vivid rose lip. The throat is pastel yellow with rose veining. Our Trimos, alba, is a top producer of well formed, heavy textured flowers having pure white petals of 6-7/8" spread, with lips of rose-purple and yellow throats. We expect this hybrid to be a profound producer of fine flowers for the April-May-June period.

1-3/4" Pot - \$3.00 each

10 or more - \$2.25 each

R-1652 - C. MOUNT ROYAL (C. Enid, alba x C. Maggie Raphael, var. Brilliantissima) Bred to counteract the serious shortage of dependable whites with colored lip for Christmas production, this cross should carry the following characteristics of its parents. The petals of the Enid are of lovely form and heavy substance, 7" in spread. Its long lip is heavily tipped with bright rose, edged in white, with light yellow veining deep within the throat. Maggie Raphael, var. Brilliantissima, is productive of attractive flowers of heavy texture, 6-3/4" - 7" spread. The large lip is handsomely tipped with rose-purple and has yellow eyes in the throat.

1-3/4" Pot - \$2.00 each

10 or more - \$1.40 each

R-1653 - (Lc. Edith Dorp x Lc. Aconcagua, F. C. C., R. H. S.) Our Edith Dorp has large, heavy textured petals of pure white that average 2-3/4" in width and 7" in spread. The lip is deep rose, large and lovely, with bright golden throat. The awarded Aconcagua is a well proportioned flower having white petals 2-7/8" in width and 6" in spread. The lip is tipped with vivid fuchsia-rose, bordered in white, with very large golden eyes and veining within the throat. A floriferous Thanksgiving-Christmas-New Year's hybrid of quality rating is anticipated.

1-3/4" Pot - \$3.00 each

10 or more - \$2.40 each

## LAVENDERS

R-1289 - (Lc. Helen Wilmer, Silver Medal Award x C. Palatine) Both parents are dark lavenders with deep rose lips, of heavy texture and excellent form. The Helen Wilmer of this mating has petals averaging 2-3/4" in width and 6-1/2" in spread, while the very dark petals of C. Palatine are 3-3/16" in width and 7-1/4" in spread. A small area of deep orange centers the throat of Helen Wilmer; large, yellow eyes and veining are characteristic of Palatine. This cross is expected to be highly productive of quality cut flowers for the Christmas-New Year's period.

1-3/4" Pot - \$2.00 each

10 or more - \$1.60 each

R-1626 - C. HENTSCHELII (C. Dupreana x C. Gigas, Hamilton's Variety) This cross should be outstanding for high productivity during May and June, the months of graduations and weddings. This Dupreana has heavy, dark lavender petals of 3-1/8" width and 8-1/4" spread. Its long and ruffled lip is tipped with deep rose-crimson, with golden eyes and veining in the throat. The flowers of the gigas are of very good proportion and heavy substance, 3-1/8" in width and 8-1/2" - 9" in spread. The handsome rose lip is moderately ruffled and has yellow eyes and veining in the throat.

1-3/4" Pot - \$2.00 each

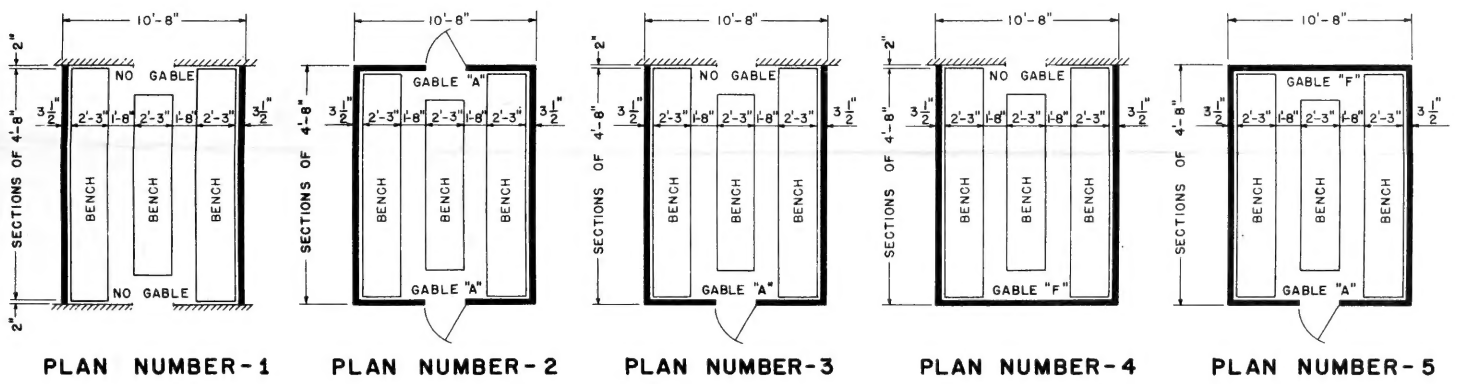
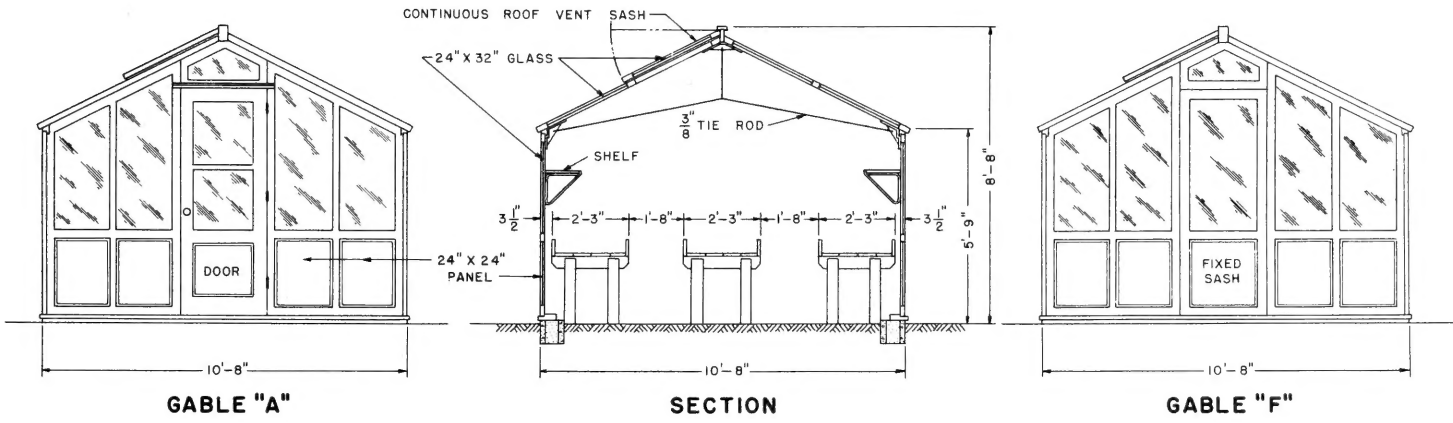
10 or more - \$1.60 each

R-1670 - (Lc. Helen Wilmer x Bc. Imperialis, var. Senora de la Colina) Late winter to spring flowering, this cross should be highly desirable for Christmas, New Year's and on into Valentine's Day. The Helen Wilmer parent is of exquisite dark rose color, with heavy textured petals 3" in width and 6-3/4" in spread. The deep purple lip is broad and slightly ruffled with indistinct gold veining in the throat. Bc. Imperialis is also of very good proportion and A-1 substance, having rose petals 3-1/8" in width and 7-1/2" in spread. Its very large, dark rose lip is ruffled and has yellow veining in the throat.

1-3/4" pot - \$2.00 each

10 or more - \$1.60 each.

# STANDARD **Metrolite** GREENHOUSE PRICE LIST



\* PRICES FOR LONGER HOUSES AVAILABLE UPON REQUEST. PLEASE STATE LENGTH.

NUMBER OF SECTIONS	* LENGTH OF GREENHOUSE	STANDARD METROLITE GREENHOUSE										PLANT BENCHES		SHELVES FOR ONE SIDE OF GREENHOUSE ONLY	
		PLAN NUMBER-1		PLAN NUMBER-2		PLAN NUMBER-3		PLAN NUMBER-4		PLAN NUMBER-5		WEIGHT	PRICE	WEIGHT	PRICE
		WEIGHT	PRICE	WEIGHT	PRICE	WEIGHT	PRICE	WEIGHT	PRICE	WEIGHT	PRICE				
1	4'-8"	539	178.00	961	340.00	750	259.00	717	229.00	928	310.00	465	37.00	19	3.00
2	9'-4"	967	306.00	1389	468.00	1178	387.00	1145	357.00	1356	438.00	792	55.00	35	6.00
3	14'-0"	1395	434.00	1817	596.00	1606	515.00	1573	486.00	1784	566.00	1091	73.00	55	8.00
4	18'-8"	1823	562.00	2245	724.00	2034	643.00	2001	614.00	2212	695.00	1462	97.00	70	11.00
5	23'-4"	2251	690.00	2673	852.00	2462	771.00	2429	742.00	2640	823.00	1790	116.00	84	13.00
6	28'-0"	2679	818.00	3101	980.00	2890	899.00	2857	870.00	3068	951.00	2053	131.00	98	15.00
7	32'-8"	3140	966.00	3562	1128.00	3351	1047.00	3318	1018.00	3529	1099.00	2389	152.00	119	18.00
8	37'-4"	3568	1095.00	3990	1256.00	3779	1175.00	3746	1146.00	3957	1227.00	2719	171.00	133	20.00
9	42'-0"	3996	1223.00	4418	1384.00	4207	1304.00	4174	1274.00	4385	1355.00	3017	189.00	147	22.00
10	46'-8"	4424	1351.00	4846	1512.00	4635	1432.00	4602	1402.00	4813	1483.00	3344	207.00	168	25.00
11	51'-4"	4852	1479.00	5274	1641.00	5063	1560.00	5030	1530.00	5241	1611.00	3714	231.00	182	27.00
12	56'-0"	5280	1607.00	5702	1769.00	5491	1688.00	5458	1658.00	5669	1739.00	4015	249.00	196	29.00

# S P E C I F

## GENERAL

The METROLITE greenhouse is a prefabricated, factory painted and glazed, large-light, sash-type structure of conventional straight-eave design. The structure consists mainly of wood sash and framing members, all milled from clear all-heart sap-free California redwood (*Sequoia Sempervirens*), a species universally known for its long life properties.

Foundation work is reduced to a minimum. All that is necessary is a shallow foundation of 8" wide poured concrete or 8" concrete blocks. A substantial wood sill is provided with the greenhouse, being anchored to the foundation by means of anchor bolts.

The sidewall panels, 1 $\frac{3}{4}$ " thick, are for 2' 4" wide unit spacing, the panels having one light of 24" x 32" glass over a solid panel of waterproof plywood or other suitable material. The sidewall panels start at grade. Therefore, there are no masonry or wooden base walls to build above grade.

The roof panels, also 1 $\frac{3}{4}$ " thick, are for 2' 4" wide unit spacing, and are arranged to receive 24" x 32" glass. The roof ventilator sash are made in 4' 8" spacing units, arranged to receive two lights of glass, to match the roof panel spacing. They are arranged into a continuous run as is shown on the drawings.

Metropolitan's METROLITE prefabricating methods include factory drilling of all bolt holes in the sash panels for accuracy and greatest economy in field erection. Screw holes are not factory drilled as they may be done in the field with a push drill with equal economy and for greater accuracy. Long run members, such as sills, eaves, ridge and ridge cap, are factory splice cut and end cut for quick accurate field assembly.

Galvanized steel battens are provided to cover all roof and side panel joints to assure a tight, weather-proof job, to keep out the rain and to reduce heat losses.

A continuous wood member is provided along both eave lines. This member is designed to receive the lower rails of the roof panels, also the top rails of the side panels. Eave brackets are provided to tie side and roof panels securely together.

A wood ridge and ridge cap member is provided at the peak of the structure. Ridge brackets are used to tie roof panels and ridge securely together. Steel crosstie rods are provided at frequent intervals for added stability.

Standard glass gable ends consist of two main gable panels, 1 $\frac{3}{4}$ " thick (left hand and right hand), one door (or blank panel if door is omitted) and one panel above.

Standard greenhouse ventilating apparatus is included as standard equipment with the METROLITE.

METROLITE leanto models embody the same general features enumerated above PLUS the materials for the roof deck which is shown on the leanto drawing.

## DETAIL

The doors are factory mortised to receive the locks and hinges. Mortising for the door lock strike plate is done by the purchaser for greatest accuracy in fitting the door. The appropriate gable sash panels are mortised to receive the door hinges. The steel crosstie rods, also all lugs and construction fittings, are completely shop fabricated, ready for installation.



# CATIONS

All roof ventilating sash, roof, side and gable panels, also doors, are factory glazed with double strength clear glass, bedded in Metropolitan's famous greenhouse putty and secured with glazing nails. All wooden items are painted with two coats of Metropolitan "Dutch Boy" greenhouse white paint, prior to glazing. Paint materials are included, in addition, for a third, or dress-up coat after erection.

All panel sections and doors are carefully crated to assure safe arrival at destination.

Hardware items comprise Schlage type locks, galvanized steel door and sash hinges with brass pins. Eave brackets and ridge brackets are of bronze or of malleable iron, galvanized. All steel items such as side panel-sill lugs, crosstie rods, sash battens, also nails, bolts, and screws are furnished galvanized or otherwise thoroughly rust-proofed.

Ventilating apparatus provided with this structure is Metropolitan elbow-arm type, consisting of 1" galvanized steel pipe shafting, shaft hangers, shaft end plugs, elbow-arm type ventilator arms (lifters) and handchain-operated enclosed worm and gear type machine.

With the materials we provide a complete set of plans and details, easily followed, for guidance in field erection.

In some instances it may be desirable or necessary to have a WORKROOM attached to the METROLITE house, to provide for a complete self-contained unit. A suggested arrangement, Plan No. 2, is shown on drawing No. ML-1. We will be glad to mail the same upon request, also to quote prices.

Structurally the workroom is similar to the standard METROLITE. However, the roof would be glazed with double strength ground (frosted) glass to diffuse the sun's rays, or it can be covered with a suitable solid material.

PLANT BENCHES are furnished as a separate additional item. See price list. These benches are all-wood private house type. They have 2 x 4" rough redwood legs and crossbearers, 1" rough redwood bottom boards and surfaced sideboards and sideboard caps.

Wood legs are precut with lap joint, square shoulder end for rigid, square assembly with crossbearers. Crossbearers are cut to exact length with chamfered ends as required. Sideboards are surfaced one side and two edges. End and corner cutting of boards, an easy operation, is done by purchaser for greatest accuracy.

Necessary corner angles, nails, sideboard brackets, also paint for sideboards, are included.

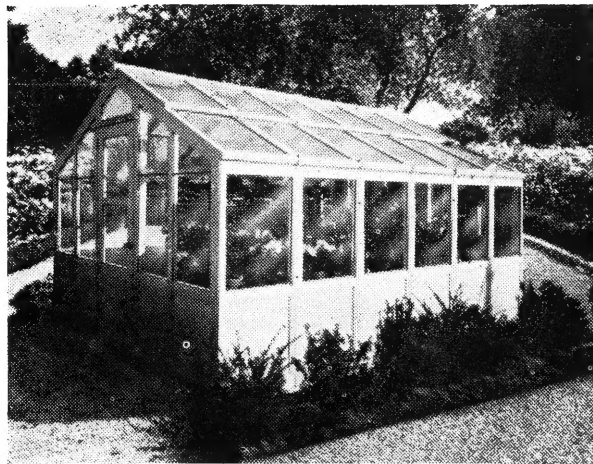
SHELVES AND SHELF BRACKETS are also available at slight added cost. See price list. The shelf boards are 1" x 12" redwood, surfaced both sides. Shelf brackets are steel, of special design. They are supported by screws, on the sidewall panels. They may be easily lifted off when not required. Much added necessary space is available, at moderate cost, when needed.

The subject of HEATING is important. For small to average length houses, one or two oil burning space heaters, thermostatically controlled, with built-in circulating fans, will generally suffice. If desired, other types of heating systems can be provided. Prices and data are available upon application.

A flower-lover and his 14 year old son put up their METROLITE Greenhouse themselves . . . WITH NO OUTSIDE HELP WHATSOEVER! He reported that the plans were so simple to follow and each part fit together so perfectly that they DID NOT MAKE ONE ERROR IN ASSEMBLY!



The METROLITE GREENHOUSE has been designed to give you maximum sunshine in winter when you'll need it most. The METROLITE also gives off less shadows from girders, insuring a larger yield of whatever you'll be growing.



Grow Healthier, More Vigorous Orchids,  
Producing More and Better Flowers

FERTILIZE

There is no doubt that applications of completely soluble fertilizer at weekly or bi-weekly intervals from March 15 until September 25 are highly beneficial to your orchid seedlings, mature Cattleyas, Phalaenopsis, Cymbidiums, Zygopetalums, Cypripediums, and other varieties. It has been established that, because of the short days between September 25 and March 15 it is not necessary to fertilize orchids to stimulate them to optimum vigor. As everyone knows, it takes either long exposures of sunlight or artificial light to stimulate many plants into vigorous growth.

Rivermont recommends fertilizing seedlings and mature plants of Cattleyas, Cypripediums, and Cymbidiums; however, we should like to caution that if the plant does not have a well developed root system, it should not be fertilized under any circumstances, because the plant will not be capable of absorbing the nutrients which are made available in the potting medium.

These are the two fertilizers we use and recommend:

VHPF (Guaranteed analysis 6% nitrogen, 25% phosphorous, 15% potash)

NUTRI-LEAF (Guaranteed analysis 16% nitrogen, 16% phosphorous, 16% potash)

Both of these superior plant foods contain trace elements and growth stimulating hormones. VHPF is used as a liquid fertilizer, and Nutri-Leaf is used as a liquid fertilizer and as a spray for the leaves. The recommended concentration of each is as follows:

When fertilizing weekly, use 1/2 tablespoon per gallon of water.

When fertilizing at two week intervals, use 1 tablespoon per gallon of water.

Try VHPF and NUTRI-LEAF on your orchids and observe the difference. Both of these fine plant foods are available in the 3 lb. economy-size package.

\* \* \* \* \*

Rivermont Orchids  
Signal Mountain, Tennessee

Please ship \_\_\_\_\_ 3 lb. Packages of VHPF, @ \$1.50 each \$\_\_\_\_\_

Please ship \_\_\_\_\_ 3 lb. Packages of NUTRI-LEAF, @ \$1.60 each \_\_\_\_\_

\_\_\_\_\_ Charge my account; \_\_\_\_\_ Payment enclosed Total: \_\_\_\_\_

Name \_\_\_\_\_

\_\_\_\_\_

\_\_\_\_\_

MAIL THIS ORDER SHEET TO US



# GREENHOUSE ORDER BLANK

METROPOLITAN GREENHOUSE MFG. CORP.

1851 FLUSHING AVENUE, BROOKLYN 37, NEW YORK

TELEPHONE: EVERGREEN 6-2700

SHIP TO..... DATE.....  
 STREET.....  
 CITY..... ZONE..... STATE.....

CHECK TYPE		NUMBER OF GHS.	NUMBER OF SECTIONS	LENGTH OF GHS.	PLAN NUMBER	GREENHOUSES		PLANT BENCHES		SHELVES (1 OR 2 SIDES)		TOTALS	
STANDARD	LEAN-TO					WEIGHT	PRICE	WEIGHT	PRICE	WEIGHT	PRICE	WEIGHT	PRICE

SHIPMENT TO GO VIA: TRUCK.....  RAILROAD.....  OTHER.....  
 METROLITE GREENHOUSE PRICES ARE F.O.B. BROOKLYN, NEW YORK.  
 SALES OR USE TAXES IN STATES WHERE APPLICABLE MUST BE ADDED TO TOTALS.

TOTAL AMOUNT OF ORDER..... (CHECK, DRAFT, OR M.O.)  
 SIGNED..... PHONE NO.....  
 MAIL ADDRESS.....

RETAIN THIS ORDER SHEET FOR YOUR RECORDS



# GREENHOUSE ORDER BLANK

METROPOLITAN GREENHOUSE MFG. CORP.

1851 FLUSHING AVENUE, BROOKLYN 37, NEW YORK

TELEPHONE: EVERGREEN 6-2700

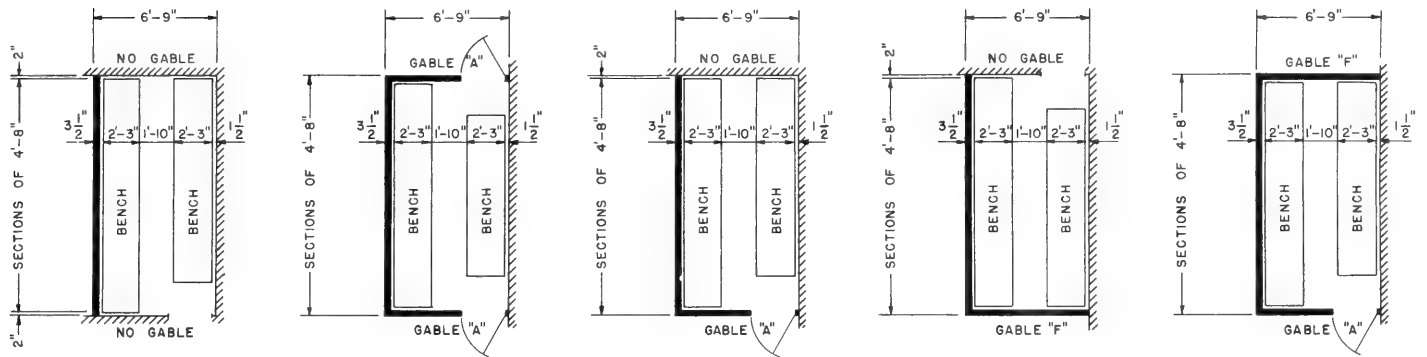
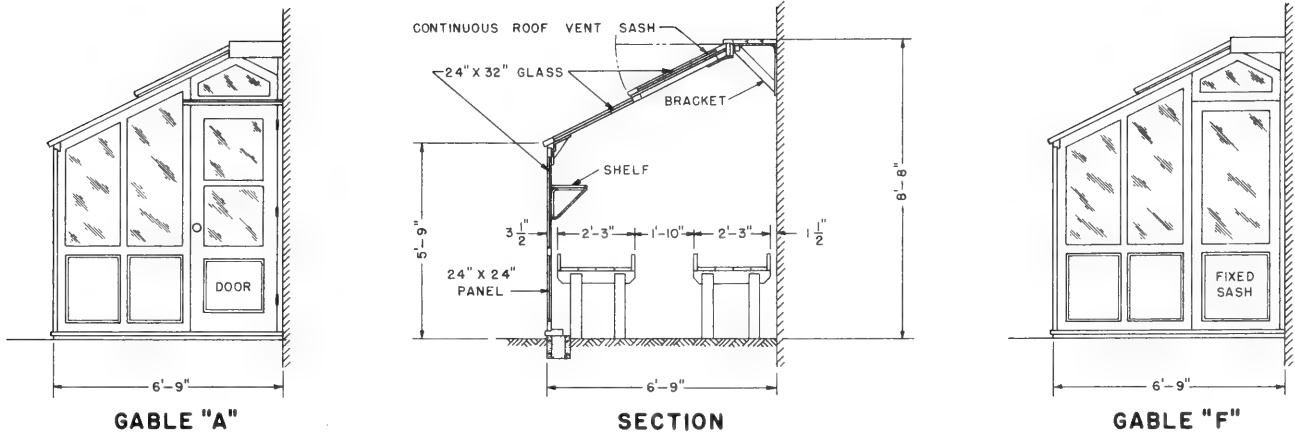
SHIP TO..... DATE.....  
 STREET.....  
 CITY..... ZONE..... STATE.....

CHECK TYPE		NUMBER OF GHS.	NUMBER OF SECTIONS	LENGTH OF GHS.	PLAN NUMBER	GREENHOUSES		PLANT BENCHES		SHELVES (1 OR 2 SIDES)		TOTALS	
STANDARD	LEAN-TO					WEIGHT	PRICE	WEIGHT	PRICE	WEIGHT	PRICE	WEIGHT	PRICE

SHIPMENT TO GO VIA: TRUCK.....  RAILROAD.....  OTHER.....  
 METROLITE GREENHOUSE PRICES ARE F.O.B. BROOKLYN, NEW YORK.  
 SALES OR USE TAXES IN STATES WHERE APPLICABLE MUST BE ADDED TO TOTALS.

TOTAL AMOUNT OF ORDER..... (CHECK, DRAFT, OR M.O.)  
 SIGNED..... PHONE NO.....  
 MAIL ADDRESS.....

# LEAN-TO **Metrolite** GREENHOUSE PRICE LIST



PLAN NUMBER-1    PLAN NUMBER-2    PLAN NUMBER-3    PLAN NUMBER-4    PLAN NUMBER-5

\* PRICES FOR LONGER HOUSES AVAILABLE UPON REQUEST. PLEASE STATE LENGTH.

NUMBER OF SECTIONS	* LENGTH OF GREENHOUSE	LEAN-TO METROLITE GREENHOUSE										PLANT BENCHES		SHELVES FOR ONE SIDE OF GREENHOUSE ONLY	
		PLAN NUMBER-1		PLAN NUMBER-2		PLAN NUMBER-3		PLAN NUMBER-4		PLAN NUMBER-5		WEIGHT	PRICE	WEIGHT	PRICE
		WEIGHT	PRICE	WEIGHT	PRICE	WEIGHT	PRICE	WEIGHT	PRICE	WEIGHT	PRICE				
1	4'-8"	387	123.00	751	259.00	563	191.00	544	168.00	726	236.00	339	28.00	19	3.00
2	9'-4"	699	211.00	1063	347.00	881	279.00	856	256.00	1038	324.00	558	41.00	35	6.00
3	14'-0"	1011	299.00	1375	435.00	1193	367.00	1168	344.00	1350	412.00	741	50.00	55	8.00
4	18'-8"	1323	387.00	1687	523.00	1505	455.00	1480	432.00	1662	500.00	993	68.00	70	11.00
5	23'-4"	1635	475.00	1999	611.00	1817	543.00	1792	520.00	1974	588.00	1211	80.00	84	13.00
6	28'-0"	1947	563.00	2311	699.00	2129	631.00	2104	608.00	2286	676.00	1406	94.00	98	15.00
7	32'-8"	2292	670.00	2656	806.00	2474	738.00	2449	715.00	2631	783.00	1625	106.00	119	18.00
8	37'-4"	2604	758.00	2968	894.00	2786	826.00	2761	803.00	2943	871.00	1848	120.00	133	20.00
9	42'-0"	2916	846.00	3280	982.00	3098	914.00	3073	891.00	3255	959.00	2001	128.00	147	22.00
10	46'-8"	3228	934.00	3592	1070.00	3410	1002.00	3385	979.00	3567	1047.00	2219	140.00	168	25.00
11	51'-4"	3540	1022.00	3904	1158.00	3722	1090.00	3697	1067.00	3879	1135.00	2466	156.00	182	27.00
12	56'-0"	3852	1110.00	4216	1246.00	4034	1178.00	4009	1155.00	4191	1223.00	2659	169.00	196	29.00

Protect your Orchids  
use  
HY-TOX

HY-TOX, the latest insecticide containing Malathon, has proven to be very effective over the past two years againse soft brown scale, spider mites, aphids, and a wide range of other greenhouse pests.

We have found at Rivermont that by following a definite plant insecticide program of spraying once each month, we can keep our range free of insects. This program is recommended for anyone growing orchids, whether it is on an amateur's scale, or commercially.

HY-TOX is simple to use and does not require any special equipment other than an ordinary hand sprayer. The concentration of this material is such that a small amount goes a long way. The recommended concentration is one tablespoon per gallon of water.

\* \* \* \* \*

Rivermont Orchids - Signal Mountain, Tennessee

Please ship \_\_\_\_\_ 8 oz. bottles HY-TOX, @ \$1.80 each., Charge my account \_\_\_\_\_  
Payment enclosed \_\_\_\_\_ Total: \$ \_\_\_\_\_

Name \_\_\_\_\_ Address \_\_\_\_\_

*Rivermont*  
ORCHIDS  
SIGNAL MOUNTAIN, TENNESSEE

*Budget Purchase Plan*

Rivermont's Budget Purchase Plan enables you to buy your orchids now and pay on convenient monthly terms. Rivermont will ship your plants and you can enjoy watching them grow and bloom while you make your payments.

Complete your contract application in duplicate and include your check for 25% of the total purchase price. Upon acceptance, it may be necessary for us to reduce the total amount of your payments if we cannot completely fill your order. We will make this change when your copy of the contract is returned to you.

No interest is charged for this service nor are there any hidden charges included in the price of our plants. Budget customers pay exactly the same prices as cash customers. This is the first time such an offer has ever been made in the orchid industry. Take advantage of this unusual offer by ordering any quantity you desire from our current catalog or lists.

*Rivermont*  
ORCHIDS  
SIGNAL MOUNTAIN, TENNESSEE

*Budget Payment Contract*

BUYER'S AGREEMENT

(To be prepared in duplicate)

I/We agree to purchase from Clint McDade & Sons, Inc., (Rivermont Orchids), orchid plants represented by the attached order dated \_\_\_\_\_.

I/We enclose \$ \_\_\_\_\_ as 25% down payment and agree to pay the balance of the purchase price in \_\_\_\_\_ equal monthly installments, payable on the 10th of each and every month thereafter until the purchase price has been paid in full.

I/We further agree that the title to plants covered by this contract is to remain vested in the seller, Clint McDade & Sons, Inc., until paid in full.

\_\_\_\_\_  
Buyer

Address: \_\_\_\_\_

Date: \_\_\_\_\_

SELLER'S ACCEPTANCE

The above payment contract and order which it represents are accepted (in the amount stated) (in the amount of \$ \_\_\_\_\_ because of our inability to fill the complete order). Equal monthly payments are to be made in the amount of \$ \_\_\_\_\_ for \_\_\_\_\_ months.

CLINT McDADE & SONS, INC.

Date: \_\_\_\_\_

By \_\_\_\_\_

...

...

...

...

...



# Rivermont

ORCHIDS  
SIGNAL MOUNTAIN, TENNESSEE

## Budget Purchase Plan

Rivermont's Budget Purchase Plan enables you to buy your orchids now and pay on convenient monthly terms. Rivermont will ship your plants and you can enjoy watching them grow and bloom while you make your payments.

Complete your contract application in duplicate and include your check for 25% of the total purchase price. Upon acceptance, it may be necessary for us to reduce the total amount of your payments if we cannot completely fill your order. We will make this change when your copy of the contract is returned to you.

No interest is charged for this service nor are there any hidden charges included in the price of our plants. Budget customers pay exactly the same prices as cash customers. This is the first time such an offer has ever been made in the orchid industry. Take advantage of this unusual offer by ordering any quantity you desire from our current catalog or lists.

Rivermont  
ORCHIDS  
SIGNAL MOUNTAIN, TENNESSEE

## Budget Payment Contract

### BUYER'S AGREEMENT

(To be prepared in duplicate)

I/We agree to purchase from Clint McDade & Sons, Inc., (Rivermont Orchids), orchid plants represented by the attached order dated \_\_\_\_\_.

I/We enclose \$ \_\_\_\_\_ as 25% down payment and agree to pay the balance of the purchase price in \_\_\_\_\_ equal monthly installments, payable on the 10th of each and every month thereafter until the purchase price has been paid in full.

I/We further agree that the title to plants covered by this contract is to remain vested in the seller, Clint McDade & Sons, Inc., until paid in full.

\_\_\_\_\_  
Buyer

Address: \_\_\_\_\_

Date: \_\_\_\_\_

### SELLER'S ACCEPTANCE

The above payment contract and order which it represents are accepted (in the amount stated) (in the amount of \$ \_\_\_\_\_ because of our inability to fill the complete order). Equal monthly payments are to be made in the amount of \$ \_\_\_\_\_ for \_\_\_\_\_ months.

CLINT McDADE & SONS, INC.

Date: \_\_\_\_\_

By \_\_\_\_\_



Postage  
Will Be Paid  
by  
Addressee

No  
Postage Stamp  
Necessary  
If Mailed in the  
United States

**BUSINESS REPLY ENVELOPE**

First Class Permit No. 2, Sec. 34.9, P. L. & R., Signal Mountain, Tenn.

**VIA AIR MAIL**

*Rivermont*

**O R C H I D S**

**SIGNAL MOUNTAIN, TENNESSEE**



